

Santa Anna News

It's More Than Just A Mountain

Single Copy 25 Cents plus tax

Thursday, February 7, 1985

Volume C Edition 06



If you were one of the crazy people on the roads this past week and you thought you had a hard time driving on ice and snow, this little youngster wants you to imagine how she felt. Her little tricycle was immediately bogged down in the snow. Thank goodness the sun has finally come out and melted most of this away.



Last Chance to Enter

Do you have a sweetheart?
Have you been sweethearts for a long time?
Are you married?
Do you have an interesting story to tell on how you got together?
Do you live in Santa Anna, Coleman or one of the area communities?
Well, have we got something coming up for you!
As you know, Valentine's Day is just around the corner. In the Valentine's Day edition of the paper, we would like to honor four couples.
Three of these couples will be honored as being (married)

sweethearts for the longest period of time. One of these couples will be chosen from the city of Santa Anna, one from the city of Coleman and one from the outlying communities. (If you are curious, we included Coleman and the outlying communities as we have a large readership in these areas also.)
These couples will need to send us information on their wedding including the date. We will compare it to the others we have received and let you know who has been married for the longest period of time. Somehow this doesn't show that you have been sweethearts for that

amount of time, so please include any of those little details that you have done for each other as sweethearts over the years.
The fourth couple will be the couple with the most interesting story to tell on how they got together.
A team of unbiased judges consisting of Eddie and Susie Voss and Gary and Teresa Absher has been selected to determine the winners. In the event of a tie, Barbara Kingsbery will cast the deciding vote.
I use the word winner as there will be prizes awarded. Caskey Coleman Florist will be sponsoring the Col-

eman winner. Flowers Unlimited of Coleman, H&H Grocery and Phillip's Drug Store, both of Santa Anna, will be sponsoring the other winners. The prizes are all sweet.
In the meantime, gather your story, write it up and mail it to Sweethearts, Santa Anna News, PO Box 399, Santa Anna, Texas 76878. Entries need to be received by Monday, February 11, in order for the judges to have time to review them.
A few responses have been received already. We hope that you will take a few moments to stop and tell us your story.

City Council Meeting Tonight

The Santa Anna City Council will meet tonight for its regular monthly session. Items on the agenda at press time include Rob Chaney with bond pledging, Joyce Wilkinson of Lone Star Gas, appointment of election judges, Joe Guerrero representing the Santa Anna Volunteer Fire Department, the routine police report, personnel and accounts payable.

Election Day April 6

Filing period for Election Day, Saturday, April 6, 1985, is now open.

The Santa Anna School Board will be filling two positions. The terms of members Max Eubank and Bill Martin will expire at that time. It is not known at this time if these candidates will run again. Gary Absher has filed application to run as a candidate for one of these places.

Other candidates may file application for a place on the ballot until the evening of March 6 in the business office of the High School.

The City of Santa Anna will also hold election on April 6. Terms will expire for Mayor Edd Hartman, Councilperson Dickie Horner, and Councilperson Joe Guerrero.

Please note that in last weeks paper it was noted that Councilperson Carmen Donham's term was shown as being up for election. This was incorrect. Mrs. Donham was re-elected last year. Her term will not expire until next year.

John Pearce of Santa Anna has filed application with the city for one of the council places. It is not known at this time if the other candidates will run again.

The filing period for the city council places opened on February 4th and will close on March 6. Absentee voting will open March 18 and close on April 2.

Blood Drive to Help Copeland's Granddaughter

On Friday, February 15, 1985, from 1 to 6 p.m. a blood mobile from the United Blood Service in San Angelo will be at the Nutrition Center in Santa Anna for donations.
These donations are for Paula Michelle Sindt who was involved in a three car accident this past Saturday on Hwy. 279.
The accident, that left Ms. Sindt and Charles Bollinger of Mozelle seriously injured, was blamed on icy road conditions.
Mr. Bollinger is in the Brownwood Regional Hospital recovering from

surgery. He suffered a broken leg with two severe lacerations.
Ms. Sindt is in the Parkland Memorial Hospital in Dallas in serious but stable condition. She suffered a variety of injuries including a closed head injury, two broken legs and a fractured pelvis.
It is said that Ms. Sindt has used 42 pints of blood at this point. Donations are needed and would be greatly appreciated.
Ms. Sindt, a Brownwood resident, is the granddaughter of Glen and Udell Copeland of Santa Anna.

TEXAS MOST WANTED

Fugitive No. 4, Kenneth Earl Barnard?

VICTORIA, Texas -- Just who is the man who calls himself 'Kenneth Earl Barnard'?

Texas law enforcement authorities would sure like to know. They want him for bank robberies in Victoria and Corpus Christi. 'Barnard' is also wanted by police in Utah and California for other savings and loan robberies.

A few things are known about the suspect by investigators. He uses a number of aliases. He has an Arkansas driver's license issued in the name of Kenneth Earl Barnard. However, investigators have discovered that Kenneth Earl Barnard was the name of an infant who died in 1941. Other aliases used by the suspect include John Roger Canoyer, Edward R. Bright, Ed-

ward Grant and William Grant Osborn.

The suspect is in his early 40's, is a white male, 5-10 to 6-0 tall, 180 to 200 pounds, has short sandy blonde hair, blue eyes and has a small facial blemish above the upper lip on the right side.

He is an avid bridge player and compulsive gambler and travels extensively in the southwest and western states.

Investigators from the Corpus Christi Police Department and the Texas Rangers say 'Barnard' robbed the First Texas Savings Association in Corpus Christi on February 8, 1984, at about 12:35 p.m.

Then on Friday, March 3, 1984, the same suspect allegedly robbed the Goliad Savings and Loan in Victoria

at about 2:00 p.m. Witnesses say the offender entered the Savings and Loan armed with a blue steel handgun, possibly an automatic. At least \$100 worth of marked money was taken in the robbery, all in \$20 denominations. The vehicle used in the robbery was rented from a Ford dealership in Victoria. Apparently the suspect switched vehicles shortly after the robbery and was last seen driving a Honda motorcycle with Arkansas plates.

Investigators say 'Barnard' also is a suspect in the December 28, 1981, armed robbery of Presidential Savings and Loan in Salta Lake City, Utah and the February 4, 1982, robbery of Gibraltar Savings and Loan in Sacramento, California. In both of those robberies, he used the alias

'William Grant Osborn.'

The two Texas robberies have landed 'Barnard' on this week's Texas Most Wanted list. Anyone with information about the true identity of the fugitive and where he might be located is asked to call Texas Crime Stoppers toll-free at 1-800-252-8477 or their local Crime Stoppers program.

All callers may remain anonymous. A \$1,000 cash reward will be paid for information leading to the fugitive's capture.

Texas Most Wanted is a weekly cooperative effort between Crime Stoppers and the Department of Public Safety and is designed to enlist the support of citizens in capturing dangerous fugitives.



Don's Diary

By Don Rutherford

Congratulations are in order for Mrs. C. D. Bruce. This lady has been a citizen of the year for many years in this writer's eyes.

It was first by Mrs. Bruce that I gained a love for books. She was the town librarian. I remember many a day when we would go to the library and she would help us find what we wanted. It was through Mrs. Bruce that I learned so much about the love of God. She was my first Sunday School Teacher. Mom and Dad would take me to Sunday School and Mrs. Bruce would be there in all her radiant love.

Thank you Mrs. Bruce for what you are, what you mean, and what you will mean to those who know you now.

Yesterday, I went to have a picture made for the Home Mission Board. During the photo session the photographer began to talk. He said a picture is a reflection of what a person is on the inside. He said he could look at a picture and tell a lot about a person. He began to tell me a lot about myself. He was right in so much he saw in the picture.

Have you ever stood before a mirror and looked at your reflection? A mirror can tell us many things. If we need a haircut, maybe a few to many pounds, or a gray hair that was not there yesterday. All these things can be seen in a mirror. There are other mirrors. The mir-

ror of friends, how do our friends see us? Do they see a real person, or a person who puts on a show, but nothing beyond a false front.

There is a mirror of other relationships, husband or wife, parent, employer, employee, what do others see in us?

Charles Swindoll has written a book entitled, 'Dropping your Guard'. In this book he challenges his readers to be real in all relations.

Sometimes being real can be dangerous. For people can see us for what we are when we are alone, or when no one else is looking. Sometimes being honest means showing emotion. We men are terrible about not showing emotion. We are taught from childhood that men don't cry and to cry is to be less than a man. Thus many men are emotional wrecks because they have no emotional outlet. We are afraid to show or to share our emotions.

Do you ever doubt? Dr. John Claypool in the book 'The Preaching Event' talks of his struggle with doubt. His ten year old daughter died of leukemia while he was pastor of Broadway Baptist Church in Ft. Worth. He talks of anger, doubt, and frustration. He also talks of consolation and insight. For the full story of this struggle, read 'Footprints of a Fellow Struggler', by John Claypool.

We sometimes think our ministers are perfect and have no problems. But our ministers cry too. He has his struggles and his fears.

Speaking of doubt, how can we doubt God? But you see God is too big to fear our doubts, and He is just big enough to take us into his arms and tell us He understands. Even Jesus questioned the Father. But He came back with 'Not my will but thine be done' and as He did this He was ultimately victorious.

So even in our doubts we can be victorious. So if sometimes you see in the mirror a shadow of doubt or anger at God, don't fear it, take it to the Father. 'Take it to the Lord in Prayer' is a song we sing a lot. In one verse it speaks of bearing

burdens because we don't take them to God.

Think about it: There is an old story of two men who were called on in a large classroom, to recite the Twenty-third Psalm. One was a published orator trained in speech and drama. He repeated the psalm in a powerful way. When he finished the audience cheered and even asked for an encore so they could hear his voice again. Then the other man, who was much older, repeated the same words. But when the man finished no sound came from the people. Then the first man stood to his feet and said, 'I have a confession to make. The difference between what you have just heard from my friend, and what you have heard from me is this: I know the Psalm, my friend knows the shepherd.'

Postmaster's Pointers

By Gary Absher

If a postal money order is lost, how can I get it replaced?

Thirty days after the date of purchase, the Postmaster will help you fill out an application for money order replacement. If the money order has not been cashed, you will receive a replacement within three weeks. There is no charge for this service.

If the money order has been cashed, the Postal Service will provide you with a photocopy for thirty cents.

The Post Office customer lobby will be closed from 12:00 noon Saturday, February 9, until Monday morning February 11 at 7:00 a.m. We are permanently sealing the floors and they cannot be walked on for 48 hours after application. Please excuse the inconvenience.

FACTS & FIGURES

The common cold is pretty common indeed. It outnumbered all other diseases 25 to one. Almost everyone catches colds. About half the population gets two a year, and a quarter gets three or more.



News Notes

Those attending the funeral for Dr. Ben H. Moore in Brownwood were Mr. and Mrs. Jasper McClellan, Mrs. Ted McCaughan, J. Ross Kelley, Jim Spillman, R. W. Balke, Mr. and Mrs. L. M. Guthrie, Mrs. Mary L. Clifford and Mr. and Mrs. Jasper McClellan from Abilene.

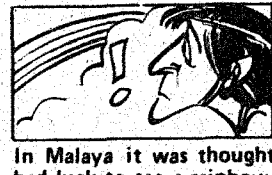
Dr. Moore was pastor of the First Presbyterian Church here from October, 1943 to July, 1966.

Mr. and Mrs. Denny Peckins of Redonda, California, announce the birth of a daughter, January 8, 1985, weighing eight pounds. The girl was named Dasha Jean.

Grandparents are Mr. and Mrs. Joe C. Deal of Santa Anna. Mr. and Mrs. R. J. Deal of Rockwood are the great-grandparents.

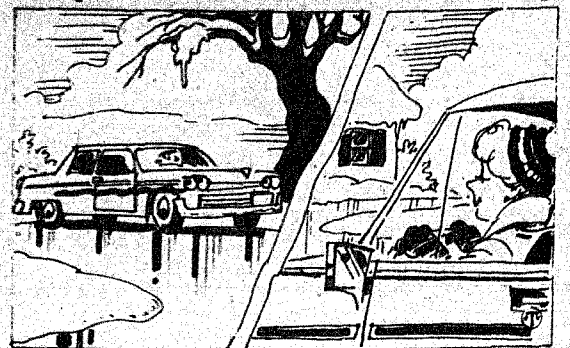
Those whose colds come with coughs can get some relief from an effective new cough-control product that's chewable. It's called Mediquell Chewy Cough Squares. The technology used to make this medicine, Warner-Lambert Company reports, virtually eliminates the bitter taste often associated with dextromethorphan hydrobromide, its active ingredient, while it also spares cough sufferers the inconvenience, dosing inaccuracies and mess of liquid cough medications. One dose of this new medicine provides up to eight hours of relief, twice as long as regular-strength liquids. Unlike liquid cough syrups, it contains no alcohol.

Surveys suggest women are more susceptible to colds than men, by a ratio of 55 to 43. Children under five are more susceptible than any other age group. Among older children, colds account for one out of every four absences from school.



In Malaya it was thought bad luck to see a rainbow.

Helpful Hints On Winter Driving



Some drivers think that the lower the temperature, the slicker ice on the road will be. Ice at 30°F has been proven to be more slick than ice at zero degrees.

Even if you consider yourself the world's best driver, winter weather requires paying added attention to the rules of the road.

Here's some advice from the Independent Insurance Agents of America (IIAA) that can help you drive more safely this winter season:

- Keep in mind that ice at 30°F has proven to be more slick than ice at zero degrees. Take extra care when driving slick roads and be sure your car has snow tires on.
- Certain items should be placed in the car in case you find yourself stranded, or if your tires lose traction. For lost traction, keep sand, cat litter or some sort of traction mats on hand. Flashlights and blankets, as well as canned drinks and packaged foods, could be lifesavers if your car breaks down on a deserted road.
- Begin driving in winter weather by slowly accelerating to determine if your wheels may spin—if they don't, reduce your speed and drive carefully. If they do, use the steering wheel. Steer the car in the direction you want the front to go and the rest of the car will probably skid out sideways. Do not brake until you have regained control of the steering wheel. Apply gradual pressure on the brakes.
- While driving, remember to keep sufficient distance between you and other cars. It takes three to nine times as far to come to a stop on snow and ice.
- Be sure to have antifreeze in your windshield washer as well as some in your cooling system.
- If you're stranded, stay with your car. Exercise to keep warm. Use a flashlight. Leave the window open just a crack, if the engine is running, for some fresh air. Use flares if you have them.



Among certain tribes, women were not allowed to eat tiger meat, lest it make them too strong-minded.

Long-Lasting Lovers

Since it was painted in 1898, this picture of a violinist, so overcome by his beautiful accompanist that he abandoned both music and decorum for a kiss, has been seen over a billion times in America alone.



THIS KISS has lasted nearly 80 years.

Part of its popularity comes from its appearance in advertisements for a heady, mysterious Oriental fragrance blend that lingers and lasts—Tabu. It has even been suggested that the lovely lady was wearing that very scent when she sent the violinist into such raptures.

Now you can get Tabu for (or from) someone with whom you'd like to make some beautiful music. There's a whole collection of lovely gift sets in this warmly sensual and sophisticated fragrance, featuring various combinations of spray cologne, dusting powder, perfume and spray mist concentrate.

In addition, you can get a reproduction of this famous picture, in color, suitable for framing, by sending 25 cents for postage and handling to Tabu Violinist, Dana Perfumes Corp., 609 Fifth Ave., New York, N.Y. 10017.

SANTA ANNA NEWS
PO Box 399
Santa Anna, TX 76878
(915) 348-3545
(USPS 481540)

The Santa Anna News is published every Thursday at Santa Anna, Texas 76878 and entered as second class mail under the Act of Congress of March 2, 1879.

SUBSCRIPTION PRICE: Coleman County and all other areas, \$11.95. As of October, 1984, all Texas subscriptions are taxable making the amount due on them \$12.56. Subscriptions for out of state remain \$11.95.

CLASSIFIED RATES: \$1.50 for the first 20 words; five cents per word thereafter per week for personal items. Rates for business advertising are by the agate inch.

LINDA BERTONI
Managing Editor

TANDY HOWARD
Advertising Manager

DANNA TURNER
Bookkeeper

New-Renewed Subscribers

Brownwood Bulletin, Brownwood
Martin Genz, Wichita, KS
C. C. Gilbert, Santa Anna
Hays Hefner, Lubbock
Darrell Holland, Ft. Worth
Phillips Welding Co., Santa Anna
Gene Smith, Richardson
I. O. Smith, Iraan
Jesse L. Sparkman, Lubbock
Rod Spence, Grand Prairie
Adelle Vinson, Santa Anna
John A. Wornack, Santa Anna
W. M. Rice, Fresno, CA
Mrs. Brian Hardin, Houston
Ed Schrader, Santa Anna
Mrs. John D. Davis, Mt. Vernon, IL
Elgean C. Shield, Houston
Mrs. Cora Zachary, Brazoria
Jim Parker, Austin
Sam Allen, Euless
Arthur Casey, Coleman
Leonard Welch, LaMesa, CA

Sweetheart SWEEPSTAKES

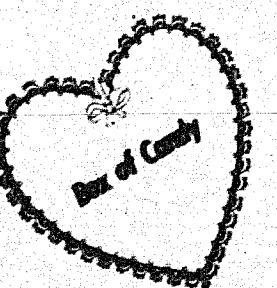


Do You Have A Sweetheart?
Have You Been Sweethearts
For A Long Time?

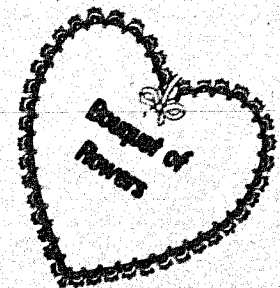
Do You Have An Interesting
Story To Tell On How You Got
Together?

Do You Live In Santa Anna,
Coleman, Or One Of The
Surrounding Area Communities?

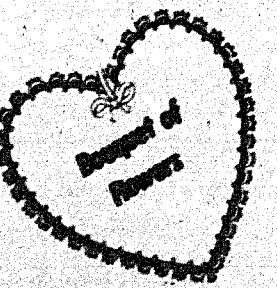
If You Do, Refer To Page 1 For Details On Entering
Our SWEETHEART SWEEPSTAKES!!!!
Prizes Awarded Will Be:



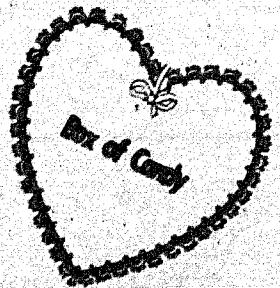
H&H FOOD MART
DOWNTOWN SANTA ANNA



FLOWERS UNLIMITED
209 COMMERCIAL
625-2941
COLEMAN



CASKEY COLEMAN FLORAL
306 COMMERCIAL
625-2111
COLEMAN

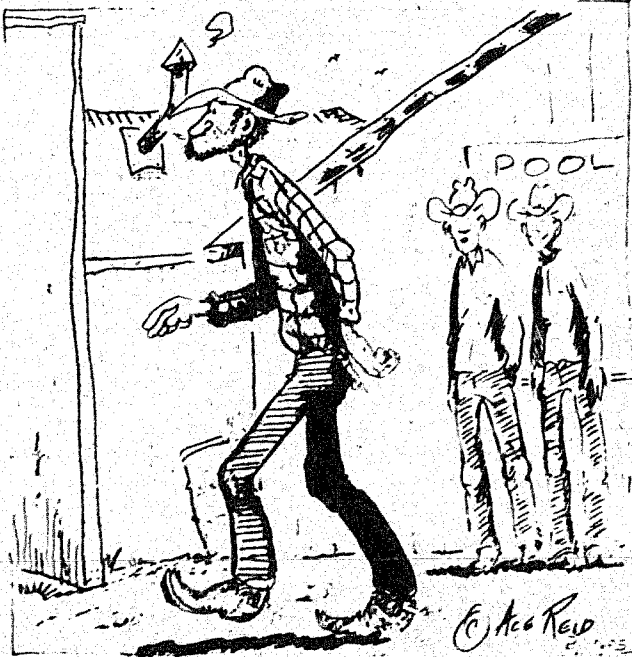


PHILIP'S DRUG
348-3151
DOWNTOWN SANTA ANNA

SANTA ANNA NEWS

COW POKES

By Ace Reid



"Naw, he ain't worth a dang as a cowboy but he is sure good stomping out grass fires!"

Santa Anna National Bank

Deposits Insured By FDIC Up To \$100,000

Ask About Our Interest-bearing

Checking Accounts 1,000 Minimum

PassBook Savings

Certificates of Deposit

Substantial Interest Penalty Is Required
For Early Withdrawal

R. E. Horner Real Estate

625-5625 or 348-3715

31.57 acres, all or part, \$900 per acre

51.83 40 ac. cult., NE of Santa Anna \$800 per acre

303.8 ac. NE of Santa Anna, good hunting, several tanks,

100 ac. cult. \$530 per acre

153 ac. South of Santa Anna, \$550 per acre

97 ac. on Fm 1176, good hunting, \$530 per acre

PLANT PLACE

By Edith Martin

I have had so many questions on what I call the three basics of potting soil and what is soilless potting medium? The answer to both are sphagnum peat moss, perlite and vermiculite.

Perlite and vermiculite starts out as solid ores buried deep beneath the soil surface. After the ore is mined, it is crushed. The flakes are sorted according to size and heated up to 1600 degrees.

Along with the intense heat and with the moisture in the rock, the formation turns to steam causing the tiny rock particles to "pop" to many times the original size. The results is a pile of light particles honeycombed with numerous airspaces.

This combination of airspace and

rock is what makes perlite and vermiculite such great soil additives. They prevent soil from drying out too quickly but also prevent the soil from packing.

With perlite and vermiculite to maintain a loose airy soil structure, excess water will drain quickly from the soil mix. But this is where the resemblance ends. Perlite is a dusty mass of white balls and does not effect the soil chemistry at all but it is very important in the soil drainage and makes a great rooting for succulents and tropical foliage plants.

Vermiculite on the other hand, is a dark substance and looks like a miniature accordion and will absorb water. After about six months in a growing medium, it will compress into flat pieces under pressure of constant moist soil. It also contains small doses of plant nutrients which it releases into the soil. Vermiculite

Sphagnum has many uses. The milled sphagnum is the most useful grade for starting small seeds. Mixed with perlite and vermiculite, it becomes a soilless potting mix and is great for begonias and African violets.

is very good to mix with peat moss for planting soil.

The sphagnum is a true moss-no flowering and forms seeds. It spreads by releasing "spores" as a fern or mushroom and grows in bogs or swamps. Most of peat and sphagnum comes from Canada.

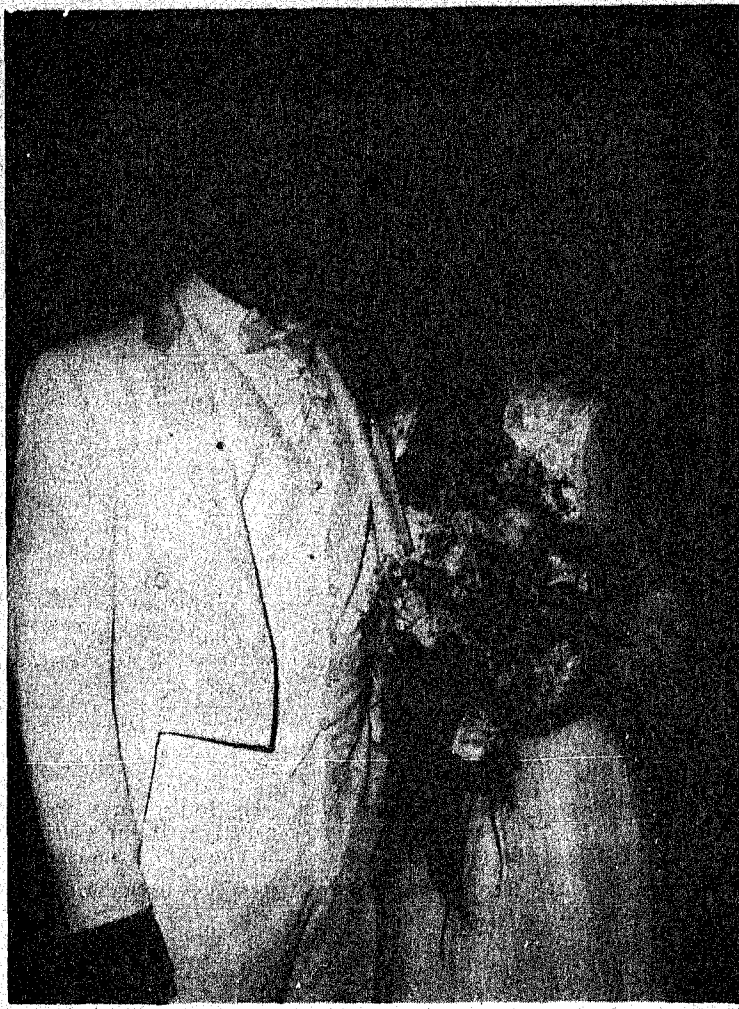
There is a saying, "All peat is sphagnum but not all sphagnum is peat." Sphagnum is available in several grades, from the freshly harvested living plants to the dried versions sold either in long fibers, chopped up hunks, or finely milled grades. Peat is dark brown and fine textured like sawdust.

Chopped or shredded sphagnum makes a good seed bed for larger seeds and is great for mixing with garden soil for larger plants.

The long fiber or living sphagnum is the dried plant unchanged from its harvested state. It is ideal for wire baskets or fern columns. It gives air to soil yet it holds in the moisture.

Peat is recommended for a mulch on top dressing in the garden. It is great for transplanting. Its coarse texture worked into then soil will increase water holding ability yet give air to the root system, stimulating the growth of tiny root hairs.

It would be hard to imagine what indoor gardening would be like without sphagnum peat, perlite and vermiculite.



Toni DeFood and Judd Stewardson

DeFoor - Stewardson Wedding

The Santa Anna United Presbyterian Church was the setting for the Saturday, January 12, wedding of Toni DeFoor and Judd Stewardson. The Rev. James Gooch, pastor, officiated at the 3:00 p.m. ceremony.

Parents of the couple are Mr. and Mrs. Gary Herring of Coleman and Mr. and Mrs. Burgess Stewardson of Santa Anna.

Brass candelabra holding white bridal tapers formed the background for the ceremony, with a heart-shaped brass candelabra centering the altar. A large arrangement of white mums and blue and white carnations centered the communion table. The aisle was marked with blue and white ribbon bows.

Mrs. Louis Miles Guthrie was organist, playing the traditional bridal selections and accompanying Jeanene Rogers of Midland as she sang 'Wedding Song' preceding the ceremony and 'Wedding Prayer' before the recessional.

Given in marriage by her parents, the bride was ushered to the altar by her father. Her formal gown of bridal organza and lace was fashioned with a molded bodice of empire style with a Juliet neckline. Appliques of chantilly lace and seed pearls outlined the neckline and shoulders. The long sleeves were attached to wide fitted cuffs of lace and were overlaid with full shirred organza. The crystal pleated skirt was edged in lace and extended to a cathedral train that fell in tiers banded in wide lace.

A Juliet cap of lace and seed pearls held the elbow length veil of lace-edge illusion, and she carried a cascade bouquet of white roses, blue carnations and baby's breath tied with satin and velvet ribbons in shades of blue. Her jewelry was a strand of heirloom pearls belonging to the mother of her maid of honor. She wore the traditional blue lace garter.

Susie Scott of Midland was maid of honor. Bridesmaids were Jackie Herring, sister of the bride, Marcella Shelton of Tatum, New Mexico and Pam Kenney of Brownwood. They wore identical gowns of royal and romance blue taffeta fashioned with fitted bodices and a double ruffle around the neckline. The full skirts were shirred at the hemline to show the royal blue underlay. They carried col-

onial bouquets of blue and white carnations and roses.

Ward Stewardson was his brother's best man. Groomsman were Randy Scarborough and Gary Hubbard of Santa Anna, brother-in-law of the groom, and Todd Johnson of Burnet, cousin of the groom. Candlelighters and ushers were Ron Stewart and Mike Anderson.

Following the wedding the bride's parents hosted a reception in the fellowship hall at the church. The bride's table was laid with a floor-length cloth of ecru linen overlaid with lace and centered with an arrangement of blue and white carnations surrounding a gold candelabra. A four-tiered cake was iced in white and trimmed in blue. Silk flowers decorated the third layer, and a miniature bride and groom topped the cake. Kay McKinney served cake and Paula Dela Rosa served punch from the crystal bowl.

Chocolate cake was served with coffee at the groom's table which was covered with a floor-length yellow cloth and centered with an arrangement of bronze mums and carnations. Lugenia Knight and Tara Castelle served from chrome and walnut appointments. Also in the house party were Barbara Kingsbery and Roanna Barton.

Kim Hubbard, sister of the groom, secured names for the bride's book.

Special guests at the ceremony and reception were Vernon and Kirk DeFoor of Gillham, Arkansas, father and half-brother of the bride; Mr. and Mrs. Raymond Ellis of San Saba, grandparents of the groom; Mr. and Mrs. Homer Shelton of Tatum, New Mexico, grandparents

of the bride; and Mr. and Mrs. Dale Griel of Odessa.

For the wedding trip to San Antonio, the bride wore a tailored suit and blouse with black accessories.

The couple are making their home on the Stewardson Ranch near Santa Anna, where the groom is engaged in the family business. He is a graduate of Santa Anna High School and Texas State Technical Institute at Waco. The bride, a graduate of Talpa-Centennial High School, is employed with Invader Wireline, Inc., in Coleman and Conquistador Petroleum, Inc. in Santa Anna.

REHEARSAL DINNER

The parents of the groom hosted a dinner at their home following the wedding rehearsal on Friday, January 11. Tables were decorated with arrangements of blue silk flowers and greenery.

The menu featured homemade tamales, chili and chicken enchiladas. The host couple were assisted with the serving by Ginger Jamison, Diane Cupps and Sylvia Edwards.

PRENUPTIAL PARTY

The bride was honored prior to the wedding with a gift tea at the home of Kathy McDonald in Coleman.

BRIDAL PARTY

On Sunday afternoon, January 27, ladies of the United Presbyterian Church hosted an old fashioned 'pounding' for the newlyweds at the church fellowship hall.

Canned goods, food items and other gifts were presented to those attending.

First Presbyterian Church

The delegates to Presbytery in Abilene January 25-26 were the Rev. Jim Gooch and Mary L. Clifford. Mrs. Clifford was elected to the Evaluation Committee.

Mrs. Jim Gooch went to the Young People's meeting at the same time. Mr. Jim Spillman took Misses Monique and Toni Yancy for the Friday evening meeting.

Attending Presbytery on Saturday were Mr. and Mrs. Luther May from Santa Anna and Mr. and Mrs. Hugh W. Burden from Llano who were visiting the Mays.

The Rev. Jim Gooch attended the Spring Lectures at the Presbyterian Seminary in Austin last week.

Mr. Jasper McClellan from Abilene filled the pulpit Sunday, February 3 for the Rev. Gooch.

CHARLEY'S GENERAL STORE

HIWAY 67 IN BANGS

Plumbing
Batteries
Gulf Gas
Fishing Tackle
Used Cars & Trucks

ORIGINAL
BRIGGS & STRATTON
SERVICE
PARTS

Tires
Tools
Electrical
Petroleum Products

Authorized Briggs & Stratton Dealer

Your one stop shop

QUALITY ASSORTED CHOCOLATES

VALENTINES CANDY

GIFT BOXED
LARGE SELECTION

\$2.95
TO
\$9.95

COOKED FOOD SPECIAL
AS FEATURED ON TV
CHOPPED

B.B.Q. ON A BUN SANDWICH

EACH 99¢

WE HAVE MONEY ORDERS
ALLSUP'S
UP TO \$200.00
FAST & CONVENIENT

MONEY ORDERS

EACH 19¢

DIET. PEPSI LIGHT,
PEPSI FREE, OR
PEPSI-COLA

6 Pack Cans \$2.69

DECKER JUMBO
MEAT FRANKS

1 lb. Pkg. \$1.19

DECKER
FRANKS

1 LB. PKG. Reg. 2.07 99¢ Reg. 40¢ 30¢

Cheez Whiz Sm. Fountain Drink
Reg. 40¢ 30¢

Turkeys 49¢ Lb.

PRICES EFFECTIVE
FEBRUARY 7-9, 1985

OPEN 24 HOURS EVERYDAY
MONEY ORDERS - GROCERIES
ICE - MILK - CHIPS & DIPS - SOFT
DRINKS - SNACKS - HOT COOKED FOODS
SELF SERVE GAS WHILE SUPPLIES LAST

WE ♥ YOUR BUSINESS

Santa Anna Seed Co.

Bill Smith, the new manager of Santa Anna Seed Co., would like to invite everyone to drop by and get acquainted.

Bill has been associated with Browning Seed, Inc. for 1 1/2 years and is looking forward to working with the people of this area.

**Walker
Funeral Home**
625-4103 Coleman, Tx.
Pre-Arranged Funerals

SANTA ANNA NEWS
 Thursday, February 7, 1985
 Page 4

RANGER PARK

By Annie Mae Briner

Living Center

Edna Wells visitors were Steve Hale, Jackie Jennings and JoAnn Hale.

Vivian West visited Cody Mathews. O. C. Barker was visited by R. W. Balke, Wayne Barker and Mr. and Mrs. Clifford Lowe.

Nursing Home

We are delighted to have the women of the Presbyterian Church keep the mending done for the residents. Their last visit and work day they got the mending done and made lap spreads too. We say a big thank you to Nell Myers, Claudine Brown, Era Walters and Janet May for being so good to us.

We are so happy to have Kenneth Brusenhan and Ira Tyler make their home with us. We welcome you both.

Amanda Perry conducted the devotion Wednesday morning. We sure appreciate your faithfulness Amanda.

Brother Steve Ramsdell was here for devotion time Thursday morning and visited with the residents. We appreciate you Bro. Steve.

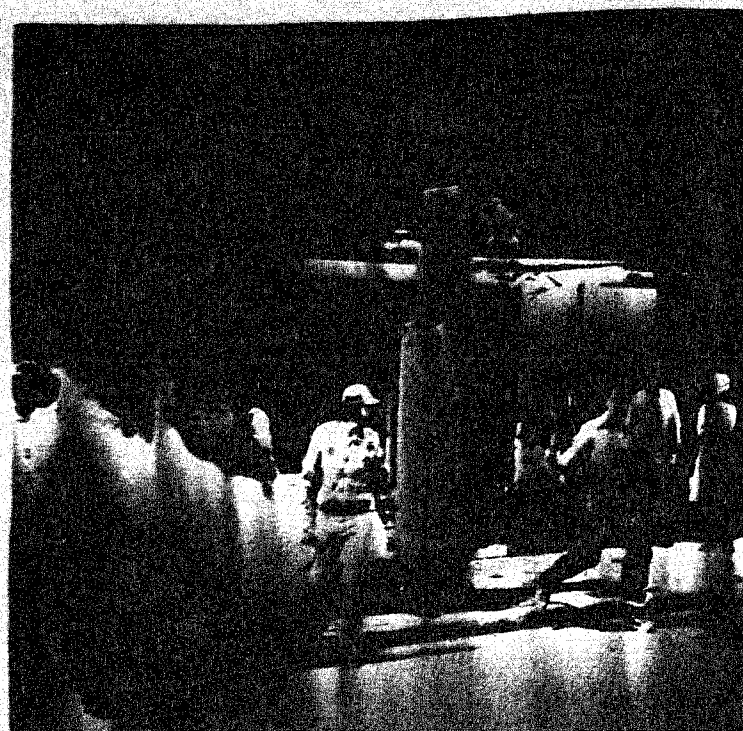
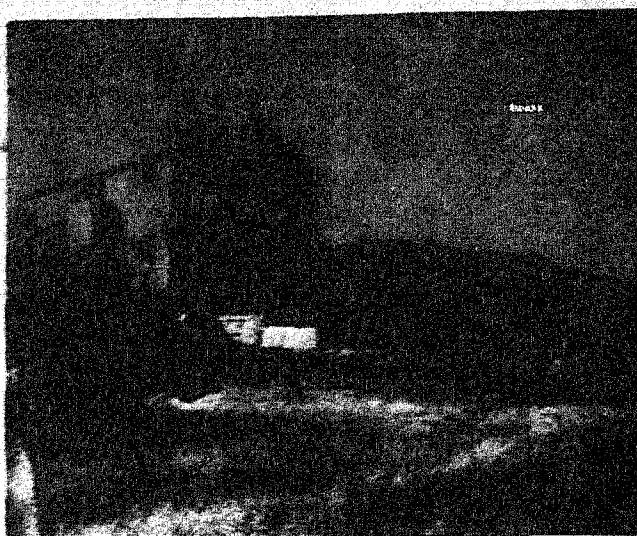
The Overcomers were here Saturday afternoon and sang for the residents. We are happy you come each first Saturday of the month. A hearty thank you to Brett Stear, Mickey Alva, Mark Murdock, Mark Alva, Vicki Shearer, Rebecca Cola, Tommy Marney, Rutina Marney, Nadine Shearer, Tony Marney, Katrina Gunderson, Rachel Gunderson, Ann Kaplan, Robin and Karla Gunderson, Carol Marney, Wally and Karen Shearer.

We express our thanks to Mrs. Fanny Bullock's family for sharing the beautiful flowers with the residents. We enjoyed them so much.

N. A. Parsons visited Robert Reynolds.

Jane Hawkins visitors were Barbara Moore, Bea Graham and Sam Estes.

continued page 8



Though seldom seen, the Santa Anna Volunteer Fire Department has worked hard through the years to eliminate fires such as the Cotton Gin Fire of 1978, the Santa Anna News Fire of 1981 and various grass fires throughout the area.

The Volunteer Fire Department

You can bank any time when you bank by mail.

All Types of Savings Accounts

First Coleman National Bank

Member F.D.I.C.

"Always Willing - Always Prepared"



Your Good Neighbor Bank

We Sponsor TBS News Each Day At 12:30 Over KSTA

The Santa Anna Volunteer Fire Dept. Aux. met Mon., Feb. 4 for its regular monthly meeting.

Our annual Mexican style supper was enjoyed by members and their families. Mr. and Mrs. Dickie Horner and family; Mr. and Mrs. Jimmy Eisenhower and family; Mr. and Mrs. Marty Donham and family; Mr. and Mrs. Freddie Dodson; Mr. and Mrs. Dale Bradley and

family; Mr. and Mrs. Don Carter and family; Mr. and Mrs. Donald Strickland; Mr. and Mrs. Roddy Dean and family; LeRay Huggins and a visitor, Our 'Mother', Carman Donham

Our past and present sweethearts were recognized and presented a gift box. They were: 1978, Julie Dean, daughter of Mr. and Mrs. Roddy Dean; 1979, Amy Day, daughter of Mr. and Mrs. Clint Day; 1980, Brandi Horner, daughter of Mr. and Mrs. Dickie Horner; 1981, Amber Huggins, daughter of David Huggins; 1982, Misty Bradley, daughter of Mr. and Mrs. Dale Bradley; 1983, Briana Horner, daughter of Mr. and Mrs. Dickie Horner; 1984, Shelly Carter, daughter of Mr. and Mrs. Don Carter; 1985, Beth Eisenhower, daughter of Mr. and Mrs. Jimmy Eisenhower.

Our next regular meeting will be March 4th.

You only look at the new Fire Truck of the Santa Anna Volunteer Fire Department to realize just what can be accomplished by a group of volunteer men with a common goal.

Years ago, Mr. W. T. Rae helped organize a fire department for Santa Anna, asking each business to furnish a member. They had plans and aspirations.

The City of Santa Anna was incorporated in June, 1906. S. J. Pieratt was elected the first mayor. L. V. Stockard, Miles Wofford, Fred Turner, V. L. Grady and John Hall were elected commissioners.

Santa Anna had no water, few wells and cisterns to catch water and water holes in the creeks. So, water was the first priority for the new city.

A bond election was held on March 9, 1909, for \$25,000 for a water system. Tax was to be 25 cents on each \$100.00. This carried on April 6, 1909, by 92 for and 24 against.

A later entry, May 26, 1909, for a \$22,000 bond was voted with 61 for, 25 against. Fred Turner, Dr. J. P. Mathews and Ed Wallace were commissioners.

A. R. Brown contracted to build the dam for a lake for 20 cents a cubic yard.

September 7, 1909, E. R. Brooker Co. was to install the water system for \$15,000. \$612.22 was paid for the land.

F. C. Woodward was the first elected mayor after the city went to a council form of government in April of 1920.

After the water system was installed the City Council bought two hand reels and 500 feet of standard fire hose. The hose reels, with double axle connection to wheel, with a tongue and hand holds and a rope to be used, so several could help pull.

Noted in the minutes of July 6, 1917, a deposit slip to the First National Bank of Santa Anna for \$5.95 for a truck fund.

Minutes show the dues as 25 cents per month in 1916.

First fire was Polk Bros. Warehouse, who had no insurance with a \$100 loss.

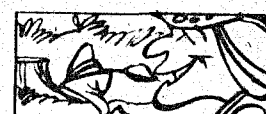
Members listed from 1916 to 1919 were G. E. Adams, J. D. Allen, A. R. Brown, Ford Barnes, S. H. Collier, C. G. Erwin, Roger Hunter, R. D. Kelley, J. J. Kirkpatrick, Leman Brown, B. H. Melton, M. J. Norrell, E. E. Polk, S. M. Polk, E. M. Raney, B. W. Ryan, Jim Scott, Jim Thur-

man, B. T. Vinson, F. C. Woodward, Lee Woodward and Lee Hunter.

Records show that a regular meeting in January of 1917 was held at Polk and Baxters. On motion the following officers were elected for the year: B. W. Ryan, Chief; J. D. Allen, Asst. Chief; C. G. Erwin, Foreman; and M. J. Norrell, Secretary-treasurer. It was agreed that the Fire Company be revived and registered in the County Clerk's office.

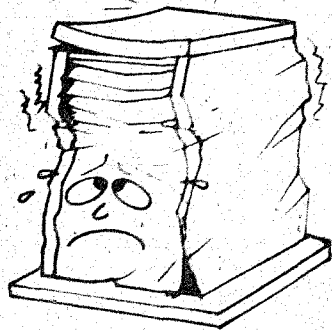
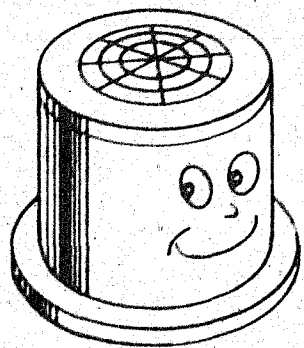
By June, 1919, they had ordered a truck and appointed a committee of B. W. Ryan, C. G. Erwin and W. F. Barnes to arrange location and financing of a one room brick or stone building to keep the truck. Estimating the cost would be \$200, on July 2, 1917, they bought the lot for housing of the truck.

The next chapter will introduce the Women's Auxiliary of the Volunteer Fire Department and some highlights from the minutes as we go down through the years.



In ancient India, it was believed that a prince who had lost his kingdom would have it restored if he ate food cooked on a fire made with wood grown out of the stump of a tree that had been cut down.

When Your Present Heating Unit Has About Had It, Replace It With A New Electric Heat Pump.



WTU Will Pay You A Cash Bonus

For installing residential energy efficient electric heat pumps, air conditioners and heat recovery units in new or existing single family homes. To qualify, your home must be served by WTU and meet our energy efficiency requirements.

The Energy Savings Plan

Now WTU will pay you to save energy through the Energy Savings Plan. When you buy energy efficient equipment, you not only get a cash bonus, you also save money on future energy bills. WTU wants you to buy energy efficient equipment because it helps to hold down the demand for electricity, and less demand helps us postpone building new and expensive power plants.

Cash Incentives for New or Existing Single Family Homes

HEAT PUMPS SEER EER 8 and Above		AIR CONDITIONERS SEER EER 8.5 and Above	
Central Systems.....	\$110 Per Ton	Central Systems.....	\$ 50 Per Ton
Window Units 11,999 BTU and Below	\$ 60 Per Unit	Window Units 11,999 BTU and Below	\$ 40 Per Unit
12,000 BTU and Above	\$ 75 Per Unit	12,000 BTU and Above	\$ 50 Per Unit
Solar-assisted Electric Water Heating \$100 Per Unit		Heat Recovery For Electric Water Heating \$100 Per Unit	

WEST TEXAS UTILITIES COMPANY



Electricity It's the Power of Choice.

Ambulance Service

Yes

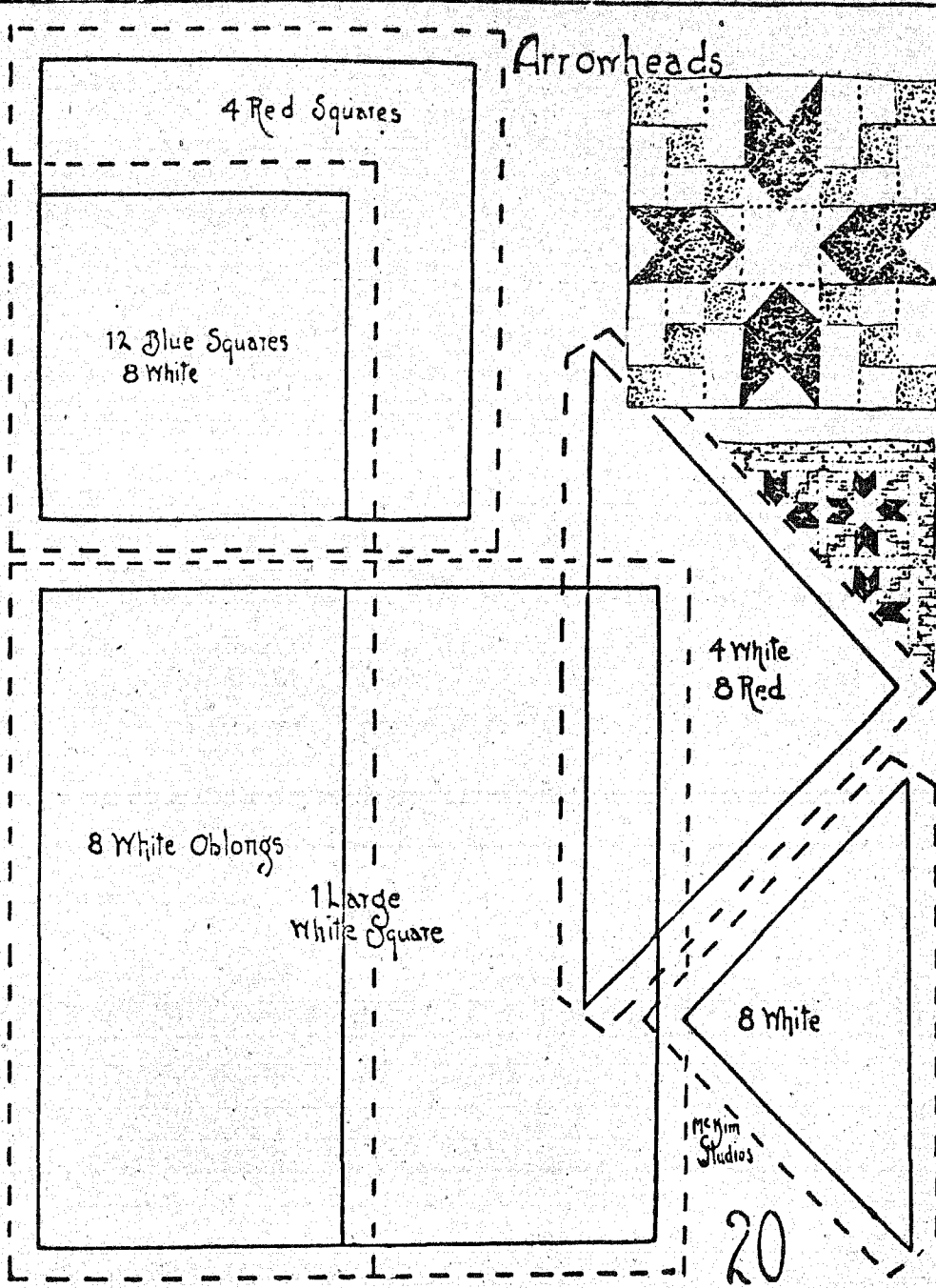
Henderson Funeral Home is providing Emergency Ambulance Service with ECA and EMT trained personnel to the people of Santa Anna and the surrounding area, which are licensed and certified by The State Dept. of Health Emergency Medical Service, as we have been for the past 13 years. We will continue to offer this service until a decision is made on emergency ambulance service for Coleman County. We would like to thank the people for their past patronage. We appreciate your patience and understanding in this matter.

Thank- You,

Donnie M. Henderson

Owner-Operator

THE STATES PATCHWORK QUILT PARADE



There was a day when each of our 48 great commonwealths was a far-flung outpost of civilization, but colonies and territories became States: the eastern seaboard was rich in old settled communities while the Midwest was pioneering and the Far West just a future!

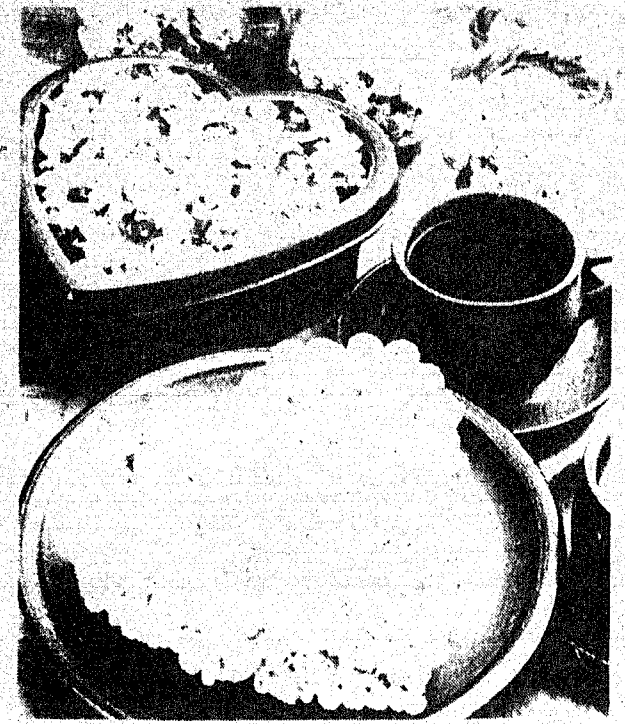
To the grand old State of Michigan we dedicate this quilt beautifully patterned with arrowheads, a center star and sturdy squares that build a progressive network through the whole counterpane.

Trace the eight cutting units onto cardboard, then mark around these onto material. We suggest blood red for the squares and triangles that form the arrowhead with either navy or a lighter gray blue for the squares. There are 53 different pieces in each block finished 16 inches square, but the sewing is all straight seams such as may be run on the machine. Blue and white corner squares piece and add to the red and white blocks between in a simple piecing plan. These are set together with strips of white cut 2 3/8 inches wide by about 16 1/2 inches long with blue squares like their pattern at all intersections.

Twenty pieced blocks surrounded by such strips would make a top 74 by 92. A checkerboard border as suggested in the small sketch would bring this size to 82 by 100.

Material allowance for a full sized arrowhead quilt would be about six yards of white, four of blue and two of red.

WELCOME VALENTINE'S DAY WITH POP CORN SWEETS



The custom of celebrating Valentine's Day with the exchange of sweets and other tokens of affection began during an ancient Roman festival. The first Valentine's greeting card, made of raised paper, dates back to the 1790's.

To continue this loving tradition, celebrate February 14 with family and friends by exchanging special cards and sharing sweets made from pop corn.

A folder featuring a variety of pop corn recipes plus a "how-to" holiday and party crafts section may be obtained by sending the pennant from any JOLLY TIME product or 25c along with your name, address and zip to JOLLY TIME, P.O. Box 178, Sioux City, Iowa 51102.

A pop corn ball maker, made of durable molded plastic, also is available by sending \$1.00 to the JOLLY TIME address.

POP CORN HEART

- 2 quarts popped Jolly Time Pop Corn
- 4 tablespoons butter
- 6 cups miniature marshmallows (1-pkg.)
- red cherries for decoration

Preheat oven to 250 degrees. Place popped corn in a large, 4-inch deep buttered baking pan. Keep warm in oven. Butter a 6-cup heart-shaped cake pan. In a double boiler or large saucepan, melt butter over low heat. Stir in and melt marshmallows. Remove pop corn from oven. Pour butter mixture over pop corn, stirring to coat evenly. Pack the pop corn mixture into the heart-shaped pan. Chill. To remove the cake from the pan, place the pan in a shallow dish of warm water and loosen edges with a spatula. Decorate with cherries.

Henderson Funeral Homes

Coleman 625-2121 'People Who Care' Santa Anna 348-3131

Offering At Your Request

Pre-Arranged Funerals

Funeral Insurance and Counseling

Ambulance Service

MICHIGAN QUILT

THE ARROWHEAD

THIS YEAR YOU CAN SEND
Happy Valentine Ads

MESSAGE OF LOVE

From your heart,
Write your love
In a special message.
And say "I love you"
— Bill

1 COLUMN X 1 INCH

\$2⁶⁵



Valentine Greetings
TO MOM & DAD!

— Jean and Jay

2 COLUMN X 1 INCH

\$5²⁵

TO MISS JONES

Best Wishes to
the best teacher
in the world!

from
YOUR CLASS

1 COLUMN X 1 1/2 INCHES

\$3⁹⁵



HAPPY
VALENTINE'S DAY
TO MY WIFE

Thank you for a
fabulous 23 years!
— Henry T.

1 COLUMN X 2 INCHES

\$5²⁵

Happy Valentines Day !!
Grandmother and Granddaddy,
You're the best Grandparents anyone
could ever have.

Love, Sissy

2 COLUMN X 1 1/2 INCHES

\$7⁸⁰

Dress up your Valentine's Day Greeting with a
large heart 10" extra or a small heart 5" extra

ATTENTION STUDENTS:

The Santa Anna High School Senior Class Will
Print Your Special Message To That Special
Someone For 1/2 The Price .

ALL ADS MUST BE PREPAID

SANTA ANNA NEWS

health hints

Frostbite—A Serious Winter Hazard

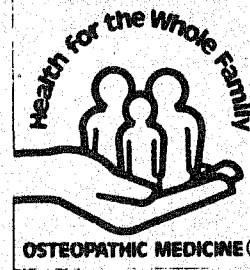
What is the best treatment for frostbite? Here are some views from John W. Becher, Jr., D.O., Chairman of Emergency Medicine, Philadelphia College of Osteopathic Medicine.

First, it is important to recognize that frostbite is the actual freezing of body tissue. The most important thing to remember with frostbite is to keep the injured part cold until you can be sure it will not be subject to refreezing once it has thawed. Thawing and re-freezing is considered the most damaging thing that can happen.

If competent medical attention can be reached quickly, the frozen portion should probably be kept literally "on ice." Inside a warm car or vehicle, it would actually be best to pack the frozen arm or leg in ice. This will prevent a gradual thaw that increases tissue damage.

In cases where it is impossible to reach a physician in less than several hours, Dr. Becher, an osteopathic physician, recommends the following:

- Heat water to a temperature between 100 and 108 degrees Fahrenheit.
- Immerse the frostbitten part in a suitable container filled with this warm water.
- Handle the frozen part as little as possible. Do not



OSTEOPATHIC MEDICINE

massage it. This will cause further damage.

- Keep the injured part in the warm water until the tip of the thawed part flushes, is warm to the touch, and remains flushed when removed from the bath.

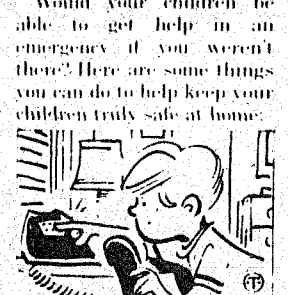
With this rapid thawing the injured person may notice some degree of sensation returning to the affected part. When blisters develop, and they will in all but the mildest cases, sensation will disappear again and will not return until healing is complete. Do not touch or prick the blisters open. They are clean and protect the underlying tissue so that healing can begin.

Remember, an untrained person should only attempt to thaw a frozen part when a physician cannot be reached within several hours. Medical supervision is preferred because it will almost always improve the chances of complete recovery.

Emergency Pointers

For Parents

Would your children be able to get help in an emergency if you weren't there? Here are some things you can do to help keep your children truly safe at home.



Teach your children to dial "0" in an emergency for operator assistance.

- Teach your children to dial "0" in an emergency and explain how operators can get fire, police and medical assistance to help when needed.

Make certain children know their full names and address, town and telephone number. Post it by the telephone where the child can see it.

- Let your children know the importance of speaking clearly and calmly to the operator.

Make sure visiting relatives and babysitters know where emergency telephone numbers are posted and where you can be reached in case of emergency.

- Above all, teach your children the problems associated with abuse of emergency numbers. False alarms and pranks called to police or fire officials can literally jeopardize lives.

Children should understand and make their friends understand that abuse of emergency numbers is no joke.

For a free brochure on emergency phone tips, write: Emergency Communications Workers of America, P.O. Box 13008, Dept. B, Washington, DC 20009.



Toothbrush bristles were the first commercial product made of nylon, which was patented in 1937.

STATEMENT OF NONDISCRIMINATION

COLEMAN COUNTY TELEPHONE COOP, Inc. has filed with the Federal Government a Compliance Assurance in which it assures the Rural Electrification Administration that it will comply fully with all requirements of Title VI of the Civil Rights Act of 1964 and the Rules and Regulations of the Department of Agriculture issued thereunder, to the end that no person in the United States shall, on the ground of race, color or national origin, be excluded from participation in, be denied the benefits of, or be otherwise subjected to discrimination in the conduct of its program and the operation of its facilities. Under this Assurance, this organization is committed not to discriminate against any person on the ground of race, color or national origin in its policies and practices relating to applications for service or any other policies and practices relating to mistreatment of beneficiaries and participants including rates, conditions and extension of service, use of any of its facilities, attendance at and participation in any meetings of beneficiaries and participants or the exercise of any rights of such beneficiaries and participants in the conduct of the operations of this organization.

Any person who believes himself, or any specific class of individuals, to be subjected by this organization to discrimination prohibited by Title VI of the Act and the Rules and Regulations issued thereunder may, by himself or a representative, file with the Secretary of Agriculture, Washington, D. C. 20250, or this organization, or all, a written complaint. Such complaint must be filed not later than 180 days after the alleged discrimination, or by such later date to which the Secretary of Agriculture or the Rural Electrification Administration extends the time for filing. Identity of complaints will be kept confidential except to the extent necessary to carry out the purposes of the Rules and Regulations.

Reed Memorial Co.

Monuments of Distinction
Fort Worth Highway
Brownwood, Texas
Box 265 - Ph. 646-7625
Sylvia Herring
Local Representative

1985 Science Fair Scheduled February 23

Plans are underway for Coleman County's fourth annual Science Fair, sponsored by the Women's Civic League. The Fair is scheduled for Saturday, February 23 at the Coleman High School. The competition is open to any student enrolled in grades 4 thru 12 in any Coleman County School.

Grades 4 thru 6 will compete in a Sub-Junior Division, grades 7 thru 9 will be in the Junior Division, and grades 10 thru 12 will be in the Senior Division. All of the projects will be subdivided into two categories, either biological or physical science.

Entry blanks for Santa Anna students are available in the High School office. Entry deadline is February 18, when the forms must be turned in to your science teachers.

The Fair features an exhibit of the work of students at all levels who are

interested in science. It provides an opportunity for display of their work to parents, teachers, other students and the general public.

Judging will be in the morning hours, and viewing by the public will be from 3:30 to 5:30 p.m. The awards ceremony will follow from 5:30 to 6:30 p.m. Certificates of participation will be given to all students who have entries. Ribbons will be awarded to the first three places and honorable mention projects. A number of special awards and prizes will also be given.

Worthy projects presented with place awards of Awards of Merit in grades 7 thru 12 will attend the Abilene Science Fair March 6, 7 and 8.

Students are encouraged to start making plans for their projects, talk to their science teachers and get their entry blanks in by February 18.

Police Chief Visits School

Students at Santa Anna Adventist School listened intently while Police Chief Russell Ellis told many of his exciting experiences as a law enforcement officer. He explained the various parts of his uniform and the purpose of all the equipment he carries, such as his handcuffs, gun, pen, etc. Many students were surprised when Police Chief Ellis said that he considered his pen his most deadly weapon. This is due to the fact that what he writes about a crime can be instrumental in putting someone behind bars for many years.

He encouraged students to be wise and say 'NO' to drugs and alcohol. Also we, as citizens, should not be afraid to report a crime if we witness it. We are all enforcers of the law even though we are not paid.

By reporting someone who breaks the law we may prevent that person from bringing harm to another individual.

Police Chief Ellis shared his reasons for being a law enforcement officer. He said that the majority of his work was not looking for people to arrest and put in jail but in helping people who had various problems, such as being locked out of their house or car, people involved in car accidents, or those suffering from natural disasters. 'I enjoy helping people,' said Police Chief Ellis.

We at Santa Anna Adventist School appreciate the fine work of Police Chief Ellis. We would like to extend a special thank you to him for taking time to talk to our students.



Santa Anna Police Chief Russ Ellis visits the Seventh Day Adventist School.

SCHOOL MENU

Monday, February 11 ---
Corn dogs with mustard, potato salad, baked beans, spice cake and milk.

Tuesday, February 12
Meat and spaghetti, mixed vegetables, shredded lettuce, peaches, hot rolls and milk.

Wednesday, February 13
Taco nuggets, pinto beans, cream potatoes, hot rolls, chocolate clusters and milk.

Thursday, February 14
HAPPY VALENTINES
Western Burgers, Buttered corn, cheese potatoes, apples and milk.

Friday, February 15
BarBQue on bun with pickle relish, french fries, tomato wedge, fruit cup and milk.

Last Call for Cookbook Recipes

Recipes of all kinds are still needed for the Band Booster Cookbook. These should be turned in by February 15th.

If enough old-time recipes are turned in, the cookbook will feature a special section in conjunction with the up-coming sesquicentennial celebration.

Legal Notice

LEGAL NOTICE

NOTICE OF APPLICATION FOR FLUID INJECTION WELL PERMIT. Thompson Well Service, Inc., 3327 Winthrop, No. 166, Fort Worth, Texas 76116, has applied to the Railroad Commission of Texas for a permit to inject fluid into a formation which is productive of oil or gas. The applicant proposes to inject fluid into the Morris Sand Formation, W. D. Cope Lease, Well Number 1. The proposed injection well is located 4 1/2 miles southeast of Coleman, in the Coleman County Regular Field, in Coleman County. Fluid will be injected into strata in the subsurface depth interval from 1982 to 2000 feet.

LEGAL AUTHORITY: Chapter 27 of the Texas Water Code, as amended, Title 3 of the Natural Resources Code, as amended, and the Statewide Rules of the Oil and Gas Division of the Railroad Commission of Texas. Requests for a public hearing from persons who can show they are adversely affected, or requests for further information concerning any aspect of the application should be submitted in writing, within fifteen days of publication, to the Underground Injection Control Section, Oil and Gas Division, Railroad Commission of Texas, Drawer 12967, Capitol Station, Austin, TX 78711 (Telephone 512-445-1373).

T-25976-06-06

CLASSIFIEDS

SANTA ANNA NEWS
Thursday, February 7, 1985
Page 7

Card of Thanks

Thank you for cards, flowers, food, visits and calls while I was in the hospital and since I have been at home. Each act of thoughtfulness is really appreciated.

THANKS
Mrs. Harry Crews

C-25980-06-06

I would like to take this means to Thank everyone for the visits, cards, food and the beautiful flowers and other gifts of kindness. But most of all the concern for my welfare and your prayers while I was in the hospital.

THANK YOU AGAIN
JoAnn Buse

B-25979-06-06



The first trained nurse in the United States was Linda Richards who graduated from New England Hospital for Women and Children, in 1873.

T-25976-06-06

Automotive

SATURDAY ONLY
Auto Repair Equipment Sale!

Compressor, air and floor jacks, new and used parts, some tools. 10 a.m. til 3 p.m. at the old Dave's Auto Repair in Santa Anna on E. Wallis Ave. Call evenings 643-1455 or Saturday 348-3772 and ask for Dave.

C-25981-06-06

Miscellaneous

FOR SALE: Frigidaire Refrigerator. \$250, large size, excellent condition. Call Mrs. L. E. Storey 348-3734 or call 214-376-3663.

C-25978-06-UF

MARTIN MEMORIALS
2500 South Commercial
Coleman, Texas 76834

Quality monuments
reasonable prices.
625-4927 or 625-3313. Nights
625-2438

M-27378-27-UF

NEW AND USED furniture, antiques at Travis Trading Post, 402 N. Col- orad, Coleman. We're a U-Haul dealer, too.

T-27379-35-UF

Opportunities

WANTED: Dog Catcher, male or female. Apply at City Hall in Santa Anna for more information.

S-25972-05-TF

Federal, state and civil jobs now available in your area. Call 1-619-569-8304 for information 24 hours.

T-25977-06-08

Services

Overall-Morris Home Health Department offers skilled nursing services and aide services for the Medicare-Medicaid patient under the direct supervision of your physician. For more information contact either your doctor or our office at 625-2235.

H-25962-04-UF

ROGER WHITE ELECTRIC
Licensed and bonded electrician will do residential wiring. No job too small. Call 915-625-2552 or 1015 Roosevelt Street, Coleman, Texas.

W-25958-03-06

PAUL'S CARPENTRY
Additions and remodeling. Free estimates. Call 348-3260.

B-25937-52-47

For Rent

HOUSES FOR RENT

306 4th Street - \$125.00
308 2nd Street - \$95.00
Sante Fe Street and 7th - \$75.00
Deposit Required
348-3122 or 348-3226

C-25952-03-UF

Real Estate

\$20,000 buys a large corner lot. 2 bedroom, 1 bath. Freshly painted inside and out. New carpet makes this a real buy. Call K&H Real Estates, Pattie Blake, 625-3513 or evenings 382-4415.

K-25971-05-UF

Houses for sale. Low down payments and low monthly payments. Owner financed. Call 348-3122.

C-25951-03-UF

FOR SALE: Large mountainside lot. Located on Mountain Street. Call 348-9177 after 6 p.m.

W-25961-04-UF

HOUSE FOR SALE: 407 Avenue C. Close to school and town. Remodeled. Reasonably priced. 348-3118. Days. 348-3665 after 5.

M-25966-04-07

Roundup

Hardin Simmons University annual High School Roundup will be held Thursday through Saturday, February 7-9.

Opening day highlight will be a concert from 8 to 10 p.m. featuring the Cruise Family.

The Roundup is sponsored by the HSU Student Foundation. Registration will begin at 4 p.m. in Mabee Athletic Complex. Visiting students will eat in the Moody Center Cafeteria and be hosted for several socials. The visitors will be housed in campus residence halls.

Following Thursday's concert, an ice cream social will be held from 10 to 11 p.m.

On Friday, they will attend classes, take campus tours, and attend a 'Preview Session' from 1:30 to 3 p.m. A 'Hoe Down' and movie will be on the entertainment schedule during the evening.

A banquet Saturday noon will end the weekend.

While on campus, students will receive information about financial aid, student life, academics, and other areas of interest.



1984 & 1985 Basketball Santa Anna Mountaineers



Basketball Schedule

Date	Opponent	Time	Place	Girls	Boys
Jan. 18	Talpa	6:30	Here	V	V
Jan. 22	Rochelle	6:30	Here	V	V
Jan. 25	Novice	6:30	Here	V	V
Jan. 29	Brookesmith	6:30	There	V	V
Feb. 1	Mozelle	6:30	There	V	V
Feb. 8	Lohn	6:30	here	V	V

Geo. D. Rhone Co.
Coleman 625-4141

Pape Bros
Precision Drilling Co.
Santa Anna 348-3178

H & H Food Mart
Eddie & Stanley Hartman 348-3148

Oakes Foods inc.
Coleman Texas

Henderson Funeral Home
Santa Anna 348-3131 Coleman 625-2121

Santa Anna National Bank
Santa Anna

Taylor Motor Co.
Coleman 625-4111

Williams Tire Store
Coleman 625-5152

Santa Anna News
Santa Anna 348-3545

Countywide Insurance Agency
Coleman 625-4126

Tomlinson Transport
Tex & Roberta 348-9146

Coleman County Telephone Cooperative inc.
Santa Anna

1st Coleman National Bank
Coleman 625-2115

GOLD BAR CLUB

Enjoy A Night Out At The Gold Bar Club

FRIDAY NIGHT 6:00

SHUFFLEBOARD TOURNAMENT

Live Music Every Saturday Night

KOUNTRY GOOD TIMES

IRA PUMP & SUPPLY CO.

General Oilfield Supplies
Santa Anna, Texas
Box 580-Ph. 348-3179
Box 21, Ira, Texas
Bus. 915-573-6403

CLEVELAND

By Clara Cupps

Vera Wise visited the Adolph Kelly Sunday night. Ruby Stephenson visited Sunday evening.

Bro. Dalton Moss of Brownwood will preach at the Cleveland Church of Christ this coming Sunday, February 10. All are invited.

Max and Donna Mapson and Jason of Brownwood and Eddie and Phillis Dillard of Santa Anna and Gail Fleming and children visited the Beulah Fleming and Margie Sunday.

Mr. and Mrs. Kenneth Sikes and Roger of Bangs, Iris and Ronnie Seaton of Brownwood were dinner guest of her parents Sunday, the Charlie Fleming.

Gladys Day and Ruby Howard went by Mr. and Mrs. Joe Morrow. Gladys went on to Duncanville to visit Gene Rice. Ruby visited the Joe Morrow family Monday until Wednesday. They returned home Wednesday to welcome the cold weather. Mrs. Odell Henderson visited Mrs. Ruby Howard for awhile Sunday evening.

Mrs. Ruby Hartman visited in Bangs Wednesday afternoon with Sandra Walker and Cindy Boyle, Shannon and Mathew. Darrel, Cindy Boyle and children spent Saturday afternoon with the Edd Hartman.

Dena and Lance Rasch of Brownwood spent Sunday night with their grandparents, the Cavin Campbells. Mary and Tom Starnes

visited the Cavin Campbell one day this past week.

James Perry, Leshia and Lorrie visited his parents, Mr. and Mrs. John Perry, over the weekend.

Leon Phillip of San Angelo visited Hardon Phillip Saturday. David Lee Huggins visited the Loyd Halmon and Bruce Alsbrook last Friday.

Those visited the L. V. Cupps over the week were Gladys Haynes, Bill Williams and Darrel Cupps. L. V. visited Bill and Darrel at Bill's place on Sunday evening.

Mrs. Carmilla Baugh was in Bangs twice this past week to visit her mother Mrs. Mae Flores.

Royce Cupps of Stephenville visited his dad, Virgil Cupps, Sunday.

Tuesday, Neva and Myrtle Parson and Mrs. Audrey Wright visited the Emil Williams.

Mr. and Mrs. Ercell Ellis visited the A. C. Pierce on Monday night. Chrystal Pelton spent Wednesday night with her grandparents, the A. C. Pierce. Lou Pierce visited Cind Pelton and girls a couple of times this past weekend.

Mrs. Burnice Battles heard from Peat Battles and J. R. Battles. They called Burnice and visited for awhile. They were okay. Hello boys, come to see us.

Verna and Wilmoth Russell visited Mrs. Lora Russell Sunday afternoon.

Shane Cupps spent Saturday night with Betty Joyce Cupps. Curtis and Janice Fellers and Betty Joyce went to Abilene Sunday afternoon to visit with Regina and Danna Walker and Tonya of Abilene.

Mrs. J. M. Fields visited the Ercell Ellis one day last week.

The fellow who worries what people think of him, wouldn't worry so much if he only knew how seldom they do.

TRICKHAM

By Mrs. O. R. Boenicke

Sunday school and church was called off on account of bad weather. If the weather is not to bad next Sunday, Rev. Stephen Ramsdell, the Methodist minister, will preach at 9:30 a.m.

Next Saturday night will be game night at the community center at 6 p.m.

The Quilting Club will meet Tuesday afternoon at the community center.

Florence Stearns visited her sister, Carrie Stacy, Sunday afternoon.

Saturday evening Sug Stearns visited Florence Stearns.

We had a big snow about 5 inches Thursday night and Friday it was real pretty and white. We still had a lot of snow Sunday. The sun shown Saturday and Sunday it melted a lot of it. The weather has sure been cold and reported 11 below zero.

Lou Vaughn and Pat and Roberta McShan had dinner with Russie James Sunday. Later, Betty Martin visited Lou Vaughn, Sunday evening Russie and Roberta visited Lou.

Saturday night Doynne and Wanda Melver and family of San Angelo and Terry and Orabeth Melver and family all had supper with Genia Melver. Sunday Genia had dinner with the Terry Melver family and their girls came home with her. Betsy and Sally spent the afternoon.

Visitors with the G. K. Stearns were Tomie Melvain and son who came Saturday evening, James and Mildred Ford and Jack Overtree came Sunday evening. Mr. and Mrs. Jeff Howard visited one evening last week.

Candice Henderson spent Wednesday, Thursday and Friday with her grandparents, Hilburn and Leona Henderson, last week.

Saturday Janice and Delbert Snow and children, Paul and Gay Nell Martin and baby, and Bill and Becky and girls all had dinner with Felton and Betty Martin. Betty Martin came by Sunday evening late and visited me.

Christi Beal spent Saturday night with Natalie and Rankin Melver. Rankin Melver went Wednesday to Coleman and visited Roy and Inez Miller while there.

Edna Laughlin entered the Brownwood Regional Hospital this Monday morning for test.

Saturday night Paul and Gay Nell Martin and Sabrina and Pat Jr. and Shannon McShan and Erica all had supper with Russie James.

Mr. O. J. Martin was moved to the Twilight Nursing home in Bangs. He had been in the Holiday Hills Nursing Home in Coleman for some time.

He is closer to his girls. Mammie lives close to that home and closer to Ora too.

WHON

By Mrs. Tom Rutherford

The beginning of this weeks news seems very scarce. Our weather has been so cold and bad with snow falling on Friday. Lots of snow, so everyone stayed at home and in the house trying to stay warm. Lots of frozen pipes kept folks busy trying to keep water around for use. Hopefully, we will have more and better news letter when the weather warms.

Mr. John Hensley was on his place here on the Colorado River the past Wednesday. While on the place he was repairing fences. To his surprise he was almost on a large rattle snake. The snake was much disturbed. Mr. Hensley reports had the snake not warned him he would have stepped on it. He was successful in killing the snake and all was well. My son, Thomas, saw the snake, a huge ugly fellow. Mr. Hensley reports the snake had 11 rattlers with some missing. We feel sure that not many people find rattle snakes in January crawling in the pasture. Mr. Hensley reports he looked for a den of snakes following finding this one. None were located but all of us should be ware of rattlesnakes anytime.

Mrs. Darwin Lovelady of Santa Anna visited with Lucille Sorrells in Coleman Sunday afternoon.

Mr. Rocky Rutherford and Loy Vaughan of Coleman visited with Mr. Arnon Ott Sunday afternoon.

Mrs. Graham Fitzpatrick visited with her mother Mrs. Mary Snowden in a Brady nursing home on Wednesday. She reported her mother feeling well and in good spirits.

Mr. and Mrs. Hilary Rutherford of Coleman drove out Sunday after-

noon and visited with my son, Thomas, and I.

Mrs. Rolan (Iris) Williams was a patient in the San Angelo Community Hospital three days this past week where she had sinus surgery. She is home now. She reports back to her doctor in San Angelo on Thursday.

She reports she is feeling well considering and feels her surgery was a success. She has had sinus problems for years and was a rather rough surgery. Hopefully will soon be completely well. We do wish a speedy recovery.

Mr. Leon Carter visited for awhile Monday afternoon with Mr. and Mrs. Floyd Morris. Mrs. Morris reports their sons have been in close contact with them by telephone during the extremely cold weather.

Mr. S. D. Fellers of Early was with Mr. Loyd Rutherford during the week. Mr. Don Bible also visited with Loyd.

Ranger Park

continued

Zula Burton was visited by Mr. and Mrs. W. E. Long and Willie Rider.

Opal Maples visitors were Ruby and David Thompson.

Ethel Matthews visitors have been Jeanette Brock, Mavis Satterfield, Marie and Virgil Lancaster, Blackie Brock.

Delbert Teague was visited by Maria Vincint and Olivia Frausta.

Nora Jennings visitors were Mildred Rawls, Clayton Rawls, Elvia, Glenda and Wesley Hutchins, Virgie Morgan, Lucille Lancaster, Fred Lancaster, Letta Vallier, Shirley Torres, Garland Morgan, H. O. and Annie Merle Trent, Evelyn Williams, Bill Stanphill, Vivian Bozeman and Mrs. Bert Scott.

Pearl White was visited by Mona Watts and son, Rodger and Sue White, Charles and Dustin White, Floyd and Ruth Donica, Wanda Steffey and Goldie White.

Nell and Major Mulanax visitors were Bro. Charles and Stena Mitchell, Kenneth Mulanax.

Beulah Hyden was visited by Mike and Sherry Moore, S. D. Conner and John Cross.

Ray Lile visited Solon and Emmie Seale.

Jay McCoy visitors were Viona West, Charles Benge, Billie Lorene Hipp, R. W. Balke and Clarence Hipp.

Mabel Burrage was visited by Dorothy and Elgean Harris and Tommy Harris.

Laverne Simmons and Bud Simmons visited Bessie Thomas.

Nancy Menges visitors were Nancy Bodine, Bill Conner, Ann Spence and Shirley Thompson.

Mildred Absher was visited by Gary, Teresa, Dennis and Toby Absher.

Mrs. Ethel Wilson visitors have been Mr. and Mrs. N. A. Parsons, Viona West, Garland Morgan, Woodrow and Willie Mae Wilson, Rodger White, Charles and Dustin White.

Nyla Simmons and Ursulla Shelley were visited by Bertha Allen, Vera Wise, Dutch Campbell, Julian Kelley and Alvin Williams.

Bertha Allen visited Jessie Lewis. Donna Estes was visited by Betty Day, Louise McClellan, Sam Estes and Aubrey McSwain.

Pearl Etheridge visitors were Lora Russell, Wilmoth Russell and Ruby Howard.

Jimmy Watson visitors were Oscar Taylor, Garland Morgan, Marge and Brisco Channault.

Julian Kelley visited John Hunter. Ora Caldwell was visited by Viona West, Kenneth Estes, Charles and Jean Caldwell, Herman and Edna Estes.

Ollie Estes visitors on her 93rd birthday were Herman and Edna Estes and Kenneth Estes.

Kenneth Brusenhan visitors have been R. W. Balke, Jeannette and Blackie Brock, Sam Estes, Virgil Lancaster and Ernest Brusenhan.

Jim Daniell was visited by Mr. and Mrs. Ray Moore of Ft. Worth, Sharon Moore of Abilene, Garland Morgan, Steve Ramsdell, Dick Longbrake, Viona West, Pauline Eubank, Chester and Mildred Galloway and W. D. Scarborough.

The Sunday afternoon church service was enjoyed by a large number of residents. Bro. Charles Mitchell gave a very inspiring message. Stena sang a beautiful special. It's a joy to have them come each first Sunday of the month.

Jess Caffall visitors have been Dick Longbrake, Linwood Bishop, Garland, Morgan, Viona West and Mae Caffall.

ROCKWOOD

By Mrs. John Hunter

Mrs. Sadie Bryan and Mrs. Ella Gray were in Brady Wednesday having lunch with Mr. and Mrs. P. L. Ulstad.

Mr. and Mrs. Wayne Bray were in Coleman Saturday spending the day with Mr. and Mrs. John W. Gregg, Carla and Lucy.

Last Tuesday Frank Brusenhan of Eden spent the day with Mr. and Mrs. Junior Brusenhan. Mr. and Mrs. Stan Martin of Denver, Colorado, came Saturday visiting to Wednesday with the Brusenhans.

Mr. and Mrs. Bob Brown and Meca of Menard spent Sunday with the Brusenhans and their guests. Sunday and Monday visitors were Mr. and Mrs. Jody Brusenhan and Jennifer of Converse. Mrs. Mary Emerson visited with the family different days.

Marcus Johnson visited Mr. and Mrs. Sam Estes Tuesday afternoon. Frank Brusenhan visited Wednesday morning.

Ella Gray visited Sunday afternoon with the Bill Bryans.

Marcus Johnson visited Aubrey McSwain Sunday afternoon.

Mr. and Mrs. Bert Fowler were business visitors in Coleman Monday. While there they visited Mr. and Mrs. A. D. Eppler.

Kenneth Brusenhan has been dismissed from the Coleman Hospital and is recuperating at Ranger Park Inn Nursing Home in Santa Anna.

Mrs. Aleen Rutherford of Whon

and her guests, her son, Thomas Ray Rutherford of New Hampshire, and her daughter, Mrs. Bob Smith of Abilene, visited Thursday night with Mr. and Mrs. Deal.

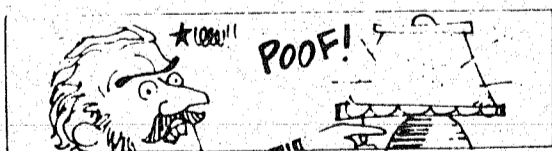
Joe C. Deal of Santa Anna was with his parents Friday and spent the night. Rolan Deal of Santa Anna was Saturday dinner guest. Mr. and Mrs. Johnny Deal of Brownwood were Sunday visitors.

Mrs. Deal reports grandson, Ronnie Deal, of Abilene is in a Dallas hospital following surgery.

Mrs. Jane Wise and Mrs. Wilma Williams visited Wednesday afternoon with Mrs. Lillie Box.

Mr. and Mrs. Dan Slate and children of Brownwood spent Sunday with Mr. and Mrs. Jim Rutherford and Jennifer. Mrs. Jody Brusenhan and Jennifer were Monday afternoon callers.

Mrs. Jake McCreary of Santa Anna visited Linnie Box Wednesday afternoon. Mr. and Mrs. Rodney Guthrie and baby, who have recently moved to the Steward farm, and Mr. and Mrs. Dan Slate and children visited Sunday afternoon. Other Sunday visitors were Mr. and Mrs. Lee Wristen of Brownwood, Mr. and Mrs. Joe Riley of Santa Anna and her mother, Mrs. C. H. Wise. Mr. and Mrs. Andy Hancock visited Tuesday. Mrs. Lana Sturgill, Jessica, Jennifer and Heather of San Angelo spent Thursday with her granddad, Carl Buttry. They visited Linnie.



Early light bulbs did not last as long as modern ones because they contained a vacuum. Now they are filled with an inert gas.



The first dining cars were in service on the Wilmington and Baltimore Railroad in 1863. They had no seats - passengers ate standing up or took their food back to their seat.

Santa Anna Funeral Home Offers:

Ambulance Service located in Santa Anna, so we can reach any area where we may be needed quickly.

Our Funeral Home is open from 8:00-5:00 Monday - Friday to assist in any needs that may arise.

We honor all burial, life insurance, or pre-arranged funerals....no matter from whom purchased.

Santa Anna Funeral Home
348-3153

Our new HOMESTYLE FULL MEAL DEAL™ is better than ever.

But it still doesn't amount to much. You're gonna find that our new HOMESTYLE Full Meal Deal™ amounts to a lot of good eating. With a quarter-pound, 100% beef HOMESTYLE Hungr-buster™ that looks, cooks and tastes like homemade. A regular order of golden french fries. A refreshing medium-soft drink. And a creamy 5 oz. D.Q. Sundae with your choice of topping. But where it doesn't amount to much is at the cash register. It's still only \$2.59. And only at Dairy Queen.

STILL ONLY \$2.59

January 14 thru February 24, 1985

Dairy Queen
"better than ever."

†Precooked Weight
© Copyright 1985 by D. Q. Co. All Rights Reserved
* TM Trademark of the D. Q. Co. Council. * A Trademark Am. D. Q. Corp.