

# Red Raiders, Longhorns Clash at Austin

SEE STORY PAGE 8

## ELECTIONS SET WEDNESDAY



Vol. 34

Lubbock, Texas, Saturday, Oct. 4, 1958

No. 7



**FAIR DAY** — Myrna Jo Phillips, Tech beauty (Miss West Texas, fourth in Miss Texas contest), enjoys a day at the South Plains Fair. Miss Phillips walked through the door of the "fun house," and then went on to enjoy almost every other feature the fair offered. She is a freshman from Odessa. (photos by Joe Spears)

## 86 Candidates Bid For Class Positions

Election of class officers is scheduled Wednesday with voting to be conducted from 8 a.m. to 5 p.m. in various booths over the campus.

**STUDENTS LIVING IN DORMITORIES** may vote there during the noon and dinner hour. Men living in No. 7 and 8 will vote at any of the campus booths.

**BOOTHS** will be erected in the Administration Bldg., Tech Union, East Engineering Bldg., Home Ec Bldg., and the Agriculture Bldg.

**EXPENSE ACCOUNTS** must be turned in to the Student Council office by 1 p.m. on Tuesday. Candidates not submitting accounts will be disqualified.

Jay Dunlap is candidate for senior class president.

Vice president nominees are Peggy Miller and Weldon Shaffer. **CANDIDATES FOR SECRETARY** are Kay Adkins, Jean Brown, Hazel Casey and Anease Pritchett.

Senior AWS representatives are Bebe Davis, Barbara Hawk, Helen Locke, Mary Ann Pippin and Susie Smith.

**NOMINEES FOR junior president** are Dewey Bryant, Robert Echols and Dub Heffington. Bob Kinney, Don McMurray and Maynard Snell are candidates for vice president.

**SECRETARY CANDIDATES** are juniors Becky Pierce, Leta Marle Roberts, Ruth Sewell, Joyce Streidl, Kathy Whit and Carolyn Wilmeth.

Candidates for junior AWS representative are Carolyn Dorsey, Mary Frank Garrett, Martha Kaiser, Martha Kenley and Mayme McDaniels, Cora Jo Lilly and Mildred Thompson.

**SOPHOMORE** president nominees are Mike Montgomery, Don Nix, Mike Robinson, Jerry Storch and Dan Webster.

Vice-president hopefuls are Pete Baker, Bob Honts, Jimmy Johns and John Stokes.

**CANDIDATES** for sophomore secretary are Carolyn Jenkins, Kay Kring, Ginger Meyers, Linda Roberts, Shirley Stephens and Joyce Tallman.

Sophomores seeking the AWS representative post are Peggy Braselton, Kay Cole, Clo Ann

## Fair Ends Here Today

by LEE SULLENGER

The Panhandle - South Plains Fair opened its gates yesterday for Texas Tech students, who streamed onto the fairgrounds by the hundreds, basking in the afternoon sun as they peered at exhibits and helped boost the concession stand business.

Most popular with Tech students was the midway. One could scarcely look in any direction without seeing a group of students, either enjoying one of the rides or taking the part of a bystander offering encouragement to those students who were riding.

**FIGURES** were not available at press time on the total number of Tech's students who availed themselves of the opportunity to get into the fair free, but judging from the swarm of students to be seen anywhere one looked, the number was not small.

The "Water Follies of 1958" proved to be a stellar attraction with Techsians. The unpredictable antics of diving comedian Eddie Rose held students spellbound, as did the graceful diving of New England champion Roger Nadeau.

**THE LARGE** turnout of Tech students can be attributed in part to the pleasant day. The cold wind and rain of the night before failed to reappear and the warm sun made the day a perfect one for strolling around the fairgrounds.

The fair continues through today, and officials are expecting the fair to close with the greatest attendance record in the history of the fair.

## Other Nominees

Names for freshmen secretary nominees which did not appear in The Toreador Thursday include Jaylon Mantooth, Myrna Jo Phillips, Doranna Scott, Carol Wheeler and Kay Woody.

Ethridge, Linda Jobb, Janis Jones, Julienne Loomis, Ann Selecman and Marolyn Symes.

**FRESHMEN** nominated for president are John Alexander, Dick Curry, Soapy Sudburry, Bob Rippy, Cary Hobbs and Bob O'Neal.

Sid Alexander, Malcolm Garrett, Gary Gwyn and Kenneth Hill are the candidates for vice president.

**NOMINATED** for freshman secretary are Judy Baker, Sara Chumley, Dee Dorsett, La Rue Elliott and Ginger Gilbert.

Others are Jaylon Mantooth, Myrna Jo Phillips, Doranna Scott and Kay Woody.

**AWS REPRESENTATIVE** office-seekers are Linda Gates, Susan Craig, Judy Grundy, Suzanne Halbrook, Vee Hartman and Elaine Higginbotham.

Also Joy Keller, Linda Kennedy, Linda Linn, Mary Jo McClain, Patricia McCullough, Betty Sue Meinecke, Betty Russell and Ferne Vestal.

## FYI

For your information, Club Scarlet, mock nightclub, has been postponed until the spring semester. The club date is usually set in the fall, but due to Homecoming and the limited amount of time, Theta Sigma Phi, sponsoring group, felt that a better job could be done if it were postponed until the spring.

Theta Sigma Phi is a national journalism fraternity for women.

## Trip Ticket Deadline Extended Till Monday

Deadline for the all-school trip to Fort Worth next weekend has been extended until Monday at 5 p.m., Dan Howard, Student Council business manager, said yesterday.

Tech's Raiders will play Texas Christian University next Saturday.

**HOWARD REPORTED** ticket sales are going good and if they keep up, the train will be overflowing. Yesterday approximately 300 tickets had been sold.

Tickets are being sold in all dorms and at a booth in the Tech Union. All council members and girl's dorm vice presidents are selling tickets.

**THE 12-CAR** train will leave Lubbock at 10 p.m. Friday, and will arrive in Fort Worth at 6:30 a.m. Saturday. There will be a baggage car and a concession stand sponsored by Kappa Psi and Tau Beta Sigma music fraternities.

There will be a pep rally at the Fort Worth station before the train continues to Dallas where the students may attend the State Fair.

**AMUSEMENTS** at the Fair will include "The Music Man," Meredith Wilson's Broadway musical hit, and the Texas-Oklahoma football game.

The train will leave Dallas at 6 p.m. and arrive in Fort Worth about 7 p.m. TCU representatives will meet the train and transport students to the stadium in busses. After the game TCU students

are sponsoring a dance at their Student Center.

The train will leave Fort Worth at 1 a.m., October 13, for Lubbock.

## IKE Salutes

WASHINGTON (AP)—President Eisenhower saluted Friday night the 600,000 boys and girls who deliver the nation's newspapers. He said they are rendering a valuable service to the public and "learning how to become dependable and loyal citizen."

## Army ROTC Units Select Sweethearts

The Army ROTC has announced its sweethearts for 1958-59.

Joan Carvey, Lubbock, was elected Brigade Sweetheart with Nancy Murphy, Houston, 1st Battle Group; Mary Lynn Peveto, Lubbock, 2nd Battle Group; and Myrna Jo Phillips, Odessa, 3rd Battle Group.

Company sweethearts are Ginger Gilbert, Amarillo, Company

A; Peggy O'Neil Houston, Company B; Melinda Bartlett, Anson, Company C and Lynn Herring, Ballinger, Company D.

(See Photo, Page 2)

Sweethearts for Company E and Company F are Marilyn Campbell, Lubbock and Linda Osborne, Phoenix, Arizona.

Each girl was elected by the members of the unit from which she was nominated.

## Union Gets Kenton

Tickets for Stan Kenton's appearance Tuesday, Oct. 14, at the Municipal Auditorium, will go on sale Monday in the lobby of the Tech Union.

People not connected with Tech will not be able to buy tickets until Friday, Oct. 10. Tickets for Tech students and personnel will be 50 cents and others will be \$1.50. There will be no reserve seats.

Kenton, hailed as "Modern America's Man of Music" will present 20 of the world's greatest instrumentalists. He has been the winner for five years of Down Beat Magazine's popularity poll as leader of the nation's number one orchestra.

Currently on a nationwide tour, the bandleader will be making his first local appearance since winning the award for the fourth time.



# ★ Campus ★

## Phi Delt's Initiate Pledges

Phi Delta Theta recently initiated 29 pledges.

New members are Michael Abel, Lubbock; James Brock, Fort Worth; Mike Fry, Lubbock; Clark Hampton, Abilene.

Don Hunt, Lubbock; Johnny Janak, Amarillo; Jim Johns, Dallas; Art Jones, Dallas; Bill Koeh-

ler, Dalhart; Dennis Lamphere, Lamesa; Mike Lundy, Lubbock; Joe Nelson, Denver City; Jon Page, Lubbock.

Mike Robinson, Lubbock; Bobby Rodgers, Lubbock; Dannie Scales, Lubbock; Stacy Smith, Dallas; Lynn Stanton, Lubbock; Ronnie Thompson, Dallas; Bill Vehslage, Belton; and Gilbert Weaver, Kilgore.

### DR. C. EARL HILDRETH

Optometrist

Visual Analysis 2421-B Broadway  
Visual Training Phone FO2-4828  
Vision Related to Reading

There can be no such thing as a necessary evil. For, if a thing is really necessary, it cannot be an evil and if it is an evil, it is not necessary.



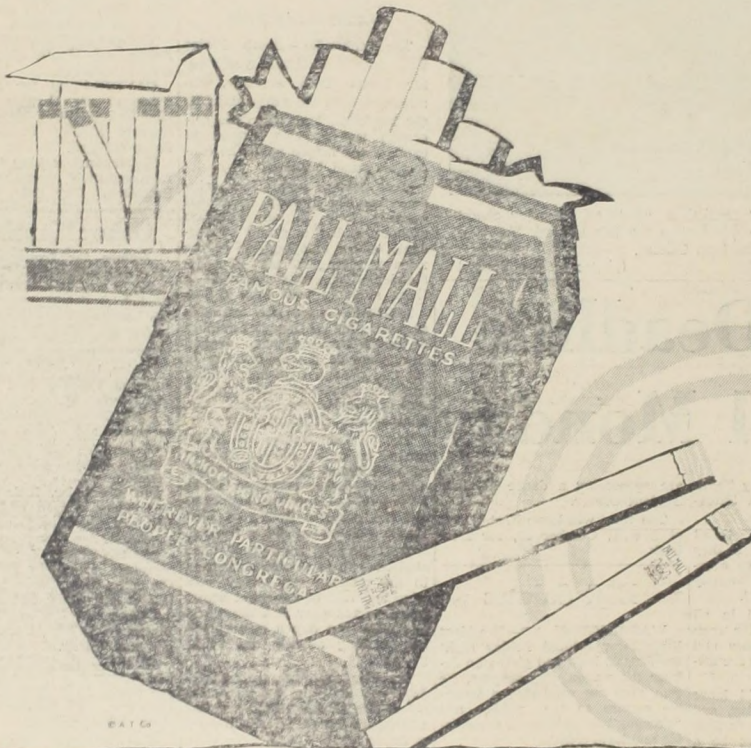
ARMY ROTC sweethearts are (top row) Joan Carvey, Marilyn Campbell, Ginger Gilbert, Mary Lynn Peveto and Peggy O'Neil. Bottom row,

Nancy Murphy, Linda Osbourne, Myrna Jo Phillips, Lynn Herring and Melinda Bartlett. (Staff Photo)

GET SATISFYING FLAVOR...

So friendly to your taste!

No flat "filtered-out" flavor!  
No dry "smoked-out" taste!



You can light either end!

### See how

Pall Mall's greater length of fine tobacco filters the smoke and makes it mild—but does not filter out that satisfying flavor!

FOR FLAVOR AND MILDNESS, FINE TOBACCO FILTERS BEST



1 You get greater length of the finest tobacco money can buy. 2 Pall Mall's greater length filters the smoke naturally. 3 Filters it over, under, around and through Pall Mall's fine tobacco!

Outstanding... and they are Mild!

Product of The American Tobacco Company—Tobacco is our middle name.

## Euleen Moore Receives Title

Sigma Nu's saw a round of activities the past week in their newly decorated lodge. Highlighting the West Texas-Texas Tech football weekend was the presentation of Miss Euleen Moore, Delta Gamma, as White Rose Princess of Sigma Nu for the month of September. Her bouquet of eleven red roses and one white rose was presented by Commander Lewis Stone at an after game dance.

Before the football game a reception was held for the members of Epsilon Beta, a social club at West Texas, petitioning to be a chapter of Sigma Nu.

## ROPE THE STEERS!



CREW NECK PULLOVERS

When there's a nip in the air, you'll enjoy this warm pullover spun lamb's wool combination developed by Towne and King. High crew neck with a jaunty smartness... as rugged as a briar pipe, reliable and friendly as your favorite tweeds and flannels; just the thing for the crisp mornings on the Tech campus.

\$2.50-\$5.00 Values  
**TIE SPECIAL**  
Only \$1.79

**Doms**

2420 Broadway  
Now Under New Management

## Week's High

### Gamma

Miss Kathleen Evans, Tech Education Department, speak tonight at the Gamma Beta Scholarship Banquet.

The banquet will highlight Phi Beta Week on Monday. New initiates recognized at the banquet include the initiate with the highest grades and those with the best average. Best pledge presented at the affair will be held at the Chickadee at 6 p.m.

Other events of the week include Brown Day, final pledge meeting, Convocation as a body, day; and Paddle party at home of Mrs. Georgia on Friday.

## Art Club Meets

The Applied Arts Club, presided by Mrs. Meda Johnson, instructor in the Tech Applied Arts Department, will have a meeting of the semester on Monday in Home Economics.

All persons interested in a hobby and art in business are urged to come to the meeting and be acquainted with the members.

After meeting in the Home Building, the group will go to Johnston's home at 2604 make arrangements for next year.

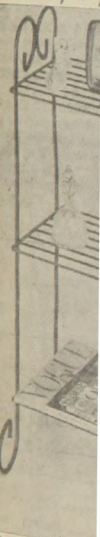
## CSO Meets Sunday

Kathryn Flechtner, was president of the Christian Organization at its first business meeting Wednesday.

Named to assist her are Barbara Garnett, vice president; Grace Flechtner, secretary.

The Christian Science Organization meets every Sunday 5:30 p.m. in room B of the Union.

## Smartly Sty



Pictured above is one of utility racks, magazine rack iron... Priced From \$3.00 IDEAL

Texas Tech College BOOKSTORE



**Week's Highlight**

**Gamma Scholarship**

Miss Kathleen Evans of the Tech Education Department will speak tonight at the Gamma Phi Beta Scholarship Banquet.

The banquet will highlight Gamma Phi Beta Week which began Monday. New initiates will be recognized at the banquet, including the initiate with the highest grades and those with a 2.0 or better average. Best pledge will be presented at the affair which will be held at the Chicken Shack at 6 p.m.

Other events of the week were Mode and Brown Day, Monday; final pledge meeting, Tuesday; Convocation as a body, Wednesday; and Paddle party at the home of Mrs. Georgia Waldron on Friday.

New initiates are Kay Hoelscher, Anton; Mayme McDaniel, Odessa; Mary Jane Campbell, Rule; Arden Stone, Lubbock; Gloria Crouch, Graham; Gail Cooper, Dimmitt; Kay Cole, Three Corners; Nan Keenum, Cleburne and Wilma Scott.

**Town Girls Plan Meeting**

Florence Phillips, Dean of Women, will be guest speaker at the weekly luncheon of the Town Girls Club Wednesday.

Julienne Loomis, president, announced the completion of officer election. Those elected include: Mabelle Tate, secretary-treasurer; Manon Markham, AWS representative; Ellen Venable, program chairman; Irene Putnam and Janet Bell, telephone committee. Dues will be collected at Wednesday's meeting.

Out-of-town girls living in Lubbock and Lubbock girls living in dormitories are eligible for membership. Lunch is served each Wednesday on the second floor of the Tech Union with a special program planned each month. The aim is to bring the town girls together and to acquaint them with the campus.

**Art Club Meeting**

The Applied Arts Club, sponsored by Mrs. Meda Johnston, instructor in the Tech Applied Arts Department, will have its first meeting of the semester at 6:30 p.m. Monday in Home Ec Building.

All persons interested in art as a hobby and art in business are urged to come to the meeting to get acquainted with the members.

After meeting in the Home Ec Building, the group will go to Mrs. Johnston's home at 2604 47th to make arrangements for new projects during the year.

**CSO Meets Sunday**

Kathryn Flechtner, was elected president of the Christian Organization at its first business meeting Wednesday.

Named to assist her are Barbara Garnett vice president and Grace Flechtner, secretary-treasurer.

The Christian Science Organization meets every Sunday at 5:30 p.m. in room B of the Tech Union.

**Alpha Phi Pledges Select Officers**

Alpha Phi's fall pledge class has elected officers.

Elaine Bowron was chosen president; Suzanne Holbrook, secretary; Jan Rhodes, treasurer; Dana Sue Sutton, social chairman; Eleanor Clayton, scholarship chairman; and Pat Tate, junior Panhellenic representative.

**Four Teens At Rodeo Mixer**

Lubbock's own widely known recording group, The Four Teens, will provide the music for the Tech Rodeo Association Mixer in the Rec. Hall at 8:30 tonight.

The group made their latest appearance with the "Jerry Lee Lewis" show in the Municipal Auditorium last Thursday night.

Otis Echols, a Tech graduate, is manager of the group.

During the two years since their organization, they have appeared on the Big D Jamboree in Dallas, The Louisiana Hayride, KRLD-TV in Dallas, and numerous western and country music programs in Lubbock.

Jimmy Peters, the lead vocalist, has been appearing and singing at country and western music shows since he was three years old.

All Rodeo Association members and prospective members are urged to attend the mixer and become acquainted with the old and new members. Admission will be free upon presentation of club membership cards or receipts. Membership cards may be obtained at the entrance to the Rec. Hall, where dues will also be accepted for the fall semester. Dues are \$3.00 for new members and \$1.00 for renewals.

**SMOLA SPEAKS**

Der Liederkrantz, German Club, will have its first meeting Oct. 7 in the Tech Union Anniversary Room at 7:15 p.m.

Guest speaker will be Dr. Friedrich Smola, who is at Tech. Dr. Elaine Boney will play the accordion.

All interested students are invited and refreshments will be served after the meeting.

**SPORT CENTER**

1612 - 13th PO 5-6645

Complete Athletic and Sports Equipment

**FRATERNITY-SORORITY HEADQUARTERS**

**NOW AVAILABLE LOCALLY**  
**PADDLES • BEER MUGS**  
**SHIRTS • FAVORS**  
**OFFICER & CHAPTER GUARDS**

Monogram lapel buttons and lavaliers in stock

**THOMAS JEWELRY**  
 1207 College Ave. — Phone PO 3-6468

**Thank You Techsans**

For Making Our

**Grand Opening A Success AND PROVING . . .**

**It's FUN to EAT at CHAR-KING!**

**LUBBOCK'S NEWEST and MOST UNIQUE DRIVE-IN RESTAURANT**

**Delicious FOOD Speedy SERVICE**

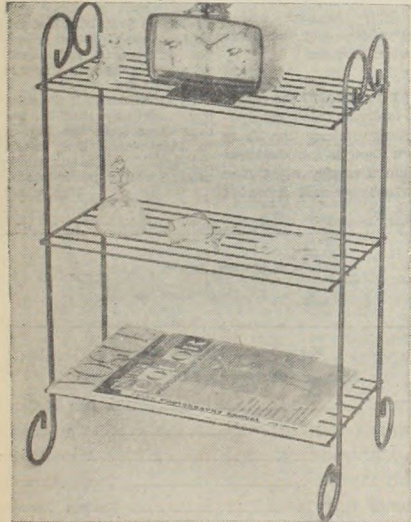
**Char-King**

**DRIVE-UP RESTAURANT**

3 1/2 MINUTES FROM CAMPUS  
 OUT BROWNFIELD HIWAY

**TECH BEAT TEA-SIPPERS**

**Smartly Styled Wrought Iron**



Pictured above is one of the many styles of tables, book racks, utility racks, magazine racks . . . all handsomely made in wrought iron . . . Priced From

\$3.00 to \$10.00  
 IDEAL FOR YOUR ROOM

**Texas Tech College BOOKSTORE**

"ON THE CAMPUS"

Moore  
 Title  
 Delta Gamma  
 Rose Princess  
 month of Sep  
 bouquet of eleven red  
 white rose was preme  
 Commander Lewis  
 after game dance.  
 football game a re-  
 held for the members  
 Beta, a social club at  
 petitioning to be a  
 Sigma Nu.

THE STEERS!



NEW NECK  
 SWEATERS  
 here's a nip in the air,  
 enjoy this warm pull-  
 in lamb's wool com-  
 developed by  
 and King High  
 neck with a jaunty  
 as ragged as  
 pipe, reliable and  
 as your favorite  
 and flannels; just the  
 the crisp mornings  
 Tech campus.  
 \$0-\$5.00 Values  
**SPECIAL**  
 only \$1.79  
**DOMS**  
 420 Broadway  
 low Under New  
 Management



# TOREADOR

THE TEXAS TECHNOLOGICAL COLLEGE

## Editorial Page

### Tech Constitution Is For Students

STUDENT GOVERNMENT at Texas Tech is in the form of a Student Council which is made up of four executive positions and representative positions from the various schools.

In the executive positions this year are Donnell Echols, president; David Steinman, vice president; Dan Howard, business manager and Gail Petersen, secretary.

With any government, there must be a constitution by which, and through which, the governing body must act. At Tech it is called the "Constitution of the Student Association of Texas Technological College."

★ ★ ★ ★

The constitution is the strongest point of government, because from it come the powers and duties of the entire governing body.

One of the main functions of the Constitution of the Student Body at Tech is the specification of duties of the Student Council. For those who aren't up on their student government, here are the duties:

★ ★ ★ ★

The Council shall exercise regular legislative powers including —

- Filling vacancies in office provided by this Constitution except where other procedure is specified;
- Supervising elections;
- Making all rules and regulations for carrying out the provisions of this Constitution;
- Plan Student Council sponsoring activities and co-ordinate all activities of the Spring Festival;
- Making all rules and regulations concerning use of posters and similar items for use of publicity;
- Co-ordinate student activities at Homecoming.

★ ★ ★ ★

These prescribed duties are much more important than they appear on the surface in that they cover many underlying factors which arise daily. These are factors too numerous to mention.

It is the duty of each student, since it is his Constitution, to become informed of it and its working, and also to use the Student Council to gain a better place for the students at Tech. Don't hesitate to exercise your right as a member of the Student Association when something arises.

### two party Beat U of T mccarty

Here we go again, commenting about football on the editorial page. I suppose it is permissible, since it is the main subject of gab about this time of the week.

Last week I missed the final scores of the Tech-WT game by one point (I guessed 32 to 6 and it was 32 to 7; I figured WT would try for the two-pointer and miss, but they fouled my calculations up by kicking the extra point).

My prediction this week is Tech 22, Texas 16. The guys who are supposed to know pick Texas by 11 points, but I think they are all wet because Tech is constantly getting better, and the two teams Texas has beaten have been stomped in their other outings.

Another thing which may be taken into consideration is that Texas plays Oklahoma the week-end following the Tech game, and they can't afford to let loose with everything against the Raiders.

Texas has such a name that I don't think Big Red will be overconfident. I think our team will scrap for every inch of ground, especially on defense, and will be driving hard on offense.

Give'em hell Raiders.

I'm in the same shape that a lot of other Techsians are in—the cold bug bit me and all I can do is drag around and hope it gets better.

I followed the usual routine by first feeling a little ache all over, then getting a "runny nose." Second, I straggled over to the Infirmary and picked up some Red Raider pills and nose drops. Unusual as it seems, they seemed to have helped.

I hope to goodness I get okay before Saturday night so I can enjoy seeing the Raiders beat the Longhorns. The warmer climate at Austin may help.

Hope to see a lot of you Techsians down there.



### What About It

tms

My, my, the rumors one will hear on a college campus. And how they spread!

I HEARD A couple of pretty good 'uns this week. It was rumored, for instance, that the girls' dormitories were closed Wednesday (as was the Tech Union, the Recreation Hall, etc.) to encourage attendance at the All-College Convocation. This should be done more often. I hear that College Avenue's drugstore and cafe businesses really boom.

And then there's the one about a certain dean hiring private detectives to check the working permits of off-campus students. This seems highly irregular and I doubt its validity. But you never can tell about rumors.

HAVE YOU HEARD the reason the girls in dorms didn't get special permission to see the Jerry Lee Lewis Show in the Municipal Auditorium Thursday night. The people who know said it wasn't

educational. Heck! it just depends on what your studying.

How about the World Series? I have to admit (even if I am an ardent supporter of the Yanks) that the present situation looks pretty grim. But unless you bet that the Yanks would take the Series in five games or less, don't pay off yet. You never can tell!

OH YES, I understand the Four Freshmen are scheduled to appear here soon, preceded a couple of weeks by Stan Kenton. It's hard to understand why Tech Union officials will spend so much time and money for first class entertainment when they won't even put a record by either artist on the Union juke box. Instead they load it down with that juvenile (if not delinquent) rock and roll with an occasional ancient-timer by Mantovani.

IN DESCRIBING the selections one might say that it includes everything from the Big Bopper to Mantovani. But, that's not between. The juke box needs some music for true music-lovers.

Well, that's life.

## Techsians Talk Back

### LA VENTANA PROPOSAL

Honey, Just what was the proposal marriage?

A doll

No doll, the proposal wasn't marriage. It is the La Ventana editor's prerogative not to disclose what the style of the new La Ventana will be. It was approved by the Student Council, so don't worry your little ole self about it. It is also against our policy to publish unsigned letters, and it will not be done in the future, but we felt this would clear up a point, so it was an exception.

### SAGACIOUS RATIONALITY

The title of the column is obviously a misnomer since it is hardly rational—much less sagacious.

A few banal remarks on "maturity" and presto! I, g. becomes a philosopher. I wonder if he spends

an hour each day contemplating his navel.

The most evident fault of the column was lack of continuity; when a writer's work is so incoherent that he feels it necessary to explain the context in a summary at the end, it would be best to write the summary first and conceal his incoherence in his head. Please reveal this mental cripple's identity.

Donald F. Jordan  
Box 4357, Tech Sta.

### GRAD PROGRAM

Editor,

Two recent developments, the portents of which are of considerable importance to every student at Tech are: first the official statement by the Tech administration that enrollment at Tech will probably soon become more selective and the number of admissions considerably curtailed; and second, the proposal by the Texas Commission of Education to limit all postgraduate work in

the state to the University of Texas and Texas A&M College. These two issues seem to have a very close connection.

The reason given by the Tech administration for limiting enrollment (maintenance of high standards) and the reason given by the Education Commission for its proposals are the same: FINANCES.

If all of the tax money appropriated by the state legislature for Tech were used for the improvement of present facilities and expansion and development of additional facilities for undergraduate students, the expected increase in enrollment could likely be easily accommodated.

However, if a part of this tax money should be diverted into postgraduate programs, benefiting an extremely small minority of students, it is more than likely that the capacities of our facilities will be greatly taxed, and perhaps

Page 5, TECHSANS TALK . . .

## TOREADOR

Member The Associated Press

Member The Associated Collegiate Press

EDITOR	Ben McCarty
BUSINESS MANAGER	Roy Lemons
MANAGING EDITOR	James Hamm
NEWS EDITOR	Tommy Schmidt
CAMPUS EDITOR	Merium Jackson
SPORTS EDITOR	Bill Dean
ASST. SPORTS EDITOR	Ron Calhoun
SATURDAY COPY EDITOR	Mary Atchison
HEAD PHOTOGRAPHER	Joe Spears
ASST. DIR. OF STUDENT PUBLICATIONS	Phil Orman

The TOREADOR, official student newspaper of Texas Technological College, Lubbock, Texas, is regularly published each Tuesday, Thursday and Saturday morning during the two long terms, excepting holidays, by students of the College as an expression of student news and opinion only.

The TOREADOR is financed by a student matriculation fee, advertising and subscriptions. Letters to the editor represent the views of their writers and not necessarily those of the TOREADOR. Letter must be signed, but may be published without signatures in justifiable instances. The views of the TOREADOR are in no way to be construed as necessarily those of the administration.

Entered as second class matter at the Post Office in Lubbock, Texas, under the act of March 3, 1879.

ven exceeded, as has be  
ipated. Postgraduate p  
especially in the sciences  
come relatively expensive  
As others have indicate  
information, the final  
of the tax money appro  
Tech is delegated to tel  
ministration. If postgr  
were limited to the Univ  
to A&M none of this mo  
be diverted from the u  
uate programs to suppor  
postgraduate program.  
This limitation could n  
sible raises in salaries  
of our more deserving i  
in addition to the develo  
a better overall under  
program, benefiting a la  
jority of students.  
In spite of the great  
of planning and work wh  
gone into the improvem  
Tech during the past fe  
almost every student co  
tion some needed addit  
provements which would  
rectly in more effici  
therefore better quality  
tion (e.g. classroom tele  
ing the services of recog  
perior instructors and m  
instruction, perhaps rec  
film and in many cour  
as mathematics, reus  
years without change).  
There seems to be ever  
especially for undergrad  
support the Commission's  
al, and the knowledge  
highest quality postgradu  
gram will be available at  
venity (acknowledged s  
cally first in the state)  
fied graduates of all Te  
leges should gratify pers  
engaged in or planning  
postgraduate work. (Th  
indication that the lack  
graduate school would i  
affect the value of a  
gree.)  
By centralizing and  
lizing the graduate progr  
wile there are the addi  
tages of uniformity of  
and of saving money wh  
be more economically us  
dergraduate programs by

The T  
USING O  
LAUN  
WASH 20  
• Finishing  
• Dry Cleaning  
2416 Main



# ... Techsans Talk

ven exceeded, as has been anticipated. Postgraduate programs, especially in the sciences, can become relatively expensive.

As others have indicated for our information, the final allocation of the tax money appropriated to Tech is delegated to the Tech administration. If postgraduate work were limited to the University and to A&M none of this money could be diverted from the undergraduate programs to support a local postgraduate program.

This limitation could make possible raises in salaries for some of our more deserving instructors in addition to the development of a better overall undergraduate program, benefiting a large majority of students.

In spite of the great amount of planning and work which have gone into the improvement of Tech during the past few years, almost every student could mention some needed additional improvements which would result directly in more efficient, and therefore better quality, instruction (e.g. classroom television using the services of recognized superior instructors and methods of instruction, perhaps recorded on film and in many courses, such as mathematics, reusable for years without change).

There seems to be every reason, especially for undergraduates, to support the Commission's proposal, and the knowledge that the highest quality postgraduate program will be available at the University (acknowledged scholastically first in the state) to qualified graduates of all Texas colleges should gratify persons now engaged in or planning to enter postgraduate work. (There is no indication that the lack of a post graduate school would materially affect the value of a Tech degree.)

By centralizing and standardizing the graduate programs statewide there are the added advantages of uniformity of standards and of saving money which could be more economically used by undergraduate programs by eliminat-

ing the waste of needless duplication of the plant facilities and equipment necessary for a good quality postgraduate school.

The geographically central location of a central graduate school at Austin would be fair to the students of the entire state, and its proximity to the largest centers of population, Dallas, Fort Worth, San Antonio, Houston, from which the largest percentages of students come, justifiable.

Tech's educational value to the students living in this area would not be decreased. A very small percentage of students contemplating postgraduate work live within two hundred miles of Tech, as a matter of fact, it is

doubtful if a majority of undergraduate students live within two hundred miles and not actually closer to another tax-supported college.

In view of the fact that our tax-supported colleges are maintained solely for the benefit of the students who attend them, considerations involving business and other local selfish interests are completely irrelevant! (Opinions of Lubbock's state Senator Smith not withstanding).

It is easy to see that admission curtailment depends on whether or not Tech is limited to undergraduate programs of instruction. These issues have vital and far-reaching intents and purposes, some of which have been enumerated.

Unless additional reliable official information which would warrant other different conclusions should be made available immediately, every student should personally and through campus organizations support the proposal of the Education Commission.

It seems to be aimed directly at benefiting the majority of the college students of the state from

our tax money, and therefore in our best interests.

A brief letter to the Education Commission in Austin would assure its members of having the intelligent support of college students for their honest efforts in behalf of all the colleges and college students of Texas.

Maurice Mitchell  
Tech Student

**Editors Note:**

The above letter presents the views of Mr. Mitchell — not the views of the TOREADOR. The TOREADOR is of the opinion that an expanding graduate program is necessary in the development of Tech. An institution cannot "freeze" its programs — it must either advance or fall back. An editorial in the Sept. 20 issue of the TOREADOR dealt with this subject.

All the money in the world is no use to a man or his country if he spends it as fast as he makes it. All he has left is his bills and the reputation for being a fool.

SPECIAL STUDENT RATE  
**CAR WASH**  
**\$1.25**

With Tech I.D. or Fee Slip



MINI-MAN  
AUTOMATIC CAR WASH  
Wayne D. Beebe, Owner  
PO-32641 1510 Ave. L

**SPECIALIZED SEWING**  
Tailored Western Shirts  
Dress Making & Alterations  
Also Leathercraft - Belts & Billfolds  
TOMMIE FLOWERS  
2110 6th PO 3-2430



**SCOOT back to SCHOOL on a CUSHMAN.**  
HIGHLANDER  
**\$239.00**  
LOW DOWN PAYMENTS  
PARTS AND SERVICE  
Cushman  
Scooter SALES  
2210 19th



**CONFUCIUS say:**  
"Most wise idea for college boy or girl"  
...an *Olympia* precision portable!



**Olympia**  
WRITES BEST OF ALL  
BECAUSE IT'S BUILT BEST OF ALL

... and a word to the wise should be sufficient—for the magnificent German-made Olympia makes short work of any assignment—easier, faster, finer!  
A breeze to operate, it's fully-equipped with the most advanced and worthwhile typing features. There's even convenient half-spacing—ideal for ruled index cards, mathematical problems and equations.  
So, see—test—and compare Olympia before you decide on any other portable. One can be yours for just pennies a day! Full one-year national warranty, too.



**The TALCO LAUNDRY**  
SAY'S  
USING OUR NEW COIN OPERATED  
LAUNDRY IS LIKE HAVING  
A PARTY  
WASH 20c DRY 20c  
ALSO  
• Finishing  
• Dry Cleaning — One Day Service  
2416 Main PO 3-881

See and try  
an Olympia  
precision  
portable  
**Hester's**  
office supply co.  
Texas Avenue at 15th St.



*The Texas Cookie Shops*  
invite you . . .  
To Be Our Guests

To Try Our  
QUALITY

**FREE  
COOKIES**

THIS AD, PRESENTED  
BY ANY STUDENT,  
GOOD FOR 1  
PACKAGE COOKIES  
AT COLLEGE AVE  
STORE

**4 Convenient  
Locations:**

- 3329 34th St.
- Corner College & 14th
- 501 Idalou Highway
- 4201 19th St.



### Museum Shows Portraits

The exhibit, assembled by Portraits Inc., of New York, features the best works of Lester Bentley, Robert Brackman and Gardner Cox.

Bentley's contribution to the exhibit is entitled "Ronna Lee Cowles," and is the portrait of a smiling, golden-haired child in a russet-colored jacket.

BRACKMAN'S contribution to the exhibit is a portrait of his daughter, entitled "My Daughter, Celia."

"MRS. THORNE Dickenson" is the title of Sidney Dickenson's contribution to the exhibit. Of special interest is the self-portrait of Erik Haupt. The portrait is proof of Haupt's widely known ability to inject his perception of the emotions and personality of his subject into the portrait.

ANOTHER exceptionally interesting painting is the portrait entitled "Gerald Marr", by the famous New Mexico artist Peter Hurd.

Also on display are portraits by Louise Altson, Gladys Rockmore Davis, Mildred Reilly, Laurence Beall Smith, William Draper, Hester Miller, Elmer Greene, Colleen Browning, and Dimitri Romanovsky.

### THEY SAID IT COULDN'T BE DONE - BUT TODAY'S L&M GIVES YOU-



A hundred points in a basketball game by one player! They said it couldn't be done. But in 1953, 6'9" Clarence (Bevo) Francis, of Ohio's tiny Rio Grande College, re-wrote the record books with his phenomenal scoring feats, including a 116-point spree in a single game. Bevo's season total: 1,954 points.

Puff by puff **Less tars & More taste**

#### DON'T SETTLE FOR ONE WITHOUT THE OTHER!

Change to L'M and get 'em both. Such an improved filter and more taste! Better taste than in any other cigarette. Yes, today's L'M combines these two essentials of modern smoking enjoyment—less tars and more taste—in one great cigarette.



Light into that Live Modern flavor!

©1958 LIGGETT & MYERS TOBACCO CO.

Has Texas University's team been under... I doubt if Texas has... and-butter plays in their... They have played just... attempted 13 passes and... Lacey has hit only one... gaining has been done via... And again, Texas is... Tech in Memorial Stadium... the Steers with a 20-14 u... tell you it's not likely.

This afternoon the... time at the Stadium in N... has a 2-0 lead in the se... in this affair.

Today might be a d... clutch and especially at... today it might be the si... then. I'll vote for that.

If every week tu... turn professional book... The average for the y... TEXAS VS. TEXAS'... lookout — An upset — BAYLOR VS. MIAMI... take Miami.

NOTRE DAME VS. SA... That's someone who wa... who wins. In the game... TCU VS. ARKANSAS... with a romp.

PURDUE VS. RICE: TEXAS A&M VS. MI...

OTHERS:  
Tulsa over Arizona  
Army over Penn State  
Navy over Boston U.  
Mississippi over Trinity  
Oklahoma over Oregon  
Ohio State over Washing...  
Arizona State over West...  
Georgia Tech over Tulane

Drop in to  
Studio

UNIV  
SH 4-0320

SP  
VIS  
An intensive

Improves:  
• Reading  
• Compre  
• Visual E  
• Visual C

LA:  
Bi  
E

Lub  
1613 AVE. Q



# Outlook

By BILL DEAN

Has Texas University been playing under wraps or has Darrell Royal's team been underated? We may soon know.

I doubt if Texas has done much other than run straight bread-and-butter plays in their first two games with Georgia and Tulane. They have played just good enough to win and have been able to move the ball every time they had to.

**THE STATISTICS TELL** a little of the story. The Steers have attempted 13 passes and completed but three. Quarterback Bobby Lackey has hit only one, but has thrown only seven. So most of the gaining has been done via the land route.

And again, Texas is not forgetting the last time they tagged with Tech in Memorial Stadium in 1955. That year the Raiders stunned the Steers with a 20-14 upset. It could happen again but as most will tell you it's not likely.

\*\*\*\*\*  
This afternoon the Braves and the Yankees pick up again, this time at the Stadium in New York. It's hard to believe that Milwaukee has a 2-0 lead in the series. But Haney's Boys have taken charge in this affair.

Today might be a different series. The Yanks are tough in the clutch and especially at home. But if the Braves can break through today it might be the shortest World Series Casey Stengel has ever seen. I'll vote for that.

\*\*\*\*\*  
If every week turned out like last week I'd quit school and turn professional bookie. With 15 out of 17 our average was 88%. The average for the year is 73%. **This week —**

**TEXAS VS. TEXAS TECH:** If the Longhorns look to Oklahoma lookout — An upset — Texas Tech.

**BAYLOR VS. MIAMI:** The Bears will have to go hard but will take Miami.

**NOTRE DAME VS. SMU:** Ever hear the definition of an "atheist." That's someone who watches SMU play Notre Dame and doesn't care who wins. In the game of the week in the nation — Notre Dame.

**TCU VS. ARKANSAS:** TCU will start off its conference slate with a romp.

**PURDUE VS. RICE:** A tip to the Owls on their home grounds.

**TEXAS A&M VS. MISSOURI:** The Aggies finally win one.

**OTHERS:**  
Tulsa over Arizona  
Army over Penn State  
Navy over Boston U.  
Mississippi over Trinity  
Oklahoma over Oregon  
Ohio State over Washington  
Arizona State over West Texas  
Georgia Tech over Tulane

## Picadors to Play Inter Squad Match

One of the best Texas Tech freshman teams ever assembled will open their 1958 season with an inter-squad game today at 2:00 p.m. in Jones Stadium.

Such high school stars as Billy Ryan of Seymour, Pat Holmes of Del Rio, Ken Milliken of San Angelo and John Hanst of Lockney will play in the game that will be like any other but minus the kick-offs. The squad has been divided into the Blues and the Whites to test their abilities as college players before they play their first "real" game against

the North Texas State freshman in Denton on October 10.

**ACCORDING** to the Picador coach, Tom Hamm, the freshmen have shown steady progress after working together only two weeks. The players who start against the North Texas freshmen will be the ones who stand out in their performance this afternoon and in next weeks practice.

Other Picador coaches are: Jim Farmer, Ray Howard, Tim Stone, Don Schmidt and Bobby Hunt.

**Picador Schedule**  
October 10 — North Texas State at Denton  
October 23 — Abilene Christian at Abilene  
November 1 — West Texas State at Lubbock  
November 6 — Hardin-Simmons at Lubbock  
November 14 — Tulsa University at Tulsa

### Mural Briefs

Tech's Intramural Director, Edsel Buchanan, still needs students interested in officiating touch football games. Those interested can contact Buchanan at the Men's Gym.

**TOUCH FOOTBALL** games will start the week of October 13. Entries in the Fraternity League are: Phi Kappa Psi, Delta Tau Delta, ATO, Phi Gamma Delta, Kappa Sigma, Phi Delta Theta, Sigma Chi, SAE, and Sigma Nu. There are teams entered from all the boy's dorms. The Independent League includes: Newman Club, Church of Christ, Big Eleven, BSU, Delta Sigma Pi, DSF, Rodeo Club, Roman Rushers and Alpha Delta Sigma.

\*\*\*\*\*  
**ENTRIES** are now open for all Tech students who would like to compete in the following intramural events: Tennis singles, handball, volleyball and badminton. Participants can sign for the events at the Intramural Office in the Men's Gym.

### Q. C. BOWL



and Keep Healthy

Lubbock's Largest Bowling Alley

**SPECIAL STUDENT RATES**  
30c per line

for reservations  
7301 College SH4-8451

## THE CHICKEN SHACK

Lubbock's LARGEST Restaurant

WE CATER TO BREAKFASTS  
DINNERS AND DANCES

1710 - 34th Street — Phone SH 4-7673

Drop in today and inspect Lubbock's Finest Health Studio

- Muscle Toning
- Body Building
- Stream Bath
- Massage
- Weight Reducing

## UNIVERSAL HEALTH STUDIO

SH 4-0320

3019 34th

## SPEED READING

AND

## VISUAL TRAINING

An intensive training program tailor-made to your specific needs for improving Reading Speed and visual efficiency

Improves:

- Reading Speed
- Comprehension
- Visual Efficiency
- Visual Comfort
- Screen Visual Problems
- Increases Reading Production
- Makes Reading More Pleasant

LAST CLASS MORE THAN DOUBLED READING SPEED

Beginning Speed — 228 Words Per Minute

Ending Speed — 740 Words Per Minute (70% comprehension)

ENROLL NOW

### Lubbock Vision-Reading Center

1613 AVE. Q

PHONE PO 2-8769

## TWO MEN-OF-TEXAS LEAD REVIVAL



FIRST BAPTIST CHURCH  
DR. J. RALPH GRANT, PASTOR  
BROADWAY AND AVENUE V  
LUBBOCK



RALPH LANGLEY

Dr. Ralph Langley is pastor of Willow Meadows Baptist Church in Houston. He is one of the most sought after speakers in the Southwest, and will bring a message that will inspire you. Don't miss a single service.

J. T. ADAMS

Mr. J. T. Adams is Minister of Music and Youth at First Baptist Church, Sulphur Springs. His voice is familiar to thousands since he is the featured soloist and director of the famous Men of Texas who have recorded for Word Records. You will enjoy hearing him in person.



OCTOBER 5-12, 1958



# Upstart Tech Challenges Texas Steers

**GAME AT A GLANCE**  
 Who: Texas Tech vs. Texas  
 When: 8 p.m.  
 Where: Memorial Stadium, Austin

**Probable Starting Line-ups**

<b>Tech</b>	<b>Texas</b>
Seemann	LT Bryant
Henderson	LG Jones
Stockton	LG Anderson
Holub	RG Parkhurst
Bentley	RT Padgett
Williams	RT Shillingburg
Selfridge	RE Duke
Bell	QB Lackey
Rice	LH Blanch
Dellinger	RB Ramirez
Witucki	FB Altes

**By Bill Dean**  
 Austin, Oct. 4.—Texas Tech's Red Raiders, riding a two-game winning streak, challenge the tough Texas Longhorns tonight before an expected crowd of over 40,000 in Memorial Stadium.

**THE STEERS** are also undefeated with wins over Georgia, 13-8, and Tulane 21-20. It is the general feeling of Raider coaches that Coach Darrell Royal has been holding Texas under wraps for these first two however.

The Red Raiders have beaten a University of Texas team only once in eight tries, but the single victory, a 20-14 decision in Austin in 1955, was a most significant one. When Tech beat the Steers as 46,000 watched, the fans and members of the Southwest Conference suddenly began to look at the West Texas school as an equal and a year later Tech was accepted into the league.

This will be old home night for Tech assistant J. T. King, a former A&M and Texas aide. King, a Texas ex who was an assistant at the University through the 1956 season, is familiar with Texas personnel, having coached the seniors personally and recruited many of the Juniors.

**COACH DEWITT WEAVER** is hoping that Texas will be thinking about their meeting with Oklahoma next week. If they are, the stage will be ripe for an upset.

The Longhorns will be rugged, though. Their top point-maker is quarterback Bobby Lackey with 14. He is also their leading punter with a 41.3 average and does a good job on defense.

Second team fullback Mike Dowdle, with a 5.0 average, is the leading rusher. He has carried 16 times for 80 yards. Behind him are halfback Rene Ramirez, with 81 yards on 21 tries for a 3.9 mark.

fullback Don Allen, with 59 yards in 17 carries and a 3.5 average, and halfback George Blanch with 49 yards after 13 carries and an average of 3.8.

As a team the Longhorns have gathered 345 yards rushing, and 195 passing for a total of 595.

**IN THE LINE** Texas has returning from last year's Sugar Bowl team ends Bob Bryant, tackles James Shillingburg; guards H. G. Anderson J. B. Padgett and Mike Wells; centers Arlis Parkhurst and Jerry Huennink. In addition, sophomore tackles Dick and Tillman O'Brien are making strong bids for starting berths.

The backfield is set with Lackey, Blanch, Ramirez and Allen. On the second unit will be quarterback Tom Newman, halfbacks

Bob Matocha and Drew Morris and fullback Dowdle.

The Raiders will probably use the same line-up that plastered

West Texas so effectively last week 32-7. The halfback Floyd Dellinger to end Gerald Seeman passing combination struck once again against the Buffs, making Seeman the leading scorer with 12 points. Halfback Ronnie and Dellinger are the leading rushers.

The line is led by big E. J. Holub. Holub was credited with 10 unassisted tackles against West Texas. But he had plenty of help from tackles Phil Williams and Jim Henderson; guards Gene Bentley and Jerry Stockton; and ends Jerry Selfridge and Seeman.

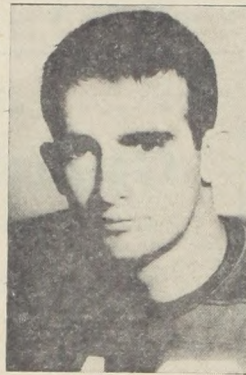
Jerry Bell, who is proving to be a most capable team leader, will man the guns at quarterback with Johnny Riddle standing by to direct the second unit. First team halfbacks are Rice and Dellinger with John Roberts and Milton Vaughn on the second eleven. Alternating at fullback will be Bob Witucki, Glen Amerson and Doug Duncan.

Although Tech is the conference's only West Texas representative, players from that

area have long been stars in SWC football. The Longhorn squad this season has 10 West Texans including co-captains Bob Bryant of Plainview and Arlis Parkhurst of Colorado City. Others are quarterbacks Larry Cooper of Midland and Tommy Newman of Phillips, tackle Jim Shillingburg, fullback Mike Dowdle of Graham, center Jim Rose of Abilene, and end Stuart Peake of Abilene, guard J. B. Padgett of Colorado City and end Maurice Duke of Wichita Falls.



HOLUB



DELLINGER

• TUXEDOS •  
 RENT THEM FROM

**Costume Studio**

COSTUMES FOR ALL OCCASIONS  
 Wigs - Mustaches - Novelties  
 2422A-Bdwy PO 3-2388

WELCOME TEXANS FROM

**Parisian Cleaners**

Fine Cleaning At A Fair Price

2305 4th PO 3-3194

ANNOUNCING

**4 Hour Wash Service On Shirts.**

CASH AND CARRY DISCOUNT CURB SERVICE

**HUB LAUNDRY**

FIRST IN QUALITY

2107 19th PO 5-7871

it's high time for high fashion ...in the season's smartest shoes

Welcome the new season in these handsome new Crosby Squares. Superbly crafted in fine leathers, each reflects careful attention to styling and detail—and a buyer's good judgment. Choose from our complete selection of styles, leathers and colors.

**Crosby Square**  
 as advertised in Esquire

**Bray's**  
 CAMPUS TOGGERY

2422 Broadway PO 2-3501

