

Hansford Library  
120 Main  
Spearman, Tx 79081

# Hansford County 4-Hers Show Stock At Houston

HOUSTON--Thirty-eight 4-H members from Hansford County will be joining other 4-H and FFA members from throughout the state for showing competition at the upcoming Houston Livestock Show, Feb. 17 through March 4 at the Astrobhall.

Hansford County 4-H members from Spearman who are scheduled to exhibit market barrows include Brooks Beck, Brian Black, Darla Black, Cody Brooks, Brandon Close, Jason Harnish, Shane Harnish, Jeremy Hunter, Mandy Kenney, Leslie Latta, Leah Mackie, Randie Renner, Ronda Renner, Chad Riggins, Summer Riggins, Kacey Smith, and Kevin Williams.

Gruber members of Hansford County 4-H set for market barrow competition include Brant Armes, Katrina Bratton, Kaisi Foster, Cori Lowe, Jamie Ralston, Wendell Ralston, Holly Venneman and Kim Venneman.

Those from Spearman set to exhibit market steers include Chris Brooks, Cody Brooks, Ashley Brown, Brandon Close, Shane Harnish, Tom Kirk, Leslie Latta, Tommi Latta, Leah Mackie, Randie Renner, Ronda Renner, Kelly Shieldknight, Quentin Shield-

knight, Dallas Trosper, Paul Trosper, Brandon Vanderburg, Clancy Vanderburg and Kevin Williams.

Also exhibiting market steers will be Gruber residents Brant Armes, Cherylann Thompson, Clint Williams and Stacy Williams.

Exhibiting market lambs will be Leslie Latta, Tommi Latta, Leah Mackie and Kevin Williams, all of Spearman.

These 4-H and FFA exhibitors compete in one of two divisions of the Houston Livestock Show-the junior show division. The other division, the open show, attracts its exhibitors from the world's agricultural industry, primarily professional breeders and ranchers.

Representing 841 Texas 4-H clubs and FFA chapters, the junior show is expected to exceed 12,000 entries this year. A variety of animals are shown in the junior show division: market steers, market swine, market sheep, market poultry, beef and dairy heifers, breeding sheep, goats, commercial steers and breeding rabbits.

The four market animal categories represent animals raised by the exhibitor as food sources. Top animals in each of these cate-

gories are eligible for their individual market auctions. Total money paid in 1989 at the four junior show auctions exceeded \$4.5 million.

"Our Show, the world's largest livestock show, attracts some of the finest breeders and ranchers from throughout the world. Yet during the second week of livestock show competition, the young 4-H and FFA exhibitors take over the Astrobhall. We feel these outstanding youngsters exemplify the purpose behind our event-to benefit youth and support education," said Steve Woodley, Houston Livestock Show and Rodeo assistant manager.

All net proceeds from the annual Houston Livestock Show and Rodeo provide funds for scholarships and research projects throughout the state. Currently, more than 1,000 students receive some form of Show-sponsored financial assistance, with 30 research projects funded. More than 6,500 volunteers ensure the success of each year's event.

This year's event begins with horse show competition, Thursday, Feb. 15 followed by other livestock competition beginning Saturday, Feb. 17. The first rodeo performance will be held at 4 p.m.



A packed house of Lynxettes fans try to rally their team during the bi-district game against Wellington. See story on page 4.

## McWhirter May Be Last Miss Wheatheart

Kellie McWhirter of Spearman, the reigning Miss Wheatheart, may be the last Miss Wheatheart for a while, according to the Perryton-Ochiltree Chamber of Commerce.

The chamber's board of directors decided at its recent meeting to cancel the Miss Wheatheart Scholarship Pageant for this year, but will continue support for McWhirter through the July Miss Texas Pageant.

"We really had no other choice but to end the Miss Wheatheart Scholarship Pageant for this year," said Jim Hudson, president of the chamber. "The financial resources of the chamber are limited. The pageant had been supported by City of Perryton hotel-motel tax collections, advertising and entry fees.

"Over the past three years, because of shrinking collections, the hotel-motel tax support has dropped from \$5,000 to \$2,500 for this year," Hudson added, "and indications are that it will be less

in the next hotel-motel tax apportionment. We cannot ask our membership to make up the difference from their dues."

Hudson went on to say that of the 61 contestants in the Miss Texas Scholarship Pageant, Perryton was either the smallest city or close to the smallest city sponsoring an entrant. "The Miss Texas Pageant has just grown past our chamber's ability to compete," said Hudson.

The chamber will continue its sponsorship of the current Miss Wheatheart through the end of the 1990 Miss Texas contest and honor its obligations to fund the scholarships for current and past Miss Wheathearts.

"Becky Cunningham, the chair of the Miss Wheatheart Scholarship Pageant committee, and all the committee members have given a lot to the project," said Hudson. "The board expresses its appreciation for the time and commitment they have given to the pageant through the years."



Kellie McWhirter maybe the last Miss. Wheatheart Queen.

## January VIPs Named At High School

January VIPs at Spearman High School have been announced by Jim Kirkland, SHS principal. The VIPs for the month of January 1990 are Lori Lieb, Brian Kidder

and Phyllis Kirkland. Lori Lieb is the 15-year-old sophomore daughter of Dean and Linda Lieb. She lists reading, basketball, cross-stitch and piano

among her interests. Her future plans are to attend Texas Tech University, majoring in elementary education.

Brian Kidder, age 16, is also a

sophomore student at SHS. He is the son of Susan Kidder. His interests include football, basketball, track and "passing classes". Future plans for Kidder will include attending college.

Phyllis Kirkland is a graduate of Spearman High School and West Texas State University. She has been in the teaching profession for 19 years. This is her third year at SHS. She is the mother of Brent, a junior at Texas Tech University; and Krista, a freshman at Tech. Her hobbies include boating, sports, yard work and corcheting.

Spearman High School names three VIPs each month, to include to outstanding students and an outstanding teacher.



Lori Lieb



Brian Kidder



Phyllis Kirkland



The Spearman

# Reporter

25¢  
Per Copy

6 Pages

Volume 82, No. 17

YOUR HOMETOWN NEWSPAPER

Thursday, February 22, 1990

## December Business Down From 88

December 1989 business was down in both Spearman and Gruber from December 1988, according to city sales taxes collected during that month and then returned in February by the State Comptroller's Office.

Spearman received a check totaling \$23,358.50 this month, as compared with the check for \$25,698.07 which was sent to Spearman by the Comptroller's Office in February 1989. That represents a business downturn of 9.1 percent.

Year-to-date receipts of returned city sales taxes in Spearman total \$35,303.80, which is 3.86 percent less than the \$36,719.55 received by Spearman in January and February of 1989.

Gruber's total sales tax rebate in February was \$5,517.67, which

is 17.91 percent less than the \$6,721.59 received in February 1989. The year-to-date total for Gruber is \$8,468.54, which is 13.68 percent less than the \$9,810 which had been received by Gruber at this time last year.

Statewide, State Comptroller Bob Bullock said that his office sent checks totaling \$156 million in local sales tax rebates to cities and counties in Texas.

This month's total is the second highest monthly rebate in the state's history with last February's payments of \$157 million to cities and counties setting the state's record.

Total payments last February were \$1.2 million higher than this month because a number of large audit payments were credited to the books last February. Bullock

said.

This February's payments to cities totaled \$143 million.

Houston received \$24 million, the state's largest payment. Dallas received the state's second largest payment of \$15 million. San Antonio received \$8 million and Austin received \$6 million.

Payments to counties totaled \$13 million this month, compared to \$12 million last February.

Merchants collect the state, city and county sales taxes and send them to the Comptroller's office with their tax returns. The state keeps its 6 percent share and each month sends cities and counties their portion of the sales tax.

This month's checks reflect taxes collected on December sales and reported in January by busi-

nesses filing monthly tax returns.

### WEATHER

	High	Low	Preci.
Sat. 60	23		
Sun. 69	29		
Mon. 43	21		
Tue. 35	29	.90	9 in. snow

24 hour  
Prayer Service  
659-2911

## Panhandle Crisis Center Sets Fund Raiser

by Mary Frances Elzey

You readers familiar with us may skip this paragraph and start with the next one. The PCC offers services to men or women who are victims of domestic violence, whether verbal or physical. We give counseling, support and information to these victims, plus a shelter to those who feel themselves to be in danger at home. These services are free of

charge. If you want information only, call us at 435-5008 from 9:00 a.m. to 5:00 p.m. We are available for help at any time, 24 hours a day. For those of you who must call us long distance, use the toll-free number: 1-800-753-5308.

O frabjous day! Calloo, Callay! We did very well on our first two fund raisers, the Mexican Pile-on

and the Amarillo Little Theatre presentation of The Quilters. They were delicious and delightful. I even heard that the next day at a certain Sunday School class, the men were as enthusiastic about it as the women! Can you imagine? Not only was it not football - it even had an all-woman cast!

Oh my! That was a putdown! Please accept my apologies, gentlemen. It was too good a chance to make a funny. I didn't really mean it.

We have one more fund-raiser to go, this one on March 3 out at the Perryton Club. It's called A Mystery Play; that is, it is a murder drama in which even the paying guests take part, if they are willing. Everyone gets to guess the identity of the murderer. The first person to put the finger on the guilty party receives a couple of tickets to New Orleans, the winner to be announced at the close of the drama. The tickets, each of which admits two guests (husband and wife, a dating couple, a couple of friends) and entitles them to the hot/cold hors d'oeuvres and one guest at the identity of the perpetrator. Each guess after that first one will cost \$10. So if your interest is sufficiently piqued, perhaps you will

contribute quite a bit to this worthy cause!

I don't stand a chance of winning the airline tickets, for we board members are automatically disqualified. But if we pay our fee, we may indeed guess. Sounds like a racket, doesn't it?

This final fund-raiser should raise all the money we need for our programs this year. Surely you knew, all of you, that we must raise a certain percentage of our grant money locally, in order to qualify for further grants. Furthermore, the percentage is higher each year.

Recently the General Telephone Company of the Southwest gave us an in-kind contribution between our three offices. Before this Jeannie had to yell at one or the other of the two adjacent offices to tell 'em to get on the phone. Now only one or two buzzes, depending on which office is to answer, disturbs the atmosphere. Geezeel, isn't it?

The Parenting classes in Perryton are doing very well. Perhaps you people in Follett, Darouzett, Spearman or Gruber would like a series of classes presented in your own town. If so, please let me know at once so we can start laying our plans.

See you next month.



Mr. and Mrs. Albert T. Baker of Spearman announce the engagement of their daughter, Denaee, of Gamber, Md. to Doug Chandler of Finksburg, Md. The couple plans a March 17 wedding at the First United Methodist Church of Spearman. Chandler is the son of Catherine R. Chandler of Westminster, Md. and David O. Chandler of Upper Marlboro, Md. The bride-elect is a graduate of Texas Tech University with a bachelor of fine arts degree and has a certificate of completion from National Shakespeare Conservatory in New York. She is a professional actress performing with the Entourage Resident Theatre Company and the mime company, Imagimime. The prospective groom is a graduate of Catonsville Community College, Catonsville, Md. and is currently attending the University of Maryland. He is a staff sergeant in the Maryland National Guard and manager at the Social Security Teleservice Center in Baltimore, Md.

## Among The Neighbors

by Helen Fisher

The roots of the Harbour family tree are deep and now the branches are spreading with the arrival of the 7th grandson of Ira and Loree Harbour.

Dalton Chance made his arrival on February 13th at Baylor Hospital in Dallas. He is the son of Ted and Debra Harbour of Rockwall. He has a sister, Zada Loree, and a brother, Austin Ira.

Grandparents in addition to the Harbours are Mr. and Mrs. Ferris Wood, Wellington; great-grandparents are Mr. and Mrs. Woodie Wood and Mrs. Jackie Bell, also of Wellington.

Jean and Pinky Sheets, wintering in Mission, were in Spearman part of last week, transacting business and visiting relatives. The weather has been colder than usual and a freeze killed their fruit trees, not just the current crop. Relatives were somewhat dismayed as they surely have enjoyed the lemons, oranges and tangerines from the trees that the Sheets have shared with them through the years.

Rubijo and J.D. Wilbanks are back at home after a short stay at their place in Santa Fe. No unusual or entertaining activity absorbed their time and the snow was deep and beautiful. No doubt Rubijo met with considerable resistance in keeping J.D. off the ski slopes!

Friends of Ruth Hill are sympathizing with her in the loss of her brother for whom services were held Monday morning in Lorenzo, Texas. He was 78 and had endured, uncomplainingly, a long siege of illness. Due to the impending inclement weather, Ruth was unable to attend the funeral, but he had called her on her birthday February 8 and they had had a long, companionable visit on the phone.

Teena and Elmon Jacobs came in Saturday from Port Aransas where they have been for five months. Usually they remain until late in the spring, but this year,

according to Teena, the weather wasn't as pleasant as usual. But according to Jake, he is expecting a multitude of Purple Martins this spring and needed to prepare the welcome mat for them; says it takes him a little longer than it used to. Age has nothing to do with it—it is just a coincidence that nowadays he is feeling his corns a lot more than his oats!

Three Spearman ladies ran the gamut of weather on Monday when they returned from a trip to Old Mexico just ahead of the storm. In fact they were fogged in at Harlingen on Monday and their flight was delayed several hours.

Pearl Pierce, Rosalie Butt and Adalyn Barnes left last Sunday, flying to Harlingen on Monday. They took a bus to Mission where they joined a tour group.

They took the bus to Reynosa, then a train to Monteray, changed to a luxury train there for the trip on in to Mexico City.

They stayed at a plush hotel, and every day and evening was filled with activities. They visited many fascinating historic places and scenic wonders.

The tour group was very congenial and the entire trip was indeed a pleasure.

They returned to Harlingen on Monday and reached home late in the evening.

Congratulations are in order for Craig Vinson who was recently promoted by the Texas-New Mexico Power Company to the Electric Service Supervisor of the Panhandle District. This district serves Perryton, Spearman, Booker, Follett and Higgins. He will be supervising five service men and two meter readers.

He will work out of the Perryton District Office, commuting from his home in Spearman.

Craig has been with the company eight years during which time he has lived in Spearman. He and his wife, Beverly, have a daughter, Heather, in the 7th grade, and sons Nicholas in the 4th grade and Dusty in the 1st grade.



Mr. and Mrs. Castulo Rosales of Spearman announce the engagement of their daughter Diana to Karl Bynum, son of Mr. and Mrs. Joe Bynum of Spearman. An April 7 wedding is planned at the First Christian Church of Spearman. The bride-elect is a 1989 graduate of Spearman High School. The prospective groom is a 1985 SHS graduate and is with the United States Marine Corps stationed at Camp Lejeune, N.C., where the couple will make their home.



Sherri Gayle Wilkes and Kelly Cureton Slover were married December 23, 1989 at the First Methodist Church of Odessa with the Rev. Charles Crutchfield officiating. The bride is the daughter of Mr. and Mrs. Monte Wilkes of Odessa. She is a 1984 graduate of Permian High School and attended Midland College. The groom is the son of Mr. Sammy Slover of Hedley, Tx and the late Wanda Slover of Olton, Tx. He is a graduate of Sul Ross State University and is employed by the Spearman School District. Honor attendants were Terri Day, Toni Wilkes, Kim Wileman, Jimmy Slover, James Stewart, Greg Wilkes, Hadley Reed, Jamie McAdams, and Lindsey Little. Tisha Lane was maid of honor and Kelly McCall was best man. The couple took a wedding trip to New Orleans and plan to live in Spearman.

## Club News

### PALO DURO PLAYERS

The second meeting of the Palo Duro Players was called to order by temporary board member Linda Butt on Monday, Feb. 12 at the Hansford Activity Center.

Members were reminded that 'Quilters' is scheduled for March 24. Palo Duro Players will be selling tickets, along with 'Thirty-something.' Tickets will be distributed at the next meeting, March 5. Money and extra tickets are to be turned in to Linda Butt at the Golden Spread Center by March 17.

Cecil Biggers informed members about filing fees to get state approval to make Palo Duro Players a corporation. These fees will be paid by Palo Duro Players in the form of yearly membership dues. The amount of these dues will be set at the next meeting.

Because of a conflict with the Parent Teacher Association, many key members were absent from the meeting. It was decided to postpone election of a board of directors until the next meeting.

The Palo Duro Players have been asked by the Hansford County Round-Up Committee to head the entertainment Committee. The Palo Duro Players will create a talent show for the Saturday afternoon portion of the celebration, which is tentatively set for June 8-9. The committee of Palo Duro Players who will arrange this show are chairperson Linda Butt and members Samme Goehring, Billie Willingham,

Mary Schuman and Brenda Ross.

It was also suggested that Palo Duro Players have a food booth at the celebration. The committee in charge of arranging this will be Billie Willingham, Sandy Smith, Sharon Boyd and Rhonda Covington.

It was decided that a fund raiser would be conducted in the form of a Lip Synch. Jean Ann Behney and her committee will report on the time and place for the fund raiser.

The next meeting is scheduled for Monday, March 5 at 7:00 p.m. at the Hansford Activity Center. The agenda will include election of board members, distribution of tickets for 'Quilters', and the amount of membership dues. All interested parties are urged to attend the meeting.

With all business concluded the meeting was adjourned. Members in attendance were Linda Butt, Ron Dunning, Denise Schuman, Billie Willingham, Bruce and Sharon Boyd, Ciria Vela, Brenda Ross and Samme Goehring.

### SERVITORS

Servitors held their February 15 meeting at the Hansford Abstract hosted by Cheryl Freeman, Hope Moore and Donna McCubbin.

Members present were Cindy Avila, Pauline Close, Linda Cummings, Cheryl Freeman, Donna McCubbin, Tina Lozano, Hope Moore, Maria Ochoa, Lee Schubert, Charlotte Sheets, Sally Vaquera and Kim Vera.

The meeting was started with prayer given by Pauline Close. Club Collect was led by Cindy Avila. An informative program and discussion on C.P.R. was given by Michele Davis.

Cheryl Freeman, Tina Lozano and Marcia Olivas were appointed as the nominating committee for the elective officers for the year of 1990-1991. A donation was given to the Gruver Library.

## Club News

### WORLD DAY OF PRAYER COMMITTEE

The World Day of Prayer planning committee met on Monday, Feb. 19 at the Lutheran Church.

Those present were Dorothy Haner, Ruth Knudson, Anita Summers, Janie Ward, Elma Ward, Selma Reneau, Betty Davis and Patty Sheppard. Parts in the worship service will be led by women of all denominations.

The service, although led by Church Women United, is open to everyone and not confined to women only. A nursery will be provided.

The offering received at the World Day of Prayer will be given to H&S EMS.

### HANSFORD COUNTY HISTORICAL COMMISSION

by Juanita Pierce

The Hansford County Historical Commission met February 5 at the Stationmaster's House Museum with Chairman Silvia Robertson presiding. Several changes in rules and regulations pertaining to historical markers were read and

discussed.

Hansford County's newest marker, the Lindburgh marker located on Highway 207 just south of Spearman, will be dedicated during the Hansford Round-Up.

The week of April 8-14 has been designated as Archeology Awareness Week. The Hansford County Historical Commission encourages all residents to help preserve the county's history.

The Preservation Committee reported on work done on the cemeteries in and around Hansford County. The committee's objective is to list all the names and dates on the headstones in the cemeteries. Only one list is complete at this time, the committee noted. Lieb Cemetery listing was done by students from the Pringle-Morse School District. The list was typed and corrected by members of the Cemetery Committee. The list is at the museum, for use by interested persons.

Johnny Lee gave members a report of progress at the Palo Duro Dam. Historical Commission members hope to obtain a marker for placement at the rock house commonly known as the Coble House, located eight miles south of Gruver on Highway 136. Members are now actively collecting history on the old house.

Members present at the recent meeting included Johnny Lee, Helen Boyd, Gus and Clementine Renner, Silvia Robertson, Rila Racer, Juanita Pierce, Joyce Johnson and J.R. Collard.

**THANK YOU**

I want to take this opportunity to thank all of you who have been so thoughtful of me during my illness.

Thanks to all of you for your cards, visits, phone calls, flowers and the food you have brought in. I do not know what we would do without good friends.

Thank you for your prayers and may the good Lord send his blessings to all of you.

With love,  
Pope Gibner

## Obituary

Nellie Ross Kitchens

PAMPA - Nellie Ross Kitchens, 88, died Tuesday, Feb. 20.

Mrs. Kitchens had been a resident of Pampa since 1934, moving from Eastland County. She married Truman Carter Kitchens in 1920 at Eastland. He preceded her in death in 1967. She was a charter member of Pampa Church of God.

Survivors include two sons, Truman Carter Kitchens Jr. of Spearman and Nelson Daniel Kitchens of Pampa; three daughters, Faye Jenks of Austin, Mary Conine of Dennison and Billie Laramore of Pampa; two sisters, Georgia Pugh-Holiday of Florida and Pat Newbold of Plano; 16 grandchildren; 25 great-grandchildren; and a great-great-grandson.

Funeral services were conducted Thursday, Feb. 22 at Carmichael-Whately Colonial Chapel with the Rev. M.E. Harris, pastor of Church of God and the Rev. Don Turner, associate pastor, officiating. Interment was in Fairview Cemetery.

The family requests memorials be to the Church of God, 731 North Faulkner, Pampa, Texas, 79065.

**THANK YOU**

Thank you so very much for your visits, calls, prayers, cards and other expressions of concern while I was in the hospital here and in Amarillo.

God has been very good to me and answered the many prayers offered in my behalf.

Thank you to wonderful caring friends who have brought food to my home since my return.

Sincerely,  
Avo Gray (Tope) and family

S17-2tp

## The Spearman Reporter

Your Hometown Newspaper

USPS 509660  
213 Main, Box 458, 659-3434  
Spearman, TX 79081

Published Weekly at  
213 Main, Spearman, Texas

Owned and Operated by:  
**Texas Independent Newspapers, Inc.**  
16607 Blanco Road, Suite 701  
San Antonio, TX 78232  
Second Class postage paid at  
Spearman, Texas 79081.

Any erroneous reflection upon the character of any person or firm appearing in these pages will be gladly and promptly corrected upon being brought to the attention of the management.

Publisher - Robert M. Hulett  
Copy Editor - JoAnn Morton  
Bookkeeper - Cayla Eaton

Subscription Rate: Hansford County, combination with the Hansford Plainsman \$19.95; out of county, \$24.95 annually.

Postmaster: Send address changes to **Spearman Reporter** Box 458, Spearman, TX 79081.

The publisher reserves the right to revise or reject at its option any advertisement which it deems objectionable, either in subject or phraseology, or which it may deem detrimental to its business.

Advertising and Story Deadlines: Monday 12:00 p.m. for Spearman Reporter, Thursday 12:00 p.m. for Hansford Plainsman.

**TA** MEMBER  
TEXAS PRESS ASSOCIATION

**BETTER SERVICE FOR YOUR HEARING AID...**

...MEANS BETTER HEARING FOR YOU.

**Ask For FREE Hearing Test**

Be sure to visit our next Service Center.

Saturday, Feb. 24, 1990  
Hansford Manor  
707 S. Roland  
Spearman, Texas  
10:00 a.m. - 12:00 Noon

Golden Spread Hearing Aid

Formerly Beltone  
27-B Medical Dr  
Amarillo 352-8961

*Mr. and Mrs. Vernon Morris request the honour of your presence at the marriage of their daughter*

*Loree Jo*

*to*

*Mr. Quentin Neal Hart*

*son of*

*Mr. and Mrs. Jon Hart*

*Saturday, the twenty-fourth of February*

*at seven o'clock in the evening*

*First United Methodist Church*

*Spearman, Texas*

*Reception following*

*Hospital provided*



"Evergreen," a gospel trio comprised of Janae Harris, Russell Ball and Wendel Christenson will be singing at Apostolic Faith Church in Spearman on February 25 at 11:00 a.m. "Evergreen" ministers in churches throughout the United States, singing a wide variety of music including southern gospel, classic hymns of the church and some original compositions. The pastor, Lealand Grimmer, invites everyone to attend this special time of ministry and sharing. Young and old alike will be blessed by the ministry of Evergreen, he says.

**Panhandle Events**

**ALL STAR KIDS - AMARILLO**

All Star Kids will host a children's pageant at Austin Middle School, 1808 Wimberly, Amarillo, on Saturday, Feb. 24. Competition is open to children from birth to 18 years of age. More information and entry forms can be obtained by calling (806) 655-0652 or (214) 494-4299.

**Pancake Day - Liberal, Kan.**

The Liberal chapter of Rotary International and Parade Chairman Jay Fredrick announce that plans are almost complete for the 1990 International Pancake Day Parade.

"Racing in the Land of Ah's" has been chosen for the theme of this year's parade, to held at 2:00 p.m., Tuesday, Feb. 27.

Persons interested in participating in the parade with floats, horses, clowns or as individuals may pick up entries at the Chamber of Commerce, Tourist Information Center or may write to: Jay Fredrick, Parade Chairman; Pancake Day Parade; c/o Nichols Fluid Service; P.O. Box 1259; Liberal, Ks. 67905.

**THE TEMPEST - ALT**

On March 2, 3, 9 and 10 at 8:00 p.m. The Amarillo Little Theatre will be presenting "The Tempest" by William Shakespeare. Preview night featuring reduced ticket prices will be Thursday, March 1 at 8:00 p.m.

This classic tale, one of Shakespeare's last works, is a comedy that will entertain people of all ages. What should prove exciting about this production is that Director Allen Shankles has set this play in the 21st century. The updated version will feature futuristic sets, costumes and special effects, while keeping the dialogue and story line intact. The result will be an exciting new look for a centuries-old play.

Tickets are available at Amarillo Little Theatre by calling 355-9991 for reservations. Discounts for Students and Senior Citizens are available. Group rates are also available.

**ORCHESTRA CONCERT - AC**

The Randel Chamber Orchestra will give a concert Saturday, March 3, 1990 at eight o'clock in the evening at Amarillo College in the Concert Hall theatre.

James Setapen will be the Conductor for the Chamber orchestra and the orchestra is made up of musicians from the Amarillo Symphony. The guest artist for the concert will be Edmund Battersby on piano.

For more information call: (806) 376-8782.

**SAUSAGE DINNER - PAMPA**

The Pampa Knights of Columbus are having their 38th Annual Polish Sausage Dinner Sunday, March 4th, from 11:00 a.m. to 2:00 p.m. and from 4:00 p.m. to 6:00 p.m. at the K of C Hall at the corner of Ward and Buckler Streets in Pampa.

**AWARDS LUNCHEON AMARILLO**

1990 Womens's Forum-Amarillo Area, has announced plans for the Distinguished Service Awards Luncheon. For further information or to request a nomination form, contact Womens's Forum-Amarillo Area, c/o Patty Bryant, P.O. Box 9897, Amarillo, TX 79105.



by Russ Gibbs  
First Baptist Church

**Spiritually Speaking**

Solomon said that a man who "is slothful in his work is a brother to him that is a great waster" (Prov. 18:9).

Thomas Edison was probably the greatest inventor in history. He invented the phonograph, the incandescent light bulb, the microphone, the mimeograph machine, the medical fluoroscope, the nickel alkali battery, and hundreds of other things. However, Thomas Edison had every reason to do nothing.

At the age of seven his mother took him out of a private school because his teacher had said Tom was "addled." He had only three months of formal schooling. Gradually he lost his hearing until he was almost deaf. And he failed in many more experiments than he ever succeeded at. So he could have wallowed in self-pity. But not Edison. He got busy and taught himself the things he needed to know. When people asked if his deafness was a handicap, he replied, "No, how many things have you heard today that weren't worth listening to?" In fact, he capitalized on his deafness because it shut out noise and enabled him to concentrate more.

When a friend once asked if he weren't discouraged over a project that had failed about 10,000 times, he replied, "Why, I have not failed. I've just found 10,000 ways that won't work."

Think what a waste it would have been if Thomas Edison had done nothing. He would not have

had to do bad things. It would have been sufficient for him to do nothing. The world would have been worse, and we would all have been losers if Edison had taken life easy.

I think God must often feel like Abraham Lincoln, who once wrote to General McClellan, "If you are not planning to do anything with the army, will you lend it to me for a while?" I think Christ may feel like saying to us today, "If you aren't planning to do anything with your talents, your potentials, your opportunities, give them back to Me so I can use them."

Unfortunately many professing Christians are of no use to the Lord. Doing nothing is a serious sin because it is a sin against both knowledge and opportunity.

Ignorance is not our main problem. Everywhere I go I find people who know what they ought to do, but they do not do it. Our problem is not our minds but our wills. We lack dedication. We don't need to know better; we just need to do better. We need more devotion, not more truth.

**Ms. P's Boutique**  
601 W. 3rd  
Borger, Texas

**Hansford Happenings**

"Quilters," starring Candy Boxwell of Spearman, will be presented Saturday, March 24 at 7:30 p.m. at the Spearman High School auditorium. The Golden Spread Senior Citizens Center of Spearman is sponsor for this Amarillo Little Theatre production. Palo Duro Players theater group will provide assistance with a stage crew and ushers for the play, and the Palo Duro Players, along with the Thirtysomething youth group, will be selling tickets. Hansford County residents are urged to mark the date and time on their calendars and plan to attend the play.

The Bureau of the Census still needs applicants for jobs taking the census, especially in Spearman and rural Hansford County. For information contact the Bureau of the Census, 3501-H W. 45th, Amarillo, TX 79109, telephone 354-3700.

Spearman High School Chorale is now selling "BoosterShades" to show its support for the Lynx and Lynettes. Lynette fans are encouraged to obtain these shades and display them in their automobiles as the Lynettes head into the playoffs. Shades sell for \$5.00 each, and all proceeds will go toward Chorale's spring trip. BoosterShades are available from any Chorale member, or at Kids' Stuff, First National Bank, J.G.'s and Cates Men and Boys Wear.

Panhandle Crisis Center will present "An evening of murder and excitement" Saturday, March 3 at 7:30 p.m. at The Perryton Club in Perryton. Those attending are invited to solve a "murder mystery" for a chance to win two airline tickets compliments of American Airlines. Admission price is \$50 per couple. More information can be obtained by calling 659-3042 or 659-3413.

A special fund has been set up at First State Bank in Spearman for the benefit of Verlin and Edward Beck, area residents who sustained injuries in a recent fire. The Becks have been transferred to Lubbock General Hospital's Burn Center for treatment, and the fund has been set up to help defray expenses incurred during their hospital stay. Deposits can be made at First State Bank, or by contacting Mae Wofford at 659-5233 or 659-2018.

Commodity distribution was cancelled on Wednesday, Feb. 21 due to the weather. Commodities will be distributed on Wednesday, Feb. 22 from 1:00 p.m. to 5:00 p.m.

**maywood**  
PATIO DOOR SYSTEM

**\$285**

500R GRILLES EXTRA

**Jenkins**  
Doors and Windows

1-800 692-4066

**FEBRUARY CALENDER OF EVENTS**

To put dates on this calendar, please call the Spearman Reporter Phone 659-3434.

SUNDAY	MONDAY	TUESDAY	WEDNESDAY	THURSDAY	FRIDAY	SATURDAY
				1	2 *SHS Basketball Panhandle There JV & Varsity Girls & Boys *Jr. High Basketball West Texas 9th Grade Tournament *Groundhog Day *Flame Fellowship 7:00 p.m.	3
4 * Attend the Church of your choice	5 * Rotary Meeting *Hansford Showtime Car Club 7:30 p.m. *Jr. High Basketball vs. West Texas Boys There Girls Here	6 *SHS Basketball Highland Park There JV & Varsity Girls & Boys *Defensive Driving Course 6-10 p.m. Home Demonstration Club Room *Lions Club	7	8 *Rainbows & Ranglers Square Dance Lessons 8 p.m. County Barn	9 *SHS Basketball West Texas Here JV & Varsity Girls & Boys *SHS Basketball White Deer Tournament JV Girls & Boys	10
11 * Attend the Church of your choice	12 *Spearman PTA 6:30 p.m. *Blood Drive 3-7 p.m. Parish Hall *Abraham Lincoln's Birthday *Rotary Meeting	13 *Lion's Club	14 *Valentine's Day *C of C Women's Division Executive Board 12:00 p.m. Chamber Office	15	16 *Hansford Heart Association Banquet 7 p.m. First Baptist Church Gruver	17
18 *Attend the Church of your choice	19 *Rotary Meeting *Presidents' Day	20 *Lion's Club	21 *C of C Women's Division Meeting 12:00 p.m. Home Demonstration Club Room	22 *George Washington's Birthday	23	24 *SHS Track at Canyon Varsity & JV Boys
25 *Attend the Church of your choice	26 *Rotary Meeting	27 *Lions Club	28			

THIS COMMUNITY CALENDER OF EVENTS IS BROUGHT TO YOU AS A PUBLIC SERVICE BY:

**Good for You**  
Open Thurs.  
4p.m. - 6 p.m.



**"Your Full Service Bank"**  
Member FDIC

729 W. 7th

659-5544

## Road To State Ends For SHS Lynxettes

The road to the state basketball tournament ended for the Lynxettes last Friday night at Tascosa Activity Center, when they lost to the Wellington Rockettes 39-47.

"We dug a pretty deep hole in the first period," said Coach Jim Kirkland. The Lynxettes were outscored 13-3 in the first period. According to Kirkland, cold shooting and turnovers were the main causes of the lack of scoring by the Lynxettes in the first period.

The Lynxettes' turnovers came as a result of the pressure brought to bear by the Rockettes' full court press. They pressed the Lynxettes the entire first period, and only relented as some of their players began to get into foul trouble.

In the second quarter the Lynxettes played the Rockettes almost even, scoring 14 points. Seniors Michelle Cook and Vonda Benson were joined by Jill Lusby in getting the Lynxettes back into the game.

At the beginning of the third period, the Lynxettes were down by 11 points. In that period both teams scored 10 points. Helping to keep the Lynxettes from losing ground were Laci Lasater, Joy Gafford, Vonda Benson and Jill Lusby.

After not gaining any ground on the Rockettes for two periods playing defense at half court, Coach Kirkland instructed the

Lynxettes to press the Rockettes full court. As a result of the Lynxette press, the Rockettes began to panic a little and turn the ball over. The Lynxettes were able to close to within three points of the Rockettes with three minutes left in the game.

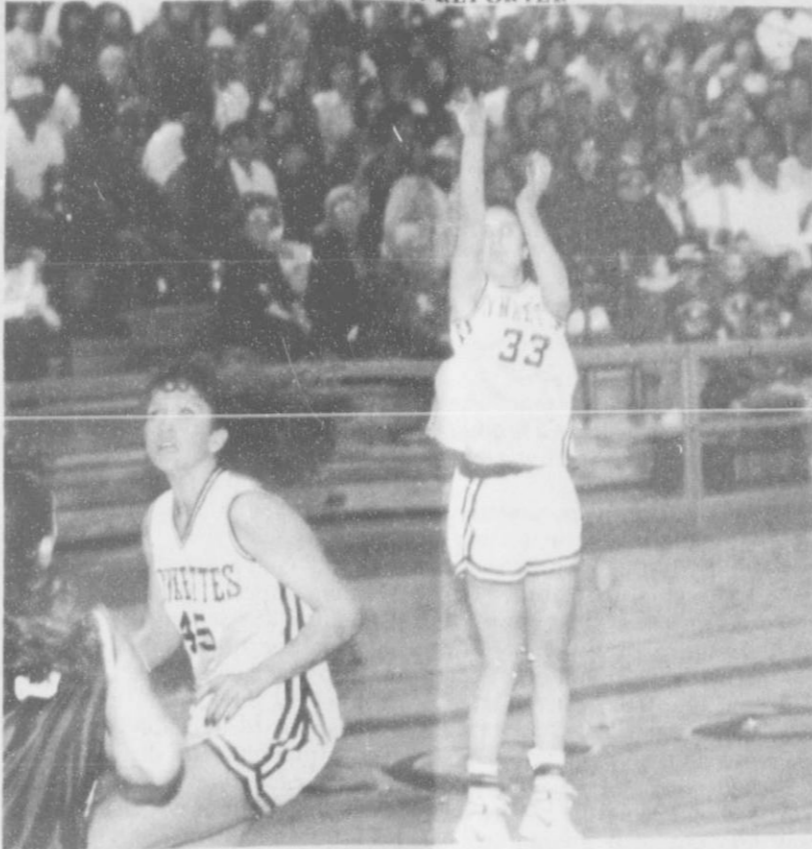
Mendy Lasater led the scoring drive for the Lynxettes with 10 points. She sank two 3-point field goals and two 2-point baskets. Laura Pearson scored a 2-pointer for the Lynxettes to boost the Lynxette scoring in the fourth quarter to 12 points.

In the end, those 12 points were not enough. Thanks to good free-throw shooting by the Rockettes, they scored nine points in the quarter.

After the game, Coach Kirkland thanked the three seniors for their leadership throughout the year. He stated that he and his coaching staff, Richard North and Susan Davis, are already looking forward to working with the returning players of next year's team.

Lynxettes scoring in the bi-district tilt were

Mendy Lasater	10
Vonda Benson	10
Jill Lusby	6
Laci Lasater	4
Joy Gafford	4
Laura Pearson	3
Michelle Cook	2
Bonnie Thompson	2



Joy Gafford [33] puts up a jump shot during the Lynxettes bi-district game against Wellington. Laura Pearson [45] moves into position for a rebound.

## First Track Meet Set For Saturday

Coach Rickey Smith will lead a slightly attenuated Lynx track team to its first track meet this Saturday, Feb. 24 at Canyon.

Because this is the first weekend of spring break, the full track team will not be participating in this meet.

According to Coach Smith, this year's Lynx track team is going to be young. There are only six returning lettermen on the team. Only one of them is a senior, John Hughes.

Hughes, along with returning lettermen Tim Dooley and Chris Williamson, earned post-district honors last year. Hughes placed in shot and discus at the district meet. Williamson placed third in the 100-meter dash at the district meet and was an alternate on the sprint relay team at the regional

meet. Dooley was an alternate on the regional 400-meter relay team.

Other Lynx track team members and the events in which they will compete at Canyon include:

- Chris Williamson - triple jump, 100-meter high hurdles, 200 m. dash, 100 m. dash.
- Tim Dooley - 400 m. dash, 800 m. run.
- Chad Riggins - 3200 m. run, 1600 m. run.
- Tino Garcia - 3200 m. run, 1600 m. run.
- Armando Munoz - 800 m. run, 1600 m. run.
- Brian Beck - 110 m. high hurdles.
- John Hughes - shot put, discus.
- Brian Kidder - shot put, discus.
- Ramon Lozano - shot put, discus.
- Sammy Graham - shot put, discus.



Skip Lesly of Spearman recently bagged this Brown Fallow buck on a hunt in the Texas Hill Country. Skip killed his deer with one shot from a .243 rifle on the famous Y-O Ranch in Kerr County. His hunt was courtesy of Larry Reichenau, and he was guided by his uncle, Don McClure of Kerrville. Skip is the son of Beth Lesly and the late David Lesly, and grandson of Vernetta Lesly and the late T.O. Lesly and Patty and Bert Sheppard of Spearman. Skip lives in Spearman with his mother and sister Brooke.

## Basketball Roundup

MENS LEAGUE	Donahue Ditching 70	Stan's Raiders 36
-------------	---------------------	-------------------

Results of the fourth week of Mens League play at the Activity Center were

<b>GAME 1</b>		
Wild Bunch 52	Last Place 36	
<b>GAME 2</b>		
Enron 45	Spearman Coaches 42	
<b>GAME 3</b>		
Gruver 48	Church of Christ 45	
<b>GAME 4</b>		

**LEAGUE STANDINGS:**

Donahue Ditching	4-0
Enron	3-0
Gruver	3-1
Wild Bunch	2-1
Stan's Raiders	2-2
Spearman Coaches	1-2
Rodger's Ramblers	1-2
Church of Christ	0-4
Last Place	0-4



Before about 1800, there were no separately designed shoes for right and left feet.

**"Service"**  
is the key word at

### White House Lumber

306 Davis Spearman, Texas  
659-3792

**We Serve Contractors  
Do-It-Yourselfers  
Oil Fields**

**We're here to Serve all our  
Hansford County customers**

**New Manager Dick Murry  
Assistant Manager Jean Burgess**

## Energy Efficient Irrigation Engines

**ENER-TECH**  
3410 Fillmore  
Amarillo, Tx 79110

1-800-766-9699  
806-372-2078  
FAX 806-372-2081

Can you afford not to invest in your future?

ENER-TECH of Amarillo, Texas has developed the most cost effective irrigation engine available on today's market.

- WE OFFER:**
- Fuel Savings of 25 - 40%
  - 12 Month Limited Warranty
  - Horsepower Ranges of 50 - 250
  - On-Site Installation
  - 24-Hour Service

In order to remain cost effective, today's Agri-businessman must consider the most dependable, fuel efficient engine on the market.

Call Us ... We have what you're looking for!

**1-800-766-9699** — **ENER-TECH**  
IS THE FUTURE!

## National FFA Week Celebrated Here

The 50 members of the Spearman High School FFA chapter join thousands of FFA chapters across the United States, the District of Columbia, Puerto Rico and the Virgin Islands in celebrating National FFA Week, February 17-24. This year's theme is "FFA - Leading the Challenge."

According to Kelly Slover, ag teacher at SHS, the local members are busy preparing their projects for show in the Houston Livestock Show, and for the Hansford County Livestock Show, coming in March. Slover says his students will be showing pigs, lambs and steers.

According to the National FFA Organization, agricultural education classes stress hands-on experience in diverse areas of agriculture. FFA activities provide leadership development, career training and award incentives for young people.

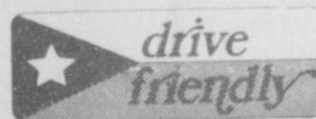
Donnell Brown, national FFA

president from Throckmorton, said FFA Week is the chance for members and communities to recognize achievements and activities available through FFA and agricultural education.

"We're proud of this commitment to young people and agriculture. As FFA members and students in agriculture classes, we are receiving the business, science and leadership skills we need to prepare for the diverse and challenging careers in agriculture," Brown said.

Each year FFA Week is held during the week of George Washington's birthday (traditional) to recognize his leadership and commitment to American agriculture. The National FFA Center is located on part of Washington's original Mt. Vernon estate near Alexandria, Va.

FFA is a national organization of 397,115 students in 7,705 local chapters preparing for agricultural careers. FFA activities and award programs complement instruction in agricultural education by giving students practical experience in the application of agricultural skills and knowledge gained in classes. Developing agricultural leadership, cooperation and citizenship is FFA's major objective.



**Texas-New Mexico Power Company.**  
Neighborhood Professionals  
Offering You The Best Choice

**THESE ARE THE DAYS  
TO SAVE 6%...  
FEBRUARY 19-24**



Hurry in to see your Pioneer sales representative during Pioneer Days.

Special 6% savings soon will end on every Pioneer® brand product you purchase! We have the performance and savings you won't want to miss.

See your Pioneer sales representative during Pioneer Days!

**Billy Logsdon**  
Spearman 733-2803  
**Andy Watley**  
Spearman 659-3838



**PIONEER.**  
BRAND PRODUCTS

All sales are subject to the terms of labeling and sale documents.  
\*Registered trademark of Pioneer Hi-Bred International, Inc., Des Moines, Iowa, U.S.A.

### NEAL BURNETT



Neal Burnett of Plainview produces cotton, milo, corn soybeans and wheat on his 2700 acre farm in Hale County. He began farming in 1956.

Neal graduated from Cotton Center High School and served in Korea with the Fifth Force as part of the Air Force Legal Service.

Neal is a man of integrity and is dedicated to promoting Texas Agriculture. He is a real farmer and has invested his dollars as well as sweat, blood and tears in farming and will make an outstanding Commissioner of Agriculture. He would appreciate your vote.

Paid for by the friends of Neal Burnett.

## The heat pump provides comfort for you & your energy budget

The heat pump is the most efficient heating and cooling system you can buy to heat and cool your home throughout the year. The heat pump keeps your home comfortable by removing heat from your home in the summer and transferring heat into your home in the winter. It keeps your energy budget comfortable by using less electricity than a traditional electric resistance heating and cooling system.

For more information on the heat pump, call or visit your local TNP office today.



# Villines Wins School Level Bee

Jason Villines, a sixth grade student at Spearman Elementary School, moved one step closer to winning a \$25,000 college scholarship from National Geographic Society in the National Geography Bee.

Jason won the school's geography bee on Tuesday, Feb. 13. The school-level bee, at which students answered oral questions on geography, was the first round in the second annual National Geography Bee sponsored by National Geographic World, the Society's magazine for children, Amtrak and Kudos Snack.

The bee was kicked off the week of January 29 in thousands of schools around the United States, District of Columbia, and five U.S. territories. The school winners,

including Jason, will now take a written test; up to 100 of the top scorers in each state will be eligible to compete in their state bee March 30.

The National Geographic Society with its co-sponsors will provide an all-expenses-paid trip to Washington, D.C., for state champions and their teacher escorts to participate in the National Geography Bee finals on May 23 and 24. The first-place national winner will receive a \$25,000 college scholarship; the second-place winner, a \$15,000 scholarship; and the third-place winner, a \$10,000 scholarship.

Alex Trebek, host of "Jeopardy!" will moderate the national finals.

The National Geographic

Society developed the National Geography Bee in response to a growing concern about the lack of geographic knowledge among young people in the United States. A 10-country Gallup Survey conducted for the Society in 1988 and 1989 found that people in the U.S. ages 18 to 24, the youngest group surveyed, knew less about geography than young people in any of the other countries.

The National Geographic Society, with nearly 11 million members, has as its mission the "increase and diffusion of geographic knowledge." Besides the National Geography Bee, the Society sponsors a number of other geography education initiatives, including the Summer Geography Institute for teachers, the National Geographic Society Education Foundation, and the Geographic Alliance Network, which currently encompasses 34 states.



The residents of Hansford Manor held their "Mr. and Mrs. Hansford Manor" Pageant on Wednesday, Feb. 14. The Queen, and King and their court are [l-r] Mabel Edward, first runner up Queen; Myrle Farrington, Queen; Pheobe Fox, King; Laquita Edwards, Mistress of Ceremonies; and Richard Shedick, first runner up King.

# Church Welcomes New Minister

A reception is scheduled for Sunday, Feb. 25 at First Christian Church of Spearman to welcome the church's new minister, the Rev. LaVern Draper and his wife Dean.

The reception will begin following morning worship services at the church and will extend until 2:00 p.m. that afternoon. The Service of Installation will be included in the morning worship on that morning.

The Drapers come to Spearman from First Christian Church in Altus, Okla., where he had pastored since 1982.

Rev. Draper received his formal education at Midwest Christian College. His continued education

included courses in psychology at SMU, economics at OSU, institutional counseling at Northeastern State Hospital, evangelism and marriage enrichment at O.U. and courses in marriage counseling.

Former pastorates include Oklahoma churches in Carney, Fletcher, Broken Bow, Holdenville, Nawate, Sayre, Henryetta and Altus.

Rev. Draper's wife Dean will be enjoying her retirement from teaching in the Oklahoma school system for 33 years.

The couple have twin daughters, Robbie is married to Tony Scott and lives in Nowata, Okla. She is a school teacher there. Susan is married to Brad Vincent

and they live in Bartlesville. The Vincents have two sons, Joshua Tyler, 3½, and Justin Levi who is 1½ years old.

The Drapers are excited about their ministry with First Christian and are anxious to get acquainted with our community. He is active in civic clubs and will be "out and around" to meet the folks of Spearman.

The public is invited to attend the worship services and reception Sunday, to help welcome the Drapers to Spearman.



Jason Villines

**Democratic Primary Voters Guide**

For Commissioner Of Agriculture ?

**ANYONE BUT HIGHTOWER**

We Asked Jim Hightower To Stand His Qualifications Before Us...

**But Jim Had None.**

Elec. A **Qualified** Democrat Farmer Of Your Choice

Neal Burnett Paul McDaniel    Clyde Chandler Dan Pustejovsky    Dan Krenck John Earl Smith

Pol. Ad. Prepared by Texas Farm Bureau AGFUND, 7420 Fish Pond Road, Waco, Texas 76710

Newspaper Ad paid for by: The Friends of Neal Burnett

**HENSON CHIROPRACTIC**

410 S. Davis Spearman, TX

Call For Appointment 659-5603

Office Hours: Mon., Wed., Fri. 8:30-5:00  
Tue., Thu. 8:30-11:30

**FEET HURT?**

Dr. Patrick Crawford (Podiatrist/Foot Specialist)

NOW TREATING ALL TYPES OF FOOT DISORDERS INCLUDING

- BUNIONS • CORNS • HAMMER TOES • NAIL PROBLEMS •
- WARTS • CALLUSES • HEEL PAIN • FOOT INJURIES •

2913 S. Georgia in Amarillo  
Offices also in Borger and Pampa

**1(800)-658-2006**

110 OFF WITH THIS AD. Exp. 3-31-90

# BEEDY FURNITURE STEP UP To The Best!

**WHIRLPOOL BONUS WEEKS**

Take Home One Of These Special Bonus Gifts, When You Save On A Selected Whirlpool Appliance.

Whirlpool Full Size THIN TWIN® Model U170001 Electric

- Large Capacity/27" Wide
- 2 Wash & Spin Speeds • Gentle Wash System • 6 Wash Cycles
- 4 Water Temperature Selections
- "Infinite" Water Level Selector
- Bleach Dispenser • 5 Drying Cycles • Gentle Heat • "Infinite" Temperature Control • Electronic DRYMETER™ Control • Dryer End-of-Cycle Signal • 4-Way Exhausting

**\$998.00**

Whirlpool Bonus Weeks! Ends March 18, 1990. See Dealer For Details

**Whirlpool Electric Range Model RF387PXX**

- Self-Cleaning Oven • Electronic MEALMINDER™ Clock with Oven Controls and Minute Timer • Custom Broil Control
- Solid Element Surface Unit
- SPILLGUARD™ Cooktop • Panoramic Black-Glass Oven Door with Window (optional white or almond glass available) • Balanced Cooking System • Full-Width Storage Drawer with Literature Pac

**\$699.00**

**Whirlpool Dishwasher Model DU7800X5**

- 16 Cycles/Options with 6 Automatic Cycles • QUIET WASH™ System • POWER CLEAN™ Washing System • Hi-Temp Washing Option • 1-6 Hour Delay Wash Option • In-the-Door Silverware Basket • SIGNAL EYE Rinse Aid Dispenser • Grant High Side Rack/Adj. Upper Rack • Black/Almond Door Panel

**\$499.00**

**See These Other Great Whirlpool Savings.**

**Model ED22DWXT** 21.6 cu. ft. Refrigerator/Freezer **\$1499**

**Model ET18NKXR** 18.0 cu. ft. Refrigerator/Freezer **\$599.00**

**Model MWS50X5** with MICRO-COMPUTER Touch Control **\$259**

**NO PAYMENTS UNTIL MEMORIAL DAY.**

NO FINANCE CHARGE IF PAID IN FULL BY FIRST DUE DATE, DURING OUR "WHIRLPOOL BONUS WEEKS!"

**Whirlpool** **Boody FURNITURE CO.**

723 W. 7th Spearman, Texas 79081

**RCA STEREO ColorTrak 2000 Monitor-Receiver**

**RCA 5 YEARS PARTS/LABOR AT NO ADDITIONAL CHARGE!**

**RCA Model G31100** 31" diagonal **\$1499.00**

**RCA Model G27450CP** 27" diagonal **\$1049.00**

**RCA 27" diagonal ColorTrak 2000 Stereo Monitor-Receiver with Pix-in-Pix**

- 76-button Universal remote control
- On-screen menu controls for total electronic convenience
- Digital Pix-in-Pix with Zoom, Pan, and Channel Guide
- 27" VHP picture tube
- Channel captioning
- 5-watt surround sound stereo system
- 20-jack stereo monitor panel with gold-plated connectors

**INTRODUCING PROEDIT™ THE WORLD'S SMALLEST VIDEO PRODUCTION STUDIO.**

RCA ProEdit™ camcorders bring you the most advanced technology in our history with features designed for professional-looking video projects.

**RCA PRO EDIT**

- RCA ProEdit™ camcorders with Hi-Fi Head
- 1.5-Inch Zoom
- Time-Lapse and
- Announcements Recording
- Hi-Speed Shutter
- Built-In Speaker

**\$1199.00**

**RCA Hi-Fi Stereo VCR with 4-Head Video System**

- VHS Hi-Fi stereo sound with built-in TV broadcast stereo tuner and SAP (Second Audio Program)
- Double azimuth 4-head video system
- Fixed still special effects: slow motion, stop action, frame advance, picture search
- 8 program's 1-year timer with on-screen display and remote programming
- Remote also operates many RCA TVs
- 155-channel cable-compatible quartz tuner with Auto Programming

**TERMS [With Credit Approval] 30-60-90 Day Accounts With No Finance Charge 24-Month Bank Rate Financing W.F.C. Revolving Accounts With No Down Payment**

**RCA Model VR620HF** **\$529.00**

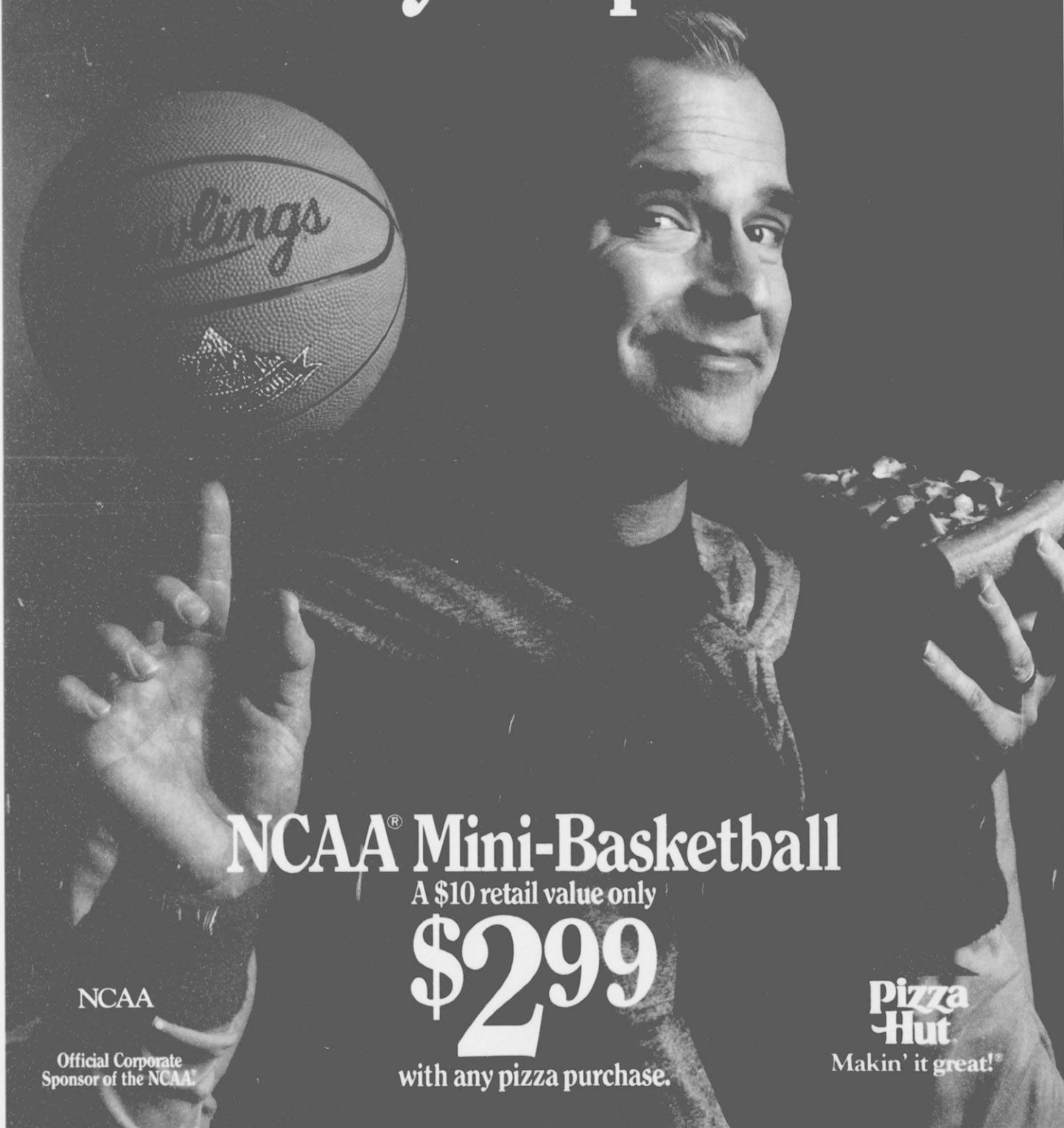
**RCA Model G31149TP** 31" diagonal **\$1799.00**

**Whirlpool** **Boody FURNITURE CO.**

723 W. 7th Spearman, Texas 79081

**NUMBER ONE WITH THE TOUCHEST CRITICS IN THE WORLD.**

# Enjoy a little basketball with your pizza.



## NCAA<sup>®</sup> Mini-Basketball

A \$10 retail value only

# \$299

with any pizza purchase.

NCAA

Official Corporate  
Sponsor of the NCAA<sup>®</sup>

**Pizza  
Hut**

Makin' it great!<sup>®</sup>

# Delicious pizza goes great with a little basketball.



**NCAA®  
Mini-Basketball**  
A \$10 retail value only

**\$2.99**  
with any pizza purchase.

NCAA  
Official Corporate Sponsor of the NCAA®

**Pizza Hut**  
Makin' it great!

**DINE-IN, CARRYOUT  
OR FAST, DELIVERY!**



Limited Delivery Area.

### Mix 'N Match!

**One Medium Specialty Pizza for \$8.99 or Two Medium Specialty Pizzas for \$12.99!**

Valid on Supreme, Pepperoni Lover's™ or Meat Lover's® pizza. Available on Pan, Hand-Tossed and Thin 'N Crispy® pizza crusts.

Valid on Dine-In, Carryout or Delivery where available. Please mention coupon when ordering. One coupon per party per visit at all participating Pizza Hut® restaurants in Canadian, TX; Dodge City, KS; Elkhart, KS; Kingman, KS; Meade, KS; Scott City, KS; Shattuck, OK; Spearman, TX; Woodward, OK; Cherokee, OK; and Fairview, OK. NOT valid in combination with any other Pizza Hut® offer. \* and \*\* respectively designate registered trademark and trademarks of Pizza Hut, Inc. Offer expires March 31, 1990.



© 1990 Pizza Hut, Inc.  
1/20 cent redemption value.

### Lunch Special!

**\$2.09 One Pepperoni or Supreme Personal Pan Pizza® and Medium Soft Drink.**

Dine-In or Carryout only.

Please mention coupon when ordering. One coupon per party per visit at all participating Pizza Hut® restaurants in Canadian, TX; Dodge City, KS; Elkhart, KS; Kingman, KS; Meade, KS; Scott City, KS; Shattuck, OK; Spearman, TX; Woodward, OK; Cherokee, OK; and Fairview, OK. NOT valid in combination with any other Pizza Hut® offer. Personal Pan Pizza® is available Monday through Saturday, 11:00 a.m. to 4:00 p.m. Personal Pan Pizza is a registered trademark of Pizza Hut, Inc. Offer expires March 31, 1990.



© 1990 Pizza Hut, Inc.  
1/20 cent redemption value.

### Special Value!

**Buy Any Large Pizza For The Price Of A Medium Pizza!**

Available on Pan, Hand-Tossed and Thin 'N Crispy® pizza crusts.

Valid on Dine-In, Carryout or Delivery where available. Please mention coupon when ordering. One coupon per party per visit at all participating Pizza Hut® restaurants in Canadian, TX; Dodge City, KS; Elkhart, KS; Kingman, KS; Meade, KS; Scott City, KS; Shattuck, OK; Spearman, TX; Woodward, OK; Cherokee, OK; and Fairview, OK. NOT valid in combination with any other Pizza Hut® offer. \* & \*\* respectively designate registered trademark and trademark of Pizza Hut, Inc. Offer expires March 31, 1990.



© 1990 Pizza Hut, Inc.  
1/20 cent redemption value.

### Pick A Specialty!

**Pick two of our large Specialty Pizzas for only \$17.99!**

Offer available on Supreme, Pepperoni Lover's™ Cheese Lover's Plus™ and Meat Lover's® pizzas.

Available on Pan, Hand-Tossed and Thin 'N Crispy® pizza crusts. Valid on Dine-In, Carryout and Delivery where available. Please mention coupon when ordering. One coupon per party per visit at all participating Pizza Hut® restaurants in Canadian, TX; Dodge City, KS; Elkhart, KS; Kingman, KS; Meade, KS; Scott City, KS; Shattuck, OK; Spearman, TX; Woodward, OK; Cherokee, OK; and Fairview, OK. NOT valid in combination with any other Pizza Hut® offer. \* and \*\* respectively designate registered trademark and trademarks of Pizza Hut, Inc. Offer expires March 31, 1990.



© 1990 Pizza Hut, Inc.  
1/20 cent redemption value.

### Early Week Special!

**Medium Pizza Half Price on Monday or Tuesday from 8:00 pm. to Close.**

Available on Pan, Hand-Tossed and Thin 'N Crispy® pizza crusts.

Dine-In or Carryout only. Please mention coupon when ordering. One coupon per party per visit at all participating Pizza Hut® restaurants in Canadian, TX; Dodge City, KS; Elkhart, KS; Kingman, KS; Meade, KS; Scott City, KS; Shattuck, OK; Spearman, TX; Woodward, OK; Cherokee, OK; and Fairview, OK. NOT valid in combination with any other Pizza Hut® offer. \* designates a registered trademark of Pizza Hut, Inc. Offer expires March 31, 1990.



© 1990 Pizza Hut, Inc.  
1/20 cent redemption value.

### Be part of the NCAA® Team!

**\$2.99 NCAA® Mini-Basketball**

Stop by any participating Pizza Hut® restaurant or delivery/carryout unit and pick up a NCAA® Mini Basketball for only \$2.99 with any pizza purchase.



© 1990 Pizza Hut, Inc.  
1/20 cent redemption value.