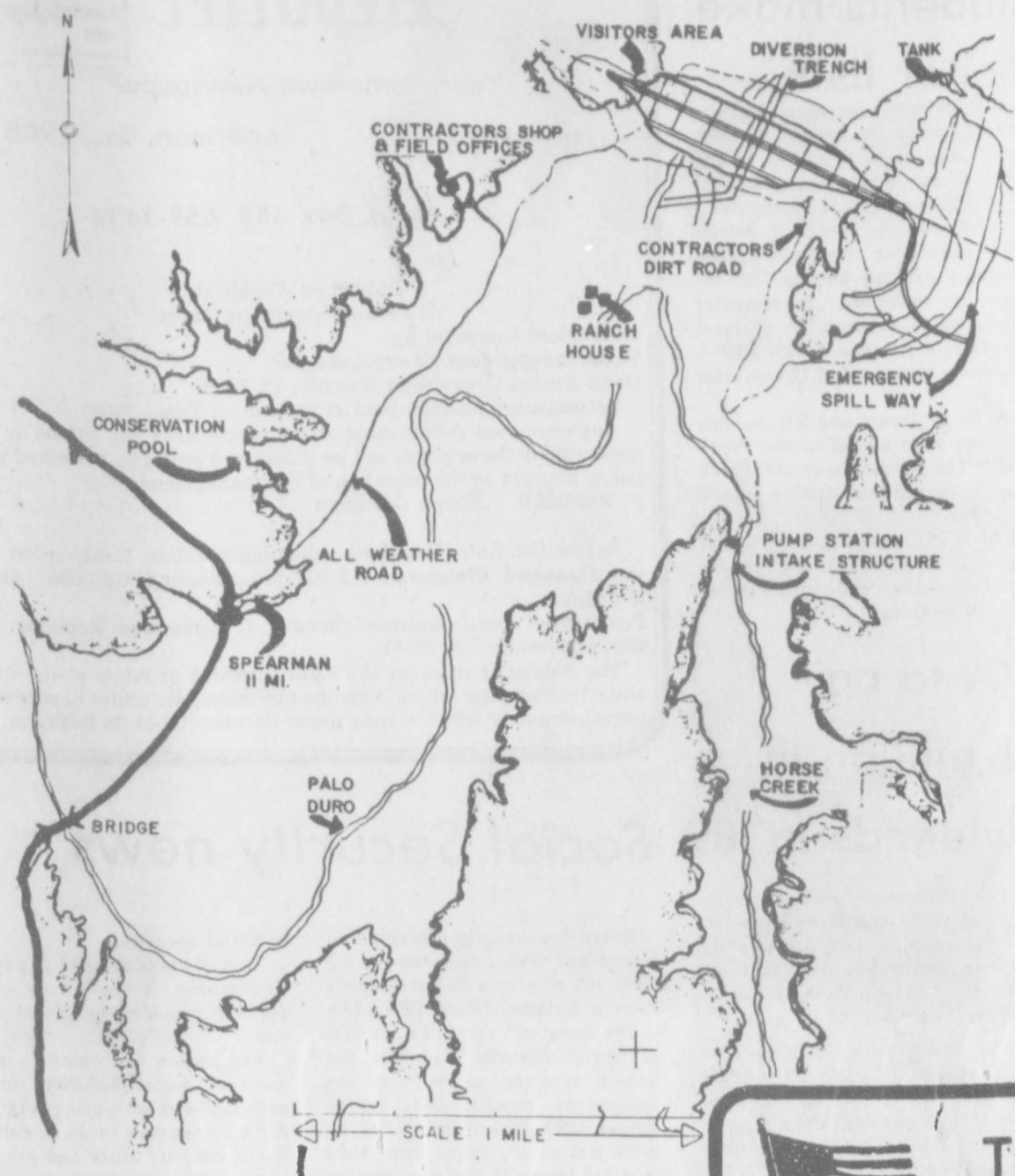


PALO DURO RESERVOIR CONSTRUCTION SITE



Palo Duro Dam construction shows steady developments

Much progress has been made on the 7,000 acres of the Palo Duro River Dam site. Since last reports, six telephones were installed at the site by Panhandle Telephone Cooperative out of Guymon, Okla. These installations have helped to speed up more work on the dam project.

A road for the visitor's overlook has been made on the north side of the dam project. Many persons from the area have taken advantage of the overlook to view the work at the site.

A huge backhoe dug a slurry trench, a trench dug underneath the middle of the dam which has been filled with a watery mixture of mud and other matter that will not be dissolved by water. This slurry base will not allow water to seep underneath the ground.

Lab technician, Jim McElveen, has been busy testing sand that Central Plains workers have found on the site, to see if it is appropriate for the use it is intended. This is a long process in which the sand is weighed, dried, re-weighed and possibly re-dried and then sifted through various sizes of sieves. From there, the sand that has been left in each

sieve is weighed again, and a percentage is figured. Frieze and Nichols, engineers of the site, have determined the percentages that are necessary in each different use of the sand.

Johnnie Lee, general manager of the Palo Duro River Authority, noted that the construction crew "has been lucky so far in finding the material they need on site." Lee also commented, "We are fortunate to have the crew we have working on the site. They work well together. And Frieze and Nichols Engineers are reported to be some of the best engineers in the country. They have already planned nearly 200 dams, and have an excellent reputation."

The crew at the dam site generally works 10 hours a day, six days a week. This includes the lab technician and his assistant, who want to remain on site when the crew is working so they will be available to test any materials that need be, so progress will not be impaired.

Much blasting is also going on at the site to clear the rock to prepare for the core of the dam. Superintendent of the blasting arranges most of the blasts to be set off at

noon or at 5:30 so that other workers will not have to shut down.

Workers are busy stockpiling some 78,000 yards of sand that is needed for the lake bed. Other materials are also being stockpiled, such as the special dirt that will be used in cement mixing. Other dirt that has no other specific purpose has been used in plugging up one of the creeks.

There has also been a stockpile of topsoil made for the use of completing the dam project.

Work has also gotten underway for the emergency spillway which will be 60 feet deep, 600 feet wide and 1,000 feet long. The dam is being built where it will be self-contained. When the water reaches a certain level, part of it will begin to run in the emergency spillway, with no labor required of opening gates or such.

Work is expected to continue at a good pace, with some 45 workers on site now, so long as the weather holds the way it has so far. Lee notes, "The weather has been too dry for many things like our crops, but it has been perfect for building the dam."

City receives 1.92% increase in rebates

The first city allocations of 1989 in sales tax rebates shows an increase for the city of Spearman from the State Comptroller's office.

In Hansford County, Spearman's net payment this period was \$11,021.48. This was up over last year's \$10,813.63 for the same period or a 1.92 percent increase. Gruver's net payment this period was \$3,089.04 compared to last year's \$3,135.48 or down 1.48 percent. The Hansford County totals were still up 1.16 percent.

State comptroller, Bob Bullock, said last Friday, "Most cities, counties and metropolitan transit authorities can expect a little extra spending money for the 1989 budgets. That additional money can be put towards needed local projects or set aside for a rainy day."

Checks totaling \$64.1 million

were sent last Friday to 924 cities that collect local sales tax at either one or one and one-half percent.

The payment to the cities reflect 19.4 percent more money than was sent in the January 1988 allocation, Bullock said.

According to Bullock, the state's six metropolitan transit authorities and one city transit department received \$29.9 million in rebates.

The increase in payments to the MTAs showed a 22.7 percent increase over the 1988 January payments.

Checks totaling \$6.1 million were also sent to 81 counties that collect the one-half percent county sales tax Bullock said.

January's checks represent taxes collected by monthly filers in November and reported to the Comptroller's office by Dec. 20.

City council authorizes bids for six new items

The City Council of Spearman met Tuesday evening, Jan. 10 to discuss several matters on the agenda.

After the meeting was called to order, the council considered a preliminary design report by Tim White, architect, on the t-hangar structural stabilization project. The design was approved and the architect will be sending out bids shortly.

Next the council considered a lease agreement for the t-hangars at the municipal airport. No action was taken on the lease agreement, but ideas were presented to City Manager, Jim Murray. Many present requested a completely new lease agreement to be drawn up by an attorney.

Consideration of ordinance #572 was next on the agenda. Council authorized an ordinance amending chapter 2 of the airport and aircraft Spearman city code which reduced the rate for t-hangar rental.

The next item on the agenda for the council was the consideration of authorizing the City Manager to solicit bids on the following items: a portable defibrillator for the HMS Emergency Medical Service; a central automatic control system for the utilities department; a building to house well number seven for the water department;

A two-step chlorination system for the utilities department; an animal control shelter; and an

addition to the fire station.

Before bringing the meeting to a close, council appointed Al La-Rochelle to the Housing Board. He will serve a two-year term on the board.

The next council meeting is scheduled for Tuesday, Jan. 24 at 7:30 p.m. at the City Hall.

Seedling program offered by HSWD

The Hansford Soil and Water Conservation District is now accepting orders for windbreak seedlings from rural landowners. The seedlings will be supplied by the Texas Forest Service and the Colorado Forest Service.

Potted evergreen seedlings, including species such as Rocky Mountain Juniper, Austrian & Ponderosa Pine, Eastern Red Cedar and several other types, will be available at a cost of \$34.50 per thirty trees.

Bare root deciduous seedlings such as Cottonwood, Russian Olive Honeylocust, Green Ash and others will be available at a cost of \$20 per fifty trees.

A quail and pheasant wildlife planting packet consisting of 25 Russian Olive, 25 Lilac, 25 Sand Cherry and 25 Skunkbush Sumac is available at cost of \$25 per packet.

For further information about

Conference set to discuss irrigation systems

Lubbock—Experts from universities and industry from several states will be joined by experienced producers to present information vital for the best use of center pivot irrigation systems at a conference in Lubbock Jan. 18-19.

An added feature of the Center Pivot Irrigation Conference, being presented by the Texas Agricultural Extension Service, will be a trade show exhibiting the latest equipment and supplies for pivot irrigation.

The conference will be at the Lubbock Plaza Hotel, South Loop 289 at Indiana Avenue. It will open at 7 p.m. Jan. 18 with the trade show, a shrimp boil and hospitality hour.

Presentations by educators, industry representatives and growers will begin at 8:40 a.m. Jan. 19. Topics will range from economics and financing to comparisons with other irrigation methods and tips on designing systems for particular needs.

Environmental Protection Agency requirements on use of the systems to apply chemicals to crops will be explained.

"Irrigated acreage under pivots has increased greatly in Texas," said Joe Henggeler, Extension agricultural engineer who is conference coordinator.

Several factors probably have led to increased pivot use, Henggeler said. He cited generally good crops last year, changes in labor laws and increased labor costs as some of the reasons.

Programs and registration information for the conference are available at county Extension offices. Advance registration is \$10; registration at the conference is \$15. This includes lunch on Jan. 19.

the seedling program call 659-2330 or come by the Soil Conservation Service office at 505 W. 11th in Spearman.

The delivery date for these seedlings is Mar. 24, but orders should be placed as soon as possible since the supply of some species will soon be exhausted.

State Comptroller proposes bond program for schools

State Comptroller Bob Bullock Tuesday proposed a multi-million dollar, low interest state bond program to help local school districts build needed classrooms.

"Where our kids are educated is just as important as textbooks and lesson plans," Bullock said.

The plan to issue \$750 million in revenue bonds would require legislative approval.

Bullock said the money saved by local schools through a state-sponsored program to build educational facilities could be used to upgrade educational programs or provide property tax relief.

He said Texas is only one of 10 states that doesn't provide financial assistance to local schools to build classrooms.

"High local property taxes are killing education and it's time for the state to help. Our state desperately needs an educated work force to compete in tomorrow's economy," Bullock said.

He said bond money could also

be used to refund any costly outstanding school bond debts and the resulting savings could be applied to each district's basic education program.

"Texas needs classrooms, laboratories and libraries. I'm not talking about building football stadiums, gymnasiums or swimming pools," Bullock said, pointing out that many districts can't afford to build needed facilities because their limited local tax resources have been exhausted.

Texas' 1100 school districts paid almost \$900 million in 1988 on more than \$6.5 billion in bond debt interest and principle. Texas, according to Bullock, has the highest public school bond debt in the nation.

The availability of state bond funds for local school construction would be a tremendous benefit to those districts in the greatest need, Bullock said.

"We need to give these schools some relief on expensive, big-ticket

items like classrooms," Bullock said.

He said a state-sponsored bond program should be able to raise money for education at a lower cost. It would be run by the state's Bond Review Board which could have broad latitude to establish eligibility requirements.

"These savings will be passed on to local school districts, letting them concentrate on their main goal of providing a good education," he said.

Bullock said the lack of state support for school facilities was a major factor in a lawsuit that was filed against the Texas school system.

"I think the bond program is a workable alternative that the Legislature can endorse in spite of the fact that the state is facing a tight budget," he said.

Bullock unveiled the plan in a letter to the members of the 71st Legislature.



The Spearman

Reporter

Volume 81, No. 11

YOUR HOMETOWN NEWSPAPER

Thursday, January 12, 1989

25¢
Per Copy

6 Pages



This is the large backhoe digger Central Plains Construction brought to the Palo Duro Dam site to dig the slurry trench underneath the middle of the dam. The trench was filled with a mixture that will not allow water to drain beneath it.



Don't
print
this,
but...

'Don't quote me'

Editor's Note: A reporter focuses on one of her hardest yet sometimes humorous interview situations in the following article. Although the story contains a definite grain of truth, its "gist" is meant to be mostly in "jest." We hope our readers will appreciate this feature as such.

Nothing dismays a reporter so much as the dreaded words, "Don't quote me."

"Don't quote me" means "Put down your pen." It means "this cannot go in your story, even though it is the most quotable/fascinating/alarmsome-i.e. newsworthy thing I will say in the course of this entire interview."

People in Spearman say "Don't quote me" for two very different reasons. The first of these is really the most acceptable one and is given apologetically by extremely caring people: "Don't quote me because there is possibly someone out there who will read this and who will then by some astronomical stretch of the imagination find something in this remark about which to be wretchedly unhappy."

These "Don't Quote Me's" have nothing to be afraid of, in reality, because they are always described as "the nicest person I know" by everybody else, including in-laws and ex-spouses. In spite of their universal reputations as candidates for local sainthood, however, this Mr./Mrs. Nice Guy/Gal is severely cautious. They abhor questions of a confrontational nature, such as "What/Who is your favorite/best/fondest place to eat/friend/mem-

ory?" One almost gets the impression that they fear reprisals in the form of telephoned death threats after expressing their opinion of the weather. Now, admittedly, weather can be controversial in the Panhandle, but really!

The irony here, of course, is that these "Don't Quote Me's" could and never would take a swipe at a horsefly! And if by some quirk they ever said something as flaming as "I don't like Mr. Crankcase's cat," the automatic reaction of every townsman would be to declare a personal war against "that impertinent new reporter who dared to misquote dear old Mrs. Crumfeather, who loves everyone!"

The second type of "Don't Quote Me" interviewee inevitably has something to hide that he/she has no way or interest in proving, but that he/she nonetheless cannot resist blurting out. This is nothing short of an exquisite form of reporter torture.

After this person's warning "Don't quote me," there is always a darting glance around the room and a mysteriously lowered voice speaking the following words, "But to tell you the truth about so and so is... Needless to say, the words which some next are compellingly... quotable!"

In a town of 3400 people, however, their "true story" is also impossible to investigate. How, after all, does one familiar face do "research" on no-no topics without first undergoing spy-scale plastic surgery and adopting a secret life?

Show up for a second interview with this omniscient person carrying a tape recorder and he/she will dive under the knee-hole of the desk and ask tremulously, "Who are you really working for and why come here?" Selective memory rears its ugly head once more... The tidbits planted by these "Don't Quote Me's" are instantly germinating seeds of insatiable curiosity with little or no hope of ever flowering into a full-bloom Pulitzer-prize winning expose. Where can a reporter run with a mere rumor, even when it bears further scrutiny in the interest of public education?

A reporter can deal with a "Don't Quote Me" who acts out of kindness, but this second variety is usually doing a disservice. Reporters leave these interviews seething with unanswered ques-

tions and fighting the good fight with journalistic ethics: "She told me not to tell a soul, but I wish I could confirm this story with so and so because if it is true, then our readers need to be told what has been going on..."

The story is duly written, but certain fascinating facets are deliberately left unexplored and unexpressed. One reporter has gotten to the place where second category "Don't Quote Me's" come waving red flags, prompting dropped pencils, mid-word, hands raised in self-defense to the ears, and the plea, "STOP! I don't want to know what I can't use!" Invariably, the interviewee views this reporter's anguish as false modesty (never reverse psychology!) and plunges right into a colorful rendition of "the true story."

What follows is destined to linger uncomfortably (and uselessly, one might add peevishly) in the pit of one's stomach, a sort of undigested side order at an unfinished meal. Suppose someone confides to a young clear-eyed journalist the "fact" that Elvis Presley was spotted in Womble Park earlier in the week and will be making a surprise appearance at the Teen Hut at 8 p.m. on Thursday, then adds, "But don't print this and you can't tell anyone!" The reporter's eyes rapidly glaze over and by the end of the interview, he is nail-biting and pacing in frustration, convinced he must sacrifice the story of his lifetime for the sake of this "Don't Quote Me" 's confidentiality. (The Elvis story is always leaked within moments of the newspaper's publication by this same "Don't Quote Me.")

Happily, ninety percent of one's interviews are with "Quote Me's." These people are friendly and fearless. Pearls of wisdom roll from their mouths too quickly to be counted, let alone collected for use in an already-rich story. They seem flattered when asked to repeat the words a distracted reporter misses and usually protest with a genuinely modest smile when offered a chance to read their story prior to publication. Or if they do read what's written about them in advance, their only critique is that the reporter made them seem more wonderful than they really are, which is impossible: these are souls in the superlative from their first "Quote Me!"

So... one should not complain about "Don't Quote Me's" to often, should one? Those in the "nice but paranoid" category are somehow lovable, even when a reporter has just been forbidden to reveal something that will make not only the story but every reader's day. The secret scandals revealed by second category "Don't Quote Me's" exist uneasily and ultimately unpublished, but their sharers honestly have no idea what havoc they wreak in the hearts of earnest journalists. They remind one of one's journalistic limitations on life's unpublishable paths.

That's the last word on this subject... just don't quote me!

Toll-Free College

Information Hotline

The Texas Association of College Admission Counselors (TACAC) and First City, Texas will co-sponsor a toll-free HOTLINE number available to all Texas residents from 9 a.m. to 6 p.m. on Saturday, Jan. 14 and Sunday, Jan. 15.

People in Texas may telephone toll-free 1-800-253-8989 with their questions about college selection, admission, testing and financial aid. The most up-to-date information regarding the application process, college majors, entrance requirements, financial aid and meeting deadlines will be available.

College admission directors and high school guidance counselors will be answering the ten (10) phone lines. Financial aid personnel will round out the team of "experts."

4 local WTSU students make honor lists

Four West Texas State University students from Spearman were among the students named to the Dean's and President's list at WTSU for the 1988 fall semester.

Jeri D. Orr and Melvin S. Swenn were named on the Dean's List. Students earning Dean's List recognition achieved a semester grade point average of at least 3.250 (of a possible 4.000) with a minimum class load of 12 semester hours.

Anne R. Sheets and Glenna Sue Woolley were added to the President's List. Students on the President's List achieved GPA's of 3.85 or better.

651 WTSU students were named to the Dean's List and 157 earned mention on the President's List for the fall semester of 1988.

VA to pay \$1 million in dividends in '89

The Veterans Administration will pay more than \$1 billion worth of dividends in 1989 to veterans holding active VA life insurance policies -- the largest amount in the 70-year history of the program.

The record payout will be sent automatically to some 2.9 million policyholders on the anniversary date of their policies in the form of dividend checks or one of five other payment options they selected.

VA administrator Thomas K. Turnage said the dividend -- which exceeds the 1988 payment by \$44.6 million -- reflects both favorable claims experience and high yields on trust funds invested in U.S. Government securities.

Government life insurance policies were issued to veterans of World Wars I and II and the Korean Conflict from 1919 to 1966. Only those policies that have been kept in force receive annual dividend distributions. No application from individual policyholders is necessary.

The largest group receiving 1989 payments will be almost 2.5 million veterans of World War II with National Service Life Insurance (prefix "V") who will each receive an average of \$350.

Dividends totaling \$11.1 million will be paid to 43,175 World War I veterans holding U.S. Government Life Insurance (prefix "K") policies for an average of \$257.

Nearly 304,000 veterans have Veterans Special Life Insurance (prefixes "RS" and "W") and their dividends will average \$310.

Holders of "J", "JR" and "JS" policies -- Veterans Reopened Insurance -- who currently number 155,677, will receive 1989 dividends averaging \$284.

Individual payments under each of the seven programs paying dividends vary according to age, type of insurance and length of time a policy has been in force.

In Texas, there are 151,964 veterans insured under all insurance programs offered by the VA. Total dividends to be paid to Texas veterans are \$53,098,000 which amounts to an average of \$349 each.

The VA also administers a special life insurance program for disabled veterans and another offering mortgage life insurance coverage, neither of which pays dividends. The VA supervises a contract with a private carrier who underwrites Servicemen's Group Life Insurance for active-duty service members and reservists.

THURSDAY, JANUARY 12, 1989

The Spearman Reporter
Your Hometown Newspaper

Spearman, Tx. 79081

USPS 509660

213 Main, Box 458, 659-3434

Published Weekly at
213 Main, Spearman, Texas

Owned and Operated by:
Texas Independent Newspapers, Inc.
19906 Encino Grove, San Antonio, Tx 78259
Second class postage paid at Spearman, Texas 79081.
Any erroneous reflection upon the character of any person or firm appearing in these pages will be gladly and promptly corrected upon being brought to the attention of the management.
PUBLISHER - Karen Goodman

Subscription Rate: Hansford, adjoining counties, combination with the **Hansford Plainsman** \$19.95; non-adjointing counties, \$24.95 annually.
Postmaster: Send address changes to **Spearman Reporter**, Box 458, Spearman, Tx. 79081.
The publisher reserves the right to revise or reject at its option any advertisement which it deems objectionable, either in subject or phraseology, or which it may deem detrimental to its business.

Social Security news

Every person who received or repaid any Social Security during 1988 will receive a Social Security Benefit Statement Form SSA-1099.

The form will show the amount of Social Security benefits the person received as well as the amount of benefits they repaid during 1988. The form should be used just as any other form 1099 received from a financial institution is used when the person completes his or her Federal income tax return for 1988.

People who have substantial other income may have to include up to half of their Social Security benefits in their taxable income. Included with the benefit statement will be IRS Notice 703. This is a worksheet that people can fill out to see if any of their Social Security benefits may be subject to Federal Income tax.

A free publication -- Publication 915 -- contains a detailed explanation of the entries on the benefit statement and explains about taxability of benefits. A free copy is available at any Internal Revenue Service office.

For further information you may use toll-free telephone numbers: 1-800-442-2620 Texas and 1-800-522-9079 Oklahoma.

People in the Panhandle area have been receiving direct mail solicitations asking that they pay \$7 to join an organization that says it will provide many services related

to Social Security. First, there is no need to pay any firm money to obtain any of the services provided by Social Security.

Any person can obtain a statement of Social Security covered earnings without paying anybody. All a person has to do is call any Social Security office and ask for a request for statement of earnings form.

In addition, there is no need for a plastic Social Security card. It is of no use for Social Security or employment purposes. The Social Security card issued by the Social Security Administration is the only official card and should be used whenever a Social Security card is needed.

People can obtain many publications about Social Security free at any Social Security office. Just call the Toll Free number 1-800-2345-SSA.

Our Sincere thanks for the thoughtful courtesies shown to us during the loss of our beloved Mike. We truly appreciate the prayers, calls cards, flowers, memorials, food, visits and other kindnesses extended to us. Your expressions of sympathy have helped make our loss easier to bear.

Ora Sanders
Rue & Ann Sanders
Kurk & Julie Adams & girls

You Are Invited To a
Bridal Shower honoring
Rhonda (Stumpf) Baker
Saturday, January 14
from 3:00 to 4:30 p.m.
Fellowship Hall
First Christian Church
Given by Hostesses

Through heat waves and cold spells insulation helps you save

Insulation can help you use less electricity throughout the year. In the winter, it helps keep the heated air in your house. During hot weather, it keeps the hot air out.

With Insulation, your home is more comfortable, and your heating and cooling systems don't have to work as hard during weather extremes.

To learn more about putting insulation to work for you, visit or call your local TNP office today.

Texas-New/Mexico Power Company.
Neighborhood Professionals
Offering You The Best Choice

DANCE

Uncle Ed's Audio Philo
(Sound System & Lights Show)

Saturday, January 14th
(Old Crawford Imp. Building)

8:30 p.m. - 1:00 a.m.

\$5.00 A Person - 21 yrs. and up

(for more information call . . . 659-3328)

Selected Groups of Fall & Winter Clothing 30 to 70% off

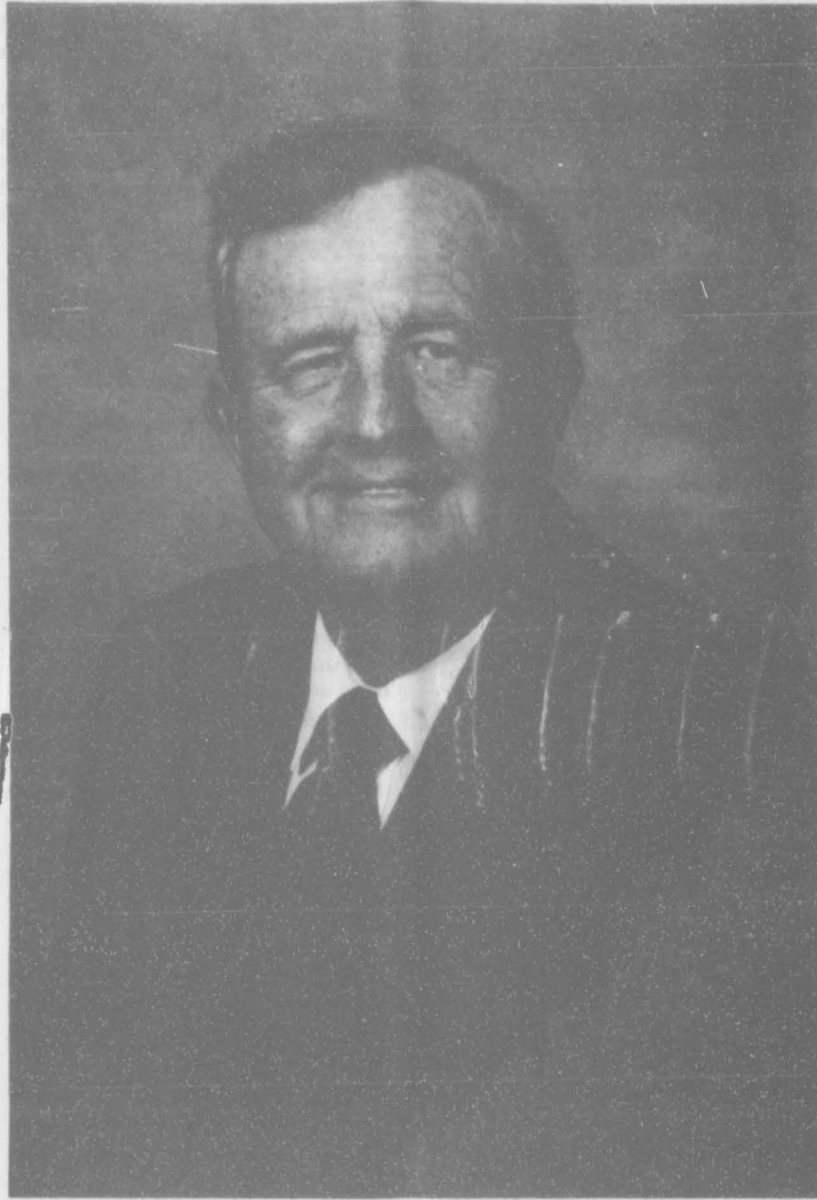
Men's Trousers -
50% off

Men's Woven
Arrow Shirts -
30 to 50% off

MAIN STREET STORE

506 Main, Gruver

Thank You



PETE FISHER

We wish to say thanks to everyone in this area, not only just for your great support over these many years, but also for your kindness, consideration, and loyalty. And, most of all, for just being the tremendous people that you are. Alta and I deem ourselves very fortunate to have been able to conduct a business and to make our home among you in this best part of the world in which to live.

Our goal was to always afford you the best possible store to shop for food. And we think the torch has now passed into very capable hands for you in the future.

We plan to continue to make this community our home and we wish to be available always to all of you.

Presently, I can be reached at 511G Plains Shopping Center. My telephone number is 659-3482. and my mailing address is Box 126 , Spearman, Tx.

AGAIN MANY MANY THANKS

Pete and Alta Fisher

Doc Blakely's

Pokin' Fun



There I was in Des Moines, Iowa, for the fifth time this year. The question that kept coming to my mind was a profound one... why?

Do these folks like to hear Texan accents? Do they have a more finely tuned sense of humor than most? I suspect the latter must be true because the moment I arrived at the Airport Hilton, the young lady at the reception desk looked at my cowboy hat and boots, lowered her voice, and said, "Howdy, Pilgrim..."

With my best drawl, I said, "Well, now, pretty little lady, I'd like to bed down tonight between clean sheets and get a rub down for my horse." She raised one eyebrow and replied, "Well-ll-l, maybe, but first let me see the horse."

Yep, they are mighty quick up here in the Midwest. I was autographing one of my books in the same hotel for a crowd where I had been the featured speaker. Reading their first names off the name tags, I asked a woman if she went by "Dona" as it read on her tag. She replied, "Yes, but it should have two n's in it."

I jokingly asked, "Is there any particular place you prefer the second 'N' like behind the first one?"

She said, "No, in front of it." Ever get the impression you are a real wit and an amateur points out that you are about half right? This trip I was speaking to the Iowa Electric Cooperatives. I arrived in time for an evening banquet to which I was invited just

as a guest prior to my keynote the next morning. They led me to a table filled with "Rowdies" whose chief aim was to humble me in preparation for my part on the program the next day. "Hope you're not from Texas," one said. "The hog market is bad enough without competition from bologna."

"Are you talking about the President of the United States?" I asked.

"Oh, no," he replied, "there's a big difference between bologna and bull."

I heard every anti-Texas joke that was ever invented that night. "A Texan is just an illegal alien on his way to Oklahoma. ... If the Alamo had had a back door, there wouldn't be any Texas. ... There is not that much difference between Iowa and Texas, but thank God for that difference."

I was rather proud of my composure at this good-natured kidding. The Yankees were a fun lot, but I got the parting shot. "I'll bet you meet a lot of interesting people," one said. I replied, "Not tonight."

PSU to host auction

The Panhandle State University Rodeo Club will hold a benefit auction at the England Activity Center Jan. 28.

The Rodeo Club will accept donated items to be sold at the auction. Anything else will be put on consignment. There will be a 10 percent consignment fee for items under \$300 and a sliding fee for items above \$300.

This auction is to help pay travel expenses to future rodeos, pay for feed for roping cattle, help sponsor the spring rodeo and pay for travel expenses to the National Intercollegiate Finals.

Hightower asked to resign from TCA

The president of the state's largest farm organization Friday called on Texas Commissioner of Agriculture Jim Hightower to resign because of what he called the "damage" Hightower had caused livestock producers through public statements about the European ban on U.S. meat imports.

S. M. True, a grain, cotton and beef cattle producer from Plainview, said in a letter to Hightower, "I am extremely disappointed at your press response to the European Economic Community ban of U. S. meat imports. The damage you have done to the state's \$6 billion livestock industry warrants your immediate resignation as Texas Commissioner of Agriculture."

In a statement to the press Dec. 27, Hightower said the European Community, in opposing meat treated with growth hormones, "is not expressing the views of a group of hippies. The reality is a concern that is growing worldwide about chemicals and drugs in feed products."

Hightower said there is a "clear trend among consumers who are concerned about food."

In his letter to the Commissioner, the Farm Bureau president said the agricultural industry in Texas and the nation has united over the years to support exports for meat and other products.

"Trade negotiations with the E. C. have been very sensitive due to their highly-protected and subsidized domestic agricultural programs," True said.

"These programs have created a

surplus situation for European meat products, and the hormone issue has become a scapegoat for other political considerations.

"The Texas Commissioner of Agriculture should be aware of and help promote the point that no scientist -- on either side of the Atlantic -- has provided any evidence that current methods of hormone use provide a health hazard.

"In your quest to oppose mainstream agriculture to chase self-promoting political headlines, you have either ignored or misunderstood the basics of international trade policy. You have created unnecessary embarrassment and economic difficulty for livestock producers.

"Your immediate resignation will provide relief to U. S. trade negotiators who must now face European counterparts now armed with supportive remarks from an agriculture official."

Choosing the Right Diet

So you over did it on the holiday eating and now it's time to hop on the diet bandwagon!

To help you fulfill your New Year's vow to lose weight, the magazines will be filled with diet plans and the commercial weight loss programs will advertise heavily in January. The question is, how to choose.

You may not need a "special diet" at all. People with an extra 2 to 5 pounds from overdoing it during the holidays can probably drop the weight just by cutting back on extra calories and getting on an exercise program, such as walking a mile or two each day.

Following the low-fat recipes from a magazine diet plan may help some people do that. But if you're already 20 to 30 pounds overweight and have added even more over the holidays, it's time for a significant diet.

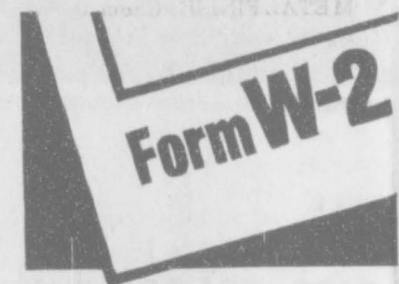
Although a post-holiday fad diet may help in the short run, research indicates that 95 percent of the people who go on them regain the weight within a year.

Before choosing a diet book, class or plan in hopes that it will help you with significant and permanent weight loss, ask the following questions:

- *What's the source of the diet? Is it a reliable health organization?
- *How is the effectiveness of the diet documented? Be wary of testimonials by "successful" clients. Ask for figures on long-term maintenance as well.
- *Are sensational claims made for the diet? Does it make sense that you can "lose ten pounds overnight" or "eat all you want" and still lose weight?
- *Is the program supervised by qualified personnel, such as a physician or a registered dietitian?
- *Along with calorie reduction, does the diet include instruction in behavior and lifestyle modification to help maintain the weight loss?
- *Is this a one-food diet or a liquid diet? In addition to being boring, these diets omit necessary nutrients and can be a danger to your health.
- *Is the diet nutritionally balanced? It should include foods from the major food groups of meat, poultry and fish; fruits and vegetables; dairy products; and grains and cereals.
- *What is the cost of the diet? If you have to buy special foods, devices, supplements or books will it be worth it?

W-2 Forms Due By January 31

Employers must make available to each of their employees from 1988 a Form W-2, "Wage and Tax Statement," by January 31, 1989. Employees who have not received their Form W-2 by that date should contact their employer and request the form, the Internal Revenue Service says.



Employees who, after having contacted their employer, still have not received a W-2 by February 15 should notify the IRS. When contacting the IRS, employees will be asked to provide the employer's name, address and employer identification number, if known. Having the necessary information available on the first contact, IRS adds, will prevent the need to call again.

Employees should receive a W-2 from each employer for whom they worked, even if they only worked for a particular employer for part of the year. Employees should also be aware that if they leave their jobs, they may request that their employers give them their Forms W-2 within 30 days after they leave.

Receiving a Form W-2 for each job held during 1988 is important, not only because a copy of it must accompany the tax return, but also for personal records, the IRS said.

Form W-2 lists many items including the wages paid, the amount of federal income tax withheld, social security tax withheld, any uncollected employee social security tax on tips, social security wages, social security tips, advance earned income credit payments, and the cost of group-term life insurance over \$50,000.

If a Form W-2 contains an error, the employee should notify the employer so that the employer can send a corrected Form W-2 to the employee, the IRS and the Social Security Administration.



Not Going To Church Because Of Hypocrites? Your Lifescope Says, "Better Stay Home From The Mall, Too!"

Then Jesus spoke to the crowds and to His disciples. "The teachers of the Law and the Pharisees," He said, "are the authorized interpreters of Moses' Law. So you must obey and follow everything they tell you to do; do not, however, imitate their actions, because they do not practice what they preach. They pile up back-breaking burdens and lay them on other men's shoulders - yet they themselves will not raise a finger to move them. They do everything just so people will see them. See how big are the containers with scripture verses on their foreheads and arms, and notice how long are the hems of their cloaks! They love the best places at feasts and the reserved seats in the synagogues; they love to be greeted with respect in the market places and have people call them 'Teacher.'"

"But alas for you, you scribes and Pharisees, play-actors that you are! You lock the doors of the kingdom of Heaven in men's faces; you will not go in yourselves neither will you allow those at the door to go inside. You sail the seas and cross whole countries to win one convert; and when you succeed, you make him twice as deserving of going to hell as you yourselves are!

"How terrible for you, teachers of the Law and Pharisees! Hypocrites! You give to God one tenth even of the seasoning herbs, such as mint, dill, and cumin, but you neglect to obey the really important teachings of the Law, such as justice and mercy and honesty. These you should practice, without neglecting the others. Blind guides! You strain a fly out of your drink, but swallow a camel!

"What miserable frauds you are, you scribes and Pharisees! You clean the outside of the cup and the dish, while the inside is full of greed and self-indulgence. Can't you see, Pharisee? First wash the inside of a cup, and then you can clean the outside.

"Alas for you, you hypocritical scribes and Pharisees! You are like white-washed tombs, which look fine on the outside but inside are full of dead men's bones and all kinds of rotteness. For you appear like good men on the outside - but inside you are a mass of pretence and wickedness. Snakes, and sons of snakes! How do you expect to escape from being condemned to hell?"

Low income taxpayers may be eligible to take a special tax credit on their federal income tax returns, which could result in a larger refund, the Internal Revenue Service says.

The "earned income credit" is available to those whose income for 1988 was less than \$18,576 and had a child living in their home.

Taxpayers entitled to the earned income credit can subtract it from the tax owed. If the credit is larger than the tax, the difference will be refunded. Even those who did not have tax withheld from their pay or are not required to file a return should file to get a refund. The credit can be as much as \$874.

Those eligible for the credit must have earned income during the year. Generally, earned income includes wages, salaries, and tips and self-employment income. Earned income does not include social security payments, welfare benefits or unemployment compensation.

There are certain conditions that have to be met in order to take this credit. For example, a child must have lived in the home for more than half the year and their principal home must be in the United States. Married persons must file a joint return.

Charts and worksheets are available in the Form 1040 and 1040A instruc-

tion booklets to help figure the credit, or by request, the IRS can figure the tax and credit for those eligible for the earned income credit.

For further information, contact the IRS at 1-800-424-1040.

Hansford Video

Now have 3 prices for movies:

- \$1.50 Movies Everyday
- \$2.00 Spanish Movies
- \$2.50 New Movies

VCR \$5.00 /day
TV's \$10.00/day

309 Main, Spearman
T.H. Rodriguez

FULLERS JEWELRY



40% off everything

The Spearman store is not closing. We are expanding to Perryton.



221 Sanders
Spearman, Tx. 79081
(806) 659-5005

Jenifer's Children's Apparel

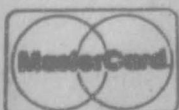
524 N. Main
Borger, Texas
273-2443

January Clearance Sale

25% to 50% Off

Open Sunday Jan. 15

1 - 5 p.m.



FEET HURT? DR. PATRICK CRAWFORD Podiatrist (Foot Specialist) PROVIDING THE MOST UP-TO-DATE TREATMENT FOR ALL TYPES OF FOOT DISORDERS INCLUDING:

- . Arch Pain
- . Bunions
- . Calluses
- . Corns
- . Flat Feet
- . Hammertoes
- . Heel Pain
- . Nail Problems
- . Sports Injuries
- . Work Injuries

Amarillo Foot Clinic 2913 S. Georgia St.
Offices also in Borger and Pampa
For Appointment Call Collect (806) 358-7363

Put Yourself in the Marketplace, in the Classifieds

Count on the Classifieds to Do the Job

For Sale

USED AUTO PARTS FOR SALE: Located 4 miles west of Hooker, Ok. on highway 54. Muss Cat Auto Salvage. (405)652-2400. S10-rtn

FOR SALE: 14 x 70 Mobile Home. Almost new carpet and tile and ceiling fans. Asking \$4500. Call 659-3117 after 5 p.m. S10S-7tp

FOR SALE: Hay Grazer and Red Top Cane. Round bales. Call 659-2786 or 659-3816. S10S-2tp

GRASS FOR SALE: 2 sections of Western Lipscomb County native grass. Located on pavement, well watered and good fences. Sell individually or as a unit. Alternative financing available to qualified buyers. Contact Ken Burton, High Plains FLBA, Perryton, Tex. 806-435-4319. S51-rtn

FOR SALE: 2 sections of grassland in Hansford County 10 miles Southwest of Gruver. Mineral rights-not included. Call after 5 p.m. (806) 358-2127 or (806) 352-6656. S10-4tp

FOR SALE OR LEASE: Office building for sale or lease. Owner will finance. Call 659-5051 before 5 p.m. and 659-2719 after 5 p.m. S05S-rtn

FOR SALE: 1978 Crew Cab Ford Pickup 460 Engine 1981 Ford LTD 4-Door. Phone 659-2767 day or 659-3398 evening. S11-4tp

FOR SALE: 3 bedroom, 2 bath home 1 mile south of Spearman, 2200 sq. ft. on 2 acres with barn and corrals. Call 659-5162 for appointment. S11S-5tp-sun. only

3 Repo Pianos For Sale: Spinnet & 2 Consoles-Assume Low Monthly Payments-Can be Seen Locally-Ph. 316-824-8422-Brier & Hale Music-Liberal, Ks. S11-3tc

HOUSE FOR SALE: 3 bedroom, 1 1/4 bath, good location. 659-3801. S11-6tp

Work Wanted

EARN TO \$500 WEEKLY...FROM YOUR HOME. For Free details send S.A.S.E. to: Southlake Adv. Inc., P.O. Box 429, Dept. 1211, Griffith, Indiana 46319 S06 11 tp

HELP WANTED: Honest dependable, clean, experienced person for maintenance. Will furnish tools. Excellent benefits. Probationary period required. Send resume to Caprock Industries, Inc. #2, Box 948, Gruver, Tx. 79040 or apply in person on location. S11-4tc

WORK WANTED: Will clean houses, offices and businesses. Call June or Juanita Tucker at 659-3061 or 659-2950. S10-4tp

HELP WANTED: Hansford Manor is now taking applications for part-time nurses-aides. Applications may be picked up at Hansford Manor, 707 S. Roland, Spearman, Tx. 79081. EOE. S11-2tp

HELP WANTED: Hansford Manor is now taking applications for a part-time RN. Need caring individual to work with elderly. Applications may be picked up at Hansford Manor, 707 S. Roland, Spearman, Tx. 79081 or call Tina Freeman, personell Director at 806-659-2535 for more information. EOE. S11-2tp

Miscellaneous

MITCHELL GARAGE DOOR REPAIR & INSTALLATION: Residential and commercial. Also will install electric openers. Experienced. Call after 5 p.m. 323-8210 or 435-3033. S10-rtn

PERSONAL: For those wishing to get in contact with me, Pete Fisher, my new business address is 511 G. Plains Shopping Center in Spearman, phone number 659-3482 or Box 126, Spearman. S11-8tc

NOTICE TO BIDDERS

Spearman Independent School District is requesting sealed bids on the following items:

1. 125 Combination Study Top Desk with Book rack with the following specifications:

FRAME: Self-supporting and non-tilting of 16 gauge swaged steel front legs and 18 gauge tube back legs. The top support tube shall be of 1-1/8" 14 gauge steel. A 3/4" 18 gauge tube shall connect rear legs, top brace and front legs to eliminate leverage. Seat supports shall be die formed of 16 gauge steel punched for concealed seat rivets. The one-piece shell shall be supported at the intersection of the back and seat with a 16 gauge die formed saddle brace, welded to the back leg assembly and riveted to the lower flange of the shell to prevent excessive flexing of the back.

SEAT AND BACK: A one-piece molded poly-propylene static-free with double contour seat and deep curved back with flanged opening in back

to eliminate pressure in the vital lower back area. Back reinforced with two 13 gauge side braces, riveted to inside of side flanges.

BOOKRACK: #4 welded steel rods projection welded together then welded to frame.

METAL FINISH: Chem-O-Pon Epoxy over iron phosphate coating or nickel chrome plating.

GLIDES: Shall be 1-1/4" diameter, rubber cushioned nickel plated with swivel action. Nylon base (Steel optional). Polypropylene leg ferrules are optional.

WRITING SURFACE: 9/16" high density particle board with a high pressure laminate top, and backer sheet. Edges are painted with black modified urethane plastic.

TOP: 18"x24", attached to support with 16 gauge clamps and screws.

SEAT HEIGHTS: 15-1/2"

2. **COLOR:** Blue; Teak Top

DESK FRAME: Top portion of adjustable legs are 1-1/8" 18 gauge steel tubing welded to two die formed top supports. Adjustable leg inserts are chrome plated. 18 gauge swaged tube, tapped at 1" levels for Phillips set screws. Each leg has additional 1/8" adjustment for uneven floors. All legs tied together with 3/4" 18 gauge wrap around tube.

BOOK COMPARTMENT: 22 gauge steel with a continuous tubular edge curl and one-piece front panel. Shelf, 3-1/2" from top, has a deep utility tray for small items. Dimensions of compartment, 15" deep x 14" high x 12-1/2" inside width at top tapering to 10" width at bottom.

PRIVACY PANEL: Molded polyethylene plastic with flanged edges and reinforced bottom edge, attached to top and wrap around tube with screws.

TOP: 9/16" high-density particle board with high-pres-

sure laminate surface and backer sheet. Edges are painted with black modified urethane plastic. Size 18" x 33"

METAL FINISH: Chem-O-Pon Epoxy over iron phosphate coating.

GLIDES: Shall be 1-1/4" diameter, rubber cushioned nickel plated with swivel action. Nylon base. (Steel Optional).

ADJUSTABLE HEIGHT: 22" to 29" in one inch steps.

COLOR: Desk Top-Teak

3. 200 contour stacking chairs with the following specifications:

FRAME: Legs of 1-1/8" 18 gauge swaged steel tubing of wall saver design. Each set made of one continuous tube running from side to side of the seat, welded to two 16 gauge die formed seat braces punched for concealed seat rivets. The one-piece shell shall be supported with a 16 gauge die formed saddle brace robotically (Mig) welded to the back leg assembly and riveted to the lower flange of the shell to prevent excessive flexing of the back. Saddle brace not required on 11-1/2" and 13-1/2" chairs. 7/8" x 18 gauge on 11-1/2" and 13-1/2" legs.

SEAT AND BACK: A one-piece molded shell of static-free polypropylene with double contour seat and curved back. Shell must have a flanged opening in the back to eliminate pressure to the vital lower back area. Shell shall be attached with concealed rivets under the seat to the seat brackets. Exposed rivets will not be acceptable.

METAL FINISH: Chem-O-Pon Epoxy over iron phosphate

coating or nickel chrome plating.

GLIDES: Shall be 1-1/4" diameter, rubber cushioned nickel plated with swivel action which secures the glide to the outside of the leg, internal holding devices are not acceptable. Nylon base (Steel optional). Polypropylene leg ferrule extending 5" from floor. (Optional).

SEAT HEIGHTS: 15-1/2". Chairs shall stack 10 high.

COLORS: Blue & Red

Bids are to be sent to Larry Butler, Superintendent of Schools, Spearman I. S. D. at 403 E. 11th Ave., Spearman, Tx. 79081. Bids will be accepted until February 10, 1989 at 4:00 p.m. The Board of Trustees reserves the right to accept or reject any or all bids. Delivery is expected no later than March 31, 1989.

Letter to the Editor

Dear Editor,

It is literally incredible that America, once the strongest nation on the face of the earth, and still imagined so by many, has allowed the American prisoners from the Korean and Vietnam wars and now the victims of the Korean flight KAL 007 to be abandoned without adequate investigation and disclosure.

At the same time the U.S. Government is supporting the evil regime (communism) at every turn all over the globe with our technology, food, and other materials, even financing it with U.S. taxpayers' money, allowing the Russians to prepare headlong for war. Our representatives (congressmen), 98.5% of whom will be back

next session, are allowing this to happen. Is it any wonder that voters are not just apathetic, but even moreso, ALIENATED?

Sincerely,
Fletcher Sims
Canyon, Texas

To the Editor:

Thank you for your story on December 18 concerning the recent Texas Supreme Court decision that will require school districts to inform teachers of their salary levels before the beginning of the school year. I truly appreciate your efforts to keep your community informed about the important issues that affect our children's education.

Your story did contain an inaccuracy, however, that I believe deserves clarification. The lawsuit leading to that important decision was not filed "jointly" by the Association of Texas Professional Educators and the Texas State Teachers Association, as you reported. The lawsuit was originated and filed by ATPE attorneys on behalf of several ATPE members; TSTA later intervened on behalf of a few of its members. ATPE is proud to have been the leader in obtaining this ruling for all affected Texas educators.

Again thank you for your coverage of public education. I believe the future of Texas' schoolchildren rests upon the interest and concern of every individual in this state.

Sincerely,
Mike Morrow
Executive Director
ATPE



Woodsy Owl says Stash Your Trash

NOTICE
Wallace Monument Co.
Monuments, Curbing,
Grave Covers
Local Representative
LEONARD JAMESON
Spearman, Texas

Offered by
EMMETT R. SANDERS
REALTOR
3 bedroom home, attached garage. ****
Owner's 2 bedroom home plus 3 rental units. Good investment package. ****
Call for details on almost new FmHA repo's, 3 bedroom homes
EMMETT R. SANDERS
REALTOR
659-2516, nights 659-2601

BOB HARDY REALTY
803 Wilmeth Dr.
659-3440
NEW LISTINGS
We need your listing
We also have some (FmHA) Repo Homes for sale - Call for details.
Robert Hardy-broker

Real Estate Sampler
Allen Alford-Broker-659-3034
Hester Sue Crawford-Sales 659-3060 or 659-2074
Dennis Nelson-Sales-659-3608
Larry Trosper-Sales-659-3491
715 Steele Dr. - 3 br, 1 1/2 baths. Price Reduced! Free-standing fireplace included.
Duplex - Kenneth & Hoskins 1111 Barkley - 3 bdr., 1 1/4 bth
316 Roland - 2 bdr., 1 1/2 bath
811 Townsend - 2 bdr, double car garage.
727 Wilbanks - Double lot, 3 bdr.
708 Steele Dr., 3 br, fireplace Price Reduced.
1016 Townsend - 3 br - garage - nice.
1116 Townsend - 3 br - double garage - extras.
COUNTRY HOME COMING UP SOON
Auctioneering services and Appraisal services available.
WE WANT TO BE YOUR REALTOR

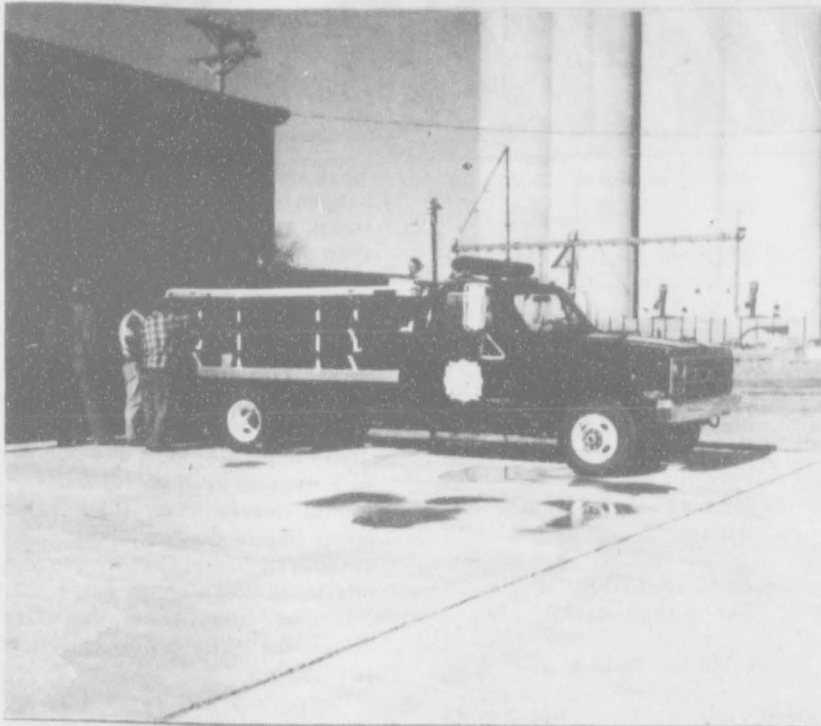
Century 21
GOLDEN SPREAD REALTY
Janye Helton Pointer, Broker
Owner, 435-5444
SALES ASSOCIATES
T.O. Lesly 659-3836 or 659-2028
3/4 miles E. of Spearman High.
3/2 - large log home on 1 acre!
609 E. Kenneth - 3/2 smart style, smart buy!
515 S. Bernice - 4/3 1/4, extra large lot & close to school!
1012 S. Haney - 3/1 1/2. Walk to school!
703 Collier - 3/1, Close to High School!
712 Collier - 3/1 1/2, foreclosure! Fireplace & extra lot!
607, 609, 611, 615 Haney - Small house / 2 apartments.
118 Townsend - 4/2, Apartment included!
108 S. James - 3/1. No down payment to eligible buyers!
310 Townsend - 3/1 home with large lot!
1010 Dressen - UNDER CONTRACT, home v.
322 S. Barkley - 3/1. Good location at affordable price!
121 Endicott - Attention Investors!
511 Haney - 2/1 Small price tag!
220 S. Snyder - Make an offer!
315 1/2 N. Bernice - Lot for sale!
FARM & COMMERCIAL
Industrial Road - 40 x 60 steel building!
Buster Duster's - Large office building with or without shop.
640 acres of grass in Sherman Co., over 500 acres in the C.P.R. Program.
2 Ranches in Brownwood area. Call today!

©1988 © and '89 Century 21 Real Estate Corporation
Equal Housing Opportunity
INDEPENDENTLY OWNED AND OPERATED

OSGARD MONUMENT CO.
Amarillo, Texas
Dealers of Rock of Ages Granite, as well as all colored granites, marble and bronze memorials.
represented by,
BOXWELL BROS.
FUNERAL HOME
519 S. Evans
659-3802

Local Happening?
Special Event?
Club Meeting?
If it's important to you,
it's important to us.
Let us know about your event
and we'll do our best to get you
the publicity it deserves both before and after.
Call 659-3434 Today!
The Spearman Reporter
The Gruver Statesman
The Hansford Plainsman

Hansford County gets new fire truck



The Gruver Volunteer Fire Department started the new year with a new fire truck thanks to the Commissioner's Court of Hansford County.

The truck was purchased from Gillaspie Chevrolet of Spearman and the bed, tank, pump and accessories were furnished by Neel Associates of West Texas which were low bidders on the equipment.

The Truck is a 1988 Chevrolet 4-wheel drive one ton truck. It carried 350 gallons of water, the pump, and other accessories to battle most fires in the county.

This new truck will replace a 25 year old truck that will now be used as a backup truck by the department. The truck has already answered one fire call since it was delivered to Gruver.

Among the Neighbors

Helen Fisher

Rhoda Overton enjoyed an extended visit with her children and their families over the holidays.

Before Christmas she went by bus to Port Arthur on the coast and was a guest of the Larry Overtons.

Then she went to Utopia where she visited with Nancy and Buddy Thompson in their rural ranch home.

She flew back and returned home on Wednesday.

Mary Schumann is in Harrison, Ark. where she attended the funeral of her brother, Clayton Haun, on Monday.

Clayton was graduated from high school here in 1931 and has attended class reunions since.

He is survived by his wife, three children and several grandchildren.

Matilda Entrekin is again adjusting to living alone since her daughter, Edith Eddleman, moved. Edith and her son Barry Eddleman recently left for a new home in Moreno Valley, Calif. Edith's son, Curt Carson, lives there. It is near Los Angeles.

Dora Kate Lee came over from Amarillo on Sunday and spent the day with her mother and stepfather Cleo and Lowell Denman. He was recently released from Hansford Hospital.

Old friends received word of the passing of Mrs. Bob (Debbie) Latham this past weekend. Funeral services were held Wednesday in Elmore City, Ok.

Bob and Mrs. Latham and family lived in Spearman for a number of years and some of the family

finished high school here. All three of the Latham sons served in the military from Spearman.

She had been living near her son near San Diego, Calif. She is survived by a son, Ralph, and two daughters, Joan Davis of Soldotna, Alaska and Merle of Minnesota.

H. O. and Sue Abbott spent last Tuesday night with old friends, Virginia and Garland Head.

The Abbotts, former residents of Spearman when he was pastor of the Methodist Church, were en route back to their home in Aroura, Colo.

They had been in Abilene welcoming a new granddaughter, the daughter of their son, Horace.

The Heads left Thursday for Clovis where they attended a funeral. They spent the weekend in Artesia with their son, Ronnie and his family.

Another busy week for the Bert Sheppard family began just as an extremely busy holiday season ended.

On Wednesday funeral services were held in Longview for Sylvia Kennemer. Mrs. Kennemer, who had visited the Sheppards have on several occasions, was a sister to Patti.

In an earlier issue of this paper was the account of the lovely wedding of Rory Sheppard. It was held in Amarillo on Saturday.

On Monday Patti was hostess to the Spearman Study Club in her home with a good attendance.

Spearman boasts a number and variety of talented citizens, but none more so than a couple of ladies who either have an amazing green thumb or long ago learned to properly use a certain vocabulary to encourage house plants to thrive. Ora Lee Balckburn and Matilda Entrekin are sharing with their friends a plant that they have had more than 20 years, whose phenomenal growth and endurance is amazing. Their stephanotis, often called the "wedding flower," is blooming and permeating their homes with a lovely fragrance—puts all callers in a "marrying mood".

Sometime ago this column carried a doleful little item about the crumbling wooden corrals and their declining use—so one of Spearman's wood craftsmen carved a toy sized replica corral, complete with loading chute, and presented it to your neighbor, to ease the nostalgia. . . Thanks, John.

Free booklet offers widows, widowers help

Did you know that there are more than 12.5 million widowed people in the United States? If you've recently lost a spouse, you may find that there are many widows and widowers in your community willing to offer you help in your bereavement.

Many of these people are part of the American Association of Retired Persons (AARP) Widowed Persons Service. The Service is a one-to-one outreach program that involves people of all ages. Most of these widows and widowers have already discovered an important source of comfort from sharing their feelings with those who have gone through similar experiences.

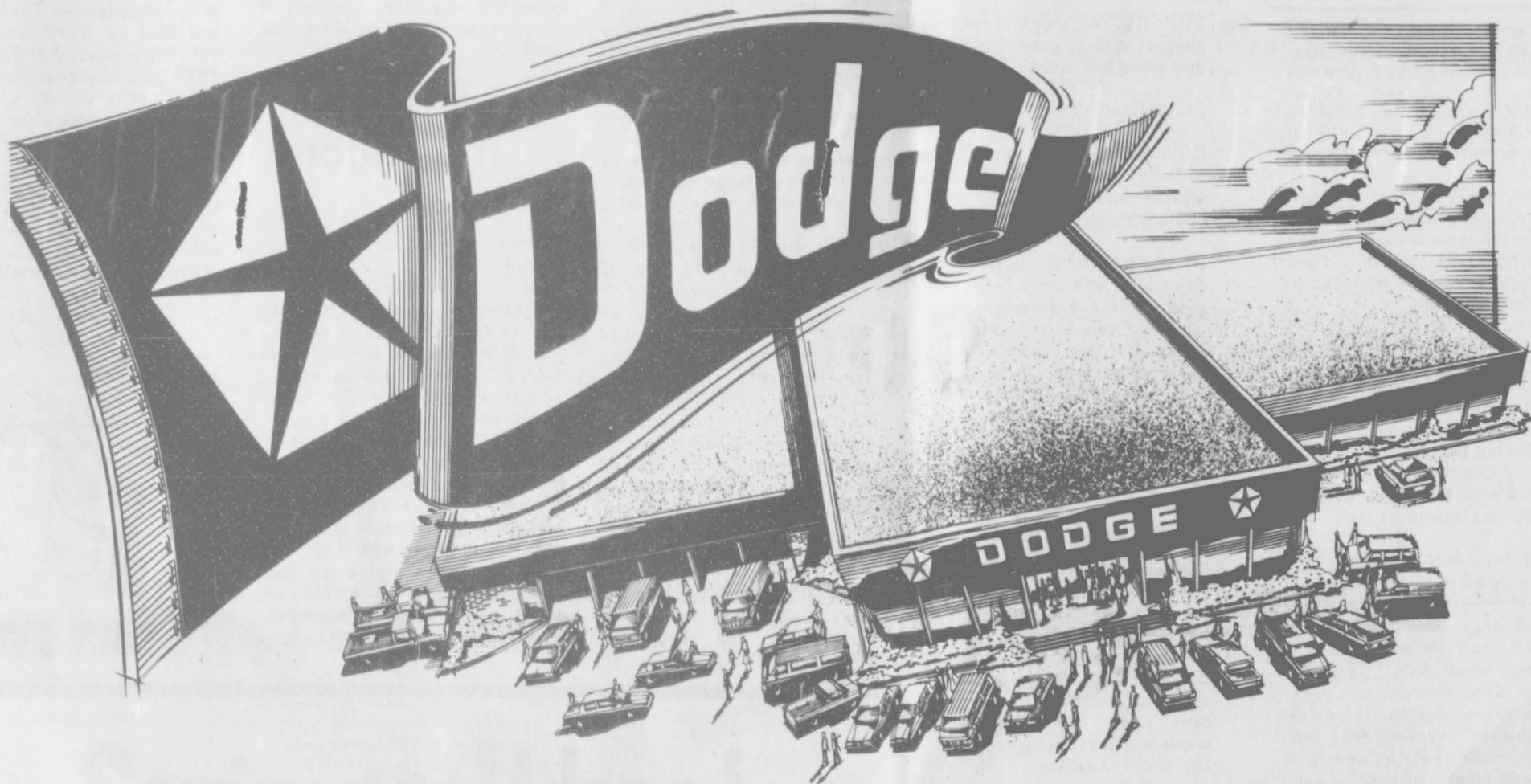
FREE BOOKLET

Volunteers in the Widowed Persons Service caution the newly widowed against making any major decisions regarding housing, finances, investments, living arrangements or anything else during early bereavement. They also recommend that the newly widowed should contact the spouse's employer, soon after becoming widowed, to ensure continuation of health benefits. These and other suggestions are contained in a free booklet produced by AARP, "On Being Alone," a guide for the process of adjusting to widowhood.

You may find that sharing your experience with others like yourself may help you better deal with grief. To find out more about programs available in your community and to get the free booklet, "On Being Alone," write WPS-11, AARP, Washington, D.C. 20049 or call 1-202-728-4370.

Give A Hoot. Don't Pollute.

Forest Service—USDA



"WE'RE ADDING TO OUR LINEUP," SAYS DICK GILLASPIE



DODGE SHADOW



DODGE CARAVAN



DODGE D-150

We're proud to announce the addition of Dodge to our lineup of quality Chrysler cars and trucks. Now, we're better able to serve you with a wider selection of vehicles and the same friendly sales staff you've come to know and trust. And with more

to choose from, you'll be able to find the exact model car or truck you're looking for, all in one location.

Come in and see our new lineup of Dodge and check out our great deals on every car and truck we sell.



**THE NEW SPIRIT
OF DODGE**
CARS • TRUCKS • IMPORTS

SEE YOUR DODGE DEALER. WHERE THE NEW SPIRIT SHOWS.

BUCKLE UP...AND PLEASE DRIVE SAFELY.

Gillaspie - Chrysler - Plymouth - Dodge

Hwy 207 S. Spearman 659-2541