

The Spearman Reporter

24 hr. prayer
service 659-2911

Volume 76, Number 23

The Spearman Reporter, Spearman, Texas 79081

Thursday, April 12, 1984

Gruver School Bond Defeated

Election results

In the City of Spearman election, C. Ralph Blodgett received 98 votes, Jim Nicholson had 102, Ed Garner, 96. These three men were incumbents and had no opponents.

In the Spearman School Board election, Jim Davis was re-elected with 108 votes, and Phillip Renner was elected with 104. Neither men had an opponent.

In Gruver the big item up for balloting was the proposed \$1,100,000 school bond proposition. This was soundly defeated, with 434 against and 244 for the issue.

Incumbents Wayne Garrett and Ronnie Williams were elected to the Gruver school board. Garrett had 397 votes, and Williams had 414 votes.

In the Gruver City election, Ila Jo Hart was unopposed on the ballot. She received 319 votes. Receiving write in votes were E. J. Riley 4; Tom Razor 4; Weldon Green 2; John Gibson 2; Rex Shapley 1; Roy Riley, 1; Roy Byrd 2; and Kent Rimmell 1.

Incumbents Jon Jarvis, Charles Reid, and Bob Womble were re-elected to the Pringle-Morse school board. They were unopposed.

Cheese & butter distribution April 17

U.S. Department of Agriculture surplus cheese and butter will be given away to qualified individuals at the county judges office at the courthouse April 17 from 1 to 5.

Renner and Davis sworn in

New school board member Phillip Renner and incumbent Jim Davis were sworn in at the regular school board meeting in Spearman Monday night.

In other business the school board canvassed the election results and made them official.

Election of officers for the board 1984-85 was held and Dr. Tom Latta was named as president of the board, and Kent Guthrie was named Vice President, along with Charlie Shieldknight who was named Secretary. Members of the school board for 1984-85 are Latta, Guthrie, Shieldknight, Renner, Davis, Garrett and Nelson.

Resignations from four teachers were accepted at the meeting. They are Mrs. Minnie Weaver, Mrs. Wilma Clark, Burt Williams and Rhonda Brown.

The board discussed the Hansford County Appraisal District concerning proposed building financing.

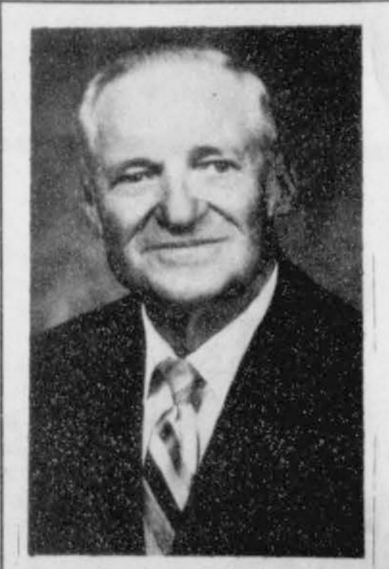
The enrollment at the Spearman school system is now 832, which is down 7 from last month.

Hansford Roundup Planning meeting

A Hansford Roundup planning meeting will be held Thursday, April 12, 1984 at 7:30 p.m. in the Chamber office.

Interested persons are urged to attend.

Head announces for re-election



GARLAND HEAD

I wish to announce that I am running for re-election for Commissioner of Precinct I. It has been a privilege to have served the people of Hansford County these past eight years. I have a proven track record of honesty, efficiency and dedication.

If elected I will continue to spend your tax dollars wisely and conservatively, and a vote for me will be greatly appreciated.

Sincerely,
Garland Head

Jill McLain to Odessa



Jill McLain

Jill McLain, Spearman Freshman, qualified for the regional track meet at Odessa, April 16th.

Jill will enter the high jump competition Monday, April 16th at 1 p.m.

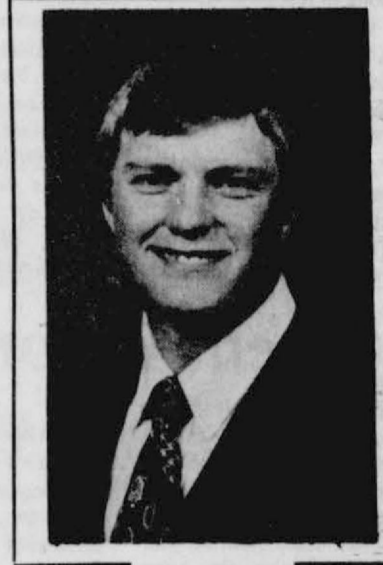
Jill will also compete in the 100 meter hurdles at 3:40 p.m. on Monday. If she qualifies for the finals in the hurdles, she will compete at 3 p.m. Tuesday, April 17th.

Jill's time was 15.53. Her high jump was 5.4, but she has jumped 5.8. The 5.4 is just 1 inch below the girls 1-AAA district record.

Melanie Morris of Gruver won the 3200 in the girls District 1-AA competition with a 14.05.78 and will compete April 19th in Lubbock at 1 p.m., regional competition.



Billy Haden



Darl Farris

Haden, Farris scholarships

Football scholarships were awarded to two of Spearman's finest last week. Billy Ray Haden and Darl Farris, two local Lynx stars were awarded football scholarships to Northwestern Oklahoma State, Alva, Oklahoma. Both Haden and Farris have signed letters of intent to play for the Rangers.

Commissioners purchase pickup

County commissioners met in regular session Monday, April 9. Routine business matters were handled.

They voted to accept Gruver Motor Co.'s bid for a 1/2 ton Super Cab pickup in the amount of \$10,761. The pickup will be used by new county agent, Burt Williams.

Commissioners passed on Marlin Oil Co. request for road easement as the road was not a county road.

The commissioners authorized Judge R.L. McClellan to buy two typewriters for the tax office, replacing those presently in use.

District golf

In the District 1-3A boys' golf tournament held here last weekend, Canadian was 1st in the fourth round with 316-1330. Dalhart was 2nd, 340-1381; Perryton 3rd with 353-1447 and Spearman 4th with 367-1564.

Spearman scores were Pat Tucker 89; Jeff Gressett 90; Jeff Graves 90; Trevor Pool 98; and Jeff Vanlandingham 110.

Spearman B team scores were Shane Swenn, 106; Ross Bulls, 107; Mark Allen, 111 and Wayne Groves, 125.

Prizes for Bike-A-Thon

The St. Jude Bike-A-Thon will be held April 14 from 1 p.m. to 5 p.m. Bike riders should meet at the Rocketslide park.

Ronnie Williams, chairman of the drive for St. Jude's Children, announced that two bicycles will be given away to the rider who brings in the most money for the charity in ages Kindergarten thru 4th grade, and 5th thru 8th grade.

Longtime teacher buried Monday

Graveside services were held Monday, April 8, 1984 at 4 p.m. for Barbara Patterson, 69, who died Sunday in Amarillo.

The Rev. Albert Lindley, pastor of First United Methodist Church of Perryton officiated at the services in Holt Cemetery. Burial was under the direction of Boxwell Brothers Funeral Home.

Mrs. Patterson was born in Lawton, Okla. She had lived in Spearman 45 years. She taught high school English and Spanish for 20 years and was a teacher's aide for seven years. She was a member of First United Methodist Church.

She married Sam Patterson in 1941 in Panhandle. He died in 1982. Survivors include two daughters, Phyllis Kirkland of Sudan and Sheila Watley of Spearman; and three grandchildren.

Blodgett keynote speaker

C. Ralph Blodgett, mayor of Spearman and president of Texas Municipal League, was the keynote speaker for the Career Clinic held Wednesday, April 11 at the high school.

The clinic was the fifth annual career program held here. The clinic was jointly sponsored by the Free Enterprise Committee of the Spearman Chamber of Commerce and the Spearman Rotary Club. Committee members were Rita Curtis, Mike Schnell, Gerald Heinrich, Bodil Stackhouse and Gary Wyson. Frances Loftin and Claudine Laxton were in charge of the coffee for the consultants.

High School students were able to familiarize themselves with many types of careers available to them as they finish high school and make preparations for an occupation.

In allied health areas consultants were Audrey Ehrlich, Follett, occupational therapist; Tim Kemp, Spearman, physician assistant; Nita Boynton, Amarillo College, physical therapist; Tim Godfrey, Hansford Hospital, respiratory therapist; E.E. Novak, DDS, Spearman dentist.

Monty Blackman of Brown, Graham & Co. was the accountant consultant.

Brice McRee, Agco, and Marge Rockenhous, Amarillo, were consultants for Agriculture-business.

Vic Kyler, Frank Phillips College, was psychology consultant.

Tom Latta, DVM, Spearman, was veterinarian consultant.

Bodil Stackhouse, Blackburn Flowers, was the florist consultant.

Carla Beezley, Spearman, was the dancing professional consultant.

Kay McFarlin, Hansford Hospital, Marcie Gage, WTSU and Lucy Coggins, Frank Phillips were on hand to discuss nursing as a career.

Len Slesick, KVII, Amarillo, was the meteorologist on hand.

Tex Selvedge, Clarendon College, was the ranching and farming consultant.

Mike Schnell, First State Bank, was the business and finance consultant.

Jerry Don Davis, First Baptist Church, was youth & education consultant.

Steven Mays, WTSU, was the art consultant.

Wayne Beighle, Amarillo, explained the Dept. of Public Safety careers available.

Joe Callahan, and Bob Ellis, Amarillo College, were the mechanics consultants.

James C. Wilson, Perryton, was the Park & Wildlife consultant.

Interior design consultant was Bill Banks, TSTI.

Nita Boynton, Amarillo College, was the dental assistant & dental hygienist consultant.

David A. McClellan, MD, Spearman, was the physician consultant.

Photographer consultant was Jay McMullan of Spearman.

John Hutchison, Spearman, was veterinarian consultant.

Military consultants were Bob Dietrich, Amarillo, Navy; James Witenberg, Borger, Army; Ralph Meyer, Amarillo, gunnery sergeant; Steve Powell, Amarillo, staff sergeant.

Vic Kyler, Frank Phillips, was the business management consultant.

Cosmetologist consultant was Regie Reneau, TSTI.

Dwayne Mitchell, Spearman, discussed teaching.

Delores Behrens, Amarillo College, discussed office occupations, secretary-receptionist, secretary-

certified professional, secretary-legal and court reporter.

Dash Danner, Amarillo College, was the welding consultant.

Rowie Durden, WTSU, was the music consultant.

Computer consultant was Dr. Joe Savoill-Frank Phillips.

Bill Banks, TSTI, discussed interior design.

Pat Dear, Spearman, was the travel service consultant.

This is a very worthwhile project and the Chamber of Commerce and Rotary Club should be commended for their work in making these clinics available to our students.

Sales tax checks higher

State Comptroller Bob Bullock sent checks totaling \$46.3 million in local sales tax payments to the 985 cities that levy the one-percent city sales tax.

"These receipts are up more than 16 percent over last year," Bullock said. "This is just exactly where I estimated they would be when I gave the Legislature its estimate of revenues last year. Texas is in the thick of the national economic recovery. Let's just hope we stay there."

April checks reflect sales made in

February and reported to the Comptroller in late March.

The City of Spearman received a check for \$12,168.88 compared to \$8,220.49 for the same reporting period last year. Total receipts for the city from the sales tax this year is \$63,574.96 up 0.62% over the \$63,180.61 received last year.

The City of Gruver received \$1,861.04 for the same reporting period up from \$848.16 last year. The City of Gruver has received \$11,381.20 to date in 1984 compared to \$11,115.14 for the same period, some 2.39%.

Youth Group plans bake sale

The Youth Group of the Assembly of God Church in Spearman will hold a Bake Sale.

The date will be Saturday, April 14th at Thriftway starting at 8:30 a.m. and at Gordon's Drug starting at 7:30 a.m.

The proceeds will go to the youth attending Church Camp.

Annual Easter Egg Hunt planned

The Spearman Moose Lodge will sponsor its Annual Easter Egg Hunt for all Hansford County children Saturday, April 21st at 10:00 a.m.

See related ad in paper.

Auxillary serves 1500 hours

The Hansford Hospital Auxillary enjoyed the annual spring luncheon at the Fellowship Hall of the First Christian Church April 11 at 11:30.

After the meal a short business meeting was conducted with Virginia Head presiding. Minutes of the previous meeting were read and approved and the treasurer's report given.

Mr. Ray Wasil and Jody Harnish, representing the Hansford Manor, were guests and presented a film program relative to residents of different Manors.

A total of 1500 hours and 40 members were included in the report sent to National by the president.

By unanimous vote all bills presented are to be paid. The kitchen personnel are in need of an electric meat slicer, costing \$825.00 and an insulat-

ed cart food warmer, costing \$2000.00 for the meals. The members voted to buy these with money obtained from the "Operation Christmas Greeting" fund which netted a little over \$4000.00.

Proceeds from the bake sale on April 11 will be used to purchase a microwave oven.

Dolly McWhirter, Sharon Barkley and Doris Wilde are welcomed as new members.

Those present were: Rosa Lee Butt, Mary Cornelius, Myrt Bohanan, Ethel Byers, Clementine Renner, Maria Avila, Hazel Stumpf, Virginia Trindle, Frances Cudd, Lorene Kunselman, Jo Larsen, Virginia Head, Sharon Barkley, Doris Wilde, Dolly McWhirter, Eva Boyd, Buena Lyon, Ora Lee Blackburn, Edith Smith, Maylyn Schubert, Gwen Smith and Betty Davis.

Calendar of Events

- APRIL 12--The tennis teams will play Stratford here.
- APRIL 12-14--The FHA State Meeting will be held at San Antonio.
- APRIL 14--Boys will play golf at Perryton. FFA will be judging at Texas Tech. Boys varsity track team will be at Dumas. Boys district tennis meet will be at Canadian.
- APRIL 16--Methodist Senior Supper will be at 6:30.
- APRIL 16-17--Regional track and field meet.
- APRIL 16-18--Regional girls golf.
- APRIL 18--Panhandle State Contests.
- APRIL 18-19--Regional girls tennis.
- APRIL 19-- District boys at Canadian.
- APRIL 20-23--Holiday.
- APRIL 24--In-Service.
- APRIL 25-28--Choir trip to St. Louis.
- APRIL 27-28--High School Rodeo and State Literary Meet.
- APRIL 28--Elementary Literary Meet.
- APRIL 30--DECA Banquet.
- APRIL 30-May 1--Boys Regional Tennis.

FFA team to Lubbock

The Spearman FFA livestock judging team received some valuable experience at WT, Canyon, over the week-end when they judged Dairy Cattle, Meats and Livestock.

Members of the team are: Dairy Cattle; Danny Close, Carl Williams, and Terry Phillips.

Livestock judging: Bob Jarvis, Timmy Willis, Allan Gardiner, and Monty Beck.

The teams will go to Texas Tech April 14th for the FFA judging contest, and the top 5 teams will go for the state meet at Texas A&M April 28th.

Eastern Star honors members

Spearman Chapter #721, Order of the Eastern Star met on Monday, April 2nd at the Hansford Masonic Lodge. A delicious supper of Spaghetti and Meat sauce, salad and garlic bread was enjoyed by all those attending. At the meeting that followed, members who received their 25 year pins or 25 or longer years were: Jessie Faries, Maudine Patterson and Millie Buchanan. Other new 25 year or longer members unable to attend were: Ceril Batton, Elva Cooper, Anna Fay Die, Elmon Jacobs, Alteena Jacobs, and Nina Hendricks.

A special program honoring the Past Matrons and Past Patrons and the 25 year and 50

Secretary, Mona Slater; and Treasurer, Charlene Bryan. The meeting was adjourned with the following attending: Charlene and Mansel Bryan, John R. Collard, Jr. Thelma Scott, Millie Craig, Lynanne Maize, Mona Slater, Myrna Biggers, Wilma Clark, Virus Willbanks, Louie Sampson, Iva McElhaney, Delores Beville, Roy Lee and Betty Uptergrove, Marjorie Collard, Q.D. Beville, Albert and JoAnn Graves, Jessie and Dan Faries, Minnie

Jones, Dick and Frances Hudson, Millie Buchanan, Maudine Patterson, Cecil Biggers, and Ruby Lair.

Ronald Reagan, President: "The deficit which all pessimists predicted would keep going up is now coming down...by economic growth."

Circus is coming to town

Ford Bros. Circus is coming to Spearman on April 19 with internationally known circus superstars presented in a widely varied program of almost two hours duration. The circus will erect the huge canvas tent at Oscar Archer Arena and show times are scheduled for 7:30 p.m. under the sponsorship of Chamber of Commerce. Advance tickets are \$2 and \$4 at the Chamber office.

To make this remarkable program possible, a large number of skilled and accomplished performers and trained animals have been recruited from throughout the circus world. In one display the Ford Bros. lovely circus starlets perform aerial acrobatics on the Spanish web in perfect harmony while the sensational trapeze star, Miss Christa from Czechoslovakia, per-

forms a heart-stopping routine high above the center ring.

Among other featured displays are: three herds of performing African and Indian Elephants spotlighted by America's only herd of performing baby elephants; African Jungle lions trained and presented by Sir Gauntlet inside the giant steel arena;

Center ring display of the trained Siberian Zebra fantasy; Spanish Andalusian Stallions; Military Marching Horses; Ford Bros. K.9. review; Baby African Pygmy goats; Skippy the High School educated chimpanzee; Delightfully trained Russian Black Bears; Arabian Camel Caravan; Two of nature's natural enemies come together to perform the unbelievable,

TIGER RIDING ELEPHANT DUO: The thrilling high flying trapeze; From the FORD BROS. clown college comes professors Lucky, Smiley, Spoofo, B.J. and their ASININE ASSOCIATES; Peruvian Llama review.

Plus the world's largest traveling zoo: baby hippopotamus from the river Nile; from Sumatra comes Goliath the giant orangutan; from the South African Velts comes the largest living bird, Mahatma the racing ostrich; Chris the sky scraping Giraffe; exotic subtropical parrot, plus many more.

All this to be topped off by Mr. Big Top the circus performance director who will lead the live circus band, and artist in a salute to the return of the old fashion circus parade.

Martin Feldstein, chief White House economist, on interest rates:

"I want to stress that such an increase in interest rates would not choke off the recovery or make credit unavailable."

Edwin Meese, designated Attorney General, on special prosecutor:

"I believe that only an investigation like this can determine the facts and the legal issues in a fair and orderly manner."

Markets

WHEAT	53.46
MILO	5.15
CORN	3.40

BIBLE VERSE



Father, forgive them; for they know not what they do.

1. Who made the above request?
2. Upon what occasion?
3. Who were "they"?
4. Where may his verse be found?

4. Luke 23:34

1. Jesus.
2. As he hung on the cross on Golgotha.
3. The Roman soldiers, who crucified Him specifically, but generally to the Jewish leaders who had caused his death.

Answers to Bible Verse

Golden Gleams

What is, is right.
-Alexander Pope.

Be sure you are right; then go ahead.
-David Crockett.

If it be right to me, it is right.
-Max Stirner.

Sir, I would rather be right than be President.
-Henry Clay.

SNACKING AND DIET
COLUMBIA, Mo. (AP) — Snacking has become a part of the diet and people who are nutritionally aware know that snacking provides a viable way to obtain a well-balanced diet, according to Dr. Karen Morgan.

Dr. Morgan, an associate professor of nutrition at the University of Missouri, says people need to reconsider what they think about snacks.

Foods can no longer be classified as snack foods and meal foods, she says. The key is that all foods, whether eaten at meals or between meals, can contribute to a healthful diet provided individuals eat a variety of them and eat them in the right proportions.



Move Up To Comfort And Energy Efficiency With An Energy Checked Efficiency Home

Before you and your family move into your next house, make sure your new home can provide the year-round comfort and energy efficiency of an Energy Checked Efficiency Home. Inspected for adequate insulation throughout the house, as well as energy efficient heating and cooling equipment, in addition to many other features, Energy Checked Efficiency Homes can provide the indoor comfort you want while being energy efficient at the same time. So if you are building, buying or remodeling your house, start enjoying the full benefits of your electric service with an Energy Checked Efficiency Home. Call our office today for all the details.



Texas-New Mexico Power Company.
EL-15-84

K. Dale Johnson, D.D.S., Inc.
3102 Carroll Drive
Perryton, Texas 79070
435-6564

SPRING EXTRAVAGANZA
Fashions, Color, Glamour
Tuesday, April 17, 1984--7:00 p.m.
Methodist Church Fellowship Hall
Sacred Heart Parish Hall

FASHIONS: Boyd's Shoes, TG&Y, Lady Fair, Bunkhouse, Trudy's, J.G.'s, Jan's Fashions, Main Street.
COLOR: Annette McCloy.
GLAMOUR: Mary Kay Consultants; Jan Dunn, Robbie Reid.

DOOR PRIZES.

Kay Hill
is back at
The Vogue
Tuesdays through Fridays
Old and new customers are welcome
Call 659-3531

ALLSUP'S
CONVENIENCE STORES

***PRICES EFFECTIVE
APRIL 12-14, 1984**

- SELF SERV GAS - GROCERIES
- OPEN 24 HOURS - EVERYDAY
- "THERE'S ONE NEAR YOU"

ALLSUP'S COOKED FOOD SPECIAL
SAUSAGE ON A STICK
AS FEATURED ON T.V. **99¢ EACH**

EASTER BASKETS
LARGE \$8.99
MEDIUM \$7.99

DISH DETERGENT T.V. SPECIAL
SUNLIGHT 12 OZ. BTL. **45¢**

SWIFT VIENNA SAUSAGE 5 OZ. CANS **2 79¢**

CONTADINA TOMATO SAUCE 8 OZ. CANS **7 1**

BORDEN'S BUTTERMILK 1/2 GAL. CTN. **\$1.09**

ALLSUP'S ASST. RND CTN. ICE CREAM 1/2 GAL. CTN. **\$1.69**

LARGER EASTER BASKETS FILLED WITH STUFFED ANIMALS AND EASTER CANDY
INDIVIDUALLY WRAPPED CANDY EGGS 99¢ A BAG
GET READY FOR EASTER AT ALLSUP'S

DR. PEPPER 8 PACK CANS **\$1.59**

**Call
659-3434
SERVICES**

**BUY, SELL, TRADE OR RENT THROUGH THE
CLASSIFIED ADS**

MONUMENTS
Save Agents and Undertakers Profits
If it is inconvenient for you to visit our large display, please phone collect (405) 327-0626 or write and we will call on you.
ALVA MONUMENT WORKS, INC.
Alva, OK 73717

SPEARMAN ELECTRIC
Licensed and Bonded
New work and rework
Phone 659-2636
11-rtn

New to area?
Give us a try
Call your local
USED COW DEALER
As soon as Possible
659-3544
659-3545
1-800-692-4043
17S-rtn

STEAM RINSE & VAC
Special for April only.
Rinse-and-Vac Shampooers:
\$9.95 for up to 24 hours at
Gordon's Drug, 314 Main,
Spearman, Tx.

NOTICE
Wallace Monument Co.
Monuments, Curbing,
Grave Covers
Local Representative
LEONARD JAMESON
Spearman, Texas
35S-RTN

SERVICE: Pits cleaned, wet or dry. Dragline or loader. Also, dozer, grader, carry-all service. Lee Roy Mitchell, 806-733-2384, Gruver, Texas 79040.
12-rtn

OSGOOD MONUMENT CO.
Amarillo, Texas
Dealers of Rock of Ages Granite as well as all colored granites, marble and bronze memorials.
represented by
BOXWELL BROS. FUNERAL HOME
519 S. EVANS
659-3802

PROFESSIONAL DOG GROOMING. Years of experience. Call 659-3210 for appt. Dogs done by Dolores.
11-rtn
Hansford County
Planned Parenthood
412 Davis
659-2483
Spearman
Mon.-Fri.
8:30-12:30

FOR SALE: Novelty lamb or bunny Easter cakes. Also Mothers Day, Fathers Day and Graduation. Call Joy at 733-2517.
22-rtn

FOR SALE: Girls new fur pile coat with hood. Rust color. Size 12. Machine washable. \$25.00. Call 659-2739 or come by 1118 S. Haney.
45S-rtn nc
Reduce safe & fast with GoBese Capsules & E-Vap "water pills" Spearman Drug.
22-2tp

REDUCE! Burn off excess fat - Take Glucomannan - The original formula.
Spearman Drug.
22-2tp

FOR SALE: 76 Honda Civic runs great. 62 Chevy, perfect body, no motor, \$1050. takes either one. Ford 289 motor. 3-cycle trailer. 1 blk. E. of M&M. 659-5239.
21S-4tc

RENTAL RETURN PIANOS: Used At School Music Contests--New Pianos At Used Piano Prices--Contact Piano Manager--316-624-8421--Brier & Hale Music--Liberal, Ks.
22S-2tc

YARD SALE: king size waterbed, Early American chair, and lawn mower. Corner of Hoskins and 5th St. Trailer lot #6. Friday and Saturday from 9 to 5.
23-1tc

FOR SALE: Female Irish setter. Registered. Call 3676.
22S-2tc

FOR SALE: wheat hay. 659-2808.
23-4tp

FOR SALE: 16' travel trailer, dual voltage, new refrigerator, new tires, port-a-pottie. 659-2789. Rick.
22-rtn

FOR SALE: Couch in excellent condition. Call Mark Sheets 659-2368 after 5:00 p.m.
22S-2tc

REAL ESTATE FOR SALE
FOR SALE: BRICK HOME--well insulated, 3 bedrooms, 2 baths, den plant room, storm cellar, carport, good water & natural gas. 1/2 mile South on FM 760. 659-3089.
21-rtn

FOR SALE: 3 bedroom, 1 bath home with new patio. Located at 205 Lonita. Is fenced and has underground utilities. **PRICE REDUCED.** Call 659-2369.
42-rtn

FOR RENT
FOR RENT: Furnished or unfurnished apartments. 659-3384.
22S-2tc
FOR RENT: 2 bedroom furnished apartment. No pets. Call 3471 afternoon and evenings.
22S-rtn
FOR RENT: 1-3 bedroom mobile home, 1-3 bedroom house, 1-2 bedroom trailer, all partially furnished. 659-2388, 659-3181 after 5 p.m., 659-2392.
21S-rtn
FOR RENT: 3 bedroom house. Unfurnished. Nice location. Call 9-2754 after 8:30 a.m. to 10:00 a.m. and during noon hour to 3:00 p.m. and after 6:00 p.m.
22-rtn-c
FOR RENT: 3 bedroom furnished home on corner lot. Call 3434.

FOR RENT: small office building. Call 659-3434.
9S-rtn-nc

WANTED
WANT TO BUY: a reloading press for high powered rifle cartridges. Preferably a 30.06. 659-5238.
23-4tc

HELP WANTED
HELP WANTED: need maintenance man at Palo Duro Feeders, located 10 miles South of Gruver. Apply in person.
18S-rtn
HELP WANTED: Part time person, not high school student. Please apply in person. Sears, Plains Shopping Center.
22S-2tc

MOBILE HOMES FOR SALE

DEALER REPO
3 bedroom name brand mobile home. 2 full baths--wood siding--storm windows, garden tub, dishwasher, etc. Assume F.H.A. loan of \$276.49 with approved credit.
WE TAKE TRADES
Anything of value
QUALITY AFFORDABLE MOBILE HOMES
HWY. 60 WEST PAMPA, TX.
665-0715
18-8tc

SERVICES
DOG GROOMING at prices you can afford. We also offer boarding by day or week. Call Jodie 659-3937.
16-rtn
HERE AT LAST!!!
No longer is it necessary to make long distance phone calls--pay mileage--wait weeks for service--then wait day's for your carpet to dry. Perryton area now has it's own
COMPLETE JANITORIAL SERVICE
"Better cleaning plus proper knowhow."
Offering you Home and commercial carpet shampooing with Dry Foam Machines.
Tile Stripping
Spray Buffing
Commercial Office Cleaning
Complete Home Cleaning
Local reference available.
All work guaranteed.
OWNER-OPERATOR
ODIS TAYLOR
HOME PHONE
435-3043
20-5t

ODD JOBS around your house, don't know who to call? Call C.W. Handy Man Services, Charles West, 659-3833.
20S-rtn

AUTOMOBILES FOR SALE
1979 Holiday Rambler Imperial 5000 with or without tow vehicle. Call 659-2190.
21S-4tp
FOR SALE: 1973 Chevelle. Ready to go. Phone 2228, Spearman.
22S-3tc
FOR SALE: 1983 4-Wheel drive Suburban. Excellent condition. Fully loaded, new tires and hitch. Low mileage. Call 733-2984 during day or 659-3616 after 5 p.m.
21S-6tc

LEGAL NOTICE
NOTICE TO ALL PERSONS HAVING CLAIMS AGAINST THE ESTATE OF JEFFIE MAY HOY, DECEASED
Notice is hereby given that original Letters Testamentary for the Estate of Jeffie May Hoy were issued on April 9, 1984, in Cause No. 1744, pending in the County Court of Hansford County, Texas, to James Thomas Hoy. The post office address of James Thomas Hoy is Box 45, Canyon, Texas 79015. The residence of such executor is Canyon, Randall County, Texas. All persons having claims against this Estate which is currently being administered are required to present them within the time and in the manner prescribed by law.
Dated this 9th day of April, 1984.
John L. Hutchinson
Attorney for the Estate
23-1tc

LEGAL NOTICE
Hansford County will receive bids until 4:00 p.m., Friday, April 6, 1984 on one, new, 1984 1/2 ton pickup without trade-in. Bids will be opened April 9, 1984 at the regular meeting of the Commissioner's Court.
Specifications are available at the County Judge's office or the County Auditor's office in Hansford County Courthouse. The Court reserves the right to accept or reject any or all bids.
Roy L. McCellan,
County Judge
21-2tc T only

PUBLIC NOTICE

The Cowboy Sub-Chapter of the F.C.A. meets the fourth Saturday of every month at 7:30 p.m. at the Home Demonstration Building, Spearman, Texas.
Weight Watchers meets each Monday at 6:00 p.m. at the Home Demonstration Building, Spearman, Texas.

CARD OF THANKS

The family of Amos C. Burke would like to thank everyone for their prayers and thoughtfulness during the loss of our father and grandfather. A special thank you to the Ambulance Paramedics, doctor, nurses and local law officers for their help. Thank you for all the lovely flowers, delicious food, warm cards and thoughtful visits. God bless everyone.
Mr. & Mrs. Bob Burke & family
Mr. & Mrs. Kenneth Burke & family
Mr. & Mrs. Richard Burke & family
Mr. & Mrs. Gene Skaggs & family
Mrs. Clarence Burke & family
Mrs. T.G. Burke & family

Offered Exclusively By
EMMETT R. SANDERS,
REALTOR

R
REALTOR

75 ft. by 225 ft. lot on paved county road in Crawford Addition.

PRICE LOWER ON Elegant home on 100 ft. corner lot, 3 bedrooms, 3 baths, formal living room, formal dining room, basement den, detached double garage with small apartment in rear, covered patio, established landscaping, yard sprinkler system, new shingle roof, quality construction throughout.

Lot on North Hazelwood Street zoned for mobile home.

LOWER PRICE ON 3 bedroom, 1 bath, home with attached garage, good location, built-in oven and cook top, carpets, curtains & drapes.

New 3 bedroom, 2 bath brick home, carpets, central heat and air, dishwasher, extra insulation, attached garage, 75 ft. lot frontage.

Extra nice 3 bedroom home, 2 miles West of Spearman. Has 2 baths, den with wet bar, carpets, utility room, large kitchen with Jenn Air range. Show by appointment only.

Near junior high, 2 bedroom stucco home, living room, dining room, kitchen, utility, carpet, fence, detached garage. By appointment.

EMMETT R. SANDERS
REALTOR
659-2516
659-2601 (nights)
23-rtn T only

Spearman Reporter

PUBLICATION (USPS 5096-6000)
SPEARMAN, TEXAS 79081
213 Main Box 458 659-3434
Published Weekly at 213 Main Street
Spearman, Texas 79081
Owner-Publisher.....William M. Miller
Editor.....Faye Lynch
Second Class postage paid at Spearman, Texas 79081
Any erroneous reflection upon the character of any person or firm appearing in these columns will be gladly and promptly corrected upon being brought to the attention of the management.

POSTMASTER: Send address changes to Spearman Reporter, Box 458, Spearman, Tx. 79081.

SUBSCRIPTION RATE: Hansford, adjoining counties, combination with the Hansford Plainsman \$25.00.
Other points, \$30.00.

MEMBER
TEXAS PRESS ASSOCIATION

POLITICAL ANNOUNCEMENTS

POLITICAL ANNOUNCEMENTS
Democratic Primary
State Representative Texas 88th Legislative District
J.W. "Buck" Buchanan

State Senator, 31st District
Bill Sarpallus

Hansford County Sheriff
R.L. McFarlin

Hansford County Commissioner, Precinct 1
Vance Snider
Garland Head

District Attorney,
84th Judicial District
Steve Cross

Phil Black
Republican Primary
U.S. Representative, 13th District
Beau Boulter

HELP WANTED: Need maintenance man at Palo Duro Feeders, located 10 miles S. of Gruver. Apply in person.
18S-rtn

VIRGINIA WHITE
Realtor
Your Business is Assured



SPACIOUS HOME-- formal living room, large bedrooms, big family room in basement with fireplace. Fenced, sprinkler system. Near school. **WILL SHOW TO QUALIFIED BUYERS.**



BEAUTIFUL UNDER CONTRACT 2 baths, fireplace, fenced. Excellent location. Appointment.

LARGE FAMILY HOME-- 4 bedrooms, 2 baths, incredible closets and storage through out the house. Near grade school. Low 70's. **CALL TO SEE!**

NEW LISTING: clean, tastefully decorated, 3 bedrooms, 1 1/2 baths, fenced yard, good location. Call for appointment.

CORNER LOT FOR SALE WITH 2 garages, storm celler, chainlink fence. Priced \$17,000.

COMMERCIAL: 30X75 building (has 2 rest-rooms) with 50X100 warehouse in back on 7th St. across from Plains Shopping Center. Call.

Virginia White, Broker
659-3841

Many thanks to Dr. Muthali, the emergency staff for all their help and kindness.

We also wish to express our appreciation to the Rebekah Lodge ladies for all the food and kind deeds.
Rev. Lane Boyd, United Methodist Choir and the United Methodist ladies for working so hard to serve our family such a delicious luncheon. Thanks to everyone for food, flowers, memorials, visits, prayers and loving concern shown our family during our sorrow.
May God bless each and everyone.
Jimmy Linn Family
Bob & Louise Pittard
Jimmy Venable family
Donnie Mackie family
Jim Beeson family
J.D. Beeson family
A.D. Sparks family

Century 21
Daryl Wynn, Broker
658-4258
"We'll Give Our Word To You"
Allen Alford 659-3034
Larry Trosper 659-3491
GOLDEN SPREAD REALTY
Corporate Registered Trademark of Century 21 Real Estate Corporation. Printed U.S.A. Each office is independently owned and operated.
Equal Housing Opportunity.

WE WANT YOUR LISTINGS!!!
CALL TODAY!!!
Several Lots FOR SALE
WE ARE WILLING TO HELP YOU WITH V.A. OR F.H.A. FINANCING.



7 Glover Place-- This beautiful home has 3 bedrooms with matching wall paper and drapes, with 2 full baths. Has a fireplace and all the amenities. The garage is an oversized garage with alot of storage. Shown by appointment.



12th and Archer-- 3 bedroom, 2 bath, skylight, double car garage, underground storm shelter. 10.25% financing available. Excellent location.



207 South James-- extra large home with basement, double car garage, large den, family room, fireplace and fenced yard.

Starter Home-- 421 S. Drossen. Corner lot, 2 bedroom, 1 large unfinished room. Fenced yard, small rent apartment in back of house, close to school. Ideal location. Sets on two lots. Priced to sell.

1010 Haney-- Three bedroom home, single garage. This home has just been redecorated in the past year. New six foot fence and landscaping is excellent. Has a fireplace to enjoy on these snowy days that will be coming our way. Has central air and heat. Insulated well. Let us show you this home today. Shown by appointment only.

307 12th Street-- Three bedroom, central heat and air. New fence. Has been freshly painted inside. Large den area. Let us show you this home today. Has many amenities.

116 North James-- Mobile Home-- 1981 Redman New Moon 14'X60'--Central air and heat--Two bedrooms. 3 years old. Let us show you this mobile home today. Furniture goes.
708 Townsend-- must see this home today. It has two full baths, three bedrooms with walk-in closets, large kitchen, family room, utility room. The home is ready to move into. The carpet is almost new.

A Centerpiece

by Alma Remy

Another year has come and gone for the annual Radio-Thon, held at the Golden Spread Center on April 5 from 10 a.m. to 4:30 p.m.

The day was beautiful outside, it was beautiful inside and everything started off with a Bang! Rev. Steve Rogers gave the invocation. The people of Spearman were beautiful with their generous donations for the purpose of keeping the Golden Spread Center open and the purpose for which it was intended, a place for our Golden Age people to meet, a place they are proud to call their own.

Folks drifted in all day long, enjoyed the local talent and visiting with friends and neighbors—drinking coffee and eating delicious home-made cookies made by our senior citizens. It was a dandy and if for any reason you missed it, well—you missed a good one. The broadcasting was perfect and came over the air loud and clear and you better believe Spearman folk and surrounding area did it again with their talent and generosity. Also let us not forget the organization it took to put this program together and for this we give Frances Loftin credit, Coy Palmer of KRDF was at the mike all day, assisted by Pearl Pierce, director of the center, Marsha Murphy—president of the Board; Frances Loftin and Jettie Davis, just to talk or to read some of the collection of poems.

Also let us remember the folk left at the station of KRDF to get the program on the air and keep it there. And keep it there they did—all day—an excellent performance! So please accept the "Thanks" of the whole community for a job well done.

Phones were answered by Claudine Laxton and Alva Garner and Rosa Lee Butt,

Charles T. Manatt, Democratic National Committee chairman, on anti-Reagan platform:

"We must document the Reagan record and subject its failure and deception to full, critical examination."

Jane Meek and Frances Cudd went out to pick up donations called in to the Center.

Alma Remy was named Senior Citizen of the Year and Jettie Davis was chosen for Volunteer of the Year. Both received awards. Frances Loftin was given a special award of appreciation for continual support and dedication to the Center.

All in all it was a great day for the Center as well as our "Senior Citizens"—just another case of people helping people and our "Thanks" go out to everyone who helped in any way to make it such a success. That means for all the good home-made cookies too—they were delicious.

Come on by when you are downtown—this is your Center—please enjoy it. Hope to see you soon.

Oh yes! We are still taking sealed bids on the beautiful Dresden Plate Quilt. We will receive bids till April 30.

Alma

Early detection key to cancer

"Many of the 180,000 deaths from lung and colorectal cancers predicted for 1984 could have been avoided through prevention and early detection," said Patsy Hunt, president of the Hansford Unit of the American Cancer Society.

Nowadays we know what a person can do to protect against cancer. During the annual April educational and fund-raising Cancer Crusade local volunteers in all areas of Hansford County are distributing the new folder, "A Quick Test on Cancer Risks for Lung, Colon, and Rectum" during these first two weeks in April.

The test has questions which are designed to measure a person's built-in risks, such as personal and family medical history, age, and lifestyle. It also includes a section that explains the significance of the answers and describes measure to take to guard against these concerns.

According to the American Cancer Society, a person is at much greater risk for lung cancer if he or she has a history of heavy cigarette

smoking or exposure to certain industrial substances such as asbestos. Lung cancer is very difficult to detect early, and only 9 percent of all lung cancer patients live 5 years or more after diagnosis. Only 39 percent of people with early lung cancer survive 5 years or more.

Recent trends indicate that the death rate from lung cancer for women is quickly approaching that of men. This has been attributed to a narrowing of the gap between male and female smoking rates.

"The best protection against this killer is for people to stop smoking or never start at all," explained President Hunt (Sounds easy, doesn't it, but until one has been there, can one know just how difficult this prescription might be).

"But with colorectal cancer, early detection is the key," she added. "Seventy-five percent of patients facing this second leading form of cancer can be cured if this disease is found at an early stage."

The American Cancer Society recommends three aids in detecting this cancer. The

digital rectal examination is performed by a physician during an office visit and is recommended yearly after age 40. The stool blood test done by the patient at home is a simple method for testing for hidden blood. The ACS recommends the test every year after age 50.

Proctosigmoidoscopy, known as the "procto", is an examination in which a physician inspects the rectum and lower colon with a hollow, lighted tube. The ACS recommends a procto every three to five years after 50, following two annual exams with negative results.

"It's imperative that everybody knows what their personal risks for cancer are because this will affect their habits and health actions," said the Hansford Unit President. "We want to make sure that everyone in Hansford County takes the quick test. Medical science has made great advances in the fight against cancer, but the important defense, the protection against this disease, has to begin at home."

Gladiola Flower Club meets

The Gladiola Flower Club met at the First Christian Church for their April 5th meeting. Dorothy Haner was hostess.

Estelle Jackson was in charge of the program. It was a slide presentation of the Buchard Gardens she had visited at Victoria, British Columbia. Dorothy Haner narrated as Estelle showed the slides.

Members present were Charlie Baker, Dorothy Buzard, Rose Cummings, Betty Jean Davis, Margarette

Evans, Ann Flowers, Virginia Head, Mike Hergert, Estelle Jackson, Lorene Kunselman, Judy Martin, Fay Palmer, Kathleen Sutton and hostess Dorothy Haner.

Try It
If you think fascism can rule America try telling your wife that your first duty is to the State instead of her.
—Times, Louisville.

For The Ultimate In
STORM DOORS & WINDOWS
Custom Built, Designed And In
Colors To Fit Your Home
Contact Howard Moyer at
Only Aluminum Industries
405-338-6966 or
405-338-6170
AFTER 6 P.M.
Guymon, Okla. 114 W. 1st
73942

Spearman Moose Lodge
4th Annual
Easter Egg Hunt!!
Sat. April 21st 10:00 a.m.
East of High School
3 Age Groups:
6 and under 7-10 11-14
3 Prizes in each group.
All Hansford Co. Children welcome.

Easter Specials
Boys dress shirts
(Sizes 4-14)
25% discount
The Bunkhouse
659-2476 210 Main Spearman

WE'RE STANDING BY YOU

Helping you plan for your retirement is just another way we're standing by you.

(IRA) Individual Retirement Account...

WE'RE STANDING BY YOU

We want to make sure your retirement years are truly golden. Careful planning is more important today than ever before.

When you open an Insured Individual Retirement Account (IRA) you can deposit up to \$2,000 each year which is tax deductible.

An IRA is one of the best ways to make sure your retirement years are safe and secure. Especially in retirement...
"We're Standing By You."

FIRST STATE BANK
SPEARMAN, TEXAS 79081
FDIC

8222

Let the new generation of hybrids do for your sorghum acres what Pioneer has done for Plains corn.

8222 Big yield potential under full irrigation. A widely adapted hybrid, 8222 has produced a superior record under many different environmental conditions. But it's especially adapted to full-season production in this area. Provides outstanding stress tolerance, plus excellent resistance to MDMV and head smut. It's an attractive, medium height hybrid with semi-open heads of bright red, hard-textured grain. Leaves that are above average in width help provide first-rate shading. And outstanding root and stalk strength keeps plants standing for maximum harvest.

8493 Especially adapted for dryland or very limited water conditions, this is a fast maturing hybrid with exceptional drought tolerance. It has the ability to take full advantage of normal early season rainfall; then it makes efficient use of available ground moisture to produce all that the season allows. Under tough growing conditions, the standability of many hybrids often suffers. But not 8493. Strong stalks and roots keep medium height plants standing straight for easy harvest of dark red, high test weight grain. It's the standard for resistance to greenbugs.

8333 Pioneer plant breeders developed this great new hybrid to make the most of what the growing season has to offer. This one has outstanding drought tolerance, too—but you should plant it on good dryland or under limited irrigation to take full advantage of its maturity and yield potential. In irrigation tests throughout the Plains, 8333 has produced exceptional yields. The field appearance of the bronze, hard-textured grain is most attractive. Harvesting is made easy, too, by excellent head exertion and very good standability. For late season plant health, 8333 is highly resistant to MDMV, head smut, and Biotype C greenbugs.

Choose the combination best suited to your land and your conditions—and get ready for a great sorghum crop.

See Your Nearest Pioneer Dealer.

Burl Buchanan
Spearman (659-3914)

8493

Road to Recovery program underway

A total of eleven new volunteers have been recruited to serve in the Road to Recovery Program of the American Cancer Society's Hansford County Unit, according to Mrs. Fay Palmer, Program coordinator.

Among those who were recruited to drive cancer patients to and from treatments are: Mesdames Dorothy Haner, Pat Dear, Betty Jean Davis, Gwen Smith, Jolinda Hutchinson, Dodie Beedy, Mary Dixon, Frances Newel, Kathleen Sutton, June Jackson and Fay Palmer from Spearman and two from Gruver: Mozelle McClellan and Georgia Holt.

The new volunteers attended an orientation program on March 22, at the First Christian Church in Spearman. A field representative from the American Cancer Society, Sandy St. John, showed a film and answered questions concerning the Road to Recovery program. They learned about the American Cancer Society's cancer control program, what chemotherapy and radiation therapy involve, and some common patient concerns during treatment process.

"We can always use more transportation volunteers--especially men

drivers," said Fay Palmer. "Anyone who would like to join us should call me at 659-2878."

Mrs. Palmer will be visiting Spearman organizations to explain more about the program and recruiting new volunteers. When a new group has been signed up Ms. St. John will come back for another orientation meeting.

Drivers will be furnished with a volunteer card as well as a large volunteer driver card to place on the inside of their car windshield for identification at the cancer center in Amarillo.

In addition to those already mentioned, Mrs. Clementine Renner and Vera Dominguez were present at the meeting.

GALLE GLASS

CORNING, N.Y. (AP) — Emile Galle was born in France in 1846 and spent most of the 58 years of his life creating works of art in glass.

A selection of Galle's transformations of nature into glass will be seen at the special exhibition "Emile Galle: Dreams Into Glass," at the Corning Museum of Glass April 28-Oct. 21.

The museum says the 40 works in the show "represent Galle's outstanding achievements as a symbolist artist in glass." Nearly all of the objects in the show were made during Galle's last 15 years.

Beef conference set for Amarillo

Leaders in the cattle industry from Texas and surrounding states will gather in Amarillo Thursday, April 19, for the annual Texas Beef Conference. The daylong program at the Amarillo Livestock Auction Co. will focus on ways cattlemen can "beef up" their profits.

Major emphasis will be given to animal health, managing stocker cattle on wheat pasture, and live animal demonstrations on delivery of cattle on Chicago Mercantile Exchange futures contracts, said Dr. John McNeill. He is a beef specialist with the Texas Agricultural Extension Service and conference coordinator.

Registration will begin at 7:30 a.m. at the auction company, 100 South Manhattan St. "This is the first time in the long history of the conference that it has not been held at the Hilton Inn," McNeill said. "The use of facilities at the Amarillo Livestock Auction Co. enables us to present the live demonstration on cattle delivery."

The registration fee is \$30 for the conference, lunch and steak banquet which concludes the day. The conference and lunch without the banquet is \$20, and the banquet alone is \$15.

Opening the program at 8:30 a.m. is an update on animal health concerns and trends, moderated by Dr. Richard McDonald of the Texas Cattle Feeders Assn., Amarillo. Extra-label drug usage and effective use of legal antibiotics will be discussed by Dr. Larry Hollis of the Texas A&M University Veterinary Medical Diagnostic Lab, Amarillo. He also will discuss residue avoidance and report on health trends observed at the lab.

Another veterinarian from the diagnostic laboratory, Dr. Robert Sprowls, will discuss factors affecting vaccination response and report on problems observed with high non-protein nitrogen supplements.

Resistance to fly tags will be discussed by Dr. James Leser, Extension entomologist from Lubbock. A new parasite control drug for cattle will be discussed by Dr. Billy Clymer of Clymer Research and Consulting, Amarillo.

Dr. Bill Bennett, with Monfort of Colorado,

Clown's Happy Face Masks Serious Goal

By DAVID McCORMICK

Associated Press Writer

HENDERSON, Ky. (AP) —

When Larry Haywood puts on his clown suit, it's serious business. He's a rodeo clown and his crowd-pleasing antics are just an artful way of performing his real job — saving cowboys' lives.

"Most people other than the cowboys look at the clown as being just a clown, just something to entertain the kids," he said.

But while the audience sees only someone in funny clothes running around the arena goofily waving his handkerchief at bulls, the cowboy sees someone distracting a 2,000-pound beast long enough for him to catch his wind and limp to safety.

"Those bulls, they're bad," said Haywood, one of just about 100 rodeo clowns in the nation.

"And when a cowboy gets into trouble, you've got to go in there and get him out."

The clown's work looks like easy fun, but it takes long hours of practice to perfect.

"It's not something you just say you're going to jump in and try. I worked at it for two years before I got in the ring to fight a bull," Haywood said.

That was when he was a teenager, touring the rodeo circuit with his family and a halftime performer named Loretta Lynn, an ambitious singer yet to

become one of country music's stars.

Now 35, Haywood works one or two rodeo shows a month, devoting his time to his paint contracting business, wife and family. He was off the circuit for about a dozen years, but took up clowning two years ago. He admits that he thinks of getting more involved in it.

"Thirty-five isn't old to be a clown," he said. "It's a little old to be a bullfighter, but I could go back on the big circuits if I had a younger partner to do the bullfighting part of the act."

Haywood said he could work almost every weekend at shows around Kentucky and neighboring states, but doesn't want to work that often for the kind of money rodeos in this region pay.

The West may be rodeo's major league, but the Appalachian hill country is a successful farm club.

"A lot of your top riders are from Tennessee and Kentucky," said Haywood, who remembers when rodeo was almost as popular in the South as the West.

"It used to be real big here," he said in a recent interview. "It pretty much died out, but a few of the people who used to put on shows are bringing it back again."

Haywood makes anywhere from \$40 to \$150 for a two-hour night clowning, enough to pay for his makeup, costumes and travel.

Clowns who work the country's top rodeos, about four or five much sought-after pros, make up to \$400 a night and \$50,000 a year.

Haywood is more typical of the rare breed, though, and said what he had missed in money he had gained in health. "I've been real lucky. I've been cut a few times and I've been bruised real bad a few times, but I've never had any broken bones or gotten hurt real bad."

All school track results

Spearman varsity boys track team placed 3rd at Canadian Track Meet with 126 points. Perryton was 1st with 163, Clarendon, 2nd, with 133.

Burke of Spearman was 2nd in shot with 49-1 3/4 and Guthrie was 3rd with 48-11 1/2.

Laird of Spearman was 2nd in Long Jump with 18-11 1/2.

Guthrie was 3rd in pole vault.

Nava of Spearman was first in the 800 with 2:03.87, breaking an old record of 2:05.99 by Brown, Panhandle, 1981.

Laird of Spearman was 2nd in 110 HH with 15.06.

He was also 2nd in 330 IH with 41.99.

McLain was 1st in the 200 with 24.22.

Lopez was 3rd with 4:59.42.

Spearman was 3rd in the 1600 relay with 3:38.69.

They were also 3rd in the 400 relay with 46.24.

In the JV Division, Spearman placed 5th.

Spearman girls placed 3rd at District held at Perryton with 85 points. Dalhart was 1st with 196, Perryton, 2nd with 113.

Robbie Heinrich was 3rd in triple jump with 31-3/4.

Jill McLain, was 1st in high jump with 5-4.

Shelly Cook was 3rd in 3200 with 13:57.22.

Spearman was 3rd in the 400 relay with 52.27.

Jill McLain, was 1st in 100 H with 15.53, Tiki Jackson was 3rd with 16.31.

Christa Urban was 3rd in 100 with 13.04.

Spearman was 3rd in 100 with 1:56.20.

Spearman's eighth grade girls were 4th with 62 points.

Spearman's seventh grade girls were 1st with 140 points.

ELECT

VANCE SNIDER
COMMISSIONER, PRECINCT I

MAY 5th PRIMARY DEMOCRATIC ELECTION
"YOUR VOTE AND INFLUENCE APPRECIATED"

PAID FOR BY VANCE SNIDER - CAMPAIGN TREASURER,
SPEARMAN, TX

NOTICE TO MEMBERS OF NORTH PLAINS ELECTRIC COOPERATIVE, INC.



The 40th Annual Membership meeting of North Plains Electric Cooperative, Inc., will be held in the Perryton High School Rangerette Center, 1102 South Jefferson St., Perryton, Texas, Monday evening, April 16, 1984. Registration and a free barbecue dinner, catered by Wheatheart Shrine Club, will begin at 6:30 p.m.

Many prizes will be available to the lucky members whose names are drawn. The Grand Prize this year will be a micro-wave oven. These prizes will be on display at your Cooperative headquarters in Perryton.

The business meeting will begin promptly at 8:00 p.m. for the purpose of: Reports from Officers; Management and Committees; Election of three directors for a three-year term in Districts 1, 3, and 4; All other business which may come before the meeting.

Remember this is your Cooperative, so be sure and mark April 16 on your calendar. This is a time to be a part of directing the future of your Cooperative.

sears Spring Lawn and Garden SALE!



5-HP front tine garden tiller
CUT \$60.00 \$349⁹⁹



CUT \$65⁰⁰
3.5-R.P. Craftsman rear bagger mower
\$208⁹⁹
Eager-1 engine; solid state ignition; catcher.



CUT \$65⁰⁰
3.5-R.P. solid state Craftsman mower
\$192⁹⁹
Eager-1 engine; quick height adjusters, 20-in.

Prices are catalog prices • Now available in our "LG" catalog supplement • Shipping extra • Ask about Sears credit plans

Sears, Roebuck and Co. Satisfaction Guaranteed or Your Money Back
Plains Shopping Center
9 a.m. to 5:30 p.m.
Phone 659-2573
Most merchandise available for pick-up within a few days
There's more for your life at Sears

Texhoma Livestock Commission Co., Inc.

The Action Auction

Always An Abundance of Buying Power

Box 449 Phone 405-423-7511

April 5, 1984 Cattle sold 3773

Packer Cows \$33.00-\$47.50

Packer Bulls \$46.00-\$56.00

Stocker Cows \$41.00-\$52.50

Pairs \$00.00-\$00.00

Steer Calves 300-400# \$74.00-\$83.00

400-500# \$70.00-\$81.00

Heifer Calves 300-400# \$58.50-\$70.00

400-500# \$57.00-\$65.00

Feeder Steers 525-600# \$66.00-\$75.00

600-700# \$65.00-\$69.50

700-800# \$64.00-\$68.50

800-900# \$63.00-\$68.00

Feeder Heifer 525-600# \$57.00-\$63.00

600-750# \$57.50-\$63.50

Keith Lauer, Manager

Rob Lauer, yard Manager

Sonny Garratt, Asst. Yard Manager

Raymond Chcate, Cattle Dept.

Bobbie Adamsen, Office Manager

Jimmy Nichols, Feild Rep.

Shelly Cook is pageant finalist



Shelly Cook

Miss Shelly Cook, age 17, daughter of Mr. and Mrs. Ron Cook of Spearman, has been selected to be a finalist in the 1984 Miss West Texas National Teen-Ager Pageant to be held at The Centre in Odessa, April 27, 28, 29, 1984. The Miss West Texas National Teen-Ager Pageant is the Official Pageant to the 13th Annual Miss Texas National Teen-Ager Pageant to be held at Texas Christian University, Fort Worth, Texas, on June 1, 2, 3, 1984.

The winner of the Miss West Texas National Teen-Ager Pageant will receive a \$1,000 Cash Scholarship, a Full Four-Year Tuition Scholarship to Oklahoma City University, a Full-Tuition Modeling Scholarship to Barbizon of Dallas, a \$2,400 Scholarship from Wayland Baptist University, numerous other awards, and an all-expense paid trip to compete in the Miss Texas National Teen-Ager Pageant.

Sabrina Lynch of Plano, Texas, reigning 1983 Miss Texas National Teen-Ager, will crown the new Queen. There will be contestants from all over West Texas competing for the title of Miss West Texas National Teen-Ager. The reigning Miss National Teen-Ager is Susan Mitchell of Michigan. The 1984 Miss Texas National Teen-Ager will be competing for over \$75,000 in cash, scholarships, and prizes.

Each contestant accepted will be requested to participate in the Volunteer Community Service Program of the National Teen-Ager Pageant. This program encourages teenagers to share and to participate in school and civic activities. A Mini-Modeling Charm Course will be given during the weekend of the Pageant.

Contestants will be judged on scholastic achievement, leadership, poise-personality, and beauty. There is no swim suit competition. Talent may

be presented at the option of the participant or an oral essay on the subject of "What's Right About America."

Miss Shelly Cook is being sponsored by Sound Trax, Brown, Graham, and Co., Bunkhouse, DipShip, Lady Fair, and JG's.

Her hobbies include running, singing and horseback riding.

Arts & Crafts

Guild Meets

The Arts & Crafts Guild held their weekly meeting on April 6 in the home of Mrs. Joe Trayler.

One guest, Mrs. John Berry, and members Mrs. Deta Blodgett, Blanche Fuller, Sada Hoskins, Lemmie Russell Ailene White, Jewel Turner, and hostess Athalie Trayler attended.

Next meeting will be April 13 in the home of Blanche Fuller.

Music Club members enjoy

Mexican Dinner

The Spearman Music Club, a member of the State and National Federation of Music Clubs, met on April 3, 1984 at the First Christian Church for a dinner of Mexican food.

Following the meal, which all members helped to prepare, the special guest for the evening, Mrs. J.B. (Helen) Caraway gave a humorous talk about the State Meeting which was held in Amarillo. Mrs. Caraway of Dawn, Tx. is the President of the First District of the State Federation of Music Clubs.

Entertainment for the evening was provided by Janie Kunselman and some of her piano students. A six handed piece for the piano, "Bob's Blues" by Robert D. Vandall, was played by Wanda Wagner, Mary Lou Baker and Janie. J.J. Schaffer and Andi Speck played the piano duet entitled "La Fiesta" by David Carr Glover.

The Story of the Hymn of the Month, "He Lives" by A.H. Ackley was read by Phyllis Shedeck. Janie accompanied as all present sang the hymn.

Dahlia Flower Club Met

The Dahlia Flower Club met at the Cattleman's Steakhouse with Margaret Shedeck as hostess.

The President, Nelle Evans opened the meeting with the Pledge of Allegiance to the flag.

Roll call was answered with a childhood vacation.

The program consisted of slides and pictures from a vacation in Mexico that Nelle Evans and her family took last summer.

Meeting was closed by repeating the Club Collect.

Refreshments were served to members:

Nellie Abrecht, Louise Archer, Sammie Bishop, Deta Blodgett, Cleo Denman, Mabel Edwards, Nelle Evans, Karen Harruff, Hazel Loftin, Hollie Riley, Ora Sanders, Jewel Turner, Ruth Mary Whitson, and the hostess Margaret Shedeck.

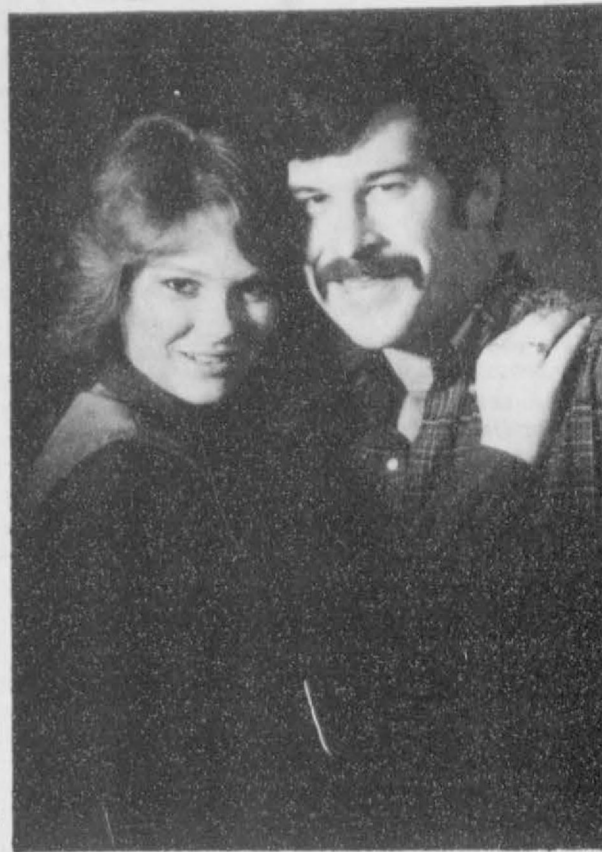
You are invited to a
Bridal Shower
for
Renee Kitch
bride elect of
James Whitaker
on Saturday, April 14
from 2-3:30
at First Methodist Church

Selections at The Gift Box, Sacks Third Ave. and General Store.

Hostesses
Judy Martin Alta Fisher
Dodie Beedy Pat Dear
Ivan Allen Barbara McClellan
Virginia Trindle Nellie Buchanan
Dolly McWhirter Carolyn Cummings
Mable Wislon Donnie Mitchell

Betty Porter
22S-2tp 27-1tp

Engagement Announced



Mr. and Mrs. Johnny C. Stepp of Amarillo announces the engagement and approaching marriage of their daughter, Cheryl Lynne, to Mr. Terrell Lance Evans, son of Mr. and Mrs. K.E. Evans of Spearman.

Cheryl is a graduate of Gruver High School and is currently employed by Palo Duro Feeders, Inc. as a computer operator.

Terrell was a graduate of Spearman High School, and has attended Texas Tech University. He is currently engaged in farming.

They plan to be married May 19, 1984, in Amarillo, and will reside in Spearman.

Cora Smith celebrates 88th birthday

Cora L. Smith had her 88th birthday.

Her daughter, Juanita Cook, her brother and wife from Borger, E.V. Bailey, Rhoda Overton, Mary Harmond, Iva McElhany and Verna Finley were present to share in the

happy occasion. Mary Harmond made the birthday cake. Everyone had a wonderful time.

LESS KILLED

The number of law enforcement officers killed in the line of duty in 1983 was the lowest in a decade, the FBI reported recently. FBI Director Webster said preliminary figures show 79 officers--most of them city police--were killed on the job last year, a drop from 92 in 1982.

The Stamp Act went into effect in the British colonies in 1765, and it aroused stiff resistance from the American colonists.

A cloud of radioactive debris moved across Central Siberia in late 1961, following a nuclear test explosion by the Soviet Union.

SPRING REVIVAL

Church of Christ -- 121 S. Haney

April 15-19



Charles Hodge

Duncanville, Texas

Sunday Services:
9:45 a.m.
10:35 a.m.
6:00 p.m.
Everyone Welcome

Weekday Services
7:30 p.m.

MONEY MARKET RATES

Money Market Certificates	\$2,500	\$10,000	\$25,000	\$50,000	\$100,000
32 DAYS	9.65%	9.75%	9.85%	9.95%	10.30%
90 DAYS	9.85%	9.95%	10.05%	10.15%	10.50%
180 DAYS	10.10%	10.20%	10.30%	10.40%	10.75%
1 YEAR	10.30%	10.40%	10.50%	10.60%	10.85%
18 MONTHS	10.40%	10.50%	10.60%	10.70%	10.90%

Call the Money Market Advisor at First National Bank, Phone 435-3676.

We can keep your certificate safe in our vault at no charge.



First National Bank
Perryton, Texas

Rates Effective
Thru April 16, 1984

All Deposits Insured to
\$100,000 by F.D.I.C.

Substantial Penalty for
Early Withdrawal.

ATTENTION LIVESTOCK PRODUCERS: CATTLEMAN'S LIVESTOCK COMMISSION CO.

Box 50, Dalhart, Tx. 79022

Phone (806) 249-5505

4 Miles West of Dalhart on Hwy. 54

*Hog sale starts at 9:00 a.m.

*Cattle sale starts Fridays at 12 noon.

HOG SALE WILL BE HELD ON 1ST AND 3RD WEDNESDAY OF EACH MONTH.

HOG MARKET WEDNESDAY, APRIL 4

Sold 497 hogs
Top hogs \$45.50 to \$47
Sows \$41 to \$48
Boars \$33 to \$35

CATTLE MARKET FRIDAY, APRIL 6, 1984

Sold 5409 cattle
Butcher Cows \$36 to \$48
Butcher Bulls \$46 to \$55
Heiferettes \$45 to \$58
Cutting Bulls \$50 to \$61
Feeder Steers 500 to 600 lbs. \$67 to \$75
600 to 700 lbs. \$65 to \$70
700 to 800 lbs. \$64 to \$68
800 to 900 lbs. \$63 to \$67
Feeder Heifers 500 to 700 lbs. \$57 to \$64
Steer Calves 300 to 400 lbs. \$75 to \$85
400 to 500 lbs. \$70 to \$82
Heifer Calves 300 to 400 lbs. \$58 to \$66
400 to 500 lbs. \$57 to \$66

ALL COWS AND BULLS MUST COMPLY WITH STATE AND FEDERAL REGULATIONS FOR BLOOD TESTING. STATE OF TEXAS PAYS FOR THESE TESTS.

WE ARE THE DEALERS FOR THE NECKOVER TRAILERS.

NEW TEXAS WATTS NUMBER 1-800-692-4453.
NEW TOLL FREE NUMBER 1-800-858-4013.
LARRY WING, MANAGER, RES. 806-249-2402.
CRAIG LAWRENCE, Yd. Foreman 806-384-2153.
FIELD REPRESENTATIVES:
BOB PAYNE, DALHART, TX. 806-249-5894.
GREG WADE, CANYON, TX. 806-655-3318.



WHO KNOWS

- Who first flew in an airplane over Antarctica?
- Who discovered Newfoundland?
- When is Easter?
- Who was President Buchanan's wife?
- On what day in April did Paul Revere make his famous ride?
- Has a date been affixed for the crucifixion of Jesus?
- When is Good Friday this year?
- Name the first American to orbit in space.
- What science does omithology deal?
- When did Americans pay their first Federal Tax?

- Hubert Wilkins.
- John Cabot, 1497.
- April 22.
- He was a bachelor.
- April 18, 1775.
- Yes, April 7, 30 a.d.
- April 20.
- Lt. Col. John H. Glenn, Jr.
- Birds.
- In 1862.

Answers to Who Knows

POETRY AWARD
NEW YORK (AP) — The Delmore Schwartz Memorial Poetry Award has been presented to Ruth Stone by New York University's College of Arts and Science.
Ms. Stone is the fifth recipient of the \$1,000 award. It is presented periodically either to a young poet of exceptional promise or to a more mature poet who, in the opinion of the selection committee, has received insufficient national acclaim.
A resident of Brandon, Vt., Ms. Stone has published four collections of poetry, and her work has also been published in a variety of periodicals.

Karen's Kooky Koiner
By Karen Harruff
Harris County Extension Agent
Home Economics

The salad bar is becoming an American institution. They can now be found in every type of restaurant from fast food stores to the finest steak houses.

Of course, restaurants have salad bars because the customers want them. When the magazine *Restaurants and Institutions* recently asked customers what menu items they're ordering from often, salad was the number one answer.

People like salad bars for a variety of reasons, most of them having to do with nutrition. Often they'll say they eat at the salad bar because it's not fattening, it's nutritious, you can make it any way you want, you can make a whole meal out of it, and it's good for you even if you're on a special diet.

Salad bars can live up to these nutritional expectations but it's not automatic. Whether your salad is high in nutrients, low in calories, right for your special diet, or adequate for a one-dish meal, depends entirely upon the choices you make.

For some people, a salad is a bowl of iceberg lettuce with dressing. That type of salad is high in fiber and low in calories if you don't over-do it on the dressing. But you can do better nutritionally by adding vegetables high in vitamins A and C.

Pale green leaves, such as iceberg lettuce, don't provide much vitamin A and C. But dark green leaves like Romain Lettuce and spinach do.

The typical salad bar also has many other good vitamin A and C sources such as hot red peppers, broccoli, carrots, cauliflower, and cole slaw.

Vegetables can't do everything for you, however. So if your salad is supposed to be an entire meal, you should also include some non-vegetable ingredients like bacon bits, shredded cheese, chopped egg or cottage cheese. These are good sources of protein, calcium and riboflavin.

Some nutrients, like thiamin, iron and niacin are primarily supplied by foods you don't often see at salad bars, such as meats and grain products.

If you're looking for a low-calorie meal, the salad bar may not necessarily be the best place to find it. By choosing helpings of potatoe salad, cottage cheese, gelatin and coleslaw along with your vegetables, then topping it with bacon bits and croutons and using a non-diet dressing, you can wind up with more calories than a "regular" meal.

To keep your calorie count down when you go to the salad bar, follow these suggestions from the American Council on Science and Health:

- Select the plain raw vegetables because they have the lowest calorie counts.

- Don't take too many pickled foods. They're somewhat higher in calories because sugar is added in the pickling process. Pickled beets, for example, have twice as many calories as plain beets.

- Avoid the non-vegetable items such as cottage cheese and the various high-calorie dressings. Cottage cheese and cheese are good sources of calcium, however, so you might want to include them if you are not normally a milk-drinker.

- Stay away from prepared salads like cole slaw, potato salad and marinated salads. Prepared salads are higher in calories than plain vegetables because they use high-calorie dressings. For example, cole slaw contains more than six times the calories of plain cabbage.

- Use only a small amount of diet dressing. Some diet dressings have as much as 30 calories a tablespoon, and the calories will add up fast if you use a large amount.

Homemakers club meeting held

The Town and Country Home Demonstration Club met Tuesday, April 3rd, with Linda Close hostessing. A program on Home Nursing was given by Joan McClellan. Joan, a Texas Dept. of Health Home Nurse, gave the advantages and disadvantages of home health care, where to get the resources to pay for home health care and exactly what home health care is. She gave members a self-evaluation test on stress.

Following the program, Denise Harbour, president, called the meeting to order. Connie Steger gave the devotional. Roll call was answered to "My favorite home remedy". Minutes of the last meeting were read and approved. One communication from Karen Harruff was read. Janie Kunselman gave the treasurer's report.

Lynna Renner announced the next meeting will be at her home with an Easter Egg Hunt following the meeting. Delinda McLaughlin gave the TEHA report. The Pampa District Meeting will be April 24.

Penny Ralston reported that a "Cleaning Day" at the clubroom will be held April 10 starting at 9:30. She also asked for volunteers to take refreshments to Commissioners Court April 9. Pat Cudd and Lynna Renner volunteered. Janie Kunselman was appointed new Program Chair-

man for council. Jeanie Laughlin was voted to fill the position of County TEHA Chairman and State TEHA Convention Delegate.

Finally it was decided we would donate to the Home Nursing fund and Denise Harbour adjourned the meeting. Linda Close served refreshments.

Members attending were Julie Adams, Joan Brown, Linda Close, Pat Cudd, Denise Harbour, Janie Kunselman, Delinda McLaughlin, Jeanie Laughlin, Penny Ralston, Lynna Renner, Dixie Smith, Connie Steger and Beverly Antalek.

THE Know Weather

Do inverted air masses cause tornadoes? Are the cause of tornadoes known and understood?

The varied causes of tornadoes are not fully understood-even with all the modern scientific knowledge at our disposal.

The theory that inverted air masses produce tornadoes is one of several. This theory holds that heavier



air, pouring down, gets turned or twisted in a whirlwind manner and creates one or more tornadoes.

The inversion and the rushing and falling air masses might cover an area of a hundred miles or more, while the small tornadoes created might be separated by many miles, each less than a mile in diameter and some never touching the surface of the earth.



Frances Loftin is busy at work to keep everyone in place at the Radio-thon held Thursday. She was the Radio-thon Co-ordinator.

April 15th is Deadline

To Secure Your IRA's....

**(IRA)
Individual
Retirement
Account...**

**It's just a matter of
saving money!**

IRA even if you're already in a qualified retirement plan. Save and deduct from your 1983 taxable income. Up to \$2,000 a year for singles; \$2,250 for couples; \$4,000 for working couples.

*Whether for retirement, or whatever,
you need to see us before April 15th and get your IRA's!!!*

*You can deposit up to \$2,000 each year,
which is tax deductible.*

(\$4,000 for working couple)!

A person in the 32% bracket who saves \$2,000 in an IRA, reduces their current tax payment by \$640, for example.



First National Bank
Perryton, Texas
806/435-3676
Member FDIC

ONE DAY ONLY
April 19th - 7:30 p.m.
Rodeo Grounds, Spearman

THE GREAT FORD BROS. CIRCUS

CLOWNS • AERIALISTS
ELEPHANTS • ACROBATS

100 MINUTES
THRILLS • LAUGHS 100

Sponsored by
Chamber of Commerce

Tickets on sale at C. of C.

Advance Tickets \$2.00 Children
\$4.00 Adults

Four local women among nominees for honors

WTSU—Four Spearman residents are among the more than 90 nominees for the Texas Panhandle Distinguished Service Awards which will be presented on Saturday, April 14, at West Texas State University.

Nominated from Spearman are Rosa Lee Butt, Michele Davis, Jackie Pearson and Clementine Renner.

Nominees from 24 Panhandle and South Plains communities have been selected by individuals and members of organizations. Ten recipients will be presented during the ninth annual luncheon at 11 a.m. at the WTSU East Dining Hall.

Dr. Marjorie Bell Chambers of Los Alamos, N.M., will address the theme, "One World - Where Women Are Concerned," at the luncheon. Tickets are \$10 each and may be purchased through Thursday, April 12, by calling the Returning Student Program which annually hosts the luncheon.

Chambers, co-founder of Bell-Chambers Associates, Inc., a consulting firm, is a former college president and has served as a presidential appointee to a number of national and international groups.

Honorary chairpersons for the 1984 luncheon are Mrs. Gail Shannon of Canyon and Bobby Henson of Happy. Planning the luncheon as co-chairpersons are Dr. Charlotte Rappsilber, dean of the WTSU School of Nursing and president of the Canyon branch of the American Association of University Women, and Lois Lowe, president of the Amarillo AAUW branch.

Nominating Butt are the Women's Division of the Spearman Chamber of Commerce, Spearman Chamber of Commerce.

Named as Spearman Chamber of Commerce's 1983 "Citizen Over the Years," Butt has

exhibited her concern for the community by helping to establish Meals on Wheels, promoting blood drives, and serving on the committee to establish the Golden Spread Center.

She also is a member of First United Methodist Church, Preceptor Epsilon Zeta Chapter of Beta Sigma Phi and has been an officer with the Spearman hospital auxiliary. She is the mother of three children.

Station Master's House Museum Board has nominated Davis.

Davis, who works in the Agriculture Stabilization and Conservation Service at Spearman, also has been an emergency medical technician for five years and a paramedic for three years. She is a volunteer for the Hansford and Spearman Emergency Medical Service and teaches a class in Perryton for the residents of Booker, Darrouzett, Perryton, Spearman and Balco, Okla.

A native of Hansford County, Davis is a member of Servitor's Club. She and her husband, Mike, are parents of two children.

Nominating Pearson are the Women's Division of the Spearman Chamber of Commerce and the Spearman Chamber of Commerce.

Spearman's 1983 Citizen of the Year, Pearson is a businessperson, has been involved in the Spearman Fruitcake Revue, as a member of the board of directors of YMCA, Beta Sigma Phi member and Spearman Church of Christ.

She co-chairs the Miss Hansford County Pageant and has served on the advisory council of the First National Bank in Perryton for two years. Pearson is a graduate of Texas Tech University and she and her husband, Bob, are the parents of three children.

Renner is another nominee of the Station Master's House Museum.

She is a charter member of

the historical commission and museum board and has been actively involved with American Cancer Society and as a volunteer at the hospital.

She and her husband, Gus, donate part of their annual garden at their ranch to the children's home at Panhandle.

Church of Christ plans revival

The Church of Christ has announced their Spring Revival to begin on Sunday, April 15, and continuing through Thursday, April 19. The Sunday services will be at regular meeting times, with the morning services being followed by a meal in the Fellowship Hall to which all are invited. Services during the week will be at 7:30 p.m. each evening.

The featured speaker will be Charles Hodge of Duncanville, Tx. Mr. Hodge is a graduate of Abilene Christian University and earned the M.A. degree in the Harding Graduate School of Religion. He has authored a number of books, including: *Will God Run?*, *Twentieth Century Sermons*, *Hodge Podge*, *My God and Prayer*, *My Preacher*, *Writing Out Loud*, *My Elders*, *God's Deacons* Angels. In addition to his book writing he is a staff writer for *20th Century Christian and Restoration Quarterly*. Widely traveled in Europe and the Bible Lands, Hodge has preached in over thirty states. He served the Rosemont church of Christ in Ft. Worth as minister for twenty-two years. Interest in young people has led him to serve on the Board of Directors of Medina Children's Home and the Advisory Board of Abilene Christian University.

Members of the Church of Christ invite you to be with them at any of the planned services. Theme of the Revival will be "The Cross" with all lessons being on that topic.

Cooley's Returning

The Cooleys are coming again to the Apostolic Faith Church located on the corner of 9th and Dressen in Spearman. They will be in concert Friday night April 13 at 7:00 p.m. and everyone is invited to come and be blessed by their musical ministry.

Pastor Grimmer and the church family will be looking for you.

The Cooleys (Haskell, JoLee and Cason) present a gospel music program called "A Time for Refreshing." They present gospel music vocally and instrumentally. This family's "style" of music is easy listening and is designed to be enjoyed by young and old. In 1981, at the age of 2, Cason began singing with his mom and dad. He always delights the audience with his renditions.

Several albums on which Haskell is pianist have been

Get well Dick Elbert

Dick Elbert, North Plains International dealer of Spearman, was taken to High Plains Baptist Hospital Monday of this week. His wife Betty is with him. Members of the noon Lions Club in Spearman wish a speedy recovery for Lion Dick Elbert.

nominated for Grammy Awards by the National Academy of Recording Arts and Sciences. The Gospel Music Association and the Singing News Fan Awards have honor-

ed him by nominating him as Best Gospel Musician. JoLee's bass guitar playing complements Haskell's piano playing.

Most of the songs they sing and play are written by themselves and regularly make the radio stations' playlists throughout the nation. One of their compositions, "I'll Sail Away Home," was on the top-forty gospel charts for almost two years.

The Cooley's full-time music ministry takes them throughout the United States and portions of Canada.



Charles and Lola Newcomb discuss their sealed bid on the Quilt to be given away [sold] April 30th.

Just Out

After a final row with his wife, a brow-beaten husband took his hat from the peg in the hall and said: "I'm going."

Three years later he returned, and his wife demanded: "Where on earth have you been?"

"Out," he replied, and hung his hat on the same peg.

Big Job

Boss--Can't you find something to do?
Office Boy--Gee whiz; am I expected to do the work and find it too?

Career Man

First Prisoner--"What are you in for?"
Second Prisoner-- "Want to be a warden, so I thought I'd start from the bottom."

NOTICE

Please notify all store personnel that the Traditional Ceiling Fan pictured on page 3 of circular #15FC is incorrect.

It should have four blades, instead of the five shown. However, the descriptive copy, stock number and price are correct.

TGIY
family centers

NOTICE

Due to shipping difficulties, the 16 oz. Evinrude Outboard Motor Oil, shown in this week's TG&Y Family Center circular, is unavailable. We are substituting Mercury Outboard Motor Oil in all locations. Unfortunately, no rainchecks will be issued for the Evinrude. Thank you for your cooperation and we regret any inconvenience caused.

TGIY
family centers

Hanging Baskets

Geraniums

Grand Opening

Thursday, Friday, & Saturday

April 12th, 13th, & 14th

Door will open at 9:00 Thursday.

Vegetable Plants

CAULIFLOWER	SPINACH	ONION	TURNIPS	CANTALOUPE	PUMPKIN	ZUCCHINI SQUASH	CARROT	BEETS	EGGPLANT
RADISH	LETTUCE	CHIVES	CUCUMBER	WAX BEANS	CABBAGE	BROCCOLI	CORN	TOMATO	

Petunias

Perennials

Many new varieties of outdoor flowers.

D & C Greenhouse

659-5171

2 Miles West on Gruver Hwy. Spearman

