

# ON TO MORSE : SANTA FE SPECIAL EDITION THE SPEARMAN REPORTER

Third Year Spearman, Hansford County, Texas, Thursday, May 14, 1931 Number 23

## CELEBRATORS MOVE ON TO MORSE FOR RAIL FETE

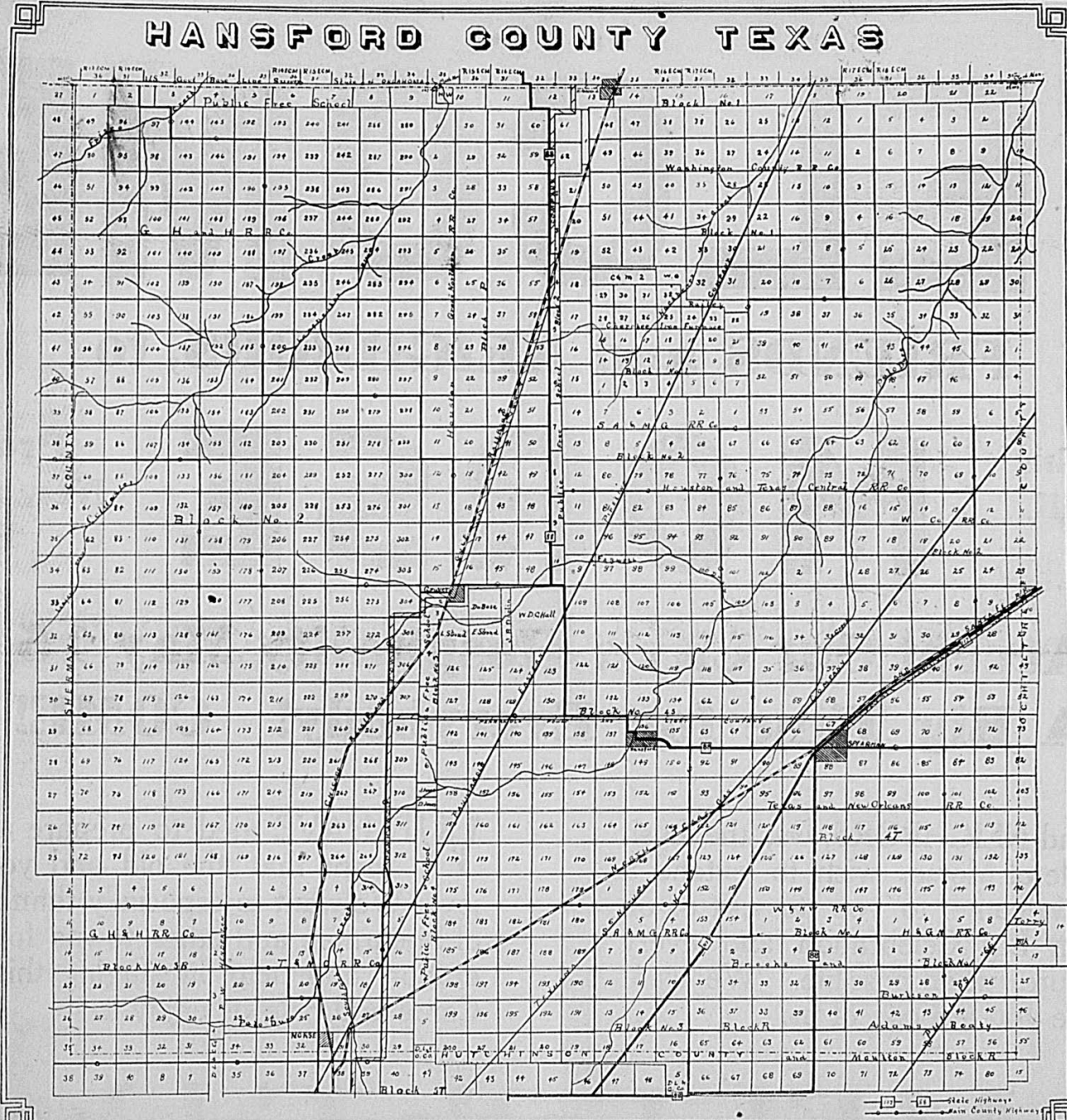
### Spearman Business Men Organize Golf Club; Laying Out Course to Begin Friday

#### COMMITTEE SECURED BASE ON 80 ACRES X MILES FROM CITY

Already Signed Up For  
Membership in New Golf Club

Members have already signed up in Spearman's Club, and the completion of designing the leasing of 100 acres six miles south of the city. Max Lackey, Walker, well known golfer of the city is expected to arrive Friday to supervise the laying out of the course. It was through the efforts of J. R. Collard that the services were secured. A final decision for a golf course for Spearman was reached last night when a large group of business men met at the American Legion Hall. Wm. E. McWhorter headed the golf committee, assisted by Max Lackey, Campbell, R. E. Lee and J. R. Holland, was elected temporary chairman of the new organization. Election of officers was made next Monday night at the American Legion Hall. All are urged to attend the meeting, whether or not they wish to join the club at this time. Cost of membership is very small, due to the excellent plan worked out by the committee and men interested in the work. Other temporary officers who were named Monday night are P. R. Walker, secretary and J. W. Rakein, chairman of the committee of rules and regulations of the club. Lackey is chairman of the membership committee. Organization of the club came much harder work on the part of the enthusiasts of the city in getting up interest in the project in less than 10 days, local clubs will be playing on the committee men said.

#### WORKING FOR COUNTY



#### ALL ROADS OF PLAINS LEAD TO MORSE AS THROUGHS GET READY

Neighbor City Promises Two  
Days of Great Entertainment to  
Guests and Visitors

All roads lead to Morse, Friday, May 15, for the two-day celebration that promises to be one of the greatest events ever witnessed on the Panhandle-Plains of Texas. From every direction a caravan of automobiles will move down on the city and all trains will bring a host of visitors to celebrate the completion of the new Santa Fe rail line from Spearman to Morse.

There will be entertainment and amusement for everybody. The city of Morse and her progressive citizens have left nothing undone in order that everyone present will be royally entertained, in keeping with the spirit and hospitality of the great north plains area.

Following the baseball game between Morse and Dumas at 10:30 o'clock, the Old Timers parade will be the feature of the opening day, led by one of the west's greatest characters, John Lanners.

Negro Bones, an old chuck wagon cook who saw service on the plains long before the advent of the wire fence, is expected to be among the old-time citizens. Scores of pioneers, who are in a large measure responsible for the present progress of this great country will be there to celebrate another step in the advancement and development of this country.

Eight bands will see that no one gets away without having had plenty of music to make the occasion merry. Bands are expected from Spearman, Perryton, Borger, Canyon, Amarillo, Canadian, Dalhart, together with Morse's home band to play for the fete.

In the parade decorated floats will add color to the occasion, which is expected to start at 12 o'clock.

Citizens of Morse are furnishing eight beefs for the big free barbecue at 1:00 o'clock Friday afternoon. Everyone is invited to come and dine on beans, bread, barbecue, pickles and hot coffee.

In the afternoon, Judge H. E. Hoover, pioneer citizen of the north plains and a prominent figure in the business and social life of Canadian, will speak his welcome to visitors and all present. J. B. Speer, Supt. of the Morse schools will also appear on the program in the afternoon.

Leonard Stroud, world's champion trick rider offers a host of entertainment and thrills on both afternoons with his big rodeo. A cowboy riding and roping contest is expected to draw a big crowd of wild and wooly cow hands from every direction to participate.

A big platform dance, with plenty of room for everybody to enjoy themselves will be the night offering on both Friday and Saturday. Horace Mann and his orchestra from Perryton will furnish the music.

Morse citizens who have worked painstakingly in an effort to make the event the greatest success possible are: D. M. Womble, Roy McNutt, J. B. Speer, H. S. Durham, Mrs. Roy Womble, Jake Miller, H. C. Coffee and Jimmie Robert.

#### FINAL INSPECTION BY RAIL OFFICIALS MADE

First Official Train Over New  
Line Expected to Be Run Fri-  
day May 15th.

O. R. Hitchcock general manager; C. W. Harris, chief engineer and T. B. Gallaher, general freight and passenger agent, together with other officials of the Santa Fe, made a final inspection of the new rail line Monday. The line is now completed and the first train is to make its official tour Friday, May 15.

Two passenger trains a day are scheduled for Spearman. The completion of the line represents the expenditure of millions of dollars in rail line development, verifying the faith of the Santa Fe Railway in the future prosperity of this section of the country.

Mr. and Mrs. E. H. Barber and son Clarke of Dalhart were in Spearman Wednesday afternoon.

J. L. Davis and family are moving to Gruver. Mr. Davis is accepting a position as sales manager for the A. P. Borger Grain Company.

#### LOCAL MEN ATTEND BIG C. OF C. MEETING

J. W. Rakein and Judge C. W. King Represent Spearman at Annual Meet

Spearman will be represented at the annual convention of the West Texas Chamber of Commerce, that meets in Lubbock Friday and Saturday, May 15 and 16 by J. W. Rakein, secretary of the Spearman Chamber of Commerce and county judge C. W. King. Both men left Wednesday.

One of the largest and most interesting programs that any annual convention of the organization has ever had has been announced.

Valuable information on the work of that organization together with an interchange of ideas and plans from other cities, will be the work of the two Spearman representatives.

#### Streets In Good Shape Now After Heavy Rains

The city's streets are in good shape again after the heavy rains of last week which made them extremely difficult to travel over early this week.

Mayor W. D. Cooke and city Manager Sampson started men with graders and drags Tuesday and the streets are now in fine shape for travelling.

Read the Reporter every week.

#### SPEARMAN MAY HAVE PAID BAND DIRECTOR

Plans Being Considered to Vote  
Three Mill Band Tax on City  
Property

A petition was being circulated Wednesday to determine whether or not the citizens of the city of Spearman favored voting a one mill tax on resident property owners for the maintenance of a band director and a reorganization of an efficient municipal band for the city of Spearman.

Under the plan of a one mill tax, one dollar on every thousand dollar valuation of property would be paid by citizens.

For some time, citizens have talked of voting a measure of this kind. A good band, many say is one of the many assets that is considered necessary for a city's social life and for the promotion of good will among other cities. In many cities of the North Plains, a tax measure is in effect for the paying of a director and upkeep of the band in their work.

At the present time, E. K. Snider is giving as much of his time as he can, gratis, toward the direction of a municipal band. Citizens here expressed their appreciation to Snider for his public spirited work, but are of the opinion that a director should be paid for his time and services in giving the city a good band.

Mrs. Fred Wilson from Stigler, Oklahoma, is visiting her sister, Mrs. John Bolton, in Spearman.

#### THE LAND OF OPPORTUNITY

Hansford county, from the standpoint of agricultural growth and development is unquestionably on the threshold of an era of great advancement. Every indication points now toward a steady march forward. Being essentially an agricultural county, it is but a natural assumption that its general prosperity depends largely upon the welfare of her farmers. With the advent of the realization among our farmers that through bending their own efforts in various ways they are capable of placing the industry in which they are engaged on a parity with others, the dawn of a new day for agriculture seems to be definitely outlined.

#### Ideally Situated

Hansford county is ideally situated, which enables it to reap the profits of harvests which success in farming brings. Her climate is such that practically any crop grown in the United States can be produced within her borders. It is well, however to observe here that Hansford county farmers in general have adhered to a policy of using their lands for the production of crops to which they are best adapted. In this case, wheat is Hansford county's chief money-producing crop. The lands of this county are unquestionably better adapted to small grains. Steps in the direction of diversification have been taken on the 576,000 acres of land in Hansford county, there is hardly an acre of land in the county that cannot be made to produce

some profitable crop. The market value of Hansford county's wheat crop is about \$3,500,000 per year. Crop failures in the county are unknown.

#### Much Livestock

Among other profitable industries which are being built up in Hansford county is live stock; we find throughout the county an increasing production of dairy and poultry products. These very attractive industries have grown rapidly in the last few years, and are destined to be one of our leading side lines. A system of marketing our live stock and poultry products to gain the most profit is now being perfected.

#### Dairying

One could go on and describe scores of crops which are perfectly adapted to the various soils which lie within the confines of Hansford county, but here we must consider an industry which more than any other, is coming to the front in Hansford county's line of industries. This is dairying. Improved herds are constantly replacing unprofitable stock and it will not be long until our county can boast of many fine dairy herds.

The first great source of original wealth is Agriculture; and Hansford county is blessed with this source. Sensible diversified farming among the farmers of Hansford county is increasing rapidly.

Around the County  
Hansford County's cities speak for themselves. Well located on

the Rock Island from Amarillo to Liberal in Hansford county is the enterprising city of Gruver, the city being named after one of Hansford County's most progressive citizens, J. H. Gruver, who is always alert for any movement that will benefit Hansford county.

Morse, located in the southern part of Hansford County is a very progressive city, with more railroads than any other city in the county, which on May 15th is celebrating the completion of the Santa Fe Railroad from Spearman to Morse.

Hitchland, named after Hitch Brothers, ranchers of the early days of the county. This city is surrounded by farm lands that produce golden wheat.

Bernstein, named after Captain J. Bernstein, a gentleman of extensive travel, having sailed the seven seas, landing in most every important port of the continent. The town of Bernstein is surrounded by fine agricultural lands.

Spearman a thriving city of 2500 population, eleven years old, named after Thomas C. Spearman a Santa Fe official, and assistant to the president. It became an incorporated city April 14, 1921. Has most excellent school system, paved streets, pure water, churches of many denominations, fine system of roads, served by the Santa Fe R. R. and Auto Bus lines, two strong banks, a very active Chamber of Commerce, and a set of folks that make you enjoy and appreciate being in Spearman.



J. W. RATEKIN  
Secretary Spearman Chamber  
of Commerce

constant worker for the good of Hansford county is J. W. Rakein, secretary of the Spearman Chamber of Commerce. Mr. Rakein is largely responsible for the success of the recent Farmers' meet held in Spearman and has his support in creating interest in the big rail celebration at Morse to be held in that City Friday, May 15. Seasoned experience and long year's standing in city development and chamber of Commerce work, makes Mr. Rakein a valuable official to be at the head of the Spearman organization.

#### Phone Company Here Changes Billing Date

Changing date of the Western Home Corp., serving the city of Spearman and adjacent territories has been changed from the 15th of the month, according to information made today by Fred Lusk, local manager. This means that residents will have only until the 15th of each month to pay their telephone bill, instead of the 20th of each month, as heretofore.





**Hurrah!**

Here  
Comes  
the

**SANTA FE**



**Hurrah!**

We  
Welcome  
the

**SANTA FE**



# WELCOME!

**FRIENDS and NEIGHBORS, to**

**North Plains  
Newest Rail  
Terminal**

# MORSE

**Progressive  
New : Modern  
Beautiful**

**Accept Our City's Hospitality May 15  
A Big Time for Everybody! COME!**

**FRIENDS and NEIGHBORS**, we, the business people of Morse, wish to extend a most cordial welcome to you to visit us on the days of our Big Celebration and every day in the future, when possible. We want you to feel like you are one of us.

**WE HAVE** tried to prepare an entertainment that the old and young will enjoy. We want to especially thank the people of Spearman and other towns for their cooperation and help in staging this big event. Come and help us enjoy it.

## COME! Let's Celebrate

**These Progressive Business Firms and Public Spirited Citizens Bid You Welcome to Morse**

PANHANDLE LUMBER CO., Earl Hickle, Mgr.  
 MORSE EQUITY EXCHANGE  
 R. L. McLELLAN GRAIN CO.,  
 PHILLIPS SERVICE STATION, L. C. Utley  
 PHILLIPS PETROLEUM CO., Jimmie Roberts.  
 CONTINENTAL PETROLEUM, CO., Bud Coffee.  
 MAGNOLIA PETROLEUM CO., Roy Womble

H. C. COFFEE, School Supplies.  
 CONOCO SERVICE STATION, G. M. Ffacker  
 R. W. MORTON, Baldwin Combines.  
 SANITARY GROCERY, Roscoe Parks  
 HOTEL "36", Jimmie Roberts.  
 MORSE MOTOR CO., H. S. Durham  
 BECK'S LUNCHEONETTE, R. L. Beck

BELL'S IMPLEMENT CO., Allis Chalmers.  
 MORSE BARBER SHOP, T. O. McKay  
 CRAWFORD IMPLEMENT CO.  
 WOMBLE HARDWARE  
 MORSE PHARMACY, Bullock & Vaughn  
 MORSE LUNCH, V. E. Casey  
 DR. SECHRIST, Physician & Surgeon  
 MORSE MONITOR, Irene Manney



# Windom One of Two Plains Boys to Win Honors at State Meet Last Saturday

## ARMAN'S IDOLIZED ATHLETE WINS SECOND PLACE IN POLE VAULT FOR STATE

**Ties for Second Place in Jump at State Meet in Last Week**

(Tip) Windom, barely the mark of being state champion in interscholastic pole vault at the state meet held in last week. Windom cleared in the pole vault at 12 feet and one-half inch, to win second place. He also tied for second in the high jump at a height of 5 feet and 2 and one-half inches.

Windom beat any previous record he had made in other sports which was much in his favor according to coach Billy Change of climate and surging winds was expected to have helped his ability.

Windom is certainly proud and I think we all should feel proud of the record made by Windom," said. "He and another boy named Caldwell from Farwell, Texas were the only two boys in the district one to place in the pole vault in the quarter mile

## To Start in 1932 Olympics



Ann V. O'Brien, twenty-year-old athlete, competed in the 1928 Olympics in the 50, 100 and 200-yard events and holds the world's record for the 50-yard dash for women. She is pictured here taking a high jump at the seriously going about the business of conditioning herself for the 1932 Olympics. Miss O'Brien will carry the colors of the Pasadena A. C.

## GRID MEN WILL HOLD LAST SCRIMMAGE

Spearman's grid warriors will have their spring training Thursday with a lively scrimmage. Coach Billy Jarvis has had his training for the past two weeks. Thursday they will wear their uniforms until the start of the season.

When questioned about the possibility of a good team for next year, Jarvis said he believed they would have a fair team. At least, he said, material that he had been building together with the old team would be back next year. He looked very encouraging.

Jarvis will take his squad for summer outing the latter part of June in order to get them in shape for the hard training that will follow.

## Cotton Grower Yet In Panhandle

Goodwell, Okla., May 14.—Who remembers the agitation for cotton production which swept thru Panhandle country in 1923? The market conditions of that year are raising the question of whether crops it may be that will recall that cotton has been considered a promising crop in this part of the country.

Several attempts were made in years ago to produce cotton on a commercial scale but for the reason cotton has dropped in sight during the great situation of wheat production that came with the advent of the combine.

So far as is known there is just a few in Texas County, Oklahoma, who has continued to plant.

## TWO BALL GAMES SLATED FEATURES OF MORSE RAIL CELEBRAION THIS WEEK

Agers of both teams and the fans are expected to see a real baseball battle.

No less important is the game between Morse and Gruver, to be played Saturday. The Morse Sluggers are of the opinion that they are going to make a clean sweep of the games. Quite to the contrary, Dumas and Gruver say that they are not going to win either of the games.

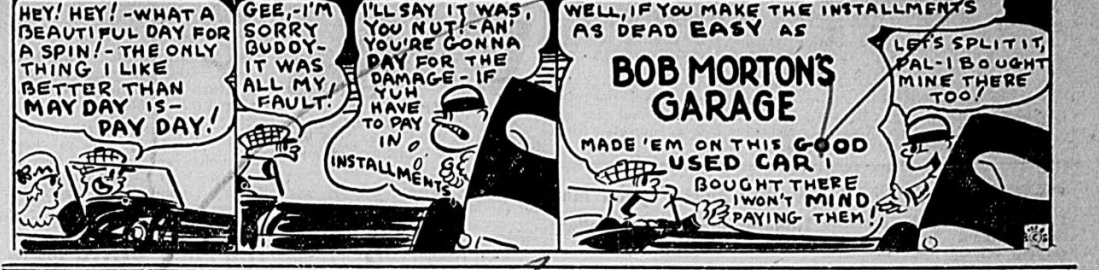
## TOPNOTCHERS by KET

"Polo Monarch" AMERICA'S INTERNATIONAL CAPTAIN AGAIN RANKED AT THE MAXIMUM OF TEN GOALS by the U.S. POLO ASSOCIATION. "The ONLY PLAYER IN THE WORLD SO HONORED."

Capt. Tommy Hitchcock

(Copyright, W. N. U.)

## MILE-A-MINUTE MARTY —by— Bob Morton's Garage



known to your petitioner.

Your petitioner would respectfully show that if the above named defendants at any time had any interest in said land, it was prior to September 18, 1916, because at that time the said E. E. Wilbanks, who was claiming the land for himself, and who had peaceable and adverse possession, sold said land to Bryan Wilbanks, who held the land adversely and peaceably against the world. That said adverse possession continued through the time said Bryan Wilbanks owned the land, and at the time the said Bryan Wilbanks and wife Ada Wilbanks sold said land to E. E. Wilbanks, whatever interest they had in the land at that time was lost by said conveyance of general warranty deed to said land.

The said E. E. Wilbanks continued to enjoy peaceable and adverse possession of said land, paying the taxes on the same, and enjoying the benefits therefrom until he sold it to A. L. West on or about November 15th, 1922.

It is further shown that A. L. West entered into possession of said land peaceably and adversely under a deed from E. E. Wilbanks and continued to hold said land peaceably and adversely, acknowledging the interest of no other

person whatsoever in said land, and paying the taxes on said land as the taxes accrued until the death of said A. L. West. Since the death of said A. L. West, his son, Charles J. West, and his wife, Mattie J. West, have continued to hold peaceable and adverse possession of said land and have continued to pay the taxes on the land as they accrued. That the plaintiffs in this action have caused the said land to be put into a state of cultivation, and it is now being farmed under their directions.

The plaintiffs allege that they have held peaceable, continuous and adverse possession under title or color of title from and under the said E. E. Wilbanks and his assigns of said land above described for more than three years before the commencement of this suit, wherefore, plaintiffs allege that if the defendant ever had any interest in said land, which is not admitted but denied, the same is barred by the statute of limitation of three years.

Plaintiffs would further show that they and those whose title they hold have claimed the same under deed duly registered, had peaceable, continuous and adverse possession of said land using and enjoying the same and paying all

taxes as same became due thereon for a period of more than five years before the commencement of this suit, wherefore, plaintiffs allege that if the defendants ever had any interest in said land, which is not admitted but denied, the same is barred by the statutes of limitation of five years.

The plaintiffs further allege that they and those whose title they hold have had peaceable, continuous and adverse possession of said land using and enjoying the same for a period of more than ten years before the commencement of this suit, wherefore, plaintiffs allege that if defendants ever had any interest in said land, which is not admitted but denied, the same is barred by the statute of limitation of ten years.

The plaintiffs further allege that all of said defendants who are alleged to be the children and heirs of E. E. Wilbanks are barred from any interest or claim to said land, and that none of them are under the age so that the statute of limitations has not run against them.

Wherefore, premises considered, plaintiffs pray that they be declared to be the sole owners of the fee simple title to the above described land; that the defendants be declared to have no interest or claim

on said land, and that they be forever barred from any interest or claim on said land that they might have had prior to this date.

J. H. BROADHURST, Attorney for Plaintiff.

You are hereby commanded to so summon the defendants, and to serve this citation, by making publication of such citation once in each week for four consecutive weeks previous to the return day hereof, in a newspaper published in your county; but if no newspaper is published in said county, then in the nearest county where a newspaper is published.

Herein fail not, but have you before said court, on the said first day of the next term thereof, this writ, with your return thereon, showing how you have executed the same.

Witness, J. E. Womble, clerk of the District Court of Hansford County, Texas.

Given under my hand and the seal of said court, in the city of Spearman this the 22nd day of April, 1931.

(Seal) J. E. WOMBLE, Clerk of District Court, Hansford County, Texas.

Issued this 22nd day of April, 1931. J. E. WOMBLE, 204 Clerk of District Court, Hansford County, Texas.

# Congratulations Morse and Santa Fe

... You Set Another Example of Progress

## In a New Rail Line for the Great North Plains Area.

We Offer Crop PROTECTION To FARMERS - Against Hail

Insure Today

You have insurance at a minimum cost when you insure your crop with us against loss by hail. The Company's net earnings are applied to building up legal reserves, thus insuring the solvency of your company. Save the profits from your insurance business for deposits in banks at home.

### INSURE AT HOME WITH HOME PEOPLE

## Great Plains Mutual Insurance ASSOCIATION

Coffee & Lance, Office in Perryton Hotel Perryton, Texas

Geo. M. Whitson, Sec.-Treas. Office in McLain Building, Phone 215, Spearman, Tex.



# The SPEARMAN REPORTER

Successor to The Hansford Headlight

Published Thursday Morning of Each Week  
Nunn-Warren Publishing Company, Inc., Publishers  
J. DAVE CAMERON, Editor and Manager

Entered as second class matter on November 21, 1919, at the post office at Spearman, Texas, under the act of March 3, 1879

Subscription Rates  
One Year—\$2.00 Six Months—\$1.25 Three Months—75c  
All subscriptions must be paid in advance

NOTICE TO THE PUBLIC—Any erroneous reflection upon the reputation or standing of any individual, firm or corporation that may appear in the columns of the Spearman Reporter will be corrected when called to the attention of the management.

### COMMENCEMENT PROGRAM

The following is the complete "Commencement Program" for Spearman schools for the term just ending.

**Commencement Program**  
Tuesday, May 19, 8:30 p. m.  
Processional, Miss Troas Elliott; Invocation, Rev. H. A. Nichols; Salutatory, Chloé Oldham; Vocal Solo, "Love Here Is My Heart," Fannie Sparks; Address, Dr. J. A. Hill; Piano Duet, "Yellow Jonquils"; Vaudeville, Lloyd Terry; Presentation of Diplomas and Scholarships, Supt. R. L. Snider; Benediction, Rev. B. W. Baker.

**Class Night Program**  
Monday Night, May 18, 8:30 p. m.  
Processional, Miss Troas Elliott; Presentation of Key of Knowledge, Orville Rippey; Acceptance of Key of Knowledge, Marion Gaylor; Song, "Our Old High," High School Chorus; Advice to Juniors, Aln Reed; Response to advice, R. B. Archer; Class History, Freeman Barkley; Song, "Dear High School Days," High School Chorus; Class Prophecy, Helen Buchanan; Class Poem, Pat Bennett; Class Will, Walter Broadhurst; Quartet, "My Dear is Waiting," Emma Reaves, Mac Richards, Marion Gaylor, Orville Rippey; Best mixers—Seniors, Holie Brown; Juniors, Gertrude Howerton, Noel Womble; School Song, Seniors and Juniors; Recessional, Miss Troas Elliott.

**Baccalaureate Program**  
Sunday Morning, May 17, 11:00 a. m.  
Processional, Miss Troas Elliott; Invocation, Rev. Jasper Bogue; Violin Trio, Miss Verna Lawrence, Mrs. O. G. Collins, A. L. Rippey; Sermon, Rev. J. H. Richards; Song, girls quartet, Jean Lyon, Alene Gill, Willene Gill, Frankie Bendergraft; Benediction, Rev. Felix W. Tarbet; Recessional, Miss Troas Elliott.

**Seventh Grade Commencement**  
Wednesday, May 20, 8:15 p. m.  
Processional, Miss Troas Elliott; Welcome Address, Lyndall Tice; Class Song; Class History, Willard Davis; Piano Solo, Mary Brandt; Farewell, Elsie Reed; Address, Supt. R. L. Snider; Presentation of Diplomas, J. E. Gunn; Benediction, W. R. Finley.

Frank Cocke of Shamrock was here the latter part of last week, visiting with old friends.

### World's Most Popular Man Unassuming Regular Fellow

Being funny is Will Rogers' business. His pastimes are aviation, polo and golf, but he never plays golf in public, only on his private course that Fred Stone recently laid out on Rogers' vast estate near Beverly Hills, California.

Interesting facts concerning this wit and philosopher of international fame are:  
He never smokes.  
He has few intimates, moving in a small circle of friends.

He is married and has a family made up of his charming wife, Mary, his daughter and his two sons, Will Jr. and Jimmy.  
He will be 52 years old on November 4 of this year.  
He does not own a dress suit and refuses to wear one.

He wears the same costume in his pictures that he wears at home and around town.  
He refuses to have a telephone in his home.

Has the brakes of his automobile tested every night.  
Wears a slouch hat of ancient vintage and a well worn chamois jacket.

His trousers generally need pressing and his shoes look as if they had never been shined.  
He writes for 600 or more newspapers and his copy has never been late.

He writes it as soon as he has finished lunch and takes it to the telegraph office himself.  
He never takes a train, but goes by airplane, if his destination is more than 100 miles away.

Has written seven books.  
He was doing his rope act in a street carnival when he was discovered by Harry Weber, a theatrical agent, who put him in vaudeville.

He does not drink and he dislikes social life.  
Rogers will be seen and heard in "Lightnin'" at Lyric Theatre, Friday and Saturday.

**Kept Husbands**  
Dorothy Macknill does some real feminine dominance in this show at the Lyric Monday and Tuesday. Poor man, that plays opposite Dorothy—he was every inch a man bought body and soul by this wife. Great adult entertainment worth seeing. Don't forget the comedy, "Dizzy Dates."

### Want Ads

**TELEPHONE**  
All classified advertisements must be in the office no later than 10 o'clock on date of publication.  
RATES: Two cents per word for the first insertion and one cent per word for each consecutive insertion.

**CARD OF THANKS**: Ten lines or under, 10c. Each additional line 10c.

A MEMBER of large rocks may be had by removing same from Mrs. D. W. Hazlewood's home in west Spearman.

**FOR SALE**—Full stock of finest Western Seed, certified for pure germination. See maize, wheat, and barley chops, etc. R. L. Porter Elevator. 23212

**ALL EASTERN STAR** members are urged to attend meeting Friday night, May 15 at 7:30 p. m. Memorial services and initiation will be the feature of this meeting. Visitors welcome. Valena Allen, W. M. 23211

**LARGE STOCK** of finest quality Western seed, certified for purity and germination, including seeded ribbon cane, sourless, red top cane, sudan, higeria and all varieties of maize, corn, feed maize, oats, barley-wheat chop. See our sample, heavy-duty corrugated steel granary. Porter Grain Co. 23211

**FOR RENT**—Nice, modern bed rooms for rent—Phone 164. 23211p.

**LADIES** I am equipped to give anything you need in permanent waving. Realistic permanents \$5.00, any style. Special prices on three or more permanents. Ask about the combination. Clip this ad for it is worth 50c to you on a permanent. Your business appreciated. Mrs. E. B. Dodson, Phone 114. 23212p.

**WANTS POSITION**—A competent and experienced stenographer, bookkeeper and typist wants position. Inquire at Reporter, or see Miss Hazel Noy, Spearman, Texas. 23212p.

**3 SECTIONS** wheat land at a bargain. On the Dumas-Hartley highway. All mineral rights go. Practically all cash. M. F. Beaumont, Hartley, Texas. 2324p.

**MISS TROAS ELLIOTT** will have music class this summer. She will teach voice, piano and all stringed instruments. 23211.

**HAVE YOU** recorded that record yet? Its lots of fun to hear your voice reproduced. I also do radio work of all kinds. W. O. Swain, second house south of Baptist church. 23212.

### THE FIRST STATE BANK

The history of the First State Bank commences in July 1917 when it was organized as Guaranty State Bank of Hansford. It took over assets of Hansford County Bank, which was unincorporated, July 10, 1917, at which time the following directors and officers were elected: W. S. McNabb, President; B. V. Andrews, vice president; Walter C. Sikes, cashier; L. G. Blackmer and L. R. Comas as directors.

In the fall of 1919 the bank was purchased by Mr. I. E. Cameron of Guymon, Oklahoma. H. E. James was appointed cashier. The bank was moved from Hansford, Texas to the new town of Spearman, in December 1919, which was then at the end of the new Santa Fe extension into Hansford county out of Shattuck, Oklahoma.

In November 1926, the Guaranty State Bank withdrew from the Guaranty Fund and changed its name to the Fidelity Bank of Commerce.

On January 1st, 1930 The Fidelity bank of Commerce was purchased from I. E. Cameron by Walter Wilmet, P. B. Higgs, H. B. Hart, Homer Allen and J. R. Collard. All of these men were farmers and business men of Hansford county. The name was changed again, this time it was to be the First State Bank. At present the officers and directors of the institution are: J. R. Collard, president; C. A. Gibner, vice president; Fred J. Hoskins, cashier, P. B. Higgs, H. B. Hart and Homer Allen, directors.

### CARD OF THANKS

With hearts full of gratitude and appreciation we wish to express our thanks to each and every one who expressed their sympathy both in words and deeds, in our bereavement in the loss of our father and brother. May the Lord bless you.  
Mr. and Mrs. Paul Thompson, Warden Thompson, Mrs. O. W. Farley, Thelma Thompson.

### NOTICE

Will the two fellows in the Chevrolet who borrowed a garden hose from behind Snider's Mill please return some night before we look up your tag number and find out who it was.—E. K. Snider. 23211c.

### BOARD OF INSURANCE COMMISSIONERS STATE OF TEXAS

Austin, Texas, April 25, 1931. No. 4002.  
To All Whom It May Concern: This is to certify, that the Groom Mutual Hail Association, Groom, Texas, has according to its affidavit complied with the laws of Texas as conditions precedent to its doing business in this State, and I have issued to said Company a Certificate of Authority from this office entitling it to do business in this State for the year ending the 29th day of February, 1932.  
Given under my hand and my seal of office at Austin, Texas, the date first above written.  
W. A. T. RIVER, Chairman of the Board. 23213.

## Snider Produce

Oldest Produce Firm In Hansford County

Dealing in All Country Produce, Bulk Garden Seed and Plans

Iowa Cream Separators : Feed Milling

Tankage Cheap Enough to Feed 6c Hogs



A FULL LINE OF Poultry and Stock Feeds

## Fryers for Sale

ALSO BROODED CHICKS

Your Last Opportunity to Buy BABY CHICKS

Buy Now

### Cook Hatcheries

Spearman, Texas

Where Friendly Service Bids You Welcome!

## Hastings Pharmacy

SPEARMAN



## It's TRACTOR TIME

Get Ready NOW!


SEE US FOR

- Magneto Repairing, Magneto Parts
- New Batteries, or we will rebuild the old one.
- Electrical Supplies and Service.
- Acetylene Welding

PHILCO RADIOS and RADIO SUPPLIES

## Delon Kirk

Phone 141 for Electrical Service



Modernization of your plumbing will repay you over and over in convenience and health, comfort and appearance. Especially in the summer will you enjoy the time-saving and energy-saving advantage of new plumbing. That is why you should take care of your plumbing immediately. Let me tell you more about plumbing modernization.

You Will be Surprised How Very Inexpensive I am

## W. L. VANHOOK

PLUMBING AND SUPPLIES

Spearman Texas

## STAPLE GROCERIES

at Money Saving Prices

We Deliver : Phone 216

For Friday and Saturday MAY 15-16

Congratulations to Morse and the Santa Fe

BANANAS (Yellow Fruit) 6 lbs . . . . .	29c
GREEN BEANS, fresh, 2 lbs. . . . .	19c
BUTTER, fresh creamery, per lb. . . . .	25c
SALT MEAT, very nice, per lb. . . . .	15c
MOTHER'S OATS, with China, pkg. . . . .	28c
CURED HAM, half or whole, per lb. . . . .	22c
FLOUR, 48 lbs., guaranteed . . . . .	98c

## W. C. Bryan & Son

SPEARMAN





We Extend Our . . .

Population Barometer  
of  
HANSFORD COUNTY

# Congratulations to MORSE

Not only for the accomplishments of the past, but also on its present policy of progress. Just as Hansford County's future develops, Morse will grow and develop. Spearman is always glad to assist in any degree to the prosperity and happiness of its people, and we offer our sincere gratitude for the splendid celebration the city of Morse has planned on the completion of the Santa Fe R. R. from this city. Spearman is always ready to serve the community of Morse in a way as distinct as we serve each individual in Spearman. We feel honored to be a part of such a town as Morse. Just as the Chamber of Commerce shall continue to serve Spearman, so shall we serve the people of Morse and its community. May the next ten years be a period of prosperity for all of Hansford county and it will be if we all cooperate and pull together for the county.

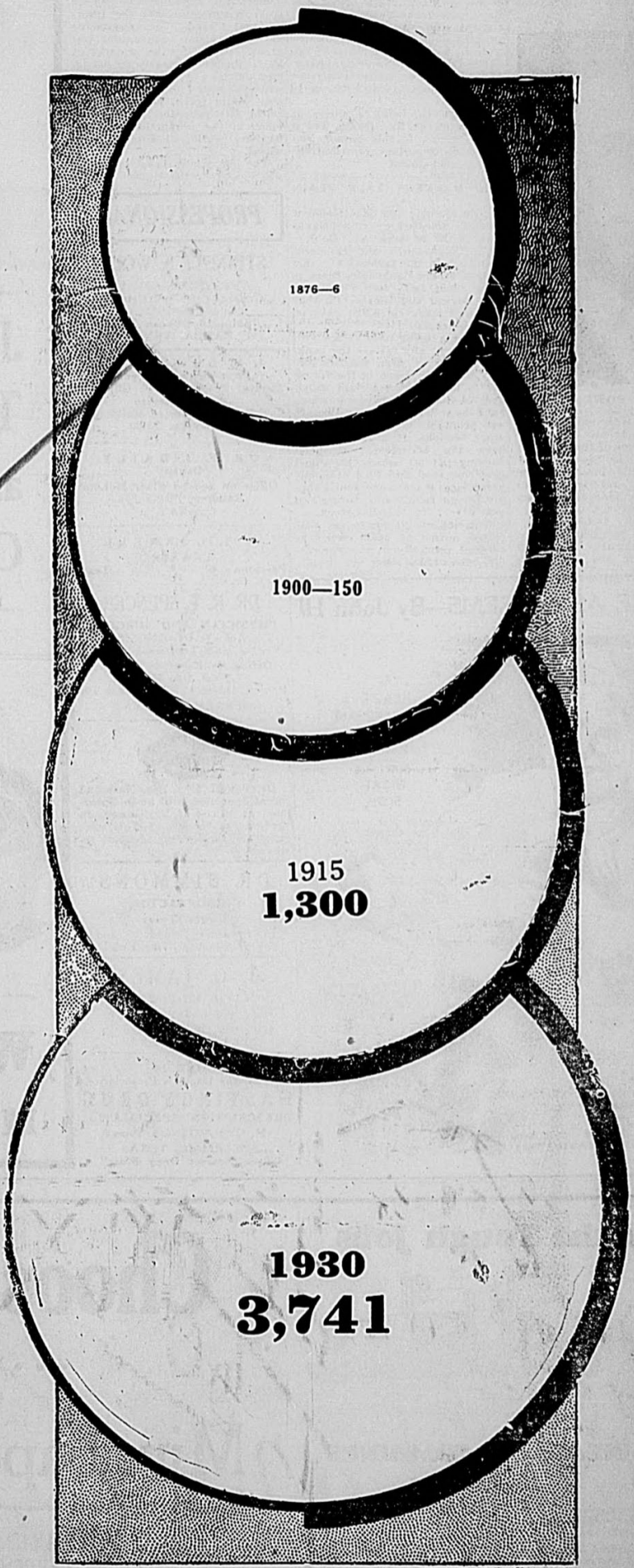
**SPEARMAN**—The Center of a rapidly developing agricultural section, surrounded by most fertile lands, soils not found in as large area anywhere else in the State. Hansford county, of which Spearman is the County Seat, ranks first in production of wheat in Texas. The soils will grow most every known crop.

**SPEARMAN**—Is the radiating point for more roads and highways than most any other city of the North Plains. North and South and East and West roads pass through Spearman.

**SPEARMAN**—A city of Homes, Schools, and Churches. Spearman is now arranging for the very best of conveniences which go to make the ideal community, an ample water supply from deep wells, electric light and power service, natural gas for fuel, sanitary sewer system, paved streets, beautiful homes, churches of several denominations, fully accredited school system.

**Come Live With Us!**

Hansford county is growing in population and wealth. Come and grow with it.



## SPEARMAN C. OF C.





R. L. BOWEN MADE HEAD POWER FIRM

R. L. Bowen well known in this city, has been elected Vice President and Director of the Texas-Louisiana Power Company, according to an announcement received by O. G. Collins, local manager.



R. L. BOWEN

Mr. Bowen, who is a native of Van Alstyne, Texas, has been with the Company since its inception in 1922, having started work in the capacity of line walker at Graham, Texas, when a very young man.

ed Terrill School for Boys at Dallas. His college education was received in Blue Mountain, Mississippi, where he was a student in Mississippi College.

THE BANKERS TALK PLAIN

In a circular and advertisement recently released over the signature of the bankers of Donley, Hall, Collinsworth and Childress Counties, to the farmers of this section of the Panhandle, there is some plain talk, but withal the most logical and timely talk that has been made since the days of boom business.

Plain, sincere talk is certainly in order just now, and if we know anything about the general attitude of the people, we feel that the advice of the bankers will be adopted unanimously—because it is the sensible thing to do.—Clarendon News.

RUSSIAN WHEAT

An International Wheat Conference has been called for May 19 in London to consider ways to reallocate world wheat-growing areas and bring order out of threatened chaos.

The immediate threat of Russia was voiced by the United States

Department of Agriculture a few days ago with an estimate of 1,097,000,000 bushels of wheat for the 1931 crop or some 246,000,000 bushels larger than the wheat crop of the United States.

Guesses at Russia's 1931 production are futile at this time, but there is some consolation in the May 4 report in Foreign Crops and Markets, published by the Federal Government, which states that

bad weather, heavy and later snows than usual have delayed the spring wheat sowing program of the Soviet Republic about two weeks. On April 10 a total of only 2,842,000 acres of spring wheat had been sown in Russia, compared with 28,145,000 acres a year ago.

This would be fortunate for the United States with its large crop now in the making and coming to market some time in June.—Dallas News.

Missing Horticulturalist Found in Indiana

Goodwell, Okla., May 14—Associates of Mr. Fred P. Esbaugh, well known horticulturist and member of the Experiment Station

staff at Goodwell, Okla., were dumbfounded last week when a mysterious disappearance of a horticulturalist was later reported by the receipt of a letter from Mrs. Anderson, Indiana, announcing the marriage of her daughter, Dolyn Ann, to Mr. Esbaugh, May 10.

Mr. and Mrs. L. M. Esbaugh, former owners of the Okla. Experiment Station, were visiting and attending to matters in Spearman

John Deere

Answering the Complete Power Farming Needs of Every Farmer

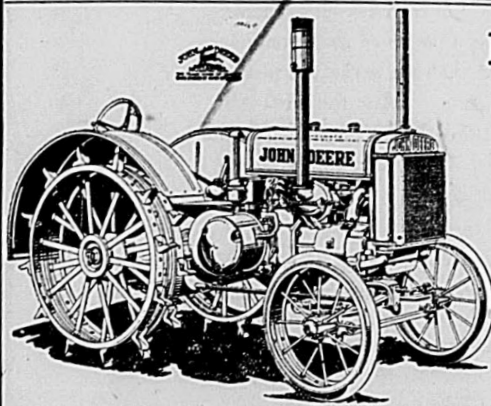
John Deere Tractors and ... Combines

Whatever the power farming needs, JOHN DEERE answers them. For efficient service, long life and low upkeep, John Deere has a proven record of performance.

In Harvesting time, the John Deere Combine goes steadily down the field with a minimum of trouble. Speed in getting the crop harvested when it should be harvested, is one of the big assets that can be attributed to John Deere efficiency.

For whatever power needs, let John Deere Tractors do the work for you. From pulling the largest size John Deere Combine to pulling a string of cultivator plows or discs, John Deere tractors offer carefree performance at the lowest possible upkeep.

And whatever you might buy in the John Deere Line—Combine, Tractor, Cultivators, Listers, or any needed farm implement, you know and can feel assured that you are getting the best.



PLAY SAFE . . .

If It Is a John Deere You Need Not Worry

CONGRATULATIONS, Morse

We want to Join with all the North Plains in congratulating MORSE and the SANTA FE upon the completion of the new Santa Fe line and the big Celebration May 15. It is another successful step in the progress of this great country.

WOMBLE HWD. COMPANY

Morse SPEARMAN Sunray

STRANGE AS IT SEEMS—By John Hi



THE HEART OF NEEDHAM PEARSALL, CHARLOTTE, N.C. IS ON HIS RIGHT SIDE

BRECHT YLWAS, OF BUFFALO, CALLED DO REGULATION SIGNS OF GUM AT THE SAME TIME

HARRY STUHDREHER THREW 12 CONSECUTIVE FORWARD PASSES BEFORE ONE WENT AMISS IN A GAME BETWEEN NOTRE DAME AND CARNegie TECH

PROFESSIONAL

STINNETT & WOLFE ATTORNEYS-AT-LAW General Civil and Criminal Practice Suite 10, Duncan Bldg. PAMP, TEXAS

J. E. GOWLER, M.D. Physician and Surgeon Phones: Residence, 9; Office 33 K-Ray Service Office in Reporter Building Spearman, Texas

DR. F. J. DAILY Dentist Office on Second Floor McLean Building, Phone 156 X-RAY

R. T. CORRELL LAWYER Perryton, Texas

DR. R. T. SPENCER PHYSICIAN AND SURGEON X-RAY DIAGNOSIS and Treatment Offices in Reporter Building West Side Main Phones: Office 177; Residence 198 SPEARMAN, TEXAS

Dr. Powell, Eye, Ear, Nose and Throat Specialist, will be in Spearman, at offices of Dr. Gower, on Wednesday, June 3, 1931. Glasses fitted and tonsils and adenoids removed.

DR. SIMMONS CHIROPRACTOR Borger, Texas In Spearman Sundays and Wednesdays at Tice Hotel

T. O. JAMES CIVIL ENGINEER State and County Surveyor Office with McNabb Land Co. SPEARMAN, TEXAS

PHONE 46 We Fill Any Doctor's Prescription HASTINGS DRUG PRESCRIPTION SPECIALISTS H. G. HASTINGS, Prop SPEARMAN, TEXAS "Your Nearest Drug Store"

for the Tough Jobs



MINNEAPOLIS COMBINES EXCEL

You will recognize in MINNEAPOLIS Combines those qualities necessary for cutting, threshing, saving and cleaning grain in unusual conditions.

Their excellent performance in long straw, lodged grain, weedy grain and other unfavorable conditions has given them a reputation for mastering tough jobs.

FEW ADVANTAGES OF MINNEAPOLIS COMBINES:

Famous MINNEAPOLIS threshing cylinder; long and lively straw racks; high clearance over straw racks and shoes; header especially adapted for both tall and lodged grain; low down, built-in grain bin; operator has full view of standing grain and grain in bin; heavy duty engine and roller chain drives.

Across Street from City Hall

Cooke - Mathews

Spearman Texas

Choose Wisely

... and you will choose a

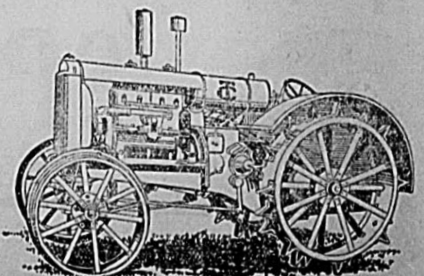
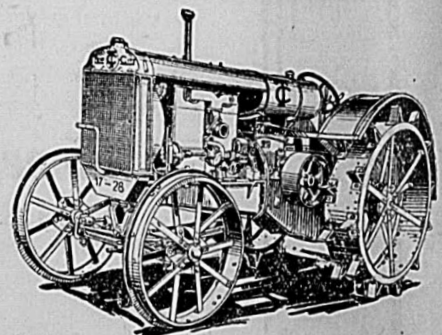
Minneapolis Combine

THOROUGH SEPARATION—EASE OF OPERATION—LARGE CAPACITY—LONG LIFE—

LOW UPKEEP COST—EASILY CONTROLLED HEADER—SIMPLE HEADER DRIVE—ROOMY FEEDER HOUSING—

SEE US BEFORE PLACING YOUR ORDER

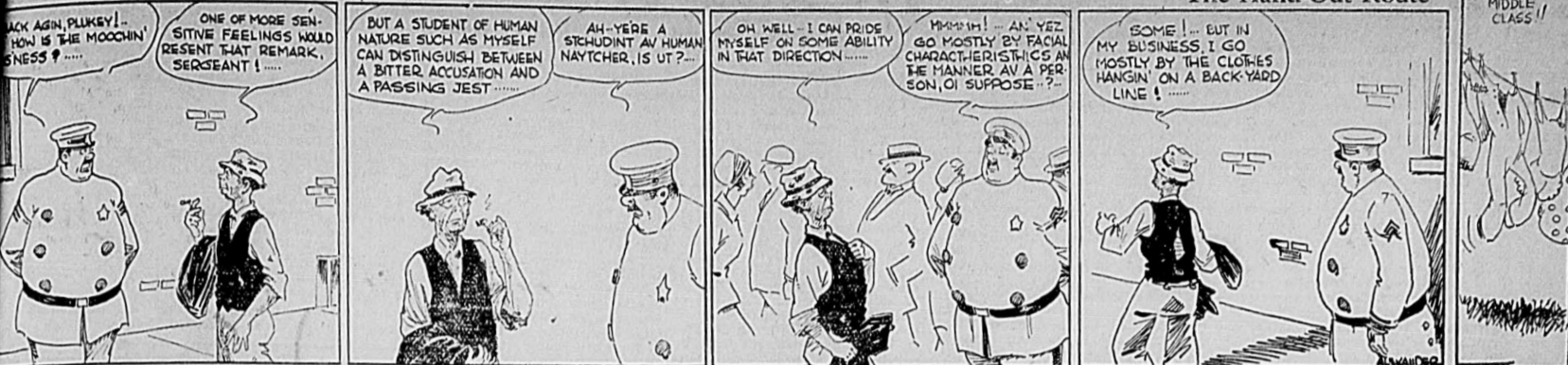
Two Great Tractors





ANNY OF THE FORCE

By F. O. Alexander



The Hand-Out Route

MIDDLE CLASS!!

Plains Dairy Farm Proving Ground for Butterfat Possibilities

Note.—The possibility of the development of the industry as it particularly pertains to the production of registered herds, as told by Robert out the Grand Plains owned by his father Shapley, who resides in County near Gruver. Recently made its appearance in a current issue of the magazine printed in Texas, devoted to a vamping interests. No one read the article that is a true story of what done in butter fat production Hansford county with a combination of common sense work.

ally the land was put under the plow until by 1920 there was very little free range left. It was 1925, however, before F. A. Shapley decided to sell his last beef cattle and establish a herd of registered Jerseys on his 1600-acre farm. It was in April 1928 that Mr. Shapley, with his oldest son Robert, who had now completed his first year in Oklahoma A. & M. College, picked out the foundation for their present herd. They purchased three registered cows and three registered heifers and a registered bull, and have purchased no females since. It was rather hard for one who had always been accustomed to handling range cattle and farming wheat to take up the milk pail and crank the separator. It was also something of a task to learn the difference in the management and feeding of the dairy cow from that of the range cattle. To add to the hardships, it was found, when the heifers from the

first bull began to freshen, that they were good in type only. So in 1926 Mr. Shapley and Robert made a trip to South Texas, where they secured a bull from the Santa Gertrudis Jersey farm at Kingsville. This bull, Marin Viola's Cid, a son of the \$30,000 bull The Imported Cid, showed excellent type and his dam had a Register of Merit record of 551 pounds of butterfat. In 1928 Robert, who after graduating from the Dairy Husbandry department of the Oklahoma A. & M. College spent two years at teaching, took charge of the farm. The farm now takes as its name "The Grand Plains Jersey Farm." In the fall of 1928 the cattle were shown at the Texas County Fair at Guyton, Oklahoma, for the first time. The premiums won were encouraging and the herd has returned to the Show Booth in 1929 and 1930. The stock from this farm have won fully three-fourths of the premiums on Jerseys during this time, having won over \$400.00 in cash prizes. The herd is now entered in the Amarillo News Globe Master Dairyman's Contest and production and feed records have been kept since November 1, 1930. The

testing is supervised, through the courtesy of the Vocational Agriculture Department of the Spearman High School by the instructor C. A. Robinson. The daughters of Maria Viola's Cid are showing marked improvement over their dams and the owners of the farm are sure that one cannot be too exacting in the requirements of his bull. In the face of present low prices, the Grand Plains Jersey farm has been able to show a profit on butterfat production. This has been possible Mr. Shapley tells us by feeding, weeding and breeding. All of the roughness and all of the grain fed are raised on the farm this being balanced by the use of cottonseed meal. Sudan, cane, and kafir furnish the hay

and the basal concentrate ration is composed of: 200 lbs. ground sweet clover hay, 200 lbs. ground oats, 300 lbs. milo maize, ground, 100 lbs. ground wheat or barley, 400 lbs. cottonseed meal, 20 lbs. mineral mixture composed of one-third salt, one-third bone meal and one third ground limestone. The amount of cottonseed meal is reduced when cows are on good succulent pasture that is high in protein. At the present the milking herd of 18 cows is cared for by one man, with the use of a milker and electric separator. Next fall a grandson of Fern's wexford Noble whose dam has a record of 806 pounds of butterfat on twice a day milking will take his place at the head of this

herd. The owners plan to continue the development of this herd so that it shall be the leading herd of this locality. **La Fiesta de Los Angeles** LOS ANGELES, May 14.—A question that disturbed planners of La Fiesta de Los Angeles, the city's 150th anniversary celebration, scheduled for September 4 to 12, has just been answered. The question was: "Can modern California reproduce the equestrian scenes that were familiar in the days of the dons?" The answer is, "Yes;" and that isn't all of it. The rest is—"They can be bettered." This is the report that has been received by La Fiesta Association

following a canvass of available horseflesh throughout California. What the scouts were looking for, of course, were saddle horses, as the only vehicle known to Spanish California was the carreta, and it was ox-drawn. As a result of the appeals to horseowners, including the large ranches and stock farms, La Fiesta will show in the historical pageant 500 matched steppers, valued at a half a million dollars, and their silver-mounted trappings will represent as much. While the historical pageant, opening feature of La Fiesta, will colorfully portray a century and a half of progress from pueblo days on, other events of the celebration will carry out the same theme.

**Cattleman Becomes A Successful Dairyman** and Plains Jersey Farm, F. A. Shapley and son Robert, Texas, has been known for only three years. It does not mark the extent of his success. Shapley settled on the farm in 1905. This was the days of open ranges in the country and the range cattle practically the only source of income to the settlers. Gradu-

ally the land was put under the plow until by 1920 there was very little free range left. It was 1925, however, before F. A. Shapley decided to sell his last beef cattle and establish a herd of registered Jerseys on his 1600-acre farm. It was in April 1928 that Mr. Shapley, with his oldest son Robert, who had now completed his first year in Oklahoma A. & M. College, picked out the foundation for their present herd. They purchased three registered cows and three registered heifers and a registered bull, and have purchased no females since. It was rather hard for one who had always been accustomed to handling range cattle and farming wheat to take up the milk pail and crank the separator. It was also something of a task to learn the difference in the management and feeding of the dairy cow from that of the range cattle. To add to the hardships, it was found, when the heifers from the

first bull began to freshen, that they were good in type only. So in 1926 Mr. Shapley and Robert made a trip to South Texas, where they secured a bull from the Santa Gertrudis Jersey farm at Kingsville. This bull, Marin Viola's Cid, a son of the \$30,000 bull The Imported Cid, showed excellent type and his dam had a Register of Merit record of 551 pounds of butterfat. In 1928 Robert, who after graduating from the Dairy Husbandry department of the Oklahoma A. & M. College spent two years at teaching, took charge of the farm. The farm now takes as its name "The Grand Plains Jersey Farm." In the fall of 1928 the cattle were shown at the Texas County Fair at Guyton, Oklahoma, for the first time. The premiums won were encouraging and the herd has returned to the Show Booth in 1929 and 1930. The stock from this farm have won fully three-fourths of the premiums on Jerseys during this time, having won over \$400.00 in cash prizes. The herd is now entered in the Amarillo News Globe Master Dairyman's Contest and production and feed records have been kept since November 1, 1930. The

testing is supervised, through the courtesy of the Vocational Agriculture Department of the Spearman High School by the instructor C. A. Robinson. The daughters of Maria Viola's Cid are showing marked improvement over their dams and the owners of the farm are sure that one cannot be too exacting in the requirements of his bull. In the face of present low prices, the Grand Plains Jersey farm has been able to show a profit on butterfat production. This has been possible Mr. Shapley tells us by feeding, weeding and breeding. All of the roughness and all of the grain fed are raised on the farm this being balanced by the use of cottonseed meal. Sudan, cane, and kafir furnish the hay

and the basal concentrate ration is composed of: 200 lbs. ground sweet clover hay, 200 lbs. ground oats, 300 lbs. milo maize, ground, 100 lbs. ground wheat or barley, 400 lbs. cottonseed meal, 20 lbs. mineral mixture composed of one-third salt, one-third bone meal and one third ground limestone. The amount of cottonseed meal is reduced when cows are on good succulent pasture that is high in protein. At the present the milking herd of 18 cows is cared for by one man, with the use of a milker and electric separator. Next fall a grandson of Fern's wexford Noble whose dam has a record of 806 pounds of butterfat on twice a day milking will take his place at the head of this

herd. The owners plan to continue the development of this herd so that it shall be the leading herd of this locality. **La Fiesta de Los Angeles** LOS ANGELES, May 14.—A question that disturbed planners of La Fiesta de Los Angeles, the city's 150th anniversary celebration, scheduled for September 4 to 12, has just been answered. The question was: "Can modern California reproduce the equestrian scenes that were familiar in the days of the dons?" The answer is, "Yes;" and that isn't all of it. The rest is—"They can be bettered." This is the report that has been received by La Fiesta Association

following a canvass of available horseflesh throughout California. What the scouts were looking for, of course, were saddle horses, as the only vehicle known to Spanish California was the carreta, and it was ox-drawn. As a result of the appeals to horseowners, including the large ranches and stock farms, La Fiesta will show in the historical pageant 500 matched steppers, valued at a half a million dollars, and their silver-mounted trappings will represent as much. While the historical pageant, opening feature of La Fiesta, will colorfully portray a century and a half of progress from pueblo days on, other events of the celebration will carry out the same theme.

**Permanent Waving**  
Experts who can perform permanent waving in the very best manner.  
**Special This Week REALISTIC WAVE**  
Including Shampoo \$5.00  
Finger Waving 50c  
**MRS. DODSON'S BEAUTY PARLOR**  
PHONE 114

**We're For You**  
**MORSE**  
and  
Congratulate the Santa Fe on the completion of its new line  
Think of Smith's Variety Store when in need of latest patterns in WALL PAPER.  
WE CARRY A LARGE STOCK  
**Smith Variety Store**  
Spearman, Texas

**With Astonishing Speed**  
**"FRIGIDAIRE" Freezes**  
**Desserts of Delicious Firmness**  
The "Cold Control" for faster freezing of ice cubes and desserts is one of the many outstanding advantages of Frigidaire Advanced Refrigeration. There are many others. It is these major improvements, developed by Frigidaire, that have made household refrigeration so healthful, convenient and economical.  
**A 3 YEAR SERVICE GUARANTEE**  
**.. Joe Perry ..**  
At Morton's Garage Spearman, Texas  
*Terms Will Be Arranged to Suit Purchaser*

**... AN ...**  
**ANNOUNCEMENT**  
**of Importance**  
**To All Truck Operators!**  
**The FORD TRUCK CARAVAN**  
**Will Stop At Our Show Room on SATURDAY, MAY 23**  
**Newest Ford Commercial Types Are Included**  
The Ford Truck Caravan, which consists of a number of Ford commercial units, including the newest truck and light delivery types, creates wide interest in every locality it visits.  
Many types for special purposes, are included, and among them are one or more of interest to every truck owner. The Ford Truck Caravan, containing a representative number of these units gives every one an opportunity to see and examine them in front of our showroom.  
The Ford Motor company has greatly enlarged its line of commercial vehicles, until there are now forty different bodies, two different chassis, and three wheelbase available. This provides a Ford unit for every business need, and offers economical hauling to every operator.  
Salesmen will be on duty to answer questions and to arrange demonstrations. We are prepared to supply any Ford type, in any of the large number of color combinations available. All are low in first cost, and give long, reliable, and economical service. You are invited to inspect the Caravan.  
**R. W. MORTON**  
**Phone 45 Main Street Spearman**



Churches and Society

Le Jeudi Bridge Club

Mrs. C. D. Foote and Mrs. Dawson Nichols entertained the club Thursday afternoon with a charming party at the home of Mrs. L. W. Mathews.

The color scheme of pink and green was carried out in table appointments, tallies and refreshments. Mrs. A. S. Richerson received the guest prize and Mrs. W. L. Russell high score for the club members. Mrs. R. E. Lee received low score.

Attractive two course refreshments were served to the following guests and club members.

Mesdames, A. S. Richerson, H. P. Bailey, W. W. Merritt, C. E. Jones, W. S. McNabb, W. G. McNabb, Vester Hill, J. D. Cameron, Miss Lucile Maize, E. C. Dumble, H. L. Dumas, R. E. Lee, W. L. Russell, Max Lackey, J. L. Hays, R. H. Prewitt, D. W. Holland, J. M. Thompson, R. W. Morton, S. B. Hale, C. C. Chambers, Wm. J. Whitson, R. M. Clogston.

Mrs. Max Lackey and Mrs. R. E. Lee will entertain the club at the country home of Mrs. Lackey, Thursday, May 21.

Bridge Party

Mrs. W. W. Merritt delightfully entertained with six tables of bridge at her home Monday afternoon. Mrs. Marvin Lee was awarded high score, and Mrs. R. E. Lee received low.

Dainty refreshments were served to the following guests: Mesdames, R. W. Morton, S. B. Hale, H. L. Dumas, R. E. Lee, Marvin Lee, Vester Hill, C. C. Chambers, Chas. E. Jones, J. W. Jones, J. M. Thompson, O. G. Collins, Max Lackey, R. M. Clogston, W. L. Russell, D. W. Holland, J. D. Hester, C. D. Foote, E. W. Huffstuter, E. C. Womble, W. S. McNabb, W. G. McNabb, J. W. Rakekin, R. H. Prewitt, J. D. Cameron.

First Christian Church

We came near our record in attendance last Sunday. Mother's Day program was of a high order and very well rendered. We are boosting for a big attendance in Sunday school next Sunday. Our morning preaching service will be dismissed for the Baccalaureate service at the high school auditorium. Sermon Sunday night at 8:00, "The New Birth"—Scripturally and sensibly faced. Come with us you will enjoy the service.

May 24th is Pentecost Sunday. We anticipate a great day in all our services on that anniversary. Plan to come.

JASPER BOGUE, Minister.

Methodist Missionary Society

The Methodist Missionary Society will meet Wednesday, May 20 at the home of Mrs. P. A. Lyon. The program will be from the Missionary Voice, with Mrs. J. W. Rakekin as leader.

Methodist Church

Sunday school promptly at 10 o'clock. The bell rings half an hour before the Sunday school opens—so let it be a reminder for you to get to the church. We will not have any preaching in the morning on account of the baccalaureate sermon at the school auditorium. League meets at 7:30 in the evening and preaching at 8:15 at night.

The District Women's Missionary Society which convened Tuesday afternoon and closed Wednesday, was a success from every point of view. There were 84 registered as delegates to this conference, besides many visitors and several ministers. The local committee are to be congratulated for the splendid way in which they cared for the delegates and visitors. Many homes were offered—more than we had delegates for—all of which was appreciated by the committees. We are grateful to the homes offered us by the other denominations—thanks to you.

Baptist Church

Sunday school will meet at 9:45. Will go immediately to high school at close of Sunday school. On account of baccalaureate sermon we will not go to Gruver as previously announced. Every one is urged to be on time.

J. H. RICHARDS, Pastor.

Woman's Missionary Union

The Woman's Missionary Union of the First Baptist church met at the home of Mrs. A. L. Rippey Wednesday afternoon, with sixteen members present; had a very interesting lesson from 15th and 16th chapters of John, led by Mrs. O. G. Collins; also a short business session was held. Mrs. C. T. Hitt was elected president and Mrs. W. T. Smith, reporter.

Next meeting will be held at the home of Mrs. N. L. Beck, Wednesday, May 20.

Popular Couple Are Wed at Cortez

The many friend of Miss Grace McDill and Dimer W. Reaves were surprised to learn that on Saturday the couple had come to Cortez and were married at the Methodist parsonage by Rev. B. R. Lawton. The ceremony was attended by J. T. McDill father of the bride.

Following the ceremony a wedding dinner was enjoyed at the McDill home in Lakeview and then the newlyweds left for their new home at Ackmen.

The bride is a popular member of the younger set of Lakeview, and the groom a well known ranchman of the Ackmen district. He has been associated with his father, C. B. Reaves, in the operation of a large wheat farm in the nature farming country, since they moved here from Texas over a year ago.

Their host of friends over the entire county, including the Journal-Herald, wish them happiness and prosperity.—Cortez (Colo.) Journal-Herald.

Perryton Next Meeting Place For Missionaries

Perryton was chosen as the next meeting place of the district convention of the Methodist Missionary Society at the close of their two day session here Wednesday. Many out of town delegates were present. Mrs. J. W. Rakekin of this city was elected superintendent of publicity.

Many important speakers appeared on the program for the good of the organization and many helpful discussions by well-known speakers were brought before the session.

The Passion Play of Obermaurer was one of the interesting events of the meet, shown at the high school building Tuesday night. It was largely attended. The passion play was under the supervision here of Mattie May Fisher, head of the Panhandle Music association and instructor of religious education in Canyon College.

Church of Christ

The revival meeting resulted in much good. There were good crowds throughout the meeting despite the inclement weather; the house was filled to capacity several times. There were sixteen additions to the church and much good accomplished in other ways. The entire church was stirred up to a greater work.

Next Lord's day we will meet at 10 a. m. have a short sermon and communion and be dismissed in time to attend the Baccalaureate services at the high school beginning at 11 o'clock. At the evening service Bro. Tarbet will speak on "God's Rainbow." This is an inspirational service which everyone will enjoy, come.

FELIX W. TARBET.

Religious Educator Speaks at Lions Club

Miss Mattie May Swisher, Canyon, president of the Panhandle Music Association and an instructor in religious education in Canyon college, made an interesting talk to members of the Lions club at their regular meeting at Tuesday noon at the American Legion hall. She also favored the club with a vocal solo, playing her own accompaniment.

Other guests and who made short talks were, Mr. and Mrs. E. E. Adams, of Amarillo, and Mrs. P. I. Graves, also of Amarillo. The guests here were in attendance of the district conference of the ladies' Methodist Missionary Society that convened here for a two day session.

President R. M. Clogston presided at the meeting.

Fathes Dies in Oklahoma

Charles Darnell received a wire late Wednesday night notifying him of the death of his father, J. M. Darnell, at Wewoka, Oklahoma. Mr. and Mrs. Darnell left immediately to attend the funeral.

The older Darnell has been in a critical condition for some time, and his death was not wholly unexpected. Funeral arrangements were not completed at the time of this writing.

R. V. Converse Address At Farmers Banquet

Establishing a better understanding between the rural people of the communities and the city of Spearman is the main object of the Agricultural Committee of the Spearman Chamber of Commerce. The agricultural committee, which you must all know is composed of farmers living in the rural communities, providing a better understanding between all. By having such an organization, all can work together in bringing around worth-while accomplishments to all this section, which is of benefit to all our farmers. The work of this agricultural committee, which has been very faithfully carried on by its members, has built up a better and closer understanding between the city and the rural dweller. There is a big work ahead on which this committee has not had time to concentrate its efforts, but it shall be the constant effort of the agricultural committee to continue to achieve real results. I believe that most all the rural citizens fully realize that the business men of Spearman are working in real cooperation with them, as there are many things that are a credit to any rural community in the country. The Spearman Chamber of Commerce is an organization where any farmer can come who has problems which he or his community are unable to bring about the results wanted, and receive at all times the full cooperation of the citizens of Spearman and rural districts in putting things over.

The activities of the Agricultural committee cover a wide field. They gave much assistance to the County Commissioners in securing the attitude of the land owners in the county as to securing a county agent. This committee is now working out plans and making surveys that additional rural mail routes may be extended thru several rural districts. They are now working out plans for a soil survey to be made of the county. Through their efforts they discouraged the sale of Oleomargarine by the merchants in the county,

this going into effect June 1st when state license expire. They are also working out plans to start more diversification of crops. Also, plans are being worked on to extend rural telephone lines. Many other important things are included in the working program of this committee. The Chamber's offices are always open to the farmers for any meetings they wish to hold. It is their Chamber of Commerce, and all are requested to make use of it. You will always be cordially greeted by our secretary, J. W. Rakekin.

Hansford county is becoming recognized in many portions of the state due to the activities of the Chamber of Commerce. I have letters from Prof. Connor and Mr. Edmonds, District Agent of College Station, who congratulate the agricultural committee in their work and progress being made.

In conclusion, in behalf of the business men of Spearman, we want to express to the farmers our appreciation of their presence at this meeting tonight. The agricultural committee has held many important meetings during the year, and we congratulate President W. W. Merritt, and the Board of Directors of the Chamber of Commerce for the splendid assistance and cooperation given us farmers; they have the farmers interest at heart at all times.

W. B. Thompson Dies At Dalhart Monday

W. B. Thompson, well known farmer of this section, and the father of Paul and Warden Thompson of this city, was found dead in bed, Monday evening about 10:30, at his farm home six miles west of Dalhart. No one was at home at the time. The cause of his death was attributed to acute indigestion.

Walter Bateman Thompson was born September 28, 1879, at Tennessee Colony, in Anderson County, Texas. He moved with his wife and two sons to Hansford county in the spring of 1918, and located a few miles east of Spearman. He continued his residence in Hansford county until about a

year ago, when he moved to Dalhart. The remains were brought to Spearman, where funeral services were conducted Wednesday by Judge A. E. Townsend, at the Union church. He was laid to rest by the side of his wife, who preceded him in death several years. Left to mourn his death are his two sons, Warden and Paul, a number of sisters, a step mother and a host of other relatives and friends. Relatives who attended the funeral besides Warden and Paul were two sisters, Mrs. O. V. Farley, Eldorado, Oklahoma, and Miss Thelma Thompson, of Quanah.

Homer Cluck and sons Duward and Sam were in from their farm homes west of Gruver Saturday.

SLEEP ON RIGHT SIDE BEST FOR THE HEAD

If you lose sleep on right side, you can't sleep on right side, etc. It is just ONE dose of stomach GAS pressing on the right side of the head. Advertise your symptoms. You will be cured in 2 hours. See your stomach and bowels how good they feel! Happiness Company.

Read the Reporter every Sunday, with his mother.

## Let Us Haul It By Truck

**Faster & No Delays More Economical**

## Mizar Truck Line

**Spearman : Amarillo**

# DRESS SALE

**Three Days Only, May 14 - 15 - 16**

## B. H. SIMON'S

**\$12.50 Values**

For the Closing of School or for the Morse Celebration you will surely want a new dress—at this low price. They are brand new dresses.

### Not In Years Have We Seen Such SILK DRESSES

**\$9.95**

A LOW PRICE for such Smartness!

Every woman who knows the high priced characteristics of chic, taste and good quality will be thrilled to find these in dresses at only \$9.95. For you never saw anything quite as good looking, as utterly smart as the dresses in this low priced group. Bright prints in the gayest of colors—plain colors and contrasts. Made with the care and details you would expect only in much higher priced models.

- THREE-QUARTER COATS—SOFT COWL
- NECKLINES—DISCREET FLARES
- SHORT JACKETS—FAGGOTTING—LACE

Sizes for Women and Misses

Dress Sale  
Thurs'd'y  
Friday  
Saturday

# Thomason Brothers

THE QUALITY STORE


SPEARMAN, TEXAS

B. H. Simons  
\$12.50 at  
\$9.95



# Shop and Save

## SATURDAY and MONDAY



SUGAR, 10 pounds	55c
(Limit 10 pounds to each customer)	
MAXWELL HOUSE COFFEE, 3 lbs.	\$1.00
PEACH BUTTER, 1 gallon	87c
BREAD, 2 loaves	15c
SANDWICH SPREAD or Mayonnaise, 8oz.	17c
LAUNDRY SOAP, P. & G. or Crystal	
White, 7 bars	25c
BEANS, large white, 10 lbs.	59c
PEARS, Bartlett's, No. 2 1/2 can	19c

**We'll Help Celebrate, Morse and Santa Fe**

**Jitney Jungle**

Save a Nickle On a Quarter



ON TO MORSE : SANTA FE SPECIAL EDITION  
**THE SPEARMAN REPORTER**

Third Year Spearman, Hansford County, Texas, Thursday, May 14, 1931 Number 23

**OF C. - FARMERS BANQUET DRAWS A BIG CROWD**

**Outlook For Good Wheat Crop In 1931 Very Promising Is Farmers Predictions**

**FARMERS' BANQUET BIG SUCCESS; MORE THAN 300 ATTEND IMPORTANT GATHERING**

...of Cooperation Ex-  
 ...Men in Working for  
 ...Progress

Farmers Banquet held Fri-  
 ...in the large High School  
 ...by the Chamber of  
 ...proved one of the most  
 ...and largely attended  
 ...ever held in Spearman.  
 ...hundred were present.  
 ...and business men from  
 ...of Hansford and ad-  
 ...counties were present, and  
 ...iving above the state line  
 ...oma were in attendance.  
 ...Anselby of Amarillo, and  
 ...in most every section of  
 ...was Toastmaster of the  
 ...President W. W. Merritt,  
 ...Spearman Chamber of  
 ...ce, in calling the meeting  
 ...expressed the pleasure of  
 ...of Spearman in having  
 ...of our rural neighbors  
 ...from all sections of Hans-  
 ...county and emphasized the  
 ...the citizens of Spearman  
 ...rural communities. The  
 ...all rose to their feet and  
 ...Hail, Hail the Gang's All  
 ...led by J. Dave Cameron.  
 ...on was offered by Rev. H.  
 ...ost. President Merritt then  
 ...ted Henry Anselby, who  
 ...as toastmaster of the  
 ...and with his ready humor  
 ...on occasion a most pleas-  
 ...able one for all present.  
 ...the dinner hour the guests  
 ...entertained with good selections  
 ...orchestra, Miss Troas Eli-  
 ...Willoughby Sparks. Judge  
 ...owns delivered the ad-  
 ...welcome in which he re-  
 ...in this section, saying the  
 ...stant asset to our coun-  
 ...farmers, that the  
 ...came from the soil, and  
 ...future possibilities of

**ROW CROP ACREAGE**



Row crops do well in Hansford County. This is a typical scene of a tract of land planted to kafir corn, and later produced a large yield.

...d county and its adjoin-  
 ...itory and suggested the  
 ...take advantage of them.  
 ...tion is and will continue  
 ...an attractive magnet,  
 ...idge Townsend emphasize  
 ...of the Spearman Cham-  
 ...merce and its efforts to  
 ...operate with every citizen  
 ...of the county, that it was  
 ...anation where all can work  
 ...and was most important  
 ...communities. In conclu-  
 ...sion this organization was  
 ...ness institution that was  
 ...all.

...Gruver, of near Gruver,  
 ...Hansford county's progress-  
 ...sive men responded to  
 ...come address in a most  
 ...anner, stressing many im-  
 ...portant things that should not be  
 ...for the future develop-  
 ...our county. Building good  
 ...every section of Hans-  
 ...county and linking them with  
 ...roads and highways thru  
 ...tion, was stressed by the  
 ...Mr. Gruver's address was  
 ...mistic analysis for future  
 ...

...Anselby was then intro-  
 ...by President Merritt, who  
 ...large of the Banquet and  
 ...the large attendance in an  
 ...of laughter and amusement  
 ...out the evening. Mr. An-  
 ...a large acquaintance in  
 ...an and adjacent counties.  
 ...Converse, Chairman of  
 ...gricultural Committee of the  
 ...of Commerce, was next  
 ...program, who gave a fine  
 ...report of accomplish-  
 ...of his committee and what  
 ...included in their large  
 ...of work for the future.  
 ...J. Dave Cameron, of the  
 ...Reporter in his talk re-  
 ...his impressions of the fine  
 ...ship of this community  
 ...his arrival and taking up of

**WHEATFIELD SCENE**



A wheatfield scene taken on the O'Loughlin Bros. ranch near Spearman. The wheat was estimated to have made between 40 and 60 bushels to the acre. O'Loughlin Bros. are big wheat farmers in this section and have several thousand acres planted to wheat now.

Power and Light Co., Borger  
 ...briefly outlined what his company  
 ...were doing in this section which  
 ...will add to future development in  
 ...agricultural phases.

The ladies of the Baptist  
 ...Church served the dinner for this  
 ...banquet, which was served in a  
 ...most excellent manner and received  
 ...may praises during the evening  
 ...by the speakers, as well as the  
 ...toastmaster. Much credit is due  
 ...the Baptist ladies for their assist-  
 ...ance in making the evening a most  
 ...enjoyable one.

This Farmers Banquet held by  
 ...the chamber of commerce, was the  
 ...largest attended affair of its kind  
 ...ever held in Spearman, and it was  
 ...very noticeable how many farmers  
 ...were present from every  
 ...section of this county. The work-  
 ...ing committee of the Chamber of  
 ...Commerce deserves much credit  
 ...in the manner everything was  
 ...planned, so that the banquet and  
 ...program of the evening was car-  
 ...ried out in a wonderful manner.

Committees were composed of  
 ...Wm. E. McClellan, general chair-  
 ...man of the program committee,  
 ...assisted by Fred Lusk, O. G. Col-  
 ...lins, Fred Hoskins, C. H. Ging,  
 ...R. L. McClellan, and all worked  
 ...industriously for two weeks prior  
 ...to this meeting to make it the  
 ...largest affair ever staged in Spear-  
 ...man. Secretary J. W. Ratekin,  
 ...worked unflinchingly during all this  
 ...time. Invitations, personal appeal,  
 ...telephone calls, were resorted to  
 ...in order that it should be a suc-  
 ...cessful gathering. Through Mr.  
 ...Ratekin's efforts Spearman is be-  
 ...coming known throughout the en-  
 ...tire section of Texas. Ratekin cer-  
 ...tainly believes in doing worth  
 ...while things to bring about re-  
 ...sults in whatever he goes about.

The representations from rural  
 ...communities, neighboring towns  
 ...and cities in the county and else-  
 ...where was commented upon. The  
 ...response received prior to a full  
 ...gathering indicated that a full  
 ...house would result and sure  
 ...enough the Gymnasium was filled  
 ...almost to the limit. Secretary  
 ...Ratekin, since the Banquet is re-  
 ...ceiving calls from many farmers  
 ...and letters from neighboring  
 ...towns congratulating the Cham-  
 ...ber of Commerce. At the close of  
 ...the banquet all left the High  
 ...school building with a smile of  
 ...good feeling for the manner in  
 ...which they were entertained, and  
 ...the expressions that followed, that  
 ...they would always be present  
 ...when any farmers banquets fol-  
 ...lowed.

The Spearman Band, under the  
 ...direction of E. K. Snider, band  
 ...master, was appreciated. They  
 ...played outside the school building  
 ...early in the evening and when the

**NEW TOWNSITES ON SANTA FE NEW LINE**

Two new townsites on the new-  
 ...ly completed line of the Santa Fe  
 ...Railway from Amarillo to Boise  
 ...City in the Oklahoma Panhandle  
 ...are ready to be opened, according  
 ...to information given out by rail-  
 ...way officials.

Kerrick in Dallam County,  
 ...Texas, one hundred miles north of  
 ...Amarillo and located just south  
 ...of the Oklahoma State line, will  
 ...be opened Monday, May 11th.

Etter in Moore County, Texas,  
 ...sixty four miles north of Ama-  
 ...rillo and fourteen miles north of  
 ...Dumas, the County Seat, will be  
 ...opened on Monday, May 18th.

Lots, going on sale in these two  
 ...townsites on the opening days, in-  
 ...clude business and residence lots  
 ...and will be sold at very reason-  
 ...able prices. Both towns will make  
 ...a start in a new and undeveloped  
 ...country.

The towns are located in fine  
 ...agricultural and livestock districts,  
 ...which this new main line of the  
 ...Santa Fe railway opens to devel-  
 ...opment. An opportunity is here  
 ...offered to business men to start  
 ...on the ground floor. The rich  
 ...lands are already being settled  
 ...and brought under cultivation  
 ...and in a few years will be impor-  
 ...tant producers of much winter  
 ...wheat, grain, forage sorghums,  
 ...Indian corn, and other crops. The  
 ...transportation facilities now pro-  
 ...vided by the Santa Fe Railway,  
 ...will hurry the development of this  
 ...fine plains section.

**ROW CROPS PRODUCE GOOD YIELDS IN CO.**

Milo Maize, Kafir, Cane, and  
 ...Higeria Thrive in Hansford  
 ...County Soil

The natural adaptability of row  
 ...crops to Hansford county soil  
 ...makes this section ideal for the  
 ...growing of kafir, milo maize, cane,  
 ...higeria and other grains.

Due to the fact that these  
 ...crops are quick maturing, failure  
 ...to make a crop is a rare thing.

There must be some consider-  
 ...ation in the preparation of the  
 ...soil for these crops, farmers say.  
 ...Early plowing so that the ground  
 ...will conserve the moisture, is  
 ...necessary. After the crop is up  
 ...at least three good cultivations  
 ...are needed in order to produce  
 ...the greatest yield.

Any one of these small grain  
 ...crops can be planted in May,  
 ...which will give plenty of time for  
 ...harvest before frost.

Although row crops as a rule,  
 ...do not produce as much in dollars  
 ...and cents if sold as feed products,  
 ...farmers say that in many cases  
 ...much more can be realized out of  
 ...row crops if they are marketed  
 ...thru the production of hogs, beef  
 ...cattle, milk cows and other live-  
 ...stock.

Power farming has in a great  
 ...measure, lessened the tendency of  
 ...many farmers to produce a feed  
 ...crop because they no longer de-  
 ...pend upon horse drawn imple-  
 ...ments in producing a crop, but a  
 ...number of farmers in this section  
 ...are getting away from the idea of  
 ...depending upon wheat altogether  
 ...as a farm crop.

Childress — Seventh annual  
 ...meeting of Great Plains Highway  
 ...Association will be held at this  
 ...city June 2-3.

Brownsville — Carload lot tomato  
 ...shipments now leaving here; 2,000  
 ...cars expected to be shipped from  
 ...Valley during season.

**OUTLOOK UNUSUALLY GOOD FOR BIG WHEAT YIELD IN HANSFORD COUNTY THIS YEAR**

**RAISING OF POULTRY PROVES REAL SUCCESS**

Moisture in April Which Totaled  
 ...More Than Three Inches Virtu-  
 ...ally Assures Good Yield

That Hansford county has as  
 ...good prospects for a bumper  
 ...wheat crop, as she has ever be-  
 ...fore had in the past is the predic-  
 ...tion of farmers over the wheat  
 ...belt.

Farmers here had some fear of  
 ...the 1931 crop due to a dry early  
 ...Spring and wheat did not look any  
 ...too good. Recent rains that fell  
 ...in April brought the wheat out  
 ...and now the entire county indi-  
 ...cates a very promising yield.

According to figures compiled  
 ...by the agricultural committee of  
 ...the Spearman chamber of com-  
 ...merce, a larger acreage is plant-  
 ...ed to wheat than ever before in  
 ...the history of the county. Farm-  
 ...ers are now getting their machin-  
 ...ery in shape for the harvest.

Sid Powers, business man and  
 ...farmer of Spearman, who recently  
 ...made a close inspection of his  
 ...wheat crop, said wheat over the  
 ...county generally is larger than it  
 ...has been in some years. This he  
 ...claimed would cause harvest to be-  
 ...gin earlier than usual.

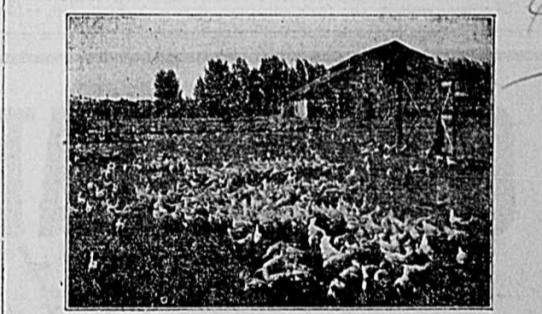
Better railroad facilities for  
 ...the marketing of the 1931 crop  
 ...will be of great assistance to  
 ...farmers. The completion of the  
 ...new Santa Fe line from Spearman  
 ...offers a better and quicker outlet  
 ...for the shipping of wheat, which  
 ...is claimed will move the crop off  
 ...this year without the serious diffi-  
 ...culty that has been experienced in  
 ...the past in this regard.

Tractor and combine businesses  
 ...report good interest in the sale  
 ...of new machinery and say that  
 ...where farmers already have their  
 ...equipment they are making need-  
 ...ed repairs and making ready for  
 ...a big crop.

Sonora — Roy Hudspeth ships  
 ...solid trainload of 25 cars cattle  
 ...to grass lands near Sedan, Kansas.

Read the Reporter every week.

**POULTRY THRIVES HERE**



Many fine flocks of poultry are now to be seen around the farm homes of Hansford County. Farmers are turning their attention more to this type of farm work that brings steady revenue the year round.

**HANSFORD SHIPS MANY BEEF CATTLE MARKET**

Livestock Is Still Considered One  
 ...of Big Phases of County's  
 ...Production

Good ranches with good beef  
 ...cattle are still found in Hansford  
 ...county. Many old timers who pio-  
 ...neered in the cattle business in  
 ...this county 30 years ago, find  
 ...ranching a paying proposition to-  
 ...day and refuse to plow their land  
 ...up.

Grass is still good on the north  
 ...plains. Range cattle do well al-  
 ...most the entire year and very lit-  
 ...tle feeding is necessary in winter-  
 ...ing stock.

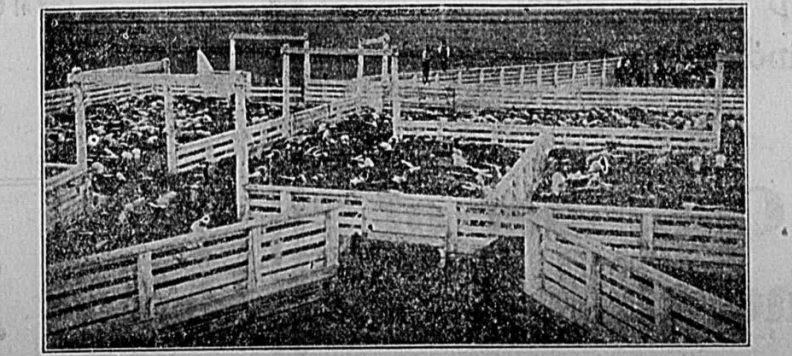
Cattlemen engaged in feeding  
 ...find it a profitable business. Beef  
 ...cattle shipped from southern and  
 ...eastern points and fed for a sea-  
 ...son bring a good price on the mar-  
 ...ket.

Palestine — New county jail will  
 ...be built at estimated cost of \$60,-  
 ...000.

Tyler — KGKB, city's new  
 ...broadcasting station, located in  
 ...Tyler Commercial building, forma-  
 ...lly opened on recent date.

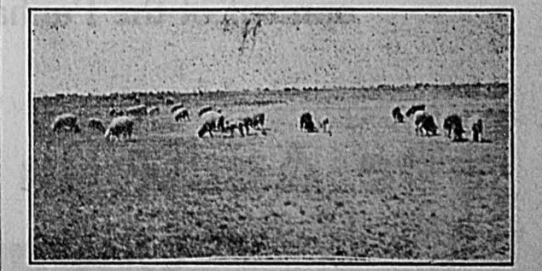
Austin — Total of 6,957 cars of  
 ...fruit and vegetables shipped from  
 ...State in March.

**HANSFORD REAL BEEF COUNTRY**



The above scene is the stock pens of Spearman. Hundreds of beef cattle are assembled each year in these pens and shipped out to eastern markets.

**SHEEP ON THE PLAINS**



In the past several years several thousand sheep have been brought to the North Plains and are proving to be a profitable investment. The north plains produces good wool and is found to be an ideal breeding country.

(Continued on Page Four)



# Concerning Prominent Citizens of Spearman

J. R. COLLARD

Celebrating his 25th anniversary in Hansford county, John R. Collard today is seeing many of his dream of 25 years ago come true.

As a young man he came to Hansford county and bought a ranch eight miles south of Hansford. Although the ranch cost only \$2.50 an acre with 50 cents an acre as cash payment he admitted that he had more trouble meeting the annual payments than he has had on any land purchased since that time.

After spending a few years on the ranch he entered the real estate business at Hansford. He was elected as cashier of the First State Bank, which is now the First National Bank of Spearman. He was the only person employed by the bank. The bank did a small business and could not pay much salary. For that reason Mr. Collard resigned and began his real estate program on a big scale.

Although there had been talk of Hansford county getting a railroad when he first came to it, the results had not been satisfactory. About 1907 the Enid, Ochiltree and Western Railway was formed. This road was to run from Dalt toward Enid. The bed was graded about 15 miles east of Dalt. Several townsites were laid out, one being about a mile east of the present town of Spearman. Another was on top of the hill close to Hansford.

The Santa Fe became interested in serving this territory. President E. P. Ripley started building a line from Shattuck, Okla., to Spearman before the war. The war delayed the railroad and it was not completed until the fall of 1919. The contractor handled car load shipments for several months and it was in 1920 that the Santa Fe formally began operating the road.

Mr. Collard's ability as a real estate and business man had attracted the attention of the Santa Fe. He was selected to sell lots for the town of Spearman. How well he succeeded may be seen from the development that has taken place at Spearman.

Today the Santa Fe owns less than 100 lots, probably not more than 25 in the city of Spearman. Spearman townsite covers a section. In connection with the sale of town lots, Mr. Collard also became a land agent and helped sell about 200 sections of the Santa Fe land. This land was sold to actual farmers and it was necessary to improve the acreage. Farmers were sold land with one-eighth down no payments for two years and the balance in seven equal payments.

Mr. Collard is proud of the development that has come to Spearman and Hansford county. Farmers today have markets for their

wheat and row crops because of the building of railroads.

Long residence in the Panhandle has made Mr. Collard a super-booster and yet he wants the farmers of Hansford county to diversify. Good wheat yields make the farmers forget the short yields. Every farmer should raise feed crops, milk a few cows, keep a flock of chickens and feed a few hogs he firmly believes. The farmer who has taken this precaution can pull through a year with short wheat crop without going broke, he holds.

The Panhandle land is profitable, more so than East Texas land. Mr. Collard has found thru actual experience. He owns his old Homestead in East Texas. Although that high priced land is among the best in the state, their production is not as profitable as Hansford county land, he has learned.

Whenever the people of Spearman want a big task done, the first man thought of is John Collard, for he has given unstintingly of himself for the welfare of the community.

FRED W. BRANDT

Fred W. Brandt is a native of Texas being raised near Chapel Hill in Southwestern Texas. His father was a pioneer of that section of the state and the Brandt have been connected with important affairs all their lives. He is owner of the Fred W. Brandt & Co. store and has lived in this county something over twenty years. During that time he has witnessed the change that has made this section into an ideal wheat raising country. Twenty-five years ago, farms were few and far between. Cattle was the principle industry of the plains residents and east herds grew fat on the succulent grasses of the plains. Now wheat has crowded the cattle off into the breaks and a herd of cattle on the plains of Hansford county is a rare sight.

Like all others who have lived here any length of time, Mr. Brandt is a firm believer in the future greatness of Hansford county and thinks that now we are only in the infancy of what we will become in time.

A. F. BARKLEY

Judge A. F. Barkley is perhaps one of the best known men in the north Panhandle, and counts his friends by his acquaintances. He came to Old Hansford in 1905 and opened an abstract business and has followed this combined with insurance business until the first of 1929, when he sold out and entered the hardware and implement business as a partner in the Womble Hardware.

Shortly after coming to the county, Mr. Barkley was elected to the office of county judge and filled the office with credit, both to

himself and his constituents for a number of years, in fact his friends kept putting him in office as long as he would accept the place. He has always been active in politics, and held the office of county chairman of the democratic party for over twenty years. It goes without saying that he also kept Hansford county safely within the democratic ranks as long as he held the office.

For a number of years, Mr. Barkley, in partnership with his brother "Bill," has conducted a modern ranch on the Palo Duro near the southwest corner of the county. Alfalfa feed, small grain, cattle and hogs are raised and marketed at a profit. This method of handling farm operations has always proven profitable, and when the dry years roll around, there is always something to sell at a profit. The new Rock Island railroad built their line close by this ranch and the town of Morse is located near one corner of it.

There has always been a crying need for better schools in this county and Mr. Barkley was among the first to realize this fact. He has always been a booster for better schools and has given unsparsingly of both his time and his money toward furthering this end. Shortly after coming to the county he was elected a member of the school board and has served continuously until the past election, when he was left off so that he could serve legally as a member of the county school board. Spearman's supreme position as school town has been attained largely through his efforts and his untiring work is certainly appreciated by our citizens.

Should there be such a thing as a prize given by this community to its most useful citizen there is no doubt but it would be awarded to Judge Barkley by unanimous consent. He is active in church work and has been prominent in Methodist circles over the Panhandle, since the church was organized

here in the early days. He is also an active civic worker and belongs and takes an enthusiastic interest in our various civic clubs. He is also a member of the Spearman Gun Club, and attends the shoots regularly, but perhaps nothing better be said concerning his ability as a shooter.

Judge Barkley comes of pioneer stock, and still has many of the well known characteristics of the pioneer. His father settled in Foard county, in an early day, when that section was considered back of beyond, and there were few advantages and many hardships and disadvantages. Since the sheep business has become profitable, industry, as well as respectable, over the north plains, Mr. Barkley has admitted that he was a pioneer in the business in Foard county. He and J. C. Whittenberg of Plemons, formed a partnership and ran sheep for some time. However, the business did not prove as lucrative as Mr. Barkley hoped and as the assets just about equalled the liabilities, he decided he would sever his connections with the firm, and head back toward civilization in search of a schoolhouse. School facilities were few and far between, at that time, and the book "Iarlin" received by Judge Barkley would be considered pitifully small in this day. However he has continued his education all through life, and now, perhaps, would be considered one of the most learned men in this section of the country although there is no array of capital letters strung after his name.

Various communities owe a debt of gratitude to their pioneer citizens who endured the hardships while "blazing the way" for civilization and this fact should not be lost sight of by the modern generation. It took real staying qualities to endure the privations that were the lot of the pioneer, and especially the pioneer who was sincerely trying to be a good citizen and bring his children up

in the right manner. Not all pioneers were honest, Christian men, sincerely trying to build a high class, and forward looking coun-

try, out of the frontier settlements. We of this day, enjoying the fruits of the patient labor of those who have passed on as well

as those who are still with us not for a moment (Continued on Page Three)

## "When I sell anybody on Germ Processed Oil once . . . they stay sold"

THE use of Conoco Germ-Processed Motor Oil becomes a decided preference once you have had it in your crankcase. As value to your motor, and to you, is quickly demonstrated. You may never have need to call on it for the extra safety factor it provides. You may never drive fast enough to test its ability to stand up day after day at 60 miles per hour. But when your speedometer says it is your usual oil changing time and you find your oil in perfect condition for longer use . . . when your gas-

gauge tells you that your mileage has definitely increased . . . when the space of time between quarts of oil and between repair bills has appreciably lengthened . . . then you know that you were right in changing to Germ-Processed oil.

So many motorists have changed to Germ-Processed and "stayed sold" that it has caused a real revolution in oil circles. Join these motorists in their satisfaction. Stop today at the sign of the Conoco Red Triangle and ask for Conoco Germ-Processed Motor Oil. All grades 35¢ per quart.



**CONOCO**  
GERM  
PROCESSED  
PARAFFIN BASE  
MOTOR OIL

Travel with a Conoco Passport! . . . Send an outline of your proposed motor trip or let us help plan your trip. Get a Conoco passport, individually marked maps and other travel helps . . . all FREE! More than thirty thousand motorists used this service in the season just passed. CONOCO TRAVEL BUREAU Denver, Colorado.

# THE FOUNDATIONS ARE SOUND

*-construction proceeds!*

America has had enough of "paper" prosperity. The next prosperity must be REAL. Youth and intelligence, foresight and honest labor, have laid firm foundations. It's up to the constructive business man to do the rest.

## First State Bank

OF SPEARMAN

# CONGRATULATIONS!

## SPEARMAN

Amarillo joins you in a hearty welcome to the Santa Fe Railway system for this forward step in the development of the Panhandle.

### The Amarillo Chamber of Commerce

Newest—Latest—Most Accurate  
JUST COMPLETED

# MAP of HANSFORD COUNTY

NOW AVAILABLE AT THE  
**SPEARMAN REPORTER**  
SPEARMAN, TEXAS

Shows all Latest Railroad, Pipe Line, Highway and Other Developments

Size of Map 10 1-2 by 10 Inches

Call at the Office or Mail Your Order Today  
For This Valuable Map

## Price . . . 25 Cents



**PROMINENT CITIZENS—**  
(Continued From Page Two)

them the credit that is so fully theirs.

**S. B. HALE**

S. B. Hale, our well known apocary, was, like Sam Bass, born in Indiana, and, also like this late hero of song and story, left his native home at an early age, to see the wonders of Texas. Arriving here the resemblance to Judge Hale immediately set about to overcome his many disadvantages and make a citizen while Sam descended to the level of a common high-society man and finally waked up one morning so full of lead that he was unable to carry it about with him, and thereupon decided to migrate to another bourne, "Where the whangadoo mourneth constantly over the loss of its first born."

Judge Hale has lived in Hansford county something over twenty years and during that time has been actively engaged in many movements that have helped to make this section what it is. He owns a good farm near old Hansford and was among the first converts to the wisdom of the "Cow, Pig and Hen" system of farming. While he has never actively engaged in farming himself, he has always supervised the farming operations and devoted his time to his drug business, with pleasing results. Judge Hale takes an active interest in Chamber of Commerce work and is always ready to devote his time and ability toward putting over movements that will be an aid to Spearman and the surrounding territory. He was twice elected to the office of county judge and filled the office with credit to himself and the county. Judge Hale married a Hansford county girl, Miss Grace Wright, who was born and raised in this county, and a member of a well-known pioneer family. This fact, together with others, firmly attach him to our country, which he truly believes is the best in the states.

**R. L. McCLELLAN**

R. L. McClellan is one of the outstanding young business men of the north Panhandle country. Very few men in this entire section have made the success in business that he has made. Above that, and of much more importance, however, is the fact that he is a good citizen, in every sense of the word. He is a leader in every civic enterprise that is calculated to make Hansford county a better place in which to live and raise our families. His time and his means are always at the disposal of the community, and he has aided materially in shaping

the destinies of Spearman. When the enterprising little city laid off swaddling clothes and took on the garments of maturity Mr. McClellan was elected mayor. He held the office for a number of terms. He took a personal interest in all the various improvements that were going on, and made several trips each day, to see that the work was being done according to contract.

When he had barely reached his majority, he was elected County Clerk of Hansford county and held that office a number of terms. He gave the office the painstaking care that he gives to any other business entrusted to his care, and was an extremely popular officer. When the Spearman Equity was organized, he left the clerk's office to become its manager, and made the Equity successful from the start. Later he resigned from this position to go into business for himself and organized the McClellan Grain Co., which has also been a success from the start. He now has three elevators on the new Rock Island railroad at Bernstein, Gruber and Morse. Combined with his grain business is the agency and sale of the Case line of farming machinery, and the number of these machines over the country attests his ability as a salesman.

R. L. McClellan has been an asset to Hansford county, since he first entered public life, and many of our modern improvements are due to his foresight and unflinching energy. He has always been prominent in the religious and civic life of the community and always stands ready to lay aside his own business in order to advance the interest of the community.

**R. W. MORTON**

One of the real "Hard Hitters" for Spearman is R. W. Morton, owner of the Ford business and also handling a line of combines and farm implements. Mr. Morton is a native of Tennessee, but realized very early in life that opportunities there were limited for ambitious boys, and at the age of three, persuaded his parents to move to the Lone Star state where there was plenty of room to grow. After reaching manhood Mr. Morton took up the profession of nursing and followed it for many years. In those days real capable nurses were in demand over the sparsely populated regions of west Texas and the subject of our sketch perhaps has the distinction of being employed on more of the large ranches than any person now living. The larger ranches were largely owned by English and Scotch syndicates, and many English owners and manager lived on them. They were usually of the higher type of people and had been associated with nurses since their earliest infancy. The very idea of turning cows and wee baby

calves loose on the boundless ranges, to shift for themselves, was abhorrent to them, so they employed a large number of high class young men as nurses, and put the herds in charge of them. These quiet, mannerly young men were expected to see that all young cattle were properly chaperoned, and no common, or garden variety of bovine society be allowed to associate with them. As the shades of night were falling, and all nature was expected to be wrapped in the arms of Morpheus, and sometimes the juvenile members of the Bovine clan were unwilling to go to sleep. Then it was the duty of the nurses to raise their gentle voices in song and sooth the jagged nerves of the restless ones until they were overcome with slumber. Mr. Morton is said to have excelled all other nurses in this line of endeavor. No restless member in his charge could long resist the deep pathos of his low treble voice. It is said that even the wild cats and coyotes, after once hearing him sing "The Chishlom Trail" gave up their singing in disgust and thereafter gave that territory a wide berth. Since coming to Hansford county, Mr. Morton has taken a leading part in every movement, calculated to make the country progress and develop. He is never too busy to leave his business and go away on a good road or kindred mission. He has unbounded confidence in the great north plains region and gives generously of both time and money to help develop it.

**JUDGE A. E. TOWNSEND**

Judge A. E. Townsend is now, since so many of the real old pioneers have passed on, one of the pioneers of Hansford county, and is one of its greatest boosters. Mr. Townsend first became interested in the county in 1906 and since that time his faith in the future of the north plains has never faltered. In season and out—in drouth, pestilence and war—in times of adversity and in times of prosperity, Judge Townsend was one who can truly be said to have "kept the faith." Over twenty years ago he started preaching diversity of farm crops and advocating dairy and poultry as a side line for plains farmers and is still a firm believer in these safe principles. Mr. Townsend is a native of Iowa and grew to manhood in that great corn state. He was raised on a farm and followed farming for a number of years after reaching man's estate. He early discovered that the low price the farmer received for his products was not conducive to a prosperous existence, and this fact caused him to discontinue farming and enter the

mercantile business, which he followed until shortly before coming to this country. About the time

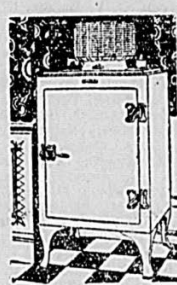
he decided to come to this country he lost a contract with certain railroad companies, to sell their

lands, that had been given them (Continued on Page Four)



*Just imagine!*

We thought we couldn't afford one



Terms As Low As  
**\$10.00** Down  
24 MONTHS  
TO PAY

General Electric Refrigerators are not an expense. A family in the most moderate circumstances can afford one. For the actual experience of General Electric owners proves that the savings made possible through its use repay the cost of a General Electric refrigerator in two years time. The most important savings are due to food protection made possible by the constant dry cold. Spoilage is prevented. Leftovers are utilized. Foods can be bought in quantities on special bargain days—at lower prices. In health, and in savings of time and labor, the dividends are just as tangible. Buy the refrigerator with the Monitor Top—a symbol of saving—sealed within is the entire simple mechanism—permanently oiled. Beautiful cabinets are all steel—porcelain lined—easy to clean—and exceptionally roomy. Drop in today and let us show you in dollars and cents how your General Electric will pay for itself.

**GENERAL ELECTRIC**  
ALL-STEEL REFRIGERATOR

Join us in the General Electric Hour—NRC Network—Saturday 3 P. M.

ANSWERING THE CALL FOR SERVICE  
**TEXAS LOUISIANA POWER COMPANY**  
ECONOMICAL QUALITY MERCHANDISE

We Join With Others  
in Expressing Our  
*Congratulations!*

This should be a time for great rejoicing—now a new rail outlet for Spearman and a new line for Morse. It will mean much in the development of this country.

If we can be of service to you, please call on us.

**BURRAN BROS.**

SPEARMAN, TEXAS

Quality—Service—Courtesy



**Since July 1887**

THE SANTA FE has kept pace with the growth and development of the Panhandle territory, and proposes to continue that policy.

SINCE July, 1887, when the first line was laid in the Panhandle, the Santa Fe has been earnestly striving to serve this territory, and to lend a helping hand to any forward movement in its behalf.

THE facilities of a first-class railroad with well organized departments are at your disposal at all times to help you in your transportation problems. Constructive criticism and helpful suggestions are most cordially invited.

T. B. GALLAHER,  
General Freight and Passenger Agent,  
Amarillo, Texas



... We Want to Congratulate  
You ...

**Friends and Neighbors**

We believe that it is entirely in keeping with the neighborly spirit of North Plains Cities to express our most sincere congratulations to you citizens of Morse and folks all over this section of the country.

The extension of the Santa Fe line to Morse is another step forward in the continued progress of this great agricultural area and we are happy to commemorate it.

We extend our hands in the best sense of fellowship and cordiality, MORSE, and wish you continued progress and success.

**The First National Bank**  
of SPEARMAN  
**Oldest Bank In Hansford County**



### IRRIGATION LOOMS HANSFORD COUNTY AS NEWEST AGRICULTURAL POSSIBILITY

Irrigation of Palo Duro valley at Spearman, looms as the most recent agricultural possibility for this section of the country. Citizens of this county are optimistic in the belief that they will be developed. For many years a number of companies, after having made water and soil tests, declared that the valley was well adapted for the production of scores of vegetables, melons and other farm products.

The natural slope of the ground affords excellent irrigation possibilities and thousands of acres can easily be put under intensive irrigation.

Although the company working on the project declined to make any prophecies of the possibilities, they say that they have faith in the outcome of the experiment. A considerable sum of money is being spent.

Announcement was made last week at the offices of the Panhandle Power and Light Company of the employment of Mr. C. J. Todd of Pecos, Texas, as manager of an irrigation project which is being put on by the Panhandle Power & Light Company in the Valley of the North Palo Duro creek, about 1/2 miles from Spearman. Mr. Todd comes to this territory with life-time experience in irrigation work, having been associated with his father in the operation of the largest irrigation farm at Pecos, Texas. He is a graduate of Texas A. & M. College in the year 1927, and expressed himself as being very much enthused over the prospect of successful irrigation in this valley.

Mr. Todd will make his home in Hansford county and devote all of his time to the development of his project. It is planned to raise crops requiring high cultivation and high yields per acre.

The test wells have shown ample water available at depth from 30 to 60 feet and it is expected that by the use of electric power to keep down pumping costs and pumping installation costs that this will be a financial success. Electric energy will be furnished by the Panhandle Power & Light Company from the generating station at Borger where electrical production costs are very low.

This plant uses residue gas from the Borger fields and is one of the largest plants in the Panhandle.

The principal crops to be grown will be alfalfa, potatoes, tomatoes, melons and various garden truck, including peas, beans and spinach.

This project is another evidence of the interest of the Panhandle Power & Light Company in the development of the Panhandle country, and indicates the progressiveness of this Company in forwarding their ideas by the expenditure of money and the action which has characterized them in the past.

Mr. Todd expressed himself this morning as being anxious to become a citizen of this territory and to become acquainted with the citizens and business people here, and invites all who are interested to visit him and see the project at all times at Hansford.

The land to be used in the irrigation experiment was bought by the Panhandle Power & Light Company several days ago from G. W. Price. There is 128 acres in the site and 100 acres will be under irrigation.

A well from which water will be furnished was spudded in by the company Monday and is now at depth around 75 feet. The well is being drilled by W. M. Brown of Borger and is expected to be completed in about 10 days and possibly at a depth of 300 feet.

The company will keep an accurate record on all crops grown, so that intelligent and helpful information can be given those who might be interested in developing the irrigation field in Palo Duro valley of Hansford county.

Sometime ago a test for water was made on the place of S. B. Hale, that adjoins the power and light company's tract and an abundant supply of fine water was found.

Numbers of tests made of the soil by engineers shows it to be the finest river bottom silt, with an average depth of 10 feet and free from alkali or other mineral that might be harmful to crops.

At the place where the test well is being sunk the valley ranges from one mile to one and one-half miles wide and runs for a distance of some 35 miles through Hansford county.

The well is located only 5 and one-half miles from Spearman near old Hansford and in case the test proves that irrigation is practical and profitable, excellent market outlets are available for the sale of all truck products and other crops that might be raised.



Wm. E. McCLELLAN

Chairman of the entertainment committee for the recent Farmers Banquet and active in the organization of a golf club for Spearman.

#### IN MEMORY OF MAXINE BOGUE

A bud so sweet and tender  
Was opened by Gods sweet smile,  
To bless the lives of his children  
It bloomed on earth awhile.

It grew among the rocks and nettles,  
And thrived o'er the tares of sin  
So strong o'er the wiles of Satan  
The battles of life to win.

The burdened heart of the toiler  
Was eased by it's beauty rare,  
The smile of the rose of Eden  
Spread gladness everywhere.

But this smile of God in blossom  
Was called to it's Fathers home  
Its work on the earth was finished  
It's toils of life were done.

And now it cheers the angels  
With beauty sweet and fair,  
The earth won laurels of glory  
In Heaven bright shall wear.

Ah yes 'tis now in Heaven  
This spirit rose of love  
Tho' dust to dust departed  
It dwells in peace above.

And if we grow strong and lovely  
No thorns for others feet  
Our roses too will follow,  
In Beulah land we'll meet.  
—By a Friend of the Family.

### FARMERS BANQUET—(Continued From Page One)

Rosenbaum, G. W. Price, Cap Richardson, Rex Sanders, Lloyd Allen, L. M. Buchner, Bill Burran, Lloyd Copeland, W. A. Cone, C. H. Ging, Buddy Ging, J. E. Gerber, S. E. Harbison, J. W. Daniel, Raymond Jarvis, W. C. Dahms, O. W. Jarvis, R. W. Maples, P. F. Hawkins, R. L. McClellan, M. C. Chamness, C. V. Main, P. A. Lyon, S. R. Hibbs, Milton Hughes, C. J. Frantz, N. L. Beck, R. E. Lee, C. J. Todd, D. P. Tice, Wm. J. Whitson, Chas. Chambers, F. C. Sumrall, T. I. Harbour, J. K. Collard, J. H. Campbell, W. H. Jackson, D. A. Jackson, Lewis Meers, F. A. Shapley, Robert Shapley, C. L. Reeves, J. O. Andrews, W. A. Schubert, C. R. Oldham, F. R. L. Jones, Orville Curran, C. D. Riggs, Kirff White, Claude Owen, E. D. Church, J. H. Broadhurst, E. S. Uptergrove, G. H. Gay, R. C. Bennett, A. L. Thoreson, C. Fred Cline, R. H. Prewitt, F. W. Brandt, Elmon Jacobs, George Schneider, Virgil Mathews, Woodrow Gibner, Jack Noe, Milton Neilson, J. H. Nichols, M. C. Lee, M. E. Hill, J. W. Buschman, E. T. Read, Carl E. Hutchison, R. D. Tomlinson, D. A. Tomlinson, Leonard Jameson, J. L. Edwards, R. C. Womble, E. F. Fite, J. D. Amend, Henry Reid, A. D. Reed, A. J. Wilbanks, A. R. Stetson, Vester P. Hill, C. A. Hitt, L. R. Tompkins, J. M. Miller, W. R. Parks, Pearl M. Dixon, Meard Beck, E. A. Greever, W. R. Greever, J. L. Redus, Delon Kirk, W. J. Warren, O. V. Batson, Chas. Ross, Carter Crawford, H. A. Pearce, Ralph Blodgett Jr., J. M. Blodgett, Mrs. John Kenny, A. H. Frazier, A. R. Bort, W. B. Lackey, W. A. Jordan, E. R. Wilbanks, Earl M. Flinn, Paul Thompson, J. H. Buchanan, O. G. Collins, Otto Reimer, Henry Keith, W. C. Nollner, T. A. Cooke, E. J. Norman, D. M. Wymbly, Van Earl Steed, Otis H. Parker, Archa Morse, Cecil Crawford, H. A. Nichols, C. E. Lieb, M. W. Lackey, P. H. Jameson, N. F. Hull, Robt. E. Meek, H. C. Charless, W. M. Glover, O. L. Williams, L. S. McClellan, O. C. Raney, R. E. Burran, Sr., R. E. Burran, Jr., D. W. Holland, Halsey H. Hulbert, E. K. Snider, A. G. Brant, Wm. A. Wilbanks, S. B. Hale, Jr., Raymond Keith, Thad McMurry, C. D. Foote, J. A. Roberts, J. R. Douglas Jim Ownbey, Geo. M. Whitson, G. C. Mitts, C. W. Hendricks, A. L. Rippy, Herb Campbell, C. D. Richards, Iva Wilcox, Tom Caruth, T. H. Taylor, Garrett Allen, C. P. Jackson, D. T. Gatewood, R. L. Snider, J. G. Sparks, L. S. McLain, L. M. Pierce, Carroll Cone, F. J. Hoskins, W. L. Bryan, Homer Read, Wilson McCloy, T. P. Tackitt, J. R. Cox.

### PROMINENT CITIZENS—(Continued From Page Three)

by the State of Texas, as a bonus for building railroads in central Texas. Most of the lands were sold at around \$2 per acre and Judge Townsend can rightly claim to be the first man who started immigration to this part of the state. His extensive advertising campaigns brought this section to notice of northern farmers, who were on the lookout for cheap land, and practically all those who bought land from Judge Townsend have sold out at a profit. Some of them still own their land and the rise in values have made them independently rich.

Judge Townsend has always been an enthusiastic worker for the upbuilding of the community, in which he resides. Times without number he has publicly stated that "Every man owes his community something and should not be satisfied without giving it his best." He started numerous Sunday schools over the county in the early days, and did many other things to bring the story of the Gentle Nazarene to the attention of his growing generation. He filled the office of County Judge and ex-officio county superintendent of schools for several terms and while in office perhaps did more than any one else to bring our school up to their present high standard. This office had before this time been considered somewhat of a political sinecure, with incumbents pledged to keep taxes down. He promptly dispelled that idea and became respected for what unpopular with certain sections, but the people of the county.

### WALTER WILMETH

W. W. Wilmeth might be pointed out as the outstanding type of man Hansford county produces. His father was a pioneer resident of the county, and Walter has spent practically all his life here. For a number of years he followed ranching and wheat growing, supplemented by the growing of swine in which he was successful. Later he disposed of a part of his interests, and came to Spearman and entered the hardware and implement business as a partner in the Spearman Hardware. This business has thrived exceedingly under the present management and now can be considered one of the outstanding firms of the north Panhandle. He is also interested in the First State Bank of Spearman. He is an extensive dealer in livestock and buys and ships many cars of hogs and cattle during the season.

Success of Mr. Wilmeth was founded on a well balanced diversity of farm crops so that when one crop failed he had another to fall back on. This enables him to keep his expenses paid, and when he made a wheat crop it was his rather than his creditors. Mr. Wilmeth firmly believes this method will insure success to any farmer who uses intelligence and industry in his farming operations.

More men of this type are needed in the north plains country, as well as all over the southwest. The soil and other natural conditions are here, but it takes men with vision and industry to get the best from them. Mr. Wilmeth is the

type of man, who is an asset to county is fortunate in having any community, and Hansford number of his kind.



WESTERN TELEPHONE PLANT, SPEARMAN, TEXAS.

## NOTICE!

We are changing the billing in our office, therefore it will be necessary to disconnect all delinquent subscribers on the 15th of the month, instead of the 20th, as before.

**Western Telephone Corporation**  
FRED LUSK, Mgr. Spearman

# ICE!

Delivery Begins  
Saturday, May 16

ANSWERING THE CALL FOR SERVICE  
TEXAS LOUISIANA POWER COMPANY  
ECONOMICAL QUALITY MERCHANDISE

# BUILDERS of PANHANDLE and GREAT NORTH PLAINS PROSPERITY!

Extend Congratulations to the Santa Fe Railway on the Completion of their new line from SPEARMAN to MORSE

Lumber, Nails, Paints, Hardware, Cement, Screens, Glas, Lime, Stucco, Tile, Complete Water, Fencing, Brick, Well Materials

Our Aim - To Help Improve the Panhandle  
**PANHANDLE LUMBER Co.**  
Courtesy - Quality - Service

Spearman : D. W. HOLLAND, Mgr. : Texas

# Hello,

**MORSE!**

We're Coming Over...

—We mean 100 per cent strong to help you celebrate!—  
and—  
When you need good tires worth the money, celebrate with **FEDERALS** and you'll always be happy.

**ALLEN TIRE SHOP**  
Spearman

**Did You Know?**

That for just a few cents you can insert a want ad in the Spearman Reporter that will find—

A buyer for your home  
A tenant for your house, apartment or room  
Office or clerical help  
A buyer for your car  
Employment  
A place to live  
And hundreds of other things that you have or want and someone else wants or has?

**SPEARMAN REPORTER**  
Phone 10



# North Plains Promises Greatest Development in Great Southwest

## and Natural Resources Only Beginning to Be Utilized; Many Acres of Cultivated Land

at the North Plains area has greatest opportunity for ex- ve development than any sec- in the Southwest is the pre- on of scores of farmers and ess men who have watched evelopment of this section of ountry for the past 20 years. atural resources of the coun- and the utilization of the soil et unscratched. Thousands of s of fine fertile land capable producing many farm crops, et untilld.

arge scale farming, principally wheat, is beginning to wune. ds are being cut up in smaller s and a more intensive farm- program is seen.

igation in the Palo Duro ey began in Hansford county week when the Panhandle er and Light Company started ing a water well on the 128 s of land they purchased for

an agricultural experiment sta- tion.

One hundred acres of this land will be put under intensive culti- vation and irrigation. Most every kind of truck product and vege- tables will be planted. An accu- rate check on costs and revenues from irrigated crops will be kept.

An indication of the faith of the Panhandle Power and Light Company places in the valley is evident.

Dairy farming is beginning to place itself in the ranks of other farm products. Already a number of fine dairy farms are located in Hansford and adjoining coun- ties and are proving to be suc- cessful.

It has already been found true that Hansford county is ideal for the raising of poultry and this in- dustry should progress greatly within the next few years.

With the completion of hard surfaced roads in the county and now that the new Santa Fe line is connected to Morse giving the city of Spearman a new rail out- let, first class transportation facili- ties are offered farmers for all farm products, which means a quicker and better market and a

better price, in all likelihood, for all farm products. It is believed that this is just the beginning of new rail lines in the offing.

With the good season that has been made possible to growing wheat during the past several days when the entire plains area was excellently soaked, wheat is looking as good as it has ever looked in any past year when good yields were made.

Many farmers are turning to diversification programs to pro- duce their living on the farm and then with their main crop, wheat, revenue from this will be profit for labors.

Round Rock—Old Settlers' As- sociation to improve block of about 20 acres here for use as permanent home.

Westhoff—New bank known as Home State Bank opens with capi- tal stock of \$22,500.

Ablene—New Church of Sac- red Hearts dedicated recently.

Brownsville—Northern Com- pany plans construction of \$100, 000 carrot syrup plant in this city.

Pecos.—An Electrical revolving beacon to be installed at local airport to guide night fliers.

# MORSE and Santa Fe

## ELECTRIC POWER



Lifting Drudgery from *Your* Shoulders

We Offer You Congratulations

We Have All Electrical Appliances

### SEE THEM TO-DAY



HANSFORD COUNTY'S NEW COURTHOUSE NOW UNDER CONSTRUCTION IN SPEARMAN.

# Progress ..



This company and every employee in every local- ity considers the seriousness of their service and working with each city it serves, for the greatest progress and development.

Serving thousands of satisfied customers as impor- tant message bearers is a task that this company is proud of. And so progresses the country, you will find this company progressing, too, and be- hind every worth while civic advancement, in every city that it is a part of and working with.

# Western Telephone Corporation

FRED LUSK, Mgr.

SPEARMAN



## SOLD OUT!



The pathetic plight of the wife and children of the man who carried no life insurance. They thought that Daddy would arrange for their protection after he had passed away as he had been protecting them whilst he was alive.

National Aid Life has over \$52,000,000.00 of business in force and has paid to bene- ficiaries \$2,148,000.00, over \$200,000.00 of which has been paid to beneficiaries in the State of Texas during the past year.

92 PER CENT OF THIS AMOUNT HAS BEEN PAID BEFORE THE FUNERALS OF THE DECEASED MEMBERS

## NATIONAL AID LIFE

OKLAHOMA'S LARGEST LIFE INSURANCE CORPORATION  
HOME OFFICE—CONTINENTAL BLDG. OKLAHOMA CITY, OKLA.  
Texas State Office—810 Fidelity Union Bldg., Dallas, Texas

### John L. Davis

DISTRICT MANAGER, SPEARMAN, TEXAS





# Concerning The Soil Survey --- What It Is --- It's Uses

By R. V. Converse

### Progress of Soil Survey Work

Soil survey work has been carried on in parts of the United States for thirty years. It is planned to cover the entire United States with soil surveys, but as no large number of men are kept at this work, only two or three counties a year are completed in most states. Since cooperative work has been carried on in Texas, about three counties a year are surveyed, the work continuing the year round. Before that, the Federal Bureau carried on the work only during the fall and winter months.

About sixty-five counties, or parts of counties, have been covered by a detail soil survey in Texas. The total extent of these areas surveyed is about 50,000 square miles. Reports of some of the latter surveyed areas have not as yet been published.

Eight large areas comprising the most of western and southern Texas have been covered by reconnaissance surveys, all of which have been published, except one. The reconnaissance surveys cover one hundred and twenty-eight counties having an aggregate area of about 165,000 square miles. Several of the areas that have been surveyed in detail lie within the reconnaissance survey areas. Thus will be seen that it will be many years before all parts of Texas are covered by soil surveys if the rate of progress in the future is not greater than it has been in the past. Most of the Texas counties require detailed soil surveys, although the reconnaissance surveys should probably not be extended any further east than they are at present. While reconnaissance surveys give much valuable information in a general way, helpful to graziers, for example to desultory farming, the development or agriculture with the settlement of the western counties bring problems which

### require more detailed surveys.

#### Cost of Making a Soil Survey

It costs less to make a detailed soil survey of a large Texas county than it does to build one-half mile of concrete road. The cost of field work for a reconnaissance survey is less than one-half cent per acre, while the cost of a detailed soil survey ranges from one to three cents per acre. This seems no excessive cost for outlining the basic resource of our most important industry.

The cost of soil surveys to the State of Texas for the past six years since cooperation was started has amounted to less than one-fifth cent per person each year for all the inhabitants of the State.

#### Uses of the Soil Survey

A soil survey is valuable to the individual farmer because it gives him a better idea as to the differences which exist between the various soil types on his farm. It indicates to him the possibilities of growing other crops than those he has been growing, where such possibilities have been demonstrated on the same character of soils in other localities either by other farms or by experiment station investigation. In the same way it gives him information on his soil types as developed on these soils in other areas whenever such information is known to apply to his soils. It gives the farmer a broader view of his soils and their relation to agriculture by comparing his soils with similar soils in other regions. It serves as a key in translating experimental station investigations and results in terms of his own soil conditions.

#### Valuable to Land Buyer

Farmers and others seeking farm lands in a region which they are unacquainted with, find soil survey maps and reports useful in outlining to them soil and agricultural conditions and by the

use of this information they are able to select lands which are suited for the various branches of agriculture in which they wish to engage. The maps and reports are aids to bankers or other business men in making loans on land, or in appraising land values.

#### Building Materials Located

Soil maps are sometimes used by engineers and manufacturers as an aid in locating gravel, sand, shale, tile and brick clays and other materials for use in road-building and in the manufacture of various products.

#### Extension Service

County agricultural agents and extension specialists use the maps and reports in advising farmers concerning many agricultural questions. In some counties the local demonstration agents have, through the aid of the soil survey, located areas of the most important soil types, and on these have assisted the farmers to make crop variety and fertilizer tests which have proved highly valuable.

### PROSPERITY NOTES FROM OVER TEXAS

The following record of industrial activity lists items showing investment of capital, employment of labor and business activities and opportunities. Information from which the paragraphs are prepared is from the local papers, usually of towns mentioned, and may be considered generally correct.

Spearman—City will have water supply in every section when new lines are completed.

Spearman—Work starts on erection of Hansford County courthouse.

Overton—Butler - Calhoun Co. pipe line started loading oil out of city recently.

Edouch—Two blocks on Hill street to be graveled.

Yoakum—A. & P. Store establishing business in this place.

Graham—J. W. Miller of Eastland to open variety store here.

Orange Grove—Emil Klare op-

ens City Meat Market in old location of Texas Market.

Sandia—Extension made to switch in local railroad yards, preparatory to taking care of season's cucumber shipments.

Throckmorton—County to buy road machinery for use on lateral roads.

Bonham—Former State Bank and Trust Co. reorganizes as First State Bank, and reopens with \$100,000 capital stock.

Mt. Pleasant—Mr. Joiner secures block of 10,000 acres 12 miles northeast of town, on which he will drill three oil tests.

Dallas—T. & P. Railroad to build its \$1,000,000 freight depot on Pacific Avenue sometime in near future.

Ingleside—Local ice, light and power company sells to Central Power and Light Co.; to connect up Ingleside, Arkansas Pass, Rockport, Fulton and Bayside with high line.

Crawford—Crawford Cemetery cleaned.

Haskall—Actual work starts on repairing county courthouse.

Seymour—This city seeks new post office building.

Crowell—Heavy gas sand and oil showing struck in Texas oil test on Johnson ranch.

Crosbyton—Trees being set out on every street in city.

Wolfe City—Improvements are made to City National Bank building and White Dry Goods Co.

Sinton—Erection of modern hospital planned here.

Alice—Lone Star Ice Factory to open station here.

Winters—M. S. Patrick now sole owner of Patrick Chevrolet Co.

Goldthwaite—Regency bridge repairs almost completed.

San Diego—Kyle Drak ships ten cars of cattle to Fort Worth markets.

Alice—New \$5,000 cooling plant at Rialto Theatre will be in operation soon.

San Juan—Whittenburg Bros. contemplate erection of fruit packing plant in this city.

Wallis—Jemela Red and White Store building being rushed to completion.

Damon—Layne Texas Company brings in good oil producer on

Wisdom tract of land.

Eagle Pass—Canal Headworks completed; construction started on road to power plant site.

Crystal City—Spinach shipments for past season totaled

3,914 carloads from this city.

Midlothian—Right-of-way to be cleared at once for new part of Highway No. 67 from here to Johnson County line.

Sherman—Grayson County

plans erection of six-story courthouse and jail, to cost about \$300,000.

Denison—Local Kraft-Flora cheese and mayonnaise plants.

# Progress!

Progress never comes to the city and county that waits.

The reason for the steady development of the North Plains is because of the work of men who have faith in it.

Morse, Spearman, and all other cities in Hansford county have grown and gone forward because of the faith and unflinching efforts of their citizenships.

We want to take this opportunity to congratulate MORSE, and at the same time present our congratulations to the Santa Fe and her officials upon the extension of this new rail line to Morse.

We as the Pioneer Drug Store of Spearman have watched the progress of this section and have tried to be instrumental in working for the progress and growth of Hansford County.

## HALE DRUG CO.

### Spearman's Pioneer Drug Store



HANSFORD COUNTY HAS PROVEN ITSELF A VERY SUITABLE AREA FOR PROFITABLE PORK PRODUCTION. MOST OF THE FEEDS NECESSARY CAN BE PRODUCED AT HOME AT A VERY SMALL COST PER ACRE.

## As One Good Town to Another, we say

# SHAKE, MORSE

MORSE, you're to be congratulated on your good fortune in having secured a new rail line. We are just as proud of it as you are. And as one good town and as one good friend to another, we say—Shake. We're glad you got it!

When you think of buying an automobile that is always worth the money, we believe you will think of the

When you need a good USED CAR, we want to tell you we've got them at the lowest prices in our history.

AGAIN we want to say, accept our hand, and lots of luck to you—

WE'LL BE AT YOUR CELEBRATION MAY 15TH



IT'S WISE TO CHOOSE  
A "SIX"

IT'S WISE TO CHOOSE  
A "SIX"

# J. R. Collard

## REAL ESTATE

## LOANS

## INSURANCE

For more than twenty-five years I have been selling real estate, making farm loans and writing insurance in Hansford county, and my business in these lines grows larger every year.

I established this business at old Hansford in 1905, on the principle of "A Square Deal or No Deal at All." This principle has been strictly adhered to through all these years.

The North Plains country, in which Spearman is centrally located, is now developing at a rapid rate. New people are coming here and the business and industrial life of the entire country is undergoing a change.

We have looked forward to this change for many years. Now that it is here, let us lend our every energy toward building along correct lines. Let us build for the future—

### SUBSTANTIAL: PERMANENT

This is a great wheat country, but we should not lose sight of the fact that it also is a great "Cow, Sow and Hen" country and that the latter never fails. Lets build for the future—

Substantial and Permanent

## J. R. COLLARD

REAL ESTATE—LOANS—INSURANCE

Spearman, Texas



### National Sunday School Lesson

By DR. J. E. NUNN

MAY 17, 1931

Topic:—Jesus Enters Jerusalem as King.  
Lesson:—Luke 19:29.

29. And it came to pass that he drew nigh unto Bethany, at the place which is called Olivet, he and the disciples, going. Go your way into the city, and ye shall find whereon no man ever rode before him, and bring him to Jerusalem, and loose him; thus shall the Lord hath need of him.

And they that were sent to find him, found even as he had said. And they brought him to Jerusalem, and they threw their garments on him, and set Jesus on him, and he rode on him, and the multitude followed him, shouting, Hosanna to the Son of David, Blessed is he that cometh in the name of the Lord, in the name of the Lord, in the name of the Lord, in the name of the Lord.

And as he went, they rent their garments in the way, and as he was now drawing nigh to the descent of Olivet, the whole multitude of the disciples began to praise God with a loud voice, saying, Blessed is he that cometh in the name of the Lord, in the name of the Lord, in the name of the Lord, in the name of the Lord.

And when he drew nigh to the city, and wept over it, saying, If thou hadst known, even thou, which belong unto peace, they are hid from thine eyes.

And he entered into the city, and began to cast out the tables of the money-changers, and the benches of them that sold, saying, unto them, It is written, My house shall be called a house of prayer; but ye have made it a den of robbers.

And he was teaching daily in the temple. But the chief priests and the principal men sought to destroy him, and they could not find any manner of accusation against him, and listening to him, they feared, because of the multitude of the people, who were giving ear unto him.

Text:—He is Lord of the King of Kings.—Rev. J. Marshall Lang, D. D.

Text:—The triumphal entry, the cleansing of the temple, the raising of the dead, the feeding of the multitude, the turning of water into wine, the stilling of the tempest, the cure of leprosy, and many other marvelous, each of which was a "mighty work" indeed. Never in all the history of the world was there material and greater cause for a thanksgiving anthem.

Text:—Rainbows Through Tears. "Our Lord's tears lead to his infinite sacrifice for sin; and our sorrow for sin also, if it is like Christ's will lead us to seek his salvation from sin."—And so, while we weep, whether it be over the evil that is in others or in ourselves, our tears will be rainbow, bright with the promise of an immortal hope. Aye, far above the sorrows and the sins of the city that now is, we shall see the splendors of the New Jerusalem that is to be.—Bishop Henry C. Potter.

Text:—Jesus Approaches Jerusalem v. 41. "And when he drew nigh, he saw the city." "The road slopes by a gradual ascent up the Mount of Olivet, through green fields and under shady trees, till it suddenly sweeps round to the northward. It is at this angle of the road that Jerusalem, which hitherto has been hidden by the shoulder of the hill, bursts full upon the view. There, through the clear atmosphere, rising out of the deep, unbragous valleys which surround it, the city of ten thousand memories stood clear before him; and the morning sunlight, as it blazed

Sunday, April 2, A. D. 30, a week before Easter Sunday. The cursing of the fig-tree and the cleansing of the temple, on the following day. The fig-tree withered and the controversies in the temple, Tuesday, April 4.

Place:—Bethany. The temple in Jerusalem.

#### Introduction

Jesus came up from Jericho to Bethany—it was seventeen miles—over the fine military road, on Friday, and spent the Sabbath at the home of Lazarus, Mary and Martha. We assume that a considerable number of Jesus' disciples and sympathizers from Galilee who were coming down to the Passover festival, had lined themselves to his train along the way. This would account for the "multitude" (ver. 27). Luke omits the supper and the anointing by Mary (Matt. 26; Mark 14; John 12).

It was on the morning of the first day of the week—hence "Palm Sunday"—that our Lord started for the near-by city. The Mount of Olivet—or simply Olivet as the R. V. has it—is really the range of hills east of Jerusalem, separated from the city by the Kidron Valley. The site of Bethphage ("house of figs") is unknown, but it was evidently a little to the west of Bethany.

#### Jesus in Bethany

"And it came to pass," Jesus arrived in Bethany, on the eastern slope of the Mount of Olivet, probably in the evening of Friday, March 31, and made his headquarters in the hospitable home of Mary and Martha and their brother Lazarus, whom he had raised from the dead. "There, in the house of Simon the Leper, on Saturday, April 1, a feast was given him, signalized by the beautiful act of Mary in anointing Jesus with costly ointment—the act which aroused the cupidity of Judas and probably led him to betray his Lord. The triumphal entry took place the following day, on our Sunday."

#### Mount of Olivet

"At the mount that is called Olivet." The Mount of Olivet, about a mile east of Jerusalem, was named from the olive orchards that grew upon it, and was the park or pleasure ground of the city. Olivet is a hill of three peaks (some call it four); the Hill of the Ascension being 2643 feet above the sea or 208 feet higher than the temple plateau. "He sent

two of the disciples." It is supposed, from Mark's minute account, that Peter was one of these; the other was probably John who was much with Peter.

#### "The Lord Hath Need of Him."

"And they said, The Lord hath need of him." The message is striking, for who was this Lord? The cattle on a thousand hills were his, and yet he had need of that one colt. So is it with us; infinitely great as Christ is and insignificant as we are, he has need of us to aid him in his vast undertakings, and sends words to us to come to his assistance. "Man, woman, it is for thee that thou hast redeemed it; thy life, if it is his; thyself, for 'he is thy lord, and worship thou him.' Shall not the response 'straightway' be, 'Now to be thine, forever thine?' And then the possessions. Art thou ready to give him what thou hast, however dear it may be? Ah! the life is a new life when Christ's vice, as the voice of the life's true Master, is heard, and the answer is returned, 'Here am I; for thou didst call me.'" Rev. J. Marshall Lang, D. D.

"And they brought him to Jesus." It is a happy day when our possessions are brought to Jesus; when they are his, they are then for the first time truly ours.

#### The Triumphal Jesus, vs. 37, 38

"The whole multitude of the disciples began to rejoice and praise God with a loud voice for all the mighty work which they had seen." What a procession of blessed miracles passed before our memory as we read these words! There were the cures of many terrible diseases, the opening of blind eyes, the unstopping of deaf ears, the healing of the crippled, even the raising of the dead. And there was the feeding of great multitudes from a boy's lunch, the turning of water into wine, the stilling of the tempest at a word, the walking on the waves, the cure of leprosy, and many other marvels, each of which was a "mighty work" indeed. Never in all the history of the world was there material and greater cause for a thanksgiving anthem.

#### Jesus Cleanses the Temple

"And began to cast out them that sold." This was the second cleansing of the temple, the first having taken place at the beginning of Christ's ministry, three years before; see John 2:13-17. "My house is the house of prayer," v. 46. "For all its profanation and the hollowness of its worship, this temple was still his Father's house. Jesus, as rightful Lord of it, had a right to cleanse it. He remembers how it had been desecrated in Jeremiah's time and repeats that prophet's words of upbraiding (Jer. 7:11). It is a remarkable picture of another side of Jesus' nature. It has reminded men that they may not make common any place of prayer and worship without incurring the severe displeasure of their Lord."

#### Rainbows Through Tears

"Our Lord's tears lead to his infinite sacrifice for sin; and our sorrow for sin also, if it is like Christ's will lead us to seek his salvation from sin."—And so, while we weep, whether it be over the evil that is in others or in ourselves, our tears will be rainbow, bright with the promise of an immortal hope. Aye, far above the sorrows and the sins of the city that now is, we shall see the splendors of the New Jerusalem that is to be.—Bishop Henry C. Potter.

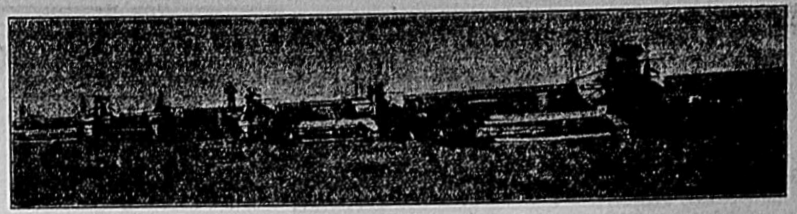
#### Jesus Approaches Jerusalem v. 41

"And when he drew nigh, he saw the city." "The road slopes by a gradual ascent up the Mount of Olivet, through green fields and under shady trees, till it suddenly sweeps round to the northward. It is at this angle of the road that Jerusalem, which hitherto has been hidden by the shoulder of the hill, bursts full upon the view. There, through the clear atmosphere, rising out of the deep, unbragous valleys which surround it, the city of ten thousand memories stood clear before him; and the morning sunlight, as it blazed

on the marble pinnacles and gilded roofs of the temple buildings, was reflected in a very fiery splendor which forced the spectator to avert his glance. The Jerusalem of that day, with its imperial mantle of proud towers, regarded as one of the wonders of the world, and was a spectacle incomparably more magnificent than the decayed and crumbling city of today.

#### Jesus Wept Over Jerusalem v. 41

"And wept over it." The translation might be much stronger, "He wailed over it." "It is the only instance in his life where this is recorded of him. We are told that he sighed when he opened the blind man's eyes; and that he shed silent tears by the grave of Lazarus; but we are told, at this moment only in all his life 'he wailed aloud.'"—F. W. Farrar. "For the multitude the sight was the most beautiful that earth could offer; for Jesus it was the most saddening. He saw, as only he could see, the doom already overshadowing Jerusalem. The day was close at hand when its walls would be battered down, its temple polluted, forsaken, blackened by fire, and its houses a mass of ruins filled with rotting corpses. The contrast touched him to the heart." Rev. William Bancroft Hill, D. D. Litt. D.



A WHEAT HARVESTING SCENE ON ONE OF HANSFORD COUNTY'S LARGER FARMS.

#### THERE OUGHT TO BE A LAW TO—

An act once passed by the Kansas Legislature read—

"When two trains approach each other at a crossing, they shall both come to a full stop and neither shall start till the other is gone."

Another Kansas legislative gem reads: "All carpets and equipment used in offices and sleeping rooms, including walls and ceilings, must be well plastered and kept in a clean sanitary condition at all times."

A law passed in Ohio, April 8, 1919, reads: "Major surgery shall be defined to mean the performance of those surgical operations attended by mortality from the use of the knife or other surgical instruments."

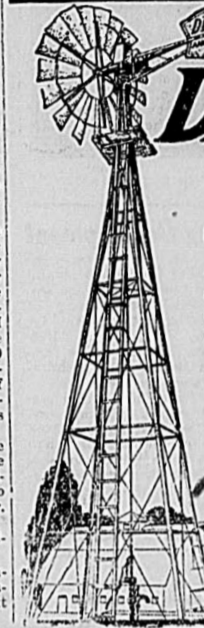
Such foolish and silly laws, you probably remark. I fully agree with you, but is it any wonder by when one stops to consider that every legislative year there are thousands of new laws proposed throughout the 48 states. I wonder how many of you are aware that there were over 2,000 measures affecting insurance considered during the 1929 session of the state legislatures, and insurance is only one line of business activity.

The saying, "There ought to be a law against that," seems to be the popular sign with the American people doing their best to make good at it.—The Employer.

Longview—Several new dwellings under construction here.

Leveland—Improvements contemplated for Farmer's Cooperative Gin plant before opening next season.

## Pumps 25% More Water in the Lighter Winds



### DEMPSTER No. 12 Annu-Oiled WINDMILL

THE DEMPSTER No. 12 Annu-Oiled Windmill is equipped with famous Timken Bearings that add durability, compactness and assures easy running. That's why it starts and actually pumps in the lighter winds. Has oil-bath on a year principle. Starts easily—runs smoother. Self-adjusting in all winds. Machine cut gears run continuously in bath of oil.


See DEMPSTER Windmills and other DEMPSTER farm equipment at local dealers. If dealer is not supplied, write us for full particulars.

DEMPSTER MILL MFG. CO. AMARILLO, TEXAS.

# Congratulations

## Santa Fe

... You are always a step ahead



The Hansford Abstract Co. boasts of the fact that it was established in 1905 and has been rendering a sincere service in "JUST ABSTRACTS and INSURANCE" since that time.

We'll Be There

## MORSE

to help you

## CELEBRATE

We have tried to keep pace with the progress of this country. We are endeavoring to render the self-same service upon which this successful business was builded. We have a complete abstract to title to Hansford County lands and town lots and can serve you efficiently in this regard.

We have faith in the continued prosperity of the Great North Plains—and we offer our assistance in making this prosperity possible. . .

## Hansford Abstract Co.

P. A. LYON, Manager  
SPEARMAN, TEXAS



# Don't Forget, Big Boy

Refresh Yo'self with **Coca Cola**

## At the Big Celebration in Morse May 15

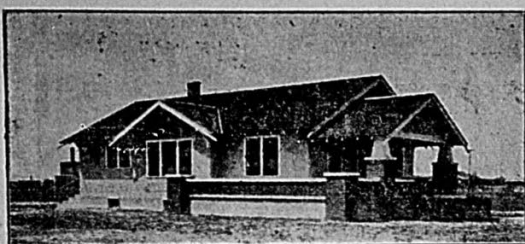
# Congratulations, -- Santa Fe!

We are glad to voice our best wishes and to be among the progressive firms who join in celebrating such a worth while achievement.

## Coca Cola Bottling Co. Inc.

JACK O. LUSHER, Manager  
PERRYTON, TEXAS





A MODERN HOME IN THE REAVES ADDITION, SPEARMAN.



SCENE ON THE PALO DURO WEST OF SPEARMAN

### Transportation Facilities Bring Development

That any country, regardless of natural advantages, must have adequate transportation facilities, before it can prosper, or even begin to realize a small enjoyment of its ultimate prosperity, has been clearly demonstrated in Hansford county.

For forty years, or more, the citizens of this county have worked, and worked harder, for railroads and highways, so that the produce grown from the ideal and fertile soils of our territory could be marketed in the great commercial centers of the nation.

Every since the first pioneer discovered this section praises have been sung to the world. Prospective settlers have come, many have gone and a few remained in the hope that soon the highways would be built and the railroads would come. None have doubted that as soon as those dreams became a reality, we would become one of the most desirable and prosperous sections to be found anywhere in the greatest nation of the world.

Just eleven years ago the first rails of the county's first railroad reached their terminus in Hansford county. Spearman sprang up practically over night, and prosperity began to be felt by those pioneers who had braved the early day struggles of the territory.

The price of land doubled and trebled in a few weeks. Vast sections, and acres upon acres of waving wheat and other grains rewarded the new-comers. New homes began to build, and a feeling of permanency and satisfaction was evident on every hand.

Two years ago the western section of the county rejoiced over the arrival of steel on the Rock Island, and at the present time that section is enjoying a phenomenal growth that was witnessed in this part of the county several years ago.

Another ten years and prosperous farm homes will be seen on every quarter section of land in the county. Improved highways now lead in every direction, and modern schools and churches are seen on every hand. Our people are more deeply rooted in the soil, and pride of community, a deeper appreciation of the things our pioneers went through and better understanding of what they accomplished, so that we who came later might enjoy the fruits of their labors, is more evident. Monuments will be built to their memory, and the glory of our early history will become a priceless heritage.

And new what will the extension of the Santa Fe to Morse mean?

## How to Prepare Them Foods How to Serve Them

**Are You a Good Cook?**

That is what readers of the Spearmian Reporter would like to find out—can you cook any particular dish well. Every woman in Hansford County is requested to send in her favorite recipe to the Food Column of the Reporter. If you have some delicious dish, tell others about it. Send in your recipe today.

**Spider Corn Bread**

1 egg.  
1 1/2 cups milk.  
1/2 cup flour.  
2 tablespoons sugar.  
1 teaspoon salt.  
2 teaspoons baking powder.  
1 tablespoon shortening.

Beat egg and add one cup milk; stir in corn meal, flour, sugar, salt and baking powders which have been sifted together; turn into frying pan in which shortening has been melted; pour in remainder of milk but do not stir. Bake about twenty-five minutes in hot oven. There should be a line of creamy custard through the bread. Cut into triangles and serve.

**Prune or Date Bread**

1 cup prunes or dates.  
2 1/2 cups graham flour or 1 cup flour and 1 1/2 cups graham flour.  
1/4 cup sugar.  
1 teaspoon salt.  
5 teaspoons baking powder.  
1 cup milk.  
1 tablespoon shortening.

Stone and chop fruit; prunes must be soaked several hours and drained. Mix flour, sugar, salt and baking powder; add milk and beat well; add fruit and shortening. Put into greased bread pan; allow to stand 20 to 25 minutes in warm

place. Bake in moderate oven one hour.

**Maple Layer Cake**

1/2 cup shortening.  
1 cup sugar.  
2 eggs.  
1 teaspoon vanilla extract.  
1/2 cup milk.  
2 cups flour.  
3 teaspoons baking powder.  
1/4 teaspoon salt.

Cream shortening and sugar; add egg yolks and flavoring; mix well; add milk slowly, stirring until smooth; sift flour, baking powder and salt together; add half to mixture, then half of beaten egg whites, then remainder of flour, stirring after each addition; mix in balance of whites. Bake in greased layer cake tins in moderate oven 12 to 15 minutes. For middle layer of chocolate, take 1-3 of batter of above recipe and add 1 oz. melted chocolate. Put together with maple icing.

**Recipe For Maple Icing**

1/2 teaspoon butter.  
2 tablespoons hot milk.  
1 1/2 cup confectioners sugar.  
1/2 teaspoon Maple flavoring.

Add butter to hot milk; add sugar slowly to the right consistency to spread; add flavoring and spread on cake.

**Strawberry Mousse**

1 box strawberries.  
1 cup sugar.  
1 tablespoon granulated gelatin.

2 tablespoons cold water.  
3 tablespoons boiling water.  
1 quart cream.

Wash and hull berries, sprinkle with sugar and let stand one hour; mash and rub thru fine sieve; add gelatin which has been soaked in cold water and dissolve

## JOHN LANNERS OLD TIMER SAYS HE IS GOING TO TALK "PLENTY" AT BIG MORSE CELEBRATION NEXT FRIDAY

John Lanners, known over this section of the country by most every man, woman and child and perhaps one of the oldest pioneer citizens of the North Plains said Monday when he was in Spearman and talking about the big Morse celebration, that he absolutely refused to serve on any kind of committee because he was going to talk "plenty" at the celebration.

Don't get Mr. Lanners wrong, he did not mean that he was going to get up and make speeches.

His talking is going to be individual.

"I'm going to meet all my old time friends over there," he said, "and talk about the old days—good days and bad days. They wanted me to serve on some kind of a committee but I turned them

down. I want to be free to loaf about the rounds and want to anybody and everybody want to."

Lanners, who is nearly 40 years of age has been in the nation of the country for more than 40 years. He is considered the most successful ranchman in Hansford, Sherman and Mason counties.

Lubbock—More than 1000 in public improvement way or contemplated here.

## Have You a Little Mental Cruelty In the Home?

How far do you live from Reno? Have you been separated? Have you stopped beating your wife? (Answer "yes" or "no") Do you look on divorce as a last resort or just a summer resort? How fat is incompatible?

For the right answer, see

# Will Rogers

in HENRY KING'S Production

## "LIGHTNIN'"

LYRIC THEATER, Spearman  
Friday and Saturday  
May 15 - 16

Your Canary's Complete Menu

EVERYTHING your bird needs for health and song. The best blend of Seed—the necessary Cuttle Bone—all vitamins of Green Sand—and two SING-SING Biscuits in every package of

**Sing Sing BIRD SEED**

at Grocers and Druggists.

**FREE** Mail this ad with name and address to SING-SING BISCUIT CO., KANSAS CITY, Mo., for a FREE Carton of SING-SING Biscuits and Booklet on Birds.

**CONGRATULATIONS!**

SPEARMAN — MORSE

## Men Prefer to Buy Their Clothes at

# Campbell's STORE

The very newest and most wanted styles, patterns and fabrics in Men's Suits—now on display at Campbell's store. By all means, see our lines before you buy. There's quality and good looks in every suit.

Men who know their clothes and demand the most for their money, prefer to trade at Campbell's Store.

You are invited to come in and inspect our newest Spring lines in wearables for men.

**Bostonian and Friendly Five Shoes**

**Statson Hats**

**Idle Shirts**

**Allen-A**

**Underwear and Hosiery**

**We Maintain a Modern Cleaning and Pressing Department**

# CAMPBELL'S STORE

**Spearman**

**HELLO! Neighbors**

And we say congratulations MORSE upon your progressive step forward. The new Santa Fe Line will mean much to you.

THIS BANK bends its efforts in working with farmers as well as business men, lending its utmost in cooperation for the prosperity of the farmer and doing its best to help in continued development of County, Spearman and its trade territory.

**Come to See Us When In Spearman**

# FIRST STATE BANK

**of SPEARMAN**

"A HOME OWNED INSTITUTION"