

Hansford Co. Library  
120 Main  
Spearman, Tx 79081

## Of public events and school sports Ernie is unofficial photographer



SPEARMAN'S UNOFFICIAL PHOTOGRAPHER in his natural element [left] taking pictures at a junior high football game. On the right, Ernest Newcomb proudly displays the tools of his unofficial trade.

He's everybody's self-appointed "Uncle" and the unofficial photographer of every public happening in the city of Spearman -- a chore which Ernest "Ernie" Newcomb has performed without compensation for as long as most Spearman residents can remember.

The 85-year old camera buff is an everpresent sight at football and basketball games as well as public functions, parades, get-togethers and whatever else special happens along the way.

Quiet and unobtrusive, Ernie makes the events, snaps the pictures and sends them off to be developed. Then he takes the finished results and gives them away to the subjects pictured in those particular photographs.

"Mine are just drug-store variety pictures," he explains when

queried about handing out pictures for free. "I'm not a professional and besides all that, I like giving them away."

While he may not be a professional, he has a professional's grasp on photography as far as posing and settings go and he can speak the jargon of f-stops, shutter speeds and synchronization.

That, coupled with the fact that a series of flower-stills he took last year won him the Grand Champion award at the 1986 Hansford County Fair belies the modesty the venerable photographer gives his work.

Ernie is just a few months short of being a Hansford County native. His parents moved to Hansford County in July of 1903. He was born in April that year in Kent County, Texas.

An Army veteran, Ernie has

served his country in the Panama Canal Zone in the late 1920's, then was reactivated from the reserves in 1942 when Americans entered World War II.

He came out of the war with the rank of sergeant and served overseas with MacArthur's troops in New Guinea.

In between his two stints in the armed services, Ernie had returned to Spearman to take care of his ailing parents.

Ernie's father died in 1943 but he continued to care for his mother who died later, in 1966.

Spearman's unofficial photographer gained an active interest in the hobby in 1929 when he was living in New York City just shortly after his release from the Army.

There he lived in a 65-family apartment complex and bought his

first camera -- this an accordion box camera.

He made acquaintance with another tenant in the building who owned an outfit which Ernie remembers as being a "better" camera than his. It didn't really matter, however; Ernie's pictures always came out better.

One morning, after viewing some of Ernie's photography work, the man invited him to walk with him.

"I didn't know where we were going," Ernie remembers. "But the next thing I know, we're on Wall Street and taking an elevator up to the twenty-second floor of a business office complex."

Ernie's new friend took him into the offices of one of New York City's largest financial institutions

See "ERNIE", p-2

## Lynx skin Elks in 37-8 district win

Operating with the finesse of a tournament master chess player, the Spearman Lynx -- behind the second-half 3-TD explosion of junior runningback Shawn Cook -- rolled past the Stratford Elks, 37-8, Friday night in Elk stadium in the 1-AA district opener for both ball clubs.

In other district games Friday, West Texas scalped Panhandle by a 35-24 count and Gruver pounced on Amarillo Highland Park, 35-6.

The Lynx's season mark goes to 3-0-1 and 1-0 in district while Stratford falls to 3-1 for the year and 0-1 in 1-AA play.

WT is now 4-0 on the year and 1-0 in district while Panhandle is 3-1 and 0-1. Gruver holds a 1-0 district mark and is 1-3 for the season. Highland Park goes to 0-4 and 0-1 respectively.

Going into Friday's game in Stratford, the Elks had had only three points scored against them in their first three contests this year.

But the Lynx took advantage of eight Elk turnovers to rout their hosts in that 37-8 blood-letting.

Spearman racked up 16 first downs and 331 yards total offense while holding the hapless Elks to 11 first downs and only 199 yards for the night. Stratford managed only 75 yards on the ground.

The Lynx posted 201 yards on the ground and another 130 through the air -- 79 of that coming on a second-half opening pass from Spearman signal caller Brent Davis to Cook in a patented "Hide Out" play.

The well-oiled Spearman scoring machine put up points in each quarter of Friday's Texas Schoolboy Football clash and even included a 30-yard Matt Tucker field goal in the third frame for extra measure as they totalled their 37-point score.

The Lynx shocked Stratford early when they took over on the Elk 49 yard line for a fumble recovery.

Three plays later, Davis stepped in from the 8-yard line for the opening touchdown of the evening. Tucker's PAT kick was good and Spearman held a 7-0 lead with just over seven minutes gone in the game.

That 49-yard drive required only three plays with runningback Haskell Garrett accounting for all but the final eight yards.

The ball swapped hands several times before the Lynx decided to show Stratford just what they could do.

Taking the ball on their own 13-yard line early in the second

See "LYNX", p-2

## New 7 percent sales tax goes into effect Oct. 1

A host of new items and services will fall under the state sales tax which moves from 5.25 percent to six percent beginning next Thursday.

Both Gruver and Spearman businesses will begin charging the new rate which -- along with the city

**Borger man announces for senate**

The 1988 political season opens this week as a retired Borger orthodontist is expected to announce his candidacy for district 31 state senator -- an office currently held by Democrat Bill Sarpaullius of Canyon.

Will Graham of Borger will be announcing on the Republican ticket for primaries to be held next May.

His announcement is expected next Tuesday in Amarillo, according to information received from his campaign headquarters.

Other formal announcements are planned at Borger and Pampa on the same day.

The Borger retiree served as a Pampa city councilman at one time and brands himself as "solidly conservative".

Graham is a lifelong resident of the Panhandle and was raised in Tulia. He has lived in Hereford, Amarillo, Pampa and Borger.

sales tax in both cities -- will have a total of seven cents going to the state on each \$1 bill spent.

The expanded sales tax base was a major element of a \$5.7 billion tax bill approved by the Texas state legislature this past summer.

In addition to the expanded sales tax base and the increase tax, taxes on cigarettes will be going up from 20.5 cents a pack to 26 cents a pack on Oct. 1.

The sales tax base has been extended to several broad categories of services such as real property services including landscaping, janitorial, garbage collection and pest control;

Security services, including private investigators and armored car services; information furnished by credit bureaus; and debt services such as adjustments and repossessions.

Also included under the expanded base is information services like financial research, specialized information and insurance services including damage appraisals, investigations and claims adjustments, but not premiums paid for insurance.

The new tax base is expected to add more than 64,000 Texas businesses to the state's tax rolls, joining the more than 420,000 merchants and businesses already collecting sales tax.

Newly taxable items include custom computer programs, labor on installations to tangible property, some transportation charges on the sale of goods, telephone service and membership and dues to

See "SALES TAX", p-2

The Hansford  
**Plainsman**

25¢  
Per Copy  
6 Pages

Volume 18 No. 47      YOUR HOMETOWN NEWSPAPER      Sunday, September 27, 1987

## School reverses decision to hold referendum on building project

Spearman school trustees reversed an earlier decision to seek a non-binding referendum and elected to go straight to a bond issue on a propose building project on the junior high campus during a special meeting Thursday.

That decision came following a presentation of a new building plan by Andrews architect Larry Donham to the SISD board.

"After looking at the options open to us, it appears this (new) plan is the most workable," school superintendent Larry Butler noted at the meeting. "With that in mind, it appears unnecessary to take this before a referendum."

The newest plan -- it's one of six presented to the school board -- calls for additions to the elementary school to bring it to a true kindergarten through fifth grade campus.

Also included is the addition of an all purpose gym which would serve as an auditorium for both elementary and junior high campuses.

The east wing of the existing junior high building would be demolished with classrooms built to replace those torn down. The new structure would be built so later additions could be made.

The projection on the new building scheme carries an estimated price tag of \$2,183,339, Donham told the school board.

"I think we need to do one thing at a time," notes board president



LOOKING OVER THE PLANS . . . SISD officials look over a new proposal presented by an Andrews architect Thursday afternoon before reversing an earlier decision to offer voters a referendum on selecting a

plan for a new junior high building. The board opted to go with the new proposal presented by the architect. The new proposal has a cost of almost \$2.185 million.

STAFF PHOTOS BY KIRBY MCADAMS

Mike Barnett. "This plan is expandable and I don't like the idea of trying to do everything at once."

Trustees had discussed demolition of the entire junior high building with new construction to replace all existing classrooms there. That plan, coupled with building a new competition gym on the high school campus, carried a price tag in excess of \$5-million.

"This is what I feel the school

system needs at this time," remarked Barnett. "I feel the burden for the entire project would be too excessive right now."

Early estimates on the tax rate needed to pay off the bond obligations are around one cent for every \$21,000, Orville Latham, SISD business manager told the board.

The \$2-million project the board settled on Thursday will require an additional 10 to 11 cents per \$100 valuation under those guidelines.

The actual rate will depend upon length of the bonds and the interest rate the bonds carry.

Thursday's meeting brings to a culmination over nine months of work on the part of SISD officials in evaluating and working toward a possible solution for the building

See "SCHOOL", p-2

**Deadlines noted for county fair**

Plans for the upcoming Hansford County Fair are well underway, reports Bert Williams, county extension agent.

The fair will open Thursday with non-perishable entries being accepted from 3 to 7 p.m. that day. Judging on the events will take place Friday and Saturday, he notes.

Non-perishable entries can not be accepted after the Thursday 7 p.m. deadline. "We sure want everybody who would like to place an entry to get in," Williams says.

Exhibits will include items from agriculture to arts and crafts. A dog show, a talent show and a children's petting zoo will also be featured highlights of the fourth annual County Fair.

Art, baked goods, food preservation, clothing, flowers, horticulture, needlework, toile painting, photography and a lamb and steer show will also be included in the 3-day run.

All perishable exhibits should be entered Friday morning between 9 and 11 o'clock, notes Williams.

## Homecoming slated for next Friday

The 1987 Spearman Lynx homecoming celebration will unfold Friday night in Lynx stadium with a full slate of events scheduled this week.

The homecoming bonfire and dance will be held Thursday evening from 10 p.m. to 1 a.m. while a pep rally will be held at the junior high gym Friday afternoon.

Pregame festivities will be held beginning at 7:30 Friday night, just prior to the district 1-AA meeting between Spearman and White Deer in Lynx stadium.

Homecoming queen candidates for the 1987 crown include seniors Sandy Hill, Paige Pittman and Kathy Poole;

Junior candidate Krista Kirkland, sophomore Laci Lasater and freshman Kyla Nelson make up the rest of the royal court.

Other events scheduled for the 1987 homecoming celebration include an FFA sponsored barbecue dinner beginning at 5:30 in the high school cafeteria prior to Friday's game.



1987 HOMECOMING QUEEN CANDIDATES are [l-r] Krista Kirkland, Kyla Nelson, Sandy Hill, Paige Pittman, Kathy Poole and Laci Lasater. One of these girls will be chosen as the reigning Homecoming Queen during pregame ceremonies this Friday evening in Lynx stadium.



**LYNX**

frame, the Lynx offensive machine marched the length of the ballfield in only 12 plays with Alan Beeson slashing in from the Elk 6-yard line for the 6-pointer.

That march was highlighted by the pin-point passing of Davis to a trio of receivers as he hit Kevin Nelson for 14 yards, Keith Benson for another 13 and Jeff Gustin for 22 yards.

Tucker toed the extra point and, with 6:02 left before halftime, the score read 14-0 for Spearman.

Neither team was able to mount a threat before halftime intermission and that's the way things stood when the two teams went to the lockers, with Spearman holding a 14-point advantage.

Stratford kicked off the start the first half and the Lynx took it from there.

Opening on their own 21, the Lynx lined up for the first play from scrimmage while Cook sauntered off to the far sideline near where the rest of the Spearman team stood just out of bounds.

When the ball was snapped, Cook seemed to come from no where as he caught Davis's pass in full gallop down the right sideline.

With only 14 seconds ticked off the third quarter scoreboard clock, Spearman had jumped to a 20-0 lead before a shocked and dismayed Stratford hometown crowd.

Tucker's PAT kick was wide left, but the Lynx were in command with that 20-point advantage.

Tucker added a 30-yard field goal with 5:02 left in the third stanza. The Lynx grabbed a muffed punt reception by Stratford on the Elk 16 to set up the field goal try.

Stratford avoided a shutout with their only drive of the night -- that a 70-yarder in eight plays with runningback Gared McBryde tallying the 6-pointer.

Elk QB Doug Pittman found Kirk Davis in the end zone for a 2-point conversion to put the score at 23-8 with 2:14 left in the third quarter.

Stratford began desperation type attacks from then on and the Lynx settled into a defensive hold out.

But Spearman wasn't to be denied -- especially when an Elk fumble and a pass interception set them up deep in Stratford territory near game's end.

The first gift came on a fumble recovery on the Stratford 34. In just five plays the Lynx found double stripe territory with Cook taking it the final 20 yards with 1:46 left in the game.

Tucker's PAT boot was good this time and Spearman found themselves the possessor of a 30-8 rout.

It didn't stop there. On the Elk's



DEFENSIVE PLAYS LIKE THIS ONE by Spearman's Matt Tucker [74] on Elk runningback Gared McBryde [33] played a key roll in Friday night's Lynx domination of their district 1-AA opener. Spearman held Stratford to only 75 yards on the ground for the entire ball game. PHOTO COURTESY OF BILLY MILLER

next possession, Gustin intercepted a Pittman pass to put Spearman in control at the Stratford 16.

Again it was Cook, this time from nine yards out, to score the TD. That final score came with 42 seconds left in the contest. Tucker's extra point kick was good and the Lynx had their first district win of the 1987 season with that 37-8 skinning of the Elks.

Davis finished the night by hitting on five of nine attempts for 130 yards and one touchdown. He carried the ball 11 times for 22 yards.

Leading rusher was Garrett with 74 yards on 10 totes. Alan Beeson finished with 38 yards on 17 carries

and one touchdown while Stan Brandt had 10 yards on five carries and one TD.

The real story of the night was the performance of Shawn Cook who had three markers to his credit. The junior runningback finished with 63 yards on five carries while he also caught that 79-yard TD pass to open the second half.

Leading rusher for the Elks was Parker Johnson with 57 yards on 14 carries. His counterpart in the Elk backfield, McBryde, carried the ball 11 times for 42 yards and caught three passes for another 48.

Pittman, the Elk helmsman, had a negative 24 yards on seven

carries. He also hit on 11 of 19 passes for 124 yards.

Next Friday, Spearman will host the White Deer Bucks in the 1987 Lynx Homecoming celebration.

This will be the first district 1-AA game of the season for the Bucks.

**GAME STATS**

	SPM	STR
1st Downs	16	11
Yds Rush	201	75
Yds Pass	130	124
Total Yds	331	199
Pass Md/Att	5/9	11/19
Fum Rec By	7	2
Int Md By	1	0
Pen/Yds	5/50	5/45

**Lynx jv outlast Stratford, 24-16**

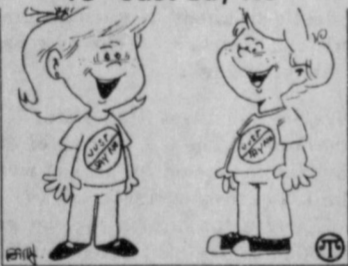
The Spearman Lynx junior varsity football eleven racked up their fourth win in as many starts as they held off a determined crew from Stratford in a 24-16 contest Thursday evening in Lynx stadium.

Spearman workhorse runningbacks Scott Wilkerson and Edgar Nava scored a pair of touchdowns a piece to propel the jv Lynx to the win.

Wilkerson finished the night with 160 yards on 19 carries while Nava toted the ball 18 times for 82 yards.

Spearman totaled 284 yards of offense compared to Stratford's 207 yards on offense. This is the second time this season the Lynx jv

**Teaching Your Child To "Just Say No"**



Check food and drug stores for displays that help your child stay drug-free.

has beaten their Stratford counterparts.

Spearman took a 14-6 decision over the Stratford jv in the opening game of the season in Stratford.

Thursday night, Spearman took advantage of Elk jv turnovers, punching across three second frame TD's and one third quarter score to account for their 24 points.

Three of the scores were set up on fumble recoveries while the other TD was due to a bad snap which sailed over the Elk punter's head to the Stratford 6-yard line.

Wilkerson scored the opening marker of the evening on an 18-yard run with 6:09 remaining in the second quarter. The PAT snap was mishandled, but the Lynx jv crew had a 6-0 lead.

Just two minutes later, Nava blasted in from the 6 to put Spearman in front by a 12-0 count with 4:04 remaining in the half. The PAT failed again.

Then, with 45 seconds left in the second stanza, Wilkerson found daylight again, this time from the Elk 2-yard line.

The PAT boot was wide left but the Lynx jv carried a commanding 18-0 lead into halftime intermission.

Nava tacked on an insurance touchdown midway through the third quarter on another 6-yard run.

This score came with 7:34 left in the third quarter. The PAT was muffed again, but Spearman held firm control of the scoreboard with a 24-0 tally.

As the game progressed, Spearman jv coach James Mireles began making liberal substitution while Stratford kept their number one unit on the field.

Stratford punched across their first TD of the night with 5:13 remaining in the game and made good a 2-point conversion to bring the score to 24-8.

With 1:55 remaining on the fourth quarter clock, the Elk jv again found paydirt and converted their 2-point PAT to boost the score to a 24-16 deficit.

But the Lynx jv was able to stave off any further Elk hopes to corner

their fourth win of the year by that final score, 24-16.

Next week, the Lynx jv will go to White Deer to take on the Bucks in their fifth game of the year.

**SCHOOL**

problems at the junior high campus.

Board members instructed Butler to proceed forward with work toward a bond election. This election could be held as early as Dec. 8, reports the Spearman school superintendent.

School officials would have to call the election during their Oct. 15 meeting for the \$2.185 million bond issue.

SISD trustees will meet again Tuesday morning in a special breakfast meeting at 7 a.m. in the high school cafeteria.

At this meeting, they are expected to rescind an earlier vote to hold a non-binding referendum on the bond issue and discuss the building project.

**Junior high Lynx fall to Stratford grid teams**

The Spearman junior high Lynx dropped a pair of games to their Stratford Elk counterparts Thursday evening in Lynx stadium with the seventh grade bowing out in a 20-32 encounter, while the eighth grade Lynx dropped a 6-22 contest.

"Both teams really had good games, despite the score," declares junior high head coach Ken Rutherford. "We got excellent play from both offensive lines."

In the seventh grade game, Spearman trailed by a 24-0 count before posting their first touchdown of the night.

Roman Arnold broke loose on a 60-yard gallop to paydirt to notch the score at 24-6 by halftime.

Stratford tallied another marker

continued from p-1

**ERNIE**

and took him into the office of the president.

"I couldn't imagine what he was doing, taking us into the president's office," Ernie laughs. "And I almost fell over when he sat in the chair behind the desk."

At this point, the man offered Ernie a lucrative salary to take what the Hansford photography buff terms as "naughty" pictures in Chicago.

Ernie considered the proposition for a few days, but later turned down that offer.

"This was Chicago of 1929," he remembers. "All I could think of was Al Capone and I knew stuff like this was right up his ally. Besides that, my parents were good Baptists and it would have killed them if they thought I was making dirty pictures."

So Ernie came back to Spearman and his parents. Taking care of them, working, and later, taking care of his mother while additionally recording county events with his camera, the long-time Hansford resident never got around to getting married.

"I've been chasing the pretty girls for over 60 years now," he smiles. "I guess they just see me coming."

A familiar sight around Spearman, Ernie is now retired although he does serve the Stationmaster's House Museum as handi-man, host and tour guide some 20 hours each week.

There he is paid by the Green Thumb Program and gets around \$130 every two weeks for his efforts. His only other income is from social security.

Ernie has for years taken and had film developed and printed for more than one citizen or group in Spearman. He's done it all out of his own pocket for the most part.

This summer he became the victim of pneumonia and took his first trip ever to a hospital. This was in July and Ernie spent a full week under an oxygen tent in

continued from p-1

**SALES TAX**

private clubs.

"Businesses need to reprogram cash registers and alert workers and staff of the new rate taking effect October 1," State comptroller, Bob Bullock said.

There is no increase in the one-percent local option tax collected in some areas of Texas.

A fee for getting a sales tax permit and an increase in the state's motor vehicle sales and hotel/motel room taxes went into effect on September 1.

A rollback in the state's motor fuels tax from 15 cents and to 10 cents a gallon was also cancelled on September 1.

Starting January 1, 1988, the sales tax will be further extended to data processing services, including word processing, data entry, retrieval and search as well as payroll and business accounting, data production, time sharing and computer management.

Taxes will also be due on repair and remodeling services, except on new construction and owner-occupied residences starting January 1, 1988.

**The Hansford Plainsman**

PUBLICATION [USPS 2346-6000]  
SPEARMAN, TEXAS 79081  
213 main  
Box 458  
659-3434

OWNED AND OPERATED BY  
Texas Independent  
Newspapers Inc.



Second Class postage paid at Spearman, Texas 79081.

Any erroneous reflection upon the character of any person or firm appearing in these columns will be gladly and promptly corrected upon being brought to the attention of the management.

PUBLISHER  
JAMES C. JARRETT  
Advertising Director  
Kirby McAdams

SUBSCRIPTION RATE: Hansford, adjoining counties, combination with the Spearman Reporter, \$19.95 out of county \$24.95. POSTMASTER: Send address changes to Hansford Plainsman, Box 458, Spearman, Texas 79081.

addition to massive doses of antibiotics.

While Medicare picked a large portion of his expenses, Ernie has had to spend a good deal out of his own pocket -- something his limited budget wasn't geared for.

But he hasn't quit taking pictures or giving them away for free. Instead, he took money he'd been saving for a new camera to pay his medical bills.

He's back to saving again, but when you're 85, one never knows how long it'll take to save up for a new camera. Especially one of those new automatic focusing cameras which with Ernie's failing eyesight may become a necessity before too much more time passes.

Because of this, a special fund has been started by some of Ernie's friends in order to purchase the camera for him.

The fund already has \$50 in it, but that's way shy of the approximately \$600 it will take to purchase the outfit.

Ernie's pneumonia, by the way, came about as a result of his attempts to take pictures of tornadoes during this spring's thunderstorms which dotted the area. Several soakings of cold showers helped bring it on.

For those who would like to show their appreciation of Spearman's unofficial photographer, money may be turned in to a special fund which has been started at the First National Bank.

Money for "Ernie's Camera Fund" can be taken by the bank or mailed to the fund in care of the bank at Box 337, Spearman, Tx. 79081.

**Full agenda Tuesday for councilmen**

A full agenda awaits Spearman city councilmen Tuesday evening when they meet to accept the 1987-88 budget and establish the tax rate for the upcoming fiscal year.

In addition, the 8 o'clock evening meeting will see city fathers making final decisions on federal revenue sharing money, setting new rates for garbage collection, amending the current city budget and other items.

Included in Tuesday's agenda will be a special meeting to receive public input concerning a city application to the Texas Department of Community Affairs for a possible community development improvement project.

The TDCA has some \$1.2 million in funds available for Panhandle cities for improvement projects. In the past, the city of Spearman has gotten these funds to improve water facilities.

The proposed garbage collection fee increase will be an across the board 12 percent raise. This increase will move residential costs from \$5.35 per month to \$6 per month.

Commercial and business rates will get the same 12 percent increase, notes city manager Jim Murray.

Commissioners will also look at improving the city's retirement program in addition to authorizing an independent salary survey by an outside consultation firm.

The family of Vina Hawpe cordially invite you to attend a 90th Birthday Reception on Sunday, October 4, from 2:00 to 4:00 in the afternoon. First Methodist Church Fellowship Hall Sunray, Texas. No gifts please. S-3tp

**ABSOLUTE AUCTION**  
John Deere Co. - Repossession Settlement  
Tuesday-Oct. 6, 1987 - 10:30 A.M.  
Location: Hwy 207 S., Spearman, Tx.  
(Next to JD dealership)

**TRUCKS AND PICKUPS**  
1977 GMC Astro 95, w/sleeper, single axle, Perkins dsl., 8 spd., 10:00X20 Tires  
1978 GMC Astro 95, w/sleeper, tandem axle, Cummings dsl., 8 spd., 11.25x24 tires  
1979 Chevrolet Bison Tandem Truck, 350 Cummings dsl., 13 spd twin cyl hoist, dual saddle tanks  
1982 Chevrolet C-30 1 ton service truck, duals, 6.2 dsl [bad], auto trans, Koenig service bed w/fuel tanks & electric pump  
1981 Chevrolet Silverado 1/2 ton pickup, 5.7 dsl., auto trans

**TRAILERS**  
1966 Dorsey 42' Van Trailer, side & rear doors, 7.50X15 tires, parts bins and workbench  
1976 Ledwell 45' Drop Deck Implement Trailer, dovetail, fold-up side extensions, hyd. Tuisa winch, 8.25X15 tires  
1980 Jantz LP8-12 H.D. Combine

Trailer, 40,000 cap., 7.50X15 radials  
2) 1979 Jantz LP12 H. D. Combine Trailer, 40,000 cap., 8.25X15 radials

**EQUIPMENT AND MISCELLANEOUS**  
JD 843 Cornhead, converted to grow40",  
1) lot chains and boomers  
1) lot miscellaneous JD combine parts  
1) lot fuel nozzles and pumps  
1) lot pintel hitches  
1) lot new 10.00RX20 radial truck tires  
1) lot new 8.25RX15 radial trailer tires  
1) Johnson PPL 6000 2-way mobile radio  
4) Regency XI2000 2-way mobile radio

NOTE: Please be on time as there are very few small items, for information, Call: 806-659-2568.

**PERRYTON CLEANERS & LAUNDRY**  
Shirts and Jeans Starched to your liking! Free Pickup and del.  
Call 435-4211 Mon. and Thurs. Afternoons



# Letter to the Editor

Dear Editor,  
For a long time we have wanted to publicly express our appreciation for the privilege of living in a county where we have efficient, capable and honest law enforcement people.

We were both born within ten miles of Spearman, went to school here, raised our family here, and intend to be here from now on. We grew up with respect and admiration for law enforcement due in large part to Hix Wilbanks. He was not officious, never pushing or flaunting his authority, but firm and fair.

We do not recall ever seeing him wearing a gun, but he was able to get cooperation from the criminals. J.B. Cooke started as his deputy when he was quite young and followed the example set by Hix.

J.B. served the people of this county faithfully and with integrity for many years. Many a middle-aged man today credits J.B. with setting his steps in the right direction. He was understanding of their temptations, but insistent on going straight.

R.L. McFarlin served as deputy under J.B. and we see many of the same qualities in him that we

admired and respected in Hix and J.B.

Our generation grew up in an atmosphere of respect for law and we took it for granted until we had contact with other places and began to realize how fortunate we are.

The Deputy Sheriffs, Jim Brown and Gary Evans together with the Sheriff go beyond their exact duties and take a personal interest in the safety of people and property. The office staff is very capable and cooperative.

We want to publicly express our thanks to them all for "keeping an eye on us and ours", especially since we are not as agile as we once were.

Sincerely,

Hollie and Earl Riley



Cattle branding was practiced 4,000 years ago. Old tomb paintings show Egyptians branding their cattle.

# Among the Neighbors

By Helen Fisher

Jeanette Allen has a new great niece. Macy Polk Hicks was born in Amaillo on Sept. 20, weighing 7 pounds, 6 ounces.

She is the second daughter of Mr. and Mrs. James P. Hicks. Mrs. Hicks was the former Candy Thoreson.

Mr. and Mrs. Delbert Allen returned the first of the week from a leisurely trip through southern Colorado and New Mexico.

It was Ivan's "last hurrah" before returning to work at Boyd's Beauty Salon. She has been recovering from surgery for several months.

The many friends of Mrs. Blanch Watson are welcoming her back to Spearman after an absence of 4 years.

She left here to live in Plainview and Tulia but decided that there

were too many miles between her and her grandchildren. In addition, she preferred living in Spearman to anywhere else.

She is the mother of Debra, Mrs. Dale Gable, and is now living at 312 1/2 South Hoskins. She intends to make her home here permanently, and is a member of the Baptist Church.

Lois and Woodrow Gibner re-

turned Wednesday from Oklahoma City. They were there several days while she was an outpatient at McBride Clinic.

They also visited old friends while there. They returned by Shawnee for a short visit.



There is no single cat called a panther. The name is commonly applied to the leopard, puma, and the jaguar.

**WEDDING SHOWER**

Gai Pipkin and Tommy Weaver

First State Bank Hospitality Room

October 6, 7:00 to 8:30 p.m.

Selections at Sacks

Given by hostesses

**UNWANTED HAIR REMOVED PERMANENTLY**

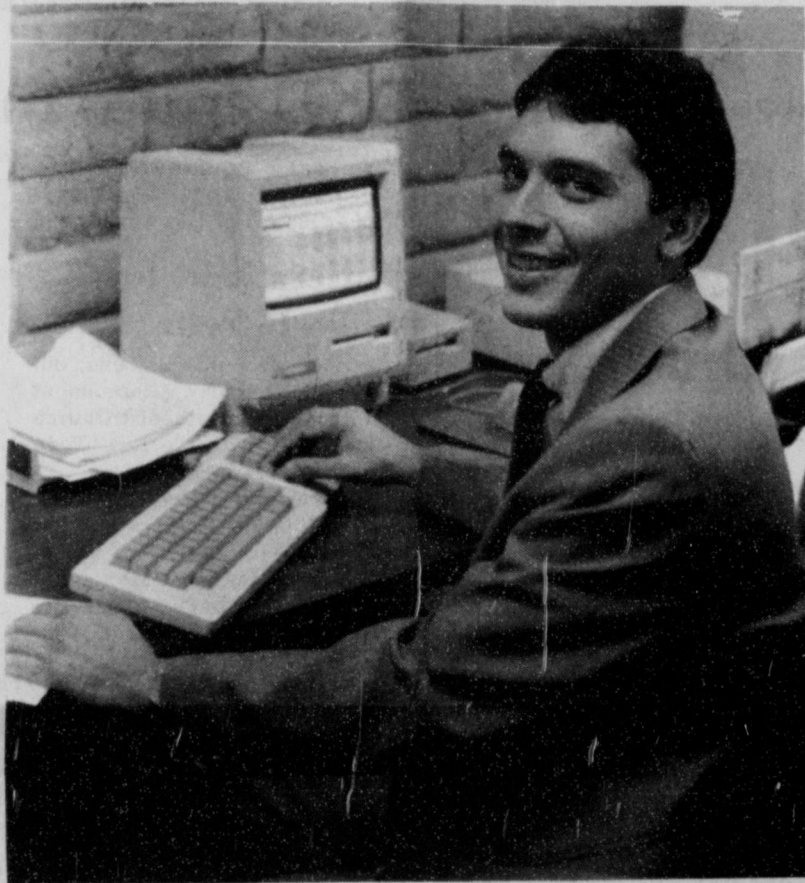
By Electrolysis, The Only Medically Approved Way. Call For Appointment Or Free Consultation

Retha Atkinson Electrolygist  
Member A.T.E.

**273-6228 (Borger)**

Call Monday-Thursday After 5 p.m.  
Friday & Saturday All Day

# Dealing With People You Trust



Tindle Ramon

**... it's important to you, and it's important to us.**

Smooth operations aren't accomplished by accident. It takes qualified and quality people such as Tindle Ramon to help make your banking operations as everyday and ordinary as you've come to expect.

Tindle is in charge of our data processing here at First National and his expertise assures you of the error-free banking which is a byword here.

He carries a science degree from Panhandle State University in Goodwell and is an assistant cashier here at the bank. He's also a member of the board of directors of the Texas-Oklahoma Panhandle Chapter of the Bank Administrative Institute.

Active in our community as well, Tindle is a member of the Spearman Jaycees where he has served as secretary for that organization. He's also active in his church where he is a member of the First United Methodist choir and is on the administrative council of the church. He and his wife, Kristi, are sponsors for the senior high UMYF youth group.

Dealing with quality people. It's just one more reason that banking at

First National is



First National Bank of Spearman



**Good for You**  
and Hansford County Tool



**Booster club to meet Tuesday night**


The Spearman Lynx and Lynxette Sports Booster Club will be meeting Tuesday evening to review game film of the Spearman-Stratford district game which ran off this past Friday in Stratford. That meeting will begin at 8 p.m. in the Home Ec room at Spearman High School. Also on tap will be game highlights of the Spearman Junior High games against Stratford in Lynx stadium last Thurs-

day. In addition, the Booster Club will be selling Mother's Mums for homecoming this week. Cost of the mums are \$12 each and are available from Booster Club members. For full information, contact Marlene Davis at 659-2912, Carol Hall at 659-3356, Cathy Beck at 659-2866 or Hester Sue Crawford at 659-2074.

**Cubs Scouts to hold first meet**

The first Cub Scout pack meeting of the fall term will be held this Tuesday evening in the county barn. The meeting will begin at 7 p.m. All Cub Scouts planning to participate in this year's activities should attend Tuesday's meeting, reports Candy Delozier, Den Mother. At Tuesday's meeting, Tiger Cubs will be graduated into Cub Scouts and fourth and fifth grade boys will be advancing to Webelos.

Baby Shower for Jarick Layne Howard son of Rick and Jan Howard Tuesday Sept. 29 from 7:00 to 8:30 p.m. at 1106 Wilmeth Drive Given by hostesses



s50-2tc

**Services held for father of resident**

J.B. Raper, 71, father of Spearman Police Chief Joe Raper, died Thursday in Dimmitt. Funeral services were held Saturday at First Baptist Church there. Burial was in Westlawn Memorial Park in Dimmitt.

Mr. Raper was born at Vernon. He moved to Dimmitt in 1936 from Earth. He was married to Oleta Boozer in 1954 in Castro County.

He was a service station operator until retiring in 1977. He served in the Air Force during World War II. He was preceded in death by a son, Johnny, in 1972.

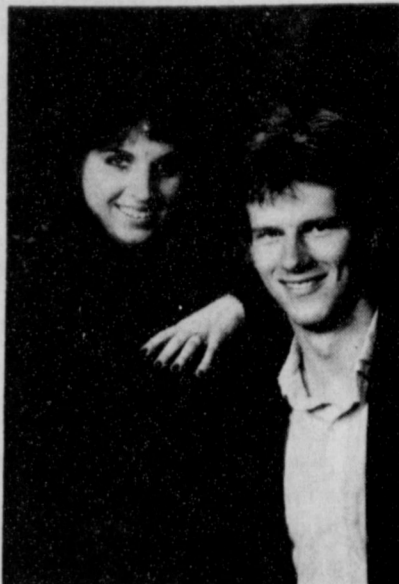
Survivors include his wife; a daughter, Donetta Hendrickson of Canyon; a son, Joe Spearman; three sisters, Mary Woodburn of Dimmitt and Ruby Dempsey and Joyce Angel, both of Amarillo; a brother, Sam of Dimmitt; and three grandchildren.

Memorials may be to Westlawn Memorial Park Fund c/o Castro County Courthouse.



IT'S NOT GRAFFITI... Spearman's Jeff Smith adds the finishing touches to a special sign at the Hideout Teen Center -- a large outdoor slogan which reads, "Just Say No". The drug and alcohol awareness program is being sponsored by the Spearman non-profit organization where some 50 junior high students signed special pledges this past week in support of the "Just Say No" program.

**Engagement Announced**



TISCHA LEN PEARCY AND STEVEN WAYNE FRY

The engagement and approaching marriage of Tisha Len Pearcy of Spearman to Steven Wayne Fry of Gruver is announced this week by the bride-elect's parents, Mr. and Mrs. Edwin Pearcy. Fry is the son of Mr. and Mrs. Edward Fry of Gruver. The couple plan a December wedding. Both Miss Pearcy and Fry are education majors at West Texas State University in Canyon.

**Girls takes third place**

The Spearman girls cross country team captured a third place finish at Plainview last weekend in

their second cross country meet of the 1987 season.

Perryton won the event, followed by Dalhart in second place. The girls team will be in Hereford this weekend for competition there.

Racing against 177 others, Lynxette Krista Kirkland led the Spearman girls, placing fifth with a time of 13 minutes, nine seconds for the 2-mile event.

Only 10 seconds separated her and 12th place Hailey Shieldknight who wound up the run with a time of 13:19.

Heather Murrel placed 21st with a time of 13:45 while Carly Shieldknight clocked 13:50 for 24th place.

Junior varsity action saw the Lynx girls competing with 234 as they finished in sixth place at Plainview.

Finishing in the top 25 were Shannon Holton and Cam Butts.

**Services held for Willie B. Seitz**

Services for Willie B. Seitz, 86, were held Thursday afternoon at the First United Methodist Church in Spearman, with the Rev. Todd Dyess, pastor, officiating.

Burial was in Hansford Cemetery by Boxwell Brothers Funeral Home of Spearman.

Mr. Seitz, born at Montague, moved to Mobeetie in 1902. He moved to Hansford County in 1928. He was a retired farmer and rancher.

He was married to Emma Hodel in 1951. He was a member of First United Methodist Church, Khiva Temple and Scottish Rite.

He was a 32nd Degree Mason, a 50-year member of Hansford Masonic Lodge #1040 and a Shriner for more than 50 years.

Survivors include his wife; a daughter, Willa Faye Creamer of Harrah, Okla.; a brother, Roy of Spearman; two sisters, Ruby Jones of Pampa and Virgie Phillips of California; four grandchildren; and four great-grandchildren.

The family requests memorials be to First United Methodist Church of Spearman, American Cancer Society or a favorite charity.

**Markets**

WHEAT	\$2.28
MILO	\$2.90
CORN	\$1.83
BARLEY	\$1.45

**Hospital Report**

Patients in Hansford Hospital are Eldon Boese, Patricia Frayre and son, Rosa Maria Briseno and daughter, Beatrice Lozano and Winnie Allen. There were no dismissals.

**Engagement Announced**



GAI PIPKIN AND TOMMY WEAVER

The engagement and approaching marriage of Gai Pipkin of Spearman to Tommy Weaver of Perryton is announced this week by the bride-elect's parents, Mr. and Mrs. J.W. Pipkin.

Parents of the prospective groom are Mr. and Mrs. R.L. Weaver.

The wedding date has been set for Oct. 17 at Bako Baptist Church in Bako, Ok.

**Swink & Cook Auction Co.**

"Pound for Pound the Best Team Around"

**AUCTION**

**Saturday, October 3, 1987 - 10:00 a.m.**

LOCATED: Corner of Industrial Road & Brillhart Ave. [Hwy. 15] Perryton, Tx. OWNER: Clint Ragsdale, Craig Ragsdale Estates & Others Information: Tony Ragsdale - Home Phone: 435-4362 or Business Phone: 435-4941 Day of Inspection - October 2, 1987 - 12 noon to 6 p.m.

**VEHICLES, FARM EQUIPMENT & TRAILERS**

- 1-1986 Grand Wagoneer, Loaded 20,000 Mi. (Very Sharp & Like New)
- 1-1979 Cadillac Sedan De Ville 44,000 Mi. (Like New)
- 1-1979 Ford Maxi Van, Superwagon, 4 Captains Chairs, Extended Body and 2 Fuel Tanks
- 1-1980 Grand Marquis Mercury, 67,000 Mi.
- 1-1973 Sedan De Ville Cadillac 69,000 Mi.
- 1-1983 Chevy 1/2 Ton Silverado Pickup, Loaded
- 1-1964 Chevy Pickup
- 1-Big 12 Grain Cart
- 1-8N Ford Tractor
- 1-2Row Mower
- 1-2 Wheel Trailer W/ Spare
- 1-2 Wheel Tilt Trailer W/Lights
- 1-1984 Yamaha 225 Three Wheeler
- 1-Yamaha 125 Three Wheeler

(Very Nice)

**ANTIQUES**

- 1-Lot Quilts (1800's)
- 1-Oak Conference Table (42" Wide, 8' Long)
- 1-Oak Round Coffee Table W/Claw Feet
- 1-Captain Chair
- 1-Barber Chair, Restored, Theo-A-Kochs
- 2-Barber Chairs, 1 Koken, 1 Emil J. Paidar
- 1-Oak Filing Cabinet
- 1-Hall Tree
- 1-Triple, Bevel Edge, 2 Winged Mirror & Dresser
- 1-3 Piece Bedroom, Full Size (Excellent Shape)
- 1-Three Piece Bedroom, Full Size
- 1-Large Lot Doilies & Hot Pads
- 1-Lot of Feather Pillows
- 1-Dresser Bench
- 1-Magazine Table
- 1-Underwood Typewriter
- 1-Singer Sewing Machine, Treadle, Working Condition
- 1-Lot Sewing Machine Cabinets & Machines
- 1-Cash Register
- 1-Tokheim Gas Pump
- 1-Round-Top Truck
- 1-Large Lot Dishes, Pots, Pans, Utensils, Glasses
- 1-Set Homer Laughlin Pink Flowered Dishes
- 1-Soda Fountain Chair
- 1-Pepsi Wagon
- 1-Rocker
- 1-Occasional Chair
- 1-Wicker Standing Wash Basin W/Mirror
- 1-Lot Horse Collars
- 1-Set of Harnesses

**FURNITURE**

- 1-4-Piece Bedroom Suite, Full Size
- 1-4-Piece Bedroom Suite, Queen Size
- 1-4-Piece Wicker Bedroom Suite, King Size
- 1-Children's Bedroom Suite, Full Size
- 1-Lot Recliners
- 1-Lot Swivel Rockers
- 1-Lot Occasional Chairs
- 1-Lot Lamps, Table & Hanging
- 1-3 Piece Living Room Group W/Ottoman
- 1-Wicker Lounger
- 1-Sofa & Love Seat
- 1-Lot of Sofas
- 6-Rod-Iron Counter Bar Stools
- 4-Kitchenette Chairs
- 2-Bar Stools
- 1-Formal Dining Suite, Double-Leaf W/Pads & 6 Chairs
- 1-Smoked Glass Dinette W/4 Chairs, Chrome
- 1-Kitchenette W/4 Chairs
- 1-Lot Assorted Tables

- 1-Round Marble Table
- 1-Occasional Table, Marble In-Lay
- 1-White Game Table W/4 Chairs
- 1-Lot Mirrors
- 1-Lot Wall Clocks
- 1-Wicker Vanity W/Chair
- 1-Brass Hall Tree
- 3-Brass & Glass Plant Stands
- 1-Brass Fireplace Set
- 1-Kirby Vacuum
- 1-Hotpoint Washer & Dryer
- 1-Executive Office Chair
- 1-Desk W/L Attachment
- 1-Magazine Rack
- 1-Lot Trash & Ashtray Cans
- 1-Large Lot Household Knick-Knacks

**RADIOS & TV'S**

- 1-Zenith 25" Console Color TV W/Remote
- 1-RCA 12" Portable TV W/Stand, Color & Remote
- 1-Quasar 25" Console Color TV W/Remote
- 1-Admiral Portable Black & White TV

**MISCELLANEOUS**

- 1-Power Tow Electric Chain Driven Airplane Tower
- 1-Lot Mud and Log Chains
- 1-26" Ten Speed Bicycle (Like New)
- 1-Lot Yard & Patio Furniture & Equipment
- 1-Lot Cash Registers
- 4-22 Column Cigarette Machines
- 1-Lot Of Dolls
- 1-Lot of Stuffed Animals
- 1-Table Saw
- 1-Lot Tires & Wheels
- 1-Lot Aluminum Store Front Doors
- 1-Popcorn Machine
- 1-Refrigerated Fountain Root Beer Machine
- 1-Lot Coin Operated Riding Machines (Childrens)
- 2-Ambulance Stretcher Beds
- 1-Lot Carpet
- 1-Lot Luggage
- 1-Lot Flowers, Baskets & Pictures
- 1-Lot Canning Jars
- 1-Lot Childrens Toys
- 1-Lot Bedding, Towels & Pillows
- 1-Swinging Bar Doors
- 1-Charmglo Gas Grill W/Rotisserie

•Other Items to Numerous to Mention  
•Bring Your Own Boxes

•More Items by Auction Time  
•Lunch Available By Wheatheart Shriners  
•Night Watchman Provided

Rick Riffin, Representative-Spearman. 806-659-3819

Lunch Available Wheatheart Shriners Any Announcements on Auction Day Supersedes Any Other Previous Advertising Cash & Checks Only No Drafts Accepted

**Get a New Armstrong Carpet**

**FREE 'TIL FEBRUARY**

No Payments. No Finance Charges. No Kidding.

Now you can have that new Armstrong carpet in your home right now without paying a single cent for it until February 1988!

Simply choose the Armstrong carpet that's right for you. There's "Anything Goes!" — the carpet that's so good against matting and crushing it comes with a 10-year performance warranty or DuPont certified Stainmaster® Carpets by Armstrong or Nixy-Free Carpets by Armstrong, the choice!

\*Subject to customer credit approval. After February 1, 1988, finance charges will accrue at a rate up to 18% APR with up to a .50 cents minimum finance charge. \*\*Du Pont certification mark for residential carpets meeting its quality standards.



**CUSTOM CARPET**

405 E. 1st • DUMAS • 935-4485

**INTRODUCTORY SPECIAL!**



- Improve Handling
- Extend Tire Life
- Enjoy Smoother Ride

balancing only  
**\$5.50 per tire**

most cars and 1/2 ton pickups. 3/4 and 1-ton slightly higher.

Mr. Goodwrench



**Gillaspie Chevrolet Oldsmobile**

Hwy. 207 659-2541





All real estate advertising in this newspaper is subject to the Federal Fair Housing Act of 1968 which makes it illegal to advertise any preference, limitation or discrimination based on race, color, religion, sex or national origin, or an intention to make any such preference, limitation or discrimination. This newspaper will not knowingly accept any advertising for real estate which is in violation of the law.

# Get Professional Real Estate Service ... Let A Realtor Serve Your Needs!



**CLASSIFIED RATES**  
 Regular . . . Per Word-\$0.13  
 Display . . . Per Col. Inch-\$4.20  
 Double rate for blind ads  
 Minimum charges  
 Cash . . . . . \$4.00  
 Charge . . . . . \$4.50

**CASH IN ADVANCE ADS**  
 •Work wanted •Trailers for Sale •  
 •Business Opportunities •No longer Responsible •Political Advertising •Child Care •  
 •Baby sitting •Garage Sales •  
 •Out-of-county Ads unless advertiser has established credit with •The Spearman Reporter•

**DEADLINES**  
 To place or cancel ads  
 Friday - 12:00 p.m. . . . . Sunday edition.  
 Tuesday - 12:00 p.m. . . . . Thursday edition  
 The Spearman Reporter reserves the right to reject, edit, revise and properly classify all advertising submitted for publication. The Spearman Reporter also reserves the right to cancel any advertisement at any time.  
**THE SPEARMAN REPORTER**  
 213 Main, P.O. Box 458  
 Spearman, Texas 79081

Texas Carpet Cleaners - for free estimates on carpet, upholstery, cars, R.V.'s, and Suburbans. Scotch Guard. Call 733-2612 or 733-2046. 42-rtm

**PANHANDLE CRISIS CENTER:** 101 S.W. Forth, Perryton, Texas 79070, 806-435-5013. Help is available at no charge for domestic violence and sexual assault. Call Panhandle Crisis Center, receive support during a difficult time. Counselors on call 24 hours a day. Call for help.

**L&M Body Works**  
 1501 Hwy 15  
 659-2775

Tailpipes - \$29.95  
 Mufflers - \$39.95  
 Most Duals \$160.00 complete

**WEIGHT WATCHERS:** meets each Monday at 6:00 p.m. at the Home Demonstration Building, Spearman Texas.

**Mobile Homes**

**FOR SALE:** \$130. monthly payment for 14' wide mobile home remodeled and ready for delivery 12.77% A.P.R. \$500 down for 60 months. Ask for Don. 806-376-4612 s44s-7t

**FOR SALE:** \$99 total down payment. For 1987 double wide 3 bedroom, 2 bath, delivered to your location. 120 months. 11.0% A.P.R. \$333. per month. Call Art 806-376-5630. s44s-7t

**FOR SALE:** New 3 bed, 2 bath, Tiffany for only \$203. per month. Fully furnished & free delivery. 240 months. at 13.5% A.P.R. at 1,628 down payment. A-1 Mobile Homes. 806-376-5363. s44s-7t

**FOR SALE:** \$198 monthly for new 1988 double wide 3 bed, 2 bath, free delivery & set up. 13% A.P.R. 1,630 down payment at 240 months. Ask for Frank. 806-376-8611. s44s-7t

**COMPLETE MOBILE HOME** Services available. Check our cheaper rates on transporting, escorting, and skirting anchors and cool seal for all makes. Large selection of new, used and repos. B & D Mobile Homes. Guymon, Ok. 405/338-5315. s47-2tc

**FOR RENT:** Trailer space in Spearman. All utilities, fenced and concrete walk ways. Call 435-5080. s46S-only rtn

**ABANDONED HOMES -** Take over payments on 2 and 3 bedroom homes. **Qualify by phone.** 806/381-1352. Call collect. s46-rtm

**For Sale**  
**FOR SALE:** 1973 Dodge pickup. \$600.00. Can be seen at 309 Main St. in Spearman. S47S-1tp

**HOUSE FOR SALE:** 701 Wilmeth, 3 BR, 2 1/2 bath, 2 living areas, 3000 sq. feet living area. Call Betty Elbert, 659-3996 after 5:00. s46-4tp

**FALL OPENING**  
 Garage sale items - second hand furniture - antique and collectibles - jewelry and junk.  
**Palo Duro Antiques and Bargain Store**  
 601 Main  
 Gruver, Texas  
 Open Monday - Friday  
 Sometimes on Saturdays  
 9:00 a.m. - 5:00 p.m.  
 Call 733-2129 s46-rtm

**FOR SALE:** Subaru Stationwagon with four wheel drive. Call 659-2272. s43rtn

**FOR SALE:** Like new 8 John Deere #71 flex planters. Call Richie Fletcher. Day 733-5061. Night 733-2817. s47-2tc

**FOR SALE:** 851 Round New Holland Bailer. In good condition. For more information call 435-2575. s47-2tc

**FOR SALE:** 1976 CJ-7 Jeep. Air conditioning, automatic transmission. Loaded quad-trac. 659-3911. s47-4tp

**Real Estate**

**\$\$\$REPOSS\$\$\$** Colorado Mountains, 40 acre ranch, trees, views. Low down, assume. Ellis, 303-846-9824, 303-846-4004. SOUTHERN COLORADO REALTY. S44-8tp

**Help Wanted**

**HELP WANTED:** Experienced sales clerk wanted. Pick up applications at Hickerson's Jewelry. s47-2tc

**HELP WANTED:** We are now taking applications for salespersons, both full time and part time. Please apply in person. Spearman Rexall Drug. s46-rtm

**HELP WANTED:** House of Lloyd needs demonstrations to show fantastic gifts and toys, until December. Great pay. FREE \$300 kit and training. Unbeatable program. Call Jo Ann 806/857-2553. s46s-2tc

**HIRING!** Government jobs - your area. \$15,000 - \$68,000. Call (602) 838-8885. EXT 4514. S47-9tp

**New Image**

Vicky Bullard is now taking appointments at

the New Image  
 502 Davis, 659-3803.  
 Homecoming perm sale starts Sept. 29 to Oct. 2.  
 Basic short perm \$25.00  
 Basic long perm \$30.00  
 Call Vicky Bullard or Lee Ann Sheets  
 S47-2tc

**WANTED**

Place to Pheasant hunt for week-end for 6 hunters. Prefer opening weekend. Call James at 659-3434, or 659-3161.

**The Energy Wire**

**THE ENERGY WIRE ANALYSTS SAY RIG COUNT WILL CREEEP UPWARD**

WASHINGTON -- Analysts predict that the weekly count of operating drilling rigs will continue to edge higher, although probably not high enough to prevent 1987 from going down as the lowest on record, for the annual average rig count in the United States.

The Baker-Hughes weekly count increased by nine rigs to reach 1,108 on Sept. 14, poking through the 1,100 mark for the first time since March, 1986. Trailing the crash in prices, the count bottomed out in July, 1986 at 663.

Baker-Hughes has projected an average count for 1987 at 960, just below last year's average of 964 -- the lowest previous level since World War II when records on the rig count were begun. Last year's tally was boosted by a higher count at the start of the year before the impact of the price drop.

Ike Kerridge, an economist with Baker-Hughes, said the average of 960 for this year means the count will need to rise by December to the 1,300 range, which is the Baker-Hughes outlook. "While we think that's reasonable, we don't see any reason to change the forecast," said Kerridge, explaining that Baker-Hughes did not expect the count to go higher than that by year-end.

If anything, Kerridge hinted the count might lag behind that level. "A lot of the larger oil companies reviewed their drilling plans in April and decided that we would have an \$18 minimum price and decided to step up drilling in the last half of 1987," Kerridge said. "They've begun to implement that and perhaps the rig count will level off for a few months."

He said the increase in drilling has been primarily focused on development within existing fields. "I think the emphasis is on oil development wells," he said, although he noted that some infill drilling in existing fields also has been widespread in sections of Oklahoma and Kansas, especially in the Hugoton gas field.

Baker-Hughes will release its rig-count projection for 1988 in October and Kerridge only noted that the projected average would go up from this year.

Projected averages for the month already have been released by analysts in New York for several major investment firms. Paine Webber has predicted a 1988 average count of 1,100 and Salomon Brothers Inc. has forecast 1,200.

Brian T. Petty, manager of government affairs in Washington for the International Association of Drilling Contractors, said the count will not take a major leap to higher activity without further help from prices. "It simply won't improve until the price of oil kicks up to the mid-20s range," he said.

The current increase in drilling has been "spread out all over the traditional oil field," said Ed McGhee, executive vice president of IADC in Houston. "There's a minor flurry here, a minor flurry

there, but it's pretty much spread all over the oil field," he said.

Richard Sparling, director of economic studies with the Independent Petroleum Association of America, noted that the rig count is getting an additional lift from a traditional increase during the last half of the year and that it should hit 1,300 if the current pace continues.

**The Energy Wire PROVED OIL RESERVES PLUNGE IN 1986**

WASHINGTON -- The tab for last year's dramatic decline in oil prices has been calculated in a new Energy Department study showing that the nation's oil reserves in 1986 sank to the lowest year-end level since 1950.

Proved reserves fell by 5.4 percent or slightly more than 1.5 billion barrels from the year-end level for 1985, according to an advance summary of DOE's annual report on reserves of crude oil and natural gas.

The annual report adds more negative statistics to the dark industry picture that dominated 1986 and made clear the cost of wholesale cutbacks in all segments of industry activities last year.

"This substantial decline (in reserves) was in large part a response to domestic oil prices that fell precipitously in early 1986," the report by DOE's Energy Information Administration said.

Particularly discouraging was the statistic that reserve additions in newly-discovered fields were well below the lowest levels since DOE began keeping records on the source of new reserves in 1977.

"The 48 million barrels of new field discoveries were by far the lowest in the last 10 years -- less than a third of the 1977 through 1985 average of 175 million barrels," the report said.

Also down by 45 percent from 1985 were added by extension drilling and down by 52 percent were reserve additions from new reservoirs in old oilfields.

"Driven by price declines of more than 50 percent, exploratory and development well completions dropped by 46 percent, maintenance and workovers on oil wells were curtailed and large numbers of marginal oil wells were shut in," said the report.

The report showed that total U.S. oil reserves at the end of 1986 was 26,889 billion barrels compared to 28,416 billion barrels at the end of 1985. Total U.S. reserves stood at their lowest since 1950 when U.S. oil reserves were 25,268 billion barrels, according to the American Petroleum Institute.

It was the first significant drop in oil reserves since 1982, when the year-end total showed a similar decline. Oil reserves fell by only 30 million barrels from 1984 to 1985 and grew by 711 million barrels from 1983 to 1984.

Dry natural gas reserves also declined sharply in 1986 for the fifth straight year and reached the lowest level since 1976, when DOE first estimated gas reserves. Total dry natural gas reserves were down to 191.5 billion cubic feet from 193.3 billion cubic feet in 1985.

All major oil-producing states reflected the decline in oil reserves. Year-end reserves in Texas dipped from 7,782 billion barrels in 1985 to 7,152 billion barrels at the end of 1986, ahead of second-ranked Alaska which dipped from 7,056 billion barrels in 1985 to

6,875 billion barrels at the end of 1986.

Other statewide reserves in the report included: California, from 4,810 billion barrels in 1985 to 4,734 billion barrels in 1986; Oklahoma, from 935 million barrels in 1985 to 874 million in 1986; Louisiana, from 883 million in 1985 to 826 million in 1986; New Mexico, from 688 million in 1985 to 644 million in 1986; North Dakota, from 255 million in 1985 to 218 million in 1986.

**Seed Wheat**  
**Volume Discounts**  
**AGRI PRO PIONEER**

• Stallion • Mustang 2157  
 Wrangler 2172  
 Thunderbird 135 Beardless  
 All Seed Certified, Cleaned and Sized!!  
**Watley Seed Co.**  
 SPEARMAN 659-3338

**School Menu**

**SCHOOL MENU**  
**HIGH SCHOOL**  
**MONDAY, SEPT. 28**  
 MANAGER'S CHOICE  
 SALAD BAR  
 PINTO BEANS  
 CORN BREAD  
 FRUIT CUP  
 MILK

**TUESDAY, SEPT. 29**  
 FISH  
 NEW POTATOES/  
 CREAM SAUCE  
 SALAD BAR  
 HOT BREAD  
 PEANUT BUTTER BLEND  
 MILK

**WEDNESDAY, SEPT. 30**  
 HAMBURGER/BUN  
 TATOR TOTS  
 SALAD BAR  
 COOKIE  
 MILK

**THURSDAY, OCT. 1**  
 PIZZA BURGER/BUN  
 SALAD BAR  
 FRENCH FRIES  
 LIME JELLO/PEARS  
 MILK

**FRIDAY, OCT. 2**  
 CORN DOG  
 MACARONI/CHEESE  
 SALAD BAR  
 BIRTHDAY CAKE  
 MILK

**ELEMENTARY & JR. HIGH**  
**MONDAY, SEPT. 28**  
 SAUSAGE/STICK  
 PINTO BEANS  
 CHOPPED SPINACH  
 CORN BREAD  
 FRUIT CUP  
 MILK

**TUESDAY, SEPT. 29**  
 FISH STICKS  
 NEW POTATOES/  
 CREAM SAUCE  
 GREEN PEAS  
 HOT BREAD  
 PEANUT BUTTER BLEND  
 MILK

**WEDNESDAY, SEPT. 30**  
 HAMBURGER/BUN  
 TATOR TOTS  
 LETTUCE/PICKLE/ONION  
 COOKIE  
 MILK

**THURSDAY, OCT. 1**  
 PIZZA BURGER/BUN  
 PORK & BEANS  
 FRENCH FRIES  
 LIME JELLO/PEARS  
 MILK

**FRIDAY, OCT. 2**  
 CORN DOG  
 MACARONI/CHEESE  
 GREEN BEANS  
 BIRTHDAY CAKE  
 MILK

**OSGOOD MONUMENT CO.**  
 Amarillo, Texas  
 Dealers of Rock of Ages Granite, as well as all colored granites, marble and bronze memorials.  
 represented by  
**BOXWELL BROS. FUNERAL HOME**  
 519 S. Evans  
 659-3802

**ALCOHOLICS ANONYMOUS MEETING**  
 Hansford County Library (Upstairs)  
 122 Main-Spearman  
 Open meeting 2nd Tuesday  
**AL ANON**  
 Tuesday  
 8:00 P.M.

**STEAM RINSE & VAC**-Rinse and Vac Shampooer for rent at Gordons Drug. \$10.95 up to 24 hours.

**NOTICE**  
 Wallace Monument Co. Monuments, Curbing, Grave Covers  
 Local Representative  
**LEONARD JAMESON**  
 Spearman, Texas

**APPLIANCE REPAIR** Call Jim Nobles at 659-3528.

**HANSFORD COUNTY**  
 Planned Parenthood  
 412 Davis  
 659-2483  
 Spearman, Tx.  
 Monday - Friday  
 8:30 - 12:30

**FALL WEATHER SPECIAL**  
 All Sweaters Cleaned 1/2 price.  
 Free pickup and Delivery through Oct. 3  
 Mon and Thur. Afternoons  
 Call Collect **PERRYTON CLEANERS & LAUNDRY**  
 435-4211

**Radio Shack**  
 DEALER

**NOW OPEN**  
**Borger, Texas**

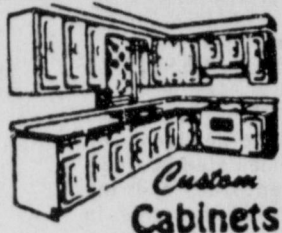
425 W. 10TH  
 PHONE — 274-7077

**COMPLETE LINE OF RADIO SHACK PRODUCTS INCLUDING COMPUTERS**  
 NEW OWNERS: ART & DONETTA OWEN



# Shop Spearman U. S. A. WHERE YOUR DOLLARS MAKE CENTS!

## Gordon's Custom Cabinets



We Specialize In Kitchen Remodeling  
and Formica Tops

Stop by Today!!!

Rick Gordon

659-3467

659-3648

**Monday Night  
CATFISH DINNER SPECIAL**  
**TV's HUNGRY COWBOY**  
Our Catfish will be  
the most fresh fish  
available !!!!!



## Saldivar Body Shop

Dan Saldivar  
Owner

LET US ADD A TOUCH OF  
SPARKLE TO YOUR AUTO!

1100 West 7th Street  
Spearman, Texas 79081

Phone (806) 659-2531

Wrecker (806) 659-3946

24 Hr.  
Wrecker Service

**JG's Homecoming  
Specials**  
**20% off**  
with this coupon  
Expires Sat. Oct. 3, 1987

**J. G.'s**  
306 Hancock Spearman, Texas

**HORSE RACING**  
This Sunday 1:30 p.m.  
at **Panhandle  
Training Center**  
Less than 10 mi.  
from Spearman

Nothing Keeps the Wolf  
from the Door...

Like a Solid Savings Plan...  
**Interstate Savings**  
AND LOAN ASSOCIATION  
Member Federal Savings and Loan Insurance Corporation  
Member Savings and Loan Foundation, Inc.

**For Your  
Homecoming  
Mums**

check with  
**Adela's  
Flowers**

511-J Plains Shopping Center 659-5180

**DON'T MONKEY AROUND**

**Head  
to**

**HI PLAINS AUTO  
SUPPLY**  
Vance Snider-Billy Baker  
659-2506 Spearman, Texas 118 Main

**SAM'S SHOE CLINIC**  
BOOT & SHOE REPAIR

Custom Hand Made Boots  
by  
Sammy C.

8:30 - 11:30  
12:30 - 5:30  
M-F

SAMMY C. PIERSON  
BUS: (806) 659-3234

P.O. BOX 1074  
307 W. DAVIS  
SPEARMAN, TX. 79081

Winchester Remington  
Plumbers Available

**C.O.'S SUPPLY CO.**

Plumbers Supplies, Appliances  
Wholesale & Retail  
Fishing and Hunting License  
Guns, Reloading Supplies

Colt Buy, Sell & Trade Smith  
P.O. BOX 505  
SPEARMAN, TX 79081 806-659-3781 STEVE KRUG

Start Planning for your  
Holiday Travels.

See us at  
D & M TRAVEL SERVICE  
PITTMAN-SHIELDKNIGHT BLDG.  
Mae Wofford CTC  
(806) 659-5233  
Certified Travel  
Counselor  
511 SW 11th - #102  
Box 1027, Spearman, TX 79081

**Rag Rug Class**  
Mon. Sept. 28 from 1-3 P.M.  
Fee is \$10<sup>00</sup>

**Rag Basket Class**  
Sat., Oct. 10th from 9:30-11:30 a.m.  
Fee is \$7<sup>50</sup>

**Sweatshirt Scene Class**  
Sat., Oct 10th From 1-4 p.m.  
Fee is \$10<sup>00</sup>  
Advanced Registration Required

**COUNTRY  
STITCHES**  
715 W. 7th Spearman