

Sept. 28 - Oct. 1 ...

Something For Everyone At County Fair

by Jean Ann Behney

"Something for everyone" could well be the theme for the 1989 Hansford County Fair, which will take place September 28, 29, 30 and October 1 (Thursday through Sunday) in Gruver.

The fair location is being moved to Gruver this year (after being located for six years in the Spearman County Barn) so that several buildings in close proximity can be used for the various events and displays. According to Hansford County Fair Chairperson Troy Morris, the Gruver location is preferable because Gruver's County Barn will be used for the stock shows and competitions and petting zoo, while the high school auditorium will be reserved for entertainment and the elementary school gym will be the site of the many displays of art, crafts, photographs and foods.

"The elementary school gym is preferable over the old location in the Spearman County Barn because it will keep the fine arts displays away from the dust and livestock," Morris commented. "And with the county barn in Gruver being used for the animals, both will have a lot more space." He added that the Gruver High School auditorium will provide a nicer setting and better acoustics and viewing for audiences at the annual fair Variety Show.

Morris speculates that parking spaces will not be a problem at the three fair sites in Gruver. "The main thing is that the fair won't be crowded into one barn this year," he said.

The 1989 Hansford County Fair will feature competitions in 13 departments ranging from agriculture to photography. A superintendent from the county has been put in charge of each department, and judges from outside of Hansford County will determine the winning entries in each category. These judges are paid a nominal fee which covers their transportation costs to and from the fair, but they are "essentially volunteers," said Morris.

A new department for this year's fair is China Painting. Mickey Delano and Maude McClellan are in charge of this department. Delano explained that it had been suggested to the Fair Board that china painting be included this year. She herself has painted on china for over 30 years and says this art form has been popular for a long time in this area.

"You can paint on almost any kind of blank china, from plates, cups and saucers to bowls and platters," Delano said. Popular designs include flowers, animals and berries and nuts but, she added, "everything can be painted on the china." Gold rims on the edges and handles of cups and

other dishes are also common. The fact that the gold used by the artist to do this rim-painting has escalated in price from a mere \$3.45 for an eighth-ounce back in the 1950s when Delano first china painted to today's price of \$48 for the same amount of gold hasn't dimmed many artists' love of this craft.

It should be pointed out that many of this county's best-known china painters have passed away, so a special exhibit of their work is being planned for the fair apart from the usual categories for living artists. "It is harder to find blank china now and many of our best teachers of this are gone, but the fair display will give those who do china painting a chance to show their work and perhaps inspire others to take up this hobby," commented Delano.

This year's Petting Zoo at the fair will be expanded to include more animals and more unusual animals. Norma Jean Mackie reports that Shirley Harbour is loaning her game bantams, zebra finches and sunat conure parrot to the Petting Zoo. Alfred Bayless's llama will be present as will Mike Burnam's baby pigs. Other animals may include quail, pheasant, turkeys and a small donkey.

The Crafts and Hobbies Department has added a new entry category, leatherworking, according to Superintendent Janie Jeffries. "We will have everything from ceramics to models, metalwork, basketry and wall hangings on display as well," promised Jeffries. She added, "We try to cover every category possible and this year we patterned our list after the Amarillo fair's list, but if something comes in that doesn't fit into one of the categories, we'll make a new one!" Jeffries reminds Hansfordites to get busy on their entries now. "We definitely have a lot of talent out there," she said.

Other events at this year's county fair will include a Dog Show, sponsored by Rho Rho Sorority, a Lamb and Steer Show, sponsored by the Hansford County Stock Show Board, Roping by the 4-H Horse Club and a Saturday night Variety Show. More details about these events and other departments will be given each week in this newspaper over the next month.

In the meantime, county clubs and organizations are urged by fair planners to reserve booths now by contacting Harry Stumpf at 659-2109, Weldon Green at 733-2624, or Cora Queener at the Spearman Chamber of Commerce (659-5555). Booth fees are \$25 and they must be reserved before September 15, 1989. Organizations and clubs can use the booths for selling food, drinks or games.

The annual Hansford County

Fair Book, outlining all the dates, times and events, as well as rules for entries, is currently being prepared and will be available for distribution on September 7. Fair Books may be obtained at the Spearman Chamber of Commerce, the local banks, and many other public locations. The book is free.

Those who wish to contribute items to the departments can find out more specific information by telephoning County Agents Burt Williams and Karen Babitzke at 659-2136 and 659-2030, respectively. There is also a number for those calling outside Spearman. It is 733-2901.

Those on the Hansford County Fair Committee said that this year's event will be "bigger and better than ever," but emphasize that county residents' participation is what makes the fair a success.

The Hansford County Fair is a tradition dating back many decades. Although the fair was only revived in recent years--1983 according to the Spearman Chamber of Commerce--there were fairs for many years in the county's early days.

The very first Hansford County Fair was in the year 1907. The site for the fair was the courthouse square in Old Hansford, the original county seat located between present-day Spearman and Gruver just west of the

cemetery. Although local historian J.B. Buchanan did not live here in that year, he remembers being told about the fair by those who planned it and attended it.

"There was art and produce and lots of handwork and a few prizes for the best cake and dress

and art," he recalls. He was also told that one of the highlights of this first fair was that there was an automobile there and for \$3 a carload of people, fairgoers could take a two-mile ride. "That seems kind of high-priced today, doesn't it?" he comments. "Much later,

the big deal at county fairs was airplane rides and air shows."

In Grace Lyon's written history of the county, it is reported that this first fair included a parade

See Fair Page 2



It is believed this photograph is of the first Hansford County Fair in 1907. It is also believed the two men in the foreground are Bill Barkley and Mr. McNabb. Anyone with information which can help identify the people in the photograph and when the photograph was made can contact the Spearman Reporter at 659-3434.

The Hansford Plainsman

25¢

Per Copy

Volume 19, No. 44

YOUR HOMETOWN NEWSPAPER

Sunday, September 3, 1989

4 Pages

Spearman JCs Named 1989 Telethon Reps

Spearman J.C.s have been named representatives of the 1989 Jerry Lewis Telethon to benefit the Muscular Dystrophy Association (MDA), announced Chip Rodgers, District Director of the National Voluntary Health Agency's Panhandle Chapter.

"We're proud to have caring organizations like the Spearman J.C.s working closely with MDA and its supporters," said Mr. Rodgers. "Our Telethon Team is dedicated to making this year's show another record-breaker." Telethon '88 was the most successful in the show's history, raising over \$41 million in pledges.

The 24th annual Labor Day Telethon will be broadcast by KFDD-TV, starting at 8:00 p.m., Sunday, September 3rd, and continuing to 6:00 p.m., Monday, September 4th. The 2 1/2-hour extravaganza will originate live from the Cashman Field Center in Las Vegas, and will be carried through the country by some 200 "Love Network" stations.

Wesley Garcia, 1989 poster child for the Panhandle Chapter of MDA, will be just one of the many special guests who will be attending the Jerry Lewis Labor Day Telethon. At this year's Telethon Wesley will be assisting hosts Kari King, John Hagerty and Emcee Jon Hart. This year's show is being broadcast live from the Fifth Season Inn West.

Children wishing to collect door to door for "Jerry's Kids" are asked to come by the J.C.'s Hut at

the Little League Baseball Park on Monday, September 3, starting at 9 a.m. to pick up an official badge and canister. Prizes will be given to the young people who collect the most money.

A special phone number 659-2746 has been assigned for the use by the people of Spearman to phone in their pledges.

Money raised through the efforts of Telethon "Love Network" affiliates helps fund the important work being done by MDA-sponsored researchers to find treatments and cures for muscle disease. One of the most promising, experimental techniques now under investigation is "Myoblast Transfer Therapy." This technique involves the injection of healthy immature muscle cells, called myoblasts, into diseased muscle in an effort to produce hybrid muscle cells that display healthy characteristics. The procedure has shown positive results in laboratory mice. "The people of Spearman can take great pride in their contribution to this major research undertaking," said Ray Ortega MDA Coordinator. "Scientists are closer than ever to developing a treatment or cure--if increased public support of MDA's work can be achieved."

The association currently sponsors some 500 individual research projects worldwide. It also supports some 230 outpatient clinics nationwide, where people with any of the 40 muscle disorders covered by MDA programs receive medical care, orthopedic aids and related services.

Spearman ISD Develops

Gifted and Talented Program

The Spearman ISD has begun the development of a special program for Gifted and Talented learners. Students in grades 1-5 are being screened for specific abilities and characteristics which are typical of giftedness. A locally appointed planning committee under the direction of Wynnette Mullins is developing program, budget, screening, placement and long-range planning. The initial screening process

will include a search of student records for evidence of advanced academic achievement. The APT (advanced pupil training) program will begin serving students the second six weeks in grades 1 - 5. Grades 6, 7, and 8 are already in operation. Plans are to extend the program to kindergarten and high school in 1990-91. Persons interested in further information should contact Wynnette Mullins.

911 Emergency Number Explained

The City of Spearman will hold a public hearing concerning the community participation in the enhanced 9-1-1 system. The hearing will be held in the foyer of City Hall, 30 S.W. Court, Spearman, Texas, at 7:00 p.m. on September 12, 1989. All citizens are invited to attend and participate in the hearing. A representative of the Panhandle Regional Planning Commission will be present as a resource to answer your questions on the enhanced 9-1-1 system.

The emergency number concept was introduced in England in 1937. In the USA, it was first used in Alabama in 1968. Since then, more than 1500 communities have implemented the three-digit emergency 9-1-1 number nationwide. Fifty of those systems are in Texas.

Two years ago, a committee of the Panhandle Regional Planning Commission was asked to identify pressing health concerns for the region. It was agreed the biggest problem was emergency health communications. As a result, the PRPC board of directors appointed an advisory committee for emergency communications and the planning process began.

The process included resolutions from each city and county supporting the planning commission's planning effort.

As a result of the planning, 22 locations for public safety answering points (PSAPs) around the Panhandle region have been identified. Although most of them are to be located in the dispatching offices of county sheriff's offices, a few are to be placed in police department dispatching centers.

The twenty-four hour staff in each PSAP will answer all 9-1-1 calls for the geographic area served by the PSAP. That means regardless of where the caller is, in town or in the country, only the three numbers have to be called.

In some cases, calls for one county may first be answered in an adjoining county and then transferred. This is because it is

less expensive to put telephone exchange offices together in a PSAP than to try to design a system which would stay strictly within county boundaries.

Speed and simplicity are the biggest advantages of 9-1-1. Regardless of where a person is in the Panhandle, dialing those three digits will bring an immediate answer for any emergency, whether it is police, fire or ambulance.

The number is especially critical for small children who might be at home alone when a crisis occurs. It's also important for someone who might not be able to speak once they have dialed the number.

The public safety answering point will be equipped with a display which will show the seven-digit number from which the call is being placed. The dispatcher can call the person back if more information is needed or can look the number up in a cross-reference to determine where the caller lives.

The proposed system will not keep the caller from using existing seven-digit numbers to get police, fire or emergency medical assistance. The 9-1-1 number is faster and is a more direct link to the public safety agency which does the dispatching.

Under legislation passed in 1987, counties of less than 120,000 population may join a regional 9-1-1 system. In each county and city, the elected officials will be asked to pass a resolution which directs their telephone company to add fifty cents to the monthly phone bill.

That money will be used by the Panhandle Regional Planning Commission to design and implement an emergency communications system for the region.

It will take about two years to install the system and will cost approximately \$1.5 million. That cost will be covered through the monthly fifty cent fee. The rest will come from a surcharge on intrastate long distance calls which will be collected statewide.

HANSFORD COUNTY FAIR COMMITTEE	
Chairperson: Troy Morris	China Painting: Mickey Delano
Vice Chairperson: Joan Farr	Maude McClellan
Secretary/Treasurer: Julie Ortega	Crafts/Hobbies: Janie Jeffries
Members	Patty Cator
Harry Stumpf	Photography: Mike Simpson
Melba Rasor	Jean Ann Behney
LaVon Reid	Children's Petting Zoo:
Melyn Johnson	Burt Williams
Advisors to the Committee:	Norma Jean Mackie
Cora Queener	Dog Show:
Wanda Wagner	Rho Rho Sorority
Karen Babitzke	Entertainment Committee:
Burt Williams	Laquita Evans
Departments and Superintendents	Betty Chisum
Agriculture:	Janie Kunselman
Kermit Mckee	Publicity:
Keith Martin	Wanda Wagner
Antiques:	Jean Ann Behney
Helen Boyd	Julie Ortega
Art:	Lamb and Steer Show:
Brenda Shieldknight	Hansford County Stock Show
Doris Armes	Board
Baked Goods:	Roping:
Mary Schumann	4-H Horse Club
Sara Dossett	Allen AcCloy
Food Preservation:	Fair Book:
Delinda McLaughlin	Cora Queener
Shirley Burton	Wanda Wagner
Clothing:	Brenda Shieldknight
Loretto Cook	Melba Rasor
Flowers:	Loretto Cook
Danny Howell	Grade School Posters:
Mrs. Joe Traylor	Betty Chisum
Horticulture:	Harry Stumpf
Verna Maupin	Entries:
Cindy Howell	Norma Jean Mackie
Needlework:	Weldon Green
Joan Farr	Boots:
Julie Ortega	Harry Stumpf
Tote Painting:	Weldon Green
Alta Fisher	
Janita Tucker	

Among the Neighbors

by Helen Fisher

Ora Lee Blackburn, who has had to curtail her usual strenuous activities this summer due to a cracked bone, make up for the loss with a busy and pleasant three weeks.

Her daughter, Elaine Cessnum, of Kenai, Alaska came down for a three weeks stay. The first week here, all of the Blackburns, except Bill, came. Eddie Lee and Betty of Houston were here several days as was Allouz Blackburn of Abilene, niece of Ora Lee of Abilene. Other family members entertained them in their homes also.

The next week Ora Lee, Elaine, Anna Hutchison, Bodil Stackhouse of Amarillo, and her friend from Dumas spent several days in Santa Fe.

Next was a family gathering at the Fifth Season Motel in Amarillo. Elaine and her cousin, Lois Pearson Mergert, were reunited for the first time since 1974.

Lois now lives in Florida and travels extensively. All her children, except Rusty, and most of her grandchildren attended the reunion at Fifth Season. All of Bodil's children and most of her grandchildren were there, as were many other family members. It was a happy occasion with much family fellowship and fun.

Elaine, a nurse, and who has recently undergone back surgery, is employed part time as a medical dispenser at the local prison at Kenai. She left Thursday morning to return.

Sympathy is extended to Peggy Archer and family in the loss of her aunt, Jim Kate Garrett. Mrs. Garrett, gracious and genteel, will be missed by a host of friends of many, many years.

It was Spearman's loss when the erudite Dr. Mike Wolfe and Wife Debbie accepted a pastorage at the Coachella Valley Christian Church of Indio, California, near Palm Springs.

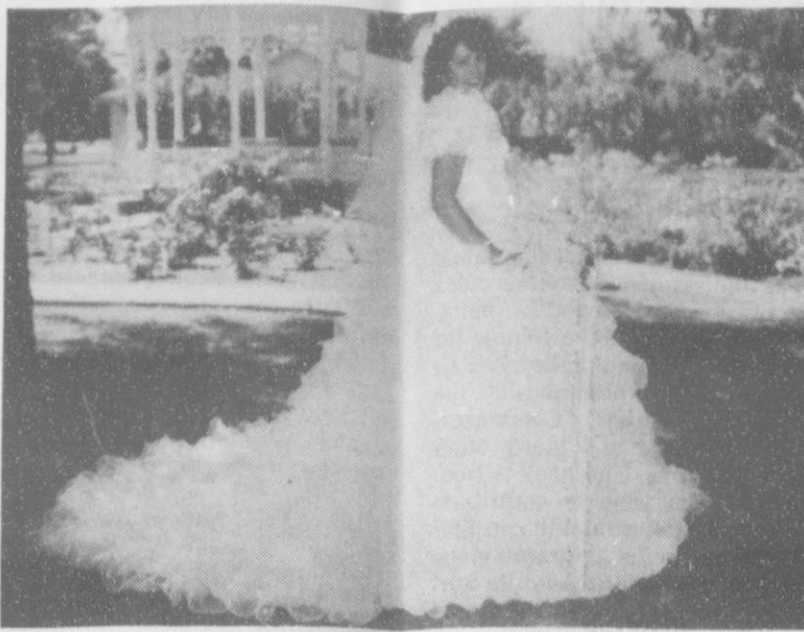
Last Sunday Dr. Wolfe preached his last sermon here - and to a tearful congregation. He expressed the enjoyment he and Debbie felt in their sojourn here their first experience in a small town - and their appreciation for the cooperation of the community.

All join in wishing the best of luck to the Wolfe family.

One of life's unexpected pleasures-that of again hearing the cheerful, lilting voice of Kay Lackey Orrell; this time all the way from Arroyo Grande, California-not from the halls of Spearman High-thus it sounded the same. Incredible that after 25 years of teaching-the voice has not worn out!

Due to a little item that appeared in this column recently, Kay was contacted by another ex-Spearman resident of Arroyo Grande and was reacquainted with Marily Crawford Grag.

Kay is looking forward to the all school reunion here next spring.



MRS. JOSE AVILA

Aguirre, Avila Wed

Maria Carmen Aguirre of Hereford and Jose Juan Avila Jr. of Amarillo were united in marriage Saturday afternoon in San Jose Catholic Church.

Officiating for the couple were Father Joe Bixenmen and Deacon Esteban Castillo. Altar boys were the bride's cousins, Michael Dean Aguirre and Steven Ray Aguirre, both of Odessa.

The bride is the daughter of Mr. and Mrs. Jose C. Aguirre of 419 Barrett St., Hereford, and the bridegroom is the son of Mr. and Mrs. Jose Juan Avila Sr. of Spearman.

The couple will make their home in Amarillo following a wedding trip to Colorado Springs, Colo.

The bride is a 1980 graduate of Hereford High School and a 1985 graduate of West Texas State University. She is currently employed by Allstate Security Industries of Amarillo.

The groom, a 1980 graduate of Spearman High School, graduated in 1982 from Texas State Technical Institute of Amarillo. He is presently a sales representative for Street Toyota Mazda of Amarillo.

Club News

RHO RHO SORORITY

Rho Rho Sorority held its recent meeting Aug. 24 in the home of Pat Cudd. A Mexican dinner was served by the hostess.

President, Pat Cudd, called the meeting to order with all members reciting the opening ritual. The minutes of the previous meeting were read and approved. Elaine Morris gave the treasurer's report.

Pat Cudd introduced Melaine Elliott as a former member of Rho Rho who would be rejoining the group.

Stephaine Crossland reported that at the executive board meeting it was decided to nominate at least two candidates for Valentine Queen by secret ballot. The queen would be crowned at the Valentine Ball which is to be held February 10, 1990. Stephaine asked the group if they were interested in spending a little bit more on the band for the Valentine Ball. A motion was made to spend a little more for the band, the motion was seconded, and carried by the group.

Stephaine also reported on the surprise party which was held Aug. 4. The group traveled to Guymon, played putt putt golf, went to eat, then went to the show.

Pat reported that the Hansford County Fair is coming up Sept. 29 and 30. The group is in charge of the Dog Show for the fair. Elaine Morris and Brenda Pierson agreed to be co-chairman for this project. Brenda Winegarner presented past president Tina Wilmeth with a scrapbook. Tina then passed the book around for everyone to see.

Laura Dear will be taking a leave of absence until December due to a conflict with her schedule at school.

President, Pat Cudd opened the floor for nominations for 12 new pledges. It was decided to have an ice cream social Sunday, Aug. 27, at Pat Cudd's house. All pledges were notified and invited to the social.

Donna Murray mentioned that since the majority of the members work during the day, the group might consider having both meetings at night. After a brief discussion, Janie Kunselman made the motion that meetings be held at night, seconded by Lori Scroggs, and the motion carried.

The next meeting will be a model meeting for the pledges on Sept. 7 at 7:00 p.m. in the home of Donna Murray.

After reciting the closing ritual the meeting was adjourned.

Members present included Tina Wilmeth, Pat Cudd, Janie Kunselman, Elaine Morris, Brenda Winegarner, Paula Butler, Leslie Cazares, Stephaine Crossland, Samme Goehring, Donna Murray, Kristi Ramon, Jan Williamson, Laura Dear, Brenda Pierson, Patti Schnell and Lori Scroggs.

STATION MASTER'S HOUSE MUSEUM

The Station Master's House Museum committee met Aug. 14 and heard reports from Johnny Lee on the Palo Duro Dam and the antiquity committee's activities.

Lee also told the group about how the Lasaters' house will be arranged at the dam site.

It was noted that the Old Steele house has been donated to the museum, and would be moved if enough funding can be found for the project.

Committee members present included Ruby Jo Wilbanks, Johnny Lee, Gus and Clementine Renner, Juanita Pierce and Helen Boyd.

Donations to the museum have been made by R.E. Sanders Jr. and memorials have been received from Virginia Cates and from Mrs. Clarence Vaught from Irma Sackett.

RAINBOWS AND RANGLERS

Rainbows and Ranglers Square Dance Club hosted its monthly Mainstream Dance Saturday, Aug. 26 in the County Barn. Nine squares danced to the music of Gary Schick from Borger.

Members present were Joe and Wanda Archer; Danny and Debbie Herrington; Sonny and Marlane Nollner; Carol Short; Gwen Shuler; Worley Smith; and Johnny and Virginia White.

Visitors included Ali and Fay Gokmen, Marvin Buck, Gale Fuller, Roscoe and Roberta Casady, and Don and Carol Gillespie from Liberal, Kan.; Wanda Malone, John and Ruth Keltz, and Bill and Leller Schmuril from Sublette, Kan.; Lester and Peggy Miller and Dick and Kay Whaley from Goodwell, Okla.; Ross Bryan, Kaye Barrett, Fred and Sue Tipton and Gerry Lickliter from Guymon, Okla.

Others included Jerry and Kaye Murphy, Wayne and Glenda Bryant, Myron and Janee McCarter, Howard and Nancy Barkley, Ed and Lois Merydith, and June Kindy from Perryton; Clyde and Jody Bechthold and Jack Clarke from Booker; George and Mary Nies, David and Joyce Walton, Carl and Lucille Horst, C.A. and Wilda Brown, Shorty and Leola Albert, John and Leis Harvey, Steve and Tammy Dowell, and James and Shirley Bruce from Borger; Avis Strasher and Loraine Conner from Keyes, Okla.; Sid and Ada Newberry from Fritch; and Cecil and Maudie Stewart from Elkhart, Kan.

The next dance will be a "PLUS" Dance on Sept. 14, with Murry Beasley calling. The monthly Mainstream Dance will be Sept. 23 with Roy Johnson of Amarillo calling.

The public is invited.



Winner of the Little Miss Wheatie Sweetie pageant, held in conjunction with the Wheatheart of the Nation pageant, was Camille Graves, daughter of John and Angie Graves of Perryton and granddaughter of Jesse and Wilma Francis of Spearman. She was escorted by Tate Allred.

Fair From Page 1

with "many beautiful horses." Gwenfred Jones Lackey won the prize for the most graceful rider. "Uncle" Joe Close won the \$2 prize for best milo maize, while O.W. Jarvis won \$5 for the "Sweepstakes Sow." Fifty cents went to Lena Bailey Brandt for the best darned sock and Mrs. P.M. Maize won \$1.50 for her angelfood cake.

The next fair J.B. remembers wasn't until the early 20's and took place in Spearman, then the county's fledgling railroad town. "It was a small deal compared to fairs today, but we sure enjoyed it," he said.

In the photograph shown here, J.B. believes the two men in the foreground are Bill Barkley and Mr. McNabb, both of whom had children who live in Spearman today. McNabb, our Centennial Series readers may recall, owned the first automobile in Hansford County. Perhaps his was the automobile drawing the crowds at the very first county fair!



David McGuire

David McGuire of Spearman has been named the recipient of a grant at Liberal Area Vocational-Technical School, Liberal, Kan.

McGuire, son of Ann McGuire, received a LAVTS Foundation Tuition Grant. He is enrolled in the Auto Mechanics II program for the 1989-90 school year at LAVTS.

Also receiving a grant is Andres Morales Crisostomo, son of Jose and Beatrice Anaya of Spearman. Crisostomo, also enrolled in the Auto Mechanics II program at LAVTS this year, will receive the same type of grant from the LAVTS Foundation.

"Beauty Tips for the Active Woman" Free Brochure Available

"Beauty Tips for the Active Woman" is available by sending a stamped self-addressed business-size envelope to: All Set Brochure, Suite 850, 35 East Wacker Dr., Chicago, IL 60601.

A new free brochure, "Beauty Tips for the Active Woman," outlines skin protection, hair care, make-up, clothing and "look" coordination advice for fitness-oriented women. It applies to millions of women active in jogging, bike riding, swimming, tennis, golf, aerobics, walking and other sports.

Ms. P's Boutique
601 W. 3rd
Borger, Texas

The Hansford Plainsman

Your Hometown Newspaper
USPS 2346-6000 Spearman, Tx. 79081
213 Main, Box 458, 659-3434
Published Weekly at
213 Main, Spearman, Texas

Owned and Operated by:
Texas Independent Newspapers, Inc.
19906 Encino Grove, San Antonio, Tx 78259
Second class postage paid at Spearman, Texas 79081.
Any erroneous reflection upon the character of any person or firm appearing in these pages will be gladly and promptly corrected upon being brought to the attention of the management.
PUBLISHER - ROBERT M. HULETT

Subscription Rate: Spearman, adjoining counties, combination with the Spearman Reporter, \$19.95; non-adjointing counties, \$24.95 annually.
Postmaster: Send address changes to Hansford Plainsman Box 458, Spearman, Tx. 79081.

The publisher reserves the right to revise or reject at its option any advertisement which it deems objectionable, either in subject or phraseology, or which it may deem detrimental to its business.

Hometown News

DAVID TURNER AWARDED SCHOLARSHIP

St. Gregory's College has announced the awarding of a scholarship to David Alan Turner of Tulsa.

David's parents are Bill and Lil Turner of Spearman, Texas. David turned to Spearman High School.

St. Gregory's College is a two-year liberal arts institution that is very successful at the transfer of its students when they complete their associates degree programs. It has about 114 years of tradition in the Southwest.

HOSPITAL AUXILIARY TO MEET

The Hansford Hospital Auxiliary will meet Tuesday, Sept. 5 at 9:30 a.m. in the activity room of the Hansford Manor. All members are urged to attend.

SEPTEMBER CLINIC SCHEDULE

Immunization clinics offering vaccines that give protection against several childhood diseases are scheduled for September. Protection is against polio, diphtheria, lock jaw (tetanus), whooping cough (pertussis), measles, rubella, and mumps.

The Texas Department of Health is charging money to help with the cost of keeping the clinic open. The amount of money charged will be based on family income and size, and the ability to pay.

The Spearman Texas Department of Health office on 720 S. Archer, will be hosting the clinic on September 7, 10 a.m. - 12 noon.

School Lunch Menu

Free, reduced lunch applications have been handed out please read through these, this program may be of help to you. This scale will be used to determine eligibility.

JR. HIGH ELEMENTARY MENU SEPTEMBER 4 - SEPTEMBER 8

MONDAY NO SCHOOL
TUESDAY
BEEF TIPS WITH GRAVY
RICE
SEASONED GREEN BEANS
YEAST BATTER BREAD
APPLESAUCE
MILK
WEDNESDAY
LASAGNA
ITALIAN MIX VEGETABLES
BREAD STICK
FRUIT SALAD
MILK
THURSDAY
TURKEY FRITTER
MACARONI/TOMATO
BROCCOLI/CHEESE SAUCE
HOT ROLLS/BUTTER
GRAPE JUICE
MILK
FRIDAY
CATTLEMANS BAR B Q ON BUN
FRENCH FRIES
COLE SLAW
CARROT CAKE
MILK

SALAD BAR
BREAD STICK
FRUIT SALAD
MILK
THURSDAY
TURKEY FRITTER
BROCCOLI/CHEESE SAUCE
SALAD BAR
HOT ROLLS/BUTTER
ORANGE JUICE
MILK
FRIDAY
CATTLEMANS BAR B Q ON BUN
FRENCH FRIES
SALAD BAR
CARROT CAKE
MILK

HIGH SCHOOL MENU SEPTEMBER 4 - SEPTEMBER 8

MONDAY NO SCHOOL
TUESDAY
BEEF TIPS WITH GRAVY
RICE
SALAD BAR
YEAST BATTER BREAD
APPLESAUCE
MILK
WEDNESDAY
LASAGNA
ITALIAN MIX VEGETABLES

BREAKFAST MENU HIGH SCHOOL, JR. HIGH & ELEMENTARY SEPTEMBER 4 - SEPTEMBER 8
MONDAY NO SCHOOL
TUESDAY
RAISIN BREAD TOAST
PEANUT BUTTER
APPLESAUCE
MILK
WEDNESDAY
1 WAFFLE
SAUSAGE
JUICE
MILK
THURSDAY
BREAKFAST BURRITO
SCRAMBLED EGG
HASH BROWNS
TORTILLA
MILK
FRIDAY
TOAST
HAM SLICE
FRUIT
MILK

Blood Pressure Clinic

Free Free

Tuesday, September 5 9:00 a.m. until 1:00 p.m.

MEMBER
FDIC

(806) 659-5565

One NE Court
Spearman, TX
79081

Some sound advice:

There's a sound exam we recommend for anyone who values their hearing. It involves using this simple instrument, as well as listening for a series of tones at various levels. A qualified professional conducts this painless test in minutes.

If you have hearing problems, our professionals can explain hearing loss and also tell you about the latest advances in hearing aids. They're now very lightweight, small and inconspicuous as well as longer lasting and more trouble-free! We think you'll like what you hear.

HIGH PLAINS HEARING AID CENTER

Will conduct FREE HEARING EVALUATIONS at the Golden Spread Senior Center, 14 S. Haney in Spearman, Tx on the second and fourth Tuesday of every month. If you have any questions please call our Amarillo office at 1-800-333-4504.

Classifieds!

For Sale

HOUSE FOR SALE: Reduced 3 Bdr. 1 1/4 bath setting on 3 lots. Has out buildings, cellar on corner lot room for trailer houses. Call: 659-3425 after 5:00 or see at 217 N. Hoskins. S44S-8tc

SEED WHEAT FOR SALE: 2nd year from registered Sioux land. Cleaned and length graded. Test Weight 61 lbs. Germination 96%. Call: 375-2343-Canadian Area. S44S-7T

For Rent

HOUSE FOR RENT: 307 12th. Brick, 3 bedroom, 1 bath. Available Sept. 1. Call 659-3809. S44-1tc RTN

FOR RENT: Furnished 1 Bedroom Apartment. Call: Gus McLain 659-2274 S44S-1tc-RTN

HOUSE FOR RENT: 3 Bdr. 2 bath home fenced yard. Carpet. Applications being taken Call: Allen Alfred at 659-3034. S434S-1tc RTN

FOR SALE: 1982 Chevette, 4 door and hatchback, good tires 93,500 miles. Automatic. \$900. or best offer. Call 659-3434. RTN

IRRIGATION MOTORS FOR SALE: 2 V-12 GMCs, 1 454 Chevrolet, and 1 413 Chrysler. For more information contact: Bill at B&D Industrial Automotive, 300 West 1st, Dumas, TX. 79029 or call: Daytime 806-935-3900 and Nightly 806-935-3121. S44S-8tc

FOR SALE: 1982 Chevrolet Cavalier 4 door Sedan. Automatic transmission 85,000 miles. \$500 or best offer. Call 659-3434 RTN

PIANO FOR SALE

Wanted responsible party to assume small monthly payments on piano. See locally. Call Credit Manager at 1-800-233-8663. S41S-7tp

FOR SALE: Seed Wheat, Tam 101, Tam 105, Tam 108, Tam 200 and Russian Beardless. Call: V.B. Morris 806-733-2203 S38-RTN

HOUSE FOR SALE 4 Bedroom 1 1/4 bath 2 Car Garage, Fireplace Remodeled, New Carpet. 1119 Archer. Call: Sue Gerardy - 659-5196 or 733-5101. S 37 - RTN 1tp

FOR SALE 3 bedroom, 2 bath home Fireplace, large living area, drapes, mini-blinds, completely remodeled and large deck patio. Nice neighborhood. 1110 S. Barkley. Call 659-3800 S36rtn

FOR SALE: 3 bedroom, 2 bath home. Sunken living room, parquet floors, fireplace, covered patio, 2 car garage, sprinkler system, 2193 sq. ft. living space, excellent location. Call 659-3587 or 659-5022. S33-RTN

FOR SALE: 1 Metal Building and Property 35' x 50' - 1 Large Cinder Block Building and Property 3000 sq ft. Contact: First State Bank, Box 247, Spearman 659-5565. S29-RTN

USED AUTO PARTS FOR SALE: Located 4 miles west of Hooker, Ok. on highway 54. **Muss Cat Auto Salvage.** (405) 652-2400. S10-rtn

FOR SALE: 30 ft. Flex King Rod Weeder - like new - always shedded. Also, 12 ft. mayrath drill loader, battery operated, always shedded. Call 435-2798. S44-4tp

FOR SALE: 3 Bedroom, 2 bath mobile home on 2 lots with fenced yard. If interested call 659-5012 after 5:00. S44-3tp

Miscellaneous

LONELY? NEED A DATE?

Meet that special someone today! Call **DATE TIME** (405) 366-6335 S44S-8tc

Sutphen's Bar-B-Que

We would love to feed Spearman football teams, bands and fans coming through Borger. All you can eat "Help Yourself Buffet" (1 meat \$4.00 - 2 meats \$4.75) We'll stay open late and You're Welcome! S41S-12c

AVON PRODUCTS
NO TERRITORY REQUIRED
\$5 INVESTMENT
FREE KIT - FREE GIFT
CALL 806-373-AVON
S44 1tc RTN (Sunday only)

OSGOOD MONUMENT CO.

Amarillo, Texas
Dealers of Rock of Ages Granite, as well as all colored granites, marble and bronze memorials.

represented by
BOXWELL BROS.
FUNERAL HOME

519 S. Evans
659-3802

Oil and Gas Report

Intentions to Drill

HALL (WILDCAT) Enre Corp., #1 Veazey (220 ac) 1300' from North & 2173' from East line Sec. 77, 3. T&P, 6 mi south from Turkey, PD 7500' (Box 6027, San Antonio, TX 78209)

MOORE (PANHANDLE) Myriad Resources Corp., #1-R Sneed 'F' (76.74 ac) 330' from South & 1447' from East line, Sec. 5, --J.T. Sneed 18 mi easterly from Dumas, PD 3450' (Box 380, Pampa, TX 79066) Replacement Well for #1 Sneed 'F', which was plugged.

ROBERTS (WILDCAT) Nadel & Gussman, #1-175 Payne (640 ac) 2080' from North & 2440' from West line, Sec. 175, 42, H&TC, 19 mi northerly from Miami, PD 9900' (3200 First Natl. Tower, Tulsa, OK 74103)

ROBERTS (SOUTH PARSELL) Upper Morrow Nadel & Gussman, #1-112 Waterfield (640 ac) 1980' from South & 1240' from East line, Sec. 112, C. G&M. 20

mi northerly from Miami, PD 10800'

Application to Plug-Back

ROBERTS (R.D. MILLS Atoka) Quinoco Petroleum, Inc., #2 R.D. Mills (686 ac) 4131' from North & 5838' from East line, Clay County School Land, Tract 2-A, 18 1/2 mi west from Canadian, PD 9750' (Box 378111, Denver, CO 80237)

Amended Intention to Drill

ROBERTS (WILDCAT) Lasmo Energy Corp., #1 Payne Ranch (720 ac) 467' from South & 16900' from East line, D.D. Payne Survey, 20 mi. NW from Miami, PD 9250' (6120 South Yale, Suite 1200, Tulsa, OK 74136) Amended to change Well location.

Plugged Well

CARSON (PANHANDLE) Almac Oil Co., #1 Bucket Shop, Sec. 184, 3. I&GN, spud 2-10-82, plugged 7-17-89, TD 3400' (oil)--



This was the prize-winning fowl at the first Hansford County Fair in 1907.

AGRICULTURAL MILESTONES

"Eradication and control of noxious brush on rangelands offer excellent opportunities for improved forage and livestock production in Texas," said Bulletin 721, published in 1950 by the Texas Agricultural Experiment Station (TAES).

"A large proportion of the state's 93.5 million acres of rangeland is infested with undesirable woody plant species. Reduction in forage from this brush cover means an annual financial loss of many millions of dollars to ranchmen and industries which handle livestock and livestock products."

Not mentioned in this 1950 publication as a reason for controlling unwanted plants on rangeland, but of primary importance today, is prevention of use of water by such plants. Expanding industry and a growing population in Texas are exerting increasing pressures on our limited water supplies.

In 1984, adverse weather forced several major cities, including San Antonio, Austin and Corpus Christi, into water rationing. Rangeland watersheds provide water for most of the state's major metropolitan centers. Such major aquifers as the Trinity, Edwards-Trinity, Edwards, Carrizo-Wilcox and Gulf Coast are recharged by run-off from rangeland. About 60 percent of the surface flow in rivers comes from rangeland watersheds.

BRUSHLAND MANAGEMENT FOR WATER YIELD: PROSPECTS FOR TEXAS, published in May 1987 as TAES Bulletin 1569, concluded: "Reduction of brush and non-economic plants would not only reduce water consumption but might also increase agricultural productivity. This has raised the policy issue of whether brush can be beneficially shifted to other uses, reducing water scarcity and augmenting land productivity."

An earlier study in 1984 by Station scientists painted an optimistic picture. This preliminary estimate of the economic consequences of brush management for water production figured that 40 million acres of moderate and dense Texas brushland could be treated for a one-time cost of \$800 million.

However, in many instances, cost of brush control exceeds gains of productivity for the landowner. Some say that a large part of future brush control costs, with resultant gains in water yields, will have to be borne by industry and metropolitan areas.

Texas Agricultural Experiment Station

Caring And Sharing

Are The PTA

by Teresa Kirk
Membership Chairman

"Caring and Sharing is PTA". To be a part of the partnership of sharing and caring between home and school, join the Spearman PTA. All that is needed is a small sum for dues and your support in attendance at three meetings this year. The cost of membership is \$5 for an individual or \$8.50 for a family. Show the children of our community that your care and want to share in the success of their education. For further information contact Teresa Kirk, 659-2794.

Texas
It's Like A Whole Other Country.

Precision Sweep Airseeding

Is your name on our wheat planting list?

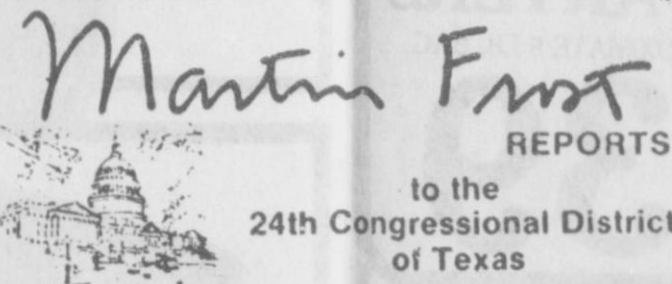
Book your favorite date NOW!

Quick

Economical
Minimum tillage

Bob Williams
435-4835

CONGRESSMAN



by Congressman Martin Frost

One of the first issues Congress will confront this Fall is the future of the catastrophic health insurance program that was enacted last year. The surtax included in the legislation is extremely unpopular with senior citizens and has been a major subject of my mail and of comments at Town Hall Meetings.

The House Ways and Means Committee has a proposal to significantly change the program; however, the changes are very controversial, and I have not endorsed them. If we are not able to come up with a workable plan to improve the current law, we may have no choice but to repeal the entire catastrophic health care program.

Below is a brief description of the current law and of the Ways and Means reform plan:
CURRENT CATASTROPHIC HEALTH CARE SURTAX-Prior to the catastrophic health care program, all Medicare benefits were financed by a combination of monthly premiums, payroll taxes and general tax revenues. The Regan Administration insisted that new coverage be paid for by senior citizens themselves, and the President vowed to veto a bill without such a tax. Congress therefore devised the current income tax surcharge beginning at 15% in 1989 with a cap of \$800 (\$1,600 for couples) up to 28% in 1993, with a cap of \$1,050 (\$2,100 for couples.)

WAYS AND MEANS RECOMMENDATION -- The Committee provides people with a right to

drop out of catastrophic coverage and also proposes cuts in the income tax surcharge...

1. "Opt Out Provision": This provision would allow seniors a one-time chance to "opt out" of the catastrophic health care program; however, those who choose to "opt out" would also lose the standard Medicare Part B coverage for doctor services. This decision would need to be made between October 1, and December 31, 1989. New beneficiaries would be automatically enrolled in Part B and catastrophic coverage unless they specifically decline coverage.

2. "Prescription Drug Deductible": Under current law, beginning in 1991, beneficiaries will begin to receive reimbursement for out-of-pocket prescription drug expenses after satisfying a \$600 deductible. Under the Committee proposal, the deductible would be increased to \$800 and in 1992 it would be raised to \$950.

3. "Income Tax Surcharge": The Committee proposal cuts maximum surcharge rates in half while maintaining the current dollar caps. In 1989 the surcharge rate would become 7.5% (current law is 15%) up to 14.0% in 1993 (now scheduled to be 28% in that year.)

4. "Part B Premium Increases": The revenue lost through the surtax reduction would be recovered by increasing the Medicare Part B monthly premium. Part B monthly premiums would increase from \$31.10 in 1989 (same as current law) to \$49.00 in 1993 (as opposed to \$42.60 under current law.)

Farm Safety Today

When harvest is in full swing, work often continues well into the night. This creates new safety challenges for equipment operators who must fight both fatigue and reduced visibility.

"If you must operate equipment at night, proper lighting is crucial," said Murray Madsen, product safety engineer for Deere & Company. "Rear-facing work-lights on tractors, combines or other types of harvesting equipment should provide ample lighting to allow the operator to clearly see the implement. The lights should also provide enough light for easy adjustment and maintenance of the equipment."

"Front and side-facing lights should be sufficient, and properly adjusted, to provide a clear view of the area around the equipment, and to spot potential hazards."

Equipment operators are particularly vulnerable when equipment is transported on or along roads and highways. "Laws governing lighting

and marking of slow-moving vehicles vary from state to state," noted the Deere & Company safety specialist.

STATEMENT OF FINANCIAL CONDITION OF HANSFORD COUNTY

RECONCILIATION WITH DEPOSITORY BANKS AS OF AUGUST 1, 1989

FUNDS	BOOK BALANCE	OUTSTANDING CHECKS	OUTSTANDING DEPOSITS	BANK BALANCE
JURY	2,237.11	11,941.81	7,068.87	7,110.05
GENERAL	35,446.64	153,933.75	107,420.29	81,960.10
ROAD & BRIDGE, GENERAL				
Precinct # 1	10,337.98	19,444.08	98.38	30,927.60
Precinct # 2	2,484.69	36,773.02	10,098.38	29,625.46
Precinct # 3	12,110.06	4,512.63		17,591.19
Precinct # 4	14,228.95	3,611.21		18,256.04
ROAD & BRIDGE, PRECINCT				
1 Improvement	1,243.92			
2 Improvement	466.13			
3 Improvement	968.50			
4 Improvement	415.88			

SUMMARY OF RECEIPTS AND DISBURSEMENTS

FUND	BALANCE 5/1/89	RECEIPTS	DISBURSEMENTS	BALANCE 8/1/89
JURY GENERAL	8,773.48	49,266.09	55,802.46	2,237.11
GENERAL	153,024.54	593,239.54	710,817.44	35,446.64
ROAD & BRIDGE, GENERAL				
PRECINCT # 1	35,337.76	125,365.52	150,365.30	10,337.98
PRECINCT # 2	39,436.29	135,620.27	172,571.87	2,484.69
PRECINCT # 3	28,100.08	145,799.32	161,789.32	12,110.06
PRECINCT # 4	30,385.44	162,815.02	178,971.51	14,228.95
ROAD & BRIDGE, PRECINCT				
1 IMPROVEMENT	23,448.63	40,390.29	62,595.00	1,243.92
2 IMPROVEMENT	7,256.96	10,209.17	17,000.00	466.13
3 IMPROVEMENT	7,003.49	30,294.01	36,329.00	968.50
4 IMPROVEMENT	6,713.90	201.98	6,500.00	415.88

NOTICE

Wallace Monument Co.
Monuments, Curbing,
Grave Covers
Local Representative
LEONARD J AMESON
Spearman, Texas
35s-rtn

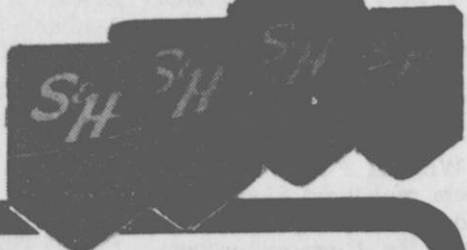
Back-To-School



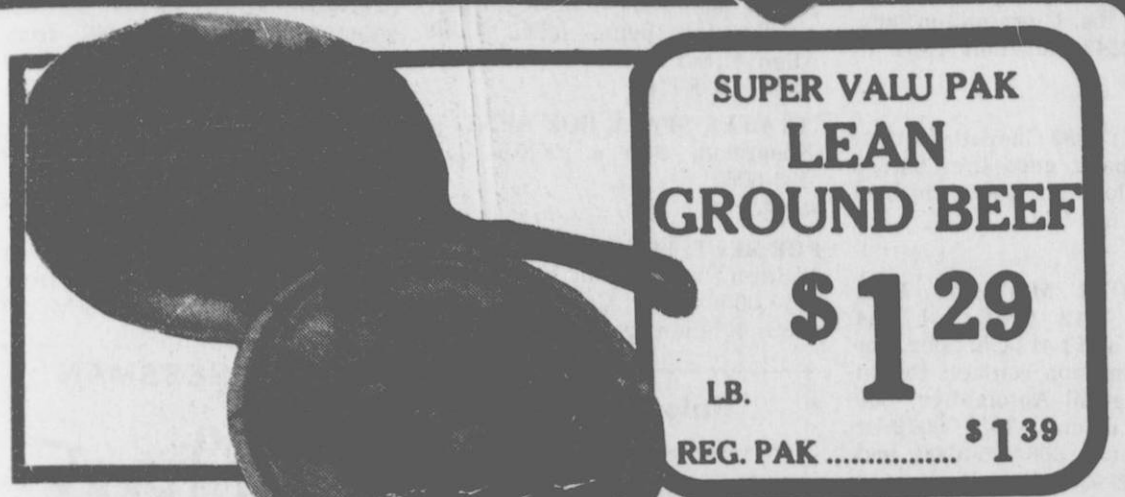
GOOD THROUGH
SEPT. 9, 1989
PERRYTON
STORE ONLY

KICK OFF

WE GIVE S&H GREEN
SEALS EVERYDAY.
DOUBLE SEALS ON
WEDNESDAY.



FRESH
FRYER
LEG
QUARTERS
APPROXIMATE 5 LB. BAG
.39
LB.



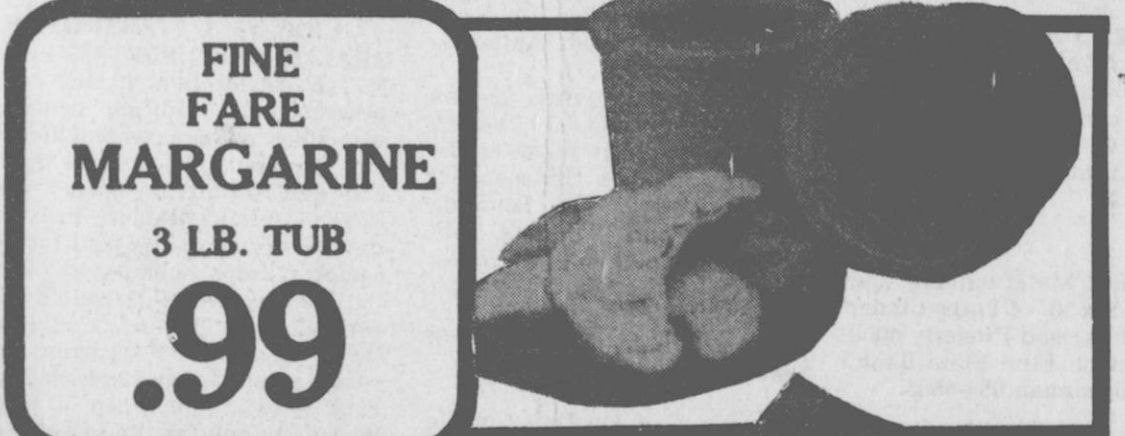
SUPER VALU PAK
LEAN
GROUND BEEF
\$1.29
LB.
REG. PAK \$1.39



UNITED TRU TENDR
OR USDA CHOICE
SUPER VALU PAK
CHUCK ROAST
BLADE CUT
.98
LB.
SINGLE PAK.....LB. \$1.09



MARYLAND
CLUB
COFFEE
\$1.69
ASST. GRINDS
13 OZ. CAN



FINE
FARE
MARGARINE
3 LB. TUB
.99

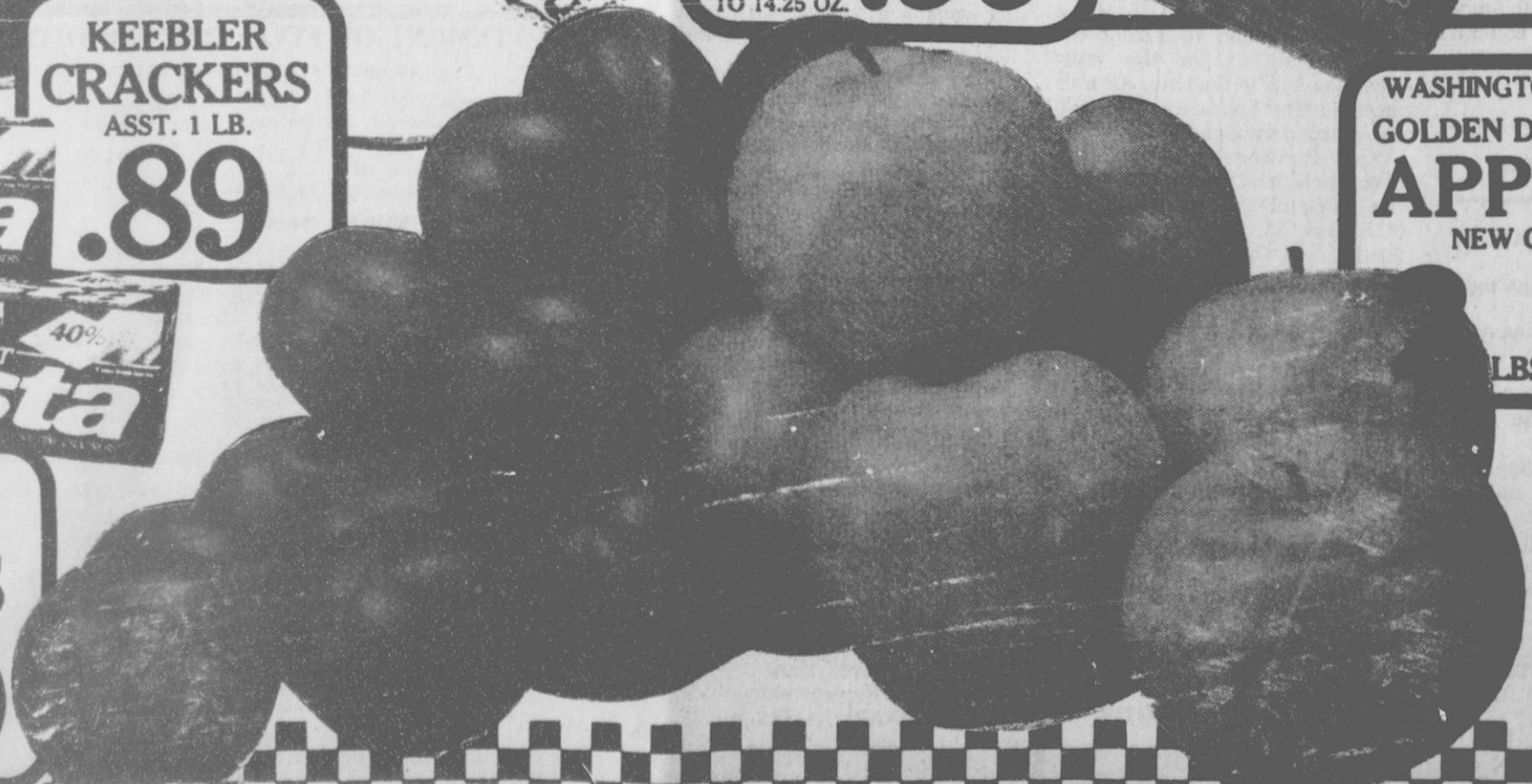


EL CHARRITO
MEXICAN
DINNERS
.99
ASST. 13.25
TO 14.25 OZ.



KEEBLER
CRACKERS
ASST. 1 LB.
.89

SWEET
JUICY
PLUMS
.59
LB.



WASHINGTON STATE
GOLDEN DELICIOUS
APPLES
NEW CROP
\$1
LBS.