

Choirs Sing In Concert Tuesday P.M.

The public will have its last chance this year to hear the award winning Spearman Choir in concert Tuesday at 7:30 p.m. in the high school auditorium.

A concert featuring the Lynx Choir, the Seventh and Eighth Grade Choir and the Fifth and Sixth grade Choir will feature some of the award winning numbers presented in contest at the Tri-State Music Festival in Enid.

Lewis Tilford will direct the high school and eighth grade groups. Mrs. Don Seymour is director of the fifth and sixth grades.

The high school choir won its third Outstanding Choir award at the Tri-State Music Festival and retired the trophy. It has to be won three years in succession for a school to keep it.

Spearman's choir won the award the first year it was organized and has not relinquished it since.

The girls' glee club was given a first division rating also, and will be singing along with other groups from the choir.



HANSFORD COUNTY'S LEADING NEWSPAPER



The Hansford Plainsman



VOLUME VII., NUMBER 59

SPEARMAN, HANSFORD COUNTY, TEXAS 79081

SUNDAY, MAY 15, 1966

Jaycees Shaping Final Plans For Celebration June 1-5

With just 16 days to go before the opening events, plans for the Spearman Jaycee sponsored celebration are rapidly taking shape, according to Jaycee President Jim Evans.

The celebration opens Wednesday night, June 1, with a county-wide religious service in the Spearman High School

Auditorium at 8 p.m.

The celebrating begins Friday with a rodeo performance at the local rodeo grounds at 2 p.m. The rodeo this year is sponsored by the FFA. There will be both a high school rodeo and amateur rodeo performances.

Friday night, some pretty

girl from the county will be named the new Miss Hansford County, replacing the reigning Miss Jane Hoy of Gruver.

This show begins at 7:30 p.m. in the school auditorium with the young women competing in both swimsuits and evening gowns. Each girl will be sponsored by a business or organization. The entry fee for the sponsor is \$25 and each girl furnishes her own wardrobe.

Dr. Damon Gregg is heading up the Miss Hansford contest. He and any member of the Jaycees have entry blanks.

Friday evening there will be a teenage dance with music by the Riveras of Lubbock.

Saturday morning the parade will roll down Main Street at 10 a.m.

After the parade the barbecue will be held at noon. Tickets are \$1.50 for adults and \$1. for children.

The second performance of the rodeo will be at 2 p.m. Sunday.

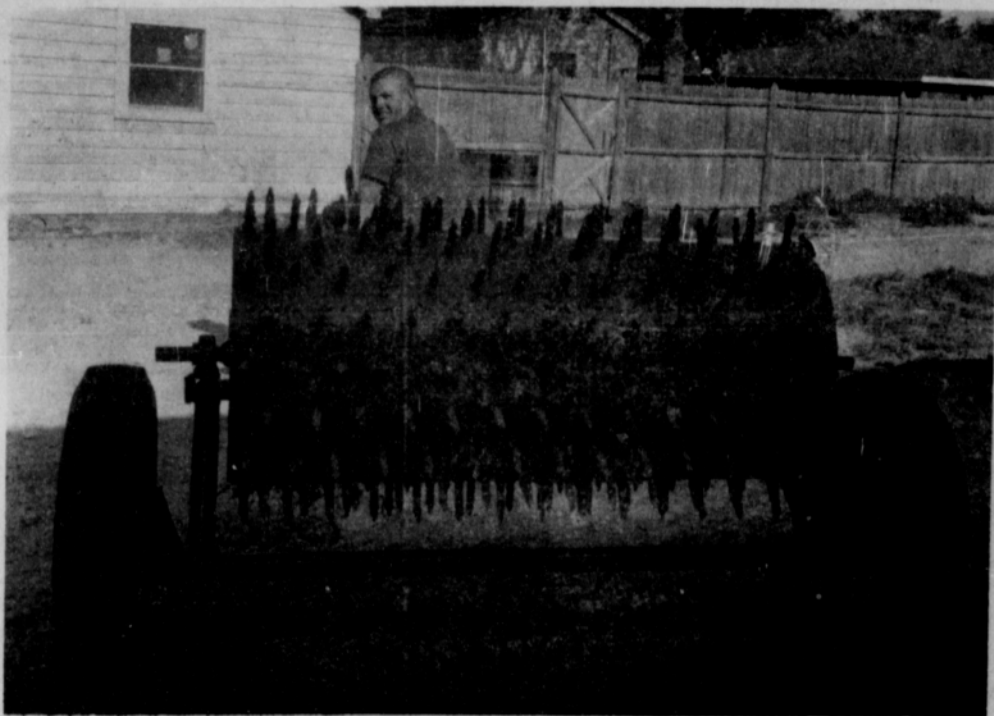
Saturday night the annual western dance will begin at 9 p.m.

Cooke Warns Farmers of Gas Thefts

Sheriff J. B. Cooke issued a warning this week to farmers with butane tanks on equipment and in storage tanks in the fields.

Cooke said there have been reports of butane being stolen from tanks in the north part of the county.

He asked that everyone keep a close check on the amount of fuel in their tanks, so they can detect the thefts as soon after they happen as possible, and help officers trying to arrest the thieves.



HANDIWORK -- Billy Haden, janitor and maintenance man for the schools, starts out with the \$65 aerator that he built to use on the school lawns and playing field. This is just one of his money savers.

Plainsman photo

'Temporary' Janitor's Talents Save School Taxpayers Money

Democrats Sending Uninstructed Group

Hansford County Democrats voted to send uninstructed delegates to the State Democratic Convention this year.

In the County Democratic Convention at 10 a.m. Saturday the 11 delegates attending passed this motion and named delegates to the state convention.

Party members also set the place for voting in the June 4 Democratic candidate runoff election.

There will be three voting boxes in the county for the election on Saturday, June 4. In Gruver, precincts three

and four will vote at the school agriculture building. Precincts one, two, nine and 10 will vote at the courthouse in Spearman. Precincts seven and eight will vote at the Oslo Church.

A resolution from the state Democratic headquarters that the delegates be instructed to support Gov. John Connally never was presented as a motion before the convention.

Another resolution from Precinct One on favoring permanent registration of voters was not passed since the del-

(Con't. on page 2.)

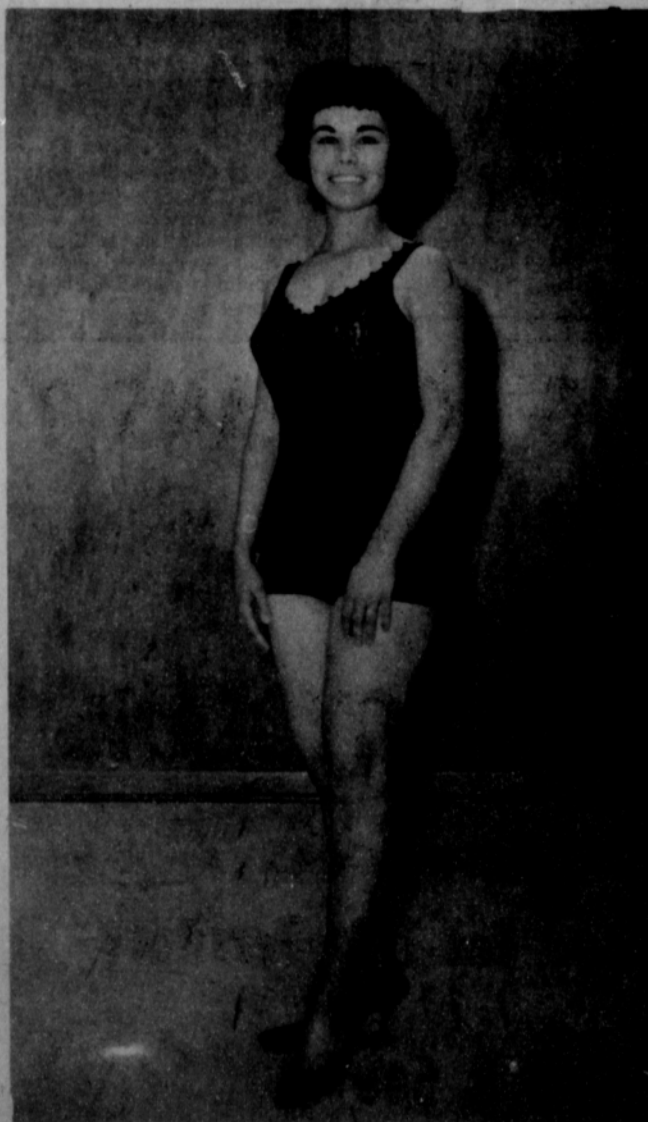
In January 1965, the Spearman School Board hired a janitor they thought might stay on the job a few months. Seventeen months later, the board and school officials think they have the best money saver ever installed in a school system.

Billy Haden was hired for the janitor's job because the school needed a janitor and they were hard to find. However, the board and school officials didn't think the young man would be satisfied with being just a janitor for long.

The board was correct, Haden wasn't satisfied with being just a janitor for long, but the taxpayers of the Spearman School District are the winners from his dissatisfaction.

The new janitor is a natural "Mr. Fix-It" and it did not take him long to find many

(Con't. on page 2.)



ENTRY -- Miss Kay Huse is one of the early contestants in the Miss Hansford contest to be held as part of the annual celebration. She is sponsored by the Hansford Plainsman.

Plainsman Photo

Buy, Sell, Trade
Hire, Rent, Find
THROUGH THE

WANT ADS

TAX MAN SEZ:

The good tax folks suggest that you take a look at your withholding tax. Be sure that the total tax withheld this year will be sufficient to cover your 1966 income tax liability. If it is not, now is the time to have your employer increase the amount withheld--or adjust your estimated tax. Tax planning now can lighten your burden when you file in 1966.

We know more about the moon than we do of the common cold.

lasting life, and shall not come into judgement, but is passed from death unto life."

Happiness does not develop from absence of troubles, but from rising above them.

Men are what boys were.

FOR SALE

FOR SALE-1963 American-Westwood 2 bedroom mobile home, excellent condition, 119 N. Brandt, Phone 659-2454 after 6 p.m. 24-tfc

FOR SALE 3 bedroom on corner lot, low equity, low payments, 112 Wanda Drive, Phone 659-3308.

FOR SALE-White & cream toy poodle puppies, AKC registered, Phone 659-2855, 117 Townsend, Mrs. Richard Burke. 53-tfc

FOR SALE-1962 Bonneville Pontiac 2 dr. loaded, Phone 659-2441, after 6 p.m. 659-2408. 40-tfc

Graduation cards at Plainsman Office Supply.

FOR SALE-3 bedroom brick, bath & 3/4, den, double car garage, carpeted, Phone 659-2462, 1118 S. Barkley. 51-tfc

FOR SALE-3 bedroom house, redwood fenced backyard, 1010 S. Haney, Call 659-3103 or 659-2754. 25-tfc

FOR SALE-3 bedroom house, Blodgett Linn addition, one bath, Phone 659-2441, after 6 p.m. 659-2408. 40-tfc

LEGAL NOTICE

Bids will be received by the Spearman Independent School District for one, thirteen (13) total accounting machine, NCR Class 33 or equal, programmed to perform the following operations:

- Budgetary Accounting
- Payroll Accounting
- School Lunchroom Accounting
- Preparation of Tax Roll and Receipts
- School Activity Fund Accounting.

Bids will be received at the office of Dr. B. E. Reeves, Superintendent, Spearman Independent School District, 403 East 11th, Spearman, Texas, not later than Wednesday, May 18, 1966 at 4:00 p.m. 58-2c

FOR SALE-3 bedroom, 1 1/2 bath home, south part of town, Collard Real Estate, Phone 2501. 58-4c

FOR SALE by owner, 3 joining lots including 1 corner lot. Paved front and sides, lot 4-5-6, Block 54, Corner 2nd & Brandt, \$2,250.00. Call 659-2668 after 5:30. 40-tfc

FOR SALE-1-7000 rpm Tack, \$20; '60 El Camino 283 Auto, \$800; '57 Buick Century \$600, 2-45 Amp Gen Delco \$25 each, 1 late Air Cond. Comp. needs repair \$20, 1 Single Coleman Lamp \$10, 1 dog house new \$10, 1 GE Roaster \$15, 1 22 Marlin Magnum New \$65; 1 7 x 35 Field Glasses \$20, Power Saw \$30, Jig Saw \$20, 1 3/4 Ton Ref. Air Cond. \$30, 659-3229 after 6 p.m. 118 S. Brandt St. 56-4c

FOR SALE-4000 CFM, 1/3 HP mobilhome water cooler, used 2 months, \$60, 418 S. Endicott. 54-8c

FOR SALE-Three bedroom brick, carpet, drapes and fence, 1006 S. Barkley, phone 2261. 58-8c

FOR SALE-3 bedroom house, Call 659-2687. 59-tfc

FOR SALE-One 1959-A Gleaner Baldwin Combine, one 1960 C Combine, one 1954 Chevrolet Truck, one 1957 Chevrolet Truck, James P. Johnson, Box 882, Phone 7246, Electra Texas. 49-12p

FOR SALE: This space...next week. You'll be surprised at the response Plainsman want ads bring and at 4¢ per word they're the best bargain you'll find!

Ideas Offered

Need fence and deck ideas? Write to the Western Wood Products Assn., Yeon Building, Portland, Oregon. Address fence inquiries to Dept. 514-P, and deck inquiries to Dept. 502-P. Enclose 10¢ for each to cover mailing.

SERVICES

Amarillo Daily News & Globe Times home delivery, Call 2685. 14-tfc

SERVICE-Ditches from 3-12 inches, any desired depth, S. D. Jones 659-2809, Harold Shaver 659-3474. 17-tfc

Irrigation gas meter repair and testing. Monthly billing service for irrigation customers on co-op line, Phone 659-2297, 1004 S. Haney, J.A. Morris. 52-tfc

WANTED

WANTED-Retired person to assume responsibility for home and care of male semi-invalid in Perryton, Dan Nitschke. Live in, living expenses furnished, plus salary. Apply in writing giving personal background, Box 197, Perryton. 51-8p

ROSS CATERING SERVICE-Suppers, luncheons, teas, children's parties, Phone 659-3227. 55-tfc

Trees and Hedges Trimmed. Reasonable, Bill Hand, 315 S. Townsend, Phone 2967. 57-4p

Wood Floors Help Busy Builder Sell

Crystal chandeliers and wood floors are prestige features that helped one Southern California builder ignore last year's slowdown in new homes.

Robert H. Grant, 44-year-old Anaheim developer, has installed hardwood floors in all of the 8,000 houses he has built in the last decade. One of his advertising themes is: "Wood is for your feet--concrete is for your tires."

Wood floors make up in beauty and comfort their small extra cost, states Grant. Under his flooring, he installs 2x6-inch tongue-and-groove fir subflooring, over 4x6-inch fir girders placed up to 4 1/2 feet apart.

FOR RENT

FOR RENT OR LEASE-Brick Building, 100 N. Bernice, formerly Dortch Body Shop, Collard Real Estate, Phone 659-2501. 53-tfc

Two Minutes With The Bible

"Faith cometh by hearing, and hearing by the Word of God" (Rom. 10:17). This important passage of Scripture is, sad to say, little understood. Many people think of faith in the abstract, as though it were some mysterious power in itself. They speak of faith, but what do they mean? Faith in what? or in whom? Surely it is not possible just to have faith, without something or someone to have faith in.

Faith is not wishing hard, or feeling confident. Much less is it optimism or presumption or imagination. Faith must have a basis, a foundation. Thus the Christian's faith is founded on "the Word of God"--on what God has said in the Bible. The above passage explains: "Faith cometh by hearing." Isn't that simple? Isn't it true? Some have said that "seeing is believing," but a moment's reflection will reveal that, like the phrase: "I'm from Missouri," this saying is an expression of UNbelief. When we have seen a thing we need no longer believe it; it has been demonstrated to us. But when we hear (or read) a matter reported, we may either believe or doubt it. "Faith cometh by hearing." And likewise hearing comes through what has been said. We believe what we hear and we hear what has been said. The Christian's faith, then, comes by hearing (God) and hearing by THE WORD of God. All true Christian faith is founded on the Word of God.

Actually the word "hearing," in Rom. 10:17, has the idea of heeding--paying attention, eagerly listening. This is why Gal. 3:5 speaks of "the hearing of faith." Thus Eph. 1:13, referring to Christ says: "In whom ye also trusted, having heard the word of truth, the gospel of your salvation." Similarly we read in John 5:24 the words of the Lord Jesus: "He that heareth my word, and believeth on Him that sent Me, hath ever-

Thinking About

Carpeting



Then let us show you our large selection of quality carpeting in nylons and Acrylic Fabric. We can give you quick and dependable service. Free Estimates.

White House

Lumber Company

- Lumber - Paint - Hardware -

I Sisten

to KBMF-FM

"the fun station"

98.3 on your dial

FREE Lubrication
From
Red Byrd's

TEXACO

Offer Good With
The Cash or
Credit Card
Purchase
OF
Wash, Oil &
Oil Filter

OPEN 7 Till 9
7 Days A Week

Please present this adv.
Offer Expires May 31, 1966

659-9970

Highway 15



Get High
Net Profits
with PIONEER.
Sorghums

Proved yield champions in
farmers' fields and Texas
A & M tests!

B & B GRAIN

The Hansford Plainsman
Publishers Inc.

Jim O. Davis
Burl G. McClellan



County-wide independent newspaper published every Thursday and Sunday at 209 Main St., Box 668, Spearman, Texas 79081. Second Class postage paid in Spearman, Texas 79081. Editor . . . Burl McClellan

Democrats...

(Con't. from page 1.)

egates would be uninstructed. Delegates to the State Convention will be J. D. Helms, J. L. Brock, Roy Riley and Carl Archer. First alternate is Peyton Gibner and the second alternate is E. J. Riley. County Chairman J. D. Helms was out of town because his father-in-law was injured in an accident. Dick Countess was elected convention chairman and Mrs. Emmett Sanders served as secretary.

MINOR WRECK ON MAIN STREET

City Police investigated a minor traffic accident on Main Street this week involving a car backing from a parking place and a car driving down the street.

The accident occurred in front of Excel Chevrolet-Olds. Drivers of the cars were Kathy Southerland and William Simpson.

San Francisco Fire

NEW YORK—The fire which followed the 1906 earthquake in San Francisco destroyed 28,000 buildings and did an estimated \$350 million in damage, according to the Insurance Information Institute.

R. L. Ooley

J. F. Ooley

SPEARMAN CUSTOM CABINETS

Millwork-Furniture-Formica Drainboard-Bar & Counter Tops
Formica Tub & Shower Enclosures
Gruver Highway - 659-2782
Residential-Commercial
Expert Workmanship, Satisfaction Guaranteed,
Work From Your Ideas or Ours

Temporary...

(Con't. from page 1.)

things to fix. School officials knew there were many things that needed fixing, but there was always the question of "Where do we get the funds?"

Haden has another talent that goes well with his fix-it ability; he is a scrounger who would have made the famous "Seabees" of World War II jealous.

What is junk or unusable material to most people is just what Haden needs for many of his projects. Also, equipment that is sitting around unused is not idle long if he needs it.

When Haden went to work in the small elementary building, the dirt playground to the south of the building kept him working many hours shoveling the blow-dirt out of the halls and rooms.

Grass on the playground would solve the problem, but getting the grass had proved to be an unpopular subject with the local board. Administrators and coaches had tried to get the several thousand dollars needed for sprinklers, grass seed and for planting the grass. They had been turned down because of the cost and the belief that grass would not grow on a playground.

Haden got the grass and the board did not get the big bill they did not have the funds to pay. Contractors were plowing up grass around the junior high as they started remodeling. The Jaycees had some aluminum sprinkler pipe that was not used much, and they needed their park mowed. Haden had a power mower.

He took the plowed-up grass, sprigged it on the playground, mowed the Jaycee park and got free use of the pipe. The grass grew the dirt stopped blowing and the school was out only the cost of the water.

In the past few years the school has been out a lot of money trying to get a turf on the football field, but has not been successful.

After last season the field was like concrete, it was going to be another big cost to get it fixed. Again the janitor's knack for getting things done economically came through.

His father was having a tractor overhauled and wanted to test it. The football field was close and needed deep plow-



Doctor in the Kitchen

by W. W. Bauer, M.D.
Consultant, National Dairy Council

MY CHILD WON'T EAT!!!

In tones ranging from exasperation to despair on the telephone, in plaintive letters to health information agencies, in the pediatrician's office and in the discussion groups at the P.T.A., the cry from young mothers is:

"What can I do when my child won't eat?"

This has been going on for a long time, ever since (more years ago than I'll ever tell) my professor of pediatrics in the medical school admonished us, with a child on his knee, about the care and feeding of infants. This theme became the title of a book

ing. The tractor and borrowed plow worked fine plowing the field 10 inches deep.

This spring Haden levelled the field with a small land leveler he built to pull behind his jeep. He is now waiting for the weather to settle down before he puts in the grass seed, the only expense other than fertilizer and water.

With all this new grass to keep, an aerator was needed so the ground could be opened to take the water.

It took Haden a month to scrounge around through scrap materials and build one that can be pulled behind a small yard tractor. The total cost was \$65. The cheapest to be found in the catalogues was about \$650.

What did he use? Some old scrap pipe, some scrap metal people wanted to get rid of, wheels off a 1941 Chevy and some welding gas and rods.

Small projects are many, like a rack in each mop storage room, so the mops hang straight and dry quickly. This makes the mops and handles last longer. Plumbing repair, electrical jobs, just about anything that does not require major parts, he handles.

"He saves us money every day, and we would probably save money if we got a janitor to replace him and let him do nothing but maintenance work," Supt. Reeves commented.

Haden is a property owner and believes that saving the school money is saving himself money.

"There was lots of stuff stuck back from past years that we have been able to use. Every little repair job does not take all new materials," he says.

If all decisions reached by school board members and administrators worked as well as the one they made on their "temporary janitor", running a school would be easy.

for young mothers long before the era of Dr. Spock, and has been spoofed in the form of advice on the care and feeding of executives. There seems little difference—just don't let the individual dramatize himself.

Best Advice

The first and hardest advice to these young mothers is to relax. No normal child is going to starve in the midst of plenty. When he vacates the center of the stage, or has the rug pulled out from under him by having mother calmly walk out and let him alone, he'll eat. When he gets ready. And that will be time enough.

There are several reasons why the toddler doesn't eat as his parents wish he would:

- a) his growth has slowed down since he was a baby, and he doesn't need as much food;
- b) he begins to have likes and dislikes;
- c) he likes to dawdle and play over eating;
- d) he loves the limelight and the attention he is getting.

Therefore you must not expect him to eat as much as you think he should. If he is healthy and gaining, he is eating enough. You must consider his likes, and substitute other and equally nutritious foods for those he doesn't like. You must be patient, but not too patient, with his time-wasting. And you must quit worrying, or he will—excuse me—make a monkey of you, just as my kids did of me, until I got on to them.

The first Negro college graduate in the U.S. was John Brown Russwurm, one of 32 men who completed the four-year course at Bowdoin College.

Ashley and Aspaughs Win Pioneer Trophies

Guymon Pioneer Day officials just like the way Doss Ashley of Spearman dresses and the wagon he drives, for he again won the prizes at the Pioneer Day Celebration in Guymon.

Again this year Ashley won two trophies, one for best dressed pioneer and the second for the most authentic wagon.

A third award, "Most Colorful Wagon" was presented to Mr. and Mrs. Dave Aspaugh of LaVerne, Okla.

These winners are all members of the Rolling Plains Mule Train, with headquarters in Spearman, who made the three day trip from Spearman to Guymon to be a part of the celebration there.

The train left Spearman at 9 a.m. May 4, for the trip to Guymon. They were in Gruver for lunch at a campsite provided by Doug Younger of Taylor-Evans Farm Stores.

After parading in Gruver, the train went to its campsite six miles north of there on the F.A. Shapley farm. Mr. and Mrs. H.L. Boyd of Gruver and Mr. and Mrs. H.H. Crooks of Spearman had a fried chicken supper for the train members.

On the second day the train was the subject of photographs and interviews by radio, TV and newspapers from Oklahoma City and other towns.

The second night the train camped on the Vantine ranch south of Guymon. They were met by Mr. and Mrs. Mark Vantine and officials of the Guymon celebration. Several entertainment groups from Guymon entertained at the campsite.

Friday morning the train met the trailriders from Elkhart, Kan. That evening the train gave an appreciation banquet for celebration officials, newsmen and others at Hotel Dale.

The train was led by Jack Kemper, carrying the American flag, and flanked by Elmer Hunt of Binger, Okla., carrying his home state flag and Terry Morgan of Corpus Christi carrying the Texas flag.

There were 12 wagons in the train, plus some mule riders and the sound truck.

"I saw it in The Plainsman."

For Quick Courteous Service

Chvron Gasolines
Atlas Tires & Accessories
Washing-Greasing

**QUICK,
COURTEOUS
SERVICE**

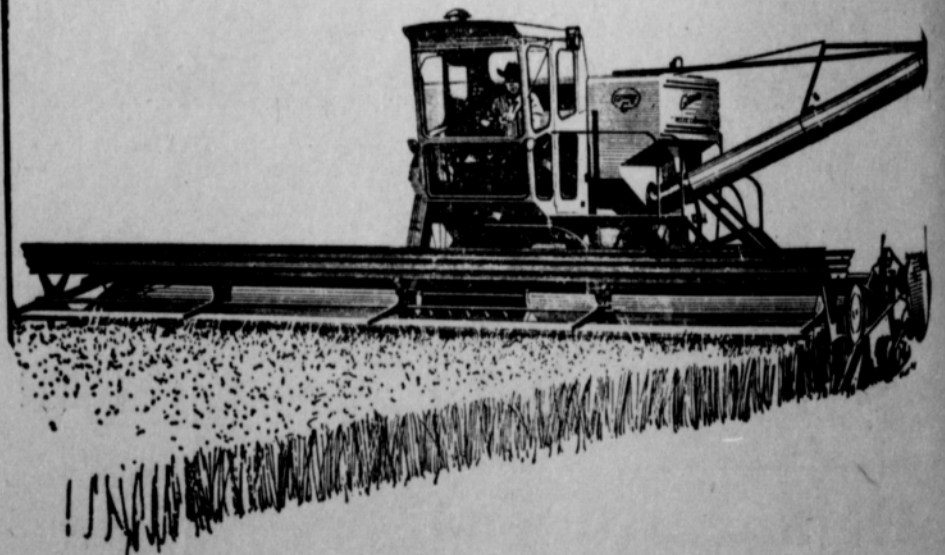
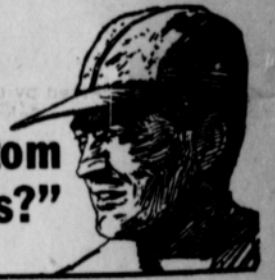
Loren Simmons

**SIMMONS
CHEVRON
SERVICE**

Phone 659-9985
Plains Shopping Center



"How come so many custom operators use Gleaners?"



High capacity and low maintenance win fame for Allis-Chalmers CII Gleaner combine!

Down-front cylinder leaves room in the thresher body for 49 square feet of separating area! That's capacity that puts more and cleaner grain in the bin. Low upkeep begins with the heaviest main frame in the industry,

balanced weight distribution and the full-jewelled smoothness of running parts. New variable-speed cylinder control lets you set RPM's to match crop conditions. Easily switched to regular or narrow 4-row corn head!

PLANTING SOY BEANS ?

We Still Have Available A Limited Supply

CLARK 63 SOYBEANS

This Bean Looks Real Good For This Territory

Call & See
STRAWN FARM & RANCH SUPPLY

R.L. McClellan & Sons

Baptist Circles Meet In Homes of Members

The Alma Reed Circle met Wednesday morning with Mrs. R.H. Gray.

Mrs. Don Jones was in charge of the business session and Mrs. Fred Holt gave the Bible study.

Attending were Mmes. A.F. Loftin, Luther Berry, Major Lackey, Don Denham, Eddie Gates, Fred Holt, Don Jones and a new member, Mrs. Jerry Ralls.

Mrs. L.L. Anthony was hostess for the Kezzia Mae Seawright Circle Wednesday morning.

The program "My Family Witnessing to Other Families" was led by Mrs. G.R. Kilgore. She was assisted by Mrs. R.L. Uptergrove and Mrs. Royce McIver.

Present were Mmes. Lena Stephenson, Paul Conner, D. W. Hazelwood, Uptergrove, McIver, Ed Hutton, Roscoe Nelson, Kilgore, two guests, Mrs. George Wright and Myrtle Middleton and the hostess.

Banquet Given At Waka F for Eighth Grade

The eighth grade class of Waka School was honored with a banquet recently by the seventh grade.

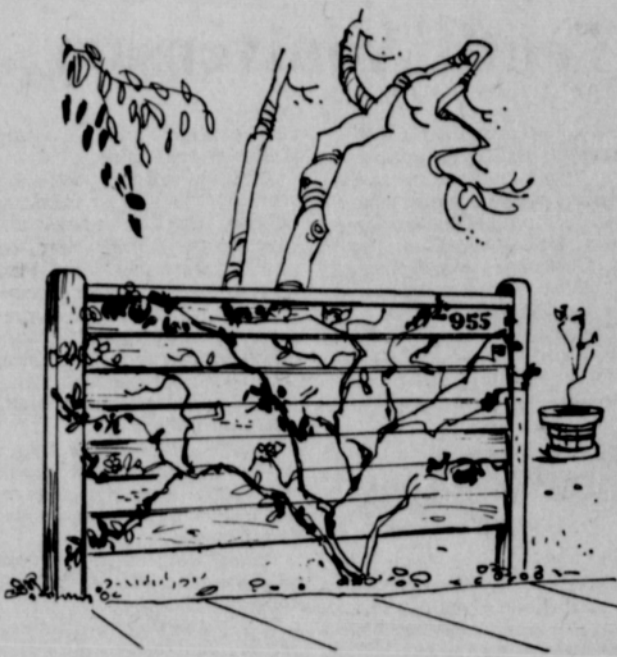
Special guests were parents of the seventh and eighth graders and Mr. and Mrs. L.L. Laws.

Theme for the banquet was "The Roundup" with decorations in the western motif.

Mr. Laws, counselor of Spearman High School, gave the address.

The Waka P.T.A. helped the seventh grade finance the banquet.

Pretty Screen Stops Car Lights



Bothered by car lights beaming into the house windows? A driveway screen can solve the problem. This one's low, built of cedar bevel siding boards to match house exterior. Use screen as a trellis for show-quality climbing rose.

LAND SALES DO "ABOUT FACE"

Part of the Texas farm and ranch land market has done a sudden about-face, according to a survey released by Texas A&M University.

The survey was done by F. B. Andrews, Extension resource development specialist, and A.B. Wooten, professor of agricultural economics, both at A&M.

Since 1949, Texas agricultural land prices have risen each year, but the volume of sales has consistently declined. In the A&M study, land prices continued to rise—but for the first time since 1949, the volume of sales also increased, reversing the downward trend.

Economists at Texas A&M say the reason for steadily increasing prices is the urban influence on farm and ranch land. Urban demands of land for hobby farming, rural homesites, speculation and recreation drive prices higher each year, say the economists.

The abrupt increase in volume of sales comes from a growing population, with more income and better transportation to take them to land in the country.

According to the study, average land price in 1963 was \$93.94 per acre, 10 percent above the 1960 average. Volume of sales increased 22 percent.

Prices ranged from a high of \$700 an acre for land in the upper Rio Grand Valley, near El Paso; \$200 an acre for Blackland areas; to a low of \$41 an acre for land in the Trans-Pecos area.

The greatest increase in price since 1960 was in the Trans-Pecos region. Land prices in the Lower Rio Grand Valley declined 19 percent from 1960 to 1963.

ANTIQUITY OF GLOVES: Xenophon and Homer (Greeks) found gloves worn by women, or by men doing heavy work, and remains of gloves are found in most Egyptian tombs.

Surprise Shower Honors Mrs. Earnst and Daughter

Mrs. Jim Earnst and baby daughter, Kathryn Geanine were honored Thursday afternoon with a surprise baby shower.

Friends came at 2 p.m. with gifts and refreshments of chocolate cake and coffee.

Mrs. Earnst was presented a pink carnation corsage by the group. The afternoon was spent in the opening of the gifts and visiting.

Hostesses for the courtesy were Wilma Goff, Deloris Guthrie, Geanine Innes, Betty Morris and Patty Spoonmore.

Others present were Frankie Grange, LoRee Booth, Phyllis Cook, Susan Delk, Fern Welch, Mary Brown, Jackie Banks, Norma Holland, Paulette Hand, Evelyn Schulenburg, Alma Ricketts and Ginger Pieratt of Guymon.



Kenneth Taylor Finishes Training

Kenneth W. Taylor has recently completed three months training in the U.S. Navy at San Diego, Cal., and is being transferred to the Navy Technical Training Center in Memphis, Tenn., where he will be for 9 months.

He has been visiting in the home of his parents, Mr. and Mrs. Orville E. Taylor.

Mrs. Haner Has Program

The Fellowship Hall at the First Christian Church was the meeting place for the Phelo Circle Wednesday morning.

Gwen Smith presided at the business session with Dorothy Haner giving the program "Salt of the Earth". Loydell Hollar gave the devotional.

Attending were Gwen Smith, Margaret Evans, Dorothy Longley, Loydell Hollar, Dorothy Haner, Charlotte Jackson, Dorothy Buzzard and Betty Davis.

RECORD FEE

For their 30-minute show in New York City in August, 1965, The Beatles were paid more than \$5,000 per minute!

The U.S. Department of Agriculture reports that Americans eat more potatoes mashed than in other forms.

MOONLIGHT TV

Specializing in Minor TV Repair.

EVENINGS & SATURDAY Sorry-No Sunday Call Phone 659-2792 or 659-3321

Service Calls - \$2.50

KNAPP SHOES

Kenneth Bailey
212 N. James
Phone 659-2458
Spearman, Texas
For Cushioned Comfort

The members of the Faith Lutheran Circle held a salad supper at the church Wednesday evening honoring their daughters.

The tables were laid in white with red streamers running down the center and centered with arrangements of spring flowers.

Eunice Cooksey of Guymon was in charge of the program. The devotional was given by Elaine Ward, Colleen Schaefer sang a solo, accompanied by Nancy Meyer of Gruver at the piano.

Americans want chairs that vibrate, and cars that won't. We don't get it.

TOMMY GOOCH AGENCY
FARM BUREAU INSURANCE
Spearman, Texas

— TRACTOR TIRE SERVICE —

WE HAVE IT!

TWO RIGS READY TO GO AT ANY TIME

Service Is What We Offer

WE ALSO HANDLE
Firestone Tractor Tires

"The Best Going"

LESS DOWN TIME

with Firestone Tires &

Snider - Pearson SERVICE!

REAL SHEIKH



Ashour Abdul Kerim El-Gabry is a colorful Arab Sheikh who, as Chief Dragoon (Guide) for the American Express Company's Eastern Mediterranean tours visiting Cairo, shows visitors the marvels of the pyramids and Sphinx.

SAFETY TIP

Each year about 30 children, most of them under 6, get trapped in refrigerators and suffocate, according to the U.S. Department of Agriculture. A refrigerator that is temporarily out of use should be encircled with strong filament tape or a chain with a padlock. The doors of a refrigerator that is to be junked, discarded or abandoned should be removed.

FIRST MAIL BOX

The mail box was invented in 1810 by Thomas Brown, who later became governor of Florida.

Cummings Refrigeration

HEATING
AIR CONDITIONING
SALES & SERVICE

SPECIALIST

659-2721

SPEARMAN



PAG 665 IS YIELD PROVEN!



It is a proven fact. According to the High Plains Research Foundation at Halfway, the five year average for PAG 665 for 1960-64 was 7,256 pounds per acre. It is uniform in height, medium height, sturdy stalk with large semi-compact heads with bright red, quality grain. Very resistant to head smut and milo disease.

PLANT PAG 665 FOR EXTRA PROFITS

Strawn Farm & Ranch Supply

Shamrock Price Up

The price of crude oil purchased by Shamrock Oil and Gas Corp., in Hansford County has been increased, according to an announcement by the company Wednesday.

The price increase is caused by the company reducing the penalty per degree of gravity from three to two cents. The base price of \$2.95 per barrel for 40 gravity and above remains the same, Shamrock said.

The price increase will affect from 8,000 to 10,000 barrels of oil daily. The increase covers oil purchased by Shamrock in Hansford, Moore, Hutchinson, Ochiltree and Lipscomb counties.

Shamrock follows Phillips and Pan American Petroleum Corp. in announcing the reduced deductions for crude in the below 40 gravity area.

Use of Paper Towels, Napkins Said Rising

NEENAH, Wis. —If use of paper in the kitchen is any indication, the washing machine in the future may well be replaced by the incinerator.

By 1975, the Kimberly-Clark Corp. predicts, the American housewife will nearly double her expenditures for paper towels and napkins from her present spending rate of \$348 million annually to \$740 million.

SHOP at HOME

The Road Report . . . ARBA



Last year 90 per cent of all domestic vacation and pleasure trips were taken by automobile. These trips totaled 120 billion miles. New Interstate highways make it possible for motorists to travel farther within their vacation periods.

American Road Builders' Association

Beef prices are steady this week. The economy cuts come from the forequarter of the animal. Fryers remain moderately priced. For best value, compare the cost of fryer parts with prices on whole birds. Egg prices are about the same as a week ago, although a pricedrop is expected.

Weather conditions have caused fluctuation in supplies of head lettuce, onions and white potatoes. Carrots, Celery,

You can bring interest to your breakfast menus with these suggestions. For an elegant, yet simple-to-prepare Sunday breakfast, place broiled bologna slices on an English muffin and cover with chopped hard cooked eggs in a white sauce. Or add bologna slivers to scrambled eggs. Quickly browned bologna slices will curl to form cups—a tasty and eye-appealing container for scrambled eggs.

LARGEST WHEAT FIELD

The world's largest single wheat field was probably one of more than 35,000 acres, sown in 1951 near Lethbridge, Alberta, Canada.

Anti-Flame Finish

A new flame-retardant finish improves nap resilience of cotton blankets and carpets.

B&PW Club Has Luncheon May 12

The meeting of the B&PW Club was held Thursday, May 12 with a luncheon at the Home Demonstration Building. President Mary Lou Wysong presided at the business session and plans were made for the

delegates, Ludie Mae Lovett and Dorothy Roden, to attend the state convention in San Antonio, June 2-5.

Attending were Muriel Fryer, Belle Crawford, Mae Floyd, Juanita Kemper, Dorothy Quinn, Ludie Mae Lovett, Leona King, Mable Edwards, Mabel Jameson, Evelyn Mackie, Mary Tanner, Lou Howerter, Mary Lou Walker, Sammy Bishop, Jennie Massad, Dorothy Roden, Mary Lou Wysong, Rhoda Overton and Mildred Rolles.

The next meeting will be May 19 at 7:30 at the Chamber of Commerce office for the purpose of working on material for the state convention.

One sound-masking method that's already working for many office workers is background music, scientifically programmed to create an efficient and profitable work mood all day.

It is the planned use of pleasant sound to offset distracting noises. Experts at Muzak International, whose music is sent into many thousands of locations throughout the world, have found in their management surveys that music, when it is scored with all attention-getting devices and distracting features eliminated, successfully masks office din.

The profitable result of Muzak programming can be a decrease in costly errors, accidents, absenteeism and lateness. It's all in the process of controlling job noises before they control us.



According to a university study, an office worker spends about 19 per cent of his energy fighting noise. Experts class noise with poor ventilation and lighting as a cause of lower office output which in turn costs American management millions of dollars a day!

Office workers may chalk tension and irritability up to a "bad mood," but noise is often more the culprit than they think. Electric typewriters clatter away, metal file drawers bang open and shut, telephones constantly ring, machines whirr, clank and buzz, traffic rumbles in the street below, and conversation of necessity must rise to a pitch above all the din.

Noises on the job are here to stay as unavoidable by-products of the age of automation and increased productivity. But industry has progressed in methods of "masking" office noises. Sound-absorbing ceilings, cork flooring, machines set on rubber mountings—these are a few.

OpenHouse Is Today

Mr. and Mrs. E.S. Uptergrove will be honored with an open house May 15 (today) on their golden wedding anniversary. The open house will be from 2 to 4 p.m. in the Home Demonstration Clubroom with the children of the couple as hosts.

Friends of the couple are invited to attend.

FACTS ON FEET

An average, healthy 7-year-old boy may take 30 thousand steps every day, according to the U.S. Department of Agriculture. That adds up to about 10 miles a day and more than 300 miles a month. His mother, on a busy shopping day, may walk 10 miles. A policeman walks about 15 miles on his beat.

LARGEST SHOPPING CENTER

The World's largest shopping center is the Lloyd Center, opened on August 1, 1960, in Portland, Oregon. It covers 56 acres, including a covered parking lot of 21 acres for 3,000 cars, and open parking lots for an additional 5,000.

This year plant

Quality Proven



hybrid-sorghums

PROVEN QUALITY PERFORMANCE THRU RESEARCH

We have these varieties

- Excel 404** Medium early maturing, short stalk, dryland & irrigation adapted.
- Excel 505** Medium early maturing, stands well, good yields, heads dry well
- Excel 707** medium maturity, excellent yields, stands good
- Excel B-52** full season hybrid for maximum yield areas under heavy irrigation.
- Excel Chowmaker** Sorghum-Sudangrass cross for grazing and greenchop

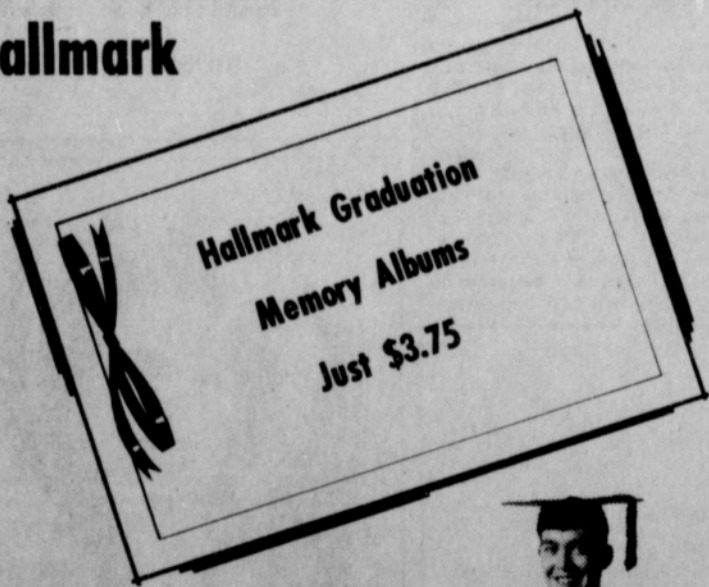
Excel Texas Varieties Texas 660 - RS 608

All Excel Hybrids Have Good Standability And Are Resistant To All Known Head Smut

Buy your seed today

R.L. McClellan Grain Co., Inc.

Choose Hallmark Gifts for the Grads.



Beautiful Hallmark Notepaper with matching Pen \$1.25
Parker Pens & Pen Sets \$1.95 to \$25.00
Hallmark Stationery

Plainsman Office Supply



Mrs. Davis Is Installed As Rho Rho President

Mrs. Jim O. Davis was installed as president of Rho Rho Chapter of Beta Sigma Phi at a meeting held Thursday evening in the hospitality room of the First State Bank.

Verna Strawn was hostess for the meeting, a salad supper. Other new officers installed by Kay Nollner, outgoing president, included Judy Martin, first vice-president; Peggy West, second vice president; Lil Turner, recording secretary; Beverly Sparks, corresponding secretary; Glenda Guthrie, treasurer; and Mary Kathryn Parris, civil defense officer.

Mary Kathryn Parris presented the program on architecture.

Those attending were Juanita Kemper, Teressa Dollar, Beverly Sparks, Peggy West, Kay Nollner, Judy Martin, Glenda

Guthrie, Jeanette Allen, DeLores Guthrie, Linda Davis, Verna Strawn, Charlene Tilford, Toni Archer, Lil Turner, Dodie Beedy and Mary Kathryn Parris.

FORTUNE TELLER'S DREAM

The largest crystal ball is the Warner 106-pound sphere of Burmese quartz in the U.S. National Museum in Washington, D.C.

The longest recorded time spent under a shower is 60 hours by Mike Williams, age 19, at Carbondale, Illinois, from 11 p.m. on January 14 to 11 a.m. January 17, 1965.

Father Hurt By Horses

Ray Brown of Allison, father of Mrs. J. D. Helms of Spearman is in critical condition in Northwest Texas Hospital in Amarillo with head injuries.

Brown was injured about 7:30 p.m. Thursday when he was kicked two times by a horse, then trampled by other horses.

At Northwest Texas Hospital, the doctors said his condition was critical with severe head injuries.

Mrs. Brown saw the accident. She said he had a halter on a mare and was putting the mare and some other horses in a pen. The mare's colt did not come in with her and she turned to go back for the colt.

The mare kicked Brown twice, the second time hitting him in the head. Then the other horses ran over him as they bolted from the pen.

The size of our space program also taxes our imagination.

West's Military Rites Conducted Here Fri.

Funeral services and military graveside rites for U.S. Navy Airman Ronald Lloyd West, 20, were conducted at 2 p.m. Friday in the First Baptist Church of Spearman.

Services were conducted by the Rev. Luther Berry, pastor. Graveside rites were conducted by Lt. Commander Stames, Chaplain, USN.

Burial with military graveside rites were conducted in Hansford Cemetery. A Navy Color Guard was present from the Amarillo Reserve Center. The Honor Guard and Bugler were Airmen from Amarillo Air Base.

The military escort for Ronnie West from Lakehurst Naval Air Station was Marine Staff Sergeant Raymond F. McClendon, S/Sgt. McClendon made the military presentation of the flag that covered the casket to the parents, Mr. and Mrs. A.F. West, at the military services.

Airman West was killed Saturday, May 7, when a plane in which he was riding, crashed shortly after take-off at Pottstown, Pa. Airman West was a Skydiver and was fixing to compete in a meet when the

accident occurred.

He was attending Navy Parachute Rigging School in Lakehurst, N.J., at the time of his death. He had enlisted in the Navy, Oct. 13, 1965 after attending West Texas State University in Canyon for one year. He was a graduate of Spearman High School.

He was named outstanding recruit in both the West Texas ROTC and his Navy Recruit Training. In High School Ronnie West was active in the choir and sang in the boys' quartet.

The quartet, composed of Mike Morris, Ronald McDonald, Rennie Berry and Lloyd McWhirter sang at the funeral services.

Survivors are his parents and a brother, Tommy West, all of Spearman.

Pallbearers were high school and college friends, Bill Blackburn, Bari Blevins, Jimmy Kirkland, Thom Hix, Johnny Crawford, Eddie Martin, Olo Crum and Clayton Cochran.

Funeral arrangements were by Boxwell's of Spearman.

Jaycees Make Survey of Boys

All boys over the Little League age who would like to play baseball this summer are asked to register at Cates Men and Boys Wear Monday and Tuesday.

The Junior Chamber of Commerce is making a survey of boys interested in playing, so they can decide if the project to light the park is feasible.

Profits from this year's celebration and other Jaycee projects will go into the lighting fund, if enough boys are interested.

Ad Touche Scored

EBINGEN, Germany
When a local businessman bought personal ads in the press to announce that he was no longer responsible for debts incurred by his wife, she promptly replied with her own paid announcement: "My dear Theo, don't be worried. Nobody will give me credit as long as I have your name."

SAY IT IN PORTUGUESE



Pretty Lufthansa Airline hostess Mariana speaks Portuguese. She offers these phrases for visitors to Brazil to help make your stay more pleasant: *Se faz favor* ("Please"), *Como esta?* ("How are you?"), *Bem, obrigado* ("Fine, thank you"), *Bom dia* ("Good day"), *Adeus* ("Good bye"), *Muito obrigado*, Mariana.

FIRST RELIGIOUS JOURNAL

The first religious journal in America was "The Christian History", published weekly in Boston, Mass., from March 5, 1743 to February 23, 1745.

"Better Food For Less"

IDEAL FOOD STORES

Beautiful Mountain Rose
DINNERWARE

ON IDEAL'S EXCLUSIVE PIECE-A-WEEK PLAN
THIS WEEK
FRUIT DISHES
EACH ONLY **9¢** With \$7.50 Purchase
(2 For 18¢ With \$15.00 Purchase, etc.)

LOVELY COMPLETER PIECES ONLY 29¢ and 69¢ EACH... NO OTHER PURCHASE REQUIRED.

Values good Tues. & Wed. May 17-18



FRESH, LEAN
Ground Beef 49¢ lb.

SAVE 15¢ WITH VALUABLE COUPON BELOW

VALUABLE IDEAL COUPON
GOOD FOR 15¢ off On Purchase of 1-lb. Pkg. FOR SWIFT'S LAZY MAPLE SLICED BACON
Limit One Coupon Per Family Expires Wed., May 18, 1966

RED-RIPE CALIFORNIA
Strawberries 3 Boxes **89¢**

FRESH CALIFORNIA
ARTICHOKES 3 for 29¢

THE BEST BUYS are at IDEAL!

SHOP OFTEN...THE SELECTION IS SUPERB, AND THE SAVINGS ARE ALWAYS GREAT AT YOUR FRIENDLY IDEAL STORE.

GERBER STRAINED
BABY FOODS 10 4 1/2 oz. jars \$1.00



FAMILY FAVORITE... A MONEY-SAVER TOO!

BANQUET



FROZEN CREAM PIES

25¢

CHOICE OF CHOCOLATE COCONUT CREAM, LEMON CREAM, BANANA CREAM, OR NEAPOLITAN 14 OZ. Pkg.

MOUNTAIN GROWN
FOLGERS COFFEE 3-lb. Can \$2.19

GREAT SAVINGS TODAY
RUSTY DOG FOOD 12 Tall Cans \$1.00

BALLARD BISCUITS OR PILLSBURY 3 8-oz. CANS 29¢
KRAFT OIL FOR SALADS OR COOKING QT. BTL 65¢
DELSEY TISSUE 4 Roll Pkg. 39¢
COKE Reg. or King Ctn. -Plus Dep. 39¢

ORANGE JUICE MEADOWDALE UNSWEETENED 46 oz. Can 39¢
BARBECUE SAUCE "LITTLE PIG" 36 oz. Btl. 49¢
TOPCO PAPER TOWELS 4 BIG ROLLS \$1.00
TOPCO FABRIC SOFTENER 33 oz. Plastic 39¢
NINE LIVES CAT FOOD 6 No. 1/2 Cans \$1.00
HI VI "50" DOG FOOD 10 Tall Cans \$1.00

IDEAL'S DELICIOUS **CHERRY TWIRLS** Pkg. OF 6 33¢

IDEAL'S HOLLAND **DUTCH STYLE BREAD** 1 LB. LOAF 21¢

Breakthru to Greater Sorghum Profits with



DEKALB F-64 Breakthru Hybrid

Here's a new DeKalb Breakthru Hybrid bred for stalk strength, smut resistance and great yield capacity. F-64 is a little earlier than F-63 and slightly taller than other DeKalb varieties. Even though F-64 is recommended as a top irrigation variety, it has produced good yields even under marginal moisture. Try this fine number.



Planted by More Farmers Than Any Other Brand

TROY SLOAN 659-2954

RAY MOORE 659-2886



By Vern Sanford

Wise outdoorsmen read the weather reports regularly.

They know that sudden weather changes have a great influence on our outdoor creatures. And they put these to their advantage.

A sudden drop in the barometer, for instance, often prods fish into hitting.

Some of my most memorable fishing has occurred just before a front hits. Usually, fishing also is good just afterwards, when conditions are settling back to normal and the barometer starts its rise again.

Getting in on the fast action often calls for timing things just right. There is a flurry of activity before the front hits. But once it arrives you may as well stop fishing.

However the situation will change within a day or two after the front has passed through.

A striking example of this came during Texas eliminations for the World Series of Fishing, held on Granite Shoals Lake (now Lake LBJ) in 1963.

On Friday and Saturday the contestants had fairly good fishing, but on Saturday night a cold front moved in and fishing was all but dead on Sunday.

Many outdoorsmen realize this about fishing. What they fail to understand is that it often works equally well with wildlife.

I remember the opening of deer season a few years back. It was a warm, still day. But, despite the high temperatures, deer were up and about all day. Even toward mid-afternoon, when the temperature was pushing the high 80's, many deer were feeding out in the open.

Next day a severe norther hit. Deer kill was nowhere as good as it was opening day. But a few days later, when things started warming up again, the deer came out en masse as they had just before the front hit.

Our wild creatures, both fish and fowl, have some sort

of built-in weather predicting device. They know when nasty weather is coming and they get ready for it. If it looks like a severe front that will drop the temperature or perhaps bring heavy rain, they'll start feeding to store up for the lean days ahead.

Once on a fishing trip on the Llano River, I noticed hundreds of wasp nests scattered along a rocky overhang on a bluff. Black and red insects were swarming everywhere. Next morning, when I walked down to the river, I noticed the wasps were inactive. They were bunched on the nests. Not a single one was flying about.

At the time I wondered if maybe this meant the weather was to change.

Sure enough, late that evening a front moved in, bringing severe thundershowers. These wasps knew the change was coming. And they were ready for it.

A few years back, on a warm October morning, I went squirrel hunting. On the way out I heard on my car radio that a front was moving in. It was not a bad front, but it was enough to drop the temperature somewhat and bring light rain.

By the time I reached the woods, there was a lead-gray overcast from horizon to horizon and a light mist was falling. But instead of driving the squirrels into hiding, it has just the opposite effect. They were everywhere in the tree-tops. I've never had better squirrel hunting, any time, anywhere.

My deer hunting friends who make regular annual trips into Colorado tell me that one of the best times to hunt mule deer is just before a cold front moves in, triggering snowfall. Cold weather prompts the annual migration into the lower country. Hence, the deer are on the move and consequently more vulnerable to hunters.

Then there was the time on the famous YO Ranch near Kerrville when a sudden front had dropped temperatures and brought rain. It wasn't a severe storm. Just enough to plummet the temperature into the lower 40's and really start the deer moving.

As we drove through the pasture that day we counted numerous bucks. Yet on the previous day we'd driven the same route and spotted very few.

Weather changes influence animals in different ways, depending mostly on whether it is a severe, moderate or mild front.

A severe front might prompt active feeding before it hits. But poor hunting results after it arrives. Then animal activity picks up again as the temperature starts to warm.

Skilled outdoorsmen learned long ago that they must cater to the whims of fish and wildlife...not vice-versa.

Mr. and Mrs. Loyd Carroll were in Amarillo Friday afternoon and were Friday overnight guests of Mr. and Mrs. Alvin Lewis and family of Panhandle.

Mr. and Mrs. Robert Brandt and sons spent the weekend visiting his mother, Mrs. Clyde Phillips at Amarillo and with her parents, Mr. and Mrs. C.V. Williamson and brother Burton in Lubbock.

Mr. and Mrs. John Trindle were called to Oklahoma Wednesday due to the death of John's father. Mr. Trindle has been seriously ill for some time.

Music Club Observes Tenth Anniversary

The Spearman Music Club observed their tenth anniversary Tuesday evening in the Russell Townsend home with a salad supper. Hostesses were Mmes. Walter Schaefer, Danie Desimone, Don Knox, J. D. Helms, Ray Robertson and Miss Linda Webb.

The supper was served from a beautifully appointed table laid with a pastel yellow cloth

and centered with a spring flower arrangement.

After the supper, Mrs. Sam Watson, acting as installing officer, installed the new officers for the coming year. Installed were president, Mrs. Russell Townsend; vice president, Mrs. Don Knox; Secretary, Mrs. Walter R. Schaefer; recording secretary, Mrs. Jack Oakes; parliamentarian, Mrs. Coy Palmer and pianist, Miss Linda Webb.

Mrs. John Yows of Borger gave the orientation speech and Mrs. Tom Sutton gave the history of the club for the past 10 years.

Present were Mmes. Schaefer, Desimone, Knox, Helms, Robertson, Townsend, Palmer, J.D. Wilbanks, Pat Cates, Sutton, Bernard Barnes, Billie Miller, Miss Webb, and guests Mrs. John Yows of Borger and Mrs. Sam Watson.

Mr. and Mrs. Dan Collins of Amarillo spent the weekend with the Roy Collins and Cy Ainsworths.

Mrs. Beck Has Program

The Susannah Wesley Circle of the WSCS met Wednesday morning at the First Methodist Church.

Donna Baxter presided at the business session and Nellie Buchanan gave the devotional. The program "Self Evaluation" was given by Marie Beck.

Attending were Margaret Adamson, Donna Baxter, Myra Grimes, Nellie Buchanan, Marie Beck, Carolyn Messer and Marie Hays.

Mrs. Hiller Is Hostess

The Roundtable of the WMU met Thursday morning in the home of Mrs. Glen Hiller.

Mrs. Wesley Garnett reviewed the book "Eighth Moon".

Attending were Mmes. Rex Sanders, Sr., Luther Berry, Woodville Jarvis, J.D. Helms, Eddie Gates, Don Jones, Wesley Garnett, Evelyn Hiller, the hostess and three new members, Mmes. R.H. Gray, Jerry Ralls and Roscoe Nelson.

HOSPITAL News

Patients in Hansford Hospital are Robert Ownbey, H.J. Prater, Carolyn Slaton, Elsie Mathews, Andy Rogers, Lillie Mae Chase, J.H. Davis, Irene Reeves, Delores Lovato.

Dismissed were Pauline Staggs, Marshall Benton and Melvin Guffey.

Use the classified ads!

Calendar of Events

- Monday, May 16 Dahlia Flower Club-Mrs. Irvin DeIk
- Tuesday, May 17 Lions Club
- Town & Country HD Club-Mrs. Tommie Lovett
- Thursday, May 19 Gladiola Flower Club-Dorothy Baggerly
- Xi Zeta Upsilon-Joyce Lackey
- Happy Homes HD Club-Mrs. Fred Groves

Gift Box Memo :

We are not trying to run anyone out of town, but we do have some really outstanding travel items for gifts for the graduates and others who might be traveling.

The problem of storing luggage when not in use has been solved. We have the new Trina presto folding luggage. It is beautiful, strong and collapsible when not in use. We also have the matching shoe totes.

Another travel aid is the fitted make-up cases that carry all of the make-up and other aids you must have night and morning.

We also have travel mirrors in cases so you can carry them without the danger of seven years bad luck.

For the girls staying home we have some more of the padded, scented clothes hangers. These are easy on clothes and make them smell so fresh.

The GIFT BOX

Want To Build a New Home, Remodel or Repair Your Home ?

CALL

R. L. UPTERGROVE

659-2677

Out of Town, Call Collect

Spearman

For Sale :

3 Bedroom House-Several Lots-2 Commercial Buildings

T.G.&Y.

5¢ TO \$1.00 STORES

COUPON SALE

PRICES GOOD MON.-TUES.-WED. MAY 16-17-18 While quantities last

STORE HOURS Mon.-Fri.-8:30-6:00 Sat.-8:30-8:00

These sale prices good with coupons only!

50 Ft. VINYL 1/2 INCH 8 YR. GUARANTEE - \$1.98 Value

GARDEN HOSE

DISCOUNT PRICE LIMIT 1 With Coupon

99¢

Men's, Women's & Children's Sizes Values to 47¢

RUBBER THONGS

DISCOUNT PRICE LIMIT 3 With Coupon

23¢

Lady Pepperell Second Quality Twin or Full Size

COLORED PERCALE SHEETS

Fitted & Flats With Coupon

DISCOUNT PRICE LIMIT 2

\$1.88

\$8.95 Value Aluminum Frame

CHAISE Lounge

Green Webbing

DISCOUNT PRICE LIMIT 1 With Coupon

\$4.88

10¢

Candy Bars

DISCOUNT PRICE LIMIT 6 With Coupon

6¢

Reg. \$5.99 Ladies & Children's Sizes

"GO-GO" WHITE BOOTS

DISCOUNT PRICE LIMIT 1 With Coupon

\$2.99

Melrose \$1.00 Value

Hand Cream

DISCOUNT PRICE LIMIT 3 With Coupon

12¢

Plastic Decanters, Vegetable Bowls, Foam Ice Buckets, Salt & Peppers & Butter Dish Combinations

Housewares

Values to 79¢

DISCOUNT PRICE LIMIT 2 With Coupon

15¢

EARLY IN THE WEEK

FOOD BONANZA



9 OZ.
ON-THE-ROCKS
IN THE NEW
AVOCADO COLOR

9 each

3 For Only

WITH EACH \$5.00 PURCHASE

TUMBLER	Fruit Juice	6 oz.	2 FOR 25¢
TUMBLER	On-the-Rocks	9 oz.	2 FOR 29¢
Beverage	TUMBLER	12 oz.	2 FOR 35¢
Beverage	PITCHER	64 oz.	79¢
Assorted ASH TRAYS			
4 1/4 in.	21¢	6 1/4 in.	49¢
8 in.	95¢		
Deep Square	6 1/2 x 6 1/2 or 6 5/8 x 6 5/8	35¢	
DISHES			
CHIP & DIP	Large	\$2.19	

Tendercrust "Ranch Style" or "Cello Pak"

Bread King Size
1 1/2 lb. loaf
2 for 43¢



Lanes "All Flavors"

Shербet Half Gallon **59¢**

Hunts Heavenly Clings

PEACHES No. 2 1/2 can **3 for 79¢**

COFFEE Sanka Vac. Pak'd, lb. can **85¢**

TOMATO JUICE Libbys Tall Can **2 for 19¢**

Cheese Spread Krafts Velveeta 2 lb. loaf **88¢**

Values for Tues. & Wed.,
May 17th & 18th



GUARANTEED TENDER TASTY THRIFTY MEATS

NORTHERN PORK PORK CHOPS

CENTER CUTS FIRST CUTS
lb. **89¢** lb. **59¢**

NORTHERN PORK PORK STEAK lb. **59¢**

SHURFRESH THIN SLICED BACON lb. **79¢**
THICK SLICED 2 lb. pkg. **\$1.57**
"HICKORY SMOKED"



I drink Shurfresh Milk!



Morton's Cream Pies All Flavors Large Frozen
3 for \$1.

CALIFORNIA FUERTE AVOCADOS 10¢ EACH
U.S. NUMBER 1

POTATOES Rus. Set 10 lb. Bag **59¢**
CALIFORNIA CHOICE VALENCIA

ORANGES 4 lb. bag **39¢**

Pork & Beans Van Camps Tall Can **2 FOR 23¢**

DOG FOOD Roxey Tall Can **4 for 27¢**

IMPERIAL PURE CANE
Sugar 5 LB. BAG **44¢**

With \$5.00 Purchase and Over
Thereafter 59¢

Del Monte Cream Golden	CORN	303 size can	2 for 35¢
Hormel Luncheon Meat	SPAM	12 oz. tin	49¢
Welch's Grape Drink	WELCHADE	46 oz. can	29¢
Shortening	BAKERITE	3 lb. can	63¢
Nestle Fruit Flavored	KEEN	12 oz.	25¢

"Andrea Dumon" Half Gallon
Bubbling Bath Reg. \$1.50 Size **78¢**

Reg. 69¢ Value
NO BAKING with FROZEN
Morton ALL-BUTTER Danish Coffee Rings Apple and Cinnamon Raisin **49¢**

Shurfine Evaporated	MILK	Tall Can	3 for 39¢
New Detergent	BOLD	Giant Size	59¢
Paper Towels	KLEENEX	Giant Roll	33¢
Bleach	ENERGY	Half Gallon Plastic	27¢

Cut Rate GROCERY

Mrs. Fisher Is Chairman Of FB Group

Mrs. Zack B. Fisher of Memphis and formerly of Spearman has been in Waco this past week for a meeting of the Texas Farm Bureau Young People Committee.

Mrs. Fisher is vice chairman of the TFB group. She is the only Panhandle representative.

This 13-member group coordinates the TFB's annual Queen's contest, talent find and discussion meet. The committee meets twice each year to plan these events.

This meeting is for planning the year's activities and making committee assignments in conjunction with the three main projects.

As District I chairman, Mrs. Fisher will be working with the District I Farm Bureau Queen's contest. The Hansford County Queen and representative is Miss Judy Bayless of Gruver.

A "Different" Sweet William



Red Monarch is a new sweet william that blooms in two months from the time seeds are sown. Unusual in color too.

Most sweet williams are biennial. That is the seeds are sown one year and develop into small plants. These winter outdoors and bloom the following year. Red Monarch sweet william acts, instead, as an annual, blooming in two months from seeds sown in early spring; or in spring from fall-sown seeds. That's one characteristic that makes it "different."

A second is its flower color which is solid scarlet red, relieved by white stamens. Since mature plants grow 10 inches high if spring sown and 16 inches tall if seeds are sown in fall, those scarlet red blooms are good for cutting. They last a long time as individual flowers continue to open.

Because of its annual flowering habit and its new color Red Monarch received an award for 1966 from All-America Selections. Seeds of all award winners should be purchased early as there never is enough to go around.

SO THEY SAY

HE HAD AN OWLISH LOOK.



because he was wise enough to know that nowhere are quality and service as high as at Burton's TV. Their motto is "We Service What We Sell".

Burton's TV
106 E. Kenneth
Spearman, Texas