

LYNXETTES IN STATE MEET

Spearman's Regional Basketball Champion Lynxettes are in Austin to compete in the Girls AA State Tournament Friday and Saturday.

Spearman won the right to represent this region in the state finals by beating Floydada and Hamlin in Lubbock Saturday.

The Lynxettes will go into

action Friday afternoon against Rivercrest of East Texas. Rivercrest is a consolidated school at Talco. The first AA game is at 3:10 p.m. The second at 4:35 p.m.

The other two teams in the AA division tournament will be Little Cypress and Granado. They will meet in the first round.

Lynxette Coach Dean Weese said Rivercrest has been averaging 52 points a game this year. They have lost three games to Deport, a strong class B school who is in the B state tournament.

Weese said Rivercrest's three starting forwards are 5'8", 5'10" and 5'4". The 5'8" forward has been averaging 22

points a game, the tall girl 18 points and the short girl 12. The tall and short ones are sophomores.

The guards are 5'11", 5'7", and 5'6".

In the ratings released recently by the State Girls Coaching Association Little Cypress was rated first in the state, Spearman second, River-

crest third and Granado twentieth. Floydada was rated sixth.

Weese said Little Cypress has been strong all year and has had the top spot in the AA ratings since the first of the year. Spearman climbed from fourth to second.

The Lynxettes left Spearman Wednesday morning and will work out in Gregory gym

today.

The finals for the AA division will be played at 7:30 p.m. Saturday night. The consolation game for third and fourth places will be played at 10:20 a.m. Saturday.

Coach Weese said the team will be staying at the Terrace Motel in Austin. They will come home Sunday.

A large delegation of Spearman fans began leaving Wednesday for the tourney. A chartered bus will leave Thursday night and get there in time for the first game.

HANSFORD COUNTY'S LEADING NEWSPAPER



The Hansford Plainsman



VOLUME VII., NUMBER 40

SPEARMAN, HANSFORD COUNTY, TEXAS 79081

THURSDAY, MARCH 10, 1966



There have been lots of outstanding examples of teamwork, extra effort and devotion to the team on this year's edition of the Spearman Lynxettes.

Coach Dean Weese says the "crutch players" Bethany Donnell and Kathi Pattison, are still contributing to the team's winning with their constant encouragement to the players.

Other players have changed positions, worked hard at learning new jobs and been willing to make any sacrifice for the good of the team.

The pinnacle of this devotion to team and teammates was shown Saturday night at the regional tournament in Lubbock.

The winning team received the first place trophy and each player got an individual trophy that is engraved "Regional Champions, 1966". It is something that will be treasured by every member of the team the rest of their lives.

The last girl in to receive her trophy was Jeannette McAdams a sophomore up from the B-Team. There was one extra trophy and the official gave them both to her.

She took both trophies over to the sidelines where Kathi Pattison and Bethany Donnell were watching on crutches.

She gave each girl a trophy, the extra and the one she had received, because they were members of the varsity and she was a B-teamer.

Later, when Coach Weese learned about the girl giving up her trophy he said that kind of spirit among every girl on the team is why the crippled team is still winning.

He also added, Jeannette will have a trophy to replace the one she gave away.

We do not know how that much heart can be put in such a little girl.

Farm Deadlines Approaching

Ellzey vanderburg, manager of the local ASCS office, urges all farmers to come in and sign up for the feed grain, wheat and cotton programs before the deadline of April 1st.

Vanderburg stated there is no automatic sign-up for the program as some farmers believe. Even though a farmer has the allotted number of acres he must still sign up.



CRITICAL POINTS - Barbara Wilde (hair flying) leaves her guard going the other way as she scores a critical basket against Hamlin in the finals of the Regional tournament in Lubbock. Spearman won and is in Austin for the state tournament.

-Plainsman photo

Faith Lutherans Are Dedicating Spearman's Newest Church

Spearman's newest church, the Faith Lutheran Church, will have dedication services and a worship of thanksgiving in the new church building at 11th and Bernice at 3 p.m. Sunday.

Dr. Vernon Mohr, President of the Southern District of the American Lutheran Church will dedicate the building. The pastor, the Rev. Robert Cordes will conduct the worship service. The Rev. Orris Songstad of Beautiful Savior Lutheran Church in Amarillo will deliver the dedication message.

The new church was founded in February of 1964 when the Rev. Cordes began meeting with a small group of Lutherans in the Farm Bureau Building here.

The growing group was organized as an official congregation of the American Lutheran Church on June 13, 1965, and immediately began the construction of a church and educational unit.

This new \$60,000 building was started in August. It will seat 200 in the auditorium and has a large area for the educational department and offices.

There are approximately

100 members in the church now.

Several members of the local church were members of the Oslo Lutheran Church. It was this church that started the Spearman church, has extended its financial aid and the services of the Rev. Cordes.

Massie Is P-TA Leader

A new slate of officers for the Spearman Parent-Teacher Association was elected Monday night. The officers will be installed at the next meeting.

Bill Massie was elected President of the organization succeeding Mrs. Oleta Hall.

Officers who will serve with him next year are Mrs. Wallace Berner first Vice President, Mrs. Bill Reeves second Vice President, Mrs. J.W. Pipkin Secretary, Mrs. Ed Dear Treasurer, Mrs. E.J. Callaway Jr. Historian, Mrs. Marcus Larson Parliamentarian.

53 Teachers Hired; Board Studies Taxes

Teachers contracts and the school district's tax program were the major items on the agenda of the Spearman School District Board meeting Tuesday night.

Seven teachers asked the board not to consider their contracts for renewal for another year. The contracts of 53 teachers were renewed for another year.

Mrs. Sam Patterson was one of the seven asking not to be considered for next year. Mrs. Patterson has decided to retire. She has taught English and Spanish in high school.

The board passed a resolution commending Mrs. Patterson for her outstanding teaching and devotion to duty in the Spearman school system.

This commendation was placed in the minutes in recognition of Mrs. Patterson's work in the school.

"In recognition of faithful, dedicated service to the boys and girls in this community as she has taught inspirationally by word, example and deed, the Spearman Board of Education unanimously passes this resolution of commendation to Mrs. Barbara Patterson.

"She has served as an in-

tegral part of sound educational planning and instruction which has led to improved quality of educational opportunity for the youth of Spearman.

"As she retires from active service, we feel she will continue to be a significant influence in our community."

High School coaches Joe Granato and Fred Dawson and junior high coach and math teacher Kenneth Thomas requested not to be considered for re-election.

Dwaine Summerville is quitting teaching to go into private business.

Howard Raff and Joyce Culbert resigned. Raff was the study coordinator in high school and he is going to seek a teaching position in high school science. Mrs. Culbert has been teaching fifth grade and did not want to continue in that capacity. She is going to seek a science position.

The elementary and junior high contracts were renewed for Mmes. Wilma Clark, Mathilde Entekin, Nellie Payne, Dee Deere, Neil Benton, Fern Robinson, Thelma Vaughn, Lois Hull, Doris Looper, Fern West, Mikie Richeson, Glenda Allen, Louise Archer, Elva Lee Sheets, Charlie Theis, Ruth Mary Whitson, Marcella Kay Hobbs, Willa Mae Seymour, Doris Crum, Eula Goodall, Betty Witcher, Lee Laws, Blant McGee, Eddie Read, Dickie Robinson, Miss Marlene Dietrich and Miss Kay Bussard.

Men whose contracts were renewed in these schools are Larry Anthony, Lloyd Looper, Eddie Allen, Eddie Clemmons, Perry Coursey, Edwin Pearcy, G.W. Robinson and Frank Porter.

High school instructors who received new contracts are Robert Barker, Marshall Benton, Mrs. Claudine Clark, Mrs. Berdine Crawford, Gerald Felder, Mrs. Nancy Felder, John Hickey, Mrs. Frances Hudson, L.L. Laws, Blant McGee, Mrs. June Porter, Miss Dorothy Rodan, Terry Schneider, W.W. Smith, Worley Smith, Lewis Tilford, Sam Watson and Dean Weese.

After renewing contracts, the board began a study on the methods of taxing property in the district with school tax assessors, Troy Sloan and Orvil Latham and the school attorney J.D. Helms.

Sloan and Latham went over the basis for taxing all the different kinds of property in the district and the rates of taxation.

WE SALUTE YOU!

Mr. and Mrs. Consumer

You have made Spearman the finest shopping center in this region. Your shopping habits and buying skill have thrown the spotlight on Spearman and caused other communities to cast envious eyes in our direction.

The merchants advertising on the "Salute of Values" page in this edition of the Hansford Plainsman have long been aware of your value, but have recently come to appreciate you even more when they compare sales receipts and bank deposits with other communities throughout the state.

Your knowledge of merchandise keeps these merchants busy constantly looking for bigger and better values to pass on to you. These firms are proud of their new merchandise. They pride themselves that they can supply your every need. They also take great pleasure in knowing you can find the identical item in Spearman that you can find in any shopping center and in most cases for less money.

You can shop in Spearman with confidence. The shop keepers here are your friends. Their purpose is to supply you with the best quality merchandise at the lowest possible price.

Shop the "Salute of Values" page for your family needs. Be in Spearman for a tremendous "Salute of Values" from these fine merchants.



OUR TOWN



HOMEMAKING NOTES

by Linda Webb

Weight-conscious Americans hear much these days about the role of fats in the diet. Today, I want to help solve some of the questions you may have about fats in our diet, and the fat's role in weight reduction.

Because of its high caloric density, fat has been considered objectionable in reducing diets. Of all foodstuffs, fatty foods are richest in calories. This makes it logical material

to consider when it is necessary to decrease the number of calories consumed per day. This decrease, however, has frequently been carried to the extreme of attempting to exclude fat entirely from the diet.

Rigid exclusion of fat is detrimental to the health and welfare of the dieter, and recommended diets ordinarily include moderate amounts of

fats.

Some of the most successful diets supply equal weights of fat, protein and carbohydrates. Using then balanced meals, dieters are able to reduce without the usual experiences of hunger, excessive fatigue and irritability, which are often associated with low fat diets.

To understand the importance of fat in a reducing diet, it is important to understand some of the background of obesity and dieting.

Reasons for weight reduction vary, of course, with the individual; but in general they can be classified under four headings: (1) for better appearance; (2) for improved health; (3) for longer life; (4) to prevent rapid tiring and listlessness.

Figures published by life insurance companies continue to show increases in mortality rates for over-weight policyholders. We must face facts—excess weight decreases health and vigor. And there are many factors to hunger, including habit, the amount of food in the stomach, nervousness, blood sugar level, psychologi-

cal attitudes, etc. By properly controlling the carbohydrate, protein, and fat content of our meals, it is possible to take advantage of varying rates of utilization to delay hunger and make reducing easier.

Let's take a quick look at them.

Carbohydrates are quickly digested and absorbed. If they constitute the principle source of food, the meal is quickly used, hunger symptoms are felt, and you are hungry again.

Protein is more slowly utilized and will lengthen by several hours the period of satisfaction following a meal.

Fat is even more slowly utilized and further delays the recurrence of hunger. These slower utilizations don't imply poor digestion or absorption. It is simply the nature of the metabolic processes to utilize these substances at different rates.

The most adequate explanations of physiological hunger are based upon observations that effective blood sugar levels below a certain value results in symptoms of hunger.

Since proteins and fats are more slowly absorbed in meals, blood sugar is maintained at satisfactory levels for longer periods of time than when the



SHE'S A FRESHMAN!—Marcia Shieldknight (22) jumps high above a Hamlin Piperette to control the ball for the Lynxettes. The Lynxettes, despite numerous injuries to regulars, captured the Regional crown Saturday night in Lubbock by beating Hamlin.

Plainsman Photo

Want To Build a New Home, Remodel or Repair Your Home ?

CALL

R. L. UPTERGROVE

659-2677

Out of Town, Call Collect

Spearman

For Sale :

3 Bedroom House—Several Lots - 2 Commercial Buildings

Stop right there.

Let's see which big car gives you the most for your money—and the longest warranty:*

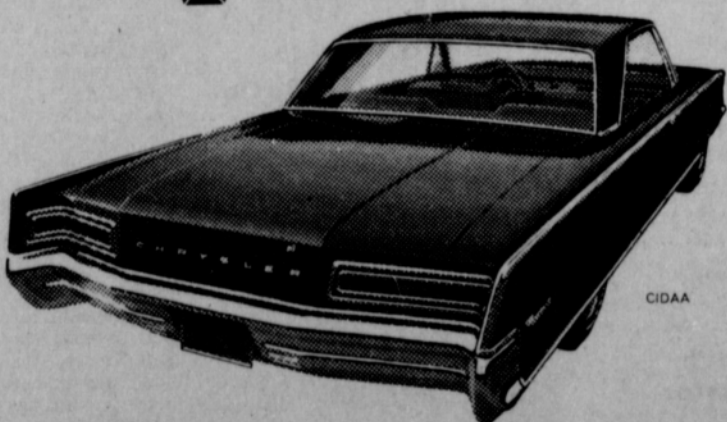
Make	Wheelbase	Overall Length	V-8 Engine Cubic Inch Displacement	Base Monthly Payments	Difference Per Month
CHRYSLER NEWPORT	124"	219.0"	383	\$65.80	—
FORD GALAXIE 500	119"	210.0"	289	\$58.32	\$7.48
CHEVROLET IMPALA	119"	213.2"	283	\$58.45	\$7.35

BASIS OF COMPARISON—All models are two-door hardtops equipped with V-8 engine, automatic transmission, power steering, power brakes, radio and heater. Monthly payments have been computed on manufacturer's suggested retail price, 1/3 down and 36 monthly payments. Not included are the extras you pay for on practically any new car: whitewall tires, deluxe wheel covers, destination charges, state and local taxes, interest, insurance, and licensing fees.

*CHRYSLER'S 5-YEAR/50,000-MILE ENGINE AND DRIVE TRAIN WARRANTY WITH THIS COVERAGE: Chrysler Corporation warrants, for 5 years or 50,000 miles, whichever comes first, against defects in materials and workmanship and will replace or repair at a Chrysler Motors Corporation Authorized Dealer's place of business, without charge for required parts and labor, the engine block, head and internal parts, intake manifold, water pump, transmission case and internal parts (excluding manual clutch), torque converter, drive shaft, universal joints, rear axle and differential, and rear wheel bearings of its 1966 automobiles, provided the owner has the engine oil changed every 3 months or 4,000 miles, whichever comes first, the oil filter replaced every second oil change and the carburetor air filter cleaned every 6 months and replaced every 2 years, and every 6 months furnishes to such a dealer evidence of performance of the required service, and requests the dealer to certify (1) receipt of such evidence and (2) the car's then current mileage.

And now, about the warranty. Chrysler's is the only one that covers the engine and drive train for 5 years or 50,000 miles.

AUTHORIZED DEALER CHRYSLER MOTORS CORPORATION



Move up to Chrysler—the big car you can afford

SPEARMAN MOTOR CO.

316 W. Kenneth Av.

Spearman, Texas

PRE - PIONEER DAY

OLD TIME DANCES

SQUARES, TWO STEPS, WALTZS

-SCHOTTISCHES-

No Jerk, No Twist, No Rock!

Featuring

BOBBY CARL & HIS BAND

COMMUNITY BLDG. GUYMON

REAL OLD-TIME MUSIC

EVERY FRIDAY AT 9 P. M.



FINEST STEAKS

Good Food
Good Service
Good Menus

GUESTS OF THE WEEK
for Sunday Dinner

MR. & MRS. MACK MAULDIN

Watch each week for new names in this space.

CATTLEMEN'S CAFE

Rock & Georgia McLeod

1966

GIRL SCOUT WEEK
MARCH 6-12

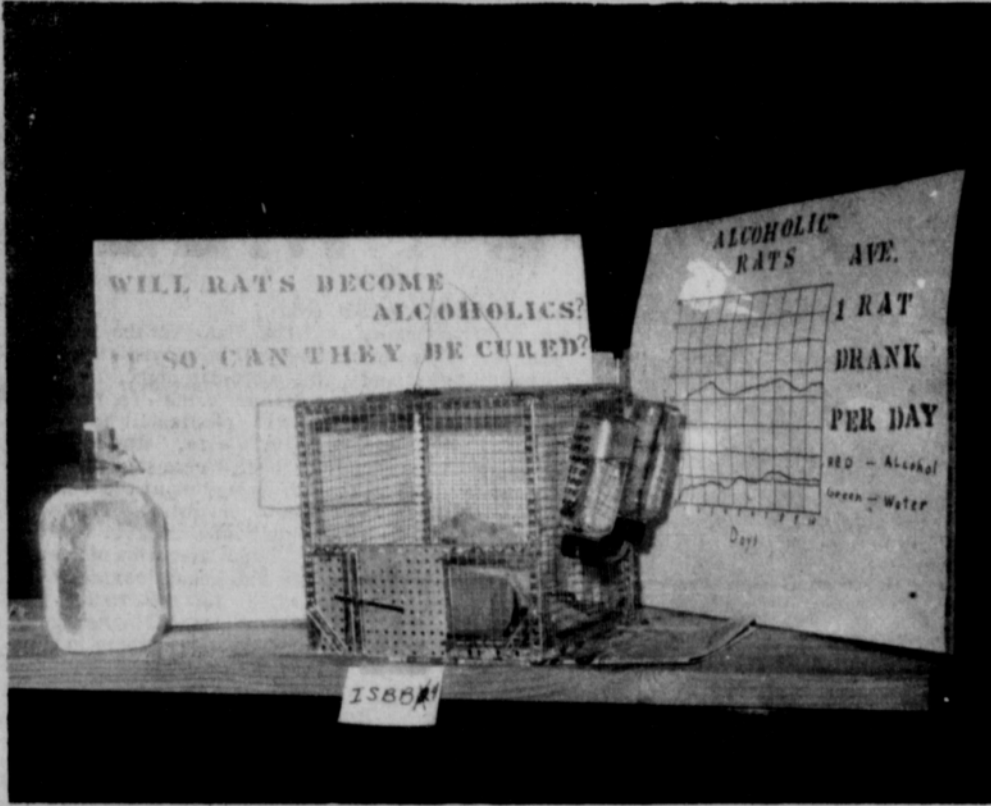
NEW 1966
GMC 1/2 Ton
PICKUP

With Heater and
Defroster, Seat Belts,
Back up lights, Two
speed wipers, Windshield
Washer, Rear Bumper.

\$1,888

A.&B. GMC

801 FLORIDA-EAST BY-PASS
PHONE BR 3-3771
BORGER TEXAS



ALCOHOLIC RATS- A Spearman High School biology student made alcoholics of these rats and then tried to find a cure for them. This was a science fair exhibit. -Plainsman photo

Thirty-five Ribbons Science Fair Awards

Thirty-five ribbons were presented to individual students and elementary class rooms at the annual County Science Fair here Thursday, Friday and Saturday.

The many different and varied science research exhibits were displayed in the Community Building Thursday, Friday, and Saturday. The displays ranged from the simple science studies of the first grade rooms to the advanced biological research work by high school seniors.

The exhibits were judged by instructors from Panhandle A&M College in Goodwell, Okla. Robert Barker, head of the Spearman High Science Department is director of the fair.

The results of the judging by divisions are:

Senior Boys Biological: 1, David McClellan; 2, Terry Jones.

Senior Girls Biological: 1, Debbie Standefer; 2, Rebecca Hutchison; 3, Linda Spoonmore; HM, Susan Holt.

Senior Girls Physical: HM Jeannette McAdams.

Intermediate Boys Biological: 1, Dan Folk, 1, Greg Buskirk (tie), 2, Bobby Kunkel.

Intermediate Girls Biological: 1, Kathy Dear, 2, Donna Fryrear.

Inter. Boys Physical: 1, Brad Stalder.

Inter. Girls Physical: 1, Kandy Vaughn; 2, Denise Standefer; 3, Dixie Sheppard; HM Leann Shieldknight.

Junior Boys Biological: 1, Robert Barker; 2, P.A. Lyon; 3, Bobbie Brown and Wallie

Windom; HM Larry McCoy. Junior Girls Biological: 1, Deanna Sheets; 2, Sandra Fowler; 3, Joellen Kirkland; HM Cindy Hutchison.

Junior Boys Physical: 1, Louis Conner; 2, Butch Standefer; 3, Richard Barnes; HM Monte Pond.

Junior Girls Physical: 1, Jan Jones; 2, Sandra Shufeldt; 3, Susan Brillhart; HM Cheryl Montgomery.

Gruver Primary Biological: (Primary room exhibits) 1, Mrs. Nikki Cotter.

Spearman Primary Physical: 1, Mrs. Allen; 2, Mrs. Richeson; 3, Mrs. Clark; HM, Mrs. Hull, Mrs. Benton and Mrs. Payne.

Primary Biological: 1, Mrs. Allen, 2, Mrs. Payne; 3, Mrs. Robinson; HM, Mrs. Deere.

Primary Girls Biological: 1, Becky Daniel.

Primary Boys Biological: 1, Tex Kopke; 2, Billy Grimes.

The Hansford Plainsman Publishers Inc.

Jim O. Davis
Burl G. McClellan



County-wide independent newspaper published every Thursday and Sunday at 209 Main St., Box 668, Spearman, Texas 79081. Second Class postage paid in Spearman, Texas 79081. Editor . . . Burl McClellan

Rainbow Girls To Welcome State Officer

A Rainbow School of Instruction honoring Mrs. Martha Marie Whitfield, Supreme Service and Supreme Inspector of the Texas Order of Rainbow Girls will be held here in the Masonic Hall Saturday.

Miss Sheila Frazier Grand Worthy Advisor and other Grand Officers will also be honored at the school.

There will be a morning session beginning at 9 a.m., and an afternoon session at 1 p.m.

The Spearman chapter is hostess and co-hostesses are Dalhart, Dumas, Stinnett, Perryton and Borger.

SCOUT NEWS

Brownie Troop #80 met Tuesday evening in the Bert Sheppard home with Mmes. Sheppard and James Pendergraft as leaders.

The girls finished their ring boxes and played outdoor games.

Attending were Debbie Sheppard, Stacy Pendergraft, Rhonda Nelson, Nikki Jones, Cheryl Gibson, Kim Rylant, Pam Conner, Debbie Simmons and a guest, LeAnn Uptergrove.

YOU WHO WANT THE ELEGANCE OF THE NEW CAPRICE,
YOU WHO WANT THE SMOOTHNESS OF A NEW IMPALA,
YOU WHO WANT THE PERFORMANCE OF A NEW CHEVELLE,
YOU WHO WANT THE UNIQUENESS OF A NEW CORVAIR,
AND YOU WHO WANT THE THRIFTINESS OF A NEW CHEVY II . . .

COME ON IN NOW!

CHEVROLET



Now's the time to get just the buy you want on just the car you want. Your Chevrolet dealer is celebrating Double Dividend Days—No. 1 Buys on America's No. 1 Cars!

Availability and variety have never been greater! Pick your model, pick your color, pick your custom touches and power. Get your No. 1 Buy now—at your Chevrolet dealer's. Hurry!

DOUBLE DIVIDEND DAYS!

NOW AT YOUR CHEVROLET DEALER'S

Always use that outside mirror before passing! It's one of eight standard safety features you'll now find on every Chevrolet.

All kinds of cars, all in one place . . . at your Chevrolet dealer's:
Chevrolet • Chevelle • Chevy II • Corvair • Corvette



42 8055

EXCEL CHEVROLET CO.

120 MAIN

SPEARMAN, TEXAS

Grandma paid
\$20.70* for a
coast-to-coast call.



Now it costs you
only \$1.00* after 8 p.m.
and all day Sunday

In 1915 a coast-to-coast phone call cost \$20.70*. By 1934 the rate had been reduced to \$9.00. Today the same call costs you only \$1.00* if you place your call station-to-station after 8 p.m. or anytime on Sunday. And, it costs even less for shorter distances.

What's more, if your area has been converted to Direct Distance Dialing, you can use this fast, easy service to dial directly, at no extra cost.

Today, there's more reason than ever to use Long Distance for all its worth.

*First 3 minutes, station to station, excluding tax.

GENERAL TELEPHONE

America's Largest Independent Telephone System

Train Receives Invitations

The regular meeting of the Rolling Plains Mule Train was held Thursday evening March 3 at the HD Clubroom.

During the business session, invitations for the train to attend Fritch Day in June and the Guymon celebration in May were read.

As part of the program slides were shown of the Oklahoma City trip and pie and coffee were served to 36 members including Mr. and Mrs. Elmer Hunt of Binger, Okla. who made the trip especially for the meeting.

Mrs. Evans Is Club Hostess

The Happy Homes HD Club met Thursday in the home of Mrs. Kenneth Evans at 9 a. m. for their first March meeting.

Rose Cummings, vice president, presided and the devotional was given by Dorothy Groves.

The lesson titled Sewing of the New Fabrics was given by Adalyn Barnes.

Present were Mmes. Groves, Barnes, Rose Cummings, Wanda Schubert, Maylynn Schubert, Rita Reed, three guests, Barbara Kenney, Doris Jean Pipkin, Norma Jean Curtis and the hostess.

Club Discusses Apostolic Church

The Discussion Club of the Sacred Heart Church met March 2 at 8:30 p.m., in the home of John Hickey.

The topic for discussion was the Apostolic Church.

Coffee was served the group by Mr. and Mrs. Jerry Morris. Attending were Father James Gurzynski, Ralph Bynum, Evelyn King, John Hickey, Marie Gregg, Barbara Granato, Hazel Batenhorst, Mr. and Mrs. Hugh Banks, Priscilla Thayer and Sally Pfab, both of Perryton.

Spring Luncheon Held In Louis Schnell Home

The Gladiola Flower Club held their annual spring luncheon Thursday, March 3 in the home of Barbara Schnell.

Hostesses were Betty Davis, Margaret Adamson, Dorothy Haner, Estelle Jackson, Sylvia Robertson, Gwendolyn Smith, Pat Reeves, Lil Turner and Barbara Schnell.

The tables were covered with white linen cloths and the centerpieces were dainty bouquets of spring flowers. Colorful small hats and name cards were place cards.

The business meeting followed a delightful reading of "O, Ye Jigs & Juleps" by Patty Sheppard.

Members other than the hostesses present were Dorothy Baggerly, Jackie Banks, Wanda Brown, Dorothy Buzard, Darlene Cherry, Jo Lar-

son, Sherry Partridge, Patty Spoonemore and Carolyn Woods.

Party Honors Jean, Jan Davis

Jean Ann and Jan Lou Davis, daughters of Mr. and Mrs. Jim O. Davis celebrated their first birthday with a party Tuesday evening, March 8 in the Davis home.

Their coconut birthday cakes were decorated as a bunny and a lamb and were served with ice cream and lemonade.

Films were made of the little girls opening their birthday gifts.

Attending were Mr. and Mrs. Everett Vanderburg, Mr. and Mrs. Burl McClellan, Mr. and Mrs. Davis, and the honorees, Jean and Jan Davis.



PAST PRESIDENTS---of the Twentieth Century Club at the Texas Day Tea were (seated, from left) Mmes. R.W. Morton, Deta Blodgett, G.C. Brillhart, Jr., Woodville Jarvis and P.A. Lyon, Sr., (Back, from left) Mmes. Olin Sheets, T.D. Sansing, Raymond Kirk, George Buzzard, G.R. Kilgore, O.C. Holt, Dwight Hutchison and J.R. Stump. The annual observance honored charter members, honorary members, and past presidents of the club and the Spearman Study Club.

Plainsman Photo

'Texas Day' Observed by Club

The First Christian Church was the scene for the Texas Day Tea and general meeting of the Twentieth Century Club held Thursday, March 3 to honor the charter members, honorary members, past presi-

dents and the Spearman Study Club.

Mmes. R.W. Morton and P.A. Lyon, Sr., were the only two charter members present for the meeting with Mrs. R. W. Morton, the only honorary

member present.

Past presidents attending were Mmes. Olin Sheets, T. D. Sansing, Raymond Kirk, George Buzzard, G.R. Kilgore, O.C. Holt, Dwight Hutchison, J.R. Stump, R.W. Morton, G.C. Brillhart, Jr., Woodville Jarvis and P.A. Lyon.

The musical part of the program was presented by Carol Jarvis Pack, who played "The Prelude to the Sweet Bergamasque" by Claude Debussy.

Mrs. P.A. Lyon, Sr., gave the program titled "The Tyler Ranch". The Tyler Ranch was located between Morse and Gruver and she told of the family and their ranch home. Two original paintings by Gwenfred Lackey were on display. One was the "Tyler Home" painted especially for this meeting and the second was "The Zulu Stockade."

Mrs. J.R. Keim recognized three club members, Mmes. Woodville Jarvis, George Buzzard and P.A. Lyon, who have been active the longest time and told of the club work done by each. They were presented federation charms for a bracelet and a piece of wood taken from the Zulu Stockade, built in 1873. The wood was glued to a Texas map with a printed story of the Stockade, which



Engaged —

Mr. and Mrs. Walter Dean Stumpf announce the forthcoming marriage of their daughter, Mary Louise to William Darrel Wilkerson, son of Mr. and Mrs. Willie Wilkerson. The wedding will be an event of Tuesday, April 5 at 8 p.m. in the First Baptist Church.



GUESTS---Mrs. J.R. Keim (left) serves Mrs. R.W. Morton (center) and Mrs. P.A. Lyon, Sr. at the Twentieth Century Club's Texas Day Tea. Mrs. Morton and Mrs. Lyon were honored as charter members of the club.

Plainsman Photo



It's hard to tell the difference, by the tears, at whether you've won or just been defeated at regional.

After the Lynxettes won Saturday night, tears were flowing almost as profusely as in and around the Hamlin dressing room. It's different though. You can remember that if you were down there last year or the year before.

Be sure and see the page congratulating the Lynxettes in this issue. One of my favorite pictures on that page is the one of Bethany Donnell and Kathi Pattison on their crutches standing by Coach Weese with the regional trophy.

These two fine players were as thrilled as the six who played and as the young reserves who were there to back them up. Fact is, I've heard Bethany and Kathi have made and are making quite a contribution to the team's morale even though their injuries keep them from participating physically.

They have certainly taken their injuries in the best spirit and have gone on to cheer their teammates despite the fact that they had looked forward and worked hard for this season for years.

They are courageous young women who have learned early to accept disappointment and make the best of it.

Besides the Lynxettes' achievement Saturday, Spearman can also be proud of the high school speech students who were doing a fine job in the High School Invitational Forensic Tournament in Lubbock.

Our speech students chose to compete against the largest schools in the contest and I understand Hal Sanders and Kenneth Faries in boys' debate defeated Amarillo High School, Lubbock Coronado and Lubbock Monterrey before losing to Amarillo Tascosa. There were 46 teams entered in that particular division, by the way.

A story elsewhere in the paper gives the details of the speech department's excellent record at Lubbock last weekend. Mrs. Frank Porter, instructor, and all the students who participated last weekend and at other tournaments this year are doing an excellent job.

If you missed the "tunnel of fudge cake" recipe from the Pillsbury Bake-off this year, you can try it now. (It sounds delicious and I'm going to try baking it in an angel cake pan as soon as I get back from Austin.)

TUNNEL OF FUDGE CAKE

- 1 1/2 cups butter
- 6 eggs
- 1 1/2 cups sugar
- 2 cups flour
- 1 12 1/2 oz. pkg. double Dutch fudge buttercream frosting mix
- 2 cups chopped pecans

Cream butter in large mixing bowl. Add eggs one at a time, beating well after each. Gradually add sugar; continue creaming until light and fluffy. Stir in flour, frosting mix and pecans. Pour batter into greased, teflon-lined bundt pan. Bake in a 350 degree oven 65 minutes. Cool one hour; remove from pan. Cool another hour before serving.

The originator of the recipe says proper blending of ingredients is very important. For best results, "cream the butter, eggs and sugar with a mixer and then use a spoon when folding in the other ingredients. Just dump the frosting mix in the batter and mix. The batter should be very stiff."

"If you use the pan the recipe calls for the cake comes out shiny and smooth", she notes. If two layer cake pans are used, reduce baking time a few minutes.

Mrs. Archer Is Luncheon Hostess

Mrs. Bobbie Archer was hostess for a bridge luncheon Thursday, March 3.

Mary Kathryn Parris won high score and Kay Dean Jackson won low, Deloris Guthrie won the traveling prize.

Attending were Nelva White, Karen Countiss, Linda Davis, Linda McLain, Verna Strawn, Sheryl Meek, Jackie Mathews, Mary Kathryn Parris, Kay Dean Jackson, Deloris Guthrie and the hostess.

Artists Meet

In Fuller Home

Mrs. Guy Fuller was hostess for the Arts and Craft Guild meeting held Friday, March 5.

Enjoying an afternoon of china painting were Mmes. F. J. Daily, Clay Gibner, J.E. Womble, Sada Hoskins, Ned Turner and the hostess.

The next meeting will be in the home of Mrs. Freeman Barkley.

Mr. and Mrs. Elmer Hunt of Binger, Okla. were Thursday overnight guests of Mr. and Mrs. Earl Riley.

was the first building built north of the Canadian River. Later it was the first post office north of the Canadian River.

The serving table was laid in white and the centerpiece was of wood from the Zulu Stockade with a map of Texas on a standing board with designs depicting historical places and industries of Texas. Noted was a book, belonging to Mrs. John Allen, which was of articles compiled from "Ladies Home Journal."

Cakesquares outlined in the shape of the State of Texas, and blue bonnet mints and coffee were served by the hostesses, Mmes. Jack McWhirter, V.N. King, C.J. Renner, Frank Davis, Nolan Holt and John Allen.

Attending were Mmes. J.W. Davis, Olin Sheets, J.R. Stump, H.H. Chevalier, T.D. Sansing, Carl Archer, Guy Fuller, P.A. Lyon, Dwight Hutchison, O.C. Holt, George Buzzard, Raymond Kirk, Woodville Jarvis, Deta Blodgett, C.A. Kleeberger, Lloyd Buzzard, Bill Reeves, Johnnie Lee, J.R. Keim, W.J. Massie, honorary members, R.W. Morton, guests, Mmes. Pat Holt, Jimmie Shieldknight, Gwenfred Lackey, Marcus Larson, Bert Sheppard, Kenneth Evans, Richard Baxter, G.C. Brillhart, Jr., E.N. Pack and Robert Adamson.



Welcoming March —

TWO LITTLE DOLLS--Little Miss Dawn Jackson and her Raggedy Ann doll welcome March for Plainsman readers. Dawn is the daughter of Mr. and Mrs. Danny Jackson, 730 Cotter Drive.

Photo by C&B Studio

Take your problems to Church this week — millions leave them there!

The Family
Who Prays Together
Stays Together



**Attend
The Church Of Your Choice
Sunday**

—Weekly Opportunities For Worship—

**Apostolic Faith Church
V. E. (Hap) Blythe, Pastor**

9th & Dressen
Sunday School 10:00 a.m.
Morning Worship 11:00 a.m.
Young People 6:30 p.m.
Children's Church 7:00 p.m.
Evening Worship 7:30 p.m.
Thurs.:
Ladies Bible Study 2:00 p.m.
Prayer Meeting 7:30 p.m.

**Assembly of God Church
Rev. T. J. Taylor, Jr.**

403 N. Bernice
Sunday School 9:45 a.m.
Morning Worship 11:00 a.m.
Sunday C.A.'s 6:30 p.m.
Evening Worship 7:30 p.m.
Wed. Bible Study 7:30 p.m.

**Church of Christ
Charles Milner, Minister**

121 S. Haney
Bible Class 10:00 a.m.
Worship 10:50 a.m.
Teen Age Class 6:00 p.m.
Worship 7:00 p.m.
Wed. Ladies Bible Class 9:30 a.m.
Wed. Bible Study 7:30 p.m.
Daily Television on Channel 3, Mon. thru Fri. 10:15 a.m.

**Our Lady of Guadalupe
Mission**

Gruver
Sunday Mass 4:00 p.m.

First Christian Church

29 S. Bernice
Sunday School 9:45 a.m.
Morning Worship 11:00 a.m.
Youth Meetings 5:30 p.m.
Evening Worship 7:30 p.m.
Wed. Choir Practice 7:30 p.m.

Fellowship Baptist Church

11th & Archer
Sunday School 10:00 a.m.
Preaching Service 11:00 a.m.
Sunday Evening Service 7:30 p.m.
Wed. Evening Service 7:30 p.m.

**Union Full Gospel Church
Rev. George R. Bollinger,
Pastor**

1st & Endicott
Sunday School 10:00 a.m.
Morning Worship 11:00 a.m.
Bible Classes Sunday 6:45 a.m.
Evening Worship 7:30 p.m.
Wed. Bible Study 7:30 p.m.

Pentecostal Church

Sunday School 9:45 a.m.
Morning Worship 11:00 a.m.
Evening Worship 7:30 p.m.

**First Methodist Church
Rev. Wesley Daniel, Pastor**

407 S. Haney
Sunday School 9:45 a.m.
Morning Worship 11:00 a.m.
M.Y.F. 6:30 p.m.
Evening Worship 7:00 p.m.
Women's Society of Christian Service Wed. 3:00 p.m. and 9 a.m.
Choir Rehearsal 7:30 p.m.

**Waka
Church of the Brethren
Lawrence Lehman, Pastor**

Sunday School 10:00 a.m.
Morning Worship 11:00 a.m.
Evening Service 7:00 p.m.
Choir Practice Wed. 7:30 p.m.

**Oslo Lutheran Church
Robert L. Cordes, Pastor**

18 mi. N.W. of Gruver
Sunday School 9:45 a.m.
(includes adults)
Worship Services 11:00 a.m.

**Faith Lutheran Church
Robert L. Cordes, Pastor**

11th & Bernice
Worship Services 11:00 a.m.
Sunday School 10:00 a.m.

**Sacred Heart
Catholic Church
Rev. James C. Gurzynski**

901 S. Roland
Sunday Mass 9:00 a.m.
Wednesday & Friday 8:00 p.m.
Saturday Mass 8:00 a.m.
Other Days Mass 7:30 p.m.

**First Baptist Church
Rev. Luther M. Berry, Pastor**

123 S. Bernice
Sunday School 9:45 a.m.
Morning Worship 10:55 a.m.
Training Union 5:30 p.m.
(Oct. 1-Apr. 30)
Training Union (May 1-Sept. 30) 6:00 p.m.
Evening Worship (Oct. 1-Apr. 30) 6:30 p.m.
Evening Worship (May 1-Sept. 30) 7:00 p.m.
Wed. Evening Prayer Hour 8:00 p.m.

**First United
Presbyterian Church**

1021 Cotter Drive,
Sunday Church School 9:45 a.m.
Morning Worship 11:00 a.m.
Evening Study Group 7:30 p.m.
Wed. Choir Practice 7:30 p.m.

Sponsored By

**R. L. McCLELLAN
GRAIN CO., INC.**

FIRST STATE BANK
Member F.D.I.C.

B & B GRAIN CO., INC.

The Hansford Plainsman

**THE WAY
I SEE IT**

Robert Cordes, pastor
Oslo & Faith Lutheran

**ADAM'S SIN VS. CHRIST'S
GIFT**

"For if many died through one man's trespass, the free gift in the grace of that one man Jesus Christ abounded for many." (Romans 5:15)

Our hope for staying on the road to eternal life lies entirely in what God has done. Woe to the man who tries to go it by himself! Blessed is the man who trusts in the Lord!

How great is this help God offers? Great enough to offset all the evil consequences that have come upon us since, and from, the fall of Adam.

That fall at the beginning of man's history did untold damage. "Many died through one man's trespass." No one will ever fully understand how and why we are tied up with that sad mistake in the Garden of Eden. We are involved whether we like it or not. For we see that all men die. Paul uses harsh words to describe the tragic results, condemnation, the reign of death, condemnation for all men, and disobedience. All men includes everyone...we are all counted as having fallen in Adam whether we think it logical or not. Who is brought into this world perfect? None!

Thank God, the work that Christ did can offset and overcome all of this. For the results of Christ's work are that now grace abounds for many, there is justification (we made to be holy, acquittal from eternal damnation, many made righteous, and eternal life.

Adam's fall did much damage. Christ's salvation cancels all of this and gives abundant life. But if you do not believe this, then you still have not heard and are still lost or separated from God and eternal life. Reader, why do you fight? Or resist Christ? Come!



**Make-Believe
Meat in Future**

"Make Believe" meat—a substitute for red meat and poultry could have a severe impact upon the economy of Texas, says Ed Uvacek, Extension livestock marketing specialist, Texas A&M University.

Recent developments in the use of spun fibers of soybean protein as a substitute for almost any food with natural fiber texture may bring this problem closer to farmers and ranchers in the foreseeable future.

The fiber can be treated to imitate such foods as meat, dried fruits, potato chips, nut kernels and many vegetables. Since it has no taste, it may be given any flavor desired.

Substitution of synthetics for farm products is not new. Nylon, rayon, dacron and other synthetic fibers have cut deeply into wool and cotton utilization. Soybeans or other substitutes for meat is therefore not too surprising.

The final story will be unfolded in the future. Since these synthetics are new, research is still in progress and many product developments and consumer response problems still have to be worked out.

In Texas, livestock provides the major source of farm income, and any development in the competition for meat production could have a substantial effect upon the income and type of products produced by individual farmers and ranchers.

Currently, synthetics are not yet major competitors with fresh meat. With further developments, however, Texas producers may face some severe problems in the competition for real meat.

SAVE MORE ON LUMBER AND BUILDING SUPPLIES

Lumber — Plumbing Supplies

Anchor Paints

() Brushes

() Rollers

Hardware Fixtures of All Kinds

° Roofing Materials

° Sheetrock

° Plywood

° Pipe & Steel

Callaway Lumber Co.

Highway 15



OUR COOK

Just the Best Food in Town!

That's what we offer... complete dining room facilities for all occasions and delicious food... every time you visit us!



Pioneer Restaurant

MARKDOWN^{GE}

General Electric Chest Type or Upright 12 Cu. ft. w/t.

Deep Freeze \$169.95

General Electric 2 speed, 3-temp-with 2 temp. rinse and mini-basket

Washer w/t. \$189.95

General Electric One 3-cycle, 2 heat

Dryer \$119.95

General Electric Black & White with stand- Reg. \$259.99

Portable TV Now \$169.95

Anthony Electric

Thrifty, Nifty Buys in
USED CARS

2-Door Sport Coupe "Nova 400"

1962 CHEV. II \$750.00

4-Door Station Wagon Classic 660 Cross Country w/air cond., standard transmission w/ O.D.

1963 RAMBLER \$1400.00

900 Monza 4-Speed

1964 CHEV. CORVAIR \$1250.00

1964 CHEV. 1/2 TON \$1250.00

North Plains Truck & Implement Co.

SHOP THIS PAGE...

FOR SALUTE OF VALUES

"ALL MERCHANDISE GUARANTEED AS ADVERTISED"

Automotive Shop Repair

- ° PLANE HEADS ° RECONDITION RODS
- ° GRIND VALVES ° BORE BLOCKS
- ° INSTALL VALVE SEATS ° FIT PINS
- ° GRIND BRAKE DRUMS ° INSTALL CAM BEARINGS
- ° NURILIZE PISTONS
- ° GENERATOR & ALTERNATOR REPAIR

Kenneth Burch will handle these jobs for you.

-FULLY EXPERIENCED-

OWENS SALES COMPANY

659-2506 118 Main 659-2507

Farm Bureau Insurance Agency

307 Davis

Phone 659-3133

TOMMY GOOCH, AGENCY MANAGER

Life, Fire & Casualty Insurance

We appreciate the opportunity of serving you.

Donmoor Knit Shirts

(Donmoor makes things little boys like to wear!)



*** CLIPS * TWIGS**

SUITS FOR LITTLE BOYS

Choose your youngsters' Easter Outfits Now.

Young Fashions



- 1 Always use dry string, wood and paper in your kite... not wire or metal.
- 2 Always fly your kite on days when there is no rain.
- 3 Always avoid busy streets and highways while flying your kite.
- 4 Always fly your kite away from TV and radio aerials, electric or power lines.
- 5 Always keep away from fallen wires.
- 6 Always call your power company if your kite gets snagged in a power line. Do not pull the string or climb power poles.



COMMUNITY PUBLIC SERVICE
Your Electric Light & Power Company



Buy, Sell, Trade
Hire, Rent, Find
THROUGH THE

WANT ADS

FOR SALE

FOR SALE-1963 American-Westwood 2 bedroom mobile home. Excellent condition. 119 N. Brandt, Phone 659-2454 after 6 p.m. 24-tfc

FOR SALE-Two bedroom house, corner lot, excellent location. Phone Mrs. Wilburn McGuire 2359 after 5:30 p.m. 29-tfc

FOR SALE-3 bedroom, 2 bath brick home, large rooms, 306 Chase St., Gruver, Texas, phone F17-2329. 32-tfc

REDUCED for short time only. 3 adorably tiny toy poodles, male and females-white and apricot AKC registered. Must see to appreciate. Phone 659-2082 or 428 S. Bernice, Spearman. 38-tfc

FOR SALE-3 bedroom house, garage and fenced yard with low equity. Call 659-2967 or 659-2294. 40-tfc

FOR SALE by owner, 3 joining lots including 1 corner lot. Paved front and sides, lot 4-5-6, Block 54, Corner 2nd & Brandt, \$2,250.00. Call 659-2668 after 5:30. 40-tfc

FOR SALE-1962 Bonneville Pontiac 2 dr. loaded. Phone 659-2441, after 6 p.m. 659-2408. 40-tfc

FOR SALE-3 bedroom house, Blodgett Linn addition, one bath. Phone 659-2441, after 6 p.m. 659-2408. 40-tfc

GARAGE SALE-1117 S. Townsend, March 10 thru 14. 40-1c

TOMMY GOOCH AGENCY
FARM BUREAU INSURANCE
Spearman, Texas

Farm-Ranch Loans

Improving-Refinancing
Developing-Purchasing
Long Term-Competitive
Interest-No Appraisal Fee

BROOKSHIRE-ELLIOTT LOAN & REALTY CO.

'We make loans anywhere'

COME BY
211 East 7th St.
OR Telephone
806-935-3325
Dumas, Texas 79029

Cummings

Refrigeration

HEATING

AIR CONDITIONING

SALES & SERVICE

SPECIALISTS

659-2721

SPEARMAN

FORQUICK SALE-Camp Trailer, sleeps 5 & storage. May see at 118 S. Brandt St. 659-3229. 40-2c

FOR SALE-3 bedroom house, redwood fenced backyard. 1010 S. Haney. Call 659-3103 or 659-2754. 25-tfc

FOR SALE-4 Wheel drive jeep pickup, 1954 Chevrolet 2-door hardtop. Phone 659-3181. 32-tfc

FOR SALE-14 Volume set of Junior Classics and 20 Volume set of Collier's Encyclopedias. Phone 659-3067. 36-tfc

FOR SALE-2 bedroom house with basement and 1 1/2 acres of land, 607 E. 10th, Gruver, Texas. Call F17-2732. 37-8c

FOR SALE-Two bedroom brick veneer house. Will sell or trade on good terms for smaller house. Phone 659-2464. L.S. McLain. 36-tfc

Bowling Beat

TUESDAY MIXED DOUBLES			
TEAM	WON	LOST	
Behne Electric	53	27	
Etling Grain	53	27	
#5	46	34	
#3	43	37	
Snider-Pearson	31	49	
Spearman Floral	14	66	
HIGH TEAM GAME			
Behne Electric	636		
Etling Grain	594		
Etling Grain	589		
HIGH TEAM SERIES			
Etling Grain	1739		
Behne Electric	1690		
#3	1652		
HIGH INDIVIDUAL SERIES			
Shorty Hamlett	502		
Betty Monk			
Jr. Hollis	492		
Tab Barnes	488		
HIGH INDIVIDUAL GAME			
Herb McClellan	204		
Jr. Hollis	201		
Buch Behne	195		

SCATTER PINS LEAGUE			
TEAM	WON	LOST	
Anthony Electric	62	26	
Equity	61	27	
Taylor-Evans	52	36	
Pioneer Rest.	46	42	
Gruver Motor	42	46	
Grunewalds	42	46	
G&G Foodliner	35	53	
Ideal	12	76	
HIGH TEAM GAME			
Pioneer	634		
Anthony Electric	612		
Anthony Electric	589		
HIGH TEAM SERIES			
Pioneer	1768		
Anthony Electric	1757		
Ideal	1638		
HIGH INDIVIDUAL GAME			
Jane Meek	190		
Darlene Pierce	185		

STATE REPRESENTATIVE			
NAME	WON	LOST	
A.C. Hallmark	175		
U.S. REPRESENTATIVE			
18TH CONGRESSIONAL DIST.			
Walter Rogers	175		
STATE SENATOR			
31ST SENATORIAL DIST.			
Grady Hazlewood	175		
COUNTY, DIST. CLERK			
Mrs. Keese Richardson	175		
Donald Heath	175		
COUNTY TREASURER			
Mrs. Juanita Kemper	175		
Mrs. Selma Dahl Reneau	175		
REPUBLICAN CANDIDATE			
STATE REPRESENTATIVE			
83 DISTRICT			
Jack H. Hart	175		

FOR SALE-Two solid oak single beds with innerspring mattresses and box springs. 659-2350. 39-tfc

FOR SALE-Ironrite Ironer, Trombone, Accordion, two bicycles, also antiques. 306 Chase St., Gruver, Texas, phone F17-2329. 32-tfc

Training School Set March 14

A Child Evangelism Training School will be held in Amarillo for two weeks beginning March 14 through March 25. These classes will be held in the Amarillo Bible Church at 15th and Ong Streets. The classes will be taught by Mrs. Stella Fisher and Miss Mabel Denormandie, National Training Team of Kansas City. All Christian workers from this area are invited to attend any or all of the sessions, especially those interested in learning new and better methods of teaching children in Sunday Schools and churches. School will begin at 9:15 and end at 3:00 each day.

For further information you may contact Mrs. Merle Warner, City Director, Amarillo, 3506 Polk St., DR-40688 or Hansford County Director, Mrs. D.H. Kelly, Morse, Fireside 7-2320.

Mr. and Mrs. Loyd Carroll were weekend guests of Mr. and Mrs. Alvin Lewis and family at Panhandle.

Tommie Arbsland	175
HIGH INDIVIDUAL SERIES	
Jane Meek	504
Heler Dry	458
Thelma Gilbert	453

POLITICAL ANNOUNCEMENTS

The following persons have authorized this newspaper to announce their candidacy for the following offices in the Democratic Primaries, May 7, 1966.

STATE REPRESENTATIVE	
83RD DISTRICT	
A.C. Hallmark	175
U.S. REPRESENTATIVE	
18TH CONGRESSIONAL DIST.	
Walter Rogers	175
STATE SENATOR	
31ST SENATORIAL DIST.	
Grady Hazlewood	175
COUNTY, DIST. CLERK	
Mrs. Keese Richardson	175
Donald Heath	175
COUNTY TREASURER	
Mrs. Juanita Kemper	175
Mrs. Selma Dahl Reneau	175
REPUBLICAN CANDIDATE	
STATE REPRESENTATIVE	
83 DISTRICT	
Jack H. Hart	175

SERVICES

Amarillo Daily News & Globe Times home delivery. Call 2685. 14-tfc

SERVICE-Ditches from 3-12 inches, any desired depth. S. D. Jones 659-2809. Harold Shaver 659-3474. 17-tfc

Ironing Wanted. \$1.50 per dozen or 45¢ for uniforms. Phone 659-2796 or come by 210 S. Snider. 39-2c

OPPORTUNITY FOR MEN OR WOMEN EARNING LESS THAN \$1,000 PER MONTH! You should be investigating auto accidents and other loss claims for insurance adjusting firms. Expenses paid and car furnished. We train you at home in your spare time and give free placement service; you keep your present job until ready to switch. Pick your location; full or part time people needed almost everywhere. For personal interview in this area to see if you can qualify for this specialized training write at once to: NORTH AMERICAN CLAIMS TRAINING DIVISION, 3435 East Bayaud Ave., Denver, Colorado, 80209. 40-1p

SPARE TIME INCOME-Refilling and collecting money from NEW TYPE high quality coin operated dispensers in this area. No selling. To qualify you must have car, references, \$600 to \$1900 cash. Seven to twelve hours weekly can net excellent monthly income. More full time. For personal interview write P.O. BOX 10573, DALLAS, TEXAS 75207. Include phone number.

Mrs. Earl Riley is a patient in Hansford Hospital, where she is in traction for her back. She entered the hospital Saturday.

Sam Graves of the Baker Hotel returned last week from Raleigh, N.C. after spending several days with his son and family. Mr. and Mrs. Albert Graves, Becky and Debbie.

Southwestern Life Insurance Co.

LIFE INSURANCE IS MY ONLY BUSINESS...

LET ME HELP YOU

PLAN YOUR NEEDS

DON KNOX

Phone 659-3294
Spearman

Legal Notice

NOTICE TO BIDDERS

Sealed bids will be received at the office of the City of Spearman, Texas until 8:00 p.m. March 21, 1966 for furnishing the gasoline requirements of the City of Spearman for a period of six (6) months, April 1966 through September 1966. Approximate requirements for the period, 6000 gallons. Bids to be made on regular grade gasoline delivered to overhead tank at the City of Spearman Warehouse.

The City reserves the right to reject any and all bids or waive any informality in the bid or accept any bid regardless.

By order of the Mayor and City Council of the City of Spearman, Texas this 7th day of March 1966.
s/ R.E. Vaughn
Mayor

ATTEST:

s/ Darce Foshee
City Secretary

40-42-c

4-H NEWS

Three members of the Busy Bee 4-H Club met Feb. 29 in the Home Demonstration Club House for a foods lesson.

Each girl learned to prepare Broiled Weiner, Cheese and Tomato Sandwiches and cocoa. The Favorite Food Show rules were discussed.

Present were Lydia Reed, LeAnn Smith, Paula Hagerman and their Junior Foods Leader, Cindy Hutchison.

Tim Lackey from Goodwell, Okla. spent the weekend with his parents, Mr. and Mrs. Ray Lackey.

Burton's TV
Your PHILCO Dealer
106 E. Kenneth
Spearman, Texas
Phone 659-2121

E. C. Greene & Sons Agency

Real Estate-Loans
Insurance-Cattle
Aluminum Pipes

410 Davis, Spearman
Phone 659-2587

For Quick Courteous Service

Chevron Gasolines
Atlas Tires & Accessories
Washing-Greasing

QUICK, COURTEOUS SERVICE

Loren Simmons

SIMMONS CHEVRON SERVICE

Phone 659-9985
Plains Shopping Center

O. E. S. Meets At Lodge Hall

The Order of the Eastern Star met in a regular meeting Friday evening, March 5 at the Masonic Hall with Mary Brock and Preston Scott presiding.

Attending were 14 officers, 4 pro tems and 2 members. At the close of the meeting lovely refreshments were served in the dining room by Joyce Lackey and Mary Brown.

NEW SHIPMENT

A new shipment of needlepoint has arrived and another shipment will be coming soon. We also have tapestry canvas by the yard, many shades of tapestry wool and needlepoint rugs.

We have crewel linen by the yard also; along with Penelope Crewel Wool.

Come in and browse around.

Needlework Nook

1 1/2 blocks South of Equity in Waka

City Directory

CLEANERS

CLEANING

PRESSING

CARPET

CLEANING SERVICE

COIN OPERATED

DRY CLEANING

FREE

PICK-UP & DELIVERY

PHONE 659-2511

Wardrobe Cleaners

Oscar Donnell

302 MAIN ST.

SPEARMAN, TEXAS

DENTISTS

F. J. Daily D.D.S.

16 SW COURT STREET

SPEARMAN

ELECTRICIAN

Anthony Electric

Industrial, Commercial and House Wiring

Heating and Air Conditioning

Contracting and Repairs

Fully Insured

PLAINS

SHOPPING CENTER

PHONE 659-2441

BOX 727

SPEARMAN, TEXAS

TELEGAGS by BOB NOBLES



Bob's SALES and SERVICE

WE SELL THE BEST and SERVICE THE REST
SPEARMAN, TEXAS

Phone 659-3222

ASK YOUR DOCTOR THIS QUESTION:

• The next time your doctor writes a prescription for you, ask him if it matters where you have it filled. He'll probably advise you to go to a Pharmacy that enjoys a reputation for dependability based on professional skill and integrity, interest in your well-being, prompt service and price fairness.

Two
Registered
Pharmacists

• Such advice leads directly to this Pharmacy, for we meet fully all the requirements doctors set up for a truly professional prescription service.

"Prescription Specialists"

It's worth a lot to know that the prescriptions and medicines you purchase are of the finest quality —



Spearman Drug

PHONE FOR FREE DELIVERY

659-2226

Bobbie Brooks Junior Sets

Daytime
Playtime
Datetime

Skirt
\$7.98

Top
\$11.98

Matching

Capris \$11.98

Tops \$7.98

Skirts \$4.98

Tops \$7.98



Bobbie Brooks
-the "in" look-

Massad's

214 Main



FRONT END ALIGNMENT

Extend the Life of Your Tires

For Safety's Sake!

\$7.00 any make of car

During the Month of March

Excel Chevrolet Co.

UTE YOU!



SHOPPING CENTER IN THIS REGION!"

Get your farm equipment
ready
for the Spring work

**WITH CO-OP TIRES,
BATTERIES, OILS
& GREASES.**

Call or See

Consumers Sales

Home Insurance

All the risk will be taken care of
when we plan your
homeowner's policy!

Your house and its contents will be fully insured and liability and medical worries will be taken care of too! You can even have coverage away from home on clothing and valuables.

Stop by today and let's talk over your present home insurance coverage.

**Complete Life Insurance Plans
To Fit Everyone**

J. L. BROCK AGENCY
Insurance

Complete Insurance Needs
Spearman 659-2514

Calif. REDWOOD and ALUMINUM

Outdoor Furniture

Twin Settee, Matching Chair and Roll-About Hostess Cart

All for \$29.88

* Fertilizers
* Spreaders (free use)

* Lawnmowers
* Rotatillers

* Lawn & Garden Tools

Crabgrass Preventer

Full Line of Lawn and Garden Pest Control insecticides and Sprays

Western Auto

...for Spring

- * Permanent Flowers
- * Permanent Arrangements
- * Italian - Made Corbosca Flowers
- * Spring Types & Colors



Nice Selection of Arrangements For Your Selection

Come in and help us plan the permanent arrangement to fit perfectly in a special space in your home or business.

**Spearman
FLORAL
&
GIFTS**

PLAINS SHOPPING CENTER
Phone 659-2593

**Old Masters
Creative Finishes**

See how easy to refinish -
right over the old finish -

- * WOOD GRAINING
- * MARBELIZING
- * ANTIQUING

with
**OLD MASTERS
CREATIVE FINISHES**

ANYTHING YOU CAN PAINT (OLD OR NEW) CAN BE CHANGED TO SIMULATE RICH WOOD GRAIN, AGE OLD ANTIQUE, OR BEAUTIFUL MARBLE — "WITHOUT REMOVING THE OLD FINISH," SCRAPING, OR BLEACHING.

PROFESSIONAL FINISHES — FOR THE AMATEUR

- WOOD GRAIN FINISHES
- ANTIQUÉ FINISHES
- PROVINCIAL ANTIQUÉ FINISHES
- MARBLEIZED FINISHES
- DECORATOR FINISHES

Spearman Hardware

Lady Manhattan



What a way to go! To work. To play. To travel. To relax. In the neatest, sweetest Lady Manhattan® shirt of all! This in-or-outer broadcloth shirt of no-iron 65% Dacron® polyester, 35% long staple cotton. Lady Manhattan man-tailors it for strictly man-appeal . . . with a crisp convertible short point collar, roll-your-own sleeves and the side-vented square bottom that looks equally well in or out of your favorite skirts and pants. Go casual, go social, go Lady Manhattan with this and other great shirts for Spring!

Chambers Dept. Store

**BULK GRASS SEED
For Your Lawn
(MIXED TO YOUR NEEDS)**

**TURF MAGIC
NEW FERTILIZER WITH CRABGRASS
KILLER THAT IS MORE ECONOMICAL
& SAFER TO USE !**

**Lawn & Garden Tools
Fertilizers**

**Strawn
Farm & Ranch Supply**

Spearman



CHAMPLIN KEEPS THINGS MOVING

Oils & Greases

Davis Oil Co.

Phone 659-2025



**You're
Invited
to use our
banking services**

- Drive-In Banking
- Checking Accounts
- Savings Accounts
- Prompt Loan Services
- Safety Deposit Boxes



First State Bank

Member Federal Deposit Insurance Corporation

MY PRAYER AS A BUSINESSMAN:

JESUS, I WANT YOU TO BE A PARTNER IN MY EVERY BUSINESS TRANSACTION. I WANT YOUR APPROVAL ON EACH ACT THAT I PERFORM AND ON EVERY CONTRACT THAT I ENTER INTO. HELP ME TO DO EACH JOB WELL. LET ME NEVER TAKE UNFAIR ADVANTAGE OF ANYONE. HELP ME TO FULFIL MY PART IN EVERY CONTRACT. THAT I ENTER INTO. GIVE ME PATIENCE TO BEAR WITH ANY THAT FAIL ME. FOR, I HAD RATHER BE A GODLY WITNESS THAN TO MAKE UNJUST GAIN.

GEORGE YANCY

**Yancey Welding &
Machine Shop**

We SaLU



"YOU HAVE MADE OURS THE FINEST SH"

A New Generation Of
DEPENDABLE

MAYTAGS

*For the family
with a lot of
living to do.*



Bob's SALES and SERVICE

WE SELL THE BEST and SERVICE THE REST
SPEARMAN, TEXAS

Phone 659-3222

**LEVI'S FIRST
STA-PREST JEANS**

**LEVI'S®
STA-PREST®
Sportswear
Never Needs Ironing!**

50% COTTON - 50% DACRON
The best wash & wear results you have had or
your money back!

**COLORFUL SPRING
WINDBREAKERS
FOR BOYS**



**SPRING
SPORT COATS**

"Everything
for men & boys"

Cates Men & Boys Wear

**Feed Grinding
& Mixing**

Fertilizers - Applicators

Grain Storage

**We Buy
& Sell Grain**

We appreciate
the opportunity
of serving you.

Hansford Grain Inc.

LET US KEEP YOUR CAR RUNNING SMOOTHLY



We feature
Alemite
front end
alignment

Air-Conditioner
Service

Our trained mechanics can take care of all service on your Chryslers, Plymouths and all other makes. Bring your problems to us!



Spearman Motor & Marine Co.

LOOK

Protective Spray
For All Fabrics
\$2.98 16 oz. Can

Lemon Oil
6 oz. Size **50¢** 16 oz. Size **\$1.00**

Star Chemical 16 oz. **\$1.98**
Furniture Polish
(For All Woods)
659-3044

Boody FURNITURE CO.
PLAINS SHOPPING CENTER
Spearman, Texas

T.G.&Y.
5¢ TO \$1.00 STORES
Specials Good Thursday, Friday & Saturday, March 10, 11, 12

45¢ Value Discount Price

KOTEX 12's 27¢

NOTHIN DOLL TG&Y Price
"I'm Nothin' at All!" Ass't. Colors-
With Comb **98¢**

WOODEN for Skirts, Dresses, Trousers, Etc.,
Clothes Hangers 57¢
Reg. 98¢ Per Pkg. Discount Price

STORE HOURS
Monday-Friday 8:30 a.m. to 6:00 p.m.
Saturday 8:30 a.m. to 8:00 p.m.

In - Field Service

Portable
Steam Cleaning Service
Tractor Tire Repair Service

Motor Tune-Ups



Check
Our Tire Prices!

Snider-Pearson Texaco

"Service Is Our Biggest Product"

SHOP THIS PAGE...


FOR SALUTE OF VALUES

"ALL MERCHANDISE GUARANTEED AS ADVERTISED"

Hallmark

A PIXIE FOR YOUR PARTY

Just like this delightful Irish sprite, you'll be sitting pretty come St. Patrick's Day if you come to our Party Shop now! Here you'll find everything you need to make your party special—from invitations to nut cups—all in clever matching design. Remember, when Hallmark Plans-a-Party, you'll receive the compliments . . . and that's no blarney!



Centerpieces \$1.25 Beverage Napkins 39¢
Dessert Plates 39¢ Tallies 46¢ & 50¢
Bridge Covers 49¢ Dollies 30¢
A variety of new Hallmark Spring and Easter party supplies.

PLAINSMAN OFFICE SUPPLY INC.



Kenmore 6-Cycle Automatic Washers

Check Sears low price
No Trade-in Required **\$184.95**

2 speeds, 6 cycles, 5 wash-rinse temperatures

SHOP AT SEARS AND SAVE **Sears**
SEARS, ROEBUCK AND CO.

VALUES GALORE!

Faberge Fragrances
For Women
Tigress Aphrodisia
Flambeau Woodhue

The Newest Fragrance for Men:
Brut

Gordon's Drug
Prescriptions,
Fountain Service & Cosmetics

NOW . . . RUST FREE

Coleman
Vit-Rock



ONLY Water Heater backed by 10-year \$500 warranty bond!

GAS WATER HEATER

-Come in today for complete details-

White House Lumber Co.



**Make It
A New
FORD**

- *Falcons
- *Fairlanes
- *Mustangs
- *Galaxies
- *LTD Fords

You'll find service to back up your Ford...
24 months or 24,000 miles on your new Ford

at

Joe Trayler Motor Co.

7 to 14's are
very Mod

You might think Miss Pops is a London import! That switched-on high waisted Mod look, the wonderful charcoal with red combination, put little Sister right in the big girls' class! Seersucker skirt, chambray top, with pin dotted red trim. Sizes 7 to 14.



miss pops

Jim Neely's

Its' Here Now !

**John Deere's
5020**

The world's
most powerful tractor
Confirmed: 132 H.P.

See it at

Hansford Implement



**TV
on the blink ?**

TRUST YOUR REPAIRS TO A
TRAINED PROFESSIONAL
TECHNICIAN

TV problems might be just a tube or the bad tube could be caused from more serious trouble. Let us take care of all your repairs and you can be sure everything is checked... and working properly.



106 E. Kenneth

Spearman, Texas

SHOP THIS PAGE...

**FOR
SALUTE OF
VALUES**

"ALL MERCHANDISE GUARANTEED AS ADVERTISED"



3/8" Drills

featuring the motor that won't burn out

895

New Jackall Jack

3 ton lifting capacity, 48 inches high, for lifting heavy farm equipment. Ideal for stretching fence, pulling posts. Used by farmers, contractors, ranchers, etc.

List \$24.95

Fleet Price -

17⁵⁰

B & B Sales

Spearman - Perryton - Guymon

OPPORTUNITY DAYS

50 Foot Reg. \$1.19

Plastic Hose 99¢

Genuine Spring Steel

Lawn Rake Reg. 98¢ 66¢

Ideal for Camping or Sundeck

Aluminum Cot \$6.99

Redwood table & two matching benches

Picnic Table Set \$19.00

Boys & Girls 24" or 26" size

Bicycle \$33.00

Whites Auto

**Purina Chows
for Livestock**

Hogs, Sheep, Show Steers, Horses and Pets all do well on Purina Chows



EACH PURINA CHOW IS BACKED BY YEARS OF RESEARCH AND TESTING IN PURINA LABORATORIES AND RESEARCH FARMS.

You can depend on the feed in the Checkerboard bag!

**R. L. McClellan
Grain Co., Inc.**

**FOR BETTER LIVING
HOME IMPROVEMENT SUPPLIES**

**Need a 2X4 or a
Truckload of Lumber ?**

We're ready to fill all of your
building & repair needs.

Lumber - Paints - Nails
Roofing Materials

**Foxworth-Galbraith
Lumber Co.**

One - Stop Building Supplies

Dr. Collister Promoted by High Plains Research Foundation

Frank Moore, President of the High Plains Research Foundation, announced today that in recognition of the rapid growth of the Foundation under his management since he became Director in 1962 and his foresight and leadership in the development of the answers to many agricultural problems in

advance of the needs; among them his development of new soybean varieties for Texas. Under his direction, the Foundation staff have made advances in irrigation efficiency; recharge of surface water into the Ogallala sand; perfection of the High Plains Foundation Farming System (interplanting of crops) acquisition of the 505-acre J. Frank Triplett Research and Demonstration Farm; and the acquisition of other new facilities under his administration, including the Moody Memorial Education and Communication Building,

which was completed and occupied in 1965 at the Foundation's Research farm at Halfway.

Dr. Collister was elected 2nd Vice-President of the Texas Certified Seed Growers Association with a three year term on its Board of Directors at the 1966 Convention of the Association in Dallas.

He is a recognized professional plant breeder in Texas, several other States, and many foreign countries. He has developed six improved crop varieties which are grown in the United States.

Dr. Collister was elected 2nd Vice-President of the Texas Certified Seed Growers Association with a three year term on its Board of Directors at the 1966 Convention of the Association in Dallas.

HIGH PLAINS TAILWATER PUMP



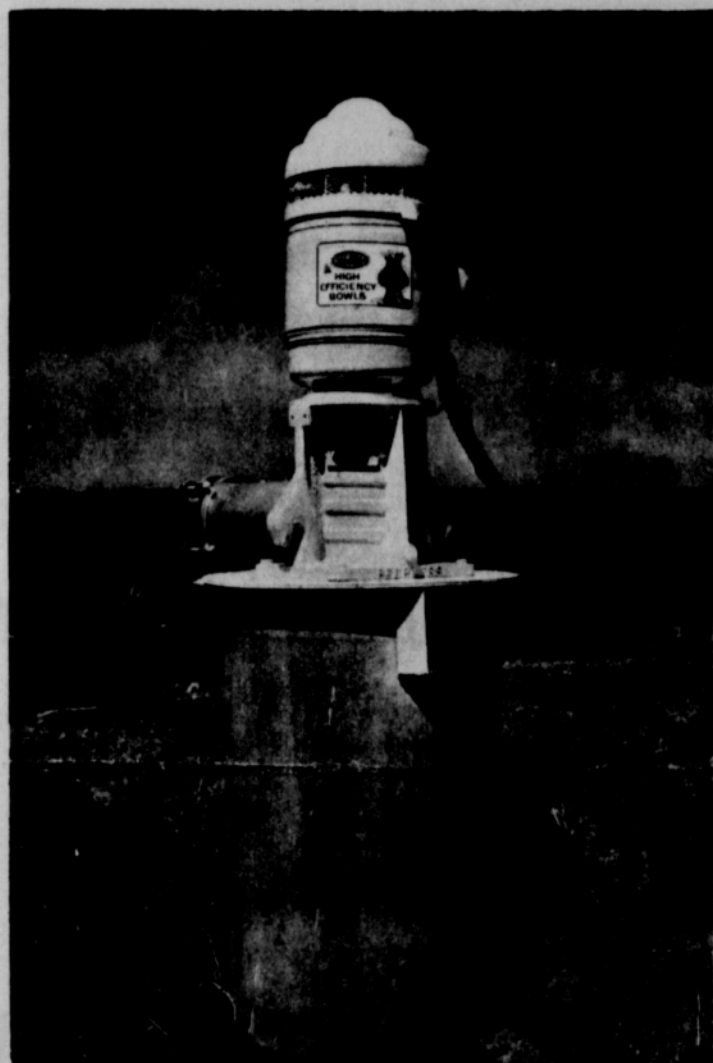
Salvage Your Waste Water!

Save Your Money!

The Peerless Tailwater Pump is especially designed to economically reclaim water now going to waste on your irrigation land.

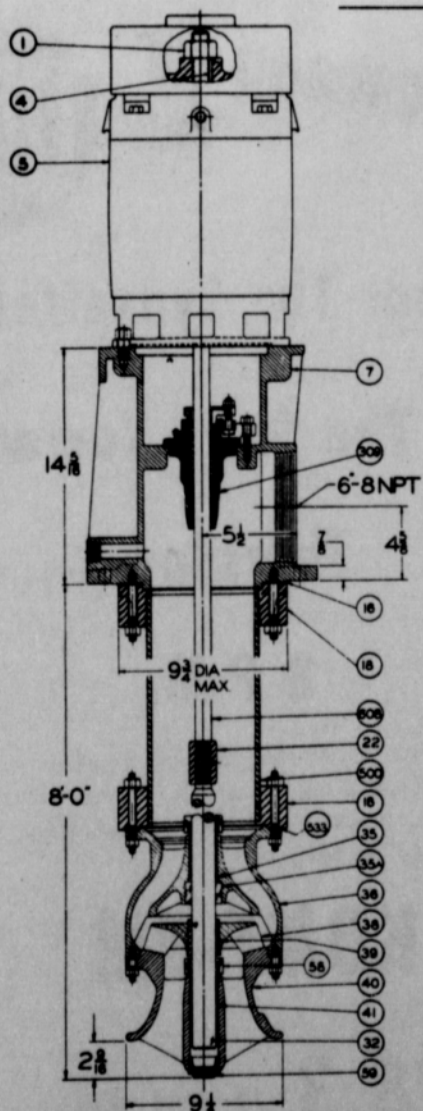
LOOK AT THESE FEATURES:

- Heavy Duty Cast Iron Discharge Head
- High Strength Stainless Steel Shaft
- Dual Bronze and Neoprene Bearings
- Open Type Impeller
- Easy, Quick Adjustment



GIVING YOU THESE BENEFITS:

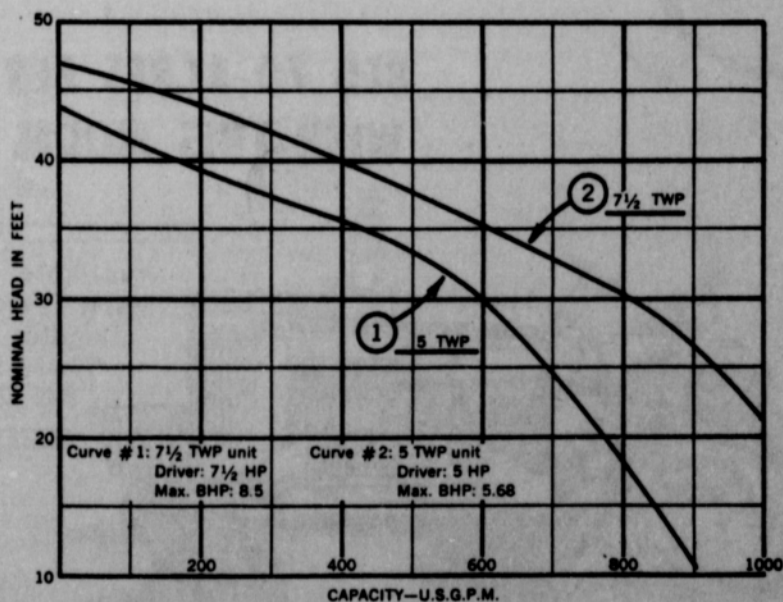
- Rigid Frame—Longer Bearing Life
- Longer Life—No Rusting Out
- Resists Wear and Abrasion
- Handles Grit and Abrasives
- Assures Highest Performance



ITEM NO.	DESCRIPTION
1	Nut: Top Shaft
4	Key: GIB
5	Motor: Driver
7	Head: Discharge
16	Gasket: Head
18	Flange: Top Column
22	Coupling: Shaft
32	Shaft: Impeller
35	Bearing: Std. Bowl, Bronze
35A	Bearing: Std. Bowl, Neoprene
36	Bowl: Standard
38	Impeller: Semi-open
39	Bushing: Impeller Taper Lock
40	Manifold: Bell Type Suction
41	Bearing: Suction Manifold
58	Collar: Sand
59	Plug: Suction Manifold
309	Container: Packing Assembly
500	Column: Flanged Bottom and Top
533	Gasket: Bowl
608	Shaft: O.L.S. Top

ALSO AVAILABLE

Larger models - 10 HP and 15 HP - for combination lake or tailwater service.



SEE YOUR PIPE DISTRIBUTOR OR

PEERLESS PUMPS

AMARILLO HWY. -PLAINVIEW

SPEARMAN

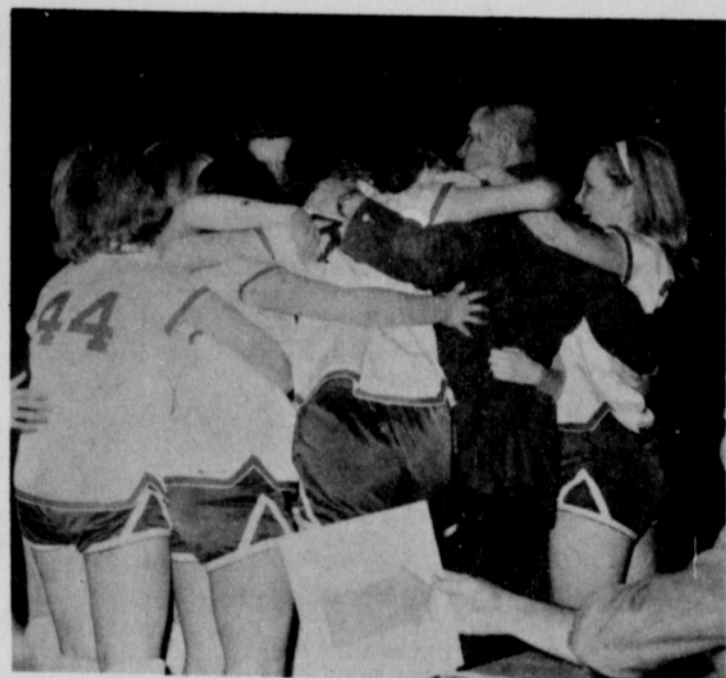
IS PROUD
OF YOU,



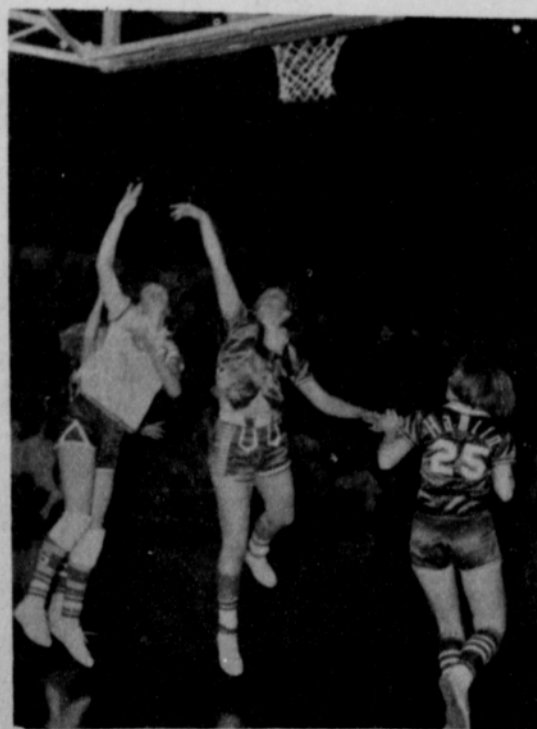
LYNXETTES



1966 Spearman Lynxettes



LET'S BRING HOME THAT
State Championship Trophy



Presented by these Proud Lynxette Boosters:

Lynx Den

Spearman Rexall Drug

Ayers Brake Service

Chambers Dept. Store

Snider - Pearson Texaco

Spearman Hardware

Owens Sales Co.

Community Public Service

White House Lumber Co.

Cattleman's Cafe

Calendar of Events

- THURSDAY, MARCH 10** Jonquil Flower Club Coffee 9:30 a.m. - Mrs. Bill Massie
- Jaycees
- B&PW Luncheon
- Rho Rho - Mrs. Brad Beedy
- Rainbow Girls - 6:30 p.m.
- FRIDAY, MARCH 11** Arts & Craft Guild - Mrs. Freeman Barkley
- Spearman H.D. Club - Mrs. Richard Reimund - 2:30 p.m.
- SATURDAY, MARCH 12** Do-So-Do Club
- MONDAY, MARCH 14** Blue Monday Bridge Club - Deta Blodgett
- Delphinium Flower Club - Mrs. W. A. Ellsworth
- Hansford HD Club - 2:30 p.m.
- TUESDAY, MARCH 15** Lions Club
- THURSDAY, MARCH 17** Jaycees
- Gladiola Flower Club - Mrs. Leland Wood
- Twentieth Century Club
- Home Science - Mrs. Frank Davis
- Fine Arts - Mrs. George Buzzard



A FIRST PLACE - This leukemia research project won a first place for David McClellan in the Senior Boys Biological Division of the science fair last weekend. There were 35 ribbons presented.

-Plainsman photo

Club Makes Tour of High School

The Spearman Study Club met Monday afternoon with Mrs. Troy Sloan and Mrs. Marcus Lanon as co-hostesses in the home of Mrs. Kiff White.

At the business session presided over by Mrs. Lanon, April 12 was set for the door-to-door cancer drive. It was also announced that the Federated Club District meeting will be held March 24-25 at Hereford.

Mrs. James Pendergraft was in charge of the program and the group went to the High School where they were given a guided tour of the school by Jim Cherry, principal.

Attending were Meses Richard Baxter, Kenneth Evans, Curtis Frances, Joel Lackey, Ray Martin, Bill Partridge, James Pendergraft, Carl Reed, Bert Sheppard, Jimmie Shieldknight, David Wilson, Sandra Ladd and the hostesses.

Survey To Be Made of Traffic Problem At Intersection of Highways 15 and 282

A new survey of the traffic problem at the intersection of highways 15 and 282 at the railroad crossing will be made by the Texas Highway Department.

City Manager Darc Foshee reported to the City Council Monday night that District Engineer Charles Smith told him the survey and study on controlling traffic in the five-way intersection will be made as

soon as possible.

Foshee met with the engineer in Amarillo recently to discuss the intersection problem.

Foshee was also instructed to advertise for bids to supply the city's gasoline needs for the next six months, beginning April 1. The City Manager said the bid purchases of gasoline was saving the city money.

The fire department reported they answered three alarms during February and had two drills.

Corporation Court Judge T. J. Pittman reported that he had 18 cases in his court and assessed a total of \$331.50 in fines.

Police Chief Wayne Pierce reported that his department investigated 10 traffic accidents in which two were injured, two thefts and one burglary, arrested four drunks and one person for driving while intoxicated, one death, one

family disturbance and issued 10 traffic tickets.

Foshee told the council the parking lanes on Main Street will be painted as soon as the weather permits the work to be done at night.

Group Attends Regional Meet

The Hansford County Historical Survey Committee attended a meeting of Regions 1 and 18 at Canyon March 5.

The highlight of the meeting was an address by John Ben Sheppard, president of the Texas Historical Survey Committee.

The committee is active in marking historical sites for tourist attractions.

Attending the informative meeting were Messrs. and Meses Tom Jones, Olen Sheets, Meses Gwenned Lackey, R. B. Archer, P. A. Lyon and J. R. Keim.

Mrs. Hoskins Is Hostess

The Ruth Sunday School Class of the First Baptist Church met March 1 with Sada Hoskins. Mrs. W. L. Russell gave the devotional followed with prayer by Mrs. Rex Sanders.

Present for the business conducted by president, Mable Edwards and the social hour following were Meses E. S. Uptergrove, Edwards, Russell, Sanders, Abbye Ownbey, W. H. Gandy and Vera Campbell.

Laurence Dossett who has been a patient at St. Anthony's Hospital for the past 5 weeks underwent surgery for the second time Monday. Mrs. Dossett is in Amarillo with her husband.

Mr. and Mrs. Bill Lewis had as Sunday guests their sons, Mr. and Mrs. Harold Lewis and children and Mr. and Mrs. James Lewis, all of Pampa.

Mr. and Mrs. Don DeArmond and children had as dinner guests Sunday Mr. and Mrs. Wally Cayton and children of Amarillo and Mr. and Mrs. Billie Haden and boys.

Future Readers Of The Plainsman

Mr. and Mrs. Carl Nickles of Irving are the parents of a son, Marty Dale, born Feb. 23, weighing 6 lbs, 5 1/2 oz. Mr. and Mrs. C. A. Nickles are the paternal grandparents.

Mr. and Mrs. Virgil Hull spent Sunday in Goodwell where they visited their granddaughter, Barbara Barnes of Midland, who attends PAMC and with her brother and wife, Mr. and Mrs. Charles Darbo.

Avoid Cover Fade

To keep slip covers and draperies looking alike, always launder at the same time.

Speech Students Do Well at Lubbock Meet

The Spearman High School speech department entered the annual High School Invitational Forensic Tournament. Though Spearman would have ordinarily entered the small school division they chose to enter Class 1, the large school division. Competing against 4-A and 3-A schools the local students compiled an excellent record. In boys' debate there were 46 teams entered. Hal Sanders and Kenneth Faries defeated Amarillo High School, Lubbock Coronado, Lubbock Monterey before they lost to Tascosa High School. Gary Benge and Doug Lackey went through the preliminaries undefeated against Amarillo High School, Tascosa High School, Lubbock High School and Palo Duro of Amarillo. They went into the quarterfinals against Midland Lee and lost the decision to them. Midland Lee later won the tournament.

In the girls' division 29 teams were entered. Lisa Curry and Thelma Daniel met Denison, Lubbock Monterey, and Pampa but did not qualify for the elimination rounds. Linnie Bollinger and D'dee Collard went through the preliminaries undefeated against Amarillo High School, Midland High School, Lubbock Coronado, and in the quarterfinals defeated Abilene Cooper. They met Andrews High School in the semi-final round and lost the decision.

Geir Overland and Jock Lee went through the preliminaries with a 2-2 record. In order to allow Spearman to enter all seven debate teams the tournament director allowed two of them to enter the small school division but made them ineligible to compete for awards. Mary Jones and James Lemons won three and lost one; Carrol Day and Steve Sheets had a 2-2 record. In individuals the students spoke two rounds, Debra Brock went to the finals in Prose Reading. Other individualists who ranked high in one round were:

Hal Sanders in Boys' Extemp; Cloetta Fullbright, Girls' Poetry; Marty Jones, Boys' Persuasive; Linda Benge, Girls' Persuasive; Paula Stout, Girls' extemp; Donna Ownbey, Girl's Prose; Rennie Berry, Boys' Prose.

Miss Sue Bradford and a friend, Linda Beth Johnson of Muleshoe, spent the past weekend with Sue's parents, Mr. and Mrs. R. E. Bradford. Both girls attend Wayland College.

Mr. and Mrs. R. E. Bradford and Sue plan to spend this weekend in Dallas visiting their son, Mr. and Mrs. David Bradford and to get acquainted with the new grandson Erik.

Loyd D. Carroll, son of Mr. and Mrs. Loyd Carroll has joined the Air Force and is stationed at Amarillo Air Force Base where he will take his basic training.

Miss Sue Bradford is now a member of the International Chorus at Wayland College and the group has made appearances in several towns. The chorus will go to Canada to perform the last week in May.

Mr. and Mrs. B. J. Garnett were hosts for a family get together for Sunday dinner. Attending were Cmdr. Howard Garnett of Washington, D.C., Mr. and Mrs. Tom Morris, Linda and Vicki of Amarillo, Mr. and Mrs. Wesley Garnett and Lynn, Mr. and Mrs. Stanley Garnett and Mr. and Mrs. W. M. Deck of Balco, Okla.

Card of Thanks

"Thank You" to each of you who telephoned or sent me cards, letters, gifts and flowers while I was in the hospital in Oklahoma City. I am deeply grateful to each of you. I want to especially thank Bethany Donnell and the Lynxettes for the birthday cake. Kathi Pattison

Lynxettes Capture Regional; Beat Floydada and Hamlin

A strong defense and some great shooting from the field and at the free throw line gave the Spearman Lynxettes their first Regional championship since 1961 in Lubbock Saturday.

In Lubbock for the third consecutive year, the Lynxettes lived up to their "favorites" title by beating Floydada 42-36 in the first round and Hamlin 38-35 in the finals.

The big game of the tournament for the Lynxettes was billed as the first one with Floydada. The winner of this game in past years has advanced to the state finals.

Defensive tactics decided the game. Spearman had to stop Floydada's rolling offense featuring speedy Shirley Rainer. Some coaches doubted that she could be stopped. Floydada came into the game with their defense pointed toward stopping Barbara Wilde.

The Lynxette defensive threesome of Robbie Ownbey, Susan Hutchison and Nancy McCullough checked the Floydada offense.

Ownbey kept the middle stopped up forcing Rainer away from the basket and McCullough and Hutchison covered the other two guards, and rebounded.

All three guards played one of their top games of the year. McCullough and Hutchison were outstanding in rebounding against the taller forwards and Ownbey and Hutchison were successful in bringing the ball out to the Lynxette forwards.

Floydada ganged their defense on top of Barbara Wilde and held the tall post girl in check, but they paid the price. Karen Gibson ripped the nets from the outside and from

the free throw line to carry the scoring attack. Gibson had six field goals and eight free shots for 20 points. She made eight of 11 free throws and made four straight in the final quarter to keep Spearman's lead safe.

In the second half Floydada had to loosen their defense to try and stop Gibson and get the ball from Spearman's stall offense. With some breathing room, Wilde pumped in some quick shots. She had six field goals and one free shot for 13 points.

Freshman Marcia Shieldknight was a rocket on rebounds. She out-rebounded the taller girls, did a good job handling the ball and put in three field goals and three free shots for nine points.

The lead changed hands several times in the first quarter as Spearman was having trouble hitting, but in the second quarter the Lynxettes took a 16-14 lead and stayed in front the rest of the way. It was sometimes by only one or two points.

Spearman had 15 field goals, 12 free shots, nine fouls and 42 points. Ownbey was the only one in foul trouble with four.

Floydada had 14 field goals, eight free shots and 13 fouls. They made eight of 10 free shots.

Hamlin came back strong in the finals and the Lynxettes suffered a let-down after the furious first game. It was a very touch-and-go situation until the last minute.

Wilde carried the field goal chore and Gibson was deadly at the free throw line in the clutch when a very point counted. Spearman made 10 of 13 free throws. Gibson made all

eight of hers and Wilde made her two.

Wilde had 20 points on nine field goals and two free shots. Gibson had 14 points on three field goals and eight free shots. Shieldknight poked in two field goals for four points. Spearman fell behind early in the game when they committed some quick fouls and Hamlin stayed in front at the free throw line.

The Lynxettes came from behind to be tied at the end of the first quarter 7-7, then managed to have a thin two-point 16-14 lead at the half. They could not pull away and were only ahead 26-25 at the end of three quarters.

With less than a minute to play Spearman had a six point lead, but let Hamlin cut it to three in the final minute as the Lynxettes stayed away from the fouls.

On defense it was again a strong effort by Ownbey, Hutchison and McCullough that kept the Hamlin offense in check. Hamlin's Jenkins hit 24 points, but no one else reached the double figures.

Both teams the Lynxettes met featured a rolling offense that tried to drive the middle for close shots. Ownbey was the plug that stopped the attack while the other two guards protected the sides and rebounded.

The fired-up Lynxettes made very few mental mistakes and did not turn the ball over to the opposition without getting a chance to score.

Coach Dean Weese said it was the mistake factor and great desire that won the games for the Lynxettes.

CWF Plans St. Patrick Luncheon

The First Christian Church Women would like to invite the public to come and eat lunch at the church on

March 16, Wednesday, 11:30 til 1:30. Price \$1.50 for adults and 75¢ for children. This is the Annual St. Pat-

rick's dinner and will serve only the noon meal this year.

Buick's \$1,000,000 Sweepstakes.

You may have won \$2332⁰⁰ cash!

A new list every week from now until March 31st. 429 first prizes.

1J4	2G65	2P69	3A60	3J62	3S42	41747	4G54	4N69	4Z64	639L	863A
1K4	2J26	2S64	3A64	3J65	3S43	41847	4G61	4S57	543	662P	864S
21739	2J53	2S69	3A67	3J67	3S67	423	4G62	4S62	604F	663L	864W
21747	2J63	2W51	3A68	3J69	3U60	442	4I1	4S64	604M	616	874K
21839	2J64	2W64	3A72	3K2	3U64	443	4I8	4U64	614C	6J3	884D
21847	2J67	2W69	3A74	3K32	3U67	45537	4J3	4U72	614M	6K3	884T
252	2J69	2Z51	3E43	3K38	3U68	45637	4J57	4U74	621K	712	894L
253	2J72	2Z64	3E47	3K42	3U72	45767	4J6	4U76	622M	754	815
254	2K32	2Z69	3E63	3K43	3U74	45867	4J62	4U78	623	762A	8J3
2E71	2K47	31135	3E66	3K47	3Y83	4A72	4J64	4W51	624B	7J3	8K3
2E72	2N51	31235	3E67	3K48	3Z43	4A74	4K3	4W52	625C	7K3	962K
2E74	2N52	31535	3E69	3N74	3Z47	4A76	4K38	4W53	626A	814F	963K
2E76	2N61	31739	3F38	3N76	3Z63	4A78	4K43	4W54	628W	834P	963W
2E78	2N62	31839	3F42	3N78	3Z66	4D51	4K47	4W57	632C	834W	A12
2F32	2N65	342	3F47	3P51	3Z67	4E57	4K48	4W61	632W	844L	AJ2
2G51	2P26	343	3F48	3P53	3Z69	4E62	4N60	4W62	635A	854C	AK2
2G52	2P63	344	3J52	3P61	40837	4E64	4N65	4W64	636M	854M	BI2
2G61	2P64	362S	3J54	3S32	41347	4G52	4N66	4Z57	636T	862D	L44
2G62	2P67	363D	3J61	3S38	41447	4G53	4N68	4Z62	638K	862W	L54

If the first part of your vehicle identification number is here, you might be a winner.

Here's how it works. Look at the first symbols (the prefix) on your vehicle identification slip. Then look at the symbols listed above. If you find yours on the list, you've taken the first step toward being a winner. Now go see your Buick dealer. He has a list of 72 winners posted in his showroom. If you see your entire vehicle identification number on the poster—the symbols plus the rest of the numbers—\$2332 cash is yours. (If your prefix isn't listed in this ad, don't give up. Your numbers may have been posted during the past few weeks. And every week there are 72 new winners posted on the showroom wall. So watch for next week's list of new symbols in this newspaper.) No slogan to

invent, no puzzles to solve. In fact, you don't even have to own a Buick to have a winning number. While you're in the showroom, get a good look at the Buick Special. The \$2332.00* happens to be its price. *Manufacturer's suggested retail price for Special V-6, 2-dr. coupe. Price includes Federal Excise Tax and suggested dealer delivery and handling charge.

Contest Rules. Residents of Kansas, Missouri and Nebraska may, if they prefer, send in a postcard to R. L. Polk and Co., P.O. Box 1347, Detroit, Michigan 48231 and receive the weekly list of winning numbers by mail for comparison with their own vehicle identification number. An official entry form will be included. Sweepstakes limited to persons over 21 living in the continental U.S. Not valid in Florida or states where prohibited by law.



Buick's \$1,000,000 Sweepstakes.

See this Buick dealer near you. See his Double-Checked used cars, too.

SCHOOL MENU

MONDAY, MARCH 14
 Beef Ravioli in Sauce
 Buttered Potatoes
 Seasoned Blackeye Peas
 Carrot Sticks
 Mixed Fruit Cup
 Honey-Peanut Butter
 Hot Rolls-Butter
 Chocolate or Plain Milk

TUESDAY, MARCH 15
 Country Fried Steak
 Seasoned Green Peas
 Mashed Potatoes
 Combination Tossed Salad
 Chocolate Pudding
 Bread
 Chocolate or Plain Milk

WEDNESDAY, MARCH 16
 Hamburger-Mustard
 Tator Tots
 Seasoned Pinto Beans
 Tomato Slice
 Dill Pickle Slices
 Spicy Apple Bars
 Chocolate or Plain Milk

THURSDAY, MARCH 17
 Stewed Chicken-Egg Noodles
 Buttered Corn
 Seasoned Green Beans
 Mandarin Orange Jellied Salad
 Hot Rolls-Butter
 Chocolate or Plain Milk

FRIDAY, MARCH 18
 Grilled Cheese Sandwich or
 Peanut Butter Sandwich
 Vegetable-Beef Stew
 Crackers
 Apple Wedges
 Spice Cake
 Chocolate or Plain Milk



"Duty to Country" has been a Girl Scout ethic and a part of the Girl Scout Promise since March 12, 1912, when Juliette Gordon Low organized the first troop of 12 girls in an organization that today numbers more than three and a half million members. Girl Scout Week (March 6-12) is a time for Girl Scouts everywhere to re-examine the ways they can demonstrate good citizenship, and to remember that, for 22 million others over a 54-year span, Girl Scouting's high ideals of character, conduct, patriotism and service have been as sturdy as the Statue of Liberty itself.

Class Set March 14

The last modern Math class will be held Monday night, March 14 at 7:30 in the Jr. High Auditorium.

J.W. Walker is a patient in Northwest Texas Hospital in Amarillo where he underwent surgery.

Mrs. Wilson McClellan and Mrs. Thelma Blevins are in Austin where they are taking a short course at the University.

Mr. and Mrs. L.M. Womble and Mr. and Mrs. N.F. Renner attended the Joint Annual Cooperative Convention in Corpus Christi last week.

CARD OF THANKS

I wish to thank my friends for the gifts, flowers, visits and many cards that I received during my stay in Northwest Texas Hospital, Andy J. Rhodes

STRETCH FABRIC

When you sew rayon jersey, you need to have a seam as elastic as the material. To obtain this, keep the tension of your machine loose.

MOONLIGHT TV

On the next rainy day bring out those new coloring books and crayons that you have previously purchased. Hide the crayons over the house and let the children have a crayon hunt before starting to color.

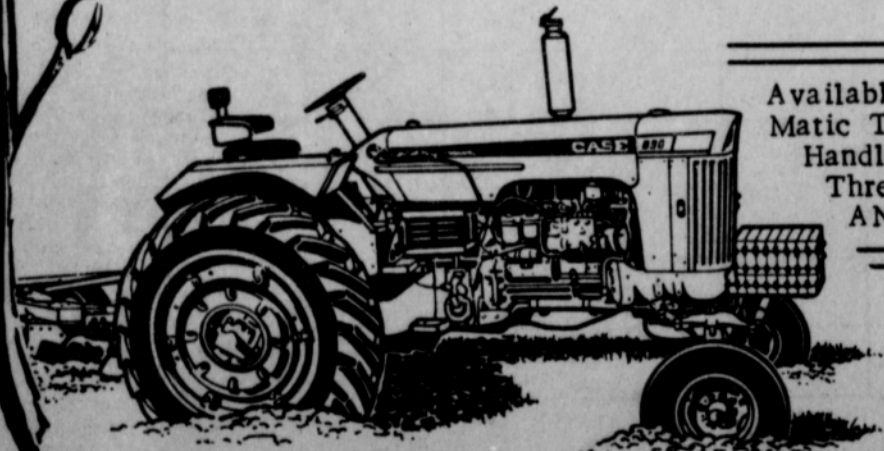
Phone 2466 or 3258 to report local news.

Specializing in Minor TV Repair, EVENINGS & SATURDAY Sorry-No Sunday Calls Phone 659-2792 or 659-3321 Service Calls - \$2.50

at R. L. McClellan & Sons

SPRING IS HERE

BED 70 ACRES PER DAY WITH THIS MODEL 830 CASE®



830 Row Crop-Adjust. Axle-4 Wheel

Available in Direct or Case-O-Matic Torque Converter Drive-Handles 6-Row Bedder or Three Bottom Moldboards--AN ECONMY TRACTOR!

SPARE PARTS

CASE SERVICE

R. L. McClellan & Sons Implt. Co.

Get ready for **FUN!**

Hear The Lynettes

At The State Tourney

Thursday

3 P.M.

Hear the colorful play-by-play of the Lynettes games at the state tournament in Austin. Listen in today for complete details!

KBMF-FM

98.3 on your dial



SURE I SHOP

AT CUT RATE GROCERY

Don't YOU?

Smart Shoppers go where ALL the prices are ALWAYS LOW! That's why so many families buy ALL their food at CUT RATE. Our storewide low prices and SUPER SPECIALS add up to bigger and better SAVINGS for you!

Shortening 3 lb. Can

Crisco 79¢

Gold Medal

Flour 5 lb. Bag 47¢

Carnation Evaporated Tall Cans

Milk 3 for 39¢

Shurfresh Individually Wrapped

6 oz. Pkg. **CHEESE SLICES 25¢**



Del Monte Tomato 20 oz. Family Size **CATSUP 2 FOR 49¢**

MORE for your grocery dollar HERE

Corn

Shurfine Frozen W.K. Golden 10 oz. Pkg.

2 for 29¢

Tuna

Del Monte Chunk-Style Flat Can

3 for 79¢

Bama Peach 18 oz. Tumbler

Preserves 3 for \$1.00

Hunts Tall Can

Tomato Juice 3 for 29¢

Lanes Regular Half Gallon

ICE CREAM 69¢

Folgers Instant 6 oz. Jar

COFFEE 67¢

Nestles Instant Chocolate

QUIK 2 lb. Box 69¢

Andrea Dumon

Bath Oil

Quart **48¢**
Reg. 98¢ size

Half Gal. **88¢**
Reg. \$1.50 size

Del Monte Clings

PEACHES

no. 2 1/2 cans

2 FOR 57¢

Del Monte Cut Bluelake

GREEN BEANS

303 Size Cans

2 FOR 47¢

Week-end Values for Friday & Saturday
March 11 & 12

Food King Tall Cans

PINTO BEANS 2 FOR 17¢

Hi-V 50% Horsemeat Tall Can

DOG FOOD 5 FOR 49¢

Northern Paper 80 Count Cello Pak

NAPKINS 11¢

PEAT MOSS

50 lb. bag **79¢**

BEST VALUES IN QUALITY MEATS

Franks

AF Brand All Meat lb. **59¢**

Fresh Homemade lb. Pork

Sausage 69¢

Blue Morrow Breaded Chuck Wagon lb.

Beef Steaks 89¢

Colorado Red McClure

farm-fresh PRODUCE

Potatoes 10 LBS. 39¢

California Fuerte Large **Avocados 2 for 29¢**

Colorado Medium Danver **Onions 3 LBS. 19¢**

Sweet Juicy Navel **Oranges 5 LBS. 59¢**

Energy Plastic Jug

BLEACH

Half Gallon

25¢

Detergent

COLD POWDER

Giant Box **69¢**



Grape Juice

2 6 oz. Cans

39¢

German Chocolate Cake

13 oz Each

59¢

Bus Chartered

For Austin Trip

A bus is being chartered to take Spearman fans to the girls basketball games at the state tournament in Austin.

The bus will leave here at midnight Thursday and the cost will be \$20 per person, according to Mrs. Sam Graves who is making the arrangements.

The \$20 covers the entire cost of the round trip and the bus will furnish transportation to and from the gymnasium while in Austin.

Call Mrs. Graves at the bus station, 659-3446, anytime today (Thursday) to make reservations.

The bus will return to Spearman following the Lynettes' final game, according to Mrs. Graves.

Missionary

To Speak Here

Rev. Bloomquist, who has been serving as a missionary in Southern Rhodesia, will be speaking at the First Methodist Church March 14 at 7:30 p. m.

Rev. Bloomquist is the District Superintendent for the Mtoko-Nyadiri District which includes 75 churches, 72 public schools with 5,000 students enrolled, 1 higher teaching training school and 1 hospital and 10 clinics.

There will be a fellowship hour after the close of Rev. Bloomquist's talk.

Program Given

By Mrs. Donnell

Xi Zeta Upsilon chapter of Beta Sigma Phi met Thursday in the home of Helen Etter.

Mona Beth Windom presided at a short business meeting preceding the program titled "Window Treatment" which was given by Pat Donnell.

Attending were Pat Donnell, Elaine Floyd, Joyce Lackey, Mona Beth Windom, Pat Dear, Marva Hohertz and the hostess.

HANSFORD

HOSPITAL NEWS

Patients in Hansford Hospital this week are Sarah Townsend, Phillip Ray Kent, David Stafford, Neil Cummings, Roscoe Crawford, Billie Joe Dyer, Viola Fite, Lena Stephenson, Tomasa Lonjolia, Edith Bartz, Hollie Riley, Nellie Payne, Rosa Richardson, Susie Hand.

Dismissed were Frances Yell, Glenda Westerfield, Elizabeth Underwood, William Hutton, JoAnn Weaver, Addie Estherbrook, Betty Howell and Joe Day.

A.S. Gamble was transferred to Northwest Texas Hospital in Amarillo.

Charity Class

Has Meeting

Jo Nell Grayson was hostess for the Charity Sunday School Class meeting held in her home Monday evening, Feb. 28.

The meeting was opened and conducted by Dorothy Woolley with Betty Hazelwood leading in prayer. The group set a goal for 7 members to be present each Sunday in March. The next meeting will be with Pat Dear.

Attending were Mrs. Woolley, Hazelwood, Mary Faith Nollner, Joan Crawford, Dear, Wanda Brown and one visitor, Jean Kloss.

Mr. and Mrs. Jim Womble and Terry accompanied Jimmy Dale to Houston last week where he entered his steer in the stock show.

Cut Rate GROCERY