

HANSFORD COUNTY'S LEADING NEWSPAPER



The Hansford Plainsman



VOLUME VII, NUMBER 18

SPEARMAN, HANSFORD COUNTY, TEXAS 79081

THURSDAY, DECEMBER 23, 1965

Miss Jayne Massie portrays Mary



And she brought forth her firstborn son,
and wrapped him in swaddling clothes,
and laid him in a manger.

Luke 2:7



SANTA VISITS--Santa Claus found plenty of Spearman small-fry on hand to get candy and give their orders for Christmas. Santa came to town Saturday afternoon and spent about one hour visiting with children and presenting candy.

Plainsman Photo

Royalty Presented Tuesday At SHS Assembly Program

The personalities and outstanding students in Who's Who for Spearman High School were presented in a special assembly program Tuesday afternoon.

Entertainment for the program was presented by the Lynx Choir. After the program of concert numbers, the personalities were presented and Mr. and Miss SHS were crowned.

Crowned this year as Mr. SHS was Lynn Buzzard, President of the Student Council, and captain of the football team. Miss SHS this year is Betty Brown, head cheerleader. Both are seniors.

Eight students were presented as the class favorites. They are: Seniors, Karen Gibson and Mike Babbs; Juniors, Nancy McCullough and Anthony Wilkerson; Sophomores, Cindy Cochran and Chris Babbs; Freshmen, Marcia Shield-knight and Bobby Smith.

Mr. and Miss Intellect are James Ownbey and Frances Whitson.

Mr. and Miss Dependability, Harrell Adkison and Janie Kirkland.

Mr. and Miss Sincerity, Mart Brillhart and Gwen Hanners.

Most Likely to Succeed, Kathi Pattison and Larry Holt.

Mr. and Miss Personality,

Rennie Berry and Sue Stubblefield.

Most Beautiful, Robbie Ownbey.

Most Handsome, Larry Butts.

FHA Beau, Larry Holt.

FFA Sweetheart, Betty Brown.

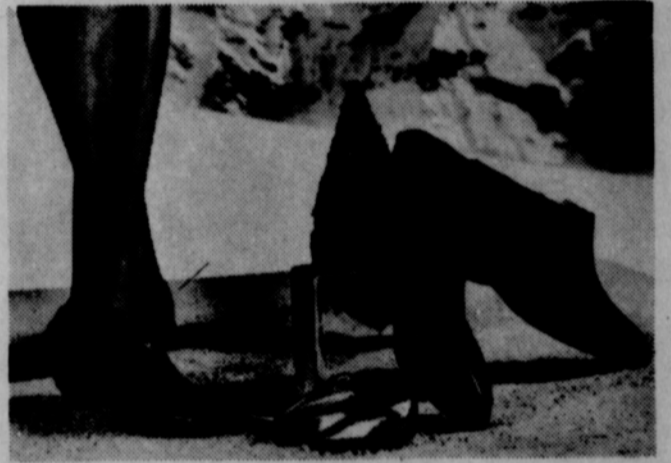
Who's Who for 1965-66 at SHS were:

Karen Gibson, Bethany Donnell, Susan Hutchison,

Frances Whitson, James Ownbey, Kathi Pattison,

Harrell Adkison, Mart Brillhart,

Rennie Berry and Lynn Buzzard.



PLEASE THE WHOLE FAMILY WITH SLIPPER GIFTS. Suggested here, left to right, are: for the teen-ager, smooth leather "zipper slipper"; for little sister, grained leather scuff; for Mom, a leather slipper-boot; for Dad, brushed leather slipper-boot with shearling lining. By Bertlyn, Winig and Daniel Green.

Card Changes Hands For Seventeenth Time

Coil Electric Cord

Never bend an electric appliance cord sharply. Coil it around a hot appliance or hide it under a rug.

A big Christmas card that the first sender does not think is very pretty, has been exchanged between the Olin Sheets family and the Zack Jagers family for the last 17

years.

Mrs. Sheets said she sent the card to the Jagers after they moved from Spearman. It was a big card that unfolded and had a big Santa Claus on it.

The next year the Jagers returned it with a note that they could send it to the Sheets more than they could return it. The swap-out has continued every year.

It even made trips to Indonesia and to the Dominican Republic when the Jagers were there. He served as an agriculture advisor in those countries.

Jagers was County Agent here and his wife taught in the Spearman schools. They are now teaching in the Bonham Public Schools.

"If I had known we were going to keep the card in circulation so long, I would have picked a prettier one," Mrs. Sheets said.

Repeal of Federal Tax Puts St. Nick In Generous Mood

The Federal Government has put Santa in a very generous mood for Christmas 1965. Repeal of the Federal Excise Tax on many giftable items, from furs and jewelry to handbags and cosmetics, is filling Santa's bag with savings and more gifts for his favorite gals.

Luxurious fur can be a Christmas dream come true, both for the giver and receiver. Santa saves substantially when he buys this most perfect of all feminine Christmas gifts—now tax-free.

Such stunning, "luxury" leather gifts as handbags and purse accessories will put Santa dollars ahead through tax savings and make her heart glad on Christmas morn.

For the Santa who counts his dimes, little things do mean a lot.

Pretty costume jewelry, new and old favorites among toiletry items and the cosmetics she never gets enough of are in the "no more Federal Excise Tax" bracket, to give Santa savings on every dollar he spends.

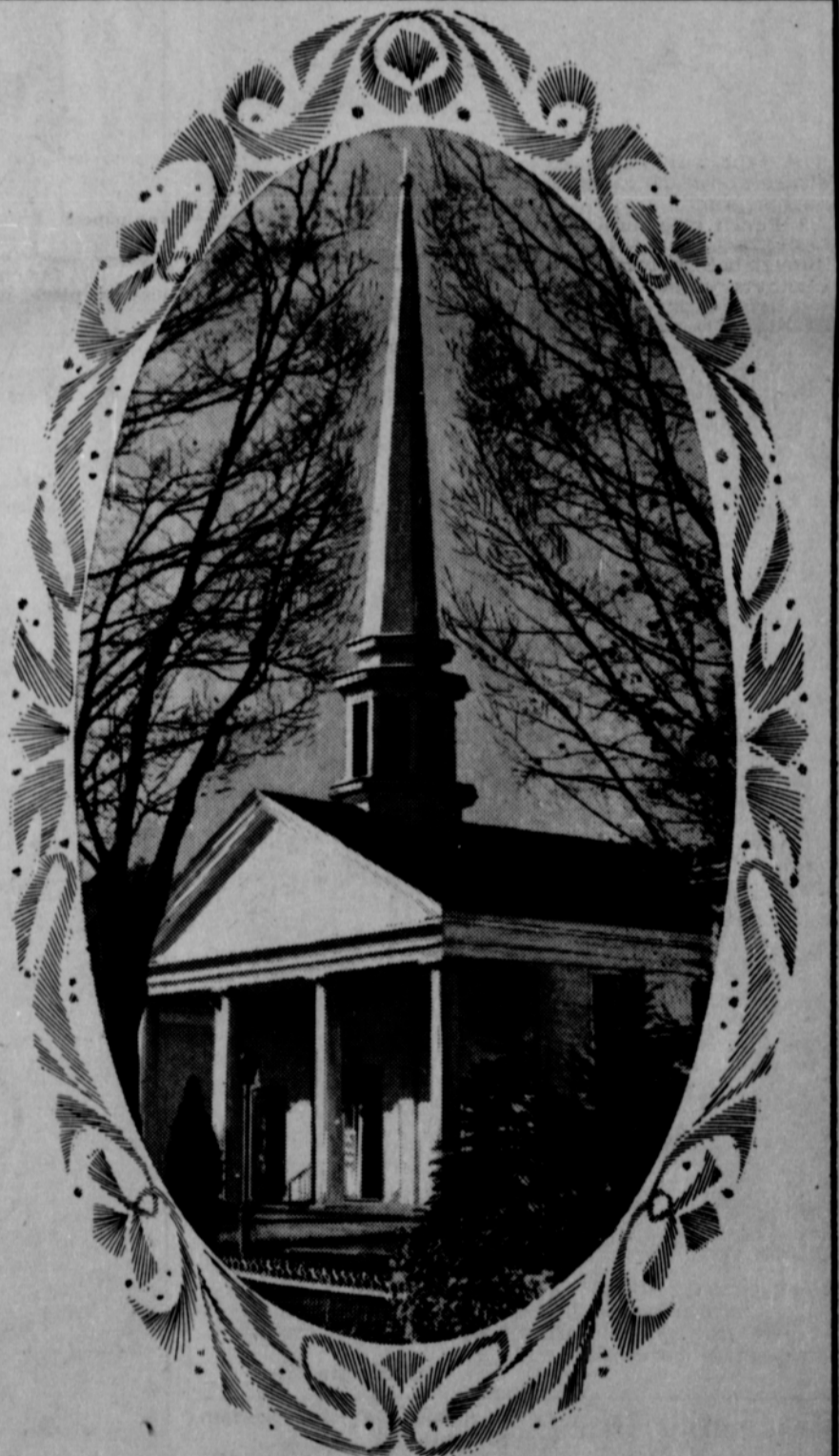
**CHRISTMAS
COUNTDOWN
ONLY
1
SHOPPING
DAY
LEFT**

PLAYING MONSTERS
New novelty card games take inspiration from the monster cult. There's Monster Old Maid, for example. The Adams Family and the Munsters are basis for still others.

**Christmas
Greetings**
Spearman Motor Co.

P *Peace*
on
E *Earth*

As the joy, light and love of this Christmas season, radiate their blessings upon all, we sincerely wish our good friends in the community a holiday filled with life's most treasured gifts.



**Horizon Oil
& Gas Co.**

For Family's Christmas Fun

Little Prune People Bring Good Luck

From the South of Germany comes a centuries-old custom of making "Little Prune People" for Christmas decorating and eating.

Legend has it that the appearance of these "little people" in the home during the holiday season will bring good luck and good harvest during the coming year. They take on characterizations of people of all ages and occupations, including St. Nicholas himself.

If Dad has some heavy wire and some scraps of plywood in his workshop, and if fruits and nuts are on hand (as they usually are at Christmas), almost any family could make some "lucky little prune people" this Yuletide. For groups large or small, planned or impromptu parties, the creation of prune people could be an enjoyable Christmas Day pastime.

Most people will quickly come up with their own ideas for prune characters they would like to create. The characterizations are limited only by the imagination and the materials that can be used.

Traditional materials used to create "prune people" are: heavy picture wire, prunes, dried figs and raisins, unshelled nuts, quarter-inch plywood scraps or wood scraps from crates, pliers, hammer, small awl, foil, scraps of Christmas wrapping, glue and a little imagination.

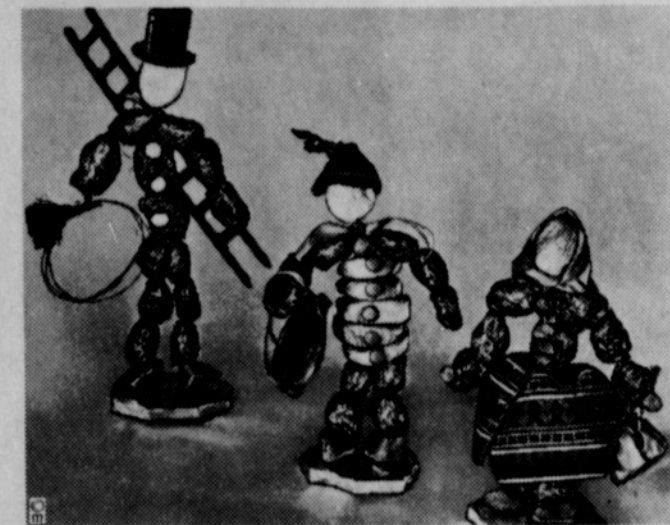
To make prune people, follow these steps:

1. Cut a three-inch square wooden base. Make two holes one inch apart in center of base and cover with paper or foil.

2. Cut wire 30" long and put each end through holes in bottom of base. The base will now stand with wire perpendicular and ready to string on nuts or prunes.

3. Punch hole through two Brazil nuts and string wire through holes to form feet and glue nuts to wooden base.

4. String two or three prunes on each wire for legs. Then twist two strands of wire around each other to form one strand so that body can be made from prunes or figs (five or six figs or two or three prunes).



PRUNE PEOPLE BRING luck during the coming year, legend says. They are easy to make with ingredients most families have on hand at Christmas time —

prunes, figs, Brazil nuts, together with plywood scraps, picture wire and scraps of such decorative materials as foil and gift wrapping paper.

5. Twist strands of wire again to hold torso in place at neck. Then separate wires and bend down arms. Make arms of prunes, adding raisins for cuffs or hands, snip off extra wire and bend into loop to hold fruit in place.

6. For the head, make small hole in end of walnut and insert short piece of wire in walnut — just far enough to hold head in place, using balance of wire to wrap around wire that forms body of figure.

7. With scraps of cloth, thumb tacks, small balls of foil or raisins and a little creative thought, dress the little prune figures.

"NIGHT OF CAKES"

In Ireland, Christmas Eve is often called the Night of Cakes. This name is based on

the custom, still practiced, of baking special Christmas Eve cakes spiced with caraway seeds.

Christmas Blessings

May your heart be filled with the rich blessings, and abiding love of the holiday.



**CHARLENE BULLS
DECORATOR**

208 Hancock

Spearman



To our many friends and patrons who have made this Christmas so grand for us, we wish the Merriest Christmas of all.

Mr. & Mrs. Jim Strawn & Employees

STRAWN FARM & RANCH SUPPLY

Spearman

Gruver

GREETINGS

Carolers raise their voices in song, and we raise ours in thanks to all of you, our customers, for your patronage.



John, Pat, Millard, Cecil, Max and Vance

B. & B. Sales Co.

Spearman

Perryton



Joy and Peace

May the true meaning of Christmas be with you always, bringing joy, light and love into your heart and home. And may all your hopes be brighter because of the Christ Child's coming.

Chambers Department Store

Downtown

Lady Fair Shop

Plains Shopping Center

Spearman

Letters

to

Santa



Dear Santa Claus,
Please bring me a truck, some spurs, and a guitar. Bring my sister, Johnnie, a doll and an ironing board. We have both been good! Merry Christmas
Chuck Eaton.

Dear Santa
Please bring me a talking doll and a top. I have been a good little girl!
Love,
Johnnie LeAnne Eaton

Dear Santa,
Please bring me a little princess make-up vanity and a Baby Boo. I will leave something good to eat on the table for you. I've been a good girl, and I am 5 years old.
Thank you
Kim Keyser

Dear Santa,
I don't want anything for Christmas, but I do have 4 things. I don't know if I have been good at all, but I hope I have. Here are the things I want.

1. Cookie Factory with extra mixes and decorators.
2. Easy-Bake Oven with popcorn maker.
3. Doll swing that swings doll for 10 min.
4. Baby Nancy with all the things that go with her.

P.S. They cost all together \$34.66. I might not get all of them, but I hope I've been good.

Love you very much,
Mary Kibler
P.S. I love you very, very much. I think you're the best man in the whole wide world. I love you.

Dear Santa Claus,
My name is Jeffery Hohertz. I would like you to bring me a tiger Joe, an Indian outfit and some parts to my train. My little brother, Doug, would like a gun and a cowboy suit and guitar. Please remember all of the other little girls and boys.
Jeffery Hohertz

Dear Santa Claus,
I am a little boy Ted Morgan. I live away out in the country. Sure hope you can find me. I want a guitar. I can't ask for much I will have a birthday New Year's Day. My big brother Derral wants a pair of binoculars. We have a new big big brother in our

family now. He married my sister Doris. I don't know what to ask Santa Claus to bring them. I am sure you can find something.
Ted Morgan,
Box 182
Spearman, Texas, 79081

Dear Santa,
I have been good. And I wish you would bring me a Baby Boo. And I would like for you to bring me a camera. And my brother would like a tractor. And I would like an electric telephone. And my brother would like a truck. My brother has been good.
Your friend
Janyth.

Homemaking Notes

By Linda Webb
Home Demonstration Agent

When the Christmas holidays arrive, my thoughts along with everyone else, turn to holiday foods and parties. Of course, mail coming across my desk is loaded with good new recipes.

Sort Those Clothes

Sort your clothes before starting to wash, using a work table of proper height. Mend articles that need it and remove stains before washing, as tears become larger in washing and stains are often set.

Use Cart for Jobs

Use baskets and carts to make one trip do the place of several as you do your housework.

For the punch bowl, here are a couple of very good sounding recipes featuring fresh citrus fruit.

CARROLLER'S PUNCH
1 quart boiling water
4 teabags
2 sticks cinnamon
3/4 teaspoon ground allspice
3/4 cup sugar
1 cup fresh orange juice
1/4 cup fresh lemon juice
1 pint cranberry juice cocktail
orange or lemon slices
Pour boiling water over tea bags; add cinnamon and allspice; steep for 5 minutes. Remove tea bags and cinnamon. Add sugar; stir until dissolved. Add fruit juices; heat, but do not boil. Serve hot in individual mugs. Garnish with orange or lemon slices. If desired, serve cold over ice. Makes approximately 2 quarts.

FIRESIDE PUNCH
1 egg
1/4 cup sugar
1 pint cranberry juice cocktail chilled
2 cups fresh orange juice, chilled
2/3 cup fresh lemon juice, chilled
1 12 oz. bottle ginger ale, chilled
California orange slices
Place egg, sugar, cranberry juice cocktail and citrus juices in electric blender. Cover and blend at low speed for 1 minute. Or, beat egg and sugar with rotary beater; add juices and beat until frothy. Pour into pitcher and add ginger ale. Pour into ice-filled glasses; garnish with orange slices. Makes 1 -1/2 quarts.

Amid all our hurried, hurried preparations for this holiday season, won't you stop for a reflection of the true meaning of Christmas?

I wish all of my readers the merriest of holidays and best wishes for a prosperous New Year.

THE LAST NOTE-When fate knocks you flat on your back, remember she leaves you looking up.

Mr. and Mrs. Ray Lackey, Tim and Ann left Wednesday to spend the holidays with relatives in Shidler, Okla. and Christmas Day with Mrs. Elsie Stephenson and daughters of Enid.

Stubborn Sink Rust

If you have rust stains on your sink, try sprinkling with a few drops of vinegar and letting it remain for a few minutes. Scour in the usual manner.

plan to destroy evil and adopt us as His children again. It would take a cross and a Supreme sacrifice to be offered on it. He had to send His Son to earth, to take on human form that He could suffer, die & be raised again. This is Christmas--the beginning of this redemption plan.

"The wages of sin is death; but the free gift of God is eternal life through Jesus Christ our Lord." (Romans 6:23).

Make this a real Christmas by accepting God's great GIFT, Jesus. "Thanks be to God for His unspeakable Gift." (2 Corinthians 9:15).

God's salvation plan began in a manger, continued on a cross and now seeks to be born in your heart. Will you respond to this gift of love: May your Christmas this year be true joy! Personal greetings!

Flavor for Gravy

Browned flour is fine to use as thickening for old-fashioned gravy. It provides good color and flavor. Stir the flour in a skillet over low heat until it becomes a dark, golden color. Its well to remember, when using, that flour so prepared has less thickening power.

THE WAY I SEE IT

Robert Cordes, Pastor
Oslo & Faith Lutheran

CHRISTMAS

"But when the time had fully come, God sent forth His Son, born of woman, born under the law, to redeem those who were under the law, so that we might receive adoptions as sons." (Gal. 4:4)

And He was laid in a manger! Christmas is a miracle, so great that we cannot grasp its complete meaning. But we can let it fill us with marvel. What is there to marvel over?--That there was a manger at all! That the manger cradled God who was made man. That the manger should have power to draw the attention of mankind, even hardened persons in sin. That the manger event should have power to transform men.

We worship, not the manger, nor a relic, but Him who once lay in a manger. Worshipping Jesus as King and Savior, we go forth, glorifying and praising God. This makes Christmas a blessed event.

It was the mighty act of God. We read in the Bible how God created the world and people. We read of His mighty flood engulfing the world, or about delivering His people from Egypt. But the Christmas story is one of the mightiest acts of God.

This baby was born to fulfill the promises God made again and again. Here is the God almighty carrying out His

St. Francis Planned for First Creche

In the miracle of the manger, in the Madonna and Child, mankind sees an ever-present reminder of the love of God, the glory and promise of Christmas. Each year, as Christians return in heart and spirit to Bethlehem and the manger, the joyous message lives anew. In cities, churches and homes, manger scenes symbolize once again the birth of a holy Child.

The treasured tradition of re-creating the manger has a long and notable history. The first creche or crib, scholars say, was erected by St. Francis of Assisi and his brethren, in the tiny Italian village of Greccio in 1223.

As the people of the town gathered about the manger, the first Christmas carols were sung--joyous songs in honor of the Saviour's birth. St. Francis felt that, through the manger scene and the cheery Christmas songs, even the humblest member of the congregation could participate more fully in the observance of Christmas.

Re-Creating the Nativity in Art, Song

Through the years, the meaning of the manger has been enriched by hundreds of thousands of reverent re-creations.

Both craftsmen and artists have been inspired by the manger, and have shared their inspiration with many. The Madonna and Child appear again and again in countless famous paintings, and the Christmas creche in miniature, created by the loving hands of skillful craftsmen, is a precious tradition in many lands, in many homes.

In song, too, "the young Child with Mary His mother" lives anew. Gathering around the manger scene, glad voices joyfully carol, "Silent Night, Holy Night! All is calm, all is bright, 'round yon Virgin Mother and Child..."



GLAD CHRISTMAS TIDINGS

All the world is happy... it's Christmas Day, the bells are ringing those special Christmas wishes of joy and happiness to all. We are taking this perfect opportunity to express deep appreciation to you, our valued friends and customers.

CATES

MENS AND BOYS

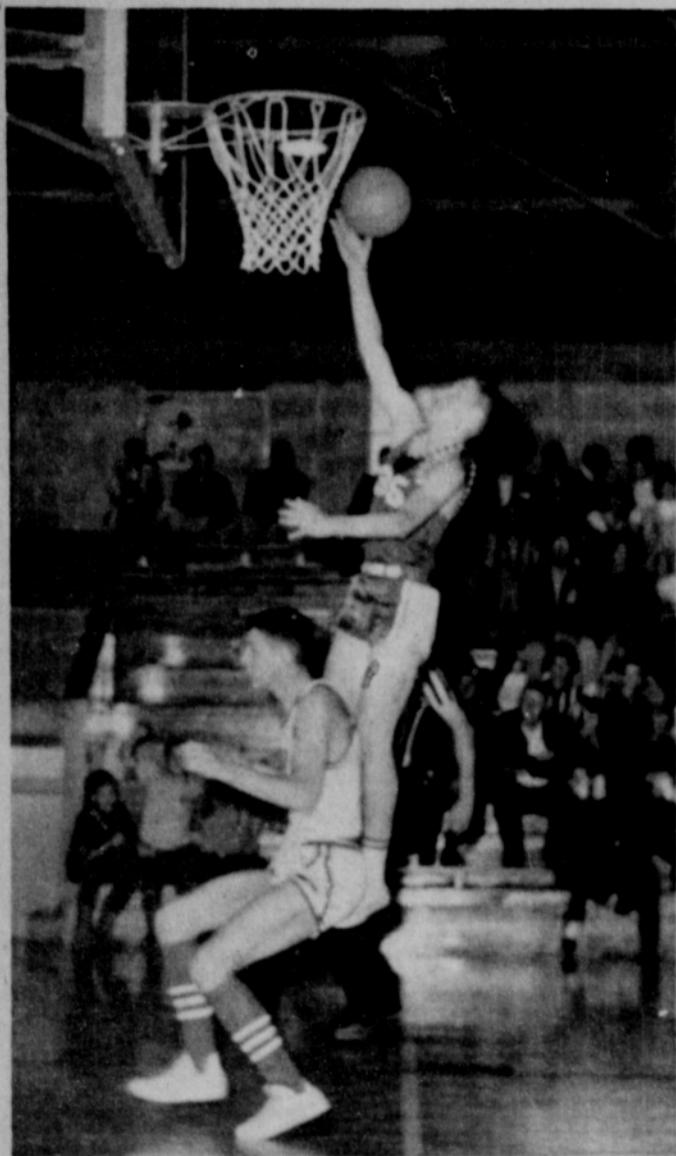
WEAR



It's that joyous and gladsome time of year when we open our hearts and homes to one and all, sharing our blessings large and small. May yours be the rich delight that comes with partaking of the spirit of Christmas.

PLAINSMAN NEWSPAPERS

Jim - Linda - Burl - Day - Faye - June - Alma - Billy



TWO POINTS--Mike Hendricks goes high over a Gruver Greyhound to score two points. Hendricks scored seven points in a losing effort by the Lynx. Gruver won the game 67-47.

Plainsman Photo

Varsity Teams Win 3 of 4 Games at Sunray, Gruver

Spearman varsity basketball teams won three and lost one in games played Monday and Tuesday night in Sunray and Gruver.

Monday night Spearman teams took two games from Sunray. The Lynxettes took a close one 47-44 and the Lynx won 57-49.

Gibson and Wilde took the scoring task at Sunray with Wilde hitting 23 points and Gibson 16. Marcia Shieldknight had 7 and Susan Hutchison 1.

Spearman led at the quarter stops 15-9, 21-18 and 34-25.

Four Lynx hit the scoring double figures to defeat Sunray. Ken Shufeldt came out of his shooting deep freeze to put in 15 points with four field goals and seven free shots.

Sophomore Mike Hendricks came on strong with five field

goals and three free shots for 13 points. Carl Close had the best night from the floor with six field goals for 12 points.

Larry Butts scored 10 points, Charles Shieldknight four and Carroll Day three.

Tuesday night the Lynxettes guards Bethany Donnell, Kathi Pattison and Robbie Ownbey stopped Gruver cold as Spearman won 44-22. The Lynxette defenders held Gruver to five points in the first half.

Wilde and Gibson pushed in the points. Wilde scored 20 points and Gibson 15. Shieldknight scored seven and Hutchison two.

Wright led the Gruver scoring with 11, Odom had seven, and Bayless and Stewart had two each.

Spearman was leading the Greyhounds 14-12 at the end of the first quarter, and were behind only 23-30 at the half, but the deadly ballhawking

and shooting by Gruver, took its toll in the last two quarters.

Ken Shufeldt and Hoel took scoring honors with 18 points each. Hoel got help from Tipton who had 17 and Silva with 10 as three Greyhounds got in the double figures.

Shufeldt was the only Lynx to break in to the double figures. Hendricks and Shieldknight each scored seven points and worked well around the boards on rebounds.

Butts had six and Clement, Close and Day each had three for Spearman.

Lieb scored eight, Laxson and Wilson six each and G. Wilson had two.

Gruver scored on 17 of 20 free shots and Spearman scored on 11 of 18.

From 80 to 90 per cent of the world supply of gum arabic comes from the Sudan.

Minor Damage In Collision

Two cars sustained minor damages in an accident in intersection of Kenneth and Davis streets at 1 p.m. Wednesday.

The drivers of the cars, according to city police chief Wayne Pierce, were Mrs. Crville Fullbright and Miss Barbara Kitchens.

Miss Kitchens was going south on Davis and Mrs. Fullbright was going west on Kenneth.

INSURANCE JOBS

The insurance business in the U.S., including life, health and property-liability insurance, provides about 1,200,000 jobs, the Insurance Information Institute reports.

Never bend an electric appliance cord sharply. Coil it around a hot appliance or hide it under a rug.



JUMP BALL--Gruver's Darlene Odom (in white) tries to get high enough but fails as Lynxette Nancy McCullough gets the tip. Judy Jones of Spearman waits for the ball. Spearman won 44-22.

Plainsman Photo

Mrs. Santa Does Share of Gifting

Santa isn't the only one who has the Christmas spirit. Mrs. Santa does her share of gifts shopping, not only for Santa himself, but for her feminine friends and relatives.

Some of the loveliest gifts under the tree will be wrapped up with the message, "Merry

Christmas -- from one woman to another."

Here's where fashion gifts really shine! Mrs. Santa has personal knowledge of fashion. More easily than Santa, she can judge what another woman would like, and what colors and styles would be welcome.

In the area of intimate apparel, Mrs. Santa can most appropriately give presents of pretty, personal lingerie.



Merry Christmas

It's Christmastime. The land is cloaked in white serenity . . . hearths are aglow with golden embers of warmth and homeliness . . . peace and happiness fill the air. With our deepest appreciation for all the blessing bestowed upon us, we reach out to our friends and neighbors to share with us the joys of this Holy Season.

Joe Trayler

James Cummings

Tommy Russell

Don Wilcox

Clyde Hacker

Joe Trayler Ford

MERRY CHRISTMAS



Joyous Message of Christmas Lives Anew As Manger Scenes Symbolize Holy Night

"And it came to pass, as the angels were gone away from them into heaven, the shepherds said to one another, let us now go even unto Bethlehem, and see this thing which is come to pass, which the Lord hath made known to us. And they came with haste, and found Mary, and Joseph, and the Babe lying in a manger." — Luke 2: 15-16.

Thus, in the New Testament, Luke tells the story of humble shepherds watching in the fields — shepherds to whom the herald angels brought "good tidings of great joy," that they might seek and find the Infant Saviour. In still another Biblical account of the Nativity, Matthew writes of the Wise Men, who followed a Star to Bethlehem.

"And when they were come into the house, they saw the young Child with Mary His Mother, and fell down, and worshipped Him. And . . . they presented unto him gifts, gold, and frankincense, and myrrh." — Matthew 2: 11

At Christmas, as Christians everywhere celebrate the birth of Christ in church and home devotions, the story of the Nativity is told and retold — but it never grows old. Always, the well-remembered words of two of his disciples, Matthew and Luke, seem to resound with renewed meaning and inspiration, bringing to all some measure of that awe and wonder experienced by the shepherds and the wise men, long ago.

And now, as then, the supreme, the all-absorbing moment in the sacred story is that moment at the manger when first "they saw the young Child with Mary His mother."

Nelda Vanderburg is here from Texas Tech for the holidays with her parents, the Everett Vanderburgs.

Sue Bradford of Wayland College is here with her parents, the R.E. Bradfords for the holidays.

Phyllis Patterson, a WT student, is here for the holidays with Mr. and Mrs. Sam Patterson and Sheila.

Rick Collins is spending the holidays from Texas Tech with his parents, Mr. and Mrs. Lewis Collins.

Jim Steve Ownbey of Texas Tech is here for the holidays with his parents, the Robert Ownbeys.

Miss Gloria Ricketts of Texas Tech is home for the holidays.

Larry Edd Beck of Texas Tech is home for Christmas.

Donna Boyd, a West Texas State student, is here visiting her parents, Mr. and Mrs. Granville Boyd.

Carol Simmons, a student at WT is here with her parents, the Loren Simmons, for the holidays.

Jimmy Kirkland of WT and Malcolm Kirkland of Tech are spending the holidays with their parents, the W.E. Kirklands.

Sandra Kitchens of Texas Tech is here for Christmas with her parents, Mr. and Mrs. T.C. Kitchens and Barbara.

Mr. and Mrs. Bill Choate and family spent last weekend in Amarillo visiting with Dennis Choate, who is being transferred to Hawaii for military duty. Others at the family gathering were Mr. and Mrs. T. A. Choate, Mr. and Mrs. Howard Choate, Mrs. Emma Phillips, Robert Russell and children.

Party in McClellan Home Honors Baptist Youth

Mr. and Mrs. Burl McClellan hosted a party Tuesday night following the ballgame honoring members of the senior department of the First Baptist Church, members of last year's class and other

guests.

Decorations included a green tree decorated with whipped "snow", red felt Santas and candy canes. Various other decorations carried out the seasonal motif.

The table was covered with a green and white snowflake patterned cloth and centered with a candle and greenery arrangement.

Dips, chips, Christmas candies, cookies and cokes were served to Mae Bell Witcher, Rick Collins, Rennie Berry, Frances Clark of Lefors, Nelda Vanderburg, Leroy Callaway, Ronnie Grey, Gary Payne, Willie Reneau, Jim Steve Ownbey, Susan Hutchison, Sue Bradford, Susan Holt, Margot Kilgore, Kate Kilgore, Donna Boyd, Karen Gibson, Harrel Atkison, Connie Fowler, Bethany Donnell, Richard Smith and the hosts, Burl and Day McClellan.

Mr. and Mrs. Bill Choate and family and Mr. and Mrs. Andy Honea and family will be spending Christmas in Holiday with Mrs. Choate's and Mrs. Honea's mother, Mrs. Bill Adams.

Richie Hudson of Southwest State at Weatherford, Okla. is here spending the holidays with his parents, Mr. and Mrs. Dick Hudson and family.

Glenn Ayers of Oklahoma City Christian College is spending the holidays with his parents, Mr. and Mrs. Flavel Ayers.

Young Farmers, Young Homemakers Have Party

The Spearman Chapter of the State Association of Young Homemakers of Texas and their husbands and the Young

Farmers and wives met Dec. 17 at the Hospitality Room of the First State Bank for the annual covered dish dinner and Christmas party.

The tables were decorated in the Christmas motif and after the dinner games were enjoyed by the group.

Attending were Messrs. and Mmes. Harold Groves, Ralph Straw, Jerry Felder, Herman Boone, Albert Clark, Darrel Longlev, Claude Pearson, Fred Groves, Eddie Gates and Mrs. Dick Hudson.

Mr. and Mrs. Orville Fullbright were hosts for a Christmas dinner Friday evening. After dinner gifts were exchanged and all enjoyed visiting front of the fireplace. Attending were Mr. and Mrs. Ernest Sluder of Gruver, Oxlene and James Martin, the Fullbrights and Cloetta.

Paulede Hester of Phillips University is here visiting her parents, Mr. and Mrs. Jimmy Hester during the holidays.

Mr. and Mrs. Jack McWhirter, Lloyd and Marla Jo and Geir Overland were Monday evening dinner guests of Mr. and Mrs. John Trindle, Janice and Connie.

Miss Darla Adkison started work at the Rexall drug store Monday till after the holidays.

Burt on Williamson of Lubbock came Saturday and will work here during the holidays from school. He is staying with his sister, Mr. and Mrs. Robert Brandt.

Pat Pattison of Phillips University is spending the holidays with Mr. and Mrs. Clyde Yeary of Waka.

Yule Music Blends Joy, Reverence

Across the centuries, man has looked to music to express his happy feelings at Christmas time.

From the medieval "Hail, Mary, full of grace" and "Mervele nocht, Josep" to the modern "White Christmas" and "Rudolph the Red-Nosed Reindeer," songs have been a favorite part of Christmas celebrations.

In the tradition of Christmas music, there are simple carols, blending reverent wonder with quiet joy — Martin Luther's "Away in a Manger," for instance, or the mid-nineteenth century hymns, "It Came upon a Midnight Clear," "We Three Kings of Orient Are" and "O Little Town of Bethlehem."

There are merry songs, celebrating the jolly mood of the Yuletide, such as the time-honored "Deck the Halls," or the modern "Rudolph" and "Frosty the Snowman."

Save Lipstick Cases

Save some of your very prettiest lipstick cases. When the lipstick is all gone, clean the case well with a cleansing tissue. Place one in each of your handbags to hold bobby pins.

BABYLON CALENDAR

About 4,000 B.C. Babylonians made the first calendar in which a year was divided into 12 equal parts.

Composers Inspired...

Famous composers have found in Christmas inspiration for some of their most renowned music. At Christmas, and Easter, too, people gather to hear performances of Handel's "Messiah," Bach's Christmas Oratorio and Berlioz' "L'Enfance du Christ" are other examples of "serious" music often specially performed at Christmas.

Twentieth century composers, too, have written music around Christmas themes. Probably the most familiar example is Menotti's "Amahl and the Night Visitors," an opera commissioned for television and performed annually. Honegger's "Christmas Cantata" and Britten's "Ceremony of Carols" are other notable examples.

Take your problems to Church this week — millions leave them there!



**R. L. McCLELLAN
GRAIN CO., INC.**

FIRST STATE BANK
Member F.D.I.C.

B & B GRAIN CO., INC.

The Hansford Plainsman



Evergreen Undisputed Favorite

In Christmas trees, it is spirit that counts. Almost anything can be made into a Christmas tree. In Minneapolis, Minn., they made a tree out of water pipes fastened like spokes to a telephone pole, and appropriately decorated.

In Wilmington, N. C., an oak more than 300 years old is adorned at the Yuletide with colorful ornaments and electric lights. In Indiana, they decorate the foot Soldiers and Sailors monument with electric candles and stars.

The U.S. National Christmas Tree, officially designated in 1926, is not an evergreen. It is a giant redwood, located in Kings Canyon National Park, Calif.

This unusual Christmas tree, called the "General Grant," is 3,500 years old.

Many families prefer "permanent" Christmas trees made of aluminum.

Despite all this, the tested favorite tree is still the evergreen. Most people asked, would probably vote for the "fir tree."

Actually, there are nearly 100 species of the popular "fir tree," found in the mountainous regions of Central Europe, Southern Europe, Asia and the Himalayas and North America.

A frequently-seen Christmas tree variety is the "balsam fir," also called "Canada balsam" or "Balm of Gilead," according to the Encyclopedia Americana. This is one of the most common trees of eastern North America, extending from Virginia and West Virginia in the United States to Labrador and Newfoundland.

The balsam fir may grow 40 or 50 feet tall. The southern fir is of about the same height and is found in the mountains of Virginia, North Carolina and Tennessee.

Other American firs are essentially Western. They include the Pacific silver fir, white fir, the grand fir, the Alpine fir, the red fir, the Shasta red fir and the noble fir. These firs may attain 100 feet in height.

In Canada, the exporting of Christmas trees, including spruce, pine and spruce, is important business. Seven provinces export trees, to countries as far away as Venezuela.

Keep Heating Unit In Good Repair At Yule Time

Are you looking forward to a warm and happy Christmas?

If so, make sure your heating unit is operating properly.

If you did not have your heating unit checked before winter began, it is a good plan to have it done now, before the holiday season arrives.

You will not only provide efficient heating during the Yule season, but you can also feel assured that your heating unit is in good operating order.

Every eighth fire is caused by a fault in a heating unit or system, or by failure to maintain it properly, the American Insurance Association says.

Source of Song

Among the well-loved Christmas hymns is "It Came Upon a Midnight Clear." The words to this one were written by a Unitarian minister of Weston, Mass., named Edmund H. Sears. Time? Just about a hundred years ago, says the Book of Knowledge.

One melody for this hymn was composed by a Detroit journalist and editor; another melody was adapted from an old British folk tune by a composer better known for his long string of light-hearted operetta hits. This was Sir Arthur Sullivan, of the team of Gilbert and Sullivan.

—Weekly Opportunities For Worship—

Apostolic Faith Church
W. E. (Hap) Blythe, Pastor
Sunday School 10:00 a.m.
Morning Worship 11:00 a.m.
Evening Worship 7:00 p.m.

Assembly of God Church
Rev. T.J. Taylor Jr.
Sunday School 9:45 a.m.
Morning Worship 11:00 a.m.
Evening Worship 7:30 p.m.
Wed. Bible Study 7:30 p.m.

Church of Christ
Charles Milner, Minister
Sunday School 10:00 a.m.
Worship 11:00 a.m.
Worship 7:00 a.m.
Wed. Ladies Bible Class 9:30 a.m.
Wed. Bible Study 7:30 p.m.

Fellowship Baptist Church
W. S. Herring, Pastor
Sunday School 10:00 a.m.
Preaching Service 11:00 a.m.
Sunday Evening Service 7:30 p.m.
Wed. Evening Service 7:30 p.m.

First Christian Church
Rev. W. Graham Pugh, Minister
Sunday School 9:45 a.m.
Morning Worship 11:00 a.m.
Youth Meetings 6:00 p.m.
Evening Worship 7:30 p.m.
Wed. Choir Practice 7:30 p.m.

First Baptist Church
The Rev. Luther M. Berry, Pastor
Sunday School 9:45 a.m.
Morning Worship 10:45 a.m.
Training Union 5:30 p.m.
(Oct. 1-Apr. 30)
Training Union 6:00 p.m.
(May 1-Sept. 30)
Evening Worship 6:30 p.m.
(Oct. 1-Apr. 30)
Evening Worship 7:00 p.m.
(May 1-Sept. 30)
Wed. Evening Prayer Hour 7:30 p.m.
Thurs. Choir Rehearsal 7:00 p.m.

Oslo Lutheran Church
18 mi. N.W. of Gruver
Robert L. Cordes, Pastor
Sunday School 9:45 a.m.
(includes adults)
Worship Services 11:00 a.m.

First Methodist Church
Brother Wesley Daniel, Minister
Sunday School 9:45 a.m.
Morning Worship 11:00 a.m.
M.Y.T. 6:30 p.m.
Evening Worship 7:30 p.m.
Women's Society of Christian Service Wed. 3:00 p.m.
Choir Rehearsal 7:30 p.m.

First United Presbyterian Church
Everett H. Cain, Jr., Pastor
Sunday Church School 9:45 a.m.
Morning Worship 11:00 a.m.
Evening Study Group 7:30 p.m.
Wed. Choir Practice 7:30 p.m.

Our Lady of Guadalupe Mission, Gruver
Sunday Mass 4:00 p.m.

Pentecostal Church
Sunday School 9:45 a.m.
Morning Worship 11:00 a.m.
Evening Worship 7:30 p.m.

Sacred Heart Catholic Church
Spearman
Rev. James C. Gurzyński
Sunday Mass 9:00 a.m.
Wednesday & Friday 8:00 p.m.
Saturday Mass 8:00 a.m.
Other Days Mass 6:30 a.m.

Faith Lutheran Church
Farm Bureau Bldg.
Robert Cordes, Pastor
Worship Services 9:00 a.m.
Sunday School 10:00 a.m.

Union Full Gospel Church
Rev. George R. Bollinger, Pastor
Sunday School 10:00 a.m.
Morning Worship 11:00 a.m.
Bible Classes Sunday 6:45 p.m.
Evening Worship 7:30 p.m.
Wed. Bible Study 7:30 p.m.

Waka Church of the Brethren
Lawrence Lehman, Pastor
Sunday School 10:00 a.m.
Morning Worship 11:00 a.m.
Evening Service 7:00 p.m.
Choir Practice
Wed. 7:00 p.m.
Adult Bible Study
Wed. 8:00 p.m.



NATIVITY SCENE IN BAS RELIEF adorns a marble pulpit in the Church of Santa Maria Novella at Florence, Italy. The early-Renaissance work was completed and placed in the church only after a court dispute by two families, both of whom claimed the rights to the pulpit.

Florentine Art Tells Story of Christ Child

In the Dominican church of Santa Maria Novella at Florence, Italy, stands a pulpit of white marble which bears, in bas relief, scenes from the story of Christ's life on earth — the Annunciation, the Nativity, the Presentation in the Temple.

Like many a building in famous Florence, the cradle of the Italian Renaissance, this ancient church is rich in the treasures of art and history, and both art and history combine in the story of the white marble pulpit, a story that lives across the years.

The pulpit first was placed in its present situation, on a column of the west aisle, in 1448. Early Renaissance theories of art are reflected in the bas reliefs. For instance, the Nativity scene presents lifelike figures with the warmth of humanity, rather than the more stylized, ornate forms that a sculptor of an earlier era might have chosen to create. Families "Feuded"

Full of very human feeling, too, is the story of how the pulpit came to be created — the story of a "feud" between two great families.

The Rucellai family undertook to have the pulpit designed, executed and placed in the church, and Filippo Brunelleschi, the first great architect of the Italian Renaissance, was commissioned to design it.

Brunelleschi is best known for his design of the octagonal ribbed dome of the Florence cathedral. Among his other works are the Pazzi chapel, the church of San Lorenzo and the Pitti Palace, all in Florence.

Designing the pulpit for the Rucellai family may have been one of Brunelleschi's last works, for the Florentine architect died in 1446, two years before the pulpit was completed and placed in the church.

Maestro Lazzaro, history says, was the sculptor chosen to execute Brunelleschi's design.

Claimed Column
Up to this point, there is nothing unusual in the story of the pulpit. It was common in those days for parts of a church to become the "appropriation" of a particular family.

For instance, the chapel within the church of Santa Maria Novella, where the pulpit was to be placed, was the property of the Pasquali family. The Rucellai simply claimed one pillar or column within the chapel, and no objection was recorded by the Pasquali.

The Minerbetti family, however, felt differently. When the pulpit was completed and ready to be put up on the column, representatives of the

Minerbetti came forward with the claim that this particular column belonged to them.

Decided in Court

The matter was taken before a court composed of Bishop Antonio of Florence and other judges. The only proof that the Minerbetti could offer to substantiate their claim was that their family arms stood painted over the column.

The court ruled that the Rucellai could place the pulpit

in the church, on condition that the Rucellai would remove it whenever the Minerbetti agreed to replace it with a pulpit of equal or greater value.

How was the "feud" decided? What the Minerbetti did is not recorded, but, clearly, one thing they didn't do was to replace the pulpit. Lazzaro's bas reliefs continue to tell their stories of the Christ Child, and in the base of the pulpit, triumphantly placed for all to see, is the coat of arms of the Rucellai family.



Plant Wins Yule Favor

One plant particularly favored at Christmas in the United States and Canada is the poinsettia. The holiday colors of this green shrub with its star-shaped red clusters make it an appropriate symbol of the season.

If it had not been for the interest of an American diplomat, Dr. Joel Poinsett of Charleston, S. C., the poinsettia might never have attained popularity. Serving as the first U. S. minister to Mexico in 1828, Dr. Poinsett discovered this tropical plant.

Impressed with its beauty, he brought it back to the United States and introduced it into cultivation. Later, the plant was named the "poinsettia" in his honor.

Albert Ecke, a California farmer, developed and improved the plant, and first marketed it in 1906. Since then, it has become a favorite Yuletide decoration.



Christmas is the perfect time to count our many, many blessings. High on our list is the confidence and good will you've showed us. So to you, our patrons, we're extending a cheerful, hearty holiday "thanks."

Pioneer Restaurant

210 Main

Spearman

In order for our employees to spend the holidays with their loved ones, we will be closed, December 25 and 26th.

A Very Happy

Christmas

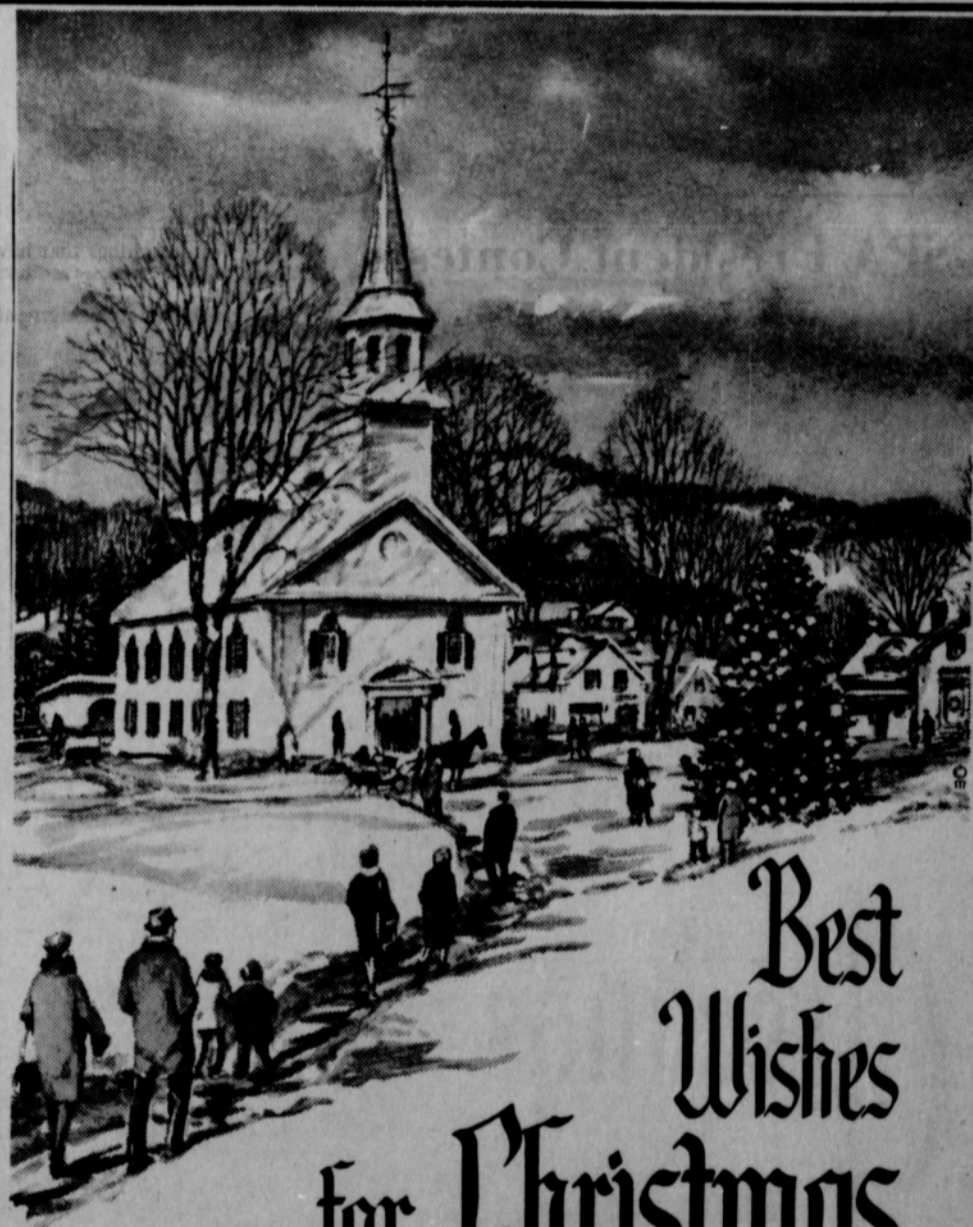
The tree is trimmed, ornaments are glimmering, Santa's arrived and everybody's happy!
To all you wonderful people, we send wishes for all the best of Christmas.
We are happy to know and to serve you.

to Everyone

Spearman Cable T. V.

System

308 S. Main Telephone 659-3363



Best Wishes for Christmas

As we celebrate this joyous occasion of the birth of the Christ Child, let us remember especially the hope that was born anew and the love that filled the world on that first Christmas. May their light shine today, so that peace and understanding will prevail among men.

DAN DESIMONE, OWNER

Berry's Cleaners



SHOPPING--Miss Kay Huse discusses a Christmas purchase with Mrs. Sam Watson in Massad's. The high school student was just one of the many shoppers who crowded the stores this week. This has been one of the biggest Christmas business years in Spearman.

Plainsman Photo

Survey Shows Christmas '65 Is Biggest Ever for Spearman

This is one of the biggest Christmas business years Spearman has experienced, a survey of stores has shown.

Not only has business been good the last two weeks before Christmas, but it has been good all month. Business owners say that Christmas shopping started early this year. Some people were shopping even before the

Thanksgiving holidays. Some merchants reported the shopping started earlier, but with the earlier shopping, was a more discriminating shopper. Customers did more looking and were not just buying anything to complete their buying in a rush.

An encouraging note was reported by some stores, who

had shoppers returning to Spearman after trips to neighboring towns and cities to buy their gifts.

Practically all stores have been working extra clerks during the rush of the last two weeks, and the help is busy.

A change in buying habits and things being purchased has been reported. One store owner reported that some items which had been good sellers every year, are not moving this year, and things that have been slow in the past are "hot" this year.

Shortages and slow shipments have plagued many stores and seriously cut into sales. Stores selling colored televisions have been unable to meet the demands and the suppliers are unable to fill orders. Store owners said they could have sold a large number of sets if they could have filled the orders.

Some women's clothing stores reported that shipments expected early in December for the Christmas season have been late arriving or cancelled.

The popular toy items have been in short supply. Many stores said they sold the popular dolls, road race sets and other "hot" items and have not been able to replenish their stocks.

There have been some stores reporting slow sales or about average sales, but overall, business of the past two or three months has been on the increase.

Car dealers report car sales about average for Christmas. However, sales have been good over the last two or three months.

One businessman said he expected business in 1966 to be better. Our agriculture is in better position than in the last couple of years, so business should be on the increase.

Mr. and Mrs. Cecil Rains of Medicine Lodge, Kans. are coming to visit her parents, Mr. and Mrs. Laird Locke for the holidays.

expected net income loss to producers, according to Harp.

Even while taking issue with the administration of the feed grain program, Harp and GSPA hasten to remind producers that organized efforts by farmers have been effective, for before the present Feed Grain Program in 1960, grain sorghum price support loan was then too down to the current \$1.52 national average level--except then there was no direct price support payment of 53 cents per hundred as in 1966.

Exchange Student Reminisces About Christmas in Norway

Christmas is more commercial here, but in the cities of Norway, we are becoming

America, than in Norway, but the Norwegians celebrate longer after Christmas.

crowds at two services each Christmas Eve. There are also Christmas ser-



TRANSLATING--Geir Overland of Norway translates the sign in Norwegian that has been put up in the yard of his foster home, Mr. and Mrs. Jack McWhirter in Spearman. The sign reads Merry Christmas and a Happy New Year. Geir is an exchange student in Spearman High School.

Plainsman Photo

GSPA President Contests Statement by Sec. Freeman

The widely circulated views of Secretary of Agriculture Orville Freeman that the 1966 Feed Grain Program Provisions as announced by USDA recently "maintain farm income of participants", was challenged today by Elbert Harp, Hale County Texas farmer and President of the Grain Sorghum Producers Association.

The Association, headquartered in Amarillo, nationally represents, next to corn, the principal feed grain affected by the program. In a prepared statement Harp said:

"This past Congress, with urging from grain sorghum and other feed grain producers, in the Food and Agriculture Act of 1966, included a Feed Grain Section designed to continue provisions of the Emergency Feed Grain Program which had been effective in improving farm income since 1961.

"Due to rapid changing world situations which could affect the need for grains, Congress gave wide authority for administering the Program to the Secretary of Agriculture as long as it met several stated objectives, one of which was 'to maintain farm income.'

"Since U.S.D.A. announced the Feed Grain Program Provisions November 19, and as detailed instructions have been received by local Agricultural Stabilization and Conservation committees, GSPA staff and officers have studied and evaluated them as to possible effects on grain sorghum.

"At no level of minimum or maximum participation in the Program or even non-participation, figured by GSPA, will 1966 farm income of the grain sorghum producer be up to the level received in 1965.

"Initial figures indicate that the typical sorghum producer in Texas, New Mexico, Oklahoma, Kansas and Nebraska faces an average loss in total gross income of about \$3.00 per base acre. Some farmers with high "proven yields" may lose up to \$10.90 per acre as

may non-participants in the program in such areas as those with new irrigation with no allotted feed grain base, if the market price of grain follows the downward trend set by the government loan rate.

"Officers of the GSPA have appointments today and throughout the entire week, in Washington with USDA officials and leaders of the three major National general farm organizations there, in an attempt to alleviate the specific problems of grain sorghum producers' income.

"Briscoe County farmer and GSPA Vice President, Pat Northcutt of Silverton and Association Agricultural Economist and Executive Vice President, Bill Nelson of Amarillo are representing the Association in Washington with strong support from the local sorghum producers in the states mentioned and where GSPA is organized.

"At this point, our problem is one of 'Administrative Decision'. We hope we can solve it in USDA. If not, however, efforts are already being made and ground work laid to seek a solution 'legislatively'--even for the 1966 crop as soon as the new Congress convenes."

The Feed Grain Program to which Harp refers continues the principles of past programs of providing farmers, who agree to idle 20% to 50% of their grain sorghum acres, with a system of diversion payments, price support loans and price support payments.

In 1966 producers will receive no diversion payments on the first 20% diversion and a maximum of price support payments on only 50% of the base acres.

The price support loan has been lowered by Freeman, from a \$1.65 per hundred on sorghum in 1965 to a \$1.52 in 1966. The price support payment has been increased from 35 cents per hundred to 53 cents. The combination of these changes resulted in the

more commercial, Geir Overland said this week.

Geir, an exchange student attending school in Spearman, is from Norway and is spending his first Christmas in America and away from home. He lives with Mr. and Mrs. Jack McWhirter.

He has been here since Aug. 16, and as the Christmas season approaches, he misses the snow and forests of his homeland more.

"If we do not have more than three feet of snow at Christmas, we do not consider it much of a snow.

Christmas starts earlier in

Mrs. Doyle Futch and Mrs. James Honaker, Jr., twin daughters of Mr. and Mrs. Carl Galbreath, and their husbands and children of Pampa will spend the Christmas holidays with their parents and sisters, Elizabeth, Carllessa and Zelpha.

"We put our Christmas tree up on Dec. 23 and decorate it. We decorate our house on the inside and do not put as much outside as you do here." The tree stays until several days after Christmas.

Christmas Eve is the day that Norwegians open their presents, have the big dinner and begin their celebration.

Church services are held on Christmas Eve and Christmas Day. In Geir's hometown and his father's church there will be services at 4 p.m. Christmas Eve, then two services, at 7 a.m. and 11 a.m. Christmas Day.

From 5 until 6 p.m. on Christmas Eve Church bells throughout Norway ring in Christmas.

Geir's father has a new church this year that will seat 1,000 people and Geir says it should handle all the people in one service.

Prior to this year, the small chapel would only seat 350 persons, there were standing room

services on the second day of Christmas and there will be services at 4 p.m. on New Year's Eve.

In the town where he used to live, the New Year's Eve service was held at 11 p.m.

In the old tradition of Christmas in Norway there were 13 days of Christmas celebrated after Christmas, but that is changing.

Now, after the third or fourth day, most of the activity is confined to a few parties, Geir said. The stores resume business after the third day, he added.

"Norway, like most of Western Europe is adopting many American customs about Christmas," he commented.

In early tradition and still in the rural areas the elves who were early Norwegian forefathers are supposed to bring the presents to children.

"Santa Claus is a new idea adopted from America, but is popular in the urban areas," he said.

Beedy Furniture and Kunkles Win Local Decoration Contests

Three homes and three businesses were named winners by out-of-town judges in the home and business Christmas decoration conducted by the Chamber of Commerce.

The Marvin Kunkle home at 523 W. Third won first in the home decoration contest. Second place went to the Harold Shaver home at 1100 S. Townsend. Third place went to the home of Mrs. Freddie Largent and Miss Carolyn Davidson on Cotter Drive.

Beedy Furniture in Plains Shopping Center won first in the business contest. Second place was won by Alton's Gulf Service and third by Charlene Bulls Interior Decorator and Louis Schnell Electric Shop.

Cash prizes were awarded to the winners. Final winners in the weekly presentation of gift certificates were: Hazel Jackson, Mrs. Charles Cox, Olen Sheets,

Mrs. Paul Taylor and Mrs. Carl Hutchison, each received \$1. The \$50 gift certificates went to Debbie Barfield.

The Business and Profession-

al Women's Club presented their playhouse to Mrs. Virginia Burns. The quilt given by the Home Demonstration Clubs went to Mrs. Ethel Cookston.

Poinsettias Give Holiday Warmth

Traditionally associated with Christmas, colorful poinsettias enhance the special warmth of the holidays in any household.

In addition to the green and red or white plants, pink and green poinsettias are new this year, too.

As gifts or household decorations, professionally-grown poinsettias will arrive in porous red clay pots, for plant health. The warm, earthy tones of the pots blend per-

fectly with holiday decor. If a colorful holiday wrapping around the pots is preferred, expose the drainage hole in the bottom by tearing an opening in the paper or foil covering.

Then, when plants are watered, excess moisture can drain out, without any accumulation to drown the roots.

It's a particularly good Christmas for giving major musical instruments such as pianos, now that the ten per cent Federal Excise Tax has been removed.



Gold Decor Highlights Guild Party

The Arts and Craft Guild met Friday, Dec. 17 in the Hospitality Room of the First State Bank for the annual Christmas Party and gift exchange. Hostesses for the meeting were Mmes. Clay Gibner, Jesse Womble and F. J. Hoskins.

The room was beautifully decorated in gold and the serving table was laid with a hand made lace and net cloth centered with a Christmas arrangement in gold.

Hand painted gifts were exchanged, it being the aim of the group to one day have a piece of china painted by every member of the club.

Refreshment plates were served to Mmes. Garrett Allen, Deta Blodgett, F. J. Daily, Guy Fuller, Pope Gibner, Nolan Holt, Bill Hutton, P. A. Lyon, Ray Phelps, Bill Russell, Bruce Sheets, Joe Trayler, Kiff White, Ned Turner, Freeman Barkley and the hostesses, Mrs. Joe Dan Bryan was the only member not present.

The next meeting will be January 7 in the home of Mrs. Bruce Sheets.

Party Honors

Miss Bollinger

Cheri Bollinger was surprised and delighted when she returned home from a tree trimming excursion Dec. 17 to find her living room filled with guests who shouted Happy Birthday as she opened the door.

The guests enjoyed a pizza supper, and birthday cake. Games, stunts, gags and singing of Christmas carols were enjoyed afterwards.

Attending were Tom Gibner, Geir Overland, Debbie Standefer, Jan Trindle, Bruce Brown, Lloyd McWhirter, Carla Archer, Lynne Garnett and Vernon Pipkin.

Melinda Pearson left Wednesday for St. Petersburg, Fla. where she will visit her mother.

Polly McLain, a student at WT, is flying to Los Angeles, Calif. where she will spend Christmas with her parents, Mr. and Mrs. Lester McLain, who are visiting relatives there.

Mr. and Mrs. Mike Garnett and Jon Slade of Lubbock are spending the holidays with Mr. and Mrs. Wesley Garnett and Lynne.

Janice Phelps of Texas Tech is here for the holidays with her parents, the Ray Phelps.

Mary Ellen Barkley of Texas Tech is spending the holidays with her parents, the Freeman Barkleys.

Mr. and Mrs. Floyd Close and D'Anda will spend Christmas in Oceanside, Calif. with their daughter, Mr. and Mrs. Lynn Cook.

Nancy Wilmeth and Mrs. Jan Williams and children of Huntsville are here for the holidays with Mr. and Mrs. Ernest Wilmeth.



Mrs. Dennis Kim Copeland

Willis-Copeland Nuptials Read in Canyon Church

Miss Brenda Joyce Willis and Dennis Kim Copeland were united in marriage Saturday, Dec. 18 at 2 o'clock in a double-ring ceremony at the Calvary Baptist Church in Canyon. Rev. Jack L. Boyett, pastor, officiated.

M/Sgt. and Mrs. W. D. Watson of Iowa Park are the parents of the bride. The groom is the son of Mr. and Mrs. E. J. Copeland of Spearman.

Vows were exchanged before a seven branched candelabra which held white tapers and was centered by a basket of "Bird of Paradise." The tapers were lighted by Keith Watson of Iowa Park, brother of the bride.

Ushering were Douglas Forsyth of Happy and Joe E. Price of Olton. Stanley Martinez of Amarillo served as best man. Groomsman were Raymond Cline of Texline and Doyle Bryan of Happy.

Pianist Mrs. Jerry Renner of Canyon played traditional wedding selections and accompanied Mr. Jesse Sutton of Canyon, vocalist, as she sang "Because" and "The Wedding Prayer."

Given in marriage by her step-father, the bride wore a formal gown which she had designed and made. The bodice was of an iridescent tissue fabric imported from France and featured a scooped neckline accented by soft gathers in front and back, and soft gathers at the waist, with elbow-length sleeves. The skirt of white velvet draped from soft gathers at the waistline to the top of her iridescent white shoes. Elbow-length white kid gloves completed her ensemble. A shoulder-length veil cascaded from a crown of bridal pearls. She carried a white orchid with a yellow throat atop her white Bible. Two strands of pearls, draped off her Bible from her corsage.

The bride followed the tradition of "something old, something new, something borrowed, something blue, and a sixpence in her shoe." "For something old" she carried the two strands of pearls draped on her Bible, which were a gift to her from the late Mrs. Shelia Stewart of Pace, Fla. Her dress was "something

new", and "something borrowed", and "something blue" was the blue garter which she wore, borrowed from a friend.

The bride was attended by Miss Donita Allred of Wildorado as maid of honor. Miss Allred wore a gold satin dress designed with scooped neckline and elbow-length sleeves and bouffant skirt. A halo hat of matching gold satin and matching gold satin slippers were accented by short white kid gloves. She carried a single gold carnation tied with a blue bow.

The bride's mother, Mrs. Watson, was attired in a peacock blue silk suit ensemble with white accessories. Her corsage was of gold roses. The groom's mother, Mrs. Copeland, chose a mauve silk suit with matching accessories. She also wore a corsage of gold roses.

After the ceremony, the bride's parents hosted the reception in Fellowship Hall of the church. The bride's chosen colors of blue and gold were emphasized in table decorations and appointments. The bride's table was laid with a gold lace cloth with her bridal bouquet forming the centerpiece.

The four-tiered wedding cake was decorated with blue bells and gold leaves and topped with a miniature bride and groom. The cake was served with gold punch in a crystal punch bowl on a gold pedestal base and the mints were served from a crystal plate. The groom's table was covered with an imported ecru cloth of cut-work linen, belonging to his grandmother, Mrs. H. C. Brown of Perryton. Silver appointments were used on the groom's table with a silver coffee service as the main appointment. Coffee and chocolate cake were served at his table. An arrangement of interlocking gold wedding bands centered in a spray of blue spruce flanked with tapers in gold holders decorated the piano, and the table where the guests were registered held an arrangement of blue spider mums and gold stock further carrying out the blue and gold color scheme.

For traveling the bride wore a two-piece suit of gold wool tweed trimmed with tan suede on the jacket front. She chose

The Plainswoman

— The Plainsman —

Cut Rate Employees Enjoy Party

Grunewald's Dining Room was the scene for the Cut Rate Grocery Christmas dinner and gift exchange held Friday night Dec. 17.

The dining tables were attractively decorated in the Christmas motif and all enjoyed the traditional Christmas dinner.

After dinner gifts were exchanged and games of 42, cards and dominoes were enjoyed.

Attending were Ray and Ronnie Gibson, Harold Harris.

Messrs. and Mmes. T. C. Kitchens, Jr., V. N. King, W. W. Cypert, Ernest Butler, Chester Barnes, Mrs. Ethel Black and Mrs. Ruby McCullough, Harrell

Adkison, Connie Fowler, Loyd Carroll, Janet Bomer, Eddie Butler, Mary Gale Jackson, Dan Harder and Mr. and Mrs. Pete Fisher and Tim.

Mr. and Mrs. Myrl Guy Jones and Stephen of Beaumont arrived Saturday to spend the holidays with their parents, the E. D. Mundy and the R. Y. Joneses of Gruver.

Mr. and Mrs. Roy Furry of Minneola, Kans. were Monday

dinner guests of Mr. and Mrs. Guy Remy and girls.

Mr. and Mrs. Loyd Carroll left Friday to spend the Christmas holidays with relatives in Ft. Worth and with their daughter and family, Mr. and Mrs. John Moore of Lockport, La.

Annual Christmas Dinner Held in Buzzard Home

The Gladiola Flower Club met Friday evening at 7 p. m. in the home of Mrs. Lloyd Buzzard for their annual dinner and Christmas party. Hostesses were Mmes. Gwen Smith, Betty Davis, Margaret Adamson, Barbara Schnell, Dorothy Buzzard, Dorothy Baggerly and Sylvia Robertson. As the guests arrived they were served cranberry punch.

The entertaining rooms were gaily decorated in the Christmas motif highlighted with a beautiful white flocked Christmas tree decorated in red balls and green and red birds.

The guests were seated at quartet tables covered in white with red napkins, and centered with brandy snifters of green with red candles surrounded with greenery and red carnations. Name cards were decorated with miniature snowmen. Rolled sandwiches, fruit cocktail pie and coffee were served.

For the entertainment, Misses Donna and Bonnie Seymour sang two selections "It's The Most Wonderful Time of the Year" and "I Want An Old Fashioned Christmas". They were accompanied at the piano by Mrs. Don Seymour.

Gifts were exchanged by the club members and gifts were also presented the guest entertainers. Jackie Banks was presented a gift by Margaret Adamson in behalf of the club

brown lizard shoes, white kid gloves, and a natural color fur hat, worn with the orchid lifted from her bridal bouquet.

The couple honeymooned at Red River, N. M. and will take up residence in Canyon until January 17 when Kim will enter the U. S. Army for a two year period.

The bride is a junior at West Texas State University in Canyon majoring in Elementary Education. Mr. Copeland is a 1965 graduate of West Texas State University and received his bachelor of science degree in chemistry.

Out of town wedding guests included the bride's parents, M/Sgt. and Mrs. W. D. Watson and Keith of Iowa Park, and Mr. and Mrs. Whitehead of Pensacola, Fla., grandparents of the bride and Mrs. Nona Whitehead of Orlando, Fla., great-aunt of the bride, Mrs. H. C. Brown Sr. of Perryton, grandmother of the groom, Mr. and Mrs. Roger Pearson and Jerry, Mr. and Mrs. Ray Osborne, Gayla Raye, Lindy Clay, and Tammy Jaye of Perryton, Mr. and Mrs. Buster Brown, Barbara and Kelly of Farnsworth, Mr. and Mrs. Victor Juarez and Ramona Lynn and Mrs. F. P. Copeland of Dumas, Mr. and Mrs. Jake Clifton and Jo Lynn of Clayton, N. M., Mr. and Mrs. Henry Reid and Mrs. David Reid and Rex, Mr. and Mrs. Erlis Pittman and Bill of Morse, Mr. and Mrs. Frank Pittman and Chet of Stillwater, Okla. and Mr. and Mrs. J. W. Rivers and Sally of Amarillo.

in appreciation for her year as president. Carols were sung accompanied by Dorothy Baggerly.

Attending were Mmes.



by Day McClellan

We lost a very dear friend last week when Christine Rosson died.

Christine was so quick to offer her friendship and made known her faith in us in so many ways in the six short years we knew her. It is, as many have said, hard to realize one so vibrant and alive could be gone so suddenly.

Which leads me to remember a thought I had about a week ago.

I saw Christine out for a ride and realizing she was ill, thought, I still haven't been by to see her. "I'll go next week when I take the box of Christmas candies I always make for her," I told myself.

Sometimes rather than "no room" we have "no time".

If you missed the High School Choir's program and the Community Choir's "Messiah" last week, you missed two very beautiful parts of the Christmas season.

The Hallelujah Chorus with which both programs were closed was absolutely spine-tingling on both occasions.

Everyone at our office this week has been sharing homemade cookies and candies. I was too cautious to take any of mine but the few I was pretty sure would be complimented. My friend June, though, finally gave in and shared her divinity with us. Burl promptly told her it was the best he ever drank.

It did me good to find someone else whose never-fail recipe didn't turn out like the picture!

This recipe is almost never-fail though. I say that only because it is made from two kinds of already prepared candy.

It's called Texas Millionaires and involves only a little patience in waiting for the candies to melt. It, by the way, is from that Ponca City paper Mrs. Taylor brought me a few weeks ago.

TEXAS MILLIONAIRES

- 1 lb. marshmallows
- 1 lb. vanilla-chocolate drops
- 1 lb. caramels
- 2 cups chopped pecans

Place candies and marshmallows in double boiler and leave until softened enough to stir. Be sure water doesn't boil away or candy will be ruined. Do not even look at candy for 30 minutes as it takes quite a while to melt. When soft, stir in nuts. Pour onto large greased plate and cut in squares or better still, when cool enough to handle, shape into logs and roll in chopped pecans. The longer this candy sets, the better it gets.

Our front page this Christmas is, I think, the prettiest we've ever had. I believe Jayne Massie, daughter of the Bill Massies, is one of the most beautiful Marys I've ever seen.

Our thanks, Jayne, for lending an air of true beauty and sweetness to The Plainsman this Christmas.

May the joys of Christmastide
Fill the home where you abide
And throughout the year to come
May its walls with gladness hum;
Peace and plenty! May these two
Fill your home the whole year through.

from the writings of Edgar A. Guest

Mr. and Mrs. Everett Vandenberg, Jack and Nelda and Mr. and Mrs. Ellzey Vandenberg and family were in Pampa Sunday for the annual Christmas tree at the home of Mr. and Mrs. E. F. Vandenberg.

Miss Fran Vernon of Denver and Mr. and Mrs. Jimmy Vernon and children of Fort Worth will be here for Christmas with Mr. and Mrs. Jake Vernon.

Mr. and Mrs. Jerry Parrish and children of Lubbock and Mr. and Mrs. Jim Maxwell of Roswell, N. M., are to be home for Christmas with their parents, Mr. and Mrs. Gordon Parrish.

Mr. and Mrs. Stanley Garnett and their daughter Ann of Baylor are spending the holidays in Florida with Mr. and Mrs. Howard Garnett.

Party Held In Lynch Home

Mrs. Faye Lynch was hostess for the annual Hi-Lo Bridge Club Christmas party and gift exchange Thursday evening, Dec. 16.

Mrs. R.E. Lee had high score and Mrs. Bruce Sheets had low. Mrs. Jimmie Hicks won the traveling prize.

Attending were Mmes. Lee, Sheets, Hicks, W.H. Gandy, Leonard Jameson, Joe Dan Bryan, John Berry and the hostess.

Candlemas Eve Is Favored As Time To Remove Green

When is the right time to take down the Christmas greens? Before they become a fire hazard, is the modern belief, and that usually means soon after Christmas Day.

In earlier times, however, the question was not so easily answered.

Some people believed that Epiphany, or Twelfth Day, January 6, was the proper time for removing all Christmas decorations. Others firmly contended that the greens should remain until Candlemas, February 2.

One of those favoring the later date was, apparently, the poet Robert Herrick, who lived from 1591 to 1633. He wrote of taking down the greens in his poem, "Ceremonies for Candlemas Eve," but warned that the greens must be completely removed.

"For look how many leaves there be neglected there (maids, trust to me) So many goblins you shall see."

JEST A MINUTE

Some folks start things they can't finish and others start things they can't even begin.

Drinking Drivers Are Number 1

Hazard During Christmas Season

The Texas Highway Patrol investigated one accident on rural highways in Hansford County during the month of November, according to Sergeant W.J. McLean, Highway Patrol Supervisor of this area.

These wrecks accounted for two persons injured and an estimated property damage of \$2,000.

The rural traffic accident summary for this county from January through November of 1965 shows a total of 10 crashes. As a result of these crashes there were no persons killed and 14 persons injured. The estimated property damage amounted to \$11,730.

Ochiltree County had four accidents on rural roads and one person was injured. Property damage totaled \$1,170.

Hutchinson County had seven rural accidents with one person injured and property damage totalling \$3,215.

Moore County had nine accidents which injured 11 persons and the damage totaled \$5,175.

Sherman County had only one accident with no injuries and \$200 in damages.

Six people died in November in accidents on highways and rural roads in the 32-county district of the Panhandle. There were 107 injured in the 187 accidents and damages totaled \$128,057.

"If you think drinking and driving is not such a big problem as we picture it---you are wrong," the Sergeant stated. "Drinking drivers are involved in more than half the fatal Christmastime accidents, a higher percentage than the one-out-of-three proportion during the rest of the year.

The problem is not only the heavy drinker but also the social drinker and even the person who only had a few at the

office party or on the way home from work.

The Texas Safety Association has issued its annual "Accidental Death Alert" for the Christmas-New Year's holiday period and called on citizens for support of traffic law enforcement to reduce the holiday death toll.

"Law enforcement officers and agencies officially responsible for the welfare of the people of our state need the cooperation and support of every citizen if we are to prevent a tragic loss of life on our streets and highways during the holiday season," S. Ross Carr of Houston, TSA President, said.

It has been estimated that 110 persons will be killed in traffic in Texas during a 10-day period, beginning at 12:01 a.m. Friday, December 24 and ending at 11:59 p.m. January 2, 1966.

This is the period designated by the Association for the "Accidental Death Alert" which includes all types of accidents. It coincides with the period set for the annual "Operation Deathwatch" of the Texas Department of Public Safety.

The association is joining the DPS, the Texas Highway Department and other groups in a coordinated safety program aimed at reducing accidental deaths during the holiday period.

Carr also urged citizens to be on the alert for other hazards, such as fires in the home, falls and hunting accidents. It is estimated that an additional 42 persons will be killed in accidents other than traffic and that 43 persons will die as suicides and homicides.

In closing, the Association President challenged citizens

to put safety first - "whether at home, at play, at work or behind the wheel of an automobile."

BOWLING BEAT

TUESDAY MIXED LEAGUE

Team	WON	LOST
6	23	13
2	23	13
5	23	13
1	17	19
3	17	19
4	5	31

HIGH TEAM GAME

2	652
2	640
5	579

HIGH TEAM SERIES

2	1820
6	1692
5	1623

HIGH INDIVIDUAL GAME

Ed Vernon	190
Ed Vernon	181
Betty Monk	178
HIGH INDIVIDUAL SERIES	
Ed Vernon	521
Shorty Hamlett	461
Winnie Vernon	456

With 15 million television sets in operation, Japan ranks second only to the United States in television ownership.

Holiday Greetings

Santa is here to wish you all good cheer, and so are we! We're hoping that all of the greatest holiday gifts are yours.



Mavis Bybee, Manager and employees at

SEARS ROEBUCK AND COMPANY

Plains Shopping Center

Telephone 659-2573 Spearman



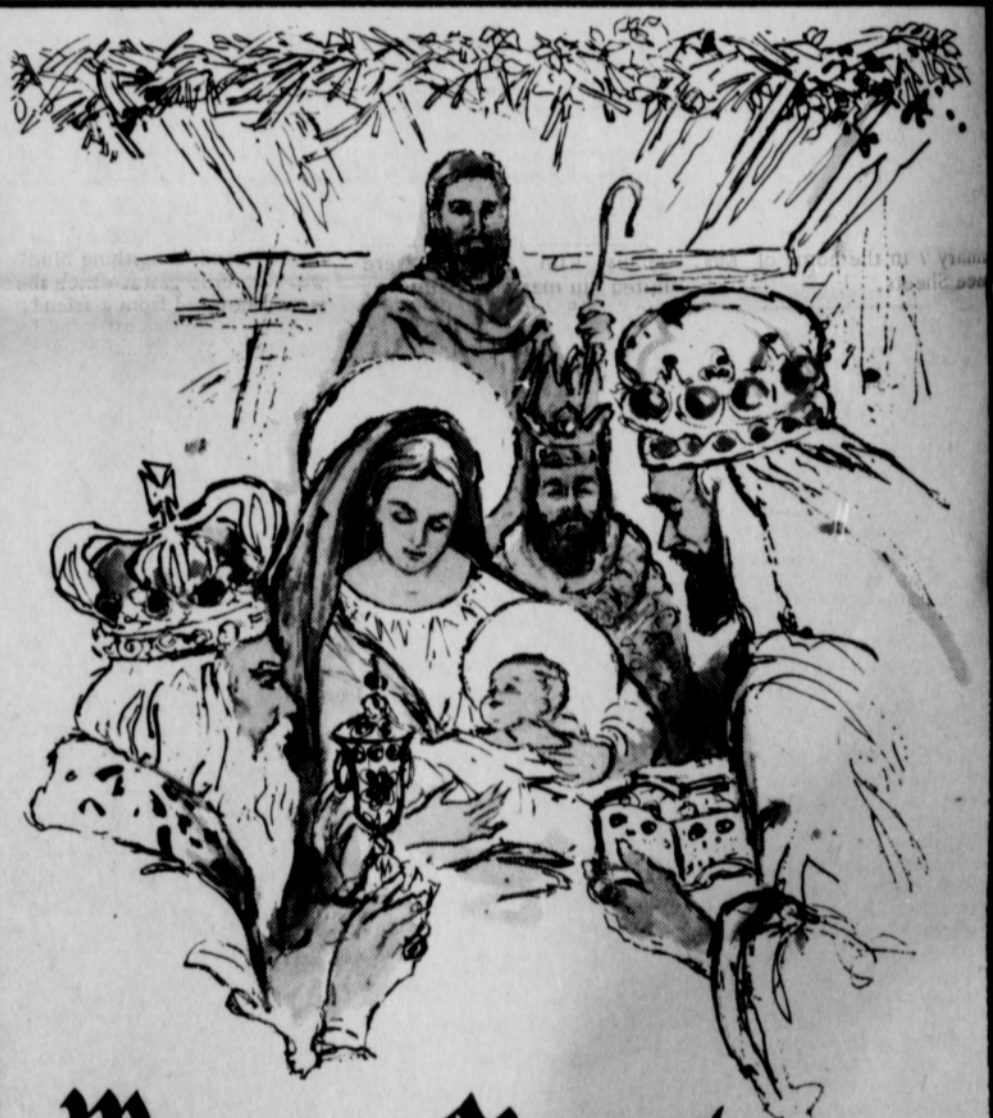
Greetings

Peaceful as a countryside wrapped in snowy white, the quiet contentment of Christmas spreads across the land. We greet you with the wish that great joy may be yours at this happy, holy time. And with sincere thanks, we extend to you our great appreciation for your favors and friendly good will.

We Appreciate Your Business

Simmons Chevron

Plains Shopping Center
659-9985



Merry Christmas

The joyous Christmas Season is here, filling our hearts with its spirit of happiness and good cheer. May you enjoy an abundance of pleasures among family and friends. And please add our sincere greeting for a very, Merry Christmas.

Hansford Implement Co.



Mrs. Dennis Kim Copeland

Willis-Copeland Nuptials Read in Canyon Church

Miss Brenda Joyce Willis and Dennis Kim Copeland were united in marriage Saturday, Dec. 18 at 2 o'clock in a double-ring ceremony at the Calvary Baptist Church in Canyon. Rev. Jack L. Boyett, pastor, officiated.

M/Sgt. and Mrs. W.D. Watson of Iowa Park are the parents of the bride. The groom is the son of Mr. and Mrs. E.J. Copeland of Spearman.

Vows were exchanged before a seven branched candelabra which held white tapers and was centered by a basket of "Bird of Paradise." The tapers were lighted by Keith Watson of Iowa Park, brother of the bride.

Ushering were Douglas Forsyth of Happy and Joe E. Price of Olton. Stanley Martinez of Amarillo served as best man. Groomsmen were Raymond Cline of Texline and Doyle Bryan of Happy.

Pianist Mrs. Jerry Renner of Canyon played traditional wedding selections and accompanied Mr. Jesse Sutton of Canyon, vocalist, as she sang "Because" and "The Wedding Prayer."

Given in marriage by her step-father, the bride wore a formal gown which she had designed and made. The bodice was of an iridescent tissue fabric imported from France and featured a scooped neckline accented by soft gathers in front and back, and soft gathers at the waist, with elbow-length sleeves. The skirt of white velvet draped from soft gathers at the waistline to the top of her iridescent white shoes. Elbow-length white kid gloves completed her ensemble. A shoulder-length veil cascaded from a crown of bridal pearls. She carried a white orchid with a yellow throat atop her white Bible. Two strands of pearls, draped off her Bible from her corsage.

The bride followed the tradition of "something old, something new, something borrowed, something blue, and a sixpence in her shoe." "For something old" she carried the two strands of pearls draped on her Bible, which were a gift to her from the late Mrs. Shelia Stewart of Pace, Fla. Her dress was "something

new", and "something borrowed", and "something blue" was the blue garter which she wore, borrowed from a friend.

The bride was attended by Miss Donita Allred of Wildorado as maid of honor. Miss Allred wore a gold satin dress designed with scooped neckline and elbow-length sleeves and bouffant skirt. A halo hat of matching gold satin and matching gold satin slippers were accented by short white kid gloves. She carried a single gold carnation tied with a blue bow.

The bride's mother, Mrs. Watson, was attired in a peacock blue silk suit ensemble with white accessories. Her corsage was of gold roses. The groom's mother, Mrs. Copeland, chose a mauve silk suit with matching accessories. She also wore a corsage of gold roses.

After the ceremony, the bride's parents hosted the reception in Fellowship Hall of the church. The bride's chosen colors of blue and gold were emphasized in table decorations and appointments. The bride's table was laid with a gold lace cloth with her bridal bouquet forming the centerpiece. The four-tiered wedding cake was decorated with blue bells and gold leaves and topped with a miniature bride and groom. The cake was served with gold punch in a crystal punch bowl on a gold pedestal base and the mints were served from a crystal plate. The groom's table was covered with an imported ecru cloth of cut-work linen, belonging to his grandmother, Mrs. H.C. Brown of Perryton. Silver appointments were used on the groom's table with a silver coffee service as the main appointment. Coffee and chocolate cake were served at his table. An arrangement of interlocking gold wedding bands centered in a spray of blue spruce flanked with tapers in gold holders decorated the piano, and the table where the guests were registered held an arrangement of blue spider mums and gold stock further carrying out the blue and gold color scheme.

For traveling the bride wore a two-piece suit of gold wool tweed trimmed with tan suede on the jacket front. She chose

The Plainswoman

Hartford, Plainsman

Cut Rate Employees Enjoy Party

Grunewald's Dining Room was the scene for the Cut Rate Grocery Christmas dinner and gift exchange held Friday nite Dec. 17.

The dining tables were attractively decorated in the Christmas motif and all enjoyed the traditional Christmas dinner.

After dinner gifts were exchanged and games of 42, cards and dominoes were enjoyed.

Attending were Ray and Ronnie Gibson, Harold Harris,

Messrs. and Mmes. T.C. Kitchens, Jr., V.N. King, W.W. Cypert, Ernest Butler, Chester Barnes, Mrs. Ethel Black and Mrs. Ruby McCullough, Harrell

Adkison, Connie Fowler, Loyd Carroll, Janet Bomer, Eddie Butler, Mary Gale Jackson, Dan Harder and Mr. and Mrs. Pete Fisher and Tim.

Mr. and Mrs. Myrl Guy Jones and Stephen of Beaumont arrived Saturday to spend the holidays with their parents, the E.D. Mundys and the R.Y. Joneses of Gruver.

Mr. and Mrs. Roy Furry of Minneola, Kans. were Monday

dinner guests of Mr. and Mrs. Guy Remy and girls.

Mr. and Mrs. Loyd Carroll left Friday to spend the Christmas holidays with relatives in Ft. Worth and with their daughter and family, Mr. and Mrs. John Moore of Lockport, La.

Annual Christmas Dinner Held in Buzzard Home

The Gladiola Flower Club met Friday evening at 7 p.m. in the home of Mrs. Lloyd Buzzard for their annual dinner and Christmas party. Hostesses were Mmes. Gwen Smith, Betty Davis, Margaret Adamson, Barbara Schnell, Dorothy Buzzard, Dorothy Baggerly and Sylvia Robertson. As the guests arrived they were served cranberry punch.

The entertaining rooms were gaily decorated in the Christmas motif highlighted with a beautiful white flocked Christmas tree decorated in red balls and green and red birds.

The guests were seated at quartet tables covered in white with red napkins, and centered with brandy snifters of green with red candles surrounded with greenery and red carnations. Name cards were decorated with miniature snowmen. Rolled sandwiches, fruit cocktail pie and coffee were served.

For the entertainment, Misses Donna and Bonnie Seymour sang two selections "It's The Most Wonderful Time of the Year" and "I Want An Old Fashioned Christmas". They were accompanied at the piano by Mrs. Don Seymour.

Gifts were exchanged by the club members and gifts were also presented the guest entertainers. Jackie Banks was presented a gift by Margaret Adamson in behalf of the club

brown lizard shoes, white kid gloves, and a natural color fur hat, worn with the orchid lifted from her bridal bouquet. The couple honeymooned at Red River, N.M., and will take up residence in Canyon until January 17 when Kim will enter the U.S. Army for a two year period.

The bride is a junior at West Texas State University in Canyon majoring in Elementary Education. Mr. Copeland is a 1965 graduate of West Texas State University and received his bachelor of science degree in chemistry.

Out of town wedding guests included the bride's parents, M/Sgt. and Mrs. W.D. Watson and Keith of Iowa Park, and Mr. and Mrs. Whitehead of Pensacola, Fla., grandparents of the bride and Mrs. Nona Whitehead of Orlando, Fla., great-aunt of the bride, Mrs. H.C. Brown Sr. of Perryton, grandmother of the groom, Mr. and Mrs. Roger Pearson and Jerry, Mr. and Mrs. Ray Osborne, Gayla Raye, Lindy Clay, and Tammy Jaye of Perryton, Mr. and Mrs. Buster Brown, Barbara and Kelly of Farnsworth, Mr. and Mrs. Victor Juarez and Ramona Lynn and Mrs. F.P. Copeland of Dumas, Mr. and Mrs. Jake Clifton and Jo Lynn of Clayton, N.M., Mr. and Mrs. Henry Reid and Mrs. David Reid and Rex, Mr. and Mrs. Erlis Pittman and Bill of Morse, Mr. and Mrs. Frank Pittman and Chet of Stillwater, Okla. and Mr. and Mrs. J.W. Rivers and Sally of Amarillo.

in appreciation for her year as president. Carols were sung accompanied by Dorothy Baggerly.

Attending were Mmes.



by Day McClellan

We lost a very dear friend last week when Christine Rosson died.

Christine was so quick to offer her friendship and made known her faith in us in so many ways in the six short years we knew her. It is, as many have said, hard to realize one so vibrant and alive could be gone so suddenly.

Which leads me to remember a thought I had about a week ago.

I saw Christine out for a ride and realizing she was ill, thought, I still haven't been by to see her. "I'll go next week when I take the box of Christmas candies I always make for her," I told myself.

Sometimes rather than "no room" we have "no time".

If you missed the High School Choir's program and the Community Choir's "Messiah" last week, you missed two very beautiful parts of the Christmas season.

The Hallelujah Chorus with which both programs were closed was absolutely spine-tingling on both occasions.

Everyone at our office this week has been sharing homemade cookies and candies. I was too cautious to take any of mine but the few I was pretty sure would be complimented. My friend June, though, finally gave in and shared her divinity with us. Burl promptly told her it was the best he ever drank.

It did me good to find someone else whose never-fail recipe didn't turn out like the picture!

This recipe is almost never-fail though. I say that only because it is made from two kinds of already prepared candy.

It's called Texas Millionaires and involves only a little patience in waiting for the candies to melt. It, by the way, is from that Ponca City paper Mrs. Taylor brought me a few weeks ago.

TEXAS MILLIONAIRES

1 lb. marshmallows
1 lb. vanilla-chocolate drops
1 lb. caramels
2 cups chopped pecans

Place candies and marshmallows in double boiler and leave until softened enough to stir. Be sure water doesn't boil away or candy will be ruined. Do not even look at candy for 30 minutes as it takes quite a while to melt. When soft, stir in nuts. Pour onto large greased plate and cut in squares or better still, when cool enough to handle, shape into logs and roll in chopped pecans. The longer this candy sets, the better it gets.

Our front page this Christmas is, I think, the prettiest we've ever had. I believe Jayne Massie, daughter of the Bill Massies, is one of the most beautiful Marys I've ever seen.

Our thanks, Jayne, for lending an air of true beauty and sweetness to The Plainsman this Christmas.

May the joys of Christmastide
Fill the home where you abide
And throughout the year to come
May its walls with gladness hum;
Peace and plenty! May these two
Fill your home the whole year through.

from the writings of Edgar A. Guest

Mr. and Mrs. Everett Vanderburg, Jack and Nelda and Mr. and Mrs. Ellzey Vanderburg and family were in Pampa Sunday for the annual Christmas tree at the home of Mr. and Mrs. E.F. Vanderburg.

Miss Fran Vernon of Denver and Mr. and Mrs. Jimmy Vernon and children of Fort Worth will be here for Christmas with Mr. and Mrs. Jake Vernon.

Mr. and Mrs. Stanley Garnett and their daughter Ann of Baylor are spending the holidays in Florida with Mr. and Mrs. Howard Garnett.

Mr. and Mrs. Jerry Parrish and children of Lubbock and Mr. and Mrs. Jim Maxwell of Roswell, N.M., are to be home for Christmas with their parents, Mr. and Mrs. Gordon Parrish.

Gold Decor Highlights Guild Party

The Arts and Craft Guild met Friday, Dec. 17 in the Hospitality Room of the First State Bank for the annual Christmas Party and gift exchange. Hostesses for the meeting were Mmes. Clay Gibner, Jesse Womble and F.J. Hoskins.

The room was beautifully decorated in gold and the serving table was laid with a hand made lace and net cloth centered with a Christmas arrangement in gold.

Hand painted gifts were exchanged, it being the aim of the group to one day have a piece of china painted by every member of the club.

Refreshment plates were served to Mmes. Garrett Allen, Deta Blodgett, F.J. Daily, Guy Fuller, Pope Gibner, Nolan Holt, Bill Hutton, P.A. Lyon, Ray Phelps, Bill Russell, Bruce Sheets, Joe Trayler, Kiff White, Ned Turner, Freeman Barkley and the hostesses, Mrs. Joe Dan Bryan was the only member not present.

The next meeting will be January 7 in the home of Mrs. Bruce Sheets.

Party Honors Miss Bollinger

Cheri Bollinger was surprised and delighted when she returned home from a tree trimming excursion Dec. 17 to find her living room filled with guests who shouted Happy Birthday as she opened the door.

The guests enjoyed a pizza supper, and birthday cake. Games, stunts, gags and singing of Christmas carols were enjoyed afterwards.

Attending were Tom Gibner, Geir Overland, Debbie Standerfer, Jan Trindle, Bruce Brown, Lloyd McWhirter, Carla Archer, Lynne Garnett and Vernon Pipkin.

Melinda Pearson left Wednesday for St. Petersburg, Fla. where she will visit her mother.

Polly McLain, a student at WT, is flying to Los Angeles, Calif. where she will spend Christmas with her parents, Mr. and Mrs. Lester McLain, who are visiting relatives there.

Mr. and Mrs. Mike Garnett and Jon Slade of Lubbock are spending the holidays with Mr. and Mrs. Wesley Garnett and Lynne.

Janice Phelps of Texas Tech is here for the holidays with her parents, the Ray Phelps.

Mary Ellen Barkley of Texas Tech is spending the holidays with her parents, the Freeman Barkleys.

Mr. and Mrs. Floyd Close and D'Anda will spend Christmas in Oceanside, Calif. with their daughter, Mr. and Mrs. Lynn Cook.

Nancy Wilmeth and Mrs. Jan Williams and children of Huntsville are here for the holidays with Mr. and Mrs. Ernest Wilmeth.

Party Held In Lynch Home

Mrs. Faye Lynch was hostess for the annual Hi-Lo Bridge Club Christmas party and gift exchange Thursday evening, Dec. 16.

Mrs. R.E. Lee had high score and Mrs. Bruce Sheets had low. Mrs. Jimmie Hicks won the traveling prize.

Attending were Mmes. Lee, Sheets, Hicks, W.H. Gandy, Leonard Jameson, Joe Dan Bryan, John Berry and the hostess.

Candlemas Eve Is Favored As Time To Remove Green

When is the right time to take down the Christmas greens? Before they become a fire hazard, is the modern belief, and that usually means soon after Christmas Day.

In earlier times, however, the question was not so easily answered.

Some people believed that Epiphany, or Twelfth Day, January 6, was the proper time for removing all Christmas decorations. Others firmly contended that the greens should remain until Candlemas, February 2.

One of those favoring the later date was, apparently, the poet Robert Herrick, who lived from 1591 to 1634. He wrote of taking down the greens in his poem, "Ceremonies for Candlemas Eve," but warned that the greens must be completely removed.

"For look how many leaves there be neglected there (maids, trust to me) So many goblins you shall see."

JEST A MINUTE

Some folks start things they can't finish and others start things they can't even begin.

Drinking Drivers Are Number 1 Hazard During Christmas Season

The Texas Highway Patrol investigated one accident on rural highways in Hansford County during the month of November, according to Sergeant W.J. McLean, Highway Patrol Supervisor of this area. These wrecks accounted for two persons injured and an estimated property damage of \$2,000.

The rural traffic accident summary for this county from January through November of 1965 shows a total of 10 crashes. As a result of these crashes there were no persons killed and 14 persons injured. The estimated property damage amounted to \$11,730.

Ochiltree County had four accidents on rural roads and one person was injured. Property damage totaled \$1,170.

Hutchinson County had seven rural accidents with one person injured and property damage totalling \$3,215.

Moore County had nine accidents which injured 11 persons and the damage totaled \$5,175.

Sherman County had only one accident with no injuries and \$200 in damages.

Six people died in November in accidents on highways and rural roads in the 32-county district of the Panhandle. There were 107 injured in the 187 accidents and damages totaled \$128,057.

"If you think drinking and driving is not such a big problem as we picture it--you are wrong," the Sergeant stated. "Drinking drivers are involved in more than half the fatal Christmastime accidents, a higher percentage than the one-out-of-three proportion during the rest of the year."

The problem is not only the heavy drinker but also the social drinker and even the person who only had a few at the

office party or on the way home from work.

The Texas Safety Association has issued its annual "Accidental Death Alert" for the Christmas-New Year's holiday period and called on citizens for support of traffic law enforcement to reduce the holiday death toll.

"Law enforcement officers and agencies officially responsible for the welfare of the people of our state need the cooperation and support of every citizen if we are to prevent a tragic loss of life on our streets and highways during the holiday season," S. Ross Carr of Houston, TSA President, said.

It has been estimated that 110 persons will be killed in traffic in Texas during a 10-day period, beginning at 12:01 a.m. Friday, December 24 and ending at 11:59 p.m. January 2, 1966.

This is the period designated by the Association for the "Accidental Death Alert" which includes all types of accidents. It coincides with the period set for the annual "Operation Deathwatch" of the Texas Department of Public Safety.

The association is joining the DPS, the Texas Highway Department and other groups in a coordinated safety program aimed at reducing accidental deaths during the holiday period.

Carr also urged citizens to be on the alert for other hazards, such as fires in the home, falls and hunting accidents. It is estimated that an additional 42 persons will be killed in accidents other than traffic and that 43 persons will die as suicides and homicides.

In closing, the Association President challenged citizens

to put safety first - "whether at home, at play, at work or behind the wheel of an automobile."

BOWLING BEAT

TUESDAY MIXED LEAGUE	WON	LOST
Team		
6	23	13
2	23	13
5	23	13
1	17	19
3	17	19
4	5	31

HIGH TEAM GAME

2	652
2	640
5	579

HIGH TEAM SERIES

2	1820
6	1692
5	1623

HIGH INDIVIDUAL GAME

Ed Vernon	190
Ed Vernon	181
Betty Monk	178
HIGH INDIVIDUAL SERIES	
Ed Vernon	521
Shorty Hamlett	461
Winnie Vernon	456

With 15 million television sets in operation, Japan ranks second only to the United States in television ownership.

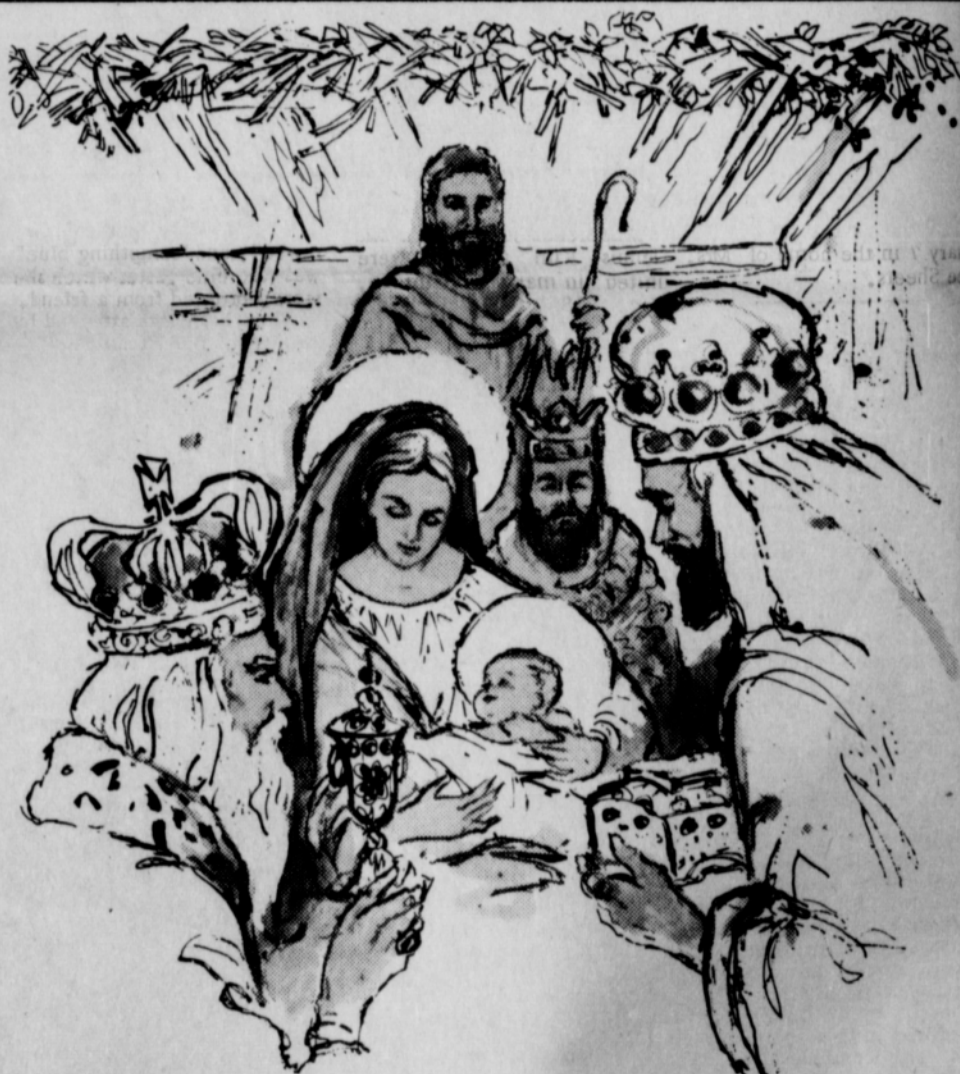
Holiday Greetings

Santa is here to wish you all good cheer, and so are we! We're hoping that all of the greatest holiday gifts are yours.



Mavis Bybee, Manager and employees at

SEARS ROEBUCK AND COMPANY
Plains Shopping Center
Telephone 659-2573 Spearman



Merry Christmas

The joyous Christmas Season is here, filling our hearts with its spirit of happiness and good cheer. May you enjoy an abundance of pleasures among family and friends. And please add our sincere greeting for a very, Merry Christmas.

Hansford Implement Co.



Greetings

Peaceful as a countryside wrapped in snowy white, the quiet contentment of Christmas spreads across the land. We greet you with the wish that great joy may be yours at this happy, holy time. And with sincere thanks, we extend to you our great appreciation for your favors and friendly good will.

We Appreciate Your Business

Simmons Chevron

Plains Shopping Center
659-9985

Buy, Sell, Trade Hire, Rent, Find THROUGH THE

WANT ADS

FOR SALE

FOR SALE-95 acres southeast of Spearman, irrigation water, 1/2 minerals. Industrial lots and acreage. Financing available. Cecil Crawford, Phone 659-2409.

FOR SALE-7 room, 2 bath, good sturdy built house, 301 N. Hoskins, Sam Condo, Call 659-2368.

FOR SALE-3 bedroom house, carpeted, fenced, landscaped, G.E. built-in oven and range top, ceramic tile bath with glass enclosure shower, tub. 1010 S. Haney. Call 3103 daytime or 2754 at night.

FOR SALE--Zig Zag Sewing Machine, walnut veneer cabinet No. 20S11085N2 \$154.88. Sears, Spearman, Phone 659-2573.

FOR SALE-Sweet Shop. Netting better than \$5000 a year. Will finance. Other business reason for selling, R.R. Carter, Spearman, Texas.

City Directory

CLEANERS

CLEANING PRESSING CARPET CLEANING SERVICE

COIN OPERATED DRY CLEANING

FREE PICK-UP & DELIVERY PHONE 659-2511

Wardrobe Cleaners Oscar Donnell 302 MAIN ST. SPEARMAN, TEXAS

DENTISTS

F. J. Daily D.D.S. 16 SW COURT STREET SPEARMAN

ELECTRICIAN

Anthony Electric Industrial, Commercial and House Wiring Heating and Air Conditioning Contracting and Repairs Fully Insured

PLAINS SHOPPING CENTER PHONE 659-2441 BOX 727 SPEARMAN, TEXAS

EXCLUSIVE AT SEARS- The James Bond 007 Road Race Set with six scenic lock-together panels. Only \$34.44. No. 79S7666L 13-tfc

FOR SALE-3 bedroom brick, fenced, carpet and drapes. Phone 2261, 1006 S. Barkley 12-8c

FOR SALE-3 bedroom brick, 2 baths, large built-in kitchen and dining area, utility room and storage room, double garage, double lot, fenced, 301 W. 12th. Phone 659-2725. 92-tfc

FOR SALE-3 bedroom brick, attached garage, take trade or second lien. 401 S. W. 12th. 96-tfc

FOR SALE-3 bedroom brick veneer, 1102 S. Haney. 14-tfc

FOR SALE-8 ft. Frigidaire deep freeze. Call 659-2350. 95-tfc

FOR SALE-20S507112Y--Floor Conditioner, plus 12 pc. brush set and floor kdt, \$39.88. Sears, Phone 659-2573. 9-tfc

FOR SALE- 8x40 ft. mobile home furnished, good condition. \$1250. 2 air conditioners. Phone 659-3422. 16-tfc

For Sale: Modern two room house, to be moved. Call 659-2251. 17-tfc

FOR SALE-Castor bean harvest-er. Call Capitol 3-2834, Plain-view. 17-2c

FOR SALE-Purebred Dachshund puppies. 6 weeks old. Phone 659-2331 after 6 p.m. 12-2p

FOR SALE: Four unit brick furnished apartment house located in Spearman. Due to ill health priced to sell. Apartments all rented, only 6 years old. Write Box 26, Alva, Oklahoma. 17-4c

4-H Girls

Make Cookies

A Busy Bee 4-H Foods I group met in the home of their Junior Foods Leader, Cindy Hutchison Dec. 17. The lesson was on making cookies. Cindy demonstrated using the Cookie Press to the group. Each girl took home a box of Christmas cookies which she had made. Members present were Paula Haggerman, Lydia Reed and Janice Whitefield.

Foil Fire Damage

If any of the utensils that you are using for cooking over a campfire have plastic handles, be sure to wrap the handles with aluminum foil to keep them from being damaged by fire.

College Women

Women earned 19 per cent of all bachelor's or first professional degrees in 1900, 40 per cent in 1930, and 40 per cent in 1964, figures from the U.S. Dept. of Labor Women's Bureau show.

COST OF ELECTRICITY

The average monthly residential electric bill in Boston is \$5.36.

FOR SALE--W2656170NH--Kenmore dry mate, white or copper. Electric, \$142.00, Gas \$182.00. Sears, Phone 659-2573. 9-tfc

For Sale: House, carpeted, fenced back yard, low payments. 109 W. 12th, call 659-2110. 17-4p

FOR SALE--65S6584N--Portable dishwasher, copper or white, \$159.95. Sears, Phone 659-2573. 9-tfc

FOR SALE--20S5772K2-Kenmore Cleaners with 1 3/4 Hp motor. High suction twin fans and automatic cord reel. 8 pc. attachment set. \$57.88. Sears, Phone 659-2573. 9-tfc

LAND FOR SALE-132 1/2 ft. at 311 N. James St. Small house on it. Lot 7, Block 14 on Main Street between barber shop and pool hall. Contact Raymond Sparks, Box 633. 17-tfc

Life Span Grows

The life expectancy of a girl baby born today is nearly 74 years, while at the beginning of this century it was only 48 years.

Try Food Coloring

If you wish the water in crystal containers to match the color of the flowers they hold, just add food coloring to the water.

Card of Thanks

I wish to thank all who sent me flowers, cards, letters and gifts and for phone calls to my family with expressions of concern, wishes and prayers for my recovery while in the hospital. Each was deeply appreciated. Also thanks to the Hospital Staff, Doctors and Nurses who ministered so faithfully to my needs and for my comfort. My wish for you is a very Joyous Christmas and a Happy New Year with Health and Prosperity. Mrs. Lee McClellan

There are 301 female long-shoremen in the United States.

NOTICE TO CREDITORS

I, Gertie Sparks, whose residence is Hansford County, Texas, and whose Post Office address is Gruver, Texas, having on the 13th day of September, 1965, been duly granted Letters Testamentary of the Estate of Burnie Sparks, deceased, and having qualified according to law as Independent Executrix, NOW GIVE NOTICE TO ALL PERSONS HAVING CLAIMS AGAINST SAID ESTATE, requiring them to present the same properly authenticated, to the undersigned within Twelve Months from the date of said appointment, for allowance. Gertie Sparks Independent Executrix Post Office Address: Box 562, Gruver, Texas

E. C. Greene & Sons Agency

Real Estate-Loans Insurance-Cattle Aluminum Pipes

410 Davis, Spearman Phone 659-2587

SERVICES

Amarillo Daily News & Globe Times home delivery. Call 2685. 14-tfc

SERVICE-Ditches from 3-12 inches, any desired depth. S. D. Jones 659-2809. Harold Shaver 659-3474. 17-tfc

Livestock water hauling. Dependable service. 1200 gal. tank. Call Richard Ooley, phone 659-2782. 16-8p

Stock water hauling. Dependable service. Olin Sheets, 659-3167. 4-tfc

SEE OR CALL your new Stanley Dealer. 505 S. Haney. Opal Jenkins, Phone 659-2747. 15-tfc

Need baby sitter to stay in my home. Call 2822 or 3009. 18-tfc

Shape Beret

To have your child's beret dry in a perfect shape and look like a new one when you launder it, place the right size sauce-pan lid inside it. Tie a placed to that the knob is on top of the lid which you have placed so that he knob is on the underside. Hang to clotheslines by the string.

Holt News

Mr. and Mrs. Bruce Fiedler of Big Fork, Montana are visiting her parents, Mr. and Mrs. C.W. Kirk and other relatives.

Mr. and Mrs. Jimmy DeArmond and Karen of Amarillo and Mrs. Grace Jenkins of Spearman were Sunday guests of Mr. and Mrs. Leonard DeArmond of Spearman.

Mr. and Mrs. Britt Jarvis and son of Dallas have returned home for the holidays to visit Mr. and Mrs. Billy Jarvis of Gruver, and Mr. and Mrs. Nolan Holt and Larry.

NOTICE TO CREDITORS

I, Martha Kauffman, whose residence is Hansford County, Texas, and whose Post Office Address is Gruver, Texas, having on the 19th day of April, 1965, been duly granted Letters Testamentary of the Estate of C.F. Kauffman, deceased, and having qualified according to law an Independent Executrix, NOW GIVE NOTICE TO ALL PERSONS HAVING CLAIMS AGAINST SAID ESTATE, requiring them to present the same properly authenticated, to the undersigned within TWELVE MONTHS from the date of said appointment, for allowance. Martha Kauffman, Independent Executrix Post Office Address: Gruver, Texas

Cummings Refrigeration

HEATING AIR CONDITIONING SALES & SERVICE SPECIALIST

659-2721 SPEARMAN

FOR RENT

FOR RENT-Downtown Apts. Nicely furnished, bills paid, 2 bedroom. \$80. Call 659-2269. 7-tfc

FOR RENT-small 4 room house. Phone 2941. 5-tfc

WANTED

WANTED-Farm job in Spearman School district. Irrigating and cattle. Richard Mickler, Rt. 1, Box 70, Perryton. 13-17p

HALF IN BRAZIL

One of every two South Americans lives in Brazil, the National Geographic Society says. Brazil's territory covers almost half the continent.

For Quick Courteous Service

Chevron Gasolines Atlas Tires & Accessories Washing-Greasing

QUICK, COURTEOUS SERVICE

Loren Simmons

SIMMONS CHEVRON SERVICE

Phone 659-9985 Plains Shopping Center

Plainsman Office Supply Hallmark Christmas Cards 1/2 price



Ed Dear

703 Cotter Drive Spearman, Texas

Office 2516 Home 3073

PART OF ALL YOU EARN... SHOULD BE YOURS TO KEEP

TELEGAGS

BOB NOBLES



Bob's SALES and SERVICE

WE SELL THE BEST and SERVICE THE REST SPEARMAN, TEXAS

Phone 659-3222

Keep Herbs Dry

Keep your indoor crop of herbs on the dry side. This is best accomplished by starting your parsley, chive, basil, shallot, rosemary, dill and other savory seeds in porous clay pots to make sure excess water will drain and leach out. The humid air of your kitchen or laundry room is the best atmosphere for your indoor herb garden.

United States currency, whether a \$1 note or \$100, costs less than one cent a bill to make.

TOMMY BOOCH AGENCY FARM BUREAU INSURANCE Spearman, Texas



318 DAVIS-SPEARMAN, TEX.

Southwestern Life Insurance Co.

LIFE INSURANCE IS MY ONLY BUSINESS...

LET ME HELP YOU PLAN YOUR NEEDS

DON KNOX Phone 659-3294 Spearman

YOUR HALLMARK STORE Hallmark Cards PLAINSMAN OFFICE SUPPLY INC. OFFICE SUPPLY HEADQUARTERS FOR HANSFORD COUNTY

French Yule Log Worth Work, Cost

There's nothing chintzy about the French when they concoct a fine dessert—and when it's for Christmas they really outdo themselves.

This one is perfect for an American Christmas, too, and well worth the cost of ingredients and extra effort.

The French love for chestnuts and chocolate is brought into glorious combination in the dark, rich filling for the Yule Log covered with whipped cream and garnished with marzipan strawberries.

Most of the work can be done in advance. Bake the cake, prepare the filling, roll them together, wrap and freeze until the great day; then thaw and add the covering of whipped cream.

Canned chestnut puree used in the filling and the marzipan strawberries can be found in speciality food departments and stores. They are French imports.

CHESTNUT YULE LOG

To make cake roll:

- 3 eggs
- 1 cup granulated sugar
- 5 tablespoons water
- 1 teaspoon vanilla extract
- 1 cup sifted all-purpose flour
- 1 teaspoon baking powder
- 1/2 teaspoon salt

Line a 15 by 10-inch jelly roll pan with heavy weight

aluminum foil. Lightly grease bottom of foil, not the sides.

Beat eggs until thick and lemon colored. Gradually heat in sugar, 1 tablespoon at a time until mixture is very thick. Beat in water and vanilla. Sift flour with baking

powder and salt. Add flour all at once and fold gently into egg mixture. Spread butter evenly in pan. Bake in 375-degree oven 12 to 15 minutes.

Remove from oven and immediately turn cake onto a towel covered with granulated sugar. Remove foil. With a sharp knife trim the crisp crust. Starting at the 15-inch side roll up cake in the towel. Place roll on rack and cool.

To make filling:

- 2 cans (15 1/2-ounce) chestnut puree
- 1/2 cup sweet butter
- 4 squares (4-ounces) sweet cooking chocolate
- 2 tablespoons milk
- 1 teaspoon vanilla extract
- 1 tablespoon instant coffee
- 2-3 cup granulated sugar
- 1 1/2 cups heavy cream, whipped
- 1-3 cup confectioners sugar
- 1 tablespoon Cointreau

Beat chestnut puree with butter until smooth. Melt chocolate. Stir in milk, vanilla, coffee and sugar. Add chocolate mixture to chestnut puree; beat until well blended and smooth. Chill until firm.

With the hands, shape mixture into a long roll about the width of the cake. Unroll cake. Place chestnut filling roll at one end of the cake and reroll around the filling. Put roll on a serving platter.

Decorate with cream whipped with confectioners sugar and Cointreau. Garnish with marzipan strawberries, if desired.



VIVE LA DIFFERENCE—This handsome French Yule Log combines chestnut puree, bittersweet chocolate, coffee and Cointreau in a truly great dessert.

County Agent's Report

By Robert Adamson

SPRING CALVES

The time of year to have calves dropped depends on local feed, labor and climate.

Producers should have their cows drop calves as early as conditions here in Hansford County will allow. Some cattlemen prefer to time breeding so the cows will drop their calves in the spring of the year.

This practice has several advantages and disadvantages. Some advantages are:

Cows are in good shape for breeding due to abundance of early spring feed.

Dry, pregnant cows winter with less feed expense than cows with calves at side.

There is little trouble at calving time, due to an abundance of feed.

Calves may be held over to clean up stubble fields and other cheap roughages, then sold the following spring.

Some disadvantages are:

Milk flow is stimulated to the extent that calves cannot take all of the milk from some cows. This causes extra labor in milking the cows or risking spoiled udders.

Many calves develop scours. At about the time the calves get old enough to consume all the milk, dry weather begins and the milk flow decreases. As a result, calves do not continue to develop rapidly.

There usually are more flies, lice, ticks and screw-worms in the spring and summer.

But regardless of the season when calves are dropped, it is advisable to keep the cow herd in a good thrifty condition to produce thrifty calves.

CATTLE LICE

Hansford County stockmen are advised to be on the lookout for the annual invasion of lice on their livestock. These pests can take a real bite out of profits unless they are controlled.

How Celebrations Began

"Merry Christmas!" The words are simple, familiar, even old-fashioned, yet they still contain a newness and freshness, a significance to thrill the heart of mankind.

Whence did they come, these familiar words? As a holy day and a holiday, Christmas means both festive merrymaking and prayerful worship, and both meanings are expressed in the traditional greeting, "Merry Christmas."

Christmas, commemorating the birth of Christ, derives its name from the medieval "Christes Masse," the mass of Christ. Yet, in the first centuries of the Christian church, there was no celebration of the birth of Christ, no Christmas.

The December festivals of those days were pagan in nature—the Roman Saturnalia in Southern Europe, the Yuletide festival of the winter solstice in Northern Europe.

When, in the fifth century A.D., Christmas began to be celebrated on December 25, the old customs of the pagan festivals were connected with the Christmas feast. The merrymaking continued, but it gained a deeper meaning, as pagan traditions were hallowed by association with the Nativity.

Thus Christmas became "Merry Christmas!"

Livestock producers can get a copy of Extension publication, MP-691, "Texas Guide for Controlling External Parasites of Livestock and Poultry." The publication is "chuck-full" of information on insecticide formulations and how to use them in controlling flies, lice, mites, ticks, fleas and cattle grubs. It contains a dilution chart for mixing sprays and dips and outlines control pro-

grams for beef animals and nonlactating dairy cattle, dairy animals, sheep and goats, swine, horses and poultry. The bulletin also offers suggestions for controlling house and stable flies.

To get a head start on lice this fall and winter, start a sound program now. The above bulletin is a good guide for such a program and is available without cost from my office.



Greetings

We've come a-caroling to bring you all the joy, happiness and gladness of heart that goes with Christmas. To our song of good cheer, we add a special note of thanks for your kind patronage throughout the year. We are deeply appreciative. May our warm friendship continue for many more years.

EQUITY

State Draft Boards May Have To Increase Quotas

State draft boards may have to go up to the 26 to 35 range in the near future to help fill quotas for the armed forces.

Colonel Morris S. Schwartz, state Selective Service director, said Wednesday in a letter to Texas college and university registrars that this is being considered.

The state Selective Service director, in his letter to the college and university officials, asked them to let Selective Service know "at the earliest possible moment" when draft-age male students drop out of school, as "the nation can provide useful occupation for the perennial student who shows no progress."

Colonel Schwartz also asked the registrars to report "rapidly" the male students whose academic load drops below full time.

"This does not mean that each student who drops under full time will be selected automatically for the armed forces,"

the state draft director wrote. "His local board is going to want to ask him why he has dropped some of his work."

Colonel Schwartz doesn't think authorizing boards to go up to the 26-35 age range will produce many men under present circumstances. He estimated there are less than 3,000 in that age range available for consideration in Texas because most men in that age group "qualify for deferments on the basis of dependent children, or for other reasons."

Draft boards are currently deferring more men to attend state colleges and universities than ever before, a total of more than 105,000, Colonel Schwartz told the registrars.

"We want to do everything we can to leave the serious, dedicated student in school to complete his work," Colonel Schwartz wrote. "Reporting the drop-out and the man who drops below full-time immediately will help us to achieve that end."

Holiday Celebrations Reflect Customs from Far and Near

Celebrating the happy holiday of Christmas is an almost universal custom, and many of the traditions belonging to the day are universal, too. Gift giving, merrymaking, gaily decorated trees and brightly glowing lights are holiday bits that have found their way to almost every corner of the globe.

Along with the similarities the way people observe Christmas go just as many differences. From country to country, from city to city, from family to family, holiday customs vary, sometimes just enough to show the touch of individual imagination, and sometimes so greatly that it seems hard to believe the same day is being commemorated.

Gift Giving . . .

It's traditional to receive gifts during the Yuletide season, but the time is not always December 25, and the gift-giver is not always Santa. One of the earliest Christmas giving times takes place in the Netherlands, according to the Book of Knowledge. Here, the children receive their gifts from St. Nicholas on December 6, the date, appropriately enough, is called St. Nicholas Eve, in honor of the real St. Nicholas, a fourth century bishop.

Christmas gift giving in Italy comes on January 5, which is known as Epiphany Eve. The

traditional gift giver is Befana. Legend says that Befana misdirected the wise men, and now she seeks to atone by going about the world doing good to children.

In Scandinavian countries, gifts are given on St. Lucy's Day, December 13.

The time for gift giving in Puerto Rico and Spain is January 6, the day when, traditionally, the wise men came to Bethlehem.

In Germany

From Christmas trees to Christmas toys, many Christmas customs now universally observed came first from Germany.

In the medieval town of Nuremberg, the highlight of the Christmas season is the "Christkindmarkt," or literally, Christ Child's Fair.

The "Christ Kind," or Christ Child, is the gift giver, and the culmination of the fair, on Christmas Eve, is a visit by the Christ Kind to the balcony of the historic church, the Frauenkirche. Days of group caroling by the children precede this event.

Fun and Feasting . . .

A merry, hearty feast is traditional at Christmas, but the ingredients are not always the same. Norwegians might serve, instead of turkey and trimmings, codfish and pickled pork, while baked carp is a

favored Christmas delicacy in Austria.

Christmas dining customs change with time, too. History describes a "traditional" Christmas feast of seventeenth century Quebec, a feast that would be considered somewhat unusual today.

Before each diner at the feast was placed a bowl of birchbark or polished basswood and a spoon of bark. The diners supplied their own knives, and there were no forks.

Into the bowl went first the appetizers — cornbread and a boiled mixture of eels, salmon and beans. The soup course was a rich meat broth, thickened with nuts. Vegetables included corn, peas and baked squash.

The main course featured roast venison and squirrel pies, with baked wild pigeons, partridges, blackbirds, owls — all served together.

Dessert consisted of cakes of maple sugar or sunflower seeds and nuts, topped with a sauce of boiled dried berries.

favored Christmas delicacy in Austria.

Christmas dining customs change with time, too. History describes a "traditional" Christmas feast of seventeenth century Quebec, a feast that would be considered somewhat unusual today.

Before each diner at the feast was placed a bowl of birchbark or polished basswood and a spoon of bark. The diners supplied their own knives, and there were no forks.

Into the bowl went first the appetizers — cornbread and a boiled mixture of eels, salmon and beans. The soup course was a rich meat broth, thickened with nuts. Vegetables included corn, peas and baked squash.

The main course featured roast venison and squirrel pies, with baked wild pigeons, partridges, blackbirds, owls — all served together.

Dessert consisted of cakes of maple sugar or sunflower seeds and nuts, topped with a sauce of boiled dried berries.

favored Christmas delicacy in Austria.

Christmas dining customs change with time, too. History describes a "traditional" Christmas feast of seventeenth century Quebec, a feast that would be considered somewhat unusual today.

Before each diner at the feast was placed a bowl of birchbark or polished basswood and a spoon of bark. The diners supplied their own knives, and there were no forks.

Into the bowl went first the appetizers — cornbread and a boiled mixture of eels, salmon and beans. The soup course was a rich meat broth, thickened with nuts. Vegetables included corn, peas and baked squash.

The main course featured roast venison and squirrel pies, with baked wild pigeons, partridges, blackbirds, owls — all served together.

Dessert consisted of cakes of maple sugar or sunflower seeds and nuts, topped with a sauce of boiled dried berries.

favored Christmas delicacy in Austria.

Christmas dining customs change with time, too. History describes a "traditional" Christmas feast of seventeenth century Quebec, a feast that would be considered somewhat unusual today.

Before each diner at the feast was placed a bowl of birchbark or polished basswood and a spoon of bark. The diners supplied their own knives, and there were no forks.

Into the bowl went first the appetizers — cornbread and a boiled mixture of eels, salmon and beans. The soup course was a rich meat broth, thickened with nuts. Vegetables included corn, peas and baked squash.

The main course featured roast venison and squirrel pies, with baked wild pigeons, partridges, blackbirds, owls — all served together.

Dessert consisted of cakes of maple sugar or sunflower seeds and nuts, topped with a sauce of boiled dried berries.

Lighting Up . . .

Since the Star shone on Bethlehem, lights have been a part of Christmas celebrations. Today, candlelight services are traditionally held by many churches at Christmas.

Something unique in the way of Christmas lights are the "luminarias" used to decorate the city of Albuquerque,

Since the Star shone on Bethlehem, lights have been a part of Christmas celebrations. Today, candlelight services are traditionally held by many churches at Christmas.

Something unique in the way of Christmas lights are the "luminarias" used to decorate the city of Albuquerque,

Since the Star shone on Bethlehem, lights have been a part of Christmas celebrations. Today, candlelight services are traditionally held by many churches at Christmas.

Something unique in the way of Christmas lights are the "luminarias" used to decorate the city of Albuquerque,

Early Roman Had 'Practical' View On Gift Giving

"Christmas is getting too commercial!"

This modern complaint, while it may have force, is somewhat lacking in originality.

"I hate the crafty arts of giving presents," said the witty Roman poet Martial, who lived and wrote from about 40 to 104 A.D. "Gifts are like hooks."

His complaint was expressed in a series of poems written for a wealthy patron, at the time of the Saturnalia, the pagan festival from which came many Christmas customs.

Martial, however, was not always averse to presents. After listing a large number of small gifts, such as toothpicks, figs, napkins, which had been delivered to him, he pointed out that it would have been much easier for the messenger to bring him "five pounds of silver plate."

"Christmas is getting too commercial!"

This modern complaint, while it may have force, is somewhat lacking in originality.

"I hate the crafty arts of giving presents," said the witty Roman poet Martial, who lived and wrote from about 40 to 104 A.D. "Gifts are like hooks."

His complaint was expressed in a series of poems written for a wealthy patron, at the time of the Saturnalia, the pagan festival from which came many Christmas customs.

Martial, however, was not always averse to presents. After listing a large number of small gifts, such as toothpicks, figs, napkins, which had been delivered to him, he pointed out that it would have been much easier for the messenger to bring him "five pounds of silver plate."

"Christmas is getting too commercial!"

This modern complaint, while it may have force, is somewhat lacking in originality.

"I hate the crafty arts of giving presents," said the witty Roman poet Martial, who lived and wrote from about 40 to 104 A.D. "Gifts are like hooks."

His complaint was expressed in a series of poems written for a wealthy patron, at the time of the Saturnalia, the pagan festival from which came many Christmas customs.

Martial, however, was not always averse to presents. After listing a large number of small gifts, such as toothpicks, figs, napkins, which had been delivered to him, he pointed out that it would have been much easier for the messenger to bring him "five pounds of silver plate."

"Christmas is getting too commercial!"

This modern complaint, while it may have force, is somewhat lacking in originality.

"I hate the crafty arts of giving presents," said the witty Roman poet Martial, who lived and wrote from about 40 to 104 A.D. "Gifts are like hooks."

His complaint was expressed in a series of poems written for a wealthy patron, at the time of the Saturnalia, the pagan festival from which came many Christmas customs.

Martial, however, was not always averse to presents. After listing a large number of small gifts, such as toothpicks, figs, napkins, which had been delivered to him, he pointed out that it would have been much easier for the messenger to bring him "five pounds of silver plate."

"Christmas is getting too commercial!"

This modern complaint, while it may have force, is somewhat lacking in originality.

"I hate the crafty arts of giving presents," said the witty Roman poet Martial, who lived and wrote from about 40 to 104 A.D. "Gifts are like hooks."

His complaint was expressed in a series of poems written for a wealthy patron, at the time of the Saturnalia, the pagan festival from which came many Christmas customs.

Martial, however, was not always averse to presents. After listing a large number of small gifts, such as toothpicks, figs, napkins, which had been delivered to him, he pointed out that it would have been much easier for the messenger to bring him "five pounds of silver plate."

"Christmas is getting too commercial!"

This modern complaint, while it may have force, is somewhat lacking in originality.

"I hate the crafty arts of giving presents," said the witty Roman poet Martial, who lived and wrote from about 40 to 104 A.D. "Gifts are like hooks."

His complaint was expressed in a series of poems written for a wealthy patron, at the time of the Saturnalia, the pagan festival from which came many Christmas customs.

Martial, however, was not always averse to presents. After listing a large number of small gifts, such as toothpicks, figs, napkins, which had been delivered to him, he pointed out that it would have been much easier for the messenger to bring him "five pounds of silver plate."

"Christmas is getting too commercial!"

This modern complaint, while it may have force, is somewhat lacking in originality.

"I hate the crafty arts of giving presents," said the witty Roman poet Martial, who lived and wrote from about 40 to 104 A.D. "Gifts are like hooks."

His complaint was expressed in a series of poems written for a wealthy patron, at the time of the Saturnalia, the pagan festival from which came many Christmas customs.

Martial, however, was not always averse to presents. After listing a large number of small gifts, such as toothpicks, figs, napkins, which had been delivered to him, he pointed out that it would have been much easier for the messenger to bring him "five pounds of silver plate."

"Christmas is getting too commercial!"

This modern complaint, while it may have force, is somewhat lacking in originality.

"I hate the crafty arts of giving presents," said the witty Roman poet Martial, who lived and wrote from about 40 to 104 A.D. "Gifts are like hooks."

His complaint was expressed in a series of poems written for a wealthy patron, at the time of the Saturnalia, the pagan festival from which came many Christmas customs.

Martial, however, was not always averse to presents. After listing a large number of small gifts, such as toothpicks, figs, napkins, which had been delivered to him, he pointed out that it would have been much easier for the messenger to bring him "five pounds of silver plate."

"Christmas is getting too commercial!"

This modern complaint, while it may have force, is somewhat lacking in originality.

"I hate the crafty arts of giving presents," said the witty Roman poet Martial, who lived and wrote from about 40 to 104 A.D. "Gifts are like hooks."

His complaint was expressed in a series of poems written for a wealthy patron, at the time of the Saturnalia, the pagan festival from which came many Christmas customs.

Martial, however, was not always averse to presents. After listing a large number of small gifts, such as toothpicks, figs, napkins, which had been delivered to him, he pointed out that it would have been much easier for the messenger to bring him "five pounds of silver plate."

"Christmas is getting too commercial!"

This modern complaint, while it may have force, is somewhat lacking in originality.

"I hate the crafty arts of giving presents," said the witty Roman poet Martial, who lived and wrote from about 40 to 104 A.D. "Gifts are like hooks."

His complaint was expressed in a series of poems written for a wealthy patron, at the time of the Saturnalia, the pagan festival from which came many Christmas customs.

Martial, however, was not always averse to presents. After listing a large number of small gifts, such as toothpicks, figs, napkins, which had been delivered to him, he pointed out that it would have been much easier for the messenger to bring him "five pounds of silver plate."

Manufacturers turn out some 48 billion cans annually, according to the Can Manufacturers Institute, which estimates that the average American empties 252 tins a year.



Blessings at Christmas

May the hope, the peace and the love that is Christmas remain with you and your dear ones forever and ever.

SPARKS LAUNDRY & DRY CLEANING

112 Hancock Spearman



Like jolly old Santa himself, we've a pack of good wishes for a holiday season that will long be remembered for its good cheer, and its enduring happiness.

SPEARMAN SUPER SERVICE

greetings



Santa's Christmas Express is coming your way, laden with all the good things of Christmas.

And we're sending along with it our heartiest wishes to you and yours for a happy holiday season. May this Christmas hold for you a future of happy memories.

PENNY THOMAS WYONA OWENS

YOUNG FASHIONS

Children Present Annual Program at Methodist Church

The Christmas program for the Methodist Church school was held Sunday evening at the church.

The welcome was given by Mrs. Jack McWhirter followed

with prayer by the Rev. Wesley Daniel. Bill Partridge, school superintendent introduced Mrs. Jimmie Shieldknight who presented Nursery I and II singing Christmas songs. Teachers for this group are Mmes. Shieldknight, E.J. Callaway, Jr., Frank Buzzard, Harold Shaver, Sid Beck and Patton Ann McGuire.

Kindergarten I and II sang 3 Christmas songs. Teachers are Mmes. Dale Sutton, Dee Allen, Garland Head, O.R. Latham. Music teachers are Mrs. Hubert Hays, Jr. and Mrs. Doug Grimes.

Card of Thanks

We would like to express our appreciation for the flowers, cards, memorials, food, and to the ministers who conducted the memorial service, and for all the acts of kindness extended to Christine during her illness and to us in our bereavement.

Vernie Rosson, Laura Ann Berry and the family of Christine Rosson

Mrs. Louis Schnell introduced Elementary I and II in a skit "What Makes Christmas?" Teachers are Mmes. Joel Lackey, Troy Sloan, James Lair and Jack Lovett.

Elementary III, IV, V and VI presented "The Christmas Story" portraying the manger scene. Teacher for this group are Mmes. John Sell, John Trindle, D.D. Stalder, Mr. John Trindle with music by Mmes. Carl Reed and Wesley Daniel.

Youth Superintendent Allen Alford introduced the 7th and 8th grade Youth Choir who presented the Processional and Allelulia by John W. Patterson directed by Mrs. Don Seymour and accompanied by Mrs. Bob Meek. Teachers for this group are Mmes. Bert Sheppard and Jack Lovett.

After the program refreshments of hot chocolate, coffee and cookies were served in fellowship hall where Santa Claus also made an appearance to delight the children.



Miss Hutchison Is Outstanding Senior Girl

Miss Susan Hutchison has been selected by the students and faculty of Spearman High School as the Outstanding Citizen of the Senior Girls.

Miss Hutchison will be competing for area, state and national awards in the Daughters of the American Revolution Citizenship Contest. The National winner will receive a \$10,000 scholarship.

The school representative was selected on the basis of her grades, honors, extra-curricular activities.

Students voted on students they thought qualified for the honor. Then, faculty members voted on the three top candidates.

Mr. and Mrs. Lee Keys are in Ponca City to spend Christmas with her mother, Mrs.

M.A. Robinson and visit other relatives in El Dorado and Wichita, Kans.

Joy and Peace

With the Christmas Star reminding us of Love, Peace and Good Will, we joyfully thank all our wonderful customers for their patronage.

CATES GROCERY & MARKET

119 Bernice Phone 659-2224

Notice

The dishes and containers that were brought to the Rosson home last week may be picked up in the kitchen of the First Methodist Church.

HAPPY HOLIDAYS

We want to say a sincere "thank you" to all our great friends and wish them all the laughter, fun and good cheer of this happy holiday season.

C & B STUDIO
Cricket, Bill and Billy

Pampa Office Opened By Social Security

"Our Pampa Branch Office opened this past Monday to serve the people of the Northeastern portion of the Texas Panhandle." Hal Geldon Amarillo Social Security District Manager announced. Field Representative Virgil J. Holloway is Officer-In-Charge.

The Pampa Office will provide social security service for the residents of seven counties. These are Gray, Hutchinson, Roberts, Hemphill, Hansford, Ochiltree and Lipscomb. The larger communities of Borger, Perryton, Canadian and Spearman will continue to be visited by a representative on a regularly scheduled preannounced basis. Representatives from the Branch Office will provide this service.

The office is located at 400 West Kingsmill Street, on the ground floor of the Hughes Building. It is open from 8:30 a.m. to 4:45 p.m. Monday through Friday, except national holidays.

Geldon pointed out that the office has been opened so as to provide faster and better service to the residents of the area. The office is under the supervision of the Amarillo District Office.

The staff of the Branch Office consists of seven persons. In addition to Officer-In-Charge Holloway these include: Claims Representatives Stanley White and Grady Savage; Service Representative Robert Hancock; Claims Development Clerks Mary Crawford and Ima Tarrant; and Receptionist Billie Bruner.

Holy night

May all the spiritual blessings of the Christmas season be with you and your loved ones, and your hearts be filled with peace and true contentment.

Spearman Rexall Drug

Sending Greetings

"Merry Christmas!" The custom of extending holiday greetings to friends undoubtedly goes back many years, but the Christmas card as a means of expressing those greetings is a relative newcomer to Christmas traditions.

Christmas cards had their beginning only 122 years ago in England, but despite the comparatively recent start, saying "Merry Christmas" in card form was a custom that quickly caught the public fancy.

The wish to say, "Merry Christmas" to friends and neighbors is strong, and the ways of expressing it are many. Today's edition of this newspaper, for instance, is one big "Merry Christmas" card, in which businessmen of this community offer special greetings and words of appreciation to their customers and friends.

"And on Earth" . . .

"Glory to God in the highest, and on earth peace among men with whom He is pleased."

This is how the latest version of the Bible translates Luke 2:14—a change from the familiar "and on earth peace, good will to men."

A clip-type clothespin is fine for holding stored paper bags in a neat stack.

GREETINGS

To all the messages of good cheer that ring out during this holiday season, we'd like to add our own, wishing you a very merry Christmas. May you find an abundance of the real joys of Christmas filling your heart and home, bringing you peace and contentment.

OWENS SALES COMPANY

Tudor Times . . .
 In England during Tudor times, Christmas celebrations were gay. on All Saints' Day, November 1, and continued until Candlemas, on February 2. The Lord of Misrule acted as master of ceremonies at the Yuletide festivities. Much of the music for all his merrymaking was extemporaneous. Many songs were passed on by word of mouth from generation to generation. Songs such as "The Boar's Head Carol," referring to the boar or pig which was traditional at the Yule feast, and "The First Nowell."

Since the herald angels sang, bringing "glad tidings of great joy" to shepherds watching their flocks, the people of many lands have contributed to the history of Christmas hymns and carols. In the fourth century, St. Basil the Great of Greece emerged victorious in his struggle for Christianity with the Byzantine Emperor Julian. To celebrate this victory, a musical poem or carol was sung in his honor. The first day of the New Year is still celebrated as St. Basil's day in Greece, and children receive their "Christmas" gifts on that day.

Johnson Says Congress Helped In Water Resources Management

President Johnson, referring to November as Water Conservation Month, said the first session of the Eighty-ninth Congress "made a number of significant contributions to the strengthening of the Federal Government's role in water resources management."

Legislation increasing the maximum flood storage capacity from 5,000 to 12,500 acre-feet in floodwater retarding lakes built and operated by local people with the help of the Soil Conservation Service and other U.S. Department of Agriculture agencies was one of the important laws enacted by the Congress, according to Mr. H.N. Smith, State Conservationist for the Soil Conservation Service in Texas.

"This law will permit better use of many upstream reservoir sites in multi-purpose watershed projects," said Smith.

Excerpts from the President's Proclamation designating November as Water Conservation Month include:

Of all the natural resources with which our nation has been so richly blessed, none is more important than water.

"Both urban and rural citizens rely on our water resources to satisfy human needs,

to maintain farm and industrial production, and to provide electric power. Our rivers, lakes, and similar bodies of water constitute a vital segment of our transportation and communication system, and provide recreational facilities that enhance our use of leisure time.

"The good health of the people of this nation is in no small measure dependent upon the quantity and quality of our water.

"But none of our resources has been more grossly abused by waste, and pollution. Concern as to the quantity and quality of our supply of water is being expressed in all quarters of the nation. The problem, in many places, is not a need to find new sources of water, but, is a need to develop sound conservation practices and to make more effective use of water resources now available.

"We must be farsighted and bold in managing and using our water. What must be done -- and done as soon as possible -- is to reverse the trends of waste and man-made pollution and contamination which have assured such mas-

sive and lethal proportions as to threaten the health, economy, and natural beauty of the nation."

First in U.S. . . .

First Christmas carol composed in the United States was the work of an 18th century leather worker named William Billings, reports The Book of Knowledge. A tanner by trade but a tunesmith by inclination, Billings composed the carol, "A Virgin Unspotted."

The song isn't one that is still sung, and few hymnals now include it, but carol singers today owe William Billings a considerable debt of gratitude.

During Puritan times in England, the singing of carols and, indeed, the whole celebration of Christmas, was banned. The Puritan-minded American colonies followed suit.

It was William Billings, more than any other individual, who managed to persuade the Puritan New England settlers that singing songs at Christmas wasn't sinful.

Zuilt Given To Mrs. Cookston

Mrs. Ethel Cookston was presented with the quilt being given away last week by the Home Demonstration Clubs of Hansford County.

The quilt was a fund raising project of the clubs to allow them to enlarge the Home Demonstration Clubhouse on N. Bernice in Spearman.

This quilt was made and given to the fund drive by Mrs. H.H. Crooks and Mrs. W.H. Tarbox. A total of \$390 was raised in the one project.

The club women said they wished to thank Spearman Hardware, Cut Rate Grocery, Ideal Grocery and the Spearman Reporter for the help they gave in the campaign.

Miss Patsy Kinglley of Lubbock Christian College is home for Christmas.

Dr. and Mrs. W.C. Davis of Memphis and Mr. and Mrs. Bill Davis, Shariu, Teri, Carl Pat and Danny of Decatur will arrive today to spend Christmas with Mr. and Mrs. Burl McClellan and Mr. and Mrs. Jim Davis, Jean and Jan.

Mae Bell Witcher of Texas Tech and Bobby Witcher of Oklahoma Baptist University are here for the holidays with their parents, the A.R. Witchers.



At Christmas, we especially recall the simple message of "Peace on Earth, Good Will to Men." You, dear customers, have shown your good will to us by your loyal patronage. Our hearts filled with gladness, we wish to say, "Thank you for such a wonderful year."

- C. A. Gibner, President
- J. W. Gibner, Vice President
- Peyton Gibner, Vice President
- Freeman Barkley, Cashier
- Paul Hazelwood, Assistant Cashier
- Verna Lee Schnell, Assistant Cashier
- Rex Sanders, Director
- H. B. Hart, Director
- Felma Evans, Teller
- Frankie Duryee, Bookkeeper
- Connie Jones, Bookkeeper
- Orlene Martin, Drive-in Teller
- Elaine Ernest, Secretary
- Beulah Abston, Proof

First State Bank

Member F.D.I.C.

Beady FURNITURE CO.
 PLAINS SHOPPING CENTER
 659-3044
 Spearman, Texas

To our many Friends and Customers,

We at Beady Furniture Company wish to take this opportunity to wish you a very Merry Christmas and Happy New Year. Also we wish to thank you, our customers and friends, for making this a wonderful year in Spearman.

Your support during the past three years has been most gratifying. We hope to continue serving you for many years to come.

Sincerely,
Brad Beady



Famous People Call Yule Their Birthday

A young farmer's wife in England gave birth to a son in 1642. In 1821, a baby girl was born in the Massachusetts village of Oxford. In 1865, the wife of a militant Christian crusader gave birth to her fourth daughter. And in 1883, in Paris, an artist's model bore a baby boy.

What did these four births have in common? In each case, the child was born on Christmas Day, and grew up to become a famous person. According to the Book of Knowledge, these well-known "Christmas babies" were Clara Barton, Evangeline Booth, Maurice Utrillo and Sir Isaac Newton.

Founder of Red Cross

Clara Barton, Civil War nurse, was born on Christmas Day in 1821. It was her warm thoughts of Christmas that led her, when she set off to visit her brother, a prisoner during the Civil War, to offer to take presents not only to him but to the prisoner relatives of all her Oxford, Mass., neighbors.

Subsequently, Clara Barton was instrumental in founding the American Red Cross and served as its president for many years.

In Salvation Army

Born on Christmas Day in 1865, Evangeline Booth was the fourth daughter of the Salvation Army founder, William Booth. By the age of 23, she was head of the Salvation

Army in London, and in 1904 she took over operations for the entire United States.

During World War I, the Salvation Army lassies under her jurisdiction spent Christmas—as well as many other days—ministering to the needs of American doughboys in France. The word "doughboy" stems from the celebrated Salvation Army doughnut, a World War I staple.

Known for Paintings

One Christmas-born child had little cheer in his life, on holidays or otherwise. This was the French painter, Maurice Utrillo, born on December 25, 1883.

Son of an unknown father and a mother who was a model for many of the Montmartre brush wielders of her time, young Maurice was shy and withdrawn, not only in childhood but throughout his life.

Ironically, reproductions of many of his paintings, particularly those of the sparkling white dome of the Montmartre Church of Sacre Coeur, are used by the thousands every year on Christmas cards.

He Invented Toys

Sir Isaac Newton, English physicist, mathematician, philosopher greeted his first Christmas, and his first day, in Lincolnshire, England, in 1642.

Frail and sickly as a youth, he devoted many boyhood Decembers to inventing and making Christmas toys.

Gold, Frankincense, Myrrh Make Suitable Gifts for Infant King

In New Testament history, St. Matthew describes the first of all Christmas gifts—gold, frankincense and myrrh. After the wise men had knelt at the manger, he tells us, they opened their treasures to select these special offerings for the newborn Babe of Bethlehem.

To the modern mind, gold is instantly recognizable as a treasure, but the value of frankincense and myrrh is not

so readily apparent. Actually, frankincense and myrrh were costly items in the time of Christ, and they are still costly. Both are resins used in making incense, surviving today at many a Christian altar.

As further evidence that frankincense and myrrh were precious treasures, worthy gifts for an Infant King, there is the old poem which expressed the ancient belief that "incense owns a deity night."

Omens Dim Yule Spirit

"Merry" Christmas? Not always, according to some ancient beliefs once associated with the day.

Take, for instance, the old belief that cattle and other stable animals were given the power of speech on Christmas Eve.

Any person who heard the animals speak would die within a year, so superstition said.

Somber omens of death were read into still other Yuletide legends. When the Yule log

burned, bystanders were told to watch the shadows on the walls. If the shadows of any persons appeared to be headless, this supposedly meant death for those persons, again within a year.

Salt was also said to have the power of forecasting life or death, when used in connection with Christmas. The test could be made by leaving a small mound of salt on the table on Christmas Eve. If the salt melted during the night, that, too, meant death within 12 months.

If the salt remained unmelted, the forecast was for a long and healthy life.



GREETINGS

At the Yuletide, we especially rejoice in the opportunity to turn from the routine of everyday business and in real sincerity convey our appreciation to our many valued friends. Your favors and good will have made "everyday business" a very special pleasure for us. To all, our wishes for a happy, hearty holiday rich in good old-fashioned joys.

From the owners and employees of

Crawford Implement Co., Inc.

Spearman

Peace on Earth



GOOD WILL TOWARD MEN

Wade's Diner

Highway 15

Spearman



Christmas BLESSINGS

To each and every one of our friends, we send our most cordial wishes for a holiday season abounding in blessings, with genuine appreciation for our pleasant relations throughout the past year.

Massad's

Merry Christmas

GREENS FORBIDDEN

Until about 565 A.D., the use of evergreens for decorations at Christmas was forbidden by church authorities.

Yuletide Beauty Is Reflected In Legends of Flowers and Greens

Radio Station

kbmf-fm

Once again
Broadcasting

Season's
Greetings

and Best Wishes

Stand by

for a

Happy New Year!

ON

98.3 **kbmf-fm**

SPEARMAN, TEXAS

Flowers burst into bloom and trees and shrubs were green with new leaves on the night of the Saviour's birth, so legend says. Down through the ages, certain flowers and greens have held an honored place in the lore of Christmas — the holly and the ivy, mistletoe, rosemary, the Christmas rose, the thorn tree.

Ancient peoples believed that mistletoe had powers to ward off evil or cure a variety of illnesses. Druid priests of Britain, long ago, believed that mistletoe should be cut with a golden knife, then hung over doorways as a protection from evil. The Greeks, too, used it to ward off evil.

One of many legends surrounding the poinsettia tells of a poor Mexican girl who, having no gift of value, humbly placed some roadside weeds at the foot of a statue representing the Virgin and Child. Instantly, the weeds became scarlet blossoms and thus, so the legend says, the poinsettia was created.

Rosemary, the symbol of constancy, was at one time widely used in England as a Christmas decoration. During the Victorian era, it lost popularity and is now seldom, if ever, seen as part of the Yuletide greenery.

An old story says that the fragrance of rosemary was given to it when Mary placed the Christ Child's garments on this shrub.

Like mistletoe, the brightly-berried holly was early credited with magical and medical powers. It could even, legend said, tell girls the name of their future husbands.



Cards Tell Of Changes

The tradition of exchanging Christmas cards is a charming part of the joyous holiday, and it has a history of its own.

One of the most interesting parts of that history is the way that, greeting cards serve to record changing social customs, manners and fashions through the years, points out Miss Esther Mooney, curator of the Norcross, Inc., greeting card collection.

For instance, an English card of 1892 shows the formality existing between parents and children during the Victorian era. Here, a little girl kneels solemnly at her mother's knee, sedately offering her a Christmas bouquet, with the wish, "May your life be a Merry Christmas."

Modern cards take a livelier, more light-hearted approach. Even earlier, greeting cards began to reflect an easier sort of filial relationship. Declares a 1930 card: "3 cheers 4 a Merry Christmas and you, Dad!"

Golden Age Of Christmas Saw Birth of Cards

It was the "Golden Age of Christmas." The personal exchange of good wishes, visiting homes to toast a friend's good health, carol-singing, bringing in the Yule log and great family dinners were all in vogue.

A new book was published that year. It told of Christmas goose and plum pudding, of happy family parties. It presented, and made immortal, Ebenezer Scrooge, Bob Cratchit and Tiny Tim. The book was Charles Dickens' "A Christmas Carol," and the year was 1843.

Appropriately, during this "Golden Age of Christmas," the now universally-popular custom of sending Christmas greeting cards began.

The very first card, authorities now agree, is the celebrated Cole-Horsley, designed and printed in London in 1843. Only a dozen of the original 1,000 copies are known to exist, and two of these, including the only unsigned and unposted specimen, are part of the Hallmark Historical Collection.

When not on display in museums and similar institutions, the collection is filed in a specially constructed vault at Hallmark Cards in Kansas City, Mo.

Sir Henry Cole, a wealthy London gentleman, and founder of the Victoria and Albert Museum, asked his friend, John C. Horsley, noted artist and member of the Royal Academy, to design the now-famous card as an unusual means of expressing his kind wishes to friends at the holiday season.

WHAT "NOEL" MEANS

"Noel," the French word for Christmas, means "birthday," "news," or "a shout of joy."

About Trees . . .

On the night Christ was born, legend says, all the trees burst into bloom. Thus began many stories about the Christmas tree.

Early folk tales described a huge tree in the midst of a forest. The tree held many candles, some straight, some upside down. At the top was an infant with a halo around his head.

It was believed that the tree represented humanity. The candles, up and down, symbolized people, good and bad. The infant was the Christ Child.

IN CASE OF FIRE

At home—
Quickly get everybody out of the house.

Call the fire department.
(Be sure everyone in your family knows how to call the fire department.)

At public gatherings—
Walk, do not run, to the nearest exit. Call the fire department immediately. Keep calm.

—American Insurance Association



We're wishing that all good things may come your way this year, and for many, many years.

And to our fine patrons, our sincere thanks.

GORDON'S DRUG

Telephone 659-2141

Gordon and Jim



During this especially glad time of Christmas, we'd like to extend our best holiday wishes to you and yours. It has been our pleasure to serve you and we thank you for your loyal patronage.

Ken and Dixie

GRUNEWALD'S RESTAURANT

Plains Shopping Center

Spearman

Merry Christmas



This is the happy season, when voices join together in laughter and song. It's the time when we count our blessings and share our good fortunes with friends and strangers, alike. In the true Christmas tradition, we'd like to extend to you and yours, our best wishes for a Merry Christmas.

H & H Water Well Service



PERFORMS-The Music Department of the Morse elementary school presented the program at the December meeting of the Morse P-TA.

Music Department Gives Morse Christmas Program

The music department of the elementary grades presented the program for the December meeting of the Morse PTA Tuesday night at the school auditorium. The program was under the direction of Mr. and Mrs. C.D. Whitaker.

The program was opened with guitar and piano music by Gary Reiswig, a senior, accompanied by Mrs. Whitaker at the piano. Another high school student, Bonnie Hewitt presented a vocal solo "Thine Alone."

Grade school soloists were Sam Fleming, Van Lewis, Ricky Brumley, Carol Hurley, Vickie Scribner, John Feeny, Karis Fleming and Terry Womble.

During the business session preceding the program, the yearbook chairman, Mrs. Don McCammond, presented the yearbooks and read the dedication. The book was dedicated to Johnny Brumley, superintendent of the Morse school.

Future Readers of The Plainsman

Mr. and Mrs. John LeRoy Wagner of Spearman are the parents of a daughter born Dec. 20 at Hansford Hospital.

Mr. and Mrs. Bernard Dossett are the parents of an adopted daughter, Christy Lynn born Dec. 16. She weighed 6 lbs. 15 1/2 oz.

A life membership was presented to Mrs. H.B. Parks by Mrs. R.C. Womble, chairman of the committee.

Refreshments were served in the school cafeteria by hospitality chairman, Mrs. Frank Lewis at the close of the meeting. She was assisted by Mrs. O.E. Hext.



Patients in Hansford Hospital this week are Steven Crawford, W.S. Jones, Deana May Douglas, Dennis George, Sarah Townsend, Harold Wood, Lo Anna Wagner and daughter.

Dismissed were W.D. Spradling, Ada Ann Rex, Santos Gonzales, Bobbie DeArmond, Jim Pingleton, Rock McLeod, Joan Gilley, Carmen Walker.

FOR HOMEMAKERS

For the homemakers on the gifts list, there's the new non-stick cookware, which combines cooking and clean-up convenience with colorful accents for kitchen beauty.

THEY'RE GAINING

The oval-cut and heart-shape sre fancy cut diamonds whose popularity is increasing.

Faus Rites Held Here Wednesday

Funeral services for a former resident of this area, Samuel Norman Faus, were conducted at 2 p.m. Wednesday in the Apostolic Faith Church of Spearman by the Rev. Robert Giouard and the Rev. W.E. Blythe.

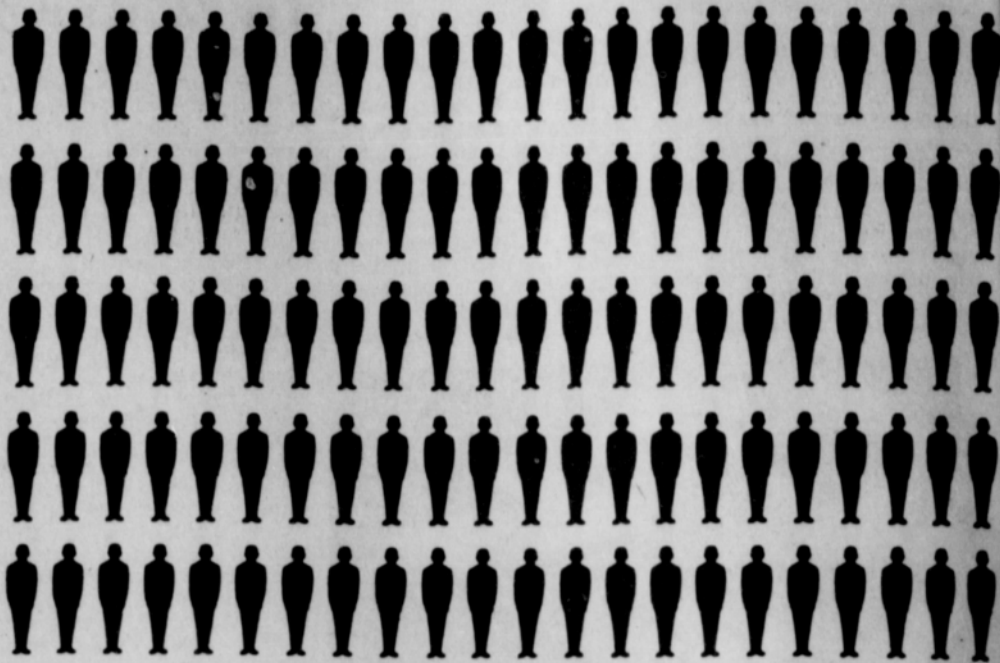
Mr. Faus, a retired butcher, died Dec. 20, in a Canon City, Colo., hospital. He was 76.

He was born in Runaway Springs, South Dakota, Aug. 2, 1889. Before moving to Spearman, Mr. Faus lived in the Oklahoma Panhandle and at Ochiltree. He moved to Old Hansford, then to Spearman. He was a member of the Apostolic Faith Church. He has lived in Canon City for 10 years.

Burial was in the Ochiltree Cemetery under the direction of Boxwell's.

Survivors are his daughters, Mrs. O.A. Scroggs and Mrs. B.A. Byers of Spearman, Mrs. Cecil Tomblason of Lamar, Colo.; sons, Francis of Hutchinson, Kan., and Jack of Las Animas, Colo, sisters, Mrs. Tim Minton of Canon City, Mrs. Effie Cox of Idaho and Mrs. Ella Bushman of Spearman; brothers, Reuben of Spearman and Bill of Idaho. Pallbearers were Benny By-

OPERATION "DEATHWATCH" DEC. 24 thru JAN. 2 ESTIMATE - 110 MOTORCIDES



"OPERATION DEATHWATCH-1965"—The Department of Public Safety estimates that 110 persons will die in traffic accidents during the 10-day Christmas-New Year's holiday period from December 24 through January 2. Three times daily during the period the death totals will be tabulated and released from DPS headquarters in Austin. Each time a life is lost, a corresponding figure will be marked off the "Deathboards", shown above, to bring attention to the dangers of holiday travel. An appeal is made to every motorist and pedestrian to prove the above estimate too high.

ers, James, Tildon and Ted Scroggs, Wayman Edwards and S.W. Pipkin.

Honorary pallbearers were Lee McClellan, Virgil Floyd, E.J. Copeland, Kenneth Longley, Jess Womble, Floyd Hays, Ed Greever, James Riley, Vester Hill and Jack Spearman.

Hidden Clasps Are News in Pearls

Pearl necklaces, ever-popular presents, make news this year with hidden clasps and roundel clasps of diamonds or other precious stones.

Either one effects a continuous-strand look, so that the necklace can be worn many different ways.

The clasp in matched pearl necklaces is often an extra Christmas present — so beautifully bejeweled that the wearer may want to display it.

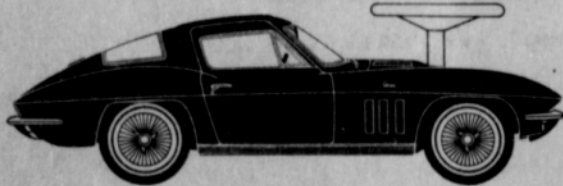
Greetings



We're wishing you joy and happiness during this beautiful season. May the true spirit of the Yuletide bring us peace and contentment, with thankfulness for our many blessings, as we celebrate with family and friends.

North Plains Truck & Implement, Inc.

LITTLE CORVETTES for LITTLE PEOPLE



at a LITTLE PRICE

Kiddie Corvettes for the youngsters in your family . . . now at our dealership. Bright, tough red plastic body that youngsters can ride on. It's got simulated magnesium wheels and a battery-operated horn. Pure playtime fun for the kids. And you can get one for a short time only for just

\$5.95

Come on in and pick one up while there's still a good supply.



Excel Chevrolet Co.

120 Main Spearman

Phone 659-2541



LIVING MANGER SCENE---The Three Wise Men present gifts at the manger in this Christmas scene presented Sunday and Monday evenings by the young people of the First Christian Church. A large crowd watched the presentation each evening.
Plainsman Photo

Presbyterian Pastor Receives Fellowship

The pastor of the Presbyterian Church of Spearman, the Rev. Everett Cain Jr., has resigned his position here to return to school.
The Rev. Cain will leave Jan. 1 to enroll in the University of Austin in Austin. He enrolls in the Presbyterian

Seminary in Austin on Jan. 15.

A fellowship for special study Theology and Pastorate Care has been extended to the Rev. Cain. He said he hated to leave the church here, but could not turn down this fellowship. He will also complete his work for his Master's degree.

The Rev. and Mrs. Cain and daughter Leslie came to Spearman in July of 1964. This was his first pastorate and he was the first pastor in the new Presbyterian Church. The church had organized earlier and conducted services in the Farm Bureau building.



PLAY FAMILY, complete with dog, lives in a Lacing Shoe that also teaches lacing, tying. Family fits slots in the shoe. By Fisher-Price.

Unusually Gifted

For the dog who has everything, how about a solid mahogany indoor dog house, with a gold-plated crest of arms on the entrance?

This is just one of a number of "unusual" gifts for those difficult-to-gift people, and dogs, on the list. Others include, for junior, an electrically-operated, life-size stuffed gorilla and, for the golfer, a gold-plated putter with battery-operated siren, flashlight and compass.

On second thought, maybe it's just as well that most people don't have everything!

Photo Gifts Can Help to Recreate Happy Moments

Santa wisely suggests photographs as Christmas gifts that carry a special message of love and thoughtfulness to the recipient.

Portrait photographs, of individuals or of a family group, are traditional and always welcomed as gifts. But this Christmas, Santa has come up with a new suggestion.

Why not give a restored, old but cherished photograph, too?

Any photograph, regardless of age or condition—even a torn-in-pieces photo—can be restored, say the Professional Photographers of America.

Qualified portrait photography studios can also create a new group photo, complete with background, from several old, individual photos.

An old black and white photo can become doubly valuable and meaningful when restored in color. It will look as real as an original color photograph.

For the best results, and protection of a prized, only-copy photo, take old photographs to professional photographers who specialize in restoration.

Don't select restorer on the sole basis of price, but ask to see his "credentials": the examples of restorations he has completed.

GIVE DESKS

Gift almost every member of the family could use, from Dad to the young students, is a handsome new desk.

The rule of thumb for adequate protection, according to the Institute of Life Insurance, is that a family breadwinner should carry life insurance equal to four or five years of his income.

IT'S A MYSTERY

Newest twist to jigsaw puzzle fun this Christmas is a Mystery Puzzle assortment. Each 600-piece puzzle contains a mystery story which points to a clue to be found in the completed puzzle.

U. S. NURSING HOMES

There are about 9,700 nursing homes in the nation offering skilled care for 350,000 patients.

It took Gertrude Ederle 11 hours, 34 minutes to swim the English Channel Aug. 6, 1926.

WHEELING IN

Gifts on wheels include sidewalk bikes equipped with motor roar and other devices to reproduce traffic sounds.



Merry Christmas

The joyous Christmas Season is here, filling our hearts with its spirit of happiness and good cheer. May you enjoy an abundance of pleasures among family and friends. And please add our sincere greeting for a very, Merry Christmas.

Mr. and Mrs. Junior Lusby and employees

Junior Lusby 'Cats'



YOU JUST CAN'T BEAT THESE SAVINGS

Prices good Thursday and Friday

Hunt's sliced or halves 2 1/2 can | Kimbell's
PEACHES 4 for \$1.00 | BISCUITS 13 cans for \$1.00

Sweet Peas Del Monte Early Garden 303 can 5 for \$1.00

Pork and Beans Van Camp's 300 size 6 for 99¢

Black-eyed Peas Diamond with bacon 300 size 8 for 99¢

5 pounds Sugar with purchase of any five lightbulbs. 19¢

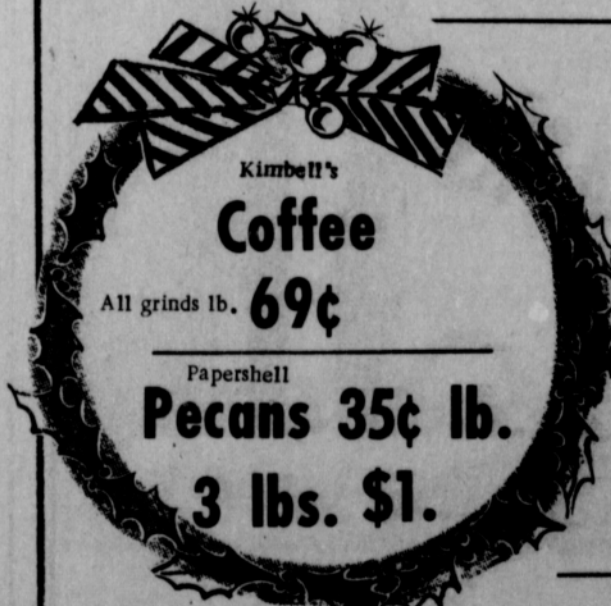
Pork Sausage Homemade lb. 59¢

Whipping Cream Borden's 1/2 pint 19¢

Corn Del Monte WK or Cream style 303 can 2 for 39¢

Bacon Longhorn Stagecoach 2 lbs. \$1.43

Ground Beef 49¢ lb.



Kimbell's Coffee All grinds lb. 69¢

Papershell Pecans 35¢ lb. 3 lbs. \$1.

We Will Open at 10:30 a.m. Christmas Day and remain Open Until 4 p.m. Regular Hours Sunday.

M & M Grocery

We Give Buccaneer Stamps

THE MORSE CODE

Morse basketball teams have been busy the past two weeks. Last Monday they went to Stinnett to play the B teams there. The Mustangs won by a large margin and the Morse girls lost by three points. On Friday night the teams went to Hartley where they lost to the host teams by narrow margins. The Morse girls lost by one point in an overtime.

Monday night both the Morse boys and girls won over the

Mobeetie teams at Morse. Score for the girls was 43-26. Suzanne Dixon with 25 points was high. The Mustangs won their game by 30 points, 75-45. Gerald Scribner was high for the Mustangs with 16.

The Community Christmas Tree, an annual event will be held at the school auditorium Friday night at 7 p.m.

The Morse PTA sponsors this tree each year. Committees

have been appointed to take care of arrangements.

A short program will precede the arrival of Santa Claus.

The Community 4-H Club held its Christmas party at the Community Building Saturday night. Nell Henderson, leader, was sponsor for the party.

At the beginning of the evening the club members took baskets of fruit to some of the senior citizens of the community.

The WSCS had a Christmas party Tuesday afternoon with Gene Dixon as hostess.

A program "Symbols in Christmas Art" was presented by members of the organization.

Games and a gift exchange where secret friends were revealed followed the program.

Those present were Mmes. Lex Board, Jack Johnson, M. W. McCloy, Pearl Dixon, Lynn Davis, Gene Dixon and the Rev. and Mrs. John Fitzgerald.

Funeral services for Carl Tompkins, a former resident of Morse, were held Thursday afternoon at the Morse Baptist Church.

Mr. Tompkins, 63, died in Agnew, Calif. He was the first custodian of the Morse school from 1930-40.

Pallbearers were H. B. Parks, Willard McCloy, Jack Gillispie, Desmond Kelly, Daryl Lanners and R. E. Womble.

Interment was in Leib Cemetery.

A large group of friends gathered at the community building Thursday after the Tompkins funeral to visit with members of the family.

Rae and Dick Payatt and

T. W. (Pete) Tompkins of Redwood City, and Truman Tompkins of Lakeport, Calif. were here for their father's funeral. All three attended Morse school.

Other relatives and friends coming for the funeral were Tommy and Sue Tompkins of Dallas, Mr. and Mrs. R. B. Tompkins of Ft. Worth, Horace and Emily Tompkins of Sunray, Mrs. Clyde Nelson of Munday, Mrs. Ruth Parks of Fort Worth, Tab and Armeta Womble of Fritch, Mr. and Mrs. Charlie White of Amarillo and Mr. and Mrs. Ralph Forester of Dalhart.

A Christmas dinner honoring members of a Bible class for child evangelism was held at the home of Mrs. Desmond Kelly Thursday. The group sang Christmas carols and listened to Bible tapes.

Attending were Mr. and Mrs. Tom Dortch, Mmes. Annie Clifton, John Thompson, J. Fly of Stinnett and Mrs. Doyle Fogle of Phillips and the hosts.

Morse HD Club members and guests met at the home of Mrs. Tom Dortch for a gift exchange Friday morning.

Following the exchange the group went to Borger where they had luncheon at the Sands Motel.

Attending were Linda Leib, Lovenia Thompson, Mildred Lewis, Evelyn Hext, Gretchen

Alexander, Besse Henderson, Lily Johnson, LaVerne Parks, Linda Webb, Mary Gillispie, Lela Dortch, Beth Dortch, Charlotte Hurley and Ella Parks.

College students home for the holidays include Wayne Board of WTSU, Donna Cator of McMurry, Elaine Kelly of Bob Jones University, Sharon Parks and Bill Pittman of Texas Tech, Allen McCloy, Allen Dixon and Jack and Carolyn Giblin of Panhandle A&M.

Beth Dortch and Lela Dortch visited Friday in the home of Mrs. Jenny Searcy of Stinnett. Eschol Blankenship of Texas Tech visited Sunday in the homes of his sisters, the Lynn Davis and Tom Dortchs.

Mrs. Annie Clifton has gone to Denver to spend Christmas with her daughter and grandson, Josie and Kurt Aaron.

Mrs. M. W. McCloy and Mrs. Annie Clifton spent last weekend with the Carson McCloy's in La Junta, Colo.

Bill and Barbara Clifton of Borger came to watch the Mustangs play ball Monday night. While here they visited in the Tom Dortch and H. B. Parks' homes. Bill is a former coach of Morse.

Among those attending the Independence Ins. Christmas banquet at the Borger Hotel Thursday night were Mr. and Mrs. Henry Reid, Mrs. Besse

Notice

Your Sunday Plainsman will arrive by mail this week in order that the employees of the paper might have a holiday.

WHITER TURKEY

When roasting turkey for a holiday feast, basting the bird with ReaLemon lemon juice will help keep the white meat white. It enhances the flavor of the bird, too. A plastic squeeze lemon makes an especially convenient baster for the inside. During roasting, baste the outside of the turkey with lemon juice and melted butter.

FIRST CARDS SOLD

Christmas cards were first offered "to the trade" by an English publishing house in the 1860's. They carried such designs as jolly old gentlemen (who might have been Santa's forebears), plum puddings, holly and mistletoe.

Henderson, Mr. and Mrs. Garmertsfelder and the H. B. Parks. Mrs. Floyd Bynum suffered severe lacerations and bruises in a one car accident near Pringle last week. She is now at home after spending several days in the Borger hospital.



Christmas BLESSINGS

May the blessings of Christmas be yours during this holy season and may they continue long into the future.

SPEARMAN HARDWARE
John and Sammie Bishop



Select A Philco Radio or Stereo

Radios \$9.95 to \$66.95
Stereos \$69.95 to \$189.95

Give A Christmas Gift That Will Provide Enjoyment For Years To Come !

BURTONS TV



Season's Greetings!

Reddy Kilowatt and the Community Public Service employee family extend warmest best wishes to you and your family. They hope that this Holiday season will be your happiest ever, and that your electric service will play a part in making each day of the New Year a little more pleasant than the last.

COMMUNITY PUBLIC SERVICE

Your Electric Light & Power Company



Distinguished Scholar Had Doubts About Famous Christmas Poem

"Twas the night before Christmas, when all through the house, Not a creature was stirring, not even a mouse."

With these lines begins the familiar poem, "A Visit from St. Nicholas." Today, this poem is a treasured part of the lore of Christmas, often quoted and published at the Yuletide season.

Surprisingly, the poet who created it was far from proud of his work.

A distinguished Biblical scholar and professor of divinity, Dr. Clement Clark Moore wrote the poem for the amusement of his children at Christmas in 1822. A visitor in the home at the time copied it and had it published a year later in the Troy, N.Y., Sentinel.

The poem appeared anonymously, because Dr. Moore felt that he, as a professor of di-

poem. In 1844 the poem was published and for the first time credited to its creator, Clement Clark Moore.

IT'S SPACE DUST

Several million tons of dust drift down through the atmosphere each year and mix with dirt from terrestrial sources. Now and then a housewife may

sweep up a trace of space dust, not dreaming it came from the moon or beyond.

PURE NICKEL COINS

The world's largest pure nick-

el coins, each weighing nearly one ounce, are the Belgian 20-franc pieces minted in 1931. The smallest are the current 10-cent pieces of the Netherlands, each weighing one-twentieth of an ounce.

Since 1961, a team of highly organized treasure hunters has recovered more than a million dollars in gold and silver from the rotted remains of a Spanish fleet wrecked off Florida in a 1715 hurricane.



vinity, should not be associated with such "undignified" work.

For more than 20 years, he refused to take credit for the

Egg Shelling Easy By This Method

When boiling eggs to be hardboiled, add a teaspoon of salt to the water. When done, remove at once from the hot water and place in a container holding cold water.

Shake the container so the eggs hit each other and the sides of the utensil and crack slightly. Leave them in the water for a few minutes. Drain off water and cover eggs again with cold water, then see how perfectly the shells come off.

CHESAPEAKE BAY AREA

From the Virginia capes to the mouth of the Susquehanna River lies the Chesapeake Bay country.

Gift Box

Memo :

PEACE in the NEW YEAR

We heartily wish that this New Year brings to all of us the abiding love and understanding that leads to peace among men. Thank you, our loyal customers for a truly wonderful year.

The GIFT BOX

Betty & Employees

A JOYOUS CHRISTMAS



"Unto you is born this day in the city of David a Saviour, which is Christ the Lord"

As brightly as the star of Bethlehem, that Silent Night, may the spirit of the first Christmas shine forever in your heart.

May its message of Peace and Good Will become an abiding source of hope to you and yours.

FROM THE EMPLOYEES OF



CRIME RATE HIKE

Since 1958, crime rates in this country have advanced five times faster than the population growth, an FBI crime report reveals.

MORE DOCTORATES

There will be about 13,300 doctorates awarded this year by colleges and universities in the United States, an increase of 1,400 over last year.

MOYERS' OLD JOB

Bill Don Moyers, the presidential press secretary, was formerly deputy director of the Peace Corps.

Owens Sales Has Annual Yule Party

The annual Christmas party for the employees and their families of Owens Sales Co. was held Tuesday evening December 21 in the store building.

Guests arrived at 6:30 and were served a delicious turkey dinner with all the trimmings catered by Ross's Catering Service. After dinner, Santa Claus made an appearance bringing gifts to everyone. The children were then entertained by Misses Janie and Jo Ellen Kirkland while the adults enjoyed games of cards and dominoes.

Enjoying the evening of entertainment were Mr. and Mrs. Kenneth Burch, Ronnie, Terry, Kerry, Carma and Cindy Simms; Mr. and Mrs. Don DeArmond, James, Dennis, Bobby and Mary Lou; Mr. and Mrs. Eldon Smith, Kim, Deborah, and LeAnn; Mr. and Mrs. George Rook, Tammy & Kevin; Mr. and Mrs. Larry Hays, Mark and Joanne; Mr. and Mrs. Jim Beeson; Mr. and Mrs. Claude Owens; and Janie and Jo Ellen Kirkland.

Brock, Blodgett and Gibner Are Elected

In a close election that had 101 of the 170 members returning ballots, three men were elected to the board of directors of the Chamber of

Commerce. Three women received write-in votes.

The new board members are J.L. Brock, re-elected, Peyton Gibner and Ralph Blodgett.

Members were voting on three of six candidates. The other three who had consented to serve, if elected, were Roy Bulls, Jim Evans and Johnnie Lee.

The women receiving write-in votes were Kay Nollner, Beth Fox and Mona Beth Windom.

The two directors going off the board are Bill Massie and James Bramlett, who resigned when he moved from Spearman.

The new directors will be installed at an installation dinner on Jan. 15. Officers will be elected at the next board meeting on Jan. 6.

Membership banquet will be held on Jan. 20, when humorist John Armstrong, of Chicago Institute of Electronics, will be the speaker. Tickets are now on sale at the Chamber of Commerce office.

Candle - Light Service Set Christmas Eve

The traditional candle-light Communion Service, held each year in the Presbyterian Church is scheduled for Friday evening, Dec. 24 at 7 p.m.

The pastor, Rev. Everett Cain Jr., invites the public to attend this special Christmas Eve service.

Sport Shirts Fit His Leisure Life

Whether he prefers to spend his leisure hours in sports activities — from fishing to bowling — or would rather just relax in an easy chair, there's a place in his life for gifts of sport shirts.

New shirtjacks and pullovers, as well as traditional shirt styles, offer opportunity to make his gift a bit different, but still practical.

WHAT'S NEW?

"What else is new?" is a good question for Santa to ask himself when checking for gifts ideas. Stores and departments serving the home will provide plenty of giftworthy answers.

Handsome solid colors are apt to appeal to the man who thinks he doesn't like sport shirts. For the confirmed sport shirt wearer, paisleys and giant plaids are news.

Sheets and towels are always wearing out; appealing new color combinations and patterns are always being created — two good reasons why linen gifts are right for every home.

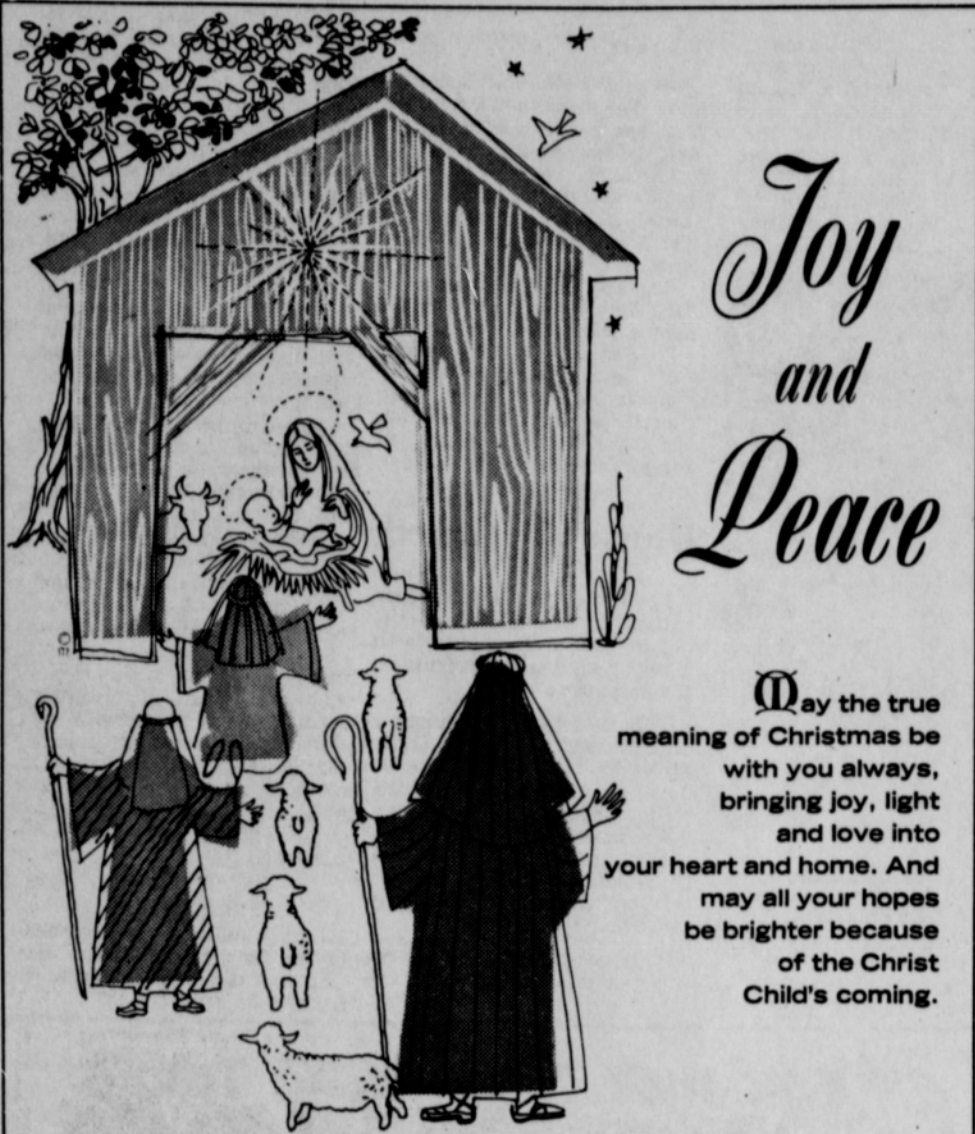
Kenneth Taylor, student at Northwestern State College at Alva, Okla., is spending the Christmas holiday with his parents, Mr. and Mrs. Orville Taylor and his brother, Max Taylor.

Man Returned On Forgery

A man has been returned here by Hansford County Sheriff J.B. Cooke on a forgery charge. He was apprehended in Shreveport, La.

Sheriff Cooke returned Isaac Jests to face forgery charges. He allegedly forged a check on Rex Jones and passed it at Cates Grocery.

Mr. and Mrs. Jim Orrell of Barstow, Calif. are here to spend the holidays in the home of her parents, Mr. and Mrs. Major Lackey.



Floyds' Locker

MAE & VIRGIL FLOYD



HANSFORD ABSTRACT COMPANY



B & B Grain Co., Inc.