

HANSFORD CO. LIBRARY
120 MA IN
SPEARMAN TEXAS 79081



HANSFORD PLAINSMAN

MEMBER 1981
TEXAS PRESS ASSOCIATION

VOL. 11, NO. 19 THE HANSFORD PLAINSMAN, SPEARMAN, TEXAS 79081 SUNDAY, MARCH 1, 1981

Open House Monday Nite

Spearman schools, along with 1,100 other school systems across the state, will make March 2-6 the thirty first annual Texas Public Schools Week beginning with an Open House at all local schools 7 - 9 p.m., Monday.

Although parents are free at any time during the school year to visit the school their children attend, this special week with its beginning Open House is to especially attract all members of the community to view first-hand how the school system operates and how this specialized machinery translates money, time and teaching talent into student learning and accomplishment that causes great pride in every home where there is a school child.

Parents, all members of the community are urged during this week to have lunch at one of the schools with the children. In addition to Open House, Monday night, various teachers and their students have prepared special programs for this special week of focus on Texas public schools. At least all parents should get a schedule of these programs and throughout the week.

Texas Public Schools Week became an official observance in 1950. For some two decades prior to that date, most school systems in Texas had been having Open House occasions and special programs with community attendance invitations. These were generated by administration, faculty and students on their own initiative to urge parents to visit the schools and to help the general public gain an appreciation of what schools were doing for the children of the community.

Every school in the Spearman system will be observing this special week beginning with the Monday night Open House with the welcome mat out for every person in the community.

City Candidates Going 'Begging'

Elections to place three people on the Spearman city council and three on the board of trustees of the Spearman Independent School District will be held April 4.

With the candidate-filing midnight, Wednesday, March 4, not one of the three with terms expiring on the city council have filed for re-election

nor have any candidates filed for first-time tries for the posts. The school board has fared a bit better. Some aspiring candidates have filed. SISD Supt. James Cunningham explained that there are two three-year terms and one two-year unexpired term left when Clark Mires moved to Stratford.

According to Cunningham, a candidate may file for any of these positions but...he or she must declare which position is being sought at the time of filing.

Filing for the school board must be done at the office at high school while filing for city council seats must be done at city hall.

So, for all "intents and purposes" the filing deadline, Wednesday, must actually be at the close of those offices at the end of the business day.

There had been four file for school board positions at press time, Friday. These candidates are Roger Odegaard, Craig Schuman, Jim Davis and Tom White.

At the same press deadline, City Manager Jim Murray said there had been no candidates file for seats on the city council.

Spearman Faces Landfill Problem

The regular meeting of the Spearman city council, Tuesday night, was concerned with problems at the sanitary landfill, bids on police vehicles and annual reports from various departments of city governments, among other items.

A visiting state inspector met with the council, Tuesday night, after spending considerable time with City Manager Jim Murray at the sanitary landfill.

The chief problems that render the city "dump" in non-compliance are old vehicle tires, scrap metal and brush. The city is already operating the dump as is in a period compliance grace and--while it has a permit to burn--it does not cover the old tires. The air control board will not issue permits to burn tires because of the dense smoke resulting.

Much of the scrap metal problem is the result of one individual who wanted to haul it off and reap the profit but he wants to do it at his leisure. He scrounges the scrap from the pit where it is buried and stacks it where it can be loaded handily. Often, weeks pass before he gets it loaded. In the meantime, that scrap metal just stacked out on the bare ground is a point of non-compliance.

The normally required procedure to comply is to dig a trench. The tires must be buried at the bottom of the trench with the scrap, any stones or other concrete and the brush on top to keep it from "floating" to the top. The chief problem is having no space to dig the trench.

The visiting inspector told council members that he felt--what with the burn permit and the fact the area in non-compliance is an old area holding

See COUNCIL p. 2

1980 Annual Police Report More Offenders, But --Get Faster 'Shake'

Traffic accidents on the city streets of Spearman occur, on the average, one of every four days, according to the annual report of the Spearman Police Department.

In 1980, there were 86 accidents investigated--up from 79 the previous year. These traffic accidents ranged from minor damage to vehicles, to vehicles that were totally demolished. Ten of the accidents resulted in injuries, some of them major.

There were no fatalities. Forty two of these mishaps involved two vehicles; 23 involved a moving vehicle and a parked vehicle; 15, a vehicle and a fixed object and two involved a motor vehicle and a motorcycle.

There were seven hit-and-run accidents reported. Three vehicle-pedestrian accidents and one vehicle-train accident were investigated.

Seven of the traffic accidents investigated involved multiple combinations of the above accident types. An example of this is the crash of two vehicles with one leaving the roadway and striking a fixed object.

According to the police department annual report, November was the worst month for traffic mishaps with 13 investigated. The months of March, April and May were the lowest with three mishaps each reported.

During the year, there were 740 citations issued for moving traffic violations and 40 for vehicle parking violations.

In other police activity, there were 141 cases of class "C" misdemeanor--public drunkenness, minor thefts and other petty criminal activity.



Fifty cases were filed in connection with city ordinance violation. Officers investigated two as-

saults with firearms; 12 simple assault; three forceable entry burglaries; one burglary that was a case of unlawful entry; 17 actual larcenies and cases of major theft; four stolen motor vehicles and a total value of \$25,425 given to property stolen during 1980.

Of this amount, \$25,071 was recovered! A total of 86 persons were arrested, some of them for multiple violations of the law. Municipal court cases totaled 971--up from 833 in 1979.

Police Chief Ronald Robinson noted that in 1979, 65 offense cases were cleared and removed from the records which represent 55 percent of those on the docket. In 1980, 201 offense cases were processed and cleared from the record and this represented 100 percent of the offense cases on the docket.

According to Chief Robinson, December was the peak month for offenses with 41 investigated. February was the low month for offenses. The most cases were filed in October with March holding the low record.

In addition to the department's work with crime and traffic control, officers still found time to answer 1,431 calls for assistance in situations that were not law enforcement problems or of minimal consequence. That figure was only 784 in 1979.

So, it would seem members of the Spearman Police Department established an enviable record under the leadership of Chief Robinson despite the fact that he did not assume the post until well into the year 1980. Chief evidence in this instance is a case docket 100 percent cleared and the pride shown in words of praise for the chief and the department from the average citizens of the community.

Hansford County Site Sew Fair

All homemakers in the surrounding area are invited to attend the SEW FAIR Tuesday evening, March 24, 1981 to be held in the Catholic Parish Hall, 901 S. Roland, in Spearman. Registration for the event begins at 7:00 p.m.

An exciting evening full of the latest information on home sewing techniques is in store for you, according to Hansford County Extension Agent for Home Economics, Mrs. Peggy Winegarner.

Gayle Bratcher, instructor from the Bernina Sewing Studio in Amarillo, will demonstrate how to make the most use of your sewing machine.

Becky Saunders, Area Clothing Specialist for Texas Agricultural Extension Service from Amarillo, will speak on what's new in notions to help the home

sewer achieve professional results. Completing the program will be tips on coordinating your wardrobe for spring and summer with a look at new fashions and accessories as presented by Judy Nelson co-owner of J.G.'s ladies apparel store in Spearman.

The evening promises something for everyone--outstanding programs, exhibits and door prizes. No admission will be charged. Extension programs are open to persons of all ages regardless of socio-economic levels, race, color, sex, religion or national origin.

This program is sponsored by the Hansford County Family Living Committee in cooperation with the Texas Agricultural Extension Service.



Tracy Vernon with his Champion Angus Steer at the Amarillo Fat Stock Show held January 21 through 24. There were over 400 steers entered in the show.

Pictured with Tracy are Billy Brown and his parents, Mr. and Mrs. Peter Vernon. Tracy is a Junior in Spearman High School and a member of the Spearman FFA Chapter.



Scott Strawn with his Reserve Champion Herford Steer. At the San Antonio Livestock Show held February 12 through 21. There were over 1400 Steer entries in the show.

Scott is the son of Mr. and Mrs. Bill Strawn. He is a Sophomore in Spearman High School and a member of the Spearman FFA Chapter.

Practice Livestock Show Conducted Here

The Spearman chapter, Future Farmers of America, conducted a practice livestock show, Saturday, Feb. 20, for all FFA and 4-H Club members in the community.

Some 59 barrows and 26 lambs were brought to the show. Trophies and ribbons were awarded to the following winners:

Grand Champion barrow: Tracy Vernon; Reserve Grand Champion: Curtis Porter.

In the following categories, winners are listed in order: Berkshires: Tracy Vernon, Troy Queen, Chester Whites: Roger Buchanan, Jeff Hand Ed Whitefield, Hampshires (lightweight): Lynette Williams, Shawn English, Troy Queen, Hampshires (heavyweight): Rory Sheppard, Pam Porter, David Pearson.

Rory Sheppard exhibited the Breed Champion and Pam Porter, Reserve Breed Champion.

Durocs (lightweight): Curt Porter, Mike Dixon, Jana McCoy, Durocs (heavyweight): Tracy Vernon, Curt Porter, Greg Meisner.

Tracy Vernon showed the Champion Duroc and Curt Porter, the Reserve Champion.

Cross (lightweight): James Tindell, Mark Guthrie, Eadie Clemmons, Cross (heavyweight): Lynette Williams, Chad Guthrie, Pam Porter.

By class showing, winners (in order of placing) were: Dorsets: Lynette Williams, Greg Odegaard, Medium Wool (lightweight): Troy Queen, Alex Vela, Ross Bulls, Medium Wool (medium weight): Richard Weakley, Danny Close, Felix Sandoval, Medium Wool (heavyweight): Greg Odegaard, Ron Clark, Carla Latta.

While this practice show as a thrill for project exhibitors and lovers of fine livestock alike and while it showed winning potential in every class, the March Livestock Show will be an entirely different "ballgame" with additional competition from project exhibitors who did not participate in the practice show.

Champion Cross was exhibited by Lynette Williams and the Reserve Cross Champion by James Tindell.

Spots (heavyweight): Greg Odegaard, Jerry Ross, Rocky Randall, Cross (lightweights): Jerry Ross, James Leib, Paul Moore.

Greg Odegaard had the Champion Spot and Jerry Ross, the Reserve Champion.

Yorks: Eadie Clemmons, Jana McCoy, Mike Dixon.

Eadie Clemmons showed the Champion York and Jana McCoy, the Reserve Champion.

In the Lamb Show, Greg Odegaard exhibited the all-around Grand Champion and Lynette Williams, the Reserve Champion.

Champion Cross was exhibited by Lynette Williams and the Reserve Cross Champion by James Tindell.

Spots (heavyweight): Greg Odegaard, Jerry Ross, Rocky Randall, Cross (lightweights): Jerry Ross, James Leib, Paul Moore.

Greg Odegaard had the Champion Spot and Jerry Ross, the Reserve Champion.

Yorks: Eadie Clemmons, Jana McCoy, Mike Dixon. Eadie Clemmons showed the Champion York and Jana McCoy, the Reserve Champion.

In the Lamb Show, Greg Odegaard exhibited the all-around Grand Champion and Lynette Williams, the Reserve Champion.

Champion Cross was exhibited by Lynette Williams and the Reserve Cross Champion by James Tindell.

Spots (heavyweight): Greg Odegaard, Jerry Ross, Rocky Randall, Cross (lightweights): Jerry Ross, James Leib, Paul Moore.

Greg Odegaard had the Champion Spot and Jerry Ross, the Reserve Champion.

Win Trip to Six Flags

Win a trip to Six Flags for four persons! Raffle tickets are \$5.00 each. The drawing will take place on Saturday, March 28th, 10:00 a.m. at Thriftway. Buy your ticket now from any member of Rho Rho Sorority or contact Linda Sanders at 659-3951.

Hospital news

Patients in Hansford Hospital are Dorothy Welch, Rosalia Flores, Susan Poole, Salina Sintas and son, Dorothy Lesly, Sandra Zamora, Lorrie Richie, Faye Miller, Florine Deevers, Aloha Bentley, Dee Jackson.

Dismissed were Veronica Lopez, Maria Portillo, Odis Dry, Charles Asbill, Carry French, L.C. Owens, Carrie Artterberry, Sherry Stafford and daughter, Gloria Kingman.

4-H Clubs to Meet

Bronze sculpture will be the program topic for the regular meetings of Hansford County 4-H Clubs in March.

Mrs. Nell Patterson will present this most interesting program March 9 in Spearman Show Barn and March 10 in Gruver Show Barn. Both meetings start at 7:00 p.m.

A new leader has volunteered to teach a 4-H project on Dog Obedience Training. Carla Gamble experienced dog trainer for three years will teach the six week project. All youth interested should contact the County Extension Office located in the Courthouse basement; phone 659-2030 or 733-2901.

4-H Horsemanship Clinic

A 4-H Horsemanship Clinic was held Friday, February 20, and Saturday, February 21, at the Pat Patterson arena. Twenty-one 4-H'ers participated in the clinic put on by Karen Russell from Hutchinson, Kansas. One unique feature of the program was the use of a video-tape which enabled 4-H'ers to view themselves on a TV

screen after they rode prescribed patterns on horseback. Meals were catered by the parents and the clinic was concluded with a hamburger fry Saturday night. Thirty-two youth were present at the first meeting of the 4-H Veterinary Science Project. The next meeting will be March 4 at the County Barn.

WANTED ADS

CAPROCK MONUMENT CO.

Dealers of Georgia Granite, Georgia Marble, Colored Granite, & Bronze.

represented by
BOXWELL BROS. FUNERAL HOME
519 S. EVANS
659-3802

Hansford County
Planned Parenthood
26 S. Haney
659-2483
Spearman
Mon.-Fri.
Call for an appointment.
305-rtm

SERVICES

SERVICE: Pits cleaned, wet or dry. Dragline or loader. Also, dozer, grader, carry-all service. Lee Roy Mitchell, 806-733-2384, Gruver, Texas 79040.

KIRBY SALES & SERVICE. New & reconditioned vacuum cleaners. Claude Newell, 912 S. Bernice.
8-rtm

Fee Wee's Plumbing Service
Roto-rooter, Acoustical Ceilings. Blown Insulation in walls and ceilings. **Appliance Service,** used appliances for sale. 659-2811 or 659-3781.
20-rtm

MONUMENTS
Save 20% to 30%
Agents and Undertakers
Commission
ALVA MONUMENT CO.
Alva, Okla.
51-rtm tonly

NOTICE
Wallace Monument Co.
Monuments, Curbings,
Grave Covers
Local Representative
LEONARD JAMESON
Spearman, Texas
20-rtm

WINTER RATES

The Winter rates are \$6.95 per day for Stem Rinse & Vac shampooer. Available at **Gordon's Drug.** Also available at Freddie Largent's; 716 Cotter Drive; after 4:00 p.m. and Saturday and Sunday.

A. and A. Gas Leak Survey, Inc.
Commercial, Residential, and Irrigation.
GAS LEAK DETECTION
Call: 659-3519 anytime
659-3019 after 5 p.m.

Will decorate cakes all occasions. Also cookies and cupcakes. Call Nelda 659-3984.
51-rtm

Carpet & upholstery cleaning
Rogers Steam Way, Guymon, 405-338-7926
5s-rtm

TREES & shrubs trimmed or removed yard work except mowing. Calling 659-2787 or 659-2463 after 5:00 p.m.
15s-4tp

MISCELLANEOUS FOR SALE

FOR SALE: 40 ft. X 250 ft. commercial lot—Golden Circle addition. Phone 659-3802.
12-rtm

FOR SALE OR LEASE—Service station, cafe & house. 21 miles south of Perryton. Phone 806-659-3414.
405-rtm

FOR SALE: Weiland Tunnel Ram for Small Blk Chevy single 4 BBl. "New" contact: David Stafford 310 S. Hoskins, Phone No. 659-2021. New \$350.00 sell for \$350.00.
9s-rtm

FOR SALE: 3 bedroom house - large den & living room combination - central air & heat woodburning fireplace - Shown by appointment only. Call 659-3327.
1-rtm

Two bedroom, 2 bath, central heat & air, fireplace, sundeck, extra lot, fenced patio, & built-ins! Call 659-2117.
41s-rtm

FOR SALE: 1974 Cadillac Eldorado. Beige over brown. Loaded. Excellent condition. \$1,800. Call Borger 274-6648.
11s-rtm

FOR SALE OR RENT: Commercial building—Stinnett HWY, 1800 square feet. Small office and bath. Call 659-3436 or 659-3466.
13-rtm

HOUSE FOR SALE: 3 bedroom, 1 bath, fully carpeted, lots of storage, mid 20's. For more information call 659-2309.
11-rtm

FOR SALE: 1980 Road Ranger Camping Trailer 19 ft. Loaded. Call 659-2506 or after 6:00 call 659-2327.
16-rtm

FOR SALE: Used cook stove and used dishwasher. Call 659-2506 or after 6:00 p.m. call 659-2327.
16-rtm

FOR SALE: Bulls—2 big stout 3-year old $\frac{3}{4}$ Limousin and $\frac{1}{4}$ Hereford. Ideal for cross-breeding or raising show calves. Call 733-2908.
16-2tc

FOR SALE: Rebuilt: 454 Chev V-8 pickup motor. 428 V-8 Ford truck motor. 396 V-8 Chev. pickup motor. 702 GMC irrigation motor V-12.
Hi-Plains Auto Supply Phone 659-2506, Spearman.

FOR RENT

OFFICE SPACE FOR RENT
11 West Kenneth - West side two offices, file and storage area receptionist's office and lounge. Call J.E. Blackburn (806) 659-2766 or 659-2719.
10s-rtm

HELP WANTED

NEEDED: Receptionist at the YMCA from 4 p.m. to 10 p.m. weeknights. Contact Jim Benson 659-2591.
16-2tc

PRIVATE DUTY PATIENT CARE, Contact Lana Millsap or Sandy, in Gruver, Texas, Phone 733-2448.
rtn-c

Good Pay working from home, processing mail for us. No experience required. Part or full time. Start immediately. For information and application, send stamped, self-addressed envelope to: Colfax Publications, Box 1135, Newberry, Florida 32669
16s-12tc **Sanly**

WANTED: Waitresses for Moose Lodge. Call or apply in person to Verlin Behne after 8:00 p.m. at 659-3971 Moose Lodge.
rtn

SERVICES

Taylor Spraying Service, Termite & Pest control, tree spraying, pine tree service especially serving the Panhandle for 17 years with personalized service. Home Industry Business. Monthly service available without contract. 669-9992, Pampa.
10s-rtm

For Deal Stock Removal Call your local used Cow Dealer. 1-800-692-4043
16-2tc

3rd Annual Farmers Union Consignment Auction—April 24. To consign items contact Burton Schubert at 659-2667 or Jerry Gee 659-3664.
16-17tc

Linda's Furniture
Nice upright Deep freeze used electric stove, used gas stove, new trundle bed and new captain's bed. New chest office desks, Lamps, new and used Dinecetes, Used bedroom suits, new and used living room suits. New Love Seats and Platform Rockers. Call 435-6487 or come by 12 E. Brillhart in Perryton.
16-2tc

WILL ROTO-TIL
Your Garden, Call 659-2764.
rtn-c

SNOOPY'S DAY SCHOOL Open Monday-Friday, 7 a.m. to 6 p.m. We have Morning snack. Hot Lunch, and Afternoon snacks. Holiday parties—crafts—and now an added extra for Mom. You receive (Western gift stamps for your payment. Pay on Friday and get double stamps call or come by 620 1/2 Bernice, 9-3328. Ages 18 mo. to 12 yrs.
Call S&H Remodeling for your painting or papering needs--659-3328.
14s-rtm

NOTICE

REWARD: for information leading to return of black labrador retriever missing from Perryton since 2/21/81. Call 435-5308 or 435-6544.
16s-1tc

TO GIVE AWAY puppies-4 males approx. 2 mo. old (good dogs) 659-3891 or 659-3068.
16s-2tp

LUNCH MENU
MONDAY, MARCH 2
Beef & Bean Burritos Spaghetti in Sauce Buttered Peas Tossed Salad-Dressing Crunchy Peanut Butter Hot Rolls-Butter Milk

HIGH SCHOOL CHOICE
Corn dogs-Mustard

TUESDAY, MARCH 3
Grilled Cheese Sandwich Vegetable-Beef Stew Buttered Corn Fruit Cup Chocolate Nut Cake Milk

HIGH SCHOOL CHOICE
Roast Beef Sandwich

WEDNESDAY, MARCH 4
BBQ Beef Potato Salad Seasoned Pinto Beans Cole Slaw Pineapple Upside-Down Cake Cornbread-Butter Milk

HIGH SCHOOL CHOICE
Braised Ham

THURSDAY, MARCH 5
Hot Turkey Sandwich Mashed Potatoes Green Bean Casserole Celery Sticks Mandarin Orange Gelatin Milk

HIGH SCHOOL CHOICE
Hot Steak Sandwich

FRIDAY, MARCH 6
Hamburger or Tuna Salad Sandwich

French Fries-Catsup Baked Beans Shredded Lettuce-Dressing Chopped Onions Sliced Dill Pickles Birthday Cake Milk

FCA's Benefit Game

The FCA, Fellowship of Christian Athletes, will be having a Benefit Game on March 7, 1981 starting at 7:30 p.m.

The game will be against the KVII players. Those playing for the FCA will be the Faculty and Ex-Students. So the Spearman FCA will have a good chance of winning.

The game will be played at the Varsity Gym here in Spearman.

The fee will be \$2.00 for Students and \$3.00 for Adults. This will help the FCA in many things, and it will be a real good game, so do try and make it.

Dahlia Flower Club

The Dahlia Flower Club met Monday, February 23rd, for a covered dish luncheon, in the home of Cleo Denman. This was the first meeting of the new year.

Following the luncheon, the business meeting was held, led by president Myrna Biggers. New Year Books were distributed and discussed; and dues were paid.

Members present: Annie Allen, Hollie Riley, Louise Archer, Margaret Shedeck, Myrna Biggers, Cora Smith, Sammie Bishop, Ruth Mary Whitson, Deta Blodgett, Jewel Turner, Mable Edwards, and the hostess, Cleo Denman. Sada Hoskins, Hazel Loftin and the hostess, Cleo Denman.

The next meeting will be March 9 in the home of Annie Allen.

TABS Required

Third, fifth, and ninth grade students from the Spearman Independent School District participated in the second Texas Assessment of Basic Skills test program scheduled for February, 1981.

The assessment plan, first of its kind in this state, is scheduled once each year under requirements set by the Texas Legislature during its 1979 regular session.

The Spearman ISD students will be among 700,000 expected to take the reading, writing composition, and mathematics tests during the February 2-20 statewide testing period. Each of the tests requires a maximum of 40 to 60 minutes to complete.

The Spearman ISD will report its district and campus aggregate scores to the public as a May or June meeting of the board of trustees, according to James Cunningham, district superintendent. "However, individual student scores will be reported only to the student, parents or guardian, and the school personnel directly involved," Cunningham adds.

"This testing program is designed to help the student and the school improve achievement," Cunningham points out. "For this reason, results will be reported in a manner that will help everyone become more effective."

"Third grade students were added to the annual testing sequence for the first time this year. The three tests make up an annual assessment effort designed to help both state and

local school officials improve their services," Cunningham says.

Overall student performance, both by campus and by district, will be reported each year to the public by the local board of trustees.

CTB/McGraw-Hill of Monterey, California helped administrator the 1981 test program and develop and field test new items for the 1981-82 series under contract to the State Board of Education. The California firm also operates a computerized inventory of all test booklets to assure strict security at all times.

"Each test question relates to a specific objective or skill students are expected to learn by the time they complete the particular grade," Cunningham points out.

"We use the term 'criterion-referenced' simply because it is a short way of saying the answer to each question must lead back to a specific objective," Cunningham explains.

Ninth grade students who do not make a satisfactory "exit level" score may re-take the test each year they remain in high school. However, they will not be required to take it more than once. Later attempts to improve scores and evaluate any remedial programs will be voluntary.

The annual test program is administered by specially-trained personnel in each school district under the guidelines and supervision of the Texas Education Agency.

Texas Independence Day is celebrated on Monday, March 2.

Leave a record with your will-of insurance policies, bank accounts and death benefits for which claims must be filed, reminds Nancy Granovsky, a family resource management specialist.

Mrs. Granovsky is on the home economics staff of the Texas Agricultural Extension Service.

Why Not Sell The Sundancer Aerobic Exerciser?
Best & Safest Mini-Trap Available
Highly Recommended by Doctors
Sign up Now to Be A Distributor
Call: 806-659-2361
Kenneth Friemel
Spearman, Tx. 79081

ALL STEEL BUILDINGS
STRAIGHT WALLS-40' x 60' x 14' COLORED WALLS, GALV. ROOF.
Two 20'x14' dbl. slide doors One steel walk door
\$13,888 Erected
806-435-3107
Bob Slaughter - Rep.
1306 S. Grinnell, rtm

Spearman Appliance Center
313 Main
New & Used Appliances
Appliance Service
659-2388

CUSTOM FARMING
GARY BRELAND
806-733-2539

The Hansford Plainsman
PUBLICATION (USPS 243-660)
SPEARMAN, TEXAS 79081
213 Main Box 458 659-3434
Published Weekly at 213 Main Street
Spearman, Texas 79081
Owner-Publisher William M. Miller
Editor Faye Lynch
Second Class Postage paid at Spearman, Texas 79081
Any erroneous reflection upon the character of any person or firm appearing in these columns will be gladly and promptly corrected upon being brought to the attention of the management.
SUBSCRIPTION RATE: Hansford, adjoining counties, combination with the Spearman Reporter, \$15.00.
Other points, \$20.00.


MEMBER
TEXAS PRESS ASSOCIATION

COUPON
ALL YOU CAN EAT
A Catfish dinner
\$1.00 off with this coupon
every Friday night 5-9 p.m.
single serving are
available at DAIRY QUEEN
Hwy. 207 S. 659-3324 Spearman, Tx.

For The Ultimate In
STORM DOORS
Custom Built, Designed, And In Colors To Fit Your Home....
Contact Howard Moyer at
Only Aluminum Industries
Guymon, Okla. 114 W. 1st 405-338-6966 or 73942 338-6170

Film Flash Photo Department
FILM DEVELOPING SPECIAL!
Borderless **Color Prints 10¢** PER PRINT
DELUX
LUSTER Clear
Plus 99¢ DEVELOPING
12 EXP. ROLL..... ONLY 2"
on original roll orders only.
Includes Kodak c41 Focal Fuji & Fotomat Films.
BRING your FILM to 521 Hwy. 207 S SPEARMAN, TX.
TG&Y

The Hansford County Appraisal District Board of Directors have arranged for Ken Graeber, Executive Director of the State Property Tax Board to hold a work-shop on implementation of the single appraisal district which will be setting the taxable value of all property in our district. Both Mr. Graeber and the Board of Directors would like to invite anyone interested to attend the meeting at 2:00 p.m. on March 3rd, 1981 in the Spearman High School Auditorium.

Your Asgrow seed dealer.
Ralph Blodgett
A mighty good man to know for seeds with complete performance.
Topaz
• Downy Mildew Resistant • A Complete Performance Hybrid • Resistant to Races 1 and 3 of Head Smut • Tolerant to MDMV • Short, Sturdy Stalks

come grow with asgrow
B. & B. Farm Industries, Inc.
703 Collard 659-2551 Spearman, Texas

Ladies and mens Fashion Jewelry
rings, necklaces, earrings and much more, low prices. A life time Guarantee
Call Jan after 6 p.m.
659-3880.

DAVE'S FRAMES
506 Richardson
Gruver 733-2169
CUSTOM PICTURE FRAMES
By Dave Karlin



CPS program: Is it for you?

Selling a new idea, even though it might be great, is sometimes hard to do. Just ask Community Public Service about their new average billing plan. The company adopted the plan last August but to date only Spearman people have opted for it. The lack of response has company officials a bit perplexed.

With the new plan, customers will pay an average amount instead of actual amount for electricity used in a month. "Use of electricity fluctuates drastically from season to season," said Rich Melton, customer services representative. "The average billing plan gives our customers a way to smooth out their electric utility bills which makes personal budgeting easier."

The program is open to everyone and Melton thinks that it could be beneficial to just about everyone. "It is especially

good for people with fixed incomes. This is an ideal way of knowing what your electrical bill would be each month, within a few dollars. It also would be a plus for people with total electric homes."

The way the average billing plans works is this: The bill for the first month is based on the average of the last 2 months. After that, the bill is calculated each month on the average of the last 12 months plus 15 per cent of the accumulated amount for actual usage that is over the accumulated payments.

The plan, which has been approved by the Public Utility Commission of Texas, has caught on in other cities, but acceptance in Perryton has been slow. The plan, Melton pointed out, does not change in any way how the rates are applied.

The total cost to the customer will be the same, it just may make budgeting a little easier.

Prior to last summer, CPS operated on an equal payment plan. The benefit of the new plan versus the old is that the customer does not have a "catch up" month. In the equal payment plan, customers paid 11 equal payments and in the 12th month they had to pay the difference in their actual usage and the amount they had paid. "This sometimes was a large amount and hard for some customers to pay," Melton said. "In the average billing plan, any difference in amount used and amount billed will be adjusted each month."

To get on the average bill list, all a customer has to do is call the local CPS office or drop a note in with their monthly payment. "I think if people would try it for a year, they would never want to go back to the regular system of paying monthly for the amount of electricity used," Melton declared. "The new average billing plan is fully controlled by the computer and is up to date each month as a new 12-month average is computed every 30 days." The CPS plan, Melton noted, utilizes the same style and formula as the one being implemented by Southwestern Public Service Company.

"We'd like to see more people sign-up and really it is a good system for everyone who is wanting a solid budgetary figure each month for their electrical utility."

With the cost of energy continuing to increase, it's a safe bet that a good number of Spearman people will be interested in the plan when they receive their high bills in the warm summer months.

Concert Association To Begin Drive For Future Membership

Tri-City Community Concert Association, the local group which brings nationally and internationally known performers here, is beginning its campaign for memberships for the 1981-82 season.

Admission to programs arranged by the Association is by membership card only, so advance sale of memberships is necessary. Single adult memberships, to permit persons to attend the last of this year's concerts and the four scheduled for the coming season, are \$14. Student memberships are \$7. A family may secure a membership for \$35.

Programs scheduled for 1981-82 are "An Evening with John Raitt," with the talented performer to present his favorite Broadway music and reminisce about his memorable career in show business; *Jury's Irish Cabaret of Dublin*, a company of 30 singers, dancers, harpists, fiddlers and story tellers; Keith and Rusty McNeill, American folksingers; and *The Aspen Soloists*, including violinist Eriko Sato, pianist David Oei, and cellist William Grubb.

The membership campaign will open with a tea for membership solicitors, from 2 p.m. to 4 p.m. today, in the social rooms of the First Presbyterian Church, 418 W. Coolidge. Donna Wyatt is chairman.

The campaign will be kicked off at a dinner for workers at 6:30 p.m. March 2 in the dining room of the First Christian Church, 200 S. Bryan. Helen Owen is chairman of arrangements, and Roger Brown is program chairman.

From March 2 through March 6, memberships may be secured at the Association's headquarters in the Southwestern Public Service Building, 431 N. Main. Headquarters will be open.

If interested, call 659-24321

Prayer

World Day of Prayer will be celebrated in Spearman on Friday, March 6. There will be a coffee fellowship in the fellowship hall of the Union Church at 9:30 a.m. There will be an ecumenical service around the theme "The Earth is the Lord's" at 10:00 a.m. in the Union Church sanctuary.

Women of 150 countries and islands throughout the world will gather in prayer to worship God as the Creator and Sustainer of the Earth and to pray for the healing and fruitfulness of the earth.

This year's international service was written by Christian American Indians from six tribes—Cherokee, Choctaw, Hopi, Seneca, Sioux and Winnebago. They drew upon Scripture and the rich religious heritage of the American Indians for this meditation on the theme, "The Earth is the Lord's." Local women from each of Spearman's churches will be leading various parts of the service and adding their Holy Spirit given insights to the contents of the program.

The offering at this ecumenical service will be given toward the purchase of a portable incubator for the ambulance of Hansford Hospital.

Ag Focus

As the public and farmers become increasingly concerned about the loss of farmland, the methods of farming are changing. Each year prime agricultural land is lost forever due to new highways, shopping centers, factories and homes. Some state, county and local governments are beginning to react to this disturbing trend by adopting laws to make it much more difficult to convert prime agricultural land to other uses.

In addition to the losses described above, farmers are spending even more time and money to prevent the loss of irreplaceable land due to wind and water erosion. During the past three years, many farmers in the traditional fall plowing regions of the country have switched to various methods of reduced tillage on corn ground. And, as the equipment for reduced and no-till farming becomes more sophisticated, you will undoubtedly see more reduced tillage in the future. (Iowa presently has 43% of its cropland in some type of reduced tillage system.)

When selecting hybrids for reduced tillage or no-till systems, there are some points to consider:

1. Excellent seedling vigor: especially in continuous corn, heavy crop residues, and heavy or poorly drained soils. Fast emergence reduces the potential of insects, rodents, birds and seedling disease reducing the percent emerged.

2. Disease and insect resistance: the crop residue offers some degree of increased disease and insect problems. Northern and southern corn leaf blight and anthracnose are probably the most important. In northern area, eyespot and yellow leaf blight might be seen. European corn borer, common stalk borer and grasshoppers are insects to stay alert for as they overwinter in crop and weed residue.

3. Rapid plant growth: allows the plants to get above the residue and absorb more sunlight at the critical stage when potential ear-size is determined—approximately 35 days after emergence.

4. High yields: No matter what criteria are used to select hybrids, the one which pays the bills is yield. I'm seeing more and more no-till plot reports from farmers, state yield trials and county extension agents. Therefore, it is becoming less difficult to obtain performance data on hybrids.

If no-till, or reduced tillage, is in your plans for the future, be prepared to learn all that you can before you employ this system. It can work if you take the time to do it right.

Help Send a Mouse to College



Spearman Included

Frank R. Price the son of a long time Santa Fe Railway engineer is compiling a history of the Plains Division of the AT&SF Railroad. Amarillo is the site of the general offices of this division which encompasses Western Oklahoma, the Texas Panhandle, and Eastern New Mexico. Price's project is concerned with the first, second and third districts of the Division. Spearman will be included in this project.

"There are surprisingly few records left of this division history," said Price, "it was for this reason that I began this project over eleven months ago. When I started working on this history I could find no photographs to speak of; and little else which would indicate more than the existence of a railroad through this area. So far I have saved more than 200 photos from certain destruction, and I have collected upwards of 400 photos from certain destruction.

"There are surprisingly few records left of this division history," said Price, "it was for this reason that I began this project over eleven months ago. When I started working on this history I could find no photographs to speak of; and little else which would indicate more than the existence of a railroad through this area. So far I have saved more than 200 photos from certain destruction, and I have collected upwards of 400 photos and a great deal of historical information which will eventually be placed in a museum along the Plains Division; possibly at Canyon."

Just recently Price was furnished with a seventy-nine page history titled: "Memories of 49 Years on the Santa Fe Railway" which was written by Rayond McLeod Champion, Sr. The material covers information from 1918 to 1967.

"It is this kind of a find that really has excited me," said Price.

"Mrs. R.M. Champion furnished me with her husbands memories; and it is a good history too. There is the possibility in every situation such as this that such material could be lost or misplaced. Mr. Champion intended for the material to be read and enjoyed; his family intended to do this; but it takes someone with a real interest to encourage any family to take

active steps to present the material to the public at large. I intend to see that this material as well as the other information is in the public domain so that historians, researchers, and railfans can enjoy the material; as I have," he said.

Price's history will concern itself with the communities along the Districts previously mentioned; and he will be concentrating on one specific class of Santa Fe engine; The 2-10-4, Texas Type locomotive. Engine number 5000 on display in front of the Santa Fe depot in Amarillo is such an engine; and in fact it is the "Last Texas Type Locomotive on display in the State of Texas," according to Price.

"I am in contact with well known railroad author Lloyd Stagner of Newton, Kansas," said Price, "and Mr. Stagner

informs me that the Madam Queen or engine 5000 is the last Texas Type on display in the state. Plus this engine is the only remaining single engine, single class-single design 'Texas Type' in the world," he said. The Madam Queen interest is what determined Price to get involved with this project. He has begun a public awareness campaign to try and bring attention to the old steam engine which is deteriorating badly in her open air storage pen.

"We are witnessing the second passing of the steam engine," said Price. "If the current trend continues—just a very short time from now there will be no steam engines on display as we know them. Chances are good that the remaining engines could be junked or at the least removed to obscure locations. This would be the greatest shame to happen to railroad history since the 1950's when thousands of locomotives were cut-up for scrap content. As recently as the early sixties these engines were still being chopped up. American history deserves better preservation."

It is expected that later this year the 'Madam Queen' will be recommended for consideration as a National Historic Site. This recommendation will come in conjunction with a historical study to be published by the city of Amarillo sometime this spring; and it will be based on efforts by Price to familiarize the public with the plight of the 5000.

Meanwhile, Price's research continues and he is still looking for photographs, books, records and information about this areas Santa Fe railroad history.

Individuals wishing to contact Price can do so by writing: Frank R. Price, 3512 Bristol Rd. Amarillo, Texas 79109.

Livestock

Attorney General Mark White has requested that state legislators inform their constituents of the changes in the laws pertaining to the registration of livestock brands.

Representative Buck Buchanan noted that the changes, which became effective on August 30, 1971, require that all marks and brands registered after that date and prior to August 30, 1981, must be re-registered within six months of the 1981 date. Then, at each subsequent ten-year period, the brands and marks must be re-registered by the current owners.

"In other words," Buchanan stated, "regardless of when they were originally recorded, Article 6899j requires all marks and brands to be registered with the county clerk within six months of August 30th in 1981, 1991, 2001, and so on."

Rep Buchanan said that the primary objective of the 1971 Act was to provide county clerks with accurate, up-to-date records that would be revised every ten years.

New Cancer Center

Mr. Don Rowe, President of the Panhandle Area Cancer Council, parent body of the Don and Sybil Harrington Cancer Center, announced today the appointment of the two men who will be charged with the operation of this new center: Mr. James B. King, Operations Director, and Dr. Phillip Periman, Medical Director.

Both men are respected professionals and both are highly qualified for the positions to which they have been appointed.

Dr. Periman, one of the originators of the Panhandle Area Cancer Council, said, "The completion of the Harrington Cancer Center will bring the type of cancer care to the people of the Panhandle that they currently can only get in Dallas or Houston. It fills a need for a treatment center that will be unique in the area."

Mr. King, an Amarillo native said, "I'm looking forward to the opening of the Harrington Cancer Center. It will mean better health care for everyone. The people of the Panhandle can take great pride in what they have created."

The search for qualified persons to handle these two positions was carried nationwide by the Panhandle Area Cancer Council committees responsible for their selection. Don Rowe said, "That both of these highly qualified individuals are from the Panhandle area speaks well for the quality of leadership currently available. None of our search committees turned up any candidates who were better qualified or more highly motivated."

The Don and Sybil Harrington Cancer Center is expected to be fully operational by mid-July of this year. Grand Opening ceremonies for the center are scheduled for September of 1981, under the direction of Mrs. T.B. Pickens, Jr., with a scientific symposium conducted in connection therewith.

Wasting Food?

COLLEGE STATION—Are we wasting food?

If so, we're wasting our own money, too, while some of the nation's families don't have enough food, says Mary K. Sweeten, a foods and nutrition specialist.

National statistics say many of the nation's families are wasting food—almost half of all the food we buy, the specialist reports.

Mrs. Sweeten is on the home economics staff of the Texas Agricultural Extension Service, The Texas A&M University System.

Results of a 1977-78 national survey show that about 2,900 kilocalories enter a household every day, but only 1,800-1,900 kilocalories actually are consumed.

Research scientists in university laboratories throughout the country need thousands of mice to help save lives from cancer.

Will you help? GIVE TO YOUR American Cancer Society

Fight cancer with a checkup and a check.



I want her to live in a world without cancer.

My dream is shared by all people, I'm certain. And it is not impossible. Much has already been learned through research. This year I understand over 200,000 Americans will be saved from cancer by earlier detection and treatment.

Soon perhaps all Americans. All the world. That is the aim of a powerful organization that supports cancer research. "We want to wipe out cancer in your lifetime" they say. But they need mothers and fathers—and everyone—to help them do it. Help them. Give to the...

American Cancer Society We want to wipe out cancer in your lifetime.

The most beautiful picture ever of a woman's breasts.



It's a thermogram—a picture of heat patterns in breast tissue. Along with a mammogram (X-ray), it's the most advanced way to spot trouble before it's felt as a lump. And that will save lives.

And that's beautiful. 100,000 women this year will be tested at Breast Diagnostic Centers set up by the American Cancer Society and the National Cancer Institute.

But we're greedy. We want to protect millions of women. We need money for all our cancer research. Please give.

We want to wipe out cancer in your lifetime.

American Cancer Society

THIS SPACE CONTRIBUTED BY THE PUBLISHER

Paste this inside your medicine cabinet.

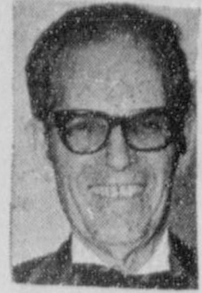
Cancer's seven warning signals

1. Change in bowel or bladder habits.
2. A sore that does not heal.
3. Unusual bleeding or discharge.
4. Thickening or lump in breast or elsewhere.
5. Indigestion or difficulty in swallowing.
6. Obvious change in wart or mole.
7. Nagging cough or hoarseness.

If you have a warning signal, see your doctor.

American Cancer Society

THIS SPACE CONTRIBUTED BY THE PUBLISHER



Insurance Corner

FIRST AID FOR SCALDS
First aid for scalds is the same as first aid for other burns. For minor scalds or those confined to a small area, soak the burn in cold water. Usually in a few minutes, the pain will diminish and the cold can be felt. The objective is to cool the skin.

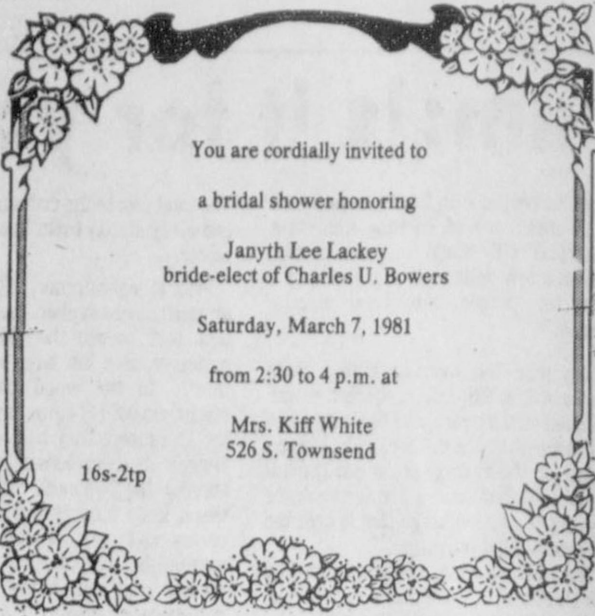
Cold water stops the destruction of tissue that can continue long after the burn is inflicted. However, too much cold to large areas of the body can bring the body temperature down to dangerous levels, causing shock.

For more serious scalds involving large areas of the body,

wipe off the scalding liquid with a towel or other cloth soaked with cold water. Also, remove soaked clothing that is not stuck to the skin. Seek medical treatment as soon as possible.

Better than first aid, though, is not getting burned. Remember, anytime you're careless around hot liquids, you're playing with "fire".

This information has been brought to you as a public service by John R. Collard, Jr., your one step answer to complete business and personal insurance protection. Life, home, auto, group insurance, and profit-sharing plans. See John R. Collard, Jr., 405 Davis St., Telephone 659-2501.



You are cordially invited to
a bridal shower honoring
Janyth Lee Lackey
bride-elect of Charles U. Bowers
Saturday, March 7, 1981
from 2:30 to 4 p.m. at
Mrs. Kiff White
526 S. Townsend
16s-2tp

Rho Rho Sorority News Special Study

Rho Rho Sorority met in the home of Mona Beth Windom with Jody Rex as hostess, on February 12. Marilyn Cline, President, presided. Minutes of the previous meeting were read and approved.

A letter was received concerning the state projects. Candy Boxwell received another letter from International stating the members of Rho Rho who will be eligible for the Exemplar Chapter.

Stephanie Brock reported that the next meeting will be February 20th in the home of Brenda Shieldknight. Karen Schnell will be in charge of the program.

Karen Schnell, Social Chairman, reported that the pledges had been assigned to various committees.

Linda Sanders, who is in charge of the ways and means projects, stated that the raffle will be held sometime in March.

Karen Schnell told about the meeting that was held in Perryton concerning the area convention.

Linda Sanders stated that the drawing for the raffle will be on March 28th. Tickets will be passed out at the next meeting.

Teresa Kirk gave a very interesting and informative program on the La Leche League.

Jody Rex served refreshments to: Marilyn Cline, Candy Boxwell, Karen Schnell, Stephanie Brock, Susan Pearson, Gayle Smith, Michele Beedy and Brittini, Joan Brown and Ashley, Linda Brown, Janie Henton, Jolinda Hutchison, Ginger McClellan, Lisa Pipkin, Linda Sanders, Brenda Shieldknight and Quentin, Kim Vandenburg and Clancey, and Gayle Woolley.

Rho Rho Sorority met February 26th in the beautiful home of Brenda Shieldknight. Marilyn Cline presided over the meeting. Minutes of the previous meeting were read and approved.

Marilyn Cline received letters concerning Founder's Day, the state convention in McAllen, and a Sew Fair which will be held on March 24th here in Spearman. An Executive Board report was given by Marilyn concerning the area convention in Perryton.

Sheri McWhirter, program chairman, reported that the next meeting will be held on March 12th in the home of Gayle Smith. Joan Brown will be in charge of the program.

Membership Chairman, Candy Boxwell, reported that a pledge meeting had been held prior to the regular meeting.

Linda Sanders, head of the ways and means department, told about the raffle which is coming up. Every member must sell 10 tickets. The drawing will be held on March 28th at 10:00 a.m. at Thriftway.

Stephanie Brock, publicity chairman, reported that the radio and newspaper office had been contacted about the raffle. Volunteers were asked for to help put up posters.

A "Woman of the Year" nominee was chosen from Rho Rho.

Karen Schnell gave a very entertaining program titled "The Great American Motherhood Test."

Brenda Shieldknight served refreshments to: Marilyn Cline, Candy Boxwell, Karen Schnell, Stephanie Brock, Susan Pearson, Gayle Smith, Michele Beedy, Linda Brown, Gina Davis, Jolinda Hutchison, Ginger McClellan, Delinda McLaughlin, Sheri McWhirter, Lisa Pipkin, Linda Sanders, Dixie Smith, Mary Ann Wilmeth, Gayle Woolley and Joy McCormack.



DR. KEN LAWRENCE

First Christian Church is hosting a special study of the Development of Faith to be held in their Fellowship Hall on Saturday, February 28, from 2-5 p.m. and on Sunday, March 1, from 9:30 - 10:30 a.m. Teacher for the even is Dr. Ken Lawrence, religion professor, and chairman of the religion department at Texas Christian University in Ft. Worth.

The first session will be conducted from 2-5 p.m., Saturday afternoon, February 28, at the church's Fellowship Hall. Dr. Lawrence will lead in an exploration of how faith is developed throughout an individual's life cycle. The study begins with birth and continues through childhood, adolescence and adulthood. Sunday morning from 9:30 - 10:30 Dr. Lawrence will complete the study.

Ken Lawrence and his wife Carol are not among those who have never heard of Spearman. They have maintained a close friendship with Spearmanites, Jimmy and Kay Vernon, since college days. The Lawrences have two children, Eric and Cyrena.

Ken, a native of Snyder and a Phi Beta Kappa, received Bachelor of Music Education and Divinity degrees from T.C.U. in 1958 and 1965, respectively. In 1971 he earned his Ph. D. from Boston University. It was here that he received a great deal of expertise in the area of human psychological development studying under Dr. Erik Erikson.

From 1968-1972, Dr. Lawrence was a professor of religion at McMurry College in Abilene, then moved to T.C.U. where in 1975 he became chairman of the department of religion.

Dr. Lawrence's casual presentation style and delightful sense of humor have made him a very popular professor at T.C.U. and a much sought-after lecturer, not only on Religion and Learning Process, but also on Religion and Art. He has taught a foreign study class in religious art and architecture in Italy and France for several years.

First Christian Church welcomes all who wish to learn about the way our faith is developed. A nursery will be provided.

"No one has ever died an atheist." Plato

Ash Wednesday, the first day of Lent, is March 4.

COUNCIL from p. 1

mostly cement and metal—that Austin might rule compliance if the area could be covered by March 31, 1982.

The inspector was very sympathetic with the problem and pledged the council any aid and comfort he could give them and remain within the bounds of his authority.

Spearman Mayor Ralph Blodgett expressed his appreciation for this attitude and offer and assured the inspector the city was aware of the problem and was working on it and at no time would try to shirk the responsibility.

Airport T-hangers were on the agenda again. A number of persons had inquired about purchasing one of the forthcoming structures. Due to the fact they are planned as participating units of six within the hangar structure, it was felt sale would pose a number of problems for both the city and the purchaser(s). It would be a financial burden on one or two to purchase a structure and the law of averages of six persons holding continuous leases is very slim.

The council voted to stipulate conditions and—according to fulfillment of those conditions—give ownership of the six-unit structure to the six lessees of record at the time the hangar became paid off. Stipulations were that the land on which the unit stands must be leased from the city. There is no way the city could pass title to an individual. Too, the hangar would be placed on the city tax rolls in the same manner as any other structure within the city limits. (The city has annexed the airport location.)

Should one of the six lessees vacate the space and the lease and another person take over the responsibility, that new lessee—regardless of tenure and terms—would become a participating owner in the T-hanger. This is the reason the action taken Tuesday night by the council specifies "lessee of record."

An addendum will be come a part of each lease so specifying the city's decision and the conditions for participating ownership.

Bids on two new full-size

police vehicles were discussed. What with down-sizing because of the energy crunch and smog control restrictive measures and devices, it is almost impossible to find vehicles that closely adhere to bid specifications.

Bids received for these two vehicles were remanded by the council to City Manager Murray and Police Chief Ronald Robinson for a thorough consideration of specifications with a view to being absolutely fair to all bidders. Once this is done, the city manager is authorized to complete the purchase from the firm submitting the lowest bid.

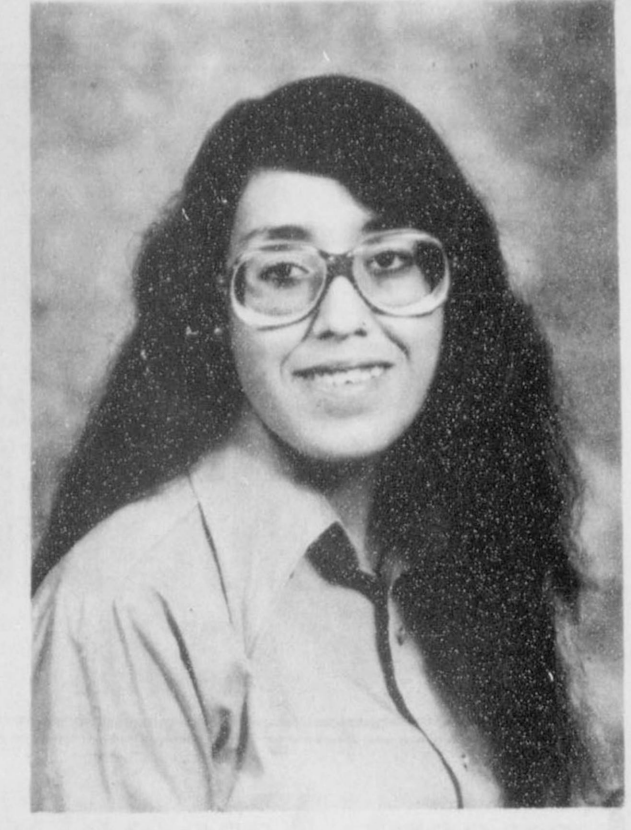
The city manager and the police chief were handed another assignment by the council. They are to undertake a study and submit the findings to the council concerning the upgrading of the physical property of the dog pound. Since Chief Robinson began his tenure, meticulous care has been taken to see that the animals are properly fed on schedule and watched for illness problems. The chief explained to the council that all animals are "logged" in and a log is also kept of their feeding schedules and "menu." Still, all present agreed that the physical plant left something to be desired.

Annual reports for the year preceding were submitted for council consideration by the police department, the Emergency Medical Service and the Spearman Volunteer Fire Department. All were approved and made a matter of city record.

With the exception of some other routine reports, the remainder of the meeting was devoted to a perusal of the city audit for the preceding year. This audit is always published once it has been approved and since this was the preliminary scrutiny, news coverage will await the final version.

| | |
|---------|--------|
| Wheat | \$3.94 |
| Corn | 3.44 |
| Soybean | 5.48 |
| Milo | 5.20 |

Texas Independence Day is celebrated on Monday, March 2.



Engagement Announcement

Mr. and Mrs. Guillermo Vela of Spearman announce the engagement and approaching marriage of their daughter Barbara to Ramon Reza, son of Mr. and Mrs. Blass Reza of San Jose de los Reyes Durango, Mexico.
Barbara is a graduate of Spearman High School.

Presbyterian Church News

There is a Sunday Church School class for everyone every Sunday at 9:45 a.m.

"I believe in the Church" will be the subject of the Rev. Carter McKemy's sermon at the service for the public worship of God on Sunday, March 1, at 11:00 a.m. The sacrament of the Lord's Supper will be celebrated.

"Focus on the Family" series continues on Sunday evenings at 6:00 p.m. at the First Baptist Church and at 7:00 p.m. at the First United Methodist Church.

There will be a Stewardship Cluster Meeting at the First Presbyterian Church of Pampa on Tuesday, March 3, at 7:00 p.m. This is for all elders and treasurers.

Ash Wednesday, the beginning of Lent, is March 4. Presbyterian men will participate in the interdenominational men's prayer breakfast on Ash Wednesday at 6:30 a.m. in the garden room of the Cattleman's Restaurant.

Presbyterian women will participate in the World Day of Prayer at the Union Church on Friday, March 6. Coffee Fellowship will be at 9:30 a.m. in the fellowship hall. World Day of Prayer ecumenical service will be held in the Union Church sanctuary at 10:00 a.m.

Spring Leadership School will be held on Saturday, March 7, at St. Luke Presbyterian Church in Amarillo.

Ash Wednesday, the first day of Lent, is March 4.

Golden Spread Center News

Eddie Ballen, Belle Crawford, Willard Davis, Anna McGary, Elsie Mathews, Esther Stewart and Ruth Caro were honored at a birthday party on Tuesday, February 24, at 6:30 p.m. at the Golden Spread Center. Birthday cake was served. Ed Freeman led the assembled people in singing, "Happy Birthday" to the birthday honorees. 46 people at eleven tables enjoyed an evening of table games. Games in play were bridge, canasta, dominoes, forty-two, pitch and skip-bo.

There will be an afternoon of table games at the Golden Spread Center on Monday, March 2, and on Friday, March 6, from 2:00 to 5:00 p.m.

Covered dish dinner will be served at the Golden Spread Center on Tuesday, March 3, at 6:30 p.m. Patsy Hunt of the Panhandle Home Nursing Association will be present to take blood pressures. There will be an evening of table games. Cindy Schneider will be teaching an exercise class at the Golden Spread Center on Tuesday, March 3 and Thursday, March 5, at 10:00 a.m. This is open to both men and women who need to get some of those muscles limbered up.

Ruby Lair will be driving the Golden Spread Center's vanbus on Wednesday, March 4, from 9:30 a.m. to noon, picking up the sixty-plus bunch and taking them shopping, on errands, and to meet appointments. This service is offered free to all persons who are sixty years of age or older. If you need transportation call the Golden Spread Center (659-3521) on Tuesday and get your name on the list.

Marv Hendricks will be teaching arts and crafts on Thursday, March 5, from 11:00 a.m. to 5:00 p.m. There will be a break at noon for a gourmet covered dish luncheon.

Crusade Rally

A community-wide Pre-Larry Jones Crusade Rally is to be held at the First Baptist Church in Gruver Saturday, March 7, 1981, highlighted by a covered-dish dinner in the Activities Building at 6:30 p.m. Larry Jones will be the featured speaker for the evening with the well-known Royal Heirs, the supportive singing group.

Following the initial meeting in early December 1980 at the United Methodist Church, conducted by the Larry Jones Crusade representative Jack Hymer, committee heads were named for the Rally slated for May 26th through the 31st with J.C. Harris, named General Chairman.

Les Barkley and Keith Lamb are serving as co-Chairmen for the May Crusade. Included under the direction of Mr. Lamb will be six committees including Finance, Zay Gilbreath, Chairman; Social Amenities and relations, Mack Bevell, Chairman; Special Events, Mack Hoel, Chairman; Breakfast; Ushers, Horace Curlee, Chair-

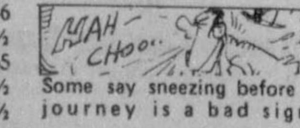
Fourth Annual Pageant

The fourth annual Cinderella Girl Pageant is underway. Deadline for entering is March 4. Those interested may call Katie Hubbard, 5-4329 or Stephanie Davis 5-2872 in Perryton.

This years judges will be Vickie Morris of Borger, Gail Turman of Amarillo and Lola Hughes of Pampa. Trophies will be given to the winners and first and second alternates of each division Third and fourth alternates will receive certificates. Talent winners will receive a trophy and banner. Each participant will also be given a certificate and charm in remembrance. The winning tot, miniature miss, Cinderella miss and Cinderella teen will receive crowns and will be sponsored for the state contest. Those providing the state sponsorship are the First National Bank and Perryton National Bank.

Bowling News

| | |
|------------------------|---------|
| HIGH INDIVIDUAL GAME | |
| Colleen Yeary | 203 |
| HIGH INDIVIDUAL SERIES | |
| Cleo veach | 566 |
| HIGH TEAM GAME | |
| Smith Rentals | 793 |
| HIGH TEAM SERIES | |
| Barclay Child Care | 2278 |
| STANDINGS | |
| Smith Rentals | 61-31 |
| Frank Oil Company | 60-32 |
| Deis Grill | 57½-34½ |
| Barclay Child Care | 52-40 |
| Daley's | 49½-42½ |
| Kirby | 47-45 |
| Bull Rogers | 47-45 |
| Big A Spreader | 46½-45¼ |
| Faussett & Sons Conoco | 46-46 |
| Ranger Bowl | 46-46 |
| Anthony Electric | 45½-46½ |
| George Lease Service | 37-55 |
| Giles Const. | 33½-58½ |
| Otis Engineering | 15½-76½ |



Some say sneezing before a journey is a bad sign.

Ash Wednesday, the first day of Lent, is March 4.

Ministerial Alliance To Meet

Spearman Ministerial Alliance will meet on Shrove Tuesday, March 3, at 9:30 a.m. at the Church of the Brethren in Waka. The Rev. David Nuckles, pastor of the Assembly of God and president of the Alliance, will preside. The Rev. Frank Oglesby, pastor of the First United Methodist Church and secretary-treasurer of the Alliance, will lead devotions.

Mother-in-Law Day is observed on Thursday, March 5.

BUY CHIEF BINS NOW. GET A REBATE OF UP TO \$1,000!

| LIST VALUE | REBATE |
|------------|----------|
| \$ 48,000 | \$ 250 |
| \$ 83,000 | \$ 500 |
| \$132,000 | \$ 750 |
| \$ 20,000+ | \$ 1,000 |

All Chief grain drying and storage bins and grain accessories qualify. Rebate offer ends March 15, 1981. Steel prices are going up soon. So stop in and see us now and save.

Chief believes in the American farmer. That's why we're ready to rebate up to \$1,000 so you can have the bins you need to make the most from your harvest.

And as your Chief dealer I'm going to reduce prices so you save two ways. First, bring me this ad and get the best bin price in the area. Then, get an added Chief rebate based on their list price.

Dr. Lawrence's casual presentation style and delightful sense of humor have made him a very popular professor at T.C.U. and a much sought-after lecturer, not only on Religion and Learning Process, but also on Religion and Art. He has taught a foreign study class in religious art and architecture in Italy and France for several years.

First Christian Church welcomes all who wish to learn about the way our faith is developed. A nursery will be provided.

Membership Chairman, Candy Boxwell, reported that a pledge meeting had been held prior to the regular meeting.

Linda Sanders, head of the ways and means department, told about the raffle which is coming up. Every member must sell 10 tickets. The drawing will be held on March 28th at 10:00 a.m. at Thriftway.

Stephanie Brock, publicity chairman, reported that the radio and newspaper office had been contacted about the raffle. Volunteers were asked for to help put up posters.

A "Woman of the Year" nominee was chosen from Rho Rho.

Karen Schnell gave a very entertaining program titled "The Great American Motherhood Test."

Brenda Shieldknight served refreshments to: Marilyn Cline, Candy Boxwell, Karen Schnell, Stephanie Brock, Susan Pearson, Gayle Smith, Michele Beedy, Linda Brown, Gina Davis, Jolinda Hutchison, Ginger McClellan, Delinda McLaughlin, Sheri McWhirter, Lisa Pipkin, Linda Sanders, Dixie Smith, Mary Ann Wilmeth, Gayle Woolley and Joy McCormack.

First Christian Church welcomes all who wish to learn about the way our faith is developed. A nursery will be provided.

Membership Chairman, Candy Boxwell, reported that a pledge meeting had been held prior to the regular meeting.

Linda Sanders, head of the ways and means department, told about the raffle which is coming up. Every member must sell 10 tickets. The drawing will be held on March 28th at 10:00 a.m. at Thriftway.

Stephanie Brock, publicity chairman, reported that the radio and newspaper office had been contacted about the raffle. Volunteers were asked for to help put up posters.

A "Woman of the Year" nominee was chosen from Rho Rho.

Karen Schnell gave a very entertaining program titled "The Great American Motherhood Test."

Brenda Shieldknight served refreshments to: Marilyn Cline, Candy Boxwell, Karen Schnell, Stephanie Brock, Susan Pearson, Gayle Smith, Michele Beedy, Linda Brown, Gina Davis, Jolinda Hutchison, Ginger McClellan, Delinda McLaughlin, Sheri McWhirter, Lisa Pipkin, Linda Sanders, Dixie Smith, Mary Ann Wilmeth, Gayle Woolley and Joy McCormack.

First Christian Church welcomes all who wish to learn about the way our faith is developed. A nursery will be provided.

Membership Chairman, Candy Boxwell, reported that a pledge meeting had been held prior to the regular meeting.

Linda Sanders, head of the ways and means department, told about the raffle which is coming up. Every member must sell 10 tickets. The drawing will be held on March 28th at 10:00 a.m. at Thriftway.

Stephanie Brock, publicity chairman, reported that the radio and newspaper office had been contacted about the raffle. Volunteers were asked for to help put up posters.

A "Woman of the Year" nominee was chosen from Rho Rho.

Karen Schnell gave a very entertaining program titled "The Great American Motherhood Test."

Brenda Shieldknight served refreshments to: Marilyn Cline, Candy Boxwell, Karen Schnell, Stephanie Brock, Susan Pearson, Gayle Smith, Michele Beedy, Linda Brown, Gina Davis, Jolinda Hutchison, Ginger McClellan, Delinda McLaughlin, Sheri McWhirter, Lisa Pipkin, Linda Sanders, Dixie Smith, Mary Ann Wilmeth, Gayle Woolley and Joy McCormack.

First Christian Church welcomes all who wish to learn about the way our faith is developed. A nursery will be provided.

Agri-Tech Services, Inc.

PAY TO THE ORDER OF American Farmers

One thousand and no/100

CHIEF INDUSTRIES, INC.

FOR Bin Rebate

50-947-219

383

Before March 15, 1981

\$1,000.00 DOLLARS

Chief Industries, Inc.

CHIEF INDUSTRIES, INC.

Your local independent dealer:

Agri-Tech Services, Inc.

Box 161
Guymon, Oklahoma 73942
405-338-2610

Roc Harrington
Res. 338-2442
Mobile 338-7847

Doug Booth
Res. 338-2445

Dave Harrington
Res. 338-2731
Mobile 338-7855

© 1981 Chief Industries, Inc.

Public School Week

Open House Monday Nite, 7 til 9 p. m.

All Spearman schools



STATE CHAMPIONS---Kneeling front row left to right 31-Linda Ricketts, 11-Rhonda Jones, 23-Kim Boone, 21-Teresa Beck, 13-Sharalyn Schell, 41-Peggy Floyd. Standing left to right: Mary Lou DeArmond, team manager; Coach Harley Lewis, 25-Cheryl Evans, 53-Kristi Gressett, 55-LeAnn Shie Id knight, 15-Sheila Patterson, 33-Patricia Schnell, 3-Liz Hohertz, Coach Dean Weese, Linda Hamilton, team manager.

Plan to attend open house Monday night,
and then plan to go to AUSTIN next
week as the team of 1972,

State Champion Lynxettes
will be honored!

Call us for your oil field field hauling needs

Lawrence Ward Trucking, Inc.

Phone 733-5025

364-1171 Hereford, Tx.

Permitted and insured (call collect) Gruver, Texas

Contact us for all of your

Hauling needs

We are located in the

John Deere Building

West Hwy. 15 Gruver, Texas

OIL FIELD HAULING

PROGRESS
THROUGH
PEOPLE



Call us for your

MUD HAULING Needs---

Lawrence Ward --

Lindsey's Sacrifices Total Inventory!

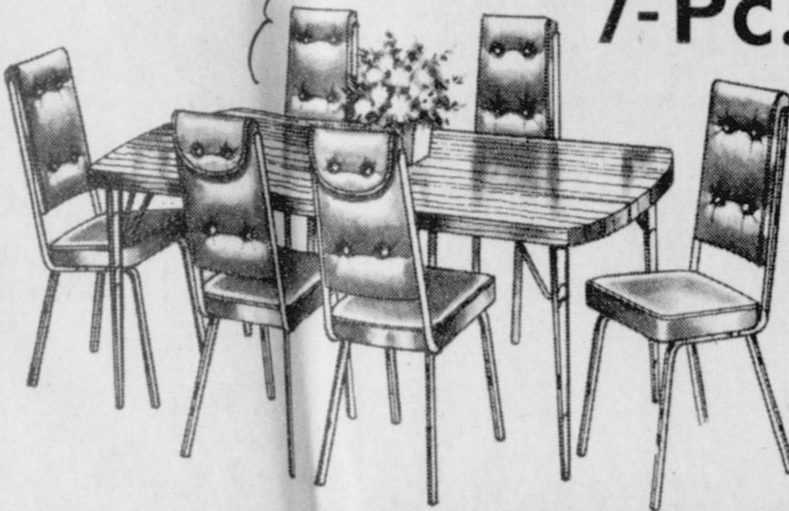
Price Breakthrough SALE

EVERY ITEM IN EVERY DEPARTMENT

REDUCED DURING THIS SALE!!!

Not Just Furniture..America's Finest..At 1974 Prices or Less!

SOFAS - CHAIRS -
LOVE SEATS -
RECLINERS -
TABLES -
EVEN APPLIANCES



7-Pc. DINETTES

Going as Low as **\$99**

EVERY SUITE GETS ITS PRICE SLASHED!

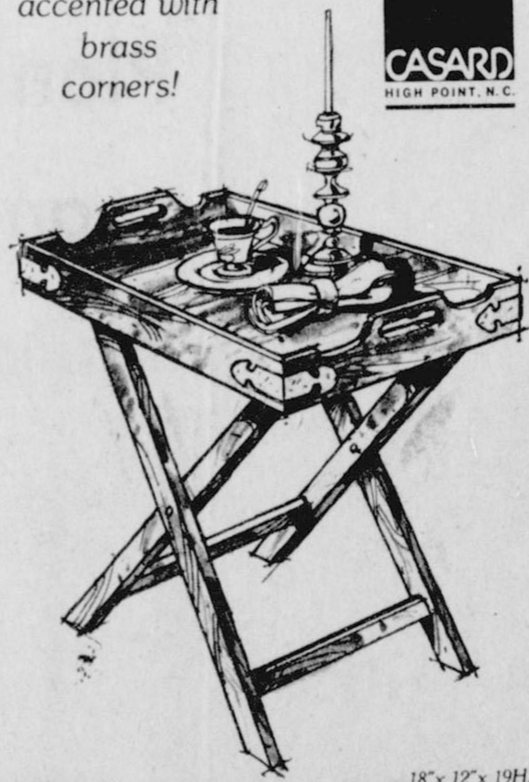
EVERY
Item
EVERY
Department!

CREDIT?
of course!
You deal only with Lindsey's

Imagine Saving **UP TO 50%**

DOORBUSTER

accented with brass corners!



18" x 12" x 19H.

The decorative brass corners and the folding stand makes this tray table a really unique and space saving piece. The lovely tray top lifts off for very easy serving. Fits any decor. Available in Old World finish. From Casard

Folding Tray Table
Unbelievable prices while they last

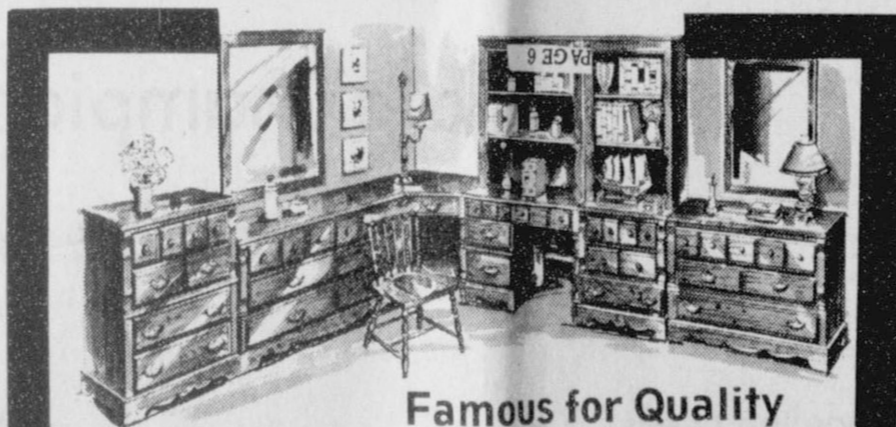
\$15⁹⁹



NOW!
Have That Lovely Accent Piece!
CURIO CASES
Reduced

40%

Lovely Selection



Famous for Quality
BEDROOM FURNITURE

Choice of Fine Woods & Finishes

40%

OFF
Regular Prices Now!

LINDSEY
FURNITURE COMPANY

910 N. Main, Borger