

HANSFORD LIBRARY  
120 MAIN ST.  
SPEARMAN, TX

Ann Sanders has love for music . . .

# Church pianist to be honored Sunday



A STRONG MUSIC LOVER, Ann Sanders sits at her baby grand piano in her home northwest of Spearman. She has been playing the piano since she was 5-years old.

Churches for years -- their pastors in particular -- have been preaching commitment . . . and somewhere along the line Ann Sanders became a believer, enough so to commit herself to playing the piano for her church each Sunday and Wednesday for the past 40 years.

That selfless dedication will be honored by her church this Sunday from 2 to 3:30 p.m. with a special reception in recognition of her efforts on behalf of the First Baptist Church in Spearman, a special devotion to duty which began in 1948.

"I was asked to help with a Christmas program at the church, to play the organ for them," she remembers. "I promised them I would, and I did."

Her attitude towards commitment showed up even then when, later she learned her sister was going to be married on the night the church was giving their Christmas program.

"I had no choice," she laughs. "I missed my sister's wedding

because I had already told the people in the church I'd play for them."

Like many West Texans, Ann places firm conviction in her word. And, it's this type of commitment which has seen her through some trying times in her life.

Both she and her husband, Rue, are natives of Hansford County. Ann was born and raised in Gruver while Rue was born and raised in Spearman.

So, where do a native Gruverite and a native Spearmanite manage to meet -- in Perryton, of course.

The two were married shortly before Rue was shipped overseas to England, August 23, 1943, during WWII.

While she had been attending North Texas Agricultural College -- the forerunner of the University of Texas at Arlington -- with a major in music, following her marriage to Rue, she swithed her major to business and finally graduated with a BBA from the University of Colorado in Boulder.

Her musical background came

from her mother and Ann learned to play the piano beginning at the age of five. In fact, her first performance came that same year in the Spearman auditorium in what is now the junior high building in Spearman.

"I've always had a love for music that I can't really explain," she notes. "It's just there."

For 15 years following the Christmas program, Ann played the organ at the church in Spearman. But her real love was the piano, so when another organist came along, she gave that up and moved over to being the church pianist -- a position she's held now for 25 years.

Her commitment still holds strong -- she's still there each Sunday and each Wednesday to help with the music and the choir. The only time she has missed over the years has been due to sickness.

Ann's commitments not only include those to her church, but to her family as well.

Ann Sanders possesses a strong sense of duty and it shows in her

daily life. Constantly smiling, her affable personality is charming and her enthusiasm is almost infectious.

That smiling personality and enthusiasm has carried her over several rough spots in her life and her characteristic West Texas sense of duty is something she's passed on to her children.

The Sanders have two children -- Michael who lives in Clarendon and Julie who is the wife of Kurk Adams in Spearman.

Ann's eyes beam with pride only a grandmother can know when she talks of her three grandchildren who are Julie's and Kurk's daughters.

Ann and Rue's son, Michael, when he was just 2-1/2 months old suffered through a disease which doctors were never able to properly diagnose. Whatever it was left the baby with a form of polio.

Ann became Michael's physical therapist over the years as she helped her son overcome his handicap of weakened and atrophied muscles.

See "PIANIST", p-2

## The Hansford Report

by JAMES JARRETT

I find it hard to believe that -- at one point -- I felt Hansford County didn't possess any honest, down-to-earth characters.

I made that statement once when I was introducing a short dissertation on John Bishop. Since then, I've apologized to John, that coming before a description of Jim Ivey and Jimmy Shieldknight.

Following last week's roast of Shieldknight, I got a preview of Worley Smith. Now, I owe an apology to all of Hansford County.

Worley is more character all by himself than any one county should have in a century.

Slender, balding and with a bushy moustache that would do any self-respecting walrus proud, Worley is much like the events in Genesis -- he's one of a kind, an original which will probably never happen again, good Lord willing, that is.

His keen sense of humor can be cutting, at times. At other times it can be thought provoking as he makes us look at ourselves in a humorous vein.

Worley is a man without peer -- simply because nobody wants to look at him, and many don't want to be considered close to him on any level.

A lot of these things we wouldn't say about just anyone. Because not everyone would take the things said here in the proper vein. Who knows, Worley may be one of them.

But don't feel sorry for him. Somewhere, somehow, Worley will get even, if not ahead, for anything printed in this column.

What he may not realize is that I'm looking forward to it. Because I know that whatever he does, it will be original, it won't be an old gag.

Worley is bright and articulate and spouts one-liners like everybody he meets is a straight man.

That requires a mental dexterity that his physical attributes really don't indicate. Perhaps that's why he's so devastatingly funny.

The only thing really scary about Worley Smith is the fact that, not too long ago, he was a teacher. . . a mold of young minds. With any luck, his students have been able to slough off that mold. If not, they may be as warped as he is.

Whatever the case may be, Hansford County has no shortage of characters. And each one we meet is more of a character than the one before.

That thought in itself is scary. Is there someone in Hansford County who is more of a character than Worley Smith.

\*\*\*\*\*

With all the talk on television about the NFL strike, a football fan is really given a lot to think about.

After all, there's the 'quality' of

play to consider. Unfortunately, I'm not enough of a connoisseur of the sport to tell the difference.

Then there's the consideration of having to watch the 'scabs' play football. Here we're asked to forget that these people have ever known anything at all about the game.

Now the NFL owners are taking a hard line on the case and, despite Thursday's breakdown of hundreds of striking players who wanted to be in this week's game -- and therefore get this week's paycheck -- the owners said, "NO".

They had established a 1 p.m. Wednesday deadline. Those who didn't report by that deadline didn't get the play Sunday. Those were the rules they outlined and they stuck by it.

I think I have an answer to the problem. Let's have a wholesale replacement of all the NFL sports announcers and do away with the now inane and redundant television cutaways for interviews with fans, friends, etc. of the replacements.

I have enjoyed the games the past few weeks -- just like I would have if the 'pro' players had been in there.

See "REPORT", p-2

The Hansford  
**Plainsman**  
Volume 18 No. 50      YOUR HOMETOWN NEWSPAPER      Sunday, Oct. 18, 1987  
25¢ Per Copy  
8 Pages

## Bond issue voting slated for Dec. 8

Voters in the Spearman Independent School District will get the opportunity to accept or reject a proposed \$2.185-million building project at the Spearman elementary and junior high campus. That vote will be held Tuesday, Dec. 8, trustees decided in a special called

meeting last Thursday.

Absentee voting will begin Monday, Nov. 23 and run through Friday, Dec. 4 prior to the actual voting date.

Trustees are looking at an 11.89 cents per \$100 valuation tax in-

crease in order to pay off the 15-year bond issue, assuming the bonds can be issued for 8 percent, notes Larry Butler, SISD superintendent.

The bond issue stems from structural problems in the oldest portion of the existing junior high building -- the east wing which was built in the 1920's.

Temporary repairs were made just prior to the start of the current school year. These problems were noted when trustees hired an architect to investigate the building last January.

The architect's report was serious enough that Spearman school officials closed off classrooms on the second floor of that structure this spring.

The classrooms are in use now

after extensive repairs this summer. But the repairs were temporary, to ensure students' safety.

The \$2.185-million bond issue will be used to add classrooms to the elementary school to house kindergarten through fifth grade with added construction at junior high to enable that building to be utilized as a true middle school, housing grades six through eight.

The construction at the new middle school building will be done in such a manner that later expansion needs can be met through attaching directly to the existing structure at that time.

Architect's drawings of the proposed construction should be available from the Andrew's firm within the next few weeks, Butler's office reports.

## Golden Spread Center to host Health Fair

The Golden Spread Center will be hosting their fourth annual Health Fair this Wednesday at the Center's building located at 14 S. Haney in Spearman.

The Health Fair will run from 9 a.m. to 1 p.m. and will feature several tests and screenings for those who wish to take advantage of them.

The only charges for the tests will be for the SMAC 24 -- a blood test -- and flu shots which will be administered at the health fair.

Charges for the blood test will be \$15 while flu shots will be \$10. Those wishing blood tests should have their blood drawn before eating breakfast of drinking coffee.

Other services being offered at the health fair include pulmonary function tests, oral screening, glaucoma screening and colorectal cancer screening.

Appointments for hearing tests which will also be administered at the annual health fair, must be made in advance by calling 659-3521.

These screenings and exams are being performed by local area physicians and health organizations.

Those wishing to utilize the services are asked to leave the noon to 1 p.m. time slot for those who work, notes Pearl Pierce of the Golden Spread Center.

## Sales tax figures show signs of better economy

Signs of a positive economy are beginning to show in Hansford County and the surrounding area according to a report on the third quarter's sales tax payments issued from the Texas comptroller's office this week.

After six quarters of negative results, sales tax figures in Hansford County are beginning to grow again -- and this based on figures compiled through the end of September and before the new sales tax and broadened base was put into effect Oct. 1.

Spearman shows an increase of 16.6 percent for the third quarter of 1987 with city sales tax of \$11,921.18 compared with \$10,222.75 for the same period a year ago.

Gruver's increase is 18.4 percent with their sales tax up from 1986's \$901.11 to \$1,087.57 this year.

For the county, sales tax figures are up 17 percent from \$12,977.29 in 1986 to \$15,183.32 in 1987.

Ochiltree County has seen the largest third quarter increase of the surrounding communities with a 33.4 percent increase over the last year.

But all the economic news isn't good for some surrounding cities. Amarillo's sales tax records fell 14.7 percent for the third quarter compared against 1986 figures.

Stratford's sales taxes were down 14.8 percent on the state comptroller's accounting, with 1986 figures at \$3,965.40 and this year's at \$3,378.56.

Moore County was off six percent with sales tax figures of \$54,882.54 in 1986 while recording sales tax figures of \$51,517.53 this year.

## TEAMS exam to be given SHS students

Spearman juniors and seniors will be offered the TEAMS -- Texas Assessment of Minimum Skills -- test Oct. 27-28 at Spearman High School, reports Marjorie Alford, SHS counselor.

TEAMS is now a requirement for all students and both a mathematics and English language arts must be passed by the students before they can receive a diploma.

Students are allowed to take the test either junior or senior year. Once they have passed both portions of the test, they will not be tested again, notes Alford.

TEAMS is designed to evaluate a student's knowledge of the mathematics, reading and writing skills they have been learning throughout their school years, according to the high school counselor.

TEAMS testing for Spearman will begin both days at 8:30 a.m. in the auditorium at Spearman High School.

## David-Goliath with no miracles . . . Lynx bulldoze Hounds, 47-0

It was a David-Goliath contest without benefit of miracles as gigantic cross-county rival, Spearman Lynx steamrolled the smaller Gruver Greyhounds, 47-0, Friday night in Gruver.

The win ups the Lynx's district 1-AA record to 2-1 and puts them at 4-1-1 for the year while Gruver saw their conference mark fall to 1-3 and their season record to 1-6.

Spearman's larger offensive and defensive lines spelled the difference in Friday's district encounter between the two Hansford county ball clubs as they completely dominated their smaller Gruver counterparts.

While the Lynx rolled off 412 yards on the ground and another 82 through the air for a total of 494 offensive yards, the Greyhounds could muster only 33 yards on the ground and another 27 through the air for 60 yards total offense.

Spearman racked up 22 first downs to Gruver's six -- and two of Gruver's first downs came off penalties against the Lynx.

Gruver gridiron stalwart Tim Fletcher provided a brief bright spot for the Greyhounds when he came into Friday's contest despite a broken hand which was complete-

ly wrapped in a cast.

Fletcher wound up playing both ways where he caught two passes for 12 yards and provided Gruver with several strong defensive plays from his defensive back slot.

As many things which were going right for Spearman, nothing seemed to be going Gruver's way, and that fact was underlined early in the second half when Hound quarterback-defensive back Brent Wagner was carried off the field with a severely sprained right ankle.

The Gruver signal caller was later taken to Hansford Hospital for x-rays, then was released. The exact nature of his injury was not known at presstime.

Otherwise, the night belonged to the Spearman Lynx as they put up points in all but the final frame where coach Don Mullins and company were utilizing liberal substitutions.

Spearman scored 20 points in the opening stanza of play, added 14 more before halftime, then tacked on 13 more in the third frame to account for their 47-point scoring spree.

Runningback Alan Beeson scored three TD's for Spearman, on a 3-yard run in the first quarter, an

11-yard run in the second stanza, then tacked on a 6-yard dash in the third frame for the final Lynx points of the night.

Even Lynx helmetsman Brett Davis got in on the scoring action, popping in for two first-quarter markers.

One of those was a 20-yard gallop and the other a 1-yard sneak in the waning moments of those first 12 minutes of play.

Stan Brandt and Shawn Cook scored single TD's each with Brandt's coming off a 30-yard thriller just before halftime while Cook scored on a 10-yard scamper to open the second half.

Matt Tucker kicked true on five of the seven point-after-touchdown attempts to account for all of Spearman's scoring for the night.

In their seven touchdowns, Spearman had only three long drives as their defensive unit kept the Greyhounds bottlenecked on their own side of the field throughout most of the night.

Three of Spearman's touchdowns were set up by Gruver turnovers -- two fumbles, one on the Hound 36 and another on

## David-Goliath with no miracles . . .

Lipscomb County suffered the largest drop off of area county's, 41 percent from 1986. Last year the county's sales tax figures for the third quarter were \$5,645.98. This year they totaled \$3,327.66.

Hutchinson County was up 15 percent from last year and Dallam County was off 19.5 percent from their 1986 third quarter figures.

## David-Goliath with no miracles . . .

See "LYNX", p-2

**LYNX**

Gruver's 24 -- and an interception which the Lynx hauled in at the Gruver 31-yard line.

Of their seven touchdowns, Spearman had three drives -- a 71-yarder to open the game, a 64-yarder near the end of that opening quarter and a 63-yard drive to open the second half.

Otherwise they had drives of less than 36 yards to score against the hapless Gruver defense.

Beeson scored the opening TD of the night on a 3-yard run with only 1:32 run off the scoreboard clock.

That capped a 5-play, 71-yard drive which saw Davis complete a 56-yard toss to Kevin Nelson to put the Lynx in scoring position on the Greyhound 10.

Tucker's PAT gave the Lynx an early lead at 7-0.

Then, following a fumble recovery on the Gruver 36, Davis put together a 4-play drive which he capped himself with a 20-yard scamper to paydirt.

Tucker's point-after-touchdown was wide, but Spearman held a quick, 13-0, lead with 9:21 remaining in that first quarter of play.

Gruver took the ensuing kickoff but was forced to punt after three plays and Spearman set up the patented Lynx scoring machine on the Spearman 36.

The Greyhound defense stiffened, but was unable to contain the surging Lynx offensive line and, 13 plays later, Davis scored on a 1-yard plunge.

With 2:53 remaining in that opening frame, the shell-shocked Hounds watched as Tucker booted the ball through the uprights to put the score at 20-0, Spearman.

In the second quarter, Gruver

was forced to punt from their own end zone and Spearman wound up with the ball on the Hound 35.

Four plays later, Beeson ran around end for 11 yards out for the score. Tucker made his PAT kick and the Lynx had jumped out to a 27-0 lead with 6:52 remaining before halftime intermission.

But the fireworks weren't over. The Lynx defense hauled in an interception on the Hound 31 and it was off to the races again.

It took the Lynx only three plays to hit paydirt with Brandt running off 30 yards for the final tally before halftime.

Tucker's PAT kick was good again and, with 4:46 left on the first half clock, Spearman had things well in hand with a lopsided 34-0 score.

On their first possession of the second half, Spearman marched 63 yards in six plays with Cook running off the final 10 steps.

The clock showed 7:26 when Tucker's PAT went through the uprights and Spearman's command was stretched to 41-zip.

Beeson's final tally with 5:25 left in the third quarter was anticlimatic after the Lynx pounced on a Gruver fumble on the Hound's 24-yard line.

Four plays later, Beeson stepped in from six yards out to put the game at 47-0. Tucker's kick was wide again and that's the way the score remained as Spearman subs were used liberally throughout the remainder of the contest.

Next week, Spearman will host the West Texas Commanches in Lynx stadium while Gruver takes on Booker in a non-conference clash.

Cook finished the night with 112

**THE HANSFORD PLAINSMAN**

**7-8th Lynx make clean sweep of Gruver teams**

Spearman junior high football teams made a clean sweep of their Gruver counterparts Thursday evening in Lynx stadium with the eighth grade taking a 22-8 win while the seventh grade Lynx held out for a 16-8 victory.

In eighth grade action, Tino Garcia scored on a 10-yard run with a 2-point PAT pass from Chris Kelp to Chris Strawn to put the score at 8-zip.

Then Kelp connected on a 15-yard screen pass to Darren Hawkins to set the score at 14-0. The

yards on 14 carries while Beeson added another 109 on 17 totes to pace the Lynx.

Brandt carried the ball 11 times for 88 yards while Mark Garcia had 70 yards on 11 carries.

Davis had 17 yards on seven carries and completed three of nine passes for 82 yards. Will Black, subbing at quarterback, carried the ball three times for 16 yards.

	SPM	GRU
FIRST DOWNS	22	6
YDS RUSH	412	33
YDS PASS	82	27
TOTAL YDS	494	60
PASS COMP/ATTEM	3/9	7/13
PASS INT BY	1	0
FUM REC BY	2	0
PEN/YDS	4/45	3/19

PAT failed, but Spearman owned that lead at halftime.

The Spearman eighth graders put across their final marker in the third frame on a 35-yard pass play from Kelp to Chad Riggins.

Brian Beck ran in the 2-pointer to put the score at 22-0.

Gruver tallied their only points in the fourth quarter to put the final at 22-8, Spearman.

Coach Ken Rutherford gave accolades to offensive players Chris Kelp and Garcia while defensive honors went to Jeff Wagner, Kelp and Garcia.

Seventh grade gridiron action saw Junior Tercero draw first blood for the Lynx on a 20-yard run to paydirt.

The 2-point PAT was good on a pass from Curtis Pearson to Cody Pipkin. At halftime, Spearman led by that 8-0 count.

In the fourth quarter, Russell Schaefer knifed into the end zone from three yards out and a 2-point toss for Pearson to Clint Townsend completed Spearman's scoring to set the final at 16-8.

Roman Arnold, Clint Simms and Justin Boyd were given praise from the Spearman junior high coach while defensively, Sammy Graham and Pearson received coaches accolades.

continued from p-1

**PIANIST**

phied muscles. She also instilled her pride and determination in her son.

So much so, that Michael graduated from the University of Texas Law School in 1970. He then moved to Clarendon where he has been practicing law since, although he has been confined to a wheel chair for the past two years.

In 1983, Ann was diagnosed with lung cancer and radical surgery removed the diseased lung. But the cure required extensive and painful care over the months following her surgery as her body healed.

This past summer she had a kidney removed along with a tumor in her bladder. Today, she's up and running as though nothing ever happened and is looking forward to Sunday's reception in her honor.

"Ma does a good job getting through the different crisis' that comes with living," her husband states matter-of-factly. "Most of the things she's done has been for other people."

Perhaps that's been her source of strength, helping those other people.

Whatever the case may be, Ann Sanders has a grateful audience each Sunday. This Sunday, that audience will be paying special tribute to her devotion and to her courage.

Which just goes to prove that, sometimes, paybacks can be more than enjoyable.

continued from p-1

**REPORT**

So, the answer seems simple enough. If we have replacements on the field, in perfect fairness we need replacements in the announcer's booths. Please. And quickly.

Slogans on caps and T-shirts are quickly becoming a special form of Americana. Take the one the other day which read, "My wife ran off with my best friend . . . and I miss him."

Or the one which read, "My wife ran off with a tractor salesman. First time I ever got a John Deere letter."

Call them partners: birds called egrets feed on insects stirred up by grazing cattle. In return, the egret warns the cattle of danger by flying away.

**Defensive struggle all night long . . .**

**Lynx jv slips by Greyhounds, 7-0**

A lone late second-quarter score held up through another 26 minutes of Texas schoolboy football play as the Spearman Lynx jv edged out their Gruver Greyhound counterparts, 7-0, Thursday evening in Lynx stadium.

With the win, the Spearman junior varsity gridiron crew upped their season mark to 6-0.

A defensive struggle throughout all four quarters of football action, Thursday's game saw that lone TD marker stand up as neither team was able to mount a sustained drive against the other squad's defense.

Scott Wilkerson provided the only touchdown, that coming off a

3-yard dive to paydirt with 2:37 remaining before halftime.

Cody Reynolds toed the point after touchdown to put the score at 7-0.

Spearman had beaten the Greyhounds in Gruver, 9-0, earlier in the year. This was their second meeting.

That lone score was set up off a Joel Shields interception on the Gruver 30 late in the second quarter. Spearman was unable to move the ball from that point into double stripe territory.

Shields helped spark the Lynx jv defense throughout the evening

and hauled in a total of three interceptions against the Greyhounds.

Otherwise the game was a defensive bout with neither team able to mount any type of offensive thrust.

Spearman wound up the evening with 10 first downs to Gruver's eight. The Lynx jv had 137 yards rushing while the Greyhounds finished with 102 and another 50 through the air.

Wilkerson finished the night with 87 yards on 16 carries and one touchdown.

Edgar Nova carried the ball 17 times for 50 yards against the Greyhounds Thursday night.

Next Thursday, the Lynx jv's will travel to Stinnett to take on the West Texas Consolidated Commanche jv squad.

**The Hansford Plainsman**

Publication [USPS 2346-6000]  
SPEARMAN, TEXAS 79081  
231 Main, Box 458, 659-3434  
Published weekly at  
213 Main Street  
Spearman, Texas  
Texas Independent  
Newspapers Inc.



19906 Encino Grove  
San Antonio, Tx 78259  
Second Class postage paid  
at Spearman, Texas 79081.

Any erroneous reflection upon the character of any person or firm appearing in these columns will be gladly and promptly corrected upon being brought to the attention of the management.

Member of the Texas Press Association.

**PUBLISHER**  
James C. Jarrett  
**ADVERTISING DIRECTOR**  
Kirby McAdams

**SUBSCRIPTION RATE:**  
Hansford, adjoining counties, combination with the Spearman Reporter, \$19.95; out of county \$24.95.  
**POSTMASTER:** Send address changes to Hansford Plainsman, Box 458, Spearman, Texas 79081.

The publisher reserves the right to revise or reject at its option any advertisement which it deems objectionable, either in subject or phraseology, or which it may deem detrimental to its business.

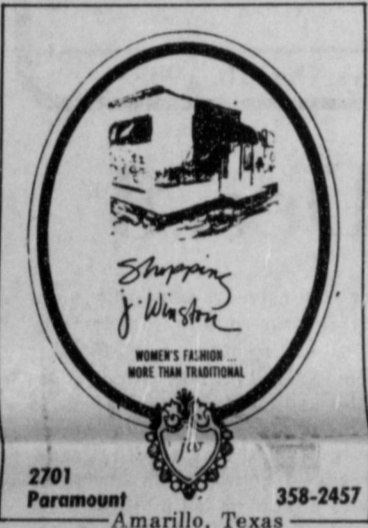
**NORTH TEXAS METER SERVICE**

All types gas meter repair and testing  
Free transportation

Larry - 249-4915  
Jim - 249-5741  
Mike - 249-5020

SHOP NUMBER  
249-5852

1801 Apache Dr.  
Dalhart, Tx. 79022



2701 Paramount  
Amarillo, Texas 358-2457

Introducing the new

**MAGNUM 7120**



And the first all-new tractors from Case IH

Case IH put more into the new MAGNUM tractor line than any farm tractors developed in over twenty years. Here's why you'll get more out of it:

**MAGNUM means more.** Outstanding field performance from a new 505 cubic inch turbocharged engine with reserve power. MAGNUM power.

The MAGNUM tractor's powershift puts 18-speeds of shift-on-the-go workpower at your fingertips—standard. And only MAGNUM tractors offer a full powershift creeper transmission with six additional

speeds from .5 to 2.1 mph . . . for more control and performance. MAGNUM performance.

The MAGNUM tractor's new larger cab has 48 square feet of window area . . . virtually unobstructed visibility . . . more seating comfort. MAGNUM comfort.

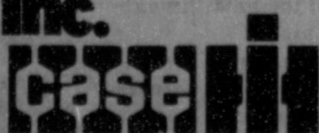
It all adds up: The Case IH MAGNUM 7120 tractor sets new standards for the 150 hp (112 kW) class . . . and for you. See us for details.

**MAGNUM means more.**

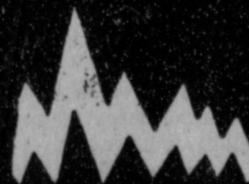
**Five Star Equipment Inc.**

Hi-Way 15 West Spearman

659-3743



Without advertising a terrible thing happens ...



nothing



WHAT, NO POLES? . . . Spearman telephone users will shortly be utilizing a new fiber optics telecommunications system being installed underground here by GTE.

### VA Questions & Answers

**Q** - I used my VA home loan entitlement in 1969 to purchase a home. I now want to sell this home and buy a larger one, do I have any remaining entitlement?

**A** - The maximum home loan guaranty entitlement was raised to \$27,500 in 1980. The amount of any additional entitlement is the difference between \$27,500 and the amount of entitlement used on prior loans.

**Q** - Is there a time limit to file for reimbursement for the cost of a non-Government headstone placed in a private cemetery?

**A** - yes. The claim must be filed within two years of either the date of burial or the date of purchase of a privately purchased headstone or marker.

**Q** - My husband was cremated and his ashes were scattered without interment of any portion of the ashes. May I still obtain a memorial marker for him?

**A** - Yes. The memorial may be erected in a private cemetery or memorial section of a national cemetery.

## PRE-WINTER SAVINGS NOW AT HERGERT'S!

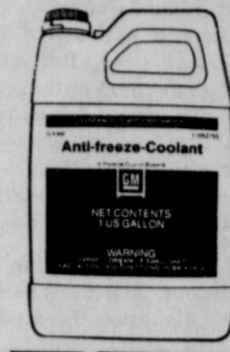
**BEAT WINTER CAR WOES AND SAVE COLD CASH IN THE BARGAIN**



1. Drain and flush radiator
2. Test pressure
3. Inspect for leaks
4. Check all hoses and clamps
5. Check fan belts
6. Refill with GM coolant (2 gal.)
7. Replace thermostat and gasket

**HERGERT**

PONTIAC, BUICK, GMC, INC.



GM QUALITY SERVICE PARTS Mr. Goodwrench

**SPECIAL 7-POINT PRE-WINTER SAVINGS**

Now Only **\$19.95** plus tax

Regular \$34.95



Offer good until 11-30-87

Advertising Pays! Call 659-3434

### School Menu

**HIGH SCHOOL MENU**

Monday, October 19  
Hot Dog/Chili/Bun  
Salad Bar  
Fries  
Cookie  
Milk

Tuesday, October 20  
Fiestada Pizza  
Macaroni/Cheese  
Salad Bar  
Spicy Red Jello  
Milk

Wednesday, October 21  
Rib B Que/Bun  
Pinto Beans  
Salad Bar  
Peach Slices  
Milk

Thursday, October 22  
Chicken Nugget  
Salad Bar  
Blackeyed Peas  
Hot Bread/Honey  
Milk

Friday, October 23  
Hamburger/Bun  
Tator Tots  
Salad Bar  
Chocolate Cake  
Milk

**Nugent addresses**

**national group**

Texas Railroad Commissioner Jim Nugent will address the Texas meeting of the National Association of Royalty Owners in San Antonio Oct. 24.

The meeting is for mineral owners and surface owners who belong to the national organization.

Seminars for those attending the Saturday meeting will be held in addition to Nugent's address.

Headquarters for the meeting will be at the Hilton palace Del Rio in San Antonio.

Anyone interested in attending the meeting should contact district 10 Representative at Robertson at 374-8592 in Amarillo.

MARKETS	
WHEAT	\$2.39
CORN	\$1.86
MILO	\$2.90



### Ready or Not Debbie's

Made to order cakes, cookies, or cupcakes of any kind-for any occasion: Halloween Parties (school;church), Birthdays, Weddings, Anniversary, or just tomorrow's lunch.

Debbie is also making the "BIG" cookies! In the all popular chocolate chip and also sugar or peanut butter. Several sizes and styles available.

(806) 659-3328

Do you do your own decorating or cook for the public? Debbie's is expanding her line of Wilton products! With solid or fillgree Halloween picks, anyone can make a hit with their own cupcakes, crispie treats or popcorn balls. "Little Trickers" top also in stock. Stop by and see us!

620 1/2 Bernice  
Spearman, Tx

### Just Call Us

Carpet  
Vinyl  
Hardwood  
Ceramic Tile  
Expert Sales and  
installation



Truck Mounted  
Cleaning Plant  
Professional Service

**Chris Coffman**

1026 Mergert  
Borger, TX

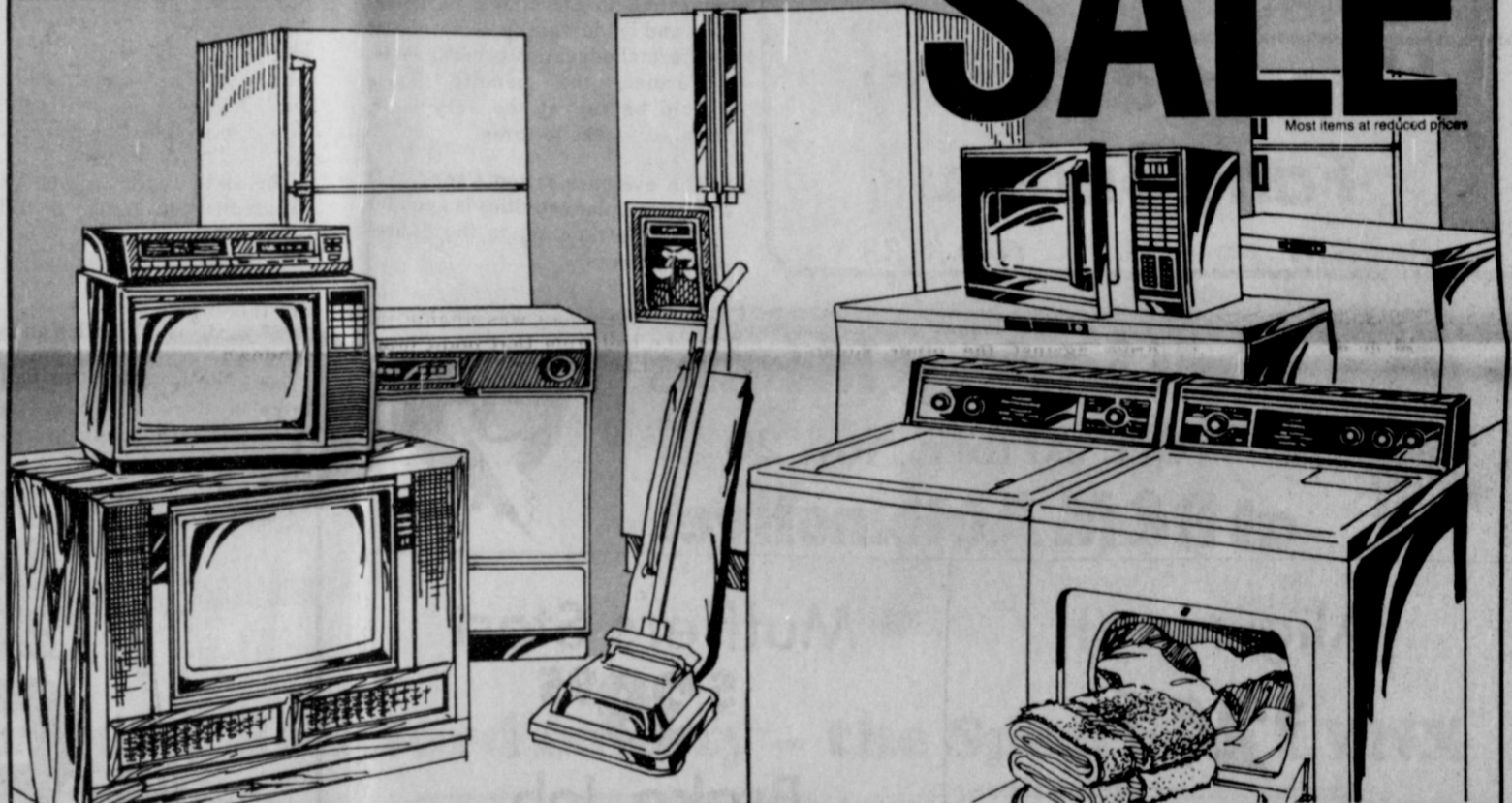
**Carpets 273-2114**

### SEARS Catalog

SAVE 10% on any purchase of \$75 or more from the 1987 Wish Books! Order between Oct. 19-24

## 100-HOUR KENMORE APPLIANCE

# SALE



#### Extra-capacity pair

SAVE \$125 2-speed washer 10 cycles. Electronic control automatically adjusts temperature. E26811 **374.99**

SAVE \$100 Electronic dryer 5 temperatures, 10 cycles for flexible fabric care. E66821 **299.99**

#### Kitchen appliances

VALUE! .5 cu. ft. microwave Solid-state oven with electronic readout. Sears reg. price. NV88217 **119.99**

SAVE \$100 .8 cu. ft. microwave 2-stage memory plus programmed defrost. E88329 **169.99**

SAVE \$120 Large-capacity model 1.4 cu. ft. microwave is the right size for cooking full meals! NV88347 **219.99**

SAVE \$140 Built-in dishwasher With Sears exclusive ULTRA WASH cleaning system, more. NV16775 **349.99**

SAVE \$140 Portable dishwasher With ULTRA WASH system, 6 hour delay start. NV17775 **399.99**

#### Refrigerators, freezers

SAVE \$55 Space-saving model 14.3 cu. ft. total cap. ALL FROSTLESS refrigerator. W66431 **464.99**

VALUE! Icemaker model 22.2 cu. ft. total cap. refrigerator. Factory installed icemaker. NV78251. Sears reg. price. **779.99**

SAVE \$100 Side-by-side model Spacious 19.9 cu. ft. total capacity refrigerator. NV58911 **669.99**

YOUR CHOICE Freezers SAVE \$40-\$100. 15.1 cu. ft. total cap. Upright or chest. K17358, W26251 **279.99**

#### Powerful vacuums

1/2 PRICE! Upright vac 2 speeds, automatic pile height adjustment, floor light. NV35941 **99.99**

SAVE \$120 4.1 peak HP vac Powerful (1.10-HP VCNA) vac with handy floor light, cord reel. E26413 **229.99**

#### Electronic buys

VALUE! Stereo console TV 25-in. diag. meas. color TV. MTS stereo for rich sound. E48203. Sears reg. price. **529.99**

VALUE! Portable color TV 13-in. diag. meas. screen. E40353. Sears reg. price. **\$169**

SAVE \$82 Remote color TV 19-in. diag. meas. screen. quartz tuner, cable compatible. KA42109 **\$277**

SAVE \$80 On-screen display TV MTS stereo, 19-in. diag. meas., quartz tuner, remote. K42311 **339.99**

SAVE \$70 VHS/VCR, remote Our lowest price ever! 14-day/4-event timer, more. E53295 **249.99**

VALUE! On-screen display VCR 27-function remote, 1-year/4-event timer, quartz tuner. E53298. Sears reg. price. **294.99**

SAVE \$95 50-watt rack stereo 50-w. min. RMS, 8 ohms, 80 Hz-20KHz. 0.09% THD. CD compatible. E9284 **289.99**

SAVE \$205 100 watt stereo CD player, more. 100-w. min. RMS, 8 ohms, 40Hz-20KHz with 0.9% HD. E93016 **579.99**

Each of these advertised items is readily available for sale as advertised. Prices are catalog prices now available in our "E", "K", "KA", "W", and "NV" catalogs. Shipping, installation extra. Many Kenmore models come in colors at additional cost. Kenmore dryers require connectors not included in price shown. Ask about Sears credit plans.

Call 659-2578  
Most merchandise available for pick-up within a few days

Located: 517 S. HWY 207, Spearman, Tx.  
Phone 659-2573  
Monday-Saturday from 9 a.m. - 5:30 p.m.

There's more for your life at SEARS  
©Sears, Roebuck and Co., 1987  
Satisfaction guaranteed or your money back

# Extra-curricular activities prove beneficial for school students

When the issue of no-pass, no-play first came up, many argued that it would penalize students who are more likely to have higher grades, better attendance and take a more rigorous course load.

A study of the effects of after-school activities on the performance of 3,500 Texas youth for a doctorate at Texas A&M seems to verify that assertion.

Kenneth W. Patranella, an assistant principal at San Antonio Clark High School, said his study shows that extracurricular activities such as football, band, drama club or

student government tend to improve students' academic achievement rather than detract from it.

The study, one of the first of its kind since House Bill 72 three years ago stiffened eligibility requirements for after-school activities, is unusual in that it examines the effects of all extracurricular activities on male and female students, rather than looking only at male students in athletics, as earlier research had done.

"More than anything else that's come out, his (Patranella's) study really disproves the myth that kids

who participate in extracurricular activities take easier classes or have poor grades," said Dr. John Chevrette, a professor of health and physical education at A&M who monitored the doctoral work.

Patranella examined the records of all students attending two high schools in the Northside Independent School District in San Antonio who participated in at least one extracurricular activity and then a matching group in sex, grade level and race who did not participate in anything.

He then compared grade point, attendance and course load difficulty between the two groups, looking at each grade level separately and dividing the groups according to sex and race.

Patranella said in all cases students who participated in after-school activities out-performed those who did not. Further, those who were involved in more than one activity or who were involved in leadership roles, had the best grades and attendance records and took the most rigorous course loads.

No one is saying students should not make a passing grade - but those students who are turning in their work, getting tutoring and making every effort to pass - especially those in extra-curricular activities, deserve every reasonable and fair opportunity to pass.

Those extra activities are a legitimate and needed part of education to encourage participation and leadership in society after the formal education process ends.

Further, the penalty phase should be cut, at the very least, from six weeks to three.

The evidence is too strong that extracurricular activities is good for and not detrimental to the educational process.



### ONLY TEN?

Tucked away in the flying manual of a 1946 piper cub were the handwritten ten commandments of an anonymous pilot. The first rule read "Thou shalt not become airborne without checking thy fuel supply." In layman's terms, that means it's hard to play aerial leap frog when you don't have a leg to stand on.

Commandment 2 stated, "Thou shalt not taxi with carelessness." Airplanes handle marvelously in the air, but on a windy day, next to a pond, make a mighty poor substitute for a submarine . . . especially on its back.

The third warns of a potential for a mid-air: "Thou shalt ever heed into air traffic rules." In other words, when the controller says, "Take up heading 081 and descend to 3,500 feet," you don't say, "Listen, buddy, just say 'right or left, up or down.'"

I remember once flying a slow Cessna at night in front of a 747. I asked the controller if he wanted me to yield to the heavier traffic. He said, "No," but did ask the 747, who was trying hard to fly slow enough to stay behind me, if he had me in sight. Calmly the captain replied, "Roger, I've got him. I think he's stopped."

Number four states, "Thou shalt not make flat turns" which is roughly equivalent in auto terms to "When skidding backwards on ice, don't worry about turn signals."

Commandment five reads, "Thou shalt maintain thy air speed lest the earth rise up and smite thee." A similar relationship exists when a man gets smart with his wife.

The sixth commandment is: "Thou shalt not let thy confidence exceed thy ability." I remember making that mistake once myself when we thought one of the kids was thoroughly potty trained.

"Thou shalt make use of thy carburetor heater." This one may throw a lot of new-pilot types. Ice forms in airplane carburetors under certain conditions causing stop-

page of two things -- fuel flow and normal heart beat. Properly used, heat restores both.

"Thou shalt not perform aerobatics at low altitude." Even my uncle, a non-pilot, learned that one early in life while hanging out in bars. In either case, pilot or non-pilot, aerobatics started near the ground can end up 6 feet under the ground.

"Thou shalt not allow indecision in thy judgment." A classic example of a piper cub accident occurred when a student pilot said, "I think I can make it," took off from a muddy field with a full load and flew through the wind direction indicator, powerlines, and the port-a-potty section of a construction project. The plane was bent badly but the unhurt pilot had this dumb request of the news media, "Don't tell my instructor."

The 10 commandment is the most memorable and famous: "Thou shalt know always -- There are old pilots and bold pilots, but no old, bold pilots."

All these commandments are designed for safe operation of aircraft and I am a great believer that air travel is the safest transportation in the world. One of my friends disagrees because, he says, his grandfather died in a train wreck.

"What's a train wreck got to do with air safety?" I asked.

"A plane fell on it," he replied.

## Hospital Auxiliary seeks volunteers; training meet set

A special training and orientation meeting for new volunteers will be held by the Hansford Hospital Auxiliary this Monday beginning at 2 p.m. in the Hansford Manor Activity Room, reports Barbara McClellan, president of the group.

"We need more volunteers," she reports. "And we'd like to invite any man or woman in Hansford County who would be interested in spending a few hours each month with patients in the hospital or the residents in the Manor to come to Monday's meeting."

For more information, contact Mrs. McClellan at 659-2156 or second vice-president Freddie Largent at 659-3042.

## Hospital Report

Patients in Hansford Hospital are Bob Thompson, Roy Russell, Juanita Macias, Juliette Stewart, Jo Ella Jones, Mary Chavez, Audra Mae Burke, Joe Baca, Eldon Boese and Rosa Lee Grotgeut.


Dismissed were Dale Womble, Debbie Buchanan and Sam Wytson.

## Kelly Mahanay

### Awarded Certificate in Personal Insurance Course

Southern Farm Bureau Life Insurance Company is proud to announce that Kelly Mahanay, Farm Bureau agent in Hansford County has been awarded a certificate in Personal Insurance by the Life Underwriter Training Council.

The LUTC program is a four course curriculum. The objective is to contribute to the constant improvement of the quality of life insurance marketing. It is essential for the industry to produce informed, well-trained life underwriters. SFB Life congratulates Kelly on the completion of this course.



KELLY MAHANAY

## Hansford County Farm Bureau

Box 578                      659-3133

## Fall Savings Months

Oct. 20 thru Nov. 20  
at B&M Automotive!

<p style="text-align: center;">Alignment <b>\$24<sup>95</sup></b></p> <p style="text-align: center;">Balance 4-Tire <b>\$19<sup>95</sup></b></p> <p style="text-align: center;">Wheel Bearing Pack <b>\$19<sup>95</sup></b></p>	<p style="text-align: center;">Mufflers Start <b>\$39<sup>95</sup></b></p> <p style="text-align: center;">Brake Job 4 Wheel Start <b>\$84<sup>95</sup></b></p> <p style="text-align: center;">Winterize Cooling System <b>\$19<sup>95</sup></b></p>
---	---

Major Engine & Transmission  
Repair call for estimate

### New Amnco 4-Wheel Alignment



Easy-Fast-Accurate-Complete

Owner  
**Doug Brown**
phone 659-3111
Owner  
**Mario Molina**

## FUZZY'S RADIATOR SALES & SERVICE

SINCE 1932  
SPECIALIZING IN SALES & SERVICE  
AUTO • TRUCK  
TRACTOR • INDUSTRIAL



- REPAIRING
- RECORDING
- CLEANING
- REBUILDING
- CUSTOM BUILT RADIATORS
- FEED LOT CORES
- SPECIALTY CORES OF ALL TYPES

EXPERT WORK  
INDUSTRIAL FIELD SERVICE  
• STATIONARY & MOBILE  
REMOVAL • INSTALLATION

**273-2818**

**273-5911**

NIGHTS 273-3283

Alan Jones Owner - Manager  
204 W 1st BORGER



# MAGNUM COMFORT

See more. Feel better.

MAGNUM comfort means more comfort and operator efficiency. There's 48 square feet of visibility. And the tractor's sloping hood and hidden exhaust provide unobstructed visibility ahead. This cab is bigger, with more head room, and a wide, fully-adjustable swivel seat. All controls are conveniently located, and designed for comfortable low-effort operation.

The new MAGNUM tractor cab will keep you going strong and feeling good. And it's standard on all Case IH MAGNUM tractors. Four all-new models. 130 to 195 PTO hp. See us for details.



MAGNUM means more.

## Five Star Equipment Inc.

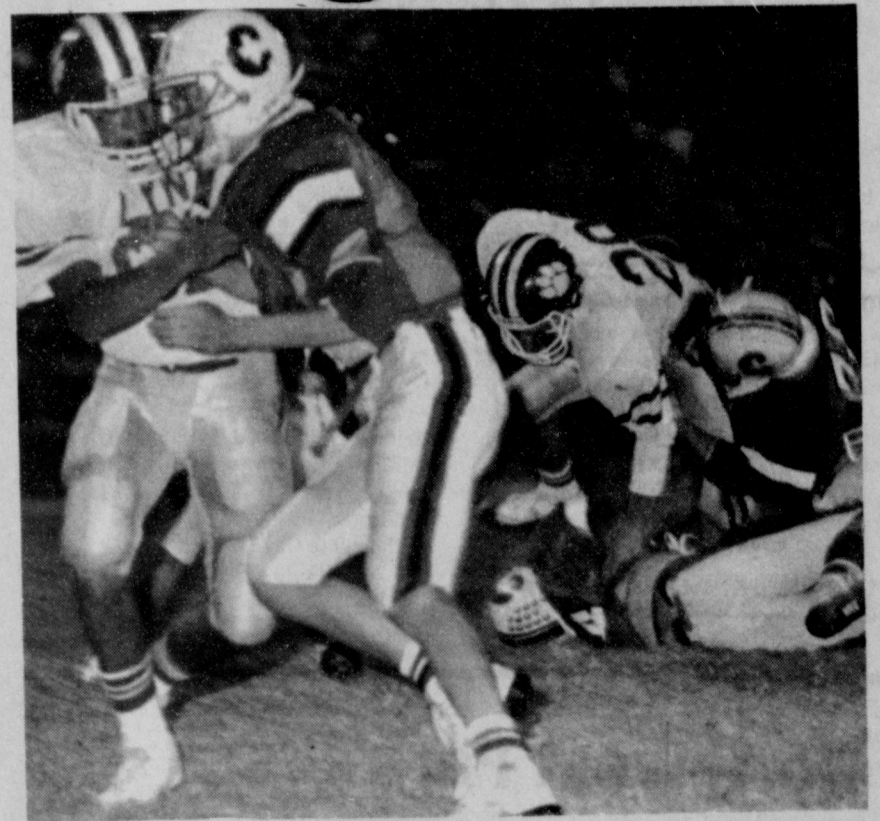
Hi-Way 15 West Spearman  
659-3743



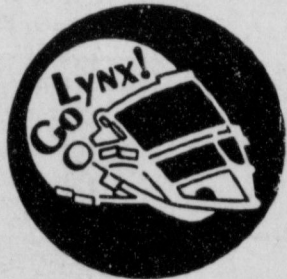
# Purple Pride strikes again!



Take it  
one step  
at a time,  
**LYNX...**



## ... all the way to district!



Highland Park

Panhandle

WT Consolidated




Gruver



Proud supporters of the pride of Hansford county -- the Spearman LYNX

 **Archer Inc.**  
Airport addition  
659-5272  
Spearman, Tx.

 **Gordon's Drug**  
314 Main  
659-2141  
Spearman, Tx.

 **Beedy Furniture**  
725 W. 7th  
659-3701  
Spearman, Tx.

 **Golden Spread Sales**  
412 Collard  
659-3776  
Spearman, Tx.


 **B&B Sales**  
205 N. Dillon  
659-5507  
Spearman, Tx.

 **Spearman Cable T.V. Systems**  
308 Main  
659-3363  
Spearman, Tx.

 **Adela's Flowers**  
511 Hwy. 207 S.  
659-5180  
Spearman, Tx.

 **Thriftway**  
505 Plains Shopping Center  
659-2522  
Spearman, Tx.

 **Hansford Implement**  
Hwy. 207  
659-2568  
Spearman, Tx.


 **Tucker Water Well**  
120 Hwy. 207  
659-3013  
Spearman, Tx.

 **Video Hut**  
Plains Shopping Center  
659-2973  
Spearman, Tx.

 **B&B Farm Industries**  
703 Collard  
659-5507  
Spearman, Tx.

 **Buster's Dusters**  
902 Hwy. 207  
659-3648  
Spearman, Tx.


 **Spearman Jack & Jill**  
123 W. Kenneth  
659-3190  
Spearman, Tx.

 **Hansford Co. Farm Bureau**  
307 W. Davis  
659-3133  
Spearman, Tx.

 **Davis Gulf**  
503 Collard  
659-2422  
Spearman, Tx.

 **J.G.'s**  
306 Hancock  
659-3424  
Spearman, Tx.

 **Interstate Savings & Loan**  
322 Main  
659-2559  
Spearman, Tx.

 **White House Lumber Co.**  
306 Davis  
659-3792  
Spearman, Tx.

 **First State Bank**  
1 N.E. Court  
659-5565  
Spearman, Tx.

# School Menus

**ELEMENTARY & JR HIGH**

Monday, October 19  
Hot Dog/Bun  
Fries  
Diced Carrots  
Cookie  
Milk

Tuesday, October 20  
Tonys Pizza  
Macaroni/Cheese

Chopped Spinach  
Red Jello  
Milk

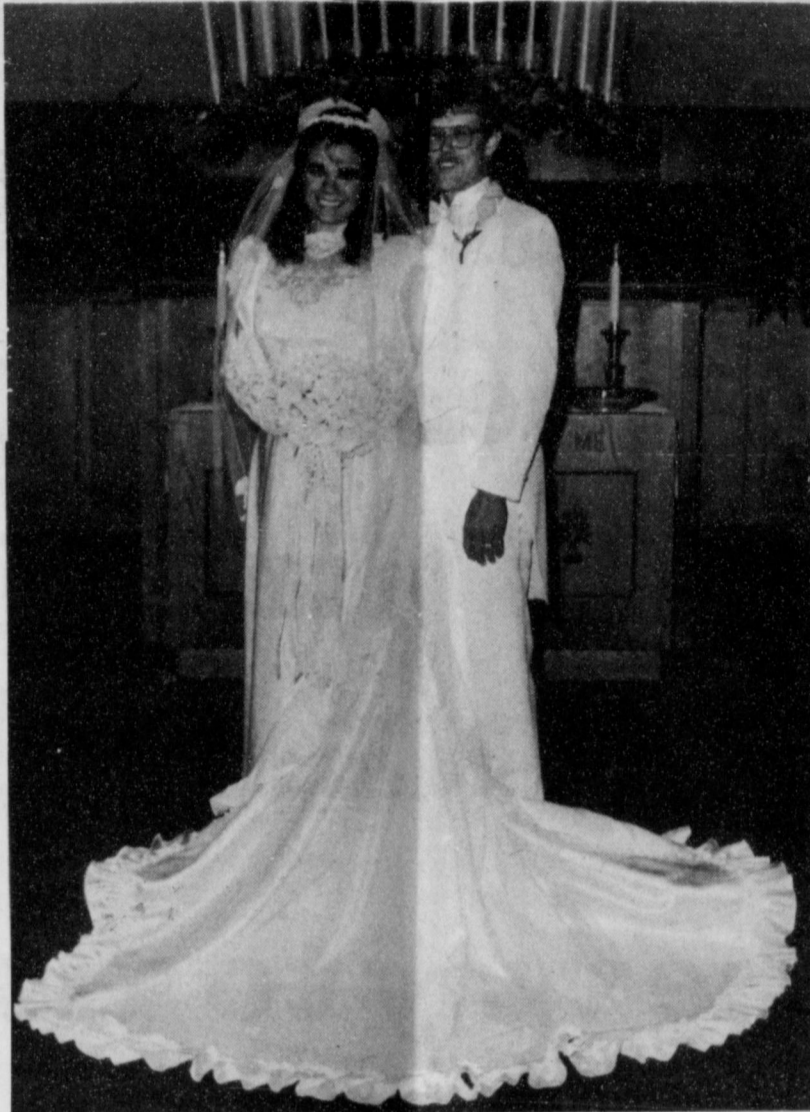
Wednesday, October 21  
Rib B Que/Bun  
Pinto Beans  
Mixed Vegetables  
Fruit Slice  
Milk

Thursday, October 21  
Turkey  
Blackeyed Peas  
Cole Slaw  
Hot Bread/Honey  
Milk

Friday, October 23  
Hamburger/Bun  
Fries  
Lettuce/Pickle  
Chocolate Cake  
Milk

**Cimarron Tank Co. and Operators.**  
**Attention Oil Companies**  
Cimarron Tank Co., Guymon, Ok. has a need for used 300 BBL and 400 BBL API 12F Stock tanks in good condition.  
GUYMON, OK. 405-338-5496

# United in Marriage



Lori Fletcher - Darrell Messer

Lori Fletcher and Darrell Messer were united in marriage on Saturday evening, Oct. 10 with the Rev. Larry Miller, pastor of the First Baptist Church in Gruver officiating. The ceremony was held in the Gruver United Methodist Church.

The bride is the daughter of Mr. and Mrs. Richie Fletcher of Gruver. Parents of the groom are Mr. Loyd Messer of Gruver, and Mrs. Sara Carter of Clayton, N.M.

Maid of honor was Paula Nix of Panhandle. Best man was Michael Messer, brother of the groom.

Guests were seated by Stan Fletcher of Denton, and Tim Fletcher of Gruver, brothers of the bride. Guests were registered by Miss Deana Messer from Amarillo, sister of the groom.

Flower girl was Lindsay Messer of Gruver, sister of the groom. Ring bearer was Cory Schneider, cousin of the bride from Spearman.

A reception was held in the fellowship hall for guests attending the wedding.

Out of town guests included Mrs. Phyllis Cutter, Waco, Tx.; Cindy and Ali Wheeler, Austin, Tx.; Sallie McClure and Jude Potts, Norman, Ok.;

Mr. and Mrs. Don Fletcher, Denton, Tx.; Bob Fletcher, Amarillo, Tx.; Mr. and Mrs. David Fletcher and family, Lockney, Tx.;

Kathleen Pixley, Lindsay, Ok.; Eloise Spalding, Hedley, Tx.; Claudine Keisling, Sunray, Tx.; Doug and Martha Lowe, Clarendon, Tx.; Mr. and Mrs. Jim Bonham, Spearman;

Mrs. Don Mitchell, Weatherford, Ok.; Mr. and Mrs. Oscar Doshier, Hardesty, Ok.; Tesha Cluck, Canyon, Ts.;

Cappi Davis, Fritch, Tx.; Mrs. Dot Messer, Hedley, Tx.; Roger Messer, Memphis, Ts.; Mr. and Mrs. Warren McClenagan, Darrouzett, Tx.;

Brian McClenagan, Plainview, Tx.; Mr. and Mrs. Rick Nix and Kent, Panhandle, Tx.;

Heather Peddy, Guymon, Ok.; Paula Hargrove, Perryton, Tx.; Rona Crable, Dallas, Tx.; Dee and Jill Starkey, Ft. Worth, Tx.;

Donna Sue Messer, Amarillo, Tx.; Stacy Kelly, LaMarada, Cal.; George and Patti Buebenau, Amarillo, Tx.;

Dala Shapley, Abilene, Tx.; Mike Riley, Perryton, Tx.; and Stacy Kelly of Denton, Tx.

Pre-nuptial courtesies included a bridal shower in the home of Mrs. James Dorman, a lingerie shower in the home of Mrs. Ricky Thompson, and a bridal luncheon in the home of Mrs. Don Hart and her daughter, Carrie.

Friends of the groom hosted the rehearsal dinner at the Methodist Church.

Following a honeymoon trip to Red River, N.M., Lori and Darrell plan to make their home in Gruver.



\$500 WINNERS in a national promotion by a floral tele-marketing firm is presented to Mary Mayfield (left) and Wanda Reid by Jerry Dorsey (far right) of Oklahoma City. The two Spearman businesswomen won the \$500 bond in a nationwide promotion and were presented with the award this past week.

Bridal Shower for Tisha Pearcy Oct. 24, 3 to 4:30 p.m. at home of Francis Biles 104 Wanda Dr., Spearman

S50S-2t

## Northwest Portraits

EARLY BIRD CHRISTMAS SPECIAL NOW WITH MORE BILLFOLDS

Full Size Borderless Prints. No Salesmen, No Surprises

2 - 8 x 10s In 2 Poses  
2 - 5 x 7s  
24 - Billfolds



\$300 deposit when photographed  
\$1295 balance on delivery  
\$1595 FULL PRICE NO EXTRA CHARGES

Satisfaction guaranteed or your money refunded

All Ages Infants to Adults Families Welcome

We use Kodak paper. For a good look.

No extra charges for groups. Order as many packages as you want at this one low price; we give each customer a money back guarantee in writing. Low priced reorders available by mail.

## KIDS' STUFF

Monday, Oct. 19th

10:00-7:00 p.m.

# Mark Your Calendar!

Saturday,

Oct. 31

**HALLOWEEN**

## Dinner and Dance

Enjoy Delicious Prime Rib at 6 p.m. then Dance to Eloy and the Troubadors from 9 p.m. to 1 a.m. Prize for Best Costumed Couple

Now Open Again - 2 to 5 p.m.

**CATTLEMAN'S** Supper Club  
Spearman



When the Autumn leaves have turned, join us for the...

## FALL FOLIAGE FESTIVAL & Tour Of Homes

**Saturday, October 17**

FALL FESTIVE CAR SHOW 10 A.M.-9 P.M.  
KIWANIS 10K/2-MILE FUN RUN STARTS 9:30 A.M.  
NORTHEAST PANHANDLE CHAMPIONSHIP TEAM ROPING 1-5 P.M.  
DANCE TO "CIMARRON" 9 P.M.-1 A.M.

HOBBY SHOW 11 A.M.-5 P.M.  
KOUNTRY KITCHEN 11 A.M.-3 P.M.  
RIVER VALLEY PIONEER MUSEUM DEMONSTRATIONS & EXHIBITS 1:30-4 P.M.  
MELODRAMA: "Foiled By An Innocent Maid" 5-6 P.M.  
TRI STATE HIGH SCHOOL RODEO STARTS 11 A.M.

**Sunday, October 18**

FALL FOLIAGE TOUR 11 A.M.-5 P.M.  
TOUR OF HOMES 1-4 P.M.

FALL FESTIVAL CAR SHOW NOON-5 P.M.  
FOR MORE INFORMATION CONTACT THE CANADIAN CHAMBER OF COMMERCE OFFICE, 323-6234

in Canadian, Texas



# Your Home Is Full Of Hidden Dollars



Call 659-3434



Turn idle items into cash fast with a Want Ad

**CLASSIFIED RATES**  
 Regular . . . Per Word-\$0.13  
 Display . . . Per Col. Inch-\$4.20  
 Double rate for blind ads  
 Minimum charges  
 Cash . . . . . \$4.00  
 Charge . . . . . \$4.50

**CASH IN ADVANCE ADS**  
 •Work wanted •Trailers for Sale  
 •Business Opportunities •No longer Responsible •Political Advertising •Child Care •Baby sitting •Garage Sales •Out-of-county Ads unless advertiser has established credit with •The Spearman Reporter

**DEADLINES**  
 To place or cancel ads  
 Friday - 12:00 p.m. . . . . Sunday edition.  
 Tuesday - 12:00 p.m. . . . . Thursday edition  
 The Spearman Reporter reserves the right to reject, edit, revise and properly classify all advertising submitted for publication. The Spearman Reporter also reserves the right to cancel any advertisement at any time.  
**THE SPEARMAN REPORTER**  
 213 Main, P.O. Box 458  
 Spearman, Texas 79081

**HANSFORD COUNTY**  
 Planned Parenthood  
 412 Davis  
 659-2488  
 Spearman, Tx  
 Monday - Friday  
 8:30 - 12:30

**STEAM RINSE & VAC**-Rinse and Vac Shampooer for rent at Gordons Drug. \$10.95 up to 24 hours.

**Real Estate**

**HOUSE OUT BUILDINGS** on 3 lots and platform for mobile home. Call 806-878-2877 or 405-352-4515. S49-4tc

**FOR RENT:** One bedroom furnished apartment. Unfurnished two bedroom house. Call Gus McLain at 659-2274. S49-rtm

La Mirage Villas Apts. - 309 S. E. 15th Ave.

Excellent for the retired on a fixed income. Families w/children-young couples. Rent is based on income. Ask about our rental assistance. Phone 435-6916. S49 4tc

**FOR SALE OR RENT:** Nice house in nice neighborhood. 3 bedrooms, 1 1/2 baths, office, lots of cabinet storage. Good condition! Call Sheila Watley at 659-3970. S50-rtm

**WANTED** U.S.D.A. Employee wants to rent a house in the country within reasonable driving distance of Perryton. Would consider caretaker responsibilities. Need by 10-23-87. Tele. 915/382-4691 S50-2tc

**HOUSE FOR SALE:** 2 bedroom 1 1/2 bath 2 car garage newly remodeled 1 block from school priced in the low 20's call 659-3987 S 49 2tc

**Mobile Homes**

**COMPLETE MOBILE HOME** Services available. Check our cheaper rates on transporting, escorting, and skirting anchors and cool seal for all makes. Large selection of new, used and repos. B & D Mobile Homes. Guyton, Ok. 405/338-5315. S47-2tc

**\$99 total down payment** for 1987 doublewide, 3 bedroom, 2 bath, delivered to your location. 120 months at 11% APR at \$333 per month. Cat Art at (806)376-5630. S49-9t

**\$179 per month for 3 bedroom, 2 bath** mobile home. Completely refurbished with new carpet. \$743 down at 12.77% APR. for 84 months. Free delivery and set up. Call A-1 Mobile Homes at (806) 376-5363. S49-9t

**\$130 per month payment** for 14-foot wide mobile home. Remodeled and ready for delivery. 12.77% APR at \$500 down for 60 months. Call (806)376-4612 and ask for Tim. S49-9t

**\$206 PER MONTH** for new 1988 doublewide. 3 bedroom, 2 bath. Free delivery and set up. 13.75% APR at 240 months. \$1,591 down. Ask for Ruben at (806)376-8611. S49-9t

**ABANDONED HOMES** - Take over payments on 2 and 3 bedroom homes. **Qualify by phone.** 806/381-1352. Call collect. S46-rtm

**FOR RENT:** 3 bedroom trailer. Has 2 full bathrooms, a fenced backyard with patio and storage building. Call 659-3186 day or night. S50-3tp

**FOR RENT:** 3 bedroom trailer. Has 2 full bathrooms, a fenced backyard with patio and storage building. Call 659-3186 day or night. S494tp

**FOR RENT:** Trailer space in Spearman. All utilities, fenced and concrete walk ways. Call 435-5080. S46S-only rtn

**Service Repairs**

**Dingmans general carpentry** - roofing - carpors. Free estimates. Call 435-3222. S49-4tp

**Dan's Wallpapering & Paint Service** Reasonable Prices. Free Estimates. Contact Dan Ortiz - 733-2121

**OFFICE CLERK**  
 Part-time clerk needed to work in the Spearman office. Job requires typing (55-60 w.p.m.), customer contact, cash transaction, posting, filing and reports. High school diploma required. Call (806) 659-2336 for information.  
 Texas-New Mexico Power Co. An Equal Opportunity Employer M/F 50s-2tc

**For Sale**

**Couch For Sale:** Light gold, crush velvet, with button tusks on back. Call after 5:00 733-2958. S50-2tc

**FOR SALE:** 327 engine with 350 turbo transmission and a Kirby Vacuum cleaner - 3 years old. Call 659-5052 after 5 p.m. S50S-2tc

**FOR SALE:** Silvertone Chord Organ in good condition. For information call 659-2809. S49-7tp

**FOR SALE:** Travel Trailer - 1978 Del Ray, air condition. Winter price - \$2750. Edwin Pearey - 659-2941. S50-S-2tp

**PIANO FOR SALE**

**WANTED:** Responsible party to assume small monthly payments on piano. See locally. Call credit manager 1(800)447-4266. S48-8tp

**FOR SALE:** Carved Davin, chair and coffee table from Old Mexico. \$250. Call 659-3958 after 5:30 - 733-5158. In very good condition. S50-2tp S50-2tc

**FOR SALE:** 6 International planters, pipe trailer, 8" pipe, 10" by 8" Hydrant - Ts Ls etc., 4-14" tires like new, antiques, clocks, bathtub, and gun cabinet. Call 659-3029. S50-2tp

**Help Wanted**

**HIRING!** Government jobs - your area. \$15,000 - \$68,000. Call (602) 838-8885. EXT 4514. S47-9tp

**HELP WANTED:** Port A Medic needs a LVN or EMT to perform part time mobile insurance physicals in your area. Call 806/747-3223. S50-2tc

Will do babysitting in my home. Call 659-5298. S50S-2tp

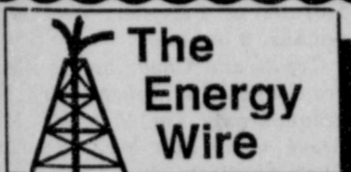
**NOTICE**

Borger Area Singles Club Dance. Friday, Oct. 30, 9 to ? Country & Western Band. Borger V.F.W. Hall - \$3. each. S51Sonly-1tp

**NOTICE TO BIDDERS**

Sealed bids for the purchase of the following equipment will be received by the City of Spearman, Tx., at the office of the City Manager up until 2 p.m., Nov. 19 then publicly opened and read.  
 1. One (1) pickup truck with standard cab and bed.  
 2. One (1) four door police special sedan with a trade-in.  
 The City reserves the right to reject any or all bids, to waive informalities and to accept the bid deemed to be the most advantageous to the City. All bids received after the above closing hour will be returned unopened.  
 Specifications and bidding documents may be secured from the office of the City Manager, P.O. Box 37, Spearman, Tx. 79081. S50S-2t-Sonly

**NOTICE OF PUBLIC HEARING**  
 The City of Spearman, Tx., will hold a public hearing at 7:30 p.m., Oct. 27, 1987, at the City Hall Council Chambers, 30 S.W. Court in regards to submission of an application to the Texas Department of Community Affairs (TDCA) for a Texas Community Development Program (TCDP) Fund Grant.  
 The purpose of this meeting is to allow citizens an opportunity to comment on the City of Spearman's proposed application and review the project for water distribution line improvements prior to submission of the application to TDCA by Dec. 3, 1987. S50-S-1t



**Washington** -- The Energy Department, which regularly tracks earnings of selected independent and major oil companies, has reported that energy businesses this year have come out stronger than during the disastrous early months of 1986.

In an in-house quarterly DOE report, the department's Energy Information Administration found that profits for 36 independent oil and gas companies rose in the first six months of this year to \$35.8 million compared to a net loss for the companies last year of \$74.3 million.

Most of those profits were accumulated during the first quarter, according to the report, entitled "U.S. Energy Industry Financial Developments."

Earnings for the 36 companies in the second quarter amounted only to about \$5 million, but that figure compared to a loss of \$80.4 million in the second quarter of 1986 following the full thrust of the decline in oil prices.

Independent companies included in DOE's report of industry profits are mostly mid-sized to smaller firms, said T. Crawford Honeycutt, a DOE economist who helped

**Farm Items**  
**Colorado Onions For Sale.** Call 659-3301. 416 W. 13 Street, Spm.

**Auction**

Notice is hereby given that on Tuesday, the 3rd day of November, 1987 at 10:05 a.m. the following described Royalty Interests will be sold at the door of the Hansford County Courthouse to the highest bidder for cash subject to any and all taxes!

**TRACT ONE:**  
 An undivided .0244048 royalty interest in and to all oil, gas, and other minerals produced from Section 61, H & GN Survey Hansford County, Texas.

**TRACT THREE:**  
 An undivided .0366071 royalty interest in and to all oil, gas, and other minerals produced from all of Sections 27 and 29, Block 1, Certificate No. 27, original grantee, Cherokee Furnace Company, Hansford County, Texas, containing 160 acres, more or less.

**TRACT FOUR:**  
 An undivided .0117105 royalty interest in and to all of the oil, gas, and other minerals produced from all of Section 31, Block 1, Certificate No. 31, Cherokee Furnace Company Survey; all of the East half of Section 2, Block 1, Central & Montgomery Rcy. Co. Survey, Certificate No. 206; all of the East half of the B Venneman Survey, Abstract No. 1269, containing 666.88 acres, more or less, in Hansford County, Texas.

All of the right, title, and interest of Jacqueline K. Thoreson, whether now owned or hereinafter acquired in and to (i) all oil, gas, and/or mineral leases and other minerals so produced, on the above described lands, (ii) the aforesaid leases, even though the Grantor's interest therein may be incorrectly described in Exhibit, "A" or even though said leases cover lands other than (or in addition to) land described above, and (iii) all other oil, gas, and/or minerals or mineral leases and interests with which the aforesaid leases may be pooled or unitized, in whole or in part.

Grantor warrants that the undivided leasehold and royalty interests secured hereby equals a net revenue interest described in each of the aforesaid tracts.

These Properties are owned by Jacqueline K. Thoreson and are being sold by the U. S. Small Business Administration in foreclosure and proceedings.

Please contact Williams & Webb, Inc. at (806) 374-9387 or 2208 Canyon Drive Amarillo, Texas 79109 for additional information concerning this Auction.

prepare the report. Those companies include Cabot Corp. of Houston, Anadarko Petroleum Co. of Houston, Hamilton Oil Co. of Denver and Louisiana Land & Exploration Co. of New Orleans.

The 20 diversified major oil companies in the study also reflected a recovery from the crash in oil prices. Total earnings for the 20 companies rose to \$3.9 billion in the first six months of 1987, up 30 percent from income generated in the first half of last year.

The report said the increase for the majors was due primarily to improvements in oil and gas production and chemical sectors.

Oil and gas production income for the major companies was \$671 million in the second quarter of this year, compared to a loss for the second quarter last year of \$19.9 million, the report showed.

In other categories tracked by DOE, the report showed that earnings for 22 oilfield service companies also showed improvement but were still well below profitability.

Losses by the service companies declined by \$57 million in the second quarter of this year compared to the second quarter of 1986. But the loss for those companies in the second quarter was still \$92.6 million, compared to a loss last year for the same period of \$149.9 million. The service firms lost \$191.8 million for the first half of this year.

The report said smaller losses this year for service companies resulted from "a combination of a small increase in oilfield activity and cost savings and reduced depreciation charges resulting from last year's writedowns and restructuring."

In the major petroleum industry categories, the report said refining and marketing firms were the only losers compared to last year.

The \$125.4 million income by the 12 marketers/refiners followed by DOE was the lowest reported by those companies for a second quarter since 1983, the report said. Their income fell by \$200 million, or 62 percent, compared to the level for 1986 due to product prices that lagged behind rising crude prices.

**WASHINGTON** -- At a petroleum conference in Washington this week there appeared to be less urgency than during recent months in answering the question posed as the session's theme: "Are We Moving Toward Another Energy Crisis?"

As on most matters of energy policy, a spectrum of views emerged with little consensus except that the United States is likely to keep thirsting for more oil imports in the late 1980's and into the 1990's.

Imports could rise to 50 or even 60 percent of the country's demand in the next few years and not cause a "Crisis" without some form of supply disruption, said John Lichtblau, president of the New York-based Petroleum Industry Research Foundation Inc., which hosted the conference.

Afterall, he noted, Japan and many European countries get by even with higher import levels.

The analyst said the real longer-term threat could appear when higher worldwide demand begins to erode excess production capacity of the Organization of Petroleum Exporting Countries in the Middle East.

"At some point in the future it is certainly possible that rising world oil imports, led by the U.S., the world's largest importer, could absorb so much of OPEC's excess producing capacity that there would again be insufficient flexibility to cope with sub-catastrophic supply disruptions or unexpected demand increases," said Lichtblau.

Conoco Inc.'s president and chief executive officer Constantine S. Nicandros underscored the view that "we will have to import large volumes of oil whether we like it or not. The issue is to try to minimize the imports and manage them."

Deputy Energy Secretary William F. Martin, while acknowledging that higher imports present a growing problem, reinforced the administration's low regard for an oil import fee and cited the effect on the economy of steeply rising oil prices in the 1970's. "Why inflict the wounds on ourselves?" he said about boosting prices through a

fee. One speaker who answered that question favorably for an import fee was University of Texas Professor William L. Fisher.

Fisher put forth the idea the United States should not shy away from exerting control over an oil market that otherwise is manipulated elsewhere.

He pointed out that the United States produces 30 percent of the non-communist world's oil and gas and consumes 40 percent. That's enough, he said, for the United States to be "the equivalent of a 700-pound gorilla. Where does it sit? It sits anywhere it wants to sit."

He said the "only option open to the U.S., and most likely the only one to provide world price stability, is direct price administration by the U.S."

He said the country should "set a price range with a floor and ceiling" and that the U.S. price "would rapidly become the world price." To maintain "current levels of production well into the next century" the industry would need stable prices of about \$25 per barrel, he said.

**Washington** -- A prominent oil-state official has suggested that a ceiling on oil prices, coupled with a minimum price, would be worth accepting in return for stability in petroleum markets.

Industry officials, however, said they were not yet ready to talk in terms of a price cap.

Texas Gov. Bill Clements said he might favor a controlled range of prices between \$20 and \$25 per barrel just before visiting Washington to meet with Energy Department and White House officials.

"A minimum, or floor, at \$20 makes oil recovery possible and a maximum, or ceiling, of \$25 answers the issue of the consumer markets and energy costs," Clements said at an industry meeting in Dallas.

The governors' price ceiling suggestion was considered a surprise since many in the industry have been reluctant to support a variable oil import fee, which would set an oil floor price, for the very reason that it might lead to a maximum price as well as the minimum price.

"I think it's absolutely ludicrous to be talking like that," said Harold B. "Bud" Scoggins, president of the Independent Petroleum Association of America. "The last thing the petroleum industry needs is any kind of ceiling. Nobody knows what kind of conditions are going to exist in the future and trying to put on an artificial ceiling price just doesn't make any sense."

"There are a lot of prospects that wouldn't be economic at a \$25 price," Scoggins said. "Why rule out those prospects if we set the market would take the price even higher?" he asked.

Out in the heart of the Texas oil patch, another spokesman for the industry said the governor's idea wouldn't hold much glamour for producers in his region.

"I don't know where Clements came up with those figures," said Harry Spannaus, executive vice president of the Permian Basin Petroleum Association in Midland.

"It didn't come from West Texas," he added. "We're pretty much certain that if we set a floor, then Congress will want a cap, but \$25 oil is not the place to cap it at. There's some production that you can't make any money at \$25," he said.

Henry Gandy, director of the State of Texas Office of State-Federal Relations in Washington, made the rounds with Clements last week and said the governor's suggestion should be viewed as "a range of prices that would be required to stabilize the oil market. He doesn't want to lock them (Reagan administration officials) into a situation in which they're limited with their options."

Clements said White House Chief of Staff Howard Baker was "enthusiastic" about setting up a presidential commission on energy policy.

The governor said he stressed to Energy Department officials the value of promoting further research into techniques for enhanced oil recovery that could bring up billions of barrels of oil that now are unrecoverable.

**OSGOOD MONUMENT CO.**  
 Amarillo, Texas  
 Dealers of Rock of Ages Granite, as well as all colored granites, marble and bronze memorials.  
 represented by  
**BOXWELL BROS. FUNERAL HOME**  
 519 S. Evans  
 659-3802

**ALCOHOLICS ANONYMOUS MEETING**  
 Hansford County Library (Upstairs)  
 122 Main-Spearman  
 Open meeting 2nd Tuesday  
**AL ANON**  
 Tuesday  
 8:00 P.M.

**WEIGHT WATCHERS:** meets each Monday at 6:00 p.m. at the Home Demonstration Building, Spearman Texas.

**NOTICE**  
 Wallace Monument Co. Monuments, Curbing, Grave Covers  
 Local Representative  
**LEONARD JAMESON**  
 Spearman, Texas

**PANHANDLE CRISIS CENTER:** 101 S.W. Forth, Perryton, Texas 79070, 806-435-5013. Help is available at no charge for domestic violence and sexual assault. Call Panhandle Crisis Center, receive support during a difficult time. Counselors on call 24 hours a day. Call for help.

**APPLIANCE REPAIR** - Call Jim Nobles at 659-3528

**TOPS 1245**, SP meets every Tuesday night at 7:30 p.m. at the Girl Scout House located at 22 S. Endicott. Drop by and join TOPS.

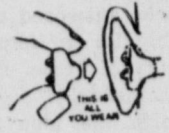
**L&M Body Works**  
 1501 Hwy 15  
 659-2775  
 Tailpipes - \$29.95  
 Mufflers - \$39.95  
 Most Duals \$160.00 complete

### Scholarship applications available

High school students who are interested in applying for \$1,000 college scholarships should request applications by December 1, from Educational Communications Scholarship Foundation, 721 N. McKinley Road, Lake Forest, Ill. 60045.

To receive an application, students should send a note stating their name, address, city, state and zip code, approximate grade point average and year of graduation.

Sixty-five winners will be selected on the basis of academic performance, involvement in extracurricular activities and need for financial aid.



### Free Hearing Test

HIGH PLAINS HEARING ASSOCIATION in conjunction with GOLDEN SPREAD SENIOR CITIZEN CENTER located at 14 S. Haney will offer Free hearing tests this Tuesday, Oct. 20 from 1:30 to 4:30 p.m.

All walk-ins welcome or phone for appointment by calling 659-3521.

Test will be conducted by Jerry Stingley, H.A.S.

### Among the Neighbors

By Helen Fisher

The newest little twig on a well-established family tree is Katie Michelle Sherlock, daughter of Kim and Gary Sherlock. Her birthday will be Oct. 12, and she was born at Ochiltree General Hospital at Perryton, weighing 7 pounds, 6 ounces.

Travis and Chad, her brothers, are delighted to welcome her. Her grandparents are Mr. and Mrs. Bruce Cline and Mr. and Mrs. Gayle Sherlock, all of Plainview.

Great grandparents are Mr. and Mrs. A.L. Hand of Clovis, and Mrs. Sally Teague of Plainview and Mrs. Dale Stevens of Houston.

Great great grandparents are Mrs. Mae Cline of Truth or Consequence and Mr. Monroe Hopper of Houston.

Mrs. Bruce Cline has been in the Sherlock home for several days helping Katie Michelle get acquainted.

Carol Hergert, Jody Harnish and Margy Schoenhals represented the Hansford Manor on Tuesday in Lubbock. They attended the all day seminar on "New Minimum Standards for Licensing".

Carol pointed out that Hansford Manor has had a Superior Rating for several years.

Kaydean Smith of Floydada visited her mother, Mrs. Girtha Gamble, last weekend and is expected to return this weekend. Mrs. Gamble was released from Hansford Hospital on Wednesday and is recovering at home.



Whales' skeletons reveal that the ancestors of these animals once lived on land.

### Health HINTS



Sunday, October 18, 1987  
lieve lifestyle changes can help heart attack victims reverse much of the damage to their hearts and live full, energetic lives.

The booklet is part of a public education effort by the makers of Ecotrin safety-coated aspirin. The suggestions in "Your Heart, An Owners Manual," include: an exercise routine; a well-balanced, low-fat diet; and aspirin therapy.

Aspirin therapy is especially recommended for people who've suffered a previous heart attack or who have unstable angina (chest pains).

Here's good news for the millions of Americans who've survived a heart attack: a new free booklet summarizes up-to-date information on diet, exercise, stress reduction and aspirin therapy—the major therapies in preventing a second attack. Cardiologists be-

**FHA Baked Potato & Sundae Supper**  
**Friday, Oct. 23**  
 Served from 5 to 7 p.m.  
 in the high school cafeteria.

\$2 for children 6-yrs old and under  
 \$4 for adults

# Dealing with Experience



EDNA LEE GRIMMER

## Our employees provide that dependability . . .

That's something we can say with confidence here at First National Bank in Spearman, especially with employees like Edna Lee.

With over 23 years of banking experience ranging from positions she's held in Oklahoma, Perryton and right here in Hansford county, Edna Lee provides our customers with the knowledge that their transactions are in competent hands.

Edna Lee handles our proofing operations here at First National. She double checks each and every transaction to verify its correctness before it ever reaches our computers. It's an exacting job and one she handles well.

In addition, she also works in our bookkeeping department and provides teller relief out front. Her experience pays off in a big way for First National Bank customers.

Outside of the bank, Edna Lee works hand in hand with her husband Lealand Grimmer who is pastor of the Apostolic Faith Church in Spearman. She also teaches a young children's Sunday School class at the church.

All in all, it's employees such as Edna Lee Grimmer who are helping to make banking at the First National Bank in Spearman



Good for You  
and Hansford County Tool