

HANSFORD COUNTY'S LEADING NEWSPAPER



The

SUNDAY The Hansford Plainsman



VOLUME VII., NUMBER 43

SPEARMAN, HANSFORD COUNTY, TEXAS 79081

SUNDAY, MARCH 20, 1966

Hansford Junior Show Is Tomorrow

Owners of some 140 steers, barrows and lambs will be in Spearman Monday to show and sell these animals in the annual

Hansford County Junior Livestock Show. The once-delayed show for FFA and 4-H club feeders will

be held in the Community building in Spearman with two judges selecting the best of animals.

H. M. "Flip" Breedlove, a former county agent and now vice president of a bank in Clarendon, will judge the steers.

Frank Sokolosky of Panhandle A&M College at Goodwell, Okla., will judge the barrows and lambs.

Show officials are expecting the junior feeders to show about 65 steers, 60 barrows and 15 lambs.

The barrow show will begin at 10 a. m. and the lambs will be judged following the hog show. Judging of the classes of steers will begin at 1 p. m.

County Agent Robert Adamson said if the weather is bad, there is enough room in the Community building to judge the steers in the building.

Sawdust is being placed in the building for bedding and Adamson said after it is wet down, the show should be just about a dust-free show and sale.

Auctioneers will begin selling the prize winning entries in the show at 6:30 p. m.

Jerry Black Completes Training For Army Special Forces Duty

The basic mission of the Army Special Forces is teaching, says Pfc Jerry Black, who has just finished almost a year's training in the Special Forces.

Black, son of Mrs. Ethel Black of Spearman, is home on leave before going to Germany for duty with the "Green Beret".

It takes just about a year to complete Special Forces training and some phases, like the Special Forces medics, takes longer, Black said.

He has been in the Army 14 months and is just now completing the training as a radio man.

He volunteered for Special Forces before being inducted. A man has to be 21 and pass a battery of mental tests and tests on military aptitude, ability to live on your own and a man must be physically qualified for parachute jump school.

Black said he did not know how many men got through the training, but there were very few of the ones that volunteer who finally graduate.

"The qualifying tests get a few, then jump school gets some and others drop out in different parts of the training before they get through."

Black's basic job is a communications expert. He has been trained to maintain his equipment, and send a minimum of 18 words per minute in Morse code.

A Special forces team has 12 men and there are five different jobs in the team's medics, communications, weapons, engineers and operations and intelligence.

Black said each man has some training in all the fields and after he becomes a permanent member of a team, he

will be cross-trained more thoroughly.

In the training, Black said

you are hanging on a rope or something and the ground is coming up to meet you.

"Those night jumps are something else, but you would be surprised how much you can see," Black commented.

Jumpers are trained out to use their auxiliary chutes to get down from tall trees. They just release it, then trip their harnesses open and climb down the auxiliary chute like a rope.

"I landed in the trees twice, but was only a few feet from the ground so I had no trouble."

Black was jumping from (Continued on Page 2)



Pfc. Jerry Black
-A "Green Beret"

Special Forces men are trained in their specialty for awhile, then go into the field and use what they have learned, then back for more training.

It stays with you better when you use it as you learn," Black commented.

Jump school is some of the first training. In the weeks of training the students make 11 jumps, four of them are at night.

"The first jump did not bother me. We were so busy that we were out of the plane and on the ground before we realized it. It was the second jump that gave me time to think about jumping."

"There is really no sensation of falling. It just seems like



MORSE LAD- Jimmy Dale Womble is shown with the steer he showed recently at the Houston Fat Stock Show, placing second out of 78 entries. The Hansford County Junior Stock Show will take place tomorrow at the Spearman Community Building.

Lynxettes Surprised At Making All-State

Neither one of the Spearman Lynxettes believed they had made the All-State tournament team when it was announced in the daily papers this week.

Someone called both Nancy McCullough and Susan Hutchison and told them before they saw it in the daily paper.

"I thought it had to be a misprint," said Nancy McCullough.

In talking about the tournament, both girls thought they played better in the first game against Rivercrest than against Little Cypress.

Susan Hutchison said she knew her play against Rivercrest was better than against LC. "I could get to the passes that Rivercrest was making to their post girl and intercept them, but the Little Cypress girl was so tall they lodged them in to her and I could not get them."

Nancy said it was much harder to defend the Little Cypress post girl. The officials were calling it so much closer that we just had to stay away from her when she got the ball and hope she would miss.

Hutchison and McCullough teamed up on the tall girls in both games to hold down their scoring.

Against Little Cypress McCullough said about all she could do against tall Phyllis Parish, an all-state forward, was beat her to her favorite shooting spot.

"She had one spot she liked to get set on before starting her shot. If I could get there and keep her from pushing me off, she did not shoot so well," McCullough recalled.

The girls said they had to fit their defenses to the other teams' offenses.

Coach Dean Weese, who was sitting in on the interview, said it was the team's ability to think and make adjustments on the court that enabled them to win the championship.

He said every girl helped the others and would tell each ot-

her what needed to be done.

McCullough and Hutchison changed their defensive assignments when they saw that one of the LC tall girls was able to shoot over Hutchison's defense.

It was Hutchison who warned McCullough to back off LC's Parish when she beat McCullough to the base line and McCullough could not keep her from shooting without fouling her.

"They were just so tall that when they got the ball into the tall girls, we just had to let them shoot and hope they missed," Hutchison said.

The two were extremely successful in getting rebounds against the superior height. Hutchison said she thought it was timing that enabled them to do it.

"We just had to beat them to a better position and get the ball before they could get

(Continued on Page 2)

Spearman Choir Wins I, III UIL Ratings

Spearman High School's 85-voice mixed choir entered its first Texas University Interscholastic League competition Thursday and earned I and III ratings.

Four choirs from AA schools entered the competition at West Texas State University in Canyon and Spearman and Phillips were the only two receiving I ratings for concert performances.

Director Lewis Tilford said the Spearman choir received a I rating from all three of the judges.

The other two choirs competing were Dalhart and Stinnett.

The choir also entered sight-reading competition which was something new to the group.

In sightreading, the choir is

given an original composition and is allowed a few minutes to study the music. Then they must sing the selection.

The choir will enter the festival at Panhandle A&M College in Goodwell, Okla., March 30. Then they will enter the Tri-State Music Festival in Enid, Okla., the last of April.

JOE DAY GOES TO HOUSTON HOSPITAL

Mr. and Mrs. Joe Day flew to Houston today (Sunday) in a private plane for Joe to undergo examination in a Houston Hospital. Day, County Commissioner, has been ill for several months with a heart ailment.



S. H. S. CHOIR - The Spearman High School Choir received a Superior Rating this week in the Texas University Interscholastic League contest at Canyon. The Choir, under the direction of Lewis Tilford, will enter a contest late this month at Panhandle A&M and in April will enter the Tri-State Contest in Enid, Okla. Photo by C&B Studio



MR. & MRS. HARRIS P. HOOVER, III

Photo courtesy The Everman Times

Mobleys' Granddaughter

Is Wed in Fort Worth

Miss Queen Mobley, daughter of Mr. and Mrs. Max B. Mobley of Fort Worth and granddaughter of Mr. and Mrs. A. W. Mobley of Spearman, was married recently to Harris P. Hoover, III, son of Mr. and Mrs. Harris P. Hoover, II., also of Fort Worth.

Nurses Set Workshop

A workshop will be conducted by the Texas Nurses' Association and District #23 of T. N. A., on March 26 at the Coronado Inn in Pampa.

Registration fee including cost of luncheon will be \$3 for TNA members and \$5 for Non-Members.

Speakers will be Martha Ann Bobbitt, R.N., of Amarillo, Edwin S. Williams, M. D., of Pampa, Mrs. Betty Ware of Borger, Katherine Piercy, R.N., of San Antonio, and Wilbert E. Scott, N.D., Internist F.A.C.P. of Amarillo.

Vows were exchanged before an embankment of palms, white gladioli and votive candles entwined with orange blossoms. Dr. Thomas Sterck, Minister Emeritus of Matthews Memorial Methodist Church, officiated.

Escorted to the altar and given in marriage by her father, the bride wore a traditional gown of white peau de soie embroidered at the bodice with seed pearls and featuring long sleeves which ended in points over her wrists. Her full skirt ended in chapel-length train.

The bride's veil of illusion fell from a pearl tiara and she carried a bouquet of white rosebuds and orchids. She carried an heirloom Bible and silk handkerchief, both belonging to her maternal grandmother. Miss Melody Mobley was her sister's only attendant. She wore a pink taffeta gown with matching headpiece of net and carried a bouquet of white carnations.

The bridegroom's twin brother, John F. Hoover, II., of Dallas, was best man. Ushers were Bill McDavid, Jr., of Fort Worth and David McDavid of Weatherford.

At the reception, the bride's table was laid with white satin caught up at intervals with white satin ribbon bows and wedding bells. A bouquet of white rosebuds and carnations centered the table and white candles in milk glass holders flanked the arrangement.

The three-tiered white wedding cake was covered with white rosebuds and was served with punch from an heirloom cut glass punch bowl. Crystal and silver appointments completed the setting.

The bride's sister, Maxine Mobley presided at the guest register.

The couple will reside in Fort Worth where the bridegroom is employed by Bell Helicopter.

Revival Begins March 29 At Church of Christ

A series of special gospel sermons by Larry Fluitt, minister of the Church of Christ in Keller, will begin in the Spearman Church of Christ Monday, March 29.

Fluitt, a friend of Charles Milner, minister of the local congregation, has been a Church of Christ minister for seven years. He served churches in Mason and Decatur before moving to Keller.

The two ministers attended Abilene Christian College together.

Milner said the evening services will be at 7:30 p.m. Monday through Sunday, April 3. The 10 a.m. services will begin Tuesday.

He extended an invitation to everyone to attend the services.

Choose your Easter cards at Plainsman Office Supply. They're beautiful, by Hallmark, of course!



Larry D. Fluitt

HANSFORD HOSPITAL NEWS

Patients in Hansford Hospital are Lola Stuck, Orlena Riley, Elizabeth Underwood, Mary Farris, Dee Deere, Suzy Hand, Leonard Deadman, Nancy Hoyle, Bertha Saenz. Dismissed were Mary Graham, Doris Crum, J.D. McCoy, J.T. Edge, Debra Smith, Annie Allen, Mary Guzman, Glen Reed.

Cummings

Refrigeration

HEATING

AIR CONDITIONING

SALES & SERVICE

SPECIALIST

659-2721

Mrs. Helms Gives Book Review

Roundtable met Thursday morning in the home of Mrs. Don Jones for their regular monthly meeting. Mrs. J.D. Helms reviewed the book "Escape From Red China" by Robert Loh.

Attending were Magda Garnett, Abby Ownbey, Evelyn Hiller, Donna Helms and the hostess.

WILL ACCEPT BIDS ON

OLD CITY HALL BUILDING

LOCATED AT THE CORNER OF KENNETH AND DAVIS STREETS IN SPEARMAN. BIDS MUST BE IN BY NOON MARCH 28, 1966 IN THE OFFICE OF J. L. BROCK AT 206 MAIN STREET OR JOHN R. COLLARD, JR., 407 DAVID STREET, SPEARMAN. WILL RESERVE RIGHT TO ACCEPT OR REJECT BIDS.

HANSFORD LODGE # 1040

HOME LAUNDRY CLEARANCE SALE

(MAKING ROOM FOR THE NEW ONES)

No Foolin'...

THIS IS A SALE YOU CAN'T MISS!



**GE Washer Reg. \$249.95
Now \$169.95**

**GE Dryer Reg. \$149.95
Now \$129.95**

2 load selectors - 2 speed
**GE Washer 3 washing temp.
Reg. \$239.95
Now \$199.95**

**83 2A GE
Was her
Reg. \$259.95
8 10A GE
Dryer
Reg. \$179.95**

**Both for
\$350.**
This Sale Only

**GE Dryer Reg. \$169.95
Now \$129.95**

1 only mina basket-2 speed
3 wash temp.-2 rinse temp.

**GE Washer 4 load selectors
Reg. \$289.95
Now \$189.95**

Fully automatic dryer
**Almost Matching Dryer
Reg. \$199.95
Now \$169.95**

WATCH FOR A NEW

Anthony Electric

GE LINE SOON!

The Hansford Plainsman

Publishers Inc.

Jim O. Davis
Burl G. McClellan



County-wide independent newspaper published every Thursday and Sunday at 209 Main St., Box 668, Spearman, Texas 79081. Second Class postage paid in Spearman, Texas 79081. Editor . . . Burl McClellan

Black . . .

(Continued from Page 1)
about 1200 feet, but when he gets to his new station, he will be trained to make free fall jumps from 30,000 to 40,000 feet.
In the last two weeks of training the Special Forces men go on survival training. They are dropped in the wilds of North Carolina and must avoid being captured, complete mission, rejoin their groups and finally escape. They must live off the land while they are completing their work.

"When I jumped I landed near some persimmon trees and I lived on them for a couple of days. When I could not eat any more, I rigged up some snares and caught a couple of birds and a rabbit.

"After eating those, I decided there had to be 'enemy forces' looking for me, so I would jump them and steal some of their food. I did and after the problem was completed I learned that everyone did the same thing.

Not a one of us searched the men we captured and each one had a record of when and where the 'enemy' were to get supplies. We were supposed to have searched them."

"I never did know what kind of birds they were that I caught, but after those persimmons, they were pretty good."

When Black gets to Germany he will learn to carry out all his jobs in cold weather and travel on skis.

"All the training in North Carolina was in the mountains and swamp jungles."

Black says the reason Special Forces is rated as being such a tough outfit is because they are supposed to operate behind enemy lines or in territory away from the regular forces.

"Because our job is to teach the people we live with to use weapons, explosives, radios and other things against the enemy, the enemy wants to get rid of us quickly and sometimes the teams have to fight."

He said the medics in Special Forces can do amputations, minor surgery like an appendectomy, deliver babies, treat wounds and other medical services the team or people in their area might need.

Black said he went into the Special Forces because of the age requirements that would put him with older, more experienced men. Men who would know how to do their jobs, he felt.

Black said when a team is formed, the members stay in that team as long as they are in the Army. He said men like himself just out of training, will be on C and B teams before they make an A team of 12 men.

The soldier had orders for Okinawa, but was later transferred to Germany.

"I don't like cold weather, so I don't know how I am going to like this cold weather training," he commented.

The Plainsman and its readers would like to know about that party you're having. I be sure you call 3258 or 2466 to let us know the details.



ALL STATERS- Nancy McCullough (left) and Susan Hutchison seemed surprised to hear they had been named to the AA All-State team this week. Nancy is a junior and Susan will graduate this year.
Plainsman photo

Lynxettes . . .

(Continued from Page 1)

to it," she added.
Hutchison has been playing basketball since she was in the fifth grade. "We have known we were going to state since we were in the seventh grade."

The girls still playing this year from that group are Hutchison, Karen Gibson, Robbie Ownbey, Bethany Donnell and Kathi Pattison.

Hutchison said it has been worth all the hard work, but she would do things differently if she had a chance to play her career again.

McCullough played in the eighth grade and her freshman year, then missed last year. It had been said earlier that she was not going to play next year but she said she would be playing.

This announcement brought a smile from Dean Weese.

Women Attend School Meet

Mrs. J.E. Womble and Mrs. F.J. Hoskins attended the Golden Spread Kindergarten Association meeting held in Amarillo Friday, March 11 at the Lollipop School on Western. Workshops were held in the morning and group sections in the afternoon with discussion on kindergarten problems.

Bowling Beat

TUESDAY MIXED LEAGUE		
March 16, 1966		
TEAM	WON	LOST
Etling Grain	60	28
Behne Electric	55	33
#5	50	38
Spearman Vol.	47	41
Snider-Pearson	34	54
Spearman Floral	18	70
HIGH TEAM GAME		
Etling Grain	664	
Spearman Floral	652	
Etling Grain	624	
HIGH TEAM SERIES		
Etling Grain	1831	
Spearman Floral	1673	
Behne Electric	1634	
HIGH INDIVIDUAL GAME		
Shorty Hamlett	230	
Shorty Hamlett	228	
Bernice McBride	203	
HIGH INDIVIDUAL SERIES		
Shorty Hamlett	641	
Ed Vernon	487	
Bernice McBride	469	

Hutchison said the seniors did not have doubt that they were going to state this year, but they did get depressed after both Pattison and Donnell were injured.

"When we beat Tulia with Karen on the bench, we knew we could go to state," Hutchison remembered. "Because if we could beat Tulia with Karen out with a sprained ankle, we could win with her."

Both Hutchison and McCullough started the year as forwards, then moved to guard when Pattison and Donnell were injured.

Both girls said they liked playing guard better than forward, but when they were playing both ways for awhile, it was confusing. In one game, Nancy forgot which end she was playing and went the wrong way.

Weese said the game against Rivercrest at state was Hutchison's best game, but he felt McCullough played her best game against Floydada in the regional tournament.

In fact, he said the team played a near perfect game against Floydada.

Hutchison said when the year started the players thought they had a good team, even though the public did not think it would be too good.

She said this team had more unity than any she had played on. "We all knew we had to play together to win and if something happened, we talked it out and got it settled. That is why we won the title."

Southwestern Life Insurance Co.

LIFE INSURANCE IS MY ONLY BUSINESS...

LET ME HELP YOU

PLAN YOUR NEEDS

DON KNOX

Phone 659-3294
Spearman

Injured Girl Is Critical

The two young Gruver women injured early Wednesday in a one-car accident six miles south of Gruver are now in an Amarillo hospital.

The condition of Miss Linda Willoughby was reported to be very critical early Saturday morning. She has a serious head injury along with other injuries.

Miss Barbara Reeves was reported to be in fair condition. Officers believed the car in which the women were riding left the highway and crashed into the bank of Palo Duro Creek about 12:30 a.m. Wednesday. They were not found until 7:30 a.m. Wednesday by a passing motorist.

128 More Voters Have Registered

The two weeks of voter registration in Hansford County under the state's new free voting law produced 128 more voters in the county.

J. B. Cooke, County Tax Assessor-Collector, reported the figure after registration closed Thursday night. County voters had 14 days and nights to register. The local tax office had a deputy in the radio dispatch office each night during the 14 day period.

"I saw it in The Plainsman."

THE HOME TEAM



"That show off! He can skate out a figure 8, but I'll bet he can't even count that high."

Want To Build a New Home, Remodel or Repair Your Home ?

CALL
R. L. UPTERGROVE

659-2677

Out of Town, Call Collect

Spearman

For Sale :

3 Bedroom House-Several Lots-2 Commercial Buildings

Who Installs Air Conditioners and Heating Units ?

CUMMINGS REFRIGERATION

phone 659-2721

Plains Shopping Center

We sell and install 3 different brands

LENNOX AIR CONDITIONING
HEATING



WRIGHT Evaporative Coolers

These are not window coolers but duct model coolers

ALL SHEET METAL DUCT WORK IS DONE IN OUR SHOP. IT IS MADE TO FIT

-WE SERVICE ALL MAKES OF AIR CONDITIONING.-

Baptist WMU Circles Hold Regular Meetings

Mrs. Herb Howe presided at the Betty Morris Circle of WMU Wednesday, March 16 with Mrs. Abbye Ownbey hostess. Mrs. Howe read the prayer calendar followed with prayer by Florene Devers. All members present took parts in the mission study program.

Attending were Eva Adkison, Edith Ann Cage, Howe, Verna Jarvis, Angie Sheets, Devers and the hostess.

The home of Mrs. J.D. Helms was the meeting place for the Louise Mitchell Training circle Wednesday. The group worked on their workbooks. The next meeting will be at the Helms home for their last meeting before going into the regular WMU circle. Attending were Mary Lovett, Louise Hawkins, Barbara Sampson and the hostess.

The Kezzia Mae Seawright Circle met at the church for their mission study meeting. A film was shown by Joan Eaton on Missions in Brazil. Wanda McIver read the prayer calendar.

Attending were Mmes. Johnson, Viola Hutton, Dana Hazelwood, Joan Eaton, Wanda McIver, Marguerite Nelson, and the hostess, Betty Uptergrove. The next meeting will be Bible study and will be held at Pioneer Manor.

Mrs. Don Denham was hostess for the Alma Reed Circle Wednesday morning in her home. Edrie Jones was in charge and read the prayer calendar. Mrs. R.H. Gray led the prayer. Bible study was led by Mrs. Fred Holt.

Jackie Banks Presents Program

Mrs. John Brown was hostess for the Gladiola Flower Club Thursday, March 17 at the Home Demonstration Clubroom.

Margaret Adamson presided at the business session. The program "Preparing Your Yard for Spring and Fall" was given by Jackie Banks.

Mrs. Brown served apple cake and coffee to members, Margaret Adamson, Dorothy Baggerly, Darlene Cherry, Dorothy Haner, Dorothy Buzzard, Estelle Jackson, Sherry Partridge, Barbara Schnell, Patty Spoonmore, Pat Reeves and the hostess.

The next meeting will be in the home of Lil Turner April 7.

FOR EASTER . . .

All kinds of Easter party goods, by Hallmark - of course, at Plainsman Office Supply. Also a nice selection of beautiful Easter cards. Choose yours today!

TOMMY GOOCH AGENCY
FARM BUREAU INSURANCE
Spearman, Texas

Farm-Ranch Loans
Improving-Refinancing
Developing-Purchasing
Long Term-Competitive
Interest-No Appraisal Fee

BROOKSHIRE-ELLIOTT LOAN & REALTY CO.

'We make loans anywhere'

COME BY
211 East 7th St.
OR Telephone

806-935-3325
Dumas, Texas 79029

Mrs. Davis Hosts Club

The Home Science Division of the Twentieth Century Club met Thursday afternoon in the country home of Mrs. Frank Davis, with Mrs. Johnnie Lee presiding in the absence of the president.

Attending were Mmes. Ed-die Gates, A.F. Loftin, Major Lackey, Luther Berry, Holt, Gray, Jones and Denham.

The program "Challenge To Be Politically Informed" was given by Mrs. Guy Fuller who gave a report on facts of the city. Mrs. Carl Archer, the country and Mrs. Fred Holt reported on the school.

Attending were Mmes. Archer, Lloyd Buzzard, H.H. Chevalier, Fuller, Holt, Nolan Holt, O.C. Holt, Dwight Hutchison, J.R. Keim, C.A. Kleeberger, Johnnie Lee, C.J.

King, Queen Honored at Party

A party held at Mrs. J.E. Womble's Kindergarten Thursday morning March 10, honored two children of the class,

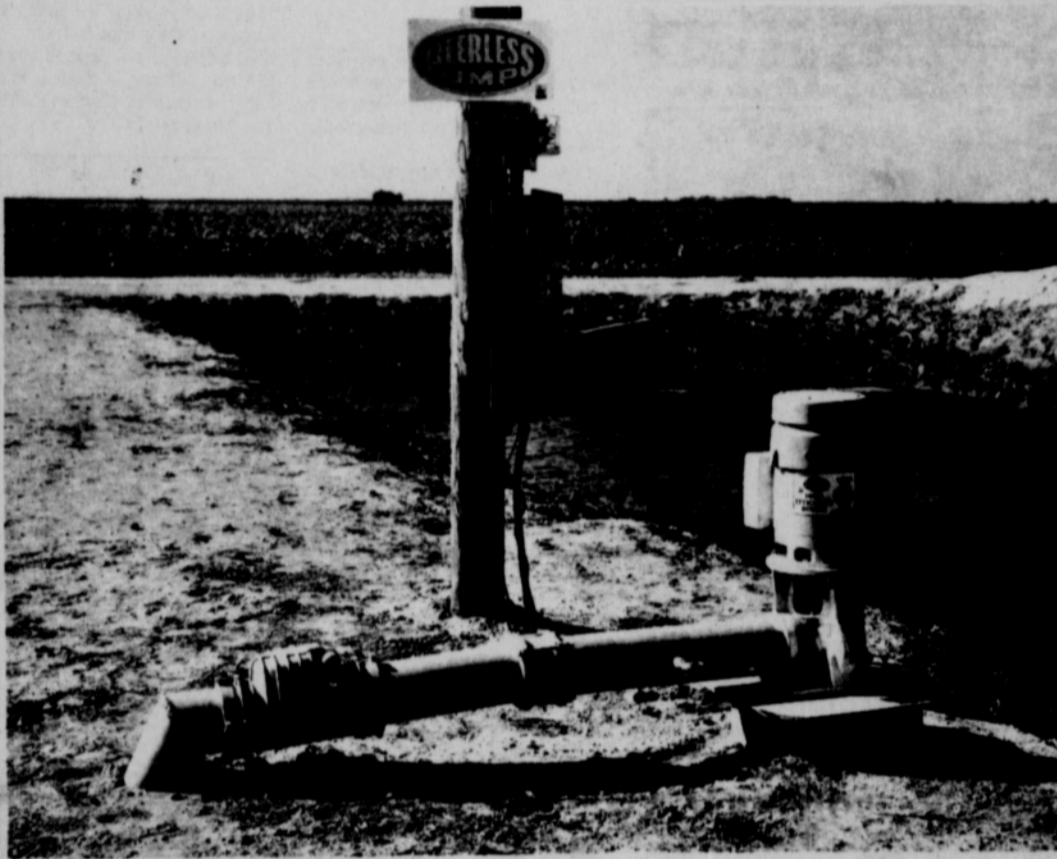
Renner, J.R. Stump, Joe Trayler and the hostess.

Leslie Ann Groves and Mickie Gates on their sixth birthdays. The birthday cake and ice cream were served by Mrs. Womble and the children wore crowns and were king and queen for the day. Quinn Banister and Gerri Lynn Kendrick were chosen as prince and princess for the birthdays.

Plainsman want ads get results. Try them.

SALVAGE WASTE WATER!

... SAVE YOUR MONEY!



CLARENCE R. BYRD WHO FARMS SOUTH OF KRESS

Irrigated 20 acres of grain sorghum and 60 acres of cotton - - each three times from this tailwater installation

Grain Yielded 5,200 Lbs. Per Acre And Cotton Made 102 Bales - All Without Fertilizer!

MR. BYRD STATES

"In 1964, without using my tailwater, I made only 3500 lbs. of grain per acre and 57 bales of cotton on the same ground. The system paid for itself in one year and I plan to install another Peerless Tailwater Pump in 1966."

"My Cost To Irrigate With My Peerless Tailwater Pump Was 10¢ Per Acre."

Only Peerless Builds A Pump Especially Designed To Reclaim Irrigation Tailwater

*100 to 1200 GPM

*Never needs priming

*Cannot freeze

*Available in electric or engine drive

*ADJUSTABLE FLOW impellers are set for amount of water entering pit or lake

See Your Underground Pipe Distributor Or

PEERLESS PUMP

AMARILLO HWY. - PLAINVIEW



LEGAL NOTICE

NOTICE TO CREDITORS

I, Beatrice Stayton, whose residence is Hansford County, Texas, and whose Post Office address is Gruver, Texas, having on the 14th day of March, 1966, been duly granted Letters Testamentary of the Estate of Lois R. Hays, deceased, and having qualified according to law as Independent Executrix, NOW GIVE NOTICE TO ALL PERSONS HAVING CLAIMS AGAINST SAID ESTATE, requiring them to present the same properly authenticated, to the undersigned within Twelve Months from the date of said appointment, for allowance.

s/ Beatrice Stayton
Independent Executrix
Post Office Address:
Gruver, Texas
43-1c

**Buy, Sell, Trade
Hire, Rent, Find
THROUGH THE**

WANT ADS

- FOR SALE -

FOR SALE-1963 American-Westwood 2 bedroom mobile home. Excellent condition. 119 N. Brandt. Phone 659-2454 after 6 p.m.
24-tfc

FOR SALE-Two bedroom house, corner lot, excellent location. Phone Mrs. Wilburn McGuire 2359 after 5:30 p.m.
29-tfc

Will make feather flowers and arrangements, corsages and centerpieces, any color. Dorothy Groves, 3027.
42-2c

FOR SALE-3 bedroom house, garage and fenced yard with low equity. Call 659-2967 or 659-2294.
40-tfc

FOR SALE by owner, 3 joining lots including 1 corner lot. Paved front and sides, lot 4-5-6, Block 54, Corner 2nd & Brandt. \$2,250.00. Call 659-2668 after 5:30.
40-tfc

FOR SALE-1962 Bonneville Pontiac 2 dr. loaded. Phone 659-2441, after 6 p.m. 659-2408.
40-tfc

FOR SALE-3 bedroom house, Blodgett Linn addition, one bath. Phone 659-2441, after 6 p.m. 659-2408.
40-tfc

FOR SALE-Two solid oak single beds with innerspring mattresses and box springs. 659-2350.
39-tfc

FOR SALE BY OWNER-100 ft. front with stuccoed 22' x 26' garage, modern, a 12 x 44 addition for trailer on pavement. Call 659-2304.
42-3p

FOR SALE-3 bedroom house, redwood fenced backyard. 1010 S. Haney. Call 659-3103 or 659-2754.
25-tfc

FOR SALE-4 Wheel drive jeep pickup, 1954 Chevrolet 2-door hardtop. Phone 659-3181.
32-tfc

FOR SALE-14 Volume set of Junior Classics and 20 Volume set of Collier's Encyclopedias. Phone 659-3067.
36-tfc

FOR SALE-2 bedroom house with basement and 1 1/2 acres of land, 607 E. 10th, Gruver, Texas. Call Ft7-2732.
37-8c

FOR SALE-Two bedroom brick veneer house. Will sell or trade on good terms for smaller house. Phone 659-2464; L.S. McLain.
36-tfc

- SERVICES -

Amarillo Daily News & Globe Times home delivery. Call 2685.
14-tfc

SERVICE-Ditches from 3-12 inches, any desired depth. S. D. Jones 659-2809, Harold Shaver 659-3474.
17-tfc

"I saw it in The Plainsman."

Retired person wanted to assume responsibility for home and care of male semi-invalid in Perryton; live in, living expenses furnished plus salary. Apply in writing, giving personal background, Box 197, Perryton.
42-4c

WANTED-We are looking for a young man to work in our shop. Must be mechanically inclined and want to learn a trade. Apply at Permian Corp. 42-6p

WANTED: One or two men, experienced, reliable, for yard work, starting NOW. Needed one or two days each week. Own equipment desirable. Call 659-2804 anytime or contact R.L. Kleeberger, M.D. 905 S. Barkley St., Spearman, Texas.
43-2c

FOR CASH RENT-One quarter section of land four miles south and one mile east of Farnsworth, Texas, I will rent it and you put down a well for irrigation, or I will rent it for dry farming. Don't bother me, unless you have the money to handle it. Sibley Jines, Perryton, Texas.
43-2c-

MEN WOMEN

**EARN EXTRA CASH!
Be an
INCOME TAX SPECIALIST**

Earn lucrative fees. Learn to prepare tax returns full or part time. (Some tax specialists earn \$5 and more per return.) Modern, low-cost, training program. Earn year 'round income keeping client's books, tax records.

If you are mature minded, can study one hour daily at home, send name, address, age, phone number for free facts about this dignified profession.

SOUTHWESTERN ACADEMY
DALLAS, TEXAS 75220

KNAPP SHOES

KENNETH BAILEY

212 N. James
Phone 659-2458
Spearman, Texas

**For Cushioned
Comfort**

**For Quick Courteous
Service**

Chevron Gasolines

Atlas Tires & Accessories

Washing-Greasing

Loren Simmons

**SIMMONS
CHEVRON
SERVICE**

Phone 659-9985
Plains Shopping Center

Be Sure And LISTEN IN -



**to Hansford County's
Junior Livestock Show
Monday**

on

KBMF-FM

98.3 on your dial

Better Food For Less

IDEAL
FOOD STORES

GET THE MOST OUT OF YOUR FOOD
DOLLAR ... Shop Ideal and SAVE!

STALEY SPECIAL LABEL
WAFFLE SYRUP
PINT BOTTLE 29¢ QT. BTL. 55¢

IDEAL
ENRICHED FLOUR
10-LB. BAG 79¢

DRY PACK
ELLIS BEANS
CHOICE OF SMALL LIMAS, NORTHERN PINTO, CHILI BEANS OR KIDNEY BEANS
MIX OR MATCH
10 No 300 Can \$1.00

MARYLAND CLUB
COFFEE
SPECIAL LABEL 1-lb. Can 73¢
2-lb. CAN 1.15

STRONGHEART
DOG FOOD
REGULAR OR LIVER FLAVOR
NO 300 CAN 10¢

MELLOSWEET
CANDIES
LARGE VARIETY TO CHOOSE FROM
4 REG 29¢ PKGS. \$1.00

BAKERY FRESH!

IDEAL WHITE OR CARAMEL ICED Cinnamon Rolls PKG. OF 8 35¢	IDEAL Ranch Style Bread ENRICHED, SLICED 2 1/2 lb. Loaves 45¢
--	---

ASSORTED FLAVORS
SEGO DIET FOOD
4 10-oz. Cans \$1.00

MRS. TUCKER'S
SHORTENING
3-lb. Can 69¢

GERBER STRAINED FRUITS & VEGETABLES
BABY FOODS
10 4 1/2-oz. Jars \$1.00
FOOD CLUB STRAINED BABY FOODS 10 JARS 90¢

FRESH, LEAN, TASTY
Ground Beef
lb. 49¢

FAMOUS HEINZ
KETCHUP
2 26-oz. BTLs. 69¢

U.S. NO. 1 COLORADO RED
POTATOES
10 POUND BAG 39¢

CALIFORNIA RED EMPEROR GRAPES 2 lbs. 29¢	FRESH, CRISP RED RADISHES 3 BUNCHES 19¢
---	--

SUNSWEET
Miniature Raisins 14 1/2-oz. Pkg. 29¢

SMUCKER'S BLUEBERRY
Preserves PURE FRUIT 12-oz. Jar 39¢

STURGEON BAY RED PIPPED
Pie Cherries 5 303 CANS \$1.00

FOOD CLUB MANDARIN
Oranges 4 11-oz. Cans \$1.00

FOOD CLUB
Apricot Nectar 2 12-oz. Cans 25¢

HI-C SIX FLAVORS
Beverages 3 46-oz. Cans \$1.00

PILLSBURY OR
Ballard Biscuits 3 3-oz. Cans 29¢

FULL STRENGTH LIQUID
Topco Bleach 1/2 Gal. Plastic 29¢

Prices effective Tuesday and Wednesday March 22-23
Limit Rights Reserved

Mr. and Mrs. Jack Lovett and Mr. and Mrs. G.I. Brown attended the banquet opening the St. Patrick's Day celebration in Shamrock Wednesday night.

Phone 2466 or 3258 to report local news.

See the "Salute of Values" ads in Thursday's edition of this paper. Forty local merchants are offering some of their best merchandise at real savings in these advertisements!! Check the "Salute of Values" ads for services and merchandise.

Union Church To Hold Bible Information Meet

A one night visit to this city will be made by a group of four students and the Superintendent of Midwest Bible Institute of Webb City, Mo. Ministerial students Alfred Hall of Dove Creek, Colorado; Chester Shaw of Millport, Alabama; Anneta Harper of Booker, Texas and Ruby Norman of Bentonville, Arkansas will accompany Rev. Pauline Parham of Webb City, Mo. to Spearman and will conduct a "Bible Institute Information meeting" at the Union Church on March 20.

High School students will especially enjoy the meeting and many questions regarding the opportunity a Bible Institute offers will be given your

attention. Adults interested in key church leadership should take time to attend the meeting tonight as a special presentation of Midwest Bible Institute will show how a number of adults have helped increase the effectiveness of their local church program by attending Midwest.

The group will present special songs, testimonies and a stirring message for our times by Rev. Parham.

Spearman is one of six places selected by the Institute for stops by the group on a 1500 mile tour.

Pastor George Bollinger of the Union Church extends a welcome to students and adults alike to attend the meeting which begins at 7 p.m.

Mrs. Lackey Will Head Xi Zeta

Mona Beth Windom was hostess for Xi Zeta Chapter of Beta Sigma Phi Thursday afternoon in her home.

The following officers were elected President-Joyce Lackey; Vice President-Barbara McClellan; Secretary-Elaine Floyd; Treasurer-Caulene Mason; Corresponding Secretary-Ruby Lair; Civil Defense Officer-Helen Watson.

The program was given by Helen Etter who reviewed "Grandmother's Household Hints."

Attending were Barbara Schnell, Caulene Mason, Marva Hohertz, Pat Dear, Charlene Bulls, Helen Watson, Ruth Skinner, Day McClellan, Barbara McClellan, Joyce Lackey, Elaine Floyd, Helen Etter, Pat Donnell, Dorcas Collard and the hostess.

All kinds of new Hallmark boxed stationeries in a variety of designs at Plainsman Office Supply, 209 Main.

MOONLIGHT TV

Specializing in Minor TV Repair. EVENINGS & SATURDAY Sorry-No Sunday Calls Phone 659-2792 or 659-3321 Service Calls - \$2.50

Gift Box Memo:

It is coming slow, but our new merchandise is beginning to arrive. You will find something new just about every day or two.

Probably the newest novelty gift you will find is the fuzzy Slurp. This unique doll is a ball of hair that can be combed, styled, and shampooed. It is perfect for all ages. It will be a conversation piece for a long time.

We have more of the new Stotter Glasses in a variety of colors. These are the glasses that retain heat or cold without sweating, so they never need coasters. They look and feel like fine frosted glass.

An added service. We now represent the B&P watch repair service. We give one week service and all work is guaranteed.

NEW SHIPMENT

A new shipment of needlepoint has arrived and another shipment will be coming soon. We also have tapestry canvas by the yard, many shades of tapestry wool and needlepoint rugs.

We have crewl linen by the yard also; along with Penelope Crewl Wool.

Come in and browse around.

Needlework Nook

1 1/2 blocks South of Equity in Waka

The Gift Box

You're Invited to our **OPEN HOUSE** 303 Main **SUNDAY, 2 P. M.**

Free Doughnuts and Coffee Register for Free Door Prizes

EASTER SPECIAL

MONDAY, MARCH 21 TO SATURDAY, APRIL 2

Permanent Wave Special

Reg. \$10.00 Permanent Wave **\$8.00**
Reg. \$12.50 Permanent Wave **\$10.00**

Phone 2124

Ann's Beauty Salon
ANN DARNELL

SO THEY SAY



except in insisting that Burton's was the right place to buy TV, Radio, Hi-Fi and Stereo units. He kept saying "They Service What They Sell".

Burton's TV
Your PHILCO Dealer
106 E. Kenneth Spearman, Texas
Phone 659-2121

IN APPRECIATION

We would like to give our sincere thanks and appreciation to each and everyone who has supported our basketball team this year.

Especially we say thanks to our coach, school and administration for taking care of the girls so nicely.

We cannot say enough for the welcome that was given the girls and coaches on their return to Spearman. The band students and Mr. Watson are certainly due our thanks for coming out especially considering the trouble it is to get a band together in such a short notice.

This has been a good year and we are looking forward to the time when other members of our fine school bring home the trophies and we will be just as proud of them as we are our basketball girls.

The Proud Owner of a Spearman Lynxette P.S. It is so nice to be working for an employer who lets you off for such occasions as this past week-end.

Mid-Week Values for Tuesday & Wednesday March 22 & 23

Take a **BIG LOOK** at Our **SMALL PRICES**

Energy 5 lb. Bag **Charcoal Briquets 29¢**

MIX OR MATCH
California Juicy Navel **ORANGES 8 lbs. \$1.**
Florida Ruby Red **GRAPEFRUIT**
Fresh Vine Ripe **TOMATOES 17¢ lb.**

Shurfine Bartlett Halves 303 Size Can **PEARS 27¢**
Del Monte Whole Sweet **PICKLES 22 oz. Jar 43¢**

Sunshine **Hi-No Crackers 1 lb. box 33¢**
Carnation Evaporated **Milk Tall Cans 3 for 39¢**

Santa Rosa 46 oz. Cans **Pineapple Juice 25¢**

Swansons **TV DINNERS "All Varieties" Frozen Your Choice 55¢**

Del Monte **PEACHES**
Clings Sliced or Halves No. 2 1/2 size Cans
4 FOR \$1.00

USDA CHOICE **BEEF LB. ROUND STEAK 89¢**
Corn Fed Pork **PORK CHOPS FIRST CUTS LB. 69¢ CENTER CUTS LB. 89¢**

Shortening 3 lb. Can **BAKERITE 67¢**
Energy Liquid 22 oz. Bottle **DETERGENT 25¢**
Shurfine "All Flavors" 12 oz. Cans **CANNED POP 6 for 39¢**
MARGARINE 2 for 37¢

Gladiola **FLOUR 5 lb. Bag 47¢**
Elmdale **SALMON Tall Can 47¢**
Softin **BATHROOM TISSUE 10 roll pak 68¢**

Biltrite Rubber Tire Cord Reinforced **GARDEN HOSE Solid Brass Couplings 50 foot Length \$4.88**

Cut Rate GROCERY