

The Hansford Plainsman

VOLUME 9, NO. 9 THE HANSFORD PLAINSMAN, SPEARMAN, TEXAS 79081 SUNDAY, DECEMBER 25, 1977

Christmas Services Slotted

Christmas Eve Communion Services are scheduled in several churches in Spearman Saturday plus a full schedule of regular and special services Sunday, Dec. 25, in observance of the Birth of Christ.

First Presbyterian Church will have a Christmas Eve Candle-light Carol and Communion Service beginning at 7 p.m. Dec. 24. Student Recognition Sunday and Christmas Day Worship Service will begin at 11 a.m. Dec. 25.

Faith Lutheran Church will have a special Christmas Eve Candlelight Service at 5:30 p.m. Saturday. The Christmas Day Service will begin at 9:30 a.m. and will be followed by Sunday School and the singing of Christmas Carols.

First Christian Church will have a special Communion Service Christmas Eve between 7 p.m. and midnight. Christmas Day Worship Service will begin at 10 a.m.

The First Assembly of God Church will hold a Praise and Worship Service Sunday beginning at 8 a.m., with a Communion Service to begin at 9 a.m. There will be no Sunday night service. It has been announced.

Library Notice

There will be no story hour at Hansford Library on Tuesday, Dec. 27 or on Tuesday, Jan. 3. The library will be closed on Monday, Dec. 26 and on Monday, Jan. 3.

A "Drive By Church" from 7 to 8 p.m. Sunday will be at the First Baptist Church during which chalk drawings by Mrs. Russell Pogue will be on display and there will be appropriate special music. Combined services will begin at 10 a.m. Sunday as part of the Christmas Day Observance.

Christmas Day at Fellowship Baptist Church will be the locale for a Birthday Party For Jesus. Regular church services at 11 a.m. with the children's program scheduled for 7 p.m. will be followed by the Birthday For Jesus to which everybody is invited. Sunday School will be at 10 a.m.

The Singing Bureaux Family singing Christmas Carols will be the highlight of the Union Church Services Christmas Day. Sunday School will begin at 10 a.m. with the Sunday Worship Service to follow and the morning services will be concluded by 11:30 a.m. There will be no Sunday night service.

First United Methodist Church will be open Christmas Eve for those who desire to enter for individual worship on Christmas Eve. Regular church services will be held Christmas Day.

5-Yr. Economic Gains Locally

NATIONAL NEWSPAPER
DINA DISTRICT
MEMBER-1977

HANSFORD COUNTY, Dec. 17 - Hansford County's economy made sizeable gains in the last five years, the latest figures show, notwithstanding the problems that plagued the nation as a whole.

The extent of that growth, since the beginning of 1972, is brought out in surveys made by the Standard Rate and Data Service.

They show that the volume of retail business in the local area, a principal indicator of business vitality, was relatively strong. Despite the general concern regarding inflation, higher taxes, unemployment, crime conditions, political uncertainties and the like, consumer spending per family was at a better level than in many communities.

It reflects the fact that the majority of local families, with steadily rising incomes, had more money available and were willing to spend more.

As a result, the amount of business done by retail stores in

Vandalism Investigated

The Hansford County Sheriff's Department is investigating a case of vandalism which occurred sometime between Dec. 17 and Dec. 21 in which the rear tire on a tractor was punctured by a shot and the rear window of the vehicle was shot out. The weapon used was identified as a .22 caliber firearm. Damage to the tractor and tire was set at more than \$100.

Sheriff R.L. McFarlin, noting that this was another in a series of vandalism occurrences in the county during the past couple of weeks in which a .22 caliber weapon was used, has asked that anyone having any information please contact the department in Spearman or Gruver.

It was noted that several empty .22 caliber casings and one cartridge have been found in areas where the vandalism has occurred.

Snodgrass Recovering

Ralph Snodgrass, 70, of Spearman, burned in a fire at the Spearman Hotel Dec. 19, is in fair condition and recovering. It was reported Thursday, Dec. 22 by attendants at Hansford Hospital. The retired resident was given emergency first aid after being brought from his burning room and then hospitalized.

Five Years For Forgery

Prentice Crouch last week pleaded guilty to a charge of forgery and was sentenced to five years to serve by 84th Judicial District Judge Richard Countiss during Crouch's appearance in court in Spearman. Crouch, serving a prison term, had been transferred from Huntsville to Spearman to appear in court on the forgery charge.

Crouch pleaded to the charge in the indictment returned in August by the Hansford County Grand Jury for the 84th Judicial District Court.

Weather

December 14	69	27
December 15	72	29
December 16	62	45
December 17	56	23
December 18	70	33
December 19	67	32
December 20	55	22

Christmas Is For Love & Life



It's Happy 80th Birthday time for Ralph Bort - pictured here with his wonderful wife, Beulah; his two daughters, Peggy and Barbara, and most of the Bort's grandchildren. Happy Birthday, Ralph!

Now where in all of Gruver town could one find a more excited nor a younger eighty-year old than Mr. Ralph Bort. Thursday, December 15 as he became an octogenarian with pomp, ceremony, love and laughter in an all-day open house in the lobby of the Gruver State Bank.

Many were the wonderful surprises in store for Ralph who is one of the most delightful personages this old world has ever known-among them was the best-kept surprise of the arrival of the Bort's younger daughters, Peggy (Bort) Jones, her husband, Jim, and the Jones' boys, Bort, Cliff, Lee, and Carson from San Francisco for the occasion and the holidays.

The Bort's delightful older daughter, Mrs. Del (Barbara Bort) Clark along with members of her family, Del, Nanette home from Texas Tech and son Brad were very much in atten-

dance with Beulah presiding at the picture-pretty table in the center of the lobby. The table decor, which had been the special privilege of Barbara and her mother, Beulah Ben, was laid with a Santa bordered cloth centered by an arrangement of pine cones and evergreenery surrounding a big red candle and embellished in red velvet. The silver-handled punch service, along with trays of petit fours, some chocolate with a golden "80" and some white with Christmas red roses and the special chocolate holiday cake embellished with candy canes and inscribed "Happy Birthday Bort" completed the table center. The cakes were the special gift of the Ken Lewins, Spiced tea, coffee, and holiday punch were served during the calling hours.

Early in the afternoon a group of students from the Gruver Junior High School came to offer birthday greetings and

County employees except those required to be on duty will be on holiday from Dec. 23 beginning at noon until 8 a.m. Tuesday, Dec. 27. In observance of New Year's the Court-house will be closed on Monday, Jan. 2, only.

In order for the employees of the Spearman Reporter-Hansford Plainsman and Gruver Statesman, the business office in Spearman at 213 Main will be closed Dec. 26.

The Farm Bureau of Hansford County, which was closed Friday, will also be closed Monday.

The Spearman Post will be closed Monday, December 26, in observance of Christmas Day. There will be incoming and outgoing mail service and post office lock box service will be provided. No deliveries will be made in city or rural routes.

The holiday schedule for business firms in Spearman is:

The First State Bank will be closed Dec. 26 and Jan. 2, 1978.

The Hansford County Agricultural Stabilization and Conservation Service office will be closed Dec. 26 and be open for business on Tuesday.

Employees of the city other than those required to be on duty will have a day off Dec. 26. Interstate Savings and Loan Association offices in Spearman will be closed Dec. 26 and Jan. 2.

County employees except those required to be on duty will be on holiday from Dec. 23 beginning at noon until 8 a.m. Tuesday, Dec. 27. In observance of New Year's the Court-house will be closed on Monday, Jan. 2, only.

In order for the employees of the Spearman Reporter-Hansford Plainsman and Gruver Statesman, the business office in Spearman at 213 Main will be closed Dec. 26.

The Farm Bureau of Hansford County, which was closed Friday, will also be closed Monday.



THE TIME ARRIVED -- And in spite of the cold and windy outdoors in Spearman Thursday, Dec. 22, this crowd collected around the Chamber of Commerce office for the first of the four giveaways, during which \$800 in Christmas Bucks was parceled out Thursday.



EARLY ARRIVAL -- A packet of \$200 in Christmas dollars is being handed Starlet Jackson of Spearman by Mary Lou Wysong, right, of the Chamber of Commerce office after the 10 a.m. selection.



SPEND IT IN SPEARMAN -- And Eva Mae Reger of Spearman, who was pleasantly surprised at the whole thing, promised Mary Lou Wysong, right, of the Chamber of Commerce, to do exactly that.

County Gross Sales

\$11,779,637

Hansford County merchants and other sales tax permit holders reported gross sales totaling \$11,779,637 for the second quarter of this year, it has been announced by State Comptroller Bob Bullock who reported Monday, Dec. 19, the Texas merchants and other sales tax permit holders reported gross sales totaling \$40.3 billion for the second quarter of the year.

The \$40.3 billion represents a \$6.3 billion or 18.8 percent increase over the same three-month period (April - June) last year.

Reported gross sales for the first three months of this year totaled just over \$36.8 billion, Bullock reported.

The number of outlets also jumped to 246,347 for the second quarter of this year, up from 228,571 for the second quarter of 1976.

Gross taxable sales for Hans-

Murder Indictment Returned

A resident of Houston and former resident of Spearman, James Paul Starr, 27, has been indicted for murder and aggravated assault and Wednesday, Dec. 21, was in Hansford County jail in lieu of \$15,000 in bonds. He has pleaded not guilty to both indictments.

Starr was indicted by Hansford County Grand Jury for 84th Judicial District Court at the Tuesday, Dec. 20, session in Spearman.

After the indictments had been handed up to District Judge Richard Countiss, Starr appeared before the bench, represented by counsel, and entered his plea. The judge set bond of \$5,000 on the aggravated assault charge and \$10,000 on the murder charge and Starr was remanded to the custody of the Hansford County Sheriff's Department in lieu of bond and pending further court proceedings.

The charges alleged in each of the indictments are based on occurrences in Spearman some three years ago during which Starr's wife at the time suffered a beating and a miscarriage resulting in the premature birth of a daughter and the infant died shortly thereafter.

No trial date has been set, it was announced.

Local Woman's Brother Dies

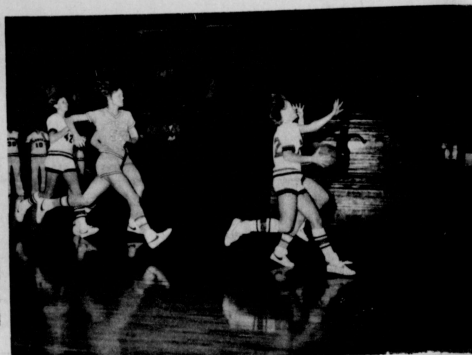
M.K. Morrow of Terzahans, Ark., brother of Mrs. Evelyn Mackie of Spearman passed away Dec. 5 at 2 a.m. He was buried Tuesday, Dec. 6 at 4 p.m. in the Hillcrest Memorial Cemetery, Terzahans. He was born Jan. 14, 1905.

'77

PROGRAM



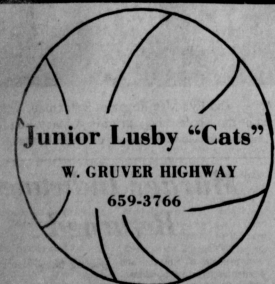
Lynx and Lynxette Basketball



Lynxettes Hurrying up to wait for the Gruver Girls to make a basket at the exciting Lynxette-Gruver girls game won by the host team 43-40!

DECEMBER 26, 27, 28	MID AMERICA TOURNEY - Ada, Oklahoma	A Girls
DECEMBER 29	CLARENDON - A and B Boys	----- HERE
JANUARY 3	DUMAS - A and B Boys and Girls	----- THERE
JANUARY 5, 6, 7	FRITCH B TOURNEY	
JANUARY 6	STINNETT - A and B Boys and Girls	----- THERE
JANUARY 10	GUYMON - A and B Girls	----- HERE
JANUARY 13	RIVER ROAD - A and B Boys and Girls	-----THERE
JANUARY 17	CANADIAN - A and B Boys and Girls	----- HERE
JANUARY 20	DALHART - A and B Boys and Girls	----- THERE
JANUARY 24	BOYS RANCH - A and B Boys	----- HERE
JANUARY 26, 27, 28	SPEARMAN B TOURNEY	
JANUARY 27	PANHANDLE - A Boys and Girls	----- THERE
JANUARY 31	RIVER ROAD - A and B Boys and Girls	----- HERE
FEBRUARY 3	CANADIAN - A and B Boys and Girls	-----THERE
FEBRUARY 7	DALHART - A and B Boys and Girls	----- HERE
FEBRUARY 10	BOYS RANCH - A and B Boys	----- THERE
FEBRUARY 14	PANHANDLE - A and B Boys and Girls	----- HERE

Go team - Win state again



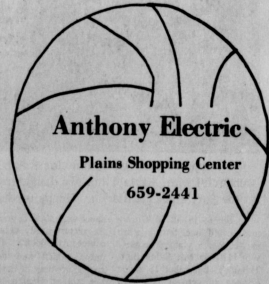
Junior Lusby "Cats"
W. GRUVER HIGHWAY
659-3766



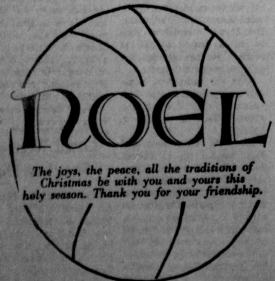
Louis Schnell Electric
208 Hancock
659-3433



Excel Chevrolet-Olds Inc.
Hwy 207
659-2541



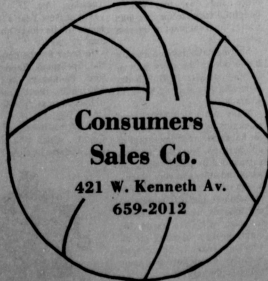
Anthony Electric
Plains Shopping Center
659-2441



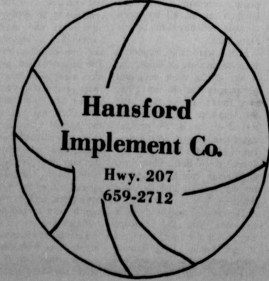
NOEL
The joys, the peace, all the traditions of Christmas be with you and yours this holy season. Thank you for your friendship.



BAKER & TAYLOR COMPANY



Consumers Sales Co.
421 W. Kenneth Av.
659-2012



Hansford Implement Co.
Hwy. 207
659-2712

Christmas Is For Greetings

Mr. and Mrs. Jeff Noell cordially invite you to attend a reception honoring Mr. and Mrs. Bruce Sheets on their 50th wedding anniversary to be held at Fellowship Hall in First United Methodist Church Sunday, January 1, 1977 between 2 and 4 p. m. Please no gifts

6-2tc

CHRISTMAS



We strive always to earn the continuing support of the people in this fine community.

The Staff of The Spearman Reporter

"A Merry Christmas and A Happy New Year"—familiar and dear are these words which are found on many of most greeting cards during the holiday season. A lovely custom which along with many other traditions is fast disappearing in the hubbub of the holidays, the high postal rates, commercialism, opportunities to use card money for worthy causes instead, and the time element required in mailing which practically demands that cards be mailed in July to guarantee delivery.

"Twas on a December day in 1843 that a middle-aged Englishman, one Henry Cole, sat at his desk in his London home addressing to his friends what were perhaps the first Christmas cards ever printed. This first of a kind depicted a Victorian family assembled for dinner on the middle panel and on the side panels, the traditional customs of giving to the poor which also bore the now classic greeting "A Merry Christmas and a Happy New Year To You."

Lithographed were these which Mr. Cole dispatched that December, reserving a few for sale and as a result of his thoughtfulness at the Yule Season, he became no longer plain Mr. Henry Cole but Sir Henry Cole. In 1848 a similar Christmas card was designed by William Egley which some think to have been the first Christmas card.

With enthusiasm some Valentine manufacturers took up the production of the Christmas card. After the first lithograph and etching by Horsley (who had been commissioned by Cole to do his) and Egley, small single cards similar to calling cards appeared, which were followed by ornate and mechanical ones.

These mechanical ones were ingenious to say the least and usually were in the form of a bouquet or basket of flowers, with ribbons or tabs which could be pulled up or down to open the flowers and reveal the messages beneath.

The only religious cards seemed to have been produced by the church in German-speaking countries. Religious designs as we know them today did not become popular until Louis Prang of Boston (who is called "The Father of the American Christmas card") in 1875-80 offered prize contests. Soem of the entries were of religious design which started the trend. If you think that we have inflation today and that cards are all out of reason, consider that these cards sold for 50 cents to \$1.00 a piece. The robin was considered by some to fall in the religious category because of its connection with early Christmas legend. Perry Como's Wednesday evening TV show "An Old English Christmas" was concluded by a Christmas greeting with a robin prominently on the

cover of the greeting. England's most famous woman artist, Kate Greenway, contributed greeting card designs as well as illustrations for children's books. Kate's "children" are considered masterpieces of greeting card art.

The early designs seem perhaps a bit strange to us such as the birds, animals, various foods, and perhaps most popular of all were the floral designs. The card manufacturers used floral designs with everything, even snow scenes. The Cross was also a popular design. Alto handmade earlier, New Year Cards were not manufactured until after the Christmas card.

The Gay 90's saw more elaborate cards of satin, silk, fringe, bright colors, and heavy embossing, many ribboned and some in very ornate frames. Toward the turn of the century, a postal card craze swept the country, carrying Prang and other card publishers before it. This lasted about two decades and it was not until about 1911 that Christmas greetings of the type we know appeared.

Curiously, the first Christmas cards appeared in London about the same time as the first Christmas tree introduced by Prince Albert, Victoria's consort, and the publication by Charles Dickens of his classic Christmas stories, "A Christmas Carol" and "The Cricket on the Hearth," and others.

Sir Henry Cole really started

Christmas Is For Keeps

Henry Van Dyke had words of wisdom to relate to every generation in his "keeping Christmas"—a truly great piece which might just rub off on some of us who are going too fast to enjoy life to its fullest.

"It is a good thing to observe Christmas day. The mere marking of time and seasons, when men agree to stop work and make merry together is a wise and wholesome custom. It helps one to feel the supremacy of the common life over the individual life. It reminds a man to set his own little watch, now and then, by the great clock of humanity which runs on sun time."

"But there is a better thing than the observance of Christmas Day—and that is, keeping Christmas!"

"Are you willing to forget what you have done for other

people, and to remember what other people have done for you: to ignore what the world owes you, and to think what you owe the world; to put your rights in the background and your duties in the middle distance, and your chance to do a little more than your duty in the foreground; to see that your fellow men are just as real as you are, and try to look behind their faces to their hearts; that a probably the only good reason for your existence is not what you are to get out of life but what you're going to give life; to close your book of complaints against the management of the universe, and look around you for a place where you can sow a few seeds of happiness—are you willing to do these things even for a day? Then you can keep Christmas.

Are you willing to believe that love is the strongest thing in the world—stronger than hate,

stronger than evil, stronger than death—and that the blessed light which began in Bethlehem nineteen hundred years ago is the image and brightness of Eternal Love? Then, you can keep Christmas.

And if you keep it for a day, why not always? But you can never keep it alone."

Those observing their anniversaries in Jan. of the new year 1978 are Doug and Mary Connelly, Ronny and Cindy Smith, Mr. and Mrs. Billy Miller, Jewel and Leroy McCalman, Mr. and Mrs. Steve George, Don and Elaine Floyd, Mr. and Mrs. B. A. Byers, Mr. and Mrs. Archie Smith, Junior and Dorothy Luby, Pete and Alta Fisher, and Irma and Manuel Ruiz.

Happy Anniversary



Let Nothing You Dismay



- Sunday Isaiah 11:1-10
- Monday Isaiah 25:1-12
- Tuesday Isaiah 40:1-17
- Wednesday Isaiah 52:1-15
- Thursday Isaiah 58:1-21
- Friday Jeremiah 23:1-8
- Saturday Jeremiah 33:12-26

One of a million carolers. And on Christmas Eve she will bring comfort, reassurance, joy to many.

Mrs. J. is blind. She has never seen the carolers... but eagerly she listens for their arrival.

Mr. H. is an invalid. His nurse invites the boys and girls in and serves them cocoa. Mr. H. loves their happy smiles as well as their joyous voices.

Little Paul R. broke his leg last Saturday. That's why he's not caroling this year. But they'll be around to sing "Silent Night" under his window. That one is Paul's favorite.

When you hear the carolers on Christmas Eve, pause and consider the Love that inspires their singing. That Love was born in a Bethlehem stable one holy night centuries ago.

Copyright 1977 Kessler Advertising Service, Brearley, Virginia

Scriptures selected by The American Bible Society

Spearman Redi-Mix Concrete Co.

In the spirit of this holy season, may you and your family share the joys of Christmas in fullest measure. Thanks for your patronage.

Spearman

659-2323

Speartex Grain Co.

659-3711
514 Collard
Spearman, Texas

Consumer Sales Co.

421 W. Kenneth Ave.
Spearman, Texas
659-2012

Equity Elevators

659-2420
104 Collard
Spearman, Texas



Sansing To Celebrate 50th Anniversary

The 50th wedding anniversary of Mr. and Mrs. T.D. Sansing of 204 Dresden will be celebrated December 28th with a luncheon in the home of their daughter, Mrs. David Jordan, 515 Wolvorten Courts, Katy, Texas. Other children hosting the event will be Mrs. Jerome McGehearty of Houston and

Mrs. Perry Coursey of Monahan. Mr. Sansing and the former Mary Givens were married in Dallas, Texas on January 6, 1928, by the well known Dr. George W. Truett. They have seven grandchildren. The Sansings moved from East Texas to Spearman in 1938.

where he engaged in the practice of law until his retirement early in 1977.

The couple attend the First United Methodist Church of Spearman.

Dear Santa, I want a party baby and a rub dub tug boat shower and a baby town house.

Love, Julie



GREETINGS

IN THE TRUE CHRISTMAS SPIRIT. WE JOIN ALL MEN OF GOOD WILL IN PRAYERS FOR LASTING PEACE. GRATEFULLY, WE THANK EVERYONE FOR THE TRUST AND CONFIDENCE THAT HAS BEEN EXTENDED TO US.

Mr. & Mrs. Dan Kauffman

and the *Fat Walker's* staff
Figure Perfection Int'l.

Mr. and Mrs. Frank Buzzard

and

Mr. and Mrs. Gordon Cummings

would like your presence at the

marriage of their children

Linda

and

Douglas

on Friday, the thirtieth of December

nineteen hundred and seventy-seven

at six thirty o'clock in the evening

First United Methodist Church

Spearman, Texas

6-3tc

Happy Birthday

Starting off the new year with January birthdays are Andy Francis, Carolyn Cummings, Rene Pool, Josh Zachrischo, Alta Fisher, Lois Shieldknight, Darie Hergert, Wilma Snow, Emma Lou Collins, Denise Ware, Allen Mires, Scotty DeWitt, Becky Renteria, Karen Cook, Ronnie Antalek, Haley Shieldknight, Steve George, Lena Mays Jones, Mary Schumann, Doug Steele, Melissa Robertson, Susan Cope, Karen Kirk, Francis Biles, Tom Etter, Becky Madison, Jane Nuckles, and Frank Lozano.

Also celebrating their birthdays are Nancy Ivey, Kimberly Jenkins, Joy McCormack, Shari Vernon, Daphne Fisher, Mike Cook, Fred Van Buskirk, Kelli Sue Crawford, Irvin Davis, Jeanne Laird, Zena Newton, Schans Schneider, Doyle Jackson, Beth Collins, Nella Beth White, and Barbara Collier. Congratulations also are extended to Calvin H. Bodey, Donna Thomas, Mrs. Harold Harris, Richard Yancey, Carol Lemons, Wanda Archer, James Lemons, Jim Kenney, Louise Archer, Kaye McFarlin, Johnnie Eaton, Michael Barnes, J. W. Pipkin, Lupe Renteria, Geri Witt, Deloris Guthrie, R. L. McFarlin, Travis Davis, Joanna Jarvis, Matt Archer, Gary Woolley, Jerry Ford, Nikki Rylant, Twana Byrd, Lynette Williams, Marsha Pipkin, Chuck Steele, Melissa Beck, Shannon Rylant, Bud Heath, Terry Jackson, Mark Neff, Cindy McClellan, Julie Godfrey, and Rosalie Osborne.

B & T Women Association

Oma Stinson was in charge of the Baker and Taylor Women as they served supper to the Golden Spread Club on Tuesday, December 20 at the Home Demonstration Clubroom. She was assisted by Frances Luttin and a good group of Baker and Taylor Women.

Baker and Taylor Women's Setette composed of Betty Hill, June Spencer, Marly Scroggs, Cecelia Randall, Phyllis Schell, and Margaret Hill sang a group of Christmas carols. The Hill, Schell, Scroggs, and Spencer children also sang carols and two groups combined for the last number. As people gathered and acting as accompanist for both singing groups was Eddy Gale Martin.

The blessing on the group and on the food was given by the

Rev. Russell Pogue. Dinner was served to sixteen men, fifty-seven women, and eight children. Some plates of food were taken to shutins by Mildred Chamberlain.

"Happy Birthday" was sung to those having December birthdays. Newcomers were introduced and welcomed. The evening was rounded out with many tables of forty-two, dominoes, pitch, and bridge. Hostesses for the January Golden Spread Club potluck dinners on January 3 and 17 will be the Spearman Study Club at 6:00 p.m. at the Home Demonstration Clubroom.

Golden Spread Club is an organization of people who are 55 years of age or older without discrimination as to color, race, sex, religion, ethnic background, or political affiliation.

Bridge Club

The Friday Night Bridge Club met in the home of Mr. and Mrs. Roy Flowers Saturday, December 17.

High couple was Mr. and Mrs. Jimmy Green and low couple was Mr. and Mrs. Ted Godfrey. The traveling prize was won by Mrs. Donita Green.

Those present were members, Messrs and Mesdames: Jimmy Green, Albert Clark, Ted Godfrey, and Roy Flowers.

The next meeting will be in the home of Mr. and Mrs. Ted Godfrey. The Tuesday Bridge Club met Tuesday, December 20 for a Christmas Dinner in the country home of Mr. and Mrs. Joel Lackey.

Mr. and Mrs. E. W. Bradford

and

Mr. and Mrs. Don Denham

invite you to share in the joy of the marriage uniting their children

Marla Diane

and

Randall Don

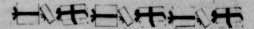
This celebration of love will be on Saturday, the seventh of January

nineteen hundred and seventy-eight

at eight o'clock in the evening

First Baptist Church

Canyon, Texas



Mrs. Lorene Kunselman won high in bridge for the women, Garland Head won high in bridge for the men, Irvin Davis won high in '42, and door prize went to Mrs. Donna Sheets.

Those present were members and their husbands, Messrs and Mesdames: Gene Cudd, Irvin Davis, Tom Sutton, Garland Head, Don Kunselman, Don McLain, Ted Godfrey, Joel Lackey and guests Mr. and Mrs. Sonny Windom and Mr. and Mrs. S. B. Sheets.

The next meeting will be January 3 in the home of Mrs. Don McLain.

At 8:00 p.m. they went to the home of Craig and Karl Schumann for dinner. The menu consisted of several meat casseroles, beans, strawberry jello, rolls, salad, and ice tea were served.

Then they went to the home of Monte and Lilly Lesly and opened gag gifts. Punch, chips and dips, Christmas candy were served.

Debbie and Joe Clements helped as hosts for the different homes.

Those enjoying the festive evening were Hazel and Charles Shieldknight, Monty and Linda Blackman, John and Jolinda Hutchison, Ronnie and Donita Lusby, Bob and Jackie Pearson, Vernon and Marsha Pipkin, Randy and Teresa Hargis, Richard and Lisa Pipkin, Dan and Penney Ralston, Doc and Susan Pearson, Linda and Murphy Allen and the hosts: Craig and Kari Schumann, Monte and Lilly Lesly, George and Jodie Rex, and Debbie and Joe Clements.

Rho Rho Sorority Meets

Rho Rho Sorority met for their Progressive Dinner on Saturday, December 17 at 7:00 p.m. in the home of Mr. and Mrs. Sonny Windom with Jodie and George Rex as hosts.

Hors d'oeuvres, cheese log, crackers, and punch were served at the Windom home.

5 storage spaces available for your boat or truck storage!
MINI-STORAGE NOW AVAILABLE
10x12-12x30 14' per Sq. Ft. Per Mo.
Phone 659-2155 or 2201
Concrete Blocks, Metal Doors
DON SCHELL SPEARMAN, TEXAS

Happy Holidays

One of the nicest things about this season of the year is the opportunity it gives us to send greetings to our friends and customers. From all of us to all of you, Merry Christmas and Happy New Year.



Adeste Fidelis
(O Come, All Ye Faithful)

Let us all recognise the truth of Christmas
—Christ is born in Bethlehem—
—Joy to the World.

Good luck through all the days ahead. Thank you for your patronage and for the opportunity to serve you in the New Year.

John R. Collard, Jr.
Real Estate - Insurance - Farm Management
Phone 659-2501
Spearman, Texas



Insurance Corner

Straight Talk

How long since you had a straight talk about business insurance? Just a down to earth discussion of your business coverages. What's available and how much it ought to cost. After all, your insurance is just like any other part of your business. Every now and then it deserves a good and careful review.

For example, if you haven't looked at your property and liability coverages lately, there's a good change you could be dangerously underinsured or overprotected. Or, if you've assumed that employee benefits and pension plans are for the corporate giants -- we've got quite a surprise in store! Even companies with as few as two

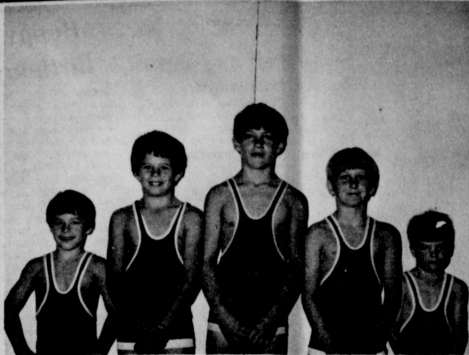
employees can now qualify for low-cost, high-benefit group life and health coverages. And you can use an IRA tax-sheltered retirement plan as a purely voluntary employee pension program. Give us a call. There's no obligation, just straight talk. We'll show you how to make your business insurance work as hard as you do.

This information has been brought to you as a public service by John R. Collard, Jr., your one stop answer to complete business and personal insurance protection. Life, home, auto, group insurance, and profit-sharing plans. See John R. Collard, Jr., 405 Davis St., Telephone 659-2501.

Christmas Greeting 1977

We wish all our friends a very Merry Christmas and a Happy New Year. Instead of sending cards this year, we have donated to the Hospital Auxiliary Fund for the Hansford County Hospital:

- | | |
|---|--|
| Mary Fern Terry
Dr. R.L. Kleeberger
Phill & Marguerite Jenkins
Emmert R. Sanders
Tom & Helen Eiter
Charlene McClellan
Mr. & Mrs. P.A. Lyon, Jr.
Faye Lynch
Jim & Geneva Eddielean
Gertrude Jones
Irvin & Betty Davis
Mrs. C.A. Kleeberger
Pat & Virginia Cates
Mrs. Walter Wilmoth
Juanita Logan
Agnes Windom
Woodie & Lois Gibner
John & Sammie Bishop
Mr. & Mrs. Freeman Barkley
The Dennis Nelson Family
Gwendred Lackey
Bruce & Freda Sheets
W.E. & Loydell Sparks
Mrs. R.D. Chamberlain
Raymond & Grace Kirk | Mr. & Mrs. Bob Crawford
Mr. & Mrs. J. B. Buchanan
Garland & Virginia Head
Jack & Mary Weldon
The George C. Lowe Family
Mr. & Mrs. W. L. Russell
Mrs. Mildred Daily
Mrs. C. W. Smith
Mr. & Mrs. Howard C. Nash
Gene & Wanda Cudd
John & Wanda Brown
Wesley & Dot Jenkins
Bernice V. Brown
Billy Brown
Evelyn Guthrie
Mr. & Mrs. Bob Collier
Cary & Christy
Mrs. Fred J. Hoskins
Leroy & May Lee Smith
Judge & Mrs. Dick Countess
Jeff, Mike & Julie
Maybryan Schubert
Mr. & Mrs. Kiff White
Mr. & Mrs. E.J. Copeland
Mr. & Mrs. Roy Edwards |
|---|--|



WIN IN AMARILLO -- These five K.I.D.S. of Spearman wrestlers made their presence known during the recent Dory Funk Memorial Tournament in the Amarillo Civic Center. Representing Spearman, from left, Carl Urban, 50 pounds, won a third place medal; Mack McLain, 74 pounds, won a second place medal; Greg Meek, 89 pounds, of Spearman, won a second place medal; Mark Johnson, 65 pounds, of Gruver, won a third place medal, and Lance Sparks, 40 pounds, of Gruver, won a third place medal.

- | | |
|--|---|
| Owen & Babe Pendergraft
The Dick Kilgones
Deacon & Willie Clement
Sparks Laundries
Condee A. & Doris Ellison
Margaret Shedeck
Glen & Evelyn Hiller
Mr. & Mrs. John Hutchison
Jeff and Alan
Mr. & Mrs. Carl Archer
Mr. & Mrs. J.T. McWhirter
Irwin & Susan Dalk
Mr. & Mrs. Juan Avila
& family
Preston & Edith Smith
Gus & Clementine Renner
Dub & Mary Hanners
The Floyd Close Family
Herbert, Rosalie & Terry Butt
Mr. & Mrs. Glen Bohanan
Floy & Eddie Largent
Mr. & Mrs. Ed Garner
Dede Blodgett
Mr. & Mrs. Robert Novak
Mr. & Mrs. Eddie Babbs | Mr. & Mrs. Junior Lusby
& Family
Mr. & Mrs. Rue Sanders
Don & Gwen Smith
Ted, Sonya, Jayne, Dalene
& Julie Godfrey
Medlin & Maudine Patterson
Junior & Maudine in memory
of John & Mabel Campbell
Emma & Willie Seitz
Eck & Mary Lee
Fanny, Johnny & Mary E.
Veneman
Merrel & Grace Johnson
Mr. & Mrs. W.E. Bratton
Mr. & Mrs. L.L. Anthony
Ray & Beth Phelps
J.D. & Rubyjo Wilbanks
Ellsworth Oil Company
Mr. & Mrs. Sammy Don Jones
Billy & Wanda
Robin & Leota Giblin
Mrs. Pearl M. Dixon
Elvagne Dixon |
|--|---|

United Presbyterian Church News

"Christmas Carol Serenade" will be the subject of Pastor Edward D. Freeman's communion meditation at the Christmas Eve Candlelight Carol and Communion Service on Saturday, December 24 at 7:00 p.m.

On Christmas Day there will be no Sunday Church School but the Christmas Day service for the public worship of God will be at 11:00 a.m. Pastor Freeman will speak on "Glory to God in the Highest".
The Session will meet on Wednesday, December 28 at 7:30 p.m.
Everyone is always welcome at any activity or service of the First Presbyterian Church. The

doors to the church are as open as the doors to heaven.



End of the Year CLEARANCE SALE

BEGINS DEC. 27 AT 9 A.M.

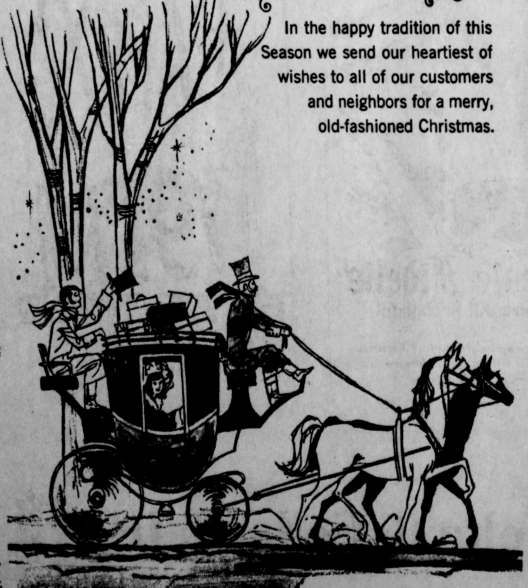
Lil' Lynx Shoppe

Bowling News

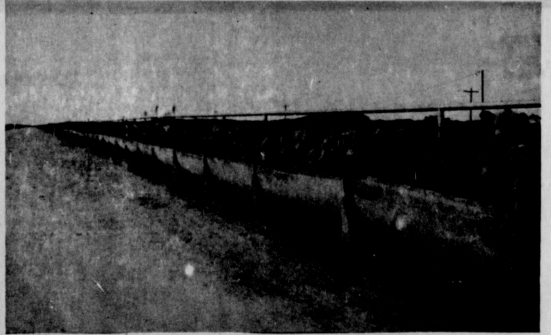
Pin Benders	W	L
Brock Insurance	39	17
Cinderella	33	23
Spear, Super Service	33	23
Farm Bureau	31	25
Bowl Mor	27	29
McClellan Grain	22	34
L.M.W.	20	36
Vernon's	19	37
High Team Series		
Brock Insurance	1565	
Cinderella	1523	
Spear, Super Service	1472	
High Team Game		
Brock Insurance	581	
Spear, Super Service	541	
Cinderella	523	
High Ind. Series		
Shirley Greenwood	569	
Millie Craig	558	
Patty Spoonmore	516	
Peggy Shelton	516	
High Ind. Game		
Pam Gray	215	
Shirley Greenwood	206	
Peggy Shelton	205	

Season's Greetings

In the happy tradition of this Season we send our heartiest of wishes to all of our customers and neighbors for a merry, old-fashioned Christmas.



P. A. Lyon Insurance, Co.



- ★ Feeder Cattle ★ Custom Cattle Feeding
- ★ Feed Financing ★ Locally Owned
- ★ Our objective is to furnish the best service available

Palo Duro Feeders

Penny Brooks, Manager
John Hatton, Assistant
10 Mi. S. of Gruver Hiway 136
PHONE 733-2416
and 733-2417

Merry Christmas

FROM
THE STAFF AND MANAGEMENT




The Spearman Reporter

VOLUME 69, NO. 7

THE SPEARMAN REPORTER, SPEARMAN, TEXAS 79081

THURSDAY, DECEMBER 29, 1977

19 Beginning 78 of the year



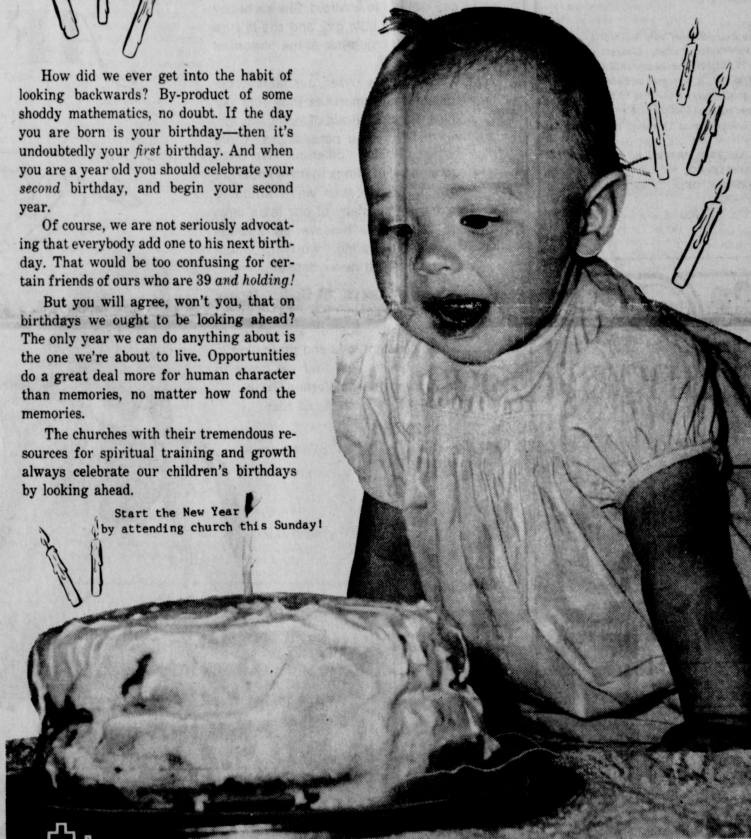

How did we ever get into the habit of looking backwards? By-product of some shoddy mathematics, no doubt. If the day you are born is your birthday—then it's undoubtedly your *first* birthday. And when you are a year old you should celebrate your *second* birthday, and begin your second year.

Of course, we are not seriously advocating that everybody add one to his next birthday. That would be too confusing for certain friends of ours who are *39 and holding!*

But you will agree, won't you, that on birthdays we ought to be looking ahead? The only year we can do anything about is the one we're about to live. Opportunities do a great deal more for human character than memories, no matter how fond the memories.

The churches with their tremendous resources for spiritual training and growth always celebrate our children's birthdays by looking ahead.

Start the New Year
by attending church this Sunday!



Happy New Year From All Of Us At The Reporter



AND YOU'D SMILE TOO -- After being named the recipients of \$200 in Christmas Bucks last Thursday shortly after the 2 p.m. session at Plains Shopping Center, John Bishop, right, and his wife, Sammie, left, join Mary Lou Wyosong of the chamber of commerce in a bit of banter about Christmas shopping.

Bowling News		Tuesday Night 12-20-77	
W	L	Berry Grain	5 3
6	2	Cates Men & Boys	3 5
6	2	Lyric Theater	1 7
6	2	Spearman Auto	1 7
6	2	High Men's Series	
6	2	Charlie Greenwood	565
6	2	Millard Tucker	551
6	2	Don Gray	529
6	2	High Women's Series	
6	2	Shirley Greenwood	483

Receipts at the Texhoma Livestock Comm. Co., Inc. yesterday were 1614 cattle & calves. Small run due to the holidays. A very active to higher market. Stocker calves, \$2, higher. Feeder steers \$1, higher. Feeder heifers \$2, higher. Facker cows \$22 to \$25, higher. Canners & cutters \$20 to \$22, Bologna bulls \$30 to \$32, A very good demand now for feeder cattle. Fat market good, future market good. Steer calves 300# to 500#-\$42, to \$48. Heifer calves 300# to 500# \$38 to \$39, Feeder steers 600# to 900# \$41, 80 to \$43, 90, Feeder heifers 600# to 700# \$38, to \$39, 40. For next Thursday, Dec. 29 we are expecting 2500 cattle & calves.

YOUR DEFENDABLE LIVESTOCK AUCTION MARKET
 TEXHOMA LIVESTOCK COMMISSION CO.
 P.O. BOX 70 TEXHOMA, OKLA, 73949
 PHONE 405-423-7511 & 423-7512.
 CATTLE DEPARTMENT LLOYD GOODNER & RAYMOND CHOA TE
 GOODNER RES. PHONE 405-423-7427

Our Heritage of Faith

notes from Faith Lutheran Church

1978 will soon be here. We often wildly and joyfully celebrate the coming of the New Year. Our celebration may be out of a feeling of anticipation and hope as we wonder what the new year will bring for us and as we hope that it will be an important and beneficial year in our life. Other times our celebration of the New Year is simply another excuse to get away from the dullness of our daily life.

January 1, in the church year, also marks the festival of the Name of Jesus. This is also a celebration of a new beginning, the name Jesus given to a baby born in a barn in Bethlehem. This name has come to mean much more to us. Jesus is not the name of a person who lived 2,000 years ago, but Jesus is the name of God himself. God come to be with us, God born a child, that He might die for us and free us from all powers which threaten and destroy our life.

May our joy this January 1 not rest on the coming of a new year and our hopes that this might be a good year for us, but may our joy rest on the name of Jesus. For the coming of a new year and the passage of time only brings us closer to the end of our life, but the name of Jesus bring us new hope, peace, and joy. We can truly celebrate when the name of Jesus lives within us.

We at Faith Lutheran wish all of you a Happy New Year. May it be happy not simply because a new year has come, but may it be happy because the name of Jesus lives within you! Our Sunday services at Faith are at 9:30 and Sunday School is at 10:30. If you have no regular church home come and join us. You are welcome at any time.

Club Elects Officers



Eck Späthich

The Hutchinson County Stamp and Coin Club, Borger, Tex. has installed its newly-elected officers for the year 1978.

Installed as the club's president was Eck Späthich, stamp and coin columnist for the Borger News-Herald. Installing officer was Lloyd Calvin of Amarillo; second vice president of the Texas Numismatic Association.

Other officers installed in-

Fined \$150

A juvenile resident of Spearman has been fined \$150 and is to pay damage repair costs to the city animal shelter after being arrested for breaking into the shelter to release his dog.

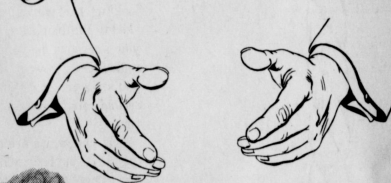
According to police records, a plea of guilty was entered within the past week to the misdemeanor offense.



Some people believe that sleeping with a fork under your pillow will keep witches from riding on your chest while you sleep.

5 storage spaces available for your boat or truck storage!
MINI-STORAGE NOW AVAILABLE
 10x12-12x30 14' per Sq. Ft. Per Mo.
Phone 659-2155 or 2201
 Concrete Blocks, Metal Doors
DON SCHELL SPEARMAN, TEXAS

DON'T BE AFRAID!



Jeannie is still at the age when she can look at life unafraid. She's a happy and trusting little girl, and she is sure Daddy will catch her at the bottom of the slide.

As we grow older, our fears accumulate and sometimes they rule our lives. We grow afraid of losing our job, our health or our possessions. There is fear of being "different." We often go along with things that we know are wrong, just because we're afraid to take a stand. Many of our fears have no foundation. Yet we go through needless suffering, worrying about things that will never happen.

The Bible says, "If God is for us, who can be against us?" Through the Church, we receive assurance of God's constant love and protection in all our adversities. And we come to understand the comforting Truth... "Perfect love casteth out fear."



MAALOX
 \$1.48

ASCRIPIN TABLETS
 \$1.18

TRIAMINICIN TABLETS
 \$1.18

KAZ VAPORIZER
 \$4.47

KAZ HUMIDIFIER
 \$8.47

ROSE MILK SKIN CARE CREAM
 \$1.25

PHISODERM SKIN CLEANSER
 \$1.69

"ONE-STEP-AT-A-TIME"
 \$7.36

SUCCETS THROAT LOZENGES
 99¢

TAMPAX TAMPONS
 \$1.59

SOFF COSMETIC PUFFS
 \$1.19

GILLETTE TRAC II CARTRIDGE
 \$2.21

TYLENOL EXTRA STRENGTH TABLETS
 \$1.89

THESE ARE SUGGESTED A.P. PRICES. OPTIONAL, WITH PARTICIPATING STORES.

Spearman Rexall Drug
 220 MAIN SPEARMAN

Spartex Grain Co.
 659-3711
 514 Collard
 Spearman, Texas

Consumer Sales Co.
 421 W. Kenneth Ave.
 Spearman, Texas
 659-2012

Equity Elevators
 659-2420
 104 Collard
 Spearman, Texas



WANTED ADS

Boxwell Bros. Funeral Home and Flower Shop

Hansford County Planning Parenthood

EMMETT K. SANDERS REALTOR

HANSFORD LODGE

Stated Communications

KIRBY SALES & SERVICE OF Spearman

HOLIDAY RATES \$6.95 PER DAY

EVERY DAY NINE thru JAN.

YOUR LOCAL USED COY DEALER

SERVICE: Pits cleaned, wet or dry

Alcoholic Anonymous Meetings

Al-Anon meetings 8 p.m. Friday

Office Cleaning

SPERMAN INSULATION SERVICE

Real Estate For Sale

FOR SALE: Levely 3 bedroom brick home

FOR SALE: 3 1/2 bedroom home

FOR SALE: 3 1/2 bedroom home

FOR SALE: 3 1/2 bedroom home

FOR SALE: 3 1/2 bedroom home

FOR SALE: 3 1/2 bedroom home

OFFERED BY: Emmett K. Sanders Realtor

FOR RENT: Furnished 2 room house

FOR RENT: Furnished apartment

FOR RENT: Nice two bedroom trailer house

FOR RENT: Furnished trailer

WANTED: Pheasant feathers

Help Wanted

RESPONSIBLE PERSON

HELP WANTED: 3-11 shift

PART TIME CLERK

FOR SALE: 2 bedroom stucco home

FOR SALE: Two-bedroom house with garage

FOR SALE: Two bedroom house with large workshop

FOR SALE: Attractive 3 bedroom home

LOTS FOR SALE: 82' x 160' located at 319 S. Endicott

Miscellaneous FOR SALE

FOR SALE: Yamaha 90. Just completed overhauled.

FOR SALE: Firewood. Burton Schubert. Call 659-2667.

FOR SALE: 3 1/2 bedroom home

FOR SALE: 3 1/2 bedroom home

FOR SALE: 3 1/2 bedroom home

FOR SALE: 3 1/2 bedroom home

FOR RENT: Furnished 2 room house

FOR RENT: Furnished apartment

FOR RENT: Nice two bedroom trailer house

FOR RENT: Furnished trailer

WANTED: Pheasant feathers

Help Wanted

RESPONSIBLE PERSON

HELP WANTED: 3-11 shift

PART TIME CLERK

FOR SALE: 2 bedroom stucco home

FOR SALE: Two-bedroom house with garage

FOR SALE: Two bedroom house with large workshop

FOR SALE: Attractive 3 bedroom home

LOTS FOR SALE: 82' x 160' located at 319 S. Endicott

Miscellaneous FOR SALE

FOR SALE: Yamaha 90. Just completed overhauled.

FOR SALE: Firewood. Burton Schubert. Call 659-2667.

FOR SALE: 3 1/2 bedroom home

FOR SALE: 3 1/2 bedroom home

FOR SALE: 3 1/2 bedroom home

FOR SALE: 3 1/2 bedroom home

FOR SALE: 3 1/2 bedroom home

LEGAL NOTICE

TO THE RESIDENT QUALIFIED TAXPAYING VOTERS OF GROUND WATER CONSERVATION DISTRICT NO. 2, NORTH OF THE CANADIAN RIVER IN TEXAS:

NOTICE IS HEREBY GIVEN that an election will be held within and for said GROUND WATER CONSERVATION DISTRICT NO. 2, NORTH OF THE CANADIAN RIVER IN TEXAS, on the 21st day of January, 1978, in the polling places hereinafter set out...

BE IT RESOLVED BY THE Board of Directors of Ground Water Conservation District No. 2, North of the Canadian River, Texas...

I. That an election shall be held within and for said GROUND WATER CONSERVATION DISTRICT NO. 2, NORTH OF THE CANADIAN RIVER IN TEXAS...

II. Upon each of the ballots used in said election shall be placed the names of the candidates for Precinct Director to be elected as follows:

III. Upon each of the ballots used in said election shall be placed the names of the candidates for County Committeemen to be elected for each county composing the District as follows:

IV. Blank spaces shall be left in or on the ballot for the names of other persons who may be written in. Each person (voter) residing in Director's Precincts No. I, II and III, as set forth above, shall vote for only one Director, namely for Director for the Director's Precinct in which the voter resides...

V. The area comprising the District is hereby divided into the following precincts, to include all or that part of the county designated which lies within the district, such election to be conducted by the following election officers:

ELECTION PRECINCT NO. I OCHILTREE COUNTY

ELECTION PRECINCT NO. II LIPSOMB COUNTY

ELECTION PRECINCT NO. III SHERMAN COUNTY

VI. That such election shall be held and conducted and returns made to the Board of Directors of the District, in accordance with the general election laws of Texas...

LEGAL NOTICE

TO THE RESIDENT QUALIFIED TAXPAYING VOTERS OF GROUND WATER CONSERVATION DISTRICT NO. 2, NORTH OF THE CANADIAN RIVER IN TEXAS:

NOTICE IS HEREBY GIVEN that an election will be held within and for said GROUND WATER CONSERVATION DISTRICT NO. 2, NORTH OF THE CANADIAN RIVER IN TEXAS, on the 21st day of January, 1978, in the polling places hereinafter set out...

BE IT RESOLVED BY THE Board of Directors of Ground Water Conservation District No. 2, North of the Canadian River, Texas...

I. That an election shall be held within and for said GROUND WATER CONSERVATION DISTRICT NO. 2, NORTH OF THE CANADIAN RIVER IN TEXAS...

II. Upon each of the ballots used in said election shall be placed the names of the candidates for Precinct Director to be elected as follows:

III. Upon each of the ballots used in said election shall be placed the names of the candidates for County Committeemen to be elected for each county composing the District as follows:

IV. Blank spaces shall be left in or on the ballot for the names of other persons who may be written in. Each person (voter) residing in Director's Precincts No. I, II and III, as set forth above, shall vote for only one Director, namely for Director for the Director's Precinct in which the voter resides...

V. The area comprising the District is hereby divided into the following precincts, to include all or that part of the county designated which lies within the district, such election to be conducted by the following election officers:

ELECTION PRECINCT NO. I OCHILTREE COUNTY

ELECTION PRECINCT NO. II LIPSOMB COUNTY

ELECTION PRECINCT NO. III SHERMAN COUNTY

VI. That such election shall be held and conducted and returns made to the Board of Directors of the District, in accordance with the general election laws of Texas...

LEGAL NOTICE

TO THE RESIDENT QUALIFIED TAXPAYING VOTERS OF GROUND WATER CONSERVATION DISTRICT NO. 2, NORTH OF THE CANADIAN RIVER IN TEXAS:

NOTICE IS HEREBY GIVEN that an election will be held within and for said GROUND WATER CONSERVATION DISTRICT NO. 2, NORTH OF THE CANADIAN RIVER IN TEXAS, on the 21st day of January, 1978, in the polling places hereinafter set out...

BE IT RESOLVED BY THE Board of Directors of Ground Water Conservation District No. 2, North of the Canadian River, Texas...

I. That an election shall be held within and for said GROUND WATER CONSERVATION DISTRICT NO. 2, NORTH OF THE CANADIAN RIVER IN TEXAS...

II. Upon each of the ballots used in said election shall be placed the names of the candidates for Precinct Director to be elected as follows:

III. Upon each of the ballots used in said election shall be placed the names of the candidates for County Committeemen to be elected for each county composing the District as follows:

IV. Blank spaces shall be left in or on the ballot for the names of other persons who may be written in. Each person (voter) residing in Director's Precincts No. I, II and III, as set forth above, shall vote for only one Director, namely for Director for the Director's Precinct in which the voter resides...

V. The area comprising the District is hereby divided into the following precincts, to include all or that part of the county designated which lies within the district, such election to be conducted by the following election officers:

ELECTION PRECINCT NO. I OCHILTREE COUNTY

ELECTION PRECINCT NO. II LIPSOMB COUNTY

ELECTION PRECINCT NO. III SHERMAN COUNTY

VI. That such election shall be held and conducted and returns made to the Board of Directors of the District, in accordance with the general election laws of Texas...

TEXAS PRESS ASSOCIATION

SPEARMAN, TEXAS 79081

ANY ERRONEOUS REFLECTION UPON THE CHARACTER OF ANY PERSON OR FIRM APPEARING ON THESE COLUMNS WILL BE GLADLY AND PROMPTLY CORRECTED UPON BEING BROUGHT TO THE ATTENTION OF THE MANAGEMENT.

SUBSCRIPTION RATE: Standard, alluding counties, combination with the Standard Family, \$10.40.

FOR THE ULTIMATE IN STORM DOORS

HOWARD MOYER AT ONLY ALUMINUM INDUSTRIES

President, Board of Directors

CONTRACTORS' NOTICE OF TEXAS HIGHWAY CONSTRUCTION

Sealed proposals for constructing 242.091 miles of Seal Coat on various highways

RECINTO DE ELECCION NUM. 1 -- EL CONDADO DE OCHILTREE COUNTY

RECINTO DE ELECCION NUM. 1 -- EL CONDADO DE OCHILTREE COUNTY

RECINTO DE ELECCION NUM. 1 -- EL CONDADO DE OCHILTREE COUNTY

RECINTO DE ELECCION NUM. 2 -- EL CONDADO DE LIPSOMB COUNTY

RECINTO DE ELECCION NUM. 2 -- EL CONDADO DE LIPSOMB COUNTY

RECINTO DE ELECCION NUM. 2 -- EL CONDADO DE LIPSOMB COUNTY

RECINTO DE ELECCION NUM. 3 -- EL CONDADO DE SHERMAN COUNTY

RECINTO DE ELECCION NUM. 3 -- EL CONDADO DE SHERMAN COUNTY

RECINTO DE ELECCION NUM. 3 -- EL CONDADO DE SHERMAN COUNTY

RECINTO DE ELECCION NUM. 3 -- EL CONDADO DE SHERMAN COUNTY

RECINTO DE ELECCION NUM. 3 -- EL CONDADO DE SHERMAN COUNTY

RECINTO DE ELECCION NUM. 3 -- EL CONDADO DE SHERMAN COUNTY

RECINTO DE ELECCION NUM. 3 -- EL CONDADO DE SHERMAN COUNTY

FOR SALE: 3 1/2 bedroom home

You Light Up My Life--A Special Film

"You Light Up My Life." It is a song you will always remember. It is a motion picture you will never forget...

Now and then, a very special film appears, intimate in nature, modest in budget, which captures the hearts of the movie-going public. A film which surges with emotion, warmth and love. A film to which audiences can relate because the characters on screen express their own feelings, hopes, and dreams.

Last year, there was "Rocky"; earlier, such popular motion pictures as "Heister Street," "Harry and the Bucket," "Jermy," "The Sierrite Cuckoo," "I Never Sang For My Father," "Lies of the Field" and "Marty."

Such a motion picture is "You Light Up My Life," produced, directed and written by the award-winning composer Joseph Brooks for release by Columbia Pictures and opening on Wednesday, Dec. 28, at the Lyric Theatre.

A contemporary story, set against the worlds of pop music and television commercials, "You Light Up My Life" stars actress and comedienne Didi Conn as an aspiring songwriter and singer who earns her living by performing in television commercials and hosting a children's show on public television. She tries to cope with the three men in her life: her father, a second-rate comic who wants his daughter to follow in his footsteps; her fiancé, a tennis instructor, straight and boring; and a film director with whom she becomes romantically involved.

"Once upon a time there was a girl who didn't know any better. She believed that dreams come true." According to filmmaker Joseph Brooks, "There are a lot of people who are establishing instant issuance systems. At the same time the experimental issuance program is operational in limited sections of the state, the central issuance program in Austin is undergoing changes as well which will improve the quality of the program in the other sections."

Spir said Polaroid cameras will be operational in January at Fort Worth, Garland, Beaumont, Anahuac, Winnie, Kountze, Angleton, Corpus Christi, Victoria, Abilene, Big Spring, Lubbock, and And. Post, Slaton, Tahoka, North Austin, Meridian, West McGregor, Hubbard, Mart, Mexia, Marlin, Groesbeck, Bastrop, Smithville, Giddings and Elgin.

The second phase of the program--planned now for early spring--will have DEK cameras functioning at the following 27 different towns:

Irving, Tyler, Mt. Pleasant, West Bellfort (Houston), Pierce, Hartington, McAllen, Devine, Hondo, Bandera, Midland, San Angelo, Ozona. Also, Sonora, Mertzon, Rock Springs, Big Lake, Eldoras, Plainview, Borger, Vernon, Seymour, Quanah, Crowell, South Austin, Waco and Palestine.

There are now more than eight million licenses in Texas with about three million new, renewals or duplicate licenses issued annually. Last year, Spir said, the \$5 towns to be involved in the instant issuance program combined to issue 1.1 million driver licenses.

When the program is initiated, it will provide better, quicker service to the driving public. Also, Spir added, it will lower the mailing costs to the Department.

Renewal notices will continue to be mailed about a month prior to expiration of licenses, he noted.

As Brooks explains, "Anyone who sets out to make a movie starts out with a dream. Each filmmaker or would-be filmmaker believes that somehow, against all odds, he will find a way to finance his film, find a way to discover the best possible actors or actresses to play the roles and, finally, find a way to get the movie made."

In addition, Brooks elaborates, "Every actor who ever dreamed the 'impossible dream' of walking into a producer's or director's office and hearing someone say: 'You've got the parts,' knows that generally dreams like that remain just that--dreams. But, in the case of this motion picture, Didi Conn and I found each other, and a very warm and special movie, filled with music and love, emerged."

Collisions Checked

Spearman Police Chief Steve Wisniewski reported Tuesday, Dec. 27, his department investigated three collisions which occurred during the past week. Minor injuries were reported as a result of one of the three.

On Tuesday, the department checked out a collision in the 300 block of Townsend in which minor damage resulted when two vehicles collided and there were no injuries reported for the occupants of either vehicle. The occupants were Spearman residents.

On Christmas Day at First Avenue and State Highway 207 South minor damage was inflicted to both vehicles when two pickup trucks collided neither of the occupants, one from Spearman and the other from Sunny, was reported injured.

In a collision with a parked vehicle on Christmas Eve, a juvenile resident of Spearman received minor injuries and was cited for improper lookout when the car she was operating collided with a parked vehicle belonging to a Pampa resident.

Etheridge Rites Held Saturday

Services for Lewis Etheridge, 66, of Dumas were held at 10 a.m. Saturday, Dec. 24 in the Crestview Baptist Church of Lamesa. Officiating was the Rev. H. F. Scott, pastor of the Bacon Heights Baptist Church of Lubbock.

Etheridge died Thursday morning in the Highland Hospital in Lubbock following a lengthy illness. Burial was in Lamesa Memorial Park.

The retired farmer and rancher lived in Lamesa 33 years. He also lived in Lubbock for two years and Dumas the past six years. He was a member of the First Baptist Church in Dumas.

Survivors include his wife, Elena, a son, Waymond D. of Spearman; his father, N.J. Etheridge of Plains; three sisters, Mrs. Elsie Pierce of Plains, Mrs. Allene Thurman of Abilene and Mrs. Louise McWilliams of Berryville, Ark.; a brother, Homer of Lamesa; four grandchildren and three great-grandchildren.



HAPPY TIME -- Friends, acquaintances, guests and relatives spent the better part of the afternoon last Thursday enjoying the open house at the J. L. Brock Agency on Main Street in Spearman. Carl Archer, right, is shown with Rajan Martin with J. L. Brock in the right background and Mayor Ralph Blodgett in the left background.

Instant Driver's License Planned

AUSTIN -- The Department of Public Safety will launch an experimental across-the-counter instant issuance system of Texas drivers licenses in January in 28 selective towns and communities.

Colonel Wilson E. (Pat) Speir, DPS director, said the experiment would open in the North Austin District Office effective January 3. Other license issuance changeovers will be completed by January 13.

Spir said the experimental pilot project will be conducted in widely separated stations throughout the state. "Special camera equipment will be used on a comparison basis. The equipment has the capability of immediate production of a photo driver license after the applicant has established eligibility, and qualified for a license," he added.

Spir added that the applicant will then receive a validated photo drivers license before leaving the examining station. He will not have to wait 20 to 30 days for the license to be mailed nor will it be necessary for the license to drive on a temporary paper permit until the license is issued from the central DPS facility in the Capital City.

"We are constantly trying to upgrade the licensing system and we hope that this experiment will prove to be a more convenient service to the public than the central issuance system which we now use," Spir emphasized.

He added that a careful evaluation will be made before the experimental instant across-the-counter photo licensing system and the present central issuance system in order to upgrade the total program in the future.

Spir said a second phase-in 27 other Texas cities and communities--will be initiated in late spring.

He added that the experimental issuance policy will continue for a two-year period, after which time the contract will be considered for a statewide



PRICES EFFECTIVE THRU SATURDAY, DECEMBER 31, 1977. NONE SOLD TO DEALERS. LIMIT RIGHTS RESERVED. MON.-SAT. 8:00 a.m.-9:00 p.m. SUN. 10:00 a.m.-7:00 p.m.

FRESH EXTRA LEAN Ground Beef 1 1/2 lbs. 99¢
SEE IDEAL FOR YOUR NEW YEAR'S PARTY SNACK TRAY ASSORTMENT!

MEDIUM SIZE FRESH Frozen Shrimp LB. \$2.79
LASSCO Shrimp Cocktail 4-oz. jar 59¢

FRESH Ground Beef 3 TO 5 LB. FAMILY PACK... 79¢

U.S.D.A. CHOICE BUTCHER BLOCK BEEF BONELESS CHUCK ROAST \$1.09 LB.
CENTER RIB CUT Pork Loin Roast \$1.49 LB.
BAR-B-QUE BONELESS HAMS \$2.39 LB.
MEADOWDALE HICKORY SMOKED Sliced Bacon \$1.19 1/2 LB. Pkg.
U.S.D.A. CHOICE BUTCHER BLOCK BEEF BONELESS Chuck Steak \$1.19 LB.

HAPPY NEW YEAR!

RANCH STYLE Blackeye Peas 3-oz. cans 79¢
SHOWBOAT Pork & Beans 4 1/2 lbs. \$1
HUNTS Tomato Ketchup 14-oz. jar 39¢
VALUABLE COUPON: Hills Bros Coffee 60¢ OFF 1/2 lb. can.

MEADOWDALE...CREAM STYLE OR WHOLE KERNEL Golden Corn 4 16-oz. cans \$1
KRAFT...SALAD DRESSING... Miracle Whip 32-oz. jar 86¢
CHARMIN Bath Tissue 4-roll pkg. 74¢

\$650 Per Capita Taxes For Residents

HANFORD COUNTY, Dec. 24 - For Hanford County residents who wonder whether the local taxes they are paying are lower than those levied in other communities, recent surveys provide some answers.

The facts and figures come from the Department of Commerce, the Commerce Clearing House and others. Nearly every community has been put in a squeeze, it seems, trying to maintain and, if possible, to expand its services and meet rising payrolls.

The fastest expansion in operating costs has been centered in education, health care, hospitals and public welfare. In the past 10 years, states the Conference Board, state and local expenditures have more than tripled, going from \$101 billion to \$319 billion.

As a result, the tax load for these governmental services rose throughout the United States to a record high of \$731 per capita in the past fiscal year. This was \$304 above the \$427 in Hanford County, state and local taxes came to an estimated

\$650 per capita in the year. This compares with an average of \$581 in the rest of the State of Texas, about \$66 more than the year before. The average in the West South Central States was \$544.

The tax burden grew heavier in the past year in every section of the country and varies widely from state to state.

Arizona retained its position as the state with the lowest per capita rate, \$454. Alaska was highest, with \$1,896, replacing New York, which had topped the list for 10 straight years.

Nationwide, most of the state-local revenue, 36.3 percent of it, was raised through property taxes. The yield from sales and gross receipts taxes was almost as much, 34.8 percent. Income taxes were next in line, producing 15.7 percent.

For residents of Hanford County, the tax load for their state and local governmental operations came to an estimated \$4,030,000.

HEALTH & BEAUTY AIDS REGULAR 4-OZ. OR ANTIPERSPIRANT 5-OZ.

Secret 99¢
Creme Rinse 89¢
Shasta Beverages 3 \$1
HIDE PARK Egg Nog 68¢
HYDRO PORK OR CHIVE Sausage Cream 39¢

DEL MONTE Tomato Juice 49¢
CLUB SODA, COLLINS MIX, GINGER ALE Shasta Beverages 3 \$1

FRESH DAIRY FOODS GRADE "A" Medium Eggs 63¢
HIDE PARK Onion Dip 39¢
HYDRO PORK REG. OR CHIVE Sausage Cream 39¢

FRITO LAY RUFFLES Potato Chips 79¢
CAMELOT Apple Sauce 3 \$1

DEL MONTE HALVES OR Sliced Peaches 2 \$1
MELO-CRUST HAMBURGER OR Goney Buns 34¢

DEL MONTE HALVES OR Sliced Peaches 2 \$1
MELO-CRUST HAMBURGER OR Goney Buns 34¢

FROZEN FOODS Pizza 68¢
BANQUET Chicken Gizzards 289¢
MEADOWDALE CRINKLE CUT Potatoes 49¢

BANQUET Chicken Livers 289¢
MEADOWDALE FROZEN Orange Juice 3 1/2 \$89¢

SHOP IDEAL...WHERE THERE'S MORE VALUE IN STORE



NOW HEAR THIS -- Richard Holt, a honcho at H & H Water Well Service, Inc., of Spearman at left, can really get in communication now that he is the owner of a Bearcat 210 scanner. He is shown here with Mike Holt, center, and Kurt Shedeck checking out the equipment. Donations toward the acquisition of the scanner will be used by the Signal Hill Repeater Club, with members in Stinnett, Borger, Gruver and Spearman, for repeater equipment for the ham radio club.

Shaver Services Held

Funeral services for Harold L. Shaver, 56, of 1100 Townsend who died Dec. 24 were held at 10:30 a.m. Dec. 27 at the First United Methodist Church in Spearman with the Rev. Frank Oglesby, pastor, officiating. Burial under direction of Boxwell Brothers Funeral Directors was in Hanford Cemetery.

Mr. Shaver, a native of Belpre Kan., had lived in Spearman since 1958. A veteran of World War II, he was an employee of Northern Natural Gas Co. and a charter member of the Spearman Moose Lodge.

He is survived by his widow, Ruth; two daughters, Stephanie Woodson of Garland and Kelly of the home; a son Lee of Spearman; four sisters, Nellie Kindall and Helen Sellers of Salina, Kan., Myrtle Valahos of Paris, Ill., and Mrs. Mildred Cater of Ludington, Mich.; four brothers, Charles of Phoenix, Ariz., Ted of Kit Carson, Colo., and Ike and Frank of Larned, Kan., and four grandchildren. Casket bearers were James Morris, Lawrence Anthony, Fred Callon, Don Jones, Willie Wilkerson and Ralph Blodgett.



CHRISTMAS CHEER -- The First State Bank was one of the many local business firms hosting an open house for one and all last week. Partaking last Friday were Mrs. Sam Graves and her son, Albert, at right, passing the time with Felma Evans, bank officer, while Beulah Abston, center, prepares some refreshment for two more around the festive board, Gerri Maize and James Madison.

Notice

Due to New Year's Day being such a widely observed holiday there will be no incoming or outgoing mail service Sunday, January 1.

The Spearman Post office will be closed Monday, January 2, in observance of New Year's Day. There will be incoming and outgoing mail service and post office lock box service will be provided.

No deliveries will be made on city or rural routes.

City Court Set

Spearman Municipal Court will be in session twice between now and Jan. 16, according to the posted notice at City Hall.

Court will be in session Jan. 9 from 10 a.m. to noon and from 1 to 3 p.m., and again on Jan. 16 from 10 a.m. to noon and again from 1 to 3 p.m.

"He is really wise who is nettled at nothing."
La Rochefoucauld

CUDAWY CHUCKWAGON
Boneless Hams
FULLY COOKED, HALVED, 3-4 LBS. AVG. LB. **\$1.59**

HICKORY SMOKED
Smoked Jowls
WHOLE LB. **59¢**

EXTRA LEAN BONELESS
Beef Stew..... LB. **1.29**

EXCELLENT FOR QUICK MEALS
Beef Cube Steaks..... LB. **1.89**

ALL MEAT PURCHASES AT IDEAL GUARANTEED 200%!

HICKORY SMOKED...SLAB CUT
Sliced Bacon
DULK PACK LB. **89¢**

SWIFT'S EMPIRE
YOUNG TOM TURKEYS
16 TO 20 LBS. AVERAGE **55¢**

RODED MEAT OR BEEF
Skinless Franks 12.48 **69¢**
OSCAR MAYER SMOKIE 12.48 **71¢**
Link Sausage 12.48 **71¢**
Skinless Franks 12.48 **71¢**
OSCAR MAYER 6.42 **69¢**
Braunschweiger 12.48 **83¢**
OSCAR MAYER MEAT OR BEEF
Sliced Bologna 12.48 **83¢**
ASSORTED VARIETIES -- RODED SLICED
Luncheon Meat 12.48 **89¢**

PLAY CASH KING



People once measured rank by the length of the toes of their shoes. Some dandies wore shoes 2 1/2 feet long and tied the toes to the knee with chains.



Sheets To Celebrate 50th Anniversary

Mr. and Mrs. Bruce Sheets will be honored with a reception on the occasion of their fiftieth wedding anniversary on January 1 in the First United Methodist Church Fellowship Hall, 407 S. Haney. Guests are invited to call between the hours of 2 to 4 p.m. They ask that those calling not bring gifts.

Hosting the reception will be their children Susan and Jeff C. Noell and grandson Chris.

Freda Newcomb and Bruce Sheets were married in Fargo, Okla., January 1, 1928. They have resided in Spearman most of their married life. Mr. Sheets became a registered pharmacist in 1928, and served as such in Shattuck, Okla. until 1931. At that time they moved to Perryton to work for Mr. H.C. Sanford. In 1933 they moved to Spearman where he operated the Spearman Drug Co. until his retirement.

Both Mr. and Mrs. Sheets are active members of the First United Methodist Church. They reside at 722 S. Bernice.

They have also been active in city and community affairs, with Bruce having served as Mayor of the City of Spearman.

From Your Friendly Ideal Food Stores!

7-Up or... Coca Cola
YOUR CHOICE
6 \$1.49 Plus Deposit

MEADOW GOLD -- ALL FLAVORS
Ice Cream **1.09**

NORTHERN Napkins..... 148.07 **49¢**
MEADOWDALE Bleach..... 84.02 **43¢**
CAMELOT Cleanser..... 2.14 **33¢**
CAMELOT Tomato Soup..... 2.10 **33¢**
DIXIE BELL Saltines..... 16.32 **39¢**
CARNATION LIGHT Chunk Tuna..... 67.82 **58¢**
ELLIS HOT Chili & Beans..... 15.92 **49¢**
ELLIS MILD Chili & Beans..... 15.42 **49¢**
KEEBLER TOWNHOUSE Crackers..... 16.92 **85¢**
KEEBLER Vanilla Wafers..... 12.82 **55¢**

MEET SOME NEW CASH KING WINNERS!
\$1000.00 WINNERS
Mrs. Harriet Woodward OF BORGER
Bess Hibler OF BEAVER
Victor L. Bansenmer OF BEAVER

\$100.00 WINNERS
Dorothy Emberton OF MEAD

Bonnie Day
Wayne Shelton
Kathy Barnett
Randel Gray
Joe Kelly
Canyon

Patricia Ake
Wynnewood
Vivian Jackson
Woodward
Maredee Cooley
Uylesses
Susan Smith
Woodward
Roxanne Matheson
Perryton

ODDS CHART as of 12-17-77

PRIZES	12-17-77	12-18-77	12-19-77	12-20-77	12-21-77	12-22-77	12-23-77	12-24-77	12-25-77	12-26-77	12-27-77	12-28-77	12-29-77	12-30-77	1-1-78	1-2-78	1-3-78	1-4-78	1-5-78	1-6-78	1-7-78	1-8-78	1-9-78	1-10-78	1-11-78	1-12-78	1-13-78	1-14-78	1-15-78	1-16-78	1-17-78	1-18-78	1-19-78	1-20-78	1-21-78	1-22-78	1-23-78	1-24-78	1-25-78	1-26-78	1-27-78	1-28-78	1-29-78	1-30-78	2-1-78	2-2-78	2-3-78	2-4-78	2-5-78	2-6-78	2-7-78	2-8-78	2-9-78	2-10-78	2-11-78	2-12-78	2-13-78	2-14-78	2-15-78	2-16-78	2-17-78	2-18-78	2-19-78	2-20-78	2-21-78	2-22-78	2-23-78	2-24-78	2-25-78	2-26-78	2-27-78	2-28-78	2-29-78	2-30-78	3-1-78	3-2-78	3-3-78	3-4-78	3-5-78	3-6-78	3-7-78	3-8-78	3-9-78	3-10-78	3-11-78	3-12-78	3-13-78	3-14-78	3-15-78	3-16-78	3-17-78	3-18-78	3-19-78	3-20-78	3-21-78	3-22-78	3-23-78	3-24-78	3-25-78	3-26-78	3-27-78	3-28-78	3-29-78	3-30-78	3-31-78	4-1-78	4-2-78	4-3-78	4-4-78	4-5-78	4-6-78	4-7-78	4-8-78	4-9-78	4-10-78	4-11-78	4-12-78	4-13-78	4-14-78	4-15-78	4-16-78	4-17-78	4-18-78	4-19-78	4-20-78	4-21-78	4-22-78	4-23-78	4-24-78	4-25-78	4-26-78	4-27-78	4-28-78	4-29-78	4-30-78	5-1-78	5-2-78	5-3-78	5-4-78	5-5-78	5-6-78	5-7-78	5-8-78	5-9-78	5-10-78	5-11-78	5-12-78	5-13-78	5-14-78	5-15-78	5-16-78	5-17-78	5-18-78	5-19-78	5-20-78	5-21-78	5-22-78	5-23-78	5-24-78	5-25-78	5-26-78	5-27-78	5-28-78	5-29-78	5-30-78	5-31-78	6-1-78	6-2-78	6-3-78	6-4-78	6-5-78	6-6-78	6-7-78	6-8-78	6-9-78	6-10-78	6-11-78	6-12-78	6-13-78	6-14-78	6-15-78	6-16-78	6-17-78	6-18-78	6-19-78	6-20-78	6-21-78	6-22-78	6-23-78	6-24-78	6-25-78	6-26-78	6-27-78	6-28-78	6-29-78	6-30-78	7-1-78	7-2-78	7-3-78	7-4-78	7-5-78	7-6-78	7-7-78	7-8-78	7-9-78	7-10-78	7-11-78	7-12-78	7-13-78	7-14-78	7-15-78	7-16-78	7-17-78	7-18-78	7-19-78	7-20-78	7-21-78	7-22-78	7-23-78	7-24-78	7-25-78	7-26-78	7-27-78	7-28-78	7-29-78	7-30-78	7-31-78	8-1-78	8-2-78	8-3-78	8-4-78	8-5-78	8-6-78	8-7-78	8-8-78	8-9-78	8-10-78	8-11-78	8-12-78	8-13-78	8-14-78	8-15-78	8-16-78	8-17-78	8-18-78	8-19-78	8-20-78	8-21-78	8-22-78	8-23-78	8-24-78	8-25-78	8-26-78	8-27-78	8-28-78	8-29-78	8-30-78	8-31-78	9-1-78	9-2-78	9-3-78	9-4-78	9-5-78	9-6-78	9-7-78	9-8-78	9-9-78	9-10-78	9-11-78	9-12-78	9-13-78	9-14-78	9-15-78	9-16-78	9-17-78	9-18-78	9-19-78	9-20-78	9-21-78	9-22-78	9-23-78	9-24-78	9-25-78	9-26-78	9-27-78	9-28-78	9-29-78	9-30-78	10-1-78	10-2-78	10-3-78	10-4-78	10-5-78	10-6-78	10-7-78	10-8-78	10-9-78	10-10-78	10-11-78	10-12-78	10-13-78	10-14-78	10-15-78	10-16-78	10-17-78	10-18-78	10-19-78	10-20-78	10-21-78	10-22-78	10-23-78	10-24-78	10-25-78	10-26-78	10-27-78	10-28-78	10-29-78	10-30-78	10-31-78	11-1-78	11-2-78	11-3-78	11-4-78	11-5-78	11-6-78	11-7-78	11-8-78	11-9-78	11-10-78	11-11-78	11-12-78	11-13-78	11-14-78	11-15-78	11-16-78	11-17-78	11-18-78	11-19-78	11-20-78	11-21-78	11-22-78	11-23-78	11-24-78	11-25-78	11-26-78	11-27-78	11-28-78	11-29-78	11-30-78	12-1-78	12-2-78	12-3-78	12-4-78	12-5-78	12-6-78	12-7-78	12-8-78	12-9-78	12-10-78	12-11-78	12-12-78	12-13-78	12-14-78	12-15-78	12-16-78	12-17-78	12-18-78	12-19-78	12-20-78	12-21-78	12-22-78	12-23-78	12-24-78	12-25-78	12-26-78	12-27-78	12-28-78	12-29-78	12-30-78	12-31-78
--------	----------	----------	----------	----------	----------	----------	----------	----------	----------	----------	----------	----------	----------	----------	--------	--------	--------	--------	--------	--------	--------	--------	--------	---------	---------	---------	---------	---------	---------	---------	---------	---------	---------	---------	---------	---------	---------	---------	---------	---------	---------	---------	---------	---------	--------	--------	--------	--------	--------	--------	--------	--------	--------	---------	---------	---------	---------	---------	---------	---------	---------	---------	---------	---------	---------	---------	---------	---------	---------	---------	---------	---------	---------	---------	--------	--------	--------	--------	--------	--------	--------	--------	--------	---------	---------	---------	---------	---------	---------	---------	---------	---------	---------	---------	---------	---------	---------	---------	---------	---------	---------	---------	---------	---------	---------	--------	--------	--------	--------	--------	--------	--------	--------	--------	---------	---------	---------	---------	---------	---------	---------	---------	---------	---------	---------	---------	---------	---------	---------	---------	---------	---------	---------	---------	---------	--------	--------	--------	--------	--------	--------	--------	--------	--------	---------	---------	---------	---------	---------	---------	---------	---------	---------	---------	---------	---------	---------	---------	---------	---------	---------	---------	---------	---------	---------	---------	--------	--------	--------	--------	--------	--------	--------	--------	--------	---------	---------	---------	---------	---------	---------	---------	---------	---------	---------	---------	---------	---------	---------	---------	---------	---------	---------	---------	---------	---------	--------	--------	--------	--------	--------	--------	--------	--------	--------	---------	---------	---------	---------	---------	---------	---------	---------	---------	---------	---------	---------	---------	---------	---------	---------	---------	---------	---------	---------	---------	---------	--------	--------	--------	--------	--------	--------	--------	--------	--------	---------	---------	---------	---------	---------	---------	---------	---------	---------	---------	---------	---------	---------	---------	---------	---------	---------	---------	---------	---------	---------	---------	--------	--------	--------	--------	--------	--------	--------	--------	--------	---------	---------	---------	---------	---------	---------	---------	---------	---------	---------	---------	---------	---------	---------	---------	---------	---------	---------	---------	---------	---------	---------	---------	---------	---------	---------	---------	---------	---------	---------	----------	----------	----------	----------	----------	----------	----------	----------	----------	----------	----------	----------	----------	----------	----------	----------	----------	----------	----------	----------	----------	----------	---------	---------	---------	---------	---------	---------	---------	---------	---------	----------	----------	----------	----------	----------	----------	----------	----------	----------	----------	----------	----------	----------	----------	----------	----------	----------	----------	----------	----------	----------	---------	---------	---------	---------	---------	---------	---------	---------	---------	----------	----------	----------	----------	----------	----------	----------	----------	----------	----------	----------	----------	----------	----------	----------	----------	----------	----------	----------	----------	----------	----------

Celerly
Large Crisp Stalks
Ea. **39¢**

Tomatoes
VINE RIPENED SALAD SIZE
QT. **69¢**

Grapefruit
INDIAN RIVER RUBY REDS LARGE SIZE
4 FOR \$1.00

Russet Potatoes
COLORADO ALL PURPOSE
10 LB. BAG **68¢**

CALIFORNIA FULL OF JUICE
Lemons **5 for 59¢**
FOR HOLIDAY MIXERS CELLO PKG.
Limes ea. **49¢**

TENDER AND MILD
Green onions..... **29¢**
GARDEN FRESH
Radishes **29¢**

NO SHORTAGE of... GOOD WISHES!

SEASONS GREETINGS
Spearman Family
Practice Clinic
R. L. Kleeberger M.D.

FOR YOU!.....

SHOP IDEAL FOR SUPERLATIVE SAVINGS, 7-DAYS A WEEK... WE WELCOME FOOD STAMP CUSTOMERS.

IDEAL FOOD STORES

WE GLOBALLY ACCEPT U.S. FOOD STAMPS

Christmas Greeting 1977

We wish all our friends a very Merry Christmas and a Happy New Year. Instead of sending cards this year, we have donated to the Hospital Auxiliary Fund for the Hansford County Hospital:

- Mary Fern Terry
- Dr. R.L. Kleeberger
- Phill & Marguerite Jenkins
- Emmett E. Sanders
- Tom & Helen Eiter
- Charlene McClellan
- Mr. & Mrs. P.A. Lyon, Jr.
- Faye Lynch
- Jim & Geneva Eddleman
- Gertrude Jones
- Irvin & Betty Davis
- Mrs. C.A. Kleeberger
- Pat & Virginia Cates
- Mrs. Walter Wilmeth
- Juanita Logan
- Agnes Windom
- Woodie & Lois Gilbert
- John & Sammie Bishop
- Mr. & Mrs. Freeman Barkley
- The Dennis Nelson Family
- Gwenfred Lackey
- Bruce & Freda Sheets
- W.E. & Loydell Sparks
- Mrs. R.D. Chamberlain
- Raymond & Grace Kirk
- Owen & Babe Pendergraft
- The Dick Kilgore
- Deacon & Willie Clement
- Sparks Laundries
- Condee A. & Doris Ellison
- Margaret Shedeck
- Glen & Evelyn Hiller
- Mr. & Mrs. John Hutchison
- Jeff and Alan
- Mr. & Mrs. Carl Archer
- Mr. & Mrs. J.T. McWhirter
- Irwin & Susan Dalk
- Mr. & Mrs. Juan Avila
- family
- Preston & Edith Smith
- Gas & Clementine Benner
- Dub & Marva Hanners
- The Floyd Close Family
- Herbert, Rosalie & Terry Butt
- Mr. & Mrs. Glen Bohanan
- Floy & Eddie Largent
- Mr. & Mrs. Ed Garner
- Deta Blodgett
- Mr. & Mrs. Robert Novak
- Mr. & Mrs. Eddie Babbs
- Russell & Alpha Townsend
- Johnny & Virginia White



The Consumer Alert

by John L. Hill
Attorney General

AUSTIN—When the family settles down after Christmas, usually at least one family member will have to return a present because of poor fit or duplication.

Store clerks have learned to expect a rash of post-Christmas visitors with gift packages in hand.

Most consumers are able to return or exchange their gifts with little or no trouble, except fighting the crowds.

But attorneys in our Consumer Protection Division point out that stores are not legally obligated to refund money, exchange merchandise, or accept returned goods for store credit unless an item is defective or is not as represented.

As a courtesy of customers, however, most stores are very accommodating about such matters. There are, of course, some stores (often in large chains) which are unable to make a gift exchange or give a refund or credit because of store policy.

Our lawyers recommend that consumers inquire about a store's policy before purchasing a gift that may have to be returned later. For example, a store may refuse to accept a returned item if the merchandise was on sale when it was bought.

Of course, if the store made an error, such as sending a size 44 regular jacket when the order specified a size 44 long,

the store is required to correct the mistake.

It should also be remembered that personal or intimate items such as underwear, earrings for pierced ears, and some cosmetics are usually always sold on a no refund-to-exchange basis.

If you receive a Christmas gift or a gift for any occasion that you need to return, follow these guidelines from our attorneys:

—Take the item to the department it was purchased in or to the "return" office and explain the reason for returning the gift.

—Take all sales or charge slips, hang tags, and labels, with you when you return the item to the store.

—Save the box or container the item came in so you can return the goods in it.

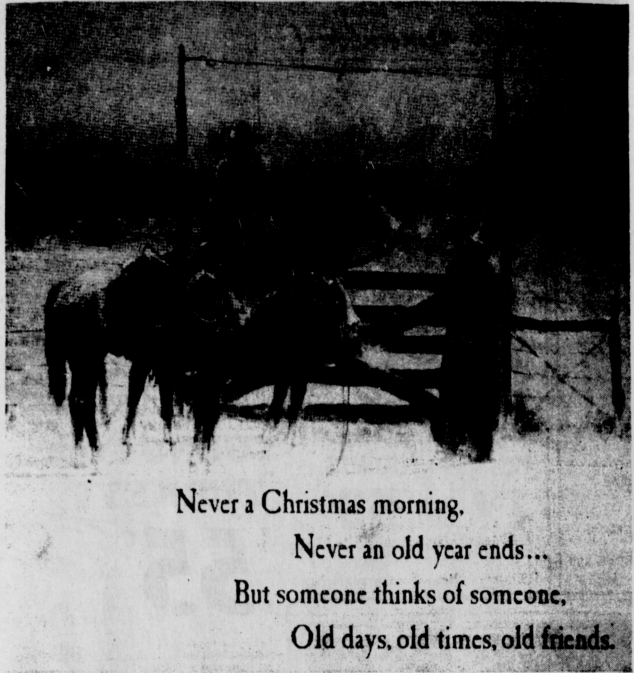
—Never wait more than a month to return something and don't make an attempt to return goods that are worn or used.

—Always be aware of the store's policy on gift exchange and refund.

If you have a problem returning a Christmas gift, make an attempt to settle it with the store management. If that doesn't prove successful, contact the Attorney General's Consumer Protection Division in Austin, Dallas, San Antonio, Houston, Lubbock, El Paso, or McAllen. If you live outside these areas, call toll-free: 1-800-252-9236.

The world's first cowboys were Tories during the American Revolution from Westchester, New York. They went out in the bushes armed with guns and a tinkling cow bell so as to beguile the patriots into the bushes hunting for cows.

The corduroy cloths, that are the workhorses of your wardrobe really mean "cord fit for the king." Originally it was woven from flax and used exclusively by the Kings of France as part of their hunting costumes.



Never a Christmas morning.
Never an old year ends...
But someone thinks of someone,
Old days, old times, old friends.

Speartex Grain Co.

Spearman, Texas

Adult Typing Course Offered

There will be an adult typing course offered at Spearman High School beginning Monday night, January 9 at 6:30 p.m. Fee for the course will be \$25 which will include all materials including typing paper.

Mrs. John Davey will be the

LOTS OF CELLS

The body of a man has more than a million million (1,000,000,000,000) cells according to the World Book Encyclopedia.

instructor for the thirty hour course. The course is for beginning typists and will be held in the high school typing room. There will be a 3 hour session each evening.

Anyone interested in taking the course may contact the superintendent's office, 659-3233.



Contrary to popular belief, Colonel James Bowie did not invent the bowie knife. His brother Rezin Pleasant Bowie did.



Martin's Steak Garden

HANSFORD COUNTY'S ENTERTAINMENT CENTER LYRIC THEATRE

PHONE 659-2812

ONE SHOW
SUN.-MON.-TUES.
-WED.-THURS.-
7:30 P.M.

TWO SHOWS
FRI.-SAT.
7:00 P.M.
AND 9:00 P.M.

NEXT ATTRACTION

BE ON THE
LOOKOUT...
FOR AN 8-YEAR-OLD
ELECTRONICS GENIUS
RUNNING LOOSE IN A
SMALL TEXAS
TOWN!



where's
WILLIE?
COULD BE BLIND FORMERLY BY HANSON PICTURES INC. ©

JAN. 4 THROUGH JAN. 10



Sometimes
when you reach
for a dream
you have to leave
something behind.



You Light Up My Life

It's a song you'll always remember. It's a movie you'll never forget.

A Joseph Books Film

Starring
Dixie Conn, Joe Silver, Michael Zaslow, Stephen Nathan, and Melanie Mayron as Anne Gerrard
Music and title song composed, arranged and conducted by Joseph Brooks
Director of Photography Eric Saarnen Associate Producers Nicholas Grappo, Edwin Morgan
Written, Produced and Directed by Joseph Brooks A Columbia Pictures Release

DEC. 28 THROUGH JAN. 3

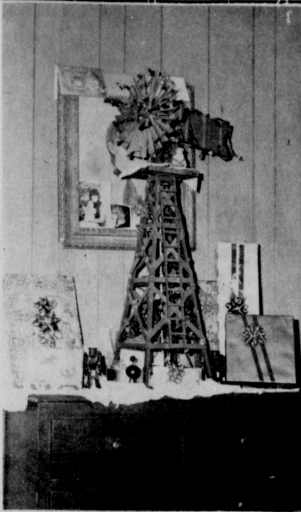
PELICULAS MEXICANAS

RAZA DE VIBORAS

VALENTIN TRUJILLO FABIAN REBECA SILVA

A COLORES

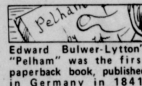
SUNDAY MATINEE 2 PM, JAN. 1, 1978



CHRISTMAS TREE -- PANHANDLE STYLE --
The J. M. Melton family at 217 N. Hoskins used this model of a windmill for Christmas 1977.

Sewing Workshop Set

A weekend workshop following the theme "Sew New for Spring/Summer 1978" will be offered at the Texas 4-H Center near Brownwood on Saturday and Sunday, January 28 and 29, 1978. County Extension Agent Peggy Winegarner notes that this week-end training opportunity is especially for adult 4-H leaders who assist youth in clothing and sewing projects. Texas Agricultural Extension Service Area Clothing Specialist Mrs. Becky Culp of Amarillo will lead workshop instruction sessions. She will be assisted by three resource instructors from the Abilene area. Topics for week-end participants include fashion trends for youth; fabric and notion trends; fa-



Edward Bulwer-Lytton's "Pelham" was the first paperback book, published in Germany in 1841.

Mr. and Mrs. Frank Buzzard
and
Mr. and Mrs. Gordon Cummings
would like your presence at the

marriage of their children

Linda
and
Douglas

on Friday, the thirtieth of December
nineteen hundred and seventy-seven
at six thirty o'clock in the evening

First United Methodist Church
Spearman, Texas

6-3tc

PSU Spring Enrollment Set

Finals at Panhandle State University will come to a close this Thursday, ending the first semester. Enrollment for the second semester will be Monday, January 9, from 9:00 a.m. till 3:00 p.m. in the Student Union Ballroom. Classes start on Tuesday, January 10. Pre-enrollment for the second semester has been in process since November 14. Students planning to attend Panhandle State University for the first time should have an application for admission, medical form, ACT test results, and high school transcript on file at the Registrar's office. Students transferring to Panhandle State from another college should request a transcript from the last college they attended. Class schedules listing courses for the second semester are available at the Office of the Registrar. Thirteen evening classes will be offered for students interested in attending night classes. Classes being taught are Accounting II 6:30-9:30 p.m., Wednesday; Business Law, 6:30-9:30, Tuesday; Computer Programming, 6:30-

9:30, Thursday; Lapidary, 6:30-9:30, Monday; Descriptive Astronomy, 7:00-9:30, Wednesday, Intramural Sports, 6:30-9:30, Monday; American History, 7:00-8:15, Tuesday and Thursday; Art Leatherwork, 7:00-9:30, Monday; Advanced Crafts, 6:00-9:00, Monday; General Psychology, 6:30-9:30, Wednesday; Psychology of Learning, 6:30-9:30, Tuesday; Development Psychology, 6:30-9:30, Tuesday; Marriage and Family Living, 7:00-8:40, Monday; and Intermediate Spanish, 6:30-9:30, Monday. A Senior Life Saving and Water Safety Instructors course will be offered the second semester. This course is arranged according to classes schedules and will meet evenings. Students interested in these two courses should call 349-2611 ext. 255.

Workshops scheduled the second semester include a Special Education course March 6-9. For further information, contact the Office of the Registrar, Panhandle State University, Goodwell, OK, 73939, or call (405) 349-2611, ext. 223.



WELCOME PARCEL -- Judy Friemel of Spearman, at right, is shown here receiving her parcel of \$200 worth of Christmas Bucks from Mary Lou Wysonog of the Chamber of Commerce after the 3 p.m. activity last Thursday at Plains Shopping Center.

Irrigation System Set

A meteorologist who uses sophisticated remote sensing techniques to determine soil moisture, an agricultural engineer who specializes in irrigation equipment, and a longtime research scientist knowledgeable in irrigation problems and techniques are among those who will share ideas and information with Panhandle growers in a one-day irrigation seminar in Amarillo Thursday, January 5.

The program will explore ways growers involved in irrigation farming can conserve water and reduce their costs of production. Paul E. Gross, Extension district agriculture agent, said.

The seminar begins at 9:45 a.m. and continues until 3 p.m. at the Texas A&M University Agricultural Research and Extension Center, 6500 Amarillo Blvd. West. It is being sponsored by the Panhandle Economics Program and the Texas Agricultural Service.

The meteorologist is Dr. Joe McFarland of College Station. He is in charge of the National

Weather Service Environmental Studies Service Center. McFarland will discuss weather forecasting as it applies to irrigation management. He also will report on research and new methods of remote sensing to determine soil moisture.

Rick Ackeroed, the irrigation equipment engineer, will discuss pump and well efficiency. He is Lubbock branch manager of the Stewart and Stevenson Irrigation Division.

Irrigation research will be reported by Jack Musick, veteran research agricultural engineer with the Agricultural Research Service, U.S. Department of Agriculture. He is stationed at the Southwestern Great Plains Research Center, Bushland.

Charles Schiabs, a Deal Smith County grower who irrigates and is chairman of the county water association, will present the growers' perspective.

Also on the program are two Extension agricultural engineers who specialize in irrigation. Leon New of Lubbock and

Wayne Keese of College Station and County Extension agriculture agents Joe VanZandt of Gray, Gaines Franks of Moore County.

New will discuss water losses from center pivot sprinklers, which are being increasingly used on the West Texas plains. Keese will focus on irrigation considerations for the future. The three agents will serve as moderators for the sessions.

Special Meeting

At press time Wednesday, Dec. 28, Spearman City Council was meeting in special session in the City Hall for discussion pertaining to a park grant application for use in the possible establishment of a new city park in Spearman.

After due deliberation, City Council authorized submission of a park grant application in the amount of \$38,504 for use in providing a park in the northeast part of the community, west of the County barn and south of the rodeo grounds.

As proposed at this time, the park will be 2.2 acres in size.

Additional details will be announced. Mayor Ralph Blodgett, City Manager Mark Neff and other members of the City Council were in agreement that the park was a necessity for that part of the community, noting that children in that area were without such a facility at this time.

One of the proposed installations in the park will be a jet aircraft on display. Neff noted that the application will be in the mail Dec. 28 to the Texas Parks and Wildlife Department in Austin.

Shooting Incident

No arrests had been made at press time Wednesday, Dec. 28 as investigation into a shooting in the yard of a home in Gruver earlier this week continues by deputies from the Hansford County Sheriff's Department. Two persons were injured in the shooting, one of them receiving a serious wound in the leg and after receiving treatment at Hansford Hospital was transferred to a hospital in Amarillo.

★ Feeder Cattle ★ Custom Cattle Feeding
★ Feed Financing ★ Locally Owned
★ Our objective is to furnish the best service available

Palo Duro Feeders

Penny Brooks, Manager
John Hatton, Assistant

10 Mi. S. of Gruver Hiway 136
PHONE 733-2416
and 733-2417

NEW YEAR GREETINGS
May the days ahead reflect the peace of the greatest of all holidays.

FROM THE STAFF AND MANAGEMENT

Thanks for the many times you came our way during the year now ending. We hope to continue to merit your confidence and trust.

We send warm and friendly wishes to all our friends, old and new. May your holiday be one to remember in all the years to come.

EQUITY



MRS. C. J. (ELOISE) RENNER

Artist Of the Month

The Artist of the Month for January is a Spearman resident who devoted most of her time, when she isn't on duty as a nurse or doing some sewing, to painting and examples of her efforts are on display at the

Hansford County Library in Spearman. She is Mrs. C.J. (Eloise) Renner of 302 S. Barkley and she is joining other Artists of the Month in having her paintings displayed in the local library.

Painting is nothing new to her. She says that she has been interested in such an avocation since her high school days. But more time and effort in that line by studying with Ruth Hutton of Spearman, Mrs. A. Y. Ingham of Texoma, Dord Fitz and Siefon Kramer of Amarillo and Emilio Caballero of Canyon.

And while she works in water color, oil and acrylic, she prefers water color. When she is not painting landscapes or flowers in vases, as a registered nurse she is on duty at Ochiltree General Hospital in Perryton. Or else is involved in doing some sewing. The mother of three children, a son and two daughters, Mrs. Renner notes that a daughter who is a resident of Austin has evidenced an interest in painting.

Mrs. Renner's artistic ability will be on display at the Hansford County Library through January and the public is invited to drop by.

And she also finds the time to take care of the work involved in taking care of the family residence and a husband who manages the family farming and ranching interests.



HELLO WORLD

Mr. and Mrs. Harley Hiller of Graver are the parents of a son, Christopher Asa, born Dec. 14 at Guyton Memorial Hospital. He weighed 7 lbs. 11 1/2 oz. Maternal grandparents are Mr. and Mrs. Jack Olson, Cimarron, N.M., and paternal

grandparents are Mr. and Mrs. Glen Hiller of Spearman.

Library Notice

There will be no story hour at Hansford Library on Tuesday, Dec. 27 or on Tuesday, Jan. 3. The library will be closed on Monday, Dec. 26 and on Monday, Jan. 3.

Hospital News

Patients in Hansford Hospital are Ralph Snodgrass, Mary Sparks, Mose Lamb, Robert Speck, and Velma Roden.

Dismissed were Danny Goodson, Robert Welsh, Gloria White, Harvey Urban, Ann Wyrick, R.E. Martin, Ina Martin, Kenneth Virden, Minnie Richardson and daughter.

Markets

Wheat \$2.53
Corn \$2.13
Milo \$3.25

Crop Care



Tim Assiter

THANKS

B & B would like to thank you for your patronage in 1977. We feel very fortunate that you call on us for your needs. We would also like to wish you a Happy and Successful 1978.

By the way, we have a good supply of rain gauges and 1978 calendars to give away. Stop by soon and pick one up.

THINGS LOOK BETTER

Even though we still need moisture, and improved wheat pasture, the markets are getting stronger. Since the low points in 1977, wheat's up around 62 cents, corn's up about 40 cents, and sorghum about 84 cents. The beef cattle report also proved to be bullish.

These signs are very good, especially this time of year. The coming year's odds favor: world production down, world demand up, continued strong exports, and prices continuing to improve.

MERRY CHRISTMAS!

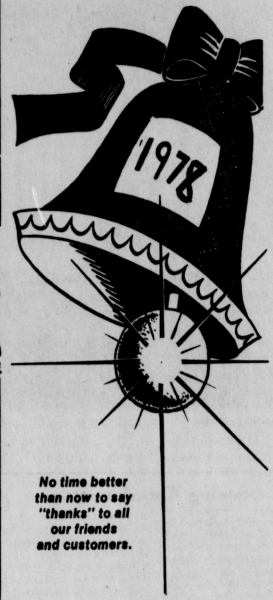
B. and B.
Farm Ind., Inc.
Spearman, Texas

COYOTES
Top Prices
BILL'S TAXIDERMY

111 MORSE ST.
STINNETT, TEXAS
PHONE 878-2134



May the true joy of Christmas be given unto us all. Best wishes to our friends and neighbors.



No time better than now to say "thanks" to all our friends and customers.

K-Bob's Steak House

Hwy. 83 and Loop Road PERRYTON

435-5573

OPEN 24 HOURS

ALLSUP'S

CONVENIENCE STORES

HAPPY NEW YEAR FROM ALLSUP'S

SPECIALS GOOD DEC 29-JAN. 1, 1978

J.D., LIZ, ANNETTE, GEORGEANN, SUE & GLORIA
WE AT ALLSUPS WILL APPRECIATE YOUR BUSINESS IN THE COMING NEW YEAR!

BORDEN'S EGGNOG BORDEN'S DIPPS AND SOUR CREAM	89¢
BORDEN'S WHIPPING CREAM 1/2 PT. CTN.	39¢
BORDEN'S BUTTER-MILK 1/2 GAL. CTN.	79¢
BORDEN'S ICE CREAM 1/2 GAL. RD. CTN.	\$1 19
MONSTER CHOCOLATE CHIP COOKIES	39¢
SHURFINE Paper Towels ROLL	49¢
GIANT SIZE BOLD	\$1 19
RATH SAUSAGE 1 LB.	59¢
BUGS BUNNY CARROTS 1 LB. PKG.	15¢
FISHER MIXED NUTS 12 OZ. CAN	79¢
SHURFRESH VANILLA WAFFERS 10 OZ. PKG.	3/1
SHURFRESH BOLOGNA 12 OZ. PKG.	89¢
WILSON WESTERN STYLE FRANKS 1 LB. PKG.	\$1 19
SHURFRESH BACON 1 LB. PKG.	99¢

HOME FOR THE HOLIDAYS
SPECIALS

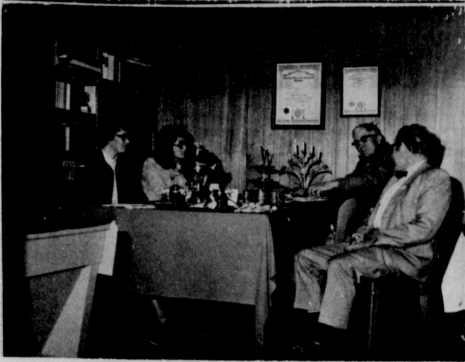
305 W. KENNETH

Did Santa bring you a CB base unit?

Stick around to enjoy it... follow these antenna raising safety rules.

1. Watch out for overhead power lines... even a slight touch of your antenna to a power line can cause serious... or even fatal... injuries.
2. Use a wooden ladder.
3. Have a "spotter" watching while you're on the roof... many times your spotter can see things you can't.
4. If your antenna should fall, do not try to hang on to it... let it fall and get away from it.
5. If your antenna should fall against a power line, call us immediately and we will remove it safely for you. Do not attempt to retrieve it yourself.
6. Keep your masts, lead-in wire and guy lines clear of utility lines.
7. Make certain your antenna is properly grounded.
8. Before you begin, make sure your family and helpers understand these safety rules.

COMMUNITY PUBLIC SERVICE
Your Electric Light & Power Company



MORE HAPPY HOUR -- Open house was the fashion of the day last week and this convivial group, clockwise, Barbara Scroggs, Judy Sellers, Guy Fuller and John R. Collard, Jr., are shown gathered around the festive board at the Collard Real Estate and Insurance offices on Davis Street on Thursday of last week to help usher in observance of Christmas.

License Plate Renewal Notices

AUSTIN -- License plate renewal notices for almost 11 million motor vehicles are in U.S. post offices throughout Texas for delivery to owners beginning the day after Christmas.

R.W. Townsley, director of the Motor Vehicle Division, State Department of Highways and Public Transportation, said the renewal notices were stuffed into envelopes, pre-sorted by zip code, boxed and delivered to post offices to expedite delivery. Work to get the renewal notices ready for delivery started in early October.

"The plate renewals for passenger cars and light trucks (such as pickups) will be different from last year. A new law requires that renewal dates be spread as equally as possible over 12 months, rather than have all expire at one time (April 1) each year," Townsley said.

Since the Motor Vehicle Division does not maintain records by owner's name or birth date, the license number of the vehicle has been used to deter-

mine the month of registration renewal in the future. Renewal notices have been issued to reflect the number of months and the prorated fee to be paid to register each vehicle under the new system. A complete explanation of the new system is enclosed with each renewal notice for passenger cars and light trucks (one ton or less). It is imperative that vehicle owners not lose the registration notice as it must be presented at the county tax collection office to obtain new license plates.

Litter MESSAGE

AUSTIN -- Littering Texans, take heed! The State Department of Highways and Public Transportation has just released a new motion picture that zeros in on your dastardly deeds.

Titled "A Litter MESSAGE," it's the most recent addition to the Department's free loan library of award-winning public service films and is designed to reinforce an on-going campaign against litterers.

Animation introduces live action as the film takes a sometimes humorous look at the thoughtless trash tossing of "litter bums" who are otherwise quite pleasant and friendly folks.

"A Litter MESSAGE" is 16mm sound and color, 13 minutes in length, and can be borrowed from your local district office, or by writing to FILMS, Travel and Information Division, Box 5004, Austin, Texas 78763.

The film is a timely reminder that litter is a nasty problem which causes unsightly roadsides and cluttered public areas and costs taxpayers several million dollars annually to clean up. "Let's get mad about it," admonishes "A Litter MESSAGE," mad enough to do something about it.

So -- litterers, beware! You may soon become personae non gratae in the state of Texas, if "A Litter MESSAGE" has its way.

Chinese emperors were believed to commune with heaven through a pierced disk of white jade.

May your days be bright and cheerful and peace attend you always.

HAPPY NEW YEAR

To our good friends and patrons, sincere wishes for a happy holiday.

H. & H. WATER WELL SERVICE, INC.

659-2242

GRUVER HIGHWAY SPEARMAN

To our circle of friends, blessings each and everyone.



We'd like to extend season's greetings to all of you, with the wish that everyone may share the joyful spirit of giving.

We add to our wishes the hope that the coming year fulfills a dream for each of you and brings peace to the world for all.

WE WILL BE CLOSED MONDAY JAN. 2



SPEARMAN, TEXAS 79081



We hope 1978 offers peace and prosperity to the entire community.

TG&Y

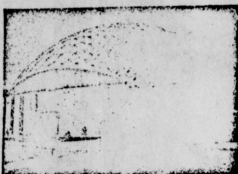
family centers

521 HWY. 207 S. SPEARMAN OPEN: 9 A.M. - 9 P.M.

'77



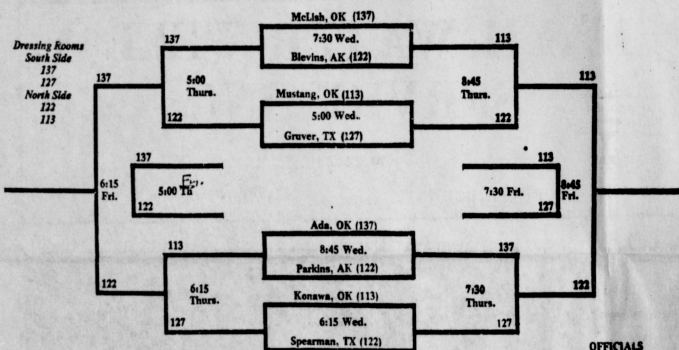
EAST CENTRAL UNIVERSITY



Robert S. Kerr Activities Center
Ada, Oklahoma

Mid-America High School Girls Basketball Tournament

December 28, 29, 30 1977



OFFICIALS
Gene Robbins-Durant
Clyde Smith-Colbert
Ray Garrett-Oklahoma City
John Prosser-Ada

First Game---December 28 5:00 P.M.
Admission---Adults \$2.00 Students \$1.00

*Printed in the Byng Printing Department



Go team - Win state again

Junior Lusby "Cats"
W. GRUVER HIGHWAY
659-3766

Louis Schnell Electric
208 Hancock
659-3433

Excel Chevrolet-Olds Inc.
Hwy 207
659-2541

Anthony Electric
Plains Shopping Center
659-2441

New Year Greetings

BAKER & TAYLOR

Consumers Sales Co.
421 W. Kenneth Av.
659-2012

Hansford Implement Co.
Hwy. 207
659-2712

DECEMBER 26, 27, 28	MID AMERICA TOURNEY - Ada, Oklahoma	A Girls
DECEMBER 29	CLARENDON - A and B Boys	HERE
JANUARY 3	DUMAS - A and B Boys and Girls	THERE
JANUARY 5, 6, 7	FRITCH B TOURNEY	
JANUARY 6	STINNETT - A and B Boys and Girls	THERE
JANUARY 10	GUYMON - A and B Girls	HERE
JANUARY 13	RIVER ROAD - A and B Boys and Girls	THERE
JANUARY 17	CANADIAN - A and B Boys and Girls	HERE
JANUARY 20	DALHART - A and B Boys and Girls	THERE
JANUARY 24	BOYS RANCH - A and B Boys	HERE
JANUARY 26, 27, 28	SPEARMAN B TOURNEY	
JANUARY 27	PANHANDLE - A Boys and Girls	THERE
JANUARY 31	RIVER ROAD - A and B Boys and Girls	HERE
FEBRUARY 3	CANADIAN - A and B Boys and Girls	THERE
FEBRUARY 7	DALHART - A and B Boys and Girls	HERE
FEBRUARY 10	BOYS RANCH - A and B Boys	THERE
FEBRUARY 14	PANHANDLE - A and B Boys and Girls	HERE