

# The Hansford Plainsman

VOLUME VII., NUMBER 86

SPEARMAN, HANSFORD COUNTY, TEXAS 79081

THURSDAY, AUGUST 18, 1966

## Helms Seeks Democratic District Post

Hansford County Democratic Party Chairman, J.D. Helms has announced he will seek the Democratic Committeeman's post of the 31st district in the state Democratic Convention in September.

Helms is seeking the position Bob Lindsey of Borger put up for grabs when he announced he would not seek another term.

Helms, an attorney here, has been active in Democratic party politics for several years and has served two terms as county chairman.

The 31st district includes the 20 counties in the top of the Texas Panhandle.

## Gruver Man Is Critical

### From Gunshot

A Gruver electrician is in an Amarillo hospital in critical condition from a gunshot wound in the chest.

W.D. Spradling was found about 7:30 a.m. Monday in his small apartment on the Main Street of Gruver, Sheriff J.B. Cooke said.

Sheriff Cooke said a barber, whose shop is near Spradlin's apartment, heard someone groaning and when he investigated, he found Spradling.

The officer said his investigation showed the wound in the right side of the chest to be self-inflicted.

Officers believe the wound was inflicted a "good while" before the man was found.

He was brought to Hansford Hospital, then later in the day, transferred to an Amarillo hospital.

## Two Accidents Investigated

City police officers investigated two accidents during the past few days.

Vehicles driven by William B. Haworth and Sid Evans were involved in an accident in the 1,000 block of S. Haney Friday.

Officers said the damage was light to the cars.

Tuesday vehicles driven by Samuel L. Fouquet of Guymon, Okla., and Ronnie Dean Lusby were involved in an accident at 210 Roland.

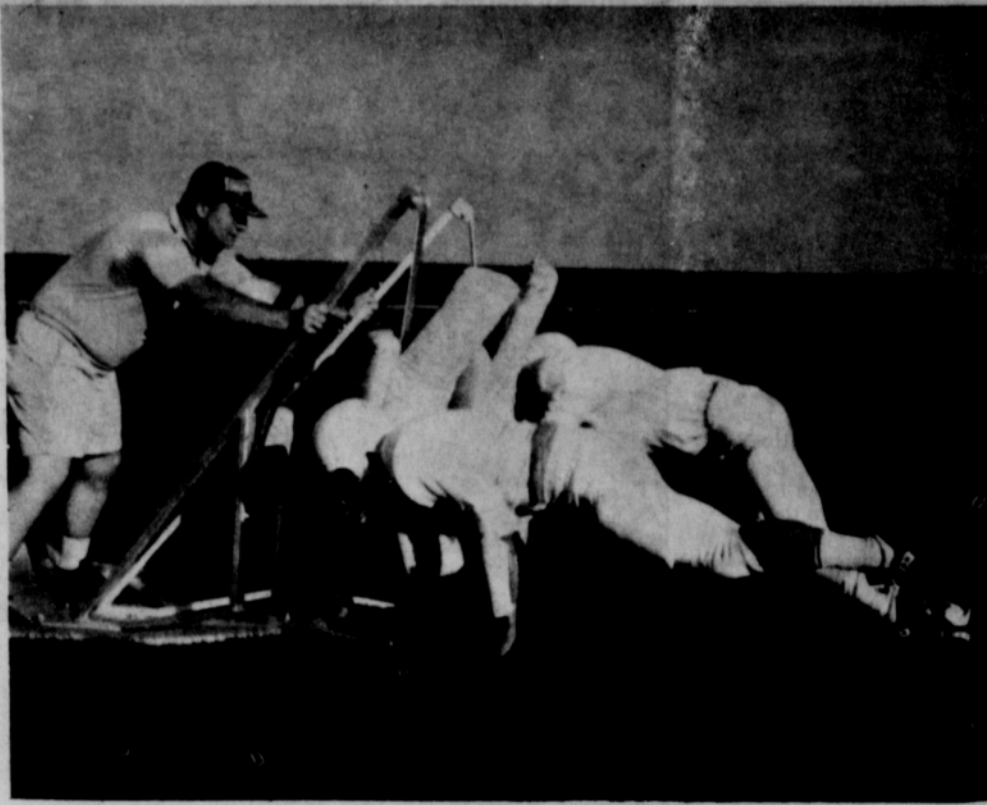
The accident occurred shortly before noon.

On one was injured, but damage to the vehicles was heavy.

### VAUGHN PROMOTED

Bob Vaughn Jr., son of Mr. and Mrs. Bob Vaughn of Spearman, was promoted Wednesday to the rank of Lt. Colonel in the Army.

Lt. Col. Vaughn is now with an Army Intelligence unit in Viet Nam.



FIRING OUT -- Tackles Randy Moore, front, and Ronnie Gilbert drive into the blocking sled under the watchful eye of coach Larry Anthony. Both boys are seniors. This is just part of the work that greeted 44 varsity candidates on the first day of workouts. Plainsman Photo

## Coaches Well Pleased With Team's Efforts

"They are sore and tired right now, but we are well pleased with their efforts," Lynx football coach George Wright said Wednesday afternoon.

Wright said all of the coaches are well pleased with the attitude and spirit of all the players.

We have had some good workouts, very good when you consider that the boys are tired and sore from these first workouts.

There have been no serious injuries, Wright said, most of the boys reported in rather good shape.

The number of players on both the varsity and freshmen squads have been increasing since workouts began Monday.

Wright said there were 64 boys out for varsity and freshman teams, Wednesday there were 44 on the varsity squad and 20 on the freshman team.

We have lost only one boy

who decided he did not want to play, Wright said. There have been three added to the varsity group and three added to the freshman group since the physicals were given Sat.

Candidates for the team have been going in two-a-day workouts since they were issued equipment Monday morning.

The players have been doing contact work since the first workout.

A large number of the players are much bigger than last year, with a good crop of big sophomores up to push the juniors and seniors for places on the varsity.

Working with Wright this year on the varsity are coaches Jim Allen, Allen Simpson, Larry Anthony and trainer Dean Weese. Eddie Clemmons and Jerry King are coaching the freshman team.

Workouts twice daily will continue until school begins on Monday, Aug. 29.

### THURSDAY, FRIDAY & SATURDAY

## Montgomery Wards Opens Catalogue Store Here

A new business will be officially opened this morning on Main Street in Spearman.

Mayor Bob Vaughn will officially cut the ribbon on the new Montgomery Wards catalogue order store at 218 Main at 9 a.m.

Wards officials, Wanda Hopkins and Mr. and Mrs. Jerry Cashion and other Wards officials will be here to help Mr. and Mrs. Robert Presnell open their new store.

The couple will have Mrs. L.F. Hand as an employee in the store.

There will be a three-day opening celebration sale with door prizes and refreshments. A transistor radio will be given as a door prize at 10-2 and 4 o'clock each of the three days. A grand prize of a portable TV will be given at 5 p.m. Saturday.

Donuts and coffee will be served during the opening.

## Bar Group Endorses Judge Max Boyer

The Northeast Panhandle Bar Association has formerly passed a resolution endorsing 84th District Court Judge Max Boyer of Perryton for Federal District Judge of the Northern District of Texas.

A judge will be appointed to replace Federal Judge Joseph B. Dooley who has resigned, effective Oct. 1, 1966.

James P. Linn, President of the Northeast Panhandle Bar Association said the resolution and copies of it will be sent to President Lyndon Johnson and Senator Ralph Yarborough.

The resolution says that Judge Boyer has compiled a long and

impressive record as a practicing attorney, prosecutor, legislator and judge.

It said the judge is held in high esteem by his associates as a man of exceptional ability and integrity and would be the best qualified individual in the Northern District of Texas to succeed the Honorable Joseph B. Dooley.

Judge Boyer has served as District Judge since December 1957 when he was appointed to office. He was elected to office in 1966 and has been re-elected each time he has announced for the office.

He served in the state legislature for 1936-1940. In 1964 he was an alternate delegate from Texas to the National Democratic Convention.

The judge has practiced law in Perryton since 1929.

## Hospital Is Approved for Program

Hansford Hospital was one of eight new vocational nursing schools approved recently by the State Board of Vocational Nurse Examiners.

The eight schools were granted provisional approval for one year beginning with enrollment of their first class. The Spearman class will begin in September with seven students, all that are allowed the local school.

There are now 153 vocational nurse programs active in Texas.

Recently in the statewide examination 662 candidates passed and were issued vocational nurse licenses.

Since the Vocational Nurse Law was approved on Sept. 7, 1951, a total of 35,085 licenses have been issued.

## Burglary Is Investigated at Salvage Firm

Sheriff's officer are investigating the burglary of the National Auto Salvage firm two miles west of Spearman on the Gruver Highway, Tuesday night.

Sheriff J.B. Cooke said thieves broke a front window of the building and gained entry to the building. They took parts and tools from the firm.

Jack Moran, manager of the firm, discovered the burglary Wednesday morning when he went to open the business.



GETTING READY -- Assistant coaches Eddie Clemmons, left, Larry Anthony, Jerry King and Jim Allen get the tackling dummy put up and ready for the Lynx football hopefuls. There are 64 boys out for freshman and varsity football. Plainsman Photo



### Rebekahs Have Meeting

Rebekah Lodge 290 met Thursday in the IOOF Hall with Deanna Kenney, Noble Grand and Inez Holland, Vice Grand, presiding. The lodge voted to have a rummage sale Aug. 26-27. Margaret Kirk served refreshments to the 15 members present.

### All-Weather Cattle Need Little Care

HUNTSVILLE, --- There's a herd of what could be called "all weather" cattle on a small ranch near here.

They are heat tolerant in the summer, winter hardy during the cold months, relatively disease resistant and the mother cows raise big healthy calves.

The cattle are an unusual cross--ordinary range cows crossed with a Scotch Highland bull. Raymond Blalock, a Huntsville eye surgeon, is the owner of the cattle. They are the only Scotch Highland cattle in Texas, he says.

He's crossed the Scotch bull with Brahman, Hereford and Jersey type mothers. "The Brahman type mothers and the Scotch bull give the best calves," he says. Blalock says the cattle are extremely thrifty. They will eat almost anything that grows--including rosebushes, bark and weeds. This means little or no supplemental feeding is necessary, even during drouth or winter.

Walker County Agricultural Agent Wesley Sherrill says the cattle are getting the heat tolerance and disease resistance from the Brahman blood and the cold hardiness from the Scotch Highland blood. Sherrill says the Scotch cattle are naturally slow growing--they grow for up to nine years. But when they are crossed with a Brahman, the result is a rapid growing calf.

Blalock said his calves weighed 500 pounds without creep feed at weaning last year. When asked if the cows had a high percentage calf crop, he answered, "One year my cattle had a 104 percent calf crop--every cow had a calf and one had twins." He said the calf crop is consistently over 90 percent.

The Scotch Highland cattle originated in Scotland, where the winters are severe. Even here, they grow long coats of hair in winter, but shed it in the summer. They are a British breed, although they don't resemble the Herefords, Shorthorns or Angus.

Blalock says he experimented with Hereford and dairy type

### Services Held Tuesday For Mrs. Effie Jarvis

Funeral services for a pioneer resident of the Lieb community in Hutchinson County, were held at 2:30 p.m. Tuesday in the Pringle School Auditorium.

Services for Mrs. Effie E. Jarvis, 92, were conducted by the Rev. Harold Fleming of the Morse Community Chapel and the Rev. Luther Berry of the First Baptist Church of Spearman.

Mrs. Jarvis died at 12:05 a.m. Monday in Pioneer Manor in Spearman. She had lived in the home for almost two years.

The native Texan was born in Denton County Jan. 8, 1874. She was the daughter of Chris Luginbyhl and the former Jaretta Myers.

Effie Luginbyhl and O.W. Jarvis were married Dec. 1, 1897, in Denton County in 1902.

They lived in the community for 62 years, until Mr. Jarvis' death four years ago. They were members of the Lieb Community Church until it was disbanded, then Mrs. Jarvis was a member of the Morse Methodist Church.

Survivors include three sons, Woodville of Spearman, Raymond of Borger and Billy of Lieb.

Burial was in the Lieb cemetery with Boxwell's of Spearman in charge of arrangements.

Pallbearers were Pete Lieb, Dean Lieb, Monty Harbour, Perry Dixon, Thane McCloy and Nolan Holt.

Honorary pallbearers were Richard Groves, Edgar Brittan, Ernest Lieb, Tom Henderson, Moody Womble, I.T. Harbour, E.J. Copeland and O.C. Holt.

Mr. and Mrs. Jim Davis visited Tuesday evening in Amarillo with his dad, Dr. W.C. Davis, in Northwest Texas Hospital, and with Mrs. Davis.

The objectionable thing about flattery is that it so seldom comes up to our expectations.

### VA Expects Many to Apply For Benefits

Approximately 28,000 veterans in the Waco Veterans Administration Regional Office area are expected to apply for educational benefits under PE 89-358 during the first year, according to Jack Coker, Manager of the Waco Regional Office.

The first payments have now been issued to veterans enrolled in summer schools and these payments were for attendance during the month of June. Payments may be made only after the VA receives a certificate of attendance submitted by the veteran at the end of each month he is in attendance.

Coker cautioned that students reporting for school this fall should have sufficient funds in addition to enrollment costs to support themselves for at least two months, since it takes approximately that long before the first VA check may be issued. Students should be prepared also to supplement educational allowance payments, as normally these payments will not be sufficient to cover all of their educational expenses.

Veterans applying for benefits will receive a certificate of eligibility showing the school and the training objective they have selected. These are presented to the school, which in turn will certify veterans' enrollments. Coker urged that veterans be sure that they meet entrance requirements and that they will be accepted by their chosen school before filling an application for educational benefits.

mothers crossed with the Scotch Highland bull. But he's satisfied that the Brahman makes the best mother. Next year, he will breed the purebred Scotch bull to purebred Brahman mothers. Meantime, the "all weather" cattle are eating and growing--and turning a nice profit.

British archaeologist think they have discovered the original site of "Camelot." What did they find, a couple of ticket stubs from opening night?

Decorative Grapes & Pineapples  
Liquid Resin & Dye  
Christmas Balls Colored Leaves  
We Do Arrangements

DORTHY'S NOVELTIES

912 S. Bernice  
Phone 659-3027



HEY THERE PARTNERS!

IT'S BARGAIN ROUND-UP TIME!



LOWEST PRICES OF THE SEASON!

BIG TRADE-IN ALLOWANCES!

DEMONSTRATIONS

North Plains Truck & Implt Co.

Catalog Sales Agency

**MONTGOMERY WARD**

LOOK WHAT'S COMING TO TOWN

**WARDS CATALOG SALES AGENCY GRAND OPENING**

Thursday, Friday & Saturday, Aug. 18-19-20

OPEN AT 9 A.M. THURSDAY 218 MAIN

DOOR PRIZES: 3 transistor Radios will be given each day. One at 10, at 2 and at 4!

GRAND PRIZE: Portable TV to be given away at 5 p.m. Saturday

MR. & MRS. ROBERT PRESNELL

**Hi, Neighbors!**

We'll be looking forward to serving all of you, in our new Montgomery Ward Catalog Sales Agency.

**GET BIG SAVINGS ON GRAND OPENING SPECIALS**

Guaranteed 1 coat-Was \$5.98	
SUPER HOUSE PAINT Now	\$3.98
7.50 X 14 - Nylon - Each \$22.50	
TUBELESS TIRES	4 for \$67.50
20 # Signature DETERGENT	\$3.59
12" Was \$99.95	
PORTABLE TV Now	\$82.00
Sale Priced	
2 SPEED WASHER	\$178.00
Fits in Shirt Pocket - Sale Priced	
6 TRANSISTOR RADIO	\$5.39
4 qt. Electric - Was \$21.50	
ICE CREAM FREEZER	\$15.99
24" X 72" - Was \$3.99	
SCATTER RUGS	\$2.99

DOOR PRIZES

FREE GIFTS

FREE CATALOGS

COFFEE & DONUTS

### GIFT BOXMEMO:

Those ever popular glass cake covers are now in stock and we suggest all of you who want them for Christmas gifts come in and have them put away now. They go real fast. We also have some new cake plates that go with the cake covers. We are sorry, but you have to make the cakes.

We are getting in some more Spanish items that are new and different. We think these are prettier than the other items we have had.

Also new are some planters and candlesticks.

Cooler weather will be here soon and the coffee pot will be on most of the time. We have some new coffee mugs for you who like to serve coffee.

There are new items every day. Come in and browse.

The Gift Box





Fifty-two sons, daughter, in-laws, grandchildren and great-grandchildren, led by Mrs. Homer Cluck, prominent ranchers in the Gruver-Spearman area, boarded the Santa Fe's San Francisco Chief at Amarillo, Aug. 10, en route Newport Beach, Calif., for a family reunion. Arrangements for the trip were worked out by F.E. Hanlon, Amarillo, and Dr. D.E. Hackley, Spearman, a son-in-law. Pictured are (l-r) F.E. Hanlon, Dr. D.E. Hackley, Mrs. Homer Cluck and Mrs. D.E. Hackley. Behind them are Joan Hackley and Sandra Hale, Mr. and Mrs. Bobby Archer, and Bob Cluck, waving from the top of the door.



### Hansford Hospital News

In the hospital are Ray Oliver, Frank Najdek, Cindy Henderson, Johnnie Martin, Louise Ferguson and son, Lodie Nolder, Pay Brown, R.D. Stephenson, Sr., Warren McClenegan, Lloyd McCune, Eddie Poe, Paula Hood, Sandra McKnight, Venita Martin, A.W. Mobley, Ann Morris, Kenneth Harris and Glenn Harris.

Dismissed were Kenneth Pope, Horton Prater, Gordon Parrish, Jimmy Davis, Marshal Cator, Essie Burkhardt, David Martin, Janette George and son, Mary Miesner, Ray Todd, Andrea Lilly.

Settlement of the airline strike might have a few undesirable side-effects, such as a sudden releasing of the dammed-up supply of visiting relatives.

is more important than quantity.

Russia continues to claim longevity records for its citizens. However, in measuring life, as in other things, quality

An American is one who gets mad at his wife for not running the home like a motel and gets made at a motel for not operating like a home.



## Let's Get Ready, It's Back-to-School Time Again!

GIRLS OF ALL AGES, PRE-SCHOOL TO COLLEGE, WILL FIND THE "IN FASHIONS" FOR FALL RIGHT HERE IN OUR STORE



We Have The Brands You Like

- \* Kelly Arden
- \* Kate Greenway
- \* Gay Gibson
- \* Bobbie Brooks
- \* Thermo-Jac
- \* Pacquette

From "Plum", the fashion favorite, to Heather Tones, Dark Reds, Blues and Greens, The Colors & Styles That Are Newest are right here in our collection. Shop now for back-to-school.

SHOES FOR EVERY OCCASION

- \* Buster Brown
- \* Old Maine Trotters
- \* Connie
- \* Jacqueline
- \* Paris Fashion
- \* Town & Country

Massads

214 Main

### Greene, Murrell Are Winners at San Antonio

Two Hansford County youths placed high in their events at the State 4-H Horse Show in San Antonio recently.

Miss Wanda Greene, daughter of Mr. and Mrs. Everett Greene of Spearman, placed second in the Western Pleasure riding event.

Walter Murrell, son of Mr. and Mrs. Buddy Murrell of Gruver entered a mare in the horse show that place third.

This was Hansford County's first year to compete in 4-H horse shows.

### Rainbows Plan Slave Sale

The Spearman Rainbow chapter will have a slave sale Aug. 22 through 27.

The girls will work from 9 a.m. until 4 p.m. each day at housework, baby-sitting and other odd jobs. Anyone wanting a slave should call DeAnna Sheets at 2256 or Susan Uptergrove at 2677.

Another reason we should beat the Soviets to the moon: We want the moon to keep changing into quarters, not rubles.

It is best to limit the garage sale to the neighborhood. Otherwise, some of your old junk you might want to buy back later could go to a stranger.



**NIGHT FISHING FOR CRAPPIE**—Fish for crappie at night when they bite best. A lighted lantern (shaded to place the boat in the shadow) will serve a dual purpose. It will attract more fish and at the same time lessen pesky insect swarms.

**MARLIN FISHING**—You who hanker for a bit of marlin fishing had better use a pretty rugged line if you want to land your catch.

Nothing short of a 30-pound test, fluorescent monofilament line is recommended for marlin fishing, especially if you want to take home a 150-pound fish.

Increase the test weight according to your optimism.

**DARK RINGS IN YOUR BOAT**—In these days of widespread water pollution your boat is apt to get mighty dirty, very quickly.

Mostly, this dirt takes the form of dark, slimy rings that accumulate on the hull at the waterline.

These can be removed easiest with a good scouring powder and a "Chore Girl" activated by a lot of muscle power.

**CLEANING YOUR BOAT**—Your boat's exterior, the bottom in particular, can be cleaned quicker and easier if you'll don a bathing suit and do the cleaning job while you and the boat both are in shallow water.

This mainly because clean water is handy all around you—and the underwater parts of the craft are kept soft.

**SALT WATER WEIGHTS**—The size sinker to use when surf fishing is determined by the strength of the wind and what weight of sinker the rod will cast.

Many fishermen prefer a 4-oz. weight for the usual size rod. But when the wind is high, nothing less than a 5-oz. lead is recommended.

A lot also depends on the action of your rod. Carry weights from one to five ounces in your box to be on the safe side.

**BIG-GAME-RIFLE CALIBER**—That caliber of rifle slug to be used on big game largely is determined by experience. However, the 270, 243 are hard to beat when used for most big game.

When hand-loaded with 43 grains of No. 4350 powder, using No. 120 primers, and 100-grain partition soft pointed bullets, the 243 is ideal for such big game as polar bears, grizzlies, etc.



## HS Lunchroom Will Offer Food Choices

With the opening of the 1966-67 school year, some changes in the food service program of the Spearman Schools are being planned.

In addition to the Type A lunch, a choice of meat items will be served each day at the High School Lunchroom. The choice will be what is commonly termed "a snack item"—hot dogs, hamburgers, sandwiches, etc. The snack item will be served with the necessary foods to make a balanced lunch.

High School Lunchroom will have available for students iced tea with a choice of chocolate or white milk. Ice cream novelties will be available also. Extra cartons of milk, other than the one served with the lunch, may be purchased for three cents a half-pint.

Due to the crowded conditions and the age of the students at the Elementary--Junior High Lunchroom, serving will be limited to the Type A Lunch. Each lunch will contain a minimum of the following: Milk, one-half pint; Meat or meat substitute, 2 ounces; Vegetables and Fruit, 3/4 cup; a fruit or vegetable rich in vitamin C will be served each day and a fruit or vegetable rich in vitamin A will be served twice each week. Bread, a slice of enriched bread, hot rolls, cornbread or batter bread (a bread made of whole wheat flour, cornmeal, and enriched white flour; Butter, two teaspoons with each lunch.

One may readily see that the fine foods groups serve as the foundation for this lunch, and by adjusting the amounts the amounts of these foods served necessary to satisfy the appetite, will meet the nutritional needs of our students.

Teaching students to eat and enjoy a well balanced lunch is a very important part of the learning process. In our nation of plenty of good foods, statistics show that 6 out of 10 teenage girls eat an inadequate diet and 4 out of 10 teenage boys eat a poor diet. The difference being in the amount of food the boys eat.

Prices of lunches will be: Grades one through eight—35¢; Grades nine through twelve—45¢; Faculty and visiting adults—60¢ (no state or federal help is given on adults lunches).

Three types of lunchroom tickets may be purchased: five lunches, ten lunches, twenty lunches. These tickets are for convenience and are not refunded if lost. A refund will be made on tickets presented to the lunchroom manager at the end of school year or when a student needs to withdraw from school.

High school students may not "charge" for their lunches. One charge will be permitted in grades one through eight, age of students being the reason.

Some Reasons For Serving a Type A Lunch are: A well nourished child can function better than a poorly nourished one.

The food children eat makes a difference in the way they look and in the manners they have.

The food children eat each day should provide the many kinds of nutrients in the amounts needed.

Learning to eat and enjoy a Type A Lunch is an easy way to influence good food habits for life.

Mr. and Mrs. Billy Boatwright and Mr. and Mrs. Kenneth Evans spent the weekend in Amarillo and went to Palo Duro Canyon to see the production of "Texas".

Teen-ager to inquiring father: "I'm reading a mystery book—advanced geometry."



CALIFORNIA BOUND -- Fifty-two members of Mrs. Homer Cluck's family boarded this train last week for a reunion of the Davidson-Cluck families in Newport Beach, Calif. Festivities the family enjoyed in California included a reception, dinner-dance, harbor cruise, major league baseball game, a tour of Disneyland and a trip to the races.

Photo Courtesy of Santa Fe

## Homemaking Notes

By Linda Webb

Your Home Demonstration Agent

How many monthly installment payments are you making right now? Authorities say that if you are spending more than 20 percent of your monthly income for installment payments, you are a very poor risk for more debt, or for meeting emergencies which could arise in your family.

Statistics are showing an alarming number of families are filing bankruptcy claims every year. It isn't because there is a lack of money. It is simply because of poor money management.

Are you living within your income? Or are you one of these "unwise" people who are spending without first planning?

The one thing to remember in installment buying is that on the other side of "credit" is debt. Signing a credit contract means mortgaging your future income. Too much credit, therefore, can lower your level of living.

Here are three principles to keep in mind to help keep "interest" charges down in installment buying:

- (1) Make the down payment as large as possible.
- (2) Shorten the payment period as much as possible.
- (3) Make payments on schedule. Avoid penalty charges and possible repossession of merchandise.

Credit is fine for those who can't save and pay cash. You have the use of the merchandise while you pay for it. This must be considered each time you think about installment buying. It may be worth it to you and your family to pay a little more and have the use of merchandise as you pay. Remember, though, it does cost more.

Okra, fresh and tender, is in good supply now. It is one of our more versatile vegetables—excellent in soups and stews, delicious boiled, baked and fried. Okra combines with other vegetables, too—especially tomatoes.

It is best not to cook okra in copper, brass, iron or tin utensils because they cause the okra to discolor. No harm is done, however, except in appearance.

Turkey is the "all American" bird, often considered the epitome of American life and prosperity. Mr. Tom is vain, sociable, courageous, and freedom-loving. He's generally over-weight and over-indulged, and highly susceptible to neuroses. (Sounds like a typical American.)

He is the noblest expression of American wilderness and one of the largest, most

beautiful game birds in the world.

All of this is relatively unimportant when you consider the delicate, juicy flavor of turkey. Most of us prefer to "talk turkey" in terms of eating pleasure rather than personal characteristics.

It is no longer necessary to make an all-day affair of preparing the turkey treat. And there are so many ways you can serve turkey.

One way to enhance the natural flavors and give it a rich golden finish is to baste your bird generously with a mixture of melted butter and lemon juice.

Or when you cook outdoors, try barbeque turkey halves or quarters. It's an easy way to serve the smaller birds and you butcher can cut them in two or four parts with his electric saw. Baste generously with barbeque sauce to keep the surface moist and develop the best flavor. Cook until the legs and wings move very easily in the sockets, about 1 1/2 to 2 hours.

Boneless turkey roasts may

be found in our grocery stores, too. They are convenient, no-waste roasts, and very delicious. Use turkey often—for special or not so special occasions.

The Last Note—During the summer vacation, raising children ceases to be a job. It's more a test of character.

Mrs. Bill Russell has been in Lamesa visiting her daughter, Mr. and Mrs. J.V. Burdett.

Recent visitors of Mr. and Mrs. Freeman Barkley and Mary Ellen were Mr. and Mrs. L.O. Moss of Sayre, Okla., Mr. and Mrs. Sid Curtis of Walters, Okla., Mrs. Charles Greenfield and Marena and Mr. and Mrs. Johnnie Louis of Walters, Okla. and Mrs. A.L. Brewer and Curtis Lee of Oklahoma City.

Burton Williamson and Sandra Kitchens were in Amarillo Sunday where they attended a reunion at Ellwood Park.

## WHIP UP A FROTHY COOLER



Summertime always challenges the inventive spirit when it comes to fixing a quick thirst-quenching drink. It's the perfect time to use the convenient ready-to-serve strained and junior fruits. They not only are great for babies and toddlers, but they also make tempting adult fare.

When you go rummaging in the refrigerator for something cool on a hot day, don't forget Junior; mix some for him, too! Toddlers like the tempting taste and texture of a fluffy fruit beverage.

With strained fruit and orange juice on hand, you can whip a frothy drink together in a flash for the whole family to enjoy.

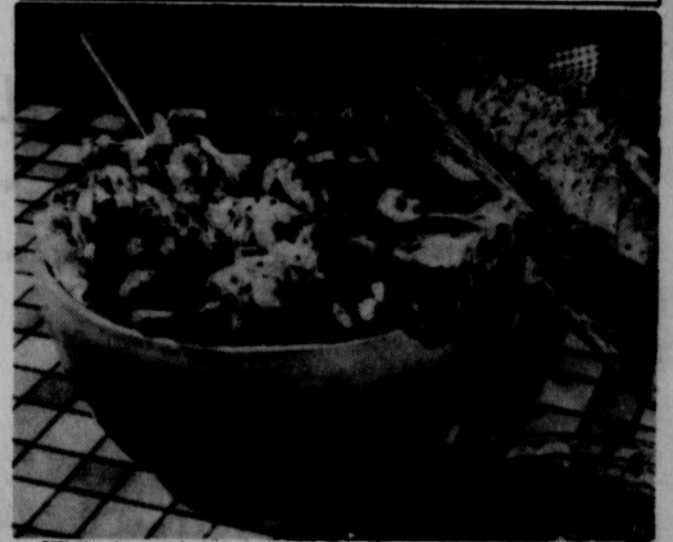
### PINEAPPLE-PEAR FLUFF

- 1 egg white
- 1 can Gerber strained orange juice
- 2 teaspoons lemon juice
- 1 jar Gerber strained pears and pineapple

Combine all ingredients and beat with a rotary beater until foamy. Makes 2-4 small servings.

## NEW DRESSING ADDS

### Onion Flavor Without Tears



While the onion brings vivacious flavor to foods, it often brings tears to your eyes as well. Now the lively onion flavor comes in a new convenient form. Wish-Bone Creamy Onion Dressing, being introduced nationally by Thomas J. Lipton, Inc., is rich, thick and creamy white with bits of the sweet onion blended in, and a touch of delightful dill. The smooth new dressing needs no shaking before use; it's homogenized. It enhances rather than overwhelms its food partners. It perks up all manner of salads, adds peppy flavor to cold meats, is wonderful on hot cooked vegetables. Try it with this cool and pretty shrimp salad, from The Lipton Kitchens. It adds that extra "something" to this old favorite.

### TOSSED CREAMY SHRIMP SALAD

- 1 pound shrimp, cooked, shelled, deveined and chilled
- 1 quart cut-up mixed salad greens
- 2 medium tomatoes, cut into thin wedges
- 1/2 teaspoon salt
- 1 tablespoon capers, chopped (optional)
- 1/2 cup Wish-Bone Creamy Onion Dressing

In salad bowl, mix together shrimp, salad greens, tomatoes, salt and capers. Toss Creamy Onion Dressing with salad mixture. Makes 6 to 8 servings.



## Day by Day

by Day McClellan

I've heard so much criticism in the past about Northwest Texas Hospital in Amarillo, I feel I should pass on this first hand information about it.

I'm not sure whether our experiences there last week were unusual or not; I do know we were treated much differently than 10 years ago.

But, at any rate, the doctors were absolutely beyond criticism in their kindness and more importantly, their skill. The nurses, aids, students, candy-strippers and other hospital personnel were extremely thoughtful, pleasant and helpful. And that's a long way from some of the stories I had heard about how one might expect to be treated at Northwest Texas Hospital.

If you've ever been through those hours of waiting while a family member is in surgery and then the recovery room, you know how slowly the time passes and how nervous you can get. (Surgery may be "old hat" to you, but in my immediate family, my dad's major operation last week was the first.)

After the surgery, I was quietly standing by his side, watching some kind of fluid drip slowly into his veins and noticing that they had taped his hand to a board to keep the needle intact.

All of a sudden he mumbled something and that left hand started moving in long even strokes, up and down and then from side to side.

I was afraid he shouldn't move it about so rigorously so I took his hand, placed it on the bed again and told him to leave it still. We were all amused when he opened his eyes, looked at me and said abruptly, "Don't I'm spray painting."

A little later, out of the blue, he said, "She's Mrs. McClellan, that's who she is." He sounded just a little disturbed at me for delaying his paint job.

He should be out of the hospital soon now. Maybe I'll get him the supplies to antique or paint some furniture for a going-home gift. I'll probably need to do something to get out of the doghouse for mentioning that painting episode.

I lost one of my favorite persons this week when my 96-year-old grandmother passed away. She spanned the distance from the rugged life of a pioneer to the space age and she was a happy, vital part of each stage of the journey.

Up until she was 80, she still rode horseback, kept her own milkcow and lived without any unnecessary luxuries. Even in the years following that, she always had her own garden and insisted whether in good health or not, that she attend her church camp meetings during which she slept on a cot in a tent for two or three nights. All during the heat of the day and into the evening she listened to preaching and sang.

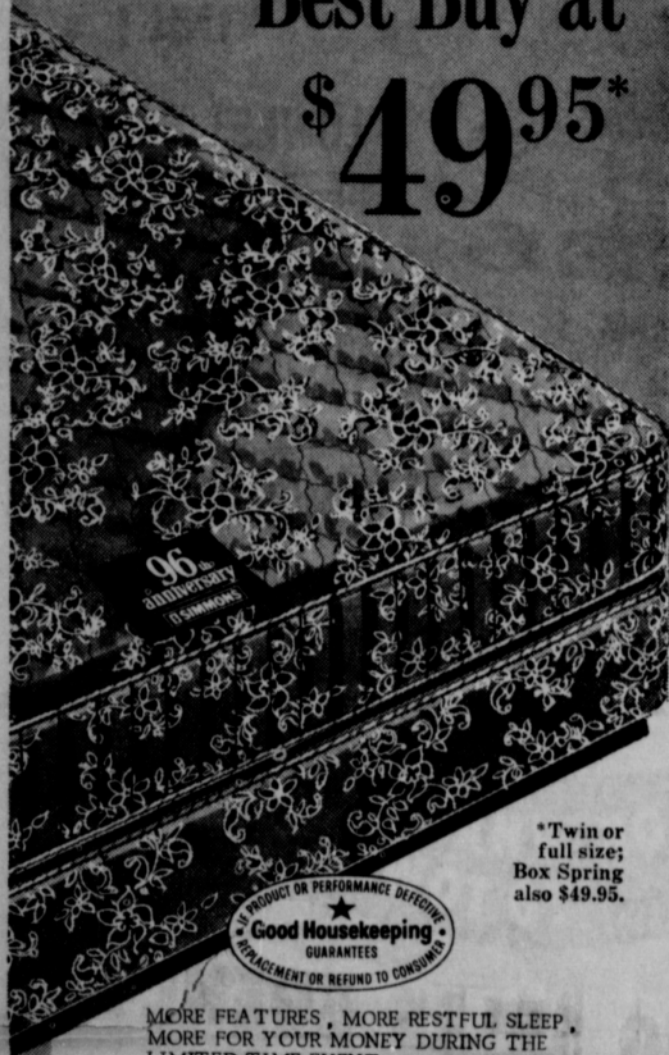
I really think she enjoyed those camp meetings even more than the happy family reunions when all her children came home for her birthday every year.

Many people, anymore, live to a ripe old age, as they call it. Not so many still have a twinkle in their eye and a courageous spirit as they near the century mark.

My grandmother was like that.



# Simmons Special 96th Anniversary Mattress is Your Best Buy at \$49.95\*



\*Twin or full size; Box Spring also \$49.95.

MORE FEATURES, MORE RESTFUL SLEEP, MORE FOR YOUR MONEY DURING THE LIMITED TIME EVENT. At \$49.95 only SIMMONS could offer a mattress buy like this - a superior mattress with 312 Adjusto-Rest coils for extra comfort and body support. 100% cotton felt upholstery for buoyant cushioning - long-wearing, deep-quilted damask cover - pre-built crush-proof borders that won't sag. All costly Quality details. An unbeatable mattress value at \$49.95 ... offered for a limited time only. Come in TODAY! Special prices on super sizes.

For the Best Buy at any Price...Choose BEAUTYREST



The separate, individually pocketed coils give BEAUTYREST its unique flexibly firm body support. You get a more restful sleep. More people sleep on BEAUTYREST than all other mattresses. No wonder its the best mattress value - at any price!

\$79.50

Twin or Full size; Box Spring also \$79.50

Available in Super Sizes

**SIMMONS**  
World's Largest Mattress Manufacturer



## Womble Clan Holds 10th Annual Reunion in Dalhart

Jess Womble, 83-year-old Spearman resident, was the oldest Womble at the clan's 10th annual reunion Sunday in Dalhart. Youngest present was Roger West, seven-week-old son of Mr. and Mrs. Tommy West of Gruver.

Following lunch, Mrs. Jess Womble presented a memorial tribute to W.T. (Tab) Womble, Jimmy Womble and Virgil Mathews, all of whom passed away since the group's reunion last year.

L.M. Womble of Spearman was re-elected chairman; Ralph Forester of Dalhart, vice-chairman; and Mrs. Ben Foster of Stinnett, secretary-treasurer.

Vida and Emma House of Oklahoma City came the furthest for the reunion.

The Wombles have been traced to Lorenza Dow Womble who was born in 1803 in Tennessee. He was a circuit rider for the Methodist Episcopal Church South.

The 76 present for the affair were Messrs. and Mmes. Ben M. Foster, R.E. Womble, Dan Ruttman, all of Stinnett; Mrs. Lorene Leek and children, Stanley, Releta & Danny, Bradle Wagon, Clyde Judkins and children, Jim Jerry, Johnny and Renee, all of Amarillo, Tex.; Misses Vida and Emma House of Bethany, Okla.; Arland Womble, Mrs. Erma Womble, Mrs. Arlyss Welch, and daughter, Mona, Terry and Donna, all of Lubbock, Tex.; Herman and Charles Olin Womble of Solano, New Mexico; C. N. Hill and son Max of Sunray Texas; Mrs. Dane Cambem and daughter, Cindy of Pampa, Tex.; L.M. Womble and children, Edgar, Danny and Suellen, Jesse Womble of Spearman, Tex.; John Weiser and daughters, Kathy Sheri and Kristi, of Ulysses, Kans.; L.R. Steinkoenig and sons, Pat and Mike of Borger, Tex.; Ralph Forester, Mrs.

Ella Womble, Mrs. Frank Womble and son Paul of Dalhart, Tex.;

R.C. Womble, Lex Board and son Wayne, Robin Giblin and daughter, Peggy, A.C. Womble all of Morse; John Smith and daughters, Ekene and Debra from Hereford, Tex.; Mrs. Thomas F. West and son, Roger, from Gruver, Tex.; Jim Shields and children, Connie, Allen and Steve from Pringle, Tex.; and one visitor, Mrs. Ivy Hedgecoke, from Stinnett, Texas.

## Workshop for Local Teachers Held in Dalhart

Luke Munn, Field Editor of The Economy Company from the Oklahoma City office held a reading workshop for teachers of the surrounding area in Dalhart, Aug. 11-12. Assisting him was Nikki Cotter of Spearman.

Attending from Hansford County were Skeet Ellison, Linda Hoight, Anna Marie Stedje and Doris Looper from the Gruver Schools, and Sue McClellan of Gruver who will be teaching second grade in the Dalhart Schools.

## Union Church Holds Meeting

Ladies Missionary Meeting of the Union Church was at 2 p.m. Aug. 16 in the home of Mrs. Virgil Floyd.

The meeting was opened with prayer by Mrs. O.C. Raney. Nellie Sluder gave the lesson from the 7th chapter of Acts. After the lesson, the group hon-

ored Mrs. O.C. Raney on her 85th birthday with a card and handkerchief shower.

Mrs. Alin Barnes closed the meeting with a prayer.

Those attending were Mmes. J.W. Pipkin, Alin Barnes, B. J. Garnett, Bell Crawford, Fred Jones, Sr., Mrs. Nellie Sluder, F.W. Seubert, Orville Fullbright, O.C. Raney, Bud Beeson, Mart Crawford, and Virgil Floyd.

Laura Reynolds of Amarillo has been visiting in the homes of Dr. H.B. Rinker, and Martha Delon Allison this week.

## IT'S A FACT!..... by THOMPSON

THE SCOTSMEN'S BELOVED INSTRUMENT, THE BAGPIPE, CAME ORIGINALLY FROM THE ORIENT -- AND WAS PLAYED BY THE ROMAN SOLDIERS WHEN THEY CONQUERED ANCIENT BRITAIN!



GIANT, PIPE-LIKE INSTRUMENTS -- OFTEN REACHING 12 FEET IN LENGTH -- ARE PLAYED AS PART OF BOISTEROUS BAVARIAN GET-TOGETHERS!



### A UNIQUE INSTRUMENT

IS THE NEW BASS GUITAR \*AS SOFT AS A KITTEN'S PURR OR AS LOUD AS A SCREAMING JET.\* MANUFACTURED BY THE AMPEG CO. ITS TONAL QUALITY IS MADE POSSIBLE BY A 5-INCH SQUARE OF ALLEGHENY LUPULUM'S SILECTRON STEEL WHICH ACTS AS A \*MYSTERY PICKUP.\*

## Holt News

Doug Hill of San Diego, California spent the summer with his aunt and uncle, Mr. and Mrs. Phil Jenkins and Kathy. Doug returned home Thursday.

Mr. and Mrs. Bob Tevebaugh of Claude and Mr. and Mrs. C.W. Kirk are on a two week vacation. They spent the first two nights with Mr. and Mrs. Harry Tevebaugh at Denver, then they went to Big Fork, Mont. to visit Mr. and Bruce Fiedler. Bruce got a notice from the U.S.A. that he will be leaving with his unit Aug. 25 for Missouri, from there he will go to Ft. Bragg, N.C. for eight weeks training. At present, Mrs. Fiedler is moving back with her parents, Mr. and Mrs. C.W. Kirk.

Mrs. Maude Rosson is sponsoring adopted, little 12 year old Cherokee Indian girl, name Vera Ann Hammer at Tulsa, Okla. for one year.

Dan Jackson visited Saturday his brother Mr. and Mrs. Bud Jackson and Robin at Kelton, Okla.

Mr. and Mrs. C.W. Johnson and boys of Madison Heights, Va. are visiting her parents, Mr. and Mrs. T. I. Harbour and other relatives.

Mr. and Mrs. Bob Phelps and family of Forgan, Okla. were weekend guests of her parents, Mr. and Mrs. Dan Jackson.

Mr. and Mrs. Medlin Patterson were happy to be guests of Mr. and Mrs. Raymond Kirk to celebrate their 30th wedding anniversary for a dinner Saturday night at Sutphens in Borger.

Mmes. Mildred Chamberlain of Spearman, Bertha Jenkins and Maude Rosson were Sunday afternoon callers of Maude Henderson of Pringle.



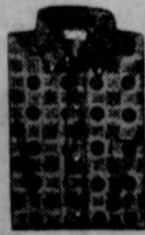
Plain, unadorned water has more variations in taste than many people realize. According to experts at the Miller Brewing Company in Milwaukee, the water used in brewing beer plays an important part in the taste of the final product.

JUST ARRIVED FOR FALL!

SMART OUTERWEAR

MOST LIKELY TO SUCCEED IN ANY WEATHER

SCHOOL TIME IS JUST AROUND THE CORNER, be sure your young man is ready by choosing his school clothes now from our selection. Perhaps he will like to come along and help make the choices. We'll be glad to show you the latest prints and colors in sport shirts, and all the very newest clothing for boys of all ages.



Shop Now For Best Selection

handsome fall suits and topcoats

FOR MEN WHO WANT QUALITY AS WELL AS VALUE

USE OUR CONVENIENT LAY-AWAY PLAN

CATES MENS & BOYS WEAR

"EVERYTHING FOR MENS & BOYS"



### Rites Held for Grandmother Of Spearmanites

Funeral services were held Tuesday, August 16 at 2 p.m. in La Pryor, near Uvalde, for Mrs. Kendall Davis, 96, grandmother of Mrs. Burl McClellan and Jim O. Davis, both of Spearman.

Mrs. Davis died at 4 a.m. Monday in a Uvalde hospital following an illness of six weeks.

She was born in 1870 and married Kendall Davis in 1885. Mr. Davis died in 1934.

Of the fourteen children born to the couple, nine survive Mrs. Davis. They are, sons, Dr. William Carlton Davis of Memphis, Offie Davis of El Paso, Samuel Davis of Orange, Marion Davis of Houston and Robert K. Davis of La Pryor; four daughters, Mrs. E.A. Barnes of Batesville, Mrs. Hanel Peterson, Mrs. Verner Salmon and Mrs. L.L. Andrews, all of La Pryor; 47 grandchildren and numerous great-grandchildren.

Mr. and Mrs. Irvin Delk and their daughter, Marva Sue, have been vacationing in Tucson where Marva Sue has accepted a position in the Tucson Library. She is a 1961 graduate of Spearman High School and has just received her Masters Degree in Library Science at O.S.U.

On the way to Tucson, the family stopped at Big Springs where they attended the wedding of a niece.

History's most prolific writer was Lope de la Vega, the 16th-century Spanish author, who wrote about 1,800 plays as well as many poems and novels.

### Social Security Branch Office Sets New Hours

The Social Security Branch Office located in Pampa, Texas has extended office hours each Thursday Night until 8:45 p.m. As a means of providing better service to the public, those persons who cannot come in during regular office hours can now come in between 8:30 a.m. and 8:45 p.m. any Thursday evening. Regular Office hours are from 8:30 a.m. until 4:45 p.m. Monday thru Friday except holidays.

The Pampa Office services the communities in Gray, Hutchinson, Hansford, Hemphill, Ochiltree, Lipscomb and Roberts counties.

You can check with the Post Office in your area for the date, time and place a representative will be in your area if you can not come to the Pampa office located at 400 W. Kingsmill in the Hughes Building, Pampa, Texas.

### BIG CHEESE

The largest cheese ever made was a cheddar of 34,591 pounds manufactured in Wisconsin in 1964 for exhibition at the New York World's Fair.

The most common surname in the English-speaking world is Smith. There are an estimated 1,290,000 Smiths in the U.S. alone!

### Elementary Registration Dates Announced

Elementary Principal Allen Alford announced this week the registration dates and information for students who will be in grades one through four this fall.

First graders will enroll from 9 until 12 Thursday, Aug. 25. These students will need a medical report from their doctor, their birth certificate and a \$2.75 supply fee.

New students in the district in grades two through four will enroll Aug. 25 in the afternoon. They will need a \$2.50 supply fee also.

Grades two through four will enroll Friday, Aug. 26, according to Principal Alford. These students should also bring a \$2.75 supply fee.

### Local Teachers Attend Conference

Attending the Reading Conference in Canyon Aug. 9-11 were Allen Alford, Mattilda Entekin, Nellie Payne, Mikie Richeson, Louise Archer, Fern Robinson, Doris Crum, Mr. and Mrs. Eddie Allen and Nikki Cotter.

Dr. Kate Bell, Curriculum Director of the Houston Elementary Schools and cousin of Mrs. Charlie Theis, local teacher, was one of the main speakers. She is president of the Texas Association for the Improvement of Reading of which the Canyon Reading Conference is associated.

an appropriation in an amount sufficient to replace the uninsured loss so incurred may be made by the Legislature out of General Revenue funds.

"Said Boards are severally authorized to pledge the whole or any part of the respective interests of Texas A & M University and of The University of Texas in the income from the Permanent University Fund, as such interests are now apportioned by Chapter 42 of the Acts of the Regular Session of the 42nd Legislature of the State of Texas, for the purpose of securing the payment of the principal and interest of such bonds or notes. The Permanent University Fund may be invested in such bonds or notes.

"All bonds or notes issued pursuant hereto shall be approved by the Attorney General of Texas and when so approved shall be incontestable. This Amendment shall be self-enacting provided, however, that nothing herein shall be construed as impairing any obligation heretofore created by the issuance of any outstanding notes or bonds under this Section by the respective Boards prior to the adoption of this Amendment but any such outstanding notes or bonds shall be paid in full, both principal and interest, in accordance with the terms of such contracts."

Sec. 2. The foregoing Constitutional Amendment shall be submitted to a vote of the qualified electors of this state at an election to be held on the first Tuesday after the first Monday in November, 1966, at which election all ballots shall have printed on them the following:

"FOR the Constitutional Amendment withdrawing Arlington State College from participation in the Permanent University Fund."

"AGAINST the Constitutional Amendment withdrawing Arlington State College from participation in the Permanent University Fund."

Sec. 3. The Governor of the State of Texas shall issue the necessary proclamation for the election and this Amendment shall be published in the manner and for the length of time as required by the constitution and laws of this state.

### PUBLIC NOTICE

#### Proposed CONSTITUTIONAL AMENDMENT NUMBER EIGHT ON THE BALLOT

PROPOSED CONSTITUTIONAL AMENDMENT TO BE VOTED ON AT AN ELECTION TO BE HELD ON NOVEMBER 8, 1966.

HOUSE JOINT RESOLUTION NO. 24 proposing an amendment to Article VI of the Constitution of the State of Texas by adding a new Section thereto, Section 2a, to provide for voting on electors for President and Vice President, and on all state-wide offices, questions or propositions by persons qualified to vote in this State except for meeting county or district residence requirements, and to provide for voting on electors for President and Vice President by otherwise qualified United States citizens who have moved into or out of the State preceding a presidential election.

BE IT RESOLVED BY THE LEGISLATURE OF THE STATE OF TEXAS:

Section 1. Article VI of the Constitution of the State of Texas is amended by adding a new Section thereto, Section 2a, to read:

"Section 2a. (a) Notwithstanding any other provision of this Constitution, the Legislature may enact laws and provide a method of registration, including the time of such registration, permitting any person who is qualified to vote in this State except for the residence requirements within a county or district, as set forth in Section 2 of this Article, to vote for (1) electors for President and Vice President of the United States and (2) all offices, questions

or propositions to be voted on by all electors throughout this State.

"(b) Notwithstanding any other provision of this Constitution, the Legislature may enact laws and provide for a method of registration, including the time for such registration, permitting any person (1) who is qualified to vote in this State except for the residence requirements of Section 2 of this Article, and (2) who shall have resided anywhere within this State at least thirty (30) days next preceding a General Election in a presidential election year, and (3) who shall have been a qualified elector in another state immediately prior to his removal to this State or would have been eligible to vote in such other state had he remained there until such election, to vote for electors for President and Vice President of the United States in that election.

"(c) Notwithstanding any other provision of this Constitution, the Legislature may enact laws and provide for a method of registration, including the time for such registration, permitting absentee voting for electors for President and Vice President of the United States in this State by former residents of this State (1) who have removed to another state, and (2) who meet all qualifications, except residence requirements, for voting for electors for President and Vice President in this State at the time of the election, but the privileges of suffrage so granted shall be only for

such period of time as would permit a former resident of this State to meet the residence requirements for voting in his new state of residence, and in no case for more than twenty-four (24) months."

Sec. 2. The foregoing Constitutional Amendment shall be submitted to a vote of the qualified electors of this State at an election to be held on the first Tuesday after the first Monday in November, 1966, at which election all ballots shall have printed thereon the following:

"FOR the Constitutional Amendment permitting persons qualified to vote in this State except for the residence requirements in a county or district to vote for Presidential and Vice Presidential Electors and for all state-wide offices, questions or propositions, and permitting citizens of the United States recently arrived or departed from the State to vote for Presidential and Vice Presidential Electors."

"AGAINST the Constitutional Amendment permitting persons qualified to vote in this State except for the residence requirements in a county or district to vote for Presidential and Vice Presidential Electors and for all state-wide offices, questions or propositions, and permitting citizens of the United States recently arrived or departed from the State to vote for Presidential and Vice Presidential Electors."

Sec. 3. The Governor of Texas shall issue the necessary proclamation for the election and this Amendment shall be published in the manner and for the length of time as required by the Constitution and laws of this State.

### PUBLIC NOTICE

#### Proposed CONSTITUTIONAL AMENDMENT NUMBER SEVEN ON THE BALLOT

PROPOSED CONSTITUTIONAL AMENDMENT TO BE VOTED ON AT AN ELECTION TO BE HELD ON NOVEMBER 8, 1966.

HOUSE JOINT RESOLUTION NO. 13 proposing an Amendment to Sections 2 and 4 of Article VI of the Constitution of the State of Texas so as to repeal the provision making payment of the poll tax a requirement for voting and so as to authorize the Legislature to provide for the registration of all voters. BE IT RESOLVED BY THE LEGISLATURE OF THE STATE OF TEXAS:

Section 1. That Section 2 of Article VI of the Constitution of the State of Texas be amended, effective February 1, 1968, by deleting the following language:

"and provided further, that any voter who is subject to pay a poll tax under the laws of the State of Texas shall have paid said tax before offering to vote at any election in this State and hold a receipt showing that said poll tax was paid before the first day of February next preceding such election. Or if said voter shall have lost or misplaced said tax receipt, he or she, as the case may be, shall be entitled to vote upon making affidavit before any officer authorized to administer oaths that such tax receipt has been lost. The husband may pay the poll tax of his wife and receive the receipt therefor. In like manner, the wife may pay the poll tax of her husband and receive the receipt therefor."

"provided, however, that before offering to vote at an election a voter shall have registered annually, but such requirement for registration shall not be considered a qualification of an elector within the meaning of the term 'qualified elector' as used in any other Article of this Constitution in respect to any matter except qualification and eligibility to vote at an election. Any legislation enacted in anticipation of the adoption of this Amendment shall not be invalid because of its anticipatory nature."

The text of this Section, as so amended, is shown below, with the deleted language marked through by a broken line and with the new

language underscored:

"Section 2. Every person subject to none of the foregoing disqualifications who shall have attained the age of twenty-one (21) years and who shall be a citizen of the United States and who shall have resided in this State one (1) year next preceding an election and the last six (6) months within the district or county in which such person offers to vote, shall be deemed a qualified elector; and provided further, that any voter who is subject to pay a poll tax under the laws of the State of Texas shall have paid said tax before offering to vote at any election in this State and hold a receipt showing that said poll tax was paid before the first day of February next preceding such election. Or if said voter shall have lost or misplaced said tax receipt, he or she, as the case may be, shall be entitled to vote upon making affidavit before any officer authorized to administer oaths that such tax receipt has been lost. Such affidavit shall be made in writing and left with the judge of the election. The husband may pay the poll tax of his wife and receive the receipt therefor. In like manner, the wife may pay the poll tax of her husband and receive the receipt therefor."

provided, however, that before offering to vote at an election a voter shall have registered annually, but such requirement for registration shall not be considered a qualification of an elector within the meaning of the term 'qualified elector' as used in any other Article of this Constitution in respect to any matter except qualification and eligibility to vote at an election. Any legislation enacted in anticipation of the adoption of this Amendment shall not be invalid because of its anticipatory nature. The Legislature may authorize absentee voting. And this provision of the Constitution shall be self-enacting without the necessity of further legislation. Any member of the Armed Forces of the United States or component branches thereof; or in the military service of the United States, may vote only in the county in which he or she resided at the time of en-

tering such service so long as he or she is a member of the Armed Forces."

Sec. 2. That Section 4 of Article VI of the Constitution of the State of Texas be amended by changing the word "may" to "shall" in the last clause thereof and by deleting the words "in all cities containing a population of ten thousand inhabitants or more."

The text of this Section, as so amended, is shown below, with the deleted language marked through by a broken line and with the new language underscored:

"Section 4. In all elections by the people, the vote shall be by ballot, and the Legislature shall provide for the numbering of tickets and make such other regulations as may be necessary to detect and punish fraud and preserve the purity of the ballot box; and the Legislature may shall provide by law for the registration of all voters in all cities containing a population of ten thousand inhabitants or more."

Sec. 3. If any other Amendment to Sections 2 or 4 of Article VI of the Constitution of the State of Texas, being for a different purpose, is adopted at an earlier election or at the same election, the adoption of this Amendment shall not be construed as nullifying any change made by such other Amendment.

Sec. 4. The foregoing Constitutional Amendment shall be submitted to a vote of the qualified electors of the state at an election to be held on the first Tuesday after the first Monday in November, 1966, at which election all ballots shall have printed thereon the following:

"FOR repealing the poll tax as a requirement for voting."

"AGAINST repealing the poll tax as a requirement for voting."

Sec. 5. If the foregoing Amendment is adopted, the proclamation of the Governor declaring the adoption of the Amendment shall set forth the full text of the amended Sections, as amended herein and as amended by any other proposed Amendment which is submitted by the 59th Legislature and which has been duly adopted prior to such proclamation.

Sec. 6. The Governor of the State of Texas shall issue the necessary proclamation for the election and this Amendment shall be published in the manner and for the length of time as required by the Constitution and laws of this State.

### PUBLIC NOTICE

#### Proposed CONSTITUTIONAL AMENDMENT NUMBER THREE ON THE BALLOT

PROPOSED CONSTITUTIONAL AMENDMENT TO BE VOTED ON AT AN ELECTION TO BE HELD ON NOVEMBER 8, 1966.

SENATE JOINT RESOLUTION NO. 39 proposing an amendment to Section 18, Article VII, Constitution of the State of Texas, to withdraw Arlington State College from participation in the Permanent University Fund.

BE IT RESOLVED BY THE LEGISLATURE OF THE STATE OF TEXAS:

Section 1. That Section 18, Article VII, Constitution of the State of Texas, be amended to read as follows:

"Section 18. For the purpose of constructing, equipping, or acquiring buildings or other permanent improvements for the Texas A & M University System, including Texas A & M University, Prairie View Agricultural and Mechanical College of Texas at Prairie View, Tarleton State College at Stephenville, Texas Agricultural Experiment Stations, Texas Agricultural Extension Service, Texas Engineering Experiment Station at College Station, Texas Engineering Extension Service at College Station, and the Texas Forest Service, the Board of Directors is hereby authorized to issue negotiable bonds or notes not to exceed a total amount of one-third (1/3) of twenty per cent (20%) of the value of the Permanent University Fund exclusive of real estate at the time of any issuance thereof; provided, however, no building or other permanent improvement shall be acquired or constructed hereunder for use by any part of the Texas A & M University System, except at and for the use of the general academic institutions of said System, namely, Texas A & M University, Tarleton State College, and Prairie View A & M College, without the prior approval of the Legislature or of such agency as may be authorized by the Legislature to grant such approval; and for the purpose of constructing, equipping, or acquiring buildings or other permanent improvements for the University of Texas System, includ-

ing The Main University of Texas at Austin, The University of Texas Medical Branch at Galveston, The University of Texas Southwestern Medical School at Dallas, The University of Texas Dental Branch at Houston, Texas Western College of The University of Texas at El Paso, The University of Texas M. D. Anderson Hospital and Tumor Institute at Houston, The University of Texas Postgraduate School of Medicine, The University of Texas School of Public Health, McDonald Observatory at Mount Locke, and the Marine Science Institute at Port Aransas, the Board of Regents of The University of Texas is hereby authorized to issue negotiable bonds and notes not to exceed a total amount of two-thirds (2/3) of twenty per cent (20%) of the value of the Permanent University Fund exclusive of real estate at the time of any issuance thereof; provided, however, no building or other permanent improvement shall be acquired or constructed hereunder for use by any institution of The University of Texas System, except at and for the use of the general academic institutions of said System, namely, The Main University and Texas Western College, without the prior approval of the Legislature or of such agency as may be authorized by the Legislature to grant such approval. Any bonds or notes issued hereunder shall be payable solely out of the income from the Permanent University Fund. Bonds or notes so issued shall mature serially or otherwise not more than thirty (30) years from their respective dates.

"The Texas A & M University System and all of the institutions constituting such System as hereinabove enumerated, and The University of Texas System, and all of the institutions constituting such System as hereinabove enumerated, shall not receive any General Revenue funds for the acquiring or constructing of buildings or other permanent improvements, except in case of fire, flood, storm, or earthquake occurring at any such institution, in which case



Oslo News

Pastor and Mrs. Lawrence Jenson of Humboldt will be visiting Sunday and Pastor Jenson will preach at Oslo.

Mr. and Mrs. Harold Doerring and family of Luana, Iowa and her father Elmer Jensen are here visiting in the Elmo Dahl home. Mrs. Doerring is the former Elveria Jensen.

Mr. and Mrs. Reben TeBest visited over the weekend in Denver, Colorado.

Sunday dinner guests in the Elmo Dahl home were Mr. and Mrs. Peter Dahl of Amarillo and Mr. and Mrs. Harold Doerring and family and Elmer Jensen of Luana, Iowa.

Mr. and Mrs. Carl Neiders of Hardesty, Oklahoma visited Sunday in the John Dahl home.

Mrs. Clifford Stedje and family returned Wednesday from an extended trip to Huntington Beach, Calif.

Adeline Dahl and Kevin visited over the weekend at the home of her sister, Mrs. Joe Walker.

Mr. and Mrs. Clifford Hill and Donnie visited Sunday afternoon in the Carl Gebhardt home in Optima.

Visiting last week in the Bill Johnson home were Mr. and Mrs. Doug Hackett of San Diego and Mrs. D.E. Cox of Hatch, New Mex.

Several Boy Scouts of the Oslo area are among a group of boys hiking to Lake Meredith. They are Floyd Walker, Eric Johnson, Milton Walker, and Chris Mohring.

Mr. and Mrs. Gordon Stedje and family went to Amarillo on Sunday evening. While they were there they attended the performance of "Texas" at the Amphitheatre in Palo Duro Canyon.

Mrs. Mary Olsen visited Monday morning in the James Stedfe home.

Mrs. Ray Lawrence and Susie of Long Beach, Calif. are visiting this week in Dewayne TeBest home in Gruey.

Mr. and Mrs. Terry Huse and family visited last week in Colorado with Terry's sister, Mrs. Ruth Pearson.

Mr. and Mrs. Joel Stavio and family are vacationing in New Mexico.

Student Council Holds Meeting

The Student Council had a meeting Tuesday, Aug. 16. They discussed next year's budget and a benefit dance for the American Field Service student, Chris Lobo. The dance will be held Aug. 27 at the Kon Tiki at 8:00. Stephan Sheets was elected as publicity chairman.

Gary Ellsworth, Sandra Schufeldt, Stephen Sheets, Doug Lackey, Thel Daniel, Joe Hutchison, Donna Ownbey, and Mr. L.L. Lays were present.



MODEL RAILROAD

Oddly enough, according to Associated Hobby Manufacturers, Inc., H-O Scale model railroads are found pleasurable not only by hobbyists at home, but also by businessmen at the office—who are said to assemble desk-drawer models during mid-morning or mid-afternoon breaks.

Take your problems to Church this week — millions leave them there!

the Word

"Thy word is a lamp unto my feet; and a light unto my path." — Psalm 119:105



If you are a Christian, you are blessed with a great heritage. It is a heritage of truth and has nothing to do with imagination or myths. It is a truth that remains unchanged, no matter how many times someone attempts a rewrite or offers a "studied" translation.

This truth is the word of God. It is found in the Holy Bible. It is found in Ten Commandments, which form a guidepost for Christian living.

Accept this truth; it is useless to argue against it. Conscience and common sense will not permit you to be unaware. You fool no one, not even yourself, if you pretend to ignore or disbelieve.



Sponsored By

**R. L. McCLELLAN  
GRAIN CO., INC.**

**FIRST STATE BANK**  
Member F.D.I.C.

**B & B GRAIN CO., INC.**

The Hansford Plainsman

Attend  
The Church Of Your Choice  
Sunday



"Do not be afraid; for I know that you seek Jesus who was crucified. He is not here; for He is risen as He said . . ." Matthew 28:5-6

—Weekly Opportunities For Worship—

**Apostolic Faith Church**  
V. E. (Hap) Blythe, Pastor  
9th & Dressen  
Sunday School 9:45 a.m.  
Morning Worship 10:35 a.m.  
Young People 6:30 p.m.  
Children's Church 7:00 p.m.  
Evening Worship 7:30 p.m.  
Thurs.:  
Ladies Bible Study 2:00 p.m.  
Prayer Meeting 7:30 p.m.

**Assembly of God Church**  
Rev. T. J. Taylor, Jr.  
403 N. Bemice  
Sunday School 9:45 a.m.  
Morning Worship 11:00 a.m.  
Sunday C.A.'s 6:30 p.m.  
Evening Worship 7:30 p.m.  
Wed. Bible Study 7:30 p.m.

**Church of Christ**  
Charles Milner, Minister  
121 S. Haney  
Bible Class 10:00 a.m.  
Worship 10:50 a.m.  
Teen Age Class 6:00 p.m.  
Worship 7:00 p.m.  
Wed. Ladies Bible Class 9:30 a.m.  
Wed. Bible Study 7:30 p.m.  
Daily Television on Channel 3, Mon. thru Fri. 10:15 a.m.

**First Christian Church**  
Rev. Dayle Schnell  
29 S. Bemice  
Sunday School 9:45 a.m.  
Morning Worship 11:00 a.m.  
Youth Meetings 5:30 p.m.  
Evening Worship 7:30 p.m.  
Wed. Choir Practice 7:30 p.m.

**Fellowship Baptist Church**  
Rev. Roy Meksch  
11th & Archer  
Sunday School 10:00 a.m.  
Preaching Service 11:00 a.m.  
Sunday Evening Service 7:30 p.m.  
Wed. Evening Service 7:30 p.m.

**Union Full Gospel Church**  
Rev. George R. Bollinger, Pastor  
1st & Endicott  
Sunday School 10:00 a.m.  
Morning Worship 11:00 a.m.  
Bible Classes Sunday 6:45 a.m.  
Evening Worship 7:30 p.m.  
Wed. Bible Study 7:30 p.m.

**Pentecostal Church**  
Sunday School 9:45 a.m.  
Morning Worship 11:00 a.m.  
Evening Worship 7:30 p.m.

**First Methodist Church**  
Rev. Wesley Daniel, Pastor  
407 S. Haney  
Sunday School 9:45 a.m.  
Morning Worship 11:00 a.m.  
M. Y. F. 6:30 p.m.  
Evening Worship 7:00 p.m.  
Women's Society of Christian Service Wed. 3:00 p.m. and 9 a.m.  
Choir Rehearsal 7:30 p.m.

**Waka Church of the Brethren**  
Lawrence Lehman, Pastor  
Sunday School 10:00 a.m.  
Morning Worship 11:00 a.m.  
Evening Service 7:00 p.m.  
Choir Practice Wed. 7:30 p.m.

**Oslo Lutheran Church**  
Robert L. Cordes, Pastor  
18 mi. N.W. of Gruver  
Sunday School 9:45 a.m. (includes adults)  
Worship Services 11:00 a.m.

**Faith Lutheran Church**  
Robert L. Cordes, Pastor  
11th & Bemice  
Worship Services 9:00 a.m.  
Sunday School 10:00 a.m.

**Sacred Heart Catholic Church**  
Rev. James C. Gurzynski  
901 S. Roland  
Sunday Mass 8 a.m. & 11 a.m.  
Wednesday & Friday 8:00 p.m.  
Saturday Mass 8:00 a.m.  
Other Days Mass 7:30 p.m.

**First Baptist Church**  
Rev. Luther M. Berry, Pastor  
123 S. Bemice  
Sunday School 9:45 a.m.  
Morning Worship 10:55 a.m.  
Training Union 5:30 p.m. (Oct. 1-Apr. 30)  
Training Union 6:00 p.m. (May 1-Sept. 30)  
Evening Worship 6:30 p.m. (Oct. 1-Apr. 30)  
Evening Worship 7:00 p.m. (May 1-Sept. 30)  
Wed. Evening Prayer Hour 8:00 p.m.

**First United Presbyterian Church**  
Rev. Lewis Koerselman, Sr.  
1021 Cotter Drive.  
Sunday Church School 9:45 a.m.  
Morning Worship 11:00 a.m.  
Evening Study Group 7:30 p.m.  
Wed. Choir Practice 7:30 p.m.



## Love of Texas History Prompted Restoring House

Houston---Love of Texas history prompted a Houston couple to restore an 1853 plantation house.

As a result, Mr. and Mrs. Ben L. Britton of Houston will receive the second Texas Restoration Award on Aug. 16 in ceremonies at Hatfield Plantation, which is located F.M. 912 near Washington in Washington County.

Mrs. Ben Barnes, wife of the baker of the Texas House Representatives, will present the award at 4 p.m.

The new award was initiated by the Texas State Historical Society Committee to recognize individuals and groups for significant restoration projects.

The fanfare that goes along with being recognized with an important award has amazed Britton, a man who speaks modestly of his accomplishments.

All this attention surprises Britton. "We were honored and pleased to receive the award, but we never dreamed of it....we embarked on the restoration project simply because we thought the house should be saved, and we found it to be a fascinating, enjoyable work," Britton first heard of Hatfield Plantations about 10 years ago. They drove to see it, and found that the house had fallen into ill repair because it had been vacant for about 18 years. But they were intrigued by the structure and workmanship and decided to purchase the house, restore it, and use it as a country home.

"This was our first restoration experience, and I'll have to say I was discouraged at first," recalls Marian Britton. "There was a great hole in the side of the house, and the windows were broken out. The roof had sagged, and water came in and damaged the ceilings and floors. The basement, or lower floor, was covered with dirt."

Typical of a couple that roughly enjoys team projects, Britton gives his wife the credit for success, and credits him.

"My wife was so enthusiastic she was the mainstay of the project....I just carried out her orders," mused Britton, a soft-spoken man who heads an investments company.

"But I couldn't have done it without my husband," injected Mrs. Britton. "He spent hours and read volumes of books studying restoration architectural history, and personally supervised virtually all of the restoration work."

"It took about five years to complete the restoration work because the Brittons took painstaking care with details. We wouldn't settle for reproductions, and had to comb the country for old hardware, such as cast iron water hangars, keyhole escapers and locks," said Britton. "We traveled a great deal searching for materials, found the hardware in Pennsylvania, Alabama, Tennessee, Virginia, and parts of Texas.

Sixty per cent of the glass window panes were missing, but we managed to find enough old hand-blown glass to complete the job.

"We also found many old materials in Galveston, where considerable demolishing is being done. We were able to salvage old flooring, timbers and studding. The floors are pine, and the staircase is cedar. All the woods were sanded and waxed, and as natural as possible.

"The foundation presented the most restoration problem, when the house was built, dirt excavated for the foundation was thrown to the front of the house," explained Britton. "Over this caused shifting of the earth which pushed in the foundation. So we had to haul

away the dirt and put in a firm, permanent foundation of steel girders and reinforced concrete. It was a real engineering job."

Britton searched diligently for craftsmen, but wasn't able to find any experienced in restoration work. So he gave instructions and guidance, and the workmen became as engrossed with the work as the Brittons.

Mrs. Britton supervised supervised furnishing the home in the 1810-40 period.

Hatfield Plantation was built by Col. Basil M. Hatfield, who fought in the battle of San Jacinto and operated one of the first steamboats on the Brazos River.

House features include hand hewn timbers, all notched and pegged.

Built by slave labor, the 3-story house is made of pink handmade brick with walls 13 inches thick. The house is unusual because it is constructed of brick, as most buildings of that time were frame. This indicates that Colonel Hatfield must have been well to do, for most of his contemporaries could not afford the time and money to make brick, even if they had available the needed materials and skilled slaves.

Research so far has not shown where Colonel Hatfield came to Texas from, but as his house is similar to those of early Western Virginia, Kentucky and Tennessee, he probably came from that area.

The early 19th century classical structure is an example of houses built during the transition from Roman to Greek Revival periods. It was built in 1853, during the Greek Revival peak in Texas, 1840-70.

Chief features are the formal balance, with the door in the center flanked by two windows on either side. Central halls have a room on each side. The use of a double portico shows Thomas Jefferson architectural influences. The portico has square posts instead of columns, because during those years the skilled slave labor necessary to build columns was scarce.

"So many people think early Texas produced only crude homes," said Britton. "That is why I think this house is important...it shows that Texas, too, had its day of early elegance."

### SOMETHING NEW FOR TRAVELERS: CARTAGENA!



Looking for a unique vacation at bargain prices? You may find it in the city of Cartagena, Colombia!

Of special interest to visitors are the walls surrounding Cartagena's "old city." Built in 1533 as a series of fortresses to guard the city from pirates, the walls are so thick that cars drive on top of them.

The colonial architecture, with its beautiful monasteries and churches, is more Spanish than Spain.

Only a short distance from the "old city," beach and sun lovers will find the resort section - a sun-filled world of luxurious hotels, a gambling casino, restaurants and beaches.

## HD Club Holds Regular Meeting

Town and Country Home Demonstration Club met Aug. 16 at the Home Demonstration Club Room with Louise Hawkins the hostess.

Roll call was answered with "the best advise I ever received."

Nedra Hays gave the devotional and presided over the business.

Marie Gruver gave her report on her trip to 4-H camp which was sponsored by the Town and Country Club.

Marie Crawford gave a demonstration on cake decoration. Donnetta Green won the cake that was used for demonstration. Auction was brought by Mary

Lovett and bought by Louise Hawkins.

Those attending were Nedra Lays, Donnetta Green, Nellie Buchanan, Kay Dean Jackson, Mary Lovett, the hostess, Louise Hawkins, and guests Marie Crawford and Marie Gruver.

Recent visitors in the L.F. Hand home were Mrs. Hand's parents, Mr. and Mrs. Clarence Leshar of Loco, N.M.

The longest freshwater lake in the world is Lake Tanganyika in Africa, which is 400 miles long, 15-50 miles wide and covers an area of 12,700 square miles.

The tailorbird of Asia uses its bill as a needle and bits of fiber or grass to sew leaf edges into a sack, which it fills with wool, fibers and hair to make a soft nest.

Sears

## We're Celebrating Our Second ANNIVERSARY

### Sears Acrylic White House Paint

Reg. \$5.98 **\$4.97 gal.**

### Silvertone 19" Portable T.V.

**\$119.95**

### Lamps

**\$5.50**

### Towels 2 for \$1.95

### All-Weather Motor Oil

Quart **35¢**

### Materials ( Assorted Colors )

4 yds. **\$1.59**

### Kenmore Washer

660 Series **\$194.95**  
Delivered & Installed

### Kenmore Washers

Model 51471 **\$204.95**

### Matching Kenmore Dryer

Model 51871 **\$139.95**  
Delivered & Installed

### Kenmore Detergent

25 lbs.	<b>\$4.99</b>
21 lbs.	<b>\$4.25</b>

### Coldspot 14' Frostless Refrigerator

Reg. \$329.95  
**Now \$300.95**

### 15' Coldspot Freezer

**\$275.95**

### 15' Coldspot Refrigerator Frostless Icemaker

**\$339.95**

### Kenmore Gas Range 36", with Teflon Griddle in middle Burner with Brain & Automatic Ovens

**\$274.95**  
(Delivered & Installed)

## Lady Kenmore Washer-Dryer

Combination  
Reg. \$444.50 **\$429.95**

SEARS, ROEBUCK AND CO.



## High Plains Foundation Sets Annual Meeting

Halfway, Texas--Harold Hinn, Chairman of the Board of Trustees of the High Plains Research Foundation has called the fall meeting of the Board of Trustees of the Foundation for 10 a.m., Thursday, September 8, 1966. The Board will convene at 10 a.m. at Wayne's Restaurant in Plainview.

The budget and research program for the Foundation in 1967 will be decided at the Board Meeting.

Reports on progress of the Foundation will be made by Frank Moore, President. Reports on the research program for this year and recommendations for the 1967 program of research will be made by Dr. Earl H. Collister, Executive Vice-President and Director. Other matters of business of the Foundation and committee reports will be on the agenda. There are one hundred and four members of the Board of Trustees, most of whom reside in the High and South Plains of Texas and the Panhandle of Oklahoma.

Orville Freeman, Secretary of Agriculture for the United States and the Honorable George Mahon, Congressman from the 19th District will be guests of the Board of Trustees for the noon luncheon, which will conclude the Board Meeting.

Following the meeting of the Board of Trustees, members of the Board will be hosts to the large number of visitors who will help celebrate the Tenth Annual Field Day of the Foundation at the Research Headquarters at Halfway, 14 miles west of Plainview. Board members will serve as hosts at each of the seven places of interest for the visitors. They will conduct guests through the various buildings, laboratories, greenhouse, lawn grass demonstrations and farm equipment display. Tours of the Research Farm will be, as always, the major feature from 1 p.m. to 4:30 p.m.

Secretary Freeman will address the assembled guests on the campus of the Foundation at 5 p.m. in the area south of the Moody Memorial Administration and Education Building. The free barbecue will be served right after the conclusion of the program.

## SAY IT IN DANISH



A must on many travelers' itineraries is Copenhagen. Here are some phrases compiled by Julia Jansen, a hostess for Lufthansa German Airlines, which may help add more fun to your visit to this fun-loving city: *Undskyld* (ohn-skewl), "Excuse me."; *Mange tak* (Mahng-eh tak), "Many thanks."; *God morgen* (go-MORN), "Good morning."; *Hvordan har De det?* (VOR-den hahr dee de?), "How are you?"; *Tak, godt, og De?* (tak, got, aw dee?) "Fine, thanks, and you?" *Mange tak, Julia!*

## Head of Dallas Library To Be Special Guest

Mrs. Lucile Boykin, head of the Texas History, Local History and Genealogy Department of the Dallas Public Library, will be special guest director of the genealogical workshop presented by the South Plains Genealogical Society, August 19-20 at the Municipal Garden-Arts Center, 4215 College Ave., Lubbock, according to Mrs. Carl H. Gelin, Lubbock, workshop chairman.

Mrs. Boykin will speak to the general assembly at 10 a.m. both Friday and Saturday. At 2 p.m. Friday, she will speak and conduct a question and answer program. At other times during both days, Mrs. Boykin will hold informal sessions for special groups and beginning researchers.

Books, maps and other research materials for use during the workshop will be furnished from the collection of the South Plains Genealogical Society and by its individual members. Other persons having books which they would like to lend to the workshop are welcome to do so, Mrs. Gelin said.

Mrs. Boykin, who has conducted genealogical workshops in Kansas, Oklahoma, and elsewhere in addition to

the Dallas Library, holds a bachelor's degree in library science from State Teachers College, Emporia, Kansas and a master's degree from the University of Denver in Colorado. She has been a member of the staff of the Dallas Library since 1956 and has been head of the history and genealogy department there since 1963. She spent the year of 1962 with the U.S. Army Library Service in Korea.

Among the topics discussed by Mrs. Boykin at the Lubbock workshop will be time-saving methods for locating materials and records in libraries; how to use such materials most effectively; basic needs in genealogical research, and how-to-go-about-it techniques.

Genealogical workshops are presented twice yearly by the South Plains Genealogical as a public service feature. No formal admission fee is charged, Mrs. Gelin said, but contributions are gratefully accepted and used to meet workshop expense as well as purchase books for the Society's collection.

Dining facilities are available at the workshop and all persons wishing to bring lunches are welcome to do so.

## THE BEETLE POPULATION

Beetles make up more than 40% of the entire insect species. There are about 277,000 species of beetles known in the world, with more being identified annually.

## U.S. MOTTO

The U.S. motto, "In God We Trust," was not officially adopted until July 30, 1956.

## PUBLIC NOTICE

### Proposed CONSTITUTIONAL AMENDMENT NUMBER TWELVE ON THE BALLOT

PROPOSED CONSTITUTIONAL AMENDMENT TO BE VOTED ON AT AN ELECTION TO BE HELD ON NOVEMBER 8, 1966. HOUSE JOINT RESOLUTION NO. 48 proposing an Amendment to Article IX of the Constitution of the State of Texas, providing the method and manner for dissolution of hospital districts created under Article IX of the Constitution.

BE IT RESOLVED BY THE LEGISLATURE OF THE STATE OF TEXAS:

Section 1. That Section 9, Article IX of the Constitution of the State of Texas be amended to read as follows: "Section 9. The Legislature may by law provide for the creation, establishment, maintenance and operation of hospital districts composed of one or more counties or all or any part of one or more counties with power to issue bonds for the purchase, construction, acquisition, repair or renovation of buildings and improvements and equipping same, for hospital purposes; providing for the transfer to the hospital district of the title to any land, buildings, improvements and equipment located wholly within the district which may be jointly or separately owned by any city, town or county, providing that any district so created shall assume full responsibility for providing medical and hospital care for its needy inhabitants and assume the outstanding indebtedness incurred by cities, towns and counties for hospital purposes prior to the creation of the district, if same are located wholly within its boundaries, and a pro rata portion of such indebtedness based upon the then last approved tax assessment rolls of the included cities, towns and counties if less than all

the territory thereof is included within the district boundaries; providing that after its creation no other municipality or political subdivision shall have the power to levy taxes or issue bonds or other obligations for hospital purposes or for providing medical care within the boundaries of the district; providing for the levy of annual taxes at a rate not to exceed seventy-five cents (75c) on the One Hundred Dollar valuation of all taxable property within such district for the purpose of meeting the requirements of the district's bonds, the indebtedness assumed by it and its maintenance and operating expenses, providing that such district shall not be created or such tax authorized unless approved by a majority of the qualified property taxpaying electors thereof voting at an election called for the purpose; and providing further that the support and maintenance of the district's hospital system shall never become a charge against or obligation of the State of Texas nor shall any direct appropriation be made by the Legislature for the construction, maintenance or improvement of any of the facilities of such district.

Provided, however, that no district shall be created except by act of the Legislature and then only after thirty (30) days' public notice to the district affected, and in no event may the Legislature provide for a district to be created without the affirmative vote of a majority of the taxpaying voters in the district concerned.

The Legislature may also provide for the dissolution of hospital districts provided that a process is afforded by statute for:

(1) determining the desire of a majority of the qualified voters within the district to dissolve it;

(2) disposing of or transferring the assets, if any, of the district; and

(3) satisfying the debts and bond obligations, if any, of the district, in such manner as to protect the interest of the citizens within the district, including their collective property rights in the assets and property of the district, provided, however, that any grant from federal funds, however dispensed, shall be considered an obligation to be repaid in satisfaction and provided that no election to dissolve shall be held more often than once each year. In such connection, the statute shall provide against disposal or transfer of the assets of the district except for due compensation unless such assets are transferred to another governmental agency, such as a county, embracing such district and using such transferred assets in such a way as to benefit citizens formerly within the district.

Sec. 2. The foregoing constitutional amendment shall be submitted to a vote of the qualified electors of this State at an election to be held on the first Tuesday after the first Monday in November, 1966, at which election all ballots shall have printed thereon the following:

"FOR the constitutional amendment providing the method and manner for dissolution of hospital districts."

"AGAINST the constitutional amendment providing the method and manner for dissolution of hospital districts."

Sec. 3. The Governor of the State of Texas shall issue the necessary proclamation for the election and this amendment shall be published in the manner and for the length of time as required by the Constitution and laws of this State.

## MISCONCEPTIONS



If you believe going into debt is sure to make a marriage unhappy, says the National Consumer Finance Association, you hold a common misconception. Actually, the wise use of credit can help prevent the unhappiness that comes from having to do without things that make life easier and more pleasant.

## Banks Used to Be All Dollars and Cents

Now, I depend on my bank for much more than "dollars and cents" service. That's where I go for sound financial advice, geared to my personal needs, plus the best in full banking service.

### CHECK THESE ADDITIONAL BANKING SERVICES

Checking Accounts • Savings Certificates • Home Improvement Loans  
Savings Accounts • Drive-In Banking • Money Orders • Personal Loans

**First State Bank**  
MEMBER F.D.I.C.



## PUBLIC NOTICE

### Proposed CONSTITUTIONAL AMENDMENT NUMBER FIFTEEN ON THE BALLOT

PROPOSED CONSTITUTIONAL AMENDMENT TO BE VOTED ON AT AN ELECTION TO BE HELD ON NOVEMBER 8, 1966.

SENATE JOINT RESOLUTION NO. 33 proposing an Amendment to Section 6, Article XVI, Constitution of the State of Texas, to authorize state participation in programs financed with funds from private or federal sources and conducted by local level or other private, nonsectarian associations, groups, and nonprofit organizations for establishing and equipping facilities for assisting the blind, crippled, or otherwise physically or mentally handicapped in becoming gainfully employed, for their rehabilitation or restoration, or for providing other services essential for the better care and treatment of the handicapped.

BE IT RESOLVED BY THE LEGISLATURE OF THE STATE OF TEXAS:

Section 1. That Section 6, Article XVI, Constitution of the State of Texas, be amended to read as follows:

"Section 6. (a) No appropriation for private or individual purposes shall be made, unless authorized by this Constitution. A regular statement, under oath, and an account of the receipts and expenditures of all public money shall be published annually, in such manner as shall be prescribed by law.

(b) State agencies charged with the responsibility of providing services to those who are blind, crippled, or otherwise physically or mentally handicapped may accept money from private or federal sources, designated by the private or federal source as money to be used in and establishing and equipping facilities for assisting those who are blind, crippled, or otherwise physically or mentally handicapped in becoming gainfully employed, in rehabilitating and restoring the handi-

capped, and in providing other services determined by the state agency to be essential for the better care and treatment of the handicapped. Money accepted under this subsection is state money. State agencies may spend money accepted under this subsection, and no other money, for specific programs and projects to be conducted by local level or other private, nonsectarian associations, groups, and nonprofit organizations, in establishing and equipping facilities for assisting those who are blind, crippled, or otherwise physically or mentally handicapped in becoming gainfully employed, in rehabilitating and restoring the handicapped, and in providing other services determined by the state agency to be essential for the better care or treatment of the handicapped.

"The state agencies may deposit money accepted under this subsection either in the state treasury or in other secure depositories. The money may not be expended for any purpose other than the purpose for which it was given. Notwithstanding any other provision of this Constitution, the state agencies may expend money accepted under this subsection without the necessity of an appropriation, unless the Legislature, by law, requires that the money be expended only on appropriation. The Legislature may prohibit state agencies from accepting money under this subsection or may regulate the amount of money accepted, the way the acceptance and expenditure of the money is administered, and the purposes for which the state agencies may expend the money. Money accepted under this subsection for a purpose prohibited by the Legislature shall be returned to the entity that gave the money.

"This subsection does not prohibit state agencies au-

thorized to render services to the handicapped from contracting with privately-owned or local facilities for necessary and essential services, subject to such conditions, standards, and procedures as may be prescribed by law."

Sec. 2. The foregoing Constitutional Amendment shall be submitted to a vote of the qualified voters of this state at an election to be held on the first Tuesday after the first Monday in November, 1966, at which election all ballots shall have printed on them the following:

"FOR the Constitutional Amendment authorizing assistance to the blind, crippled, or otherwise physically or mentally handicapped, in the form of grants of public funds obtained from private or federal sources only, to local level or other private, nonsectarian associations, groups, and nonprofit organizations for establishing and equipping facilities to assist the handicapped in becoming gainfully employed, for their rehabilitation or restoration, or for providing other services essential for the better care and treatment of the handicapped."

"AGAINST the Constitutional Amendment authorizing assistance to the blind, crippled, or otherwise physically or mentally handicapped, in the form of grants of public funds, obtained from private or federal sources only, to local level or other private, nonsectarian associations, groups, and nonprofit organizations for establishing and equipping facilities to assist the handicapped in becoming gainfully employed, for their rehabilitation or restoration, or for providing other services essential for the better care and treatment of the handicapped."

Sec. 3. The Governor of the State of Texas shall issue the necessary proclamation for the election and this amendment shall be published in the manner and for the length of time as required by the Constitution and laws of this state.



Buy, Sell, Trade  
Hire, Rent, Find  
THROUGH THE

# WANT ADS



## FOR SALE

For Sale:  
Four Wire Fox Terriers, One male, three females, 4 mos. Irvin Boyd, Star Rt., Guymon, Okla. Phone 659-2109.  
84-6-p

For Sale:  
2 bedroom house, 1 block from elementary school---4 years 10 months to Pay Off. See at 619 S. Evans.  
82tfc-c

For Sale:  
3 bedroom house, Call 659-2687.  
59tfc

For Sale:  
1955 Chevy-Belair 4-door. Contact Tommy West, 902 Womble, Gruver, Texas, or phone Fireside 7-2157.  
77tfc

For Sale:  
3 bedroom house. Blodgett Linn addition, one bath. Phone 659-2441, after 6 p.m. phone 659-2408.  
40tfc

For Sale:  
3 bedroom brick house, 2 baths, fenced--to be shown by appointment. Only call 659-3166, 1005 Barkley, will take trade for equity.  
80tfc

For Sale:  
Industrial lots on Gruver Highway. Cecil Crawford, 659-2409.  
61tfc

For Sale:  
1955 Chevrolet Pick-up. A1 condition. Floyd Mitts, Phone 659-2203.  
84tfc

For Sale:  
3 bedroom brick, 2 baths. Corner lot, fenced yard. Low equity. Assumed GI loan. Phone 659-3215 or after five, 2158.  
77tfc

## Electrolux

The Amazing Electrolux with power nozzle. Rotating brush action cleans all rugs faster--gently fluffs carpet nap. Sales and Service, call Don Seymour at 435-2064, Perryton, Texas.  
68-69-p-70tfc

For Sale:  
10 cu. ft. Hot-Point Refrigerator, 659-2318, 707 Lee Drive.  
80tfc

For Sale:  
Five room house with basement, draperies, deep freeze, one-car garage, one and one-half acres of land. Phone F17-2731 or F1-7-2282, J.E. Sluder, Gruver, Texas.  
64tfc

For Sale, Rent or Trade:  
2 bedroom house 210 N. Snider, W.H. Overall, inquire at 659-2426.  
84tfc

For Fuller Brush products write 2301 Georgia Drive, Perryton, Texas or call 435-4967.  
73tfc

For Sale:  
1961 Corvair, 57,000 miles, bargain. Phone 659-2559 or 2114.  
74tfc

Picture Frames made to order any size selections of molding fast service. C&B Studio, Spearman, Texas.  
78tfc-c

For Sale:  
Story and 1/2 home, living room, formal dining room, 3 bedrooms and 3 and 3/4 baths. On corner lot. Collard Real Estate, ph. 659-2501.  
86-tfc-c

For Sale:  
1 practically new 3-bedroom home and 1 new 3 bedroom home with 1 1/2 baths. Collard Real Estate, ph. 659-2501.  
86tfc-c

Garage Sale:  
Friday and Saturday, Aug. 19 and 20, 322 South Endicott, Elsie Mathews.  
86-1-p

Looking for a Batman Card? We, the Plainsman, have them! Get them while they are in stock.

For Sale:  
1958 Pontiac, Extra Clean. Used TV's \$19.95 up. Also used appliances. Spearman TV and Appliance, 309 Main, Phone 659-2625.  
86-4-c

For Sale:  
1961 Chevrolet, low mileage, good condition, air conditioner. See Ola Sparks.  
86tfc-c

For Sale:  
Full Blood Dach'und, Call Patty McGuire, 659-2900.  
86tfc-c

New bridge party items by Hallmark at Plainsman Office Supply.

For Sale:  
3 bedroom brick house. 1110 S. Barkley, Ph. 659-3050 or 817-LY4-5422, Weatherford, Texas.  
86-7-c

## WANTED

Wanted:  
Need a typist and receptionist. Phone 659-2566, Linn and Helms.  
82tfc-c

Custom plowing wanted. Phone 659-2914.  
72tfc-c

Wanted:  
To Buy a Steel windmill tower and windmill. Contact Carl Archer or Phone 659-2508.  
76tfc-c

Will pay cash for equity in three bedroom house. Phone 659-2181, Guy Fuller.  
79tfc-c

Wanted:  
Septic tank pumping, Portable and Disc Rolling. Bobby Joe Grayson, phone 659-2209.  
80tfc-c

Work Wanted:  
Pits filled, ditches back filled. Dozer Work Roy McCammond. 659-3393.

Wanted:  
Baby sitting in my home. Viola George, phone 659-2835.  
82-16-p.

Need reliable service station attendant. Contact Nelson's Texaco Station, Elmwood, Okla.  
62tfc-c

Wanted:  
Baby-sitter in my home. Mrs. Robert Janzen. Phone 659-3125.  
84tfc

WANTED:  
PERM SHY? NEVER FEAR! CURVE IS HERE! KEIM BEAUTY SALON. PHONE 659-2320, 812 S. Archer.  
85-2-c

Want to Buy:  
12 or 14 feet fishing boat. Phone 659-2591.  
83-3-c

## SERVICES

Amarillo Daily News & Globe Times home delivery. Call 2685.  
14tfc

ROSS CATERING SERVICE- Suppers, luncheons, teas, children's parties. Phone 659-3227.  
55tfc-c

SERVICE-Ditches from 3-12 inches, any desired dept. S. D. Jones 659-2809, Harold Shaver 659-3474.  
17tfc-c

Poodle Grooming by appointment. Phone Mrs. Richard Burke, 659-2855, 117 Townsend.  
76tfc

## Most Home Accidents To Children

College Station, --- Home accidents need attention and considerable effort to overcome, says Mrs. Wanda Meyer, Extension home management specialist at Texas A&M University.

Children are especially susceptible to home accidents. The U.S. Public Health Service notes that one of every four children under six years of age will be injured in the home this year.

Up to age 14, accidents take more lives than any of the five leading diseases, says Mrs. Meyer. Statistics like these can't be passed off simply by saying, "People are careless."

The World Health Organization recently completed a global study of domestic accidents and found that homes, themselves, are hazardous--more dangerous actually, than the office or factory.

There were about nine million work accidents in 1964. But there were 22 million home accidents in the same year.

From time to time it might be well for families to go over a sort of home safety checklist, suggests Mrs. Meyer.

Are the stairways in good repair? Are they guarded against accidents to younger children? Is a rug likely to slip from under you? Falls cause most

## FOR RENT

For Rent:  
2 room furnished apartment. 222 Roland, Bert Briley.  
84-2-c

For Rent:  
1 bedroom furnished apartment. Bills are paid. Phone 659-3017.  
86-2-p

## Future Readers of The Plainsman

Mr. and Mrs. Tommie Ferguson of Stinnett are the parents of a son named Tracy Dale, born Aug. 15 at 1:48 p.m., weighing 8 lb. 10 1/2 oz.

A father down the block realizes at last that the children are growing up. It's been three years since he tripped over a roller skate on the stairs.

## SALAD DAYS

To keep your picnic salad crisp and inviting prepare it a step at a time. Salad greens should be washed and prepared at home and stored in plastic wrap or a tightly covered bowl. Keep it cool. Add tomatoes, cucumbers or other items when it's eating time.

## PICTURE ON \$500

McKinley's portrait is on the \$500 bill.

The fact that silence is golden may explain why there's so little of it.

of the home injuries.

Safety authorities also advise families to have an escape plan that everyone at home knows about, in case of fire.

The family checklist should naturally emphasize the hazards children are most likely to encounter. But it shouldn't ignore the woman of the house. Since she spends more time at home, she is twice as likely to have a home accident as a man.



106 E. Kenneth

## Everett E. Greene AGENCY

Real Estate-Loans Insurance-Cattle Aluminum Pipes

410 Davis, Spearman Phone 659-2587

## TOMMY GOOCH AGENCY

Farm Bureau Insurance

Spearman, Texas

Want to Build a New Home, Remodel or Repair your present home CALL R. L. UPTERGROVE

FOR SALE:

3 Bedroom House-Several Lots-2 Commercial Buildings

## Pioneer Manor Welcomes Four

Four persons recently moved into Pioneer Manor, manager Bob Vaughn announced this week.

Mrs. Donnie Womack of Snider moved into the home this week. She is the mother of Jimmie Hester of Spearman. Last week Dude Wilson of Perryton. Henry Kern of Booker and S.W. McQuin of Gruver all moved into Pioneer Manor.

## Police Seek Parts Thief

City Police are investigating the theft of auto parts taken from the R.L. Huse garage Tuesday night.

Jerry Darmell, son-in-law of Huse, reported to the police that eight auto pistons were taken from the garage. The pistons belong to Darmell.

Chief of Police Leland Wood said the pistons were valued at more than \$50, making the offense a felony.

## HARASS YOUR HUBBY

Your marriage may be less than wedded bliss if you always meet your husband at the door with tales of what a terrible day you've had. On the other hand, taking time to spruce up and use a fragrance like Desert Flower may remind him of the pretty girl he married.

The trouble with being a parent is that by the time you're experienced, you're unemployed.

## Spearman TV & Appliance Service

All Brands Appliance & T.V. Service

Carol Willis Junior Hollis T.V. Appl.

309 Main Phone 2625

## City Directory

### CLEANERS

CLEANING PRESSING

CARPET

CLEANING SERVICE

COIN OPERATED

DRY CLEANING

FREE

PICK UP & DELIVERY

PHONE 659 2511

Wardrobe Cleaners

Oscar Donnell

302 MAIN ST

SPEARMAN, TEXAS

### DENTISTS

F. J. Daily D.D.S.

13 S. COURT STREET

SPEARMAN

### ELECTRICIAN

Anthony Electric

Industrial, Commercial and Home Wiring

Heating and

Air Conditioning

Contractors

and Repairs

Fully Insured

PLAINS

SHOPPING CENTER

PHONE 659-2511

PLAINS, TEXAS

Part of all you earn - should be yours to keep.



Ed Dear

Office: 659-2516 Home: 659-3073

222 Main Street Spearman, Texas

## Cummings Refrigeration

HEATING

AIR CONDITIONING

SALES & SERVICE

SPECIALIST

659-2721

SPEARMAN

For Your Summertime Convenience,

WE NOW HAVE

## ICE

L. D. Staggs

Top Mechanic

## Simmons CHEVRON SERVICE

Loren Simmons 659-9985

Plains Shopping Center



# Calendar of Events

- Thursday, Aug. 18 Gladiola Flower Club meets with Mrs. Hugh Banks at 9:30 a. m.
- Friday, Aug. 19 Arts and Craft Guild will not meet this week. Jonquil Flower Club meets with Mrs. Travis Davis as the hostess.
- Saturday, Aug. 20 Rummage Sale held at Russell Building by Ladies of the Christian Church, starting at 9 a. m.
- Monday, Aug. 22 Hansford H.D. Club meets. Dahlia Flower Club meets with Mrs. E.D. Clement. Delphinium Flower Club meets with Mrs. W.A. Ellsworth.
- Tuesday, Aug. 23 Lions Club
- Wednesday, Aug. 24 Baptist W.M.U. Royal Service
- Thursday, Aug. 25 Happy Homes Homes H.D. Club meets with Mrs. Thomas Reed. B&PW Meeting.



WASHINGTON NEWSLETTER FROM SENATOR JOHN TOWER

Committees: Banking and Currency Labor and Public Welfare



As we all know too well, inflation has grown very serious. Its symptoms and consequences have gone beyond higher costs and now inflation is upsetting whole industries.

We are suffering an attack of what is called "tight money." Let's take a look at some of the pressures inflation has forced upon us:

—Consumer prices have risen alarmingly to their highest point in our nation's history. On a 100-point index based on 1959, consumer prices have risen to 112.9.

—The current annual rate of cost inflation is between four and five percent. In only six months the cost of food has risen 2.5 percent. Commodities have risen 1.6 percent. Services are up 2.5 percent.

—The 1933 dollar is now worth 40 cents. The 1940 dollar is worth 43 cents. The 1959 dollar is worth 88 cents. Never before has the value of our dollar been so low.

—Higher taxes and higher prices more than wiped out whatever additional income Americans earned in April, May and June. The average American had \$10 less purchasing power in those months than he did during the first quarter of this year.

—Interest rates have risen to their highest point, and bank liquidity has fallen to its lowest point in 36 years. The prime rate for bank loans is now 5 1/4 per cent. Home mortgage rates are averaging over six percent, and rates of seven to eight percent and climbing are reported.

—The U. S. Treasury's national debt managers are borrowing money at the highest interest rate the government has paid in 45 years.

—Interest rates on automobile loans and installment credit have increased in many areas.

—A general credit contraction has occurred. It has become increasingly difficult for both businesses and individuals to obtain loans.

—The nation's savings and loan institutions are, for the first time in their history, facing a serious outflow of funds. In April alone they lost \$1 Million in deposits to other higher-interest investment opportunities. U. S. News quotes a Houston savings and loan executive as saying, "We're a \$50 Million loan operation, and we have not made a single new loan since May 1st."

—Because loan money is not available, residential construction has dropped sharply—in some places 30 percent—in reaction to both increased costs and the credit contraction. Home building last month hit a

five-year low.

—And, in the face of these ominous trends, the Administration is operating with a budget sure to run a deficit of between \$5 and \$10 Billion or more, the largest budget and possibly the largest deficit in our history.

We are now faced with this deteriorating situation because of federal insistence on following a policy of "administered inflation." Inflation, which some bureaucrats hoped could be tolerated and controlled in small doses, has not been contained. It has grown beyond all safe proportions and has turned from threat into reality.

In the absence of administrative action, Congress can take some steps to better the tight-money situation, particularly its harmful consequences for the housing industry.

In June, I introduced legislation to increase the secondary mortgage purchase authority of the Federal National Mortgage Association. This would help place more loan money in the hands of savings and loan businesses so both home sellers and home buyers could complete transactions at lower rates.

As ranking minority member of the Senate Housing Subcommittee, I have joined with Subcommittee Chairman Sparkman in sponsoring additional legislation to increase by \$3 Billion the purchasing power of the Federal National Mortgage Association and to give it new authority to help finance FHA and VA mortgages. The Banking Committee has sent this bill to the Senate.

I believe it is absolutely necessary that relief legislation be approved as soon as possible to offset the housing industry stalemate.

We will need other, longer-term solutions to combat general inflation—controlled government spending would do a lot—but the fact remains that fast action is necessary now to alleviate the tight-money strain on consumers, on banking and savings institutions, and on the home-building industry.

The present situation has been blamed on everyone from rancher to housewife. But important national inflations can occur only with the support of the government or in lieu of any anti-inflation moves by the government.

## Debaters Are Selected for Workshop Honor

Spearman High School debaters Gary Bengé and Hal Sanders were selected for an outstanding honor at the debate workshop they are attending in Michigan this week.

The Spearman team and a team from Indiana, that finished second in the national debate contests last year, were chosen to give the demonstration debate for the workshop.

There was no official judging of the debate, according to Mrs. Frank Porter, the team coach.

Six rounds of debate for the 80 teams from across the nation began Wednesday. This is the last event of the two-week workshop.

The team will return home Sunday. They are the only Texas team at the workshop. Bengé and Sanders were accompanied to Michigan by Frank Porter. Mrs. Porter was unable to make the trip.

Whatever your job, there are always youngsters coming up who think they can do it better, and probable can.

## Spicy Applesauce

To give canned applesauce a spicy flavor, heat with a little cinnamon. Delicious served warm, topped with vanilla ice cream.

In international affairs, it is still best to take the long view. The trouble is that it seems to be necessary to take them longer and longer.

When you are out of your teens, your fads begin to look silly as your folks said they were.

Inflation: The system whereby if you save up long enough to buy something you can't afford it.

There are two kinds of egoists—those who admit it and the rest of us.

**BIG LIGHT... SMALL COST**

THE AUTOMATIC NITE-LITER WIDE AREA OUTDOOR LIGHTING \$4.00 PER MONTH INCLUDING INSTALLATION

Enjoy the convenience and protection of big area outdoor lighting the economical way. Let us install a Nite-Liter, the modern mercury vapor lighting unit that provides effective light up to 150 feet away. Fully automatic, it turns itself on at dusk and off at dawn. Ideal for use around your home, farm or business. No investment required. CPS provides the Nite-Liter, installs it on a tall wooden pole, maintains it and furnishes replacement bulbs and electricity used... all for only \$4.00 per month. Call our office soon for your Nite-Liter.

**COMMUNITY PUBLIC SERVICE**  
Your Electric Light & Power Company



## Doctor in the Kitchen

By W.W. Bauer, M.D. Consultant, National Dairy Council

### DIET FOR DIABETICS

Nutrition can be discussed in general terms for normal people. For those with illnesses or metabolic deficiencies, the diet must be "tailored" to each individual, just as a well-fitted garment must be. Diet for diabetics falls into this class. One can, of course, give certain general principles, but the details must be:

- a) advised by the attending physician after physical examination, history of illness, and laboratory tests;
- b) closely supervised at intervals varying with the severity of the condition; and
- c) modified from time to time as conditions change.

#### Nature of Diabetes

Diabetes is an inability of the body to cope with the chemical handling (metabolism) of sugars in the body. It is due to deficiency in a secretion produced by specialized cells in the pancreas, called after their discoverer, the islands of Langerhans. The se-

cretion is called insulin.

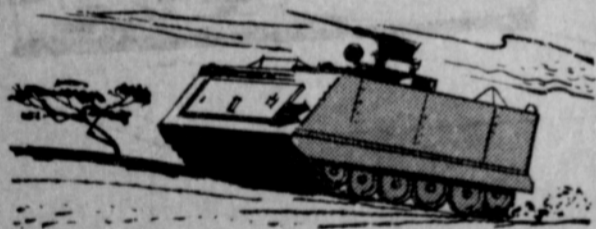
While diabetes is a deficiency in sugar metabolism, it involves other classes of foods. Starches are quickly converted into sugar; proteins in excess of needs are also changed into sugar. The handling of fats is impaired by the deficiency in sugar chemistry. It is obvious that the entire diet must be controlled.

These controls usually involve:

- a) reduction in total calories, except where body weights are normal or below (many diabetics are overweight);
- b) elimination of all sugar as such;
- c) restriction of starchy foods;
- d) adjustment of fat intake to dietary needs.

In addition to dietary controls, diabetics may require injections of insulin, or in the case of older and milder cases, one of the pills which help metabolize sugar. These pills are not insulin. Insu-

## Army Tanks Give Good



## Hail Protection

### But You Can't Grow

## A Maize Crop In One!

We Offer Crop Protection With Crop Hail Insurance

See Us Today

## J.L. Brock Agency

206 Main

Phone 659-2514

lin must be injected.

#### Must Have Adequate Diet

Diabetics, like everyone else, must have an adequate diet in order to maintain health and strength. The diabetic diet, in addition to its emphasis on strict quantity control and sugar elimination, stresses the adequacy of protein intake. It also demands ample vitamin and mineral supplies, derived from vegetables and fruits relatively low in sugars.

A few of the useful books for diabetics are listed here:

- Diabetic Manual, Elliot P. Joslin, Lea & Febiger, 10th ed.
  - Your Diabetes and How to Live with It, Rogers, Leverton, and Hervert, Univ. of Nebraska Press, 1961.
  - Diabetes, a Way of Life, T. S. Danowski, Coward-McCann, 1964.
  - Diabetics Handbook, A. M. Sindoni, Ronald Press, 1959.
  - Diabetic menus, meals, recipes, Betty M. West, Doubleday, 1959.
  - Cookbook for Diabetics, American Diabetes Ass'n, 1 East 45th Street, New York 10017, 1959.
  - How to Live With Diabetes, Henry Dolger and Bernard Seeman, W. W. Norton, 1959.
- Any of these books is obtainable through any book store.

Put Some **ZING** In Your Life

Hear The Best Music...

- \* easy listening
- \* top 40
- \* country-western

on **k b m f - f m** 98.3 on your dial.



# Take Home a Cartload of... SPECIALS

YES...SPECIALS like these are a great break for you...they mean SAVINGS BY THE CARTLOAD and lots more for your grocery dollar! Shop CUT RATE GROCERY for these lower-than-ever SPECIALS on Friday and Saturday, August 19 and 20. An added extra you'll get at CUT RATE are those wonderful BUCCANEER STAMPS...you can redeem them right here in SPEARMAN.

Krafts Velveeta

**Cheese Spread** 2 lb. Loaf **79¢**

**Miracle Whip** Krafts Salad Dressing Quart **47¢**

Ranch Style Tall Can  
**BLACK EYE PEAS**  
3 for 29¢

Shurfine  
lb. can  
**Coffee 67¢**

California Sunbelt  
**Lemons** lb. **17¢**  
Pick-O-Morn  
**Tomatoes** Pkg. **19¢**  
New Crop  
Russell  
**Potatoes** 10 lb. bag **49¢**  
Large Thick-Meated Bell Peppers **17¢ lb.**



Shurfine Cucumber  
Quart Barrel Jar

**DILL CHIP PICKLES 29¢**

Weekend Values  
for Friday  
& Saturday,  
Aug. 19  
& 20

Del Monte  
Pineapple Juice,  
Pineapple-  
Grapefruit Drink,  
Orange Drink,  
or Tomato Juice  
46 oz. cans  
**3 for \$1.00**  
"mix or match"

Van Camps  
**Vienna Sausage**  
5 for \$1.

**TEA**  
Shurfine  
1/2 lb. box **49¢**

Arrow Brand  
4 lb. Bag  
**Pinto Beans 39¢**

## FROZEN FOODS

Patio  
**Mexican Dinners** Pkg **39¢**

Mortons Apple Cherry or Peach  
**Fruit Pies** each **29¢**

**Golden Corn** Shurfine Cut 24 oz. Bag **39¢**

**Orange Drink** Hi-C 9 oz. Cans **27¢**

Imperial Pure Cane  
10 lb Bag

**Sugar 99¢**

Lanes "Old Fashioned"

**Ice Cream 67¢**  
All Flavors  
Half Gallon

**Strawberry Preserves** Zestee 18 oz. Tumbler **39¢**

Armours  
**Treet** 12 oz. Tin **39¢**

Hunts Solid Pack Whole Tall Can  
**Tomatoes 2 for 35¢**

Micro Mesh  
**LADIES NYLONS** 3 Pairs **98¢**

Andrea Dumons Reg. \$1.59  
**BUBBLING BATH OIL** Half Gallon **79¢**

**Kool-Aid** All Flavors 5¢ Pkg.  
**5 for 19¢**

Del Monte Chunk Style  
**Tuna** Flat Can  
**3 for 79¢**

Wholesome Goodness in EVERY Drop. It's Quality Milk AT ITS BEST



Reynolds 12 in. x 25 ft. roll  
**Aluminum Foil 29¢**

Ken L Ration Tall Can  
**Dog Food 6 for \$1.**

Jumbo Size Detergent

GIANT SIZE  
**Tide 59¢**

**Dash** with FREE Ice Cream Scoop attached  
**\$2.39**

Heavy Duty Detergent  
**DUZ** with FREE 16 oz. Smoked Crystal Iced Tea Tumbler  
**\$1.39**

For Automatic Dishwashers  
**Cascade** New Giant Size  
**83¢**

This Week's Dish  
**White Swirl**  
**FRUIT DISH 9¢**



PFC. BOBBY WILLIAMS

### Pfc. Williams Is 6th in Class

Pfc. Bobby Williams, son of Mr. and Mrs. Joe Reeves of Gruver and husband of the former Monet Washington of Spearman, of the 4th Warrant Officer Candidate Company is now stationed at Fort Wolters, Helicopter Division at Mineral Wells. Out of the 40 men in his section he is in 6th place for solo flying.

### Royal Service Program Held

The Royal Service Program of the First Baptist Church met Wednesday morning at the First Baptist Church. Betty Uptergrove conducted the business meeting. The Prayer Calendar was lead by Barbara Howe. The Royal Service program for this week was entitled "Understanding Malaysia" and by Patsy Gates. She was assisted by Marie Barry, Pat Denham, Vicki Atkinson, and Joy Ralls. Approximately 12 members were present.

Ivey Duncan of Pampa visited the Delon Kirks Tuesday.

Mr. and Mrs. Buri McClellan spent Sunday in Amarillo where they visited her father, Dr. W.C. Davis in Northwest Texas Hospital.

### Color Blind Men

Tests show that men are more likely to be color blind than women.

### COAL DISCOVERY

Coal was discovered in North America in 1679.

### Old Teapot Planter

You can make a pretty centerpiece that will bring compliments to your dining table by planting ivy in an old teapot. The centerpiece can be called into use when flowers are unavailable and you want a bit of green to liven up the table.

Overheard: "They call me Batman because my wife is an old bat."

### SPEARMAN T.V. & APPLIANCE

Zenith and RCA factory trained technician  
RCA Whirlpool factory trained technician

We Specialize In  
Color TV & Antenna Repair.

309 Main Ph. 2526

A.F. Brand  
all meat  
**Bacon** 2 lb. **1.79**  
Swift's Premium 3 to 4 lb.  
**Stewing Chicken** lb. **39¢**  
USDA CHOICE Beef  
**Sirloin Steak** lb. **89¢**

**Cut Rate GROCERY**