

The Hansford Plainsman

VOLUME VIII. NUMBER 16

SPEARMAN, HANSFORD COUNTY, TEXAS 79081

SUNDAY, DECEMBER 11, 1966



HOLDING MOISTURE - While the snow was blowing like dust from the neighboring fields, this maize stalk field was holding the snow that fell and blew into it. Fields such as this were the only ones that realized much benefit from the light snowfall. Plainsman photo

County Receives First Blast Of Bad Weather

Spearman and Hansford County got their first real shot of winter, complete with blowing snow, high winds, low temperatures and icy streets and roads Friday.

The snow storm amounted to very little moisture, as it blew in on a cold front just before daybreak Friday morning. By 8 a.m., the ground lay covered with snow.

Mrs. Pat Cates said the official moisture was .02 of an inch. The snow fell parallel to the ground and very little stuck except in areas where grass or stubble held it.

During the morning the small storm resembled a bliz-

zard as the wind drove the snow ahead of it and officers reported that driving was hazardous on the highways.

On east-west roads, the snow drifted out from the fence rows and made drifts across the roads. There were no roads reported closed by the snow.

By afternoon the skies had cleared and the snow had been beaten off the streets. On the highways the snow was beaten off into frozen patches by night which made driving dangerous.

A salesman coming from Amarillo Friday morning said driving was dangerous all the way with the highway having ice on it and the wind blowing the snow, cutting visibility.

Clear skies Saturday morning set the mercury sliding down to a low of six degrees. It was up to 22 at 10:30 a.m.

Friday morning the low was 21. The lows and highs this

week, according to Mrs. Cates, were: Monday, 69-22; Tuesday, 61-37; Wednesday, 72-38; Thursday, 56-29; and Friday, 48-21. The readings are taken at 7 a.m. each day and the highs reflect the temperature of the previous day.

Lynx Drop Mustangs In Tourney

Spearman's Lynx went into the consolation finals of the Gruver tournament at 3 p.m. Saturday after beating Morse 48-36 Friday.

Carl Close led the scoring parade for the Lynx as he pushed in six field goals and three free shots for 15 points. Benny McCullough hit on five field goals and one free shot for 11 points.

Gary Faries hit seven points on two field goals and three free shots. Charles Shieldknight had two and two for six points. Mike Hendrick scored five points and Carrol Day had four.

The Lynx scored 10 of 18 free shots.

Alva Henderson and Mike Johnson led the Morse scoring with nine points each. Bob Womble had eight, Monte McCloy had five, Bill McCloy three, Jesse Vera two and Jim Womble one.

Spearman did not pull away
(Con't. on page 7)

First Snow for Miss Cris Lobo

The snow storm Friday morning was old stuff for local residents, but for our guest from Brazil it was a new experience.

Miss Cris Lobo, the exchange student from Salto, Brazil, saw her first snow Friday morning.

Her only comment about the experience was while she was making a snowball for the photographer, "Please hurry! This is cold."

Spearman Lynxettes In Finals Of Gruver Ball Tournament

The Spearman Lynxettes went into the finals of the Gruver Tournament Saturday night after taking an easy win from the Gruver girls 37-15 Friday night.

Lynxette Coach Dean Weese is apparently getting his defensive problems solved as his senior and rookie defenders held the Gruver forwards to seven field goals. Gruver hit only one of 12 free shots.

Weese got outstanding protection with senior Nancy Mc-

Cullough leading Jeanette Mc-Adams, Jyniece Callaway, Sandra Shufeldt, Sue Sloan and Judy and Marilyn Jones.

Marsha Shieldknight showed some of her speed and ability as she pushed in six field goals to take some of the pressure off Barbara Wilde. Wilde had 15 points to lead the scoring. She hit five field goals and five free shots.

Linn Robinson scored eight points on a field goal and six

free shots. She made six of seven free shots. Callaway got two points on free shots while playing on offense. Shufeldt also saw some forward action.

Stedje led the Gruver action with five points on two field goals and one free shot. Karon Wright, who saw only limited action, scored four points as did Wood. Roper hit two points.

Spearman was leading 9-2, 17-5 and 27-9 at the quarter marks.



TOURNAMENT ACTION - Barbara Wilde goes up for a shot against the Gruver girls in a game played Friday night in the Gruver tournament. Spearman won the game and the Lynxettes were to play in the finals Saturday night. The other Lynxette in the picture is Sandra Shufeldt. Plainsman photo

Production Of Oil Total One Billion

Texas oil production reached the one billion barrel total in 1965 for the first time since 1957, figures compiled by Texas Mid-Continent Oil & Gas Association show.

There were 1,000,749,000 barrels of crude oil, valued at more than \$3 billion, produced in 200 of the 254 counties during 1965, statistics show.

Since production records began 70 years ago, the state has produced a total of 28,403,016,481 barrels of crude.

Hansford County had a 1965 crude production of 1,894,100 barrels to bring its total to 16,764,100 barrels since its first discovery in 1937. Its 1965 production rate averaged 5,189 barrels a day.

Andrews County continued to be the leading county in oil production, with 76,908,300 barrels, although all sections of the state have several high producing oil fields.

"The state's excellent oil and gas conservation system must be given credit for the widespread and continuing development of production throughout Texas," said W. A. Landreth, Fort Worth independent operator who is president of Texas Mid-Continent. "Under our state laws, administered ably by the Texas Railroad Commission, the state's petroleum resources development has been encouraged from the driller to the refiner."

In 1965, Texas had three counties that produced in excess of 40 million barrels. Besides Andrews, Ector County had a total of 61,266,600 and Crane County produced 43,952,300 barrels.

In addition, five other counties produced more than 20 million barrels and an additional 24 had production in excess of 10 million barrels.

Gregg remains the only county in the state that has produced more than two billion barrels, while three other counties--Rusk, Ector and Andrews--have produced more than one billion.



THE FIRST - Cris Lobo, Spearman's exchange student, got her first experience with snow when the small blizzard hit Friday. Cris lives with Mr. and Mrs. John Wilde. Plainsman photo

Mrs. Daniel Has Program

The Susannah Wesley Circle of the WSCS met Wednesday morning in the church parlor with Mrs. Don DeArmond as

hostess. After a short business session conducted by Mrs. Richard Baxter, Mrs. Wesley Daniel gave the program entitled "Christmas". Refreshments were served to members, Meses, Robert Ad- amson, Baxter, Daniel, Gar- land Head, Bert Sheppard, Win- fred Lewis, Larry McIntire, George Collard, Ray Messer and the hostess.

Meat Program Given For 4-H

The Foods II group of the Busy Bees 4-H Club met for their first meeting with their Foods Leader, Rebecca Hutchi-

son. Their lesson was "Let's Start with Meat". It was stressed that everyone should eat meat at least twice each day for proper growth and re- pair of body tissues. Each girl made a meat loaf to take home for her family's evening meal. 4-H members attending were: Delinda Head, Gloria Lopez, Nanette McIntyre, Donna Read and Katherine Reeves.



"Sticking your nose into other peoples' business is the surest way of coming face to face with trouble."

Union Women Have Meeting

The Women's Missionary Group of the Union Church met Tuesday afternoon in the Ernest Sluder home in Gruver. Mrs. Sluder has been confined to her home for the past two months with a broken hip. The group had for the Bible lesson the 14th chapter of Acts. Refreshments were served to members, Meses, Virgil Floyd, Frances Sim, Harold Bowen, B. J. Garnett, O.C. Roney, W.A. Schubert, J.H. Martin, R.E. Martin, Lilly Bowling, Charles Martin, Alberta Estes, Bernard Barges, Myrtle Fullbright and George Bollinger.

Mrs. Martin Has Rho Rho

Rho Rho Chapter of Beta Sig- ma Phi met Thursday at 12:30 for a luncheon in the home of Mrs. Ray Martin. The entertaining rooms were attractively decorated in the Christmas motif. The serving table was laid with a red cloth and centered with candles and poinsettias. Linda Davis, president, pre- sided at the business session fol- lowed by the lesson "Nature, the Universe" given by Verna Strawn. She tied the lesson in with the Christmas season. Present were Jeanette Allen, Ann Archer, Peggy Boatwright, Linda Davis, Karen Countiss, Marti Garnett, Deloris Guthrie, Glenda Guthrie, Charlene Jack- son, Judy Martin, Linda Mc- Lain, Beverly Sparks, Joan Ste- wart, Verna Strawn, Lil Turn- er, Peggy West and Ramah Bo- secker.



WESTERN AUTO IN SPEARMAN

IS THE BEST FRIEND SANTA EVER HAD!
THERE ARE GIFTS FOR EVERY MEMBER OF THE FAMILY

Junior Size Early American



Padded Rocker **7.88** at W.A.!

Bright patch- work - uphol- stered front & back! Maple- finished hard- wood! E5903

SMALL GIFT IDEAS!
Billfolds, Pendant Watches, Electric Razors, Swinger Cameras, Games, Toys, Dolls!
OUIJA BOARDS!

Coba and Hallicrafter Citizenband Radios

Handicraft Purses You assemble these



Feed Dolly in Her Own Maple Finish Colonial-Style High Chair! Only..

4.99 Now at W.A.!

All Sturdy Hardwood with Turned Arm & Back Pieces!

Padded seat, valance and removable back pillow are patchwork print! E5435

Doll Houses

Baby Strollers

Electric Heaters

Western Auto
Associate Store



Santa Sizzler

Western Flyer Husky!

7.44 At W.A.

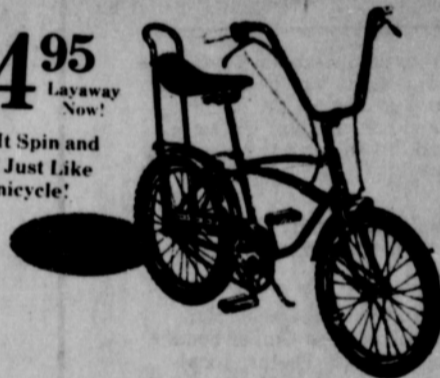
Look! 10" Trike! Bright flamboyant finish! 3FC1031

12" Trike 3FC1032 8.44
16" Trike 3FC1033 9.88
20" Trike 3FC1034 11.44

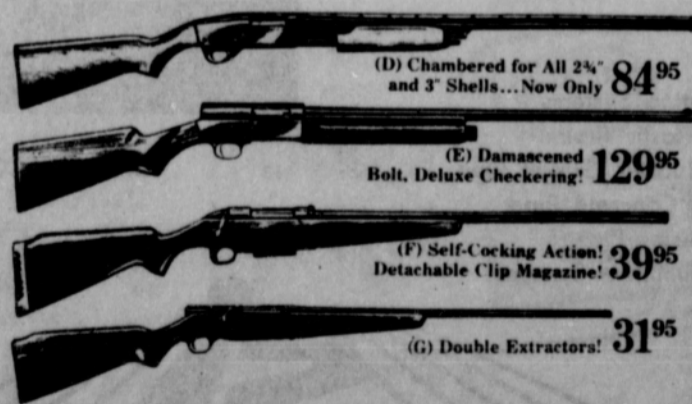
LARGE SELECTION BICYCLES

54.95 Layaway Now!

Make It Spin and Buck! Just Like a Unicycle!



MANY SHOTGUNS AND RIFLES



(D) Chambered for All 2 1/2" and 3" Shells... Now Only **84.95**

(E) Damascened Bolt, Deluxe Checkering! **129.95**

(F) Self-Cocking Action! Detachable Clip Magazine! **39.95**

(G) Double Extractors! **31.95**

Layaway Now!
Or Use Your Handy Charge at Western Auto!

FREE GIFT WRAPPING



100

27 Branches!

Easy Assembly & Dismantling!

Aluminum Tripod Base!

6-Ft. Evergreen Pine Christmas Tree

All-aluminum tree has brilliant new frosty look! Special storage tubes! E8165

Colorized 4-Wheel! E8155 6-Ft. "Silver Fountain" Aluminum Christmas Tree! 43 branches! E8166 **5.99**

Gift Box Memo:

Make this Christmas a real joy for some of your friends who really enjoy books. It is really surprising how many people like to have books, but just never buy them. Some of the most popular books we have are "The Treasure Chest", "Leaves of Gold" and "Words of Life". We also have many religious books, some are for enjoyable reading and inspiration, others are for instruct on and better understanding of the Bible. Novels are always good gifts and we try to keep the better and more popular novels. For the woman who likes to cook, we have many of the popular cookbooks. These might also help some of those who do not like to cook. With cold weather here, who would not like to have a set of colorful coffee mugs. These are the popular mugs that we have such a hard time keeping. The linen calendars are always popular gifts and we still have some in stock. These are one of the most popular gift items we stock. As always, we are getting more stock in and there is something new and different in each shipment.

Gift Box

The Hansford Plainsman

PUBLISHERS INC.



Co-Publishers . . . Jim O. Davis and Burl McClellan
 County-Wide, Independent Newspaper published every Thursday and Sunday at 209 Main St., Post Office Box 668, Spearman, Texas 79081. Second Class postage paid in Spearman, Texas 79081.
 Editor . . . Burl McClellan
 Manager . . . Jim O. Davis

Dumas Man Heading District 102 Masons

Paul E. Umphres of Dumas has been named District Deputy Grand Master of Masons for Masons District No. 102, which includes eight Masonic Lodges in Hansford, Hutchinson and



Paul E. Umphres

ed as a teacher and Sunday school superintendent. He is currently serving as President of the Cactus Federal Credit Union.

The appointment was made by the newly-elected Grand Master of Masons in Texas, J. D. Tomme, Jr. of Fort Worth, as the 131st Annual Communication of the Grand Lodge of Texas was concluded in Waco Dec. 8.

District Deputy Grand Masters are appointed for each of the 132 Masonic Districts of Texas. They are the personal representatives of the Grand Master, head of the state's largest fraternal organization with nearly 250,000 members.

Hansford Hospital News

Patients in Hansford Hospital are J.W. Williamson, Ethel Davis, Mary Cone, Bill Miller, W.W. Weaver, John Jasper, Venita Martin, R.B. Anderson, Eva Holt, A.W. Mobley, Elsie Trolinder, Jackie Nichols, Leonard Mackey, Kay Hobbs and son, Nolan Lewis Crandall.

Dismissed were Verna Gail Keim, Skipper Robinson, Charlie Love, H.L. Searcy, Rose Cassidy.

Pisa, Italy, has one leaning tower, but Bologna has two. One, 163 feet tall, is 10 feet out of plumb.

Future Readers of The Plainsman

Mr. and Mrs. Leon Hobbs are the parents of a boy born Dec. 7 at Hansford Hospital. He weighed 6 lbs. 7 1/2 oz.

Tax Man Sam Sez. . . .

Farmers should stop by their County Agent's office or by the local Internal Revenue Service office and get the 1967 edition of the FARMERS TAX GUIDE. This free booklet tells farmers in plain down-to-earth language how to prepare their 1966 tax returns. It's worth plowing through.

Homes, Businesses May Still Compete For Prizes

Spearman residents have until Dec. 21 to enter their home in the Christmas decoration contest, sponsored by the Chamber of Commerce.

There will be \$50 in prize money for the three best decorated homes in Spearman. First prize will be \$25, second prize will be \$15 and third \$10.

The homes will be judged just before Christmas.

A business decoration contest is open to all members of the Chamber of Commerce and the three best decorated

businesses will receive \$50 in prizes.

To enter the contest a store must call the Chamber and enter.

The deadline for entering this is also Dec. 21.

Broiler-fryers, grapes, raisins, winter pears, pork and canned salmon will be on the USDA plentiful foods list for December, according to the U.S. Department of Agriculture.

Moore Counties.

Umphres, who is a warehouse and materials superintendent with Phillips Petroleum Co., is a Past Master of Sunray Lodge 1281 in Sunray.

A member of the First Baptist Church in Cactus, he has serv-

Circle Has Season Party

Mrs. J.T. McWhirter was hostess Wednesday afternoon for the Mary Martha Circle meeting held at the church parlor.

Mrs. Andy Rhodes presided and opening prayer was given by Mrs. P.A. Lyon.

The program was given by Mrs. Wesley Daniel and was in the form of a Christmas party.

Present were Mmes. Lyon, Sid Beck Jr., Rhodes, Pope Gibner, Sam Patterson, H.M. Shedeck, Daniel and R.E. Lee.

TOO-DRY HOME?

Humidify with an
RP Aprilaire
 AUTOMATIC HUMIDIFIER

CALL: Cummings Refrigeration
 519 S. Hwy 15 659-2721

LOOK WHAT SANTA FOUND

YOUR PHILCO DEALER!

WE HAVE STEREOS & RADIOS TO FIT EVERY BUDGET

LOOK FIRST AT BURTON'S

YOUR PHILCO SALES & SERVICE HEADQUARTERS

WHEN YOU NEED SERVICE THINK FIRST OF BURTON'S TV

GLEN MAYBEN SERVICE MAN OVER 20 YEARS EXPERIENCE

BURTON'S TV

106 E. KENNETH PHONE 659-2121

THINKING OF HOLIDAY HIM AND HER GIFTS?

VISIT OUR "HOUSE OF FRAGRANCE"

PERFUME FOR HER

- CHANEL NO. 5 & 22
- CORDAY
- FAME
- POSSESSION
- INTIMATE
- AQUA MARINA
- HYPNOTIQUE
- SHARI
- GOLDEN WOODS
- MIDNIGHT
- EMOTION
- HEAVEN SENT
- FLOWER DRUM
- 4 FRAGRANCES OF LENELE
- PROMESSE

MEN'S TOILETRIES

- BRITISH STERLING
- PUB
- JADE EAST
- LENELE FOR MEN
- KENT OF LONDON
- ROYAL REGIMENT
- GOLDEN SOVERIGN
- SIGNATURE
- ROYAL STAG

Spearman Rexall Drug

PHONE FOR FREE DELIVERY

659-2226 Two Registered Pharmacists

An Editorial

Independent, But Not Neutral

A small town editor in New Hampshire prints this very illuminating statement in his masthead each week: "Independent, but not neutral." We think we'd like that man!

Independence is wonderful, but oftentimes it needs qualifying. The beamick sitting in a run-down cafe, with his guitar leaning on his table, is making a profound statement to his friend, in a cartoon we saw in this morning's paper. "As long as my family keeps sending me my allowance," he said, "I intend to live a free and independent life!" Independent of what?--of whom? And yet too often, similar absurdities have lodged themselves in the inner recesses of the human cerebrum, we fear.

Not being neutral can sometimes present the traveller with a rough journey, but at least he's going somewhere; while the man in neutral can't move at all unless, of course, he's going downhill!

Now if he chooses to go uphill, he can only do so if someone else hauls him. But then he loses that independence which he professes to cherish!

Just being neutral has no merit to speak of. It reminds one of a barnacle which has attached itself to a ship. The barnacle gets

a free ride, but it slows down the vessel; and it's too far below the waterline to see the horizon.

If we were a nation of neutrals, we would not occupy the enviable position as the leading nation of the world.

If we'd been a confederation of neutrals in 1776, we would not be a nation today.

If we'd been neutral in 1941, all of Western Europe would now be living under either Nazism or Communism. And if this had come to pass, no living man can say where the United States would be today. But it is certain that we would not occupy as dominant a position in the world as we do now.

George Washington warned this nation against any entangling alliances, but he did not warn us against taking sides. And steering clear of entangling alliances does not constitute neutrality.

The neutral strives--or hopes--to be everything to everybody, and it just cannot be done. Playing both ends against the middle, a familiar ploy of many nations today, may constitute neutrality in the minds of their leaders, but thinking people are not fooled.

And as for independence, on the contrary, they're dependent upon everybody.

-East Texas Magazine

PEP Has Much Potential For Ambitious Man

Sixteen interested individuals from Hemphill County attended the first of four area meetings Monday to hear a report on the Panhandle Economic Program. . . and they heard an earful. The PEP is a comprehensive and detailed survey of the natural economic resources of the Panhandle area, undertaken jointly

by state and federal agricultural agencies.

And its confusion, in a nutshell, is that we of the Texas Panhandle area aren't beginning to realize all of our potential. "Millions of dollars are being lost annually," PEP coordinator James Murphrey told the group Monday at Borger, "through mis-use of water and land and poor management."

This doesn't mean, mind you, that the Texas Panhandle is an economically depressed area. It isn't . . . not by a long shot.

It means simply that we aren't doing nearly as well in the Panhandle area as we are capable of doing if we make best use of our natural resources. And this is a problem for business and professional people as well as for farmers and ranchers. We are all inter-dependent.

PEP has pointed the way to even greater prosperity and economic growth than we now enjoy . . . and outlined specific methods of achieving our potential. The only problem that remains is the big one of putting the wise counsel to practical use.

Which recalls the old story about the farmer who refused to attend meetings planned by agricultural experts to teach better methods of farming because, as he said, "I already know how to farm a whole lot better than I'm farming now, and I don't want to get any farther behind."

PEP has nothing to say to this fellow . . . but it has a great deal to say to the farmers and ranchers and businessmen who want to get farther ahead.

-Canadian Record.

Elementary Honor Roll

The following students are named on the honor roll and honorable mention in the Elementary school:

FIRST GRADE
Gerri Lynn Kendrick

SECOND GRADE
Kim Daniel
Pam Rylant
Jan Mason
Ira Reed
Lonita Greene
Leslie Woods
Tammy Rook
Alan Uptergrove

THIRD GRADE
Rajan Martin
Lynda Reed
Carol Reeves
Beth Sheets
Christe Sparks
Janice Stewart
Tina Green

FOURTH GRADE
Jana Ralls

HONORABLE MENTION
Stephen Green
Becky Daniel
Ted Harbour
James Neal
William Porter
Mike Turner
Debbie Sheppard

Hallmark Christmas cards at Plainsman Office Supply.

Better Food For Less

IDEAL FOOD STORES

Prices good Tuesday & Wednesday, Dec. 13 & 14

FAMOUS BRAND...LOW PRICES AT YOUR FRIENDLY IDEAL!

COME TO THE BIG STORE WITH THE BIG SELECTION. IDEAL HAS THE VARIETY YOU NEED TO PLEASE EVERY MEMBER OF THE FAMILY!



CENTER CUT RIB	PORK CHOPS	79¢
TENDER LOIN END	PORK ROAST	59¢
COUNTRY STYLE	SPARERIBS	69¢
COUNTRY KITCHEN	SLICED LUNCH MEATS	35¢
BOLOGNA PICKLE & PIMENTO	SALAMI SPICED LUNCHEON	6 OZ. PKGS. EA.
MEADOWDALE	SLICED BACON	1 LB. PKG. 69¢

Crystal Chimes



EARLY AMERICAN PRESCUT COVERED SUGAR BOWL

9¢

WITH EACH \$7.50 PURCHASE 2 FOR 1¢ WITH \$15.00 PURCHASE

ONLY CRYSTAL CHIMES 7 1/4" IN ROUND

ASH TRAY 66¢

NO OTHER PURCHASE REQUIRED.



Don't thank us. We'll thank you.

Sometimes we wonder if we deserve some of the testimonials we receive from Dale Carnegie graduates.

They say things like, "Dale Carnegie training helped me get a raise" . . . "made me feel adequate in situations I used to fear" . . . or "made a new man of me."

The fact is that credit belongs mostly to them, because the idea behind the Dale Carnegie Course is not what we do for you, but what you can do for yourself once you learn the fundamental principles taught in our classes.

We teach you how to communicate better, but you have to do the communicating. We show you how to develop your best natural capabilities and use them to reach your highest goals. But you have to set the goals.

We don't deny that many have risen to new heights in business and professions with the aid of Dale Carnegie Course training, but this has never been its main purpose. Our immediate objectives are to help you become a better equipped, more confident, more communicative and understanding human being. From there on out, you have only yourself to thank for what you accomplish. Call us for details.

Presented by: Joel R. Combs & Associates, Sponsored by Hansford County Farm Bureau. For more information call 859-3133

PETER PAN SMOOTH OR CRUNCHY	PEANUT BUTTER	28 OZ. JAR	88¢
KUMER WHOLE KERNEL	GOLDEN CORN	5 303 CANS	\$1.00
PILLSBURY OR	BALLARD BISCUITS	3 8 OZ. CANS	29¢
BANQUET FROZEN 5-VARIETIES	CREAM PIES	3 14 OZ. PKGS.	\$1.00
PILLSBURY ORANGE	DANISH ROLLS	14 OZ. PKG.	39¢
BLUE BONNET WHIPPED	MARGARINE	SPECIAL LABEL 1 LB.	33¢
MAN SIZE	KLEENEX TISSUES	BOX	29¢
FOREMOST INSTANT	BREAKFAST	4 PKG. of 6	69¢
RANCH STYLE	IDEAL BREAD	1 1/2 LB. LOAF	21¢
FAIRMONT CREAMY	CHOC. DRINK	1/2 GAL. CTN.	39¢
U.S. NO. 1 RUSSET	POTATOES	10 LB. BAG	59¢
KRAFT	ORANGE JUICE	3 QUARTS	\$1.00
FRESH ROASTED	PEANUTS	3 LBS.	\$1.00
ELLIS	VIENNA SAUSAGE	5 4 OZ. CANS	\$1.00
ELLIS	Chili with Beans	3 NO. 300 CANS	\$1.00
ELLIS	Corn Beef Hash	NO. 300 CAN	49¢
ELLIS	JUMBO TAMALES	NO. 2 / CAN	39¢
ELLIS	BEEF STEW	NO. 300 CAN	39¢
ELLIS	ALL MEAT CHILI	NO. 300 CAN	43¢
ELLIS	SPAGHETTI & MEAT BALLS	NO. 300 CAN	29¢



HEINZ



PORK & BEANS

10 NO. 1 CANS

88¢

GERBER STRAINED



BABY FOODS

10 4 1/2 OZ. JARS

\$1.00

MEADOWDALE



FRUIT COCKTAIL

3 NO. 2 1/2 CANS

\$1.00

CLASSIFIED ADS WORK WONDERS

FOR SALE

For Fuller Brush products write 2301 Georgia Drive, Perryton, Texas or call 435-4967. 73tfc

FOR SALE-Walsh 22 cu. ft. upright freezer. May be seen at Cummings Refrigeration. Price \$150. 16-2p

WANTED: Real estate listings. Emmett Sanders, real estate broker. Phone 659-2516, nights 659-2601. 104-tfc

FOR SALE-10' x 43' trailer, 1964 model, \$250 equity, payments \$69.39 mo. 15 N. Endicott, Phone 2310. 99-tfc

FOR SALE-1962 Skyline house trailer, size 10' x 50' with kitchen, living room, 2 bedrooms and bath. This mobile home is in excellent condition and can be seen by contacting George C. Miller, Darrouzett, Texas. 7-tfc

Industrial lots on Gruver Highway. Cecil Crawford, 659-2409. 61tfc

FOR SALE-50 ft. antenna. Call 2082. 15-tfc

3 bedroom brick house, 2 baths, fenced--to be shown by appointment. Only call 659-3166, 1005 Barkley, will take trade for equity. 80tfc

FOR SALE-3 bedroom house, garage, built in electric range, approximately 4 years old. Phone 659-2837 or 99979. 15-8c

4 room house for sale, trade or rent. Newly decorated. Will be at 210 N. Snider all day Sunday, Dec. 11. Phone 338-7150, H.W. Overall, 419 W. 17th, Guymon, Okla. 15-2p

FOR SALE-Corner bathrhub. Virgil Wilbanks, 659-3385. 3-tfc

FOR SALE: Good Hegari Bales with grain. Contact D. L. Schumann. Call 659-2178. 12-3c

Electrolux

The Amazing Electrolux with power nozzle. Rotating brush action cleans all rugs faster--gently fluffs carpet nap. Sales and Service, call Don Seymour at 435-3880. Perryton, Texas. 68-69-p-70tfc

FOR SALE-Ideal, industrial lot 100' x 225' with good fence. Emmett Sanders Real Estate. 6-tfc

FOR SALE-Lot and barn with water in Crawford addition. Cheap. See Pete Vernon. 104-tfc

Select your Christmas cards today from our selection of Hallmark cards in a wide variety of choices. Plainsman Office Supply.

FOR SALE-2 girls bicycles, new tires, good saxophone. Ph. 2644. 14-tfc

Write Santa in Care of The Plainsman, Box 668, Spearman, Texas.

WANTED TO BUY-Cash register. Call 2466. 12-tfc

610,000 American people are directly affected by TB. Use Christmas Seals to help them.

WANTED-Shop Hand. Apply in person at Permian Corporation. Phone 659-2572. 9-tfc

Farmer from Lockney would like to rent land in this area. Will consider some equipment. Write Robert Carthel, Rt. 1, Lockney, or call 806-OL4-3549. 9-8c

WANTED: Real estate listings Emmett Sanders, real estate broker. Phone 659-2516, nights 659-2601. 104-tfc

Wanted light hauling. Will haul reasonable or take salvage that you want to dispose of in exchange for hauling. Call 659-2876, R.C. Stewart. 12-4p

Service ditches and foundations dug. Call Don Schmehr 659-2858. 10-tfc

LADIES-Like to be your own boss with unlimited earnings potential? Part time or full time. Husband and wife can work together. For interview appointment Call FI7-2763 Gruver. 13-4p

LOST-3 mo. old English Setter bird dog. Collar has Bossen, Amarillo, Texas on it. Phone 2743. 12-tfc

FOR RENT

FOR RENT-Downtown Apts. Furnished 1 and 2 bedroom. Call 2269. 11-tfc

FOR RENT-One bedroom brick apt. Call 2274. 93-tfc

FOR RENT-2 room furnished apartment. Phone 3239. 16-2c

THE HOME FOR ACTIVE FAMILIES-2019 feet of floor space with all the closets a home needs, two full baths, play room, formal living room and the biggest master bedroom you've ever seen. Three bedrooms, built in appliances. Don't spend another cramped Christmas season. Call Macias Construction Co. Perryton-435-5464 or 435-2030. FHA Loan, lots of money available for homes. 10-12c

MACIAS CONST. CO. is proud to announce that Mr. Lloyd King has joined their staff to bring his experience as a custom builder of fine and larger homes to the Panhandle area. Complete services from planning through building is now available. If you are thinking of trading in your present home or building call Mr. Lloyd King at 435-5464 or 435-2030 in Perryton. 10-12c



Tommy Gooch Agency

Farm Bureau Insurance
Spearman, Texas

Cummings Refrigeration

Heating
Air Conditioning
Sales & Service
Specialist
659 - 2721
Spearman

White House Lumber Co.

Building & Plumbing Supplies
Phone 659-2818
306 Davis

For Your Convenience

We now have

ICE

L. D. Staggs
Top Mechanic

Simmons CHEVRON SERVICE

Loren Simmons
659-9985
Plains Shopping Center

SERVICES

SERVICE-Ditches from 3-12 inches, any desired dept. S. D. Jones 659-2809, Harold Shaver 659-3474. 17tfc-c

WANTED: Irrigated and dry farmland. Cash lease or crop rent. Phone 3063, Spearman. 1-tfc

Shop in Spearman this Christmas season. You'll find many bargains and all the name brand merchandise you have come to know and appreciate.

Spearman Study Club's Home Tour is today from 2 until 5 p.m.

Attend the tea and open house today in Gruver honoring Mrs. Ray Phelps, local artist, from 3 until 5 p.m. in the Gruver Library.

Beautiful selection of Hallmark Christmas cards at Plainsman Office Supply.

KIRBY SPECIALS SERVICES

SALES PARTS

ALL MAKES & MODELS YEAR GUARANTEE SPECIALIZE IN KIRBY, COMPACTS, ELECTROLUX, AND HOOVER

LIBERAL VACUUM CLEANER COMPANY
704 S. KANSAS
LIBERAL, KANSAS
AREA OUTLET STORE

SPEARMAN HARDWARE
PHONE 659-2737

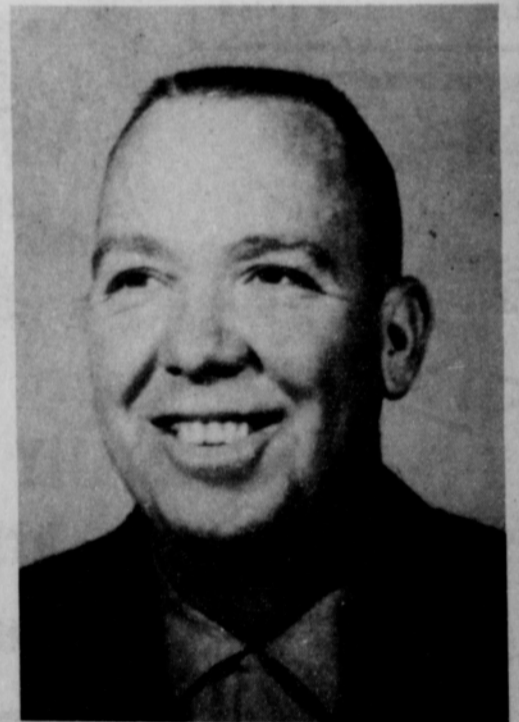
TO

Better Serve you

SOUTHWEST IRRIGATION CO.

IS HAPPY to announce...

The appointment of MR. TOMMY JACOBS as Manager of Southwest Irrigation Company of Gruver, Gruver, Texas. Mr. Jacobs, formerly Assistant Manager of Southwest Irrigation Company of Muleshoe, assumes his new duties immediately. Mr. Jacobs, his wife June and sons, Richard and Mark will move to Gruver in the very near future. Mr. Jacobs, who has been in the Irrigation business over six years, is also active in the Baptist Church, various civic organizations and is a Mason. You are cordially invited to drop by anytime and meet him.



TOMMY JACOBS,

- Complete Irrigation Systems
- Fused-Joint Plastic Pipe
 - PermOring Rubber Gasket Pipe
 - Mortar Joint Concrete Pipe
 - Cement Asbestos Pipe
 - Complete Aluminum Systems
 - Skid Systems



SOUTHWEST IRRIGATION CO.

BOX 646

GRUVER, TEXAS

PHONE FI 7-2132

RON'S PLAN SERVICE

Residential and Commercial
1817 Colgate in Perryton

PHONE 435-5287

LET US HELP YOU DESIGN YOUR HOME

Open House, Tea in Gruver To Honor Spearman Artist

The Gruver Fine Arts Club will honor Mrs. Ray Phelps, Spearman artist, today from 2 to 5 p.m. with an open house and tea at the Gruver Library.

The public is cordially invited to attend the tea and to view Mrs. Phelps' paintings anytime during December at the library.

Abraham Lincoln was born (1809) just 600 years after the founding of the Franciscan Order (1209), 300 years after John Calvin (1509), 200 years after Henry Hudson explored the river bearing his name (1609), 100 years after Sam Johnson (1709), and 50 years before Victor Herbert and Arthur Conan Doyle (1859).



Lynx, Lynxettes Begin Races for District Crowns

Spearman basketball teams begin playing for the titles here Tuesday night when they take on Sanford Fritch in the opening district games.

The defending state champion Lynxettes will be opening the defense of their state title and beginning the chase for their seventh consecutive district title. They have won three consecutive bi-district titles.

The Lynx will be looking for their first district cage title since back in the mid-fifties. A new coach, Allen Simpson is guiding the Lynx this year. He has a 6-4 record with the squad for this season going into the consolation finals of the Gruver tournament.

The Lynxettes will be hard pressed this year as they were hit harder by graduation last year than at any time since 1961. Coach Dean Weese had

a senior forward and a senior guard in Barbara Wilde and Nancy McCullough who had much playing time last year. From there he is building with mostly sophomores and freshmen.

Fritch is bringing strong teams to Spearman. The girls lost to White Deer 43-45 in the Panhandle tournament Friday night. The Fritch boys beat White Deer easily 46-29.

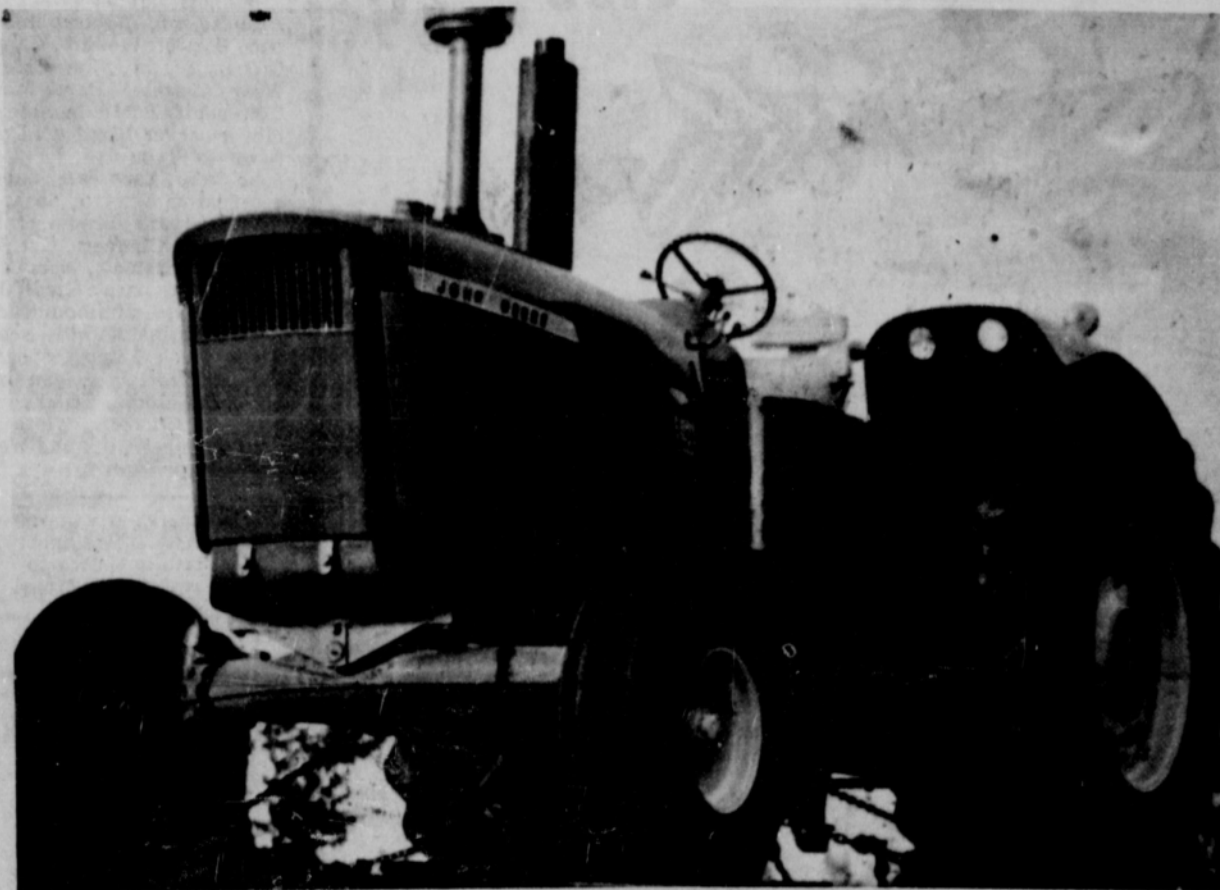
Thursday night the teams go on the road for their second district games. They meet Panhandle in Panther gym.

The Pantherettes are picked by some to be the toughest team in this area. They have speed and are picked by some to end the Lynxettes' domination of the 1-AA district. They beat Canadian Friday night 55-28.

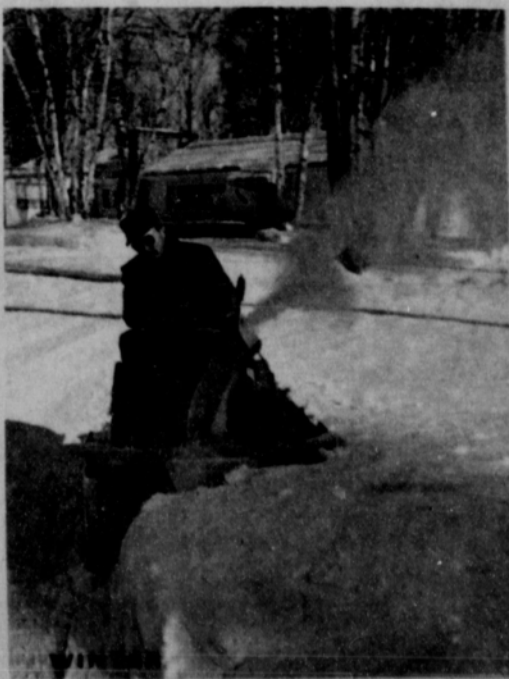
The Panhandle boys beat Groom Friday 40-31.

WHILE THE BOSS IS AWAY !

WHILE THE GENE CUDDS ARE AWAY AT NASSAU
THIS WILL BE A PERFECT TIME TO COME IN AND
LOOK OVER OUR 4010 TRACTORS. WE'LL GIVE YOU
A DEAL EVEN GENE CAN'T BEAT !



MAKE HIS CHRISTMAS A PERFECT ONE
JOHN DEERE LAWN & GARDEN TRACTOR
NOT JUST A LAWN MOWER, IT'S A TRACTOR.
NOT JUST ANY TRACTOR, IT'S A JOHN DEERE !



It's superiority is just what you'd expect from John Deere, No. 1 in U.S. Farm Machinery sales

HANSFORD IMPLEMENT

HIGHWAY 15

(YOUR JOHN DEERE DEALER)

PHONE 659-2712

Hutchison Girls Win Places in Wool Contest

Rebecca and Cindy Hutchison placed in the District "Make-It-Yourself-With-Wool" contest held at Texas Technological College at Lubbock recently. There were 150 girls entered in the contest. The Hutchison sisters competed against each other in the junior group, ages 14-16.

Rebecca was chosen first alternate and Cindy second alternate. In case either the first or second winner would be unable to attend, one of the Hutchison sisters would compete in the state contest to be held in Denton, Jan. 14.

Rebecca made and modeled an antique gold wool suit with skirt and short cape trimmed in matching wool braid with matching accessories with a paisley silk blouse and umbrella of red, old gold, blue and black.

Cindy wore a shirt-like shift of pumpkin colored wool with a co-ordinated dickey and cap of red, green and pumpkin plaid.

Mrs. Don Jones returned home Tuesday after being in Pampa for the past three weeks, where she underwent surgery at Highland General Hospital.

Man Admits Morse Burglary

A man convicted of the theft of a saddle in Cordell, Okla., has admitted the burglary of Long's Grocery in Morse, according to sheriff J. B. Cooke.

Sheriff Cooke said Vestal Lesley had signed a statement admitting the burglary of the store. He also had the field glasses that were taken from the store.

Cooke said the man would face charges here after completing his term in Oklahoma prison.

Lynx . . .

(Con't. from page 1)

from the Mustangs until in the third quarter. At the end of the first quarter, Spearman led 12-10. At the half they led only 19-16.

In the final half Coach Allen Simpson went to his bench for what must have been some scoring punch.

Mr. and Mrs. Fred Jones and Mr. and Mrs. Herb Howe left Thursday for the Jones cabin at South Fork, Colo. to do some elk hunting. The season opened Saturday for 8 days.

Shop at home this Christmas

STERLING 12 PAINT

★ WILL LAST LONGER

★ IS MORE BEAUTIFUL

When You Protect It With Proper

REGAL LITE LATEX HOUSE PAINT

★ Easy Working

★ Long-lasting

★ Low Lint Finish

White House Lumber Co.

Spearman, Texas

Open House Set Today at Windy Acres

You are invited to attend the annual Christmas Open House today, Dec. 11 from 2 until 9 p.m. at Windy Acres Farm at Pringle with Mrs. Maudie

Henderson and Mr. and Mrs. Bob Carp as hosts. Santa Claus will attend the annual get-together and will pass out favors to the children. Refreshments will be served and all guests will be welcome. Assisting with hostess duties will be Mmes. Louvenia Thompson and Laverne Parks of Morse, Henrietta Johnson of Dumas, Arnetta Womble of

Fritch and Edna Ownbey, Jean Chisum, Clenna Lee Watson and Ruth Chisum of Strinnett. A lifelike nativity scene is the focal point of the decorations at the farm but there are many new additions to the decorations this year.

Hallmark cards when you care enough to send the very best.

Home Tour Sunday Afternoon

The public is invited to the third annual tour of homes Sunday, Dec. 11 sponsored by the Spearman Study Club. The hours will be from 2 until 5 p.m. Seven homes are included in this year's tour which was planned during the Christmas

season so holiday decorations and refreshments could be enjoyed by those attending. Homes on the tour will be those of Mrs. Sandra Ladd, Mr. and Mrs. Kiff White, Dr. and Mrs. E.E. Novak, the Rev. and Mrs. Wesley Daniel, Mr. and Mrs. Chalmers Port-

er, Mr. and Mrs. Frank Davis and Mr. and Mrs. John Trindle. Refreshments will be served at the home of Mrs. Ladd in Waka. Tickets will be \$1.00 each

SANTA CLAUS IS SALES MANAGER

AT EXCEL CHEVROLET-OLDS



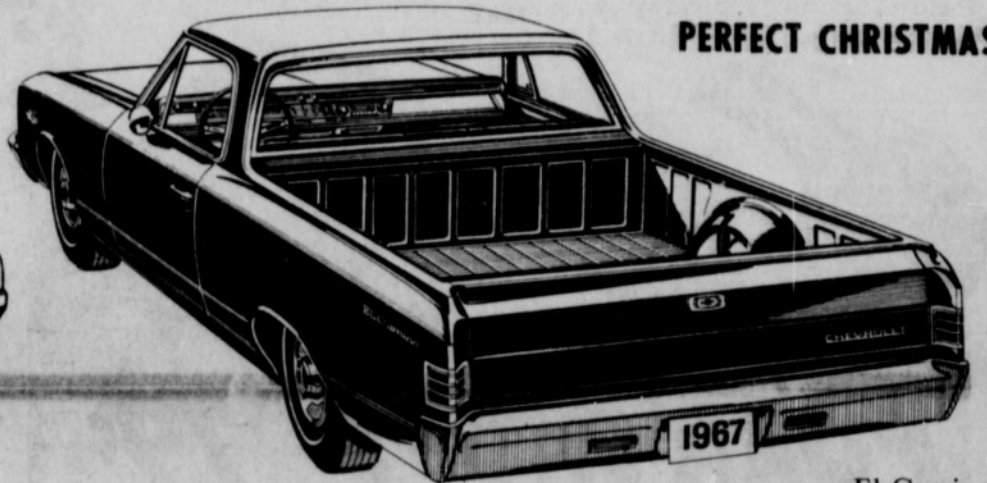
TO MAKE A
PERFECT CHRISTMAS



Impala Sport Coupe



THE ONE JUST FOR YOU



El Camino

YEAR AFTER YEAR
THE BEST SELLER



SS 350 Camaro Sport Coupe

COME IN

WE ARE READY TO DEAL NOW !!!

" IF YOU THINK CHEVROLET IS TRYING TO GET ALONG ON LOOKS ALONE THIS YEAR - - - YOU HAVEN'T DRIVEN ONE YET !"



Series 10 Fleetside Pickup

COME IN AND LOOK OVER OUR PICKUPS YOU CAN'T GO WRONG WHEN YOU BUY THE NO. 1 PICKUP IN THE U.S.A.

EXCEL

CHEVROLET-OLDS

"Mid-Week Values for Tuesday & Wednesday Dec. 13th & 14th"



More Christmas Time
-Less Kitchen Time...

QUICK-FIX FOODS



THOUSANDS of FREE STAMPS!

to be given away by the Buccaneer Stamp Company thru Cut Rate Grocery. It's simple to win; just collect 4 matching pieces and win 10,000, 5,000, 100 or 50 Free Buccaneer Stamps. Another reason why it pays to shop Cut Rate Grocery.



Meadowlake Yellow Quarters

Margarine
lb. **23¢**

Bathroom Tissue 6 roll bag

Delsey 69¢

Lanes All Flavors Half Gallon
Sherbert 59¢

Welchs Grape Drink 46 oz. Can
Welchade 33¢

Shurfresh All Meat 1b.
FRANKS 59¢

Armour Star Thin Sliced
BACON 2 lb. pkg. \$1.39

USDA Choice Beef 1b.
SIRLOIN STEAK 89¢

Campbells Tall Can
Vegetable Soup 3 for 39¢

Shurfresh 2 lb. loaf
Cheese Spread 2 lbs. 69¢

Wholesome Goodness In EVERY Drop. It's Quality Milk AT ITS BEST

Mortons All Varieties Frozen Your Choice
TV DINNERS 39¢

Mortons All Varieties Frozen Your Choice
MEAT PIES 2 for 37¢

Del Monte 303 size can
SPINACH 2 for 29¢

Van Camps Tall Can
PORK & BEANS 2 for 25¢

Shurfine 24 oz. Bottle
GRAPE JUICE 35¢

Sunshine Krispy Saltine 1b. box
CRACKERS 33¢

Cleanser Giant Size
Comet 27¢

River Brand White 1b. bag
RICE 15¢

Gold Medal 10 lb. bag
FLOUR 99¢

Imperial Cane 10 lb. bag
Sugar 99¢

Mortons Apple, Cherry or Peach Large Frozen
Fruit Pies 3 for 89¢

Wolf's "No Beans" Tall Can
Chili 49¢

EMERALD
WALNUTS 1b. 39¢

RED EMPEROR
GRAPES 1b. 15¢

CRANBERRIES 29¢ lb.

Starkist Chunk Style Flat Can
Tuna 33¢

Shurfine Cling Sliced or Halves no. 2 1/2 can

Peaches 4 for \$1.

Tendercrust Regular or Thin Sliced King Size

Bread 2 for 49¢



Cut Rate GROCERY

Treasure Hunt Tickets Are Valuable

Save those tickets you are receiving in all the businesses in Spearman cooperating in the Christmas Treasure Chest program.

This year the tickets you receive with each purchase in a store, may win you part of the \$1,500 in prizes being given by Spearman merchants.

Each store has a prize or prizes for the customers shopping in the store. The tickets given by each individual store are good only for the prizes being given by that business.

On Dec. 23 the winning numbers for each store will be posted in the window of the store or inside the store. Then those holding tickets can see if they have the winning numbers in the stores.

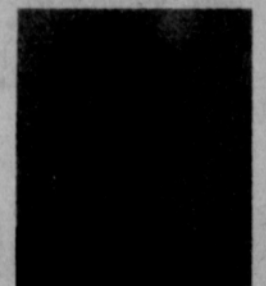
These numbers will be posted until Jan. 1, and the winners have until then to claim the prizes.

Businesses giving prizes are Alton's Gulf, Anthony Electric, Boxwell Flowers, Cates Grocery & Mkt., Cates Men's Wear, Chambers Dept. Store, Community Public Service, Floyds Locker, Gordon's Drug, Hansford Plainsman, Ideal Food Store, Lady Fair, Snider-Pearson Texaco, Spearman Hardware, Beedy Furniture, Berry Cleaners, Cut Rate Grocery, Massad's, Neely's Mens Wear, Harp's Credit Jewelry, Sears, Simmons Chevron, Spearman Cable, North Plains Truck & Imp., Spearman Reporter, Spearman Drug, Spearman Floral, TG&Y, Wardrobe Cleaners, White House Lumber Co., and Western Auto.

Hallmark party goods at Plainsman Office Supply, 209 Main in Spearman, your party headquarters.

REXALL BOYS & GIRLS CONTEST LEADERS

3rd WEEK



BOYS:
Grand Prize, Bicycle, Mike Tucker
1st, Pool Table, Scott Martin
2nd, Road Race Set, Dennis DeArmond
3rd, Snare Drum Set, Billy Giles
4th, RAF Spitfire Airplane, Scott Latham
5th, Microscope Set, Ricky Driscoll



GIRLS:
Grand Prize, Bicycle, Jamie Pierce,
1st, Typewriter, Jeannie Porter
2nd, Guitar, Charlene Lopez
3rd, Phonograph, Cecilia Randall
4th, Wrist Watch, D'Ann Reed
5th, Talking Dog, Jeannie McClellan

SPEARMAN REXALL DRUG