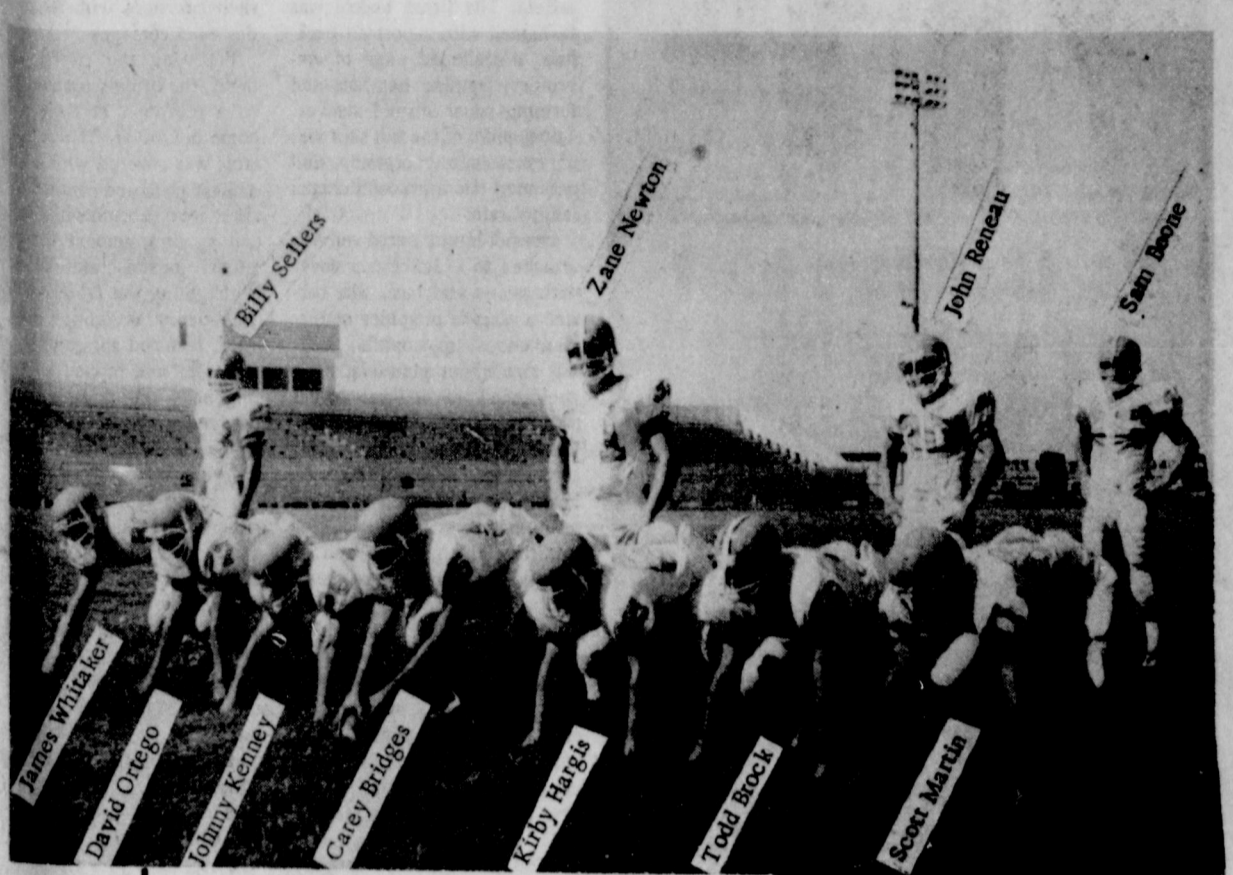




The local Sears catalog staff, won a national sales contest, on appliances this year, and they are heading to Dallas to reap the victory, this Sunday. Pictured above, left to right; Virginia Fowler, Deb Owens, Debbie Hornsby, and Phyllis Shedeck. Not pictured, but employed at the local store, Barbara Rosser and David Martin. District personnel will keep the store open for the local crew as they bask in the sun and fun of Dallas, which includes; 3 days in big D, 6 flags over Texas, Granny Dinner Theatre, featuring Phyllis Diller, tour Sears plant, and visit Vice Pres. Lacknollner. The Spearman store was the only store in the Southwest area of 64 stores, to win.



The Governor's I formation!
The defending 1-AA district champions are pictured above. They are all seniors, and represent only the offense.

Lynx open season with scrimmage at Dumas!

Spearman's defending 1-AA Champion Lynx will open their season, with an un-official scrimmage at

Dumas, next Thursday night, August 24th. Coach Don Barton and his Demons are rated in the top 10 in AAA and the Lynx should have their work cut out for them. In the other pre-season scrimmage this year, the Lynx will travel to Sunray, Friday September 1st, for a scrimmage. Sunray is rated as one of the top teams in District 1-A this year!

In other sports action this week, the Lynx had their "press day" at the field Friday morning at 10:30 a.m. News photographers from Spearman, Amarillo, and Borger were on hand for the action, plus Guymon, Oklahoma. The local newspaper shot individual pics of all 62 boys on the varsity lineup, plus the starting lineups, backs, and linemen, offensive and defensive, and the coach's pictures! Football fever is running high at Lynxville this year. The fever is not subdued by

the fact that the Lynx will be playing the toughest schedule in the school's history. In fact local fans are a bit excited about the big name teams, Elk City, Perryton, Dalhart, Friendship, Tulla and of course according to the scouting reports the Stratford game will be rated as one of the toughest of the year. Perryton, Friendship, Tulla have lost heavily to graduation, while Stratford is rated a top team to watch in class 1-A!

At the picture taking session Friday morning, the Lynx looked more mature than last year, and they are plenty big enough to be tough. And, remember, most of these kids have been on the team at least one year, and many of them have been doing battle for two or three years. They look sharp! Football fever has hit Spearman, and there is no denying it. The Lynx look good this year!



THE HANSFORD PLAINSMAN

VOLUME 9, NO. 43

THE HANSFORD PLAINSMAN, SPEARMAN, TEXAS 79081

SUNDAY, AUGUST 20, 1978

Muscular Dystrophy Dance-A-Thon Planned

The Spearman Explorer Post #502 will be holding a 24 hour Dance-A-Thon to benefit the Jerry Lewis Muscular Dystrophy Telethon Saturday, Aug. 26, beginning at 6 p.m. and lasting until 6 p.m. Sunday evening.

The Dance-A-Thon will be held in the old Beedy Furniture building at Plains Shopping Center.

Anyone interested in participating should contact Jennifer Umphress, 3039; Cindy Arnold, 2356; Troy Thompson, 3458; or Ronnie Burke, 2529.

Contestants will need to get as many sponsors as they can, the more sponsors the more money will be raised. The Dance-A-Thon will be open to all ages although anyone under 18 will need to have a release form signed by their parents or guardian. These release forms and sponsorship forms may be picked up from the persons named above.

All donations from sponsors are tax deductible.

All contestants need to be at the building by 5:30 p.m. Saturday.

Nursing Home

The Medical Services Committee of the Spearman Chamber of Commerce will hold a special meeting Thursday, August 24th at 8:00 p.m. in the Golden Spread Center Building, 14 South Haney, concerning a nursing home for Hansford County.

Orvil Brummett, Chairman of the Medical Services Committee has invited Mr. B. A. Hyatt, Senior Vice President of Service Ministries, Management Services Consultation Associates out of Lubbock, Texas, to meet with this committee and interested persons, to lend guidance in providing a nursing home for Hansford County.

You are encouraged to attend this important meeting.

Mr. and Mrs. H.R. Bowen moved this week to Olney, Illinois, after residing in Spearman for the past 18 years. Olney is their hometown.

Mr. Bowen retired June 1 after 31 years of service with Phillips Petroleum Company.

The Bowens will be missed in Spearman, but we wish them well in their new home and retirement.

Hansford County 4-H Fair

Come one, come all to the Hansford County 4-H Fair, Saturday, August 26 at the Spearman County Barn.

A Dog Show will be held in the back of the Barn at 9:30 a.m. 4-H Youth will have their dogs dressed and ready to perform!

Following the Dog Show, on the east side of the show barn, 4-H youth will demonstrate their skills with bicycles and motor bikes in the Wheels A' Go-Go contest.

A variety of exhibits will be open for public viewing from 11:30 a.m.-1:00 p.m. in the meeting room in front of the show barn. You will see a number of baked goods, arts & crafts, clothing, textiles, garden and farm products, rabbits and poultry!

The 4-H Council will have a concession stand with refreshments for all!

4-H and youth activities sponsored by the Texas Agricultural Extension Service are open to all regardless of socioeconomic level, race, color, sex, religion or national origin.

Don't miss the second annual Hansford County 4-H Fair, Saturday, August 26 at the Spearman County Show barn!



The wooden Indian at the Museum says get ready for "rain dance" as it's too hot here!

Museum Note Is Paid Off

The Hansford County Historical Survey Committee, Inc. met Friday, August 11, 1978 in the Stationmaster House Museum at 1:30 p.m.

The Treasurer, Mrs. Renner, gave her report of \$643.56 before the bills were paid. After the bills were paid there was approximately \$300 left. Mrs. Gus Renner donated \$500 to the Museum Account. Mrs. Gwenfred Lackey donated \$100 to the Museum Account.

At the meeting the members decided to hold an old car show for the Celebration next year. Plans are to be made for trailer spaces and motel rooms for the people showing their old cars. Spaces for the old cars to be parked will be needed.

Gwenfred Lackey read a letter from a lady who used to live in Fort Zulu. The letter had a description of the Fort for the Museum to use to make a better model.

Members present were Judge R. L. McClellan; President, Fred Groves; Treasurer, Clementine Renner; Secretary, Juanita Pierce; Gwenfred Lackey, Grace Lyon, Helen Boyd and Mary Lou Wysong.

Plans are being made to have a called meeting to start the Hansford County History Book. The meeting will be held around the first of September.

Markets

WHEAT	\$2.86
MILO	\$3.55
CORN	\$2.35

WEATHER

WEATHER	HI.	LO.
August 11	95	66
August 12	95	73
August 13	98	72
August 14	95	73
August 15	94	67
August 16	100	63
August 17	103	74

Hospital

Patients in Hansford Hospital are Guy Remy, Edna Hays, Teresa Villines and son, Tim Woodington, Will Douglas, Ben Harris, Mary Lou DeArmond, Charles Arnold, and Bessie Jackson.

Dismissed were Marie Herrerra, Melissa Kelly, Clinton Hamilton, Travis Reger, Mary Arnold, Lucy Martinez, Elizabeth Pipkin and Mary Hermopillo. Hazel Martin was transferred.

RED POWER SHOWDOWN DAYS

North Plains International will host a special "Red Power Showdown Days" field demonstration, featuring International Harvester's improved Series 86 tractors, at the James Breland Farm, Gruver, Texas, from 2:00 to 6:00 on Thursday, August 24.

Along with the demonstration, the local dealer will hold a sweepstakes drawing. Participating farmers will be eligible for a national drawing, with a top-of-the-line 1586, 160 pto horsepower, two-wheel drive tractor as the grand prize.

Complete details about the Red Power Showdown Days sweepstakes may be obtained from the local dealer.

Including all Series 86 models over 100 pto hp, the field day will be "one of the biggest IH promotions ever," according to the dealer. He noted that farmers will have the opportunity to test drive IH's 986, 1086, 1486, 1586 and Hydro 186. Also the new 4786 4 Wheel Drive (350 HP) will be available.

"They will be able to try out the new park-lock transmission and heavy-duty power shift TA, which makes shifting easier," the dealer continued. Also, farmers will be able to judge for themselves just how quiet the Control Center is."

The dealer said the Control Center, a departure from the add-on cab of the past, is an integral part of the Series 86 models located forward of the conventional design. This permits maximum visibility and improved riding quality.

With resilient rubber isolators and other sound-deadening techniques, the Control Center has an officially-tested 78.5 dba sound rating on the 1586. That rating is one of the lowest in the industry.

"We also will discuss the new and exclusive tractor warranty for the 86 line," the dealer said, "which guarantees tract-

ors for two full years or 1500 hours of operation, whichever occurs first."

Other features to be highlighted are the wet power disk brakes designed for maximum heat dissipation and extended service life, wet differential lock that overcomes one-wheel spinout, and increased fuel efficiency and easy service accessibility.

"We believe we have the best tractor line available. And we hope our farmers take advantage of our Red Power Showdown Days to see what we're talking about," the dealer concluded.

Mrs. Massad's Mother Dies

Services were held at 2 p.m. Thursday at the First United Methodist Church in Wellington for Mrs. Mack Saied Sr., 79, who died Tuesday. She was the mother of Mrs. Frank Massad of Spearman.

The Rev. Thomson, pastor, officiated. Burial was in Fairview Cemetery by Kelson Funeral Home.

Mrs. Saied was born in Lebanon. She married Mack Saied Sr. in 1911 in Henryetta, Okla. He died in 1976.

Mr. and Mrs. Saied moved to Wellington in 1927 from Healdton, Okla. They established a dry goods store which they operated until they retired.

Survivors include two daughters, Mrs. Massad of Spearman, and Mrs. Floyd Taylor of Quanah; three sons, Mack Jr. of Wellington, Dr. V.C. of Wichita Falls and Fred of Elk City, Okla.; 18 grandchildren; and five great-grandchildren.

Many people have asked us for Kaki Coates mail address. Kaki was burned August 3rd, and is in the Shrine Burn Institute now. If you would like to drop Kaki a get well card, here is her address; KAKI COATES
C/o SHRINE BURN INSTITUTE
WARD 3 WEST
610 Texas Avenue
Galveston, Texas, 77550

1978 Sales Tax Up 21% Over 1977

State Comptroller Bob Bullock Tuesday said Texas Cities netted a record \$236.4 million in sales tax revenues during the 1978 fiscal year, a 14.8 percent increase over the previous budget year.

Bullock said his office mailed checks August 15, totaling \$20.1 million to 903 cities as their August share of the local option, one percent sales tax. The current state budget year ends August 31.

The City of Spearman received \$4,543.60 compared to \$3,744.51 for the same period last year.

1978 payments to date are \$67,584.81 compared to \$55,775.36 a year ago, showing an increase of 21 percent.

The City of Gruver received a check for \$567.69 compared to \$973.12 for the same period last year.

1978 payment to the City of Gruver totaled \$11,586.88, down 10 percent from last year's figures of \$12,979.53.

The biggest percentage increase in sales tax collections among the state's larger cities, with revenues up 18 percent for the year.

Houston's total for the year was \$49.3 million. Dallas recorded a 9 percent increase for the year with collections of \$27.7 million. San Antonio received \$13.6 million, a 10 percent hike, and revenues for Fort Worth totaled \$9.8 million up 13 percent.

To Visit Here

Mrs. John Hill, wife of Attorney General John Hill, who is the Democratic candidate for Governor of Texas in the November election, will be in Spearman Friday, August 25 at 1:30 p.m. in the Carl Archer home, 304 S. Endicott to visit with people in the area. A cordial invitation is issued to all interested persons to come by and meet and visit with Mrs. Hill.

Double Ring Ceremony Unites Couple



MRS. MICHAEL PAUL SMITH

With the soft rays of an August sunset streaming through the stained glass windows accented by the warm glow of candlelight within the Sanctuary, double ring wedding vows were exchanged by Rebecca Lee Westerfield and Michael Paul Smith in a 7:00 P.M. ceremony Saturday, August 12, 1978, at the altar of the Gruver United Methodist Church. Officiant for the service was the minister of the church, the reverend Tom Fuller.

Parents of the couple are Mr. and Mrs. Paul Westerfield of Gruver, and Mr. and Mrs. Hercul Smith of Weatherford, Oklahoma.

Nuptial music was offered by Mrs. James Dorman at the organ and Mrs. Richie Fletcher at the piano. Miss Diane Thompson of Weatherford registered the guests.

The altar scene as softly aglow with a center heart-shaped brass candleabrum bearing eighteen green cathedral tapers flanked by brass tree candleabra with twenty green tapers each. Magan satin bows with gypsophila marked the aisle pews.

Cousins of the bride, Miss Sharon Shoemaker of Garland, Texas, and Miss Dawn Pitzer of Carrollton, Texas, were candle-

lighters, and Miss Amy Pitzer served as flower girl. They wore floor-length seafoam green gowns of qiana and halo cornets of gypsophila in their hair.

Presented in marriage by her father, the radiant bride wore her mother's wedding gown, an original design of imported candlelight Swiss organdy over taffeta. The fitted bodice was fashioned with a portrait neckline, a scalloped edge of embroidery framing her face and forming small shirred sleeves. The peplum of the full skirt was of embroidered organdy and extended into a graceful chapel length train.

Her full-length tiered veil was attached to a Juliet cap cover with pearls and lace. She carried a cascade of spider mums, stephanotis, gypsophila, trailing and spider plantlets, nops she carried out the lovely bridal tradition, her veil for something new; a pearl necklace for something old; a borrowed handkerchief carried at her grandmother's wedding; the traditional blue garter; and in her shoe, a sixpence brought to her from England by her Grandmother Shoemaker of Midland.

Bridal attendants were Mrs. Sandra Ross Watlington of Colorado City, Texas, who served as matron of honor; Mrs. Melanie Yanke Zimmer of Gruver, bridesmaid; and Miss Barbara Kourt of Thoma, Oklahoma, bridesmaid. They were each carried in elegant floor-length dresses of seafoam green quiana which were complimented by halo cornets of gypsophila in their hair. They each carried nosegay bouquets of purple asters nestled in gypsophila and long white satin streamers with lover's knots.

Gacy Amem of Duncan, Oklahoma, served the groom as best man with Floyd Adler of Mutual, Oklahoma, and Larry West of Weatherford, serving as groomsmen. Ushers were Steve Westerfield, brother of the bride from Dallas and Matt Bush of Weatherford, Okla-

homa. The groom was handsomely attired in ivory tails and the men of the wedding party wore green tuxedos.

For her daughter's wedding Mrs. Westerfield chose a long pink quiana dress trimmed at the neckline, waist, and sleeves with silver bugle beads. The groom's mother complimented their costumes with white spider mums corsages.

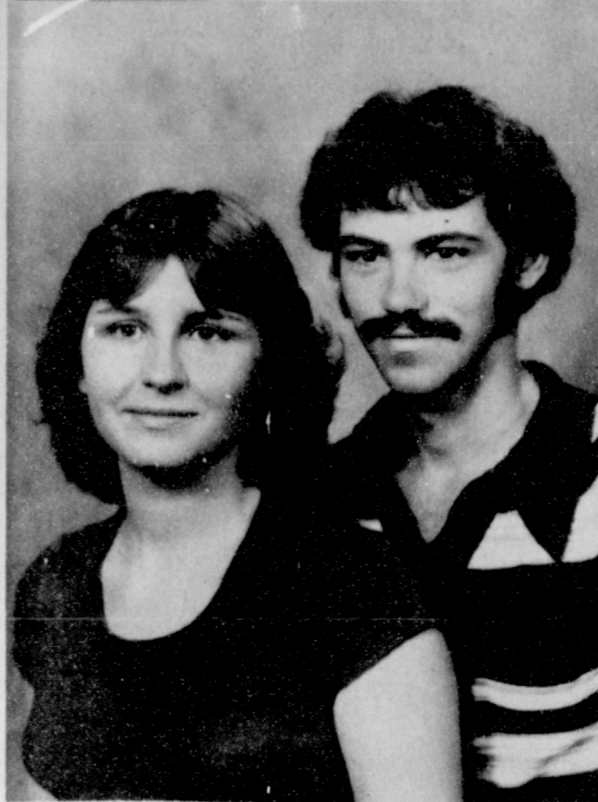
Following the church ceremony, the bride's parents hosted a reception at their lovely home in Gruver. The reception table was covered with a white damask cloth and centered by a silver condoleabrum with candles and an arrangement of white mums, daisies, and fernery. Highlighting the table was the three-tiered wedding cake which featured sprigs of lily of the valley and topped by wedding bells and flowers. Delicious punch was served from a crystal punch bowl surrounded by fernery.

A round table laid with a gathered net skirt accented by green satin bows held the bubbling champagne fountain, the whole softly aglow from lighting directed from beneath the table.

After tossing the bride's bouquet, the couple left for their new home in McLoud, Oklahoma where Mr. Smith is a football coach. The new Mrs. Smith chose a two-piece beige dress with matching jacket and white accessories for travel.

The rehearsal dinner, hosted by the groom's parents, was Friday evening at the El Vaquero in Gruver with the tables decorated with candles surrounded with puffs of organdy and sprigs of ivy.

Among the pre-nuptial affairs was a brunch held at the country home of Clarence Yanks. Delectable crepes, assorted sweet rolls, and fruits were served to the gride-elect; Mrs. Paul Westerfield, the brides grandmother, Mrs. P.H. Westerfield, and Mrs. G.L. Shoemaker; Mrs. Sandra Watlington; Mrs. Melanie Zimmer, Miss Barbara Kourt, Mrs. Beck Pitzer, Mrs. Sue Ellen Shoemaker, Mrs. Hercul Smith, and hostesses, Mrs. Yanke who assisted Mrs. Melvin Ross.



Engagement Announced

Beth Collins and Aaron Brown, both of Spearman, are announcing their engagement and approaching marriage.

The wedding is planned for Sept. 30 at the First Christian Church here.

The groom is a graduate of Spearman High School.



The first lion tamer on record was "Manchester Jack" of Wombwell's Menagerie, a traveling show in England during the early 19th century.

You are cordially invited to a

wedding shower honoring

Mrs. Tommy Barber

(nee Pam Dry)

August 25, 1978, 7 to 9 p.m.

Union Church Annex

Hostesses:

Carolyn McLeod	Sue Ann Burress
Patsy Burress	Sherry Shields
Brantley Cornelson	Darrie Howard
Marcia Anderson	Adalyn Barnes
Mae Floyd	Wilma Francis
Jesse Schubert	Michael Peralta
Rhonda Burress	
405-2tc	

"Car Smash It" Planned

Missionaries spreading the Gospel is a vital part of God's Program. You can help supply these Missionaries with necessary tools by participating on August 26 in a "CAR SMASH IT!" This is being sponsored by Assembly of God Youth on the High Plains Shopping Center Parking Lot from 3-8 p.m. Come vent your frustrations!

Any area bowlers who are interested in bowling in a Special Sunday Bowling League at the Suburban Bowl in Guymon are requested to contact the Suburban Bowl, 405-338-7123 or Jeweldeane Lewis, 405-888-4436 after six.

The Special Sunday Bowling is slated for 3:30 P.M. and consists of two men and two women. There were several area residents who were interested in this League play last year but were too late to be included.

ANNOUNCING

Dr. Mario V. Manese, M. D.

WILL PRACTICE AT
THE HANSFORD CLINIC

721 EVANS
SPEARMAN, TEXAS

Surgery and
Obstetrics

Phone 659- 2532

POMPEII A-D
79

Date: February 3-4

Cost: \$160 (Subject to Change)

LIMITED TO 100 PERSONS
DEADLINE SEPT. 1

Dallas Museum Of Fine Arts

—CONTACT—
PBT WORLD TRAVEL CENTER



Station Master

Museum News

We are ready to grow...come grow with us.

The Hansford County Historical Commission is branching out! We realize that there are many people in Hansford County that want to be involved. Historically speaking. You now have the opportunity to join with us in our endeavors which include collecting artifacts for the museum, museum upkeep, oral histories a history book starting in September, designating historical markers throughout the county, educational programs, field work, and tours of the county. We have many other projects in mind, the opportunities to grow and develop are limitless, both for the individual and the entire population. WE invite clubs and businesses to join with us to expand our cultural awareness.

Membership will be open to all who are interested and feel that they have something to gain by the experience and something to offer the community. Enthusiasm is your best asset.

The Hansford County Historical Society will be a subdivision of the Hansford County Historical Commission. The Hansford County Historical Commission is appointed by the Hansford County Commissioners Court and will be the governing body. They will set policy, make decisions and function as usual. The contributing membership is welcome to all meetings, which are open to the public, be entitled to a bi-monthly news letter, and be eligible for volunteer work in all of our projects.

All interested persons should call the museum at 3008 to find out more. We soon will print application blanks and cards to issue to contributing members of the Hansford County Historical Society.

Roping Set

The Adobe Walls Roping Club has scheduled a Dally Team Roping Saturday, Aug. 19 at 8 p.m. at the Oscar Archer Arena here.

Entry fee is \$40.00 for 5 head, pro after 2.

For further information contact Adobe Walls Roping Club, Box 65, Spearman or call Gary Taylor, 659-3968.

TG&Y
FABRIC SHOPS

OPEN 9 A.M.-9 P.M.
MON.-SAT.

THIS WEEK'S Fabric
SPECIALS!

FABRIC SAVINGS...

for BACK to SCHOOL

DOUBLE KNIT

100% Polyester!

ENTIRE STOCK REG. 1.97

Ever popular and easy-care double knit! Machine wash and tumble dry. No ironing needed. 58/60" wide.

\$1.57 Yd.

save 15%

Northstar
Plaid
FLANNEL

100% Cotton. Perfect for cozy robes and night gowns and the greatest for a favorite flannel shirt!

1.27 Yd.

Reg. 1.49

save 14%

Threesome
Coordinate
DRESS
PRINTS

1.97 Yd.

Reg. 2.29

save 23%

Stitch
WITCHERY

18" wide. 30 yd. pcs. rolled on board. Clear color. Reg. 1.00

.77

save 11%

Surflin Solid
SPORTS-
WEAR

1.77 Yd.

Reg. 1.98

TG&Y'S ADVERTISED MERCHANDISE POLICY—TG&Y's policy is to always have advertised merchandise in adequate supply in our stores. In the event the advertised merchandise is not available due to unforeseen reasons, TG&Y will provide a Rain Check, upon request, in order that the merchandise may be purchased at the sale price when it becomes available, or you may purchase similar quality merchandise at a similar price reduction. We will be happy to refund your money if you are not satisfied with your purchase. It is the policy of TG&Y to see that you are happy with your purchases. It is TG&Y's policy to be priced competitively in the market. Regular Sale Prices may vary market by market, but the sale price will always be as advertised.



Your best buy is at TG&Y!

521 HWY. 207 SOUTH SPEARMAN, TEXAS 659-3742
PRICES GOOD ONLY AT T.G.&Y. FAMILY CENTER


WANT ADS

CAPROCK MONUMENT CO.

Dishes of Georgia Granite, Georgia Marble, Colored Granite, & Brims.
represented by
BOXWELL BROS. FUNERAL HOME
519 S. EVANS
659-3802

Hansford County
Planned Parenthood
265. Haney
659-2483
Spearman
Mon.-Fri.
8 a.m. to 12 noon
30S-rtm

SERVICES

HANSFORD LODGE
No. 1040
A.F. & A.M.

Stated Meeting
Aug. 14 8:00 p.m.
Dwayne L. Smith, W.M.
Cerril Batton, Sec'y.

KIRBY SALES & SERVICE of
Spearman, 912 S. Bernice.
659-2797.
30-rtm

STEAM RINSEVAC RUG SHAMPOOER
\$6.95 PER DAY
with Upholstery Attachment
\$8.95 PER DAY
Call Gordon's Drug
659-2141 or
after 7 p.m. & Sundays
call **FREDDIE LARGENT:**
659-3437
24-rtm

NOTICE
Wallace Monument Co.
Monuments, Curbing,
Grave Covers
Local Representative
LEONARD JAMESON
659-3406
20-rtm

CUSTOM HAY BALING. Jerry
D. Virden, Gruver, Texas. Call
733-2236.
29-rtm

SERVICE: Pits cleaned, wet or
dry. Dragline or loader. Also,
dozer, grader, carry-all service.
LeeRoy Mitchell, 806-733-2384,
Gruver, Texas, 79040.
9-rtm

Alcoholic Anonymous
meeting 8 p.m. Friday,
Home Demonstration Club
building, 305 N. Bernice.
Phone 659-3181 for infor-
mation.

Al-Anon meetings 8 p.m.
Friday, Home Demonstration
Club building, 305 N. Ber-
nice in back room. Phone
659-3181 for information.
Ask for Al-Anon.

PEE WEE'S PLUMBING &
Appliance Service. Roto-rooter.
659-2811 or 659-3781.
26-rtm

ROOFING PROBLEMS? Call
Garrard Roofing, free esti-
mates, latest equipment. 659-
3482.
39S-rtm

**MARTHA'S PAINT & STITCH-
ING PANTRY.** Complete tole-
canvas painting supplies. Deco-
page boards and prints.
Needlepoint, crewel embroi-
dery, rug hooking. Custom wood
specialties made on order.
Classes available. For more
information come by or call
Martha's, 903 S. Bernice,
806-659-3297.
40S-rtm

REAL ESTATE FOR SALE

FOR SALE: Barber Shop,
Beauty Shop and Building 211
Main, Spearman, Tex. Call
659-2167.
39S-6T

FOR SALE: Three bedroom two
bath home on large lot.
Excellent location, close to
schools. Shown by appointment
only. Call 3450 or 3802.
32-rtm

Mayfield Real Estate
John Mayfield - Broker
435-6528
Ruby Lalr - Salesperson
659-2188

714 Steel Drive, 3 bedrooms,
single bath, utility room, den
living room, carpet, drapes,
has many decorative fea-
tures. ****
710 Steel Drive, 3 bedroom,
1 1/2 baths, utility room, single
garage, central heat. ****
2 lots for sale in Shaull addi-
tion.
33S-rtm

OFFERED BY:
Emmett R. Sanders
REALTOR


Combination dwelling and
store building at 5th & Dres-
sen, on 90' x 140' lot with
small detached apartment
and storage shed. Main
building has about 1650
square feet enclosed, 2 bed-
rooms, 1 bath, living room,
dining room, kitchen, utility
room, store room with extra
room which could be another
bedroom.
+++

Growing with Spearman!
Two new 3 bedroom, 2 bath
homes now under construc-
tion on South James St. in
Delon Kirk Addition. Refri-
gerated air, carpets, nice
master bedroom, utility
room, attached garages.
+++

Two bedroom stucco home in
excellent condition with new
carpets throughout; has for-
mal dining room, utility
room, detached double gar-
age, near school on 75 ft. lot.
+++

308 S. Hoskins, 5 room
house, carport, fenced yard.
+++
Excellent ranch-farm combi-
nation 5 miles west of
Spearman, total 2 1/2 sections,
no minerals, about 400 acres
cultivated, balance choice
Palo Duro Valley and upland
grass, 2 irrigation wells.
Good stucco 3 bedroom ranch
home with basement, 3 car
garage, shop, etc. Ideal
stockman-farmer set-up.
Owner will carry paper.
+++

150'x140' prime commercial
tract, zoned heavy retail,
includes immaculate 2 bed-
room home and detached
garage with storeroom. This
is the best location presently
available for business or
office development. Terms
available.
+++

5 room stucco house on 110
foot lot; room for a mobile
home; owner will carry pa-
per.
+++

EMMETT R. SANDERS
REALTOR
659-2516
659-2601 (nights)
34S-rtm

FOR SALE-One 60 ft lot with
hog houses and many improve-
ments in Crawford addition.
Water & electricity. Dean
Groves, 918-299-6251 or call
659-3343.
40S-rtm

MISCELLANEOUS FOR SALE

MOVING-MUST SELL: 14x72
LANCER Mobile Home. Two
bedrooms, two baths, central
heat and air. Phone 733-2142,
Gruver, Texas. Call anytime
but Friday.
39-8tp

FOR SALE: 1977 Chevrolet
Caprice 4-door. Red with C.B.
call 659-3434 or 659-2338. Car is
only 10 months old. Will sell for
\$5200, cost over \$7000 today!

PIANO IN STORAGE - Beau-
tiful spinet piano stored locally.
Responsible party can assume
low payment balance. Write:
National Keyboard Inc. 6720 1/2
Shirley, Austin TX 78752.
39-4tp

FOR SALE: 1969 Buick Electra
225. Loaded. Phone 659-3802.
35-rtm

FOR SALE-1975 CHEVY VEGA
in good condition, new tires, air
conditioner. Call 659-3947 or
2431.
40S-2tp

FOR SALE: 90" 3 Cushion
Antique White Sofa. Excellent
condition. Phone 659-2038.
40S-1tp

FOR SALE: Carpet Samples -
27 inches X 18 inches. 50 cents
each. 659-3350.
40S-2tc

ANTIQUES FOR SALE: Small
Cherrywood ladies slant top
desk, beautiful color. Marble
top walnut Victorian occasional
table. These are not cheap. If
interested call Sybil Miller,
659-2338.
40-rtm

FOR SALE: 2 Female AKC
Registered St. Bernard Puppies.
One 2 1/2 year old female St.
Bernard-Registered, also.
Good fenced yard a necessity.
Call 659-2827 anytime.
40S-2tp

HELP WANTED

WANTED: Mature woman to
live with, do light housekeeping
and cooking for older woman.
Room and board plus salary.
Call 806-733-2465.
39S-3TP

HELP WANTED: Waitresses,
apply in person at Martin's
Steak Garden.
40-2tc

WANTED: Someone to live in
with elderly person. Time off.
733-2423 or write Box 520,
Gruver, Texas, 79040.
39-6tc

HELP WANTED: Mechanic,
and anyone interested in learn-
ing this field. Contact George
Norwood, Bob Johnson Motor
Co. Borger, Texas. 273-7541.
39S-4tc

HELP WANTED: Apply in
person, Rogers, Sales & Ser-
vice, Waka, Texas. Inside
shop, manufacturing work.
25S-rtm

FOR RENT

FOR RENT: 3 Trailer Spaces,
\$25 each. Located at 219 N.
Hoskins and 220 N. Brandt.
Call 383-9886.
32S-rtm

FOR RENT: LBL Trailer Space.
659-3627.
39S-rtm

HOUSE FOR RENT: 2 Bed-
room, Unfurnished. \$50.00
deposit, \$150.00 per month.
314 S.townsend. 373-8550 in
Amarillo.
40-rtm

WANTED

WANTED: Corn and milo
harvesting. Have two 1978
Gleander Combines and 6 row
30 inch corn heads. Call
Collect: 913/675-3475. Pat
Haffner, Hoxie, Kansas.
39-8tp

FOUND

FOUND: One black bunny.
Call 659-3988 or come by 506 S.
Endicott.
40S-2tc

LEGAL NOTICE

**NOTICE OF HEARING
BEFORE THE TEXAS WATER
COMMISSION
OF AN APPLICATION TO
EXTEND THE TIME TO
COMMENCE
AND COMPLETE
CONSTRUCTION UNDER
PERMIT NO. 2932**

Notice is given that **PALO
DURO RIVER AUTHORITY OF
TEXAS**
c/o Johnnie C. Lee,
General Manager
P. O. Box 1046
Spearman, Texas 79081
applicant, seeks to extend, pur-
suant to §11.145, Texas Water
Code, and Rule 156.04.25.001-
003, the time for commence-
ment of construction of work on
a dam and 60,900 acre-foot
capacity reservoir on Palo Duro
Creek, tributary of North Can-
adian River, Canadian River Basin,
for municipal and recreational
purposes in Hansford County,
Texas, under Permit No. 2932
from June 9, 1978, to June 9,
1980, and the time for comple-
tion of the construction from
June 10, 1981, to June 10, 1983,
all being more fully set out in
the application.

The permit was issued on
June 10, 1974, and originally
required construction to com-

ence on June 10, 1976, and to be
completed on June 10, 1979.
The hearing of this application
for an extension of time will be
in the manner of a new applica-
tion for a permit.

The application for an exten-
sion of time for Permit No. 2932
was filed on July 24, 1978, and a
hearing thereon will be held by
the Commission in the Stephen
F. Austin State Office Building
at 1700 North Congress Avenue
in Austin, Texas, on September
15, 1978, at 10 o'clock a.m. Any
person who intends to offer
prepared testimony at the pub-
lic hearing shall prefile the
testimony with the Chief Clerk
of the Commission not less than
five days prior to the hearing,
and shall serve copies of pre-
pared testimony on the appli-
cant, the Executive Director
and Public Interest Advocate of
the Department of Water Re-
sources and all other persons
who have filed written protests
or written requests not less than
eight days prior to the hearing.
The Commission may authorize
the late filing of prepared
testimony upon a showing of
good cause and extenuating
circumstances. Any person who
desires to receive prepared
testimony shall file a written
protest or a written request with
the Commission not less than
eight days prior to the hearing.

Those opposing the granting of
this application may appear at
the hearing and/or, not less
than eight days before the
hearing date, may file written
protests with the Commission
and serve copies on the appli-
cant with proof of service to be
provided to the Commission.
Written protests shall contain
the name and address of the
protestant's interest, location of
protestant's diversion point(s)
or property, if applicable and
any amendments or adjust-
ments to the application which
would result in a withdrawal of
the protest. However, persons
filing such written protests are
not entitled to be admitted as
parties to the proceeding unless
they comply with Rule 155.04.
00.001 which requires actual
presence at the hearing. Per-
sons desiring further infor-
mation in connection with this
application may contact Tim-
othy L. Brown, P. O. Box 13087,
Capitol Station, Austin, Texas
78711.

Mary Ann Hefner,
Chief Clerk
TEXAS WATER COMMISSION
Date: July 25, 1978

Notice
Pringle-Morse CISD now
accepting bids for construction
of a 3 bedroom teacherage in
Morse, Texas. Bid sheets
available from Superintendent's
office at Morse. All bids
submitted to Superintendent's
office by August 25. Bids will
be opened and contract let at
board meeting, August 29, 8
p.m. in the school cafeteria,
Morse, Texas. Pringle-Morse
School District reserves the
right to refuse any and all bids.
39S-2tSonly

For sale: 8' x 27' Travel
Trailer, Phone 659-2176,
40S-RTN

* **Readers Want-Ads** [Mini-
* mum charge \$2.00], 11 cents
* a word; 55-cent billing charge
* for ads charged.

* **Display Classified Adver-**
* **tising, \$2.00 column inch.**

* **PHONE 659-3434 FOR AD-**
* **TAKER**

ED WHEELER REAL ESTATE
HOMES - FARM
- COMMERCIAL -

1006 Barkley, 3 bedroom, 1 1/2 bath, large den,
fireplace, fenced, a nice home.

900 Haney, 3 bedrooms, single bath, fenced,
storage, cover for camper, corner lot, extra nice.

1010 Haney, 3 bedrooms, single bath, recently
redone, built-ins, fenced, attached garage,
vacant.

34 N. Snider, 3 bedrooms, 1 1/2 bath, living room,
den, nice kitchen and dining area, large utility
room, living room can be fourth bedroom,
attached garage, metal siding, alot of square feet,
recently remodeled.

1114 S. Haney - 3 bedrooms, single bath,
attached single garage, fenced, completely
repainted, extra nice carpet. Priced to sell.

Ed Wheeler 659-2613, Office
Jerry Gee or 659-2951, Home
35S-rtm 659-3664

**B and B Roofing
and Sheet Metal**

Phone 335-2042 P. O. Box 30581
Amarillo, Texas 79109

DWYANE BULLARD

Composition Shingles Wood Shingles
Bid Up Roofing Tile Shingles

Bonded / Licensed / Insured
FREE ESTIMATES

BERLEN GRAIN TANKS & HANDLING EQUIPMENT

HALLMARK BUILDERS, INC.
822 Canyon Drive Amarillo, Texas 806-355-9223
40S-4tc

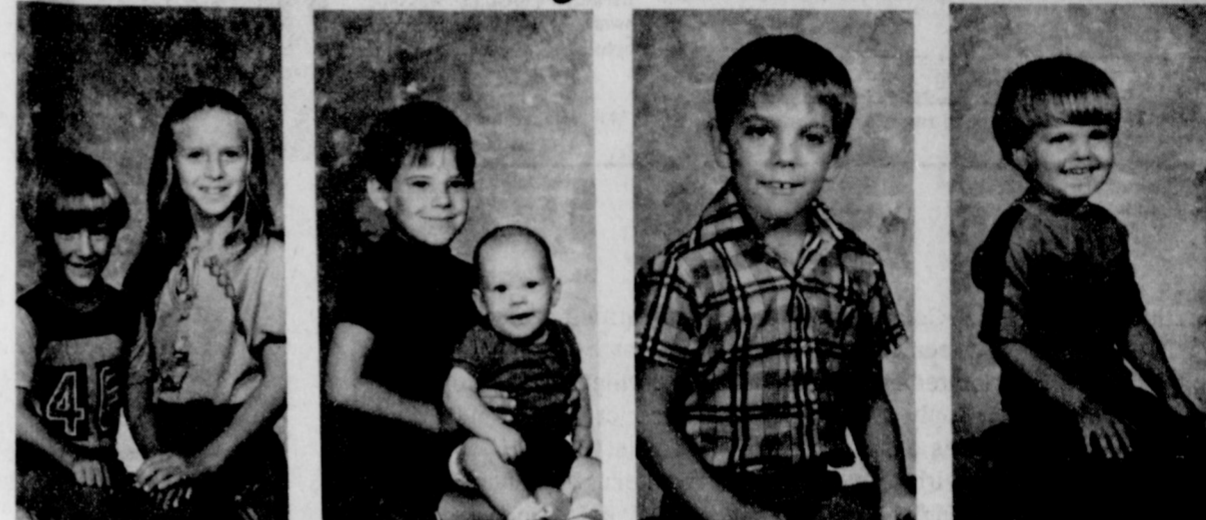
The Hansford Plainsman

PUBLICATION NO. 234660
SPEARMAN, TEXAS 79081
213 Main Box 458 659-3434
Published Weekly at 213 Main Street
Spearman, Texas 79081
Owner-Publisher.....William M. Miller
Second Class Postage paid at Spearman,
Texas 79081

Any erroneous reflection upon the character of
any person or firm appearing in these columns
will be gladly and promptly corrected upon being
brought to the attention of the management.
SUBSCRIPTION RATE: Hansford, adjoining
counties, combination with the Spearman Report-
er, \$10.40.
Other points, \$14.40.

MEMBER
**TEXAS PRESS
ASSOCIATION**

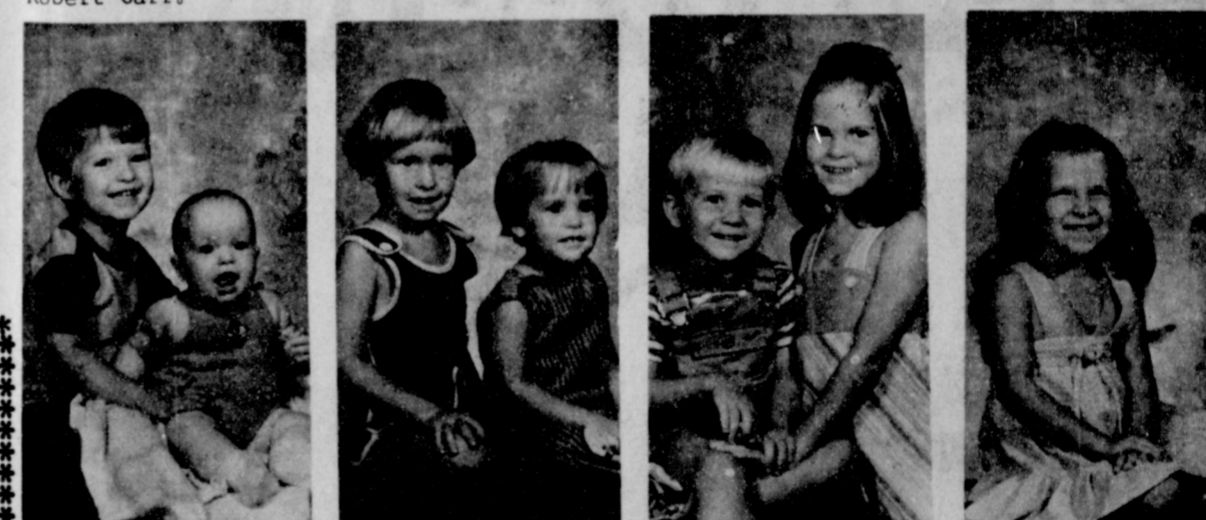
Citizens Of Tomorrow



Brian & Melissa Beck children of Mr. and Mrs. Ronnie Beck.
Logan & Cliff Hudson, children of Mr. and Mrs. Stan Hudson.
Chance Jackson, son of Mr. and Mrs. Pat Jackson.
T. Kendrick, daughter of Mr. and Mrs. Gene Hendrick.



Jerrod & Tisha, children of Mr. and Mrs. Robert Carr.
Sophia Salgado, daughter of Mr. and Mrs. Willie Salgado.
Olivia Salgado, daughter of Mr. and Mrs. Willie Salgado.
Frank Salgado, Jr. son of Mr. and Mrs. Willie Salgado.



J.C. & Ricky, children of Mr. and Mrs. Richard Bennett.
Brandi & Shane, children of Mr. and Mrs. Ken Schneider.
Misha & Cory, children of Mr. and Mrs. Monte Lesly.
Heather Loveday, daughter of Mr. and Mrs. Tom Loveday.

Home For Sale

We offer one of the largest and finest homes
in Southeast Spearman across from the high
school. Five bedrooms, formal living room,
den in basement with built-in fireplace.
Approximately 4000 square feet with many
extras. Includes 12X20 storage shed, central
fence, sprinkler system, TV and CB towers
and antennas, many more features.

Call for appointment
659-3343

If no answer call 918-299-
Mr. and Mrs. Harold Groves



Insurance Corner What Is A Fire

Two words used by insurance companies to define a fire covered by insurance are "hostile" and "unfriendly." This means the fire must be somewhere it is NOT supposed to be...not in a furnace, fireplace or stove. Another definition involves the requirement that there must be flames and burning (ignition). These definitions are important, and policyholders should know what they mean, since it affects their loss-collecting ability.

For example, suppose something goes wrong with an oil heater and it starts putting out excessive heat, melting something of value. This damage is not covered by a fire insurance policy, because the flame in the heater is considered "friendly."

ly--it's supposed to be there. It never left the inside of the heater. Furthermore, the damage was not caused by flames or burning, thus not meeting that requirement of a fire.

If, however, the flames came out of the heater and spread to rugs, furniture, paneling, lamps, etc., it is considered "unfriendly" and the damage would be directly caused by the flames. It would then be covered.

This information has been brought to you as a public service by John R. Collard, Jr., your one stop answer to complete business and personal insurance protection. Life, home, auto, group insurance, and profit-sharing plans. See John R. Collard, Jr., 405 Davis St., Telephone 659-2501.

Presbyterian Church News

There is a class for you every Sunday in our Sunday Church School at 9:45 a.m.

The Rev. Carter McKemy will be the guest minister at the service for the public worship of God on Sunday, August 20 at 11:00 a.m.

The Session will meet on Wednesday, August 23 at 8:00 p.m.

Presbyterian Men will have their monthly prayer breakfast on Thursday, August 24 at 6:30 a.m. Pastor Ed Freeman will be leading devotions.

Betty Freeman will be one of four delegates from Palo Duro Union Presbytery at a training session in Fort Worth for the Synod Hunger Resource Committee August 24-26.

The Fall Leadership School and Area meeting will be held at the First Presbyterian Church in Amarillo on Saturday, August 26 from 8:30 a.m. to 3:45 p.m.

If you are new to Spearman and/or have not yet found a church home, there is a warm, friendly Christian welcome awaiting you at the First Presbyterian Church.



September Wedding Date Set

Mr. and Mrs. Mel Grantham of Ordway, Colorado announce the engagement of their daughter, Melyn, to Chris Johnson, son of Mr. and Mrs. W. L. Johnson of Gruver, Texas.

The bride-elect is a 1977 graduate of Crowley County High School and is presently attending Panhandle State University at Goodwell, Oklahoma. Chris is a 1974 graduate of Gruver High School and is a Senior at Panhandle State University.

A September 2nd wedding date has been set with vows to be exchanged at 2:00 P.M. in the Ordway Methodist Church. They plan to live in the Oslo Community where Mr. Johnson will be farming with his father.

Sunday Last Day
NOTICE: The City Municipal Swimming Pool's last day to be open will be August 20.

"For the lonely one even noise is a comfort."
Friedrich Nietzsche

HD Club News

The Happy Homes club met Thursday, August 17, 1978 in the home of Mrs. Benny Byers.

The President, Adalyn Barnes, called the meeting to order and the roll was answered by favorite childhood games.

The yearbooks were completed with the hostess and programs.

The program for the meeting was Aggie jokes and lots of fun. Refreshments were served to members Adalyn Barnes, Rose Cummings, Nan Nicholson, and Fontel McKey by hostess Joyce Byers.

The Happy Homes decided to have an ice cream and cake social at the swimming pool park August 22, 1978 at 8:00 p.m.

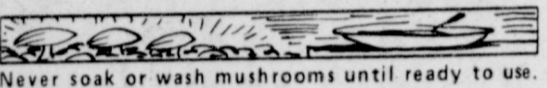
The next meeting of the Happy Homes club will be held at the home of Adalyn Barnes.

1918 1978

The friends and relatives of Mr. and Mrs. Kelly Gannett cordially invite you to attend the celebration of their Sixtieth Wedding Anniversary on Sunday, the twenty-seventh day of August, 1978 in the Fellowship Hall of the United Methodist Church of Gruver, Texas from two to five in the afternoon. No gifts, please

Meetings

Charles Rogers will be ministering and teaching the Word of God at Believer's Cottage, 2.7 miles west of Spearman on Highway 15. Meetings will be held Thursday, Aug. 24, and Friday Aug. 25, at 1:30 and 7:30 p.m. A luncheon will be held at 1:00 p.m. - Sat. Aug. 26 at Martin's Steak Garden. The evening meeting Saturday will be in Believer's Cottage at 7:30 p.m. Everyone welcome.



"All affliction is a fault." Cervantes

Notice

Northern Natural Gas Company will take applications on Tuesday August 22, 1978, between the hours of 8 A. m. and 4 P. M. for regular full time maintenance persons, one of which will be for the Canadian Plant. Apply at the Spearman District Office, 8 miles south and 7 miles east of Spearman, Texas. Typical job duties are; assisting with overhauls of large internal combustion gas compressor engines, maintenance of vessels and towers, all phases of pipeline repair, and some rotating flin work relieving regular operating crew during vacations or illness, etc. Pre-employment tests will be given for the maintenance person job on Friday August 25, at 7 p. m. and Saturday, August 26, at 9 a. m. at the Spearman high school in Spearman, Texas for all persons that have completed an application. Northern Natural Gas Co. is a major diversified energy company offering an attractive, salary, and has an excellent benefit program. Equal opportunity employer.

Hansford County Farm Bureau Policy Development Meeting

August 22, 1978

8:30 P.M.

Gruver, County Barn

This meeting is for members of our county organization who produce agricultural products. You are urged to attend this county meeting. This year, more than ever before, we need the thinking of all our producer members.

The purpose of this meeting is to draw up the policies for next year. Be prepared and bring your own ideas and suggestions for policies to be considered in drafting the tentative resolutions.

Policies and resolutions draw up at this meeting will be voted on at our annual meeting on October 23rd.

Thursday August 24 James Breland Farm

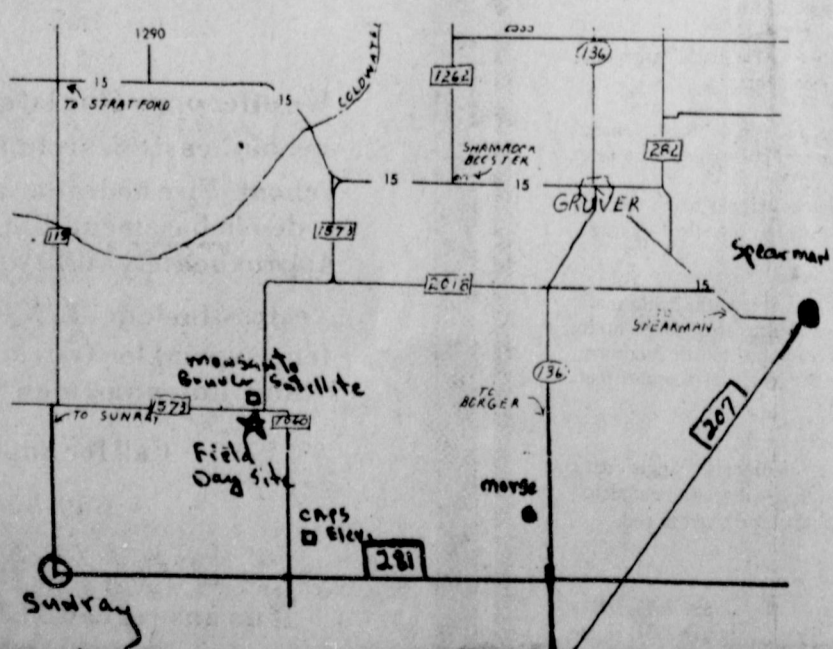


We're aimin' to make IH your tractor brand

at our

Field Demo Day

Thursday August 24
2:00 to 6:00
Field Demo Site
James Breland Farm
at intersection of FM 1573
and FM 1060. Across road
from Monsanto
Gruver Satellite.



\$100 REWARD

WITH THE PURCHASE OF ANY NEW IH 2WD SERIES 86 TRACTOR OVER 100 HP

You can get a coupon good for \$100 off the purchase price of any International Harvester farm product or service when you buy a new 2WD Series 86 Tractor over 100 hp. Purchase must occur within 30 days of our Red Power Field Demo Day.

Get your coupon at our Field Demo Day!

RED POWER SHOWDOWN SWEEPSTAKES

WIN

an IH 1586 or one of 7 other tractor prizes!

Here's your chance to saddle up a brand new Big Red 1586 or any of 7 other great IH tractors! They're waiting for you in the Red Power Showdown Sweepstakes. It's easy to enter, and there's no purchase necessary.

GRAND PRIZE



2 Second Prizes
484 Utility Tractors

5 Third Prizes
Cadet 81 Lawn Tractors

Get your official entry blank at our Red Power Field Demo Day

North Plains International Inc.
Highway 207
Spearman
Phone 659-2421

School To Serve Breakfast

Beginning with the 1978-79 school term, the Spearman I.S.D. will begin serving breakfast to comply with the Texas State law bill, #136 that makes the breakfast program mandatory. Breakfast will be served in each cafeteria from 7:45 to 8:15 only.

Texas is mandated by public law #136 to offer the breakfast in all schools where 10% or more students are eligible for free and reduced price lunches.

Beginning with the 1978-79 school term, a nutritious breakfast will be offered for it's students. It must be pointed out that the breakfast will be a very light, not heavy, breakfast and will provide 1/2 of the daily nutritional requirement of the 10-12 yr. old students.

As specified in the breakfast regulations, the school breakfast shall contain as a minimum the following components: 1/2 pt. fluid milk served as a beverage or over cereal; 1/2 cup serving of fruit or vegetable or both or full strength juice; bread or cereal - 1 slice bread, enriched, or an equivalent serving of biscuits, rolls, muffins, etc., or 3/4 cup of whole grain cereal; or any combination of these items. Protein rich foods and other additional foods may be served with breakfast as desired. Doris Wilde, lunchroom supervisor, states that the students will be served protein enriched foods, such as sausage or eggs.

as often as possible. During the rest of the time, the breakfast will be light, but still comply with the Federal guide lines and provide the students with 1/2 of the daily nutritional requirements.

Students may enjoy breakfast for 25 cents. Teachers will be charged 50 cents and students on reduced price will be charged 10 cents for breakfast. Parent or guest price for breakfast will be 75 cents.

Spearman I.S.D. serves nutritious lunches every day in the cafeterias. Students may purchase lunch for 55 cents at Elementary, 60 cents at Jr. High and 65 cents at the High School. Extra milk for the students is 5 cents. Faculty prices for lunch is \$1.00 and guests are \$1.25.

The type A lunch pattern is at least 2 oz. meat or meat alternate; 1/2 cup fruit and or vegetable; 1 slice bread or equivalent; and 1/2 pt. whole fluid milk.

Beginning with the 1978-79 school term, students in High School do not have to take the full meal on their trays, but have to take at least 3 of the main food components listed in the type A lunch. This is called the Offer-Versus Serve Program, but regardless of what 3 foods the students take or chooses to eat, they must still pay the full price for their meal. It will be no cheaper because only 3 foods may be chosen. This is for grades 9 - 12 only.

Peggy's Pointers

To help prevent snarls, knots or breaks in thread while hand sewing, follow a few easy tips.

Cut cotton and silk threads no longer than 24 inches for ease in handling.

Cut polyester and cotton-covered polyester strands 18 inches or less—they may snarl more easily because of their elasticity.

Thread the needle so the thread is used in the same direction it comes off the spool. An easy way to remember this is to thread the needle and then cut the thread. Knot the end just cut.

When a double thread is needed for sewing on buttons or reinforcing corners, cut off one length of thread.

Using the cut length and thread from the spool, thread the needle with two threads so both will be used in the direction they come from the spool. This puts the twist of the two threads in the same direction and reduces knotting and snarling problems.

Sew loosely, pulling thread through the fabric smoothly. Jerking and pulling too tightly causes thread to snarl or break.

SEWING MACHINE NEWS—you have approximately 200 different sewing machine models on the market to choose from. Many popular brands of sewing machines feature radio-TV suppressors which eliminate static and picture distortion when the sewing machine is in use.

TO REMOVE SOIL in cold water, select the longest washer cycle, add agitation time to a shorter cycle, or use a pre-wash or pre-soak to give extra washing action.

As you select BACK-TO-school clothes, select clothing that will "grow with" your child rather than clothing he must "grow into". Select features such as adjustable straps, deep hems and stretch fabrics.

QUARRELING requires soul-searching—determine what you contributed to the quarrel.

Special Session Means

\$1 Billion Relief

Although the special session for "meaningful tax relief" of the Texas Legislature started out in disharmony, by the end of it about \$1 billion in relief was given (if constitutional amendments are adopted in the November 7 general election). That the way State Representative Bob Close sees the special session of 1978.

On the other side of the coin are school administrators throughout the state of Texas. School ad valorem taxation is a big part of the tax relief package adopted and the questions left unanswered by the special session will continue to eat on school administrators until they are answered. And that won't be until the legislature meets in regular session in the second week of January.

About half of the tax break came about two hours before the session was to adjourn. Under a compromise approved by both the House and Senate, every homeowner would get a \$5,000 residential homestead exemption and the 1979 legislature could give the elderly and disabled additional exemptions up to \$10,000. Farm and ranch land would be taxed on its ability to produce income, not market value. Household goods and personal effects, including one car, would be exempt from taxation.

If the constitutional amendment passes, the state would refund the school districts any difference in revenue lost during the 1979-80 and 1980-81 school years. How the money would be distributed among the districts has not been decided.

Rep. Close said that it cost anywhere from \$300,000 to \$600,000 in additional costs to the state to hold special session called by Governor Dolph Briscoe. Balance that against nearly \$1 billion in tax relief, he said, and it was worthwhile, at least financially.

All but two measures passes by the legislature will be included on the November 7 general election ballot as constitutional amendments. These include the inheritance tax exemption increase, the first since 1923, which will go into effect Sept. 1, and the bill repealing the 4 per cent state sales tax on residential utility bills, which becomes effective October 1.

The inheritance tax exemption applies to estates of persons dying on or after September 1. The present inheritance tax exemption is \$25,000 per heir. Now taxes will not be paid on the first \$200,000 of an estate. That exemption will rise to \$250,000 in September 1982 and to \$300,000 in September 1985. This will help the farmers and ranchers, said Close. "The farmers and ranchers needed some relief and anything we could do helps," Close said.

The representative said that he was glad to see that the proposition to tax all farm and ranchland according to its income-producing capacity and not its potential selling price passed even though compromise to include the \$5,000 residential homestead exemption was tacked on by urban legislators. Although guidelines must still be worked out when the legislature meets in regular session in January, Close said that the plan to value

the farmland would probably be based on a five year average.

Other proposals that will go to the voters in the November election that the representative considers as important is the truth in taxation procedure, and setting a limit on state spending.

The truth in taxation proposal would require city, county and special governing bodies to observe the procedures now required of school districts.

The tax relief amendments actually come as a package and each of the following propositions are to be considered collectively (voters will pass all or none): taxing of farm and ranch land, higher exemptions of homesteads, providing a freeze on residential homestead taxes for older persons with fixed incomes, truth in taxation, and limitation of growth in state appropriations.

Senior Citizens Activities

People began gathering at the Center about 6:30 P.M. Tuesday August 15, 1978 for an evening of visiting and games of bridge, pitch, "42" and dominoes. The Servitors Club had a table of goodies prepared for which we offer a great big

THANKS. They have been marvelous hosts this August. Fifty men and women attended, including two from Gruver.

Beginning next Monday the Center will be open each afternoon.

College List Is Planned

Every year about this time we like to have the names of young people leaving our community for various colleges to further their education.

Please call the office, 659-3434, or our society reporter, Linda Cummings, at 3944, and give the names and colleges your young people are attending.

A complete list will be printed at a later date.

We are interested in all college students, not just freshmen leaving home for the first time.

Bridge Clubs

The Grand Slam Bridge Club met at Dodie Beedy's home on Thursday August 17, 1978.

Mary Ann Lasater won the high score and Linda Veneman won the low score. The Traveling prize was awarded to Candy Boxwell.

Refreshments were served to members and guest. The members present were Eulalia Mires, Sonja Godfrey, Betty Greene, Dodie Beedy, Ann Flowers, Linda Blackman, Irene Baker, and guests Carolyn Gressett and Dorothy Faye Baggerly.

School Begins August 28

Students in the Spearman Independent School District have until Monday, August 28 to finish all their summertime activities, before getting back into the swing of school this year.

All elementary students, grades kindergarten thru 4 are to register, Friday, Aug. 25 from 8:30 to 10:30 a.m., according to Allen Alford, elementary school principal. Also, any new students moving into the district will enroll Aug. 21, 22, and 24 from 9 to 2. These new students must have their immunization record before they can be enrolled.

Junior High Principal G. W. Robinson announced that all students in junior high are to register at 8:20 a.m. Monday, August 28. There will be a general assembly in the junior high auditorium. Classes will be run on a short period on the first day, will dismiss at 2:30 and buses will run at that time.

Any new junior high students will register from 9 to 2 on Aug. 21, 22, and 24, with their immunization record. Orientation and pre-registration for all high school students will be Friday Aug. 25 at 10 a.m. All students should be present. Aug. 28 at 8:20 a.m.

The first holiday will be on Labor Day, Sept. 4. Thanksgiving holidays will be Nov. 22, 23, and 24. Christmas holidays for school children will be Dec. 25 thru Jan. 1.

The Easter Holiday will be April 13, April 16.

Other holidays for students will be In-Service Days for teachers. They are Nov. 3, Nov. 22, Feb. 23, April 7 and May 18. There are 175 student days on the 1978-79 calendar, 8 In-Service days, and 11 days of holidays.

Baptist Women Meet

The Marsha Key Group met last Wednesday, August 16, 1978 at the home of Mrs. Roscoe Nelson for current missions.

Anita Anthony presided over the program. Verna Jarvis read the prayer calendar for the missionaries that had birthdays.

The Bible reading was Ephesians: 14: 17-24. Altha Groves led prayer for the missionaries and Verna Jarvis gave a prayer for all the sick people.

Mrs. Nelson gave the program. The program was "Getting to know the Asian Americans." Those assisting with the program were Viola Hutton, Imogene Pogue, and Anita Anthony.

Ora Sanders dismissed the group with prayer.

Members present were Ora Sanders, Anita Anthony, Evelyn Hiller, Addie Novak, Viola Hutton, Eva Adkinson, Altha Groves, Imogene Pogue, Verna Jarvis and Marguerite Nelson.

The next meeting will be held at the church for an all day work day.

Sale For Season Tickets Set

Season football tickets will go on sale to previous holders Monday, August 21 at the business office of Spearman High School.

Previous ticket holders have until Friday, Sept. 1 to pick up their tickets. After that, these will be available to others, beginning Tuesday, Sept. 5.

The tickets this year are \$12.50 for a 5 ticket package. Tickets for reserved seats at individual games will be \$3.00.

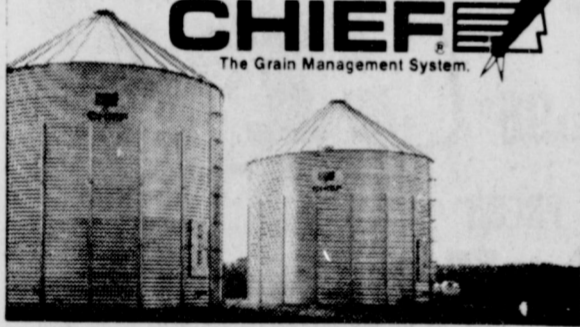
The Spearman Lynx open their football season Sept. 8 at Stratford. The first home game will be Friendship here on Sept. 15.

Increase your grain profits every year. All it takes is grain management.

Every year, for the last 30 years, farmers who've stored their grain have made more per bushel profit. That's a fact. And the reason why you should invest in a Chief Grain Management System. The Chief System is complete, expandable and costs much less than you might expect. Especially now, when many dealers are offering big winter discounts. With a Chief Grain Management System going for you, you harvest when you're ready. And sell when the price is right. There's no downtime at the elevator... while expensive combines and operators wait in the field. You make the decisions. You reap the profits. Write today for our free Chief Grain Management Systems kit. It'll convince you with facts and figures.

Western Ag Sales Co.
Call 659-2596

Bill Sexton - Wilton Green



Great taste in Root Beer? It's as simple as I.B.C.

The I.B.C. Root Beer Company is proud to announce the introduction in this area of a fine old product... I.B.C. Root Beer.

I.B.C. tastes the same way Root Beer used to taste years ago. Because I.B.C. is the same one they used to make. In 1919, at the start of Prohibition, the Independent Breweries Company changed over from production of beer and developed a unique formula for a distinctive, true Root Beer.

Today, I.B.C. Root Beer is produced through the most modern soft drink technology and under the most stringent quality controls. But everything that made I.B.C. a Midwest favorite for decades is still all there.

Almost sixty years of tradition and a perfect combination of ingredients create the rich I.B.C. color, foamy head and incomparable taste. We believe that, since 1919, no one ever made a better tasting Root Beer.

Use the coupon and find out why. Great taste in Root Beer? It's as simple as I.B.C.



20¢ OFF 1—64 oz. bottle, regular or sugar free #W 93

Save 20¢



TO THE DEALER
You are authorized as our agent to redeem this coupon for 20¢ on the purchase of one 64 oz. bottle of I.B.C. Root Beer, Regular or Sugar-Free, ONLY. We will pay you 20¢ plus 5¢ handling charge for each of these coupons redeemed in accordance with the terms of this offer. To obtain payment, send to I.B.C. Root Beer Co., 555 Brown Road, Hazelwood, MO 63042. Coupon void if taxed, restricted or prohibited by law. Cash redemption value 1/20th of one cent. Offer good only in U.S. COUPONS MAY NOT BE REDEEMED BY DISTRIBUTORS, BROKERS, ROUTE DRIVERS, SALESMEN, OR COUPON SERVICES. OFFER EXPIRES NOVEMBER 30, 1978

20¢ OFF

How Stereo 98 Changed My Life!



BEFORE
This is me before I started listening to Stereo 98. Overweight, poor, unhappy and alone.



AFTER
This is I after 16 short days as a listener. Rich, trim and popular!

Spearman - Gruver - Stereo 98

6 A.M. Til Midnight

KBMF/KRDF

Cardiff Broadcasting Co., Inc.

Arthritis Foundation Sets Annual Cattle Roundup

The Panhandle Division of the Arthritis Foundation is staging its third annual Cattle Roundup.

Farmers, ranchers, and feedlot managers in the 26 counties of the Panhandle are being asked to donate cattle to be auctioned off at the Amarillo Livestock Auction beginning at 1:00 P.M. on Monday, August 28.

The Arthritis Foundation reports that farmers, ranchers, and agricultural workers are hit hardest by this number one crippler. In fact, one in every eight of the people involved in agriculture is a victim of arthritis.

The cause and cure of this hard hitting disease is still unknown, but it is suspected that exposure to the elements can trigger arthritis.

It is also thought that hard physical labor is a possible cause.

Added to the pain and suffering is the financial burden that occurs when the farmer or rancher can no longer work, due to arthritis.

There is hope, however, if the victim will seek help from a qualified rheumatologist.

The magic number for this year's roundup is 100. The

Arthritis Foundation's goal of 100 head of donated cattle underscores the fact that there are more than 100 kinds of arthritis.

Panhandle Division Director, Vivian Madewell said for more information about the auction and arthritis, contact the Arthritis Foundation, Panhandle Division, at 804 South Bryan, phone 374-2922, or write P. O. Box 3096, Amarillo, Texas 79106.

Kenneth Irwin of Gruver, will be the head of the cattle roundup in Hansford County.

County, and Canadian River. Current officers of the organization are: Roland Wheat, president, Higgins; James Bible, vice president, Wayside; Frank Buzzard, secretary, Perryton.

TOP RESORT

Premier resort in the area around Huntsville, Texas, in case you are traveling in the vicinity of Houston, is Waterwood on Lake Livingston. Waterwood actually is a resort community built on 25,000 acres in the wooded East Texas forest area. It has scenic beauty, quiet atmosphere, a fine golf course and tennis courts, cabanas and hotel type rooms and outstanding dining facilities.

Livingston fishing is excellent and the reason for many visitors to the Huntsville area. Huntsville itself is an interesting small city, with two museums dedicated to Sam Houston, and nearby is the Alabama-Coushatta Indian Reservation. My visit here has been most delightful...and far, far too short.

Regional Meeting Set For Small Farmers

ALBUQUERQUE, NM--Small farmers from eight states will have an opportunity to discuss their special problems at a meeting here Sept. 6-7.

Delegates from Texas, New Mexico, Colorado, Arizona, Utah, Nevada, California and Hawaii will attend the meeting jointly sponsored by the U.S. Department of Agriculture and the community Services Administration.

According to Dr. Dempsey H. Seastrunk, assistant director of the Texas Agricultural Extension Service, participants in the regional small farm conference will be nominated by local county USDA Rural Development Committees and community groups of farm operators "who really know what the appropriate definition of a 'small farmer' is in a given area."

Six delegates from each of the continental states and four from Hawaii will be nominated. Conference expenses will be shared by USDA and CSA.

Indicates there are about 1.8 million small farm operators who together own about 37 percent of the farmland and control 31 percent of all farm assets, including land, machinery and buildings.

In addition to the delegates, officials from concerned federal and state agencies and from other interested groups will be invited to attend, notes Seastrunk.

The meeting at the Albuquerque convention center will be the last of five held across the country. Others have been held in Montgomery, Ala.; Ames, Iowa; La Grande, Ore.; and Portland, Maine.

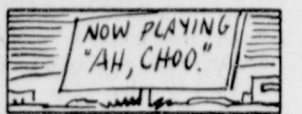
The meetings are intended to give small farmers an opportunity to express concern and to tell how responsible government agencies can better expend money and effort to help, points out Seastrunk.

Travel tips

BY GORDON M. QUARNSTROM

There is rafting on the Rio Grande. One outfitter is Far Flung Adventures, Box 31, Terlingua, Tx., 79852. The Big Bend region offers a variety of river runs, depending on the amount of water flowing in the border river. The most popular is a

two-day trip through Santa Elena Canyon. The best times to float are April and October, because of the waterflows and mild weather.



The first motion picture copyrighted in the U.S. was of a man sneezing. The year was 1894.

SUN	MON	TUE	WED	THU	FRI	SAT	AUG 1978
		1	2	3	4	5	
6	7	8	9	10	11	12	
13	14	15	16	17	18	19	
20	21	22	23	24	25	26	
27	28	29	30	31			

Monday, August 21, 1978

Rotary Club - Martin's Steak Garden

Tuesday, August 22, 1978

Lion's Club - Martin's Steak Garden

Moose Lodge

Wednesday, August 23, 1978

Marsha Key - Baptist Church

Thursday, August 24, 1978

Rebekah Lodge #290-I.O.O.F. Lodge Hall

FRIDAY, August 25, 1978

Arts and Crafts Guild

"Stars In Palo Duro Canyon" September Event

The walls of the Palo Duro Canyon near Canyon and Amarillo, Texas, will unfold new sights and sounds in September.

STARS IN PALO DURO CANYON will run in Pioneer Amphitheatre in the Canyon, September 1-10 except for Wednesday the 6th, at 8:00 p.m., CDST.

Led by soloists from Ballet West and from New York City Ballet, the first movements against the great Cliff behind the stage will be dances. After a few classic numbers there will be a section for children with dancing animals, "Alice in Wonderland," a jazz section, "Broadway Out West" and a western number "Westward Ho!"

The Stars will be backed by members of the School of American Ballet from New York and by the Lone Star Dancers, renowned for their dances on this same stage during the summer months in "TEXAS".

In the second part of the program, sights and sounds of a different kind will soar against the cliff. In a "Fantasy in Sound and Light" some of the sights and sounds of the past-in the Canyon-will be recreated.

Artistic director for the season is Neil Hess, choreographer for "TEXAS" since its beginning. In addition to teaching dance at West Texas State University, he is in demand for workshops in creative movement across the country. Forty of his former students are dancing professionally.

Pat Jarrett is in charge of the sound and light. Jarrett has designed the machinery to produce the natural effects which are such telling parts of "TEXAS". He also is in the demand in other parts of the country. Among his designs and installations are the new outdoor theatre in El Paso and the sound and light equipment at Stone Mountain, Georgia.

Parts of this production will be available for conventions and tour groups after the season closes on September 10. Write Pioneer Amphitheatre, Box 268, Canyon, Texas 79015 to make special arrangements.

The 1979 dates for "TEXAS" are June 20 through August 25, nightly except Sundays.

For tickets to the September production, write "STARS", Box 268, Canyon, Texas or call 806-655-2182. Prices are \$3.50 for adults and \$2.00 for children under 12. Reserved sections for groups may be arranged.

Hightower Seeks Bread Labeling

(Washington, D.C.)--Congressman Jack Hightower introduced legislation that, if passed, will require the label of a loaf of bread to show the cost of the agricultural commodities in the loaf of bread.

During the speech on the floor, Hightower pointed out, "The time has come for consumers to understand what effect an increase in the price of wheat has on the cost of bread. The wrapper often costs more than the wheat in that bread." Hightower explained during his speech the problems of the farmer are not solved and the legislation would help the public understand the farmer's continued cost-price squeeze. Hightower comments, "News stories often mention increases in the price of food in the same paragraph as increases in farm prices. While some farm prices are up a little over what they were last year, prices are still below the farmers' cost of production."

The cost figure on the label would be in cents per pound derived from the average cost of wheat or other products

from the previous marketing year. The information would be required to appear in a regular location and in print easily readable as compared to other matters on the package. Twelve other Congressmen cosponsored the legislation with Hightower. Although the amount of time left for the current Congress to Act on this bill is limited, Hightower expressed hope that the groundwork could be laid for early passage during the next Congress.

Hightower concluded his remarks by stating, "I am confident this legislation can go a long way in creating better understanding between farmer and consumer. No group in this country consumes like the American farmer. Inflation is THE problem for rural America as it is for urban America. If we can reach an understanding that keeping the family farmer in business is as important to the housewife as it is to the farmer and the baker, we are well on our way to finding long range and answers to our food and fiber problems."

PLAY WIN UP TO \$1000.

CASH KING

Pat Spitz
\$1000
WINNER

Grace Brunet
\$100
WINNER

PRIZE VALUE	NO. OF PRIZES	ODDS FOR 1 STONE	ODDS FOR 4 STONES	ODDS FOR 15 STONES	ODDS FOR 25 STONES
\$1,000.00	30	110,870 to 1	18,458 to 1	5,028 to 1	
100.00	100	13,321 to 1	230 to 1	800 to 1	
10.00	349	8,338 to 1	1,058 to 1	288 to 1	
5.00	688	2,664 to 1	420 to 1	160 to 1	
2.00	2,662	837 to 1	140 to 1	50 to 1	
1.00	17,304	120 to 1	21 to 1	5.7 to 1	
TOTAL	2,184	100 to 1	17 to 1	4.8 to 1	

Scheduled Termination Date of this Promotion is October 17, 1978

MEADOWDALE Flour
5 LB. BAG **48¢**

SHOWBOAT Pork & Beans
31-OZ. CAN **48¢**

FRESH DAIRY Kraft Parkay MAXI CUP 16-OZ. PKG. **64¢**

CAMELOT Half & Half 16-OZ. CTR. **33¢**

PILLSBURY BUTTERSCOTCH BISCUITS 4.5-OZ. CANS **8¢**

BONELESS Chuck Roast U.S.D.A. CHOICE BUTCHER BLOCK BEEF **\$1.39** LB.

BONELESS Chuck Steaks U.S.D.A. CHOICE BUTCHER BLOCK BEEF **\$1.49** LB.

GREEN GIANT WHOLE KERNEL OR CREAM STYLE Golden Corn 17-OZ. CANS **3 89¢**

CHARMIN Tissue ROLL PKG. **4 79¢**

FROZEN FOODS Cool Whip 9-OZ. TUB **59¢**

COUNTRY TIME Lemonade 4 8-OZ. CANS **\$1.00**

BIRDSEYE Corn 'n' the Cob 8 EARS **98¢**

FRESH Pork Loins **\$1.19** LB. (14 TO 17 LBS. AVG.)

FRESH Pork Loins SLICED **\$1.29** LB.

FRESH Beef Liver SLICED **59¢** LB.

BREADED PRE-COOKED Fish Sticks BULK PACK **89¢** LB.

ASSORTED FLAVORS Fairmont Ice Cream \$1.39

ROUND CARTON 1/2 GALLON

New motel

Official groundbreaking for the Nursanickel Motel, will be held Wednesday, the sixth day of September, at ten a.m. in Spearman, Texas. The motel location will be on Texas Highway 207 just north of Martin's Steak Garden. Mr. Cleo Coffey Jr. of Dalhart, Texas is the owner and Hallmark Builders of Amarillo is the contractor.

The motel will have 30 units with an attached office-apartment and a swimming pool. Mr. Coffey built his first Nursanickel Motel in Dalhart in 1977.

The Spearman High School Band, under the direction of

Larry Prather, will play for the festivities. Master of Ceremonies will be Mr. J.L. Brock, the invocation will be given by Rev. Russell Pogue, pastor of the First Baptist Church. Mayor C. Ralph Blodgett, Jim McLain, President of the Chamber of Commerce; L.L. Anthony, President of the Spearman Industrial Plan, Inc.; and C.A. Gibner, President of the First State Bank will be among the dignitaries on the program.

This motel is made possible by the stockholders of Spearman Industrial Plan, Inc.

CALIFORNIA ICEBERG HEAD Lettuce **29¢** LB.

WASHINGTON PRUNE Plums **39¢** LB.

CALIFORNIA BARTLETT Pears **39¢** LB.

WILSON'S CORN KING Skinless Franks **79¢** MEAT 12-OZ. PKG.

WILSON'S WESTERN STYLE Smoked Sausage **\$1.89** LB. BULK PACK

WE GIVE Double Gunns Bros. Stamps EVERY WEDNESDAY