



# HANSFORD PLAINSMAN

VOL. 11, NO. 18

THE HANSFORD PLAINSMAN, SPEARMAN, TEXAS 79081

SUNDAY, FEBRUARY 22, 1981

## Schubert Delegate

WACO, TX; -- Burton Schubert of Spearman will serve as one of the five delegates from the Texas Farmers Union to the National Farmers Union convention in Orlando, Florida, March 1-4. Scheduled to address the convention is newly appointed Secretary of Agriculture John R. Block.

Mike Moeller, President of the TFU, said the national convention takes on added importance this year to the country's family farmers and ranchers as the 1981 Farm Bill will soon be pending before Congress. "The Convention will provide an excellent opportunity for Secretary of Agriculture Block to outline the administration's plans on the farm bill and for the next four years. Farmers and ranchers are anxious to learn what the Reagan Administration plans for the many programs which affect them," Moeller stated. The TFU President will also attend the national convention.

The theme of the 1981 NFU Convention is "Justice for Agriculture." George Stone, President of the NFU, said the theme was selected "because justice is exactly what the debate over the farm bill will be about. There will be powerful interests working hard against the family farm concept." Stone added "it will take every Farmers Union member in this country to begin to tip the scale of justice out of the hands of the few and back into the hands of the families in agriculture."

In addition to Agriculture Secretary Block, other speakers at the NFU convention will be U.S. Senator Max Baucus (Montana), Congressman Kika de la Garza (Texas), Chairman of the House Agriculture Committee, and Congressman Tom Daschle (South Dakota) a member of the House Agriculture Committee.

The NFU is composed of over a quarter million family farmers and ranchers from 22 states. The organization will be drafting their annual policy for the membership during the national convention.

The NFU address the concerns of all major farm commodities and is the major proponent of a fair government support program combined with supply management practices such as allotments and set-asides. The organization also supports interational commodity agreements and has historically stood for 100 percent of parity farm prices.

## Hospital news

Patients in Hansford Hospital are Maria Ortel, Dorothy Saveler, Connie Garcia, Lula Baggerly, Sandra Zamora, Addie Novak, Hazel Stumpf, Faye Miller, Aloha Bentley, Dan Jackson and Lawrence Wilbanks.

Dismissed were Ester Stewart, Sid Evans, Teresa Brown & daughter, Mildred Hiltogan, Ray Procter, Eunice Spivey, Birdie Thomas, Nancy Ochoa & daughter, Willie Seitz and Ras Russell, Jr.

## FCA's Benefit Game

The FCA, Fellowship of Christian Athletes, will be having a Benefit Game on March 7, 1981 starting at 7:30 p.m.

The game will be against the KVII players. Those playing for the FCA will be the Faculty and Ex-Students. So the Spearman FCA will have a good chance of winning.

The fee will be \$2.00 for Students and \$3.00 for Adults. This will help the FCA in many things, and it will be a real good game, so do try and make it.

IT WAS 92 degrees in Spearman Friday for the HOTTEST spot in the national A "muster" blew in from the North early Saturday morn- to remind local folks that they were not in Miami, Florida, how- ever!



## Boxing Team Wins 'Team Trophy'

The Spearman - Gruver boxing team traveled to Amarillo on Saturday and Sunday, February 14th & 15th to compete in the 13th Annual Lions Golden Gloves Regional Tournament.

The Spearman-Gruver boxing team came home with the coveted "Team Trophy", competing with teams from Amarillo, Tulia, Hereford, Borger, Panhandle and Stinnett.

Each boy participating contributed points for their team. One point was given for each team

member. Three points for first place and two points for second place.

The boys from Spearman and how they placed are as follows.

55# class - Regional champion, Mark Eakin

65# class - Regional champion, Edward Mayfield

85# class - Regional champion Will Black, runner-up, Gannon Crum.

105# class - third place, Dee Mayfield

125# class - Regional champion, Brian Beck runner-up John Antalek, third place, Dillas Trospier.

55# class - Regional champion, Mark Eakin

65# class - Regional champion, Edward Mayfield

85# class - Regional champion Will Black, runner-up, Gannon Crum.

105# class - third place, Dee Mayfield

125# class - Regional champion, Brian Beck runner-up John Antalek, third place, Dillas Trospier.

150# class - Regional champion, Brian Beck runner-up John Antalek, third place, Dillas Trospier.

175# class - Regional champion, Brian Beck runner-up John Antalek, third place, Dillas Trospier.

200# class - Regional champion, Brian Beck runner-up John Antalek, third place, Dillas Trospier.

The open division boys from Gruver will advance to Ft. Worth for the Golden Gloves States Finals.

The boys exhibited great skill & excellent sportsmanship & represented their community in a way we can all be proud of. I would like to take this opportunity to thank the YMCA, Baker & Taylor, Junior Lusby "Cats", & all of the parents for their support through the year. - Ray Thomas

Gruver boys participating in the Senior Division were Durward Cator & Rickey Lopez. Open division boys were Marshall Cator & Johnny Williams.

## City, GTE Facing Hearings Over Rate Increase Bid

General Telephone is still in there trying to squeeze the pocketbook of phone subscribers in its Texas service area...

And the city of Spearman is in there standing firm with 105 other cities in Texas served by GTE to prevent the second rate increase request for \$44.6-million placed before the Public Utilities Commission of Texas, Jan. 23.

If granted, this increase would be some 28 percent. On an average residential one-party service, rates would go from \$11.15 to \$14.49 as compared to \$8.20 charged by Southwestern Bell for service admitted by GTE to be superior to that it is now supplying subscribers.

Business one-party rates would increase from \$37.30 to \$48.39 compared to \$27.45 charged by Southwestern Bell.

This rate increase request comes only weeks after PUC granted an increase of \$31.9-million in October, 1980.

At that time, GTE had sought an increase of \$58.3-million. In addition, PUC imposed a \$4-million quality-of-service penalty was imposed against the company.

The company had appealed that ruling to the district court and it had been set for March 6-which accounted for much surprise on the part of the 106 cities as well as members of the PUC when the second rate increase request was made.

The same cities agreed to enter into further action against the new increase and Spearman Mayor Ralph Blodgett is a member of the 21-man steering committee coordinating that effort. Once again, Don Butler of Austin and John Bell of

Arlington will act as attorneys for the cities.

In a prehearing conference before the PUC to rule on interventions and to set a hearing schedule, the telephone company objected strenuously to any participation by the cities but intervention by the cities was allowed notwithstanding the company's protests.

At the earlier hearing, telephone subscribing ratepayers from the various cities served by GTE were a decided thorn in the flesh of the company in airing views before the PUC. Even more have expressed a desire to do so against the second rate increase request which was one reason for the company's objections.

At Spearman, appropriate information and forms will go out with utility bill mailings for those ratepayers here who might wish to participate against the rate increase.

A ratepayer participation hearing has been scheduled March 30 and 31 before the PUC at Austin.

The intervening cities will present testimony April 13.

The actual case for the increase will begin April 27.

"Meanwhile, back at the wrench," the telephone company is conducting a two-pronged campaign to either divert or dilute the attention of individual customers to the issues at hand.

One prong seeks to reach into various council meetings of cities in the service area to try and convince of the futility of fighting the increase.

The other is in the form of ostensible interviews with company district officials wherein the company maintains-

through the official-that the only service problems in the GTE subscribers area are delays in getting initial telephone service installed for new customers. In one such interview published in a high plains paper, no mention was made of problems being experienced at points such as Spearman with service already installed.

While time between the report of service problems and the appearance of a technician has markedly shortened, according to a tabulation of experience in Spearman, overall quality has not improved and in many cases has deteriorated.

As the 106 cities and their consultants rallied for the new fight, a newspaper story published in the GTE's headquarters city of San Angelo stated that members of the PUC had instructed the member they designated as their "telephone expert" to proceed immediately with action on the quality-of-service ultimatum ahead of the deadline established in October. The article interpreted this to mean the PUC was displeased with the new request just weeks after an increase had been granted and the commission's displeasure with current service quality stated.

At that time, GTE was told by the commission that failure to meet the standards they considered fair expectations could result either in curtailment of service area or complete loss of franchise to operate in Texas.

## MARKETS

Wheat	\$4.00
Soybean	\$5.70
Milo	\$5.25
Corn	\$3.47

## Blood donors give 77 pints

The "bloodmobile" came to Spearman, Thursday, greeted by a host of willing donors when the collection center was set up at the Parish Hall of the Sacred Heart Church, but...

--The collection campaign fell 25 short of the target quota of 110 and 33 blood units short of the goal established.

Edith Smith, local chairman of the Red Cross effort, felt the "shortfall" was due to two things: different hours than other such campaigns and the continued inroads influenza has made into the adult life of the community.

Some persons going through the donor line were turned down because of medication taken in the face of prevailing threats of illness. However, those going through the line to the final "checkpoint" where they are accepted or rejected, count on the quota. Before the collection center closed at 1:30 p.m., 85 persons had gone through the donor line. Only 77 of them were accepted to give blood.

The center, staffed by Red Cross administrative and nursing personnel as well as local Red Cross volunteer workers, opened at 8:30 a.m., Thursday. It was kept open during the noon hour to allow for employees of downtown firms to make a lunchtime visit to give blood.

None came. However, many persons, such as some school personnel, came during the morning hours on a sort of unofficial released-time basis to make contributions.

The average adult feels no effects of his or her gift of blood 15 minutes after the "drawing"

and all vestiges of the experience are gone within 24 hours. That average adult has some 10 to 20 pints of blood circulating

through the system and the unit drawn is slightly less than a pint. So, there is no danger involved for the person of

average health. Red Cross drawing technology has changed dramatically in the past few years taking away virtually all "fright" aspects for the squeamish.

Policy has changed, too. The free supply of blood to a needing patient does not depend-with Red Cross-upon a donor relationship. Red Cross endeavors to meet all illness and emergency demands for blood from its blood centers and will, if supplies permit, supply free blood provided patients at those points where it comes from a commercial blood supply firm or a private hospital reserve.

The single unit you give may help as many as four persons. Whole blood--the form in which you give it--is composed of red cells, white cells, plasma and platelets.

Whole blood is given to those patients bleeding heavily, either from serious injury or massive hemorrhaging. Patients not so actively bleeding but suffering a medical illness may require the therapeutic value of only one of blood's components.

Edith Smith told the REPORTER she did not know just when the next bloodmobile visit would be. Schedules are established at the Red Cross area administrative office. However, she felt a study would be made and submitted taking into account the hours and peculiar conditions of workers in the field who cannot turn loose and come in until the next shift reports for duty.

The only established fact at present is that the next donor campaign will be conducted at Gruver.



Oldest blood donor, Dr. Novak....



Youngest blood donor, baby Dr. McClellan!



OUR SPECIAL thanks to the Lynxettes and Rangers who stayed after the game to pose for this picture! This shows the winning Lynxettes and their Captains and the winning Rangers and their captains with their winning district gold basketball!

## Rangers take boys' crown Lynxettes capture title

The Spearman Lynxettes won the District 1-AAA title outright from a classy Ranger girls team, here last night, before 1200 screaming fans, 46-38. The Lynxettes will meet Dimmitt at the Civic Center in Amarillo Tuesday evening, at 8 p. m. for

the bi-district game, and the right to advance to the regional game this weekend in Lubbock, Texas.

The No. 1 Class AAA boys team the Perryton Rangers won the district 1-AAA boys crown outright also, by blasting a good Dalhart

team 74-55. It was homecoming for former Spearman coach Bones Simpson, and all fans agreed that his team was really "something to see!"

Kendra Burke hit for 20 points to lead the host girls to the win.

# WANTED ADS

## CAPROCK MONUMENT CO.

Dealers of Georgia Granite, Georgia Marble, Colored Granite, & Bronze.

represented by  
**BOXWELL BROS. FUNERAL HOME**

519 S. EVANS  
659-3802

Hansford County  
Planned Parenthood  
26 S. Haney  
659-2483  
Spearman  
Mon.-Fri.  
Call for an appointment.  
305-rtn

### SERVICES

**SERVICE:** Pits cleaned, wet or dry. Dragline or loader. Also, dozer, grader, carry-all service. Lee Roy Mitchell, 806-733-2384, Gruver, Texas 79040.

**KIRBY SALES & SERVICE.** New & reconditioned vacuum cleaners. Claude Newell, 912 S. Bernice.  
8-rtn

**Pee Wee's Plumbing Service** Roto-rooter, Acoustical Ceilings. **Blown Insulation** in walls and ceilings. **Appliance Service**, used appliances for sale. 659-2811 or 659-3781.  
20-rtn

**MONUMENTS** Save 20% to 30% Agents and Undertakers Commission **ALVA MONUMENT CO.** Alva, Okla.  
51-rtn only

**NOTICE** **Wallace Monument Co.** Monuments, Curbing, Grave Covers Local Representative **LEONARD JAMESON** Spearman, Texas  
20-rtn

**WINTER RATES** The Winter rates are \$6.95 per day for Stem Rinse & Vac shampooer. Available at **Gordon's Drug**. Also available at Freddie Largets; 716 Cotter Drive; after 4:00 p.m. and Saturday and Sunday.

A. and A. Gas Leak Survey, Inc. Commercial, Residential, and Irrigation. **GAS LEAK DETECTION** Call: 659-3519 anytime 659-3019 after 5 p.m.

Will decorate cakes all occasions. Also cookies and cupcakes. Call Nelda 659-3984.  
51-rtn

Carpet & upholstery cleaning **Rogers Steam Way**, Guymon, 405-338-7926  
5s-rtn

TREES & shrubs trimmed or removed yard work except mowing. Calling 659-2787 or 659-2463 after 5:00 p.m.  
15s-4tp

### MISCELLANEOUS FOR SALE

**FOR SALE:** 40 ft. X 250 ft. commercial lot-Golden Circle addition. Phone 659-3802.  
12-rtn

**FOR SALE OR LEASE:** Service station, cafe & house. 21 miles south of Perryton. Phone 806-659-3414.  
40s-rtn

**FOR SALE:** Weiland Tunnel Ram for Small Bk Chevy single 4 BBI. "New" contact: David Stafford 310 S. Hoskins, Phone No. 659-2021. New \$350.00 sell for \$350.00.  
9s-rtn

**FOR SALE:** Rebuilt: 454 Chev V-9 pickup motor. 428 V-8 Ford truck motor. 396 V-8 Chev. pickup motor. 702 GMC irrigation motor V-12.  
Hi-Plains Auto Supply Phone 659-2506, Spearman.  
15-2tc

**HOUSE FOR SALE:** 3 bedroom, 1 bath, fully carpeted, lots of storage, mid 20's. For more information call 659-2309.  
11-rtn

**FOR SALE:** 2 Doberman-Females for sale. Contact Scott Henderson at 733-2517 in Gruver, NC

Two bedroom, 2 bath, central heat & air, fireplace, sundeck, extra lot, fenced patio, & built-ins! Call 659-2117.  
41s-rtn

**FOR SALE:** Sofa, chair and ottoman. Call 733-2598, Gruver.  
15-rtn

**FOR SALE:** 3 bedroom house - large den & living room combination - central air & heat woodburning fireplace - Shown by Appointment only. Call 659-3327.  
1-rtn

**FOR SALE:** 1974 Cadillac Eldorado. Beige over brown. Loaded. Excellent condition. \$1,800. Call Borger 274-6648.  
11s-rtn

**FOR SALE or RENT:** Commercial building-Stinnett HWY, 1800 square feet. Small office and bath. Call 659-3436 or 659-3466.  
13-rtn

**FOR SALE:** Round pedestal maple table, 4 matching hutch. \$600.00. Call 659-3492.  
13-rtn

**FOR SALE:** 3 bedroom home, 1 bath, nice family room, on large lot. Pens & Barn on back or lot. Edge of town! Call 659-3027.  
12s-rtn

**FOR SALE:** Used refrigerator with ice-maker. Phone 659-2506 or 659-2327.  
14s-3tc

### Business Opportunities

HAVE A HIGHLY PROFITABLE, non-franchised, Jean & Sportswear Shop of your own. Featuring over 100 brands - Levi, Vanderbilt, Klein, Sedgfield, Britannia, many more. \$16,500.00 includes inventory, in-shop training, installed fixtures and Grand Opening. Open within 15 days. Call Mr. Hartley at PACESETTER FASHIONS (214) 937-9876.  
15s-1tc

Own your own Jean Shop; go direct - no middle man, no salesman's fee. Offering all the nationally know brands such as Jordache, Vanderbilt, Calvin Klein, Sedgfield, Levi and over 70 other brands. \$15,500.00 includes beginning inventory, airfare for 1 to our national warehouse, training, fixtures and Grand Opening Promotions. Call Mr. Loughlin at Mademoiselle Fashions 612-835-1304.  
15s-1tp

Own your own highly profitable and beautiful infant to pre-teen shop. Mademoiselle Fashions offers this unique opportunity. Brand names such as Health Tex, Billy the Kid, Sassoon, Calvin Klein and many other major brands. \$16,500.00 includes beginning inventory, fixtures and training. Call Mr. Loughlin any time at 612-835-1304 Ext. 7.  
15s-1tp

### FOR RENT

**OFFICE SPACE FOR RENT** - 11 West Kenneth - West side two offices, file and storage area receptionist's office and lounge. Call J.E. Blackburn (806) 659-2766 or 659-2719.  
10s-rtn

### HELP WANTED

**HELP WANTED:** Territorial sales in Petroleum Industry--Need someone in this area to assist part time or full time in my business. A position that could increase your annual income by 10,000 part time or more. Responsible person, married, over 30 with reliable transportation to service established industrial, oil field and farm accounts. Call 806-355-4161, or mail resume to DON LONGHOFER, 6500 Oakhurst, Amarillo, Tx. 79109.  
10-10tc

Would like to start a Country-Western band in area. Need People with time in the evening for practice. Also need female singer. Hope to play in bars in area. For more information call Bill Laird 659-2409.  
15-2tc

**Linda's Furniture**  
Upright freezer, captain's bed, several platform rockers, new lamps, new and used living suits, new and used bedroom suits, new and used dinette, new love seat, baby bed, used gas cook stoves, used vanity, copper tables, and many more good bargains. Call 435-6487, or come by 12 E. Brillhart in Perryton.  
15-2tc

**Taylor Spraying Service,** Termite & Pest control, tree spraying, pine tree service especially serving the Panhandle for 17 years with personalized service. Home Industry Business. Monthly service available without contract. 669-9992, Pampa.  
10s-rtn

**SNOOPY'S DAY SCHOOL** Open Monday-Friday, 7 a.m. to 6 p.m. We have Morning snack, Hot Lunch, and Afternoon snacks. Holiday parties-crafts-and now an added extra for Mom, You receive (Western gift stamps for your payment. Pay on Friday and get double stamps call or come by 620 1/2 Bernice, 9-3328. Ages 18 mo. to 12 yrs. Call S&H Remodeling for your painting or papering needs-659-3328.  
14s-rtn

### CARD OF THANKS

To all our wonderful friends a great big Thank You for remembering me during my recent stay in the Spearman and Amarillo hospitals. Your flowers, cards, and calls were greatly appreciated. A special thanks to our wonderful Dr. Manese and nurses. Also to Brother Don Wirsdorfer. You are all great.  
Lelan Chase

**Why Not Sell The Sundancer Aerobic Exerciser** Best & Safest Mini-Tramp Available Highly Recommended by Doctors Sign up Now to Be A Distributor  
Call: 806-659-2361  
Kenneth Friemel  
Spearman, Tx.  
79081

## School Menus

**LUNCH MENUS**  
**MONDAY, FEBRUARY 23**  
Roast & Gravy  
Buttered Rice  
English Peas  
Combination Salad-Dressing  
Peanut Butter Blend  
Hot Rolls-Butter  
Milk

**HIGH SCHOOL CHOICE**  
Chicken & Noodles

**TUESDAY, FEBRUARY 24**  
Frito Pie  
Buttered Potatoes  
Whole Kernel Corn  
Congealed Lime Salad  
Cinnamon Rolls  
Bread-Opt.  
Milk

**HIGH SCHOOL CHOICE**  
Lasagna Casserole

**WEDNESDAY, FEBRUARY 25**  
Pizza  
Mashed Potatoes  
Buttered Spinach  
Cole Slaw  
Spice Cake  
Milk

**HIGH SCHOOL CHOICE**  
Hamburger Steak-Catsup-Bread

**THURSDAY, FEBRUARY 26**  
Turkey & Gravy  
Cornbread Dressing  
Candied Yams  
Green Beans  
Fruit Salad  
Bread-Opt.  
Milk

**HIGH SCHOOL CHOICE**  
Pork Sausage

**FRIDAY, FEBRUARY 27**  
Sloppy Joe or Oven Fried Liver-Bread  
Fried Taters-Catsup  
Seasoned Pinto Beans  
Lettuce-Tomato Salad-Dressing  
Cookies  
Milk

**ALL STEEL BUILDINGS**  
STRAIGHT WALLS  
40' x 80' x 14'  
COLORED WALLS,  
GALV. ROOF.  
Two 20'x14' dbl. slide doors  
One steel walk door  
**\$13,880 Erected**  
806-435-3107  
Bob Slaughter - Rep.  
1306 S. Grinnell  
79081

**SPEARMAN** - Spearman's Kenda Burke hit for 20 points to lead the host girls to a 46-38 win over Perryton, and Perryton's Gary Rinker tallied 31 markers to lead the Rangers over Dalhart, 74-55, as District 1-3A cage championships were decided yesterday here.

A capacity crowd of close to 1,200 watched the Lynxettes claim their fifth consecutive district title. Spearman's girls are slated to take on District 2-3A winner Dimmitt on Tuesday beginning at 8 p.m. in the Amarillo Civic Center Coliseum in a bi-district game.

Perryton's boys, now 27-1, will also meet the 2-3A winner, yet to be decided although Dimmitt is favored to win.

Both winners last night were also round-robin winners prior to the district tourney which started Thursday.

**PERRYTON** 20 38 52 74  
**DALHART** 10 23 38 55

**PERRYTON:** Jeff Greenway 4-0-8; Ricky Herring 6-2-14; Lance Simpson 0-0-0; Mark Buck 1-2-4; Gary Rinker 14-3-31; Russell Osborne 5-0-10; Randy Sawalsky 3-1-7; Kim Clemmy 0-0-0. **TOTALS:** 224-74.

**DALHART:** Rick Stepp 7-5-19; Rory Gomez 4-0-8; Terry Morris 2-2-4; Zurick Labrier 3-1-7; Jerry Vinson 6-1-13; Ray Tyler 0-0-0; Bill Graff 10-2. **TOTALS:** 129-55.

**TOTAL FOULS:** Perryton 13, Dalhart 14  
**FOULED OUT:** Osborne, Perryton  
ATT: 1,200

Miss Burke sparked the Lynxettes while Mary Martin added 12 to up Spearman's mark to 19-11. While the Lynxettes never really pulled away from taller Perryton, they never trailed early in the contest.

The teams went into the half knotted at 17, however, Miss Burke put Spearman up by two, 19-17, early in the second half, and the Lynxettes held Perryton the rest of the way.

Stacy Blasingame led Perryton with 14 points.

The boys' game was never in doubt as the Rangers took a 15-point lead by halftime. Rick Herring and Russell Osborne combined for 24 points to help in securing the Ranger win.

Dalhart's Rick Stepp had 19 points to lead the losers.

**PERRYTON (G)** 4 17 30 38  
**SPEARMAN** 10 17 33 46

**PERRYTON:** Julie Hargrove 1-1-3; Cindy Haines 5-1-11; Ruth Ogden 1-2-4; Barbara Luthi 3-0-4; Therese Liles 0-0-0; Stacy Blasingame 2-1-4; Kris Reid 0-0-0. **TOTALS:** 164-38.

**SPEARMAN:** Kenda Burke 7-4-20; Nancy Wilson 0-5-5; Mary Martin 5-2-12; Tammi Matze 1-0-2; Lee Ann Gibner 1-2-4; Susan Davis 1-1-3; Bonnie McCoy 0-0-0; Margaret Reed 0-0-0; Mary McIntyre 0-0-0; Kamela Ford 0-0-0; Johnnie Eaton 0-0-0. **TOTALS:** 15-16-46  
**FOULED OUT:** Perryton 17, Spearman 15  
**FOULED OUT:** None  
ATT: 1,200

**Spearman Appliance Center**  
313 Main  
New & Used Appliances  
Appliance Service  
659-2388

**CUSTOM FARMING**  
GARY BRELAND  
806-733-2539

**The Hansford Plainsman**  
PUBLICATION (USPS 243-660)  
SPEARMAN, TEXAS 79081  
213 Main Box 458 659-3434  
Published Weekly at 213 Main Street  
Spearman, Texas 79081  
Owner-Publisher ..... William M. Miller  
Editor ..... Faye Lynch  
Second Class Postage paid at Spearman, Texas 79081  
Any erroneous reflection upon the character of any person or firm appearing in these columns will be gladly and promptly corrected upon being brought to the attention of the management.  
SUBSCRIPTION RATE: Hansford, adjoining counties, combination with the Spearman Reporter, \$15.00.  
Other points, \$20.00.  
MEMBER  
**TEXAS PRESS ASSOCIATION**

**COUPON**  
**ALL YOU CAN EAT**  
A Catfish dinner  
\$1.00 off with this coupon  
every Friday night 5-9 p.m.  
single serving are  
available at **DAIRY QUEEN**  
Hwy. 207 S. 659-3324 Spearman, Tx.

**For The Ultimate In**  
**STORM DOORS**  
Custom Built, Designed, And In  
Colors To Fit Your Home....  
Contact Howard Moyer at  
**Only Aluminum Industries**  
Guymon, Okla. 114 W. 1st 405-338-6966  
73942 338-6170

**100-BULLS ... Performance Tested**  
Selling on Wed. March 4, 1981  
Oklahoma Panhandle State University  
Goodwell, Ok. - 1:00 p.m. cst

42-Herefords	The Selected Tops
52-Angus	from 143 head
30-Polled Hfrds	Weighing 1000-1400
5-Charolais	
2-Simmentals	<b>BIG YEARLINGS</b>
5-Beefmasters	

Fertility checked - Frame Scored - Fat Probed  
Fed on High-Roughage Ration  
Many-daily gains near 4-lbs. and  
**BUY PERFORMANCE ---IT PAYS!**

For Catalogs write or call: M.W. England  
Box 186; Goodwell, OK 73939  
Phone- 405-349-2611 - Ext. -228

**Your Asgrow seed dealer.**  
Ralph Blodgett  
A mighty good man to know for seeds with complete performance.

**Topaz**  
• Downy Mildew Resistant • A Complete Performance Hybrid • Resistant to Races 1 and 3 of Head Smut • Tolerant to MDMV • Short, Sturdy Stalks

**asgrow**

come grow with asgrow  
**B. & B. Farm Industries, Inc.**  
703 Collard 659-2551 Spearman, Texas

**FINAL REDUCTIONS**  
All fall & holiday merchandise Reduced up to 70% off  
**For One Week Only**  
Feb. 23 thru Feb. 28  
at  
**Kids' Stuff**  
Spearman 312 Main

**Film-Flash-Photo Department**  
**FILM DEVELOPING SPECIAL!**  
Borderless **Color Prints 10¢ PER PRINT**  
DELUX LUSTER Clear  
Plus **99¢ DEVELOPING**  
12 EXP. ROLL..... ONLY **2"**  
on original roll orders only.  
Includes Kodak Ektachrome, Focal, Fuji & Fomat Films.  
BRING your FILM to 521 Hwy. 207 S  
SPEARMAN, TX.  
**TG&Y**

intoxicated.  
 Feb. 14, a Spearman resident was arrested for public intoxication and disorderly conduct.  
 Feb. 15, a Follett resident was arrested for public intoxication.  
 Feb. 16, Ms. Javeta McGill reported the theft of several gallons of gasoline from her pickup truck while the vehicle was parked unattended in the Ideal Food Store Parking Lot.

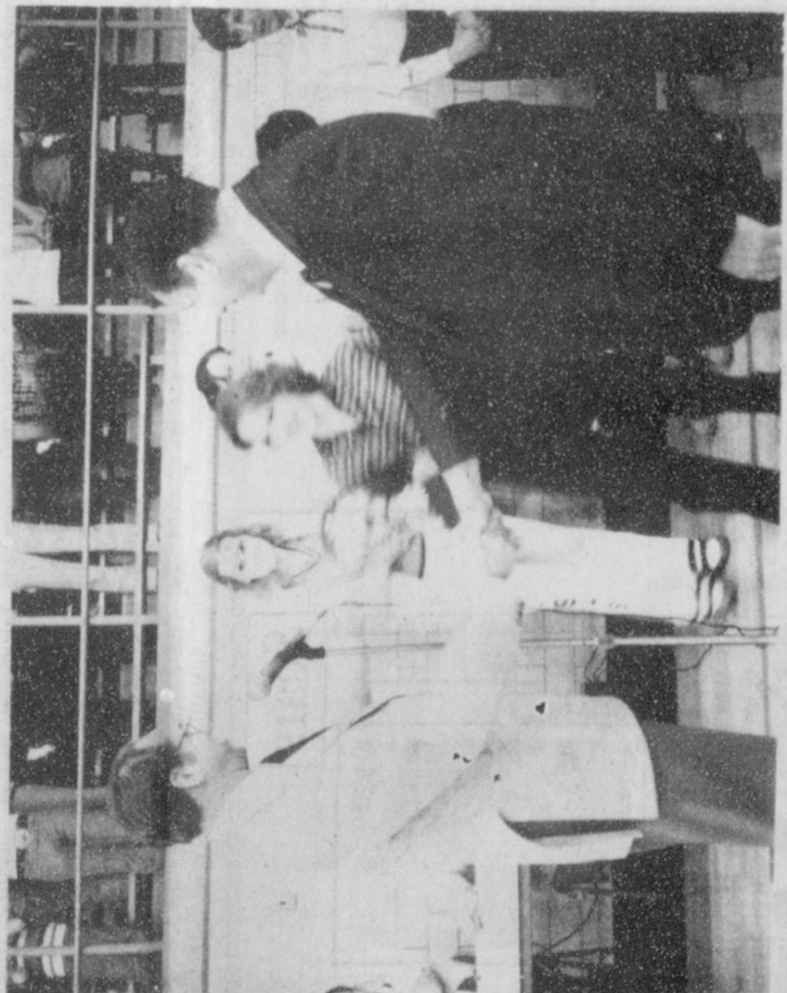
owned by Wayne Cook occurred in the 400 block of South Bernice. No injuries were reported.  
 Feb. 13, an accident involving a vehicle driven by Ms. Penny A. Caisson and a vehicle driven by Ms. Leota A. DeLano occurred at the intersection of seventh Ave. and South Hancy St. Injuries were reported.

Feb. 18, Pat Benton filed a complaint regarding excessively noisy motorcycles that were unlicensed riding in the alley in the 10 block of North James. The youths were contacted and advised of the complaint.  
 Feb. 13, an accident involving a vehicle driven by Jeffrey L. Beedy and a parked vehicle

# Baker & Taylor Drilling Co.

GRUVER HWY.  
659-2503

# Congratulations Lynxettes Dist. Champions



Coach Newton receives the District trophy!

See you at Amarillo  
 Tuesday night 8 p. m.

Junior Lusby Cats  
 Spartex Grain Co.

W. GRUVER HWY.  
659-3766  
 514 COLLARD  
659-3711

# TV WEEKLY GUIDE

## Monday FEB. 23, 1981

6:00 **Macneil Lehrer**  
 Report  
 (1) **News**  
 (2) **Norman Vincent Peale**  
 (3) **Barney Miller**  
 (4) **Barney Show With Tom And Jerry**  
 (5) **What Will They Think Of Next?**  
 (6) **Oklahoma Report**  
 (7) **Tic Tac Dough**  
 (8) **Words Of Hope**  
 (9) **Carol Burnett And Friends**  
 (10) **All In The Family**  
 (11) **Barney Show With Spiderman**  
 (12) **Video Comics**  
 (13) **The Shakespear**  
 Plays "The Merchant of Venice" Gemma Jones plays Portia and Warren Beatty plays Shylock in the second Shakespeare play of the new season. (3 hrs.)  
 (14) **Little House On The Prairie** Adam and Mary Kendall return to Walnut Grove where Adam sets up a law practice, and in- surs reports by defied, ing a man accused of cheating them in a land fraud deal. (60 mins.) (Closed-Captioned.)  
 (15) **U.S.A. (Comedy)** "Being There" 1979 Peter Sellers, Shirley Maclaine. A childlike man chances to meet important, powerful people who interpret his behavior. (Rat- ed PG) (2 hrs., 30 mins.)  
 (16) **That's Incredible** A courageous karate ex- port attempts to break an arrow as it whizzes past him at 130 mph, an amuz- ing feat. (30 mins.)  
 (17) **Robot** and an as- tounding new invention that enables a blind per- son to actually feel the let- ters on the page. (60 mins.)  
 (18) **American Catholic**  
 (19) **Solid Gold**  
 (20) **The White Shadow** A teacher, only recently recovered from a nervous breakdown, becomes the target for a sinister har- assment.  
 (21) **Six Million Dollar Man**  
 (22) **Hocus Focus**  
 (23) **New Bible Baffle Show**  
 (24) **Monday Night At The Movies** "E.T." Faye Dunaway, James Farentino. A poor Argentinian girl becomes an actress and ultimately the most powerful woman in her country as the wife of (Part 1) or a top presentation.  
 (2 hrs.)  
 (25) **Dynasty** Although Blake's financial crisis is deepening, it's Matthew who benefits when Kyle sells him out after his rig is sabotaged for a second time. (60 mins.)  
 (26) **700 Club**  
 (27) **Monte Carlo Show**  
 (28) **M.A.S.H.** While the 407th puts a surprise to his wedding anniversary, a tearful Charles is sent on an inspection tour to the front lines.

8:30 **Streets Of San Francisco**  
 (1) **First Row Features**  
 (2) **House Calls** Ann Anderson is upset because her ex-husband is remarrying. Dr. Michaels seems irritated with a woman who is not up to speed because he's not getting enough sleep.  
 (3) **Foul Play** Tucker's friend, world famous pianist Paul Farrow, who is secretly involved in an affair with Gloria and persuades Tucker, a violinist, to appear with him in concert. (60 mins.)  
 (4) **News**  
 (5) **Lou Grant** A Tribune story about a doomsday group that is preparing at a state university to assassinate a prominent oiler for Lou and Ross when they are caught in a killer storm. (60 mins.)  
 (6) **M.A.S.H.**  
 (7) **Livewire**  
 (8) **Movie (Drama)** "1970 Frederick Combs, Leonard Frey Story about a homosexual's birthday party where hidden thoughts and feelings are suddenly and sadly brought into the open. (2 hrs.)  
 (9) **Rise And Be Healed**  
 (10) **Barney Miller**  
 (11) **Dick Cavett Show**  
 (12) **News**  
 (13) **Festival Of Praise**  
 (14) **Prisoner: Cell Block H**  
 (15) **Comedy-Musical** "Follow That Dream" O'Connell, A family moves to Southern Florida where his wife is accused of attacking the manager of a liquor store. (Closed-Captioned, U.S.A.)  
 (16) **Tuesday Night At The Movies** "E.T." Faye Dunaway, James Farentino. A poor Argentinian girl becomes an actress and ultimately the most powerful woman in her country as the wife of (Part 1) or a top presentation.  
 (2 hrs.)  
 (17) **Club**  
 (18) **Comedy Night**  
 (19) **Movie (Drama)** "The Helix" 1972 Elizabeth Ashley, Tough cop is convinced that an armored car guard engineer is a bank robber.  
 (20) **Tic Tac Dough**  
 (21) **Faith That Lives**  
 (22) **Carol Burnett And Friends**  
 (23) **All In The Family**  
 (24) **Barney Show With Spiderman**  
 (25) **Video Comics**  
 (26) **Nova** "The Malady of Health Care" In an era of medical miracles, a shocking large segment of the population is unable to afford health care. (NOV) How does the society of Great Britain and the U.S. have organized health care delivery for their people, and how these systems are financed.  
 (27) **U.S.A.** (60 mins.)  
 (28) **Lobo** It's another

Typical day in the Atlanta area when Lobo bomber whose carefully planned blasts rip apart their land, which then will be strip mined. (60 mins.)  
 (9) **News**  
 (10) **Livewire**  
 (11) **Faith 20**  
 (12) **Barney Miller**  
 (13) **Dick Cavett Show**  
 (14) **News**  
 (15) **Today In Bible Prophecy**  
 (16) **Prisoner: Cell Block H**  
 (17) **Movie**  
 (18) **Comedy-Adventure** "1966 James Coburn, Lee J. Cobb. A secret agent tries to destroy an organization attempting to control the world's weather. (2 hrs.)  
 (19) **Oral Roberts**  
 (20) **Movie (Western)** "Rough Night In Jericho" 1967 Dean Martin, Jean Simmons. An ex-lawman turned town boss, his toughest opponent is the owner of a stagecoach line, who forces him into a showdown. (2 hrs.)  
 (21) **That's My Line** A man who drives for lost golf balls, a lingerie party for ladies only, and the world's best burlesque are highlighted on tonight's program. (60 mins.)  
 (22) **San Francisco Giants Tradition For Today**  
 (23) **Hocus Focus**  
 (24) **Lavigne And Shirley**  
 (25) **Barney Miller**  
 (26) **Dick Cavett Show**  
 (27) **News**  
 (28) **Festival Of Praise**  
 (29) **Prisoner: Cell Block H**  
 (30) **Comedy-Musical** "Follow That Dream" O'Connell, A family moves to Southern Florida where his wife is accused of attacking the manager of a liquor store. (Closed-Captioned, U.S.A.)  
 (31) **Tuesday Night At The Movies** "E.T." Faye Dunaway, James Farentino. A poor Argentinian girl becomes an actress and ultimately the most powerful woman in her country as the wife of (Part 1) or a top presentation.  
 (2 hrs.)  
 (32) **Club**  
 (33) **Comedy Night**  
 (34) **Movie (Drama)** "The Helix" 1972 Elizabeth Ashley, Tough cop is convinced that an armored car guard engineer is a bank robber.  
 (35) **Tic Tac Dough**  
 (36) **Faith That Lives**  
 (37) **Carol Burnett And Friends**  
 (38) **All In The Family**  
 (39) **Barney Show With Spiderman**  
 (40) **Video Comics**  
 (41) **Nova** "The Malady of Health Care" In an era of medical miracles, a shocking large segment of the population is unable to afford health care. (NOV) How does the society of Great Britain and the U.S. have organized health care delivery for their people, and how these systems are financed.  
 (42) **U.S.A.** (60 mins.)  
 (43) **Lobo** It's another

7:30 **Streets Of San Francisco**  
 (1) **First Row Features**  
 (2) **House Calls** Ann Anderson is upset because her ex-husband is remarrying. Dr. Michaels seems irritated with a woman who is not up to speed because he's not getting enough sleep.  
 (3) **Foul Play** Tucker's friend, world famous pianist Paul Farrow, who is secretly involved in an affair with Gloria and persuades Tucker, a violinist, to appear with him in concert. (60 mins.)  
 (4) **News**  
 (5) **Lou Grant** A Tribune story about a doomsday group that is preparing at a state university to assassinate a prominent oiler for Lou and Ross when they are caught in a killer storm. (60 mins.)  
 (6) **M.A.S.H.**  
 (7) **Livewire**  
 (8) **Movie (Drama)** "1970 Frederick Combs, Leonard Frey Story about a homosexual's birthday party where hidden thoughts and feelings are suddenly and sadly brought into the open. (2 hrs.)  
 (9) **Rise And Be Healed**  
 (10) **Barney Miller**  
 (11) **Dick Cavett Show**  
 (12) **News**  
 (13) **Festival Of Praise**  
 (14) **Prisoner: Cell Block H**  
 (15) **Comedy-Musical** "Follow That Dream" O'Connell, A family moves to Southern Florida where his wife is accused of attacking the manager of a liquor store. (Closed-Captioned, U.S.A.)  
 (16) **Tuesday Night At The Movies** "E.T." Faye Dunaway, James Farentino. A poor Argentinian girl becomes an actress and ultimately the most powerful woman in her country as the wife of (Part 1) or a top presentation.  
 (2 hrs.)  
 (17) **Club**  
 (18) **Comedy Night**  
 (19) **Movie (Drama)** "The Helix" 1972 Elizabeth Ashley, Tough cop is convinced that an armored car guard engineer is a bank robber.  
 (20) **Tic Tac Dough**  
 (21) **Faith That Lives**  
 (22) **Carol Burnett And Friends**  
 (23) **All In The Family**  
 (24) **Barney Show With Spiderman**  
 (25) **Video Comics**  
 (26) **Nova** "The Malady of Health Care" In an era of medical miracles, a shocking large segment of the population is unable to afford health care. (NOV) How does the society of Great Britain and the U.S. have organized health care delivery for their people, and how these systems are financed.  
 (27) **U.S.A.** (60 mins.)  
 (28) **Lobo** It's another

7:30 **Streets Of San Francisco**  
 (1) **First Row Features**  
 (2) **House Calls** Ann Anderson is upset because her ex-husband is remarrying. Dr. Michaels seems irritated with a woman who is not up to speed because he's not getting enough sleep.  
 (3) **Foul Play** Tucker's friend, world famous pianist Paul Farrow, who is secretly involved in an affair with Gloria and persuades Tucker, a violinist, to appear with him in concert. (60 mins.)  
 (4) **News**  
 (5) **Lou Grant** A Tribune story about a doomsday group that is preparing at a state university to assassinate a prominent oiler for Lou and Ross when they are caught in a killer storm. (60 mins.)  
 (6) **M.A.S.H.**  
 (7) **Livewire**  
 (8) **Movie (Drama)** "1970 Frederick Combs, Leonard Frey Story about a homosexual's birthday party where hidden thoughts and feelings are suddenly and sadly brought into the open. (2 hrs.)  
 (9) **Rise And Be Healed**  
 (10) **Barney Miller**  
 (11) **Dick Cavett Show**  
 (12) **News**  
 (13) **Festival Of Praise**  
 (14) **Prisoner: Cell Block H**  
 (15) **Comedy-Musical** "Follow That Dream" O'Connell, A family moves to Southern Florida where his wife is accused of attacking the manager of a liquor store. (Closed-Captioned, U.S.A.)  
 (16) **Tuesday Night At The Movies** "E.T." Faye Dunaway, James Farentino. A poor Argentinian girl becomes an actress and ultimately the most powerful woman in her country as the wife of (Part 1) or a top presentation.  
 (2 hrs.)  
 (17) **Club**  
 (18) **Comedy Night**  
 (19) **Movie (Drama)** "The Helix" 1972 Elizabeth Ashley, Tough cop is convinced that an armored car guard engineer is a bank robber.  
 (20) **Tic Tac Dough**  
 (21) **Faith That Lives**  
 (22) **Carol Burnett And Friends**  
 (23) **All In The Family**  
 (24) **Barney Show With Spiderman**  
 (25) **Video Comics**  
 (26) **Nova** "The Malady of Health Care" In an era of medical miracles, a shocking large segment of the population is unable to afford health care. (NOV) How does the society of Great Britain and the U.S. have organized health care delivery for their people, and how these systems are financed.  
 (27) **U.S.A.** (60 mins.)  
 (28) **Lobo** It's another

## Wednesday FEB. 25, 1981

6:00 **Macneil Lehrer**  
 Report  
 (1) **News**  
 (2) **Science-Fiction** "Humanoids From The Deep" 1980 Grotesque come to life as a DNA experiment goes awry. (Rated R) (90 mins.)  
 (3) **Send Forth Your Spirit**  
 (4) **Barney Miller**  
 (5) **Dick Cavett Show**  
 (6) **News**  
 (7) **Oklahoma Report**  
 (8) **M.A.S.H.**  
 (9) **Tic Tac Dough**  
 (10) **At Home With The Bible**  
 (11) **Comedy** "Burnett And Friends"  
 (12) **All In The Family**  
 (13) **Barney Show With Spiderman**  
 (14) **Video Comics**  
 (15) **Nova** "The Island of Clipperton" The island of Clipperton: Captain Time Forgo. (Closed-Captioned, U.S.A.)  
 (16) **Tuesday Night At The Movies** "E.T." Faye Dunaway, James Farentino. A poor Argentinian girl becomes an actress and ultimately the most powerful woman in her country as the wife of (Part 1) or a top presentation.  
 (2 hrs.)  
 (17) **Club**  
 (18) **Comedy Night**  
 (19) **Movie (Drama)** "The Helix" 1972 Elizabeth Ashley, Tough cop is convinced that an armored car guard engineer is a bank robber.  
 (20) **Tic Tac Dough**  
 (21) **Faith That Lives**  
 (22) **Carol Burnett And Friends**  
 (23) **All In The Family**  
 (24) **Barney Show With Spiderman**  
 (25) **Video Comics**  
 (26) **Nova** "The Malady of Health Care" In an era of medical miracles, a shocking large segment of the population is unable to afford health care. (NOV) How does the society of Great Britain and the U.S. have organized health care delivery for their people, and how these systems are financed.  
 (27) **U.S.A.** (60 mins.)  
 (28) **Lobo** It's another

6:00 **Macneil Lehrer**  
 Report  
 (1) **News**  
 (2) **Science-Fiction** "Humanoids From The Deep" 1980 Grotesque come to life as a DNA experiment goes awry. (Rated R) (90 mins.)  
 (3) **Send Forth Your Spirit**  
 (4) **Barney Miller**  
 (5) **Dick Cavett Show**  
 (6) **News**  
 (7) **Oklahoma Report**  
 (8) **M.A.S.H.**  
 (9) **Tic Tac Dough**  
 (10) **At Home With The Bible**  
 (11) **Comedy** "Burnett And Friends"  
 (12) **All In The Family**  
 (13) **Barney Show With Spiderman**  
 (14) **Video Comics**  
 (15) **Nova** "The Island of Clipperton" The island of Clipperton: Captain Time Forgo. (Closed-Captioned, U.S.A.)  
 (16) **Tuesday Night At The Movies** "E.T." Faye Dunaway, James Farentino. A poor Argentinian girl becomes an actress and ultimately the most powerful woman in her country as the wife of (Part 1) or a top presentation.  
 (2 hrs.)  
 (17) **Club**  
 (18) **Comedy Night**  
 (19) **Movie (Drama)** "The Helix" 1972 Elizabeth Ashley, Tough cop is convinced that an armored car guard engineer is a bank robber.  
 (20) **Tic Tac Dough**  
 (21) **Faith That Lives**  
 (22) **Carol Burnett And Friends**  
 (23) **All In The Family**  
 (24) **Barney Show With Spiderman**  
 (25) **Video Comics**  
 (26) **Nova** "The Malady of Health Care" In an era of medical miracles, a shocking large segment of the population is unable to afford health care. (NOV) How does the society of Great Britain and the U.S. have organized health care delivery for their people, and how these systems are financed.  
 (27) **U.S.A.** (60 mins.)  
 (28) **Lobo** It's another

7:00 **Streets Of San Francisco**  
 (1) **First Row Features**  
 (2) **House Calls** Ann Anderson is upset because her ex-husband is remarrying. Dr. Michaels seems irritated with a woman who is not up to speed because he's not getting enough sleep.  
 (3) **Foul Play** Tucker's friend, world famous pianist Paul Farrow, who is secretly involved in an affair with Gloria and persuades Tucker, a violinist, to appear with him in concert. (60 mins.)  
 (4) **News**  
 (5) **Lou Grant** A Tribune story about a doomsday group that is preparing at a state university to assassinate a prominent oiler for Lou and Ross when they are caught in a killer storm. (60 mins.)  
 (6) **M.A.S.H.**  
 (7) **Livewire**  
 (8) **Movie (Drama)** "1970 Frederick Combs, Leonard Frey Story about a homosexual's birthday party where hidden thoughts and feelings are suddenly and sadly brought into the open. (2 hrs.)  
 (9) **Rise And Be Healed**  
 (10) **Barney Miller**  
 (11) **Dick Cavett Show**  
 (12) **News**  
 (13) **Festival Of Praise**  
 (14) **Prisoner: Cell Block H**  
 (15) **Comedy-Musical** "Follow That Dream" O'Connell, A family moves to Southern Florida where his wife is accused of attacking the manager of a liquor store. (Closed-Captioned, U.S.A.)  
 (16) **Tuesday Night At The Movies** "E.T." Faye Dunaway, James Farentino. A poor Argentinian girl becomes an actress and ultimately the most powerful woman in her country as the wife of (Part 1) or a top presentation.  
 (2 hrs.)  
 (17) **Club**  
 (18) **Comedy Night**  
 (19) **Movie (Drama)** "The Helix" 1972 Elizabeth Ashley, Tough cop is convinced that an armored car guard engineer is a bank robber.  
 (20) **Tic Tac Dough**  
 (21) **Faith That Lives**  
 (22) **Carol Burnett And Friends**  
 (23) **All In The Family**  
 (24) **Barney Show With Spiderman**  
 (25) **Video Comics**  
 (26) **Nova** "The Malady of Health Care" In an era of medical miracles, a shocking large segment of the population is unable to afford health care. (NOV) How does the society of Great Britain and the U.S. have organized health care delivery for their people, and how these systems are financed.  
 (27) **U.S.A.** (60 mins.)  
 (28) **Lobo** It's another

7:00 **Streets Of San Francisco**  
 (1) **First Row Features**  
 (2) **House Calls** Ann Anderson is upset because her ex-husband is remarrying. Dr. Michaels seems irritated with a woman who is not up to speed because he's not getting enough sleep.  
 (3) **Foul Play** Tucker's friend, world famous pianist Paul Farrow, who is secretly involved in an affair with Gloria and persuades Tucker, a violinist, to appear with him in concert. (60 mins.)  
 (4) **News**  
 (5) **Lou Grant** A Tribune story about a doomsday group that is preparing at a state university to assassinate a prominent oiler for Lou and Ross when they are caught in a killer storm. (60 mins.)  
 (6) **M.A.S.H.**  
 (7) **Livewire**  
 (8) **Movie (Drama)** "1970 Frederick Combs, Leonard Frey Story about a homosexual's birthday party where hidden thoughts and feelings are suddenly and sadly brought into the open. (2 hrs.)  
 (9) **Rise And Be Healed**  
 (10) **Barney Miller**  
 (11) **Dick Cavett Show**  
 (12) **News**  
 (13) **Festival Of Praise**  
 (14) **Prisoner: Cell Block H**  
 (15) **Comedy-Musical** "Follow That Dream" O'Connell, A family moves to Southern Florida where his wife is accused of attacking the manager of a liquor store. (Closed-Captioned, U.S.A.)  
 (16) **Tuesday Night At The Movies** "E.T." Faye Dunaway, James Farentino. A poor Argentinian girl becomes an actress and ultimately the most powerful woman in her country as the wife of (Part 1) or a top presentation.  
 (2 hrs.)  
 (17) **Club**  
 (18) **Comedy Night**  
 (19) **Movie (Drama)** "The Helix" 1972 Elizabeth Ashley, Tough cop is convinced that an armored car guard engineer is a bank robber.  
 (20) **Tic Tac Dough**  
 (21) **Faith That Lives**  
 (22) **Carol Burnett And Friends**  
 (23) **All In The Family**  
 (24) **Barney Show With Spiderman**  
 (25) **Video Comics**  
 (26) **Nova** "The Malady of Health Care" In an era of medical miracles, a shocking large segment of the population is unable to afford health care. (NOV) How does the society of Great Britain and the U.S. have organized health care delivery for their people, and how these systems are financed.  
 (27) **U.S.A.** (60 mins.)  
 (28) **Lobo** It's another

7:00 **Streets Of San Francisco**  
 (1) **First Row Features**  
 (2) **House Calls** Ann Anderson is upset because her ex-husband is remarrying. Dr. Michaels seems irritated with a woman who is not up to speed because he's not getting enough sleep.  
 (3) **Foul Play** Tucker's friend, world famous pianist Paul Farrow, who is secretly involved in an affair with Gloria and persuades Tucker, a violinist, to appear with him in concert. (60 mins.)  
 (4) **News**  
 (5) **Lou Grant** A Tribune story about a doomsday group that is preparing at a state university to assassinate a prominent oiler for Lou and Ross when they are caught in a killer storm. (60 mins.)  
 (6) **M.A.S.H.**  
 (7) **Livewire**  
 (8) **Movie (Drama)** "1970 Frederick Combs, Leonard Frey Story about a homosexual's birthday party where hidden thoughts and feelings are suddenly and sadly brought into the open. (2 hrs.)  
 (9) **Rise And Be Healed**  
 (10) **Barney Miller**  
 (11) **Dick Cavett Show**  
 (12) **News**  
 (13) **Festival Of Praise**  
 (14) **Prisoner: Cell Block H**  
 (15) **Comedy-Musical** "Follow That Dream" O'Connell, A family moves to Southern Florida where his wife is accused of attacking the manager of a liquor store. (Closed-Captioned, U.S.A.)  
 (16) **Tuesday Night At The Movies** "E.T." Faye Dunaway, James Farentino. A poor Argentinian girl becomes an actress and ultimately the most powerful woman in her country as the wife of (Part 1) or a top presentation.  
 (2 hrs.)  
 (17) **Club**  
 (18) **Comedy Night**  
 (19) **Movie (Drama)** "The Helix" 1972 Elizabeth Ashley, Tough cop is convinced that an armored car guard engineer is a bank robber.  
 (20) **Tic Tac Dough**  
 (21) **Faith That Lives**  
 (22) **Carol Burnett And Friends**  
 (23) **All In The Family**  
 (24) **Barney Show With Spiderman**  
 (25) **Video Comics**  
 (26) **Nova** "The Malady of Health Care" In an era of medical miracles, a shocking large segment of the population is unable to afford health care. (NOV) How does the society of Great Britain and the U.S. have organized health care delivery for their people, and how these systems are financed.  
 (27) **U.S.A.** (60 mins.)  
 (28) **Lobo** It's another

7:00 **Streets Of San Francisco**  
 (1) **First Row Features**  
 (2) **House Calls** Ann Anderson is upset because her ex-husband is remarrying. Dr. Michaels seems irritated with a woman who is not up to speed because he's not getting enough sleep.  
 (3) **Foul Play** Tucker's friend, world famous pianist Paul Farrow, who is secretly involved in an affair with Gloria and persuades Tucker, a violinist, to appear with him in concert. (60 mins.)  
 (4) **News**  
 (5) **Lou Grant** A Tribune story about a doomsday group that is preparing at a state university to assassinate a prominent oiler for Lou and Ross when they are caught in a killer storm. (60 mins.)  
 (6) **M.A.S.H.**  
 (7) **Livewire**  
 (8) **Movie (Drama)** "1970 Frederick Combs, Leonard Frey Story about a homosexual's birthday party where hidden thoughts and feelings are suddenly and sadly brought into the open. (2 hrs.)  
 (9) **Rise And Be Healed**  
 (10) **Barney Miller**  
 (11) **Dick Cavett Show**  
 (12) **News**  
 (13) **Festival Of Praise**  
 (14) **Prisoner: Cell Block H**  
 (15) **Comedy-Musical** "Follow That Dream" O'Connell, A family moves to Southern Florida where his wife is accused of attacking the manager of a liquor store. (Closed-Captioned, U.S.A.)  
 (16) **Tuesday Night At The Movies** "E.T." Faye Dunaway, James Farentino. A poor Argentinian girl becomes an actress and ultimately the most powerful woman in her country as the wife of (Part 1) or a top presentation.  
 (2 hrs.)  
 (17) **Club**  
 (18) **Comedy Night**  
 (19) **Movie (Drama)** "The Helix" 1972 Elizabeth Ashley, Tough cop is convinced that an armored car guard engineer is a bank robber.  
 (20) **Tic Tac Dough**  
 (21) **Faith That Lives**  
 (22) **Carol Burnett And Friends**  
 (23) **All In The Family**  
 (24) **Barney Show With Spiderman**  
 (25) **Video Comics**  
 (26) **Nova** "The Malady of Health Care" In an era of medical miracles, a shocking large segment of the population is unable to afford health care. (NOV) How does the society of Great Britain and the U.S. have organized health care delivery for their people, and how these systems are financed.  
 (27) **U.S.A.** (60 mins.)  
 (28) **Lobo** It's another

7:00 **Streets Of San Francisco**  
 (1) **First Row Features**  
 (2) **House Calls** Ann Anderson is upset because her ex-husband is remarrying. Dr. Michaels seems irritated with a woman who is not up to speed because he's not getting enough sleep.  
 (3) **Foul Play** Tucker's friend, world famous pianist Paul Farrow, who is secretly involved in an affair with Gloria and persuades Tucker, a violinist, to appear with him in concert. (60 mins.)  
 (4) **News**  
 (5) **Lou Grant** A Tribune story about a doomsday group that is preparing at a state university to assassinate a prominent oiler for Lou and Ross when they are caught in a killer storm. (60 mins.)  
 (6) **M.A.S.H.**  
 (7) **Livewire**  
 (8) **Movie (Drama)** "1970 Frederick Combs, Leonard Frey Story about a homosexual's birthday party where hidden thoughts and feelings are suddenly and sadly brought into the open. (2 hrs.)  
 (9) **Rise And Be Healed**  
 (10) **Barney Miller**  
 (11) **Dick Cavett Show**  
 (12) **News**  
 (13) **Festival Of Praise**  
 (14) **Prisoner: Cell Block H**  
 (15) **Comedy-Musical** "Follow That Dream" O'Connell, A family moves to Southern Florida where his wife is accused of attacking the manager of a liquor store. (Closed-Captioned, U.S.A.)  
 (16) **Tuesday Night At The Movies** "E.T." Faye Dunaway, James Farentino. A poor Argentinian girl becomes an actress and ultimately the most powerful woman in her country as the wife of (Part 1) or a top presentation.  
 (2 hrs.)  
 (17) **Club**  
 (18) **Comedy Night**  
 (19) **Movie (Drama)** "The Helix" 1972 Elizabeth Ashley, Tough cop is convinced that an armored car guard engineer is a bank robber.  
 (20) **Tic Tac Dough**  
 (21) **Faith That Lives**  
 (22) **Carol Burnett And Friends**  
 (23) **All In The Family**  
 (24) **Barney Show With Spiderman**  
 (25) **Video Comics**  
 (26) **Nova** "The Malady of Health Care" In an era of medical miracles, a shocking large segment of the population is unable to afford health care. (NOV) How does the society of Great Britain and the U.S. have organized health care delivery for their people, and how these systems are financed.  
 (27) **U.S.A.** (60 mins.)  
 (28) **Lobo** It's another

7:00 **Streets Of San Francisco**  
 (1) **First Row Features**  
 (2) **House Calls** Ann Anderson is upset because her ex-husband is remarrying. Dr. Michaels seems irritated with a woman who is not up to speed because he's not getting enough sleep.  
 (3) **Foul Play** Tucker's friend, world famous pianist Paul Farrow, who is secretly involved in an affair with Gloria and persuades Tucker, a violinist, to appear with him in concert. (60 mins.)  
 (4) **News**  
 (5) **Lou Grant** A Tribune story about a doomsday group that is preparing at a state university to assassinate a prominent oiler for Lou and Ross when they are caught in a killer storm. (60 mins.)  
 (6) **M.A.S.H.**  
 (7) **Livewire**  
 (8) **Movie (Drama)** "1970 Frederick Combs, Leonard Frey Story about a homosexual's birthday party where hidden thoughts and feelings are suddenly and sadly brought into the open. (2 hrs.)  
 (9) **Rise And Be Healed**  
 (10) **Barney Miller**  
 (11) **Dick Cavett Show**  
 (12) **News**  
 (13) **Festival Of Praise**  
 (14) **Prisoner: Cell Block H**  
 (15) **Comedy-Musical** "Follow That Dream" O'Connell, A family moves to Southern Florida where his wife is accused of attacking the manager of a liquor store. (Closed-Captioned, U.S.A.)  
 (16) **Tuesday Night At The Movies** "E.T." Faye Dunaway, James Farentino. A poor Argentinian girl becomes an actress and ultimately the most powerful woman in her country as the wife of (Part 1) or a top presentation.  
 (2 hrs.)  
 (17) **Club**  
 (18) **Comedy Night**  
 (19) **Movie (Drama)** "The Helix" 1972 Elizabeth Ashley, Tough cop is convinced that an armored car guard engineer is a bank robber.  
 (20) **Tic Tac Dough**  
 (21) **Faith That Lives**  
 (22) **Carol Burnett And Friends**  
 (23) **All In The Family**  
 (24) **Barney Show With Spiderman**  
 (25) **Video Comics**  
 (26) **Nova** "The Malady of Health Care" In an era of medical miracles, a shocking large segment of the population is unable to afford health care. (NOV) How does the society of Great Britain and the U.S. have organized health care delivery for their people, and how these systems are financed.  
 (27) **U.S.A.** (60 mins.)  
 (28) **Lobo** It's another

7:00 **Streets Of San Francisco**  
 (1) **First Row Features**





### Engagement Announced

Mr. & Mrs. M.W. (Pete) Ownbey of Vilas, Colorado wish to announce the engagement and approaching marriage of their daughter Debbie to Jim Curlee, son of Mr. & Mrs. H.L. Curlee of Gruver, Texas.

The couple will be married March 7, at the Campo Baptist Church in Campo, Colorado.

Debbie is a graduate of Vilas High School and Panhandle State University with a BS degree in Physical Education. She is presently employed as a bookkeeper at Master Feeders in Hooker, Oklahoma.

Jim graduated from Gruver High School and will be a Spring graduate of Panhandle State University. He is presently a member of the football and track coaching staff at Panhandle State University.

### Golden Spread Center News

Cindy Schneider will be conducting exercise classes at the Golden Spread Center on Tuesdays and Thursdays at 10:00 a.m.

There will be all new arts and crafts on Thursday, February 19, from 10:00 a.m. to 5:00 p.m. There will be a break at noon for a gourmet covered dish luncheon.

There will be an afternoon of table games at the Golden Spread Center on Friday, February 20, from 2:00 to 5:00 p.m. Fifteen fortunate friends will be driving to Amarillo on the Golden Spread Center's van-bus on Friday, February 20, at 5:00 p.m. to go to the Country Squire Dinner Theatre to see "The Ninety Day Mistress" starring June Wilkinson.

There will be another afternoon of table games at the Golden Spread Center on Monday, February 23, from 2:00 to

5:00 p.m. Another fifteen fortunate friends will drive to Perryton on the Golden Spread Center's van-bus on Monday, February 23, at 5:00 p.m. for food, fun, and fellowship at K-Bobs.

Because the weather was bad on Tuesday evening, February 10, the February Birthday Party got postponed until Tuesday, February 24, at 6:30 p.m. All persons with February birthdays will be honored and there will be a pleasant evening of table games. Besides George Washington, Abraham Lincoln, and Benjamin Franklin, we shall honor Belle Crawford, Ina Martin, Ruth Hill, Willard Davis, Maylynn Schubert, Anna McGary, Martha Batton, Tex Davis, Elsie Mathews, Esther Stewart, Ruth Caro, and anyone else that has a February birthday.

### Presbyterian Church News

There is a Sunday Church School class for everyone every Sunday at 9:45 a.m. with a dedicated teacher with an interesting, well-prepared, practical Bible lesson.

"Humanity: the Temple of God" is the subject of Pastor Edward D. Freeman's sermon on Sunday, February 22, at the service for the public worship of God at 11:00 a.m.

The Session will meet on

Wednesday, February 25 at 7:30 p.m.

The Reformed Center of the South West will have a conference on "Children and the Lord's Supper" at First Presbyterian Church in Amarillo on Saturday, February 28, from 9:30 a.m. to noon.

There is a warm, Christian welcome awaiting everyone who comes to any of the services and activities of the First Presbyterian Church.

### Extension Club

The Spearman Extension Homemakers Clubroom (formally called Home Demonstration Clubroom) located at 305 N. Bernice is available to the public for rental on a daily basis.

Price for renting the Clubroom for part of a day or night is fifteen dollars (\$15.00). For luncheons or all day meetings the price is twenty dollars (\$20.00). These prices takes effect March 1, 1981.

The building offers a large meeting room with tables and chairs, equipped kitchen, restrooms and one smaller room.

Scheduling for the clubroom is handled through the County Extension office located in the Courthouse (lower floor); telephone number 659-2030 or 733-2901. Call or come by between 9:00 a.m. and 5:00 p.m. Office is closed between 12:00 and 1:00 p.m. on Saturdays and Sundays.

The Extension Homemaker's Clubroom is owned and maintained by the Extension Homemaker's Clubs in Hansford County.

The DECA Club of Spearman High School is selling Beef Jerky.

The proceeds are to help send the Students to contests. The Beef Jerky is 25 cents a stick and \$5.00 a jar. The jar has twenty (20) sticks, ask any DECA Student.

Thanks for your support, in advance!!!

### Applications Being Accepted

The seventh annual Running Water Draw Arts and Crafts Festival is now accepting applications. Co-sponsored by the Rotary Club and the Llano Estacado Museum, the show is held the third weekend in October in Plainview, Texas.

Artists and craftsmen in all handcrafted media are invited to apply. The deadline for applications for the 125 booths is April 1.

For application forms and any other information, contact Rob Strong, Wayland College, Plainview, Texas 79072.

### Bowling

HIGH INDIVIDUAL GAME	
Mary Williams	192
HIGH INDIVIDUAL SERIES	
Maria Kelly	529
HIGH TEAM GAME	
Faussett & Sons Conoco	796
HIGH TEAM SERIES	
Frank Oil Company	2233
STANDINGS	
Frank Oil Company	60-28
Smith Rentals	57-31
Deis Grill	53 1/2-34 1/2
Daley's	48 1/2-39 1/2
Bailey Child Care	48-40
Big A Spreader	46 1/2-41 1/2
Kirby	44-44
Ranger Bowl	44-44
Anthony Electric	43 1/2-44 1/2
Faussett & Sons Conoco	43-45
Bull Rogers	43-45
George Lease Service	37-53
Giles Const.	33 1/2-54 1/2
Otis Engineering	14 1/2-73 1/2

### IRS News

A common error of taxpayers claiming head of household filing status is not listing the name of a qualifying dependent or child, and this can lead to a refund delay.

To file as a head of household a taxpayer must be unmarried and provide more than half the cost of keeping up a home that is the main home for his or her dependent or child. An unmarried child who qualified the taxpayer as head of household must live with the taxpayer but need not be his or her dependent. Other qualifying persons must be the taxpayer's dependents. They generally must live with the taxpayer.

However, the taxpayer's dependent parents may qualify, even though they live elsewhere, if the taxpayer paid more than half the cost of keeping up their home and is eligible to claim one or both parents as dependents.

Unmarried includes single, legally separated, divorced and widowed persons, the IRS said.

Without a child or qualifying dependent, unmarried taxpayers are not eligible to file as heads of household and if they do not qualify as surviving widows or widowers, they file under single status and use the corresponding tax table.

### Town & Country Club Met

The Town and Country Extension Homemakers Club met February 17, 1981, in the home of Delinda McLaughlin. Delinda gave the program on "The Art of Preparing Mexican Dishes", which was followed by a delicious luncheon.

After the luncheon, President Penny Ralston called the meeting to order. Roll call was answered by "My favorite hearburn remedy!" Minutes of the previous meeting were read and approved. Janie Kunselman gave the treasurer's report.

Lisa Pipkin ask for volunteers to bring sandwiches to the blood drive February 19, 1981. Ideas for the second meeting in March were discussed and left tentative.

Those who can help clean the clubroom were reminded to do so on Monday, February 23.

An Easter Egg Hunt was discussed. Lynna Renner and Dixie Smith will be in charge of arrangements for this.

The next meeting will be March 3, 1981, with Cindy Holton as hostess.

Members present were Cheryl Blankenship, Linda Close, Janie Kunselman, Delinda McLaughlin, Lisa Pipkin, Penny Ralston, Lynna Renner, Dixie Smith, and Connie Steger.

Jr. Lusby and his crew recently returned from a trip "across the waters!" We plan to get some

pictures and a story on their cruise as soon as the pictures are available. Admiral Lusby is back on the job this week!

### EMT Course In March

H & S Emergency Medical Service will be conducting an Emergency Medical Technician Course in March. All interested persons need to sign up now. The class will be limited to 30 students.

Those interested should contact Michele Davis at 9-3411, Ed Williamson at 9-3843, or City Hall at 9-2524.

The course is 140 hours, which includes hospital emergency room experience.

Upon completion you will not be required to serve with an ambulance service.

Approximate cost of the course is \$25.00 which is required upon registering. Plus cost of books (approximately \$11.00) which will be collected during class.

Again, the course will be limited to 30 students, so sign up now.

### Arts & Crafts Guild Met

Mrs. Ned Turner was hostess to the Arts Craft Club on Friday, February 13.

Those present were Members--Mesdames: Joe Trayler, F.J. Hoskins, W.L. Russell, Deta Blodgett, Garrett Allen, Pope Gibner, F.J. Daily. Mrs. Turner served refreshments to the members. And there was one guest--Mrs. A.D. Sparks.

The next meeting will be with Mrs. Garrett Allen.

### Altar Society Meeting Held

The Sacred Heart Altar Society met February 5 at 7:30 p.m. in the Parish Hall. As members came in they were given a Valentine Corsage by the hostess from Father Ray.

Prior to the meeting a very interesting program on Drugs was presented by Lloyd McWhirter.

The meeting was opened with all joining in prayer. Joan Farr presiding, read the minutes after business discussion. Plans for a Mexican Dinner on March 15 were made.

There was a Parish Family Dinner on February 14. The Dinner began at 8:00 p.m. at the Parish Hall.

Delicious Valentine cake and cookies and punch were enjoyed by all present.

The meeting was adjourned with Father Ray Crosier leading in prayer.

### 20th Century Club Meets

Twentieth Century Club met in the home of Mrs. Wayne Hutchison on Thursday, February 12. Mrs. Michael Holt opened the business meeting.

Mrs. Holt announced that her President's Project of carpeting the stairs at the Hansford County Library had been completed.

Roll Call was answered with "A Remembrance of Our Wedding Day." Mrs. John Brown gave the program on "America's First Ladies." She showed three Madame Alexander Dolls dressed as First Ladies. She also gave some interesting stories of some of our First Ladies.

Hostesses Mrs. Wayne Hutchison and Mrs. John Bishop served refreshments to Mesdames: Michael Holt, Russell Pogue, J.R. Stump, Coy Palmer, L.L. Anthony, O.C. Holt, C.A. Kleeberger, Ed Freeman, C.U. Pope, Jane Meek, Tom Sutton and John Brown.

# Lynxettes win opener

The first girls game in the District 1-AAA Tournament was between the Perryton Rangerettes and the Dalhart Wolverines. The game was played at 3:00 p.m. on Thursday, February 19. The game was in the Rangerettes hands from the very start of the game. The Perryton Rangerettes advanced to the Championship which will take place tonight--Friday, February 20--against the winner of the Spearman Lynxettes/River Road Wildcats.

The Lynxettes went up against the River Road Wildcats girls, the boys had already lost and COULD not compete any more. The game was scheduled for 6:00 p.m. There were lots of Spearman folks at the game, giving their support to their Lynxettes! The Lynxettes had to win this game in order to play against the Perryton Rangerettes for the Championship!!

All the fans could see that the Lynxettes and the River Road Wildcats were TENSE, and the 1st quarter showed how tense everyone was! Nancy Wilson and Kenda Burke, the SUPER SENIORS for the Lynxettes, started getting into foul trouble early in the game. Coach Newton had to sit Nancy and Kenda almost the WHOLE 1st quarter. Having Nancy and Kenda, they are 5'10 each--officially, having them out meant trouble. Now, the rest of the Lynxettes, Tammi Maize, Margaret Reed, Kamala Ford, Bonnie McCloy, Mary Ann Martin, Mary McIntyre, Johnnie Eaton, Susan Davis and Lea Ann Gibner, all made a fine effort--Offensively and Defensively--while Nancy and Kenda waited a bit before going back out. Tammi Maize, the 1981 Basketball Queen, had a tremendous 1st quarter. She had put 4 points on the board in the 1st quarter alone--the last time these two teams met, Tammi had finished the game with 4 points. So Tammi was having a good enough start against this bunch of Wildcats--tough bunch of Wildcats! The River Road

Wildcats, at one time in the 1st quarter, had a 5 point lead, that didn't seem to stop the Lady Lynx, but gave them more "go-power". When the 1st quarter did end, the Lynxettes had made a TREMENDOUS comeback--sign of a Championship team. The 2nd quarter was "No Contest". The Lynxettes just could do no wrong. Kenda Burke, with 2 fouls, had the hottest hand in the 2nd quarter. Kenda then committed her 3rd foul. Nancy had 3 points, and she also committed her 3rd foul in the 2nd quarter. TAMMI MAIZE, BONNIE McCLOY AND whoever else guarded Judy Chacellor--the Deadly weapon of the Wildcats--DID A GREAT JOB ON JUDY, NOT LETTING HER SCORE ANY POINTS AT ALL!! The 2nd quarter ended with the Wildcats getting 4 points, because of the Lynxettes' Stingy Defense. The Lynxettes, on the other hand, scored 17 POINTS!! The half-time score was The Lynxettes 31 and the River Road Wildcats were 15--the Lynxettes had a 16 point lead!!

The 2nd half, lately, had been the Lynxettes Specialty!!

The haltime stats showed that Mary Ann Martin, a Junior, had scored 8 points--4 in the 1st quarter and 4 in the 2nd, very consistent. Kenda Burke had 6 points--all in the 2nd quarter--and 3 fouls. Nancy Wilson, who had 3 fouls, also, had 5 points--2 in the 1st quarter and 3 in the 2nd quarter, was 1 of 5 from the freethrow line. Susan Davis, Mary McIntyre and Tammi Maize had 4 points a piece. Susan made her 4 in the 2nd quarter; Mary had her 4 points in the 1st quarter, was 2 of 3 from the "charity stripe". And Tammi had her 4 points in the 1st quarter, was 2 of 4 from the line. The Lynxettes Defense had MADE the River Road Wildcats turn the ball over lots of times, and the Lynxettes took advantage of the Wildcat mistakes!!

The 3rd quarter was as even as it had been in the 1st quarter.

Mary Ann had another 4 point quarter. The Wildcats wanted to win themselves and made a run-for-it in the 3rd quarter, but the Lynxettes STILL outscored the Wildcats by 1 point. The Lynxettes scored 9 points to the 8 points of the River Road Wildcats. The Wildcats were excited for the 4th quarter to begin, the Lynxettes had a 17 point lead and would play the 4th quarter cautiously, but aggressively! Nancy committed her 4th Personal Foul in the 3rd quarter. Nancy still got to play in the final quarter. Could the River Road Wildcats come back from a 17 point deficit and win? The Lynxettes had to much TALENT to lose a game with that kind of lead!! Susan, Tammi, Nancy and Bonnie McCloy and Mary McIntyre all had a hand in scoring for the Lynxettes. The game ended with the Lynxettes winning by 21 points!! The game was played VERY well, by both teams, but the Lynxettes had the better end of it!! The Lynxettes had 14 points in that final quarter; the Wildcats had 10 points. The final score was the Lynxettes 54 and the River Road Wildcats 33!!

The Lynxettes had made 10 of 21 freethrows--individually Mary McIntyre made 4 of 7 freethrows; Nancy Wilson made 3 of 8 freethrows, Tammi Maize made 2 of 4 and Kamala Ford made 1 of 2 freethrows. Scoring wise, the Lynxettes had 2 people in double figures--Mary Ann Martin, the leading scorer for the Lynxettes with 12, and Susan Davis had 10 points. Tammi Maize had 8 points, while Nancy Wilson made 7 points, Kenda Burke and Mary McIntyre had 6 points a piece, Bonnie McCloy and Lea Ann Gibner had 2 points each, and Kamala Ford ended the scoring for the Lynxettes with 1 point.

The Lynxettes will face the Perryton Rangerettes for the District 1-AAA Title tonight, Friday--February 20, at Lynx Varsity Gym. The game will begin at 6:30 p.m. If the

Lynxettes win tonight, they will be the "crowned" District Champions. If the Lynxettes lose, there will be a play-off game tomorrow night--Saturday, February 21--at 7:30 p.m. If both the Lynxettes and the Rangers lose tonight, there will be 2 play-off games tomorrow night to decide who will represent District 1-AAA. The girls play-off game will begin at 6:30 p.m. and the boys game will be played at 8:00 p.m. or whenever the girls game is finished.

The game tonight will be a GREAT game. Both the Rangerettes and the Lynxettes will play the BLST game they have ever played to win the Championship!! Go out and cheer on the Lynxettes to victory. If the Lynxettes and the Rangers win they will play in Bi-District and so on. It would be so neat to have both the Rangers and the Lynxettes State Champions!! But games must be played one game at a time!!

### FLCW Met

The FLCW met Wednesday, February 11, at Myrna Biggers. The opening devotion was given by Rhonda Ward. The lesson on the Lutheran Church was led by Myrna Biggers. Rhonda Ward gave the Offering Meditation.

The Panhandle Conference Spring Convention will be April 25 at Shepherd Kind Lutheran Church in Lubbock. The ALCW General Convention will be July 19-23 in San Antonio.

Betsy Ward and Selma Reneau have made arrangements of silk flowers to take to members in the hospital.

We will serve cookies and coffee March 9 after the Ash Wednesday service with Oslo Lutheran Church.

The next meeting will be Thursday, March 12, at Selma Reneau's.

Hostess Myrna Biggers served refreshments to Rev. Bruno Gaskamp, JoAnn Gaskamp, Celia Krug, Selma Reneau, Josephine Schneider, Dorothea Tackitt, Betsy Ward, Janice Ward and Rhonda Ward.

Go Lynxettes...

Go Straight

to

STATE

...Tuesday nite at the

Civic center

in Amarillo

A GIANT AREA-WIDE PRAISE GATHERING  
IN CONCERT

The BLACKWOOD BROS.

Saturday, February 28

8 p.m.

Civic Center Auditorium  
Amarillo, Tx.

ADMISSION - FREE



**Insurance Corner**

surgical, ambulance, hospital, medical, and nursing expenses. So much for broad definitions. The major difference between the two coverages is that medical payments are made regardless of liability or negligence of the insured. When the insurance company makes the medical payments, they are not admitting the liability of the policyholder. Thus in the case of smaller injuries, difficulty and delay in questions involving legal liability are avoided. Bruises, sprains, cuts, and simple fractures can be taken care of immediately without worrying about whether they were or were not caused by negligence.

This information has been brought to you as a public service by John R. Collard, Jr., your one step answer to complete business and personal insurance protection. Life, home, auto, group insurance, and profit-sharing plans. See John R. Collard, Jr., 405 Davis St., Telephone 659-2501.

**BODILY INJURY—MEDICAL PAYMENTS**  
The coverages "bodily injury" and "medical payments" are often found in auto insurance policies. Since they sound somewhat alike, a definition of each should prove enlightening. Briefly, bodily injury liability involves financial compensation concerning two factors...an amount for each person and an amount for each accident. Typical policy limits might be \$50,000 per person and \$100,000 per accident...this is usually written \$50,000/\$100,000 coverage. Medical payments are lump sums paid to victims, usually in multiples of a certain amount with a broad range of limits. They cover

**Lynx Beat Wildcats In Tourney**

The District 1-AAA Tournament got underway Thursday morning, February 19, at 10:30 a.m. with the Lynx going up against the River Road Wildcats. There were lots of students cheering on the Lynx to beat the River Road Wildcats. Now, whichever team won in this contest would then play against the Perryton Rangers at 7:30 p.m. on Thursday night, February 19. This game was very important to both teams, because whichever team lost would have to go home and just listen or stay and watch the other teams, to find out which team is the best—from Spearman River Road, Boys Ranch, Dalhart and, of course, Perryton. The Championship would be played on Friday, February 20 at 8:00 p.m. If the Perryton Rangers were defeated during the tournament, then there would be a Play-off game between the Perryton Rangers, uncrowned District Champs, and the winner of the District 1-AAA Tournament Champion on Saturday, February 21. The game would start at 7:30 p.m., if the Spearman Lynxettes won the tournament, but if they didn't win then there would be 2 play-off games and the first game—girls game—would begin at 6:30 p.m., then the boys would play their play-off game at 8:00 p.m.

The first tournament game was between the #4 and #5 team in District—the Spearman Lynx and the River Road Wildcats, in their respective order.

Karey Bodey started off the game by putting the first 2 points on the board. Steven Tindell was having a GREAT morning shooting—if the Lynx won, they sure hoped that Steven would have another hot hand against the Rangers—shooting the ball and making almost every point. The other hand were also having a GREAT morning, shooting from the perimeter and the inside. Jimmy Ladd was having his BEST start all year. Jimmy, as everyone should know, is the 1981 Basketball Homecoming King and a very muscular fellow. The 1st quarter finally ended with the Lynx scoring 22 points and the River Road Wildcats had 18 points—getting almost as many points as the Lynx. Steven Tindell had 8 of those 22 points and Jimmy had 6 of those 22 points. Steve Shields was having a time out there—not being able to get his Offensive show started!! The 2nd quarter that these two teams would have the same amount of points!! The Spearman Lynx did capture a 10 point lead, but the River Road Wildcats—breathing down their necks—came back and were behind by only 4 points. The Lynx tried for the last shot with just about 20 or so seconds left in the half. The

attempted shot failed and the Lynx led at halftime—35-31. A four point lead was not a comfortable lead, but the Wildcats knew that the 3rd quarter, the Lynx specialty, would probably Kill them or Help them!!

Steven Tindell led the Lynx with 10 points in the game—8 in the first quarter and 2 in the second quarter. Jimmy Ladd and Steve Shields had 6 points a piece. Jimmy made his 6 points all in the 1st quarter, while Steve had his in the 2nd quarter. Steve was 2 of 5 freethrows given to him. Monte George and Jamie Bulls both had 4 points—a piece—while Wayne Meek and Karey Bodey had 2 points each. Kyle Brack ended the Lynx first half scoring with 1 point—1 of 2 from the freethrow line. The Lynx HAD to win to have a chance for the TITLE! The River Road Wildcats were in the same boat—they had to beat the Lynx in order to be in the running for the District Title. The Wildcats knew that the Lynx were a GREAT 3rd quarter team and sometimes a GREAT 2nd Half team. The Lynx knew that the Wildcats had a GOOD come-from-behind kind of team—they had done it before.

Karey Bodey came back in the 2nd half as he had in the 1st. Karey scored the first 2 points of the half!! That had to have given him and the Lynx confidence, that maybe things would go as they did in the first half—the Lynx owning the lead by 4 points. Everyone from both teams seemed to have been ready in the 3rd quarter—although the Lynx managed to get another 10 point lead. This time the Lynx were ready for the River Road Wildcat comeback, and stopped them from getting closer than 3 points. Steven and Jimmy put on another Offensive show. The 3rd quarter ended with the Lynx adding to their 4 point lead—4 more points—53-45. The Lynx had 18 points, but the River Road Wildcats still managed to get 14 points. The 4th quarter had to be the quarter to determine the winner of this game and the challenger to the #1 ranked Perryton Rangers. The one that put the Lynx on the right track was SENIOR JAMIE BULLS. Jamie scored on percentage shots and from the line. Jamie, on the Defensive side, stole the ball, made the Wildcats make more

"turnovers" than "Aunt Jemima"!! After that all the Lynx got into the act. The Lynx built up a 10 point lead, then a 12 and finally up to a 19 point lead!! The Lynx offense was really working, and so was the Defense!! Coach Morris started substituting freely. David Hall Mike Blanton and Jay Pack went in. They played a great game themselves. MIKE BLANTON had GREAT rebounding abilities. He would go high up and grab a rebound from a defender. Although Mike did not score, he did just a GREAT job, by GRABBING rebound after rebound!! Mike was aggressive on the back boards. Near the end of the game, DAVID HALL, a SENIOR, had control of the ball, he shot the ball, and THE BALL WENT IN! DAVID HAD TO HAVE BEEN HAPPY—THAT WAS HIS FIRST 2 POINTS IN DISTRICT PLAY!! Everyone in the Gym were happy for him. The game finally ended with the Lynx winning the game by the score of 80-61—the Lynx winning by 19 POINTS!! The Lynx had managed to stay alive in the race for the District Title!! The Lynx would face up with the Perryton Rangers—the Lynx lost to the Rangers 2 times this season, not wanting to lose for the 3rd time! The game would be played Thursday night, February 19, at 7:30 p.m. The Lynx, with the help of JAMIE BULLS—mainly in the 2nd half—scored 27 points in the last quarter of play, and the Wildcats had 16 points.

The Lynx had 4 guys in double-figures, none fouled out—Monte George had 4 fouls but didn't foul out, and no technicals. The Wildcats, on the other hand, had 2 fellows foul out—Pat Rogers and Jack Reynolds, and had 1 technical foul—because the ball was "slammed down". Steven Tindell, the GREAT Junior, was the leading Lynx scorer with 18 points—his BEST! Jimmy Ladd had a GREAT MORNING, too—he had 16 points; Jamie Bulls, also, had a GREAT MORNING with 13 points. Steve Shields did not have his usual 20 point game—it was cut in half—he had 10 points. Steve didn't have his kind of game, but the other Lynx scored when the "chips were down"—at the right time. Karey Bodey had 8 points of his own; Monte

begins with birth and continues through childhood, adolescence and adulthood. Sunday morning from 9:30 - 10:30 Dr. Lawrence will complete the study.

Ken Lawrence and his wife Carol are not among those who have never heard of Spearman. They have maintained a close friendship with Spearmanites, Jimmy and Kay Vernon, since college days. The Lawrences have two children, Eric and Cyrena.

Ken, a native of Snyder and a Phi Beta Kappa, received Bachelor of Music Education and Divinity degrees from T.C.U. in 1958 and 1965, respectively. In 1971 he earned his Ph. D. from Boston University. It was here that he received a great deal of expertise in the area of human psychological development studying under Dr. Erik Erikson.

From 1968-1972, Dr. Lawrence was a professor of religion at McMurry College in Abilene, then moved to T.C.U. where in 1975 he became chairman of the department of religion.

Dr. Lawrence's casual presentation style and delightful sense of humor have made him a very popular professor at T.C.U. and a much sought-after lecturer, not only on Religion and Learning Process, but also on Religion and Art. He has taught a foreign study class in religious art and architecture in Italy and France for several years.

First Christian Church welcomes all who wish to learn about the way our faith is developed. A nursery will be provided.

**WARNING: Women, Young Girls Should Be Careful of Strangers Approach**

It is believed women and young girls in the Spearman-Gruver area should exert some extra caution regarding strange men—particularly cruising in automobiles.

The warning was sounded following two incidents at Perryton in recent days.

The city police report there records an abduction attempt on two women boldly made in the yard of one of them as they stood just outside her home. A latin male drove his large Buick or Cadillac car right to the front door and pursued the women on foot as they fled. He overtook them in the alley behind the home and attempted to force them back to the front yard and into his car.

They managed to elude him and flee to safety. Police are circulating a description of the man and his vehicle.

A second incident was reported at Perryton where a man attempted to get a student into his car as she left school for the day. She refused and furnished authorities with a description of the man and identification of the car.

It proved to be a rental vehicle and the identity of the man was learned. It developed that he lived out of the city of Perryton and was there for a period on business. Perryton police have notified authorities in his home town of his attempted actions at Perryton.

The warnings and admonitions of parents, school officials and law enforcement people regarding the danger to young females from strangers are as old, almost, as human nature itself and as one law enforcement officer noted, such are as timely and important as the first one issued and will be until human nature undergoes a drastic change neither expected or predicted at this time.

It has also been pointed out that such warnings might be useless in certain instances if there is no responsible person with young girls of his or her own to respond to pleas for help if they are cried out.

Authorities emphasize that this is one area in which homefolk had better be ready to get involved if the girls and women of the community need assistance.

**Golden Spread Center News**

Ten senior citizens, some in leotards and some in slacks, enjoyed the exercise class on Tuesday morning, February 17, led by Cindy Schneider. These classes will continue indefinitely every Tuesday and Thursday morning and 10:00 a.m. at the Golden Spread Center, 14 S. Haney. This is open to all persons who are fifty-five years of age or older.

Russell Pogue prayed the blessing on the food as seventy people gathered at the Golden Spread Center on Tuesday evening, February 17, at 6:30 p.m. for the covered dish dinner. Hostesses for the dinner were Ladies of the Moose and Ned and Jewell Turner and Irwin and Susan Delk of the Golden Spread Club. Patsy Hunt of the Panhandle Region Home Nursing Association was present to take blood pressures. Throughout the evening there were seventeen tables of bridge, canasta, chicken tracks, cribbage, dominoes, forty-two, eighty-eight, pitch, and skip-bo.

Marv Hendricks is directing all new arts and crafts at the Golden Spread every Thursday from 11:00 a.m. to 5:00 p.m. There will be a break at noon for a sumptuous covered dish luncheon.

There will be an afternoon of table games at the Golden Spread Center on Friday afternoon, February 20, from 2:00 to 5:00 p.m., to go to the Country Squire Dinner Theatre to see June Wilkinson star in "The Ninety Day Mistress".

Another enjoyable afternoon of table games will take place at the Golden Spread Center on Monday, February 23, from 2:00 to 5:00 p.m.

Another fifteen people will

enjoy food, fun, and fellowship on Monday, February 23, leaving the Golden Spread Center at 5:00 p.m. to drive to Perryton to go to K-Bobs.

Nina Hendricks will be driving the Golden Spread Center's van-bus on Wednesday, February 25, from 9:30 a.m. to noon, picking up the sixty-plus bunch and taking them shopping, on errands, and to meet appointments. This service is furnished free to all persons who are sixty years of age or older without discrimination as to sex, color, race, religion, politics, or handicap. People needing transportation should call the Golden Spread Center (659-3521) on Tuesday and get your name on the list.

**Presbyterian Church News**

There is a Sunday Church School class for everyone every Sunday at 9:45 a.m.

"Humanity: the Temple of God" will be the subject of Pastor Edward D. Freeman's sermon at the service for the public worship of God on Sunday, February 22, at 11:00 a.m. This is the beginning of World Understanding Week.

Focus on the Family continues at 6:00 p.m. at the First Baptist Church and at 7:00 p.m. at the First United Methodist Church.

There is a warm, Christian welcome awaiting everyone who attends any of the services and activities of the First Presbyterian Church.

**Special Study**

First Christian Church is hosting a special study of the Development of Faith to be held in their Fellowship Hall on Saturday, February 28, from 2-5 p.m. and on Sunday, March 1, from 9:30 - 10:30 a.m. Teacher for the even is Dr. Ken Lawrence, religion professor and chairman of the religion department at Texas Christian University in Ft. Worth.

The first session will be conducted from 2-5 p.m., Saturday afternoon, February 28, at the church's Fellowship Hall. Dr. Lawrence will lead in an exploration of how faith is developed throughout an individual's life cycle. The study

**JEEPS CARS TRUCKS**

Available through government agencies. Many sell under \$200. Call: 602-941-8014 Ext: 518 for your directory on how to purchase.

**Clip Me! Bring Me In!**



**1/2 PRICE 44¢** with this ad (Regularly 88¢) For an 8x10 color portrait

For an additional charge, You Can Get An Exciting Dual-Image Portrait! Ask photographer for details.

These days only Feb.: Thurs. 26 Fri. 27 Sat. 28

Daily: 10 a.m. - 8 p.m. Hwy. 207 South

**TG&Y** First sitting 44¢. Additional subjects photographed individually 88¢ each. One special per person. Backgrounds may occasionally change. Remember, children must be accompanied by parent. Satisfaction always, or your money cheerfully refunded.

**The CUPBOARD phone 659-2416**

**Menus Week of Feb. 16**

	Soup	Salad	San-wich	Spcl	Veg	Bread	Des-ert
Mon	baked French onion	cucumber cheese	ham turkey	Pot roast	potatoes	Home-made white & whole wheat	pecan praline pie
	brown beans	salad bar			carrots	corn bread	
Tue	beef stew	Spinach	ham turkey	chicken breast stuffed with ham	green bean supreme	corn bread	pecan pie
	beans	salad bar			white		
Wed	Texas chill	Mexican	ham turkey	Mexican taco casseroles	corn pudding	Mexican corn-bread	sour cream apple pie
	beans	salad bar					
Thu	beef stew	spinach	ham turkey	crepes		white whole wheat	chocolate ice box pie
	Navy beans	salad bar			English peas		
Fri	Texas chill	Tossed green	ham turkey	stuffed baked potatoes	green beans	Mexican corn bread	cherry cobbler
	beans	salad bar				white whole wheat	

HOME MADE TV DINNERS \$1.50

**The BULLS' INN**

Save up to 70% on

All fall & winter merchandise

One week only

Feb. 23 - Feb. 28

Lady Fair

Plains Shopping Center

Spearman