

Lynx now 4-1

Monday jury
duty canceled

Judge J. E. Blackburn, District
Judge, has canceled jury duty for
Monday. Jurors will not need to
report Monday.

24 hr. prayer
service 659-2911

SUNDAY

THE

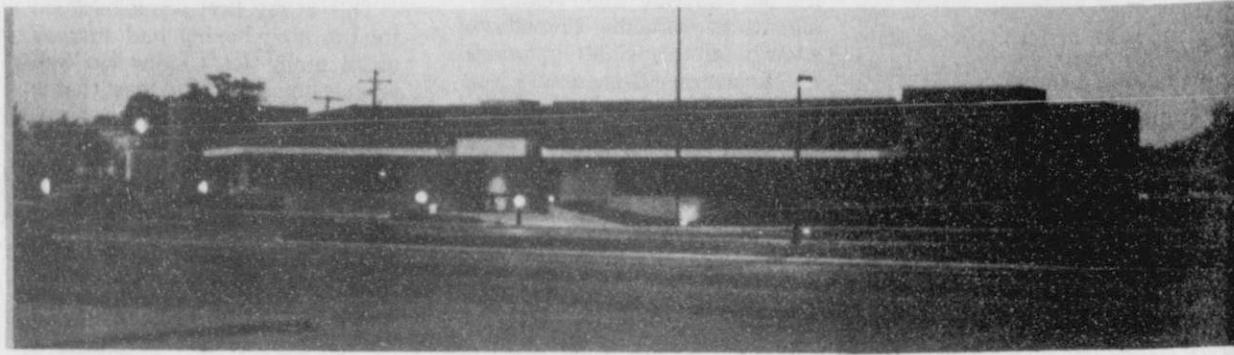
Hansford PLAINSMAN

Volume 14 Number 48

The Hansford Plainsman, Spearman, Texas 79081

Sunday, October 7, 1984

Y'all come to the Grand Opening



The public is invited to attend
the Grand Opening of the beautiful
new First State Bank in
Spearman, Saturday, October 13.

The opening will be held from 2 -
5 p.m. Refreshments, tours of the
bank and a ribbon cutting will be

held. The public is invited to
attend. [nite foto by E. New-
comb].

Jettie Davis exhibits Indian objects



Collection of the Month at the
Hansford County Library is an
array of Indian objects belonging
to Jettie Davis of Spearman.

Indian pottery from various
pueblos, jewelry, fetishes, baskets,
kachina dolls, Apache beadwork,
and an Indian headdress are included
in Jettie's collection. Most of these
items are craft arts of the Southwest
Indian.

Jettie began collecting these
items over thirty years ago. While
she was in nursing school, she met
an Indian girl from San Juan Pueblo
who introduced her to the people
who later gave her many of the
items in her Indian collection.

This fascinating collection will
be on display at the library
through October.

Mrs. Willard Davis and Indian
display.

Rattler Bill to be ordained



Bill Schardin

William Carl Schardin, the
pastor of Faith Lutheran Church,
Spearman, Texas will be ordained
as a pastor of the American
Lutheran Church, on Sunday,
October 14, 1984. He will be
ordained in his home congregation
at Calvary Lutheran Church,
Mora, Minnesota.

Pastor Schardin is a native of
Minnesota. He graduated from
Golden Valley Lutheran College
in Minneapolis with an Associate
of Arts Degree in History and Art
(1973), from Concordia College in
Moorhead, Minnesota with a
Bachelor of Arts Degree in Political
Science and Secondary Education
(1975), and from Lutheran
Northwestern Theological Seminary,
St. Paul, Minnesota with a
Master of Divinity Degree (1980).

In the summer of 1979 William
had taken a basic course in
Clinical Pastoral Education
through Andover Newton Theological
Seminary, Boston, Massachusetts
at Westboro State Hospital,
Westboro, Massachusetts.

In the fall of 1981 William had
taken two years of Clinical Pastoral
Education at Northwest Texas
Hospital, Amarillo, Texas graduating
with 8 units: 5 basic and 3
advanced, in the summer of
1983.

William has been an intern
pastor at Faith Lutheran Church,
Spearman, Texas since June 19,
1983. He was certified by Luther
Northwestern Theological Seminary
on June 5, 1984. On June 18,
1984, William was assigned to the
Southern District of the American
Lutheran Church.

Pastor Schardin has accepted a
Letter of Pastoral Call to Faith
Lutheran Church. The Service of
Installation will be held on Reformation
Sunday, October 28, 1984
at Spearman, Texas. He will be

installed by Panhandle Conference
Chairman of the American
Lutheran Church, Rev. Darrel
Gilbertson, pastor of Beautiful
Savior Lutheran Church, Amarillo,
Texas.

William will be ordained by his
home pastor, John R. Bucka,
pastor of Calvary Lutheran
Church, Mora, Minnesota. The
Lector will be Pastor Axel O.
Kordahl, Visitation Pastor of
Calvary Lutheran Church. The
Liturgist, the Presenter of the
Stole, and Presenting the Candidate
will be Pastor Jerome G. Malak,
former pastor of Calvary Lutheran
Church, presently, pastor of
Newport Lutheran Church, Newport,
Minnesota. Ordination Advisor is

SPEARMAN I.S.D.
AGENDA
BOARD OF TRUSTEES
OCT. 8, 1984
8:00 p.m.

- I. Establish quorum.
- II. Hearing of any group wishing to come before the board.
- III. Reading of minutes
 - a. regular meeting of Sept. 10, 1984.
- IV. Business manager's report.
 - A. ratification of bills
 - b. financial report
- C. Tax report
- V. Communications
 - A. letter from Lary Barber concerning Substance Abuse Rally on Sept. 17th.
 - B. minutes from Panhandle Area Association of School Boards meetings of May 3, 1984 and Sept. 13, 1984
 - c. Workers Compensation Self Insurance Fund report for 9-1-83 to 8-31-84.
- VI. Old business
- VII. New business
 - A. consideration of changes in Board Policies to meet requirements of new laws.
 - b. change meeting time to 7:00 beginning in November
- VIII. Superintendent's Report
 - A. high school calendar for Oct.
 - B. lunchroom report for Sept.
 - C. enrollment chart
 - D. high school list of failures for first three weeks.
 - E. elementary news letter of Oct.
 - F. high school choir members making all district choir
 - G. information from Mr. Mitchell in relation to his serving on the state committee to develop the TABS test for 12th grade students
 - H. board breakfast Oct. 23rd, 7:00 a.m. (policy changes)

Pastor Gary O. Bruns and his wife
Martha, pastor of Olso Lutheran
Church, Gruver, Texas.

William is the son of the late
Ford Schardin Sr. and the son of
Carmen Schardin of Mora, Minnesota
who is living at Knife
Lake.

Local residents in area hospitals

Several Spearman residents are
in Amarillo hospitals this week.
Owen Montgomery underwent
surgery Thursday in High Plains
Hospital and is reported to be
doing well.

Will Ella Martin is in St.
Anthony's with a broken hip. She
also had surgery Thursday and is
doing as well as can be expected.

Louene Hutchison remains at
St. Anthony's and her son John
reported Friday that she seems
some better.

Martha Batton received serious
injuries in a wreck near Oklahoma
City Tuesday. She sustained a
broken ankle as well as other
injuries. Her address is South
Central Hospital, 1001 Southwest
44th St. Oklahoma City, Oklahoma,
73109.

Others who have had surgery
and are home recuperating are
Mayor Blodgett, and Carrie Marie
Berry.

Hospital

Patients in Hansford Hospital
are: Naomi Wilkerson, Glenna
Hunt, Lori Vargas, Viola Graves.

Dismissed were: Kay Snider
and daughter, Betty Williams and
daughter, Kayla Taylor, Diane
Boyd and son, Clara May Nelson,
Wilma Mestas, Barbara Cook,
J.W. Mason.

Jaycees are making progress on
their new fence at the ballpark in

Spearman. Stacy Cook is painting
the signs for the Jaycees.



The cast of "The Sound of
Music" is pictured above during
rehearsal Thursday evening.
"The Sound of Music" will be
presented November 10 and 12.
Pictured are members of the cast:

Stacey Pool, Kevin Slaten, Jeff
Gressett, Jo Ann Odegaard, Alan
Mires, Andrea Archer, Chris
Strawn, Carla Latta, Charity Rol-
ler, Kellie McWhirter, Vickie
Hand, Jackie Archer.

Lynx now 4-1

Lynx win 21-6

Gruver 34- Booker 0

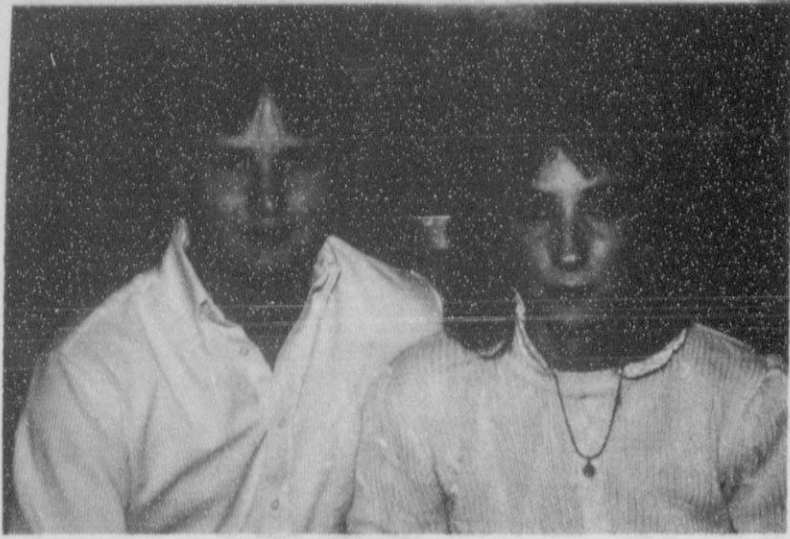
The Spearman Lynx zapped the
Longhorns of Vega Friday night,
21-6, but they made so many
errors, it looked like the Lynx
might night even pull the game
out. The Lynx fumbled inside the
Vega 10 yard line 5 times, failing
to score on all of these 5 times.
Donahue ran for 2 touchdowns
and passed for another to lead the
Lynx to the 21-6 win. Mack
McLain scored on a 38 yard toss
for the aerial score. The Horns

shut down the Lynx passing, as
Donahue managed only 5 of 26
passes, and had 2 intercepted.
The Lynx also learned that the
Stratford Elks upset Boys Ranch
to set up the opening conference
game between the Lynx and
the Elks at Stratford Friday night.
It should be a barn-burner.

In the meantime, the Gruver
Greyhounds pulverized Booker
34-0 to jump into the district I-A
lead, tied with Wheeler and
Follett.

ANNUAL LIONS CLUB BROOM SALE

Engagement announced



Barbara Keel daughter of Carol Keel of Amarillo, and Johnny Keel of Germany, and Johnny Hand, son of Mr. and Mrs. Bill Hand of Spearman are announcing their engagement. They plan to be married October 27 at 11 a.m. in

the First Baptist Church here. Jeff is a Spearman High School graduate and is employed at Hand's Welding. Barbara is a graduate of Palo Duro High in Amarillo.

Our Heritage of Faith...

Are there distinctive ways Lutherans have of interpreting the Bible? If by this meant a single approach to its study, no. Some Lutherans think of themselves as literalists. (Literalists do not put Lutherans in their camp because Lutherans are rarely literalist about revelational-dream-visionary language, and they give disproportionate attention to some parts of Scripture). Others make use of modern literary and historical techniques for understanding the original context and meaning of biblical texts. All serious Lutherans are serious also about hearing the Bible speak to them, through whatever scholarly means. Distinctiveness lies in a principle that Lutherans see throughout Scripture: the proper distinction between Law and Gospel. NEXT TOPIC: What does this distinction imply?

Bill Schardin, Pastor
Faith Lutheran Church
Spearman, Texas

The Bible is a book of witness to God's actions and the Bible becomes the means through which the Holy Spirit bears His testimony in our hearts to the truth of God's salvation. The Bible is the Word of God in that it contains God's saving Word to the world, namely Christ of whom it is the only authoritative historical record.

The authority of the Bible is apprehended by those to whom the Spirit of God has brought conviction through the words of its human witness. This witness to Christ is the reality which gives the scriptures their sole and unique authority in the hearts and the lives of all who confess that Jesus is Lord.

NEXT TOPIC: Are there distinctive ways Lutherans have of interpreting the Bible?

Bill Schardin, Pastor
Faith Lutheran Church
Spearman, Texas

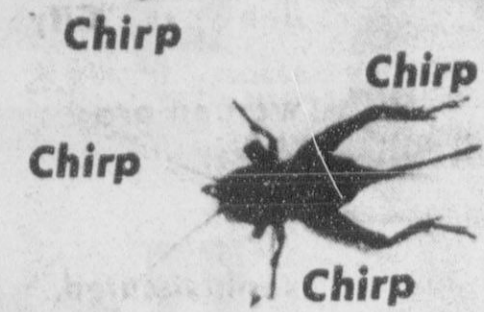
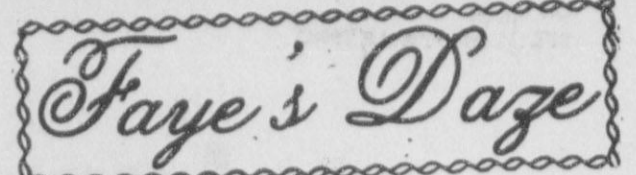
School Menu

HIGH SCHOOL MENU OCTOBER 8-12

- MONDAY, OCT. 8
Juicy Burger/Bun
Curley Fries
Salad Bar
Fruit Cup
Milk
- TUESDAY, OCT. 9
Fiestada Pizza
Macaroni & Cheese
Salad Bar
Pudding
Milk
- WEDNESDAY, OCT. 10
Spaghetti & Meat Sauce
Dill Spear
Salad Bar/Mozzarella
Garlic Bread
Jello/Fruit
Milk
- THURSDAY, OCT. 11
Chicken Pattie
Potato/Gravy
Salad Bar
Hot Rolls/Butter
Honey
Milk
- FRIDAY, OCT. 12
Hamburger/Bun
Lettuce/Tomato
Pickle/Onion
Beefy Cut Fries
Ginger Bread/Topping
Milk

ELEMENTARY & JR HIGH OCTOBER 8-12

- MONDAY, OCT. 8
Sumarine Sandwich
Macaroni & Cheese
Green Sugar Peas
Fruit Cup
Milk
- TUESDAY, OCT. 9
Tonys Pizza
Pinto Beans
Overnight Slaw
Chocolate Pudding
Milk
- WEDNESDAY, OCT. 10
Chicken Pattie
Potatoes/Gravy
Buttered Corn
Hot Rolls
Peanut Butter Blend
Milk
- THURSDAY, OCT. 11
Hamburger/Bun
Lettuce/Tomato
Pickle/Onion
French Fries
Peach Slices
Milk
- FRIDAY, OCT. 12
Pig In A Blanket
Macaroni & Tomato
Seasoned Green Beans
Jello/Topping
Milk



After much consideration and several bottles of insect spray I have come to the conclusion that the crickets at my house are having a convention in the garage and the spray I am using is joy juice for them. I notice that on the cooler nights they are not so loud, guess maybe the frost will get them one of these days.

Speaking of frosts, snow, winter, I hate to even think about it, but anyway the weather almanac is predicting 25 inches of snow to fall this winter in Amarillo. The average first snow is Nov. 17, and we've already blown that with light snow Friday night. The average last snowfall of the winter is predicted for March 30, I wouldn't bank much on that either. Since I am a native of the Panhandle nothing surprises me in the way of weather, but days like today (Friday) are especially nice, and speaking of weather

wasn't that rain nice yesterday morning.

Reports from the fair early Friday sounded good. The many artists in our area are evidently putting their work on display. Hope you get to go to the fair. There are lots of events scheduled and lots of work has been done by the fair committee and other volunteers. Hopefully this will turn out to be an annual affair.

This is my first week back on the job after having had surgery and I really don't know too well what is going on, or at least that is the excuse I am using.

Really where I would like to be is at Cimmarron, Red River, Questa, Taos or any of those places viewing the fall foliage. Maybe I'll make it too Canadian, since I seem to be traveling in the slow lane more and more.

Calendar of Events

Calendar of the month for October is filled to the limit. Those events and happenings will be as follows:

Tuesday, October 9 is the Fall choir concert.

Wednesday, October 10 the Choir begins their cookie sale (thru the 17th)

Thursday, October 11 the JV plays Stratford here

Friday, October 12 the Varsity plays Stratford there at 7:30; Drivers Ed will have written tests at 3:30.

Thursday, October 18 the JV plays Panhandle there.

Friday, October 19 the Varsity plays Panhandle here at 7:30; FFA will have a Bar-B-Que from 5:00 to 8:00 p.m.

Monday, October 22 Jostens will be here for Sr. invitations; Officers meet at 7:15 a.m. then class at 7:30 a.m. Bring \$25.00 for deposit.

Tuesday, October 23 PSAT for Juniors.

Jolene Clement gives program

Rho Rho Chapter #4782 of Beta Sigma Phi held its 482nd meeting Thursday, September 27 with Stephanie Brock as hostess at the new Brock Insurance Agency building.

Social committee chairman, Tami Janzen told members that the Couples Rush Party honoring new pledges will be October 20.

Service committee chairman, Kitty Edwards reported that Rho Rho will be sponsoring a Dog Show at the upcoming Hansford County Fair on Saturday, October 6. Children 12 years of age and under can enter their dogs.

Members voted Kitty Edwards to be the Valentine Girl for 1985 year. Karon Farber will be taking the pictures of our Valentine Girl.

Jolene Clement from Perryton presented an informative program on furniture and art showing different ways to arrange and group them in different house

styles. She also showed how decorating with plants and art can enhance your home.

Refreshments were served to members present: Frances Pipkin, Linda Winegarner, Tami Janzen, Joyce Vanderburg, Molly Holton, Denise Harbour, Holly Simpson, Shelly Beedy, Stephanie Brock, Pamela Cates, Kitty Edwards, Carol Hergert, Martha Lanier, Ginger McClellan, Sheila Watley, Garry Woolley, Sue Woolley, and Terry Womble.

The next meeting will be our Model Meeting and will be held at Gaye Woolley's home, Thursday, October 11. This is the first Meeting Executive Board: Francis Pipkin, Linda Winegarner, Tami Janzen, Joyce Vanderburg, Molly Holton, Denise Harbour, and Holly Simpson. The skit will give new pledges an ideal of what the duties of these officers are.

Tuesday, October 9, 1984 — Sale Time: 10:30 a.m.

LOCATED: From Gruver, Texas, 2 miles West on Highway 15 then 2 miles South, OR From Stratford, Texas, 37 miles East on Highway 15 then 2 miles South.

BRUCE AYERS & NEIGHBORS — Owners

Telephone: (806) 733-2815

The following will be sold at Public Auction:



AUCTION



TRACTORS, COMBINE, ATTACHMENTS —

- 1-1979 Farmall 1086 Diesel Tractor, Cab, A/C, Htr., AM-FM Radio, Cassette, W.F., 3-pt., Weights, D.H., 18.4X38 Rubber (851 Hours), Clean (Bought New 1980)
- 1-1976 John Deere 4430 Diesel Tractor, Cab, A/C, Htr., AM-FM Radio, Quad-Range Trans., W.F., 3-pt., Weights, D.H., 18.4X38 Rubber (3300 Hours), Good
- 1-1973 International 915 Diesel Combine, Cab, A/C, Htr., Radio, Turbo, Hydro., 20" Hdr., 20" Hume Reel, Big Rubber (1750 Hours)
- 6-Husber Head Hunter Pickup Units
- 1-Lot Maize Fingers

EQUIPMENT —

- 1-John Deere 400, 32" Rotary Hoe, With Transport Wheels
- 1-Miller 20" Offset Disc, H.D. Axles & Bearings
- 1-John Deere PK-03, 14" Offset Disc
- 1-Burd R.O.C. 21", D.S.B., 7 Shank Stubble Mulch Plow, 3-pt., D.G.W.
- 1-Tye 6 Row, 3-pt. Grain Drill (Rigged For Double Row, 40")
- 1-Tye 6 Row, 3-pt. Grain Drill, 8" Spacing
- 1-King 10", D.T. Terra Minder Dirt Mover
- 1-Reynolds 2 1/2 Yard Dirt Mover
- 1-Lulliston 6 Row, 3-pt. Rolling Cultivator, 40" Rows
- 1-John Deere DR 16-10" Grain Drill, L.W.R.
- 1-John Deere DR 20-8" Grain Drill, L.W.R.
- 1-Yanbrunt 16-10" Grain Drill, S.W., With 2-Drill Hitch
- 1-Allis Chalmers 4 Row, D.T. Shredder
- 1-SM 30" Land Float, 12" Blade
- 1-Allis Chalmers 3-16" Spinner Mouldboard Plow
- 1-21", D.T.B., A.A. Applicator Rig, 3-pt., Gauge Wheels
- 1-SM 5 Shank, D.T. Ripper Plow
- 1-SM 8", 3-pt. Blade
- 1-John Deere 21", D.T.B., 6 Row Lister Rig, Gauge Wheels, 3-pt., Markers
- 2-Noble 7", Single Shank Big Sweep Plows, With Hitch
- 2-Planet Jr. Ind. Planter Units
- 1-Corsicana 5", 3-pt. Shredder
- 1-Hoeme, 18 Shank, D.T., L.C., Gauge Wheels
- 1-Hoeme, 15 Shank, D.T., H.C., Gauge Wheels
- 1-John Deere 2-14" Spinner Mouldboard Plow
- 1-Clark 200 Gallon T.T. Spray Rig, Booms, Pump
- 1-7", 3-pt., S.M. Blade
- 1-John Deere D.T. V-Ditcher, C.C.
- 1-John Deere 6", 3-pt. Rotary Hoe
- 1-3-pt. Lift Boom, C.C.
- 1-Johnson 7", D.T. Blade
- 1-4 Row, 3-pt. Go-Devil
- 8-Harrow Sections
- 1-3-pt. Lift Boom

IRRIGATION —

- 1-Fairbanks Morse Tail Water Pump, With 30 H.P. Electric Motor, 3 Phase, Switch Boxes, Good
- 12-Joints 6" X 30' Gated Pipe, 40" Rows
- 10-Joints 8" X 30' Gated Pipe, 32" Rows
- 9-Joints 8" X 25' Gated Pipe, 32" Rows
- 9-Joints 8" X 30' Gated Pipe, 40" Rows
- 2-Joints 8" X 30' Gated Pipe, 40" Rows, Sliding Gates
- 2-12" X 10" Hydrants
- 2-12" X 8" Hydrants
- 1-Lot 10", 8", 6" Irrigation Fittings, T's, L's, Etc.
- 1-Lot Short Joints, Various Sizes
- 100-1 1/2" Irrigation Tubes
- 2-Joints 12" X 9' Column Pipe
- 1-Joint 8" X 20' Column Pipe
- 2-Joints 8" X 9' Column Pipe
- Approx. 91', 6" Column Pipe

1-2 Wheel Pipe Trailer

- UTILITY TRUCK, GRAIN TRUCKS, CAR, GRAIN TRAILERS, MANURE SPREADER —
- 1-1978 Dodge 1 Ton Dual Wheel Truck, 360 Engine, 4 Sp., P/S, P/B, With Metal Utility Bed, Gooseneck Hookup
- 1-1948 Chevrolet S.A. Grain Truck, 6 Cylinder, 4 Sp-2 Sp., 15" Metal Grain Bed, Hoist, 8.25X20 Rubber
- 1-1944 Chevrolet S.A. Grain Truck, 6 Cylinder, 4 Speed, 15" Metal Grain Bed, T/C Hoist, 8.25X20 Rubber
- 1-1974 Ford 4 Door Car, V-8 Engine, A/T, A/C
- 1-SM 24' Flatbed, Tri-Axle Gooseneck Trailer
- 1-Horn 90 Bushel Gooseneck Grain Trailer
- 1-Farmhand H-314-A Manure Spreader On Truck Chassis, T.A. Trailer, P.T.O. Drive

HAY EQUIPMENT, LIVESTOCK EQUIPMENT —

- 1-SM Hay Bale Loader
- 1-Davis Roller Mill With Continental Gas Engine
- 1-New Holland Forage Harvester, Belt Driven
- 1-Continental Hi-Pressure Sprayer, with 5 H.P. Gas Engine, Pump, Hoses
- 1-16" Double Sided Wooded Self Feeder On Skids
- 2-Fiberglass 12" Cattle Troughs
- 1-18" Metal Portable Hay Feeder On Wheels
- 1-Hamleys Stock Saddle
- 4-Metal Syrup Feeders
- 3-Electric Fence Chargers
- 1-Lot Electric Fence Posts, Wire, & Insulators
- 1-Lot Barbwire
- 1-Propane Stock Tank Heater
- 2-Stockwater Tubs (1-7' & 1-9')
- 17-Telephone Poles, Various Lengths
- 30-Telephone Cross Arms

SCALES, GRAIN BIN, AUGERS —

- 1-Set Fairbanks Morse 24" Scales, 30,000 Pound Capacity (To Be Moved)
- 1-SM 450 Bushel Overhead Grain Bin
- 1-Mayrath 40" X 6" Grain Auger, With 5 H.P. Electric Motor
- 1-Vertical 30" X 6" Grain Auger
- 1-12" X 6" Auger, No Motor
- 1-21" X 6" Portable Grain Auger

TRACTOR & TOOL MAKEUPS —

- 1-Set 18.4X38 Axle Duals
- 1-Set 18.4X38 Snap-On Duals
- 6-Hydraulic Cylinders
- 2-John Deere 21" X 24" Toolbars
- 2-12" X 24" Toolbars
- 1-Set John Deere Gauge Wheels
- 7-John Deere Lister Beams
- 6-John Deere Orchard Shanks
- 4-John Deere Spacers
- 1-John Deere 3-pt., 3-pt. Hitch
- 5-1" X 3" Shanks & Clamps
- 1-Lot Tye Planter Discs
- 1-6 1/2" X 2 1/2" Toolbar, With 3-pt.
- 4-Go-Devil Scratchers
- 1-Lot Tractor Lift Arms & Center Links
- 7-8" Bullet Drags

TANKS —

- 1-500 Gallon Diesel Tank On 4 Wheel Trailer
- 1-500 Gallon Water Tank Skids
- 2-500 Gallon Overhead Fuel Tanks & Stands

- 1-Snyde 200 Gallon Poly Tank On 2 Wheel Trailer, With 3 H.P. B & S Gas Engine, Centrifugal Pump
- 1-100 Gallon Fuel Tank
- 1-120 Gallon Diesel Tank, With Pump
- 1-47 Gallon Propane Tank For Pickup
- 1-38 Gallon Propane Tank
- 1-25 Gallon Oil Tank, With Hand Pump
- 2-25 Gallon Butane Tanks
- 1-23 Gallon Auxiliary Tank

ANTIQUE CLOCKS —

- 8-Antique Replica Shelf & Wall Clocks (To Sell R 1:00 p.m.)

NON-CLASSIFIED —

- 1-Stohkoenig Side Pack Utility Boxes For N.B. Pickup
- 1-Bolons 9 H.P. Roto Tiller
- 1-6' X 8' Storage Building
- 1-Ford 361 Engine, With 1000 Miles
- 1-P.T.O. Cement Mixer
- 1-Lift Boom With Winch
- 1-Craftsman Paint Pot, With Spray Gun
- 2-10X22 Truck Tires, 10 Hole
- 1-Mico 12V Fuel Transfer Pump
- 1-Pickup Camper, L.W.B.
- 1-Champion Spark Plug Tester
- 1-Lot Hydraulic Jacks
- 1-Woodburning Cast Iron Heat Stove
- 1-Lot Chains, Boomers
- 1-Motor Overhead Stand
- 1-Lot 2" & 3" Pipe, Various Lengths
- 1-SM Sandblast Pot
- 1-New 8.25X20 Truck Tire
- 1-4 Ton Air Conditioner Compressor
- 1-Set Carryall Axle & Tires
- 1-B & D Electric D.A. Grinder
- 1-14" Metal Ladder
- 1-4 Speed Transmission For Ford
- 1-18.00X20 Truck Tire & Wheel
- 1-Lot Tires & Wheels
- 1-B/S 10 H.P. Engine
- 1-McCauley 16" Chain Saw
- 1-Barrel Dolly
- 1-10' 6" X 14' Overhead Door
- 2-20" Sicks
- 4-17' Building Trusses
- 1-Lot Windmill Cable
- 1-Lot Keel Cinder Blocks
- 12-9" Sections Grain Aeration Duct
- 1-Lot Screen Doors
- 1-Paint Gun
- 1-Lot Scrap Iron



Cruce and Long Auctioneers

BOX 1921 — PLAINVIEW, TEXAS 79072

James G. Cruce (806) 296-7252 (735-015-0242)

James M. "Mike" Long (806) 293-8883 (735-015-0487)

Jim Summers (806) 864-3611 (731-085-5182)

Jimmy Reeves (806) 864-3362 (Clerk)

Terms of Sale: CASH Lunch Will Be Available All Accounts Settled Day of Sale

VCR Tape Rentals

Introductory offer....

Rent 2 - get 1 FREE

Plus free membership to the tape club. LIMITED TIME ONLY

200 titles to choose from

Open Saturday's 10:00 to 6:00

Earl's TV & Appliance

106 E. Kenneth

Spearman

659-2121

BUY, SELL, TRADE OR RENT THROUGH THE CLASSIFIED ADS

**Call
659-3434**

SERVICES

MONUMENTS

Save Agents and Undertakers Profits

If it is inconvenient for you to visit our large display, please phone collect (405) 327-0626 or write and we will call on you.

ALVA MONUMENT WORKS, INC.
Alva, OK 73717

New to area?
Give us a try
Call your local
USED COW DEAL.

As soon as Possible
659-3544
659-3545
1-800-692-4043
17S-rtm

NOTICE

Wallace Monument Co.
Monuments, Curbing,
Grave Covers
Local Representative
LEONARD JAMESON
Spearman, Texas
35S-RTN

STEAM RINSE & VAC
Rinse and Vac Shampooer for rent at Gordons Drug. \$10.95 up to 24 hours.

OSGOOD MONUMENT CO.

Amarillo, Texas
Dealers of Rock of Ages Granite as well as all colored granites, marble and bronze memorials.

represented by
BOXWELL BROS. FUNERAL HOME
519 S. EVANS
659-3802

Hansford County
Planned Parenthood
412 Davis
659-2483
Spearman
Mon.-Fri.
8:30-12:30

SERVICE: Pits cleaned, wet or dry. Dragline or loader. Also, dozer, grader, carryall service. Lee Roy Mitchell, 806-733-2384, Gruver, Texas 79040. 12-rtm

ODD JOBS around your house, don't know who to call? Call C. W. Handy Man Services, Charles West, 659-3833. 20S-rtm

Home Baked Goods!!! Baked to order by the Spearman High School Cheerleaders. We will bake anything! To place an order call 659-2807. We will appreciate your support.

B & T Electric, Spearman, Tx. 806-659-3831, Residential, Commercial, Industrial, Feedlots, Controls, Troubleshooting, Electricians Bill Laird and Texas Bradford. 36S-rtm

SEARS BLOWN-IN ATTIC INSULATION. Completely installed. For FREE Estimate at your convenience dial 659-2573. Sears, Roebuck and Co. 517 S. Hwy. 207. 44S-rtm

OFF THE WALL wallpapering and interior painting Experienced work guaranteed. Call 659-5196 or 659-3647. 44S-7tp rtm

MISC. FOR SALE

Great Dane puppies for sale AKC registered. Call 659-5260. 46s-rtm

FOR SALE: Two technics SB-L71 home speakers. Mint condition. Sound Good. 733-2517. 29-rtm

FOR SALE: firewood pinion and oak. Delivered and stacked. Call Robert Randall at 393-5394. 37s-

Registered 3 male screwtail black and white bulldogs for sale. Call 659-3436. 46s-rtm

OATH HAY for sale. Call 733-2517. 44S-rtm nc

FOR SALE: Never used Vita-Max Roller Massage; Ping Pong table 3/4" thick wood in good condition; Portable hair dryer. Call 659-2809. 47-6tp

Reduce safe & fast with Go-Bese capsules & E-Vap "water pills" Spearman Drug. 47s-2tp-s-only

FOR SALE: AKC registered Boxer puppies, \$200. 9-2225 or 405-327-5506. 47S-3tc

FOR SALE: Cocker spaniel puppies, AKC registered. Call 659-3902 or 3289. 48s-6tc

FOR RENT

HOUSE FOR RENT: 3 bedroom, 2 bath. Available Oct. 16. Call 9-2130.

3 bedroom house for rent. Den with fireplace. Call 659-5108 after 4 p.m. 48-8tc

2 bedroom, furnished mobile home for rent. Call 2770 or 3017. 47s-2tc

FOR RENT IN SPEARMAN: Mobile Home Lots, utilities, telephone & TV, fenced, concrete sidewalks and patio. 435-5080 or 435-6396. 32-rtm

AUTOMOBILES FOR SALE

FOR SALE: 1981 Phoenix 4 door, \$4,250. 733-2817. 48-4tc

FOR SALE: 1982 Subaru 4 door, front wheel drive, P.S., P.B., cruise, automatic trans., AM/FM, electric windows, low mileage. \$3995.00. 659-3850 evenings and weekends. 47-4tc

REAL ESTATE

FOR SALE-3 bedroom, 2 bath home, double car garage, 1/2 mile west of Gruver. 659-5260 35-rtm

FOR SALE: Two story, 2 bath, fireplace, central air, large lot. 659-2329 or 733-2855. \$30's. 47-8tp

FOR SALE: 3 bedroom, unfinished. 2 bath home. 715 Dresden. Phon 733-5102. 1475 sq. feet. 2 car garage. 44s-rtm

House For Sale: 416 Haney 4 bedroom, 2 baths large fenced back yard plenty of fruit trees in back yard. Call 659-2512 or 659-5015. 45-rtm

FOR SALE: 3 bedroom, 1 bath home, single car garage, 6 ft. fenced backyard with patio. Call 659-2369. 40-rtm

FOR SALE: 3 bedroom, fireplace, large kitchen with lots of cabinets, dishwasher, new steel siding, detached garage, large yard with 6 ft. fence. Central heat and air, priced under \$40,000. Call 659-5048 for appointment. If no answer call 799-4031 from 9 a.m. to 6 p.m. 37S-rtm

HOUSE FOR SALE: 1018 Evans 3 bedroom, 1 1/4 bath, new paint on trim, ceiling fan. Phone 659-3846 4tc-s-only

HELP WANTED

The City of Spearman is now accepting applications for the position of automotive and maintenance mechanic. The mechanic is a skilled position in repairing, maintaining and trouble-shooting automotive and heavy duty equipment. Applicants must hold a high school diploma or equivalent.

General duties include preventive maintenance and repairing equipment as warranted and performing other duties as assigned.

The City provides an excellent fringe benefit program which includes retirement, group hospitalization insurance, vacation, holidays, and sick leave.

Interested persons in this position should come by 514 Collard by October 15, 1984.

The City of Spearman is an equal opportunity employer. 48s-2tc

Excellent Income for part time home assembly work. For info. call 312-741-8400 Ext. 547. 47-4tp-to

Part Time RN, LVN, or EMT, to complete health histories in the Spearman area for insurance companies. Must have telephone and auto. 806-765-0381. 47s-2tc

WORK WANTED: I will be a good and dependable employee and do things the way you want them done. Please call Rodney Strawn at 659-2754. 48-1tc

WANTED: Babysitter to care for one child and do light housekeeping in my home starting in Jan. until end of May. References requested. Call 659-5006 after 4 p.m. 48-8tc

BUSINESS OPPORTUNITIES

Own your own Jean-Sportswear, Ladies Apparel, Combination, Accessories, Large Size store. National brands: Jordache, Chic, Lee, Levi, Vanderbilt, Izod, Esprit, Britannia, Calvin Klein, Sergio Valente, Evan Picone, Claiborne, Members Only, Organically Grown, Healthtex, 700 others. \$7,900 to \$24,900, inventory, airfare, training, fixtures, grand opening, etc. Can open 15 days. Mr. Loughlin (612) 888-6555. 48s-1tp

MOBILE HOMES FOR SALE

FOR SALE: Mobile Home 1975-14x72 Charter- 2 bedroom, 2-bath in excellent condition. Call 669-7024 or 659-2809. 47-6tp

PUBLIC NOTICE

Guymon Elks Supper Club is open to the public. Our hours are Wednesday-Thursday 6-10 p.m. Friday-Saturday 6-10:30 p.m. We have a Prime rib special every Friday. 46s-rtm

The COWBOY SUB-CHAPTER of the F.C.A. meets the fourth Saturday of every month at 7:30 p.m. at the Home Demonstration Building, Spearman, Texas.

WEIGHT WATCHERS meets each Monday at 6:00 p.m. at the Home Demonstration Building, Spearman, Texas.

I, Steve Mitchell, am no longer responsible for Margie Mitchell's bills or responsibilities. 48s-4tc

POLITICAL ANNOUNCEMENTS

REPUBLICAN
84th Judicial District Attorney
GENE COMPTON

DEMOCRATIC
84th Judicial District Attorney
PHIL BLACK

LEGAL NOTICE

Sealed bids for the purchase of the following items will be received by the City of Spearman, Texas, at the office of the City Manager up until 2:00 p.m., October 18, 1984, then publicly opened and read.

Item 1. 34 - 3 Cubic yard side loading containers and 200 replacement bottoms for three cubic yard refuse containers for the Health & Sanitation Department.

Item 2. Janitorial Service Contracts for the Administration Department.

Item 3. One Pickup for the Utilities Department.

The City reserves the right to reject any or all bids, to waive informalities and to accept the bid deemed to be the most advantageous to the City. All bids received after the above closing hour will be returned, unopened.

Specifications and bidding documents may be secured from the office of the City Manager, P.O. Box 37, Spearman, Texas, 79081. 47s-2tc-s-only

For a Private Club Registration Permit:

Notice is hereby given in accordance with the Alcoholic Beverage Code that an (unincorporated) association of persons, Cattleman's Supper Club, has applied for a Private Club Registration Permit doing business as Cattleman's Supper Club located at 821 South Highway 207, Spearman, Hansford County, Texas. The officers are as follows: Pat L. Underwood, President; Reva Jean Nollner, Secretary-Treasurer, Vice Pres. Billy Pat Underwood, etc.

LOST

LOST: Silver/White Persian kitten. Missing 1 week. Reward offered. Call April 9-3279. Lost from 303 Barkley. 47-4tc

GARAGE SALE

GARAGE SALE: 4 families. Furniture, antiques, dishes, costume jewelry, clothes (all sizes, also baby), lots of misc. Wednesday, October 10, 8 a.m. to 8 p.m. Home Demonstration Bldg. 313 N. Bernice.

CRIME STOPPERS

Low-Cost, No-Cost Ways to Protect Yourself, Your Family, Your Home, and Your Car

CRIME STOPPERS: Low-Cost, No-Cost Ways to Protect Yourself, Your Family, Your Home and Your Car is a welcome relief for anyone looking for a simple and affordable way to achieve personal and family security. Written by Wesley Cox and published by Crown Publishers, Inc., New York, N.Y.

THE Hansford Plainsman

PUBLICATION (USPS 2346-6000)
SPEARMAN, TEXAS 79081

213 Main Box 458 659-3434
Published Weekly at 213 Main Street
Spearman, Texas 79081
Owner-Publisher.....William M. Miller
Editor.....Faye Lynch
Second Class postage paid at Spearman, Texas 79081

Any erroneous reflection upon the character of any person or firm appearing in these columns will be gladly and promptly corrected upon being brought to the attention of the management.

POSTMASTER: Send address changes to Hansford Plainsman, Box 458, Spearman, Tx. 79081.

SUBSCRIPTION RATE: Hansford, adjoining counties, combination with the Spearman Reporter, \$25.00.
Other points, \$30.00.

MEMBER
texas press association

Regional Chiropractic Center

Dr. Darrell D. Duke
complete Chiropractic and nutritional services.

Open Mon.-Fri. 9:00-4:30
221 Sanders 659-5585

ANOTHER GREAT DISCOVERY

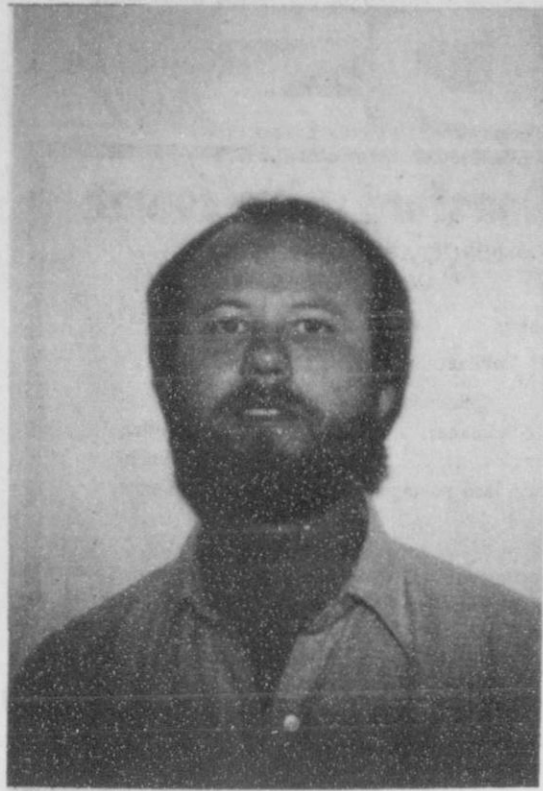
BANK WILL BE CLOSED MONDAY

OCTOBER 8 Columbus Day

FIRST STATE BANK

SPEARMAN, TEXAS 79081

Poet to conduct Creative Classes here



Poet Charles Behlen

Poet Charles Behlen of San Antonio will conduct creative writing classes at Spearman Elementary School from Oct. 8 to 12. The 35 year-old poet is here through the "Artists-in-Education" program of the Texas Commission on the Arts. Funding is provided by the Texas Commission on the Arts, the National Endowment for the Arts, and Region XVI Education Service Center.

Behlen's works have been published in dozens of literary magazines and anthologies. In addition, he has published one book of poetry, and two other collections are scheduled for publication in '85 and '86.

Behlen, who grew up in Slaton, Texas, smilingly describes himself as a poet of the "West Texas Gothic" school. Many of his poems have a dark side, exposing with surgical precision man's inhumanity to man and the over-

whelming effects of nature on man's struggle to survive.

His work "not only" demonstrates his gifts and skill with language, but also his profound understanding of people and places, particularly those of rural Texas.

Behlen says, "I come into the classroom, as an artist, to show students new approaches to reading and writing poetry. The physical presence of the poet in the classroom make poetry not only an intellectual reality, but a visceral one as well."

Behlen urges teachers to avoid having students approach poems in mechanical or analytical ways.

I want students to know how the experiences of the poet are entangled in the words of the poem," he says. "I want them to know that writing poetry involves their guts and their hearts, and with what's going on out on the front porch."

Behlen says that it's possible to identify poets at an early age. These children, he notes, "like to hang around words, play with words. If they can hook their language up to their imagination" he says, "they have the potential to write poetry."

Behlen has worked with hundreds of eager young people in elementary, middle and high schools in Texas, New Mexico and California. Behlen has high praises for the young people of the Texas Panhandle and is pleased to be given the opportunity to work with the children at Spearman Elementary.

Behlen's visit to Spearman marks the first of five creative writing classes which will be conducted in Amarillo and surrounding communities.

Bliss named Caprock president

Robert L. "Bob" Bliss has been appointed president and general manager of Caprock Cattle Management Services, a newly formed division of Caprock Industries, effective Nov. 1.

Bliss will be responsible for expanding and servicing Caprock's custom cattle feeding business and will apply the company's risk management expertise to managing customer cattle, said Zay Gilbreath, president of Caprock Industries. Bliss also will help direct the company's pasture feeding operations from his office in Amarillo.

"Bob's joining Caprock reflects our commitment to a strong custom cattle feeding operation. His 22 years of High Plains cattle industry experience will serve our customers well," Gilbreath said.

Caprock, a Cargill subsidiary, provides a complete range of cattle-feeding services. In addition to conventional programs, it offers fixed-rate or variable-rate financing, set-ration or set-grain prices, finished-cattle buy-back contracts and risk-management plans to its custom feeding clients. The company has feedlots in Leoti, Kansas, Gruver and Dalhart, Texas.

Bliss began his commercial cattle feeding career in Muleshoe, Texas, in 1962. He was the managing partner responsible for building the Swisher County Cattle Co. feedlot, Tulia, Texas. And for the last 10 years was vice president of feedlots for Friona Industries, Friona, Texas.

Bliss is a member of the executive committee of the National Cattlemen's Association board of directors, president of Cattle-Fax, the market advisory service of NCA, and past president of the Texas Cattlefeeders Assn.

He and his wife, Skeet, live in Amarillo.

New Arrivals

Bobby and Kay Snider are proud to announce the arrival of a new daughter Taryn Ranæ. She was born Thursday, Oct. 4, 1984 at Hansford Hospital in Spearman at 12:18 a.m. She weighed 7 lbs. 8 oz. and was 20" long.

She joins sisters LaShera, Denise and Kylie Irene in the home.

Maternal grandparents are Mr. and Mrs. Steve Glassey of Perryton. Paternal grandparents are Mr. and Mrs. Vance Snider.

Paternal great grandmothers are Nota Snider of Coleman and Cora Helton of Pampa.

FREE COLOR EVALUATION to assist you in proper selection in cosmetics that best suit your skin type.

Joy Uselton of Perryton has had special training in this field. She has had training in Montreal, Canada, and Dallas, Texas. Joy has been a hair dresser and beauty advisor for several years.

She will be giving free color evaluation on October 10, 1984, from 9:30 - 4:30 at Chalor's. It is necessary to call for appointments, so please do so soon!

GUYMON LIVESTOCK AUCTION

WE SELL BOTH CATTLE & HOGS

"A FAST GROWING MARKET"
PRIVATE TREATY EVERY DAY

FRESH CALVES OFFERED
SALE EVERY WEDNESDAY
STARTS AT 11:00 A.M.

Phone us about your consignments

Office 1-405-338-3378

Out of State 1-800-338-5871

Gary Cobb - General Manager

Res. Phone 1-405-545-3470

Bill Blackmore - Field Representative

Res. Phone 1-405-349-2254

DIMENSION LUMBER				
Dimension	8'	10'	12'	14'
2" x 4"	179	225	299	315
2" x 6"	269	335	399	469
2" x 8"	409	509	609	709
2" x 12"	799	999	1199	1399

Every Day Low Price CASH & CARRY COME-A-LONG

2 Ton

\$1188 Ea.

Every Day Low Price CATTLE PANELS CASH & CARRY

52" High, 16' Long, 1/4" Wide

\$1299 Ea.

Every Day Low Price CASH & CARRY LEATHER GLOVES

\$219 Pair

PLYWOOD SPECIALS

4' x 8' x 1/2"

\$789 Sheet

PRIMED HARDBOARD SIDING

4' x 8' x 7/16"

\$1349 Per Sheet

Every Day Low Price GALVANIZED WELDED WIRE CASH & CARRY

2" x 3" x 36" 16 Ga.

\$1449 50' Rolls

2" x 3" x 48" 16 Ga.

\$1779 50' Rolls

IMPORT CORRUGATED STEEL SHEETS

6"	\$350	Sheet	11"	\$650	Sheet
7"	\$419	Sheet	12"	\$699	Sheet
8"	\$479	Sheet			
9"	\$549	Sheet			
10"	\$599	Sheet			

ECONOMY STUDS

4' x 8' Good 1 Side

1/4"	\$895	Sheet
3/8"	\$1149	Sheet
1/2"	\$1449	Sheet
3/4"	\$1995	Sheet

VERSATILE PEG BOARD

4' x 8' x 1/4"

\$1199 Sheet

STEEL TEE POSTS

6'	\$259	Ea.
6 1/2'	\$279	Ea.

POULTRY NETTING

	24"	36"	48"	60"	72"
1"	2750	3995	5325	6575	7875
2"	1495	2150	2995	3595	4250

PLYWOOD

4' x 8' Good 1 Side

1/4"	\$895	Sheet
3/8"	\$1149	Sheet
1/2"	\$1449	Sheet
3/4"	\$1995	Sheet

MASONITE

4' x 8' x 3/8"	\$699
1/8"	\$899
1/4"	\$899

GALVANIZED FENCE STAYS

100 Per Bundle	\$2099	Bundle
36"	\$2799	Bundle
42"	\$3199	Bundle
48"	\$3199	Bundle

12 1/2 Ga. Domestic BARBED WIRE

\$3295 Roll

APPEARANCE BOARDS

	4'	6'	8'	10'
1" x 4"	55°	80°	109°	130°
1" x 6"	80°	120°	160°	200°
1" x 8"	109°	160°	210°	269°
1" x 12"	199°	299°	399°	499°

COMBINATION DOOR With Tempered Safety Glass

2'8" x 6'8"

\$4995 Ea.

3'0" x 6'8"

\$4995 Ea.

HARDBOARD SIDING

10' x 12" x 7/16"

\$549 Sheet

STEEL GATES FARMMASTER

5 Panel	\$3195	Ea.		
8'	\$3595	Ea.	\$4295	Ea.
10'	\$3895	Ea.	\$4995	Ea.
12'				
14'				
16'				

Shop October 3rd./20th.

TRADES FAIR DAY in Borger

700 S. Cedar, 79007 / Phone: 806 / 273-6404
Hours: Mon. - Sat. 8:00 a.m.-5:30 p.m.

FOXWORTH GALBRAITH THE PROS GO!

Building Materials Centers

Spelling Bee director named

For the 37th year the Amarillo Globe-News and West Texas State University, Canyon, are again sponsoring the National Spelling Bee for students in public and parochial schools in this area.

Directors of the 46 counties of the Panhandle of Texas, parts of Oklahoma, New Mexico and Kansas are being named to handle their respective events. Directors select the dates of their county bees and report their champions to the Amarillo newspaper. The director for Hansford County will be Roy Harris, superintendent, Pringle-Morse CISD, Morse.

Information relating to the county program may be obtained from the director. Other information concerning the 1985 Regional Bee, scheduled for April 27 on the campus of WTSU, will be available on request from Gene Parker, bee coordinator. Parker is

director of placement for WTSU.

"We are looking forward to having these outstanding young people on the campus of WTSU next April. The university takes a great deal of pride in working with this educational program and placing great emphasis on learning," Parker said.

The deadline for directors to report their county champs to Jeane Bartlett, Spelling Bee Editor for the Amarillo newspaper will be April 6. The winner of the 1985 regional bee will be sent to Washington, D.C. to take part in the National Spelling Bee, early in June, with all expenses paid, courtesy of the Amarillo Globe-News. This includes expenses for one parent.

Rules, established by the national sponsors, the Scripps-Howard Newspapers, state that any student who will not be older than 16 by June 1, or in a grade higher than the 8th by the end of

the current school term, may participate.

A Junior Bee for younger students, grade six and under, will also be conducted in each county if directors so desire. The county junior winners do not spell in the Regional Bee, but are special guests of the sponsors and will be recognized and awarded trophies.

The booklet, "Words of the Champions", containing more than 3,000 words and prepared by the national sponsors, is used in most school events and county contests. The booklet is available from the Amarillo Globe-News

and is priced at only 40-cents each. Orders should be mailed to Spelling Bee Editor, Amarillo Globe-News, Box 2091, Amarillo, Texas 79166.

Buckles are here

The Spearman Chamber of Commerce has just received the new belt buckles for Spearman. These buckles were designed especially for Spearman and made by the Awards Medal Co. in Noble, Oklahoma. They are beautiful buckles and they are a numbered limited edition. The number one buckle is gold plated on sterling silver and tickets will be sold for a drawing on November 17, at the Harvest Ball, for the gold belt buckle. Buckles 2 thru 10 are sterling silver and sell for \$125 and number 11 thru 240 are solid brass and they sell for \$20.00 each. These buckles are a limited edition and will make an excellent Christmas present. For



more information call the Chamber of Commerce office or stop by and see the beautiful belt buckles. Chances for the gold belt buckle will be sold at a cost of \$5.00 per chance. The design for the buckles has

Spearman across the top with the State of Texas, a spear, wheat, maize, an oil derrick, windmill, steer, yucca, pheasant and the Zulu stockade. This was the first building built in Hansford County.

SPEARMAN CHURCH DIRECTORY

APOSTOLIC FAITH CHURCH:
Leland Grimmer, Pastor
824 South Dressen
Sunday School: 10:00
Morning Worship 11:00
Evening Worship 7:00
Wednesday Service 7:30
659-2870

CHURCH OF THE BRETHREN:
Steve Bailey, Pastor
Waka, Texas
Sunday School 10:00
Morning Worship 11:00
No Evening Services
435-4598

CHURCH OF CHRIST:
Gaylord Cook & David Fultz,
Co-ministers
121 South Haney
Sunday School: 9:45
Morning Worship 10:35
Evening Worship 6:00
Wednesday Service 7:30
659-3244

FAITH LUTHERAN CHURCH:
William Schardin, Interim Pastor
1101 South Bernice
Sunday School 9:45
Morning Worship 10:45
No Evening Worship
659-2252

FELLOWSHIP BAPTIST CHURCH
Jim Jones, Pastor
1102 South Archer
Sunday School 10:00
Morning Worship 11:00
Evening Worship 7:00
Wednesday Service 7:30
659-2782

FIRST ASSEMBLY OF GOD:
David Nuckels, Pastor
401 North Bernice
Sunday School 9:45
Morning Worship 11:00
Evening Worship 7:00
Wednesday Service 7:00
659-2295

**FIRST BAPTIST CHURCH
[SOUTHERN BAPTIST]:**
Russ Gibbs, Pastor
Jerry Don Davis,
Minister of Youth
123 South Bernice
Sunday School 9:45

**FIRST CHRISTIAN CHURCH:
[DISCIPLES OF CHRIST]:**
Martin Foster, Pastor
29 South Bernice
Sunday School 9:30
Morning Worship 10:50
Evening Worship 6:30
659-2036

**SACRED HEART CATHOLIC
CHURCH:**
Father Raymond Crosier, Priest
Saturday Evening Mass 7:00
Friday Mass 8:30 AM
Sunday Mass 8:00 AM
Thursday Mass 6:30 PM
659-2166

**FIRST UNITED PRESBYTERIAN
CHURCH:**
Leland McCullough, Pastor
1021 Cotter
Sunday School 9:45
Morning Worship 11:00
No Evening Services
659-2033

**FIRST UNITED METHODIST
CHURCH:**
Lane Boyd, Pastor
407 South Haney
Sunday School 9:45
Morning Worship 11:00
Evening Worship 7:00
659-3220

SPEARMAN UNION CHURCH:
(Inter-Denominational):
Steve Rogers, Pastor
31 South Endicott
Sunday School 9:45
Morning Worship 10:45
Evening Service 6:30
Wednesday Service 7:30
659-2644

**SPEARMAN-GRUBER SPANISH
BAPTIST MISSION:**
Romeo Reyes, Pastor
502 E. 7th
Sunday School 9:45
Morning Worship 11:00
Church Training 6:00
Evening Worship 7:00
Wednesday Service 7:00
659-3948

Morning Worship 11:00
Church Training 6:00
Evening Worship 7:00
Wednesday Service 7:00
659-5557
Intercessory Prayer Line 659-2911



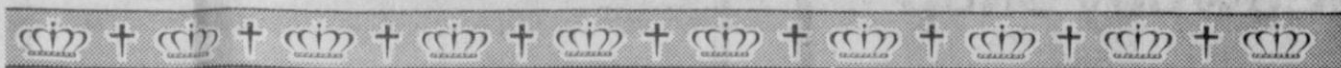
He's escaped the fate of an egg—but what has the chick got to look forward to? The technology that incubated him in twenty-one days now carries him relentlessly toward the roaster.

We, too, often seem trapped on a similar conveyer belt, caught in a cadence which carries us step by step through life. The carefree days of childhood swiftly wane once schooling begins. Then come jobs, marriage, family, a home.

The list—and the responsibilities of mature life—seems endless. No wonder we long to escape—to "get away from it all."

Yet such daydreams little help us to cope with life today. God's love and wisdom give us the guidance and solace we need. His Church—the church down the street—stands ready to meet our needs.

Sunday	Monday	Tuesday	Wednesday	Thursday	Friday	Saturday
II Timothy 1:8-10	Matthew 17:1-9	Genesis 22:1-3	Psalms 27:1-14	Genesis 15:5-18	Exodus 17:3-7	Psalms 95:1-9



**Church page
compliments of:**

INTERSTATE SAVINGS & LOAN

322 Main Spearman 659-2559

1st NATIONAL BANK

201 S. Main Perryton 435-3676

BOXWELL BROTHERS

519 Evans Spearman 659-2212

BROCK INS. AGENCY

121 Main Spearman 659-2514

BAKER & TAYLOR

Gruver Hwy. Spearman 659-2503

Wool Contest Set

The 1984 District I Make-It-Yourself-With-Wool Contest is scheduled for Saturday, November 17 according to Texas Agricultural Extension Service District Director, Mrs. Sue Farris. Farris is the coordinator of this year's contest, which will be held in Amarillo at the Texas A&M Extension and Research Center on Amarillo Blvd., from 8:00 a.m. to noon.

"The purpose of Make-It-Yourself-With-Wool is to focus attention on the beauty and versatility of wool," states Farris. She explained that the contest also encourages the use of wool in sewing, knitting and crocheting, along with offering individual the opportunity to compete for valuable prizes and win recognition for their skills.

Held on a district state and national level, the Make-It-Yourself-With-Wool contest is open to any American citizen regardless of race, creed or sex. Divisions are determined by contestant's age as of December 31 of the current year. The district and state contest divisions are as follows: Pre-teen (through 13); Junior (14-16); Senior (17-20); adult (21 and up); and Professional (21 and up).

Sponsored by the Texas Sheep and Goat Raiser's Association Auxiliary and the American Sheep Council, the state's district contests will be held either on November 10 or 17 throughout Texas. "This is the first year our District's contest will be held in Amarillo," stated Farris, "and we are all very excited about hosting. The contest had previously been held on the campus of Texas Tech University in Lubbock for several years."

Contestants must have sewn, knitted, or crocheted a garment for competition after January 1, 1984 and the garment must be made of a loomed, knitted or felted fabric or yarn of 100 percent wool or a minimum 60 percent wool blend. Preteens may enter pants, skirt, vest, sweater, jumper, poncho, shirt or dress categories. The Junior, Senior, Adult and Professional divisions are limited to entering dress, coat or suit categories.

The procedure for judging includes modeling the garment with accessories for judges and then having the garment judged for construction techniques off the contestant. A fashion show will be

held following the judging at 11:15 a.m. featuring all entrants in their woolen garments, and is open to the public.

Farris listed some of the prizes available at this year's District and state contests which included a Bernina sewing machine, scholarships, wool fabric, mohair stoles, and gift certificates. District winners will proceed to state competition which will be held on the Campus of Texas Womens University in Denton on December 1. Junior and Senior State winners will have the opportunity to advance to the National Finals to be held in Reno, Nevada at the MGM Hotel, January 27-30, 1985.

Deadline to enter the District I Make-It-Yourself-With-Wool contest is November 2, 1984. Farris encouraged residents of the Panhandle to pick up an entry form from their County Extension Offices. For additional information contact Mrs. Sue Farris, District Director Texas-Make-It-Yourself-With-Wool Contest, 6500 Amarillo Blvd. West, Amarillo, Texas 79106 (806) 359-5401, or County Extension Agent, at 659-2030 or 733-2901.

Education programs conducted by the Texas Agricultural Extension Service serve people of all ages regardless of socio-economic

levels, race, color, sex, religion or national origin.

Vera Hays completes training

After completing a comprehensive 30-hour training program, Vera Hays of Spearman, Texas, has been certified as a Consultant for BeautiControl Cosmetics, headquartered in Dallas, Texas.

Ms. Hays will be offering free counseling on skin care and cosmetic application in conjunction with free color analysis and counseling on color harmony in makeup and wardrobe selection. Her training qualifies her to perform color analysis to determine the colors a person looks best in, according to his or her natural coloration.

"Our company uses the seasonal approach to color analysis by categorizing each person as Winter, Summer, Spring or Autumn--according to skin pigmentation, hair and eye coloration," Ms. Hays explained. BeautiControl's

makeup is color-coded so women can select specific colors that will harmonize best with their natural coloring and create a more attractive appearance. Once a person has been color analyzed, she will have a lifetime guide for purchasing makeup and clothing with complete color confidence.

Persons interested in free color analysis or becoming a certified BeautiControl Consultant should contact Ms. Hays at 806-659-3953.

New laws explained at PTA

The newly organized Spearman PTA met on Monday, September 24, at the Jr. High cafeteria. President, Karen Schnell presided over the large group of concerned teachers and parents. There was a general meeting held with special committee reports followed by a very enlightening program given by High School Principal, Eddie Clemmons, Jr. High principal, Kenneth Freimel, and Elementary Principal, Allen Alford.

These three gentlemen discussed the new State laws regarding tutoring. This is House Bill # 72. They explained to the group about absenteeism, exemptions, tutoring, and the eligibility rule in athletics. The Spearman PTA and the school faculty want all concerned parents and citizens to be aware of the laws that govern our schools and how they can best

benefit us all. The program was very informative. We are very lucky to have such a fine educational staff teaching our children and it was wonderful to see so many concerned parents at the first PTA meeting.

The PTA will have a booth set up at the Hansford County Fair, October 5 & 6. Please stop by to talk to one of our representatives about joining this fine organization. And remember, you do not have to have a child in school to join PTA. All people interested in the further and better education of our future generation are welcome to attend.

The next meeting of the PTA will be October 22 in the Jr. High Cafeteria. Please come and join us.

Markets

WHEAT	\$3.31
MILO	4.50
CORN	2.85

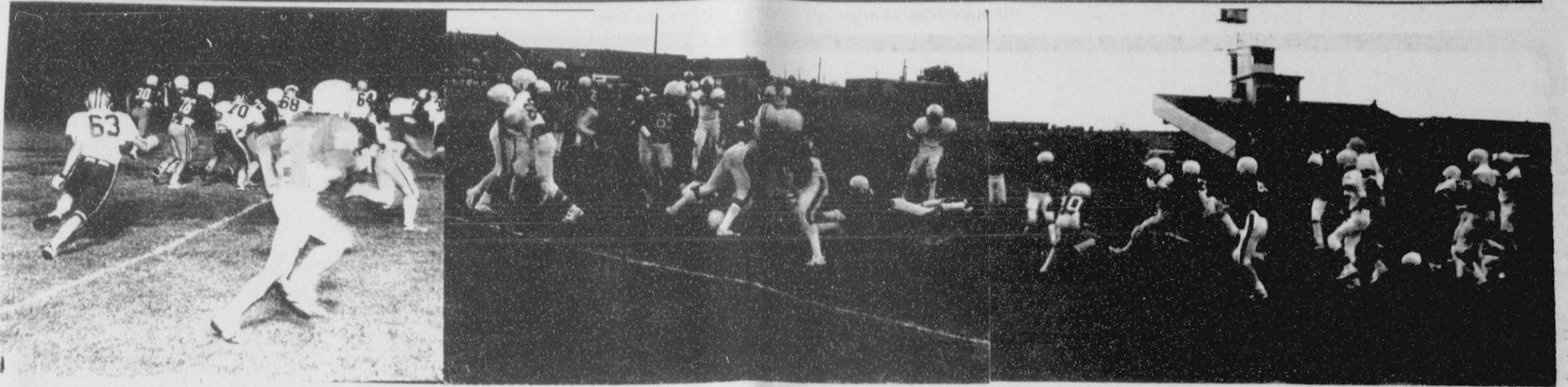
BROOM SALE THURSDAY, OCTOBER 11, 1984

SPONSORED ANNUALLY BY YOUR LOCAL LIONS CLUB ANNUAL BROOM & MOP SALE Helping your service club

1984 price list - All prices subject to applicable sales taxes

<p>Mops</p> <p>WAREHOUSE MOP 4 oz. 3 ply cotton #107 \$5.50</p> <p>HOUSE MOP 12 oz. #102 \$1.75</p> <p>TOY MOP excellent utility & BBQ mop #104 \$2.00</p> <p>SPONGE MOP with scrubber #106 \$6.50</p> <p>SPONGE MOP REFILL #107 \$2.75</p> <p>INDUSTRIAL MOP HANDLE patented steel #110 \$4.00</p> <p>14" CH. RAYON MOP HEAD #111 \$4.25</p> <p>24" ST. STEEL MOP HEAD #124 \$1.00</p> <p>BUG-MUGGER SQUEEGEE #142 \$3.00</p> <p>LAMB'S WOOL DUSTER #199 \$6.75</p>	<p>Brooms</p> <p>WAREHOUSE BROOM 4 rows stitching steel band #112 \$7.25</p> <p>HOUSE BROOM 5 rows stitching #205 \$4.00</p> <p>DAINTIE BROOM light weight 100% broom corn #206 \$5.50</p> <p>RAINBOW BROOM light weight fluffed plastic bristles #207 \$5.25</p> <p>WHEEL BROOM #208 \$2.75</p> <p>LAWN BAKE LAMPT ROWM no-shed spring steel construction #210 \$6.00</p> <p>TOY BROOM excellent for campers & fire places #209 \$2.50</p> <p>FLOR-ADORA BROOM soft feather-tips #211 \$5.50</p>
---	--

<p>Brushes</p> <p>WAX-LEATHER BRUSHES with wax-resin assistant removes waxes #121 \$1.75</p> <p>WAX-LEATHER BRUSHES with wax-resin assistant removes waxes #122 \$1.75</p> <p>WAX-LEATHER BRUSHES with wax-resin assistant removes waxes #123 \$1.75</p> <p>WAX-LEATHER BRUSHES with wax-resin assistant removes waxes #124 \$1.75</p> <p>WAX-LEATHER BRUSHES with wax-resin assistant removes waxes #125 \$1.75</p> <p>WAX-LEATHER BRUSHES with wax-resin assistant removes waxes #126 \$1.75</p> <p>WAX-LEATHER BRUSHES with wax-resin assistant removes waxes #127 \$1.75</p> <p>WAX-LEATHER BRUSHES with wax-resin assistant removes waxes #128 \$1.75</p> <p>WAX-LEATHER BRUSHES with wax-resin assistant removes waxes #129 \$1.75</p> <p>WAX-LEATHER BRUSHES with wax-resin assistant removes waxes #130 \$1.75</p> <p>WAX-LEATHER BRUSHES with wax-resin assistant removes waxes #131 \$1.75</p> <p>WAX-LEATHER BRUSHES with wax-resin assistant removes waxes #132 \$1.75</p> <p>WAX-LEATHER BRUSHES with wax-resin assistant removes waxes #133 \$1.75</p> <p>WAX-LEATHER BRUSHES with wax-resin assistant removes waxes #134 \$1.75</p> <p>WAX-LEATHER BRUSHES with wax-resin assistant removes waxes #135 \$1.75</p> <p>WAX-LEATHER BRUSHES with wax-resin assistant removes waxes #136 \$1.75</p> <p>WAX-LEATHER BRUSHES with wax-resin assistant removes waxes #137 \$1.75</p> <p>WAX-LEATHER BRUSHES with wax-resin assistant removes waxes #138 \$1.75</p> <p>WAX-LEATHER BRUSHES with wax-resin assistant removes waxes #139 \$1.75</p> <p>WAX-LEATHER BRUSHES with wax-resin assistant removes waxes #140 \$1.75</p> <p>WAX-LEATHER BRUSHES with wax-resin assistant removes waxes #141 \$1.75</p> <p>WAX-LEATHER BRUSHES with wax-resin assistant removes waxes #142 \$1.75</p> <p>WAX-LEATHER BRUSHES with wax-resin assistant removes waxes #143 \$1.75</p> <p>WAX-LEATHER BRUSHES with wax-resin assistant removes waxes #144 \$1.75</p> <p>WAX-LEATHER BRUSHES with wax-resin assistant removes waxes #145 \$1.75</p> <p>WAX-LEATHER BRUSHES with wax-resin assistant removes waxes #146 \$1.75</p> <p>WAX-LEATHER BRUSHES with wax-resin assistant removes waxes #147 \$1.75</p> <p>WAX-LEATHER BRUSHES with wax-resin assistant removes waxes #148 \$1.75</p> <p>WAX-LEATHER BRUSHES with wax-resin assistant removes waxes #149 \$1.75</p> <p>WAX-LEATHER BRUSHES with wax-resin assistant removes waxes #150 \$1.75</p> <p>WAX-LEATHER BRUSHES with wax-resin assistant removes waxes #151 \$1.75</p> <p>WAX-LEATHER BRUSHES with wax-resin assistant removes waxes #152 \$1.75</p> <p>WAX-LEATHER BRUSHES with wax-resin assistant removes waxes #153 \$1.75</p> <p>WAX-LEATHER BRUSHES with wax-resin assistant removes waxes #154 \$1.75</p> <p>WAX-LEATHER BRUSHES with wax-resin assistant removes waxes #155 \$1.75</p> <p>WAX-LEATHER BRUSHES with wax-resin assistant removes waxes #156 \$1.75</p> <p>WAX-LEATHER BRUSHES with wax-resin assistant removes waxes #157 \$1.75</p> <p>WAX-LEATHER BRUSHES with wax-resin assistant removes waxes #158 \$1.75</p> <p>WAX-LEATHER BRUSHES with wax-resin assistant removes waxes #159 \$1.75</p> <p>WAX-LEATHER BRUSHES with wax-resin assistant removes waxes #160 \$1.75</p> <p>WAX-LEATHER BRUSHES with wax-resin assistant removes waxes #161 \$1.75</p> <p>WAX-LEATHER BRUSHES with wax-resin assistant removes waxes #162 \$1.75</p> <p>WAX-LEATHER BRUSHES with wax-resin assistant removes waxes #163 \$1.75</p> <p>WAX-LEATHER BRUSHES with wax-resin assistant removes waxes #164 \$1.75</p> <p>WAX-LEATHER BRUSHES with wax-resin assistant removes waxes #165 \$1.75</p> <p>WAX-LEATHER BRUSHES with wax-resin assistant removes waxes #166 \$1.75</p> <p>WAX-LEATHER BRUSHES with wax-resin assistant removes waxes #167 \$1.75</p> <p>WAX-LEATHER BRUSHES with wax-resin assistant removes waxes #168 \$1.75</p> <p>WAX-LEATHER BRUSHES with wax-resin assistant removes waxes #169 \$1.75</p> <p>WAX-LEATHER BRUSHES with wax-resin assistant removes waxes #170 \$1.75</p> <p>WAX-LEATHER BRUSHES with wax-resin assistant removes waxes #171 \$1.75</p> <p>WAX-LEATHER BRUSHES with wax-resin assistant removes waxes #172 \$1.75</p> <p>WAX-LEATHER BRUSHES with wax-resin assistant removes waxes #173 \$1.75</p> <p>WAX-LEATHER BRUSHES with wax-resin assistant removes waxes #174 \$1.75</p> <p>WAX-LEATHER BRUSHES with wax-resin assistant removes waxes #175 \$1.75</p> <p>WAX-LEATHER BRUSHES with wax-resin assistant removes waxes #176 \$1.75</p> <p>WAX-LEATHER BRUSHES with wax-resin assistant removes waxes #177 \$1.75</p> <p>WAX-LEATHER BRUSHES with wax-resin assistant removes waxes #178 \$1.75</p> <p>WAX-LEATHER BRUSHES with wax-resin assistant removes waxes #179 \$1.75</p> <p>WAX-LEATHER BRUSHES with wax-resin assistant removes waxes #180 \$1.75</p> <p>WAX-LEATHER BRUSHES with wax-resin assistant removes waxes #181 \$1.75</p> <p>WAX-LEATHER BRUSHES with wax-resin assistant removes waxes #182 \$1.75</p> <p>WAX-LEATHER BRUSHES with wax-resin assistant removes waxes #183 \$1.75</p> <p>WAX-LEATHER BRUSHES with wax-resin assistant removes waxes #184 \$1.75</p> <p>WAX-LEATHER BRUSHES with wax-resin assistant removes waxes #185 \$1.75</p> <p>WAX-LEATHER BRUSHES with wax-resin assistant removes waxes #186 \$1.75</p> <p>WAX-LEATHER BRUSHES with wax-resin assistant removes waxes #187 \$1.75</p> <p>WAX-LEATHER BRUSHES with wax-resin assistant removes waxes #188 \$1.75</p> <p>WAX-LEATHER BRUSHES with wax-resin assistant removes waxes #189 \$1.75</p> <p>WAX-LEATHER BRUSHES with wax-resin assistant removes waxes #190 \$1.75</p> <p>WAX-LEATHER BRUSHES with wax-resin assistant removes waxes #191 \$1.75</p> <p>WAX-LEATHER BRUSHES with wax-resin assistant removes waxes #192 \$1.75</p> <p>WAX-LEATHER BRUSHES with wax-resin assistant removes waxes #193 \$1.75</p> <p>WAX-LEATHER BRUSHES with wax-resin assistant removes waxes #194 \$1.75</p> <p>WAX-LEATHER BRUSHES with wax-resin assistant removes waxes #195 \$1.75</p> <p>WAX-LEATHER BRUSHES with wax-resin assistant removes waxes #196 \$1.75</p> <p>WAX-LEATHER BRUSHES with wax-resin assistant removes waxes #197 \$1.75</p> <p>WAX-LEATHER BRUSHES with wax-resin assistant removes waxes #198 \$1.75</p> <p>WAX-LEATHER BRUSHES with wax-resin assistant removes waxes #199 \$1.75</p> <p>WAX-LEATHER BRUSHES with wax-resin assistant removes waxes #200 \$1.75</p> <p>WAX-LEATHER BRUSHES with wax-resin assistant removes waxes #201 \$1.75</p> <p>WAX-LEATHER BRUSHES with wax-resin assistant removes waxes #202 \$1.75</p> <p>WAX-LEATHER BRUSHES with wax-resin assistant removes waxes #203 \$1.75</p> <p>WAX-LEATHER BRUSHES with wax-resin assistant removes waxes #204 \$1.75</p> <p>WAX-LEATHER BRUSHES with wax-resin assistant removes waxes #205 \$1.75</p> <p>WAX-LEATHER BRUSHES with wax-resin assistant removes waxes #206 \$1.75</p> <p>WAX-LEATHER BRUSHES with wax-resin assistant removes waxes #207 \$1.75</p> <p>WAX-LEATHER BRUSHES with wax-resin assistant removes waxes #208 \$1.75</p> <p>WAX-LEATHER BRUSHES with wax-resin assistant removes waxes #209 \$1.75</p> <p>WAX-LEATHER BRUSHES with wax-resin assistant removes waxes #210 \$1.75</p> <p>WAX-LEATHER BRUSHES with wax-resin assistant removes waxes #211 \$1.75</p> <p>WAX-LEATHER BRUSHES with wax-resin assistant removes waxes #212 \$1.75</p> <p>WAX-LEATHER BRUSHES with wax-resin assistant removes waxes #213 \$1.75</p> <p>WAX-LEATHER BRUSHES with wax-resin assistant removes waxes #214 \$1.75</p> <p>WAX-LEATHER BRUSHES with wax-resin assistant removes waxes #215 \$1.75</p> <p>WAX-LEATHER BRUSHES with wax-resin assistant removes waxes #216 \$1.75</p> <p>WAX-LEATHER BRUSHES with wax-resin assistant removes waxes #217 \$1.75</p> <p>WAX-LEATHER BRUSHES with wax-resin assistant removes waxes #218 \$1.75</p> <p>WAX-LEATHER BRUSHES with wax-resin assistant removes waxes #219 \$1.75</p> <p>WAX-LEATHER BRUSHES with wax-resin assistant removes waxes #220 \$1.75</p> <p>WAX-LEATHER BRUSHES with wax-resin assistant removes waxes #221 \$1.75</p> <p>WAX-LEATHER BRUSHES with wax-resin assistant removes waxes #222 \$1.75</p> <p>WAX-LEATHER BRUSHES with wax-resin assistant removes waxes #223 \$1.75</p> <p>WAX-LEATHER BRUSHES with wax-resin assistant removes waxes #224 \$1.75</p> <p>WAX-LEATHER BRUSHES with wax-resin assistant removes waxes #225 \$1.75</p> <p>WAX-LEATHER BRUSHES with wax-resin assistant removes waxes #226 \$1.75</p> <p>WAX-LEATHER BRUSHES with wax-resin assistant removes waxes #227 \$1.75</p> <p>WAX-LEATHER BRUSHES with wax-resin assistant removes waxes #228 \$1.75</p> <p>WAX-LEATHER BRUSHES with wax-resin assistant removes waxes #229 \$1.75</p> <p>WAX-LEATHER BRUSHES with wax-resin assistant removes waxes #230 \$1.75</p> <p>WAX-LEATHER BRUSHES with wax-resin assistant removes waxes #231 \$1.75</p> <p>WAX-LEATHER BRUSHES with wax-resin assistant removes waxes #232 \$1.75</p> <p>WAX-LEATHER BRUSHES with wax-resin assistant removes waxes #233 \$1.75</p> <p>WAX-LEATHER BRUSHES with wax-resin assistant removes waxes #234 \$1.75</p> <p>WAX-LEATHER BRUSHES with wax-resin assistant removes waxes #235 \$1.75</p> <p>WAX-LEATHER BRUSHES with wax-resin assistant removes waxes #236 \$1.75</p> <p>WAX-LEATHER BRUSHES with wax-resin assistant removes waxes #237 \$1.75</p> <p>WAX-LEATHER BRUSHES with wax-resin assistant removes waxes #238 \$1.75</p> <p>WAX-LEATHER BRUSHES with wax-resin assistant removes waxes #239 \$1.75</p> <p>WAX-LEATHER BRUSHES with wax-resin assistant removes waxes #240 \$1.75</p> <p>WAX-LEATHER BRUSHES with wax-resin assistant removes waxes #241 \$1.75</p> <p>WAX-LEATHER BRUSHES with wax-resin assistant removes waxes #242 \$1.75</p> <p>WAX-LEATHER BRUSHES with wax-resin assistant removes waxes #243 \$1.75</p> <p>WAX-LEATHER BRUSHES with wax-resin assistant removes waxes #244 \$1.75</p> <p>WAX-LEATHER BRUSHES with wax-resin assistant removes waxes #245 \$1.75</p> <p>WAX-LEATHER BRUSHES with wax-resin assistant removes waxes #246 \$1.75</p> <p>WAX-LEATHER BRUSHES with wax-resin assistant removes waxes #247 \$1.75</p> <p>WAX-LEATHER BRUSHES with wax-resin assistant removes waxes #248 \$1.75</p> <p>WAX-LEATHER BRUSHES with wax-resin assistant removes waxes #249 \$1.75</p> <p>WAX-LEATHER BRUSHES with wax-resin assistant removes waxes #250 \$1.75</p> <p>WAX-LEATHER BRUSHES with wax-resin assistant removes waxes #251 \$1.75</p> <p>WAX-LEATHER BRUSHES with wax-resin assistant removes waxes #252 \$1.75</p> <p>WAX-LEATHER BRUSHES with wax-resin assistant removes waxes #253 \$1.75</p> <p>WAX-LEATHER BRUSHES with wax-resin assistant removes waxes #254 \$1.75</p> <p>WAX-LEATHER BRUSHES with wax-resin assistant removes waxes #255 \$1.75</p> <p>WAX-LEATHER BRUSHES with wax-resin assistant removes waxes #256 \$1.75</p> <p>WAX-LEATHER BRUSHES with wax-resin assistant removes waxes #257 \$1.75</p> <p>WAX-LEATHER BRUSHES with wax-resin assistant removes waxes #258 \$1.75</p> <p>WAX-LEATHER BRUSHES with wax-resin assistant removes waxes #259 \$1.75</p> <p>WAX-LEATHER BRUSHES with wax-resin assistant removes waxes #260 \$1.75</p> <p>WAX-LEATHER BRUSHES with wax-resin assistant removes waxes #261 \$1.75</p> <p>WAX-LEATHER BRUSHES with wax-resin assistant removes waxes #262 \$1.75</p> <p>WAX-LEATHER BRUSHES with wax-resin assistant removes waxes #263 \$1.75</p> <p>WAX-LEATHER BRUSHES with wax-resin assistant removes waxes #264 \$1.75</p> <p>WAX-LEATHER BRUSHES with wax-resin assistant removes waxes #265 \$1.75</p> <p>WAX-LEATHER BRUSHES with wax-resin assistant removes waxes #266 \$1.75</p> <p>WAX-LEATHER BRUSHES with wax-resin assistant removes waxes #267 \$1.75</p> <p>WAX-LEATHER BRUSHES with wax-resin assistant removes waxes #268 \$1.75</p> <p>WAX-LEATHER BRUSHES with wax-resin assistant removes waxes #269 \$1.75</p> <p>WAX-LEATHER BRUSHES with wax-resin assistant removes waxes #270 \$1.75</p> <p>WAX-LEATHER BRUSHES with wax-resin assistant removes waxes #271 \$1.75</p> <p>WAX-LEATHER BRUSHES with wax-resin assistant removes waxes #272 \$1.75</p> <p>WAX-LEATHER BRUSHES with wax-resin assistant removes waxes #273 \$1.75</p> <p>WAX-LEATHER BRUSHES with wax-resin assistant removes waxes #274 \$1.75</p> <p>WAX-LEATHER BRUSHES with wax-resin assistant removes waxes #275 \$1.75</p> <p>WAX-LEATHER BRUSHES with wax-resin assistant removes waxes #276 \$1.75</p> <p>WAX-LEATHER BRUSHES with wax-resin assistant removes waxes #277 \$1.75</p> <p>WAX-LEATHER BRUSHES with wax-resin assistant removes waxes #278 \$1.75</p> <p>WAX-LEATHER BRUSHES with wax-resin assistant removes waxes #279 \$1.75</p> <p>WAX-LEATHER BRUSHES with wax-resin assistant removes waxes #280 \$1.75</p> <p>WAX-LEATHER BRUSHES with wax-resin assistant removes waxes #281 \$1.75</p> <p>WAX-LEATHER BRUSHES with wax-resin assistant removes waxes #282 \$1.75</p> <p>WAX-LEATHER BRUSHES with wax-resin assistant removes waxes #283 \$1.75</p> <p>WAX-LEATHER BRUSHES with wax-resin assistant removes waxes #284 \$1.75</p> <p>WAX-LEATHER BRUSHES with wax-resin assistant removes waxes #285 \$1.75</p> <p>WAX-LEATHER BRUSHES with wax-resin assistant removes waxes #286 \$1.75</p> <p>WAX-LEATHER BRUSHES with wax-resin assistant removes waxes #287 \$1.75</p> <p>WAX-LEATHER BRUSHES with wax-resin assistant removes waxes #288 \$1.75</p> <p>WAX-LEATHER BRUSHES with wax-resin assistant removes waxes #289 \$1.75</p> <p>WAX-LEATHER BRUSHES with wax-resin assistant removes waxes #290 \$1.75</p> <p>WAX-LEATHER BRUSHES with wax-resin assistant removes waxes #291 \$1.75</p> <p>WAX-LEATHER BRUSHES with wax-resin assistant removes waxes #292 \$1.75</p> <p>WAX-LEATHER BRUSHES with wax-resin assistant removes waxes #293 \$1.75</p> <p>WAX-LEATHER BRUSHES with wax-resin assistant removes waxes #294 \$1.75</p> <p>WAX-LEATHER BRUSHES with wax-resin assistant removes waxes #295 \$1.75</p> <p>WAX-LEATHER BRUSHES with wax-resin assistant removes waxes #296 \$1.75</p> <p>WAX-LEATHER BRUSHES with wax-resin assistant removes waxes #297 \$1.75</p> <p>WAX-LEATHER BRUSHES with wax-resin assistant removes waxes #298 \$1.75</p> <p>WAX-LEATHER BRUSHES with wax-resin assistant removes waxes #299 \$1.75</p> <p>WAX-LEATHER BRUSHES with wax-resin assistant removes waxes #300 \$1.75</p> <p>WAX-LEATHER BRUSHES with wax-resin assistant removes waxes #301 \$1.75</p> <p>WAX-LEATHER BRUSHES with wax-resin assistant removes waxes #302 \$1.75</p> <p>WAX-LEATHER BRUSHES with wax-resin assistant removes waxes #303 \$1.75</p> <p>WAX-LEATHER BRUSHES with wax-resin assistant removes waxes #304 \$1.75</p> <p>WAX-LEATHER BRUSHES with wax-resin assistant removes waxes #305 \$1.75</p> <p>WAX-LEATHER BRUSHES with wax-resin assistant removes waxes #306 \$1.75</p> <p>WAX-LEATHER BRUSHES with wax-resin assistant removes waxes #307 \$1.75</p> <p>WAX-LEATHER BRUSHES with wax-resin assistant removes waxes #308 \$1.75</p> <p>WAX-LEATHER BRUSHES with wax-resin assistant removes waxes #309 \$1.75</p> <p>WAX-LEATHER BRUSHES with wax-resin assistant removes waxes #310 \$1.75</p> <p>WAX-LEATHER BRUSHES with wax-resin assistant removes waxes #311 \$1.75</p> <p>WAX-LEATHER BRUSHES with wax-resin assistant removes waxes #312 \$1.75</p> <p>WAX-LEATHER BRUSHES with wax-resin assistant removes waxes #313 \$1.75</p> <p>WAX-LEATHER BRUSHES with wax-resin assistant removes waxes #314 \$1.75</p> <p>WAX-LEATHER BRUSHES with wax-resin assistant removes waxes #315 \$1.75</p> <p>WAX-LEATHER BRUSHES with wax-resin assistant removes waxes #316 \$1.75</p> <p>WAX-LEATHER BRUSHES with wax-resin assistant removes waxes #317 \$1.75</p> <p>WAX-LEATHER BRUSHES with wax-resin assistant removes waxes #318 \$1.75</p> <p>WAX-LEATHER BRUSHES with wax-resin assistant removes waxes #319 \$1.75</p> <p>WAX-LEATHER BRUSHES with wax-resin assistant removes waxes #320 \$1.75</p> <p>WAX-LEATHER BRUSHES with wax-resin assistant removes waxes #321 \$1.75</p> <p>WAX-LEATHER BRUSHES with wax-resin assistant removes waxes #322 \$1.75</p> <p>WAX-LEATHER BRUSHES with wax-resin assistant removes waxes #323 \$1.75</p> <p>WAX-LEATHER BRUSHES with wax-resin assistant removes waxes #324 \$1.75</p> <p>WAX-LEATHER BRUSHES with wax-resin assistant removes waxes #325 \$1.75</p> <p>WAX-LEATHER BRUSHES with wax-resin assistant removes waxes #326 \$1.75</p> <p>WAX-LEATHER BRUSHES with wax-resin assistant removes waxes #327 \$1.75</p> <p>WAX-LEATHER BRUSHES with wax-resin assistant removes waxes #328 \$1.75</p> <p>WAX-LEATHER BRUSHES with wax-resin assistant removes waxes #329 \$1.75</p> <p>WAX-LEATHER BRUSHES with wax-resin assistant removes waxes #330 \$1.75</p> <p>WAX-LEATHER BRUSHES with wax-resin assistant removes waxes #331 \$1.75</p> <p>WAX-LEATHER BRUSHES with wax-resin assistant removes waxes #332 \$1.75</p> <p>WAX-LEATHER BRUSHES with wax-resin assistant removes waxes #333 \$1.75</p> <p>WAX-LEATHER BRUSHES with wax-resin assistant removes waxes #334 \$1.75</p> <p>WAX-LEATHER BRUSHES with wax-resin assistant removes waxes #335 \$1.75</p> <p>WAX-LEATHER BRUSHES with wax-resin assistant removes waxes #336 \$1.75</p> <p>WAX-LEATHER BRUSHES with wax-resin assistant removes waxes #337 \$1.75</p> <p>WAX-LEATHER BRUSHES with wax-resin assistant removes waxes #338 \$1.75</p> <p>WAX-LEATHER BRUSHES with wax-resin assistant removes waxes #339 \$1.75</p> <p>WAX-LEATHER BRUSHES with wax-resin assistant removes waxes #340 \$1.75</p> <p>WAX-LEATHER BRUSHES with wax-resin assistant removes waxes #341 \$1.75</p> <p>WAX-LEATHER BRUSHES with wax-resin assistant removes waxes #342 \$1.75</p> <p>WAX-LEATHER BRUSHES with wax-resin assistant removes waxes #343 \$1.75</p> <p>WAX-LEATHER BRUSHES with wax-resin assistant removes waxes #344 \$1.75</p> <p>WAX-LEATHER BRUSHES with wax-resin assistant removes waxes #345 \$1.75</p> <p>WAX-LEATHER BRUSHES with wax-resin assistant removes waxes #346 \$1.75</p> <p>WAX-LEATHER BRUSHES with wax-resin assistant removes waxes #347 \$1.75</p> <p>WAX-LEATHER BRUSHES with wax-resin assistant removes waxes #348 \$1.75</p> <p>WAX-LEATHER BRUSHES with wax-resin assistant removes waxes #349 \$1.75</p> <p>WAX-LEATHER BRUSHES with wax-resin assistant removes waxes #350 \$1.75</p> <p>WAX-LEATHER BRUSHES with wax-resin assistant removes waxes #351 \$1.75</p> <p>WAX-LEATHER BRUSHES with wax-resin assistant removes waxes #352 \$1.75</p> <p>WAX-LEATHER BRUSHES with wax-resin assistant removes waxes #353 \$1.75</p> <p>WAX-LEATHER BRUSHES with wax-resin assistant removes waxes #354 \$1.75</p> <p>WAX-LEATHER BRUSHES with wax-resin assistant removes waxes #355 \$1.75</p> <p>WAX-LEATHER BRUSHES with wax-resin assistant removes waxes #356 \$1.75</p> <p>WAX-LEATHER BRUSHES with wax-resin assistant removes waxes #357 \$1.75</p> <p>WAX-LEATHER BRUSHES with wax-resin assistant removes waxes #358 \$1.</p>



7th graders lose to S-F Eighth graders

Danny Lopez scored the only touchdown for the 7th grade Lynx in their battle against Sanford-Fritch Thursday night there. S-F won the game 30-6.

defeat 7-8

The eighth grade Lynx defeated Sanford-Fritch by a score of 6-0 with Stan Brandt making the touchdown. Eighth grade defense played well, stated Coach Larry Lanier.

S-F defeats

Junior Varsity

The Junior Varsity defeated by 28-8 at Sanford Fritch Thursday night there. Mike Pearson scored on a one yard plunge and the two point conversion was a pass from Brett Davis to Dusty Hill.

The seventh grade football team



Christian Church sets Fall revival

The Pastor and Congregation of First Christian Church (Disciples of Christ) in Spearman extend a special invitation to everyone to share in their Fall Revival, October 7-10.

The guest minister will be Rev. Mac Lee, pastor of First Christian Church, Beloit, Kansas. Mac is a native of Texas, having grown up in Kilgore, and educated in Johnson City, Tenn. and Fort Worth, Texas. Mac and his wife Diann and involved in Children's Church programs, a Puppet Ministry, and Children's Choirs. He also coaches a 3rd and 4th grade soccer team.

Mac was listed in the Outstanding Young Men of America in 1975, is a past president of the Society of American Magicians, a member of the Fellowship of Christian Magicians, a Puppeteer and Clown. He has used his talent singing and playing the guitar to communicate the Gospel as well as entertain his listeners.

He and his wife have two children, Matthew, 9½, and Erin, 4½ years old.

The Revival begins with Morning Worship, Sunday, October 7,

10:50 a.m. followed by a Covered Dish Luncheon at noon. Evening Worship Services will be held at 7:00 p.m. Sunday through Wednesday evenings. There will be a Luncheon and Study from 11:50 to 12:50 Monday through Wednesday. Food will be provided. The topic for these studies will be the Spirit-filled Life. A nursery will be provided for each event for pre-school children. Music will be featured each evening with local and area talent sharing God's love through song.

Come catch the fire of enthusiasm and renewal during this four-day special Fall Revival at First Christian Church, 29 S. Bernice, Spearman.

The peanut, native to the Americas, was imported to Africa by Portuguese traders. It returned to America again in the 18th and 19th centuries on ships transporting slaves. Primarily intended as food for the slaves during the long ocean crossing, the peanuts that were left over were planted. This was the beginning of one of the most important crops in the United States.

© 1984 Suburban Features

The United States first committed itself to the metric system at an international convention in 1875. Although American fundamental weights and measures have been metric since 1893, this country is the only major industrial nation that still has not brought the metric system into its everyday life.



Guess who's mommy's 30

Grand Opening

of the **FIRST STATE BANK**

2-5 p.m.

Sat., Oct. 13th



SPEARMAN, TEXAS 79081

Refreshments, tours, ribbon cutting, Public Invited.

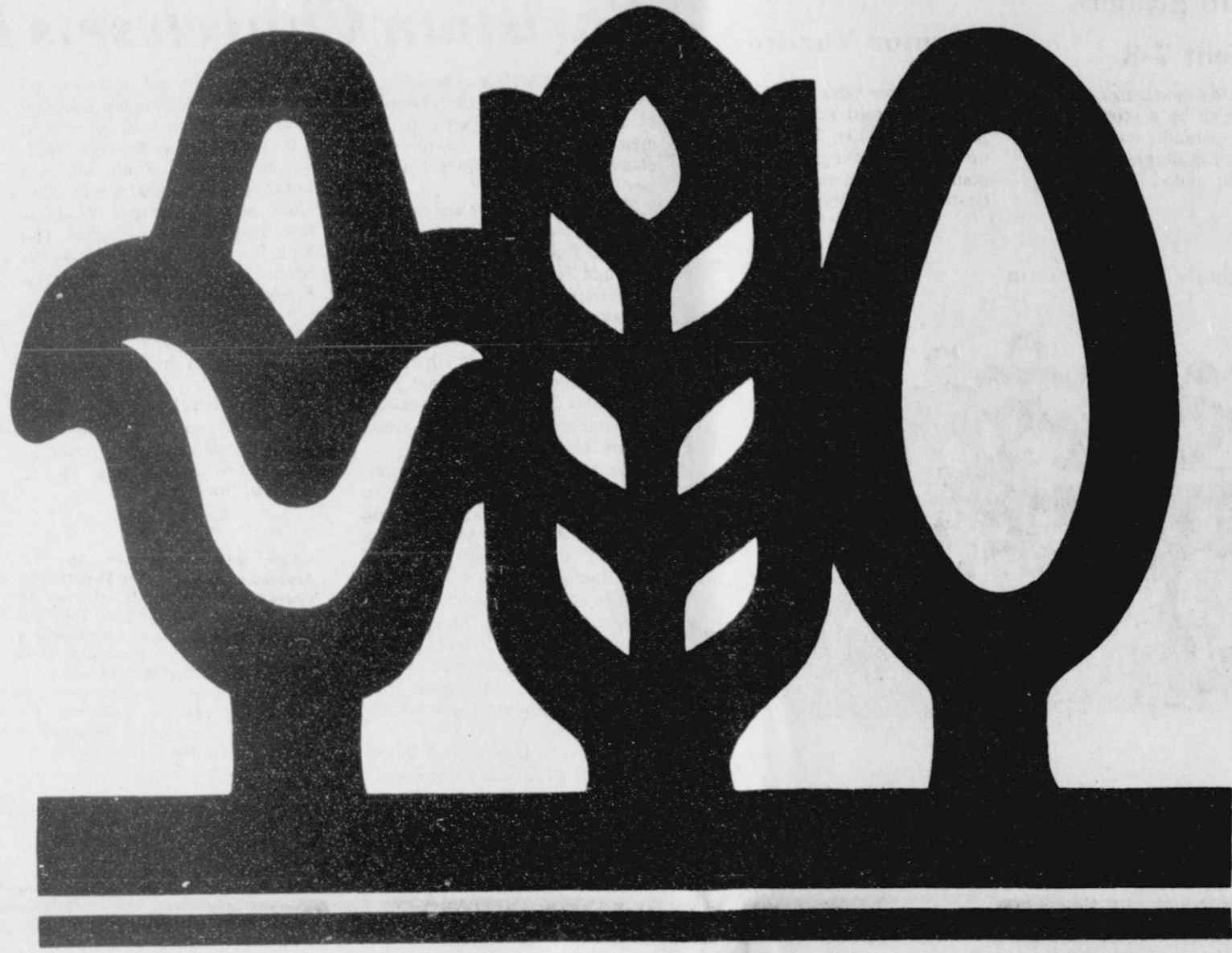
1 NE Court

659-5565

Spearman, Texas



**We are here to serve you during the
1984 maize harvest**



**OLEES
GRAIN
COMPANY**

Perryton - 435-5449

Spearman - 659-3990

LIONS CLUB BROOM SALE THURSDAY, OCTOBER 11, 1984

228 Collard

Spearman, Texas