

1987 Spearman high school homecoming



THE 1987 HOMECOMING got a big sendoff Thursday evening at the school bonfire. Here young student spectators climb aboard one of the Spearman Volunteer

Fire Department trucks which was on standby. In the picture to the left, SHS cheerleaders urge the crowd on in cheers and victory chants. The bonfire was the



prelude to Friday's homecoming gridiron clash between the Spearman Lynx and the White Deer Bucks of district 1-AA. The bonfire was held in the vacant lot

just east of the high school tennis courts.

STAFF PHOTOS BY KIRBY MCADAMS



THE 1987 HOMECOMING QUEEN crowned during pregame ceremonies Friday evening is SHS senior Paige Pittman, daughter of Mr. and Mrs. Steve Mathews and Mr. and Mrs. Bill Pittman.



The Hansford
Plainsman

25¢
Per Copy
8 Pages

Volume 18 No. 48 YOUR HOMETOWN NEWSPAPER Sunday, October 4, 1987

Bucks stall Lynx in 33-27 contest

Like a seething volcano, the White Deer Bucks erupted for 24 unanswered second quarter points and a valiant Spearman Lynx bucket brigade was unable to

quench the inferno as they bowed out to their district 1-AA guests Friday night before a full house of homecoming fans in Lynx Stadium.

Friday's loss was the first of the 1987 season for the Lynx who go to 3-1-1 for the year, but -- more importantly -- it seriously dimmed their hopes for a 1-AA district crown as that mark goes to 1-1.

In a district as evenly balanced as 1-AA, this single misstep could spell the difference between a district championship and the also-ran column.

Friday's game was as close statistically as it was on the scoreboard with both teams earning 16 first downs in the district tilt.

Spearman, however, wound up with only 124 yards rushing as they were forced into a catch up mode. But senior quarterback Brett Davis hit on 14 of 22 aerial shots for 325 yards to put the Lynx totals at 449 for the game.

The Bucks had 247 yards rushing and 121 yards passing to total 368 yards in Friday's contest.

Perhaps the turning point rest on two key fumbles -- both in the first half of play.

The first fumble killed Spearman's opening drive which they had taken to the White Deer 22 before coughing up the ball.

Then, in the second frame, trailing by a 17-0 count, the Lynx lost another fumble deep in their own territory at the Spearman 30-yard line. Two plays later, Buck tailback Tim Davis waltzed in for yet another score to put White Deer out front by a 24-0.

White Deer scored in every conceivable manner -- rushing, passing, field goal and safety -- in mounting their 1-AA win.

With 1:08 left before halftime, Davis toed the PAT to up the White Deer domination to a 24-0 count.

Following the Buck kickoff, Spearman's Brett Davis found Shawn Cook for a 47-yard pass completion to put the Lynx in scoring position as time ran down to the half.

Then, with all time expired from the first half clock, Davis again found Cook for a 7-yard TD toss to get the Lynx on the board.

A 2-point PAT conversion attempt fell incomplete, but the Lynx had broken their dry spell and the

See "BUCKS STALL", p-2

Moonlight Madness promotion slated for Monday evening

Spearman merchants will be open from 6 to 9 p.m. Monday with special prices on merchandise during the Spearman Chamber of Commerce's annual Moonlight Madness Sale.

Some 17 Spearman retail stores will be open during Monday's special sale and will feature top savings on merchandise.

The Moonlight Madness promotion is an annual event which is sponsored by the Spearman Chamber of Commerce.

Advertisements in this edition detail information from the various stores participating in the special promotion.

Celebrity roast set for Friday

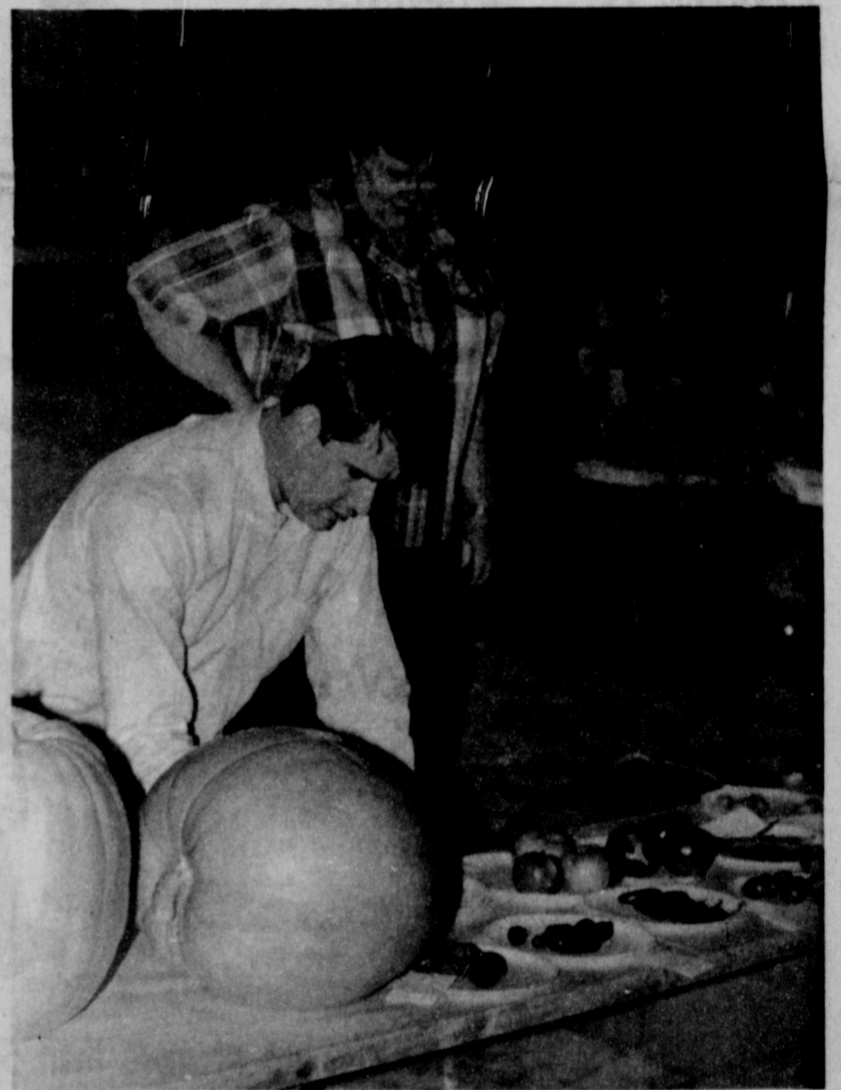
Longtime Hansford resident, Jimmy Shieldknight, will be the honoree during a special Celebrity Roast sponsored by the Spearman Chamber of Commerce this Friday evening.

The special dinner will be held in the Spearman Junior High cafeteria and will begin at 7 p.m. Proceeds from the dinner will go to the Spearman Chamber of Commerce general fund.

Tickets for dinner-roast are \$30 for couples and \$15 for individuals, notes Nancy Graves, chairman for the event.

"We're looking forward to a good time," she declares. "In addition to the roast, we'll also have dinner music provided by Cheryl Meek."

Emcee for the event will be Bob Pearson with Bill Pittman, Dick Gillaspie, James Cummings and Jim Ivey serving as roasters.



LOOKING OVER THE ENTRIES at the Hansford County fair are Mike Hergert (standing) and Doug Steele. The fourth annual county exhibition closed Saturday afternoon following the talent show and the livestock show.

Spearman woman fined on contributing charge

Hansford County Judge R.L. McClellan fined a Spearman woman \$100 and court costs Friday morning on charges of contributing to the delinquency of a minor.

Elizabeth Nitschke was arrested by Hansford County Sheriff R.L. McFarlin on the evening of Sept. 26 when officers of the sheriff's department broke up a party in the sand pits off FM 760 north.

Several minors were involved but were released by the sheriff's office that night.

The Spearman woman was charged with providing two kegs of beer to the minors, according to Sheriff McFarlin.

Consumption of alcohol by persons under 21 has been illegal since legislation was passed by the state two years ago.

"We need to get the word

around to all the kids that the game's over," notes McFarlin. "We released those kids the other night, but we won't be doing that any more."

Minors in possession will be charged, juvenile authorities will be contacted and school officials notified in the future, McFarlin warns.

"We've got a good bunch of kids around here and it'd be a shame to see them messed up by something like this," he observes.

School officials report that students who are caught with alcohol in their possession or who are caught drinking outside of school functions will be placed on probation for the remainder of that semester.

Any further infractions would result in automatic suspension.

THE HANSFORD REPORT

by JAMES JARRETT



For all those people who feel they have been maligned by my feeble writings in this column -- well, you have a champion now to defend you.

Perhaps that should be championess... maybe even championette. Fact is, you may just call a female champion a champion. But that's not the point of this story.

The other day, following a particularly resplendent noon luncheon where I performed my usual gastronomical feats -- that's right, I overate again -- I came back

to the newspaper office feeling more than a little full.

Walking up to our receptionist-bookkeeper, Pat Hopkins, I attempted to underline the extent to which I had gone by telling her, "Go ahead, punch it." I said this as I indicated my overfilled diaphragm.

I was proud of myself. I gurgled only slightly as her fist hit my spine. Others in the office swore my eyes bulged when she hit me, but I don't give much credence to that report. After all, they're my eyes and I'd certainly know if they had bulged.

For what it's worth, I am not a masochist. Pat merely took my figurative statement literally and punched. Hard. With her fist.

That, of course is the true definition of punch used in that context. I have learned my lesson. From now on I will use the word poke. I might be able to live through that much more comfortably.

If, at any time, we should embarrass anyone through the writings in this column, please let us know.

At no time are our intentions here meant to degrade anyone. It's done in pure fun and, hopefully, is taken in the same manner in which it is given.

We extend our apologies to anyone who might have taken umbrage at anything said here and assure them -- if they will let us know -- that it will not happen again.

1987 milo crop harvest begins

A "better than average" milo crop is waiting in Hansford County fields this week for harvesting as the 1987 cutting begins to get underway, reports Hansford County extension agent Burt Williams.

"All but some milo around and east of Spearman looks real good," Williams notes. "There's a little being cut right now, but some of it is two to three weeks away yet."

Early cuttings already received at county elevators are showing test weights in the 56 to 60 pound range with moisture running at or slightly above 13.

Yields have been running around 5,000 pounds per acre on grain sorghum cut last week.

More sorghum has been cut around the Gruver area than around Spearman, notes Williams.

Page 2
Continued from p-1

BUCKS STALL

score stood 6-24 at intermission. It appeared as if the Lynx run of mistakes were going to start all over again in the third quarter when -- on their first possession -- a errant snap to punter Davis flew over his head and rolled out of the back of the end zone for a safety. That gave White Deer yet another two points to up the score to 26-12 with 5:18 left in the third quarter.

A fake punt by Spearman late in the third quarter gave the Lynx new life at the White Deer 40-yard line and, three plays later, Davis found Keith Benson for an 18-yard scoring strike to bring the Lynx within 14 points on their guests, 12-26.

White Deer effectively salted the game away with a 2-yard plunge by fullback Lance Cross with 7:40 remaining in the game.

When Chris Davis toed the PAT, the score went to 33-12 for White Deer and the Lynx were a long three touchdowns away from the

Bucks. But Davis found Cook for a 21-yard touchdown pass, then hit him again on the next possession for a 19-yard Td strike to pull within six points of their 1-AA opponents, 27-33.

Brett Davis kept the ball for a 2-point conversion on that first Lynx TD of the final frame.

When White Deer got the ball back, there was still 4:26 to go in the game and Spearman trailed by

a slim six points. But the Bucks managed to put together two first downs while running nine plays -- and more importantly, they held the ball until only 37 seconds remained in the game and Spearman was out of timeouts.

The Lynx defense held White Deer on a fourth and one attempt on the Spearman 34 where they took over.

Despite their loss, the Lynx

THE HANSFORD PLAINSMAN
wound up with creditable performances from a number of players.

Cook -- for the second week in a row -- scored three touchdowns, two on passes of 7 and 81 yards and another on a 21-yard scamper.

The junior runningback-flanker carried the ball 11 times for 41 yards, and caught six passes for 177 yards to produce 218 offensive yards for the Lynx.

Benson hauled in six Davis aerials for 103 yards and one

touchdown to account for Spearman's scoring.

GAME STATS

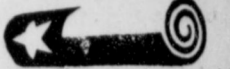
	SPM	WD
First Downs	16	16
Yds Rush	124	247
Yds Pass	325	121
Total Yds	449	368
Pass M d/ Attmp	14/22	6/9
Int By	1	0
Fum Rec By	0	2
Pen/Yds	5/40	3/25

The Hansford Plainsman

PUBLICATION [USPS 2346-6000]
SPEARMAN, TEXAS 79081

213 main
Box 458
659-3434

OWNED AND OPERATED BY
Texas Independent
Newspapers Inc.



Second Class postage paid at Spearman, Texas 79081.

Any erroneous reflection upon the character of any person or firm appearing in these columns will be gladly and promptly corrected upon being brought to the attention of the management.

PUBLISHER
JAMES C. JARRETT
Advertising Director
Kirby McAdams

SUBSCRIPTION RATE: Hansford, adjoining counties, combination with the Spearman Reporter, \$19.95 out of county \$24.95.
POSTMASTER: Send address changes to Hansford Plainsman, Box 458, Spearman, Texas 79081.

Spearman jv slips past Bucks, 9-6

The Spearman Lynx junior varsity football 11 kept their season record unblemished this week, turning a defensive struggle at White Deer into a 9-6 win.

The win puts Spearman at 5-0 for the year against district 1-AA jv teams.

The Lynx got on the scoreboard about midway through the second quarter.

They had marched the ball down to the White Deer 3-yard line only to lose it on a fumble.

Three plays later, White Deer dropped back to pass and a raging Spearman defense trapped the quarterback in the end zone for a 2-point safety.

Thursday evening's defensive struggle was proven on the scoreboard as Spearman held that slim, 2-0, lead. That's the way things stood at halftime.

The defensive deadlock carried through into the second half as well with neither team able to mount an offensive strike to paydirt.

Then, midway through the final frame, Lynx signal caller Edward Mayfield found Keith Slaton for a 49-yard touchdown pass.

Cody Reynolds toed the PAT boot and Spearman held a 9-0 lead. The ensuing kickoff provided the

only bright spot for the White Deer hosts when they hauled in the kick then returned it for a touchdown of their own.

A 2-point PAT pass was caught by a White Deer downlineman and was nullified. Their next attempt was broken up by Spearman to put the final count at 9-6.

"The kids really deserve all the credit on this one," declares Spearman jv head coach James Mireles. "They played when they needed to and won the game."

The Lynx coach gave accolades to both his offensive and defensive units.

"This was a true team effort," he remarks. "The entire team did an outstanding job."

The Spearman defense held the White Deer junior varsity to only 109 yards rushing and 68 yards passing for 177 yards total offense.

Spearman, meanwhile, racked up 167 yards rushing and added another 68 through the air for 235 yards total.

Scott Wilkerson proved to be the workhorse for Spearman with 83 yards on 26 carries. Edgar Nava had 66 yards on 14 totes and Mayfield finished the night with eight yards on seven carries.

Slaton caught two passes for a total of 56 yards and Reynolds had one pass reception for 12 yards.

The Lynx jv will be idle next week during an open date, then will play host to the Gruver jv on Oct. 15.

MARKETS

WHEAT	\$2.28
MILO	\$2.95
CORN	\$1.88

as White Deer was unable to field a team.

Both the Spearman seventh and eighth grade Lynx gridiron squads will be idle next week with an open date.

White Deer edges Lynx eighth grade

A wily crew at White Deer had to rely on a pair of back-breaking kickoff returns and a last-second effort to escape their Spearman 8th grade counterparts with a 20-14 win Thursday evening in White Deer during junior high football action.

The tone of the evening was set on the opening kickoff which White Deer returned for a touchdown to capture a 6-0 lead just seconds into the contest.

Not to be outdone, the Lynx eighth graders took the ensuing

kickoff to march the length of the field with Tino Garcia dancing in from the 8-yard line to knot the score at 6-ALL in the first quarter.

White Deer came back to set up their second touchdown of the night following that kickoff with a return which netted the Lynx 20.

But it wasn't until the second stanza that White Deer could convert against a determined Spearman defense.

Following that TD, White Deer went for the 2-point PAT and made it good to go out by a 14-6 count.

Later, Spearman again put together another strong drive -- this some 70 yards -- with Brian Beck providing the fireworks on a 3-yard plunge for paydirt.

Chris Kelp hit Chris Strawn on a

short pass for the 2-point conversion and the score stood tied again, 14-14.

The second half was marked by strong defensive plays both ways, but disaster struck the Lynx offense when, with 1:15 remaining in the game, they fumbled on their own 20-yard line.

Operating from there, it appeared that Spearman had managed to defend their position on a fourth down try which came short of a first down -- only to have an unsportsmanlike conduct flag to give White Deer new life with a first and goal inside the Lynx 10.

With only 12 seconds remaining in the game, White Deer broke into the end zone to take their 20-14 win.

No seventh grade game was held

SPECIAL FINANCING

TERMS

On Whirlpool

Appliances

No Money Down

No Payment for 120 Days

No Finance Charges

For 120 Days

Now At

Beedy Furniture
Spearman

1/4 off Dressy Dresses
1/4 off Sweater Sets
1/4 off Selected Wedding gowns

New Shipment of Carefree Fashions just arrived
Lenel Perfumes

Special Occasions

518 N. Main
Borger, Tx 274-5515

Lay-A-Way-Visa-Mastercard accepted

...a bid for our next trick

\$10⁰⁰ Down
Puts
Anything on
Lay-A-Way
til Christmas

We'll Make High Prices Disappear

Sapphire & Diamond Ring
3 Carat total Gem weight for
\$299⁰⁰

SEIKO Watches at more than 50% off.

20" Strand Culture Pearls
Reg. 475⁰⁰ Now **\$299⁰⁰**

Ladies Emerald & Diamond Dinner Ring
Reg. \$1600⁰⁰ Now **\$649⁰⁰**

Ladies Sapphire-Diamond Ring
Reg. \$846⁰⁰ Now **\$499⁰⁰**

Free Hot Punch, Coffee and Cookies

During Moonlight Madness
Monday - 6-9 p.m. ONLY

DOUBLE ROPE Sapphire Bracelet
Reg. \$1700⁰⁰
Now **\$795⁰⁰**

FULLERS JEWELERS
221 Sanders 659-5005

MAGNUM COMFORT

See more. Feel better.

MAGNUM comfort means more comfort and operator efficiency. There's 48 square feet of visibility. And the tractor's sloping hood and hidden exhaust provide unobstructed visibility ahead. This cab is bigger, with more head room, and a wide, fully-adjustable swivel seat. All controls are conveniently located, and designed for comfortable low-effort operation.

The new MAGNUM tractor cab will keep you going strong and feeling good. And it's standard on all Case IH MAGNUM tractors. Four all-new models, 130 to 195 PTO hp. See us for details.

MAGNUM means more.

Five Star Equipment Inc.
Hi-Way 15 West Spearman
659-3743

Women's group attend conference

A group of women from the Women's Division of the Spearman Chamber of Commerce recently attended the Regional Conference for area chamber women's divisions which was held in Hereford.

Attending from Spearman was Helen Melton, Mae Wofford, Cora Queener, Linda Davis, Karen Bantzke and Nancy Graves.

The 1-day meeting featured a general session for the chamber women and included a tour of the Deaf Smith County Museum and the Cowgirl Hall of Fame in

Hereford.

Some 70 women from Muleshoe, Memphis, Dumas, Amarillo, Spearman, Hereford and Borger attended the meeting.

Hosted by the Women's Division of the Hereford Chamber of Commerce, the noon meal was highlighted by the Deaf Smith Chamber Singers.

In scrapbook contests, Spearman's entry placed second, just behind first place finisher, Hereford.

Teacher group goes to Panhandle

there and the Hazelwood Education Center.

The group will be leaving at 8 a.m. for Panhandle where they will visit the Square House Museum and the education center. The center is exhibiting Indian art.

From there the group will go to Borger for lunch, then to Fritch for a tour of the wildlife museum and the Poling art collection.

Anyone interested in making the trip should contact James Cunningham, the HRTA president, or Dorothy Roden who is second vice-president and program chairman for the Hansford group.

Other officers for the current year are Raymond Birchfield, first vice-president and membership chairman;

Olga Gafford, secretary-treasurer; and David Arrington who The Hansford Retired Teachers Association will be traveling as a group to Panhandle this coming Saturday to take in the museum serves the organization as parlia-

mentarian.

The Hansford Retired Teachers Association meets monthly with programs designed to help or inform its membership.

The September meeting featured a program on estate planning and wills by a Spearman attorney. One program will deal with knife making.

The organization's regular meeting date is the second Tuesday of each month. Associate memberships are available to spouses of members and to any person who has an interest in education.



The U.S. receives more legal immigrants than any other country. Between 1820 and 1984, about 52 million people officially arrived on our shores.

UNWANTED HAIR REMOVED PERMANENTLY
 By Electrolysis, The Only Medically Approved Way.
 Call For Appointment Or Free Consultation
 Retha Atkinson Electrolygist
 Member A.T.E.
273-6228 (Borger)
 Call Monday-Thursday After 5 p.m.
 Friday & Saturday All Day

Blades Roofing & Construction
 Shakes, Wood & Composition
 Build-Up Hot Roofing Res. Or Comm.
 Remodeling New Construction
 Billy Blades Wellington, Texas
806-659-2227 806-447-5198

People Helping People



Kathy Boyd

People helping people . . . with employees like Kathy Boyd, that phrase is more than a mere slogan. A personable teller in our bank, Kathy meets our customers and friends with a friendly smile and on very common ground. . . she treats everyone just like she likes to be treated.

Married to Hansford county native David Boyd, she and her husband are regular members of our community. Their two children - Justin who is 12 and Crystyal who is nine - attend Spearman schools.

An active member of the First United Methodist Church in Spearman, Kathy also participates in the Women's Division of the Spearman Chamber of Commerce.

Like most folks in our community, she is an avid spectator of her children's various sports activities and this summer helped with the Hansford Y Fund Drive.

If you haven't had to opportunity, come in today and meet her. After all, a bank should be more than just a place to keep your money. Kathy Boyd helps bring a personal touch to your banking.

People helping people . . . it's just another way we're out to make banking at the First National in Spearman



Chamber spotlight . . .

Tom Latta's operate Hansford veterinary clinic

The Hansford County Veterinary Hospital has been owned by Dr.

Tom and Linda Latta since 1976. They came to Spearman in 1968 and were associated with the Panhandle Veterinary Clinic operated by Dr. H. B. Rinker. They purchased his interest in 1976.

The treatment and boarding facilities have been expanded and now there is considerable acreage adjacent to the structures and some pens used for cattle conditioning.

It is located on County Road #1. There is adequate hospital, treatment and boarding facilities for use in both small and large animal veterinary services.

The Lattas consider the firm fortunate in having the services of Dr. Clint Irwin who is associated with them.

Other employees are Cynthia Floyd, Elizabeth Taylor, Karla McGarrough, Roger Buchanan, Edmond Flores, Encelmo Rodri-

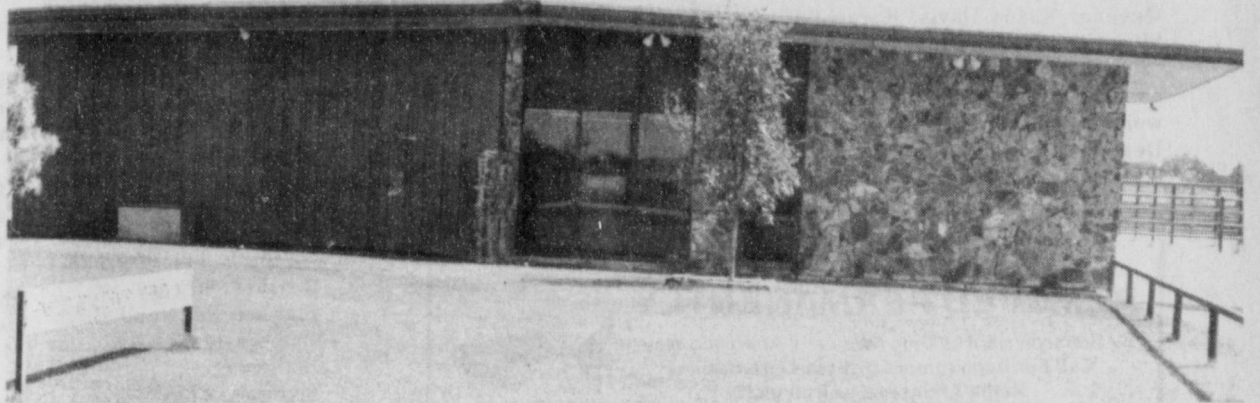
quez, Miquel Rodriguez, and Rebecca Rodriguez. Roger left recently to do post graduate work at Texas Tech.

Dr. Latta decided to pursue a veterinary career early in his life due to his devotion to all animals and concern for their welfare. He has some preferences as to which he deals with, but is equally conscientious with large and small.

He recognized that his dedication would have to compensate for the long hours, interrupted nights, and disappointments that are expected with the veterinary practice.

Dr. Latta makes time to study and keep abreast of the latest research and medicines, as well as surgical techniques in order to offer his clients service equal to any available.

He is a native of Woodward, Ok. and attended school at Ft. Supply, then to Northwestern State Univer-



THE HANSFORD VETERINARY CLINIC is owned and operated by Tom and Linda Latta. The Latta's took over the Hansford business in 1976.

STAFF PHOTO BY KIRBY MCADAMS

Linda Latta, the daughter of Alice and the late Jack Harrison, was also a native of Woodward, and her early schooling was at Ft. Supply. She attended Oklahoma State University where she majored in business.

The Lattas were married in 1965. They have four daughters -- Karla who is Mrs. Neil McGarrough; Julie, a freshman at Tartleton University at Stephenville, Texas; Leslie and Tommi are both in Junior High School here.

An important member of the family is 11 month old Kallie McGarrough.

The Lattas chose Spearman to make a permanent home after they lived here awhile, deciding that it would be a good and wholesome environment in which to rear their family.

While it is their nature and disposition to adjust to and accept people of all walks of life, they felt a compatibility with the people of

Spearman which has grown with the years. They felt strongly that the future here held much promise. They are members of the First United Methodist Church and both are participants in its activities.

He is currently on the Spearman Independent School board, is president of the Teen Center, and is involved in many youth activities.

They have varied cattle interests in Oklahoma, New Mexico and Colorado. Mrs. Latta is a member of Epsilon Beta Sorority.

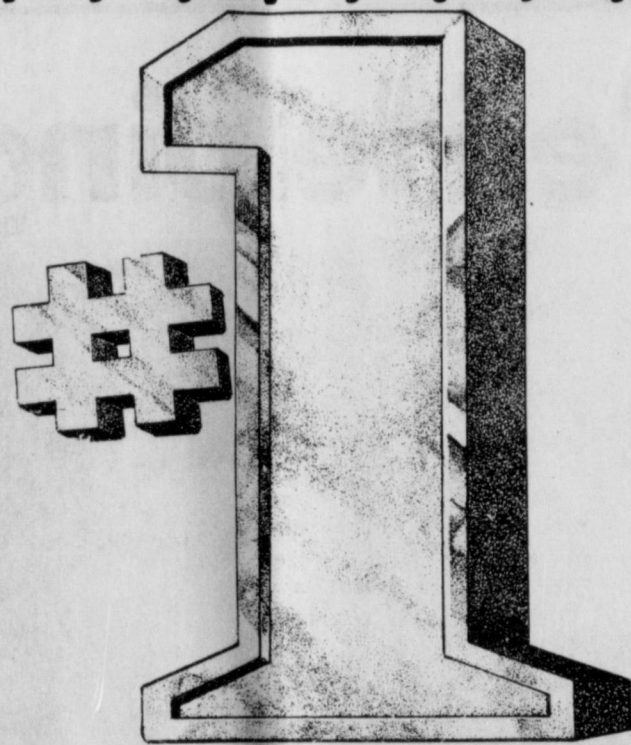
When there is time they both enjoy playing bridge, boating, swimming, snow and water skiing. For real relaxing, she reads and works in her yard.

Hansford County Veterinary Hospital has been a member of the Spearman Chamber of Commerce for 25 years, and the Lattas feel that it is an essential part of the growth and welfare of the community.



FHA 1987 OFFICERS pictured here are president Tina Breeden [sitting] and [standing, l-r] Sara Blackburn, vice-president of projects; Margie Evans, vice-president of recreation; Christa Sims, secretary-treasurer; Robbie McFarlin, historian; and Traci Scribner, freshmen representative.

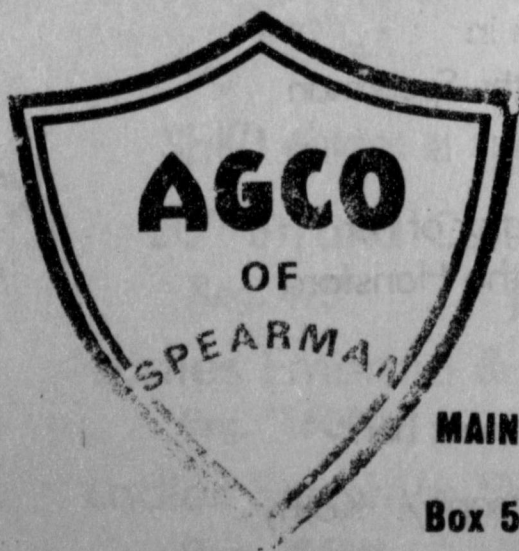
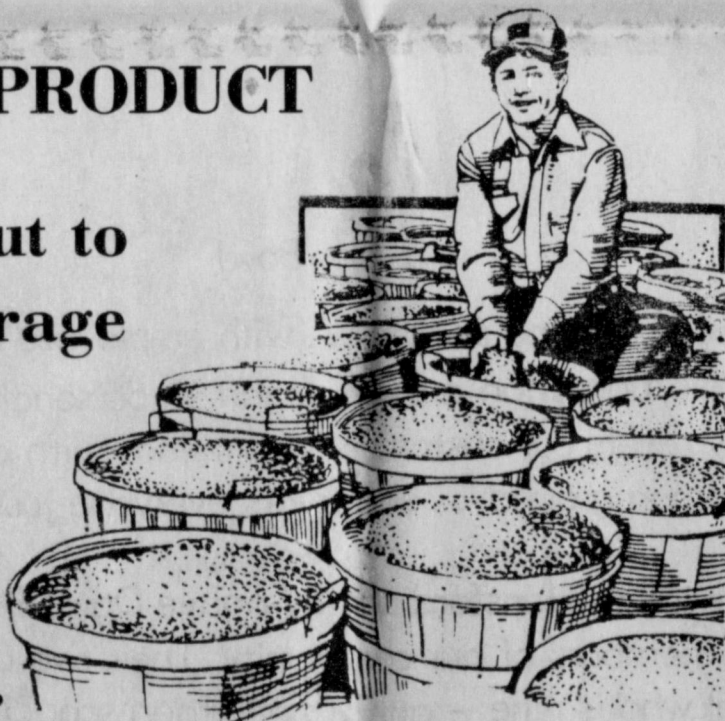
with us
you're



And we're doing our
best to show it!

AT AGCO, CUSTOMER SERVICE IS
OUR MOST IMPORTANT PRODUCT

From the first bushel cut to
the last bushel put in storage
we're working hard to
make you a satisfied
customer . . . Become
No. 1 This Harvest At . . .



AGCO A ELEVATOR - 4 miles South on FM 760

AGCO BUZZARD ELEVATOR - 8 miles South on FM 760

AGCO B (MILL) - Highway 15 East

MAIN OFFICE - 511 S. W. 11th - Pittman - Shieldknight Bldg.

Box 566

Spearman, Tx.

659-3751

Don't Forget At Agco we have feed
for horses, pigs and cattle!
We also Custom Blend feed
to fit your needs!

BINGO

13	19	40	55	61	8	25	38	60	70	15	26	39	57	70
14	22	34	60	68	5	26	40	47	73	11	24	31	47	62
4	16	50	65		14	21	51	65		1	25	48	74	
6	17	32	53	66	9	28	34	54	66	3	29	42	58	64
5	18	36	59	73	13	29	31	53	63	12	23	33	52	71

ST. JOHN'S
school gym
SUNDAYS 3:00 pm
Borger

TX. LICENSE #1-75-6005074-6

ST. JOHN'S CATHOLIC CHURCH

201 ST. JOHN RD., BORGER TX

Among the Neighbors

By Helen Fisher

F.C. Steve Burke has a months leave from the Navy and is visiting his parents, Mr. and Mrs. Kenneth Burke.

Steve has completed two years schooling in radar and electronics. He has been stationed in San Francisco and will be assigned to Mayport, Fl. where he will receive more schooling. In February he will leave for six months sea duty.

Altha Townsend is back from a ten day vacation in Virginia. She was a guest of her son Rt. Lt. Col. Kenneth Townsend and his family at Newport News.

While there a visit to the Atlantic

Ocean was a first for her. She especially enjoyed the "Neptune Festival".

Catherine Hall of Pampa visited her mother, Mrs. Ailene White the first of the week. Another guest was Sue White from Fork Lake who is visiting her mother at the Manor also.

The report on William Whitford is very encouraging since he underwent major surgery on Monday.

He is in St. Anthony's Hospital where he will be for ten more days. Mrs. Whitford is staying in Amarillo

Children's book writer contest opens for 1987

The West Texas Chapter of the Society of Children Book Writers announces its 1987 Third Annual Children's Writing Contest. The contest is open to all adult authors who write for children.

Winners will be announced and awarded cash prizes at the Annual SCBW Conference to be held November 14 at the Region 18 Service Center in Amarillo, Texas.

Writers may submit their original stories in the following categories:

Young Readers (600 word maximum), Ages 9-12 (900 word maximum), Young Adult (1200 word maximum).

The entry fee is \$3 per manuscript for SCBW members, \$5 per manuscript for non-SCBW members. Writers may submit no more than two entries, both in different categories. Manuscripts which won a first place in any previous SCBW contest may not be entered again in any of the three categories. All manuscripts must be the original work of the author and unpublished at the time of submission.

No name or pen name can appear on the manuscript. Include a cover sheet containing your name, address, category entered, title of submission. Enclose an SASE or pick up manuscripts at the conference.

Mail entry and fee to SCBW Contest, Rt. 6, Box 673, Amarillo, Texas 79105. Manuscripts must be postmarked by October 24, 1987. The contest judge is Carol Hamilton of Oklahoma, author of Dawn Seekers.

7 students get recognition

A 1987 SHS graduate, a Spearman senior and five juniors have been selected as members of the Society of Distinguished American High School Students, the group announced this week.

Students accepted as 1987 members include Anne Marie Jarvis -- the 1987 grad -- Deana Turner, a senior; and juniors Jan Crawford, Ginger Pearson, Carly Shield-knight, Jennifer Turner and Billy Clubb.

Membership in the 19-year old Society is designed to be a national honor and incentive for top performance among high school students, the release notes.

To be accepted, candidates must excel in academics, extracurricular or civic activities.

gories: Young Readers (600 word maximum), Ages 9-12 (900 word maximum), Young Adult (1200 word maximum).

The entry fee is \$3 per manuscript for SCBW members, \$5 per manuscript for non-SCBW members. Writers may submit no more than two entries, both in different categories. Manuscripts which won a first place in any previous SCBW contest may not be entered again in any of the three categories. All manuscripts must be the original work of the author and unpublished at the time of submission.

No name or pen name can appear on the manuscript. Include a cover sheet containing your name, address, category entered, title of submission. Enclose an SASE or pick up manuscripts at the conference.

Mail entry and fee to SCBW Contest, Rt. 6, Box 673, Amarillo, Texas 79105. Manuscripts must be postmarked by October 24, 1987. The contest judge is Carol Hamilton of Oklahoma, author of Dawn Seekers.

7 students get recognition

A 1987 SHS graduate, a Spearman senior and five juniors have been selected as members of the Society of Distinguished American High School Students, the group announced this week.

Students accepted as 1987 members include Anne Marie Jarvis -- the 1987 grad -- Deana Turner, a senior; and juniors Jan Crawford, Ginger Pearson, Carly Shield-knight, Jennifer Turner and Billy Clubb.

Membership in the 19-year old Society is designed to be a national honor and incentive for top performance among high school students, the release notes.

To be accepted, candidates must excel in academics, extracurricular or civic activities.

Elementary & Jr. High Menu
Monday, Oct. 5
Enchilada
Pinto Beans
Mixed Vegetable
Pineapple Tidbit
Milk
Tuesday, Oct. 6
Pimento/Sandwich
Corn Cobbette
Green Peas
Chocolate Pudding
Milk
Wednesday, Oct. 7
Fried Chicken
Potatoes/Gravy
Diced Carrots
Bread/Honey
Milk
Thursday, Oct. 8
Pig-In-Poke
Chopped Spinach
Pork & Beans
Spicy Red Jello
Milk
Friday, Oct. 9
Hamburger/Bun
French Fries
Shredded Lettuce

Sunday, October 4, 1987
Cookie
Milk
High School Menu
Monday, Oct. 5
Enchilada/Beans
Salad Bar
Spanish Rice
Sopapella/Honey
Tuesday, Oct. 6
Pimento Sandwich
Corn Cobbette
Salad Bar
Chocolate Pudding
Wednesday, Oct. 7
Fried Chicken
Salad Bar
Potatoes/Gravy
Pineapple Tidbit
Thursday, Oct. 8
Pig-In-Poke
Pork & Beans
Salad Bar
Red Jello
Milk
Friday, Oct. 9
Hamburger/Bun
Salad Bar
Tator Tots
Cookie
Milk

Moonlight Madness
is Monday Night
6:00 - 9:00 p.m.
So come on in and
save through the store.
If you pay cash you'll
save even more.
BUNKHOUSE
210 S. Main 659-2476

Radio Shack
DEALER
NOW OPEN
Borger, Texas
425 W. 10TH
PHONE - 274-7077
COMPLETE LINE OF RADIO
SHACK PRODUCTS
INCLUDING
COMPUTERS
NEW OWNERS: ART & DONETTA OWEN

Moonlight Madness
Monday, Oct. 5th
6:00 - 9:00 p.m.
Spearman, Texas

Cates Men's & Boys
Hotel Royale
Fuller's Jewelry
Sacks 3rd Ave.
Beedy's Furniture
Country Stitches
Kids' Stuff
Lady Fair
McCrory's TG&Y

McClure Paints & Supply
Hickerson's Jewelry
JG's
The Bunkhouse
Chalor's
Charlotte Ford's Trunks
Blackburn's Flower Basket
Earl's T.V.

MOONLIGHT MADNESS
SHOP UNDER THE LIGHTS AND SAVE!

Featured in campus newspaper . . .

Spearman grad leads TSU rodeo'ers

Editor's note: The following article on Hadley Reed appeared in a recent edition of the Texas State University's campus newspaper. Reed is a Spearman High School graduate and is now president of TSU's rodeo club.

"Rodeo is the greatest sport in the world," Hadley Reed said. "I don't want to make a living at it, but I figure I'll do it as long as I'm able."

Hadley Reed is President of TSU's Rodeo Club and Regional Student Director for the National

Inter-collegiate Rodeo Association (NIRA). He's been to the College National Finals (CNFR) twice and thinks the TSU Rodeo Team will probably be back in Bozeman, Mon. competing at the CNFR again next Spring. "We've just got so many people with so much talent," talent."

At last year's CNFR, Reed did not do as well as he would have liked. Just before Bozeman, he tried his luck at riding the buffalo at the Mesquite Rodeo and was about two seconds short of winning the \$500 prize money offered. Reed injured his knee during his 'dis-mount.' He is just now getting back to riding broncs and roping calves since knee surgery.

At the Portales, New Mexico College rodeo last weekend, Reed was one of the 75 TSU Rodeo hands to enter up. In the Saddle Bronc, he placed third in the short go and third in the average. Don Eddleman was first in the calf roping and Pat Yancy placed second in the first round of Bull Riding.

Reed plans to compete in the three additional college rodeos this fall; Sul Ross, Vernon, and Texas Tech. His events are Saddle bronc, Calf Roping and Team Roping; he said he has "given up Bareback Riding."

He has been involved in rodeo since his high school days in the Spearman High School.

As busy as Reed is with rodeo, he has managed to maintain a 3.6 GPA with a major in horse produc-

tion. He takes care of his place just outside of Stephenville, and tends his animals well. His 12 head of roping calves and his steers "are fed as much as they'll eat," Reed said.

"The calves last until they're too big for me to rope," which Reed estimated is about a month or two. They then get turned out on his dad's wheat field in the Panhandle.

"You've just got to take good care of your livestock," Reed said. Hadley Reed is the president of the Rodeo Club; Amy Sanders, Vice-President and Toni Randall, Sec-Treasurer.

Spearman artist featured at Pampa

Spearman's Edith Eddleman will be one of some 40 featured artisans at the 21st Annual Top O' Texas Fine Arts and Crafts Festival which will be held in Pampa Oct. 10-11.

The 2-day run will be held in the M.K. Brown Civic Center there with exhibitors from four states on hand to display their talents.

The festival opens Saturday at 10 a.m. and will run until 6 o'clock that evening. Sunday's hours will be from noon to 5 p.m. Admission is free. Eddleman has chosen to display her works of clay and fabric ornaments at the Pampa exhibit.

In addition to the arts and crafts displays there will also be several food booths.

Featured artist for the 2-day show is Nancy Brown, a noted watercolor painter from Amarillo.

One of her paintings will be given as a door prize at the Festival.



The squid escapes from his enemies by shooting a cloud of black sepia into its enemy's face. Leaving his enemy in the dark, the squid makes his getaway.

Spelling bee plans being formulated for 1988

AMARILLO, TX.: The Amarillo Globe-News and West Texas State University are again sponsoring the National Spelling Bee for students in the area.

This year's Spelling Bee will be the 40th annual competition for students in the eighth and lower grades and who will not reach their 16th birthday by the end of the current school year.

In each of the 46 counties assigned the sponsors, bee directors have been named to coordinate the program. Serving as bee director for Hansford County is Eddie Gage, principal, Spearman junior high school.

Interested students and school officials should contact the director for information concerning participating.

Each county winner is to be named by March 19 in order to compete in the Regional Bee on the WTSU campus in Canyon on April 16.

One of the 46 participants will win the trip to Washington, D.C. to represent the area in the 1988

National Spelling Bee. The Amarillo Globe-News will provide expenses for the winner and one parent.

Some of the other top finalists will be given special awards.

Gene Parker, director of placement at West Texas State University is bee coordinator.

"I urge all students to participate in this worthwhile educational program. All of us at the university are proud to be associated with the Amarillo newspaper in recognizing the accomplishments of young students," Parker said.

Additional information is available from Parker and also from Jeane Bartlett, spelling bee editor of the Amarillo Globe-News.

The 1988 issue of "Words of the Champions", the study booklet used in the schools, is available from Jeane Bartlett at 50-cents each. Orders may be placed directly with Mrs. Bartlett by contacting her at the newspaper, Box 2091, Amarillo, 79166. The booklet contains more than 3,000 words.

Each county director has the option of conducting a Junior Bee for grades six and lower. Junior county winners do not compete unless they also win the secondary championship.

The sponsors will provide special

Sunday, October 4, 1987 awards for each county Junior champ.

Four states are assigned the WTSU-AGN sponsors. They include parts of Texas, Oklahoma, New Mexico and Kansas.



HOWDY, PARTNER!

Repeat that greeting 60,000,000 times to that many cooperative consumer-owners throughout the entire nation, and you come up with one of the greatest networks of partnerships in existence.

Cooperatives, owned and operated by their members, provide an array of goods and services for their friends, neighbors and communities. Co-ops are found in big cities, small towns, rural areas — anywhere people need to get things done efficiently and economically.

There are co-ops for electric and telephone service, farm credit, credit unions, farm marketing and farm supply, insurance, food, and health and day care.

40,000 co-ops have made their mark on their communities with a 50-year-plus track record of helping their communities thrive. That's a lot of progress for a lot of people.

So look for the people in partnership in your community. They're working hard for you and for the nation.



COOPERATIVES — PEOPLE IN PARTNERSHIP

Special Financing Terms
On RCA Electronics
No Money Down
No Payment Until February
No Finance Charges Until February on Colortrack
2000 TV's, Dimensia TV's, Stereo VCR's and RCA Camcorders
Now at
Beedy Furniture Spearman

The Lady Fair cordially invites you to a trunk showing of MacIntosh coats and of fine leathers and scodes shown by Larry and Carrie Jacobs on Wednesday, October 7, 1987 10:00 a.m. to 5:00 p.m. At this time all MacIntosh coats in stock or any special order can be purchased at a 25% discount

Introducing the new
MAGNUM 7140

And the first all-new tractors from Case IH

Case IH put more into the new MAGNUM tractor line than any farm tractors developed in over twenty years. Here's why you'll get more out of it:

MAGNUM means more. Outstanding field performance from a new 505 cubic inch turbocharged engine with reserve power. MAGNUM power.

The MAGNUM tractor's powershift puts 18-speeds of shift-on-the-go workpower at your fingertips—standard. And only MAGNUM tractors offer a full powershift creeper transmission with six additional

speeds from 5 to 2.1 mph . . . for more control and performance. MAGNUM performance.

The MAGNUM tractor's new larger cab has 48 square feet of window area . . . virtually unobstructed visibility . . . more seating comfort. MAGNUM comfort.

It all adds up. The Case IH MAGNUM 7140 tractor sets new standards for the 195 hp (145 kW) class . . . and for you. See us for details.

MAGNUM means more.

Five Star Equipment Inc.
 Hi-Way 15 West Spearman
 659-3743

Without advertising a terrible thing happens ...

nothing



All real estate advertising in this newspaper is subject to the Federal Fair Housing Act of 1968 which makes it illegal to advertise any preference, limitation or discrimination based on race, color, religion, sex or national origin, or an intention to make any such preference, limitation or discrimination.
This newspaper will not knowingly accept an advertisement for real estate which is in violation of the law.

Get Professional Real Estate Service ... Let A Realtor Serve Your Needs!



CLASSIFIED RATES
Regular... Per Word-\$0.13
Display... Per col. Inch-\$4.20
Double rate for blind ads
Minimum charges
Cash... \$4.00
Charge... \$4.50

CASH IN ADVANCE ADS
•Work wanted •Trailers for Sale •Business Opportunities •No longer Responsible •Political Advertising •Child Care •Baby sitting •Garage Sales •Out-of-county Ads unless advertiser has established credit with •The Spearman Reporter

DEADLINES
To place or cancel ads
Friday - 12:00 p.m. ... Sunday edition.
Tuesday - 12:00 p.m. ... Thursday edition
The Spearman Reporter reserves the right to reject, edit, revise and properly classify all advertising submitted for publication. The Spearman Reporter also reserves the right to cancel any advertisement at any time.
THE SPEARMAN REPORTER
213 Main, P.O. Box 458
Spearman, Texas 79081

OSGOOD MONUMENT CO.
Amarillo, Texas
Dealers of Rock of Ages Granite, as well as all colored granites, marble and bronze memorials.
represented by
BOXWELL BROS. FUNERAL HOME
519 S. Evans
659-3802

ALCOHOLICS ANONYMOUS MEETING
Hansford County Library (Upstairs)
122 Main-Spearman
Open meeting 2nd Tuesday
AL ANON
Tuesday
8:00 P.M.

WEIGHT WATCHERS: meets each Monday at 6:00 p.m. at the Home Demonstration Building, Spearman Texas.

STEAM RINSE & VAC-Rinse and Vac Shampooer for rent at Gordons Drug. \$10.95 up to 24 hours.

NOTICE
Wallace Monument Co. Monuments, Curbing, Grave Covers
Local Representative
LEONARD JAMESON
Spearman, Texas

APPLIANCE REPAIR Call Jim Nobles at 659-3528.

HANSFORD COUNTY
Planned Parenthood
412 Davis
659-2488
Spearman, Tx.
Monday - Friday
8:30-12:30

TOPS 1245, SP meets every Tuesday night at 7:30 p.m. at the Girl Scout House located at 22 S. Endicott. Drop by and join TOPS.

PANHANDLE CRISIS CENTER: 101 S.W. Forth, Perryton, Texas 79070, 806-435-5013. Help is available at no charge for domestic violence and sexual assault. Call Panhandle Crisis Center, receive support during a difficult time. Counselors on call 24 hours a day. Call for help.

L&M Body Works
1501 Hwy 15
659-2775
Tailpipes - \$29.95
Mufflers - \$39.95
Most Duals \$160.00 complete

Mobile Homes
ABANDONED HOMES - Take over payments on 2 and 3 bedroom homes. Quality by phone. 806/381-1352. Call collect.
S46-rtm

COMPLETE MOBILE HOME Services available. Check our cheaper rates on transporting, escorting, and skirting anchors and cool seal for all makes. Large selection of new, used and repos. B & D Mobile Homes. Guymon, Ok. 405/338-5315.
S47-2tc

FOR RENT: Trailer space in Spearman. All utilities, fenced and concrete walk ways. Call 435-5080. S46S-only rtm

HOUSE FOR RENT: 3 bedroom, brick, 1 bath, 1004 Townsend. Close to junior high and high school. Fenced back yard. 659-2245
S48-4tc

For Sale
FIRE WOOD Mesquite, Oak, Hickory order now. 659-2836.
S48 1tp

FOR SALE 1973 GMC Sprint
Pick-up 659-2836
S48-1tp

FOR SALE: Upright piano & bench \$400. Upright deepfreeze \$100. Call Betty Elbert 659-3996.
S48-2tp

FOR SALE: Complete livingroom set, maple fold down leaf dining room table, entertainment center wall unit, double bed, and prism cut glass chandelier. Call 659-2409.
S48-2tp

FOR SALE: Angel Fire cabin-share \$2,000 below cost. Membership goes. Call 878-3265.
S48-4tc

PIANO FOR SALE
WANTED: Responsible party to assume small monthly payments on piano. See locally. Call credit manager 1(800)447-4266.
S48-8tp

FOR SALE: Antique piano and work table with drawers. Call 659-2967.
S48-4tp

INTRODUCTORY SPECIAL!

□ Improve Handling
□ Extend Tire Life
□ Enjoy Smoother Ride

balancing only

\$5.50 per tire

most cars and 1/2 ton pickups. 3/4 and 1-ton slightly higher.

Mr. Goodwrench

GM QUALITY SERVICE PARTS
GENERAL MOTORS CORPORATION

Gillaspie Chevrolet Oldsmobile
Hwy. 207 659-2541

Autos for Sale
FOR SALE 1984 Suburban - Excellent Condition inside & out. New tires, low mileage. Can be seen at 1007 S. Bernice or call 659-3402 after 5:00 p.m.
Sp 48 4t

FOR SALE: 1976 CJ-7 Jeep. Air conditioning, automatic transmission. Loaded quad-trac. 659-3911.
S47-4tp

FOR SALE: Subaru Stationwagon with four wheel drive. Call 659-2272.
S43rtm

Help Wanted
HELP WANTED: Experienced sales clerk wanted. Pick up applications at Hickerson's Jewelry.
S47-2tc

HELP WANTED: Need reliable dependable babysitter for new born. Mon. - Fri. 8:00 - 5:00. Please call 659-5283.
S48-2tp

HIRING! Government jobs - your area. \$15,000 - \$68,000. Call (602) 838-8885. EXT 4514.
S47-9tp

EXCELLENT INCOME FOR HOME ASSEMBLY WORK. FOR INFO CALL 504-646-1700. Dept. P-1039
9/20, 9/24, 10/4, and 10/8

HANSFORD SWCD DIRECTOR ELECTION SET

An election for a director to serve in Zone 3 on the Hansford Soil and Water Conservation District Board is scheduled for Tuesday October 6th at the SWCD Conference which is located in the Pittman-Shieldknight Building at 505 W. 11th in Spearman. The election will be held at 7:00 p.m.

State law decrees that to be eligible to vote in a soil and water conservation district director's election, a person must own agricultural land within the district where the election is being held. The person must also live in a county all or part of which is in the district and the voter must be 18 years old.

Legal qualifications state that a candidate for the office of a soil and water conservation district director must own land in the zone he represents, be 18 years of age and be actively engaged in farming or ranching. The director must also be a resident of Hansford County. SWCD directors serve four year terms.

Zone 3 of the district includes the southeastern portion of Hansford County.
S48S-1t

To Give Away
To Give Away 6 yr. old Blonde Cocker Spaniel Spayed W/dog-house. Call after 6:00 p.m. 659-2842
48 Nc

Notice to all persons having claims against the Guardianship Estate of Edward Joplin Franz

Notice is hereby given that original letters of Guardianship for the Estate of Edward Joplin Franz were issued on the 29th day of September, 1987, in Cause No. 1874, pending in the County Court of Hansford County, Texas, to Edward Francis Devine. The post office address of such guardian is 315 Cerny, Eureka Missouri 63025. All persons having claims against this guardianship estate are required to present them within the time and in the manner prescribed by law.

Dated this 30th day of September, 1987.
John L. Hutchinson,
Attorney at Law
S 48 1tc

SPECIAL FINANCING TERMS
On Whirlpool Appliances
No Money Down
No Payment for 120 Days
No Finance Charges For 120 Days
Now At
Beedy Furniture Spearman

Free Hearing Test

HIGH PLAINS HEARING ASSOCIATION in conjunction with **GOLDEN SPREAD SENIOR CITIZEN CENTER** located at 14 S. Haney will offer Free hearing tests this Tuesday, October 6th from 1:30 p.m. to 4:30 p.m. All walk-ins welcome or phone for appointment by calling 659-3521. Test will be conducted by Jerry Stingley, H.A.S.

U.S. Postal Service
STATEMENT OF OWNERSHIP, MANAGEMENT AND CIRCULATION
Required by 39 U.S.C. 3685

1A. TITLE OF PUBLICATION		1B. PUBLICATION NO.		2. DATE OF FILING	
Hansford Plainsman		2 3 4 6 6 0 0 0		9/28/87	
3. FREQUENCY OF ISSUE		3A. NO. OF ISSUES PUBLISHED ANNUALLY		3B. ANNUAL SUBSCRIPTION PRICE	
Weekly		52		\$19.95 (combined)	
4. COMPLETE MAILING ADDRESS OF KNOWN OFFICE OF PUBLICATION (Street, City, County, State and ZIP+4 Code) (Not printers)					
213 Main, Spearman, Hansford County, Texas 79081					
5. COMPLETE MAILING ADDRESS OF THE HEADQUARTERS OF GENERAL BUSINESS OFFICES OF THE PUBLISHER (Not printer)					
Same					
6. FULL NAMES AND COMPLETE MAILING ADDRESS OF PUBLISHER, EDITOR, AND MANAGING EDITOR (This item MUST NOT be blank)					
PUBLISHER (Name and Complete Mailing Address)					
James C. Jarrett, Box 458, Spearman, Texas 79081					
EDITOR (Name and Complete Mailing Address)					
MANAGING EDITOR (Name and Complete Mailing Address)					
7. OWNER (If owned by a corporation, its name and address must be stated and also immediately thereunder the names and addresses of stockholders owning or holding 1 percent or more of total amount of stock. If not owned by a corporation, the names and addresses of the individual owners must be given. If owned by partnership or other unincorporated firm, its name and address, as well as that of each individual must be given. If the publication is published by a nonprofit organization, its name and address must be stated.) (Item must be completed.)					
FULL NAME		COMPLETE MAILING ADDRESS			
Texas Independent Newspapers, Inc.		19906 Encino Grove, San Antonio, Tx 78259			
Howard L. Schramm		19906 Encino Grove, San Antonio, Tx 78259			
Michael Morton		8060 Pimlico, Boerne, Tx 78006			
Jud F. Walford		15915 Alsace, San Antonio, Tx 78232			
8. KNOWN BONDHOLDERS, MORTGAGEES, AND OTHER SECURITY HOLDERS OWNING OR HOLDING 1 PERCENT OR MORE OF TOTAL AMOUNT OF BONDS, MORTGAGES OR OTHER SECURITIES (If there are none, so state)					
FULL NAME		COMPLETE MAILING ADDRESS			
W. M. Miller		810 S. Bernice, Spearman, Tx 79081			
9. FOR COMPLETION BY NONPROFIT ORGANIZATIONS AUTHORIZED TO MAIL AT SPECIAL RATES (Section 431.12 DMM only) The purpose, function, and nonprofit status of this organization and the exempt status for Federal income tax purposes (Check one)					
<input type="checkbox"/> HAS NOT CHANGED DURING PRECEDING 12 MONTHS		<input type="checkbox"/> HAS CHANGED DURING PRECEDING 12 MONTHS		(If changed, publisher must submit explanation of change with this statement.)	
10. EXTENT AND NATURE OF CIRCULATION (See instructions on reverse side)		AVERAGE NO. COPIES EACH ISSUE DURING PRECEDING 12 MONTHS		ACTUAL NO. COPIES OF SINGLE ISSUE PUBLISHED NEAREST TO FILING DATE	
A. TOTAL NO. COPIES (Net Press Run)		1383		1500	
B. PAID AND/OR REQUESTED CIRCULATION		423		725	
1. Sales through dealers and carriers, street vendors and counter sales					
2. Mail Subscription (Paid and/or requested)		498		614	
C. TOTAL PAID AND/OR REQUESTED CIRCULATION (Sum of 10B1 and 10B2)		931		1339	
D. FREE DISTRIBUTION BY MAIL, CARRIER OR OTHER MEANS SAMPLES, COMPLIMENTARY, AND OTHER FREE COPIES		212		36	
E. TOTAL DISTRIBUTION (Sum of C and D)		1143		1375	
F. COPIES NOT DISTRIBUTED		98		63	
1. Office use, left over, unaccounted, spoiled after printing					
2. Return from News Agents		142		62	
G. TOTAL (Sum of E, F1 and 2—should equal net press run shown in A)		1383		1500	
11. I certify that the statements made by me above are correct and complete		SIGNATURE AND TITLE OF EDITOR, PUBLISHER, BUSINESS MANAGER, OR OWNER			
		<i>James C. Jarrett</i>			

The Energy Wire

The Energy Wire
Washington -- No one is predicting flatly that the crude oil windfall profits tax will be history before the end of the year.
 But the reversal by Rep. John D. Dingell, D-Mich., in favor of killing the tax is perhaps the strongest indication that a fresh political attitude toward the oil and gas industry is as present in the political atmosphere as the new crispness in the early autumn air.
 Dingell, chairman of the House Energy and Commerce Committee, has often been an arch enemy of

industry initiatives in Congress, including repeal of the windfall tax. He was famous in the early 1980's for his phrase that he would allow decontrol of all natural gas prices only "over my dead body."
 It was a subdued Dingell, limping on crutches due to a recent hip operation, who told reporters that he had reached a conclusion that the oil industry should receive a political boost and the most attainable way to do it would be to set aside the seven-year-old tax.
 He joined several other oil-state lawmakers in signing a letter to House Ways and Means Committee Chairman Dan Rostenkowski asking that the Illinois Democrat go along with a Senate provision in the omnibus trade bill to repeal the windfall levy.
 Rostenkowski, as chairman of

THE HANSFORD PLAINSMAN

House members on the House-Senate conference committee revising the final version of the trade measure, will play a pivotal role in determining the outcome on the tax. The Senate passed repeal of the tax on a 58 to 40 vote last July after Sen. Lloyd Bentsen D-Texas, was successful in adding the provision to the trade bill in the Senate Finance Committee.
 Dingell cited several factors influencing his change of heart on the windfall tax and, more broadly, about the oil industry.
 "The domestic oil industry is struggling through a severe recession," he said. "Wells are being shut-in, drilling is down, and even ordinary maintenance is being deferred. The downturn in the industry is increasing our vulnerability to future oil shut-offs," said Dingell.
 "In short, the time has arrived when we should repeal the windfall profits tax. We should do so both because no significant revenues are being -- or will be -- collected, and because we must reverse the downward trend of our domestic oil industry. The energy security of the nation depends on it," Dingell said.
 The words might have been uttered by one of the seven oil-state Democrats who joined him in the letter, including Reps. Mike Synar, D-Okla., John Bryant, D-Texas, W.J. "Billy" Tauzin, D-La. and Bill Richardson, D-N.M.
 Dingell also noted the high and useless cost to producers of filling out forms for a tax most of them have not paid since the crash in oil prices.
 "As with the automobile industry, the domestic oil industry is vital to this nation's economy. The repeal of this tax should signal the domestic oil and gas industry that it is time to increase and expand its operations," said the energy committee chairman.
 He added that other northern congressmen might also go along with repeal. "Many members from the Northeast will support it when the issue becomes plain," he said.

Washington -- An oil import fee has been on life supports for months in Congress without hope

of immediate recovery, but opponents of the fee were surprised last week by a report from an unexpected source.
 Congressional observers said the study favoring the fee would carry higher credibility not so much because it was done by Harvard's Energy and Environmental Policy Center as because it was produced in New England, the area where opposition to an oil tariff has been strongest.
 The immediate question for those favoring the fee is whether the report really will stir any action in Congress.
 The House Ways and Means Committee is looking at a wide variety of revenue measures for the 1988 budget and an oil import fee has been one of the items thrown on the table, though without backing from the committee's leadership.

A spokesman for the ways and means committee said the committee's chairman, Rep. Dan Rostenkowski, D-Ill., had been meeting behind closed doors to come up with revenue suggestions from the panel's members.
 "My guess would be that in these private conversations, they are saying we should really consider an oil import fee," he said about oil-state lawmakers. So I think it's really a felicitous time for Harvard to have issued this thing. But how much influence it will have, it's still too early to tell."
 The 99-page study does not attempt to justify an oil tariff solely on the basis of providing assistance to the domestic oil and gas industry.
 One of the authors made clear to reporters that the fee would be best for the overall U.S. economy, even though it would have the side-benefit of providing greater industry stability.
 William W. Hogan, Thornton Bradshaw professor of public policy and management at Harvard, said the "optimal tariff" would be \$10 per barrel to offset the "social costs" of oil at prices that are expected to gradually rise.
 The argument goes that, in a situation of increasing oil imports, all consumers pay for the cost of increased imports rather than

those consumers who actually cause the increase by creating the demand for more foreign oil.
 Thus, Hogan said as an example, if imports go up from 4 million barrels to 5 million barrels per day and the price, due to higher demand, goes up from \$18 to \$20 per barrel, the total U.S. import bill would rise from \$72 to \$100 million per day. The actual cost for the 1 million barrels of increased oil imports is \$28 per barrel and yet, by spreading the cost to all imports, the market price is only \$20 with an increase of \$2 per barrel.
 By adding "security costs" onto the social costs, Hogan said an import fee of \$10 would more truly reflect the cost of imports and help balance the nation's import diet by encouraging more conservation.
 Hogan said the Reagan admini-

Sunday, October 4, 1987
 stration's "Energy Security" study earlier this year wrongly calculated the cost to the economy of a \$10 per barrel oil import fee at \$200 billion over 10 years. Hogan's report said the fee would benefit the economy by \$10 billion over eight years.
 Since a \$10 per barrel fee is not politically practical in Congress, the report recommended a flat \$5 fee, regardless of the price of oil, which Hogan said would do almost as much good.
HOSPITAL REPORT
 Patients in Hansford Hospital are Eldon Boese, John Murdock, Cindy Elliot, Lois Gibner, Ruby Heath, Ofelia Vela, Edna Grimmer, Doug Maupin and Winnie Allen.
 Dismissed were Cynthia Floyd and Betty Cotter.

Bewitching Values
 throughout the store
Moonlight Madness Sale
 Monday Night
 6:00-9:00 p.m.
CATES MEN & BOYS WEAR
 221 Main
 659-3426

Make a clean Sweep
 with up to **50% savings**
 During the **Moonlight Madness Sale**.
Hotel Royal
 OWNERS: Linda Sanders, Gina Davis, E. C. Bulls
 502 Davis Spearman, (806) 659-3155

Worth staying up for...
MOONLIGHT MADNESS Sale
Monday, October 5th
 6:00 - 9:00 P.M.
 3 HOURS ONLY

30% OFF
 ALL Home Furnishings
 and Save up to
 \$510⁰⁰ on RCA Electronics and
 up to \$320⁰⁰ on Whirlpool
 Appliances

MONDAY, OCTOBER 5TH
OPEN:
 6:00 p.m. until 9:00 p.m.

To Participate in the Spearman Merchants Moonlight Madness Sale

FOR THE BIGGEST & BEST BARGAINS EVER ... BE AT BEEDY FURNITURE!

TERMS
 Nothing Down,
 Up to 36 Months
 With
 Credit Approval
 Revolving Accounts
 with
 Credit Approval

CLOSED ALL DAY MONDAY
 Until 6:00 P.M.
 Marking Merchandise For The Sale.

TERMS WILL BE EXTENDED PENDING CREDIT APPROVAL
A DEPOSIT MUST BE MADE ON ALL PURCHASES

Beedy FURNITURE CO.
 plains shopping center
 659-3701
 723 W. 7th
 Spearman, Texas