

The McLean News

Price 15¢

Serving McLean and the Area Since 1903

VOLUME 73

McLEAN, GRAY COUNTY, TEXAS - THURSDAY, FEBRUARY 12, 1976

NUMBER 7

Co. Easter Seal Representative Named for 1976

Mrs. B. Casey of Pampa will lead the 1976 Easter Seal Appeal in Gray County, it was announced by Irving A. Baker of Dallas, President of the Easter Seal Society for Crippled Children and Adults of Texas.

Residents in the county will receive the traditional Easter Seal Appeal letters beginning March 1. The Easter Seal Appeal is conducted each Spring to provide disabled persons and their families treatment and services. It will continue through Easter Sunday, April 18. Mrs. Casey is one of the 234 men and women throughout Texas who serve in this capacity to help meet the cost of the statewide Easter Seal program, which assisted 10,768 handicapped Texans in 1975.

The Texas Easter Seal Society and its statewide network of treatment centers and local volunteers spent \$1,825,547 financed by the traditional Spring Easter Seal Appeal and Fall Membership Drive. Over 90 percent of all funds raised remain in Texas to support the growing needs of the disabled in the state.

Special emphasis is being given in the 1976 Easter Seal Appeal to the disabled citizen who may need assistance and not know where to obtain it. Contact Mrs. Betty Casey, Citizens Bank & Trust Co., Pampa to receive a simple, self-mailing request for service form. Determination of the extent and type of assistance needed, the most efficient means of obtaining that assistance, and arrangements for qualified treatment or other services will be made by the Texas Easter Seal Society.

Youth Banquet Set For Friday

The First Baptist Church is hosting their annual Youth Banquet Feb. 13 at 7:30 p.m. in the fellowship hall. The adults of the church are making preparations for the banquet. Everything is being kept a secret for the program. The tickets may be bought from Curtis Simpson, Jerry Rollison, Lisa Gabel, Maridale Glass, Carolyn Bailey, Cree Boyd, Teresa Rollison, Sherry Glass, and Janet Smith.

A man becomes the father of his uniform.

Texas School Week Set For March 1-5

Texas Public Schools Week, March 1-5, is observed each year in order that parents and the public may visit schools in local communities. Mr. Homer Jefferson stated, "All classrooms, elementary through high school will host open-house during this week. The Community is invited to see first-hand how the school system operates."

According to Mr. Jefferson, Texas Public Schools Week has been used to increase the public's knowledge about the schools, to encourage parents to visit their public schools at least once a year and to help the public gain an appreciation of what schools and the community are doing for them.

"We encourage useful evaluation and criticism," Mr. Jefferson further stated, "for it is our belief that public comments will secure civic and community support for measures to improve the schools."

Volleyball Meet To Be Held In Memphis

The Memphis Young Homemakers are sponsoring a mens and womens volleyball tournament March 18, 19, and 20 at the Memphis High School Gym.

Deadline for entries will be March 11. Due to time limitations, only the first ten entries in each division will be accepted.

All interested teams should contact Mrs. Susan McQueen, Box 392, Memphis, Texas 79245, Ph. 259-3238 or Mrs. Nelwyn Warn, 2007 Palo Duro, Memphis, Texas 79245, Ph. 259-3397.

Proceeds from this project will go to the Memphis Young Homemakers Scholarship Fund in memory of Nancy May.

Senior Citizens To Have Party Saturday

A Valentine party will be held Saturday night at the Senior Citizen's building.

All senior citizens are invited to come and join in the fun. Please bring a Valentine.

Blood Pressure Clinic Friday

There will be blood pressure clinic on Friday from 2 p.m. to 5 p.m. at the Senior Citizen's Building. Anyone wishing their blood pressure taken may come by.

Heart Assoc. Sets Campaign Goal

The Gray County Heart Association has set as a goal, of \$8,000 for its 1976 Heart fund drive, for which plans are currently underway.

Funds collected during February -- American Heart month -- will support educational and community programs as well as research, a prime function of the Heart Association, Bill Slaughter, Heart Fund Campaign Chairperson, said.

Heart and blood vessel diseases afflict one out of every eight Americans. They will claim more than one million lives this year--52% of all deaths in the U.S. Through research and other programs, we can reduce premature death and disability from heart disease.

During Heart Month, more than 100 concerned people in Pampa, McLean, and Lefors, will join over two million Heart Association Volunteers throughout the country to distribute heart-saving information and collect funds to support programs of the Heart Association.

For instance, since the early 1960's, coronary care units have reduced the in-hospital death rate from heart attack by about 30%. But despite achievements in the fight against the nation's number one killer, more help is needed.

Please give generously when your heartfelt volunteer calls, Slaughter asked. Your Heart Association needs your help!

Clarendon College Shows Increase

Enrollment at Clarendon College is up 23 percent over spring of 1975 according to final figures released by the Registrar's Office at the college.

A total of 512 students are enrolled this spring compared to 418 last spring. Figures indicate that enrollment increased both in on-campus and off-campus programs, of the 512 students, 322 are enrolled in classes at Clarendon and 190 in off-campus locations.

Academic programs have an enrollment of 431 students, and increase of 13 percent over last spring, and vocational-technical programs are up by 17 percent with 81 enrolled.

Clarendon College has off-campus classes in Pampa, McLean, Valley High, Childress, Memphis, Shamrock, and Wellington.

Miss McLean 1976 To Be Crowned Saturday Night

The McLean Mothers Inc. is sponsoring the Miss McLean Beauty Pageant. It is to be held on Feb. 14 at 7:30 p.m. in the High School Auditorium.

The freshmen entered are Diane McAnear, Kara Daniels, Glenda Pharis, Robin Smith, Kelly Moore, Terri Rollison, Jamie Trew. Sophomores are Natalie Morris, Billie Lowery, Melinda Hunt, Robbie Turpen. Juniors are Peggy Van Huss, Teresa Mounce, Donna Benningfield, Beth Hambricht, Maridale Glass, Rose Dwyer. The seniors are Denice Lamb, Tammy Pierce, Betty Holmes, Cherrie Adams, Beckie Leeder, Cynthia Morris, Janet Smith, and Halcyon Back.

The Mothers Inc. has also contacted former Miss McLeans dating back to 1949. Many of the women will be there and be presented a rose on stage during intermission. The Miss McLean from 1937 will also be present.

(A call was received this week from Miss Kathy Raines, Miss McLean 1975, who is attending Delta State University at Cleveland, Miss., for the pageant contestants. It reads as follows.)

To all participants of the 1976 Miss McLean Beauty Contest, I extend my high approval and congratulations. First by entering the contest you won a chance to expand your circle of friends and a wonderful opportunity to have a lot of fun. You are also taking a giant step forward in maturing. This is an experience that non-participants will never be able to enjoy in this capacity. I am looking forward to seeing everyone again and am hoping for the best for each of you. Good luck.

Miss Kathy Raines
Miss McLean 1975

Tigers Play Claude 63-55

The McLean Tigers played the Claude Mustangs here last Friday night and they lost 63-55. The Mustangs were in command all through the game. The Tigers had a fourth quarter rally, but it fell short. The outstanding scorers for the Tigers were Morse Haynes with 25, Jim Bond with 12, Sam Haynes and Dean Trew with six points a piece, Ricky Lowery with four and Carter Trew with two points. The Tigers are now 8-16 for



MORSE HAYNES

FBLA Members Go To Contest

The McLean Future Business Leaders of America traveled to West Texas State University last Thursday for their annual district convention. The schools represented were Palo Duro, Canyon, Dumas, Silverton and McLean. During the first general session the area FBLA members listened to several different speakers. Then there were campaign speeches given by the candidate running for district office. From McLean, Scott Raines got vice-president and Natalie Morris got reporter. After lunch at McDonald's, the FBLA's returned to WTSU to have contests. The parliamentary procedure team of Cherrie Billingsley, Scott Raines, Tim Johnston, and Carter Trew won first place. The spelling team of Betty Holmes and Dean Trew won second place, and Morse Haynes won 3rd place in the Mr. FBLA contest. On the way home, the members stopped at Amarillo's Pizza Planet for supper.

"I Love America" To Be Presented

"I Love America", Colingsworth Counties bicentennial musical will be presented Thursday, Saturday, and Sunday, March 18, 20, and 21 at 8 p.m. First Baptist Church and Wellington High School will be the setting for the musical. Benny Hilgo, director, has announced that 82 singers and narrators will participate, reflecting the highlights of the nation's history.

Each of the songs salute America as a country of which all Americans can be proud.

Tickets will be available at the door.

the season and 3-10 in district play.

McLean Heart Fund Drive is Sunday

Pat Guill, president of the McLean Hospital Auxiliary was appointed chairman of the McLean Gray county Heart Fund Drive Sunday.

The Heart Fund Drive will be held Sunday, Feb. 22 from 1 to 5:30 p.m.

Anyone wishing to help in the drive may contact Mrs. Pat Guill or Mrs. Christine Winegeart.

Tigers Lose To Clarendon 53-52

The McLean Tigers traveled to Clarendon last Tuesday night to take on the Broncos and they lost 53-52. It was an exciting game all the way to the end. The Tigers were ahead by five at the end of the first half. The Broncos then came back and won. The outstanding scorers for the Tigers were Morse Haynes with 23, Dean Trew with 12, Ricky Lowery with seven, Sam Haynes with six and Billy Terry with four points.

Tigerettes Lose To Claude 46-52

The McLean Tigerettes hosted Claude last Friday night for the final home game of the season and lost by a score of 46-52. For the seniors, it was a very hard game to lose since it was the last time for them to play in their home gym. The Tigerettes led in the 1st quarter 8-6. Claude came back and downed the Tigerettes 19-20 at the half. At the end of the 3rd quarter the Tigerettes were still trailing one point with a score of 31-32. In the final quarter Claude outscored McLean five points and won 46-52. Cindy Sherrod and Delinda Howard pumped in 17 points a piece. Rose Dwyer followed with 12 points. Halcyon Back and Betty Holmes had six rebounds a piece. Terri Henley was close behind with five rebounds. Halcyon Back and Betty Holmes led with three steals each. Cindy Sherrod won all of her six jump balls.

Barton Landers of Tygh, Oregon and L.L. Rogers of Amarillo visited in the McLean Heald communities last week visiting friends and relatives.



A pair of spools tacked close together on the wall will make a broom or tennis racket holder.



Who Else Wants LOWER FOOD BILLS?

SHORTENING
CRISCO
IMPERIAL PURE CANE
SUGAR

3 LB. CAN

\$1.39

10 LB. BAG

\$2.29

GLADIOLA YELLOW or WHITE
CORN BREAD MIX PKG. **21¢**

64 OZ. BOTTLES
COCA-COLA No Return Bottles **75¢**

WAGONERS ALL FLAVORS BREAKFAST
DRINK CANS **2 FOR 89¢**

WILSONS
BOLOGNA LB. **89¢**

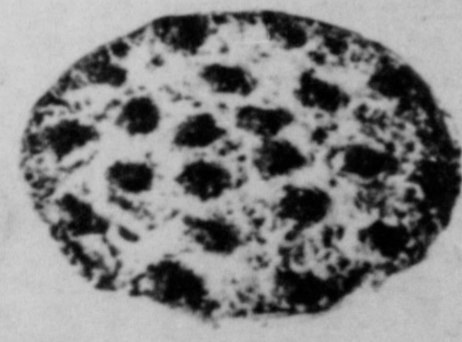
CHUCK WAGON
BACON 2 LB. PKG. **\$3.19**

BAMA STRAWBERRY
PRESERVES JAR **\$1.69**

BAMA PEACH
PRESERVES JAR **\$1.49**

BAMA GRAPE
JELLY OR JAM JAR **\$1.09**

Tony's *Special*
PIZZA



20¢ OFF

CANADIAN BACON - PEPPERONI - HAMBURGER - SAUSAGE

SHURFINE FROZEN
CORN 10 OZ. PKG. **3 FOR \$1**

U. S. NO. 2 WHITE
POTATOES 10 LB. BAG **89¢**

CABBAGE LB. **10¢**

CELERY STALK **35¢**



SIMPSON'S **LOWEST EVERYDAY FOOD PRICES**
MARKET

Tendercrust Bread and Bakery Products
SPECIALS GOOD
Fri. & Sat., Feb. 13-14

Ma
Egg
grocer
ing up
they re
oliday
still r
values
Cwende
Of c
around
ported
specia
includ
milk.
Mrs.
sumer
nation
Texas
ension
Texas
System
She
ers to
als on
vegetab
values
lesauc
eas an
Also,
ered a
choose
right
uniform
At fre
rapefr
aste
rices,
my bu
ples,
ears.
She ji
ble ch
rots,
ps, ru
For Ex
UNIPRO
F
A
4310-
4310
Pare
Pare
ere a
erves
1. Y
es
2. Y
Bil
3. Y
ab
4. Y
the
5. Y
the
6. Y
by
7. Y
ch
8. Y
YC
9. Y
Lo
10. Y
of a
And
rath:
onitic
our ch
ord a
the chil
OU?
C

Market Report

Egg prices at Texas grocery stores are trending upward slightly as they recover from post-holiday dips, but they are still reasonable for the values they provide, Mrs. Gwendolyn Clyatt Says.

Of other price checks around the state, she reported dairy items on special in many stores, including cheeses and milk.

Mrs. Clyatt is a consumer marketing information specialist with the Texas Agricultural Extension Service, The Texas A&M University System.

She also advised shoppers to watch for specials on canned and frozen vegetables -- with good values currently on applesauce, corn, green peas and tuna fish.

Also, dry beans are offered at attractive prices. Choose beans that have a bright uniform color and uniform size.

At fresh-fruit counters, grapefruit features fine taste and moderate prices, while other economy buys are oranges, apples, bananas and lemons.

She listed budget vegetable choices as cabbage, carrots, broccoli, turnips, rutabagas and hard-

shell squash. **CONSUMER WATCH-WORDS:** In buying fryer chickens, look for well-fleshed birds with full breast and meaty legs, along with a generous layer of fat well-distributed under the skin-giving it a yellow cast. A bird with clean, thin skin -- free from abrasions, bruises, pinfeathers and discoloration -- is desirable.

A new synthetic fiber produced in Japan by an emulsion spinning process is a "biconstituent" fiber--50 per cent vinyl alcohol and 50 per cent vinyon composition. This fabric is inherently flame retardant and does not release highly toxic fumes when ignited and forced to burn, according to Beverly Rhoades, clothes specialist with the Texas Agricultural Extension Service, The Texas A&M University System.

Cream of tartar, one of the main ingredients in baking powder, is recovered from fermented grape juice in wine making, Marilyn Haggard, foods and nutrition specialist with the Texas Agricultural Extension Service, The Texas A&M University System, says.



MR. AND MRS. KENNETH BELL

Michele Parker and Kenneth Bell Are Married at Methodist Church

First United Methodist Church of McLean was the scene of the December 27 double-ring ceremony uniting Michele Lou Parker and Kenneth Edward Bell. Parents of the couple are Mr. and Mrs. R.C. Parker of McLean and Mr. and Mrs. Louie L. Bell, also of McLean. Wedding vows were read by Rev. Robert Brown of Haskell, Texas before an arch which was adorned with greenery, ribbon and a pair of white doves. Light for the candle-light service was provided by five candelabra at the altar holding turquoise candles, and votive candles along the chancel which was draped with greenery. Votive candles were placed at each window of the church sanctuary and hurricane lamps lit the family pews, registrar's table, and organ. Mrs. Joann Miller, organist, of McLean played traditional wedding music. Soloist Wesley Brown of Haskell sang "Whither Thou

Goest", "Because", and "The Lord's Prayer". He was accompanied by Mrs. Miller.

The bride, given in marriage by her father with her mother and I" a vowal, wore a white floor-length gown of polyester crepe. The gown which was designed by the bride's mother featured an empire waistline and lantern sleeves. The lace bodice was topped by a mandarin collar and edged with lace embroidery. Her three-tiered veil fell from a Juliet headpiece and was also designed by her mother. The veil was of bridal illusion and each tier was edged in lace. The bride wore her gown for something new. Something old was a family heirloom cameo necklace; for something borrowed she carried her grandmother's handkerchief and wore a bracelet belonging to the groom's grandmother. Something blue was her blue garter.

Attending the bride as

maid-of-honor was Miss Betty Holmes of McLean. Bridesmaids were Miss Cherylan Holmes and Mrs. Loyce Parker of McLean, and Mrs. Brenda Parker of Amarillo. They wore identical floor-length gowns of turquoise floral polyester fashioned similar to the bride's gown and featuring cape collar and sleeves. Each carried a long-stemmed glamelia.

Mr. Steven Bell of Odessa attended his brother as best man. Groomsmen were Lewis Bell, brother of the groom, and Bryan Parker, brother of the bride, both of McLean, and Brad Parker, also the bride's brother, of Amarillo. Ushers were Wayman Bell, brother of the groom, and Ken Parker, brother of the bride, both of McLean.

The bride's mother wore a floor length dress of lilac doubleknit featuring an empire waist and angel sleeves. Her corsage was of pink roses.

The groom's mother was dressed in a floor length gown of light green doubleknit featuring empire waist and Gibson-girl sleeves. Her corsage was also of pink roses.

Miss Gina Layne and Miss Jeree Boyd of McLean registered guests. Miss Wendy McDowell of McLean passed out rice bags.

The reception was in Fellowship Hall. The bride's table featured a three-tiered cake decorated with turquoise flowers and a bouquet of turquoise carnations. The wedding cake was served by Miss Sarah Brown of Seymour, Texas and punch was served by Miss Jeree Boyd.

The groom's table was decorated in red and white featuring a "Coca-Cola" theme. The chocolate cake was served by Mrs. Janet Bell of Odessa, and Coca-Cola was served by Miss Gina Layne.

For the wedding trip to New Mexico, the bride

wore a pantsuit of turquoise doubleknit given to her by the groom.

Out of town guests included the groom's grandparents, Mr. and Mrs. F.D. Calder of Andrews, Texas, Mr. and Mrs. Steven Bell of Odessa, Rev. and Mrs. Robert Brown and Wesley of Haskell, Miss Sarah Brown of Seymour, and Mr. and Mrs. Brad Parker and Derek of Amarillo.

The bride is a senior at West Texas State University majoring in English Education. The groom is employed with the Coca-Cola Bottling Co. of Pampa. The couple is making their home at 610 N. Frost in Pampa.

Texas Farms To Decline 1% in 1976

AUSTIN--According to preliminary estimates, the number of Texas farms and ranches will decrease by 2,000 in 1976, Agriculture Commissioner John C. White said.

This is a decline of one percent from 207,000 acres last year to only 205,000 in 1976.

The number of farms and ranches in Texas had remained at 209,000 from 1972 through 1974 with the decline beginning in 1975 and continuing into this year, Commissioner White noted.

But while the number of farms and ranches has declined, the total acreage has remained the same, at 141,800, with average farm acreage increasing, White added.

In 1976, the estimated average size of farms and ranches will be 692, an increase from 685 in 1975.

Nationwide, total land in farms and ranches is forecast at 1,085 million for 1976. This represents a slight decline from 1975, when acreage was 1,086 million. The number of farms in the United States is expected to decline one percent to 2,785,780.

For Extra Energy - Try Our High-Potency, Pre-Digested UNIPRO 9 - 100 Tablets for \$5.95 Mail Orders Welcome
FOUNTAIN OF HEALTH
 A. B. C. CENTER Ph. 355-5162
 4310-E SOUTH WESTERN AMARILLO, TEXAS

Open 10 to 6
 Thurs. 10 to 8
 INFANTS TO
 SIZE 6X
CLOTHES 'N THINGS
 4310 S. Western * ABC Center * 352-2181
 AMARILLO, TEXAS

Parents . . . Please Read!

Parents, your child deserves the very best. Here are ten things which your child certainly deserves:

1. Your child deserves to hear you pray earnestly and often.
 2. Your child deserves to go to worship and Bible study with you . . . regularly!
 3. Your child deserves to hear you talk to others about becoming a Christian!
 4. Your child deserves to see you sacrifice for the Lord!
 5. Your child deserves to go with you to visit the sick and bereaved!
 6. Your child deserves to be taught the Bible by you!
 7. Your child deserves to hear you praise the church of our Lord!
 8. Your child deserves to be encouraged by YOU to always seek and obey the truth!
 9. Your child deserves to see you putting the Lord FIRST in your giving!
 10. Your child deserves to know the Christ, first of all, as He lives in YOU!
- "And, ye fathers, provoke not your children to wrath: but bring them up in the nurture and admonition of the Lord." (Eph. 6:4) Yes parents, your child does deserve the very best. Only the Lord and YOU, working together, can give it to your child. The Lord is doing His part. How about YOU?

CHURCH OF CHRIST
 J. A. Farber, Evangelist
 4th and Clarendon
 McLEAN, TEXAS

**Other Prices Are UP
 But Not FERTILIZER!**

46-0-0 UREA
 Compare - Feb. 1975 250.00
 Feb. 1976 158.00
Prices are down 92.00
 We handle Bulk or Bag
FERTILIZERS
 "You Make The Choice"
 We have the following brands:
 Olin Matheson - Nipak - Oxy-Zipp -
 Phillips
BENTLEYS FERTILIZER
 301 E. Foster Phone 779-2209



1946 1976

*The Children of
 Mr. and Mrs. Truitt Stewart
 request the pleasure of your company
 at a come and go reception
 in celebration of
 The Thirtieth Anniversary
 of their parents marriage
 Sunday, the fifteenth day of February
 nineteen hundred and seventy-six
 two-thirty until five o'clock
 in the home of
 Mr. and Mrs. Stewart
 901 North Commerce
 McLean, Texas*

DOWN MEMORY LANE

10 YEARS AGO

The McLean Jaycees took on the Lefors Jaycees Monday night in the local gym, in a basketball contest.

Miss Frances Cawfield became the bride of Hershel L. Smith Friday, Feb. 4, at 7:30p.m., in the First Baptist Church in McLean.

20 YEARS AGO

Thirteen McLean FFA and 4-H Club boys will be entered in the Gray County Junior Livestock Show which will be held at Recreation Park in Pampa Saturday.

Construction of the four-lane pavement of Highway 66 to the Carson County line was resumed last week when crews cleared away the snow in order to begin work on paving the north lane of the highway.

30 YEARS AGO

Beginning with a slow rain freezing as it fell Tuesday night, Wednesday morning saw the community in the grip of an ice storm turning to snow as the day advanced.

Mrs. Jean Word Orrick of Shamrock bought the Orchid Beauty Shop from Mrs. S.M. Hodges and will take charge next Monday.

W.E. Adams has opened an automobile repair shop on Highway 66.

Political Announcements

Political announcements appearing in this column are subject to the action of the Democratic primary May 1, 1976. All announcement fees must be paid in advance.

JUSTICE of the PEACE PRECINCT 5
Dorothy Beck
Carey Don Smith

CONSTABLE PREC. 5
J. D. Fish
Jimmy Joe McDonald

DISTRICT ATTORNEY
Harold Comer
John W. Warner

TAX - ASSESSOR - COLLECTOR
Jack Back

COUNTY ATTORNEY
David L. Marti

40 YEARS AGO

Grandmother Cubine celebrated her 86th birthday Feb. 6, with a turkey dinner at the home of her son, J.E. Cubine.

Winter has been here in earnest for the past two weeks with the thermometer dropping to eight below zero Saturday night, and near zero weather since.

Nisses Nona and Jewell entertained at a waffle supper last Friday evening. Those present were Misses Lillian Abbott, Pansy Harris and Eunice Stratten.

50 YEARS AGO

Mr. and Mrs. W. C. Phillips entertained with a pot luck dinner Feb. 14, for their grand daughters.

Childress Woman Celebrates 87th Birthday

Mrs. L.E. Murphy of Childress celebrated her 87th birthday last Saturday, Feb. 7. On hand to wish her well were her three children, Mr. and Mrs. Elmer Trent of Lufkin, Mr. and Mrs. Ott Moore of McLean and Mr. and Mrs. L.V. Keel.

Other guests were Mr. and Mrs. Harold Trent, Venita, Peggy and Joy of Carey; Mr. and Mrs. Wayland Trent and Wendell of Amarillo; Kenneth and Kerry Trent of Paducah; Mr. and Mrs. Jim Trent and Jody, Mrs. Allie Mae Trent, Donald Trent and Mrs. Opal Smith, all of Childress.

BIRTHDAYS

FEBRUARY 16

G. C. Prock
Ricky Ronald Willis
Phillip Gibson

FEBRUARY 17

Mrs. F. E. Hambright
Mrs. C. L. Woods
Michael Patterson
Sharon Barker
George Allen Bailey
Viola Holt

FEBRUARY 18

NONE

FEBRUARY 19

Tonue Hathaway

Minerva was the goddess Europa.

PERRIN'S
BEDSPREADS PILLOWS DRAPERIES

BRING YOUR WINDOW SIZES FOR FREE ESTIMATE
34 Western Plaza Phone 353-1421
AMARILLO, TEXAS 79109

NAWCC 0026939 07

WILKES CLOCK SHOP
CLOCK AND WATCH REPAIRING
ANTIQUES

Ph. 806-374-5632
206 W. 6TH AMARILLO, TEXAS 79101



WILSONS CORN KING

VACUUM PACK

BACON

1 LB. PKG.

\$14

2 LB. PKG.

\$26

2 LB. PKG.

\$27



64 OZ. BOTTLES

COCA-COLA OR 7 UP

79

DIAMOND SOLID

OLEO

LB. PKG.

3 FOR 99

GOLDEN CRUST

FLOUR

5 LB. BAG

79

BANQUET T.V.

DINNERS

CHICKEN
SALSURRY STEAK
MACARONI & CHEESE
SPAGHETTI &
MEAT BALLS

299 FOR

SHAWNEE

CORN BREAD MIX

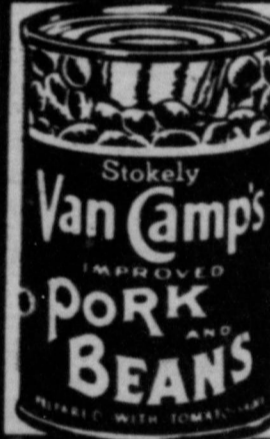
PKG.

2 FOR 39



303 CAN

3 95¢ FOR



300 CAN

3 95¢ FOR

DONALD DUCK

ORANGE JUICE

12 OZ. CANS

49

WE ARE YOUR
TOP STAMP
REDEMPTION CENTER



NONE MORE VALUABLE

U. S. NO. 2 WHITE

POTATOES

10 LB. BAG

79

LETTUCE

2 HEADS FOR

49

GRAPEFRUIT

9 99 FOR

99

TRY FRESH

BISCUITS CANS 10 FOR \$1

KELLY

MILK GALLON \$1.75

CAMPBELLS CHICKEN NOODLE

SOUP CANS 3 FOR 89c

LITTLE BROWNIE

COOKIES REG. 3 for \$1 3 FOR 89c

AUSTEX

CHILI 15 OZ. CAN 79c

INS STRAWBERRY

RESERVES 18 OZ. JAR 69c

EYS

GREEN BEANS 303 CAN 3 FOR 89c

GIANT SIZE \$1.29

POWELS LARGE ROLL 59c

Specials Good Friday and Saturday, February 13, 14, 1976

Farm-facts

Compiled From Sources Of The Texas Department of Agriculture John C. White, Commissioner

Not Since 1919... They've Done It Again... Above Last Year.

A report from the Texas Crop and Livestock Reporting Service backs up what Texas sheep producers have been saying all along: numbers of sheep and lambs in the state as well as the nation continue to decline.

For Texas, you have to go back to 1919 -- that's 57 years ago -- to find a year in which sheep numbers are lower than was the case as of Jan. 1.

All sheep and lambs on Texas farms totaled 2,600,000; this is 3 per cent below a year ago and ties the 1919 figure.

The number of sheep operations took an even sharper percentage dip. There are 9,500 sheep operations in the state as of Jan. 1. This is down 14 per cent from a year ago.

The inventory of all goats and kids is also down. The total as of Jan. 1 is 1,050,000. This is 9 per cent below a year ago. Angora goats are down 10 percent from a year ago; as of Jan. 1 the total is 890,000.

Nationwide, it's the same story. The Jan. 1 inventory of all sheep and lambs is 13,300,000 head, a decline of 8 per cent from 1975 and a downturn of 19 per cent from 1974.

Texas' value of all sheep and lambs is estimated at \$81,900,000. The average value per head is set at \$31.50 compared to \$23.50 a year ago.

Nationwide, a value of \$37.30 is placed on each head of sheep which compares with \$30.40 last year.

WHILE MANY TEXAS FARMERS are still trying to figure out what to do in the way of cropping plans this year, they set new production records in at least three commodities last year.

The 1975 wheat production in Texas set an all-time record of 131,100,000 bushels. This was more than twice the previous year. A new high in soybean production was also attained in 1975. Soybean production last year was 9,065,000 bushels for the state.

Although farmers did not produce a record total corn crop, they did set what is expected to be a new high for Texas in per acre yields of that commodity. A 103-bushel per acre average for the state during 1975 is about 20 bushels per acre higher than the major corn state of Iowa for last year. Total corn production for the state is set at 11,300,000 bushels, which is second in size only to the 1910 crop.

Grain sorghum producers also did well for themselves. Production of that commodity in 1975 was second to the largest crop ever produced in Texas. The 1975 crop amounted to 374,400,000 bushels.

The cotton crop was probably the biggest disappointment. The 1975 crop was 2,400,000 bales, which was the smallest in almost 30 years. Even at that, it was only slightly lower than 1974.

ONE OF THE STATE'S MAJOR specialty crops -- rice -- shows an increase in storage stocks. Rough rice stocks as of Jan. 1 are 22 per cent above a year ago. However, milled rice stocks are 38 per cent below a year ago.

Nationwide, rough rice stocks are 32 per cent above a year earlier and milled rice stocks are 6 per cent above a year ago.

Statistics are no substitute for judgement.

DR. JACK L. ROSE OPTOMETRIST

121 Main Shamrock Phone 256-3203 Tues.: 9-5 Fri.: 2-5



Some people believe that if you sneeze before breakfast, company's coming.

LRL AUTO AIR

ARA DISTRIBUTOR

* Air Conditioners for Cars and Farm Machinery

CRUISE CONTROLS

* Radios with Tape Players included

373-1313

1101 No. Fillmore AMARILLO, TEXAS

Blakemore

FRESH PROTEIN FED CATFISH



"Dressed While You Wait"

BLAKEMORE MOTOR CO. BUILDING

Phone 255-3287

400 North Main

Shamrock, Texas 79079

TIGER RAG

EDITORS.....Betty Holmes and Gina Layne
 REPORTERS.....Gary Danner, Dave Dorman, Marty Duniven, Sammy Don Haynes, Becky Henley, Betty Holmes, Denise Lamb, Ken Parker, Janet Smith, Johnny Winegeart, Cherrie Adams, Carolyn Bailey, Wayman Bell, Connie Cunningham, Maridale Glass, Beth Hambright, Peggy Van Hiss, Gina Layne, Teresa Mounce, Tammy Pierce.
 SPONSOR.....Mrs. Linda Haynes

Rodeo Club Goes To Amarillo

by Cherrie Billingsley
 MHS's Rodeo Club is really going for the top with a determination and a talent that is hard to believe unless you have a chance to see them in action.
 At the Amarillo High Rodeo this past weekend McLean really left its mark.

Greg Tolleson scored a 51 on his bull ride, Van Horn scored a 44 on his bareback, Greg Henley and Dale Steel with a 9.776 had first wrapped up when the last heading and heeler team bet them and moved them to second. Jim Bond walked away with a first place buckle in bull riding. Other boys participating were Jerry Rollison, Mike Harkins, David Tollison, and Marshall Hanes.

The girls team was nothing to sneeze at. Delinda Howard scored a 58 on her steer ride and came home with a second place buckle. Kelly Moore also did well. The girls placed third in the girls team standings. It was an exciting and prosperous weekend for the MHS Rodeo Club.

Students Have Career Assembly

Local high school students assembled in the auditorium Monday, Feb. 9, for a career assembly sponsored by the Explorer Scouts organization.

The Department of Public Safety had Safety Officer Greg Burgtorf on hand to talk about law enforcement as a career.

The starting pay for the recruit at the Law Enforcement Academy in Austin is \$768.00 a month. For entry into the academy a minimum of 60 college hours is required.

The five divisions of the Department include the Highway Patrol, Drivers License, safety Education, Vehicle Inspection, and Licenses and Weights.

Jr. Varsity Lose To Wellington

The McLean Tigerettes junior varsity lost to the Wellington junior varsity in a close overtime by a score of 32-34. The game remained relatively close throughout the game going into overtime with a score of 31-31. During the one minute overtime the score was again tied 32-32 but was broken by a Wellington lay-up on the buzzer ending the game with a score of 32-34. High point for the game was Billie Lowery with 17 followed by Cathy Estes with 13. On the guard end Tonue Hathaway led with nine rebounds while Gina Layne tied with four steals.

Tigerettes Stomp Wellington 67-37

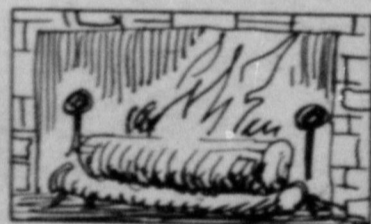
Tigerettes stomped the Wellington Rockets Tuesday night at Wellington with a score of 67-37.

The Tigerettes were in command throughout the game outscoring the Rockets with a half time score of 33-23.

Outstanding scorer for the evening was Rose Dwyer with 34 big points, followed by Delinda Howard with 17 and Cindy Sherrod with 13 points.

The guards played an important role in the victory receiving 23 rebounds; Betty Holmes with six; followed by Lela Skipper with five and Terri Henley and Halcyon Back both with four. Halcyon Back lead the guards in steals as she took away four Wellington balls.

This was the last game of the season with an overall season record of 14-14 and district game record of 9-5



How great a matter a little fire kindleth!

Tigers Lose to Wellington 50-74

The McLean Tigers finished out the season with a loss to the Wellington Rockets by a score of 50-74. The Tigers had to play the district champs and weren't able to stay on top. The half time score was 21-39. High point scorer for the Tigers was Morse Haynes with 20 points. Dean Trew followed with 10. The Tigers will be back next year in class "B" basketball anticipating a better season.

Committee Named By Sorority To Pick Outstanding Woman

Committee members have been named for the Outstanding Woman of the Year program according to Mrs. Evelyn Shaw, president of the local chapter of Beta Sigma Phi. Mrs. Naomi Ashcraft, chairman, Mrs. Wanda Reynolds and Mrs. Betty Throckmorton, will be in charge of the program, which will honor the woman of the year who has made outstanding contributions in her respective field, church, home and community life, during the past year.

This is a community wide competition and anyone wishing to place a nomination should get in contact with one of the above ladies for the correct form and return it before or on March 31, 1976.

Members of Beta Sigma Phi are not eligible for the outstanding award and the community will be notified at a later time as to the choice and place the presentation will be made.



People once had their children wear necklaces of white beads to aid their teething.



MR. AND MRS. JAYSON SMITH

"Let Heritage Ring" Is Theme Of Valentine Banquet

The date was February 7th, the time was 7:00 p.m., and the place was the McLean Country Club.

The occasion for the festivities was the annual Beta Sigma Phi Valentine Banquet. The meal was furnished by the members and three members daughters, Robin and Tami Smith and Sherry Glass served the members and their guests.

All enjoyed the beautiful Valentine decorations done by the members and music was played during the evening meal. After the meal the guests were introduced. President Evelyn Shaw then introduced the Valentine Sweetheart, Linda Smith escorted by her husband Jay.

Doing the honors of crowning the Sweetheart was President Evelyn Shaw with Shirley Stokes presenting the bouquet of yellow roses and sweetheart charm.

Members and husbands attending were: Mr. and Mrs. Jim Shaw, Mr. and Mrs. Casper Smith, Mr. and Mrs. Dub Stokes, Mr. and Mrs. Bill Heasley, Mr. and Mrs. Jay Smith, Mr. and Mrs. Bryan Parker, Mr. and Mrs. Bill Kingston, Mr. and Mrs. Doyal Billingsley, Mr. and Mrs. Dale Glass, Mr. and Mrs. Robert

Mrs. Billy J. Bailey Honoree at Pink-Blue Show

A pink and blue show honoring Mrs. Billy J. Bailey was given Sat. Feb. 31 in the home of Mrs. Britt Hathaway.

Refreshments were served from a table accented with green and yellow.

Hostesses were: Mrs. Britt Hathaway, Mrs. Odis Calcote, Mrs. Dean Trew, Mrs. Clyde Brock, Dorothy Beck, Mrs. Joe Glass and Mrs. Jim Shipman of Shamrock.

Out of town guests were Mrs. Vernon Tarbet of Shamrock, Mrs. Marshall Steward and Vicki of Amarillo and Mrs. Thornie of Pampa.



The flowering plant found at the highest altitude is "Stellaria decumbens" which grows 20,130 feet up in the Himalayas!

SMITH'S TAX SERVICE
 WILL DO TAX RETURNS SATURDAYS
 207 N. MAIN
 779-2343
 or 779-2297
 McLEAN, TEXAS

AMARILLO PROSTHETICS
 RON FLANARY, C.P. - Owner
 ALL TYPES ARTIFICIAL LIMBS
 CUSTOM FITTINGS & REPAIRS
 CERTIFIED FACILITY
 Member
 806 352-0431
 WEEKDAYS 9:00 AM - 5:30 PM
 27-B Medical Dr. AMARILLO, TEXAS
 We Will Always Take The Time To Talk With You

TOTAL SERVICE

It's Hard To Get Today, But That's What TEXAS PANHANDLE LIBRARY SYSTEM is About! One of Our Many Services is RECIPROCAL BORROWING, which means if you are eligible check out a book in your library; you may be able to borrow books from other TPLS Member Libraries. Check it out and take advantage of our many other TOTAL SERVICES!

Funded By The Texas Panhandle Library System with A Grant From Texas State Library Through the Texas Library Systems Act and the Library Services and Construction Act.

OSGOOD MONUMENT CO. IN AMARILLO
 as Area Sales Representative
GLADYS STEWART
 of McLean, Shamrock and Area
 You Can Contact Gladys Stewart at 779-2092
 or drop by Stewarts 66 Station and Religious Book Store on I-40 East in McLean

WEEKEND SPECIALS

1 GROUP BLOUSES	\$500
1 GROUP TOPS	\$300
1 GROUP PANTS	\$500
1 GROUP SWEATERS	\$800

TOPS 'N BOTTOMS
 4310 S. Western Ph. 352-0311
 AMARILLO, TEXAS abc Center

MISS McLEAN 1976

BEAUTY PAGEANT

Presented by Mothers Inc.

SATURDAY, FEBRUARY 14, 1976

at 7:30 p.m.

In High School Auditorium



TAMMY PIERCE
Jewel Box Fashions



CYTHIA MORRIS
Cowboy Drive Inn



BETH HAMBRIGHT
Pot Pourri Shop



BETTY HOLMES
City of McLean



JANET SMITH
Jane Simpson Agency



DENISE LAMB
J. R. Glass Oil Co.



MARIDALE GLASS
Puckett's Grocery



CHERRIE ADAMS
Billingsley's Station



ROSE DWYER
Corrines



CHERRIE BILLINGSLEY
McLean Hardware



HALCYON BACK
Parson Drug



TERESA MOUNCE
Gene's Garage



TERRI ROLLISON
Tigers Den



KARA DANIELS
Lamb Flowers



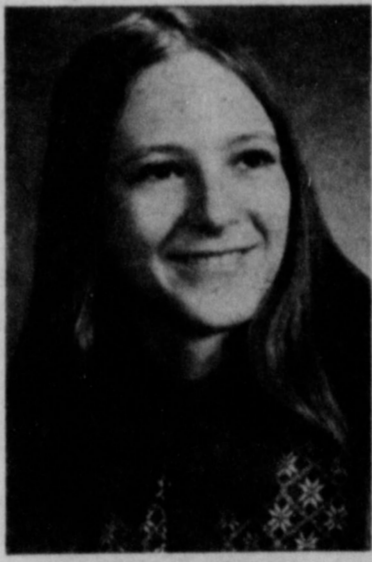
NATALIE MORRIS
Texaco Inc.



DONNA BENNINGFIELD
Hambright Cabinet Shop



PEGGY VAN HUSS
McLean Cattle Co.



BECKY LEEDER
Billie's Beauty Shop



MELINDA HUNT
Bailey's Welding Shop



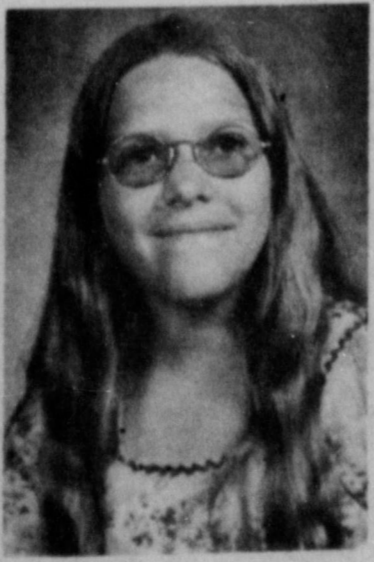
BILLIE LOWERY
Mullanax Men's Store



GLENDIA PHARIS
Simpsons Market



ROBBIE TURPEN
American National Bank



ROBIN SMITH
Jean's Beauty Shop



KELLY MOORE
Alberta's Hair Fashions



DIANE McANEAR
Terry's Electric



JAMIE TREW
Mary's Beauty Shop

CANCER ANSWER LINE American Cancer Society
M. D. Anderson Hospital and Tumor Institute



When something spills or cooks over in your oven, sprinkle it with salt and leave it overnight. Next day it should come off easily with a pancake turner.

Story's Custom Upholstery
COMPLETE LINE OF FABRICS VINYL LEATHERS
Estimates By Appointment
EDWARD STORY Owner
3410 VAN BUREN (806) 373-5470
AMARILLO, TEXAS 79109

A fireman notes: "I understand that if you can make it five years after you've been treated for cancer, that's considered cured. Is that correct?"

ANSWERline: Today, a cancer patient who is free of disease five years after diagnosis and treatment is considered cured for most forms of cancer. Nonetheless, individual doctors do consider shorter periods such as three years for cure in particular cases. The American Cancer Society uses the figure 1,500,000 for the number of Americans living now who are cured five years after treatment. Many more will be added to the cured ranks in the coming years.

A reader explains: "I am a factory worker and a union member. I am reading more and more about cancer risks on the job. What can you tell me about it?"

ANSWERline: You are reading more about this subject because we are learning more. Today, unions and management are joining scientists and the American Cancer Society in investigating such risks. We already know for example that there is a lung cancer risk for miners and for workers with nitrogen mustard asbestos, a nasal sinus cancer risk for woodworkers, internal and lymphatic cancer risk for organic chemists. All of us are out to eliminate risk factors but first we have to identify them. Why don't you find out what your employer and union is doing about this matter.

A teacher writes: "Three weeks ago my favorite aunt was treated for breast cancer, a disease that killed my mother. Now I am petrified

that the same thing will happen to her -- and to me because I am from the same family. Am I right to be frightened?"

ANSWERline: First of all, you said that your aunt was treated and that's a very positive thing for that's the only way to handle cancer. Hopefully, that treatment will work for her. As for you, there is no guarantee or law that says that you will get breast cancer too. Because of your family history, you run a higher risk than the woman without that background. That means that you should take advantage of the excellent means of early detection that we have today -- means that weren't available to your mother -- early detection is the key to cure. Ask your physician or the American Cancer Society about them. Also, be sure to learn and practice the life-saving habit of breast self-examination.

A businessman asks: "We Americans are polished off by heart disease, car accidents and so many other things. I wonder if cancer is really so important?"

ANSWERline: Just in pure numbers, one out of every six Americans die of cancer. It's estimated that some 54 million Americans alive today will eventually get cancer and that means one of four people in this country.

Do you have further questions? Call your local unit of the American Cancer Society or write: Cancer Communication Center, The University of Texas M.D. Anderson Hospital & Tumor Institute, Texas Medical Center, Houston, TX 77025.

gram was a 4-H demonstration by Layton Barton. We talked about our stock show. The 4-H'ers are having a Bicentennial cherry pie contest at Sunset Center in Amarillo Feb. 21.

4-H Have Club Meeting

The McLean 4-H Club regular meeting was held Wed., Feb. 4. Our pro-

AUCTION SALE

LOCATED AT 504 FIRST STREET - WEST EDGE OF McLEAN, TEXAS ON I-40, KNOWN AS ELLISON EQUIPMENT CO.

Saturday, February 21, 1976 10 a.m.

TRUCKS

- 1-61 GMC 4000 Truck Tractor, 5-sp. transmission w/2-sp. rear end, single axle V-6
- 1-40 ft. Tandem Axle Float w/2 ft. ext., Hobbs
- 1-62 Ford Winch Truck F-600 V8
- 1-55 Chevrolet 1 1/2-ton, good steel 16-ft. grain bed, 4-sp./2-sp.
- 1-74 Chevy Cheyenne Super 10, 454, automatic, long bed, low milage

EQUIPMENT

- 1-4 Row J.D. Planter, FD, GWD, 3-pt., DTB
- 1-4 Row J.D. 200 Bedder Planter, BD, DB, GWD, 3-pt.
- 1-4 Row M.F. Planter, late style w/J_Blue fert. boxes, 3-pt, pto drive
- 1-Hay Bailer 14-172 Ford
- 1-4 Row M.F. Planter, 3-pt., pto drive
- 1-Roto Tiller, 4-row, Service
- 1-4 Row J.D. FM Cultivator for wide front
- 1-4 Row Case 3-pt. Cultivator, rear mount
- 1-14 ft. Schafer Tandem
- 1-3-14 J.D. Breaking Plow, rollover
- 1-2-16 IH Breaking Plow, rollover
- 1-2-14 A.C. Breaking Plow, rollover
- 1-4 Row Crust Buster, sled, 3-pt.
- 1-4 Row Knifing Sled, angle iron, 3-pt.
- 1-2 Row Knifing Sled, angle iron, 3-pt.
- 1-4 Row M.F. Gang Rotary Hoe, 3-pt.
- 1-13 ft. J.D. Oneway, cylinder controlled
- 1-2 Row Liston Shredder, mo. 7-60
- 1-25 gal drag Spray Rig, Demster, No. 500, 10-row boom
- 1-7 1/2 ft. J.D. Mower, 3-pt.
- 1-25 gal Butane Tank with aprox. 6 gal. butane
- 1-Butane Filler Hose
- 1-Flame Cultivator
- 8-Barring Off. Discs - sealed bearings
- Large Lot Lister Points
- 1-Ace Pump, hi-pressure

SHOP EQUIPMENT

- Weaver Headlight Machine
- 6-Parts Bins
- Shop Vacuum Cleaner
- Power Kraft Table Saw
- 2-Steam Cleaners - 1 Jenny II C

HOME

- 1-Intercom System, Case
- Whirlpool Ref. Air Conditioner, #D 6100
- Miscellaneous Mattresses and Springs
- 3-Couches
- Large Lot Misc. Chairs
- Metal Desk
- Tent
- Screens
- 4-Sets Table and Chairs
- GE Stove
- Dupont Refrigerator
- 2-Air Conditioners
- Miscellaneous Doors

TRACTORS

- 2-9N Fords, one-53, one earlier, good motors & tires, gasoline
- 1-Case LC Wheatland, butane

ENGINES

- 383 Chrysler
- 352 Ford
- GMC 6-cyl. short block
- 283 Chevrolet

MISCELLANEOUS

- Bolen Riding Mower, Surburbin 24
- Saddle with Saddle stand
- 2-Bridles
- Halters
- Trailer Jack - high lift - new
- Large Lot Hydraulic Jacks
- 1-National Cash Register (electric)
- Large Lot Chains and Boomers
- Tow Bar
- Battery Cables
- 2-Adding Machines
- 2-New and used Shredder Blades
- 1-Large Lot new IH Roller bearings and ball bearings
- Large lot Hand Tools
- 35 Gal., Cleaner Fluid - 1/2 full
- 2 1/2 gal. Mobilube C90 SAE 90-50
- Drop Lift
- Dr. Pepper Machine
- Misc. Tire Tools
- Lot Batteries
- 3-Fire Extinguishers
- 8-sheets Paneling - wood
- Tool Chest
- Misc. Brooms, hoes, Shovels, Racks
- 2 1/2 gal. SA-50 Thinner
- Large Lot Center Links
- Misc. Rope
- 24x32 Goodrich Tires
- Large Lot Tires, rims, truck and car
- 6 Boothes, restaurant type
- Large Lot Ceiling Panels
- Large Lot Mower & IH & J.L. Case combine sickles
- 1/4 Mile Electric Fence Wire
- Large Lot Hub Caps
- Large Lot Paint
- Large Lot Planter Chains, various sizes
- JD Planter Plates
- Large Lot Flares and reflectors
- Large Lot Keys
- Large Lot Brake Shoes
- 10-ft. Show Case, glass top
- 16-ft. Counter
- 2-2x9 ft. Shelves
- Metal Cabinet, with bolts, zerts, screws
- Large Lot Carburetor
- Large Lot V-Belts
- Large Lot Motor Slevs for I.H.
- Large Lot new Tractor Machinery parts ranging from water pumps to axle housings also GM car Parts

MANY ITEMS TOO NUMEROUS TO LIST.

TERMS: CASH

James G. Ellison, Estate

SHELBY PETTIT - AUCTIONEER

Lic. TXGC-76-0101
Phone 826-5255
Wheeler, Texas

ROGER E. McCRACKEN
RITA JO' CROCKETT
CLERKS

Not Responsible For Theft or Accident.

All COATS 30% OFF

ALL MENS SHIRTS 30% OFF

APACHE LEATHER GOODS is now the OSBORNE TOOL DEALER for the Panhandle area.

We have a new shipment of Gift Items - all of Leather

Large selection of Brass Belt Buckles. Good collection of rodeo gloves.

GIFT CERTIFICATES Open 10 am - 6 pm

APACHE LEATHER GOODS
6666 Hwy 66 West. 353-3401
AMARILLO, TEXAS 79106

CLASSIFIED * ADS * NEWS

CLASSIFIED

ads cash, unless customer, an established account with McLean News.

Deadline for Want Ads - 5 p.m. Tuesday

Phone 779-2447

FOR SALE

HOUSE FOR SALE - N. Walnut, 779-2049. 44-tfc

FOR SALE - Top quality alfalfa hay and number 1 alfalfa hay. Call Dick Pett, Rt. 1, McLean, Texas, 779-2750. 1tp

FOR SALE - 6 room brick house with two baths on West First St. Call 779-2777 at night. 51-tfc

FOR SALE - 1974 Maverick V8, 2-door, automatic transmission, power windows, air conditioner. J. Dickinson, 779-2555. 7-1c

NEW pair boys boots for sale. Size 5 1/2. \$15. 779-2189. 7-tfc

FOR SALE - My home at the end of Main St. Vela Corcoran. Call day 779-2282, night 779-2319. 7-tfc

THIS WEEK ONLY One table of miscellaneous items consisting of girls and womens boots, shoes, shirts, pants, handbags, etc. \$1.00 each. Jewel Box Fashions. 7-1c

FOR SALE - One hay rack 9 ft. long with 2 in. pipe frame on skids, ONE #1 ft. windmill tower made out of 2 in. pipe. Call 779-2973. 6-2tp

VALENTINES at the Pot Pourri Shop. 7-1c

BUY your sweetheart a gift from the Pot Pourri Shop. 7-1c

OVER 200 articles to sell, home. Farm and household after Feb. 14th. Mrs. Luther Petty. 7-1c

FOR SALE 62 Oldsmobile good shape. Fully Equipped. Mrs. Dick Dickin- son. 779-2105. 6-2c

WANTED

WANTED to lease for season Lovegrass for cows. Contact Tommy Emmert 779-2849 or Bill Janes 447-2791. 6-tfc

BULLDOZING Work wanted. Britt Hathaway, 779-2585. 24-tfc

RESTAURANT and motel help wanted. Apply at Dixie Motel or Restaurant. 4-tfc

FOR RENT

HOUSE FOR RENT - Nice two bedroom. Call 779-2393. 1-tfc

PUBLIC SERVICES

INCOME TAX DONE. Sunday afternoon. 817 N. Waldron. Vera Sharber, 806 - 355 - 5716 or 779-2152. 1-tfc

FOR all your plumbing needs call Wallace Plumbing and heating. Day or night. 779-2838. 47-tfc

SEPTIC tank pumping and cleaning, pit pumping, also do ditching digging work. Cleaning lines, all types. Shamrock, Texas. D. H. Sanford, 256-3117. 51-tfc

PAMPA CHRYSLER DODGE has large selection of trucks, pickups, Chryslers, Dodges, Plymouths, Ramcharger, 4 wheel drive pickups, large selection of good used cars and trucks. Pampa Chrysler Dodge, 811 W. Wilks, Pampa, Texas, 665-5766.

ALL TYPE carpenter work wanted. Contract or by hour. Write R.L. Leeder, Box 124, Alanreed or call 779-2950 before 3 p.m. 3-tfc

RID your home of termites, roaches, carpet beetles. Free inspection. Work guaranteed. United Pest Control. Call Mrs. G. W. Humphreys 779-2743 or 323-6666. 7-tfc

*** County *** Agricultural Agents Texas A. & M. College Extension Service

BY Joe Van Zandt

The recently released USDA cattle and calf inventory as of January 1, 1976 showed a decline for the first decline in cattle inventory since January 1, 1967 nine years ago. All cattle and calves are estimated at 128.0 million head, 3 percent below a year earlier and down 9 percent from the number estimated for July 1, 1975.

All cows and heifers that have calved are down 3 percent from a year ago and 5 percent below last July at 54.8 million head.

Beef cows at 43.7 million head, are down 4 percent from a year earlier but 2 percent above 2 years ago.

Heifers kept for replacements for both beef and dairy cows declined 14 percent during 1975 while the total heifer population declined 5 percent. This resulted in an increase of 14 percent in other heifers which would include those on feed and pasture over 50 pounds.

The number of steers weighing 500 pounds and over increased 5 percent from 16,373 to 17,153 on

CARD OF THANKS

CARD OF THANKS The family of Mug Castleberry would like to express our deep appreciation for the prayers, visits, cards and flowers sent to Mug while he was in the McLean Hospital, also the High Plains Baptist Hospital in Amarillo. A special thanks to Dr. Fabian, hospital staff and Dr. Wood.

Thank you to the many friends who brought food. Since the food was served at two places some of the dishes do not have names on them. Everything was deeply appreciated so if we fail to deliver your dishes or send a card of thanks contact us for the dishes. We are indeed grateful for every thing that was done and can never express our thanks to you.

Mrs. Mug Castleberry J.C. and Bobbie Willis Bobby Jack and Ella Mae Massey and Brent Greg and Patti Willis James, Delora and Jimmie Jarrett Eugene and Brenda Galley

CARD OF THANKS

Thanks to everyone for your prayers, visits, cards and calls during my second stay in the hospital. Thanks to the Drs. and nurses for their excellent care and to all who worked to make the hospital first class. May God richly bless you for it. Nora Clawson

CARD OF THANKS

We would like to express our deep appreciation to our wonderful old friends in the McLean area for their kindness and sympathy for the funeral of our dad and brother, Temple Rogers. Brooks, Mille and the Rogers family.

CARD OF THANKS

We wish to express our deep appreciation to everyone for their kindness and words of sympathy following the loss of our loved one. The cards, flowers, words of sympathy all helped to lighten our load. The Bill Estes Family

EVERYDAY LOW PRICES ON TIRES

EXAMPLE: F8 F78x14 21.35
Fed. Tax \$2.40
State Tax \$1.07

To FARM BUREAU MEMBERS - Memberships available at

C & H SUPPLY CO.
U.S. Hi-Way 66 & 83 Intersections
SHAMROCK, TEXAS
Phone 256-2124

Approval Given FM Construction

CHILDRESS--Administrative approval for the proposed construction of F.M. Road 3134 in Collingsworth County has been granted announced Lewis H. White, Childress district engineer for the State Department of Highways and Public Transportation.

The proposed construction extends from the Donley County Line, in the northwest corner of Collingsworth County, East and South 6.2 miles, with each end of the project connecting to previously completed sections of F.M. 3134.

"Construction of the project will be dependent on when funds become available", said White.

Completion of the project will afford a thru Farm-to-Market route between Dozier and McLean.

The project will consist of grading, drainage structures, base and surfacing of the present county earth road to provide two 10-foot travel lanes.

The Department afforded an opportunity for a public hearing but no requests were received.

When traveling by car, a roomy handbag or basket will keep possessions together and reduce the jumble that accumulates on car seats.

It will be to check regularly and to bring in vegetables. Regular checking is important to detect insect and disease problems and to determine the need for watering. It's also handy to have the garden located near a water outlet.

A garden size of about 20 feet by 20 feet for an average size family is recommended.

After deciding on the garden's location, select the vegetables you want to plant. The only things limiting the type of vegetables you plant are space and soil conditions.

The next step in garden planning is to make a diagram of the garden and prepare an information chart. The chart should tell such things as the kinds of vegetables to be planted, the distance between rows and plants, the amount of fertilizer to be used, the time of planting and any other information that might be helpful.

Detailed gardening information is available at the county Extension Office to help you "grow your own groceries." Also Gray County 4-H members will be selling packets of vegetable seeds in about a month.

DON MILLER RADIATOR SERVICE

"IS OUR BUSINESS" NOT A SIDELINE

New & Rebuilt Radiators
Gas Tanks & Heaters Repaired

376-6666
612 S JEFFERSON
AMARILLO, TEXAS

MILDRED OTT McDONALD INCOME TAX SERVICE

BOOKKEEPING EFFICIENT * CAPABLE * ECONOMICAL
2704 JULIAN BLVD. PHONE 374-4467
AMARILLO, TEXAS

SALES and SERVICE ON NEW, USED & REBUILT

KIRBY-HOOVER-EUREKA COMPACT
ELECTROLUX-FILTER QUEEN-SILVER KING

A and S VACUUM CENTER
1402 WEST 15TH
AMARILLO, TEXAS 79102
JOHN H. SORRELL 1-806-374-3691

Join the fantastic world of Hairdressing

Great career for both Men and Women

Continuous Enrollment

American Hair Design School
3710 MOCKINGBIRD LANE • 806-355-9111
AMARILLO, TEXAS 79109
MEMBER NHCA

News From ALAN REED

Little Jimmy Armbrister was on the sick list Tuesday.

County school supt. Mrs. Anderson of Pampa was at the salad supper.

Visitors in church Sunday was Mr. and Mrs. Fred Patterson and Mrs. Leonard's sister.

Mr. and Mrs. P. M. Gibson and Mrs. T. T. Griffin of McLean were in Pampa Monday.

Mrs. Dick Drago was in Groom Hospital on Monday to see the Dr. Her daughter Mrs. Shirley Armbrister and Jimmy went with her.

The pastor's wife Mrs. Delores Thames is graduating from a six weeks school in Midland on last Tuesday.

Mrs. J.A. Hill spent several days in Lubbock last week with her son and family while some of them were ill.

Visiting Mrs. Cecil Carter Sunday was Mr. and Mrs. Jim Bruce and Shelby of Amarillo and Mr. and Mrs. Jerry Carter of Pampa.

Mr. and Mrs. Robert Bruce were in Jacksboro last week.

Visiting at the Carter orchard Sunday was Mr. and Mrs. Jerry Carter of Pampa, Mr. and Mrs. Wayne Leathers and children of McLean, Virginia Dalton and Lena Carter. Neal Hill of California

visited his sister, Mrs. G. E. Castleberry this week.

Visiting the Bill Crisp last week was Mr. and Mrs. Don Wilson, Brenda and Karen of Lake McClellan.

Mr. and Mrs. Robert Crisp of Rosewall, N. M. is here visiting, his brother, Mr. Frank Crisp who is in Groom Hospital.

Visiting Mr. and Mrs. Dick Drago is Mr. and Mrs. Vester Queen from Arkansas.

On Feb. 10 at 6:30 p. m. about 65 or 70 people gathered at the Alanreed School cafeteria for a salad supper.

Birthday Party Held Recently

Sunday at the home of his parents, Mr. and Mrs. Casper Smith, Spooky Smith was honored with a birthday party on his 12th birthday.

Cake, punch, and ice cream were served to Mike and Dennis Butolph, Jeff Kingston, Chett, Cris Coleman, Mike Doss and Jess Hernandez. His sisters, Robin, Tami and Wendi were there also.

Mr. and Mrs. Wayne Leathers and children were in Amarillo on Monday where Mr. Leathers father underwent eye surgery. Mr. Leathers returned home on Tuesday and Mr. and Mrs. Wayne Leathers were over there at Lelia Lake to see how he was doing.

HONEY COOKIES

2/3 cup shortening
1/2 cup sugar
1 cup Texas honey
1 egg, beaten
1/2 cup sour cream
5 cups cake flour

1 tsp. baking soda
1 tsp. cinnamon
1 tsp. nutmeg
1/2 tsp. cloves
1 tsp. salt

Cream shortening and sugar. Add honey and blend well. Sift dry ingredients and add to creamed mixture. This cookie dough can be rolled and cut in various shapes with cookie cutters, formed with a cookie press or dropped from a teaspoon. Bake on greased cookie sheets at 350 degrees for 15 minutes. Serve the cookies plain, decorate with frosting or before baking, sprinkle with colored sugar. Yield: approximately 10 dozen.

ORANGE GUMDROP COOKIES

1 cup shortening
1 cup granulated sugar
1 cup brown sugar (not packed)
2 eggs
1 tsp. vanilla
2 cups flour
1 tsp. baking powder

1 tsp. baking soda
1/2 tsp. salt
2 cups quick-cooking oats
1-1/2 cups chopped Texas peanuts
1 cup chopped orange gumdrop slices

Cream shortening and sugars. Add eggs and beat well. Add vanilla, flour, baking powder, soda and salt. Mix well. Add oats, peanuts and gumdrop slices. Drop by teaspoons onto greased cookie sheet. Bake in 325 degree oven for 10-12 minutes. Yield: 5-6 dozen.

HONEY CRUNCHIES

3 cups quick-cooking oats
1 cup flaked coconut
1 cup chopped pecans
1 cup all-purpose flour

1-1/2 cups brown sugar, firmly packed
1 cup butter
1/3 cup Texas honey

In large mixing bowl, combine oats, coconut, pecans and flour. Combine brown sugar, butter and honey in heavy saucepan and heat to boiling. Pour mixture over dry ingredients, mixing until well combined. Drop by teaspoonfuls into greased muffin cups. Bake at 350 degrees for 12-15 minutes or until browned. Cool in pans. Yield: 50 cookies.

Visitors in the E. M. Bailey home over the weekend were Mr. and Mrs. Matthew Bailey, Allen, Misti and Kristi, Mr. and Mrs. Ben Hill,

Valerie and Jennifer, Mrs. Kathy Southerland and Bradley of Wellington.

CARD OF THANKS

CARD OF THANKS
Thank you is not a big enough word to express how we feel. Everyone was so kind during the illness and death of our husband and father. To Dr. Fabian, Dr. Wood and the nursing staff of McLean Hospital go our deepest gratitude for their unflinching help. To Creed and Wanda who were so kind and helpful, Rev. Bell and Mr. Farber for their support and to each one of you for food, flowers, cards, prayers and words of encouragement. Thank you. The wife and children of Bill Pettit

SMITHERMAN

TAX SERVICE

MONDAY thru FRIDAY

1 to 5 P.M.

Phone 779-2595



COOKIES FOR VALENTINE'S DAY—Valentine's Day is a special day for people of all ages. For young children it means a party complete with lots of Valentines, and what's a party without a variety of homemade cookies? Honey Cookies, Orange Gumdrop Cookies and Honey Crunchies are sure to be favorites with children and adults, too, says the Texas Department of Agriculture home economist.

LARGEST PRO-LINE INVENTORY
INDOOR GOLF LESSONS BY APPOINTMENT

EVERYDAY  LOW PRICES

Joe Brannon's Golf Center

JOE BRANNON, PROFESSIONAL
TEXAS FINEST PRO SHOP

SO. GEORGIA SHOPPING CENTER
2644 West 46th 353-6312

AMARILLO, TEXAS 79109


*We Welcome You to come in
and examine our selection of
Internationally Famous Name
brand Merchandise*

*"Clothes for
All Occasions"*

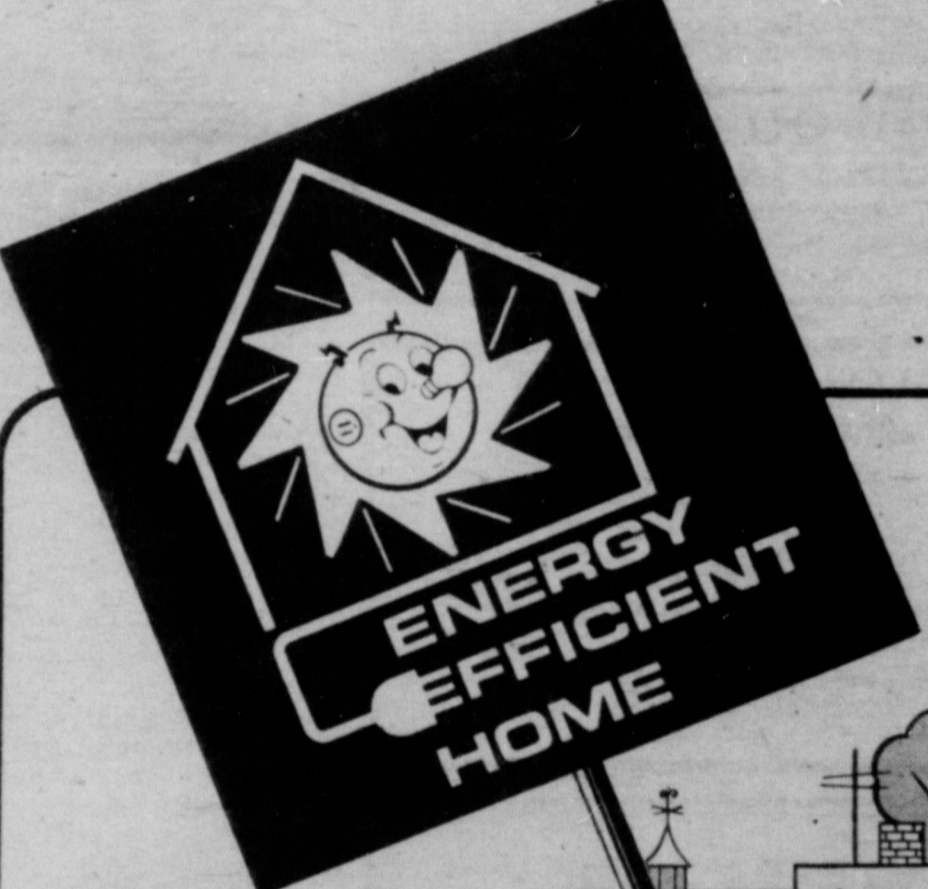
Anne Foster's Shop

Phone 353-4771 • Coronado Shopping Center • 3313 Wimberly
AMARILLO, TEXAS 79109

*Invest your Savings with us
We have a great interest in your future*

 **PANHANDLE SAVINGS & LOAN ASSOCIATION**

AMARILLO - 7th & Tyler & Wolflin At Georgia
CANYON - 1901 4th Avenue
PAMPA - Hobart & Cook




**THIS SIGN...
ON A NEW HOUSE
MEANS 40% OR MORE SAVINGS
ON HEATING & COOLING COSTS**

It has been known for some time that methods existed to insure the building of ENERGY EFFICIENT HOMES. But, inexpensive energy in the past made it logical to ignore the extra investment such a home would require. Now with energy costs rising, it becomes more and more important to use effectively every bit of energy we consume. The TOTAL ELECTRIC ENERGY EFFICIENT HOME does this... and, it means, conservatively, a 40% reduction in heating and cooling costs.

you're considering a newly constructed home, let us work with you and your builder to assure that your new home is designed for maximum comfort and energy savings — THE TOTAL ELECTRIC ENERGY EFFICIENT HOME.

ELECTRICITY - IT DOES SO MUCH GOOD

 *The Electric Company*

FOR SO MANY PEOPLE

You'll be hearing more about the ENERGY EFFICIENT HOME. If

The Future IS Electric!

Equal Opportunity Employer

VOLUME

Orville Buried

Funeral Orville R. 66, who were held in the Church with W. Bell, p. ting.

Graveside held at 11 day in the City at A. rangement by Lamb 1

Mr. Rya Kingsley, lived in 1974 when from Leve

He was a dealer. He Norton in City, Mont

He is su widow; five of Anthony of Columbia Tommy of Va., Terry Okla., and home; four Mrs. Conn Okla., Mrs wood of P Carolyn G junction, C Linda Ryan Calif.; a br of Anthony, L. E. Cro tras, Ore.; ren and of child.

Band Box Meet Mo

There w boosters m Feb. 23 a the band h

Everyone attend to plans for t and to se contest filr participate won.

Teachers Honore d

A dinner Saturday, Masonic the teache officials f Lefors and The dinn begin at 6: icially opic School The mini wives fro will also b

Former

Word wa week of the Wade, a fc of McLean of the busi Gatelys, fo

In Canadi ures almo