

# The McLean News

Serving McLean and the Area Since 1903

Volume 79 McLean, Gray County, Texas 79057 Thursday, September 16, 1982 Price 25¢ Number 37



There are still Good Samaritans in the world. One of those, Dr. Fulwider of Rancho Palo Verde, Calif., was in the right place at the right time to help save the life of McLean resident Vernon Turner. Turner was critically injured in an accident while working with the Texas Highway Department east of Amarillo July 21. The doctor was passing by the accident and stopped to render aid. Turner's injuries were so critical that without the doctor's expertise the McLean man probably would not have survived.

When the Turners told Emergency Room personnel how grateful they were to the California doctor, officials there told them that many doctors who have stopped to give aid to accident victims have been sued by those they were trying to help.

It's very reassuring to know there are still people who are willing to get involved to help others, despite the epidemic of lawsuits in our society today. We join the Texas Highway Department who recently wrote the doctor to express their gratitude for his help in saving Turner's life. It was truly an act of mercy, and courage.

Most experts tell us that it is not the problems that we have in life that cause us to be miserable, but rather our reaction to them. If that is true, then we need to learn how to look at difficulties in a more constructive way.

I've found that one of the best ways to combat the "overdrawn again, broke again" blues is to clean out closets!

By the time I've finished rearranging the tons of clothes and miscellaneous articles, I feel surfeited with all the "things" that we've managed to accumulate.

If that cure doesn't work for you, I can give you one more suggestion. A few weeks ago, I was wandering around Pampa, waiting for the paper to be printed. After spending almost an hour in the book store, killing time, and looking at various books, I finally decided to invest in one called "Color Me Beautiful." This book is about the latest fashion craze which says that all people are divided into four skin tones (named arbitrarily "winter", "summer",

See DISTAFF, Page 2

## McLEAN WEATHER

Date	High	Low
9-7-82	90	65
9-8-82	93	60
9-9-82	93	62
9-10-82	94	72
9-11-82	87	63
9-12-82	91	59
9-13-82	90	58

Precip. 9-11-82 - 10

## Board Approves Five Cent Increase

Several taxpayers attended the McLean School Board meeting Monday night as board members met for the final time to consider the proposed tax rate for 1983. The board approved a rate of \$1.03 per \$100 evaluation. The rate last year was 98¢ per \$100 evaluation.

Mrs. Shirley Johnson, school business manager, explained to the taxpayers that while the state law requires that the tax increase be figured on the effective tax rate the figures are misleading. The tax increase, based on the effective tax rate, is 15

percent, but the increase based on the difference between 98¢ and \$1.03 is actually about 4.7 percent.

Mrs. Johnson said that last year's expenditures were \$1,028,060, which included the new science/administration building at \$209,000. The budget for 1982-83 calls for expenditures of \$1,013,065, an increase of about 11 percent. Mrs. Johnson said that this budget includes cafeteria expenses for the first time and state-mandated salary raises.

The board voted to give taxpayers the customary discount of 3 percent if

paid in October, 2 percent if paid in November, and 1 percent if paid in December.

Linda Haynes, Debbie Fitch, and Martha Jo Bailey, members of the McLean Swimming Pool Committee, asked the board to consider how the school could use a swimming pool, if the committee is able to raise the money to construct one.

Board members said they would consider the various questions regarding a pool. No official action was taken.

In other business the

board considered the cafeteria report for August, which listed expenses of \$4,492.67, with an income of \$67.90 for the breakfast program and \$611.72 for the lunch program. Superintendent Jim Rutherford told the board that start-up expenses in the cafeteria were always greater than any other expenses. The board has budgeted \$16,000 for cafeteria deficits for the year.

Rutherford told the board that the school now has no reserve buses. He said that a Chevrolet van with 97,000 miles on it

was due for replacement. He recommended that the board purchase a 48-passenger bus. "The cost difference between a van and a large bus is very minimal," he said.

"I think the large bus would be more versatile." The board voted to order the large bus.

Rutherford said the factory was about 12 months behind on orders.

The board officially hired Sharon Lofton, who has been teaching social studies at the high school since school began. Board members also ap-

proved Rose Ann Shanks as a part-time employee in the business office.

The board discussed purchasing a stock trailer for the ag department, but tabled the matter until firm bids could be obtained.

Dennis Cleaver, auditor of Amarillo, was approved to audit the school's financial records.

Rutherford told the board that construction on the new science/administration building had not begun, because the contractor was waiting on the arrival of steel for the

building. Attending the meeting were board members Jim Allison,

Lloyd Hunt, J. C. McAnear, James Hefley, Joe Magee, and Darryl Herndon; superintendent Jim Rutherford; business manager Shirley Johnson; principal Ron Cummings;

and Mrs. A. E. Carpenter, Mr. and Mrs. Troy Corbin, Mr. and Mrs. O. O. Tate, Debbie Fitch, Linda Haynes,

Martha Jo Bailey, Cliff Tucker, Mr. and Mrs. Miro Pagan, Mr. and Mrs. Pete Brown, Mr. and Mrs. Lonnie Knutson, and Mrs. Varney Lowe.



FULLBACK ELSON RICE turns into the line to avoid the Owl tacklers during the non-conference clash at Silverton Friday night. [Photo by Kathy Carter]

## Silverton Owls Blank Tigers In Second Game Of Season

The McLean Tigers got another jolt Friday night as they suffered their second defeat in fall football action. The Silverton Owls took the ballgame 20-0 on their own turf Sept. 10, adding to McLean's loss record after the Sept. 2 McLean 7-0 defeat at the hands of Whiteface.

Action cooled off early for the Tigers, with Silverton making its first score half-way through the first quarter, after pass interception at McLean's 45-yard-line gave Silverton the ball. They turned that possession into a 45-yard jaunt to the goal line, taking the extra point as well, and setting the score at Silverton 7, McLean 0. Owl quarterback Shane Reagan threw the pass to set up Bob Arnold's touchdown, and Clifford Clardy kicked the extra point.

But the remainder of the first half saw neither team racking up much yardage. McLean's chances looked good, however, toward the end of the half as Tiger

Robert Swaner recovered a Silverton fumble, and McLean quarterback Randall Wynn threw to Daniel Via, putting the ball on Silverton's 25.

But what looked like the beginning of a run for the Tigers, petered out as the clock ticked away, and the Owls snared a Tiger pass to regain possession on their own 15. A clipping penalty against the Owls stopped the ball back to the 30, but the Owls still were in possession, and the clock was running out, so there were no further hopes for the Tigers in the first half.

The second half was even gloomier as far as the Tigers were concerned. Despite inspired punting by Andy Eck, who kicked seven punts for an average of 34 yards during the game, the Owls still overran McLean both in rushing and downs.

In the fourth quarter, after a steady drive from the McLean 36, Silverton's Reagan ran the ball in from the McLean 1

to up the ante. Clardy's kick again was good, and Silverton led 14-0 with 9:04 showing on the fourth quarter scoreboard.

Even though McLean

managed to regain the ball, and despite another Wynn-Via pass combination, Silverton managed to keep out-playing the Tigers, ripping off a pass, and keeping the ball

throughout the remainder of the game.

With only 1:39 left in the game, the Owls hit paydirt again, as Reagan slipped through on a 16-yarder for another score,

leaving the final tally at Silverton 20, McLean 0.

"Offensively, we just never could put it together," head coach Joe Riley commented. "Our blocking assignments

were off; four or five would get their assignments, but one or two would blow them. Intensity is the key to good football, and our intensity

See FOOTBALL, Page 2

## Youngsters Compete At McLean Playday

Cowboys and cowgirls from around the area gathered Sunday afternoon for a Playday at the Felton Webb rodeo arena north of McLean. The event was sponsored by the McLean Tri-State High School Rodeo Association.

Winners in the different age groups were as follows: GIRLS, 8 and under: Sonja Hext, first in barrels, first in poles; Shan Til Hext, second in barrels; Sequin Downey, second in poles and first in flag race.

BOYS, 8 and under: Charlie Russell, first in barrels, first in poles, first in flag race, second in rescue dump; Daniel Harris, second in barrels, second in poles, second in flag race and 1st in

rescue dump. GIRLS, 9 to 13, Cindy Coleman, first in barrels, Sally Worsham, second in barrels, second in poles, second in flag race, third in rescue dump; Deana Billingsley, third in barrels; Lolly Campbell, first in poles, first in flag race; Misty

Mayo, third in poles, third in flags; Darla McAnear, first in rescue dump; Desha Russell, second in rescue dump. BOYS, 9 to 13, Donald Harris, first in barrels, first in poles, first in flag race, first in rescue dump; Johnny Mangum, second in barrels, second

in flags; Robert Sanderson, third in barrels,

## EMT Registration Begins

Registration for an Emergency Medical Technician class to be given in McLean began Monday night at Thomas Nursing Center. Eight students registered for the class. Twelve students are needed before the course can be taught. The final registration day is Monday, Sept. 20. Anyone interested in taking the class should call Lynda Syfrett or Lisa Patman.

Classes will be each Monday and Wednesday night through mid-January, with a week off at both Thanksgiving and

third in poles; Monte

See PLAYDAY, Page 2

Christmas.

The course plan includes cardiopulmonary resuscitation techniques, emergency treatment of various injuries incurred in accidents, emergency childbirth techniques, patient extraction from vehicle wrecks, splinting and bandaging, and other general emergency medical procedures.

Along with classwork, students will receive 24 hours training in the emergency room at Coronado Community Hospital in Pampa, along with options for training in other departments in the hospital.

## DPS Reports Minor Wreck

An Indiana car was struck by a semi-tractor truck Sunday at 7:35 a.m. when the car attempted to turn left from the right hand lane of Interstate-40. The accident occurred near the Rowe street intersection of the west-bound lane, according to investigating officer, De-

partment of Public Safety trooper Ron Shanks.

The 1978 Impala Chevrolet was driven by John Landuit of South Bend, Ind., and the truck was driven by Michael Allen Smith of Jay, Okla. No injuries were reported in the accident.



# OPINIONS

VIEWS ARE WRITTEN BY LINDA HAYNES UNLESS OTHERWISE NOTED-IF YOU HAVE AN OPINION ON ANY CURRENT SUBJECT WE WELCOME YOUR SIGNED LETTERS.

## Increase Our Taxes?

We taxpayers are a funny breed. We scream and yell our heads off if we think we are paying an unfair tax. But this week several McLean citizens have actually commented "I'm glad the City raised the taxes!"

It seems to be the opinion of several residents that the City should have raised taxes a long time ago to provide more services.

The new tax increase raises taxes from 43c per \$100 evaluation to 45c per \$100 evaluation. For the average taxpayer that means that he will pay \$45 on a home valued at \$10,000.

For the City that means that municipal government will collect about \$27,000 in taxes this year.

When you look at today's prices and the number of services the City should perform, you can see that that is not much money.

Why has the City's tax rate been kept so low? Do the citizens prefer the low tax rate to increased services from the City?

Increased taxes bringing in more revenue might mean that McLean could have a city law officer or more paved streets or more custodial work in the City park. Increased taxes could mean a vast improvement in all the City's services.

Paying slightly higher taxes for better service from the City is something that many citizens would vote for if they had a chance. It's a question that our city councilmen should ponder as they look at future budgets and future tax increases.

## FOOTBALL

Continued From Page 1

just wasn't good. We forced ourselves to play defense too often.

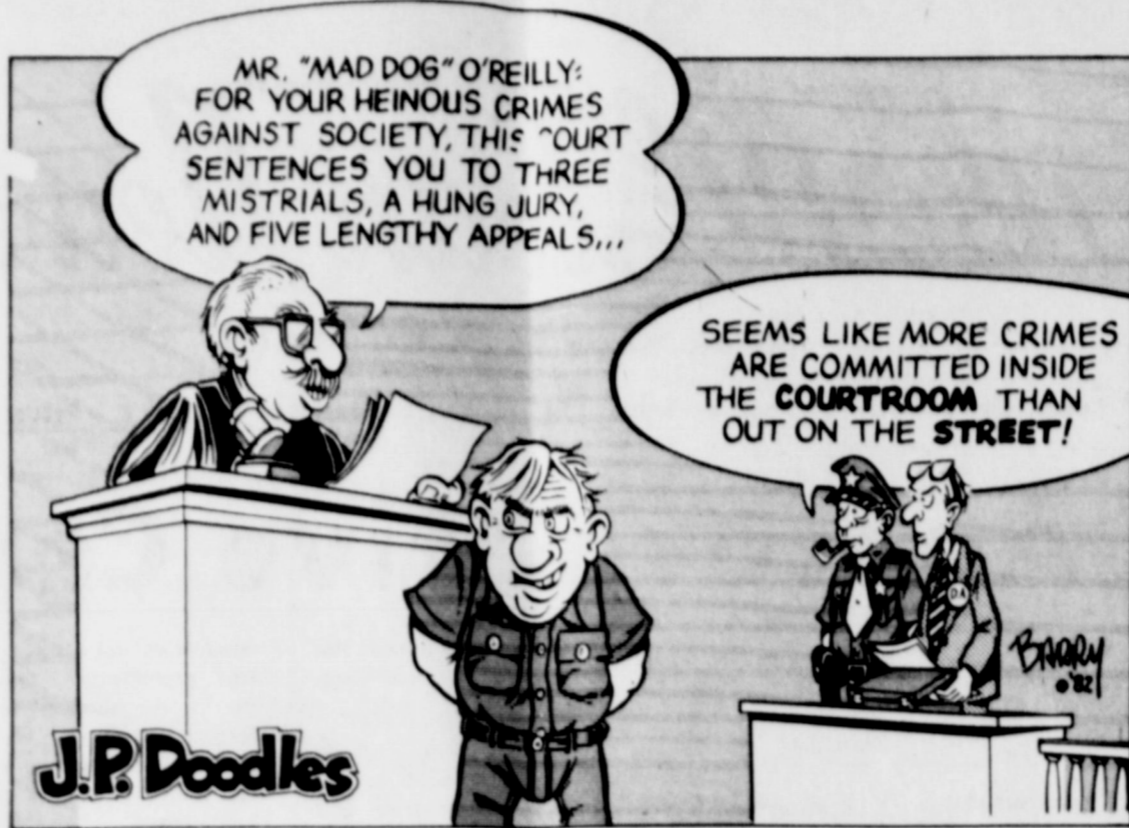
"But we're working on our intensity. We'll have to have it against Valley. And offensively we're going to have to make some changes. Valley is fundamentally a good team. They run the power sweep, and we'll have to stop that. They also have a couple of really good backs. It'll be a tough ballgame, but I think we can pull this one out."

"Our philosophy is that a defeat is when you don't do the best you can. We hope to have all our boys playing their best. They have the potential to be winners," he added.

McLean will play the Valley High Patriots Friday evening at 8 o'clock at Duncan Field in McLean.

Sept. 24 will be an open date for the Tigers, followed by an Oct. 1 Homecoming game against Groom.

Teams	McLean	Silverton
Yds. Rushing	39	159
Yds. Passing	47	85
Passes Att.	6	15
Passes Comp.	3	6
Passes Int. by	1	2
Yards Pen.	25	35
Punts	7	5
Punt Av.	34	30
First Downs	4	12
Fumbles	3	3
Fumble Rec.	2	2



## DISTAFF

"spring", and "autumn") and that each person has about 30 colors which look best on him or her.

After reading the book, I decided that all of us here at the News office could use a little psychological lift, so we proceeded to follow the book's instructions, and "redo" each of us with

different make up and different color clothes. The results were so astonishing that word began to spread, and before we knew it, we had a regular little beauty clinic here for our friends. All in all, I think we have done "makeovers" on about 22 women! Of course, this was not a money-making scheme

(nothing at the News office ever is!), but we have profited from the experience.

As each woman saw how terrific she looked in "her" colors, she began cleaning out her closet and bringing all the wrong colors down here for someone else. Well, not only do we all have

new make up, but we have so thoroughly exchanged clothes, that our latest game is to guess who's wearing whose clothes.

Needless to say, the men in our lives pretend to think the whole thing is crazy, but even they have noticed a considerable improvement. I'm not

LINES  
by  
LEM  
O'RICKK



We hope Fall will bring us some rain,  
And allergies go down the drain;  
We'll enjoy the cool days,  
And one big change we'll praise;  
Lawn mowing won't be such a strain!

## PLAYDAY

Continued From Page 1  
Mayo, second in poles, third in flag race, second in rescue dump.

GIRLS, 14 to 18, Robyn Coleman, first in barrels, second in poles, first in flag race, first in rescue dump; Teresa Woods, second in barrels, first in poles, second in flag race, second in rescue dump; Candi Carpenter, third in barrels

BOYS, 14 to 18: Russell Littlefield, first in barrels, first in poles, second in rescue dump, second in saddle race; Lance Stovall, second in barrels, third in flag race; Billie Billingsley, second in poles, second in flag race; Gregg Mann, first in flag race, third in saddle race; Andy Eck, first in rescue dump, third in sled race; Tim Hembree, third in rescue dump; Elson Rice, first in saddle race; Kirk Anderson, second in sled race.

GIRLS, 19 and over: Virginia Hext, first in barrels; Kelly Wolker, second in barrels, first in poles, second in flag race; Deannie Downey, third in barrels; Lynn Holland, second in barrels, first in flag race. BOYS, 19 and over: Bill Billingsley, first in barrels, first in flag race; Jack Campbell, second in barrels, third in poles; Frank Worsham, third in barrels, second in poles; Lloyd Littlefield, first in poles, second in flag race, and first in sled race; and Jimmy Al Anderson, third in flags.

## CAPITOL UPDATE

John Tower  
U.S. SENATOR for TEXAS



Out of the recent public debate on whether and how to change our income tax system has come an idea which many believe will make it more fair and simpler to manage. You will be hearing a great deal about this proposal in the weeks ahead, so I would like to take a moment to discuss its strengths and weaknesses.

Advocates of the "flat-rate tax" want to see everyone taxed at the same percentage rate, and to eliminate all tax deductions. This, they contend, would be fairer, because the rich could not take refuge in tax shelters. The rate middle-income taxpayers pay would be lower, so even without tax deductions, many people would pay less than they do now. The flat-rate tax would be simpler and cheaper for both taxpayers and the government, and would result in more investment since there no longer would be the incentive to put money into losing concerns to save tax dollars, according to its proponents.

Certainly, our tax system is too complicated. And in too many cases, middle income workers -- particularly married couples -- without enough deductions to itemize their returns wind up paying a disproportionate share of their income in taxes. More than half of all government regulations come from the Internal Revenue Service. Clearly, reforms are needed.

However, the flat-rate tax carries some pitfalls that must be considered before it is embraced as the answer to our problems.

Tax deductions, or expenses that are exempt from taxation, have been created with specific goals in mind. Extraordinary medical expenses are exempt because we have decided that we should give some assistance to families which must bear this financial burden. Home mortgage interest is deductible because we as a nation have tried to make it easier for families to own their own homes. Some forms of income, most notably Social Security, are exempt from taxation entirely because we have come to believe we should not diminish further the frequently small incomes of our senior citizens.

A true flat-rate tax would eliminate all of these considerations, and I am far from convinced that such an action would be consistent with our national goals and priorities.

Additionally, our current progressive tax structure is based on a belief that those who have higher incomes are able to pay a higher percentage of their incomes in taxes. A flat-rate tax, by definition, would not be progressive. Even without any deductions or tax shelters, high-income taxpayers would pay less into the federal treasury than they do now.

Some proposals would keep some of the deductions most frequently used by middle-income Americans, or even create two or three different tax brackets so that those with higher incomes would continue to pay a greater percentage of their income in taxes.

But if we decide to keep some deductions and eliminate others, more questions as to fairness arise.

Your letters to me indicate that an increased number of Texans are interested in the concept of the flat-rate tax, but that opinion is about evenly divided on its merits. Nor is there a consensus among either Democrats or Republicans.

The Senate Finance Committee will begin hearings on the subject Sept. 27. I will follow the testimony with great interest, because I believe it will be most helpful in illuminating the advantages and disadvantages of the flat-rate tax and its variations. No major revision of our tax code should be made hastily, without full consideration of all of the ramifications.

I hope you will give me the benefit of your views on the subject as public discussion continues in the weeks ahead.

## PSYCHOLOGY

Teaching Neatness



It's easier than you might think to get your children to be a help around the house. A good first step might be to assign a certain time of a day, or a few times a week for neatness.



In addition to a time for neatness, children need the proper tools for neatness. A lightweight carpet sweeper is much easier than a vacuum cleaner for a youngster to handle. With today's top technology, carpet sweepers can pick up everything from paper clips to pet hair. One new model, the Double Action from Bissell, features double brushes and over 15,000 bristles for fast pick-ups.



After clean-up time is over, the carpet sweeper is extra-easy to hang flatly and neatly away in the closet. Many parents reward their children with a special treat for neatness, such as an allowance, or special privileges around the house. It could be a great way to train your children to be the better homemaker of tomorrow.



The antenna of a male wasp has 13 joints.

"Truth is within ourselves." Robert Browning

## Senator Bill Sarpalius

Reports



### WAGES OR CHILDREN?

AUSTIN - Four of five women on welfare in Texas would not be eligible for welfare if their former husbands would pay their child support. Sixty percent of all Texas children below the poverty line would be lifted above that condition if their fathers (or mothers, as the case may be) would pay the child support ordered by the divorce court. Paying this amount would not put any of these paying parents below the poverty line.

Today, if the parent does not pay child support, the court can put him or her in jail. That is the court's only remedy, and courts are understandably reluctant to take the parent away from a job and put him in jail. Wage assignment, voluntarily or otherwise, will be a very controversial issue next session. Voluntary wage assignment is simply when the employer and employee agree that the employer will send part of a paycheck to someone other than the wage earner, with the wage earner's consent. Involuntary wage assignment, a form of garnishment, is when a court orders the employer to pay someone other than the wage earner, without the consent of the wage earner. It is prohibited by the Texas Constitution.

One thing the Legislature could do next session is pass a bill to establish an easy procedure for voluntary wage assignment for child support. Those who support the bill say the children need the money, and parents should be responsible for their children, whether the parents stay married or not. To be effective, the law would have to protect the employee from dismissal or harassment by his boss.

However, the bills likely to be introduced next session will go further than that. Under the new law, the

parent who has not paid his child support probably will have a choice: either assign part of his wages to the parent keeping the child or go to jail.

This extra feature -- close to involuntariness -- makes the decision on whether to support this bill very hard.

On the one hand, no group could be more deserving of this protection than innocent children, unable to fend for themselves. On the other hand, the judge's action in a case like this would be close to garnishment, which has been long-forbidden in Texas, for a good reason. It could take away the incentive to work. There is something special about salaries for work that we do not want to disturb. People like to see their paychecks in their hands, even if the whole check is spoken for before the employee gets it.

As you can see, this is a tough issue with good and bad points on both sides. But because the change ultimately will require a change in the Texas Constitution, the people may get a chance to vote on the change themselves, before it becomes law.



Many people once considered it bad luck to mention the name of a king.

## The McLean News

USPS 336-260  
LINDA HAYNES,  
EDITOR AND PUBLISHER  
LISA PATMAN, ASSOCIATE EDITOR

201 N. Main P.O. Drawer H  
McLean, Texas 79057



McLean, Gray County, Texas  
Published each Thursday  
(except the last week in December)

Second class postage paid at McLean, Texas 79057  
POSTMASTER: Send address changes to:  
THE McLEAN NEWS  
P.O. DRAWER H  
McLEAN, TEXAS 79057

SUBSCRIPTION RATES:  
\$12 per year in Gray County  
\$14 per year outside Gray County  
ADVERTISING RATES:  
\$2.00 per column inch National Rate  
\$1.85 per column inch Open Retail Rate

### COLUMNISTS:

Linda Haynes  
Sam Haynes  
Lisa Patman

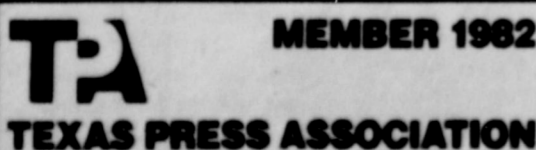
### ADVERTISING MANAGER:

Kathy Carter

### STRINGERS:

Lavern Carter, McLean  
Lena Carter, Alanreed

McLean, Texas  
Population 1183 [1970 Census]



## ON YOUR PAYROLL

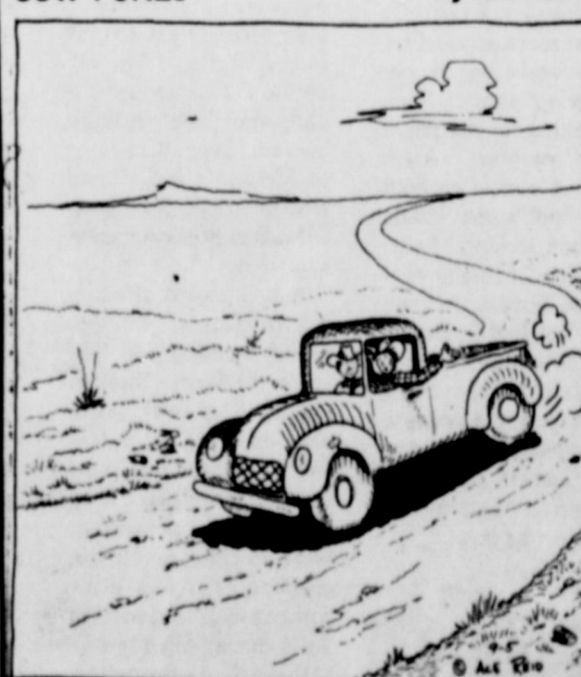
SENATOR BILL SARPALIUS, P.O. Box 12068, Austin, Texas 78711 or P.O. Box 7926, Amarillo, Texas 79101, or call 512/475-3222.  
REPRESENTATIVE FOSTER WHALEY, Texas House of Representatives, P.O. Box 2910, Austin, Texas 78769.  
REPRESENTATIVE JACK HIGHTOWER, 13th District, Room 2348 Rayburn Building, Washington, D.C. 20515.  
SENATOR LLOYD M. BENTSEN, Room 240, Russell Building, Washington, D.C. 20510.  
SENATOR JOHN TOWER, Room 142, Russell Building, Washington, D.C. 20510.

## LAST CHANCE!

MONDAY, SEPT. 20  
IS YOUR LAST CHANCE  
TO REGISTER FOR THE  
EMERGENCY MEDICAL TECHNICIAN  
COURSE  
TO BE HELD IN McLEAN.  
REGISTER TONIGHT AT 7 p.m. AT  
UNITED METHODIST CHURCH.  
DON'T MISS THIS  
LIFE-SAVING  
OPPORTUNITY!

## COW POKES

By Ace Reid



"Yeah we shore had a wet summer, one inch of rain and a foot of hail!" "COWPOKES" is brought to you by the friendly folks at the

American National Bank  
In McLean

779-2461  
201 N. Main  
McLean, Texas





# Diane McAnear, Phillip York Wed In Ceremony At Church Of Christ



MR. AND MRS. PHILLIP YORK

Cynthia Diane McAnear and Phillip Merle York of Olney exchanged wedding vows Sept. 4 at 7:30 p.m. in the McLean Church of Christ. James Douglas of Pampa officiated at the double-ring ceremony. The bride is the daughter of Mr. and Mrs. J.C. McAnear of McLean. The groom is the son of Mr. and Mrs. J.C. York of Olney.

Traditional wedding music was sung by the Bill Cox Singers of Pampa.

Hurricane-globed candle holders marked the pews of the church. The front of the church was decorated with three candelabras containing blue candles. The center candelabra was decorated with flowers and lemon leaf.

Candlelighters were the bride's brothers and sister, Jim Ridgway, Davey Ridgway, and Darla McAnear.

Given in marriage by her father, the bride wore a floor-length white dress which featured a fitted bodice with a Queen Anne neckline, a pleated skirt, puffed sleeves, and a chapel-length train. White brocade decorated the bodice. Her veil of illusion fell from a Juliet cap which was bordered in beads. She carried a bouquet of white carnations, roses, and baby's breath.

Attending the bride were her maid of honor, Jamie Trew of Palo Pinto,

and bridesmaids Sandra Reed of Roanoke, Rhonda Slater of Colorado City, and Donna McAnear, sister of the bride, of McLean. Flower girl was Tai Young of Wichita Falls.

The attendants wore floor-length dresses of light blue, with a sheer overlay. They wore wreaths of flowers in their hair, and carried brandy snifter candle

holders set on base of flowers.

Best man was Kelly Mahler of Lubbock. Groomsmen were David Cope of Olney, Scott Slater of Lubbock, and Steve Ashton of Wichita Falls. Ushers were Steven McAnear, brother of the bride, of McLean, and Leslie York, brother of the groom, of Olney.

The bride's parents hosted a wedding recep-

tion in the church annex immediately following the ceremony. The serving table featured the wedding cake, which was a four-tiered cake set on a fountain. Punch and blue mints were served from crystal serving pieces. The table was covered with a white lace cloth, caught up in tiers with blue bows. Serving at the reception were Carol Witt of Canadian and Robin

Smith of Canyon. Kathy Shifflett of Graham registered guests.

Grandparents attending the ceremony were Mr. and Mrs. Wallace Grimsley of McLean and Mr. and Mrs. John Tolle of Olney.

Following a wedding trip to Fort Worth, the couple is at home at Olney. Both are students at Midwestern University at Wichita Falls.

## Bode, Braidfoot Engagement Told

Mr. and Mrs. Dick Bode of Alanreed announce the engagement of their daughter Margie to Randy Braidfoot, son of Mr. and Mrs. E. R. Braidfoot of Panhandle.

Miss Bode, a graduate of McLean High School, is a senior art education major at West Texas State University.

Her fiancé is currently a senior mass communications major at West Texas State University and is a member of Pi Kappa Alpha national fraternity. He is employed by KBUY radio station.

The couple plans a Jan. 8 wedding at First Baptist Church in Pampa.



MARGIE BODE AND RANDY BRAIDFOOT

## McLEAN BRIEFS

Mrs. W. O. Hommel, Mr. and Mrs. Claude Brooks, and Mr. and Mrs. Ray Howard Miller of Amarillo attended the Johnston family reunion in Kelton last Sunday. While there they went to see Mrs. Hommel's old home place where she lived before her family moved to the McLean and Alanreed area.

Visiting Helen Simmons last week were Mr. and Mrs. Richard Simmons and Mr. and Mrs. Arthur Thomas of Tehachapi, Calif.

Rev. Archie Cooper was honored with a surprise birthday dinner given by his wife Virginia at the Maverick Cafe in Shamrock Sunday. Those present were his brother and sister-in-law, Paul and Vera Cooper and Ruby Gilbreath of Alan-

reed and Mr. and Mrs. F. M. Grimes of Wheeler.

Attending the Senior Citizens quilting and pot luck dinner Tuesday were Ruby Boyd, Mildred Giesler, Bertha Smith, Annie Herndon, Juanita Smith, Cliffie Heasley, and Ruby Tibbetts. Adelle Walker served the dinner. Guests were Eula Morrow, Lorene Sharp, Pete Evans, Raymond Smith, and E. J. Windom, Sr.

## Study Club Installs Officers

The Alanreed Twentieth Century Study Club met with Saffronia Pettit Sept. 9 for a covered-dish luncheon. The hostess carried out the club colors with green and pink candles and white carnations.

Officers for the new year were installed. Sa-

ffronia Pettit is president. Vela Young if first vice-president. Louise Dickinson is second vice-president, and Relia Ayers is secretary-treasurer.

After the lunch the group went to the Pioneer Room of the Lovett Memorial Library where Mrs. Irene Pagan showed

pictures of Cypress Gardens and Alaska.

Present were Louise Dickinson, Ada Simmons, Barbara Hambricht, Bertha Smith, Laverne Brooks, Nola Crisp, LaRue Hambricht, and Rose Hall, and guests Wilma Mangum, Faye Conners, and Mrs. Pagan.

## Ambulance Association Sponsors First Fund Raiser

McLean Volunteer Ambulance Association sponsored its first fundraiser of the year Saturday night with a Derbytown Jubilee. The musical event, which featured three western bands and two duets, brought in over \$866 for the ambulance organization.

"We were really pleased to have such support from the com-

munity," said ambulance member Jane Simpson. "This was one of the best jubilees we've had, in terms of attendance and performance, and the proceeds were much more than we had anticipated."

Ambulance members sponsored both ticket sales and concessions for the jubilee, and sold advertising spots for local

merchants. Ambulance association secretary Lisa Patman presented the informal ads during breaks in the show. "This was the first time anyone had tried advertising during the jubilee," she said, "so we didn't know if it would go over well. But the audience seemed to enjoy the ads, and I think the merchants liked the way they were presented,

so they turned out to be beneficial to everyone."

Proceeds from the jubilee will go into the ambulance association's general fund, and will go toward the purchase of new papers, a new communication system, and other new equipment.

The association plans to have other money-raising events in the future.

## Loose Marbles

by Lisa Patman

Dear Miss Mumbles,

I have a terrible problem, and you are the only one I can turn to.

I have a teenager who is a constant problem. He is often surly and uncooperative, never wants to be with the rest of the family, and seems to think that I am a noodle-brain. What's a mother to do?

Signed,  
Desperate.

Dear Desperate,

You have to remember that teenage years are difficult ones, not only for the families of teenagers, but also for the teenagers themselves. This is the time of life when a child feels unsure of himself, when he wants to try to be independent, when he may act as if he dislikes his family, when in reality he wants family support.

My suggestion is that you give your child the support he needs. I have found that an easy way to accomplish this is to cover his head with a large grocery bag, and then, taking lots of nice, sturdy nylon rope, tie him securely to the uppermost part of the tallest tree you can find.

This measure gives the child a sure sense of security, and the bag helps muffle the screams. I'm sure the entire family will benefit from this procedure.

Sympathetically,  
Ms. Muddled

Dear Mrs. Warbles,

I have a terrible problem, and you are the only one I can turn to. I have an old-fashioned mother who is a constant problem. She bursts into tears whenever I say the least little thing wrong. Also, she wants me to be at home more than one evening a month, which is cramping my style. She's a real noodle-brain. What's a teenager to do?

Signed,  
A Real Swell Person Who Doesn't Deserve The Rotten Breaks He's Getting

Dear Swollen,

You must remember that the teenage years are difficult ones, not only for you, but for your family as well. Your mother, knowing that you are growing up, probably is trying to be a little more independent. She may be thinking ahead to the day when her little darlings will be gone from the nest and she will be left alone in peace and quiet. Have sympathy for her, as her thoughts of the future with its hours, nay, days, of no interruptions, no complaints, no dirty socks, no whining and griping - have left her a bit restless and moody.

You can overcome all of this by removing yourself from the situation. Take a grocery sack, put it over

your head, and have someone tie you to the uppermost limbs of a tall tree. Only then will you be able to find true peace and serenity. There you will be able to meditate upon all the problems that plague you, and best of all, no one will recognize you with the bag over your head. I'm sure this will help the problem immensely, as you no longer will be subjected to the disgusting situation you have so bravely faced in the past.

Signed,

Trust Me Have I Ever Lied To You Before

Dear Ms. Muddled,

I've had enough of your interference! I recently found the above letters in the desk, and now I know what has been going on around here. Not only have I been perplexed by my wife's constant state of happiness, but also I have occasionally been puzzled about the disappearance of our teenager. Now I know that you are the reason for all this disruption, and I want it stopped right now.

Just keep your nose and your advice, out of my family's business, you old bat.

It's obvious that both my wife and child have been the objects of your warped, misguided advice.

I don't know why either of them would listen to you. I plan to question both of them quite fully, just as soon as my wife and I return from an extended trip to the continents. I'm going to untie that kid the minute we get back, and I'll sure let him know what a dumb thing he has done.

Signed,

An Indignant Father

Dear Petulant Pop,

Please accept my heartfelt apologies. I just haven't been the same since Dutch Elm Disease felled all my trees.

Signed,

Miz Maples

**HAMBRIGHT'S BUILDING SUPPLY**

Will Be Closed For Two Weeks  
-Sept. 13 to Sept. 25  
We Will Open On Sept. 27

We apologize for the inconvenience.

# AUCTION

**REAL ESTATE - FARM EQUIPMENT - SERVICE STATION EQUIPMENT**

**Wednesday, September 22, 1982 - Sale Time: 10:00 a.m.**

LOCATED: McLean, Texas - Corner of 1st and Commerce Street (same being on West Bound Lane of Interstate 40 in McLean, Texas), (Gulf Station)

**E. M. STEWART & OTHERS - Owners**

Telephone: (806) 779-2484 or (806) 779-2900

I am quitting farming and the Service Station Business and will sell the following at Public Auction:

<p><b>TRACTORS, RIDING MOWER, TILLER -</b></p> <ul style="list-style-type: none"> <li>1-1973 Farmall 766 Diesel Tractor, Cab, A/C, Hbr, Radio, W.F. Weights, S.H. D.P.T.O. 18.4X34 Rubber, 3500 Hours</li> <li>1-1949 John Deere G LPG Tractor, Tricycle Front, 3-pt Hitch</li> <li>1-Farmall H LPG Tractor, Tricycle Front</li> <li>1-MW 10 H.P. Riding Lawn Mower</li> <li>1-Craftsman Gas Powered Roto-Tiller</li> </ul> <p><b>SWATHER, FARM EQUIPMENT, TRACTOR &amp; TOOL MAKEUPS -</b></p> <ul style="list-style-type: none"> <li>1-International 1290 P.T.O. Swather, 12' Cut, With Crimper, (Been Reconditioned)</li> <li>1-International 610 14' Offset Disc, Nearly New Disc</li> <li>1-Pull Type 2 Round Bale Hauler</li> <li>1-John Deere 8' 3-pt Tandem Disc</li> <li>1-John Deere 216' 3-pt Mouldboard</li> <li>1-Oliver 4 Row 3-pt Lister</li> <li>1-BMB 2 Row D.T. Shredder</li> <li>1-Oliver Superior 16-8 Grain Drill, S.W.</li> <li>1-International 16-8 Grain Drill, L.W.R.</li> <li>1-Moline 8 Disc One-way, On Rubber</li> <li>1-R &amp; J 6 Row Crustbuster Knifing Rig</li> <li>1-Ford 1 Row P.T.O. Ensilage Cutter</li> <li>1-Hygro P.T.O. Roller Pump</li> <li>1-Set 18.4X34 Tractor Duals</li> <li>2-200 Gallon Fiberglass Spray Tanks</li> <li>1-Lot New &amp; Used John Deere 55 Combine Parts</li> <li>1-8' Channel Iron Drag</li> </ul>	<ul style="list-style-type: none"> <li>1-75 Gallon Pickup Aux. Gas Tank &amp; Toolbox Combination</li> <li>1-250 Gallon "Honey Dipper" Tank</li> <li>1-Butane Filler Hose</li> <li>1-Butane Crown Gun</li> </ul> <p><b>ICE MAKER, OFFICE EQUIPMENT, FURNITURE, GAMES -</b></p> <ul style="list-style-type: none"> <li>1-Mantovac Ice Machine</li> <li>1-Signature Chest Type Deep Freeze</li> <li>1-Weed Eater</li> <li>1-Wall-A-Way Reclining Chair</li> <li>1-Soft &amp; Chair Set</li> <li>1-Wooden Desk &amp; Chair</li> <li>1-Cash Drawer</li> <li>1-Tape Player With Speakers</li> <li>1-Brunswick Air Hockey Game Table</li> <li>1-Metal Swing Sets</li> <li>1-Standard Size Pool Table</li> <li>1-Sears Portable Dish Washer</li> <li>1-Oaele &amp; Merritt Gas Range</li> <li>1-BH Exercising Bicycle</li> <li>1-Frigidaire Electric Refrigerator</li> <li>1-Resizer Gas Heater</li> <li>2-Barbecue Grills</li> <li>1-Regency 23 Channel CB Base Radio</li> <li>2-Glass Counters</li> <li>1-Map Machine, 354</li> <li>1-Lot Curoes, Straw Hats, Gloves</li> <li>2-Ice Coolers</li> </ul> <p><b>LIVESTOCK EQUIPMENT -</b></p> <ul style="list-style-type: none"> <li>20-5X10 Metal Livestock Panels</li> <li>1-Prefort Cattle Head Gate</li> <li>4-Metal Cattle Feed Troughs</li> </ul> <p><b>MOTOR HOME, MOTORCYCLE -</b></p> <ul style="list-style-type: none"> <li>1-1970 Winnebago 21' Motor Home, Fully Self Contained</li> <li>1-Indian 2 Cycle, 10cc, Motorcycle</li> </ul> <p><b>SERVICE STATION EQUIPMENT, TOOLS -</b></p> <ul style="list-style-type: none"> <li>1-Coats 20-20 Automatic Tire Changer</li> <li>1-Coats Manual Tire Changer</li> <li>2-Marcusette Portable Battery Chargers</li> <li>1-Walker Hydraulic Bumper Jack</li> <li>1-Hen Werner 1 1/2 Ton Hydraulic Floor Jack</li> <li>1-4 Ton Hydraulic Floor Jack</li> <li>1-Challenger Bubble Tire Balancer</li> <li>2-Hot Patch Machines &amp; Stand</li> <li>1-Tire Spreader</li> <li>2-Hurricane Hi-Pressure Washers</li> <li>1-Chicago 5" Drill Press</li> <li>1-Pullman Vacuum Vacuum Cleaner</li> <li>1-Roll-A-Way Vacuum Cleaner</li> <li>1-Columbia D.A. Electric Grinder</li> <li>1-Metal Work Table &amp; Vice</li> <li>1-Wringer Washing Machine</li> <li>1-Chamos Wringer</li> <li>1-Transmission Gun Dispenser</li> <li>1-Yale 4 Ton Chain Hoist</li> </ul>	<ul style="list-style-type: none"> <li>2-Air Impact Wrenches</li> <li>2-Portable Air Tanks</li> <li>1-Lot Hand Tools</li> <li>1-Lot Various Electric Tools</li> <li>1-Hand Rivet Machine With Rivets</li> <li>1-Teel 1 1/2" Centrifugal Pump</li> <li>1-Lot Tire Tools, Hammers, Etc.</li> <li>1-Wheel Barrow</li> <li>1-Dolly Truck</li> <li>1-Tire Cage</li> <li>1-Manual Bumper Jack</li> <li>1-Large Shop Fan, 220 Volt</li> <li>2-Shop Fans, 110 Volt</li> <li>1-Lot Jacks</li> <li>1-Shop Creeper</li> <li>1-Aluminum Extension Ladder</li> <li>1-Aluminum Step Ladder</li> <li>1-Come-A-Long</li> <li>2-Hi-Lift Jacks</li> <li>1-Lot Extension Cords</li> <li>1-Lot Air Hoses, Gauges</li> <li>1-Lot Shovels, Brooms, Etc.</li> <li>1-Tool Chest</li> <li>1-Lot Stoves, Heaters</li> <li>1-Stapling Gun</li> <li>1-Radiator Tester</li> </ul> <p><b>ANTIQUES, PET CROW -</b></p> <ul style="list-style-type: none"> <li>1-Pet Crow &amp; Cage</li> <li>1-Antique Pump Organ</li> <li>1-Antique Detroit Jewel Cook Stove</li> <li>2-Antique Bath Tubs, With Legs</li> <li>1-Antique Fresco</li> <li>1-Double Hand Saw</li> <li>1-Lot Curoes</li> <li>1-Bird Cage</li> </ul> <p><b>MERCHANDISE -</b></p> <ul style="list-style-type: none"> <li>1-Lot Various Kinds Oil</li> <li>1-Lot Anti-Freeze, Brake Fluid, Cleaning Agents, Oil &amp; Gas Cleaners, Tubs, Ice Bags, Bells, Hose, Oil &amp; Gas Additives, Paper Towels, Toilet Papers</li> <li>1-Lot Tire Weights</li> <li>1-Lot Gas Cans</li> <li>1-Lot Tire Patching, Glue, Etc.</li> <li>1-Lot Used Tires &amp; Wheels</li> <li>1-Lot Hand Cleaner</li> <li>1-Lot Gas Nozzles</li> <li>1-Part Barrel Amway Liquid Car Wash</li> <li>1-Part Barrel Car Wash Soap</li> <li>1-Lot Grease, Furnels</li> <li>1-Lot Hose Clamps, Bolts, Screws, Washers, Cotter Pins, Etc.</li> <li>1-Lot Items Too Numerous To Mention</li> </ul>
-----------------------------------------------------------------------------------------------------------------------------------------------------------------------------------------------------------------------------------------------------------------------------------------------------------------------------------------------------------------------------------------------------------------------------------------------------------------------------------------------------------------------------------------------------------------------------------------------------------------------------------------------------------------------------------------------------------------------------------------------------------------------------------------------------------------------------------------------------------------------------------------------------------------------------------------------------------------------------------------------------------------------------------------------------------------------------------------------------------------------------------------------------------------------------------------------------------------------------------------------------------------------------------------------------------------------------------------------------------------------	---------------------------------------------------------------------------------------------------------------------------------------------------------------------------------------------------------------------------------------------------------------------------------------------------------------------------------------------------------------------------------------------------------------------------------------------------------------------------------------------------------------------------------------------------------------------------------------------------------------------------------------------------------------------------------------------------------------------------------------------------------------------------------------------------------------------------------------------------------------------------------------------------------------------------------------------------------------------------------------------------------------------------------------------------------------------------------------------------------------------------------------------------------------------------------------------------------------------------------------------------------------------------------------------------------------------------------------------------------------------------------------------------------------------------------------------------------------------------------------------------------------------------------------------------------------------------------------------------------------------------------------------------------------------------------------------------------------------------------------------------------------------------------------------------------------------------------------------------------------------------------------------------------------------------------------------------------------------------------------------------------------------------------------------------------------------------------------------------------------------------------------------------------------------------------------------------------------------------------------------------------------------------------------------------------------------------------------------------------	--------------------------------------------------------------------------------------------------------------------------------------------------------------------------------------------------------------------------------------------------------------------------------------------------------------------------------------------------------------------------------------------------------------------------------------------------------------------------------------------------------------------------------------------------------------------------------------------------------------------------------------------------------------------------------------------------------------------------------------------------------------------------------------------------------------------------------------------------------------------------------------------------------------------------------------------------------------------------------------------------------------------------------------------------------------------------------------------------------------------------------------------------------------------------------------------------------------------------------------------------------------------------------------------------------------------------------------------------------------------------------------------------------------------------------------------------------------------------------------------------------------------------------------------------------------------------------------------------------------------------------------------------------------------------------------------------------------------------------------------------------------------------------------------------------------------------------------------------------------------------------------------

**Cruce and Long Auctioneers**

P. O. Box 1921 - Plainview, Texas 79072

James G. Cruce (956) 61-0843	(806) 796-7252
James M. "Mike" Long (956) 61-0847	(806) 293-8883
Jim Summers (956) 61-1182	(806) 864-3611
Jimmy Reeves (956)	(806) 864-3362





CUB CHEERLEADERS POSE after their first pep rally of the season last Thursday. Shown are, from

the left, Kara Tate, Misty Magee, Tanya Cummings, Jem Ann Rice, Angie Reynolds, and Judy Kennedy. [Photo by Kathy Carter]

## Former Resident Dies In New Mexico

Nara Visa, N.M.—James C. y Patterson, a former McLean resident, died Sept. 10. He was 67 years old.

He was buried Sept. 12 in Nara Visa Cemetery.

Funeral services were at Nara Visa First United Methodist Church with the Rev. Tom Mullins, pastor of the Assembly of God Church, officiating. Patterson was born

Jan. 21, 1915 at Steedman, Okla. He moved with his family from Pontotoc County, Oklahoma, to Texas, where he was employed at the Charlie

McMurtry Ranch near Clarendon.

During World War II, Patterson was awarded a Bronze Star from the U.S. Army. Following his tour of duty he worked at the Johnson Ranch, moving to New Mexico in 1946.

He married Kate Karl Garcia Oct. 18, 1948 at Clayton, N.M. Following their marriage they owned and operated a ranch north of Nara Vista. Mrs. Patterson died in 1970.

Also preceding him in death were his parents and one brother, Carl.

Survivors include three brothers Clyde Patterson of Blanchard, Okla., Jody Patterson of Washington, Okla., and Carlton Patterson of Canyon; four sisters Nell Phillips of Orange, Calif., Lelia White of Amarillo, Mildred Carlisle of Kingston, Okla., and Ruby Hayes of Oklahoma City; his aunt, Gladys Hill of McLean; a cousin Fred Patterson of McLean, and a niece, Nancy Skipper of McLean.

He also is survived by 21 nieces and nephews, 34 great-nieces and nephews, and one great-great nephew.

## In The Kitchen

by Linda Haynes



The "Gray County Heritage Cook Book" is now on sale in McLean at the Potpourri Shop. This book contains hundreds of recipes from Gray County women, and is a must collectible for those of you who love good "down-home" recipes. You will find several recipes from McLean residents included in the book.

Here is a sample from the collection:  
FRUIT JUICE CAKE  
Mrs. Otto C. (Bessie Reid) Rice  
3 eggs  
1 cup lard  
2 cups sugar  
1 cup sour milk  
1 cup fruit juice (black-berry juice is best)  
1 cup nuts  
1/2 cup cocoa

3 cups flour  
1 t. soda  
1 t. cloves  
2 t. nutmeg  
2 t. cinnamon  
2 t. ginger  
1/2 t. salt  
1 t. vanilla

Cream lard and sugar together, add beaten eggs. Sift flour and spice together and add alternately with fruit juice and sour milk.

(No cooking instructions are given in this old recipe, but I assume you put into a greased and floured cake pan and bake at 325 degrees until cake tests done.)

FRUIT PIZZA  
Mrs. Floyd (Imogene Conway) McMinn  
1 pkg. sugar cookie dough  
1/2 cup sugar

1/4 cup favorite preserves  
1 8 oz. pkg. cream cheese  
1 t. vanilla  
1 T. water  
apple, orange, sliced banana, drained blue and black berries, pineapple, peaches.

Cut cookie dough, spread over 14 inch pizza pan and cook as directed. Cool completely. Cream cheese, sugar, and vanilla; spread over crust. Layer on fruit. Mix preserves and water and brush over fruit.

## McLean Briefs

Those who are eligible for the free cheese but have not gotten it for the month of September may come to the McLean Senior Citizens building Sept. 20 from 9 to 5 for their share.

The Susanna Group of the United Methodist Women met Sept. 14 in the church for their quarterly birthday luncheon.

Mary Dwyer opened the meeting with a prayer. A devotional on "Faith" was given by Robbie Wilson. Isabel Cousins gave the prayer before the meal.

Those having birthdays in this quarter were Betty McCurley and Robbie Wilson.

Others attending were Sophia Hutchison, Beulah Humphreys, Maggie Johnston, Beatrice Foster, Mollie McDowell, Grace Glenn, Janet and Moriah McCracken.

## LIBRARY NOTES

by Sam Haynes

A Complete Guide to Bird Feeding

John V. Dennis, ornithologist and biologist, has produced for bird lovers a veritable bible of information for those interested in studying, feeding or just observing our friends from the bird world.

Information in this book will help you to be able to attract a greater variety of birds, and will even show you how to be eminently successful in appealing to a particular species or type of bird about which you are particularly interested.

Part I of this book shows you how to get started feeding birds, what type of feeders to install, how to adapt them to your surroundings, and how to take advantage of the plantings and natural topography of your own garden of acreage.

Part II introduces you to all the birds you are likely to attract, their migration periods, range, feeding habits (both in nature and at your feeder) and eccentricities. An exhaustive glossary of foods and precautions, menus that are favored by certain species but not by others, and recipes for

making your own bird feed grace the pages of this edition as well as other valuable information helpful to bird lovers.

John Dennis also includes wonderful anecdotes gathered from his many years experience, which make the reading more interesting, and the immense wealth of bird information will help you to be prepared to properly care for our feathered friends as we are starting in to the fall and winter season.

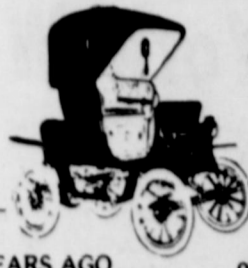
If you love to observe and feed birds, you will be thrilled with "A Complete Guide to Bird Feeding" and it is now available at Lovett Memorial Library.

•Boots by Tony Lama  
•Guns by Colt, Ruger, Smith & Wesson, Weatherby  
•Hats by Bradford and American  
•Tack  
•Western Apparel the Whole Family

Complete Line of Quality Brands Western Wear

"Complete Ranch Outfitters"  
Where your Search Ends And Hospitality Begins

\*119 S. Cuyler 669-3161 Pampa, Tx



## DOWN MEMORY LANE

by Sam Haynes

From the files of The McLean News

TEN YEARS AGO  
E.M. Bailey, editor  
Mr. and Mrs. David Upton of Amarillo spent Friday and Monday nights in the home of her parents, Mr. and Mrs. Oba Kunkel.

The freshman class of McLean High held a meeting Friday of last week at the school to elect officers for the 1972-73 school year. Officers elected were president Todd Darsey; vice president Morse Haynes; secretary and treasurer, Betty Holmes; reporter, Dean Trew.

George Johnson of McLean is seriously ill at The Veteran Hospital in Amarillo and would enjoy receiving cards from his friends and neighbors.

TWENTY YEARS AGO  
Jack Shelton, editor  
A Friday downpour, which started as McLean fans returned from the Tiger-Shamrock football game, brought 1.08 inches of needed moisture to the city.

Harlan Pool Sr. has been elected commander of the Floyd-Corbin-Florey American Legion Post. Frank Going is the new service officer.

Mr. and Mrs. A.W. Lankford and Mickey of Tulsa spent the weekend with the K.S. Rippys and attended the McMullin-Tate wedding at Lela.

THIRTY YEARS AGO  
Lester Campbell, editor  
The home of Mr. and Mrs. Paul Hugg was almost completely destroyed by fire of an undetermined origin late Saturday afternoon. The home is the second house north of the old grade school. The house was owned by L.I. Stevens of Claude. The house, and the contents owned by Mr. and Mrs. Hugg, were only partially covered by insurance.

Mr. and Mrs. Charles Bailey and Mr. and Mrs. Melvin Bailey and family

of Pampa, and Mr. and Mrs. Gene Bailey and children of Kellerville were Sunday visitors in the home of their parents Mr. and Mrs. Jack Bailey.

Mary Ann Back left Monday to enroll in ACC in Abilene.

FORTY YEARS AGO - No paper available for this date.

FIFTY YEARS AGO  
T.A. Landers, editor  
Miss Lettie Bogan returned to her home in Denver, Colo., last week after a visit with her mother, Mrs. C.E. Bogan.

Plans are made for one of the most interesting football games of the season to be played under the auspices of the Tri-State Fair, at Butler Field in Amarillo, Saturday, September 24, when the Aggies of College Station and the Matadors of Texas Tech meet. Out of town orders for tickets should be sent to Lyman E. Robbins, Globe-News, Amarillo, prices being \$1.10, \$1.65, and \$2.20.

Mrs. C.S. Rice and daughter, Miss Verna, Mrs. Ed Dishman and Mrs. W.E. Ballard were in Amarillo Tuesday.

Thursday afternoon, Sept. 8, the girls of Alanreed High School organized the Happy Hikers Club for the purpose of promoting better health, good sportsmanship, and more social life among its members. The club plans to have as much of its social outdoor features as the weather permits. The following

officers were elected: President, Julia Lee Walker; secretary, Artie Lee Smith. Saturday morning a number of the members hiked to a creek south of town and enjoyed a sunrise breakfast.

SIXTY YEARS AGO  
T.A. Landers, editor  
W.P. Rogers, stockman and farmer of the Heald community placed an ad in The News last week offering seed wheat for sale. Mr. Rogers sold 80 bushels of the wheat the same day the paper was published. The ad cost 25c for one issue of The News. Advertising is an investment, not an expense.

Little I.J. Miller, son of Mr. and Mrs. N.J. Miller, was riding a burro last Tuesday, and in some manner fell off the animal and broke an arm. Dr. Montgomery set the injured arm, and the boy is doing as nicely as could be expected.

FOR SALE-- Complete house-keeping outfit, practically new. Priced to sell.... Foster VanSant

Mr. and Mrs. Bee Everett, Mr. and Mrs. Joe Hindman and little son

left last Thursday, via auto, for Brownwood and other points to visit relatives.

SEVENTY YEARS AGO  
A.G. Richardson, editor  
Adv... Eat fresh cat fish at the Bon Ton....

To the public... Considering the "lecture" last Friday night at the tabernacle, under the auspices of the Home Mission Society, unsatisfactory it is hereby announced that the Society will gladly repay the admission fee to anyone who attended if they will only apply to the undersigned... Mrs. S.E. Boyett, Pres.

Mrs. A.A. Beall favored the News force with a bucket of fine peaches this week which were grown in her orchard in the north part of town. They were of unusual size and very much enjoyed.

Cattle shipments to the Kansas City market last Saturday were as follows: G.S. Loyd, 3 cars; Cooper and Crabtree, 2 cars; L.H. Webb, 1 car.

Adv... Get those cow yokes, calf and cow weaners at S.O. Cook's.

**DR. BROCK W. LOVETT**  
Chiropractor will not be practicing in Shamrock after October 1, 1982  
If you would like an appointment for Chiropractic care, or need a supply of the nutritional supplements we carry, or if you need an insurance or medicare claim submitted, please contact us as soon as possible.  
**DR. BROCK W. LOVETT, CHIROPRACTOR**  
310 S. Main ---256-2133

# Let's talk.

Information about your changing telephone service from Gary Stevens, Community Relations Manager.

## We're Changing Today, Preparing for Tomorrow

As you probably know, there's been a lot of talk in recent months about the "break-up" of the Bell System. But "reorganization" is probably a more appropriate word. It's something many of the larger and more successful corporations have been going through lately. Technological, economic and social changes make it necessary for businesses to change, too.

Even after attempts over the years by Congress, the FCC and the courts to effect sweeping changes in the telecommunications industry, there are still many uncertainties about the future.

As employees of Southwestern Bell, however, we face the future with confidence that we will be able to serve you even better. After all, we have the technical background and the spirit-of-service traditions acquired over 100 years.

### Local Service Charges

Questions I hear most often are: What will happen to my local rates? Is it true they're going to skyrocket? Rates are not going to skyrocket, but they will go up. Local rates will rise because of many factors, among them inflation and changes in accounting and financial procedures. In addition, Southwestern Bell has been subsidizing local telephone service with its profits from long distance and other services. In the future, local service will have to pay more of its own cost.

### Prevent Phone Troubles In Your Own Backyard

I've been asked by our repair technicians to remind you to be on the lookout for buried telephone lines and cables when you dig, whether it's preparing for a garden, planting a shrub, putting up a fence, or digging a ditch.

It was only a few years ago that we started moving our cable and wire from overhead to underground so service would be protected from ice, wind and rain. But as more and more goes underground, the greater the problem with people literally cutting off their own service, usually with a ditch-digging machine or a shovel.

If you think there may be a cable or phone lines underground in the area where you want to dig, but you don't know for sure, just dial "0" and ask for "Enterprise 9800." We'll tell you what to do, maybe even send a telephone person out at no cost to you, to show you where a cable runs through the area.

### Sharing Makes Community A Nicer Place for All

A final note... it's time to think about United Way pledges. Like me, Southwestern Bell employees state-wide believe in the organization.

The United Way sponsors more than 60 agencies which bring people together—caring and sharing. So, give what you can... your time or a donation... to make our community the best it can be.

Remember, if you have something to talk about, don't hesitate to drop me a line. Here's my address:

Mr. Gary Stevens  
Southwestern Bell  
714 S. Tyler  
Amarillo, Texas 79101

# Strake Talk

## SMALL BUSINESS—A RESOURCE WE MUST PROTECT

You can look around the square of any Texas town and see the backbone of the state economy—and of the national economy. It's small business, and it provides half of all jobs. By the current state definition there are 260,000 in our state—that's 97% of all Texas businesses. The small businessman and woman not only provide jobs and pay taxes, their independent tradition also helps explain the enduring quality of our democratic form of government.

The state of Texas recognizes the importance of small business and has programs to help it. But we can do better.

For one thing, we can abolish the sales tax on utility bills which now falls basically on small business owners. Large manufacturing and processing firms don't have to pay the tax, but the grocer, retailer and florist do. It is not fair.

My opponent opposed doing away with this tax in the last session of the legislature. The tax will bring in an estimated \$220 million in 1984-85. But when you compare that with the extra \$5.1 billion the legislature will have to spend during that time, I feel we can do without the tax and the revenue it will bring. And, as Lt. Governor, I would support its repeal.

I would also support putting into effect recommendations of the small business task force initiated by the Governor. Two of these recommendations are especially appealing. One is to help small business borrow money at better rates. Most small businesses which fail do so because they are under-capitalized. To help that situation, franchise tax money would be deposited in participating banks, which would, in turn, make loans at lower rates to small businesses.

The other recommendation is that we form a group of small business development centers at colleges and universities statewide. Money for the centers would come from the U.S. Small Business Administration, the state and participating schools. The centers would provide training, counseling and other help to small business owners so that they could be more competitive in the marketplace.

If you have any thoughts on this, I'd like to hear them. Please write me at 1213 W. 34th Street, Austin 78705.

*George W. Strake, Jr.*  
George W. Strake, Jr.

Paid Political Advertisement. Texas for Strake 1213 W 34th Street, Austin, Texas 78705. Bayard Friedman Treasurer.



## ALANREED BRIEFS

The Alanreed Home-maker's Club met Sept. 8 in the basement of the First Baptist Church, with Ruth McLain as hostess. In the absence of the president Mary Davis vice president Anita Bruce presided. Scripture Matthew 22:31-46, was read by Lena Carter. Roll call "What I Can Do for My Club," was answered by Anita Bruce; Lena Carter, Nell Keese, Sophia Hutchison, Polly Harrison, Faye Conner, Onie Gibson, Ruth McLain, Brenda McLean, Renee Reynolds, Joan Warminski, and Donna Brauchi. Minutes were read by Ruth McLain and the council report given by

### School Menus

**BREAKFAST**  
**FRIDAY, September 17**  
 Cold Cereal, Toast and Jelly, Juice and Milk  
**MONDAY, September 20**  
 Out of School  
**TUESDAY, Sept. 21**  
 Hot Cereal, Toast and Jelly, Juice and Milk  
**WEDNESDAY, Sept. 22**  
 Creamed Beef on toast, Jelly, Juice and Milk  
**THURSDAY, Sept. 23**  
 Pancakes, Butter, Syrup, Juice and Milk  
**LUNCH**  
**FRIDAY, September 17**  
 Roast Beef, Mashed Potatoes, Gravy, Green Beans, Hot Rolls w/ Butter  
**MONDAY, Sept. 20**  
 Teachers Workday - No School  
**TUESDAY, Sept. 21**  
 Pizza, Salad, Fruit Cup, and Peanut Butter Chewies  
**WEDNESDAY, Sept. 22**  
 Spaghetti w/ Meat Sauce, English Peas, Salad, Garlic Bread  
**THURSDAY, Sept. 23**  
 Hamburgers, Lettuce & Tomato, Pickles & Onions, French Fries, Cookies & Peaches

Polly Harrison. Donna Brauchi then gave a program on redoing or re-decorating kitchen and bathroom cabinets. Refreshments of crackers, cheese, brownies, coffee, and lemonade were served by the hostess. Next meeting will be for the election of officers for another year.

The Marvin Rawlings and Buddy Montgomery made a trip to Fort Worth and Dallas recently.

The Dick Dragoos are adding a garage to their home.

Bill McKee of Amarillo visited his parents, the Bert McKees this week.

Polly Harrison left Thursday for Pampa and on to Lubbock for the weekend. From Lubbock she went to Brownwood to attend a class reunion and to visit old friends.

Visiting Jewel Warner Thursday were her niece and husband, the Howard McClellans of Amarillo.

Guy Patterson, long-time resident here, died in Nara Visa, N.M., last week. He was a nephew of Mrs. Dick Hill of McLean, and a cousin of Fred Patterson of McLean.

The Alanreed Community Improvement program met Sept. 11th in the Alanreed Cafeterium, Glenn Hallum, president, presiding. After a covered-dish supper, new officers for this coming year were elected and are as following: Chairman, Putt Rawlings; vice chairman, Faye Conner;

Secretary-Treasurer, Barbara Bode; Reporter, Jeanette Fish; Program Chairman, Anita Bruce. After their business session, games and visiting were enjoyed by a good crowd.

Lena Carter visited in the home of Sammie and Vickie Bryant in Amarillo Saturday. Vicki is Mrs. Carter's granddaughter.

Visiting the R.L. Leeders during the weekend were daughter Sharon and family of Clarendon.

Shirley Armbrister and children and Nora Dragoos were in Pampa Saturday.

Lena Carter accompanied Mr. and Mrs. Jerry Carter and Jerri Ann Watson to Amarillo on Saturday where they attended a double wedding ceremony for two of Mrs. Carter's grandchildren. A back yard wedding united Deborah Ann Bruce and Kenneth Casey Ward and Danny Paul Bruce and Barbara Ann Northern. Serving at the bride and groom's tables were Vickie Bryant and Jerrie Ann Watson. Serving as flower girls were Melissa Bruce and Melissa Northern.

Visiting Onie Gibson Sunday and attending First Baptist Church were Johnny Vineyard, Windi and Scott and Peggy Bryant of Lubbock. They brought up Onie's new car for her.

The J.D. Fishes of McLean and the Bob Fishes were in Pampa Thursday.

Polly Harrison and Lena Carter made a trip to

Pampa Wednesday.

The Dick Dragoos and Denva and Kristi Tidwell were shopping in Pampa Thursday.

Polly Harrison was in Pampa Friday and helped sister Betty move to her new home.

The houses belonging to the school system are being painted.

A large rattlesnake was discovered in some debris in the new gym last week. The Hartley Davises also killed a large rattler in his yard.

Drew Word was hospitalized in the Pampa hospital last week.

Addie Allred has been visiting in California.

Bill McKee of Amarillo visited his parents the Bert McKees here this week.

Visiting the Robert Bruces during the weekend, and attending First Baptist Church were Sandra and Nickie De-webber and Dave Beth-

une of Midland and Shawn Bruce of Pampa.

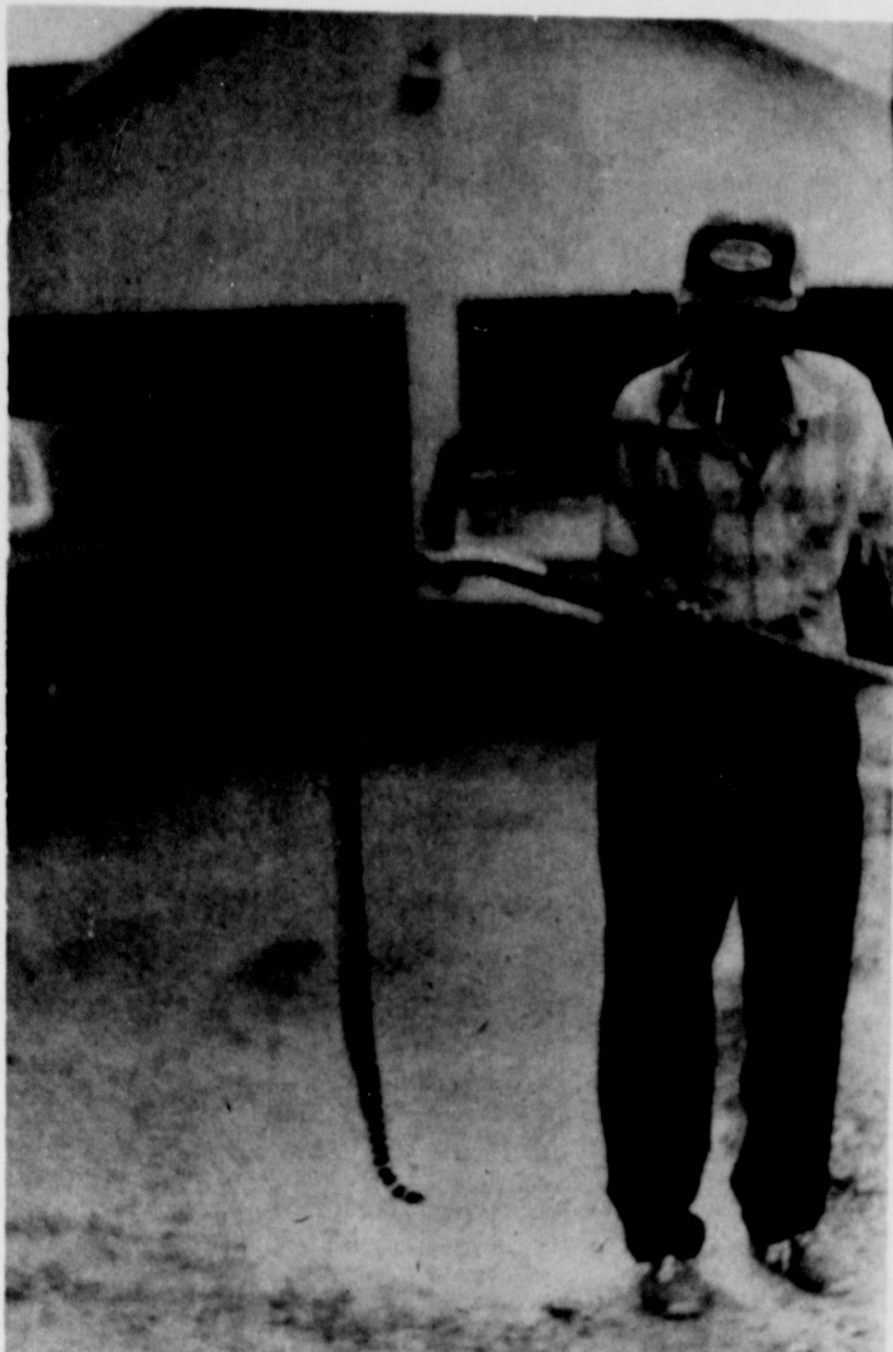
Visiting Onie Gibson Saturday were Mr. and Mrs. Charlie Vineyard and Shane of Glen Rose. They all had supper Saturday at the Doyal Billingsley's of McLean.

The Willis Mays were here Sunday at the W.H. Davises. The Davises went home with them and went on to Amarillo where they will spend the week with their other children, Betty and John, and their families.

Mrs. Robert Bruce made a trip to Pampa Friday.

Visiting the Leo Keese this week were Mr. and Mrs. Bob Keese, Robert and Scott of Fort Worth. (Bob is the Keese's son) and Mr. and Mrs. Felton Conner and family of McLean.

Gray County's 80th Birthday Celebration will be October 15, 16, and 17. Anyone in the Alanreed area moving into Gray County before 1920, please contact Kay Halum.



RAYMOND SMITH DISPLAYS this three-foot long "coon-tail" rattlesnake which was found in the dog house in the Smith's back yard. They live at 517 S. Main. [Photo by Kathy Carter]

### Nursing Center News

Thomas Nursing Center welcomes a new resident Alma Turman former resident of McLean.

Helen Linke is in the hospital in Shamrock and

Lula Sheegog is still in the hospital in Amarillo, we wish them both a speedy recovery.

Sunday, Brother Archie Cooper of the Pentecostal Holiness

church was here to conduct services.

Monday our residents played Bingo, those assisting were Lena Bailey, Bertha Smith, Loree Bailey, Ruby Boyd and Mildred Giesler.

Tuesday several residents worked on their crafts. We could still use the oatmeal boxes or any other container similar to that size that can be cut down, also empty salt boxes.

Wednesday members of the Pentecostal church were here for a Bible study. Thomas Nursing Center Ladies Auxiliary met for election of officers. Our new president is Mary Dwyer, vice president is Ginger Morilla, treasurer is Leta Mae Hess and Secretary Isabelle Cousins.

Thursday afternoon members of the Pentecostal church were here for a sing-a-long. In the evening Gib Welsh was here to play his guitar and sing for us.

Friday our lovely lady Martha Parker was here with her movies.

### 4-H Corner

**4-H Rodeo**  
 We would like to say "Thank you" to all the individuals and businesses who donated time, money, and concession goods for the 4-H Youth Rodeo held August 20 and 21.

This year's rodeo was a great success and everyone in the 4-H program appreciates the help. "Come Let Us Reason Together"

September 25-26 at the Texas 4-H Center, Brownwood. A Conflict Management Workshop will be held for Adult Volunteer Leaders and County Extension Agents. It is a workshop in conflict management, communication skills and 4-H rules, regulations and policies. It will help you explore and learn about conflict management and managing "no win" situations. If you would be interested in this workshop, contact the County Extension Office.

**4-H "IS"**  
 Each year, beginning in September, more than 100,000 Texas boys and girls aged 9 to 19 join millions of others throughout the country in the world's largest youth organization-4-H.

What is it and why do they do it?  
 A brief look into the nature of the 4-H program and what it has to offer youth and their families can provide the answers to these questions.

First of all, 4-H is fun. 4-H'ers take part in a wide variety of enjoyable activities -- club meetings, recreation, camps, learning laboratories and project work. Meanwhile, their families have the joy of working together on projects, participating in fun days,

and enjoying a host of other opportunities.

Secondly, 4-H offers educational experiences. Youngsters learn that learning can be fun. 4-H learning takes place in small group work, in individual work on projects, and in conjunction with adult volunteers and family members. They learn at fairs and project shows of various sorts and in a variety of other "non-classroom" environments.

In a sense, 4-H is for everyone--young or old, rural or city, male or female, regardless of race or ethnic group. Furthermore, 4-H requires no membership fee or dues.

Find out all about 4-H by contacting the county Extension office at 669-7429 or come by the Courthouse Annex.

### Birthdays

**SEPTEMBER 16**  
 Tommie Dee Hill  
 Tony Bryan Smitherman  
**SEPTEMBER 17**  
 Clinton McPherson  
 Johnny Mann  
**SEPTEMBER 18**  
 Lady Bryant  
 J. J. Railsback  
 Ronnie McLeroy  
 Peggy Van Huss  
 Letitia McPherson  
 Jarrett Coleman  
**SEPTEMBER 19**  
 None  
**SEPTEMBER 20**  
 Dennis Gene Graham  
 Gary Fry  
 Bonnie Chilton  
 Stacy Smith  
**SEPTEMBER 21**  
 Ellis Lee Foudren  
 Candee Webb  
 Tina Michelle Kennedy  
**SEPTEMBER 22**  
 Mrs. Pat Word  
 Joel McCarty  
 Bill Henderson  
 Carolyn Coleman  
 Michael Throckmorton

Mmmmmmmmm

**COWBOY DRIVE INN**  
 109 N. Cedar McLean, Texas 779-2315

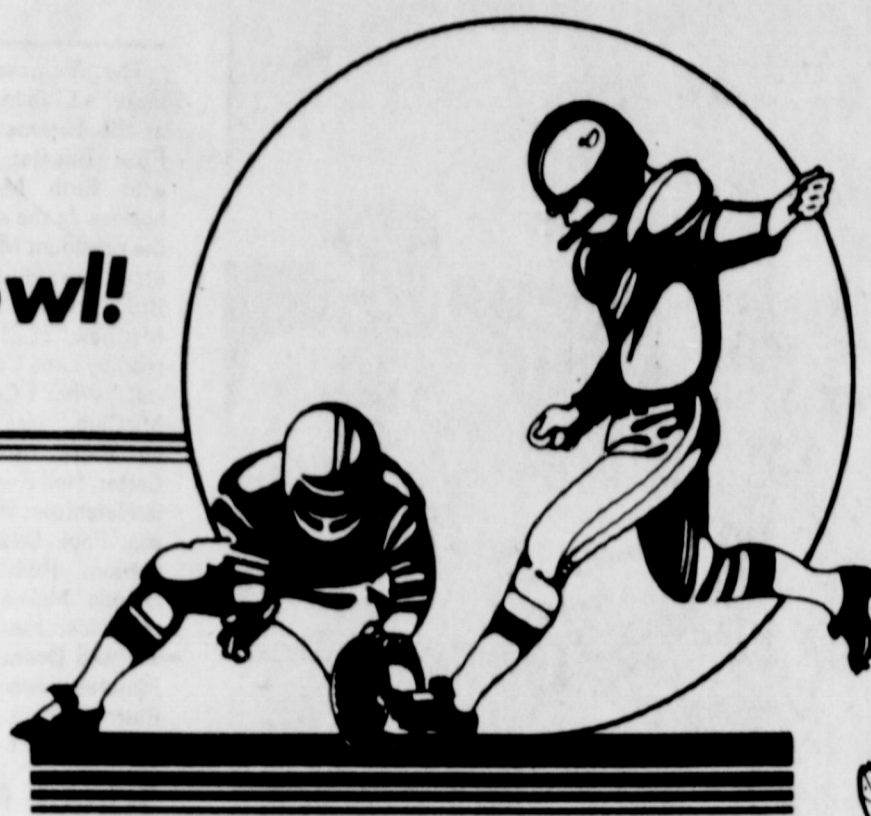
**SAVE! SAVE! SAVE! WITH THESE SPECIALS FROM GIBSONS!**

<b>DAIRY</b> Borden's Hi-Protein MILK 1/2 gal. 99c Borden's Lite Line Cottage CHEESE 16 oz. 79c Bluebonnet MARGARINE 1 lb. Quarters 2 for \$1 White Swan Texas Style BISCUITS Sweetmilk or Buttermilk - 12 oz. 3 for \$1 Grandma's COOKIES All Flavors - 9 oz. 89c Starburst CANDY 6 pack 99c Nabisco Snack CRACKERS All Flavors 89c Spillmate TOWELS Roll 2 for \$1 Zee Family Pack NAPKINS 360 ct. \$1.39 Comet CLEANSER 21 oz. 59c Mr. CLEAN 28 oz. \$1.59 LOVE MY CARPET Institutional - 21 oz. \$1.99 Breast O Chicken TUNA 9.25 oz. - Reg. or Water pack 99c Post RAISIN BRAN 25 oz. \$1.79 Welch's Grape JELLY 32 oz. 99c	<b>Chinet Luncheon PLATES</b> 40 ct. \$1.69 Hefty Steel SAK 30 gal - 20 ct. \$2.29 Skinner MACARONI Short cut or Large Elbow - 12 oz. 39c Eagle Brand Condensed MILK 14 oz. \$1.09 French Squeeze MUSTARD 16 oz. 69c Crisco All Vegetable SHORTENING 3 lb. Can \$1.99	<b>White House Apple Cranberry JUICE</b> 32 oz. 89c White Swan PEANUT BUTTER Creamy or Crunch - 18 oz. \$1.09 Kraft Macaroni & Cheese DINNER 7 1/4 oz. 3 for \$1 White Swan Whole Kernel or Cream Style CORN 17 oz. 3 for \$1 White Swan Whole BEETS 16 oz. 3 for \$1 White Swan Cut Green BEANS 16 oz. 3 for 89c Ranch Style BEANS 23 oz. 59c Folgers COFFEE 1 lb. - All Grinds \$2.27 Keebler Chips Deluxe COOKIES 12 oz. \$1.09 Seven Seas Buttermilk Recipe DRESSING 16 oz. 99c Bounce Fabric Softener SHEETS 40 ct. \$1.89 Limit 1 with \$7.50 purchase Gladiola FLOUR All Purpose - 5 lb. 85c Hi Vi So DOG FOOD Beef Flavor - 15.5 oz. 6 for \$1 Meeds Roman Meal BREAD 1 1/2 lb. loaf 89c A-1 SAUCE 15 oz. \$1.69
<b>PRODUCE</b> Long Green Slicer CUCUMBERS 8 for \$1 Colorado Yellow ONIONS 12c lb. CABBAGE 10c lb. Thompson Seedless GRAPES 55c lb. BANANAS 3 lbs. for 89c U.S. No. 1 POTATO 10 lb. bag \$1.29	<b>MEAT MARKET</b> Lean - Ground Fresh Daily Ground BEEF \$1.17 lb. White Swan Sliced BACON \$1.78 lb. pkg. Tyson's Chicken FRANKS 12 oz. pkg. 68c Kraft Single Slices American CHEESE (19c off label) 12 oz. pkg. \$1.48 USDA Choice Beef - Boneless Top Round STEAK or ROAST \$2.28 lb. USDA Choice Beef - Boneless Bottom Round STEAK or ROAST \$2.18 lb. Owens Smoked SAUSAGE \$2.18 lb. pkg.	<b>FROZEN FOOD</b> Combination DINNER Patio Mexican, Fiesta, or 89c Minute Maid Orange JUICE 12 oz. 99c Red Baron Large Pizzas ALL FLAVORS \$2.49 Lady Doren ICE CREAM 1/2 Gal. - round - Ass. Flavors \$2.29

**GIBSON'S DISCOUNT CENTER**  
 I-40 & Highway 73  
 Phone 256-3266  
 Shamrock, Texas  
**STORE HOURS**  
 Mon. - Fri. 8 - 7 Sat. 8 - 8 Sun. 9 - 6



# It's Football Kickoff Time, and the Tigers Are On The Prowl!



THE McLEAN CUBS line up at the season's first pep rally for the junior high.

## JOIN THESE TIGER BOOSTERS IN SUPPORTING THE McLEAN TIGERS BY ATTENDING THE GAMES:

**McLean Hardware**

**David Brown's  
Water Well Service**

**Parson's Rexall Drug**

**Judy's Atex**

**Corinne's Style Shop**

**J&J Shamrock**

**Doctor Herefords**  
F. J. and Leta Mae Hess

**Hambright's  
Building Supply**

**Alberta's  
Beauty Shop**

**Terry's Electric**

**McLean Cattle  
Company, Inc.**

**Ted & Sue Simmons**

**B & B Turbine  
Engine Service**  
Wayne, Sonie, Billy, and Vonda

**Curry's Processing**

**Denworth Line Camp**

**Dairy Queen**

**Jerry Cook Plumbing**

**Foshee's Texaco**

**American National Bank  
in McLean**

**Barker Redi-Mix**

**Yesteryear Antiques**

**Johnnie & Colleen  
Mertel Boot Shop**

**Jane Simpson  
Insurance Agency**

**Wil-Mart**  
For People On The Go

**Cowboy Drive In**

**Williams Appliances**  
Howard and Lillie Mae

**Cuntrell Oil & Gas**

**L & P Chevron**

**Windom's  
Auto Supply**

**Brass RO Ranch**

**Smitherman Farms**

**McLean Veterinary Clinic**

**Dixie Restaurant**

**Wilson's  
Machine & Welding**

**Puckett's Grocery**

**Lamb's Flower Shop**

**The Potpourri  
Gift Shop**

**Jake Hess II Family**  
Jake, Ida, Tres, Tanner,  
and Heather

**City of McLean**

**The McLean News**  
Linda, Lisa, Sam and Kathy

The High School... their first... of the... night in... Groom... Groom... lead two... first qu... yard pu... brought... The two... brought... to 8 poi... They... until ea... quarter... scored... 12-yard... version... the scor... 14, McL... utes bef... when Cu... scored f... 56 yard... Darre... success... two-poi... final sco... "The... good jo... coach Jo... really p... perform... high exp... group of... potenti... eager... lot of di... differen... The C... tonight... McLean

Qu... Qu... Germ... asked t... various... said that... tacked s... French... ing, but... cans atta... They like... who atta... shouting... silent me... ing on stu... a sound... Even a... es in the... Stupid... ental fore... earthquak

L... A... A... I... H... M... N... N... C... C... P... S... T... T... G... E... E... D... D... H... L... W... L... P... if you... paint br... drying o... into a... the bag... knot the... ing tool... pliable t... need it.



# McLean Loses Battle Of The Cubs To Groom Thursday

The McLean Junior High School Cubs saw their first gridiron action of the season Thursday night in a 14-8 loss to Groom here.

Groom took an early lead two minutes into the first quarter with a 52-yard punt return which brought them 6 points. The two-point conversion brought the Groom team to 8 points.

They held that lead until early in the third quarter when they again scored, this time on a 12-yard pass. The conversion was no good, and the score held at Groom 14, McLean 0, until minutes before the final gun when Cub Clint Herndon scored for McLean on a 56 yard run.

Darren Johnson was successful on McLean's two-pointer, to bring the final score to 14-8.

"The boys really did a good job," commented coach Joe Riley. "I was really pleased at their performance. I have high expectations for this group of kids. They have potential, and they're eager. That can make a lot of difference."

The Cubs play Lefors tonight (Thursday) at the McLean field.



CUB CLINT HERNDON crosses the goal line to score for the McLean Junior High as the referee signals "Touchdown!" The Cubs were narrowly

defeated by the Groom Cubs Thursday night at McLean. (Photo by Kathy Carter)



THE BALL IS in the air and up for grabs as the McLean Cubs (in black) face the Groom Cubs during a game at McLean Thursday night. (Photo by Kathy Carter)

## Junior High Band To Perform With High School

The McLean Junior High School band has been invited to practice and perform with the McLean High School Band, according to band director Francis Adamson. "We are very proud of our junior high band members," she commented, "and we know that their participation will be an asset to us all."

It's really a pleasure to have a group so enthusiastic. Schedule for junior high band is as follows: Practice: 6-7:30 p.m., each Tuesday, Sept. 21-Oct. 19 (Sept. 21, Sept. 28, Oct. 5 Oct. 12, Oct. 19) Students will meet at the band hall and will be bussed to the field.

Junior High band schedule for High School Games is as follows: Sept. 17 - Valley - here - play in stands Oct. 1 - Groom - here - march on field Oct. 9 - Phillips - there - junior high will not go Oct. 15 - Lefors - here - march on field Oct. 22 - Claude -

there - march on field Oct. 29 - Booker - here - will not march - high school contest next day. Nov. 5 - Follett - here - play in stands Nov. 12 - Wheeler - there - will not go Oct. 12 - all band members will ride on the band only bus. "We may have some changes on the practice schedule," noted Mrs. Adamson, "but we'll try to give the students adequate time to plan for them."



THE McLEAN JUNIOR high band gets ready to play during the Cub pep rally Thursday afternoon. (Photo by Kathy Carter)

## Quotable Quotes

German prisoners, asked to assess their various enemies, have said that the British attacked singing, and the French attacked shouting, but that the Americans attacked in silence. They liked better the men who attacked singing or shouting than the grimly silent men who kept coming on stubbornly without a sound.

James Jones Even a small star shines in the darkness.

Danish Proverb Stupidity is an elemental force for which no earthquake is a match.

Karl Kraus

## Homemaker News

By Donna Brauchi School days, school days...and on goes the rhyme which many of us remember as school begins again in Gray County. Since the early Colonial period, most Americans have been interested in education. Not only is formal education the only accepted form of education. Informal educational opportunities are available for all ages. The Gray County Extension Service emphasizes

informal education. There are some basic facts about informal learning that the Extension Service and other groups focusing on this form of education use as guidelines for their programs. Informal Education Informal education exists because: (1) People can and do learn throughout their lifetimes. One is never too old or too young to learn. (2) People learn because they want to learn and because they have to learn to improve their way of living. (3) People learn when they can see that the experience is worthwhile and will benefit them or their families. (4) People learn when they are interested in what is being taught. (5) People usually respond when they are involved in planning and implementing learning experiences. (6) People can often be motivated to learn when the risk is not too great or the situation is not too threatening. (7) People learn if values and traditions do not prevent them from wanting to learn and change. Do any of these statements describe your attitude about education? If so...take advantage of the many opportunities for informal education available in Gray County. The Family and Education The family is one of the main sources for informal education. Parents help

prepare their children for the responsibilities of adulthood through example, explanation, and experience. They teach and pass on some of their values and cultural traditions often without realizing they have done so to their offspring. Aging and Education Aging is a time of life - not a disease. Barring an illness, a person can expect their mind to stay strong and healthy well past the age of 80. You may be wondering how much can you do now, how much can you learn, how much can you remember. The ability to learn will be as good as it has ever been. With retirement there is a need to learn. What? New developments in all phases of life. Learn about the world. Take night school classes, adult education courses either formal or informal, go back to high school and get that diploma, or take college courses for credit or pleasure. Remember - the world today belongs not to the young but to the knowledgeable. Cranberries will keep for 4 to 8 weeks in your refrigerator. Or you can freeze them with no preparation.

## Understanding Yourself

Understanding Your Child

By Dr. Oswald Hoffmann Lutheran Hour Speaker

When parents are at the end of their rope, they ask advice: "Can anybody talk to our kids?" Parents who do not know the Lord will have a tough time with that one. It's not just a matter of recognizing the existence of God. It is a matter of knowing the Lord. Who He is, what He has done, and what He will do for people who know Him and put their confidence in Him.



Recognize your children for their humanity. Talk to them and let them talk to you. Show them that they are more important to you than things. Teach them that there are rules that need to be kept. If God says it, it is so.

When parents teach their children to rely on God's Word and when they pray with their children, the mistakes of the day are forgotten and the promise of the next day turns brighter.

## You And Your Heart

Many treatments for diseases of the heart have been known for several hundred years.

THEN: The drug digitalis was first used to treat heart failure in 1785 when it was introduced by English physician William Withering. It was made from the dried leaves of the foxglove plant. Digitalis remains in use today for heart problems.



NOW: For many years, nitroglycerin has been a recognized treatment for angina pectoris, pains in the chest that are created when the blood supply to the heart muscle is inadequate to meet its demands. Angina patients may welcome the news of a new form of nitroglycerin that offers fast action and prolonged effect. It's called Susadrin Transmucosal Tablets, and

Then & Now made by Merrell Dow Pharmaceuticals. If you have angina pectoris or think you do, you should consult your doctor.

**"Convert your 'All-Savers' into high, insured tax free interest!"**

**Insured Municipal Income Trust**  
IMIT

**10 3/4%\***

"My Edward D. Jones & Co. representative showed me a good way to continue earning high tax-free interest even though my All-Savers certificate has matured. In addition to high interest, I'll receive —"

- Insured investment
- AAA-rating
- Convenience of no clipping coupons or bookkeeping
- Monthly, quarterly, or semi-annual interest

Please call, or stop by my office for more information.

Call 665-7137 or Come By 317 N. Ballard Mon. - Fri. 9 a.m. to 5 p.m. After 5 call 665-7333

**Edward D. Jones & Co.**

R.E. Tom Byrd

\*The return is due to an insurance policy and relates only to the bonds in the portfolio and not to the units of the trust. The insurance does not remove market risk since it does not guarantee the market value of the units. The details of the insurance policy are more fully described in the prospectus. No representation is made as to the insurer's ability to meet its commitments.

1. The return represents the net annual interest, after annual expenses, divided by the public offering price. It varies with changes in either amount and with particular payment options.

2. Portions of the income may be subject to state and local taxes.

This is neither an offer to sell nor a solicitation of an offer to buy any Units of the Fund. The offering of Units is made only by the Prospectus and only in those states in which Units may legally be offered.

Please send me a free 18-IT prospectus.

Name \_\_\_\_\_  
Street \_\_\_\_\_  
City/State/Zip \_\_\_\_\_  
Home Phone \_\_\_\_\_ Business Phone \_\_\_\_\_

A Prospectus containing more complete information about the 18-IT fund including all charges and expenses will be sent upon receipt of the coupon. Read it carefully before you invest. Send no money.

## Peerless Prognosticator Predicts

by Sam Haynes

Air Force 14	Texas Tech 17
Alabama 31	Mississippi 10
Arizona St. 24	Houston 20
Arkansas 33	Navy 13
Iowa State 20	Iowa 17
Kansas 42	S. Dakota 7
Kansas 14	T.C.U. 17
Michigan St. 14	Ohio State 28
Michigan 27	Notre Dame 14
Nebraska 45	N. Mex. St. 0
New Mexico 31	U. Nev. Las Vegas 13
N. Carolina 33	Vanderbilt 6
Ok. State 28	Tulsa 10
Oklahoma 33	Kentucky 10
Penn State 42	Rutgers 14
S.M.U. 55	U.T.E.P. 0
Tex. A&M 30	UT-Arl. 7
Texas 28	Utah 7
Tulane 17	Rice 14
Oregon St. 6	L.S.U. 36
Boston Col. 24	Clemson 21
Florida St. 17	Pittsburgh 20
Duke 24	S. Carolina 21
Dallas 35	St. Louis 13
Houston 31	Seattle 17

Last Week  
Won 13  
Lost 10  
Percentage - 565

**TOBACCO**

If you want to keep a paint brush or roller from drying out, you can slip it into a plastic bag, twist the bag to remove air and knot the bag. Your painting tool will be perfectly pliable the next time you need it.

**SAVE NOW ON HOMEOWNERS INSURANCE!**

TEXAS HOMEOWNERS INSURANCE RATES HAVE DECREASED SINCE SEPT. CHECK WITH US TO FIND OUT ABOUT YOUR SAVINGS!

**JANE SIMPSON INSURANCE AGENCY**

106-A N. Main - McLEAN, TEXAS 779-2451

**GENUINE 14K GOLD NECKLACE**

**3 DAY SALE \$5<sup>00</sup>**

Because of a recent major purchase and fluctuating gold price, our company can sell this 14K Gold S Chain at the ridiculously low prices shown here. The only stipulation is that you can only order a maximum of 5 chains and you must have your order in the mail within 3 days of this ad appearing in your local newspaper. These beautiful chains will be plated and mailed to you within 2-4 weeks. Orders postmarked after 3 days will be returned and you will miss the opportunity of a lifetime. These chains are 14K Gold and come in either 15 or 18 inch lengths. ACT TODAY!

T.F. Merchandising Unit, P.O. Box 109, Lake Grove, N.Y. 11755

I wish to order \_\_\_\_\_ 15" 14K Gold chains \_\_\_\_\_ 18" chains.

I am ordering within the 3 day time period.

I am enclosing \$5 for each 15" chain or \$6 for each 18" chain.

I may order up to 5 chains.

Please send me your FREE catalogue with my order. \_\_\_\_\_ yes \_\_\_\_\_ no

Enclosed, please find my: \_\_\_\_\_ check \_\_\_\_\_ money order

Name \_\_\_\_\_  
Address \_\_\_\_\_  
City \_\_\_\_\_ State \_\_\_\_\_ Zip \_\_\_\_\_

Allow 4 weeks for delivery. These beautiful chains would make great gifts.

**Edward D. Jones & Co.**

R.E. Tom Byrd

1. The return is due to an insurance policy and relates only to the bonds in the portfolio and not to the units of the trust. The insurance does not remove market risk since it does not guarantee the market value of the units. The details of the insurance policy are more fully described in the prospectus. No representation is made as to the insurer's ability to meet its commitments.

2. The return represents the net annual interest, after annual expenses, divided by the public offering price. It varies with changes in either amount and with particular payment options.

3. Portions of the income may be subject to state and local taxes.

This is neither an offer to sell nor a solicitation of an offer to buy any Units of the Fund. The offering of Units is made only by the Prospectus and only in those states in which Units may legally be offered.

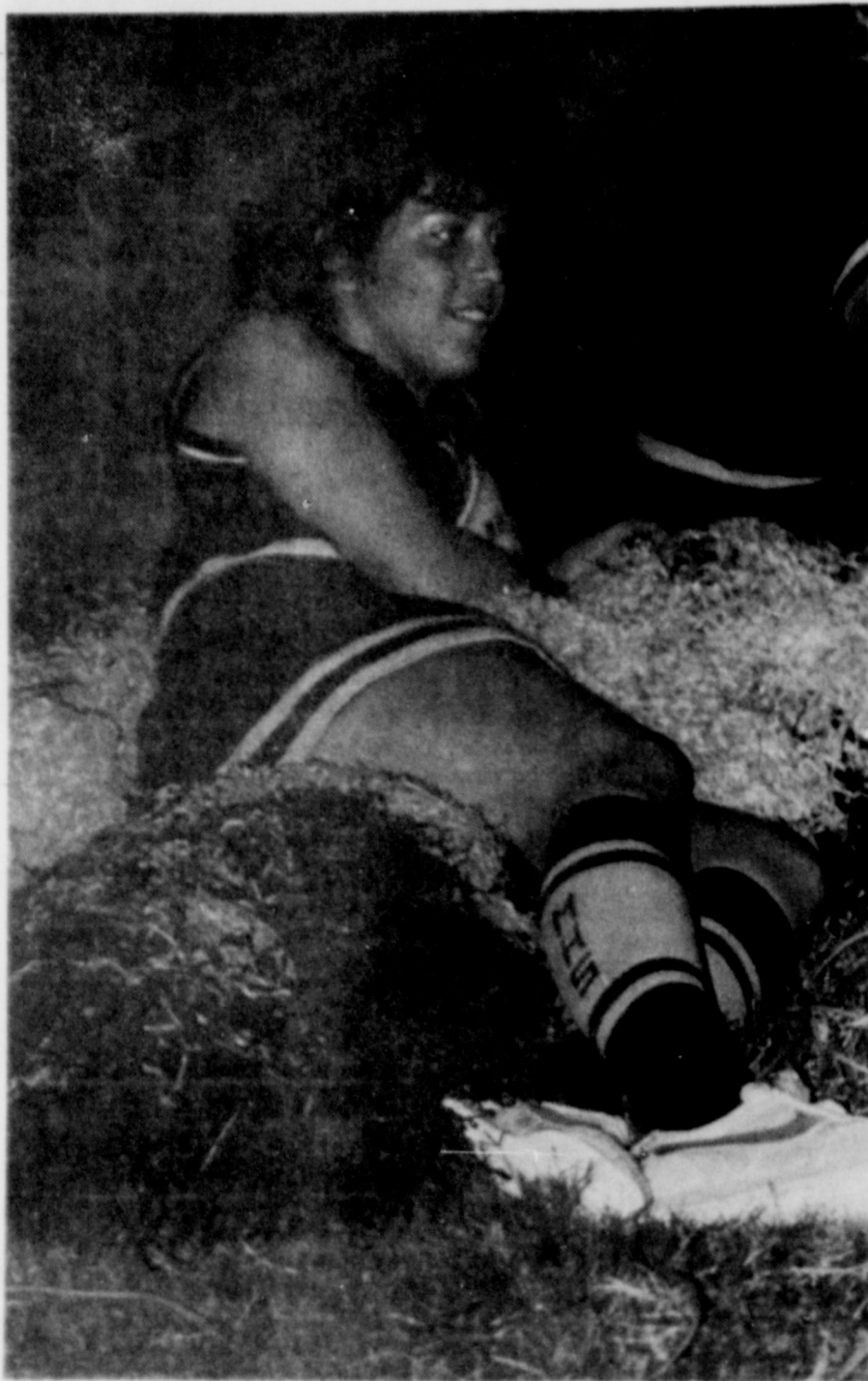
Please send me a free 18-IT prospectus.

Name \_\_\_\_\_  
Street \_\_\_\_\_  
City/State/Zip \_\_\_\_\_  
Home Phone \_\_\_\_\_ Business Phone \_\_\_\_\_

A Prospectus containing more complete information about the 18-IT fund including all charges and expenses will be sent upon receipt of the coupon. Read it carefully before you invest. Send no money.



# More Highlights Of The Owl-Tiger Clash .....



TIGER CHEERLEADER JANA Harris rests during halftime of the McLean-Silverton game Friday night. [Photo by Kathy Carter]



TIGER ROBERT SWANER jumps over the downed Silverton ball carrier during the Tiger-Owl clash Friday night in Silverton. [Photo by Kathy Carter]



DRUM MAJOR KAREN Wilson models her tuxedo-style drum major's uniform during the Silverton-McLean game Friday night. [Photo by Kathy Carter]

### New Arrival

Mr. and Mrs. Harry Tate of Gillette, Wyo. are the parents of a son, Eric. He was born Sept. 21. He weighed 7 lbs. 4 oz.

Grandparents are Mr. and Mrs. Ted Hightower of Childress and Mr. and Mrs. O. O. Tate of McLean.

### Quotable Quotes

Pale death, with impartial step, knocks at the poor man's cottage and the palaces of kings.

Horace  
Gods send meat and the devil sends cooks.  
Thomas Deloney

Very few people go to the doctor when have a cold. They go to the theatre instead.

W. Boyd Gatewood  
He who likes cherries soon learns to climb.  
German Proverb

## Tiger Booster Club Sets First Meeting

The Tiger Booster club will have its first meeting next Monday night, Sept. 20, at 7 p.m. in the school cafeteria. All those interested in supporting the McLean Tigers are invited to attend the meeting, which will feature films of Friday night's game again

Valley. "We also plan to take a look at our next opponent and get acquainted with our boosters. We have a lot of support in the community, and we'd like to have all our fans come for these Monday night sessions,"

coach Joe Riley said. "It's a great way to become more involved with the kids, and to get some behind-the-scenes looks at our opponents."

Tiger Booster meetings will be each Monday night after the Tiger football games.

## Now Is The Time To Enroll

Now is the time to prepare for the winter months ahead by enrolling in the Home Care and Maintenance Letter Series prepared by the Gray County Extension Service. Topics to be included are:

1. Insulation
2. Storm Doors and Windows
3. Weatherizing Your Home
4. Keeping Home Heating and Cooling Equipment in Shape
5. Cleaning on a shoe-string
6. Floor Care
7. Care and Cleaning of Furniture and Furnishings

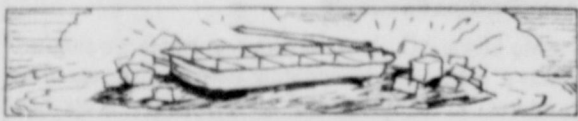
The letters will be mailed one per week beginning Sept. 1 and ending Oct. 13. To enroll - call or write the County Extension Office by August 30. Phone: 669-7429

or write Star Route 2, Box 33, Pampa. The series is free of charge.



TIGER COACH JOE Riley attends to one of the McLean players who was injured during the

McLean-Silverton game Friday night. [Photo by Kathy Carter]



Greenland is the world's largest island. Of its 840,000 square miles, 700,000 are ice-covered.

**SUBSCRIBE TO**  
*The McLean News*

IN-COUNTY RATE - \$12 per year  
OUTSIDE GRAY COUNTY - \$14 per year  
SPECIAL 9-MONTH STUDENT RATE - \$9

You can subscribe by mail by completing the form below and mailing with your check or money order to:  
THE McLEAN NEWS  
P. O. DRAWER H  
McLEAN, TX. 79057

NAME \_\_\_\_\_  
ADDRESS \_\_\_\_\_  
CITY \_\_\_\_\_  
STATE \_\_\_\_\_ ZIP CODE \_\_\_\_\_

**FREE FRIES**  
with purchase of a **Hungr-buster**

**Dairy Queen**

This Monday, Sept. 20 thru Sunday, Sept. 26 only.  
Only at participating stores.

Every Hungr-buster is made to your order with a quarter-pound\* of 100% pure lean beef. (The cooked weight)

**We treat you like a Texan.**

# did you know?

Electricity is a product that must be manufactured. To help our customers understand the process of generating electricity, we offer tours of our power plants. Tour guides conduct business and civic organizations, clubs, school classes and other groups through these plants, discussing equipment and the production process according to the ages and interests of tour participants. Contact your SPS manager to arrange for your tour of a power plant.

Susan McKissack, Plant Clerk, Harrington Station.

SPS has a Speakers Bureau. Our specialists are available to present programs on such topics as using energy wisely or how electricity is made from coal. These programs, designed to inform our customers about electric energy and related subjects, are available at no charge for schools, clubs or other organizations. Many programs include special demonstrations, slide shows or films. Your local SPS manager can suggest a speaker for your next meeting.

Randy Eminger, Consumer Services Representative, Lubbock.

You and SPS are partners in energy management. SPS does its part by operating its power plants as efficiently as possible and by planning now for future demands for electricity. You do your part when you use electricity wisely. Remembering to switch off lights and appliances when not in use can help keep down your electric bills. Insulating your home or using energy-efficient appliances, like the heat pump, can help too. Working together to manage electricity benefits us all.

Ralph Sanchez, Engineering Estimator, Roswell.

For answers to your questions, call or write your SPS manager.

**You and SPS, partners managing electricity, make the difference.**

**SPS**  
SOUTHWESTERN PUBLIC SERVICE COMPANY



# CLASSIFIED ADS sure to get results

**CLASSIFIED RATE**  
\$2.00 minimum  
15 cents per word  
**CARD OF THANKS \$3**  
All ads cash, unless customer has an established account with The McLean News-Deadline for Want Ads-Noon-Tuesday. Phone 779-2447.

The McLean News cannot verify the financial potential of these advertisements. Readers are advised to approach any "business opportunity" with reasonable caution.

FOR SALE: five-year-old gelding. Kid broke. Call 779-2315. 37-2c

ONE PAIR SIZE girls 14 regular designer jeans and one pair girls 14 Calvin Klein jeans. Both pre-washed and altered to 28" length. Will sell at half price. Call 779-2908. 37-1c

### AGRICULTURAL PRODUCTS FOR SALE

SEED WHEAT FOR sale. Call Don Crockett at 779-2998. 37-tfc

FOR SALE: 1974 24' Twilight Bungalow travel trailer. \$4500. Call 779-2708. 36-20

FOR SALE: SEVERAL varieties of good apples. 3 miles south of Alanreed. Hommels Orchard. 779-3139. 29-tfc

### KARATE

**KARATE CLASS**  
Anyone interested should attend a meeting Saturday Sept. 18 at 415 W. Second at 6 p.m. Must be at least 18 years of age. If under 18, bring a parent. 37-1c

### VEHICLES FOR SALE

FOR SALE: 766 International tractor - 14' off-set disc, 12' swather. James Hefley 779-3134. 34-4p

FOR SALE: 1980 Ford F350. 20,000 miles. Call 256-2092. 37-1p

'79 IMPALA STATION Wagon. 9 passenger, power, air, and cruise. New tires - Excellent condition. \$2594. 779-2764. 37-1c

### CARD OF THANKS

Once again we thank the many good people of our town. Flowers, cards, visits, phone calls - so many we can't list all. Fresh vegetables from Hathaway, Rutherford and Kinard gardens have really been enjoyed. It is really great all the kind things that have been done for us. The special prayers for us - we believe God was listening to each of you on our behalf. Thanks again for being our friends. Vernon & Louise Turner

I would love to thank each of you for your prayers, visits, and beautiful cards while I was in the hospital. I also appreciate the food and visits since I came home. You are wonderful people. We love you. Thelma Stevens

I would like to thank all my friends in McLean for the cards and gifts on my 87th birthday. I appreciate them so much. You will never know how much they meant to me to get cards from the ones I love dearly. It made me homesick to come back to McLean. May God Bless you all. Kate Jones

I would like to thank the volunteers who helped fight and stop the fire on our land. Floyd Hines

The McLean Tri State High School Rodeo Club members and sponsors would like to say "Thank you" to everyone who helped at our Play-day Sunday. We appreciated it very much. Also for the people from town who came out and supported us. Thanks again. The McLean Tri State Club

### REAL ESTATE FOR SALE

THREE BEDROOM TWO bath house on 20 acres for sale or rent. Call Lynda Syfrett at 779-2577. 34-tfc

STORE BLDG. FOR sale. Living quarters in the back. Phone 779-2814 or 779-2161. 23-tfc

FOR SALE: TWO bedroom house - By Owner 779-2666. 31-tfc

THREE BEDROOM, two full baths, large den and formal living room. Central heat and air. With down payment, will carry papers. Call Mary Powell. 779-2119. 37-tfc

HOUSE FOR SALE in McLean. Furnished or unfurnished. Dishwasher, washer and dryer connections. \$15,000 unfurnished \$16,000 furnished. Call 353-6356. 36-4c

FOR SALE: TWO Bedroom house south of railroad tracks. 4 lots. By Owner. Contact Dale Killham. Phone 779-2139 or 779-2132. 30-tfc

### APPLIANCES & FURNITURE FOR SALE

FURNITURE FOR SALE: gas range, sofa and chair, bed. Call 779-2538. 34-tfc

### PAINTING

PAINTING - INSIDE & outside. Billy Connell. Phone 779-2191 after 7 p.m. 36-2p

### TYPING

TEACHERS, STUDENTS EXECUTIVES... Need typing done, but can't get around to it? Bring your letters, tests, essays, etc. to me for fast, accurate typing and take a load off!!!!!! Kathy Carter - 779-2447 or 779-2152. 35-tfc

### MOBILE HOMES FOR SALE

FOR SALE: 14 x 80 trailer. Three bedroom 1 1/2 bath, furnished or unfurnished. Call Dorothy Middleton at 779-2674. 12-tfc

### DEALER REPO!

Two bedroom mobile home Good condition, garden tub, bay window, wet bar, etc. Assume payments of \$244.04 with approved credit. FIRST QUALITY MOBILE HOMES. (806) 665-0715. Pampa, TX. 35-5c

WE TAKE TRADES- ANYTHING OF VALUE! Used cars, boats, mobile homes, real estate, etc. Large selection of two and three bedroom Value Brand mobile homes E-Z terms. FIRST QUALITY MOBILE HOMES. (806) 665-0715. Pampa, TX. 35-5c

### GARAGE SALES

GARAGE SALE: Sept. 16 and 17. Thursday and Friday, Fifth and Clarendon. 9-6 p.m. Eleanor McCarty. 37-1p

FOUR FAMILY GARAGE sale - 318 W. 3rd. Lots of good clothes: men's size - small, large, x-large. Women's sizes 9-20. Children's 5, 12, 14. Two Deerborn gas stoves, rocking chair, lots of odds and ends. Thurs., Fri., Sat., 9 to 7. 37-1p

### MUSICAL INSTRUMENTS FOR SALE

LIKE-NEW TROMBONE for sale. Call Jim McDonald at 779-2516 after 5 p.m. 34-tfc

### NOTICES

A budget hearing will be held September 28, 1982 at 7:00 p.m. in the City Hall for the use of revenue sharing funds. Revenue sharing funds budget is as follows: City Park Improvements - \$1,000.00 General Fund Use - \$6,977.00

The public has the right to provide written and oral comments for the budget. A copy of the proposed budget for the City of McLean fiscal year 1982-83 is on file at the City Hall and is available for inspection during regular working hours. Sam A. Haynes Mayor

HAMBRIGHT'S BUILDING SUPPLY will be closed for 2 weeks - Sept. 13 to 25. We will reopen Sept. 27. Sorry for the inconvenience. 36-2c

MASONIC LODGE REGULAR MEETING second Thursday, 7:30 p.m. Practice nights First, Third, and Fourth Thursdays at 7:30 p.m.

### LOST & FOUND

LOST: TAN LEATHER dog collar with tags and chain. Name THOR. Call Laverne Back at 779-2461. 37-1c

LOST: 1 BLUE "NEW BALANCE" jogging shoe. (It was carried off by dog from home.) \$5 reward - Kathy Carter - 315 N. Waldron - 779-2152. 29-tfc

### FOR RENT

HOUSE FOR RENT: Call Don Crockett at 779-2998. 37-tfc

FOR RENT: COMPLETELY FURNISHED Three bedroom trailer house. 1 1/2 baths. \$250 month. Furnish own utilities. \$100 cleanup deposit. No small children. Call Dorothy Middleton at 779-2674. 27-tfc

### BUSINESS

NEED CARPENTER WORK done? Call Leeland Myers 779-2734.

**SADDLE AND BOOT REPAIR**  
Open Until 7 Mondays and Thursdays  
**McLEAN SADDLE CO.**  
111 McCarty St. McLean, Texas 779-2339

**LOWRANCE PLUMBING**  
Fast and reliable service  
Licensed 24-hour Service  
Call 779-2563 or 779-2065  
Serving McLean and surrounding areas

**TIRED OF SEWING MACHINE PROBLEMS?**  
See Peggy Dennis or Nancy O'Neal. Bernina Sewing Center, 1312 N. Hobart, Pampa. 665-7147. 42-tfc

**REMODELING, ADDITIONS, ROOFING and painting.** 779-2206. Larry Christopher. 1'

Call Jerry Cook at **ATLAS Plumbing** 779-2784 Water-Gas-Sewer

**MARY KAY COSMETICS**  
Call me for your complimentary facial. Karon Tate. 256-3770. 36-4p

### WANTED

ANYONE WISHING TO donate empty baby food jars, with or without the lids, call 779-2158. 37-1c

### HELP WANTED

**THOMAS NURSING CENTER** is now accepting applications for Nurses Aids - all Shifts... Contact the Director of Nursing in person. 33-tfc

## The McLean News BUSINESS DIRECTORY

<p><b>DON MILLER RADIATOR SERVICE</b> "Is Our Business" Not a Sideline *New &amp; Rebuilt Radiators *Gas Tanks &amp; Heaters Repaired 376-666 612 S. JEFFERSON AMARILLO, TEXAS</p>	<p><b>Foshee's Texaco</b> Your full-service station Earnest &amp; Maurine Foshee Owners 779-2621  SUBSCRIBE TO THE McLEAN NEWS NOW!!! IN COUNTY - \$12. OUT OF COUNTY - \$14. NINE MONTH STUDENT SUBSCRIPTION - \$9</p>	<p><b>WATER WELL SERVICE</b> SUBMERSIBLE PUMP SALES &amp; SERVICE <b>DAVID BROWN</b> 806-779-2678 BOX 273 MCLEAN, TX 79057</p>	<p><b>GERMANIA Farm Mutual Insurance</b> REASONABLE SOUND INSURANCE PROTECTION FOR YOUR HOME AND OTHER PROPERTY  <b>DON WILSON</b> 779-3174</p>	<p><b>NATIONAL AUTO SALVAGE</b> 665-3222 or 665-3962 1 1/2 miles west of Pampa on Highway 60 Large selection of used auto parts We appreciate your business  CALL 779-2447 AND GET YOUR BUSINESS IN THE McLEAN NEWS BUSINESS DIRECTORY</p>	<p><b>DIANN DALTON'S Country Cut BEAUTY SHOP</b> 779-2413 Open Tuesday through Friday and Saturdays until noon 1 mile south of McLean on FM 3143</p>
<p><b>BARKER REDI-MIX</b> READY-MIX, CONCRETE BACK-HOE SERVICE AND FINISHING WORK PHONE 779-2703 OR 779-2869</p>	<p><b>McLEAN HARDWARE</b> complete hardware line -DISHES-PAINT-TOOLS-GIFTS- 779-2591</p>	<p><b>GLENN HALLUM BACKHOE SERVICE</b> Commercial or Individual Fully Insured Alanreed, Texas 779-3138</p>	<p><i>Johnnie F. Mertel</i> <b>Boot Shop</b> Tony Lama, Texas, Acme, Justin Leather Goods Shoe Repair phone 779-2161</p>	<p><b>Expert DRY CLEANERS</b> BRING YOUR CLEANING WHEN YOU SHOP IN PAMPA PICK IT UP THE SAME DAY!  <b>One Hour Martinizing</b></p>	<p><b>LAMB FLOWER SHOP</b> 779-2611 ASK ABOUT OUR REGULAR FRIDAY SPECIALS</p>
<p><b>Bug Baggers Pest Control Inc.</b> TERMITE SPECIALISTS COMPLETE PEST CONTROL STATE LICENSED IN YOUR TOWN WEEKLY CALL COLLECT 865-0090 CANTON, TX</p>	<p>For all your Purina Feeds: <b>BULK FEED BAG FEED</b> <b>BENTLEYS FERTILIZER</b> 301 E. Foster McLean, Texas 779-2209</p>	<p><b>DALE'S SERVICE STATION</b> PHILLIPS 66 217 W. 1st McLean 779-2181 779-2181  YOUR AD HERE GIVES YOUR CUSTOMERS EASY ACCESSABILITY TO YOUR BUSINESS 779-2447</p>	<p>WE NOW HANDLE <b>AMWAY</b> PRODUCTS WAYNE AND KATHY CARTER 779-2152  McLEAN NEWS ADS HELP YOUR BUSINESS SALES. 779-2447</p>	<p><b>B&amp;B ELECTRIC</b> Parts &amp; Service *ELECTRIC WORK *APPLIANCES *TV ANTENNAS *HEATING AND *AIR CONDITIONING <b>PHONE Loyd Bybee</b> 779-2601 EMERGENCY 779-2517 2 BLKS NORTH OF I-40 ON PAMPA HWY I WILL APPRECIATE YOUR BUSINESS</p>	



## Retired Senior Volunteer Is Super Community Helper

Delta is a small mountain town in Western Colorado. With a population of a little more than 3,000, its most popular center of social activity for young people is the community swimming pool, a magnet for every youngster in the area.

On any given afternoon and during the week-ends, you'll find Charlie Clubb at the poolside, maintaining what he terms "a semblance of order amidst a mass of confusion." It's not that he's a law officer or a John Wayne type; quite the opposite. He's gray haired, slight, wears thick-lensed glasses along with his easy, winning smile, and Delta residents think he resembles George Burns.

To say that most of the citizens of Delta and the surrounding hills know Charlie and his devoted wife, Ann, is no exaggeration. As an RSVP (Retired Senior Volunteer Program) volunteer, he is not only a man for all seasons but, more importantly, a volunteer for all ages. He spends one morning a week at the local kindergarten, assisting the beginners with their reading and special projects. At recess, he's out on the playground pushing a swing or holding one end of the skip-rope.

The Clubbs never had any children of their own, but Charlie has pretty well adopted the youngsters of Delta, or maybe it's the other way around.

He spends time aiding the slow learners in elementary school, and he's there to offer guidance and companionship to the teenagers who have gotten in trouble. He and Ann know all about trouble; they've had some of their own. Some years ago Charlie was a dedicated alcoholic. Now it's said that he does his most critical volunteer work for the community at the local AA chapter where he devoted his energies to helping others break the drinking habit.

But that's not the end of his day. There are two home-bound elderly folks that he visits, and he's a regular volunteer at the nursing home. Comes Christmas and he dons his beard and Santa

Claus costume, and, while Ann does the driving, he makes the rounds delivering gift boxes of food and fruit to about 75 shut-ins.

It seems that wherever Charlie is - whether it's at the swimming pool where he checks clothes, mans the cash register and keeps the bedlam under control, or patiently encouraging reading skills in the young - he's the humor-filled man who carries on wherever he's needed. He does so through the pure joy of giving, making restitution, he says, for all the lost years.

To bring a smile to someone else is his daily goal. He can be spotted a block away seeking it because he walks with a

white cane. Though legally blind, Charlie sees the world around him in the manner it was meant to be, and everyone in

Delta who knows him is now a bright spirit on the move.

### Quotable Quotes

A man's worst difficulties begin when he is able to do what he likes.  
Thomas Henry Huxley

With silence one irritates the devil.  
Bulgarian Proverb

Skill and assurance are an invincible combination.

Dutch Proverb

The busiest man needs no more hours of rest than the idler.  
William James

• RE-ELECT •

## WANDA CARTER

County Clerk, Gray County

\*\*\*\*\*

TO VOTE ON NOV. 2, 1982,

YOU MUST:

Register by October 1 OR  
Transfer your voter registration certificate if you have moved within the County.

\*\*\*\*\*

Your vote and support is respectfully requested and appreciated.

Vote  Wanda Carter

PO BOX 404 BY WANDA CARTER  
422 EAST 18TH, PAMPA, TEXAS 75074



Wanda Carter  
Democrat

# Puckett's

FOOD STORES  
McLEAN, TEXAS

# END O' Summer SALE!



Aurora  
**TISSUE**  
4 roll pack  
**95¢**



Vlasic  
Sweet Butter  
**PICKLES**  
16 oz jar  
**89¢**



Laundry  
Detergent  
**ERA**  
128 oz  
**\$6.59**



Scott  
**PAPER TOWELS**  
large roll  
**69¢**



**GATORADE**  
32 oz jar  
**69¢**

Post  
**RAISIN BRAN**  
20 oz box  
**\$1.59**



Peter Pan  
**PEANUT BUTTER**  
18 oz jar  
**\$1.69**



**DR. PEPPERS**  
6 Pack 12 oz cans  
**\$1.39**



Nestea  
**INSTANT TEA**  
3 oz jar  
**\$1.89**



Post Toasties  
**CORN FLAKES**  
18 oz box  
**99¢**



Chicken of the Sea  
**TUNA**  
6 1/2 oz can  
**89¢**

Del Monte 303 can  
**PEAS 2 - 89¢**

Del Monte Golden 303 can  
**CORN 2 - 89¢**

Del Monte Cut 303 can  
**GREEN BEANS 3 - 79¢**

Diamond LP 40 count  
**PAPER PLATES \$1.89**

Shawnee  
**MIXES 4 - 89¢**

Betty Crocker Layer  
**CAKE MIX 79¢**

### DAIRY PRODUCTS

Festival 24 oz carton  
**COTTAGE CHEESE 99¢**

Giltedge 16 oz carton  
**HALF & HALF 59¢**

Giltedge 1/2 gallon  
**BUTTERMILK 89¢**

Hormel 15 oz can  
**CHILI 99¢**

Bama Apricot 18 oz jar  
**PRESERVES 89¢**

Bama Peach 18 oz jar  
**PRESERVES 79¢**

Bama Red Plum 18 oz jar  
**PRESERVES 79¢**

Bama Strawberry 18 oz jar  
**PRESERVES 89¢**

12 oz can  
**SPAM \$1.39**

### FROZEN FOOD

**BANQUET DINNERS**  
11 oz carton **69¢**

Good Value 16 oz pkg  
**FISH STICKS \$1.19**

Giltedge Round 1/2 gallon  
**ICE CREAM \$1.69**

### PRODUCE

**BANANAS 3 - \$1**

**GRAPEFRUIT 3 lb - \$1**

**CARROTS 1 lb bag 5 - \$1**

**CORN 6 ears - 89¢**

**YAMS 39¢**

Del Monte 16 oz can  
**PEACHES 65¢**

Del Monte 15 oz can  
**PINEAPPLE 2 - \$1.09**

Del Monte 46 oz can  
**PINEAPPLE JUICE 99¢**

Del Monte 32 oz jar  
**CATSUP \$1.19**

Keebler Zesta 1 lb box  
**CRACKERS 69¢**

### MEAT

**SIRLOIN STEAKS \$2.39**

**T-BONE STEAKS \$3.19**

Rodeo All Meat 12 oz  
**FRANKS 98¢**

Wilson  
**SMOKED SAUSAGE \$1.98**

**TURKEY HAMS \$1.98**

Wrights Slab Sliced  
**SLICED BACON \$1.79**

# Puckett's

WE ARE YOUR  
TOP STAMP  
REDEMPTION CENTER



Prices Subject To Availability  
Of Merchandise



USDA INSPECTED  
TENDER  
TASTY  
TRIMMED