

The Eldorado Success

Baze Bookbinding
514 W. 7th St.
Amarillo, Tx. 79101
3

A Positive Forecast "Serving West Texas Since 1901" A Good News Review

Volume 88 #31

Eldorado, Texas

August 10, 1989

SC Days Rodeo To Begin Friday

Eldorado welcomes one and all to Schleicher County Days, this weekend, August 11 and 12. The two day event will begin with a parade through downtown Eldorado at 5:30 p.m. Friday, complete with floats, horses, cars and various other entries.

The Eldorado Open Rodeo will begin at 8 p.m. Friday night at the rodeo arena. A dance will begin at 9 p.m. on the slab next to the arena with music furnished by Cattle Ax of San Angelo. This group of musicians combine a wide variety of talent and playing styles to create a sound that has taken many people by surprise and left the name The Cattle Ax as firmly imbedded in their memories as one of San Angelo's best.

Saturday morning begins with registration for the two-mile Fun Run and Walk in front of First National Bank. The run and walk will begin at 8:30 a.m.

Food booths and arts and crafts booths will set up on the courthouse lawn at 9 a.m. Some of the food booths will include fajitas, nachos, pop corn balls, candy apples, snow cones, hamburgers, fruit cups, funnel cakes, hot dogs, watermelon, chopped beef sandwiches and watermelon to name a few.

Other booths planned are arts and crafts booths, a cake walk, panning for gold, bobbing for apples, wheel of fortune, a duck race, rides for the youngsters and the hospital will be taking blood pressures.

Other events are scheduled as follows:

- 10 a.m. - Dominoes and 42 tournaments
- 10:30 a.m. - Men's horseshoes and women's washers
- 11 a.m. - Representatives of Old Settlers will be presented
- 11:30 a.m. - Little Mr. and Miss Schleicher County contest. Just show up and enter your little one, ages between two and five, and must be a Schleicher County resident.
- 12 Noon - Flag Ceremony
- 12:15 p.m. - Children's games
- 1 p.m. Women's horseshoes

- and men's washers
- 2 p.m. Karate Demonstration
- 2:30 p.m. - Relay obstacle course
- 3:30 p.m. - Egg toss
- 4:30 p.m. - Wet tug of war
- 6 p.m. - "Ragweed Cowboy Joe" presented by Civic Theatre Group
- 8 p.m. - Rodeo with dance on the slab immediately following. Music by Bleeders Creek from San Antonio.

With excellent showmanship and getting audience participating during their show is what has helped to create this popularity. When the sun does down in Texas you can rest assure that people will be enjoying and dancing to the live music of Jay Eric...a name you will be hearing more and more of.

Saturday night at 8 p.m. will be the second performance of the Eldorado Open Rodeo and a second dance featuring Jay Eric and Bleeders Creek from San Antonio. Jay Eric is the dynamic lead singer of the band and is well on his way to becoming country music's latest name. The group plays old standards, new country and can throw in some Top 40.

A Touch Of History

Harper And Edmiston To Represent Pioneer Heritage

By Rene Calcote

Representing their pioneer heritage from Schleicher County, at the 1989 Schleicher County Days Celebration August 11 and 12, will be Ruth DeLong Harper and Orval Edmiston.

Here are their stories:

DELONG

The civil war left Wash and Sylvia Williams DeLong in a difficult situation in 1865. The Southern army had taken half of their hogs and cattle. This made it difficult to make a living on their farm near Ft. Belnap, on the Brazos river. They packed all their belongings in a covered wagon and started west -- as were many other families.

In Lipan Springs near San Angelo, they built a sod house and planted crops. This area turned out to be an undesirable location also. The soil was rich, but they were frequently raided by hostile Indians who stole their horses. They feared for their lives.

Sylvia sat many nights, when Wash had to be away, with a shot gun, almost as big as her 80-pound frame, across her lap.

Nine children were born to Wash and Sylvia. The oldest child was David Edward "Dave".

The family moved to Christoval in 1874, becoming the second farm family in that area.

In 1899, Dave DeLong bought four sections in Schleicher County, 14 1/2 miles northeast of Eldorado. He built a modern four-room frame house. To the envy of all his neighbors, he built a bath room with a large painted tub inside -- of course, you still had to carry heated water and pour into it.

Dave married Annie Belle Smith, a Coryell County girl, in 1897. Over the next years this couple was blessed with six children. Their first child, Ruby Marion, was born in officers quarters #8 at Fort Concho in 1899. Annie's mother and step-father lived in the barracks after the evacuation of the calvary. Annie went to stay with her parents to have their first baby.

Dave DeLong served on the first grand jury in Schleicher County, was director of the First National Bank of Eldorado and helped establish the First Methodist Church.

Ruth Alice, the third child born to this union, lives in the ranch house built in 1939 by her father.

After graduating high school in Eldorado, Ruth attended college at McMurry in Abilene and Texas University. She taught school at Skidmore after college.

In a double ring ceremony,

Ruth married S.D. Harper January 1, 1930, in the First Baptist Church in Eldorado.

Two girls were born to Ruth and S.D., Myrta Bob and Emily Ann.

Ruth worked as a nurse's aide in Eldorado Clinic during World War II, later she was employed as bookkeeper for City Hall, remaining here many years.

Being active in the Woman's Club, the Methodist Church, Hospital Auxiliary and Mias Amigas has kept her busy. She is also a charter member of the Schleicher County Historical Society, and was on the first committee establishing the museum.

Ruth DeLong Harper is a definite asset to our community and represents her Schleicher County heritage with pride and integrity.

EDMISTON

Many new settlers came to Schleicher County in 1901 during the famous land rush years. Everyone tried to be the first to file on the land.

One of the families these land rushes brought to Schleicher County was the William Frank and Martha Ellen Lindsay Edmiston family. They filed on land east of Eldorado known as Middle Valley.

The Edmistons traveled five days in a covered wagon from

Mason, herding their cattle, to reach their new home.

Frank and Ellen, with their first four children, Arch, Grat, Gene and Bill, made their home under a large wagon sheet draped over a pole, until a house could be built.

Three more children were born to this union in the years to come, Sallie, Cutter and Speck. The children are all listed by their nicknames -- as they are known in Schleicher County.

Life in the Edmiston household was far from boring, with six robust boys and only one girl. Discipline was something of a chore for mom. The boys usually headed for the large dirt tank at the threat of a spanking. They knew their mother would not be able to reach them until Dad got home -- but when he did!!?

Frank Sr. served as deputy sheriff after the family moved to town in 1931. He was deputy at the time of the Calcote killings in 1940. Everyone remembers this terrible event -- four members from the Calcote family were shot to death. Frank helped catch the killer, bringing him in for trial.

Eugene Newt "Gene" was the third son born to Frank and Ellen. He grew up in Schleicher County, attending Mayer Rural School and Eldorado High. Gene went into the ranching business. In 1915 he married Idella "Dell" Neal.

Five children were born to this union, Orval, Shinc, W.F., Mary Dell and Billy Gene.

Orval, the oldest child of Gene and Dell was born February 21, 1919 in Middle Valley. He grew up in this area attending school at Mayer and Eldorado.

In 1942 Orval married Charlene Mund. Their children are Brian, Phil, Joe Max, Chris and Jim Bob.

It seems Orval was destined to be a sheriff -- coming from a long line of law men. His great great Granddad Milligan was the first sheriff in Mason. He was killed by hostile Indians.

In the 31 years that Orval was sheriff he related that he had been through various events -- quiet an interesting and sometimes frightening career.

Orval and Charlene raised their family in the old jail -- living there almost all of the years Orval was sheriff.

The Edmistons are among the many beloved pioneers that have labored to make Schleicher County what it is today. Orval, his parents, and grandparents, have contributed much to our community. We are proud to have him represent our county in his pioneer heritage Schleicher County Days August 11 and 12.

Editorial Comment

by Gary Smith

For the past few weeks, Craig and Cynthia Griffin have been living a nightmare.

July had a wonderful start with the birth of their daughter, Kathryn on the fifth. Shortly thereafter, the heartaches began.

The Griffins found a bruised, swollen area on little Kathryn's thigh. When they took her to the hospital, it was determined that her left thigh bone had been broken. Doctors stated that this could only have been

caused by a great trauma.

According to Craig and Cynthia's family, these young parents were treated like criminals after they went to the hospital. Social Services had hearings and did everything possible to take Kathryn from her parents. Craig and Cynthia were forced to take a battery of psychological examinations. The cost of the psychologicals was \$1000.

An attorney was hired to keep government officials from taking their baby. This

cost another \$1000.

Craig told me, "We didn't have the money. If it hadn't been for my parents (Dan and Judy Griffin), they (Social Services) would have already taken Katy."

Through all of this, their "Doctor" continued to say that the only thing wrong with Katy was that a "trauma" had caused her leg to be broken.

Katy now has two broken legs. It has been determined that she suffers from Osteogenesis

imperfecta or "brittle bones." Her right leg was broken while she was hospitalized, possibly while she was getting an injection.

Katy's prognosis is good. She has the opportunity to live a long and happy life. Because of her disease, she will probably have more broken bones, and Mom and Dad will have to be over-protective. But Katy will not even remember this hospital ordeal. But, you can bet that it is one that her Mom and Dad will never forget.

Emergency Farm Loan Applications Being Accepted

Applications for emergency farm loans for losses caused by natural disaster due to damages and losses caused by drought conditions which occurred January 1

through August 31, 1988 and continuing, are now being accepted at the Farmers Home Administration (FmHA) office located in the Eden ASCS Building, FmHA

County Supervisor Ben T. Rucker, Jr., said.

Schleicher County is one of 50 counties in Texas recently named by Secretary of Agriculture Richard E. Lyng as eligible for loans to cover part of actual production losses resulting from the drought.

Rucker said farmers may be eligible for loans of up to 80 percent of their actual losses or the operating loan needed to continue in business or \$500,000, whichever is less. For farmers unable to obtain credit from private commercial lenders, the interest rate is 4.5 percent.

"As a general rule, a farmer must have suffered at least 30 percent loss of production to be

eligible for an FmHA emergency loan," Rucker said. Farmers participating in the PIK or Federal Crop Insurance programs will have to figure in proceeds from those programs in determining their loss.

"Applications for loans under this emergency designation will be accepted until September 11, 1989 but farmers should apply as soon as possible. Delays in applying could create backlogs in processing and possibly over into the new farming season," Rucker said.

FmHA is a credit agency of the U.S. Department of Agriculture. It is authorized to provide disaster emergency loans to recognized farmers who work at and rely on farming for a substantial

part of their living. Eligibility is extended to individual farmers who are U.S. citizens and to farming partnerships, corporations or cooperatives in which U.S. citizens hold a majority interest.

The FmHA office in Eden is open from 8 a.m. to 12 Noon and 1 p.m. to 5 p.m. Monday through Friday. The mailing address is P.O. Box H, Eden, Texas 76837, and telephone (915) 869-3941.

Office period for Schleicher County is the Thursday afternoon following the second Wednesday of each month from 1:30 p.m. to 3 p.m. and is located in the Schleicher County Courthouse. The next office period is scheduled for Thursday afternoon, August 10, 1:30 to 3 p.m.

Weather Watch by Pat Joiner

High	July 31-August 6, 1989	Low
91	Monday	62
88	Tuesday	58
88	Wednesday	61
98	Thursday	66
90	Friday	67
97	Saturday	68
97	Sunday	67

This Weeks Rainfall: 0.27
Total Rain 1989: 10.11

Attention Voters!

Precinct 2 voting place will now be the Memorial Building. Precinct 3 will now vote in the courthouse.

The Editor's Journal

Life Among The Fishes

By Thomas Giovannitti

Nicolas, my middle child, sometimes surprises me with the things he takes notice of. He and I were talking the other day about things that sometimes bother us or we can't figure out. He brought to my attention a matter which might very well have something to do with the "greenhouse effect".

It appears that if there are more trees the "greenhouse effect" is abated and may even be reversed since trees produce carbon dioxide which helps protect the ozone layer. I think that is sort of how it goes, but don't use this information in any science homework kids, since I can't be all that sure I am right here.

Anyway, the thing Nicolas noticed was that when people eat at "fast food" places, when they get napkins they always get a huge handful. I mean they clean out half the napkin holder and the next guy takes the rest. I think

that the Big Mac could be a lot cheaper if McDonald's didn't have to spend so much money on napkins.

I am glad that they have changed napkin dispensers from those tall ones. You know the kind of restaurant napkin dispenser I mean. The best way I know to describe them is that when you tried to get a napkin it always ripped at the top. It doesn't matter how few or how many you tried to take from those tall ones, the front napkin always tore in the middle.

The horizontal dispensers stopped all the tearing but made it much easier to get hundreds of napkins at one swipe, and therein lies the problem.

Okay, I am sure there are one or two very careful and considerate souls that only take exactly the number of napkins that their group needs but there are not very many of these type of

folks around and, for some reason, the group seldom sends that person to get the napkins (for obvious reasons).

What has all this got to do with the ozone layer, the greenhouse effect and the like? Plenty!

Napkins are made from wood pulp which comes from trees which have to be cut down to make napkins (among other things). There you have it, those trees will take 15 to 20 years to replace. In the meantime the earth

is getting warmer, people don't want to stay home to cook, so they go out to eat, usually at a fast food place, and, so there, even more napkins are destroyed. Can't people see the world catastrophe about to occur just because we couldn't curb our need to have so many napkins?

There may be only one way to avert this doomsday, McDonald's and all the rest (with the exception of fried chicken places) need to switch to "family" napkins.

Editor's Clips

By Mary Jenkins

It can be a major task for some wives -- that is, getting along with her husband. It takes more than just trying to look pretty and keeping your cool. It requires one basic instinct -- knowing what *not* to say and when not to say it.

You never know what might have happened to him just minutes before he left work. You must try to figure out the situation before you make any statement. But don't be caught keeping quiet too long or he will ask what is wrong with you.

Here are some rules, tested in every home and divorce court, on what you must never bring up if you want a peaceful marriage.

Never say, "How do I look?" If you don't look all right he will let you know. If you do, he won't. The best you can hope for as an answer is "Fine dear," while he watches TV.

Never tell him you're tired. He's tired. You don't plan your day right. When he asks "How was your day?" don't tell him. If you are lucky enough to get a "How are you?" it is okay to say, "Fine,

maybe a little beat." If you go on, a glazed look will cloud his eyes and without looking up from the TV he will mumble, "That's nice dear."

Don't start any sentence with, "Never mind, I'll do it," or "Aren't you ever going to --?" First, you'll have to. Second, he isn't. These are the two most bullheaded approaches in marriage.

Never ask if he enjoyed his nap after he has snored his way through an evening of television. He was not asleep he was resting his eyes. He heard every word of it.

Never say, "You're always talking sports. Don't you think it's time you let me in on what you're talking about?" He may decide, all right, he will. So he takes you to a baseball game and is prepared to be kind and instructive. He is not, however, prepared for you to ask where the goal posts are.

Through all this the wife is, above all, faithful, to her husband and to her wedding vows. She knows the difference between fiction and reality.

The Way We See It

By Lola Squyres

"If you wish to appear agreeable in society you must consent to be taught many things which you know already." LAVATER

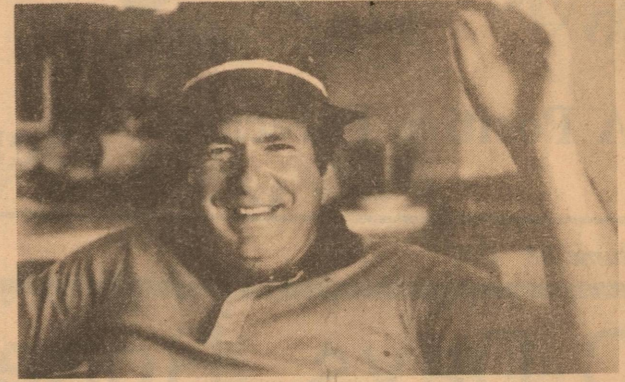
I love it when someone explains something to me in detail as if I just 'fell off the cabbage truck'. I listen, wondering why, because I already know this and then I hear something I haven't

heard before and realize again that we grow and learn in many ways when we least expect to if we leave ourselves open.

So - perhaps we should "appear agreeable in society" sometimes if only to reinforce what we already know with the possibility of gaining a new twist on whatever we are being taught.

Laugh and Live

by Gary Smith



*"The way to happiness --
Keep your heart free
from hate, your mind
from worry...
live simply...
expect little...
give much..."*

Used to love limericks. I was fascinated not only by the rhyming, but also by the wit that was found in limericks.

Now that I am older, I don't take as much time for just plain, simple, fun things of life. I do, however, remember a few of those old poems and thought that I would share them with you this week...

There was a young fellow of Perth
Who was born on the day of his birth,
He was married they say,
On his wife's wedding day,
And he died when he quitted the earth.

In Iceland, a supple, young miss,
Enthused, "I think skating is bliss."
This no more will she state,
For a slip of her skate
Left her ending up something like this.

And my all time favorite...

As a beauty I am not a star
There are others more handsome by far
But my face, I don't mind it
For I am behind it
It's the people in front get the jar.

Sometimes we forget that the simple things of life can be as much fun as any thing else.

Till the next time... May God Bless.

Open Letter To Eldorado

Dear Eldorado,

Due to previous obligations in Abilene, Woodie and Mindy McClung have had to return there. We will miss them and their love and concern for the spiritual and physical needs of our congregation and of the people of this community.

Clarence Ware of San Angelo will be teaching and preaching for us every Sunday until such time as we hire another full time preacher.

We also have Brother Joe Valenzuela of San Angelo teaching a class in Spanish every Thursday night at 7 p.m.

We would like to invite everyone in the community to come and hear these men preach God's message. A free Bible correspondence course is available to anyone who is interested.

In Love,
Members of Warner Avenue Church of Christ



When discovered in 1781, the planet Uranus was first named George in honor of King George III of England.

Eldorado Success

USPS 342-470
Box 1115
Phone 915-853-3125

Published each Thursday
Eldorado, Tx. 76936

Gary C. Smith
Publisher

Mary Jenkins
Editor in Chief

Cathy Smith
Managing Editor



Subscription Prices

In Schleicher County -- \$15.00 per year
Senior Citizen -- \$13.00 per year
Out of Schleicher County -- \$18.00
Senior Citizen -- \$16.00 per year

Second class postage paid at Eldorado, Texas 76936. POSTMASTER: Send address changes to The Success, Box 1115, Eldorado, Texas 76936.

THE SUCCESS is an independent newspaper, published in Eldorado, Texas by PRIME MINISTER PUBLISHING COMPANY.

THE SUCCESS cannot be held responsible for erroneous information provided by sources other than its staff. Should this publication make an erroneous statement, a retraction will follow as soon as the Editor is notified of such an error.

Member 1989
West Texas Press Assn.

Copyright 1989...
Prime Minister Publishing

Mittel Insurance presents... Eagle Spotlight



NICOLAS GIOVANNITTI



ANNAMARIE GIOVANNITTI

Nicolas and Annamarie Giovannitti are the children of Tom and Maxine Giovannitti.

Nicolas will be in the sixth grade this year at Eldorado Middle School. He plays the French horn in band and last year was elected secretary of the middle school student body. He enjoys basketball, reading, especially National Geographic articles, and watching movies. He is an altar boy at the Catholic church and is a member of the Scream Team at school.

Annamarie will be a first grader this year. She likes books, Nickelodeon television and sleeping late. She also likes making cookies with her Grandmother, and has just been introduced to needlepoint by her mother. Her favorite food is probably bean burritos.

Mittel Insurance Agency
"For Your Insurance Needs"
Phone: 853-2576



SWTEC

"Member Owned"

"The Co-op"

Proudly Serving
West Texas

853-2544 office hours
853-2546 24 hrs.

WTU Names Sharkey Vice President Of Finance

West Texas Utilities Company has selected Dennis M. Sharkey as its new vice president-finance. Glen Churchill, WTU's president and chief executive officer, announced the move which was effective August 2. Sharkey succeeds Larry Connors who has transferred to an affiliate utility that serves south Texas.

Sharkey will supervise the company's accounting and finance operations as well as the computer information services department. He has served as controller of Public Service Company of Oklahoma, another affiliate of WTU, for the past eleven years. Prior to that he worked for the Arthur Andersen accounting firm nine years.

A native of Oklahoma, he graduated from Northeastern Oklahoma State University with a

bachelor of science degree in accounting and business administration. He is a certified public accountant.

He has been involved in a number of community activities including serving on the capital campaign committee for the Salvation Army of greater Tulsa, Junior Achievement fund drive team captain and advisor, and vice chairman of the Tulsa United Way Trailblazer campaign. He has also served as the citizens budget review committee for the city of Tulsa, and has been chairman of the board of directors of the Oklahoma Central Credit Union which is a voluntary, non-paid position.

In addition, he has been on the Salvation Army Advisory board and a member of the Kiwanis Club.

Sharkey is married and has three children. He will be relocating to Abilene sometime in August. WTU's corporate headquarters are in Abilene.

It's A Girl!

Mr. and Mrs. Steve Crawford of Houston are the proud parents of another daughter, Caley Jordan Crawford, who was born July 16, 1989. She weighed in at six pounds and six ounces.

She was welcomed home by two brothers, Stephen and Chase, and one sister, Courtney.

Maternal grandparents are Mr. and Mrs. Jerrol Sanders of Eldorado and paternal grandmother is Mrs. Gladys Sternberg of Fort Worth.

Demand For Natural Gas On The Increase

State Comptroller Bob Bullock said Monday that less regulation and increasing consumer demand will result in higher natural gas tax revenue for the state.

Bullock has raised his 1989-91 natural gas tax revenue estimate by \$92.9 million for a total of \$1.7 billion over the three-year period.

"This is good news for Texas. It means more revenue for the state and more jobs for Texans," Bullock said.

The natural gas industry hit a slump in the early 1980s, due largely to federal regulations, excess gas supplies and competition from other energy sources.

But one reason demand for natural gas has increased is that it is considered a cleaner fuel, and more environmentally sound, than some other energy sources.

Increased demand can only be good for Texas, which produces and consumes more natural gas than any other state. The Lone

Star State produced one-third of all natural gas in the nation in 1988, and used one-fifth of the nation's production that same year.

Highlights of the outlook are summarized in the July issue of "Fiscal Notes", a financial newsletter published by the Comptroller's office and available free by writing to: Bob Bullock, State Comptroller, Economic Analysis Center, P.O. Box 13528, Capitol Station, Austin, Texas 78711-9831.

Workshop Slated For Swallowing Disorders

A one-day workshop on pediatric dysphagia (swallowing) disorders will be conducted at West Texas Rehabilitation Center Saturday, August 12 from 8 a.m. to 4 p.m.

Leading discussions for professionals and caregivers on dysphagia anatomy, evaluation and treatment will be respected specialist Bob Beecher of Milwaukee Children's Hospitals.

The \$50 registration fee is payable to WTRC, 3001 South Jackson, San Angelo, Texas 76904. Interested persons may contact WTRC's speech department at (915) 949-9535 for more information.

"We're especially pleased to have an authority such as Mr. Beecher on the program," said Elizabeth Stinnett, WTRC speech/language pathologist. "Health care

professionals, teachers, parents and families will have an opportunity to learn more about these disorders and new treatment techniques."

West Texas Rehab Center recently initiated a dysphagia program for victims of stroke, head injury, cancer, Parkinson's disease, multiple sclerosis, amyotrophic lateral sclerosis (ALS or Lou Gehrig's disease), cerebral palsy, developmental delay, laryngectomies and other illnesses or injuries.

Following X-ray studies which provide a structural look at the swallowing process, therapists and patients learn what can be done to improve individual situations. Treatment usually emphasizes improvement in eating, chewing, drinking, swallowing actions and posture positions.

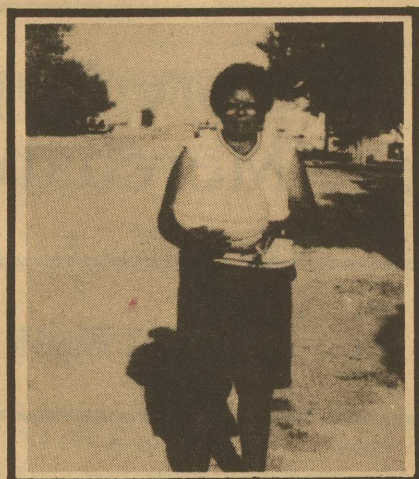
Public Transportation Van Available

Schleicher County's Public Transportation Van is available to anyone on Monday, Tuesday, Wednesday and Friday from 1:30 to 3:30 p.m. for local rides.

The van travels to Sonora on Wednesdays and to San Angelo on Thursdays. It is also available

locally on Monday and Tuesday from 8 to 10 a.m.

Anyone over the age of 60 years rides free. Under 60 years of age the price is \$1.00 for local rides, \$2.00 to Sonora round trip, and \$3.00 to San Angelo round trip.



Cora Hastings is pictured here with a Santa Claus melon cantaloupe which she grew in her garden. The melon weighed 15 pounds. Mrs. Hastings stated she brought two seeds back with her from California last year in her purse. She planted them this year and only one came up. The first melon picked from the vine weighed 17 pounds.

Next Week --

Highlights From One Of The Biggest And Best Barbecues Ever

Southwest Texas Electric Cooperative employees and members were hosts to a barbecue on the courthouse lawn Tuesday evening, August 8.

The largest crowd that has ever been to one of these events was on hand to enjoy the delicious food and fellowship with friends from all over this area.

There will be a more complete story and pictures in next week's paper. Don't miss it!

Hole In One!

Steve Baker, of San Angelo, made a hole in one on the Eldorado Golf Course Sunday, August 6, using a 5 iron on hole number six. Witnesses were Tip Finley and Clay Porter.

LOST YOUR JOB? WE CAN HELP.

1-800-433-1-800

TEXAS NEEDS YOU BACK ON THE JOB.

Texas Department of Commerce
Work Force Development Division
P.O. Box 12728
Austin, Texas 78711

(915) 853-2314

JERRY'S T.V. SERVICE
SYLVANIA TELEVISIONS - SATELLITE T.V. SYSTEMS

JERRY J. JONES
Owner

214 S. MAIN STREET
ELDORADO, TEXAS 76936

You are invited to Worship & Study with

Warner Ave. Church of Christ
(North of Courthouse)

Sunday Bible Study... 9:30 a.m.
Sunday Worship Service... 10:30 a.m.
Sunday Worship Service ...6:00 p.m.
Wednesday Bible Study & Worship 7 p.m.

853-3418
Office a.m.



A to Z Maintenance

Remodeling House Repairs
Painting - Interior/Exterior
All sheetrock Work (Our Specialty)

Brian Holsey 853-2603
R. J. Wilkins 853-2753

OPENHOUSE

Steve M. Sesson, D.D.S.

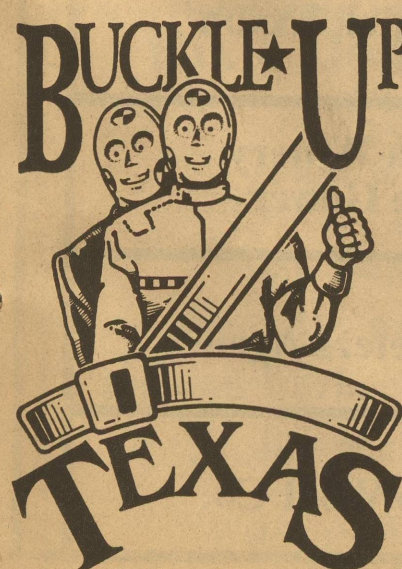
Tuesday - August 15
4-6 p.m.
304 Ave. D
(formerly Radio Shack)
Ozona, Tx
392-2575

West Texas Liquid Feed

Norris Sauer - Pro-Lix Dealer
Ph. 853-3051 - Eldorado, Tx.

Criticism, as it was first instituted by Aristotle, was meant as a standard of judging well.

--Samuel Johnson



SHOT'S SPECIAL



Coke, Diet Coke,
7-Up, Diet 7-Up
\$1.99

Good at your Eldorado Store til August 31st

Hamburger 99c
Cheeseburger \$1.19



A Great Combination!

McCormick's Exxon

Friendly Service
Clean Facilities
Caring About Eldorado



101 S. Divide
Eldorado, Texas
Phone---853-3407



Eldorado Supports It's Lantana Winery

Eldorado's Lantana Winery, Inc.

- Planted April, 1988
- 4,000 Chardonnay Grapes
- 4,000 more to be planted spring of 1989
- 20 ton press and tanks installed
- 3 to 4 ton harvest expected July, 1989
- Reach 20 ton harvest goal by July, 1990
- Irrigation Drip System
- Grapes benefit from Schleicher County (Eldorado, Texas) dry climate to reduce fungus and insect problems
- Texas grapes now growing on South Plains, Hill Country and Trans-Pecos (far West Texas)
- Chardonnay grapes grow in wide range of soils, mature early & produce small berry award winning Chardonnay Wines.....



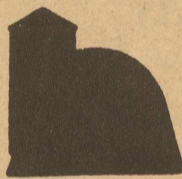
The Schleicher County Chamber of Commerce is interested in promoting new businesses in and around Eldorado. We hardily endorse the Eldorado Lantana Winery. We hope that all of the citizens of Precinct #2 will vote to support the operation of this new Schleicher County industry.

"An investment in Eldorado's future."

For more information call George Gower at 853-2539 or 853-3183



Hayloft



HWY. 277
800 N. DIVIDE
ELDORADO, TEXAS 76936

PHONE
853-2943

GLORIA SWIFT

Pat's Hair Salon
Your full-service salon

Pat Lloyd Owner/Stylest Melinda Hunley Stylest & Nail Tech

Offering
Manicures, Pedicures, Hair Removal with Hot Wax, Lash & Brow Dye

August Specials	
Sun Glitsing	\$35.00 Reg. \$50.00
Perfecto Perm	\$35.00 Reg. \$45.00

Open 9 to 5
Monday - Friday
Walk-ins Welcome

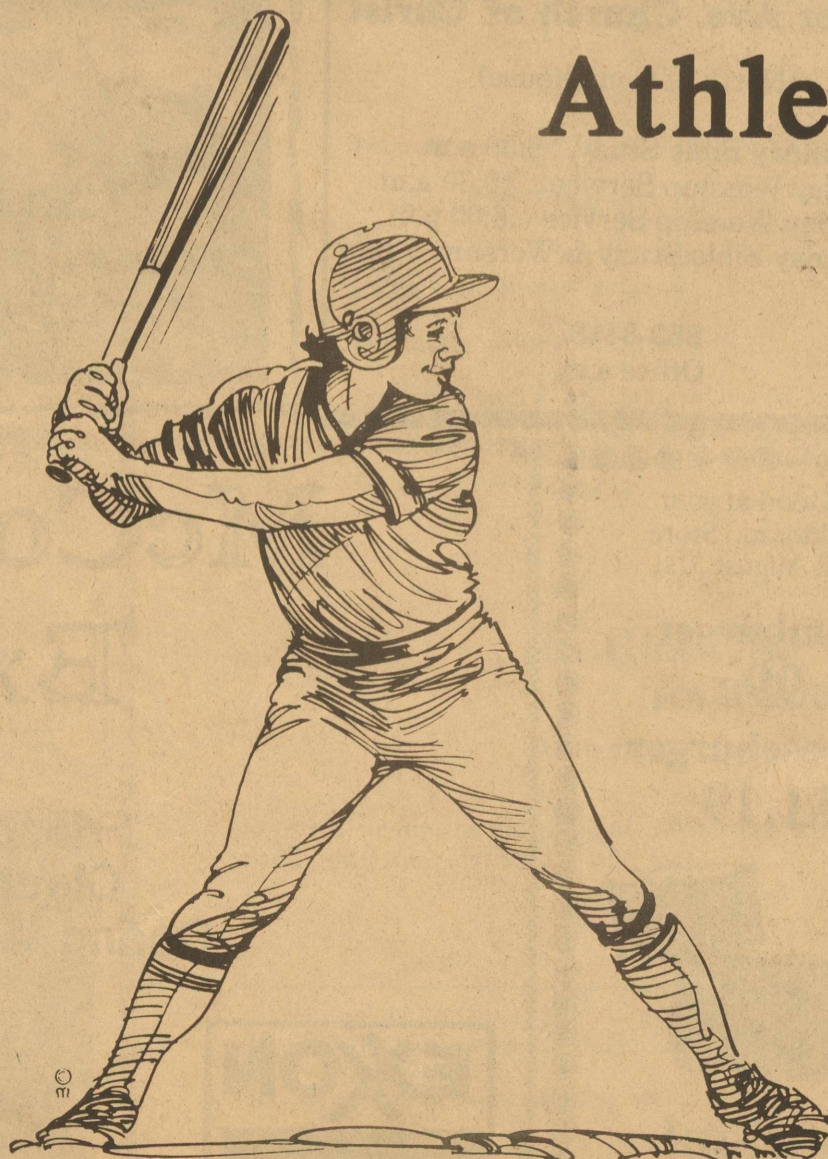
211 S.W. Main
Eldorado, Tx.
853-3608

Smokey Taylor
of
Eldorado Pharmacy
is
Your Hometown Druggist

Rx

Call... 853-2064
or 853-3130
Nights... 853-3414

Eldorado Supports Summer Youth Athletics



Sponsored by these Merchants

First National Bank

Lynn Meador Real Estate

Hayloft

Southwest Texas Electric Co-op Inc.

McCormick Exxon

Lantana Winery
George Gower

Meador-Peters Agency

Eldorado Wool Co.

UNITED ARTISTS
KAY-FIT MARGAIN TUESDAYS
ALL SEATS \$3.00

SUNSET 4
1066 SUNSET MALL 844-3390

Bat Man - PG13
1:15 4:00 7:15 9:55
License to Kill - PG13
7:20 10:00 only
Friday 13 Part VIII - R
1:00 3:30 7:40 9:50
Shag - PG
12:45 2:35 5:00
When Harry Met Sally - R
1:15 2:20 5:20 7:30 9:35

SOUTHWEST 7
3590 WICKERBOCKER RD 948-9984

Lock Up - R
1:10 4:00 7:15 9:40
Young Einstein - PG
1:00 3:15 7:40 9:50
Parenthood - PG
1:15 4:15 7:10 9:45
Indiana Jones - PG13
1:15 4:00 7:20 9:50
Ghost Busters 2 - PG
1:20 3:45 7:10 9:30
Weekend at Bernie's
1:00 3:15 7:20 10:00
Lethal Weapon 2
12:45 3:30 7:10 9:45

Registration Dates Set For Elementary School

Registration for Pre-Kindergarten (four year olds) will be held Monday, August 14 at 9 a.m. in the Pre-Kindergarten classroom (portable building) by the elementary building.

All parents with children who will be four on or before September 1, 1989, are urged to attend. The four year old child will be tested at that time. The parent is asked to take the child's birth certificate, immunization record, social security card and a recent parent's proof of income.

Pre-registration for kindergarten through fourth grade will be held all next week, August 14 through August 18. Please call the elementary office, 853-2770, between 8:30 a.m. and 12 Noon, and 1 to 3:30 p.m. to update your child's record and let the school know if you are still living in Eldorado.

School will begin Wednesday, August 30. The first bell rings at 8:05 a.m. and the tardy bell rings at 8:10.

Lunch prices are as follows: Grades K-3, \$1.00 and grades 4-6 are \$1.10.

A list of school supplies follows:

- Pre-Kindergarten**
- * Crayolas - box of 8 (no fluorescent)
- * Glue - No paste
- * Safety scissors
- * 1 box Kleenex (large)
- * School box
- * 1 package 9x12 assorted construction paper (loose)
- Kindergarten**
- * Glue - No paste
- * Pencil
- * Crayolas - box of 8
- * 1 set watercolors
- * Metal inlaid scissors
- * 10 white sandwich size paper bags
- * School box
- * 1 pocket folder
- * 1 package 9x12 assorted construction paper (loose)
- * 1 tablet (masterpiece #401,

Union Camp #532310, 532410, or Aladdin #4001)

* 1 Small plastic cup
PLEASE LABEL ALL SUPPLIES
First Grade

- * Husky pencil #2 (no thin pencils)
- * Large Elmer's Glue
- * 2 pocket folders
- * School box
- * Scissors (plastic handles)
- * Jumbo crayolas - box of 8
- * 1 package 9x12 assorted construction paper (loose)
- * Large box Kleenex (Teacher has one box out at all times.)
- * Tablet - Masterpiece #401, Aladdin #4001, or Union Camp #532617 (Approximately 1 a month)

Second Grade

- * Eraser
- * No. 2 pencils
- * Crayolas
- * Ruler with inch and centimeters
- * Elmer's Glue
- * School box
- * Scissors
- * 12 tablets - Aladdin #2225 or Union Camp #532179 - these 12 should last all year
- * Kleenex (200 count)
- * 2 Pocket folders
- * 1 folder with brads
- * 1 package 9x12 assorted construction paper (loose)
- * 60 page spiral notebook
- * 1 package notebook paper (wide ruled)
- Third Grade**
- * Crayons - 24 colors

- * White glue - 4 ounce
- * Two pencils - #2
- * Facial Tissue - 200 count
- * Scissors - sharp point
- * 12" ruler - inch and centimeter
- * Zipper pouch for notebook
- * 2 red marking pencils
- * Notebook paper - wide ruled, loose leaf
- * 3 pocket folders
- * Erasers

INDIVIDUAL TEACHERS WILL GIVE ADDITIONAL SUPPLIES NEEDED ON THE FIRST DAY OF SCHOOL.

Fourth Grade

- * 3 ring notebook - no trapper keeper please
- * Notebook paper - no college or narrow ruled
- * 3 spiral notebooks - 100 pages or more
- * Eraser
- * Crayolas (large box)
- * Map Colors
- * Ruler - has both metric and American standard
- * Glue
- * Scissors - 6" or 7" sharp point
- * No. 2 pencils
- * 5 pocket folders
- * 1 package 9x12 assorted construction paper
- * Red grading pencil
- * Kleenex - large box

"Love is like the five loaves and two fishes. It doesn't start to multiply until you give it away."

ACS To Host Duck Race

The American Cancer Society will be sponsoring a duck race, "Can-Ducky-Derby", Saturday, August 12, during Schleicher County Days.

Local merchants have donated prizes totaling over \$1,000 to be given away. Anyone wishing to compete may obtain an entry form from West Texas Utilities and Schleicher County Medical

Center or from area representatives who will be calling on you. Each entry is \$3. Entry forms will be available at Schleicher County Days.

Two grand prizes will be awarded -- one day of deer hunting from Charlie Brazzel and a frozen fresh deer from Reuben and Scharlotte Constanco. Some of the prizes that will

be awarded include a study lamp, savings bonds, case of cokes, cash, gasoline, movies, propane, shampoo and conditioner with set, manicure, fish dinner, brisket dinner, haircut and much more.

Help support the local chapter of the American Cancer Society. Your time and money is valuable.

Youth Return From Mission Trip

The Mission trip to Houston by the youth of First Baptist Church was explained Sunday night as each youth who went got a chance to tell about his or her part in the trip.

The hardships endured at first, and which almost brought them back home before their mission was completed, turned out

to be a rewarding experience. They helped in the nursery, planned recreation activities, took part in Bible Study and put on skits with puppets and dressed as clowns.

They gave bags of food and clothes to the needy every day. They helped to fill paper bags every day from a stack of clothes

in one room, which had been donated from many places.

In addition to the mission activities they got to visit NASA, Galveston for a swim in the ocean, and many sights in Houston and along the way.

The planning of the trip was done by Scott Waller, youth director, with the help of Ken Thomas, Rick and Lori Stricklan and Carolyn Whitten.



The redness of the Red Sea is caused by a red algae abundant there.

My candle burns at both ends;
It will not last the night;
But, ah, my foes, and oh, my friends
It gives a lovely light.
--Edna St. Vincent Millay



THORP'S
LAUNDRY
Laundry & Cleaners
Linen Supply - Uniforms - Dust Control
SONORA - OZONA - ELDORADO
SINCE 1948
214 S. Main Eldorado, Texas
853-2900

KENT'S
AUTOMOTIVE
PARTS AND SERVICE
Phone 853-2733
712 North Divide
Eldorado, Texas 76936



GEORGE H. GOWER
Eldorado Lantana Winery
Gower Pumping Service
BOX 655
ELDORADO, TX 76936
915-853-3183/2539



Decorate with our low rates

Protect your investment with our cost-competitive home improvement loans.

Your home is undoubtedly the major investment of your lifetime. So doesn't it make sense to keep it in tip-top shape so it won't go down in value? Our home improvement loans provide the means; all you provide are the easy, affordable payments. Come talk about it with a personal banker today.

First National Bank

102 SW Main
Eldorado, Texas

Member FDIC

GOT SOME OF THESE?



SELL 'EM WITH A Success Want Ad

CALL 853-3125 TODAY!!!!!!

Purchasing a new air conditioner can be a dilemma!



All air conditioning systems may look similar when you're shopping for a new one, but before you purchase, be sure you know about the **Seasonal Energy Efficiency Ratio**. **S.E.E.R.** is a system that rates air conditioning equipment usually from 5 to 15 so shoppers will know how energy efficient a unit is.

WTU recommends selecting a unit with a rating of 9 or higher to insure lower operating costs.

Plus a S.E.E.R. of 9 or above can qualify you for a rebate under WTU's Energy Saving Plan. Ask for details.

WEST TEXAS UTILITIES COMPANY
An Equal Opportunity Employer
WTU
A Member of The Central and South West System

To find out more about the **S.E.E.R.** rating of cooling equipment, call your cooling and heating dealer or West Texas Utilities.

SC Medical Center Aides Pass Test

Employees of Schleicher County Medical Center recently took the Texas Nurse's Aide Test which is now required by the state in order to work in a medical center.

The purpose of the nurse aide testing program is to identify the people who have the necessary knowledge and skills to be nurse aides in long-term care facilities. Certification as a nurse aide means the person has completed an approved training program and passed a skills test and a written test.

A total of 28 people from Eldorado took the exam and all passed. It was coordinated by

Delia Pina and Rita Reeves.

Those who took the test are: Rosetta Lozano, Peggy Ussery, Petra Barajas, Lucia Martinez, Guadalupe Arispe, Emma McDonald, Virginia Rodriguez, Sylvia Arispe, Angela Redish, Nancy Sanchez, Alicia Fuentes, Marisela M. Estrada, Eugenia Tijerina, Scharlott G. Constanancio, Martha J. Hooten, Amy Arebalo, Larry Ramos, Marco Antonio Martinez, Rosa Martinez, Juanita F. Puente, Lydia B. Guerrero, Martha A. Adame, Brenda Lacy, Josie Arebalo, Marion Simmons, Rhonda Corbell, Cyd Manning and Cora Hastings.

Cheerleaders Sponsor Critter Race At SC Days

Leapin' lizards, enter your critter in the first annual critter race at Schleicher County Days, Saturday, August 12. The event is being sponsored by the Eldorado Varsity Cheerleaders. The event will begin at 1 p.m.

Rules are as follows:

- * Must keep up with your own critter
- * \$1.00 entry fee per critter; age 20 and over qualify for senior citizen discount of \$.75 per critter
- * All ages may enter

* Must sign up 15 minutes prior to race

* No snakes allowed!

There will be three categories for entries. Group 1 consists of insects - if insect flies, it must cross finish line. Group 2 consists of hamsters, gerbils, rabbits, guinea pigs and mice. Group 3 consists of frogs, toads, horny toads and lizards.

Pre-registering is not required, just show up 15 minutes prior to race time and enter your critter. Prizes will be awarded.

FFA Fund Raiser To Benefit Bodie Gilstrap

The Eldorado FFA officers will be selling barbecued briskets and goat meat, cooked by Jimmy Martin, at Schleicher County Days, Saturday, August 12, from 9 a.m. to 5 p.m. Proceeds will go to the Bodie Gilstrap fund.

If you would like goat meat, be there early Saturday as supplies are limited. The briskets are fully

cooked and will be sold whole or half brisket.

The FFA members will also be taking orders for the briskets. To place your order, call Jimmy Martin at 853-2806, Craig Menzies at 853-2272 or Vicki Hooten at 853-2348. "We would really appreciate any donations," the members stated.



Mohair Coats, Vests, Blankets and Throws
100% Texas Wool and Mohair

Featuring Herman Walker's
Oil Paintings and Bronze Sculptures

(915) 887-2524 - Mohair of Texas - (915) 387-2947

Special of the Week

89 Chev. Ext. Cab P/U

Short Wheel Base

Stock #9294

List Price \$13,548.00

Dealer Discount \$1,050.00

Cash Rebate \$500.00

Your Price \$11,998.00 +TTL

We invite you to shop and compare. We would appreciate the opportunity to meet or beat any off you have from another G.M Dealer.

Our Computerized locator serviv gives us access to over 5000 cars nad trucks. If we don't have it - we'll get it!

We sincerely appreciate your business!

No high pressure - you can talk to us.

Good stock of custom painted suburbans, extended cab pick-ups., 4 wheel drive pick-ups - Buicks, Pontiac and Olds.



Call Collect - 915-387-2529 - for Tony or Jerry

Hospital Auxiliary Holds Monthly Meeting

The monthly meeting of the Hospital Auxiliary was held Thursday morning, August 3.

Highlights of discussion was improvements in overall look of the hospital in general. New carpet has been installed in several rooms.

The new meditation room

across from the dentist office is almost finished. New couches have been installed, floor carpeted and walls painted. Two new Bibles are to be donated by Agape Assembly of God Church which will be placed in the room. A new stained glass menagerie will be installed soon. Anyone wishing to contri-

bute toward the purchase of the menagerie may make a donation to Dorothy Harris, treasurer of the auxiliary, or memorials may be made to the auxiliary and designated toward a certain project.

The birthday party will be held August 9 in the dining room. Mrs. Bradshaw and Mr. Goode,

administrator, will be honored.

Volunteer of the month is Barbara Frazier, resident of the month is Marie Spigarelli and employee of the month is Nancy Sanchez.

Many new and interesting things are going on at the hospital. Take a look and see.

19 89 Property Tax Rates in the City of Eldorado

This notice concerns 19 89 property tax rates for the City of Eldorado. It presents information about three tax rates. Last year's tax rate is the actual rate the taxing unit used to determine property taxes last year. This year's effective tax rate would impose the same total taxes as last year if you compare properties taxed in both years. Compare it to the tax rate the taxing unit proposes for this year. This year's rollback tax rate is the highest tax rate the taxing unit can set before taxpayers can start tax rollback procedures. In each case these rates are found by dividing the total amount of taxes by the tax base (the total value of taxable property) with adjustments as required by state law. The rates are given per \$100 of property value.

Last year's tax rate:	
Last year's operating taxes	\$ 86,640
+ Last year's debt taxes	\$ 61,556
= Last year's total taxes	\$ 148,196
÷ Last year's tax base	\$ 22,376,030
= Last year's total tax rate	\$ 0.6623 /\$100

This year's effective tax rate:	
Last year's adjusted taxes	\$ 148,196
(after subtracting taxes on lost property and taxes to correct appraisal roll errors)	
÷ This year's adjusted tax base	\$ 21,074,300
(after subtracting taxes on new property)	
= This year's effective tax rate	\$ 0.7032 /\$100
× 1.03	
= Maximum rate unless unit publishes notices and holds hearings	\$ 0.7242 /\$100

This year's rollback tax rate:	
Last year's adjusted operating taxes	\$ 86,640
(after subtracting taxes on lost property and taxes to correct appraisal roll errors and adding taxes lost in court suits)	
÷ This year's adjusted tax base	\$ 21,074,300
(after subtracting taxes on new property)	
= This year's effective operating rate	\$ 0.4111 /\$100
× 1.08	
= This year's maximum operating rate	\$ 0.4440 /\$100
+ This year's debt rate	\$ 0.2858 /\$100
= This year's rollback rate	\$ 0.7298 /\$100

SCHEDULE A: Unencumbered Fund Balances

The following balances will probably be left in the unit's property tax accounts at the end of the fiscal year. These balances are not encumbered by a corresponding debt obligation.

Type of Property Tax Fund	Balance
General Fund	-0-
Gas I & S Fund	\$ 303.12
Sewer I & S Fund	\$ 4,456.30

SCHEDULE B: 19 89 Debts Service

The unit plans to pay the following amounts for long-term debts that are secured by property taxes. These amounts will be paid from property tax revenues (or additional sales tax revenues, if applicable).

Description of Debt	Principal or Contract Payment to be Paid	Interest to be Paid	Other Amounts to be Paid	Total Payment
1982 Certificates of Obligation	\$ 17,500	6,730	-0-	\$ 24,230
1983 General Obligation	\$ 5,000	31,301	-0-	\$ 36,301
Total required for 19 89 debt service			\$ 60,531	
- Amount (if any) paid from funds listed in Schedule A			-0-	
- Excess collections last year			2,560	
= Total to be paid from taxes in 19 89			57,971	
+ Amount added in anticipation that the unit will collect only 95% of its taxes in 19 89			3,051	
= Total Debt Service Levy			\$ 61,022	

SCHEDULE C: Expected Revenue from Additional Sales Tax

(For counties and cities with additional 1/2 cent sales tax)

In calculating its effective and rollback tax rates, the unit estimated that it will receive \$ N/A in additional sales and use tax revenues.

This notice contains a summary of actual effective and rollback tax rate calculations. You can inspect a copy of the full calculations at City Hall or the Schleicher County Appraisal District office

Name of person preparing this notice Ray L Ballew

Title Chief Appraiser

Date prepared 8-8-89



Pictured above are Karate Institute instructors Walter Bryant in back and Clarence Smith in front.

Karate Instructors Listed As Top Martial Artists

Two Karate Institute instructors are listed as top martial artists in Texas and Louisiana in the July-August issue of 'Sport Karate Magazine'.

Clarence 'Daddy-O' Smith was ranked No. 1 in fighting and No. 1 in forms, and Walter Bryant Jr., was No 2 in fighting. The 1988 final black belt ratings list three Karate Institute instructors --

Smith, No. 1 in fighting and No. 6 in katas; Bryant, No. 2 in fighting and No. 5 in katas; and Clarence Bowman, No. 5 in fighting, No. 3 in katas and No. 4 in weapons. Pictured are Bryant in back and Smith in front.

Karate Institute will be having a self defense class August 17 beginning at 7 p.m. at the

Karate Institute gym on Foster Street in San Angelo. If you are interested call Rita Reeves at 853-3178, Carolyn Porter at 853-2795, or Nancy Miller at 655-4057.

Karate classes will be held on Mondays from 6:30 to 8:30 p.m. beginning September 7, at the Schleicher County Community Center located at 201 S.W. Main.

'Seniors' On The Go

The Meals on Wheels program will be having a booth at Schleicher County Days, Saturday, August 12. They will be selling watermelon.

Anyone wanting to help with this project or donate watermelons, please call Josie Knight at 853-3177.

Results Of TEAMS Test Reported Good

Results of the TEAMS test which was given to Eldorado students this past school year are in and the report is very good. Results for those mastering the test locally and statewide are listed below.

Math, 94 percent locally, 89 percent statewide; Reading, 96 percent locally, 85 percent statewide; Writing, 92 percent locally, 84 percent statewide.

Grade 7

Math, 92 percent locally, 91 percent statewide; Reading, 88 percent locally, 96 percent statewide; Writing, 88 percent locally, 79 percent statewide.

Grade 9

Math, 96 percent locally, 83 percent locally, 83 percent statewide; Reading, 88 percent locally, 83 percent statewide; Writing, 76 percent locally, 69 percent statewide.

Grade 1

Math, 100 percent; Reading, 100 percent; and Writing, 100 percent.

Grade 3

Math, 89 percent locally, 92 percent statewide; Reading, 88 percent locally, 86 percent statewide; Writing, 89 percent locally and 79 percent statewide.

Grade 5

'Ragweed Cowboy Joe' Performance Set

The Schleicher County Chamber of Commerce is happy to announce that the Civic Theatre group will be presenting "Ragweed Cowboy Joe" during Schleicher County Days.

The melodrama will have one performance at 6 p.m. on Saturday, August 12. It will be held in the Play House on Main Street.

Tickets are \$2 for adults and \$1 for children under 12. Refreshments will be served.

Kerbow Inc.
your authorized

Radio Shack

Dealer

Downtown Sonora

KERBOW'S

"Little Outdoors"

- Fishing • Hunting
- Camping Equipment



BRUCE KERBOW

214 NE Main Sonora, Texas 76950
(915) 387-5500 (915) 387-2240

Edna's House of Beauty

Operator & Owner
Edna Vargas

Hwy. 277 N. Sonora 387-2337
Tues - Sat 9-5

Manicures - \$6.00 Pedicures - \$15.00
Matrix Perms - \$35.00

Dixie Doodle Drive In

601 S. Main
853-3624

11 a.m. to 11 p.m. Daily

Fish Basket - \$2.99

Poor Boy w/ Fries - \$1.50

Chopped Barbecue Sandwich - \$1.45

Jr. Burger Basket - .95c

Welcome all phone-in orders!

19 89 Property Tax Rates in the Schleicher Co ISD

This notice concerns 19 89 property tax rates for the Schleicher Co ISD. It presents information about three tax rates. Last year's tax rate is the actual rate the taxing unit used to determine property taxes last year. This year's effective tax rate would impose the same total taxes as last year if you compare properties taxed in both years. Compare it to the tax rate the taxing unit proposes for this year. This year's rollback tax rate is the highest tax rate the taxing unit can set before taxpayers can start tax rollback procedures. In each case these rates are found by dividing the total amount of taxes by the tax base (the total value of taxable property) with adjustments as required by state law. The rates are given per \$100 of property value.

Last year's tax rate:	
Last year's operating taxes	\$ 1,618,388
+ Last year's debt taxes	\$ 404,716
= Last year's total taxes	\$ 2,023,104
÷ Last year's tax base	\$ 180,328,370
= Last year's total tax rate	\$ 1.1219 /\$100

This year's effective tax rate:	
Last year's adjusted taxes	\$ 2,009,086
(after subtracting taxes on lost property and taxes to correct appraisal roll errors)	
÷ This year's adjusted tax base	\$ 163,450,074
(after subtracting taxes on new property)	
= This year's effective tax rate	\$ 1.2291 /\$100
× 1.03	
= Maximum rate unless unit publishes notices and holds hearings	\$ 1.2659 /\$100

This year's rollback tax rate:	
Last year's adjusted operating taxes	\$ 1,605,621
(after subtracting taxes on lost property and taxes to correct appraisal roll errors and adding taxes lost in court suits)	
÷ This year's adjusted tax base	\$ 163,450,074
(after subtracting taxes on new property)	
= This year's effective operating rate	\$ 0.9823 /\$100
× 1.08	
= This year's maximum operating rate	\$ 1.0609 /\$100
+ This year's debt rate	\$ 0.2623 /\$100
= This year's rollback rate	\$ 1.3232 /\$100

SCHEDULE A: Unencumbered Fund Balances

The following balances will probably be left in the unit's property tax accounts at the end of the fiscal year. These balances are not encumbered by a corresponding debt obligation.

Type of Property Tax Fund	Balance
Maintenance and Operation	\$ 865,000
Interest and Sinking	\$ 85,000

SCHEDULE B: 19 89 Debts Service

The unit plans to pay the following amounts for long-term debts that are secured by property taxes. These amounts will be paid from property tax revenues (or additional sales tax revenues, if applicable).

Description of Debt	Principal or Contract Payment to be Paid	Interest to be Paid	Other Amounts to be Paid	Total Payment
1985 General Obligation	\$ 275,000	\$ 145,719	\$ 500	\$ 421,219
Total required for 19 89 debt service			\$ 421,219	
- Amount (if any) paid from funds listed in Schedule A			-0-	
- Excess collections last year			-0-	
= Total to be paid from taxes in 19 89			\$ 421,219	
+ Amount added in anticipation that the unit will collect only 98 % of its taxes in 19 89			\$ 8,596	
= Total Debt Service Levy			\$ 429,815	

SCHEDULE C: Expected Revenue from Additional Sales Tax

(For counties and cities with additional 1/2 cent sales tax)

In calculating its effective and rollback tax rates, the unit estimated that it will receive \$ N/A in additional sales and use tax revenues.

This notice contains a summary of actual effective and rollback tax rate calculations. You can inspect a copy of the full calculations at the Schleicher Co ISD or Schleicher County Appraisal District office.

Name of person preparing this notice Ray L. Ballew

Title Chief Appraiser

Date prepared 8-8-89

Sutton County Days Scheduled August 25, 26

Sonora, Texas welcomes one and all, young and old, August 25 and 26 to the Sutton County Days Celebration. The two-day weekend will begin Friday, August 25 with a parade downtown at 5 p.m. complete with floats, horses, and a variety of other entrants. A barbecue, sponsored by the Sonora Chamber of Commerce, will follow on the courthouse lawn immediately following the parade.

A PRCA Rodeo will begin at 8 p.m. at the Sutton County Park Arena with a dance on the slab

next to the arena after the rodeo. Mac Abernathy will play for the dance.

As an annual attraction for 1989, the Muzzle Loaders Association will have a Rendezvous August 25 and 26 in Sonora. They will feature a Trader's Row in camp and have a Trade Booth on the courthouse lawn on August 26. They welcome anyone to come to their camp and visit. They will be involved in a shootout at 3 p.m. on Saturday at the courthouse. For further information contact Jimmy

Cahill at 915-387-2524.

Saturday morning will begin bright and early with food booths and arts and craft booths on the courthouse lawn. A fun run will be first on the agenda, followed by opening ceremonies, flag raising by Boy Scout Troop 19, Little Miss and Little Mr. Sutton County contest, Old Timers Reunion, pet show, fiddlers contest, class reunions, games, the crowning of Miss Sutton County, March of Dines jail and bail, West Texas Boys Ranch buggy rides and many other fun events to follow. The Outdoor Drama Group will perform for your entertainment also. Horseshoe pitching and washer pitching will be just some

of the other events -- all on the courthouse lawn in Sonora. There will also be a Karate demonstration by KIC with instructor Clarence Smith.

Saturday night, August 26, there will be a second performance of the PRCA Rodeo and another dance featuring Mac Abernathy on the fiddlers contest contact Patti Strauch at 915-387-3784.

Join in the fun in Sonora. Enjoy the relaxed atmosphere and the friendly people. For further information contact the Sonora Chamber of Commerce, P.O. Box 1172, Sonora, Texas 76950 or call 915-387-2880. For information on the fiddlers contest contact Patti Strauch at 915-387-3784.

Masterpiece Exhibition Enters Last Three Weeks

The Cowboy Artists "Masterpiece Exhibition" has three weeks remaining in its four-month run at Kerrville's Cowboy Artists of America Museum.

The huge display features 66 paintings and bronzes and encompasses three of the museum's four galleries. Sunday, August 27 will be the exhibition's final day.

The artworks were assembled primarily from private collections across the United States and represent the top pieces produced by members of the Cowboy Artists of America, a group founded in 1965. Twenty percent of the artworks earned gold and silver medals at past competitions.

Museum personnel organized the "Masterpiece Exhibition" only for display in Kerrville. When it is dismantled, the paintings and bronzes will not travel to another exhibit site, but will be dispersed back to their owners.

According to museum director Gene Ball, "Paintings and bronzes in this exhibition can be appreciated in several ways. Each work incorporates an idea or theme for viewers to explore. Then there is the visual reward of the interplay of colors, composition, design and perspective. And, of course one of the extra elements which many people appreciate is authenticity in details based on diligent historical research and keen-eyed close study of today's western scene."

The Masterpiece Exhibition can be seen Mondays through Saturdays from 9 a.m. to 5 p.m. and on Sunday from 1 to 5 p.m. Museum admission fees are \$2 for adults and \$.50 for children ages 6-12.

The CAA Museum is located in Kerrville on Highway 173 one-half mile from Highway 16.

Poetry Contest Open

Poets may enter the American Poetry Association's nationwide contest now. Over \$11,000 in prizes will be awarded to 152 winners. Entry is free and everyone is welcome to enter.

The grand prize is \$1,000 and the first prize \$500. Other prizes include cash awards and publication.

"A special opportunity for undiscovered poets only comes along once in a while. That's exactly what this contest is. It can help you get published and gain greater public recognition," said Robert Nelson, Publisher for the Association. "Everyone who writes poetry is urged to enter our contest."

Poets may enter the contest

by sending up to six poems, each no more than 20 lines, name and address on each page, to American Poetry Association, Dept. CT-56, 250-A Potrero St., P.O. Box 1803, Santa Cruz, CA 95061. Entries should be mailed by December 31.

Every entrant receives a free copy of "The Poet's Guide to Getting Published", a four-page booklet full of useful information.

Each poem is also considered for publication in the "American Poetry Anthology", a leading collection of contemporary verse.

During seven years of sponsorship the American Poetry Association has run 32 contests and awarded \$145,000 in prizes to 3,040 winning poets.

One-Day Historical Marker Workshop Set

The Texas Historical Commission and the Tom Green County Historical Commission will sponsor a one-day historical marker workshop on Saturday, August 19, in San Angelo. The workshop is entitled, "Marking Local History: How to Successfully Prepare an Official Texas Historical Marker Application."

THC staff will cover topics such as marker policies and criteria, application procedures, proper documentation methods, historic architecture, and the Recorded Texas Historic Landmark designation. A brief overview of the National Register nomination process and benefits will be included as well.

The workshop will begin with

registration at 9:30 a.m. and will continue until approximately 3:30 p.m. All sessions will be held in Officers Quarters #8 at the Fort Concho National Historic Landmark, 215 East Avenue D.

Cost of the workshop is \$10 and includes lunch. Pre-registration is encouraged but is not required. All those interested in learning more about the state marker program and its application requirements are encouraged to attend.

For more information or a registration form, contact the State Marker Program, THC, P.O. Box 12276, Austin, Texas 78711, 512-463-6100, or Golda Foster, Chair, Tom Green County Historical Commission, 915-655-1380.

19 89 Property Tax Rates in Schleicher County Hospital District

This notice concerns 19 89 property tax rates for Schleicher County Hospital District. It presents information about three tax rates. Last year's tax rate is the actual rate the taxing unit used to determine property taxes last year. This year's effective tax rate would impose the same total taxes as last year if you compare properties taxed in both years. Compare it to the tax rate the taxing unit proposes for this year. This year's rollback tax rate is the highest tax rate the taxing unit can set before taxpayers can start tax rollback procedures. In each case these rates are found by dividing the total amount of taxes by the tax base (the total value of taxable property) with adjustments as required by state law. The rates are given per \$100 of property value.

Last year's tax rate:

Last year's operating taxes	\$ 659,997
+ Last year's debt taxes	\$ -
= Last year's total taxes	\$ 659,997
÷ Last year's tax base	\$ 189,327,880
= Last year's total tax rate	\$ 0.3486 /\$100

This year's effective tax rate:

Last year's adjusted taxes	\$ 659,997
(after subtracting taxes on lost property and taxes to correct appraisal roll errors)	
÷ This year's adjusted tax base	\$ 172,564,888
(after subtracting taxes on new property)	
= This year's effective tax rate	\$ 0.3824 /\$100
× 1.03	
= Maximum rate unless unit publishes notices and holds hearings	\$ 0.3938 /\$100

This year's rollback tax rate:

Last year's adjusted operating taxes	\$ 659,997
(after subtracting taxes on lost property and taxes to correct appraisal roll errors and adding taxes lost in court suits)	
÷ This year's adjusted tax base	\$ 172,564,888
(after subtracting taxes on new property)	
= This year's effective operating rate	\$ 0.3824 /\$100
× 1.08	
= This year's maximum operating rate	\$ 0.4130 /\$100
+ This year's debt rate	\$ - /\$100
= This year's rollback rate	\$ 0.4130 /\$100

SCHEDULE A: Unencumbered Fund Balances

The following balances will probably be left in the unit's property tax accounts at the end of the fiscal year. These balances are not encumbered by a corresponding debt obligation.

Type of Property Tax Fund	Balance
---------------------------	---------

SCHEDULE B: 19 89 Debts Service

The unit plans to pay the following amounts for long-term debts that are secured by property taxes. These amounts will be paid from property tax revenues (or additional sales tax revenues, if applicable).

Description of Debt	Principal or Contract Payment to be Paid	Interest to be Paid	Other Amounts to be Paid	Total Payment
Total required for 19 ____ debt service			-0-	
- Amount (if any) paid from funds listed in Schedule A			-0-	
- Excess collections last year			-0-	
= Total to be paid from taxes in 19 ____			-0-	
+ Amount added in anticipation that the unit will collect only ____% of its taxes in 19 ____			-0-	
= Total Debt Service Levy			-0-	

SCHEDULE C: Expected Revenue from Additional Sales Tax

(For counties and cities with additional 1/2 cent sales tax)

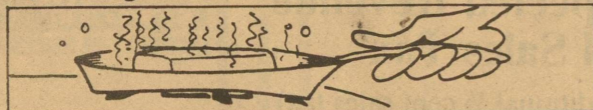
In calculating its effective and rollback tax rates, the unit estimated that it will receive \$ _____ in additional sales and use tax revenues.

This notice contains a summary of actual effective and rollback tax rate calculations. You can inspect a copy of the full calculations at _____ County Courthouse tax office

Name of person preparing this notice _____ Dorothy M. Ivins

Title _____ County Tax Assessor-Collector

Date prepared _____ August 9, 1989



Only half as much butter is needed for seasoning vegetables if butter is browned before it is added. The browning brings out the butter's flavor.

Eldorado Wool Company

Eldorado, Texas

PHONE NUMBERS:

Feed Department 853-2820
Office & Warehouse 853-2772



Immunizations Are Required By Texas Schools

With the new school year just around the corner, the Texas Medical Association encourages parents to check their child's immunization records. Although outbreaks and epidemics of killer diseases like polio and diphtheria don't pose the threat they once did, infectious diseases can still spread among us.

Children are not born immune to infectious diseases; they must be immunized against them. More than any other preventive health-care practice, immunizations begun in childhood and kept up to date save money, misery and lives.

In Texas, proof of vaccinations for six communicable diseases -- polio, tetanus, measles, rubella (German measles), mumps, and diphtheria -- is required by law for all children registering for day-care or public school. In addition, pertussis, or whooping cough, vaccine is required for children less than five years old in day-care or a public school. The Texas Medical Association recommends the pertussis vaccine be extended for children through age six.

Because of vaccinations, only two cases of diphtheria and one

fatal case of polio have been reported in Texas in the past 10 years. However, some preventable diseases persist because parents allow the original vaccinations to expire without getting the necessary follow-up booster shots. In 1988, the Texas Department of Health recorded outbreaks of measles, mumps, rubella, pertussis

and tetanus. About 3,000 cases of measles were reported during an epidemic in Texas in late 1988 and early 1989. Victims of these diseases included unimmunized children, as well as adults who had allowed their immunizations to lapse.

Parents should follow their physician's advice in scheduling the

necessary vaccinations and boosters of more than 29,000 physician and medical student members. It is for each child. Parents who are based in Austin and has 116 not sure if their children's component county medical society vaccinations are current should ties around the state. The Association represents 80 percent of the state's physicians, and its goal is to improve the health of Texans through the professional and personal development of members.

The Texas Medical Association is a professional organization

New Method Controls Brush Without Drift

Farmers and ranchers can use a new method to control individual brush plants about anytime of year without affecting other plants, says a range brush control expert with the Texas Agricultural Extension Service.

The new method is an updated version of the old conventional basal bark treatment, says Dr. Tommy Welch, Extension range brush and weed control specialist. Preliminary results from demonstrations with the new "low volume basal treatment" indicate that many species can be controlled in and out of the growing season, though the optimum time probably is May through September.

One advantage of any basal bark treatment is there's virtually no danger of affecting non-target plants.

With the new low volume method, the spray mix includes more herbicide so less total solution is required on each plant. This makes application quicker, the specialist says.

Using the low volume technique, a mixture of 20 to 30 percent Grazon ET herbicide in diesel

fuel is sprayed on the lower 15 to 20 inches of the stem. Only enough is used to wet the bark. The method works best on smooth-barked trees less than six inches in diameter.

Many ranchers may be familiar with the old basal treatment. A mixture of two percent Grazon ET herbicide and diesel is sprayed on the lower 15 to 20 inches of the plant's trunk until the solution pools at the base. Usually effective on trees less than six inches in diameter, the method can be used anytime except when snow or water prevent spraying to the ground. The method may work best when the soil is dry and pulled away from the tree, allowing the solution to reach the bud zone, Welch says.

Texas farmers and ranchers increasingly are using single plant treatments as a way to control small, scattered brush in pastures, to maintain fencerows and to manage brush coming back after a broadcast herbicide or mechanical treatment. In general, for fewer than 150 to 200 plants per acre, individual treatment will be more economical than broadcast application, Welch says.

Arbor Day Foundation Offers Free Trees

Ten free white flowering dogwood trees will be given to each person who joins The National Arbor Day Foundation during August, 1989.

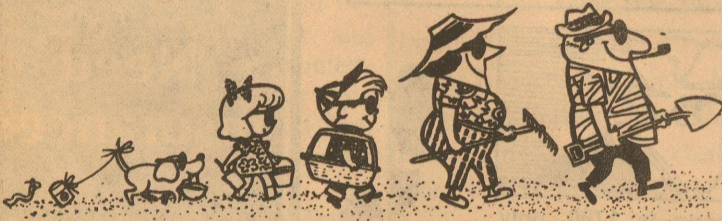
The free trees are part of the nonprofit Foundation's efforts to encourage tree planting throughout America.

"The white flowering dogwoods will add year-round beauty to your home and neighborhood," John Rosenow, the Foundation's executive director, said. "Dogwoods have showy spring flowers, scarlet autumn foliage, and red berries

which attract songbirds all winter."

The trees will be shipped postpaid at the right time for planting between October 15 and December 10 with enclosed planting instructions. The six to 12 inch trees are guaranteed to grow or they will be replaced free of charge.

To become a member of the Foundation and to receive the free trees, send a \$10 membership contribution to TEN DOGWOODS, National Arbor Day Foundation, 100 Arbor Avenue, Nebraska City, NE 68410, by August 31, 1989.



SUBSCRIPTION FORM

THE SUCCESS

Date: _____

Name: _____

Mailing Address: _____

City, State, Zip: _____

Telephone Number: _____

Price Schedule:

In Schleicher County \$15.00/YEAR
 Senior Citizen \$13.00/YEAR
 Out of Schleicher County \$18.00/YEAR
 Senior Citizen \$16.00/YEAR

Send Check or Money Order to:

The Success
 Box 1115
 Eldorado, Tx. 76936
 (915) 853-3125

19 89 Property Tax Rates in Schleicher County

This notice concerns 19 89 property tax rates for Schleicher County. It presents information about three tax rates. Last year's tax rate is the actual rate the county used to determine property taxes last year. This year's effective tax rate would impose the same total taxes as last year if you compare properties taxed in both years. Compare it to the tax rate the county proposes for this year. This year's rollback tax rate is the highest tax rate the county can set before taxpayers can start tax rollback procedures. In each case these rates are found by dividing the total amount of taxes by the tax base (the total value of taxable property) with adjustments as required by state law. The rates are given per \$100 of property value.

	General Fund	Farm-to-Market/ Flood Control Fund	Special Road/Bridge Fund
Last year's tax rate:			
Last year's operating taxes	\$ 768,276	\$ 77,349	\$ 77,862
+ Last year's debt taxes	\$ 149,517	\$ -0-	\$ -0-
= Last year's total taxes	\$ 917,793	\$ 77,349	\$ 77,862
÷ Last year's tax base	\$ 188,072,278	\$ 186,382,210	\$ 188,072,278
= Last year's tax rate for each fund	\$ 0.4880 /\$100	\$ 0.0415 /\$100	\$ 0.0414 /\$100
Last year's total tax rate			
		\$ 0.5709 /\$100	
This year's effective tax rate:			
Last year's adjusted taxes (after subtracting taxes on lost property and taxes to correct appraisal roll errors)	\$ 916,425	\$ 77,207	\$ 77,746
÷ This year's adjusted tax base (after subtracting taxes on new property)	\$ 171,357,218	\$ 169,711,314	\$ 171,357,218
= This year's effective tax rate for each fund	\$ 0.5348 /\$100	\$ 0.0454 /\$100	\$ 0.0453 /\$100
This year's total effective tax rate			
		\$ 0.6255 /\$100	
- Sales tax adjustment rate		\$ 0.0128 /\$100	
= This year's adjusted effective tax rate		\$ 0.6127 /\$100	
x 1.03			
= Maximum rate unless unit publishes notices and holds hearings		\$ 0.6310 /\$100	
This year's rollback tax rate:			
Last year's adjusted operating taxes (after subtracting taxes on lost property and taxes to correct appraisal roll errors and adding taxes lost in court suits)	\$ 767,131	\$ 77,207	\$ 77,746
÷ This year's adjusted tax base (after subtracting taxes on new property)	\$ 171,357,218	\$ 169,711,314	\$ 171,357,218
= This year's effective operating rate	\$ 0.4476 /\$100	\$ 0.0454 /\$100	\$ 0.0453 /\$100
x 1.08			
= This year's maximum operating rate	\$ 0.4834 /\$100	\$ 0.0490 /\$100	\$ 0.0489 /\$100
+ This year's debt rate	\$ 0.0795 /\$100	\$ -0- /\$100	\$ -0- /\$100
= This year's rollback rate for each fund	\$ 0.5629 /\$100	\$ 0.0490 /\$100	\$ 0.0489 /\$100
This year's total rollback rate			
		\$ 0.6608 /\$100	
- Sales tax adjustment rate		\$ 0.0128 /\$100	
= Maximum rate before taxpayers can start rollback election process		\$ 0.6480 /\$100	

SCHEDULE A: Unencumbered Fund Balances

The following balances will probably be left in the unit's property tax accounts at the end of the fiscal year. These balances are not encumbered by a corresponding debt obligation.

Type of Property Tax Fund Balance

SCHEDULE B: 19 89 Debts Service

The unit plans to pay the following amounts for long-term debts that are secured by property taxes. These amounts will be paid from property tax revenues (or additional sales tax revenues, if applicable).

Description of Debt	Principal or Contract Payment to be Paid	Interest to be Paid	Other Amounts to be Paid	Total Payment
Memorial Bldg. Imp. Bond	\$50,000.00	\$ 2087.50		\$52,087.50
Law Enforcement Center	50,000.00	31865.00		81,865.00

Total required for 19 89 debt service	\$133,952.50
- Amount (if any) paid from funds listed in Schedule A	
- Excess collections last year	
= Total to be paid from taxes in 19 89	\$133,952.50
+ Amount added in anticipation that the unit will collect only _____% of its taxes in 19 _____	
= Total Debt Service Levy	

SCHEDULE C: Expected Revenue from Additional Sales Tax

(For counties and cities with additional 1/2 cent sales tax)

In calculating its effective and rollback tax rates, the unit estimated that it will receive \$ _____ in additional sales and use tax revenues.

This notice contains a summary of actual effective and rollback tax rate calculations. You can inspect a copy of the full calculations at _____ County Courthouse Tax Office.





Name of person preparing this notice _____ Dorothy H. Evans

Title _____ County Tax Assessor-Collector

Date prepared _____ 8/9/89

<p>Lettuce Head 49c</p>	<p>Swanson Beef, Chicken or Turkey Pot Pies 2/99c</p>	<p>5 lb. Parade Sugar-----\$1.79 8 oz. Parade Tomato Sauce-----4/\$1.00 16 oz. Parade Corn-----2/\$1.00 16 oz. Parade Tomatoes-----2/\$1.00 12 oz. Parade Weiners-----69c 48 oz. Crisco Reg. or Corn Oil-----\$2.49</p>	<p>6 1/2 oz. Ripplin's Potato Chips 99c</p>	<p>Large Parade Eggs 79c/doz.</p>
-----------------------------	---	---	---	---------------------------------------

Prices Effective August 10-16

<p>2 Liter Cokes or 7Up 89c</p> 	<p>5 Qt. Bucket Gandy Ice Cream \$3.99</p> 	<p>12 oz. Asst. Parade Canned Drinks 8/99c</p> 	<p>1 lb. Owens Sausage \$1.59</p> 	<p>Boneless Chuck Roast-----\$1.59 Boneless Arm Roast-----\$1.69 Boneless Sirloin-----\$2.79</p> <p>Large Tomatoes-----59c/lb 10 lb. Potatoes-----\$2.49 Large California Peaches-----3/\$1.00 Avocados-----49c/each</p>
--	--	--	--	--

Glidden Foods Open Monday-Saturday 9 a.m.-6 p.m. Food Stamps Accepted

NOTICE

NOTICE
Mary Kay Cosmetics. Graduation, birthday, anniversary gifts. Martha Spinks, 701 Lee Street. 853-3415 after 4 p.m.
tfn-(7-20-89)-b

NOTICE
Teenager would like to babysit, all ages, your home or mine, week-ends, evening, and during the summer. Reliable and experienced with good references. Call Jennifer Smith at 853-2721.
tfn-(8-3-89)-nc

NOTICE: Farmers!! CPR acres mowed, reasonable prices. I have 4, 15-foot mowers and John Deere tractors. Phone 806-791-1017, leave message.
4-(8-3-89)-b

NOTICE: National company seeking part-time insurance inspector for Eldorado and surrounding area. Must have reliable vehicle. Send resume to GIS, 8700 N. Stemmons Freeway, Suite 133, Dallas, Texas 75247.
2-(8-10-89)-b

NOTICE
Foxworth-Galbraith Lumber Company will be open Saturdays until 4 p.m. July and August.
6-(7-13-89)-b

NOTICE: Buy or sell - Art, cookbooks, American, Russian, Asian, World War I & II, Photography, Poetry, Language, Religious, Metaphysical, Children 1st edition, Texana. *Ye Ole Fantastique Book Shoppe*, 1218 W. Beauregard.
tfn-(6-1-89)-b

NOTICE: For metal buildings, corrals, arenas, chutes, chain-link and yard fencing, call R&B Services. Don Richters 853-2444 or Bud Arendt 853-2337. Leave Message.
f-(5-25-89)-b

NOTICE: Defensive Driving offered weekly in this area. Call 853-2777.
tfn-(6-1-89)-b

WANTED

L.V.N. NEEDED
Schleicher County Medical Center Nursing Home needs an L.V.N. Full time 3-11 shift, work on 4 days off 2. Part time 11-7 shift, work 2-3 nights/week. Starting salary \$7.75 per hour. Contact Rita Reeves, R.N. 853-2049 or Steve Goode 853-2507.
8-(8-3-89)-b

WANTED: Part-time admissions person needed. Call Mickey Lane's College, 915-653-3585.
1-(8-10-89)-B

WANTED: Experienced tractor operators. Needed for highway mowing. Motel furnished. Will be traveling. Call 806-791-1017, leave message.
2-(8-10-89)-b

GARAGE SALE

Gigantic Garage Sale
Thursday and Friday, August 10 and 11. 8 a.m. to ? at building to back of Glidden's Grocery parking lot. Furniture, bedding, linens, stove, portable dishwasher, carpet, dishes, pots and pans, clothes, picture frames, lamps books, bric a brac, and much more.
1-(8-10-89)-p

PUBLIC NOTICE

PRECINCT 2 ONLY
NOTICE OF LOCAL OPTION ELECTION
To the Registered Voters of Schleicher County, Texas: Notice is hereby given that the polling place listed below will be open from 7:00 a.m. to 7:00 p.m. on August 22, 1989 for voting in a Local Option Election for the legal sale of beer and wine in Precinct 2 only.
Location of polling place -- Memorial Building, Courthouse Square.
Absentee voting by personal appearance will be conducted each week day in the County Clerk's office, courthouse between the hours of 8 a.m. and 5 p.m. beginning August 2, 1989 and ending on August 18, 1989.
Applications for ballot by mail shall be mailed to: Helen Blakeway, Drawer 580, Eldorado, Tx. 76936.
Applications for ballots by mail must be received no later than the close of business on August 15, 1989.
PRECINTO 2 SOLAMENTE-AVISO DE OPCION LOCAL ELECCION
A los votantes registrados del Schleicher County, Texas: Nitifiquese, por las presente, que las casillas electorales sitados abajo se abriran desde las 7:00 a.m. hasta las 7:00 p.m. el 22 de Agosto de 1989 para votar en Opcion Local Eleccion a favor de la venta legal de cerveza y vino Precinto 2 solamente.

Want Ads

Direccion de las caillas electorales -- Memorial Building, Schleicher County Courthouse Square.
La votacion en ausencia en persona se llevara a cabo de lunes a viernes en County Clerk's office, Courthouse entre las 8:00 de la manana y las 5:00 de la tarde empezando el Lunes, 2 de Agosto 1989 y terminando el Martes, 18 de Agosto 1989.
Las solicitudes para boletas que se votaran en ausencia por correo deberan enviarse a: Helen Blakeway, Drawer 580, Eldorado, Tx. 76936.
Las solicitudes para boletas que se votaran en ausencia por correo deberan recibirse para el fin de las horas de negocio el 15 de Agosto de 1989.
1-(8-3-89)-b

Public Notice
The Schleicher County I.S.D. will conduct its annual Budget Hearing on August 14, 1989 at 6:30 p.m. in the Administration Building located at 205 Fields in Eldorado, Texas.

PUBLIC NOTICE
CITY OF ELDORADO
TEXAS COMMUNITY DEVELOPMENT PROGRAM
The City of Eldorado is currently making plans to apply to Texas Department of Commerce for Texas Community Development Program funds. Two public hearings to solicit the input of the community in the preparation of the Community Development Program will be conducted.
The first public hearing will be held at the Parking Lot of Our Lady Of Guadalupe, at 5:15 p.m., August 14, 1989 to discuss housing and community development needs, use of past TCDP awards, amount of funds available and eligible activities. The City encourages individual citizens and citizen's groups to make their views known at these public hearings and welcomes the full participation of its citizens in the development of this TCDP application. General information on the TCDP program will be available. Citizen comments may be delivered in advance to City Hall at any time. Groups representative of persons of low and moderate income may request technical assistance in developing TCDP proposals by contacting the person listed below.
The second public hearing will be held at City Hall, 6 South Cottonwood at 7:30 p.m., August 21, 1989 to allow citizens an opportunity to comment on proposed project, amount of funds requested and estimated amount proposed for activities that will benefit low/moderate income persons.
More detailed information on proposed activities, amount of funds and proposed location of activities will be available for inspection at City Hall after the second hearing. Handicapped individuals who may have difficulty in attending these meetings should contact City Hall to arrange for assistance. Para residentes necesitados de interpretes, favor de comunicarse con la municipalidad antes de las audiencias publicas.
For further information, contact Carolyn Mayo at the City Hall at 915-853-2691.
1-(8-10-89)-b

FOR SALE

FOR SALE: 8X8 Barn with plywood floor. \$300. See Gene at lumber yard. Call 853-2744.
1-(8-10-89)-b

FOR SALE: Home with 4 bedrooms, 1 upstairs, on 2 lots. 2 baths, utility room, double carport, sun deck, central air and heat, vinyl siding. \$59,500. Call 853-3368.
4-(8-10-89)-b

FOR SALE: 1987 Nissan King Cab pickup. AM/FM cassette player, AC. Call 853-3608 or 853-3705 after 5 p.m.
1-(8-10-89)-b

FOR SALE: 3 bedroom home for sale near school. Phone 853-2848.
4-(7-27-89)-b

Donaldson Painting
Quality painting at reasonable prices. Free Estimates. Phone 896-2280 or 657-2687.
4-(7-20-89)-p

THANK YOU

THANK YOU
We would like to take this opportunity to thank the Eldorado Fire Department for their quick response in extinguishing the fire at our house on Monday, July 31. Thanks,
George & Su Scott
1-(8-10-89)-p

THANK YOU
I would like to express my sincere appreciation to all the people of Eldorado that so graciously gave their love and support to me & my family because of the loss of my mother. Smokey Taylor

FREE

FREE PUPPIES: Mother is full-blood blue heeler, dad is collie-German shepherd mix. Six males, one female. Call 853-2658.
1-(8-10-89)-p

When the nation took its first census in 1790, only five percent of the population lived in cities or towns. Most of the 3.9 million people lived in farm areas.

Casa Arispe
Fine Mexican Dining



Open 7 Days a Week
8 a.m. to 10 p.m.

Saturday - Catfish Buffet

Need insurance?

Then give me a ring. I'm your neighborhood Farmers Insurance Group Agent and I may provide the coverage you need in Auto, Life, Fire or Commercial insurance - and maybe save your money too. Let me tell you about the discounts available - for non-smokers, good students, for drivers between 25 and 69 years of age. And for your convenience you can take care of most all your insurance with Farmers in just one monthly payment.

Randy Upham
Insurance Agency
405 277 North
Sonora, Tx.
387-2465

