

# LEADER

SERVING SCHLEICHER AND IRION COUNTIES

inside



Adult  
Education  
Classes

MEMBER  
1985  
**TA**  
TEXAS PRESS  
ASSOCIATION

(U.S.P.S.) 342-470

25 cents

January 10, 1985

## Area livestock-project shows this week-end

This week-end would be the ideal time for a family outing since both Schleicher and Irion counties will be hosting their annual livestock & project shows.

The Irion County Stock Show, sponsored by the Irion County Live Stock Association, will be held January 12th at the Irion County Show Barn in Mertzon City Park.

The daylong event will kick off at 8:00a.m. and will continue to run through until 12 noon. Auctioning will be held throughout the day. The Premium Sale is expected to begin at 1:00p.m. A BBQ lunch will be held at noon sponsored by the Lions Club.

All proceeds from the auction go to the Irion County 4-H and FFA clubs. Donated items from area merchants will be included in the auction and all donations are tax deductible. Auctioneering will be handled by Wes Minton. Scott Holland is the Association Chairman this year in Irion County. Schleicher County will be host-

ing their live stock and project show January 11th - 12th in Eldorado at the Ag. Barn.

There will, of course, be the livestock show featuring the exhibitors' lambs, sheep, hogs, steers and cattle. In addition to this will be the delightful "Dog Show" which was so popular last year. In the Women's Division there will be exhibits ranging from needlework, hobbies, and crafts, quilts, art and canned goods. The Food Show will feature three categories: Yeast Bread, Cakes & Pies, and Candy & Cookies. In the Youth Art Show, exhibitors will be showing their needlework and hobbies & crafts.

The Program of Events for the two day show is as follows:

Friday, Jan. 11

8:00-9:00a.m. - Women's Division Entries Accepted  
9:00-12:00a.m. - Judging Women's Entries in Divisions  
9:00a.m. - Weighing Lambs  
10:00a.m. - Weighing Hogs  
11:00a.m. - Weighing Steers

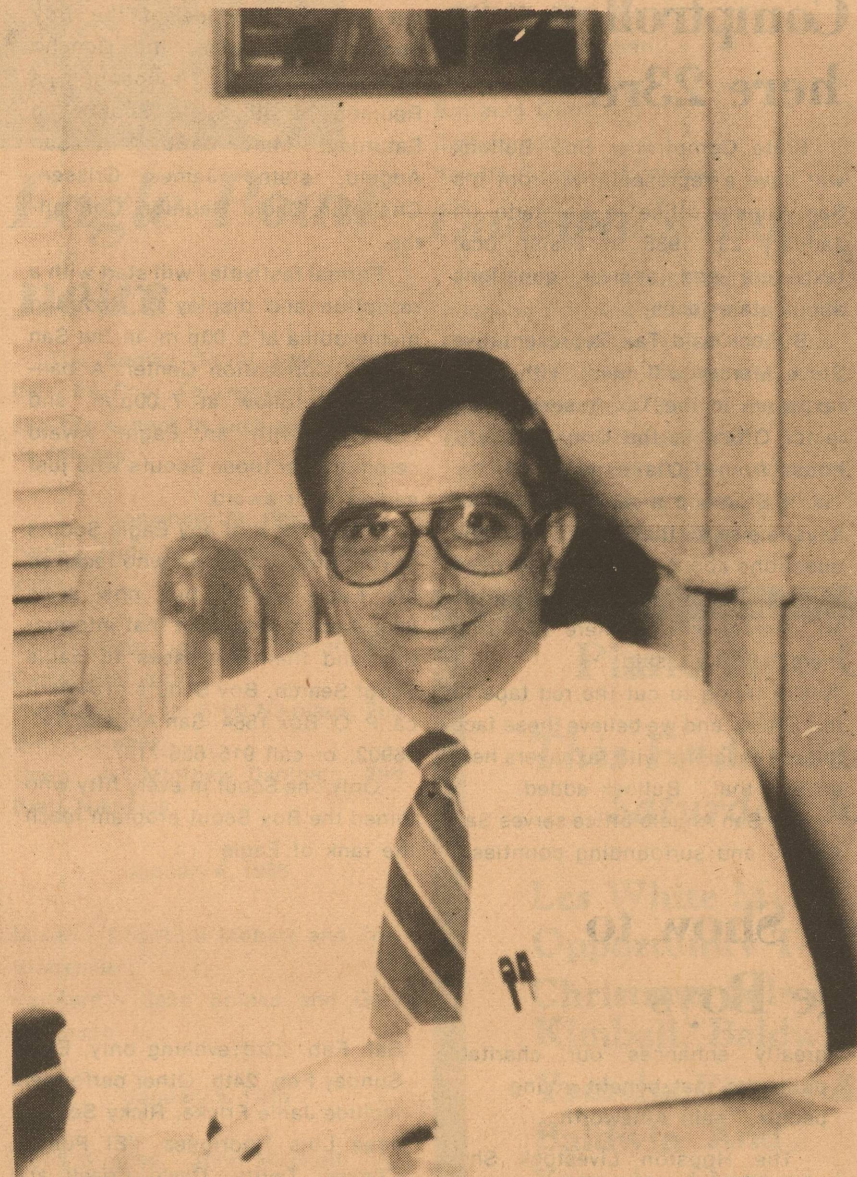
3:00p.m. - Dog Show  
4:00p.m. - Judging of Rabbits  
4:15p.m. - Judging of Market Lambs  
6:00p.m. - Judging of Angora Goats  
6:30p.m. - Judging of Breeding Sheep & Range Ewes (in wool)  
7:00p.m. - Swine Show

Saturday, Jan. 12

9:00a.m. - Judging Shorn Lambs  
9:30a.m. - All Food Show Entries In  
10:00a.m. - Judging of Food Show Entries  
11:00a.m. - Judging Range Ewes - Shorn  
12:00 Noon - Bar-B-Q Lunch  
1:00p.m. - Judging of Wool Fleeces  
1:00p.m. Judging Breeding Cattle  
2:00p.m. - Judging Steers  
3:30p.m. - Champion & Reserve Champion Steers

Presentation of Awards

4:00p.m. - Livestock Premium Sale  
5:00p.m. - Food Premium Sale  
6:00p.m. - Chinese Auction  
9:00p.m. - Dance



## Giovannitti takes over County Attorney position

Thomas Giovannitti, 42, has replaced T.P. Robinson in the office of County Attorney.

Giovannitti now representing Schleicher County, started practicing law at the age of 34. His studies led him to many different places around the nation, finally setting him at ASU in 1974 where he received his B.A. in History. Among his degrees is a Doctor of Jurisprudence which he received at Texas Tech in 1976, and he was admitted to the Bar June 10, 1977.

The new County Attorney has been married to wife Maxine, whom he met in the service, since 1965. They are Catholic, and have three children; Mario, 14, Nicolas, 7, and Annamarie, 20 months.

Giovannitti is teaching part-time business law at ASU until the end of this semester. At this time, he will devote that time to the people of Eldorado.

He says he likes this position, because of the small town appeal, and hopes he can aid in improving the quality of life for many people. His private practice is aimed in dealing and helping people, not just in legal problems, but non-legal as well.

The Giovannitti Family still reside in San Angelo, and plan to move to Schleicher County will take at least a year. "We'll have to wait and see," he said.

According to Giovannitti, "The County Commissioners wanted someone that was willing to set up a private practice, so the people of Eldorado would have access to legal help all over the city. This position will help reduce my trial practice, which is what I'm looking for. I've met a lot of nice people here, and I've got a good feeling about this town."

## Local economy looks great for now

It looks like the local economy is taking a sharp turn upward in 1985 if the most recent sales tax rebate checks are any indication. Even though these checks represent taxes collected in November and reported in December, it certainly is a vast improvement over past rebates.

Eldorado's check for \$3,395.58 is a 23.81 % increase over the check they received this time last year for \$2,742.66.

Mertzon is starting off the new year with a bang. Their rebate check of \$6,132.79 marks a 55.79 % increase over last year's check for the same period for \$3,936.48.

Sonora is showing a decrease of

1.92% in their rebate, as their check of \$12,678.19 is down a little from last year's check for this period of \$12,926.37.

Menard is showing a large drop from last year with a decrease of 53.40% in their check of \$1,163.15. Last year at this time it totaled \$2,496.02.

"Statewide payments are up more than 15 percent over last January's checks, mostly because of the new items brought under the sales tax by the Legislature last summer," said State Comptroller Bob Bullock. He cautioned city governments not to expect similar increases for the rest of 1985. "The

cuts we've had to make in expected state revenues are coming from the slump in the oil industry and reduced receipts from oil companies aren't yet reflected in these pay-

ments." Bullock added that sales taxes from a disappointing Christmas retail season are due in payments to cities next month.

## Grand Jury indicts two

The Schleicher County Grand Jury returned two indictments during their session, Wednesday, January 9th.

Those being indicted were: Donnie Bridges - felony theft and Jerry Ford - forgery.

## Help the Leader with news items

The Leader requests that any club, organization, church or individuals who have news worthy items to please turn them in to the Leader office. Our deadline for the Thursday publication is 3:00 p.m. Tuesdays.

We at the Leader would love to be able to cover every community, civic, school and local function or meeting but our limited staff does not permit us to do so.

So if you have any news about clubs, school functions, nursing

home news or personal news, etc. don't hesitate to call 853-3074 to report the items or bring by the news to the Leader office at 210 Main in Eldorado. For our readers in Mertzon, call Donna St. Clair after 6:00 p.m. at 835-4771 or the Leader

office during regular business hours.

We want the Leader to be the best hometown newspaper possible but we need your help and support.

## Cawley's calf wins many honors

The year of 1984 saw two well-traveled Eldorado citizens finally getting a rest from the stock show circuit. Bill Cawley is now at home after an extensive haul with Cawley's Extra 12/4.

The yearling Brangus bull brought home numerous awards from stock shows throughout the Southwest. In Albuquerque at the New Mexico State Fair he was selected Championship Calf. At Abilene's West Texas State Fair he once again dominated the calf show. In Shreveport, Louisiana at the Louisiana State Fair he received Reserve Champion Calf in the Brangus breed and at the illustrious Herman Gardner Invitational Brangus Show, Cawley's Extra 12/4 was the recipient of Reserve Champion Calf honors.

## Catholic Church has new pastor

Our Lady of Guadalupe Catholic Church in Eldorado will have a new pastor beginning Jan. 12th. He is Rev. Maurice Voity, who has been pastor of St. Margaret's Catholic Church in Big Lake.

He is a native of Manhasset, N.Y. and attended college at State University of New York. He did graduate studies at the University of Maryland. He then served eight years in the Air Force, which includes two years in Viet Nam.

After the Armed Forces, he was owner and operator of Radio Station KWLW in San Angelo until 1976. At that time, he was sent to Rome, Italy, by Bishop Steven Leven. He did graduate studies there for two years, specializing in spirituality and Canon Law. Ordained on June 24, 1979, he was the first American ordained by Pope John Paul II.

Returning to the Diocese of San Angelo in the summer of 1980, he was assigned to the Mexican

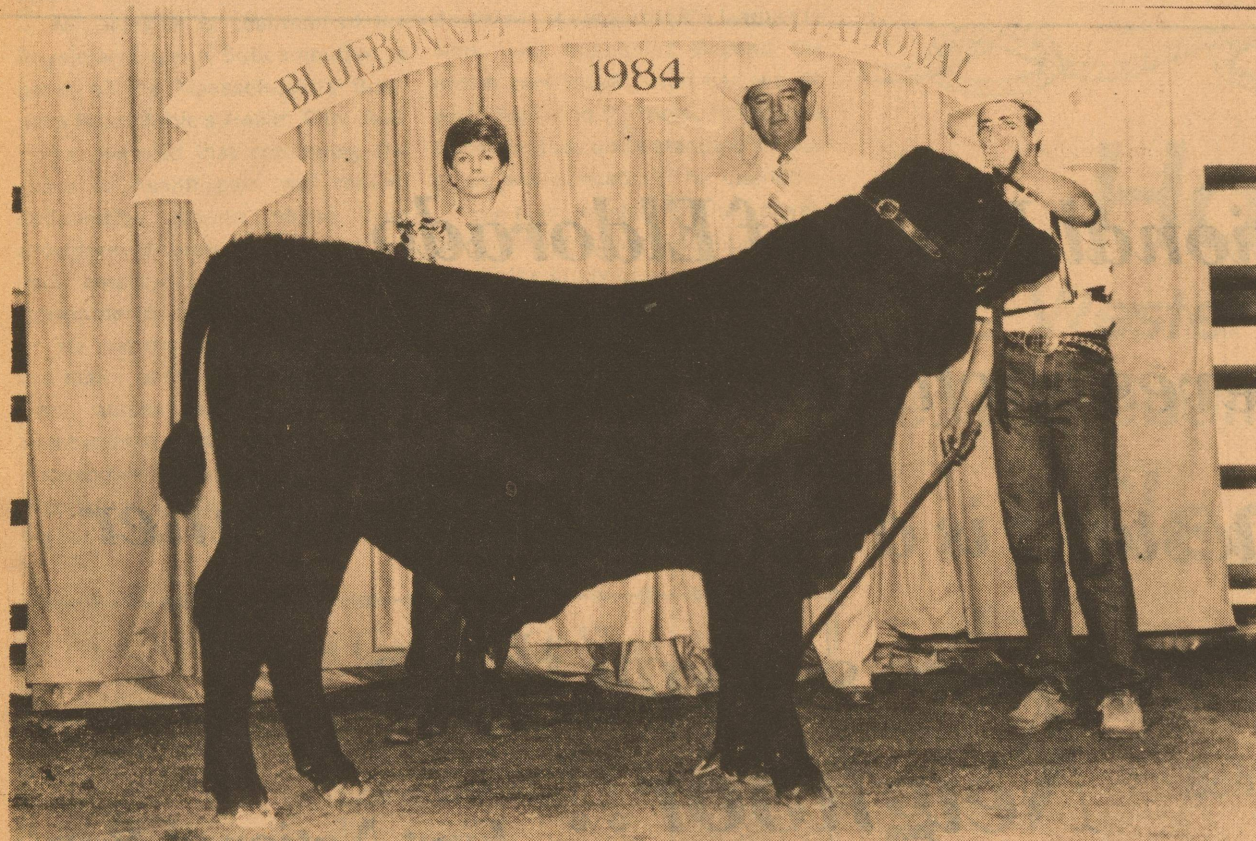
American Cultural Center in San Antonio for study in the Spanish language and Hispanic Culture.

In the fall of 1980, he became associate pastor of St. Mary's Church in Odessa. In June of 1981, he became pastor of St. Margaret's in Big Lake and St. Thomas mission in Rankin. Rev. Voity will also be in charge of the Immaculate Conception Mission in Knickerbocker.

Mass schedules will be changed to 7 p.m. on Saturday and 9 a.m. on Sunday. Sunday School classes will be after Mass, ending at 11:30 a.m. These changes will begin Sunday, Jan. 13th.

Rev. Voity will be replacing Rev. Bernard Gully who has been pastor of both the Eldorado church and St. Ann's in Sonora. He will remain in Sonora.

The parish will honor both priests with a covered dish dinner at 1 p.m. Sunday Jan. 13th.



Bill Cawley, right, shows off Cawley's Extra 12/4 during the

Bluebonnet Brangus Invitational. The yearling bull has brought in

many honors during the past year.

## Pecans in short supply

Pecans, those tasty morsels that are so much a part of the holiday season, are in short supply this year, at least in Texas.

The 1984 Texas pecan crop is only a fraction of what it was a year ago, points out Dr. George Ray McEachern horticulturist with the Texas Agricultural Extension Service, The Texas A&M University System. About a third of the crop has been harvested to date.

"We are estimating a crop of less than 20 million pounds this year," says McEachern. "That compares to last year's crop of more than 80 million pounds."

Why the sharp drop? According to McEachern, the state's pecan crop was hard hit from several fronts. The first and foremost reason was the large 1983 crop. Pecans generally produce good crops on alternate years, so that accounts for much of the decline of this year's crop.

Other factors that kept pecan production down in 1984 were the severe freeze last December which damaged some trees, the extensive drought this past summer, and a heavy infestation of pecan nut casebearers, the most serious pecan pest.

Although Texas produced a large pecan crop last year, use was heavy so carryover stocks were not that great, notes the horticulturist.

Texans can expect to see some pecans coming in from other states although the crop is also short in the other major pecan growing areas, adds McEachern.

## Houston Livestock Show to feature Oak Ridge Boys

Go Texan Days were kicked off when the Houston Livestock Show and Rodeo announced its 16-star rodeo entertainment line-up for the 1985 Show, which runs Feb. 20 through March 3.

"We're especially excited about this year's entertainment because of two Houston rodeo firsts," said show president Dr. Joseph T. Ainsworth. "Continental Airlines, a long-time show supporter will be our first corporate sponsor when they join with us in presenting the Oak Ridge Boys at both the matinee and evening performances Sunday, March 3rd."

Ainsworth said that in addition to sponsoring the Oak Ridge Boys live performance, Continental Airlines will also be a major sponsor of the Show's television special.

"This substantial contribution

## Cawley Ranch visited by A & M students

The Cawley Ranch, east of Eldorado, was the scene of much activity Tuesday

Dr. Howard Hesby of the Department of Animal Science at Texas A & M, along with sixty animal science students making their annual Animal Production Field Study Trip visited the Cawley Ranch.

During the tour of the ranch they were shown a cutting horse demonstration by John Ben Cawley. Also while there, they were given a tour of the Cawley's show cattle barn. They also were shown Bill Cawley's Custom Fitting Service.

The students also inspected a group of Angora goats and listened

## Comptroller rep. here 23rd

State Comptroller Bob Bullock will have a representative from his San Angelo office in Eldorado on January 23, 1985 to assist local taxpayers and answer questions about state taxes.

Bullock said Tax Representative Steve Mercer will meet with local taxpayers in the Tax Assessor-Collector Office in the County Courthouse from 9:00a.m. to 10:00a.m.

"If Eldorado area merchants, or anyone else for that matter, have any questions about state taxes or need help in preparing state tax forms, Mr. Mercer will be there to assist them," Bullock said.

"We're trying to cut the red tape in this office, and we believe these face to face sessions with taxpayers help do just that," Bullock added.

The San Angelo office serves San Angelo and surrounding counties.

to a discussion of how the Cawley is operated.

Afterwards the students and their hosts drank coffee and spent some time visiting before the group left.

## Search for Eagle Scouts

The Concho Valley Council, Boy Scouts of America is searching for Eagle Scouts who received their award in the Council. Since 1927, when the first Eagle was presented in the 23½ county area served by this Council, over 1,850 Boy Scouts have received Scoutings highest award.

In conjunction with celebrating the Diamond Jubilee of the Boy Scouts of America, the Concho Valley Council is sponsoring a Reunion of all Eagle Scouts on Saturday, March 16th, in San Angelo, stated James Grissen, Chairman Eagle Reunion Committee.

Formal festivities will start with a reception and display of Scouting memorabilia at 5:00p.m. in the San Angelo Convention Center. A banquet will follow at 7:00p.m. and conclude with an Eagle Award ceremony for those Scouts who just earned their award.

If you know of any Eagle Scouts in your area or a Scout who received his Eagle award but now lives elsewhere please send that information and their addresses to Eagle Scout Search, Boy Scouts of America, P. O. Box 1584, San Angelo, Tx., 76902, or call 915/655-7107.

Only one Scout in every fifty who joined the Boy Scout program reach the rank of Eagle.

## Put an end to family violence

How often have you gasped in disbelief as your husband tore the phone off the hook? Stared in silence while you were verbally attacked for things you didn't do? Shook uncontrollably after being pushed and shoved around?

Do you know what it means if he

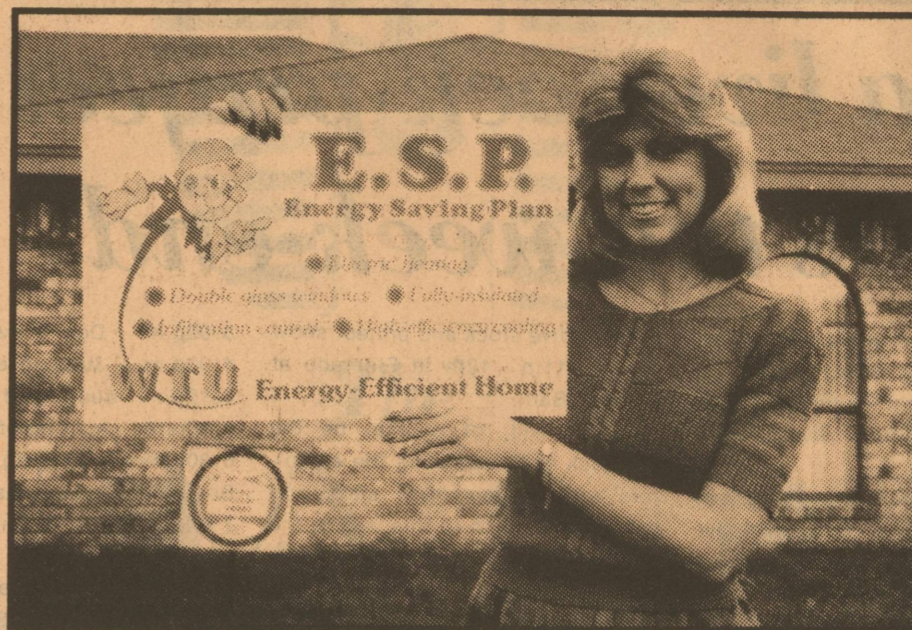
suddenly hits you across the face, says your no good, That you've been with another man, that you can't go to the store, talk on the phone, or go out with friends?

Well, it's time to recognize the violence. Put a stop to it and feel safe. You deserve a life without

violence.

The FamilyShelter is available to you 24 hours a day, seven days a week for help. Call collect, 655-5774 for information about Shelter services. All calls are strictly confidential.

## When You're Looking For A New Home, Look For An E.S.P. Home...



## It'll Save You Money!

**SAVE THOUSANDS OF DOLLARS** on your electric bill over the life of your home by owning a WTU-Approved E. S. P. Home. Some homes on the market may seem energy efficient, but you can be confident an E. S. P. Home really is. WTU has carefully inspected and qualified each E. S. P. Home to meet energy efficiency requirements.

- Electric heat pump with a Seasonal Energy Efficiency Ratio (SEER) of 8.0 or above.
- Air conditioning with a SEER of 8.5 or above.
- Air infiltration control.

**COMPARE HOW MUCH YOU CAN SAVE** with an E. S. P. Home over a one-year period:

An average 1800 square foot home will cost you approximately \$775 a year to heat and cool. An E. S. P. Home of 1800 square feet will cost approximately \$570 a year to heat and cool, which results in an annual savings on electricity of 26 percent or more. (Energy savings may vary according to the type of home, family size and individual energy usage habits.)

**E. S. P. REQUIREMENTS** include some of the most important energy saving features, such as:

- Ceiling insulation of R-30 and wall insulation of R-16.
- Storm windows or insulated glass.
- Weatherstripping and caulking around all doors and windows.



**Electricity. It's the Power of Choice.**

For more information on the E. S. P. Program, call your local WTU office today. **AN E. S. P. HOME CAN SAVE YOU MONEY ON FUTURE ENERGY BILLS.**

## Parade to kick off Fat Stock Show 19th

The All-Western Parade which heralds the start of the 89th annual Southwestern Exposition and Fat Stock Show has been scheduled to begin at 11 a.m. Saturday, Jan. 19, through downtown Fort Worth.

Show dates for this year's Stock Show are Jan. 23 through Feb. 3, and will include 23 performances of the World's Original Indoor Rodeo in Will Rogers Coliseum.

Entries for the parade are being accepted through the show's Special Events Department. Staying with the all western theme, participants are marching bands, riding clubs and horse-drawn vehicles, many sponsored by area merchants and businesses. Motorized vehicles are disallowed from participation.

Plaques are awarded for the most outstanding riding clubs and horse-drawn vehicles, in addition to awards for the entry traveling the farthest distance, the most colorful, and the entry which best displays the Western Heritage theme.

To date, 36 riding clubs, 38 horse-drawn vehicles and 15 bands have entered. Lineup will again be in the Tandy Parking Center, northwest of Henderson and Belknap Streets.

greatly enhances our charitable programs that benefit young people," said Ainsworth.

The Houston Livestock Show presently has 885 students in school on show sponsored scholarships with a commitment of more than \$1.8 million. Ainsworth also announced the Show's first full-length, two hour concert following uninterrupted rodeo action. Superstar Willie Nelson will perform Monday night, Feb. 25th, after the rodeo is over. That night's regular priced rodeo ticket allows admission to both events.

In addition to Willie Nelson and the Oak Ridge Boys, other stars will be Billy Ocean, Wed. Feb. 20th, The Judds, Thurs. Feb. 21st, George Strait, Fri. Feb. 22nd, Ronnie Milsap, Sat. the 23rd, matinee performances only: Charlie Pride,

Sat. Feb. 23rd; evening only, Exile, Sunday Feb. 24th. Other performers include Janie Fricke, Ricky Scaggs, Jose Luis Rodriguez, "El Puma", Conway Twitty, David Frizzell and Shelly West, Lee Greenwood, and Larry Gatlin and the Gatlin Brothers Band. Seven of these stars will also appear in the 1985 Houston Livestock Show and Rodeo television special to air in the spring and summer.

City council member Eleanor Tinsley also presented the mayor's proclamation of Go Texan Days. Go Texan weekend activities begin Feb. 16th with the big rodeo parade in downtown Houston.

Rodeo performances can be seen in the Astrodome. All evening performances are at 7:45 p.m., with Saturday matinees at 11a.m. and Sunday matinees at 1p.m. Ticket prices are \$4.00 and \$8.50 and are on sale at all Ticketmaster and Ticketron locations and the Astrodome. All activities conclude March 3rd.



*This ain't no Bull*

The **First National Bank of Eldorado** Believes each and every project shoe contestant is a **Blue Ribbon Winner**

We hope to see you there **Neighbor!!**

**First National Bank of Eldorado**

Member F.D.I.C.

since 1907

**Red Wings**



**McCalla's Dept. Store**

You've earned your Wings!

**Wanted Hunting Rights on 2000 - 12,000 acres with 5 yr. lease. Don't want to work with hunters? I'll do the work, pay a fair price, and care for it like my own 25yrs. experience in ranching & hunting management**

**Prefer Edwards Plateau Please send location, acreage, and price to:**

**T A Ranches 400 W. Lampasas, Llano, Tx. 78643**

# Pope appoints S.A. Bishop as Diocesan Bishop in Galveston-Houston

Pope John Paul II has appointed Vishop Joseph A. Fiorenza of San Angelo to be the diocesan bishop of the Diocese of Galveston-Houston. The announcement was made Tuesday morning, December 18, 1984 by Archbishop Pio Laghi, the papal envoy to the United States.

Bishop Fiorenza, 53, has served as Bishop of the San Angelo Diocese since October 25, 1979. Before

coming to San Angelo, he was a priest of the diocese that he will now head as the bishop. A ceremony of installation will be held in Houston on February 18, 1985. Archbishop Patrick Flores of San Antonio and Archbishop Laghi will conduct the installation. Until he is installed as the Bishop of Galveston-Houston, Bishop Fiorenza will be the Apostolic Administrator of the San Angelo Diocese.

The Diocese of Galveston-Houston was established in 1847 which at that time included the whole state of Texas. Fiorenza will be its seventh bishop. The diocese has 141 parishes and 16 mission churches served by 450 priests, 130 permanent deacons and 650 nuns and a Catholic population of about 650,000. It has one Catholic University, a diocesan seminary, nine high schools, 50 elementary schools, four hospitals, two clinics and two homes for the elderly. It is one of the largest and fastest growing Catholic dioceses in the United States. Today there are 13 dioceses in Texas that minister to 3 million Catholics.

In a statement to the Diocese of San Angelo, Bishop Fiorenza said, "You have made my life as a bishop very happy. I am deeply grateful for the cooperation that has been given to me by all. You have made me proud to be your bishop. West Texas will always be a part of me and I will carry the memory of its wonderful people in my heart....Archbishop Pio Laghi, the papal nuncio, has assured me that everything will be done to appoint a new bishop as soon as possible. I ask that you give the new bishop the same love and cooperation which I knew and treasured as a blessing from God." The Diocese of San Angelo

consists of parishes scattered over a 29 county area of West Texas. No appointment of a new Bishop for the Diocese has yet been made.

## Dorans have daughter

Mr. and Mrs. Robert Doran are the proud parents of a daughter, Mary Elizabeth, who was born January 9, 1984 at Community Hospital in San Angelo. She weighed 8 lb. 8 oz. and measured 21 inches.

Proud grandparents are Mr. and Mrs. William F. Dugan, Dallas, Texas and Ethel Doran of Eldorado, great-grandparents are Mr. and Mrs. Charles Sturgill, Charlotte, North Carolina.

## Oops.....

Dusti Murph is going to wed Kelly Joe Charboneau Not Joe Charboneau. We at the Leader apologize for the error in last week's publication.

## Historical Society holds meeting

The Historical Society met for the monthly meeting the 7th day of Jan. Ruth Baker called the meeting to order and Maggaret Frost gave the Secretary's report.

Those attending were Ruth Baker, Margaret Frost, Willie Blanch Johnson, Mable Freitag, Ola Ruth Barbee, Frankie Williams, and Elizabeth Ballew.

A business meeting was held. — Memorials came in for Jodie Whitten, Elizabeth Henderson, and Arch Edmiston.

Members were reminded that later in the spring, the club will have an open house.

# The Leader Letter Policy

We welcome all Letters to the Editor. However, we ask that each of you include your address and phone number at the bottom so verification can be made before publication.

If you would like to remain anonymous, your name must also appear, and we will withhold your name upon your written request.

**TEXAS PRESS ASSOCIATION**  
MEMBER 1984

Leader  
U.S.P.S. 342-470  
Published Every Thursday  
P.O. Box 790  
210 Main St.  
Eldorado, Texas 76936  
Finis C. Bratcher  
Owner-Publisher

Second class postage paid at Eldorado, Tex. 76936. POSTMASTER: Send address changes to Schleicher County Leader, Box 790, Eldorado, Tex. 76936.

Any erroneous reflection upon the character or standing of any person or firm appearing in these columns will be gladly and promptly corrected upon calling the attention of the management to the article in question. Attention Advertisers: It is the Leader's policy that all ads are proofed before publishing, any error not brought to our attention at that time, will be a matter for correction on the Leader's behalf.

**Schleicher County Medical Center**  
(Fully Medicare Certified)  
and  
B.R. Respass, M.D. 853-2533  
Announce The Re-opening  
Of The Family Practice  
Of J.B. Brame, M.D. 853-2529  
Mertzson Highway, Eldorado, 76936

### Eldorado Community Calendar

<b>Kountry Kousins</b> 1st Sat. (Dance) 8:00 p.m. Memorial Building	<b>Tri-Cities Shriners</b> 1st Monday 7:00 p.m. Contact John Mitchell for locations
<b>Girl Scouts (Troop 71)</b> 1st & 3rd Monday 5:00 p.m. Kim-et Nelson Resident	<b>Alcoholic Anonymous</b> Mondays 8:00 p.m. Memorial Building
<b>Duplicate Bridge</b> Every Thursday 7:00 p.m. Memorial Building	<b>Historical society</b> 1st Monday 3:00 p.m. Museum
<b>Hospital Auxiliary</b> 1st Thursday 9:00 a.m. Hospital Lobby	<b>Eastern Star</b> 2nd Monday 7:30 p.m. Masonic Lodge
<b>Eldorado Women's Club</b> Reg. Meetings 2nd Tuesday 2:30 p.m. In different homes	<b>Beta Sigma Phi</b> 2nd & 4th Monday 7:00 p.m. Firehall
	<b>Eldorado Lodge</b> 890 AF & AM Reg. Meetings 2nd Thursday Callender Street Lodge
	<b>Lions Club</b> Every Wednesday 12:05p.m. Eldorado Restaurant
	<b>Boy Scouts</b> Tuesdays 5:30 p.m. Memorial Building

### Mertzson Community Calendar

<b>Lions Club</b> Every Wednesday 12:00 p.m. Community Center	<b>Brownies</b> Every other Wednesday Community Center After School	<b>Band Boosters</b> 3rd Monday 7:30 p.m. Band Hall
<b>Eastern Star</b> 2nd Tuesday 7:30 p.m. Masonic Lodge	<b>Athletic Booster</b> Every Monday Field House (During Football Season)	<b>Roping Club</b> 1st Tuesday 7:00 p.m. Ag. Building
<b>Rebekah Lodge</b> 2nd & 4th Thursday 7:30 p.m. Community Center	<b>Weight Watchers</b> Every Tuesday First Methodist Church Weigh-in: 6:30 p.m. Lecture: 7:00 p.m.	<b>Boy Scouts</b> Every Wednesday 6:30 p.m. School Library
<b>Odd Fellows</b> 2nd & 4th Thursday 7:30 p.m. Community Center	<b>48 Study Club</b> 1st Tuesday 2:30 p.m. Study Club House	<b>Cub Scouts</b> Every Wednesday 3:45 p.m. School
<b>Historical Society</b> 3rd Monday Every Other Month 2:00 p.m.	<b>Extension Homemakers</b> 2nd Monday 12 noon Covered Dish Community Center	<b>Girl Scouts</b> Every Tuesday After school 1st Methodist Church
<b>Sesquicentennial</b> 4th Monday Community Center	<b>Senior Citizens Club</b> Every Tuesday 12 noon Community Center	<b>Mertzson Lodge</b> 1st Tuesday Masonic Lodge 7:30 p.m.
<b>Sat. Afternoon Club (Bridge)</b> 1st Saturday Noon In Different Homes		

Join our Salute to the area project show contestants in Irion County Schleicher County Reagan County

**The Effort you put forth today will build our future**

*The First National Bank*  
of Mertzson Serving West Texas Since 1910

Member F.D.I.C.  
(915) 835-4321

# West Texas Rehab Center to have show

The West Texas Rehabilitation Center's 15th annual telecast, Rehab '85, will be aired January 12 from 7 pm to 2 am. Rex Allen and Shari Lewis will host this fast-paced 7-hour television production which will feature a number of top entertainers including for the first time Dick Van Dyke, Shelley Long (from "Cheers"), and The Judds.

Other talent will be Bill and Susan Hayes (formerly Doug and Julie of "Days of Our Lives"); Susan now appears on "The Young and the Restless"; Grandpa Jones, Ken Curtis ("Festus"), Rex Allen, Jr. and Arizona.

Also, Helen O'Connell, Anacani, Arthur Duncan, The Otwell Twins, Patsy Weaver ("The Young and the Restless"), Andre Landzaat (formerly on "General Hospital"), Pat Buttram, Pedro Gonzalez-Gonzalez, Mac Wiseman, Sammi Smith, Jimmy Weldon and Webster Webfoot.

Also, Roy Rogers, Jr., Montie Montana, Maines Brothers Band,

The Nelsons, Wade Ray, Bali Folklori, Scotty Ousley and The Lone Star Travelers, James Drury, and Pat Patterson and the Rehab '85 Orchestra.

Bids will be accepted on more than \$100,000 worth of items donated for the Rehab '85 Auction Board.

The "Country Kin" program will involve young people making house to house appeals. Supplies for this may be picked up at Town & Country Food Stores in your area, or your local "Country Kin" headquarters.

The West Texas Rehabilitation Center is a private, non-profit, outpatient treatment and diagnostic complex with facilities in Abilene and San Angelo. The Center will serve more than 10,000 handicapped children and adults this year, without charge.

Tickets for the show, which originates from the Abilene Civic Center, will be \$7 each and doors will open at 6 pm.

## Programs to improve production

In the initial phase of a four-year pilot program involving 17 South Central Texas counties, the Texas Agricultural Extension Service has identified four production practices that can significantly contribute to the efficiency and profitability of Texas beef herd operations.

A survey of production practices among more than 1,200 cattlemen in late 1983, identified the practices giving the largest dollar return for relatively small dollar investments as:

Maintaining uniform, short-term calving seasons for up to an extra \$30 per calf;

Culling poorer producing cows for an extra \$20 to \$25 per calf;

Using performance tested bulls for an extra \$15 to \$20 per calf;

Implanting nursing calves for an extra \$10 to \$30 per calf.

According to Dr. Larry Boleman, extension beef cattle specialist, the profitability of implanting calves is among the first of many specific production practices upon which producers will be educated. "Cattlemen can spend the least amount of money here for their biggest dollar return," said Boleman. "Currently about 12 percent or less of producers implant calves. We would like to see this increase to at least about 30 percent."

Syntex Animal Health provided a free Synovex Revolver and 100 implants to each county agricultural extension agent to use in this two to three year educational program. "We'd like to see producers implant calves during routine processing," said Boleman.

In 1985 and 1986, eight beef calf demonstrations per county will be used to demonstrate the profitability of implanting. In both, innovative and non-innovative operations trials will be run in which half the calves are implanted with Synovex C and half are not implanted. "The difference in weights of nursing calves should confirm research findings on the benefits of growth promotants," said Boleman.

In a summary of trials, calves under 400 pounds, implanted with Synovex C, had an additional gain of five pounds over calves implanted with Raigro and 18 pounds over non-implanted calves, according to Dr. Robert L. Botts, Nutritionist, Syntex Animal Health, Des Moines, Iowa.

In the long-term, uniform calving seasons and culling poorer cows may make cattlemen the most per investment and management change said Boleman. "However, we don't feel we'll be able to change existing breeding practices quickly because of the money involved."

To educate producers on more of the profitable practices, intensive result demonstrations and a computerized record-keeping system are being used as well, said Boleman.

South Central Texas was selected for this pilot project because the region boasts the largest number of mother cows of any Extension district in the state, more than 733,000 head or 12 percent of all cows in Texas, added Boleman.

Based upon the initial success of the program, four more extension districts in Texas are initiating similar programs, according to Boleman.

## Eagles lose to McCamey 42-34

Coach Rick Singleton's Eagles boy's Varsity team put up a good fight but in the end McCamey came out on top Tuesday night in Eldorado. The Eagles were defeated 42 - 34 by McCamey.

Jimmy Turbeville took high point honors with 14 points. Erik Cheatham tallied 8 points and Victor Gutierrez put in 6 points. Other

Eagles scoring were: Mike Moore 2 points, Ron Mittel 2 points, Kenny Gutierrez 1 point and Chris Woodward 1 point.

The Eagles will square off against Greenwood, there, Friday night at 7:30p.m. Everyone is urged to come out and boost the Eagles on to victory.

# School Menu Eldorado

Monday Jan. 14th  
Meatloaf  
Pinto Beans  
Buttered Potatoes  
Applesauce  
White Cake w/ Icing

Breakfast  
Monday Jan 14th  
Applesauce  
Bran Muffins

Tuesday Jan. 15th  
Turkey Ala King  
Whole Kernel Corn  
Sliced Peaches  
Sugar Cookies

Tuesday Jan. 15th  
Pineapple Juice  
Hot Biscuits-Sausage-Jelly

Wednesday Jan. 16th  
Hot Dogs w/Chili  
Corn Chips  
Stuffed Celery (cheese)  
Pork & Beans  
Rice Krispie Cookies

Wednesday Jan. 16th  
Apple Juice  
Cinnamon Rolls

Thursday Jan. 17th  
Roast Beef w/gravy  
Buttered Rice  
English Peas  
Orange Congealed Salad  
Peach Cobbler

Thursday Jan. 17th  
Apricot Halves  
Buttered Rice w/Toast

Friday Jan. 18th  
Sandwiches-Tuna,  
Chicken or Ham Salad  
Pimento Cheese & Peanut Butter  
French Fries  
Apple Wedges  
Brownies

Friday Jan. 18th  
Grape Juice  
Toast-Eggs-Jelly

## Eaglettes take McCamey 42-28

The McCamey Varsity girls may have wished they'd never come to Eldorado Tuesday night as the Eaglettes romped over them 42 - 28.

Stephanie Field led the Eaglettes in scoring with 12 points, followed closely by Jennifer Willoughby with 11 points.

Debbie Sutto put in 5 points. She was followed by Jennifer Patton, Kara Garlitz and Jennifer Stensby who all tallied four points each and Michelle Walker had two points.

The Eaglettes will travel to Greenwood Friday night and would appreciate the support of the hometown fans. Their game will start at 6:00p.m.

**TAKE OFF!**  
Journey to ADVENTURE  
We go anywhere, any way.  
Contact us for the vacation of a lifetime  
**Travelers III**  
Park Place Sonora 387-2586

**Don't Delay Subscribe now**  
to the Leader for the following low prices  
includes tax  
**Schleicher & Irion Counties - \$7.88**  
**Out of County - \$8.93**  
**Senior Citizens - \$6.83**  
Clip and Mail in Coupon along with check or money order to The Leader Box 790 Eldorado, Tex. 76936

NAME: \_\_\_\_\_  
ADDRESS: \_\_\_\_\_  
CITY: \_\_\_\_\_

**Bobby Phillips of Eldorado Instruments and Controls is able to help with all your gas and oil well needs.**

**Creek Swabbing Co.**  
FULLY INSURED  
RADIO DISPATCHED  
**Luther Creek**  
Box 361 Sonora 76950  
387-5938 Business 387-3295 Home

**Tex-Sun Insulation**  
Free Estimates  
Commercial  
Residential  
Farris Nixon 853-2996

**For Rent**

**Frontier Petroleum Services**  
Well servicing and water hauling,  
24 hour service, pump trucks.  
Eldorado  
853-2331 853-2351

**Finally**  
A satellite antenna system good enough to bear the name Curtis Mathes!

**But don't do it with an UNKNOWN. Do it with reliability and satisfaction. Do it with Curtis Mathes.**

**Curtis Mathes**  
HOME ENTERTAINMENT CENTER  
BANK FINANCING UP TO 48 MONTHS  
942-1519 Southwest Plaza 942-9305

**BUTLER SUPPLY**  
"Your complete oil field store."  
East St.

**Insurance**  
Fire-Auto-Windstorm  
Casualty  
Call Tom Ratliff  
853-2636

**C.H. Poynor Construction Co.**  
Complete Roustabout Service  
Britt Poynor  
Eldorado 853-3064

**Thorp's Dry Cleaners and Laundry**  
Uniform rental - Dust control mops and mats  
212 S. Main 853-2900

**Schleicher County Abstract Company**  
Abstracts and Title insurance for all properties in Eldorado and Schleicher County  
853-2689  
5 North Dixie

**HENDERSON Water Well Windmill and Pump Repair**  
Phone 853-3280

**Complete Oilfield Service R & H Well Service Trey Trucks**  
Division of Norton Well Service  
853-2186 Eldorado

**Kerbow Funeral Home**  
Serving Eldorado & Sonora  
Phone 853-2636 or 387-2266

**Eldorado Instrument & Control Co.**  
INSTRUMENTS-GAUGES-METERS  
Controls for oil and gas industry. Industrial plants sales and service on oilfield and industrial instruments.  
24 Hour Service  
Home 853-2624 Office 853-2506



The Schleicher County courthouse gets a re-roofing job this week. The workmen have a good view of Eldorado from their high perch.

## Tax payers get new tax deferral

Taxpayers aged 65 or over can delay payment of property taxes on their homesteads.

Elderly homeowners can qualify for the "over-65 tax deferral" by filing a sworn affidavit at the office of the appraisal district in which they live.

If an elderly taxpayer has already been sued to collect delinquent taxes on his homestead, he can still take advantage of the tax deferral by filing an affidavit asserting age and ownership with the court in which the suit is pending.

According to Ron Patterson, executive director of the State Property Tax Board, the Texas

Property Tax Code provides that, once an "over-65 tax deferral" affidavit has been properly filed, taxing units may not pursue or initiate delinquent tax suits on the homestead as long as the applicant owns and lives at that property.

Patterson said that forms for the deferral affidavit are available at local appraisal district offices in the state. The form should be filled out and signed by the applicant and his signature witnessed by a notary public or other official authorized to take oaths.

Patterson stressed that elderly homeowners should realize that the

deferral only allows payments to be postponed, not dismissed. "During the period of deferral, the amounts of delinquent taxes, penalties and interest continue to add up," explained Patterson. "Once the applicant no longer qualifies for deferral -- that is, if he no longer owns or resides at that homestead -- all those accrued amounts become due and payable. Taxing units at that time may sue and foreclose on the accrued delinquent taxes, penalties and interest."

## T. C. A. needs accepting sponsors

The Texas Commission on the Arts is currently accepting applications from local sponsors for its 1985-86 Artists-In-Education Program (AIE).

AIE is an established, fundamental approach designed to stimulate the development of basic skills and self-expression, as well as to

form a lasting interest in the arts. It is a collaborative effort of the Texas Commission on the Arts, the National Endowment for the Arts and local sponsors.

Sponsors are eligible to apply for up to 50% of the total program cost regardless of previous participation.

## Medical establishment asked to help lower Medical costs by Norton Company President

The medical establishment was asked today to provide health care information only they have to regional coalitions working to harness the skyrocketing price of medical care.

The suggestion came from Donald R. Melville, president and chief executive officer of Norton Company, a diversified, global manufacturer headquartered in Massachusetts, and a leading private sector proponent for the control of rising health care costs. Mr. Melville was addressing a meeting of the American Medical Association's State Legislative Group meeting here on the subject of state and local coalitions formed to address this issue.

Mr. Melville is chairman of the Physician Liaison Subcommittee, a panel of the Massachusetts Business Roundtable's Health Care Task Force. He said that containing the costs of health care will require cooperation among health care providers, insurers, public and private employers, state and local governments, and consumers.

He told the audience that one of the major concerns of health coalitions across the country is the number of malpractice suits and the subsequent costs that arise from the practice of defensive medicine and higher insurance fees.

Yet, he said, there is little in the way of documentation on how malpractice has affected defensive medicine. Referring to physicians in Massachusetts he said, "Only the doctors can provide us with this information; I hope they'll do some studies on their own and give us some good data to work with."

He said his committee feels that, now that Massachusetts hospitals have cooperated in efforts to contain health care costs through their support of the Massachusetts Hospital Cost Control Law, it must also work closely with the medical community to ensure that health care systems are affordable, adequate, and accessible for everyone. "Can business learn to work with doctors in the way that it's learned to work with hospitals? Beyond the health care issue, what can we do with them, and for them, to create a better mutual understanding of our goals and concerns?" he queried.

He also suggested that physicians should form coalitions to review the study of surgical patterns in Massachusetts done in 1984 and in other states. He noted that in one Massachusetts town, for example, the rate of gall bladder removals was four times that in another. Doctors and health care coalitions could use this kind of information to make the practice of medicine more efficient, he said.

## Eagle Point news

The Eagles' Point teen center held its Pool Tournament recently and the winner in each division are as follows:

December 28, 1984  
Junior High - 1st Brett Nikolauk, 2nd

Junior High - 1st Trey Preston, 2nd Carter Edmiston.  
High School - 1st Brett Nikolauk, 2nd Billy Caveness  
Open - 1st Matthew Dahlberg, 2nd Brett Nikolauk.

January 4, 1985  
Mixed - Charlotte Mobley and Trey Bradshaw  
Partners - Jake Spinks and Gary Robinson

January 5, 1985  
Open Singles - John Mitchell  
Mixed - Mindy Edmiston and Tom Dean

The Ping Pong Tournament will begin Thursday, January 10th at the Eagles' Point and everyone who has signed up to participate is urged to attend. Trophies will be awarded.

Eagles' Point members are also requested to design a T-shirt decal and slogan for Eagles Point. The members will review all the entries and pick the winning decal and slogan for the center's T-Shirts.

The next council meeting will be held Sunday, January 20th at 3:00p.m., all council members are requested to attend.

## School Menu

Mertzson

Monday Jan. 14th  
Chili Beans  
Mustard Greens  
Pickled Beets  
Cornbread  
Spice Cake

Friday Jan. 18th.  
Hamburgers  
Lettuce, Tomatoes, Pickles  
French Fries  
Peaches

Breakfast

Tuesday Jan. 15th  
Turkey Salad  
Macaroni & Cheese  
English Peas  
Rice Krispies Squares

Monday Jan. 14th  
Oatmeal  
Biscuits

Wednesday Jan. 16th  
Steak Fingers & Gravy  
Mashed Potatoes  
Glazed Carrots  
Mixed Fruit

Tuesday Jan. 15th  
Toast & Jelly

Wednesday Jan. 16th  
Cinnamon Rolls

Thursday Jan. 17th  
Chicken & Spaghetti  
Tossed Salad  
Buttered Corn  
Batterbread  
Vanilla Pudding & Wafers

Thursday Jan. 17th  
Sausage Rolls

Friday Jan. 18th  
Biscuits & Gravy

## Cunsteads move

Mrs. Charlene Gunstead, her late husband Bill, and his father ran the Eldorado paper from 1947-1977, has moved to Denton Texas. Her new address is Box 50 Lakewood Estates, Denton Texas 76205.

The Gunstead's son, William Charles Gunstead, is now a new car salesman for Guy Laney, his new

address is La Colina apt. 1812 1200 Dallas Drive, Denton Texas 76201.

Gwendolyn Rae Gunstead, their daughter, is now residing in Scottsdale, Arizona. Her address is 4140 North 78th Street, apt. 2249, Scottsdale Arizona.

The Gunstead family has many friends in Eldorado and would like them to know they have relocated.

## Piano And Organ Sale!

This Friday January 11 And Saturday January 12

Les White Music Offers You An Opportunity To Shop Our After Christmas Sale Featuring Kimball, Baldwin And

Yamaha Pianos And Baldwin And Yamaha Organs.

Used Pianos 20-40% Savings On Selected One Of A Kind Models.



## Les White Music

2009 Knickerbocker Road Stadium Park Shopping Center San Angelo, Texas 944-8140



During the month of January, call the San Angelo office at 653-1287

Beginning February 1st, 1985

Farm Bureau's office will be located in the

BMB Petroleum Building in Eldorado

Rick Fuessel will be the new agent

853-3234

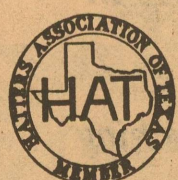
## Hatatorium

"The Western Center of the Southwest" Texas' leading Hat Cleaning Specialists

### Cleaning Special

# \$32.50

Belts-Suits-Boots-Jeans-Shirts



25 N. Chadborne

655-9191

San Angelo

Cottage Crafts & Gift Shop

is closing

Lots of everything

1/2 price sale now till Thursday Jan. 17th

219 s. Main

D&D Feeds Bldg.

# Classified

## Business Services

### For Sale

**FOR SALE:** 1984 B-2000 Mazda pick-up. 5 speed, short bed, air conditioner, AM/FM, full factory warranty 24,000 miles. Actual mileage 9,000. Call Jo Ed Hill for details. 1-2-c

**ESTATE SALE:** Round oak table, brassbed, marble top dresser, desk, antique striking clock, dishes, tools, linens, much misc. Sat. & Sun. 403 Holland, Christoval. 8-7. 2-c

**FOR SALE:** breakfast table & 4 chairs, 2 butane tanks. N.A. Green. 853-3220. Call at night. 2-3-c

**FOR SALE:** 1972 (Olds) Delta 88. Good conditions. Can be seen at Kent's automotive (Eldorado). 853-2733. 2-3-p

**FOR SALE:** Completely rebuilt set of Chevy small block heads. Ready to go. Call 835-4771 or 835-4351 ask for Steve. 1-tfc-nc

**FREE SCISSOR SHARPENING** (one pair) with \$9.95 clean, oil and tension adjustment. The Sewing Maching Man. 853-2851. Extra scissors \$2.00/pair. 50-tfc-c

### Help Wanted

**FEDERAL STATE & CIVIL Service Jobs** available. Call 1-(619) 569-8304 for info. 24 hrs. 1-2-3-p

**HAVE YOU EVER** thought about earning some extra money? Become a Standard Times carrier. Delivering the Standard Times each day is like being in business for yourself. You distribute a product, collect the money, keep your own records and pocket the profits. The money you earn can help with those monthly bills or enable you to buy those occasional extras. Interested? Call 1-800-592-4655 Ext. 293. 2-tfc-c

### Real Estate

**HOUSE FOR SALE:** 3 bdm, 2 bath, large living area, separate dining, sunny kitchen w/ built-in range top & oven, utility/laundry room, lots of storage, central heat & air. \$45,000 call for appt. 215 Dixie, 853-3103. 50-10-c

**FOR SALE:** 3 bedroom, 2 bath - large den with fireplace - fenced back yard - near school. Walter Powell, Jr. 853-3310 12-tfc-c

**FOR SALE:** 4 bed., 3 bath home NEAR SCHOOL, plenty of storage with fenced in back yard. \$59,000. call 853-2177. 51-1-2-3p, 4-tfc-c

**INDIVIDUAL MARRIAGE AND FAMILY THERAPY.** FREE professional counseling. Personal and confidential. Help also groups. Call (915)392-5830 or write: P.O. Box 1765, Ozona, Tex. 76943. 2-3-c

**IRONING AND STARCHING:** Jeans 1.50 pair. Shirts 1.00 a piece. 835-5732. 2-c

**BAKING:** Breads, pies, cookies, cakes, etc. 835-5732. 2-c

**DAVID GUARDINO**  
**WORLD'S GREATEST PSYCHIC AND BUSINESS CONSULTANT**  
Can mesmerize loved ones and enemies alike, to do your bidding. He has worldwide connections for developing business deals. "THE PSYCHIC TO THE STARS". Telephone anytime, day or night, including holidays: (702)386-0702 or (702)386-0827 (615)970-2448 or (615)970-2453. P.O. Box 880, Lenoir City, Tn. 37771. 39-tfc-c

**WALTER FORD CONSTRUCTION**  
I am doing carpenter work again after being out of it for three years so if you have a repair job, house to build, a barn to go up, a room to add on, and do plumbing also, I still work by hour or contract. Call Walter L. Ford 853-2806 1-2-c

### Thank You

We sincerely appreciate all the cards and calls we received during the death of Jerry's brother. Your love and concern has touched us deeply. Jerry and Bessie Jones.

I just want to thank everyone for the gifts, flowers, cards, visits, phone calls and goods that was given me during Christmas. May God bless all of you. Have a Happy New Year. Love, Claudia Galbreath. 2-p

### Misc.

N.A. you don't have anything that interest me, or anyone else. 2-p

**FOR SALE:** Residential lots in Juniper Acres located on old Mertzton Hwy. adjacent to Sunset Acres. For more information call J&R Properties 853-3345 or 512-896-7016. 30-35-p, 36-tfc-c

**FOR SALE:** 1/2 acre lot, city hook-ups. Set up for mobile home. Fence posts in place. Located on Village Lane in Eldorado. Call 853-3007. 50-tfc-c

**FOR SALE:** 3 bedroom, 2 bath, 2 lots. Must see to appreciate. For information call 853-2641. \$29,500. 2-3-p

**The Leader Classifieds**  
call 853-3074

## Lynn Meador Real Estate and Company

**NEAR SCHOOL**  
2 BR - 1 Bath, detached garage with efficiency apartment. \$20,000.00

**STOCK FARM**  
61 acres. One mile east of Eldorado on Hwy.91 includes 3 BR - 2 Bath house recently refurbished in excellent condition, stock tank, 52 acres cultivated fields - will not subdivide. 409 COTTONWOOD

4 BR - 2 Bath, large rooms and closets, fenced yard; corner lot, storage/utility room. 2 1/2 years old. good location. Nice home for large family.

**LOVELY STUCCO**  
3 Bedroom on corner lot. Owners have moved and must sell. Central heat, recently remodeled. Reduced to \$49,700.

**ON BLUEBONNET**  
Price reduced. 3 bedroom, 2 bath, carpeted, central heat and air, dishwasher.

**EDGEFIELD TRACTS**  
1 ac tracts restricted with city water. \$3,500.00.

**EDGEFIELD LOTS**  
8000 sq.ft. restricted with city water and sewer. Ideal for Ready Builts. \$4,500.

Office 853-2808  
E.C.(Pete)Peters 853-2843  
Jo Ward 853-2339  
Lynn Meador 853-2353

5 N. Divide  
Eldorado, Texas 76936

**Fighting a Losing Battle with Your Weight? Is It Winning?**  
Then try the ALLFOODTAB - 100% pure, natural vegetable nutrition in delicious 20-calorie tablets.



For more information, contact your nearest ALLFOODTAB Independent Distributor.



### FIRST UNITED METHODIST CHURCH

Rev. Fred Brown  
Hwy. 277  
across from courthouse  
853-2721 853-3030  
Church School 9:50 a.m.  
Morning Worship 10:50 a.m.  
Youth Fellowship 7:00 p.m. Wed.  
Youth Adult Study 7:30

### IGLESIA GETHSEMANE ASEMBLEA

DE DIOS  
Rev. Nick Robledo  
Menard Hwy.  
Sunday School 9:45  
Morning Worship 11:00  
Evening Services 5:00  
Wed. Prayer Services 7:00  
Friday Services 7:00

### CHURCH OF JESUS CHRIST OF LATTER DAY SAINTS

Bishop: Keith Knepp  
San Angelo 949-6894  
2817 Christoval Rd.  
Priesthood 9:00 a.m.  
Primary 9:00 a.m.  
Relief Society 9:00 a.m.  
Sunday School 10:00 a.m.  
Sacrament Meeting 11:00 a.m.

### CHURCH OF CHRIST

Rusty Kwast, Minister  
Mertzton Hwy.  
Sunday Services  
Bible Class 10:00 a.m.  
Assembly-11:30 a.m. & 6:00 p.m.  
Wednesday Services  
Ladies Bible Class 10:00 a.m.  
Bible Class 8:00 p.m.

### PRIMERA IGLESIA BAUTISTA

Rev. Raul Tirado, Pastor  
El Paso and Concho St.  
Sunday School 9:45 a.m.  
Morning Worship 11:00 a.m.  
Training Union 6-7 p.m.  
Evening Worship 7-8 p.m.  
Sunbeams Wed. 3 p.m.  
Prayer Service 7 p.m.

### FIRST BAPTIST CHURCH

Rev. Clive Johnston  
853-2406 (res.) Oak & Gillis  
Sunday School 9:45 a.m.  
Morning Worship 11:00 a.m.  
Adult Evening Bible Study  
Worship 7:00 p.m. Wed.  
Prayer Service 7:30 p.m.



# The LEADER

## Two County News Coverage

### Hometown Reporting

and

## Bargains Galore



**Southwest Texas Electric Co-op, Inc.**  
Eldorado

**Butler Supply Company**  
Eldorado

**El Dorado Restaurant**  
Eldorado

**R & H Well Service**  
Eldorado

**Western Company**  
Eldorado

**Sonic Drive-In**  
Sonora

**Trey Trucking**  
Eldorado

**Food Center**  
Sonora

**FIRST CHRISTIAN CHURCH**  
Dale Lipsett, Minister  
Sunday School 9:45 a.m.  
Morning Service 11:00 a.m.  
Evening Service 7:00 p.m.  
Wed. Bible Study 7:00 p.m.  
853-3101

**UNITED PENECONSTAL CHURCH**  
Rev. Walter Ford  
Hackberry St.  
Sunday School 10:00 a.m.  
Worship Service 11:00 a.m.  
Sun. Evening Service 7:00 p.m.  
Wed. Evening Service 7:30 p.m.

**UNITED BAPTIST CHURCH**  
West and Carson  
Elder Duane McCarty Pastor  
Services each 2nd & 4th Sunday  
10:30 a.m. and 2:30 p.m.  
Also on Sat. night before 2nd Sun.  
Meeting at 7:00 p.m.

**ST. MARY'S EPISCOPAL CHURCH**  
Rev. Lea Roy Aldwell  
Pelt St. & McWhorter Ave.  
Sonora, Tx. 387-2617  
Sunday Morning Worship  
and Holy Communion

**ANTIOCH BAPTIST CHURCH**  
Sunday School 10:00 a.m.  
Morning Worship Service 11:00 a.m.  
No Sunday Night Service  
Everyone Welcome  
Located on Callender St.

**WESTSIDE CHURCH OF CHRIST**  
Hwy. 277  
Sun. Morning Service 10:30 a.m.  
Sun. Evening Service 6:00 p.m.  
Wed. Evening Service 7:30 p.m.  
Mike Sokoff, Minister

**FIRST PRESBYTERIAN CHURCH**  
Rev. Ronald J. Sutto  
7 N. Cottonwood  
Sunday School 10:00 a.m.  
Fellowship Time 10:30 a.m.  
Morning Worship 11:00 a.m.

**OUR LADY OF GUADALUPE CATHOLIC CHURCH**  
Father Bernard L. Gully  
853-2663  
Wed. 7:00 p.m.  
Fri. 7:00 p.m.  
Sun. 8:30 a.m.

**AGAPE ASSEMBLY OF GOD**  
Hwy. 277  
Sunday School 10:00 A.M.  
Morning Service 11:00 A.M.  
Evening Service 6:00 P.M.  
Wednesday Bible Study 7:00 P.M.  
Rev. Dave Stephens, Pastor

## PUBLIC NOTICE

In accordance with the Public Utility Regulatory Act and the Rules of the Public Utility Commission of Texas, AT&T Communications of the Southwest, Inc. (AT&T Communications) gives notice to all of its Texas customers that a new procedure for long distance billing was made effective on an interim basis on August 6, 1984 in Docket No. 5800.

The procedure referred to is "Rate Period Specific Billing" and it applies to all message telephone service (AT&T Long Distance calls) including non-REACH OUT Texas calls within the State of Texas. This new procedure effects all AT&T Long Distance customers. All intralATA long distance calls and all interstate long distance calls are currently billed using this procedure.

Under this procedure, customers are billed a specific charge for long distance calls according to the rate or rates in effect throughout the time of each call. If a call begins in one rate period and extends into a different rate period, the customer will be charged whatever rate is in effect for each portion of the call.

For example, if a customer places a call at 4:58 p.m. on a weekday and talks for ten minutes, the first two minutes of the call would be charged at the full weekday rate which extends from 8:00 a.m. to 5:00 p.m. The remaining eight minutes of the call would be billed at the evening rate which extends from 5:00 p.m. to 11:00 p.m. and includes a 25% discount. If Rate Period Specific Billing were not in effect, the entire call would have been billed at the higher day rate. Calls which extend from the evening rate period (25% discount) to the night and weekend rate period (40% discount) or from the night and weekend rate period (40% discount) to the day rate period (no discount) would also be billed according to the actual minutes of use during each rate period.

AT&T Communications anticipates a minimal increase of approximately .02% in its revenues or approximately \$250,000 annually.

A complete copy of the "Rate Period Specific Billing" tariff is on file with the Texas Public Utility Commission.

Persons who wish to intervene or otherwise participate in these proceedings should notify the Commission as soon as possible. A request to intervene or participate or for further information should be mailed to the Public Utility Commission of Texas, 7800 Shoal Creek Boulevard, Suite 400N, Austin, Texas 78757. Further information also may be obtained by calling the Public Utility Commission Consumer Affairs Division at (512) 458-0223 or (512) 458-0227 or (512) 458-0221 teletypewriter for the deaf.

