

For Super Santa Celebration Santa Claus Is Coming To Town!

Santa Claus is coming to town today! Arriving at the Eldorado Airport at 4p.m., jolly old Saint Nick is the star attraction for the third annual Super Santa Celebration, sponsored by the Schleicher County Progress Council.

He will be met at the airport by the 'Goin' Band from Eagle Land', a Boy Scout flag corp, several floats and many children who will escort him across highway 277 and then down Main Street to the Memorial Building.

Original plans had called for Santa Claus to meet the parade at Casa Arispe but those plans have been changed so that the parade will begin at the airport, as in previous years.

Once at the Memorial Building, Santa will visit with the children to get their Christmas wishes. At the same time, adults will be outside waiting to see if their names will be drawn for prizes, merchandise and cash prizes from many local merchants.

There will be three prizes given to those entering

floats. \$50 from Southwest Texas Electric Cooperative, for first place; \$25 from Ratliff Insurance for second place and \$15 from Jackson Joint Inspection for third place.

Businesses and prizes included in the drawing will be as follows:

Hext Grocery	\$50 merchandise
Cathy's	Citizens watch
M. Calla's	Leather jacket and paddle pool game
Weserman Drug	Electric knife
Meador-Peters and Meador Land	\$50 cash
H.G. Automotive and Western Auto	popcorn popper
First National Bank	\$50 savings bond
First South-Galbraith	merchandise
Holly House	merchandise
Solges	\$20 certificate
Pat's Sew-n-Sew	\$25 merchandise
The Cottage	merchandise
El Dorado Restaurant	two dinners for two

Names from these boxes will be combined to draw for prizes or merchandise or cash from the following:

Kents Automotive	\$50 merchandise
Your Place	two pizzas and four Burgers
Griffin Oil	\$50 cash
Top's Liquor	\$25 cash
Kwik Service	68 qt. Igloo cooler
Shaw's Motel	\$15 cash
Heart of Texas	\$25 savings account
SW Texas Electric	\$50 cash
Mr. and Mrs. Lionel Ballew	\$25 cash
El Dorado Wool	25 lb. puppy chow
Poynor Construction	\$100 cash
B&H Construction	\$25 cash
Duncan Texaco	three grease and wash jobs
Eldorado Instruments	\$20 cash
NL Well Serv.	\$25 cash



SCHLEICHER COUNTY LEADER

25°

Eldorado, Texas

'On Top of the Divide'

Thursday, December 17, 1981

Gas Leak Closes School

What was to be a "line survey" by the Railroad Commission turned out to be a major problem for school officials and city employees this week.

Four representatives of the commission were in the city last week to check the city's gas lines because a large amount of gas was not being accounted for. They found several leaks around the elementary school building. In order to repair the leaks because of a potential hazard, the school was closed Monday and Tuesday of this week. At presstime, school officials were hoping school would reopen Wednesday.

The line running next to the elementary school was repaired Monday afternoon by a private contractor, but commission workers found leakage and a gas pocket in the city's gas line in the alleyway and it had to be repaired before school could reopen.

According to Milt Fagenbush, head engineer for the commission, his crews had checked Eldorado

before and found that some of the city's gaslines did not "conform to pipeline safety standards" that they would "continue their evaluation and determine if there were any other problems in other areas of non-compliance...and to determine if Eldorado was following rules and regulations."

The commission reported that the city is losing 46 percent of the gas that is going into its gas system. Fagenbush said this could be due to leakage, poor measurement, accumulation of calculated gas loss, new lines, repairs and renovation of gaslines and the use of gas to fill new and renovated lines among other reasons.

He said the commission should check "every system in the state" on a regular basis and with an increased staff they should be able to do more than before.

One of the representatives here said they would remain in the city checking lines with instruments to find gas leakage, especially around

churches, large buildings and the downtown business district. If a leak is found on private property, it will be the owner's responsibility to have it repaired, according to city secretary Carolyn Mayo. If a leak is found in an alleyway or on city property, the city will have it repaired.

The problem of gas leakage has been a problem to the city council for several years because some of the city's lines are old and need replacing.

Mrs. Mayo reported that the city council is looking for a company that will do a turn key job in repairing the gas lines. That would include digging the ditches, testing the lines and making repairs.

She said that rumors about the leakage had gotten out of hand and caused a mild panic for some people but there was no need for alarm.

Commission representatives said they should be through testing lines and making repairs before the end of this week or by the first of next week.

County Adjusts Employee Pay Scale

Schleicher County Commissioners approved an adjusted pay scale for elected officials and employees during their meeting Monday. The adjusted scale was made during an executive session Dec. 7 and approved during the meeting this week.

County Judge Johnny Griffin said the new scale represented an average of 6.53 percent increase for employees. He added that the increase would mean that salaries would be 38-29 percent of the county's budget.

The adjustments were made after lengthy discussions by commission-

ers. The general consensus is that the pay scale was out of line for some employees because of their tenure, job responsibilities and performance. Commissioners said they took each job "by itself" and considered all of these things before making an adjustment on the pay scale.

Elected officials salaries include \$7,500 for commissioners, \$12,953 for the justice of the peace, \$17,340 for the county attorney, \$18,511 for the county treasurer, tax assessor-collector and county and district clerk, to \$20,178

for the sheriff and \$20,717 for the county judge.

The court also met with sheriff Orval Edmiston to discuss the budget for law enforcement center and the sheriff's department. Edmiston told the court the average price for meals at the center was 96 cents. He added that he has had as many as ten persons in the jail at one time.

Don Meador, president of the Eldorado Lions Club, met with the court to present them with two petitions from local citizens. One was for a traffic light at the junction of highway 277 and 190, at the courthouse and the second was for stricter enforcement of traffic laws. There were about 230 signatures on the petitions which have already been presented the Texas State Department of Highways and Public Transportation.

Meador told the court the petitions were a result of a discussion during a Lions Club meeting in which members voiced their concern about traffic control and safety on Highway 277.

Edmiston told the court about his efforts for a stop light on the corner and that a state survey team was in the city last week conducting another traffic survey to determine if a stop light was necessary.

He also told the court that he has submitted a report on all of the accidents at that intersection as well as those within the next block of either side of that corner to Austin from 1980 and 1981 saying there was a "considerable number."

Tour Of Homes Delights Visitors

Christmas decorations of every kind, from the plain to the elegant were the main attractions of the annual Parade of Homes hosted by the Eldorado's Woman's Club Sunday. All four homes were decorated for a festive and family-oriented season.

The first stop on the tour was a step back 100 years at the log cabin summer home of Pauline Jones Lucas on the old San Angelo highway. Built of stained lumber by Eldorado carpenter Richard Mendez, it was a replica of rural America with homemade ornaments, rag dolls and antique and western furniture in the loft and first floor bedrooms. Ingenuity was seen in every corner of including the Noel across a wash-tub hung by the back door. But the antique touch was complimented by modern ideas such as a stainless steel kitchen sink and glass doors on the unusual rock fireplace.

The next stop was the elegant home of Mr. and Mrs. E.W. Williamson which greeted visitors with the warmth of lovely centerpiece of poinsettia and lit candles. The rock mantel was decorated with Bethlehem house replicas and the tree was filled with handmade ornaments of glitter which caught visitors' eyes immediately.

The entrance of the Jan and Raymon Mobley home greeted visitors with a special mail box and a china Christmas bell collection. The frosted tree was decorated with ornaments specially hand painted by Mrs. Mobley. But the pride of the home was the nativity scene



Cathy Niblett at mantel.

Continued on page 6



Jan Mobley and tree



E.W. and Louise Williamson.

New Housing Addition Approved By City Council

The Eldorado City Council approved a plat and restrictions for a new housing addition in the city during their meeting last week. Britt Poynor met with the council and presented his plans for developing nine and one-half acres of land east of Sunset Acres addition, adjoining the old Mertzon Highway.

Poynor said the addition will be called North Town Addition and work will begin after the first of the year on the street and alleyway. There are no plans for home construction yet, but several lots have are in the process of being sold.

In other business, the council denied a 15.4 rate increase presented by West Texas Utilities representative Leroy Reeves. The council then voted to cede jurisdiction to the

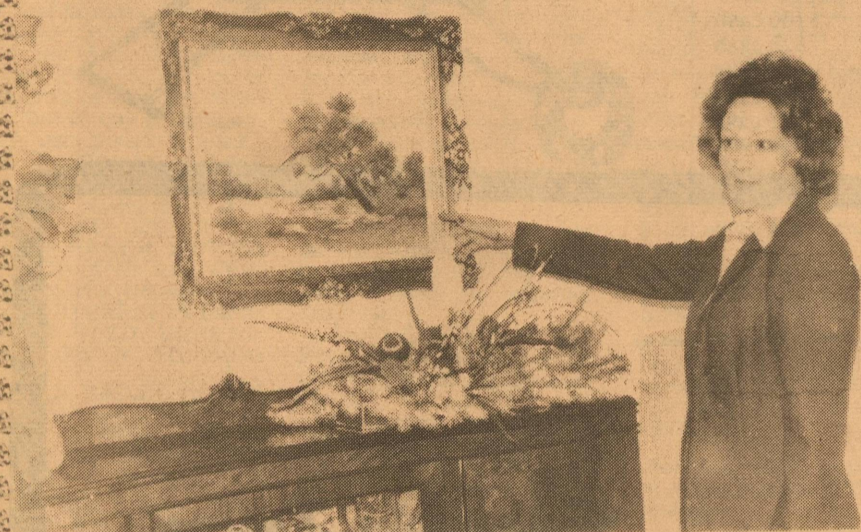
Public Utilities Commission, which means the PUC can still approve the rate increase even though the council denied it.

Mike Porter, a local resident, met with the council about sewage problems on his property which had been repaired. Since the problem originated in a city-owned main, the city reimbursed Porter for the expenses. The council discussed group insurance for employees, the purchase of the property for the new firehall and the salary of the night watchman who is paid partially by the city and the county. No action was taken in any of the items.

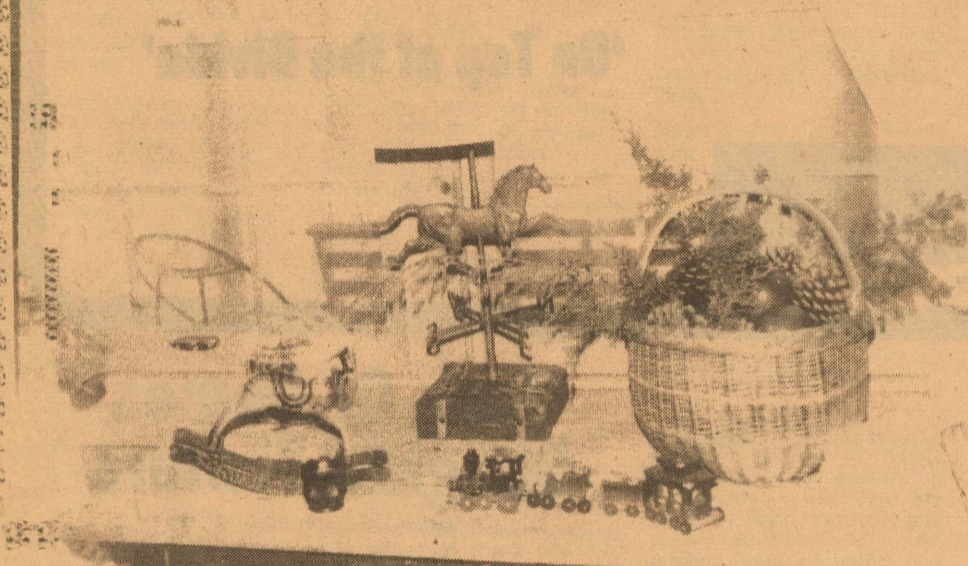
The city decided not to have a signed agreement with the county on the city-county work agreement because of the good report between the two bodies.



Ora Deal in Williamson kitchen

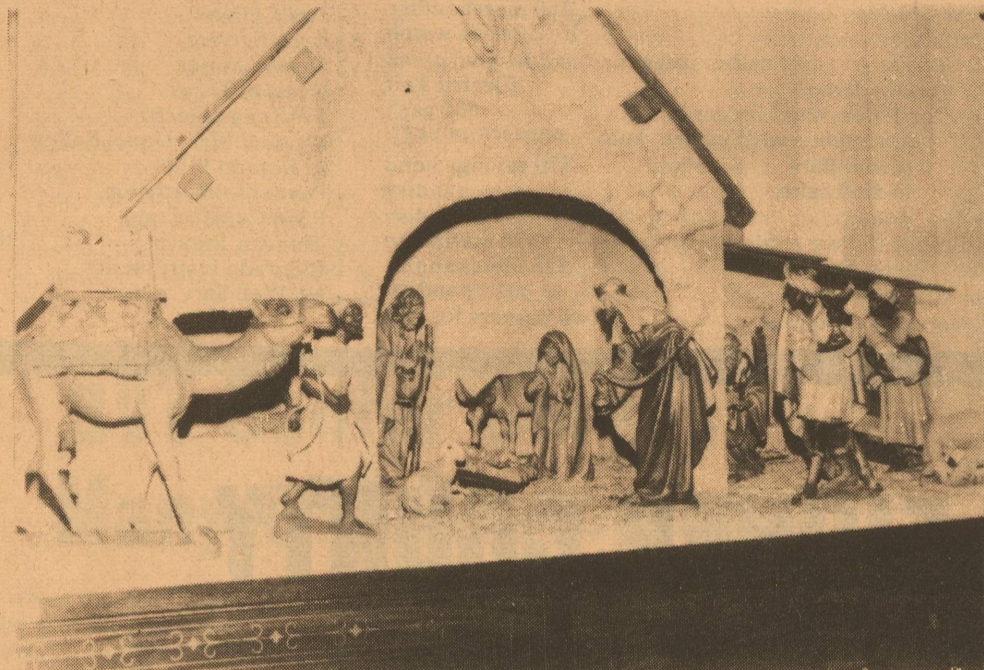


Tooter Dunham with her painting in Niblett home.



Country Christmas in log cabin.

More Scenes From Parade Of Homes



Unique Nativity scene in Mobley Home.

89 Expected To Die During Holiday

The Department of Public Safety has estimated that as many as 89 persons may perish on Texas Streets and highways during the Christmas and New Year's holidays.

Colonel Jim Adams, DPS director, asked Texas drivers to make this holiday season the safest in recent years.

"Nothing would please us more than to get through these holidays with far fewer fatalities than we project," Adams said. "We can reduce the number of fatalities if more drivers will moderate their speed, refrain from using alcohol or drugs if they plan to drive and make sure everyone in the vehicle wears a seat belt."

The DPS estimated that 51 persons would die in motor vehicle accidents during the Christmas holiday weekend and another 38 people would be killed during the new year holiday weekend. Both holiday

periods are 78 hours long.

Adams said 64 persons died in traffic crashes during the Christmas holiday period last year. Motor vehicle accidents claimed 58 lives over the new Year's holiday weekend.

During the first nine months of this year, 151,261 persons received injuries in Texas traffic accidents.

"That's an increase of slightly over 10 per cent compared to the same period in 1980," Adams said. "More than 19,000 of those people received serious, incapacitating injuries."

"A head-on crash at only 30 mph hurls a person's body forward with the same force as a fall from a third story window," Adams pointed out. "A buckled seat belt keeps passengers from striking their head or another part of their body and prevents serious injury."

Adams also recommended that before traveling, children under four years of age or weighing less than 40 pounds should be strapped into an approved child restraint seat.

"This would be a very sensible and perhaps life-saving gift for an infant or small child from a caring parent or grandparent," he said.

The DPS director said all available troopers would be on patrol duty during the fatality counting periods. For Christmas, the count will begin at 6 p.m. Thursday, December 24 and end at midnight Sunday, December 27. The New Year's period starts at 6 p.m. Thursday, December 31 and ends at midnight Sunday, January 3, 1982.

The DPS headquarters in Austin will release information on the various accidents as part of the "Operation Motorcade" program.

McCalla's

now has

You've earned your Wings!

Red Wings RED WING SHOES



There will be a Drawing for

one U.S. Grade A Premium (9lb.) Butterball Turkey Stuffed with seasoned bread, onions, and celery

Wed. Dec. 23 6:00 p.m.

Register anytime at Adobe Mini Mart

PUBLIC NOTICE

In compliance with Sec. 43(a) of Art. 1446c, V.A.C.S., West Texas Utilities Company hereby publishes NOTICE that it has filed, on November 25, 1981, its statement of intent to make changes in its rates charged for electricity and services sold and rendered inside and outside municipal jurisdictions, such proposed changes to be effective January 1, 1982. Such Statement of Intent includes the proposed revisions, tariffs and schedules, and a statement specifying in detail each proposed change. The effect of the proposed change is expected to have on the revenues of the Company, and the classes and numbers of utility customers affected. Gross revenues are expected to be increased 15.4 per cent over adjusted test year revenues by the new rates. Statements of intent were filed with the Public Utility Commission of Texas and with the following municipalities:

Abilene	Hawley	Quitaque
Alpine	Hedley	Rankin
Anson	Impact	Rising Star
Aspermont	Iraan	Roaring Springs
Baird	Jayton	Rochester
Balmorhea	Junction	Rule
Ballinger	Knox City	San Angelo
Benjamin	Lawn	Santa Anna
Big Lake	Lueders	Shamrock
Blackwell	Marfa	Sonora
Bronte	McCamey	Spur
Buffalo Gap	Melvin	Stamford
Childress	Memphis	Sterling City
Cisco	Menard	Talpa
Clarendon	Merkel	Throckmorton
Clyde	Mertzon	Trent
Cross Plains	Miles	Turkey
Crowell	Moran	Tuscola
Dodson	Munday	Tye
Eden	O'Brien	Valentine
Eldorado	Paducah	Weinert
Estelline	Paint Rock	Wellington
Goree	Presidio	Winters
Hamilin	Putnam	Woodson
Haskell	Quanah	

Areas affected by the filing with the Public Utility Commission of Texas are in the following:

Albany	Chillicothe	Dickens	Cities	Lakeview	Matador	Roby
				Robert Lee		Rotan
			Counties			
Baylor	Brewster	Briscoe	Foard	Gillespie	Hall	Pecos
Brown	Callahan	Childress	Hardeman	Haskell	Irion	Presidio
Coleman	Coke	Coleman	Jeff Davis	Jones	Kent	Reagan
Collingsworth	Concho	Cottle	Kent	Kimble	King	Reeves
Crane	Crane	Crockett	King	Knox	Mason	Runnels
Dickens	Donley	Edwards	McCulloch	Menard	Motley	Schleicher
Edwards	Eastland	Edwards	Nolan			Shackelford
Fisher						Stephens
						Sterling
						Stonewall
						Sutton
						Taylor
						Throckmorton
						Tom Green
						Upton
						Wheeler
						Wilbarger

This Christmas...

Give her a gift of the heart

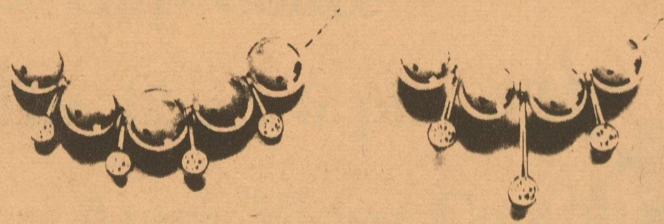


DIAMOND LOVE BUDS®

your way to grow a DIAMOND NECKLACE — to your own design

then — on all occasions — add more DIAMOND LOVE BUDS®

between your 14K Gold Beads



GROW A STAR NECKLACE by adding regular Diamond Love Buds®

A PRINCESS NECKLACE by adding regular and long-stem Love Buds®

Ask to see our complete selection of starter necklaces, assorted 14K solid gold beads, genuine stone beads, and 14K gold chains in any length...and ask for them by name..... ADD-A-GOLD BEADS...the beads you'll be proud to wear!

Tedford Jewelry

Downtown Sonora

387-3839

The First National Bank of Eldorado

"Serving the complete Banking Needs of Eldorado and Schleicher County Since 1907"

Highest Interest Rates

allowed by regulations are always paid on all types of savings plans and certificates,

With a BIG PLUS.

Your deposit is insured by F.D.I.C. and backed by the strong financial condition

of First National Bank, Eldorado,

Let us help you with your financial needs.



Drive-In Banking

Each depositor insured to \$100,000



From The County Agent

Garden Check List For December

1. Make plans for a Texas Arbor Day celebration on the third Friday in January. This should make it January 15, 1982.
2. Don't believe everything you read. Many newspaper and magazine articles continue to malign the Christmas poinsettia plant by claiming it is poisonous. Recent research at Ohio State indicates the plant is not poisonous to pets or children. The milky latex may on rare occasions cause skin irritation on people with sensitive skin. The leaves tasted so bad, the test animals had to be force-fed but no ill effects were ever noted, it was reported.
3. Be ready to either protect those semi-hardy landscape plants when a sudden severe cold snap is predicted, or be ready to replace them.
4. This is an excellent time to plant or transplant trees and shrubs. Before adding any woody plant to the landscape, be sure it is the correct mature size or has the proper growing habit for the location. In other words: "Plan" before "Planting".
5. Was that lawnmower or power tool in good working condition when last used? If not, this is an excellent

Service Held For Roberta Finklea

A memorial service was held Dec. 10 at Johnson's Funeral Home in San Angelo for Roberta Finklea who died in Park Plaza Nursing home in San Angelo.

Burial was in Amarillo Friday.

Mrs. Annie Emmons, Mrs. Finklea's sister, and others went to Amarillo for the service.

Mrs. Emmons is a resident at Park Plaza.

Jamboree A Success

The monthly Country-Western Jamboree was a great success Saturday night as entertainers from nearby towns gathered at the Memorial Building to perform.

Country selections got off to a big start with Eldorado High School coach Craig Bessent who was accompanied by Kirk Griffin and Matthew Nixon.

time to take it to the repair shop. It will then be ready when you need it. Repair shops usually become extremely busy in early spring.

6. Don't forget those tulip bulbs in the refrigerator. They can be planted as soon as they have received 60 or more days of chilling.

7. Spider mites, mealy bugs, white fly and other pests can take over houseplants and plants in the backyard greenhouse if not checked frequently.

8. Remember to water evergreen plants during winter dry spells. They will be better able to withstand unexpected cold periods if there is adequate soil moisture. Plants protected by a roof overhang are especially vulnerable.

9. Remove any bagworm pouches or bags hanging on landscape plants, as they contain eggs for next year's attack. The most likely place to look is on juniper plants, but they may be found on almost any nearby plant. Remove and burn to prevent cycle from starting over.

10. While trees are without leaves, it is a good time to examine them for rubbing limbs, broken limbs, narrow crotches, or double leaders and to make necessary corrective surgery using good pruning practices.

11. Make another effort to remove dead plants in compost pile. Remove overwintering hiding places for insects and disease.

12. Rake leaves from the lawn area and place in compost pile. The addition of water and fertilizer will greatly hasten the breakdown of dry leaves. A shredder attachment on the rotary mower will also help.

13. Don't forget to keep the bird feeders well stocked at this time of the year.

14. Chuckle for the month: Definition of a weed - It is a thoroughly successful plant.

15. Want to start cuttings of your favorite Christmas cactus? As soon as they have finished blooming, select a cutting with four or five joints, break or cut it off and insert the basal end into a pot of potting soil that is moderately moist. Place it on a window sill or other brightly lit area. The cuttings should be rooted within three to four weeks.

16. Now's the time to control camellia petal blight, a disease which causes the flowers to turn brown and rot at the center. Clear off old mulch material and any debris under the camellia plants. Spray the ground beneath and immediately around the plants with PCNB (Terraclor). Replace the old mulch with clean, fresh mulch. When flowers as they fall.

17. Pansy plants and other annuals set out in November should be fertilized lightly using about one pound of 10-10-10 or the equivalent per 100 square feet of bed area. Be sure soil is moist before applying.

18. Those rows of regularly spaced holes in the bark of your favorite tree are probably due to the yellow-bellied sapsucker, a close cousin of the woodpecker, who drills the hole and then revisits the site each day to feed on the accumulated sap. Brush the damaged

area with one of the tree wound paints to seal off the injury and encourage healing and discourage the unwanted visitor.

Sonora Team Ties For Second

A foursome from Sonora tied for second during the Christmas party held by the Eldorado Duplicate Bridge Club last week. The local winners were Lottie Puckett, Fred Adkins, Muriel Brown and Lunetta Morgan.

Other Eldorado teams won rounds during the play in which 14 tables participated.

The Duplicate Bridge Played two weeks ago Mary Lois Brown of San Angelo and Anne Parker of Ozona won first. Billie Andrews and Jack Bebee won second and third went to Zeila Baker and Imogene Edmiston.

Fourth was won by Ina Lambert and Clay Porter.

Halberts Are Proud Parents Of A Daughter

Mr. and Mrs. Danny Halbert became parents of a baby girl, named Lycynda Lyne, Dec. 7 at Angelo Community Hospital. She

weighed six pounds, 15 ounces and was 19 1/2 inches long.

Mr. and Mrs. Jack Hal-

bert of Eldorado and Mr. and Mrs. Claude Ledbetter of San Angelo are grandparents. J.A. Cornett of San Angelo is a great-

grandfather. The baby was welcomed home by three sisters, Charissa, Alyssa and Jessica.

Phone someone this Christmas.



This year, say Merry Christmas with a phone from GTE. We've got phones that say it the old-fashioned way, phones that take the modern approach, and phones that stand on their own two feet (and come with their own two ears). What's more, you can actually take these phones home, wrap them up and put them under the tree. So call your local General Telephone business office. For a gift that really communicates.

General Telephone **GTE**

Santa is Coming to Ken Braden Motors Thursday Evening Dec. 17th DON'T MISS HIM!

Treats galore for all makes AND He'll Broadcast on K.V.R.N. Remote at Ken Braden Motors Join The Fun



1-10 Golf Course Rd. 387-2529

5 1/4 % NOW accounts* are free at Heart O' Texas Savings if you're 60 or over.

Included with this offer is the first fifty checks free of charge.

Heart O' Texas SAVINGS ASSOCIATION

HOME OFFICE • SAN SABA
200 East Wallace Street • San Saba, Texas 76877 • Phone 915/372-5121

3rd oldest Savings and Loan in Texas

BALLINGER
718 Hutchings Ave
Ballinger, Texas 76821
Phone 915/365-5164

BIG LAKE
606 2nd Street
Big Lake, Texas 76932
Phone 915/884-3696

ROBERT LEE
403 West 10th
Robert Lee, Texas 76945
Phone 915/453-2385

SONORA
409 Hwy 227 North
Sonora, Texas 76950
Phone 915/387-2179

SAN ANGELO
412 College Hills Blvd.
San Angelo, Texas 76901
Phone 915/944-0545

SAN ANGELO
337 W. Twohig
Phone 915/653-6778

RICHLAND SPRINGS
P.O. Box 8
Richland Springs, Texas 76971
915/452-3470

WINTERS
102 S. Main
Winters, Texas 79567
Phone 915/754-4513

ELDORADO
Hwy 277 & 190
Eldorado, Texas 76936
Phone 915/853-3272

Federal regulations require a substantial interest penalty for early withdrawal.

The S&L that makes home loans in your community.

*Heart O' Texas Savings reserves the right to eliminate or modify this free service.

CLASSIFIED ADS

Public Notice

CITATION BY PUBLICATION

THE STATE OF TEXAS, TO: BAILEY RANCH BAPTIST CHURCH AND ALL PERSONS CLAIMING AN INTEREST IN LAND UNDER DEED HERETOFORE GIVEN TO DEACONS OF BAILEY RANCH BAPTIST CHURCH AND THEIR SUCCESSORS IN OFFICE, OF SCHLEICHER COUNTY, TEXAS, AS GRANTEE. Defendants in the hereinafter styled and numbered cause.

You and each of you are hereby commanded to appear before the District Court of Schleicher County, Texas, 51st Judicial District, to be held at the Courthouse of said County in the City of Eldorado, Schleicher County, Texas, at or before 10:00 a.m. on the first Monday after expiration of forty-two (42) days from the date of issuance hereof; that is to say, on or before 10:00 a.m. on Monday, the 18 day of January, 1982, and answer the petition of MRS. J.E. (JESSE LEE) SPENCER in Cause No. 1644, styled MRS. J.E. (JESSE LEE) SPENCER v. BAILEY RANCH BAPTIST CHURCH AND ALL PERSONS CLAIMING ANY TITLE OR INTEREST IN LAND UNDER DEED HERETOFORE GIVEN TO DEACONS OF BAILEY RANCH BAPTIST CHURCH AND THEIR SUCCESSORS IN OFFICE, OF SCHLEICHER COUNTY, TEXAS, AS GRANTEE, in which MRS. J.E. (JESSE LEE) SPENCER is Plaintiff and the parties herein named as Defendants are Defendants, which petition was filed in said Court on the 4th day of September, 1981, and the nature of such suit is as follows:

Plaintiff brings this suit to remove a cloud and quiet title to a parcel of real property and all the improvements on that property, consisting of a five acre parcel of land, described as follows: Being five acres of land in Schleicher County, Texas, out of the North one-half (N 1/2) of Section No. 164, Abstract No. 803, in Block "A", originally surveyed for the Common School Fund by the H E & W T R Y Co., by virtue of Certificate No. 84, and sold by the State of Texas to John Hutto. Said five acres described by metes and bounds as follows:

Beginning at a large fence post in the North line of said survey 164 766-3/10 vrs from its NE Corner, Thence South 103 vrs. to a mesquite stake for the S.E. Corner of this tract; Thence West 274 vrs. to an iron pin for the S.W. Corner of this tract; Thence North 103 vrs. to a large mesquite stake post in the North line of said Survey No. 164 to the place of beginning. Thence North 103 vrs. to a large mesquite stake post in the North line of said Survey No. 164 to the place of beginning. Thence East 274 vrs. with the North line of said Survey No. 164 to the place of beginning.

This five acre parcel was conveyed to Deacons of Bailey Ranch Baptist Church by a deed dated January 19, 1924. The Bailey Ranch Baptist Church ceased holding services in the early 1950's, and since that time, Plaintiff (and her predecessors in interest) have been in adverse possession of the real property involved here, under Articles 5509, 5510, 5519, 5518, and 5519a of Texas Revised Civil Statutes.

If this citation is not served within ninety (90) days after date of its issuance, it shall be returned unrecorded.

WITNESS, Mrs. Helen Bebee, Clerk of the District Court of Schleicher County, Texas.

GIVEN under my hand and seal of said Court at office in the City of Eldorado, this 3rd day of December, 1981.

Mrs. Helen Bebee,
Clerk of the
District Court of
Schleicher County, Texas

For Sale

For Sale - By owner 3 bedroom home, corner lot, and 3 room storage carport, fruit and pecan trees. Shows by appointment only phone 853-2641.

For Sale: 1972 Impala: good condition. clean, fully equipped. Contact 853-2012.

For Sale: Several pieces of used carpet. Make offer for one or all--853-2721.

Car For Sale - 1974 Vega \$500.00 8-5:30-853-2544. Come by 305 Felid Ave. Fiber Glass Bathtub avocado 853-2715 853-2535

For sale--shelled pecans 3.50 pound Call 853-3003

For Sale--1975 Buick LaSabre--nice, clean, good condition, call Danny Halbert. 853-2173.

1967 Caribou 16 foot \$2,050. Contact Kents Automotive 3-2733 and ask for Bob. Monday thru Friday.

Small Ranch--140 acres near Roosevelt, well, windmill, concrete reservoir, good fence, and road \$800 per acre terms not Real Estate agent. If you don't have money don't bother me. 512-965-8905 or 512-695-3205.

For Sale--Residential Lot located on Lee Street. Call 853-2795.

2 wheel camping trailer shag carpet, new stove, double bunk, chemical toilet - \$950.00 call Cristoval 896-2561

15 foot, 2 wheel camping trailer sleeps four. See Domingo Pinaat. 302 Merton Hwy. Call 853-2873 after 5p.m.

Mobile Scout Travel Trailer, 15 foot, \$1200, camper for long narrow bed pickup, \$150, white and blue, white camper shell for wide-bed \$75. Boat for sale and motor, \$50.00, 14 foot. 3-2694 or 601 W. Ave.

For Sale - Kawasaki Mini-Endura 75 H.P. Excellent for youth 8-14 year old. Call 853-3121

For Sale - Reg. toy poodles - 6 weeks old. call 853-2202 2 males.

16 ft. carabo double axle. Call Kent Automotive. \$1900.00

For Sale - Kelvinator electric range. Good condition cooks well \$50 Phone 853-2625

New Student Desk- Whole sale cost. Metal kitchen cabinet see at Shaws Motel

For Sale - Eighty new 6 ft. steel fence post \$2.25 each E.H. Toplife 853-2355 at sacrifice price.

For Sale - Brittany Spaniel pups. Good hunting dogs and pets. Great for Christmas - 387-2901 387-5619.

Help Wanted
Local oil service co. needs secretary with accounting background. Excellent benefits. Send resume and salary requirements to Schleicher County Leader, Box 769, in care of Secretary Respondant.

Public Notice

LEGAL NOTICE

Notice is hereby given by the Commissioners' Court of Schleicher County, Texas as required by Article 3912K, Section 6, Vernon's Annotated Civil Statutes, that the annual salaries of the following County Officials;

County Judge proposed salary \$20,717.00; Sheriff proposed salary \$20,178.00; County Treasurer proposed salary \$18,511.00; Tax Assessor-Collector proposed salary \$18,511.00; County and District Clerk proposed salary 18,511.00; County Attorney proposed salary 17,340.00; Justice of the

Peace proposed salary \$12,953.00; Commissioners, Pcts. 1,2,3 & 4 proposed salary \$ 7,500.00.

The above listed Elected Officials salaries are to be set at the Regular Meeting of the Commissioners' Court at 10:00 A.M. January 11, 1982. ATTEST: Helen Bebee, County Clerk Schleicher County, Texas

Con't. From Page 1.....

carved in Italy from 300 year old wood which stands a foot high and includes all the Christmas characters. The rest of the home was decorated in soft colors of Christmas and also included a special room labeled "Señor shop".

The last stop on the tour was that of Cathy and Charlie Niblett which greeted guests with a tree decorated in various ornaments including an array of beads. Other centerpieces

of bright red, angels in fusia and a handmade macrame Christmas tree highlighted the home. The mantel was especially attractive with the family's stockings and a lighted Noel sign. Guests stopping here enjoyed sipping hot apple cider, coffee and munching on a large assortment of cookies and other season delights.

Women's Club members served as hostesses and termed the event a huge success.

BVT Center Serves Many GTE Customers

When it comes to paying bills with their hard-earned money, customers want their billing questions answered accurately and fast.

General Telephone has a center that not only answers questions and adjusts phone bills for residential customers, but also serves as a collection office for both residential and business customers who don't pay their bills.

Each month more than 24,400 calls are made to the firm's BVT Center in San Angelo, Texas. The BVT Center - which stands for "Billing, Voucher and Treatment" - serves about 218,000 General Telephone customers in West Texas and New Mexico.

"We answer all types of residential billing questions, but the kind that our customers ask most often regard long-distance charges and whether we have

received their payments," David Perez, the center's manager, said.

A lot of times, customers honestly don't remember placing long-distance calls, he said. In many cases the center can provide the names of the parties they called to refresh their memory.

"We know no one likes to wait, so 97 percent of the calls made to our center are answered within 20 seconds or less," Perez said. "If customers experience any delay it will normally be on Mondays when the volume of calls is the heaviest at the center."

When residential customers think they have been charged for long-distance calls they did not place, they should call the center for a billing adjustment. If calling is not convenient, the charge and the appropriate tax can be deducted from the billing statement, which the

should be mailed with the payment.

If customers don't pay their monthly phone bill on time, the center begins collection procedures - which may lead to the temporary denial of telephone service.

"The only reason telephone service is temporarily denied to a customer is to protect company revenues," Perez emphasized. "We must protect those revenues because ultimately any dollars not collected are paid through higher rates by all other customers. And that is who we are really protecting - our other customers who pay their bills."

Perez pointed out that the center's collection section handles both residential and business accounts, while the center's billing section serves residential customers only.

The center is open from 8:30 a.m. to 5 p.m. Monday through Friday. Its phone number can be found at the top of each Gen Tel residential phone bill.

Mrs. Davis

Kills Buck

Mrs. Buck (Emma) Davis, a former resident of the Reynolds Community west of Eldorado, returned to Schleicher County this deer season and killed an eight point buck on the Jack Jones ranch four miles west of Eldorado.

The deer was field dressed at 130 pounds.

Mrs. Davis, who is now 81 years old, began hunting deer every season since her husband died in 1957 and says this is the largest buck she has ever killed.

She is the mother of J.W. Davis, Jewel Goolsby, both of Austin, Fae Conner of Lockhart and Mae Cowan (deceased), who all are former Eldorado residents.

Long-term credit that's productive.

The Land Bank
Close to the land and the people who work it
Federal Land Bank

All Prugel Mgr.



We Have Success Calendars

Schleicher County Leader

BUSINESS DIRECTORY

Knight Carpenter and Roofing

915-853-3185
Trailer underpending and leveling
Free estimates given
Work Guaranteed

C.H. Poynor Const. Co

General Oilfield construction
24 hour Call 884-2454 Big Lake 853-3064 Eldorado

Insurance

Fire, Windstorm Auto and Casualty
Call Tom Ratliff
853-2636

Tex-Sun Insulation

Residential Commercial
Free Estimates
Farris Nixon 853-2996

Kerbow Funeral Home

Servicing Eldorado & Sonora
853-2636 or 387-2266 Sonora

Whitten Liquid Feed

Nutrena & Godbold Feeds
Steve Whitten, Manager
853-2944 Res. 853-2879

N L WELL SERVICE

Well Servicing - Water Hauling
Pump trucks 24 hour service
Eldorado 853-2351 Sonora 387-2509

Henderson Waterwell

Windmill and Pump Repair
Sam Henderson, Jr
853-3280



Butler Supply Co., Inc.

Your Complete Oilfield Store
East Street
853-2503

Specializing In

Instruments, Gauges, Meters & Controls for Oil & Gas Industry, Industrial Plants
Sales & Service on Oilfields, and Industrial Instruments & Control
24 hour service
ELDORADO INSTRUMENT & CONTROL CO.
Office - 853-2506 Home - 853-2624

DRY CLEANERS LAUNDRY

Uniform Rentals
Dust Control
Mops Mats

Thorp's

212 S Main 853-2900



Manager's Specials

853-2775

Coca Cola 2-Liter \$1.29

12 oz. cans 35¢ (2.09 6 Pack)

Corn Dogs 39¢ Each

Burritos 49¢ Each

Eggs 99¢ Dozen

6Pk Old Milwaukee \$2.25

Fresh Hot Popcorn

Free Cup Coffee

Schlitz 12 oz. 6 pk - \$2.25

Atari Video Computer \$169.95

Atari Games \$29.95 to \$39.95

Accept Master Charge, VISA, and Chevron.

Unleaded and Diesel Gasoline

Also offered Daily-Assorted Jack & Jill Donuts-Reg, Chocolate Covered, and Filled Apple Fritters Eclairs

Open: Sunday thru Thursday 5am - 11pm
Friday and Sat. 5am-12 pm