

# SCHLEICHER COUNTY LEADER

25¢

Eldorado, Texas  
'On Top of the Divide'

Thursday, September 17, 1981

## City, County Plan For New Fire Hall

Preliminary action for a new city-county firehall was taken during a meeting of the city council last week when city councilmen voted to purchase the land next to City Hall. Councilmen Bob Lester, Wayne McGinnes, Rooster Jackson and John Callison voted to buy the land for \$21,000.

Present at the meeting were County Judge Johnny Griffin, and county commissioners Prissy Paxton, Hovley Enochs, De Lux and David Meador as well as fireman Phil Edminston, Jerry Jones and Richard Harris.

County and City officials came to a verbal agreement that the city will purchase the land for the building and the county will build the structure. Then the building will be turned over to the fire department which will operate and maintain it, submitting a budget to the city and county. Both of the governing bodies will then pay half of the

Firemen showed all officials their plans for the building which will have bays for six trucks, a storage room meeting room. It will have three large doors that will open on Cottonwood Street as the present fire hall does.

The idea of building a new fire hall came after the last fire truck was purchased. Because of a lack of space in the old building, one of the trucks had to sit outside during cold weather, it will have to be drained after use and filled when a fire is called in, thus delaying firemen's response to call.

County officials are estimating the cost of the building at \$25,000.

Councilmen also met with Lynn Meador representing Meals for

Friends. Meador told the group the program was still operating with about 17 volunteers who were serving about 20 persons in the city three times a week. He stressed that the program was strictly for the elderly who could not afford to buy food or who were not able to prepare it for themselves.

The city agreed to grant the program \$3,000 for the upcoming year.

A hearing was held on the proposed change of utility charges. Mrs. Paxton asked why different businesses had to pay utility charges when they were in the same building. City secretary Carolyn Mayo replied that all businesses were charged a flat rate regardless of what building they were in.

Mrs. Mayo reported that it will be one week before work can begin on the water tower to remove obscene words painted on it two weeks ago.

Councilmen were asked to increase insurance on the tower to \$121,000, but voted to retain the insurance they had which costs \$110,000. They will also put a cage and light on the tower. The light will alert aircraft of the tower and the cage is to prevent any more vandalism and/or accidents.

The estimated budget for the coming year was approved with some minor adjustments. The tax rate of 27 cents per \$100 assessment was also approved.

The council also heard a petition from Patton Enchós, Weatherly Kinser and Cramer Sofge asking to close portions of Warner, Orient and Vermont Streets so that a Trailer park could be built. Action on the request was tabled until the next meeting.

## County Drops Tax Rate During Meeting

A tax rate of 41 cents per each \$100 assessment was approved by Schleicher County Commissioners during their meeting Monday. This is a four cent drop from last year's rate of 45 cents. The drop is attributed to a bigger assessment of property in the county. County Judge Johnny Griffin reported that property in the county has been assessed at about \$212 million.

Commissioners also approved a \$890,000 budget for the coming year.

Lynn Meador, representing Meals for Friends, met with the court and requested financial help for the program. Commissioners agreed to pay \$6,000 out of the new budget for the cause.

The court also met with sheriff Orval Edmiston concerning liability insurance for law enforcement officers and jailers. After a brief discussion about the results of a law suit for false arrest or other problems, the court decided to get insurance for jailers as well as law enforcement officers. It will cost the county \$1368 yearly.

Commissioners discussed the new fire hall building and decided to get specifications before calling for bids. Ray Ballew, manager for the tax

appraisal district, met with the court and gave a report on the remodeling project at the old jail. He reported representatives of the electrical company estimated the cost for metering electricity to the building at \$1,000. He was asked to get further information about the problem and other alternatives and present them at the next meeting.

Sid Rogge, golf course custodian, met with the court and presented his resignation.

The court also decided to call for bids on two wrecked vehicles, a 1974 Chevrolet pickup and a 1977 International dump truck.

They also approved fixed fees for court costs. On the justice of the peace level, the following fees were approved: citations, \$10; writs, \$12 and subpoenas, \$10. District court costs will be: citations, \$12; temporary restraining orders, \$20; writs, \$15 and subpoenas, \$10.

The court also decided to set the daily bag limit of quail to 12 for this season with the limit in possession set at 36.

The court will also take bids on the shooting range on the east side of town because of maintenance problems and the fact that so many people are moving into that area.



## Herman Walker Local Artist Invited To Prestigious Exhibits

Herman Walker, a well known artist from Eldorado, will be participating in two art shows the weekend of Oct. 2-4. He is well known for his paintings and sculptures which portray ranch life in the old west.

Several of Walker's paintings will be featured in the annual OS Ranch Steer Roping and Art Exhibit in Post that weekend.

At 2 p.m. Oct. 2, there will be team roping on the Basinger Ranch and at 5 p.m. there will be an art preview party with entertainment by Red Steagall and Coleman County Cowboys.

On Oct. 3, events include a cutting horse contest at 8 a.m., girls barrel racing at 9 a.m., fiddler's contest at 9:30 a.m., barbecue at 11:30 a.m., calf roping, girls barrel racing and team roping at 1:30 p.m. and a dance at the Post Community Center at 9 p.m.

An old timer's breakfast will be at 8 a.m. Oct. 4 followed by church service at 8:45 a.m., OS Ranch colt sale at 9:45 a.m., barbecue at 11:30 a.m. and invitational steer roping and cutting horse contest at 1:30

p.m. The art exhibit and sale will from 10 a.m. to 5 p.m. Saturday and Sunday. A preview party will be Friday night, deadline for buying tickets.

The art exhibit and sale is from 10 a.m. to 5 p.m. Saturday and Sunday. A preview party will be Friday night, deadline for buying tickets is Sept. 26. For reservations call 806-495-3958.

Walker will be among 37 artists from all over the Southwest to take part in the art show.

At the same time, Walker will have sent some of his pieces to the Indian Summer Day's Professional Western Art Show and Sale at medicine Lodge, Kan. A total of 15 artist from the southwest will be taking part in that show.

Guest speaker will be nationally known western artist, Keith Avery of Roswell, N.M. He is known for his covers on the Western Horseman and the Quarter Horse Journal.

The show and sale will be open to the public Oct. 3 from 10 a.m. to 10 p.m. and from 10 a.m. to 4 p.m. Oct. 4.

### Two of Walkers Paintings



## School Board Slices Tax Rate To 63 Cents Monday Night

The Eldorado School Board met Monday with a full agenda. The board's first business was the review of the bond payment schedule. The school board agreed to weekly payments not to exceed \$50,000.

The tax increase rate of 63 cents per \$100 assessment was passed unanimously.

The option to cancel social security payments was discussed. The board suggested that the teachers be re-poled before a final decision was made.

Bids were received on two buses which were sold for \$2,000 each. The board approved payment of \$1.50 per student to the region center.

Meals for Friends lunches will cost \$1.35 which was calculated on \$1.15 cost to prepare the food.

Board members received a report that the cost of sewer problems last year exceeded \$1,000, and the problem intensified during basketball season. A resolution was approved to purchase an electrical

snake to be operated by present maintenance crews.

The lawn mower problem has increased as the rain continues. The problem is lack of equipment and the need to use the tractor mower to do the regular lawns as well as the football field. This has resulted in the growth of weeds on the field and many man hours to rake grass. The item was tabled until further information can be obtained on costs of new mowers.

Phone allocations were mentioned but no definite action was taken.



## Production Figures Released

Texas crude oil production totaled 73,952,092 barrels in June, according to a preliminary report released today by the Railroad Commission's Oil and Gas Division.

The figure compares with final compilation of reported May 1981 produc-

tion totaling 76,662,263 barrels and June 1980 production of 76,127,406 barrels.

Texas oil production averaged 2,465,070 barrels daily in June 1981, down from 2,472,976 barrels daily in May 1981 and down from 2,537,580 barrels

daily in June 1980.

The June 1981 allowable totaled 109,786,166 barrels.

The preliminary June summary indicated Texas oil production was 32.64 percent under the allowable for the month.

A long-time resident of Eldorado, Felis Gomez Arispe, died Monday night. He was pronounced dead on arrival at Schleicher County Medical Center about 9 p.m.

Services have been set for 3 p.m. Thursday at Our Lady of Guadalupe Catholic Church. Burial will be in Eldorado Cemetery, with the Rev. Serran Braun, pastor, officiating.

Mr. Arispe was born March 31, 1907 in Rosales Mexico. He married Paula A. Aguilar in Eldorado Nov. 7,

1931. He had moved to Eldorado in 1925 from Mexico in 1925.

He was a fence builder.

He is survived by his wife; two sons, Juan A. Arispe and Porfirio Arispe, both of Eldorado; three sisters, Maria Ramirez of Madera, Calif., Leandra Amaya of Sabinas, Mexico and Minga Gonzales of Eldorado; three brothers, Jesus Arispe, Jose Arispe and Mike Arispe, all of Eldorado; two grandchildren, Diana Taylor and Felis Arispe, nine other grandchildren and eight great-grandchildren.

## Services Are Today For Felis Arispe

## Range Tour Is Set For Oct. 1

The Eldorado-Divide Soil & Water Conservation District, the Texas Agriculture Extension Service, and the Soil Conservation Service are planning a range management tour on October 1. According to Fred Stumberg, local SCS conservationist, the tour will look at two prescribed burns for brush control and a wagon-wheel or cell-type grazing system.

The tour will leave from the county courthouse at 3 on October 1. First stop will be Patton Enochs' ranch where a prescribed burn on pricklypear and mesquite was done this year. Jim Hardy's ranch will be visited also to see a burn that is in its second year of regrowth.

The Thompson T-Circle ranch will then be visited to see their new cell-type grazing system. Partners Charles Probandt and Laurie Lasater

are using this system to run an amazing number of cattle on a small amount of land. Ranch manager Jim Holly says the stocking rate is now near 80 animal units per section (eight cows per acre). This type of grazing system has received wide publicity for commonly doubling the normal stocking rate.

Following the tour, there will be a barbeque either on the courthouse lawn or in the Lion's Club room of the Memorial Building depending on the weather. Landowners from zone three of the Soil Conservation District will elect a district director to replace Jimmy O'Harrow who has decided not to run for re-election this year. Zone three covers the area in the northeast quarter of Schleicher County between the San Angelo and Menard highways.

All interested ranchers and land managers are invited to attend.

## Malathion Safe For Humans

Despite the public uproar in California about use of the insecticide malathion to control Mediterranean fruit flies, the material has a proven track record of being safe and free of health hazards.

"Malathion has been with us for a long time--since the early 1950's--and is one of the most commonly used insecticides by farmers, homeowners, and gardeners," points out Dr. Phil Hamman, entomologist with the Texas Agricultural Extension Service, Texas A&M University System. Hamman says he has been inundated with telephone calls since the California controversy from people wanting to know about the safety of malathion.

Tests sponsored by the National Cancer Institute have shown malathion to be both non-carcinogenic (not causing cancer) and non-mutagenic (not causing genetic changes).

"Malathion is routinely used by many homeowners and gardeners to control insects and mites on trees, shrubs, houseplants, flowers and vegetables. It is also used to control external parasites on pets," says Hamman.

In addition, he explains that malathion is used widely to control many different insect pests of crops. For instance, it has been used in large area

control programs for boll weevils and grasshoppers in West Texas.

Another major use of malathion in Texas has been for mosquito control programs, points out the entomologist. "Malathion is used almost exclusively to rid urban and suburban areas of disease-carrying mosquitoes," says Hamman. "In 1966-67 and again in 1971, vast areas of Texas, including major cities such as Dallas, Houston, and Corpus Christi, were aerially sprayed with malathion to control outbreaks of St. Louis encephalitis and Venezuelan equine encephalomyelitis, diseases spread by mosquitoes."

## JV Eagles Win Again

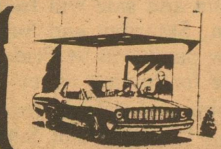
The Eldorado Eagle junior varsity won their ninth consecutive game by stomping the Big Lake Owls 40-0 last Thursday in Eldorado's Eagle stadium.

Touchdowns were made by Luke Brame, Douglas Ussery, Tim McAngus and Brett Nikolauk.

The eighth grade tied the Owls 6-6. The seventh, eighth and junior varsity teams will travel to Wall and face the Wall Hawks today. Action will begin at 5:00 p.m.

**THE FIRST NATIONAL BANK OF ELDORADO**  
Serving Eldorado and Schleicher County since 1907  
**TAX FREE INTEREST on a deposit that is FULLY INSURED BY FDIC**  
**Beginning October 1, 1981**

Ask one of our experienced financial advisors about the "All Savers Certificate" Remember, your deposit is ALWAYS FULLY INSURED, up to \$100,000.00 per depositor, by F.D.I.C. In addition, we have a sound financial structure to further protect your deposit dollars. Your deposit dollars help provide funds that are reinvested in LOCAL loans to help Eldorado and Schleicher County continue to grow.



Drive-In Banking



## Farmers Have Time to Study Insurance

Between now and September 30, Texas farmers can study the All-Risk Crop Insurance Program for wheat and barley to decide how it can fit into their 1982 plans.

"Basically, the program works the same as before. The producer signs up for protection now. After the crop is planted, they file a

report of planted acres which becomes the basis for their protection.

"If the crop is damaged by an unavoidable natural hazard at any time during the growing season, and indemnity is paid on the difference between the producer's guarantee and the actual or appraised production," explained

Ben A. Jordan, Jr., ECIC Regional Director. "Payment of premiums is not required until after harvest."

The program is set up so every producer can work out an insurance plan that fits his or her needs and budget. For wheat and barley, the producer selects a guarantee in bushels per

acre from one of three levels which reflect approximately 50, 65 and 75 percent of their average yield.

The producer also selects one of three price elections. This year's options are \$2.50, \$3.50 and \$4.50 per bushel on wheat; and \$2.00, \$2.25 and \$2.60 on barley, according to the Regional Director.

Another feature of the program is that producers can count on the government paying up to 30 percent of the premium and the rest is tax deductible. Those producers who establish good insurance experience also receive additional discounts of from 5 to 50 percent of the regular premium.

"While it is still a government program, it is available in most communi-

ties from private insurance agents. Some companies call it comprehensive or multiple peril rather than all-risk, it's still the same policy with the same protection and the same cost," said Jordan.

## Make-up Tourney Is Set Sept. 26

The local Eldorado Golf Club tournament that was cancelled Aug 16 will be held Saturday, Sept. 26.

There will be nine holes played in the morning for qualifying brackets. Eighteen holes will be played in the afternoon.

A barbeque will be served after awarding of club trophies.

An entrance fee of \$10 will be charged to club members only.

## Church Directory

**FIRST BAPTIST CHURCH**  
Oak and Gillis  
Sunday School 9:45 a.m.  
Morning Worship 11 a.m.  
Adult Evening Bible Study 7:00 p.m.  
Wed. Prayer Service 7:30

**ST. MARY'S EPISCOPAL CHURCH**  
Rev. Lea Roy Aldwell  
Pelt St. & McWhorter Ave.  
387-2617 (Sonora, Tex.)  
Sunday Morning Worship and Holy Communion

**FIRST PRESBYTERIAN CHURCH**  
Rev. Ronald J. Sutto  
7 N. Cottonwood  
Sunday School 10 a.m.  
Morning Worship 10 a.m.  
Fellowship Time 10:30 a.m.  
Visitors Welcome  
**CHURCH OF JESUS CHRIST OF LATTER DAY SAINTS**  
Bishop: Bryan Galloway  
San Angelo 658-4797  
2817 Christoval Rd.  
Priesthood 9 a.m.  
Primary 9 a.m.  
Relief Society 9 a.m.  
Sunday School 10 a.m.  
Sacrament meeting 11 a.m.

**OUR LADY OF GAUDALUPE CATHOLIC CHURCH**  
Rev. Mark J. Woodruff  
Pastor 853-2663  
Saturday 7:00 p.m.  
Sunday 8:00 a.m. (Spanish)  
9:30 a.m. (English)

**WESTSIDE CHURCH OF CHRIST**  
Hwy 277  
Sun. Morn. Serv. 10:30 a.m.  
Sun. Eve. Serv. 6:00 p.m.  
Wed. Eve. Serv. 7:30 p.m.

**PRIMITIVE BAPTIST CHURCH**  
Menard Hwy  
Elder Freddy Boen, Pastor  
Services each 2nd & 4th Sunday at 10:30 a.m. and 2:30 p.m.  
Also on Saturday night before 2 and 4th Sun. Meeting at 7:00 p.m.

**PRIMERA IGLESIA BAUTISTA**  
Rev. E.L. Flores, Pastor  
El Paso and Concho St.  
Sunday School 9:45 a.m.  
Morn. Worship 11:00 a.m.  
Training Union 6-7 p.m.  
Evening Worshisp 7-8 p.m.  
Sunbeams Wed. 3 p.m.  
Prayer Service 7p.m.

**FIRST CHRISTIAN CHURCH**  
Dale Lipsett, Minister  
Sunday School 10:15 a.m.  
Worship 11:00 a.m.  
Wed. Bible Study 7:00 p.m.  
853-2247

**UNITED PENTECOSTAL CHURCH**  
Rev. Walter Ford  
Hackberry St.  
Sunday School 10:00 a.m.  
Worship Service 11:00 a.m.  
Sun. Eve. Serv. 7:00 p.m.  
Wed. Eve. Serv. 7:30 p.m.

**ROCK CHURCH OF CHRIST**  
Dale Huff, Evangelist  
708 Lee St.  
Sunday Bible Class 10 a.m.  
Worship Service 11 a.m.  
Evening Worship 6 p.m.  
Wed. Bible Class 7:30 p.m.

**FIRST UNITED METHODIST CHURCH**  
Rev. John A. Robinson  
Hwy 277  
across from Courthouse  
853-2721 853-3010  
Church School 9:50 a.m.  
Morn. Worship 10:50 a.m.  
Youth Fellowship 7:00 p.m.  
Wednesday:  
Youth Adult Study 7:30  
All are welcome

## Joy Its Own Security

Serene will be our days and bright,  
And happy will our nature be.  
When love is an unerring light,  
And joy its own security.

W. Wordsworth

Nothing can produce so great a serenity of life, as a mind free from guilt, and kept untainted, not only from actions, but purposes that are wicked. By this means the soul will be not only unpolluted, but this means the fountain will run clear and unsullied, and the streams that flow from it will be just and honest deeds, ecstasies of satisfaction, a brisk energy of spirit, which makes a man an enthusiast in his joy, and a tenacious memory, sweeter than hope. For as shrubs which are cut down with the morning dew upon them do for a long time after retain their fragrance, so the good actions of a wise man perfume his mind, and leave a rich scent behind them. So that joy is, as it were, watered with these essences, and owes its flourishing to them.

Plutarch

## Methodist Pregame Bar-B-Que

September 18, 1981  
5:00 p.m. till game time

at Methodist Fellowship Hall

Proceeds to be for Building Fund

\$4.00 per adult  
\$2.50 for children under 10

Orland Harris is the Chef.  
Tickets available before or during barbeque.



This weekly church feature is sponsored by the following merchants who urge you to attend the church of your choice this Sunday.

<b>WESTERMAN DRUG</b> Cecil Westerman Would Like To Be Your Pharmacist 853-2226	<b>SOUTHWEST TEXAS ELECTRIC CO-OP, INC.</b> Owned by Those We Serve Eldorado, Texas 853-2544	<b>HOLLEY HOUSE</b> "For the Unique and Creative" Eldorado, Texas 853-2763
<b>EL DORADO RESTAURANT</b> Steaks-Seafood & Mexican Foods Catering Service Available 853-2818	<b>TREY TRUCKING</b> All Kinds Of Oilfield Trucking Eldorado, Texas 853-2186	<b>SONIC DRIVE-IN OF SONORA</b> Hwy. 277 North Sonora, Texas 387-5292
<b>BUTLER SUPPLY COMPANY</b> Oilman's Friend East St. Eldorado, Texas Day 853-2503 Night 853-2004	<b>COMMERCIAL RESTAURANT</b> Where Friends Meet To Eat Glasscock & Plum Sonora, Texas 387-9928	<b>THE WESTERN COMPANY</b> Pacesetters in the Oil & Gas Industry Eldorado, Texas
<b>FOOD CENTER</b> Herbert & Lois Fields, Owners Les Robertson Manager Sonora, Texas 387-3438	<b>R &amp; H WELL SERVICE, INC</b> Complete Oilfield Service Eldorado, Texas 853-2003	<b>SCHLEICHER COUNTY LEADER</b> Interested persons may submit original church features anytime 853-2032

## Schleicher County Leader

Published Weekly on Thursdays  
Second Class Postage paid at Eldorado, Texas  
Phone 853-2032 P.O. Box 782, Eldorado Texas  
Any erroneous reflection upon the character or standing of any person or firm appearing in this publication will be gladly and promptly corrected upon the calling the attention of the management to the article in question

**Nell Edmiston...Editor**  
**Alma Wlazinski... Advertising Manager**

Display advertising open rate is \$1.56 per column inch. Classified rate is 10 cents per word, per insertion, \$2.00 minimum charge. Classified display is \$2.00 per column inch.

Notices of entertainment, where admission is charged, notices of events of a fund-raising nature, cards of thanks, resolutions of respect, submitted poetry, and all such matters NOT NEWS will be for the normal advertising earned rates. Volume and frequency rates are available upon written request to the publisher or advertising sales manager.

Yearly subscription rate is \$7.50 in county and \$8.50 outside Schleicher County.




# IT'S Football Time



'The Big Eagle' watches action during pep rally

**Eagle of the Week**



**Eagle Dairy Mart**

Owner: John Callison  
853-2125

**ELDRADO**  
Jimmy Lloyd

**Ask For Callison's Special**



Cheerleaders watch the contest



Football boys have their own yell

**Gibson's**  
Sonora, TX

**Meador Land Company**

**Trey Trucking**  
853-2186

**R & H Well Service Inc.**

**Meador - Peters Insurance Co**

**Big John's Welding**  
John & Marlene Mitchell

**First National Bank**  
853-2535

**Kent's Automotive**  
853-2733

**Northern Natural Gas**

**Oil Patch**  
853-3192

**Southwest Texas Electric CO—OP**

**Eldorado Instrument & Control Co.**

**Hext Grocery**  
853-2892  
Granvell Hext

**Sutton Specialty**  
853-2574

**C.H Poynor Construction**  
853-3064

**Pat's Sew-N-Sew**  
Pat Gentry

**Lynn Meador Real Estate**

**Quadra Corporation**  
853-3004

**Devil's River News**  
Sonora 387-2507

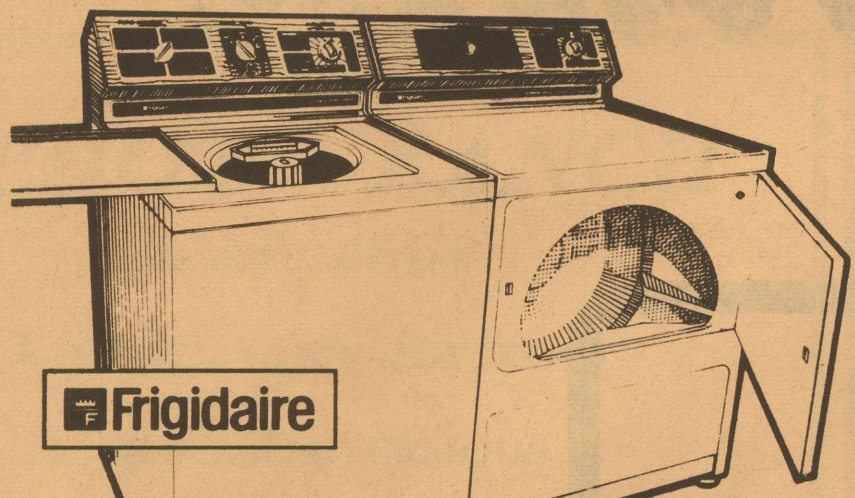
**Casa Arispe**  
853-2143

**Hunley Plumbing**  
853-2046  
Tommy Hunley

**McCalla's Department Store**  
853-2851



**This dependable energy saving Frigidaire Laundry Pair can handle big family-size loads—up to a full 18 pounds.**



**Washer offers dependable cleaning power — even lets you conserve hot water and detergent**

- No need to waste hot water. This Frigidaire Washer features a Water Level selector that lets you match the amount of water to the size of your washload.
- Depend on Frigidaire to keep lint from settling back on your clothes with the lint filter which snaps in and out for easy cleaning.
- New horizontal cleaning action passes clothes under the recirculating filter 8 to 14 times each cycle. The new system is equally effective for small average or large loads.

**See a Demonstration TODAY!**

**Dryer puts big drying capacity within easy reach**

- For easy loading and unloading, the big oversized door opening — one of the largest in the industry — is positioned a comfortable 18 inches off the floor.
- For efficient drying without hot spots that can damage fabrics, Frigidaire gently pulls air through your clothes.
- For big-family wash loads, this Frigidaire dryer provides gentle fabric care for up to 18 pounds of laundry.

WEST TEXAS UTILITIES COMPANY



A Member of The Central and South West System

Qualified Factory-Trained Servicemen Offer You The Finest In Appliance Service



Mrs. Blaylock opens gifts

## In Those Days

**FIVE YEARS AGO**—Bill Radle was named fire chief. The Eagles tied with the Braves in their second game 13-13.

Howard Derrick completed his term as director of the National Livestock and Meat Board.

Deborah Johnson was married to Thomas Eugene Chase.

Brad Thomas, David Doran, Danny Pina, Wade Wallis, Billy Gunstead, Mark Wallis and Gary Miner attended an all-day camporee at Camp Sol Mayer.

The Woman's Club began its year with a meeting at the home of Mrs. Oliver Teele.

**12 YEARS AGO**—Jesus Minor brought in the first bale of cotton.

Mrs. W.W. Woodward was president of the Eldorado Woman's Club which was celebrating its 50th anniversary.

Mrs. Jack Hibbits and Mrs. C.W. Wallace took over operation of the Eagle's Nest Drive-in across

from the school. Robbye Waldron was admitted into the state bar of Texas.

An order for upholstery material was presented to Eldorado Woolen Mills which put all regular mill hands back on the job. James Barker had moved here to help his father, Pen Barker, run the operation.

**35 YEARS AGO**—The third well on the Koy ranch looked to be as good a producer as the first two wells.

Sam Kerr died at the age of 56 at his home in Three Rivers.

Mrs. Frances Robinson Sellers was named the new fifth grade teacher here.

The big lamb sale was rescheduled because of heavy showers although those who attended still got to eat barbecue.

It cost 75 cents for adults to see the football games and 30 for students.

Mrs. May Dabney died at her home Sunday at the age of 63.

Funeral services were held for Henry Mercer at the age of 60.

## Auxiliary Hosts Party

The medical auxiliary honored Hattie Blaylock, Les Garrett and Pearl Edmiston with a birthday party Saturday. A program of music was given by Stanley Nixon, Junelle Nixon, Doris Craig, Mable Blaylock, Billie Gail McKinney, Eva Jo Milby and C.C. Gilbert.

Assisting in serving were Mildred Roach, Ola Mae McDonald, Louise Logan,

Mary Hext, Evelyn Stigler, Eitta Ruth Dannhelm, Lorana Heffernan and Lorie Heffernan.

Mrs. Blaylock celebrated her 101st birthday. She was born Sept. 11, 1880 in Austin "in the shade of the capitol."

She and her husband had nine children, three boys and six girls, which she almost reared herself because her husband, a gov-

ernment trapper, was away from home much of the time.

Mrs. Blaylock, a Baptist, is a very religious person and "dependent upon the Lord for guidance and help."

Three of her children have died, Bill, Vera and R.H. She has 25 grandchildren, many great-grandchildren and many great-great-grandchildren.

## Children's Clothing An Expression Of Feeling

The nursery school teacher smiled as she read the note.

"Lynn really does have other dresses," it said, "but she insists on the red corduroy every day. I can't get her to wear anything else."

Lynn's mother was embarrassed that her daughter wore the same favorite outfit every day for weeks, but the teacher knew better. The child was simply expressing herself.

Growing Child, the monthly child development newsletter, notes that children don't really have "bad taste." Like adults, they just like to dress to express how they feel inside. Unfortunately, sometimes we think it looks horrendous on the outside.

A child who insists on mismatched colors, pants that are too short, tacky costume jewelry, or a favorite item that gets worn and worn-and worn-can exasperate and sometimes embarrass parents.

But we should remember that adults, too, dress to express how they feel inside. We feel prettier in bright colors, more comfortable in well-worn jeans, braver in boots. Through years of experience, we know how to put things together to make a "look" that becomes us.

Children need to develop that sense. Rather than fight it, parents can help the child along by finding out just what it is the child likes about a certain piece of apparel-and working from there.

You may be surprised to find that there's one specific feature that your child is attached to. Lynn, for instance, liked the way the red dress fit-no buttons, no snaps, no belts, no buckles, so her mother made her a half dozen jumpers in all colors and they both were happier.

Ask your child why he likes something. It might be the big shiny zipper on that old windbreaker. Or

the ladybug applique on those too-short overalls. Or the sparkle of rinstones in that gaudy costume jewelry.

Maybe it's how the piece of clothing fits. Stretch pants that don't bind, for instance, or velvety fabrics that are soft. Find out, and make use of his prefer-

ences. Transfer the applique to a new pair of overalls. Get a small barette with rinstones. Buy a new velour shirt. Together, you can "put together" a look that you're both comfortable with.

The Growing Child newsletter follows a child's development month-by-month. For more information on the social and physical development of children from birth to six years old, write to Growing Child, PO Box 620N, Lafayette, IN 47902. Include child's birthdate when writing. A year's subscription to the newsletter costs \$11.95.

## AVISO PUBLICO

Breves Declaraciones Explicativas De Las ENMIENDAS CONSTITUCIONALES PROPUESTAS ELECCION ESPECIAL 3 DE NOVIEMBRE DE 1981

### PROPOSICION NO. 1 EN LA BOLETA

**Resolución Conjunta No. 8 de la Cámara de Representantes** propone una enmienda constitucional que permita a la legislatura autorizar a ciudades, pueblos y otras entidades fiscales conceder exenciones de impuestos por avalúo a una zona no productiva, subdesarrollada o de gran pobreza para atraer su desarrollo. La enmienda también permitiría a la legislatura autorizar a una ciudad o a un pueblo emitir bonos a corto plazo para financiar este desarrollo y a emitir bonos a largo plazo para financiar otros proyectos de desarrollo, para pagar estos bonos a corto plazo.

La enmienda propuesta aparecerá en la boleta como sigue: "La enmienda constitucional que autoriza a ciudades, pueblos, y otras entidades fiscales estimular el mejoramiento, desarrollo, o redesarrollo de ciertas áreas por medio de avalúo en los impuestos sobre la propiedad y la emisión de bonos y tales."

### PROPOSICION NO. 2 EN LA BOLETA

**Resolución Conjunta No. 117 de la Cámara de Representantes** propone una enmienda constitucional que autorice a una persona a recibir título de terreno del Comisionado de la Oficina General de Terrenos bajo ciertas condiciones. La solicitud para el título se tiene que hacer dentro de cinco años a partir de la aprobación de la enmienda. El terreno tiene que ser terreno de las escuelas públicas libres, medido, y no previamente titulado. La persona tiene que tener una escritura del terreno propiamente registrada, que adquirió sin saber del defecto de título y que él y sus antepasados interesados han tenido por lo menos durante 50 años. La persona y sus antepasados interesados tienen que haber reclamado el terreno continuamente y pagado los impuestos por lo menos durante 50 años.

Esta enmienda no se aplica a terreno de playa, a terreno submergido ni a islas. Un solicitante no puede usar esta provisión

para resolver una disputa de límites de terrenos. Esta enmienda no se aplica a terrenos que hayan sido declarados propiedad del estado por una corte de jurisdicción competente ni a los que tengan un avalúo de avalúo de avalúo, los cuales están produciendo a una fecha cierta de la enmienda.

La enmienda propuesta aparecerá en la boleta como sigue: "La enmienda constitucional que autoriza al Comisionado de la Oficina General de Terrenos a dar títulos para ciertas parcelas de terreno para escuelas públicas libres, medidos o no, bajo el título apropiado durante por lo menos cincuenta (50) años antes del 15 de noviembre de 1981."

### PROPOSICION NO. 3 EN LA BOLETA

**Resolución Conjunta No. 38 de la Cámara de Representantes** propone una enmienda constitucional que autorice a la legislatura conceder a un comité estatal de administración financiera la autoridad de administrar fondos estatales. Los fondos destinados por la constitución a fines específicos no estarán sujetos a la administración del comité. El comité estará compuesto del Gobernador, el Gobernador Teniente, el Presidente de la Cámara de Representantes, el Presidente del Comité de Finanzas del Senado, el Presidente del Comité de Asignaciones de la Cámara de Representantes, el Presidente del Comité de Asuntos de Estado y el Presidente del Comité de Medios y Arbitrios de la Cámara de Representantes.

La enmienda propuesta aparecerá en la boleta como sigue: "La enmienda constitucional que permite a la legislatura conceder a un comité estatal de administración financiera la autoridad de administrar el gasto de ciertos fondos apropiados."

### PROPOSICION NO. 4 EN LA BOLETA

**Resolución Conjunta No. 6 de la Cámara de Representantes** propone una enmienda constitucional que disponga que la mitad de

los ingresos sobrantes de impuestos, sobre el límite de gastos dispuesto por el Artículo VIII, Sección 22, de la Constitución de Texas, sean depositados en un Fondo de Asistencia del Agua a ser usados como provea la ley, incluso en proyectos para el desarrollo y la conservación del agua, la mejora de la calidad del agua, el control de inundaciones o para cualquier combinación de estas propósitos.

La enmienda también provee \$500,000,000 del crédito general del estado para garantizar bonos emitidos en acuerdos comerciales por subdivisiones políticas locales, incluidas ciudades, condados y distritos especiales. La enmienda permite que se establezcan entidades para administrar o para retirar deudas del estado, las cuales se clasifican como deudas garantizadas por la plena fe y el crédito del estado. La enmienda autoriza a pagar en bonos autorizados para no emitidos, garantizados por la plena fe y el crédito del estado, de 6% a 13%.

La enmienda propuesta aparecerá en la boleta como sigue: "La enmienda constitucional que autoriza el uso de una porción de los ingresos sobrantes del estado para el desarrollo, la conservación y la mejora de la calidad del agua y para el control de inundaciones; que autoriza el uso del crédito del estado, no en exceso de quinientos millones de dólares, para garantizar los bonos de ciudades, condados, pueblos, y otras entidades de gobierno local en la financiación de proyectos dedicados a tales fines; que anula la tasa de interés que se puede pagar por bonos estatales previamente aprobados pero no emitidos; y que autoriza un programa para pagar bonos."

### PROPOSICION NO. 5 EN LA BOLETA

**Resolución Conjunta No. 19 de la Cámara de Representantes** propone una enmienda constitucional que dejaría libres de impuestos el ganado y las aves. Actualmente los productos agrícolas en manos del productor y las provisiones familiares para el uso de la casa y de la granja están libres de impuestos.

La enmienda propuesta aparecerá en la boleta como sigue: "La enmienda constitucional que permite incluir el ganado y las aves con los productos agrícolas libres de impuestos."

### PROPOSICION NO. 6 EN LA BOLETA

**Resolución Conjunta No. 81 de la Cámara de Representantes** autoriza al cuerpo gubernante de un condado, una ciudad, un distrito escolar u otras subdivisiones políticas declarar libre de impuestos una porción del valor de mercado de un hogar de residencia. La porción libre de impuestos puede ser hasta 40% para el período 1982-1983; 30% para 1985-1987; y 20% para 1988 y los años siguientes. La cantidad de la exención no puede ser menos de \$5,000 a menos que la legislatura por ley general prescriba otras exenciones monetarias de la cantidad de exención. A un adulto capaz se le permite recibir otras exenciones aplicables provistas por la ley. Se hace excepción en caso de que los impuestos por avalúo hayan sido comprometidos previamente para el pago de deudas.

La enmienda además dirige a la legislatura que reparta que se les de a los propietarios una estimación razonable de impuesto sobre su propiedad en ciertas situaciones. La enmienda propuesta aparecerá en la boleta como sigue: "La enmienda constitucional que autoriza a una subdivisión política proveer exención en los impuestos sobre la propiedad para los dueños de hogares de residencia y que cubra ciertos procedimientos administrativos en los impuestos sobre la propiedad."

### PROPOSICION NO. 7 EN LA BOLETA

**Resolución Conjunta No. 1 de la Cámara de Representantes** propone una enmienda que autorice a la Junta de Terrenos para Veteranos poner en circulación y vender bonos adicionales en la cantidad de \$250,000,000 la cual aumentaría de \$700,000,000 a \$950,000,000 la autorización total de circulación de bonos del Fondo de Terrenos para Veteranos. La enmienda aumentaría el interés máximo pagable por el estado por estos bonos de 6% a 10%, y permitiría una tarifa aún más alta si fuera especificada por la legislatura.

La enmienda propuesta aparecerá en la boleta como sigue: "La enmienda constitucional que autoriza la emisión de bonos adicionales para financiar el programa de terrenos para veteranos y que aumenta la tarifa máxima de interés que se permite en los bonos del fondo de terrenos para veteranos."

## PUBLIC NOTICE

BRIEF EXPLANATORY STATEMENTS OF PROPOSED CONSTITUTIONAL AMENDMENTS SPECIAL ELECTION NOVEMBER 3, 1981

### PROPOSITION NO. 1 ON THE BALLOT

**Senate Joint Resolution 8** proposes a constitutional amendment that would allow the legislature to authorize cities, towns and other taxing units to grant exemptions from ad valorem taxes on an unproductive, underdeveloped or blighted area in order to encourage its development. The amendment would also allow the legislature to authorize a city or town to issue bonds or notes to finance this development and to pledge future increases in ad valorem tax revenues from the property in such areas to repay these bonds or notes.

The proposed amendment will appear on the ballot as follows: "The constitutional amendment to authorize cities, towns, and other taxing units to encourage the improvement, development, or redevelopment of certain areas through property tax relief and the issuance of bonds and notes."

### PROPOSITION NO. 2 ON THE BALLOT

**House Joint Resolution 117** proposes a constitutional amendment that would authorize a person to receive a patent to land from the Commissioner of the General Land Office under certain conditions. Application for the patent must be made within five years from approval of the amendment. The land must be surveyed, public free school land not previously patentable. The person must have a properly recorded deed to the land, which he acquired without knowledge of the patent defect and which title he and his predecessors in interest have held for at least 50 years. The person and his predecessors in interest must have continuously claimed the land and paid the taxes for at least 50 years.

This amendment does not apply to beach land, submerged land, or islands. An applicant may not use this provision to

resolve a boundary dispute. This amendment will not apply to land which has been determined to be state-owned by a court of competent jurisdiction or that has a productive state mineral lease on the effective date of the amendment.

The proposed amendment will appear on the ballot as follows: "The constitutional amendment authorizing the commissioner of the General Land Office to issue patents for certain public free school land held in good faith under color of title for at least 50 years as of November 15, 1981."

### PROPOSITION NO. 3 ON THE BALLOT

**House Joint Resolution 38** proposes a constitutional amendment that would enable the legislature to grant to a state finance management committee the authority to manage state funds. Funds constitutionally dedicated to specific purposes would not be subject to committee management. The committee would be composed of the Governor, Lieutenant Governor, Speaker of the House of Representatives, Chairman of the Senate Finance Committee, Chairman of the House Appropriations Committee, Chairman of the Senate State Affairs Committee, and the Chairman of the House of Representatives Ways and Means Committee.

The proposed amendment will appear on the ballot as follows: "The constitutional amendment to allow the legislature to grant to a state finance management committee the power to manage the expenditure of certain appropriated funds."

### PROPOSITION NO. 4 ON THE BALLOT

**House Joint Resolution 6** proposes a constitutional amendment that would provide that one-half of the surplus tax revenues

### PROPOSITION NO. 6 ON THE BALLOT

**House Joint Resolution 81** authorizes the governing body of a county, city, school district or other political subdivisions to exempt from taxation a portion of the market value of a residence homestead. The portion exempted may be as much as 40% for 1982-1984; 30% for 1985-1987; and 20% for 1988 and after. The amount of an exemption may not be less than \$5,000 unless the legislature by general law prescribes other monetary restrictions on the amount of the exemption. An eligible adult is allowed to receive other applicable exemptions provided by law. An exemption is made where ad valorem tax has previously been pledged for the payment of debt.

The amendment further directs the legislature to require that notice be given to property owners of a reasonable estimate of tax on their property in certain situations. The proposed amendment will appear on the ballot as follows: "The constitutional amendment authorizing the use of a portion of the excess revenues of the state for water development, water quality enhancement, and flood control purposes; authorizing the use of the state's credit, not to exceed five hundred million dollars, to guarantee the bonds of cities, counties, towns, and other units of local government in the financing of projects for such purposes; increasing the interest rate that may be paid on previously approved, but unissued, state bonds; and authorizing a program to retire state bonds."

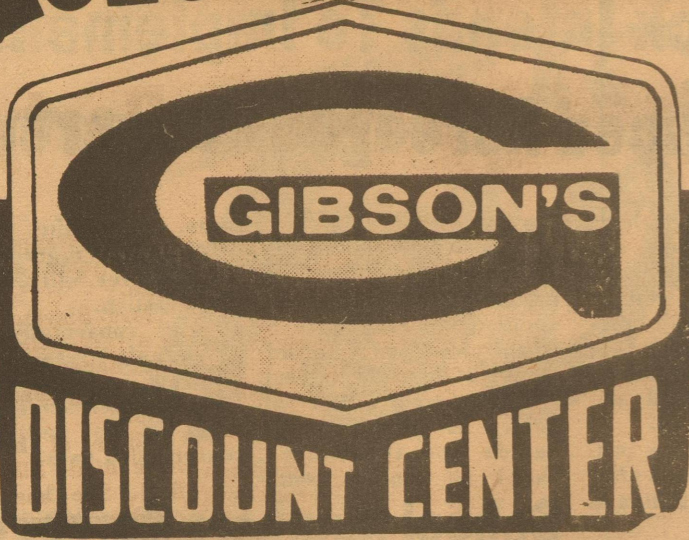
### PROPOSITION NO. 7 ON THE BALLOT

**House Joint Resolution 4** proposes a constitutional amendment that would authorize the Veterans Land Board to issue and sell an additional \$250,000,000 in bonds increasing the Veterans' Land Fund's total bond issuance authorization from \$700,000,000 to \$950,000,000. The amendment would increase the maximum interest payable by the state on these bonds from 6% to 10%, and permit an even higher rate, if specified by the legislature. The proposed amendment will appear on the ballot as follows: "The constitutional amendment authorizing the issuance of additional bonds to finance the veterans' land program and to increase the maximum interest rate allowable on veterans' land fund bonds."

### PROPOSITION NO. 5 ON THE BALLOT

**House Joint Resolution 49** proposes a constitutional amendment that would exempt livestock and poultry from taxation. Currently, farm products in the hands of the producer and family supplies for home and farm use are exempt. The proposed amendment will appear on the ballot as follows: "The constitutional amendment to provide for the inclusion of livestock and poultry with farm products as exempt from taxation."





301 Highway 277-N Phone 387-3523  
Prices Good Thurs., Fri., Sat.

### REGISTER FOR WESTINGHOUSE AUTOMATIC WASHER To be given away Oct. 3

No purchase necessary. You don't have to be present to win.



### PHOTO ALBUMS

20 Magnetic Pages **1.49**

### Gandy's Ice Cream

Round All Flavors 1.65  
1/2 Gallon



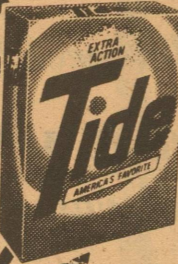
Regular & Mint Family Size 6.4-oz.

**1.43**



Royal Gelatin Dessert

All Flavors 5 for 1.00



Giant Tide

49-oz Box

**1.69**



Winchester AA Shot Gun Shells

12-Ga. Box **5.19**

20-Ga. box **4.39**



Sure Solid Reg. & Unscented 2-oz **1.89**

Anti-Perspirant

6-oz. spray **2.79**

Sue Pree Nail Polish 2 for 1.00



# TRUCKLOAD SALE



**PERT SHAMPOO**  
Normal & Dry, Oily

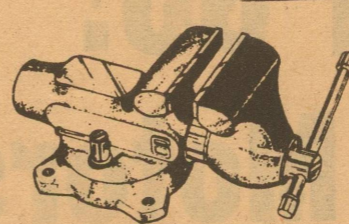


15-oz.

**2.29**

## DURACRAFT Truckload TOOL SALE

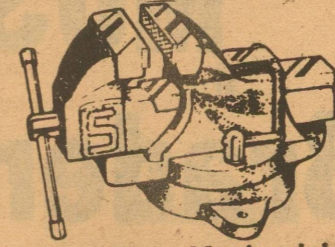
Hundreds of hand & power tool bargains  
Don't miss this once in a lifetime opportunity!



Machinist's Swivel Base Bench Vise

MODEL MSV-4 4 1/2" JAW

**34.99**



Heavy Duty Mechanic's Swivel Base Bench Vise

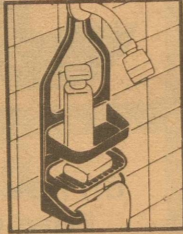
MODEL HDV-4

**27.99**

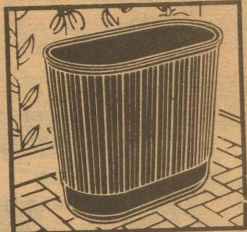
Rubbermaid

## Sale

**SHOWER CADDY**  
Attaches over shower head. Holds soap, shampoo, other bathing items.  
7" x 3 1/4" x 16 1/2" high



SPECIAL **2.39**



**VANITY WASTEBASKET**  
Ceramic design will enhance any bedroom, bath or nursery. Won't rust or dent.  
7" x 12 1/2" x 10 1/2" high

SPECIAL **2.09**

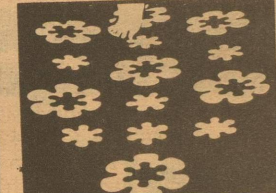
**Safti-Grip® BATHTUB MATS**  
(U.S. Pat. No. D-223,278)  
Help prevent falls... suction cups grip tub surface. Textured top for safety and comfort.  
14" x 22 1/2"



SPECIAL **2.09**

16" x 28" SPECIAL **3.49**

**BATHTUB APPLIQUES**  
Provide decorative accent for bath or shower... give safer footing in the tub.



8 large & 8 small appliques

SPECIAL **1.87**



8 large & 10 small appliques (two-toned)

SPECIAL **2.39**



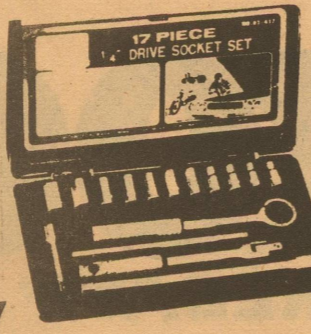
**TOILET BOWL BRUSH SET**  
Bristles rinse clean easily. Caddy hides brush, protects floor... suspends brush to air-dry.  
5 1/2" x 4 1/2" x 16 1/2" high  
Reg. \$0.00

SPECIAL **2.09**

### 17-PC. SOCKET SETS

1/4-INCH DRIVE S.A.E.

DROP FORGED CHROME ALLOY STEEL HARDENED AND TEMPERED NICKEL CHROME PLATED



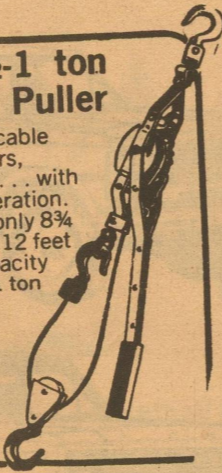
- 9-Sockets 6-Pt. (3/16" thru 1/2")
- 2-Sockets 8-Pt. (1/4" and 5/16")
- 2-Extension Bars (1-2" and 1-6")
- 1-5" Reversible Ratchet Handle
- 1-5" Cross Bar
- 1-5" Cross Bar
- 1-5" Spinner Flexible Handle

No. 2517

**3.99**

### TACKLER 1/2-1 ton Cable Winch Puller

A compact-portable cable winch that lifts, lowers, pulls, and stretches... with one hand ease of operation. The Tackler weighs only 8 3/4 pounds yet provides 12 feet of lift with 1/2 ton capacity or 6 feet of lift with 1 ton capacity.



**19.99**

MODEL DT 150

### Home... Vises

Ideal for the performance of small jobs in your shop. Rugged cast iron construction and hardened steel, replaceable serrated jaw face. Sealed screw housing prevents chips from clogging the mechanism. Choose from 4 1/4" or 5 1/4" jaw width.

MODEL MV 440

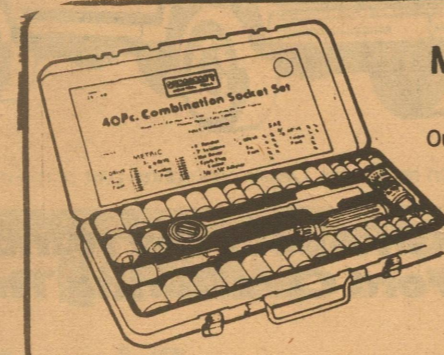
4 1/4" jaw width

**13.99**

### 40-Piece Home Mechanic's Socket Set

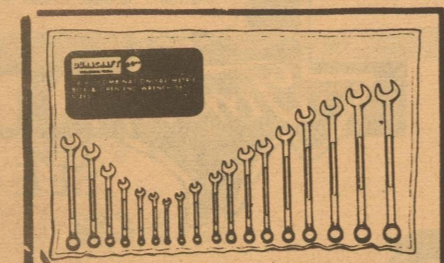
Chrome plated alloy steel

Our most popular combination metric and SAE, 1/4" and 3/8" drive socket set. Includes: 16- $\frac{1}{4}$ " SAE sockets; 18-Metric sockets, plus spark plug socket; 3/8" ratchet; 3-inch extension, 3/8" to 1/4" adapter and 1/4" spinner handle.



MODEL 2540

**8.99**



### 14-Pc. Wrench Set

Box and open end wrenches in both SAE/metric - sizes, 3/8" through 1" & 8-19mm. Dropped forged, heat treated alloy steel with bright nickel chrome plating.

**24.99**

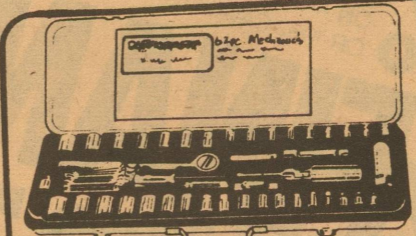
CW1400



### Duracraft Quality Hydraulic Jacks

Quality internal parts and seals for ease of operation.

3T	3 Tons	16"	11.99
5T	5 Tons	17 1/4"	14.49
8T	8 Tons	17 1/4"	23.49



### Mechanic's 62-Piece 1/4" & 3/8" Drive Socket Set

Chrome plated alloy steel sockets. Includes: 16-popular SAE sockets, 18-popular metric sockets, feeler gauge set, 18-piece ignition wrenches, 8-ratchet, Phillips and regular screwdrivers, steel box. A popular mechanic's set at a great price.

MODEL 2562

15.99

### 51-Pc. Socket Set

No. 2551... 22.49

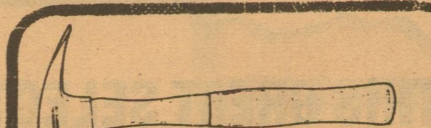
### 9-Pc. Deep Socket Set

3/8" Dr. No. D5938... 9.89

1/2" Dr. No. D5950... 12.99

### 26-Pc. 1/2" Dr. Chrome Vanadium Steel Set

No. 2650CV... 29.99

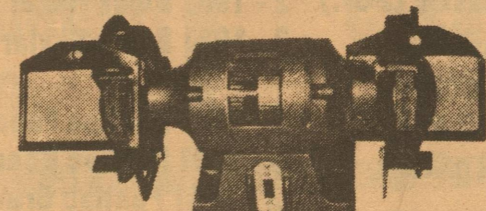


### Claw Hammer

Drop forged heat treated steel head with flexible fiberglass handle to absorb shock. Head is epoxy bonded to handle. Rubber grip gives positive control. 16-ounce.

MODEL CH 16

**3.99**



### 1/2 HP Grinder

**44.99**

Features Include:

- 6 inch wheels
- Safety eye shields
- Rear dust ejectors
- Adjustable tool rests
- Solid cast iron construction

## Lithicum Ready For Sale

The first sale for the Cattlemen's Roundup for Crippled Children is coming up soon, and Horace Linthicum, local chairman, is hoping Schleicher County will be represented.

The cattlemen's roundup for Crippled Children is a series of livestock sales benefiting the West Texas Rehabilitation Center, which has campuses in Abilene, San Angelo and Snyder.

The first cattle sale will be Sept. 28 at the Abilene Livestock Auction. Other sales include the horse sale, Oct. 3, Abilene Livestock Auction; sheep and goat sale, Oct. 5, Junction stockyards; special auction, Oct. 7, Coleman Livestock Auction; special auction, Nov. 4, Brownwood Cattle Auction and farm equipment sale, Nov. 7, Sweetwater.

To participate, cut out a calf, pen of calves, horse or some other livestock, and contact Linthicum. He will pick up the livestock and see that it is delivered.

Donors giving livestock valued at \$250.00 or more or a \$250.00 cash contribution to the 1981 roundup will have their brands applied to the walls of the new West Texas Rehabilitation Center in San Angelo.

Since the first CRCC in 1970, more than 1200 brands have been placed on the WTRC walls, including some of the most famous brands in the Southwest: the King Ranch, the LBJ Ranch, the Pitchford Ranch, the 6666 Ranch and others.

The chairman of the Cattlemen's Round-Up for Crippled Children horse sale say this year's sale will be the biggest ever.

Perhaps it's because this year, he's a patient at the West Texas Rehabilitation Center and has experienced first hand how the money raised at the horse sale will be used.

R.C. Williams, involved in CRCC since Conda Wylie brought in the first pen of calves in 1960, is known to everyone in the Abilene area as the voice of Abilene Auction.

"I have never missed a sale," he said, in an interview right after his daily treatment at WTRC. Williams's therapist, physical therapist Lu Ann Farmer, says he never misses a treatment either.

A portion of Williams' right foot was amputated in May and the treatment that started in July is to promote healing. When the foot heals, he will be fitted with a prosthesis and will be taught to walk on it at WTRC.

"It's sure done me good," he said. "Everybody out here has been good to me."

Williams still goes out to the auction three days a week, Monday, Tuesday and Thursday, and he broadcasts the auction report from his home.

RC COLA  
DIEY RITE  
NEHI (Red, Orange)  
DELAWARE PUNCH



12-oz. Cans  
6-pak  
**1.39**



301 Hwy 277 N



## Tax Payment Installation Due Sept. 15

The third installment of estimated Federal tax payments on 1981 individual income is due by September 15, 1981, the Internal Revenue Service says.

This installment should be paid using declaration voucher No. 3 found in the Form 1040 ES-package, "Declaration of Estimated Tax for Individuals." Taxpayers whose anti-

pated income changed during 1981 may have to file an amended declaration. Space is provided in the estimated tax package to compute an amended estimate.

## PHOTO RANCH

is now offering

Formal wear for your special occasions featuring

"Aftersix", "Palmbeech",

"Lord West", "L & M" Formal Fashions



Hwy 277 S

Old Elliott School

387-5388



Mr. and Mrs. Robert L. Jay of Eldorado announce the forthcoming marriage of their daughter, Sammie Lea Jay to Cullen Drue Duncan of Comstock. The parents of the prospective bridegroom are Mr. and Mrs. Don Duncan of Comstock. The wedding will be held on January 2 at the First Baptist Church of Eldorado.

The bride-elect is a graduate of Eldorado High School and attends Angelo State University and Texas A&M. She is currently employed by the First National Bank of Eldorado.

Duncan is a graduate of Comstock High School and Angelo State University. He is currently employed by Canyon Air Inc. of Sonora.

## 42 Club Meets

Mrs. Lester Henderson was hostess Thursday for the 42 Club in the El

Dorado Restaurant Clubroom.

Attending were Lillian Mikeska, Annie Speck, Opal Parks, Florence Hinton, Virginia Griffin, Mildred Stanford, Jake Spencer, Natalie Stockton, Bessie Doyle, Louise Logan, Faye Mace and the hostess.

A business meeting was held. Mrs. Mikeska was elected president and Mrs. Doyle was elected secretary-treasurer.

## Block Intends To Implement "Reduced Acreage" Program

Secretary of Agriculture John R. Block has announced his intentions to implement a 15 percent "reduced acreage" program for the 1982 wheat crop to offset the effects of record supplies and depressed wheat prices.

Program operating procedures will be issued after pending farm legislation is enacted into law.

"Wheat supplies in the United States are 14 percent above last year," Block said. "The carryover next June is expected to exceed 1 billion bushels, the highest level since 1977-78. The reduced acreage program will strengthen prices by reducing the 1982-83 marketing

year supplies." Block said the increase in supplies and decrease in prices is the result of two successive record U.S. wheat crops and a record-setting 1981 world harvest.

The program will be voluntary so producers can decide for themselves, based on market condi-

tions, whether they want to participate. Program benefits, however, will be tied to participation.

"Soil conservation will be strongly stressed in this program," Block said.

"The reduced acreage will have to be devoted to conservation uses."

## School Numbers Corrected

School officials have released the following numbers for the Eldorado school system, as some of them are incorrect in the telephone directory and some were left out.

the numbers are as follows:

Superintendent's office 853-2514  
Business office 853-2515  
High School 853-2549  
Elementary School 853-2770  
Counselor's office and 853-2771  
Cafeteria

The rest of the numbers for the school system in the phone directory are correct.

## Ram Performance

### Test Scheduled

The annual ram performance test to be conducted at the Sonora Experiment Station will get underway officially on Oct. 14, said Dr. Maurice Shelton, geneticist in charge of the test.

However, the finewool sheep are due at the station by Sept. 23 to begin a three-week adjustment period prior to the first weighing.

The blackface rams are to be delivered to the station by Oct. 21, with the first official weigh-day to be Nov. 11.

Entry forms and more information about the 1981-82 test are available from Dr. Shelton or Dr. George Ahlschwede at 915-653-4576 in San Angelo and Dr. Don Spiller at 915-387-3168 in Sonora.

## J.W. Johnson, Jr. Attorney at Law

Announces the opening of his office for the practice of law

McWhorter Building

Main St. Eldorado, Texas

Phone 915-853-3330

1981 GM BUILT CARS AND TRUCKS  
**45 MUST GO!**  
at  
**Ken Braden Motors**

**CHEVY EXTRA\***

ANNUAL PERCENTAGE RATE WHEN YOU BUY AND TAKE DELIVERY ON ANY NEW 1981 CHEVROLET CAR, 1981 LIGHT-DUTY TRUCK, OR 1982 CAVALIER.

**13.8% FINANCING EXTENDED THRU SEPTEMBER 23**

SAVE ON ALL 81 GM CARS

### LOOK AT THIS GREAT SELECTION!

- |                                       |                                   |
|---------------------------------------|-----------------------------------|
| 1 - 1981 Chevy Luv                    | 1 - 1981 Chevy Corvette           |
| 6 - 1981 Chevy 1/2 ton Pickups        | 1 - 1981 Olds Delta Royal (4 dr.) |
| 5 - 1981 Chevy HD 3/4 ton Pickups     | 1 - 1981 Olds Omega Broughm       |
| 1 - 1981 Chevy 1/2 ton Suburban       | 2 - 1981 Olds Cutlass (2 dr.)     |
| 2 - 1981 Chevy Caprice Classics       | 1 - 1981 Buick Century            |
| 1 - 1981 Chevy Malibu Classic (2 dr.) | 2 - 1981 Buick Regal              |
| 3 - 1981 Chevy Monte Carlo            | 2 - 1981 Buick Skylark            |
| 2 - 1981 Chevy Citation               |                                   |
| 1 - 1981 Chevy Cavalier (2 dr.)       | 2 - 1981 Pontiac Phoenix          |
| 1 - 1981 Pontiac Grand Le Mans        | 6 - 1981 Pontiac Bonnevilles      |
|                                       | 3 - 1981 Pontiac Grand Prix       |



THE 82's ARE COMING  
EVERTHING MUST GO

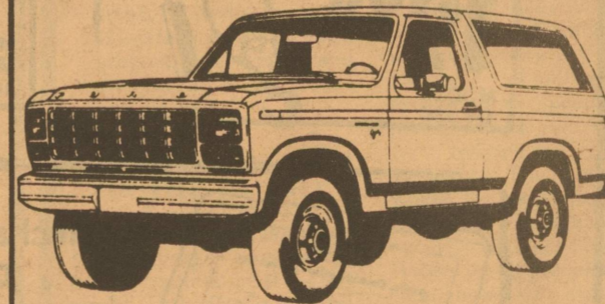
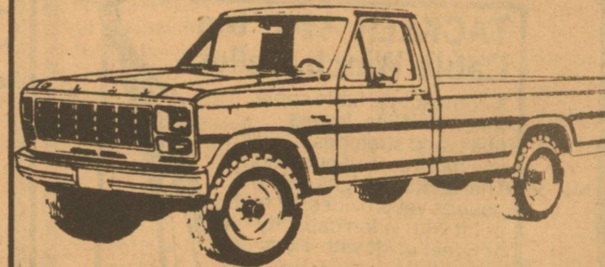
**Ken Braden Motors**

I-10 at Golf Course Road

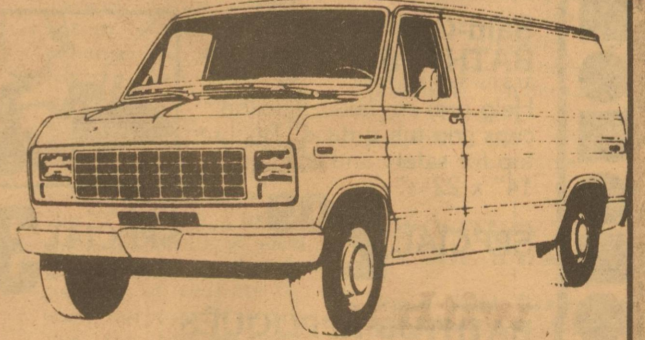
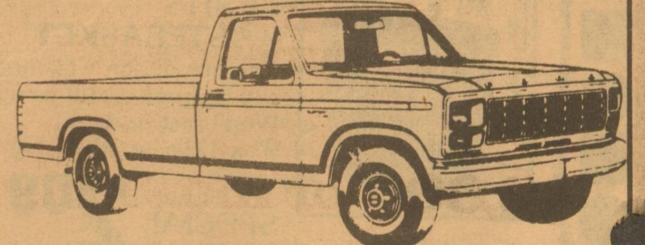
387-2529

OFFER POSITIVELY ENDS  
**SEPTEMBER 23rd!**  
Don't Miss These Great Ford Buys!  
**GET CASH REBATES FROM FORD**

**\$700 REBATE\***  
on new '81 Ford 4x4 Pickups and Ford Broncos.

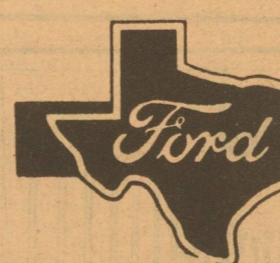


**\$500 REBATE\***  
on new '81 Ford 4x2 Pickups, Ford Couriers, Ford Vans, and Ford Club Wagons.



\*On retail sales. Dealer contributes part of the money back.

Ask About the Hundreds of Dollars You Can Save on Ford Cars During This Incredible Month of Savings!



Prices will never be lower!  
Hurry while supplies last!

**A TEXAS TRADITION**

SEE YOUR FORD DEALER TODAY

**Sonora Ford Sales**

Downtown Sonora Odis Smart, Owner Office 387-3810 Home 387-2308



## Woman's Club Meets

The Eldorado's Woman's Club met Tuesday Sept. 8 for a morning coffee in the home of Mrs. Odie Deal. Mrs. Tom Ratliff leader for the program and a skit entitled "Membership Cultivation" was presented by five members. It was a very humorous ladies meet-

ing and was the highlight of the club meeting. Mrs. Ruth Harper, club president, welcomed those present and presented highlights of the new year's book programs. Mrs. R.D. Johnson gave an interesting counselor's report and Mrs. Gladys

Mittel pointed out several changes made in the by-laws. Eighteen members and one visitor, Mrs. Florence Moore, were present. The executive committee members were hostesses with Mrs. Deal. The meeting closed with the club collect.

## Bridge Club Formed

The Northern Belle Crazy Bridge Club was organized and had their first play evening Sept. 9. Hostess for the initial meeting was

Kim-et Nelson. Prizes were given to high hand Stacey Haynes and low hand to Janet Curtis. Others who attended

were Debby Hessel, Sandy Holsey, Glynn Emmett, Janice Finley and guest player Debby Conatser. Next play evening is planned for Oct. 8.



FIDDLING AROUND--Mrs. Alice Van Horn and Bill Simmons of San Angelo play a catchy tune during a party held for senior citizens last week. Several attended the party and enjoyed playing dominoes, cards and other games. The party was hosted by members of the Schleicher County Aging Committee.

## Game Regulation Changes

The County Attorney's office would like to outline some changes in the Game and Wildlife regulations of Texas, particularly affecting Schleicher county hunters and residents that were passed by the most recent legislature.

1. New State Waterfowl stamp required for anyone hunting waterfowl. This Stamp costs \$5.00; may be obtained from anybody selling hunting and fishing license; does not exempt persons from Federal Migratory Waterfowl Stamp. Anyone hunting without stamp or refusing to show the Stamp to a Game Warden or peace officer upon demand may be found guilty of a Class "C" misdemeanor carrying a maximum fine up to \$200.00.

2. Possession of an electricity producing device commonly used to shock fish in a boat or within 1/2 mile of any water in this State is now an offense. The device may be seized and destroyed. First time conviction of this law a Class "C" misdemeanor; subsequent conviction within five years may be filed as Class "B" misdemeanor and a third time conviction within ten years carries a Class "A" misdemeanor penalty.

3. All persons hunting or taking fur bearing animals must now have a license. It is no longer legal to leave a fur bearing animal without taking the pelt, without having a license. All persons in a vehicle group hunting or taking fur bearing animals must have a license, not just the person selling the pelt. (This extends to wives and children in vehicle, etc.) New penalties for violation of the taking of fur bearing animals include enhancement of second time offense, within thirty-six months providing for a \$200.00-\$500.00 fine and or thirty to ninety days in jail. Conviction a third time within sixty months of a first conviction carries a fine of \$500.00 to \$2,000.00 and or

not less than six months nor more than one year in jail. The statute now provides for a separate offense for each fur bearing animal or pelt taken or possessed illegally. Statute now provides for revocation of license for a conviction under these statutes and prohibits getting new license within one year of revocation.

5. Criminal trespass violations carry greater than Class "C" misdemeanor classification and the definition now provides that "fencing or other enclosure obviously designed to exclude intruders or to contain livestock; or a sign or signs posted on the property or at the entrance to the building, reasonably designed to come to the attention of the intruders, indicating that entry is forbidden" constitutes "notice" under the statutes.

6. Statutes now prohibit the hunting of "any wild animal or bird" (expanding its prior game classifications) from motor vehicles, power boats or other floating devices except where the animals are not classified as migratory animals and the hunting takes place within the boundaries of private property or upon private water by a person who is legally on the property or water for the purpose of hunting and so long as no attempt is made to hunt on any part of the road system of this State.

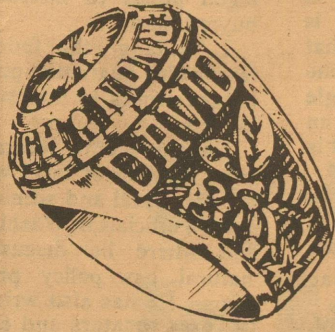
7. Several statutory changes provide for enhanced penalties for subsequent convictions for violations of numerous game laws and provide for jail time and or greater fines for violations.

The Public is advised to check with the Game Warden's office or County Attorney concerning any questions in connection with the game laws and is further advised to exercise caution and respect while hunting any wild animals.

### CLASS RINGS

\$10.00 OFF regular price with this ad on Valadium rings

See the World's Finest by R. Johns at your local High School Class Ring Headquarters.



NEW CLASS RINGS



#### The 'ATLAS'

Boy's name on side or Mascot name on side

NO CHARGE

#### The 'LTD FLAIR'

Personal initials

Sunflare stone—choice of 16

NO CHARGE

Faceted synthetic stone—choice of 16

School colors & Personalized panels choice of 200

NO CHARGE

School colors & Personalized panels choice of 200

Design beneath the stone—choice of 600

NO CHARGE

Fashion jewelry with class ring options



# Cathy's

853-2645

317 S. Divide

Eldorado, Tx 76936

## From the County Agent

by Jerry Swift, county agent

The general rule in applying nitrogen has been to increase the rate of nitrogen about 20 pounds per acre for each ton of undecomposed straw. However, a portion of this nitrogen is recovered during the final stages of decomposition so that as much as half of the may be available during the spring months. This means that about half of the "extra" nitrogen could be deducted from the late winter topdressing.

This information comes from Dr. Charles Welch, Extension soil chemist.

**CUTTING FIREWOOD**  
It's time to start thinking about firewood for those cold winter nights that are sure to come before long.

Although green wood will burn, seasoned and dry wood has more heat value and will not deposit excessive creosote in chimneys and stovepipes.

Any moisture in wood reduces the recoverable heat. The heat must first dry the wood so it will burn. So wood cut in late fall or winter doesn't have time to dry adequately. I recommend cutting firewood in spring and summer.

Split wood will dry faster that wood not split. Stack wood loosely in piles on a couple of rows of bricks.

This keeps wood off the ground and prevents decay while at the same time allowing faster drying.

Stacking firewood in a sunny location and covering it with clear plastic also helps moisture to evaporate, thus speeding up drying and seasoning.

Since water vapor will condense on the plastic, adequate ventilation is necessary. Keep plastic off the ends of the firewood to allow air to flow and to deep condensation from wetting the wood.

If trees are cut for firewood in the summer, you may want to leave tops and limbs on for a week or more. Leaves draw moisture from wood and help it to dry more quickly.

Oak and hickory make the best firewood. Both produce a high amount of available heat per pound, but oak is easier to split. Pine also can be used for firewood. Past reports that pine causes creosote build-up in chimneys and stovepipes have not been substantiated by research.

Here are four important reasons why wheat and other small grains need nitrogen at planting or a short time afterward:

- aid in development of good root system,
- for early grazing,
- to hasten decomposition
- to hasten decomposition of excess residual straw, and
- for high production of forage and grain.

Sufficient fall growth for early grazing cannot be expected without adequate nitrogen at planting. The advantages of early planting and favorable fall growing conditions can be lost if nitrogen fertilization is delayed until fall. Establishing a good uniform stand with good tillering requires nitrogen, and most soils are deficient in this nutrient.

To meet nitrogen requirements during the fall growing period, producers can apply the total requirement before planting on heavy textured soils for both forage and grain. Or they can apply a small amount at planting followed by topdressing soon after planting or in late winter for grain production only.

Of course, fall nitrogen fertilization is also affected by the amount of straw from the previous crop. The bacteria and other microorganisms needed to decompose the straw require nitrogen and can use that already in the soil as well as that applied, thus reducing the amount available during the fall.

## Hubbles Announce Birth

A baby girl was born to Mr. and Mrs. William Doc Hubble Jr. Sept. 9 in Shannon Memorial Hospital in San Angelo. She was named Kelli Nichole and weighed five pounds and

five and a half ounces. Grandparents are Mr. and Mrs. W.D. Hubble Sr. of Eldorado and Mr. and Mrs. Jerry Copeland of San Angelo. Mrs. Faries Sutherland of Eldorado is a great-grandmother.

## Hospital Board To Approve Budget At Meeting

Schleicher County Hospital District Board of Directors will make final approval of a \$1,150,000 budget during their meeting Oct. 21. Hospital officials are estimating they will receive \$345,000 from ad valorem taxes, \$293,000 from the nursing home, \$198,000 from hospital, charges \$12,000 from emergency room charges, \$117,000 from laboratory charges and \$36,000 from pharmacy charges, among other revenues.

Some of the disbursements include:

Administration	\$176,000
Dietary	108,000
Nursing home	166,400
Hospital services	208,000
Radiology and electrocardiograph	47,250
Laboratory	73,800
Clinic salaries	33,000

A total of \$110,000 has been budgeted for completion of the new building project.

## QUALITY CARS AT LOW LOW PRICES!

1981 LTD Down Victoria Full Factory warranty All appointments you expect	\$9700
1981 F-100 Pickup Air Conditioned, cruise control, aux. fuel tank, 255 V8 engine Demo	\$8650
1981 Buick Regal Loaded with all the extras	\$8750
1980 LTD 4-Door Air conditioned, cruise control, radio, heater and more!	\$7200
1977 Honda 3-Door Radio, Heater, air conditioned, good transportation at low cost	\$2750

See Odie Smart

Sonora Ford Sales

Downtown Sonora

387-3910

IF WE DIDN'T HAVE CONFIDENCE IN OUR

## QUALITY USED CARS

We Wouldn't Offer Them To You!

Shop your complete Hometown Auto Center and Save!

### 1978 Plymouth Fury Wagon

3 seats, one owner

\$2850

### 1979 Olds Cutlass

Excellent Condition - Reg. Price - \$5250 less \$300

\$4950

Our used vehicles have been checked and sent through our make-ready process.

You can buy with confidence at Ken Braden Motors.

EASY TERMS AVAILABLE!

# KEN BRADEN MOTORS

1-10 at Bell Course Road

387-2828



## Heart O' Texas SAVINGS ASSOCIATION

Chartered in 1890

\$2,000 or more can earn

# 17%

from 1 to 89 days

with a SECURITY REPURCHASE At Heart O' Texas

With these conditions::

- \$2,000 minimum purchase
- Withdrawal any time
- Fixed rate for the term of the purchases
- Collateralized by a United States Government Agency Security
- Add to in \$500 increments

This obligation is not a savings account or deposit and is not insured by the FSLIC

NOW OPEN IN ELDORADO

Eldorado Branch Hwy 277 at 190 E Eldorado, TX 76936 853-3272

Home Office 200 East Wallace San Saba, TX



# CLASSIFIED ADS

# School Menu

**For Rent**  
Small office downtown space for rent 853-2781.

**Long-term credit that's productive.**

**The Land Bank**  
Federal Land Bank

Close to the land and the people who work it

A.E. Prugel Mgr.  
853-2777



**Garage Sale**  
Four family garage sale Saturday Sept. 12 ONLY. 7 to 1 at 303 Bluebonnet. Dishes, lamps, hanging plants, clothes, misc.

Garage Sale-All day Thursday. Taylor residence, corner Divide and Hill Streets.

Yard Sale - Friday and Saturday, Sept 18 & 19. Some Kitchen appl. lots of other things. Marguerite Gillaspay 710 S. Main.

Garage Sale - Thursday & Friday - 7:30 a.m. to 6 p.m. - Stove, chairs, carpet pot plants, misc. items. 70 mills St. Bertha & Lois Carroll

Garage Sale-Friday & Saturday Sept. 18 & 19. 9 am to 5 pm. 703 South Main

for sale or lease..... Large commercial building and lot located. 308 Main St. call 853-2091.

1977 Mazda Rotary Engine Pickup. \$2,400. Call 853-2747.

Semitrax Electro-training dog collar. Call 853-2405 after 5p.m.

Four bedroom, three bath, executive type home. The ultimate in gracious living. Save 20 percent on manufacturers 1st quality steel building. All Sizes from \$2.69 sq. ft., up. Builders welcome 1-800-821-7700 Ext. 803 or 417-736-2183.

3 bedroom and 2 bedroom homes on 2 lots 50X100 for \$37,000 call James William Real Estate 853-2866.

**Harding Reports Figures**

Warren G. Harding, State Treasurer of Texas, reports interest earnings for the State have it a historical high of over \$1,000,000.00 per day. That day was Thursday, August 20, when the State earned \$1,010,003.63. The highest earnings for any day in August occurred on Monday, August 31, when the State earned \$1,088,505.99. During the month of August the State Treasurer had an average of 98.7 1/2 of the State's \$2,538,523,488.91 in interest bearing accounts earning 14 1/2 per cent interest. The State's funds are placed in 1,493 depository banks.

Depository interest earned during fiscal year 1981 (September 1, 1980 through August 31, 1981) amounted to \$254,999,541.13 which represents an increase of \$29,699,929.74 over fiscal year 1980. This equates to a 13.2 1/2 increase.

<b>Monday</b> German Style Sausage Buttered Potatoes Blackeyed Peas Cole Slaw Iced Cupcakes	<b>Monday</b> Lime Jello Peanut Butter Cookies Butter Cookies	<b>Monday</b> Apple Juice Cinnamon Toast
<b>Tuesday</b> Beef and Cheese Enchiladas Pinto Beans Lettuce & Tomato Salad Cornbread Chocolate Pudding	<b>Tuesday</b> Roast Beef & Gravy Creamed Potatoes Green Beans Carrot, Pineapple, Raisin, Salad Harvest Cake/Icing	<b>Tuesday</b> Banana Choice-of-cereal
<b>Wednesday</b> Spaghetti & Meatsauce Cream Style Corn	<b>Wednesday</b> Barbecue-on-a-Bun French Fries Ranch Style Beans Carrot Sticks Brownies	<b>Wednesday</b> Raisins Buttered Rice-Toast
<b>Thursday</b> Buttered Potatoes Blackeyed Peas Cole Slaw Iced Cupcakes	<b>Thursday</b> Lime Jello Peanut Butter Cookies Butter Cookies	<b>Thursday</b> Peaches Pancakes-Syrup
<b>Friday</b> German Style Sausage Buttered Potatoes Blackeyed Peas Cole Slaw Iced Cupcakes	<b>Friday</b> Lime Jello Peanut Butter Cookies Butter Cookies	<b>Friday</b> Orange Juice Hot Biscuits-Sausage-Jelly

**BREAKFAST**

**For Sale**

For Sale-White Camper. \$75 101 Fields Street Plano, \$375.00. 853-2680.

1976 Bonneville Braughan, good running condition. 853-2415.

Surplus Jeeps, cars, trucks available. Many sell under \$200.00. Call 312-742-1143 Ext. 9027 for information on how to purchase.

House For Sale! 3 Bedroom with patio. 201 E. Field Street. 853-3044

2 office Typewriters: IBM Executive and Adler Electric 21D. Call 853-2688 or see at Meador Realty.

12x60 one bedroom, one bath, partially furnished mini-blinds on windows, fenced yard. Perfect Bachelor pad. Call 853-2504 or 853-2935 after 5p.m.

Pickup For Sale - 1962 Chevrolet, Excellent condition, 6 cylinder, \$800.00 Call Richard Heald 853-2941.

For Sale-Alto Saxophone good condition. Call 853-2582 before 2p.m.

For Sale-1975 Monte Carlo \$1695 Walter Powell Jr. 853-3310.

For Rent-Farm house two miles west of Eldorado on Hwy 190. \$150 a month. No bills paid. Contact owner at 219 S. Tyler St. San Angelo, Tx.

Anyone interested in commuting to San Angelo for classes at ASU Monday, Wednesday and Friday. Call 853-3178 or 853-2825.

**A-1 ROOFING COMPANY**  
Repair Specialist  
SERVICE + QUALITY = SATISFACTION  
896-2561

WOOD SHINGLE REPAIR ROOF TILE REPAIR  
4 YEAR MAINTENANCE GUARANTEE  
Christoval

**Inflation - Fighting IDEAS**

**HOME: A GREAT PLACE TO VISIT**

The garden variety vacation is growing in appeal as fuel costs—and most other prices—grow. Fortunately, it can be fun, too.

If you spend your time and a little of the money that might have gone on travel in and on your own back yard, you can have an enjoyable vacation at a home that looks a little different and even a bit better.

For example, you can create a quiet place, says the American Association of Nurserymen. A nursery garden center can advise you on how to plant and landscape an area of your acreage to make it a special corner where unwanted noise and other intrusions are out. Make the walls of evergreens and flowering shrubs. Add inexpensive annuals for a splash of color. If you have the room, put in a couple of lawn chairs and small tables or even a little fountain for that special sound of nature.

It can help you feel like you've had a mini-vacation whenever you visit there.

## Texans to Face Higher Gas Prices Unless Changes Are Made

Texans face the "looming spectre of living in the midst of rich gas fields, unable to get adequate supplies, and paying artificially bloated prices for the privilege of doing without," said Railroad Commission Chairman Jim Nugent at press conferences in Austin and Dallas this week.

Nugent said Texas consumers face higher natural gas prices and probable shortages in supply unless changes are made in the federal Natural Gas Policy Act.

As the act now stands, an estimated 40 percent of all U.S. natural gas will remain under federal price controls after 1985.

Most of the low-cost, price-controlled gas will continue to flow to other states under the federal law. The Department of Energy estimates that this so-called "old interstate" gas will cost \$1.01 per Mcf (thousand cubic feet) in 1985, compared to 93 cents per Mcf in 1978.

By contrast, old interstate gas prices will cost Texas consumers \$3.29 per Mcf in 1985 under the NGPA.

"This is the gas you and I burn every day, and we'll be paying over three times what it costs our northern neighbors," said Nugent.

Problems multiply for Texans when interstate customers use the dollars they save to bid up the price of new gas supplies. Nugent seriously questions whether the intrastate pipelines can compete for these new supplies without a base of controlled low-price gas. He cited a recent Department of Energy study which estimates that half-a-trillion cubic feet of gas will be transferred from intra- to interstate markets in 1985 under the NGPA.

Even if state pipelines do compete successfully, Nugent said they will have to pay higher-than-market price for the gas. "If Texans are to burn Texas gas, they will have to pay more than the free market price, because they will be subsidizing the costs to consumers in other states,"

particularly the Northeast," he said.

Other factors add to the problem, noted Nugent. Not only will interstate customers have privileged access to new supplies as well. With few exceptions, he said, once gas is placed in the interstate market it is forever committed to that market. In many cases, the sale of gas from a single well binds the gas from an entire field until the field is depleted and abandoned. In other words, gas can move freely from Texas markets to the interstate market, but not back again.

Finally, Nugent said, federal rules effectively preclude intrastate pipelines from bidding on any gas produced from the Outer Continental Shelf, one of the most promising new areas for gas discoveries.

Nugent called on Congress and the Administration to:

1. Change the federal law which guarantees privileged prices to interstate buyers, and
2. Change the federal laws which guarantee privileged access to interstate buyers.

Nugent recently returned from a round of talks with congressional and administration officials in Washington where he discussed natural gas policy problems. He has also written to Texas senators and congressmen urging their assistance.

**The Old Shop**

has the wonderful selection that Lisa Jolly and Bobby Syke have made for their wedding

Come see them soon

Hour: Mon-Fri 10 a.m.-5 p.m. Sat. by appointment only. 2140 Hunt Street Sonora Texas: 76950

"a little bit of everything nice"

915-387-2713  
915-387-2142

**Wanted**

Coordinator for Meals for Friends, part-time work. Call Lynn Meador at 853-2808 or Rev. Ron Sutton at 853-2098.

**Business Opp.**

Home Sewing. Earn extra income. All ages. Free information. Sewing Dept. 200 Main, Corbin, KY 40701.

**Calendar**

Today, Sept. 17--Eldorado junior varsity, eighth and seventh grades vs. Wall, 5 p.m., there

Friday, Sept. 18--Barbecue by Methodist Church 6 p.m., fellowship hall; Eldorado vs. Sonora, 8 p.m. here.

Monday, Sept. 21--Hospital Board, 7:30 p.m., hospital dining room; Alcoholics Anonymous, 8 p.m., Memorial Building.

Tuesday, Sept. 22--Booster Club, 7:30 p.m., school administration building.

Thursday, Sept. 24--Eldorado junior varsity, eighth and seventh grades vs. Ozona, here, 5 p.m.

Monday, Sept. 28--Commissioners Court, 9 a.m., courthouse; AA, 8 p.m., Memorial Building.

Tuesday, Sept. 29--Booster Club, 7:30 p.m., school administration building.

Thursday, Oct. 1--Range management tour, begins at 3 p.m. from county courthouse.

Friday, Oct. 2--Eldorado vs. McCamey, 8 p.m., there.

**Edmiston Issues Warnings**

Schleicher County sheriff Orval Edmiston has two warnings to issue to local citizens. First of all, he is warning parents that they can be fined for permitting their children to drive without a drivers license. Fines are from one dollar to \$200.

Secondly, he is warning against speeding in the school zone. Officers have stopped many motorists in the past few weeks and Edmiston says they will be seeing tougher enforcement in the school zone for the safety of the children.

# ELDORADO BUSINESS DIRECTORY

**Butler Supply Co., Inc.**  
Your Complete Oilfield Store  
East Street  
853-2503

**Specializing In**  
Instruments, Gauges, Meters & Controls for Oil & Gas  
Industry, Industrial Plants  
Sales & Service on Oilfields, and Industrial Instruments & Control  
24 hour service

**ELDORADO INSTRUMENT & CONTROL CO.**  
Office - 853-2506 Home - 853-2624

**DRY CLEANERS LAUNDRY**  
Uniform Rentals  
Dust Control  
Mops Mats

**Thorp's**  
212 S Main 853-2900

**Eldorado Welding**  
24 hour service  
Call 853-2958  
Ray Guerrero Ubaldo Hernandez

**B&E Paint and Body Shop**  
Estimates \$1 Work guaranteed  
Insurance work  
Bob French 853-3358

**C.H. Poyner Const. Co**  
General Oilfield construction  
24 hour Call 884-2454 Big Lake 853-3064 Eldorado

**Insurance**  
Fire, Windstorm Auto and Casualty  
Call Tom Ratliff  
853-2636

**Tex-Sun Insulation**  
Residential Commercial  
Free Estimates  
Farris Nixon 853-2996

**Kerbow Funeral Home**  
Servicing Eldorado & Sonora  
853-2636 or 387-2266 Sonora

**Whitten Liquid Feed**  
Nutrene & Godbold Feeds  
Steve Whitten, Manager  
853-2944 Res. 853-2879

**N L WELL SERVICE**  
Well Servicing - Water Hauling  
Pump trucks 24 hour service  
Eldorado 853-2351 Sonora 387-2509

**Henderson Waterwell**  
Windmill and Pump Repair  
Sam Henderson, Jr  
853-3280



**For All Your Office Needs -**

Job Printing  
Receipt Books  
Calculators  
Envelopes  
Office Furniture  
Ledger Books  
Pens

**Schleicher County Leader**  
Your Home town leader with Office Supplies