

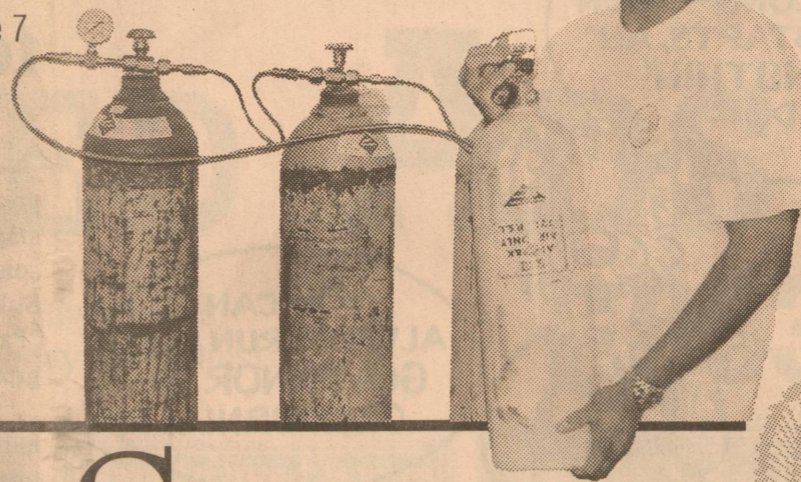
Lester's retirement party may have been a bit premature

...See Page 6



Volunteer Fire Dept. Recives Grant to Upgrade Equipment

...See Page 7



THE ELDORADO SUCCESS

© Copyright 2003, Masked Rider Publishing, Inc. website: www.myeldorado.net e-mail: success@myeldorado.net U.S.P.S. # 342-470

VOLUME 102, ISSUE 33

"The Voice of Eldorado and Schleicher County Since 1901"

AUGUST 14, 2003

SINGLE ISSUE PRICE ONLY
75¢



PHOTO BY KATHY MANKIN

Bee roundup — Sheriff David Doran and Fire Chief Jerry Jones returned Tuesday to the scene of Friday's fatal bee attack. They were there to gather samples of the bees that swarmed Bobby Daniels while he was pushing brush. The attack resulted in Daniels's death, the first Schleicher County fatality connected with a bee attack. The sample the men gathered is being sent to Texas A&M University and will be used to determine if the bees are Africanized hybrids.

Bee attack claims life of Eldorado man

Daniels dies after bees swarm tractor

A bee attack on the Powell Ranch in southern Schleicher County is credited with contributing to the death of Bobby Daniels, 66, of Eldorado. Daniels was operating a bull dozer and was in the process of "pushing brush" when the attack occurred last Friday, August 8, 2003. Daniels' body was found about a quarter-mile from the dozer which was stalled against an uprooted tree. He had reportedly been stung "many times."

Sheriff David Doran explained that family members became concerned when Daniels failed to come home from work. His son, Troy Dainels then drove to the ranch and found bees swarming around the dozer that was still idling against the tree. Unable to immediately locate his father he reported the incident to the Schleicher County Sheriff's Department.

Soon, a full-blown search and rescue effort was underway as Sheriff's Dept. officers were joined by members of the Eldorado Volunteer Fire Dept. and Schleicher County EMS personnel. Deputy David Olivian located Daniels body some 400 yards away from the dozer.

Sheriff David Doran told the Suc-

cess that Daniels appeared to have been trying to escape the bee swarm by running toward his pickup truck.

Daniels was pronounced dead at the scene by Peace Justice James C. Doyle. The body was taken to Texas Tech University Health Science Center in Lubbock for an autopsy by the Lubbock County Medical Examiner.

Results of the autopsy reportedly indicated that the bee attack was a contributing factor in Daniels' death. Sheriff Doran says his department's investigation is calling the death accidental due to bee attack.

While the violent nature of the attack would lead some to assume that the bee colony was "Africanized" or made up of so-called "Killer Bees," officials aren't jumping to any conclusions. There is no visual distinction between European Honey Bees, that are indigenous to the area, and their Africanized cousins. So, Sheriff Doran and Fire Chief Jerry Jones returned to the scene of the attack on Tuesday to collect samples of the bees. The sample is being forwarded to Texas A&M University by County Agent Scott Edmonson for identification.

Ragsdale sworn in as Municipal Judge

Mayor John Nikolauk administered the oath of office Monday night to Municipal Judge Pat Ragsdale during regular monthly meeting of the Eldorado City Council. Ragsdale's wife, Dianna, held his father's Bible, as he took the oath.

Ragsdale was appointed to the position by the Eldorado City Council several months ago. He completed 32 hours of judicial training last month at a school for new judges in Austin. The school was funded by the Texas Supreme Court.

The municipal court has jurisdiction over areas involving city ordinances, as well as traffic and Class C misdemeanor offenses.

In a related matter, the council considered appointing a prosecuting attorney

for the court and discussed a number of local and area attorneys. City Administrator Randy Mankin was directed to investigate the matter and to return with a recommendation at a future meeting so that a prosecuting attorney may be appointed.

In another item related to the municipal court, Mankin advised the council that he had met with the Schleicher County Commissioners to discuss the terms of an interlocal agreement between the city and county. One of the areas the interlocal agreement would cover would be law enforcement. Mankin noted that before the Sheriff's Dept. can send cases to the new court, the interlocal agreement must be in place. Other areas covered by the agreement include services the two entities provide to one another.

The meeting was called to order at 6:07 p.m. by Mayor John Nikolauk. On hand for the meeting were council members Dora Bosmans, Tommy Minor, Richard Mendez, Juaquin Rojas and Robert Bybee. Council member Toni Sudduth was absent. Also in attendance were City Secretary Carolyn Mayo, Superintendent Floyd Fay, Administrator Randy Mankin and Municipal Judge Pat Ragsdale.

After administering the oath of office to Judge Ragsdale, the council heard from Bobby Zesch, representing the firm of Zesch and Pickett, regarding renewal of the city's group health insurance policy. He explained that the city's current plan will be going up by 17 percent if the council should choose to renew it. The increase would cost the city an additional \$57.44 per employee, per month, for a total of \$78,689.28 per year.

After reviewing several alternative plans, the council opted to stay with Blue Cross-Blue Shield, but changed from \$500 deductible plan to one with a \$750 deductible. The change saved the city \$6,128.64 over renewing the current policy but will still cost \$4,899.70 more than last year.

Utility Superintendent Floyd Fay then updated the council on activity in the various city departments. He told the council that a work is complete on a project to improve the city's water system. Included in that project is an "altitude valve" that will allow the city's North water tower to be filled, thereby increasing the pressure on the system. Fay noted that the increased pressure, coupled with shifting soil conditions, has caused a rash of water main breaks. He pointed out that two such breaks occurred that same day and that city

CONTINUED ON PAGE 6

Public asked to "Bee Aware"

Be cautious, but don't panic. That's the word from county officials this week, following last Friday's bee attack that claimed the life of an Eldorado man.

"All honey bees are not hostile," advised Sheriff David Doran. His office received numerous bee complaints over the weekend as news of Bobby Daniels' tragic death spread around town.

"Folks just need to pay attention to their surroundings and take a few precautions," the sheriff said. "Be armed with the facts and you can make better decisions about how to protect yourself and your loved ones."

Brief History

Aggressive colonies of Africanized bees first began moving north from South America in the 1950s after a few captive bees from Africa (*Apis mellifera scutellata*) escaped from a research facility in Brazil. Once the bees

began breeding with the indigenous European Honey Bee the Africanized hybrid spread rapidly over the continent. The bee's northward march was slowed somewhat by the narrow strip of land that makes up the Isthmus of Panama. Once the bees cleared that hurdle, however, they rapidly spread across Central America and Mexico.

The first Africanized bees began arriving in Schleicher County in the early 1990s. By 1995 the county was placed on a list of counties quarantined by the Texas Department of Agriculture. No breeding populations of honey bees could be transported in or out of the affected region. Since that time, the number of quarantined counties in Texas has grown to 110 and the bee's range has spread northward to near the Red River and westward to New Mexico, Arizona, Utah and Southern California.

CONTINUED ON PAGE 8



PHOTO BY RANDY MANKIN

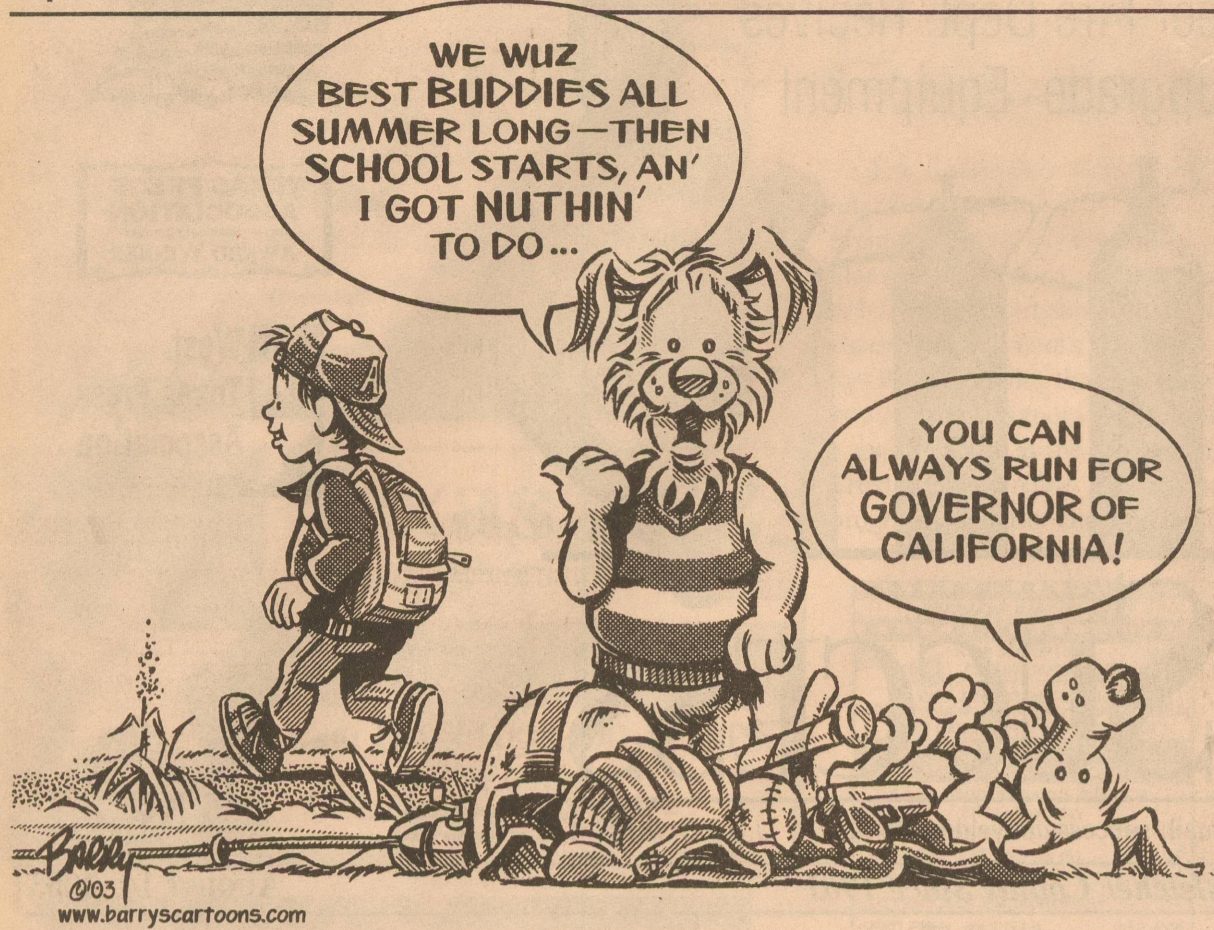
Oath of office — Municipal Judge Pat Ragsdale (R) took the oath of office Monday evening from Eldorado Mayor John Nikolauk (L). Ragsdale took the oath on his father's Bible, held by his wife, Dianna.

IS IT TIME TO RENEW YOUR SUBSCRIPTION?

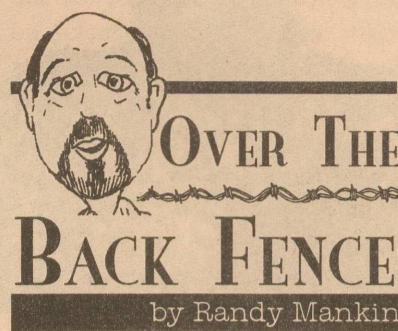
RENEWS...8/31/2003
JOHN Q. PUBLIC
BOX 12345
ELDORADO, TEXAS 76936-2345

LOOK!

The Success prints renewal dates on all mailing labels. Our readers can help us hold down the cost of subscriptions by mailing in renewals in the appropriate month. Thank you! In County \$21.83; Out of County \$27.41 Out of State \$32.73. PO Box 1115, Eldorado, TX 76936.



When they call me for jury duty just tell them that I went to Albuquerque



I like Willie Nelson. He's a great songwriter...not much as a singer, though. Maybe the term song stylist would better apply. Still, I consider his rendition of "Pancho and Lefty" as one of the greatest country songs of all time. But, just because I like Willie's music doesn't mean I'm going to turn to him for financial advice. Remember, Willie's misadventures with the IRS? Neither do I care for Willie's politics. I do find it interesting though that an avowed liberal like Willie, who never met a government program he didn't like, tried

so hard not to give the government any of his money with which to pay for those programs. Well, ol' Willie is at it again. This time he's flown off to Albuquerque, NM, where he met with the eleven Texas Democrats held up there awaiting the end of the 2nd Special Legislative Session. And, true to form, Willie called the group heroes. It looks to me like Willie's been smoking something again.

One of Willie's so-called heroes is Senator Eddie Lucio of Brownsville. He was one of the co-sponsors of the new law that, when it goes into effect on Sept. 1st, will require all Texas school children to recite the Pledge of Allegiance to the U.S. and Texas flags before beginning class each day.

I'm not going to argue with Senator Lucio about the pledges. I happen to think they are a good idea. I just find it a pity that Texas schools have become so wishy washy about patriotism that such a law is necessary.

I also find it interesting that Senator Lucio is willing to require Texas school children to pledge their allegiance to the flag of a

state from which he has fled. I know, I know, it's the redistricting thing. Leaving Texas is the only way the high-minded Democrats can stop the mean old Republicans from having their way with the congressional district map. The fact is, that poor map has been mangled so many times by Democratic gerrymandering sessions that a few wild-eyed Republicans couldn't possibly damage it.

Who are these radical right-wingers anyway, these firebrands who would hijack the state? Well, if you were casting a Hollywood B-movie, they wouldn't make very convincing villains. Senator Lucio may disagree, but I just can't picture Lt. Gov. David Dewhurst as a scoundrel. Six months ago, neither could the Democrats, so convinced were they that he was inept. Now he's the genius mastermind behind the evil plan to strip Democrats of their God-given right to perpetual power.

Be that as it may, I'm not ready to stop listening to Willie Nelson tunes. The Dixie Chicks, maybe, but not Willie Nelson. So, I'm just going to have to remember that while Willie may be a gifted musician and entertainer, he's dumber than a clod about plenty of other things...things like politics and fashion.

Besides, if, as Willie claims, a person who runs away from a battle is a hero and not a coward, then we've all been way too hard on the French.

Law requires schoolchildren to recite Texas flag pledge

AUSTIN - One more way to help your kids get ready for school: Make sure they know the pledge to the flag.

Not the pledge of allegiance to the U.S. flag, the pledge to the Texas flag.

While members of the Legislature battled over budget matters and other big issues, Rep. Dan Branch, R-Dallas, and Sen. Jeff Wentworth, R-San Antonio, succeeded in getting a bill passed that requires all Texas schoolchildren to recite the Texas pledge every morning before they start learning about reading, 'riting and 'rith-

State Capital Highlights

by Mike Cox



metic.

Oh, and they also have to pledge to the U.S. flag and observe a moment of silence.

Branch estimated all three requirements for public school students will only take a minute and 27 seconds. It doesn't take nearly that long for most Texans to realize they didn't even know Texas had its own flag pledge. But that has been the case since 1933, with the Legislature adopted rules for

proper display of the Texas flag and a pledge to honor that flag. There has been some confusion over what flag to use. The 1933 pledge specifically mentioned the 1836 flag. But the 1836 flag, used when Texas first gained independence from Mexico, was not the same as the Texas flag flying over the state Capitol today.

The red, white and blue flag with the Lone Star in the blue was adopted in 1839. Lawmakers finally corrected that error in the language in 1965.

The pledge, however, did not become mandatory for school children until this year.

Here it is: "Honor the Texas flag; I pledge allegiance to thee, Texas, one and indivisible."

You can't always believe the buzz...A rumor has been sweeping Texas, via word-of-mouth and the Internet, that the Legislature has banned the use of cellular telephones while driving. Not true.

What is true is that Rep. Paul Moreno, D-El Paso, did introduce a bill that would have done that, House Bill 281. It went into the hopper Dec. 11 but died in committee on March 3.

That's not to say that engaging in an animated conversation while

you drive is a particularly safe activity. If you don't pay attention to your driving, police say, someone else might be making a 911 call on your behalf with their cell phone.

Speaking of safety...

The Texas Department of Public Safety has presented its highest civilian honor, the Director's Award, to a 13-year-old girl from Arlington, Cameron Coplin.

The award was in recognition of what happened on Aug. 16, 2002. Her family was traveling on Interstate 35 in Travis County when her stepfather, Keith Williams, went into shock as he drove the family's Suburban. What she did next probably saved their lives and possibly others.

The vehicle began crossing traffic lanes and could have careened into oncoming traffic had it not been for Cameron, who reached around her unconscious stepfather and managed to control the vehicle until she could steer it off the roadway.

The teen-ager had to press the brake pedal with her hand to stop the Suburban.

Thanks to Cameron, no one got hurt. And Williams recovered.



ROLLING ALONG

WITH TUMBLEWEED SMITH

Dick Kendall Is A Funny Guy

When Dick Kendall of Pearl-ized a Phil Harris skit he heard on the radio and recited it for anybody who would listen to it. "My grandfather loved to hear me do that thing," says Dick. In high school he listened to the Bob Hope and Red Skelton radio shows and took notes.

"There was one show called CAN YOU TOP THIS. People would send in jokes and one guy would tell a joke that was sent in and a panel would tell jokes on the same subject. That was fascinating to me. They had a laugh meter to see which joke got the most laughs. I tried to figure out why the winning jokes were funny."

His senior year in high school he lip-synched Spike Jones's version of THE MAN ON THE FLYING TRAPEZE. "The audience just fell apart," says Dick. "It was the most fun I ever had."

He spoke at a Baptist Camp in New Mexico the summer after graduating from high school. Conditions were pretty primitive because it was a new camp. He had planned to use a memorized piece, but instead, made funny remarks about the camp and didn't use the memorized stuff. "That was when I realized I could do humor and make people laugh. That was kind of my way to relate to people. By being funny."

Dick's grandfather was a preacher and used humor in the pulpit. Dick thought he would be a preacher, too. He went to Baylor and majored in Philosophy. "I always liked funny professors."

He got on stage a couple of times in Baylor and ran for cheerleader, barely missing a spot on the squad. His use of humor in campaign speeches got him elected

vice president of the freshman class.

Dick went to work at the San Angelo Chamber of Commerce after Baylor, then went into the Air force. He entered a couple of military talent shows but didn't do well. He went back to chamber work after the service, then got into banking and now owns a bank marketing company.

He conducts seminars all over the country. "You can sure keep people's attention if you make them laugh now and then." In his spare time he does humor on cruise ships. It's all clean. He worked in comedy clubs for years. He has written a best selling business book (NOBODY TOLD ME I'D HAVE TO SELL). Dick has traveled the world. In a book store in Brazil, he ran across the Portuguese language version of his book and showed the clerks his drivers license. They were impressed.

He says most of his inspiration comes to him in the shower. "I got 5 minutes of my best humor in one 30 minute shower. The water got cold."

Humor just comes to him. "When I'm looking for new material, I notice things. I saw an Academy Store full of exercise equipment. It had an escalator to the second floor.

"I saw some tern birds in California. Two terns walking along and you have a right tern and a left tern.

"I was in the Hershey Hotel once and the guy behind the desk told me where the bar was. I said is that the Hershey Bar?"

Dick started doing comedy when he was 49 years old. That was nearly 20 years ago.

Contact Tumbleweed at: tumbleweedsmith.com.

Texas 2x2
Display Advertising Network

Reach more than a half million Texas consumers with affordable 2x2 advertisements

Call: THE ELDORADO SUCCESS
for details
853-3125

THE ELDORADO SUCCESS

Publisher and Editor: Randy Mankin
Office Manager and Classifieds: Kathy Mankin
Advertising and Circulation: Lori Stricklan

The Eldorado Success is published weekly at 204 SW Main Street in Eldorado, Texas by Masked Rider Publishing, Inc. Subscriptions are \$21.83 per year in Schleicher County and \$27.41 per year elsewhere in Texas. Out of state subscriptions are \$32.73. Periodical class postage paid at Eldorado, Texas 76936. POSTMASTER: Send address changes to THE ELDORADO SUCCESS, P.O. Box 1115, Eldorado, Texas 76936-1115. Notices of entertainment where admission is charged, cards of thanks, resolutions of respect and all material not news, will be charged at regular advertising rates. Advertisements, Classified Ads and Cards of Thanks are payable in advance unless the customer has an established account. A finance charge of 1.5% per month will be assessed to customers with balances over 30 days old. Any erroneous reflection upon the character or reputation of any person or firm will be promptly corrected when brought to the attention of the management.

The Eldorado Success is not responsible for copy omissions, typographical errors or any other unintentional errors that may occur other than to make a correction in the next issue. The Eldorado Success reserves the right to cancel any advertisement at any time.

Letters to the Editor will be considered for publication only if they are signed and are accompanied with a day and night phone number for verification purposes. Letters may be edited for length or offensive material. Anonymous letters will not be published.

THE ELDORADO SUCCESS
© Copyright 2003 MASKED RIDER PUBLISHING, INC.
Office: (325) 853-3125 Fax: (325) 853-3378
E-Mail: success@myeldorado.net
USPS 342-470
website: www.myeldorado.net

MEMBER 2003
TEXAS PRESS ASSOCIATION

West Texas Press Association
AWARD WINNER 2002

CROSSWORD PUZZLE

- ACROSS**
- Lightens up
 - Hilo hello
 - Hood's gun
 - Flat on one's face
 - Lord's home
 - Copacabana site
 - It's slippery
 - Superlative's ending
 - Trig ratio
 - Comic Caesar
 - Barn topper
 - King of tragedy
 - Brought up to date
 - Dry red wine
 - Hitchhiker's hope
 - Attorneys' org.
 - Poky critter
 - Jason's wife, in myth
 - Give a little
 - "Our Miss Brooks" star Eve
 - Makes a choice
 - Kick off
 - Really enjoy
 - Part of TGIF
 - Can't be without
 - Sci-fi weapon
 - Blood bank
- DOWN**
- Vast in scope
 - With the bow, in music
 - Salty sauces
 - Store, as fodder
 - Anglers with nets
 - Letters in some church names
 - They're sometimes broken
 - Studio warning sign
 - Place-kicker's mate
 - Boat for pairs
- It's slippery
 - River to the Oise
 - Schlepped
 - Durbin of old films
 - MTV airing
 - Keisters
 - Get-up-and-go
 - Semi compartments
 - Aid in wrongdoing
 - It's slippery
 - Wave or basin preceder
 - "Roots" star Burton
 - Ides rebuke
 - Org.
 - Get decked out
 - Acting the snoop
 - President pro
 - Field the kickoff
 - One of Santa's team
 - Took five
 - Serengeti family
 - Tool with a bubble
 - Dictation pro
 - Times to call, in ads
 - Antler branch
 - Hunter or Bayh
 - Fam. members
 - La-la lead-in
 - Put into play

See solution on Page 6

They're Slippery

1	2	3	4	5	6	7	8	9	10	11	12	13
14					15						16	
17					18						19	
20						21			22			
23					24		25		26			
27	28	29					30		31			
32					33			34		35		36 37
38					39		40			41		42
43					44		45			46		47
48					49		50			51		
52	53					54		55				
56					57		58		59		60	61 62
63								65				
66										68		
69										71		

This crossword puzzle is sponsored each week by:

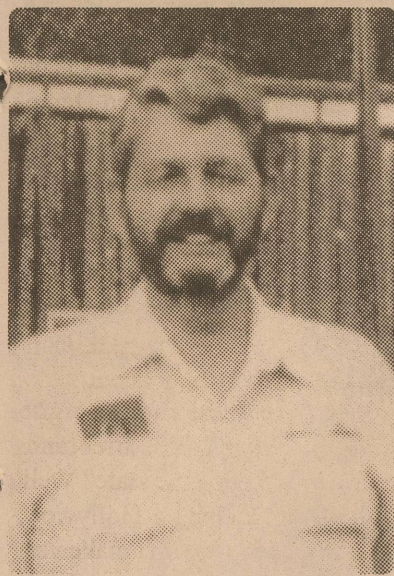
Kerbow Funeral Home
"Established in 1943"
Family owned and operated

- Monuments
- Pre-Need Burial Insurance

853-3043
387-2266

OBITUARIES

Bobby Frank Daniels



ELDORADO — Bobby Frank Daniels, 66, of Eldorado, passed away Friday, Aug. 8, 2003. Service were held Monday, Aug. 11, at the First Baptist Church of Eldorado, officiated by Brother Hughes of Central Faith Baptist Church in San Angelo. Burial followed in Eldorado Cemetery.

Bobby was born May 15, 1937, in Dallas. After serving in the Marine Corp for three years, he married Peggy Davis on Dec. 28, 1956, and had been a longtime resident of Eldorado.

He was preceded in death by his father, Frank Daniels; a sister, Wanda Holly; two brothers, Jimmy Daniels and Billy Daniels; a granddaughter, Krystal O'Daniel; and a grandson, John Richard Jacobs III.

Charlene Jeffie Edmiston Bridgeman

TOMBALL — Charlene Jeffie Edmiston Bridgeman 73, of Tomball died in a Houston hospital on Aug 8, 2003. Services were held Aug. 11, 2003 in Tomball. The Kline Funeral Home was in charge of the arrangements.

Charlene was born Nov. 8, 1929 to R.C. Edmiston and Jeffie Neal Edmiston in Schleicher Co. where she attended Eldorado public schools.

She married Robert (Punk) Bridgeman on May 2, 1948. They lived in Midland, Texas for many years, later moving to Tomball in

He is survived by his wife, Peggy Daniels of Eldorado; his children and their spouses, Marilyn Carter and husband, Sonny, of Wills Point, Rhonda O'Daniel of Robert Lee, Mark Daniels of Eldorado, Becky Sellers and husband, Darrell, of Eldorado, Donna Ledbetter and husband, Howard, of Eldorado, Brian Daniels and wife, Kim, of Monahans, Troy Daniels and wife, Wendy, of Eldorado, Kim Jacobs and husband, Richard, of Bronte; grandchildren, Laura Carter, Sheila Carter, Christy Carter, Michael O'Daniel, Casey O'Daniel, Mandi Daniels, Kayli Daniels, Amanda Gamez, Britney Sellers, Chelsi Sellers, Briley Ledbetter, Ashley Lozano, Cade Ledbetter, Lena Hill, Lauren Daniels, Lynsi Daniels, Brice Daniels, Caleb Daniels, Colten Daniels, Blaine Jacobs and Justin Jacobs; and seven great-grandchildren; his sister and brothers, Peggy Grelle, Scooter Faull and George Faull, all of Eldorado; his mother, Gladys Faull of Eldorado; and many, many nieces and nephews. Also, close family friend Red Griffin.

Pall bearers were Kenny Daniels, Dudley Daniels, Billy Frank Daniels, Wayne Daniels, Jamie Daniels, Michael Greele, Steven Greele, Sam Whitten and Red Griffin.

1990. They had three daughters Jeddy Nan, Jeffie and Jenny. She was a member of the Church of Christ her entire life.

She was preceded in death by her husband, Punk, her eldest daughter Jeddy Nan Wood and both her parents.

Charlene is survived by her daughters; Jeffie and Mitchell Cappadonna, Jenny and Mike Morgan, and son-in-law Leonard Wood. She also leaves eleven grandchildren, six granddaughters and five grandsons, plus one great grandson. She was also a double cousin to Shine Spigarelli of Eldorado.

SCMC Hospital Auxiliary update

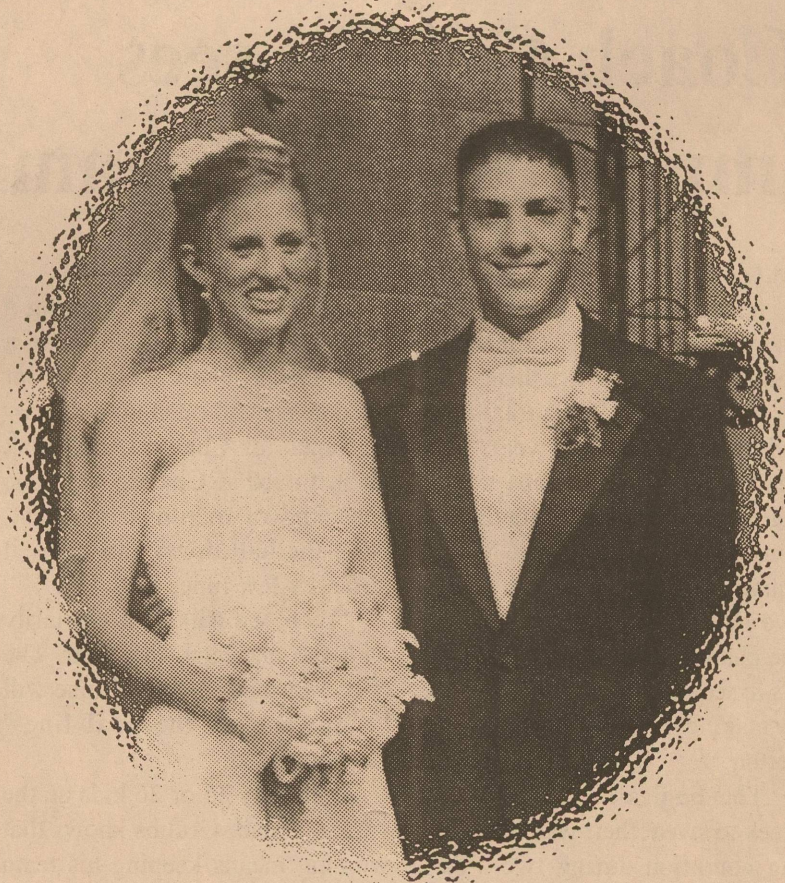
by Mary Roden, President
We met Thursday, August 7, 2003 in the lobby of the Nursing Home. We had 12 members present. A Nominating Committee was appointed to elect new officers for the next two years.

The Auxiliary meets the first Thursday of the month and would welcome any new members.

Come by and visit our dining room, and see the old Eldorado town that has been created.

The Auxiliary invites you to come share hamburgers, hot dogs, and all the trimmings out on the patio, Friday Aug 15 at 7:00 p.m., to meet and greet our two new doctors.

Who was this very special man?
The man we all loved and called husband, Dad, Paw-Paw and Friend. He was a husband and father who loved his family unconditionally and taught them all so much about family and life. He always urged his children and grandchildren to strive to do their best. And when times were hard Bobby was the strength that pulled them through.
Bobby loved his family. This love for family drove him to work long, hard hours to provide. Bobby loved the outdoors, which led him to a lifetime career in the ranching industry of Schleicher Co. This is where he and Peggy spent much of their lifetime together raising the children...out on the ranch.
And what will this community remember about Bobby Daniels? There are so, so many lives that he touched each and every day. We know all will remember the happy, loving spirit of this man, the wonderful smile that never left his face and the amazing fact that Bobby never met a stranger. He loved us all.



Mr. and Mrs. Benjamin Hiter Arbour

Anderson/Arbour wedding

On Saturday, July 26, 2003 at 4:00 p.m. Margaret Elizabeth Anderson and Benjamin Hiter Arbour were united in marriage. The bride is the daughter of Reverend and Mrs. Andy Glen Anderson of Eldorado, Texas and the groom, son of Mr. and Mrs. James Gerard Arbour of Basel, Switzerland. Reverend Darren Ely officiated the ceremony held at First Baptist Church in Boerne, Texas.

Given in marriage by her father, the bride wore a white satin gown and cathedral length train accented with glass beads, sequins and crystals and an elbow length veil. She carried a bouquet of fresh white calla lilies, stephanotis, gardenias, roses, hydrangea and her mother's heirloom wedding handkerchief.

Bridesmaids were Miss Angela Scoggins of Garland, Mrs. Jennifer Kennedy of Kingwood, Miss Crystal Ilschner of Keller, Miss Audrey Jones of Houston, Miss Haley Edmiston of Eldorado, and Mrs. Misty Kennedy of Kingwood. They wore black floor length dresses and carried bouquets in bright summer colors.

Attendants were Miss Kimberly Babcock, Mrs. Kathryn Faircloth, and Miss Monica Wuthrich. Groomsmen were Mr. Andrew Arbour of College Station, Mr. Andrew Anderson of Eldorado, Mr. Craig Williams of Spring, Mr. Michael Goodwin of Kingwood, Mr. Justin Whitaker of Conroe and Mr. Brian Phaelegly of Houston.

Ushers were Mr. Wesley Jones, Mr. Adam Snidow, Mr. Ryan Couch, Mr. Thomas Rich, Mr. Michael Klein, Mr. Brian Avery,

Business Cards and Self-Inking Stamps on sale now at THE SUCCESS
204 SW Main Street
853-3125

Mr. Sidney Arbour IV, and Mr. Chris Glossup.

Grandparents of the bride are Mr. and Mrs. Robert G. Anderson of Fort Worth and the late Mr. and Mrs. Desmond R. Pereira of Goliad, Texas. Grandparents of the groom are Mr. and Mrs. Wayne G. Hiter and Mr. and Mrs. Sidney V. Arbour II of Baton Rouge, Louisiana.

A reception dinner and dance given by their parents was held at Tapatio Springs Resort and Conference Center.

Following their rehearsal on Friday evening, July 25, the couple was honored with a dinner hosted by parents of the groom. Held at Tapatio Springs, approximately 100 family and friends attended the celebration.

The couple spent a week in Cabo San Lucas for their honeymoon and have made their home in Bryan, Texas.

Eldorado Forecast

Thu 8/14	Fri 8/15	Sat 8/16	Sun 8/17	Mon 8/18
83/60	81/62	89/65	92/66	92/66
Sun and clouds mixed with a slight chance of thunderstorms during the after.	Scattered thunderstorms. Highs in the low 80s and lows in the low 60s.	Mix of sun and clouds. Highs in the upper 80s and lows in the mid 60s.	Mix of sun and clouds. Highs in the low 90s and lows in the mid 60s.	Abundant sunshine. Highs in the low 90s and lows in the mid 60s.

©2003 American Profile Hometown Content Service

Monday Madness
Cheese Sticks \$1.99

Terrific Tuesday
2 Medium 1 Topping Pizzas \$8.99

Wacky Wednesday
1 Topping Large Pizza \$5.00

Thrilling Thursday
Medium 1 Topping \$4.99

Freaky Friday
2 Lg. 1 Topping & Cinna-Stix \$13.99

Silly Saturday
1 Medium 1 Topping & Cheese Stix \$8.99

Super Sunday
1 Topping Large Pizza & BBQ Wngs \$12.24

Mon-Fri Lunch Hours 11:00 AM-1:00 PM

Texaco Star Stop
303 N. Divide

ALL FLAVORS Dr Pepper® Products
1 Liter
2 for \$2

853-3474
Deli Hours 5am to 10pm
Store hours 5:00 AM to 11:00 PM — EVERYDAY!

my Eldorado.net
www.myeldorado.net
Eldorado's Internet Homepage

BIRTHDAY LIST

- AUGUST**
14th Lisa O'Harrow, Sharon Lemons, Miles Mikeska, Misty Key, Kisty Adame, Kerry Rodgers,
15th Jennifer Rojas, Kali Warnock, Tony Martinez Jr., Fran Robinson, Sonja Key, Helen Sanchez, Betsy Green, Della Pina, A.T. Turner, Tony Martinez, Jr., Lowe Irvine
16th Kim-et Nelson, Leon Fuentes, Michael Ballew, Ray David Buitron Jr., Kristina Prater, Rocky Robles, Kristina Fritz, Jay Blaylock, Koda Lozano, Dana Ledbetter, McKenzie McAngus, M'Lissa McKinney Schoening, J.B. Garcia, Hallie Schwenning
17th Lisa Brown, Frankie Short, Rick Singleton, Leigh Ann Neal, Mitzi Lux, Earl Yates, Shirley Joiner, Mike Sproul, Marty Joe Powell, Nikkita Herrera
18th Kimberly Griffin, Weldon Jenkins, Lana Jones, Shine Spigarelli, Elida J. Estrada, Charlie Niblett, Ray David Buitron Jr.
19th Jonathan Belman, Michael Hill, Will Kessler, Justin Paxton, Trey Walker, Jerry Richards
20th Katey Blair, Brent Moore, Craig Gutierrez, D.J. Criswell, Keith Corley
21st Hal Porter, Juan Carlos Escobar

ANNIVERSARIES

- AUGUST**
14th Brian & Mary Doran
15th Jim & Linda Chancellor
16th Debbie & Kerry Joy, Norris & Sharon Sauer
17th Robbin & Glyn Hutto, Wayne & Sharon McCarty, Richard & Carolina Mendez
18th Bessie & W.H. Clifton
20th Herman & Deanne Walker

You're a part of our family...we'll be there for you!

GERMANIA
SINCE 1896

THE GERMANIA COMPANIES
SAUER AGENCY
5 W GILLIS, ELDORADO, TX
915-853-3068
TOLL FREE-1-800-657-9225

GOOD TEACHERS ARE A GREAT INVESTMENT

At FNB we recognize and honor the role that teachers play in our community.

SCISD teachers and staff are encouraged to stop by the FNB booth during the SCISD teacher and staff Inservice Day on Aug. 15, 2003. Guess nearest the amount in the FNB Piggy Bank and you could win the CASH!

FIRST NATIONAL BANK OF ELDORADO

Main 853-2561 • TeleBank 853-2567
TeleTime 853-2569 • Member FDIC

NATIONAL OILWELL
 General Oilfield Supplies
 Pump Repairs

GO EAGLES!

216 South Divide Eldorado, TX 76936
 Ph: (915) 853-4060
 Fax: (915) 853-1411

NOS Niblett's Oilfield Services, Inc.
 PUMP TRUCKS, TRANSPORT SERVICES, VACUUM TRUCKS,
 ACID TANKS, FRAC TANKS, EQUIPMENT HAULING

Hwy. 277 S. P.O. Box 910 Eldorado, Texas 76936
(915) 853-2521

Proudly Supporting The Eagles!!!

John E. Meador Construction
 General Oil Field Construction

Complete Roustabout Service Fully Insured
 • Pumping Service & Radio Equipped
 • Backhoe • Welding 24-Hour Service
 • Sandblasting & Painting Phone: (915) 853-3135
 • Polyethylene or Steel

B. J.'s Garage & Wrecker Service

Proud Supporter of the Eagles and Lady Eagles!

216 S. Main Eldorado, Texas 76936
853-4080

We're Behind You All The Way, Eagles!

Crowder Services, Inc.
 Rt. 1 Box 70A - Eldorado, Texas 76936
(915) 853-2852
 A Petroleum Industry Construction Company
 In Field Valve Lubrication Service

CARQUEST Kent's Automotive
 AUTO PARTS

Proudly Supporting the Eldorado Eagles

712 North Divide • Eldorado, Texas • (915) 853-2733

D L Automotive

We're Backing The Mighty Eldorado Eagles!
 We're Backing The Eldorado Lady Eagles!

109 W. U.S. Hwy. 190 Eldorado, Texas 76936
853-2629

Eldorado.net
 www.myeldorado.net
 ELDORADO ONLINE ALL THE TIME

Coach Grubbs sees improved Eagles team

by J.L. Mankin

It's another year, another team and yet another chance for the Eldorado Eagles to prove themselves on the gridiron. With a total of 63 kids turning out this year, EHS head coach Gary Grubbs is feeling pretty optimistic about the season, and not just for the varsity squad. It looks like there will be two JV teams this year, improving the chances for the younger players to see some playing time, thereby making the 2004 Warbirds even better.

The Eagles hit the field last week to sweat their way into playing condition during two-a-days workouts. So far, Grubbs likes what he sees. "We will be better this year," Grubbs said. "We're faster and stronger."

Speed and strength will be needed as the Eagles face yet another tough district race. "We have to start off with some victories and gain some momentum," Grubbs said, "We're already showing some early confidence. We'll build on that and be ready for district."

"Wall will be tough," Grubbs said, looking ahead at the district schedule. "They just have so many kids returning."

But Grubbs has some talented veterans returning from last year's squad to help him face down the Wall Hawks. Trey Chavez will get the nod at Quarterback. With a last year under his belt, Chavez will take the field as the team's leader. He should be well protected with the likes of Will Griffin, Joey Hernandez, and Chris Sanchez returning on the line.

"Will has gained 30 lbs of muscle and is greatly improved in all areas of play," Grubbs noted.

Also returning from last year's squad will be veterans Seth Taylor and Andy Mejia.

Joining the experienced veterans will be some promising newcomers, including Frank Wipff at Center, and Kyle Taylor at Middle Linebacker.

Frank Edmiston and Jared Grubbs will play where needed and provide solid backups for Chavez at Quarterback. "QB is one of our

deepest areas," Grubbs noted.

The Eagles will be sporting a new one-back offense this year, a move that is likely to spread out the defense and open up the passing lanes for Chavez. And, don't be surprised if Chavez, who has been known to run in the past, pulls the ball down and turns it upfield a few times.

"Yeah, we will stick primarily with the one-back this year. The only I-formation we will use will be down near the goal line," Grubbs stated.

With only 25 or 26 kids on the varsity squad, Grubbs knows that winning means keeping his team healthy, especially during district play.

To help with that concern, Grubbs put a strength and speed program in place for the off season. The move appears to be paying off.

"The kids are noticeably stronger and quicker this year," Grubbs said.

Quickness is always desirable but especially so on the defensive side of the ball. Grubbs says his team will make use of their new found speed by taking a few more risks on defense. "We are quicker and yes, we will be bringing more people than before."

Declining enrollment, which more often concerns a school's superintendent and business manager, has not gone unnoticed on the Eagles practice field.

"We're down a few kids and we're going to have to battle this year, especially teams like Wall and Reagan County that have many more kids," Grubbs noted.

The prospect to Eldorado moving down from 2A to 1A next year is very real and one that Grubbs welcomes. "If we do move down, and can face some teams our own size, then we could be a dominant force," Grubbs said. "It would be very beneficial to all of our athletic programs, boys and girls."

"But we're here in 2A and that's where we've got to play this year," Grubbs concluded. "And, that's exactly what we're going to do...you wait and see, we'll surprise some people this year."

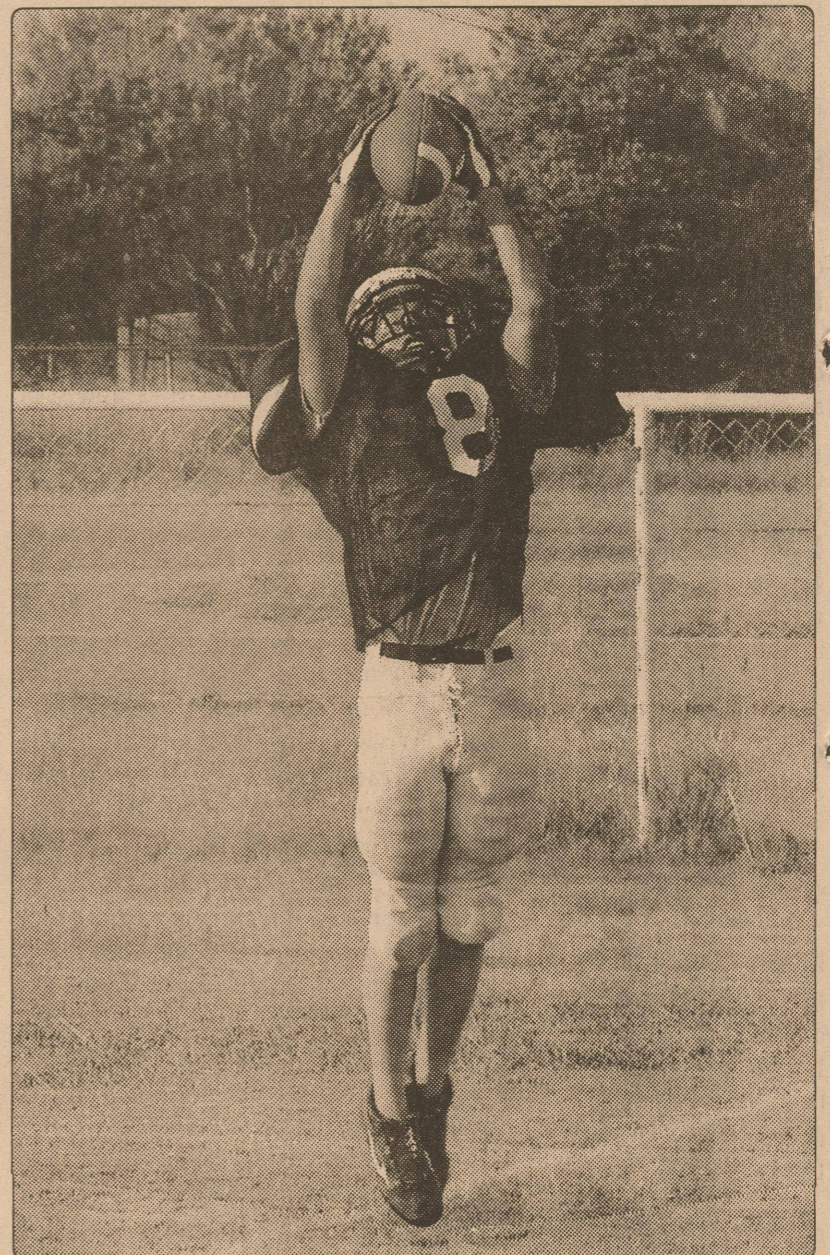


PHOTO BY J.L. MANKIN
 Goin' high for the ball — Eric Garcia hauled in this pass during two-a-day workouts on Tuesday.

Lady Colts win Western Regional All-Star Tourney

On the weekend of July 18 -20 the Western Regional ASA All-Star tournament was held in Midland. Nineteen teams participated in the 12 and under division of the double elimination tournament.

Some of the teams competing were Fort Stockton, Snyder, Coahoma, Jal, NM, Pecos, Monahans, Alpine, Kermit, Andrews, Big Spring, Odessa, Midland, Lubbock, San Angelo and the Sonora Lady Colts.

The Lady Colts worked their way into the championship game, going undefeated by putting teamwork ahead of all else. In the Championship game the Lady

Colts defeated a very good Midland team 10-0 with solid pitching and defense, and an overpowering offense. Sonora outscored their opponents 53 to 13 in winning Sonora's first championship.

Congratulations to the team of Haley Higgins, Heather Hughes, Steely Ingham, Jessica Loera, Kimble Luna, Laura Martin, Bridgett Mitchell, Adrienne Sanchez, Azeneth Villanueva, and Kayla Webb.

The team was coached by Julie Martin, Leann Higgins, Jani Mitchell, Jamie Hernandez, Javier Sanchez, George Villanueva, and Sam Hughes.



COURTESY PHOTO
 Happy winners — The Lady Colts softball team pose with Championship trophy following the Western Regional ASA Softball Tournament in Midland.

COACHES & PARENTS

Visit with Olympic Athlete Freddie Williams
 Start the school year out on top.
 Your student/child will be in the best physical condition.

MONDAY
 August 18, 2003
 6:30 p.m.
 Choice Homecare, Inc.
 106 W. Murchison
 Eldorado, Texas
 325-853-3505
 glycoscience.com

50th Birthday Specials!

to Celebrate our 50th Birthday we are offering rates as LOW as:

New & Used Vehicles
4.25% APR
 Maximum 48 months

Home Improvement & Home Equity
5.00% APR
 Maximum 60 months

APR—Annual Percentage Rate Rates Subject to Change Rates & Terms Based on Approved Credit Member NCUA

Got Photos?

We have lots of photos available for purchase at:

Eldorado.net
 www.myeldorado.net

Just log on and follow the digital photo link!

1st Community Federal Credit Union
 202 SW Main - Eldorado 853-2538
 San Angelo - 3505 Wildewood * Goodfellow AFB * 620 W 29th
 www.1stcommunityfcu.org
 653-1465 or 800/749-1465 Ballinger * Fort Stockton

Hello, to a Hill Country River: The Guadalupe

by Mark Campbell

Enjoying a Hill Country river is a summer ritual for many Texas (and non-Lone Star) families. However for us, it had been 27 years. Going somewhere every quarter century hardly qualifies as a ritual, really.

It had been so long that we couldn't even agree on where we floated in that spring of 1976 - San Marcos or New Braunfels. What I certainly remember was that the water was horribly cold, thanks to being spring fed.

The final trip of this summer was a toss-up between Palo Duro Canyon or the Guadalupe River. A 109-degree day earlier in the week made that decision easy.

Getting there

As we motored toward Guadalupe River State Park, it was nostalgic to pass places we had visited before - Colorado Bend SP, Longhorn Cavern, Inks Lake SP (with that giant castle between the two), and the just-visited-in-June Pedernales Falls SP.

However, we continued south, finally crossing over the Guadalupe on Hwy. 281 reaching the intersection of Hwy. 46. You'll need to make a decision here; it's 21 miles one way to New Braunfels and 21 to Boerne (which, by the way, is pronounced "burn-ee") the other direction.

Either way you go you'll find proud Americans willing to put you in a tube, raft, kayak, or canoe for a nominal fee. Such establishments are easy to find and they have lots of equipment for renting.

Guadalupe River SP is west so we headed toward Boerne. Eight miles from the intersection was the park road and three miles down that was the park. What we discovered at the park was that it's one of the few places that *doesn't* rent any kind of floatation device. Still, we ventured in.

At the state park

Since we were there to experience the river, we didn't pour over GRSP like we usually do on park visits. For one thing, it was late in

the afternoon. And, for another, storms were brewing in the area.

So we drove around a bit, past a pair of campgrounds and a sign that pointed to some hike-in tent camping on a river bluff (about 100 yards in). There are 20 sites of the latter for \$12 (\$72 weekly) with water spigots strategically placed. Port-a-potties are in the vicinity if you are brave enough to enter one in the summertime.

Opposite these tent areas on the other side of the park are 37 more sites (\$13/\$72) with water at every pad in the hike-free Cedar Sage section.

You'll need to go to Turkey Sink - no clue as to why it's called that - for electricity with your water. Those sites are \$17/\$90 and are the most removed from the river even though it's just a short jaunt down the road to get to the river.

Also worthy of mention is a cool amphitheater constructed of that great Hill Country white rock. (Some SP "amphitheaters" are rather lacking; they're simply-made creations of wooden [probably splinter-y] planks just hammered together [probably long ago] in a [probably tick-infested] seldom visited part of a park. Probably.)

The Honey Creek State Natural Area is sealed off, accessible only by guided tour. That's usually a Saturday venture and costs a little extra.

A winner as far as I was concerned was the refrigerated candy dispenser. Looking just like a Coke machine, these wonders house all kinds of not-yet-melted chocolate delights - just what is needed after spending hours gulping river water.

The river in the park

It's \$4 for adults to get into the state park. Under 12 are free and senior citizens play \$2.

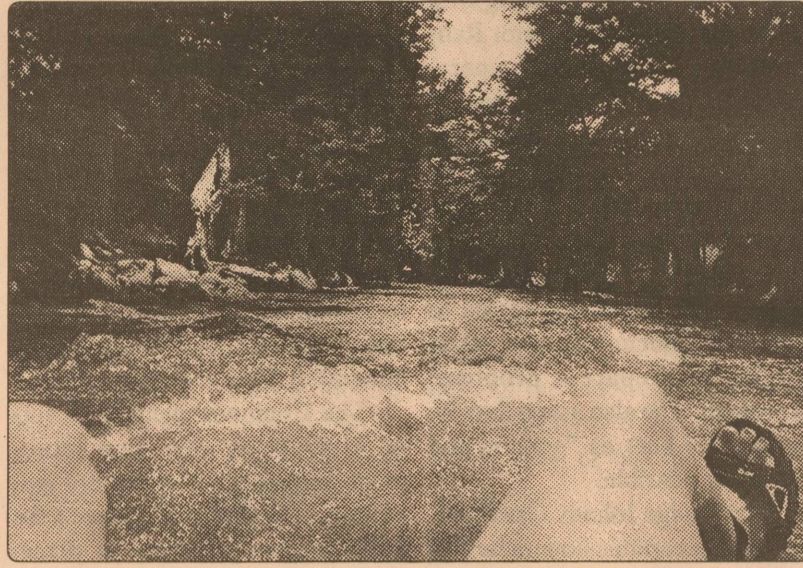
The access to the river is at the very back of the park and they've done a great job here. There is plenty of parking among huge trees, which is good because GRSP gets many day-use visitors. There's a playground and a big bathroom.

You walk down from here to the river that flows before giant limestone cliffs. The place is clean and there's ample space to spread out blankets in the grassy expanse between the parking lot and the water.

Like most state parks, it's a family affair here. And that's important to know when it comes to the Guadalupe. Alcohol is not banned on the river; in fact, many college students will tell you it's encouraged. Actually, there are only two things that can't be taken on the river - glass and Styrofoam.

The state park is different, though. No alcohol is allowed anywhere so that makes GRSP a desired destination for families. And many of those families came prepared with their own tubes. We had none.

They aren't necessary to enjoy



White water ahead - Here is a tube's-eye view of some rapids on the Guadalupe River.

the water, of course, but it's more fun that way. We just plopped into the water - which in many places is just a couple of feet deep - and let the Guadalupe do its thing. This is the Upper Guadalupe, which is, thankfully, 15 degrees cooler than down New Braunfels way.

I hate bone-chilling cold. Hate it. Just like it's hard to understand why people eat peppers that are so hot you can't taste them (or anything else for a while), it's difficult to fathom why anyone wants to submerge themselves in numbing waters.

Anyway, despite being tub-free, we let the water propel us along to a small rapids area where rocks accelerated the flow. You have to be a bit careful here; the Guadalupe isn't crystal clear and rocks of every size lurk underwater. As you float/roll along, you can easily meet one with a body part you'd just as soon not have slammed against a rock. Ever.

There are deeper pools in the park. Back west is one that was about eight feet deep. Someone had tied a nice rope swing there among the humongous magnificent bald cypress trees that were everywhere. If you can negotiate the perilously muddy bank (an only-as-wide-as-your-foot trench has been trod through the years but it is slick), then the swing is plenty fun.

Just make sure the rope isn't looped around a high knob of a cypress or you'll get a ride interrupt-

ed by a violent jerk, as a daughter found out. Her finger is still purple.

At the other end of the river, you're warned by a big sign that you're leaving the state park boundaries and that it's six miles to the next place to get out. If you can't find your kids, it's possible they've floated on down to the 281/46 intersection or they could be well en route to New Braunfels by now. Probably.

Goin' tubin'

We picked up tubing literature at the state park and decided on renting our equipment at the Bergheim Campground, which is a "Christian Campground Run By Christians." Perhaps there is a Christian Campground Run By Heathens on the river, but we did not find it. Thank God.

Our trip was 3.8 miles that normally takes 3-4 hours. However, the lady who took our money - and seemed very ready for the summer season to be over - said the flow was down and that "you'll have to paddle some. Don't come back

CONTINUED ON PAGE 7

School Children that need a ride to school and / or back home can ride the Thunderbird Van.



Parents must go to the Resource Center to register and pay in advance for each child.

No child can be picked up until they have been properly registered.

For more information call 853-2574

Physical Therapy?

No need to go to San Angelo. Ask your doctor for a referral & get your physical therapy here in Eldorado!

Rehab following orthopedic surgery
Treatment following any type of injury (work or sports related)

Call for an appointment

Christy Brown,
Physical Therapist
853-2507

Schleicher County
Medical Center



"If we didn't have libraries, many people thirsty for knowledge would dehydrate."
Schleicher County Library is open Mon-Fri. 10:00AM-5:00PM

School Menu

- Milk & Bread Offered
Menus Subject To Change
Cafeteria Line**
- Monday, 18**
Pepperoni Pizza, Whole Kernel Corn, Lettuce & Tomato Salad, Rosy Apple Sauce
- Tuesday, 19**
Chicken Fried Steak w/ Gravy, Creamed Potatoes, English Peas, Hot Rolls, Chocolate Pudding
- Wednesday, 20**
Soft Tacos w/ Cheese, Spanish Rice, Lettuce & Tomato Salad, Peaches, Cowboy Cookies
- Thursday, 21**
Hot Dogs, Fritos, Pinto Beans, Mixed Fruit, Rice Krispie Treats
- Friday, 22**
Hamburger, French Fries, Lettuce, Tomato, Pickles, Orange Halves
- Breakfast**
½ pt. Milk & 4 oz. Juice offered w/each meal
- Monday, 18**
Pan Cake on a Stick, Syrup, Peach Cups, Orange Juice
- Tuesday, 19**
Cinnamon Toast, Cereal, Apple Juice, Milk
- Wednesday, 20**
Waffles w/ Syrup, Pineapple Tidbits, Choice of Juice, Milk
- Thursday, 21**
Blueberry Muffins, Cold Cereal, Apple Sauce, Orange Juice, Milk
- Friday, 22**
Buttered Rice, Toast w/ Jelly, Apple Juice, Milk
- Fast Food Line**
- Monday, 18**
Hamburger, French Fries, Lettuce, Tomato, Pickles, Rosy Apple Sauce
- Tuesday, 19**
Steak Fingers, French Fries, Hot Rolls, Chocolate Pudding
- Wednesday, 20**
Chef Salad w/ Ham & Cheese, Crackers, Peaches, Cowboy Cookies
- Thursday, 21**
Long John Green Fish Basket, Fish Stix w/ Hot Rolls, French Fries, Pinto Beans, Mixed Fruit, Rice Krispie Treats
- Friday, 22**
Hamburger, French Fries, Lettuce, Tomato, Pickles, Orange Halves

Meals for Friends Menu



- Monday, August 18**
Meatloaf w/ Tomato Gravy, Black-eyed Peas, Honey Glazed Carrots, Cornbread, Melon Salad, Milk
- Tuesday August 19**
Polynesian Chicken Salad, Sweet Peas, Wheat Bread, Golden Salad, Vanilla Pudding, Milk
- Wednesday, August 20**
Steak Fingers w/ Cream Gravy, Whipped Potatoes, Steamed Broccoli, Dinner Roll, Peach Cobbler, Milk
- Thursday, August 21**
Oven Baked Pork Chops, Zucchini/ Yellow Squash Medley, Corn w/ Red Peppers, Wheat Roll, Tossed Salad, Fresh Fruit Parfait, Milk
- Friday, August 22**
Fried Catfish w/ Tartar Sauce, Hominy, Okra and Tomato Gumbo, Dinner Rolls, Apple Crisp, Milk

Have you tried everything and it didn't work?

**GLYCONUTRIENTS are The Healing Sugars
It's only food. No drugs.**

Just come and listen.
You have everything to gain.

**MONDAY
August 18, 2003
6:30 PM
Choice Homecare, Inc.
106 W. Murchison
Eldorado, Texas 76936
325-853-3505
glycoscience.com**

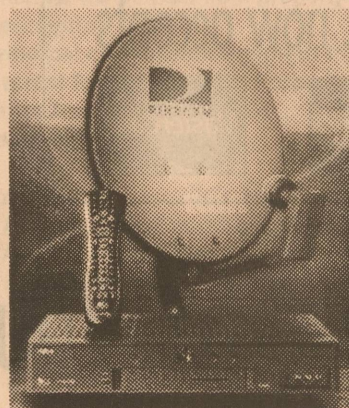


UPSET OVER SKYROCKETING CABLE TV BILLS?

A DirecTV® satellite system is only

\$29 +tax
Single Receiver System

What are you waiting for?



All new subscribers* to DirecTV® can receive one FREE MONTH of Total Choice Premiere® programming package which includes 185 crystal clear digital channels. Also, free basic installation for a single system.

*New subscribers must commit to one year of basic programming to qualify for offer.

**Jerry's TV Service
853-2314**

Fire Dept. to upgrade equipment with FEMA grant

The Eldorado Volunteer Fire Department received word this week from the Federal Emergency Management Agency (FEMA) that \$60,732.00 in grant funds will soon be coming to the department. The money will be used to upgrade its self-contained breathing apparatus (SCBA) units.

The grant funds actually originated with the U.S. Homeland Security Dept. and will be channeled through FEMA. The local fire department will be responsible for matching 10 percent of the

amount.

Fire Chief Jerry Jones said his firefighters appreciate the help. "We will use these funds to purchase a compressor, air packs, and new bottles for our SCBAs," Jones said. "We need this equipment to increase our training capability and for use at any fire or hazardous material spill where SCBAs are needed by our responders."

The Eldorado VFD, which serves all of Schleicher County will pay the \$6,073.00 in matching funds out of the department's

treasury with money raised through local fundraisers and donations.

FEMA's Assistance to Firefighters Grant program awards one-year grants to local fire departments that demonstrate financial need and state how they would use any funds they receive. The grants are intended to supplement a fire department's current budget, rather than replace it. Nearly 2,000 fire departments have received \$125 million in federal grants through FEMA and the Homeland Security

Department in the past eight weeks.

The local department is currently taking bids for a breathing air compressor, 15 air packs and 15 air bottles for the packs. The air packs will also include a device known as a "pass alert." The alert sounds and alarm anytime a firefighter becomes inactive thereby assisting fellow firefighters in locating the individual, who may be unconscious, trapped in burning building, or otherwise in need of assistance.



PHOTO BY KATHY MANKIN

Old technology — Firefighter Luiz Martinez displays the Fire Department's cascade system that is currently used to fill breathing air bottles. The system will be upgraded with a \$60,732 grant from FEMA.

Guadalupe river, summer fun for everyone

CONTINUED FROM PAGE 5

here complaining about having to paddle. You'll have to paddle."

The Bergheim Campground was at the base of the bridge on Farm Road 3351. They have canoes (\$25 plus shuttle fee), kayaks (\$20 plus shuttle), and two kinds of tubes — with a bottom (a cinched-down piece of plastic to sit on) \$9, or without bottoms, \$8. Shuttle included. We got two bottomed tubes and one without.

The flow was just fine early, paddle-free. The Guadalupe was not too cool; in fact, it was just about perfect. We floated placidly under those incredible cypresses as well as the occasional oak, elm, pecan, cottonwood and many others. But cypresses, some with trunks to so big you'd have to rest trying to run around them, dominate.

Until late-June, early-July 2002, there were probably a lot more trees to see. That's when relentless summer rains flooded all Hill Country rivers, rising them to impossible heights. Debris — big dead trees, clothing, tents, tires — has been wedged 30 and 40 feet above the Guadalupe. One place in the river that was normally two feet deep was measured to be 43.75-feet deep. The evidence of the amount of water that must've flowed through here is simply mind-boggling.

Lots of trees couldn't survive the rampaging waters. Even many Treebeard-esque cypresses were washed away.

Sometimes you just hop off your tube and float by it in the river. I myself simply can't float. I've tried all the tricks and it just never happens. Probably because the blood of the famous non-floating Scottish clan flows in me: the Drowning Campbells.

We came upon an occasional set of rapids. Nothing like *The River Wild* but enough to give the every-quarter-century visitor a thrill. The key for non-bottomed tubers — me, in this case — is to make sure you get your heinie high enough up when the water accelerates. Since the water is shallower, precautions must be taken. In advance. You learn that pretty quickly.

Sights along the river

Many people floated along in

our general vicinity. A group of teenage girls ahead of us announced the approach of every new stretch of rapids by squealing.

In some places, the river got deeper and wider and it was wonderful just to float slowly along and admire the Texas blue bells on the bank or see the sun through the towering trees. Turtles surfaced and small fish jumped clean out of the water.

The Guadalupe bass can be found only in this river. We asked an angler casting off a boulder if he had ever caught one. "Yes. They're a lot like a smallmouth." What did it taste like? "They taste good except it's against the law to eat them."

In the deepest of spots, the river crept along and actually we had to paddle! I couldn't believe it!

You can never tell how far you've been on a river. It bends and weaves, flows and slows. At some rapids, the water was too shallow and your tube would bottom out. Since the water wasn't too swift — with rare exception — you could stand up and maneuver yourself into a better place.

We came upon Class II water at the Rockpile rapids at 2.5 miles. (The lady who took our money back at the campground tried to point this spot out on her map, but through years of using her fingernail, she'd worn a hole in it. [The map, not her fingernail.] These rapids were the best yet, but a greater thrill awaited.

A waterfall splashed down into the river and, like everyone else before and after us, we de-tubed to check it out. It's best to walk right up the limestone where the water flows between cypresses. The rock has been so heavily trod that it's not slick. The water is cold; it was definitely a spring.

We tracked the spring up into a field where we interrupted an armadillo on his endless search for a meal. Be careful coming back down the falls — there's a hole in the midst of the waterfall that's about calf-deep and just big enough for your foot. The ankle-snapping potential is great.

As you tube, it's a good idea to always be looking behind you as snooty canoeists and hottsie-tottsie kayakers are always bearing down on you, smirking.

Class II No. 2

The second Class II rapids arrive near the end of the float. It's really a small waterfall. This was the only time I was ahead of everyone. I was on my stomach; you can only float on a tube so many ways and, since my legs were cooking like everyone else's, I had turned over.

These rapids went left and right on either side of a gigantic boulder. I chose the path to the right and figured I could manage the rapids on my stomach. I was wrong.

Too late I saw there was a substantial drop here, about three feet. The water churned white below before roaring away. I and my tube went over. I was unceremoniously dumped head first into the water and separated from what up until then had been up a very trusty floatation device.

If you've never been in the grip of rapidly flowing water, you don't know what it's like to have no control over your body. I had zero control. The water bashed me against rocks of many sizes as it hurtled my 200-pound tumbling body downstream.

I finally overcame the power of the water and managed to stand up but had to lean forward — hard — against the flow to do so. Miraculously, my trusty Tilley hat and prescription sunglasses stayed on my head. My tube was dallying back in the churning waters of the backwash. I finally got it.

I wasn't the only one who had an adventure here. My daughter's shorts and shoes, tied together, were snatched off a tube and sucked under a large dead tree farther off to the right. The shorts went first; the flip-flops attached to the shorts, like the barrels in *Jaws*, tried to stay afloat but could not. The river spit them both back out five minutes later.

The end

Our 3-4 hour trip took over five hours. Arm paddling was necessary. By the time we saw our take-out spot, we were ready to get out of the river. We had been in it since 11:30 a.m. and it was almost 5 p.m. You can only eat so much string cheese and bite-sized Snickers. We hadn't had a meal since breakfast.

That problem is easily remedied. Veteran tubers know to buy

an extra tube for a non-Styrofoam cooler that can hold a variety of food and drink. Several groups had such a tube. We had a soft cooler bag that we just tied off to one of our tubes. A bigger cooler with its own tube is certainly the way to go.

We all squeezed into a ratty van to make the trip back to the Christian Campground Run By Christians. By land it was only just a few minutes away, always a weird feeling when you think you've traveled so long and far on the water.

You don't forget a day on the river. It's a great family activity (if the drunks aren't too prevalent; most of them are closer to New Braunfels). Buy a waterproof camera.

Summertime, cool water, shady trees, and a river. Very *Huck Finn*-y. And very nice, especially on a broiling August day.

TEXAS TUMBLEWEEDS GYMNASTICS SCHOOL

IN ELDORADO

**Beginners thru Advanced Tumbling
Boys and Girls- Ages 3 and Up!**

Classes Start
Tuesday, August 19
Memorial Building
Special Start-Up Offer
August Lesson & Registration Fee \$45.00
Regular price is \$40.00 a month
\$25.00 onetime registration fee.
Sign up now and save!
Registration Form available at Eldorado Success
To reserve your spot or for more information call
**Landa Knight
325-650-6401**

2003 PROPERTY TAX RATES IN SCHLEICHER CO. GENERAL

THIS NOTICE CONCERNS 2003 PROPERTY TAX RATES FOR SCHLEICHER CO. GEN. IT PRESENTS INFORMATION ABOUT THREE TAX RATES. LAST YEAR'S TAX RATE IS THE ACTUAL RATE THE TAXING UNIT USED TO DETERMINE PROPERTY TAXES LAST YEAR. THIS YEAR'S EFFECTIVE RATE WOULD IMPOSE THE SAME TOTAL TAXES AS LAST YEAR IF YOU COMPARE PROPERTIES TAXED IN BOTH YEARS. THIS YEAR'S ROLLBACK TAX RATE IS THE HIGHEST TAX RATE THE TAXING UNIT CAN SET BEFORE TAXPAYER'S CAN START TAX ROLLBACK PROCEDURES. IN EACH CASE THESE RATES ARE FOUND BY DIVIDING THE TOTAL AMOUNT OF TAXES BY THE TAX BASE (THE TOTAL VALUE OF TAXABLE PROPERTY) WITH ADJUSTMENTS AS REQUIRED BY STATE LAW. THE RATES ARE GIVEN PER \$100 OF PROPERTY VALUE.

LAST YEAR'S TAX RATE:	GENERAL FUND	FARM/MARKET FUND
LAST YEAR'S OPERATING TAXES	\$1,246,253.00	\$234,337.00
LAST YEAR'S DEBT TAXES	\$0.00	\$0.00
LAST YEAR'S TOTAL TAXES	\$1,246,253.00	\$234,337.00
LAST YEAR'S TAX BASE	\$208,752,175	\$207,376,675
LAST YEAR'S TOTAL TAX RATE	\$0.5970/\$100	\$0.1130/\$100
THIS YEAR'S EFFECTIVE TAX RATE:		
LAST YEAR'S ADJUSTED TAXES (AFTER SUBTRACTING TAXES ON LOST PROPERTY)	\$1,245,178.06	\$234,090.30
/ THIS YEAR'S ADJUSTED TAX BASE (AFTER SUBTRACTING VALUE OF NEW PROPERTY)	\$205,749,968	\$204,412,858
= THIS YEAR'S EFFECTIVE TAX RATE	\$0.6051/\$100	\$0.1145/\$100
Total Effective Tax Rate	\$0.7196/\$100	
X 1.03=MAXIMUM RATE UNLESS UNIT PUBLISHES NOTICES AND HOLDS HEARING	\$0.7412/&100	
THIS YEAR'S ROLLBACK TAX RATE:		
LAST YEAR'S ADJUSTED OPERATING TAXES (AFTER SUBTRACTING TAXES ON LOST PROPERTY AND INCLUDING TAXES FOR STATE CRIMINAL JUSTICE MANDATE)	\$1,245,178.06	\$234,090.30
/ THIS YEAR'S ADJUSTED TAX BASE	\$205,749,968	\$204,412,858
= THIS YEAR'S EFFECTIVE OPERATING RATE	\$0.6051/\$100	\$0.1145/\$100
X 1.08 = THIS YEAR'S MAXIMUM OPERATING RATE	\$0.6535/\$100	\$0.1236/\$100
+ THIS YEAR'S DEBT RATE	\$0.0207/\$100	\$0.0000/\$100
= THIS YEAR'S ROLLBACK RATE FOR EACH FUND	\$0.6742/\$100	\$0.1236/\$100
THIS YEAR'S TOTAL ROLLBACK RATE	\$0.7978/\$100	
- SALES TAX ADJUSTMENT RATE	\$0.0442/\$100	
= ROLL BACK TAX RATE	\$0.7536/\$100	

STATEMENT OF INCREASE/DECREASE

If Schleicher County adopts a 2003 tax rate equal to the effective tax rate of \$0.7196 per \$100 of value, taxes would increase compared to 2002 taxes by \$1,954.00.

Schedule A

Unencumbered Fund Balances

The following estimated balances will be left in the unit's property tax accounts at the end of the fiscal year. These balances are not encumbered by a corresponding debt obligation

Type of Property Tax Fund	Balance
General Fund	\$410,000.00
Farm/Market	\$ 5,000.00

Schedule B

2003 Debt Service

The unit plans to pay the following amounts for long-term debts that are secured by property taxes. These amounts will be paid from property tax revenues (or additional sales tax revenues, if applicable).

Description of Debt

Principal or Contract Payment to be Paid from Property Taxes	\$30,000.00
Interest to be Paid from Property Taxes	\$11,480.00
Other Amounts to be Paid	\$ -0-
Total Payment	\$41,480.00

Total Required for 2003 debt service

- Amount (if any) paid from funds listed in Schedule A	\$ -0-
- Amount (if any) paid from other resources	\$ -0-
- Excess collections last year	\$ -0-
= Total to be paid from taxes in 2003	\$40,236.00
+ Amount added in anticipation that the unit will collect only 97% of its taxes in 2003	\$ 1,244.00
= Total Debt Levy	\$41,480.00

Schedule C

Expected Revenue from Additional Sales Tax

In calculating the effective and rollback tax rates, the unit estimated that it will receive \$91,287.85 in additional sales and use tax revenues. For County: The county has excluded any amount that is or will be distributed for economic development grants from this amount of expected sales tax revenue.

This notice contains a summary of actual effective and rollback tax rates' calculations. You can inspect a copy of the full calculations at County Judge Office or County Tax Office. Name of person preparing this notice Lou Ann Turner Title Tax Assessor-Collector Date prepared 8-8-03

RESOLUTION

OF THE CITY COUNCIL OF ELDORADO, TEXAS AUTHORIZING A CHANGE OF NAME FOR A STREET WITHIN THE CITY LIMITS OF ELDORADO, TEXAS:

WHEREAS on September 14, 1986, the City Council formally accepted a re-plat of Blocks 120, 121, 124 and 125 of the Original Townsite of Eldorado, Texas, and the street accepted by the City of Eldorado and dedicated to the public was designated "Western Drive" as requested by the owners J.P. Enochs and W.L. Kinser (aka Enochs & Kinser partnership). The lots were established for residential use by Western Company employees. Both the partnership of Enochs & Kinser and the company known as Western Company no longer exist;

WHEREAS the current owners of the addition have petitioned the City Council of Eldorado to change the name of the street and subdivision:

WHEREAS the property is situated on the eastern side of Eldorado rather than the western side of Eldorado, as the name may imply to those persons not familiar with the history of the property;

WHEREAS the City Council deems such a request to be appropriate given the circumstances and within the scope of authority of the City Council;

THEREFORE, BE IT RESOLVED BY THE CITY COUNCIL OF THE CITY OF ELDORADO, that the addition be officially designated as SUNRISE ACRES and the street known as SUNRISE from the date forward.

PASSED AND APPROVED this 7th day of July, 2003

Officials urge public to be aware and be safe around honey bees

CONTINUED FROM PAGE 1

Not the First Bee Attack

The attack that claimed Bobby Daniels' life last Friday was the first Schleicher County fatality to be attributed, if even indirectly, to honey bees since the aggressive strain of Africanized bees first arrived here. It was not, however, the first attack on a human. Numbers of area residents have reported being swarmed while mowing their lawns or working with other loud machinery. Some have even required hospitalization, but none, until now, have resulted in death.

One such attack was suffered by Leonard Lloyd, and under circumstances very similar to this week's tragedy. Lloyd was also swarmed by bees while clearing brush in the western part of the county. He managed to escape and seek medical attention.

An Ounce of Prevention

The best way to avoid bee stings is to prevent them from nesting in or around your home. The following ideas may help.

- Make a "bee patrol" around your home once or twice a week during swarming season usually in the spring and fall. Listen for the

sound of bees in the air. Persistent buzzing may mean a hive or swarm is nearby.

- "Bee-proof" your home by filling in potential nesting sites such as tree cavities and holes in outside walls. Put screens on the tops of rain spouts and over water meter boxes in the ground. Remove piles of trash and junk.

- If you discover a bee colony, don't disturb it. Find out who removes or destroys wild colonies in your area and report it to them. Try calling a pest control operator to see who removes bees.

- If attacked by Africanized honey bees, your best defense is to run away as fast as you can. Seek shelter immediately in a building, a car

or heavy brush.

- If you are stung many times, seek medical attention immediately.

- If you are allergic to bee stings, or think you might be, consult your physician immediately for the best precautions to take.

Mowing or Operating Other Machinery

Remember, bees don't like noise or vibration. So, keep the following points in mind.

- Vibration and exhaust from mowers and other equipment can disturb the bee-

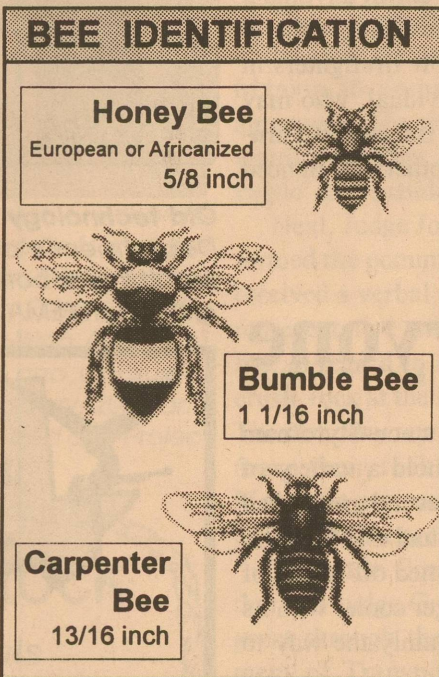
hive, and bees will respond by attacking.

- Check the area carefully for bees and hives before starting motorized mowers, weed choppers or chainsaws.

- Be aware of culverts or drainage pipes that may be harboring a colony, and junk piles of dense shrubbery that may be shielding a hive from sight.

- Don't allow grass clippings to be propelled into suspect areas.

- Have an emergency plan. Know where you will run for cover if attacked.



While At Play

Children, especially young children, need to be taught the following points.

- Watch and listen for bees.
- Avoid beehives and bee traps hanging in trees.

- Bees nest in hidden places. Don't play near old buildings or junk piles.

- If you notice numbers of bees flying around your home, contact authorities.

- If bees start flying around you, run away. Don't swat them—it will only make more bees want to sting you. And don't "freeze" in place—you will still get stung if you do.

- If bees attack, don't try to escape by jumping into a swimming pool or pond. The bees likely will be waiting for you when you come up for air.

Protect Confined Animals

Animals, especially those caged or penned, are at risk in a bee attack.

- Check carefully for bees in

pens or barns where animals are confined. Regularly check areas where pets are kept on leashes or in small fenced yards or pens.

- Call authorities to remove nests or swarms.

- If bees are disturbed and begin stinging, open gates and cover animals, if possible. Move animals to safe distance.

- Animals stung repeatedly should be seen by a veterinarian. First aid is the same as for humans.

- Watch for allergic reaction, such as pinpoint pupils, shaking and vomiting.

Know the Facts

- Africanized and domestic honey bees look the same, so stay away from all bees.

- Africanized bees will build a

nest almost anywhere.

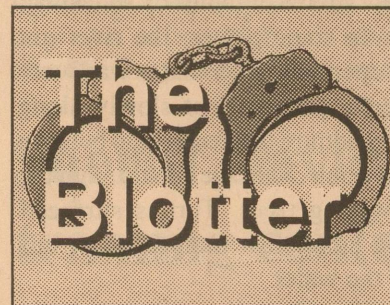
- If you know of any wild bee nests, have the nest removed.

- Africanized bees defend a wide area around their home, so you may not even see the hive before bees start buzzing around you.

- Large numbers of Africanized bees are likely to sting when they sense someone is too near their nest.

- If you get stung or hear bees buzzing, run away fast and get inside a house or car. If there is no shelter, run through bushes or high weeds.

- A honey bee will leave its stinger in your skin if it stings you. Get the stinger out by raking your fingernail across it. Don't pinch or pull the stinger out. Put ice on a sting to reduce the swelling.



The Blotter is a summary of the previous week's activity by the Schleicher County Sheriff's Dept. For practical reasons of time and space, The Blotter does not include every call made to the Sheriff's office, nor does it include routine security checks, minor traffic stops or routine patrols. Incidents of major impact will be reported separately. Subjects reported to have been arrested are presumed innocent until proven guilty in a court of law.

ARRESTS

August 6 • Martinez, Timothy Ross, male age 18, offense Motion To Revoke (Criminal Trespass of Habitation). Released on \$2,500 Surety Bond.

August 8 • Holsey, Michael Brandon, male age 19, offense Public Intoxication/Minor In Possession. Released on citation.

August 11 • Rodriguez, Mary Sylvia, female age 42. Serving 2 1/2 days.

INCIDENT REPORTS

August 6 • 11:41 a.m. Complainant on Hwy. 190 East requested an ambulance for wife. EMS 2 and officer responded.

12:10 p.m. Complainant on FM Road 2596 requested an ambulance. EMS and officer responded.

12:49 P.M. Female complainant requested an officer to their residence at apartment.

idence at apartment.

2:12 p.m. Hospital requested an ambulance for a ACLS transfer. EMS 1 responded.

August 7 • 9:27 p.m. Complainant reported a domestic disturbance on E. Fields. Officers responded and unable to locate subject.

August 8 • 11:16 a.m. Complainant on N. Divide reported some items taken from their truck. Officer responded.

11:22 a.m. Complainant reported that someone had taken an envelope out of their car at grocery store. Envelope contained \$140.00 cash. Officer responded.

12:21 p.m. Complainant reported that their tan purse had been stolen out of their vehicle. Total cash taken \$150.00 and numerous credit card. Officer responded.

6:30 p.m. Complainant requested an officer for assistance on searching for a male subject who had been missing for several hours. 7:22 officers requested an ambulance. Four officers, EMS and Justice of Peace responded.

August 9 • 1:39 p.m. Complainant reported a missing bicycle on FM 2596. Bike is a Glacier Point 3 speed women bike. Metallic Blue. Estimated value \$120.00.

no time Complainant requested to speak to an officer about phone harassment.

9:50 p.m. Complainant reported a reckless driver in a red Pontiac Grand Am traveling South on North Hwy. 277. Officer responded and vehicle located.

August 10 • 2:16 a.m. Hospital requested an ambulance for a basic transfer to San Angelo. EMS 1 responded.

7:30 p.m. Complainant called to report having a controlled burn on Depot Street.

August 11 • 9:12 a.m. Complainant reported a large bee hive at their residence on E. Warner. Fire Department notified.

6:35 p.m. Complainant called 911 to report a burglary on Village Lane. Officer responded and found everything OK.

10:20 p.m. Complainant at convenience store reported possible minors drinking. Officer responded.

August 12 • 9:42 a.m. Complainant on FM 2596 requested an ambulance for an elderly patient. EMS 2 responded.

11:05 a.m. Complainant reported losing their black Tommy Hilfiger purse.

1:18 p.m. Complainant on E. Dorris requested an ambulance for a 77 year old man. Two officers and EMS 2 responded.

1:35 p.m. Complainant reported losing their black Motorola flip top cell phone. Valued at \$250.00.

3:39 p.m. Hospital requested an ambulance for a basic transfer. EMS 1 responded.

8:58 p.m. Complainant reported a stranded motorist 1/2 mile out on Hwy. 277 North. Officer responded.

SECOND TRY HOME FINANCE
NOT HAVING ANY LUCK?!
 Have you been turned down too many times? WELL, SECOND TRY HOME FINANCE can help; we offer Home Mortgage Loans, Consolidation Loans, Personal Loans, and Small Business Loans.
1-877-817-3059

2003 PROPERTY TAX RATES IN CITY OF ELDORADO

THIS NOTICE CONCERNS 2003 PROPERTY TAX RATES FOR THE CITY OF ELDORADO. IT PRESENTS INFORMATION ABOUT THREE TAX RATES. LAST YEAR'S TAX RATE IS THE ACTUAL RATE THE TAXING UNIT USED TO DETERMINE PROPERTY TAXES LAST YEAR. THIS YEAR'S EFFECTIVE RATE WOULD IMPOSE THE SAME TOTAL TAXES AS LAST YEAR IF YOU COMPARE PROPERTIES TAXED IN BOTH YEARS. THIS YEAR'S ROLLBACK TAX RATE IS THE HIGHEST TAX RATE THE TAXING UNIT CAN SET BEFORE TAXPAYER'S CAN START TAX ROLLBACK PROCEDURES. IN EACH CASE THESE RATES ARE FOUND BY DIVIDING THE TOTAL AMOUNT OF TAXES BY THE TAX BASE (THE TOTAL VALUE OF TAXABLE PROPERTY) WITH ADJUSTMENTS AS REQUIRED BY STATE LAW, THE RATES ARE GIVEN PER \$100 OF PROPERTY VALUE.

LAST YEAR'S TAX RATE:

LAST YEAR'S OPERATING TAX	\$125,149.59
LAST YEAR'S DEBT TAXES	\$ 77,718.17
LAST YEAR'S TOTAL TAXES	\$202,867.75
LAST YEAR'S TAX BASE	\$23,118,755
LAST YEAR'S TOTAL TAX RATE	\$0.8775/\$100

THIS YEAR'S EFFECTIVE TAX RATE:

LAST YEAR'S ADJUSTED TAXES (AFTER SUBTRACTING TAXES ON LOST PROPERTY)	\$202,764.32
/ THIS YEAR'S ADJUSTED TAX BASE (AFTER SUBTRACTING VALUE OF NEW PROPERTY)	\$22,564,230
= THIS YEAR'S EFFECTIVE TAX RATE	\$0.8986/\$100
x 1.03=MAXIMUM RATE UNLESS UNIT PUBLISHES NOTICES AND HOLDS HEARING	\$0.9256/\$100

THIS YEAR'S ROLLBACK TAX RATE:

LAST YEAR'S ADJUSTED OPERATING TAXES (AFTER SUBTRACTING TAXES ON LOST PROPERTY AND ADJUSTING FOR TRANSFERRED FUNCTION, TAX INCREMENT FINANCING, AND /OR ENHANCED INDIGENT HEALTH CARE EXPENDITURES	\$125,078.43
/ THIS YEAR'S ADJUSTED TAX BASE	\$22,567,230
= THIS YEAR'S EFFECTIVE OPERATING RATE	\$0.5543/\$100
X 1.08 = THIS YEAR'S MAXIMUM OPERATING RATE	\$0.5986/\$100
+ THIS YEAR'S DEBT RATE	\$0.3498/\$100
= THIS YEAR'S ROLLBACK RATE	\$0.9484/\$100

Statement of Increase/Decrease

If the City of Eldorado adopts a 2003 tax rate equal to the effective rate of **\$0.8986** per \$100 of value, the total levy for the City of Eldorado would increase compared to the 2002 tax levy by **\$1,670.59**.

Schedule A

Unencumbered Fund Balances

The following estimated balances will be left in the unit's property tax accounts at the end of the fiscal year. These balances are not encumbered by a corresponding debt obligation

Type of Property Tax Fund	Balance
General Fund	\$ 957.35
Interest & Sinking Fund	-0-

Schedule B

2003 Debt Service

The unit plans to pay the following amounts for long-term debts that are secured by property taxes. These amounts will be paid from property tax revenues (or additional sales tax revenues, if applicable).

Description of Debt	Principal or Contract Payment to be Paid from Property Taxes	Interest to be Paid From Property Taxes	Other Amounts to be Paid	Total Payment
1994 Certificate of Obligation	\$10,000.00	\$ 4,316.25	\$-0-	\$ 14,316.25
1999 Tax Anticipation Notes	\$55,000.00	\$ 9,125.00	\$-0-	\$ 62,125.00
Total required for 2003 debt service			\$76,441.25	
- Amount (if any) paid from funds listed in Schedule A			\$-0-	
- Amount (if any) paid from other resources			\$-0-	
- Excess collections last year			\$-0-	
= Total to be paid from taxes in 2003			\$76,441.25	
+ Amount added in anticipation that the unit will collect only .96% of its taxes in 2003			\$ 3,185.00	
= Total Debt Levy			\$79,626.31	

This notice contains a summary of actual effective and rollback tax rates' calculations. you can inspect a copy of the full calculations at The Schleicher County Appraisal District or The City Hall. Name of person preparing this notice Scott Sutton.

Community Action Council due here today

The Community Action Council (C.A.C.) will be at the Resource Center on August. 14, from 11:00 a.m. to 3:00 p.m. We can help clients with electric bills that have the last half of June and the first half of July on their bill as the service period.

Elderly Clients can be helped if they have not been helped under the elderly part of program this year.

If clients have already been helped this year they need to bring both pages of the electric bill. If a client has not been helped this year, please go by the Resource Center to get a list of information that is needed.

This is a program that helps low-income families that qualify according to income guidelines. There is an income guideline posted at the Resource Center. Call Patsy at 853-2574 for further information.

DIABETICS
 Tired of jumping through hoops to get your diabetic supplies?
 Have your diabetic supplies delivered to your door for little or no cost! Medicare and private insurance welcome (sorry, HMO's not accepted).
 Call Priority Medical Supply, LLC
 "Your complete satisfaction is our Priority."
 Toll Free: 1-866-660-1718

TEXAS THE BIG PICTURE
 NOW PLAYING
 only in Austin at the Bob Bullock Texas State History Museum's IMAX Theatre
 Call (866) 389-7108 for tickets
 Major Sponsors: SOUTHWEST AIRLINES, ExxonMobil
 www.texasbigpicture.com

HUDSON LIVESTOCK SUPPLEMENTS INCORPORATED
 ✓ All Natural Protein, No Urea
 ✓ Easy to Feed/ Less Labor
 ✓ No Salt or Fillers
 ✓ Enhanced Condition Storage
 ✓ Improved Reproduction
 ✓ Heavier Weaning Weights

Matt Brown
 853-2496 or 650-6235

SureFed
 Now handling a full line of SureFed Feeds

Featuring N-Timidator® THE ORIGINAL and still the best!
 Goat Feed and Supplement

Business Cards and Self-Inking Stamps on sale now at THE SUCCESS
 204 SW Main Street
 853-3125

WEST TEXAS CLASSIFIED Ad NETWORK

CLASSIFIED ADS

- ✦ EL DORADO
- ✦ SONORA
- ✦ OZONA
- ✦ BIG LAKE

Place your non-commercial classified ad in the Eldorado Success, Devil's River News, Ozona Stockman and the Big Lake Wildcat for one low, low price. Call today for details!

853-3125

PIT BAR-BE-CUE Thursday

10:00 a.m.-8:00 p.m.
1002 South West Main
Eldorado, TX 853-2788

Card of Thanks

Thanks to Eldorado Vol. Fire Dept. for their quick response putting out the grass fire on our place last Sunday afternoon.
Sherry & Jimmy Martin

Miscellaneous

ELDORADO-For Lease: Local Convenience Store. Call 450-4620.33-34p

For Sale: Silver Gemeinhart Flute good as new. Has been professionally cleaned and has all new pads. \$300.00 Call Charissa at 853-2173.33b

For Sale: Heavy Duty Kenmore washer \$75, Call 853-3362.33p

For Sale:1994 Isuzu Rodeo LS4D - Great condition, power everything, CD player, (new tires, < 400 miles) \$3,700 Call 853-3273 or 277-4571. 2930.33b

Seeking Vendors for Antiques Etc., a new market at Christoval. Please call 255-2309 or 656-9535. 33b

Employment

TEXACO STAR STOP #5
EXCEPTING APPLICATIONS
FOR MORNING AND EVENING SHIFTS.
Apply in person.
equal opportunity employer

EXPERIENCED DRIVERS WANTED
Must have current Class A CDL and a good driving record. Experience driving transports, vacuum trucks, operating pump trucks & winch truck.

- Competitive salary
- Major medical & life insurance
- Simple IRA retirement program
- Days off schedule
- Paid Vacation & holidays
- Monthly performance & safety bonuses.

Please apply in person Niblett's Oilfield Service, Inc. Hwy. 277 South, Eldorado. No phone calls please. 97in

Manufactured Homes

Solitaire Home
New Solitaire Double-Wide, 3 Br. 2 Bath, Under \$44,000. 2" x 6" Exterior Walls 1/2" Sheet Rock, Textured Walls & Ceilings, Wood Cabinets. Enduring Quality for timeless Value. Call 657-000.30-33p

ELDORADO-For Sale: 16 X 80 mobile home. Large fenced yard, carport, storage building, new metal roof. Near school. Call 853-2459 or 277-6354. 33-36b

Real Estate

ELDORADO- HOUSE FOR RENT- 306 Larado Street-3 Bedroom, 1 Bath. Fenced yard, refrigerator and stove, washer hookup. 1-830-896-4295.32-35p

ELDORADO-For Sale-Nice, Modern Home. Two bedroom, two baths, large walk-in closet in master bedroom. Corner white brick fireplace in large living room, dining room and kitchen area. Beautiful wood cabinets and butcher block top bar in kitchen. Corner lot, established yard. Call 853-3181.32-35b

ELDORADO-House for sale: Large lots, 4 bedroom and 2 bath. Excellent for large family. 510 North Main. Please call and make offer. 979-690-0541. 33 eow.p

For Sale: Large Lot at 104 Honeysuckle St., Eldorado. Excellent building site. Established Liveoak, Ted Oak and Pecan trees. Asking \$6,000.00 serious offers considered. Call Rick Sterling 853-2932 or 224-3629.30-33p

ELDORADO- For Sale- 3 bdrm, 2 bath home on 10 acres - fenced landscaped yard, carport, barn, pens, storage buildings, pecan and fruit tree orchard w/ sprinkler system, cleared field, stock tank and water well. Call 325-853-1400.32-35P

GARAGE SALES, YARD SALES & BAKE SALES

ELDORADO-RUMMAGE SALE benefiting the **ELDORADO SCOUT BUILDING FUND**-Friday, August 15, 8a.m.-12 noon, Saturday, August 16, 8 am-12 noon. Sales held at the Scout building (old Episcopal Church, by golf course.) 33b

BlueRecliner, Maple Double Bed, Double Mattress & Box Springs. Mahogany dining table, 3 piece livingroom set, 5 couches, dining tables, 5 antique oak high back chairs, lots more. Great selection Plus Sizes and back to school clothing. **CONSIGNORS MUST CALL AHEAD BEFORE BRINGING IN CLOTHING AND/OR FURNITURE all must be in good condition.** Second Hand Rose, Eldorado 853-3736.

Notice to Parents

School Children that need a ride to school and / or back home can ride the Thunderbird Van. Parents must go to the Resource Center to register and pay in advance for each child. No child will be picked up until they have been properly registered. For more information call 853-2574

NOTICE OF JOB OPENING

The City of Eldorado is accepting applications for a full-time position in the Public Works Department. Applicants must be High School graduates and hold a valid Commerical Driver's License. Salary shall be commensurate with experience and ability. The Benefits Package includes group health insurance and retirement benefits. Application forms may be obtained and returned to the City Hall during regular office hours.32TFN

EMPLOYMENT OPPORTUNITY

Now Accepting Applications For:
Registered Nurse
Impressive Benefits
24-hour Employee Day-Care
State-of-the-Art Equipment
Numerous Education Opportunities
Flexible Schedule
Competitive Salary
Highly Skilled Team
Current Texas Nursing License
Required EOE
If Interested Please Contact:
Rebecca L. Silva BSN, RN-C
Director of Nursing
Schleicher County Medical Center
(325) 853-2507

Lynn Meador Real Estate

5 N. Divide Lynn Meador, Broker • Jo Ward, Agent/ 915-853-2339
★ **HOMES/LOTS: NEW LISTING-205 Dixie** 3BR/2BA, Frame Home, Carpet, Evap. A/C, Panel Heat, Fenced Yard. Additional lot included. In good condition. \$35,000.
★ Large and very attractive 4 bedroom 2 1/2 bath brick home. Hardwood floors, fireplace, lots of storage, central heat/air and storage barn. These are just a few of many features. Call for details. \$145,000.
★ Large 4/BR - 3/BA home on two large city lots. Fenced yard, large storage bldg/ shop. Near county park on West Ave. \$69,500.
★ •1 - 2 acre tracts in Edgfield Addition, City water available. Perfect for double wide locations. The 2 acre tract is priced at \$4,500. Call for details.
★ •2 lots Preston Heights Addition, restricted lots unimproved \$10,000.00.
COMMERCIAL: Intersection of Hwy 277 & 190 (Formerly Hayloft Liquor Store) Good location and visibility on 2 major highways. Improvements in good condition with large walk-in cooler. \$57,500.00.
Eldorado, Texas Call 325-853-2808

You are cordially invited to a **Patio Party** to welcome **Doctors**



Friday, August 15
7:00 p.m.

Patio- Schleicher Co. Medical Center
Hot Dogs and Hamburgers

The Eldorado Success is taking applications for a full time position. Seeking responsible individual to help with all facets of weekly newspaper production. Computer skills helpful. Salary commensurate with ability and experience. Apply in person only at The Eldorado Success, 204 S.W. Main Street, Eldorado, Texas.

Schleicher County Family Clinic is accepting applications for LVN. Hours are Mon. - Fri. 8:00 a.m.-5:00 p.m. Bilingual preferred. Must have good assessment skills, telephone etiquette, compassionate, self-motivated and flexible. Benefits include paid holidays, vacations, travel pay, insurance and child care available. Applications and/ or resumes may be sent to Cindy Daniels, R.N. Clinic Manager, at P.O. Box V, Eldorado, TX 76936 or hand delivered to 400 W. Murchison Highway, Eldorado, TX. Phone (325) 853-3137. Fax # (325) 853-3677.30-31p

Time for a second opinion?

Call today to schedule a no-cost, no-obligation portfolio review.

If it concerned your physical health, you'd most likely seek a second opinion. Isn't your fiscal health just as important? Do you have the right investments in place to meet the future's financial challenges? At Edward Jones, our business is helping people find solutions for their long-term financial goals.

Lee Appleberry
326 W. Twohig
San Angelo, TX 76903-6320
Bus 325-658-4233 Fax 888-835-0771
800-440-4236
Member SIPC

Edward Jones
Serving Individual Investors Since 1871

Shakspere FESTIVAL
★ ODESSA, TEXAS ★
FAMOUS GLOBE THEATRE
AUGUST 28 - SEPTEMBER 14
CALL 432-580-3177 FOR RESERVATIONS
ONLINE @ WWW.GLOBESW.ORG

Eldorado Spotlight



This week the Eldorado Spotlight shines on Amika Gonzalez, Jasmine Romero and Erica Buitron. Each of the girls participated during the "Girls for Courage Day" on Monday in the Memorial Building. The event was sponsored by the Schleicher County Child Welfare Board.

Call us for your insurance needs.

Mittel Insurance
853-2576

or come by our office at 119 SW Main Street ~ Eldorado

TEXAS STATEWIDE CLASSIFIED ADVERTISING NETWORK

TexSCAN

TexSCAN Week of
August 10, 2003

BUSINESS OPPORTUNITIES

CAPPUCCINO ITALIAN COFFEE company expanding. Distributors wanted. High profit potential. Anyone can do this. Expresso Italia, call 1-800-813-6625. Investment required.

FREE VIDEO REVEALS one of the hottest, most explosive growth franchise opportunities available today. To receive the video, call Island Inkjet's free recorded message: 1-250-704-2567.

DRIVERS WANTED

DRIVER - COMPANY & Owner/ops. Regional-home weekly. Pay for experience up to 31 cents/mile company, \$1.00/mile Owner/ops. 1-800-454-2887, Arnold Transportation.

DRIVER - COVENANT TRANSPORT. Teams, Teams, Teams. We need teams for the long haul. Owner/Operators, experienced drivers, solos, teams and graduate students. Call 1-888-MORE PAY (1-888-667-3729).

DRIVERS! LOOKING FOR stability? Great Miles. Respect. Friday paydays. In-cab e-mail. Family voice-mail. 2-hour processing. Class "A" CDL, 6 mo. OTR, 1-800-745-9670, www.continentalx.com

DRIVERS - NO EXPERIENCE? No problem. Low cost CDL training available. Meals, lodging and transportation provided, tuition reimbursement. \$1000 bonus. OTR, dedicated and regional freight. Swift Transportation, 1-800-231-5209.

DRIVERS - REGIONAL - 10 states (70%). Home weekly - \$600-\$800. OTR - start 32, 6 months experience with CDL/A. Owner/Operators - OTR. \$3 loaded and empty. Call Bob, National Freight, 1-800-666-0380.

DRIVERS - .36 A MILE! Mostly Midwest. Dry bulk, pneumatic trailer training provided. Require 2 years OTR, Class "A" CDL, no endorsements. (R-0)-821-3046, Ext. 1124, www.trucktiona.com

DRIVERS - WE HAVE what you need! Fleets to fit your needs and experience level. Top pay and benefits. Tuition reimbursement. CDL training available. Call: 1-866-333-8801, www.swifttrans.com

HEAVY HAUL DRIVERS, Owner/Operators. Drivers, 36 cents - 50 cents all miles, bonus, insurance, vacation. O/O's \$1.10/mile or 71%, you choose. Call Express Way, Inc., 1-800-835-9471.

OWNER/OPERATORS have your own truck? Looking for independence? Landstar has the tools/freight to make you successful. Let us show you. 1-888-875-7890, Landstar.

NOTICE: While most advertisers are reputable, we cannot guarantee products or services advertised. We urge readers to use caution and when in doubt, contact the Texas Attorney General at 1-800-621-0508 or the Federal Trade Commission at 1-877-FTC-HELP. The FTC web site is www.ftc.gov/bizop

FINANCIAL SERVICES

\$5CASH\$5 - IMMEDIATE CASH for structured settlements, annuities, real estate notes, private mortgage notes, accident cases, and insurance payouts. J. G. Wentworth, 1-800-794-7310.

NEED A LOAN? Try debt consolidation. Cut payments to 50%. Bad credit O.K. No application fees. 1-800-863-9006, Ext. 902, www.help-pay-bills.com

\$25,000 CASH GRANTS! All Texas residents can qualify. Use your money for school, business, personal bills, etc. Don't miss out. Call 1-800-363-5222, Ext. 014 - American Grant Services.

FOR SALE

FREE 2-ROOM DIRECTV System including installation! Used to cost over \$1,000.00 - now yours for FREE. Call 1-800-848-6511, or visit us online at www.I-Want-My-Free-Dish.com

FREE 3-ROOM DIRECTV System including installation! Subscribe to "NFL-Sunday Ticket" get 4 months FREE programming. Access 225+ TV channels. Digital quality picture/sound. Limited time offer. 1-800-264-3458.

WOLFF TANNING BEDS - Affordable - Convenient. Tan at home. Payments from \$25/month. FREE Color Catalog. Call today, 1-800-711-0158.

HELP WANTED

DISTRIBUTORS WANTED: Sales territories across TEXAS to sell and erect the Galaxy range of steel water tanks for rural, residential use. www.pionertank.com, 1-866-984-4040.

NO BOSS! NO COMMUTE! Learn to earn up to \$2,000-\$4,000 per week from home. Not MLM. Company training provided. Call Liberty League, 1-800-801-3465.

PET SUPPLIES

STAMP OUT ITCHAMACALLITS! Promote healing & hair growth on dogs & cats without steroids. Use Happy Jack Skin Balm (TM), ItchNoMore (R), and Tonekote (TM) at TSC Tractor Supply.

REAL ESTATE

FREE INFO! 20 to 50 acres. Heart of Hill Country. Gorgeous oaks, beautiful views. Excellent for horses. Starting at \$4,700/acre. Free call. Michaels/ Inland Management, 1-866-937-2624, Ext. 726.

ABSOLUTE STEAL! 5 Acres - \$19,900. Sacrifice price on beautiful North Texas hill country property. Perfect getaway, retirement or horse set-up. Access to 600 acre private park. Financing. Texas Land & Ranches. Call now, 1-866-516-4868.

COME TO COLORADO. 35-320 acres with electricity. 80 miles south of Pikes Peak region. River valley, tall cottonwoods, cool mountain air, from \$34,900. Owner financing. Call 1-866-630-7357, www.ghostrieveranch.com

NEW MEXICO MOUNTAINS. 140 Acres - Only \$49,900. Gorgeous grasslands, mature tree cover, 6,300' elevation. Mountain views, year-round roads. Perfect for horse lovers. Adjacent to national forest. Excellent financing. Call today. This won't last. SW Properties of NM, Inc., 1-866-350-5263.

TROPHY WHITETAIL 100 AC - \$39,900 (5 deer limit). 1st class Texas whitetail area. This 100 acres is an ideal habitat. Tree covered hills and draws. Private, but with good access. You'll love it! Will finance. Call Texas Land & Ranches, 1-866-899-5263.

RECREATIONAL HUNTING ELK HUNTS. Colorado - Guaranteed 100%. Estate type. Full service. All tags and licenses included. Cow - \$1495. Bulls SCI 250-299 - \$3900, Bulls SCI 300-329 - \$4900. September and October, 2003, 970-921-3234, www.BramlettBlackCanyonBulls.com

VACATIONS/TIME SHARES

TIME SHARE & CAMPGROUND rent or own dream vacations, great locations & prices, super deals in Mexico. Vacation Network Advertising Corp., 1-888-534-3800, www.vna1.com

Run Your Ad In TexSCAN!

Statewide Ad \$400
330 Newspapers, 1.3 Million Circulation
North Region Only \$175
115 Newspapers, 465,000 Circulation
South Region Only \$175
107 Newspapers, 518,000 Circulation
West Region Only \$175
108 Newspapers, 319,000 Circulation

To Order: Call This Newspaper, or call Texas Press Service at 1-800-749-4793 Today!

Extend your advertising reach with TexSCAN, your Statewide Classified Ad Network.

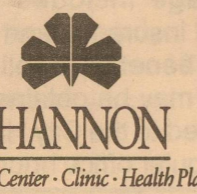
Going STRONG
CFI is now Hiring
 COMPANY * OWNER OPERATORS
 SINGLES AND TEAMS
 Loads with miles available immediately!
 Ask about our spouse-training program
Call 800-CFI-DRIVE
 www.cfidrive.com



Texas 2x2
 Display Advertising Network
 Reach more than a half million Texas consumers with affordable 2x2 advertisements.
Call: THE ELDORADO SUCCESS
 for details
853-3125



Make a difference!
 Shannon Community Health Services is looking for Community Health Educators to teach Right Choices for Youth in Bronte, Christoval, Eden, Eldorado, Junction, Mertzon, Miles, Ozona, Wall, and Winters school districts.
 Minimum requirements include: Two years experience in nursing, education, community health or closely related programs. Bachelor's degree in health related or education field required; Master's preferred. Bilingual skills a plus!
 For more information or to apply, contact:
 Human Resources • 126 E. College Ave.
 San Angelo, TX 76903
 Phone: 325-657-5243
 Shannon offers an excellent benefits package, competitive salary and more!
 EQUAL OPPORTUNITY EMPLOYER



Eldorado.net
 www.myeldorado.net
 ELDORADO ONLINE ALL THE TIME

Going... going... SCISD's free breakfast program faces cuts

The Schleicher County ISD board of trustees met Monday evening, August 11, for their regular monthly session. Among other business, the trustees discussed changes to the school's Free Breakfast Program. Time that was taken away from class room studies was a major factor in the discussion. Trustee Eddie Albin argued the program's benefits and urged the

board not to drop it. But trustee Lupe Sanchez disagreed, she noted that her children received the breakfasts last year and expressed her concern about the amount of sugar in the meals. The discussion ended with Supt. Mark Gesch and Elementary Principal Bob Wanoreck being directed to find a workable solution for keeping the program in the Elementary School.

In recent years, every school child, Pre-K through 12 grade received a free breakfast when they arrived at school. The program, funded the federal government, paid for the meals, whether or not the children ate them.

This year's program is yet to be decided, however. At press time, school officials are saying that the Free Breakfast Program will extend to Elementary School students only. It is unclear how the program will work and there is talk of extending the length of the school day for Elementary students to offset the time required to serve the breakfast.

In other business, the board agreed to lower the number of credits necessary for graduation from 24 to 22. The new guidelines bring the district into line with the State's minimum requirements. Keyboarding was also deleted as a requirement for graduation.

The trustees also changed the district's reimbursement schedule for personal vehicles. Under the new scheme school personnel who choose to travel in their personal vehicle instead of a school vehicle will be reimbursed at 10.5¢ per mile. If no school vehicle is available then the employee will be reimbursed at 35¢ per mile.

The three campus principals then reviewed the scores their students received on the State's new TAKS (Texas Assessment of Knowledge and Skills) test. The

test was taken by 3rd through 11th grade students. Overall each campus scored above the state average on science, social studies, math and writing, but when compared to the higher standard set by the state each campus fell slightly. Due to the drop, each campus is required to produce a plan of action for improving the test scores.

The board then learned that five of the air conditioning units removed from the High School building during construction of the roof, did not work when they were reinstalled. Discussions are underway with D & W Mechanical, the contractor that removed the units, in hopes of having them repaired. It was noted partial payment has been made to the contractor for the construction. The trustees also learned that work to repair tennis courts will begin in September.

A \$30,000.00 grant from the Wolslager Foundation, was accepted by the board. The money is intended to create a Safe Drop-off/Pickup Zone for all Elementary students. The zone will provide a congestion free covered drop-off and pickup areas where the students won't have to cross streets or parking lots in order to enter the school buildings. The grant will also purchase security cameras that will be installed to monitor school grounds 24 hours a day. The school applied for the grant in May and learned in July that it had been awarded. The district will receive the funds during the winter.

The board then approved the position of Band Director as an acute shortage area. The designation will allow Walther Reneau, the school's new band director maintain his retirement benefits while working for SCISD. The school will pay Reneau's salary only.

Next the board approved the Texas K-12 School-Community Partnership Grant and Food Service Bids. The trustees also voted to accept two donations, one from Creek Swabbing and Roustabout Service for material and labor to remodel the baseball field in the amount of \$20,000.00, and a second from Niblett's Oil Field Service in the amount of \$5,000.00 for the purchase and installation of mirrors and mats in the new weight room. Supt. Gesch advised the board that all donations to the district must be approved by the board.

The trustees then okayed the expenditure of \$5,749.73 to Creek Swabbing for additional work at the weight room. The amount included \$1,472.00 for installation of electrical wiring and \$4,277.73 for the construction of sidewalks and drainage repairs.

Vicki Williams, who was a middle school teacher and coach, submitted her resignation. She was released from her contract.

The trustees then moved into a budget workshop where Supt. Gesch presented a "bare bones" budget that would result in a \$1.46 tax rate. He noted that the budget required deep cuts in several areas and will still fall short of meeting expenses. Neither will the budget offset the loss of \$500 per teacher the State contributed last year to help defray the cost of health insurance.

After much discussion, the trustees left the meeting pondering their options. It was noted that an increase in the tax rate to \$1.50, which is the maximum allowed under state law, still won't balance the books and money will need to be withdrawn from the district's fund balance. Currently the fund balance stands at \$1,050,903. Another budget workshop has been scheduled for August 18.

PREMIERE CINEMA CORP.
 NOW ACCEPTING CREDIT CARDS
 \$6.00 Adult/\$3.00 Child/Senior
 \$3.00 Bargain Matinees before 6:00 p.m. \$3.00
 \$3.00 Bargain Wed. (r-RESTRICTED)
 SOUTHWEST 7
 949-9984 3998 Knickerbocker Rd.
 \$3.00 Matinees before 6:00 p.m. Friday-Thursday
 * OPEN RANGE dts (R) 1:45 4:45
 * AMERICAN WEDDING dts (R) 2:00 4:30
 * AMERICAN WEDDING (R) 2:30 5:00
 LXG LEAGUE OF EXTRAORDINARY GENTLEMEN dts (PG-13) 2:10 4:40
 TERMINATOR 3 dts (R) 1:50 4:15
 LEGALLY BLONDE (PG-13) 2:15 4:20
 CHARLIES ANGELS (PG-13) 2:20 4:50
 Times good for the week of 8/15 thru 8/21
 \$3.00 Matinees before 6:00 p.m. Friday-Thursday
 * OPEN RANGE dts (R) 8:00
 * AMERICAN WEDDING dts (R) 7:00 9:30
 * AMERICAN WEDDING (R) 7:30 10:00
 LXG LEAGUE OF EXTRAORDINARY GENTLEMEN dts (PG-13) 7:15 9:45
 TERMINATOR 3 dts (R) 7:05 9:35
 LEGALLY BLONDE (PG-13) 7:10 9:20
 CHARLIES ANGELS (PG-13) 7:20 9:40
 No Passes or Discounts www.pccmovies.com

SELF INKING STAMPS BUSINESS CARDS

FAST SERVICE ELDORADO SUCCESS 853-3125

2003 PROPERTY TAX RATES IN SCHLEICHER CO. HOSPITAL DISTRICT

THIS NOTICE CONCERNS 2003 PROPERTY TAX RATES FOR HOSPITAL DISTRICT. IT PRESENTS INFORMATION ABOUT THREE TAX RATES. LAST YEAR'S TAX RATE IS THE ACTUAL RATE THE TAXING UNIT USED TO DETERMINE PROPERTY TAXES LAST YEAR. THIS YEAR'S EFFECTIVE TAX RATE WOULD IMPOSE THE SAME TOTAL TAXES AS LAST YEAR IF YOU COMPARE PROPERTIES TAXED IN BOTH YEARS. THIS YEAR'S ROLLBACK TAX RATE IS THE HIGHEST TAX RATE THE TAXING UNIT CAN SET BEFORE TAXPAYER'S CAN START TAX ROLLBACK PROCEDURES. IN EACH CASE THESE RATES ARE FOUND BY DIVIDING THE TOTAL AMOUNT OF TAXES BY THE TAX BASE (THE TOTAL VALUE OF TAXABLE PROPERTY) WITH ADJUSTMENTS AS REQUIRED BY STATE LAW, THE RATES ARE GIVEN PER \$100 OF PROPERTY VALUE.

LAST YEAR'S TAX RATE:

LAST YEAR'S OPERATING TAXES	\$807,099.00
LAST YEAR'S DEBT TAXES	\$ 0.00
LAST YEAR'S TOTAL TAXES	\$807,099.00
LAST YEAR'S TAX BASE	\$211,005,515
LAST YEAR'S TOTAL TAX RATE	\$0.3825/\$100

THIS YEAR'S EFFECTIVE TAX RATE:

LAST YEAR'S ADJUSTED TAXES (AFTER SUBTRACTING TAXES ON LOST PROPERTY) / THIS YEAR'S ADJUSTED TAX BASE (AFTER SUBTRACTING VALUE OF NEW PROPERTY) = THIS YEAR'S EFFECTIVE TAX RATE	\$806,937.51 / \$207,809,930 = \$0.3883/\$100
x 1.03=MAXIMUM RATE UNLESS UNIT PUBLISHES NOTICES AND HOLDS HEARING	\$0.3999/\$100

THIS YEAR'S ROLLBACK TAX RATE:

LAST YEAR'S ADJUSTED OPERATING TAXES (AFTER SUBTRACTING TAXES ON LOST PROPERTY AND ADJUSTING FOR TRANSFERRED FUNCTION, TAX INCREMENT FINANCING, AND /OR ENHANCED INDIGENT HEALTH CARE EXPENDITURES) / THIS YEAR'S ADJUSTED TAX BASE = THIS YEAR'S EFFECTIVE OPERATING RATE	\$806,937.51 / \$207,809,930 = \$0.3883/\$100
x 1.08 = THIS YEAR'S MAXIMUM OPERATING RATE	\$0.4193/\$100
+ THIS YEAR'S DEBT RATE	\$0.0000/\$100
= THIS YEAR'S ROLLBACK RATE	\$0.4193/\$100

STATEMENT OF INCREASE/DECREASE

If Schleicher County Hospital District adopts a 2003 tax rate equal to the effective rate of **\$0.3883** per \$100 of value, taxes would **increase** compared to 2002 by **\$1,802.00**.

Schedule A

Unencumbered Fund Balances

The following estimated balances will be left in the unit's property tax accounts at the end of the fiscal year. These balances are not encumbered by a corresponding debt obligation.

Type of Property Tax Fund	Balance
General Fund	\$763,304.00

Schedule B

2003 Debt Service NONE

This notice contains a summary of actual effective and rollback tax rates' calculations. you can inspect a copy of the full calculations at **The Hospital Administrative Office or the County Tax Assessor's Office.**

Name of person preparing this notice **Lou Ann Turner**

Title **Tax Assessor/Collector**

Date prepared **8/08/03**

Comptroller delivers sales tax rebates

AUSTIN — Texas Comptroller Carole Keeton Strayhorn sent \$385.6 million in sales tax payments this week to Texas cities, counties, transit departments and special purpose taxing districts. Since January, local sales tax allocations are down 0.6 percent compared to the same period last year.

August sales tax rebates include local sales taxes collected in June by businesses that report sales taxes monthly, and in April, May and June by quarterly filers, and reported to the Comptroller in July. The state's share of sales tax collected during this period was \$1.16 billion, down 4.6 percent

compared to a year ago. Fiscal-year-to-date, the state has collected \$12.92 billion in sales tax, down 1.8 percent compared to the same period in FY02.

Strayhorn sent sales tax rebates of \$263.5 million to 1,118 Texas cities. Sales tax rebates of \$21.4 million went to 121 Texas counties. In addition, \$10.5 million went to 77 special purpose taxing districts. Texas' six metropolitan transit authorities and two city transit departments received \$90 million in sales tax revenue.

Locally, the sales tax rebates offer a mixed picture for the local economy. The City of Eldorado's payment was down considerably

from one year ago but the payments to Schleicher County as well as the County Health Services Tax were both up. (See chart below)

For details of July sales tax payments to individual cities, counties, transit systems and special purpose districts, locate the Monthly Sales and Use Tax Allocation Comparison Summary Reports on the Comptroller's Web site at www.window.state.tx.us/taxinfo/allocsum/compsum.html.

The Comptroller's next sales tax allocation will be made on Friday, Sept. 12, 2003, and will be reported the following week in The Success.

August 2003 Sales Tax Rebates

Local Jurisdiction	August '03	August '02	% Change	2003 YTD	2002 YTD	% Change
City of Eldorado	\$ 6,891.98	\$12,109.78	43.08% ↓	\$ 51,553.07	\$ 59,231.94	12.96% ↓
Schleicher County	\$ 7,106.40	\$ 8,646.11	17.80% ↑	\$ 61,481.56	\$ 48,834.02	25.89% ↑
Schleicher Co. Health Services Tax	\$ 7,255.78	\$ 5,230.29	38.72% ↑	\$ 55,385.75	\$ 45,550.47	21.59% ↑

30th annual Sheep and Goat Field Day set for Sept. 4 at San Angelo Research Center

SAN ANGELO — Super juniper-eating goats and range ripping are only two of many topics slated for this year's 30th Annual Sheep and Goat Field Day September 4 at the Texas A&M University Research and Extension Center.

The Center is located north of San Angelo on U.S. Highway 87. Registration runs from 9:00-

9:25 a.m. The morning field tour begins at 9:30 a.m. as does a morning-long health screening.

The morning's six-stop tour features topics and speakers including: "Super Juniper-Eating Goats", Dr. Charles "Butch" Taylor, Sonora Experiment Station superintendent; "Range Ripping", Dr. Darrell Ueckert, San Angelo-based Texas Agricultural Experiment Station (TAES) range researcher; "An Instrument That Can Do It All? Wool Measurement In The Future", Dr. Chris Lupton, TAES natural fibers researcher, San Angelo; "Salt Cedar", Dr. Allan McGinty, Texas Cooperative Extension range specialist, San Angelo; and "Texas Rambouillet Superior Genetics", Fred Campbell, Paint Rock rancher.

The health screening will run concurrently with the rest of the morning tour. The screening is being coordinated by Noemi Samaniego, Health Education for Rural Outreach (HERO) specialist at the Center.

A lunch catered by Kenny Blank of San Angelo's Crossroads Restaurant is scheduled from noon to 1:00 p.m.

The afternoon program begins at 1:00 p.m. with industry updates from the Mohair Council of America; National Sheep Industry Improvement Center; Ranchers' Lamb of Texas, Inc.; Texas Wildlife Damage Management Service, Country Of Origin Labeling (COOL) and the Texas Sheep and Goat Raisers' Association.

For further information contact the Center at (325) 653-4576.

Business Cards and Self-Inking Stamps on sale now at THE SUCCESS
 204 SW Main Street
853-3125