

Directors Turn First Shovels of Dirt For New Building

Construction of the new building for First National Bank of Eldorado officially began after the groundbreaking ceremony held last Thursday morning.

The ceremony took place on the corner of Main and Highway 190 where the new building will be located.

About 30 persons watched as bank directors James Page, Paul Page, Jimmie Powell, Edward Meador and Richard Sterling and bank president Jo Ed Hill turned the first shovels of dirt for the new project.

Among the spectators were city mayor Jimmie Doyle, city commissioner John Callison, county commis-

sioner Prissy Pacton, architect Gary Donaldson and general contractor Phil Templeton.

Addressing the group, Hill said, "If we who are here today could have been present among the organizers of the bank of Eldorado some 74 years ago, I am sure that we would have been aware of a feeling of community service as the underlying motivation of those progressive-minded citizens."

"During the years since that time," he added, "this bank and the people of Eldorado and Schleicher County have been partners of in the progress of the area. Needless to say, without the support and loyalty

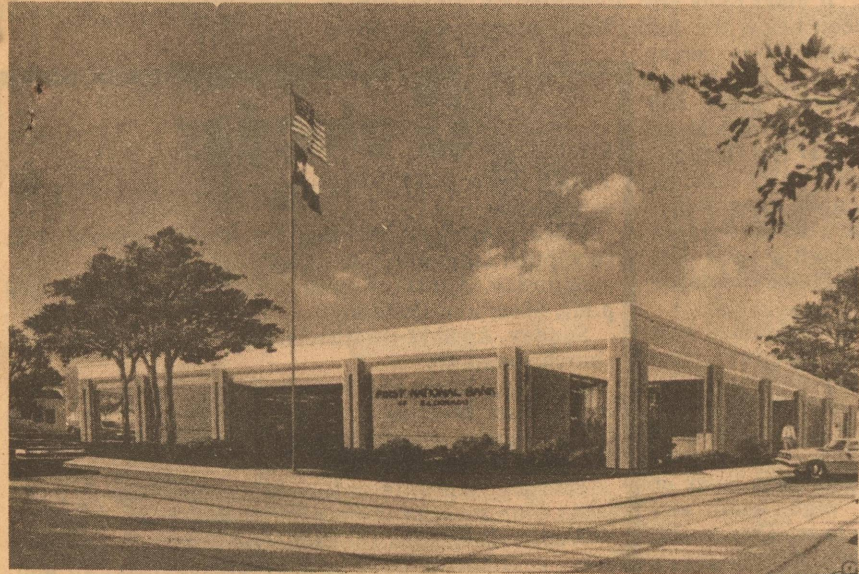
of these customers, we would not be here this morning to recognize the beginning of another milestone in our history. The new building project being started here today emphasizes our confidence in the future of Eldorado and our desire to better serve the people of Schleicher County."

The new building is expected to be complete in about ten months. It will have about 8800 square feet of space which will include offices for all the vice presidents, larger bookkeeping, lobby and customer service areas, off the-street parking and a larger safety deposit vault.



DOING THE HONORS--A small crowd watches as the directors of First National Bank turn the first shovels of dirt for the new bank building. At left is architect Gary Donaldson and building contractor Phil Templeton.

watching directors Jimmie Powell, James Page, Ed Meador and Paul Page. At right is bank president Jo Ed Hill and in the back is vice president Richard Sterling.



New Bank Building

Students Judging Plants Today

About 60 area junior and high school agriculture students will be attending the annual range judging contest at the Walter Pope ranch today.

The students will judge range conditions and identify plants on the ranch. First, second and third place trophies will be given to the teams in both junior and senior divisions.

Plaques will be given to the first second and third place individuals in each division, also.

Judges will be Jerry Swift, Schleicher County extension agent; Jake Landers, Tom Green extension agent and Dr. Bobby Joe Ragsdale, extension service range specialist.

This is an annual event held on the Pope ranch for the last several years.

Baseball Teams Being Formed

A meeting for all youths interested in playing Pee Wee baseball or Little League ball, their parents and anyone interested in coaching a team will be held at 6 p.m. Monday at the Little League field.

Pee Wee players must be seven years old or older before June 1 and cannot turn 9 before June 1. Little League players must be

eight years old or older before June 1 and cannot turn 13 before Aug. 31.

The Little League and Pee Wee program are being sponsored by the Jaycees and are in dire need of coaches. Anyone interested in coaching a team is urged to attend this meeting.

Release forms may be obtained from Joe Max Edmiston or Jackie Willis.

Women's Team
A girls slow pitch team is being formed in Eldorado,

also. A meeting of all interested players will be at 6 p.m. Friday, April 10 at the baseball field. The team will be sponsored by Producers Gas Co. and will play in the Sonora league. This is the third year for Producers to sponsor a womens slow pitch team.

Literary Sweepstakes Goes To Eldorado Students

Ever seen brightly colored balloons nestled against the rafters of coliseum? Picture instead 11 cast and crew members, one director, and one husband floating at the top of a bus loaded with costumes and props speeding down the highway. This was the scene as the victorious "Outcasts" returned home Thursday night.

Eldorado's one-act play "The Outcasts of Poker Flat" and Junction's "Enter a Queen" will proceed to area competition at Cisco Junior College today. Taking the honors at the district 9AA competition were Mike Griffith (as Oakhurst), honorable mention on the all-star cast and Kim Payne (as Mom), Linda Gentry (as Duchess), and Laurence Brème (as Uncle Billy) on the all star cast. Mark Wallis (as Tom) and Sandy Willeke (as Piney) were named best actor and actress. Completing the production were John Paul Joiner, Cindy Velez, with the sound, Helen Tinney with lighting, Anna Robledo with sound effects and Ray Blair, assistant director.

The traveling troupe wanted to make sure that their hometown was made aware of their accomplish-

ments, so, on their return home they took a slight detour and drove by high school principal Richard McCarron's house opened the bus windows and together shouted "We won!" At the school, signs were quickly crafted and taped in obvious places.

The group outscored their biggest rivals, Big Lake and Junction not only on Thursday, but also on Saturday. The play's 48 points added to points won in the 11 other district literary events earned Eldorado the 9AA high point trophy.

Out of 11 events entered, EHS students brought home 12 medals and two alternate places for a total of 188 points. Second place team, Wall, had 143½ points.

Sandy Willeke won first in prose reading and feature writing as well as third in ready writing and second in headline writing. Mark Wallis took home a first in ready writing and science.

Anna Robledo won second in poetry interpretation while Kim Payne won third in persuasive speaking. In typewriting, Nancy Turbeville won first and Beckie Simmons won second. Mike Griffith won second in news writing and was named alter-

nate in editorial writing. Brad Thomas was named alternate in science.

In calculator, Mitzi Mittel won first and Kim Payne was alternate.

Students also competing at the meet were Helen Tinney, Margaret Turner, Bridget Robinson, Melanie Moody, John Griffith, Lori Heffernan, Cindy Velez, Jeanne Redwine, Kamie Hunter, Sherrie Walling, Keith McCormack, Jeanie Day, Lou Ann Turner, Jody Reynolds, Sarah Day, Rico Forlano, Stephanie Thomas, and Craig Griffin.

When the big news came, students were exchanging hugs and hearty congratulations; sponsors were smiling and doing some hugging, also. Winning sponsors included Marcy Willis, speech; Pat Moore, Journalism; Shirley Jackson, ready writing; Sue Scott, typewriting; Robert Jay, science and calculator and Richard McCarron, food money and general all-around proud principal.

By April 22, the bus taking the winners to the regional UIL contest in Stephenville should be ready to roll instead of float. It may take that much time for the students to return to earth, as well.

Incumbents Return To Posts After Elections

All of the incumbents for the city council, school board, water district and hospital district were re-elected to their posts during the April elections held Saturday.

Re-elected to the City Council was Wayne McGinnes who had been appointed to fill a vacancy on the council, with 136 votes. Ronnie Sauer was elected to his first term on the council with 119 votes. He will fill the post held by Billy McCravey who chose not to run for re-election.

Mayor Jimmie Doyle breezed back into his spot as mayor with 166 votes. He ran unopposed.

Others receiving votes in the race included Dee Dee Duncan with nine votes, Anne Hyde with seven, Ruby "Cookie" Heffernan with nine votes and Edwin "Rooster" Jackson Jr., 55 votes.

School board incumbents Frankie Hardy and Richard Kent will return to their seats after receiving 175 and 171 votes, respectively. Voters gave their approval to A.T. "Sonny" Turner to sit on the board by giving him 156 votes. He will fill the position held by Dr. Jim Brame who chose not to run for re-election. The fourth candidate for the three open positions, Gus Willeke, received 116 votes.

The three incumbents for the

hospital board, Reuben Minor, Becky Sterling and Pat Sykes, will return to their positions after receiving 150, 153, and 152 votes, respectively. They ran unopposed for the three spots on the board.

The same story held true for the board of directors of the water board. Mort Mertz received 184 votes to

remain director at large while Ray Willoughby received 65 votes for director of precinct one and Earl Lloyd received 45 votes for director of precinct four.

Voting was reported light during the Saturday elections, although the weather was possibly because of high winds and cool temperatures.

Housing Authority Takes Over Units Today

Today, April 9, is the date tentatively set for the Eldorado Housing Authority to take over the 16 new housing units located next to the post office.

Ann Griffin, housing authority director, said several inspections have been made by the Department of Housing and Urban Development (HUD) and architect Gray Donaldson during all stages of the building program.

A final inspection is to be made today before the local housing authority can take over the units. "I am not anticipating problems," said Mrs. Griffin.

The units are all one bedroom facilities. One is for disabled persons and one is for persons in a wheelchair.

After the housing authority takes over the units, persons renting the units may move in. All are spoken for at the present time.



ALL SMILES--These Eldorado High School students are all smiles and they have a right to be after they won the sweepstakes awards during the district UIL literary meet last week. They are, from left to right, John Paul Joiner, Mark Wallis, Mike Griffith, Helen Tinney, Nancy Turbeville, Anna Robledo, Beckie Simmons,

Sandy Willeke, Linda Gentry, Kim Payne, Cindy Velez and Ray Blair. The literary team will go to regional April 1, 23, 24 and the one-act play cast is competing today. Miss Willeke and Wallis are holding trophies they won as best actress and actor in district.

Bridal Selections for

Heidi Church - John Pickel

McCalla's
Downtown Eldorado

Bessent Earns Masters Degree

Texas Tech University graduated 1,000 students at the end of the 1980 fall semester. Degree recipients included Craig Bessent of Eldorado, who received a Master of Education.

Seniors Of The Week



Mark Wallis



Sandy Willeke



Correction
Edmiston Funeral Is Held March 30

Funeral services were held Monday, March 30 at First Methodist Church of Eldorado for a well-known Schleicher County rancher and county commissioner, Billy Gene Edmiston. The Rev. John Robinson, pastor, officiated. Burial was in Eldorado Cemetery.

Edmiston, 45, died March 28 after being injured in a freak pickup-truck accident. The accident happened when Edmiston stopped at a stop sign at the corner of West Avenue and Hwy. 277. A truck being towed by another truck came loose and hit the Edmiston vehicle.

He was taken to Schleicher County Medical Center and immediately transferred to Shannon Hospital in San Angelo where he died.

Born July 4, 1935 to long-time Schleicher County residents, Mr. and Mrs. Eugene N. Edmiston, he attended schools here and graduated from Eldorado High School. On Aug. 26, 1956, he married Joann Clements. From 1958-1960, he served with the United States Army in Post-conflict Korea. He graduated from A&I University in 1961 and taught high school

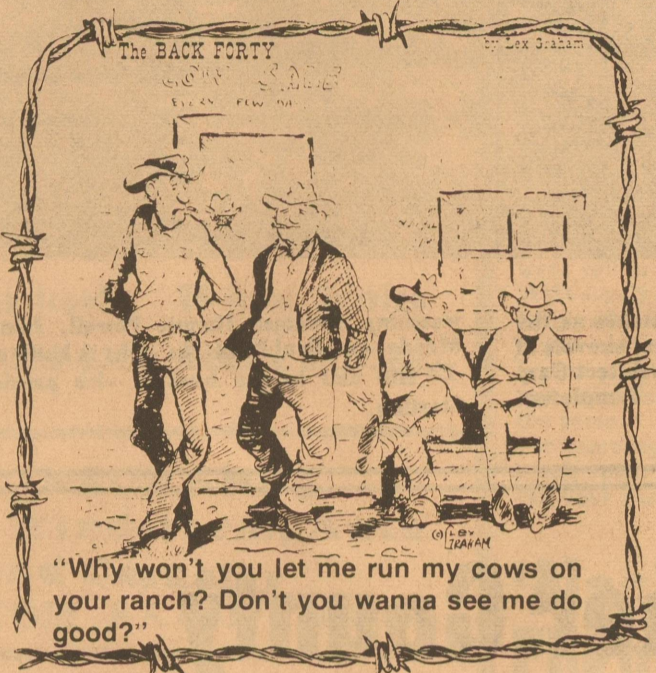
from 1962-1967. He then returned to the family ranching business here. He also owned and operated a hardware store here for two years and served as president of the Eldorado Chamber of Commerce. He has also managed the golf course and was elected commissioner of precinct one last summer, taking office last January. He and his family lived on the Bailey Ranch Road.

Survivors include his wife; two sons, Jed and Gene Edmiston, both of Eldorado; one daughter, Jan Edmiston of Eldorado; his parents, of Eldorado; two brothers, Orval and W.F. Edmiston of Eldorado; two sisters, Mrs. Nell "Shine" Spigarelli of Shreveport, La., and Mary Dell Baskin of Canton, Ohio and many nieces and nephews.

Pallbearers were Jim Thornton of Houston; and Edmiston's nephews, Bryan Edmiston of Hutto, Tim Edmiston of Midland, Dr. William Edmiston of San Angelo, and Phil Edmiston, Joe Max Edmiston, Jim Bob Edmiston and Chris McCravey, all of Eldorado.

The First National Bank of Eldorado

Serving the complete banking needs of Eldorado and Schleicher County since 1907.



Everybody wants to do good and we at The First National Bank especially want to see you do good by having your checking account with us. You'll be happy with our service and our clear, easy to read statements each month.



Transplant Very Carefully

EDITOR'S NOTE-- this is the seventh in a series of 13 articles concerning gardening in Schleicher County. Provided by county extension agents Jerry Swift and Nancy Lester, it is running weekly in the Leader.

While it's best to seed some vegetables directly in the home garden, others do best if transplanted.

In this area of Texas tomatoes, peppers and eggplant should always be set out in the garden as transplants. The reason for this is the weather. These vegetables are somewhat fickle when it comes to ideal environmental conditions for setting fruit. Bloom and fruit set must occur before temperatures get too high. Setting out transplants after danger of all frost allows these plants to bloom during ideal conditions and to set a bountiful harvest during optimum weather.

You can also transplant such so-called "cool season" crops such as cabbage, cauliflower, broccoli, lettuce and onions. This allows them to mature under ideal conditions and also saves growing time in the garden. Using transplants can lessen the garden growing time by several months or more.

However, setting out transplants of crops such as okra, squash, cucumbers and melons offers no real advantage and is usually not a recommended practice.

What about the "how" of transplanting? Handle transplants like eggs! Make every effort to avoid undue stress to young plants. Be sure plants do not suffer from lack of moisture, wind damage or excessive heat prior to and immediately after transplanting. Most plants that are available locally will be growing plantable containers such as peat pots or peat cubes. If possible, plan to transplant during late afternoon or at least on a cloudy day. I personally think it's a good idea to set your transplants in a bucket or pan of water for several minutes prior to planting so the root system is thoroughly wet.

Determine the proper spacing for the crop and dig a hole 4 inches wide and 4 to 6 inches deep. Put about a cupful of water directly in the hole and allow it to soak in. Set the transplant in the center of the hole and fill in with soil. Make certain the peat container is completely beneath the soil level as

it may act like a wick and rapidly dry out the rootball, thus killing the plant.

Depth of planting is important and often beginners make the mistake of setting plants too deep in the soil. Set most transplants only slightly deeper than they were originally growing. If tomato plants are tall and "leggy", plant them as shown in the accompanying drawing. If plant roots are set too deep below the soil level, especially in heavy soils, they will be slow to grow and the plant will have to produce roots along the stem near the surface. The original roots may, or may not, grow eventually. Either way, the advantages of transplanting are lost and harvest may be delayed greatly.

When filling the hole with soil at planting, leave a slight depression around the plant to hold additional water from spot watering or from rainfall. Also protect young plants for a week or so from high wind and excessive heat. This can be done easily by placing a shingle, board, milk carton or some similar protection on the windy or sunny side of the plant. A can placed around the transplant when it is set in the garden will also prevent damage from pesky cutworms.

Calendar

- Today, April 9--FHA representative, 1:30-2:30 p.m. courthouse
- Friday, April 10--Meeting for women interested in slow pitch league, 6 p.m., Little League field.
- Saturday, April 11--Country Western jamboree, 7:30 p.m., Memorial Building.
- Sunday, April 12--Methodist Church play, 7:30 p.m., church sanctuary.
- Monday, April 13--Commissioners Court, 9 a.m., courthouse; Meeting for Little League and Pee Wee League, 6 p.m., baseball field. Alcoholics Anonymous, 8 p.m., Memorial Building.
- Tuesday, April 14--4-H leaders meeting, 7 p.m., Lions Club room of the Memorial Building
- Wednesday, April 15--Probation officer, 9 a.m. to 4 p.m., courthouse; Food stame representative, 10 a.m. to 3 p.m., courthouse
- Thursday, April 16--Social security representative, 1:30-2:30 p.m., courthouse.

Germania Farm Mutual Aid Association

Reasonable, sound insurance protection for your home and other property.

Want to Save Contact

Sherry Lux
Box 613
Eldorado Tx.
(915) 853-2487

CHURCH DIRECTORY

CHURCH OF JESUS CHRIST OF LATTER DAY SAINTS
Bishop: Bryan Galloway
San Angelo 658-4797
2817 Christoval Rd.
Priesthood, 9 a.m.
Primary, 9 a.m.
Relief Society, 9 a.m.
Sunday School 10 a.m.
Sacrament meeting 11 a.m.

OUR LADY OF GAUDALUPE CHURCH
Rev. Mark J. Woodruff
Pastor 853-2663
Saturday 7:00p.m.
Sunday 8:00a.m. (Spanish)
9:30a.m. (English)

FIRST CHRISTIAN CHURCH
Dale Lipsett, Minister
Sunday School 10:15 a.m.
Worship 11:00 a.m.
Wed. Bible Study 7:00 p.m.
853-2247

WESTSIDE CHURCH OF CHRIST
HWY. 277
Sun. Morn. Serv. 10:30a.m.
Sun. Eve. Serv. 6:00p.m.
Wed. Eve. Serv. 7:30p.m.

UNITED PENTECOSTAL CHURCH
Rev. Walter Ford
Hackberry St.
Sunday School 10:00 a.m.
Worship Service 11:00 a.m.
Sun. Eve. Serv. 7:00 p.m.
Wed. Eve. Serv. 7:30 p.m.

ST. MARY'S EPISCOPAL CHURCH
Rev. Lea Roy Aldwell
Pelt St. & McWhorter Ave.
387-2617 (Sonora, Tex.)
Sunday Morning Worship and Holy Communion

FIRST PRESBYTERIAN CHURCH
Rev. Ronald J. Sutto
7 N. Cottonwood
Sunday School 9:45 a.m.
Morning Worship 11 a.m.
Fellowship Time 10:30 a.m.
Visitors Welcome

Primitive Baptist Church
Menard Hwy
Elder Freddy Boen, Pastor
Services each 2nd & 4th Sunday at 10:30a.m. and 2:30p.m.
Also on Saturday night Before 2 and 4th Sun. Meeting at 7:00p.m.

ROCK CHURCH OF CHRIST
Dale Huff, Evangelist
708 Lee St.
Sunday Bible Class 10 a.m.
Worship Service 11 a.m.
Evening Worship 6 p.m.
Wed. Bible Class 7:30 p.m.

FIRST BAPTIST CHURCH
Oak and Gillis
Sunday School 9:45 a.m.
Morning Worship 11 a.m.
Adult Evening Bible Study
Worship 7:00 p.m.
Wed. Prayer Service 7:30

PRIMERA IGLESIA BAUTISTA
Rev. E.L. Flores, Pastor
El Paso and Concho St.
Sunday School 9:45 a.m.
Morn. Worship 11:00 a.m.
6-7 p.m. Training Union
7-8 p.m. Evening Worship
Wed. 3 p.m. Sunbeams
7 p.m. Prayer Services

FIRST UNITED METHODIST CHURCH
Rev. John A. Robinson
Hwy 277 across from Courthouse
853-2721 853-3010
Church School 9:50 a.m.
Morn. Worship 10:50 a.m.
Youth Fellowship 7:00 p.m.
Wednesday:
Young Adult Study 7:30
All are welcome.

With Us In Our Opposition

He turned and said to Peter, "Get behind me, Satan! You are a hindrance to me; for you are not on the side of God, but of men." Matthew 16:23

Well, Simon Peter did it again. After such a marvelous confession, his impetuosity has risen once again. In many respects the scene is almost comical. Peter identifies Jesus as the Christ, the Son of God, and then turns around and opposes Jesus and the events that must inevitably come to pass.

Certainly Peter's opposition comes from his love and affection for his Lord. Still it is opposition that is a hindrance to the way of Christ. How often do our good intentions become a hindrance instead of a help?

Yet how much greater is Christ's love for us than ours for him. For each time we stand in his way as a stumbling block, Jesus, instead of tossing us to the side of the road, confronts us. He puts us back where we belong, in the place that we can be, behind him. So even in our opposing Christ, he is with us.

Our Church Feature Is Sponsored By The Following Merchants Who Urge You To

Attend The Church Of Your Choice This Week!

WESTERMAN DRUG Cecil Westerman Would Like To Be Your Pharmacist 853-2226	SOUTHWEST TEXAS ELECTRIC CO-OP, INC. Owned by Those We Serve Eldorado, Texas 853-2544
EL DORADO RESTAURANT Steaks-Seafood & Mexican Foods Catering Service Available 853-2818	TREY TRUCKING All Kinds Of Oilfield Trucking Eldorado, Texas 853-2186
BUTLER SUPPLY COMPANY Oilman's Friend East St. Eldorado, Texas Day 853-2503 Night 853-2004	COMMERCIAL RESTAURANT Where Friends Meet To Eat Glasscock & Plum Sonora, Texas 387-9928
FOOD CENTER Herbert & Lois Fields, Owners Les Robertson Manager Sonora, Texas 387-3438	R & H WELL SERVICE, INC. Complete Oilfield Service Eldorado, Texas 853-2003

Holley House
"For the Unique and Creative"
Eldorado, Texas 853-2763

SONIC DRIVE-INN OF SONORA
Hwy. 277 North
Sonora, Texas 387-5292

THE WESTERN COMPANY
Pacesetters in the Oil & Gas Industry
Eldorado, Texas

Schleicher County Leader
Interested persons may submit original church features anytime. 853-2032

Bridal Critique

Heidi Church - John Pickel

holley house

For the unique and creative
853-2763 Hwy 277 Eldorado

Spring Hairdos

Permanent Special (including haircut) \$22.50
Hair Coloring Special \$12.00

Johnnies Beauty Shop

500 Feild Ave.
853-2983

**Airman Fowler
Is Assigned
Lowry AFB**

Airman Nathan A. Fowler, son of Martha D. Fowler of Eldorado, Texas, has been assigned to Lowry Air Force Base, Co., after completing Air Force basic training. During the six weeks at Lackland Air Force Base,

the airman studied the Air Force mission, organization and customs and received special training in human relations. In addition, airmen who complete basic training earn credits toward an associate degree in applied

science through the Community College of the Air Force.

The airman will now receive specialized instruction in the munitions and weapons maintenance field.

**Nelson McGee
Is Honored**

Nelson McGee has been named musician of the month for the Eldorado Country-Western jamboree which will be at 7:30 p.m. Saturday in the Memorial Building.

McGee was born April 11, 1930 in Millersview, the youngest of six children born to John and Mae McGee. His father was a fiddle player and all his brothers and sisters played some musical instrument.

When he was 13, he and his family moved to Maryneal to a ranch. McGee's playing was limited mostly to accompanying fiddlers at country dances although he did some singing, also.

He met his wife, Virginia Alexander, at Maryneal and they were married in September of 1950. He joined the Air Force in 1948 and retired from it in 1974. He has also always found someone to pick and sing with, wherever he goes, even while stationed in Scotland with the Air Force.

He chose his retirement in San Angelo and is co-owner of Weathersbee Electric Co., Inc. He has always liked Bluegrass music, but was never able to get with a group with the same interest until he came to San Angelo. He helped form the Concho Grass, a group that plays Bluegrass music for nursing homes, barbecues, jamborees or anywhere someone wants to hear some really good picking and singing.

**Justin Stumberg
Born Feb 24.**

Mr. and Mrs. Fred Stumberg became parents of a baby boy, Justin Frederick Stumberg, February 24. He was born in Shannon Hospital in San Angelo weighing seven pounds, two ounces and measuring 21 inches.

Grandparents are Mr. and Mrs. Buck Cox of Van Horn and Mrs. Steve Stumberg, Jr. of Marathon. The baby has a sister, Shannon.

Bridge Bids For Highway 190 Called

Bids to modernize guardrails on 14 bridges along US 190 are scheduled to be received April 15 by the

State Department of Highways and Public Transportation. San Angelo District En-

gineer Durward R. Watson said Charlie Low of San Angelo, is the department's engineer who is supervising the project.

Duncan Texaco

853-2993

WASH

GREASE

OIL CHANGE

FLAT FIXED

ROAD SERVICE

WILL PICK UP AND DELIVER

Special Red Line Gloves
Reg. \$1.75
\$1.39 a pair

WE ACCEPT Master Card and Visa

"Diesel Fuel"

Send our FTD

Easter Basket Bouquet

An exclusive FTD woven basket filled with beautiful fresh spring flowers. Call or visit us today. Everyone loves an Easter Basket.



\$00.00

Easter is Sunday, April 19.

CATHY'S

Helping you say it right.

Hwy. 277 Eldorado 853-2645



Opening

Hand made items by, **Pat Gentry & others**

Paintings woodcraft stuffed animals Pillow Cases Towel wraparounds **Pat's Sew 'n Sew**

Eldorado 853-2837

MANY DOTS AND PRINTS

Interlock Prints for Spring Blouses

Tank Tops Shorts Wind Breaker Colored Overalls

New Shipment Dress-up Sandals

Just in time For **EASTER** **McCALLS**

Downtown Eldorado

Come on in! **SHEPPERSON'S HOME FURNISHINGS** At all 4 shepperson Stores!

75TH Anniversary SALE

1906-1981

FREE... CAREFUL DELIVERY!

It's time once again to celebrate...and this is our 75 th anniversary we're celebrating...with some of the greatest savings we've ever seen in a of our years in business...in spite of inflation everywhere. come on in a take advantage of big bargains all over each of Shepperson's Stores. You'll be glad you did.

By Riverside SOFA & LOVESEAT 2-piece \$897⁷⁵
Modified wing style back with attached pillow arms. Quality velvet cover, center pattern matched and our outline quilted. Reg. \$1459 Save \$560 Downtown

LAMPS PICTURES MIRRORS and ACCESSORIES 20% off Reg. Prices At all stores

REGISTER FREE...FOR OVER \$3384⁰⁰ IN VALUABLE FREE PRIZES!
Just register in any of shepperson's San Angelo Stores...nothing to buy you need not be present to win...but you must be 18 years or older to register.

A Beauty 5-pc. Game Set \$445⁷⁵
Octagonal table with protective laminated top. 4 deck chairs with padded seat and backs in natural canvas color. Reg. \$689.50 Save \$245. Downtown

Early American Sofa & Love Seat \$847⁷⁵
Wing back with attached pillow arms. Quality velvet cover and center pattern matched and outline quilted. If you need the sofa only \$ 447⁷⁵

By Rowe TRANSITIONAL SOFA \$347⁷⁵
Shell pattern velvet in beige. Loose pillow back and bolster arm cushions. 1 only, hurry. Reg. \$399.50 Save \$152. Downtown

75th Anniversary Savings special! Stratoloonger Recliner \$197⁷⁷
Herculon plaid cover in only one color and limited supply, better hurry. Compare at \$299⁵⁰ Downtown

Damaged & Repaired \$147⁷⁵
Fruitwood finish, glass shell interior traditional styling. 1 only to be sold "AS IS" Reg. & \$399.59 50 "AS IS" Thrift Shop

Flex steel 2 Pc. Sectional Sofa 2-PC \$997⁷⁵
Discontinued cover and priced to closeout. Brown & Beige Herculon stripped cover. Loose cushion seat and back with bolster arm pillows. Reg. \$1519⁹⁹ Save \$580 Downtown

All Metal Storage Cabinets at the Thrift Shop \$44.75

Odd Early American Brotherly Love Seat \$327⁷⁵
Country casual style with heavy honey pine wood trim. Rust color velvet cover. Odd stock and 1 only. Reg. 69⁹⁹ save over 1/2 (thrift shop)

5-Pc. Dinette Set With Extension Table \$97.75 Thrift Shop

SHEPPERSON'S HOME FURNISHINGS Since 1906 Also at our SHEPPERSON'S SOUTHWEST 3515 Loop 306 and...in Ballinger!

Convenient Credit

And ...Many, Many More!

Spring

81

Sports

Track

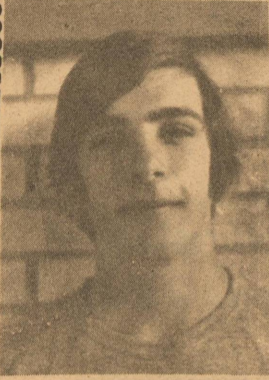
Tennis

Golf

EAGLE DAIRY MART

853-2125

Eagle of the Week John Callison-Owner Eaglelette of the Week



Ricky Cathey

**Special
Eagle Basket**

\$1.90



Becky Ragsdale

No Substitutes

Willoughby Competes At Mason

Ed Willoughby, Eldorado High School senior, won fifth in the Mason tennis meet held last week. A total of 12 teams competed in the meet, including some 4A schools.

The week before, Jennifer Willoughby won first in the junior high school girls singles at Sonora. Meanwhile, Stephanie Fields and Shanna Burleson won third in the girls doubles.

The tennis teams will be competing in district competition this week.

Eaglettes Fly To First Place

The high-flying Eaglettes ran away with top honors during the Comanche meet last weekend. They garnered 88 3/4 points with Clyde and Hamilton gathering up 60 points each for second and third place.

Teammates Linda Gentry, Lori Whitaker, Sherri Walling and Silva Guana flew to take first place in both the 800 and the 1600 relays. In the 800, their time was 1:47.63 and in the 1600, their time was 4:11.61.

Linda Gentry took a fourth in the long jump with a 16 feet 11 inches jump and a third in the triple jump

with a 32 feet, 10 inch jump. Lorie Patton jumped four feet, eight inches to tie for fourth in the high jump.

In the 3200 run, Kamie Hunter won sixth with a 14:31.51 timing and in the 800 run, Stephanie Thomas won third with a 2:33.91 timing.

Sherri Walling won second in the 200 meter dash followed by Silva Guana who won third. Their times were 27.09 and 27.21, respectively.

In the 400 relay, Becky Ragsdale, Gina Patton, Lorie Whitaker and Linda Gentry teamed up to a 52.3 timing to win second.

April Sport Events

April 10

Girls Dist. Track - Big Lake

April 11

Rankin Boys Track Meet

April 14

Boys Golf at junction

April 20

Boys Golf at Eldorado

Eagles Win Sixth In McGamey

The Eldorado Eagles finished sixth overall during the McGamey track meet last weekend, competing in a field that included five AAA teams.

In the high jump, Ricky Cathey won second and Ashley Niblett won fourth. Kirk Griffin won fifth in the pole vault and James Woodward won sixth.

In the high hurdles, Eagles John Paul Joiner, Ashley Niblett and Trey Jackson won fourth, fifth and sixth, respectively.

In the 100 meter dash, Tommy Martinez won fifth and Gregg Davidson won sixth. Ronnie Landis won third in the 400 meter dash.

In the 1600 meter relay, Mike Griffith, John Paul Joiner, Brad Thomas and Gregg Davidson won sixth place.

Joiner also won fourth in the 300 meter hurdles.

In San Angelo the week before, the team finished twelfth out of 21 teams, with the mile relay finishing fourth. The team is composed of Tommy Martinez, Mike Griffith, Brad Thomas and John Paul Joiner.

Danny Pina won fifth in the 1600 run and Joiner won fifth in the intermediate hurdles. Kirk Griffin won sixth in the pole vault.

Junior High Girls Win At Mason

The eighth grade girls placed fourth overall in the Mason track meet while the seventh grade girls placed third last weekend.

Eighth graders Jennifer Willoughby, Stephanie Field, Gina Robinson and Barbara Clinton won third in the 400 relay. In the 880 relay, Jennifer Willoughby, Stephanie Field, Rita Adame and Renetta Robinson won fourth.

Rita Adame flew to a first place finish in the 600 yard dash with a 1:50.63 timing. Jennifer Willoughby also won a first, in the 100 yard dash.

In the 100 meter low hurdles, Vicki Simmons won sixth and Sandy Hutcherson won fifth. Renetta

Robinson and Della Heffernan won third and fifth in the 300 yard dash. Rita Adame also won sixth the 200 year dash.

In the shot put, Kara Garlitz won third and in the discus, Roxanne Pina won sixth. Rita Adame also won sixth in the triple jump.


Seventh graders Patsy Ussery, Georgie Gonzales, Anna Aguilar and Martinez teamed up to win first in the 880 relay, with a 2:03.28 timing. In the 440 relay, the team of Patsy Ussery, Eloisa Hill, Anna Aguilar and Martinez were timed at 58.37 for third place.

Gina Heffernan won first in the 600 meter dash and Anna Aguilar won fifth in the 100 low hurdles with Eloisa Hill coming in fifth.

Georgie Gonzales won second in the 300 yard dash and Patsy Ussery won second in the 200 yard dash. In the 1200 relay, Mendy Edmiston, Gina Heffernan, Esquivel and Rachel Barera won fourth.

In field events, George Gonzales, Anna Aguilar Eloisa Hill won second, fourth and sixth in the triple jump, respectively. Georgie Gonzales also won fourth in the high jump and Patsy Ussery won first in the shot put. Rachel Barera won sixth in the discus.

They will be going to Big Lake this weekend to compete in the district track meet.

Kent's Automotive	First National Bank Of Eldorado	Meador Land Company	Butler Supply Co. Inc.
Northern Natural Gas	L.R. Hanusch Water Well Drilling & Service	Eldorado Instrument and Controls Co.	Willhoit Exxon Station
Kwik Pantry	Southwest Texas Electric Co-op	Whitten's Liquid Feed	Trey Trucks
CH Poynor Construction Co.	Jerry's TV Service	Eldorado Wool Co.	Hext Foods
Food Center Sonora	 Quadra Corp. 853-3004	NL Well Service Co.	Duncan Texaco Station
Meador-Peters Insurance Agency	<i>holley house</i> For the Unique & Creative	McCalla's Dept. Store	Sutton Specialties
Jack Halbert Sr. Butane, Propane & LPG	R & H Well Service Inc.	Adobe Mini Mart	Dee's Floral Designs Big Lake Hwy

In Those Days

FIVE YEARS AGO--Elizabeth Niblett attended the district 7 4-H Council retreat in Brownwood.

Funeral services were held for Lucille Lovelace.

EHS students placed third in the district UIL meet, led by Jim Bob Byrd.

Mr. and Mrs. S.E. Jones became grandparents of twin girls, born to Mr. and Mrs. Taylor Jones.

Gay Lynn Richardson became engaged to Charles Adams Jr.

Rachael Shurley was married to Gene Nixon.

Beta Sigma Phi sorority

began a scholarship for local High School boys and girls.

12 YEARS AGO--Services were held for Mrs. A. B. Blakney who was buried in Camp Wood.

A semi-formal dance was being planned by the Chamber of Commerce, with Frank Trevino providing music.

The Eldorado FFA team composed of John Danford, Pete Whitten, Jimmy Martin, Jack Williams and Donald Holsey, won fourth at the Sweetwater judging.

The Eldorado girls won the district track meet.

The two doctors at the new medical clinic reported the facility had been operating at 114 percent of its capacity, with some of the patients being treated in the nursing home.

35 YEARS AGO--Eddie Ohlenberg, was burned when he fell into tub of hot water at the home of his grandparents, Mr. and Mrs. Tom Jones.

S- Sgt. E.M. Doty received a posthumous award of the Bronze Star during a ceremony held at the home of his widow, Mrs. Edna Doty of San Angelo.

Farmers and ranchers were worried about the extent drought.

Donald Royster contacted his parents, Mr. and Mrs. D.C. Royster, to say he would receive his discharge from Camp Wallace and be home in a few days.

Charles Ratliff relocated to San Angelo where he brought an interest in the Home Appliance Co.

Mrs. Sarah Price died suddenly at her home. She was 65.

Eldorado fireman were entertained with a surprise chicken supper with all the trimmings made by their wives. The boys were run through a "belt line" and then the group played 42.

Mrs. J.E. Tisdale lead the study of "Africa" for members of the Women's Society of Christian Services at the Methodist Church.

Ice Cream Social Planned

The Band Aides for Eldorado High School are planning the third annual old fashioned ice cream social from 3-5:30 p.m. April 26 on the courthouse square.

While everyone else is enjoying their ice cream, the high school band, stage band and twirlers will perform. Proceeds will go to defray costs for the band's annual trip to Six Flags.

Anyone wanting to donate homemade ice cream, cake or help serve is welcome to do so. Further information can be obtained by contacting Vita Wilke.

New Phone Lines At Law Center

The Schleicher County sheriff's department now has three telephone lines to the new law enforcement Center. The numbers are 853-2737, 853-3179 and 853-2133.

The new center, which opened March 15, has offices for all law enforcement officials in the county and 24 hour dispatchers.

Methodists Produce Easter Play

Several adults of the First Methodist Church of Eldorado will be producing a play, "Jesus Was, Jesus Is" at 7:30 p.m. Sunday in the sanctuary of their church.

The play is a lighthearted Easter production with a good Easter message, said Martha Lee Meador, sponsor.

Cast of the production includes Rusty Meador as

John the Baptist, Melissa O'Harrow as Martha, Bridget Robinson as Mary, Lynn Meador as Paul, Johnny Griffin as Timothy, Joann Edmiston as Mary Magdalen, Elton McGinness

as Peter and Jeanne Nelson as Mary the Mother of Jesus.

Some of the children of the church will be in an Easter pageant before the

KERBOW'S



New Shipment of Plate Glass Mirrors 20% off

All Lamps 20% off Some 1/2 price

Recliners by Berkline Action Recliners by Lane and La-Z-Boy

La-Z-Boy
Reg: \$419⁹⁵ Now: \$349⁹⁵
Reg: \$399⁹⁵ Now: \$299⁹⁵
Reg: \$469⁹⁵ Now: \$369⁹⁵

Beckline Wallaways Gold Herculon

Reg: \$269⁹⁵ Now: \$179⁰⁰
Plush Nylon Velvet
Reg: \$419⁹⁵ Now: \$319⁹⁵

Action Recliners by Lane
Reg: \$409⁹⁵ Now: \$299⁹⁵
Reg: \$369⁹⁵ Now: \$269⁹⁵

Decorator Table Groups by Riverside

2 Ends - cocktail Reg: \$149⁹⁵ ea.
Now: \$99⁹⁵ ea.

Lane Cedar Chest 20% off (ONLY ONE LEFT)

Easy Financing Available

HURRY! Sale Ends

April 15

If it's not marked ask us!

Barstools 1/2 price

Check our Bargain Basement

Wood Rocker Reg: \$179⁹⁵ Now: \$139⁹⁵

Wall Units, Hat Racks, Tea Carts, Brass Acces. All Marked Down

Shop Early For Best Selections

Swiftex Sofa Sleeper Stripe Herculon
Reg: \$729⁹⁵
Now: \$619⁹⁵

De Soto Hall Tree 2 Pieces Reg: \$469⁹⁵
Now: \$349⁹⁵

Swivel Rockers by Fairfield
Reg: \$289⁹⁵ Now: \$169⁹⁵

Broyhill Medallion-Triple Dresser, Twin Mirror and Nitestand
3 pc. Reg: \$720⁰⁰ Now: \$520⁰⁰

Stoneville Glass & Chrome Dinette Reg: \$639⁶⁵
Now: \$469⁰⁰

Wicker Wicker Wicker Hanging Porch Chairs
Reg: \$149⁹⁵ Now: \$119⁹⁵
Porch Set - 4 pc. - 2 chairs Table & loveseat Reg: \$749⁹⁵
Now: \$600⁰⁰

Gun Cabinets by Riverside 10 & 6 gun 20% off Sale

Sale Starts Wed. March 25, Until April 15. 30-60-90 day Accounts No Lay-Aways At These prices.

KERBOW FURNITURE

Downtown Sonora

387-5500

INTRODUCING LARRY McCOMMAS

ASCOT

BUILDING CORPORATION
ALL STEEL CONSTRUCTION OF TEXAS

Anything and Everything to Meet Your Building Needs

Storage Bldgs - Steel half round buildings

Log Homes - Grain bins - Straight Well Bldgs.

HOME AND RANCH FREE PLANNING SERVICE

215 Main St. Eldorado

P.O. Box 310

853-2710

Nerve Deafness CAN be helped Texas State Hearing Aid Center

3421 S. H Johnson San Angelo 949-8312

SALE

In time for Easter PBJ junior Dresses 3-13

20% off

Sale

Thurs-Friday and Saturday (this week only)

PEGGY'S

Hwy. 277

853-3085



To Please the Bride & Groom

Heidi Church - John Pickel

Make your selections at

Western Auto

Eldorado

Butler Supply Co., Inc.

Your Complete Oilfield Store

Trico Insert Pumps

HINDERITER WELLHEADS

ALL SIZES TANKS STEEL & FIBERGLASS

DEMCO

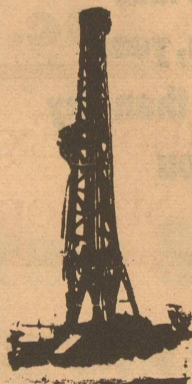
SEPERATORS HEATERS & PRODUCTION UNITS

PRITO THORNHILL CRAVER

OLMAN HEATH

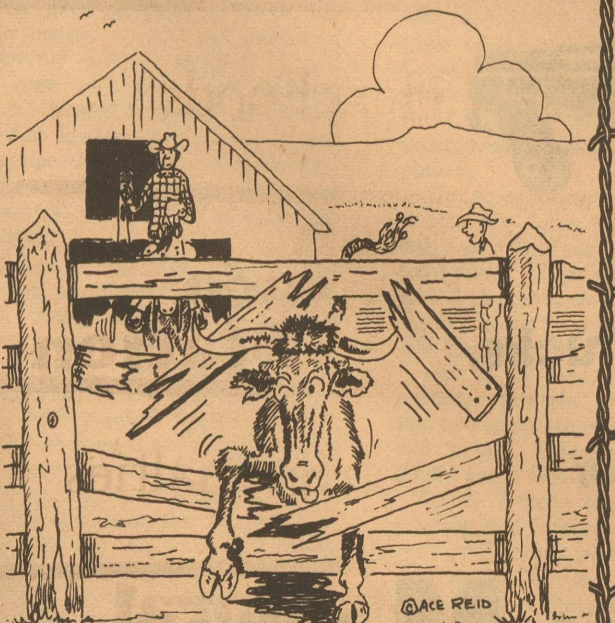
WHEATLEY

Night Phone 853-2884



COW POKES

By Ace Reid



"Now les' see if you can fix that fence up as quick as you tore it down!"

Correction

Bormex Construction Company which buys Kingsberry panelized homes in the Eldorado area, is not a subsidiary of Kingsberry homes or Boise-Cascade Co., as previously reported in the Leader. Bormex is a building company which buys Kingsberry panelized homes in the Eldorado area, is not a subsidiary of Boise-Cascade, which is a lumber company that handles wood products in every stage, from tree orchards to the final products.

Business & Service Directory

C H Poynor Const. Co.

General Oilfield Construction
24 Hour Call 884-2454 Big Lake
Call 853-3064 Eldorado

NL WELL SERVICE

Well Servicing-Water Hauling
-Pump trucks 24 Hour Service
Eldorado 853-2351 Sonora 387-3509

INSURANCE

Fire, Windstorm, Auto and Casualty
Call TOM RATLIFF 853-2636

Tex-Sun Insulation

Residential - Commercial
Free Estimates
Farris Nixon 853-2996

J.B. Beason

Remodeling
Paint Contractor
Painting Dry Wall Acoustic
John or Pam 853-2428 or 853-2258

KERBOW FUNERAL HOME

Serving Eldorado & Sonora
Call 853-2636 or 387-2266 in Sonora

Whitten Liquid Feed

Nutrene & Godbold Feeds 853-2944
Steve Whitten, Manager Res: 853-2879

DRY CLEANERS

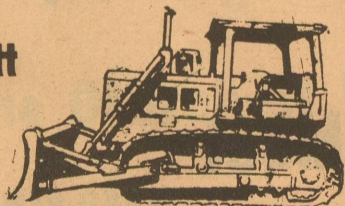
LAUNDRY
UNIFORM RENTAL
DUST CONTROL
MOPS MATS
THORP'S

212 S Main 853-2900

Leggett Construction

Brush Control-Tanks Pits
24 hour Oil Field Services

Jeff Leggett
(915) 853-3081



Specializing In

Instruments, Gauges, Meters & Controls.
For Oil & Gas Industry and Industrial
Plants Sales & Service on Oilfield and
Industrial Instruments & Control

Eldorado Instrument & Control Co. 24 Hour
Office 853-2506, Home 853-2624 Eldorado, Texas Service

Henderson Waterwell

Windmill and Pump Repair
Sam Henderson, Jr.
853-2447



Classified Ads

For Sale

1975 Volkswagon Dasher. Good condition. Call 853-2077. 219atfnc

50x150 ft Butler building. Overhead cranes. 20 ft underhook. Office and living quarters. Central air and heat. Plumbed for compressed air system and LP gas heating. 400 amp and 3 phase. Approximately two acres fenced in Sonora, Texas. \$150,000.00 firm. Call Mark Crider at 800-242-3017. 25mtfnc

30 inch Tappan electric range. Ceramic cook top, large oven, storage drawer. Harvest gold. \$50 Call 853-2905.

1977 Suzuki Dirt Bike 250, Call 853-2742 \$500.00 See at the corner of West and Field, next door to gym.

Pontiac Sun Bird-2 door. \$1,500.00 Call 853-2986

Three wheel bicycle. Call 853-2678.

1976 Chevrolet half-ton pickup, four wheel drive. Scottsdale 350 engine power and air AM/FM eight track, for speed transmission. Call 853-2266 after 5:30 p.m.

Found

Young puppy, part poodle, female. Call 853-2848 and pay for ad.

Business Services

Easter Cakes, Cupcakes, Cookies, Paramico Eggs on Sale; April 18-Pat Sykes Garage. Also special orders can be made. Call 853-2349 or 853-2209.

Sales

Garage sale. Friday and Saturday. 306 North East Street. Many clothes. O.B. Singleton.

Backyard sale-405 Gillis. Saturday April 11 9a.m. to 4p.m. several families, lots of miscellaneous, 1972 Maverick \$500.

4 family Garage Sale: Boat, motor, furniture, kid clothes, dishes, welder & guns. Fri., Sat., & Sunday. 8a.m. to dark. 511 St. Christoval.

806 N. San Angelo Hwy. Furniture, Clothes, & miscellaneous Friday. 8:30?

Inside House Sale- Asst. of Items. Thur. and Fri. 8:00a.m. to 5:00 p.m. April 9 and 10 205 S.W. Street

Rust and white colored female one-eyed Border Collie, ranch dog with limp. Family pet. If seen, contact Tip or Janee Finley 853-2848.

Wanted

A good secretary job, or a good office job. 5 days a week only off on weekends. Eldorado or Sonora area only. Call 853-3110 after 5 p.m.

Public Notice

CONTRACTORS' NOTICE OF TEXAS HIGHWAY CONSTRUCTION
Sealed proposals for construction 127.168 miles of Guardrail Safety Project Loc. at Various Location Throughout District 7 on Highway No. US 190, covered by HES OOS(96) in Schleicher, Etc. County, will be received at the State Department of Highways and Public Transportation, Austin, until 9:00a.m., April 15, 1981, and then publicly opened and read.

The State Department of Highways and Public Transportation, in accordance with the provisions of Title VI of the Civil Rights Act of 1964 (78 Stat. 252) and the Regulations of the U.S. Department of Transportation (15C.F.R., Part 8), issued pursuant to such Act, hereby notifies all bidders that it will affirmatively insure that the contract entered into pursuant to this advertisement will be awarded to the lowest responsible bidder without discrimination on the grounds of race, color, or national origin, and further that it will affirmatively insure that in any contract entered into pursuant to this advertisement, minority business enterprises will be afforded full opportunity to submit bids in response to this invitation and will not be discriminated against on the grounds of race, color, or national origin in consideration for an award. Plans and specifications including minimum wage rates as provided by Law are available at the office of Charlie F. Low, Resident Engineer, San Angelo, Texas, and State Department of Highways and Public Transportation, Austin. Usual rights reserved.

School Menu

Monday
German Style Sausage
Golden Hominy
Mixed Greens
Diced Peas
Chocolate Cake/Fudge Icing
Tuesday
Beef & Cheese Enchiladas
Pinto Beans
Lettuce & Tomato Salad
Cornbread
Banana Pudding
Wednesday
Spaghetti & Meatsauce
Thursday
Cream Style Corn
Lime Jello
Peanut Butter Cookies
Fried Chicken & Gravy
Creamed Potatoes
English Peas
Carrot, Pineapple, Raisin, Salad
Friday
Peach Cobbler
Corn Dogs
Potato Rounds
Pork & Beans
Iced Cupcakes

SHARP HOMEMAKER PARTY PLAN PEOPLE

Supervisor to hire, train people from home 6 months of year. Teaching, business or party plan background helpful. No selling, no investment. Training provided.

Call toll free number
800-821-3768

TOYS & GIFTS —
HOUSE OF LLOYD

'Alan's Flight To Heaven'

It was the hand of Jesus that reached down for Alan that day. He said, "I have prepared for you a better place to stay. Your work on earth is over, your burdens left behind, for up in Heaven, there is rest, and perfect peace to find."

The angels came to meet him, in heavenly chorus they sang, far off, the harps were playing, and golden trumpets rang. Then in shining glory, the gates swung open wide, heavenly hosts were waiting to welcome him inside.

Allan is now with Jesus, his beauty to behold, Alan's garments are snow white he walks the streets of gold.

Brother Pete, he has seen, and sister Gail has held his hand, Alan is now in Glory, he has reached the Promised Land.

Alan's earthly flights are over, he is now on higher ground. He made his flight with Jesus, his last...was Heaven bound.

DATSON
O&D IMPORTS
653-2941 San Angelo

Xerox Copies
15-A Copy
Meador - Peters Agency

Income Tax Service
Frankie Schrier
904 Main
853-2582

Long-term credit to buy or improve land.

The Land Bank
Close to the land and the people who work it

LOCAL ASSOCIATION IMPRINT

THANKS TO YOU WE'RE NUMBER ONE!

We're the leaders! We're on top! Truck buyers in the Sutton and Schleicher county. Area have registered more Chevrolet trucks during the 1980 calendar year than any other make. And we would like to thank you for helping us reach this important goal, We'd also like to remind you that year in, year out, there are more chevy trucks on the road than any other make. Proof that great customers like you and tough trucks like ours make quite a team.



Ken Braden Motors
Number One in Trucks.

Based on R.L. Polk Registration Survey



Ken Braden Motors

I-H 10 at Golf Course Road

Phone 387-2529