

# Eldorado Success

Schleicher County's Only Newspaper—

—Offering The Best Advertising Medium—

—Est. 1901, This County's Oldest Business Enterprise

72ND YEAR

ELDORADO—SCHLEICHER COUNTY, TEXAS (76936) Thursday, February 22, 1973

Number 8

## Speech Students Take Honors, Sonora Meel

The 27th Annual Speech Tournament was held Friday and Saturday, February 16 and 17, in Sonora. John Tedford was director; Terry Mitchell, student director; and James Pollard, Principal.

Preliminaries were held Friday and finals were held on Saturday. Jill Edmiston qualified in poetry reading for the finals; Mark Calk won second in Boys Poetry Reading; Tanya Corbell won third in Girls Poetry Reading; Debbie Page won second in Prose Reading and second in Dramatic Interpretation; Priscilla Holsey won third in Girls Bible Reading; and Karen Rountree won second in Humorous Speaking.

Schools entering the Sonora Speech Tournament included Reagan County High, Comstock, Knippa, Andrews, Midland Lee, Sanderson, Stanton, Lubbock Coronado, Menard, Robert Lee, Lake View, and San Angelo Central, Seminole, Wall, Christoval, McCamey, Ballinger, Ft. Stockton, Sonora Jr. High, Ozona, Crane, Eldorado, Buena Vista, Imperial High, and John Glenn Jr. High.

Plans are being made by Mr. Bill Salisbury for the Eldorado Speech Department to enter the Texas Tech Speech Tournament in Lubbock this week end, Feb. 23-24.

## Lions Met Wednesday

The Eldorado Lions Club met at noon Wednesday in El Dorado Restaurant, with Boss Lion Elton McGinnis presiding.

C. T. Humphries, chairman of the Program and Entertainment Committee, had charge of his third and final program for the month. He introduced Mark Calk and Karen Rountree who took part in meet at Sonora last week and they gave reports on how the Eldorado school placed in that event.

Next week's meeting—on Wednesday noon, Feb. 28th—will be the monthly business session of the club; The sweetheart banquet and queen's contest and program will be discussed.

## Library Acquires Some New Books

Books given as memorials: The Living Bible, memorial to W. N. Ramsay, by Mr. and Mrs. Leland Haynes, Mr. and Mrs. Royce Smith and Dorothy Evans.

Eleanor: The Years Alone, author Lash, memorial to Totsie Graves by Mr. and Mrs. W. T. Parker and Mr. and Mrs. Glenn Parker.

Wild Cow Tales, author Ben K. Green, by Nixon Class First Baptist Church.

New books for the little people: Alexander and the Terrible, Horrible, No Good Very Bad Day; Good Night Owl, Milton the Early Riser; Mogas' Flute, Elizabeth's Shopping Spree, and Peter Pan. Fast Slow High Low.

Adult Fiction: The Stepford Wives, by Levin; Green Darkness, by Seton.

Non Fiction: Queen Victoria by Smith; 1973 Britannica Yearbook of Science and the Future; The Golden Book of Poetry, by Werner; Trail blazers of America, by Haynes; Burnt Offerings, by Marrasco; American Facts and Dates, given by Abilene Public Library.

At this time of the year we send a yearly report to the state and maybe some of you would like to know what we have done the past year: Total circulation (books only), 2,899; Non-book circulation (periodicals, media, etc.) 398; Book stock at end of fiscal year, volumes: 8,239; Volumes added during fiscal year, 359; Volumes withdrawn during fiscal year, 39.

We will be getting some new books before long. Would be happy to see you come in and get a new book to read. —Gladys Gunn, librarian.

## Blue And Gold Banquet

The Cub Scout Blue and Gold Banquet is set for 7:00 p.m. Monday, Feb. 26th, in the south basement room of the Memorial Building. Each Cub and his family will attend and bring a covered dish.

Awards will be given. For entertainment, the Order of the Arrow dance team will be on hand from San Angelo to give Indian dances. They were here about a year ago.

## Post Script

We Salute FFA Week, Feb. 17-24

It is Future Farmer Week in Texas and the nation. The 430,000 FFA members in America—11% of them in Texas—are to be congratulated for the leadership programs and the scientific agriculture they practice.

Today, Feb. 22nd, is Washington's birthday, and FFA Week includes his birthday each year because Washington was a century ahead of his time in advocating and practicing scientific methods of farming.

Is there an FFA member in your neighborhood? Take time during Future Farmers of America Week to give him a pat on the back. Your future happiness will depend to a large extent on the Future Farmers of today maintaining an abundant agricultural production tomorrow.

(Related photos, articles, and advertising are on page 5 of this issue of the Success.)

With our subscribers: Lewis F. (Pete) Logan's new address is Route 6, Box 200, Gulfport, Mississippi 39501.

Thomas D. Bradley's new address is Apt. 1, 6765 Arizaba, Long Beach, California 90805.

Mrs. Elizabeth Ballew has entered new subscriptions for Mrs. Jim W. Lacy, Jr., 1713-B Taylor-Gaines, Austin, Texas 78741, and for the Bill Collins family at P.O. Box 2013 Andrews, Texas 79714.

This issue of the Success, which you are now reading, is dated for Thursday, February 22.

Since 1973 is not a Leap Year, this is the last issue for the month of February.

Next week we will go into a new month and the Success will be dated Thursday, March 1st.

Now this may seem a little bit premature to report that there will be THREE local elections on Saturday, April 7th—which is over six weeks from now. But actually on page 2 of this paper, you will find official notices for all three of these April elections.

One is for a notice of Hospital District Directors.

One is for a notice of trustees for the Independent School District.

And one is a notice of election for City of Eldorado mayor and two aldermen.

If you are a registered voter and are at all interested (you should be) in local politics and civic affairs, the Success urges you to read and study all three of these notices on page 2. Each one specifies the incumbent whose term expires, and what a candidate must do to have his name on the April 7 ballot—and it gives the deadline date for filing.

March 7th is set as the deadline date for candidates in the School Trustee election, and also March 7th is the deadline date for filing for City Mayor and Alderman.

That is about two weeks from now.

Election for Hospital District Director is also set for Saturday, April 7th, but the requirements for placing a name on the ballot is a little more complicated than the other two. It should not be necessary for us in this column to repeat what these requirements are. They are already specified in the notice on page 2. Deadline for filing a petition in this case is March 13th.

Read the notices on page 2 and be informed.

## Named Distinguished Students At A&M

College Station, Tex.—Two Eldorado students have earned "Distinguished Student" ranking at Texas A&M University, announced Registrar Robert A. Lacey.

The undergraduate honor is awarded students who have excelled academically. Recipients must earn at least a 3.25 grade point ratio (out of a possible 4.0) during the previous semester.

"Distinguished Student" ranking is limited to 10% of TAMU's undergraduate enrollment.

Eldorado students are: William F. Edmiston, junior recreation and parks major, son of Mr. and Mrs. W. F. Edmiston, and Walter Lee Ray, Jr., sophomore animal science major, son of Mr. and Mrs. Walter L. Ray Sr. of Route 1.

RECEIPT BOOKS—Pocket size, and large desk size, for sale at The Success.

## Eaglettes Win Bi-District But Lose First Regional Game



THE '73 EAGLETTES — On front row are Louann Nixon, Mgr., Kathy Page, Rosellen Maness, Denise Adams, Patti Olson, Vonda Maness, Neria Garcia, Mgr. Standing on back row are Coach Helmers, LeAnne Cawley, Janet Davis, Patsy Tampke, Janet Oglesby, Lynn Sanders, Carolyn Page, Irene Garcia, Sharon Garlitz, and Coach Harber. —Staff Photo

### Eaglettes Beat Cross Plains For Bi-District

The Eldorado girls traveled to Ballinger for their bi-district basketball game with Cross Plains, the winner of 10-A. The Eaglettes had finished their district with a 12-0 record, while Cross Plains had only one district mar coming from DeLeon.

The first half of play was a hard fought contest with Eldorado holding a slim 4 point lead after the first 16 minutes. The local girls scored mostly from the floor in the first two periods while Cross Plains kept in the ball game by scoring consistently from the free throw line. The half time score was Eldorado 31—Cross Plains 27.

The next 16 minutes proved to be too much for the Cross Plains girls as they found themselves falling farther and farther behind. The Eaglettes combined fewer fouls with a stepped up scoring pace and tenacious defense to extend their lead to 25 points at one time.

The Eldorado guards are to be commended for the fine defensive play that held the high scoring offense of their opponents to a mediocre production of 48 points. On the other hand the forwards scored well after a cool start to end the game with 64 points.

Rosellen Maness headed the Eldorado scoring with a 24 point output. Kathy Page was close behind with 23 points for the night. Scoring 5 points apiece were Carolyn Page, Sharon Garlitz, and Irene Garcia; while Rosie Smith contributed 2 points. Patsy Tampke sparkled on defense while containing Terry Eddington extremely well. Janet Davis and Vonda Maness provided the ball handling necessary to keep the ball away from the Cross Plains forwards.

This win pushed the Eaglettes season record to 21-8 and made it 16 consecutive wins. The last loss came in the second week of December while playing McCamey.

### Eldorado Eaglettes Lose To Regional Champions

The win over Cross Plains in bi-district play gave the Eaglettes the right to compete in the regional tournament in Denon for the third year in a row.

The Eaglettes met Grandview, who was rated number 2 in the state, in first round play. Even though this was a first round game it could have been considered the game that decided the eventual regional winner. This was the closest game in Class A competition at regional, with the final score being Grandview 61 and Eldorado 53.

The Eldorado girls got an extremely slow start and at one time trailed Grandview 17 to 4. From this point, however, the Eldorado team played extremely well and actually outscored the much taller Grandview opponents by 5 points. Finding themselves behind by as much as 20 points at one time, the girls never gave up and came close enough to force the Grandview girls to stall the ball to preserve a win.

Kathy Page paced the forwards with a 27 point production while Rosellen Maness contributed 16 points. Other forwards to score were Carolyn Page with 8 and Irene Garcia with 2 points. Patsy Tampke again led the guards while attempting to guard a 6' 3" Grandview forward.

The loss to Grandview closed out an extremely successful basketball season for the Eaglettes and paved the way for Grandview to compete in the state meet in Austin. After beating the Eaglettes, Grandview easily beat previously undefeated Boyd by 19 points to advance to the state playoffs.

### Beef Cattle Producers To Meet Tonight

Jerry Swift has notified all Beef Cattle Producers in the county that there will be a meeting February 22 at 7:30 p.m. in the Lions Club room of the Memorial Building with Dennis B. Herd, Extension Beef Cattle Specialist, who will present a program on Beef Cattle Nutrition. Supplemental Feeding, New Ideas in Winter Feeding, Protein Supplementals and many other problems in the nutrition of Beef Cattle will be discussed.

## Easter Seal Drive To Open Here March 1st

The 1973 Easter Seal Appeal will open in Schleicher County on Thursday, March 1, 1973, according to Raymond D. Hall, who serves as Easter Seal Representative for the county.

Hall said that Easter Seal Appeal letters would begin arriving at homes in the county about March 1st.

As Easter Seal Representative, Hall is the person to contact to request services from the Easter Seal Society for Crippled Children and Adults of Texas. These services include physical and occupational therapy, speech and hearing programs and special information services to help solve the many problems faced by the families of handicapped children and adults.

Last year 16,572 handicapped people received help from the Texas Easter Seal Society. With the costs of providing expert professional care rising, more money than ever will be needed.

Funds help support 18 centers in Texas, where crippled children and adults are treated, regardless of

their ability to pay. Providing walkers and wheelchairs is an example of the services provided to those who cannot provide for themselves and who do not qualify for help from any other source.

"The people of Texas have always responded generously to helping the handicapped, and I feel certain they will make it possible to increase Easter Seal services to crippled Texans throughout the coming year," Hall said.

## S. S. Man Here Today

Ken King, Field Representative for the San Angelo Social Security Office, has scheduled his February visit to Eldorado. He will be at the County Courthouse on Thursday, February 22nd from 9:30 a.m. to 11:30 a.m. Anyone who wants to file a claim for benefits, get information, or transact other business with the Social Security Administration may contact him at this time. Persons who are unable to meet with him are encouraged to call the office in San Angelo at 949-4608.

Mr. and Mrs. Earl Yates had their son Jackie visiting them over the week end from Abilene.

## First Filings Made In City Election

City Secretary Lum Burk Tuesday reported that he already had two filings for positions in the City Election set for Saturday, April 7th.

Granvil Hext, incumbent, has filed for re-election as alderman.

Raymon Mobley has filed for the position of Mayor.

Final filing date is Wednesday evening, March 7th.

## 42 PARTY HELD

Mrs. W. C. Parks was hostess when the club met last Thursday in the club room.

Those present were: Mable Griffin, Annie Speck, Rose Brannan, Viola Finnigan;

Natalie Stockton, Allie Cheatham, Zelma Henderson, Mary Joiner; Bessie Doyle, Virginia Griffin, "Al" Durbin, and the hostess.

Refreshments were a salad plate and coffee. —Rep.

## Gin Still Waiting On The Weather

The Mikeska cotton gin in Eldorado has been standing idle since February 7th, and this week was still waiting for dry weather when the harvest could be resumed.

Some estimate that 150 more bales still remain to be stripped in the county.

The last total reported by this paper was 2,927 bales.

## PHOTOGRAPHER COMING

A Shugart photographer will be at Buddy White's Western Auto all day on Tuesday, Feb. 27th.

Further details are in the ad and special coupon on pages 2 and 3 of this Success issue.

## School Menus

(All meals served with buttered rolls and milk.)

Wed., Feb. 21: Enchilada casserole, pinto beans, okra gumbo, peach halves, brownies.

Thursday, Feb. 22: Roast beef & gravy, creamed potatoes, spinach, waldorf salad, fruit jello.

Friday, Feb. 23: Sandwiches—tuna, chicken salad, pimento cheese; French fried potatoes, stuffed celery, peanut butter, fresh fruit cup, cookies.

Monday, Feb. 26: Lasagne, lima beans, mustard greens, canned fruit.

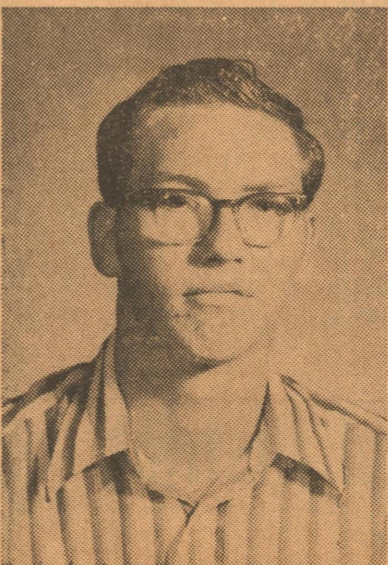
Tuesday, Feb. 27: Fried chicken and gravy, creamed potatoes, English peas, stewed tomatoes, chocolate cake.

Wed., Feb. 28: Beef stew and vegetables, stuffed celery with cheese, Mexican cornbread, crackers, fruit cobbler.

Thursday, March 1: Turkey and dressing, giblet gravy, green beans, carrot & apple & celery salad, jello.

Friday, March 2: Sloppy Joes, tossed green salad, French fried potatoes, fruit cup, cookies.

## Lions Of The Week From The '73 Senior Class



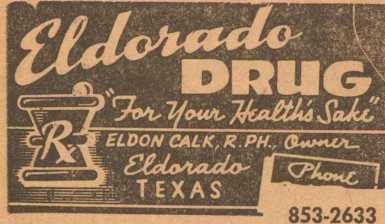
Robby Joyce and Karl McCormack



**Fountain Time At . . .  
ELDORADO DRUG**

- Cosmetics
- Perfumes
- Costume Jewelry
- Drug Supplies
- Magazines
- Electrical Gifts
- King's Chocolates
- Cameras
- Suntan Lotions
- Greeting Cards
- Stock Remedies

Where Friends meet for cool, refreshing fountain drinks and ice cream treats!



Is now  
the time to  
buy land?

Acquiring that farm might seem more practical with financing through the Federal Land Bank. Land is easier to pay off when costs are amortized over extra years with a long-term Land Bank Loan. Your total cost of borrowing, too, can be less. Ask us for help: We know land values; we will inspect the property. We will then try to make a loan that meets your exact needs.



**A. E. PRUGEL, MANAGER**  
Federal Land Bank  
Association of Sonora  
Telephone 387-2777

**On Stock Show Route**

The Cawley Ranch had a big week on the Stock Show circuit last week, scoring wins in two of the major shows.

At El Paso Southwestern International, Cawley Ranch had the Grand Champion Brangus Bull and the Grand Champion Pen of Three Brangus Bulls, plus four firsts and two seconds.

In addition at El Paso the Cawley Ranch stallion Joker's Bold Gold was named Reserve Champion Stallion.

Moving to the San Antonio show LeAnne Cawley's senior heifer calf Miss Rocky Lady was named to three Grand Championships including the J. R. Show, the champion Jr. Female and finally to the ultimate triumph, the Grand Champion Brangus Female of the Show.

John Ben Cawley, showing his heifer in the same classes also scored well winning a third in the Jr. Show and standing fifth in a very large and rough open class.

On the best information obtainable Miss Rocky Lady's win represented a feat accomplished only one other time before by a senior calf at the San Antonio show.

**Methodist Notes**

More Recent Pew Bibles—

In Honor of Tom Palmer West, given by Blanche West & Dale Eubank;

In Honor of Gene & Dale Eubank and Scott & Leslie, given by Palmer & Blanche West;

In Honor of Rev. and Mrs. Fred Cox, given by Blanche and Palmer West;

In Honor of Charlie & Cathy Niblett, Elizabeth, Cherie, Ashley, given by Blanche & Palmer West;

In Honor of Cashes & Nancy Taylor, given by Blanche & Palmer West;

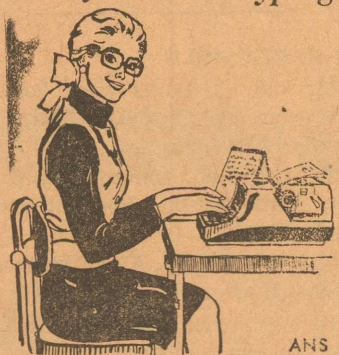
In Honor of Robbie McGinnes, given by Mr. and Mrs. Elton McGinnes;

In Honor of Jimmy McGinnes, given by Mr. and Mrs. Elton McGinnes;

In Honor of Mrs. Wylie Hight, given by Wesley Bible Class.

In honor of Mr. and Mrs. Palmer West, given by Gene & Dale Eubank, Scott & Leslie.

**Hint for Better Typing**



ANS  
Girls who peer, squint and grope through the day — at typing and filing—may develop headaches and "scowl-lines," according to the Better Vision Institute, which urges regular eye examinations.

**Medicare Coverage To Be Expanded**

Beginning in July, 1973, new changes in the law extend Medicare coverage to beneficiaries who have been entitled to disability benefits for at least 25 consecutive months. For those with a shorter period of entitlement as of next July, coverage begins with the 25th month of their entitlement to benefits, explained J. M. Talbot, social security manager.

Enrollment will be automatic and will include both hospital and medical insurance coverage. However, those who do not want the medical insurance, for which a monthly premium will be deducted from their check, may decline it by filing a notice with social security prior to the beginning of coverage, said Mr. Talbot.

Coverage is extended to disabled workers at any age, and to disabled widows, widowers, and mothers at age 50 or over who are entitled to monthly benefits. It is extended to disabled children age 18 and over who become disabled before age 22 and are entitled to benefits. Coverage is also extended to disabled railroad retirement annuitants.

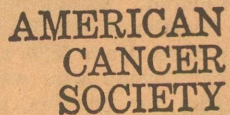
If the disability ends, Medicare coverage ends the month after the notice of termination of benefits is mailed by social security.

For more information, contact the Social Security Office at 3000 West Harris Avenue (PO Box 3808) in San Angelo, Texas, or see the representative when he is in your area. Persons who are unable to meet with him are encouraged to call the office in San Angelo at 949-4608.

**MEMORIAL PROGRAM**

Your Memorial Gift is a fitting tribute to a loved one. This remembrance helps support the research, education and service programs of the American Cancer Society.

Memorial gift funds may be sent to your local Unit of the Society.



We have the appropriate cards to send to the family and to the donor, and will send your check to the American Cancer Society in Austin.

HELEN CARLMAN  
Memorial Chmn. Schleicher County

RECEIPT BOOKS—Pocket size, and large desk size, for sale at The Success.

**Notice of Hospital District Election**

Notice is hereby given that the annual Director election of Schleicher County Hospital District will be held on Saturday, April 7, 1973.

The present law requires that any person desiring his name to be printed on the ballot as a candidate for director shall file a petition, signed by not less than 10 legally qualified voters, with the secretary of the board of directors, asking that such name be printed on the ballot. Such petition shall be filed with such secretary at least 25 days prior to the date of election; such date this year being March 13th.

Three directors are to be chosen at the April 7 election. Terms of Madolyn Mertz, Winnie Jackson, and Ed Meador expire. The term of office is for two years.

GUY WHITAKER, SECRETARY.

**S. S. MAN HERE TODAY**

Ken King, Field Representative for the San Angelo Social Security Office, has scheduled his February visit to Eldorado. He will be at the County Courthouse on Thursday, February 22nd from 9:30 a.m. to 11:30 a.m. Anyone who wants to file a claim for benefits, get information, or transact other business with the Social Security Administration may contact him at this time. Persons who are unable to meet with him are encouraged to call the office in San Angelo at 949-4608.

RECEIPT BOOKS — Small pocket size; also big ones with 500 sets On sale at The Success.

**SHUGART COUPON**  
**Western Auto Store**

133 Main Street Tuesday, Feb. 27



**9**  
WALLET SIZE  
COLOR PORTRAITS  
**99¢**

ASK About Our  
**FREE**  
**8 x 10**  
OFFER  
Extra Charge  
for  
GROUPS

**City Election Notice**

AN ELECTION HAS BEEN CALLED  
FOR SATURDAY, APRIL 7, 1973  
IN THE CITY OF ELDORADO FOR THE  
PURPOSE OF ELECTING MAYOR AND 2  
ALDERMEN TO SUCCEED—

**ELDON CALK — MAYOR**

**ALVIN FARRIS — ALDERMAN**

**GRANVIL HEXT — ALDERMAN**

WHOSE TERMS HAVE EXPIRED.

ALL CANDIDATES FOR THESE OFFICES MUST  
FILE THEIR NAMES WITH THE CITY SECRETARY  
NOT LATER THAN MIDNIGHT, MARCH 7, 1973

**LUM BURK, CITY SECRETARY**

**Notice Of School Trustee Election**

The Board of Trustees of the Schleicher County Independent School District have approved a resolution calling for a school trustee election for Saturday, April 7, 1973.

Positions to be filled this year are presently held by Wilson Page, Buddy White, and Mort Mertz. The term of office is for three years.

Candidates must file their applications with Mr. Leslie Baker, Secretary of the School Board of Trustees. March 7, 1973 is the filing deadline.

Mrs. Mayo will be clerk for absentee voting starting on March 15 and ending March 30 at the High School office.

**Schleicher Co. Ind. School District**  
Of Schleicher County, Texas

Tuesday, February 27

**8 99¢**

KING SIZE  
WALLEY  
CREATIVE  
COLOR  
PORTRAITS  
FOR ONLY



NO  
LIMIT

Extra Charge for Groups

GET PICTURES MADE OF GRANDPA, GRANDMA, DAD, MOM AND ALL THE LITTLE ONES AT THESE SAME LOW PRICES!

**SHUGART**  
**COLOR**  
**PHOTOS**

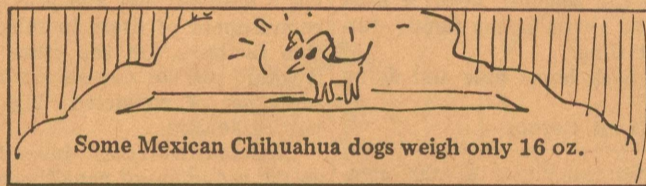
ASK About Our **FREE** 8 x 10 OFFER

**Western Auto Store**  
133 Main Street

Miss Page Wins Award At Recent Speech Meet



Debbie Page of Eldorado High School is shown with 1st place for Girls' Prose she won at annual Howard Payne College-Brownwood High School forensics tournament held recently. —HPC photo



Some Mexican Chihuahua dogs weigh only 16 oz.

It takes 40 minutes to boil an ostrich egg.



## Kent's Automotive

712 N. Divide Phone 853-2733

COMPLETE AUTO REPAIR

NAME BRAND PARTS

Including

DELCO, MOTORCRAFT & AC

SAFETY INSPECTION STATION

### Try Our Complete Service For Your Car Or Truck

Washing, Greasing, Goodyear and Firestone Tires, Continental and Firestone Batteries.

Stamps Given on credit card and cash sales, and Open Accounts paid by the 10th.

**MITTEL TEXACO SERVICE**

GAIL MITTEL

PHONE 2939 OR 2488

### News & Advertising Copy Deadlines:

**MONDAY** of Each Week: Please turn in contributed columns, club reports for preceding week end, society and personal news, etc.

**TUESDAY Morning:** More General News.

**TUESDAY Afternoon, Late:** Only news items of real significance such as deaths can be accepted.

**IN GENERAL:** Please Turn in News and Ad Copy As Early In The Week As Possible.

## THE ELDORADO SUCCESS

PRINTING—ADVERTISING—NEWS

—SINCE 1901

### Plan Space In Your Landscaping

College Station, Tex.—When planning a landscape, remember plants are the only living materials of any significance that can be used for structural elements.

Dr. William C. Welch, landscape horticulturist for the Texas Agricultural Extension Service, Texas A&M University, says that plants cover the ground with a protective surface preventing erosion, moderating temperatures, wind and noise, and screening objectionable sights. While performing all of these functions, plants add beauty and interest through their forms, textures, colors, fruits and flowers.

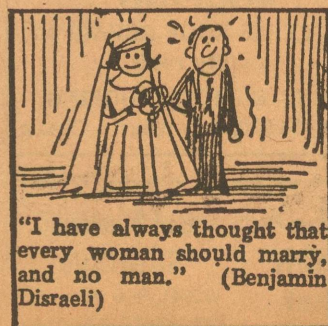
"A tree's size is important in giv-

ing scale to a landscape because trees are usually the only objects of great height and mass which are available for designers," points out Welch.

No matter how the ground area is organized, it has little meaning until given definition by objects such as trees which extend upward into space. "A yard is little more than an empty field until its area has been given volume and organization by plants or man-made structures," says the horticulturist.

Plants are important in organizing outdoor space for human living, but their misuse can destroy this organization. Plants, like buildings, occupy, enclose, define and limit space. "Plants are commonly crowded too close together and are monotonously spaced over the land," notes Welch. "When a multitude of shrubs and trees is scattered about a property, the space is limited and divided into many small bits where the effect of spaciousness is greatly reduced."

A close relationship between plants and people is promoted by using plants as elements of structure. "It is more pleasing for people to pass under, between, through or around plants than to simply look at them from one side," contends Welch.



"I have always thought that every woman should marry, and no man." (Benjamin Disraeli)

YOUR PERSONAL SERVICE BANK



The best place to get a genuine Bank Rate Auto Loan is at a genuine bank

Here at First National you can get the figures to prove this fact of life.

**BUSINESS LOANS**

We can give prompt loan service to any sound business enterprise in this area needing funds for inventory, improved equipment or interim operating expenses.

## The First National Bank

Eldorado, Texas

YOUR FRIENDLY SERVICE BANK



## Cure Those Winter Washday BLAHS with an ELECTRIC CLOTHES DRYER

Economical, automatic electric clothes drying is easy on the budget, your clothes and your time. It's the modern way to more pleasurable washdays — lets you pick your own day and hour. Electric clothes drying is 24-hour sunshine.

See your electric appliance dealer now!

### WHAT COSTS LESS NOW THAN IN 1952?

The average cost of a kilowatt hour of electricity used by a residential customer served by WTU cost 29% less than it did twenty years ago... (1952 - 1972) and... in 1972 the average customer used over three and a half times as much electricity as he did in '52.



Live the carefree way with famous **Frigidaire Electric Appliances** See them at **WTU**

**West Texas Utilities Company**

An Equal Opportunity Employer

## Ken Braden Motor Co

SERVING SONORA AND ELDORADO

A COMPLETE SALES AND SERVICE DEALERSHIP

Representing CHEVROLET - OLDSMOBILE

PONTIAC AND BUICK & CHEV. PICKUPS

Contact James Williams Car Market, Eldorado, Ph. 853-2611

or Braden Motor Company, Sonora, Texas... Phone 387-2529

YOUR BUSINESS WILL BE APPRECIATED

Cheapest, Hardest Working Salesmen In Town Are In The ADVERTISING SUPER MARKET

OLSON'S LAUNDRY Laundromat & Linen Service

We do finished work, rough dry and alterations. Dust Mops, Walk off mats, Towels, Aprons and red rags for rental. Pick up and delivery available CALL 853-2801

Myers Submersible Pumps

Check with me for complete line. I also do contract wiring

Blake's Electric

B. L. Blakeway Ph. 853-2775

LOWE'S REPAIR SHOP

AUTOMOTIVE LAWN MOWER REPAIR REPAIRS OF ALL KINDS In Northeast Eldorado



If They're Western-Bilt They're Guaranteed

Free Pick Up and Del. Phone 853-2868

INSURANCE

FIRE WINDSTORM HAIL; AUTO; LIFE CASUALTY

Car Loans Tom Ratliff Phone 853-2636

DAY OR NIGHT SERVICE

RATLIFF-KERBOW FUNERAL HOME

Eldorado Sonora Phones, Eldorado -- 853-2636 If No Answer, Dial -- 853-2860 Or call (Toll) Sonora... 21871

ELDORADO SUCCESS

PUBLISHED EVERY THURSDAY At Eldorado, Texas 76936 Fred Gunstead...Editor-Publisher Bill Gunstead...Associate Editor

Subscription Rates 1 Year, in Schleicher County \$400 1 Year, Elsewhere...\$5.00

Entered as Second Class Matter at the post office at Eldorado, Texas, under the Act of March 3, 1887.

Any erroneous reflection upon the character, standing or reputation of any person firm or corporation which may appear in the columns of the Success will be gladly corrected upon same being brought to the attention of the publisher.

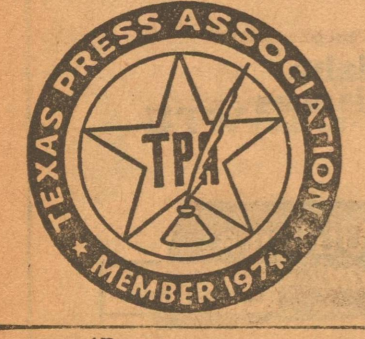
Notice of entertainments where a charge of admission is made, obituaries, cards of thanks, resolutions of respect, and all matters not news will be charged for at the regular rates.

Announcements of revivals for churches are considered advertising and charged for at regular advertising rates.

Unsolicited poetry charged for at regular advertising rates.

Pictures Unsolicited pictures for publication charged for at engraver's rates.

Front page advertising announcements to be charged for at a rate equal to three times the regular rate.



FOR SALE: 3 bedroom home, with central heat, refrigerated air, paneling, fully carpeted, fruit trees.—Ted Short, 105 Bluebonnet Drive, ph. 853-2212. (7-8\*)

FOR SALE: A John Deere B tractor, overhauled and new tires, and equipment. — See Marion Owens, or phone 853-2559. 1\*

FOR SALE: Any size John Deere and equipment. Also used parts. See Farris Nixon at S. W. Fence Co. lot on Sonora Hwy. (\*13)

FOR SALE: One twin size oak bed frame, \$10. Nearly new clarinet used three months, \$100. See Linda Walling, 116 Dixie, or phone 853-2366. 1\*

In Those Days

ONE YEAR AGO Feb. 24, 1972—Funeral services were held for Reyes Lozano, 71.

Bank directors who attended a meeting in California were Jo Ed Hill, Ed Meador, Paul Page, and James Page. Kenneth Hicks underwent further surgery in a Houston hospital.

FIVE YEARS AGO Feb. 22, 1968—Alan D. Maslof came on the job as new game warden.

Tony Clark completed Army basic training at Fort Polk, La. Funeral services were held for Mrs. F. E. Chapple, 77, and Mrs. Sam (Delorah) Williams, 91.

Karen Griffin and Sam Henderson were married in the Baptist church.

Harold Susen put workmen to work remodeling the basement of the Methodist church.

Mrs. V. G. Tisdale and Mrs. J. O. Willoughby were hostesses at a meeting of the DAR, which had program on American History.

The Hospital directors set March 13 as date to open contractors' bids for the new hospital to be built here. Don Goss was the architect.

Jim Thornton was getting ready to move the 1½-storey Archie Wright house to the country to be remodeled for his home. The Frank Kinser house in the north part of town was being moved away also.

12 YEARS AGO Feb. 23, 1961—A Denver firm removed the water tower from the Rancho pump station site south of town.

The girls basketball team were to meet Ozona for bi-district. Team captains were Gayle Woodward and Mary Ann Nixon.

Funeral services were held for Perry Johnson, 88. It was FFA Week. Leonard Kent was president and Oliver Burk advisor of the local chapter. Other officers were H. A. Belk, Judge Whitten, Mikel Jurecek, Brian Edmiston, Herman Walker and Jim Runge.

The Eldorado Study Club was sponsoring a men's bloomer basketball game to raise money for county park improvements.

Judy Webb's engagement to Dan Griffin was announced. Tom Ratliff was chairman of a heart fund drive getting under way.

65 YEARS AGO Feb. 28, 1908—A goodly crowd of young people enjoyed themselves Friday night by dancing at the court house. Music was furnished from San Angelo.

The National Feeders and Breeders show will be held in Fort Worth March 11-17, 1908, with premiums aggregating \$20,000 to be offered. Special railroad rates will be given all stockmen who can attend.

J. G. Garvin was here in town Tuesday.

J. M. Earls announced plans to organize Missionary Baptist church at the Robert Bailey Ranch in this county, in March.

Miss Susie Bailey is attending the Institute this week.

D. C. Ogden was reported back at his ranch near Fort McKavett after spending the winter in San Antonio.

A daughter was born Sunday morning to Mr. and Mrs. John Earnest.

R. A. Evans returned Saturday from a business trip to San Angelo. He closed the deal for his mother's place while gone.

A get-together for young people was held at the ranch home of Mr. and Mrs. Sewell. Those present included Misses Susie Bailey, Ruth and Frances Parker, Virge Sewell and Cora Spencer, also Messrs. Alford Stevens, R. Billings, Frank Burns, Mat Lee, Parker Finley and Rusk Sewell.

Congressman Smith wired that daylight mail service from San Angelo to Eldorado and Sonora would be started soon using the stage line.

ELDORADO LODGE No. 890 — A. F. & A. M. Stated meeting 2nd Thursday in each month, at 7:00 p. m. from Oct. 1 to April 1, and at 8:00 from April 1 to October 1. Visiting brethren welcome.

Community Calendar

Feb. 22, Thursday. Social Security man at Court House, 9:30 to 11:30 a.m. Feb. 22, Thursday. Beef Cattle Nutrition meeting, 7:30 p.m., in Lions Club room, Memorial Bldg. Feb. 26, Monday. Cub Scouts Blue & Gold Banquet, 7:00 p.m. in Lions Club Room, Memorial Bldg. Feb. 27, Tuesday. Woman's Club Feb. 27, Tuesday. Shugart photographer at Western Auto, all day. Feb. 28, Wednesday: Lions Club meets 12:05, El Dorado Restaurant. March 2, Friday. World Day of Prayer service, 3:00 p.m., at Presbyterian Church.

CUB SCOUT DEN 1 MEETS

Den 1 met Tuesday afternoon at the Memorial Building with Den Mothers Lula Joiner and Mary Ruth Wallis in charge. The group spent the meeting time completing the table decorations and favors for the Blue and Gold banquet set for Monday night.

FOR SALE: 2 bedroom house in Glendale. Ph. 853-2739 or 853-2892 or see Granville Hext at Hext Foods.

FOR SALE: One black & white console Zenith TV. See or call C. L. Andrews, ph. 2636. 1tc

'67 FORD, ½ ton pick-up for sale. Contact Bob Phillips at Sweetwater Pump & Supply Co. or call 853-2624 after 5:30 p.m. 1\*

CARD OF THANKS

I want to thank my friends, neighbors and relatives for the visits, cards, flowers and prayers during my stay in the hospital and since my return home. I especially want to thank you for the help given and concern shown my wife while I was away. Farris Nixon 1\*

CARD OF THANKS

I wish to express appreciation for the cards, letters, visits, and food sent during my two recent stays in the hospital; also for each kind deed shown to my family during that time. I am back home now and doing well. La Verne Garvin \*

REFINISH gunstocks \$10.00; complete polishing and blueing \$25; handguns \$12 (additional charges for badly pitted guns). Any, stripped and cleaned \$5. At Lee's Drive In. (Fe 8-15-22\*)

WELDING & ROTO-TILL PLOWING of gardens wanted. Call Marvin Ferguson after 5:00 at 853-2694 or go by 601 West Avenue (Greene Rutland house). (to Feb 22\*)

FOR SALE: THE W. O. ALEXANDER residence, west of school. Cash or terms. Call L. J. Alexander, 112-855-2738. (to Mar 8\*)

For Sale

Three bedroom dwelling, 1½ story, 1½ bath; in good condition; fenced yard; reasonably priced; Glendale addition.

Meador Land Company Phone 853-2688 Ed Meador Lynn Meador 7-tfc

JOE GAULT

Jim Bass Ford—San Angelo YOU'RE MISSING SOMETHING IF YOU DON'T TRADE WITH JOE (MOSTLY MONEY) Ph. 949-4621 Res 655-7211

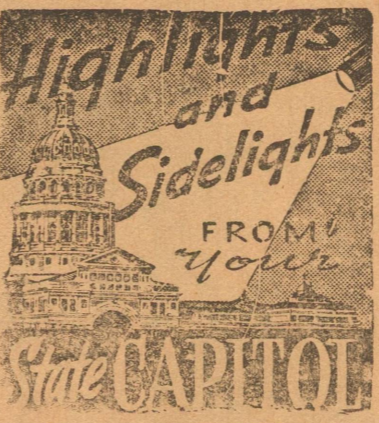
STAPLES to fit standard staplers, \$2.00 per box at The Success.

CLASSIFIED ADVERTISING RATES First Insertion.....4c word Additional Insertions.....2c word Minimum 50c Each Insertion Cash In Advance \$1.00 Minimum On All Small Ads Taken On Phone Or By Mail

ROOFING

ALL TYPES ROOF REPAIR and quality roofs. KENT ELLIOTT ROOFING Ph. 655-2800, San Angelo, Texas

The Truth That Heals 8:15 a.m. Sundays KGKL-960 Angelo New Christian Science Radio Series



Austin, Tex.—A new kind of "drug war" seems to be shaping up in the Legislature.

Gov. Dolph Briscoe spelled out his recommendations for complete revision of drug laws and promised to "lobby hard" with all the resources at his command as governor to get the bill passed.

As introduced in the House and Senate, it called for harsh penalties against dope pushers, annual registration of those who deal in legal drugs—and lowering the penalty for first offense possession of marijuana to a misdemeanor.

Briscoe's bill would allow possession of up to eight ounces of marijuana without incurring felony charge on first offense. However, the misdemeanor would be punishable by up to a year in jail and/or \$2,000 fine. The Governor also called for stepped-up education and rehabilitation programs. The bill was drawn, said Briscoe, to mesh with the 1970 federal controlled substance act to allow governments at all levels to work more effectively together.

A few days later, however, former Sen. Don Kennard of Fort Worth, who headed a Senate study committee on drug abuse, assailed the governor's proposals as "an out-and-out fraud as a reform measure." Sen. Chet Brooks of Pasadena introduced in bill form the far-reaching provisions of Kennard's committee. Brooks' bill would "decriminalize" marijuana possession and set moderate felony penalties for sales. It would also make simple possession of most drugs (heroin excluded) a misdemeanor and provide for commitment of users to rehabilitation facilities. On the other hand, it would call for non-paroleable life sentences of convicted "big time" heroin dealers.

The controversy continues to boil on the reduction of penalties on use of marijuana—and increasing penalties on those who sell marijuana or hard drugs. H. B. 86 by Rep. Lindon Williams implements more stringent penalties on those who sell drugs. It is backed by the Austin based Legal Drug Control Society, headed by E. E. Armistead. Armistead has passed petitions for over a year, and submitted these to the Legislature. "The Legal Drug Control Society asks that concerned citizens write their legislators to express support for H. B. 86," Armistead says. "We realize that there is no simple solution on this complex problem of drug abuse, but removing the pusher and dealer from the scene will certainly be a giant step in the right direction." Armistead started his crusade against the drug pushers when his daughter jumped from the University of Texas tower two years ago.

Oil Output Wide Open Again The Railroad Commission ordered wide-open, 100% market demand oil production for the 12th straight month.

In making the announcement, Commission Chairman Jim Langdon offered "some good news and some bad news." He said there were no "tremendously serious" shortages during the crucial winter months in spite of heating oil stock declines.

However, Longdon warned, the peak gasoline consuming season is just around the corner, and gasoline stocks are 19.2 million barrels below 1972 in the nation. Further, crude and products stocks in the U. S. are 70.2 million barrels off last year.

Ethics Delav Denied Lt. Gov. Bill Hobby gave repeated assurances that his plans for a March 20-21 citizens conference on ethics in government will not delay senate consideration of reform measures passed by the House.

Meanwhile, some House members blasted Hobby for indicating final Senate approval of the reform bills would be held up until after he receives advice of citizens on ethics legislation at the conference.

Light—The Criminal's Enemy Adequate lighting makes an excellent burglar repellent for the home. Twelve times as many crimes occur at night. Thus, well-lit premises and home can discourage criminals. All entrances to the home should be well lit. Even if street lights are around, the driveway, breezeway and areas between the home and neighbor's house are completely left dark. To check outside protection, turn on all outside lights and observe if any area exists where a person can hide or move without casting a shadow. If additional lighting is needed, local power company representatives can recommend placement and quantity of light needed. Illuminate the back yard as well. Have enough light to cast shadows—usually one or two 100-watt bulbs are sufficient. When away from home, leave a light burning. If the place will be vacant for the evening—or several days—leave a light on in a major living area, as well as the outside. Better still, get a timer to turn the lights on and off at a set interval. An "electric eye"—inexpensive yet valuable—can turn the outside lights on at dusk and off at dawn.

Methodist Notes The Dorcas Circle met in the parsonage Monday at 3:00 p.m. Few Bibles given last week: In Honor of W. G. Crippin Sr., given by Mr. and Mrs. W. G. Crippin, Jr. In Honor of Mrs. Charles E. Thompson, and Mrs. Luke Thompson Sr., given by Mr. and Mrs. E. C. Peters. In Honor of Mr. J. E. Hill, Mrs. J. F. Murchison, and Mrs. Margaret Hill Whitten, given by Mrs. J. E. Hill.

Hobby said hearings will move forward on ethics, lobby control and campaign financing measures. He noted it is extremely unusual for the Senate to vote on controversial measures before March 9 anyway. The Lieutenant Governor said the citizens conference carries out his campaign pledge to seek voter input on matters of intense public concern.

County Extension Agent's Column

By MRS. DIANE LUBE

Change To Metric System Gradual

Plans for converting to the metric system of measuring and weighing things are taking shape in the United States and making appearances in grocery stores. Labels on some processed foods give a measurement of liters or grams—in addition to usual information using quarts, ounces or pounds. Some labels use the metric system because the product is exported to other countries, or imported to the United States—but other labels carry metric system figures because food processors have begun the changeover. Considered simple and consistent, the metric system of weights and measures has been lauded by some educators, who believe that children learn it more quickly and easily than the system now in use. In addition, the metric system uses decimals instead of fractions, making arithmetic simpler. Others have questioned the need for changing from the system we understand and seem to make work. Advocates of the metric system point out that the United States is the only major industrial nation not using it. In fact, they say, there are only 13 other countries—all quite small—not using metric measures and weights. The rest of the world is either metric, or committed to becoming metric. Homemakers have asked about converting recipes and measuring utensils, so some manufacturers are producing utensils with metric markings on one side and the customary markings on the other. Recipe writers may follow that example and include figures for both systems. \* \* \*

Light—The Criminal's Enemy Adequate lighting makes an excellent burglar repellent for the home. Twelve times as many crimes occur at night. Thus, well-lit premises and home can discourage criminals. All entrances to the home should be well lit. Even if street lights are around, the driveway, breezeway and areas between the home and neighbor's house are completely left dark. To check outside protection, turn on all outside lights and observe if any area exists where a person can hide or move without casting a shadow. If additional lighting is needed, local power company representatives can recommend placement and quantity of light needed. Illuminate the back yard as well. Have enough light to cast shadows—usually one or two 100-watt bulbs are sufficient. When away from home, leave a light burning. If the place will be vacant for the evening—or several days—leave a light on in a major living area, as well as the outside. Better still, get a timer to turn the lights on and off at a set interval. An "electric eye"—inexpensive yet valuable—can turn the outside lights on at dusk and off at dawn.

Light—The Criminal's Enemy Adequate lighting makes an excellent burglar repellent for the home. Twelve times as many crimes occur at night. Thus, well-lit premises and home can discourage criminals. All entrances to the home should be well lit. Even if street lights are around, the driveway, breezeway and areas between the home and neighbor's house are completely left dark. To check outside protection, turn on all outside lights and observe if any area exists where a person can hide or move without casting a shadow. If additional lighting is needed, local power company representatives can recommend placement and quantity of light needed. Illuminate the back yard as well. Have enough light to cast shadows—usually one or two 100-watt bulbs are sufficient. When away from home, leave a light burning. If the place will be vacant for the evening—or several days—leave a light on in a major living area, as well as the outside. Better still, get a timer to turn the lights on and off at a set interval. An "electric eye"—inexpensive yet valuable—can turn the outside lights on at dusk and off at dawn.

Light—The Criminal's Enemy Adequate lighting makes an excellent burglar repellent for the home. Twelve times as many crimes occur at night. Thus, well-lit premises and home can discourage criminals. All entrances to the home should be well lit. Even if street lights are around, the driveway, breezeway and areas between the home and neighbor's house are completely left dark. To check outside protection, turn on all outside lights and observe if any area exists where a person can hide or move without casting a shadow. If additional lighting is needed, local power company representatives can recommend placement and quantity of light needed. Illuminate the back yard as well. Have enough light to cast shadows—usually one or two 100-watt bulbs are sufficient. When away from home, leave a light burning. If the place will be vacant for the evening—or several days—leave a light on in a major living area, as well as the outside. Better still, get a timer to turn the lights on and off at a set interval. An "electric eye"—inexpensive yet valuable—can turn the outside lights on at dusk and off at dawn.

Light—The Criminal's Enemy Adequate lighting makes an excellent burglar repellent for the home. Twelve times as many crimes occur at night. Thus, well-lit premises and home can discourage criminals. All entrances to the home should be well lit. Even if street lights are around, the driveway, breezeway and areas between the home and neighbor's house are completely left dark. To check outside protection, turn on all outside lights and observe if any area exists where a person can hide or move without casting a shadow. If additional lighting is needed, local power company representatives can recommend placement and quantity of light needed. Illuminate the back yard as well. Have enough light to cast shadows—usually one or two 100-watt bulbs are sufficient. When away from home, leave a light burning. If the place will be vacant for the evening—or several days—leave a light on in a major living area, as well as the outside. Better still, get a timer to turn the lights on and off at a set interval. An "electric eye"—inexpensive yet valuable—can turn the outside lights on at dusk and off at dawn.

Light—The Criminal's Enemy Adequate lighting makes an excellent burglar repellent for the home. Twelve times as many crimes occur at night. Thus, well-lit premises and home can discourage criminals. All entrances to the home should be well lit. Even if street lights are around, the driveway, breezeway and areas between the home and neighbor's house are completely left dark. To check outside protection, turn on all outside lights and observe if any area exists where a person can hide or move without casting a shadow. If additional lighting is needed, local power company representatives can recommend placement and quantity of light needed. Illuminate the back yard as well. Have enough light to cast shadows—usually one or two 100-watt bulbs are sufficient. When away from home, leave a light burning. If the place will be vacant for the evening—or several days—leave a light on in a major living area, as well as the outside. Better still, get a timer to turn the lights on and off at a set interval. An "electric eye"—inexpensive yet valuable—can turn the outside lights on at dusk and off at dawn.

Light—The Criminal's Enemy Adequate lighting makes an excellent burglar repellent for the home. Twelve times as many crimes occur at night. Thus, well-lit premises and home can discourage criminals. All entrances to the home should be well lit. Even if street lights are around, the driveway, breezeway and areas between the home and neighbor's house are completely left dark. To check outside protection, turn on all outside lights and observe if any area exists where a person can hide or move without casting a shadow. If additional lighting is needed, local power company representatives can recommend placement and quantity of light needed. Illuminate the back yard as well. Have enough light to cast shadows—usually one or two 100-watt bulbs are sufficient. When away from home, leave a light burning. If the place will be vacant for the evening—or several days—leave a light on in a major living area, as well as the outside. Better still, get a timer to turn the lights on and off at a set interval. An "electric eye"—inexpensive yet valuable—can turn the outside lights on at dusk and off at dawn.

Light—The Criminal's Enemy Adequate lighting makes an excellent burglar repellent for the home. Twelve times as many crimes occur at night. Thus, well-lit premises and home can discourage criminals. All entrances to the home should be well lit. Even if street lights are around, the driveway, breezeway and areas between the home and neighbor's house are completely left dark. To check outside protection, turn on all outside lights and observe if any area exists where a person can hide or move without casting a shadow. If additional lighting is needed, local power company representatives can recommend placement and quantity of light needed. Illuminate the back yard as well. Have enough light to cast shadows—usually one or two 100-watt bulbs are sufficient. When away from home, leave a light burning. If the place will be vacant for the evening—or several days—leave a light on in a major living area, as well as the outside. Better still, get a timer to turn the lights on and off at a set interval. An "electric eye"—inexpensive yet valuable—can turn the outside lights on at dusk and off at dawn.

Light—The Criminal's Enemy Adequate lighting makes an excellent burglar repellent for the home. Twelve times as many crimes occur at night. Thus, well-lit premises and home can discourage criminals. All entrances to the home should be well lit. Even if street lights are around, the driveway, breezeway and areas between the home and neighbor's house are completely left dark. To check outside protection, turn on all outside lights and observe if any area exists where a person can hide or move without casting a shadow. If additional lighting is needed, local power company representatives can recommend placement and quantity of light needed. Illuminate the back yard as well. Have enough light to cast shadows—usually one or two 100-watt bulbs are sufficient. When away from home, leave a light burning. If the place will be vacant for the evening—or several days—leave a light on in a major living area, as well as the outside. Better still, get a timer to turn the lights on and off at a set interval. An "electric eye"—inexpensive yet valuable—can turn the outside lights on at dusk and off at dawn.

Light—The Criminal's Enemy Adequate lighting makes an excellent burglar repellent for the home. Twelve times as many crimes occur at night. Thus, well-lit premises and home can discourage criminals. All entrances to the home should be well lit. Even if street lights are around, the driveway, breezeway and areas between the home and neighbor's house are completely left dark. To check outside protection, turn on all outside lights and observe if any area exists where a person can hide or move without casting a shadow. If additional lighting is needed, local power company representatives can recommend placement and quantity of light needed. Illuminate the back yard as well. Have enough light to cast shadows—usually one or two 100-watt bulbs are sufficient. When away from home, leave a light burning. If the place will be vacant for the evening—or several days—leave a light on in a major living area, as well as the outside. Better still, get a timer to turn the lights on and off at a set interval. An "electric eye"—inexpensive yet valuable—can turn the outside lights on at dusk and off at dawn.

Light—The Criminal's Enemy Adequate lighting makes an excellent burglar repellent for the home. Twelve times as many crimes occur at night. Thus, well-lit premises and home can discourage criminals. All entrances to the home should be well lit. Even if street lights are around, the driveway, breezeway and areas between the home and neighbor's house are completely left dark. To check outside protection, turn on all outside lights and observe if any area exists where a person can hide or move without casting a shadow. If additional lighting is needed, local power company representatives can recommend placement and quantity of light needed. Illuminate the back yard as well. Have enough light to cast shadows—usually one or two 100-watt bulbs are sufficient. When away from home, leave a light burning. If the place will be vacant for the evening—or several days—leave a light on in a major living area, as well as the outside. Better still, get a timer to turn the lights on and off at a set interval. An "electric eye"—inexpensive yet valuable—can turn the outside lights on at dusk and off at dawn.

Light—The Criminal's Enemy Adequate lighting makes an excellent burglar repellent for the home. Twelve times as many crimes occur at night. Thus, well-lit premises and home can discourage criminals. All entrances to the home should be well lit. Even if street lights are around, the driveway, breezeway and areas between the home and neighbor's house are completely left dark. To check outside protection, turn on all outside lights and observe if any area exists where a person can hide or move without casting a shadow. If additional lighting is needed, local power company representatives can recommend placement and quantity of light needed. Illuminate the back yard as well. Have enough light to cast shadows—usually one or two 100-watt bulbs are sufficient. When away from home, leave a light burning. If the place will be vacant for the evening—or several days—leave a light on in a major living area, as well as the outside. Better still, get a timer to turn the lights on and off at a set interval. An "electric eye"—inexpensive yet valuable—can turn the outside lights on at dusk and off at dawn.

Light—The Criminal's Enemy Adequate lighting makes an excellent burglar repellent for the home. Twelve times as many crimes occur at night. Thus, well-lit premises and home can discourage criminals. All entrances to the home should be well lit. Even if street lights are around, the driveway, breezeway and areas between the home and neighbor's house are completely left dark. To check outside protection, turn on all outside lights and observe if any area exists where a person can hide or move without casting a shadow. If additional lighting is needed, local power company representatives can recommend placement and quantity of light needed. Illuminate the back yard as well. Have enough light to cast shadows—usually one or two 100-watt bulbs are sufficient. When away from home, leave a light burning. If the place will be vacant for the evening—or several days—leave a light on in a major living area, as well as the outside. Better still, get a timer to turn the lights on and off at a set interval. An "electric eye"—inexpensive yet valuable—can turn the outside lights on at dusk and off at dawn.

Light—The Criminal's Enemy Adequate lighting makes an excellent burglar repellent for the home. Twelve times as many crimes occur at night. Thus, well-lit premises and home can discourage criminals. All entrances to the home should be well lit. Even if street lights are around, the driveway, breezeway and areas between the home and neighbor's house are completely left dark. To check outside protection, turn on all outside lights and observe if any area exists where a person can hide or move without casting a shadow. If additional lighting is needed, local power company representatives can recommend placement and quantity of light needed. Illuminate the back yard as well. Have enough light to cast shadows—usually one or two 100-watt bulbs are sufficient. When away from home, leave a light burning. If the place will be vacant for the evening—or several days—leave a light on in a major living area, as well as the outside. Better still, get a timer to turn the lights on and off at a set interval. An "electric eye"—inexpensive yet valuable—can turn the outside lights on at dusk and off at dawn.

Light—The Criminal's Enemy Adequate lighting makes an excellent burglar repellent for the home. Twelve times as many crimes occur at night. Thus, well-lit premises and home can discourage criminals. All entrances to the home should be well lit. Even if street lights are around, the driveway, breezeway and areas between the home and neighbor's house are completely left dark. To check outside protection, turn on all outside lights and observe if any area exists where a person can hide or move without casting a shadow. If additional lighting is needed, local power company representatives can recommend placement and quantity of light needed. Illuminate the back yard as well. Have enough light to cast shadows—usually one or two 100-watt bulbs are sufficient. When away from home, leave a light burning. If the place will be vacant for the evening—or several days—leave a light on in a major living area, as well as the outside. Better still, get a timer to turn the lights on and off at a set interval. An "electric eye"—inexpensive yet valuable—can turn the outside lights on at dusk and off at dawn.

Light—The Criminal's Enemy Adequate lighting makes an excellent burglar repellent for the home. Twelve times as many crimes occur at night. Thus, well-lit premises and home can discourage criminals. All entrances to the home should be well lit. Even if street lights are around, the driveway, breezeway and areas between the home and neighbor's house are completely left dark. To check outside protection, turn on all outside lights and observe if any area exists where a person can hide or move without casting a shadow. If additional lighting is needed, local power company representatives can recommend placement and quantity of light needed. Illuminate the back yard as well. Have enough light to cast shadows—usually one or two 100-watt bulbs are sufficient. When away from home, leave a light burning. If the place will be vacant for the evening—or several days—leave a light on in a major living area, as well as the outside. Better still, get a timer to turn the lights on and off at a set interval. An "electric eye"—inexpensive yet valuable—can turn the outside lights on at dusk and off at dawn.

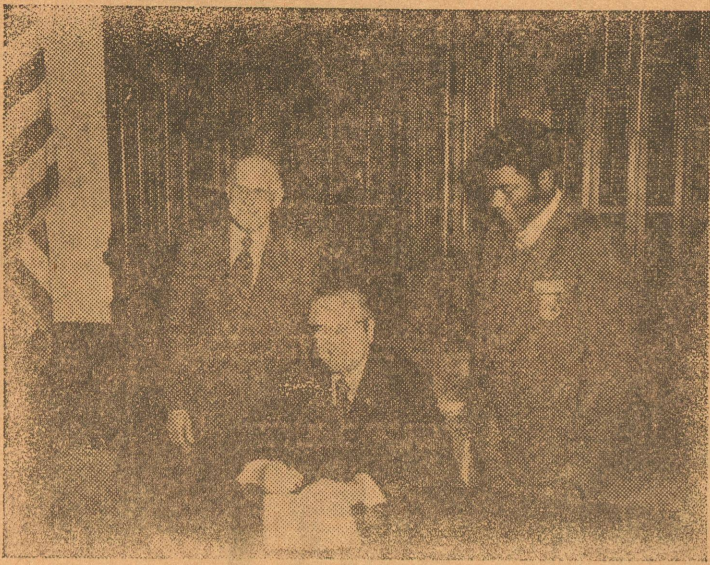
Light—The Criminal's Enemy Adequate lighting makes an excellent burglar repellent for the home. Twelve times as many crimes occur at night. Thus, well-lit premises and home can discourage criminals. All entrances to the home should be well lit. Even if street lights are around, the driveway, breezeway and areas between the home and neighbor's house are completely left dark. To check outside protection, turn on all outside lights and observe if any area exists where a person can hide or move without casting a shadow. If additional lighting is needed, local power company representatives can recommend placement and quantity of light needed. Illuminate the back yard as well. Have enough light to cast shadows—usually one or two 100-watt bulbs are sufficient. When away from home, leave a light burning. If the place will be vacant for the evening—or several days—leave a light on in a major living area, as well as the outside. Better still, get a timer to turn the lights on and off at a set interval. An "electric eye"—inexpensive yet valuable—can turn the outside lights on at dusk and off at dawn.

Light—The Criminal's Enemy Adequate lighting makes an excellent burglar repellent for the home. Twelve times as many crimes occur at night. Thus, well-lit premises and home can discourage criminals. All entrances to the home should be well lit. Even if street lights are around, the driveway, breezeway and areas between the home and neighbor's house are completely left dark. To check outside protection, turn on all outside lights and observe if any area exists where a person can hide or move without casting a shadow. If additional lighting is needed, local power company representatives can recommend placement and quantity of light needed. Illuminate the back yard as well. Have enough light to cast shadows—usually one or two 100-watt bulbs are sufficient. When away from home, leave a light burning. If the place will be vacant for the evening—or several days—leave a light on in a major living area, as well as the outside. Better still, get a timer to turn the lights on and off at a set interval. An "electric eye"—inexpensive yet valuable—can turn the outside lights on at dusk and off at dawn.

Light—The Criminal's Enemy Adequate lighting makes an excellent burglar repellent for the home. Twelve times as many crimes occur at night. Thus, well-lit premises and home can discourage criminals. All entrances to the home should be well lit. Even if street lights are around, the driveway, breezeway and areas between the home and neighbor's house are completely left dark. To check outside protection, turn on all outside lights and observe if any area exists where a person can hide or move without casting a shadow. If additional lighting is needed, local power company representatives can recommend placement and quantity of light needed. Illuminate the back yard as well. Have enough light to cast shadows—usually one or two 100-watt bulbs are sufficient. When away from home, leave a light burning. If the place will be vacant for the evening—or several days—leave a light on in a major living area, as well as the outside. Better still, get a timer to turn the lights on and off at a set interval. An "electric eye"—inexpensive yet valuable—can turn the outside lights on at dusk and off at dawn.

Light—The Criminal's Enemy Adequate lighting makes an excellent burglar repellent for the home. Twelve times as many crimes occur at night. Thus, well-lit premises and home can discourage criminals. All entrances to the home should be well lit. Even if street lights are around, the driveway, breezeway and areas between the home and neighbor's house are completely left dark. To check outside protection, turn on all outside lights and observe if any area exists where a person can hide or move without casting a shadow. If additional lighting is needed, local power company representatives can recommend placement and quantity of light needed. Illuminate the back yard as well.

**GOVERNOR BRISCOE PROCLAIMS TEXAS F.F.A. WEEK**



Governor Dolph Briscoe recently signed a proclamation declaring February 17-24 as FFA Week in Texas. State FFA President Frederick McClure, right, of San Augustine and State Advisor J. A. Marshall, left, of Austin were present at the ceremony. Governor Briscoe commended the FFA for the fine job it is doing in training its members to become informed, active citizens and urged all Texans to join in appropriate observance of FFA Week.

**WAKE UP ! !**

By: Frederick D. McClure, Pres. Texas Association, FFA

What do you see when you look at another person? The merchant sees a customer; the doctor sees a patient; the lawyer, a client; the postman, an address; the politician, a vote. But how many of us see people as persons . . . individuals . . . people to love? FFA sees young men and women as persons . . . individuals . . . endowed by their Creator with certain unalienable Rights, that among these are Life, Liberty, and the Pursuit of Happiness.

For some unknown reason, a feeling of apathetic indifference toward the real value placed on our youth today has been developed by the youth and adults of our country. Yes, we have a few in our number who burn draft cards and protest everything from chewing gum to politics. Yes, we have those who smoke pot, gulp goof balls and tranquilizers, use LSD, and live a life that is one big hallucination. To them life is a big joke, a one-act play, something that lasts only momentarily, a trip to nowhere. When will America wake up? However, with only a few of our nation's young people that could be numbered among this group, today's young people remain an untapped resource of energy and potential.

Almost everyone knows the story of Rip Van Winkle. He went up into the mountains, slept for 20 years, grew a long white beard, and came back to find a new generation. When Rip Van Winkle departed, the sign on the town's inn had on it a picture of King George III of Great Britain. When he returned it carried a picture of George Washington, the first President of the United States.

The important point of the story is not that Rip Van Winkle slept for 20 years, but that while he was snoring peacefully up in the mountains, a revolution was going on.

We, too, live in a time of revolution; a time when there is a desperate attempt to change the standards, value, and traditions that have built this country. Like Rip Van Winkle, neither is this a time for the youth of America to be snoring. There are values that will never change, e. g., honesty, truth, and sympathy and empathy for the man lowest down. It is our duty to reach out and help the people around us to grow.

Today there are many areas of life in which we all go our separate ways, causing ourselves needless suffering and heartaches. There is strength in unity. Separately we cannot solve our problems, but together we can. Why don't you WAKE UP!

CARDBOARD 10c & 20c, at Success

**HAND MADE HONDO BOOTS \$29.95**

One Day Boot and Shoe Repair Service for out of town customers.

**A & H BOOT SHOP**  
1711 West Beauregard

**A Good Loser**

By: Brian Hall, Area I State Vice-President

All through life young people hear the advice . . . "be a good loser" . . . nonsense. Anyone who can be a good loser has had a lot of losing experience. A real champion gets beaten now and then, but it seldom happens. A loser is someone who never gets back up, once he is down. A loser is the one who says "I quit." A loser is the one who spells the difficult task, "impossible" instead of "I am possible."

One of America's greatest baseball players struck out at home-plate 1,330 times; a mark in futility unapproached by any other player in the history of baseball. However, we remember Babe Ruth for his record of 714 homeruns. This record overshadows completely the 1,330 strikeouts.

At Fort Necessity, during the French and Indian War, a young officer fell captive to the enemy, but George Washington is never remembered as a man who lost a battle.

A young man was a mockery in front of the entire nation because his experiments failed from time to time. Yet, we never think of Thomas Edison as an outcast of society because his experiments failed, but because of his hatred to lose and his willingness to win. Edison invented the light bulb, improved generators, and built central power plants.

When Jim Ryun was a sophomore in high school, he went out for the track team. His coach took time to watch him run, but turned Ryun away. He told Jim he was much too slow. The next year, Ryun went out for track again. This time he made the "B" team and with the winning of one race, he was promoted to the "A" team. Still unsatisfied with his past accomplishments, Jim Ryun ran and ran. At the end of his senior year, Jim had become the first high school student in history to break the 4:00 minute mile.

In all of these cases, these men who lost battle after battle are now considered symbols of success. It wasn't that any particular one was predestined to become great. It was only through the hatred of defeat that these men found success.

For the past five years, I have been a member of the FFA, an organization of winners. From chapter meetings to State Conventions, from county fairs to the State Judging Contest, I have seen young men engage in a contest with enough determination and desire to tackle even the stiffest competition. When the results were tabulated and only one first place was awarded, I saw heads drop and dreams slowly fade away. But, for some odd reason, I saw the same young men in the same blue and gold jackets later striving for another goal; whether it be livestock judging or public speaking or other contests.

A real champion gets beaten now and then, but he hates it like poison! Truly, the FFA is made of champions of all kinds—determined young men, not willing to accept defeat, but always looking ahead to new heights of service and accomplishment.

**MR. BONE IS AG. TEACHER**

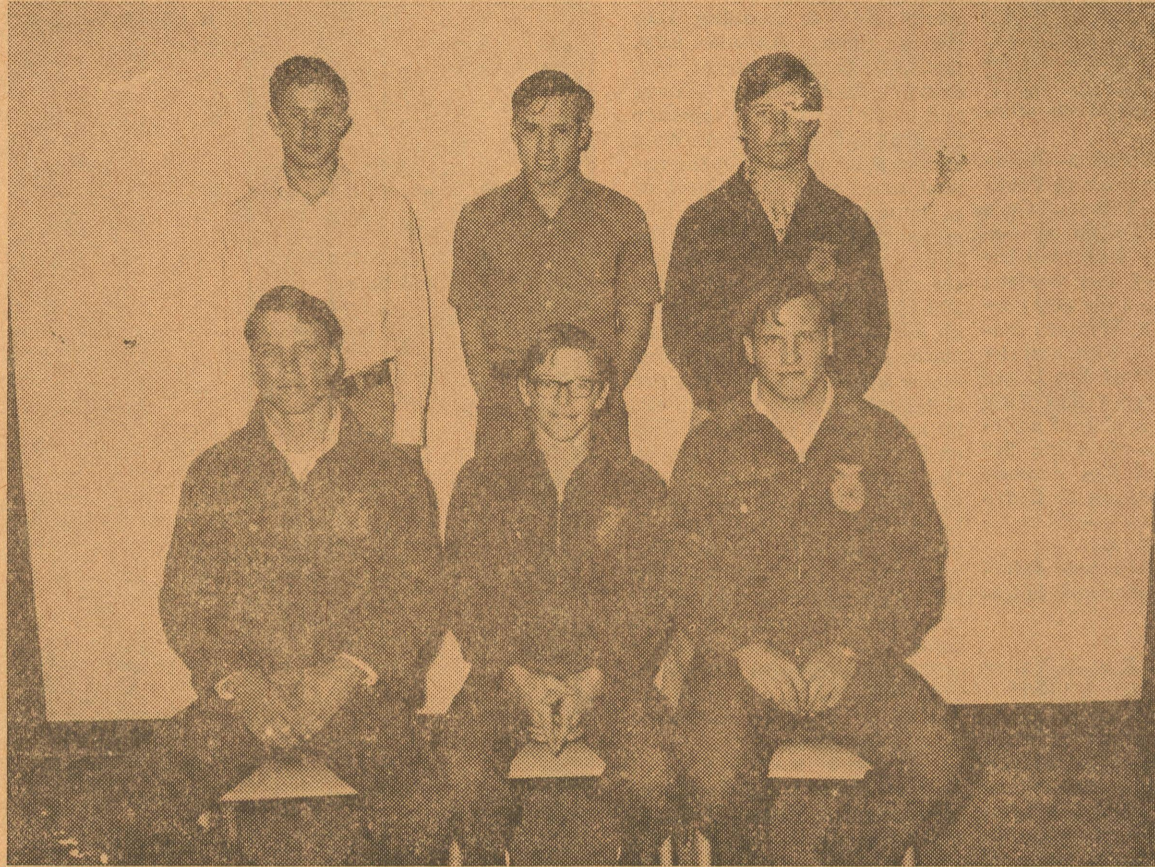
Mr. Bobby Bone is serving his initial year as Vocational Agriculture teacher in the Eldorado high school. He came on the job last year succeeding Jimmy Ball.

Mrs. Evelyn Wimer spent the latter part of last week in Austin where she visited the Kenneth Pennington family.

The C. J. Niblett family have moved to the Bernard Carr rent house located in northeast part of town, near where their own house burned on February 10th.

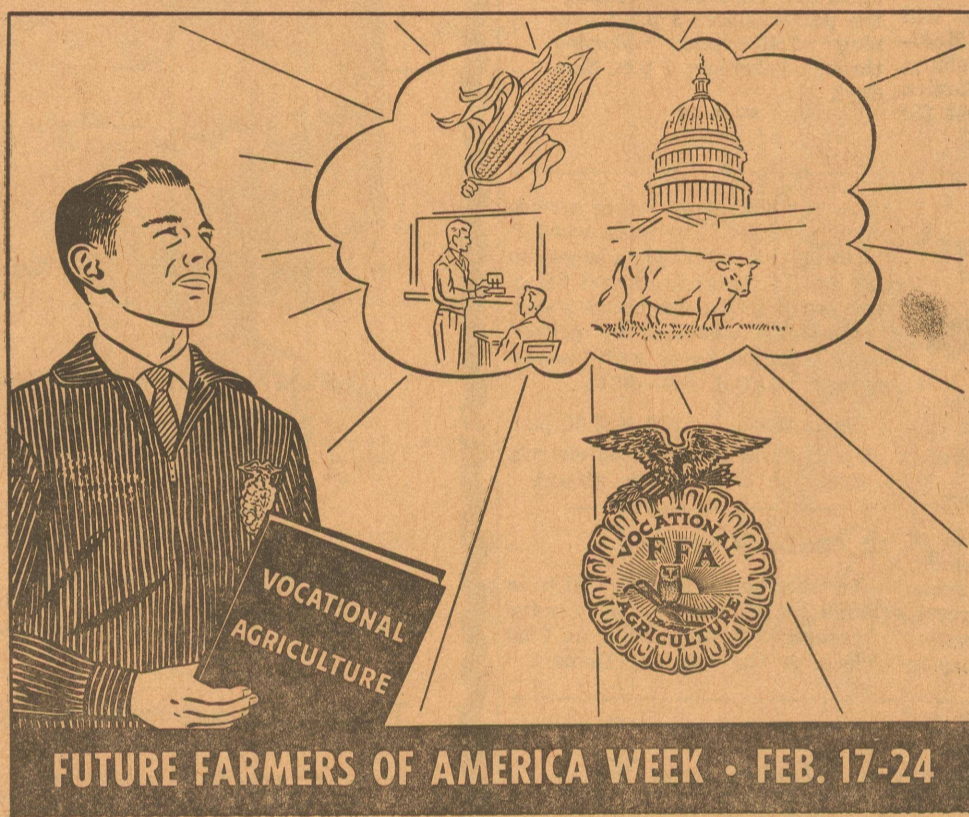
**It's F.F.A. Week In Texas: February 17-24**

Here Are This Year's F.F.A. Officers In Eldorado High



Seated Are Roy Lloyd, President; Tim Edmiston, Vice President; Ken Peters, Advisor; and standing are Wayne Joiner, Sentinel; Ben Minor, Treasurer; and Robert Parker, Reporter. Not shown was David Yocham, Secretary, who was at the San Antonio Livestock Show.

**Many Opportunities for Him in Agriculture**



These Public Spirited Boosters Salute FFA Members during their Week

**Meador - Peters Agency**  
Ed Meador—E. C. Peters

**C. C. Lease Service Company, Inc.**  
N. East Street—Phone 2351

**Southwest Texas Elect'c Co-Op**  
Owned By Those It Serves

**Davis Fina Service**  
Lum Davis and Hugh Wyland

**Hext Foods**  
Granvil Hext & Employees

**Williams Fina Station No. 18**  
Mr. & Mrs. George Williams & Employees

**Eldorado Wool Company**  
Your Purina Dealer

**The Top Package Store**  
Glynn Edmondson

**Jack Halbert, Jr. — Butane**  
And Mobil Consignee

**Tobosa Enterprises**  
Horace Linthicum

**Eldorado - Divide Petroleum Co.**  
Exxon Products—Raymon Mobley & Employees

**The Eldorado Success**  
Printing—Advertising—News



FEBRUARY

The following events, selected by the Texas Tourist Development Agency, Box 12008, Austin 78711, are but a few of the many excellent recreational opportunities offered by communities across the state. A more complete listing of Texas events may be obtained free of charge from the Texas Highway Department, Travel and Information Division, Box 6064, Austin 78703.

**Feb. 2-4 Rio Roundup—Western River Festival along Paseo del Rio, San Antonio.** Once again San Antonio's unique downtown River Walk will become a part of the western mood that invades the city during rodeo month. Western music, food, arts & crafts, and the "law and order" of the Bexar County Gunslingers and their frontier justice highlight activities and whip up spirit for the 25th annual San Antonio Livestock Exposition & Rodeo Feb. 9-18.

**Feb. 3-11 Southwestern International Livestock Show & Rodeo, El Paso.**

**Feb. 11-19 Rio Grande Valley International Music Festival & Opera, McAllen.** Now in its 13th year, this event was originated for the purpose of providing Valley students with the opportunity to enjoy live symphony performances. To do this and underwrite most of the costs for the children's concerts, it was necessary to also schedule performances for adults. The result is a schedule of 22 performances—children's, pop, concert, symphony and opera—in five cities during the nine-day festival. Over 20,000 children and 6,000 adults attended last year. This year the San Antonio Symphony will perform in the host city McAllen, in Harlingen, Edinburg, Pharr and Reynosa, Mexico. For all 18 years the cost for

children's tickets has remained at 50¢. Adult tickets for concerts are \$3.50 and opera tickets cost \$3-\$12. A complete schedule and tickets may be obtained from the Rio Grande Valley International Music Festival & Opera, P. O. Box 1915, McAllen, Texas 78501.

**Feb. 19-22 South Texas Wolf Hunters' Open Bench Show, Derby Run & Running Dog Bench Show, Karnes City.** Back in 1922 in Martinez, just east of San Antonio, 41 hounds and 55-60 hunters got together for the first South Texas Wolf Hunters' trials. In 1936 the annual event was the subject of a four-page spread in Life magazine. Life is gone, but the hunt goes on—bigger and better than ever. Last year 200-300 hounds and hunters from all over Texas and seven other states participated. This year's event will be at the Wagner Ranch six miles from Gillett, 20 miles north of Karnes City on State Highway 80. Roads to the event will be marked. On the 19th there is the open bench show for both hunting and non-hunting dogs. The mornings of the 20-22 the Running Dog Bench Show will see the hounds hunting from first light to about noon. Hunters will be camping on the ranch, but food will be available for non-cooks. There is no charge for watching.

**Feb. 21-March 4 Houston Livestock Show & Rodeo, Houston.** The Livestock Show, in its own special building, accommodates 17,000 entries that compete for more than \$200,000 in premiums. The rodeo, Feb. 23-March 4 in the Astrodome, this year stars on various days, Charley Pride, Sonny & Cher, Merle Haggard, Rick Nelson, Donna Fargo, Sonny James, the Fifth Dimension, Engelbert Humperdinck and the Jackson 5. Matinee performances 2 p.m.; evening 7:45 p.m., Monday through Saturday; 7 p.m. Sundays.

**World Day Of Prayer Is Set For March 2nd**

Call To Prayer—  
"He who is alert survives; He who goes to sleep is destroyed."  
—(Old Maori proverb)

The women of New Zealand, of both European and Maori descent, call their sister Christians, in every country to join them in prayer, and in the offering of themselves to be God's servants, alert today to

every opportunity of loving service to all mankind. The most wonderful thing that can happen to you in this life is that you should be silent and let God work and speak. "Continue steadfast in prayer, being watchful in it with thanksgiving." —(Col. 4:2—RSV)

Time: March 2, 1973 at 3:00 p.m.  
Place: First Presbyterian church.  
Everyone is invited to attend.

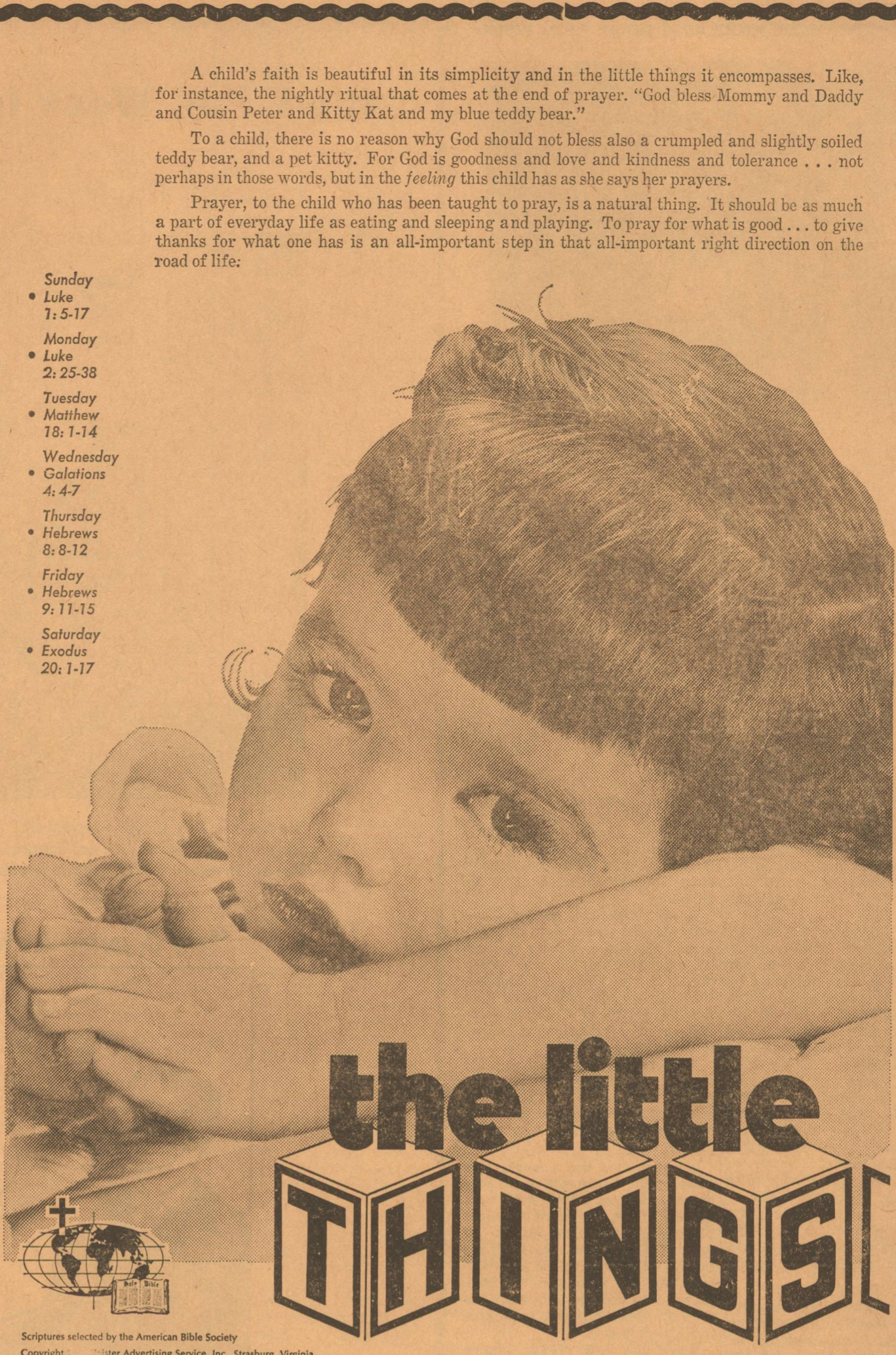
**TO CONDUCT SERVICE**

Antioch Baptist Church will have charge of the service this Sunday afternoon, February 25th, at 3:00 o'clock at the Nursing Home.

**Eldorado Churches Welcome You**

- First Presbyterian Church**  
7 North Cottonwood  
Gordon F. Garlington, Jr., Pastor  
Sunday School 9:45 A. M.  
Morning Worship 11:00 A. M.  
Union Youth Fellowship 6:00 P. M.  
Joint Methodist & Presbyterian Evening Service 7:00 P. M.
- West Side Church Of Christ**  
Divide Street  
Morning Service 10:30 A. M.  
Evening Service 6:00 P. M.  
Wed. Evening Service 8:00 P. M.
- First Assembly Of God Church**  
Menard Highway  
Robert Sherman, Pastor  
Sunday School 9:45 A. M.  
Morning Worship 11:00 A. M.  
Evening Worship 7:30 P. M.  
Wed. Bible Study 7:30 P. M.
- First Baptist Church**  
Kenneth W. Vaughan, Pastor  
W. Gillis Ave.  
Sunday School 9:45 A. M.  
Morning Worship 11:00 A. M.  
Union Youth Fel. 6:00 P. M.  
Church Training 6:00 P. M.  
Evening Worship 7:00 P. M.  
Sunday Evening Choir Practice 7:45 P. M.  
Wed. Prayer Service 8:00 P. M.
- First Christian Church**  
Allen Hurt, Layman  
Sunday School 9:45 A. M.  
Morning Worship 10:45 A. M.
- First United Methodist Church**  
Fred S. Cox, Pastor  
109 N. Divide  
Sunday School 9:45 A. M.  
Morning Worship 10:45 A. M.  
Union Youth Fel. 6:00 P. M.  
Joint Methodist & Presbyterian Evening Service 7:00 P. M.  
Wednesday Evening Choir Practice 8:00 P. M.
- United Pentecostal Church**  
Warner and Hackberry  
Walter L. Ford, Pastor  
Sunday School 10:00 A. M.  
Morning Worship 11:00 A. M.  
Evening Worship 7:00 P. M.  
Services on Tuesday and Thursday evenings at 7:30.

- Church Of Christ—Mertzon Hwy.**  
Clarence Ware, Minister  
Classes 10:00 A. M.  
Morning Worship 11:00 A. M.  
Youth Fellowship 5:00 P. M.  
Evening Worship 6:00 P. M.  
Wednesday Service 7:30 P. M.  
Dinner on the Ground Each First Sunday  
Ladies Bible Class each Tuesday Morning 9:30
- Gethsemane Assembly of God Mts.**  
Nick Robledo, Pastor  
Sunday School 10:00 A. M.  
Worship Service Friday, 7:30 P. M.
- Antioch Baptist Church**  
Billy Daniels, Pastor  
Callender & Mulberry  
Sunday School 10:00 A. M.  
Morning Worship 11:00 A. M.
- First Baptist Mexican Mission**  
El Paso St. & Concho Ave.  
Sunday School 10:00 A. M.  
Sunday Services 11:00 A. M.  
Sunda Night Services 7:00 P. M.  
Wednesday Services 7:30 P. M.
- St. Luke Missionary Bapt. Church**  
East Street  
Rev. Willie Jones, Pastor  
Sunday School 9:45 A. M.  
Worship Service on First and Third Sundays of each month at 11:00 A. M. and 4:00 P. M.
- Our Lady Of Guadalupe Catholic**  
Highway 277 North  
Fr. Richard Gagnon, Priest  
Sunday Mass 10:00 A. M.  
Wednesday Services 8:30 P. M.
- St. Mary's Episcopal Church**  
McWhorter Ave. and Pelt Street  
The Rev. Lea Roy Aldwell, Rector  
Sunday Morning Worship: 10:00
- Primitive Baptist Church**  
Menard Highway  
Elder Carl Watson, Pastor  
Service each 2nd Sunday at 11:00 a.m. and 2:00 p.m. Congregational singing half hour before preaching.



A child's faith is beautiful in its simplicity and in the little things it encompasses. Like, for instance, the nightly ritual that comes at the end of prayer. "God bless Mommy and Daddy and Cousin Peter and Kitty Kat and my blue teddy bear."

To a child, there is no reason why God should not bless also a crumpled and slightly soiled teddy bear, and a pet kitty. For God is goodness and love and kindness and tolerance . . . not perhaps in those words, but in the feeling this child has as she says her prayers.

Prayer, to the child who has been taught to pray, is a natural thing. It should be as much a part of everyday life as eating and sleeping and playing. To pray for what is good . . . to give thanks for what one has is an all-important step in that all-important right direction on the road of life:

- Sunday
- Luke 1: 5-17
- Monday
- Luke 2: 25-38
- Tuesday
- Matthew 18: 1-14
- Wednesday
- Galatians 4: 4-7
- Thursday
- Hebrews 8: 8-12
- Friday
- Hebrews 9: 11-15
- Saturday
- Exodus 20: 1-17



Copyright: Master Advertising Service, Inc., Strasburg, Virginia

These religious messages are sponsored by the following interested Schleicher business firms:

**FOREMOST - FINEST DAIRY PRODUCTS**

Elmer Garlitz—Indep. Distributor

**THE ELDORADO SUCCESS**

Printing—Advertising—News

**SOUTHWEST TEXAS ELECTRIC CO-OP.**

Inc. — Owned By Those It Serves

**THE JAVA JUNCTION CAFE**

Catherine and Walter Gonzales

**EL DORADO RESTAURANT**

Jerrold Sanders — Prop.

**JERRY'S RADIO & T-V SERVICE**

Jerry Jones — Phone 2314

**CONCHO VALLEY FARMS**

F. R. Butler & Son—Phone 2858

**ENGDAHL'S GARAGE**

South Main Street—S. C. Engdahl

**KENT'S AUTOMOTIVE & GARAGE**

Phone 2733—No. Angelo Hwy.

**DIVIDE CABLE CORPORATION**

Selma Dickson—Eldorado & Sonora

**THIS ADV. SPACE FOR SALE**

Call The Success: 2600

**GRIFFIN SERVICE COMPANY**

Derl Griffin

# FIVE ERRORS

No. 1

A MAN—

Struck a match to see  
if the gasoline tank of  
his automobile was empty . . .  
IT WASN'T

No. 2

A MAN—

Patted a strange bulldog  
on the head to see if it  
was affectionate . . .  
IT WASN'T

No. 3

A MAN—

Speeded up to see if he  
could beat a train to  
the crossing . . .  
HE COULDN'T

No. 4

A MAN—

Tried to repair a high  
tension electric line  
with his bare hands . . .  
HE COULDN'T

No. 5

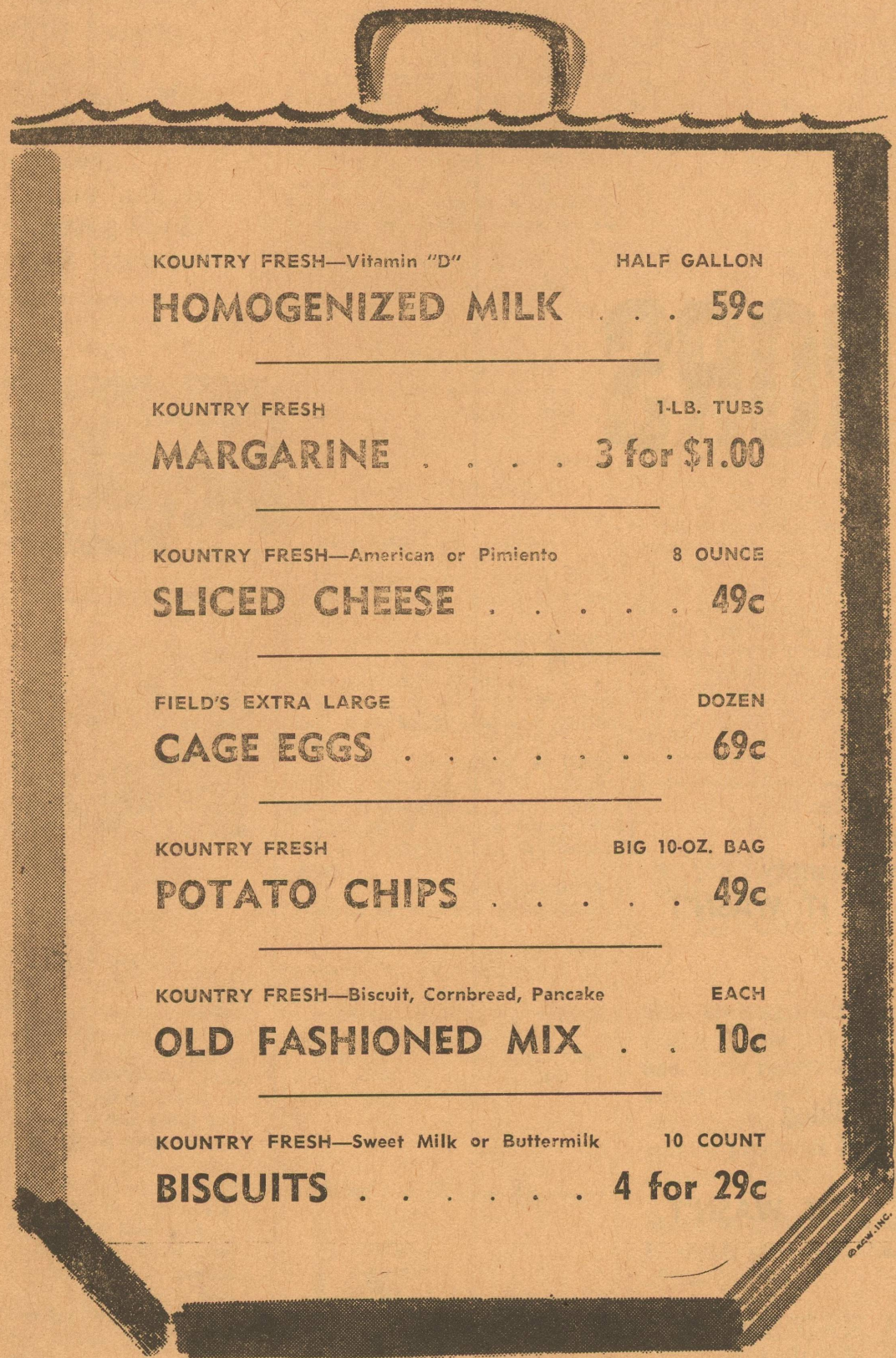
A MAN—

Cut out advertising  
to see if he could  
save money . . .  
HE DIDN'T

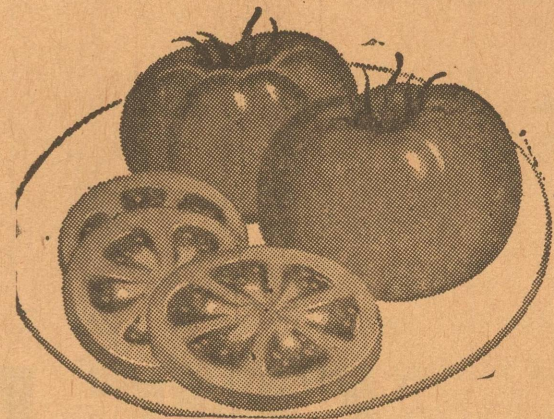
## The Eldorado Success

Phone 853-2600

# FOOD SAVINGS by the BAGFUL



KOUNTRY FRESH—Vitamin "D"	HALF GALLON
<b>HOMOGENIZED MILK</b>	<b>59c</b>
<hr/>	
KOUNTRY FRESH	1-LB. TUBS
<b>MARGARINE</b>	<b>3 for \$1.00</b>
<hr/>	
KOUNTRY FRESH—American or Pimiento	8 OUNCE
<b>SLICED CHEESE</b>	<b>49c</b>
<hr/>	
FIELD'S EXTRA LARGE	DOZEN
<b>CAGE EGGS</b>	<b>69c</b>
<hr/>	
KOUNTRY FRESH	BIG 10-OZ. BAG
<b>POTATO CHIPS</b>	<b>49c</b>
<hr/>	
KOUNTRY FRESH—Biscuit, Cornbread, Pancake	EACH
<b>OLD FASHIONED MIX</b>	<b>10c</b>
<hr/>	
KOUNTRY FRESH—Sweet Milk or Buttermilk	10 COUNT
<b>BISCUITS</b>	<b>4 for 29c</b>



No. 1  
Vine Ripened  
TOMATOES

**29** L B

SUGAR LOAF EACH  
**Pineapple 49c**

ICEBERG HEAD  
**Lettuce 29c**

TEXAS GROWN BUNCH  
**Green Onions 2 FOR 29**

TEXAS CELLO 1-LB. BAG  
**Carrots 15c**

UTILITY — RUSSET 10 LB. BAG  
**Potatoes 69c**



WHOLE SUN 12-OZ. CAN  
**Orange Juice 39c**

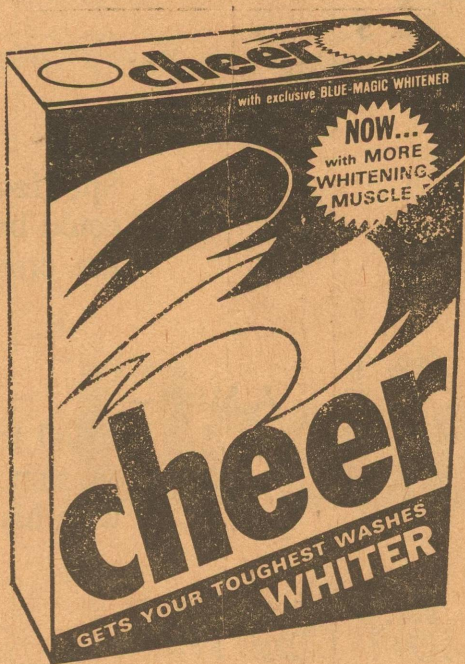
BIRD'S EYE 4 1/2 OUNCE  
**Cool Whip 39c**

ORE IDA 16 OUNCE  
**Tater Tots 39c**

PATIO BEEF EACH  
**Enchilada Dinner 49c**



KIMBELL'S 12" x 25' ROLL  
**Aluminum Foil 25c**



PROCTER & GAMBLE'S (Limit One) GIANT BOX  
**Cheer 79c**

KALEX HALF GALLON  
**Bleach 29c**

JOHNSON'S 32 OUNCE  
**Step Saver \$1.49**

LIQUID KING SIZE  
**Joy 69c**

JIFF 12 OUNCE  
**Peanut Butter 49c**

FRENCH'S 4 OUNCE  
**Black Pepper 49c**

KIMBELL'S 26 OUNCE  
**Evaporated Salt 10c**



CHOOSY MOTHERS CHOOSE JIF

**SUPER SPECIAL**

Sugar Barrel  
PURE CANE  
**SUGAR**

5-Lb. Bag **49c**

WITH \$5.00 PURCHASE  
EXCLUDING CIGARETTES  
—LIMIT ONE—

Your New 1973  
S & H IDEA BOOK  
IS HERE  
COME TO PARKER'S  
FOR FREE IDEA BOOK

All Brands  
CIGARETTES

Single Packs 40c, or **\$4**  
NO STAMPS CARTON

**SPECIALS Good Thursday, Friday & Saturday**

**Parker Foods, Inc.**

**We give S.H. GREEN STAMPS**