



Austin.—What will happen at a special session of the Texas Legislature, to convene about March 15, depends upon action—or inaction—by the U. S. Supreme Court on this state's gas gathering tax.

There are three possibilities: 1. That the high court will not hand down its decision before or during the session. In that event, a new tax bill must be passed if the teachers are going to receive their pay increase.

2. That the court will declare the tax invalid. Under those circumstances, the Legislature could re-write the bill so as to remove the court's objections.

3. That the court will approve the tax. If this is the ruling, Texas will have sufficient funds on hand and in sight to grant the teachers their salary hike.

In announcing that he would call the legislators to Austin for a 30-day meeting around mid-March, Governor Shivers said that if the gas gathering tax is ruled out by the court, "it probably will result in increasing some existing taxes."

House Speaker Reuben Senterfitt disagreed with the governor on several points.

Primarily, Senterfitt reasoned that the Legislature should not be called until the Supreme Court's ruling on the gas tax is made.

Money to pay the teachers should come from the gas gathering tax, the speaker argued, and it will be extremely difficult to pass any other kind of a tax bill during a 30-day session.

Lieutenant Governor Ben Ramsey said he considers the March 15 date "good timing." He pointed out that the best indications are that the U. S. Supreme Court will rule on the gas gathering tax late in February or early in March. Ramsey pledged his full support to the teacher pay raise plan endorsed by Governor Shivers and the Texas State Teachers Association.

If the teacher pay problem is resolved before the special session's 30 days are ended, other subjects may be submitted to the Legislature for its consideration, Gov. Shivers said.

Among these subjects he included: laws to clamp down on Communists; building programs for medical college branches and rehabilitation of Texas School for Deaf buildings; additional pay raises for state employees.

With the special session in the offing, political activity was in the doldrums. Speculation continued as to whether Shivers would run for re-election, seek some other office, or retire, but the governor wasn't talking. Reporters asking him about his plans got this answer: "I might be too busy to make any announcement."

Senterfitt, who had announced his intention to become a candidate for governor, declared, "I have had no change of mind since then." For the present however, Senterfitt said, he will have his mind on the special session.

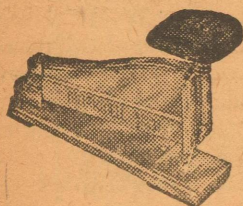
There was no word from other

SCRATCH PADS

Made of 16-pound white bond paper, with 100 sheets to the pad.

- Size 3x5
2 Dozen Pads \$1.60
Size 4x6
1 Dozen Pads \$1.20
Size 6x9
1 Dozen Pads \$3.00

THE SUCCESS OFFICE



Stapling Machines which use the standard 1/2-inch staple.

For Sale at SUCCESS OFFICE

prospective gubernatorial candidates, all of whom apparently were waiting to see what the governor would do.

Seven applicants for the job of state health officer were being considered by the State Board of Health. Dr. J. B. Copeland, chairman of the board, would not reveal the names of the applicants, but said the board would soon make its choice. Dr. George W. Cox, who has served for 17 years in the position, has submitted his resignation effective March 1, but may continue in office until his successor is named.

Garland Smith, chairman of the Texas Board of Insurance Commissioners, expressed alarm about insurance stock sales and recommended that such transactions should be supervised by the state. "Nobody is supervising them now," Smith said. He added that a law will be asked to give the state securities commissioner regulatory power over issuance and sale of insurance stock.

Houston group, the Citizens Association for Fair Telephone Rates, wants Governor Shivers to place the subject of utility rate regulation before the special session of the Legislature. Walter Keith Jr., head of the association, said that the organization has 4,000 signatures on a petition asking for the establishment of a state utilities commission.

More subject matter to come before the Legislature, sooner or later, is the motor vehicle inspection law. Flaws in it have been found, says an announcement by the Texas Legislative Council, and revision is needed in several respects. For example, the council pointed out, it is now possible for a driver to lose his license even though he was without blame in an accident, if the other party involved failed to sign a waiver.

Drouth relief hay shipment certificates will be authorized where ranchers are willing to pay half of the freight cost, Agriculture Commissioner John C. White has announced. This plan, said White, does not involve the use of state-federal funds, but "is merely a method to allow stockmen to receive the railroad grant of one-half normal freight rate."

State Selective service will draft 985 Texans during March, announced Brigadier Gen. Wakefield, state selective service director. For February the call was scheduled to be 1,019 and for January 1,314. Under the present draft law, nearly 80,000 Texans have been inducted into the armed services. The law has been in effect since June, 1948.

LET'S TALK LIVESTOCK BY TED GOULDY



Fort Worth.—Wooled slaughter lambs advanced sharply at Fort Worth Monday and prices were 50 cents to \$1 above last week's close. Shorn fat lambs were strong to 50 cents higher, and slaughter ewes sold strong to 75 cents higher. Some 100-pound woolled lambs topped at \$21.50, a new high for the current movement. Fresh shorn ewes at \$9.75 were fully 75 cents above last week's close. Feeder lambs and yearlings were fully steady to strong.

In the cattle division all classes sold fully steady on the early rounds and in the cleanup sales in the later part of the day some spots were easier on fat cows and on the shorted beef steers and yearlings.

Calves drew firm prices, some sales of the more desirable kinds stronger. There was some slowness on the medium inbetween fleshed calves of heavier weights that weighed in the light yearling bracket.

Stocker demand was fully adequate to provide strong prices for the class, quality considered. High quality load lots of stockers and feeders were quotable \$1 or more above most sales recorded Monday.

Shippers took about 25 percent of the run of hogs at prices steady to 50 cents lower than Thursday's best prices, or at \$26.75 to \$27.25 and later sales of hogs of choice grades were made at \$26 to \$26.75 or 50 cents to 75 cents lower. Sows ruled fully steady.

Good and choice fed steers and yearlings cashed at \$18 to \$23, and common to medium offerings cashed at \$12 to \$17. There were several loads of well finished cattle in the \$20 to \$22 bracket. Fat cows cleared at \$11 to \$13.50, and canners and cutters sold from \$7 to \$11. Bulls sold from \$10 to \$14.

Good and choice slaughter calves cleared at \$16 to \$19, with a few fancy heavies to \$20. Common and medium offerings cashed at \$12 to \$15, and culls sold from \$10 to \$12.

Success, \$2 year — anywhere.

Miss Ballew Honored At Shower and Tea At Methodist Church

Seventy-five friends of Miss Lola Beth Ballew, whose wedding is scheduled for next Saturday, attended a gift tea, Saturday afternoon in the parlors of the Methodist Church, with the WSCS as hostesses.

In the receiving line with Miss Ballew were her mother, Mrs. Lewis Ballew, and her grandmother Mrs. Virge Tisdale.

The serving table was decorated in the valentine motif with a red and white styrofoam arrangement, and red and white cut flowers in red vase, flanking the miniature bride and groom. The seasonal motif was also carried out in the cake and other table appointments.

Presiding at the serving table during the afternoon were Mrs. Ebba Finley, Mrs. George S. Finley, Mrs. Dorothy Evans and Mrs. Weatherly Kinser.

For the program, Mrs. John Miller, Miss Dale West and Miss

Mary Tisdale sang solos, and Jimmie Dell Williams played a flute solo with Mary at the piano. Mrs. Maxine Page played the accompaniment for Mrs. Miller, and also played other piano numbers

during the afternoon. A large number of gifts was received by the honoree.

SCRIPTO Ball Point Pens \$1.00 at the Success Office.

Mr. and Mrs. Claude Alexander spent the week end in Austin with the Clark family. They were accompanied by Mrs. Lynn Alexander who visited relatives, all returning home Sunday.

Shop at the Sign of the CIRCLE ARROW and Save

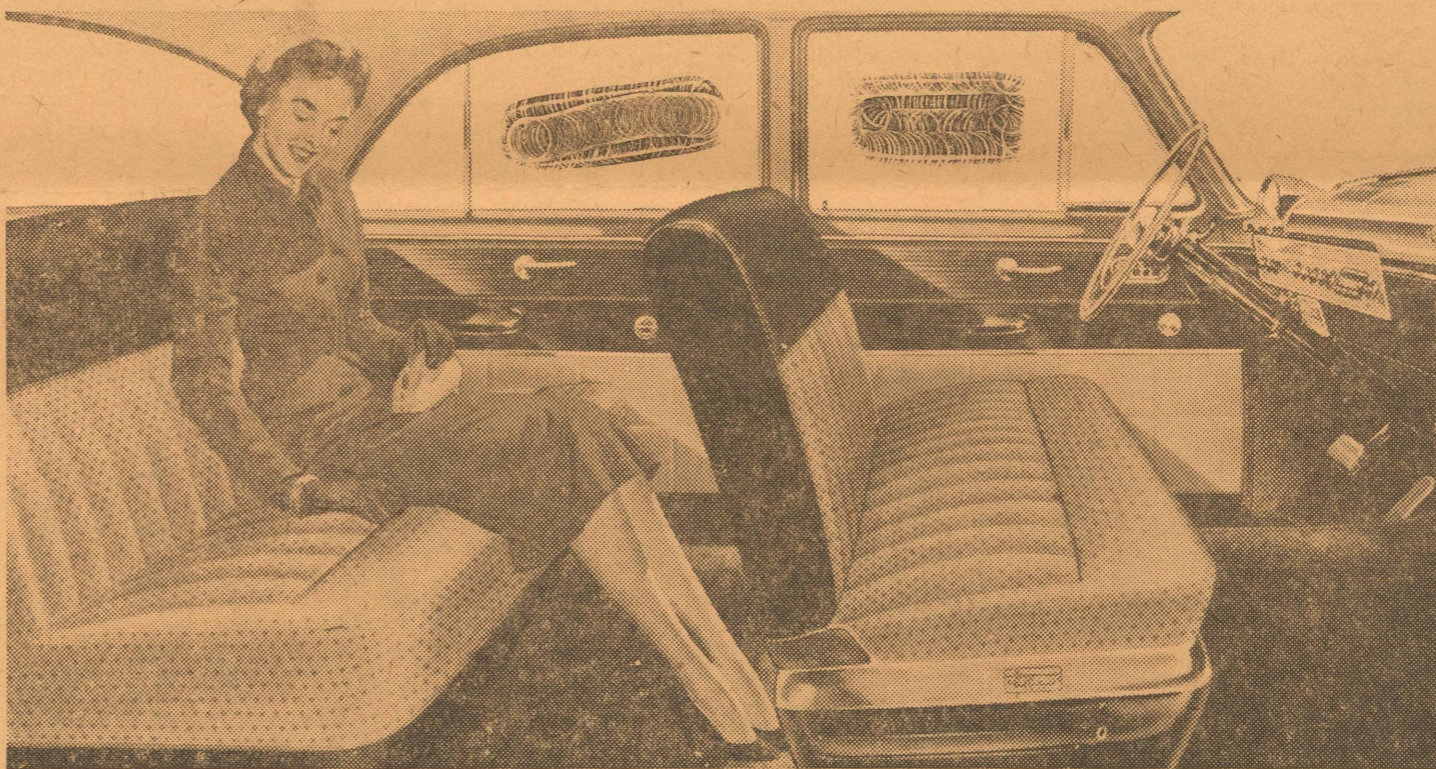
TRUETONE 17-INCH TABLE MODEL

T-V SET \$189.95

Western Auto Associate Store

Home Owned and Operated

San Antonio's KEYL-TV5 KABC-680kc Now! KGBS TELEVISION-5 RADIO-680kc

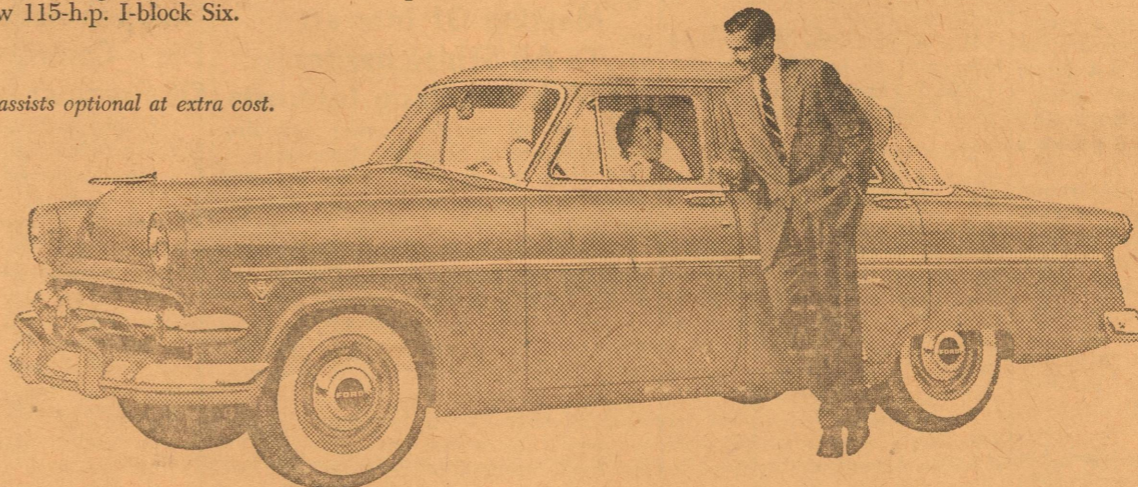


You live in style in the '54 FORD

Your life on wheels couldn't be more pleasant! Your surroundings are a decorator's dream come true with beautiful new interiors you would never have found, formerly, outside of the most expensive cars. You touch a button beneath a window and it goes up or down. Power steering takes up to three-quarters of the work out of steering. Power brakes help you stop with up to one-third less effort. Fordomatic does your shifting for you. A power seat goes up or down, front or back at a button's touch. New Ball-Joint Front Suspension gives you the smoothest ride you've ever experienced. And you'll find driving a lot more fun with the road-ruling "Go" of Ford's new 130-h.p. Y-block V-8 or new 115-h.p. I-block Six.

The many fine-car dividends you get make it more than ever the Standard for the American Road

All power assists optional at extra cost.



TAKE A "TEST DRIVE" AND YOU'LL WANT TO DRIVE IT HOME! F.D.A.F.

Charlie Trigg Motors

If you're interested in used cars, be sure to see our selections!

PROMPT SERVICE ON

WASHING AND GREASING

Get Our Deal On Tires Before You Buy

Jeffrey Bros. Station

GULF PRODUCTS — PHONE 94471

LET US HELP YOU BOOST YOUR EGG PRODUCTION



Our Purina Laying Chows program is built for more eggs and lower cost eggs than most poultrymen get on standard-type rations. New high-vitamin, high-mineral, high-protein formulas in our Laying Chows have what it takes to help keep up body weight and condition even while birds are laying 65 to 85 percent.

We've a program for you whether you're feeding all-mash, or mash and grain. Come in or telephone for full details.

ELDORADO WOOL COMPANY

Joe Bailey, son of Mr. and Mrs. T. J. Bailey of Ozona, a recent graduate of SAC, has received appointment to the atomic energy works at White Sands, N. Mexico and will work there six months, then go to school six months, according to schedule. He is well known here.

Ebbagene Blaylock, R. N., is now located with M. D. Anderson Research Hospital at Houston, as nurse. She is the daughter of Mr. and Mrs. W. A. Blaylock.

Mrs. Camilla Raggio and son Leslie Jones have returned from a trip to Austin.

News From Our Neighbors

Driller Injured

C. G. (Buck) Mills, 45, Sonora driller, suffered a broken hip Sunday morning about 8:30 o'clock when the car in which he was riding left the pavement and overturned.

The driver, Roy Dale Henderson, 19, also a driller, was uninjured. The two men were returning to Sonora from a rig location where they had worked the night shift. The accident happened on a straight stretch of U. S. 290 about 10 miles east of Sonora.—Devils River News.

Building Dismantled

The Santa Fe roundhouse built here in 1911 for the service of locomotives and other railway equipment at this end of the line, has been sold and razed for the material in its structure.

The building was recently purchased by M. J. Green. It had been in continual use in its original purpose until June 30 of last year, and until about thirty days ago had been used only as night storage for the modern diesel equipment that now serves the line.—Eden Echo.

New Oilfield Roads

Coke County commissioners held another session here Monday when further discussions were held on the matter of building roads into the oil fields in the northwest part of the county.

Judge Jeff Dean says W. W. Greif of McCamey, employed as a road engineer, will have a crew of men working immediately on preliminary surveys. Projects being considered are several miles on the west side of the Silver loop and a new route leading northwest from the Millican field to the rapidly expanding field across the river south and west of Silver.—Robert Lee Observer.

Observe Anniversary

Mr. and Mrs. John Clark quietly observed their 56th wedding anniversary Thursday at their. The Clarks were married in Eastland, Jan. 21, 1898, in the county clerk's office, located at that time in the jail. After the ceremony they went to their 160-acre stock farm on Big Sandy.—Mertzon Weekly Star

Park Considered

A long-range plan for development of James Rooney Park and adjacent areas, as well as possible restoration of Fort Stockton's historic area, is in the making following conferences here last weekend between Dr. Hugo Leipziger, professor of architecture at the University of Texas, and co-ordinator of community planning for the Department of Extension of the University, and members of the Park board, county, city and chamber of Commerce officials.—Fort Stockton Pioneer.

Fundamental Baptist

Everyone is being greatly blessed by the teaching of the large dispensational chart. The Rev. M. M. Griggs of San Angelo is teaching this chart for the next two weeks. The study began Monday, Feb. 1 and he will be teaching every night at 7:00, except Saturday and Sunday nights through the 12th of February. Everyone regardless of church affiliation is invited to attend this Bible study. So bring your Bible and study God's word with us. You will be blessed for attending these services.

There was a good number out

for all services Sunday and we were all greatly blessed by the young people's meeting. We praise God for young people who will study their Bibles and are willing to let God have his way in their lives. Friday, Feb. 19 we will journey to Coleman for another great time of Fellowship with our young people. God greatly blessed in the last one at Big Spring. Young people, you are invited to attend these meetings.

Thursday, Feb. 18 the West Texas fellowship meeting of Fundamental Baptists will meet with the church here. There will be preachers present from many of our churches. Dr. Roy Kemp, one of the teachers of the Bible Baptist

Seminary will be here at that time. Also blind evangelist Arthur A. Austin. Bro. Austin knows from memory more than 166 chapters of Bible including Revelation. Be sure and remember Feb. 18 as the day. Services will begin at 10 a. m. and will last through out the day. Lunch will be served at noon at the Memorial building. There will be a night service beginning at 7:00. You are invited to all these services. If you are not already attending church you are invited to the following services:
Sunday school 10 a. m. A class for all ages.
Morning worship 11:15.
Young people's meeting 6:30.
Evening evangelistic 7:30.

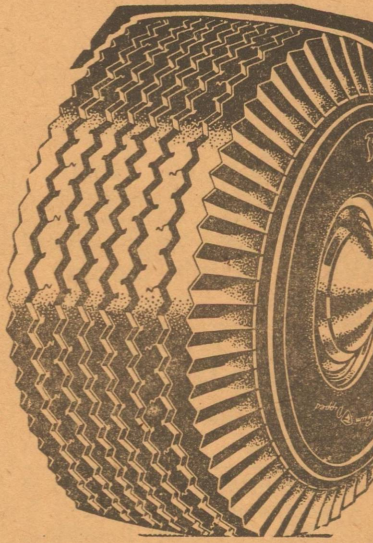
BUY THE NEW

FIRESTONE

CHAMPION DELUXE

See us about a trade-in!

Batteries, Accessories, A few used tires. Let us service your car for winter. Headquarters for anti-freeze and accessories.



Davis Gosden Service

Lum Davis, Prop.

TRY OUR—

Credit Plan

PAY WEEKLY OR MONTHLY WHILE YOU WEAR

- Total Purchases Must Be Over \$20.00
- Pay a Minimum of 10% Down When Purchased.
- A Small Carrying Charge will be added on Balance.
- Add On Privileges for Purchases of \$10.00 or More.
- Anyone With Good Paying Habit Can Buy On This Plan.

30-DAY CHARGE ACCOUNT IF YOU LIKE

The RATLIFF STORE

GROCERIES & MEATS

FRESH FRUITS — VEGETABLES

SHAW'S

NOTICE

We are now handling all lines of fire, casualty and automobile insurance, representing the Insuror's Indemnity & Insurance Company.

Let us service your insurance needs.

GEORGE S. FINLEY

Schleicher County Abstract Office

Thinking of Buying a Car on Time?

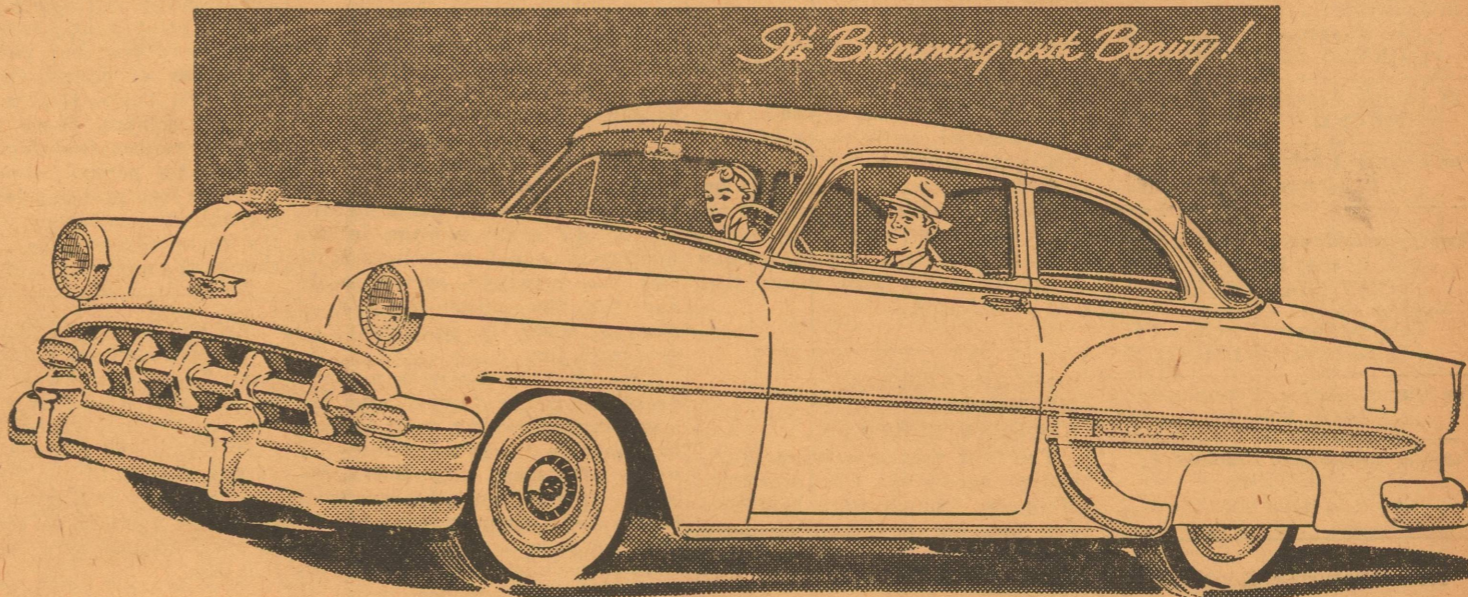
IF SO — SEE US FIRST!

- Payments Made Locally
- Insurance Handled Locally
- Low Rates. No Red Tape.

JACK RATLIFF

General Insurance Auto Loans
Out of town purchases are easily arranged

Only the '54 Chevrolet gives you all these features at lowest prices!



It's Brimming with Beauty!

The new 1954 Chevrolet Bel Air 2-door sedan. With three great series, Chevrolet offers the most beautiful choice of models in its field.

Striking New Luxury-Line Styling. Here are the best-looking Chevrolets of all time. Available in 161 model-color combinations!

Luxurious New Modern-Mode Interiors. Richer fabrics—vinyl trim—interior colors keyed to exterior colors in "Two-Ten" and Bel Air models!

POWERED FOR PERFORMANCE!

New Power in "Blue-Flame 125" Engine. More power—more smoothness—more economy—with this brilliant Powerglide engine.

ENGINEERED FOR ECONOMY!

New Power in "Blue-Flame 115" Engine. The "Blue-Flame 115" Engine also gives you new high-compression power, finer performance and important gas savings.

Highly Perfected Powerglide. Now you can have the finer, thrifter Powerglide automatic transmission* on all Chevrolet models.

Extraordinary Four-Fold Economy. (1) Lowest-priced line (2) extremely low operating costs (3) excep-

tionally low maintenance costs (4) traditionally higher resale value.

New Low Price on Power Steering. Gives fingertip control. Available on all models.*

New Power Brakes for Your Safety-Protection. The first and the outstanding Power Brakes* in Chevrolet's field. Do much of the work of braking for you. (Available on Powerglide models.)

New Automatic Window and Seat Controls. Touch a button to raise or lower front windows. Move the front seat up and forward or down and back with the same ease. Available on "Two-Ten" and Bel Air models.*

Come in, see and drive the new 1954 Chevrolet at your earliest convenience, and we believe you'll decide it's the car for you! *Optional at extra cost.

SYMBOL OF SAVINGS

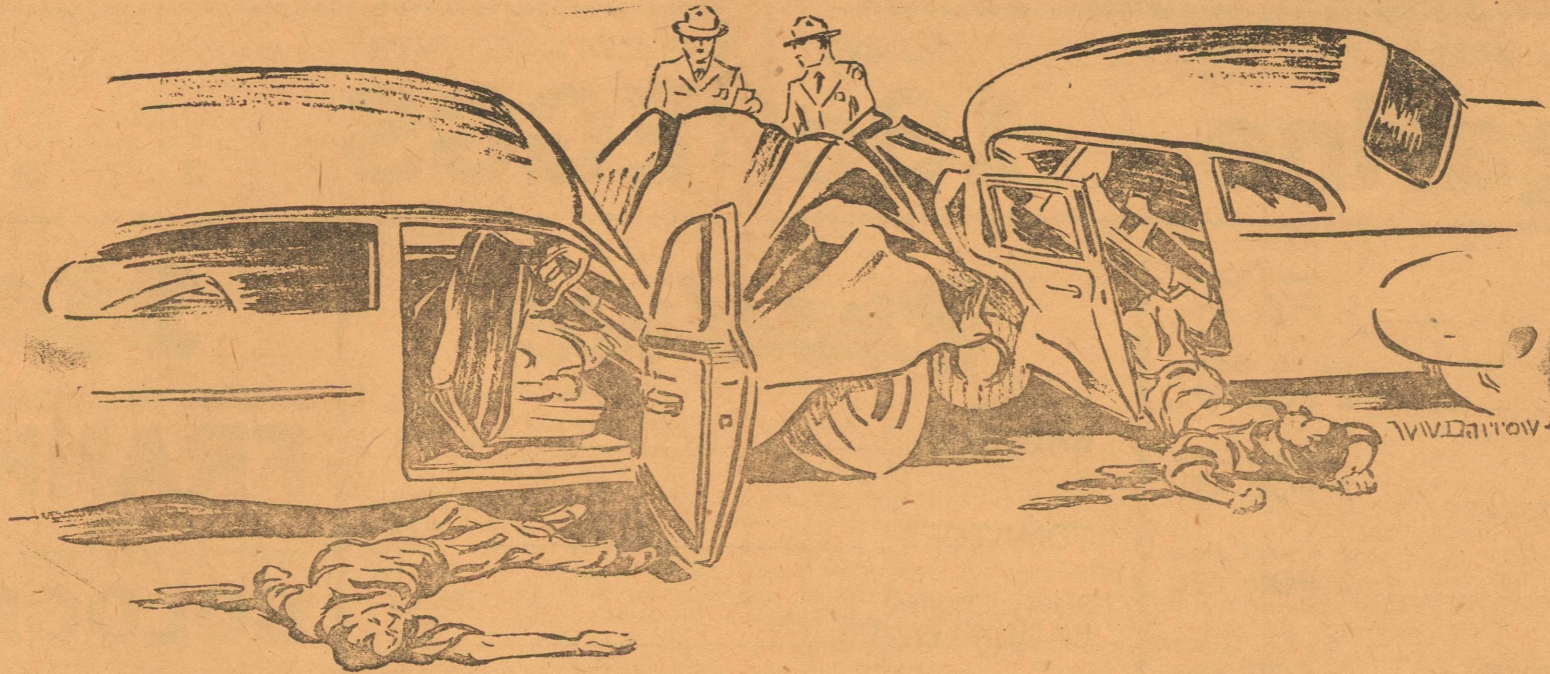


EMBLEM OF EXCELLENCE

MORE PEOPLE BUY CHEVROLETS THAN ANY OTHER CAR!

TISDALE CHEVROLET COMPANY

Phone 22981 - - Eldorado, Texas



DEADLY WEEK-ENDS

Pleasure time is no time for accidents and sudden death, but unfortunately that is when the grim specter works overtime.

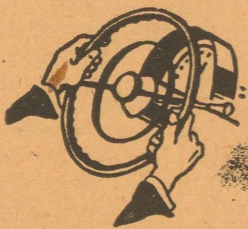
On the average week-end about 290 persons are killed and more than 13,600 injured. In a year's time, week-end and holiday casualties climb to the numbing total of 15,000 dead, 750,000 injured, or about 41 percent of all lives lost annually in traffic accidents.

With a week-end or holiday coming up, families and vacation parties swarm the roads to places of recreation, traffic is congested, driving strain increased—and then the fatal count begins.

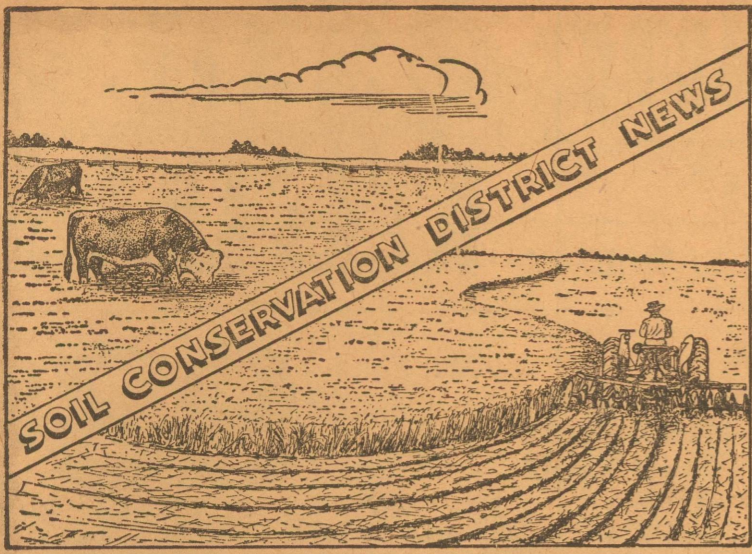
Millions of good, bad and indifferent drivers speeding, cutting in, weaving, ignoring the rules of courtesy, challenging traffic controls, provide the lethal ingredients for crashing and killing. Add to this the potion of the drinking driver and the mixture is deadly.

When you plan week-end driving be doubly cautious. Try to avoid peak hours of travel and congested routes. Start early, return before or after the rush. Watch your driving, keep your temper, don't contest the right-of-way—and watch the other driver!

Slow down—take a little longer and bring your family home alive.



SLOW DOWN—LIVES ARE IN YOUR HANDS!



J. FORREST RUNGE CHAIRMAN, CHRISTOVAL
 E. E. FOSTER SECRETARY, KNICKERBOCKER
 B. E. MOORE MEMBER, ELDORADO
 FORD BOULWARE MEMBER, CHRISTOVAL
 BEN HEXT MEMBER, ELDORADO

The Eldorado Divide Soil Conservation District now has a range pitter and planter which is raring to go. This piece of equipment which was converted to a pitting plow from a disk plow is now waiting to be used. The SCS technicians also devised a set of grass seed boxes for both trashy and fine seeds which will be mounted on the pitter. This will enable the rancher to do his range seeding and pitting in one operation. It will constitute a huge improvement over the old method of either going over the land later with a pull-type seeder or pulling both the seeder and pitter at the same time.

To people who are not acquainted with range treatment of this type; pitting is an operation whereby the soil is opened up by means of disks either set off-center or having one-third of the disk removed. As the plow moves the disks are alternately in and out of the ground leaving a series of depressions 5-6 inches deep, nearly a foot wide and four to five feet long. The disks on the district machine are nearly 3 feet apart. They leave a space of approximately 2 feet between rows of pits.

The main and essential purpose of a pitting operation is to leave the soil in a condition to catch and

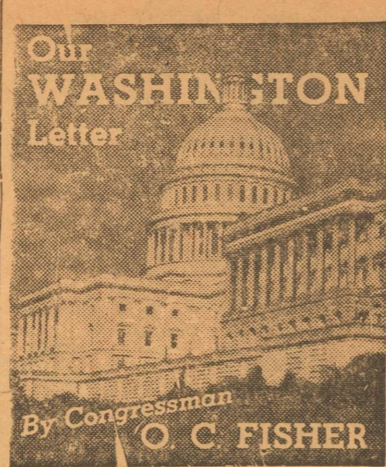
hold rainfall until it can be absorbed.

Results of experimental pitting the past few years have been very encouraging. Moisture penetration of the soil below pits will usually be three and four times as great as on adjacent land. This operation really breaks up the hard baked surface crust which will ordinarily shed water like pavement. It will also hold enough of the rainfall to help the grass seed get started.

To those who dislike leaving their soil in a rough, broken condition, experience with this operation in other localities has shown that the pits will be washed full of soil within a few years. For further information contact your district supervisor or office of the Soil Conservation Service.

Mr. and Mrs. B. O. Bridgeman left Friday on a two week's trip to California. They accompanied E. S. Mattocks, Mrs. Bridgeman's brother, who had been visiting here over a week, and will spend much of their time with him at his home in Pismo Beach, in addition to making sight seeing trips.

J. R. Trentham who has been working recently in Odessa was a visitor at home Monday.



In his State of the Union message, President Eisenhower requested the Congress to raise the public debt limit beyond the present \$275 billion ceiling. It's been a long time since our federal government had no debt. Only once, and that was in 1835 when a surplus developed that worried Congress. The lawmakers debated the problem and finally decided to declare a sort of dividend and dish the surplus out to the various states. Then came the 1837 depression, and there hasn't been a surplus in the Treasury since then.

Today a struggle is going on to keep the stupendous public debt from virtually swallowing up the whole national economy. Henry Wallace used to laugh off the public debt size by saying, "Why worry? after all we just owe it to ourselves." That fuzzy theory, if dominant, could prove disastrous. Actually some of us owe the debt to those of us who happen to own government bonds. The good faith of the government is thus involved.

The public debt now averages more than \$6,000 per family. Interest alone costs the taxpayers \$6 1/2 billion a year. The debt is created, in the main, by government borrowing. To finance borrowing, the government sells bonds to banks. Thus a base for large-scale new expansions of credit is created. This new money, bidding against more money, runs up costs and causes inflation. That inflationary force becomes a sort of vicious cycle. The impact forces government spending upward in order to pay for inflated costs for what the government buys—thus often leading to more borrowing to pay for the increase in government spending.

The Congress has tried to control the debt through controlling the ceiling. The first ceiling was set back in 1917, the first limit having been \$11 1/2 billion. By 1921 it jumped to 37 1/2 billion, and in 1945, the peak of \$300 billion was hit.

The end of the war found the Treasury with unspent money, and soon the ceiling was cut back and then upped a couple of times to the present level of \$275 billion. Actually, the debt limit device has been useful only as a psychological brake. It has been of little use in preventing the growth of the debt. The only real way to do that is for the Congress to spend less money. If the Congress voted appropriations and obligations that exceed the debt limit, then the Congress has little option but to raise the debt limit accordingly.

February's List Of Plentiful Foods

College Station. — A wide variety of foods—more than 20 in all—are noted for penny-wise shoppers on the USDA's February plentiful foods list.

For the first time in many months, supplies of pinto beans, lettuce, fresh and processed oranges and cranberry cause are large enough to rate a place on the list, says J. J. Slaughter of the Agricultural Marketing Service.

Winter pears, irish potatoes, broilers and fryers have been singled out for special attention during the month because supplies are unusually large.

Excepting pecans and frozen fish, plentiful foods carried from January on to the February list are eggs, beef, large dry lima beans, fresh and processed grapefruit, cabbage, onions, raisins, dairy products, peanuts and peanut butter and food fats and oils.

RUBBER STAMPS with the words "Past Due—" etc., carried in stock at Success office, price \$1.00. Other rubber stamps ordered custom made.

Eldorado Lodge
 No. 890 — A. F. & A. M.
 Stated Meeting 2nd Thursday in each month.
 Visiting Brethren Welcome.

The Eldorado Success

Entered as Second Class Matter at the post office at Eldorado, Texas, under the act of March 3, 1887.

PUBLISHED EVERY THURSDAY
 At Eldorado, Texas

Fred Gunstead Publisher
 Alice Gunstead Editor
 Bill Gunstead Associate Editor

Any erroneous reflection upon the character, standing or reputation of any person, firm or corporation which may appear in the columns of the Success will be gladly corrected upon same being brought to the attention of the publisher.

Notice of entertainments where a charge of admission is made, obituaries, cards of thanks, resolutions of respect, and all matters not news will be charged for at the regular rates.

First Baptist News

The month of February brings us to many of the activities that each member of the First Baptist Church has been looking forward to for some time.

This Saturday evening the Intermediate and young people are planning a Valentine party. Mrs. John Stigler is making plans for decorations and entertainment. A movie will be shown to climax the party. Every young person is urged to attend.

Monday evening February 15, has been set as date for the Brotherhood Sweetheart banquet. Plans have been made for a full night of

entertainment, food and fellowship. More about this event will be given next week.

The studies in Psalms is coming on fine. The number attending has far exceeded what we have had on previous studies. Those who have not gotten a book would find it to their advantage to get one as soon as possible. They are in the pastor's study.

Attendance in Sunday school:
 First Baptist 247
 First Mission 27
 Mexican Mission 34
 Go to church somewhere next Sunday.

Mrs. Dorothy Mahler of San Angelo was a week end guest in the home of the Bud Davidsons.

AT GOLDEN ANNIVERSARY

Mr. and Mrs. T. H. Alexander, Mrs. Beulah Kerr and Mrs. O. B. Bradshaw were among those from here who were in Rochelle Sunday to attend the Golden Wedding anniversary of Mr. and Mrs. David Childers.

The Childers' son Edwin of this place was unable to attend as he was working that day.

Mr. and Mrs. Ashby Green of Tatum, N. Mex., visited recently with Mr. and Mrs. B. K. Cheek and other relatives here.

The A. F. Uhereks of Pecos spent from Thursday through Sunday with the J. R. Trenthams, Mrs. Uherek's parents.

"how to" ideas for the handyman

from your *Better Homes & Gardens Handyman's Headquarters*

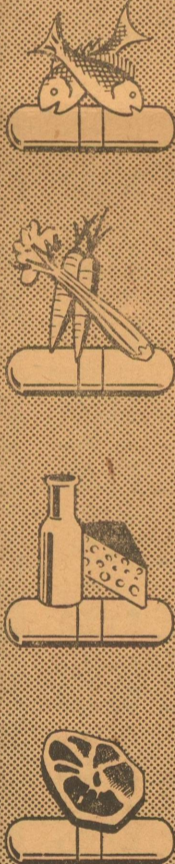


Ideas as well as handyman supplies and materials are our business. We can help you remodel, repair or build—big or small. Better Homes & Gardens ideas and techniques are available to you through our authorized Better Homes & Gardens Handyman Headquarters.

We are prepared to give you authoritative and helpful advice on all your home improvement problems. Our many years of building experience and know-how are at your disposal. Our quality lumber and tools are priced to fit your budget. Stop in today and get acquainted—just browse around, if you like. Perhaps you have some questions we might answer.

Foxworth-Galbraith Lumber Co.

Prescription Pharmacists



Know the VITAMINS You Need...

There are two general groups of vitamins: (1) the very potent ones that your Doctor prescribes to arrest a specific deficiency, and (2) those that supplement the diet, the benefits of which most everyone can enjoy.

Be certain to get vitamins produced by a reputable manufacturer, such as those of Parke, Davis & Company. If in doubt, consult your physician before purchasing vitamins—and have him check you regularly.

ELDORADO DRUG STORE

"For Your Health's Sake"

RP-137

PHARMACY

The First National Bank

Eldorado, Texas

OFFICERS AND EMPLOYEES

J. E. Hill President
 W. O. Alexander Vice President
 Leslie Baker Cashier
 Mrs. A. G. McCormack Asst. Cashier
 Mrs. L. D. Ochsner Bookkeeper
 Mrs. Dorothy Englert Bookkeeper

BANKING HOURS

Week Days 9:00 a. m. to 3:00 p. m.
 Saturdays 9:00 a. m. to 12 Noon

Member Federal Deposit Ins. Corporation



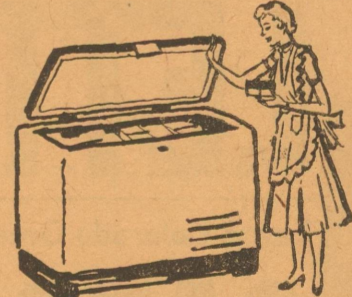
Five ways to Lighten your day



Family in a rush?
 Just plug in breakfast and serve!

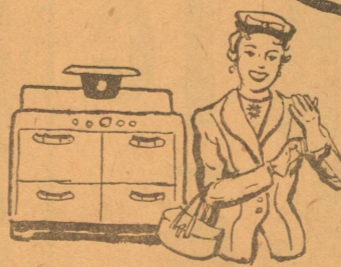


A treat for the kids... mix a cake in a matter of minutes!

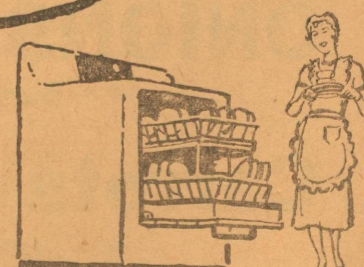


Store entire meals in your freezer! Saves time, saves money.

MORE HELP IN YOUR KITCHEN WHEN YOU LIVE ELECTRICALLY!



Dinner's on—and you're going out —thanks to an electric range!



Save work and dishes with an electric dishwasher!

See Your Electric Appliance Dealer!

West Texas Utilities Company

RED & WHITE

Parker Foods, Inc

RED & WHITE

YOUR FRIENDLY "ONE STOP TO SHOP" FOOD STORE

SALE PRICES BEGIN NOON THURSDAY—CONTINUE FRIDAY and SATURDAY

SUGAR

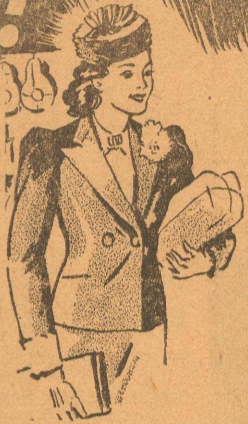
10 LBS IMPERIAL CANE **69c**

QUALITY MEATS PRICED LOW!

Armours Banner Calves For Quality!

Fresh **GROUND BEEF** 3 Lbs. **\$1**

Country style, lots of meat **Pork Backbones** Pound **59c**



ARMOURS STAR FARM FRESH FRYERS

Buy the Pieces you like.

NECKS, LB. 15c BREASTS, LB. 95c
WINGS, LB. 39c THIGHS, LB. 89c
BACKS, LB. 29c DRUMSTICKS, LB. 79c

 **3** CARTON **59c**
POUND

 **3** POUND **69c**
CAN
with coupon at our store

Season's Finest FRUITS and VEGETABLES

FIRM, ICEBURG HEAD

LETTUCE 5c

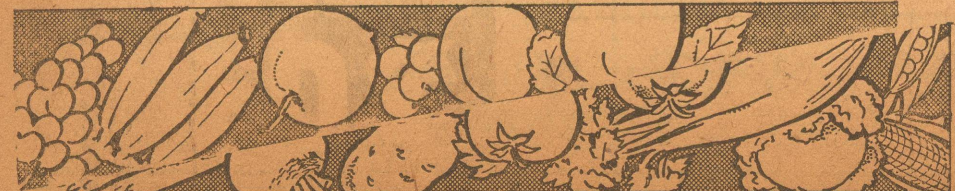
Large Colorado Green Pound

CABBAGE 1c

Fresh, Green **ONIONS** Bunch **3 1c**

Carrots Bunch **3 1c**

Radishes Bunch **3 2c**



Coffee

Maryland Club Pound **93c**

\$. Dollar Days Are Here. \$

Coca-Colas and all soft drinks 3 for \$1.00

12 pack carton

FRUIT JUICES

| | |
|-------------------------|--------|
| Libbys, 12 Oz. | 7 For |
| PEACH NECTAR | \$1.00 |
| 46 Oz. Can Libby's | 3 cans |
| PINEAPPLE JUICE | \$1.00 |
| No. 2 Can R&W | 8 For |
| ORANGE JUICE | \$1.00 |
| 12 Oz. Libbys | 8 For |
| PINEAPPLE JUICE | \$1.00 |
| 12 Oz. Red & White Pear | 8 For |
| NECTAR | \$1.00 |
| 300 Size, Libbys | 9 For |
| TOMATO JUICE | \$1.00 |
| R&W, 12 Oz. | 7 For |
| APRICOT NECTAR | \$1.00 |



LIBBY'S TOMATO JUICE

46 OZ. CAN

4 for \$1

CAN MEATS

| | |
|---------------------|--------------|
| Patio | 2 No. 2 Cans |
| CHILI | \$1.00 |
| 3 1/2 Oz. R&W Fancy | 5 For |
| VIENNA SAUSAGE | \$1.00 |
| 3 1/2 Oz. Del Valle | 10 For |
| VIENNA SAUSAGE | \$1.00 |
| R&W Pure Meat | 11 For |
| POTTED MEAT | \$1.00 |
| 16 Oz. Libbys | 3 For |
| CHILI SPAGHETTI | \$1.00 |
| 16 Oz. Libbys | 3 For |
| SPAGHETTI & MEAT | \$1.00 |
| Maine | 10 For |
| SARDINES | \$1.00 |
| Armours | 2 For |
| BEEF STEW | \$1.00 |
| Van Camps | 4 For |
| TUNA | \$1.00 |
| No. 2 Cans, Patio | 2 For |
| BEEF ENCHILADAS | \$1.00 |

PRESERVES

| | |
|-----------------------|--------|
| 12 Oz. Glass Sun Spun | 4 For |
| PEACH | \$1.00 |
| 12 Oz Glass Sun Spun | 4 For |
| APRICOT | \$1.00 |
| 32 Oz. Glass Sun Spun | 2 For |
| PEACH | \$1.00 |
| 32 Oz. Glass Sun Spun | 2 For |
| APRICOT | \$1.00 |
| 32 Oz. Glass Sun Spun | 2 For |
| PLUM | \$1.00 |

DOG FOODS

| | |
|-------------------|---------|
| 16 Oz. Can | 7 For |
| DASH | \$1.00 |
| Prince Old Pal | 12 Cans |
| DOG FOOD | \$1.00 |
| Liver & Horsemeat | 6 Cans |
| KILROY | \$1.00 |
| 16 Oz. Can | 7 For |
| PUSS & BOOTS | \$1.00 |
| 16 Oz. Can | 12 For |
| SCRAPPY | \$1.00 |

CAN FRUITS

ROSEDALE

Peaches

NO. 2 1/2 CANS

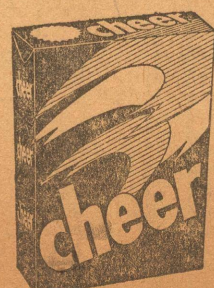
4 for \$1



| | |
|-----------------------|--------|
| 2 1/2 Can Our Value | 4 For |
| FREESTONE PEACHES | \$1.00 |
| 2 1/2 Can Rosedale | 3 For |
| PEAR HALVES | \$1.00 |
| 303 Can Sun Spun | 4 For |
| PIE CHERRIES | \$1.00 |
| 303 Can Allen | 3 For |
| STRAWBERRIES | \$1.00 |
| 12 Oz. Can Libbys | 5 For |
| TID-BIT PINEAPPLE | \$1.00 |
| 303 Can Libbys | 4 For |
| FRUIT COCKTAIL | \$1.00 |
| No. 2 Can Hills Dale | 4 For |
| Half Slices PINEAPPLE | \$1.00 |
| 2 1/2 Can Gold Coast | 3 For |
| WHOLE SPICED PEACHES | \$1.00 |

CAN VEGETABLES

| | |
|-------------------------------|---------|
| 303 Can R&W Cream Style | 5 For |
| GOLDEN CORN | \$1.00 |
| 303 Can Sun Spun | 6 For |
| CREAM STYLE CORN | \$1.00 |
| 303 Can Sun Spun Vine Ripened | 6 For |
| TOMATOES | \$1.00 |
| No. 1 Can R&W | 10 For |
| FANCY SPINACH | \$1.00 |
| 303 Can Sun Spun | 7 For |
| SPINACH | \$1.00 |
| 300 Can Kuners | 7 For |
| SAUERKRAUT | \$1.00 |
| Libbys 12 Oz. | 7 For |
| DEEP BROWN BEANS | \$1.00 |
| 300 Can Sun Spun | 10 For |
| HOMINY | \$1.00 |
| 21 Oz. Can | 3 For |
| DURAND YAMS | \$1.00 |
| 303 Size, R&W Salad Pack | 3 cans |
| BLUE LAKE GREEN BEANS | \$1.00 |
| 300 Size Sun Spun | 10 For |
| PORK & BEANS | \$1.00 |
| County Kist, Buffet Size | 10 For |
| WHOLE KERNEL CORN | \$1.00 |
| 303 Can Kuners | 4 For |
| LITTLE DAINTY PEAS | \$1.00 |
| No. 2 1/2 Can Sun Spun | 4 cans |
| SHOE STRING POTATOES | \$1.00 |
| 303 Can Sun Spun | 7 For |
| CUT OKRA | \$1.00 |
| Joan of Arc, Picnic Size | 4 For |
| ASPARAGUS | \$1.00 |
| 300 Size, Famous Star | 5 For |
| LADY CREAM PEAS | \$1.00 |
| 75 and 100 Watt | 5 For |
| LIGHT BULBS | \$1.00 |
| 25c Pkgs R&W | 6 For |
| NOTE FILLERS | \$1.00 |
| Personal | 20 Bars |
| IVORY SOAP | \$1.00 |
| Regular Size | 15 bars |
| CAMAY SOAP | \$1.00 |



OR



with coupon at our store

5

LARGE

BOXES

\$1.00