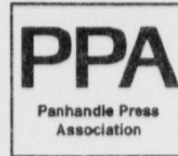


MIXED ADC 11  
185 08-27-00  
NEWS FILE  
HE 65M BOX 201  
GARR AR 72852-0065



# BAILEY COUNTY JOURNAL



Volume 37, No. 18

50¢

Published Every Sunday at Muleshoe, Bailey County, Texas 79347

50¢

Sunday, February 7, 1999

## PAGE ONE

A QUICK READ OF THE NEWS

### TASB developing profile

A series of meetings were held Feb. 4-5 in Muleshoe to gather input from different parts of the community for the creation of a profile for superintendent of the Muleshoe School District.

Clyde Gear, associate executive director of the Texas Association of School Boards, conducted the meetings.

Some of the groups giving input included the principals, teachers, central staff, school board, community, and students from all schools. Input from these meetings will be sent to the TASB where it will be compiled into a community and school profile for distribution to candidates.

The brochure is scheduled to be printed and mailed by Feb. 16.

### Six more weeks of winter?

If Prairie Dog Pete is right, the Muleshoe area is in for six more weeks of winter.

The Lubbock cousin of the more famous Punxsutawney Phil saw his shadow when he crawled out of his den Tuesday morning, which according to superstition means bad weather is coming.

When Phil was out of his hole in Punxsutawney, Pa. on Groundhog Day, he didn't see his shadow according to the Associated Press, which means an early spring.

Since there are no groundhogs in West Texas, Lubbockites have looked to prairie dog meteorologists since the 1960s.

### MISD schools closing

Schools in the Muleshoe Independent School District will be closed on Feb. 11-12 for "ski break."

Schools will reopen on Monday, Feb. 15 and return to their regular schedules.

### SERVICES

The Muleshoe Area Public Library is open Monday through Friday from 10 a.m. to 6 p.m. and on Saturday from 9 a.m. to 2 p.m.

Services offered include computers with internet access, a large meeting room with TV/VCR/computer (free use for non-profit organizations), FAX service, laminating, interlibrary loan program, and state and federal tax forms.

Librarian Dyan Shipley can be reached by phone at 272-4707 or e-mailed at dshipley@fivearea.com.



Drawing date: Saturday, Jan. 30  
Winning numbers: 09-25-27-28-30-50  
Estimated jackpot: \$4 million  
Winners: none  
Next drawing: Wednesday, Feb. 3  
Estimated jackpot: \$7 million

### On this date in history

Feb. 8 — The Boys Scouts of America is incorporated (1910).  
Feb. 9 — Jefferson Davis is elected president of the Confederacy (1861).  
Feb. 10 — Postage stamps first came into use in Britain (1840).

### LOCAL WEATHER

	High	low	Pre.
Tuesday	48	20	—
Wednesday	51	21	—
Thursday	57	26	—
Prec to date	11 inches (snow)		

### EXTENDED FORECAST

Mostly sunny Monday and Tuesday turning partly cloudy and windy Wednesday. Highs in the upper 60s to lower 70s. Lows in the mid to upper 30s.

Managing Editor Rick White can be reached at 272-4536 or ctyankee@fivearea.com



JOURNAL PHOTO BY RICK WHITE

### Meet the press

Muleshoe senior Dustin Cleavinger talks with TV reporters from Amarillo and Lubbock Wednesday after signing a letter of intent to play football with West Texas A&M University in Canyon.

## Muleshoe now on recruiting trail

Muleshoe is becoming a regular stop on the college football recruiting trail.

Lineman Matt Turney and defensive end Dustin Cleavinger signed national letters of intent Wednesday to play football with Texas schools.

About 50 family members and students attended the signing ceremony held in the high school library.

Turney (6-foot-4, 285-pounds) signed with Division I North Texas in Denton while Cleavinger (6-6, 215) chose West Texas A&M University in Canyon.

The two were key members of a senior class that helped Muleshoe go 10-2 this season and win its first district title since 1979.

The Muleshoe coaching staff is also trying to help linebacker/fullback Greg Pena land at a Division II or NAIA school.

"It speaks very highly for the program," Muleshoe

head coach David Wood said. "We're proud of what's going on here."

Wood believes there are several players on next year's team and underclassmen that will also get a chance to play college football.

"It's great motivation for the kids," Wood said. "They can see that hard work does pay off."

Last year, Ricko Aguirre signed with West Texas and saw considerable playing time at defensive tackle.

Wood said if Muleshoe players pan out at the college level the recruiters will keep coming back to Muleshoe.

Turney, an offensive guard and defensive tackle, started three years on offense and the past two on defense. He was recruited to play defense. Turney was selected All-South Plains and second-team all-state.

see SIGNINGS on page 5

## IRS changes include child tax credit

By PATTI DRIVER  
Journal staff writer

There have been many changes in the tax laws for this year.

Taxpayers need to be aware of these changes which could mean the difference between getting a refund and paying more taxes than necessary, according to the IRS.

These changes include a new child tax credit, many different educational incentives, two new types of IRAs, changes in the capital gains taxes, and a new taxpayer advocate program.

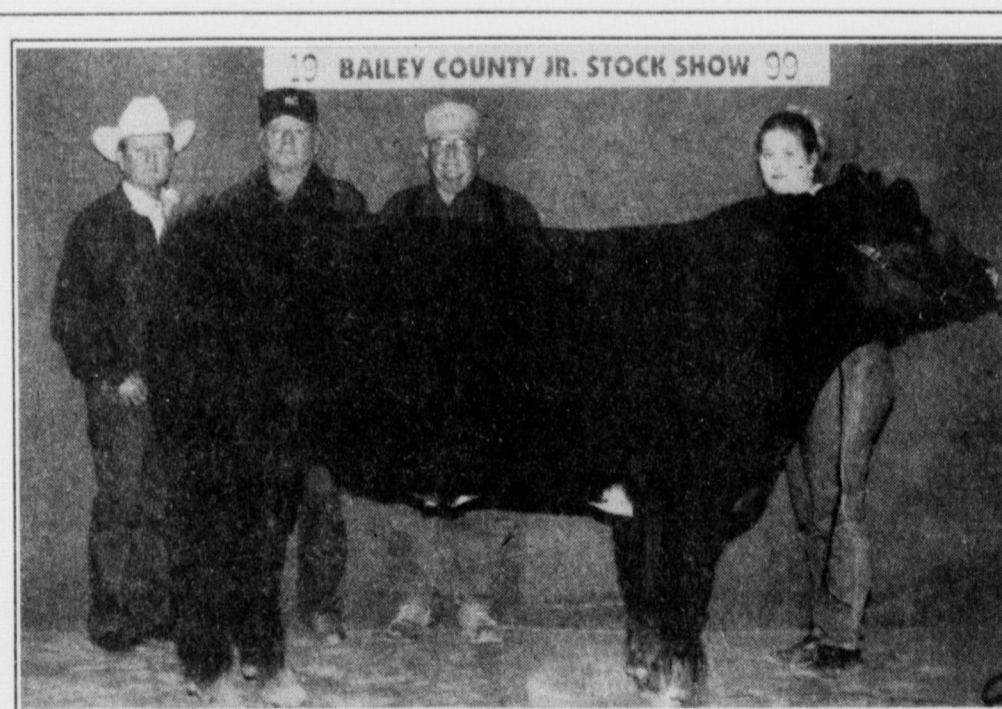
Depending on their income, people may be able to claim up to a \$400 credit for each child that qualifies under the age of 17.

Frank Wiseman of H&R Block in Muleshoe has found this particular credit has benefited more people than they had anticipated this year.

There are several new educational incentives available. The Hope credit lets people below certain income levels claim a credit for the first two years of post-secondary education up to a limit of \$1,500 for qualified tuition and expenses. The lifetime learning credit applies to qualified tuition and expenses for undergraduate, graduate, and professional degree programs. The credit is 20 percent of expenses up to \$1,000 per return.

In addition to these credits, people can set up

see IRS on page 2



Grand champion Robin Tooley showed the grand champion steer at the Three Way Junior Livestock Show. Also pictured are (l-r) Jim Pat Claunch, Travis Bessire and Ted Harrison.

## Tooley turns trifecta at Three Way Show

MAPLE — Neither rain nor sleet nor snow could prevent the Three Way Junior Livestock Show from going on during last weekend's storm.

Braving nearly 10 inches of snow, more than two dozen competitors took part in the annual livestock show Saturday at the school ag barn.

Coming through like one of the nation's finest postal workers, Robin Tooley delivered the grand champion steer, goat and sheep.

Kasey Davis prevented Tooley from a clean sweep by showing the grand cham-

pion swine in a highly competitive field.

Tooley, the daughter of Howard and Jan Tooley, had the grand and reserve champion in both the steer and goat classifications.

She also was named champion showman in the steer, goat and sheep competitions.

A 1,290-pound English steer shown by the Three Way junior was selected grand champion by judge John Senter, an extension agent from Garza County. Her 1,260-pound exotic steer was the reserve grand champion. In the junior market lamb

show, Tooley had both the champion Southdown and Champion Medium Wool. The Medium Wool was then selected as the grand champion junior market lamb by judge Senter.

Seventh-grader Kaylie James, daughter of Danny and Lonita James, showed the reserve grand champion lamb, also a Medium Wool.

James was also named reserve champion showman.

In was during the afternoon's junior market swine show when the action

see STOCK SHOW on page 7





**Taking flight**

Hundreds of SandHill cranes near the Enochs Gin take to the air Thursday after being spooked by a passing truck.



**Sign here**

Muleshoe senior Dustin Cleavinger (left) signed a letter of intent Wednesday to play college football at West Texas A&M University in Canyon. Pictured with Cleavinger are (from left) coach David Wood, Flint Bigham, Ralph Mason, Johnna Cleavinger, Ron Welch, Cindy Harrison, Jeff Armstrong, Neleen Dent and Joe Pat Wright.



**Sign here II**

Muleshoe senior Matt Turney (left) signed a letter of intent Wednesday to play college football at North Texas in Denton. Pictured with Turney are (from left) coach David Wood, Ralph Mason, Martie Cardwell, James Dewbre, Flint Bigham, Kenneth Turney, Ron Welch, Joe Pat Wright and Chance Turney.

**'Food Check-Out Day' celebrated on Tuesday**

WACO — Texas Farm Bureau will recognize "Food Check-Out Day" — the date the average American has earned enough money to pay for his or her food supply for 1999 — on February 9.

"We work only about 40 days to pay for an entire year's supply of food. Without the affordable food produced by America's farmers and ranchers, the nation's standard of living would be greatly reduced," said Bob Stallman, president of the Texas Farm Bureau. "Our farmers and ranchers are the most productive in the world."

to compare the 40 days necessary to purchase a year's worth of food with the amount of time it takes to pay a year's worth of taxes. In 1998, the average American worked until May 10, more than three additional months or 130 days, for state and local tax bills.

"That shows that food is quite a bargain," he said.

Food Check-Out Day gives America's farmers and ranchers an opportunity to take the message of efficient, affordable food production to the public, Stallman said. And

many local Farm Bureau's across the state plan to spread the word.

Some County Farm Bureaus are working with grocery stores and their customers to collect food for Ronald McDonald Houses, a non-profit operation located in many large cities that gives parents of sick children a place to stay while their children are in the hospital.

In areas where there are no Ronald McDonald Houses, food banks will get the benefit of the County Farm Bureau's collection efforts.

**Church's Fried Chicken**  
 1411 W. American Blvd. Muleshoe • 272-5581

**15 pc. CHICKEN TENDERS**  
 large fr. fries & large cream gravy ..... **\$10<sup>09</sup>**

**6 SPICY WINGS**  
 small french fries ..... **\$2<sup>49</sup>**  
 TENDER SANDWICH ..... **99¢**

**ALL DRINKS**  
 free refills ..... **79¢**  
 FRIED APPLE PIES ..... **99¢**  
 STRAWBERRY or LEMON PIE ..... **\$1<sup>29</sup>**  
 PECAN PIE ..... **\$1<sup>69</sup>**  
 COFFEE ..... **25¢**

**GOTTA LOVE OUR OKRA!**  
 Great Meals! Great Prices! 10% Discount for Senior Citizens! Come In & Check It Out! Try Our Spicy Rice or Mac & Cheese

**Hot Honey Butter Biscuit 3/\$1.00**

**SPECIAL of the MONTH**

**Jalapeno Bombers 3/\$1.00**

**3 PC. DARK.....(mxd. add 50¢)..... \$1<sup>99</sup>**  
**8 PC. DARK.....(mxd. add \$2.50)..... \$4<sup>99</sup>**  
**12 PC. DARK.....(mxd. add \$3.50)..... \$6<sup>99</sup>**

**17 IN STOCK AT SIMILAR SAVINGS!**

**UNBELIEVABLE DISCOUNTS!**

Stk # 85219

**NEW DODGE NEON**  
**4 DR SEDAN**

Loaded with tilt, cruise, air conditioning, AM/FM stereo/CD, aluminum wheels and much more!

List Price \$15,230.00  
 Discount -3,520.00

**SALE PRICE \$11,710<sup>00\*</sup>** \* Factory Rebate To Dealer

**Bender**  
 Chrysler - Plymouth - Dodge  
 3400 Mabry Dr. • 762-4511

**BLACK EYE PEAS**

Pay Less For Processing Your Open Market Peas

**OPEN MARKET OR FIRM CONTRACTS AVAILABLE** **Local Delivery**

Call Us For Details... **PEAS, INC.** Pleasanton, TX  
**830-569-2140 or 569-6331**

show your *romantic* side

When you love somebody, why be shy? Express your feelings loud and clear with a romantic Teleflora gift. Call us for delivery anywhere in the U.S. or Canada.

**DECORATOR'S Floral & Gifts**  
 616 S 1st St.  
 Muleshoe  
 272-4340

**Teleflora**  
 (shop name, address and phone number)

Teleflora's Cuddle Up Bouquet

The HERSHEY'S KISSES Bouquet by Teleflora

Cupid's Enchantment Bouquet by Teleflora

©1999 Teleflora

**Bailey County Journal** USPS 040-200  
 Established March 31, 1963. Published by Triple S Publishing, Inc.  
 Every Sunday at 304 W. Second. Box 449, Muleshoe, TX 79347.

Second Class Postage paid at Muleshoe, TX.  
 POSTMASTER: Send address changes to the Bailey County Journal, P.O. Box 449, Muleshoe, TX 79347.

We are qualified members of:  
 Panhandle Press Association, National Newspaper Association,  
 West Texas Press Association and Texas Press Association

WEST TEXAS PRESS ASSOCIATION

**PPA**  
 Panhandle Press Association

**TA** MEMBER 1999  
 TEXAS PRESS ASSOCIATION

Scot Stinnett, Publisher  
 Lisa Stinnett, Vice-President/Comptroller  
 Rick White, Editor  
 Mari Guadalcasar, Classifieds  
 Leah Bell, Advertising

© 1990

SUBSCRIPTIONS: Muleshoe Journal and Bailey County Journal  
 By Carrier Yearly - \$22.00  
 Bailey County — by mail - \$24.00  
 Elsewhere - \$26.00  
 Advertising Rate Cards on Application

\*Advertisers should check their ad the first day of insertion. The Journals will not be liable for failure to publish an ad or for a typographical error or errors in publications except to the extent of the cost of the ad for the first day of insertion. Adjustment for errors will be limited to the cost of that portion of the ad where the error occurred.\*

## Lady Mules clinch state playoff berth

Muleshoe didn't earn many style points Tuesday in a 55-35 District 2-3A win against last-place Lubbock Roosevelt.

But the harder-than-expected victory did earn the Lady Mules their first state-playoff berth in five years.

Senior post Erin Wilhite collected 17 points, nine rebounds and five blocked shots for the Lady Mules, who used an 11-1 run at the start of the fourth quarter to finally put away the pesky Lady Eagles. Junior Lindsey Field added 14 points for MHS, including five in the game-breaking spurt.

Muleshoe coach Jim Gruhlkey was kind of sheepish about the way the Lady Mules played, but he said it didn't take anything away from the big picture.

"It's nice to accomplish our first goal, which was making the playoffs," Gruhlkey said. "It's nice to be in this situation again. The kids have worked hard and deserve it."

It will be the Lady Mules' second playoff appearance under Gruhlkey.

Muleshoe's fourth-straight win, coupled with Littlefield's loss to Shallowater, clinched at least a tie for second-place in the district for the Lady Mules with two games remaining.

A win against No. 4-ranked Shallowater Friday would vault the Lady Mules (12-15 overall, 7-1 in district) into a first-place tie with the Filles.

Gruhlkey said Roosevelt's sometimes unconventional style coupled with a less-than-energetic effort by the Lady

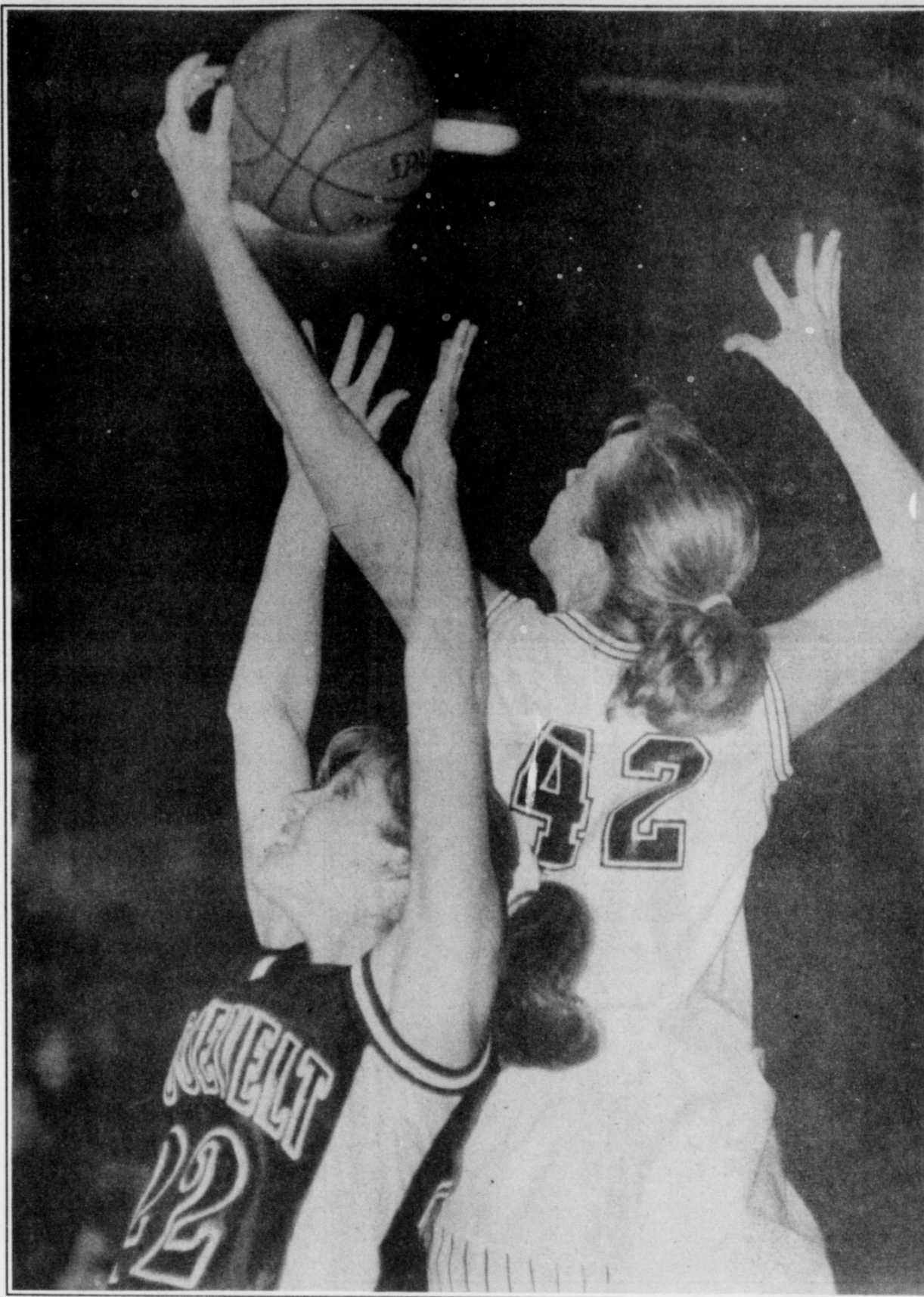
District 2-3A		
GIRLS		
Team	Dist	All
x-Shallowater	8-0	25-4
x-Muleshoe	7-1	12-15
Friona	5-3	18-8
Littlefield	3-5	11-15
Cooper	1-7	8-18
Roosevelt	0-8	5-20
Tuesday's results		
Muleshoe 55, Roosevelt 35		
Friona 59, Cooper 30		
Shallowater 67, Littlefield 23		
Friday's games		
Shallowater at Muleshoe		
Friona at Littlefield		
Cooper at Roosevelt		
BOYS		
x-Muleshoe	7-0	19-7
Friona	5-2	15-10
Shallowater	4-3	18-10
Littlefield	3-4	18-9
Roosevelt	1-6	11-14
Cooper	1-6	3-24
Tuesday's results		
Muleshoe 98, Roosevelt 43		
Shallowater 50, Littlefield 49		
Friona 66, Cooper 52		
Friday's games		
Shallowater at Muleshoe		
Friona at Littlefield		
Cooper at Roosevelt		
x-clinched playoff berth		

Mules contributed to a sluggish outing.

"You talk to them about it, but it's hard to convince them they need to be focused for every game, especially when we've got Shallowater on Friday," Gruhlkey said.

Wilhite helped carry Muleshoe through some of its early offense struggles, scoring 13 points through three quarters. The 5-10 post, showing more confidence in her mid-range jumper, connected on 7 of 11 shots.

Debra Rojas scored a game-



JOURNAL PHOTO BY RICK WHITE

### Tall timber

Muleshoe's Ellen Wood collects a rebound over the back of a Lubbock Roosevelt defender Tuesday during the Lady Mules' playoff-clinching 55-35 victory.

high 19 points while keeping Roosevelt (0-8, 5-20) within striking range through the three quarters.

Going to full-court pressure at the start of the fourth quarter pushed Muleshoe over the top.

"We tried to push the tempo the whole game," Gruhlkey said. "Finally in the fourth quarter

we took over the tempo and that got us some easy baskets."

Muleshoe's 11-1 run at the start of the quarter bumped an eight-point lead to 44-26 with three minutes left in the game.

Roosevelt (35) — Durham 0-0 0, Jones 0 0-0 0, Marshall 1 0-0 2, Chitwood 0 1-6 2, Rojas 5 6-9 19, Runyan 1 0-0 2, Newport 0 0-0 0, Torres 1 6-7 8, Woods 0 0-0 0, Harris

0 0-0 0. Totals 9 14-22 35.

Muleshoe (55) — Black 3 2-2 8, Field 4 5-5 14, Torres 2 3-3 7, Heathington 0 0-0 0, Gartin 2 0-1 4, Williams 0 0-2 0, Wood 2 1-2 5, Wilhite 7 3-6 17. Totals 20 14-22 55.

Roosevelt 10 3 10 12 35  
Muleshoe 14 7 10 24 55

3-pointers — Roosevelt 3 (Rojas 3), Muleshoe 1 (Field). Records: Muleshoe 12-16, 7-1.

### MULESHOE HOOP HIGHLIGHTS

■ Kala Johnson and Tommie Hernandez scored 8 points each as the Muleshoe JV topped Roosevelt 40-29 Tuesday.

Melissa Flores added 6 points on a pair of 3-pointers for the Lady mules, who improved to 6-2 in District 2-3A and 13-8 overall.

■ Shallowater avenged an earlier defeat by edging Muleshoe 45-38 Monday in a freshman game.

Rendi Hodge scored a game-high 20 points for the Lady Mules. Jessica Carpenter and Candace Hutto added 6 points each.

Muleshoe (11-5) won the first meeting 62-60.

■ Shallowater handed the

WJHS 8th-graders a 50-20 loss Monday.

Eva Pylant, Tiffany Flores, Bailey Barrier and Gradee Adrian scored 4 points each for the Lady Mules, who fell to 10-6.

■ Shallowater held off the WJHS 7th-grade despite 13 points by Sara Benham.

Laura Perez added 5 points for the Lady Mules (7-6) and Latasha Glover chipped in 4.

BOYS  
■ Darrell Lewis scored 21 points Tuesday as the Muleshoe JV boys rebounded from their only district loss with a 84-49 romp over Roosevelt.

Moises Garcia added 15 points for the Mules (12-7, 6-1), who roared out to a 47-23 half-time lead.

■ Lincoln Riley scored 16 of his game-high 18 points in the first half Monday as Muleshoe handled Shallowater 59-42 in a boys junior varsity game.

Kyle Atwood added 14 points and Michael Norman chipped in 11 as Muleshoe improved to 11-5.

■ Shallowater beat WJHS 49-42 Monday in an 8th-grade boys games despite a strong second half rally by the Mules.

Ryan Powell scored 17 points and Philip Field added 15 for the Mules, who trailed 25-11 at half-time.

■ Shallowater beat WJHS 65-9 in a 7th-grade game.

Ryan Marricle led WJHS with 3 points.

District 11-1A		
GIRLS		
Team	Dist	All
x-Happy	6-1	9-17
Lazbuddie	5-1	21-4
Amherst	3-3	16-10
Cotton Center	2-4	10-14
Spade	0-7	2-18
Friday's games		
Amherst at Cotton Center		
Lazbuddie at Spade		
BOYS		
x-Happy	6-1	17-6
Lazbuddie	5-1	19-8
Cotton Center	3-3	16-01
Amherst	1-5	9-15
Spade	1-6	9-16
Friday's games		
Amherst at Cotton Center		
Lazbuddie at Spade		
x-clinched playoff berth		

## Foster Fertilizer, Inc.

Serving  
*Lazbuddie*  
and the  
surrounding  
area since  
1961.

**INDEPENDENTLY  
OWNED & OPERATED**

*Come see the Foster family for all your fertilizer needs!*

**DEMP FOSTER**  
*Owner*  
**STEVE FOSTER**  
*Manager*

Hwy. 145 • Lazbuddie, TX • 965-2921



## ENMU archeology students rock Watson JH

PORTALES, NM — Archaeologists Jim Pomfrey and Shawn Patch, graduate students at Eastern New Mexico University, recently presented a program to Mrs. Chitwood's eighth grade science classes at Watson Junior High.

Pomfrey and Patch, who have been to numerous dig sites, shared some of their many adventures with the students. Pomfrey has been on digs in Texas, Ohio, Pennsylvania, Illinois, and Kenya, Africa, while Patch has been on digs in Pennsylvania, New Mexico, Vermont, North Carolina, and Texas.

The class has been studying geologic time and fossils. The presentation complemented the unit and offered insight as to what an archaeologist does at a site.

Archaeologists study anything used by humans, such as stone, artifacts, ceramics, bones, and campfires. The archaeologists take the pieces they recover and try to reconstruct a picture of what the people looked like, what they ate, where they got their food,



### They can dig it

Jim Pomfrey (left) and Shawn Patch, archeology graduate students at Eastern New Mexico University in Portales, gave a presentation to Mrs. Chitwood's 8th grade class at Watson Junior High. Pomfrey and Patch related their experiences while working on various digs around the world.

water, tools, and artifacts, and even what trade routes they used.

This was a fantastic opportunity for the eighth grade students to interact with the sci-

entists and learn from first hand experience what an archaeologist does.

## Jennyslippers install officers for 1999

The annual Jennyslipper Banquet and installation of officers was held January 25 in the Bailey County Coliseum.

Lonnie Merriott sang, "How Great Thou Art" to begin the program, followed by the invocation given by Thursie Reid. Cari Ann Kidd led the Pledge of Allegiance and everyone enjoyed a pot luck meal.

President Nelda Merriott welcomed everyone and recognized the guests, which included James Wedel, Lonnie Merriott, June Green, Tommy and Felicia Green and their children, Trista and Niclas. Special certificates of appreciation were presented to 20 Jennyslippers who spearheaded the various Jennyslipper activities. These projects include the Financial Aid Seminar, Toast to Texas, KENW Auction, the bicycling PUSH (People Understanding Severely Handicapped) group, the Tour de Muleshoe rest stop, Muleshoe pitching sets, scholarship, Garden Spot of the Week, pa-

## Tech to host Super spring sessions

Texas Tech University, Institute for the Development and Enrichment of Advanced Learners (IDEAL), will host the spring session of Super Saturdays, beginning February 13 through March 13, 1999.

Super Saturdays is designed to provide students in kindergarten through 7th grade with academic and creative experiences beyond the regular school curriculum. Classes offered include aerodynamics, animal science, art, biotechnology, cooking, computers, creative writing, geology, theatre and others. For more information or to register for Super Saturdays, contact Tina Vecchio, Program Coordinator for IDEAL, Texas Tech University, Box 42191, Lubbock, Texas 79409 or call (806) 742-2352, ext. 241.



rade floats, the annual Holiday Dinner, and other endeavours as they present themselves during the year.

Merriott presented each retiring officer with a gift and a plaque (or year bar) and expressed appreciation for a job well done. They included President-elect Ruby Green, Secretary Alene Bryant, Treasurer Joy Williams, and Past President Doris Wedel.

Nancy Kidd conducted the installation of the incoming officers with a flower talk. She presented each new officer and the five new members with a

bouquet of flowers and compared the attributes of the flowers to the duties of each office. Roses were presented to incoming President Green, President-elect Bobbie Harrison (who was represented by Ellen Ladd in Bobbie's absence), Secretary Bryant, and Treasurer Williams.

Doris Wedel presented a silver bracelet engraved "Jennyslippers" to Merriott as outgoing president. Green challenged the group to greater accomplishments in 1999. Billie Downing gave the benediction.

## FARMERS CO-OP GTN ASSN. OF ENOCHS

Enochs, TX • Mgr. Wade Baker • 927-5511 or 927-5512



GRAND CHAMPION GOAT  
Robin Tooley

G  
R  
E  
A  
T  
J  
O  
B

We Salute All Three Way Livestock Show Winners!



GRAND CHAMPION LAMB  
Robin Tooley



**JOHN DEERE**  
**FARM EQUIPMENT DEALER**

Muleshoe Hwy. • Morton, TX • 266-5535

## Dont Miss An Issue!

We deliver twice a week,  
52 weeks per year!

To subscribe to the Muleshoe Journal,  
cost is \$22 by carrier in Muleshoe;  
\$24 by mail in Bailey County and  
\$26 by mail outside Bailey County.

Send your check, name and address to:  
Muleshoe Journal  
P.O. Box 449  
Muleshoe, TX 79347

DINE OUT WITH YOUR VALENTINE

Sweetheart Dinner  
Made For Two



starting at 5 pm

Saturday, February 13

The elegant table setting includes candlelight and tablecloth.  
Dinner includes slow cooked prime rib,  
fresh garden salad, mashed potatoes,  
dinner rolls & New York style cheesecake  
with strawberries. Drinks are included.

\$24<sup>95</sup>

Show your  
sweetheart your  
love is true!



1010 W. American Blvd.  
Muleshoe • 272-3294



### THREE WAY RESULTS

**Three Way Livestock Show**  
**Saturday, Jan. 31**  
**STEERS**  
**English**  
 Champion — Robin Tooley  
**Exotic**  
 Champion — Robin Tooley  
**Grand champion**  
 Robin Tooley  
**Reserve grand champion**  
 Robin Tooley  
**Showmanship**  
 Robin Tooley

**GOATS**  
**Lightweight**  
 1. Robin Tooley, 2. Robin Tooley, 3. Dustin Cannon, 4. Dustin Cannon, 5. Shaylen Cannon.  
**Heavyweight**  
 1. Robin Tooley, 2. Chase Cannon, 3. Chase Cannon, 4. Dustin Cannon.  
**Grand champion**  
 Robin Tooley  
**Reserve grand champion**  
 Robin Tooley  
**Champion showmanship**  
 Robin Tooley  
**Reserve showmanship**  
 Shaylen Cannon

**LAMB**  
**Southdown**  
**Champion**  
 Robin Tooley  
**Reserve champion**  
 Robin Tooley

**Medium wool**  
**Champion**  
 Robin Tooley  
**Reserve champion**  
 Kaylie James  
**Grand champion**  
 Robin Tooley  
**Reserve grand champion**  
 Kaylie James  
**Champion showmanship**  
 Robin Tooley  
**Reserve showmanship**  
 Kaylie James

**SWINE**  
**Berkshires**  
**Lightweight**  
 1. Kasey Davis, 2. Cody Kirby, 3. Tiffany Davis, 4. Robin Tooley, 5. Robin Tooley, 6. Ashley Layton.  
**Heavyweight**  
 1. Cenee Hood, 2. Jordan Gray, 3. Lauren Layton, 4. Chris Kindle, 5. Jonathan Kindle.

**Champion**  
 Cenee Hood  
**Reserve champion**  
 Kasey Davis  
**Chesters**  
 1. Kara Heinrich, 2. Cody Kirby, 3. Colton Heinrich, 4. Cenee Hood.  
**Champion**  
 Kara Heinrich  
**Reserve champion**  
 Cody Kirby  
**Durocs**  
 1. Stephanie Kirby, 2. Jonathan Kindle, 3. Monty Kirby, 4. Tiffany Davis, 5. Scott Pollard.  
**Champion**  
 Stephanie Kirby

**Reserve champion**  
 Jonathan Kindle  
**Hampshires**  
**Lightweight**  
 1. Colton Heinrich, 2. Caleb Heinrich, 3. Cassie Kirby, 4. Nathan James.

**Mediumweight**  
 1. Scott Pollard, 2. Tiffany Davis, 3. April Webb, 4. Robin Tooley.  
**Heavyweight**  
 1. Kasey Davis, 2. Scott Pollard, 3. Kasey Davis.

**Champion**  
 Scott Pollard  
**Reserve champion**  
 Tiffany Davis  
**Polands**  
**Lightweight**  
 1. Monty Kirby, 2. Robin Tooley, 3. Scott Pollard, 4. Cannan Heinrich.

**Heavyweight**  
 1. Trevor Hood, 2. Robin Tooley, 3. Cale Heinrich, 4. Jennifer Kirby.  
**Grand champion**  
 Monty Kirby  
**Reserve grand champion**  
 Robin Tooley

**Spots**  
**Lightweight**  
 1. Kara Heinrich, 2. Cassie Kirby, 3. Trevor Hood, 4. Marvin McCaul, 5. Tiffany Davis.  
**Heavyweight**  
 1. Ashley Layton, 2. Lauren Layton, 3. Ashley Layton, 4. Chris Kindle.

**Champion**  
 Kara Heinrich  
**Reserve champion**  
 Cassie Kirby  
**Yorkshires**  
**Lightweight**  
 1. Robin Tooley, 2. Cody Kirby, 3. Cenee Hood, 4. Cassie Kirby, 5. April Webb.

**Heavyweight**  
 1. Tiffany Davis, 2. Cassie Kirby, 3. Lauren Layton, 4. Kasey Davis, 5. Chris Kindle.  
**Champion**  
 Robin Tooley  
**Reserve champion**  
 Cody Kirby  
**Crosses**  
**Lightweight**  
 1. Cannan Heinrich, 2. Tiffany Davis, 3. Landon Gray, 4. Jennifer Kirby, 5. Jordan Gray.

**Mediumweight**  
 1. Ashley Layton, 2. Marvin McCaul, 3. Scott Pollard, 4. Cody Kirby, 5. Kara Heinrich.  
**Heavyweight**  
 1. Kasey Davis, 2. Kasey Davis, 3. Landon Gray, 4. Monty Kirby, 5. Austin Thomas.

**Champion**  
 Kasey Davis  
**Reserve champion**  
 Ashley Layton  
**Grand champion**  
 Kasey Davis  
**Reserve grand champion**  
 Scott Pollard  
**Champion showmanship**  
 Scott Pollard  
**Reserve showmanship**  
 Cody Kirby



**Grand champion swine**  
 Kasey Davis showed the grand champion swine last week at the Three Way Junior Livestock Show.



**Grand champion goat**  
 Robin Tooley showed the grand champion junior market goat last week at the Three Way Junior Livestock Show.



**Grand champion lamb**  
 Robin Tooley showed the grand champion junior market lamb last week at the Three Way Junior Livestock Show.

### STOCK SHOW

from page 1

up.  
 Davis' 236-pound heavy-weight cross edged out seven other breed champions for the grand champion ribbon.

Davis, the son of Murray and Joann Davis, also had the reserve champion Berkshire. He is a junior.

Swine judge Kit Pettigrew, an ag science teacher at Dora (N.M.) High School, Scott Pollard's mediumweight Hampshire as the reserve grand champion.

Pollard, the son of Murray and Joann Pollard, also earned the swine champion showman award. He is a junior.

Cody Kirby earned the reserve showman award.

Bred champions and reserve champions in the swine show were:

Champion Berkshire, Cenee Hood; reserve champion, Kasey Davis;  
 Champion Chester, Kara

Heinrich; reserve champion; Cody Kirby;

Champion Duroc, Stephanie Kirby; reserve champion, Jonathan Kindle;

Champion Hampshire, Scott Pollard; reserve champion, Tiffany Davis;

Champion Poland, Monty Kirby; reserve champion, Robin Tooley;

Champion Spot, Kara Heinrich; reserve champion; Cassie Kirby;

Champion Yorkshire, Robin Tooley; reserve champion, Cody Kirby;

Champion cross, Kasey Davis; reserve champion, Ashley Layton.



The ancient Romans played games with marbles 2,000 years ago.


**B&B Agritech**  
**GRASS SEED & DRILLING**  
 Custom Farming  
 AerWay Plows  
 Ken Bales (806) 272-5400  
 Cell # (806) 946-7255  
 Doug Bales (806) 272-4419  
 P.O. Box 104 • Muleshoe, TX

**CRP CRP CRP CRP**  
 • Native Grass Is Our Business - 40 Years Experience  
 • Knowledge And Quality You Can Trust - At No Extra Charge  
**CURTIS & CURTIS, INC.**  
 Clovis, New Mexico  
**800-753-4649**  
 CALL FOR QUOTES!

**RECIPE** **OPEN** *Mon.-Fri. 5 am to 2 pm*  
*Sat. 5 am to 1 pm*  
**T.J.'s Menu For The Week**  
 Go to T.J.'s Donuts! We have a **full breakfast menu and daily lunch specials!**  
**Monday**—Roast beef, mashed potatoes, brown gravy, green beans, salad, tea & dessert  
**Tuesday**—Fried chicken, mashed potatoes, cream gravy, corn, tea & dessert  
**Wednesday**—Hot steak sandwich with choice of mashed potatoes or french fries, salad, tea & dessert  
**Thursday**—8 oz. sirloin steak, baked potato, salad, tea & dessert  
**Friday**—'All-U-Can-Eat' catfish, hush puppies, salad, fries, tea & dessert  
**T.J.'S DONUTS**  
 328 S. Main St. • Muleshoe • 272-3542

**Bailey Gin Company**  
 946-3397 • Peanut Hawkins-Mgr.  
  
**RESERVE GRAND CHAMPION GOAT**  
 Robin Tooley  
**GREAT JOB KIDS!**  
**WE'RE PROUD OF YOU!**

**Congratulations to all the exhibitors who took part in the Three Way Junior Livestock Show**  
 The Journal staff

**MULESHOE FEED BARN**  
 311 W. American Blvd.  
 272-5626  
**HIPRO FEEDS**  
  
**CHAMPION SPOT**  
 Cassie Kirby  
 Congrats Three Way Stockshow Winners!

**King** *Locally owned and operated*  
**Spraying and Pest Control**  
 Currently applying pre-emergent & fertilizer for weed control... and a healthy lawn.  
 Call for details and pricing  
**272-3138**  
 Kevin King  
 TPCL 11203

# BAILEY COUNTY DEVOTIONAL PAGE

**BRUCE, INC.** TACI-8003350C, LP08638  
 HEATING & AIR CONDITIONING  
 Hwy. 214 North Muleshoe 272-5114

**DAMRON DRUG, INC.**  
 308 Main St. 272-4210  
 Muleshoe, TX

**SAIN IRRIGATION & MACHINES**  
 Complete Pump Service  
 W. American Blvd. 272-4397  
 Walt Sain Muleshoe, TX 272-4148

**MULESHOE PEA & BEAN, INC.**  
 RR 2 Box 297 272-5589  
 Muleshoe, TX

**NEEDMORE Co-op GIN COMPANY**  
 946-3361 • Sudan, TX

**Henry Insurance Agency, Inc.**  
 "Serving You Since 1964"  
 111 West Avenue B 272-4581  
 Muleshoe, TX

**MULESHOE MOTOR CO.** FORD MERCURY  
 1225 W. American Blvd. 272-4251

**WES-TEX FEED YARDS, INC.**  
 Custom Cattle Feeding  
 272-7555 Muleshoe, TX

**TINO'S**  
 104 W. American Blvd.  
 272-7528 • Muleshoe, TX  
 Daily Specials Owners: Tino & Linda Campoya

**FARWELL CONVALESCENT CENTER**  
 "In Christ's Love, Everyone Is Someone Special"  
 305 5th St.  
 481-9027 • FARWELL, TX

**"THE FIVE AREA TELEPHONE COOPERATIVE ORGANIZATION"**  
 West Plains Telecommunications Co.  
 Five Area Systems, Inc., Plateau Cellular Network  
 Five Area Long Distance - Five Area Internet  
 302 Uvalde Muleshoe, USA (806) 272-5533

**AMERICAN VALLEY INC.** West  
 Hiway 84 272-4266  
 Muleshoe

**FIRST TEXAS FLBA MULESHOE**  
 "Serving Partner & Bailey Counties"  
 272-3010 • Fax 272-5388  
 316 Main • P.O. Box 424 • Muleshoe, TX

**McCormick Seeds, Inc.** HONEY SWEET  
 400 East Ash • Muleshoe, Texas  
 272-3156  
 A complete line of field seeds

**HIGGINBOTHAM-BARTLETT CO.**  
 215 Main Muleshoe  
 272-3351 FAX 272-6860  
 Bruce Hartline-Mgr.

**Lowe's MARKETPLACE** Pave'n-Save  
 401 W. American Blvd. 515 W. American Blvd.  
 Muleshoe 272-4585 Muleshoe 272-4406

**MULESHOE FEED BARN** HI-PRO  
 311 W. American Blvd. Muleshoe, TX  
 272-5626

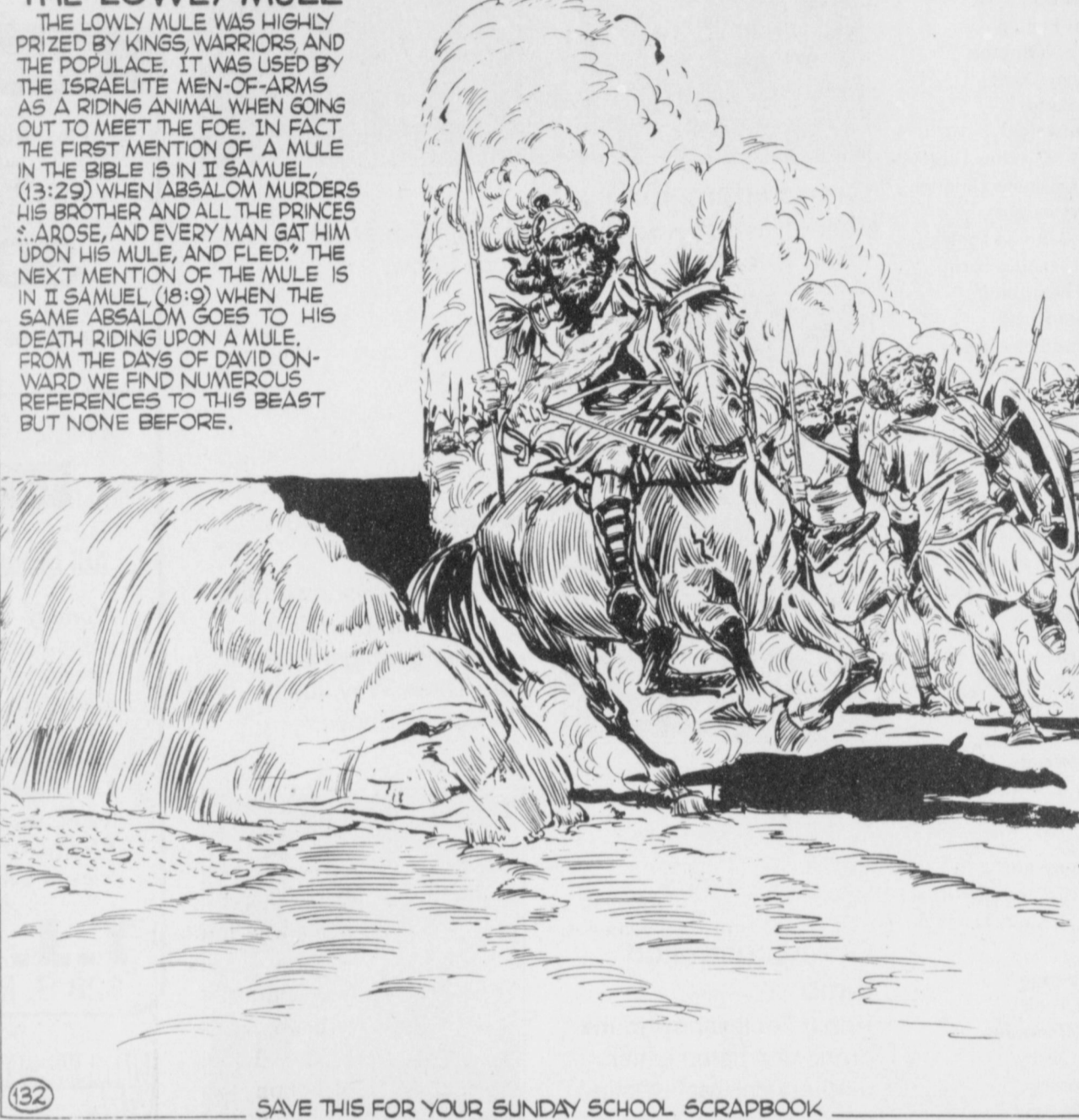
Through wisdom is an house builded; and by understanding it is established.  
 -Proverbs 24:3-

**MULESHOE AREA HEALTHCARE CENTER**  
 "Committed to Caring"  
 106 W. Ave. H Muleshoe 272-7578

**IRRIGATION PUMPS & POWER ZIMMATIC CENTER-PIVOTS**  
 W. Hwy. 84 272-4483

*Facts About The* **BIBLE** *BY JOHN LEHTI*

**THE LOWLY MULE**  
 THE LOWLY MULE WAS HIGHLY PRIZED BY KINGS, WARRIORS, AND THE POPULACE. IT WAS USED BY THE ISRAELITE MEN-OF-ARMS AS A RIDING ANIMAL WHEN GOING OUT TO MEET THE FOE. IN FACT THE FIRST MENTION OF A MULE IN THE BIBLE IS IN II SAMUEL (13:29) WHEN ABSALOM MURDERS HIS BROTHER AND ALL THE PRINCES AROSE, AND EVERY MAN GOT HIM UPON HIS MULE, AND FLED. THE NEXT MENTION OF THE MULE IS IN II SAMUEL (18:9) WHEN THE SAME ABSALOM GOES TO HIS DEATH RIDING UPON A MULE. FROM THE DAYS OF DAVID ONWARD WE FIND NUMEROUS REFERENCES TO THIS BEAST BUT NONE BEFORE.



SAVE THIS FOR YOUR SUNDAY SCHOOL SCRAPBOOK

This devotional & directory is made possible by these businesses who encourage all of us to attend worship services.

**ASSEMBLY OF GOD FIRST ASSEMBLY OF GOD**  
 521 South First Street • 272-3017  
 Jack Stone, Min. • 272-3984  
 S.S. 9:45 am, W.S. 11 am & 6:30 pm, Wed. 7:30 pm

**EL BUEN PASTOR**  
 415 E. Ave. F • Pastor Felix Cadena  
 S.S. 9:45 am, W.S. 11 am & 6 pm; Wed. 7 pm

**BAPTIST CALVARY BAPTIST**  
 1733 W. Ave. C. Rev. Jeff Coffman  
**CIRCLE BACK BAPTIST**  
 Intersection FM 3397 & FM 298  
 Jessie Shaver, Min • 946-3676

**FIRST BAPTIST**  
 220 West Ave. E., Stacey Conner, Min.  
**FIRST BAPTIST**  
 Lazbuddie • 965-2126  
**PRIMERA IGLESIA BAUTISTA**  
 223 E. Ave. E. Rev. Greg Guzman  
**PRIMITIVE BAPTIST**  
 621 South First, Elder Cleveland Bass, Min.

**PROGRESS BAPTIST**  
 Progress, TX  
**PROGRESS SECOND BAPTIST**  
 Arthur Hays, Min.  
 1st & 3rd Sundays  
**RICHLAND HILLS BAPTIST**  
 17th & West Ave. D, George Malis, Pastor  
**ST. MATTHEWS BAPTIST**  
 Corner of W. Boston & W. Birch  
 Floyd R. Monroe, Min.  
**THREE WAY BAPTIST**  
 927-5467

**TRINITY BAPTIST**  
 314 E. Ave. B, Robert Brown, Min.

**CATHOLIC IMMACULATE CONCEPTION CATHOLIC CHURCH**  
 805 E. Hickory, Joseph Agustine, Min.

**CHARISMATIC EPISCOPAL ST. CLEMENTS**  
 1536 W. American Blvd. • 272-5954  
 Father Sergio Leal  
 Sun. W.S. 10:30 am

**CHRISTIAN THE CHRISTIAN CENTER**  
 Morton Hwy. • 272-5105  
 Reydon Stanford, Min.

**Muleshoe Area Medical Center "Your Hospital"**  
 708 S. First St. • 272-4524  
 Muleshoe, TX

**minsa southwest corporation**  
 P.O. Box 484 272-5545  
 Muleshoe, TX  
 FAX (806) 272-5135 (800) 852-8291

**CHURCH OF CHRIST LARIAT CHURCH OF CHRIST**  
 Sam Billingsley, Min.  
 S.S. 10 a.m.; W.S. 11 a.m. & 6 p.m., Wed. 7 p.m.

**LAZBUDDIE CHURCH OF CHRIST**  
 Nathan Crawford, Min.  
 S.S. 9:30 am; W.S. 10:20 am & 5 pm; Wed. 7:30 pm

**MULESHOE CHURCH OF CHRIST**  
 22nd & W. American Blvd.  
 Harry Riggs, Min.  
 Albert Garcia, Min. (Spanish service)  
 S.S. 9:30 am; W.S. 10:20 am & 6 pm; Wed. 7:30 pm

**16th & AVE. D CHURCH OF CHRIST**  
 Curtis Shelburne, Min. • 272-4619  
 S.S. 10:30 am & 1:30 pm; Wed. 7:00 pm

**LUTHERAN ST. JOHN LUTHERAN**  
 Lariat, TX-Richard Greenthanner, Min.  
 S.S. 10:30 am; W.S. 9:30 am

**METHODIST FIRST UNITED METHODIST HISPANIC MINISTRIES**  
 E. 5th and E. Ave. D  
 Pastor Benito Cavazos  
**FIRST UNITED METHODIST**  
 507 W. 2nd St.  
 Pastor Brad Reeves  
**LAZBUDDIE METHODIST**  
 965-2121  
**EL DEVINO SALVADOR**  
 814 W. Ave. C, Muleshoe, TX  
 Guadalupe Ballinas, Min.

**NAZARENE NEW VISION CHURCH OF THE NAZARENE**  
 814 W. Ave. C • 272-3622  
 Hugh Hayes, Interim-S.S. 10 & 11 am; W.S. 7 pm

**PENTECOSTAL UNITED PENTECOSTAL LIGHTHOUSE**  
 207 East Ave. G • 1-800-454-6051  
 Pastor McKibben, S.S. 10 am  
 Thursday, Bible Study 7 pm

**INTER DENOMINATIONAL NEW COVENANT**  
 Plainview Hwy. Jimmy Low, Min.  
 Steve Claybrook, Assoc. Pastor  
 W.S. 10 am; Wed. 7 pm

**PACO FEED YARD, INC.** Commercial Cattle Feeders  
 P.O. Box 956 265-3281  
 Friona, TX  
 Feller Hughes-Mgr.

**TEXAS FARM BUREAU INSURANCE CO.** Life-Auto-Home-Crop  
 1612 W. American Blvd. • 272-4567 • Muleshoe  
 FARM BUREAU INSURANCE  
 FARM RANCHES RESIDENTIAL COMMERCIAL  
**Nieman Realty**  
 116 East Avenue C Muleshoe • 272-5285  
 George & Dianne Nieman

**WESTERN DRUG**  
 114 Main 272-3106 Muleshoe

**Springlake Potatoes, Inc.**  
 P.O. Box 280 • Springlake, TX  
 262-5542

**FNBANK** MEMBER FDIC  
 202 South First 272-4515

**WINKLES TRUCKS, INC.**  
 Box 757 (806) 247-2724  
 Friona, TX

**PINNACLE THERAPY SERVICES**  
 Speech/Language, Physical & Occupational Therapies  
 305 5th St. • Farwell, TX • (806) 481-CARE

1315 W. American Blvd.  
 272-3333  
 Muleshoe, TX 

**MULESHOE LIVESTOCK AUCTION**  
 Muleshoe, TX • Sale Every Saturday  
 Clayton Myers • 272-4201

**BAILEY GIN COMPANY, INC.**  
 946-3397 • Sudan, TX  
 Peanut Hawkins, MGR

**SHERLEY-ANDERSON LAZBUDDIE ELEVATOR**  
 965-2922 Lazbuddie, TX

**Leal's Tortilla Factory, Inc.**  
 "Serving West Texas since 1957"  
 107 E. Ash 272-5772 Muleshoe, TX


**MAPLE COOP GIN**  
 927-5501  
 Maple, Texas

**JAMES CRANE TIRE CO., INC.**  
 107 Main 272-4594  
 Mike Hahn Muleshoe, TX

**TERRA DISTRIBUTION**  
 Hwy. 84 • 272-4203  
 Muleshoe, Texas  
 Bruce Bruns - Mgr.


**churches** 1411 American Blvd.  
 272-5581  
 Muleshoe, Tx.  
 10% Discount for Senior Citizens

**HEREFORD FEED INGREDIENTS, INC.**  
 232 Main St. • Muleshoe, Tx.  
 272-5871  
 DAVID R. TIPPS — Representative

**Dairy Queen**  
 1201 W. American Blvd.  
 272-3412 Muleshoe 

**WEST CAMP GIN, INC.** Better Ginning & Courteous Service  
 Route 2 Box 1000 • 925-6681  
 Muleshoe, TX  
 James Shepard / Phyllis Shepard

**Shipman's Body Shop**  
 Auto Painting • Wrecker Service • Free Estimates  
 Tractor Glass & Windshields  
 410 N. 1st Muleshoe, TX  
 272-4408 FAX 272-3366

Two locations to serve you  
 1900 W. American Blvd. 107 E. American Blvd.  
 272-5337 272-3978  
 Muleshoe, TX 

**Decorators Floral & Gifts**  
 616 South First 272-4340  
 Muleshoe, TX



# Pickup dreams

I'm not sure what it is about pickups that make men drool. Maybe it's because women drool over men in pickups. But sometimes a cowboy will over reach.

Dave and Jan came by our house on the way to the city. They were goin' pickup shoppin'. "I need one that can handle those steep, rocky canyon roads with switchbacks like a bad case of hiccups and nothin' but washboard between the washouts. It's gotta be able to pull a loaded twenty-foot gooseneck up the face of Gybralter without grabbin' compound," explained Dave.

"I'm thinkin' a 3/4 ton, 4 wheel drive diesel with manual transmission." That afternoon they shopped and shopped. Four big dealerships, each with 25 to 50 new pickups... but not one 4 speed manual transmission.

"Everybody wants an automatic," said the dealer.

Dave stuck to his guns, but with each subsequent shiny macho ma-



**BAXTER BLACK**

ON THE EDGE OF COMMON SENSE

chine he was shown, the sticker price began to weigh heavier on his mind.

They had dinner in a restaurant then stopped at one last car dealer. Twenty-eight trucks on the lot. Twenty-seven has an automatic transmission. His dream truck flexed before him. The adrenaline rushed surged through him, washing away all budget concerns. He smelled the new grease, felt the gear shift sorta click around the H. He sat tall. He became General Patton leading his calvary across the Alps.

A couple times the dark cloud of doubt darkened his glittering vision but Jan encouraged him, "You can do it," she cooed.

They drove it off the lot.

Back home in bed Dave dreamed of

shackles on his ankles. He was carrying the truck on his shoulders as the dealer heaped optional accessories in the bed.

As he wound his way through the next day's chores he had visions of his children begging on the street, his mother coming out of the nursing home and his wife selling Tupperware, all to help make the payments. "It's only \$15 a day for six years," the dealer had said, "Just skip breakfast!"

Dave tossed and turned that night unable to sleep. Desperation frayed his mind.

Next morning the dealer called with a problem. Seems Dave's trade-in has a bent frame. "Can you bring the new on back?" they asked.

Dave gulped, and much to their surprise, said "Gas mine up, I'll be there by noon!"

And who says cowboys can't spot a good business opportunity when it hits them in the face.

## NEVER PRICED LOWER!

### All Remaining New '98 Model Dodge Trucks In Inventory BELOW INVOICE!

Absolutely Loaded Ram 1500 Quad Cab!

Including Cummins Diesels!

Priced Lower Than Used Book!

List \$26,730.00  
Discount -3972.00  
**SALE PRICE \$22,758.00**

#85040

\*Based on Jan. - Feb. '99 Kelley Blue Book retail western edition.

## BENDER

CHRYSLER - PLYMOUTH - DODGE

3400 Mabry Dr., Clovis • 762-4511

## Farmers learn about alternative crops

HEREFORD—Growers attending the annual West Texas Vegetable Conference here on Jan. 19 were attentive and inquisitive when university specialists presented information on improving profit potential and marketing options by growing alternative crops.

George Dickerson, New Mexico State University Extension horticulturist, told growers they could enhance their profit potential by producing seasonal alternative crops such as blue corn, sweet corn, ornamental corn, chiles and grapes.

"Each of these alternatives are niche crops. They can add seasonal income to your operation, but none are likely to replace your main production crops," Dickerson said. "Blue corn and new hybrid sweet corns can be grown on the Texas High Plains and sold directly from the field or to processors.

"Ornamental corns and gourds, on the other hand, are grown mainly for the craft market. These crops will require intensive management at

times, but they can generate healthy seasonal income if you first find a niche market for them."

Chiles are another crop option for High Plains producers, he said. They can be grown and marketed for food purposes or as ornamentals. French or American hybrid grapes also can be a profitable alternative crop, although the initial investment to establish a crop often is high and marketing outlets can be difficult

## Natural Resources Week Feb. 8-12

TEMPLE—USDA Natural Resources Conservation Service is celebrating Feb. 8-12 as Natural Resources Recognition Week in Texas.

In a statement issued by USDA-NRCS State Conservationist John P. Burt, the week is designed to encourage all Texans to reflect on the importance of natural resources in our daily lives.

"Our abundant natural resources of soil, water, air, plants, and animals continue to provide us with a healthy environment," Burt said. "The wise

use of these resources sets us apart from every other country in the world. We are fortunate to have a conservation ethic that encourages landowners and all citizens to conserve and protect those things which benefit all of us."

In Texas, NRCS works with 216 local Soil and water conservation Districts to address local resource issues. As part of the local celebrations. Various activities are planned at each USDA-NRCS office in Texas. These will include conservation tours, displays,

pumpkins.

"The best way to branch out into alternative crops is to identify a market or buyer, nail down a sales contract or direct sales outlet, start small at first and then work your way into more acreage through better contracts and sales options."

Dr. Frank Dainello, horticulturist with the Texas Agricultural Extension Service, explained the workings of the Texas Watermelon Project.

educational programs, environmental awareness, and other events.

"Each office will participated in its own program," Burt said, "which will be tailored to local natural resource issues or concerns. We have a real opportunity to have people across the state become better aware of our environment and the work of our conservation programs in Texas."

For more information, contact your local USDA-NRCS office or visit our website at <http://www.tx.nrcs.usda.gov>.

**Bailey County Electric Co-Op Assn.**

305 E. Ave. B • Muleshoe, TX  
272-4504 (in Muleshoe) or 266-8600 (in Morton)

**SHOWMANSHIP AWARD WINNERS**  
Champions—Robin Tooley (steer), Robin Tooley (lamb), Robin Tooley (goat) & Scott Pollard (pig)  
Reserve Champions—Kaylie James (lamb), Shaylen Cannon (goat) & Cody Kirby (pig)

*Congratulations Three Way Winners!*

**PRECURE Electric, Inc.**  
424 N. 1st St. • Muleshoe  
272-4844 or 946-7322 Mobile

**CHAMPION DUROC**  
Shown by Jennifer Kirby  
(Stephanie Kirby is pictured)

*We Support All Area Stockshow Participants!  
Congrats Three Way Winners!*

**We're Proud Of All Three Way Livestock Show Winners!**  
**GREAT JOB KIDS!**

**CHAMPION BERKSHIRE**  
Cenee Hood

**HIGGINBOTHAM-BARTLETT CO.**  
201 WNW 2nd St. • 266-5255  
Morton, TX

*Best Wishes To All Three Way Livestock Show Winners!*

**GRAND CHAMPION SWINE**  
Kasey Davis

**FARM BUREAU INSURANCE**

**BAILEY COUNTY FARM BUREAU**  
1612 W. American Blvd. • Muleshoe • 272-4567

# Hodges, Fritz united in marriage in Austin

Lori Diane Hodges and Donald Ray Fritz were united in marriage Jan. 9, 1999 at the Brentwood Oaks Church of Christ in Austin.

The wedding was officiated by Silas Short, minister of O'Donnell Church of Christ in O'Donnell.

Lori is the daughter of Mack and Rhonda Hodges of Earth. Donald is the son of Weldon and Helen Fritz of Rockdale, Texas. Lori is the granddaughter of Joe and Claudine Embry of Muleshoe. Donald is the grandson of Lois Fritz of Rockdale, and Faye Goldfinch of Galena Park, Texas.

Lori's gown was a Priscilla of Boston creation made of silk shantung. It featured an off the shoulder cap sleeve and low back of Denice lace over illusion for a see through effect. The bodice had a basque waist which was also accented with Denice lace. The silk skirt had a chapel length train. She carried a bouquet of Stephanotis and Orchids set in greenery with candlelight ribbons. In her shoes, the bride's father placed pennies in the year of both Lori's and Donald's birth to fulfill the luck tradition. Something old were the pearls she wore that once belonged to her paternal grandmother. Something new

was her gown. Something borrowed was her garter which belonged to the bride's mother. Something blue was also the garter.

The maid of honor was Emily Mallard and the bridesmaids were Suzy Hodges and Jill Hodges, sisters of the bride. The bridesmaids wore light blue princess style gowns featuring a circle cut out in the back of the gown. The best man was Weldon Fritz, father of the groom, and groomsmen were Ruben Juarez and Aaron Fritz, brother of the groom. The Groom and groomsmen wore black Perry Ellis Southridge tuxedos with black and silver silhouette vests and bow ties. Ushering the wedding guests were Jay Kingston and Cade Gentry.

Lori was escorted down the aisle by her father to Canon in D played by the John K. Moon String Quartet.

As the couple lit their unity candle, the minister read scripture from Ruth 1:16. Following this part of the ceremony the couple left to the traditional "Oh Perfect Love" also played by the John K. Moon String Quartet.

Following the ceremony, a reception was held in the church parlor. Serving the guests were



Lori Hodges married Donald Fritz on Jan. 9 in Austin

Bonnie Dittmer, Martha Kingston, Molly Drew, Suzanne Gentry, and Stacey Miller, cousin of the bride.

Following the reception the couple left to honeymoon a few days in New Braunfels, and then returned to their home in Bryan.

Lori graduated from Muleshoe High School in 1994. Donald graduated from

Rockdale High School in 1993. They both graduated from Texas A&M University in December 1997. Donald is employed by American Fire and Safety in Bryan, while Lori will complete her masters degree in May from the University of Texas, Austin. Lori is currently employed by the Bryan/College Station Public Libraries.

## NURSING HOME NEWS

by Joy Stancell

Peggy Hicks lavished the Care Center with two beautiful cut flower bouquets Thursday. The Muleshoe AARP gave a donation to the Care Center last week.

Mattie Grimsley's daughter visited her last week. They played dominoes with Grace Scarbrough and Aline Locke. Aline Locke and Grace Scarbrough peeled apples and put together an apple cobbler Friday morning. Fannie May Black, Mattie Grimsley and Melvin Griffin gave their support. Donna Locker played a game of chicken foot with Aline Locke, Grace Scarbrough and Minnie Underdown on Friday afternoon.

Thursday morning Melvin

Griffin, Harold Burge and Edward Orozco made and served breakfast for the men. The menu consisted of bacon, sausage, hash browns, biscuits, gravy and pancakes.

On Wednesday, Mr. Barber returned to the Care Center, having been a patient in the local hospital.

Thursday afternoon, at the January Birthday Celebration, Webb Watts and Janette Hukill were presented a boutonniere and corsage by Lasting Impressions. Melvin and Wanda Griffin had a beautiful cake made. The Espinosa brothers, Camilo and Al, entertained with country western music.

Tuesday afternoon Beverly

Wagon and Nancy Kidd came to set and comb the ladies hair. Anna B. Lane came by and also gave us a helping hand. Wednesday morning, Buster and Wanda Kittrell, and Harold and Mary Jo Burge served coffee, juice, and donuts to the residents. Harold read words of wisdom to those gathered around the table. Kittrell, Nancy Kidd and Steve Claybrook directed the Sing-spiration/Devotional Time.

Glenda Jennings and Jackie Scoggins entertained Wednesday afternoon with their music and songs. Ruth Clements, Tennie and Betty McCormick, and Melvin Griffin were our guests for the sing-a-long. The Truth Seekers Sunday

School Class of the First Baptist Church gave a donation to the Care Center. On Wednesday, Betty Ramage delivered quarters for the Saturday bingo game. The resident's Valentine party is scheduled for Feb. 11 at 3 p.m. You are invited.

Happy February Birthday to August Edd Edmiston born 2-5-1916; Dee Clements born 2-5-1908; John Barber born 2-14-1908; Zaoda Gibbs born 2-26; and Kathryn Hancock born 2-15. The February Birthday celebration is scheduled for Feb. 25 at 3 p.m. You are invited.

Gladys Wilson brought a big sack of home made brittle and cookies Tuesday. "It's like Christmas all over."

## BIRTHS

### ALICIA VICTORIA DAMRON

Randall and Jamie Damron of Sarasota, Fl. announce the birth of their first child, a daughter, Alicia Victoria.

She was born Jan. 29, 1999 at 1:19 a.m. at Sarasota Memorial Hospital. She weighed 5 lbs. and 13 ounces and was 19 inches long. Grandparents are Mr. and Mrs. Jerry Damron of Circle Back, and Mr. and Mrs. James Schultz, DDS, of Sarasota, Fl.

Greatgrandparents are Mary Kindle of Maple; Mr. and Mrs. C. G. Damron of Needmore, and Agnes Schultz.

On Sale at Dairy Queen through Feb. 21, 1999

4 piece **STEAK FINGER COUNTRY BASKET** \$2.29  
includes 4 fingers, creamy gravy, Texas toast & french fries  
 6 pc. - \$3.29 or 8 pc. - \$4.29

10% Discount for Senior citizens EVERY DAY FREE COFFEE

meet me at **Dairy Queen**  
 1201 W. American Blvd. • 272-3412

A big THANK YOU to Sherley-Anderson Elevator of Lazbuddie and Lazbuddie Ag. Buyers for buying our pigs at the Parmer County Livestock Show!  
 Bryce & Mandy Haney

**COX AUTO SUPPLY INC.**  
 S. Main St. • Morton, TX  
 266-8811 or 266-8986

RESERVE GRAND CHAMPION LAMB  
 Kaylie James

Great Show Three Way!

Now Open!  
 Eat at... **Paul's Restaurant**  
 219 N. Main • Morton, Texas

Good Show Kids!  
 We're Proud Of You!

RESERVE CHAMPION CHESTER  
 Cody Kirby

**KING AG. AVIATION INC.**  
 Sudan, TX  
 946-3399 or 946-7309

CONGRATULATIONS  
 Three Way Livestock Show Winners!  
 We're Proud of You!

GRAND CHAMPION STEER  
 Robin Tooley  
 (pictured with Jim Pat Claunch, Travis Bessire & Ted Harrison)

CHAMPION HAMPSHIRE/RESERVE GRAND CHAMPION SWINE  
 Scott Pollard

Congratulations to the winners of the Three Way Livestock Show '99!

**MAPLE CO-OP GIN**  
 Maple, TX • 927-5501  
 Marvin McCaul-Mgr.



# NATIONAL BRANDS WINTER SALE

PRICES EFFECTIVE FEBRUARY 3-9, 1999

## MEAT

Preferred Trim Boneless Beef <b>Arm Roast</b> ..... lb.	<b>99¢</b>
Preferred Trim Boneless Beef <b>Short Ribs</b> ..... lb.	<b>\$1.79</b>
Fresh <b>Ground Chuck</b> ..... lb.	<b>\$1.49</b>
Preferred Trim Boneless Beef Arm <b>Charcoal Steak</b> ..... lb.	<b>\$1.39</b>
Preferred Trim Boneless Beef Chuck <b>Tender Roast</b> ..... lb.	<b>\$1.69</b>
Preferred Trim Boneless Beef Chuck <b>Tender Steak</b> ..... lb.	<b>\$1.89</b>
Cube Beef <b>Stew Meat</b> ..... lb.	<b>\$1.99</b>
Whole Center Cut Boneless <b>Pork Loins</b> ..... lb.	<b>\$1.99</b>
Pilgrim's Pride Jumbo Pack Thighs or <b>Drumsticks</b> ..... lb.	<b>69¢</b>
Pilgrim's Pride Small Pack Drumsticks or <b>Thighs</b> ..... lb.	<b>79¢</b>
Preferred Trim Center Cut Boneless <b>Pork Chops</b> ..... lb.	<b>\$2.59</b>
Farm Raised Fresh <b>Catfish Nuggets</b> ..... lb.	<b>\$1.59</b>
Shank Half Bone-In <b>Cook's Hams</b> ..... lb.	<b>89¢</b>
Cook's Bone-In <b>Butt Half Ham</b> ..... lb.	<b>99¢</b>
Bar S <b>Sliced Bacon</b> ..... 12 oz. pkg.	<b>99¢</b>
Bar S <b>Meat Franks</b> ..... 12 oz. pkg.	<b>59¢</b>
Bar S <b>Meat Bologna</b> ..... 12 oz. pkg.	<b>69¢</b>
Oscar Mayer Mix or Match Roasted Turkey, Chopped Ham or <b>Ham &amp; Cheese</b> ..... 1 lb. pkgs.	<b>2/\$5</b>
Hillshire Farm Asstd. 1 lb. Reg. or 14.2 oz. Lean & Hearty <b>Smoked Sausage</b> ..... lb.	<b>\$1.69</b>

## PRODUCE

Golden <b>Ripe Bananas</b> ..... lbs.	<b>3/\$1</b>
No. 1 Russet <b>Potatoes</b> ..... 10 lb. bag	<b>99¢</b>
Navel <b>Oranges</b> ..... 8/\$1	
Dole Greener Selection <b>Salad</b> ..... 12 oz. pkg.	<b>99¢</b>
Washington Extra Fancy Red Delicious <b>Apples</b> ..... 5 lb. bags	<b>2/\$3</b>
Sno-White <b>Cauliflower</b> ..... ea.	<b>99¢</b>
Mini Peeled <b>Carrots</b> ..... 1 lb. bag	<b>99¢</b>
Red Ripe Cello <b>Tomatoes</b> ..... 4 ct. pack	<b>99¢</b>
Crisp D'Anjou <b>Pears</b> ..... lb.	<b>79¢</b>
Regular or w/Bleach Laundry Detergent <b>Ultra Surf</b> ..... 83-87 oz. box	<b>\$4.89</b>
Green Giant Cut/Kitchen Sliced Green Beans, WK Corn, Sweet Peas, Blackeye Peas, Pinto Beans <b>Vegetables</b> ..... 14.5-15.25 oz. cans	<b>5/\$2</b>
Ocean Spray Asstd. Grapefruit Juice or Asstd. Cranberry Juice <b>Cocktail</b> ..... 64 oz. btl.	<b>2/\$6</b>
Heinz Squeeze Tomato <b>Ketchup</b> ..... 28 oz. btl.	<b>2/\$3</b>
40 oz. Asst. Ultra Snuggle Lq./80 ct. Sheets <b>Snuggle</b> ..... your choice	<b>\$2.99</b>
Asstd. <b>Minute Maid Beverages</b> ..... 4 pk.-16 oz.	<b>\$2.99</b>

General Mills/Affiliated Foods  
Member Stores Present Race  
Weekend at the Daytona 500!

## FROZEN & DAIRY

Assorted Varieties <b>Banquet Pot Pies</b> .. 7 oz. boxes	<b>3/\$1</b>
Assorted Value Menu or Select Menu <b>Banquet Meals</b> ..... 6.7-11 oz. box	<b>79¢</b>
Assorted <b>Patio Burritos</b> ..... 5 oz. pkgs.	<b>3/\$1</b>
Assorted Mexican <b>Patio Dinners</b> ..... 12-13 oz. box	<b>79¢</b>
Oscar Mayer Asstd. <b>Fun Pack Lunchables</b> ..... 4.5-13.2 oz. pkg.	<b>\$1.69</b>
Kraft Regular or Extra Thick <b>Velveeta Slices</b> ..... 12 oz. pkg.	<b>2/\$3</b>
Plains Assorted <b>Cottage Cheese</b> ..... 24 oz. ctn.	<b>\$1.99</b>
Citrus or Mango <b>Tampico Punch</b> ..... gal. jug	<b>99¢</b>
Plains Chocolate Drink <b>Choc-O-Creme</b> ..... gal. jug	<b>\$1.29</b>
Ore-Ida Golden Fries or Crinkle Cut <b>Potatoes</b> ..... 2 lb. bag	<b>\$1.69</b>
General Mills • 15 oz. Cheerios • 12 oz. Trix • 14 oz. Lucky Charms • 14 oz. Cinnamon Toast Crunch <b>Cereals</b> ..... your choice	<b>2/\$4</b>
Gladiola White or Yellow Mix <b>Cornbread</b> ..... 6 oz. pouches	<b>4/\$1</b>
Ocean Spray Lightstyle Cranberry Juice <b>Cocktails</b> ..... 48 oz. btls.	<b>2/\$5</b>
All Types Sprite, Dr. Pepper or <b>Coca-Cola</b> ..... 12 pk.-12 oz. cans	<b>\$2.99</b>
All Types Sprite, Dr. Pepper or <b>Coca-Cola</b> ..... 3 liter btl.	<b>\$1.78</b>

\*Round trip airfare for 4 to Daytona, FL.  
• Seven nights hotel accommodations and rental car  
• Tickets to the Daytona 500 and Daytona USA attraction  
• \$500 spending money  
\* Customer Registration: Jan. 31, 1999 thru Feb. 13, 1999. Must  
be at least 18 years old. No purchase required.

## HEALTH & BEAUTY

Ex. Str. Caplets, Gelcaps or Geltabs <b>Tylenol PM</b> ..... 50 ct. btl.	<b>\$5.39</b>
Caplets, Tablets or Gelcaps <b>Motrin IB</b> ..... 24 ct. pkg.	<b>\$2.49</b>
Arthritis Caplets <b>Tylenol</b> ..... 50 ct. btl.	<b>\$3.99</b>
Regular or Chewable <b>Pepcid AC</b> ..... 6 ct. box	<b>\$2.49</b>
Oil or Water Pack Chunk Light <b>Star-Kist Tuna</b> ..... 6 oz. cans	<b>2/99¢</b>
Star-Kist in Spring Water <b>Solid White Tuna</b> ..... 6 oz. cans	<b>2/\$3</b>
Select Group Nabisco <b>Premium Crackers</b> ..... 16 oz. box	<b>99¢</b>
With or Without Beans Reg./Mild/Hot <b>Wolf Brand Chili</b> ..... 15 oz. can	<b>88¢</b>
All Purpose or Unbleached <b>Gold Medal Flour</b> ..... 5 lb. bag	<b>79¢</b>
Betty Crocker Asstd. <b>Cookie Mixes</b> ..... 17.5 oz. pouches	<b>2/\$3</b>
Fantastic, Liquid Shout or Windex Asstd. Trigger <b>Cleaners</b> ..... 22 oz. btl.	<b>2/\$4</b>
Pace Mild, Medium or Hot <b>Picante Sauce</b> ..... 16 oz. jar	<b>2/\$3</b>
Kraft Select Group Reg./ Light Done Right/Fat Free <b>Salad Dressing</b> ..... 16 oz. btl.	<b>\$1.69</b>
Little Bites or Reg./Lamb and Rice Dog Chow <b>Purina Dog Food</b> ... 17.6-22 lb. bag	<b>\$6.99</b>
Purina <b>Cat Chow</b> ..... 18 lb. bag	<b>\$7.99</b>
Purina Tidy Cats Reg. or Multicat <b>Cat Litter</b> ..... 20 lb. bag	<b>\$2.99</b>
Quick or Old Fashioned <b>Quaker Oats</b> ..... 18 oz. box	<b>\$1.39</b>
Quaker Assorted Instant <b>Oatmeal</b> ..... 11.8-16.2 oz. boxes	<b>2/\$5</b>
Quaker <b>Harina Preparada</b> ..... 8 lb. bag	<b>\$3.69</b>
Aunt Jemima Reg., Lite or Butter Lite <b>Syrup</b> ..... 24 oz. btl.	<b>\$1.99</b>
Asstd. Luncheon Meat <b>Spam</b> ® ..... 12 oz. can	<b>\$1.69</b>
Milk Choc., Rich or Mini Marshmallow Carnation <b>Hot Cocoa Mix</b> ..... 10 ct. box	<b>99¢</b>
Plain or Iodized <b>Morton Salt</b> ..... 26 oz. boxes	<b>2/69¢</b>
Culligan Drinking <b>Water</b> ..... gallon jugs	<b>2/\$1</b>
Asstd. Grinds Coffee Excluding Decaf <b>Hills Bros.</b> ..... 11.5-13 oz. can	<b>\$1.99</b>
Hunt's Assorted <b>Spaghetti Sauce</b> .. 26-26.5 oz. can	<b>89¢</b>
American Beauty Elbo-Roni/Long/Thin <b>Spaghetti</b> ..... 24 oz. pkg.	<b>89¢</b>
Campbell's Reg./Reduced Fat Chicken, Celery or Mushroom <b>Cream Soups</b> ..... 10.75 oz. cans	<b>5/\$4</b>
Betty Crocker Asstd. Chicken/ Hamburger or Tuna <b>Helper Dinners</b> .. 3-9.25 oz. boxes	<b>3/\$4</b>
Betty Crocker Asstd. Microwave Popcorn <b>Pop-Secret</b> ..... 3 ct. box	<b>\$1.69</b>
Select Group Peanut Butter <b>Peter Pan</b> ..... 17.6-18 oz. jars	<b>2/\$3</b>
Hunt's Reg. Gel/Reg./Light Puddings <b>Snack Pack</b> ..... 4 ct. pack	<b>99¢</b>
Betty Crocker Asstd. Sweet Rewards/Supermoist Layer <b>Cake Mixes</b> ..... 18-18.25 oz. box	<b>79¢</b>
Betty Crocker Asstd. Ready to Spread <b>Frostings</b> ..... 12-16 oz. can	<b>\$1.39</b>

## Introducing... SMART BUYS

Watch for "SMART BUY" Savings Throughout the Store. The "SMART BUY" Sign  
Guarantees you low prices on many of the products you buy EVERYDAY!

Unless Otherwise Noted, Smart Buy Prices End 2/13/99

Vlasic Asstd. Sandwich <b>Stackers</b> ..... 16 oz. jars	<b>2/\$3</b>
Plains Chilled <b>Orange Juice</b> ..... 1/2 gal. btl.	<b>\$1.79</b>
Reg./Non Fat Ice Cream Asstd. <b>Blue Bunny</b> ..... 1/2 gal. sq. ctns.	<b>2/\$5</b>
Reg. or Baking Soda <b>Pepsodent Toothpaste</b> ..... 6-6.4 oz. tube.	<b>89¢</b>
Libby's Reg./Chicken <b>Vienna Sausage</b> ..... 5 oz. can	<b>39¢</b>
Chef Boyardee Jr. Asstd. <b>Plain Pasta</b> ..... 15 oz. cans	<b>2/89¢</b>
Old El Paso White/Yellow <b>Taco Shells</b> ..... 12 ct. pkg.	<b>79¢</b>
Casserole <b>Pinto Beans</b> ..... 4 lb. bag	<b>\$1.89</b>
VO-5 Asstd. Shampoo or <b>Conditioner</b> ..... 15 oz. btl.	<b>99¢</b>

Alpo Assorted <b>Cat Food</b> ..... 5.5 oz. cans	<b>4/\$1</b>
Rotel Asstd. Tomatoes and <b>Green Chilies</b> ..... 10 oz. can	<b>69¢</b>
Reg., w/Jalapenos, w/Onion <b>Ranch Style Beans</b> ..... 15 oz. cans	<b>2/89¢</b>
Totino's Asstd. Party Pizza or <b>Pizza Rolls</b> ..... 7.5-10 oz. pkg.	<b>99¢</b>
Dannon Asstd. Reg./Light <b>Yogurt</b> ..... 8 oz. ctns.	<b>2/89¢</b>
Seneca Frozen <b>Apple Juice</b> ..... 12 oz. can	<b>99¢</b>
Sara Lee Asstd. <b>Pastries</b> ..... 10-19 oz. pkg.	<b>\$2.99</b>
Shedd's Asstd. Spread <b>Country Crock</b> ..... 3 lb. tub	<b>\$1.89</b>
Birds Eye Asstd. <b>Chicken Voila!</b> ..... 20 oz. pkg.	<b>\$2.99</b>

Affiliated Foods, Inc. presents Chrome Stainless Steel Flatware!  
At participating stores only.

## Granada GOURMET COLLECTION

5-Piece Place Setting **\$3.99**

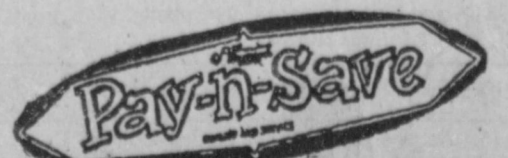
With Two Patterns To Choose From

with each  
\$10.00 purchase  
(reg. price \$6.99)

WESTERN MONEY  
UNION TRANSFER<sup>SM</sup>  
"The fastest way to send money"

# Lowe's

MARKETPLACE



401 W. American Blvd.  
Muleshoe 272-4585

WE RESERVE THE RIGHT  
TO LIMIT QUANTITIES  
IN TEXAS

515 W.  
American Blvd.  
Muleshoe  
272-4406

Look for  
valuable flatware  
coupons in this  
week's circular