

**PAGE ONE**

A QUICK READ OF THE NEWS

**Judge issues gag order**

The Journal learned Friday that a gag order has been issued in the murder of 19-year-old Yvette Barraz of Muleshoe, preventing anyone involved in the investigation from commenting on the case.

The order was signed March 18 by District Judge Felix Klein of Littlefield. But documents confirming the order had not been filed with the 28th District clerk's office in Muleshoe as of Friday afternoon, according to District Clerk Elaine Parker. Klein was assigned the case in the absence of 287th District Judge Jack Young.

Reached by phone Friday, District Attorney Johnny Actkinson refused to confirm or deny existence of the gag order.

"I won't comment on any case pending," Actkinson said. "In fact, I can't even say if a case is pending."

When asked if a gag order had been issued, Actkinson said "I won't comment."

Barraz was abducted from the parking lot of a Muleshoe restaurant March 11. She was found dead Friday in the Mexican border town of Presidio two days later.

Authorities are looking for her ex-boyfriend, Gilberto "Tito" Reyes, 24, also of Muleshoe. He is believed to have fled into Mexico.

**Indian ceremony Sunday**

At sunrise Sunday, Weldon Crim of Lazbuddie will perform his annual Indian weather forecasting ritual.

Dressed in a traditional native American costume, Crim will perform a centuries old Indian ceremony to predict this year's weather and its effect on harvest.

Crim's family has been performing the ritual for years, a family tradition started by his great-grandfather who lived with Indians outside of El Paso.

Crim estimates that his predictions are 80-85 percent accurate year to year. Last year, he foresaw the wet spring and good harvest that graced the South Plains.

The public is invited to attend. To get to Crim's house from Clay's Corner, go two miles west, then turn and go two miles north, and then 1/2 mile west. The ceremony will begin at sunrise.

**Candidates should contact Journal**

Persons wishing to announce their candidacy for public office in the May 2 election should contact the Journal at 272-4536.

**MEETINGS**

**Monday**—Bailey County Commissioner's Court, 1 p.m.; County Courthouse

**LOCAL WEATHER**

	High	low	Pre.
Tuesday	59	31	—
Wednesday	67	29	—
Thursday	51	24	—
Total to date	2.03 inches		

**EXTENDED FORECAST**

Mostly sunny with fair nights. Lows in the 30s. Highs in the 70s, approaching the 80s Tuesday.

**County population remains steady**

Bailey County Judge Marilyn Cox said Muleshoe's location along a major highway is the main reason why the county population has remained stable.

"The fact that Highway 84 still runs through Muleshoe and not around us is important," Cox said. "We pick up a lot of business off the highway."

According to figures released Tuesday by the U.S.

Census Bureau, Bailey County's population has dropped 3.3 percent since 1990.

Bailey County had about 7,084 people in 1990 compared to 6,831 in July of 1997, according to Census figures.

"I think we've been fortunate to sustain our population we have," Muleshoe Mayor Robert Montgomery said. "In rural communities, the trend toward decline. We more or

less have been able to hold our own."

While Bailey County's population has declined slightly, other communities have grown.

Neighboring Parmer County grew by 6.2 percent, while in the Northern Panhandle, Childress County grew by 28 percent and Hartley County by

see **COUNTY** on page 3

**TAKING A CLOSER LOOK**

**Estimated population change**

County	1990	1997
Bailey	7,064	6,831
Parmer	9,863	10,475
Lamb	15,072	14,849
Castro	9,070	8,307
Cochran	4,725	3,978
Childress	5,953	7,630
Curry	42,207	46,737

The U.S. Census Bureau released figures Tuesday estimating county population. The 1997 estimates are from July.

**SIGN OF SPRING**



A bed of daffodils stretch for the early morning sun Friday, the first official day of Spring

**Muleshoe updating building codes**

Amending outdated building codes and closing the city's landfill were the top items addressed Tuesday during a regular monthly meeting of the Muleshoe City Council.

The city will use uniform code manuals published by the International Conference of Building Officials as its guidelines for building and plumbing codes, according to City Manager James Fisher.

The codes, which are for all commercial and residential structures, haven't been updated since 1982.

"It was time to bring codes into compliance with current standards," Fisher said. "They haven't been updated in 15 years. A lot has changed."

The city also plans to adopt a uniform mechanical code.

Failure to meet city codes will be considered a misdemeanor criminal offense and could result in a fine of up to \$2,000 per day.

A reference copy of the updated uniform codes will be available at City Hall and the public library.

Director of Public Works Ramon Sanchez serves as city inspector.

The codes are expected to be adopted during the Council's next meeting in April.

In other items, Fisher reported that the closing of the city's Type I landfill is 90 percent complete and the city has petitioned the Texas National Resource Conservation Commission to keep its Type IV (bulk) landfill open.

The city started closing its Type I landfill when it privatized its solid waste service in the fall.

Only half of the \$100,000 budgeted for closing the landfill has been used so far, Fisher reported. He also said that the two employees working at the landfill site will be absorbed into the system when it is closed.

The Council accepted a bid of \$11,500 for a shredder/mower for the public works department from Dent & Co. of Muleshoe. C&H Equipment and Earl Ladd & Sons also placed bids.

**THE WALK OF LIFE**

By **TERESA STONE**  
Journal staff writer

Every weekday, rain or shine, more than a dozen dedicated senior citizens head to the Bailey County Coliseum for exercise.

For the past eight years, the coliseum has been opening each morning Monday through Friday between 9-10:30 a.m. for walkers.

"It's really nice here. You don't have to worry about the weather, or traffic or dogs," said Theron Eubanks, one of the older walkers at 84.

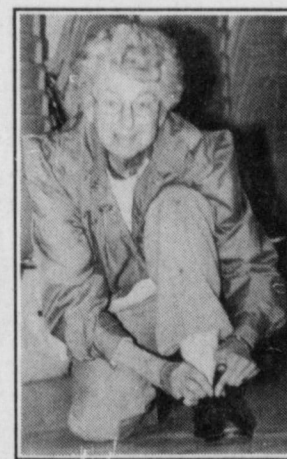
Eubanks, like most of the walkers, has been coming out for years, or at least since they retired and moved into town.

"We are kind of like a family," said Merrinan Vise. "When someone's not here, you miss them. You check up on them to make sure everything's okay."

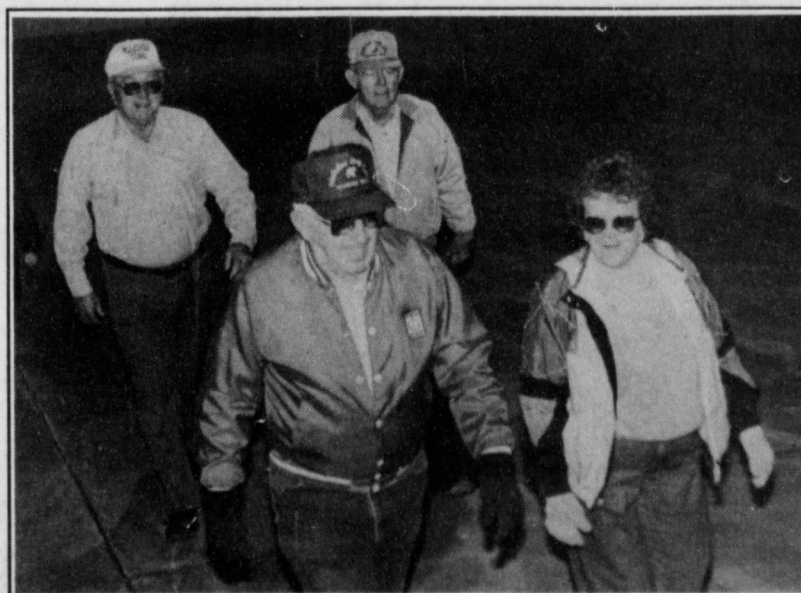
The seniors agreed that walking every day wouldn't be near as much fun without each other. They said what keeps them coming back is knowing that someone else will always be

see **WALKERS** on page 2

(Right) Theron Eubanks makes a pit stop to tie her tennie shoe. Eubanks, 84, is one of dozens of senior citizens that walk daily at the coliseum.



(Below) Merriman Vise, R.L. Scott, Don and Norma Prather take another lap Friday at the Bailey County Coliseum.



**Messenger announces candidacy for MISD school board**

Jay Messenger, vice-president and loan officer at Muleshoe State Bank, announces his candidacy for the Muleshoe Independent School District Board.

Jay is a graduate of West Texas A&M University where he earned a BA in accounting. He received his CPA certification in 1977.

He is a graduate of the Southwestern Graduate School of

Banking at SMU. He also graduated from the Texas Agricultural Lifetime Leadership program.

Jay and his wife, Sally, have two daughters, Amanda, a junior, and Suzanne, an eighth grader. Jay attends the First United Methodist Church where he serves as a Lay Leader. He is a member of the Rotary and has recently been appointed to the Board of Di-

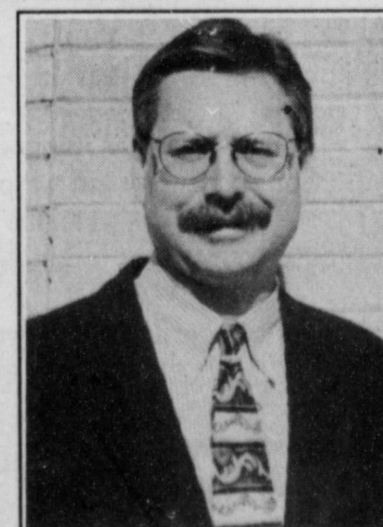
rectors of the West Texas Ag-Credit Conference.

Messenger said he would be a good school board member because his background as a CPA and loan officer would give him a thorough understanding of budgets and the budgeting process.

"MISD has made great strides in education in the past few years. We cannot rest on these improvements, however.

We must always strive for better schools, and we must do all of this within a budget that is feasible for all of us," Messenger said.

"The current Muleshoe Independent School Board has done an excellent job in the past. I would appreciate the opportunity to work with the board for continued improvement for the future of our schools."



Jay Messenger

## AROUND MULESHOE

### Breast cancer screening clinic

A breast cancer screening clinic will be held April 6, 1998 at Muleshoe Area Medical Center. Participants will receive a low-cost screening that includes a mammogram and instruction in self-examination by a registered nurse.

The total cost is \$75. Funding is available through the Texas Department of Health for Texas residents who qualify for assistance. All exams are done by appointment only. Call 1-800-377-4673 for more information.

### Enrollment for driver's education

Sign ups for driver's education are from 7:30-8 a.m., and 11:15-11:45 a.m., Wednesday and Thursday, March 25 and 26 at Muleshoe High school cafeteria.

Three sessions will be offered. The first session will be 7-8 a.m., March 30 - May 14. Students must be 15 on or before May 10th to enroll in session one. Session two is scheduled for 5-7 p.m., April 20-May 14, students must be 15 on or before May 12 to take session two. Session three is scheduled for June 2-June 23 from 9-11 a.m. Students in the summer class must be 15 on or before June 21.

### Little League baseball registration

Muleshoe Little League baseball will begin registration for all area youth interested in playing baseball this year. Two year sign-up dates have been scheduled, both will be held at the Muleshoe State Bank.

The first registration will be 6:30-8 p.m. Thursday, March 28. The second registration will be 6:30-8 p.m. Thursday, April 2.

Children who are between the ages of 5 and 12 years old on or before July 31, 1998 are eligible to participate.

Sign-up cost is \$25 per player for every division. A certified birth certificate will be required as proof of age at the time of registration. We encourage everyone to come and join in the fun,

and take part in America's national pastime.

### 3 on 3 basketball tournament

The Muleshoe Teen Leadership organization is sponsoring a 3 on 3 basketball tournament April 17-18 at the Muleshoe High School gym and the Watson Junior High gym.

The entry fee is \$20 per team. There will also be free throw and three point contests for \$1 each. Age divisions are 9-12, 13-15, and 16 and up. Each team is required to have four players.

Entry forms are available at Williams Athletics, Lambert Cleaners, and Lowe's Marketplace. Applications and fees must be received by April 1, 1998. Send entry forms to Muleshoe High School, Teen Leadership, C/O Jody Wood, 514 W. Ave. G, Muleshoe, Texas 79347. For more information contact Jody Wood at Muleshoe High School at 272-7571.

### Open house at MHS computer labs

Community members are invited to visit the computer labs at Muleshoe High School. Open House will be from 6:30-8:30 p.m. Tuesday, March 24, 1998.

A short organizational meeting to discuss future community computer classes will begin at 7:30 p.m.

### First graders perform at PTA meeting

All parents are invited to attend a PTA meeting at 6:30 p.m. Monday, March 23 at the Dillman Elementary school gym. First graders will be performing a program on Texas patriotism.

### MHS parents raise money for prom

Parents of Muleshoe High juniors and seniors are sponsoring a drawing for a Spring make-over valued at \$250. The funds raised will be used to defray the cost of the banquet and prom.

Tickets for the drawing are on sell for \$1 and will be sold throughout March. The drawing will be held April 6, 1998 at the Fine Arts Night to Shine. Tickets are available from any junior or senior parent.



## MARTINEZ Chevron

**Car Wash Special**  
March 16th through March 28th Only

<b>Cars</b> <b>\$15<sup>00</sup></b>	<b>Trucks</b> <b>\$20<sup>00</sup></b>	<b>Vans &amp; Suburbans</b> <b>\$25<sup>00</sup></b>
Call for Appointment 272-3251		
502 S. 1st St. Muleshoe		

In loving memory of our father,  
Francis H. Franks, Sr., we would like to extend our sincere gratitude to everyone for the outpouring of kindness and sympathy during our time of loss. To each and every one of you who visited while he was in the hospital, offered prayers, sent flowers and cards, brought food, attended the services, or called offering support and help, we thank you. May God bless each & every one of you.

Sincerely,  
Jr., Gene and Kathi Franks



## WALKERS

From page 1

there, someone to walk with, someone to visit, to tell stories to, to listen to.

"When someone has a story to tell, it makes the time go by much faster," said Norma Prather, as she and husband Don were briskly walking their daily two miles.

R.L. Scott said, "They'd get mad at me if I didn't have something to talk about, some story to tell. We've been coming here for years, so they've heard all my stories at least three times each."

"Yeah," Vise pitched in, "but that doesn't stop him from telling them again, and again. But that's okay, we wouldn't know what to do if he wasn't

telling a story. That's what makes coming out here fun."

Although the walkers enjoy each other's company, exercise is exercise, and just like anyone else, many said that sometimes it's hard to make themselves want to do it.

"I've been walking forever,"

Eubanks said. "But sometimes it's still hard to convince myself I need to be here. Making yourself get up and exercise never gets any easier."

"But, the walking definitely gets easier," said Eubanks' walking partner, Opal Ruthardt. "After walking for a while you

can really tell the difference. You feel healthier, it's great for you."

Besides getting a chance to visit with old friends, being healthier seems to be the driving force in keeping the seniors showing up day after day.

## COUNTY

From page 1

41 percent.

In general, a quarter of the state's population growth between 1990 and 1997 resulted from international immigration, according to the Census figures. Texas gained 2.4 mil-

lion residents between 1990 and 1997, nearly 600,000 of them coming from outside the United States, figures show.

The state's demographer, Texas A&M University professor Steve Murdock, said, however, most of the Texas

growth is resulting from natural growth — in other words, the rate of births over deaths. The state recorded 2,344,185 births and 969,352 deaths during the 1990-97 period.

Figures for Bailey County show 846 births and 466 deaths.

## GOLF

### Farwell Invitational

Wednesday at Farwell CC  
(nine holes played)  
GIRLS

**Team totals** — 1. Muleshoe 188, 2. Farwell Blue 200, 3. Tulia 208, 4. Vega 234, 5. Lazbuddie 255, 6. Nazareth Blue 259, 7. (tie) Farwell White, Happy 264, 9. Olton 267, 10. Nazareth Gold 273.

**Medalists** — 1. Keisha Whitt, Muleshoe, 39; 2. Nikki Sutton, Muleshoe 42, 3. Holly Sunderman, Vega, 46; 4. Darlin Kinsler, Tulia, 48; 5. (tie) Valarie Mace, Farwell, Jo Ann Sout, Farwell, 50.

**Muleshoe** — Keisha Whitt 39, Nikki Sutton 42, Brandi Whitt 55, Jill Gladden 58, Krystal Heathington 52.

**Lazbuddie** — Jill Hodges 66, Leah Turner 65, Holly Engelking 64, Kia Morris 60, Kendra Gallman 78.

**Individuals** — Amy Hooten, Muleshoe, 58; Crystal Scott, Lazbuddie, 78.

**KEEP RECYCLING WORKING: JOIN.**



RECYCLING COALITION OF TEXAS

1-888-258-3404 (toll free)  
www.recycletx.org

# Rip's

IN TEXICO  
314 Wheeler  
482-3363 • 800-748-2459

We Accept

## Spring Shower of SAVINGS

Specials of the week

# 33 1/3% off

Special Groups of  
Alexander Campbell - Sharon Young and others.

Open House and Style Show April 3 & 4  
Watch For More Details!

**New! New! New!**  
Dresses, Pant Suits, Skirts, Tops & Shorts

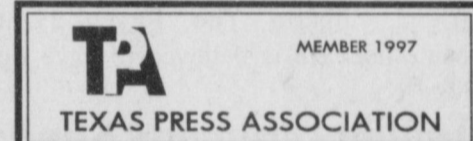
Open 9 am - 6:30 pm cst  
Complimentary gift wrapping  
Layaways welcome

*Have a nice day!*

## Bailey County Journal USPS 040-200

Established March 31, 1963. Published by Triple S Publishing, Inc. Every Sunday at 304 W. Second, Box 449, Muleshoe, TX 79347.  
Second Class Postage paid at Muleshoe, TX.  
POSTMASTER: Send address changes to the Bailey County Journal, P.O. Box 449, Muleshoe, TX 79347.  
We are qualified members of:  
Panhandle Press Association, National Newspaper Association, West Texas Press Association and Texas Press Association

WEST TEXAS PRESS ASSOCIATION



PPA  
Panhandle Press Association

Scot Stinnett, Publisher  
Lisa Stinnett, Vice-President/Comptroller  
Rick White, Editor  
Mary Ann Dominguez, Classifieds  
Leah Bell, Advertising

© 1990

SUBSCRIPTIONS: Muleshoe Journal and Bailey County Journal  
By Carrier Yearly - \$22.00  
Bailey County — by mail - \$24.00  
Elsewhere - \$26.00  
Advertising Rate Cards on Application

\*Advertisers should check their ad the first day of insertion. The Journals will not be liable for failure to publish an ad or for a typographical error or errors in publications except to the extent of the cost of the ad for the first day of insertion. Adjustment for errors will be limited to the cost of that portion of the ad where the error occurred.\*

## "Productivity appraisal" may lower the property taxes on your farm, ranch or timber land!

Texas law allows farmers, ranchers, and timber growers to pay property taxes based upon the "production value" of their land rather than on its market value. This "productivity appraisal" means qualified land is taxed based on its ability to produce crops, livestock, or timber—not on its value on the real estate market. And it can mean substantial property tax savings.

### When is the application deadline?

If your land has never had a productivity appraisal or you are a new owner, you must apply to your local appraisal district by April 30 to take advantage of this benefit on your 1998 property taxes. You may get up to 60 extra days if you have a good reason and ask for it by April 30. If you miss this deadline, you may still be able to apply, but you will pay a penalty. Check with your appraisal district office.

### Do you need to reapply annually?

If your land already receives agricultural or timber productivity appraisal, you normally don't need to reapply unless the chief appraiser requires you to do so. If a new application is required, the appraisal district will notify you by mail.

For more information, call or come by:

**BAILEY CENTRAL APPRAISAL DISTRICT**  
302 Main St.  
Muleshoe, TX 79347  
(806) 272-5501

We'll be happy to answer your questions and provide you a free copy of

"Texas Property Taxes: Taxpayers' Rights, Remedies & Responsibilities"

Or contact:

Comptroller's Property Tax Division  
P.O. Box 13528  
Austin, TX 78711-3528

**GOLDEN**

**ANNIVERSARY**

Muleshoe Chamber of Commerce and Agriculture representatives were on hand last week to commemorate the 50th anniversary of Harvey Bass Appliance, located at the corner of First and Ave. B. Pictured with Marie and Harvey Bass (center, holding plaque) are Chamber members (from left) Sheree Hunt, Wade King, Dawn Williams, Joe Flores, the Basses, Bill James, Sheila Stevenson and Susie Sowder.



*In Memory of Callie Smith*

*We, her family, wish to say thank you to every tribute given in her name. The flowers were so beautiful, the service was so in tune with her life, the food was delicious and served with grace. Her hospital stay was painful, but she was wonderfully cared for by doctors and nurses. We thank you all. To Brad Reeves - Thank You. To our hometown funeral home - Thank you for caring for all our families. Callie was so beautiful. To our friends and neighbors - Thank you for always being there. All of you helped make her birthday's a precious memory, especially her last (100th). God bless and keep you all.*

*Marie Dickinson*                      *Joe (Mory) Smith*  
*Audren (Dalton) Murrah*           *Grandchildren*  
*Ruby Green*                              *Great Grandchildren*  
*Great, great Grandchildren*

**Black, Chavez draw opposition for City Council seats**

Incumbent Muleshoe City Councilmen Juan Chavez and Cliff Black will face challengers in the May 2 election. In the area's other contested race, at least four candidates are running for two openings on the Muleshoe Independent School District Board of Trustees. The filing deadline for all the local elections was March 18. Chavez, who has served on the Council for two terms, is being challenged by Sam Burke in District 1. Burke is retired and has lived in Muleshoe for 11 months according to his application. Black, who has served one term, is

being challenged by Guadalupe Olivarez in District 2. Olivarez owns O&C Erection Sprinkler Co. City Councilors serve three-year terms. As of last week, four candidates had filed for at-large positions currently occupied by longtime Muleshoe school board members Max King and Ed Cox. Both King and Cox announced they do not plan to seek reelection. The four candidates will compete for the two spots are Jay Messenger, Thurman Myers, Bruce Barrett and David Tipps. Because the Muleshoe Independent School District offices are closed for spring break, the Journal was unable to find out

if any additional candidates had filed this week. The Lazbuddie Independent School District and the Muleshoe Area Hospital District elections are uncontested. Incumbents Tommy St. Clair and Rick Seaton will continue to serve on the Lazbuddie school board while incumbents Victor Leal, L.T. Johnson and Mike Miller will continue to serve on the hospital district board. The Three Way Independent School District is also holding a May election. As of last week, only incumbents Marvin McCaul and Murray Davis had filed.

**MAHD gets good checkup**

The Muleshoe Area Hospital District is in good financial health according to its most recent checkup. The hospital district increased its operating revenues and its profit margin last year, according to an independent audit done by the Durbin & Co. of Lubbock. The audit was reviewed by the Muleshoe Area Hospital District Board Thursday during its regular monthly meeting. The district's operating revenues increase \$400,000 to \$6.556 million and profits increased dramatically, from \$11,584 to \$480,000. Hospital administrator Jim Bone called it a good year, especially since the district also purchased the hospital property in July. "What the audit means is that we run a clean operation

from a financial point of view," Bone said. Bone said the credit belongs to the staff. "It took a lot of effort by the folks who work here," Bone said. "All the departments and people in the departments try to be productive as they can to assure the success of the district." In other items Thursday, the hospital board voted to hold a public meeting in early April to gather input on the possibility of building a new nursing home. Last fall, a citizen's task force determined there was strong community interest in building a new nursing home. The current proposal is to build a 100-bed facility that would include a separate Alzheimer's unit. The \$3 million facility would be built on city donated property near the new city park.

**Sudan "bug man" honored by entomology community**

A Sudan High School graduate has spent the last 31 years discovering new ways to help farmers across the United States battle insect-pest problems. Dr. Billy Ray Wiseman, the 1955 valedictorian of Sudan High School, was honored by his colleagues this year at the 1998 Armyworm Symposium. The symposium was dedicated to Wiseman, a highly respected bench scientist and educator, for his invaluable contributions to developing insect resistant plants, especially for corn and sorghum. Wiseman, 60, began his study of agricultural after graduating from Sudan. He attended Arlington State University and Texas Tech University where he earned a bachelor's degree in agricultural education in 1959.

Wiseman continued his education at Kansas State University, earning graduate degrees in entomology and horticulture. *see WISEMAN page 5*



**"I'm guilty of having a great time at the banquet! It would be a crime to miss it!"**

*-Marilyn Cox  
Bailey Co. Judge*

**Muleshoe Chamber of Commerce Annual Banquet**  
 Saturday, March 28, 1998 • 6:30 pm (food served)  
**All-You-Can-Eat Steak and Shrimp**  
 Muleshoe High School Cafeteria, Muleshoe High School Auditorium  
 Entertainment by: Ken Whitener, "Wizard of Comedy" and stage hypnotist Mark Langford, magician Adrian King and Others, the art of Mimes  
 Cost: \$50 (This is the Chamber of Commerce's only fund-raiser, folks!)  
 Help support the Chamber. Contact Susie Sowder at 272-6767 or Dawn Williams at 272-6853. Or get your tickets from any Chamber Board member.  
**Don't miss the food, fun & entertainment! Buy your tickets NOW!**

INSECTS    RODENTS    VEGETATION

**WEIRD BUG PEST CONTROL**

**Jose Sanchez-Mora**  
 523 W. Ave. B  
 Muleshoe, TX  
 (806) 272-5161  
 or (806) 946-8103

*"We will bug your pests away"*

*We offer competitive prices and a guaranteed service in the field of pest control and lawn care.*

**Residential/Commercial**

**Classifieds Sell!**  
**Muleshoe Journal**  
 (806) 272-4536

**"Raising The Roof"**  
**BENEFIT GOSPEL CONCERT**

**April 11, 1998**  
**7:00 P.M.**  
**Bailey Co. Coliseum**

Featuring:  
**THE ANCHOR BROTHERS**  
 (Together for the first time in 3 years!)

Also Performing  
 April 11th. . .

**Jack Stone**  
**Craig Stone**  
**Charles Schovajsa**  
**& many, many more. . .**

**For More Information Call: (806) 272-3877**

**ADMISSION IS FREE**  
 PROCEEDS WILL GO TO BENEFIT THE "RAISE THE ROOF" RENOVATION PROJECT ON THE OLD GIBSON BUILDING ON W. AMERICAN BLVD. IN MULESHOE.  
**A DONATION WILL BE TAKEN.**  
 Shuttle services will be available. Please call 272-3877 to schedule a ride to this event.

# PASTURE WORKIN' WITH OL' BROWN

"She doesn't have to be pretty, just dependable," explained Randy to his date. He was referring to his 1976 Chevrolet pickup which he affectionately calls 'Ol' Brown'.

Jackie climbed in and they headed off down the road. It was an unusual pairing. She was a born and bred city girl, worldly, sophisticated. He, a small town Kansas rancher with a deep respect for the land, cows and machinery.

He had invited her to go for an afternoon drive. Give her a taste of the idyllic country life. And he might have even taken a picnic basket with a bottle of fine wine, a selection of gourmet cheeses and a can of Vienna sausage if he'd thought of it... but he didn't.

The trip included one chore, to make it practical, of course.

Randy's bull, named Tommy, had wandered into the neighbor's pasture and Randy planned to retrieve him. Our handsome couple went through the gate and 'Ol' Brown' navigated her way through the tall July grass, amidst the neighbor's cows.

Randy had a five gallon bucket with some pellets, hangin' out the window as bait. Jackie was tryin' to spot Tommy out her side, but in the tall grass she couldn't spot the tell-tale ventral bull appendages she had been told to watch for. She became frustrated, but it didn't last long.

Suddenly Ol' Brown nose dived into an abandoned oil well, 12 feet across and deep as Lake Superior! The left from wheel was spinnin' in midair and the hood was below ground

level on the driver's side. Jackie slid into Randy's lad. Everything on the dash crashed on top of them. Randy stayed calm as Jackie patiently explained, "If I die this way, I'll kill you!" Randy climbed out his window over into the pickup bed as the truck teeter-tottered on the brink. When he reached the right rear bumper he talked Jackie into following him.

She reached him, he hopped off and left her on her precarious perch, "I'll go get help," he said, "You balance the truck. We've got to save Ol' Brown. Oh, and don't get off.. snakes, ya know."

He struck out through the pasture. It was 107° at 1:30 that afternoon.

Meanwhile, the pickup was being surrounded by curious cows, sniffing and jostling



## BAXTER BLACK

ON THE EDGE OF COMMON SENSE

around the strange sweating sunburnt figure who shooshed, hissed, cried and cursed them like a rabid bobcat.

It only took Randy an hour and a half to get back with his dad's 40-20 John Deere. It's taken Jackie a little longer to see the humor in it.

Now, when they both sit at the liar's table in The Branding Iron Cafe in Atlanta and tell the story, there seems to be two versions of it. Randy just smiles at her and looks out at Ol' Brown parked in front. "Yup," he says, "She doesn't have to be pretty, just dependable."

**If You Can't Come To Miracle-Ear,® Then We'll Come To You.**

Our Hearing Aid Service Center is coming to a convenient location near you. Complimentary Hearing Evaluations. We value your hearing as much as you do... Ask about our low monthly payments

**Miracle-Ear**  
Hearing Systems by Bausch & Lomb

Call 800/808-0188

Wed. March 25, 9 a.m. - Noon  
Muleshoe Medical Center - 708 S. 1st  
Noon - 4 p.m. / In Home Visits

**TO ALL INTERESTED PERSONS AND PARTIES:**

Wheelabrator Coal Services Company has made application with the Texas Natural Resource Conservation Commission for renewal of Air Quality Permit No. 7538A to authorize the continued operation of an existing Coal Handling Facility in Lamb County, Texas. The location of the existing facility is 8 miles east of Muleshoe on Highway 70. Additional information concerning this application is contained in the public notice section of this newspaper. This notice is to be published on March 22, 1998 and March 26, 1998.

**You Snooze, You Lose. Read the News**

## De Shazo Elementary Circle of Champions

The following students from DeShazo Elementary School were honored April 13 during a Circle of Champions assembly for academics, attendance and behavior.

### Caps

**3rd grade** — Karina Yvonne Agundis, Bryan Allen Haire, Andrew Grant Precure, Crystal Regalado, Brittany Reyna, Samantha Sanchez, Lizet Vasquez.

**4th grade** — Sandra Suxey Ovalle, Refugio Cruz Pina Jr., Autumm Remington, Amalia Ruiz.

**5th grade** — Christopher Albertson, Brittney DeAnn Fuqua, Brenda Granados, Marquia Joyce, Leonardo Ramirez, John Paul Regalado, Christopher Rubio, Ricardo Ivan Ruvalcaba, Iliana Sifuentes, Nathan Timothy Villa, Wesley Randall Welch, Tanner Judd Winkler.

### Certificates

**3rd grade** — Gabriela Ivett Alvarez, Brittany Ambriz, Juan Osvaldo Avila, Dustin Heath Barker, Matthew Barnes, T.J. Ryan Brantley, Nicklas Wilson Brewster, Kati Ranae Brown, Brittini Inez Carter, Rafael Jr. Castillo, Miguel Angel Catano, Laura Kay Cogliandro, Timothy Don Conner, Kelly Suzanne Dale, Karen Alysha DeAguiño, Juan Lorenzo Ford, Jerry Garcia, Kaitlyn Breanne Geissler, Demetrice Gilliam, Gerardo Gomez, Tosha Marie Gomez, Jamie Francis Hall, Shayla Hall, Charles Richard Hammer, Chelsi Leah Hawkins, Amanda Jean Heron, Katherine Amber Lepard, Alyssa Danielle Lopez, Claudia Morales, Ashley Aaron Mumau, Madison Marie Myers, Joshua Kiel Norman, Alvaro C. Jr. Ontiveroz, Sybonay Peralta, Kindra Shgae Pruitt, Autumn Leigh Rainey, Jaysol Eysbet Regalado, Matthew Engle Richards, Martin Humberto Rodriguez, Brandon Lee Rubio, Liliana Ruiz, Carlos Saenz, Noe

Sifuentes, Jameson Derek Skipworth, Cade Smith, Travis Lance Thompson-Camp, Brittini Alyss Torres, Irma Janel Torres, Brittany Nicole Villa, Eric Alan Washington, Danielle Witherspoon.

**4th grade** — Ana Idaly Arzola, Zannia Avila, Brady Rex Black, Daniel Armando Caraveo, Hope Ashton DePalma, Ashley Dickson, Monserrat Elias, Jarad Paul Flores, Jennalee Free, Roberto Julian Jr. Garza, Arsenio Parker Geter, Rudy Michael Jr. Gonzales, Samantha Renee Gonzalez, Lindsey Hall, Zachary Mark Hall, Joseph Edward Iuliano, William Myles James, Jacob Mendoza, Rodrigo Mendoza, Lorenzo Antonio Nunez, Veronica Esther Nunez, Jose Angel Olivas, Luz Ortega, Janice Pacheco, Dakota Leslie Pitcock, Randall Wayne Radford, Jenna LeAnn Rasco, Christine Reeves, Trisha Nicole Robertson, Logan Ruthardt, Elizabeth Salamanca, Sarah Jean Sexton, Hillary Ann Tipps, Amanda Toscano, Cami Jo Vandiver, Lidia Armida Villezcas, Corey Heath Wallace, Brandi Wood, Emily Ann Zackoski.

**5th grade** — Elena Aburto, Yuri Ivy Aguirre, Erin Jo Allen, Cristobal Almanza, Kory Brett Atwood, Amanda Barnes, Ashley Nicole Beggs, Kelsey Lynette Beggs, Michael Trent Black, Robert Franklin Bomer, Thomas Jordan Bonds, Mandy Brantley, Brady Wayne Broyles, Thomas Rojas Buenrostro, Brenda Jazmin Caraveo, Jamie Shantell Carpenter, Paul Anthony Carrion, Charissa Diann Conner, Jeremy William Copley, Amber LeAnne Cowart, Erin Crystal Dehoyos, Silbestra Diaz, Sarah Marie Dominguez, Ruth Mendes Elizalde, Erin Kendall Gallman, Patricia Lynn Garza, Jaclyn Faith Gilleland, Niclas Shayne Green, Jessica Mae Hall, Calli Alain Hancock, Mitci Kay Hawkins,

Maricela Hernandez, Coli Don Hunt, Shalisa Dawn Ladd, Vanessa Marie Lewis, Amanda Beth Lopez, Laura Lorena Marquez, Minerva Anna Martinez, Paje McRoberts, Esther Marie Mendoza, Misty Gail Miller, April Morgan, Barry Keith Morris, Luis Raul Muniz, Eric Presely Newton, Jeremy Norman, Juan Sanchez Nunez, Sarah Kristen Pace, Fernando Peralta, Francisco Ramirez, Laura Ramirez, Armida Munoz Rascon, Cecilia Reyes, Joel Jesus Salcido, Kayla Dawn Spradling, Brittany Ann Thomason, Tamara JoAnn Thompson, Irene Torres, Cami Jo Valdez, Jose Angel Vidana, Tyler Wood.

## Precure Chiropractic Clinic

### ARE YOU HURTING?

A HANDS-ON APPROACH TO...

- Headaches
- Tight, sore muscles in neck or back
- Athletic injuries
- Automobile or on-the-job injuries
- Fatigue, stress or soreness
- Chronic back or neck pain
- "Trigger points" in muscles
- Scoliosis
- "Subluxations" of the spine

There's no need to put it off any longer; you should see what chiropractic care has to offer. Dr. Mike Precure offers a wise choice for sensible, smart and effective care to keep you healthy and going strong!

Call 272-6784 today for an appointment or complementary consultation  
Or come by Monday-Friday • 8 am to Noon, 1 pm to 5 pm  
Located in Suite 4 in the Muleshoe Area Medical Center.

*We're 50 Years Old*

*Come Help Us Celebrate Our 50th Anniversary in business in Muleshoe*

*Harvey and Marie Bass Thank You for your business and support through the years.*

**SALE DAYS MARCH 9-21, 1998**

**MAYTAG**  
Super Capacity  
8 cycle Washer  
As low as  
**\$484<sup>50</sup>** \*w/t

**CROSLEY**  
WASHER & DRYER  
X Large Capacity  
**\$550<sup>50</sup> pair** \*w/t

**FRIGIDAIRE**  
Side/side Refrig.  
Ice/water through door  
**\$899<sup>50</sup>** \*w/t

**FRIGIDAIRE**  
Electric Range  
Digital clock/timer  
Porcelain oven  
**\$459<sup>50</sup>** \*w/t

**MAYTAG**  
Super Capacity-Self  
Cleaning Range  
**\$589<sup>50</sup>** \*w/t

**CROSLEY**  
REFRIGERATOR  
21 cu. ft. w/glass shelf  
**\$629<sup>50</sup>**  
w/ FREE ice maker \*w/t

**CROSLEY**  
FREEZERS  
As low as  
**\$299<sup>50</sup>** \*w/t

**CROSLEY RANGES**  
Gas or Electric  
Your Choice  
**\$299<sup>50</sup>** \*w/t

*We service what we sell!*

## HARVEY BASS APPLIANCE

122 South 1st St. • Muleshoe • 272-3030

**1633 AMERICAN BLVD. MULESHOE • 272-3998**

**HAPPY HOUR**  
Buy 1 Get 1 Free Fountain Drinks  
2-5 p.m. Everyday

**SONIC**

**SINGLE (#1 or #2) BURGERS 99¢**  
All Day Every Tuesday

Not valid with any other special offers. Available at Muleshoe location only. Offers good for a limited time, subject to change. Cheese on burgers extra.



Register for Drawings to be held on Saturday, March 21 at 3:00 p.m. You could win a Frigidaire Refrigerator or a Maytag washer worth \$550! No purchase necessary.

\* w/t - Qualified Trade  
Many more models to choose from -  
Come in for details! Financing Available with Approved Credit.  
Lazy-Boy - Berklene - Morning Glory - Dinettes - Bedroom - Vacuums

## EMPLOYEE OF THE MONTH



Pam Thomason, a secretary at Watson Junior High School, was named the Muleshoe Chamber of Commerce & Agriculture March Employee of the Month. Pictured with her are (from left) Dr. Michael Precure, Sherree Hunt, Justin Sowder, Susie Sowder, Wade King, Robert Shafer, Dawn Williams and Hugh Young.

## BUSINESS OF THE MONTH



James Crane Tire was named the Muleshoe Chamber of Commerce & Agriculture's March Business of the Month. Pictured with owner James Crane are (from left) Justin Sowder, Sheree Hunt, Hugh Young, Susie Sowder, Wade King, Robert Shafer, Dawn Williams and Dr. Michael Precure.

## Muleshoe Chamber of Commerce

### WISEMAN

From page 3

ture. While there, he worked under the direction of Dr. Reginald Painter, considered the father of host plants resistant to insects.

In 1967, after earning a doctorate in entomology, Wiseman began his professional career with the USDA in Oklahoma.

He has been involved with

the technologies in field screening of corn and sorghum for resistance to insect pests, bioassaying for antibiotic plant compounds in the laboratory and determination of mechanisms and bases of resistance.

Wiseman also helped discover the major antibiotic factor in silks of some corn genotypes to the fall armyworm and corn

earworm.

Besides research, Wiseman has authored or co-authored over 300 scientific papers, including 13 chapters, review papers and bibliographies.

After 31 years, Wiseman plans to finally slow down — in April he plans to retire from the USDA.



**"I'm looking forward to the Chamber banquet. Call all your friends-It's good, family fun for everyone!"**

-Hubert Kidd  
General Mgr. of Five Area  
Telephone Cooperative, Inc./West  
Plains Telecommunications, Inc.

### Muleshoe Chamber of Commerce Annual Banquet

Saturday, March 28, 1998 • 6:30 pm (food served)

### All-You-Can-Eat Steak and Shrimp

Muleshoe High School Cafeteria, Muleshoe High School Auditorium  
Entertainment by: Ken Whitener, "Wizard of Comedy" and stage hypnotist  
Mark Langford, magician  
Adrian King and Others, the art of Mimes

Cost: \$50 (This is the Chamber of Commerce's only fund-raiser, folks!)  
Help support the Chamber. Contact Susie Sowder at 272-6767 or Dawn Williams at 272-6853. Or get your tickets from any Chamber Board member.

**Don't miss the food, fun & entertainment! Buy your tickets NOW!**

## Aguirre qualifies for state meet

COLORADO CITY — Muleshoe senior Ricko Aguirre earned a trip to the state powerlifting meet Saturday by finishing second at regionals.

Competing in the super heavyweight class of Division II (Class 1A through 3A), Aguirre lifted a combined total of 1,445 pounds.

The top two lifters in each weight class at Saturday's Region I meet advanced to the state meet March 28 in Killeen.

MHS junior Greg Pena finished seventh in the 198-pound class.

Aguirre had lifts of 550 in the squat, 350 in the bench press and 545 in the dead lift to match his personal best.

Pena had lifts of 475 in the squat, 250 in the bench press and 485 in dead lift.

Beau Hill of Dimmitt was the winner of Pena's weight class.

## BIRTH

### CAMBREE HASELOFF

Darren and Lorre Haseloff of Tahoka announce the birth of their daughter Cambree Alice.

Cambree was born Tuesday, March 10, 1998 at Methodist Hospital in Lubbock.

She weighed 6 lbs. and was 18 1/2 inches long.

Grandparents are Mr. Mrs. Richard Haseloff of Farwell and Mr. and Mrs. Errol Johnson of Lazbuddie.

## Official Headquarters The Country House

is now offering Charter Membership in the TY Official

### Beanie Babie Club

Each Membership Kit is \$10.00



We will be closed Saturday, March 21<sup>st</sup> for market

Collectibles & Fine Gifts • Open: Mon.-Fri. 10 - 5:30, Sat. 10 - 4  
123 Marshall Howard Blvd., Littlefield • 806/385-3245

## SEE A REAL CIRCUS!

Under the Big Top

SEE THE JUNGLE BIG CATS

One Day Only! March 30<sup>th</sup>

Two Showtimes: 5:15 pm & 7:30 pm

Come see the Super Spectacular Show Under the Big Top: At the lot in front of Viola's Restaurant!



ALLEN BROS. CIRCUS

★ CIRCUS RIDES OPEN ONE HOUR BEFORE SHOWTIME ★

## Time's Running Out!

IRA NOT IRS

## April 15th Will Be Here Soon

- Contributions are tax deductible
- Interest on your contributions is tax sheltered and compounded until you take it out

## MULESHOE STATE BANK

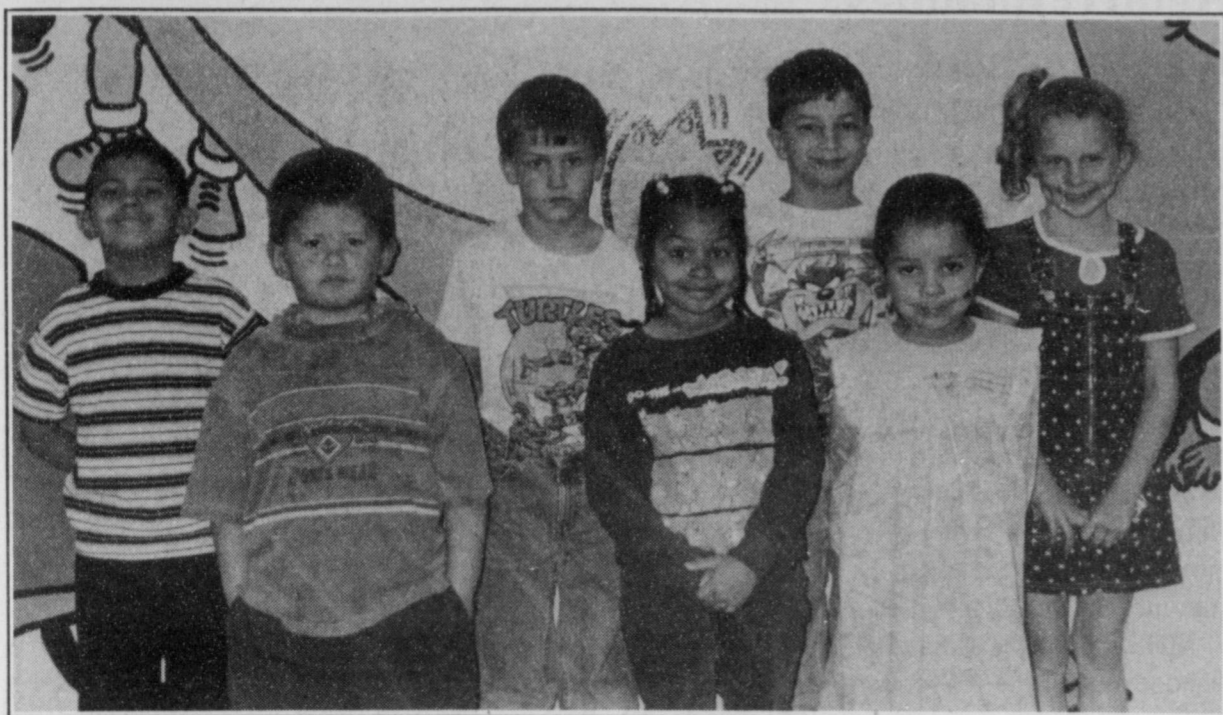
101 West American Blvd.  
272-4561 Muleshoe, TX



801 Ave. A  
481-9580 Farwell, TX



FDIC



**Dillman Super kids**

These students were named Dillman Elementary School March students of the month: (from left) Xavier Cuevas, Jay Martinez, Wes Wood, Ashley Johnson, Jacob Vega, Daniela Abruto, and Samantha Miller.

**Friends of the Library discuss fund raisers**

The Friends of the Library met Monday, March 9 at the Muleshoe Public Library.

Dyan Shipley called the meeting to order. She opened the meeting by reading the minutes of the Feb. 18 meeting. The minutes were approved by Gail Wilcox and seconded by Beth Mims.

Changes to the Friend's By-laws were discussed to be changed

Annual dues shall be \$5.00 for an individual, and \$10.00 for a family or organization. Individuals paying \$25 shall be called sustaining members, those paying \$50 shall be called supporting members, those paying \$100 shall be life members.

New business included discussions on selling a cookbook for a fund-raiser. New ideas suggested included large print and specialty or holiday.

It was mentioned that this

would be a very time consuming and expensive idea. It was also mentioned that most people do not want to buy another cookbook. Christi Beth Fishertabled the cookbook idea until the next meeting for further discussion.

Other fund-raiser ideas suggested included a summer book-fair and a paint-a-thon, which seemed to be the most accepted idea.

Members signed up to be on a fund-raising committee and the Summer Reading program. Annette Bonds gave our treasurer's report. The book sale brought in \$352. A fax machine was purchased.

The next meeting will be on April 6, 1998 at 6 p.m. It was agreed that we would meet every first Monday of the month until we have renovated the library.

The new roster of officers was discussed. These officers

- President — Lyn Vandiver
- First Vice President — Gail Wilcox
- Second Vice President — Noemi Acosta Mora
- Secretary — Kristy White
- Treasurer — Annette Bonds
- Historian — Lisa Hall
- Publicist/Reporter — Linda Piland

A motion was made by Christi Beth Fisher to accept this list and seconded by Gail Wilcox. The motion was passed. Meeting was adjourned at 7:27 p.m.

Members attending: Dyan Shipley, Jenne McVicker, Vivian White, Gayle Jones, Robert Orozco, Pat More, Linda Piland, Myrt Feagley, Christi Beth Fisher, Gail Wilcox, Beth Mims, Alice Felan, Kevin Smith, Louise Agee, Lisa Ballenger, Noemi More, Kristy Price, Donna Kirk and Annette Bonds.

**HOSPITAL ADMISSIONS**

The Muleshoe Area Medical Center has reported admitting the following patients:

**March 12** — Sandra Alafa, Johnny Hernandez, Frank Hinkson, Ruth McCarty.

**March 13** — Shaelynn Cannon, Johnny Hernandez, Ruth McCarty, Tyler Vandiver.

**March 14** — Shaelynn Cannon, Johnny Hernandez, Brent Lingnau, Ruth McCarty, Tyler Vandiver.

**March 15** — Margrit Buhrman, Johnny Hernandez, Weldon Kittrell, Brent Lingnau, Jerry Phipps, Ernestine Steinbock.

**March 16** — Margrit Buhrman, Kaylene Dale, Johnny Hernandez, Weldon Kittrell, Jerry Phipps, Ernestine Steinbock, Fermin Vela.

**March 17** — Jeffery Guillen, Johnny Hernandez, Willie James, Patsy Lindsey, Diana Pacheco, Ernestine Steinbock.

**March 18** — Logan Cates, James Herriage, Willie James, Avanelle Lenderson, Ernestine Steinbock, Hazel New, Lora Dale.

**March 19** — April Apodaca, Logan Cates, Lora Dale, James Herriage, Willie James, Avanelle Lenderson, Hazel New, Ernestine Steinbock.

**How's This for a Pastoral Search Committee Report?**

A colleague recently shared the following "Pastoral Search Committee Report" across the Internet. I hope you enjoy it:

The committee regrets that we do not have a happy report to give. We've not been able to find a suitable candidate for this church, though we have one promising prospect still... The following is our confidential report on the candidates.

**Adam:** Good man but problems with his wife. Also one reference reported that Adam and his wife

a single widow at his former church. Hosea: A tender and loving pastor but our people could never handle his wife's occupation.

**Deborah:** Female. Jeremiah: Emotionally unstable, alarmist, negative, always lamenting things, and reported to have taken a long trip to bury his underwear on the bank of a foreign river.

**Isaiah:** On the fringe? Claims to have seen angels in church. Has trouble with his language.

**Jonah:** Refused God's call into ministry until he was forced to obey by being swallowed by a large fish. He told us the fish later spit him out on the shore near here. We hung up. Amos: Too backward and unpolished. With some seminary training he might have promise, but has a hang-up against wealthy people—might fit better in a poor congregation.

**John:** Says he is a Baptist, but definitely doesn't dress like one. Has slept in the outdoors for months on end, has a weird diet, and provokes denominational leaders.

**Peter:** Too blue collar. Bad temper—has been known to curse. Had a big run-in with Paul in Antioch. Aggressive, but a loose cannon.

**Paul:** Powerful CEO type leader and a fascinating preacher. Short, however, on tact, unforgiving with younger ministers, harsh, and has been known to preach all night.

**Timothy:** Too young. Jesus: Has had popular times, but once when his church grew to 5,000 he managed to offend them all and the church dwindled down to 12 people. Seldom stays in one place very long. No wife.

**Judas:** His references are solid. A steady plodder. Conservative. Good connections. Knows how to handle money. We're inviting him to preach this Sunday. Possibilities here.

*Curtis Shelburne is minister of the 16th & D Church of Christ in Muleshoe.*



**Focus On Faith**  
Curtis Shelburne

enjoy nude walking in the woods. Noah: Former pastorate of 120 years with no converts. Prone to unrealistic building projects.

**Abraham:** Though the references reported wife-swapping, the facts seem to show he never slept with another man's wife, but did offer to share his own wife with another man.

**Joseph:** A big thinker, but a braggart; believes in dream-interpreting, and has a prison record.

**Moses:** A modest and meek man, but poor communicator, even stuttering at times. Sometimes he blows his stack and acts rashly. Some say he left an earlier church over a murder charge.

**David:** The most promising leader of all until we discovered the affair he had with his neighbor's wife.

**Solomon:** Great preacher but our parsonage would never hold all those wives.

**Elijah:** Prone to depression—collapses under pressure.  
**Elisha:** Reported to have lived with

**POLICE REPORT**

**ARRESTS MULESHOE PD**

**Mar. 19** — Roberto Rodriguez, arrested for outstanding warrant, deportation, and failure to appear.

**BAILEY COUNTY SHERIFF'S OFFICE**

**Mar. 13** — Teresa Ann Hood, 22, arrested on Lamb County warrant, theft by check.

**Mar. 14** — Sammy Gonzales, 32, arrested for driving with a suspended license.

**Mar. 14** — Michael Jason Orozco, 19, arrested for driving while intoxicated, terroristic threats and a warrant from Potter County.

**Mar. 14** — Manuel Mendoza Quesada, 36, arrested for driving while intoxicated, first offense.

**Mar. 15** — Ruben Orozco, 36, arrested for public intoxication.

**Mar. 15** — Jaime Hernandez, 21, arrested for driving without a license.

**Mar. 15** — Tracy Slaton, 34, arrested for driving with a suspended license.

**Mar. 16** — Michael Jason Orozco, 19, arrested for assault.

**Mar. 17** — Stanley Dale Parrish, 41, arrested for driving with a suspended license.

**Mar. 17** — Pete Ybarra, 24, arrested for possession of marijuana.

**TOPS**

TOPS Chapter Number 34 met at 6 p.m., Thursday, March 19, 1998 at the Muleshoe Church of Christ.

Leader Laverne James called the meeting to order. The TOPS Pledge was recited and the fellowship song was sung. James led the group in prayer.

Roll was called with members answering with the amount they lost or gained.

Best Loser for the week was Betty Jo Davis. Tied for first runner up was Mollie Davis and Alma Robertson. Second runner up was Lucille Harp.



**Pizza Hut**

Every Tuesday night is  
**Kids Night**

With the purchase of any Large or Medium Pizza at regular price, you'll get  
**TWO PERSONAL PAN PIZZAS FREE!!**

1412 W. American Blvd.  
Muleshoe, TX  
(806) 272-4213

*Home Folks Caring For Folks At Home.*

**MULESHOE AREA HOME HEALTH Agency**

**Featured Nurse**

Emily (Duncan) Hill is the daughter of Chris and Kathy Duncan of Floyd, NM (near Portales). Emily is a self-described "farm girl," spending all of her childhood in Floyd. So, she enjoys being in a small, rural town like Muleshoe. Her mother is a homemaker, and her father is an Ag. teacher in the Floyd school system. Mrs. Hill has one younger brother, Scott, who attends college at Southwestern Oklahoma State.

Emily moved to Muleshoe when she accepted a position at Muleshoe Area Home Health Agency in November of 1997. Emily just recently made another big change in her life- she married Portales native Brad Hill, head baseball coach at Muleshoe High School. The couple got married in December of 1997. Emily and Brad have no children, yet. However, they are the proud "parents" of a chocolate lab named Gus.

Emily attended Floyd schools until she entered college. She received her nursing degree from the Methodist Hospital School of Nursing in Lubbock. Mrs. Hill formerly worked in a critical care unit at Methodist Hospital.

In her spare time, Emily enjoys going to local sporting activities and cheering on her new husband's team. She is also very busy setting up their new household—decorating, painting, cleaning, rearranging, and all that fun stuff. Emily is a member of the First Baptist Church of Muleshoe.

Emily says that the work at M.A.H.H.A. is "challenging, but very rewarding." She also comments that the staff has made her feel welcome and has shown lots of support. About the patients, Emily says with a grin that "they add joy to my life."



**Emily Hill**

*Home Care*



*Home is where the heart is*

Affiliated with  
Lubbock Methodist Hospital Systems

**24 Hour # 272-3346**  
Local Nurse on call 24 hours a day to offer prompt service.

**New Out Of Hospital Advance Directives Now Available!**

We accept Medicare, Medicaid and Private Insurance  
It Is Your Right To Choose The Home Health Agency You Prefer.

To receive Home Health Services, talk with your physician or talk with hospital personnel when you are hospitalized.

It's a funny thing about life. If you refuse to accept anything but the best, you very often get it. **W.Somerset Maugham**

"Kind words can be short and easy to speak, but their echoes are truly endless." **Mother Teresa**

"Nothing is so embarrassing as watching someone do something that you said couldn't be done." **Sam Ewing**

If dandelions were hard to grow, they would be most welcome on any lawn. **Andrew V. Mason**

"The truth of the matter is that you always know the right thing to do. The hard part is doing it." **Gen. H. Norman Schwarzkopf**

# BAILEY COUNTY DEVOTIONAL PAGE

**WES-TEX FEED YARDS, INC.**  
 Custom Cattle Feeding  
 272-7555 Muleshoe, TX

**FARWELL CONVALESCENT CENTER**  
*"In Christ's Love, Everyone Is Someone Special"*  
 305 5th St.  
 481-9027 • FARWELL, TX

**OECIA SUSAN'S PHOTOGRAPHY**  
 Rt. 1 Box 120 • 2 Mi. N. Hwy. 214  
 Susan Kerby  
 (806) 272-5153  
 Muleshoe, TX (806) 946-9524 mobile

**MULESHOE COOPERATIVE**  
**GINS**  
 P.O. Box 569  
 272-4794 Muleshoe, TX

**Risinger Plumbing**  
 Serving Muleshoe Area  
 All Plumbing Repairs  
**272-6772**

**FIRST TEXAS FLBA MULESHOE**  
*"Serving Farmer & Bailey Counties"*  
 272-3010 • Fax 272-5388  
 316 Main • P.O. Box 424 • Muleshoe, TX

1315 W. American Blvd.  
 272-3333  
 Muleshoe, TX

**SIMNACHER NATIVE GRASSES**  
 Darwin Simmacher Vince Simmacher  
 (505) 762-7817 (806) 946-3461  
 Thomas Simmacher  
 (806) 285-2491

**PACO FEED YARD, INC.**  
 Commercial Cattle Feeders  
 P.O. Box 956 265-3281  
 Friona, TX  
 Feller Hughes-Mgr.

**MULESHOE AREA HEALTHCARE CENTER**  
*"Committed to Caring"*  
 106 W. Ave. H Muleshoe 272-7578

**MULESHOE LIVESTOCK AUCTION**  
 Muleshoe, TX • Sale Every Saturday  
 Clayton Myers • 272-4201

**"THE FIVE AREA TELEPHONE COOPERATIVE ORGANIZATION"**  
 West Plains Telecommunications Co.  
 Five Area Systems, Inc., Plateau Cellular Network  
 Five Area Long Distance - Five Area Internet  
 302 Uvalde Muleshoe, USA (806) 272-5533

**MULESHOE MOTOR CO.**  
 1225 W. American Blvd. 272-4251

**BAILEY COUNTY ELECTRIC COOPERATIVE ASSOCIATION**  
*"Serving Our Members Is Our Main Priority"*  
 1-800-869-7049  
 Muleshoe 272-4504 Morton 266-8600

**BRUCE, INC.**  
 AIR CONDITIONING  
 Hwy. 214 North 272-5114  
 Muleshoe, TX

**BAILEY GIN COMPANY, INC.**  
 946-3397  
 Sudan, TX  
 Peanut Hawkins, MGR

**Muleshoe Area Medical Center**  
*"Your Hospital"*  
 708 S. First St. • 272-4524  
 Muleshoe, TX

**Lowe's MARKETPLACE**  
 401 W. American Blvd. Muleshoe 272-4585

**AMERICAN AVIATION INC.**  
 West Hiway 84 272-4266  
 Muleshoe

**SHERLEY-ANDERSON LAZBUDDIE ELEVATOR**  
 965-2922 Lazbuddie, TX

## Facts About The BIBLE BY JOHN LEHTI

**WORLD'S LARGEST HANDWRITTEN BIBLE!**

IN 1949, THE CHICAGO BIBLE SOCIETY SPONSORED A UNIQUE PROJECT AT THE CHICAGO RAILROAD FAIR BY EXHIBITING A HUGE (21X27 INCHES) BOOK WITH A THOUSAND, ONE HUNDRED AND ELEVEN BLANK PAGES—A BIBLE-TO-BE! THIRTY ONE THOUSAND, ONE HUNDRED AND TWO FAIR VISITORS WERE ASKED TO WRITE ONE VERSE EACH INTO THIS MAMMOTH TOME! IN ALL, TWENTY THREE THOUSAND, TWO HUNDRED AND FOURTEEN OLD TESTAMENT VERSES AND SEVEN THOUSAND, NINE HUNDRED AND FIFTY NINE FOR THE NEW!

THE HANDWRITTEN BIBLE WEIGHS 187 POUNDS—ITS LEATHER BINDING REQUIRED THREE GOAT-SKINS, AND THE PEOPLE WHO WROTE A VERSE EACH OF HOLY SCRIPTURE CAME FROM EVERY STATE IN THE UNION AND 15 FOREIGN COUNTRIES. THE BIBLE IS NOW AT THE AMERICAN BIBLE SOCIETY IN NEW YORK, ON LOAN.

NEXT WEEK: THE GOSPEL ACCORDING TO SAINT MATTHEW

(86) SAVE THIS FOR YOUR SUNDAY SCHOOL SCRAPBOOK

**This devotional & directory is made possible by these businesses who encourage all of us to attend worship services.**

- ASSEMBLY OF GOD**  
**FIRST ASSEMBLY OF GOD**  
 521 South First Street • 272-3017  
 Jack Stone, Min. • 272-3984  
 S.S. 9:45 a.m., W.S. 11 a.m. & 6:30 p.m.,  
 Wed. 7:30 p.m.
- BAPTIST**  
**CALVARY BAPTIST**  
 1733 W. Ave. C. Rev. Jeff Coffman  
**CIRCLE BACK BAPTIST**  
 Intersection FM 3397 & FM 298  
 Jessie Shaver, Min • 946-3676  
**FIRST BAPTIST**  
 220 West Ave. E.  
 Stacey Conner, Min.  
**FIRST BAPTIST**  
 Lazbuddie • 965-2126  
**PRIMERA IGLESIA BAUTISTA**  
 223 E. Ave. B Roy Martinez, Min.  
**PRIMITIVE BAPTIST**  
 621 South First  
 Elder Cleveland Bass, Min.  
**PROGRESS BAPTIST**  
 Progress, TX  
**PROGRESS SECOND BAPTIST**  
 Arthur Hays, Min.  
 1st & 3rd Sundays  
**RICHLAND HILLS BAPTIST**  
 17th & West Ave. D  
 George Malis, Pastor  
**ST. MATTHEWS BAPTIST**  
 Corner of W. Boston & W. Birch  
 Floyd R. Monroe, Min.  
**THREE WAY BAPTIST**  
 927-5467  
 James Sinclair, Pastor  
**TRINITY BAPTIST**  
 314 E. Ave. B  
 Robert Brown, Min.
- CATHOLIC**  
**IMMACULATE CONCEPTION CATHOLIC**  
 805 E. Hickory  
 Joseph Augustine, Min.  
**CHRISTIAN**  
**THE CHRISTIAN CENTER**  
 Morton Hwy. • 272-5105  
 Reydon Stanford, Min.
- CHURCH OF CHRIST**  
**LARIAT CHURCH OF CHRIST**  
 Sam Billingsley, Min.  
 S.S. 10 a.m.; W.S. 11 a.m. & 6 p.m.,  
 Wed. 7 p.m.
- LAZBUDDIE CHURCH OF CHRIST**  
 Nathan Crawford, Min.  
 S.S. 9:30 a.m.; W.S. 10:20 a.m. & 5 p.m.;  
 Wed. 7 p.m.
- MULESHOE CHURCH OF CHRIST**  
 22nd & W. American Blvd.  
 John Knox, Min.  
 S.S. 9:30 a.m.; W.S. 10:20 a.m. & 6 p.m.;  
 Wed. 7:30 p.m.
- 16th & AVE. D CHURCH OF CHRIST**  
 Curtis Shelburne, Min. • 272-4619  
 W.S. 10:30 a.m. & 1:30 p.m.;  
 Wed. 7:30 p.m.
- LUTHERAN**  
**ST. JOHN LUTHERAN**  
 Lariat, TX  
 Richard Greenthaner, Min.  
 S.S. 10:30 a.m.; W.S. 9:30 a.m.
- METHODIST**  
**FIRST UNITED METHODIST HISPANIC MINISTRIES**  
 E. 5th and E. Ave. D  
 Pastor Benito Cavazos  
**FIRST UNITED METHODIST**  
 507 W. 2nd St.  
 Pastor Brad Reeves  
**LAZBUDDIE METHODIST**  
 965-2121  
**EL DEVINO SALVADOR**  
 814 W. Ave. C, Muleshoe, TX  
 Guadalupe Ballinas, Min.
- NAZARENE**  
**NEW VISION CHURCH OF THE NAZARENE**  
 814 W. Ave. C • 272-3622  
 David R. McIntire
- PENTECOSTAL**  
**UNITED PENTECOSTAL CHURCH**  
 207 East Ave. G • 1-800-454-6051  
 Pastor McKibben, 3 pm Sunday Service
- INTER DENOMINATIONAL NEW COVENANT**  
 Plainview Hwy. Jimmy Low, Min.  
 S.S. 9:30 a.m.; W.S. 10:15 a.m.;  
 Wed. 7 p.m.
- MULESHOE FEED BARN**  
 311 W. American Blvd. HI-PRO FEEDS  
 Muleshoe, TX 272-5626
- BANK MEMBER FDIC**  
 202 South First 272-4515
- I lead in the way of righteousness, in the midst of the paths of judgment: That I may cause those that love me to inherit substance; and I will fill their treasures. -Proverbs 8:20,21

**MOHAWK AUTO PARTS**  
 1701 W. American Blvd.  
 272-4425 Muleshoe, TX

**Bob STOVALL Printing**  
 The Wells & Janet Hall Family  
 221 E. AVE. B • MULESHOE, TX  
 (806) 272-3373

**WESTERN DRUG**  
 114 Main 272-3106 Muleshoe

**Henry Insurance Agency, Inc.**  
*"Serving You Since 1964"*  
 111 West Avenue B 272-4581  
 Muleshoe, TX

**JAMES CRANE TIRE CO., INC.**  
 107 Main 272-4594  
 Mike Hahn Muleshoe, TX

**WINKLES TRUCKS, INC.**  
 Box 757 (806) 247-2724  
 Friona, TX

**Springlake Potatoes, Inc.**  
 P.O. Box 280 • Springlake, TX  
 262-5542

Since 1957 - The Original  
**Leal's Mexican Restaurant**  
 1010 W. American Blvd. 272-3294  
 Muleshoe, TX Victor & Debbie Leal

**RONNIE HOLT INSURANCE AGENCY**  
 Specializing in Crop, Life & Health Insurance  
 Western 66 Office Bldg.  
 272-3614 Muleshoe, TX

**TERRA DISTRIBUTION**  
 Hwy. 84 • 272-4203  
 Muleshoe, Texas

**SAIN IRRIGATION & MACHINES**  
 Complete Pump Service  
 W. American Blvd. 272-4397  
 Walt Sain Muleshoe, TX 272-4148

**TINO'S**  
 104 W. American Blvd.  
 272-7528 • Muleshoe, TX  
 Daily Specials Owners: Tino & Linda Campoya

**Shipman's Body Shop**  
 Auto Painting • Wrecker Service • Free Estimates  
 Tractor Glass & Windshields  
 410 N. 1st Muleshoe, TX  
 272-4408 FAX 272-3366

**BOBO INSURANCE AGENCY**  
 108 E. Ave. C 272-4264

**MAPLE COOP GIN**  
 927-5501  
 Maple, Texas

**B/S & More Family Fun Center**  
 123 Main • Muleshoe • 272-3828

**O & C OSONS**  
 Erection Sprinkler Ser. Welding & Repair  
 Repair & Assemble 909 W. American Blvd. 272-3475  
 Lupe Olivarez 272-5018

**EASTER GRAIN, INC.**  
 Easter Labuddie  
 276-5255 965-2817

**Tortilla Leal's Factory, Inc.**  
*"Serving West Texas since 1957"*  
 107 E. Ash 272-5772 Muleshoe, TX

**Decorators Floral & Gifts**  
 616 South First 272-4340  
 Muleshoe, TX

**IRRIGATION PUMPS & POWER**  
**ZIMMATIC CENTER-PIVOTS**  
 W. Hwy. 84 272-4483

## SCHOOL MENUS

March 23 - 27

**MULESHOE HIGH & JR. HIGH**  
**Breakfast**  
**Monday** — waffles, fruit or juice, milk. **Tuesday** — scrambled egg or toast, fruit or juice, milk. **Wednesday** — biscuit with gravy, fruit or juice, milk. **Thursday** — breakfast pizza, fruit or juice, milk. **Friday** — cinnamon roll, fruit or juice, milk.  
**Lunch**  
**Monday** — burrito, chili, Mexicali corn, sliced peaches, milk. **Tuesday** — chicken tetrazzini, mixed vegetables, tossed salad, Italian bread, milk. **Wednesday** — beef enchiladas, ranch beans, rice, tossed salad, milk. **Thursday** — corn dog, vegetable beef soup, cinnamon roll, fruit cocktail, milk. **Friday** — salmon patty, macaroni, and cheese, green beans, hot roll, milk.

**DILLMAN & DESHAZO**  
**Breakfast**  
**Monday** — waffles, fruit or juice, milk. **Tuesday** — scrambled egg or toast, fruit or juice, milk. **Wednesday** — biscuit with gravy, fruit or juice, milk. **Thursday** — breakfast pizza, fruit or juice, milk. **Friday** — cinnamon roll, fruit or juice, milk.  
**Lunch**  
**Monday** — pizza, carrot sticks, sliced peaches, chocolate chip cookie, milk. **Tuesday** — beef enchiladas, ranch beans, rice, tossed salad, milk. **Wednesday** — spaghetti, mixed vegetables, sliced peaches, Italian bread, milk. **Thursday** — corn dog, vegetable beef soup, cinnamon roll, fruit cocktail, milk. **Friday** — salmon patty, macaroni, and cheese, green beans, hot roll, milk.

**THREE WAY ISD**  
**Breakfast**  
**Monday** — biscuit with gravy, Apple Cinnamon cereal, juice, graham crackers, milk. **Tuesday** — waffles, sausage, Lucky Charms, juice, graham crackers, milk. **Wednesday** — Cream of Wheat, Trix, toast, juice, graham crackers, milk. **Thursday** — biscuits, sausage, assorted cereal, juice, graham crackers, milk. **Friday** — no school.  
**Lunch**  
**Monday** — enchiladas, ranch style beans, salad, crackers, cherry cobbler, milk. **Tuesday** — cheeseburger, crispy cost fries, apple, milk. **Wednesday** — chicken nuggets, black-eyed peas, carrots, hot rolls, pineapple, milk. **Thursday** — bar-

b-que, potato salad, pinto beans, wheat rolls, chocolate yogurt, milk.  
**Friday** — no school.  
**LAZBUDDIE ISD**  
**Lunch**  
**Monday** — pizza, subs, corn dogs, (PK-1) chicken pot pie, sweet potatoes, fried okra, corn, salad, fruit, jello, milk. **Tuesday** — tacos, burritos, tuna sandwich, (PK-1) ham, au gratin potatoes, black-eyed peas, salad, fruit, jello, milk. **Wednesday** — grandparent's luncheon, hamburgers, egg rolls, BBQ sandwich, (PK-1) chicken fajitas, pinto beans, Spanish rice, squash casserole, salad, fruit, jello, milk. **Thursday** — pign-a-blanket, pizza, frito pie, (PK-1) steak patties with gravy, fries, green beans, carrots, salad, fruit, juice. **Friday** — Friday special.

## OBITUARIES

**AMBROSIA ROJAS**  
**WICHITA FALLS** — Ambrosia Cisneros Rojas, 87, of Wichita Falls died Friday, March 13, 1998, in a Wichita Falls hospital.  
 Memorial services were

held March 16, 1998 at Hampton Vaughn Downtown Chapel with the Rev. William Carnley, pastor of Maurine Street Church of God, officiating. Burial followed in Sacred Heart Cemetery.

Mr. Rojas was born Dec. 7, 1910 in Mexico. He married Eloisa Dominguez Jan. 1, 1930 in Austin. She died Nov. 27, 1977. Rojas was a retired farm laborer and a Catholic. He was a Muleshoe resident prior to his move to Wichita Falls.

Survivors include his four sons, Antonio and Ambrosio Jr. of Muleshoe, Daniel and Joe, both of Wichita Falls; six daughters, Susie Rodriguez, Mary Ambriz and Rosalinda Chavez, all of Muleshoe, Paula Reyna and Juanita Alfaro of Wichita Falls, and Minnie Vega of Winter Garden, Fla.; two brothers, George of Bertram, Texas, Pete of Santa Maria, Calif.; three sisters, Sarah Jimenez, Petra Salazar of Lampasas, Texas and Con-

cha Solis of Bertram; 32 grandchildren, 41 great-grandchildren.

**FARRIS PATTON**  
**MORTON**—Farris (Brother) Patton, 67, of Morton died Monday, March 16, 1998 at his residence in Morton.

Memorial services were held March 21, 1998 at First Baptist Church in Morton with Rev. Danny Jackson, pastor, and Rev. Johnny Evans, pastor of Church of God in Christ of Morton, and Rev. Aaron Garrett, pastor of the Morton Community Church, officiating.

Burial followed in Morton Memorial Cemetery under the direction of Ellis Funeral Home.

Patton was born July 22, 1930 in Center, Texas. He married Dorothy Moore Jan. 11,

1953 in Center.

Patton was preceded in death by his wife Dorothy, Oct. 8, 1996; one son, Bobby in 1990; one brother, R.L. Patton.

Patton moved to Morton from Center in 1959. He was employed by the Texas Highway Department in Bailey County.

Survivors include four sons, Elton, Troy, and Roy Glen all of Dallas, and Ronnie of Hondo, Texas; six daughters, Dorothy Whitfield of Morton, Edna Patton, Doretha Shelton, Sharon Shelton, Joy Lynn Patton, Vickie Patton, all of Dallas; three sisters, Geraldine Waits of Houston, Earlene Patton, Mavis Patton both of Center; brother, R.A. Patton of Center, 24 grandchildren, 6 great-grandchildren.

## NURSING HOME NEWS

On Tuesday, March 17th St. "Paddy's" Day, Karen Cook hosted a party for the residents. Refreshments of green sour dough bread and Irish cream coffee were served.

Tuesday afternoon Claudine Embry, Pat Watson, Lanell Stancell, Mary Jo Burge, Karen Cook, and Ozell Cherry shampooed and set the ladies hair and gave nail care.

Wednesday morning Harold and Mary Jo Burge and Jane Reeder served donuts and coffee and juice to the residents punctuated by conversation and laughter.

Glenda Jennings and Jonesa Brockman entertained the residents with their music, songs and puppet show Wednesday afternoon.

Jeff Peeler's brothers and sister-in-law, Mr. and Mrs. Paul Peeler from Kansas visited with him last week along with his wife and daughter.

Katherine Roger's son Richard Rogers from Houston visited her last week.

Bro. and sister Jack Stone visited Lora Dale last week.

Thursday morning Pastor David McIntire, J.C. Shanks and Zona Gatewood directed our devotional reflection time.

Friday morning Pat Watson directed the music therapy session. This is a time for name that tune, singing, reminiscing and entertainment.

We wish to express our deepest sympathy to the family and friends of Vera Colson.

Saturday afternoon Melvin and Wanda Griffin directed the bingo game. Refreshments of fresh fruit was served after the games.

Sunday afternoon the Primitive Baptist Church came for gospel singing. Diane Copley from the New Covenant Church came for church services.

Kenneth Martin and Grace Scarbrough attended church service at their places of worship Sunday morning.

Willie Maye Graves assisted the residents to and from the Communion Service Sunday morning and to bible study.

Local news for local folks  
 The Muleshoe Journal

### Zeneca Offers Rebate for Top Corn Products

Open your wallet, your Zeneca Ag Products representative wants to fill it with cash.

Zeneca Ag Products is offering area corn growers an opportunity to recoup some of their 1998 costs. Through a special two-part program called TAG

TEAM™ SOUTH, growers with 100 or more acres in production can earn up to \$4 per acre back on their Zeneca corn herbicide and insecticide purchases.

Qualified growers may enroll in the program until May 31, 1998 by registration cards sent through the mail or by visiting their local ag chem retailer for enrollment forms and program guidelines.

The Zeneca corn products that qualify for the 1998 TAG TEAM SOUTH program include Surpass® EC, Surpass 100, FulTime™, Force®, Gramoxone® Extra and Karate®. The following easy steps will earn cash back for using Zeneca corn products:

1. Use Surpass 100 on a minimum of 100 acres and earn \$1.75 per acre.
2. Add Gramoxone Extra as a burndown and the rebate increases to \$3 per acre.
3. Add Force or Karate insecticide to steps 1 and 2 and earn \$4 per acre.

For example, if 200 acres of corn were treated with Surpass, Gramoxone Extra and Karate, the rebate would be \$4 per acre, which equals \$800.

For the best protection against a wide variety of pests and to earn money back for your crop protection purchases, count on Zeneca Ag Products.

Contact your local ag chem dealer for more information about the TAG TEAM SOUTH program.

©1998 Zeneca Inc. Zeneca Ag Products is a business unit of Zeneca Inc. FulTime™, FORCE®, GRAMOXONE®, KARATE®, TAG TEAM™ and SURPASS® are trademarks of a Zeneca Group Company. Force, FulTime, Gramoxone Extra, Karate and Surpass are registered trademarks. Farm Safety Always read and follow label directions.

## Enter Now!

### The Muleshoe Journal's 4th Annual CUTEST BABY CONTEST

Enter any child born in 1997 that is special to you—children, grandchildren, nieces, nephews, etc.

Winner Will Receive a \$50 Savings Bond For Being Selected 1997's Cutest Baby!

This year's contestants will appear in the Easter (April 12th) issue of the Bailey County Journal. A panel of unbiased judges will pick the most attractive picture to be the 1997 Cutest Baby. All baby pictures will be printed. Babies need not be born in this area.

Bring your favorite child's photo along with \$9.75 to the Muleshoe Journal office at 304 W. 2nd St., Monday-Friday between 8 a.m. and 5 p.m. or mail the coupon below with your child's photo and \$9.75 to the Muleshoe Journal, P.O. Box 449, Muleshoe, TX 79347. You may pick up your baby's picture during office hours after Monday, April 13, 1998.

Please leave phone number or address (it will not be published) so that we may contact you if we need additional information.

**Baby's Name:** \_\_\_\_\_  
**Date of Birth:** \_\_\_\_\_  
**Weight at Birth:** \_\_\_\_\_  
**Place of Birth:** \_\_\_\_\_  
**Length at Birth:** \_\_\_\_\_  
**Mom & Dad's Name:** \_\_\_\_\_  
**Grandparent's Name:** \_\_\_\_\_

**ENTRY DEADLINE IS APRIL 7, 1998**

# Journal Classifieds

Call 272-4536

Deadlines are 5 p.m. Monday and Thursday

REAL ESTATE  
 AUTOMOBILES  
 HELP WANTED  
 GARAGE SALES

### BUSINESS OPPORTUNITY

Perfect part-time home business!  
 Earn \$2K per month  
 2-10 Hours a week  
 Hands on training  
 24 hour message.  
 1-888-268-0617. 12s-4tpd

### REAL ESTATE

For Sale; 2 bedroom, 2 bath, 1 carport, central air and heat, storm cellar. 272-5291. 10t-9tpd

For Sale or Rent to own, 3 bedroom, 2 bath house, 1750 sq. ft. 612 W. ave. F. (806) 265-3413. 11t-1fc

### HELP WANTED

Silage cutters & tractor operators needed for 1998 silage season. CDLs & some travel. Excellent hourly wages. Contact SCB Farms Inc. (806) 238-1206. 12s-6tpd

### Wanted

Maintenance Person  
 Requires general knowledge of electrical and mechanical equipment, heating/ air-conditioning, carpentry and plumbing. Contact Keith Harp, Director of Engineering, Muleshoe Area Medical Center, 708 South First Street, Muleshoe, TX 79347. (806) 272-4524 Ext. 3280. 11s-8tch

Sudan Drilling & Irrigation needs machine operators & helpers. License not required, experience helpful. Apply at Main St. Cruise Cafe/Sudan or call (806) 227-2438. 12t-3tpd

Now hiring part-time and full-time employees. Excellent benefits, health ins., paid sick leave, 1st year 2 weeks paid vac. Retirement plan, stock purchase plan and college. Reimbursement program. Applications are available at your nearest Town & Country Location .Drug Testing Required . 13s-5tch

### SERVICE

ARE YOU SUFFERING DEPRESSION?  
 Christian Center Counseling Service is offering a free tape series entitled "Overcoming Depression". To obtain a free copy, call (806) 272-3877. 12s-6tch

Sewing and Alterations. Peggy 272-6764. Experienced, jeans, zippers, etc. 7s-tfc

Feel better in days, please call us for your colorad and CF1 needs. Portales, NM. (505) 359-0980. 12s-6tpd

Wanted to do handy man JOBS. 272-3217 or 946-8466. 13s-1tch

### FOR SALE

For Sale, 1985 Oldsmobile Firenza; four door, automatic transmission. Good school car. \$750.00. Call 272-4468 after 4 p.m. 12t-2tch

Rebuilt vertical hollow shaft irrigation motors in stock 30 hp thru 100 hp. Ronald Ashford Electrical. (806) 272-4571. 13s-8tch

Health problems forces to sale 14 x 70 mobile home. Price below book. 272-3957. 13s-1tpd

### FAST, FABULOUS 1974 FORD LTD

Excellent condition inside and out. 65,000 ORIGINAL miles. New wiring, brakes, tires. Must see to believe! Soon to be an antique! Asking \$3,500 CASH. Call Leah at 806/272-4536 days, 806/925-6614 nights. 13s-2tpd

### WANTED

I-27 TRADERS TREASURES EAST ACCESS OF I-27 SOUTH PLAINVIEW, TX

PLAINVIEW'S NEWEST FLEA MARKET! FREE ADMISSION

EVERY SATURDAY AND SUNDAY!! Everyone is welcome!! Treasures Galore, antiques, collectibles, crafts, even an area of garage sale specials!! Vendors, there is still time to choose your space to sell your crafts, collectibles, antiques or even have a garage sale. Call Mike or Judy Tiner at (806) 747-7833 or (806) 749-2202. 13s-4tch

### REAL ESTATE

Price Reduced, Country Living at it's Best - 6 miles West of Muleshoe on Highway 1760. Approx. 3500 sq. ft. Gorgeous 3-3-3 Brick home with lots of builtins, fireplace, central heat, ref. air, sunroom with hot tub, lots of storage, large family room and utility room, every woman's dream. All on 2 1/2 acres. Also 30x50 metal barn with corrals. If you want it! This place has it!

• 320 ac. NE of Muleshoe, 2 story stucco house, very large barn, 2 sprinkler systems, well, etc. Out of Area Owner says "Sell It!"

• 160 ac. SE of Lazbuddie. Excellent water area, Circular sprinkler, 100 hp elect. Motor. Excellent cash lease in effect on this farm.

• 207 ac. NW of Lazbuddie. 125 hp Elect Motor, electric sprinkler. Domestic well.

New Listing- Just west of Muleshoe on pavement. Nice 3 bedroom 1 3/4 bath brick home with attached garage. 30 X 40 insulated barn, corrals and lots of storage all on 4.4 acres. Must see to appreciate. Call for more details.

Great Investment Opportunity- 25 acres with 3 rent houses, 6 complete mobile home hook-ups with electricity, water and cable. Just west of Muleshoe. Reasonably Prices!! Call for more details!!

### REAL ESTATE

Price Reduced, Country Living at it's Best - 6 miles West of Muleshoe on Highway 1760. Approx. 3500 sq. ft. Gorgeous 3-3-3 Brick home with lots of builtins, fireplace, central heat, ref. air, sunroom with hot tub, lots of storage, large family room and utility room, every woman's dream. All on 2 1/2 acres. Also 30x50 metal barn with corrals. If you want it! This place has it!

• 320 ac. NE of Muleshoe, 2 story stucco house, very large barn, 2 sprinkler systems, well, etc. Out of Area Owner says "Sell It!"

• 160 ac. SE of Lazbuddie. Excellent water area, Circular sprinkler, 100 hp elect. Motor. Excellent cash lease in effect on this farm.

• 207 ac. NW of Lazbuddie. 125 hp Elect Motor, electric sprinkler. Domestic well.

New Listing- Just west of Muleshoe on pavement. Nice 3 bedroom 1 3/4 bath brick home with attached garage. 30 X 40 insulated barn, corrals and lots of storage all on 4.4 acres. Must see to appreciate. Call for more details.

Great Investment Opportunity- 25 acres with 3 rent houses, 6 complete mobile home hook-ups with electricity, water and cable. Just west of Muleshoe. Reasonably Prices!! Call for more details!!

(806) 481-3846 • Toll Free: 1-888-999-3846  
 Ronald Byrd, GRI Licensed Broker  
 Home: (806) 481-9318  
 Crista Bass, Sales Associate • Home: (806) 925-6464



# Journal Classifieds

REAL ESTATE  
AUTOMOBILES  
HELP WANTED  
GARAGE SALES

## STOP & SHOP

Deadlines are 5 p.m. Monday and Thursday

Call 272-4536

Deadlines are 5 p.m. Monday and Thursday

### LEGAL

**NOTICE OF APPLICATION**  
Wheelerator Coal Services Company has applied to the Texas Natural Resources Commission (TNRCC) for renewal of Air Quality Permit No. 7538A of an existing Coal Handling Facility located 8 miles east of Muleshoe on Highway 70, Lamb County, Texas. The facility will emit the following air contaminant: particulate matter (coal dust). A person who may be affected by air contaminants emitted from the existing facility may request a hearing. If the applicant demonstrates the existing facility will comply with all applicable air quality requirements, the applicant will qualify for issuance of a permit renewal. The subject of a hearing would be limited to applicable air quality requirements, which do not include issues such as water quality, noise, traffic safety, or zoning. If a hearing is held, it will be a legal proceeding similar to civil trials in state district court. To request a hearing, you must submit the following: (1) your name (or for a group or association, an official representative), mailing address, daytime phone number, and fax number, if any; (2) the applicant's name and permit number (3) the statement "I/we request a public hearing;" (4) a brief, specific statement of how and why emissions from the facility would adversely affect you in a way not common to members of the general public; and (5) the location of your property relative to the facility. Hearing requests or comments on the application must be received in writing at the Chief Clerk's Office, MC-105, TNRCC,

### LEGAL

P.O. Box 13087, Austin, Texas 78711-3087, within 15 days after the second publication of this notice. This notice is to be published on 22 and 26. A copy of the registration is available for review reproduction at the TNRCC Office or Air Quality, 12124 Park 35 Circle, Building C, Austin, Texas 78753. Registration documents and further information may be obtained from the TNRCC Lubbock Regional Office, Air Program at 4630 50th Street, Suite 600, Lubbock, Texas 79414-3509, telephone (806) 796-7092. Individual members of the public who wish to inquire about the information contained in this notice or to inquire about other agency permit applications or permitting processes should call the TNRCC Office of Public Assistance, toll free, at 1-800-687-4040. Published in the Bailey County Journal March 22 and March 26, 1998

MAKE YOUR PITCH!



### REAL ESTATE



**Daren Sudderth**  
Associate Broker • State Certified Appraiser  
Res. (806) 825-3389

- \* 306 acres south of Lazbuddie with three 8" irrigation wells, 2 circle sprinklers and 2,500 head feed lot. Good water area.
- \* 550 acres south of Lazbuddie with 4 irrigation wells and 4 circle sprinklers. Good water area.
- \* 2 Quarters-CRP-SE of Muleshoe city limits. 10-year contract in CRP. One Quarter on Highway.
- \* 404 acres in Contract. 2 irrigation wells, 2 circle sprinklers. Good water area.
- \* 160 acres southeast of Alma Lane crossroads, 1 irrigation well.
- \* 160 acres northeast of Alma Lane crossroads, 1 irrigation well.

### LEGAL

**NOTICE OF REQUEST FOR PROPOSALS**  
The Bailey County Commissioners Court is currently accepting sealed proposals for group health insurance coverage for Bailey County Employees. Proposals must be delivered to the County Judge's office, 300 S. 1st, Muleshoe, TX 79347, no later than Monday, May 11th, 1998, at 11:00 a.m., at which time proposals will be opened. Proposals should be for the same coverage and in the amounts now provided under the Bailey County Employee Benefit Trust, a partially self-funded plan, which plan year runs from June 1st through May 31st. Any proposals for more or less coverage, or for plans which would not be partially self-funded, should be presented as options and labeled as such. Specifications, as well as personnel and claims experience information, are available in the County Judge's office and will be provided upon request. The County reserves the right to accept or reject any or all proposals. Published in the Bailey County Journal March 22nd and April 19th, 1998.

### REAL ESTATE

### LEGAL

**Notice to Bidders**  
The South Plains Community Action Association (SPCAA), in Levelland, Texas, on behalf of approved applicants, under its HOME Deferred Loan Program, is soliciting bids for the rehabilitation of certain homeowner dwellings. Interested contractors may obtain bid documents at the SOUTH PLAINS REGIONAL HOUSING AUTHORITY, 510 Ave. L, Levelland, Texas and SPARTAN 804 W. American Blvd. Muleshoe, Texas, for the following project locations.  
310 W. Austin, Muleshoe, Texas  
602 E. 3rd, Muleshoe, Texas  
Sealed bids will be opened at 2 p.m. on Monday, April 6, 1998 at 215 S. 1st, Muleshoe, Texas (City Hall). The SPCAA and / or the homeowner reserve(s) the right to refuse any and / or all bids. All qualified bidders will receive consideration for award of contract without regard to race, color, creed, sex, religion, national origin, mental or physical disability, marital status, parenthood, or age. For additional information, contact the person listed below:  
Janie Posadas, SPCAA Multi Service Center, Muleshoe, Tx (806) 272-7537.

Florence Shoemaker, HOME Program Coordinator, Levelland, Tx (806) 894-4940. Published in the Bailey County Journal March 22 and March 29, 1998.



### REAL ESTATE

## James F. Hayes & Co.

AGRICULTURAL REAL ESTATE SERVICES

4 Labors in Baillyboro area. Milo, wheat and cotton base. Good dryland cotton yield. Good government check. Immediate possession available.

390 Acres with 3 bdrm Austin stonehouse. Stegall area. 70 acres of native grass. 320 Acres of CRP just renewed for 10 yrs @ \$39.50 per acre. House and 70 acres can be sold separately.

160 Acres just north of Muleshoe. 2 irrigation well with new pumps. New underground pipe and wire. Late model Valley Sprinkler. Good F.S.A. payment. Immediate possession possible.

### Vic Coker, Agent

310 Main St. Suite 103 Muleshoe  
Office 272-3100 Home 965-2468  
WHEN LAND INVOLVES COWS AND PLOWS

### REAL ESTATE

## Jo Ann Chester Realty

806-227-2368

**BRICK**—Approx. 1200 sq. ft., 3-1-1, Strm. wd., dual fuel ht., patio, strg.hs. fenced yd., near school. **318 W. Ave. K**

**BRICK**—Approx. 2000 sq. ft., 3-1 3/4-2, kit. w/ built-ins, L.R. Den, lg. ut., ct. ht., Lg. shop or R.V. strg. w/ office and upstairs apt. **1003 W. 6th Ave. J**

**BRICK**—Approx. 1750 sq. ft., 3-13/4, newly remodeled w/ new app. carpet, wiring, grg. doors, septic, barn, strm cellar, on 3 ACRES. **South of Springlake**

**MASONITE SIDING**—Approx. 1500 sq.ft., 3-1/2-2, kit. w/ built-w, lg. ut/office, ct.ht-air. Will have new roof & septic, on 1 Acre, 3 more acres available. **DODD HWY-N. Earth**

**RESTAURANT** - 40-50 seat cap., fully equipt. **TRAVEL CENTER- 84 HWY, LITTLEFIELD.**

**FARM** - 177 ac. dryland. **CIRCLEBACK HOMES AVAILABLE - IN SUDAN, EARTH, LITTLEFIELD**

### PEAS, INC

dba

## C.T. SMITH CO.

429 HOUSTON ST.

P.O. BOX 130

PLEASANTON, TEXAS 78064

Contracts available for Black Eye Peas. For more information contact Jim Taylor Office (830) 569-2140 (830) 569-6331 Mobile (210) 213-1719 W.TX. MOB. (806) 922-7505

## The following people have announced their candidacy for the General Election

Tuesday, Nov. 3, 1998

### DISTRICT 287TH JUDGE

- Gordon H. Green, Democrat
- JUSTICE OF THE PEACE PRECINCT NO.1
- Jack Bates, Democrat
- BAILEY COUNTY CLERK
- Sherri Bessire Harrison, Republican
- Jan Pierce, Democrat
- DISTRICT CLERK
- Elaine Parker, Democrat
- BAILEY COUNTY COMMISSIONER PRECINCT 4
- Jerry Damron, Democrat

Paid political advertisement



## Nieman Realty



116 E. Ave. C • George Nieman, Broker • 272-5285 or 272-5286

### RICHLAND HILLS

- 3-3-1 Brick, cent. Heat, Evap. Air, built-ins, 2000' + lv. area, fenced yd., stor. bldg, MORE!! \$60K !!! RH-2
- PARKRIDGE-NICE 3-2-2 Brick, Cent. A&H, built-ins, FP, cov. patio, fenced yd. \$50's!!
- NICE 3-2-3 Brick, corner lot, Cent. A & H, built-ins, FP, 2 stor. bldgs., storm cellar, fenced yd., MORE !!! \$60K!!! RH-1

### HIGHLAND AREA

- 3-2-2 Brick, Cent. A&H, built-ins, gas log FP, fenced yd., stor. bldg., MORE!! Price Reduced!! HL-5
- LENAU - COUNTRY CLUB AREA
- 2-1-1 Carport Home, wall furnace, nice carpet, storm shelter, stor. bldg., fenced yd. \$20's!!! CC-3
- 2-1-1 Home, Cent. Heat, built-ins, Hardwood floors!! \$19,500! L-3
- 2-1-1 Home, floor furnace, win. ref. air, fenced yd, stor. bldg., \$19,500 !!! L-1

### COMMERCIAL

- Established Business: Land, Bldg. & Equip., \$75K!!
- 175' x 140' tract, approx. 8500' bldg. on Main. \$35K!!!
- 56' x 140' tract, approx. 4700' bldg., \$35K!!!
- NICE R.V. STORAGE, 14' X 40' metal bldg. 12' doors, corner lot!!
- SNACKSHACK - Lot, Buildings, furniture, and fixtures!!!!
- LARIAT- 240 acres, 3 wells, underground tile, good productive land!!!

### HIGH SCHOOL

- Nice 3-2-2 Brick, Cent. A&H, built-ins fenced yd., MORE !! \$40's !! HS-5
- Very Nice 3-1-1- Brick Home, cent. Heat & Air, built-ins, fans, woodburning stove, nice carpets, storage bldg., fenced yd., More !!! Price Reduced!!! HS-7
- NEWLY REMODELED 3-1-1 Home, cent. A & H, new carpet & vinyl, fenced yd., MORE !! \$30's !!! HS-2
- VERY NICE 3-1-1 Brick, Heat pump, DW, nice carpets, fenced yd., MORE!!! \$30's !!! HS-1
- NICE 2-1-1 Brick, Heat Pump, nice carpets, well insulated, storm windows & doors. \$30's!!! HS6

### RURAL

- 3-2-2 Home on .92 acre at edge of town, Cent. Heat, evap. air, DW, storage bldg., fenced yd., & MORE !! \$30K!!
- W. of SUDAN-NICE 3-3-2 Brick Home, 5 acre tract on Hwy. 298, Cent. Air & Heat, built-ins, large Quonset Barn, MORE!!! \$95K!!!
- JUST LISTED- NICE 4-1-2 Home, Heat Pump, Built-ins fenced yd., 2 Stor. bldgs., approx. 10 acre tract, on pavement close to town!! \$50's !!!
- 5 Acre tract on pavement close to town!
- NICE 3-2 Home, 40 acre tract, Geo-heat Pump, built-ins, 6' well, Hi-Pres. Lines, barns, corrals, tractor & equip!!! \$75K!!!!
- LAZBUDDIE-NICE 3-2-1 CP Brick Home on pavement, DW, Geo. Heat Pump, 4.73 ac, barns, corrals, & MORE!!! \$40's !!!
- NICE 3-2-2 Brick on pavement, 2200' t, built-ins, FP, large sunroom!! \$80's !!!

## AUCTION

Saturday, March 28, 1998 SALE TIME 9:37 A.M.

Located: Baileyboro, TX From Cemetery 1/2 mile North on FM Hwy 2487, then 1 1/2 miles West on Co Dirt Rd 1192. (Baileyboro, TX is located from Muleshoe, TX 13 miles South on Texas Hwy 214, then 5 miles West on FM Hwy 298; or from Morton, TX 21 miles North on Texas Hwy 214, then 5 miles West on FM Hwy 298.) Sale Site is located from Arch, NM 6 miles East on NM Hwy 88 to NM/TX stateline, then 16 1/2 miles East on Texas FM Hwy 746, then 7 miles South on FM Hwy 2487, then 1 1/2 miles West on Co Dirt Rd 1192. (Arch, NM is located 15 miles East of Portales, NM on NM State Hwy 88.)

**Delbert Watson Estate, Owner**

Due to the death of Mr. Watson, the following will be sold at Public Auction. Call Cruce & Fletcher (806) 296-5050 or (806) 866-4201.

### TRACTORS - ANTIQUES

- 1-1992 Case International 7120 Diesel Tractor, 2 WD, Cab, A/C, Hdr, Wf, Wts, TH, DPTD, 18.4-42 Rbr
- 1-1985 John Deere 4850 Diesel Tractor, MFWD, SG Cab, A/C, Hdr, Radio, PS, 20.8-38 Rbr, 7623 hrs
- 1-1981 Case 2390 Diesel Tractor, Cab, A/C, Hdr, Wf, Wts., DH, 18.4-38 Rubber, PS Transmission
- 1-1978 International 1486 Diesel Tractor, Cab, WF, Wts, DH, DPTD, 18.4-38 Rubber
- 1-1981 John Deere 4010 Diesel Tractor, WF, Fenders, 15.5-38 Rubber (not running)
- 1-1966 Allis Chalmers 190 Diesel Tractor, WF, 18.4-34 Rubber (not running)
- 1-1959 Ford 841 Diesel Tractor, 4 cyl, Diesel Engine, WF, 13.6-28 Rubber (not running)
- 1-1981 John Deere Model A Tractor, Styled, Elec Start Roll-Over Protection, 13.6-28 Rubber (not running)
- 1-John Deere Model A Unstyled Tractor (not running)
- 1-John Deere No. 9 DT Combine
- 1-Oliver Antique DT Combine 1-Antique JD Model D

### COMBINES-GRAIN KARTS-HDRS-CUMBER, CAB

- 1-1981 International 1400 Diesel Combine, Cab, A/C, Hdr, Radio, 810 24 ft Hdr, MBR, 30.5L-32 Rbr
- 1-1977 Massey Ferguson 750 Diesel Combine, Cab, 24 ft. Header, MBR, 24.5-32 Rubber (ATB-354 Eng.)
- 2-Big 12, 400 Bushel Grain Karts
- 1-Massey Ferguson 10' Hdr, Sund Pickup Attachment
- 3-Sund 10 ft. Pickup Attachments
- 1-Massey Ferguson 24 ft. Grain Platform
- 1-Aluminum 24 ft. Pickup Reel
- 1-John Deere Model 8FHR-1 row Ensilage Cutter

### EQUIPMENT

- 1-John Deere 7300 Vacuum Planter, 8 row, Trash Whips, DB, Monitor, Double Press Wheels, Cover
- 1-International # 82 Lister Planter, 8, 5 X 7 Bar, GWD
- 1-Allis Chalmers Lister Planter, 8 row, Rigged to Plant 6 rows, 2 in. taut, 4" x 7" Bar, GWD
- 1-Tye 8 row, 3 pt., Grain Drill, 8" Spaced, DD
- 1-RAC 3 pt, 11 shnk Stubble Mulch Sweep PLOW, H FW, 4" x 7" Bar & 4" x 4" Bar, Gauge Wheels
- 1-John Deere 400, 28 ft. Rotary Hoe, 3 pt
- 1-John Deere BWA, 21 ft. Tandem Disc Plow
- 1-John Deere 727, 4 row, DT Shredder
- 1-Phares Wilkens 8 row, 3 pt. Stalk Cutter
- 1-Noble 32 ft. Field Cultivator, DT, Fold Wing
- 1-9 row 3 pt. Lister, 4" x 7" Bar, 2" Bar, G W
- 1-9 row 3 pt. Middle Runner Sweep PLOW
- 1-Hamby 3 pt. 20' Chisel Sweep PLOW, TSB, LTM, GW
- 1-Sam Stevens 8 row 3 pt Rodweeder Knifing Cult
- 1-RAC 8 row 3 pt. Knifing Cultivator
- 1-Hamby 9 shank, 3 pt., Ripper PLOW, TSB
- 1-Big Ox 3 pt, 15 shank V Ripper PLOW
- 1-Sam Stevens 3 pt, 60 ft. Hyd. FW, Sandfighter
- 1-John Deere 8 row Lister Planter, DTB, GWD
- 1-Phares Wilkens 8 row 3 pt. Crop Knifer
- 1-Custbuster 42' Grain Drill, FW, Hoe Type, 12" space
- 1-Deartom 3 pt, 6 ft. Blade

### EQUIPMENT Cont

- 1-Caldwell 4 row DT Shredder
- 1-Rolocycle 4 row DT Shredder
- 1-Krause 14 ft. Tandem Disc Plow
- 2-Phares Wilkens 18 row DT Sandfighter
- 8-International 295 Ind. Bed Planter Units
- 1-Phares Wilkens 3 pt 9 row Sandfighter
- 1-Ferguson 2 row, 3 pt Cultivator
- 1-John Deere 8 row, 3 pt Monitor Cultivator
- 2-John Deere 17 ft. Oneways
- 1-Massey Ferguson 3 pt, 5-16" Moldboard Plow
- 1-R&J 3 pt, 6 row Crop Knifer Plow
- 1-9 row 3 pt Bed Knifer Plow
- 1-4 row FM Sickle Topper
- 1-Servis DT Whirlwind Terracing Machine
- 1-Graham Hoeme 13 shnk, DT Chisel Sweep PLOW, 1-Dempster 8 hole Drop Furrow Grain Drill
- 1-Dempster Ind. Row Bed Planter Units
- 1-Moline 16 x 10 Grain Drill
- 1-8 row 3 pt Ind Row Scratcher
- 1-Case 2 up-2 down DT Moldboard Plow
- 1-John Deere 6 row, FM Cultivator
- 1-John Deere 4 row, FM Cultivator
- 1-International Broadcast Binder
- 1-Meyers DT V Ditcher, 1-9 row DT Sandfighter
- 1-Massey Harris DT Canvas Swather

### TRAILERS

- 1-Kent BP 5' x 14' Stock Trailer, OT
- 1-Donahue 8' x 28' Lowboy Implement Trailer
- 1-T.A. Coil-link Trailer Chassis
- 2-4 wheel Trailer Chassis 1-2 wheel Flatbed Trailer

### COTTON HARVESTING EQUIPMENT

- 1-1981 International 1400 Diesel SP Cotton Stripper, Cab, A/C, Heater, 4 row Brush Header, 24L-26 Rbr (Eng OHI, 1997)
- 1-1978 John Deere 484 Diesel SP Cotton Stripper, Cab, 4 row Brush Header, 16.9-26 Rubber
- 1-Bush Hog Cotton Module Builder, Cab, 32 ft
- 1-Big 12 Model 1200, Cotton Boll Buggy
- 1-John Deere No. 33, 2 row, DT Cotton Stripper
- 3-Big 12, 8' x 9' x 24', 4 wheel Metal Cotton Trailers
- 2-Big 12, 8' x 9' x 32', 6 wheel Metal Cotton Trailers

### SPRAYERS, TANKS, TRAILER

- 1-Wylie 1000 Gallon Sprayer, Nurse Tank, on 4 wheel HC Chassis w/Gas Motor, Pump
- 1-1200 Gallon Propane Tank, 200 PSI
- 1-Wylie Twin 200 Gallon Side Mount Spray Tanks
- 1-International Broadcast Binder
- 1-G.I. Army Surplus 1200 Gallon Nurse Tank
- 1-500 Gallon O/H Fuel Tank & Stand
- 1-300 Gallon F/G, FM Sprayer
- 1-150 Gallon F/G Tank
- 1-Kuker 25 Gallon, 12 volt Spot Sprayer
- 1-250 Gallon 250 PSI Propane Tank
- 1-500 Gallon 100 PSI Butane Tank
- 1-125 Gallon Round 200 PSI Propane Tank
- 1-Ace Hyd. Pump 2-Ace PTO Pumps

### TRACTOR & TOOL MAKEUPS

- 1-Set 18.4-38 Tractor Tires, Rims, 9 Hole
- 1-Case Cat III Quick Hitch 2-Lee Cat III Quick Hitch
- 1-John Deere 484 CS Skip Row Attachment
- 1-Porter 28 ft. SSB Tool Carrier, 3 pt, GW
- 1-John Deere 3 pt, 5 row Toolbar, GW, Levers
- 2-RAC, Set Hyd Row Markers, 1 Hyd FW
- 1-Set Hamby Hyd Row Markers
- 1-Set RAC Guide Cone Gauge Wheels
- 8-See-Weed Herbicide Row Units

### YARD & GARDEN- MISC- ANTIQUES

- 1-Small Utility Yard & Garden Tractor
- 1-Lot Hoes, Forks, Rakes, Etc.
- 1-Chevrolet 250, 6 cyl. Irr. Motor
- 1-McCormick Deering Portable Blower
- 1-HD Gin Fan Blower 1-Lot Guard Rail Material
- 1-Speed King 4' x 10' Down Fill Grain Auger, 12 volt
- 10-10 gallon Cream Cans
- 1-Antique Trunk 1-Large Lot Tires, Wheels
- 1-Lot Chains, Boomers, Come Alongs
- 1-Lot Salvage Junk Engines 1-Lot Antique PLOW Tools
- 1-Lot Old Car & Pickup Bodies, Parts, Some Antiques
- 1-Lot Balls, Hoses, Clamps, Filters
- 1-Lot Barrel Pumps, Funnels, Barrels
- 1-Lot Oil, Grease, Lubricants, Farm Chemicals
- 1-Lot Scoops, Forks, Hoes, Etc.
- 1-Large Lot Aluminum Pipe, Gated, Flowline, Hydrants
- 1-Large Lot Junk & Scrap Iron, Shop Iron, Old Implements, Scrap Aluminum, Batteries, Vehicles
- 1-Lot Items Too Numerous to List

### SHOP EQUIPMENT

- 1-Solar Portable Battery Charger
- 1-Schumacher Battery Charger
- 1-Manual Tire Breakdown Tool
- 1-Jet Chain Hoist 1-Lot Hydraulic Jacks
- 1-Lot Power & Hand Tools
- 1-Lot C Clamps, Extension Cords 2-5 gal LPG Bottles
- 1-Large Lot Bolts, Nuts, Washers, Screws, Etc.
- 1-Chain Hoist A Frame Rack

### LIVESTOCK EQUIPMENT

- 1-Cake or Material Conveyor
- 1-6 hole D/S Metal Hog Feeder

### TRUCKS, PICKUPS, TRAVEL TRAILER, BOAT

- 1-1976 GMC 6500 Grain Truck, TA, 366 Engine, 5 sp, 2 sp, 22 ft. Bed, T.C. Hoist, R/O Tarp
- 1-1985 Chevrolet 6500, SA Flatbed Truck, 6 cyl.
- 1-1994 Ford F-250 Super Cab PU, Diesel, A/T, LWB
- 1-1973 Chevrolet Pickup, 4 x 4, V8, A/T, LWB, LPG
- 1-Layton 18 ft. SA Travel Trailer, AC
- 1-Hydrolyne 15 ft Boat & Trailer
- 1-Evnrude 100 OB Motor
- 1-40 ft. Trailer House Chassis
- 1-Lot Item Too Numerous to Mention

**Announcements Sale Day Take Precedence**  
Terms: Cash All Accounts Settled Sale Day  
Winch Truck Service Free on Sale Day  
**Bobby Fletcher**  
Wolforth, TX  
(806) 866-4201  
Lic #7131

## Cruce & Fletcher

Auctioneers and Real Estate Brokers

PO BOX 609 - WOLFFORTH, TX 79382

**James G. Cruce**  
Plainview, TX  
(806) 296-5050  
Lic #6704

## APPRECIATION DAYS

Use these coupons to save on Classified ads! Must present coupon. Good thru March 29, 1998. No ad changes on 2nd notices. Second ad must run in the next issue after first insertion.

**2 for 1**  
Garage Sale Ad Special  
Receive two garage sale notices for the price of one.  
Limit 20 words.

**2 for 1**  
For Sale Notice Special  
Buy one For Sale Notice and receive the 2nd notice FREE!  
Limit 30 words.

**1/2 Price Special**  
Buy one notice Full Price, receive 2nd notice for 1/2 Price  
Garage Sale-Limit 40 words  
Estate Sale-Limit 70 words  
For Sale-Limit 60 words

**Estate Sale Notices**  
**Two for One Special**  
Receive two Estate Sale Notices for the price of One.  
Limit 35 words.

# NATIONAL BRANDS

## CUSTOMER APPRECIATION SWEEPSTAKES

### \$15,000 DOLLARS CASH!

1st Prize - \$10,000 • 2nd Prize - \$3,000  
3rd Prize - \$2,000

• Register Mar. 15-28, 1998 at participating stores  
• Must be 18 yrs. or older to register  
• Store employees & immediate family not eligible to participate  
• Register at all participating Affiliated Foods member stores  
• See details at your friendly affiliated foods member store. No purchase required.

PRICES EFFECTIVE MARCH 18-24, 1998

## MEAT

Fresh	
<b>Ground Chuck</b> .....lb.	<b>\$1.59</b>
Preferred Trim Boneless Beef	
<b>Chuck Roast</b> .....lb.	<b>\$1.19</b>
Preferred Trim Boneless Beef	
<b>Arm Roast</b> .....lb.	<b>\$1.39</b>
Preferred Trim Boneless Beef	
<b>Chuck Steak</b> .....lb.	<b>\$1.39</b>
Preferred Trim Boneless Beef Arm	
<b>Charcoal Steak</b> .....lb.	<b>\$1.59</b>
Cubed Beef	
<b>Stew Meat</b> .....lb.	<b>\$1.99</b>
Center Cut Cook's	
<b>Ham Steaks</b> .....lb.	<b>\$2.59</b>
Farm Raised Raw	
<b>Catfish Nuggets</b> .....lb.	<b>\$1.79</b>
Pilgrim's Pride Grade A Jumbo Pack	
<b>Drumsticks or Thighs</b> .....lb.	<b>69¢</b>
Pilgrim's Pride Grade A Small Pack	
<b>Drumsticks or Thighs</b> .....lb.	<b>79¢</b>
Preferred Trim Boneless	
<b>Sirloin Cut Pork Chops</b> ...lb.	<b>\$1.99</b>
Advance Breaded Chicken	
Strips, Patties or	
<b>Nuggets</b> .....12 oz. pkg.	<b>\$1.69</b>
Jimmy Dean Regular or Hot Breakfast	
<b>Sausage</b> .....2 lb. roll	<b>\$3.29</b>
1 lb. Assorted or 12 oz. Light	
<b>Sausage</b> .....your choice	<b>\$1.79</b>
Decker Regular, Maple or Mesquite	
<b>Sliced Bacon</b> .....12 oz. pkg.	<b>\$1.29</b>
Decker Regular or Thick Sliced	
<b>Meat Bologna</b> .....12 oz. pkg.	<b>89¢</b>
Decker	
<b>Meat Corn Dogs</b> .....1 lb. pkg.	<b>\$1.69</b>
Decker Smoked or	
<b>Cooked Ham</b> .....10 oz. pkg.	<b>\$2.19</b>
Oscar Mayer Meat Cotto	
Salami or Red Rind	
<b>Meat Bologna</b> .....1 lb. pkgs.	<b>2/\$3</b>
Oscar Mayer	
<b>Cooked Ham</b> .....1 lb. pkg.	<b>\$3.79</b>
Oscar Mayer Rst. White Turkey,	
Chopped Ham or	
<b>Ham &amp; Cheese</b> .....1 lb. pkg.	<b>\$2.49</b>
Louis Rich Asstd. Luncheon Meats	
<b>Variety Pak</b> .....9-12 oz. pkg.	<b>\$1.99</b>
Oscar Mayer Assorted	
<b>Meat Wieners</b> .....1 lb. pkg.	<b>\$1.59</b>
Schilling	
<b>Pure Vanilla</b> .....1 oz. btl.	<b>\$1.99</b>
1-1.5 oz. pkg.	
• Bearnaise Sauce Blend • Hollandaise	
Sauce • Hunter Sauce Blend • Peppercorn	
Sauce • Pepper Medley • White Sauce Mix	
<b>Schilling</b>	
<b>Seasonings</b> .....your choice	<b>89¢</b>
Original Instant	
<b>Minute Rice</b> .....28 oz. box	<b>\$2.69</b>
16 oz. Reg., w/Almond Honey Bunches	
of Oats, 24 oz. Grape Nuts or 20 oz. Raisin Bran	
<b>Post Cereals</b> .....your choice	<b>2/\$4</b>
Blue Box Original, Thick 'n Creamy or	
Cheesy Alfredo Kraft Dinners	
<b>Mac &amp; Cheese</b> ....7.25 oz. boxes	<b>3/\$2</b>
Kraft Assorted Pudding	
<b>Handi-Snacks</b> .....4 ct. pack	<b>99¢</b>
Kraft Assorted Regular Only Pourable	
<b>Salad Dressings</b> .....16 oz. btl.	<b>\$1.99</b>
All Types Bonus Pak	
<b>Kraft Mayo</b> .....40 oz. jar	<b>\$2.39</b>
Kraft Regular or Light	
<b>Veleeta Spread</b> .....32 oz. loaf	<b>\$3.99</b>
Regular or Light	
<b>Kraft Cheez Whiz</b> .....16 oz. jar	<b>\$2.99</b>
Kraft All Varieties	
<b>Grated Parmesan</b> .....8 oz. jar	<b>\$3.39</b>
Assorted Varieties	
<b>Spam</b> ®	
<b>Luncheon Meat</b> .....12 oz. can	<b>\$1.79</b>
Assorted Varieties w/or w/out Beans	
<b>Hormel Chili</b> .....15 oz. can	<b>99¢</b>
With Fresh Potatoes & Carrots	
<b>Dinty Moore</b>	
<b>Beef Stew</b> .....24 oz. can	<b>\$1.89</b>

## PRODUCE

Fresh Golden Ripe	
<b>Bananas</b> .....lbs. 3/\$1	
Hass	
<b>Avocados</b> .....5/\$1	
Crisp	
<b>Stalk Celery</b> .....2/\$1	
Russet	
<b>Potatoes</b> .....5 lb. bag	<b>79¢</b>
Crisp	
<b>Bell Peppers</b> .....3/\$1	
Garden Fresh	
<b>Yellow Onions</b> .....lb.	<b>39¢</b>
Jewel Green	
<b>Limes</b> .....10/\$1	
Dole Complete Salad	
<b>Spinach Bacon</b> .....8 oz. bag	<b>\$1.79</b>
Select Varieties Regular/No Salt	
Reg. Wk Summer Crisp Golden Corn	
• Cut Green Beans • Fr. Style Green	
Beans • Wk/Cs. Golden Corn • Sweet Peas	
<b>Del Monte</b>	
<b>Vegetables</b> .....11-15.2 oz. can	<b>39¢</b>
Del Monte Quality	
<b>Tomato Sauce</b> .....8 oz. cans	<b>6/\$1</b>
Chunk Light Oil or Water Pack	
<b>Starkist Tuna</b> .....6 oz. can	<b>59¢</b>
Select Varieties	
<b>Folgers Coffee</b> .....11.5-13 oz. can	<b>\$2.39</b>
Assorted Citrus Punch	
<b>Sunny Delight</b> .....64 oz. btl.	<b>99¢</b>
Assorted	
<b>Pringles Chips</b> .....6-7 oz. can	<b>99¢</b>
Lemon Liqueur or Reg./Lemon Powder	
<b>Cascade</b>	
<b>Detergent</b> .....50 oz. box/btl.	<b>\$2.19</b>
Assorted Fabric Softener Sheets	
<b>Bounce or Downy</b> .....40 ct. box	<b>\$2.19</b>
Regular or Mountain Spring	
<b>Downy Ultra</b>	
<b>Softener</b> .....20 oz. btl.	<b>\$2.19</b>
Fabric Softener	
<b>Downy Ultra Refill</b> ....20 oz. btl.	<b>\$1.99</b>
Assorted 1-5 Baby Dry	
<b>Pampers Diapers</b> ...22-40 ct. pkg.	<b>\$5.99</b>
Regular, Free or w/Bleach	
<b>Tide Ultra 2</b> .....39-40 oz. box	<b>\$2.99</b>
Assorted Dish Detergent	
<b>Dawn Ultra</b> .....28 oz.	<b>\$2.39</b>
Reg., Free or w/Bleach	
<b>Tide Ultra</b> .....50 oz. btl.	<b>\$2.99</b>
Regular or Multicat Cat Litter	
<b>Tidy Cat Scoop</b> .....14 lb. jug	<b>\$4.99</b>
Purina	
<b>Mainstay Dog Food</b> ....17.6 lb. bag	<b>\$4.99</b>
Assorted Varieties	
<b>Purina Cat Food</b> ....5.5 oz. cans	<b>5/\$1</b>
Purina	
<b>Cat Chow</b> .....18 lb. bag	<b>\$7.99</b>
Regular or Tropical Blend Splash	
<b>V-8 Juice Cocktail</b> ...46 oz. btl.	<b>2/\$4</b>
Assorted Varieties	
<b>Campbell's</b>	
<b>Chunky Soups</b> .....19 oz. cans	<b>3/\$5</b>
Prego Regular, Chunky or Supreme	
<b>Spaghetti Sauce</b> ...27.7-28 oz. jar	<b>\$1.59</b>
Mix or Match Select Varieties	
• Reg., Lite, Natural Fruit Cocktail • Very	
Cherry Mixed Fruit • Reg., Lite, Natural	
Chunky Fruit • Sli. Rasp. Flavor Peaches	
• YC Reg. or Lite Peach Halves • YC Reg.	
or Lite, Freestone Peach Slices • YC	
Natural Peaches • Reg., Lite, Natural	
Pear Halves • Lite Sliced Peas	
<b>Del Monte Fruit</b> ....15-15.2 oz. can	<b>89¢</b>
• 32 oz. Kasher Dill Spears • 32 oz. Zesty	
Crunchy Dills • 32 oz. Polish Dills • 32 oz.	
Original Kasher Dills • 32 oz. Kasher Dills	
• 16 oz. Whole Sweet • 16 oz. Sweet Gherkins	
<b>Slasic Pickles</b> .....your choice	<b>\$1.99</b>
Assorted Varieties	
• York • Kisses • Hershey's Assorted	
• Hugs Reg./Almond • Kisses w/Almonds	
• Reese's • Almond Joy • Hershey's	
Asstd. Nuggets	
<b>Hershey's</b>	
<b>Miniatures</b> .....13 oz. pkgs.	<b>2/\$5</b>
Schilling 1 oz. Assorted	
<b>Food Colors</b> .....4 ct. pack	<b>\$1.99</b>

## FROZEN & DAIRY

Patio Assorted	
<b>Mexican Dinners</b> ....12-13 oz. box	<b>99¢</b>
Selected Varieties	
<b>Banquet</b>	
<b>Value Meals</b> .....9-11 oz. box	<b>99¢</b>
Assorted	
<b>Banquet Pot Pies</b> ..7 oz. boxes	<b>5/\$2</b>
Jimmy Dean	
<b>Sausage &amp; Biscuits</b> .12 oz. pkg.	<b>\$1.79</b>
Jimmy Dean Ham & Cheddar	
or Chicken & Mozzarella	
<b>Tastefuls!</b> .....5.9-6.2 oz. pkg.	<b>\$1.79</b>
MaMa Rosa's Stuffed Crust Pepperoni or	
<b>Supreme Pizza</b> ....1 lb. pkgs.	<b>2/\$3.99</b>
Price's 13 oz. Light or 14 oz. Reg. Pimiento	
<b>Cheese Spread</b> .....your choice	<b>\$2.19</b>
Market Cut Red Rind Longhorn	
<b>Cheddar Cheese</b> .....lb.	<b>\$2.59</b>
Totino's	
<b>Party Pizza</b> .....9-10 oz. box	<b>\$1.19</b>
Green Giant Frozen Mixed Vegetables,	
Niblets Corn or Sweet Peas	
<b>Vegetables</b> .....16 oz. bag	<b>99¢</b>
Fisherboy	
<b>Fish Sticks</b> .....16 oz. box	<b>\$1.99</b>
Assorted Regular or Nonfat	
<b>Blue Bunny</b>	
<b>Ice Cream</b> .....1/2 gal. squares	<b>2/\$5</b>
Blue Bunny Vanilla or Neapolitan	
<b>Ice Cream</b>	
<b>Sandwiches</b> .....12 ct. pkg.	<b>\$2.89</b>
Shurfine Chilled	
<b>Orange Juice</b> .....64 oz. btl.	<b>\$1.39</b>
Plains Non-fat, Slim 'N Trim or Regular	
<b>Cottage Cheese</b> .....24 oz. ctn.	<b>\$1.89</b>
Pillsbury Buttermilk, Butter Tastin' or Flaky	
<b>Hungry Jack</b>	
<b>Biscuits</b> .....9.5 oz. can	<b>89¢</b>
Pillsbury Reg./Apple Cinnamon Roll, Orange	
Danish, Caramel Danish w/Nuts	
<b>Sweet Rolls</b> ....12.4-13.9 oz. cans	<b>2/\$3</b>
Assorted Varieties Reg. or Super Slice	
<b>Kraft Singles</b> .....12 oz. pkg.	<b>\$1.89</b>
Kraft Assorted Varieties	
<b>Shredded Cheese</b> .....8 oz. pkg.	<b>\$1.89</b>
Kraft Colby Jack, Colby or Cheddar Longhorn	
<b>Halfmoon Cheese</b> ....10 oz. pkg.	<b>\$1.79</b>
Regular or 1/3 Less Fat Kraft Philadelphia	
<b>Cream Cheese</b> .....8 oz. brick	<b>99¢</b>
Assorted Varieties Minute Maid	
<b>Orange Juice</b> .....10-12 oz. can	<b>89¢</b>
Hormel Regular or Chicken	
<b>Vienna Sausage</b> ..5 oz. cans	<b>2/99¢</b>
Hormel	
<b>Potted Meat</b> .....3 oz. cans	<b>3/89¢</b>
Assorted Varieties Hormel Microwave	
<b>Kid's Kitchen Cups</b> ..7.5 oz. cup	<b>89¢</b>
Culligan	
<b>Drinking Water</b> .....gal. jugs	<b>2/\$1</b>
Deviled Ham, Honey Ham,	
Roast Beef or Chunky Chicken	
<b>Underwood</b>	
<b>Meat Spread</b> .....4.2-4.75 oz. ctn.	<b>\$1.29</b>
Heinz	
<b>Tomato Ketchup</b> .....40 oz. btl.	<b>\$2.49</b>
Kingsford	
<b>Charcoal Briquets</b> ....20 lb. bag	<b>\$4.99</b>
Asstd. Clorox Toilet Bowl	
<b>Cleaner</b> .....24 oz.	<b>\$1.69</b>
Regular Only Bleach	
<b>Clorox</b> .....gal. jug	<b>99¢</b>
Reg. or Soap Scum Remover	
<b>Tilex</b> .....16 oz.	<b>2/\$4</b>

## HEALTH & BEAUTY

Assorted Varieties	
<b>Always Maxi Pads</b> ...14-24 ct. pkg.	<b>\$2.99</b>
Assorted Varieties	
<b>Puffs Tissues</b> .....64-175 ct. box	<b>99¢</b>
Assorted 5 oz.	
<b>Zest Bath Soap</b> .....3 bar pack	<b>\$1.69</b>
Assorted Pantene Pro-V	
<b>Shampoo or</b>	
<b>Conditioner</b> .....10.2-13 oz. btl.	<b>\$2.69</b>
Assorted Facial	
<b>Oil of Olay Lotion</b> .....4 oz. btl.	<b>\$6.49</b>
Assorted Oil of Olay	
<b>Bath Bar Soap</b> .....2 bar pack	<b>\$1.89</b>
Assorted	
<b>Crest Toothbrush</b> ..str. or angle	<b>2/\$3</b>
Select Varieties	
<b>Crest Gel</b>	
<b>or Toothpaste</b> .....6.4 oz. tube	<b>\$1.89</b>
Caplets, Gelcaps or Tablets	
<b>Motrin Adult IB</b> .....24 ct. box	<b>\$1.99</b>
Extended Relief Caplets/Caplets/Gelcaps/Geltabs	
<b>Ex-Strength Tylenol</b> ..50 ct. box	<b>\$4.69</b>
20 ct. Max. Str. Sinus, Allergy Sinus Gelcap,	
24 ct. MS Sinus Caplet, Tablet or Allergy Sinus	
Caplet, Geltab or Allergy Sinus Nighttime	
<b>Tylenol Sinus or</b>	
<b>Allergy Sinus</b> .....your choice	<b>\$3.89</b>
Acid Controlling	
<b>Pepsid AC</b> .....18 ct. box	<b>\$5.89</b>
Grape or Bubble Gum Flavor	
<b>Children's Tylenol</b> ....30 ct. box	<b>\$2.39</b>
Flu Bubblegum Flavor, Plus Cold	
Cough, or Allergy D Sinus	
<b>Children's Tylenol</b>	
<b>Liquid</b> .....4 oz. btl.	<b>\$3.99</b>
Ex-Strength Caplets, Gelcaps or Geltabs	
<b>Tylenol PM</b> .....24 ct. btl.	<b>\$3.49</b>
Assorted Double Strength	
<b>Mylanta Liquid</b> .....12 oz. btl.	<b>\$4.99</b>
Johnson's Pure	
<b>Cotton Swabs</b> .....375 ct. pkg.	<b>\$1.89</b>
Assorted Powder	
<b>Shower to Shower</b> ..8 oz. shaker	<b>\$1.99</b>
14-15 oz. Reg./ Creamy Oil • 15 oz. Lotion	
or Bath • 14 oz. Oil w/Aloe & Vitamins • 6.5	
oz. Oil Gel • 15 oz. Asstd. Powder • 15 oz.	
Shampoo or Conditioner	
<b>Johnson's</b>	
<b>Baby Products</b> .....your choice	<b>2/\$5</b>
Reg., Rain Clean or Lemon	
<b>Pinesol</b> .....28 oz.	<b>2/\$4</b>
Regular	
<b>Clorox Clean-Up</b> .....32 oz.	<b>2/\$4</b>
Old El Paso Yellow Corn	
<b>Taco Shells</b> .....18 ct. box	<b>\$1.99</b>
Old El Paso Chopped	
<b>Green Chilies</b> .....7 oz. can	<b>\$1.19</b>
Old El Paso	
<b>Refried Beans</b> .....31 oz. cans	<b>2/\$3</b>
Old El Paso Hot, Mild, Green or Medium	
<b>Enchilada Sauce</b> .....10 oz. can	<b>99¢</b>
Old El Paso Mild, Medium Thick 'N Chunky or	
<b>Homestyle Salsa</b> ...20 oz. bonus jar	<b>\$1.79</b>
All Types	
<b>Pepsi</b> .....6 pk. 12 oz. cans	<b>\$1.48</b>
All Types	
<b>Pepsi</b> .....2 liter btl.	<b>79¢</b>
All Types	
<b>Dr. Pepper</b> .....6 pk. 12 oz. cans	<b>\$1.78</b>

**SEE YA AT  
LOWE'S**

WESTERN MONEY UNION TRANSFER<sup>SM</sup>  
"The fastest way to send money"



# Lowe's

## MARKETPLACE

401 W. American Blvd.  
Muleshoe 272-4585

515 W. American Blvd.  
Muleshoe 272-4406

WE RESERVE THE RIGHT TO LIMIT QUANTITIES IN TEXAS