

April 18...  
Killed in...  
sh at Ta...  
RST  
LOCAL NEWS  
FEATURES  
CIRCULATION  
ADVERTISING  
EAR, No. 294  
MEMPHIS, HALL COUNTY, TEXAS, FRIDAY, APRIL 19, 1935.  
8 PAGES  
PRICE 5 CENTS

# The Memphis Democrat

THE VOICE OF THE  
UPPER RED RIVER VALLEY

Your Home Paper

SERVING MEMPHIS AND  
ITS TERRITORY DAILY

Good Afternoon

Let those who con-  
template taking up farm land in  
the west be patient and  
these dust storms will bring  
it to them.—Paducah Sun-  
Democrat.

## MAKE SOIL EROSION BIDS MORROW

### Agency Program Underway in County Monday

Plans for funds for em-  
bankment work may be  
announced by farmers in Hall  
County on Monday. The  
listing of lands to pre-  
vent erosion, according to  
plans from the office of  
Agent James A. Jackson,  
will be completed this afternoon or to-  
morrow.

Plans for funds for em-  
bankment work may be  
announced by farmers in Hall  
County on Monday. The  
listing of lands to pre-  
vent erosion, according to  
plans from the office of  
Agent James A. Jackson,  
will be completed this afternoon or to-  
morrow.

Plans for funds for em-  
bankment work may be  
announced by farmers in Hall  
County on Monday. The  
listing of lands to pre-  
vent erosion, according to  
plans from the office of  
Agent James A. Jackson,  
will be completed this afternoon or to-  
morrow.

Plans for funds for em-  
bankment work may be  
announced by farmers in Hall  
County on Monday. The  
listing of lands to pre-  
vent erosion, according to  
plans from the office of  
Agent James A. Jackson,  
will be completed this afternoon or to-  
morrow.

## Confirmed Highway Board

By Associated Press.  
SANDERS, April 19.—The Sen-  
ate today confirmed the  
highway board.

By Associated Press.  
SANDERS, April 19.—The Sen-  
ate today confirmed the  
highway board.

## Hammer Slayer Is Assessed 75 Years

By Associated Press.  
WICHITA FALLS, April 19.—  
Fred L. Johnston yesterday  
was convicted and assessed a 75 year  
prison term for the slaying of  
Mrs. Maude Hefley, who was  
killed by hammer blows here on  
March 8.

## RUSSIA URGES ALL NATIONS TO UNITE AGAINST GERMANY

By Associated Press.  
MOSCOW, April 19.—M. Khri-  
pin, chief of the Soviet military  
air force, issued an appeal today  
through the authoritative organ,  
Pravda, urging all countries to  
unite in the face of what he de-  
clared were German preparations

## J. W. West, 84, Is Claimed by Death

### Sues Heirs



During the declining days of  
Meyer Davidow, 62-year-old  
millionaire of Scranton, Pa.,  
Frances Dumas (above), Broad-  
way actress, asserts, she gave  
up her stage career to be his  
companion and secretary on a  
verbal \$100-a-week life con-  
tract. His will failed to provide  
for the posthumous salary, so she  
has sued his heirs for \$401,000  
in settlement of the claim.

## BRICE RESIDENT PASSES HERE LAST NIGHT

### Hold Funeral Service Tomorrow for Hazel Shepherd, 27

Miss Glynda Hazel Shepherd,  
27, daughter of Mr. and Mrs. W.  
E. Shepherd of the Brice com-  
munity, died last night at 10:30  
o'clock at a local hospital after an  
illness of two weeks.

Funeral rites for Miss Shep-  
herd will be held tomorrow morn-  
ing at 11 o'clock at the Methodist  
Church at Brice, with Rev. G.  
H. Gattis, pastor, conducting the  
services. Interment will be in the  
Clarendon cemetery, with the King  
Mortuary in charge.

## Former Grid Star Is Shot by Police

By Associated Press.  
DALLAS, Apr. 19.—Mike Col-  
lie, former Dallas high school foot-  
ball star and University of Texas  
student last year, was shot in the  
chest early today by Policemen H.  
C. Leach, with whom he had an al-  
tercation on the street.

## BEAUTIFICATION WORK IS DONE IN DONLEY

### Tree Planting, Parks Being Made Along Highway 5

By Associated Press.  
CLARENDON, April 19.—Un-  
der the direct of Bob Rankin,  
highway foreman, and John Gas-  
ton, head of the landscape depart-  
ment of the state highway depart-  
ment, road side improvements are  
being made on the new Highway 5  
from Clarendon to Memphis,  
which is soon to be hard-surfaced.

The most beautiful part and one  
which will be an asset to Donley  
County is being made southeast of  
Giles on the Thaten place. The  
department has purchased approxi-  
mately ten acres of this land and  
will improve a plot of approxi-  
mately 1,000 feet long and 500  
feet wide from the highway north  
to the Fort Worth and Denver rail-  
road.

The plot of land is situated in  
the canyons and has many beauti-  
ful willows, cottonwoods, cedars,  
and grapevines full grown.

Another part of unusual beauty  
is being built by the state depart-  
ment five miles north of Memphis  
on the Crow homestead.

## WILL VOTE ON SCHOOL CHANGE

### Pleasant Valley Voters To Decide on Independent District May 4

An election to determine whether  
the Pleasant Valley Independent  
school district shall be dis-  
continued as an independent dis-  
trict and reverted back to the  
common district classification has  
been called for May 4, according  
to notices being mailed today by  
County Judge Jim Vallance.

The election is being called by  
authority of a petition bearing the  
names of 25 qualified voters in  
the district, presented recently to  
Judge Vallance.

## Planning Board In First Session

By Associated Press.  
AUSTIN, April 19.—The new  
state planning board, which Gov.  
James V. Allred has termed a  
cornerstone of his recovery pro-  
gram, held its first formal meet-  
ing yesterday.

## Predicts Passage Of Social Security Bill Before Night

By Associated Press.  
WASHINGTON, April 19.—  
Calling the House session an hour  
earlier than usual, Democratic  
leaders today strove to push the ad-  
ministration's social security bill  
to passage before adjournment to-  
night.

## RAINS ARE GENERAL

### Wait 'Til This Puppy Grows Up



Kop of Careil,  
explains his  
proud owner,  
Mrs. Harper  
Trois  
Fontaines  
of Moor Park,  
Hertfordshire,  
England,  
is just a  
puppy yet  
and hasn't  
attained  
his full  
growth.  
Nevertheless  
he is already  
seven feet  
long and  
considered  
the largest  
dog in the  
world.  
A Pyrenean  
Mountain dog,  
Kop and his  
breed are  
valued as  
shepherds.

## CHILDRESS IS IN CENTER, GETS TWO INCHES

### Light in County; Is General In Lower Panhandle

With the precipitation center  
at Childress, all of the Memphis  
Area received moisture in yester-  
day afternoon's and last  
night's rains, varying from light  
showers to half an inch at Es-  
teline in Hall County.

Memphis and vicinity received  
28 inches, according to J. J. Mc-  
Mickin, local weather observer.  
Esteline this morning reported  
half an inch, the heaviest in the  
county. Lakeview received about  
the same as Memphis, while Tur-  
key, getting the tail of the mois-  
ture, received only light showers.  
A quarter inch fell at Wellington.

Heavy clouds continued to hang  
over the area this morning, car-  
rying promise of additional mois-  
ture. They came over the area  
yesterday morning, with the first  
drops of rain falling here shortly  
before noon. Light showers con-  
tinued at intervals during the af-  
ternoon and early last night.

The showers extended north be-  
yond Clarendon, with that city and  
Hedley reporting precipitation  
about equal to that received here.  
At different points throughout  
the Panhandle section, the rains  
became downpours, accompanied  
by hail and a small twister at  
Frederick, Okla.

Receive Two Inches  
Childress, Kirkland and Quanah  
were in the center of the area in  
this vicinity, each city reporting  
approximately two inches. Wichi-  
ta Falls received only light  
showers, but heavier fall was re-  
ported between that city and Fort  
Worth.

A torrential downpour fell at  
Frederick, accompanied by a  
twister which hit the southwest  
edge of the town. The wind tore  
away the roof and part of an en-  
gine room at two compresses.  
Two negro residences were flat-  
tened, but occupants had taken  
refuge in a storm cellar and no  
one was injured.

The cloudburst sent 2.50 inches  
down in 30 minutes, flooding  
streets. Hail was said to be stand-  
ing two and three feet deep where  
it had been washed by the tor-  
rents. Trees were stripped in the  
Frederick section and vegetation  
battered down.

Little in North Panhandle  
Little rain was reported north-  
west of Memphis in the Panhan-  
dle. Amarillo received only .07  
(Continued on page 3)

## Legion Changes Meeting Nights

Each first and third Tuesday  
nights in each month were selected  
as regular meeting nights for the  
Charles R. Simmons Post Ameri-  
can Legion in regular session  
last night, according to L. L. Doss,  
post commander.  
The new meeting dates were set  
because of conflicting entertain-  
ments and will be continued  
through the summer months, Mr.  
Doss said. The first and third  
Thursday nights have been regular  
meeting dates for several years.  
In last night's meeting, a num-  
ber of local Legionnaires pledged  
attendance at the district Legion  
convention in Wellington tomor-  
row and Sunday. Commander Doss  
is urging large attendance from  
the local post.

## The Weather

By Associated Press.  
WEST TEXAS—Partly cloudy  
tonight and Saturday; cooler in  
southeast portion, warmer in  
northwest portion tonight.  
EAST TEXAS—Partly cloudy  
to cloudy, somewhat colder in  
south and east portions tonight;  
Saturday partly cloudy to cloudy.

Today's  
Lmanac:  
April 19  
5-Battle of  
Lexington, Mass.  
2-Senate passes  
bill imposing edu-  
cational test on  
immigrants.  
6-Everybody  
proposes bill im-  
posing education  
test on  
senators.

OUT OUR WAY

By "Cowboy" Williams



HEROES ARE MADE—NOT BORN



The DARK BLOND

By CARLTON KENDRICK



BEGIN HERE TODAY
MILlicent GRAVES, secretary to GEORGE DRIMGOLD, finds her employer in his office dead. JARVIS HAPP, a stranger, offers to help her. He sends her to a beauty shop where she is transformed into a brunet, then takes her home, introducing her as his secretary. She meets Happ's son, NORMAN; his stepson, ROBERT CAISE; MRS. HAPP; and VERA DUCHENE, Mrs. Happ's maid.

CHAPTER XXX
Millicent piloted Norman Happ down the corridor to her room, closed and locked the door. She turned to face him, wondering where she should begin, and as she stared into his eyes knew that it was going to be increasingly difficult to go through with the plan she had decided on.

Millicent saw his jaw set, saw his eyes take on a look of grim determination. For a moment it seemed as though her life force was congealing in her like mercury dropping in a tube on a very cold night. Then with the sound of his voice, she felt a surge of happiness. He said doggedly, "I don't care what the facts are. Whatever you did you had some reason for doing it. I'm going to stand back of you."

FLAPPER FANNY SAYS:



Revolutionary styles give redress from old fashions.

he knows. He was suspicious of me from the first. He wondered why your father brought me here and I think in some way he knew that your father was interested in the Drimgold murder. I don't know whether he knew about your father being in the building when the murder was committed or not. At any rate he was suspicious and he took a photograph that had been published in a newspaper, and darkened the hair. The result looked enough like me to convince him that I'm the girl they're looking for."

Tomorrow's Menu

BREAKFAST: Stewed dried apricots, cereal, cream, shirred eggs, pop-overs, milk, coffee.
LUNCHEON: Dandelion greens baked with bacon, pineapple and cheese salad, grapes, milk, tea.
DINNER: Broiled lamb chops, steamed rice, kale with lemon dressing, banana and peanut salad, hot water sponge cake, maple ice cream, milk coffee.

HARRELL CHAPEL

BY MRS. J. W. LONGSHORE
A number of Harrell Chapel people attended the singing convention at Brice last Sunday. The boys and girls playground ball teams won Saturday in the rural contests at Childress. Several have been ill with mumps in this community. Mrs. J. W. Longshore was ill with the flu last week.

LAKEVIEW

BY DAISY WELLS
Mrs. D. R. Monroe left Saturday night for Booneville, Miss., for an indefinite stay. Mrs. H. A. Leggett of Turney and Mr. and Mrs. Kirk of Plainview were Lakeview visitors Saturday night. Mr. and Mrs. Kirk visited in the home of her sister, Mrs. H. Lee Blanks, and Mrs. Leggett visited Mrs. Don Wright. Grace Gowdy, who has been working in Lakeview for the past six months, returned to Memphis Monday and will make her home there.

room?"
"Yes."
"You're certain?"
"Yes. I felt his wrist."
"Did you go to the bathroom and get a drink out of his whisky flask?"
"Yes."
"How much whisky was there in the flask?"
"I don't know. It was a little over half full, I guess."
She could see that he was driving toward some point, but couldn't anticipate what it was.
"Did you remember the brand of whisky?" he asked.

Quite a number of Lakeview people attended the singing convention at Brice Sunday. Word was received here Tuesday night that Mrs. Paul Thompson, who is in a Suansh hospital, is not doing well.

Special Gold Seal Accident Policy, ages 16 to 60 yrs. Premium \$1.50 per yr. per \$1,000. 7 to 15 yrs. Premium \$1.00 per yr. on \$500. Universal Life & Accident Insurance Company F. L. HALL, Agent

A Complete Garage and Road Service
MEMPHIS GARAGE
413 Main Phone 406M
Sid Baker - John Slover

EXPERT SHOE REPAIRING
Ladies Cement work a Speciality. No tacks—No Thread.
CHRISTENSEN'S SHOE SHOP
610 Noel St.

Bring us your Cream, Poultry, Eggs, Hides and Junk. Highest Prices Paid.
CRISMAN PRODUCE CO.
Overhaul and Repair Work Gas and Oils 323 Noel St.

INSURANCE
For Every Need Against Loss of—Fire, Windstorm, Hail.
—Automobile accidents.
—Burglary and Robbery.
—Life and Injuries.
Blankenship's Insurance Agency

Advertisement for WICHITA FALLS BUS COMPANY. Features: NOW IS THE TIME TO TRAVEL. Fares were never lower... Buses are comfortably neat... Travel now without the usual crowd of vacation time. EAST BOUND and WEST BOUND schedules. BUS STATION Memphis Hotel Phone 500. MRS. J. R. LEVERETT, Agent

W. W. Williamson Quanh Tuesday afternoon his father, T. E. Williamson is ill. A special Easter service held at the Methodist church Sunday morning. Every cordially invited to attend. Mr. and Mrs. Dell E. Kietz, and Mr. and Mrs. J. non spent Sunday in the home of Mr. and Mrs. Davis.

Advertisement for MEACHAM'S PHARMACY. Features: Easter CANDY Special. FLOWERS AND CANDY—BEST GIFTS FOR EASTER. SEE OUR FINE PACKAGE CHOCOLATES. KING'S NOVELTY PACKAGE at 25c, 50c, \$1.00 and \$2.00.

Advertisement for McCrary's Feed. Features: "Will they give us our special McCrary's Feed when they milk us to-night?" "... sure they will—they found it pays."

Advertisement for FEEDS SEEDS FLOUR. Customers appreciate the quality and money saving price they get here from our new, fresh and complete stocks. See us for high grade flour direct from mill to consumer.

Advertisement for POUNDS CAFE. YOU CAN JUDGE US BY OUR Coffee. FOR EAS... and every day favorite place of who demand the best. FOR REAL DELICIOUS MEALS...

Advertisement for THE DENVER ROAD. Traveling via The Fort Worth and Denver and Denver. AIR CONDITIONED COACHES NOW BETWEEN DALLAS AND DENVER on both DAY and NIGHT trains.

Advertisement for IT'S COOL and COMFORTABLE. Traveling via The Fort Worth and Denver and Denver. AIR CONDITIONED COACHES NOW BETWEEN DALLAS AND DENVER on both DAY and NIGHT trains. The fare are greatly reduced. To Travel by Train is not only safer and more comfortable but now more Economical. Ask our Agent for full information. J. J. McMickin.

# Bankers Optimistic on Business--Blue on Politics

## CREDIT CONTROL DANGEROUS, SAY BABSON

### Fearful About Huge Government Holdings, Low Rate

ROGER W. BABSON  
 WASHINGTON, April 19.—I am attending the American Association Convention and like to pass on to my the feeling of this meeting, the leading bankers are optimistic about but pessimistic about policy are worried about their holdings of government the continual drop in rates, and by the lack of an applications. On the and, they are encouraged strengthening in the mortgagement, and by the general ment in most fundam-

## CENTRAL BOARD TO CONTROL NATIONAL CREDIT

Administration-sponsored Bill now before Congress of the major topics of on. The bill is one of the most drastic ever proposed and if will completely revolutionize banking structure — altho is mild in comparison with which are being discussed. Our credit policies are controlled by 12 regional Federal Reserve Boards, the new bill complete control in the one board at Washington. The bill eliminates most of the checks and balances in the Federal Reserve system. The proposals would so liberalize discount rules and regulations that under a lax inflation could reach proportions.

Guidance and judgment of the highest caliber and honesty, such as to be an improvement. The board is to be appointed by the President and confirmed by the Senate. So the issue, Kaffney, money rates, the contraction of credit and other matters pertaining to banking would be political domination. The central board is to be given power, it should be removed from political control and office amendment.

GLASS ONLY OPPOSED OF BILL  
 Surprising to note how little space is being devoted to this new bill and how the protests which bank-

## OUR BOARDING HOUSE

By Ahern



ers themselves have made concerning it. This is particularly amazing since it is the most revolutionary banking act in 20 years. If such a bill had been suggested in the "Good Old Days" all the bankers and all their friends would have been up in arms. Apparently, events of the past few years have completely knocked the wind out of our bankers, sails. This is unfortunate, for now is the time when they should be rallying to the colors. If the present bill passes, politicians will have a powerful control over a most important function of our economic system,—credit.

Second to the banking bill, government bonds were the most popular subject of discussion here. Banks are holding 55 per cent of outstanding government securities. This is a dangerously high percentage. It worries bankers more than any thing else today for a 10 per cent drop below par in government bond prices would create another financial panic. We saw our government bonds decline 20 points after the World war, but fortunately the bankers then only held 20 per cent of them. Yet, so

long as public spending continues, banks must keep on taking government bonds. If they cease buying now they will only hasten the day when printing press currency is issued by the carload.

## GOVERNMENT INFLATING—BANKS DEFLATING

Many people have asked me recently why the government's spending program has not done more to stimulate business. For two years now, the bank deposits have been rising while commercial loans have been dropping week after week. Bank deposits today are \$4,663,000,000 above the March 1933 low while commercial loans

Hydrangeas, Lillies, Roses and other pot plants, and a fine selection of cut flowers for Easter. Light-over Greenhouse, 294-2c

**RAVENWOOD - NIGGERHEAD**  
**SUNSHINE - MAITLAND**  
**BEST COLORADO COALS**  
 Sold By Your Coal Dealer

and is being frozen there instead of being loaned out to private business. So the banks, by not making loans, are nullifying the stimulating effect of government spending.

However nearly every banker here with whom I have talked tells me confidently that there are few opportunities at present to make good and sound loans. Those business men who are safe risks are not borrowing money. They have been given such a licking by the New Deal that they dare not make new commitments. Labor disturbances, rising operating costs, and constant government interference are keeping profits and confidence at a low ebb. With so few opportunities to make sound loans, bankers are facing a growing problem of where to put their money for the two-fold purpose of safety and profit.

## CANNOT WORK UNDER DEMOCRACY

We are in a period of declining money rates. The yield of commercial paper, on government issues, and on sound corporation bonds is ridiculously low, the lowest in 30 years. The same situation exists all over the world. So, in spite of the largest credit reserves in our banking history, depositors may see even lower interest rates and stockholders even lower dividends on their bank stocks. Only when the administration finally gives evidence that it is going to drop reform and concentrate on recovery will the present credit jam break.

Then the demand for real estate loans, for new capital and for commercial loans will break like a cloudburst. Actually the stage is set for the greatest period of banking expansion the United

States has ever seen if the administration would only cease cracking down on the honest business men and investors. The thought I want to leave with you is that this trend toward political management of our money and business system is fraught with danger. The New Dealers feel that with such control they can eliminate the "peaks and valleys" of business and employment. Personally, I feel strongly that under a democracy political credit control would only make the "peaks" higher and the "valleys" deeper than ever before.

Business as registered by the Babsonchart, stands at 2 per cent below a year ago, but is still 21 per cent below normal. (Copyright 1935, Publishers Financial Bureau).

Don't destroy 95 honest utility men to get at five utility crooks! —Fred G. Clark, national commander of Crusaders.

## PROFESSIONAL DIRECTORY

**ODOM SANITARIUM**  
 South Eighth and Menden  
 Phone 139  
 Open To All Reputable Physicians

**DR. L. M. HICKS**  
 DENTIST  
 Office: Second Floor  
 Hall County National Bank Bldg.  
 Res. Phone 244 Office Phone 348  
 Office Hours: 8 to 6

As long as there can be a difference of opinion among nations as to what is truth and what is not truth, there will be war. —Nelson Macy, president of the Navy League.

Public enemy, facing chair, threatens to haunt his foes. There's no need for worry, however; on our side we have the spirit of the law.

We are practically the only democratic country left. —J. H. Thomas, English statesman.

**Bilious Attacks, Dizziness**  
 "Bilious attacks," dizziness, spots before the eyes, a feeling of fullness after ordinary meals, belching up of gas, a dull, sluggish feeling—due to constipation—are usually driven away by a dose or two of old, reliable Theoford's Black-Draught.

"I take Black-Draught for biliousness, dizziness, and when I feel dull, tired and stupid," writes Mr. M. L. Simmons, of Pickens, S. C. "It seems to cleanse the system and make one feel a hundred per cent better."  
 Thousands of men and women prefer this purely vegetable laxative.

**THEOFORD'S BLACK-DRAUGHT**

**10¢ TAXI**

**ALL NIGHT SERVICE**  
 ALSO  
 24-Hour Road Service  
 Gas—Oil—Flat Tires  
 (2 men on duty all night)

Pho. CUDD BROS. Pho. 157

**THE CAR that has WON AMERICA**

The Ford V-8 for 1935 has been an outstanding success, not because of any thing we have said about it but because of what owners have said. At Country Clubs... In Pullman Cars... In Air planes... In Living Rooms... At filling stations and on the streets. And all these comments tend to fall under four heads: one, "The new V-8 rides like a dream"; two, "It's smartly designed"; three, "It costs less to run"; and four, "It performs like 'nobody's business'!"

**AUTHORIZED FORD DEALERS OF THE SOUTHWEST**

**AT A FILING STATION**  
 "We don't see you so often, Mr. Headley."  
 "Well—I don't have to come around for gas quite so often with this new Ford V-8. It's by all odds the most economical car I've ever driven—and that goes for oil consumption, too."

**4,000 FT. OVER THE ALPINES**  
 "Pretty smooth flying today."  
 "Yes, the folks back home wouldn't believe it if I told them this airplane ride was real compared to a trip in our Ford V-8."  
 "You got one too?—Say! that 'Comfort Zone Ride' in this year's job has got to be tried to be appreciated, hasn't it?"

**AT A BRIDGE TABLE**  
 "I didn't realize until I saw your Ford how really smart a car it is."  
 "Inside or out?"  
 "Both... And the roominess!... Why there's all that space for bags and still George said there was more room for his legs than in a limousine."

**FORD V-8 \$495** AND UP, F.O.B. DETROIT. Standard accessory group including bumpers and spare tire extra. Easy terms through Universal Credit Co., Authorized Ford Finance Plan.



*'they certainly CAN take it'*

WE HAVE DISCONTINUED HANDLING FIRESTONES

ALL WE HAVE ON HAND WILL BE SOLD AT COST

**CUDD BROS.**  
 Service and Quality  
 MEMPHIS, TEXAS

401 NOEL PHONE 157

**FEDERAL** Extra Service **TIRES**

CLASSIFIED

CLASSIFIED RATES

Minimum 10 words. Ads may be telephoned to The Democrat and will be collected for later.

1 time, per word... 2c
3 times, per word... 4c
5 times, per word... 6c
7 times, per word... 8c
20 times, per word... 15c
30 times, per word... 20c

TELEPHONE 15

For Sale

FOR SALE—Planting Seed any kind. Buy now. Oats, Wheat, Barley and Sudan for pasture planting. Norman's, 265-tfc.

FOR SALE—Cotton seed, extra good, culled and cleaned, First Mebane planting and from Garland, Texas pedigree. All in new three bushels sacks at \$1.35 per bushel. For further information see M. C. Allen, at Memphis Compress Co., Memphis Texas, 283-7c.

Wanted

WANTED WORK—Clean reliable woman, good cook and nurse, wishes to exchange work for board and lodging for herself and small boy. Boy obedient, not troublesome. No objections to country if in reach of Memphis school. Call at Democrat Office for information. 294-tf-dh.

Lost and Found

STRAYED—Black mare mule, weight about 850 pounds, Butler Stewart, 7 miles South of Memphis. 294-3c.

Mr. and Mrs. Edward Hill left today for a visit with relatives at Bonham.

Mr. and Mrs. C. F. Lebnitz of Telluride, Colo., and Mr. and Mrs. Ray Humphrey of Denver, Colo., arrived today and will visit in the home of Mr. and Mrs. J. B. Hanna until Sunday. Mr. and Mrs. Lebnitz are Mrs. Hanna's parents and Mrs. Humphrey is her sister.

Mrs. J. A. Odum and son, Coy Lee, went to Amarillo yesterday on a brief business trip.

Tonight's Radio Programs

NBC STATIONS

Table listing radio stations and their frequencies: WFAA, Dallas (800); WBAP, Fort Worth (800); KDKA, Pittsburgh (980); KFI, Los Angeles (640); KOA, Denver (830); KPRO, Houston (920); KTHS, Hot Springs (1,060); KVOO, Tulsa (1,140); WEAJ, New York (660); WENR, Chicago (870); WHO, Des Moines (1,000); WJZ, New York (750); WKY, Oklahoma City (900); WLS, Chicago (870); WLW, Cincinnati (700); WMAQ, Chicago (670); WOAI, San Antonio (1,190); WOC, Davenport (1,000); WSM, Nashville (650); WSMB, Cleveland (1,870); WTIC, Hartford (1,040); CBS STATIONS: KMOX, St. Louis (1,995); KOMA, Oklahoma City (1,840); KRLD, Dallas (1,040); KTAT, Fort Worth (1,240); KTRH, Houston (1,120); KTSA, San Antonio (1,290); WBAC, New York (860); WACO, Waco (1,240); WFRM, Chicago (770); WCCO, Minneapolis (810); WHAS, Louisville (820).

9:00 p. m.—First Nighter (NBC). Circus night with Joe Cook (NBC).

9:30 p. m.—Frank Black's Orchestra (NBC). Dramatic sketch (CBS). Stoopnagle and Budd (CBS).

10:00 p. m.—News service (NBC). Amos 'n' Andy (NBC). Leo Zallo's Orchestra (NBC). Gene Marvey's Orchestra (CBS). Myrt and Marge (CBS).

10:05 p. m.—Ozzie Nelson's Orchestra (CBS).

10:15 p. m.—Jesse Crawford (NBC). Special church services (NBC). Red Davis (NBC). Gene Marvey's Orchestra (CBS). Ernie Madriguera's Orchestra (CBS).

10:30 p. m.—Stan Myers' Orchestra (NBC). Circus night with Joe Cook (NBC). Freddie Berren's Orchestra (CBS). Herbie Kay Orchestra (CBS).

11:00 p. m.—George Devron's Orchestra (NBC). Shandori Berren's Orchestra (NBC). Luigi Romanelli's Orchestra (CBS).

11:15 p. m.—Richard Himber's Orchestra (NBC). Scott Fisher's Orchestra (CBS).

11:30 p. m.—Jimmy Garrigan's Orchestra (NBC). Manny LaPort's Orchestra (NBC). Charles Dornberger's Orchestra (CBS).

11:45 p. m.—Joe Haymes Orchestra (CBS).

12:00 (Midnight)—Frank Daley Orchestra (CBS).

Get it At Tarver's

Fresh, Delicious Cakes and Pastries. Try Them.



BLUE RIBBON BREAD

The Favorite of many—you'll like it. Ask for it at Your Grocer's.

Memphis Bakery & Confectionery H. L. Greshchel, Prop.

Where You Get MORE Food for LESS MONEY

BRING US YOUR COUPONS FOR FREE COCA-COLA

Table listing grocery items and prices: Flour, 24 pounds (87c); Lard, 4-pound carton (59c); Cherries, gallon (57c); Prunes, gallon (31c); Coffee, White Swan, 3 pounds (89c); Lettuce, head (5c); Jersey Corn Flakes, package (9c); Milk, Page's, 6 small cans (19c); Blackberries, No. 2 can (10c); Pickles, sour, quart (16c).

IN OUR MARKET

Table listing market items and prices: Pork Chops, pound (28c); Steak, corn fed, pound (30c); Sausage, pure pork, pound (25c); Beef Roast, 2 pounds (35c); Cheese, pound (25c).

Fresh Fish, Oysters, Dressed Chickens and all kinds of Lunch Meats.

C. W. CRAWFORD

GROCERY and MARKET

PHONE 588—WE DELIVER

WEEK SPECIAL END SPECIAL

COFFEE, Folger's, 2-pound can; COFFEE, Folger's, 1-pound can; FLOUR, LaFrance, 24-pound sack; WHITE KING, large package; SOAP, Lux or Lifebuoy, 3 for 1; WASHING POWDER, Borax, 6 for 1; BAKING POWDER, Calumet, 1 pound; CRACKERS, Saltine Flakes, 2 pounds; SMACKS, the new butter cracker, pkg.; EXTRACT, any flavor, pure; JELLO, any flavor, 2 packages; POST TOASTIES, large package; PICKLES, sour, quart jar; PIMENTO, regular 15c can; SALMON, best pink, can; VIENNA SAUSAGE, 2 cans; PORK AND BEANS, Phillips, can; HOMINY, small can; TOMATOES, No. 2 cans, 2 for 1; TOMATO JUICE, Campbell's, 2 for 1; CORN, White Swan or Primrose, No. 2 can; PINEAPPLE, small cans, 3 for 1; PEACHES, best quality, No. 2 1/2 cans; TOILET PAPER, ScottTissue, 3 rolls; BANANAS, nice yellow fruit, dozen; LEMONS, large Sunkist, dozen; BACON, one pound rolls, sliced; SQUASH, nice and tender, pound; CARROTS, RADISHES, FRESH ONIONS, FRESH TOMATOES, extra good, pound; LETTUCE, good solid heads; STRAWBERRIES, new car Louisiana, pint; Call Us for Vegetables... will have everything...

BRING OR SEND YOUR COCA-COLA COUPONS

City Grocery

Phone 463 J. E. ROPER WE DELIVER

A Brand New Bunch of ANAGRAMS

HANDY ENTRY BLANK In the blank space below I have rearranged the letters in the anagrams to spell the names of the words which I think to be the solution of today's game. The ones checked with a cross mark thus X are advertised in today's Democrat.

Table with 2 columns: ANAGRAM and SOLUTION. Rows include: 1. NIRA, 2. RELBLAMU, 3. HAGLOSES, 4. EKCAS, 5. ALDOKPEAS (two words), 6. HICSWADN, 7. LOTCAGA, 8. HEENGROUSE, 9. DOLUC, 10. SEMGAES.

I have used all of today's anagram solutions in the following sentence of not more than 30 words:

My Name If awarded a prize, I want my order drawn on the store checked below: (Place cross mark after name of store you want your order drawn on). City Grocery ( ) Crawford Grocery ( ) Fields & Son ( ) Memphis Gro. Co. ( ) 'M' System ( ) Chitwood's Market ( )

10 BIG PRIZES! STORE

The Democrat Will

FREE

BASKET OF GROCERIES

And 10 Tickets to the Ritz To See Clark Gable, Constance Bennett "AFTER OFFICE HOURS"

RULES:

- 1. The letters in each of the accompanying anagrams when arranged properly will spell the ten words. Two of the words each week will be items. You are invited to solve the anagrams, arrange them in a sentence of not more than 30 words (you may use less if you wish), and try for one of the ten prizes. 2. To the persons who send in the best entries in accordance with these rules, The Democrat will send a basket of groceries and ten tickets to the Ritz. The basket of groceries will be offered as first prize, two tickets to the Ritz as second prize, and one ticket to the next eight contestants. 3. This offer is open to all except employees of The Democrat and their families. You pay nothing. 4. Awards will be made on the basis of the most correct list of anagrams and the cleverest sentence properly rearrange the letters in each anagram to form a word in common usage. Then check the food and grocery ads in today's Democrat and place a cross mark in the square if you find either of the two grocery items advertised. If the item is NOT advertised, do not mark. 5. Then arrange the ten words into a sentence of not more than thirty (30) words. You may use less if you wish. 6. All entries will be considered by a committee appointed by the Democrat. Contestants agree to the decisions of the committee as final. Judgments will be based upon suitability of words inserted, and in checking cleverness in arranging the sentence neatly. No special consideration will be given to duplicate entries. In case of ties, duplicate prizes will be awarded to tying contestants. 7. All entries must be received at the Democrat by four o'clock Saturday afternoon. 8. You need not purchase The Democrat to compete. You may use the handy blank submitted here, or you may submit your entry on a separate sheet of paper. Winners will be announced in Sunday's Democrat.

Clip the Coupon

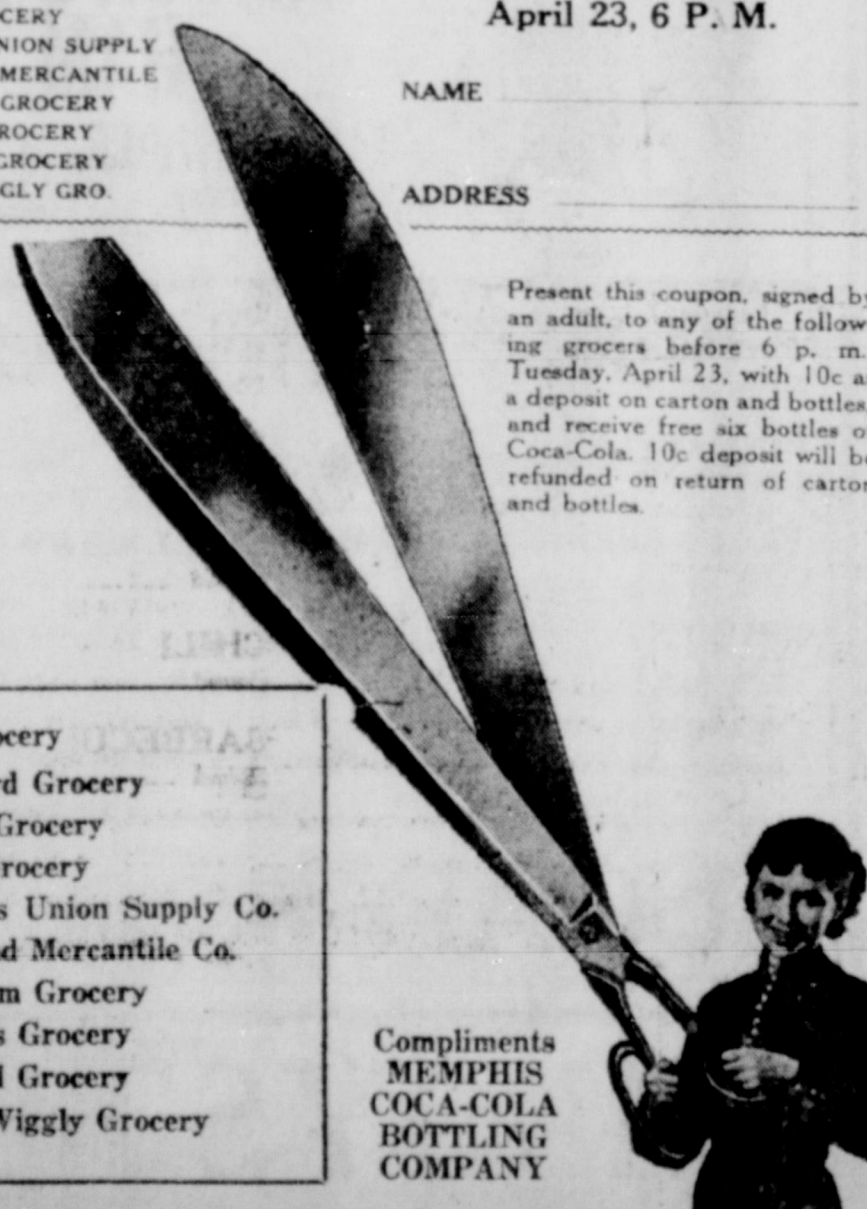
and get

SIX BOTTLES Coca-Cola FREE!

Good Only at CITY GROCERY CRAWFORD GROCERY DRAPER GROCERY FIELDS GROCERY FARMERS UNION SUPPLY HIGHLAND MERCANTILE M SYSTEM GROCERY MEMPHIS GROCERY MAYFIELD GROCERY PIGGLY WIGGLY GRO.

Good for One Coca-Cola "Six Box" if Signed and Presented before Tuesday, April 23, 6 P. M.

NAME ADDRESS



Present this coupon, signed by an adult, to any of the following grocers before 6 p. m., Tuesday, April 23, with 10c as a deposit on carton and bottles, and receive free six bottles of Coca-Cola. 10c deposit will be refunded on return of carton and bottles.

City Grocery Crawford Grocery Draper Grocery Fields Grocery Farmer's Union Supply Co. Highland Mercantile Co. M System Grocery Memphis Grocery Mayfield Grocery Piggly-Wiggly Grocery

Compliments MEMPHIS COCA-COLA BOTTLING COMPANY

**CHURCH ANNOUNCEMENTS**

**WEST PRESBYTERIAN CHURCH**  
John Angus MacMillan, Minister  
"There is more packed into that word any word in the English language—the comfort that goes beyond the grave. That Easter is one of the most days of the year."  
The church will observe Easter with two services—one at 11 a. m. and one at 5 p. m. The Easter sermon will be titled "Power To Reckon With." Adherents and visitors are invited to share in this 11 worship. There will be appropriate congregational music, as Easter music by the choir. At the vesper hour the choir will sing a cantata, "The Living Easter music lovers will service inspirational and full."  
The junior church will hold its Easter service, to which all the folks are invited. They will begin at 11 a. m. There will be a special service Sunday school—beginning at 10 a. m.

**CHRISTIAN CHURCH**  
N. D. Dyer, Pastor  
School 9:45 a. m.  
Worship 11 o'clock.  
Worship 7:30 p. m.  
AY  
Aid 3 p. m.  
WEDNESDAY  
Week service 7:30 p. m.

**WEST BAPTIST CHURCH**  
O. K. Webb, Pastor  
School 9:45 a. m.  
Training Union 6:15 p. m.  
Service, Wednesday, 7:30 p. m.  
O. K. Webb's Missionary Union, 11:30 p. m.

**METHODIST CHURCH**  
J. P. Cole, Pastor  
School 10 a. m.  
Every second and fourth Sunday

**WESLEYAN CHURCH**  
O. and Mrs. J. A. Crow, Pastors  
School 10:00 A. M.  
Worship 11 A. M. by Mrs. Crow  
Service, 7:00 P. M.

**Rains—**

(Continued from Page 1)

inches before midnight. Fort Worth and Denver railroad officials said that no moisture was received there and Texline, but heavy rains were reported in Colorado and the northeast section of New Mexico.

According to the Associated Press, a half inch fell from Altus, Okla., to Crowell. Falls received a quarter inch and Crosbyton an eighth. "Good rains" were reported between Dickens and Floydada.

From a standpoint of assisting growing plants or preparing land for further planting, the Memphis Area apparently had not received sufficient moisture to change conditions, according to James A. Jackson, Hall County Agricultural Agent.

However, fields were dampened and loose sand held in place for a short time, at least, preventing immediate blowing.

**Students Compete In 'My Home Town' Trial Here Today**

"Memphis—My Home Town." This is the title of five minute talks being made this afternoon by more than a half dozen high school students competing for three liberal awards offered by the Senior and Junior Chambers of Commerce.

Winners in the contest are being selected by competent judges in an elimination contest at the High School auditorium, beginning at 2 o'clock. Winner of first prize will receive a trip to Plainview to attend the annual convention of the West Texas Chamber of Commerce May 13, 14 and 15. Second place winner will receive \$10 in cash and third place winner will receive \$5.

Miss Obie Crabtree, high school speech director, is directing the contests this afternoon.

Hydrangeas, Lillies, Roses and other pot plants, and a fine selection of cut flowers for Easter. Hightower Greenhouse, 294-2c.

Preaching 7:45, by Rev. Henry Thomas of Lakeview.  
Midweek prayer meeting, 7:15 P. M.

**ASSEMBLY OF GOD CHURCH**  
R. A. Jones, Pastor  
SUNDAY—  
Sunday School 9:45 a. m.  
Morning service 11 o'clock.  
Friday night service, 8 o'clock.  
WEDNESDAY—  
Prayer meeting 8 o'clock.  
THURSDAY—  
Prayer meeting 8 o'clock.  
SATURDAY—  
Young people's meeting 8 o'clock.

**The STORY of EASTER**



To Pilate on Saturday, the day after the crucifixion, came a disciple of Jesus and a man of wealth—Joseph of Arimathea—to obtain the body of Jesus. Not objecting to private burial of the man he had believed innocent, but first making sure from the centurion of Jesus' death, Pilate granted Joseph's request. Aided by Nicodemus, another disciple, Joseph wrapped the body in fine linen, sprinkled it with spices, and laid it in a new tomb hewn out of rock, in a garden near the place of crucifixion. Rolling a great stone to the entrance, they departed. As they returned to Jerusalem, they discussed in hushed tones the awesome phenomena, the lightning, thunder and earth tremblers, which on the preceding day had attended the death of our Lord upon the Cross.

...NEXT: The Resurrection.

**PIONEER TRAIL DRIVER DIES**

OKLAHOMA CITY, April 19.—W. T. Hart, 86, a pioneer Oklahoma and Texas cattleman who once guided herds over the famous Chisholm trail from Texas to Dodge City and Hunnswell, Kansas, died yesterday.

Get it At Tarver's

**New Bulgarian Government**

SOFIA, April 19.—King Boris today commissioned Andrea Tschaff, diplomat and historian, to form a new Bulgarian government to succeed that of Petko Zlateff, which resigned yesterday.

Mrs. Arthur Eddleman and Miss Bertha Eddleman of Estelline are Memphis visitors today.

**LOCAL MARKETS**

Following are prices paid today on local market for farm products:

<b>No. 1 Turkeys</b>	
Young toms, heavy	13c
Old toms, per lb.	10c
Old Hens, per lb.	13c
<b>No. 2 Turkeys</b>	
Hens, 9 lbs and under	8c
Tons, 14 lbs and under	8c
<b>Chickens</b>	
Hens, heavy per lb.	14c
Hens, light, per lb.	12c
Coffered Springs, per lb.	14c
Leghorns, per lb.	8c
Stags, per pound	8c
Cocks, per pound	3c
<b>Eggs</b>	
Fresh, per doz.	17c to 18c
<b>Cream</b>	
No. 1, per lb.	25c
No. 2, per lb.	23c

**BITTEN BY SNAKE, DIES**

LAREDO, April 19.—Six hours after being bitten by a rattlesnake, William Matthews, 4, died last night at a Laredo hospital. The child was working near the family ranch house in Webb County with his mother, Mrs. Gus Matthews, when the snake struck from some cactus.

Mrs. Robert Webster of Clarendon is here visiting her parents Mr. and Mrs. M. P. Turner.

Miss Geraldine Watson, student at T. C. U. in Fort Worth arrived in Memphis last night to spend the Easter holidays here with her parents, Mr. and Mrs. J. P. Watson.

**BAPTIST PRIMARY GROUP TO HAVE EGG HUNT**

The primary department of the Baptist Sunday School will have an Easter egg hunt Saturday afternoon at 4 o'clock.

All children of the department will meet at the church and the hunt will be in the library park.

The welfare of a nation and the welfare of its children are inseparable.—President Roosevelt.

Wendell Harrison, assistant football coach at Hardin-Simmons University, at Abilene, is here to spend the Easter holidays with his parents, Mr. and Mrs. S. T. Harrison.

Mrs. E. C. Jackson and daughter, Joan, of Fort Worth, spent Wednesday and yesterday here with their parents and grandparents, Dr. and Mrs. H. F. Schoolfield.

**CHOICE MEATS**

SIRLOIN TIPS, pound	29c
BACON, Armour's Star sliced, lb.	35c
PORK CHOPS, nice lean, 2 pounds	35c
EASTER HAMS, half or whole, pound	25c
CURED HAMS, sliced, end cut, pound	32c
ROUND STEAK, Armour's corn-fed beef, lb.	30c

Try one of these Swiss Steaks and be convinced  
Chicken Salad, Ham Salad, Dressed Chickens, Assorted Lunch Meats, Barbecue and Fresh Fish.

**CHITWOOD'S MARKET**

IN WOMACK GROCERY — PHONE 22 or 600  
We Deliver Just As Close As Your Phone

**Easter FEASTERS**

In Preparing Easter Dinner Take Advantage Of The High Quality and Low Prices At The "M"

BRING US YOUR COUPONS FOR FREE COCA-COLA

LETTUCE	6c	APPLES	25c
Head		Winesaps, 2 dozen	
POKE SALAD	5c	ORANGES	25c
Bunch		2 dozen	
NEW POTATOES	15c	BANANAS	25c
2 pounds		2 dozen	
BEANS	25c	GRAPEFRUIT	25c
New Texas, 2 pounds		Dozen	
TOMATOES	10c	LEMONS	19c
Fresh, pound		Sunkist, dozen	

The only HAM with FIXED FLAVOR

**ARMOUR'S STAR HAM**

HALF or WHOLE, PER POUND **25c**

CHERRIES	49c	STEAK	25c
Gallon		Pound	
PINEAPPLE	59c	ROAST	35c
Gallon		2 pounds	
BLACKBERRIES	49c	CHILI MEAT	15c
Gallon		Pound	
PRUNES	33c	CHILI	20c
Gallon		Pound	
GRAPES	39c	BARBECUE	25c
Concord, gallon		Pound	

**SUGAR 25 LBS. \$1.25**

**'M' SYSTEM**

**FIELDS & SON**

GROCERY & MARKET

We Deliver Phone 468

**COFFEE** WHITE SWAN, 3 pounds **89c**

Lettuce, head	6c
Tomatoes, 2 pounds	25c
Green Beans, pound	10c
Onions, White Bermudas, 2 lbs.	15c
Strawberries, pints, 2 for	25c
Meal, Aunt Jemima, 10 pounds	35c
Peaches, dried, 2 pounds	25c
Sugar, 25 pounds	\$1.25
Coffee, Bright & Early, 1-lb. pkg.	21c
Post Toasties, package	10c

**LARD** 8-pound carton **\$1.05**

Tomato Juice, Campbell's, 2 for	15c
Cocoanut, bulk, pound	19c
Tea, Lipton's, 1-4 pound	21c
Powdered Sugar, 2 packages	15c
Raisins, 4 pounds	29c
Mustard, quart	15c
Soap, Big Ben, 6 for	25c
Milk, Pet or Carnation, 6 for	20c
Tissue, White Fur, 4 rolls	25c
Corn, White Swan, No. 2 size	15c

**SUGAR** 10 pounds **50c**

**IN OUR MARKET**

Pork Chops, pound	25c
Sausage, all pork, pound	25c
Bacon, Wilson's Certified, pound	35c
Liver, pork or beef, pound	15c
Roast, rib, 2 pounds	25c

**A TIME SAVER**

Prepare biscuit or muffin dough when convenient. Set in cool place and bake hours later if you wish. You save time in using

Double Tested — Double Action  
**KC BAKING POWDER**  
Same Price Today as 44 Years Ago  
25 ounces for 25c

You can also buy  
A full 10 ounce can for 15c  
15 ounce can for 15c

MILLIONS OF POUNDS HAVE BEEN USED BY OUR GOVERNMENT

**Specials SATURDAY & MONDAY**

LETTUCE, large head	7c
CELERY, large stalk	15c
GREEN BEANS, pound	12c
MARCO JELL, 5 for	23c
PRUNES, 2 1/2 pounds	25c
PEACHES, 2 pounds	25c
BEANS, small Navy, pound	6c
CEDAR MOPS, No. 15	75c
POWDERED SUGAR, 2 for	15c
LIGHT BULBS, 25 and 60 watt, each	15c
PINEAPPLE, crushed, small, 3 for	25c
PICKLES, sour or dill, quart	16c
CRACKERS, 2 pounds	19c
SHRIMP, No. 2 1/2	10c
EGG DYE, Paas, package	10c

**MEMPHIS GROCERY CO.**  
S. Side Square  
Telephone 246  
G. M. DUREN  
O. S. GOODPASTURE

# Memphis Democrat

Hall County Herald Absorbed by Purchase August 7, 1929  
Published every afternoon (except Saturday) and Sunday morning by  
THE MEMPHIS PUBLISHING CO., Inc.  
Memphis, Hall County, Texas

LYMAN E. ROBBINS Editor and Publisher  
J. CLAUDE WELLS Associate Editor  
ADRIAN ODOM Managing Editor  
M. G. RAY Mechanical Superintendent

**MEMPHIS PUBLISHING CO. MEMBER**  
BY CARRIER  
BY MAIL  
Subscription rates: ONE MONTH \$1.00, THREE MONTHS \$2.75, ONE YEAR \$10.00. Single copies 10c.

NOTICE TO PUBLIC  
Any reproduction of this paper without the consent of the publisher is prohibited.

## INVESTIGATIVE FORCE IN FULL SWING

THE Hall County "Investigative Department"—including the district and county attorneys' offices and county sheriff's department—is fast gaining a notable reputation for its work in the solution of crimes. We have received quicker and more thorough work along this line since the present administration went into office than at any other time in the county's history, so far as this writer can ascertain.

Two cases stand out in recent weeks as examples of the fine work being done in this line of the officers' duties. The latest was the rapid solution and gaining of a confession in the slaying and burning of two negroes Tuesday morning. Before noon, the confessed slayer was jailed as a suspect and held for questioning. On the following morning, a confession was made, and that afternoon murder charges were filed. On the surface, there were no clues on which to work other than the verdict of murder rather than accidental death in the fire that almost destroyed the bodies.

The other outstanding example was the recent forgery case that gained southwest-wide attention. An arrest was made in the passing of one forged instrument at Plaska, in which four men figured, but within a short time the local officials uncovered evidence of a forgery ring, which turned out to be one of the largest in the southwest and drew the attention of the Federal government, whose agent complimented the local group on their efficient work.

This "Investigative Department" is composed of County Attorney Carl Periman, Deputy Sheriff B. Wilson, who represents the sheriff's department in such matters, and District Attorney John Deaver.

As the result of this quick action, combined with more convictions and the co-operation of county and justice courts, where heavy fines are being assessed, the crime rate in Hall County has dropped greatly during the past few months. Especially is this true in the case of petty thefts, which, for a time, almost became an epidemic here.

## PEACE RESTS SECURELY ON STABILITY

A SENSIBLE approach to the problem of world peace is produced by Secretary of State Hull in his recent warning that the nations must unite in an economic program to restore economic stability before the threat of war can be averted.

We do not often stop to remember that back of almost every war scare there is some profound maladjustment which exerts an unendurable pressure on a people or a group of peoples. Our disarmament and security conferences almost uniformly ignore that fact, and for that reason get nowhere.

Secretary Hull's notion is that, if the tangled economic situation can be unscrambled first, the attempt to build an enduring peace will be a great deal simpler.

"The necessity was never more apparent," he says, "for the various countries of the world to give immediate attention to the matter of adopting a sound and comprehensive economic program, both domestic and international, and carrying it forward, to the end that the normal processes of domestic and international finance and commerce may be restored and tens of millions of unemployed wage earners may be re-employed."

"This would afford a solid foundation on which to rebuild stable peace and political structures."

Too often we seem to take it for granted that this or that nation adopts a warlike course out of pure human cussedness.

We have been very vocal in condemning Japan's course in Manchuria and China, for instance, and we have blamed it largely on the militarism of an army and navy clique which has managed to take control of the government.

What we forget is the simple fact that Japan has faced the prospect of a trade depression and a wave of unemployment far more severe than the one through which we have been passing.

The Japanese people became convinced that only by gaining access to fresh territories that would provide expanding markets, and new sources of raw material could they avert economic disaster.

This is what explains Japan's warlike course in recent years; and something similar is behind almost every resurgence of the martial spirit.

## THE WHAT-IS-IT



## BEHIND THE SCENE IN WASHINGTON

BY RODNEY DUTCHER

WASHINGTON, April 19.—According to various popular magazine writers, Roosevelt has fired the "Brain Trust," spurned the left-wingers, turned completely to the right, and surrounded himself with a new ring of conservative advisers.

I suppose that explains why the major New Deal casualties of the last year happen to have been Budget Director Lew Douglas and NRA Administrator Hugh Johnson, two of the best friends conservative financiers and industrialists have had in Washington since Mr. Hoover left.

I suppose that's why Roosevelt, faced with his most crucial program in the \$4,000,000,000 work-relief operation, has chosen as his "brain trust" to direct it the three outstanding New Dealers who still stick their necks out as liberals—Mr. Hopkins, Mr. Tugwell, and Mr. Ickes.

And I suppose that's why Roosevelt had Tom Corcoran and Ben Cohen, two original brain trusters and leading young Brandeis-Frankfurter disciples, prepare and fight for the Wheeler-Rayburn holding company bill, which has called forth the "power trusts'" most furious propaganda effort of all time.

Enough of that. What I mean is that the situation as to Roosevelt's advisers is much more complicated than most commentators would have you believe.

Despite those important incidents, the ear of Roosevelt has lately been lent most of the time to cautious conservatives, who warn him against the alleged dangers of radical reforms.

A certain ring of those fellows is coming to be known as the "palace gang," and the more Roosevelt seems to listen to them, the less he seems to take counsel from such liberals as Tugwell, Ickes, Hopkins, Frankfurter, and the progressive senators. The "palace gang" includes:

Donald Richberg, who has become increasingly unpopular with labor and the liberals since he started trying to make the New Deal the darling of "big business."

Morgenthau on Top  
Secretary Henry Morgenthau, who now stands in at the White House better than any other cabinet member, who takes his presidential in all their detail to the president—in contrast to independent Ickes, who runs his show—and who has become increasingly powerful through the no-longer independent budget bureau.

Postmaster-General Jim Farley, the administration's political boss.

White House Secretary Marvin McIntyre, commonly considered

a pipe-line to Roosevelt's big-time lobbyists here, doorman for "big business."

Raymond Moley, original One Brain Truster, who here frequently, leading vice from the business crowd in New York.

Moley has been the tall tales, and dinner party magnate named Frank Moley that Moley could "reasonable radicalism" t'oons while they're Moley what was wrong government.

Liberals here usually Moley has been taken into whitewashed of his last pink. Mr. Freed's impetuously handsome and expensively printed book, including an attack on stock market act—and with editorial administration Moley that desirable red-hot liberals were be subordinated to the government.

Harry Hopkins is the White House liberal at ing. That's because he's been playing politics with the others.

The liberals are worked up and demanding the most part, at Roosevelt position to listen to counsel advice in most matters. He press dark fears that he Howard Taft.

Point to Taft's Fate  
Taft was elected to use to carry out policies of Roosevelt, who end and then succumbed to the shipments of stand-patt "big business boys," long progressives and ending worst-defeated party.

As to the conflicts embodied in—considering initially mentioned—the men who kind differ.

But some who have many years insist on the "right" stimulating the capital goods market by instilling business.

Roosevelt knows the thinks he needs some is simply too huge to ery to win in 1936.

Re-employment by two or three million ing to this theory, we age Roosevelt to be radical than he ever He will be far more second term.

## HEALTH

By DR. MORRIS FISHBEN

Editor, Journal of the American Medical Association, and of Hygeia, the Health Magazine

Bright's disease, or chronic inflammation of the kidneys, is one of the most widespread conditions in medical practice. The condition was first described many years ago. More recently it has been realized that there are various types of Bright's disease characterized by different symptoms and a different course, and that the method of treatment depends on understanding its nature.

It is important to study the excretions from the kidney and to plan the treatment according to the condition of the kidney as it is found by this type of study. For this reason the doctor invariably asks for a specimen of the fluid excreted by the kidney as a first step in the study of the disease.

In the acute form, which comes on usually after an infection like scarlet fever or after poisoning with certain metallic poisons, the symptoms are sudden. Not only is a diminished amount of fluid excreted by the kidney, but usually there is change in color to a brownish or reddish hue because of presence of blood.

In the acute form of inflammation of the kidney there may be swelling or puffiness of the face, with headache, nausea, and vomiting. In handling this type of inflammation, the most important step is to eliminate need for action by the kidneys.

By use of cathartics and by sweating, the bowels and the skin are made to get rid of the water which the kidneys cannot eliminate. Application of heat seems to be of value in diminishing congestion of the kidneys.

After healing begins, the diet is carefully regulated to avoid too much pressure on the kidney.

In the chronic form of Bright's disease, there is a gradual change in the tissue of the kidney, leading to formation of fibers in place of the normal tissues of the kidney. As the normal cellular elements gradually disappear from it, and only the chief chains could wear its feathers.

Guatemala adopted the quetzal as its national bird when the country declared its independence in 1821.

Guatemala adopted the quetzal as its national bird when the country declared its independence in 1821.

Guatemala adopted the quetzal as its national bird when the country declared its independence in 1821.

Guatemala adopted the quetzal as its national bird when the country declared its independence in 1821.

## Stories in STAMPS

By I. S. Klein



## LAND of the QUETZAL

A strange as is its name so beautiful is the plumage of the bird that Guatemala has adopted as its national fowl placed on its stamps. The bird is the quetzal native to the heights of Central America, incapable of living in captivity. This bird was prized so highly by the natives before the Spanish conquest that no one was permitted to kill it, and only the chiefs could wear its feathers.

Guatemala adopted the quetzal as its national bird when the country declared its independence in 1821.

Guatemala adopted the quetzal as its national bird when the country declared its independence in 1821.

Guatemala adopted the quetzal as its national bird when the country declared its independence in 1821.

Guatemala adopted the quetzal as its national bird when the country declared its independence in 1821.

Guatemala adopted the quetzal as its national bird when the country declared its independence in 1821.

Guatemala adopted the quetzal as its national bird when the country declared its independence in 1821.

Guatemala adopted the quetzal as its national bird when the country declared its independence in 1821.

Guatemala adopted the quetzal as its national bird when the country declared its independence in 1821.

Guatemala adopted the quetzal as its national bird when the country declared its independence in 1821.

Guatemala adopted the quetzal as its national bird when the country declared its independence in 1821.

Guatemala adopted the quetzal as its national bird when the country declared its independence in 1821.

## Side Glances by George Clark



"That auctioneer saw he could never interest me in that junk he was selling so he took me aside and showed me some real stuff."

## Newly Made King

HORIZONTAL Answer to Previous Puzzle

1 Eleven-year-old king of Siam.  
7 He was born above.  
12 Beret.  
15 Set of three.  
16 To summer.  
17 Husbands and wives.  
19 Tiny particle.  
21 Beseeched.  
24 Mohammedan symbol.  
27 Yielded.  
29 To possess.  
31 Prohibit.  
32 Hedge-podge.  
34 Laymen.  
35 River of forgetfulness.  
37 Deposit at river's mouth.  
38 Saika.  
39 Artist's frame.  
40 Dress fastener.  
43 Damp.  
45 Age.  
48 Obliteration.

58 Since.  
59 Female horse.  
60 Oleoresin.  
61 Brought up.  
62 Ex-King Pradjhipok of Siam is his (pl.).  
63 The ex-king's throne.  
64 Dress fastener.  
65 Negative word.  
66 Hall.  
68 More modern.

5 Doctor.  
6 Head.  
8 Right.  
9 Decree of a sultan.  
10 Egg of a louse.  
11 Dove's cry.  
13 Auto.  
14 Tiny vegetable.  
16 He had been attending in Switzerland (pl.).  
17 Mountain.  
18 Street.



# The Democrat's Daily Page of All Star Comics

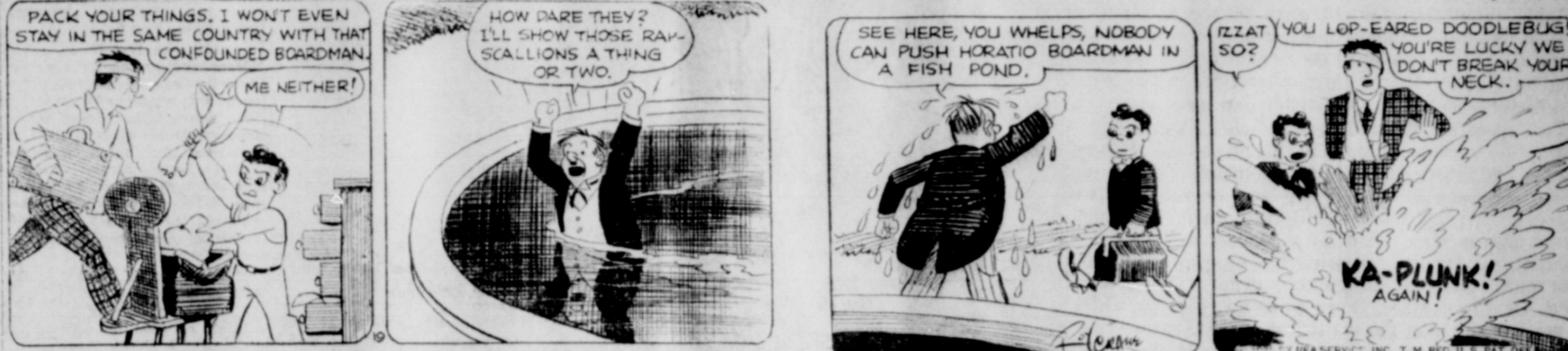
## SALESMAN SAM

By SMALL



## WASH TUBS

By CRANE



## BOOTS AND HER BUDDIES

By MARTIN



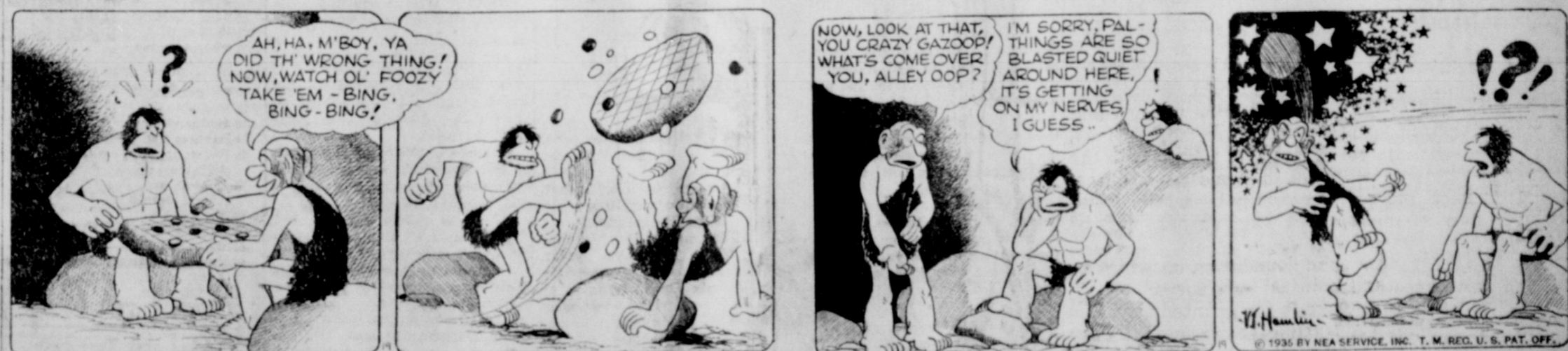
## FRECKLES AND HIS FRIENDS

By BLOSSER



## ALLEY OOP

By HAMLIN



## THE NEWFANGLES (Mom 'n Pop)

By COWAN



**Charles F. Ashcroft**  
 Easteride every person may some Crippled Children and help bring health and to some unfortunate crippled child? pleads F. Ashcroft, Secretary president of the Texas for Crippled Children, to little boys and girls saved from life long and deformity if operated on. We are selling these seals in order to raise to cure them. They are on our offices 304 Wairton Austin, and at many and others. Seal's cost a The federal govern- will not every dollar a campaign.



**HARVEY ALWAYS**  
 WEDDING RING - JUDGE SUITORS - SHE SAYS.



**GIBSON HAS A**  
 HAIR PUPPY THAT HAS BITTEN HORSES TAILS.



**KELLY CONSIDERS**  
 HIS LUCKY NUMBER, WAS BORN SEPT. 9, 1899 THERE ARE 0 LETTERS IN HIS NAME.

**PER FANNY SAYS:**  
 T. M. REG. U. S. PAT. OFF.



**Wire spreads electrify:**  
 NEWS.

