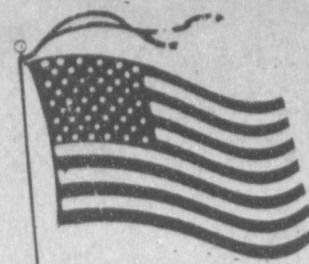


**Panhandle
Press
Association
1989
Award Winner**

BAILEY COUNTY JOURNAL

The Community Of Opportunity-Where Water Makes The Difference



© 1990

Vol. 29, No. 45

12 PAGES TODAY

Published Every Sunday At Muleshoe, Bailey County, Texas 79347

Member
**TA TEXAS PRESS
ASSOCIATION**

20¢

NOVEMBER 11, 1990

Elementary Schools Plan Open House

**around
Muleshoe**

The Jennyslippers will meet Tuesday at noon at the Depot. Jerry Savuto from Muleshoe Area Medical Center will speak on the new Prescription Drug Program."

A special two-hour, live telecast of the Final Championship Round of the National Finals Rodeo from Las Vegas, Nevada, will be sponsored locally by Fry & Cox, Inc. in Muleshoe.

The live coverage will be broadcast on America's largest Sports network ESPN on December 9, 4-6 p.m.

Coverage of the final championship go-round is sponsored by Hesston Corporation and participating Hesston Farm Equipment dealers across the United States and Canada.

Educator of the Week at Watson Junior High School is Kristy Phelps.

Cont. Page 6, Col. 2

**American Legion
Annual Breakfast
Scheduled Monday**

All veterans, their spouses and widows of deceased veterans are encouraged to attend the annual Veterans' Day Breakfast Monday morning, tomorrow, at the American Legion Hall.

It will be sponsored by Ben Richardson Post #403 and Jack Rials said the breakfast hours are 6-8:30 a.m., but if anyone comes after that time, they will be fed.

The American Legion hopes for a good participation in their breakfast this year.

**Perez, Latham
Chosen WJHS
Spirit Leaders**

Thursday afternoon, students and teachers from Watson Junior High School gathered in the gymnasium for their annual Spirit Week celebration.

Crowned the Queen and King of Spirit were eighth graders Stephanie Perez and Lance Latham.

Candidates and their escorts included from the seventh grade: Kit Dominguez, escorted by Ernie Paez; Michelle Williams, escorted by Chad Johnson; and Allyson Field, escorted by Daniel Garbarino.

Eighth grade candidates were Angela Crawford, escorted by Lance Latham; Keetha Glover, escorted by Chris Edwards; and Stephanie Perez, escorted by Robert Toscano.

Tom Boutell was master of ceremonies for the celebration.

Essay contest winners included Kermit Price from Mrs. Phelps' class; Suzy Hodges, essay and Jody Foster, speech from Mr. Black's class and Chris Page from Mrs. Green's class.

In the Spirit Link Stick contest, the eighth grade was first; seventh grade was second and sixth grade was third.

Winners of the poster contest were Steffan Sutton, sixth grade; Valentin Ramirez, seventh grade; and Patricia Franco, eighth grade.

Bryan Field gave the Player Speech and the band performed and the cheerleaders led cheers.

Also speaking was WJHS head coach Roy Donaldson.

One student said, "This was a G-R-E-A-T Week. Thanks, teachers!!"



CHIEFTAINS FOIL MULE PLANS FOR VICTORY--Friday night, the Friona Chieftains came to Muleshoe 1-8 for the season, to face the 3-6 Mules. By the end of the game, as the Chieftains hung onto a slim 7-0 lead, and turned it into a 14-5 victory over the Mules, the 1990 football season ended for both teams. This shows some of the tenacious action of the Chieftains as they struggle to keep the Mules away from the end zone. (Journal Photo)

Mules Lose Final Game Against Friona Chieftains

It was a dismal finish of the 1990 football season for the Muleshoe Mules, who lost 14-5 to a fired-up Friona Chieftain team Friday night.

Playing on their home field, the Mule defense came through to hold the Chieftains scoreless in the first quarter. By the same token, the Chieftains also held the Mules scoreless.

Going into the game, the Chieftains took the opening kickoff, but failed to move the ball, and were forced to punt to the Mules.

Then, the Mules returned the favor, moving the ball only four yards in three plays, then giving it back to Friona.

The Chieftains then fumbled and the Mules were unable to capitalize on what was the first of several Chieftain fumbles, so back the ball went -- once again.

It was a back and forth game in the first and it ended 0-0.

Then, in the second, shortly after the Mules had once again punted the ball away, the Chieftains started putting a drive together that culminated in a 56 yard gallop by Curtis Brady, after he broke through the Mule line, and into the end zone. The clock showed 11:42 of the second. Mike Scott booted the extra point, and the Chieftains, who had, up to this point, a 0-9 season, never relinquished their lead.

Penalties continued to plague the Friona Chieftains, and they

Needmore Club

Planning Annual

Thanksgiving Meal

In what has become a 'tradition' in Bailey County, the Needmore Community Club will again be presenting their Annual Thanksgiving Supper.

It will be Saturday, November 17 at the Bailey County Civic Center.

Serving will begin at 5 p.m. until everyone has been served.

Tickets will be \$6 for adults, \$3 for children 12 and under.

Carry-out orders will be available.

There will also be a drawing for a king-size quilt.

racked up around 100 yards of penalties in the first half of the game.

All the penalties failed to put the Mules in the end zone, and at one point, they fumbled the ball away on the Chieftain one yard line.

A see-saw contest then took place, with neither team managing to gain yardage against the other team, and the ball just went back and forth.

As the second half wound

County Faces

Major Decision

On Tax Change

Bailey County Commissioners will have a lot to discuss Monday during a regular session beginning at 10 a.m. in the Bailey County Commissioners' Courtroom.

Leading the discussion could be an item listed as No. 11 on the lengthy agenda. It reads "Discuss renotification to taxpayers of County tax increase and rebilling."

It was explained that although the commissioners approved a tax rate increase from \$0.30 per \$100 valuation to \$0.3125 or one and one-quarter cent increase, the Bailey County Appraisal District was never informed by the county judge's office.

Thus, the taxpayers were billed at the old rate.

Other items on the agenda other than approval of minutes of the previous meeting; review of departmental reports; county treasurer report for October and payment of routine county bills will be:

Discuss hepatitis shots for ambulance service personnel and purchase of I.V. pump; consider Wick's participation in Health Center grant proposals; consider request from Juvenile Probation Department for educational material; approve advertising for bids for the purchase of a dump truck for Precinct #1 and consider request by Pat Moore to transfer paid leave.

Also, discuss 911 proposal and plans; canvas election returns; pay election workers and expenses and adopt resolution requesting Workers' Compensation coverage for all elected officials and volunteers.

down, neither team was managing to move the ball more than a few feet before being forced to turn it back to the other team.

As the first half clock ran out, the Chieftains were clinging to a 7-0 score.

Starting back in the third, the Chieftains fumbled the opening kickoff, and the Mules took advantage, this time, and Junior Olivarez booted three points through the uprights on a 37-yard field goal.

This had the score at 3-7 with 10:09 showing in the third.

Again, the Chieftains fumbled on receiving the kickoff, then ran into a bunch of penalty trouble.

Cont. Page 6, Col. 1

Anchor Brothers Plan Concert Next Saturday

Next Saturday, November 17, at 7:30 p.m., the Anchor Brothers Band will perform a free concert at the Bailey County Civic Center.

They have just recorded their 11th cassette album, but this is their first time, ever, to share with the general public the making of an album, said Kenneth Richards, band co-founder.

He said all 10 songs on the album are original. Four songs are written by bass guitar player, Dean Richards, and five are written by the piano player, Reydon Stanford. One song was written by Sammie Parker, a friend of the band.

The album was recorded at Clear Sound Studio, in Lubbock.

Several other musicians from the West Texas area helped with the music arrangements in the overdub sessions, added Richards. He said one song has a brass section from Texas Tech University. Plans are for the musicians who played on the album to perform next Saturday night, the night of the debut.

Some of the best sellers of the Anchor Brothers' songs will be performed to start the show, then Dennis Cawthon will share some songs he has written. The new album is entitled *Treasures of the Heart* and will be Cont. Page 6, Col. 2

The Muleshoe Independent School District will observe American Education Week during the week of November 11-17.

Neal Dillman and Mary De-Shazo Elementary Schools will host Open Hours in their respective buildings on Tuesday November 13.

Barbara Finney, principal of Dillman Elementary, invites parents and patrons to visit during the hours of 6:30 to 8:30 p.m.

Fred Ivy, principal of De-Shazo Elementary, invites parents and patrons to visit during the hours of 6:00 to 8:00 p.m.

Parents and all interested persons are welcome to visit all the schools at anytime, but this is a special week to implement the theme "Educating Everyone, Takes Everyone."

Watson Junior High and High

School will host Public Schools Week during the spring of 1991.

Parents and citizens of the Muleshoe area are welcome to come and eat lunch with your child and visit the classrooms at anytime during the week.

President Bush and the state governors met in September 1990 and established National Goals to be reached in America by the year 2000:

(1) Readiness for School; (2) Student Achievement and Citizenship; (3) School completion (90%); (4) America First in Math and Science; (5) Safe, Disciplined and Drug-Free Schools; and (6) Adult Literacy and Lifelong Learning.

"Educating Everyone, Takes Everyone, to make these goals realities," says Elizabeth Watson, Assistant Superintendent for Instruction.

Dillman Elementary Has Incentive Program

If there was ever an incentive to attend school, Dillman Elementary may have come up with 'perfect' solutions. Incentives to attend school, and for proper behavior during school hours will be rewarded, handsomely, according to a letter from Barbara Finney, principal, to parents of Dillman students.

The letter reads as follows: Dear Parents,

You have previously received a copy of the discipline plan for Dillman Elementary stating rules and consequences for misbehavior. We also have developed a plan to reward and encourage appropriate behavior in our school. This will provide students with positive reinforcement and help to maintain an excellent educational environment. Our plan includes the following:

1. Starlight Diner -- (K-2 only) -- Every month one child

will be picked from each classroom to eat lunch with Mrs. Finney in a special dining area of the cafeteria. Children will be selected based on good behavior.

2. Super Kid -- Each month one boy and one girl from each grade level will be selected to be a "Super Kid." Their photos will be taken and displayed in the front trophy case. They will be interviewed by Channel 6 and pictures will be published in the local newspapers. Students will be selected based on classroom performance, work habits and citizenship characteristics.

3. School Store -- For exemplary conduct in the cafeteria, P.E., music, library, recess and while loading the buses, students can receive reward slips. When they have five slips, they may "purchase" items from the Cont. Page 6, Col. 1



ANCHOR BROTHERS BAND SET CONCERT HERE--Next Saturday night, November 17, the Anchor Brothers Band will present a gospel concert at the Bailey County Coliseum at 7 p.m. to introduce the public to their 11th album cassette. There is no charge for the concert. (Guest Photo)

VETERANS DAY

November 11, 1990



We're proud to honor all the men and women who took time out of their lives to serve in our armed forces, and especially all the veterans in our area who are our friends, relatives, and neighbors. May we never overlook and always remember the important contribution they've made to America and Democracy.

— This Page Proudly Sponsored By The Following Civic-Minded Businesses: —

Terry Field Insurance Spudnut Shop Western Drug American Valley Inc.

Muleshoe Trade Center Joes Boot Shop and Country Junction

Kristy's Plants & Pivot Products Distributors, Inc. Main Street Beauty Shop

Leals Restaurnat Bob Stovall Printing Viola's Restaurant

Glenna's Beauty Retreat W.T. Services, Inc. Alex's Tire Service

Churchs Fried Chicken Wes-Tex Feed Yards, Inc. KC Muffler Mfg. Inc.

Chubby's Beauty Shop Bailey County Farm Bureau Farmers Co-op Elevators

Posada's Radiator Shop LaPlacita Restaurant Noble T.V. and Appliance

Mission Cable Co. Irrigation Pumps and Power Serv-all Thriftway

Bobo Insurance Williams Bros Office Supply Lambert Cleaners Bailey Gin Co.

A&M Farm and Ranch Supply, Inc. Dairy Queen Decorators Floral and Gifts

Retail Merchants Association Of Muleshoe Five Area Telephone Cooperative Inc.

Report From Texas Board On Higher Education

The Texas Higher Education Coordinating Board took steps at its quarterly meeting last week to meet an unprecedented

Texas Farm Bureau Report

In the final deliberations on the 1990 Farm Bill, Congress came through with a key waiver regarding emergency loans and crop insurance that has been described as extremely important to Texas farmers and ranchers.

"The Texas Congressional Delegation has displayed its political muscle and willingness to work together. Many Texas producers would have suffered had we not gotten this waiver passed," said S.M. True, president of the Texas Farm Bureau.

At the recommendation of Congressman Bill Sarpolius (D-Texas), House Agriculture Committee Chairman Kika de la Garza (D-Texas) inserted language into the Farm Bill Conference Report to "waive" a crop insurance requirement for Emergency eligibility from the Farmers Home Administration (FmHA).

The actual language is identical to the provisions contained in the extension of the 1989 Disaster Act recently introduced by Senator Lloyd Bentsen of Texas, True said.

The waiver insures that producers seeking emergency loan assistance from FmHA will be considered even if they did not purchase crop insurance. A common complaint among producers is that crop insurance has not served as an effective risk management tool for Texas farmers.

Current FmHA regulations require that crop insurance be purchased, if available, prior to an individual's eligibility for an emergency loan from FmHA. Although this provision had been waived from the two previous disaster bills, the requirement effectively excluded most Texas producers from any assistance from FmHA.

The Farmers Home Administration is the "lender of last resort" in the farm credit system. Texas farmers who are unable to obtain credit elsewhere may now qualify for Emergency Loan Assistance from the agency.

"It was the concerted efforts of Bill Sarpolius, Chairman de la Garza, and Senator Lloyd Bentsen that again saved the day for Texas farmers and ranchers," True said.

demand for college student loans, establish a five-year plan to improve higher education, and address the role of upper level institutions. The Board also distributed energy research grants, approved campus construction projects, and considered legislative proposals.

Student Loan Funding

Demand for student loans has grown to record amounts, almost exhausting the state's existing loan fund. To provide new loans next year, the Board approved a January sale of \$25 million in general obligation bonds, which exhausts its current bonding authority.

Anticipating loan demand to continue at about \$100 million each year, the Board also voted to request legislative support for a constitutional amendment to authorize an additional \$300 million in general obligation bonds for student loans. Because November 1991 will be the earliest opportunity for voters to approve the amend-

Free Seminar On Arthritis Medications

On Monday, November 12, The City of Lubbock and Highland Medical Center will be offering a free seminar on Arthritis Medications Management. This seminar will provide an overview of the medications which are used to treat the various forms of arthritis. This information will include explanations of what these medications actually do for the arthritis, the side effects to expect, the proper substitution if any, the cost of the medications, and the "do's and don'ts" for taking the medication.

Come learn about the management of arthritis medication. Our informative seminars are taught by medical professionals who can help you better manage your arthritis.

"Arthritis Medication Management"

Todd Dipprey, R.Ph.
Director of Pharmacy, Highland Medical Center
Monday, November 12, 1990
1 p.m.
19th Street Senior Center
2001 19th Street
Contact: Colette Matticks
at 767-2679

Following the seminar, support groups will be started. If you are unable to attend the seminar, but are interested in becoming involved in a support group, please call 795-8251, Ext. 600 or 1-800-642-6021.

ment, the Board will also seek authority from the Legislature to issue \$200 million in revenue bonds to cover the interim loan demand.

Plans to Improve Higher Education

The Board also adopted the Master Plan for Texas Higher Education. The plan represents more than 12 months of work by the higher education community and private industry to develop a long-range vision for Texas higher education.

In reviewing the plan, the Board concluded that priorities should be set for the next biennium and approved the "Board Action Plan," which identifies five goals for the next two years. The Action Plan will include timelines and performance measures to enhance the quality of undergraduate education; increase the number of top graduates in teaching, nursing, allied health, engineering, math and science; improve minority participation in higher education; apply the Texas Academic Skills Program as an accountability tool for public education; and efficiently manage campus physical plants.

Copies of the Master Plan and Action Plan will be available in January 1991.

Upper-Level Institutions

After the Legislature approved the conversion of the University of Texas at Dallas and Corpus Christi State University from upper-level institutions to four-year schools in 1989, the Board requested a staff study of the future role of upper level schools. The report presented at this meeting described upper level schools as useful, successful, and relatively inexpensive.

The Board endorsed the role of upper level institutions and directed the staff to develop guidelines to improve transfer and cooperative agreements between feeder schools and the upper levels. The Board also adopted conditions for consideration of mergers and conversions involving upper levels.

Campus Construction and Renovation Projects

The Board approved \$75.4 million in construction and renovation projects at nine campuses. They included:
*Sam Houston State University, residence hall repair, \$925,000 from Student Housing

Questions & Answers From Bob Bullock

Dear Bob Bullock:

I am opening a tattoo shop. I need to know if I should charge my customers sales tax for my tattoo work.

L.M.
Houston

Dear L.M.:
No. Tattooing is not taxable. Just pay tax on all of your materials and supplies when you buy them.

Dear Bob Bullock:

Our office is putting together a Thanksgiving basket for a family in need. Will we have to pay sales tax?

J.O.
Austin

Dear J.O.:
Food items such as turkey, fruit and canned goods aren't taxable. But if you include something like candy or napkins in the basket, they will be taxable.

Bond proceeds and a federal loan;

*Texas Tech University, physical plant renovation, \$1.49 million from the Higher Education Assistance Fund;

*Texas A&M University-Galveston, physical education facility, \$3.58 million from Permanent University Fund bond proceeds and interest from tuition revenue bonds;

*University of Texas at Arlington, Preston Hall renovation, \$1.04 million from Permanent University Fund bond proceeds and UT-Arlington general use fees;

*University of Texas at Austin, Texas Union renovation, \$8 million from Student Unions fees;

*University of Texas at Dallas, Cecil and Ida Green Institute for the Study of Science and Society, \$2.4 million in private funds;

*University of Texas M.D. Anderson Cancer Center, Rotary House International, \$17.6 million in private gifts and revenue bonds;

*University of Texas Medical Branch at Galveston, Keiller building renovation, \$13.7 million from patient income; and

*University of Texas Southwestern Medical Center at Dallas, Aston Ambulatory Care Center, \$26.75 million in revenue bonds.

The Board also approved Lamar University-Port Arthur's purchase of a building and parking lot with \$38,787 from a property sale to the Port Arthur Independent School District.

Other Major Matters

In other matters, the Board:
*Distributed almost \$6 million in "oil overcharge funds" to 32 energy research projects at 11 Texas higher education institutions.

*Awarded more than \$716,000 in supplemental research grants to include 43 Black, Hispanic, and Native American students on research teams at 13 institutions.

*Discussed requiring higher education institutions to complete a percentage of deferred maintenance projects before constructing new buildings.

*Named the Commission on Colleges of the Southern Association of Colleges and Schools as the only accrediting agency it will recognize for certification of general purpose private schools.

*Recognized 15 campuses for increasing minority enrollment since 1983.

Minority Grants For Students Being Researched

The Coordinating Board has awarded more than \$716,000 in Advanced Technology Program and Advanced Research Program supplemental grants to include 43 Black, Hispanic and Native American students on the research teams at 13 institutions. This program is part of the Coordinating Board's ongoing effort to expand access to higher education for Texas minority students.

"The supplemental grants are of enormous benefit," said Roger Elliott, Assistant Commissioner for Research Programs. "Minority students don't often consider careers in scientific research. This program gets them deeply involved in some very sophisticated research projects," he said. "It opens up brand new career opportunities for them."

The Advanced Technology Program and the Advanced Research Program, created in 1987 by the 70th Legislature, provide more than \$60 million in state grants to university-based research teams. The supple-

*Endorsed the medical schools' appropriations request to fund family practice training experiences for third-year medical students and statutory changes in the Resident Physician Compensation Program as recommended by the program's advisory committee.

mental awards for minority student involvement are funded from grant allocations that have been returned to the state.

Research teams that received either an Advanced Technology Program or an Advanced Research Program grant were eligible for the supplemental grant program. More than 80 grant applications were received

Research teams that received either an Advanced Technology Program or an Advanced Research Program grant were eligible for the supplemental grant program. More than 80 grant applications were received. For more information contact Roger Elliott at 512-483-6150.

Some Run

"They tell me that Jenkins had to propose at least five times to Miss Moneybags before she accepted him."

"Well, she certainly gave him a run for her money."

For fast, fast relief.

SUNBELT SAVINGS CDs	
1-YEAR* 7.75% ANNUAL RATE	6-MONTH* 7.65% ANNUAL RATE
7.97% YIELD	7.87% YIELD

Sunbelt CDs let you sleep at night. Because you know exactly what you're getting: a good return on your money, a rate that won't change for the term of your deposit, and FDIC protection—up to \$100,000 for each insured account. In these uncertain times, a Sunbelt CD is the stuff that pleasant dreams are made of.

Sunbelt Savings FSB
No Excuses. Answers.

Muleshoe: 304 Main St. 272-5527

*\$500 minimum deposit. Annualized yield is calculated assuming all principal and interest remain on deposit for one year at the annual rate. Interest compounded quarterly. Rate subject to change. Substantial penalty for early withdrawal. © 1990 Sunbelt Savings, FSB.

ST. MARY MOBILE MEDICAL SERVICES

Mobile Mammography Unit
will be here
Wednesday, November 14, 1990
at
Muleshoe Jr. High School
Call Jean Richardson
For Appointment at 272-3389

Don't miss this excellent, low-cost opportunity for a safe and reliable breast cancer screening
Cost — \$60.00
includes X-ray, radiologist's fee, and film storage

"Bringing Medicine To You"

ST. MARY OF THE PLAINS HOSPITAL

4000 24th Street Lubbock, TX 79410 1-800-388-6266

Bailey County Journal USPS 040-200
Established March 31, 1963. Published by Muleshoe Publishing Co., Inc. Every Sunday at 304 W. Second, Box 449, Muleshoe, TX 79347. Second Class Postage paid at Muleshoe, TX, 79347.

MEMBER 1990
TEXAS PRESS ASSOCIATION

L. E. Hall, Publisher
Sammy Hall, Vice President/Controller
Cleta Williams-Jacobson, News
Evelene Harris, Society
Holly Millage, Advertising
Dora Toranzo, Classified

SUBSCRIPTIONS
Muleshoe Journal and Bailey County Journal
Bailey and surrounding counties
Muleshoe Journal and Bailey County Journal
Elsewhere in Texas \$14.75
Muleshoe Journal and Bailey County Journal
Outside Texas, \$16.50
Yearly By Carrier
\$12.50

Advertising Rate Card on Application
*Advertisers should check their ad the first day of insertion. The Journal will not be liable for failure to publish an ad or for a typographical error or error in publication except to the extent of the cost of the ad for the first day of insertion. Adjustment for error will be limited to the cost of that portion of the ad where the error occurred.

New Study Shows WIC Reduces Infant Deaths

A new study demonstrates that Medicaid costs are lower and infant birthweights are higher for pregnant women who receive healthy foods and nutrition education during their pregnancies from the Special Supplemental Food Program for Women, Infants and Children (WIC), says Tina Garcia, local WIC director.

The Muleshoe WIC program, said Garcia, provides food and nutrition services for 539 local women and children in each month.

The new findings, released October 1 by the U. S. Department of Agriculture, reaffirm the positive impact of the federally-sponsored WIC program for low-income women and infants, according to Debra Stabeno, Chief of Texas Department of Health's Bureau of WIC Nutrition. The one-year study sampled five states including Texas which serves more than 300,000 WIC participants each month.

"These results are exciting," said Stabeno, "They show that Medicaid eligible pregnant women who participate in WIC have healthier babies. These babies require less Medicaid assistance after birth than do babies of low-income pregnant women who don't participate. Unfortunately, WIC is only able to serve 25 percent of the people who are potentially eligible for the program in Texas. Maybe this study will help us secure additional funding to serve more people," she said.

For every dollar spent on prenatal WIC participants eligible for Medicaid, there is an associated savings in Medicaid costs during the first 60 days after birth for newborns and their mothers.

In Texas, prenatal participation by Medicaid recipients in

the WIC program resulted in estimated Medicaid savings of \$573 for each newborn, pointed out Stabeno. Other outcomes attributable to prenatal participation in WIC include: an average overall increase in birthweight of 77 grams; an average increase in birthweight of 165 grams for premature infants; a 3.4 percent reduction in the incidence of low birthweight, a .4 percent week increase in gestational age; and a 4.2 percent decrease in premature births.

"The WIC program is a sound investment of taxpayer dollars. We now have additional proof that money spent on WIC saves Medicaid dollars," said Stabeno.

In Texas, the WIC program is administered with \$150,004,058 in federal funds which accounts for 96.4 percent of the program's annual budget.

Doris Scoggin

Presents

AAUW Program

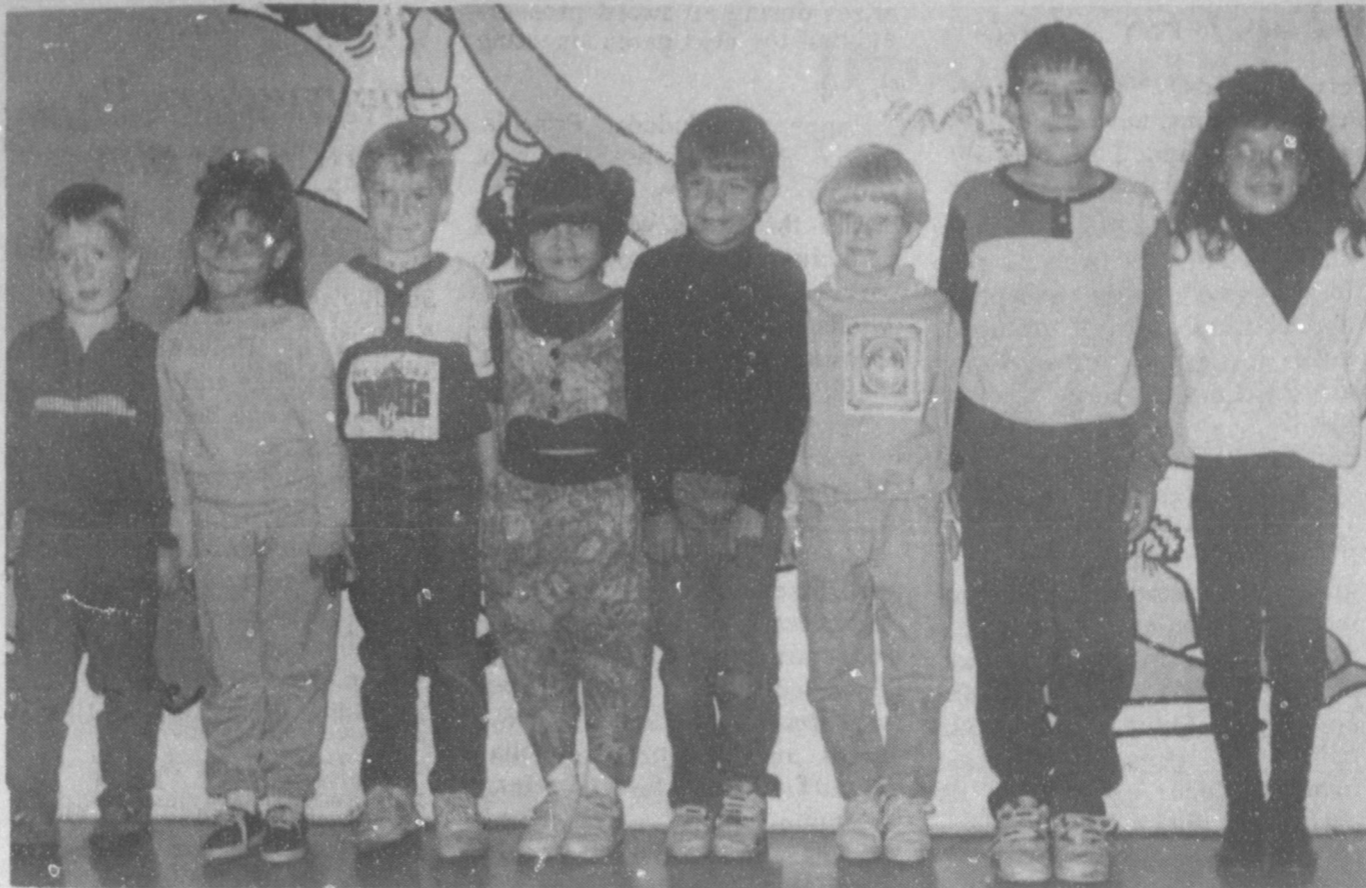
The Muleshoe branch of the American Association of University Women met Monday, Nov. 5 at the Depot.

Margaret Gleason introduced Doris Scoggin, science teacher at Watson Junior High, who then presented a program on "Sex Respect". Mrs. Scoggin quoted statistics from The Planned Parenthood Pool, Texas Department of Health, and other sources relative to adolescent pregnancy and sexually transmitted diseases. She stated that (1) Texas is first in the number of live births to girls 14 years of age and under, accounting for 10.6 percent of the total live births in the United States (2) 77 percent of teenage pregnancies are unintended, with many accompanied by significant emotional distress and family disruption. Sex Respect is a program that stresses values and total abstinence of sex before marriage.

Pam Hancock, president, previewed the programs for the year and reviewed the annual projects for the Muleshoe Branch-Girls of the Month, Library Project, Scholarship for junior or senior girl in college, and the Children's Theater.

Sue Haire, a Muleshoe High School graduate, and now a senior at Texas A&M was awarded the AAUW Scholarship of \$225 for 1990-91.

Joyline Costen was hostess for the November meeting. Members attending were: Anne Farris, Sharron Angeley, Pam Hancock, Jean Allison, Margaret Gleason, Donna Green, Sandi Chitwood, Nancy Benham, Nan Johnson, Marilyn Miller, Alene Bryant, Elizabeth Watson, Joyline Costen and Doris Scoggin, a guest.



NOVEMBER SUPER KIDS--Super Kids for the month of November at Dillman Elementary include: (From Left) Jaret Tucker, Early Childhood; Emily Alfara, Pre-Kindergarten; Jordan Dale, and DiDi Sotella, Kindergarten; Timothy Castorena and Terrell Herington, first grade; and Martin Rangel and Melissa Flores, second grade. (Journal Photo)



Fani Hildegarde Schmidt
Walter E. and L. Fani Schmidt are the proud parents of a daughter, Fani Hildegarde, who was born at 5:46 p.m. MST Thursday, Nov. 8 in Roosevelt General Hospital in Portales. The young lady weighed seven pounds and 11 ounces and was 21 and a fourth inches long.

Paternal aunt is Marilyn Bye of Wisconsin and Maternal grandfather is Agapito Espinoza of Peru.

School Of Music Presents Concert

Eastern New Mexico University's School of Music will present a Percussion Ensemble Concert on November 19 at 8 p.m. in Buchanan Hall.

The ENMU Percussion Ensemble directed by Alison Shaw with special guests, The ENMU Flute Choir directed by Jane Loschen, will supply an evening of exciting and interesting music.

Each ensemble will perform several works separately and will present a finale of music for percussion and flute combined.

The performance is free to the public. For more information call the Fine Arts Office of Promotion at 526-2500.

Creative Living

By Sheryl Borden

Information on "demystifying" hair mousses and other hair care products and using micro-convection ovens will be featured topics on "Creative Living" on Tuesday, November 13 at 12 noon and Saturday, November 17 at 2 p.m. (All times are Mountain.)

Bryant Refroe, hairstylist in New York city and representative of Ogilvie Products, will discuss an array of hairstyling aids that is available on the market for particular hair care needs.

Vickie Watts, Marketing Home Economist with Southwestern Public Service Co. in Roswell, will tell about a relatively new method of cooking that combines the best of the microwave and convection worlds. A micro-convection oven may be the perfect choice for your next oven.

On Tuesday, November 13 at 9:30 p.m. and on Thursday, November 15 at 12 noon, "Creative Living" will present information on current food trends and setting goals.

Susanne Trubey, owner of SST Consulting Firm in Norman, OK, will talk about ways to create and expand personal and professional lives. She will tell how to set realistic goals to create a new life and at the same time to eliminate many self-imposed limits.

Amy Lloyd, home economist with the Rice council in Houston, TX, will discuss the various forms of rice, and give suggestions as to using the different forms in different recipes. All of this while she prepares some examples of delicious and nutritious rice dishes.

"Creative Living" is produced and hosted by Sheryl Borden. The show is carried on more than 100 PBS stations in the United States, Canada, Guam and Puerto Rico and is distributed by Pacific Mountain Network, Denver, CO. Viewers can request copies of materials offered on the show by sending one 25 cent stamp for each handout requested. Send the stamps, along with your name, address and booklets requested to:

"Creative Living" Requests
% KENW-TV Station #52
Eastern New Mexico University
Portales, N.M. 88130

RICE: LIGHT AND EASY ORIENTAL STIR-FRY
1 package (10 ounces) frozen Chinese-or Japanese-style stir-fry vegetables with seasoning
1 tablespoon vegetable oil
1/2 lb. boned and skinned chicken breast, cut in small pieces

2 cups hot cooked rice

Remove seasoning pouch from vegetable package; reserve. Heat oil in large skillet over medium-high heat; add chicken. Stir-fry until chicken loses pink color; push to side of skillet. Add vegetables. Do not add oil to vegetables as directed on package.

Cook and cook 2 minutes, stirring once. Sprinkle vegetables with reserved seasonings; add water as directed. Cook and stir 30 seconds. Serve with fluffy rice. Makes 3 servings.

Each serving provides 307 calories, 21.6 g. protein, 6.4 g. fat, 40.0 g. carbohydrates, 520 mg. sodium, and 46 mg. cholesterol.

SKILLET SPANISH RICE
1 lb. lean ground beef
1/2 cup diced green sweet pepper

1 teaspoon chili powder
1 can (8 ounces) tomato sauce
1 cup chopped onion
1 cup uncooked rice
1/2 teaspoon each seasoned salt, ground cumin, and ground pepper

Cook beef, onion, and sweet pepper in large skillet over medium heat; drain fat. Stir in remaining ingredients and 1 1/2 cups water; bring to a boil. Reduce heat, cover, and simmer 15 to 20 minutes or until rice is tender. Makes 6 servings.

Bridal Selections
For
Melissa Wagnon
Bride-Select of
Todd Knowlton
Muleshoe Art Loft

Rebekah Lodge

Muleshoe Rebekah Lodge No. 114 met Tuesday night, Nov. 6 in the Lodge Hall with 15 members present.

Noble Grand, Dorothy Browning presided over the business meeting. Doris Lambert and Mary Ann Ramirez presented the flags.

The opening prayer was given by Fern Davis, chaplain.

Mrs. Davis reported that the Thanksgiving dinner was a great success. "We appreciate everyone who came out and ate with us" she said.

Ruby Garner was given a gift for selling more than 100 tickets to the dinner. "We appreciate you Ruby" Mrs. Davis continued.

Happy Birthday was sung to Doris Lambert.

Refreshments were served by Ina Wilemon and Pat Langfitt.

Rip's IN TEXICO
314 Wheeler
482-3363
or 800-748-2459
Since 1943 OPEN 8:00-6:30 C.S.T.

Great Fall Savings

WALL'S INSULATED COVERALLS \$29.98 While Supply Lasts	SPECIAL GROUP HATS 4X Beaver \$65.00 5X Beaver \$75.00
4 BUCKLE OVERSHOES \$14.98	MEN'S SHIRTS 10% OFF

WE WELCOME LAYAWAYS
WE ACCEPT

CONGRATULATIONS
TO RUBY BROWN of Tucumcari
WINNER OF OUR
\$100.00 Gift Certificate

For Your
Mary Kay Cosmetics
Josie Flowers
272-3865
8 a.m. - 12 noon
& after 6 p.m.

A Special Thanks To All Our Veterans



We owe our freedom to you—the fine men and women who've served our country with bravery and pride.

And now more than ever, as so much of the world discovers the shining beacon of democracy, we owe you a special debt of gratitude.



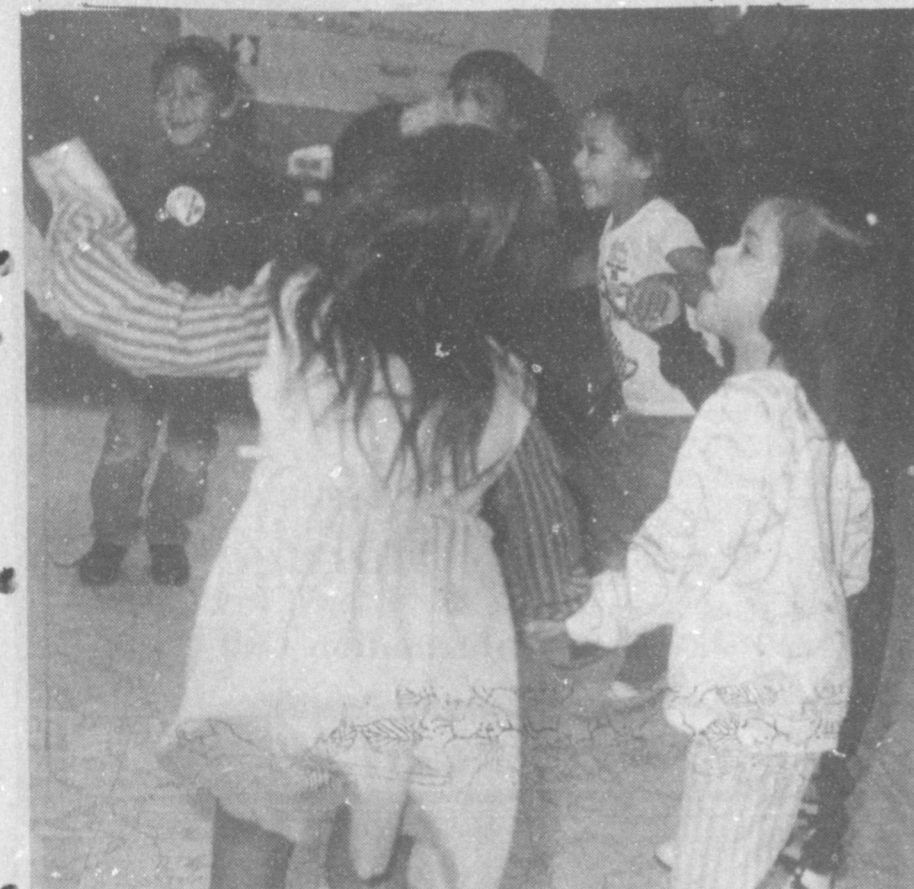
Council Raises Money For Jerry's Kids

Boys and girls at the Texas Migrant Council spent two busy days hopping for Muscular Distrophy, raising money for

Jerry's Kids, Thursday and Friday. Raising more than \$150 these boys and girls will be awarded trophies and other



DISPLAY AT LIBRARY--Mr. and Mrs. Calvin Embry have placed their Rinconada, replicas of the animals from Noah's Ark, collection in the Muleshoe Area Library. Made in Unrada, these Rinconadas' are hand molded and hand carved from the molding. To go along with the animals, Embry built an ark. Mrs. Embry stated that they were all gifts and they received their first one in 1972. Their collection now exceeds 75. (Journal Photo)



HOPPING FOR JERRY'S KIDS--Boys and girls from Texas Migrant Council spent Thursday and Friday hopping for Jerry's Kids, Muscular Dystrophy and collected over \$150. Trophies and prized will be awarded at a later date. (Journal Photo)

prizes during an award presentation at the next parent meeting Dec. 4.

Hoppers included: Priscilla Orozco, Brianne Lopez, Amanda Lopez, Anthony Maestas, Esther Mendoza, Jenny Toscano, Juan Carlos Reyes, Daniel Caraveo, Crystal Sierra, Samuel Regalado, Jeffery Vela, Brenda Caraveo, Joe Lewis Ceja and Juanita Mendoza.

Also Ashley Gutierrez, Vanessa Recio, John Paul Regalado, Adriana Gonzales, Ariana Gonzales, Melissa Catano, Jonathan Ayala, Yadira Marquez, Fernando Toscano, Adrian Garza, Sara Sierra, Alejandrina Contreras, Sabitas Calderon, Felipe Nunez, Natasia Chavez, Yesseria Regalado, Milagros Reyes, Martin Sigala, Daniel Campolla, Alvino Garza and Marlo Valdez.

Olton Young Homemakers Plan Arts-Crafts Shop

The Olton Chapter of Young Homemakers are finalizing plans for their Sixth Annual Sandhills Arts and Crafts Show. According to Lisa Neinst, publicity chairman, many talented artists and craftsmen will be showing their wares, Saturday, Nov. 24 from 9 a.m. to 5 p.m. at the Olton School Cafeteria which is located at 7th and Ave G. in Olton.

The crafts booths will be filled with an array of items which will include ceramics, jewelry, dolls, wreaths, decorated sweatshirts, and much, much more. This will be a good time to do some Christmas shopping

and selling, as there will be gift ideas for everyone on your list.

An admission charge of \$1.00 will entitle each person who attends a chance at the many door prizes which will be awarded throughout the day. This money will be used by the Young Homemakers to benefit Charities in the Olton Community.

"Delicious homemade items will be available in the concession stand, including grilled

hamburgers, frito pie and desserts. They will be available throughout the day.

"A limited number of booths are still available and anyone interested in a booth may contact Pam Halverson at HCR 4, Box 9 Olton, TX 79064 (806) 889-3535" Ms. Neinst continued.

There will be a special visit from Mr. and Mrs. Santa Clause.



CELEBRATING NOVEMBER BIRTHDAYS--Residents of Muleshoe Muleshoe Health Care Center who celebrated birthdays during the month of November were honored with a birthday party Thursday afternoon. The Needmore Community Club hosted the party and music was provided by Mr. and Mrs. J.C. Shanks and the Needmore Club. Decorators provided the flowers. Among those celebrating birthdays were: Mamie Askew born Nov. 30, 1900; Mary Sisemore, Nov. 10, 1901; and Berye Hollis, Nov. 1, 1906. (Journal Photo)



HAPPY BIRTHDAY--Nine residents of the Muleshoe Health Care Center celebrated November birthdays and were honored with a party Thursday afternoon. The Needmore Community Club hosted the party. The club members and Mr. and Mrs. J.C. Shanks provided the music and Decorators provided the flowers. Among those celebrating birthdays were Audrey Langfitt, Lawrence Blalock and Patsy Franklin. Ms. Langfitt was born Nov. 12, 1909; Blalock, Nov. 30, 1912 and Ms. Franklin Nov. 19, 1909. Others celebrating birthdays but were unable to attend were: Allie Barbour, born Nov. 19, 1894; Birdie Warren, Nov. 21, 1903; and Johnnie Chappell, Nov. 27, 1915. (Journal Photo)

Bridal Selections
For
Leah Turnbough
Bride-Elect of
Greg Young
Muleshoe Art Loft

HEALTH INSURANCE
CALL Mark Morton
109 S. 1st Muleshoe
272-7519
State Farm Insurance Company Home Office
Bloomington, Illinois

FESTIVE FOODS

FREE demonstration featuring recipe books and food tasting.

Monday, November 12
7:00 p.m.

Bailey County Coliseum
2201 W. American Blvd. — Muleshoe

Electricity - Efficient use makes for a wise choice!

Co-sponsored by SPS, Bailey County Extension Service and Extension Homemakers

Presented by

E. KAY DAVIS
SPS Home Economist
51574-9-90-930.1

SPS
SOUTHWESTERN PUBLIC SERVICE COMPANY

JOHN DEERE TOYS



Just when we believe the meaning of the season is lost, someone gives the priceless gift of quality. Share a special moment with someone you love by giving a gift that's small in size but big on quality: John Deere toys. Big and little people alike love these die-cast scale replicas of full-size John Deere machines. Brighten the holiday with John Deere toys.

DENT & CO.

Hwy 84 West
Muleshoe
272-4296
1-800-447-3741

Trade-Ins Accepted
Any Brand, Any Condition



Mules-Friona

Cont. From Page 1

But, the Mules failed to move the ball against the Chieftains and intended passes by both teams failed to 'jell.'

At the end of a penalty-ridden third quarter, the score was Muleshoe 3, Friona 7.

Friona managed another TD at 9:34 of the fourth, when Ismael Rocha broke through the Mule line and scampered for 11 yards into the end zone. Mike Scott kicked the extra point.

After a couple of attempts, and some lost yards due to a quarterback sack, the ball once again went over to the Chief-

Dillman...

Cont. From Page 1

School Store on the following Friday. Slips may be accumulated over the weeks up to 15 in order to "purchase" an even nicer prize if the child wishes. Each grade level's slips are titled differently: E.C., Pre-K, and K - *Dillman Dollars*; First grade - *Funny Money*; and Second grade - *Mule Bucks*.

4. Attendance -- Regulations for school funding have been changed this year. Our school will receive money based on daily student attendance for the entire year, not for just one reported month. Therefore, it is extremely important that every student be in school every day unless they are ill. In cases of doctor's appointments, etc., please schedule these for later in the day. If a child is at school until 10:00 they may be counted in attendance for the day.

To encourage and reward school attendance, we will give gift-certificates from local businesses for students who have perfect attendance for that six weeks. Students with perfect attendance for the semester will be taken to the Pizza Hut for lunch one school day. Also, each six weeks the classroom with the highest percentage in attendance for each grade level will be given a party (popcorn, ice cream, etc.).

5. Classroom Rewards -- Each teacher has a reward system for their classroom to encourage good classroom behavior and appropriate work habits.

Positive school climate has been proven to affect school learning. We hope this plan will enhance the overall campus atmosphere for our students at Dillman Elementary.

As always, we appreciate your cooperation with us in providing educational excellence for your child.

tains. They ended up, after several more penalties, booting the ball back to the Mules.

The Mules took over again with 3:43 left in the fourth, and moved the ball into the shadows of the end zone, before having to turn the ball back to Friona on downs.

Then at 2:33 left to play, the Mules trapped the Chieftain quarterback in his own end zone for a two-point safety, ending the scoring for the game.

Both teams, Muleshoe and Friona, racked up 240 yards in penalties Friday night, which resulted in a much longer ball game. Friona had 190 yards in penalties and Muleshoe had 50.

The Mules ended up the season with a 3-7 record, while Friona finished 2-8.

Lazbuddie defeated previously unbeaten Silverton Friday night, 42-8 in six man football. That threw the six-man district into a three way tie between Lazbuddie, Silverton and Three Way.

A coin toss will decide which two teams will represent the district in playoff action.

Also, on Friday night, Tulia defeated Dimmitt, 38-16 and Floydada fell to Littlefield by a score of 21-0.

Muleshoe...

Cont. From Page 1

Receiving the week's principal awards were Chantel Hall, sixth grade; Summer Gibbons, seventh grade and Rashad Kirven, eighth grade.

After meeting in daily sessions recently to help select a new superintendent for the Muleshoe Independent School District, the board of Trustees will meet again Sunday, today, at 2 p.m. and will immediately go into executive session "to discuss personnel issues including discussion of the finalists for the superintendency."

The board will reconvene in open session to adjourn.

The Annual Harvest Day Dinner for the Earth United Methodist Church will be 5-8 p.m. on Wednesday, November 14.

The dinner will be served in the fellowship hall of the church and adult tickets are \$5 and children 12 and under is \$2.

Funds are used to repair the parsonage, if necessary, and to purchase new equipment and furniture.

A Bazaar will be held the same hours, with a variety of items to be available.

Concert...

Cont. From Page 1

performed as they are recorded on the album. Richards said everyone will get to share at the end of the concert with some old time gospel favorites. He said, "If you have a favorite song, please feel free to share it, and we'll try to sing it."

Those wishing an autographed picture of the band may obtain one after the debut.

There will be no admission charge, but donations will help pay for the building.

Local Teachers Will Take Special Training

Jane Sanders and Barbara Turner, reading teachers in the Muleshoe Independent School District, have been selected to participate in special training for a creative reading program sponsored by GTE Southwest and Texas A&M University.

Jane Sanders, a third grade reading teacher and Barbara Truner, a fifth grade reading teacher in the Muleshoe Independent School District, have been selected to participate in a special program that emphasizes the creative use of children's literature to teach children to read.

The program, "Children's Literature: A Road to Literacy," is a three year joint venture of GTE Southwest and Texas A&M University at College Station, Texas. It is funded by a \$15,000 grant from the GTE Foundation.

Jane Sanders and Barbara

Turner, will attend a three day training conference November 2-4 at the College Station campus with thirty-nine other reading teachers and supervisors in grades 3-6. The participants will come from twenty school districts in GTE Southwest's four-state operating area--Arkansas, New Mexico, Oklahoma and Texas.

Ms. Jane Sanders is a teacher at DeShazo Elementary, she has been a teacher for four years. She graduated from Wayland Baptist University with a Bachelor of Science degree in Elementary Education.

Mrs. Barbara Turner also is a teacher at DeShazo Elementary, she has been a teacher for eighteen years. She graduated from Howard Payne University with a Bachelor of Science degree in Elementary Education.

"What Jane Sanders, Barbara Turner and the other teachers will gain is a new approach to teaching reading," said Dr. Donna E. Norton, an A&M educational curriculum and instruction professor who will direct the conference. "We will provide the teachers with new varied approaches to helping children develop an enthusiasm and appreciation for literature."

Research shows thirty percent of school age children in America read below grade level. Additional research by Dr. Norton has shown literature based reading programs lead to improved reading skills for lower achieving elementary students.

"We are delighted to participate in bringing this excellent reading program to the teachers in our service areas," said Earl Goode, GTE Southwest president. "Children will be able to master reading and, at the same time, develop an understanding and appreciation of good literature. It's a good feeling to be involved in such a worthwhile endeavor, and I congratulate Ms. Jane Sanders and Mrs. Barbara Turner on being selected to participate in the program."

Dr. Norton said teachers will

be introduced to "exciting children's literature that will light up the youngsters' imaginations and encourage an enthusiasm for reading. We will be using books that have strong settings, characteristics, plots and themes."

Students will be taught to read, understand and appreciate both classic and contemporary works, including biographies, historical fiction, folklore, poetry and fantasy.

The books have such titles as: "Lincoln: A Photo Biography;" "Sara, Plain and Tall;" "Mufaro's Beautiful Daughters;" "The Legend of the Bluebonnets;" "Princess Furball;" "Sir Gawain and the Loathly Lady;" and "Joyful Noise: Poems for Two Voices". Conference participants also will receive Dr. Norton's book, "Through the Eyes of a Child: An Introduction to Children's Literature," a reference book for teachers using the literature-based reading program.

Most of the books are winners of internationally renowned awards, such as the Newbery and Caldecott awards. The teachers also will receive a manual with model lessons on how to use each of the literary selections in class.

The GTE/A&M conference participants will implement the reading program at their schools during the second semester of the 1990-91 school year, or at the beginning of the 1991-92

school year. They also will share the basics of the program with their fellow teachers in an in-service training session so thousands of students can benefit from the special learning techniques.

The GTE Foundation, which is funding the three year training program, is among the country's top twenty corporate foundations in annual contributions. It provides financial support on behalf of GTE and its subsidiaries to numerous educational, scientific and charitable organizations in the United States and its possessions. In 1989, the GTE Foundation contributed a total of \$19.6 million, including \$9.2 million to educational support programs.

GTE is a multinational corporation operating in forty-six states and forty-one countries, with combined revenues and sales of \$17.4 billion and net income of \$1.4 billion in 1989. The company is a leader in three core businesses--telecommunications, lighting and precision materials.

GTE Southwest is a wholly owned subsidiary of GTE, and is one of GTE Telephone Operations' four area operating companies in the United States. GTE Southwest serves 1.4 million customer access lines in Arkansas, New Mexico, Oklahoma and Texas, and maintains dual headquarters in Irving, Texas and San Angelo, Texas.

Texans Ask Foreign Aid To Be Cut

Texans angry about recent tax increases may want Washington lawmakers to slash U.S. foreign aid to reduce the budget deficit, but a Texas Christian University political scientist says cutting foreign aid would do little for deficit reduction.

"We could save some money, and to some people saving some money is better than saving no money," said Dr. Ralph Carter. "From a longer-term perspective though, there are some hidden costs to cutting that aid."

Less than \$9 billion is spent each year on foreign aid, a minuscule amount when considering the country's massive annual budget, according to Carter.

Besides providing relatively little savings, Carter suggested foreign aid cuts could hurt the U.S. economy. He cited government reports claiming that 70 cents on the dollar of aid given to foreign governments is returned to the U.S. economy in the form of purchases from U.S. individuals and corporations for goods and services.

Reduction in aid would result in a reduction of foreign purchases, Carter contended. "That slows down the economy in terms of the net benefit of actual dollars saved," he explained.

In addition to the economic impact, eliminating U.S. foreign aid could undermine national security efforts abroad, Carter said.

"Many times by issuing aid, the United States receives such tangible concessions from foreign governments as military bases, landing rights and port of call rights. Consequently, when you start cutting foreign aid, you start losing the right to proposition troops," he said.

Carter noted that Japan edged out the United States in foreign aid during 1989 by giving slightly more than \$9 billion. The two countries give nearly half of all the \$40 billion of foreign aid distributed worldwide each year. Israel and Egypt are among the biggest benefactors of U.S. aid, splitting \$6 billion annually.

NEWS VIEWS

George Bush, President, on civil rights legislation:

"The measure remains a quota bill because inescapably it will have the effect of forcing businesses to adopt quotas in hiring and promotion."

Strom Thurmond, Senator (R-SC), on base closings:

"This new legislation stops current actions on base closure, and it requires the secretary of defense to submit a new list for recommended closure."

Clayton Yuttor, Secretary of Agriculture:

"I do not like everything in the bill, but it is a respectable work product that balances well innumerable sensitive, often divergent interests."

Dick Cheney, Secretary of Defense:

"The U.N.-imposed sanctions are squeezing Saddam Hussein and could eventually throw a wrench into his war machine."

Now Available
Individual Storage Units

600 N. First
Muleshoe

J&J Self Storage

For More Information Call

John or Joan Smith

272-4307

Give your money a raise.

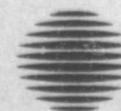
7.65%
ANNUAL RATE

7.92%
ANNUAL YIELD

Sunbelt's Money Market Investment Account is like a traditional savings account because you can come in and withdraw your money anytime you want. As much as you want. But there's nothing traditional about the rate, which is higher than many regular money market accounts.*

Open a Money Market Investment Account at Sunbelt. You'll be doing your money a favor.

*\$5,000 minimum deposit needed for higher rate with no service charge. Initial deposit must be at least \$5,000. No checking or third-party withdrawals allowed. Rate subject to change without notice. Deposits insured by FDIC. Annualized yield is calculated assuming all principal and interest remain on deposit for one year at the annual rate, with interest compounded monthly.



Sunbelt Savings[®] FSB
No Excuses. Answers.[™]



304 Main

Muleshoe

272-5527



© 1990 Sunbelt Savings, FSB

Cash Rewards
Up To \$1,000
For Information!
Call
Bailey County
Crime Line
272-HELP

Frank Kretsinger, D.O.

Announces

The Opening Of His
Medical Practice

Limited To

Family Medicine
with Obstetrics

Member:

AMA, AAFP, FOMA, FMA

Certified: Diplomate

American Board Family Practice

Medicare & Medicaid Accepted

708 S. First St.
272-5755

Muleshoe, Tx.
272-4524

Muleshoe Area
Medical Center Clinic

Nursing Home News

by: Joy Stancell

Thursday afternoon Grace Scarborough, Winnie Berry and J.E. Embry came to play Skip-Bo and dominoes.

Friday afternoon Mr. and Mrs. Harold Carpenter and Jordan came for a delightful time of song, music, and reminiscing.

Each Sunday morning the Muleshoe Church of Christ

Three Way Menu

NOVEMBER 12-16
MONDAY
BREAKFAST
Cereal, Raisins, Juice and Milk
LUNCH
Corn dog w/ Mustard, Carrots, Macaroni/Tomatoes, Cookies and Milk
TUESDAY
BREAKFAST
Cinnamon Rolls, Juice and Milk
LUNCH
Beef Enchiladas, Salad, Refried Beans, Apple Cobbler and Milk
WEDNESDAY
BREAKFAST
Waffles, Sausage, Juice and Milk
LUNCH
Roast Beef w/Brown Gravy, Creamed Potatoes, Corn, Rolls, Pudding and Milk
THURSDAY
BREAKFAST
Eggs, Bacon, Juice and Milk
LUNCH
Hamburger w/Cheese, French Fries, Jello and Milk
FRIDAY
BREAKFAST
Pancakes, Juice and Milk
LUNCH
Lasagna, Mixed Veg., Pork-N-Beans, Rolls, Pineapple and Milk

brings the Communion Service. Each Wed. afternoon Glenda Jennings comes for a Sing-a-Long. Every Sat. morning J.C. Shanks comes to cut the men's hair and give shaves. On Wed. mornings Clifton Finley goes shopping for us. Wed. afternoons Barbara Blackman comes to visit and serve juice.

Sunday afternoon the Calvary Baptist Church came for Church services.

Thurs. Nov. 15 at 5:30 will be our Annual Family, resident

Lazbuddie Menu

NOVEMBER 12-16
MONDAY
BREAKFAST
French Toast, Juice and Milk
LUNCH
Hamburgers, French Fries, Salad, Cake and Milk
TUESDAY
BREAKFAST
Cereal & Toast, Juice and Milk
LUNCH
Spagetti & Meat Sauce, Green Salad, Garlic Bread, Strawberry Cake and Milk
WEDNESDAY
BREAKFAST
Toast, Bacon, Juice and Milk
LUNCH
Fish Nuggets, Macaroni & Cheese, Green Beans, Hot Rolls, Pudding and Milk
THURSDAY
BREAKFAST
Cinnamon Rolls, Applesauce and Milk
LUNCH
Ham & Bologna Sandwiches, Potatoe Chip, Pickles, Carrot Sticks, Fruit and Milk
FRIDAY
BREAKFAST
Cereal, Juice and Milk
LUNCH
Turkey & Dressing, Potatoes & Gravy, Green Peas, Cranberry Sauce, Hot Rolls, Pecan Pies and Milk
SALAD BAR SERVED
MONDAY* TUESDAY & WEDNESDAY

Thanksgiving supper. We are really looking forward to having our families come.

We wish to express our heartfelt sympathy to the families of Edith Bruns, Mozelle Rippee and Martha Scamalz.

Finnis Kimbrough was visited Tues. by his grandson Randy of Lubbock, Donna and Ed, Wanda and Johnnie.

Recent visitors of the Healthcare Center were Nettie Bratcher, Zeffa Shafer, and S.W. Inman.

Sat. Nov. 17th around 10:00 a.m. Dean McIntosh of Clovis, N.M. is bringing his choir for a concert. We invite you to come and enjoy them with us.

Ella Faubus was visited by Mike Doyle, her daughter Julia and Lona Embry this week, also her grandson Wayne.

Minnie Pettyjohn was visited by her daughter Pat, her son-in-law and grandson.

Wilmoth Clements was visited this week by her son Jimmy of Bovina and her husband Jim.

Tues. afternoon Linda Low, Nobie Phipps, Olive Cox, Claudine Embry, Laverne James, Bonnie Green, and Beth Watson came to shampoo and set the ladies hair and give a lot of T.L.C. Shelly Lopez and Helen

Free gave manicures.

Our thanks to the Mary Martha S.S. Class of the First Baptist Church for making a donation to the Healthcare Center.

Lona Embry has furnished our supply room with paper goods for upcoming events. We wish to thank her for that much needed and thoughtful donation.

Our thanks to Kathy Embry for painting the butterfly painting that was given Halloween for our costume contest.

Patients in Muleshoe Area Medical Center

NOVEMBER 5-8, 1990
MONDAY
Michelle Rodriguez, Romulo Nava, Ruby Clark, Sam Fox
TUESDAY
Kelley Gomez, Romulo Nava, Ruby Clark, Mike Pharis, Sam Fox
WEDNESDAY
Kelley Gomez, Michael Hardwick, Ruby Clark, Sam Fox
THURSDAY
Kelley Gomez, Michael Hardwick, Ruby Clark, Sam Fox

Questions & Answers From Bob Bullock

Dear Bob Bullock:
Is sales tax due on a Christmas present that I buy here but send to a relative who lives out-of-state?

T.C. Beaumont
Dear T.C.:

If you have the store ship the gift for you, no sales tax is due because you will not have taken possession of the present or used it in Texas. But if you take the gift home and mail it yourself, sales tax is due.

Dear Bob Bullock:
I have discovered that in September 1987 my business sent in too much sales tax to the state. Is it too late for me to get a tax refund?

J.W. San Antonio
Dear J.W.:

No, you have four years from the time the taxes were due to request a refund. You either may file an amended return requesting the refund, or take a credit by reducing your taxable sales on your next return. In either case, you must include a letter explaining why the overpayment occurred.

Thank You

We would like to express our sincere thanks to everyone who shared with us in our loss of John. The prayers, phone calls, food, cards, visits, and many other acts of kindness will always be remembered and appreciated.

The John Sowder Family

1990 Crop

	Sale Flat	Month
Feed Corn.....	4.28,0.09cz Dec.
White Cobb Yellow.....	4.90,0.43cz Dec.
Red Cobb Yellow.....	4.48,0.20cz Dec.
White Food Corn.....	5.80,0.94cz Dec.
Milo.....	4.07,-0.03cz Dec.
Soybeans.....	5.28,-0.52sx Dec.
Wheat.....	2.44,-0.25kwz KC Dec.

95% %

Prices effective Nov. 9, 1990

Farmer's Co-Op Elevators

272-7561

MULESHOE AREA MEDICAL CENTER ANNOUNCES THE ASSOCIATION OF

Frank Kretsinger, D.O.

Family Practice with Obstetrics

708 S. First St. Muleshoe, Texas

806-272-5755

Office Hours: Mon.-Fri. 8:00-12:00 1:00-5:00

Saturday Clinic 9:00-12:00 Closed Tues. 1:00-5:00

Office To Open November 5, 1990

Austin Dixon, M.D.

General Surgery

708 S. First St. Muleshoe, Texas

Office Hours: Tues. 9:00-12:00

Friday 9:00-12:00

TO THE MEDICAL STAFF

Along With

Bruce Purdy, M.D.

Family Practice with Obstetrics

701 S. 1st Muleshoe, Texas

806-272-7531

Mark McClanahan, D.O.

Family Practice

708 S. First St. Muleshoe, Texas

806-272-7544

Homer Allgood, M.D.

Family Practice

708 S. First St. Muleshoe, Texas

806-272-7526

YOUR HOMETOWN HOSPITAL IS GROWING TO MEET YOUR NEEDS

College Enrollment Up This Fall

Texas college and university enrollments are up this fall by more than 26,035 students, according to a report released by the Texas Higher Education Coordinating Board. Preliminary figures for the 1990 fall semester show that the combined enrollment at all institutions of higher education in Texas is 885,515, a three percent increase from last fall. Enrollment at public junior colleges and public universities totaled 779,713, an increase of three and two tenths percent or 24,287 students.

"In the last five years, enrollment in public institutions has grown by more than 130,000 students--almost as many students as the total enrollment of the entire University of Texas System," said Kenneth H. Ashworth, Commissioner of Higher Education.

"All of these new students have been absorbed by our existing universities; meanwhile funding for key areas keep dropping. Since 1985, appropriations have declined by 24 percent of physical plants and by almost 13 percent for libraries. Universities need these resources to handle the increased enrollments," Ashworth said.

Twenty-three public universities reported combined increases of 10,107, while 12

reported a combined loss of 2,256 students. Total enrollment at these 35 institutions is 407,809, up 7,861 students or 1.9 percent from last fall, according to preliminary data.

For the third consecutive year, Texas A&M University at Galveston reports the largest percentage gain (14.9 percent) in enrollment. The University of Texas at San Antonio reports the greatest increase in the number of students (1,458) this fall.

Preliminary twelfth class day headcount enrollments for the 1990 fall semester show that the combined enrollment of all institutions of higher education in Texas was 885,515 which was 26,035 more than reported for the same period in 1989. This represents an increase of 3.03 percent.

Thirty-eight of the 49 public community college districts reported enrollment increases for the 1990 fall semester. The net increase of 16,426 students was a 4.62 percent increase. (Lamar University at Port Arthur were reported with the community colleges.)

The four campuses of the Texas State Technical Institute reported a net decrease of 88 students or 1.05 percent.

Enrollments in all programs at the public health-related

units showed a net increase of 4.75 percent. However, enrollments in the medical schools increased 0.17 percent while those in the dental schools decreased 2.42 percent. Enrollment in the veterinary medicine program was also down by 3.77 percent from the previous reporting period. The increase of 568 students in the health-related academic programs represented a 9.42 percent enrollment increase over the previous fall semester.

The independent medical, dental and health-related units showed a 0.15 percent decrease in medical student enrollments, a 6.61 percent decrease in dental student enrollments and a 3.80 percent increase in students enrolled in academic programs.

Who Knows?

1. What act triggered World War I?
2. When was Labor Day established as a holiday for employees?
3. Which president ordered the Air Force and Navy into the Korean conflict?
4. What is a crumpet?
5. Define the phrase "errare humanum est".

Answers:

1. Austrian Archduke Francis Ferdinand and his wife were assassinated.
2. First Monday of September in 1984.
3. President Harry S. Truman.
4. A thin muffin, toasted for eating.
5. To err is human.

Sudan News

By Ann Gaston

The Christmas Decoration Committee of the Pioneer Independence Day Committee met on Sunday afternoon at 3:30 on Nov. 4. The meeting was held in the Community Room at the Bank. All interested parties were present.

Sudan Chamber of Commerce had a special meeting on Tuesday Nov. 6 at 7:00 in the bank room. All members are urged to attend the next meeting.

Jonelle Bandy recently returned from Canton, Tx. where the tenth annual Foster Family reunion was held. There were about 130 persons attending; some for the first time and some after an absence of several years. She also visited in Tyler with her aunt and uncle, Mr. and Mrs. L.C. Foster. Also visited in Granbury with her cousins Bill Cecil Walters, Madge Jo Peters and Wilma Kate Umphrees.

Olin and Dot Nix were in Andrews Sunday to celebrate his sisters birthday. It was a surprise and about 25 attended.

Mike and Shawni Nix were in Dallas this past week to visit with their daughters, Melissa Nix in Arlington at UTA, Jeannia and Greg Dykman in Mesquite, and Janet and Cl-

ford Watson and Seth in Longview.

The Hospital Auxillary is selling Georgia grown pecans. The brand is Schermer's, the same as last year. The pecans are from this years crop and were expected to arrive on Nov. 1. The price is \$4.50 per pound. For orders or more information call Jeanne Bartley at 933-4380 or Joy Patterson at 262-5612.

Clovis Bridwell is home and doing alot better.

Ty Hargrove is at Methodist and has started therapy. He is now eating solids and starting to gain back some weight. Progress is slow, but very good.

Bertha Welkner, mother of Mutt Hanna, Ann Hill, and Geneva Whitten, is in the Littlefield Hospital.

Dick West is a patient in Methodist Hospital in Lubbock.

Harold Haynie has been receiving treatments in Amarillo, but is supposed to return home on Monday.

Tom McDole of Littlefield was critically injured in an automobile accident on Sunday morning in Lubbock. Tom is the son-in-law of Alvis Tubbs of Littlefield, and the uncle of Genya Nelson of Sudan. He is in University Hospital in Lubbock.

Visiting recently in the home of Evalyn Scott were Mr. and Mrs. Quitman Miller of Lan-

caster, Tx. The Millers (former Sudan residents) were enroute to Phoenix, Az. to visit a daughter.

Evalyn Scott was in Lubbock Tues. Oct. 30, to attend a committee meeting in the home of Mardema Ogletree. She accompanied Melba Mote of Amherst.

The Sudan High School Bold Gold Band received a first division at the District XVI U.I.L. Marching Contest this past Tuesday. The contest was held at Jones Stadium on the Texas Tech campus. Judges for the contest were Harris Brinson from Angelo State University, Tome Walters, Sunray, and George Strickland, Henrietta.

Four of the seventeen Class A bands competing were given first division ratings, and then the judges ranked those four bands in order of excellence. Sudan was ranked first, followed by Jayton, Plains, and Lorenzo. Because of the rankings, Sudan and Jayton will advance to the Region Marching Contest to be held at Ratliff in Odessa. Two Class A bands will be certified to attend the state marching contest in Austin on Monday, November 12.

Found
Two men were talking together in the public library. Said one: "The dime novel has gone. I wonder where it's gone to?"
The other, who knew something of literature in its various phases, answered cynically: "It's gone to two dollars and fifty cents."

Award-Winning Project Enlivens Economics

From your "throne" in front of a computer terminal, a program called Hamurabi crowns you king of a small nation by the same name. As king, you must choose how much to feed your subjects and the quantity of land to plant, buy or sell.

Students in a Texas Christian University economics class used this program and others to get a better feel for concepts they read about in textbooks and heard in classroom lectures.

Dr. Margaret Ray received the top honor for her project, "Economics 2131: Computer Laboratory in Economics," in a nationwide teaching competition drawing more than 300 entries.

The TCU economist believes the computer-based instruction provided her students with a much better understanding of economics and led to a more positive attitude regarding the subject.

The project involved two separate microeconomics classes studying the same material. While one class covered the

course work using traditional methods of lecture and textbook assignments, students from the other class enrolled in a computer lab providing simulation software that supplemented classroom instruction.

"Students seemed to get more interested," Ray noted. "Some of the students in the lab class became very competitive. They'd spend time outside class trying to beat each others' scores."

Follow-up tests at the conclusion of the classes showed that computer lab students scored higher than non-lab students on questions requiring problem identification and the use of economic tools to find solutions.

"That's what I'm after, not just can you solve this problem with these numbers, but can you look at the economy, see a problem, understand how to look at it and solve it," Ray said. "It's the highest cognitive level that you can reach, and that's what we're going for."

Watch for these signs... think SAFETY!

WARNING
NATURAL GAS PIPELINE
800-562-5879

WARNING
PIPELINE

American Pipeline Company and its subsidiary, Westar Transmission Company, place warning signs similar to these in areas where our natural gas pipelines are located.

Our pipelines are safe and we keep them that way by designing, installing and operating our pipelines to exacting standards.

If natural gas pipelines are damaged, people may be injured, property destroyed or energy supplies lost. Therefore, American Pipeline conducts an ongoing surveillance program to detect factors which might threaten safe pipeline operations. We also conduct a damage prevention program to inform the public of the importance of using safety measures when digging or excavating near natural gas pipelines.

If you are planning to dig or excavate in an area, remember to

look for warning signs indicating natural gas pipelines. If you see an American Pipeline or Westar Transmission marker, call us at our toll free number, 1-800-562-5879, before you begin working. We will send a company representative to mark the location of the pipeline.

Natural gas cannot be seen and normally cannot be smelled, but gas leaks may still be detected. Any one of the following is among the common indications of a gas leak:
• Dust blowing from a hole in the ground
• Continuous bubbling in one spot in wet or flooded areas
• A gaseous or hydrocarbon odor

If you suspect a natural gas leak in an area where American Pipeline or Westar Transmission markers are located, immediately leave the area and call us at our toll free number, 1-800-562-5879.



AMERICAN PIPELINE COMPANY

WESTAR TRANSMISSION COMPANY

JEWELRY & WATCH REPAIR



- Ring Sizing 2 Day Service
- Remounting & Diamond Setting
- Full Line Watch Batteries
- Neck Chains Repaired
- Jewelry Appraised For Insurance
- Faster Service

Let Us Be Your Jeweler

Holmberg Jewelry

312 Main SERVING CLOVIS FOR OVER 48 YEARS
"FAMOUS FOR DIAMONDS" Clovis, N.M.

Dr. Lee Baggett
Announces
Castro County Chiropractic Center
Will Open
Monday, November 5
208 W. Jones - Dimmitt, Tx.
806-647-2664
Open Mon. - Fri. 9 - 5 p.m.

Clearance Sale

1 Only!
1989 Chrysler New Yorker
Super Special

On All 1990 Models
Plymouth Voyager
Chrysler Fifth Avenue
Chrysler Imperial
Plymouth Acclaim
Chrysler LeBaron II

Rebates Available On 1990 Models!

All Loaded
Ford 1990 Model F Series Pickup
Ford 1990 Model Mercury Sable
Ford 1990 Model Mustang
1990 Model Ford Taurus

We Can Finance Your Vehicle Of Your Choice!

1 Only
1990 Dodge Ram Pickup
Special Price

We Have A Fantastic Lease Program On A Large Number Of 1990 & '91 Ford Cars & Pickups!

Muleshoe Motor Co.
"Car Capitol Of The West Plains"
1225 W. Amer. Blvd. 272-4251

Start Exercise Early

If a ski trip is part of your winter plans, start exercising now. An exercise program might help keep your trip injury-free.

"Many people are not in proper condition to ski," said Dr. Bruce Moseley, a sports medicine expert at Baylor College of Medicine in Houston. "Skiers who are out of shape tire more quickly, and tired skiers risk injury because they make mistakes and fall more often."

The most common ski injuries are strained muscles, torn knee ligaments or cartilage, bone fractures and dislocations. Moseley recommends a simple exercise routine of stretching, aerobics, and strength training. A program beginning four to six weeks before the trip will condition the body and strengthen muscles in injury-prone areas.

"Stretching always comes first," said Moseley. "Stretch each day before you exercise, and before you ski."

Five key areas that should be stretched are the back, groin, quadriceps (the muscle in the front of the thigh), hamstrings and calves.

--Stretch the back by lying flat on your back. Place your hands just below the knees and draw the legs to the chest.

--Stretch the quadriceps by holding your ankle and raising it to your buttocks. Stretch until you feel tension in your thigh.

--Stretch the hamstrings by lying flat on your back. Grasp the back of the thigh with both hands and keeping the knee straight, pull the leg toward you until you feel tension behind the knee.

--Stretch the groin by sitting with legs spread and the bottoms of your feet placed flat against each other. Lean forward at the waist.

--Stretch the calves by supporting yourself against a wall with the palms of your hands. Put one foot forward, the other foot back, and gently bend the front knee until your feet are flat on the floor.

After stretching, alternate daily between aerobic and strength exercises. The best kind of aerobic exercise available to skiers are stair-climbing machines, available at most spas. These machines offer resistance workouts for the legs while they condition the heart and lungs. Jogging or cycling are good alternatives.

"Torn ligaments and broken

bones might be prevented by giving more support to those areas," said Moseley, an assistant professor of orthopedic surgery at Baylor.

Moseley recommends a short series of exercises to strengthen the muscles around joints. These five strength exercises are effective in a short workout:

--Squats: Place feet 18-24 inches from the wall and then lean so your back is flat against the wall. Slide down until thighs are at a right angle to the wall. Hold, and slide back up.

--Knee extensions: Sit on the edge of a table or chair so that your feet are dangling. With an ankle weight, straighten your knee. Hold it and return. Repeat for both legs.

--Knee flexions: Lie flat on Your stomach. With an ankle weight, bend your knee. Hold it and return. Repeat for both legs.

--Hip flexors and hip extensors: Standing with ankle weights, bring your leg forward and then backward while keeping the knee straight. Repeat for both legs.

--Toe raises: Standing flat-footed, slowly raise on the balls of your feet and hold to strengthen the calves.

All of these exercises and stretches are effective for men or women. A workout should consist of three sets of 10 repetitions for each stretch or exercise. With any exercise, stop if there is pain.

You don't have to limit yourself to the exercises contained in this workout. Any exercise that strengthens muscles in arms, shoulders and legs will benefit you as a skier.

BIBLE VERSE

"And the child grew, and waxed strong in spirit, and was in the deserts till the day of his showing unto Israel."

1. To what child does the above statement refer?
2. Who was his mother and father?
3. What was his mission in life?
4. Where may this statement be found?

Answer:

1. John, later known as John the Baptist.
2. Elizabeth and Zacharias.
3. To prepare the way for the coming of Jesus Christ, the Messiah.
4. Luke 1:80.

Three Way News

by: Mrs. H.W. Garvin

Mrs. Ben Nelson from Semonole and Mrs. Beck Martin from Canyon spent Friday night with their sister, the Robert Kindles. Mrs. Kindle and her sisters spent the weekend in Roswell visiting another sister.

Three Way played Whitherell Friday night on the home field winning the game. The Junior Class served supper before and after the game.

George Tyson spend Friday night in Lubbock with his daughter, The Tommy Joe Durham family

We wish to express our sympathy to the John Sowder family, on his death.

Rev. and Mrs. James Gillentine from Lubbock and Mr. and Mrs. Kenneth Fox from Clovis spent the weekend with their mother, Mrs. H.W. Garvin.

Mr. and Mrs. Bill Dolle and Darla spent the weekend in Lubbock visiting their daughter, the Scott Austines.

Frank Wordam from Muncie Indiana is visiting his daughter, The Jack Robinsons.

Ben Meath from Dallas, the head of International Christian Crusade, Dick Braden from Lamesa were visitors at the Three Way Baptist Church Sunday. Both men gave talk on their work.

The children of Mr. and Mrs. Pete Tarlton honored their parents with their Golden anniversary celebration in the Tarlton home at Maple Saturday. It was hosted by Mr. and Mrs. James Tarlton from Lubbock and Mr. and Mrs. Gary Clark and family from Irving. There were about 125 guests registered. Mr. and Mrs. Tarlton were both raised in the community and lived here all of the time.

Mrs. Bobby Kindle spent the weekend in Lamesa with her daughter, Robin.

Mr. and Mrs. Jack Lane visited his parents, the V.A. Lanes, in Littlefield Thursday.

Mr. Bud Huff underwent surgery Thursday in Lubbock.

Lana Pierce from Littlefield and Charles Timmons from Lubbock visited the Jack Lanes Sunday.

H.C. Toombs underwent surgery at Methodist Hospital Friday.

GOLDEN GLEAMS

Eat at pleasure, drink by measure. -Randle Cotgrave.

The choleric eats, the melancholic eats, the phlegmatic sleeps. -Jonathan Swift.

He who eats and drinks, but does not bless the Lord, is a thief. -John Ray.

Kiwanis News



By R.A. Bradley

Seventeen Kiwanians, and three honorary Kiwanians, Robbie Clapp, Jon Keith Turner and Chad Johnson, met Friday morning at the La Placita Cafe.

It was good to have this many out for breakfast and fellowship.

Lots of discussion on the deer hunters last weekend. It seems that 'Dead-Eye' Chad Johnson got his first deer. Chad got his deer first and had to help his dad and the rest of the party get theirs. It seems that Reggie got a Sika deer. This kind of deer is imported from China. This deer does not have antlers, but it has horns.

If anyone has time, please teach Keith Turner how to use a knife safely!

Chad, we are very proud that you got your deer - Congratulations!!!

Something was missing this morning. Sweetheart Marsha Wilson, who worked real late last night on a school project asked to miss this morning. Marsha, school comes first, but we sure did miss you. Looking forward to your smiling face next Friday.

President Glen Morris called the meeting to order. Herb Langfitt led the club in the pledge to the flag, and the invocation was given by Lonnie Merriott.

Robert Montgomery, who has been looking for a friend, came in shaking hands with everyone and when he got to Scott Churchman, Scott handed Robert a bill so Robert was afraid to shake hands with Scott.

But, to show Scott that he wasn't mad, Robert gave the friendship coin to Scott. Scotty, since you are always handing everyone bills, you are going to find it hard to find a friend. Good Luck, though.

Glen introduced Lonnie Merriott, who is the manager of the Texas Employment Commission. TEC. Lonnie has been with TEC for 22 years. Lonnie told of some of the things that TEC can do for you. Lonnie passed out a pocket resume and job interview. This is something that you can fill out and carry with you when you go and apply for a job.

These are questions that will be on all job applications.

I think that maybe all of us think of the TEC office in Muleshoe is just for Muleshoe. Think again! You can fill out a job application here in Muleshoe, and this can be put in the computer and go all over America.

If you are interested in moving to Dallas - Chicago - or somewhere else in the USA, the TEC can look for a job for you in that part of the country.

Lonnie stated that the Muleshoe TEC office was the second largest in Texas.

Congratulations, Lonnie, to you and your staff because being the second largest in Texas did not come by accident, but by hard work. Lonnie, thanks for a good informative

program. Tonight, the Muleshoe Mules meet the Friona Chieftains here in Muleshoe. Mules, let's finish the football season with a BANG!! Beat Friona. Good luck to you and as always, we are proud of you.

Look out for all of the Mad people having Moonlight Madness sales tonight.

Marsha, hurry back.



BEST OF PRESS

Honest

A yawn is bad manners, but it's an honest opinion. -Record, Columbia, S.C.

A Difference

The trouble with many of us is that we would rather be ruined by praise than saved by criticism. -Telegram, Worcester, Mass.

Wrong Direction

Many people are like signposts. They spend their lives pointing in the right direction, but never go that way themselves. -Tribune, Ames, Ia.

Not Surprised

A move is under way to abolish the exclamation point. People aren't surprised at anything any more. -Sentinel, Onawa, Ia.

Dr. A.R. Ploudre

Optometrist

*Family Vision Care *Texas Medicaid *Contact Lenses

(505) 762-2951 1515 Gidding St., Clovis

Hours: Monday through Friday

8:00 a.m. to 12 noon 1-5 p.m.

Saturday, 8 a.m.-12 noon

Credit arrangements available upon prior approval.

BEAT THE COLD... Winterize Now!



Zerex Anti-Freeze

\$4.19 a gal.

\$1.50 a gal. Rebate up to 6 gal. per family

See Us For All Your Fuel & Lubricants!



SUPERCLEAN UNLEADED GASOLINES

The Clean-Up and Keep Clean Gasolines

Western "66" Company

Earth Highway

272-4556

Muleshoe

Thank You

The family of Mozelle Rippee would like to express our deep appreciation and thanks to everyone for the many expressions of love & sympathy we received during the illness & loss of our loved one.

The many calls, visits, cards, food & floral bouquets will always be remembered.

Ronnie, Ronda & Scotty Spies
Ronnie & Kristie Miller

HAPPY THANKSGIVING

TAKE ACTION AGAINST WASTE

Recycle Junk Batteries and Help Clean Up The Environment! Trade 2 Junk Batteries For 1 Gallon Of Highest Quality Anti-freeze!!

or Purchase 1 Gallon Automotive or Truck Anti-Freeze

At Only \$4.39 A Gallon



2800 Mabey Dr., Clovis, N.M. 1-800-763-7717
1801 S. Ave. D, Fortales, N.M. 1-505-355-6943
1302 W. Anselton Blvd., Muleshoe, TX 1-806-272-5871

All Stores Open Monday-Saturday 7:30-6:00 P.M. Sundays 11:00 AM - 5:30 PM

Prices Good Through Nov. 30, 1990

Enochs News

by: Mrs. J.D. Bayless

Mrs. Elnita Key was in Littlefield to visit friends, Mrs. Juanita Howard and Mrs. Lucille Johnson, Thursday afternoon.

Ynosencia Zapata

Services Held

At Morton

Services for Ynosencia Zapata, 74, of Morton were held at 2 p.m. Saturday, Nov. 10 in St. Anns Catholic Church in Morton with Father Tim Schnerter, pastor of St. Michaels Catholic Church in Levelland, officiating.

Rosary was celebrated at 7 p.m. Thursday and Friday.

Burial was in Morton Memorial Cemetery under the direction of Ellis Funeral Home of Morton. Mrs. Zapata died at 12:15 a.m. Thursday at her home.

Born Sept. 26, 1916, in Castroville, TX, she had been a resident of Morton since 1960, moving there from Miles. She was a cook/homemaker and a member of St. Anns Catholic Church at Morton. She married Gregorio Zapata on Sept. 18, 1937, in Coleman.

Survivors include three sons, Antonio Zapata of Woodridge, VA, Frank Zapata of Rosharon, and Raynaldo Zapata of Ft. Worth; three daughters, Adelita Owen of Fort Worth and Dolores Garcia and Frances Jennings, both of Morton; a sister, Angelita Caballero of Runge; three brothers, Lupe Zapata of Cisco, Eloy Zapata of Runge and Thomas Zapata of San Antonio; 29 grandchildren; and 19 great grandchildren.

Local Man's

Brother Dies

At Farwell

Funeral services for Don Lovelady, 28, of Texico, N.M. were held at 10 a.m. Saturday in the First Baptist Church in Farwell with the Rev. Rick Sullivan, pastor, officiating.

Burial was in Texico Cemetery under the direction of Steed-Todd Funeral Home of Clovis, N.M. Lovelady died Wednesday in Farwell of injuries suffered in an automobile accident.

Born in Friona, Lovelady grew up in Farwell and graduated from Farwell High School in 1981. He was married to Shamra Myers. He was employed at West Texas Feed Yard in Muleshoe and had been self-employed in Texico for two years. He was a Baptist.

Survivors include his wife, Shamra; a daughter, Kera; a son, Donald Ray, Jr.; his parents, Roy and Dorothy Lovelady of Farwell; a brother, Roy Dean Lovelady of Muleshoe; and a sister, Cathy Williams of Texico.

He was preceded in death by a son, Eric, on March 31, 1989.

The former home of Paulene and R.P. McCall at Enochs, now owned by Wendell Jones, the renters that lived in the home were Mr. and Mrs. Darnold Williams burned Saturday night. The cause is unknown.

Dannie Hall, formerly of Enochs, is a patient in Methodist Hospital. He has had heart trouble. He is in room 309.

Donna and Danny Smith and daughter Shelby by Dallas were guests in the home of her parents, Mr. and Mrs. Edward Crume Friday till Sunday.

Mrs. Paula Grant and children of Lubbock were guests in the home of her parents, the Dale Nichols Sunday afternoon.

Rain received Saturday ranged to .7. It rained, sleeted and snowed during a thunder storm. It's the first time I had seen all that during it thundering.

Mr. and Mrs. Goldman Stroud were dinner guests in the home of their daughter and family, Mr. and Mrs. Craig Kirby and children SunCay.

Rev. and Mrs. Donnie Howell and Mrs. Rose Nichols attended the W.M.U. officers pastors and wives appreciation meeting and Mexican Fiesta luncheon at the First Baptist Church in Anton Saturday.

Last Monday Lorena Miller of Canyon, Marie Adams of Morton, Doris Huff of Three Way and Elnita Key of Enochs met

at another sisters Bonnie Long's at Morton and spent the day. All of the sisters were present except one.

Jeff Blackstone and Rachel

Munn are students of Texas Tech. Also there was Thomas Blackstone from Odessa. They all went to the Texas Tech Ballgame Saturday morning.

FREE HEARING TESTS FOR SENIOR CITIZENS

MEET AT WESTERN DRUG—MULESHOE
114 MAIN
Wednesday, November 14, 1990
COME BY OR CALL 272-3106 9:30 a.m.-10:30 a.m.
10 DAYS FREE TRIAL 12 BRANDS TO CHOOSE FROM
SATISFACTION GUARANTEED

Sponsored by:
LIVINGSTON HEARING AID CENTER

Roland K. Denison

1903 19TH LUBBOCK, TX 79401
606-B QUINCY PLAINVIEW, TX 79072
806/762-2951 806/293-8874
TOLL FREE 1-800-828-0722

Will Lease Pasture Irrigated Grazeout Wheat

300 lb. Cattle -- \$4⁰⁰ per hundredweight

Cornfield Cows -- \$12⁵⁰

Cornfield Bulls -- \$15⁰⁰

For More Information

Contact Bob Clark

(feedlot) 272-7555

(Mobile) 272-6218

Immaculate Conception Catholic Church

Father Patrick Maher Northeast of City

First Baptist Church

220 West Ave. E.

Emmanuel Baptist Church

Iglesia Buatista Emmanuel 107 East Third Isaias Cardenas, Pastor

Trinity Baptist Church

314 E. Ave. B. Rev. Dale Berry

Circle Back Baptist Church

Intersection FM 3397 & FM 298 Pastor, Glen Price 946-3676

Calvary Baptist Church

1733 W. Ave. C. Rev. Rick Michael

Victory Baptist Church

605 West 8th James Williams, Pastor

Progress Baptist Church

Charles Fisk, Pastor Progress, Texas

Richland Hills Baptist Church

17th and West Ave. D. Allen Petersen, Pastor

St. Matthews Baptist Church

Corner of West Boston & West Birch M.S. Brown, Pastor

Progress Second Baptist Church

1st and 3rd Sunday Rev. Arthur Hayes

Primitive Baptist Church

621 South First Elder Cleveland Bass, Pastor

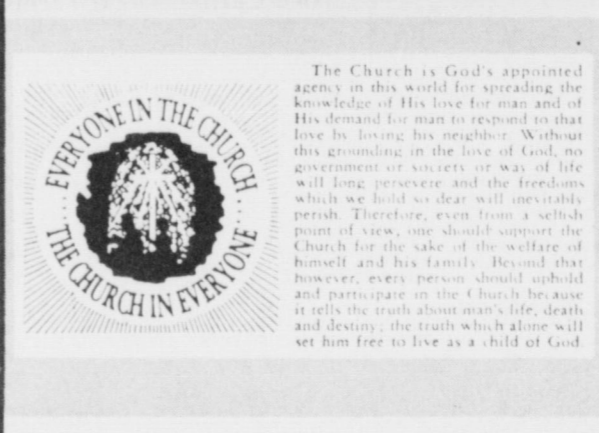
1st Baptist Church

Lazbuddie, Tx. Gary Wilcox, Pastor 965-2126



This pipe bridge spanning the water is a common sight in the gas producing areas of our great nation. This line is but one of thousands that feed the hungry furnaces of American industry. How nearly we might compare the gleaming line with the arteries that carry the precious life blood throughout our bodies. Human life and industry would not be possible without these small but important lifelines.

And so it is with the Church... for the church is the lifeline between God and man. It is where man's spiritual needs are fed, his faith and beliefs renewed. And his doubts, worries and frustrations removed. Through the church... God's Lifeline... is man able to know of the bountiful blessings of eternal life.



The Church is God's appointed agency in this world for spreading the knowledge of His love for man and of His demand for man to respond to that love by loving his neighbor. Without this grounding in the love of God, no government or society or way of life will long persevere and the freedoms which we hold so dear will inevitably perish. Therefore, even from a selfish point of view, one should support the Church for the sake of the welfare of himself and his family. Beyond that however, every person should uphold and participate in the Church because it tells the truth about man's life, death and destiny; the truth which alone will set him free to live as a child of God.

The Christian Center
Morton Hwy
272-5992

St. John Luthern
Sunday School and Bible Classes 9:30 a.m.
Church Services 10:30 a.m.
Rev. Mac Bearss, Pastor

Lazbuddie Methodist Church
965-2121
Doug Chapman, Pastor

New Covenant Church
Plainview Hwy
Sunday 10:00 a.m.
Wednesday 7:00 p.m.
Jimmy Lowe, Pastor

Jehovah Witness
Friona Hwy
Jack Tiffin, Minister
Warren Meeks, Minister

Templo Calvario
507 South Main
Sunday 10:00 a.m.
Sunday Evening 7:00 p.m.
Evangelistic Services
J.L. Soto, Pastor

Church Of The Nazarene
9th and Ave. C.
Dennis Hayes, Pastor

Primera Iglesia Bautista
223 E. Ave. B.
Roy Martinez, Pastor

Lariat Church Of Christ
Sunday School 10:00 a.m.
Worship 11:00 & 6:00 p.m.
Wednesday Services 7:00 p.m.
Sam Billingsley, Minister

Muleshoe Church Of Christ
Clovis Hwy
Bret McCasland, Minister

16th & Ave. D. Church Of Christ
Sunday 10:30 a.m.
Evening 6:00 p.m.
Wednesday 8:00 p.m.
Curtis Shelburne, Minister

Lazbuddie Church Of Christ
Minister, Keith Courmier
Sunday School 9:30 a.m.
Morning Services 10:00 a.m.
Evening Services 6:00 p.m.
Wednesday Night 7:00 p.m.

First Assembly Of God
Rev. G. Dean Reid, Pastor
Sunday School 9:45 a.m.
Morning Worship 11:00 a.m.
Evening Services 6:30 p.m.
Mid-Week Services 7:30 p.m.
272-3984

Spanish Assembly Of God
East 6th and Ave. F.
Mike Doyle, Pastor

First United Methodist Church
507 W. 2nd Street
Richard Edwards, Pastor

El Divino Salvador Methodist Church
5th and Ave. D.
Jose M. Fernandez, Pastor

United Pentacostal Lighthouse Church
207 East Ave. G.
Rev. N.W. Thompson
272-3258

Truth Tabernacle Pentecostal Church
200 E. Ithaca & Fir
Pastor, Les James
272-3391

HARD WORK DOESN'T PHASE THIS BOOT.

- Full-grain, water-repellent leather
- Sweat-resistant, cushion insole
- Steel-shank foot support
- Heel-molded counter for a heel-hugging fit
- Red Wing's exclusive, long-wearing, oil and gas-resistant, sure-gripping SuperSole

1104 SIZES MADE IN U.S.A.

The Fair Store
120 Main
272-3500

RED WING SHOES

Attend The Church Of Your Choice!

Western Drug 114 Main 272-3106			Dairy Queen 1204 W. Amer. Blvd. 272-3410
Sparkle Cleaners 114 E. Ave. C. 272-3570	W. T. Services, Inc. 319 E. Amer. Blvd. 272-4888	American Valley, Inc. W. Hwy 84 272-4266	Robert D. Green, Inc. 2400 W. Amer. Blvd. 272-4588
Fry & Cox, Inc. 401 S. First 272-4511	Bob Stovall Printing 221 E. Ave. B. 272-3373	James Roy Meat Market 506 W. Amer. Blvd. 272-4361	Lookin' Good 206 Main 272-5052
Main Street Beauty Salon 115 Main 272-3448	1st Bank Member F.D.I.C. 202 South First 272-4515	Bratcher Motor Supply 107 E. Ave. B. 272-4288	5-Area Telephone Co-Op 302 Uvalde 272-5533
Irrigation Pumps & Power W. Hwy 84 272-4483	Farmer's Co-Op Elevators Muleshoe 272-4335	Wes-Tex Futures, Inc. 1910 W. Amer. Blvd. 272-5585	Richland Hills Texaco 1914 W. Ave. B. 272-4875

CLASSIFIEDS 272-4536

CLASSIFIED RATES

15 Words & Under
Minimum Charge
\$2.30
Thereafter
\$2.00

16 Words & Over
1st Insertion
15 cents per word
2nd Insertion
13 cents per word

CLASSIFIED DISPLAY RATES \$1.75

Per Column Inch

DEADLINES
12 noon Tues.
For Thursday Paper
12 noon Friday
For Sunday Paper

To receive the reduce rate after the first insertion ad must run continuously.

We reserve the right to classify, revise, or reject any ad. We are not responsible for any error after ad has run once.

1. Personals

CONCERNED About Someone's Drinking? HELP IS AVAILABLE through Al-Anon. Call 272-2350 or 965-2870 or come to visit Tuesday and Thursday nights 8:00 p.m. & through AA call 965-2870 or come visit Tuesday nights, 8:00 at 620 W. 2nd, Muleshoe.

Furniture Upholstering and Repair. 303 East Cedar. 272-5722. B1-41t-tfc

Reduce safe and fast with GoBese Tablets and E-Vap "Water Pills" available Damon Drug. 1-45s-2tp(ts)

2. Lost & Found

Strayed from Lazbudie area, several hundred 325# heifers. Some branded 60/8 right rib and some branded UN left hip. Call Ronnie Wilkerson, 965-2487.

3. Help Wanted

HELP WANTED Route Sales person Bailey & Lamb Counties. Send resume to Morris Snack Sales, Route 1 Box 287, Hereford, Tx. 79045. 3-44t-4tp

WANTED: Experienced machinist and gearhead man. Call (806) 238-1596 days or 238-1328 nights-after 9 p.m. E3-tfc

WANTED: Reliable, dependable, stable, full-time farm employee. Must have knowledge of cattle and new-type farm equipment. Terms negotiable, salary good. 806-965-2111. 3-43t-8tp

Earn \$300 to \$500 per week Reading Books at home. Call 1-615-473-7440 Ext. B-805. 3-44t-3tp1(ts)

3. Help Wanted

HELP WANTED Truck drivers and shop help. Apply in person. Friona Transport, Inc. 1 mile east of Friona on Hwy 60. F3-45t-2tc

HELP WANTED Muleshoe DHS office eligibility specialist I Spanish-speaking ability required. Salary \$1,519 per month. Sixty semester hours from accredited college, or 18 months of certain administrative work may be substituted for each 30 hours of the required college work. Duties include determining eligibility for clients, applying for AFDC, Food Stamps and Medicaid benefits using complex policy and procedures within established time frame. Contact the Muleshoe office at 209 E. Ave. B or Lubbock personnel office at 741-0541. C3-45s-2tc(ts)

9. Automobiles For Sale

FOR SALE: 1983 Wingate mobile home by Fleetwood, 14 x 70, 2 bedroom, 2 bath, stove, refrigerator and storm windows. Good condition. Phone 272-5489 or 965-2178. D9-44t-tfc

FOR SALE: 1987 Chevy Suburu Silverado. AM/FM Casette, tilt, cruise, new tires. 60,000 miles. Call 272-5037. P9-44t-tfc

11. For Sale Or Trade

FOR SALE: 8 Tower Valley Sprinkler. 5 years old. Call Sandy at 272-7561 (day) or after 6 p.m., 272-3257 (night)

15. Misc.

WANT TO BUY: Used sprinkler and mainline pipe. Siderolls in good condition. Waterdog Irrigation. 385-4620. W15-42s-12tc

GOLD CREDIT CARD Visa/Mastercard Guaranteed. Cash Advance \$2,500. credit line. 1-900-446-0040 \$25. fee. 15-42t-8tp

MINUTE MEN FOODS delivers Prater's Products Call 1-800-544-1234

8. Real Estate

FOR SALE: Three bedroom, Two bath, 1 car garage, large kitchen, large living area and large back yard. New Fence. Approx. 1,600 sq. ft. Call Sandy at 272-7561 (day) or after 6 p.m. 272-3257 (night)

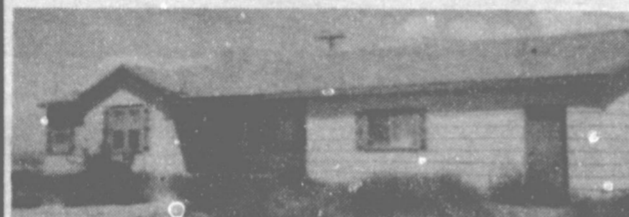
The Prudential Ada, REALTORS*
294 Acres (plus or minus). Excellent land, excellent water. Can be sold in two separate parcels. Owner financing
PATRICIA YEAGER
Broker / Owner
806-655-1093
Canyon, Texas

8. Real Estate

FOR SALE OR RENT: 3 bedroom, 1 bath House. Covered patio. Shop Building. Phone 272-3321 after 6:00 p.m.

HCR REAL ESTATE
4-2-1 Carport. Brick, lots of storage. Storage building 20x48. Let's look at this.
Thursie Reid
272-5318

Smallwood Real Estate



232 Main Muleshoe 272-4838

On pavement in Country. 3 Bedroom, 2 Bath, Large Kitchen and Dining Area, Living Room, Large Den, and Playroom. 1 Acre.

All electric energy efficient, Central Heat and Air, 2 Bedroom, 1 1/2 Bath, Living Room and Den, 1 Car Garage with Storage. Corner Lot.

3 Bedroom, 2 Bath, Living Room and Dining Area, Large Den, Utility and Large Play Room. Corner Lot. PRICED TO SELL.

Brick- 3 Bedroom, 1 3/4 Bath, Kitchen, Dining Area, Living Room, Central Heat and Refrigerated Air. 1 Car Garage.

STUCCO--2 Bedroom, 1-1/4 Bath, Remodeled Kitchen, Dishwasher, 2 Oven Stove, Central Heat and Air, Fireplace, Nice Carpet. Good Terms.

3 Bedroom, 1 Bath, Living Room, Kitchen and Dining Area, Built-in Oven, Cook Top, Dishwasher, 1 Car Garage, Patio and Large Shop Building.

3 Bedroom, 1 Bath, 1 Car, Carport, Large Kitchen, Nice Living Room. Stove and Dishwasher.

Short of money for the down payment on a home? Call or see me for a Rent to Own Contract.



8. Real Estate
BAILEY COUNTY LAND FOR SALE
Owner will finance the following size blocks: 2-80 acres, 3-160 acres, 1000 acres, and 1-277 acres. Wheat, milo and cotton allotments. 1 1/4 miles of permanent grass. 7 Center Pivots. A Sweet Circle Set-Up.
If interested, contact T.L. Timmons
806-385-4487 (Day) 806-925-6484 (Night)

High Plains Residents Can Aid Wildlife Officials

With the arrival of cooler weather and the shorter days of fall, comes the migration of thousands of ducks, geese, sandhill cranes and other migratory wildfowl to the Panhandle and Southern High Plains of Texas. The area is dotted with at least 19,000 playa basins, a few reservoirs, and hundreds of man-made stock watering impoundments. The large number of playas, their natural aquatic plants and waste grain in surrounding fields, make this region very attractive to migrating and wintering waterfowl and shorebirds.

But due to very widely sporadic rainfall amounts and drought conditions as well as varying land use practices across the region water is in short supply in most years and waterfowl are often dangerously concentrated where water is available. According to Jim Ray, Texas Parks and Wildlife Department's waterfowl biologist for the Panhandle and Southern High Plains, warm shallow playa lakes and adverse weather conditions can spell trouble for

large concentrations of waterfowl in the High Plains.

"The very nature of a playa lake and the hot, dry climate of the Southern High Plains is very conducive to outbreaks of several waterfowl diseases," said Ray. "Playa lakes are generally very shallow", Ray continued, "and water sits warm and stagnant. Add to this large concentrations of migrating and wintering birds and a climate famous for temperature extremes and you've got potential for problems."

Avian Botulism and fowl cholera are, by far, the two most commonly reported waterfowl diseases in the High Plains. Both are bacterial diseases and can effect bird species other than waterfowl and possibly even mammalian wildlife. Botulism normally occurs from July through September. At this time, water levels are dropping and our climate is characterized by hot days and relatively cool nights; all favorable to outbreaks of avian botulism. At the tail-end of this period, waterfowl begin

to concentrate in shallow, stagnant playas. If the botulism toxin is present, large concentrations of waterfowl and other birds can die rather suddenly. "It is imperative that people report such a die-off so cleanup of carcasses can begin and other waterfowl be discouraged from using the site", said Ray. "Fly maggots scavenge on infected carcasses and build up concentrations of bacterial botulism toxins. Waterfowl readily consume them and receive concentrated doses of toxin. Botulism occurs almost yearly in the High Plains with extensive losses. This year is no exception, as we already have one die-off attributed to botulism."

Avian cholera is a highly infectious disease and the Texas Panhandle is one of the four major focal point areas for the disease in the United States. This disease occurs most often in late winter and die-offs seem to be triggered by stresses such as overcrowding, harassment from predators, and the severe cold fronts that the Panhandle is famous for. According to Ray, "Under stressful circumstances "explosive" die-offs can occur and have involved more than 1,000 birds per day in some cases."

Wildlife officials could go on and on about other diseases and each of their symptoms. But according to Ray, what is important to the general public is that when someone finds sick or dying birds around a playa, in any concentration, they should immediately leave the area and phone the proper officials. "The more delay in reporting the die-off the more birds can be exposed to the bacterium or whatever harmed them," said Ray. Ray continued, "In addition, carcasses are rapidly scavenged by predators, eliminating any evidence that a die-off has occurred". If such a die-off is witnessed, people should immediately phone Buffalo Lake National Wildlife Refuge, Umbarger, Texas at (806) 499-3382.

The High Plains of Texas is a very important wintering area for the Central Flyway. One step in the right direction for High Plains' migratory waterfowl management is the Playa Lakes Joint Venture of the North American Waterfowl Management Plan. One of the foremost goals of the Playa Lake Joint Venture is to provide ample water areas across the High Plains of Texas, New Mexico, Colorado, Kansas and Oklahoma so that when migrating or wintering birds arrive they'll have plenty of habitat to disperse themselves in, thus avoiding high concentrations and minimizing the impact of diseases and other mortality factors. "We don't want more than 2.5 percent of the migratory birds to be in any one concentration or to overlap another concentration's feeding area," Ray said. For more information on the Playa Lakes Joint Venture, contact your local Texas Parks and Wildlife Department officer or James D. Ray, Wildlife Biologist, Texas Parks and Wildlife, 4815 6th St. Lubbock, TX 79416, (806) 781-3040.

8. Real Estate 8. Real Estate

Sudderth Realty, Inc. REALTOR

109 Fifth Street Farwell, Texas
Realtors/Certified Appraisers

Have Buyers. Need Farm land to sell.

Good 160 Acres irrigated. Near Clays Corner. Nearly new circle.

J.B. Sudderth Broker
Daren Sudderth Broker
Master Senior Appraiser

806-481-3288

Bingham & Nieman Realty

116 E. Ave. C George Nieman, Broker 272-5285 or 272-5286

RICHLAND HILLS
IMMACULATE 3-2-2 Brick, Cent. A&H, Built-ins, FP, sunken lv. area with cathedral ceiling, ceiling fans, earhtones, storage bldg. \$50's!!!!

NICE RESIDENTIAL LOTS- \$5,000 UP.....

PRICE REDUCED-Nice 3-2-2 Brick, Cent. A&H, FP, Earhtone carpets, fenced yd. \$60's!!!!

3-2-2 Home. Heat pump, built-ins, FP, earhtone carpets. Fenced yd., & more. PRICED TO SELL--\$30's!!!!

3-2-2 Brick, Corner lot, Cent. A&H, built-ins, FP, patio. \$60's!!!!

HIGH SCHOOL
PRICE REDUCED 3-1-1 Home, earhtone carpets, workshop, cellar, fenced yd.

IMMACULATE 2-1-1 Home, Cent. A&H, nicely remodeled, storm windows and doors, fenced yd., cellar. \$20's!!!!

2-1 1/2-1 Brick, fl. furn., Cent. Air, fenced yd., & more. \$20's!!!!
FmHA FINANCING to qualified Buyer- 3-1-1 Brick, Cent. heat, earth-tone carpet, ceiling fans, miniblinds. \$20's!!!!

HIGHLAND AREA
VERY NICE 4-2-1 Brick, Cent. A&H, built-ins, earhtone carpets, util., encl. patio, storm win. & doors, grill, spktr. sys., stor. bldg., fenced yd. \$60's!!!!

3-2-1 Brick, Cent. Heat, evap. air, fenced yard, & more!!!!

JUST LISTED- NICE 2-2-1 Brick, Cent. A&H, built-ins, HEATED POOL, spktr. Sys., fenced yd., corner lot, & more. \$50's!!!!

LENAU ADD.
Nice 4-2-2 carport Home. Cent. A&H, built-ins, FP, Cent. Vac., Office, Sewing area, fenced yard. \$30's!!!!

3-2-1 Brick, Cent. A&H, built-ins, FP, fenced yd., stor. bldg. \$40's!!!!

NICE 2-2-2 Brick, built-ins, CH, storm windows & doors, fenced yd., & more. \$50's!!!!

3-1 1/2-1 Brick, CH, Evap. Air, utility, fenced yd., corner lot. FmHA financing possible!!!!

3-1 Home, Corner lot, wall furn., fenced yd. \$20's!!!!
COUNTRY CLUB 3-2-2 Brick, Cent. A&H, built-ins, FP, 2,000sq lv. area, fenced yd., storage bldg., & more.

3-2-3 Carport Home on 11 ac. edge of town, Cent. A&H, built-ins, cellar, barns, & corral. MAKE OFFER.

NICE 3-2-1 Home on 1 acre close to town, Cent. Heat, evap. air, nice carpets, remodeled. \$30's!!!!

GYMNASTICS STUDIO- BLDG. & EQUIPMENT- PRICED TO SELL!!!!

RESTAURANT- BLDG., LAND, & EQUIPMENT- A GOOD BUY!!!!

COMMERCIAL TRACT 175'X100' (Hwy. 70 & 84, RR spur access, approx. 1200 sq. ft. bldg. PRICED TO SELL!!!!

24 A-res on pavement, edge of town, 8" irrig. well, (1-3-1-1 Home & 2-2-1 Homes for rentals plus 14 Mobile home hookups). Excellent income property set up for vegetable and fruit with stand & equip.!!!

2-1 Home, 20 Acres, sub. pump. Sprinkler, barns, & corral. \$40's!!!!

It's Like A Whole Other Country

TEXAS

LOUISA'S LETTER

really loved me? R.L.-Pa.

Answer:

Dear Louisa
I am a high school girl and very much in love with a boy of my own age. I would like to get married but the boy I am going with is planning to go to college.
I have tried to persuade him to take a job when he finishes school so we won't have to wait four years.
Don't you think that he would do this if he

young man to give up his chance for an education in order to take a job that he will be unemployed after the first few months, he would probably be discontented and blame all the trouble that came his way on you.
Be glad that your friend has sense enough to know the value of an education.
Louisa

HOLIDAY FAVORITES

YOUR FRIENDLY THRIFTWAY/LA TIENDA STORE HAS BUTTERBALL TURKEYS, HONEYSUCKLE TURKEYS, GEESE, DUCKS, CORNISH HENS, CAPONS, SMOKED TURKEY BREAST, BONELESS TURKEY AND FRESH OYSTERS FOR YOUR HOLIDAY NEEDS AND CONVENIENCE.

WITH TENDER TIMER
U.S.D.A. GRADE A FINEST QUALITY
SELF-BASTING...18-22 LB. AVG.

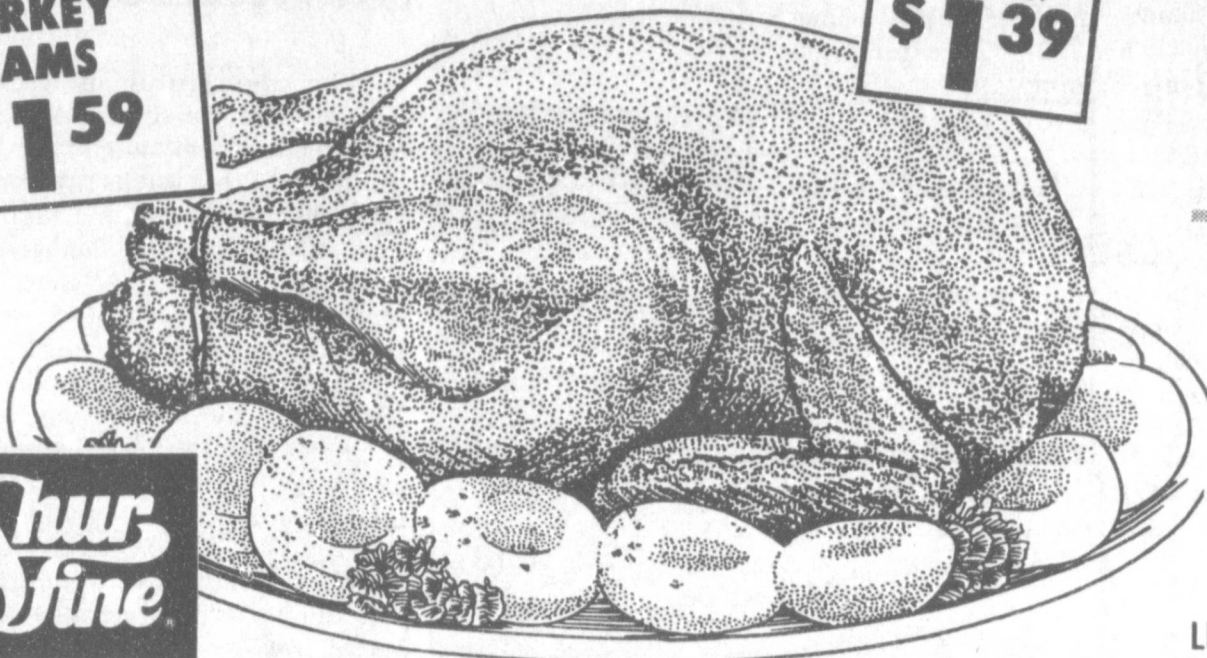
- U.S.D.A. GRADE A
TURKEY BREAST LB. **\$1⁵⁹**
- U.S.D.A. GRADE A...4-5 LB. AVG.
BAKING HENS LB. **89^c**
- SUNDAY HOUSE...9-12 LB. AVG.
SMOKED TURKEYS LB. **\$1³⁹**
- LOUIS RICH...3-5 LB. AVG.
TURKEY HAMS LB. **\$1⁷⁹**
- CORN KING FULLY COOKED...5-8 LB. AVG. WHOLE
BONELESS HAMS LB. **\$1⁹⁹**
- CORN KING FULLY COOKED BONELESS
HALF HAMS LB. **\$2¹⁹**
- FAMILY PACK...GUARANTEED 81% LEAN
GROUND BEEF LB. **\$1⁶⁹**

SHURFINE FULLY COOKED
BONELESS...2-2½ LB. AVG.
**TURKEY
HAMS**
LB. **\$1⁵⁹**

WILSON CERTIFIED
**SLICED
BACON**
1 LB. PKG.
\$1³⁹

SHURFINE TURKEYS

59^c



THRIFTWAY/LA TIENDA COUPON



TENDERCRUST BROWN & SERVE
**DINNER
ROLLS**
4 \$1
12 CT. PKGS.

FIRST 4 PACKAGES FOR \$1.00, WITH COUPON.
THEREAFTER PRICE WILL BE 2 PACKAGES FOR \$1.00.
ONE COUPON PER FAMILY. COUPON EXPIRES
NOV. 21, 1990.

THRIFTWAY/LA TIENDA COUPON

- SHURFINE WHIPPING
CREAM 3 ½ PT. CTN. **\$1⁰⁰**
- SHURFINE
SOUR CREAM 2 ½ PT. CTNS. **89^c**
- BETTY CROCKER SUPERMOIST ASSTED.
CAKE MIX 18 OZ. BOX **79^c**
- BETTY CROCKER ASSTD. RTS
FROSTINGS 16 OZ. CAN **\$1²⁹**
- ALL PURPOSE FLOUR
GOLD MEDAL 5 LB. BAG **69^c**
- CORN OR VEGETABLE
WESSON OIL 48 OZ. BTL. **\$1⁹⁹**
- PIECES
ELLIS PECANS 6 OZ. BAG **\$1⁴⁹**
- LIBBY'S
PUMPKIN 16 OZ. CAN **59^c**
- OCEAN SPRAY JELLIED/WHOLE
CRANBERRY SAUCE 14 OZ. CAN **59^c**
- SHURFINE POWDERED OR
BROWN SUGAR 2 LB. BAG **99^c**
- SWANSON BEEF OR
CHICKEN BROTH 14 OZ. CAN **39^c**
- CAMPBELL'S DRY ONION
SOUP MIX 2 CT. BOX **99^c**
- CAMPBELL'S CREAM OF CELERY, MUSHROOM OR
CHICKEN SOUPS 10 ½ OZ. CAN **59^c**
- CAMPBELL'S SPECIAL REQUEST CREAM OF BROCCOLI OR
MUSHROOM SOUP 10 ½ OZ. CAN **59^c**
- FRANCO AMERICAN ASSTD.
GRAVY 10 ½ OZ. CAN **69^c**
- PEPPERIDGE FARM'S CORNBREAD OR HERB
STUFFING MIX 8 OZ. BAG **\$1¹⁹**
- SHURFINE
EVAPORATED MILK 2 12 OZ. CANS **\$1⁰⁰**

- SUGARY SAM
CUT YAMS 23 OZ. CAN **69^c**
- BETTY CROCKER ASSTD.
MUFFINS 13 OZ. BOX **\$1⁷⁹**
- BETTY CROCKER SUPREME
BROWNIE MIX 23 OZ. BOX **\$1⁹⁹**
- BETTY CROCKER
POTATO BUDS 13 ¾ OZ. BOX **\$1⁷⁹**

- BETTY CROCKER
PIE CRUST MIX 11 OZ. BOX **\$1⁰⁹**
- 10" OFF LABEL-EXTRA FINE GRANULATED
IMPERIAL SUGAR 5 LB. BAG **\$1⁷⁹**
- KLEENEX
DINNER NAPKINS 45 CT. BOX **\$1¹⁹**
- LAUNDRY DETERGENT
LIQUID TIDE 64 OZ. BTL. **\$4⁶⁹**

- 40" OFF LABEL-DISH DETERGENT 22 OZ. BTL. **99^c**
- JOY LIQUID** 22 OZ. BTL. **99^c**
- 15" OFF LABEL-WHITE CLOUD
BATH TISSUE 4 ROLL PKG. **\$1⁰⁹**
- ASSTD.
BOUNTY TOWELS JUMBO ROLL **79^c**
- AUNT JEMIMA YELLOW OR WHITE
CORN MEAL 5 LB. BAG **\$1⁴⁹**
- QUAKER
MASA HARINA 5 LB. BAG **\$1⁹⁹**
- QUAKER
MASA TRIGO 4 LB. BAG **\$1⁹⁹**
- SCHILLING
VANILLA 1 OZ. BTL. **\$1⁴⁹**
- POLAROID HIGH SPEED
600 FILM EACH **\$9⁹⁹**
- POLAROID
VHS CASSETTE EACH **\$2⁹⁹**

DAIRY AND FROZEN

- DESSERT TOPPING REG./EXTRA CREAMY 8 OZ. TUB **89^c**
- COOL WHIP** 8 OZ. TUB **89^c**
- SHURFINE REG./DEEP DISH
PIE SHELLS 2 CT. PKG. **79^c**
- CITRUS HILL ASSTD.
ORANGE JUICE 12 OZ. CAN **\$1⁰⁹**
- BANQUET MINCE OR
PUMPKIN PIES 20 OZ. BOX **99^c**
- PILLSBURY ALREADY
PIE CRUST 15 OZ. PKG. **\$1²⁹**
- SHURFINE BUTTERMILK/SWEET MILK
BISCUITS 5 10 CT. CANS **\$1⁰⁰**
- SHURFINE QUARTERED
BUTTER 1 LB. CTN. **\$1⁴⁹**

NEW CROP

SWEET POTATOES

4 \$1

4 LBS.

GOLDEN RIPE

BANANAS

4 \$1

4 LBS.

FRESH CRISP STALKS

CELERY

4 \$1

4 LBS.

FREE PARSLEY
ONE BUNCH
WITH YOUR
THANKSGIVING
PURCHASE!

- YELLOW
ONIONS LB. **19^c**
- OCEAN SPRAY FRESH
CRANBERRIES 12 OZ. PKG. **89^c**
- GARDEN FRESH
BROCCOLI EACH **89^c**
- GARDEN FRESH
CAULIFLOWER HEAD **89^c**

- RED OR GOLDEN
DELICIOUS APPLES 3 LB. BAG **\$1¹⁹**
- NEW CROP JUICY SWEET
NAVEL ORANGES LB. **49^c**
- NEW CROP CALIFORNIA
KIWI FRUIT 3 FOR **\$1⁰⁰**
- FRESH
PECANS LB. **\$1⁹⁹**

HEALTH AND BEAUTY

- ASSORTED
FORMULA 44 4 OZ. BTL. **\$2⁹⁹**
- ORIGINAL
ALKA-SELTZER 24 CT. PKG. **\$1⁹⁹**
- WHITE RAIN ASSTD. CONDITIONER OR
SHAMPOO 15 OZ. BTL. **99^c**
- WHITE RAIN ASSTD. AERO./NON-AEROSOL
HAIR SPRAY 7 OZ. SIZE **99^c**

- SEVEN SEAS ASSTD.
DRESSINGS 8 OZ. BTL. **\$1⁰⁹**
- KRAFT MINIATURE OR JET PUFFED
MARSHMALLOWS 10 OZ. PKG. **69^c**
- KRAFT MARSHMALLOW
CREME 7 OZ. JAR **79^c**
- CARROLL SHELBY
CHILI MIX 4 OZ. PKG. **\$1⁴⁹**
- PARKAY QUARTERS
PARKAY 2 1 LB. BOXES **\$1⁰⁰**

- PHILADELPHIA REGULAR OR LITE
CREAM CHEESE 8 OZ. BOX **79^c**
- KRAFT AMERICAN, SWISS OR PIMENTO
CHEESE SINGLES 12 OZ. PKG. **\$2⁵⁹**
- KRAFT REG., MILD OR HOT MEXICAN
VELVEETA 16 OZ. LOAF **\$2⁹⁹**
- KRAFT ASSTD. CHEESE
SPREADERY 10 ½ OZ. TUB **\$1⁷⁹**
- KRAFT HALFMOON LONGHORN COLBY OR
CHEDDAR CHEESE 16 OZ. PKG. **\$3²⁹**

- BAKER'S SEMI-SWEET OR UNSWEETENED
CHOCOLATE 8 OZ. BAR **\$1⁹⁹**
- BAKER'S GERMAN SWEET
CHOCOLATE 4 OZ. BAR **\$1⁷⁹**
- STOVE TOP TURKEY, CORNBREAD OR CHICKEN
STUFFING MIX 6 OZ. BOX **\$1¹⁹**
- BAKER'S REAL
CHOCOLATE CHIPS 12 OZ. BAG **99^c**
- BAKER'S ANGEL FLAKE
COCONUT 14 OZ. BAG **99^c**
- KRAFT ASSTD. MIRACLE WHIP OR
MAYONNAISE 32 OZ. JAR **\$2⁰⁹**

thriftway

Our Best to You!

The Grocery Gang

AT AFFILIATED FOODS INC.
MEMBER STORE

WE ACCEPT FOOD STAMPS...
WE RESERVE THE RIGHT TO LIMIT

PRICES EFFECTIVE
NOVEMBER 11-17, 1990

- POST CEREAL
RAISIN BRAN 15 OZ. BOX **\$2³⁹**
- POST SUPER
GOLDEN CRISP 18 OZ. BOX **\$2⁹⁹**
- DESSERT TOPPING
DREAM WHIP 5.2 OZ. BOX **\$2¹⁹**
- ASSTD.
JELL-O GELATIN 3 OZ. BOX **39^c**
- ASSTD. INSTANT
JELL-O PUDDING 2 4 SERV. BOXES **\$1⁰⁰**
- REGULAR OR LITE SYRUP
LOG CABIN 24 OZ. BTL. **\$2⁹⁹**