

The Earth News Sun

VOLUME 23

EARTH, LAMB COUNTY, TEXAS, THURSDAY, FEBRUARY 23, 1978

12 PAGES

NUMBER 24



LAVERNE VAUGHN of Earth Feed & Seed presented Cindy Clayton top bid for her Grand Champion Barrow.



TUFFY DENT of Dent Farm Supply was high bidder for the Grand Champion Lamb shown by Bart Belew.

How It Looks From Here By Ray Freedman

Like to repeat a letter we received from someone who seems to know from beans.

Dear Editor:

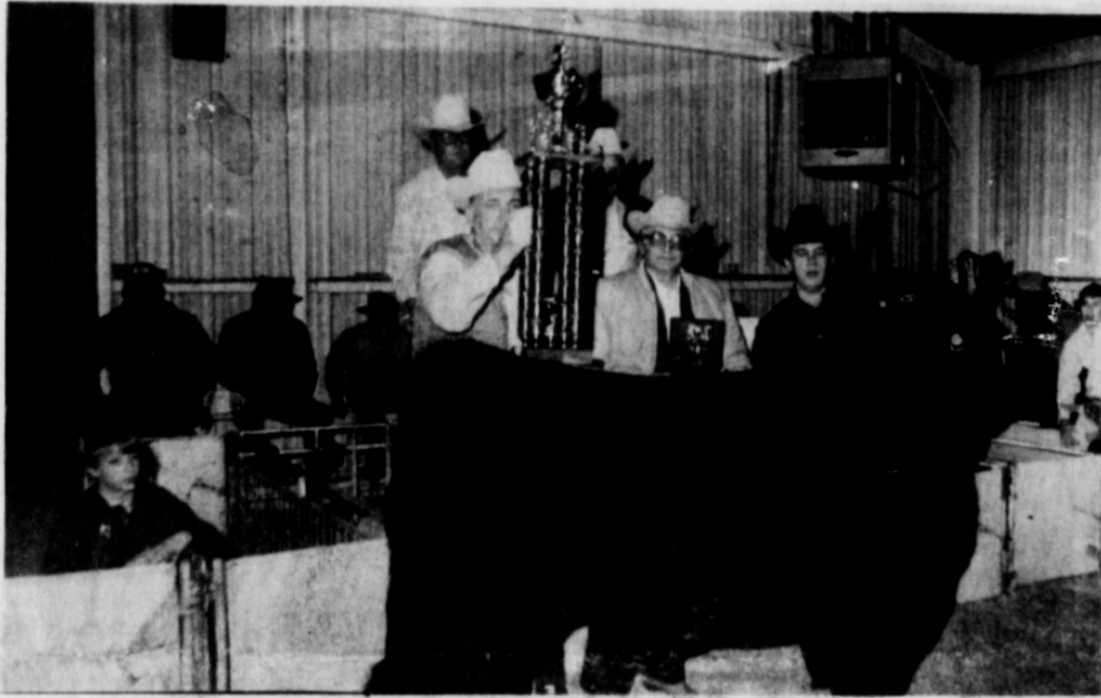
I was watching television the other day when the striking farmers drove their tractors around the White House in Washington.

A TV reporter, trying to get both sides; had his camera zoom in on a young farmer who got out of his tractor and explained that he was there because, while he enjoyed helping feed America, he didn't enjoy going broke in doing it. Then the camera switched to a bystander, obviously a well-fed city dweller, who said, when asked what he thought of the strike, "if the farmers can't make a living farming, why don't they all out and try something else?"

The network then switched to a report on the Middle East, of which Congress nor anyone else for that matter, knows very much about.

A few days later, I was reading a newspaper account of the President's new budget, and down toward the end it reported that city mayors were unanimously upset because the budget has reduced appropriations for cities.

(cont. on page 5)



MACKY McCARTY of Citizens State Bank paid top dollar for the Grand Champion Steer owned by Lexie Fennell.

23rd Annual Stock Show

Springlake-Earth area residents were presented one of the finest and best attended stock shows they have ever witnessed. A large crowd both at the show and then at the sale were delighted with a fine show of animals and the young people who displayed their efforts of the past several months. The sale drew one of the largest total amounts for a sale of this size.

The barbeque dinner which preceded the sale was the product of several hours of hard work by Lois Rudd, Elizabeth Packard, Alma Ott, and Tom Alair.

Following is a list of winners and their division.

- Grd. Chp. Lamb-Bart Belew
- Grd. Chp. Barrow-Cindy Clayton
- Grd. Chp. Steer-Lexie Fennell
- Res. Grd. Lamb-Jill Barden
- Res. Grd. Barrow-Steve Shepard
- Res. Grd. Steer-Petra Lewis
- Bd. Chp. Cross-Hoby Matlock
- Bd. Chp. Berk-Elaine Bills
- Bd. Chp. Angus-Michele McCarty
- Res. Bd. Chp. Finewool-Biff Belew
- Bd. Chp. Chester White-Stan Runyon
- Bd. Chp. Hereford-Jimmy Randolph
- Res. Chp. Med. Wool-Cary Sawyer

(cont. on page 7)

S-E PTA Meeting

There will be a PTA meeting Monday evening, February 27 at 7:00 p.m. in the Springlake Earth cafeteria. This meeting will be of particular interest to those parents having children involved in the athletic program of Springlake-Earth Schools. The program for the meeting is a discussion of the entire athletic program of Springlake-Earth. Head Coach Radford Taylor will be at the meeting to help explain the program and to give you an opportunity to ask questions.

The third grade choir will provide entertainment for the meeting and refreshments will be served.

All parents of Springlake-Earth students are invited to attend, along with anyone in the community interested in the athletic program of Springlake-Earth.

W's To Organize Local

A meeting of W's will be held Monday, February 27 at 7 p.m. at the Springlake-Earth School cafeteria to organize a local group of W's. W's stand for "Women Who Want To Be Women."

Maisie Birkelbach, president of the Littlefield W's will be present to help with procedures to organize a local group.

Women and husbands are urged to attend.

FHA Sponsor Dinner

The Springlake-Earth FHA will sponsor a Sunday dinner, February 26 at the Springlake-Earth cafeteria, following Sunday services.

The menu will consist of ham with all the trimmings. Prices for the meal are adults \$2.50 and children and under, \$1.00.

Everyone is invited.

S-E School Board Election

The Springlake-Earth Board of Trustees has called a school board election for Saturday, April 1 to elect 2 board members. The terms of Ray Joe Riley and Dwane Jones are expiring.

Filing for position to date are Ray Joe Riley for re-election and Doug Lewis.

Deadline for filing for a place on the ballot is 30 days before the date of the election.

Historical Marker Dedication

The Lamb County Historical Survey Committee wishes to announce that a Historical Marker commemorating the McKenzie Trail will be officially dedicated March 2, 1978 at 3 p.m. The marker has been placed 1/2 mile south of Fieldton on Highway 1072.

Principal speaker for this dedication will be Don Joyner, County Judge of Lamb County, a resident of the Fieldton community. Billy Wayne Clayton, Speaker of the House of Representatives of the State of Texas will also address the assembly. V.M. Peterman, chairman of the Lamb County Historical Survey Committee will conduct the ceremony.

The McKenzie Trail passed through this area along the Brazos River, commonly known as Black Water Draw, during the beginning of Lamb County History. Col. Ranald S. McKenzie led an expedition of 248 officers and enlisted men along the draw in a campaign to break up a ring of traders paying the Indians to steal cattle and horses from the early settlers. The pass beaten out by his men was used later by scouts and settlers.

Every citizen of Lamb County and all other interested persons are invited to attend this event of historic significance.

Baptists To Hold Workshop

The First Baptist Church of Earth is going to hold a "Wake-Up to the Word Workshop" this weekend, February 24, 25 in the fellowship hall of the church. It will begin at 7 p.m. on Friday and Saturday evening. The workshop will be held for those in junior high through the adult age level. A nursery will be provided for smaller children. The purpose of the workshop is to help people discover how God's Word can be applied to their daily lives.

In order to achieve this goal the pastor is going to lead a directed Bible study Friday evening with the assistance of a recording which presents some of the difficulties a family often encounters as it tries to read the Bible together. On Saturday the pastor is going to lead a film forum. The film, Bold Discipleship, shows what can happen when an average family tries to apply the teachings of the Bible to their everyday experience.

FHA Banquet

The FHA Banquet will be held Friday, February 24 at 7 p.m. at the Springlake-Earth cafeteria. Theme for the banquet is "You Light Up My Life."

During the banquet Miss FHA will be named. Senior FHA'ers will be recognized.

City Election

The Earth City Council has called a city election for Saturday, April 1 to elect a Mayor and 2 aldermen.

Filing for position to date are: Mayor-W.B. McMillan and Joe Long.

Aldermen are Jerry Been, Jimmy Huckabay, Pam Marquez and Beulah Danforth.

Deadline for filing for a place on the ballot is March 1.

For The People

The City Council at Earth met in a called session last Friday, February 17 to consider a request by the State Department of Highways. It was necessary that the council approve and guarantee to the state a sum of money which has been deposited on behalf of the citizens whose property is to be improved with curb and gutter along the proposed widening of Highway 70 to the east edge of Earth. A motion was made and carried that this be accomplished.

In attendance at the meeting were Mayor McMillan, City Secretary, Betty McAlpine, Aldermen Jerry Been, Raiford Daniel, Bill Freeman and Glenn Bulls.

Next City Council meeting is scheduled for March 6.

Notice

The Sunnyside Lion's Club is sponsoring a pancake supper in the community building Saturday night from 6:30 until 8:00 to benefit Tommy McGowan of Springlake. There will not be a charge for the supper, but donations made will help defray the medical expenses for Tommy.

Gift Of Love

A complete display of total concern and friendship was evident the night of the Livestock Sale at the S-E Junior Livestock Show. Many residents of the Springlake-Earth communities joined forces and donated a sizeable sum of money to the family of Virginia Moore, who died last Saturday, after a long bout with cancer.

This type of compassion is prevalent in these communities and is a strong guideline by which our young people are learning what life is all about. Helping each other.



RAY LYNN BRITT

Britt Seeks Re-Election

I would like to take this opportunity to formally announce my candidacy for re-election as your district clerk, subject to action of the Democratic Primary.

I am very grateful to the residents of Lamb County for electing me as your district clerk. The cooperation of each person with whom I have come into contact through the various duties of the office has been sincerely appreciated. It has been a pleasure and an honor to serve you by working diligently for the benefit of this county and its citizens through conscientious attention to the functions required.

It has been my privilege to serve in the community and the county through active membership in the First United Methodist Church and the Lamb County Historical Survey Committee. I have also represented Lamb County as a voting delegate to three State Democratic Conventions.

If you, the voters of Lamb County, choose to re-elect me as your District Clerk, I will work to the best of my ability to continue to improve the office and the services it renders to the people of this county.

Therefore, I am asking you to permit me to continue serving you in this capacity and respectfully request your support in the forthcoming elections.

Political advertising paid for by Ray Lynn Britt.
Ray Lynn Britt

* OUR
SINCEREST CONGRATULATIONS
TO YOU

The Springlake-Earth Young People Who Exhibited Animals At The 1978 Junior Livestock Show



Grand Champion Steer
Lexie Fennell



Grand Champion Barrow
Cindy Clayton



Grand Champion Lamb
Bart Belew

Citizens State Bank

Earth, Texas-Member F.D.I.C.

back to th
farming-how
money in t
The more
more you ha
at that
ion-the bi
boots who
talked ab
wanted to
me farm
some land
that seeme
At the farm
er than th
and at
they were
had ever
all going,
one who
me s
one calle
an.
The g
hington
ed to put
expression
he had
The far
omer coul
aid the en
leman.
Here I am s
nothing
the desire
I tell y
from the b
I don't
you should
Then ha
ething im
ed out int
en's colu
farmer
hington
ated that
ences with
street",
anal clerks,
mel, employ
y visited,
ults similar
with the
At first fee
mers were t
their food
Washington
ckly chs
ion whe
stood how
price of f
on raisin
farmers s

The A
griculture N
opportuni
ent its
hair soluti
mers pligh
ster and
griculture F
The hitch w
sandwic
out twent
organizations
accordir
M had
uates to a
the two to
icials. Six
ch time t
accumulated
ese month
dy about
erse as t
dustry.
If a statem
the presid
is either i
sure of th
he doesn't
out the i
er. The
ence wa
mers that
present
ll be in b
long run.
consolatio
who went b
and the one
oke this
ar. By
current farm
nd time to
farming
ready f
akeover. Th
proble
quate p

Dimmitt Locals

(cont. from page 10)

back to the economics of farming-how they made money in the last three

more they talked more you had to wonder that initial im- sion-the big men with boots who stall traffic. talked about how all wanted to do was to inue farming, maybe some land of their own that seemed impossible

at the farm, prices were than they had ever and at the grocery they were higher than had ever been and it all going, they said, to one who stood bet- one me and them, one called the mid-

The guy from Washington rose and ned to put his coat on. expression was serious he had a speech to e. The farmer and the omer could be friends, said the enemy was the eaman.

Here I am and I have no nothing in this life the desire to make a ar. I tell you truthfully the bottom of my e, I don't mind paying, you should get some of

Then having said something important, he ed out into the snow." en's column ended.

Other farmers who were in Washington have com- ated that their ex- periences with the "man in the street", cab drivers, elerks, police per- nel, employees in offices y visited, often had s similar to McLain's with the newsmen.

At first feeling that the omers were trying to raise their food bills, the Washington residents ckly changed their on when they un- stood how little effect the price of farm products on raising food costs, farmers say.

The American Agriculture Movement got the opportunity Tuesday to present its problems and their solutions to the omers plight to President Carter and Secretary of Agriculture Bob Bergland. The hitch was that AAM was sandwiched in with out twenty other farm organizations and groups, and according to reports AAM had about six minutes to air their views to the two top government cials. Six minutes is not much time to explain the accumulated knowledge of these months of intensive eady about a problem as diverse as the agriculture industry.

If a statement attributed to the president is correct, he is either ignorant of the nature of the problem, or he doesn't give a hoot about the individual far- er. The statement in essence was that "the omers that survive under the present farm program will be in better shape in the long run." That outlook consolation to the farmer who went broke last year and the ones that will go broke this year and next year. By the time the present farm program has time to work its havoc on the farming industry will be ready for corporative over. Then there will be a problem about an adequate price for farm

commodities. They will be set at the farm and not the market place.

In recent years much sympathy has been lavished on and tears shed for, the oil and gas companies that have been begging for incentive to produce more energy supplying fuels. As a result the American people have been taken to the cleaners while supplying incentive. If recent reports are correct, the major oil companies have been buying up other companies with the incentive that they received to pay for the search for more oil and gas. The newspaper story said they were branching out into all types of business including the insurance business, with our cash incentive. All the farmer asks for is enough incentive to pay his expenses and have enough left over to live like other people. And that's not unreasonable.

The long and short of the situation is that the farmer is outgunned on Capitol Hill and in the market place. He will continue to have to take what is offered and pay what he is asked. That's the farm program. However, that's not quite the only available farm program. The farmers can begin running their own program this year by planting only 50% of every crop where there is an alleged surplus. That should break the surplus log jam in a hurry. By being a little slow in selling the production from a fifty percent production acreage crop, buyers and processors will become a little bit more nervous as they see their stock in inventories diminish.

If I were farming I really believe that I would plant only 50% of my usual acreage. It seems that it would be reasonable to take a chance on realizing a profit on a half a crop, rather than facing financial ruin on full production.

We have received a little moisture but we need much more. Those fronts that have been producing huge amounts of moisture in the form of rain and snow have either seen fit to go around or skip over our immediate vicinity. Maybe we will get some moisture before planting time gets here.

CROPS AND ROBBERS

Hominy, so popular in Southern states, got its name from the Indian word *tack-hummin*, meaning "to grind corn."



The popularity of Ciba-Geigy AAtrex 4L atrazine is proved by a study showing that less than 5% of farmers who tried the liquid AAtrex switched back to using the older powder formulation.

Corn is a pretty popular food today, but the ladies of 18th century French Louisiana once staged a "petticoat rebellion" because they felt they had to eat too much of it. They were accustomed to the fancier meals they had back home in France.

Wanted By The FBI

The Dallas Office of the FBI, through its Special Agent in Charge, Mr. James A. Abbott, has announced it is in need of clerical employees to fill the positions of Clerk, Typist, and Stenographer at Bureau Headquarters in Washington D.C. These positions present an excellent opportunity for all young people, male or female, including minorities, who are at least 16 years of age, United States citizens, and have at least a high school education, provided they can pass a rigid investigation of loyalty, reputation and character, and are in good physical condition. No previous experience is required.

The entrance salary for a Clerk is \$7,035 (GS-2) per year, with a raise in thirty to ninety days to \$7,930 (GS-3) per year, if their work is satisfactory. To qualify for the Clerk position, a series of aptitude tests must be successfully completed.

A typist starts at \$7,930 (GS-3) per year. Applicants for the Typist position must pass a five minute typing test at the rate of 40 words per minute, and a series of aptitude tests must be successfully completed.

As openings occur, applicants for the Clerk and Typist positions who are interested, are considered for the Fingerprint Clerk position, which starts at \$7,930 (GS-3) per year. Successful candidates are considered for promotion to \$8,902 (GS-4) per year after six months; to \$9,959 (GS-5) per year after one year; and to \$11,101 (GS-6) per year after two years experience in fingerprint work.

A stenographer starts at \$8,902 (GS-4) per year. To qualify for the Stenographer position, applicants must pass a three minute dictation test at the rate of eighty words per minute; pass a five minute typing test at the rate of forty words per minute; and pass a series of aptitude tests.

The FBI provides counseling services to its new employees to assist them with housing, transportation, and other

needs. If close friends or young married couples apply at the same time and are found acceptable, every effort is made to afford them appointments on the same date.

The FBI does not come under Civil Service in that the FBI has its own application form, tests, investigates and hires its own employees, rather than draw them from a Civil Service list or register.

An application and detailed information may be obtained by calling or writing the Special Agent in Charge, FBI, 200 Mercantile Continental Building, Dallas, Texas 75201, Telephone Area Code 214-741-1861, or by contacting the nearest FBI Office whose telephone number will be listed in the front of your telephone directory.

Completed applications should be sent to the above

address, as processing of such applications can be instituted as much as six months prior to an individual's availability. Upon receipt of a completed application, the interested applicant will be contacted and arrangements made for administering appropriate tests at a time and place

convenient to the applicant. Only those applicants passing these tests will be afforded interviews.

Vacancies for the positions of Clerk, Typist, and Stenographer frequently exist in the Dallas Office, for which interested and qualified applicants may also be considered.

The many benefits of working for the FBI such as annual leave, sick leave, health and life insurance, and retirement benefits should be thoroughly considered when choosing a career.

Houston's CPI registered 191.6, while Dallas registered only 182.4.

For the United States as a whole the September, 1977, CPI was 184.

Explaining how the CPI works, Dr. Carolyn McKinney, a family resource management specialist, says the index compares today's prices with those of 1967 on 400 specific items. The 1967 CPI-a "base" for today's CPI-was 100.

Items compared are those that go into a "typical 'market basket' purchased by average city wage earners and clerical workers," she explains.

Dr. McKinney is with the Texas Agricultural Extension Service, The Texas A&M University System.

The CPI uses 1967 as a "base" year, the specialist continues.

Prices of all goods at the base period are considered to be equal to 100. Current prices on the "market basket" are then obtained at checkpoints throughout the United States.

Each new total value is reported as the Consumer Price Index, which gives consumers a simple way of keeping tabs on general price increases or decreases in various U.S. locations and the nation as a whole, Dr. McKinney says.

Hospital Report

February 13
ADM: Brenda Moore, Ray Blessing, Goldie Drake, Pearl Ruth, W.S. Baker

DISM: Antonio Romero, Earl Givan

February 14
ADM: Choice Frances

DISM: None

February 15
ADM: Alice Neal Smith, Esperanza Valdez, Baby Boy Valdez, Palo Rodriguez

DISM: Devonna Parkman

February 16

ADM: Sophia Rice, Annie E. McCarty

DISM: Flordia Moore

DISM: Alice Smith

Brenda Moore, W.S. Baker, Esperanza Valdez, Baby Boy Valdez

February 17
ADM: Dorothy Ferguson, Baby Girl Ferguson, Alice McCarty, Elida Garza

DISM: None

February 18
ADM: None

February 19

ADM: Mary Hardway, Raymond Cantrell, Florencio Gonzales, Gayla Ann Cowan

DISM: Pearl Ruth, Ray Axtell, Dorothea Ferguson, Baby Girl Ferguson, Annie McCarty

Relieves Pain and Itch of Hemorrhoidal Tissues

promptly, temporarily, in many cases.

There's a medication that relieves occasional hemorrhoidal symptoms within minutes. Then it goes beyond soothing; actually helps shrink swelling of hemorrhoidal tissues due to inflammation. The name: Preparation H.

Doctor-tested Preparation H with its exclusive formula, is America's leading hemorrhoidal remedy by far. Ointment or suppositories.



The ancient Greeks believed eating raven's eggs would restore blackness to gray hair.



In old Burma, it was believed that carrying flints would prevent appendicitis.

Jell-O® Magic for your kids.

To score a hit with a wobbly banana split, place scoops of JELL-O® Gelatin on banana halves and top with whipped topping, nuts, and a cherry. For other terrific kids' recipes, see November women's magazines for the new "Amazing Magical Jell-O® Desserts" cookbook offer.

Jell-O is a registered trademark of General Foods Corporation. ©General Foods Corporation 1977

MARMADUKE® by Brad Anderson

WHITES Home and Auto



"This might be getting serious. They're exchanging flea collars!"

Consumer Price Index

Consumers in Houston paid more for "typical purchase items" than Dallas residents last

September, according to the U.S. government's Consumer Price Index (CPI).

Gypsies speak a language called Romany, which comes from their word for man—"rom."



Cash and Carry

Hats 1/2 Off Resistol & Bailey 6-7 1/2

Shirts 1/2 Off Men's & Boys

Levi \$10.49 All Denim

Coats & Vests 1/2 Off Poly, Goose-down & Leather

Women's Shirts and Blouses 1/2 Price

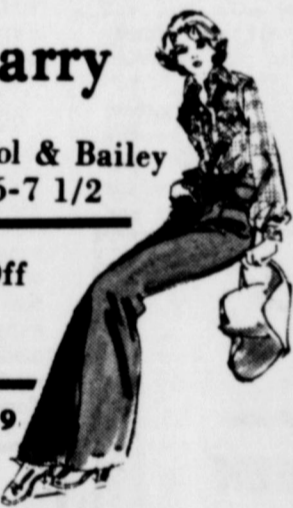
Coveralls 1/3 Off Reg and Insulated

Handbags 1/2 Price

Prices Good February 23 Till March 4

T-Bar Western

Earth



NOW OPEN

R & S Gun Shop

Clovis

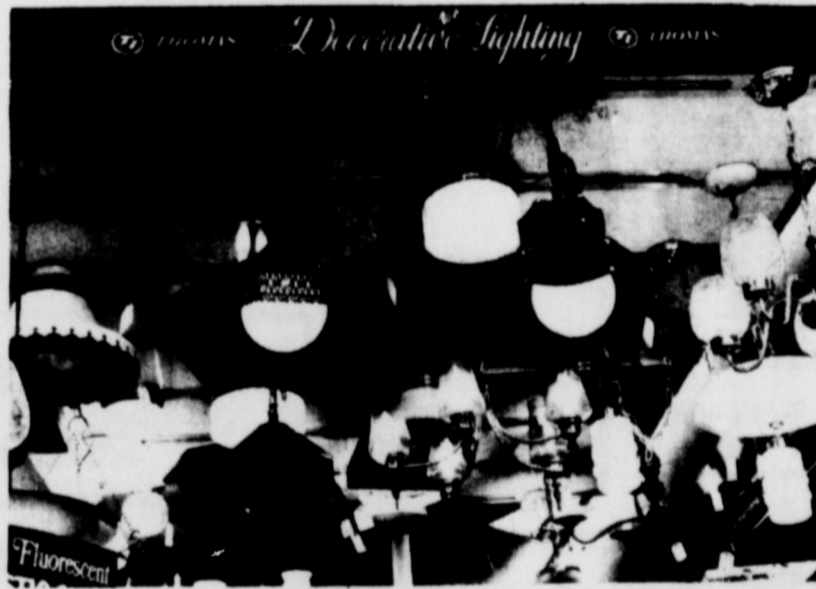
- Hand Guns • Rifles • Shotguns
- Reloading Equipment •
- Law Enforcement Equipment

Home of Fair Prices and Friendly Service

106 S. Main St. 762-1953

Store Hours 10AM - 6PM

THE CROWNING TOUCH



If you remodeled a room and it still isn't just right. . .

Top off the room with a new light fixture. Come browse through our lighting center. You'll find a light just right for every room.

Carl McCaslin

LUMBER CO. COMPLETE BUILDING SERVICE

364-3434

Hereford

344 East 3rd.

Sunnyside News

by Teeny Bowden

Mrs. Phillip Jones was chosen employee of the month at South Hills Manor this week for the month of January, so she becomes the first recipient of the award.

Mrs. E.R. Little underwent major surgery for the removal of a kidney in Methodist hospital in Lubbock Monday. She was doing fine Sunday and expecting to be home in a day or two.

Ray Axtell of Earth, father of Charles Axtell, and a resident of the community since 1909, suffered a stroke last Saturday night. He is improving nicely in the Amherst hospital, and is expected to make a full recovery since there was no paralysis. He was dismissed Sunday.

W.T. Autry was admitted to Plains Memorial Hospital in Dimmitt Wednesday after receiving a whip lash injury in a two vehicle accident on front street as a result of the icy roads making it impossible to stop at intersection.

Mr. and Mrs. Rick Bell became new parents last Tuesday, the 7th, when an adopted little boy took up residence with them. He was born November 5th, and has dark hair and eyes and weighs 14 lbs. They named him Caleb Aeneas. Mr. and Mrs. Bob Mooney of Dimmitt, his maternal grandparents braved the ice and snow to come see him this week as did Mr. and Mrs. Max Hastings also of Dimmitt.

About 5 inches of snow was received Thursday and Thursday night in addition to a light snow shower Tuesday and about one-half inch more before day break Wednesday morning. Moisture was estimated at about 30 inch.

Announcement was made this week of the coming marriage of Terry Blanton and Marla Winters. The wedding will take place March 24 in the home of her parents, Mr. and Mrs. Dale Winters of the Flagg Community. They are both employed at

the Lockney Feed Yard.

Mrs. Ben Blondell of Quitman, an aunt of Mrs. R.V. Bills passed away Saturday afternoon. The funeral services were Monday, but they didn't go because of the weather.

Mrs. Eddie Waggoner was honored with a wedding shower in the home of Mrs. Larry Sadler Thursday afternoon in spite of the snow. Hostesses for the occasion were Mrs. Larry Sadler, Mrs. Gale Sadler, Mrs. David Sadler, Mrs. J.C. Holbrooks, Mrs. Floyd Ivey, Mrs. L.B. Bowden, Mrs. Embree Roy Sadler, Mrs. Ezell Sadler, Mrs. Ezell Sadler, and Mrs. Lynn Cox, Mrs. Cliff Brown, Mrs. Ricky Byers, Mrs. Terry Guy, and Mrs. Thomas Parsons who were unable to attend.

Mrs. Roy Phelan was dismissed from Central Plains General Hospital in Plainview Friday afternoon.

Mrs. Daniel Lee was dismissed from Central Plains General Hospital in Plainview Wednesday.

Mr. and Mrs. Thomas Parson, Rev. and Mrs. Raymond Jones, Mr. and Mrs. Milburn Haydon, Mr. and Mrs. Gale Sadler, and Mr. and Mrs. David Sadler attended the Llanos Altos Baptist Men's Rally in Earth Thursday night. Dr. Dan Kent of Wayland was the guest speaker.

Jerri Ka Clark showed the 1st and 2nd place medium heavy weight Cross steers in the Castro County Jr. Livestock Show in Dimmitt Saturday. She also showed lambs. She won 2nd with a medium weight, medium wool lamb and a 1st with a Southdown lamb. The Southdown was also the Breed Champion of the show.

Ben Ray Holcomb showed the third place light weight cross breed steer in the Castro County show. Brad Holcomb showed the third Spot Polan China pig.

Coby and Matt Gilbreath showed pigs in the Dimmitt FFA show Wednesday and

also in the Castro County show. They had two 3rd place Hampshires and a 9th place Duroc. Hal, with the Flagg 4-H showed a 12th place Duroc. Gabriel Montiel showed the 13th place light medium weight, medium wool lamb for the Flagg 4-H.

Quint Waggoner showed an 11th place pig in the Castro County show. Holly showed a 9th place lamb, and Gay showed an 8th place lamb. Holly also won 2nd place with her sewing and Gay won 4th in the food show and 3rd overall. They are members of the Flagg 4-H.

Scott Nelson showed the third place heavy weight fine wool cross lamb and Lesa Nelson the 4th place medium weight fine wool cross and the 11th place heavy weight fine wool cross lambs. Camille Summers showed the 6th place cross lamb. Tracy Hatla received a 3rd place with a light weight Southdown lamb.

Mrs. George Anderson of Dimmitt was named the winner in the missions Readathon in the Sunday morning worship service for having read 30 books since last February. She will receive the new book by Jesse C. Fletcher, "Baker James Cautchen: A Man for All Nations." Others receiving an award included Mrs. L.B. Bowden for 15 books, Mrs. Raymond Jones, 8, Rev. Raymond Jones 7, and Mrs. Hershel Wilson 6.

After the Sunday night services a missions tour was taken in fellowship hall to bring to a close the activities of WMU Focus Week. The Baptist Women used maps of each of the continents showing Southern Baptist Missions around the world with mementos of the various countries displayed on the tables with the maps. They also displayed all the countries where we have work and the year Southern Baptists entered each, many of them are closed now. The Baptist Young Women displayed our work of the Home Mission Board with mementoes or souvenirs of the various states. The G.A. displayed materials from Japan, and played Japanese music throughout the tours. The Missions Friends displayed materials from Old Mexico, and cactus plants, and

souvenirs, with the mission work there. Each group prepared some kind of pick up food represented by the countries they featured.

Mr. and Mrs. Noah Spencer met her mother, Mrs. V.E. Bearden of Hart, at the plane in Amarillo Tuesday. She has been visiting in Denver since the first part of December with her daughter, Mr. and Mrs. Neal Wall and family. Mrs. Spencer took her to Plainview to the doctor for a checkup Thursday.

Mr. and Mrs. Jake King of Hereford attended the Sunday morning worship services with Mr. and Mrs. David Sadler, Melody and Karla and spent the day with them.

Mrs. Cliff Brown flew to Austin from Lubbock Tuesday night to visit for a week or so with Mr. and Mrs. Lee Brown.

Rev. and Mrs. Raymond Jones, Mr. and Mrs. Milburn Haydon, and Mr. and Mrs. Thomas Parson attended the Llanos Altos Evangelism Conference at First Church Muleshoe Monday night.

Rev. David Warren of Lawton, Oklahoma, missionary to the Indians in Oklahoma visited Monday morning and had dinner with Rev. and Mrs. Raymond Jones.

Baptist women met for the missionary program Tuesday morning. Mrs. Raymond Jones, president, showed slides on the Indian work in Oklahoma taken by Rev. David Warren.

Mr. and Mrs. John Gilbreath attended the Methodist Men's Sweetheart Banquet in Dimmitt Monday night at the First United Methodist Church.

Jerry Shive of Lubbock spent the night Thursday with Mr. and Mrs. Noah Spencer and Lyle Shive.

Mr. and Mrs. Noah Spencer and Lyle and Donnie Shive visited Sunday with Mr. and Mrs. Jerry Cox, Chris and Greg.

Carrie Sadler and the Dimmitt 7th grade team lost their last game of the season to Nazareth Monday night.

The farm sale of Bill Matlock and J. Paul Waggoner went on as scheduled Thursday in spite of the snow and the cold. The turn out and results were satisfactory considering the weather.

Mrs. Winston Waggoner attended a sewing demonstration in the community room at the court house Tuesday and

also Gay's class valentine party at school.

Lyle Louder and the Springlake-Earth 8th grade team won over Farwell last week to end the year with a 7-11 record, and 3rd place in district.

Springlake-Earth varsity boys lost to Farwell 67-44 in their last game of the season which was the last game for seniors including Clint Dawson. Clint was named the 1977-78 Basketball King.

Past champions of the Springlake-Earth Jr. Livestock show were recognized with a new trophy recently. Ricky Byers showed the champion steer in 1965 and Bruce Bridges showed the reserve champion barrow. Bruce also showed the reserve champion barrow in 1967 and 1968, the champion steer in 1969, the champion and reserve champion barrows in 1970, and the champion steer in 1972. Kevin Riley showed the 1974 reserve champion barrow, and the 1977 reserve champion barrow.

Gary Wise, Jerry Mathews, and Charles Summers were among the Dimmitt Young Farmers helping out with the Castro County Jr. Livestock Show this week. Most of the parentw also helped, the men with the animals and the women with the concession stands.

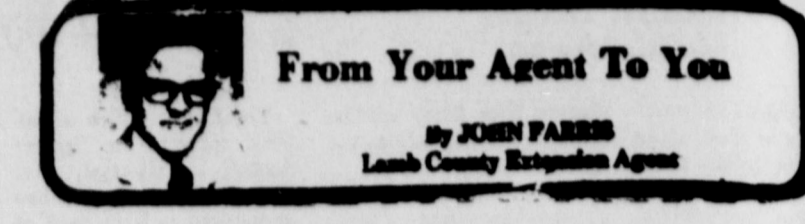
Lynna McGuire showed the 4th place medium weight Duroc barrow. James Roberts showed the 4th place Spot Polan China barrow and the 1st place medium weight cross, the Reserve Breed Champion Cross.

Kim Haydon and the Springlake-Earth girls won over Bovina in the District Tournament and lost to Vega Thursday through Saturday.

Mrs. Sandra Clark entertained her bridge club in her home Tuesday afternoon. Those present were Jo Eddy Riley of the community, and Virginia Hanson, Deanne Clark, Stephanie Love, Nancy Ross, Jeanne Johnson, and Patricia Braafadt all of Dimmitt.

Mr. and Mrs. Floyd Ivey took her sister, Vivian David to the plane in Lubbock Sunday morning. She will visit in Dallas until Wednesday with the sister who didn't get to attend the funeral services of their brother and then fly back to Ohio.

The Lion's Club is sponsoring a pancake supper in the community building Saturday night from 6:30 until 8:00 to benefit Tommy McGowen of Springlake. There will not be a charge for the supper, but donations made will help defray the medical expenses for Tommy.



From Your Agent To You

By JOHN FARRIS
Lamb County Extension Agent

LANDSCAPE GARDENING GUIDE-The following items are things that need to be done during the month of February in your landscape and garden.

1. This is a good time to check over the home landscape to note needed repairs, to remove or dispose of worn out tools, toys and other equipment left in the yard, behind the shed, garage or in the shrub border.

2. Good time to clean up storage area used for keeping garden supplies, tools, hose, fertilizer, and pesticides. Properly dispose of materials that have labels that are no longer legible.

3. Select and plant bare-root rose bushes in February. For best results, use only Number 1 or 1 1/2 grade plants. Cut tops back to 6 to 8 inches and mulch or cover canes with soil to protect from freeze and desiccation. Refer to L-866, Roses: How to Plant.

4. Continue to select and plant needed woody landscape plants. Plant according to a plan, don't plan as you plant.

5. Any necessary pruning of summer flowering trees and shrubs may be done this month. Necessary pruning of evergreen trees and shrubs can also be done this month.

6. Do not prune trees and shrubs that bloom in early spring until after they have flowered.

7. Use dormant oil spray on fruit trees and other scale prone plants to control scale insects. Follow label instructions carefully, especially in regard to temperature.

8. Fertilize and prune fruit and nut trees by late February or early March. Pecans require very little pruning.

9. Prune established through February is the hybrid tree and florabunda time to prune woody ornamentals in your landscape. Climbing roses should not scape. However, pruning

should be done only if it is a particular purpose.

10. Almost all of the favorite annual bedding plants or garden flowers may be started indoors under light in a warm room to be transplanted after danger of frost is past.

11. Stake or guy newly planted trees. Wrap trunks to protect from sunscald, desiccation and borers.

FEDLOTS HAVE PLENTY MANURE-Fedlot managers in Texas and manure contractors are hopeful of a big manure fertilizer demand this spring, despite early indications to the contrary. With Texas cattle on feed running 8.2 percent above last year, manure tonnage available for hauling and spreading should be up.

Manure contractors and feedlots are caught in a cost-price squeeze, with collection and hauling costs increasing while commercial fertilizers have stabilized in price. Also, fewer truck purchases are being made by contractors. The apparent trend is for feedlots to resume manure hauling out of necessity where contractors falter.

Meanwhile, a lot of manure is piling up and will need to be moved this spring to avoid costly, undesirable stockpiling for the first time since 1973.

Farmers may take the advice of USDA soil scientists at Bushland and fertilize with 10 tons of feedlot manure per acre when it is cheaper than applying 250 pounds of anhydrous ammonia per acre. A lot of farmers within 15 miles of a feedlot can still buy manure cheaper than commercial fertilizer.

HAVE PURPOSE FOR PRUNING WOODY PLANTS-From now on, pruning through February is the hybrid tree and florabunda time to prune woody ornamentals in your landscape. Climbing roses should not scape. However, pruning

Never leave stubs to allow insects and diseases enter; remove branches limbs at the point of origin or to a lateral branch. It is advisable but not necessary to pain all wounds or over three-fourths of an inch in diameter with wound dressing available at any nursery or garden center. In lieu of regular wound dressing, commercial orange shellac makes good temporary dressing.

Prune immediately after flowering those plants that bloom in early spring to the appearance of the leaves. However, prune while dormant those that bloom later in the spring.

To make pruning easier and for good, smooth cuts always use sharp tools.

Some reasons for pruning include removing dead or winter-killed growth or balancing the tree with the root system when setting out new plants. Diseased or insect-infested wood as well as storm-damaged limbs should be removed as soon as possible.

Rejuvenate older shrubs by removing the older branches at the base. Pruning can also help develop a desired shape as well as aid in producing better flowers and fruit.

Avoid drastic pruning unless it is necessary to correct damage from storms or accidents. It is usually better to prune lightly and more often to reduce danger of sunscald to the inner branches and to lessen the amount of sucker growth and weak sprouts.

Never leave stubs to allow insects and diseases enter; remove branches limbs at the point of origin or to a lateral branch. It is advisable but not necessary to pain all wounds or over three-fourths of an inch in diameter with wound dressing available at any nursery or garden center. In lieu of regular wound dressing, commercial orange shellac makes good temporary dressing. Prune immediately after flowering those plants that bloom in early spring to the appearance of the leaves. However, prune while dormant those that bloom later in the spring.

To make pruning easier and for good, smooth cuts always use sharp tools.

Solutions Offered To Farm Dilemma

Farmers from across the state will join others from South Dakota, Indiana, Ohio, Colorado and Wyoming in a parity campaign to Washington February 20 through 24 when members of Farmers Union will sit through the more than 400 new bills introduced to solve the agriculture dilemma.

"We're taking ninety Texas farmers to the Capitol in a well organized support movement for solutions," said Jay Naman, President of Texas Farmers Union. "Our protesting members who have been in Washington for weeks have done an excellent job of pointing out the depression we are in. They have also given Congress the message that

we are not going to tolerate a poor farm bill. We go to add our additional thrust and to get behind those bills which would truly bring about 100% parity rather than those that simply give political lip service to the problem."

Congressional hearings in both the House and Senate continue to receive voluminous testimony and new bills which are being introduced. A March 15 deadline exists, however, for any proposal which would not affect the 1979 budget.

"I feel confident that some changes can be made," Naman continued. "But we must act together and get behind specific legislative proposals that offer practical solutions, form coalitions with other groups, educate urban Congressmen and then count our votes. If we don't pull this thing together, we could let the committees draw us past March 15 and then say 'sorry folks, you'll have to wait until next year to see any improvement in price supports.'"

The Texas farm leader points out that there are some items, such as labeling and inspecting imported beef and a mandate to the Administration to set world price floors, which could be implemented after the March deadline.

"To raise the loan rate or alter the disastrous sections of the farm bill (e.g. cotton)," says Naman, "we must get the bills onto the full floor of both chambers. If farmers are left to play second fiddle to the Panama Canal, then America has only just begun to see what a farm protest looks like!"

The Farmers Union will be carrying a full arsenal of information and voting records to "separate the

sheep and the goats Congress who are trying to court us with their found concern for farmers."

"It might amaze me the people who are taken in by rosy speeches to know that only a few of our Texas delegation Congress have ever reported 100% of parity. The first challenge is to convince rural Texas Congressmen to support full parity."

Farmers Union members will be visiting with individual Congressmen as well as working in the man teams to visit and out-of-state lawmakers. Farmers represent the cotton of the state will also have special session at USDA with cotton specialists to voice concerns over the trade-oriented cotton section of the bill. A visit with State Department officials including Trade Ambassador Robert Strauss is also on the agenda.

Political Calendar

The Earth News-Sun authorized to announce following candidates election to the office which their names appear below, subject to the approval of the Democratic party in Lamb County Texas May 6, 1978.

COUNTY COMMISSIONERS PRECINCT 4
Jimmy Briggs

DISTRICT CLERK
Allene Woodward
COUNTY CLERK
Mary Beth Wiley
Verna Lichte Carter
DISTRICT CLERK
Ray Lynn Britt

Whether You're A NIGHT OWL or an EARLY BIRD
WANT ADS Work 'round the Clock

To Rest Assured
Use SAFETY
DEPOSIT
BOX
Protection
FIRST STATE BANK
DIMMITT, TEXAS

For Sale
1974 1/2 ton
Chevrolet pickup with or
without butane system.
Alfalfa hay in the barn
Oak wood 50% split
Call 257-3482

MONUMENTS
Winnaboo Blue Granite
White Georgia Marble
and others, including
Bronze for Memorial Park
Specifications
See or call Collect
Percy Parson, Olton
Phone 285-2621
or Frank Ellis, Muleshoe
Phone 272-4574

QUICKSALL PRYOR CO. INC
Automobile Parts
Supplies & Equip
P.O. Box 567
Earth, Texas
FULLER PRODUCTS-
Contact Wanda Testerman,
401 Commerce, Sudan, 227-
2083. 2/16/6tc

HOUSE FOR SALE: 610
Worth, Sudan. Contact M.
or Mrs. Alan Roberts.
1-26-tncsaa

FOR SALE: Pair of
snow skis, Remi 687
fiberglass, San Marcos
boots, Size 8. Skis, poles
and boots for \$75. Call 986-
3511. 2/23/ltc

FOR SALE: '73 two-toned
Mercury Marque in ex-
cellent condition. One
Owner. Call 227-2229 after
6 p.m. or 946-3331 days.
1-26-etcsaa

FOR SALE: 8 row
diamond tool bar, Call 933-
4418. Sudan. 2-23-2tcasaa

HELP WANTED-
Saleman, auto mechanic
and parts man.
Apply in person at
Johnson Chevrolet,
Sudan or call 227-2050.
9/1/toc SAE

BURROWS
UPHOLSTERING,
Reasonable rates, also
furniture and appliances.
Downtown Muleshoe, 213
S. 1st. 272-4255. 2/16/tfc

REWARD: For return of
black and tan female 4 year
old German Shepard. W.P.
Holland Jr., 257-3802.
2/16/2tp

DEAD STOCK
REMOVAL
7-DAYS A WEEK
SERVICE
Please Call As Soon
As Possible
MULESHOE
BI-PRODUCTS
Phone 965-2429

Hawkins & Sons, Dirt Movers
Route 2-Box 166
Hart Texas 79043
Phone (806) 938-2206 or 938-228
Turn Key Tail Water Systems
Terraces, Water Ways
General Dirt Work

Legal Notice
Mayor Harlon Watson has called election for City of
Springlake City Hall, to elect five aldermen and mayor.
All positions expire April 1st, 1978. The 5 aldermen and
the mayor have filed for re-election.
February 14, two persons have filed to replace
aldermen. Applications may be secured at City Hall in
Springlake. March 10 is deadline for filing.
Signed by Harlon Watson, Mayor, February 14,
1978.

the earth news-sun
MEMBER
TEXAS PRESS
ASSOCIATION
Published at Earth, Texas 79031 every Thursday except the first
Thursday following Christmas.
Second Class Postage paid at Earth, Texas 79031
SUBSCRIPTION RATE
Earth and Trade Territory, per year \$6.30
Elsewhere in United States, per year \$7.35
CLASSIFIED RATES
Ten cents per word, \$1.50 minimum.
Ray Freedman Publisher
Diana Freedman Bus. Mgr.
Grace Stovall Circulation

Crippled Children's Services

The Texas Department of Health Resources will hold a Crippled Children's Nursing Clinic in Olton, Texas on March 6 and March 9. The clinic will be held at the South Plains Health Provider's Office, 6th and Main, Olton, from 1:00 p.m. to 3:30 p.m.

Billie Moore, R.N., Public Health Nurse from the Region 2 office in Lubbock will be in Olton to conduct the clinic. She notes that services available at this clinic will include counseling for persons now taking part in the Crippled Children's Services Program, as well as counseling for those individuals who are not now on the program, but feel that they may qualify for treatment available in this program.

Persons eligible for services must be in the age group from birth up to age 21. Anyone in this age group who meets eligibility requirements can receive treatment through the Crippled Children's Program, or in the Congenital Heart Program or the Cystic Fibrosis Program, both of which are

administered through the Crippled Children's Division.

For further information and counseling concerning Crippled Children's Services, please plan to meet with Ms. Moore at the Olton Clinic.

Poetry Contest

A \$1000 grand prize will be awarded in the Poetry Competition sponsored by the World of Poetry, a bi-monthly newsletter for poets.

Poems of all styles and on any subject are eligible to compete for the grand prize or for 49 other cash or merchandise awards.

Says contest director,

How do doctors remove corns without surgery?

Doctors find many corns and calluses can be removed medically without surgery. The same medical ingredient doctors find so effective is now available without prescription in DERMA-SOFT® Creme. Use only as directed. Show ad to your druggist. **DERMA-SOFT**

Joseph Mellon, "We want to encourage young poets even poets who have written only one poem!" Rules and entry forms are available from World of Poetry, 2431 Stockton Blvd., Dept. B, Sacramento, California, 95817.



SHOWN ABOVE is Jill Barden with her Reserve Grand Champion lamb bought by Wood & Jordan.

(cont. from page 1)

- Chp. Cross-Glenn Craft**
 Res. Angus-Waide Kelley
 1st Med. Fine Wool-Carla Taylor
 1st Spotted Poland-Byron Vaughn
 Res. Berkshire-Cheryl Clayton
 2nd Heavy Cross-Rex Fennell
 2nd Lt. Wt. Finewool-Debbie Pittman
 Res. Chester White-Scott Baucum
 2nd Med. Cross-Carmen Kelley
 2nd Med. Finewool-Clifford James
 Res. Hamp-Lonnie Neinast
 2nd Lt. Cross-Danny Randolph
 2nd Lt. Cross-Roy McGowen
 Res. Poland-Sandy Clayton
 3rd Heavy Cross-Wendy Branscum
 2nd Med. Wt. Med. Wool-Jody Riley
 1st Light Hamp-Sam Lewis
 2nd Heavy Heavy Chester-James Herriage
 3rd Med. Cross-Lesa Templeton
 2nd Heavy Med Wool-Sharman Stephens
 1st Med. Poland-Michael Gover
 2nd Lt. Wt. Cross-Kim Haydon
 3rd Lt. Cross-Darcy Randolph
 3rd Med. Fine Wool-Cathy Cain
 2nd Med. Cross-Timmy Craft
 4th Med. Cross-Allen Clayton
 3rd Heavy Finewool-Brene Belew
 2nd Lt. Duroc-Ken Craft
 5th Heavy Cross-Michael McCarty
 3rd Med. Cross-Connie Cain
 2nd Heavy Duroc-Keith Clayton
 5th Med. Cross-Todd Lively
 3rd Heavy Cross-Gregg Geissler
 2nd Med. Hamp-Kent Hinson
 3rd Heavy Med. Wool-Vonda Stephens
 2nd Heavy Hamp-Robert Barefoot
 4th Med. Cross-Ray Van Banks
 2nd Lt. Poland-Susan Clayton
 4th Med. Wt. Me. Wool-Lloyd Smith
 3rd Heavy Chester-Claude Barlow
 4th Heavy Med. Wool-Kevin Riley
 3rd Lt. Cross-Mike Wimberly
 Heavy Finewool-Vicki Freeman
 3rd Med. Cross-Shelia Jordan
 5th Heavy Cross-Jody Conner
 3rd Med. Duroc-Gaylon Conner
 5th Med. Wt. Med. Wool-Libby Kellar
 3rd Heavy Duroc-Shannon Pelham
 6th Lt. Wt. Cross-Lacretia James
 3rd Heavy Hamp-Bobby Gover
 6th Med. Cross-Shawndi Geissler
 3rd Med. Poland-Sharla Herring
 6th Med. Cross-Teresa Ott
 7th Med. Wt. Med. Wool-Jennifer Kellar
 4th Med. Cross-Allen Moore
 7th Med. Wt. Med. Wool-Jeffrey Washington
 4th Lt. Duroc-Cliff Sanders
 4th Heavy Poland-Sheryl Clayton
 5th Med. Cross-Billy Pyle
 5th Lt. Duroc-Scott Shepard
 5th Med. Hamp-Mark Jordan
 5th Med. Duroc-Jeanne Haydon
 7th Med. Duroc-Byron Smith

Citizen Of The Week

Vonda Stephens is the 13 year old daughter of Mr. and Mrs. Gayland Stephens. She is 5 foot 4 inches tall. Her eyes are blue, and her hair blonde.

Her favorite color is red. Her favorite song is "What a Difference You've Made in My Life," and her favorite singer is Ronnie Milsap. Her favorite TV show is "One Day At A Time." Her favorite subject is sports and her favorite teacher is Mr. Verden. Her favorite sport is basketball.

She is in 4-H and placed third and sixth with her lambs in Earth Stock Show.

In the future she plans to be a barrel racer.

Senior Adults Of The Week

The First Baptist Church of Earth recognized Mr. and Mrs. A.E. Wheatley as its senior adults of the week this past Sunday. Mr. and Mrs. Wheatley both became Christians in Haskell County in 1921. He was saved under a brush arbor in the Roberts community, and she was saved in a school house in the Foster community. Both were baptized in dirt stock tanks.

The Wheatley's moved to Earth in 1936 and joined the First Baptist Church in 1937. The church has meant very much to them since that time. Mrs. Wheatley has served in some of the children's Sunday school classes and taught the T.E.L. class for 10 or 12 years. She was also active in W.M.U. work in the past and served as president and held other offices in that organization. Mr. Wheatley used to sing bass in the Roberts community choir, which sang weekly, often in the homes of the members on Sunday afternoons. He also used to sing in the choir of the local Baptist Church.

Their favorite Bible verses are John 3:16, John 14:1-7, and 1 Thessalonians 4:14-18. Their favorite songs are "Peace in the Valley," "How Great Thou Art," and "In The Garden."

They have four daughters: Mada Maxine (deceased), Wenonah Angeley, Sharon Tunnell, and Camillar Pelham. They also have nine grandchildren.

DROP Anchor at our... **Shrimp Feast**

Jumbo Fried Shrimp & Oysters All You Can Eat

W/French Fries
 Hush Puppies &
 Cole Slaw
\$3.95
 All Day
 Friday, Feb. 24

XIT
 STEAK HOUSE
 Milesboe

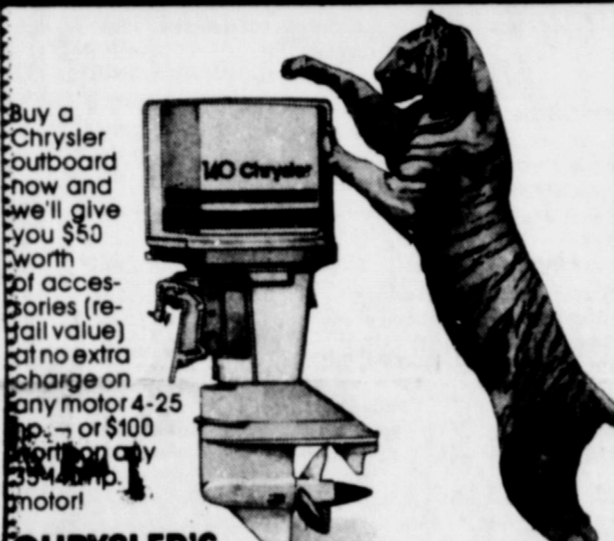
Student Of The Week

Edward Bart Belew is the 11 year old son of Mr. and Mrs. Bob Belew. He is 4 foot 5 inches tall and weighs 85 lbs.

His hair is brownish black. His favorite color is red. His favorite TV show is "Charlie's Angels" with Mexican food as his favorite. His favorite song is "Baracuda" and his favorite group is KISS. His favorite subject is science with Mrs. Crawford as his favorite teacher.

In the Springlake-Earth stock show he got Grand Champion Lamb. In the future, Bart would like to be a farmer.

FREE! UP TO \$100 IN TIGER-IFIC ACCESSORIES WHEN YOU BUY A CHRYSLER OUTBOARD DURING CHRYSLER'S "GRRREAT GIVEAWAY!"



Buy a Chrysler outboard now and we'll give you \$50 worth of accessories (retail value) at no extra charge on any motor 4-25 hp. or \$100 worth on any 25-40 hp. motor!

CHRYSLER'S "GRRREAT GIVEAWAY!"

FOR FULL DETAILS SEE: **JACK'S MARINE**
 E. HIWAY 60 Hereford 364-4331
HURRY! OFFER EXPIRES FEBRUARY 28

A GREAT TIME TO BEEF UP at THE MEAT MARKET

WHY PAY MORE?	25 LB. BEEF PACKS	Family Pack
Chuck Roast Blade Cut 79¢ lb.	6 Lbs. Chuck Roast	3 lbs Steak
Arm Roast 99¢ lb.	4 Lbs. Round Steak	Your Choice-Round, Rib or Sirloin
Donalson	4 Lbs. Rib Steak	3 lbs Roast
Chuck Roast \$1.29 lb.	6 Lbs. Ground Beef	3 lbs Ground Beef
Catfish 12-14 Oz. Each \$1.79 lb.	3 Lbs. Short Ribs	3 lbs Pork Steak
SEAFOOD LOVERS! COME BY THE MEAT MARKET AND SEE THE FRESH SEA FOODS - CATFISH, RED SNAPPER, FROG LEGS & OYSTERS!	2 Lbs. Beef Stew	3 lb Fryers
	25 Lbs. TOTAL for \$29.95	15 lbs Total \$16.95
	421 N. 25 Mile Ave. Hereford 364-9001	

Your Personal Automobile Dealer

Specials Of The Week

1974 Chevrolet Impala 4-Door 1 Owner Blue & White Power Steering, Brakes, Air Cond.	\$2278
1972 Plymouth Station Wagon 4-Door Air, Automatic, Power Steering	\$1295
1970 Buick Wildcat 2-Door Green/White Roof Power, Air, Automatic	\$1095
1977 GMC 1/2 Ton Air, Automatic Steering, Brakes, Red, 1 Owner	\$4695

-Aley's Special-
 1965 VW Bug \$795
 Economy At Its Best

Special LTD Sale Is Still In Progress

Come By and Let Us Prove That We Are and Want To Be-Your Personal Dealer!

JORDAN - GARRISON

Mike Nix T.A. Henson

FORD-MERCURY

227-2351 385-3449

525 Phelps Ave. 385-5164 Littlefield

R.T. Aley 385-5744

"We Do Business The West Texas Way"

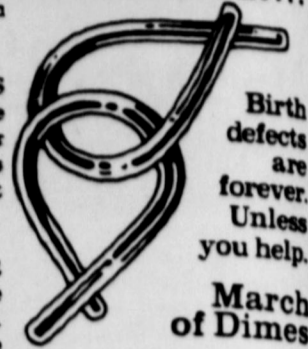


SHOWN ABOVE is the 1977-78 8th Grade Class officers. They are President-Sheryl Clayton, Vice president-Claude Barlow, Secretary-Treasurer-Frank DeLeon, and Reporter-Allen Clayton.

Amherst Manor News

Lenora Morgan visited Mrs. Pace.
Mrs. R.H. Campbell visited Agnes Phelps and others.
Mrs. Norma Owens, Mrs. Irene McFarland of Littlefield visited with Jewel Freeman.
Charlene Blume visited her mother, Agnes Phelps.
Julie Hope and Dan Templeton of Earth came to visit the residents on Valentine's Day and brought each resident a Valentine card and also three cakes for them.
Quinton and Opal McCaghen visited Mrs. Pace.
Myrtle Landers visited Sue Landers.
Mr. and Mrs. Carl Kasten of Littlefield brought the Bible Story.
Mrs. F.M. Benton played the piano. Mrs. Lupe Torres led the singing and sang 2 spanish songs.
T.W. Fife visited his mother, Laura Fife.
Mr. and Mrs. Clois Tome visited Fannie Tome.
Thelma Hufstedler visited Mrs. Pace.
Eddy Logan visited Grannie Pace.
Norman and Carolyn Patton brought the Methodist Church Service. Carolyn led the singing and played the piano.
Mrs. R.O. Dickson visited Mrs. Davis.
David and Larry Jones visited Etta Jones.
Lula and Dail and Herschell Burnett visited R.L. Gunn.
Dutch Burnett of Littlefield visited R.L. Gunn.
Pat Hughes of Kermit Texas visited Fannie Tome.
Lynn Blair, Bill Johnson brought the Church of Christ services on Sunday.
The Sudan Church of Christ singers were here Sunday and sang for the Manor residents. They appreciate it very much and want to express their thanks.
Dorothy Abbott visited her mother, Etta Jones.
Mr. and Mrs. Charlie Jones visited his mother, Etta Jones.

WOMEN WHO have experienced violence themselves are more likely to tolerate violence within the family.



There's a solution but...
Birth defects are forever. Unless you help.

WEAR A SWEATER around the house—lower the thermostat three degrees F. (two degrees C.) and save as much as 10 percent on the fuel bill.

Pet Stop
Sugarland Mall
Hereford, Texas

Over 1000 New Fish Arrived This Week- Specials On Angels, Guppies, Mollys, Fire Mouth Cich Lid, Sharks, Cardinals, Plecostomers

Dogs Available
Champion German Shepard
Great Danes, Poodles, Pugs
Reserve Your Sheltie or Schnauzer
Full Range of Pets & Supplies
364-7313

Birthday & Anniversary

Local people celebrating their birthday or anniversary from February 23 to March 1 are as follows:

- | | |
|-----------------|----------------------------|
| BIRTHDAY | March 1 |
| February 23 | Chelsie Dayton |
| February 24 | ROYCE JORDAN |
| February 25 | Marthel Hinson |
| February 26 | Heien Templeton |
| February 27 | Faye Miller |
| February 28 | Jerry Lynn Waggoner II |
| | Kyle Kelley |
| | Johnny Lunsford |
| | March 1 |
| | Mr. and Mrs. Larry Stovall |

Notice Party Line

There will be a come and go Layette shower honoring Mrs. Jack Tiffin, Saturday March 4 in the home of Lillian Hamilton. Hours are from 9:30 to 11:00 a.m.

Attention Eastern Star-Initiation services will be held Monday, March 6 at 7:30 p.m.
The Eastern Star will hold their regular meeting, Monday, February 27 at 7:30 p.m.

Party Line

Mr. and Mrs. Gene Brown, Dickie and Les Brown from Calimisa, California recently attended the wedding of their niece Hollie Jean Cheevers in Dumas.

Visiting Mrs. Beula Coker Monday afternoon was her daughter, Mrs. Bill Nix from Sudan and her granddaughters, Valerie and Shana Coker.

Mrs. Elsie Hawkins returned home Monday from Amarillo where she visited with Mr. and Mrs. J.W. Pierce, Kay Pond and family, Dennis Thompson and Mrs. C.L. Williamson.

Mr. and Mrs. Paul (Buddy) Byrnes from Clovis visited Sunday in the home of Mr. and Mrs. E.C. Hudson

School Menu

- | | |
|------------------------|--|
| February 27-March 3 | English Peas & Carrots
Plum Cobbler
Hot Rolls & Butter
Milk |
| MONDAY | THURSDAY |
| Pizza | Spaghetti with Ground Beef |
| English Pea Salad | Tossed Salad |
| Tossed Salad | Green Bean Supreme |
| Pickle Spears | Mixed Fruit Salad |
| Storybook Cake | Coconut Cake |
| Ice Cream Cup | Hot Rolls & Butter
Milk |
| TUESDAY | FRIDAY |
| Cowboy Steak | Hamburgers |
| Bologna Sandwiches | French Fries |
| Lettuce & Tomatoes | Lettuce & Tomatoes |
| Carrot & Celery Sticks | Onions & Pickles |
| Lemon Pie | Cheese Slices |
| Crackers | Cherry Cobbler |
| Cornbread & Butter | Milk |
| WEDNESDAY | |
| Country Fried Steak | |
| Cream Potatoes | |

Hello World

Mr. and Mrs. Michael Lewis of Amarillo are the parents of a baby boy born February 21, 1978. Lance Aaron weighed 6 lbs. 5 oz. He has a sister, Michelle Le Ann age 2 1/2 years old.
Paternal grandparents are Mr. and Mrs. Wilson Lewis of Earth. Maternal grandparents are Mr. and Mrs. M.A. Dunagan of Big Spring. Great grandparents are Mr. and Mrs. A.F. Sladek of Spade and Mrs. Jewell Lewis of Big Spring and Mr. and Mrs. Harold Gilmore of Big Spring.

Card Of Thanks

Thank you so very much for your prayers, food, cards and flowers. It is a great comfort to know such kind and generous people. May the Lord bless each of you in a special way.
RICHARD A. MOORE
ALLEN & CLIFF

30%-60% Off
\$9.00 Group
Casual Nook



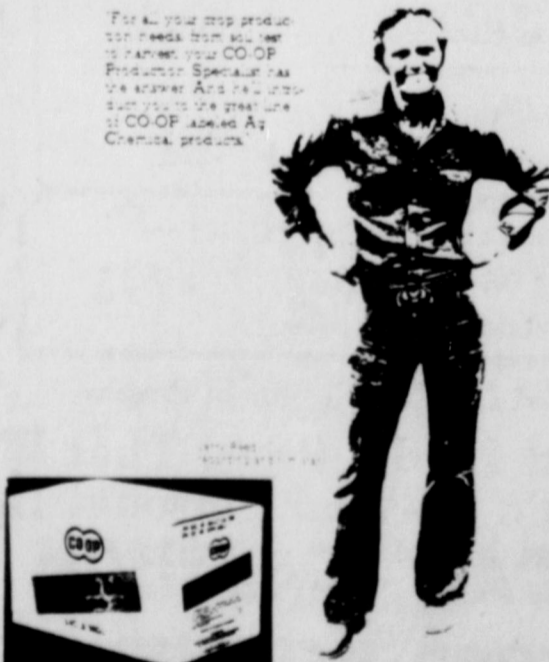
Propachlor 65WP Is Ready for Your Fields

If you need grass and weed control for your corn and grain sorghum, Propachlor 65WP is at your CO-OP Crop Production Headquarters waiting to help you.

This effective pre-emergence spray can control most annual grasses and certain broadleaf weeds. Used with Atrazine 30WP as a tank mixture it can give an even broader weed-control spectrum. This versatile herbicide can also combine with water-soluble herbicides for a custom-tailored crop care band or broadcast. Propachlor 65WP can give you early-season weed control without carryover.

For grass and weed control in your corn and sorghum crops see your CO-OP Crop Production Specialist about landing Propachlor 65WP in your fields.

Note: Before using any chemical, stop and read the label.



Fertilizer Division
Of
Earth Co-op Gin

"An ounce of work is worth many pounds of words."
St. Francis De Sales



The Welsh once believed wearing a fern would cause one to lose his way and be followed by snakes.

YIELD POWER NC + 59
SILAGE

Ask a Farmer who has planted NC+59, he will tell you of its strong vigor and the ease with which it planted. You receive the security of proven performance and a hybrid which makes the most efficient use of water and fertilizer.

OLTON GRAIN CO-OP
Mgr. E.W. (Fritz) Richards
Olton, Texas

THE SECURITY OF PROVEN PERFORMANCE

"I JOINED THE LOSING TEAM AND I LOVE EVERY MINUTE OF IT."

That's what Judy Schultz of Lubbock says about the Weight Watchers Program. Judy is 35 pounds lighter than she was six years ago. That's when she attended her first Weight Watchers meeting. Now she says, "I'm a lifetime member of Weight Watchers, and I'm confident that I can keep my weight this low with the Weight Watchers Maintenance Plan."

WEIGHT WATCHERS
The Authority.

YOU'RE THIS CLOSE TO LOSING WEIGHT.

City Hall/Community Center
Monday 7 p.m.
Earth

Need New Draperies?

See Our Huge Selection Of Custom Made Draperies Before You Buy. Over 1000 Styles and Fabrics.....Cornice Boards-Valances-Rods Pre-Measurements and Installation Are Included In The Price Coordinating Bedspreads To Go With Your Custom Drapes Call or Come By

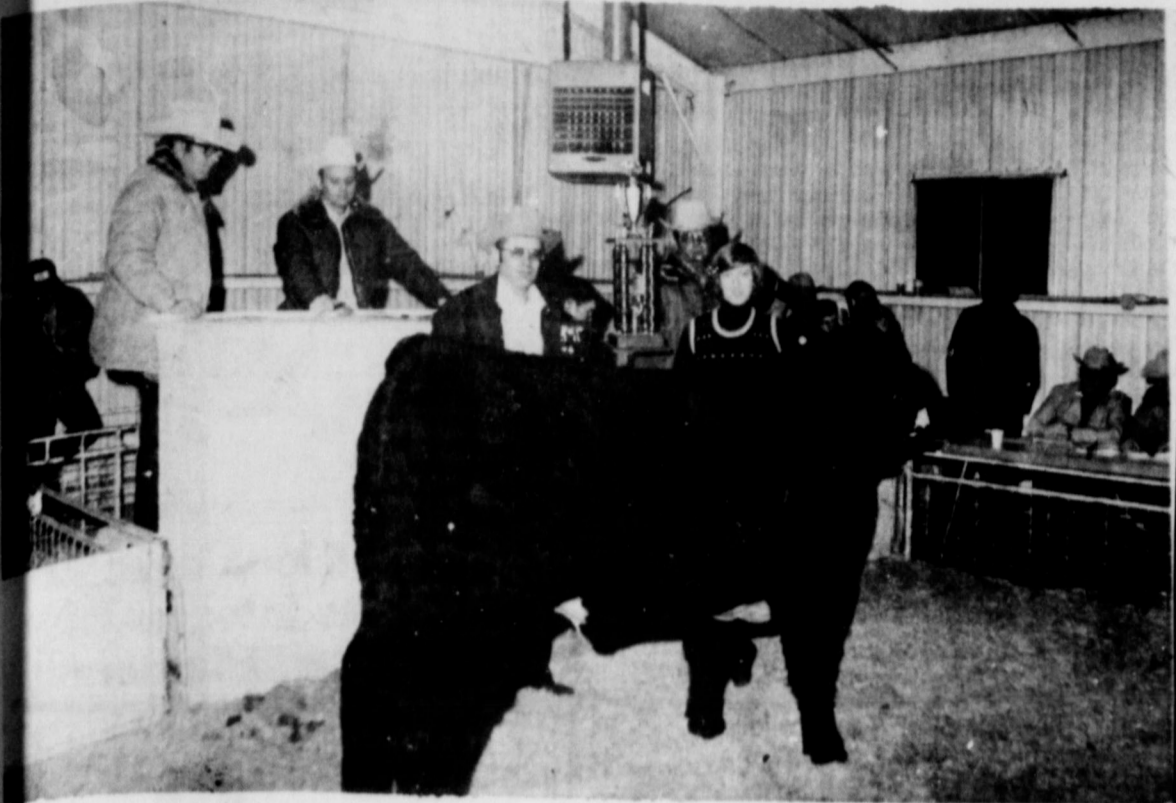
Cox FURNITURE & APPLIANCES
1804 HALL AVENUE PHONE 385-5883
LITTLEFIELD, TEXAS 79339

White House staffer, to at least \$45,000. And he has recently authorized another 7.5% to match the overall federal payroll increase. Too bad politicians can't be recalled like defective automobiles.

Possibly one of the strangest situations to come from the recently announced candidates for election to City Council is this almost unbelievable story. Seems that announced candidate Jimmy Huckaby, manager of the local Higginbotham Bartlett Lumber Co., got a visit from his boss out of Lubbock. The story got to him that the manager of the company store in Littlefield, got a phone call from some unidentified lady in Earth. She said that the city of Earth is in a complete turmoil over the upcoming election and Jimmy is the cause of most of it. She said that if he did not withdraw from the election, he would lose a major portion of his business and most of his friends. When confronted with this information by his boss, Jimmy said "do you feel that I should withdraw from the election in view of this woman's comments?" His boss said that Jimmy should use his own judgement.

Upon hearing this story, this newspaper dispatched a reporter to determine Mr. Huckaby's plans. His reply when asked for a comment was "I feel very strong about the future of Earth. These feelings have not been altered in any shape or fashion, and I intend to wage a strong campaign to be elected to the post of Alderman, and if elected, I intend to work toward improving any and all aspects of our city that is within the limitations of the City Council. As for the remarks that were passed on to me in the form of an anonymous piece of information, I feel that anyone who has the courage of their convictions, should be big enough to make this

type statement to me in person." We say bravo to anyone who will not be intimidated in even such a petty way as this.



PETRA LEWIS is shown above with her Reserve Grand Champion steer bought by the Earth Coop Gin.

(cont. from page 1)

"Cities are in dire financial trouble," a prominent mayor said: "and if the Federal government doesn't give us more relief, the whole country is in for serious trouble."

That evening on the network news I kept looking for some farmer to pop up and say "if cities can't make it on their own, why don't they sell out and try something else?"

Another thing that amuses me is the way some city people jeer when they see striking farmers driving tractors with enclosed cabs. "Look at that!" they say. "If farmers are so hard up, how can they afford those tractors with heated cabs? Probably air conditioned for summer too." Then they go back to their winter heated and summer air-conditioned offices and do whatever it is people do in a 20 story office building from 9 to 5, after which they drive home in cars with enclosed tops and sides, first stopping by a grocery store to pick up a 90 cent loaf of bread, of which the farmer was paid 3 cents for the wheat.

But if it will make them feel any better, my tractor out here on this High Plains grass infested farm doesn't have a cab. What's a cab good for on a 30 year old tractor with four flat tires? But I will say this, and I don't care what they say, my house is heated in the winter time. And in the summer, if no city people are around, I turn on a window evaporative cooler.

Yours Faithfully,
The SE Philosopher

We have never seen a finer example of the sheer joy of winning and not a trace of the agony of defeat than displayed last week at the Springlake-Earth Junior Livestock Show and Sale.

One little fellow who took fifth place in a field of five couldn't have been more delighted if he had won first at Houston. The simple fact that it was his animal, his hard work and long hours of feeding and training, coupled with the pride of accomplishment, were enough to make the whole project worth the effort. These boys and girls, along with their parents and teachers, County Agent, and the scores of people who were so involved in staging one of the finest stock shows in this part of the country, are to be commended on a job well done. We sincerely hope that the rewards for their

efforts will bring them all back again next year and the following years.

If you are looking for an interesting, as well as entertaining evening of music, don't miss the next presentation by the Sudan Fire Department and Lions Club of the Sudan Music Festival. The show will be staged February 25 at 7 p.m. at the Sudan School Cafeteria. Featuring Gospel, Country, Fiddle, and Stage Bands, you can sign up a group of your own to perform by calling 227-2230 or 227-2024. There is no admission charge and a concession stand will be sponsored by the Sudan Baseball Association. You'll enjoy every minute of the show.

Several weeks ago, we commented in this column something to the effect that we were disappointed with something President Carter had done. We got a comment from a reader that most people could care less what goes on in Washington and there was no need to print it. Well for the sake of those who are interested, and we must assume there are quite a few, we will more than likely voice our displeasure with "Carter's Crew". For example, one of Carter's promises during his campaign, "We will cut government payrolls and spending" So far, he has raised the salaries of every

BEST AREAS for insulation in existing or new structures are: unfinished attics, finished attics between ceiling joists, exterior walls, floors above crawl spaces, the perimeter of slab-on-grade, basement walls and duct work, and plumbing in uninsulated areas.

The Di-Gel Difference
Anti-Gas medicine
Di-Gel adds to its soothing Antacids.

Di-Gel.
The Anti-Gas Antacid.

Photography
by Cecilia
CECILA'S COLOR LAB
CECILA'S CAMERA SHOP
• Quality
• Utmost Consideration
• Relaxed, Unhurried Atmosphere
• Artistry In Lighting And Composition
"These Things We Promise"
IN STUDIO OR YOUR HOME OR OFFICE
512 PHELPS
385-5100
Littlefield, Texas 79339



Plant Weather Master EPX888 the consistent corn for this area. EPX 888 is medium tall, strong straight stalks, erect dark green leaves. With plenty of water and fertilizer this corn has made over 11,000 lbs. dry weight per acre. It's always at the top.

EPX 777 is a sister hybrid to EPX 888. Bred to take high population and peak fertility. Yield is almost as good as 888 and is about one week earlier in maturity. Plant Weather Master and have your corn in the elevator while other varieties are still dying down.

Your
Weathermaster
Seed Dealer
Max Crim
Muleshoe 065-2742
Rt. 3



At one time it was thought gold dissolved in dew.

30%-60% Off
\$9.00 Group
Casual Nook

GIGANTIC PANELING SALE
CASH & CARRY



FIRST QUALITY NO SECONDS

- FOLKLORE \$2.89
- LONDON BERRY \$2.89
- ANTIQUE PEARL \$5.29
- WANDAMERE \$5.29
- HARVEST \$5.95
- PLANTATION PECAN \$5.95
- NORDIC ELM \$6.89
- GLACIER GOLD \$6.99
- DEERFIELD PECAN \$7.19
- THUNDERCLOUD HICKORY \$7.59
- KNOTTY CEDAR \$7.59
- CROWN WALNUT \$8.19
- NATURAL BIRCH \$7.99
- REGAL HICKORY \$7.99
- ENGLISH BROWN OAK \$8.49
- ROSE WOOD \$8.49

4 X 8 (LIMITED QUANTITIES)
NO DEALERS PLEASE
NEW STORE HOURS
MON.-FRI. 7:30 - 5:30
SAT. 7:30 - 4 p.m.

FARM DISCOUNT LUMBER & SUPPLY Hereford
U.S. 385 South (Dimmitt Hwy) 364-6002

ALLSUP'S CONVENIENCE STORES
OPEN 24 HOURS
SAVE AT ALLSUPS
PRICES GOOD FEB. 23 thru 26th

CHECK THESE WILD BARGAINS
BORDEN'S ICE CREAM \$1.19 1/2 GAL NO CTN
Cranberry Sauce 5/\$1.00
Borden's Oleo lb 3/\$1.00

ALL SIZES ICEEES BUY ONE GET ONE FREE!
BORDEN'S HI PRO MILK 89¢ HALF GAL.
Tide \$1.29 16 oz. Size

WILSON'S CERTIFIED BACON 99¢ 12 OZ.
Frontier Paper Towels 3/99¢ 3 lb \$1.59

WILSON'S BACON 99¢ 12 OZ.
COLONIAL ASST'D COOKIES 39¢ REG. 70¢
Coca Cola Cans 6-Pack 99¢

Barbeque Sandwiches 69¢
WILSON'S BOLOGNA 79¢ 6 OZ. PKG.

Earth

built to save
ENERGY EFFICIENT HOME

It's today's best bargain



IN A NEW HOME.

Costs are on the rise. Everyone knows that. So saving money is really important today. But just how much comfort and convenience are you prepared to give up in order to save? There is a new concept in home building that gives you the utmost in comfort and convenience yet saves you money on heating and cooling cost so you don't have to give up comfort and convenience. It's the ENERGY EFFICIENT HOME AND IT'S BUILT TO SAVE! It's total electric... and it can save you 40% or more on heating and cooling costs when compared to previously accepted standards for total electric construction. Call your SOUTHWESTERN PUBLIC SERVICE COMPANY Builder Representative. He has all the facts on the ENERGY EFFICIENT HOME... the innovative way to enjoy the finest living conditions in the world today and save. It is today's best bargain in a new home.

SPS
SOUTHWESTERN PUBLIC SERVICE
OUR GENERATION IS FOR YOU!



VIRGINIA MOORE

Rites Held For Virginia Moore

Services for Virginia Moore, 36, of Earth, were at 2 p.m. Monday in the First Baptist Church here with the Rev. David Burum, pastor, officiating.

Burial was in Earth Cemetery under direction of Parsons-Ellis Singleton Funeral Home here.

Mrs. Moore, who had lived in Earth 14 years, died early Saturday morning at Medical Arts Hospital in Littlefield following a lengthy illness.

Survivors include her husband, Richard; two sons, Allen and Clifford, both of Earth; her father, William Hamlin of Earth; three sisters, Rachel McBride of Crescent City, California, Luvina Craig of Talihina, Oklahoma and Evelyn Francis of Grants, New Mexico; and three brothers, Dewey Hamlin of Hayward, Calif. and Zedoc Hamlin and Frank Hamlin, both of Crescent City, California.

Palbearers were Pete O'Hair, Donald Runyon, Jimmy Craft, Hershel Hulcy, E.R. McAlpine, D.W. Williamson.



IN APPRECIATION for all his hard work, George Gaston received the 1978 Stock Show Appreciation Award.



SHOWMANSHIP AWARDS for the 1978 Stock Show were awarded to Jimmy Randolph-steer, Elaine Bills-barrow and Jeff Washington-lamb.

Our Women In Service

Airman Debra P. Knowles, daughter of Jack N. Knowles of Muleshoe has been selected for technical training at Sheppard AFB, Texas in the Air Force aircraft maintenance field.

The airman recently completed basic training at Lackland AFB, and studied Air Force mission, organization and customs and received special instruction in human relations. Completion of this training earned the individual credits towards an associate in applied science degree through the



DEBRA KNOWLES

Community College of the Air Force.

Airman Knowles attended Muleshoe High School. Her mother, Mrs. Lou E. Knowles, resides in Canyon.

Littlefield Area Show & Sale

The Littlefield Area Junior Livestock Show and Sale will be held February 23, 24, and 25 at the Lamb County Agriculture and Community Center in Littlefield.

Participating in the show will be FFA and 4-H members from Littlefield, Sudan, Amherst and Spade.

Superintendents for this year's show are Marvin Bowling, Steers; Freddie Maxwell, sheep; and Art Foley, swine.

Judges for the show are: Joe Ed Wise, Dawson County Extension Agent, judging sheep; Jim Allison, Sherman County Ex-

tension Agent will judge swine; and the steer judge is Jim Jenkins, Ag Professor at SPC in Levelland. Scottie Beard of Littlefield will judge the Ag. Mechanics projects.

The schedule for the show is as follows: February 23rd by 12:00 p.m. all animals must be in the barn and at 1 p.m. the judging of sheep will begin.

At 3:30 p.m. the swine judging will take place and at 7 p.m. the steers will be judged. On Saturday, February 25th, at 1:30 p.m. the premium sale of lambs, steers and swine will take place. Kenneth Gregg of Plainview will serve as auctioneer for this year's sale.

We invite all of you to come out to the show and sale. We think you will really enjoy it.

Duggan Elected

Arthur P. Duggan of Littlefield, an early advocate of groundwater conservation on the High Plains, has been re-elected director of Water, Inc. Duggan was elected to a three-year term by the Water, Inc., members in District 30, Lamb County.

As a district director, Duggan will participate in the operation of the non-profit organization and the direction it takes in seeking an assured supplemental water supply for the High Plains.

Duggan is the Texas commissioner on the Canadian River Compact Commission. He is a member of the Texas Water Conservation Association. He is a past chairman of the West Texas Chamber of Commerce Water Development Committee.

Buick-Olds

Pontiac-GMC

Plus Service

That Satisfies

Robert D.

Green, Inc.

Muleshoe

Wilson Radiator And Speedometer Service

Will Be Open For Business March 1st To Serve The People Of Muleshoe And Surrounding Areas For All Cooling Systems On Cars, Trucks On Any Individual Equipment Needs, Heater Especially.

Fifteen Years Experience.

Come By And See Us At The:

Morris Douglas Location In Muleshoe

311 W. American Blvd.

Music Festival

The Sudan Music Festival will be held Saturday, February 25 in the Sudan School cafeteria.

The concession stand, sponsored by the Sudan Baseball Association, will be open with proceeds going to the baseball association.

Anyone wishing to sign up a group is asked to call 227-2230 or 227-2024.

There is no admission fee and it is good, clean family entertainment sponsored by Sudan Lion's and Sudan Fire Department.

Outsiders Tourney

An outsider's basketball tournament is being held this week in Sudan sponsored by the Sudan Booster Club. One half of gate proceeds will go to Sudan Baseball Association.

There will be a concession stand for each game with Hoyt Robertson in charge.

The tournament began on Tuesday and there will be a game this afternoon between Spade and Sudan Co-op girls at 5:15, followed by Lance Insurance and Amherst men at 6:35. Spade men and Shallowater will play at 7:55 tonight.

On Friday, First National Bank girls and Amherst will play at 5:15 followed by Central Compress men and Denver City at 6:35 p.m. Winners of Tuesdays and Thursdays games will play Friday night at 7:55 and 9:15. Other play off games will be played Saturday.

Remember half of the door proceeds go to the Sudan Baseball Association. Everyone is urged to attend these games to help support the Booster Club and Baseball Association.

Preventive Health Services

The Texas Department of Health has opened a new office in Littlefield to provide preventive health services for Lamb County citizens. These services, including immunizations, chronic disease screening, tuberculosis control, crippled children's program, environmental health, veterinary public health, and others will be available without charge. The new office will be

located at 410 Littlefield Drive with office hours from 8 a.m. to 5 p.m. daily. Dora Goheen, R.N. and Jeanie McDonald, R.N., public health nurses, will be providing preventive

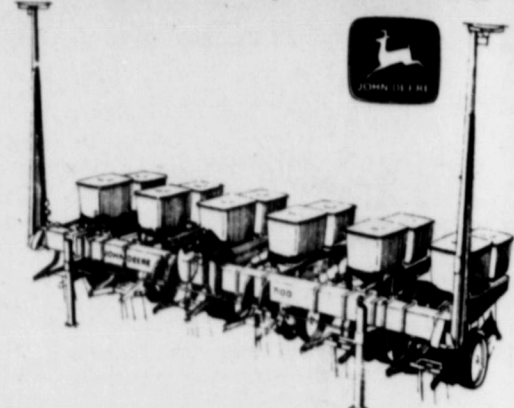
30%-60% Off
\$900 Group
Casual Nook

health services in this office, with Debra Steen working with them as receptionist. Carrying lead in the pocket was believed to prevent poison oak.

For further information regarding services available, please come by 410 Littlefield Drive or call telephone number 806-386-6149. Remember, these services are available through the Texas Department of Health, without charge, to all citizens.



Stop in and look over 7100 Series Integral Max-Emerge™ Planters... equipped for our area



You get many planting advantages with a 7100 Integral. Alternating hydraulic row markers, a central location to change seeding rate, unmatched maneuverability due to integral mounting, plus easy transport ability with new 7100 Folding Planters. But more important, you get a planter that meets the major Max-Emerge planting objective: helping you get better germination and emergence by creating an ideal soil/seed environment. Stop by and take a look at a 7100, for Max-Emerge design with integral planter advantages.

C&S EQUIPMENT CO.
Dimmitt

Stacy's

Stacy Mason Inc.

IT'S A LA-Z-BOY SALE

So put your feet up while our prices are down



LA-Z-BOY RECLINER
Reduced **30%**
Reg. 329.95
NOW **\$189.95**
Limited 'C' & 'D' Grade Fabrics Only



LA-Z-BOY RECLINER
Regular 389.95
NOW **\$239.95**
Limited Quality 'C' & 'D' Grade Fabrics Only



LA-Z-BOY SWIVEL ROCKER
Regular 269.95
NOW **\$169.95**



LA-Z-BOY SWIVEL ROCKER
Regular 269.95
NOW **\$169.95**



LA-Z-BOY RECLINER
Regular 289.95
NOW **\$149.95**
Limited Quality 'C' & 'D' grade Fabrics Only



LA-Z-BOY RECLINER
Regular 349.95
NOW **\$199.95**
Limited Quality 'C' & 'D' grade Fabrics only



LA-Z-BOY SWIVEL ROCKER
Regular 299.95
NOW **\$199.95**
Style 215



Stacy Mason Inc.

SHOWN Machine.

The 19 Dawson

SHOWN Agricult Growers dinner at They gav new chen

LOOK

Drain make 1 measured combine small bal desert d ball in e firm. Tor hours. M

Aga

FM Ea



SHOWN ABOVE is Steve Shepard with his Reserve Grand Champion Barrow bought by Earth Pump & Machine.



The 1977-78 Basketball King and Queen are Clint Dawson and Susan Clayton.



Clint Dawson was recently nominated to the McDonalds High School All American Basketball team.



SHOWN ABOVE ARE Dan Pope with FMC Agricultural Chemical Division and Jim Myers with Growers Seed Association. They sponsored a bar-b-que dinner at the Earth Coop Gin Tuesday, February 21. They gave a talk on the proper use of chemicals and the new chemicals and seeds available.

Look For The Surprise!

Peach Cheese Dessert

- 1 can (8-3/4 oz.) sliced peaches
- 1 package (3 oz.) peach flavor gelatin
- 1 cup boiling water
- 3 tablespoons (half of 3 oz. package) cream cheese, softened
- 1 teaspoon milk
- 1/4 cup finely chopped walnuts

Drain peaches, reserving syrup. Add water to syrup to make 1 cup. Dissolve gelatin in boiling water. Add measured liquid and chill until thickened. Meanwhile, combine cream cheese and milk; blend well. Shape into 5 small balls and roll in nuts. Spoon half the gelatin into 5 dessert dishes. Arrange 2 or 3 peach slices and 1 cheese ball in each. Chill again, if necessary, until set but not firm. Top with remaining gelatin. Chill until set, about 2 hours. Makes 3 cups or 5 servings.

Import Clothing Threatens Jobs

An ever-thicker blanket of import clothing threatens to smother thousands of jobs in the U.S. clothing market—yet imports may give consumers low-cost clothing and help U.S. relations with foreign countries. Also, some imports threaten the availability of prestigious—yet often expensive—European designer fashions and fabrics. There are no easy answers

to this dilemma, but the problem belongs to everyone, says Beverly Rhoades, clothing specialist with the Texas Agricultural Extension Service, The Texas A&M University System.

The problem is complicated by conflicting desires of various groups within the U.S.

- U.S. clothing workers want a curb put on import quotas to protect U.S. industries and, therefore, their jobs.

- American manufacturers and retailers want to boost sales with clothing at the lowest possible cost.

- American consumers want the availability of imports—either low cost clothing or the more expensive designer fashions and accessories.

- The government wants relations through lenient trade agreements, yet, at the same time, protect the security of textile mill and apparel factory workers.

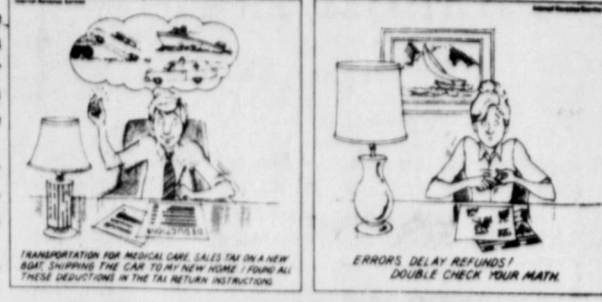
- U.S. taxpayers want to permit clothing workers to stay in the factories and avoid tax-supported unemployment lines.

Cost of domestic apparel continues to rise yearly. Labor accounts for 25-50 percent of the cost of an average garment when purchased at retail, the specialist explains.

However, textile and apparel employees are among the lowest paid workers in the union.

Domestic industry is rapidly losing ground to foreign industry. While U.S. apparel production has been rising at a yearly rate of less than three percent, import growth increases six to seven percent yearly, she continues.

Today, at least 25 imported garments are sold



"Yes, but George Washington's daddy wasn't in that cherry tree."

SPECIAL THIS WEEK

3 For 2 Shirt Sale
Buy 2 At Regular Price
Get 3rd Shirt Free

All Felt Hats 20% Off
Resistol & Bailey Brands

ee's WESTERN WEAR

Open Mon.-Sat. 9 a.m.-6 p.m.

Plenty Of Parking
1910 W. Amer. Blvd. Muleshoe 272-4663

Auction Knowles Furniture & Auction
1631 West American — Phone 272-4993
Muleshoe, Texas

Sunday, February 26, 1978—1:30 P.M.

CARS:	1967 Ford Mustang 1968 Ford Mustang 1969 Ford Mustang 1970 Ford Mustang 1971 Ford Mustang 1972 Ford Mustang 1973 Ford Mustang 1974 Ford Mustang 1975 Ford Mustang 1976 Ford Mustang 1977 Ford Mustang 1978 Ford Mustang	1967 Ford Mustang 1968 Ford Mustang 1969 Ford Mustang 1970 Ford Mustang 1971 Ford Mustang 1972 Ford Mustang 1973 Ford Mustang 1974 Ford Mustang 1975 Ford Mustang 1976 Ford Mustang 1977 Ford Mustang 1978 Ford Mustang	1967 Ford Mustang 1968 Ford Mustang 1969 Ford Mustang 1970 Ford Mustang 1971 Ford Mustang 1972 Ford Mustang 1973 Ford Mustang 1974 Ford Mustang 1975 Ford Mustang 1976 Ford Mustang 1977 Ford Mustang 1978 Ford Mustang
NEW FURNITURE:	Living room set Dining room set Bedroom set Bath set Kitchen set Office set Refrigerator Stove Washing machine Dryer Freezer	Living room set Dining room set Bedroom set Bath set Kitchen set Office set Refrigerator Stove Washing machine Dryer Freezer	Living room set Dining room set Bedroom set Bath set Kitchen set Office set Refrigerator Stove Washing machine Dryer Freezer
EQUIPMENT:	Tractor Generator Pump Motor Tool Saw Drill Hammer Screwdriver Wrench Screwdriver Wrench Screwdriver Wrench	Tractor Generator Pump Motor Tool Saw Drill Hammer Screwdriver Wrench Screwdriver Wrench Screwdriver Wrench	Tractor Generator Pump Motor Tool Saw Drill Hammer Screwdriver Wrench Screwdriver Wrench Screwdriver Wrench
MISC:	Television Radio Stereo Refrigerator Stove Washing machine Dryer Freezer Furniture Appliances	Television Radio Stereo Refrigerator Stove Washing machine Dryer Freezer Furniture Appliances	Television Radio Stereo Refrigerator Stove Washing machine Dryer Freezer Furniture Appliances

—AUCTIONEERS—
LANNY KNOWLES 272-4993
JACK KNOWLES 272-4993
NELVIS KNOWLES 272-4993

PLAINVIEW 1,000 WATTS

KKYN 1090

"Serving the Agri-Plex of the Texas Panhandle"

ABC News
With Paul Harvey
At 7:30 AM And 12:00 Noon

Spike Wideman
Farm Services Director

The Best Country

Listen To The "Our Place In Texas" Program
Saturday 1-2 PM

Sponsored By These Commercial Minded People:

Earth Co-op Gin & Fertilizer	Walker Texaco-Olton
Tom Lively White's Store-Earth	KMP Lake Pump Mfg. & Parish Windmill-Earth
Pay-N-Save-Earth	Parish Windmill-Earth
Earth Oil & Gas Co. Inc	Citizens State Bank-Earth
Earth Feed & Seed	Clothes Horse-Earth
Earth Flower Cart	H.S. Sanders Lumber-Earth
T-Bar Western Store-Earth	Western Pump-Earth
Earth News-Sun	Casual Nook-Earth

We Sell Service
One Of Americas Finest Center
Pivot Sprinkler Systems

REINKE ELECTROGATOR

Reinke Mfg. Co. Inc.-Box 566-Deshler, Nebraska 68340

With Unmatched Guarantee 3-Year-Limited Warranty On Parts

20 Years Against Corosion

Western Pump & Equipment Co.

S. Amherst Hiway
Mgr. Bill Yokum

Call 257-3926

FM 1055 Earth

Dimmitt Locals

By Maxine Short

Funeral services for Mrs. Ida Mae King, 85, of Knox City, were held last Thursday (Feb. 9) in the First Baptist Church of Knox City, where she was a member. She was the mother of Joe King, superintendent of the Nazareth School. Burial was in the Knox City Cemetery.

Mrs. King died early on February 8, one week after undergoing surgery. Her husband, John King passed on six years ago. She is survived by three daughters, Fannie Carlile of Kress, Pauline Hewitt and Mary Lou De Four, both of Calif., and two sons, Oliver of Plainview and Joe of Nazareth.

Funeral services for Mrs. Tyline Nanny Perry, were held in the Fairmont Mausoleum in Denver, Colorado.

Mrs. Perry gave the Rhodes Memorial Library a gift of \$135,000 which made it possible for the construction of the new building here now.

She is survived by a daughter, Susan Allen, and a grandson, Tom McClung, both of Kansas City.

Mrs. Rose Mary Albracht, 94, died Tuesday in Hereford. She was a former Nazareth resident. Rosary was at 7 p.m. Wednesday in the Rose Chapel of Gilliland-Watson Funeral Home with funeral mass at 11 a.m. Thursday in the St. Anthony's Catholic Church in Hereford with Rev. Bernard McGorry, pastor, officiating. Burial was in the Rest Lawn Memorial Park Cemetery.

Mrs. Albracht married John S. Albracht in 1905 in St. Bernard Nebraska. Mr. Albracht died in 1966. Survivors include six sons, five daughters, 67 grandchildren, 84 great grandchildren and 2 great great grandchildren.

The family requests memorial gifts be sent to the Catholic Children's Home in Panhandle.

Bruegel and Sons suffered another break in, third one in the past few weeks. Eleven 5 gallon cans of Treflon and 1 five gallon can of Tolban were taken. The total retail value of the items taken came to \$1402. Entry was gained to the place of business by breaking out the glass in the front door.

Happy birthday to the following people:

February 16-Ronda Powers, Tammy Ward, Amelia (Molly) Solar, Jim Aldridge, M.F. McRee, Laura Spencer, Mitzie Brockman, Bobby Backus
February 17-Max Hastings, Jess Womack, Bunia Shwen, Gaylene Wilhelm

February 18-Morris Cole, David Schulte Hartman, Paul Brockman

February 19-Jeffrey Long, Charles Hottel, Diana Wilhelm

February 20-Jan Robb, Melba Howell, Pamela Patterson, Margie Albracht, Sarah Vandergrift, Wanda Ehly, Jaime Hatla, Douglas McLain

February 21-Rhonda Welch Neighbour, Muffy Truelock, Norita Hoelting, Karen Schulte, Jason Brockman

February 22-Betty Reyes, Barbara Hudson, Sonny Armstrong, Scott Morris, Seth Ralston, Louise Braddock, Doretta Ramaker, George Huseman

February 23-Darlene Wooten, Earnest Smith Jr., Terry Mixon, Bear Thomas, Georgie Kleman, Leslie Birkenfeld, Dan Schmucker.

Mr. and Mrs. Rick Bell of Rt. 1, Dimmitt announce the adoption of a son, Caleb Aeneas, aged three months and weighing 12 pounds 8 ounces. The maternal grandparents are Mr. and Mrs. Bob Mooney, and the paternal grandparents are Mr. and Mrs. Lonnie Bell.

There were some angry fans at the Dimmitt-Friona varsity boys game here Tuesday night. Boos led to anger and anger led to violence by both the players and the fans.

After booing each other's players when they came out on to the floor for warm up, fans from Dimmitt and Friona created an unruly atmosphere throughout the entire game.

They let their emotions get out of hand both in the stands and on the floor, as a Dimmitt player was hurt in the final minute of the game and a Friona player was roughed up by a couple of Dimmitt men when he headed for the locker room after the game.

Karl Langford of Dimmitt was hit from behind and shoved into the wall, as he was driving under for a lay up. Edward Castillo did the shoving and was ejected from the game by the referees and Langford finished the game.

As the teams were going to their locker rooms after the final buzzer, two Dimmitt men jumped out of the home stands and roughed up one of the Friona players.

"We're going to have to take some sort of action, like maybe bar some people from the gym," a Dimmitt official said later. "We had people posted at all the ramps but things got out of hand anyway."

"I think the world of our fans, and I appreciate the support they give us," Coach Ken Cleveland said later, "but their heckling actually hurts our players. I know that when ever we're in another town and we're heckled and booed, it makes me more determined than ever to beat them. This incident is not good for the teams or Dimmitt image."

Happy Anniversary to the following people:
February 16-Mr. and Mrs. Harry Kleman
February 17-Melvin and Juanita Summers, J.R. and

Mary Jo Brown, Larry and Joy Ringwald
February 19-Phillip and Dora Pohlmeier, Mr. and Mrs. George Hipp, Mr. and Mrs. Lon Brockman
February 20-Mr. and Mrs. Al Huseman
February 21-Mr. and Mrs. Dwayne Schulte
February 22-Dick and Shirley Schacker
February 23-Miguel and Sabina Velasquez

Beral Nance is on the go. She went to Lubbock Saturday and attended a luncheon with her son Ken and his family.

Patients in the hospital are Ouida Boyd, Gail Bruegel, Sam Butler, Amanda Flores, Josephine Jackson, Linda Leal, Diana Lopez, Ida Mae Miller, Dora Mae Newberry, Consuela Perez, LeLand Smith, Ross Terry, Dora Thompson, Antonia Vasquez

Patients dismissed are Sister Joseetta Catalani, April Guy, Celia Carlile, Laura Broadstreet, Rachel Hunter, Leonard Gerber, John Vasquez, Eunice Thornton, Alma Umberson, Beatrice Hahn, Paula Flores, Joe Weatherford, Juanita Vidal, Hipolita DeLaPaz, Henry Behrends, Fred Ward, Carolyn Copeland, Alicia Melendez, W.B. Hammonds, Sue Miller, Isabel Mireles.

The Dimmitt Chamber of Commerce has joined the letter writing campaign to call attention in Washington D.C. to the farm price problem.

In a letter to influential legislators Agriculture Department officials and others in the nation's capital, the chamber has asked that immediate attention be given to the plight of area farmers.

Jerry Marvin, Dimmitt Chamber of Commerce president, has reminded the Washington officials that the current problem in agriculture is affecting business and industry in rural America, as well as agriculture producers. Letters are being mailed by the Chamber of Commerce this week to legislators, Agriculture Department officials and to President Jimmy Carter.

The Dimmitt Chamber of Commerce is encouraging all residents to join in the letter writing campaign. Addresses for congressmen may be obtained at the Chamber of Commerce office at the Dimmitt City Hall.

One of the most effective income management tools available to Texas farmers and ranchers is investment credit. The Tax Reform Act of 1976 extended investment credit at the 10 percent level for the years 1976 through 1980. "If you acquired new or used depreciable property such as machinery, equipment or breeding livestock for use in your farming or ranching operations, you probably qualify for investment credit," explains Dr. Richard Trimble, economist with the Texas Agriculture Extension Service.

"Investment credit, like all other tax credits, reduces taxes owed dollar for dollar."

"For example if your tax liability is \$2,800 (line 3 of Form 1040) and the investment credit should amount to \$2,000 (line 41 of Form 1040), your tax liability will be returned to \$800."

To qualify for investment credit, purchased property must be depreciable, have a useful life of at least three years and be placed in service during the tax year. For the full purchase price to qualify for investment credit, the purchased property must have a useful life of seven or more years.

If the useful life is five to seven years, only two-thirds of the purchase price is eligible for the investment credit. For property with a useful life of three to five years, one third is eligible. Property with a useful life of less than three years does not qualify for investment credits.

In general, all tangible business property except buildings or structural components and horses will qualify for investment credits.

Examples of qualifying property includes trucks, tractors, combines, automobiles, (if used in the business), power tools, fences, water wells for livestock and poultry, silos, grain bins, breeding and

Strongest anti-itch drug you can buy without prescription

Stop itching fast of external vaginal, rectal, and other skin conditions. Doctors find even severe itching can be treated with a special drug. You can now get this anti-itch drug ingredient with no prescription in BICOZENE. Use only as directed. The medicinally proven cream for itching.

BICOZENE

Grand Opening

The Newest Carpet House In Dimmitt

Modern Carpet Center

105 N. Broadway

Thursday-Friday-Saturday

Selected Samples and Every Carpet In Stock Reduced To Sale

Hi-Lo Sculptured Nylon Pile Carpet For Years Of Wear Installed and Pad \$8.99 Sq Yd	Sculptured Shag Sculptured Saxony Nylon Pile With A Price To Fit Your Pocketbook. Installation and Pad \$9.99 Sq Yd
Candy Stripe Multicolor Carpet With The Right Colors and Price Installed \$7.99 Sq Yd	Saxony Cut & Loop A Spectacular Effect Created By Spectra Color System Installed & Pad \$9.99 Sq Yd
Saxony-Plush Heavy Deep Nylon Pile Luxury For A Look Luxury, Long Beauty & Life Installation & Pad \$9.99 Sq Yd	These Are Only A Small Sample Of Our Sale Prices

★ Every Carpet On Sale

Includes Our Expert Installation and Padding

★ We'll Also Have Throw

Pieces Of Carpet For

35'-65'-129"

★ Also See Our Foot Stools

For \$15.99

★ See Our New Lines Of Carpet,

Callaway, Pepperell and Lewis

Carpet Mills, Introduced To This

Area With Our Already

Great Lines

★ Finance Terms Are Available

★ Come By and Register For A 12x12 Carpet To Be Given Away and Installed By Modern Carpet Center

★ Modern Carpet Center, Associated With Modern Carpet Cleaner Invite Your Inquiries About Our Carpet Cleaning

★ In Cooperation With Our Grand Opening, Certain Carpet Distributors and Mills Have Reduced The Price On Selected Carpet For Us and You

★ We'll Have Room Size Carpets and Few Selections Of Remnants For Quick Sale

★ Carmen and Larry Gonzales Invite You To Come By and Browse Around and Enjoy Free Coffee and Refreshments

Compare! Dristan Tablets relieve more colds miserably than Contac or Aspirin.

	Dristan	Contac	Aspirin
Nasal Congestion	✓	✓	✓
Runny Nose	✓	✓	✓
Aches & Pain	✓	✓	✓
Fever	✓	✓	✓

dairy livestock, income producing orchards and groves, and many other items.

The maximum allowable investment credit is \$25,000 plus 50 percent of your tax liability above \$25,000. The investment credit taken in any tax year may not be greater than the tax liability. However, investment credit not used the year of purchase may be carried back three years and then forward seven years. Form 3468 should be used for calculating investment credit.

"It is important to note that investment credit does not affect the amount of depreciation you can claim," explains the economist. "Any allowable depreciation method can be used, and you can use the 20% additional first-year depreciation if the useful life of the property is six years or more."

Trimble encourages producers with questions on this or any other phase of income taxes to call their local Internal Revenue Service.

One of the Castro County farmers who was among the American Agriculture representatives "swarming" Washington, D.C. recently, Allen McLain of Hart was quoted in the Washington Post by the newspaper's columnist Richard Cohen, who encountered McLain informally in a hotel.

The impromptu interview which the Capitol columnist admitted gave him a new prospective on the farmer's problems and the aims of the Washington visit, was cited by some other Castro County men as typical people-to-people meeting with the Washington

residents.

Many of the farmers said they believe these encounters not necessarily with newsmen but with various ordinary residents, were as effective in spreading their message as were the contacts with legislators and administration officials. The columnist just served to give McLain's remarks a wider audience.

Cohen's column was headed "Encountering Ominous Farmer With a Problem," and it began with his first impression that the influx of farmers was simply a nuisance in Washington's already snarled traffic.

He said the farmers looked to him "like all the people who tie up traffic and take it out on the people of Washington some gripe you have with the government—a demonstration that, when you look at it, is for higher food

prices—I had read some stories about the farmers indicating that their fight should not be with me."

Then he tells of seeing four men seated at a table in a hotel restaurant, and writes, "I approached cautiously, expressing what many city people feel about farmers as he added, 'We must always approach farmers with caution. Who knows about them? Who knows about parity and what it means? And who knows really, what farmers do and how they do it? And who can get past the whammy they have for us, and the feeling that they are in some ways better?'"

But he accosted the men, found that two of them were not farmers, but lived in Washington.

"The farmers were from Texas, a place called Hart. It's in the Panhandle," he added mentioning McLain "and his friends name was Danny. McLain did most of the talking. He wore

cowboy boots, checked shirt and dungarees and what he said was that he was going broke. Simple No talk of parity or anything like that—just talk of long hours and lots of lands and crops that brought in less money than it took to grow them. "We talked of his family and his daughter and how far back his family went in his area—always the conversation

(cont. on page 11)

Arthritis Sufferers: WAKE UP WITHOUT ALL THAT STIFFNESS!

New formula for arthritis minor pain is so strong you can take it less often and still wake up in the morning without all the pain's stiffness. Yet so gentle you can take this tablet on an empty stomach. It's called Arthritis Pain Formula. Get hours of relief. Ask for Arthritis Pain Formula, by the makers of Anacin® analgesic tablets.

-Snow Bird Specials-

1975 Dodge 4-Wheel Drive Pickup

Was \$3495 Now \$2350

1976 Dodge 1/2 Ton Loader

Was \$3450 Now \$2395

1973 Chevrolet 1/2 Ton Replaced Motor

Was \$1975 Now \$1095

1972 Dodge Van Air Cond. Was \$2975

Now \$2250

Garland Chrysler-Plymouth-Dodge

Littlefield

385-4454

The Annual Meeting of the Members of the BAILEY COUNTY ELECTRIC COOPERATIVE ASSOCIATION

and the

FIVE AREA TELEPHONE COOPERATIVE, INC.

will be held in the

MULESHOE HIGH SCHOOL AUDITORIUM

Muleshoe, Texas

SATURDAY, February 25, 1978

Free noon meal for Cooperative members and their families.

Registration opens at 11:30 a.m. You must register to get your meal tickets. Serving lines will open at 11:30 a.m.

The Telephone and Electric Cooperative Annual Membership Meetings will be held the same day. The Telephone Meeting will begin at 1:00 P.M. and the Electric Meeting will begin at 2:30 P.M.

TO TAKE ACTION UPON THE FOLLOWING

1. Give members a financial report, progress report and general condition of the Cooperative.
2. Telephone Co-op members will consider and take action on a By-Law change, to extend the tenure of directors from two (2) successive three (3) year terms to three (3) successive three (3) year terms.
3. Elect three (3) directors - TELEPHONE. Elect two (2) directors - ELECTRIC.
4. Appoint Nominating Committees for Annual Meetings to be held in 1979.
5. Consider and take action upon other matters that might be presented or come before the meeting.

In connection with the election of three (3) Telephone Cooperative directors, the following have been nominated:

<u>DISTRICT #5</u>	<u>DISTRICT #6</u>	<u>DISTRICT #7</u>
Ike Williams	Richard E. Black	Ken Wesley
Joey Kindle	W.J. (Jerry) Ray	Douglas Dunn
Tommy Terrell		

For Electric Cooperative directors:

<u>DISTRICT #3</u>	<u>DISTRICT #4</u>
Roger Haberer	Tommy Kirk
Guy F. Kelley	Jim Pat Claunch

Other nominations for directors may be made at the meetings.

DRAWING FOR DOOR PRIZES IN BOTH MEETINGS ! !

ODDS CHART

Number	Day	Time	Zone
1000	1000	1000	1000
1001	1001	1001	1001
1002	1002	1002	1002
1003	1003	1003	1003
1004	1004	1004	1004
1005	1005	1005	1005
1006	1006	1006	1006
1007	1007	1007	1007
1008	1008	1008	1008
1009	1009	1009	1009
1010	1010	1010	1010

PLAY DOUBLE CASH BINGO *Our first game was such a hit, we decided to do it again!*

WIN UP TO \$2000 ...All New Cards ...All New Bingo Discs.

MORE MONEY MORE FUN!

NE FARE
ATHROOM ISSUE 69
ROLL PACK



BUTANE LIGHTERS BIC DISPOSABLE REG. 79¢ **49¢**

NATURE SCENT SOAP BATH SIZE BARS **4** 4 1/2 OZ. BARS **\$1**

LAUNDRY DETERGENT ARM & HAMMER 30 OZ. BOX **59¢**

KEEBLER CINNAMON 14 OZ. CRISP -OR- GRAHAMS 16 OZ. HONEY **79¢**

CORN MUFFIN MIX MARTHA WHITE **6** 7 1/2 OZ. BOXES **\$1**

5 OZ. CANS ENNA SAUSAGE **4** FOR **\$1**



REFRIED BEANS GEBHARDT'S
3 15 OZ. CANS **89¢**

ORANGE DRINK
RICH 'N READY GALLON JUG **89¢**

CHICKEN OF THE SEA TUNA
LIGHT TUNA **59**
1 OZ. CAN

UNITED GRADE "A" LARGE EGGS
DOZ. **65**

KEEBLER SALTINE CRACKERS
2 LB. BOX **99**

"FROZEN FOODS"
SLIM JIM SHOESTRING POTATOES **8** 8 OZ. PKGS. **\$1**
Rupert's Fish-Chip Dinners 2 lb **\$2.29**
Old South Cobblers 32 oz **\$1.29**

CONTADINA TOMATOES
3 14 1/2 OZ. CANS **89**



SWIFT CHILI PLAIN 15 1/2 OZ. CAN **39¢**

CORN CHIPS REG. 83¢ **69¢**

LOGG'S CORN FLAKES
24 OZ. BOX **79**



GROUND BEEF "LEAN CHUCK" QUALITY **\$1.09**

BONELESS STEW "EXTRA LEAN" CUBES OF BEEF **\$1.29**

CUBED STEAK WASTE FREE BEEF **\$1.79**

SWISS STEAK ROUND BONE ARM CUTS **\$1.29**

SHOULDER ROAST CENTER CUT 7-BONE **98¢**

HORMEL LITTLE SIZZLERS 12 OZ. PKG. **98**

FRESH SLICED SKINNED & DEVEINED BEEF LIVER LB. **59¢**

WE GIVE S & H GREEN STAMPS!



QUANTITY RIGHTS RESERVED **PRICES GOOD THRU FEB. 25TH**
UNITED SUPER MARKETS

ARMOUR'S STAR BONELESS HAM
FULLY COOKED **\$1.98** LB.

WRIGHT BRAND BACON
SLAB SLICED **\$1.29** LB.

ROUND-RIB-SIRLOIN STEAK **\$1.39** LB.

"DIARY CASE"
OLEO SPREAD 1 LB. **28¢**
BELL DIPS 3 8 OZ. CRTNS. **\$1**
UNITED LOW FAT MILK HALF GAL. **69¢**



REG. OR DIET PEPSI! COLA MOUNTAIN DEW BUBBLE-UP 6 CAN PACK **99¢**

CLASSIC PICKLES *KOSHER SPEARS 24 OZ. JAR **69¢**
*POLISH SPEARS
*NO GARLIC SPEARS

DRISTAN TABLETS 50 CT. **\$2.39**

DRISTAN NASAL 15 CC SPRAY **\$1.29**

DRISTAN VAPOR 15 CC SPRAY **\$1.29**

"BUSH'S BEST" SHOWBOAT PORK 'N BEANS 14 1/2 OZ.
*PINTO BEANS *CHILI BEANS
*SHOWBOAT SPAGHETTI
*BLACKEYED PEAS *MIX CHOP GREENS
"MIX OR MATCH" **5** 15 OZ. CANS **\$1**

DELICIOUS APPLES 3 LB. BAG **89**
RUSSET ALL PURPOSE POTATOES 10 LB. BAG **89**
CALIF. CHOICE NAVAL ORANGES 4 LBS. **\$1**
COLLARD OR MUSTARD GREENS 3 FRESH BUNCHES **\$1**

CALIF. CLIP TOP TURNIPS PURPLE TOP **25** LB.

WE RESERVE THE RIGHT TO LIMIT QUANTITIES **PRICES GOOD THRU FEB. 25TH**
UNITED SUPER MARKETS

THANK YOU

To The BUYERS And DONORS Of The 1978 Junior Livestock Show For Making The Show A Success... And For Encouraging The Youth Of This Area To Participate In This Worthwhile Program.

BUYERS

Dent Farm Supply
Earth Feed & Seed
Citizens State Bank
Wood-Jordan Inc.
Earth Pump
Earth Coop Gin
David Templeton
Bruce Bridges
Eddie Sam Jones
Christain Irrigation
Dimmitt Agri. Industries
Earth Gin
Grain Handlers
Flagg Grain

City Insurance
Earth Ag Supply
A.V.I.
Ag. Aviation (Steve Busby)
Plainview Coop Compress
Olton State Bank
Sunnyside Grain
Farmers Coop-Springlake
Simmons Pump
Olton Feed Lot
First State Bank-Dimmitt
Olton Seed
Dimmitt Aerial Spraying
J.T. Gibson

Littlefield Seed & Delinting
Western Sprinkler
Hinson Inc.
Olton Feeders
Rilcot Seed
Pay & Save Grocery-Earth
Olton Feed Barn
First National Bank-Amherst
Plains Coop Oil Mill
Jack Hadaway
P.A. Washington
Jearl James
Springlake Farm Chemical
Stanley Schaffer CPA Dimmitt
Sanders Lumber Co.

DONORS

Clothes Horse
James Crane Tire
Ray Griffiths & Son
W.B. Hucks
Hollis Cain
D.K. Lewis
Busby Motor
Halls Lumber
Thompson Chevrolet
Toro Grain
Olton Farm Supply
King Grain & Feed Lot Co.
J.R. Banks
Whites Stores
Bailey County Electric
United Supermarket-Littlefield
First National Bank-Amherst
Lamb County Publishing Co.
A.H. Wilson
Barry Armes Chevrolet
G & C Auto Supply
Wayne Farris
Richard Bills
R & E Projects
C.C. Goodwin
Brian Hamilton

Fred Smith
Frontier Savings
Poyner's White's
Harold Miller
Fred Clayton
Harvey Bass
Q.P. Parts
Citizens State Bank
Plains Welding
Higginbotham-Bartlett Lumber Co.
Chem-Tex
Earth Pump & Machine
McMillian Bookkeeping
City Insurance
Layman Bros.
Fry & Cox
Southwestern Public Service
Earth Coop Gin
Gene Brown
Gene Templeton
Shelton Sanders
Gary's T.V.
Farmers Union Insurance (Skeeter Brock)
G.E. Kellar
Dan Quigley
Johnson Furniture

St. Clair's
Gordan Wilson Appliance
Lee's Western Wear
Whitt, Watts & Rempe
Goodpasture
Irrigation Inc.
Ross Family Gin
Waggoner Farm Store
M&M Farms
Sanders Lumber
Whites Auto (Tom Lively)
Bill Matlock
Moorman Feed Co.
R.E. Haberer & Son
Lowe Spraying
Muleshoe Motor
The Hamby Co.
Bill Verden
Stan Byrnes Ford
KMP Pump
Tide Fertilizer
Vic Coker
Springlake Motors
Earth Oil and Gas
Macky McCarty
Watson & Sons
Cecil Slover

Fred Johnson
T.H. Lewis
Jimmy Craft
Fuzzy Watson
Thurston Gibson
Earth 66
AVI
Wayne Davis
Vernon Holcomb
W&C Grain
Growers Seed Association
Daryl Sawyer
Big T Pump
Dimmitt Vet Clinic
Dick Burris
Ray Lynn Britt
Mary Beth Willey
East Camp Farms
Tibbetts Gin
John Bridges
Dimmitt Redi Mix
Phil Neinast
Monty Watson
Donald Templeton
Kent Lewis
Bob May
Bill Mann

First Federal Savings and Loan
Littlefield Seed & Delinting
P.A. Washington
J.D. Phipp
C.L. Barlow
Weldon Barton
R.E. Haberer & Son
Whites Store (Tom Lively)
T.H. Lewis
Melvin Chisum
W.H. Clayton
Dolan Fennell
Don Randolph
J.D. Phipps
Doug Campbell
Earth Dry Goods
L.C. Barlow
W.L. Barton
Earth Ag Supply
Richard Bills
John Bridges
Alvin E. O'Hair
Eldon Parish
Pete O'Hair
David Burum
Phillip Haberer
Robert Geissler
J.B. James

Total amount-41,953.20 for the show.

TROPHY DONORS

Nichols Gin
Bruce Bridges & David Templeton
Doug Campbell
Dewitt Kelley
Sunnyside Pork Producers
Kent Lewis
E & L Liquid Feed
City Insurance

Bob Belew
Doug Lewis
Hollis Cain
Darrell Sawyer
Carl Jones
Earl Jordan
Ray Phifer
Earth Pump & Machine

Phil Neinast
Don Randolph
Gayland Stephens
T.H. Lewis
Bob & J.D. Phipps
Randy Bills
Wendell Clayton
Robert and Sue Taylor donated a \$150.00 gift certificate from T-Bar Western Wear.

SALES COMMITTEE

Melvin Chisum
Tom Alair
Doug Lewis

Doug Campbell
Dewitt Kelley
Roger Haberer

Bruce Bridges
Jearl James
Ray Joe Riley

COOKS FOR BAR-B-Q

Elizabeth Packard

Lois Rudd
Alma Ott

Tommy Alair

Thanks To All Those Who Helped Clean The Showbarn and Get It Ready For The Stock Show