

★★★★★★
Nosin...
 With Polly
 ★★★★★★

I think it's getting pretty tricky when you plant beans near a peanut patch and come up with beans on the stalk and peanuts on the roots... Anyway, that's what happened to G.S. Armstrong of Earth.

Now we can proudly say, in Earth, we grow peanut beans. Wonder what would happen if someone planted peanuts next door to a dairy... Recon we'd have peanut butter???

"nosin"

It backfired... It flat did... Instead of selling... I bought... It all started out of a clear blue sky, when the telephone rang Tuesday and Wilma Taylor, of Taylor Furniture asked Eldon to come down to talk over a Cooperative Advertising Plan on a new line of appliances they are taking on... He dashed in and asked me to accompany him, so we could both discuss the advertising plan... I went... I talked, and I looked... but mostly I looked... I found that advertising people traveling in pairs gives one ample time to roam around while the other talks... So I did... I roamed through the entire store, like a child, I sat in every chair on the floor... Finally I couldn't stand it any longer, I asked Wilma if I could take a cushion from a lovely reclining chair home to see if it would match the other furniture in my living room... It was a big decision so I kept the cushion overnight... Wednesday morning I had made up my feeble mind to take the chair, so I dashed in with cushion in hand, to tell them to deliver it, Wilma wasn't there so it gave me a little time to LOOK... There is where I did it again... I looked... I sat... finally I saw another chair I liked equally as well so, I became so confused I asked if they'd deliver both chairs to see which one looked the best in my living room... They did... and I still couldn't decide... so I now am the proud owner of TWO lovely chairs.

That foils, is the story of my life, it seems everything backfires... When I should be talking, I'm looking, and when I should be selling, I'm buying... And what happens next is yet to be seen, since Ross is unaware of my purchases, it probably will be, when he sees them, I'd better duck...

"nosin"

Clipped the following from the Post Dispatch, hope you enjoy it as much as I.
SOME WISE MAN once said that 15 apes punching at random on typewriters would, in time, turn out all the literature that ever has been written. Well, here is what actually happened when they tried it. Read with care, it contains a little catch:
 After they put the 15 apes in front of the typewriters there was a long wait. The animals sat and looked at the machines and at the paper on the rollers. There was a long pause, then each ape, one after the other, leaned forward and typed a single, different word.
 The experimenter waited a long time. But after the one flurry of activity, nothing happened. Finally, seeing that the apes had no intention of continuing, he went towards the typewriters.
 The first ape had typed, NOW; the second ape had typed IS; the third one, THE; the fourth, TIME; the fifth, FOR; the sixth ape, ALL; the seventh, GOOD; the eighth one, PARTIES; the ninth, TO; the 10th, COME; the 11th, TO; the 12th ape, THE; the 13th, AID; the 14th, OF; and the last ape had typed, MAN.

"nosin"

It was with an old familiar tug at the heart strings that I listened Tuesday as Joanie, (Mrs. Richard Stockstill) explained, "I just can't seem to stay at home anymore and keep busy, not that I don't have plenty to keep me busy, but since Kreigh has started to school, somehow the old home is just too quiet and lonely for me."
 Joanie and Richard, like several other little mommas and poppas can be seen quite frequently eating out during the noon hour, perhaps just to keep from facing such a quiet home.
 The sad part of it all is, just about the time they become adjusted to school, their kiddos are ready to graduate and leave for college... It just don't take long to live 12 years anymore... I can recall it seemed like forever before I reached the ripe old age of 18, but from there on, my life has fled like a rocket orbiting the earth...

"nosin"

For your information... The spinal column is a collection of bones running up and down that keeps you from being legs clean up to your neck.

The NEWSpaper Dedicated to the Development of the World's Richest Irrigation Area



The Earth News-Sun

"A CONSOLIDATION OF THE EARTH NEWS and EARTH SUN, OCTOBER 12, 1956"

NUMBER 6

10 CENTS

EARTH, LAMB COUNTY, TEXAS, THURSDAY, SEPTEMBER 24, 1964

16 PAGES

VOLUME II

**EARTH
 SPRINGLAKE**

Approximately 4000 Attend Open House at Plant X

The public toured Plant X during the three day open house, Sept. 18, 19, and 20. Friday, Southwestern Public Service was host to 700 national, state, county, and municipal officials, businessmen, and news media representatives from dozens of South Plains and Panhandle towns and cities, for a preview tour of the plant.

When Southwestern Public Service Co. was transporting a 525,000 pound generator unit by truck from the rail head at Amherst to its Plant X in the sandhills twelve miles north, two Amherst residents remarked, "They'll never make it." But they did, and today, that generator unit is one of four throbbing, gleaming, electric-generating beauties of the \$43 million Plant X.

The plant received nationwide publicity when it had to "grease" a turn in the pavement with soap suds in order to literally slide the 66 wheel truck trailer by the turn.

A.R. Watson, president and General Manager of the company told the Friday visitors how the plant received its name, "When we were planning this plant to be located out here in

sandhills of what was rugged ranch country, our engineers put down a lot of 'X's' where water was available, where fuel could be obtained, etc. Every where our company men went, we were asked, what's new at Plant X near Earth, Tex.? We were getting some equipment from out of state, and the manufacturers wanted to know where to send it. We advised that the equipment should be shipped to Amherst, Texas and to be marked for Plant X. We never changed that name."

Plant X today is the largest of the 11 base load generating stations of Southwestern Public Service Co. and can produce 487,500 kilowatts to power the plains as its sign goes. Inside, Plant X is a dynamo of engineering skill, a powerhouse with a force equal to 10,000 automobiles, 325 horsepower automobiles, bearing down upon you, and if necessary, all this power can be stopped in one sixth of a second.

Company guides in white coveralls and "hardhats" conducted the tours.

According to H.O. Hodson, Amarillo, vice president of the SWPS, Plant X held open house



SOUTHWESTERN PUBLIC SERVICE COMPANY OFFICIALS gave guided tours through Plant X, the largest generating plant owned by their Company, during the 3 day open house. Shown left to right is State Representative Bill Clayton, Division Manager, J.M. Collins and A.R. Watson, President of the Company.

to "show with pride, growth in size of this pioneer among generating equipment, which first housed a 50,000 kilowatt generator, then a 100,000 kilowatt generator, and now a 210,000 kilowatt generator unit.

U.S. Representative Walter Rogers, Pampa, remarked Friday before the preview tour, "This company has done a tremendous job in our area, and has advanced in efficiency with the growing sector of Texas that was once called 'The Great American Desert' but turned out to be 'The Treasure Chest of America'."

Watson said, "The plant really belongs to you people of this area, who flip on the switches." 700 visitors toured the plant Saturday and 2,600 Sunday, and it was a rewarding experience for those who attended the open house.

Plans Being Made For Livestock Show

The Earth-Springlake Junior Livestock and Project Show members met in the FFA show barn Tuesday evening, September 22 at 8:00 p.m.

Plans were made for the livestock show to be held January 22 and 23. The meeting was conducted by John Bridges, President.

The report was made that there are approximately ninety members in this organization, the purpose of which is to encourage the feeding and showing of livestock by FFA and 4-H Club members in the Springlake School district.

Approximately thirty-five members attended, and also Bill Kimbrough, County Agent, Littlefield, Ronnie McNutt, Assistant County Agent, Littlefield, and E.G. Gaston, Vocational Agriculture teacher and FFA Advisor.

Interested persons who have not been contacted for membership in this organization are urged to see or call John Bridges, E.G. Gaston, Ed Dawson, Billy Braden, Ed Jones, Gerald James, or Norman Hinchliffe.

L.K. Anleson, President of the Earth Chamber of Commerce offered the services of the Chamber of Commerce in support of the Livestock and Project Show. Refreshments of home-made ice cream were furnished by interested mothers of the boys.



Mrs. R.C. Hooten

Final Rites Held For Mrs. Hooten

Mrs. R.C. (Rose Ella) Hooten, 72, died in her sleep in her home early Monday. She had been a resident of Earth for thirty-three years, having moved here from Klondike, Texas in 1931.

Mr. and Mrs. Hooten have been retired for some years. Mr. Hooten was connected in the past with the Farmer's Gin, and in farming.

Mrs. Hooten was preceded in death in 1953 by a daughter, Bonnie Bell, formerly of Earth. The deceased was an active member in the Church of Christ of Earth.

Funeral services were held at 2:30 p.m. Wednesday at Earth Church of Christ with M.R. Phillips, minister, officiating, assisted by Kelley Newman, Plainview minister.

Burial was in the Earth Cemetery under direction of Parson's Funeral Home of Olton.

Survivors include her husband, two sons, Hollis Hooten, Lubbock, Haskell Hooten, Borger, six daughters, Mrs. Lola Sloan, Earth, Mrs. Rena Shores, Amarillo, Mrs. Mabel Loftis, and Mrs. Erma Lee Goodin, both of Kress, Mrs. Sybil Stagg, Borger, Mrs. Dorothy Passons, Newcastle, Wyo., a brother, R.B. Robnett, of Klondike, 25 grandchildren, and 25 great grandchildren.

Palbearers were grandsons-in-law, Bud Elmore, Larry Jarrett, Bill Mitchell, Tommy Golden, Bill Holt, and Jack Durrickson.

Absentee Voting Applications Being Taken

Applications from eligible voters for absentee ballots in the November General Election are being accepted at the County Clerk's office in the Courthouse in Littlefield.

Absentee ballots will not be issued until October 14. Applications for ballots may be made now by servicemen and other eligible voters who will be out of Lamb County on election day. The absentee voting period will be from October 14 through October 30.

The Clerk's office reports several applications are now on hand.

W. E. Duncan Services To Be Held in Portales

Services for William Evan Duncan, 63, of Springlake, will be at 10:00 a.m. Thursday, September 24 in Wheeler Chapel in Portales, New Mexico.

The Rev. A.R. Stewart, pastor of Springlake First Baptist Church and the director of the Wheeler Funeral Home will officiate. Burial will be in the Portales Cemetery, under direction of Wheeler Funeral Home.

Duncan was injured Sunday night in a two-car collision near Farwell. He died at 10:15 a.m. Tuesday in Clovis Memorial Hospital where he was taken after the accident.

The head-on wreck sent seven others to the hospital for emergency treatment.

Duncan is survived by a sister, Mrs. Marvel Caruthers and a niece, Noreta Caruthers, both of Springlake. His mother and father are deceased.

Palbearers will be: John Bradley, Billy Wayne Clayton, Herman Cooper, Dick Townsend, Les Watson, and Ernest Green, all of Springlake.

Senator Yarbrough Makes Brief Stop In Earth

By: Carolyn Hamilton

Senior Senator Ralph Yarbrough and Mrs. Yarbrough received a tremendous reception in West Texas, when they honored Panhandle towns with their presence Friday, September 18.

In Plainview, Senator Yarbrough addressed the Student Body at the opening of Wayland College's fall term. Following this he and Mrs. Yarbrough were honored at a luncheon in the ballroom of the Hilton Hotel. Local residents attending the luncheon were: Mrs. Bonnie Green, and Mr. and Mrs. B.T. Hamilton.

The group of people traveling with the Senator and Mrs. Yarbrough, including the Democratic Campaign Manager for this district, Bill Gouldy, Mrs. Wiley Bullock, Committee Woman from the 33rd district, Wiley Bullock, F.O. Masten of Sudan, Ed Johnson, Editor of the Ft. Worth Star Telegram, Alex Dickie, Administrative Assistant to Ralph Yarbrough, and others as they proceeded to Olton. There they were honored with a coffee at the Spotlight Cafe, with forty-five people attending. Mr. and Mrs. Preston Sampler and Mr. and



SENATOR RALPH YARBROUGH

Mrs. Wilton Bodkins hosted the occasion.

In Earth, Senator and Mrs. Yarbrough were elegantly entertained at an informal coffee in the Community Building reception room, where approximately 140 people awaited him and his party. Hostesses for the occasion were Mesdames M.E. Kelley, Bonnie Green, R.E. Barton, C.W. Terry, J.A. Littleton, Sr., Ray Kelley, and H.H. Hamilton.

Clarence Hamilton of Earth, proudly introduced Senator and Mrs. Yarbrough. In the receiving line were Mrs. Wiley Bullock, Representative Bill Clayton, Mayor Marshal Kelley, and Ray Joe Riley of Dimmitt, and Alex Dickie.

Beautifully appointed serving tables, in a crisp-cross fashion, featured orchid, aqua, and yellow satin cloths. The original centerpiece featured a beautiful bird bath containing orchid gladioli and dahlias. Decorating each table were zests of lemons, pyrocauthea berries, and greenery, pictures of the Senator were used.

Pouring the coffee from silver services were Mesdames J.A. Littleton, Jr., Russell Haberter

(Continued on Page 10)

Chamber of Commerce and Agriculture Breakfast Held Friday

The members of the Chamber of Commerce and Agriculture met in a called meeting at the Community Building for breakfast September 18, at 6:30 a.m.

The meeting was opened with a prayer by M.E. Kelley, after which a breakfast prepared by Mrs. Pate was enjoyed by all. Minutes of the previous meeting were read and approved.

Mr. Anderson greeted each one present by saying it was good to have fellowship at a breakfast get-together, and asked for ideas and suggestions from any one at any time.

Gene Gaston was introduced, and in turn introduced the president of the Young Farmers, Gerald James. He announced that on October 29 there will be an all day meeting at the school with speakers on "Midge Control," Water conservation, and other subjects of interest to farmers of the community. Among the speakers who are to be present are Commissioner of

Agriculture White, and Representative Bill Clayton. The Chamber voted to have members present for the day, and also to furnish dough-nuts and coffee for the estimated group of 200 people.

Mr. Gaston invited everyone to attend the livestock show Tuesday night, Sept. 22 at the Show Barn. The Chamber expects all members to be present and plans to help any way possible.

Phil Raught mentioned that the committee was still working on securing land for a golf course but at this time, a site has not

been located.

It was asked that the Chamber have members present at the next meeting of the Young Farmers, Oct. 5, at 7:30 p.m. at the school Cafeteria to help plan the Field Day on Oct. 29. There will be representatives present.

George Laing asked about the Lakes that are to be formed on the Draw. This is to be discussed at the Field Day at the school Oct. 29. Also, it was announced that Henry Lewis is to notify the Chamber of the next Commissioner's meeting, so the Chamber may have a representative present.

Mr. Anderson explained some of the work of the Chamber, and announced that anyone who is interested may become a member. The meeting was adjourned.

Members present were: L.K. Anderson, Jack Rylant, Harold Miller, Melvin Bock, Paul Wood, Earl Jordon, Jim Williams, Phillip Haberter, M.E. Kelley, Ross Middleton, Phil Raught, Rex Clayton, George Laing, W.D. Beasley, and Zou Wilson.

Guests were E.G. Gaston, Gerald James, and Terry Green.



THE GOVERNMENT CLASS OF SPRINGLAKE High School turned out almost full strength to meet and hear Senator Ralph Yarbrough speak Friday in Earth. In the foreground with Yarbrough is a threesome from the class, Donnie Heston, Phil Middleton, and Ray Tom Packard.

Farm Chemical Receives First Load Of Grain

Pody Welch delivered the first load of grain Tuesday, September 22, to the Farm Chemical and Grain Co. of Earth.

This company is managed by Norman Hinchliffe, and is a joint business with the company in Springlake, which is a leg of the Farm Chemical and Grain Co. of Springlake.

Pody's first load of grain weighed 15,430 pounds. It was Dekalb F-63, and was planted May 4. It was a good yield, and was considered fairly early due to unfavorable maturing

weather.

The two new tanks hold approximately 700,000 pounds each. Storage will not be available until next year, however.

Assisting Norman are George Miller and Raul Munoz, Bookkeeper is Mrs. Hinchliffe. Norman will appreciate your business. Now you may purchase your farm chemicals and bring your grain in to him at the same time.

This new Grain Co. is an addition to Earth.

Piggly Wiggly Announce Weekly Football Contest

Piggly-Wiggly of Earth is sponsoring a "Pick your winner" contest. Each week three prizes will be given, \$7.50 first prize, \$5.00 second prize, and \$2.50 third prize, amounting to a weekly total of \$15.00. Official entry forms should be turned into Piggly-Wiggly's by 4:00 p.m. each Friday. Clip the contest slip from your Piggly-Wiggly grocery ad, and

pick your winner. There will be ten teams from which to select the winning teams.

In case of ties, the person having the most-nearly correct score in the tie-breaker game will be the winner.

No member or family of Piggly-Wiggly's or the Earth News Sun personnel will be eligible to participate.

Smith-Adkins Exchange Vows In Church Ceremony

In a double ring ceremony at the Lazbuddie Methodist Church recently, Miss Beverley Jean Smith, daughter of Mr. and Mrs. Jack Smith of Lazbuddie and Billy Earl Adkins, son of Mr. and Mrs. W. M. Adkins of Fairfax, Oklahoma exchanged wedding vows.

Performing the ceremony was Rev. Harold Morris, former pastor of the Lazbuddie Methodist Church, currently at Bovina.

Given in marriage by her father the bride wore a bridal gown of silk chiffon over taffeta designed with a fitted bodice. It featured a protail neckline and three quarter sleeves. The skirt was highlighted with a floral motif of imported net and appliques of Alecon lace on the front.

The full gathered back was enlivened by a large butterfly bough and a full chapel train. Her waist-length veil of silk illusion fell from a pill box hat of lace and seed pearls. The bride carried a bouquet of gardenias and stephanotis.

Mrs. J. D. Carpenter, organist played wedding selections for the ceremony and the reception. Wearing emerald green floor length gowns fashioned with fitted bodice and portrait neck line and elbow length sleeves, the matron of honor was Mrs. Jerry McKenzie, Plainview, Okla.

Steve Myers and Jim Evans of Ralston. Candle lighters were J. D. Rollins, Anna, Texas and Darrell Jennings of DeKalb, Okla. Ushers were Billy Bob Shirley, Lazbuddie, Greer and Timmy Cigger of Anna, Texas.

Mother of the bride, Mrs. Smith chose for the wedding a lace dress of avacodo, with matching hat and shoes. Her corsage was a white orchid. Mrs. Adkins chose a tan knit suit with matching accessories. Her corsage was a green orchid.

Immediately following the ceremony a reception was held in the fellowship hall of the church. Coretta Watkins and Susan Allen of Mineola, Texas served the guest. The brides bouquet formed the center piece, with candles and greenery used to decorate the hall.

For a wedding trip to Cloudcroft, N. M., the bride was attired in a sheath dress of ivory linen with black accessories. A pink sweetheart corsage completed her ensemble.

The bride graduated from Lazbuddie High school and from Texas Christian University in August of this year. She was a member of Chi Betae Biology Club and the National Society Decorators.

The groom is employed by Indian Electric Association of Fairfax, Oklahoma. They are now located at their home at 136 1/2 2nd street, Fairfax.

Mrs. C. W. Terry Honored With Birthday Party

The lovely home of Mrs. E. R. Hawkins was the scene of a lovely birthday party in honor of Mrs. C. W. Terry, Thursday, September 17, at 3:00 p. m.

Mrs. Zou Wilson and Mrs. Emmett Barton were co-hostesses for the occasion.

The exquisite serving table, using an exquisite antique satin cloth made by the late Mrs. Yelton, mother of Mrs. Hawkins, was beautifully accented by a centerpiece of red rosebuds. Fall flowers were featured throughout the entertaining rooms.

Cookies, coffee, and mints were served to the guests. Marie Ferguson, Truth or Consequences, N. M., Alair, Rockdale, Texas, Bonnie Green, M. E. Kelley, Sam Jones, Marie Ross, Bonnie Haberer, A. C. Barton, Lena Hite, Terry Green, J. A. Littleton, Sr., Homer Sanders, Ray Kelley, Sam Cearley, John Laing, Forest Simmons, and E. C. Hudson.

The great grandsons of Mrs. Terry, Mike and Mark Green sons of Mr. and Mrs. Terry Green honored their great grandmother in assisting in the unwrapping of the gifts.

PTA Teacher Reception Held Monday Evening

The first meeting for PTA and a reception for teachers was held on Monday, Sept. 21, at 8:00 p. m. in the Springlake Cafeteria.

The meeting was called to order, and officers of PTA were introduced by the president, Mrs. Donald Street, Project chairman, Mrs. Robert O'Hair stated that substitute teachers have been provided for one hour during the coming week, so that the teachers may meet with the parents at these meetings.

Superintendent Bill Mann introduced the teachers. After the meeting, "Get Acquainted Games" were led by vice-president, Mrs. Norman Sulser and Mrs. Albert Lindley. Cake and coffee were served. JOIN YOUR P. T. A.

The Earth News-Sun Women's Page

Judy Angeley Assistant Lubbock County HD Agent



JUDY ANGELEY

Mrs. Judy Angeley, a January 1964 Texas Tech graduate has been appointed assistant county home demonstration agent in Lubbock. Her appointment was effective Sept. 1. She received a Bachelor of Science degree in home economics education, and since has been doing graduate work in this field.

Mrs. Angeley, formerly of Earth, was graduated from Springlake High School in '59. Her work as assistant agent will deal mostly with the six 4-H Clubs in the county. She will assist in the planning and organizing of program material, as well as attending some of the meetings.

Mrs. Angeley will also assist in sending out bulletins, and will work with home demonstration clubs in the county. Currently, she is interested in forming an at-large 4-H group in Lubbock for those 9 through 18 years of age.

During National 4-H week Sept. 26 through Oct. 3 she will work to boost enrollment in all clubs and interest on the part of the community in these clubs.

Brownie Troop Organized

Attending a morning coffee in the home of Mrs. Roney Smith were Mesdames Nina Messer, Agnes Lewis, Virginia Bordon and girls, Wilma Sartton, Mary Clark, Jody Ellis, Frankie Favor, and Elizabeth Street.

These mothers met to help organize a Brownie Troop which will begin their meetings on Thursday, Sept. 24 from 4:00 p. m. to 5:00 p. m. in the Jaycee building in Earth. At this time, there have been twenty girls enrolled.

Mrs. Zou Wilson Entertains With Supper Party

Mrs. Zou Wilson entertained Sunday evening with a supper party in her home.

Guests included Mrs. E. C. Cox, of San Bernardino, Calif. Mrs. Grace Franklin, of Los Angeles, Calif. Mr. and Mrs. A. B. Wilson, of Electra, Mr. and Mrs. R. G. Wilson, of Petersburg, Mr. and Mrs. Phillip Haberer and family, and Mr. and Mrs. A. C. Barton of Earth.

Mrs. Bill Lee Honored With Housewarming

A surprise housewarming for Mrs. Bill Lee in her new home in the Highlight addition was an event of Tuesday afternoon. Friends and neighbors called to welcome her with gifts.

Her Sunday School Class presented her with a beautiful arrangement of coral flowers for her dining table. Refreshments and cookies were served to the following guests: Mesdames Forest Simmons, M. E. Kelley, L. T. Smith, L. K. Anderson, Carra Morgan, J. D. McNeil, Opal Davis, Lilly Wuerflein, Roy Neal, Wayne Rutherford, Earnest Green, B. Campbell, John Laing, J. A. Littleton, Sr., Jim Dick McNeil, Ray Kelley, Lena Hite, Ann Hodge, and L. Z. Anglin.

NOTICE

Serviceable clothing is needed for Grade School children. Please leave these items with Dorothy Woods, School Nurse, or contact Mrs. Roney Smith, 986-2601. PTA women will repair these clothes if necessary.

Local Federated Women Attend Reception in Littlefield

The community building in Littlefield was the scene of the Lamb County Federated Women Clubs at a reception, Tuesday, Sept. 15, at 2:30 p. m.

Mrs. Robert Tipps, of Denver City, District President of Texas Federated Women's Clubs, used as her theme, "In the Hollow of Our Hands."

A creative centerpiece featured a lovely hand which held beautiful dahlias and fall flowers. Napkins with the hand motif were also used.

Refreshments of punch and cake squares were served to approximately sixty guests. Local ladies attending the reception were Mesdames Lena Hite, John Laing, Ray Kelley, and Roy Neal.

Study Club Attends Opening Performance of Theatre Center

Members of the XIT Study Club of Springlake attended the opening performance of "Guys and Dolls" on September 18 in Lubbock.

The performance is a Broadway Musical show, which was presented by the Lubbock Theatre Center. A very enjoyable evening was spent, seeing West Texans transformed into New Yorkers.

Members meeting at the home of the president, Mrs. W. B. Hucks, were Mesdames, Velma Baker, Mary Clayton, Eva Hopping, Marvel Carruthers, Gail Jones, Joy Stevens, Doris Winder, and one guest, Mrs. N. O. Drake, mother of Mrs. Mary Clayton.

Springlake schools will be dismissed Monday, September 28 for the Lubbock South Plains Fair. Classes will be resumed on Tuesday morning, September 29.

Teen-Age Party Saturday Night At Jaycee Building

Mr. and Mrs. Woodrow Powell and Mrs. James Packard were sponsors of a teen-age party at the Jaycee Building in Earth, Saturday, night.

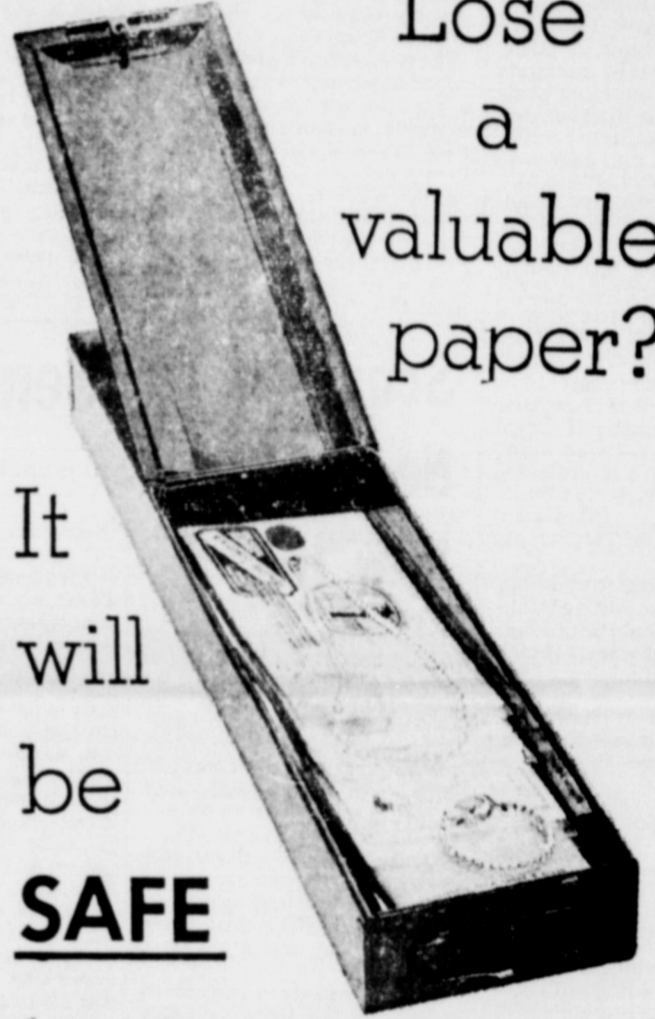
The group enjoyed dancing to the latest records. Refreshments of cookies, potato chips were served to the fifteen guests who attended.

NOTICE

Anyone knowing the correct addresses of Springlake School Exes, please leave the information at the Earth News office. This data is for the Exe's year-books which will be available at Homecoming.



Lose a valuable paper?



It will be

SAFE

in a DEPOSIT BOX... for only **PENNIES** per week



Each year she dries enough washables to clothe an army! More than a half-ton of wet clothes... that's the load the average housewife has to dry each year. She deserves a modern GAS dryer to help lighten the load. Instant GAS heat dries clothes faster, fluffier, fresher. Minimum maintenance, too. The heart of the dryer, the GAS burner, has a lifetime guarantee. No flue required and dependable, economical GAS saves you money... almost thirty "drying" dollars each year.

fuel for a growing empire **Pioneer Natural Gas Company**



MEMBER F. D. I. C. DIMMITT, TEXAS

County Man Superintendent 16 Rural Accidents Reported Of Cattle Division at Fair In County During August

A Pioneer Lamb County cattleman and agricultural leader is superintendent of the dual purpose cattle division of the Panhandle South Plains Fair which opens Monday in Lubbock.

He is V. M. Peterman, of Amherst, who has lived in Lamb County more than 38 years. Peterman is a director of the Lamb County Electric Cooperative, and a member of the agriculture committee of the Littlefield Chamber of Commerce.

He is immediate past vice president of the American Milking Shorthorn Society and has shown in practically every major show in the U. S., including the Grand National at San Francisco and the International Livestock Exposition in Chicago, the Waterloo Dairy Cattle Congress and many others, including the state fair at the southwest.

Peterman is an official judge and classifier for the Milking Shorthorn Society of Springfield. He was named outstanding Lamb Co. farmer of 1960 by the Littlefield Chamber of Commerce.

Peterman, who has spent his life breeding Milking Shorthorns is president of the Texas Milking Shorthorn Breeders, Inc. and author of many articles on breeding in trade magazines.

The Panhandle South Plains Fair will open Monday with a parade of bands through downtown Lubbock. More than 200,000 are expected to attend the fair this year. M. B. Hilburn, president, has estimated.

Preparations are being completed this week for more exhibits, rides, shows than ever presented at the fair.

Fair officials noted that livestock entries this year have already set new records. Among the special exhibits will be the famous X-15 rocket plane, a Mercury Space capsule, a brand new milking parlor, a kiddieland of rides just for young children, the children's barn yard, a hobby show and hundreds of other exhibits.

Main entertainment feature is Ice Capades, playing 4 nights and 3 matinees. First show is 3:00 p. m. Sunday.

Headlining all rides this year

will be the free parachute jump supervised by the Army, and located between the main south entrances to the fairgrounds.

Short of Coins? So Are We All!

Where are the 6,930,000 pennies, nickels, dimes and other coins that should be in general circulation in Lamb County?

Large quantities of them have disappeared from sight. According to the Treasury Department, they have been swallowed up by coin collectors, coin speculators and others.

Because of the shortage, banks are getting only a fraction of their normal supply and vending machines are less active.

How much of a supply of coins should there be in Lamb County? On a quota basis from the standpoint of population, there should be approximately 300 coins in circulation for every local resident.

There should be 193 pennies, 41 nickels, 37 dimes, 20 quarters and 6 half-dollars. The number of silver dollars is limited.

These coins should be, at any given moment, in the purses and pockets of the citizenry, in vending machines, in cash registers, in local banks and the like.

For each person in Lamb County, there should be \$16.69 in coins and, for the local population as a whole, a total of \$386,000.

Far less than that is around, however, much of it has gone into hiding, as it has in most parts of the country.

"Commercial Hoarding" is the answer, the Treasury Department states. One form of it occurs when businessmen hold onto coins rather than returning them to banks for fear of not getting sufficient new supplies when they need them.

Then there are the coin brokers, who secure coins from vending machine companies and other sources and sell them

The Highway Patrol investigated 16 rural traffic accidents in Lamb County during the month of August, according to Sergeant D. S. Lawson, Highway Patrol Supervisor of this area.

These wrecks accounted for nine persons injured, and an estimated property damage of \$14,655.00.

The rural traffic accident summary for Lamb County from January through August shows a total of 87 crashes resulting in seven persons killed, 34 persons injured, and an estimated property damage of \$82,290.00.

The statistics compiled as a result of these accidents and their consequences are very alarming. However, they are increasing and more people are being killed or injured each year as a result of someone's inadequate driving procedures.

In addition, crimes of all kinds including murder, rape, armed robbery and burglaries are increasing at an alarming rate nationally as well as in our own state of Texas.

In order to try and save some of the lives lost each year and help combat the increasing crime rate, the Patrol Sergeant requests everyone to encourage eligible young men to inquire about a position with the DPS as a law enforcement officer.

According to the Sergeant there are over one hundred vacancies in the Patrol Services of the Department and a training school is scheduled to start Nov. Men between the ages of 21-35

at a premium because of the shortage.

In some areas of the country they are selling bags of dimes and 50 cent pieces at markups of 20 per cent or more. It is reported.

Other speculators are buying up coins and keeping them off the market in the hope of selling them later at a substantial profit.

The government has a crash program under way to relieve the shortage. The mints are working 24 hours a day. Even so, it will be well into next year before it can be ended.

years who have a high school education and desire more information about a career in law enforcement are invited to contact any member of the DPS for the additional requirements as well as job benefits and an application form.

The Sergeant stated that the examinations will be given the second Saturday in October, throughout the State, for the November training school.

4-H Club Elects Officers For Year

The Springlake 4-H Club met in the School library Wednesday September 23, and elected officers.

Ann Bearden was elected President, Brenda Clayton, Vice President, Carolyn Smith, Secretary and treasurer, Carolyn Garrett, Reporter, and Lynne Hanson was selected Council Delegate.

The Club will meet every 1st Wednesday of each month at 1:40 p. m. The October meeting will be on "How to use milk on a Diet."

Approximately 23 girls attended this meeting.

WSCS Of Methodist Church Has Joint Meet

The three circles of the WSCS of the First Methodist Church met at 9:30 a. m. Thursday, September 17, for a social hour, followed by a very impressive prayer led by Mrs. Warren Morton.

The Betty Campbell and Edna Doughty Circles studied "Spanish-American Neighbors." The Training Circle observed the "Work of the Woman's Society of Christian Service."

Those present were Mrs. Ted Herring, Circle Chairman, Mesdames: Glen Bulls, Gene Tunnell, Bob Belew, Bobbie Murrell, Dean Jones, and Ray Axtell, Resource chairman.

Mrs. Albert Lindley and Mrs. Norman Sulser assisted in the program.

The three groups will be meeting jointly for the Study, "Spanish Americans," from the text, "Death of Myth" by Kyle Haselden.

A nursery will be provided each week.

Earl Moore Returns To Gonzales For Therapy Treatments

Mr. and Mrs. Richard Moore and children, and Mrs. Earl Moore have just recently returned from Gonzales, Texas where

Marianne Messer Honored On Ninth Birthday

Marianne Messer was honored on her ninth birthday Tuesday, September 22, at 4:00 p. m. by a party, given in the home of her mother, Mrs. Marcus Messer.

Refreshments of brick ice cream and birthday cake were served. The beautiful cake was white decorated in blue and yellow, and "Happy Birthday" with nine candles.

Games were enjoyed. The following attended: Leah Gallows, Frances Favor, Brenda Robinson, Melissa Been, Terri Smith, Kimberly Stockstill, Terry Jan English, Jo Anne Coker, Kim Kelley, Sheila Lewis, LaQuinta Clark, and Johnnie Olds.

Calling later in the afternoon were: Mesdames Kate Patterson, Dorothy Woods, LaDon Herring, and Elaine Been; Pansy Been, Alice Olds, and Tod Herring.

Earl was readmitted to the Texas Rehabilitation Center. He plans to remain there for physical therapy treatments for some time. His address is Box 58, % Texas Rehabilitation Center, Gonzales, Texas.

NOTICE

The Ex-Student's and Teachers Association committee members will have another planning session to be held on Sunday, Sept. 27 at 3:00 p. m. at the High School.

It is hoped that all of these committee members will be present in order to plan another successful Homecoming for our school, the date of which will be October 23.

Anyone having old photos of Exes or pictures of the school are asked to bring them by the office of the Earth News.

Mrs. Robert Tipps of Denver City District President of Tex. Federated Women's Clubs, will be the guest speaker at the joint meeting of the Town and Country Study Club and the Atrium Study Club Thursday evening at 6:30 p. m. at a Salad Supper in the Community Building.

All County Federated Club Women will be guests.

CARD of THANKS

The family of Maude Knight wish to express their appreciation of the sympathy extended during the illness and period of bereavement.

Bob A. Knights Clyde Knights R. Q. Whatleys E. W. Tuckers

Hello World



Mr. and Mrs. Arvel English wish to announce the birth of their son, Talton Ed Leon, born at 11:45 p. m. September 17. He weighed 7 pounds 6 ounces and is 21 1/2 inches long. The parents have one other child, a daughter three years old, Calessa.

Grandparents are Mr. and Mrs. Ed Mauk of Dimmitt, and Mrs. Bernice English of Muleshoe. Great grandparents are Mrs. Maud Mauk of Hereford, and Mrs. Lee Lambert of Hereford.

Uncle of the baby is Lonnie English, who is attending College in Reedley, California.

Arise, shine; for thy light is come.—(Isa. 60:1).

Every single day is fresh from the hand of God, wrapped in the shimmering glory of His presence. To get the most out of a day, one must give the most and be thankful for all the happy surprises God may grant.

now! the beautiful shapes for '65



'65 Chevrolet Impala Sport Sedan

Chevrolet Impala '65

It's longer, lower, wider—with comforts that'll have many an expensive car wondering why it didn't think of them first. More shoulder room, more leg room up front. Curved side windows, an

instrument panel that's a conversation piece. In fact, just about everything's new right down to the road. And even that'll seem newer because the Jet-smooth ride is smoother than ever.



'65 Chevelle Malibu Super Sport Coupe

Chevelle Malibu '65

Here's all that made Chevelle America's most popular new-sized car—plus some new surprises. Like those cleaner, bolder lines. Like the silky way its new ride skims over the choppiest roads. Like

V8 power that'll make you think we stole some of Corvette's stuff—which we did. All told, five engines are available from a quieter six to a V8 that comes on 300 horses strong.



'65 Chevy II Nova 4-Door Sedan

Chevy II Nova '65

It may be the expensive-est looking thrift car you've laid eyes on. But thrifty it is. The big difference being that Chevy II's marvelous mechanical efficiency now wears a debonair new look. And

offers a new range of engines, including a new 300-hp V8. You could get the idea that saving you money was the last thing we had in mind—if it weren't for that price sticker on the window.



New top-of-the-line Corvair Corsa Sport Coupe

Corvair Corsa '65

How's this for sport with an international flair! The longer, wider design gives all closed models a hardtop roof, along with more shoulder and entrance room. And to go with the racier look,

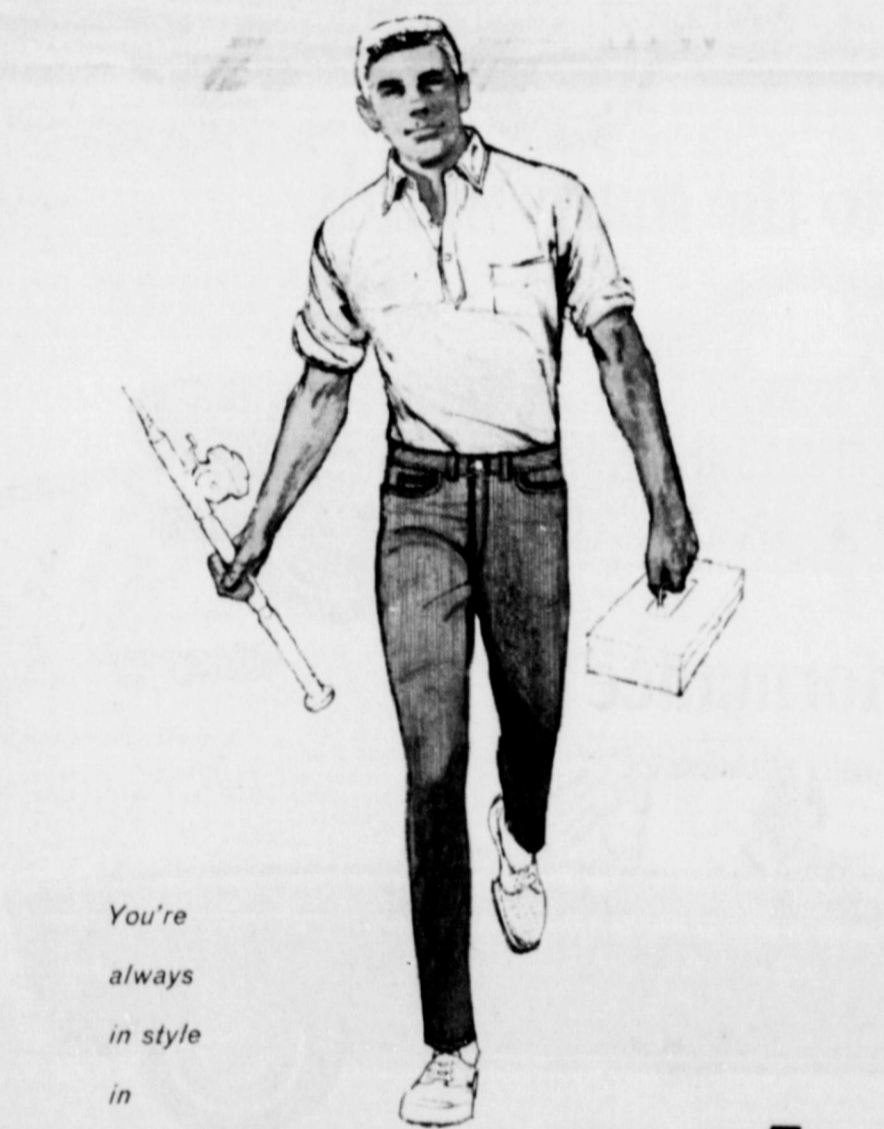
there's up to 180 hp available in the new Corsa series, up to 140 hp in the Monza and 500 series. Also a flatter riding independent suspension, more responsive steering and a wider road stance.

See 5 beautiful shapes for '65—Chevrolet, Chevelle, Chevy II, Corvair & Corvette—at your dealer's

THOMPSON CHEVROLET COMPANY

OLTON, TEXAS 79064

42-2421



You're always in style in

WHITE LEVI'S CALIFORNIAN MODEL

Wear them everywhere—WHITE LEVI'S always look right! Rugged enough for the roughest sports—neat enough for school and funtime—and now available in popular sportswear colors as well as your favorite off-white. No wonder they're young America's most-wanted pants—WHITE LEVI'S.

Your LEVI'S HEADQUARTERS

Rutherford & Co. Earth, Texas

Local FHA Chapter Elects Dreamboy, Buddy

In a recent meeting of the Springlake Chapter of the FHA members elected their dreamboy, buddy, chapter parents, and chapter mother.

Ken Dawson was selected as dreamboy for the chapter, Randy Kelley was voted buddy. The new chapter parents are Mr. and Mrs. M. H. Been, Mr. and Mrs. Weldon Barton and Mr. and Mrs.

L. H. Dent. The group selected Mrs. Leta Kelley as Chapter mother.

Also during the meeting the rules for entering items in the fair were explained and the annual trip to the state fair in Dallas was discussed.

Several committees were appointed to serve during the year. October 9 was set as the date for a salad supper that will precede the football game that night.

Mr. and Mrs. Herman Habbinga, from Lubbock, visited Sunday in the home of the Marshall Kelleys.

Mrs. Habbinga is the sister of Mrs. Kelley.



SEVERAL THOUSAND TOUR PLANT X during the weekend open house. Seen in the foreground is Carroll McDonald, office manager for Southwestern Public Service in Earth, Marcus Messer, and Eldon Parish, City Councilmen, and Rodger Haberer, member of the local school board.



The 1965 Ford is the most-changed in the 15-year history of Ford Division. The traditional, round Ford taillight is replaced by a modernistic hexagonal shape in keeping with the crisp, elegant look of the new Ford. Luxury styling is combined with a luxury car ride described as so smooth and so quiet the heater and air conditioner fans had to be moved into the engine compartment because their low-toned whirr was distracting. A luxurious new Ford Galaxie 500 LTD series (above) features an interior of quality and style previously obtainable only in higher-priced cars. Five separate roof lines are offered with interior and exterior trim features to give greater distinctiveness to each of the 17 models than ever before.

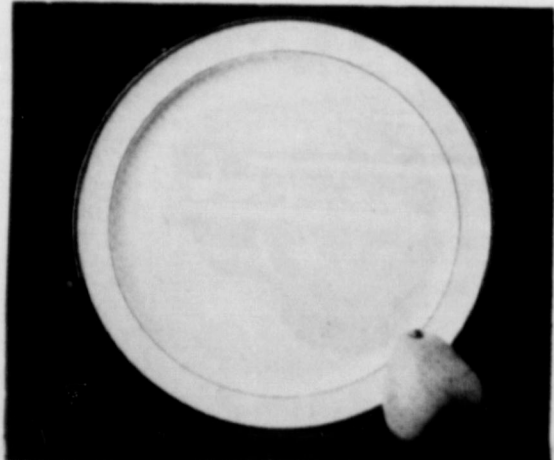
The complete line of 1965 Fords — two- and four-door hardtops, sedans, convertibles and station wagons — will be introduced in Ford dealer showrooms on Friday, September 25.



Your China Anniversary is When?

Some say it's the second. Others say it's the twentieth. We say it's whenever you need china.

If you started married life without a fine china service (lovely Lenox, for instance) . . . or if you have a service for four or six and find yourself entertaining eight or twelve . . . or if you don't have all the serving pieces and table accessories you need . . . we say your next anniversary is your china anniversary!



THE HOSTESS BOWL Regularly \$11.50 NOW \$7.95
THE HOSTESS PLATTER Regularly \$14.75 NOW \$9.95

MULESHOE 15 YEARS IN THE SAME LOCATION

JEWELRY LENOX WYLER CHINA WATCHES

HOME OWNED — HOME OPERATED

SENA STEVENS — JEWELL GRIFFITHS
PHONE 5820 MULESHOE, TEXAS

New '65 Models To Be Shown At Balko Ford, Friday

Rodney Balko, owner-manager for Balko Ford Sales invites everyone to come by to see the new Ford.

The most-changed Ford in the 15-year history of Ford Division will debut in Ford dealer showrooms Sept. 25.

"All 17 models in the 1965 Ford lineup, including a new luxurious LTD series, are literally new from tires to roof and from bumper to bumper," said Lee A. Iacocca, Ford Motor Company vice president and Ford Division general manager.

Vertical-mounted dual headlights and modernistic, hexagonal-shaped taillights accent the crisp look of the new Ford. Side styling features straight through lines emphasized by a sharp, full-length fender line from front to rear.

"The dramatic elegance of the 1965 Ford styling is combined with an even more dramatic luxury car ride so smooth and so quiet the heater and air conditioner fans had to be moved from the passenger compartment because their low-toned whirr was distracting," Mr. Iacocca said.

"Even the keys for the 1965 Ford are all new," Mr. Iacocca said. "They are designed to be inserted into the lock either side up. In addition, doors on all 1965 Fords will be equipped with a keyless locking system."

An ultra-modern six-cylinder engine rated at 150 horsepower lighter, more powerful, smoother-running and more economical than any other six-cylinder engine previously offered in the Ford line, heads a list of additional owner-benefits which include such items as the industry's first center-facing dual rear seats in 1965 Ford station wagons. Replacing the conventional third "jump seat," this new design affords comfortable seating for four children in the rear of the wagon.

Some of the many other features are curved side glass for

increased shoulder room, a 13 per cent reduction in the floor tunnel for greater passenger comfort, a recessed instrument panel with several additional inches of "living room spaciousness" in the passenger compartment, and a deeper trunk capable of holding two-suitcases in an upright position.

STYLING FEATURES

All 1965 Ford models have been completely restyled. Five separate roof lines and different series ornamentation give new and more complete distinction between the models.

Vertical-mounted dual head

lamps highlight the front with a grille that features thin horizontal bars. The turn signal parking lights are concealed behind the grille and are visible only when illuminated.

From the side, 1965 Fords feature straight-through lines emphasized by a sharp, full-length fender line from front to rear. At the front, the fender line on the body side panels accentuate this appearance.

The rear of the 1965 Ford continues the luxury-car look with clean, simple lines. The traditional round Ford taillight becomes hexagonal for 1965 to

carry out the rich styling motif. Five new and distinctive roof lines have been developed for two and four door hardtops, sedans, convertibles and station wagons.

The 1965 Ford features new, low-profile tires designed for better traction and handling as well as longer tire life and better brake performance, all at no increase in vehicle height. At the same time, tread width of the 1965 Ford has been increased to 62 inches front and rear for a wider stance on the road.

The Ford Galaxie 500 series, a completely new line of super luxury and two four door hard top Fords for 1965, features interior fabrics comparable in value to those in America's most expensive cars. Simulated wood paneling is used in the instrument panel and in door trim to produce a true luxury car decor. Sharing features common to all 1965 Fords, the Ford Ranch

Wagon, Ford Country Sedan and Ford Country Squire offer several new station wagon design ideas for 1965. All Ford wagons feature a unique rear window air deflector. Styled into the rear body pillar, the deflectors direct a curtain of air across the rear window surface to reduce accumulation of dust, water or snow.

Unique, center-facing dual rear seats available on Ford Country Sedan and Ford Country Squire wagons offer comfortable seating for up to four children. With one seat folded, a "table and chair" arrangement ideal for youngsters' games on trips is provided. With rear and center seats folded, a four by eight foot sheet of plywood may be placed flat on the load floor with the tailgate closed.

Mrs. Bill Morris, Mrs. Gene Brown and Dickie shopped in Lubbock Tuesday.

Women's Athletic Club Views Game Film

The Women's Athletic Club met Tuesday night, September 22, at the Springlake School Cafeteria, with thirteen members and one guest, Mrs. Earl Moore present.

Films of the Roosevelt and Bovina games were shown by Coach Mahan.

The next meeting will be held Tuesday night, September 29. All who are interested in the Women's Athletic program are invited to attend.

Gene Brown visited with his parents, Mr. and Mrs. Jack Brown in Hale Center Sunday.



THE TOTAL PERFORMANCE FORD GALAXIE 500 LTD 4-DOOR HARDTOP

Now... look into the many worlds



THE TOTAL PERFORMANCE MUSTANG 2+2

of Total Performance for '65



THE TOTAL PERFORMANCE FAIRLANE 500 SPORTS COUPE

-best year yet to go Ford!

From a new reversible key to a brand-new luxury series, the '65 Fords are so new you just have to see them for yourself.

New world of elegance . . . 17 solid, quiet Fords, including a new super luxury series—the LTD 2- and 4-Door Hardtops. New body, frame and suspensions give the smoothest,

quietest ride ever. New wider tread, new spaciousness, new Big Six engine.

New "cool" world of Mustang . . . Fastback 2+2 joins the Hardtop and Convertible. Many luxuries standard. New options include front disc brakes.

New world of value . . . 8 Fairlans, bigger,

handsomer, better buys than ever. A livelier, smoother new Six — 2 hotter V-8 options. 3-speed Cruise-O-Matic optional.

New world of economy . . . 13 Falcons with up to 15% greater fuel economy as a new livelier Six teams with optional 3-speed Cruise-O-Matic. New battery-saving alternator.

Best year yet to go Ford!
Test Drive Total Performance '65

FORD

MUSTANG • FALCON • FAIRLANE • FORD • THUNDERBIRD
RIDE WALT DISNEY'S MAGIC SKYWAY AT THE FORD MOTOR COMPANY'S WONDER ROTUNDA—NEW YORK WORLD'S FAIR



THE TOTAL PERFORMANCE FALCON FUTURA HARDTOP

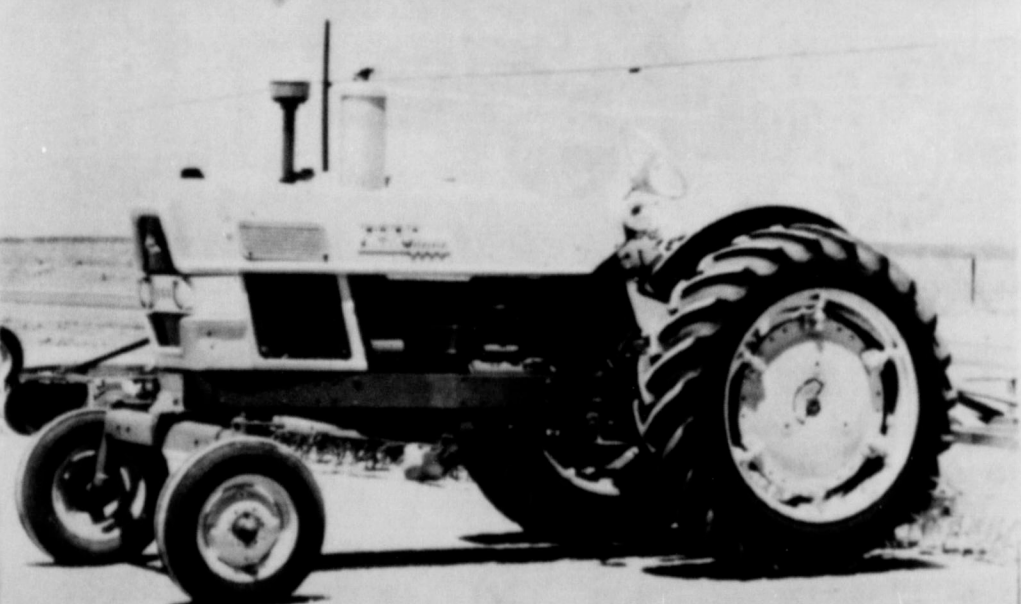
PRODUCTS OF Ford MOTOR COMPANY

See them at your neighborhood Ford Dealer's Friday!

BALKO FORD SALES

BOX 453 EARTH, TEXAS

WE'RE TRADING LONG ON NEW FORD TRACTORS



ALWAYS DEPENDABLE "FORD 6000"

PUT NEW LIFE IN YOUR TRACTOR WITH A FORD "POWER LIFT" TRACTOR ENGINE OVERHAUL

FRANCIS IMPLEMENT CO.

Box Office Now Open For Ice Capade Tickets

The box office for the all new 1965 edition of Ice Capades opens Monday, September 7, in the lobby of the Pioneer Hotel. The ice extravaganza opens at the Fair Park Coliseum during the Panhandle South Plains Fair on Sunday, September 27. There will be seven performances beginning with the 3:00 P.M. matinee on Sunday, Sept. 27 followed by four evening performances on Monday, Tuesday, Wednesday, and Thursday at 7:30 P.M. Additional matinees are scheduled for Monday, at 3:00 P.M., and Friday at 5:30 P.M. Children will be admitted half price at each performance. Adult tickets are \$2.00, \$2.50, \$3.00 and \$3.50.

Give Wood Furniture Proper Care

Too much wax, oil and polish can actually dim the beauty of wood finishes, says Mrs. Wanda Meyer, Extension Service home management specialist at Texas A&M University. Furniture manufacturers themselves point this out. The best cleaning care, according to the American Walnut Manufacturers Association, is to wash furniture with suds and water. Wash it once or twice with a cloth wrung out of warm soap or detergent suds, then wipe all surfaces with a clean damp cloth and rub dry. All wood pieces, modern or antique, thrive on this basic cleaning, as the suds remove various types of soil which are not affected by simply applying another coat of oil, polish or wax. Polishes or waxes applied too often tend to build up a film which reduces the beauty of the original finish. Authorities recommend that most furniture be waxed only once or twice a year.

My Neighbors



"I've made 'em so often I'm beginning to believe my campaign promises... you gotta help me, doc..."

Motor Vehicle Traffic Deaths Comparisons



The 44' tall swamp tree slide on Skull Island at Six Flags Over Texas is built around what once was a fire escape at a dormitory at the University of Texas. Guests climb the spiral staircase around the outside of the tree and slide down the long corkscrew-type slide inside.

There were 8 traffic deaths in Lamb County as compared to the past three year average of 8.3 deaths, according to Sergeant D.S. Lawson of the Texas Highway Patrol for this area.

The Sergeant stated that 137 counties had more deaths in 1963 than the previous three year average. One-hundred and four counties had less deaths in 1963 than the previous three year average, of this number, eight counties had no deaths. Thirteen counties had the same number of deaths in 1963 as the previous three year average.

The largest increase in the number of deaths in 1963 over the previous three year average was 55 in Harris County. The largest decrease in the number of deaths in 1963 was 11 in Brazoria County.

The 1963 death total for the state was 2729, an increase of 118 deaths over the 1956 all time high of 2611 deaths. The number of deaths for 1964 is about 12 per cent higher compared with this time last year. The Sergeant added, "with this trend the death count will exceed the 3,000 mark. This is a challenge which every responsible citizen must accept to do their best to reduce the traffic deaths on our streets and highways."

A weekly public service feature from the Texas State Department of Health

Accent on Health

J.E. PEAVY, M.D., Commissioner of Health

Anyone who is under the impression that glue sniffing gives a fellow a few harmless kicks is sadly mistaken.

Serious damage may be caused by the solvents in glues. Exactly how serious or extensive the damage can be is not yet known.

But it is a fact that nine recent deaths are attributed to this practice. Six of these involved glue sniffing while the victim's head was covered with a plastic bag. Some of the "sniffing" symptoms reported to poison control centers ranged from headache, dizziness and breathlessness to intoxication, unconsciousness, blurred vision and paleness.

Apart from the physical injury produced by the inhalation of the solvents from glues, incalculable harm can be done while youngsters are under its influence.

One youngster described his sensations: "I saw two of every thing, and everything far away looked real near. I had noise in my ears like a firecracker going off, and then I blacked out."

One boy in his early teens was so exhilarated by glue sniffing that he assumed a fighting stance

before an oncoming freight train narrowly escaping death.

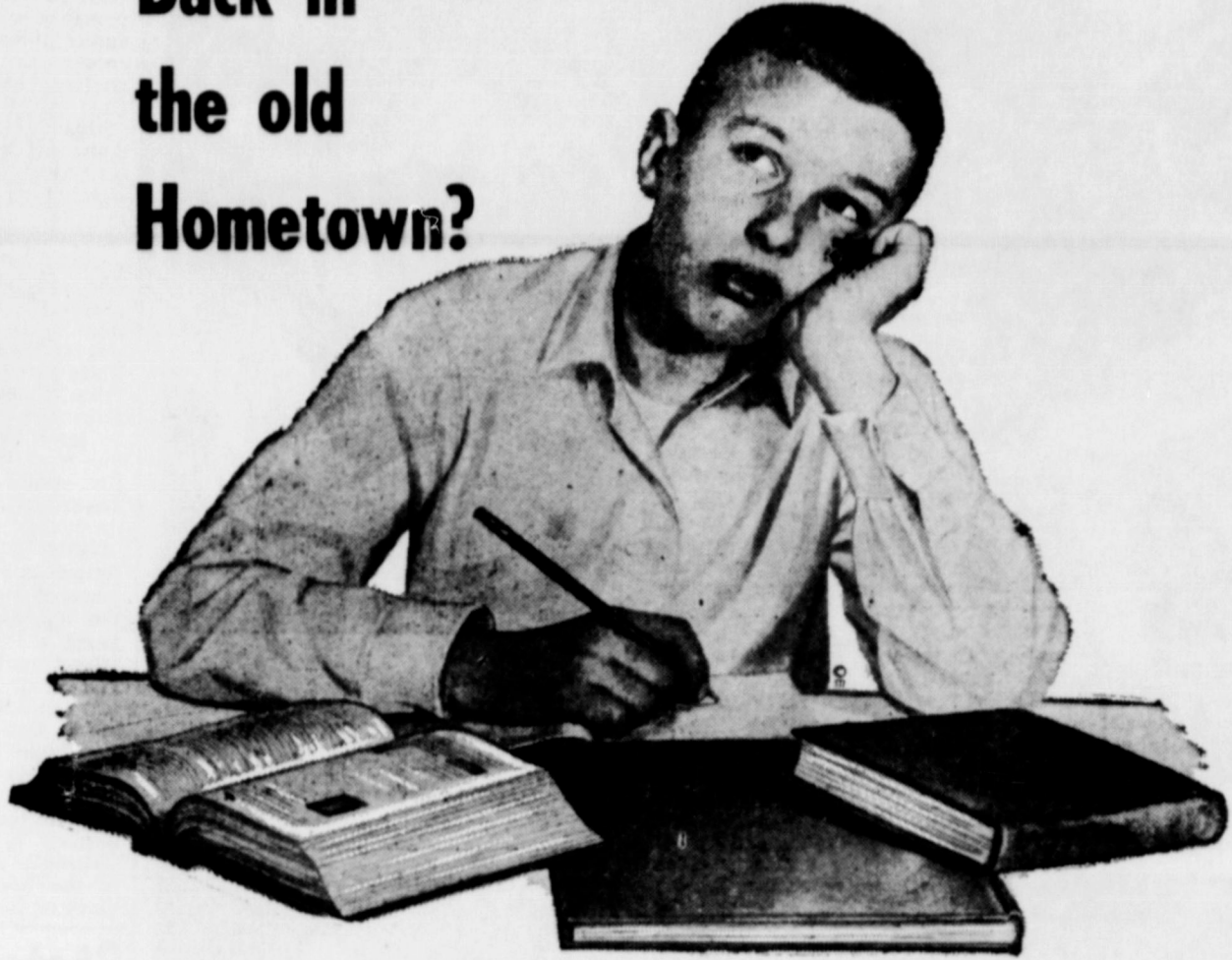
A 12-year-old who had never been known to steal, robbed a florist shop while under the influence of glue. Another young glue-sniffer jumped off a low building, convinced he could fly.

Inevitably, the question must be asked: What can be done? Some local jurisdictions have passed legislation aimed at combating the problem. Researchers are searching for a method of eliminating toxic vapors and thereby eliminating the glue-sniffing problem.

Unfortunately, there seems to be no single, simple answer. Recommendations from the National Clearinghouse for Poison Control Centers include advising parents and children as to the potential risk of sniffing, making glues and related substances less available in self service stores, and substituting less toxic ingredients in glue products.

It is important not to consider glue sniffing as amusing nonsense. A little sniffing may cause serious consequences.

I Wonder What's Going On . . . Back in the old Hometown?



Being Away at College Can Be Lonely . . . BUT IT NEEDN'T BE!

It's easy to keep informed of what your friends back home are doing. To get the complete picture of events in Earth-Springlake and Lamb County, you should receive The EARTH NEWS-SUN at your college address. You take a whole lot of home with you when you have The NEWS-SUN sent each week.

"COLLEGE YEAR SPECIAL"

COLLEGE SUBSCRIPTION COUPON

Please find enclosed \$3.00 for a School Year subscription to the New-Sun to be mailed starting

To: Name Address City State

Subscription Rates to Any College in the U.S.A.

9 Months to June 1965 - \$3.00

This Offer Good Until November 15, 1964



JUST FILL IN The coupon or bring it to the Earth News-Sun office with your remittance, and we and we will start the paper on the specified date given.

A LETTER FROM HOME ONCE A WEEK

Earth News-Sun



Handy Cartridge Container

An inexpensive plastic cigarette case makes a fine .22 cartridge container. It's lightweight, fits into your pocket and costs little.

Cooking Small-Boned Fish

Here's how some cooks prepare fish which have a lot of real small bones:

Cut the fish into chunks and run through a meat grinder, on coarse setting. Mix the chopped-up fish in cracker meal to absorb moisture.

Run this through the grinder again, only this time set on fine grind.

Result will be an easily handled substance that can be shaped into patties. Dip in egg batter and fry.

Reloading the .22 Rifle

Here's a quick way to load a .22 rifle having a tubular magazine. Just pre-pack the cartridges in a large-size soda straw and twist the ends closed. In the field, tear off one end of the straw and pour the ready-stacked hulls inside the tube. Pack as many straws as you think you might need.

For Cleaner Utensils

Coat the bottoms of your camp cooking utensils heavily with yellow soap before using them. Then the soot will wash off in a jiffy.

Shh! Quiet Man

Mr. Deer Hunter: Cover with adhesive tape keys, loose change, cartridges, anything that might clank at the wrong time. Big bucks will hate you.

Deflating Air Mattress

Deflating an air mattress takes several minutes and no small amount of work. Here's an easy way to do it:

On the morning you plan to break camp, turn the air valve as you lie in bed. Then take 40 winks while the mattress lets you down. When the air is gone, roll up the mattress and you're ready to go.

Another Use for Pipe Cleaner

Attach sinkers with a pipe cleaner cut in half and you can twist 'em off and on in less time than it takes to tell it.

Double-Duty Matches

If you cut the stems of matches in two, you can carry twice as many in your waterproof match container.

Snell Hook Holder

A good way to keep snelled hooks in your tackle box or pocket is to coil snell neatly and wrap hook and snell in masking tape.

This way rigs will not deteriorate, won't get damaged and won't catch and tangle in clothes or other gear.

Carpet Reduces Noise

More and more fishermen are lining the bottoms of their metal boats with old carpet. Cuts down noise that might spook a wary fish.

Aid to Line Spooling

Wind new monofilament on your reel by putting the line spool in a bucket.

Helps a lot in cutting down tangles, snarls and knots.

Foil Increases Lantern Light

You'll be surprised how much more light a regular gasoline lantern throws out if you line half of it with aluminum foil. Then too, the light can be directed where you want it.

Shellac Keeps Screws Tight

If a particular screw on a reel, rifle or shotgun keeps

coming loose, fix it right by putting a drop of shellac on the threads before seating it securely.

Landing Net Tip

Do you have trouble with your landing net drying out between catches so that it floats when you try to slip it under fish?

Stop this in a jiffy by dipping the net in melted paraffin before you go out. Then it will sink like a rock.

Curry Comb Scaler

There is no better fish scaler than the curry comb used to rub down horses.

Single Edge Blades Useful

Carry a single edge razor blade (in a safety wrapper of course) for quick field dressing of small game. It is sharper than a knife and easier to handle. A half dozen take up but little space.

Use Shells for Sinkers

Loop a short piece of wire into an empty .22 shell and fill with lead. Makes a good, light sliding sinker. Works equally well without the loop as a wrap around sinker if longer wire is used.

Straightening Out Line

If you have trouble spooling new monofilament on your reel, try dropping the spool into a boiling pan of water first. Hot line will pay out smoothly.

Varnish With Pipe Cleaner

When refinishing a fishing rod, a pipe cleaner will be just the right size to varnish under the guides where small brushes won't reach.

Corn Attracts Worms

An ear of corn buried in a moist corner of your garden will gather worms like a magnet.

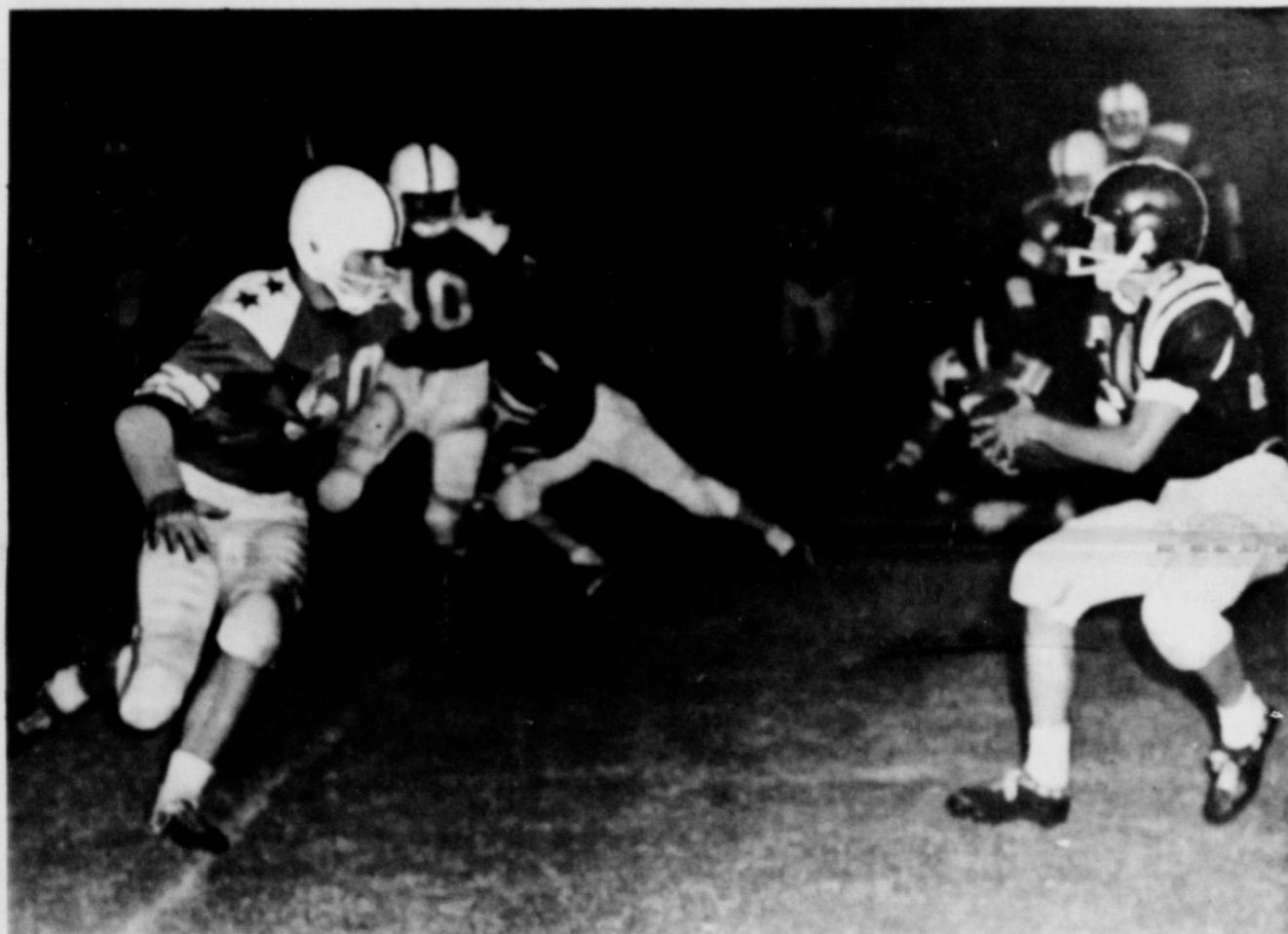
"A Victory For Danny"-Springlake 42-Bovina 14

by Eldon Trotter

This game is for Danny, Friday night as the Green and rang through the crisp air Gold of Springlake took the field. From the opening kickoff to the final whistle, there was no doubt in anyone's mind that



With a wall like this, you can't help but make yardage. It all started with a screen pass from Jerry Don Sanders to Floyd Henderson who is not pictured, but is following Thomas Gregory No. 10, Floyd Bennett No. 11, No. 53, Bobby Cofer and No. 50 John Patterson is shown taking left end, Jerry Roach out of the play.



THE END OF THE ROAD for Richard Carson of the Bovina Mustangs. Richard seems to be wondering just which Wolverine will hit him the easiest, John Patterson No. 50, or Thomas Gregory, No. 10. Action took place late in the second quarter.



GANG TACKLING SUCH AS THIS kept the Bovina Mustangs from going too many yards Friday night. Scotty Rundell No. 20 of Bovina was brought down on an attempted end run for a big loss by No. 11, Floyd Bennett, No. 81, Roy Flores and No. 40, Jose Triana. The Wolverines won the game 54-14.

the Wolverines meant to have this victory over Bovina, for just one week ago Danny Byers had walked to the center of the field, with the other two co-captains, John Patterson and Thomas Gregory for the toss of the coin against the mighty Eagles of Seagraves. It was in this game Danny received a knee injury that will probably end his football career, at least his high school career. Only a miracle will put Danny back on the playing field for the Wolverines.

Friday night, with crutches under his arms and a pad in his hand, Danny was still fighting on with the Wolverines, keeping a record of every play, and just what was working against the Mustangs of Bovina. The spirit of this one fellow player, plus a pat on the back from a smiling coach, who was even smiling at his players, while pointing out their mistakes, caused an entirely different feeling over the field as Jerry Don Sanders brought the Wolverines out of their first huddle, and started the power plays rolling up the field.

Lightning struck fast and furious as Floyd Bennett, 155 pound Junior Halfback, hit the left side of the line, and found a hole big enough to drive a truck through, and went over from 12 yards out for the first touchdown.

Jerry Don Sanders tried the right side of the line for the extra point, but fell short and had to settle for 6-0 lead.

Late in the first quarter, Floyd Bennett found the same hole waiting for him of the left side of the line and scampered 35 yards for his second touchdown

of the night. This time Thomas Gregory found running room on the right side, and carried the ball over for the two points.

On the first play of the second quarter, Messer was the man under, and handed off to Floyd Bennett, who tried his luck of the right side of the line, and again a big hole opened up for him, and he went the remaining 23 yards standing up to really put the Wolverines out in front 20-0. A pass play was blocked for the extra point attempt.

To start the third quarter, Bovina kicked to the Wolverines, and the ball was brought out to the 35 yard line. Big fullback Richard Mitchell took the hand off from Jerry Don Sanders and hit the center of the line like a freight train, and before he could be stopped he had rolled

all the way to the Bovina 13 yard line. On two power plays up the middle by Mitchell, Richard went into the end zone for a touchdown from 4 yards out. A pass play from Jerry Don Sanders to Floyd Henderson added two points and had a comfortable 28-0 lead.

With coach Mahan running his second and third units, Bovina started a drive that finally carried them to pay dirt, with Scotty Rundell hitting the left side from 7 yards out for the touchdown. A play up the middle by Rundell failed and the score was 28-6.

With 5 seconds left in the third quarter, Floyd Bennett found that same big hole waiting for him on the left side and promptly obliged Bovina by going the entire 27 yards for his fourth touchdown of the night. A pass play for extra point failed and Springlake led 34-6.

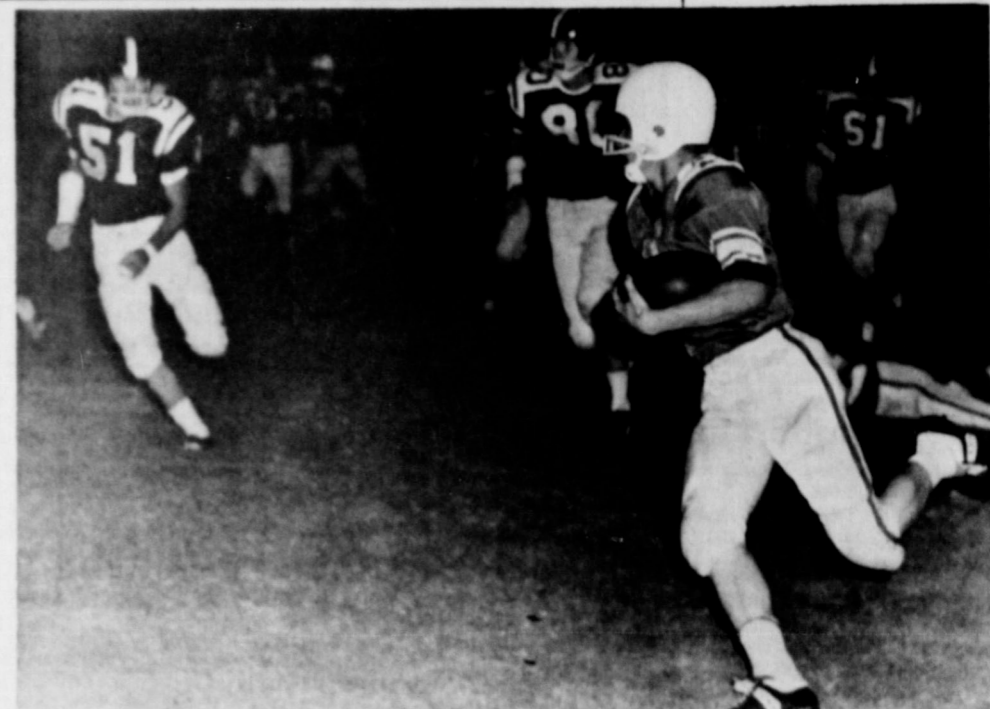
On the kickoff Larry Glasscock recovered a fumble on the 18 yard line. Doug Messer came in with the second unit and started rolling up the field once

more. From the 4 yard line, Messer pitched out to halfback Terry Parish, who found the right side to his liking, and went in standing up for another touchdown. A pass play from Doug Messer to end Roy Flores was good for the 2 extra points and a nice 42-6 lead.

Late in the fourth quarter, coach Mahan made sure that every man on the squad had some action. With the fired up third squad holding against the Mustangs, Richard Carson, the speedy Junior halfback ran wide to the outside and covered the remaining 33 yards standing up for the final touchdown.

The Bovina halfback, Scotty Rundell hit the left side for the 2 points, but the Wolverines ran the clock out moments later taking a victory for Danny from the Mustangs of Bovina 42-14.

This week the Wolverines will journey to Roosevelt to do battle and try to keep their victory streak going. Lets stay behind the Wolverines and let them know we are with them all the way.



FLOYD BENNETT ON THE LOOSE. It was runs such as this one, that gave Floyd Bennett 4 touchdowns for the night. Three Mustangs follow in pursuit, No. 51 Radford Venable, a center, No. 80, Jerry Roach, end, and No. 61, Don McKinney, a guard.

State Hunting Regulations Announced

Mourning Doves; September 1 to October 30 is open season. Shooting hours are from 12 o'clock noon to sunset. The daily bag limit is 12 and possession is 24.

Antelope; (Panhandle area) 1 antelope by permit only from October 3 through October 6. Permits must be secured from the land owner.

Deer; (Panhandle area) 1 buck deer or, by permit only, one antlerless deer may be taken. You may possess only 1 deer taken from the Panhandle Regulatory District. Open season is November 14 through 29.

Aoudad Sheep; Bag and possession is only 1 aoudad sheep by permit only. Open season is December 1 through 13.

Pheasants; Bag and possession limit is 2 cock pheasants per day and 4 in possession after the first day. Open season is Dec. 1 through 7.

Turkey; Bag and possession is 1 turkey of either sex. Open season is November 14 through 29.

Quail; Bag and possession limit is 12 quail per day and 36 in possession after the third day. Hunting hours are 30 minutes before sunrise to 30 minutes after sunset. Open season is November 14 through January 31.

Ducks and Coots; Open season November 25 to January 3 from sunrise to sunset.

Geese and Brant; Open season October 31 to January 13 from sunrise to sunset.

Sandhill Cranes; Open season October 31 through November 29 from sunrise to sunset. Bag and possession limit is 2. The bag limit on ducks is (4) and may not include more of the following species that (a) 2 wood ducks, (b) 2 mallards, (c) canvas backs 2 or 2 red heads or 1 of each. Possession limit is 8 and may not include more than (a) 2 wood ducks, (b) 4 mallards, and (c) 2 canvasbacks or 2 redheads or 1 of each.

Bag limit on coots is 10 per day and possession limit is 20.

Geese and Brant bag and possession limit may not include more than (a) 1 Ross's goose, (b) in alternative, 2 Canada geese or sub-species or 1 Canada goose or sub-species and 1 White fronted goose.

The Panhandle area consists of the counties of Cochran, Bailey, Lamb, Hale, Floyd, Motley, and Cottle and all counties to the north of these.

In Hockley County the migratory seasons are the same. The quail season is from Dec. 1 to January 16. Twelve quail per day is the limit and possession limit of 36 is allowed after the third day.

NEW AND DIFFERENT



We Invite You To
Come See The
1965 PONTIAC

FRIDAY, SEPTEMBER 25

"THE MOST BEAUTIFUL THING ON WHEELS"

AT OUR NEW LOCATION

Highways 60-70-84
East of Holiday Inn in Clovis



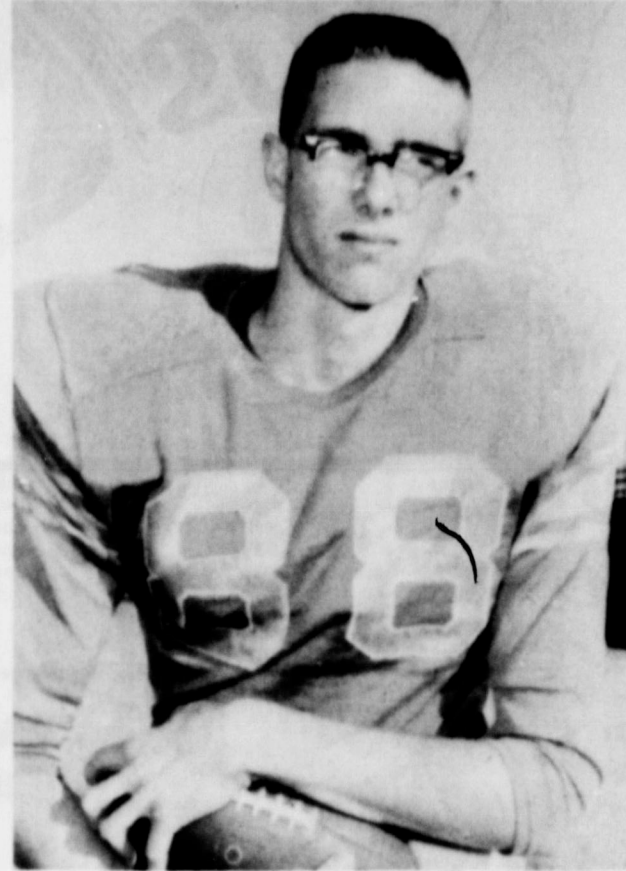
FRANK RIERSON PONTIAC

Phone 762-2986 CLOVIS, NEW MEXICO

If You Had Your Drothers - You'd Gin at Barton Bros.

FOR A GOOD JOB TODAY YOU CAN'T USE YESTERDAY'S METHODS AND HAVE BUSINESS TOMORROW

STARS OF THE WEEK



BACKFIELD

LINEMAN

Back of the week honor this week goes to halfback Floyd Bennett. Floyd scored touchdowns of 12, 35, 23, and 27 yards to lead the Wolverines to a 42-14 victory over the Bovina Mustangs. Floyd was also the high scoring back on the South Plains. The Lubbock Avalanche Journal carried a picture of Floyd, Tuesday morning, honoring him for this achievement. As a Junior we are all looking forward to a lot of fine plays to be turned in by Floyd before his high school career closes next year.

Lineman of the week honors goes to No. 70, Ken Dawson, who was one of the main reasons Bovina could not gain yardage through the middle of the line. Ken was constantly coming up on the bottom of the pile when the Mustangs would try to penetrate the stubborn Wolverine line. Ken is only a Junior and at 190 pounds is very capable of standing his own ground against anything the opponents want to dish out. We are all proud to see the younger boys on the squad make such a terrific showing as they did this week. Keep up the good work and go after Roosevelt.

SEE THIS EXCITING GAME !!!

Roosevelt

-VS-

Springlake Wolverines

**FRIDAY, SEPTEMBER 25
8 P. M.**

Roosevelt Stadium

Let's Go Wolverines!

**The Following Merchants and Businessmen Are Backing
The Wolverines All The Way...**

Patterson Bros. Grocery Earth, Texas
Jerrald's Welding & Machine Shop "Up Hill Welding Not Down" Phone 257-5341 Earth, Texas
Barton Bros. Gin Co., Inc. "We're Ginners-Not Grinders" If you won't write it or sign it Don't Say It
Wayne Rutherford 66 Station Phone 257-3661 Earth, Texas
Texaco Products Ray Glascock, Earth--Sam Fox, Muleshoe
City Drug Your Friendly Drug Store Gladys & Odum Earth, Texas
Parsons Funeral Home Phone 285-2621 Olton, Texas
Sunset Drive In Theatre Have You Attended a Movie Lately? Earth, Texas
Watson Bros. Butane Springlake, Texas
E. S. S. Co., Inc. Earth, Texas
Green Earth Earth-Phone 257-2081 Springlake-Phone 986-2311
Wolverine Drive-In Cafeteria 11-2 Window Service Earth, Texas
Springlake Motor Supply Springlake, Texas Phone 986-2291
Pounds Pharmacy YOUR HOME TOWN PHARMACY Phone 257-2861, Earth, Texas
Layman Bros. Butane Earth, Texas
Sunshine Laundry Your Philco Bendix Sunshine Center Earth, Texas
Earth Tire & Supply Phone 257-5231 Earth, Texas
Earth Cleaners Free Pick up and Delivery Phone 257-3662 Mr. and Mrs. Edwon O'Hair
Johnson-Pool HARDWARE & APPLIANCE Maytag-Zenith-Westinghouse Muleshoe, Texas
Earth Barber Shop Floyd Houston- Noe Gutierrez
Muleshoe Auto Parts Phone 3-0950 Plainview Highway

Rutherford & Co. Earth, Texas
Harvey Bass Appliance Your Frigidaire Dealer Muleshoe, Texas
The Earth News-Sun Earth, Texas
Earth Gin Co. Earth, Texas

Earth Auto Parts Your one stop Parts Store Earth, Texas
Springlake Elevator Phone 986-2311 Springlake, Texas
Earth Oil & Gas Co., Inc. Box 411 Earth, Texas Phone 257-3011
Fashion Shop 206 Main Muleshoe, Texas Phone 3-2880

Southwestern Public Service Earth, Texas
Earth Shell Station Phone 257-2251 Earth, Texas
Strain & Dunaway, Inc. Phone 257-3001 Earth, Texas
Springlake Welding Phone 986-2522 Springlake, Texas
Olton State Bank MEMBER F. D. I. C. Olton, Texas
Earth Floral & Gift Phone 257-4341 Earth, Texas
Earth Gulf Station Earth, Texas
Farm Chemical Co. Earth-Pho. 257-2301 Springlake-Pho. 986-2161
Brownd-Jordan Equipment Co. "Your International Dealer" Phone 257-3961 Earth, Texas
Springlake Superette Sooner Or Later Your Favorite Food Store
Hubbard-Warrick Phone 35660 Muleshoe, Texas
Fry & Cox Bros. Phone 3-3660-8430 Muleshoe, Texas
First State Bank Member F. D. I. C. Dimmitt, Texas
O. D.'s Pump & Machine Co. Earth, Texas
Service Seed & Delinting Co. Earth, Texas Phone 257-3911
Balko Ford Sales Earth, Texas
H. S. Sanders Lumber Earth, Texas
Piggly Wiggly Earth, Texas
King Furniture & Appliance Dimmitt, Texas
Western Ammonia Corp. Contact: Ted Herring or Curtis Smith Ph 965-3387
Francis Implement Co. Your Friendly Ford Tractor Dealer Muleshoe, Texas

Sunnyside News...

By Teeny Bowden

Mr. and Mrs. Alton Louder attended the funeral services of Forrest Westmoreland at Lums Chapel Monday afternoon. Burial was in Littlefield. He was the brother of Lowell Westmoreland, their son-in-law.

Mr. and Mrs. L. B. Bowden vacationed in Oklahoma Monday through Wednesday.

Around one inch of rain was received in the community Monday night with up to three fourths inch received again Tuesday night.

Mrs. Calvin Lippard worked at the Plains Memorial Hospital in Dimmitt with the Hospital Auxiliary Tuesday. Mrs. J. Paul Waggoner worked Thursday and Mrs. L. B. Bowden worked Friday. Mrs. Lippard also worked last Wednesday.

Mrs. Floyd Ivey was admitted to the Plainview Hospital Foundation Wednesday afternoon and underwent minor surgery Thursday. She was dismissed Friday.

Mr. and Mrs. Irving King were vacationing in the Cimarron Canyon of New Mexico Tuesday when they received word of the death of his sister in law, Mrs. Mary King of Hereford. They came as far as Dumas Tuesday night and spent the night with Mr. and Mrs. Billy King and family. They came on to Hereford and home Wednesday.

Tex Conard received only minor injuries in a two-car accident near Olton last Sunday night.

Mr. and Mrs. Orville Thompson of Hobbs, N.M., visited Tuesday and Wednesday with his twin brother, Mr. and Mrs. Ed Thompson.

Sixteen attended the Spanish Story Hour at the church Tuesday afternoon.

Mr. and Mrs. J. T. Holcomb returned home from Arkansas Wednesday. They visited last Sunday through Tuesday with Mr. and Mrs. Lilburn Arnold and family of Danville, Ark.

Mrs. Troy Jones, Mrs. Wanda Newberry, Mrs. Tex Conard and Mrs. Ezell Sadler attended the Physical Fitness Class at Dimmitt Tuesday night.

Mr. and Mrs. Earl Phelan and Mr. and Mrs. W. T. Mitchell of Weatherford visited in Berger Tuesday with Mrs. Phelan's cousin, Mr. and Mrs. Cecil McCarty. Mr. and Mrs. Mitchell spent Tuesday night with them. Mrs. and Mr. Phelan spent Tuesday night with Rev. and Mrs. Murie Rogers and son of Cactus.

Mr. and Mrs. Roy Phelan visited in Halfway Tuesday with Mr. and Mrs. Bill Dean and A. J. Morris.

Jan Blackburn was one of the five cheerleaders elected for the new Springlake school year. She is a seventh grader. Their first duties were performing Thursday night at the game at Springlake.

Carolyn Cummings entered Jessie Lee's Beauty School at Lubbock last week.

Sandra Crisp was elected the parliamentarian for the Springlake FIA last week. The installation service was held last Tuesday night.

The WMS night circle met for Bible Study Wednesday night with Mrs. L. B. Bowden in charge of the study.

The film "Unto a Full Grown Christian" was shown during the Prayer Meeting Hour in preparation for the revival which will be Sept. 27-Oct. 4.

Several from the community attended the 8th grade ballgame between Dimmitt and Springlake at Springlake Thursday night. Several also attended the Dimmitt game at Hereford Friday night.

Mrs. Vernon Scott and boys of Farwell visited Friday afternoon through Sunday with Mrs. and Mrs. Weldon Bradley, Molly and Lee.

Willard McCloy of Morse, Tex. visited Saturday morning with Mr. and Mrs. Howard Bridges and Mr. and Mrs. Roy Phelan. Mrs. McCloy will go to Dallas Monday to a vascular surgeon with a circulation problem in her legs.

Mrs. Dora Lilley of Baird visited Saturday morning with Mrs. Howard Bridges. She also visited with John Lilley, Mr. and Mrs. Johnnie B. Lilley and family and Hubert Lilley.

Several from the community attended the open house at Plant X Saturday and Sunday after noons.

Molly Bradley spent Saturday night in Dimmitt with Kay Bradley. Kay came home with her to spend the day Sunday.

Rev. and Mrs. M. D. Durham visited in Plainview Saturday with Marvayne Durham.

Mr. and Mrs. E. M. Stephens of Petersburg arrived Saturday to spend several days with Mr. and Mrs. Cecil Curtis and family.

Mr. and Mrs. Bill Baker and children of Slaton and Don Curtis of Canyon spent the weekend with Mr. and Mrs. Cecil Curtis and Debbie and other relatives.

The children of Mr. and Mrs. Cecil Curtis honored their parents with a 25th anniversary party at their home Saturday night. 22 guests were registered. The group enjoyed playing 42 during the evening. Those present were Mr. and Mrs. Curtis and their children, her parents, Mr. and Mrs. E. M. Stephens, her brother, Mr. and Mrs. Jack Stephens, Billy and Hoyt of Petersburg, his brother Mr. and Mrs. Glenn Curtis also of Petersburg, Mr. and Mrs. V. H. McRee of Lubbock, Mr. and Mrs. Ed Dawson of Springlake, Mr. and Mrs. W. O. Jones of Earth, and Mr. and Mrs. J. E. Shirey and Bill Ernest, Mr. and Mrs. Roy Phelan, Mr. and Mrs. Ray Axtell of the community, and Caroline Hucle of Springlake.

Mr. and Mrs. Earl King of Roswell, N.M., arrived Wednesday night and spent the night with Mr. and Mrs. Irving King. They are Mr. King's cousins.

Mrs. Elsie Purvines of Des Moines, N.M., arrived Thursday and stayed with the Kings until Saturday. They all attended the funeral services for Mrs. Mary King in Hereford Thursday with the burial in the Panhandle Cemetery. Mrs. Purvines is Mr. King's sister.

The WMS day circle met for the circle program from Royal Service Thursday afternoon with Mrs. Rex Jenkins acting as leader for Mrs. Raymond Littley.

The WMU met at the church Thursday afternoon for the Season of Prayer for State Missions. Mrs. Earl Phelan, prayer chairman was in charge of the meeting. Nine WMU members and one visitor, Mrs. W. T. Mitchell of Weatherford was present for the meeting.

Alford Crisp was dismissed from the Littlefield Hospital Thursday evening.

Mr. and Mrs. Milton Ott returned home from Truth of Consequences, N.M., Friday.

It's KICK-OFF time



CONTEST RULES

Get in on the fun! Anyone can win! Just fill out the entry form below, cut out the entry form each week from your Piggly Wiggly ad appearing in the Earth News Sun. Draw a circle around the team you think will win, and give the correct score on the two teams listed under the tie breaker. Take your entry to your Piggly Wiggly store in Earth. A box will be marked Football contest, drop your entry in this box by 4 p. m. each Friday. Weekly contests are open to every one except employees and families of Piggly Wiggly and Earth News Sun. Entries are to be judged by Bill Cooper and Eldon Trotter. All decisions of judges are final. Winner's names will be published in the Earth News Sun each Thursday following the close of the weekly contest.

First Prize

\$7.50

Second

\$5.00

Third

\$2.50

YOUR CHOICE OF THE ABOVE AMOUNT IN MERCHANDISE AT PIGGLY WIGGLY

PICNICS SUN-RAY Hickory Smoked Pound **29¢**

BACON CORN KING 1 Lb. Pkg. **55¢** | **LIVER** FRESH-PORK Pound **19¢**

FRANKS ARMOUR STAR 1 Lb. Pkg. **49¢** | **EGGS** XIT-Small Dozen **39¢**

MIRACLE WHIP KRAFT Quart Jar **49¢**

ZEREX ANTI-FREEZE Gallon Cans **\$1.59**

Tamales ELLIS-Jumbo 3 No. 2 1/2 Cans For **\$1** | **CHILI** ELLIS 24 Oz. Cans For **2.89¢**

DRINK HI-C Orange 3 46 Oz. Cans For **\$1** | **FLOUR** SHURFINE 25 Lb. Bag **\$1.89**

COFFEE FOLGER'S 1 Pound Can **79¢**

SUGAR IMPERIAL or HOLLY 10 Pound Bag **98¢**

FAB GIANT BOX **69¢**

Sweet Peas LIBBYS-Garden 5 FOR **\$1**

FROZEN FOODS

Fruit Pies BANQUET Peach Apple Cherry 4 FOR **\$1**

Coke OR **Dr. Pepper** KING SIZE **29¢**

Ice Cream ALL BRANDS 1/2 Gallon Carton **69¢**

FRESHEST PRODUCE

Delicious Apples LB. **19¢**

Sweet Potatoes LB. **9¢**

CABBAGE LB. **5¢**

LET US TREAT YOUR SEED WITH



Why risk disease damage that can cause poor, profit robbing stands? Let us delint and treat your seed with Panogen—the world's most proven control of cotton seedling diseases. Cost is low... profit big!

For Best Results... Let us treat your seed with Panogen THE BEST CROP INSURANCE YOU CAN BUY!

SERVICE SEED and DELINTING

EARTH, TEXAS

GAMES TO BE PLAYED OCTOBER 2-3 OFFICIAL ENTRY FORM

NAME _____
 ADDRESS _____
 CITY _____
 STATE _____

Pick 10 winners by circling your choice. On the tie breaker, Put the score of both teams.....

- | | |
|------------|-------------------|
| ANDREWS | HOBBS, NEW MEXICO |
| SILVERTON | MEMPHIS |
| PETERSBURG | ROOSEVELT |
| TULIA | FLOYDADA |
| MORTON | DIMMITT |
| SUNDOWN | LAZBUDDIE |
| ARKANSAS | TCU |
| SMU | ARLINGTON STATE |
| TEXAS | ARMY |
| RICE | WEST VIRGINIA |

TIE BREAKER KRESS HAPPY



DOUBLE S & H GREEN STAMPS WEDNESDAY

With 2.50 Purchase or More

EARTH, TEXAS



Open 7 a.m. Until 8 p.m.

Monday thru Saturday

We Reserve The Right To Limit Quantities

THESE PRICES GOOD ALL WEEK

Oil and Gas Production in County Adds \$5 Million To County Prosperity

A \$5 million a year ingredient in the prosperity of Lamb County is the production of oil and gas, the Texas Mid-continent Oil & Gas Association says in its current survey of economic factors stemming from petroleum operations here.

Using just-published U.S. Bureau of Mines figures as a base, the Association has projected what oil and gas activities mean in this county. In 1962 Lamb County was producing more than 1.7 million barrels of crude oil and 64 million cubic feet of natural gas. The oil was valued at \$5 million, the natural gas at \$8,000.

Lamb County ranks 121st in the state as total value of oil and gas production.

"Demand for Texas crude picked up enough last year to give us an increase of about 3 per cent over 1962 on a statewide basis. This slightly improving trend seems to be holding this year as more autos are put on the road and nationwide business conditions accelerate," said James L. Sewell, president of the association.

"It will be several months, however, before we know to what extent individual counties are participating in the current market."

The dispersion of oil dollars through Lamb County business channels and the healthy effect given property values by petroleum industry activity are indicated by several figures published by the association.

It is estimated that royalty payments to Lamb County landowners who are fortunate enough to have producing wells on their property create a "crop" worth about \$630,000 annually. These and other farmers and ranchers who have leased acreage for exploration receive additional rental and bonus payments, but sufficient current data is not available for measuring the amount.

Oil and gas operators invested an estimated \$144,000 in Lamb County last year in the search for new fields and in the development of zones where production has been found. The Oil and Gas Journal reports that 3 wells were drilled in the county in 1963 all were dry holes.

Drilling operations included 2 wildcat wells in which operators hunted oil in new territory or at new depths.

Petroleum industry payrolls contribute about \$400,000

a year to the county, according to Texas Employment Commission records. They show about 89 persons directly employed in oil and gas operations.

The state government's financial interest in Lamb County operations is measured by the \$232,000 a year which the operators and royalty owners provide the state government in production taxes. These payments are in addition to those paid to local units of government and schools as property taxes.

Time for Texas Motorists to Have Vehicles Inspected

Homer Garrison Jr., director of the Texas Department of Public Safety, announced today that the time has arrived for Texas motorists to have their vehicles inspected again.

Garrison said September 1 marked the beginning of the 1965 vehicle inspection period as prescribed by the Public Safety Commission. As in previous years, the period will end on April 15, 1965.

"This means that between now and April 15, 1965, more than 5,200,000 Texas registered vehicles will have to be inspected at the 5,200 official inspection stations in Texas," he said.

Garrison urged motorists to have their vehicles inspected in the routine visits to garages for ordinary maintenance and repairs and thereby eliminate the necessity of having to wait in line at a later date for an inspection sticker. He further pointed out that with the ever increasing number of vehicles registered in Texas, it is becoming ever more difficult for the motorist to get an inspection sticker without some delay.

"With the hard summer driving coming to an end, fall is an excellent time to have vehicles safety checked for the winter months ahead," Garrison said.

In announcing the new inspection period, the Public Safety Director pointed out that vehicle inspection in Texas has apparently been a valuable tool in reducing traffic accidents due to vehicle defects. When compulsory vehicle inspection began in 1951, 19% of all vehicles in fatal accidents had a defect that contributed to the accident, while in 1963, that percentage

August Permits Total \$15,800

Building in Earth slowed down considerably during the month of August with only \$15,800 in permits issued at City hall during the entire month.

Purchasing permits during the month were Fred Usery \$14,000 for a 3 bedroom home in Taylor addition, Elias Cantu, \$500, for a car port in Armstrong sub-division, J. E. Livingston, \$500, 24x10 addition in Armstrong sub-division and Ambrosia Flores \$300 for moving dwelling in to West side Addition.

Permits in August last year reached a total of \$54,500.

Save Dollars By Proper Operation Of Cotton Pickers

Cotton farmers interested in saving costly dollars on each bale produced should consider carefully the way they operate their mechanical pickers.

The difference between operating a mechanical cotton picker improperly and handling one skillfully may be as much as \$14.50 or more per bale, says Beverly G. Reeves, Cotton ginning and mechanization specialist, Texas Agricultural Extension Service.

Driving the picker off-center on a row often results in skimming off pieces of bark from the cotton stalks, explains Reeves. Being quite difficult to remove from cotton in the gin, bark may show up in the sample at the classing office. Cotton classed "bark" automatically loses one grade and receives a one cent per pound penalty in the loan, he points out.

As an example of what this might mean to you, let's say that your cotton was down-graded from M 1-3/32 to SLM 1-3/32 because of "bark". A dif-

ference in price of \$1.90 per one hundred pounds or \$14.50 on a 500 pound bale, explains the specialist.

Therefore, a properly adjusted carefully operated cotton picker can save hundreds of dollars a harvest season. This, says Reeves should be reason enough for making sure the picker operator keeps the machine centered on the row and does a good job of operating it in the field.

Salt Analysis Of Irrigation Water Advised

It's poor business to guess at the quality of your irrigation water. Rather than be in doubt as to possible harmful effects of water on future soil productivity, Jim Valentine, area Extension soil chemist, suggest you have the water evaluated by a chemical analysis. The ideal time to collect samples is during the highest period of water use.

This need is particularly acute with new wells and in instances where wells are deeper than average for the area. Valentine says it is known that common salt in high concentrations may exist below the red bed formation. If wells extend into this strata, there is a greater possibility of dangerous salt levels in the water.

Soils vary widely in their ability to tolerate salt without being harmed--and some crops are more tolerant than others. Clays where the water intake rate is already slow, can be made even less porous by a water high in sodium. Obtaining stands can become a problem on lighter soils due to sodium accumulation that crusts the surface.

Water samples may be submitted to the Soil Testing Laboratory at Texas A&M University. Samples must be accompanied by the completed information sheet, available at the local county agricultural agent's office. The present fee is \$5.00 per sample.



If we refuse to allow ourselves to believe in negativity of any kind and put our affirmation in the goodness of God, then we will be able to counteract physical ills through the purification of the body temple. And the path to that high estate is reverent prayer.

Therefore, a properly adjusted carefully operated cotton picker can save hundreds of dollars a harvest season. This, says Reeves should be reason enough for making sure the picker operator keeps the machine centered on the row and does a good job of operating it in the field.

Screwworm Danger Worse In Fall

Texas ranchers and farmers should take special precautions in handling their livestock during the coming weeks to prevent new attacks by the screwworm fly.

Eradication authorities pointed out that in past years, the livestock pest has always made large, rapid gains during the fall months when wet, cool weather is extremely favorable for insect development, and an increase in livestock management practices produces an abundance of wounds attractive to the insect.

However, only one case was detected during August.

Infestations detected, treated and reported during the early stages of development can be controlled, officials say.

Practically all of the \$6 million contributed voluntarily by farmers and ranchers and appropriated by the State will be expended by Dec. 1.

The Southwest Animal health research foundation, which spearheaded the producer fund drive, along with industry and government leaders, is studying ways of getting the program out of its financial straits.



"There would be fewer pedestrian patients if there were more patient pedestrians."

Congress Urged To Remedy Order On Redistricting

WASHINGTON—The National Association of Manufacturers has urged Congress to take action to remedy the results of the Supreme Court decision on apportionment of state legislatures.

In a letter to Representative Emanuel Celler (D-N.Y.), chairman of a House Judiciary Subcommittee, NAM Executive Vice President Leo V. Bodine said NAM supports "some corrective measure which will once again restore to the states their traditional authority to apportion their legislatures on a basis which can reflect geographic, as well as population factors."

Over 120 separate bills have been introduced in Congress to change the Supreme Court's apportionment decision, and while the NAM does not support any specific bill, the NAM letter states, "The delicate balance of power in federal-state relationships was upset when, for the first time in the history of our nation, as a result of the Supreme Court decision, states are no longer permitted to constitute their state legislatures on a basis other than population."

REMOVE POWER

The letter to Congressman Celler also states that if it is believed that an amendment to the Constitution is required, the Subcommittee should recommend legislation to maintain the status quo until full opportunity is provided to the states to ratify such an amendment.

The prayer of faith shall save him that is sick.

—(James 5:15). We can use our faith to help others in sickness, as well as ourselves. Our prayers can be like lights in the darkness because our affirmations of God-life can bring His healing presence to the side of the one in need of Him.

YOU'RE WAY OVERDUE FOR A CHECK-UP



... Memo to Grain Farmers ...



TIDE EQUIPMENT SAVES YOU MONEY

HOW TIDE CAN SERVE YOU NOW:

To get the most out of your fertilizer dollar on your grain sorghum land, use TIDE bulk blend fertilizer and their fine equipment.

NOW IS THE TIME:

As soon as possible after combining, shred stalks and apply TIDE's prescription blend fertilizer to get maximum decomposition of the stubble and bring your soil nutrient level up to its needed point. See your TIDE representative. All nutrients 100% water soluble, easily and economically applied.

A SPECIFIC FERTILIZER BLENDED FOR A SPECIFIC CROP USE:

Prescription blended on this basis to meet your soil needs:

1. BY SOIL TEST
2. BY THE AMOUNT OF CROP REMOVAL
3. BY THE AMOUNT OF ORGANIC MATTER LEFT TO DECOMPOSE.
4. BY THE ROTATION SYSTEM USED
5. BY THE SOIL TYPE AND ITS CURRENT CONDITION

TIDE'S TILT BOX SERVICE:

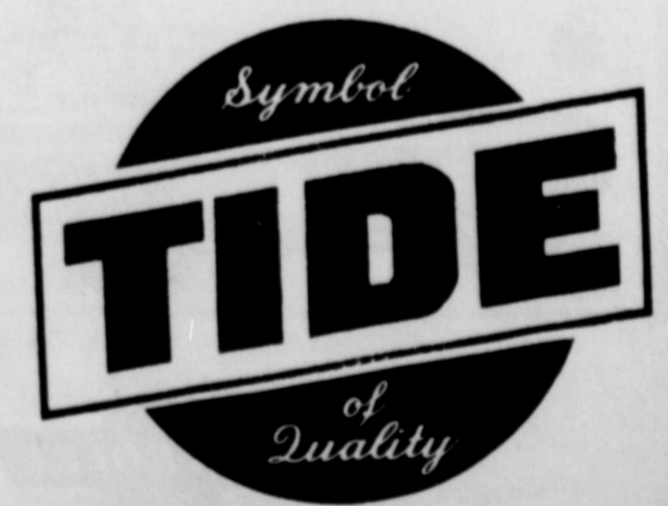
Only TIDE can give you the convenience of bulk service at the field... with no handling. 4,000 lb. spreaders filled in minutes with high analysis. Prescription blended fertilizer... no time lost in "LOADING" equipment. Fertilizing at its peak of efficiency for efficient growers who desire to reduce operational cost.

TIDE'S COMPLETE LINE OF FARM CHEMICALS:

1. All fertilizer 100% water soluble.
2. Bulk or Bag
3. Anhydrous Ammonia
4. Herbicides
5. Insecticides
6. Fungicides
7. Defoliant

LET THE EFFICIENCY OF OUR EQUIPMENT AND EXPERIENCE HELP THE EFFICIENCY OF YOUR FARMING.

No Bags to Burn
No Bags to Handle
HIGH ANALYSIS Fertilizer
By Just Pulling the Handle.

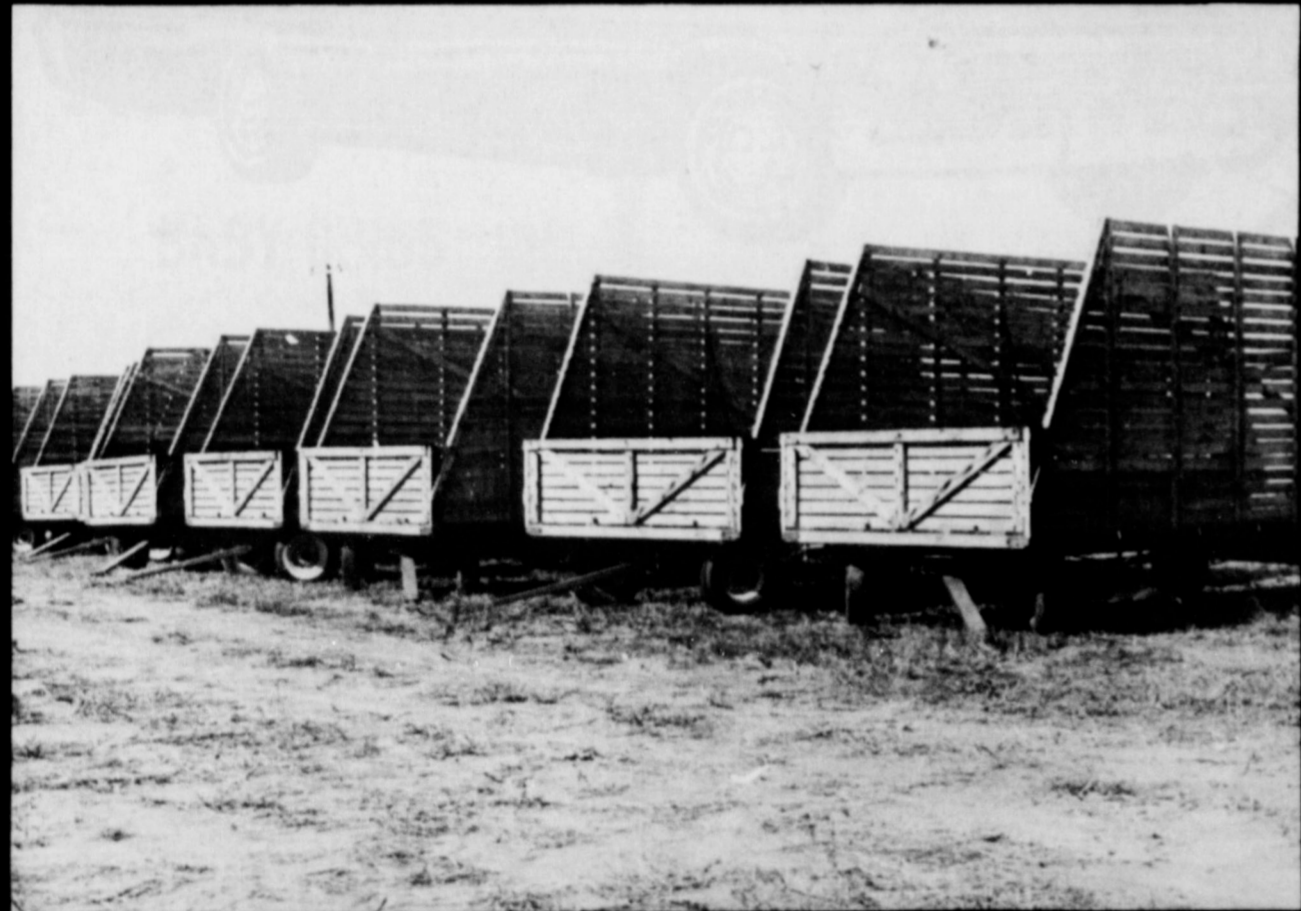


ONLY the BEST... Is Fit To Be TIDE

LITTLEFIELD 385-5735
FARWELL 481-3346

SEE DUTCH OR DAVID
SEE DICK OR CLARENCE

TRAILERS



COBY *** BIG 12 *** RANGER

THREE OF THE MOST FAMOUS CHASSIS ON THE MARKET TODAY!!!

BUILT TO YOUR SPECIFICATION

- * WOOD OR STEEL RUNNERS
- * ANY COLOR PAINT
- * MESH WIRE SIDING
- * BOARD SIDING

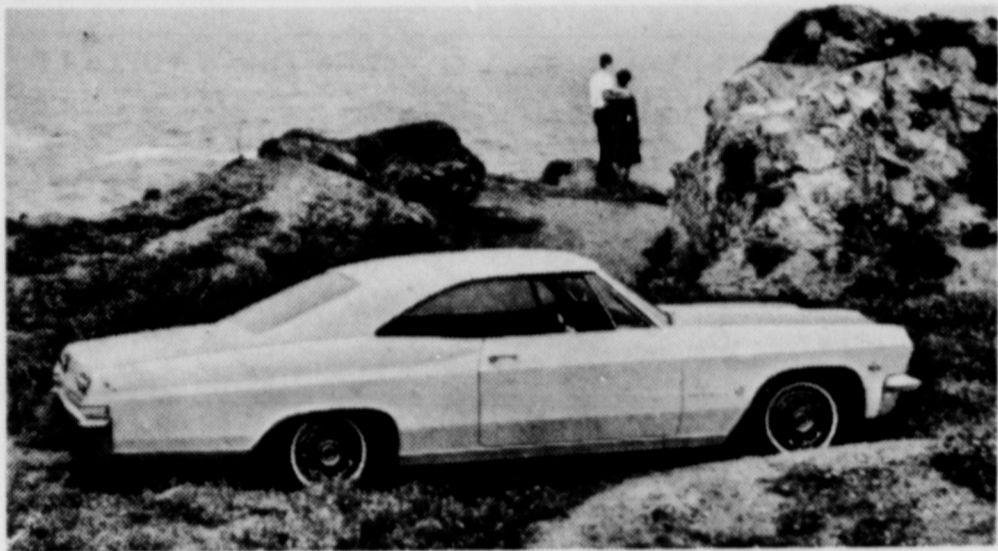
JOHNSON-POOL TIRE CO.

MULESHOE, TEXAS

Thompson Chevrolet To Show New '65s Today and Friday

Distinctive profile seen in

Beautiful New Chevrolets for 1965



Leading the beauty parade of 1965 cars is the elegant Chevrolet Impala Sport Coupe (above) with new flowing lines, new roominess and a distinctive profile. Stylish roof lines and curved side windows blend with the gracefully contoured rear quarter

The 1965 Chevrolet line will be on display Thursday and Friday, Sept. 24-25 at Thompson Chevrolet Company in Earth. Marcus Messer, manager invites everyone to stop in and see the all new Chev.

Chevrolet takes its longest stride into the line car field with its 1965 passenger cars, plus offering the widest variety of luxury models and product features in its 54-year history.

On display in dealer showrooms on Thursday, Sept. 24th will be 45 models in five distinctive lines of new Chevrolets. Of these will be "sport models", convertibles and hardtops.

There are all new cars in two lines:

The regular Chevrolet, long time industry sales leader, moves to a new prestige plateau with the greatest comfort and luxury ever offered.

The Corvair makes a dramatic advance with its first major styling change in five years.

Customer approved design, with significant styling refinements, is continued for the new Chevelle, Chevy II and Corvette lines. The Corvette also become the first American car to provide four wheel disc brakes as standard equipment.

Among approximately 400 accessories and optional features available on 1965 Chevrolets is

the first FM stereo system offered by an auto maker. Another is a telescoping steering column to give greater driving comfort for Corvairs and Corvettes.

With its new models, Chevrolet hopes this year to establish its third successive industry sales mark, S.E. Knudsen, general manager, declared.

"For 1965, Chevrolet is keeping pace with the public's growing preference for prestige transportation with the widest possible customer choice of options and features to fit individual needs."

Following are highlights of the five members of Chevrolet's "family" for 1965: Regular Chevrolet: The top selling line is an entirely new automobile for 1965. It is the most luxurious car ever offered by Chevrolet.

Fifteen models in four series stress a bigger car concept. The new Chevrolet is longer by more than three inches, wider by 1-1/2 inches and one inch lower than 1964 models.

Interiors offer greater roominess, three inches more shoulder room, plus increased leg room, both front and rear. Floor tunnels are substantially smaller. The luggage compartment has a flat floor for easier loading.

The all new styling features an entirely new look. Square front fenders sweep through the

panels. The new Impala Convertible features an inward folding top with tempered glass rear window. The regular-size Chevrolet is available in 15 models in four series. The public announcement date for all Chevrolet-built passenger cars is September 24.

body into gracefully contoured rear quarter panels. The grille is framed by deeply recessed headlights.

The rear deck is flat with a slight downward taper to a full width rear bumper. Chevrolet's traditional triple taillights are hooded and extend back from either side of the rear panel. All models have a low silhouette roofline and curved side windows. Convertibles have tempered glass rear windows.

Beneath the new body is an equally new chassis. A number of improvements result in greater ride and handling characteristics. The 119 inch wheel base is retained.

A "wide stance" chassis gives wider front and rear tread. The front is wider by 2.2 inches to a total width of 62.5 inches and the rear is 3.1 inches wider to a total of 62.4 inches. There is improved full coil suspension both front and rear.

A sturdy, new perimeter frame provides the structural platform for a new strut rod front suspension, new link-type rear suspension and new parallel relay steering system.

Six engines are offered, ranging in horsepower from 140 to 400 and incorporating a number of engine improvements. Four transmissions are available and there is a total choice of 16

Sen. Yarbrough

(Cont. from page 1)

and H. H. Hamilton.

As quoted by Senator Yarbrough in the Lubbock Avalanche, "Earth entertained with the biggest and best coffee reception I have experienced in my political career."

The Senator mentioned that this was the rich farm district of Texas, and the home of his many good friends and supporters in the past.

Influential people of business and agriculture, and civic leaders were present. Also he remarked about the importance of women in political affairs and interests. Eldon Trotter was present to take pictures. Guests from Olton, Plainview, Sulphur, Springlake, Dimmitt, Lazbudd and Amarillo were present. Many Government students of Clarence Hamilton's were present from Springlake High School and also Rainbow Girls. Musical interludes were played by Kathy Clayton.

Relating to the issues of Senator Yarbrough's campaign, he represents the liberal idea, which believes that the Federal Government should exercise authority and do for men, collectively, what they will not or cannot do individually. His opponent represents the conservative idea, which is a return of the country back to the people where the Federal Government does not exercise authority. Senator Yarbrough also stressed that he is a Party man, voting a straight Democratic ticket.

In Muleshoe, the Senator was introduced by Wiley Bullock, coffee and cookies were served by the Young Democrats of Bailey County. News reporters, radio announcers and approximately 80 people attended. From Earth, those present were, Mr. and Mrs. M. E. Kelley, Mrs. Lottie Orteg, and sister, Mrs. Bessie Wood, Mrs. J. A. Littleton, Sr., Mr. and Mrs. C. L. Hamilton, and B. T. Hamilton.

After leaving Muleshoe the Yarbrough group returned to the Lubbock Democratic headquarters, for the opening of the headquarters. The Young Democrats are very active there, and the Senator remarked how diligently the high school students and

power teams.

Party line

Melvin Bock has returned home from the Taylor Clinic in Lubbock, and he is improving nicely.

Sam Cearley had eye surgery Monday, September 21 at the St. Anthony's Hospital in Amarillo. His condition is reported as fine.

Shane Stevens, son of the Gene Stevens has been in the Green Memorial Hospital of Muleshoe since Sunday, receiving medical care.

Mr. and Mrs. Sammy Phillips and children Terry, Cindy and Dwain of Longview are spending this week visiting his parents Mr. and Mrs. M. R. Phillips of Earth.

young college students are working throughout the state. Local people attending the Lubbock meeting were B. T. Hamilton and C. L. Hamilton.

Plans Are Made For Speedier Christmas Mail Delivery Valuation Goes Up

Longer post office window hours, expanded delivery services and large scale extension of the zip-coded parcel post speedup are planned for Christmas. Postmaster General John A. Gronouski has advised the local Postmaster, Mr. Miller, Mr. Gronouski outlined to the Earth Postal head, three major new steps he has taken, "for the best Christmas mail service the Postal Service has ever had."

1. Expanded post office window hours Dec. 5 to 26 as deemed necessary by the local postmaster.

2. A six day week Dec. 7-31 for parcel post deliveries, instead of a five day week.

3. Completion by Nov. 1 of Phase III of zip code parcel handling at about 130 more "sectional center" post offices providing faster delivery up to 24 hours or more for parcels with zip code.

In phase I and II, approximately 75 offices with receipts of \$5 million annually and above activated faster zip code sorting and dispatch by Sept. 1. The 130 Phase III includes offices with receipts of \$1 to \$5 million.

In addition many other sectional center offices with smaller receipts will have the program in operation by early December, in time to help speed delivery of Christmas gifts mailed with the zip code.

At the present time the San Angelo Sectional Center is being activated and immediately following its completion the Amarillo and Lubbock Sectional Centers will begin to take shape, with Sept. 26 the tentative date.

The Postmaster General told Mr. Miller the Christmas plans are part of a nation wide program to bring postmasters into

The continued growth and development of Lamb County is pointed out in the County's assessed valuation for 1964, representing an increase of nearly \$1 million over last year.

The county Tax Assessor-Collector, Herbert Dunn, announced the 1964 valuation for Lamb County totals \$28,492,729. That is an increase over the 1963 valuation, and represents a gain of \$2,078,426 for the county since 1960.

Assessed valuation in Lamb County is based on approximately 25 percent of the true on market value of property assessed.

Dunn said, "Just a lot of new property in the county," in explaining the valuation increase.

more responsible positions in postal management as real partners in providing better mail service to all levels."



SOLVE YOUR OUTDOOR LIGHTING PROBLEMS WITH A...

GUARD AREA LIGHT

It's like having your own private street light! Reddy installs, owns and maintains this modern 7,000 lumen mercury vapor light — even changes burned out bulbs and supplies the electricity... and all for a low rental of only \$4.00 per month. It's ideal for drive-ins, parking lots, feed lots, farm yards and other large area illuminations.

- ON AT NIGHT AUTOMATICALLY ★
- OFF BY DAY AUTOMATICALLY ★
- SEE YOUR PUBLIC SERVICE MANAGER ★
- OR ASK YOUR PUBLIC SERVICE NEIGHBOR ★



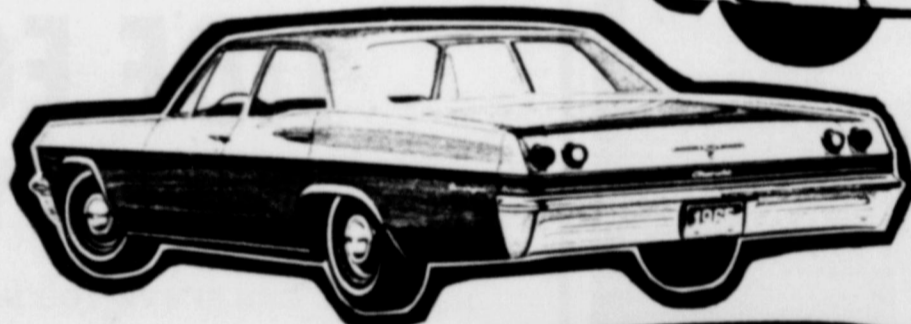
HERE THEY COME AND HOW THEY'LL GO

BRILLIANT!
SPIRITED!
ALIVE!

CHEVROLET
fun without a fancy price tag!



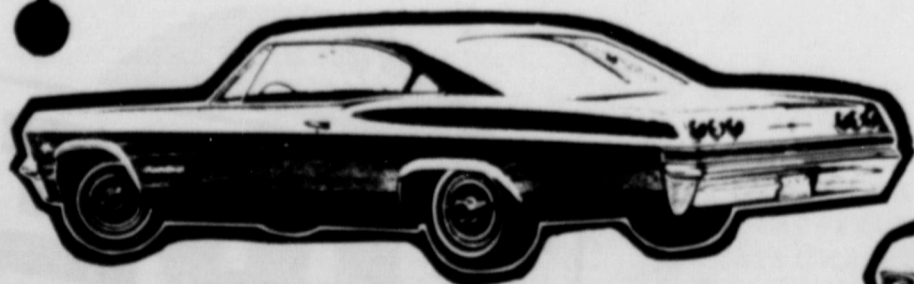
Bel Air 4-Door Sedan



Biscayne 4-Door Sedan



Monza Sport Coupe



Impala Super Sport Coupe



Biscayne 2-Door Sedan

YOU ARE INVITED TO ATTEND THE PREMIERE SHOWING OF THE ALL NEW '65 CHEVY
September 24-25

THOMPSON CHEVROLET CO.

M. W. Messer, Salesman - Earth

an INVITATION to

GRAND OPENING



Left to Right Bill Shore, Sales; Larry Allen, Sales; Charles Doss, Mgr.; Latricia White, Sect.; Mike Patterson, Service Dept.; and Juan Granado, Service.

We Are Now
GENERAL ELECTRIC
Authorized Dealer

CHECK OUR VALUES

NEW G.E. 10 Ft.
REFRIGERATOR
\$229⁸⁸ W.T.



APPLIANCE DEPARTMENT

NEW COLUMBUS 30"

RANGE

GRAND OPENING SPECIAL

\$119⁸⁸ W.T.

NEW ADMIRAL 23"

TELEVISION

Maple Cabinet

REG. \$349.95

NOW

\$269⁸⁸ W.T.

BABY CRIBS

FULL SIZE

REG. \$49.95 Complete

Grand Opening Price

\$32⁸⁸



NEW HOME OF FAMILY MART, INC.

2 Piece FRENCH PROVINCIAL BEDROOM SUITE

Fine Quality Fruitwood

Dust Proof

Center Drawer Guide

Hardwood Construction

REG. \$269.95

NOW **\$199⁸⁸**

WIZARD WRINGER

WASHER

Semi-Automatic

REG. \$189.95

NOW **\$169⁸⁸**

3 Piece MODERN BEDROOM SUITE

Walnut or Bleached Oak

REG. \$179.95

NOW **\$129⁸⁸**

2 Piece MODERN SOFA SUITES

A Real Choice of Colors

REG. \$189.95

NOW **\$149⁸⁸**

2 Piece EARLY AMERICAN Living Room Suite

Brown Tweed-Studio Couch

REG. \$299.95

Grand Opening Price **\$149⁸⁸**

FREE DRAWING

REGISTER THUR-FRI-SAT

SATURDAY, SEPTEMBER 26

\$50⁰⁰ Lounge Chair

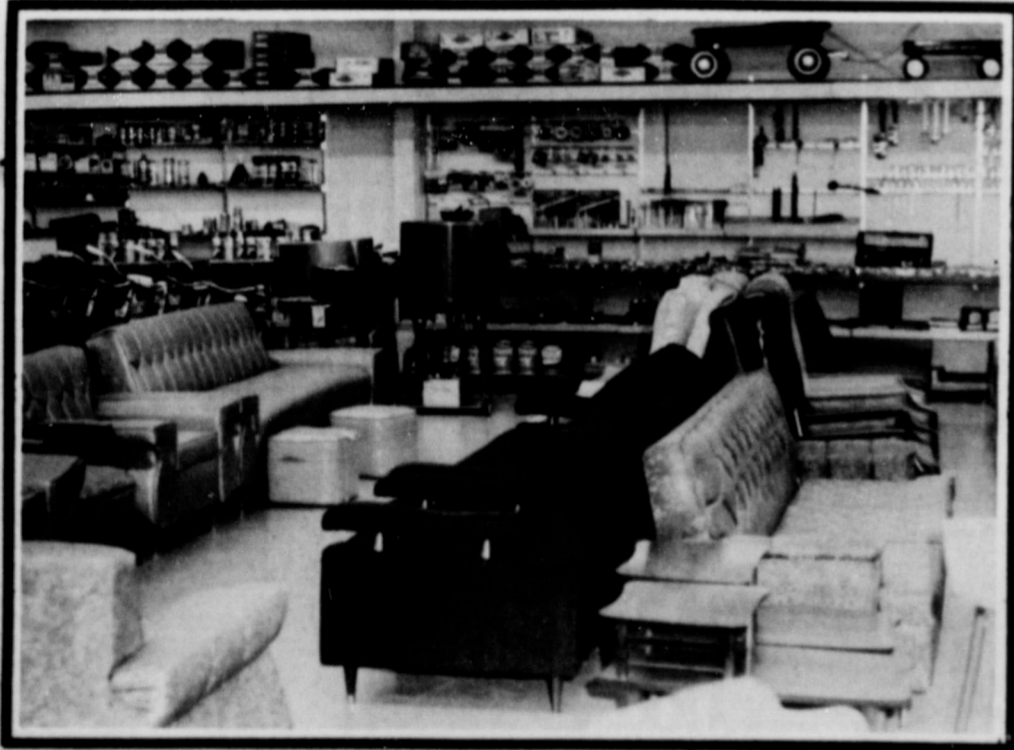
AND

SATURDAY, OCTOBER 3

Admiral Portable TV

REG. \$229.95

COME BY AND REGISTER ANY TIME-- YOU DO NOT HAVE TO BE PRESENT TO WIN...



LIVING ROOM AND TOY DEPARTMENT

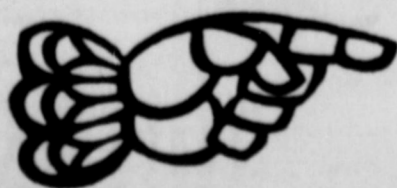


DINING ROOM DEPARTMENT

WE SERVICE ALL MAKES AND BRANDS OF WASHERS-DRYERS-RANGES

FAMILY MART, INC.

EAST OF COURT HOUSE SQUARE---DIMMITT, TEXAS



Light Flashes Upset Insect's Life Cycle

What's new in the way of insect control? The not-too-distant future may provide for the control of some insect pests, a "new" ingredient--light!

Research has found that the normal life cycle of one insect pest, the imported cabbageworm can be upset by exposing it to flashes of light lasting less than one-thousandth of a second.

The Agricultural Research Service, U.S. Department of Agriculture, has conducted experiments on this test insect at Beltsville, Md.

Photoflashes given nightly to the cabbageworm in the larva or destructive caterpillar stage upset the growth sequence later in its life cycle, report ARS scientists.

Diapause is similar to hibernation and is a vital phase of the life cycle of many major insect pests.

ARS scientists say this new photoflash technique may have potential value as a biological control method against insects.

Forcing insects in their natural environment to bypass diapause and develop into adults "ahead of schedule" would probably cause them to be so out of step with nature that they would perish, explain ARS entomologists.

The ARS emphasizes, however, that its findings do not prove photoflash can be used to control insects under field conditions.

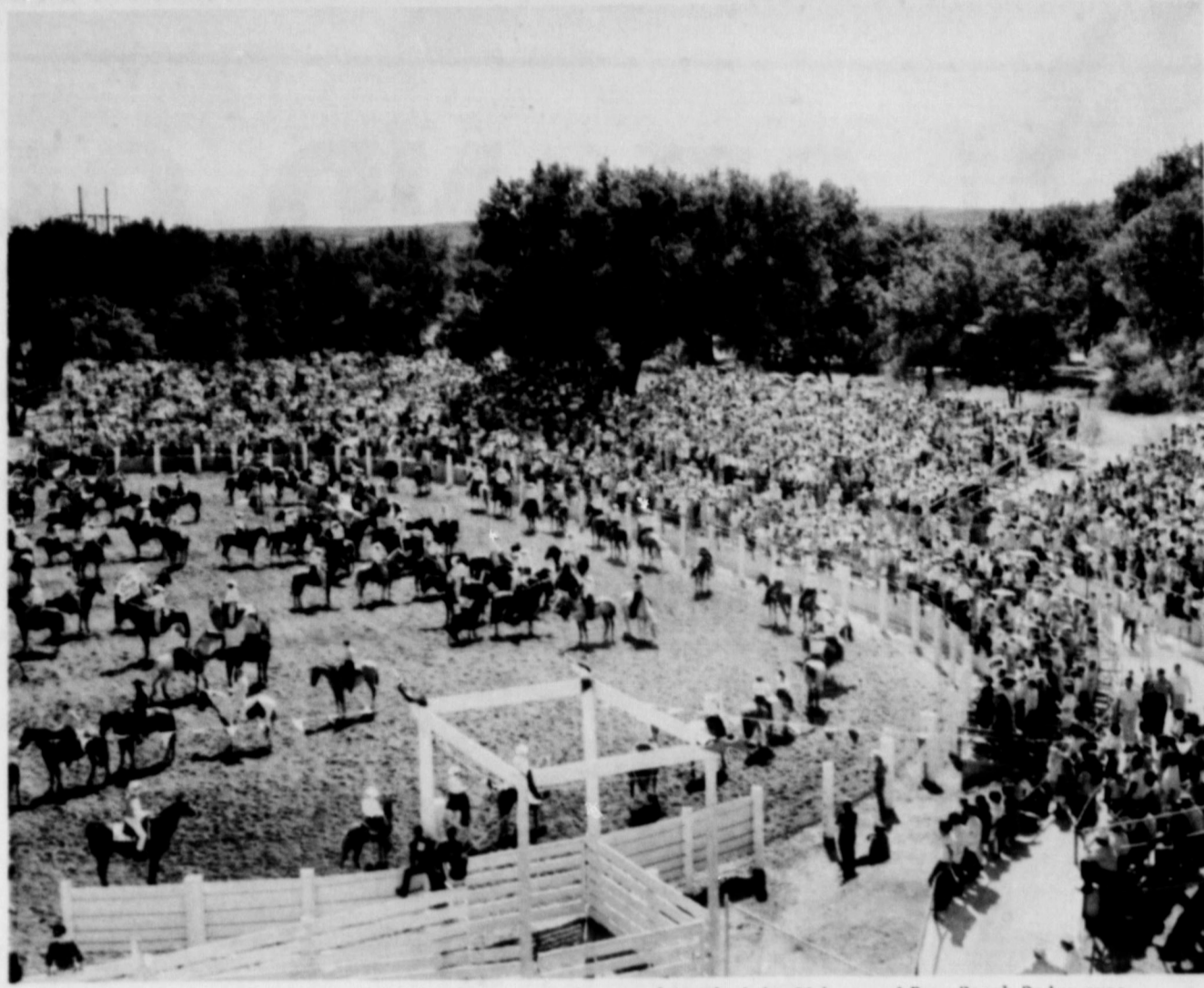
Since light treatments that alter insect development have little or no effect on plants, this new knowledge is expected to heighten research interest in photoflash as a possible means of control.

Party Line...

Mr. and Mrs. Roy Neal attended church services Sunday at the First Methodist Church of Lubbock, to hear the new pastor Reverend Paul Bumpers speak. They spent the afternoon visiting in the home of Mr. and Mrs. Bill Wicks.

Visiting in the home of the A. E. Pattersons Sunday were Mr. and Mrs. R. L. Richards and Mrs. G. E. Beach of Plainview. The group enjoyed dinner and a tour of Plant X.

Mr. and Mrs. A. K. Shelby spent last week visiting Arnold's sister, Mrs. W. L. Spencer in Mangum, Oklahoma, and in Springfield, Missouri, with the Russell families, who are sisters, a niece, and a nephew. They reported a very enjoyable vacation, and remarked, "The scenery was beautiful, but there's no place as nice as Earth."



This was the scene at Cal Farley's Boys Ranch as a capacity crowd watched the 20th annual Boys Ranch Rodeo over the Labor Day weekend. A record number visited the Ranch and attended the action-packed rodeo in which all of the more than 300 boys, living at the Ranch, took active part.

State Out Of Red, After 5 Years of Deficit

State government ended its 1963-64 fiscal year on August 31 with a fat general revenue fund balance of \$73,000,000. It was the brightest year-end figure since 1945.

"It looks better than it has for a long time," beamed State Comptroller Robert S. Calvert. Five years of deficits still are fresh in his memory. One year the State ran \$110,000,000 in the red.

Calvert declined to speculate on the amount of surplus which will be available for legislative appropriation.

Governor Connally predicted earlier that the general revenue surplus may reach \$80,000,000 next year. Despite the abundance of money, the Governor said the Legislature likely will have to pass a new tax bill or amend the existing rates in 1965. This because of demands for more spending in education and other areas.

Calvert noted three factors in the favorable fiscal 1964 close out; a \$24,000,000 increase this year over 1963 in general sales tax revenues, as \$5,000,000 jump in the auto sales tax, and a \$3,000,000 crude oil tax increase.

Comptroller's report showed state revenue collection during 1964 were more than \$1,600,000,000, compared with \$1,500,000,000 in 1963. Expenditures totaled \$1,500,000,000, compared with \$1,400,000,000 the previous year.

Double Crop Cotton and Sorghum

Grain sorghum and cotton go hand in hand to produce better yields, according to John Box, associate Extension agronomist. Where cotton fields have had the advantage of fertilization and rotation with high residue crops, such as sorghum, and where the residue has been effectively used, crops are doing remarkably well during the dry weather, says Box.

In a rotation program, sorghum residue helps maintain the annual 4,000 pound per acre minimum organic matter level needed for satisfactory crop production.

To maximize sorghum residue stubble should be shredded right behind the combine and root system destroyed immediately. This, says the agronomist, cuts regrowth and moisture loss. The residue should be either partly or completely covered, depending upon the farmer's desire to start decomposition. It also provides the soil organisms with a supply of food and energy.

Although the temptation may be strong to use crop residues for other purposes such as grazing or baling, Box says they will prove to be of greater value in the final analysis when used in a sound soil improvement program.

Mrs. E. O. Smith of San Jose, California, and Mr. and Mrs. O. E. Summer of Carlisbad, N.M., have recently visited in the home of the L. T. Smiths.

lite. The body sides have a deep indentation running the full length with slightly tapered front and rear decks. The green house has a more rounded look and uses curved side glass. A similar egg crate grille is used but with beautiful vertical dual headlights. This Fury series will really be a premium Plymouth,

and will sell in a higher price range than any previous Plymouth.

No major mechanical changes. Plymouth will continue to offer about the same performance options as Dodge, including the 436 hemi-head engine, various SuperStock options, disc brakes and etc.

Plymouth, Dodge, Chrysler To Be Shown Friday at Garland Motor

Garland Motor Company, located at 710-720 E. 3rd Street in Littlefield is expecting a capacity crowd to turn out Friday, Sept. 25 for the triple showing of the beautiful Chrysler products. The new '65 models in Plymouth, Dodge and Chrysler. The handsome threesome will all be shown to the public for the first time Friday.

Mr. Garland and his personnel invite everyone in the area to drop by and look the new automobiles over.

The new Chrysler will have an all new body shell, the first one designed entirely by Elwood Engel, the stylist who switched from Ford in '61. The styling theme is changed completely. The crisp, angular look is gone. The new body is more slab-sided and squarish, though there is a sculptured section running the full length below the beltline.

The slant of front and rear windows is less than on new Ford and GM bodies. Wheelbase is increased from 122 to 124 in., and over all length jumps from 215 to 218 in. The body is characterized by deeply curved side windows. The whole upper part of the body has a kind of rounded look. Mechanical changes are minor.

The Dodge Division will do some major switching next year. The new Chrysler "C" body shell will be used for a new Polara series that will replace the current 880 series. Wheel base is shortened from 122 to 121 in. The new body will look a lot different than the 880. Front and rear decks taper down slightly, and a deep sculptured groove runs from front to rear, with a rounded bulge above. It has the usual curved side windows, and a six window sedan

model will be available. The front has a massive grille housing horizontal dual headlights within the main body, with large vertical bars. A two door hard top in this series, called the Monaco, will make a stab at the Pontiac Grand Prix. It will have bucket seats and all the goodies. Actually this whole new Dodge Polara line is aimed at the lower medium price bracket. They're luxury cars.

Dodge's bread and butter line will be called the Coronet series, and will use the current Chrysler "B" body shell. However wheelbase is shortened from 119 to 117 inches, and overall length from 210 to 204 inches. The series is being downgraded slightly to stay away from the Polara price range. The grilles on the '65 Coronets are similar to the above described Polara fronts. The general body lines are similar to '64 with some

minor trim changes. Mechanical changes are minor. As mentioned, the transmission push buttons are replaced by a lever. They say the police versions of these '65 Coronets will offer disc brakes as optional equipment, and probably the top performance engine options will be confined to this light, short wheelbase series. The new hemi-head 426 engine will be available for production-line installation by fall. There have been rumors that this basic engine would be offered in a street version, but this seems doubtful.

Plymouth will follow the Dodge lead and expand their price range a lot in '65. There will be two distinct lines of cars. The junior line is called the Satellite, and will use the current body shell with 116 inch wheelbase and 206 inch overall length. General styling lines

will be similar to this year, but with a new "egg crate" grille across the front and single head lights instead of the duals. This reversion to single headlights is intended to slightly down-grade the Satellite line in comparison

with the new premium line, which will be called the Fury series. This series will use the new Chrysler C body shell, with 119 inch wheelbase and 209 in. length. It will have entirely different lines than the Satel-

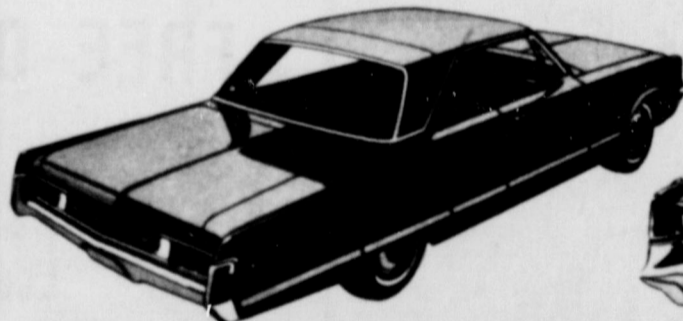
GARLAND MOTOR CO.

OF LITTLEFIELD

Proudly Presents
PLYMOUTH-DODGE-CHRYSLER for '65
Friday, September 25



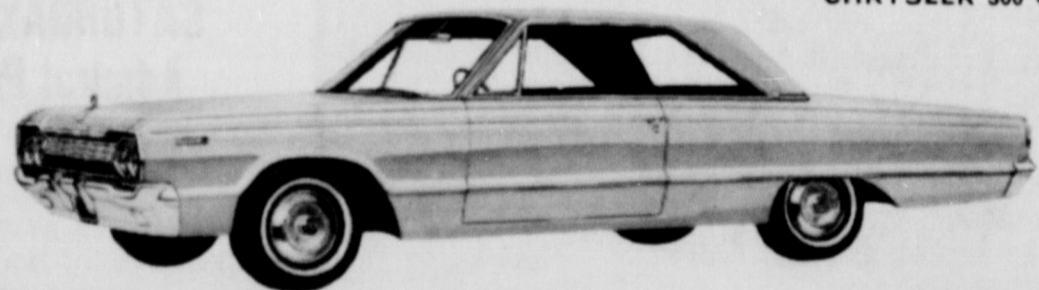
Mus & Bells. There's Fury, Fury II, Fury III and Sport Fury. 32 models from 2-dr. sedans to 9-pass. station wagons. Engines run from 4.223 cu. in. 6" to a 426 cu. in. Commando V-8. Transmissions include 3-speed manual, 3-speed automatic, and 4-speed Hurst stick. Overall length, 209 1/2"



CHRYSLER NEWPORT 2-DOOR HARDTOP



CHRYSLER 300 4-DOOR HARDTOP



DODGE POLARA 2-DOOR HARDTOP



THE INCOMPARABLE
IMPERIAL
VINTAGE 1965

AUTHORIZED DEALER CHRYSLER
MOTORS CORPORATION

GARLAND MOTOR CO.
710-720 East 3rd Street
LITTLEFIELD, TEXAS

WHY IS

LICHTE-SULLINS ACID DELINTING CO.

one of the largest on the Plains?

BECAUSE:

1. We furnish trailers to catch your cottonseed when you gin. These are furnished within 30 miles of Littlefield (this includes the Earth & Springlake areas). Just have your ginner call us collect and tell us when your cotton will be ginned.
2. We take a composite sample of delinted seed from each load of seed and send to the State Seed Laboratory of the Texas Department of Agriculture. Their report sheet is mailed to the farmer. No guessing.
3. We save the farmer real money. Our price is \$35.00 per ton, which is an economic break that counts.
4. We have a 10,000 square foot storage warehouse for finished seed. We give you 21 days free storage after delinting. After that, if you wish to leave your seed with us, our charge is \$1.00 per ton per month, which covers storage handling and insurance. Many who do not have good home storage use our warehouse, but it is your choice.

Our method? The oldest form of acid delinting. It has been in use on the Plains since 1937.

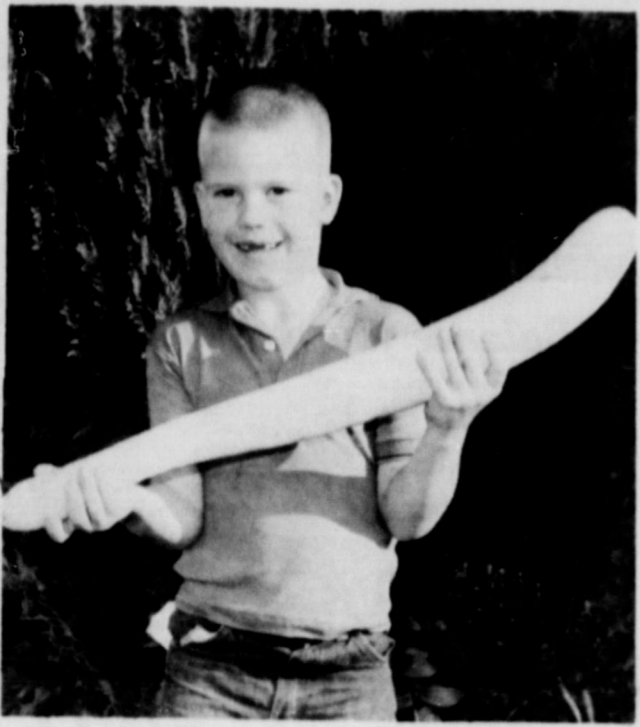
Look us over. We have had a good business here since 1958. We still ask the same question, "WHY PAY MORE THAN \$35.00 PER TON FOR DELINTING?"

LICHTE-SULLINS ACID DELINTING CO., INC.

EAST ON SPADE HIGHWAY

PHONE 385-4141

LITTLEFIELD, TEXAS



TEXAS SIZE SQUASH, this huge squash was grown in the back yard of the L.A. Glasscock home. It is 28 inches long. Shown holding the jumbo size squash is 6 year old, Rocky Glasscock, Grandson of the squash grower.

33rd Annual Texas Rodeo Begins Sunday, October 4

October is Texas Rodeo Month, and each Sunday of the month will find thousands of Texans converging on Huntsville to witness one of the most colorful and roughest rodeos of its kind in the world.

The main attraction in each show will be tough inmate cowboys attempting to tame tougher prison produced broncs and bulls in a host of events not usually found in other rodeos.

Each performance is opened with a Prison Rodeo "special" known as the Mad Scramble. Ten chute gates swing wide simultaneously, and 15,000 pounds of humped haired, in the form of vicious Brahman bulls, catapult into the arena, a man clinging desperately to each heaving back. This is rodeo behind the walls, rodeo as wild and savage, yet fantastically funny, as any in the nation.

Additional events include the calf tussle, 40 calves and 80 men loose in the arena at the same time. In two-man teams, the cowboys will try to wrestle their calf (if you can call a 400 pound critter a calf!) across the finish line for top money. Another prison rodeo special called "hard money" features one enraged Brahman bull, with \$50 tied to his horns by means of a nylon string. The object of the game is very simple: Just walk up to the bull, and remove the sack from the bull's horns.

For added attraction and speciality acts, Rodeo Officials have booked some of the greatest names traveling the professional rodeo circuit today. These include trick riders Ted & Betty Lamb, Maureen Moon, and Connie Griffith, whose fabulous acts have been hailed by rodeo producers everywhere as "the greatest in rodeo of this age"; such famous clowns and trick riders as Billy Keen and Bill Garsce who have appeared at every major rodeo in the South West the past several years, plus widely known mounted Quadrills from throughout the state.

The highlight attraction will be the personal appearance of the Duke of Paducah, Sunday,

Oct. 4 & 11, at 2 p.m. Guest stars on succeeding Sundays include the ever popular musical comedy of the Harmonica Rascal on Oct. 18 and 25, and country singing personality Jimmy Dean on Oct. 25. Pre-rodeo and between events entertainment will be furnished by talented inmate groups such as the western stringsters, The Jail House Beatles, the Jug Band, the Hungry Three, the Barber Shop Quartet, the Military Band, and the popular Goree Gals from the women's unit of the TDC.

Net proceeds of the rodeo go into the educational and recreational fund of the Department. The fund supports such inmate activities as education, vocational training, recreation, spiritual guidance and special dental, optical and medical services not provided by the state. Reserved seat tickets are \$2.50, \$3.75 and \$4.40 each, tax included. Tickets may be obtained by writing Rodeo Ticket Office, Huntsville, Texas, enclosing check or money order.

Pleasant Valley News...

by Sheryl Stevens

Visiting in the W.D. Lackey home this weekend were Mrs. O.M. Lackey and children, of Longview.

The Pleasant Valley Social Club met Thursday Sept. 11 at night in the community center. Ruth Lackey was the hostess. After a brief business meeting the ladies enjoyed games and refreshment. Those attending were: Mrs. Vicki Hendricks, Betty Jackson, May Parker, Claudine Embry, Ruth Holt, Beth Skipworth, Lara Kenney, and Diore Duncan.

Visiting in the John West home Saturday afternoon was Blake Stevens, the son of Mr.

Class Officers, Sponsors, Parents Selected

Springlake High School classes met Thursday, September 17, and elected class officers, parents and sponsors.

For the ninth grade, Mrs. Travis Jacques and Mrs. H.B. Maxey Jr. were chosen as sponsors. Officers were: President, Randy Washington, Vice President, Gary Kelley, Secretary, Susan Britton, Student Council Representative, David Jacques, Alternate, Linda Packard, and Parents, Carlis Bills and P.A. Washingtons.

The tenth grade sponsors are Bill Anderson and Mrs. Zeph Robnett. Officers are: President, Joan Dawson, Vice President, Debbie Barton, Secretary, Jimmy Stockstill, Student Council Representative, Lonnie Whitford and Alternate, Cris McClure. Parents are: Eldon Parish and Bob Armstrongs.

In the eleventh grade, the sponsors are Dean Foshee, E.G. Gaston, and Danny Smith. Officers are: Ken Dawson, President, Vice president, Jerry Don Sanders, Secretary, Jill McCord, Student Council Representative, Helen Phillips, and Alternate, Bob Coker. Parents chosen were E.C. Kelleys and Mike Dents.

For the twelfth grade, the sponsors are Gladys McCaskill and Jodie Manan. Officers are: President, Thomas Gregory, Vice president, Peggy Upchurch Secretary, Beth Dent, Student Council Representative, Darwin Sanders, and Alternate, Vicki Clayton.

Castro County Women Voters To Meet Saturday

Mrs. Ken White, New Mexico State Committee Woman of the Democratic League of Voters, will be the guest speaker of the Dimmitt League Saturday, September 26, at 3 P.M., at the new high school cafeteria.

This building is on the west clovis highway in the southeast corner of the building.

Mrs. White is an outstanding speaker. She is the wife of Ken White of the Farmer Stockman yards in Clovis.

All are invited to attend.

First Sugar Beet Plant For State

Holly Sugar Corporation held its opening Saturday, Sept. 19 in Hereford. President Dennis O'Rourke of Colorado Springs, presented Governor John Connally at dedication ceremonies

ially important because it recognizes the 50th anniversary of the Cooperative Extension Service of which 4-H is a significant part.

4-H projects meet the needs of youth in both town and country. There are some 27 different programs in which boys and girls can enter.

The educational system of the Extension Service gives leadership to both youth and adults. "There is a need for adult leaders in Lamb County," says Mrs. Lady Clare Phillips, County Home Demonstration Agent. Girls working on Foods and Nutrition are required to accomplish certain things in order to complete their goals. This project and others could lead to an award of a trip to Washington, D.C. or National 4-H Congress in Chicago or perhaps a college scholarship.

Some plans for expansion in 4-H Club membership is for each member to secure another member. The same is true with adult leaders, "each get one."

Adult leaders are a very vital part of 4-H Club work. 4-H members learn to do by doing. They conduct a project at home in which they learn scientific ways of doing things. They learn to develop leadership talents to work toward the objectives of character and effective citizenship. They learn to improve skills and how to apply their knowledge to everyday living.

Building tomorrow's citizens today is a challenge for youth this year. Won't you help promote your community by being a 4-H member or an adult leader?

The plant is located on a 7,700 acre site just west of Hereford. This plant is the first sugar beet refinery plant in Texas, and it was built at a cost of \$21.5 million.

O'Rourke said operations will begin about October 1. The plant is expected to process about 25,000 acres of beets the first season.

The sugar mill operating at capacity and its by products are expected to pump about \$20 million annually into the economy of the area. An acre of sugar beets puts about \$750 to \$1,000 in cash into circulation.

Agricultural and civic leaders were present for the ceremonies. The new plant was designated the Merrill E. Shoup Plant, honoring the corporation's late president and chairman of the board.

Construction of the plant was made possible after an agriculture department allotment of 22,230 acres of sugar beets to growers in Castro, Deaf Smith,

and Parmer Counties in Texas, and 2,500 acres to farmers in Curry County, N.M. The allotments were made after much effort by Holly and the Texas Sugar Beet Growers Association. Rigid sugar laws limit domestic production and the processing of sugar.

Holly is the nation's second largest processor of sugar beets, having headquarters in Colorado Springs. The plant will have a capacity to process in excess of 6,000 tons of beets daily. Beet production ranges from 18,000 to 25,000 tons per acre. A ton of beets will produce 300 to 350 pounds of sugar.

Local people attending the open house were: Mr. and Mrs. Roy Nea of Earth, Mr. and Mrs. Kenneth Hinson, Kevin and Kent of Springlake, Representative Bill Clayton of Springlake, and Mrs. Bonnie Haberer of Pleasant Valley. Each visiting car received a five pound box containing sugar items which the plant will refine when operations begin this fall.

GARTH SHEET METAL

Business Phone 7700 Home 6-869
215 North First Muleshoe Texas

JOIN THE BATTLE OF THE BOLL WEEVIL

Every person, directly or indirectly connected with the cotton industry, should wage war on the boll weevil. Widespread infestation of the area would produce an economic disaster that is FRIGHTENING. The economic base of our HIGH PLAINS area could be eaten away by the boll weevil. HIGH PLAINS bankers urge YOUR support of the DIAPAUSE CONTROL PROGRAM to protect your income and that of every HIGH PLAINS resident.

JOIN THE BATTLE

THE ENEMY - BOLL WEEVILS... Invading the High Plains... If they succeed will cost about \$30.00 per acre, every year, for control...

BATTLE PLAN - ATTACK AND KILL WEEVILS IN FALL before they hibernate (Diapause Control) ... Spray every acre of infested cotton ...

WAR CHEST - 50c A BALE FROM PRODUCERS, collected 100% at every compress... Supplemented by matching Federal funds. PRODUCER'S CHOICE. 50c now or \$50.00 later. For complete information, see your County Agent, ASC office, Vocational Agriculture teacher, or contact Plains Cotton Growers, Inc.

CITIZENS STATE BANK

MEMBER F.D.I.C.
EARTH, TEXAS

SOUTH PLAINS FAIR

Featuring ICE CAPEDES

SEPT. 28 thru OCT. 3
FAIRGROUNDS ... LUBBOCK



BUSINESS and INDUSTRIAL DIRECTORY

KILLINGSWORTH Builders Supply
SINCE 1949
REDI-MIX CONCRETE SAND GRAVEL
Wire Mesh Reinforcing Steel Expansion Joints
LUMBER - PAINTS - ETC.
647-3434 or 647-3593 Box 715 Dimmitt,

KEEP SMILING
PATZER CHIROPRACTIC CLINIC
317 S. 2nd 1538 American
Floydada Blvd
YU 3-3119 Muleshoe
3-9670

For your prescriptions to be filled right Have them filled by
DAMRON Rexall Drug Store
We fill any Doctor's Prescription
The most complete prescription Department in West Texas
Muleshoe Phone 2100

No Flying Saucer - But Just As Sensational!
FRESH! YUMMY!
America's finest food confection!
Coast-to-Coast Alaska to Mexico
SPUDNUTS 234 Main Muleshoe 3-5429

FASHION SHOP
For Lovely Women
206 MAIN STREET
PHONE 3-2880
MULESHOE, TEXAS

BIRKELBACH Machine Shop
GENERAL MACHINE WORK & WELDING
Complete Pump Service
Casing Perforated in well
Irrigation Pump Rebuilding
A Specialty
Littlefield
1012 E. 9th Dial 385-5123

DR. JAMES E. WOHLGEMUTH
OPTOMETRIST
300 West Bedford
Phone 647-3712
Dimmitt, Texas

Real and Artificial Flowers - Corsages
Pot Plants - Banquets
Funeral Designs
520 S. First St.
BEAVER'S FLOWERLAND
Ph. 3-1160 - Muleshoe
and
EARTH FLORAL
Ph. 7-4341 - Earth

THIS SPACE FOR SALE

BILL'S BOOT SHOP
Western wear for everyone
Boots - Men's boys, ladies
Riding Eq - Saddles
510 Phelps Ave
Littlefield

WRIGHT PRESCRIPTION DRUG
331 Phelps Littlefield
We fill all doctor's prescriptions
COTY COSMETICS
DORTHY PERKINS COSMETICS
Fred Wright, Pharmacist

SPRINGLAKE ELEVATOR
Phone 986-2311
Purina Feeds
SEED FARM SUPPLIES
HARDWARE
Young Homemakers Center
RCA Whirlpool
Lucite Paint
Old Masters
Eureka Vacuum
Corning Tableware
RCA Color TV
620 E. 3rd
Littlefield, Texas

FOR BETTER SELECTIONS IN FARMS AND RANCHES, SEE
PLAINS REAL ESTATE
L. D. ONSTAD, REALTOR
LITTLEFIELD

Norrid Sewing Machine Ctr.
Littlefield
622 Farwell 385-4330
(next door to frontier stamp store)
Dealer for Singer Sewing Machines, vacuum sweepers and typewriters
We do repair on all brands of machines and stock all Singer parts.

FAIR STORE
120 Main Muleshoe, Texas
SHOES AND CLOTHING
For Entire Family
We Sell For Less

Anthony's
Muleshoe, Texas
FAMILY DEPT. STORE

MULESHOE FARM & RANCH
Headquarters for Livestock Supplies
Dealers for NUTRENA FEEDS
Tex tan leather goods
Hereford saddles
McQuerry Trailers
Cattle feeding equipment
Veterinary Supplies
Phone 5140 Muleshoe

THE FABRIC CENTER
420 Phelps Ave.
Phone 358-5205
Littlefield, Texas
All Knitting Supplies with Free instructions with Purchase
with Purchase
All types of Needle Point
Pattens Notions Fine Fabrics
Hoses and Head Scarfs

WILLIAMS BROS. OFFICE SUPPLIES
Muleshoe, Texas
• Portable Typewriters
• Adding Machines
• Filing Cabinets
• A complete line of Furniture for the Office and Home

Nelson's Hardware
The Store That Sells Hardware
P.O. Box 871 Phone 385-3271
Young Homemakers Center
RCA Whirlpool
Lucite Paint
Old Masters
Eureka Vacuum
Corning Tableware
RCA Color TV
620 E. 3rd
Littlefield, Texas

E. C. RODGERS
COMPLETE HOME FURNISHINGS
229 Phelps Ave.
Littlefield

COX TIN SHOP
• PLUMBING
• HEATING
• AIR CONDITIONING
Home or Commercial
Lennox Heating and Refrigeration
FREE ESTIMATES
706 E. 3rd Phone 385-4020
Littlefield

Sell Us Your USED FURNITURE AND APPLIANCES
SWAP SHOP
Phone 3-0740
207 W. American Blvd
Muleshoe

ROWE ABSTRACT CO.
• ABSTRACTS
• TITLES
• INSURANCE
Phone 385-4220
P.O. Box 311 Littlefield
412 Phelps Ave
Next door to J.C. Penny Co.

McANALLY JEWELRY
Littlefield, Texas
WATCHES DIAMONDS
CHINA CRYSTAL
FRANCISCAN POTTERY
COMPLETE GIFT LINE
WATCH REPAIR
BRIDAL GIFTS

Springlake News...

By: Betty Matlock

Mr. and Mrs. Ernest Baker shopped in Plainview, Thurs. Mr. and Mrs. B.B. Burrows of Tulia were dinner guests in the home of Mr. and Mrs. James Sanderson Thursday.

Mrs. Thelma McClanahan and Mrs. Dorothy Matlock and Hoby left last Sunday for Alba, on business.

Mr. and Mrs. Bud Matlock Debbie and Sammy are dinner in Muleshoe Sunday and later attended a housewarming for Mr. and Mrs. Doug Avery and girls at their new home in Muleshoe.

Mr. and Mrs. Lowell Waldon spent several days last week in Ruidoso, N.M.

Jeff Matlock attended the Olton-Muleshoe game in Olton Friday night with Mr. and Mrs. Doug Avery and girls. He also went home with them to spend the weekend.

Douglass Self of Clovis, who is attending Wayland College was called by the First Baptist Church to serve as music-youth director.

Mr. and Mrs. Ed Jones left Friday morning for Belton to visit her parents, Mr. and Mrs. Halger. They returned home Monday.

Jim Winder and Ricky Byers attended the Tech-Mississippi State game at Lubbock Saturday night.

Danny Byers returned home Thursday from Medical Arts Hospital, Littlefield where he had been a patient for several days with a knee injury.

Bill Matlock was a dinner guest of Mr. and Mrs. Doug Avery and girls of Muleshoe. He also stayed for their housewarming at 2 p. m.

Mr. and Mrs. Arnold Washington and Mr. and Mrs. Robert Bridge and Mark shopped in Lubbock, last Monday.

Mrs. Marie Bibby, Mrs. Lavern Fennell and Mrs. Sybil Davis and Tammy shopped in Lubbock Thursday.

Mrs. Bonnie Green and Mrs. Frances Watson went to Portales N.M. Thursday on business.

Mr. and Mrs. Ernest Green dined in Muleshoe Sunday.

Douglass Self was a dinner guest of Mr. and Mrs. Ernest Baker, Sunday.

Mrs. Louise Bridge and Mrs. Betty Matlock were in Littlefield Saturday afternoon.

The WMU Week of Prayer was observed Monday through Fri. in the homes of different members, Monday, Mrs. Billie

Walden was hostess. Ten ladies were present. The theme was "I Became Aware, Praying" Tuesday. Mrs. Betty Parish was hostess with 10 ladies also being present. The theme was "I Became Aware, Observing" Wednesday's program was observed at the church, with the pastor being in charge. The theme was "I Became Aware, Listening." Afterwards a film "Shine, Mister" was shown. Thursday, Mrs. Alice Huckabee was hostess. Eight ladies enjoyed the program on "I Became Aware, Seeing." Friday Mrs. Velma Baker, was hostess and 11 ladies were present. The theme for the day was "I Became Aware, Giving." The goal for the church has been set for \$575.00.

Sunnyside News...

(Cont. from page 8)

Mr. and Mrs. E.M. Stephens, Mr. and Mrs. Jack Stephens and boys spent Saturday night with the Cecil Curtis family and enjoyed a family dinner Sunday.

Mr. and Mrs. Irving King spent Saturday night and Sunday in Dumas with Mr. and Mrs. Billy King and family.

Mr. and Mrs. Howard Bridges left Sunday morning for a month stay at Weatherford.

Mrs. Wanda Newberry and James visited in Tucumcari, N.M., with relatives Sunday.

The Adult IV Sunday School Class enjoyed a class dinner at the home of Mr. and Mrs. Weldon Bradley Sunday.

Rev. and Mrs. Tom Reynolds and children of Plainview were guests Sunday night of Rev. and Mrs. M.D. Durham and attended the services with them.

Seventy one attended Sunday School with 56 in Training Union Sunday night. The film "Shadow of the Boomerang" was shown in the evening service.

Rev. Reynolds showed the film. The Sunnyside FHA girls who attended Dimmitt School are now selling tickets to the Bar-B-Que supper to be held at the South Grade School Cafeteria Oct. 2 from 5:00 until 7:00 p. m. Johnnie Holcomb is publicity chairman.

Lazbuddie News

by Mr. C. A. WATSON

Mrs. Dan Cargile is recuperating at the Clovis Memorial Hospital this week after having surgery there Thursday of last week.

Eugene Houston, son of Mr. and Mrs. Raymond Houston returned to the Amarillo junior College Sunday where he has registered for the new fall term. Eugene is majoring in architect drafting. This is Eugene's second year at the college.

Timmy Foster and Albert Fuller, Jr. received injuries at the Lazbuddie-Whiteface game Friday night. It is feared the boys will not see action for a week or two.

Carroll Littlefield, son of Mr. and Mrs. John Littlefield was home over the weekend from Ft. Collins State University Colorado. Carol is with Wild Life Management at the college.

Mr. and Mrs. W.M. Parham from Merkel visited the weekend in the home of their son and family the E.A. Parham's. Saturday the E.A. Parhams accompanied by his parents visited in Lubbock with the John Neil Agee's.

Mr. and Mrs. Finis Jennings returned Sunday from a two weeks vacation. On the trip they visited her sister, Mrs. Paul Pittman at El Paso. They went to the state of Colorado for several days sight seeing. From Pagosa Springs they went to Aztec Indian near Farmington then on to Gallup. From there they visited the Navajo Indian Reservation. At Window Ranch they attended the Navajo Indian fair. Mrs. Jennings reports this was a very interesting experience.

Mr. and Mrs. Ben Foster, Sr. Perry Grove, Arkansas visited last week with their son and his family, the Ben Foster Jr. 's.

The Lazbuddie HD Club met Monday, Sept. 14 in the home of Mrs. Harvey Blackstone. New officers elected to take their places the first of the year are, Mrs. Adrian Weir, president, Mrs. Harvey Blackstone, vice president, Mrs. Everett McBroom, Sec. treasurer, Mrs. Roy Miller, council delegate, Mrs. Raymond McGehee, Historian and Mrs. Jimmie Briggs, Reporter.

Dale Warrick, Muleshoe was Saturday night guest in the Leon Watson home.

Mr. and Mrs. George Haskins fished from Thursday of last week to Sunday at Lake Stamford. The Haskins report a catch of about 150 fish. Although some of the fish were small

there were enough large ones to say the catch was big.

Birthday Greetings to: Linda Ashford, Leatrice Gallman, Helen Walker, Danny Miller, Carrol Miller, Robert Morris, Connie Elliott, and Linda Lesley.

Mr. and Mrs. Darrel Jennings formerly of Lazbuddie are now making their home on the Jennings Ranch at Dekalb, Texas.

Mr. and Mrs. Darrel Jennings are both 1960 graduates of Lazbuddie High. They moved to Dekalb from Lubbock recently where Jennings had been attending Texas Tech and Mrs. Jennings was a nurse in the Methodist Hospital at Lubbock. She is the former Glenda Robinson.

Mrs. Claud Blackburn returned Sunday from Ft. Hood where she had been at the bedside of their son Bob. Bob underwent surgery on Monday of last week. He is recuperating nicely.

The Lazbuddie FHA girls toured 40 miles on their annual meet trip Monday of last week. They were served a beverage, appetizer, main course, salad and dessert. The homes visited by the girls were the Atton Morris's, Bob Jones's, B.R. Seaton's, Clyde Monks and Barney Floyds.

Mr. and Mrs. Casey Jones will attend the TCU-Florida State game in Ft. Worth Saturday night Sept. 26.

SCOUT NEWS

Den 1 of the Cub Scouts visited the Open House at Plant X Saturday afternoon, September 19. Hugh Alexander accompanied the boys, and explained the work of the plant.

Boys attending were Greg Slover, Scott and Kevin Alexander, Donald Templeton, Mike Bell, Carl Sulser, Steve Randolph, and Guy Lynn Holder. Mrs. Norman Sulser, Den Mother, Mrs. Hugh Alexander, Mrs. J.C. Randolph, Mrs. Bob Bell, and daughter also attended.

There was no meeting of the Boy Scouts on Tuesday night, because of the Junior High School game.

Cubmaster, Bob Bunner presided over the first Cub Scout Pack meeting of the year, Tuesday night, September 22, in the Springlake junior high school library. Forty-six Cubs and adults were present. Den 1 opened the meeting with a flag ceremony, and the singing of "America." John Stewart, Wayne Stewart, and Guy Lynn Davis received the Bobcat awards, presented by the Cubmaster.

Approximately forty-five new boys have signed up to join Cubs, therefore, several new dens must be formed to take care of this number. There is to be an organizational meeting of all new boys and their parents on October 6.

Also, concerning the Bake Sale project all mothers of the Scouts who live east of the Springlake School road are asked

to take their baked goods to Springlake, those living west of the road are asked to bring their's to the Earth grocery stores. It is asked that the items be in the stores by 9:00 a. m. of the sale day.

All den mothers will meet in the Norman Sulser home on East Highway 70, on the evening of October 15 for the regular planning meeting. These meetings will be held each third Thursday during the year.

Pack meetings are scheduled for the fourth Tuesday of each month.

Den 7 received the flag, for having the largest number of parents present, and will present the opening flag ceremony at the October pack meeting. Den 1 was runner-up, and will be in charge of the closing.

All den news should be turned in to Louanne Britton by each Monday evening, in order to have it ready for the news office by Tuesday, for publication each week. If, for some reason, she cannot be reached, please contact Betty Alexander, at 257-4291.

When painting your home, always follow the sun. Paint the north side early in the morning, the east side late in the morning, the south well after noon, and the west side during the late afternoon, specialists in the Forest Products Laboratory of USDA Forest Service advise.



BEAUTIFUL HIGH STEPPIN' MAJORETTES, lead the Wolverine band in grand style. They are left to right, Cynthia Busby, Marilyn Coker, Alicia Galloway and Alicia Washington.

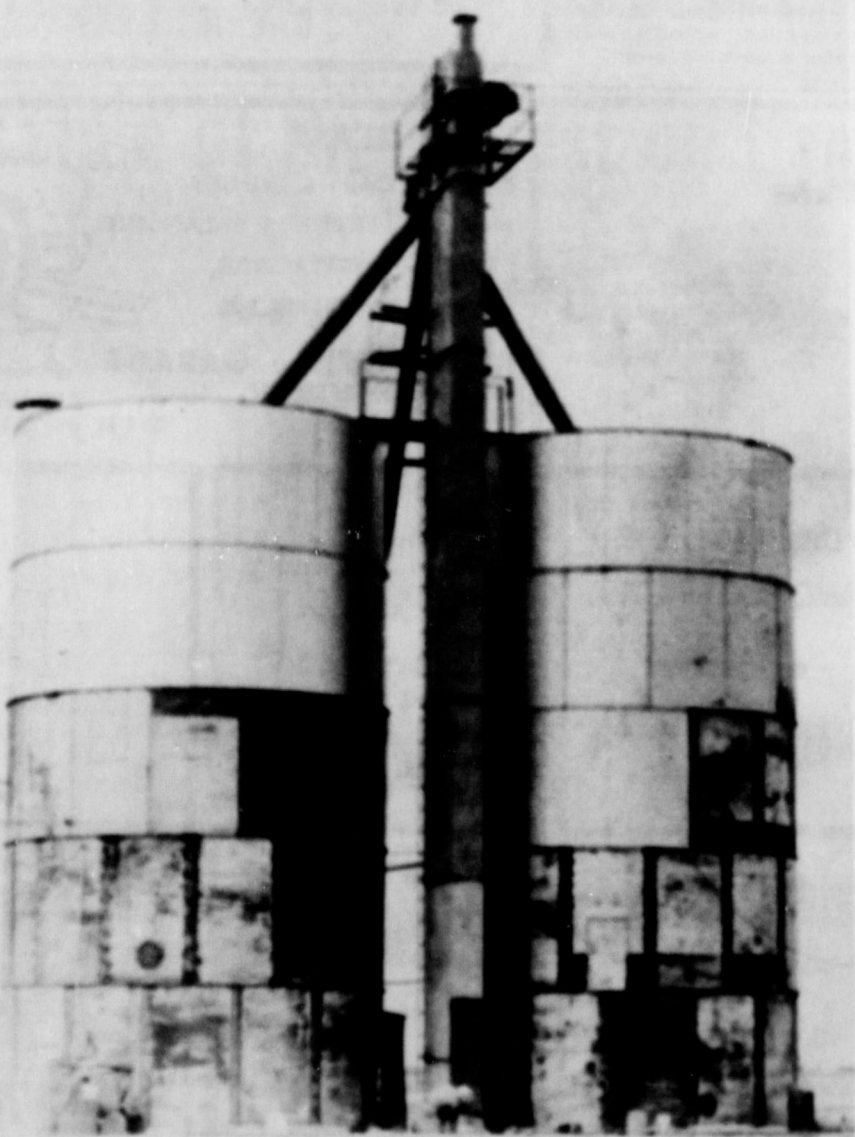
Mr. and Mrs. Homer Sanders had as house guests, Sunday, Mr. Sanders' cousins, Mrs. Roy Jones of Amarillo and her daughter, Mrs. Hurley of Shreveport, and Mr. and Mrs. Perle Martin, of Ft. Worth. Recently visiting in the Sanders' home also were Mr. and Mrs. Doyle Harris of Dallas, Mrs. Sanders' sister and husband, Mr. and Mrs. Harris of Dallas, and Mr. and Mrs. Homer Sanders, Jr. and son, Mike of Amarillo.

Mrs. Roy Haberer was the overnight guest of Mrs. Bonnie Haberer Monday night.

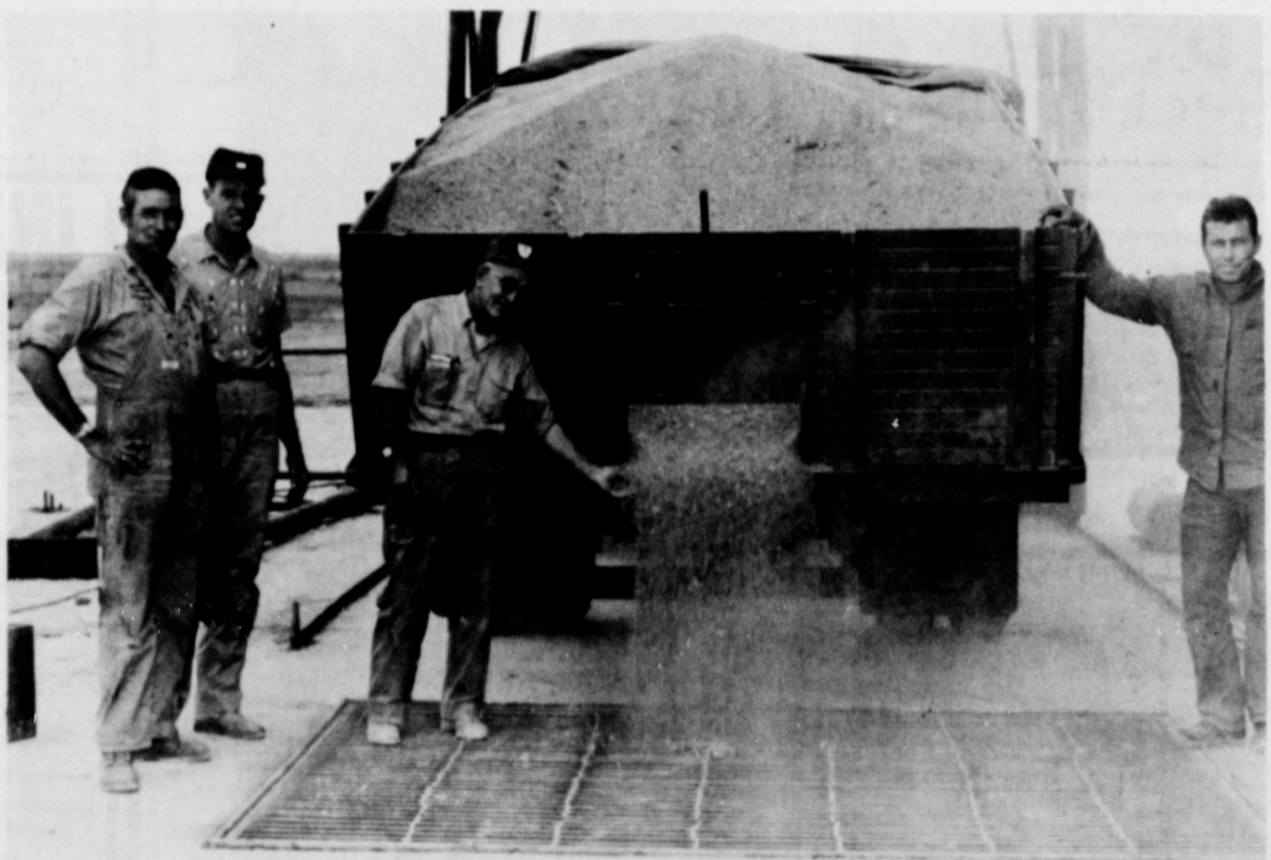
Balance your books...

 with the Original
FINE POINT
Lindy
AUDITOR'S
Ball Point Pen #480F
 Long 7" perfectly balanced writing instrument designed for auditors, accountants, bookkeepers and others who need a fine ball point pen for extreme legibility.
 ONLY THE AUTHENTIC NATIONALLY ADVERTISED LINDY PEN CARRIES THE LINDY UNCONDITIONAL GUARANTEE. DO NOT ACCEPT SUBSTITUTES—LOOK FOR "LINDY" ON THE PEN!
GIANT INK SUPPLY
 Also available in 5" pocket purse size #7-450.
49¢
 F.T.I. Pat. Trad.
 manufactured by
LINDY PEN CO., INC.
 Culver City, Calif., U.S.A.
EARTH NEWS-SUN

HEY, WE DID GET READY—



Completion draws near end on work on Elevator. Farm Chemical Grain Company of Earth.



READY & WORKING... First load of grain unloaded at Farm Chemical and Grain Company Elevator is that of Pody Welch.

AND NOW WE WANT TO HANDLE YOUR GRAIN

We will do our best for you... Give us a try... We will appreciate your business... If closer to Springlake go to Farm Chemical & Grain Co. there...

FARM CHEMICAL & GRAIN CO.

Earth 257-2301

Springlake 986-2161

WANT ADS

Party Line...

Mrs. Dick Evans of Salt Lake City, Utah, is visiting Mr. and Mrs. Bill Beasley and Mr. and Mrs. Harvey Evans.

Mrs. W. H. Evans is improving nicely in the Littlefield Memorial Hospital.

Mr. and Mrs. J. C. Blackwell had as their guests Sunday, their

family, the Rafe Rogers and three children from Whitharral, and the John Blackwells and baby from Littlefield. The Blackwell family enjoyed visiting the open house at Plant X.

Mr. and Mrs. Ted Borum visited Bobby last week at Tech. He resides in Bledsoe Hall, and the Borums report Bobby is well pleased with college.

Mrs. Ted Borum has spent the last week at the bedside of her mother, Mrs. A. L. Sparks in the Methodist Hospital in Lubbock. Mrs. Sparks fell recently receiving injuries and bruises. Her condition is not good, but she is reported to be improving.

TO WHOM IT MAY CONCERN: Ages from 25 to 50, if you are interested in a good salary, earning \$150, call 257-5761 or write box 57.

NOTICE--To all folks wishing to purchase tupper ware, or book a party, call your representative, Mrs. E. E. Danforth, Earth 257-2033 or write box 139.

11/12/13 tp

MAN WANTED..For Rawleigh business in Lamb County or Castro County. No experience needed to start. Sales easy to make and profits good. Start immediately. See Paul Roack, 1410 W. 8th St. Plainview, or write Rawleigh's Dept. TX H 290 190 Memphis, Tennessee.

somewhat. Mr. and Mrs. Sparks reside in the University Convalescent Home in Lubbock.

FOR LEASE

Have 250 cultivated acres to cash lease. Best irrigation district. Good allotments, Farm road 145. See growing crop.

C. O. BURT
HART, TEXAS

FOR SALE: Upright Pairo, Call 257-4771. 7/23/tfc

1/2 sec. - 10" W Imp. on Pave.

1/2 sec. stock farm 2-8" W. Alfalfa

160 A. 8"-10" W. 25% down-imp.

KREBBS REAL ESTATE
Muleshoe, Texas
Office Phone 3-1910
Res. Phone 5881

FOR SALE
1952 Chevrolet
Truck
2 Ton
Midwest Bed, Good
Rubber and Motor
Metal Grain Boards
Good Hoist-\$675
Contact Larry Price
at Piggly Wiggly

O. D.'s Pump and Machine

NOW IS THE TIME
TO GET
IRRIGATION
PUMPS
IN TIP-TOP
SHAPE FOR THE
COMING SEASON
LET US REPAIR
AND MOUNT
YOUR
COTTON STRIPPERS

ACETYLENE and
ELECTRIC WELDING
GENERAL SHOP WORK
NEW PUMP SALES

O. D.'s Pump and Machine

Phone 257-2951 - Earth

FURNITURE
RE-COVERED
FINE
FABRICS
EXPERT WORKMANSHIP
McCormick's
TRIM SHOP
Littlefield, Texas
227 - PHONE
XIT DRIVE 385-4555

FOR RENT----Hoover shampooer, polisher, scrubber, at
Taylor Furniture
Earth, Texas
10/17/tfc

QUICKSALL PRYOR CO., INC.
Automobile Parts
Supplies &
Equipment
P. O. Box 567
Pho. 257-3851
Earth, Texas

MONUMENTS
Winsboro Blue Granite
White Georgia Marble
and Others
Including Bronze for
Memorial Park Specifications
See Percy or Connor Parsons
or Call Collect
Oilton, Texas
Phone 285-3621 or 285-3767

CESSPOOLS and
32420 or 4543
MULESHOE
SEPTIC TANKS
CLEANED

Francis Implement Co.,
Your Ford Tractor Dealer
Muleshoe, Texas
Pd. Adv.

FOR SALE: 24" girl's bicycle.
Swinn Make. Call Karen Ann-
strong. 257-5451
8/13/tfc

FOR SALE
Lot 10, Block 1, Original town
of Earth. A. W. Gover.
Phone 257-5312
10/8/4t. p.

Help Wanted

For Drive In Theatre Snack Bar

Ted Borum

Call 257-3321
Or 257-3601

9/4/t. f. c.

For All Your

- MUFFLER - TAIL
PIPES . . .
- DUAL MUFFLER
SETS . . .
- FENDER SKIRTS . . .
- LOWERING BLOCKS
- CUSTOM MADE
SEAT COVERS . . .

Go To
**McCormick Auto
Supply**

Main Street
Littlefield, Texas

**HAMMONS
FUNERAL HOME**

Ambulance Service

Phone 385-5121
LITTLEFIELD, TEXAS

Feeders Grain, Inc.

DAILY BUYERS FOR CATTLE
FEEDERS
Federal Storage License 1-4451
We Can Use Your Grain

Have Semi-Lift - Location

Sudan Livestock and
Feeding Co.
Phone 2-7-5321 - Sudan, Tex.

ALL TYPES OF WELDING

MACHINE WORK

Truck Hoist and Boxes
Mounted
Frames Sectioned

On The Farm Service

Day and Night Service

JERRALD'S WELDING AND
MACHINE SHOP

Earth, Texas Pho. 257-5341
"Uphill Welding, Not Down"

Irrigation Systems
Designed & Installed

• Roll-Flex Concrete
Pipe

• Motor Joint
Concrete Pipe

• Asbestos Cement Pipe

ALCOA ALUMINUM
IRRIGATION SYSTEMS

• Flowline

• Gated Pipe

ALUMINUM PIPE

**BROWN
SUPPLY CO.**

Of Muleshoe

Days 2790 - Nights 4124

Phone 385-3636
Littlefield, Texas

For Sale-Two-row International
Row Binders in good condition.
Paul Chance
10/1/3t. c.

FOR SALE: Chrome Dinette Set,
4 chairs, red upholstery-in good
condition. 257-3682.
8/6/tfc

FOR SALE OR RENT
House in Earth, contact Dale
Odom, 1809 Kokoma, Plain-
view. Phone CA 4-5915.
9/17/t. f. c.

House for sale-Cheap!!! Two
bedroom house in Earth.
Call 257-3062.
9/24/2t. p.

AS NEAR AS YOUR TELEPHONE

Oxygen
Equipped



Air
Conditioned

PARSONS FUNERAL HOME

Phone 285-2621 Collect

We Accept Any Funeral Home Burial Policy

EARTH NEWS-SUN



Published at Earth, Texas every Thursday except the first
Thursday following Christmas.

Entered as Second Class Matter at the Postoffice at Earth,
Texas, October 1, 1954 --Under Act of Congress March 3, 1879

SUBSCRIPTION RATE

Earth and Trade Territory, per year\$3.00
Elsewhere in United States, per year\$3.75

CLASSIFIED RATES

4c per word, first insertion, 3c per word thereafter--40c
Minimum.

ADVERTISING RATES GIVEN ON REQUEST

ROSS and POLLY MIDDLETON, Publishers

LOOK

We Have Several

NEW TRACTORS and EQUIPMENT

That must be sold in order to
raise some money. . . .
We Guarantee you, if you buy
anywhere else you pay
too much. . . .
See W. W. Powell

Adams Tractor

Oilton, Texas
9/24/3t. c.

Sewing Machine For Sale

To Someone With Good Credit To Take Up
Payments On My Good NECCHI Sewing
Machine Complete Zig-Zag. . . 6 Payments
Of \$5.00 Per Month. . .

Write Box 4666-Tech Station
Lubbock, Texas

Used Combines

3-92 Massey-Ferguson

3-Super 92 Massey-Ferguson

1-A-C 2 Row

FRY & COX

MULESHOE, TEXAS

Social PRINTING

PROFESSIONAL
PRESSWORK . . .
PRACTICAL
PRICES



For that special occasion, let us
plan a printing job with you that
will reflect your good taste and
discrimination. Our every order
is guaranteed!

- MANY TYPE FACES
- VARIETY OF PAPER

Budget Tailored
CREDIT TERMS

The Earth News-Sun

PAYNE FUNERAL HOME

PHONE 246-3351-AMHERST, TEXAS

Welcome to Earth



MR. AND MRS. EVERETT NORRIS

Welcome to Earth to Mr. and Mrs. Everett Norris
who moved here recently from Louisiana. Mr.
Norris is employed by the Earth Texaco Station.

Prior to moving to Earth, Mr. Norris was employed for 18 years with the state Highway Department. The couple are parents of three children Bessie, 18, in the Armed Forces, stationed in Anchorage, Alaska, Billy, 17, and Brenda Faye 10, a fifth grade student. They are members of the Baptist Church.

THE FOLLOWING MERCHANTS EXTEND THEIR WELCOME TO ALL NEWCOMERS

PATTERSON BROS. GROCERY
EARTH, TEXAS

EARTH INSURANCE
PERRY MARTIN
Phone 257-3461

WOLVERINE DRIVE IN
EARTH, TEXAS

E. S. S. CO., INC.
EARTH, TEXAS

SUNSET DRIVE - IN THEATRE
EARTH, TEXAS

EARTH OIL and GAS CO., INC.
M. H. BEFN, Manager

EARTH CLEANERS
EARTH, TEXAS

GIFT AND FABRIC SHOP
EARTH, TEXAS

EARTH GULF STATION
EARTH, TEXAS

CITIZENS STATE BANK
MEMBER F. D. I. C.

The EARTH NEWS - SUN
EARTH, TEXAS

PIGGLY WIGGLY
EARTH, TEXAS

"As Seen In Earth"

By: Carolyn Hamilton

Farmers comparing their prospects and hopes for a good feed and cotton crop.

Smiling Paul Poyner, happily arranging new stock in White's Auto.

A big grasshopper, caught hopping along on the sidewalk down town.

Flowers in the Earth News Planter, has brought atmosphere to the office.

Here in Earth we have peanuts growing on a bean vine a mile from town.

A load of watermelon passing through Earth, preceded by a truck of wood--A combination of summer and winter.

The pleasant Wayne Jackson with a happy word for everyone.

Grandmothers comparing their most beautiful, most wonderful, most talented grandchildren.

Scout mothers, busily working and making plans for a better Scouting experience for their boys.

A feeling of Autumn in the air.

Roy Sawyer, whose presence is a happy addition to Earth, delivers the local mail, which arrives by train in Plainview, 365 days a year. He leaves Plainview at 6:30 a. m., stops in Oton and Springlake, and proceeds to Earth.

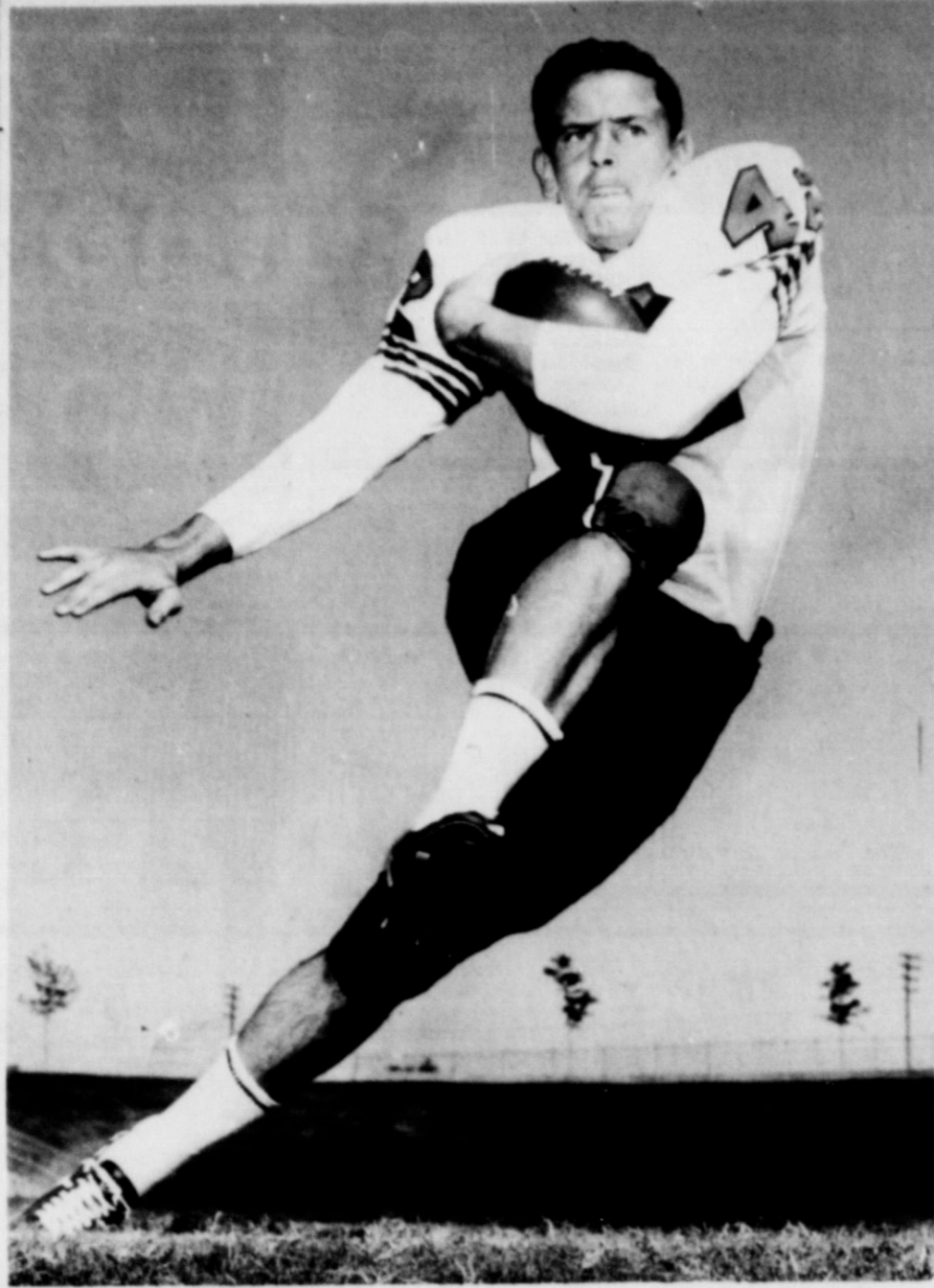
During the day he works at Earth Auto Parts Co.

Late in the evening he collects the out-going mail and makes his return trip to Plainview.

Roy Sawyer, his wife, and son reside in Plainview, where Mrs. Sawyer teaches first grade students in Ash St. School.

His three attractive daughters are married, living in Plainview and Amarillo. He has three grand children. His son is a popular Senior student in Plainview High School. The family belongs to the Baptist Church.

Roy Sawyer always has a cheerful, smiling, face as he enters the News office, and remarks, "I like coming in here where everyone is so busy, and there is such a pleasant atmosphere."



Hal Hudson returned to Tech as a one-year letterman, playing in End position. Tech meets Texas Saturday night at Tech. Last Saturday night Tech defeated Mississippi State 21-7.

Lt. Tommy Osborne Home On Leave

Lieutenant Tommy T. Osborne the son of the U.S. Osborne's is home on a twenty day leave from Ft. Gordon, Georgia. He completed the Signal Corp Officer's Basic Training course on Sept. 18, rating in the upper third of his class.

Since Tommy has only a Bachelor of Science degree, it was quite an accomplishment for him to maintain sixth place in

competition with eight men, three of whom had graduated with degrees above the level of BS.

He will meet with the Scouts and explorers in Earth on Oct. 1, which is also his birthday. Afterwards, he will leave for his Alma Mater, Prairie View A&M College, where he will visit his brother, Isaac John, who is pursuing his college pre-medical course in a major in Biology and minor in Chemistry.

On October 10, Lieutenant Osborne will marry his college sweetheart, Miss Emma Kate Elmore of Goldspring, Texas. She is a major in music and an accomplished violinist.

Tommy Osborne will embark for Germany October 14 for a three year tour of duty.



Lieutenant Tommy Osborne

Mrs. Bert Weil and Donnie were in Plainview Thursday shopping.

Mrs. L. T. Smith spent Saturday night in Dimmitt with her daughter, Mrs. Clyde Ray Davis.

BEAT ROOSEVELT

Last weekend Mrs. Ann Hodge visited in Amarillo with Mrs. Guy Byrd, while Guy attended the Buick show in El Paso, Tex. Monday Mrs. Minnie Price was luncheon guest of Mrs. Hodge.

Mrs. W.S. Braden and Mrs. Pearl Hughes, mother and sister of Bill Braden from Quinton, Oklahoma are visiting in the home of the W.H. Bradens. They visited Boy's Rauch Sunday.

Mrs. Gene Brown and Dicky,

Party Line

Mr. and Mrs. Howard Bridges visited with Mr. and Mrs. John Bridges and boys of Earth Friday afternoon.

L. T. Smith and Pete O'Hair left Thursday for a few days' fishing at Lake Kickapoo, near Archer City.

Ronnie Smith, Guy Francis Kelley, and Donald Kelley left Thursday for Lake Kickapoo. The report is that fishing is good.

Mr. and Mrs. R.J. Brock and Mr. and Mrs. Bob Brock of Lubbock attended the Tech game Saturday night. Sunday afternoon the R.J. Brocks visited the J.D. Nix family in Amherst.

MR. FARMER:

WE WANT YOUR MILO

UP TO

14% MOISTURE \$1.90

14.5 MOISTURE \$1.88

DAILY BUYERS FOR CATTLE FEEDERS ALL DAY LONG

HAVE SEMI-TRUCK DUMP

LET US HANDLE YOUR LOAN MILO.

WE ISSUE FEDERAL WAREHOUSE RECEIPTS.

FEEDERS GRAIN INC.

Located at Sudan Livestock and Feeding Co.

On Highway 84 One Mile East of Sudan

Ph. 227-5321

OLEO GOLDEN CORN 100% Pure Corn Oil 1 Lb. Pkg. **3 FOR \$1**

SPAM

Luncheon Meat 12 Oz. Can **45¢**

SOUP CAMPBELLS TOMATO CAN **10¢**

FLOUR GLADIOLA 5 Lb. Bag **49¢**

BEANS PINTO 4 Lb. Bag **49¢**

JAM KIMBELLS RED PLUM 18 Oz. Jar **3 FOR \$1**

MY-T-FINE PUDDING

PUDDING Box **10¢**

SANDWICH FILLED COOKIES

COOKIES 2 Lb. Bag **39¢**

VAN CAMPS VIENNA

SAUSAGE **19¢**

VAN CAMPS

Pork & Beans 300 Size 2 FOR **29¢**

KIMBELLS

Cooking Oil Quart **45¢**

KIMBELLS YELLOW

POPCORN NEW CROP 2 Lb. Bag **25¢**

GRAPES TOKAY Pound **12 1/2¢**

POTATOES COLORADO RED U.S. No. 1 10 Lb. Bag **49¢**

POTATOES NEW MEXICO SWEET Pound **12 1/2¢**

STEAK ROUND U.S.D.A. Good Pound **85¢**

STEAK SIRLOIN U.S.D.A. Good Pound **89¢**

STEAK T-BONE U.S.D.A. Good Pound **85¢**

YOUR BEST BUY!
SPECIALS
 September 24 through 30
 DOUBLE GUNN BROS. STAMPS
 ON WED.
 WITH PURCHASE
 OF \$2.00
 OR MORE

PATTERSON BROS. GROCERY