

# All The Better Citizens Pay Their Poll Tax - Have You?

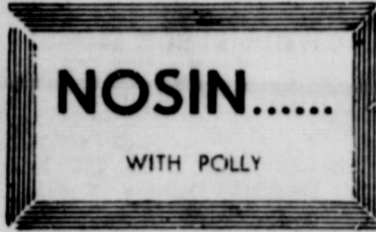
The NEWSpaper Dedicated to the Development of the World's Richest Irrigation Area

## The Earth News - Sun

"A CONSOLIDATION OF THE EARTH NEWS and EARTH SUN, OCTOBER 12, 1956"

EARTH  
SPRINGLAKE

VOLUME 5 TEN CENTS EARTH, LAMB COUNTY, TEXAS, THURSDAY, JANUARY 22, 1959 8 PAGES NUMBER 24



### Is Our Face Red

Please accept our apologies for the errors made in the story of Springlake's Fire Truck in last week's issue of the Earth News-Sun.

James Washington was appointed to fill the unexpired term of Z. T. Byers as Alderman and not Arnold Washington.

Your donations to the Fire Truck Fund can be mailed to Mrs. Latrielle Brown, Box 14, Springlake (Whose name was omitted from the story).

Also some lines and paragraphs should have been pulled from the story, and some were pulled that should have been left in.

We are sorry to have made these many mistakes.

Our boy John, just got too tired last Thursday. He'd worked all night Wednesday night, and his resistance was at its lowest ebb. So in that weakened condition, who should be expected to resist that pretty new green Chevrolet Impala he's now driving. We, at the office are getting quite a complex over John's new car. Anna Johnson said she was already parking her car on the third row back, at church. (That's the furthest row back in the church's parking area). The other two rows are taken up by all the new cars that give off a good view from the church. I agree it's getting down right embarrassing to hunt a back street to park on, and then be a bit uneasy that someone might haul off the family auto as a junk heap.

Harold Britton doesn't necessarily want a new car, he just wants a blue car.

The reason for this, he reports is that he borrowed Mrs. Hickman's car to go down town and everyone scampared to get out of his way, leaving him a clear street, (not taking time to look and see who was behind the wheel). But just knowing who owned that blue Chevrolet, Harold has decided to paint his car blue so he can get to and from work on a clear street.

(This excuse surely was from the bottom of the barrel).

Speaking of cars, Raby Kellogg meditated too long on what he'd heard a colored man say, and it made sense to Raby. He told his wife at noon one day, I believe if I'm going to suffer, I'll just buy something I can enjoy suffering for. You guessed it, Raby drove home a new 1959 Ford that day.

We Flat Flubbed, and as a result we feel so low that we could sit flat down on a cigarette paper, bang our feet off the side and never touch the floor.

We don't know how these things happen exactly, we proof read the story, marked the corrections, they were set, and low and behold when we saw the story after the paper was out, we hardly recognized it. The lines had become so jumbled. All we can say is it takes real talent to mess up a story as badly as we did the Springlake Fire Truck story.

And folks we're terribly sorry.

Stevie to profit by others mistakes

Most little boys want to grow up and be strong, big men. Stevie Hay is no exception. He came up with this idea after studying about Samson and his strength, he told his Sunday School teacher he had gotten a punching bag for Christmas. She told him that would make him strong, he said, "yes, but I'm not going to tell you where my strength is."

### Junior Class Play Date Announced

The Junior Class of the Springlake High School are announcing their class play entitled, "The Farm Divine" from the novel of Hillegard Dolson, at 8 p.m. Thursday, February 12 in the High School Auditorium.

The play is under the direction of Mrs. John H. Lawrence and Truman Reid.

Mrs. Lawrence announced that try-outs have been made and students are now practicing. The Cast will be announced at a later date.

Mr. and Mrs. Don Randolph spent Sunday with her parents, Mr. and Mrs. E. A. Wyer in Tulla.

### Funeral Services Held For Mother Of Local Resident

Funeral services for Mrs. Georgia M. Strickland, 69 of Matador was held at 3:00 p.m. Tuesday at the First Baptist Church in Rochester, Texas, with Rev. Hubert Sego and Rev. Hammer, both of Haskell, Texas officiating.

Mrs. Strickland died at 9:02 a.m. Monday in the Methodist Hospital in Lubbock, after a critical illness of several days.

Survivors include three daughters, Mrs. Homer Starkey, Earth; Mrs. Francis Strickland, Lubbock and Mrs. Dan Miller, Odessa; three sons, Iva Strickland, Knox City; Ira Strickland, Fort Worth and Rhondy Strickland, Casper, Wyo.; 14 grandchildren and ten brothers and sisters.

Burial was in the Rochester Cemetery under the direction of Mansell - Smith Funeral Home.

### DeLuna's Bond Set At \$1,500

The Lamb County Grand Jury returned 23 indictments including Jimmy DeLuna of Earth.

DeLuna was indicted in a possession of marijuana case. His bond was set at \$1,500.

DeLuna was arrested in November, 1958 by Deputy V. L. Smith, Jr., at which time a tobacco can of marijuana was found in his possession.

Indicted in assault cases were Al Thornton, Littlefield negro and Ray Trevino, Littlefield Latin American.

Bond was set at \$5,000 for Trevino and \$2,000 for Thornton.

Other indictments included 12 for forgery, two for armed robbery, four for theft, one check law violation, and one driving while intoxicated, second offense and DeLuna for possession of marijuana.

Mr. and Mrs. J. P. O'Conner of Levelland visited in the home of Mrs. Sarah Clark, Tuesday.

### A Reminder!

More Money is still needed for the Swimming Pool Fund

Turn In Those Donations Now.

(REMEMBER THESE DONATIONS ARE TAX DEDUCTABLE)

### Jaycees To Help Issue Poll Tax Receipts



SWIMMING POOL CONTRACT SIGNED — Jaycee members and Chamber of Commerce members signing the contract for Earth's new Swimming Pool. Left to right Golden Ferguson, swimming pool fund chairman, Weldon Barton, Marvin McLarty, representative of the Seahorse Swimming Pool Corp. of Lubbock, Ted Borum and A. D. Taylor of the Chamber of Commerce.

### No Loss Reported In Grandmother Of Mrs. Clark Dies In Littlefield

Indication as to having been frightened away, burglars left the Winders Fertilizer Co. Saturday night without taking any known valuable items or prying open the safe according to Jay Winders, owner and manager.

Deputy V. L. Smith, Jr. made the investigation. The burglars had broken the glass in the south door and unlocked the door from the inside to gain entrance.

Winders stated he had not noticed the door being open until about 3 p.m. Sunday afternoon, and believed it happened between closing time Saturday night and Sunday morning.

Winders said, so far he had not discovered and merchandise or small items to be missing. However, things were badly disarranged and out of place.

Funeral services for Mrs. Nannie Lee Walker, 77 of Littlefield was held at 2:30 p.m. Friday in the Littlefield Drive Church of Christ with Mr. Bostwick, minister of the Sudan Church of Christ officiating.

Mrs. Walker was the grandmother of Mrs. George Wesley Clark of Earth.

Survivors include her husband, five sons, two daughters, eight grandchildren and 11 great grandchildren.

Burial was in the Memorial Park Cemetery under the direction of Hammons Funeral Home.

### Farmers Union Organizes Lamb County Weed Control District

Farmers Union members voted to organize a Lamb County Weed Control District at the regular county meeting held in Amherst Thursday night.

The control of weeds named were bondweeds, Johnson grass and thistle.

The committee is composed of J. A. Littleton, Jr. of Earth as

chairman; Robert Mastern of Sudan; Murray Mabem of Oton and Willie Steffy of Littlefield. The committee will work together with other committees of Lamb County to get the control in force as soon as possible.

Hale County has organized a weed control district which is now in force.

### Cotton Farmers To Choose Allotment Plan After Price Support is Announced

Operators of upland cotton farms will have until March 16, 1959, to choose between the Choice (A) and Choice (B) allotments and price supports for their farms, D. C. Terrell, Chairman, Lamb County ASC Committee said recently. That is the final date for registering the operator's choice at the county ASC office.

The chairman emphasized, however, that no election of such a choice can be filed until after the farm operator receives a notice of the price support levels applicable to the 1959 upland cotton crop under the (A) and (B) allotments. That will be soon after the Secretary of Agriculture announces the

national price support levels for the 1959 upland cotton crop about the end of January.

Every cotton farm operator, therefore, should be on the lookout for a notice from his ASC office early in February, informing him of the price support level available for cotton produced on Choice (A) and (B) allotment farms and stating the deadline for filing the operator's choice in writing at the county office. The notice form will have a space where the operator can write his choice of either (A) or (B).

If the farm operator elects the Choice (A) farm allotment and complies with it, his 1959 upland cotton crop will be eligible for price support at not less than 80 per cent of parity. If he elects and complies with the Choice (B) allotment, which is 40 per cent larger than Choice (A), his crop will be eligible for support at a level which is 15 per cent of parity less than under Choice (A). The operator must elect the same choice for all farms he operates.

In accordance with legislation enacted last summer, farmers will have this opportunity to choose between the (A) and (B) farm allotments since marketing quotas will be in effect for the 1959 upland cotton crop.

### Eight Days For God Revival Begins Sunday

An "Eight Great Days for God" Revival will begin Sunday, January 25 through February 1 at the Earth First Methodist Church.

Dr. H. Clyde Smith of Big Spring will conduct the preaching service and Rev. Raymond Dyess of Hale Center will lead the singing.

A men's breakfast will be held Monday through Friday at 6 a.m. Other services will be held at 10 a.m. and 7 p.m.

Everyone is invited to attend.

### Graveside Services In Littlefield Aa 2 P. M. For Murrell Infant

Graveside services will be held at 2 p.m. Thursday (today), in Babylon Addition of the Littlefield Memorial Park Cemetery for Bradley Kirk, infant son of Mr. and Mrs. Bobby Murrell of Earth.

Bradley Kirk, lived only a few hours. He was born at 2 p.m. Tuesday in the Littlefield Hospital, weighing four and one half lbs. and died at 3 a.m. Wednesday.

Grandparents of the infant are Mr. and Mrs. T. V. Murrell and Mr. and Mrs. Neil Webb of Earth.

Rev. Gene Matthews of Post will officiate at the services.

### Wolverine Band Concerts And Contests Report

An annual report of the Wolverine Band and future concerts and contests are as follows:

December 6, 1958 — 1st Division in Marching at Plainview

December 12, 1958 — Band Clinic at Lubbock

December 13, 1958 — All State Band Tryout at Lubbock

December 19, 1958 — Christmas Band Concert

March 9, 1959 — Concert at Springlake High School Auditorium

April 4, 1959 — Solo Ensemble at Plainview

May 1-2, 1959 — Plains Contest and Sight Reading at Plainview.

There will be a final concert at the close of the Springlake School. Date for this concert will be announced later.

Mrs. Gene Brown, Kathy and Vicky and Mrs. Earl Jordan visited with Mr. and Mrs. H. A. Caraway in Hale Center, Saturday.

### L. Z. Anglin Winner Of Caprock Fertilizer

L. Z. Anglin, farmer and landowner was named one of the four winners of \$100 worth of fertilizer sponsored by the Caprock Fertilizer Co. of Littlefield recently.

Other winners were David Harmon, Amherst; H. R. Wallace, Spade and L. M. Burnett, Littlefield.

### MARVIN BROWN ATTENDING WESTINGHOUSE SCHOOL

Marvin Brown, employee of Brown-White Equipment Co. is attending a Westinghouse service school on maintenance of appliances in Lubbock. The school is for one week.

### Church of Christ Gospel Meeting Begins Sunday

A Gospel Meeting is scheduled to begin at the Earth Church of Christ, Sunday, January 25 through February 1.

Foster L. Ramsey of Borger will do the preaching. Alvis Jones of Littlefield will direct the song services.

Services will be held at 10 p.m. and 7 p.m. daily.

Evening sermon subjects are Monday, The Perfect Law of Lib-

erty; Tuesday, Temptation, Sin, and Death; Wednesday, Be Ye Reconciled Unto God; Thursday Relationship of Baptism to Cardinal Principles of Christianity; Friday, The Church and Salvation Saturday, Restore Such A One; Sunday, The Pathways of Man. (projector will be used to show scriptures)

The public is invited to attend each service. Come let us study together.

The Earth Jaycees announced at their regular weekly meeting held Monday, that they will sell and issue Poll Tax receipts to help encourage more citizens to pay their Poll Tax before or by January 31.

Jaycee groups will be issuing receipts at various business places, Meeks Barber Shop, Barton Bros. Butane, City Drug and the cafes, to help make it more convenient for everyone to pay their Poll Tax.

The Jaycees feel that it is a privilege to be able to vote and have a voice in our government. They urge you to pay your Poll Tax.

Seventeen members and one guest, Lewis McDaniel of Amherst attended the meeting.

### Lions Honor Their Ladies With Dinner

The Springlake School Cafeteria was the scene of a dinner honoring the Earth Lions and their ladies Tuesday night.

Boss Lion Bill Mann, opened the meeting by introducing Jarvis Angley, who in turn introduced those on the program. Those on the program were Annette Hodge, Jane Branscum and Linda Lawrence, pianist.

Elroy Wisian, of the Springlake Lions Club, Zone Chairman for this Zone, introduced International Counsellor, Merle Cowan of Lubbock, who introduced the guest speaker W. F. (Bill) Hunter of Amarillo, District Governor of District 27-1 Lions International.

Lion Hunter spoke on Lions Humanitarian Service, including a state report and world-wide.

A report on the Texas Lions Crippled Children's Camp at Kerrville was given by Lion Hunter. Hunter pointed out the progress of the 743 children who attended the camp last summer, coming out accepting their handicaps much better.

During the winter and spring months the Kerrville Camp is open to the blind people. Hunter stated that after being taught various trades, 80 per cent of the blind came out rehabilitated and eager to live life to the fullest.

Lion Hunter said, many other Lions Clubs were providing milk, food medicine and clothing through the Care Program to youngsters in parts of India. This is distributed by Lions when it reaches its destination. Lion Hunter expressed his hope that the local district clubs would begin a Care Program in the near future.

Other reports were, the building of schools in the Republic of Mexico and hospitals in South America and a rehabilitation club for boys and girls in Oklahoma City.

Decorations were carried out in the Valentine motif by Mrs. Paul Wood, PTA ladies were in charge of the food, directed by Mrs. Johnnie Haberer and program by Mrs. Eldon Davis.

### LCC Student Joins College Octet

Doris Jean Dickson has been selected to become a member of the Lubbock Christian College Octet, to replace a student who was forced to resign due to illness.

Doris is the second freshman to join the LCC Octet.

Doris Jean is a graduate of the Springlake High School and the daughter of Mr. and Mrs. R. O. Dickson.

# Springlake Upsets Sudan

The fighting Springlake Wolverines smacked the once mighty Sudan 52 to 48 last Friday night on their home floor to gain their first district basketball victory in 22 years. Coach Don Townsend's charges had to gain great heights in obtaining the victory, for two of his starters were out. Sandy Sanders was not suited out due to the flu bug, and Tom Messer still had a cast on his broken finger. Reserves Bobby Sloan and Norman Clayton were also out due to illness. Only eight boys were suited out, including Messer and he had to play after Gene Stephens fouled out in the third quarter and Hal Hudson in the first of the fourth quarter.

Joe Neal Ellis was the big gun for Springlake as he hit for 29 points, being high point man for the game. Gene Stephens and Hal Hudson each hit 7, Dick Evans made 6 and Stanley Irvine 3 to complete the scoring for Springlake.

Perhaps the unsung heroes of the game were the reserves who had to take up the slack due to the regulars being ill and others fouling out. Stanley Irvine started his first varsity game and played good ball until he twisted his ankle with just two minutes to go in the game. Carl Sanderson and Jerry Jones did fine work to help stave off Sudan's desperate rally.

Springlake jumped to a fast 14 to 6 first quarter lead and was never headed. The Wolverines increased the lead to 26 to 15 at half-time. But Sudan came back in the third quarter and closed the gap to 37 to 31 starting the final period. The Hornets got within three points of Springlake during the last quarter, but the Wolverines were not to be denied. They hung on separately for the four point victory. According to Sudan's coach Smith, this was Springlake's first victory over Sudan in basketball in fourteen years. It was sweet victory for the Wolverines.

Springlake girls did not fare so well as they bowed to the powerful Sudan girls' team 52 to 22. Springlake had a frigid second quarter as the girls scored just 4 points to Sudan's 18. Minnie Wheat scored 23 points for Springlake to win high point honors. Eleanor Riley made 4 points, JoAnn Oden 3 and Pat McLeod 2 to complete Springlake's scoring. Linda Lewis, one of Springlake's regular forwards, had to miss the game because of illness.

**SHOP THE CLASSIFIED WAY AND SAVE!**

## WE HAVE

- PLANTING SEED . . .
- MEAL . . .
- CAKE . . .
- 20x80 MIX . . .

# Earth Co-op Gins Inc.

Dealers In:  
Cotton, Cotton Seed and Cotton Seed Products . . .

## BANK NOTES . . . . . by Malcolm

### DID YOU KNOW...

THE OLDEST CHECK MADE OUT ON PAPER WAS WRITTEN IN LONDON ON MARCH 14, 1664. IT WAS FOR 100 POUNDS AND WAS SIGNED BY SIR WILLIAM BARKER. THE CHECK WAS FOR 100 POUNDS AND WAS SIGNED BY SIR WILLIAM BARKER. THE CHECK WAS FOR 100 POUNDS AND WAS SIGNED BY SIR WILLIAM BARKER.



A BIG IDEA FOR MAKING A PRODUCT FOR FISHERMEN. EARL A. KINGMAN, JR. OF A LOCAL BANK, TODAY HIS SPORTING GOODS ARE SOLD FROM COAST-TO-COAST.



NEWLY ENGAGED COUPLES IN AN ILLINOIS TOWN RECEIVE A HELPFUL CHECKLIST ON THINGS TO BE DONE BEFORE THE WEDDING FROM A LOCAL BANK.

## Springlake Bows Twice to Farwell

The high flying Farwell Steers came to Springlake Tuesday night and when they left, the Wolverines licked their wounds. Led by outstanding Johnny Lovelace, the Steers made a run away of the boys' game 94 to 49, to inflict one of the worst defeats upon the Wolverines ever suffered. Lovelace poured in 28 points, followed by teammate William Dickle who had 29 points. Joe Neal Ellis was high point man for Springlake with 15. Farwell played its first team just a little over half the game, but that was enough. The Steers made 20 points in the first and second quarters, 28 points in the third and 26 in the fourth. This gives Farwell a 3 won and 0 defeats record in district play. They take on Anton Friday night, also undefeated.

The Springlake girls couldn't catch up. Minnie Wheat made 21 to 14 at the half, but could never find the range and bowed to Farwell 37 to 26. They trailed just 16 out of Springlake's 26 points. Pat McLeod scored 2 points, Linda Lewis 2 and Eleanor Riley 1.

## Party Line...

Mr. and Mrs. Marvin Huff, Mr. and Mrs. O. B. Whitford, Mr. and Mrs. Chester Elmore and Joan and Mrs. Everett Patterson attended funeral services for Mrs. Georgia Strickland at Rochester, Texas, Tuesday.

—PL—

Mr. and Mrs. Raby Kellogg, Wanda, Rhonda and Rodney visited in the home of Mr. and Mrs. A. M. Timmons in Levelland, Sunday.

## Springlake Junior High Wolverines Defeat Sudan

The Springlake Junior High boys' team defeated Sudan at Sudan Monday evening 25 to 25. Dale Dent was the leading scorer.

In the girls' game Carolyn Gregory led Springlake to victory 21 to 16.

Springlake lost both seventh grade games. The boys bowled 18 to 12 with Jerry Irvine leading Springlake scoring with 8 points.

The girls went down 14 to 12 to Sudan.

## New Rice Package Serves a Crowd

By Betty Barclay

PERFECT for serving a crowd is this hearty, delicious and easy to do "Spanish Rice Pronto." Here's a recipe for 8... double the recipe if the crowd expands. And, speaking of crowds, be sure when serving them to try the new economical family size package of Minute Rice soon at your grocery.

**Spanish Rice Pronto**  
 1/2 cup bacon drippings or butter; 2 medium onions, thinly sliced, (about 1 cup); 1 medium green pepper, diced, (about 1/2 cup); 2 1/2 cups packaged pre-cooked rice; 3 cups hot water; 4 cans (8 ounces each) tomato sauce; 2 teaspoons salt; 1/4 teaspoon pepper; 1 teaspoon prepared mustard (optional).  
 Melt fat in saucepan or skillet. Add onions, green pepper, and packaged pre-cooked rice. Cook and stir over high heat until lightly browned. Add remaining ingredients. Mix well. Bring quickly to a boil, reduce heat, and simmer, uncovered, for 5 minutes. Makes 8 servings.



FOOD THAT STICKS TO THE RIBS — FFA Boys of the Springlake High School are shown enjoying a good feed of chili, beans, doughnuts and plenty of soft drinks and coffee at Dent Farm

Supply on John Deere Day last week. Pictured on the right is Tuffy Dent, busy dipping out chili to approximately 400 people who attended.

## Springlake "B's" Down Olton

The Springlake high school "B" basketball team took on Olton Thursday afternoon in the local gym and came out 63 to 40 victors. The Wolverines completely dominated play, having a 42 to 18 lead at half-time and coasting on to victory.

Hal Hudson was high point man with 16 points, followed by A. M. McGowan with 15, Stanley Irvine 8, Bob Sloan 6, Darwin McLeod 6.

Ronnie Johnson 2, Jerry Jones 2, and Carl Sanderson 2 and Albert Lopez 6.

The Springlake "B" team played Olton again Tuesday afternoon at Olton, and this time just barely won a close game 50 to 28.

Springlake built up a fairly good lead, but it dwindled in the final period until at one point Olton led by two points. Springlake came back to pull it out of the fire.

## Bright and Tasty Touch

By Betty Barclay

ADD color and special zest to holiday buffet menus with these perky cranberry relish molds. Easy to prepare with lemon-flavored gelatin, raw cranberries and horse-radish, these flavorful meat accompaniments are perfect companions for sliced turkey, ham or roast beef.



## Cranberry Relish Molds

1 package lemon-flavored gelatin; 1/2 cup sugar; 1 cup hot water; 1 cup cold water; 2 cups fresh cranberries, ground; 2 to 3 teaspoons horse-radish.  
 Dissolve gelatin and sugar in hot water. Add cold water. Chill until slightly thickened. Fold in cranberries and horse-radish. Pour into molds. Chill until firm. Makes 12 relish molds.

## Party Line.....

Mr. and Mrs. Wayne Ruherford spent the weekend with their daughter and family, Mr. and Mrs. Joe Fuller at Cortez, Colo.


|  |   |
|--|---|
| Eyes Examined                                      | Glasses Fitted                                    |
| <b>BLACK OPTOMETRIC CLINIC</b>                     |   |
| A. J. Black, O. D.                                 |   |
| Office Hours:<br>9:00 to 5:00<br>Sat. 9:00 to 1:00 | 113 West 1st St.<br>Phone 8240<br>Muleshoe, Texas |

**You Are Invited To**

# HEAR THE GOSPEL


**January 25 - February 1**

SERVICES:  
**Monday-Saturday 10 A. M. and 7 P. M.**  
**Sunday 10:50 A. M. and 6 P. M.**



FOSTER L. RAMSEY  
Borger, Texas  
Will Be Preaching

**Preached In  
Truth  
And Love**



ALVIS JONES  
Littlefield, Texas  
Song Director

AT THE

# CHURCH of CHRIST

EARTH, TEXAS

NO BOOK BUT THE BIBLE—NO CREED BUT CHRIST

# Southwestern Public Service To Spend \$14 Million In '59

The Southwestern Public Service Company will spend more than \$14,000,000 in 1959 for new equipment and extensions and additions to their electrical system. A. R. "Lon" Watson, executive vice president and general manager of the electric light and power company, announced last week.

Watson also revealed that because of the continued growth in the company's 45,000 square mile service area, a long range construction program has been proposed which would see a total of approximately \$90,000,000 invested in the territory in the next five years.

"The public utility business is different than any other, in that we have no direct control over our own growth. We grow as the territory we are privileged to serve grows. Every economic consideration indicates that this country is going to continue its progress, and we are planning now, as we must to keep up with this growth, the expansion that we will undertake in the next five years," Watson said.

Earlier this year, Southwestern Public Service Company announced it was building a 12th electric generating station to be located northwest of Amarillo. Continued work on this project in 1959, is a budget for the new year. The new major item in the construction a capability of 150,000 horsepower, will be completed in 1961.

"How this territory has grown, and how much more use for electric service the people of our area have found, is probably best illustrated by our increase in generating capability," Watson said. "Ten years ago, the capability of our

**IN THIS WORLD** by *Walter*

**NICKEL DEFIES ABSOLUTE ZERO...**

MAKES STAINLESS STEEL - OTHER NICKEL ALLOYS - TOUGH AND STRONG EVEN CLOSE TO ABSOLUTE ZERO (-459.1° F.) WHERE MOST METALS SHATTER LIKE POTTERY.

**UNDERGROUND HCP SCOTCH**  
TEXANS STRUCK OIL BY DRILLING FROM A TEXAS RIVER BANK, THROUGH A LOUISIANA ISLAND, BACK INTO TEXAS! INSTRUMENTS GUIDING DRILL WERE PROTECTED BY A HARD, TOUGH COLLAR OF NON-MAGNETIC "N" MONEL NICKEL-COPPER ALLOY.

**DID YOU KNOW?**  
"CHROME" ON CAR BUMPERS, TRIM IS ONLY 1/100,000" THICK?  
TODAY, A LAYER OF NICKEL UNDERNEATH GUARDS AGAINST CORROSION, KEEPS CHROMIUM BRIGHT FOR YEARS.

generating stations was 358,000 horsepower, today it is 1,080,000, with the additional 150,000 under construction. Electricity is unlike any other service or commodity, in that you can't store it, and must new generation and transmission

create it at the very moment that the customers demand it. Thus, equipment must be planned from 2 to 3 years ahead of the time it is needed."

Still another project in the company's 1959 construction program which indicates increased demand is the transmission line program. Two years ago, Southwestern Public Service Company began a program which is designed to double the carrying capacity of the company's 115,000 volt "backbone" transmission line which runs from Borger to Roswell, New Mexico. The first step in this project was a new line from Hereford to Plant X, near Earth, which was designed for 230,000 volts. In 1959, another segment of this line, from Hereford to Amarillo, will get underway.

Electric Service Company's investment in equipment to serve its customers has grown from \$84,000,000 to \$227,000,000. During this same period, in the face of rising costs on residential customers has gone all hands, the cost of electric down some 20 per cent in the average cost of a residential kilowatt-hour. The company's average residential customer pays 23 cents a day for electric service.

In summarizing the growth of our local electric company, Watson revealed some statistics on the nation-wide growth of business-managed, tax-paying electric companies, reporting that in the last eight years these companies have invested \$22 Billion Dollars in equipment to serve their customers at the same time that they had paid more than \$11 Billion Dollars in taxes.

"We in the electric light and power industry, labor and management alike, are many times confused that our industry, in the face of continuing efforts to serve our customers efficiently and economically, with a record that shows a lower unit cost to the customer for our service, should be the target of so many critics who advocate government ownership, despite the fact that government in business has always cost the taxpayer money," Watson concluded.

Mr. and Mrs. Edward Jones and girls of Dimmitt visited with Mr. and Mrs. V. J. Sigman, Sunday night.

# South Plains College Spring Semester Will Begin Monday

Registration at South Plains College opens for the spring semester Monday, January 26. Registration will be held in the gym starting at 9 a.m. for day-school students, while evening school enrollment will begin at 6 p.m.

Dean Clyde Prestwood predicts a 15 percent increase in enrollment the second semester, although a decline is normal for the second term.

South Plains had a total of near-

ly 600 students during the fall semester - 223 of them full-time day students.

Prestwood says that between 75 and 100 new students have indicated an interest in enrolling for the second term.

## A Frosting to Remember

By Betty Barclay

THIS memorable frosting, made with sweet cooking chocolate in the Continental tradition, will add elegance to the simplest cake. It is surprisingly easy, too.

Chocolate Cream Cheese Frosting  
1 package (3/4 pound) Baker's German's Sweet Chocolate; 1 package (3 ounces) cream cheese; 1 tablespoon light cream or top milk; 1 cup sifted confectioners' sugar; 1/4 teaspoon salt; 1/2 teaspoon vanilla.

Place chocolate in small bowl and set over hot water until melted. Cool slightly. Add cream cheese and cream; blend. Add sugar gradually, mixing well. Then add salt and vanilla. Makes 1 cup frosting, or enough to spread between layers and on top of two 8-inch or 9-inch layers, or to top a 9x9-inch cake, or to frost 25 cupcakes.

## BANK NOTES . . . . . by Malcolm

### DID YOU KNOW...



GUIDE TO DESTROY FARM-CROP INSECTS: HERE THE DREAM OF A LOUISIANA PROFESSOR SOME YEARS BACK, WHEN HE HAD DEVELOPED THE KNOW-HOW A LOCAL BANK ADVANCED CAPITAL FOR INDUSTRIAL TEXAS, HIS BUSINESS THRIVED AND INCLUDED THE MANUFACTURE OF HOUSEHOLD PEST CONTROLS.

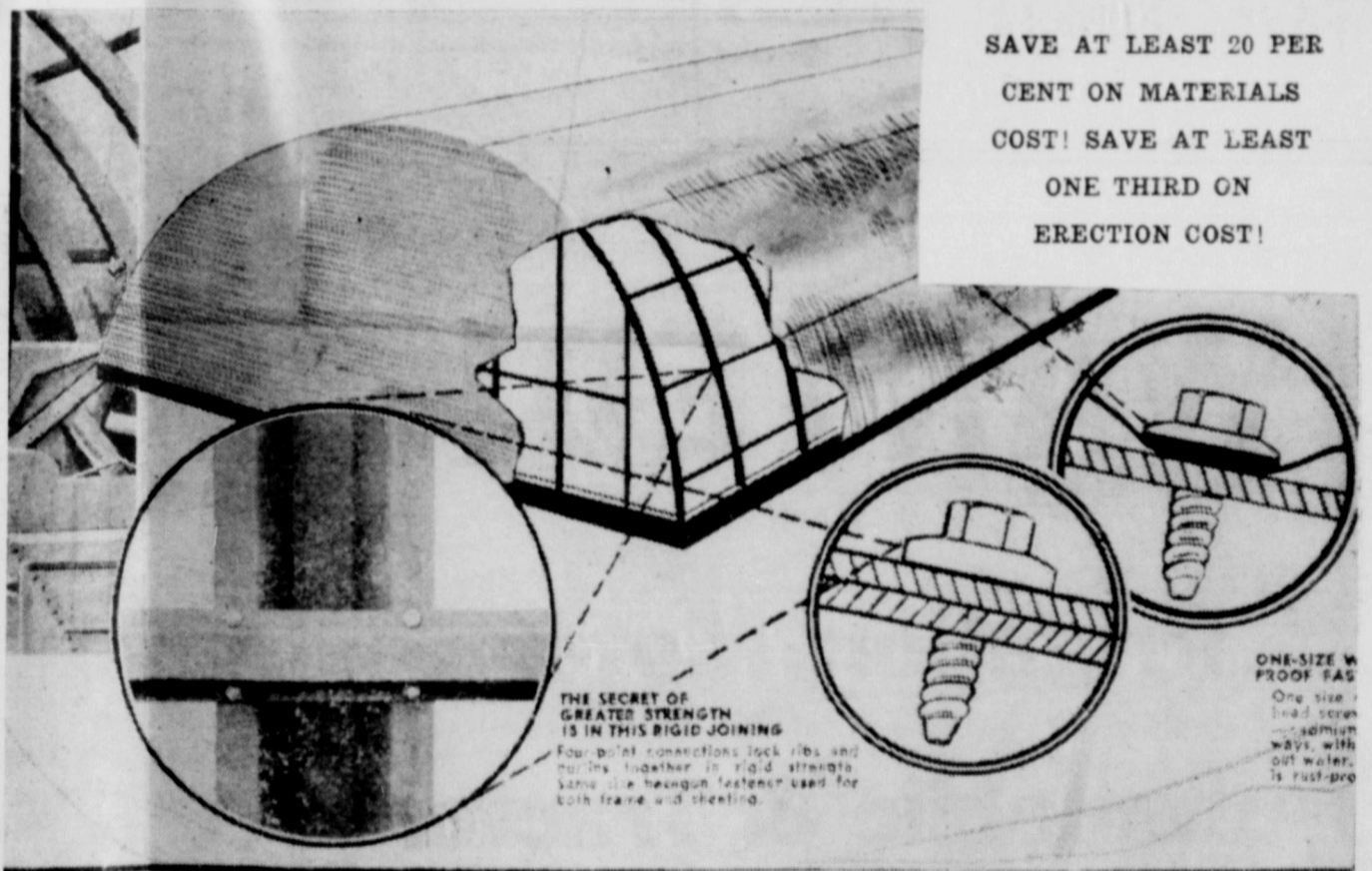


CASH WASN'T ALWAYS USED IN THE U.S. IN 1649, A HARVARD STUDENT WHO LATER BECAME PRESIDENT OF THE UNIVERSITY SETTLED HIS BILL WITH AN OLD COW.



# NOW! Important Money Savings With TRIM-STEEL Buildings

This Building Can Be 100% Financed On Short Or Long Term Loan At 4% Interest



A totally new design concept which obsolesces every similar profile building ever made, brings you a stronger, cleaner, more usable building - at great savings in cost.

The trim, four-point suspension and bracing system gives quadrangle strength. Eliminates one third of the parts formerly used, yet gives greater strength.

One size fastener for both ribs and sheeting saves time, tools, labor costs.

This PLUS new door construction, new high tensile strength roof sheeting, stouter end walls makes TRIM-STEEL Buildings the top value on the market.

To make your Grain and Livestock dollar go farther, investigate now the advantages of TRIM-STEEL Buildings. See the complete building, check for yourself the vast improvement over obsolete types.

Call, Write or Come In

See Dick Kimbell or Donald Runyan

# KIMBELL GIN

WE HAVE DISCONTINUED OUR SALE ON GREASE GUNS . . .

BUT WE STILL HAVE A FEW OF THE  
**Jacks On Sale Prices**  
**BEAVERS AUTO PARTS**

EARTH, TEXAS

PHONE 3851



**SAVE ON FOOD**  
OUR PRICES ARE LOW!

**BACON** ARMOUR STAR . . . . . 2 Lb. **98c**

**BREAD** GOLDEN CRUST . . . . . 1 1/2 Lb. Loaf **19c**

**BOLOGNA** . . . . . Lb. **39c**

**Tuna Fish** DEL MONTE CHUNK STYLE . . . . . 4 Cans **\$1**

**5 lb. Sugar FREE** WITH \$12.50 CASH PURCHASE or MORE

KIMBELLS Drip or Regular  
**Coffee** . . . . . lb. **69c**

Kimbell's Whole  
**Green Beans** . . . . . 303 can **19c**

HI - C 46 oz. Can  
**Orange Drink** . . . . . **25c**

Kimbell's All Purpose  
**Detergent** . . . . . giant size **59c**

**SALT** . . . . . 3 boxes **25c**

GLADIOLA  
**FLOUR** . . . . . 5 lbs. **39c**

Kimbell's Yellow  
**Popcorn** . . . . . 2 cans **25c**

Large Head  
**LETTUCE** . . . . . lb. **10c**

WE GIVE FRONTIER STAMPS

# Market Basket

Phone 3052

EARTH

We Deliver

# USE THE CLASSIFIED FOR YOUR PROFIT

**REAL ESTATE**

**IF YOU WANT TO SELL YOUR FARM, LIST WITH US**  
WE HAVE BUYERS WAITING

**A. D. TAYLOR**  
Real Estate Broker  
Member West Texas Farm Multiple Listings Service  
Earth Earth 3461

---

**PRICED TO SELL!**

**5 - ROOM MODERN HOUSE**  
75 ft. Corner Lot On Paving At End of N. E. 3rd St. Facing City Park WILL SELL EQUITY

See **JAMES GREY**  
At Gulf Station in Earth

**PRICED FOR QUICK SALE**

4 room and bath brick dwelling located in Taylor Addition, \$5,000 Has a \$3700 loan. Must have \$800 cash.

**JODY BLAYLOCK**  
and  
**R. V. IVY**  
Muleshoe Phone 6080

**COTTON SEED DELINTED**  
at  
**WILLIAMS SEED CLEANING CO.**  
Phone 9-1890 ... Muleshoe

**FOR REPAIRS**  
on  
**REFRIGERATORS**  
and  
**DEEP FREEZES**  
See  
**GATTIS**  
Battery and Electric  
Earth

**White's Batteries**

From \$6.95 to \$16.95  
(1 to 3 Years Guarantee)

**ADJUSTED FOR THE TIME YOU USE . . .**

**WHITE STORE**  
EARTH

**WANTED TO RENT**

One Half Section or More of  
**IRRIGATED LAND**  
In Springlake - Earth Area  
To Farm in 1959  
Contact  
**W. H. STRAUEN**  
Springlake 618, Phone 4571

**FOR SALE**

160 Ft. Setting 10" Pump  
One and one half in. Shaft  
**28 AMARILLO GEARHEAD**  
(Run One Season) Half of New Price

30 H. P. Electric Motor  
40 H. P. Electric Motor  
Complete With Switches  
For Half Of New Price

**D. H. SNEED SUPPLY**  
Muleshoe, Texas

**MOVING & STORAGE**  
**FOR COMPLETE MOVING**  
and **STORAGE SERVICE**  
**CALL BRUCE and SON**  
Phone CA 4-6349  
Plainview, Texas

**WANTED TO BUY:** Used furniture and appliances, including bedroom suites, bedsteads, dinette suites, living room furniture, wringer type washers, used refrigerators and heating stoves. King-Seely Furniture and Appliances, Dimmitt, Texas. 8-23-tfc

**SEPTIC TANKS CLEANED**

Pho. Mr. Parks  
3600 Muleshoe

**HAVE REPOSSESSED PIANOS**  
Can Be Had By  
**Taking Up Balance In Monthly Payments**  
of \$13.50 Per Month  
**DOYLE LANE**  
Write: Credit Department  
Box 502  
Lubbock, Texas

**BUSINESS OPPORTUNITY**  
**MAN OR WOMAN**

Responsible person from this area, to service and collect from electric cigarette dispensers. No selling. Car, references, and \$592.50 to \$1975 investment necessary. 7 to 12 hours weekly nets excellent monthly income. Possible full time work. For local interview give phone and particulars. Write International Sales and Mfg. Co., Inc., P. O. Box 1236, Oklahoma City, Okla.

**BANK NOTES . . . . . by Malcolm**

**DID YOU KNOW . . .** ONE OF THE WORLD'S EARLIEST BANKS WAS A CATTLE RANCH IN EGYPT AROUND 3000 B.C. CATTLE WERE DEPOSITED AND WITHDRAWN FROM RANCHES AS MONEY.

**HALLOWEEN IDEAS** HERE IS A LIST OF A NEATEST MAKE-UPER. THEN HE DEVELOPED A MANUFACTURING PROCESS THAT HELD HIM GET A DOLLAR LANE TODAY. THE MAN OWNS HIS OWN SHOP AND ALSO MAKES COSTUMES AND CHRISTMAS HATSETS.

**CARD OF THANKS**

With grateful hearts, we wish to thank all those who did so much for us during our bereavement in loss of our dear mother, Mrs. Georgia M. Strickland. We were indeed comforted by all your expressions of sympathy, such as flowers, cards, visits and in the many other ways you helped us.

Mr. and Mrs. Homer Starkey and girls,  
Francis Strickland,  
Ira, Iva and Rhonda Strickland and Mrs. Dan Miller

**Party Line.....**

Marilyn Berry of Littlefield spent the weekend with Glenda Williamson.

**FOR SALE:** Two Bedroom house. If interested, Write Keith Chus-teen Box 130, Blair, Okla. 12-4-58-tfc

**FOR RENT:** Modern 5-room house. Call 4711. 1-22-tfc

**DO YOU NEED TO SPEAK SPANISH ???**

**LEARN THE EASY WAY**

40 Complete Lessons On 4 Long Playing Records . . . Only \$10.50

A Complete Language Course Enables Anyone To Learn Spanish Quickly, Easily . . . Includes Everyday Conversation Manual Comprehensive Common Usage Dictionary . . .

**HUNKE'S MUSIC and ELECTRIC**  
Muleshoe, Texas

**The EARTH NEWS - SUN**

**TEXAS PRESS ASSOCIATION**  
Member 1959

Published Every Thursday at Earth, Texas

Entered as Second Class Matter at the Postoffice at Earth, Texas, October 1, 1954 — Under Act of March 3, 1879

**SUBSCRIPTION RATE**  
Earth and Trade Territory, per year \$3.00  
Elsewhere in United States, per year \$3.75

**ADVERTISING RATES GIVEN ON REQUEST**

ROSS and POLLY MIDDLETON Publishers

**Stock Market Round-Up**

Prepared by The Investment Research Department of Hemphill, Noyes & Co. Members of the New York Stock Exchange

January 21, 1959

**FIRE AND CASUALTY INSURANCE**

The year 1958 will undoubtedly go down as the one that marked the end of one of the longest and the most disastrous underwriting periods in the history of the fire-casualty insurance industry. This year a return to profitable underwriting results for the majority of the industry is expected. While this change in the fortunes of many underwriters has already been reflected to some extent in the prices of their stocks, it is still far from fully discounted.

The fire and casualty insurance group is one of the few that appear undervalued today based not only on present and future prospects but also on historic share prices, book values, and yields. Therefore, it is our opinion that certain issues in the industry can be purchased at this time for safety of income and worthwhile capital appreciation. Our purchase selections, while including such old line conservative issues as Hartford Fire and Travelers, also include several companies whose recent underwriting history has been relatively poor and where the turnout in results is expected to be substantially more dramatic than for some of the more conservative enterprises. They are American Insurance, Providence Washington Insurance Company, and Reliance Insurance.

The fire and casualty fields are well known for their cyclical nature and wide swings in underwriting profit margins. The reasons for this roller-coaster underwriting performance can be primarily attributed to the historic rate setting policies of the state regulatory boards which have based their decisions for the most part on a five-year running profit margin average. This, in effect, tends to magnify the good years and make the poor years even worse.

The recent cycle which started its downturn in 1950 and reached its low point in 1956-1957 when underwriting experience was the poorest in the industry's history, can be blamed not only on obsolete regulatory laws but also on changing economic conditions. Inflation, underinsured dwellings and the fact that frequency in fires increased while the average claim became costlier, also plagued fire companies. Now rates in most areas have been increased while fire losses, although still high, appear to have stabilized themselves somewhat. Casualty writers while also plagued with inflation and a staggeringly higher accident rate were further confronted with the yet unsolved problem of high jury awards and mounting costs of repairing today's automobiles. While most casualty companies are still reporting losses, these deficits are being steadily whittled down aided by increased rates and reduced commissions to agents.

While underwriting results have shown a marked turnaround, it must be remembered that insurance companies are in effect a two-fold operation. Not only do they write insurance, but there is a second and equally important operation and that is the investment of their huge cash reserves. It has been this second source of income which has been the sustaining factor for most companies in the last few dreary underwriting years. Long range operations from this facet of their business should continue to improve as their invested assets increase. **INS**

**PAYNE FUNERAL HOME**  
PHONE 2401 — AMHERST, TEXAS

**WANTED!**

**Irrigation Motor**

**Automobile & Tractor**

**REPAIRS!**

**TO DO THROUGH THE NEXT 12 MONTHS**

CALL 4951 or COME BY

**EARTH BUTANE**

PHONE 4951

**WHO SAYS . . .**  
People Don't Read  
**The NEWS-SUN**  
WANT ADS ???  
You Just Did

Let's Have  
**Cakes and Syrup!**  
By Betty Barclay

WHATEVER you call them—flapjacks, griddle cakes, pancakes—they call for plenty of maple-blended syrup. For an interesting change, mix equal parts of maple-blended syrup with applesauce . . . or drained, diced canned fruits and a bit of grated lemon rind. Serve at room temperature or, if you like, bring these mixtures to a boil and serve at once. Excellent with these **Apple Griddle Cakes**.

**Apple Griddle Cakes**  
1 1/4 cups sifted flour; 1 1/4 teaspoons double-acting baking powder; 1/2 teaspoon salt; 1/4 teaspoon ground cinnamon; 1 tablespoon sugar; 1 egg, well beaten; 1 cup milk (at room temperature); 1/2 cup butter or other shortening; 1 cup finely chopped apples; Log Cabin Syrup.

Sift flour once, measure, add baking powder, salt, cinnamon, and sugar, and sift again. Combine egg, milk, shortening, and apples. Add gradually to the flour mixture, stirring only until smooth. Bake on hot greased griddle. Serve with butter and maple-blended syrup. Makes 14 to 16 four-inch griddle cakes.

**It's Time To Start Thinking About**

**BABY CHICKS**

**BOOK YOURS NOW AND START THEM OFF RIGHT WITH PURINA STARTENA**

Call 4031

**Earth Elevator**

## Cottage Dormitory To Be Constructed At Boy's Ranch by Peace Officers

Construction of a cottage-type dormitory at Cal Farley's famous Boys Ranch near Amarillo, is the 1959 project of the United Peace Officers of America, according to Sheriff Day Thompson of Vega, president of the national association.

The project was approved this week at a meeting of the board of directors of the organization. The new dormitory will be designed especially for boys in the four to eight year age bracket. Thompson said.

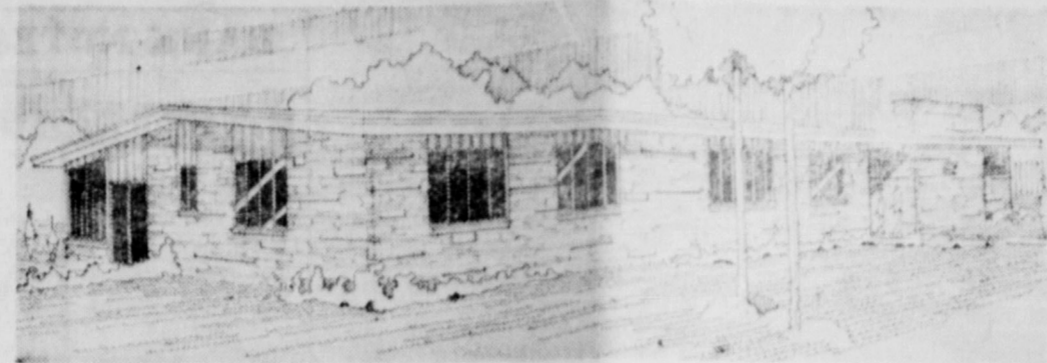
In the new building, eight of these smaller youngsters will live with a man and his wife. The housemother will prepare all meals and the entire surroundings will be as nearly like a real home as possible, and there will always be a houseparent on hand to look after the little fellows.

At the present time, 17 boys below eight years of age are living in the Old Tascosa cothouse, and it has always been the aim of Ranch founder Cal Farley to be able to provide a more homelike atmosphere for them. Most of the small boys came to the Ranch along with older brothers so that

the brothers would not have to be separated and also in many cases, to remove the little fellows from unwholesome environments, Sheriff Thompson explained.

In 1955, the United Peace Officers of America was organized to assist Boys Ranch in a building program. The first project was the Boys Ranch Independent School, and since that time the group - composed of peace officers, sheriffs, highway patrolmen, rangers and FBI men from all over the United States and Canada - has helped with raising funds for the new dining hall and in many other ways, says Cal Farley. The Boys Ranch school is dedicated to the members of UPOA.

"We are hopeful that we will be able to raise enough money to build the dormitory by May, when we will hold our annual convention at Boys Ranch," said Sheriff Thompson. "Boys Ranch has helped the peace officers by taking youngsters who were in trouble and is making good, useful citizens of them, and we know that when we take a boy to the Ranch, he is one youngster we will not have to be running after anymore."



Pictured above is an architect's sketch of the cottage-type dormitory to be built at Cal Farley's famous Boys Ranch near Amarillo, as the 1959 project of the United Peace Officers of America. The national organization was created in 1955 to assist in the building program at the Ranch.

family from Lubbock visited with Mr. and Mrs. C. J. Johnson and family Saturday.

Mr. and Mrs. Warren Thacker of El Paso visited Sunday with Mr. and Mrs. C. J. Johnson and family.

Mr. and Mrs. E. R. Sadler and Myles spent Friday night in Lubbock with Mr. and Mrs. C. J. Fowlkes and visited Saturday with Mr. and Mrs. Gale Sadler and Denise.

**Honored With Birthday Dinner**  
A birthday dinner honoring Mrs. Alton Louder was given in the home of Mr. and Mrs. Milton Ott Friday. Others present were Mr. and Mrs. Bob Ott and family from Dimmitt, Mr. and Mrs. Irvin Ott, Terry and Terrel from Big Square, Mr. and Mrs. Harry Mitchell and Richard from Springlake, Mr. and Mrs. Milburn Haydon, Mr. and Mrs. Dwayne Louder and Lance and Alton Louder and Doug.

Mr. J. T. Holcomb was on the sick list the last part of the week. Mr. and Mrs. Joe Richards and Terry and J. E. Fraizer of Melrose visited Sunday with Mr. and Mrs. Dale Widner, Lana Jaton and Mrs. Fraizer. Mrs. Fraizer returned to Melrose with them Sunday night.

Seventy two attended Sunday School with 68 in Training Union Sunday. Several W. M. S. ladies presented a skit on the "Right and Wrong Way to Present a Mission Book" before the church in the evening service.

A Young People and Intermediate Fellowship was enjoyed in the home of Mr. and Mrs. Ezell Sadler Sunday night after the services.

Mr. and Mrs. J. Paul Waggoner and boys visited her father in the Merleshoe Hospital Sunday.

Mr. and Mrs. Tex Conard and family were supper guests of Mr. and Mrs. Roy Conard in Hereford Saturday night.

Mr. and Mrs. J. C. Holbrooks and Jeanette visited with Mr. and Mrs. R. L. Childress and Nina of Dimmitt Saturday night.

Jimmy Waggoner was on the sick list Saturday.

Jeanette Holbrooks played with the Dimmitt Freshman Basketball team in Happy Thursday night.

Mr. and Mrs. Ezell Sadler visited in Hale Center Sunday with Mr. and Mrs. J. H. Hensley.

### Party Line.....

Recent visitors in the home of Mr. and Mrs. T. F. Koonce were their daughter and family, Mr. and Mrs. Francis Harland and daughter of Glen Cove, N. Y.

Mrs. Henry Randolph, Pat and Janie and Mrs. L. A. Glasscock shopped in Clovis, Saturday afternoon.

**WE WRITE ALL FORMS INSURANCE**

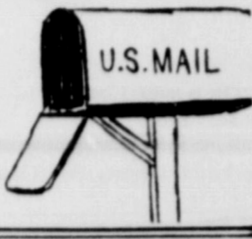
LIFE  
SICK & ACCIDENT  
HOSPITALIZATION  
FIRE  
CASUALTY  
AUTO  
LIABILITY  
CROP HAIL

**in Case of Loss Your Agent is Your Best Friend**

**A. D. TAYLOR  
H. L. EVANS**

Phone 3461 - Earth

## Letters to the Editor...



January 14, 1959

Mr. Ross Middleton, Editor  
The Earth News - Sun  
Dear Mr. Middleton:

Thanks for giving us a helping hand by giving us space for news stories about our convention at Boys Ranch last year. It is because of such help that we have been able to do as much as we have toward helping the boys at Boys Ranch.

We know what Cal Farley and his wonderful staff out there are doing for these youngsters, many of whom we peace officers have personally had as problems before

they went to the Ranch. Now, when we go back out there and visit these boys and see how friendly and well-mannered and happy they are, we know we were right when we asked Cal Farley to take them.

As for the little fellows, when we have to take their older brothers who are in trouble, we know if they are left in the old environment, it is just a matter of time before they will be turning up in trouble, too, so we try to arrange it so that they can go to Boys Ranch before they ever have a brush with the law.

That is why we are so glad that

our 1959 project is to provide a home-like situation for them at Boys Ranch, and if you have room enough to use this story we surely will appreciate it.

With best wishes, I am

Sincerely Yours,

J. W. BLACKWELL

Captain, Texas Highway Patrol

Chairman of UPOA

Publicity Committee

a case of necessity

Every Student needs a  
**REMINGTON Quiet-riter PORTABLE**



The Portable with the features that students need and want! Makes homework easier to write, easier to read, helps students get up better grades.

The EARTH NEWS-SUN

## Sunnyside News -

by MRS TEENA BOWDEN

Mr. and Mrs. Leon Dodd and Susan from Melrose visited with Mr. and Mrs. Dale Widner and Lana Jaton last Sunday.

Mr. and Mrs. J. E. Fraizer from Melrose visited Monday with Mr. and Mrs. Dale Widner and baby.

Mrs. Fraizer remained with the Widners to help them this week.

Mr. and Mrs. W. E. Louder, Mrs. Ezell Sadler and Mrs. L. B. Bowden visited with relatives in Happy and Canyon Monday.

Mr. and Mrs. Earl Phelan and children returned from Weatherford Monday.

Mr. and Mrs. Roy Phelan returned from Weatherford Monday night.

Mr. and Mrs. Lowell Westmoreland from Lubbock visited Tuesday with Mr. and Mrs. Alton Louder and other relatives.

Ben Louder, Hershel Thomlinson and Seldon Thomlinson from Canyon and Adrian visited with Mr. and Mrs. W. E. Louder Tuesday.

The ladies of the community furnished food for the Tklwell - Powell farm sale Tuesday. Several ladies served. \$89 was made from the proceeds.

Mrs. Weldon Bradley, Molly and Lee visited Tuesday afternoon with Mrs. Elmer Dixon and other relatives.

Dwayne Louder was sick this week with strep throat.

Several men from the community attended the Annual Sears banquet in Plainview Tuesday night.

Twelve ladies attended a Stanley party Wednesday morning at the home of Mrs. Howard Bridges.

The W. M. S. met Wednesday night for the General Missionary program on Foreign Language groups in California. Eighteen members attended.

The trustees of the church building program went to Lubbock Thursday to see J. L. Davis, contractor for the new parsonage.

Mr. and Mrs. Weldon Bradley attended the funeral services of Joe Hastings in Dimmitt Thursday.

Omota Bradley was home from Plainview for the weekend.

Mr. and Mrs. Tex Conard returned from the Evangelistic Conference in Dallas Tuesday evening.

Rev. and Mrs. Murie Rogers and Butch returned from the Evangelistic Conference and Electra Wednesday.

Jarvis Moore of Weatherford spent Tuesday night with his sister, Mrs. Roy Phelan and Mr. Phelan.

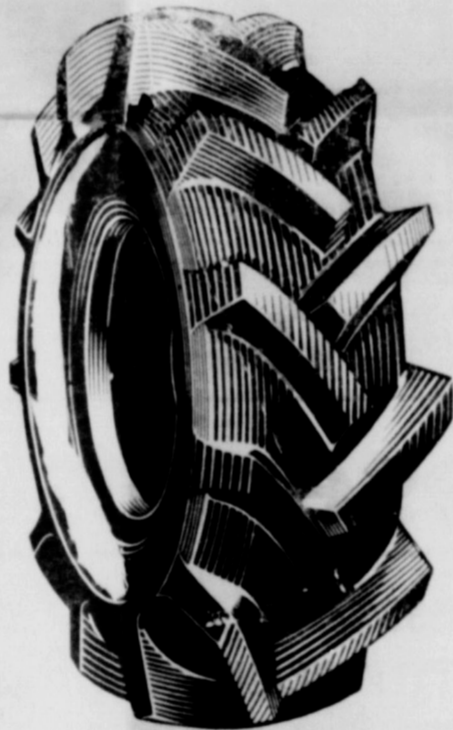
Mr. and Mrs. Bobby Robertson are among the new residents in the community. They visited in the services Sunday night.

Wanda Jones from Crosbyton visited her parents, Mr. and Mrs. Troy Jones over the weekend.

Mr. and Mrs. Ray Willbanks and

# Attention Farmers

## 1/2 PRICE TIRE Sale



ON REAR TRACTOR TIRES

NEVER BEFORE OFFERED AT SUCH LOW PRICES

FOR EXAMPLE

12-38 SIX PLY

REG. LIST PRICE \$163.00 plus tax

13-38 SIX PLY

REG. LIST PRICE \$184.15 plus tax

# HALF PRICE

DURING THIS SALE Plus Tax and Your Old Recappable Tire

DURING THIS SALE Plus Tax and Your Old Recappable Tire

**SIMILAR LOW PRICES ON OTHER SIZES**

THESE ARE FIRST LINE TIRES  
NO REJECTS NOT SECONDS  
FIRST QUALITY MERCHANDISE

**CASH IN ON THESE BARGAINS TODAY**



PHONE 7370

**JOHNSON - POOL**  
TIRE and APPLIANCE

MULESHOE

**GUARANTEED PUMP AND GEARHEAD REPAIRS**

ON ALL MAKES AND MODELS

Also

**Machine Work  
Welding and Disc Rolling**

We have experienced workmen in every department to do an Expert Job for you . . .

**B & C Pump AND MACHINE WORKS**

(Located 1/2 Mile North of Caution Light)  
EARTH - PHONE 4991



## OUR SOIL ★ OUR STRENGTH

PRESENT BOARD OF SUPERVISORS

WILEY H. MUDGETT, chairman W. E. MITCHELL, secretary,  
L. R. GOYNE, vice-chairman C. E. JONES, members

### Much Activity Shown In 1958 Soil Conservation Practice

1958 was a year of much activity and progress for the Lamb County Soil Conservation District. The board of supervisors of the Lamb County Soil Conservation District would like to take this opportunity to thank each and everyone who had a part in furnishing conservation in the district this past year.

Application of conservation practices on the land of District Cooperators during 1958 were as follows:

Conservation crop rotation, 21,315 acres; Crop residue utilization, 58,693 acres; Stubble mulching, 1682 acres; Brush control, 4929 acres; Pasture planting, 3258 acres; Range seeding, 2509 acres; Wildlife area improvement, 150 acres; Improved water application, 25,685 acres; Irrigation water management, 528 acres; Sprinkler irrigation systems installed, 3; Soil improving crops, 1158 acres; Contour farming, 5995 acres; Rotation hay and pasture, 9124 acres; Deferred grazing, 6238 acres; Fertilizing, 19,892 acres; Proper use, 8562 acres; Windbreak plantings, 37 acres; Diversion const., 4.7 miles; Land leveling, 95 acres; Laterals, 30.4 miles; Terraces, 31.24 miles

and Waterways 2.

Approximately 1290 acres of native and introduced grasses were grown in the district this past year for seed production. Included were such grasses as Blackwell switchgrass, Caddo switchgrass, El Reno switchgrass, blue panic, plains bristlegass, Indian grass, sand lovegrass, Arizona cottontop, weeping lovegrass, and Woodward sand bluestem. Grass seed production has continued to be a good cash crop as well as a very good cover and soil improving crop.

Of the 636,427 acres of agricultural land in the county 484,409 acres is now under district agreement with the Lamb County Soil Conservation district. Some 1497 land owners and operators are district cooperators. During 1958, 51 new landowners and operators became cooperators with the Lamb County Soil Conservation District and 42 cooperators developed basic conservation plans. 894 cooperators applied conservation practices.

The Lamb County Soil Conservation District is divided into five zones. The Board of Supervisors selected one landowner from each zone to be mentioned in the district annual report as having carried out a good conservation plan on their land during 1958.

A brief summary of the accomplishments in this area are as follows:

Zone 1. E. C. Jones of Olton,

District for five years and served as a supervisor for Zone 1 until 1957. Included in his program are such practices as a conservation crop rotation and winter cover cropping. Jones uses grasses and alfalfa for soil improvement and plants grain sorghum in 20 inch rows for soil protection.

Zone 2. J. T. Gibson of Springlake has been doing a good job of range conservation. He has applied brush control and range seeding on 230 acres of rangeland this past year. This area was deferred after seeding and made excellent recovery and is now in excellent condition with a covering of sidecoats grama, sand bluestem and seeded 80 acres of cotton stubble sand lovegrass. Gibson also over to rye for soil protection and improvement.

The board of Supervisors of the Lamb County Soil Conservation District challenges each and every land owner to make 1959 a year of progress in conservation on their individual farms and ranches.

### BANK NOTES . . . . . by Malcolm

Did you know...

ABOUT 15 YEARS AGO IN A SMALL SOUTH DAKOTA TOWN, A YOUNG MAN WANTED TO OPEN A JEWELRY STORE. A LOCAL BANK GAVE HIM SOME SOUND ADVICE ALONG WITH A BOLD, LOW-TALKING, HE'S A LEADING JEWELER IN THE TOWN.



THOMAS JEFFERSON COINED THE NAME "DIME" FOR ONE OF TODAY'S MOST FAMILIAR PIECES OF CURRENCY. THE WORD FROM THE LATIN "DECIMUS" MEANING "ONE TENTH".

### CALENDAR OF LOCAL EVENTS

WOODMEN CIRCLE — Meets each 2nd Tuesday of the month at 7 p.m. at the Methodist Church Annex.

We specialize in

- GROUP PICTURES
- WEDDINGS
- PORTRAITS

MAKE YOUR STUDIO  
**Taylor's Studio**


WE DON'T WANT ALL THE BUSINESS, WE JUST WANT YOURS

Littlefield — Phone 76

# GREATERSAWINGS

FOOD

## Specials For Friday, Saturday, Monday & Tuesday

|   |   |  |
|---|---|--|
|  | <b>Potatoes</b> WHITE — 10 lb. Bag <b>39c</b>     | Gladiola Flour . . . . . 5 lb. bag <b>45c</b>    |
|   | <b>Apples</b> DELICIOUS . . . . . Lb. <b>12½¢</b> | Liptons Tea . . . . . 1-4 lb. box <b>37c</b>     |
|   | <b>Lettuce</b> . . . . . Lg. Head <b>15c</b>      | Kimbells Cherries . . . . . 303 can <b>23c</b>   |
|   |   | Kounty Kist Corn 12 oz. vac pack <b>15c</b>      |
|   |   | Mission Peas . . . . . 2 no. 303 cans <b>25c</b> |

**Shortening** KIMBELLS . . . . . 3 Lb. Can **69c**

**Tuna Fish** KIMBELLS LIGHT MEAT . . . . . Can **19c**

**Peaches** OSAGE RAGGEDY RIPE . . . . . 2½ Can **3 for \$1**

**Preserves** LADY FAIR Assorted Flavors 10 oz. Jar **4 for 89c**

DELSIE TISSUE . . . . . 4 roll Pkg. **49c**  
 RANCH STYLE BEANS . . . . . 2 no. 300 Cans **25c**  
 DEL MONTE TOMATO JUICE . . . . . 46 oz. can **29c**  
 AD DETERGENT . . . . . Giant Size Box **59c**  
 CAMAY SOAP . . . . . 2 Reg. Size Bars **19c**

CUDAHYS NUTWOOD . . . . . 2 Lb. Pkg.  
**Bacon** **\$1.19**  
 ALL MEAT . . . . . Lb.  
**Bologna** **49c**

**COFFEE** WHITE SWAN . . . . . Pound **73c**

**Notebook Paper** 50c SIZE . . . . . Only **29c**

**Salad Dressing** MIRACLE WHIP . . . . . Quart **49c**

**Cake Mix** CINCH . . . . . Box **19c**

DOUBLE GUNN BROS. STAMPS ON TUESDAY WITH \$2.50 PURCHASE OR MORE

# PATTERSON BROS. GRO.

EARTH, TEXAS

a case of necessity



Every Student needs a  
**REMINGTON**  
*Quiet-riter*  
**PORTABLE**

The Portable with the features that students need and want! Makes homework easier to write, easier to read, helps students get up to 30% better grades.

## The EARTH NEWS-SUN

### THAT'S A FACT



**EARLY BIRDMAN**  
 THIS OLD ENGRAVING SHOWS MANT'S SUCCESSFUL ATTEMPT TO FLY IN THE EARLY PART OF THE 15TH CENTURY. THE INVENTOR OF THIS DEVICE WAS AN ITALIAN, JOHN DANTE. AFTER SEVERAL FLIGHTS, HE DID "FALL ON A CHURCH STEEPLE AND BREAK HIS THIGH".

**LAND BECOMES SEA!**  
 DEFENDING THEIR COUNTRY AGAINST THE SPANISH INVADERS, THE DUTCH NAVY RAIDED THE CITY OF LEYDEN, SAILED IN AND FOUGHT THE ENEMY AMONGST THE ROOFTOPS AND TREES OF THE BESIEGED CITY!

**DOUBLE HARNESS**  
 WHEN YOU BUY U.S. SAVINGS BONDS YOU ARE WORKING ALONGSIDE YOUR GOVERNMENT—HELPING TO STRENGTHEN AMERICA'S FINANCIAL POWER. START AMERICA'S PLAN TO HELP YOUR OWN AND YOUR COUNTRY'S FUTURE!



**GET IN STEP...**  
 WITH OTHER PATRIOTIC AMERICANS WHO ARE INVESTING IN U.S. SAVINGS BONDS! PEACE COSTS MONEY, AND YOUR BOND PURCHASES HELP SECURE AMERICA'S PEACEFUL FUTURE AS WELL AS YOUR OWN!