

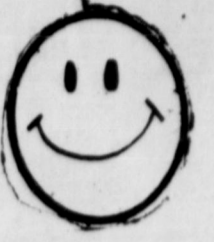


BOY-OH-BOY... Is this fun! Doug Parish was expressing the joy everyone felt after the abundant rain Monday afternoon.

The NEWSape r Dedicated to the Development of the World's Richest Irrigation Area



# The Earth News-Sun



A CONSOLIDATION OF THE EARTH NEWS & EARTH SUN, OCTOBER 12, 1966

VOLUME 22 15¢ INCLUDING TAX EARTH, LAMB COUNTY, TEXAS, THURSDAY, AUGUST 5, 1976 8 PAGES NUMBER 49

## Softball Tournament Here August 12-15

The first Lions Club slow pitch softball tournament is set for August 12-15 in the ball park at the Earth City Park. Deadline for entry is 5 o'clock Monday, August 9.

Entry fee of \$30 will be charged for each team participating in the tourney. Proceeds will go to charity.

There will be three trophies presented. Teams rating first

and second place will receive trophies and the team who makes the most home runs will receive a special trophy.

The event is expected to attract a large number of spectators as well as several competing teams for play.

Additional information can be obtained from Jerry Been at 257-3461 or call Allen Smith at 257-3484.

## County Pioneers Make Plans For 27th Reunion

Lamb County Pioneers will gather at the Lamb County Ag and Community Center in Littlefield Tuesday, August 24, for their 27th annual Lamb County Pioneer Reunion.

Registration will begin at 2:30, followed by a program, business session and huge barbecue.

Members of the organization met Thursday night for a planning session, when various committees were appointed. Presiding for the session was Joe Bitner, president.

To be in charge of the registration again this year is Herbert Dunn and his committee. A \$2 membership fee will be charged.

In charge of cooking the barbecue will be Joe Bitner, F. E. Yohner, Lehman Elms and J. W. Bitner, Jr.

Fern Bitner will cook the pies, and J. W. Bitner, Jr., and Jessie Colbert will be in charge of making the potato salad.

Members of the purchasing committee are Joe Bitner and F. E. Yohner.

Boy Scout troops will assist with several duties and hospitalities in helping the old-timers.

Gifts, which will be presented to the oldest man and woman present, the person who traveled the farthest distance, the person in the county the longest, and to the president and his wife, will be selected and presented by Emily Peterman.

Bonnie Haberer, Minnie Matthews, Myrtle Clayton, Lenore LaGrange, Doc Holt and Mrs. Simon D. Hay were appointed to the hospitality committee.

Joe Bitner and Welton Findley are working on the program.

### NOSIN... With Polly

A fellow from Kansas was in the area last week and drove from Clovis to Plainview down Highway 70. The man was absolutely shocked, at what he saw. He had never been in this area and had always thought Kansas wheat fields had every place else beat for producing great crops. After seeing the crops he saw in this area, he decided probably like so many others have, that this area will indeed be called "The bread box of America" and will in time be called on to feed others less fortunate in food production.

There is no need for Earth-Springlake to have a dope problem here, because everyone knows everyone, and should be working for the betterment of the community and helping to mold good characters of every youth in the community.

One lady recently called the News-Sun office to say she felt she could no longer be a Christian and continue to cover her eyes to things that were going on in the S-E community. My problem is that I do not know these things for sure. However, I think it is the duty of every law abiding citizen to report any unusual actions to law officials and insist that they keep their eyes open and stay alert on the job.

The crops here are unbelievable, no artist could paint such beautiful fields as are displayed to those who drive along the roadways of this area.

The 2 1/2 inches of good rain that fell in this area Tuesday in less than two hours, was very profitable and made everything look so clean.

It's unfortunate that folks who think of West Texas think of dust storms, etc., and are unaware of the rich fertile soil, water, great climate and wonderful people that we have here in good ole God's country.

We need law officials out on the job at night. In the day we don't necessarily need them so badly as we know more things of evil nature takes place in darkness.

## Band Begin Practice Monday

The City of Springlake is trying something different. They have an ad in the paper which explains that if anyone is interested in meeting with the Equalization Board to call the city office and they will be glad to meet with folks after 5 p.m., anytime before Friday, August 20.

So folks, if you wanta meet, pick up your telephone and call, you'll have your chance to speak.

Richard Roper, new band director at Springlake-Earth School will begin band practice for local students on Monday, August 9. Practice will continue each week day until school starts August 23.

Freshmen band students are asked to be at the school each morning at 9:30 a.m., to begin the practice session which will continue until 12 o'clock (noon) each day. At 10:30 a.m., all high school band students are asked to arrive at school and join the Freshmen students in an all high school band practice until noon each week day.

Roper is anxious to get acquainted with band students and get into action in order to have a top notch band.

So band students, vacation time is over. Remember Monday is the day to get back into the swing of music and marching.

## IT'S THAT TIME AGAIN... Football Practice Begins Monday

Posters to the city official or officials who finally brought about the vote to enforce traffic within the city of Earth. Everyone within the city limits of Earth must have known that racing at breakneck speed was taking place up and down the streets on several nights lately.

We have wondered many times if we citizens of Earth were going to sit back and wait until someone was killed before lifting a finger to have the law enforced here.

Roper will be practicing for half time show at the first football game slated September 3 with Amherst.

Roper, previously served for three years as band director in the Uvalde School System. Prior to that he was assistant band director in the Weslaco School.

Head Coach, Roland Murray announced Wednesday that football practice for all high school football players would begin Monday, August 9 with two workouts daily. Workouts are scheduled to begin at 9:00 a.m. and at 6:00 p.m. each day.

Scrimmage games have been slated with Sudan on August 19 and with Muleshoe on August 27.

### The Old Timer



"The best place to find a helping hand is at the end of your arm."

Coach Murray is anxious to get started, and get the team shaped up and ready to meet the challenges they will have this season.

BAPTIST SONG LEADER RESIGNS

Randy Williams, Music Director and youth leader for the First Baptist Church resigned his position with the local church at prayer meeting Wednesday night. His resignation was effective immediately.

Williams plans were indefinite at the time of resignation, but he was thinking of going to Oklahoma to work.



THE SPRING LAKE-EARTH SCHOOL CAMPUS IS BEAUTIFUL AND ALMOST READY FOR THE STAMPEDE TO BEGIN AUGUST 23.

## City To Enforce Law On Traffic Violations Teacher In-Service Begins August 16

City Dads met in regular session Monday night and discussed at length the law enforcement on traffic violations.

The group voted that tickets would be issued for littering, as well as reckless driving, which include speeding, dragging, double driving, spinning out or running stop signs. Also those who drive without drivers license will be issued tickets.

All other traffic violations will be enforced effectively immediately, with age limit, no exception.

Faculty members of Springlake-Earth will begin teachers In-Service activities on Monday, August 16 in preparation for the beginning of the '76-'77 school term which is set for August 23.

In-Service activities will begin at 8:30 Monday with a half hour for coffee and doughnuts in the cafeteria, prior to assembling for a general faculty meeting from 9 o'clock to 10:30 a.m. in the cafeteria.

After coffee and doughnuts on Friday morning the group will disassemble themselves and have a workday. Each teacher will work in their respective buildings.

On Monday, August 23, school will begin at 8:30 with registration taking place on that first day of school. Buses will run at regular scheduled times, arriving at school with students at approximately 8:15 a.m.

City Marshal Alvin Pittman has been instructed to enforce the traffic law to the letter.

The group voted to close the city office on Labor Day Monday, September 6. The city meeting scheduled for Labor Day would be held on Tuesday, September 7 at 8 o'clock in the evening.

Minutes of the previous meeting were read and approved. Bills for the month of July were reviewed and voted to be paid.

Those attending the meeting were Mayor E.C. Kelley, Aldermen Jerry Been, Doug Parish, Raiford Daniel, W.B. McMillan and Glen Bulls. Also present were City Attorney Andy Stroebel, City Marshal Alvin Pittman and City Secretary Mrs. E.R. McAlpine.

The Junior High faculty will assemble together from 10:30 to 12:00 (noon) for a faculty meeting.

At 1 p.m. the Elementary faculty will gather at the cafeteria for a faculty meeting. The meeting will conclude at 3:30 p.m. The High School faculty will be meeting at the same time, from 1:00 to 3:30 p.m. in the Home-making Cottage.

On Tuesday, August 17 the faculty will again meet at 8:30 a.m. for coffee and doughnuts before assembling for an In-Service meeting instructed by Travis Brown.

Wednesday at 8:30 the faculty will again gather for morning refreshments. At 9 o'clock

Mrs. Lady Clare Phillips of Littlefield, crusade chairman for the Lamb County Unit of the American Cancer Society, reports that Lamb County has received the Award of Merit for achieving a goal of 41 cents per capita.

"I want to thank everyone who contributed to the fund to make it the success it was, and thanks, too, to all the workers who helped with the solicitations. We especially want to thank Mrs. Joycelyn

Henry and her D.E. students at Littlefield High School for preparing the work packets," Mrs. Phillips emphasized.

A total of \$8,261 was collected for cancer research from all the communities in the county.

Notification of the award was given to Mrs. Phillips by the Texas Division Crusade Chairman, A.G. Schlosstein, Jr., of Austin, who congratulated the Lamb County Unit on its achievement.

## 3 Lamb 4-H'ers Named Best In District Competition

LUBBOCK--Forty-one 4-H record books were named the best in their division in district level competition as a result of record book judging Friday, July 30 in Lubbock. The winning books now will be forwarded to Texas A&M University for state judging.

In District 2 record book judging, South Plains 4-H'ers placed their records of achievement on the line. Records include project summaries, information detailing their activities, experiences and leadership development, a narrative about their 4-H experience, clippings, photos and other pertinent information.

The books now will be forwarded to Texas A&M University to compete at the state

level against the best books from 13 other districts of the Texas Agricultural Extension Service. Senior 4-H'ers are competing for scholarships, plaques, government bonds, a trip to the national 4-H congress in November and other awards.

Also judged during the event were junior record books, Blue, red and white ribbons were awarded for these entries.

Record book competition is the critical measurement of achievements of these youths over the years," says Catherine B. Crawford, district agent for the Texas Agricultural Extension Service, who coordinated the event. Records reveal their consistency in achieving goals, their experience in 4-H projects and activities, their experience in leadership development, and their growth and development in personal, community and civic responsibilities.

The 4-H program in Texas is administered by the Texas Agricultural Extension Service.

There were three 4-H'ers from Lamb County listed among the 41 record books named best in district competition. The three were Dina Jo Hampton, Dog Care and Training; Glen Loyd Brannum in Public Speaking and Cory Logsdon in Sheep.

Burum And Lunsford Win Prizes

Rev. David Burum, pastor of the First Baptist Church won the free barbecue grill given away at 5:00 o'clock Monday afternoon at Whites Store in Earth, following a crazy day sale. Teresa Lunsford of Springlake won the \$10 gift certificate from Whites Auto.

Tom Lively, owner, staged the big sale on freezers, air conditioners, lawn mowers and several other items in the store in order to thin out the summer stock so he could get more fall and winter merchandise in the store. Each week new merchandise is arriving and more room is needed to display merchandise.

## VISIT THE COMMUNITY LIBRARY IN EARTH

## 13 Local People Attend Seminar In Colorado

Thirteen people from Earth left Sunday and Monday for Denver, Colorado to attend the Bill Gether Family Seminar which began at 7:00 o'clock

in the evening on Monday. The Seminar will continue throughout the week, ending at 7:00 o'clock Saturday. The seminar daily schedule Mon-

day through Thursday is from 7:00 to 10:00 p.m. Then on Friday and Saturday the seminar begins early each morning and continues all day for the last two days.

Those attending from Earth include Rev. and Mrs. David Burum and sons, Mr. and Mrs. Donald Runyon and Stan, Mr. and Mrs. Pete O'Hair, Kenny and Kirk, also Mr. and Mrs. Donald Kelley.

### The EARTH NEWS-SUN



Published at Earth, Texas 79031 every Thursday except the first Thursday following Christmas.

Second Class Postage paid at Earth, Texas 79031

SUBSCRIPTION RATE  
Earth and Trade Territory, per year, \$6.00 plus tax  
Elsewhere in United States, per year, \$7.00 plus tax

CLASSIFIED RATES  
10¢ per word, first insertion, 8¢ per word thereafter  
\$1.50 minimum.

ADVERTISING RATES GIVEN ON REQUEST

ROSS and POLLY MIDDLETON, Publishers

## Change In Seed Certification

Texas producers shopping for certified planting seed for the 1977 season will see a change in the certification label accompanying each bag of seed. Starting next year, seed will be certified for genetic identity only.

Although the new certification label assures that the seed is the variety stated on the label, the big change is the fact that it does not relate to any seed quality factors such as purity, inert matter, other crop seed, weed seed, noxious weed seed and germination. The Texas seed law, however, still requires that this information be truthfully stated on the analysis label accompanying the seed.

"The change in seed certification which becomes effective January 1, 1977, means that producers will have to pay particular attention to the labels on the seed bag," emphasizes Dr. Robert B. Metzger, cotton specialist for the Texas Agricultural Extension Service. "The certification label will tell them what variety the seed is, and the analysis label will provide information on quality factors."

Both labels tell the complete story about the seed, but keep in mind that quality factors can vary even though the seed is certified, notes Metzger.

Certification for genetic identity means that seed has been produced and processed under standards and procedures established by the Texas Seed and Plant Board and enforced by the Texas Department of Agriculture to assure that the variety is as represented by the certification label accompanying the seed.

"Reading the label has always been of importance in purchasing seed, but the new standards will place even greater responsibility on the producer to carefully read both labels to determine if the seed meets his quality requirements," points out Metzger.

The Texas A&M University System specialist lists a number of reasons for the change in seed certification standards:

- To assure a more dependable supply of seed officially certified as to genetic identity.
  - To establish uniformity with the Federal Seed Act.
  - To encourage international seed trade.
  - To allow production of certified seed having quality characteristics for different market needs.
- "The change gives seedmen more flexibility in producing seed for different markets," notes Metzger, "and at the



### All Good Things

"Everybody is in favor of getting more and better jobs, higher real incomes, and a constantly rising standard of living for all. Unfortunately, all those good things are not to be found under a cabbage leaf, nor are they dropped down the chimney by the stork. They come from business making a sufficient rate of profit both to reinvest in plant and equipment and to attract external capital."

—Rogers C. B. Morton  
Former Secretary of Commerce

### Today's ABC's

"I believe the best road to American energy independence is the middle road—not the high road and not the low road—but the middle road. I believe we will solve our energy problems through a reasonable balance of interests and goals. I believe that a new Energy Era has begun in America. The problems and the issues are new. The solutions must be new. The ABC's of today are: adjustment, balance and compromise. And if I might add a D—for decisions, not delays."

—Thomas S. Kleppe  
Secretary of the Interior

## Work Scheduled On FM 303

LUBBOCK--Highway improvement projects in the area are included in the 1976 State Highway Safety and Betterment and Farm to Market Road Improvement Program, recently approved by the State Highway and Public Transportation Commission.

District Engineer, George C. Wall, Jr., of the State Department of Highways and Public Transportation said work

## Gospel Singers To Be At Methodist Church Sunday 6 p.m.

Gospel singers from Lubbock will be at the United Methodist Church in Earth on Sunday, August 8 to bring a gospel message in song. The delightful soul warming gospel singing will begin at 6 p.m.

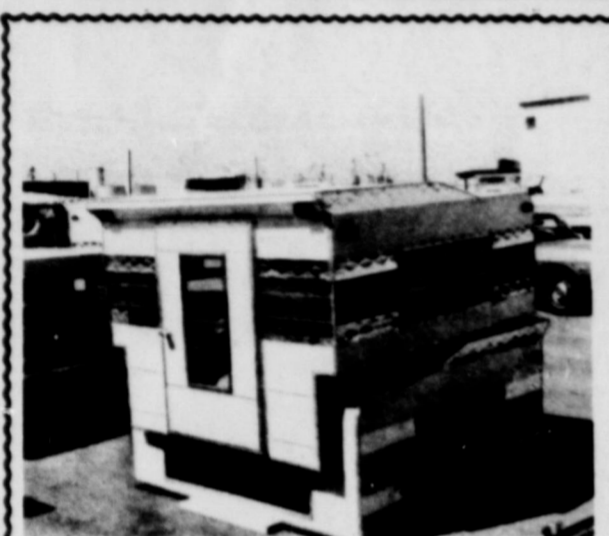
The group, "In God's Light" will be an inspiration to all who hear them.

Debra Ball, alto, is the granddaughter of Mrs. Beulah

Newton of Earth. Linda Steward is soprano. Steve Steward plays the guitar and Mike Armstrong is pianist. The foursome are from Lubbock.

Everyone is invited to attend and enjoy the message in song by the young group.

in this area includes work in Lamb County on Farm to Market Road 303 from FM 54 to Hockley County line for a distance of 5.9 miles at the cost of \$20,000.



- Shorts-Wides-Narrows-Slip-ins
- Electrically wired and lighted
- Insulated
- Paneled
- Top Vents

JUST ARRIVED!  
A NEW SHIPMENT

## TOPPERS Jack's Marine

E. Hwy 60 "WHERE SERVICE IS FIRST" HEREFORD 364-4331

## HANDLE WITH CARE

50¢ **COUPON** 50¢

**SAVE 50¢ MORE**

Take this coupon to a participating Phillips 66 Dealer and save 50¢ on the purchase price of 4 or more quarts of Top Art or Sixty Six Motor Oil installed in your car. (This 50¢ coupon does not apply to sales tax.) Take it along when you go in for the "Oil Change for Small Change" special, and save twice. Only one coupon honored per oil change. Coupon expires Sept. 30, 1976. Retailers: See reverse side for redemption instructions.

50¢

50¢ **LIMIT ONE COUPON PER OIL & FILTER CHANGE** 50¢

MR. DEALER: Please redeem this coupon on the purchase of four or more quarts of Phillips Top Art or Phillips 66 Motor Oil, when installed in customer's car. You will be paid 50¢ plus 5¢ handling plus postage by Phillips Petroleum Company provided the coupon is redeemed in accordance with our consumer offer. Copies of invoices proving your purchase of sufficient stock to cover the coupons presented for redemption must be shown upon request. This offer is void if taxed, prohibited or restricted by law, or if presented by any outside agencies, brokers, industrial or institutional users. Any use of this coupon other than that specified above constitutes fraud. Send coupons to: Phillips Petroleum Company, P.O. Box 1584, Clinton, Iowa 52734. Coupons must be returned no later than Dec. 31, 1976.

50¢



Your Phillips 66 Jobber  
**Earth Oil & Gas Co., Inc.**



Phone 257-3461---Earth

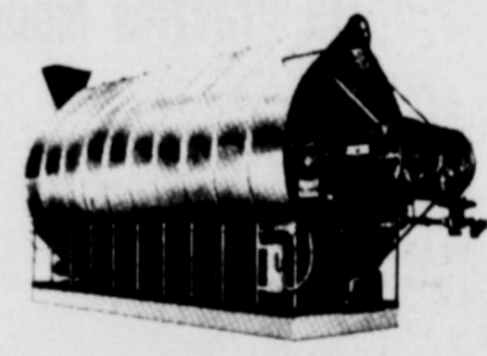
## Mr. Grain Farmer! DWY INDUSTRIES, INC.

Invites You To Benefit From Our  
**GRAIN DRYING SEMINAR**

**PROTECT YOUR GRAIN INVESTMENT  
LEARN HOW TO DRY HIGH MOISTURE  
GRAIN FOR LESS THAN 5¢ A CWT.**



**AMERICAN AUTOMATED  
GRAIN DRYERS**  
Totally Automated-High Resale Value  
Trade for a new American now-or add a new American to your drying installation  
This sale covers Small Line, 2400 Line and Commercial Dryers  
Individualized liberal lease programs available



**MARK  
YOUR  
CALENDAR  
FOR  
WEDNESDAY,  
AUGUST 11**

**Learn The FACTS About Field Loss And Drying Costs.  
Start Making Additional Profits Today.**

**JOIN US FOR A FREE BREAKFAST AND DRYING SEMINAR  
AT WOLVERINE DRIVE IN  
EARTH-7:00 a.m. WEDNESDAY, AUGUST, 11**

YOU'LL BE GLAD YOU CAME

Sponsored by American Grain Dryers  
**DWY INDUSTRIES Inc.**

820 S. Harrison Olathe, Kansas

Call Collect 913-764-3444



SUSAN BURK

## Local Students To Graduate Friday, August 6

The Bicentennial graduating class of Lubbock Christian High School announces Commencement Exercises Friday evening, August 6 at 8:00 o'clock in Moody Auditorium of Lubbock Christian College.

Four local boys and girls are among those graduating. They include Lydia Elaine Smith, daughter of Mr. and Mrs. Al-Ien Smith, Cindy Dent, daughter of Mr. and Mrs. Leon Dent, Susan Burk, daughter of Mr. and Mrs. John Burk and Buddy Glen Curtisinger, son of Mr. and Mrs. Michael Caudill all of Earth.

Susan Burk will be attending Texas Tech University this fall. Lydia Smith plans to enter Beauty School and Cindy Dent will be attending Lubbock Christian College. Glen Curtisinger is planning to work in Earth.



GLEN CURTSINGER



CINDY DENT



LYDIA SMITH

## Bearden Reunion Held Sunday

The Bearden family met Sunday at the Otton Recreation Center's party room for their annual reunion.

In the afternoon the children went swimming while adults enjoyed the time visiting.

Those attending from Otton were Mr. and Mrs. Gary DeBerry and sons, Mrs. Faye Bearden, Mrs. Elmo Hosha and children, Mr. and Mrs. Jimmie Lively and son, Montie McFadden and Miss Janet Spain.

Also Mr. and Mrs. J. B. James and Jennifer, Mrs. Lucille Matlock of Springlake, Mr. and Mrs. F. W. Bearden, Mr. and Mrs. Jearl James and children, Mrs. Estelle Bearden of Earth, Mr. and Mrs. Louis Bearden and son of Floydada, Mr. and Mrs. Billy G. Kemp and son, Mr. and Mrs. Phil Bourland of Lubbock, Mr. and Mrs. Carl Bradley and sons and Miss Kim Haydon of Sunny-side.

Others were Mr. and Mrs. Gary Bearden and children, Mrs. Ellen Kirkwood of Houston, Francis Bearden and Mrs. Wylene McCollough of Overy, Hoby Matlock of Alba, Mr. and Mrs. Darrell Nichols and children of Littlefield, Mr. and Mrs. Royce Bearden and son, Mr. and Mrs. Charles Hedrick and son, Miss Linda James, Mrs. Sonny Duckworth, Mr. and Mrs. Paul Bell of Amarillo, Mr. and Mrs. G. R. Bearden and Mary Jane Moxey of Paducah, Mr. and Mrs. Barry Bearden and sons, Mr. and Mrs. G. C. Bearden of Amherst, Mr. and Mrs. James Bills of Marshall and Ronnie Angeley of Earth.



## Hello World

Shane Darren Ross, handsome son of Mr. and Mrs. John Ross of Lubbock was born Monday, August 2 at 10:01 p.m. in the Methodist Hospital in Lubbock.

The lad weighed 8 pounds and 24 ounces and measured 21 1/2 inches in height. He is the couples first child.

Grandparents are Mr. and Mrs. Carl Jones of Earth and Mr. and Mrs. Gregory L. Ross of Iowa Park.

Great-grandparents are Mr. and Mrs. Charles W. Allen of Athnes, Illinois, Mr. and Mrs. Ed O'Hair of Earth and Mrs. Sam Jones of Hale Center.

Grandma Mary thinks the baby is beautiful, but Carl, who said he had never seen a pretty baby, says this is the most beautiful baby he's ever laid eyes on. (Carl that's alright, eyesight and reasoning goes out the window when one has grandchildren.)

WHEN PLANNING priorities and trying to get the most from time available, remember that for most people, work expands to fit time allowed. If housework is expected to require eight hours every day, it probably will.

AN INFANT goes through stages in his reaction to strangers. In the first months, he does not discriminate between

## Services Held Thursday For Manuel Barrera

Funeral services for Manuel Juventino Barrera, Jr., 27, of Turkey were conducted Thursday afternoon, July 29 at St. Peter's Catholic Church in Otton with Rev. Clarence Huber, pastor, officiating. Burial was in Otton Cemetery

under the direction of Parsons Funeral Home. Barrera died at 3 a.m., Tuesday, July 27, in Amarillo's Northwest Texas Hospital from injuries he received in an automobile accident at 3 a.m., Sunday in Amarillo.

Born in Pearsall, Barrera was a longtime resident of Otton. Survivors include his wife; a son, Manuel Jr., of Augusta, Ga.; three daughters, Gloria and Elizabeth of Augusta and Sophia Ann Alaniz of Otton; his parents, Mr. and Mrs. Juventino Barrera of Springlake; three sisters, Julia Chapa of Edmonson, Mrs. Ramiro Alaniz of Springlake and Oralia Aldape of Otton, and one brother, Sirildo of Edmonson.

## Cream Supper To Honor Band Students, Director

An ice cream supper for S-E Band students and Director Richard Roper, is set for 7:30 p.m. on Monday, August 9 on the tennis court at the school. The get-acquainted event is to allow students, parents, director and family, and anyone interested in band to have a moment of relaxation and fellowship together. Band Boosters are asked to

bring a freezer of ice cream to the event.

Mr. and Mrs. Roper attended Texas A&M University at Kingsville. Roper has a Master's degree in Music. His wife, Melody has a BS degree in Music. However, she will teach at S-E in another field. The couple have a son Brian, 3 years of age. The Ropers have moved to the S-E Campus and

are anxious to meet band students and parents in the area.

## 5 Ladies Attend School Of Missions

Five ladies from Earth attended the Northwest Texas Conference School of Missions at the Methodist Encampment at Ceta Springs, on Saturday and Sunday.

The School of Missions provided three divisions of study geared to assist the United Methodist Women in their local church work for the forthcoming year.

135 ladies from the Northwest Conference attended the school. The three divisions of study included (A) The entire book of Mark, (B) The nations of South Africa, living conditions of the people and their relation to religion, (C) People and systems of China, U. S. A., Guadmalala and Tunisia, their traditions and living conditions.

Those attending were Mrs. Melton Welch, Mrs. John Corbett, Mrs. Lena Grace Griffin, Mrs. Beulah Newton and Georgia Bahman.

The "Little Sheller" Deluxe Model No. 675

Patented Taylor Mfg. Co.

**LITTLE SHELLER PEA SHELLER**  
DELUXE MODEL NO. 675  
WITH 1/3 hp MOTOR EACH **\$150**

**FARMERS COOPERATIVE**  
of SPRINGLAKE

**WE KILL YOUR PESTS!**

- \*ROACHES
- \*MITES
- \*SPIDERS

FREE ESTIMATES AND INSPECTION ON TERMITES

Licensed & Insured ALL WORK GUARANTEED  
CALL 293-7751 COLLECT

**G & W PEST CONTROL**  
505 COLUMBIA --- PLAINVIEW

**COMING SEPT. 11**

**New power and comfort.**

"Come see our new arrivals."

**WOOD-JORDAN, INC.**  
CALVIN WOOD-EARL JORDAN  
INTERNATIONAL DEALER EARTH, TEXAS

**Play Ball On The Home Team.**

Banking's the name of the game... It makes a lot of sense to do business and banking here at home. Your support of local business helps provide jobs for your friends and neighbors, who in turn do business with other local people. Everyone on the home team comes up to bat! It all results in greater growth and expansion. We touch all bases with our banking. Join the home team today!

**CITIZENS STATE BANK**  
EARTH, TEXAS - MEMBER F. D. I. C.

Mr. and Mrs. Leon Foster They left Wednesday and returned home Sunday, spent four days in Ruidoso.

## The Glen McGeaths Honored On Anniversary

Several folks from the area attended the 40th Wedding Anniversary reception honoring Mr. and Mrs. Glen McGeath of Earth. The couples six children and their families were hosts at the event held in the Earth Community Hall from 3 to 5 p.m., Sunday afternoon.

Two rocking chairs placed side by side on a red carpet with a small table between them was the sitting for the honored couple as events unfolded. In the background behind the two chairs was a gigantic picture frame featuring various photos of the honored couple at various events and times in their lives. Also pictured were each of their six children, photos of their 26 grandchildren and one great-grandchild were attached around the outside of the frame.

Guests were registered in a white guest book by granddaughters Shelly Caudill and Paula McGeath, from a table covered with a red linen cloth enhanced with wide red lace. A picture of the honored couple centered the table. Other decorations included a large red candle.

A money tree was presented the couple along with several useful and beautiful gifts.

A poem written by Mrs. Caudill, bringing out times and events in the lives of the honored couple and bringing in all their children and grandchildren was read to the couple and their friends by a granddaughter of the couple.

The table for the bride of 40 years ago, was covered with a beautiful white lace tiered cloth and centered with lovely arrangement of miniature pink and white carnations intermingled with babies breath. The three-tiered cake was iced in white and decorated with red rose buds. Slices of cake were served with red frosted fruit punch, nuts, mints and red hots from crystal and silver appointments.

The table for the long ago groom was covered with a red cloth bordered with wide red lace. The centerpiece was a lovely candelabra holding red lighted candles in wive candle holders enhanced by red tulle and red bows. Individual cake squares decorated with long stem red roses were served with nuts, mints, red hots and coffee from silver and crystal appointments.

Another table was placed by the doorway. The table was centered with a lovely white



THE McGEATH FAMILY

carnation pot plant, where gifts were placed.

A miniature replica of the Wolverine Drive In centered a table covered with a white cloth trimmed in white lace. The honored couple bought a tiny drive in located on the present site in 1960 and enlarged the drive in many times since that date. They also added the present Mini-Mart Grocery, self-service gas sta-

tion and living quarters joining the rear of the drive-in.

Prior to purchasing the drive in, McGeath was employed by El Paso Natural Gas Company. Hosting the event were Mrs. Glenda Hall of Las Vegas, New Mexico; Mrs. Marilyn Brunson, Midland; Mrs. Jane Caudill and Mrs. Patty Moore both of Earth; Butch McGeath, Lubbock and Joe McGeath of San Angelo and their families.

Mr. and Mrs. Phil Short and children of Calera, Oklahoma are here visiting relatives and friends. Mrs. Short is the former Linda Gregory.

Mr. and Mrs. Bob Robinson and family of Springlake vacationed a few days last week at Ranger, Texas where they visited Robinson's sister, Mrs. Nellie Sharp.



MR. and MRS. GLEN McGEATH

## TOPS Has "Dieting Quiz" Program

Mrs. Fred Clayton served as leader of TOPS 891 when they met Wednesday in regular session. Mrs. Red Murrell leader, was unable to attend the event.

Mrs. Clayton led the TOPS Pledge. Five members were present to weigh in and answer the roll call.

Mrs. Clayton was Queen for the Week and Mrs. Bud Jones was presented a fruit basket

for having lost the most weight during the month. Mrs. Leon Foster presented a quiz program on "Fact on Myth of Dieting?"

Those present were Mrs. Clayton, Mrs. Henry Randolph, Mrs. Bud Jones, Mrs. Leon Foster and Mrs. Florence Gover.

Ted Borum left Wednesday morning after spending several days in Earth.

AUGUST 5-6-7

SMALL TOWN TEXAS

AUGUST 8-9-10

RON HOWARD  
EAT MY DUST!

X. I. T.  
DRIVE-IN THEATRE  
MULESHOE, TEXAS

**OUR BEST SALE YET IS STILL IN PROGRESS**

WE HAVE MANY BARGAINS JUST FOR YOU

PLACE AROUND THE CORNER NEXT TO BASKIN-ROBBINS PLAINVIEW

**BATES SHOE STORE**  
TULIA, TEXAS

**25th Anniversary Sale**

Thursday-Friday-Saturday  
**AUGUST 5-6-7**

OVER 4,000 PAIRS SHOES

**3 PAIR FOR PRICE OF 1 PAIR**

MEN'S - WOMEN'S - CHILDREN'S

**OPEN - 1:00 p.m.**  
**CLOSE - 10:00 p.m.**

**Notice**

The families of Shelley Kaye Gaston and John Stanley Kelley cordially invite you to attend their marriage at 4 o'clock p.m., Saturday, August 7 at the Earth United Methodist Church and the reception immediately following in Fellowship Hall.

**WINDSHIELDS & AUTO GLASS**  
**TRACTOR CAB GLASS**  
**TRAVEL TRAILERS GLASS**  
**MOTOR HOMES GLASS**  
**TRUCK WINDSHIELDS**  
**&**  
**DOOR GLASS**

**CRAFTON GLASS**  
OF LITTLEFIELD

385-6020, EMERGENCY NUMBER, CALL ANYTIME  
817 HALL AVE. 385-3526-DOC PHARISS, SOLE OWNER

**CHARMIN' BRASS HEADBOARDS**

TWIN 29.50  
DOUBLE 39.50  
KING 49.50  
other styles available

**THE "NOW" LOOK**

ALSO USED FOR YOUR PLANTS

29<sup>95</sup> UP

**Beautifully Designed MUSIC BOXES**

Assorted styles—lovely melodies of today and yesterday—chimes, figurines and jewel boxes.

**8<sup>95</sup> to 16<sup>95</sup>**

**3.95**

FIELDCREST—Face, Bath & Wash Cloth  
Greatest Show on Earth  
A Bedroom Store Special!!

**Towel Sets** \$14<sup>95</sup> Value  
7<sup>95</sup>

1—Bath Towel  
1—Wash Cloth  
1—Face Towel

**FIELDCREST NO-IRON COLORED PERCALE SHEETS**

Choose from beautiful contemporary and traditional patterns. Sets include Polyester/cotton blend fitted bottom, flat top and one pair pillows.

●TWIN SIZE REG. 17.50 FROM \$12.50 SET  
●DOUBLE SIZE REG. 18.00 Value FROM \$15.50 SET  
●QUEEN SIZE REG. 24.00 Value FROM \$17.50 SET  
●KING SIZE REG. 32.50 Value FROM \$19.50 SET

**VISIT OUR SLEEP SHOPS**

Our complete bedroom stores are located in Abilene • Big Spring • Brownwood • Dal Rio • Midland • Odessa as well as in San Angelo

Phone 385-3018  
316 Phelps  
Littlefield, Texas

**Western Mattress**

**YOU CAN BANK ON IT!**

By: MACKY McCARTY  
CITIZENS STATE BANK

Poet Robert Lee Frost said it best:

**Party Line**

Mr. and Mrs. Jerry Carpenter and daughter Christi spent several days camping out at Cedar Creek in Ruidoso.

Never ask of money spent Where the spender thinks it went. Nobody was ever meant To remember or invent What he did with every cent.

True, and that is a good reason for having a savings account. Without a regular weekly or monthly savings plan, money just seems to disappear. There is personal security in knowing some of what you earn has been put away, accumulating interest, for the future.

The amount saved regularly is unimportant; the important thing is to save something, often, starting now. At least you'll know where some of it went... right?

"The more you know about our business, the more we can help you!"

**WHEN YOU BUY OR BUILD A NEW HOME LOOK FOR THIS SIGN**

It has been known for some time that methods existed to insure the building of ENERGY EFFICIENT HOMES. But inexpensive energy in the past made it logical to ignore the extra investment such a home would require. Now with energy costs rising, it becomes more and more important to use effectively every bit of energy we consume. The TOTAL ELECTRIC ENERGY EFFICIENT HOME has construction features which result in savings of 40% or more on heating and cooling costs when compared to previously accepted standards for total electric construction.

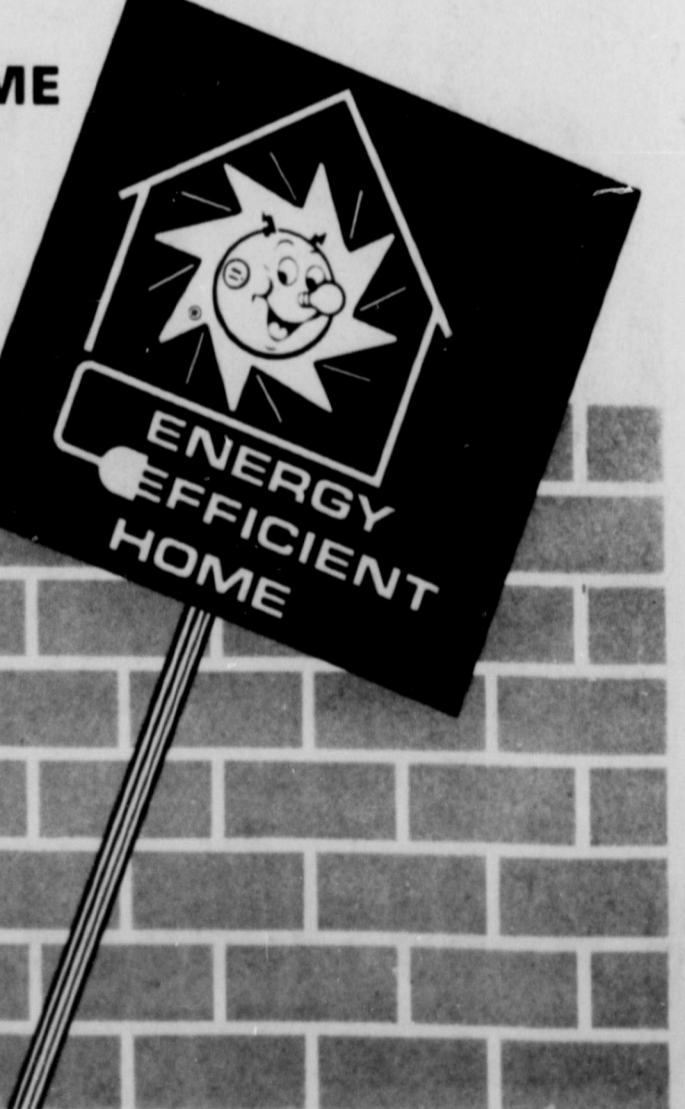
You'll be hearing more about the ENERGY EFFICIENT HOME. If you're considering a newly constructed home, let us work with you and your builder to assure that your new home is designed for maximum comfort and energy savings — the TOTAL ELECTRIC ENERGY EFFICIENT HOME.

**And Save Over 40% On Heating & Cooling Costs**

THE ELECTRIC COMPANY  
FOR US MANY PEOPLE

**CALL US!**

Equal Opportunity Employer



## Rainbow Assembly Attends School At Muleshoe

The local Rainbow Assembly met Monday, August 2 at 6 o'clock with Brene Belew as Worthy Advisor, assisted by Mother Advisor, Mrs. Earl Jordan.

A report was given on the recent school of instruction at the Muleshoe Assembly last Saturday. Nine local Rainbow members and Mother Advisor Mrs. Jordan and Grand Visitor, Mrs. Donald Kelley attended the event.

The Plainview Assembly also had representative present for

the school.

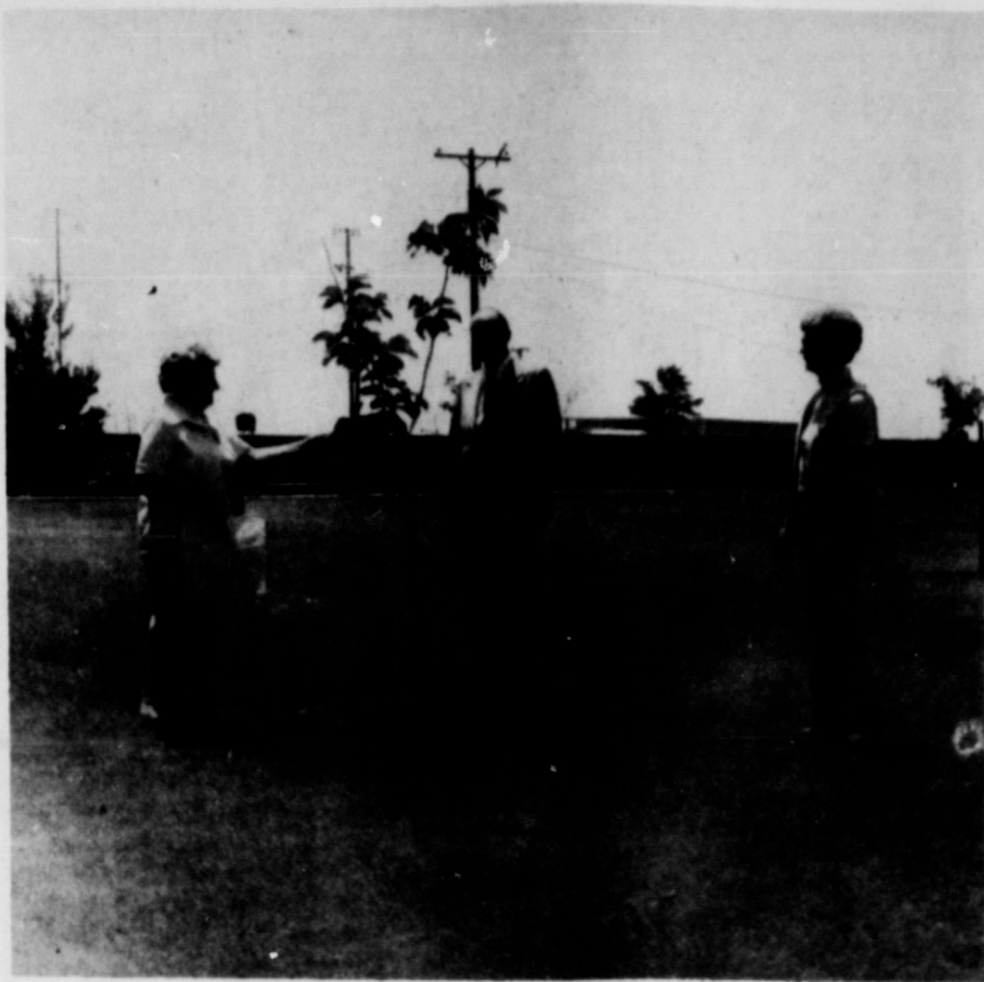
During the noon hour the Earth Rainbow Assembly presented a comical skit entitled "Radio Studying."

The local assembly made plans to attend the all-day school of instructions in Lubbock on August 9.

During the business meeting Monday afternoon Elaine Bills stated that her charity project for the term was to present gifts to residents at Girls Town at Whiteface. The group will go either August 28 or September 4 and will present to let articles to the girls. The group is looking forward to the trip to Girls Town.

### CONCESSION STAND

The Rainbow Girls will have a concession stand during the Lions Club Baseball Tournament. They will serve Barbeque sandwiches, hot dogs, candies, Cokes and chips.



SCHOOL CAMPUS LOOKS GOOD, . . . Pictured looking over the beautiful school grounds is Supt. Bill Mann, Mrs. W.B. Hucks and Mrs. Marvin Sanders.

HOME DELIVERY is expected to account for less than seven per cent of all milk bought in the U. S. by 1980, compared to 70 per cent in 1940.

print fabric, means the pattern is subtle, almost a solid color.

TO KEEP LUGGAGE looking nice, clean it regularly. Give vinyls or uncoated linen, cotton and canvas a cleaning with a damp soapy cloth. Clean smooth leather with saddle soap. After it is thoroughly dry, rub with

GOITER REMAINS a health problem and is evident today in Texas. Goiter can be prevented simply by using iodized table salt.

FAUX-UNIS, a French word used to describe some of today's

ATTEND CHURCH

**CARLILE Theatre**  
Dimmitt, Texas

**AUGUST 1976**

**THU**  
5

**GALZONZIN INSPECTOR**

**FRI SAT**  
6 7

**WALT DISNEY'S Follow Me Boys!**  
FRED MacMURRAY  
TECHNICOLOR VERA MILES

**SUN MON**  
8 9

**The Legend of Boggy Creek**  
A TRUE STORY  
THE SCARIEST OF SCARY HORROR  
THE BROTHERS OF THE TRISTAR CORPORATION

## Rainbow Girls Have Kidnap Breakfast

A kidnap breakfast for the Rainbow Assembly was held Tuesday morning in the home of Mr. and Mrs. Doug Lewis in Hite Park.

Sixteen girls were surprised early in the morning to be awakened by Worthy Advisor Brene Belew, Mother Advisor Mrs. Earl Jordan and Rosie Lewis, and whisked off to breakfast in their nighties.

The group enjoyed breakfast and a style show, modeling their morning wear. Sheryl Clayton was elected "Miss PJ" of the group.

In a spontaneous talent show, Miss Elaine Bills was elected

"Miss Talent."

Members present were Sheryl Clayton, Stacy Tunnell, Stefie Parish, Laurinda Bulls, Teresa Lively, Sheila Jordan, Rhonda Weaver, Rosie Lewis, Elaine Bills, Brene Belew, Susan Clayton, Kareen Hulcy, Sharon Jones, Donice Taylor, and Steph Tunnell.

Adults present were Mrs. C. C. Goodwin, Mrs. Earl Jordan, Mrs. Richard Bills, Mrs. Bob Belew and hostess Mrs. Doug Lewis.

## Senior Citizens Has Patriotic Program

Members of the Senior Citizens Club met in the Community Room Wednesday for a monthly noon day luncheon and fellowship session.

President Mrs. Bonnie Haberter presided over the meeting. Mrs. Carra Morgan was elected for another year as secretary of the club.

The group sang "America the Beautiful", and Mrs. B. Campbell brought a patriotic program. She read an essay entitled "What America means to me" written by her granddaughter while in high school. To further bring out the love for this country, Mrs. Campbell presented two readings,

"Same old Flag" and "I am the Nation."

Those present were Mrs. Carra Morgan, Mrs. R. C. Hyde, Mrs. Velma Jones, Mr. and Mrs. Crill Bulls, Mr. and Mrs. Ruel Fanning, Mrs. Adria Welch,

Mrs. Annie Runyon, Mrs. Gladys Goodwin, Mrs. Ruby Hodge, Mr. and Mrs. Frank Butter, Mrs. Bessie Cartley, Mrs. Lillie Wuerflein, Mr. and Mrs. Roy Taylor, Mrs. Dean Jones and Mrs. Bonnie Haberter.

# CUSTOM SLAUGHTERING & PROCESSING

of

## •BEEF •HOGS •LAMBS

Monday through Friday

Call us now

# DIMMITT MEAT CO.

Phone 647-3210      200 Broadway

V.C. Hopson, Owner & Mgr.

**Be First To Select From Our New Fall Fashions**

A Few Summer Items Left At 1/2 Price

**FASHION SHOP**

420 Main      Clovis



# NEGATORY

ON HIGH PRICES

GOOD BUDDY

NOW-THROUGH AUGUST 14

**JUST ARRIVED**

500 PIECES-NEW SELECTION

## PRE-FINISHED PANELING

10 PATTERNS TO CHOOSE FROM

**\$399 to \$879**

---

COMPLETE SELECTION

## PRE-FINISHED MOLDING

---

<p>PANEL</p> <p><b>GLUE</b> ..... TUBE <b>79¢</b></p>	<p>COLORED</p> <p><b>NAILS</b> ..... BOX <b>79¢</b></p>
---	---

---

NO. 100 MASTER

## BALL COCKS

REGULAR \$3.98.....NOW **\$2.98**

---

<p>12 1/2 GAUGE AMERICAN MADE</p> <p><b>BARB WIRE</b></p> <p>ROLL <b>\$24.95</b></p>	<p>6-FOOT</p> <p><b>T-POSTS</b></p> <p>EACH <b>\$1.98</b></p>	<p><b>JONES - BLAIR</b></p> <p>SUPER COAT EXTERIOR</p> <p><b>HOUSE PAINT</b></p> <p>GALLON <b>\$6.95</b></p>	<p>SUPER COAT</p> <p><b>WALL PAINT</b></p> <p>GALLON <b>\$5.95</b></p>
--	---	--	--

---

 <p>WHITE</p> <p><b>COMMODOE SEATS</b></p> <p>REGULAR \$6.29</p> <p>NOW <b>\$4.79</b></p>	<p>21" x 32"</p> <p><b>SINK RIMS</b></p> <p>REGULAR \$7.95</p> <p>NOW <b>\$5.39</b></p>	<p>21" x 32" DOUBLE COMPARTMENT</p> <p><b>SINKS</b></p> <p>WHITE-GOLD or AVOCADO</p> <p>NOW <b>\$21.50</b></p>	
---	---	--	--

# HIGGINBOTHAM-BARTLETT CO.

EARTH---JIMMY HUCKABEY

**First Annual!**

**EARTH LIONS CLUB**

**SLOW PITCH**



**SOFTBALL TOURNAMENT**

**AUGUST 12 thru 15**

TROPHIES FOR

**1st and 2nd and Most Homeruns**

**ENTRY FEE - \$30.00 PER TEAM**

ENTRY DEADLINE-MONDAY, AUGUST 9 5P. M.

FOR FURTHER INFORMATION CALL

**JERRY BEEN - 257-3461**

**or ALLEN SMITH - 257-3484**

## Texas Flag Will Fly Over Mt. Rushmore August 24-25

MT. RUSHMORE, S. D. -- The State of Texas Lone Star flag will fly over Mt. Rushmore National Memorial in South Dakota's Black Hills August 24-25, as this national Bicentennial focal point recognizes Texas in the National Park Service's 1976 "Days of Honor" commemoration. Secretary of State Mark White will receive the Texas flag in ceremonies at the memorial

August 25. "The Texas flag which flies over the memorial will be presented to Secretary White during our evening lighting ceremonies," says Rushmore Supt. Harvey Wickware. "Ceremonies both days will recognize Texas in the 1976 Days of Honor commemoration developed to fulfill Rushmore's role as a national Bicentennial focal point."

The Lone Star flag also flies in a special Avenue of Flags constructed for the Bicentennial at Rushmore. South Dakota Governor Richard Kneip, on behalf of all South Dakotans, has invited any Texans traveling north to take part in their state's days at Rushmore. The Mt. Rushmore Days of Honor program began May 21 and continues through Sept-



★★★ BICENTENNIAL SALUTE--The State of Texas will be honored August 24-25 at Mt. Rushmore National Memorial in the Black Hills of South Dakota. Rushmore is a national Bicentennial focal point and the site for the 111-day Days of Honor commemoration which will recognize each state and territory in the United States this summer. SD TOURISM PHOTO ★★★

★★★ ATTEND THE CHURCH OF YOUR CHOICE ON SUNDAY

# The GRAY MULE

BOOTS - BELTS - SADDLES  
Has a new location  
**NEW LOCATION**

We have relocated our shop in a larger and more convenient location at  
**129 SAMPSON**  
364-3371 Hereford

We invite our customers and the new citizens of the Hereford area to come in for a visit and get acquainted!

—FEATURING—  
3 Day In and Out  
BOOT  
REPAIR SERVICE

—SPECIALIZING IN—  
Custom Made  
BELTS  
SADDLES

ember 8, with each state and territory in the nation receiving homage at the Shrine of Democracy. Located on a 6,000-foot-high granite mountain, the Shrine of Democracy was carved by Gutzon Borglum as a monumental summation of the American Republic. Borglum chose four Presidents (Washington, Jefferson, Lincoln,

Theodore Roosevelt) to symbolize the growth of the United States. The portrait bust of each is 60 feet high. Rushmore's unique attribute of being a memorial for the whole nation, rather than just one section, led to its national Bicentennial designation by the American Revolution Bicentennial Commission in 1971.

### Former Springlake Woman Dies Saturday

Graveside services for Mildred Alice Brock, 56, of San Angelo and formerly of Springlake were held at the Springlake Cemetery at 2 p.m. Monday with the Rev. Bill Watson, pastor of First United Methodist Church in Earth, officiating.

Arrangements were under the direction of Parsons-Ellis-Singleton Funeral Home of Earth.

Miss Brock died at 5 p.m. Saturday in a San Angelo convalescent center after a lengthy illness. Born in Mayfield, Oklahoma, she moved to San Angelo more than three years ago from Springlake.

Miss Brock is survived by two brothers, Harvey of Inyokern, California and John of Houston.

### Services Held Tuesday For Daughter Of Local Woman

Funeral services for Mrs. Loveta H. Thompson, 58, of Amarillo were held at 11 a.m. Tuesday at Schooler-Gordon Colonial Chapel in Amarillo. Rev. Jack C. Parker, minister

of Education at Paramount Baptist Church officiated. Graveside rites were at 3 p.m.

BACTERIOSTATIC AND FUNGISTATIC 50 per cent polyester, 50 per cent cotton sheets which prohibit growth of microorganisms are now available. These are particularly appropriate for hospitals, nursing homes, hotels and motels.

COMMON FOOD allergies are caused by ingesting irritating foods. But food allergies may also be caused by contact from handling, which usually produces hives or rashes; by inhaling the odor of a food; or by inhaling a food in a powdered form such as the flour dust in a bakery.

Tuesday in the Earth Memorial Cemetery.

Mrs. Thompson was a floral designer at Thompson's Floral Shop. Born in Frederick, Oklahoma, she came to Amarillo 23 years ago from Canyon, where she lived for about 15 years. She was a Baptist.

Survivors include the widower, W.S. Thompson, Jr.; three sons, Dennis of Amarillo, William S. Thompson III of McKinney and E. Neil Thompson of Amarillo; her mother, Mrs. Elsie Hawkins of Earth; sister, Mrs. J.W. Pierce of Amarillo and five grandchildren.

ATTEND THE CHURCH OF YOUR CHOICE ON SUNDAY

Attention...  
**MR. FARMER**



DO YOU OWN A MASSEY FERGUSON  
CORN HEADER  
AND FARM ON 40" ROW CENTERS?

Mills Machine, Inc., Muleshoe, Texas is now extending Massey Ferguson headers from 6-row 38" centers to 6-row 40" centers through the summer months.

We guarantee absolute alignment, neat workmanship and solid reinforcement on extensions.

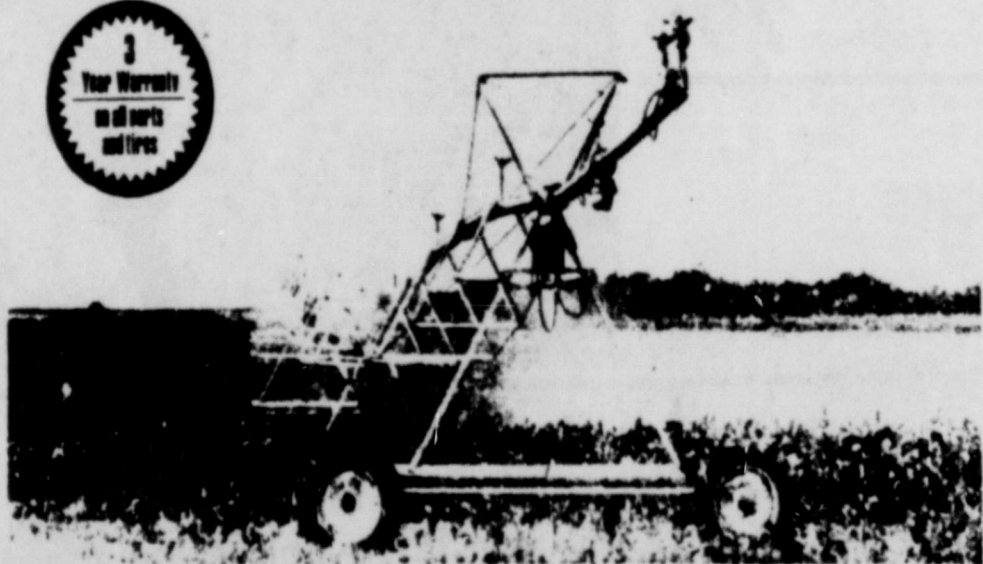
Contact Marlin Mills

**MILLS MACHINE, INC.**  
Frisco Hiway - Phone 272-4771  
MULESHOE, TEXAS

## REINKE WATER MANAGEMENT SYSTEM

### ALUMIGATOR

THE ALUMINUM CIRCULAR IRRIGATION SYSTEM



MAXIMUM FLOTATION - ALUMIGATOR SHEDS POUNDS AND PROBLEMS

- 60% less weight compared to steel systems
- Corrosion free - durable construction
- Less weight means better flotation - Twice the gear life
- Heavy/High-Tensile aluminum
- Rugged steel pivot - Structural aluminum on all other parts - No rust
- All gear drive-running in oil
- Automatically reversible
- Airplane alignment system

Dependability means modern and efficient field service too.

## WESTERN PUMP AND EQUIPMENT COMPANY

HOLLY SUGAR ROAD

HEREFORD

364-3264

# Announcing

David Cole & Joe Dan Yates

Have Purchased

## Toro Grain, Inc.

OLTON, TEXAS

We Invite Area Farmers To  
Come by and get acquainted

Let Us Handle Your  
Grain This Fall!

**BRAND NAME CARPET COST PLUS 10% ON 40 YARDS or MORE**

**HOME DECOR**

319 N. BROADWAY  
PHONE 647-3212  
DIMMITT

**TELEX Hearing Aids**

We Have Moved From 416 Mitchell To 403 E. 14th

**CLOVIS HEARING AID CENTER**

Phone 763-6900  
Clovis, N.M.

**KIRBY SALES AND SERVICE**

Repair while you wait. Harvey Bass Appliance-Muleshoe. 3/27/tfc

FOR SALE: 160 acres, 2 wells. Dick Watson Real Estate. Phone 285-2282 Olton. 7/29/2tc.

SERVICE on all heating, air conditioning, washers, dryers, refrigerators, etc. Call collect. Loveless Electric, 285-2000 Olton 6/10/tfc

FOR SALE: One two bedroom house to be moved. See Ed Cox at Fry and Cox. Phone 272-4511. 11/13/tfc.

**SINGER SEWING MACHINES SALES AND SERVICE**

COMPLETE SERVICE ON ALL ALSO SINGER VACUUM CLEANERS

**ROBINSON SEWING MACHINE CENTER**

LITTLEFIELD  
385-4621 308 W. 4th

**MONUMENTS**

Windsboro Blue Granite White Georgia Marble and others, including Bronze for Memorial Park Specifications.

See or Call Collect

Percy Parson, Olton  
Phone 285-2621 or Frank Ellis Muleshoe, Phone 272-4574.

**TRUCK DRIVER NEEDED!**

GOOD BENEFITS FOR THE RIGHT MAN.

See **ELDON PARISH**  
AT CHEM-TEN, INC.  
IN EARTH

**DEAD STOCK REMOVAL**

**7-DAYS A WEEK SERVICE**

Please Call As Soon As Possible

**MULESHOE BI-PRODUCTS**

PHONE 965-2429

**SUNNYSIDE NEWS**

By TEENY BOWDEN

Raymond Jones directed R. A. Camp at Plains Baptist Assembly Monday through Thursday. He took some of the boys on a camping and hiking trip on ranch land outside the assembly grounds.

for Wednesday night with heavier amounts to the south. 75 was recorded for Sunnyside proper and Milburn Haydon received 1.70 inch. Total for the month of July was 5.40 inch.

.30 inch of rain was recorded Mrs. Alton Loudder and Mrs.



**CLASSIFIED ADS!**

from Nichols Memorial Hospital in Plainview Saturday afternoon.

Mrs. Raymond Jones went to Killeen Monday to pick up her mother, Mrs. Mae Etta Watts and take her to her home in Fort Worth. She also visited during the week with Mr. and Mrs. Eddie Jones and children of San Angelo.

Milburn Haydon had charge of the Wednesday night prayer service while the pastor was at camp.

Mr. and Mrs. Chad Windsor of Waco visited this week with her parents, Mr. and Mrs. Tex Conard of Dimmitt and her sister, Mr. and Mrs. Larry Sadler and girls, Stacy and Laura

went home with them Friday for a visit.

Mr. and Mrs. Ezell Sadler, Mr. and Mrs. Embree Roy Sadler, Mr. and Mrs. Larry Sadler and Carrie, Mr. and Mrs. David Sadler, Melody and Karla, Mrs. James Powell, Tresa and Cheryl of Dimmitt, Mr. and Mrs. Gale Sadler, Cindy and Susan, and Dr. and Mrs. Sadler, Gregory and Amy Sadler of Lubbock attended the Sadler reunion at Breckenridge Lake over the week-end.

Mrs. Carl Bradley, and Kyle and her mother, Mrs. Jess Matlock of Springlake, went to Alba, Texas Wednesday to attend the wedding of Jeff Matlock Friday night. They returned home Saturday.

Mr. and Mrs. Carl Bradley, Kent, Kelly and Kyle attended the Bearden reunion in Olton Sunday.

In the community meeting last Monday night, Mrs. Ezell Sadler was appointed to arrange for the selling of "Current Cards" as a money making project. Mrs. Martin Lefevre was appointed to see about making a community flag to fly under the U.S. Flag on special occasions and on the day of our regular meeting night to remind people of the meeting. It will have a special insignia on it.

Kyle Bradley was presented his plastic book mark for having read 10 books in the summer reading program in the Sunday morning services last Sunday. Tommy Parson was given his also on Sunday and he was given his worm for reading 25 books and his Liberty Bell stick pin for reading 50 books before he and Rebecca returned to their home in Houston Friday.

Mrs. Franklin Lafferty and children of Houston and her parents, Mr. and Mrs. Joe Parson of Clovis visited last Monday with Mr. and Mrs. Thomas Parson and children and took Tommy and Rebecca back to Houston last Friday.

Mrs. Elaine Rodgers, Bill, Robin, Ricky, Trenton and Jeff of Oklahoma City arrived last Friday night and visited through Tuesday with Mr. and Mrs. Thomas Parson and children. They all had supper last Saturday night with Mr. and Mrs. Joe Parson and family in Clovis last Saturday night.

Mrs. Ed Thompson visited in Plainview Thursday afternoon with a friend, Fern King.

Mrs. L. B. Bowden attended the Castro County Historical Museum Association meeting in Dimmitt Thursday night.

Cinnamon and Brandon Cox and Ray Lynn Owens were guests at the Springlake-Earth 4-H Horse Club meeting Monday night.

Mission Friends and Girls in Action met at the church Tuesday afternoon. The BYW will meet first and third Tuesdays also and there will be a nursery.

Mrs. R. J. Lefevre of Hereford visited Tuesday with Mrs. Martin Lefevre. They also visited in Nichols Hospital with L. B. Bowden Tuesday afternoon.

Clint Dawson was one of the Springlake-Earth students attending the Student Council Workshop in San Antonio last week.

Edwin Parson went to Melrose last Sunday to spend a week with his grandparents there.

Mrs. Noah Spencer, Mr. and Mrs. Alan Shive, Mrs. Carmen Pigg and Donnie Shive of Dimmitt and Mr. and Mrs. Jerry Shive from Amarillo attended the funeral services of E. A. Oberst in Canyon Friday.

Mrs. Noah Spencer visited in Hart with her mother, Mrs. V. E. Bearden Thursday.

**OWENS ELECTRIC**

WE SPECIALIZE IN:

Complete sales and service of electric motors (new and used), magnitos, starters and generator repairs.

LOAN MOTORS AVAILABLE

809 E. 2nd. 364-3572 HEREFORD, TX.

Floating Tailwater Pump  
Conserve that water

Vertical Hollow Shaft

Electric Belt Driven Gear Head

"Guaranteed Satisfactory Service"  
Warren Owen.....Harvey Milton

**ELECTRIC PEA SHELLERS**

We've just received a new shipment.

**\$165**

**DIMMITT EQUIPMENT CO.**

647-2573 SE Second & Lee

FOR SALE: 1975 Malibu Classic 4-door. Like new, 24,000 miles. 257-2016, 257-3900 or 965-2391. 7/29/tfc

**QUICKBALL PRYOR CO., INC.**

Automobile Parts Supplies & Equip. P.O. Box 567 Earth Texas

FOR SALE 16" Well Casing New Steel 18 1/2¢ per pound. 6" and 8" Column Pipe. Highest prices for junk iron FARWELL PIPE and IRON Phone 481-3287 601 Ave. A Farwell, Texas

To Rest Assured Use SAFETY DEPOSIT BOX Protection

FIRST STATE BANK Dimmitt, Texas

**ROBBY'S GUITAR SHOPPE**  
809 MAIN  
CLOVIS  
"the music store."

Buy Lease Rent

**Think about the leasing alternative.**

When it's time to think about new IH equipment, leasing could make real sense. Especially if yours is a fast-growing business facing the cash-flow problems of growth. We can help. With HARCO Leasing, offered exclusively through selected IH dealers. Leasing isn't for everyone. But if you qualify, a HARCO Leasing Agreement could be your most sensible way to get the IH equipment you need to keep growing. Come in for the facts. We'll give you something worth thinking about.

**HARCO LEASING. a capital idea.**

**WOOD - JORDAN, INC.**

EARTH

**THE YEAR ROUND TRAILER.**

The RHOMAN "YEAR ROUND TRAILER" is a farm investment that works all twelve months of the year. During spring planting the RHOMAN NURSE UNIT can be utilized for all liquids, fertilizers and water. The RHOMAN HOPPER UNIT handles all grain crops throughout the harvest season, and as a flatbed, the RHOMAN TRAILER is excellent for transporting equipment and supplies.

The center section of the Rhoman Flatbed is easily removed.

The RHOMAN GOOSENECK FLATBED gives the farmer a year round trailer. Its quick-change ability allows the farmer to have a Hopper Unit as well as a Nurse Unit with minimum effort. The trailer has brakes on all 8 wheels with an axle capacity of 30,000 lbs. G.V.W., hydraulic and 24,000 lbs. G.V.W. electric. All trailers come equipped with a 3" (automatic latch) ball hitch on the gooseneck and a heavy duty rear hitch for tandem use is optional. Adjustable axles are an exclusive feature with all Rhoman trailers.

The RHOMAN TRAILER HOPPER UNIT provides commercial duty truck capacity that can be handled with a farm pickup. This unit eliminates costly truck maintenance and the need for a grain cart. The Hopper has a 350 bushel capacity and, with extensions, can be increased to 540 bushels. Extra large Hopper doors and 45° sloping sides make it possible to unload high moisture and bulky grain crops with ease.

Extra large Rhoman Hopper doors are equipped with a heavy duty rack and pinion operating mechanism.

This sturdy rear hitch is available for tandem use.

ATTENTION: COMMERCIAL FERTILIZER DEALERS & "BIG A" OWNERS—The Rhoman Nurse Unit will reduce needless trips to town and keep expensive application equipment in the field and on the job.

The RHOMAN LIQUID NURSE UNIT is available in 1,000 to 2,500 gallon capacity. Its 500 gallon tanks give a baffled effect for safer hauling. Because several liquids can be hauled at one time, the Rhoman Nurse Unit becomes the most versatile trailer on the market today. Rapid liquid transfer is accomplished with a 5 hp heavy duty 2" pump.

**AL IRONS**

Hart 938-2270

**Your Neighbors Trade At**

**Statoline Irrigation Company, Inc.**

LITTLEFIELD-MULESHOE LEVELLAND

WHY NOT YOU?

## A/New Jersey Flu Rumors Untrue

When the A/New Jersey (swine) flu struck in 1918, people had little or no warning, no effective vaccines ready and no accurate information on the subject. In 1976, some inaccurate information has been popping up around the state but otherwise people are a lot better off than in 1918, the Texas Medical Association says. Luckily the rumor that A/New Jersey flu has hit Texas is false, TMA says. Texas Department of Health Resources officials say if there are any cases they should appear during the regular flu season beginning in November. People today have access to more accurate medical information but there are still skeptics just as in 1913. A December 1918 MTA journal reports one person called the epidemic "an infectious suggestion" caused by fear. He blamed traitors for causing the problem. Some skeptics today label the inoculation program as a political ploy or a medical blunder. State health officials counter these arguments by pointing out that A/New Jersey flu definitely has appeared and the population has no established immunity to it. Similar situations occurred with the Asian flu epidemic of 1957 and the Hong Kong flu epidemic of 1968. Both these epidemics caused widespread suffering and death (about 70,000 excess fatalities nationwide in the 1957 epidemic) and A/New Jersey flu could be even more vicious. This type of flu epidemic strikes so swiftly and with such force that, unless people are already protected, the epidemic becomes widespread and has done its damage before enough vaccine can be prepared. Fortunately this time there is advance warning of trouble and better knowledge of vaccines. Of course there may not be an A/New Jersey flu epidemic, although many signs point to it. However, officials have decided to go ahead with an inoculation program rather than risk the public's health and safety.

People in 1918, faced with death and illness on every side, tried many remedies to decrease flu risks. The same TMA journal reports false remedies ranged from salves to amulets. Many patent medicines were advertised as helpful to people, for a price. One person in Missouri offered "to furnish the remedy for the nominal price of \$4.50 for each patient, or will take a surgeon major's commission and pay." Other equally worthless ideas were offered for free. People were advised to sprinkle a little sulphur in each shoe every morning to prevent flu and yellow fever. Giving up white bread and other foods or inhaling alcohol and chloroform from cotton also were alleged to be cures. Hopefully in 1976 people know vaccination is the only reasonable way to get protection from A/New Jersey flu, TMA says.

State health officials counter these arguments by pointing out that A/New Jersey flu definitely has appeared and the population has no established immunity to it. Similar situations occurred with the Asian flu epidemic of 1957 and the Hong Kong flu epidemic of 1968. Both these epidemics caused widespread suffering and death (about 70,000 excess fatalities nationwide in the 1957 epidemic) and A/New Jersey flu could be even more vicious. This type of flu epidemic strikes so swiftly and with such force that, unless people are already protected, the epidemic becomes widespread and has done its damage before enough vaccine can be prepared. Fortunately this time there is advance warning of trouble and better knowledge of vaccines. Of course there may not be an A/New Jersey flu epidemic, although many signs point to it. However, officials have decided to go ahead with an inoculation program rather than risk the public's health and safety.

State health officials counter these arguments by pointing out that A/New Jersey flu definitely has appeared and the population has no established immunity to it. Similar situations occurred with the Asian flu epidemic of 1957 and the Hong Kong flu epidemic of 1968. Both these epidemics caused widespread suffering and death (about 70,000 excess fatalities nationwide in the 1957 epidemic) and A/New Jersey flu could be even more vicious. This type of flu epidemic strikes so swiftly and with such force that, unless people are already protected, the epidemic becomes widespread and has done its damage before enough vaccine can be prepared. Fortunately this time there is advance warning of trouble and better knowledge of vaccines. Of course there may not be an A/New Jersey flu epidemic, although many signs point to it. However, officials have decided to go ahead with an inoculation program rather than risk the public's health and safety.



PVT. PEDRO RODRIQUEZ

Marine Private Pedro Rodriguez, son of Mr. and Mrs. Gregorio L. Rodriguez of Earth, has completed recruit training at the Marine Corps Recruit Depot, San Diego. During the 11-week training cycle, he learned the basics of battlefield survival. He was introduced to the typical daily routine that he will experience during his enlistment and studied the personal and professional standards traditionally exhibited by Marines. He participated in an active physical conditioning program and gained proficiency in a variety of military skills, including first aid, rifle marksmanship and close order drill. Teamwork and self-discipline were emphasized throughout the training cycle. A 1974 graduate of Springlake-Earth High School, he joined the Marine Corps in March 1976.

Mr. and Mrs. Hershel Hulcy visited relatives in Lubbock Thursday night.

Mrs. Sam Sanders and son Matt, of Brian are here this week visiting her parents, Mr. and Mrs. Paul Wood.

## Know Where Money Goes When Donating To Charities

Potential donors to charities and religious organizations deserve to know how their money is to be spent. Sometimes it is wise for consumers to question what happens to the money contributed, Mrs. Lillian Chenoweth, a family resource management specialist, advises. "In 1975, almost \$20 billion was given by individuals, representing an \$80 donation from every man, woman and child in the U.S.," This specialist is with the Texas Agricultural Extension Service, The Texas A&M University System. "For non-profit organizations, three basic kinds of expenses have to be met, and consumers should know how money is allocated among these three areas: program service, fund-raising and management."

"Also, consumers should know how an organization makes decisions. Does the group have a functioning board of directors composed of responsible people with knowledge about the objectives of the organization?" The specialist advised potential donors to consider these points in deciding whether or not to give to an organization: --Request activity, managerial and financial information. --Request a statement of purpose from the organization. Who is the group trying to help? --Recipients are not obligated to pay for or return unordered items received, such as name labels, pens or stamps. --When receiving a telephone request, ask the solicitor to put the request in writing and to supply complete information.

Travelers troubled about where their next tankful will be coming from may be thankful to learn they can now know where the gas is anywhere in the country. They can discover where it's available, whether the quantity is limited, if it's available after 6 p.m., and if never-on-a-Sunday is in fact in effect. This Gasoline Advisory Service (GAS) is run by Holiday Inn. Each of over 1,600 inns is connected to a special, computer controlled communication system that monitors the nation's gas stations. The innkeeper checks gas stations within a five-mile radius three times a day, so at your request, the man at the desk can see about the gas situation just about anywhere. People have prophesied that this program will probably prove to be a real GAS!

## GOING WITH GAS

Travelers troubled about where their next tankful will be coming from may be thankful to learn they can now know where the gas is anywhere in the country. They can discover where it's available, whether the quantity is limited, if it's available after 6 p.m., and if never-on-a-Sunday is in fact in effect. This Gasoline Advisory Service (GAS) is run by Holiday Inn. Each of over 1,600 inns is connected to a special, computer controlled communication system that monitors the nation's gas stations. The innkeeper checks gas stations within a five-mile radius three times a day, so at your request, the man at the desk can see about the gas situation just about anywhere. People have prophesied that this program will probably prove to be a real GAS!

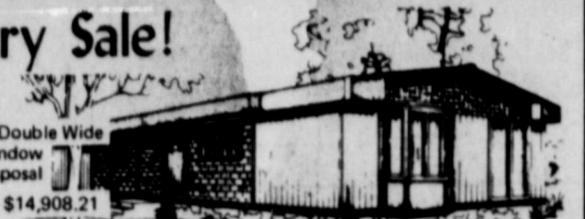
never-on-a-Sunday is in fact in effect. This Gasoline Advisory Service (GAS) is run by Holiday Inn. Each of over 1,600 inns is connected to a special, computer controlled communication system that monitors the nation's gas stations. The innkeeper checks gas stations within a five-mile radius three times a day, so at your request, the man at the desk can see about the gas situation just about anywhere. People have prophesied that this program will probably prove to be a real GAS!

GIVEN FAVORABLE physical and emotional conditions, sexual capacity frequently continues beyond the age of 80.

## Inventory Sale!

SAVE \$2,359.18

24x60 3BR 2B (#2355) Double Wide Masonite Siding - Bay Window Dishwasher - Garbage Disposal Reg. \$17,267.39 Sale \$14,908.21



SAVE \$1,146.08 14x65 2BR 2B (# 2287) Reg. \$10,137.44 Sale \$8,991.36  
 SAVE \$1,002.39 14x70 3BR 2B (# 1645) Reg. \$ 9,541.50 Sale \$8,539.11  
 SAVE \$1,000.52 14x65 2BR 2B (# 2366) Reg. \$ 9,534.78 Sale \$8,534.26

- 15 Year FHA Loans
- Complete Service
- Write for Free Brochure
- FHA Approved Park
- Open Daylight to Dark and Sundry PM



## OUR MEN IN SERVICE



PVT. PEDRO RODRIQUEZ

Marine Private Pedro Rodriguez, son of Mr. and Mrs. Gregorio L. Rodriguez of Earth, has completed recruit training at the Marine Corps Recruit Depot, San Diego. During the 11-week training cycle, he learned the basics of battlefield survival. He was introduced to the typical daily routine that he will experience during his enlistment and studied the personal and professional standards traditionally exhibited by Marines. He participated in an active physical conditioning program and gained proficiency in a variety of military skills, including first aid, rifle marksmanship and close order drill. Teamwork and self-discipline were emphasized throughout the training cycle. A 1974 graduate of Springlake-Earth High School, he joined the Marine Corps in March 1976.

Mr. and Mrs. Hershel Hulcy visited relatives in Lubbock Thursday night.

Mrs. Sam Sanders and son Matt, of Brian are here this week visiting her parents, Mr. and Mrs. Paul Wood.

## Party Line

Mr. and Mrs. Hershel Hulcy visited relatives in Lubbock Thursday night.

Mrs. Sam Sanders and son Matt, of Brian are here this week visiting her parents, Mr. and Mrs. Paul Wood.

# Come on over and save two ways!

## FINEST QUALITY, FINEST STAMPS!

WE GIVE	COFFEE MIXES	FOLGER'S, CRYSTALS, 10 OZ.	WE GIVE	DOG FOOD	ALAMO, 40 LB.	WE GIVE	8/1 BAR-B-Q SAUCE	MORTON, 18 OZ.
WE GIVE	KOOL AID	REG. 2 QT. ENVELOPE	WE GIVE	FABRIC SOFTENER	DOWNEY, 64 OZ.	WE GIVE	VIENNA SAUSAGE	ARMOUR, 5 OZ.
WE GIVE	POTATO CHIPS	PRINGLE'S, 9 OZ. TWIN	WE GIVE	RICH 'N' READY	BODEN'S, 1/2 GALLON	WE GIVE	TARTER SAUCE	KRAFT, 6 OZ.
WE GIVE	PLATES	CHINET, 40 COUNT, 8 3/4 INCH	WE GIVE	VIENNA SAUSAGE	ARMOUR, 5 OZ.	WE GIVE	MARSHMALLOW CREME	KRAFT, 13 OZ.
WE GIVE	ZIPLOC BAGS	STORAGE, Q T. SIZE	WE GIVE	MARSHMALLOW CREME	KRAFT, 13 OZ.	WE GIVE	CANTALOUPE	ARIZONA'S FINEST, LARGE
WE GIVE	A-1 STEAK SAUCE	10 OZ.	WE GIVE	PRODUCE SPECIALS		WE GIVE	APPLES	WASHINGTON STATE, EXTRA FANCY, WINESAP LB.
WE GIVE	KOOL POPS	12 COUNT	WE GIVE	CANTALOUPE	ARIZONA'S FINEST, LARGE	WE GIVE	ONIONS	FRESH, GREEN, AND RADISHES CRISP, BUNCH
WE GIVE	CANNING LIDS	BALL, REGULAR, 12 COUNT 35¢	WE GIVE	APPLES	WASHINGTON STATE, EXTRA FANCY, WINESAP LB.	WE GIVE	CORN-ON-THE-COB	FRESH, FULL EARS,
WE GIVE	FROZEN FOOD SPECIALS		WE GIVE	ONIONS	FRESH, GREEN, AND RADISHES CRISP, BUNCH	WE GIVE	SQUASH	(HOME-GROWN) ZUCCINI OR YELLOW LB.
WE GIVE	MEXICAN DINNERS	PATIO	WE GIVE	CORN-ON-THE-COB	FRESH, FULL EARS,	WE GIVE	DAIRY SPECIALS	
WE GIVE	POT PIES	MORTON	WE GIVE	SQUASH	(HOME-GROWN) ZUCCINI OR YELLOW LB.	WE GIVE	BISCUITS	BIG K, BUTTERMILK, 10 COUNT
WE GIVE	ORANGE JUICE	MINUTE MAID, 16 OZ.	WE GIVE	DAIRY SPECIALS		WE GIVE	CHEESE	VELVEETA, 2-LB. BOX
WE GIVE	PIZZAS	JENO'S, 13 OZ.	WE GIVE	BISCUITS	BIG K, BUTTERMILK, 10 COUNT	WE GIVE	OLEO	DIAMOND, SOLID, 1-LB.
WE GIVE	BATH TISSUE	CORONET, DELTA, 4 PACK	WE GIVE	CHEESE	VELVEETA, 2-LB. BOX	WE GIVE	COTTAGE CHEESE	BELL, 24 OZ.
WE GIVE	TEA	INSTANT, NESTEA, 3 OZ.	WE GIVE	OLEO	DIAMOND, SOLID, 1-LB.	WE GIVE	BUTTERMILK	BELL, 1/2 GALLON
WE GIVE	CHILI W/BEANS	LONGHORN, 15 OZ.	WE GIVE	COTTAGE CHEESE	BELL, 24 OZ.	WE GIVE	BREAD	KOUNTRY FRESH, 1 1/2 LB. LOAF
WE GIVE	TOMATO SAUCE	MOUNTAIN PASS, 8 OZ.	WE GIVE	BUTTERMILK	BELL, 1/2 GALLON	WE GIVE	COFFEE	MJB PREMIUM, QUALITY, 1-LB. CAN
WE GIVE	BEANS	RANCH STYLE, 15 OZ.	WE GIVE	BREAD	KOUNTRY FRESH, 1 1/2 LB. LOAF	WE GIVE	DILL PICKLES	HEINZ, KOSHER, 32 OZ.
WE GIVE	VINEGAR	HEINZ, DISTILLED WHITE, GALLON	WE GIVE	COFFEE	MJB PREMIUM, QUALITY, 1-LB. CAN	WE GIVE	TOWELS	HI DRI, JUMBO, LIMIT 3 WITH \$10. PURCHASE
WE GIVE	MEAT SPECIALS		WE GIVE	DILL PICKLES	HEINZ, KOSHER, 32 OZ.	WE GIVE	MILK	EAGLE BRAND, 14 OZ.
WE GIVE	ROUND STEAK	USDA CHOICE, BEEF, LB.	WE GIVE	TOWELS	HI DRI, JUMBO, LIMIT 3 WITH \$10. PURCHASE	WE GIVE	CLEANSER	COMET, 14 OZ.
WE GIVE	BACON FRANKS	DECKER'S, 1-LB. PKG.	WE GIVE	MILK	EAGLE BRAND, 14 OZ.	WE GIVE	DISHWASHING DETERGENT	PALMOLIVE, 22 OZ.
WE GIVE	CHUCK ROAST	USDA CHOICE, BEEF, LB. 69¢	WE GIVE	CLEANSER	COMET, 14 OZ.	WE GIVE	KOUNTRY BOY	
WE GIVE	SHOULDER ROAST	USDA CHOICE, BEEF, LB. 79¢	WE GIVE	DISHWASHING DETERGENT	PALMOLIVE, 22 OZ. 79¢	WE GIVE		
WE GIVE	GROUND BEEF	FRESH, LB. 69¢	WE GIVE	KOUNTRY BOY		WE GIVE		
WE GIVE	HOT LINKS	GLOVER'S, LB. 98¢	WE GIVE			WE GIVE		

**FOR SALE**  
 NEW AND USED  
**Aluminum Pipe**  
 OF ALL SIZES  
 --- ALSO ---  
**SIDE-ROW Sprinklers**  
 --- AND ---  
**UNDERGROUND Irrigation Systems**  
**Stateline Irrigation Company, Inc.**  
 LITTLEFIELD-MULESHOE LEVELLAND

**PUBLIC HEARING**  
**SPRINGLAKE - EARTH ISD BUDGET**  
**HIGH SCHOOL BUILDING**  
**Monday, August 23, 1976**  
**9p.m.**

**MEAT SPECIALS**  
 If you want good old fashion beef, come to the Kountry Boy Super Market. You'll get the best in the west. We will be glad to special cut any orders.  
 Check our new brand of lunch meat. We have a complete line of Hormel Lunch Meat.

**ROUND STEAK** USDA CHOICE, BEEF, LB. 89¢  
**BACON FRANKS** DECKER'S, 1-LB. PKG. \$1.39  
**CHUCK ROAST** USDA CHOICE, BEEF, LB. 69¢  
**SHOULDER ROAST** USDA CHOICE, BEEF, LB. 79¢  
**GROUND BEEF** FRESH, LB. 69¢  
**HOT LINKS** GLOVER'S, LB. 98¢

**BREAD** KOUNTRY FRESH, 1 1/2 LB. LOAF 2/69¢  
**COFFEE** MJB PREMIUM, QUALITY, 1-LB. CAN \$1.79  
**DILL PICKLES** HEINZ, KOSHER, 32 OZ. 69¢  
**TOWELS** HI DRI, JUMBO, LIMIT 3 WITH \$10. PURCHASE 3/51  
**MILK** EAGLE BRAND, 14 OZ. 59¢  
**CLEANSER** COMET, 14 OZ. 4/51  
**DISHWASHING DETERGENT** PALMOLIVE, 22 OZ. 79¢

**KOUNTRY BOY**  
 LITTLEFIELD PLAZA MARSHALL HOWARD BLVD.  
 OPEN 8 A. M. TILL 9 P. M. 7 DAYS A WEEK