

High School Interscholastic League Contestants Announced

★★★★★★★★★
NOSIN...
 With Polly
 ★★★★★★★★★★

Spring is bursting out all over... and in Earth touches of green can be seen dotting the lawns and flower beds as though it could not wait another moment to chase away the dread look of winter to spread forth a lovely colorful hue to the entire Earth.

Could it be possible for one to observe the transformation of spring with its masses of flowering fruit trees, spring flowers, and lovely green carpeting stretched across the world and yet fail to realize there is a living God.

With the coming of spring the world takes on a beauty unequalled by any other season. Everything that has been sleeping silently under the chilling hands of winter seems to awaken, and add color to a drab world.

Who else but God could declare the seasons, who else could create an earth made of mountains, valleys, and seas, who could shake the whole universe with a sudden bit of thunder, who could hang the stars in the sky, who could spread this colorful cloak of spring across the entire universe and transform it almost overnight into a million colorful hues, shutting away the drabness of winter past.

Who else but a living God could create man, who, for some unknown reason wants to deny that He lives today.

'NOSIN'

Phil and I went to Oklahoma last weekend to visit Polly Junior and other relatives and friends...

The visit was fine and without incident... Until I was on my way home, riding back with Carolyn Reynolds, Dixie Huffman, her dog "Pete" and Carolyn's pet, Peter Rabbit and we stopped to have chow... and would you believe I broke a tooth, eating, of all things, onion rings... I had expected bad breath, but not the extraction of teeth.

DON'T FORGET TO VOTE

Firemen Extinguish Blaze In Hernandez Home Wednesday

Earth firemen extinguished a fire at the home of Mrs. Paula Hernandez in South Earth, Wednesday about 11:45 a. m.

Quickacting firemen prevented complete loss of the house and furniture by stopping the blaze in the kitchen and one bedroom before it covered the

D. H. Koeniger, high school principal, announced the pupils who will represent the local high school in the secondary interscholastic league competition. The contests will be held at Farwell schools Friday, April 7.

Springlake Lions Collect \$530 In United Fund Drive

The Springlake Lions recently completed the United Fund Drive for the Town of Springlake and the rural area, collecting \$530 for the fund.

CITY OFFICE TO REMAIN OPEN SATURDAY

The city office will remain open all day Saturday for the convenience of those who have failed to purchase their auto tags before the deadline, according to city secretary, Mrs. Betty McAlpine.

Springlake Lions Honor Wolverettes

Members of the Springlake Lions Club honored coach Dean Foshee and his state champion basketball team, the local Wolverettes, at a noon day luncheon Thursday at the Community Building in Springlake.

Local Group to Present Act Play Friday at Farwell

The play is a one act serious type play entitled "Tiger Lily." The cast is composed of Arta Simmons, as Tiger Lily, Jimmy Stockstill, Quiney, Jerry Anderson, Walter, Pam Jordan, Nina, and Steve Larkin as Derek.

TWO IMPORTANT ELECTIONS COMING UP

Two elections of importance to the local area are scheduled for the coming week.

First will be the school trustee election scheduled for Saturday, April 1, in the Springlake-Earth high school study hall.

Three trustees are to be elected from a slate of seven candidates. The three elected will serve for three years.

The candidates in the order in which they will appear on the ballot are James Busby, incumbent; Jerry W. Kelley, James A. Littleton Jr., Thurman Lewis, Mrs. B. T. (Ann) Hamilton, Weldon Barton and John Bridges.

Election judge will be Leroy Wilkerson. Assisting him will be Phil Raught, M.E. Kelley, P.A. Washington, Howard McClure and E.C. Hudson.

Polls will open at 7 a. m. and close at 7 p. m.

The second election is scheduled for Tuesday, April 4 in the Earth community room behind the City Hall. At which time three aldermen will be elected for terms of two years each.

The vacancies were created by the expiration of the terms of Eldon Parish, Donald Runyon, and Richard Stockstill.

There are seven candidates seeking the three positions. They are, in the order they will appear on the ballot: Alma Stockstill, T. C. Fry, Leon H. Dent, Bill Freeman, Eldon Parish, (incumbent), Doug Parish and Bill Bryant.

Polls will open at 7 a. m. and close at 7 p. m.

Election judge will be W. C. Maxcey, assisted by J. A. Littleton, Sr. and Roger Haberer.

Absentee voting for the city election will close at 5 p. m. Friday, March 31.

Nº 600 OFFICIAL BALLOT

Nº 500 SCHOOL TRUSTEE ELECTION

Date: APRIL 1, 1967

Springlake-Earth Independent School District

James H. Busby
 Jerry W. Kelley
 James A. Littleton Jr.
 Thurman Lewis
 Mrs. B. T. (Ann) Hamilton
 Weldon Barton
 John Bridges

These are sample ballots of the two forthcoming elections, The School Trustee Election set for April 1, and the City Alderman Election on April 4.

Nowhere on the school trustee ballot does it inform voters to vote for only three of the seven candidates. However, if you want your vote to count, you must scratch or mark out at least four of the seven names on the ballot or it will be declared void. The city ballot carries the information to vote for three.

Nº 501 Official Ballot

Nº 501 CITY ELECTION

EARTH, TEXAS

April 4, 1967

NOTE: Voter's signature to be affixed to the reverse side.

- For Alderman:** (Vote for Three)
- ALMA STOCKSTILL
 - T. C. FRY
 - LEON H. DENT
 - BILL FREEMAN
 - ELDON PARISH
 - DOUG PARISH
 - BILL BRYANT

Wilkinson Named Secretary Of Earth Volunteer Fire Dept.

The Earth Volunteer Fire Department met Monday night for a regular fire drill and to conduct a business meeting. Leroy Wilkinson was elected secretary, replacing Billy Robnett who resigned recently and moved to Lubbock.

The practice consisted of testing fire hose on both the new truck and old truck. All busted hose were replaced with serviceable hose.

A committee of three was appointed, to check the possibility of providing better rural fire protection. The committee includes Eldon Parish as chairman, assisted by Bob Belew and Bud Matlock.

The Volunteer Fire Department consists of 27 members at the present time. Below is a roster of the members:

Phil Raught, chief; Eldon Parish, assistant chief; Leroy Wilkinson, secretary; E. R. McAlpine and Pat McCord, captains, and James Wages, fire marshal.

Firemen are: Hugh Alexander, W. L. Barton, Harold Britton, Clarence Kelley, E. C. Kelley, Donald Layman, Clinton Green, Hershel Hulcy, Doug Parish, Bob Belew, Richard Moore, Larry Weaver, Bob Seasier, Jim Williams, Bill Bryant, Sonny Hitt, W. A. Hatfield, Truman Layman, Bud Matlock, Alvin Pittman, and Ross Middleton.

EMERGENCY VEHICLE FUND \$1905 SHORT

The emergency vehicle which was purchased at a total cost of \$2,060 is currently \$1905 short of paying it off.

Two businesses and two individuals have donated a total of \$155 to-date.

The fund stands as follows: Emergency vehicle cost: \$2060; donated to-date: \$155; balance needed: \$1905.

Those who wish to donate to the fund may contact any member of the above mentioned firemen.

Norman Hinchliffe Elected Lion Boss of Local Club

Norman Hinchliffe was named President of the Earth Lions Club when local members met Tuesday and conducted their annual election of officers at a regular noon day luncheon in the Earth Community Building.

Hinchliffe, co-owner and manager of Earth Farm Chemical in Earth, has been a member of the Lions Club for nine years.

Hinchliffe and his family moved to Earth in 1960 and he assumed duties as manager of the local firm.

Other officers elected during the meeting were: first vice-

president, L. K. Anderson; second vice president, M. H. "Dutch" Been; third vice president, Leroy Wilkinson; secretary, Jarvis Angeley; treasurer, Neil Founds; tall twister, Ross Brock and Lion tamer, Henry Lewis.

Four new directors were elected: Bob Belew, and Norman Sulser were named to serve 1 year terms and Roger Haberer and Edwin O'Hair were elected to serve two year terms.

The above officers will take office July 1.

Fred Clayton who will retire as president will act as ex-officer to the new Lion Boss and officers.

Local Jaycees to Sell, Install House Numbers

The Earth Jaycees committee chairman met Thursday, March 23 for committee reports and planning session.

Darrell Williams gave a report on several projects the local group could undertake.

The group voted to sell and install house numbers in the city of Earth. The type being offered are embossed aluminum numbers. The price of the numbers will be \$2.50 per set installed.

They reported, that if residents don't know the address of their houses, the Jaycees would secure the address from the city.

They will offer brass numbers and nameplates on special order. You may contact any member and place your order.

The pageant has been scheduled for February of 1968. Work on planning the event will begin about 3 to 4 months before the date set. The winner of the local contest will be entered in the Miss Texas Pageant.

A report was given by Glen Bulls, who met with the Recreation Association, on plans for improving the City Park. Several Jaycees participated in the cleanup day, Friday at the park.

Larry Tunnell gave a report on everything that would be involved in conducting a Miss Earth Pageant. It was decided by the group that with the limited time they have to organize the pageant, it wouldn't be feasible at this time to proceed with the event.

Super Market Formal Opening in Progress

The formal opening celebration at B and W Super Market is in full swing, with area people registering daily for the free grand prize and also for free baskets of groceries to be given away at 7:30 p. m. Saturday.

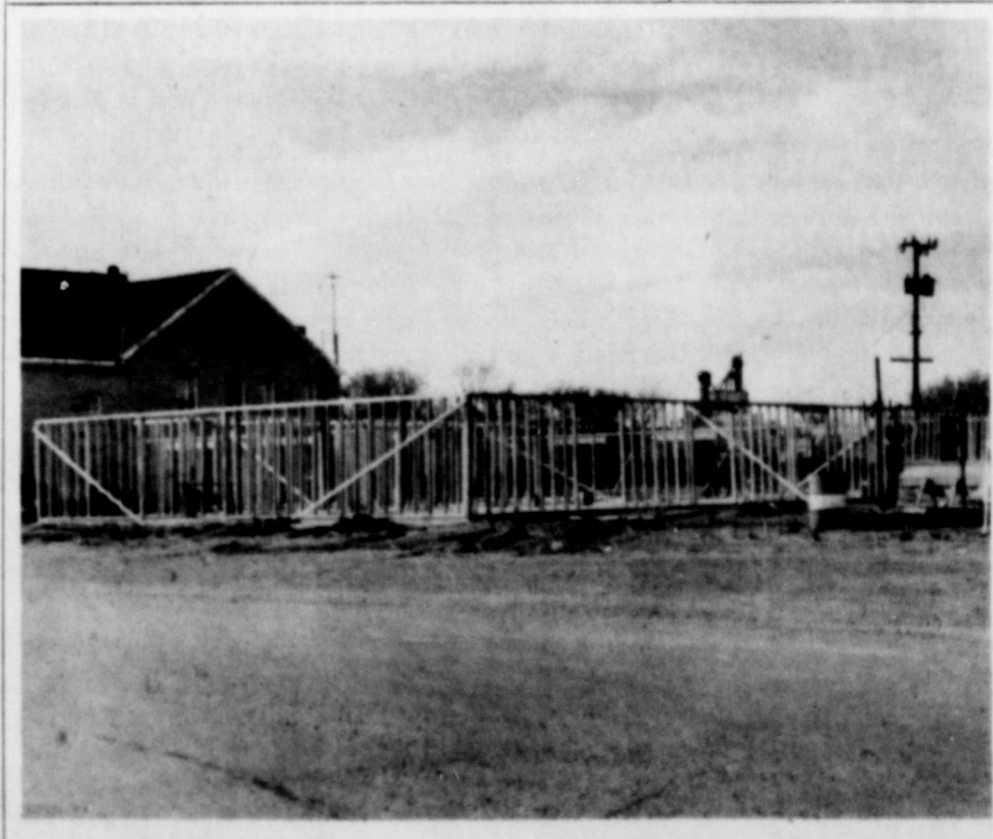
Coffee, cookies and doughnuts will be served all day (today) Thursday to all who attend.

A Pet Milk treasure chest has been set up for both Friday and Saturday to allow many, many winners during the two day event. The chest will be filled with gift slips for various items throughout the store. Those attending may select one key from a box of keys, if the key selected unlocks the chest the winner may select a free gift slip. The kiddies attending will be given balloons and suckers.

Both Wood and Brock invite the attendance of all area people to participate in their grand opening celebration.

BAND CONCERT

The Springlake-Earth Annual spring band concert will be presented Tuesday April 11, in the school auditorium. The fifth grade band, Junior high and high school band, and stage band will be performing.



BEGINNING TO SHAPE UP - Workers started raising the walls on the Earth First Baptist Church educational expansion to the present facilities. Construction was started February 20 on the \$125,000 addition. The structure is scheduled to be completed in the early part of October.



LOCAL GROUP ENTERTAINS LIONS... Six members of a local speech class taught by Mrs. Russell Haberer entertained the Earth Lions Club with a program Tuesday. This group will also compete in the forthcoming interscholastic league competition at Farwell on April 7. They are Mike Cleavinger, Jimmy Littleton, Steve Mann, Marsha Dawson, Pam Avery and their speech instructor Mrs. Haberer. (Janice Bridge was present but left before the photo was snapped.)

First Chamber of Commerce was organized in 1768 in New York City.

The 12th Annual Chamber of Commerce and Agriculture banquet has been set for Saturday, April 8 at 7:30 p. m. in the Springlake-Earth schools cafeteria.

Dr. Floyd D. Golden, educational consultant for Rittenberry and Associates, architects in Amarillo, will be guest speaker for the occasion.

Officers and directors for the coming year will be installed at the banquet.

This year the board of directors have voted to recognize an outstanding man and outstanding woman of the year, along with recognizing an outstanding farmer. These will receive recognition and awards at the banquet.

Tickets are available at \$2.50 each, from any member of the chamber or at the Chamber of Commerce office.



The EARTH NEWS-SUN



Published at Earth, Texas 79031 every Thursday except the first Thursday following Christmas.

Entered as Second Class Matter at the Post Office at Earth, Texas 79031, October 1, 1954--Under Act of Congress March 3, 1879.

SUBSCRIPTION RATE
 Earth and Trade Territory, per year, \$3.50
 Elsewhere in United States, Per year, \$5.00

CLASSIFIED RATES
 6¢ per word, first insertion, 5¢ per word thereafter--60¢ Minimum.

ADVERTISING RATES GIVEN ON REQUEST

ROSS AND POLLY MIDDLETON-----Publishers

EDITORIAL...

THINK... Then Go VOTE

Next Saturday, school trustee election day, and Tuesday, city election day, are two of the most important days of the year for the electors of Earth and Springlake area.

There are seven candidates seeking places on the school board of trustees and likewise seven seeking positions on the city council. This indicates that interest has been kindled in both races, as this is the first time in many years that area electors have had this large a number of candidates to select from.

Since these candidates have shown their interest by filing for these positions, it is now the duty of all eligible voters to go out and cast their ballots, selecting three candidates in each of the two elections, to fill the vacancies created by the expiration of terms of three men on both the school and the city council.

It is the duty of voters to fill these positions with people whom they think will take interest, and are best qualified to carry on the business of our city and school in the best possible manner.

If we as voters choose to stay home, go fishing, shopping or visiting and let someone else elect these officials, we forfeit our right to complain if things fail to please us later on. So, THINK, then don't fail to go the polls Saturday and Tuesday and vote for the candidates of your choice.

Area Receives .50 Inch Rain Last Week **Lions Present Queen With Allowance**

Gentle, welcome rain fell in the Earth-Springlake area last Wednesday night dropping amounts up to 1/2 inch at most places around the community. This was the most rain recorded since last fall and was welcomed by everyone in the area. More rain fell Thursday morning and again Friday night in Latin County but was not measurable. Sudan and Amherst measured about 1/4 inch of rain while Olton failed to report a trace of moisture. Littlefield measured approximately 0.37 inch of rain.

BE SURE AND CAST YOUR VOTE ON SATURDAY AND TUESDAY

VOTE FOR YOUR FAVORITE CANDIDATE SATURDAY AND TUESDAY

A START TOWARD WINNING



WRITE YOUR CONGRESSMAN

Do you have a gripe about taxes or federal spending? If you do, there is something that you can do about it. Write a letter!

Members of Congress always welcome the views of their constituents--particularly when a specific issue is discussed.

In the interest of aiding Congress to do its job effectively, citizens should acquaint themselves with some phase of the federal budget. Do you think we are spending too much on welfare, or urban renewal, or other phases of the domestic budget?

The Department of Health, Education and Welfare is requesting \$13.3 billion in 1968, an increase of \$3.3 billion. The Office of Economic Opportunity is requesting \$2.1 billion for 1968--up from \$1.4 billion in 1966 and the Department of Housing and Urban Development is requesting \$3.2 billion in funds--some \$1.3 billion above previous years. Over a five-year period the federal budget shows an increase of over 180 percent for all domestic programs. Letters to Congress are the only practical way of registering pertinent taxpayer opinion.

The advice to "write your Congressman" is often heard, but don't discount its importance. Chairman George H. Mahon (D-Tex.) of the House Appropriations Committee has said, "A letter, I tell you, like a vote, can make a difference, perhaps the difference."

New Sea Diver for Navy

The Miami Seaquarium is training eight porpoises as deep sea messengers for the Navy. Burton Clark, the Seaquarium's general manager, said recently that the porpoises were being schooled under a Navy contract for use in the Sealab 3 research project. The Seaquarium is a tourist attraction that highlights performing porpoises. It also engages in scientific ventures related to its various marine exhibits. Mr. Clark said the porpoises were to be used as messengers between the ocean surface and an underwater research station 400 feet deep in the Pacific Ocean off Point Magu, Calif. They carry written messages clipped to a leather harness. A male porpoise was used for courier duty in the successful Sealab 2 project.

Editorial

HOW TO TELL ONE

At this period in Man's history the most unpopular word in the English language is communist. Any American who suggests that his neighbor may be a communist, or be in sympathy with the communist causes, is likely to get a bloody nose or holes in his suit from shotgun pellets or find himself in court charged with defamation of character.

Likewise the term socialist is not popular, except in intellectual circles where people who use the term to apply to their own beliefs have made it the egghead's humanitarianism. They are convinced that the means is justified if the end seems to be praiseworthy. Really, though, there is small difference between communism and socialism except that the former bears within it a master plan to rule all the world, and to obtain control for this rulership by any means necessary--including open aggression.

But communism, Marxism, and even democratic socialism all have one common denominator that identifies them as basic opposites of freedom. It is the imposition of the will of one person or group of persons upon any other person or group of persons--AND BY FORCE.

Many philosophers have captured the spirit of freedom in last prose. One of them is Immanuel Kant, the famous German. A quotation from his works appears below:

"Freedom is independence of the compulsory will of another; and in so far as it can co-exist with the freedom of all according to a universal law, it is the one sole, original inborn right belonging to every man in virtue of his humanity.

There is, indeed, an innate quality belonging to every man which consists in his right to be independent of being bound by others to anything more than that to which he may reciprocally bind them."

IMMANUEL KANT
 The key to his message are the two words "compulsory will." So long as man is permitted to choose, he is free. When he is subject to the arbitrary will of another and is constrained by force to agree to that will, he is in bondage--no matter what it is called.

By W. H. G. Lovington Leader

PRIVATE INVITATION -- "We should never lose sight of the fact," Sen. George Murphy (R. Calif.) stated, "initially private enterprise built the great cities that dot our land. Nor should we lose sight of the fact that the government programs to rescue and rebuild our cities for the most part have failed. Private citizens and private enterprise, which built the cities in the first place, should be called upon to repair the cities' ills today."

Rowland H. Macy is credited with having conceived the department store idea in America.

THE GROWING DEBT

When visionaries insist upon federal spending beyond our tax productive capacity to pay--at some point Mr. and Mrs. America will be pressed to call a halt to the accelerated federal spending, which places our children and their children's children in hock.

Rep. H. R. Gross (R-Iowa), in commenting on the annual Economic Report to the Nation, said that the net public and private debt of this country as of January 1, 1967, was one trillion, 368 billion, 300 million dollars. That's an increase of 98 billion dollars in the twelve months since January 1, 1966, and an increase of 420 billion, 600 million dollars since January, 1961--making us the worst debt-ridden nation in the world. The federal debt alone exceeds that of all other governments in the world combined.

Isn't it about time that our legislators, federal, state, county and local, started to flyspeck--and to make sure that for every dollar spent we can be assured of value received?



side to keep his earning power up to his yearning power."--Lee Call, Star Valley (Afton, Wyo.) Independent.

"An American is the most ambitious individual on earth. He works from morning till night, then moonlights on the (Minn.) Enterprise.

"One of life's briefest moments is the time between reading the sign on the freeway and realizing you just missed the off-ramp."--Donald M. Weaver, Winnebago (Minn.) Enterprise.

LET US KEEP YOUR FARM EQUIPMENT ROLLING

WE ARE NOW OFFERING ON THE FARM SERVICE For Fast, Dependable Tire Service Call EARTH TIRE & SUPPLY Phone 257-5231

Adventures in ADVERTISING

TOMBSTONE TERRITORY

Before World War I Fairy Soap was the largest seller on the American market. Mother used it as a beauty aid. Junior used it in the bath tub. Sister used it to shampoo her hair. And father used it to wash that portion of his face which wasn't covered with mustache and mutton chops. In magazines, on bill boards and in newspapers, you would see advertisements of Fairy Soap.

During the first great war the demand for Fairy Soap was so great that the manufacturers dropped their huge advertising program with an eye to making a bigger profit. They figured Fairy Soap was so well known it would carry itself. They were wrong. Other far sighted soap manufacturers stepped in with appealing advertising campaigns and took over the market. Fairy Soap was never able to come back and today lies in the graveyard alongside the Gold Dust Twins, Saint Jacobs Oil, Melon's Baby Food, Dolly Varden Chocolates, Omar cigarettes, Maxwell automobiles and many other products that died a natural economic death due to lack of advertising.

Newspaper Advertising is the Strongest Force in Business Today

Texas Press Association 1716 SAN ANTONIO ST. AUSTIN, TEXAS

The Earth News-Sun

CASTOR GROWERS

FOR QUICK EMERGENCE STRONG EARLY GROWTH TOP YIELD

PLANT HYBRIDS

BAKER HAS THE RIGHT HYBRID FOR EVERY NEED

Proven Hybrids Include Baker Hybrid 22, 33, 44, 55, and 66

See The Qualified Field Men of

THE BAKER CASTOR OIL CO. OF TEXAS

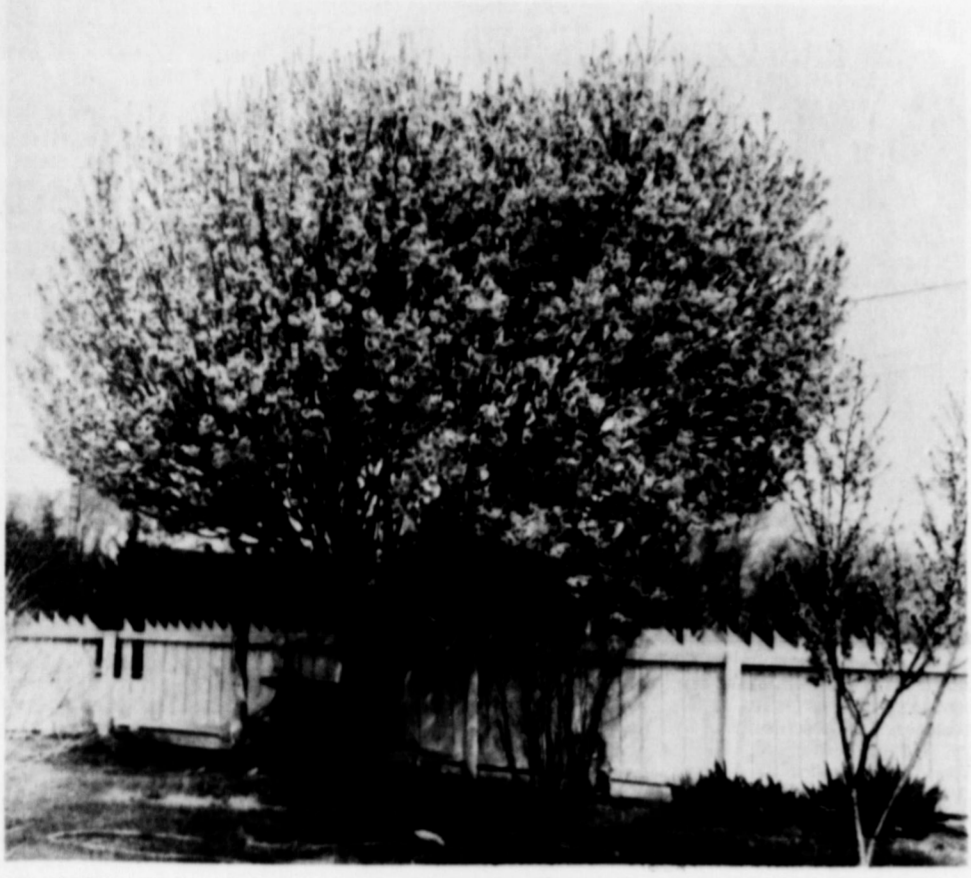
1401 N. COLUMBIA PLAINVIEW PHONE CA3-2581

SUN-VUE FERTILIZER

HART PHONE 938-2307

BAKER FARM SUPPLY, INC.

WEST HIGHWAY 84 MULESHOE PHONE 272-4613



IT'S SPRINGTIME IN EARTH... and evidence of the lovely season's transformation can be seen on every hand. This tree in blossom is in the yard of Mrs. R. E. Barton.

Rheumatoid Arthritis Is Serious Rheumatic Disease

Rheumatoid arthritis is potentially the most serious of the rheumatic diseases, says Today's Health Guide, the American Medical Association's manual of health information for the American family.

Rheumatoid arthritis characteristically occurs in attacks of pain and swelling in the joints, weakness, fatigue, and stiffness, especially in the mornings. The attacks may last for weeks, months or years, but usually the intensity of the disease fluctuates.

The disease varies in severity from time to time, seldom completely disappearing, though a few people have recovered completely. A small percentage of

patients have severe, steadily-worsening arthritis that finally results in crippling and deformity. The best treatment usually includes a variety of different methods and techniques. Rest is a cardinal principle of management and is usually prescribed as a number of hours per day. Details of rest are outlined by the physician. The bed should be firm; pillows under the knees or back should be avoided. The feet should be supported by a footboard. The bed is easier to get in and out of if blocks six to eight inches in height are placed under the casters.

Rest is alternated with exercises and activity. Prescription of the

proper balance is the physician's responsibility. Specific exercises are prescribed, among which are muscle strengthening exercises. Joint deformity can be prevented or made less severe by daily putting the joints through a full range of motion. If pain lasts for more than 15 to 20 minutes after exercise, it has been too much.

Rest is necessary to reduce joint inflammation but exercise is required also to retain muscle and joint function and prevent gradual onset of deformity. Proper balance of rest and exercise is the keynote.

Warm or hot tub baths once or twice daily are helpful. Hot towels wrung out of hot water, applied to the joints and then wrapped in plastic sheets provide muscle relaxation. Infrared lamps are sometimes useful.

Drug treatment is often prescribed by the physician.

Dual-Sleep Furniture Has Many Rolls

If you've ever caught yourself "short bedded" when a guest arrived for a visit, perhaps you need to combine several functions into one piece of furniture, says Jane Berry, Texas A&M University Extension home furnishings specialist.

Dual-sleep units really have a triple role to play in the home. They offer both seating and sleeping comfort, and have sufficient good looks to appear at home either in a bedroom or a living room.

Both eye appeal and comfort qualities have been advanced through the development of new fixtures and mechanisms for dual-sleep furniture. Such new mechanisms permit a floating action of the mattress for superior sleeping comfort, permit the user to sleep at night height rather than close to the floor, and permit many dual-sleep units to be slip covered.

One of the basic things a consumer must consider when selecting a dual-sleep unit is whether or not the piece will be used every night or just occasionally. A unit with a better mattress will be required if the furniture will have constant use.

There are three main types of seating-sleeping units made by the upholstered furniture industry--sofa beds, sofa sleepers, and day beds.

The sofa bed has no separate mattress, and when the sofa front is lifted the back drops down to form a flat surface.

Both seat and back are usually of smooth, tight construction oversprings which form a comfortable sleeping surface. A bedding box under the sofa seat provides handy storage for linens.

A full-size mattress is concealed under the cushions of the sofa sleeper. When cushions are removed and the seat lifted up and out, a mattress stretches forth.

The day bed is akin to both sofas and sleepers. Like sofas, they do not open into beds, but are stationary. Like sleepers, their seat cushions are often called mattresses, but are upholstered to match the rest of the piece. It may have arm ends but usually doesn't have a stationary back.

The "Lone Eagle," Charles A. Lindbergh, who made the first solo flight across the Atlantic Ocean in 1927, began his military career as a member of the 11th Observation Squadron, 35th Division Air Service, Missouri National Guard.



WHAT'S FOR LUNCH??? This well fed little Prairie Dog is doubtless on the poverty program. Who else but a Prairie Dog, presently posed eating carrots, knows where his next meal is coming from, yet this little fellow doubtless has no worries as crackers can be seen in the background to erase his first trace of hunger pains. (Life seems great at the Lubbock Prairie Dog Farm.)

Men Don't Live in Luxury Just Because Wives Go To Work

Don't expect to live in comparative luxury just because your wife has decided to take a job. Recent studies show that employed wives cause family spending patterns to rise. So reports Finance Facts, monthly newsletter published by the National Consumer Finance Association.

While employed-wife households spend fractionally less for food and medical care, more goes out for alcohol and tobacco, clothing, home furnishings and equipment and recreation than

in households where the husband only is employed, says Finance Facts.

One in three, or about 15 million, wives earn a pay check today, with half earning approximately one-quarter of the family's total income. Roughly 40 percent of total consumer spending is estimated to come from homes where the wife is employed, however.

Nearly half of the employed wives are in clerical jobs or are operatives in factories. More than half are in the 35 to 54

Farmers May See 3-I Show In Liberal, Kansas April 27-30

There's some Indian trading going on in Southwest Kansas and it all stems from the 19th annual 3-I-SHOW in Liberal, Kansas, next month.

Talking trade is the Kansas Forestry, Fish, and Game Commission and Dale Fry, executive secretary of the Western Kansas Manufacturers, Inc., sponsors of the show.

The state commission wants an exhibit space at the Liberal Show -- April 27 through 30 -- and Fry is willing to trade space for buffaloes. The commission has agreed to his terms.

So, WKMI will receive from the commission one buffalo for the space, WKMI also will buy another buffalo from the commission and both animals will be cooked for a buffalo barbecue scheduled April 26, the night before the 4-day exposition opens.

3-I means Implements, Irrigation, and Industry, and manufacturers in these areas from Kansas, Oklahoma, Texas, New Mexico, and Colorado, have been invited to display their products at the event.

Primary aim is to give people age bracket.

The Finance Facts report was based on a study made by the National Industrial Conference Board.

an opportunity to learn what is new in the fields of implements, irrigation, and industry. New this year will be aircraft displays.

The 1967 3-I-SHOW will be staged on the Seward County Fair Grounds and adjacent school grounds. There will be exhibit space in the fine National Guard Armory as well as the Exhibit Building of the Fair Grounds.

In addition, more than five acres of outside display space is available.

Space is being requested at a rapid rate, Fry says. Already 133,000-134,000 square feet of outside exhibit area has been reserved.

Last year the 3-I-SHOW at Great Bend, Kansas, drew 200 exhibitors and 102,000 persons. Fry expects this mark to be topped at Liberal event with at least 250 exhibitors and increase in attendance.

Firms interested in exhibiting at the show should contact the Western Kansas Manufacturers, Inc., 107 E. Fulton, Box 757, Garden City, Kansas.

HURRY-

DeKalb Sales are Booming! Make certain You get the right Varieties of

DEKALB BREAKTHRU Sorghum

SEE Your Dealer listed below-

- Olton Farm Supply-Robert Duke
- Olton Sunnyside
- Farm Chemical Co.-Farm Chemical Co.
- Earth Springlake

NEXT YEAR HE WILL BE READING



Next year he will want his own reading lamp. Next year he will need an extra wafler at breakfast too, and there will be school clothes to be ironed. All of this will require electricity which is why demand in rural areas doubles every eight years. In 1948, the average family served by Bailey County Electric Cooperative used 150 kilowatt hours per month. Today, this same family requires 450 kilowatt hours. This constantly increasing demand calls for a constantly upgraded electric service requiring more money for improvements. Bailey County Electric Cooperative is planning ahead now to provide this additional supply of electricity that is Helping Texas Grow.

Bailey County Electric Cooperative Assn.



Trouble Free Commode Problems in Bathroom



OPERATES PERFECTLY High or Low Water Pressure

FITS ALL TANKS
1 YEAR GUARANTEE

ELIMINATES WATER WASTE

TRUELOCK PLUMBING

PHONE 257-4881 EARTH

Off-season offer from WALKER REFRIGERATION



This famous **TENSOR** hi-intensity lamp **FREE** just for getting our **FREE** estimate on adding Day & Night air conditioning to your present heating system. Absolutely no charge, no obligation.

Call now for appointment at your convenience, or mail coupon today. Offer ends April 30.

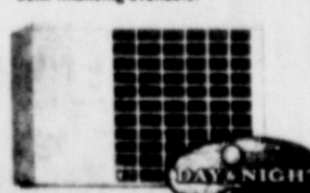
WALKER REFRIGERATION

305 E. 3rd HEREFORD Phone 364-0788

Please contact me on 612's specification below for a free "off-season" estimate which will entitle me to receive a TENSOR hi-intensity lamp free, with no further obligation on my part.

Name _____
Address _____
City _____ Phone _____
Date Preferred _____

Nationally recognized Day & Night air conditioning adds year 'round comfort, lasting value to your home. Bank financing available.





Women's Page

Miss Judy K. Lewis, Lenro L. Jennings Wed Recently

Miss Judy K. Lewis and Lenro L. Jennings were united in marriage on March 11 in the First Baptist Church of Groom with the Rev. James Coffman officiating at the double ring ceremony.

Parents of the couple are Mr. and Mrs. A. L. Lewis of Panhandle and Mr. and Mrs. R. E. Simmons of Earth.

The bride is a 1965 graduate of Panhandle High School. The groom attended Vega High School and is presently stationed at Fort Tilden, Long Island, New York, as a missile operator for the U. S. Army.



MRS. LENRO L. JENNINGS nee: JUDY K. LEWIS

Funeral Rites Today For Mrs. J. L. Walker

Funeral rites for Mrs. J. L. Walker, 77, of Amarillo will be (today) Thursday at 10:30 a. m. in the Gregg Funeral Home of Amarillo. Grave side rites will be at 3 p. m. today at the Earth Cemetery.

Mrs. Walker died at 3 p. m. Tuesday in the Amarillo Osteopathic Hospital where she had been hospitalized for the past ten days prior to her death. She had been in ill health for several years.

Survivors include four sons and two daughters, John and Clyde Walker of California, L. C. Walker, Amarillo, Earl Walker of Earth, Mrs. Maybelle Simmons of Earth and Miss Angie Nell Walker of Amarillo. Four grandchildren and several great grandchildren.

Mr. and Mrs. Roger Haberer and family spent the Easter Holidays in El Paso visiting with Davey, who is taking basic training at Ft. Bliss.

Mr. and Mrs. Bud Cooper, Kerry Kyle and Kim of Plainview,

Hello World



Mr. and Mrs. Jim Robbins are the parents of a son born at 1:50 p. m. Friday, March 24 in the West Plains Hospital at Muleshoe.

The young lad has been named Johnny Clinton. He weighed in at 2 pounds 9 1/2 ounces and was 15 inches long.

Johnny Clinton has two brothers, Jimmy Don and Charles Wayne, and two sisters, Lynda Gail and Partl Ann.

He is presently confined to an incubator at the hospital, but is reported to be doing fine.

spent Easter in the Wayne Rutherford home.

What's Cooking at School

MENU

April 3 - 7

MONDAY
Baked ham
Candied yams
Combination salad
Prune cake
Hot rolls
Milk

TUESDAY
Pinto beans - ham
Spoon tomato salad
Creamed potatoes
Peach cobbler
Corn bread - butter
Milk

WEDNESDAY
Swiss steak
Blackeyed peas
Waldorf salad
Blackberry cobbler
Hot rolls
Milk

THURSDAY
Roast and gravy
Creamed potatoes
Green beans
Chilled peaches
Hot rolls - butter
Milk

FRIDAY
Wolverine burgers
Onions, pickles
Lettuce, tomatoes
Oven fried potatoes
Pineapple up-side-down cake
Milk



MISS ARTA SIMMONS

Miss Arta Simmons To Be Presented in Voice Recital

Miss Arta Simmons, daughter of Mr. and Mrs. Melvin Simmons of Earth, will be presented by Mrs. Mary Williams Kelley in Senior Voice Recital on Saturday, April 8 at 7:30 p. m. at the Garden and Arts Center in Lubbock.

Prior to moving to Earth, Miss Simmons was a student at Lubbock Christian High School where she was a member of the chorus and was featured as the soprano soloist.

For the past year and a half Arta has been a student of Mrs. Kelley's and has received a number of recognitions: 1 ratings by judges; a full scholarship to the Texas Tech Music Camp - summer of 1966; second place in the Lubbock Music Teachers Association voice competition; first place in the Pauline Slaton voice competition in Odessa where she won a \$50 scholarship.

Miss Simmons plans to be a voice major in college and there has been discussion with several colleges about voice scholarships.

The program for the recital includes, among others, the French aria "Ahl Je veux vivre" from the opera Romeo and Juliette by Gounod, the German aria "Ach, ich fühl's" from the opera Die Zauberflöte by Mozart, the Italian art song "Amarilli" by Caccini, and the Old English art song "Art Thou Troubled" by G. F. Handel.

Springlake HDC Members Have Program on Furniture

Members of the Home Demonstration Club of Springlake were presented a program on Furniture Arrangement and the Storing of Woolens when they gathered Thursday afternoon for a regular meeting in the home of Mrs. Floyd Bills, Lady Claire Phillips, county Home Demonstration agent brought the program.

Those present for the informative meeting were Mrs. T. V. Murrell, Mrs. L. C. Black, Mrs. Ruel Fanning, Mrs. Herman Cooper, Mrs. Orlan Bibby, Mrs. Bob Boone, Mrs. Hilbert Wisian, and three visitors, Mrs. Bruce Higgins, Diana Breedlove and Mrs. Edd Bills.

Refreshments were served to all who attended.

The next meeting is slated for April 13 in the home of Mrs. Bob Boone.

Air Force Colonel Robert Rushworth, who received astronaut wings after flying the X15 rocket aircraft to an altitude of nearly 55 miles in 1963, entered the Korean War service as a member of the Maine Air National Guard 132d Fighter Interceptor Squadron.

Town and Country Study Club View Frontier Film

"Texas, Today's Fun-Tier" was given in color movie projection at Town and Country Study Club Thursday evening by Mrs. M. E. Kelley in the home of Mrs. Sam Cearley.

The "Salute to the Texas Flag" was led by Mrs. C. T. Richardson.

Roll call was answered by "Texas Facts" and the collect was led by Mrs. L. K. Anderson.

A federation report was given by Mrs. H. S. Sanders, Federation Counselor.

The members prepared folders on the City of Earth and surrounding area to be included in packets for distribution at Lubbock during the Caprock District convention.

Other plans were made for co-hosting the convention in the business session presided over by Mrs. Wayne Rutherford.

The refreshment table was covered with a white imported cloth and centered by a white Easter lily.

Strawberry pie, cheese canapes and pink punch were served to two guests, Mrs. W. D. Martens and Mrs. L. K. Anderson's mother and the members: Mrs. L. K. Anderson, Mrs. L. Z. Anglin, Mrs. Jane Beavers, Mrs. B. Campbell, Mrs. B. T. Hamilton, Mrs. Lena Hite, Mrs. M. E. Kelley, Mrs. Ray Kelley, Mrs. John Laing, Mrs. Carra Morgan, Mrs. Roy Neal, Mrs. Richardson, Mrs. Marie Ross, Mrs. Rutherford, Mrs. H. S. Sanders, Mrs. C. W. Terry and the hostess.

NOTICE

Members of the Young Homemakers Club will meet at 7:30 p. m. Monday in the Homemaking Department of the local high school building. Mrs. L. G. Layman will bring a program on crafts.

The Girl Scout neighborhood meeting will be held Monday, April 3 beginning at 9:30 a. m. at the Wilson Lewis home east of highway 70. Group leaders and committee mothers are urged to attend.

The District Meeting of the Wesleyan Service Guild will be at the First Methodist Church in Floydada, April 2, beginning at 1 p. m.

A pink and blue shower honoring Jeffrey Eldon, son of Mr. and Mrs. Terry Parish will be held in the home of Mrs. Henry Lewis, Tuesday, April 4 at 11 a. m. Everyone is invited to attend.

Friday "Something Special" will be done for the eighth grade girls and Saturday the FHA girls will assist at a clinic.

Current officers of the local Future Homemakers of America are: president, Joan Dawson; first vice president, Karen Jones; second vice president, Judy Gower; third vice president, Melodie Brock; fourth vice president, Arta Simmons; fifth vice president, Jenny Angeley; parliamentarian, Ginger Dent; pianist, Anita O'Hair; historian, Debbie Barton, and treasurer, Linda Jordan.

NOTICE

A come and go bridal shower honoring Mrs. Johnny Warner former Sue Parker is slated from 4:00 to 5:30 p. m. Saturday, April 1 in the home of Mr. and Mrs. L. G. Layman.

Gifts will be picked up at Bryant's Department Store and Earth Dry Goods.

PARTY LINE

Mrs. Ross Middleton, and Phil spent the weekend in Tulsa and Holdenville, Oklahoma visiting Polly Jean Middleton and other relatives.

Mr. and Mrs. Gene Higgins and children of Ft. Stockton visited their parents Mr. and Mrs. Bruce Higgins of Earth over the Easter Holidays.

DEKALB F65 ONE OF THE GREATEST

Short Stalked—Smut Tolerant—Big Heads and a GREAT YIELDER. Especially adapted to Texas High Plains Irrigated areas.

A REAL DEKALB HIGH PLAINS MONEY MAKER

"DEKALB" is a Registered Brand Name. The Number is a Variety Designation. SEE YOUR DEKALB DEALER LISTED BELOW

Olton Farm Supply - Robert Duke

Olton Sunnyside

Farm Chemical Co. - Farm Chemical Co.

Earth Springlake

Off-season offer from WALKER REFRIGERATION Install Day & Night Air Conditioning into your present heating system NOW—get this SONY fully-portable TV as part of the bargain!



Nationally advertised SONY "Sun Set" unit (retail value: \$125.00) operates on AC, rechargeable battery or car battery 12V / instant 7" picture and sound / black screen for outdoor viewing / solid state circuits / only 8.6 lbs.

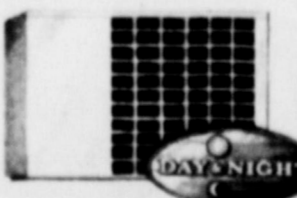
Call now for free estimate at your convenience or mail coupon today. No obligation. Offer ends April 30.

WALKER REFRIGERATION
305 E. 3rd HEREFORD Phone 364-0788

Please contact me on date specified below for a free estimate. If I then decide within 30 days to contract for an installation during this "off-season," I am to receive a Sony 7" TV set at no additional cost.

Name _____
Address _____
City _____ Phone _____
Date Preferred _____

Nationally recognized Day & Night air conditioning adds year 'round comfort, lasting value to your home. Bank financing available.



POWER YOUR LAND

WITH **BIG N BRAND**

82% NITROGEN

Big N Brand Anhydrous Ammonia (82% Nitrogen) is applied at the root zone for maximum results.

Modern power equipment makes application easy.

Anhydrous ammonia is the most popular source of nitrogen and your Agrico distributor offers you the best in service. Big N Brand plant foods are products of Agrico Chemical Company.

Get The AGRICO Difference

AGRICO Chemical Co.
Division of CONTINENTAL OIL COMPANY

SEE US FOR YOUR HYBRID PLANTING SEED

DODD FERTILIZER CO.

PHONE 965-2315

For Sale... to Highest Bidders 10 Houses... To Be Moved

CAN BE SEEN IN EAST DIMMITT NEAR DIMMITT WHEAT GROWERS

For Details... Contact

BARRY LOVE

at

DIMMITT WHEAT GROWERS

(We Reserve The Right To Reject Any or All Bids)

25 Percent of American Families Have 2 or More Cars

Perhaps it's junior's "hot rod," or mother's new station wagon, or both. Whatever it is, it adds up to the startling fact that one-fourth of all American families now own two or more cars. So reports Finance Facts, monthly newsletter of the National Consumer Finance Association.

Referring to data made available recently by the University of Michigan Survey Research Center, facts revealed that 79 percent of all U. S. families today own one or more automobiles, with 25 percent possessing two or more. Moreover, multiple auto ownership increases in direct ratio to income. Sixty percent of those with annual incomes of \$15,000 or over are

owners of more than one car and the percentage is going up yearly.

Single car ownership varies between 24 percent of families with annual incomes of \$1,000 or less to about 95 percent of those with incomes of \$10,000 or more.

Whether the car has become a status symbol or Americans have simply decided to be as mobile as possible, we are literally a nation on wheels.

Undoubtedly, the increased requirements for commuting, shopping, and other activities among the growing number of suburbanites contribute to the trend. Another factor is the expanding teenage population.



THE NEW HOME OF EARTH OIL AND GAS CO., now under construction is fast taking shape and should be completed within the near future. M.H. "Dutch" Been owner-manager of the firm will have his Phillips 66 station, warehouse and fertilizer business adjoining, on the same block, to better serve his customers.



NEW BETA SIGMA PHI MEMBERS... were each given a yellow rose bud during the ceremony in which Mrs. Gene Tunnell (right) took the Ritual of Jewels. Pledges left to right are Mrs. Charles Hedrick, Mrs. Larry Weaver and Mrs. Jimmy Bitner.

Asparagus Was Grown By Romans As Early As 200 B.C.

As early as 200 B.C., the Romans gave detailed instructions for growing asparagus, reports Miss Frances Reasonover, Extension foods and nutrition specialist at Texas A&M University. At that time it was used dried as well as fresh.

wash it thoroughly. Then select a deep pan with a tight cover. The bottom of a double boiler with the top part turned upside down as a cover will work well. Pour about two inches of water into the pan, add one tablespoon salt, and bring to a boil.

Cut off any tough ends of the asparagus. Then tie the asparagus in a bunch and stand the bunch upright in the pan. Put the lid on and boil fifteen minutes or until tender. The steam will cook the asparagus tips.

Asparagus is a nutritious vegetable. It has more vitamin A than green beans or brussels sprouts, though not as much as the leafy green vegetables.

Asparagus is one of the more expensive vegetables on the market. It is used more to add variety to meals than as a staple diet food.

Asparagus is still a popular vegetable today. It can be found on the market frozen, canned, and fresh. When you use frozen asparagus, you don't need to thaw it before cooking. Simply drop it into a small amount of boiling water and cook just until it is tender.

If you prefer canned asparagus first drain the liquid into a pan. Cook the liquid until half the original volume is left. Then add the asparagus and cook it until it is heated through.

If you are using fresh asparagus,

motor running. That way you can avoid slamming into the bank when a gust of wind hits your boat.

Another good idea is to reverse the motor and troll backwards.

SUREST WAY TO CATCH FISH—Cast close to the bank and work out.

This is one of the surest methods of catching fish. Especially is this true when fishing rocky shorelines. Cast against the rock and let the lure fall into the water. Give it a moment to sink, then jiggle the bait.

If there is a fish around it very likely will take your lure.

KEEPS SINKERS FROM SLIPPING—If you use split-shot sinkers here's a good way to keep them from slipping. Insert a short piece of rubber band into the slot in the sinker, along with the line. Then crimp the shot over the rubber band.

This will hold the line tight.

ADDING LEADS TO FLY LINE—Use a needle to install your leader to a fly line.

Here's how:

Push the needle up through the center of the line and out the side about an inch up the line. Then pull the leader through the opening and wrap the end of the leader tightly around the line in the same manner you'd wrap a rod.

DISCARD WEAK LINE—Don't use a frayed line. Each time you go fishing, cut two or three feet off the end of the line. By doing so you remove the frayed or weak spots that have had the most wear.

TEMPTING CATFISH BAIT—Some fishermen use Ivory soap for catfish bait. Others find marshmallows work good, too. And cheese is excellent bait for cats.

STORE OILY RAG IN SHELL—An empty shotgun shell makes a handy and compact carrier for a small oily rag. A hunter can always use an oily cloth in bad weather when his gun is exposed to moisture.

FISH STRIPS FOR PORK RINDS—White strips cut from the belly of a fish are as effective fish-getters as pork rind. Like pork rind, you can store the fish strips in a saline solution.

CHECK BOAT FENDERS—Use extra care with cork filled, canvas covered boat fenders. They pick up a lot of moisture. If left hanging against the boat, they will rot wood and stain fiberglass.

BOTTOM BUMPING FOR BASS—Ever try bottom bumping with unweighted floating worms?

Add a quarter-ounce lead to the line, about 18 inches from the end. On the end of the line use a plastic worm on a weedless hook. Then slowly bump the lead across the bottom, letting the worm move freely... as if swimming.

This works many times when the jig-n-worm fails.

STUDY LAKE BEDS—There is one advantage to a drought. You can study the lake beds while the water is low. Then you'll know where the fish hide. Make special note of where the ledges extend out into the water. That's where fish are likely to be found when the lake level rises again.

CROWS FOR DECOYS—Wire coat hangers make good crow hunting decoys. Take the crows you shoot and insert them in the hangers. Then hang the hangers on tree limbs near your blind.

Pioneer Natural Gas Company Receives Award

Pioneer Natural Gas Company has been selected by the Awards Committee of the National Security Traders Association for an award of excellence for shareholder and financial communications, according to C. I. (Stoney) Wall, president of the company. This is one of the major awards presented for the best program by companies in various industry classifications.

Winners of the National Security Traders Association awards for financial communications by corporations whose securities are traded in the Over-the-Counter market have been announced by NSTA President, George H. Angelos, of Charles W. Scranton & Co., New Haven. The annual program, now in its fourth year, recognizes outstanding shareholder and financial information programs conducted during the past year with awards of excellence plaques.

REMEMBER TO VOTE SATURDAY AND TUESDAY

Looking back on National Guard service in 34 WWII campaigns including seven assault landings, the late Robert P. Patterson, as Secretary of War, remarked: "The soldiers of the Guard fought in every action in which the Army participated from Bataan to Okinawa. They proved once again the value of the trained citizen-soldier."

Nebraska was the first State in the Union to mobilize and have its troops ready for Federal service in the Spanish American War. In only two days after war was declared by President McKinley, Nebraska had assembled its two regiments at a camp two miles north of the post office at Lincoln.

Our Boys In Service

NHA TRANG, VIETNAM (AHTNC)—Army Private First Class Roy G. Flores, 20, son of Ambrocio P. Flores, Earth, Texas, was assigned March 2 as a military policeman in Company A, 504th Military Police Battalion near Nha Trang, Vietnam.

Pvt. Flores entered the Army in September 1966 and was last stationed at Ft. Gordon, Georgia. Flores is a 1966 graduate of Montbello High School, Los Angeles, Calif.

Allowances Recommended For Children

Giving children allowances may be an investment in common sense training, says Mrs. Wanda Meyer, Extension home management specialist at Texas A & M University.

The youngsters not only get a feeling of sharing in the family income, but an allowance gives them some practical lessons in handling money, and they will be doing that all their lives, Mrs. Meyer explained.

Many child guidance experts recommend starting a child's allowance fairly young, around five or six years old. It doesn't have to be a large amount. Ten or fifteen cents a week will meet their small requirements.

Once the precedent is established, of course, you've got to stay with it and the obligation grows with the kids. At the age of ten, for example, allowances may range from 50 cents to a dollar a week. When the youngsters become teens, the range goes higher--from two dollars upward, depending upon how much of their personal expenses are the responsibility of the children.

Many parents let their children take over things like scout club dues, church contributions, haircuts, school supplies, and similar fixed expenses.

Every child has his own pace, Mrs. Meyer points out. But don't be surprised to find your youngsters planning, saving, and making consumer choices. These are basic money management tools and this is where your initial decision to let them handle smaller amounts really begins to make sense.

If therefore the Son shall make you free, ye shall be free indeed.—(John 8:36).

If we are unhappy with our life, and feel we are unimportant, how can we change our outlook? Listen to the voice within us that tells us of the wondrous good that is in us, that always helps us believe that things can be better and brighter. It is the Christ in us that is forever free, forever helping us to reach up toward the light of Truth.

Today's Stylish Young Woman Would Be Mistaken For A Boy In 1490

It's hard on the pocket book as styles change but styles come and styles go. Some are pretty and some are WOWEE....

However today's fashionable young woman would doubtless be mistaken for a boy back in 1490, according to Miss Rheta Boyles, Extension clothing specialist with Texas A&M University.

Miss Boyles, quoting James Laver, curator of the Victoria and Albert Museum, says fashion is undergoing a transition period. Laver has analyzed fashions since "the beginning of history," and concludes that women's clothing appears to have gone full cycle.

Today's short skirts, long hose, and flat shoes are almost exactly what young boys wore in 1490," he said. He also observed that today if one were to walk down the street in back of a young couple, their clothing--and hair length--might be enough alike to really confuse which

was which.

Right now, he states, men's and women's clothing tends to look alike because history is at a meeting point of a patriarchy and a matriarchy.

According to the U. S. Department of Labor, 72 percent of all women who had completed five years or more of college were working in March, 1965. Of women who had four years of college, 54 percent were in the labor force. At the same time,

24 percent of all women with less than eight years of elementary school were employed or actively seeking work.

When the matriarchy becomes an established fact, women will be less interested in fashions and men's fashions will become more prominent, said Laver. The beginning signs of this are the new fashions for men--with color, high style, more attention to details, accessories, and the "Total Look."



HOW CAN I HELP MY SOWS FARROW BIG LITTERS? Feed Purina Sow Chow, of Course.

Yes, Purina Sow Chow has been built through many years of careful nutritional studies on over 5,000 litters of pigs at Purina's Research Farm.

Purina Sow Chow has everything your sow needs to help her develop, farrow and nurse big litters of husky pigs and maintain her own body weight at the same time.

Authorities estimate that 20% to 33% of all pig embryos conceived are resorbed by the sow early in the gestation period, if she is fed a poorly balanced ration.

So hogmen who neglect the ration they give their sows, lose lots of pigs they never even see!

That's why it pays to feed a proved ration like Purina Sow Chow.

Stop in and see us today about either Purina Sow Chow Complete or Purina Sow Chow Concentrate to mix with your grain.

EARTH ELEVATOR

PURINA CHOWS

TIPS FOR OUTDOORSMEN

by Vern Sanford

FINDING FISH IS EASY—Finding white bass is easy, providing you know how. Perhaps the easiest way on most of Texas' large impoundments is to watch for the birds. When you see a flock of gulls diving down into the water, it is a sign that the whites are chasing shad. And that's a cue for you to chase the fish. Cast a heavy, fast sinking spoon near the edge of the activity. You'll discover that the whites usually are deep down and dining on the injured shad that sink to the bottom.

Once in awhile you'll latch onto a big old lazy black bass down there, too.

CANNED BAITS FOR CATS—Looking for a good way to bait your favorite fishing hole?

Try canned dog food, preferably the kind that makes gravy by adding a little water.

Punch a hole in each side of the can with a nail or an ice pick. Tie a rock to the can and drop it into the water.

Or, if you use the kind that's served in a sack, drop it into a loosely knit potato or citrus fruit sack, weight it down good then lower it into the water.

Catfish love dog food.

FISHING THE POINTS—When you're fishing around points it's always safe to leave your outboard

COOLER

Than An Ocean Breeze

Let Us Service YOUR OLD AIR CONDITIONER BEFORE THE HOT WEATHER SETS IN OR LET US INSTALL A NEW CATALINA AIR CONDITIONER IN YOUR HOME

AUTHORIZED DEALER **WHITE'S** Air Store THE HOME OF GREATER VALUE

EARTH

Plant **PIONEER BRAND** sorghum for high yields and smooth, low-loss combining.

SEE OR CALL Alfred Dutton Phone 965-2973 Western Ammonia Corp.

PIONEER SORGHUM

District Track Meet Scheduled at Kress

The Springlake-Earth varsity track team will travel to Kress Saturday to participate in the district 3A track meet.

Participants from the local school and the events they will participate in are as follows:

440 yd. relay - James Thomas, Steve Larkin, Neal Armstrong, and Logan Armstrong.

880 yd. dash - James Hood, Randy Washington and Randy Clayton.

120 yd. high hurdle - Doug Messer, Kelly O'Hair and Randy Haber.

100 yd. dash - Logan Armstrong, Neal Armstrong, and James Thomas.

440 yd. dash - O.C. Thomas.

330 intermediate hurdle - Doug

Messer, Kelly O'Hair and Randy Washington.

220 yd. dash - Steve Larkin, Logan Armstrong and Neal Armstrong.

Mile run - Polk Gidden, Jim Matthews and Joe Alcalá.

Mile relay - Doug Messer, James Hood, Steve Larkin, and O.C. Thomas.

Shot put - Tommy Barlow, Doug Messer, and Logan Armstrong.

Discus - James Thomas, Logan Armstrong and Ricky Byers.

Broad jump - Neal Armstrong and Doug Messer.

High jump - Gary Haber and Tim Matthews.

Pole vault - Steve Larkin, W. B. Washington and Dell Vining.



TRACK QUEEN - Miss Vicki Sanders was elected Track Queen recently by the Springlake-Earth high school varsity track team. Other candidates for the crown were Debbie Barton, Ginger Dent and Beverly Prather.

Junior High Invitational Track Meet Scheduled

Springlake-Earth Junior High school invitational track meet will get underway Saturday morning at 8:40 with the preliminaries.

The seventh grade tryouts will run first in all races, followed by the 8th and 9th grades. The finals will consist of the top eight making the best time in each event, except the hurdles, which will consist of the top six best times.

The preliminary schedule is as follows:

8:40	Relay
9:00	HH Hurdles
9:30	100 yd. Dash
10:00	180 yd. Low
10:30	75 yd. Dash
11:00	50 yd. Dash
11:30	220 yd. Dash
4:00	880 yd. Relay

The number of schools participating had not been learned at press time. It is expected that there will be a large turnout of contestants, as invitations have

been sent to 24 schools in the area.

The state's 155 draft boards will be called upon to furnish 885 men for the armed forces in May, Colonel Morris S. Schwartz, state Selective Service director, said Thursday.

This compares with quotas of 675 for April, 761 for March, 674 for February, and 1,110 for January.

There will be no quotas for the physical and mental preinduction examination of men in April, Colonel Schwartz said.

This continues a ban on examinations since early January because of the budgetary limitation of travel funds.

The state Selective Service director said no decision had been made as to whether or not examinations would be held in May.

Texas Draft Call for May Set at 885

Fabrics Reflect Culture And Echo History

Fabrics from far-away places echo history and reflect the culture of their native lands according to Rheba Boyles, Extension clothing specialist at Texas A&M University.

The environmental influences, the climate, and terrain are often portrayed in the designs of the fabric.

Paisley comes from ancient Persia via India and is named after a small town in Scotland where Indian shawls were beautifully copied in the 19th Century. Its characteristic motif is a highly stylized mango, though some insist it is copied after the pine cone.

Batik is a Javanese word meaning "wax painting." Designs and colors indicate the part of the country from which it comes and are based on objects in nature.

As the wax cools, tiny cracks occur, permitting the dye to make fine crisscross lines of color. The wax is removed while the dyes are set by immersing the cloth in boiling water.

The beautiful islands of Hawaii influence fabric designs which reflect the blue of the sky and sea and the colors of their native flowers. The use of these designs reflect the many-cultured population which includes Chinese, Japanese, Filipinos, Polynesians, Europeans, and Americans.

The sun-drenched colors of Mexico come to life in colorful striped fabrics. The homespun appearance of the weave is reminiscent of the early looms and peasant handiwork.

Cluny lace was perfected by monks in the Abbey of Cluny in France. The bobbin lace is made of linen and cotton thread, characterized by wheat or wheel designs on a coarse mesh. Today the lace is machine made, but it retains its distinctive quality.

African prints sport geometric patterns found in tribal totems throughout the continent. The highly woven intricate borders, some think are historical records woven into the design. As in primitive design everywhere, great attention is paid to detail. Here the environmental hues of soil and foliage influence color selection and motif.

Fishermen in the Texas Panhandle long have boasted that they are right in the middle of the best fishing in the world—namely halfway between the Atlantic and the Pacific.

Now, however, fishing is a little closer to home.

Today, one of the newest and most interesting lakes in Texas is in the process of filling. Lake Meredith is created by the Sanford (no kin) Dam across the Canadian River, only a few miles out of Borger.

It is a new glory for this city, which first became famous something like 40 years ago with the discovery of oil.

At that time and during the intervening years the Canadian River, which cuts across the Panhandle north of Amarillo, was mostly a dusty stream that went wild with torrential rains and flooded its valley. Then came the wind and sun . . . and the river dried up again in spots.

Now that has been changed!

After years of talk and planning and the expenditure of almost a hundred million dollars, Lake Meredith has been completed and the stored water will be carried by a 35 mile aqueduct to serve the nearby cities of Borger and Pampa.

Another aqueduct carries the water to Amarillo and a half-dozen other high-plains cities, which for years have depended entirely upon underground water for domestic purposes and agriculture.

Located in Hutchinson County, Lake Meredith will cover slightly under 44,000 surface acres. It will be 20 miles long when filled.

Sanford Dam was constructed by the Bureau of Reclamation, after years of research and survey, both by the government and by private agencies.

This lake presented some major problems because much of the reservoir site was in the heart of a major natural gas field. It was necessary to execute contracts with the owners of 19 pipe-



lines and 44 producing wells for relocation of the lines and capping of the wells, or retapping them by slant drilling.

This all has to do with the building of the lake to impound the water. But to the Texas Panhandle, it means so much more in a new recreational area. Floating docks, boat moorings, fueling facilities, trailer parking areas and other recreational facilities are being provided.

This year will see the greatest utilization of the facilities now available.

Another interesting development is the work being done by the Texas Parks & Wildlife Department in stocking the new lake with walleyes. Just a year ago some 2,000,000 fry were released in the lake. The baby walleyes were brought down from Iowa, in an exchange agreement between the two states.

Lake Meredith also has been stocked with black bass, crappie and catfish. The Canadian itself long has been a good catfish haven and natives have caught many fine cats from the river in the years gone by.

This walleye experiment has been most promising. After the first release of 500,000 in 1965, netting samples from the lake indicated good survival. Fishing for walleyes has been closed in Lake Meredith until such time as it has been shown the fish are well established.

Fine cooperation is expected from sportsmen from the area because the Panhandle long has been famous for its wildlife conservation programs. Most of the fresh water fishing that has been available to these residents has been in Colorado, New Mexico and Central Texas. So Panhandle anglers know the value of this conservation and will give it all the help possible.

Information about Lake Meredith can be obtained from the Chambers of Commerce in Borger, Pampa or any of the nearby towns all of which are extremely interested in this newest development in the Panhandle area.

Galls Described on Ornamental Plants as Damaging Their Growth

A frequent call county agricultural agents receive is from homeowners wanting to know what to do about galls on their ornamental plants and shade trees.

Fortunately, these small, usually spherical abnormal growths are not often a serious problem. Most healthy plants can tolerate a large number of galls with no apparent injury.

But there are exceptions, says Lyndon K. Almand, assistant Extension entomologist at Texas A&M University.

"Under certain conditions, gall insects can build up in sufficient numbers to damage the plant," he said. "Unhealthy trees are damaged more by galls than trees in a vigorous state of growth."

Many kinds of insects and mites can cause galls. Attack of such species results in a distinctive deformity on leaves, twigs or stems. Some of the more important gall makers are mites, plant lice or aphids, tiny flies called midges, and tiny wasps.

If control is necessary, Almand says it is important to remember that control by insecticide is next to impossible if galls have already begun to form. Egg laying or hatching by the bug pest stimulates the plant to form the abnormal growth or gall, which becomes a protective cell for the developing young. Insecticide chemicals can't make contact.

"In many instances, the best time to apply insecticides is not known," the entomologist said. "Some species of gall insects attack early in the spring, while others may attack throughout most of the growing season. Preventive spray treatments early in the growing season may reduce gall infestations."

Almand suggested that plants be sprayed in early spring just as new growth begins and continued at weekly intervals until leaves are fully developed.

Bug Bombers Have Developed Into Extensive, Skilled Profession

Aerial application of pesticides has developed into an extensive and skilled profession. Modern aerial application equipment is as up-to-date as the newest automobiles, and like them is designed to do a specific job well if correctly handled.

Four active members of this skilled profession will be participating as a panel and discussing "Aerial Application of Pesticides . . . the Operator's View" at the Northern Texas and Oklahoma session of the Southern Regional Pesticide-Chemical Application School in Wichita Falls Tuesday morning, April 6.

W.L. Norman, president, Texas Aerial Applicators Association, and operator of Norman's Flying Service in Dougherty, Texas will act as the panel chairman. Panel members are Miller Tuttle (Tuttle Spraying Company) of Breckenridge, Texas; Clint Fry (American Dusting Company) of Chickasha, Oklahoma; and Ray Williams (Midwest Aero Service) of Wichita Falls, Texas.

The Tuesday morning aerial application session of the school will be under the direction of George Harris who is the Secretary of the National Aerial Application Association. His home is in Ada, Oklahoma.

John F. Neace, Aerial Applications Project Manager of the Bell Helicopter Company in Fort Worth, will speak on "Fundamentals of Aerial Application with Helicopters" following the panel discussion.

Neace is a veteran of more than 20 years in agricultural aviation. He joined the Bell Helicopter organization in 1965. In 1957, he helped supervise what was at that time the largest aerial spray project ever under-

Tax Rate for Lamb County Remain Same

Lamb County commissioners court, recently set the tax rate for operating the county during 1968, at 95 cents per \$100 valuation, the same as for 1967.

Tax revenue brought in on the tax rate will go into the general fund, jury, road and bridge, precinct funds and courthouse and jail returning bonds.

County Judge O. J. Mangum said also added to the county tax rate is the state ad-valorem tax rate of 47 cents.

The commissioners also made adjustments of delinquent taxes from the 1965 tax role, adding new properties and cancelling others which were double assessed. The procedure is routine after the state audit is published, Mangum said.

In other business the Commissioners approved purchase of a set of books entitled "United States Code Annotated" for the county law library. Purchase was made for \$466.50 after trading in an obsolete set which was donated to the county by a local law firm.

Payment for re-laying of a water line and gas line and setting back of fences or right-of-way for a proposed farm market road in the county also was approved.

The road, designated FM 842, will run north from Fieldton community to U.S. 70 west of Oton.

Bug Bombers Have Developed Into Extensive, Skilled Profession

Aerial application of pesticides has developed into an extensive and skilled profession. Modern aerial application equipment is as up-to-date as the newest automobiles, and like them is designed to do a specific job well if correctly handled.

Four active members of this skilled profession will be participating as a panel and discussing "Aerial Application of Pesticides . . . the Operator's View" at the Northern Texas and Oklahoma session of the Southern Regional Pesticide-Chemical Application School in Wichita Falls Tuesday morning, April 6.

W.L. Norman, president, Texas Aerial Applicators Association, and operator of Norman's Flying Service in Dougherty, Texas will act as the panel chairman. Panel members are Miller Tuttle (Tuttle Spraying Company) of Breckenridge, Texas; Clint Fry (American Dusting Company) of Chickasha, Oklahoma; and Ray Williams (Midwest Aero Service) of Wichita Falls, Texas.

The Tuesday morning aerial application session of the school will be under the direction of George Harris who is the Secretary of the National Aerial Application Association. His home is in Ada, Oklahoma.

John F. Neace, Aerial Applications Project Manager of the Bell Helicopter Company in Fort Worth, will speak on "Fundamentals of Aerial Application with Helicopters" following the panel discussion.

Neace is a veteran of more than 20 years in agricultural aviation. He joined the Bell Helicopter organization in 1965. In 1957, he helped supervise what was at that time the largest aerial spray project ever under-

EVERYTHING FOR GARDENS and LAWNS

POTTED PLANTS ARRIVING DAILY

- Petunias-Snapdragons
- Carnations-Verbinas
- Mums-Pansies
- Phlox-Geranium
- Dianthus-Portulaca
- Ageratum-Alysum
- Begonia-Potted Roses

FOR YOUR GARDEN

- Tomatoes-Peppers
- Strawberry Plants

WE HAVE TRACTOR EQUIPPED WITH ROTOTILER FOR YARD WORK
ALSO HAVE SPRAY EQUIPMENT FOR SHRUBS AND TREES

LANDSCAPING and YARD WORK OUR SPECIALTY

TRY US VERY SOON

MULESHOE GARDEN CENTER

LONNIE MERRIOTT Owner-Mgr. 216 E. Ave. D Muleshoe

DON'T FORGET TO VOTE SATURDAY AND TUESDAY

Announcing...

We have dealership for all Excel and Pioneer brand Milo seed, including Excel 660 - See us 7 miles north of Earth or call 965-2973 or 965-2221 collect. Your business will be appreciated.

Alfred Dutton & Son, Bryan

MOTOROLA DOUBLE BONUS DEAL!

1 Famous Revere 3M CAMERA \$17.95 VALUE FREE!

- Instant-loading, fixed-focus camera
- Takes needle-sharp pictures
- Includes film cartridge, flash bulbs, batteries, carry case.

2 Deluxe Roll-About TV CART \$7.95 VALUE FREE!

- Custom-designed for Motorola TV
- Sturdy steel tubing
- Smart nickel plating
- Wood shelving

Manufacturer's suggested retail price

\$139.95

HURRY! OFFER LIMITED!

A \$25.00 BONUS VALUE FREE when you buy this MOTOROLA TV for the regular price of the TV alone!

We Service What We Sell Out of Our Store

HARVEY BASS APPLIANCE

Muleshoe

122 S FIRST PHONE 272-3030

Lamb County Has 473 Businesses That Employ 2477 People

Have you ever wondered how many business places there are in Lamb County? How many people they employ? What their annual payroll is?

A new survey by the Census Bureau, aided by data supplied by the Social Security Administration, sheds light on the size and scope of the local business population.

It is part of a nationwide report, recently released, entitled "County Business Patterns."

For each section of the country it presents comparable figures on the number of local businesses engaged in retail trade, wholesale trade, manufacturing, finance, services and other branches of industry.

The figures show that Lamb County's business population is at a high level. New enterprises are constantly being launched in the area by local residents who are eager to be their own bosses.

Some existing businesses are

discontinued each year, on the other hand, but the net change is on the plus side.

The report lists a total of 473 active enterprises in the county employing one or more people.

Of this number, 306 have 3 employees or less, 97 have from 4 to 7 employees and 62 have from 8 to 19.

The figures show that business establishments with fewer than 20 employees predominate in the local area, just as they do in every other part of the country.

All told, the local business firms provide employment for some 2,477 men and women of the area in jobs that are covered under social security. This does not include farm workers, government employees, domestic help and certain others.

The annual payroll for those covered by social security has been rising in recent years. Locally, it has reached a total of \$8,280,000.



EASTER VACATION WAS FUN TIME for students of Springlake-Earth who enjoyed various types of recreation during the five day holiday. This threesome is seen skating along main street. They are Gale Lackey, Donald Montelongo and Lynn Lackey.

Buyers Want Quantity, Uniformity Of Quality Fibers

Cotton in at least 500-bale lots, with the Maximum attainable uniformity of quality fibers within each bale and from bale to bale, that's what textile mill buyers look for when they set out to fill their requirements for raw cotton fiber.

It follows naturally that this is the crying need of cotton producers who would attract those mill buyers to a given area.

This was the stand-out message delivered to High Plains cotton producers by members of the American Textile Manufacturers Institute Cotton Committee meeting in Lubbock recently.

Top attraction of the two day meeting was a grower-spinner cotton quality forum attended by some 600 area producers and other cotton industry people. Nine members of the ATMI Cotton Committee were present, representing textile mills which account for about 40 percent of annual raw cotton consumption in the United States.

To reach this goal most in the cotton and textile industries agree that it will be necessary for producers to enter into lint block programs from which cotton will be block ginned to retain varietal purity.

There are four basic principles which such programs must follow if they are to be successful. They have been repeated many times, but cannot be overemphasized. They are: planting seed which is virietally pure and reasonably well adapted to the area, planted to sufficient acreage to produce at least 500-bale lots; cultural practices--including fertilization, irrigation and the use of harvest-aid chemicals--which will help, not hinder the production of the maximum length, strength and fineness potential of the variety; harvesting with quality, not speed, in mind, and ginning in such a manner as to preserve quality characteristics, which again, means speed and high grades will have to be upstaged by the desire for overall quality.

kept virietally pure at the gin will yield greater returns to the farmer, even when it goes into the government loan.

The key to success in these programs is selection of variety. And here producers have access to seed breeders, County Agricultural Agents, the South Plains Research and Extension Center, the High Plains Research Foundation, PCG and others. All of these have access to information gleaned from extensive variety trials and demonstration plots. They can all be helpful in variety selection.

Dr. Lavon Ray, head of SPREC's cotton breeding program, has said "Opportunities are offered NOW to profitably produce varieties with a fiber that will be more acceptable to mills."

He added that "In doing this, we must consider the range of adaptability of these varieties and changes that need to be made in our management practices to assure production of good quality fiber. Some emphasis needs to be shifted from our normal goal in cotton production--maximum tonnage--to fiber quality."

PCG President J. D. Smith, of Littlefield, says "The cotton producer's business in some respects not unlike that of the professional gambler. And when the proper variety is selected, lint block programs are an 'all to gain, nothing to lose' situation -- a gambler's dream."

World War I Medal of Honor winner William J. (Wild Bill) Donovan commanded the 165th ("Fighting Irish") Infantry, New York National Guard. As a major general in World War II, he headed the top-secret OSS.

Bill Clayton Sen. Hightower Reports Reports On From Austin Senate Action

Representative Clayton stated that as the House adjourned for the Easter week-end, last Thursday, this marked the half-way point in the Legislative Session.

The work load for the rest of the session will be heavy as there are approximately 1000 bills still to be acted upon.

Clayton reported that he will have two of his bills concerning Industrial Revenue Bonds up for consideration this week. These two bills will provide cities and counties in our area to be able to attract industry through a revenue bond finance plan.

Thirty-seven other states have such laws for industrial financing.

House action is also expected on three bills pertaining to water law and one relating to the licensing of court reporters, authored by Clayton, next week.

A bill creating the Earth-Springlake Hospital District will be considered the following week.

Before adjourning last week, the Committee on Revenue and Tax heard the proposed "liquor-by-the-drink" bill. The "horse-racing" bill will be heard April 6th, at 2:30 p.m. by the Committee on Counties.

Clayton, who is chairman of the Counties Committee, said he did not think that either of the bills would pass this session.

One bill of interest to be considered this week, is a measure to exempt Texas from Daylight Saving Time. Only one State in the United States has exempted itself this far.

All States surrounding Texas will go on Daylight Saving Time, April 30th. This is a very controversial bill and it is predicted that Texas will also go on Daylight Saving Time.

Legislative, Congressional, and Judicial Redistricting, along with Appropriations Bill and the tax measures will probably consume much of the time in the coming weeks.

Rep. Clayton stated that anyone desiring more information on any pending legislation, can obtain it by either phoning him at Area Code 512, Greenwood 5-3400 or writing to Box 120, Capitol Station, Austin, Texas 78711.

AUSTIN -- The Senate Wednesday approved Senator Jack Hightower's permissive tax bill for cities and towns and sent the proposal to Governor John Connally.

The bill, designed to ease the growing financial problems of Texas towns and cities, would authorize municipalities--with approval of its citizens--to impose a one percent sales tax.

Senator Hightower, of Vernon, pointed out that the sales tax could be levied only with approval of the voters.

The proposal drew wide support from city and state government officials from throughout the state.

In a report on the measure, the Texas Municipal League said that this new course of local revenue would also show the transfer of local responsibilities for social and other services to the state, and, particularly, to the federal government.

Senator Hightower said that he was "very Pleased" that the bill had been approved.

"Recognizing that the ad valorem tax payer must have some relief from the skyrocketing cost of local government and the ever pressing demands for civic improvements, this sales tax is proposed as a method for broadening the base of city tax support with the hope that it may prove beneficial to those cities that choose to take advantage of it," he said.

Co-sponsor of the Senate bill with Senator Hightower was Senator Joe Christie of El Paso.

Texans Must Consider Community Property Law In Filing Tax Returns

The income tax instructions mailed to taxpayers do not tell the whole story for married taxpayers in Texas. Ellis Campbell, Jr., District Director of the Dallas District, points out that married couples in Texas must consider the Texas Community Property Law in determining what they should report on their income tax return.

They must distinguish between what is community property and income and what is separate property and income if they plan on filing separate returns.

In filing separate returns each spouse must take into account half of the community income and deductions, and all of his or her separate income and deductions, to determine the proper tax on separate returns. Each may claim only his own exemptions and deductions, a dependent supported with community funds may be claimed by either spouse--however, an exemption may not be divided by the taxpayers.

Mr. Campbell says that--contrary to other states--a non-working wife in Texas is liable for filing an income tax return and paying the tax due on 1/2 of her working husband's income, unless they file a joint return that is signed by both husband and wife.

Determining the amount of community income and deductions becomes especially important in divorce cases. The husband and wife are each liable for income tax on 1/2 of the income from the salaries of both and are each entitled to 1/2 of the deductions up to the date of divorce.

Each is naturally liable for his or her own separate income after the date of divorce.

Mr. Campbell emphasizes three special areas affected by community property law: (1) Extra Dividend Exclusion--Since dividends are considered community property in Texas, the husband and wife may claim a \$200 dividend exclusion rather than \$100,

no matter which spouse owns the stock. An estimated 160,531 Dallas District taxpayers filing joint returns report dividends on their tax return.

Many of these taxpayers do not understand that the community property law gives them a double dividend exclusion: (2) Extra Capital Loss Deduction--Community property law makes it possible for Texas taxpayers with a capital loss of more than \$1000 on sale of community property, to file separate returns and claim as much as \$1000 capital loss on each return. An estimated 22,462 Dallas District taxpayers file joint returns showing a capital loss each year. Some of these are eligible to file separate returns and claim an additional loss. (3) Retirement Income Credit--The community property law works both for and against Texas taxpayers in claiming retirement income credit. When one spouse retires and becomes eligible for retirement income credit on his tax return and the other spouse continues to work, the community property law can eliminate part or all of the retirement income credit that would be available to the retired taxpayer in other states. On the benefit side,

community property can give a young wife in Texas full retirement income credit from the retired husband's income from a public retirement system, even though she would not qualify in non-community property states. Community property's greatest tax benefit comes from the additional \$1524 retirement income credit for a non-working wife who qualifies for retirement income credit on the basis of having community income for more than 10 years. An estimated 19,530 Dallas District taxpayers claim retirement income credit on joint returns each year. The community property law can cause some of these taxpayers to pay as much as \$300 additional tax--or it can reduce the tax bill by as much as \$300.

Document 5192, explaining the community property law effect on income tax, is available at IRS offices for taxpayers who need additional information to claim the proper dividend exclusion, capital loss, or retirement income credit. Taxpayers who are concerned about the community property effect on their income tax return should call the Internal Revenue Service for help.

Movie Regulations May Soon Be Mandatory In Texas Towns

Every incorporated city and town in Texas may soon be required to set up a "Motion Picture Classification Board" to preview every movie to be shown in that city and classify it as "suitable" or "not suitable" for persons under age 8, if the recent bill introduced in the House by Rep. Cordell Hull of Fort Worth, passes.

Hull said that cities now have the authority for such regulation, but his bill would make the board mandatory and would provide guidelines for classifying movies. Board would be composed of nine members appointed by the city's governing body for two-year terms.

The Road Report BY ARBA

road travel provides CONVENIENCE

SPEED

ROUTE FLEXIBILITY

COMFORT

AMERICAN ROAD BUILDERS' ASSOCIATION

water saver!

ALUMINUM PIPE

Gifford-Hill-Western's ROW-KING gated pipe and TUFF-TUBE flow line are quality products designed to make the best use of your irrigation water! Every joint of Gifford-Hill-Western Aluminum Pipe is pressure tested under water to assure you of trouble free performance. Every end is reinforced to prevent end splits and out-of-roundness that shortens pipe life. ROW-KING's long formed coupler allows lateral adjustment to catch every row, and you

don't have to worry about weld leaks! ROW-KING's positive control allows water flow in each row to be adjusted from 0 to 90 gallons per minute. Gifford-Hill-Western Aluminum pipe is quality pipe... quality you can depend on year after year. Now's the best time to buy! See your nearby Sales Office or Gifford-Hill-Western Salesman!

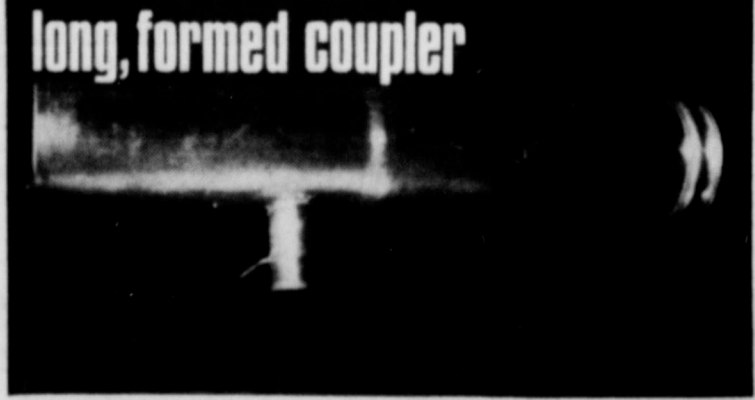
GIFFORD-HILL-WESTERN



pressure tested

long, formed coupler

positive control



Since thou has been precious in my sight... I have loved thee.--(Isa. 43:4).

The assurance of God's love for us harmonizes our minds, hearts and bodies so that we are at peace and happiness floods our soul. We know that God loves us so we can be at peace within ourselves, no matter what happens. We know that God loves us, and because of it, we love God, His world and His people. The miracle of God's love for us brings the joy of heaven to us right here and now.