
NOSIN.... With Polly

Harold Hudson, writing in The Perryton Herald, points out something that has always bothered us. How can the daily newspapers always be full of help wanted ads and our unemployment level stay so high? His thoughts on this follow:

"Although it varies from month to month and certainly from one locality to another, the Bureau of Labor Statistics generally shows with regularity more than 5 per cent unemployment.

"This is hard to justify in the minds of employers who are seeking people to hire. It is hard to justify when the classified ads of the nation's newspapers are filled with invitations for employment of various kinds.

"The National Federation of Independent Business runs a continuous survey on employment and unemployment as related to small businesses and a good many doubt the validity of the government statistics.

"It is quite clear that there are a number of people unemployed because they want to be.

"There are a great many people who actually have no job skills to sell and who are content to get by on their welfare check or other government assistance.

"There are wives who have worked at one time or another and thus are enumerated in the labor force, but who are not looking for a job at the moment. They are technically, but not actually, unemployed.

"There are job seekers who skim over the invitations for certain kinds of work, usually menial labor, and while they are hunting something more suited to the tastes and talents, they are listed as unemployed.

"There are a number of job openings that go unfilled simply because the employer doesn't have the income from his business to pay them. He scales it takes to attract workers.

"The government pays the highest wages and when a worker compares the pay of a retail clerk in a small store with that of a postal employee, he is apt to feel quite underpaid.

"A major problem in the unemployment figures is our tax system which makes it possible for a person to take a welfare check and thus get more "take home" pay than the worker can after the deductions are made from a week of toil. Until this situation is cured we are not likely to see much improvement in the unemployment situation."

in the presence of God? Suppose today were the day that you would be required to do this. What would you have to plead before God?

Some folks might think they can plead the same thing they're pleading every day here--well, I would have done better today if so and so had acted different. And if I had had more time, I could have done so and so.

Do we really think we could plead this before God? I think not, for everywhere I read in the bible about being in the presence of God, it is so very awesome. It will be so awesome, I believe we'll stand before Him in humble adoration, like the song "How Great Thou Art" says. And the only thing we will have to plead before Him will be the blood of Jesus.

And God, the Father, will know whether we really believe in Jesus or not. The bible says that His blood is the only thing that will cover our sins.

In reading in the Bible about the awesomeness of God we find that men could not even look upon Him. Moses could not look upon Him. And when Moses had spent several days on the mountain with God receiving the commandments, the people could hardly even look at Moses, there was so much glow about him.

Heb. 12:18-21: "You have not had to stand face to face with terror, flaming fire, gloom, darkness and a terrible storm, as the Israelites did at Mt. Sinai when God gave them his laws. For there was an awesome trumpet blast, and a voice with a message so terrible that the people begged God to stop speaking. They staggered back under God's command that if even an ant could touch the mountain it must die. Moses himself was so frightened at the sight that he shook with terrible fear."

1 Timothy 6:15-16: "For in due season Christ will be revealed from heaven by the blessed and only Almighty God, the King of kings and Lord of lords, who alone can never die, who lives in light so terrible that no human being can approach him. No mere man has ever seen him, nor will."

Psalms 33:8-11: "Let every one in all the world--man, women and children--fear the Lord and stand in awe of him. For when he but spoke, the world began! It appeared at his command! And with a breath he can scatter the plans of all the nations who oppose him, but his own plan stands forever. His intentions are the same for every generation."

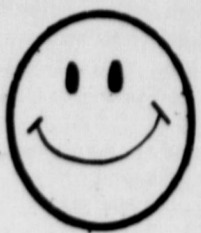
"At the name of Jesus every knee shall bow and every tongue confess..."

He is Lord!

The NEWSpaper Dedicated to the Development of the World's Richest Irrigation Area.



The Earth News-Sun



"A CONSOLIDATION OF THE EARTH NEWS & EARTH SUN OCTOBER 12, 1956"

VOLUME 20 10 CENTS EARTH, LAMB COUNTY, TEXAS, THURSDAY, SEPTEMBER 27, 1973 10 PAGES NUMBER 7



THE MIGHTY WOLVERINE BAND - were working on their halftime routine Wednesday morning in preparation for the Frisco game Friday night. The band also won fourth in the class A

division in the Parade of Bands Monday in Lubbock.

Scott Lee Leading In Football Contest

A great many football fans in this area are entering the football contest found elsewhere in the Earth News-Sun.

The weekly contests, which are filled with cash prizes, will be stepping stones for some lucky person, toward winning the grand prize of two tickets to the Cotton Bowl game in Dallas on New Year's Day plus \$25 in cash.

The rules are simple and are listed each week on the contest page. All you need to do is mark out the teams you predict will lose, fill in the tie breaker score and mail or bring your entry form to the Earth News-Sun office by 5 p.m. each Friday.

Winning first again in this week's contest was Scott Lee with 105 points, to bring his total score to 210 points.

Larry Price took second with 100 points to give him a total of 180 points.

Third place was won by Vicki Freeman with 85 points, to give her a total of 175 points to date.

Other fans entered in the contest and their season scores thus far are:

180 points, Marianne Messer; 155 points, Derek Edwards; 150 points, Mary Fuller; 140 points, Lane Louder, Jo Eddy Riley, Robert Conner, Faye Kelley, Kenny O'Hair, Jimmy Rauldolph, Jerry Barden, Jerry

Ben and Guy Kelley; 130 points, Debbie Green, Kirk O'Hair, Marvin Been, Jr., James Thomas, Brad Freeman, Carlos Triana, Lance Phelps, Doug Jones, Edwin Hunter, Wendy Branscum and Rodney Geissler; 120 points, Glenn Bulls, Jodie Riley, Johnny Kelley, Kevin Kelley, Dickie Brown, Chuck Dunnam and Kevin Riley; 110 points, Dawn Branscum, Charles Winder, Eric Freeman, Andy Ellis, William P. Holland, Jr., Allen Moore; 100 points, Ronnie Thomas, Larry Dear and Glenn Branscum; 90 points, Lonnie Neinaast, Randy Bills and Nicho Triana; 80 points, Loyd Hood; 70 points, Bobby Gover and Suzzie Smith; 60 points, Quincy Lewis; 40 points, Ronnie Hucks and Kateron Hulcy.

Help The Band-Buy Newspapers, Magazines S-E Places 4th In Parade of Bands

The annual Springlake-Earth band newspaper and magazine sale will begin Monday, October 1 with a door to door canvass of Earth, Springlake, Sunnyside, Pleasant Valley and Dodd Communities.

Tom SoRelle, band director, indicated that the band should get into this event with enthusiasm, as proceeds derived from these sales would be their operating fund.

Many people in the area are always anxious to aid the band. They will welcome a call from any member of the band, and be glad to help in the campaign. Band members always received a nice percentage of the News-Sun subscription sales and of the magazine sales.

So folks, when a member of the band calls on you, please be sure to buy your hometown paper and your favorite magazine.

The Wolverine Band from Springlake-Earth was fourth in the class "A" schools division at the Panhandle South Plains Fair, Monday in the marching band competition.

The team's band was presented a trophy and a \$25 cash prize. Tom SoRelle, band director, said he was proud of his band and their efforts. This was the first time in several years that the S-E Band had participated in a marching parade.

There were 48 bands that participated in the marching parade. These were divided into four classes with four prizes given in each of the classes.

First place winners in each of the four categories were - class A division, Hale Center; class B division, Jayton; class 2A division, Littlefield and class 3A division, Seminole.

Local Spray Pilot Drowns At Bull Lake

Larry Bynum, spray pilot for Lowe Spraying Service, was drowned Tuesday afternoon following the crash of a two engine seaplane at Bull Lake near Littlefield.

Authorities at the scene of the crash said the plane crashed soon after take off from the northwest shore of the lake.

Morgan D. Locker, 37, also of Milesheo and pilot of the plane, told Department of Public Safety officers he and Bynum both climbed on the top of the sinking plane and started swimming toward shore about 700 to 800 yards away.

Locker told DPS investigators he saw Bynum "go under once but he never came up."

Buck Ross, lake manager, witnessed the accident.

"They took off heading sort of southerly into the wind. But the wind was so strong they turned around in order to avoid a bluff," Ross explained.

"When they had turned around they had a strong tailwind behind them and suddenly the plane nosedived into the lake. Ross got his binoculars and saw both men standing on the plane and then they both started swimming toward shore," the manager said.

"It was only about seven to 10 minutes before the plane finally sank out of sight," Ross said.

Ross called police and the Littlefield rescue squad. Locker was spotted by Bill Cox, a rescue squad member, on the northwest shore shortly after the plane crashed.

Search boats and rescue squads from Levelland, Olton, Earth, Sudan and other communities soon joined in the search for the missing passenger and the plane.

At 4:50 p.m. one of the boats spotted the plane submerged in about 18 feet deep water. However, there was no sign of Bynum.

Rescue and search operations were hampered by the strong southerly winds, gusting at times to 40 mph, and the choppy waters of the lake.

Investigating highway patrolman Santiago Robles said that Locker was uninjured after his harrowing crash and swim of nearly one-half mile.

Locker joined the search in an effort to help crews locate the plane and the missing passenger. He left the lake about 6 p.m. to return to Milesheo.

Littlefield Fire Chief Leon Durham, who directed the rescue operations, said there was "no way to tell" how long the dragging operations might continue before the body was found.

More than 50 volunteers and 12 boats were at the scene late Tuesday as the search continued.

Ross said the plane had been at the lake since mid-morning. "They were practicing landings and take offs out there in that high wind," he commented.

FIND OUT OCTOBER 9 Why A PTSA at Springlake - Earth School?

Why do parents drop out of PTA as students grow older? Following is an article by David J. Asai, 18, a member of the National PTA's Commission on Leadership Development on this subject and about PTSA.

It is true that in most cases the participation of parents in the PTA decreases as their children grow older.

Why? Is it because the problems confronting youth diminish as children move up from one grade level to another? Clearly not. In fact, as young people advance in school, they're exposed to more and to greater crises.

Membership in the PTA among parents with children in the upper grades is declining a trend that tells us, perhaps, that our organization lacks something; or that, as children grow older, parents don't see the PTA as important enough to warrant their efforts; or that teachers, at times, are too busy with their own work to devote adequate time to the problems of the PTA.

What about the children, the students, themselves? Can't they help? Haven't they already? Haven't they already been effective in establishing PTSA at the intermediate and high school levels?

PTSA involves all three groups: parents, teachers, and students in an organization that once involved only parents and teachers. It offers all three equal rights as well as equal responsibilities.

PTSA isn't a social club--and

it isn't a prestige club. In effect, it's a gathering of diverse volunteers with a common goal: to identify and solve the needs of our children and the needs of our schools.

Before PTSA can become a fact rather than an idea in your school and community, two factors must be considered: the "legal" factor and the "real" factor. Together, they make PTSA possible.

Legally, any PTA can become a PTSA by changing its bylaws and by inserting an s, a simple operation that permits a legal change of name.

But the legal step isn't enough. For a PTA to become a PTSA in spirit as well as in fact, its members must have the right attitude.

For example, adults must be willing to work alongside youths with long hair. And youths, with hair long or short,

must be willing to listen to the "older generation." The right attitude must be there, on both sides, if real communication is to occur.

A group of students from Lubbock schools who are members of the PTSA will present a program to the Springlake-Earth PTA, Tuesday, October 9, to explain to members and students the importance of PTSA.

Water, Inc. To Present Water Importation Data At Meeting

Water, Inc., will present strong testimony in support of importation of water to the plains areas of West Texas and Eastern New Mexico when its officials appear before a meeting of the West Texas Water Resources Council October 3. The council, one of our regional water councils created by Senate Resolution 812 and directed to study area water problems, has set its original meeting for 10 a.m., Oct. 3, at the West Texas Museum in Lubbock.

"The preliminary report of New Mexico Import Water Project presented to us last April has given us encouragement," said A. L. Black, president of Water, Inc., and a member of the lieutenant governor-appointed council.

"For the first time, we were told that there is water in the Mississippi River that could be made available to us," he said.

"Although the report indicated the project was not economically justified when evaluated under traditional standards, we were not deterred and we have developed statistical data for presentation to the West

Texas Water Council showing beyond a doubt that the proposed project is indeed feasible," Black said.

One of the most glaring fallacies of the import study, Water, Inc., officials point out was the use of average 1965-69 prices received by farmers and comparing those to 1972 construction costs. Skyrocketing farm prices in recent months have completely changed the cost-benefit comparisons used in the original study by the Bureau of Reclamation and Corps of Engineers. This coupled with a worldwide shortage of food and fiber and an unprecedented demand for American farm produce plus the nation's desperate need for farm exports to offset the United States' deficit of payments all combine to reflect a completely different financial picture than that painted in the Import Study Report.

"We will leave no stone unturned in an effort to see that our people, the state, the nation and the world know the full truth about the import proposal," Black said.

Mrs. Jessie Sanders Injured In Wreck

Mrs. Jessie Sanders, 78, of Earth, co-owner of H.S. Sanders Lumber in Earth, was injured in a two-vehicle accident shortly after noon Friday just north of Levelland on Highway U.S. 385. The driver of the other vehicle, Amelia Ann Reed, 19, of Willman was also hospitalized from the crash.

Mrs. Sanders received a broken shoulder and suffered lacerations and bruises. She was transferred Monday from the Cook Memorial Hospital in Levelland to the Littlefield Hospital where she is reported to be recuperating from the crash.

Her husband, H.S. Sanders, is in an adjoining room in the Littlefield Hospital for tests and ear work.

... Tourism spending in the U.S. totaled \$50 billion in 1970, and is expected to reach \$127 billion by 1980.

Cotton Crop Predictions Top Past Several Years

The Lamb County ASC Office has revised their bale count estimate for the 1973 cotton crop downward from 150,000 to 147,000 since the first last summer estimate.

Richard Newman, ASC county executive director, said he'd rather under guess than over guess. The lower figure follows some hail damage and several days of hot, drying winds after the first count was made.

The county extension office has predicted around 185,000 bales will be ginned in Lamb County from the 1973 crop.

Even at the lowest estimate, the predicted number of bales this year exceeds the past five years by several thousand. This year's estimate is based on from 9/10 to more than a bale per acre county wide, including both dry land and

Co-op Selling Lazbuddie Point

Lamb County has 166,507 acres of cotton this year compared to 144,518.5 last year. Less than 900 acres of cotton were destroyed this year, compared to 28,323.7 acres of destroyed cotton reported to the ASCS office last year.

Lamb County's 1972 bale count totaled 106,069 on 172,000 acres.

In 1971, county farmers ginned 84,747 bales from 178,000 acres.

In 1970, the bale count totaled 119,063 from 199,033 acres.

The '69 crop produced only 67,754 bales from 187,432 acres. In '68, '06,707 bales were ginned from 187,315 acres.

Dimmitt Agri Industries, Inc. is in the process of selling its Lazbuddie grain storage facility to a new corporation made up of 10 Lazbuddie-area farmers.

The 454,000 - bushel "flat storage" facility will be renamed Lazbuddie Grain, Inc. President of the new corporation is J. W. Gammon of Lazbuddie.

The Dimmitt cooperative has leased the Lazbuddie facility since 1969, with an option to purchase. The cooperative exercised its purchase option two weeks ago and has entered into a contract of sale with the Lazbuddie group.

Party Line

Mr. and Mrs. Ross Middleton had as their guests over the week-end Mr. and Mrs. Matt McBryde of Okmulgee, Oklahoma, Mrs. Larry Jones and children, Allen and Belenda of Holdenville, Oklahoma, Mr. and Mrs. Phil Middleton and Keri Denise of Midland, Mrs. George Middleton of Okmulgee returned to her home there after spending three weeks here with her son and family and the Phil Middletons.

SLIDING GLASS DOOR alarms make entry difficult for burglars. When the dead bolt is in place, pressure from any side activates a siren. Hack-sawing also produces noisy results.

WHEN PURCHASING polyester thread, choose a shade darker than the fabric since thread sews in a shade lighter.

A COAT OF WAX, two or three times a year, on a room air conditioner's chassis and shell discourages rust.

Corrections

Our apologies to the Springlake Home Demonstration Club for erroneously omitting the title of the interesting program presented by the county agent. The informative program was untitled "Illness Prevention and Health Maintenance."

KEEP MILK CARTONS tightly closed so the milk won't absorb odors or flavors from other foods.



MARILYN EAGLE

Engagement Told

Mr. and Mrs. H. W. Pyle announce the engagement and approaching marriage of Marilyn Eagle, daughter of Mr. and Mrs. J. B. Eagle of Earth to Lance Shottenkirk, formerly of Lubbock, son of Mrs. Bobby Power of Lubbock and D. H.

Shottenkirk of Dimmitt. Miss Eagle is a senior student at Springlake-Earth High School and Mr. Shottenkirk is a '73 graduate of Coronado High School in Lubbock. The couple plan a December 21 wedding.

Eastern Star Observes Annual Friendship Night

The Earth Eastern Star Chapter 870 met Monday night in a regular scheduled meeting and to observe the annual friendship night. Miss Georgia Bahlan registered 52 guests. Visitors from Littlefield, Olton, Dimmitt, Muleshoe, Lockney and Hereford chapters were present.

The Hall was beautifully decorated by Mrs. Melvin Bock. Shades of orchid, red, floral arrangements and candles were used throughout the room. The east was draped in deep purple with an open bible in front of the pedestal.

Mrs. Doug Lewis, Worthy Matron, presided at the meeting. Mrs. Lewis welcomed three Grand Chapters of Texas O.E.S. officers to the meeting and also visitors from each area town. She presented a poem to representatives from each chapter present.

A short business meeting was conducted. An interesting program was presented. Mrs. Johnny Marrell gave the inspirational poem entitled "Tommy's Prayer." R. W. Fanning, Worthy Patron, gave words of welcome and the humorous poem entitled "Advise to Women."

The Worthy Matron, Mrs. Lewis, read several of her favorite verses from the bible. Mrs. Jimmy Craft, accompanied by Mrs. Larry Tunnell at the piano, presented two beautiful songs, "The Lord is My Light" and "The King is Coming."

Hostess for a delicious salad supper and fellowship hour in the dining room preceding the meeting were Mrs. Dan McInroe, Mrs. Melvin Bock,

Mrs. Jimmy Craft and Mrs. Jimmy Shirey. The next regular meeting of Earth Chapter will be held Monday, October 22.

Among Those Who Are Ill

Jim Griffin was rushed by the ambulance to the hospital at Amherst Sunday. He had been dismissed from the Methodist Hospital in Lubbock Friday where he had been a patient for several days. Griffin was said to be improved Wednesday morning.

PEOPLE SHOULDN'T BE pressured into marrying at any age. When too young, usually they are not psychically prepared to bear family responsibilities. Therefore they sometimes fail.

Noisy Environment Hard On Children

Children who live in noisy environments may have trouble learning to read, a University of Texas psychologist has found. Dr. David Glass, chairman of the UT Austin Psychology Department, says children sub-

jected to noisy surroundings have trouble discriminating between similar sounding words--such as "gear-beer" or "cope-coke."

When a child is unable to discriminate between basic

speech sounds, Dr. Glass says, he has a hard time learning to associate those sounds with written symbols, and therefore reading skills are impaired.

ATTEND CHURCH

SATURDAY
One Day Only

ONE TABLE OF NEW FALL and WINTER BAGS and ACCESSORIES

1/2 PRICE

1 Rack New Fall Transitional JUNIOR and MISSES DRESSES

1/3 OFF

The Village Shop
IN PLAINVIEW

3402 OLTON ROAD THE VILLAGE SHOPPING CENTER
OPEN 9:30 A.M. TO 6 P.M.

GRUMBACHER ART SUPPLIES

GUARANTEED TO PLEASE THE MOST ARTICULATE ARTIST!

Bring Your Paintings In For Framing...

OIL PAINTING CLASSES

MONDAY
9 to 12 Noon - RUTH BARNET (instructor)
1:30 - 4:30 p.m. - RUTH BARNET (instructor)

TUESDAY
2 to 5 p.m. - FRANCINE ANDREW (INSTRUCTOR)

OPENINGS AVAILABLE FOR TUESDAY AFTERNOON CLASSES IN

CONSUMER'S ART SHACK

WE HAVE GIFTS FOR ALL OCCASIONS!

CONSUMERS
in Olton

OPEN 9:00-5:30 DOWNTOWN
OPEN 10-9 MALL

LAYAWAY A DIAMOND NOW FOR CHRISTMAS AND SAVE 20%

SHOP NOW AND SAVE A BIG 20% ON ANY DIAMONDS PURCHASED OR PUT IN LAYAWAY

Already dreaming of a diamond Christmas? You picked the right time! Layaway or purchase a diamond ring, diamond watch, pendant or any other diamond jewelry now, and we'll give you a whopping 20% off. We'll even hold it for you until Christmas Eve if you wish. Shown are just a few of the diamond rings available right now... all at 20% off! Remember, every diamond we sell has been inspected by our gemologists to assure you it's a more-for-your-money buy!

 NOW \$76 REGULAR \$95.00 SAVE \$19.00 Enchanting miracle top solitaire.	 NOW \$55 REGULAR \$75.00 SAVE \$15.00 Three diamond princess ring.
 NOW \$330 REGULAR \$425.00 SAVE \$95.00 Classic 6 prong Tiffany 1/2 carat.	 NOW \$160 REGULAR \$200.00 SAVE \$40.00 Four prong Tiffany 1/4 carat diamond.

Five convenient ways to buy:
Revolving Charge • Custom Charge • BankAmericard • Master Charge • Layaway

JEWEL BOX
DIAMOND SPECIALISTS FOR OVER 50 YEARS
1105 BROADWAY—DOWNTOWN... 763-6362
SOUTH PLAINS MALL... 797-2474

LUBBOCK LUBBOCK

ALSO IN ABILENE, ODessa, AND FORT SMITH, ARK.

equipment operators!

Here's a man's boot every step of the way! Rugged, handsome, ready for a rough day's work anytime. Easy on the feet, too. Stop in—try on Pecos.

RED WING

Earth Dry Goods

ANNOUNCING THE OPENING OF THE KIRBY COMPANY OF DIMMITT

THE ONLY AUTHORIZED FACTORY SALES AND SERVICE FOR DIMMITT AND CASTRO COUNTY

NEW AND REBUILT KIRBY VACUUM CLEANERS

PRICED FROM \$59.95 1 YEAR WARRANTY

NO LABOR CHARGE ON ANY REPAIRS OR WARRANTY REPAIRS

WE ARE ALSO HAPPY TO ANNOUNCE THE ALL NEW MACHINE "THE KIRBY CLASSIC OMEGA". JUST OUT THIS WEEK.

It runs quieter. Equipped with shag rake that rakes any length shag as it cleans. Many, many more new features that makes Kirby an even better machine.

— FREE DEMONSTRATIONS —

CALL KIRBY CO. OF DIMMITT

647-4465 DIMMITT, TEXAS 510 W. ETTER

Miss Gena Wisian Installed As Worthy Advisor For Order of the Rainbow for Girls

Miss Gena Wisian was installed as Worthy Advisor of Earth Assembly no. 156 Order of the Rainbow for Girls in the Masonic Hall, Saturday evening. Her officers also installed were Fonda Goodwin, worthy associate advisor; Debbie Jordan, charity; Donna Green, hope; Karen Howell, faith; Kelly Jo Wheatley, drill leader; Jason Scheller, chaplain; Marianne Messer, recorder; Camille Huchliffe, treasurer. Susan Clayton, musician; Karen Hulcy, love; Renae Winder, religion; Rosie Lewis, nature; Elaine Bills, immortality; Lisa Pittman, fidelity; Laurinda Bulls, patriotism; Doniece Taylor, service; Pam Eagle, confidential observer; Tammy Davis, outer observer and Brene Belew, choir director. Serving in the choir were

Kathleen Anderson, Carmen Wimberly, Vicki West, Debra Green, Sharon Ratliffe, Denice Temple, Terri Smith, Darlene Sulser, Kleta Haberer, Donna Smith, Vicki Wisian, Melissa Been, Ruth Street and Suzy Temple. Miss Wisian's installing officers were Vicki Wisian, installing officer; Debra Green, installing marshal; Mrs. Mary Clayton, installing chaplain; Mrs. Madell Simmons, installing recorder and Mrs. Jean Craft, installing musician. Sponsors for Miss Wisian are Mrs. Fern Bock and Mrs. Ann Kelley. The Lodge Hall was decorated throughout with the Worthy Advisor's chosen colors of purple and violet. Behind the east pedestal, hanging from the wall, was a plaque of violet net with her theme,

"Prayer of Faith" in gold glittered letters. From the front of the pedestal was a drape of purple satin, on which rested an open bible, the Worthy Advisor's emblem. Violets on plaques were hung on the wall in the west, south and north. The seven color stations were covered with net over taffeta in the colors of the rainbow. An arrangement of violets and candles were placed on the piano and recorder's desk. The serving table was covered with white net over violet. The centerpiece was an arrangement of purple and violet asters. The sheet cake was frosted in white with violet flowers and a rainbow with a pot of gold at the end. White Milk Glass and silver appointments were used. Serving the cake, punch, nuts and mints were Shelley Gaston, Paige Gaston and Liz Pyle. Roberts Gaston registered approximately thirty guests.



RAINBOW OFFICERS INSTALLED. . . New officers were installed Monday night at the Masonic Hall. Gena Wisian (center) was installed as Worthy Advisor. From L to R they are Brene Belew, Melissa Been, Kelley Jo Wheatley, Donna Green, Gena Wisian, Debra Green, Karen Howell, Elaine Bills, Doniece Taylor, Laurinda Bulls and Rosie Lewis.



NOTICE

The wedding of Miss Donita Kelley and Mr. Roger Clark is scheduled for 7 o'clock on Saturday, September 29 in the First Baptist Church of Earth. The public is invited to attend.

There will be a come and go bridal shower honoring Miss Jamie Hooten, bride-elect of Randal Blanton, in the Church of Christ fellowship hall, Tuesday, October 2 beginning at 10:30 a.m. Everyone is invited to attend.



I would like to thank all my friends who remembered me while I was in the hospital at Norman, Oklahoma. I appreciate very much the flowers, cards and prayers received during my illness. Mrs. Agnes Williams

REGISTER AT THE
QUEEN BEE TEA ROOM
in Bee Hive Mall
for the
FREE MEAL
to be given each week
The more you eat, The better
chance you have to win
AT LONG LAST
OUR KARDS ARE HERE...
Queen Tea Room
IN THE BEE HIVE MALL



Mr. and Mrs. Mike Stockard announced this week they have a baby boy, Dusty Joe, born Monday, September 17 at the High Plains Baptist Hospital in Amarillo. Dusty weighed in at 7 lbs. 4 ozs. Maternal grandparents are Mr. and Mrs. P. C. Barlow of Amarillo, Paternal grandmother is Mrs. Georgia George, Ruidoso, New Mexico. Great grandparents are Mrs. Claude Eagle and Mrs. J. J. Barlow, Earth; W.R. Stockard, Mineral Wells and George M. Craw, Fort Worth.

Mr. and Mrs. Norman Clayton and family visited in the home of the Leonard Harpers in Abilene Sunday.

Furnishing Trends Turn Pillowy, Billowy

Fall furnishing trends will see '73 fashions take a firm hold with billowy, pillowy, upholstered pieces to echo the return to comfort.

"Resurgence of Colonial-Early American - Federal styles is tied to the upcoming bicentennial, so we can expect this trend to hold at least until 1976."

"Oriental overtones are seen especially in accent furniture. Tables in antiqued-color finishes can fit into any decor. Rattan and wicker frames appear on many furniture pieces.

"French provincial, Mediterranean, English and German styles also are featured, as are the country styles derived from English and French designs."

Citing texture and color as still important, Miss Bradshaw described fabrics ranging from smooth nylons, flocked suedes, hopsacking, tufted velvets, and Olefins to matelasses and Italian antelope.

"Colors in new hues are smoke, wine, gold, asparagus and cerulean.

"In paint finishes, antique yellows and whites continue with contrasting stripes and

glaze finish for richness and dimension.

"Wood furniture is in middle tones--with overtones carefully highlighted.

"To produce antique effects, distressing by hand color padding, spatter painting, crayon marking and smudging is common. A low sheen is used on a highly distressed finish."

Noting that furnishing trends effect themselves over a longer span of time than other trends, the specialist forecast a life of several years, with new variations each season, for today's trends.

CLEAN UP SPILLS ON carpet immediately--they won't stay on the surface long. After a few grinding footsteps, debris goes deeper into the rug and can gnaw at the fiber.

AMERICANS TODAY are eating more meals away from home than ever before.

AMERICANS TODAY eat 115.6 pounds of beef a year. In 1950 they were eating only 63.4 pounds of beef, per individual, each year.

What's Cooking At School

- MONDAY
Bar-B-Que on Bun
Potato Salad
Blackberry Cobbler
Milk
- TUESDAY
Baked Ham/Gravy
Creamed Potatoes
Jello Salad
Pineapple Upside-Down Cake
Hot Rolls/Butter
Milk
- WEDNESDAY
Burritos/Chili
Tossed Salad
Strawberry Shortcake
Milk
- THURSDAY
Country Burgers
Western Burgers
Oven Fries/Catsup
Carrot Sticks
Mixed Fruit/Cookies
Milk
- FRIDAY
Country Fried Steak
Blackeyed Peas
Cabbage Slaw
Prune Spiced Cake
Hot Rolls/Butter
Milk

ONCE-A-YEAR SALE-A-THON
Singer stretch-stitch sewing machine SALE
Reg. 159.95
Carrying case #574 sale-priced at 16.95
Famous Stylist* sewing machine, for knits, stretch fabrics, wovens! It sews all! With choice of built-in stitches, including blindstitch. Exclusive Singer* front drop-in bobbin, snap-on presser feet.
Many other Sale-A-Thon specials. See them all!
We repair all makes of sewing machines. We have a credit plan designed to fit your budget. We also have a liberal trade-in policy.
308 W 4th LITTLEFIELD 385-4621
*A Trademark of THE SINGER COMPANY

GREAT SALE
FAMOUS BRAND
BLUE DENIM JEANS
\$4.00
MATCHING
BLUE DENIM JACKETS
\$6.00
BELL BOTTOMS FLARES & CUFFS
all sizes \$3.00
Corduroy - Hop Sack
Suede Cloth - Knits
Matching Jackets
Pants Suits
Ladies' 100% POLYESTER DOUBLE KNIT \$16.00
POLYESTER DOUBLE KNIT 2 yds. \$5.00
NEW SHIPMENT 64" Wide
Fake Fur \$3.99 yard
RASCO
MULESHOE

Friday, September 28th
9 99¢
KING SIZE WALLET CREATIVE COLOR PORTRAITS FOR ONLY
Extra Charge for GROUPS
NO LIMIT
GET PICTURES MADE OF GRANDPA, GRANDMA, DAD, MOM AND ALL THE LITTLE ONES AT THESE SAME LOW PRICES!
SHUGART COLOR PHOTOS
PAY & SAVE
HIGHWAY 70
ASK About Our FREE 8 x 10 OFFER

GIBSON'S DISCOUNT CENTER
1723 WEST AMERICAN BLVD. MULESHOE, TEXAS
OPEN 9 a.m. til 8p.m.
CLOSED SUNDAYS
SPECIALS START THURSDAY SEPTEMBER 27 GOOD THROUGH SATURDAY, SEPTEMBER 29

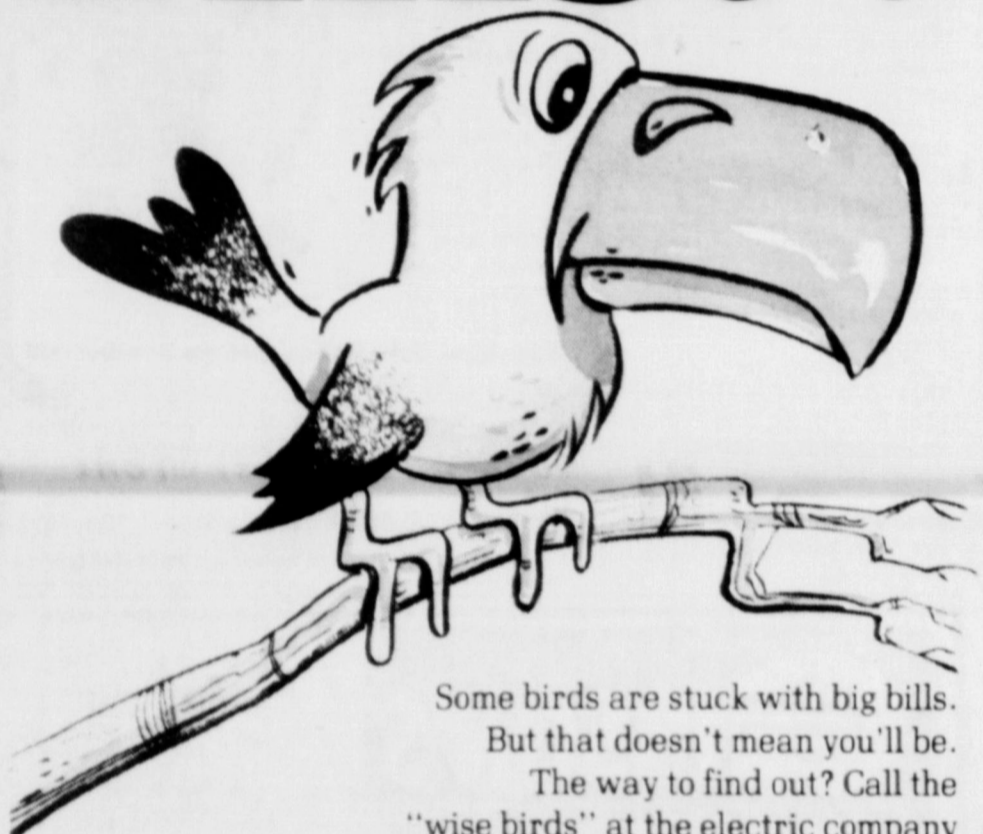
POLAROID AUTOMATIC LAND CAMERA FOCUS FLASH NOT INCL. NO. 420 \$47.88	PERMALITE ELECTRONIC FLASH CAMERA USES 126 FILM NO. E 69 \$13.88	TOOL-AID TOOL ORGANIZER THE MODERN TOOL BOX \$1.99
NEW!! BE MINE BATH OIL PEARLS OR BUBBLEBATH 17 OZ. SIZE 39¢	DAISY 880 AIR RIFLE USES BB's PUMP-UP or .177 CAL. PELLET \$18.88	PROPANE FUEL FOR LANTERNS STOVES-TORCHES OTHER USES 99¢
IRISH SPRING DEODORANT BAR SOAP REG. SIZE 2 29¢	JIFOAM OVEN CLEANER 16 OZ. CAN 79¢	4-WAY NASAL SPRAY 99¢ 1 OZ. BOTTLE
ARTHRITIS STRENGTH BUFFERIN 100 TABLETS \$1.29	AXION LAUNDRY PRE-SOAK GIANT BOX 49¢	IVORY LIQUID DETERGENT 48 OZ. \$1.13



PETE RODRIQUEZ gained a few yards for the Wolverines on this play before being brought down by Gary Wise number 30.

Bobcats Clobber Wolverines 45-0

Big Bills??



Some birds are stuck with big bills. But that doesn't mean you'll be. The way to find out? Call the "wise birds" at the electric company for a free personalized electric heat cost estimate for your home.



The Dimmitt Bobcats sunk the Wolverines Friday 45-0. The Bobcats Robert Mayberry scored the first four touchdowns followed by Rick Wright contributing 4 extra points and a field goal to lead the Wolverines 31-0 at halftime. The Bobcats capped off the scoring in the fourth quarter with 14 more points to end the game 45-0. The Wolverines and Bobcats each had a total of 7 first downs. Yards rushing the Wolverines had 115 yards, the Bobcats 335 yards. The Wolverines attempted 10 passes, completed 5 for a total of 38 yards. The Bobcats completed 4 of 5 attempted passes for 133 yards. In the penalty department the Wolverines were penalized for 95 yards and the Bobcats 70 yards. Total yards gained passing, rushing and penalties for the Wolverines was 223 and the Bobcats, 563. The Wolverines travel to Friona Friday for the last game before district starts next week. See you there.

ASCS Providing 500 Pheasants

The Lamb County ASCS office is participating in a pheasant stocking program again this year. The district has bought 500 birds, and of this number over 300 have been sold. Thus far, 171 birds have been released this season.

A few more birds are available to persons who would like to stock pheasants this fall. The 16-week-old birds sell for \$2 each, with one rooster put out for each four hens.

FOOTBALL



3 Big Prizes

GIVEN AWAY WEEKLY

First Prize—\$500

Second Prize—\$300

Third Prize—\$200

CONTEST RULES

The teams that are playing in this week's contest games are listed side by side in the official entry blank on this page.

Use the handy entry and mark out the teams you predict to lose. Print the scores you predict in the tie-breaker game in the spaces provided.

Each week's entry must be turned in or mailed to the Earth News-Sun office. Contestants are given a week to prepare and turn in their entries.

Entries must be in by 4:00 p.m. Friday or postmarked on that date. All late entries will be discarded.

In case of ties, a coin will be flipped to determine the winner.

Each week the number of games correctly predicted will count toward each contestant's season total. The person picking the most games correctly for the entire season will receive the grand prize. In the event of a tie on the season total, a coin will be flipped to determine the winner.

The weekly prizes will be given to the persons picking the most number of games for that week. The tie-breaker will count as one of the games picked, and the predicted score will be used to determine the top three places in that week's contest, if necessary.

Only one entry per person is allowed.

HART
FARWE
BOVINA
SLATO
LITTLE
MULES
MIAMI
TEXAS
WEST
TEXAS
WC
Na
Ad
Cir

CITIZENS STATE BANK MEMBER F. D. I. C. - EARTH	EARTH PUMP & MACHINE INC. YOUR DEALER FOR SINGER PUMPS WENDELL CLAYTON
H. S. SANDERS LUMBER EARTH PHONE 257-2005 WE APPRECIATE YOUR BUSINESS	CHEM-TEX FARM SUPPLY ELDON PARISH-Manager EARTH---Phone 257-2195
HALSELL CATTLE CO. EARTH---KANSAS CITY	KMP LAKE PUMPS AND PARISH WINDMILLS EARTH---Phone 257-3411
WOOD-JORDAN EQUIPMENT, INC. EARTH---Phone 257-3484	EARTH OIL & GAS CO., INC. EARTH---Phone 257-3461
EARTH ELEVATOR "YOUR ACCO DEALER" EARTH---Phone 257-3301	YOUR Olin AGENT FARM CHEMICAL CO. EARTH-SPRINGLAKE
"Football Mums"-Phone 257-2051-Earth Howell's 216 Floral Gid and Mildred Howell-Owners	SPRINGLAKE MOTOR SUPPLY SPRINGLAKE---Phone 986-2291
EARTH AUTO PARTS "Your Hometown Auto Parts Dealer"	COBB'S IN MULESHOE "Quality Clothing for the Entire Family"
DENT FARM SUPPLY "Your John Deere Dealer" EARTH	LOWE SPRAYING SERVICE KENNETH LOWE---Phone 965-2338
PAY and SAVE EARTH	SUNNYSIDE GRAIN & SUPPLY RICKY BYERS-Manager SUNNYSIDE
EARTH GIN, INC. EARTH---Phone 257-3371	GIBSON'S DISCOUNT CENTER MULESHOE
PARSON-ELLIS-SINGLETON FUNERAL HOME EARTH---Phone 257-3350	CONSUMER'S "The Store That Has Everything" OLTON
EARTH DRY GOODS EARTH---Phone 257-2026	PRODUCTION CREDIT ASSOC. DON LOAFMAN-Manager OLTON

WE HAVE RECEIVED

NEW FARM TIRES

OVER **1500** TO CHOOSE FROM

\$13.95 and up

COOP SYMBOL OF FARM LEADERSHIP

YOU CAN CART AWAY THE MONEY YOU SAVE BY BUYING HERE...

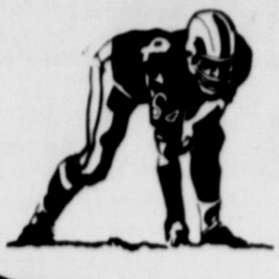
FARMERS COOPERATIVE ASSOCIATION

OF SPRINGLAKE---Phone 986-2661
"YOU OWN A BUSINESS---BE ITS BEST CUSTOMER"

TO KEEP PRICES DOWN

SAVE ON YOUR GROCERY BILL HERE

CONTEST



FRIONA-THERE
September 28
Game Time 8:00 p.m.

IZES

OFFICIAL ENTRY BLANK

OCTOBER 5-6-7

HART	VEGA
ARWELL	KRESS
OVINA	PLAINS
LATON	DENVER CITY
LITTLEFIELD	FLOYDADA
MULESHOE	PORTALES
MIAMI	N. Y. JETS
EXAS TECH	OKLAHOMA STATE
WEST TEXAS	LAMAR UNIVERSITY
EXAS	WAKE FOREST

--- TIE BREAKER ---

WOLVERINES..... SUDAN.....

Name.....
 Address.....
 City..... State.....



Nothing to suscribe to—Nothing to buy
—No obligation— JUST FILL OUT AND SEND
IN YOUR ENTRY

THIS CONTEST MADE POSSIBLE BY THE PARTICIPATING
 MERCHANTS LISTED ON THIS PAGE.....

SPRINGLAKE GIN, INC.
 W. H. and BILLY BRADEN
 SPRINGLAKE---Phone 986-2401

ARDEN'S WELDING SHOP
 SPRINGLAKE---Phone 986-2181

James Glaze Co.
 REAL ESTATE LOANS
 GENERAL INSURANCE
 JAMES (SUGAR) GLAZE, OWNER DRAWER A
 OFF. 272-4849 RES. 272-4743 MULESHOE, TEXAS

TRI-COUNTY SAVINGS & LOAN
 MULESHOE

FARMERS GRAIN
 SUNNYSIDE

**SHERLEY-ANDERSON
 LAZBUDDIE ELEVATOR**

**MULESHOE IMPLEMENT
 and SUPPLY**
 MULESHOE---Phone 272-3308

Littlefield Federal Savings & Loan
 HOME LOANS PHONE 385-5197

**LITTLEFIELD FROZEN
 FOOD CENTER**
 Mr. Kirby - Owner- Mgr. 385-3818

Western Auto associate store
 the Family Store
 320 MAIN STREET
 MULESHOE.

BIG T PUMP
 "We Appreciate Your Business"
 DIMMITT

OLTON STATE BANK
 OLTON---Member F. D. I. C.

**BAILEY COUNTY
 ELECTRIC COOPERATIVE**
 MULESHOE

FIRST NATIONAL BANK
 AMHERST---Member F. D. I. C.

RASCO
 "Your Family Store"
 MULESHOE

MULESHOE MOTOR CO.
 YOUR FRIENDLY FORD-
 MERCURY DEALER
 FORD MULESHOE MERCURY

WESTERN DRUG
 THE DRUG STORE THAT
 APPRECIATES YOUR BUSINESS

who said you wouldn't
 see the ads on this
 page?

WALLACE HOME FURNISHINGS
 (FORMERLY E.C. ROGERS FURNITURE)
 BERT WALLACE OWNER-MGR.
 LITTLEFIELD 385-3888

**CENTRAL COMPRESS
 SUDAN
 NICKELS GIN**
 PLEASANT VALLEY-EARTH

EARTH CO-OP GINS, INC.
 "We Don't Want To Gin All The Cotton
 Just Yours"

CHOW-TEX FEED LOTS, INC.
 LAZBUDDIE---Phone 965-2900
 HUGH COLLIS MGR.

**LITTLEFIELD HOSPITAL
 PHARMACY**
 FLOYCE PIERCE--DOYLE REEVES
 pharmacist
 401 W. 6th.

EARTH NEWS-SUN

Plains AUTO PARTS
 P.O. Box 586 MULESHOE, TEXAS
 79347

FIRST STATE BANK
 DIMMITTMEMBER F. D. I. C.

SPRINGLAKE GRAIN
 SPRINGLAKE---Phone 986-2311

Marcum Olds-Cadillac-Pontiac
 LITTLEFIELD---Phone 385-5171

THOMPSON CHEVROLET
 OLTON---Phone 285-2646
 MARCUS MESSER-Earth---Phone 257-3420

EARTH AG SUPPLY, INC.
 EARTH---Phone 257-3762



The 1973 annual meeting of the Plains Ginners Association will be held on Saturday, September 29, from 9:30 a.m. to 2 p.m. at the Lubbock Country Club, according to PGA President Gayle Craft of Plains. Some 325 High Plains gin operators and allied industry people are expected to attend.

The group will hear addresses by prominent members of the cotton industry on cotton legislation and marketing, open end yarn spinning, universal density bales, air pollution control and other subjects of interest to ginners.

Entertaining the ginners during lunch will be Bernie Howell and his Triolins, and Margaret Vigness of Hemphill Wells Co. will present a style show.

PGA members will elect nine directors at the meeting, and the new directors will elect officers for the 1973-74 year. Current officers in addition to Craft are Bill Weaver of Lamesa, vice-president, and Dixon White of Lubbock, secretary.

Directors this year have been Orville "Sleepy" Bailey of Roundup, Herschel Belew of Earth, Joe Ellison of Sudan, Maurice Goodwin of Ralls, A. L. "Skinny" Higgins of Plainview, Bill McCasland of Lubbock, Gene Morrison of Dimmitt, Guy Nickels of Sudan and Bill Thompson of Shallowater.

Speakers for the affair include Donald Johnson, executive vice-president of Plains Cotton Growers, Inc., Lubbock; Bob Poteet, executive vice-president of the Texas Cotton Association, Dallas; Tony Price, executive vice-president of the Texas Cotton Ginners Association, Dallas, and Jim Parker, director of the Textile Research Center at Texas Tech University, Lubbock. Plains Cotton Growers, Inc., 25-county association of cotton producers, has announced that the organization's offices are being moved from the present location at 1720 Avenue M, Lubbock, to the Wilkerson Building on the corner of 44th Street and Globe Avenue, Lubbock. PCG expects to be in the new offices on October 1.

Donald Johnson, executive vice-president of PCG, said "We will have additional space and offices better adapted to our needs in the new location and therefore should be able to serve our members more efficiently."

Also at the 44th and Globe site will be the new open end spinning plant announced last month by Feather Fabrics, Inc. and Nijverdal-Ten Cate, a leading textile firm of the Netherlands. Local investors will be partners with the Dutch company in the Feather Fabrics venture, slated to begin production in the Fall of 1974.

Johnson explained that the Wilkerson Building has ample office space for both operations plus floor space for the spinning plant. "PCG has leased all of the office space and will sub-lease a part of it to Feather Fabrics," he said.

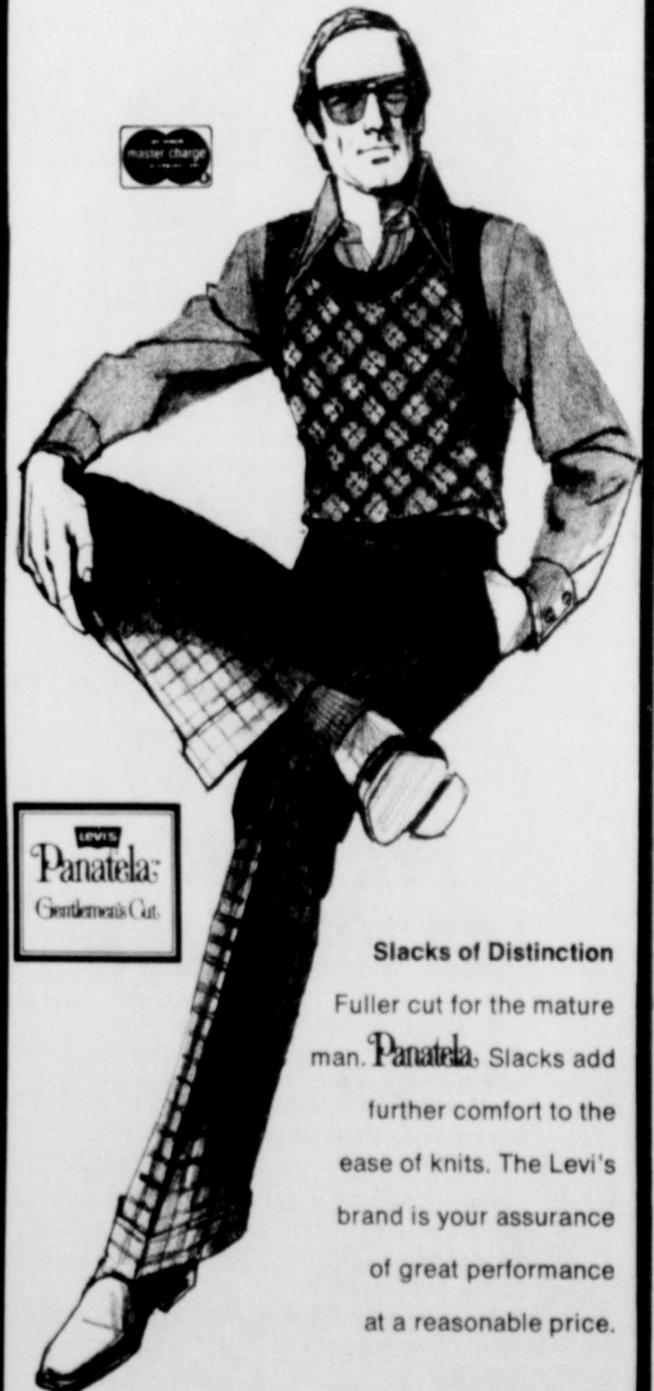
Levi's® Panatela® Knit Slacks

Look Good - Feel Great

IN OUR

SLACKS FROM

\$12⁰⁰ TO \$20⁰⁰



Slacks of Distinction

Fuller cut for the mature man. Panatela® Slacks add further comfort to the ease of knits. The Levi's brand is your assurance of great performance at a reasonable price.



PLAINVIEW

More Suits Filed In Train Accident

Two more suits were filed in district court last week in connection with the Feb. 6 school bus-train accident which killed seven Littlefield school students and injured 16. The suits seek a total of \$487,800.

Jose Frausto asks for judgment in the amount of \$425,800 for the death of his 16-year-old son, and on behalf of Johnny Frausto, whose 7-year-old daughter, Diana Sue, was killed and his 6-year-old daughter, Deborah Lynn, who suffered serious, permanent and disabling personal injuries.

Plaintiff Jose Frausto asks for \$50,000 for loss of services, contributions and earnings of his deceased son. In addition, he asks for \$1,400 for burial expenses and headstone for the boy's grave.

Jose Frausto's petition sues on behalf of his deceased wife who has died since the bus-train accident. The petition would show that in regard to his late wife, Trsas Frausto, that she grieved over her son's death to the point that she died since the time of the accident.

In 17 typed legal pages, the petition of the two Fraustos names three defendants, the Santa Fe Railroad, the Littlefield Independent School District and Artis Ray Johnson, the bus driver.

OTHER PETITIONS
Cubos Chavez filed a petition for \$35,000 on behalf of his daughter Diana Cordova who received serious, disabling and permanent injuries in the Feb. 6 accident. This suit names two defendants, the Santa Fe Railroad and bus driver Artis Ray Johnson.

The petition seeks to show nine specific acts of negligence against the railroad and four acts and omissions against the driver of the bus.

Prior to the filing of these two suits on behalf of four of the students involved in the tragic accident, three other suits asking for almost \$2 million have been filed with District Judge Pat Boone Jr. in 154th district court.

Three families filed the first suit seeking \$600,666. The Fabio Martinez family who

had one child killed and five injured seek \$191,413; the Gilbert Diaz family seeks \$186,221 for four injured children. The Andres Medina family seeks \$194,322 for one child who was killed and two injured children.

In the second suit filed in district court, the Larry Ortiz family and Mr. and Mrs. Don

Foley seek a total of \$1,300,000. Two Ortiz children were killed and one was injured. The Foley boy was injured. A third suit was filed in May. Mr. and Mrs. George Davis filed a \$40,000 suit for the death of their 10-year old daughter and injuries to two children. That petition seeks court costs and other justly entitled relief.

Camille Haberer Competing In SPC Officers Election

Elections have been scheduled for September 27-28 at South Plains College to fill a variety of posts in student government.

A total of 48 candidates have filed for a place on the ballot. Positions to be filled include president and parliamentarian of the student senate, sophomore class vice-president, seven sophomore class senators, freshman class president, vice-president and secretary and nine freshmen class senators.

Student campaigns will begin at 8 a.m. Thursday (Sept. 20). Only one person has filed to run for president of the student senate. He is Gary Russell Moore of Wilson, Texas.

Three freshman students will vie for the post of president of the freshman class. They are Max Fugate of Lockney, Connie Alexander of Brownfield, and Frank L. Reed of Levelland.

Two sophomore students are competing for the office of parliamentarian of the student senate. They are Camille Haberer of Earth and Karen Green of Pep.

Running for sophomore class vice-president is Carolyn Rawlins of Levelland.

Students who have filed for sophomore class senator are Val Stephens of Lamesa, Melanie Myers of Sundown, Thomas M. McGuffey of Lubbock, Fuzz Thurston of Denver City, Pam Peterson of Plains, Bill Pearson of Tulia, Gary Nace of Littlefield, Vicki Lampp of Brownfield, Steve Jackson of Levelland, Cecilia

Hardin of Hale Center, David Demel of Littlefield, Glenda Bryant of Brownfield and Regina Aubrey of Sundown.

The office of freshman class vice-president has three candidates in the running--David Lee Riley of Plainview, David Gillis of Denver City and Dee Ann Martin of Levelland.

Candidates running for the office of freshman class secretary are Laurie Sylvester of Levelland, Becky Chisum of Uvalde and Karen Willis of Floydada.

Twenty-two freshman are in the race for freshman class senator. Candidates include Raul Perez of Plainview, Mario Peres of Friona, David M. Shelby and Jerry Gibson, both of Lubbock, Vera Schulte of Nazareth, Aurelia Romo of Ropesville, Gary Jephcott, Dana Henderson and Stan Carroll, all of Levelland, Pam Hudson of Brownfield, De Ann Bingham of Meadow and Denise Baker of Petersburg.

Other candidates are Raymond Bernstein, Garry Tucker, Ann Lattimore, Steve Yeary, Tommy Payton and Cindy Gilliam, all of Levelland, Vanessa Word of Wolforth, Cassandra Cargile of Muleshoe, Kathy Sue Robinson of Sundown and Gail Aibus of Pep.

FIND GOD HE IS THE ANSWER

Americans Eat Their Weight In Sugar

Americans eat their weight in sugar each year, almost. "Consumption of refined sugar averages about 102 pounds per person per year," says Texas Agricultural specialist.

"Americans are getting more sweets into life than ever before, consuming 25 percent more total sugars than they did in the early 1900's."

With increased use of sugar, there is less control over sugar

content in diets due to "hidden" sugar in commercially prepared food and beverage products.

"Beverages alone, especially soda pop, comprise the largest use of refined sugar."

Other reasons she cited for eating and drinking more sugar are higher income levels, a greater number of teenage youth who consume "a large quantity of soft drinks," and new uses for sugar stemming

from technological developments.

Turning to ways of reducing sugar consumption, the specialist suggests, "A great deal of the steps necessary are up to the individual himself."

"One of the best ways to reduce sugar consumption is to consume fewer soft drink beverages. Substitute fruit juices, milk, water, and coffee or tea without sugar."

She also suggested cultivating a taste for less sugar in foods, such as fruit packed in light syrup instead of heavy syrup.

"Actually sugar often masks the distinctive flavor of foods with which it's used, reducing it can mean an awakening to new food flavor."

Another sugar-reducing tactic involves using cereal and bread products instead of more costly high-sugar products, the specialist said.

The EARTH NEWS-SUN

Member WEST TEXAS PRESS ASSOCIATION

Published at Earth, Texas 79031 every Thursday except the first Thursday following Christmas.

Second Class Postage paid at Earth, Texas 79031.

SUBSCRIPTION RATE
Earth and Trade Territory, per year, \$4.00 plus tax
Elsewhere in United States, per year, \$5.50 plus tax

CLASSIFIED RATES
6¢ per word, first insertion, 5¢ per word thereafter, 60¢ minimum.

ADVERTISING RATES GIVEN ON REQUEST

ROSS AND POLLY MIDDLETON, Publishers

Tony Lama & Other Brand BOOTS

ALL TYPES OF WESTERN CLOTHING

Fair Department Store
120 Main Muleshoe

FINEST FOOD IN WEST TEXAS

Mexican FOOD

Hot Tamales! Try Them and Our Many Other Tasty Dishes

Bite into a crunchy taco, tear off a piece of tortilla bread and tempt your taste buds with chili con carne over rice. Hungry? Dine here.

CASA DE TACO
VILLAGE CENTER
OLTON ROAD
PLAINVIEW

SPECIALIZING IN CHILI RELLENA AND SOPAIPILLAS

natural energy HOME

CLEAN ENERGY FOR TODAY AND TOMORROW

A Natural Energy Home uses natural gas for heating, cooling, water heating, cooking and clothes drying to save you money and help conserve our cleanest natural energy resource... natural gas.

That's because electricity in West Texas is generated by burning natural gas, and in the process of generating and transmitting electricity to your home, 2/3 of the gas energy is lost.

So, by using gas directly in the home for the jobs it can do, you're helping to conserve it and you're getting more energy for your money.

PIONEER NATURAL GAS COMPANY

Gander TILT & HOIST supplies the muscle to get things MOVING!

Rugged Dependability

Designed for ease of loading, handling and maneuverability, Gander construction reflects its superior engineering and high-quality workmanship. Whether you choose an all-purpose Gander flat bed with stake pockets for use with side boards or for greater versatility, a Gander spring loaded tilt bed—with 8,000 lb. winch—you'll be buying a new dimension in transporting.

Gooseneck Stock Trailers & Vans

For The Best Built And Most Attractive Stock Trailer On The Market Today - or - For The Equally Impressive Gander Van (a real money-saver in transportation - available in a variety of sizes), see your Gander dealer... he has a story to tell.

Keep your trucks on the move... your Gander trailer waits while your pickup works!

Pickup and Go... with Gander™

ANTI-FREEZE Permanent Type 55 Gal. Drum \$1.35/gal

WHILE IT LASTS!

WOOLEY-HURST INC.
522 W. American Blvd, Muleshoe

Local 4-H Club

Mrs. Ray Joe Riley presented a program and gave instructions on parliamentary procedure to the Springlake-Earth 4-H Club members, Monday, September 17.

The meeting was held in the showbarn in Earth. Bobby Brunson also showed film strips on 4-H Club projects and judging.

The club members made plans for 4-H Club week, the first week in October. They also voted to make a gift of \$10 to the Brownwood 4-H Club center in memory of the father of Mrs. Lynn Bowerman, Lamb County Extension Agent.

Also a number of fundraising projects were discussed and tabled until a future date.

Roll call was answered by the 22 members present with the name of each members projects for the year. The inspiration was given by Biff Belew.

Two new members, Carmen Kelley and Duke Hampton were welcomed into the club.

Refreshments of doughnuts and punch were served by Mrs. Bob Belew and Mrs. Kelley to the group.



SPRINGLAKE-EARTH CHEERLEADERS AND MASCOT - For 1973-74 are very enthusiastic and work hard at cheering the Wolverines on. Left to right are Kelley Haydon, Jo Ann Coker, Lydia Smith, Mellisa Been, Ruth Street, Janie Rivas and Denise Hartman, mascot.

OUR MEN IN SERVICE

Incirluk, Turkey---Technical Sergeant Don R. Moore, son of Mrs. Minnie Moore, Muleshoe, has been named one of the top

15 per cent in his Air Force specialty. He will receive a Superior Performance Pay bonus for six months as a result of his selection.

Sergeant Moore, a maintenance analysis technician, was chosen for his leadership, exemplary conduct, technical skill and duty performance in competition with all other

airmen in his grade and specialty.

He is presently serving at Incirlik AB, Turkey, with a unit of the Air Force Communications Service.

The Sergeant, a Vietnam veteran, was graduated in 1955 from Muleshoe High School and has attended Texas Tech.

MISS AMERICA SHOES

THE SADDLE SHOE

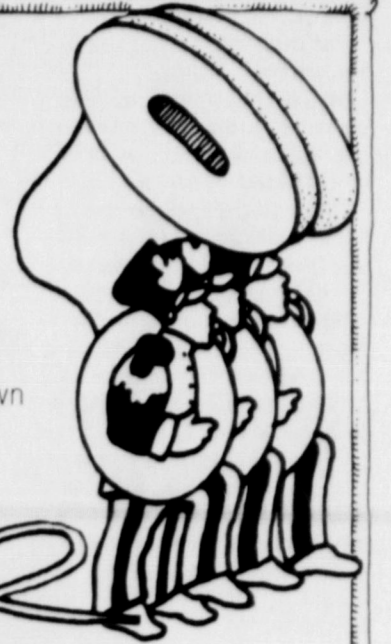
JUST LIKE IT USED TO BE — ONLY DIFFERENT. What a difference! A higher heel and bumpier toe. It's just one from our big collection. Move on down and see the whole thing soon.

17 COLORS BONE & BLUE



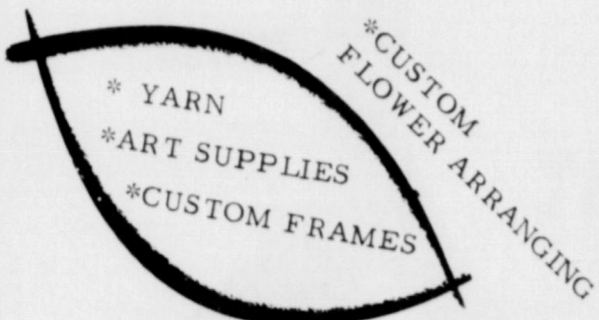
Cobb's

In Muleshoe



THE FACTORY

3010 OLTON ROAD
PLAINVIEW, TEXAS



COME SEE ALL OUR GOODIES

Photo To Be Taken Friday At Pay and Save

A representative of Shugart Studio in Levelland will be in Earth on Friday, (tomorrow) September 28 at Pay and Save Grocery Store to take pictures of area people.

Shugarts are well known for their splendid photographs and economical prices. Pay and Save Grocery personnel invite you to drop in anytime whether for photographs or to shop for groceries, you are always welcome.

SHUGART COUPON

FRIDAY, SEPTEMBER 28th

PAY & SAVE

HIGHWAY 70



9 WALLET SIZE COLOR PORTRAITS 99¢



ASK About Our FREE 8 x 10 OFFER Extra charge for GROUPS

Come See

PLACE AROUND THE CORNER

PLAINVIEW



FALL in LOVE

With The Everloving

Caribou
JEAN



ALL BRUSH DENIM CARIBOUS

30% OFF

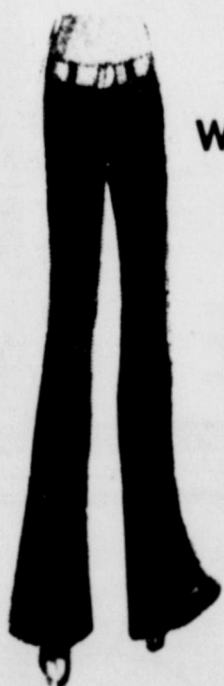
Waist Band & Hip Hugger

Reg. \$9.00 NOW \$6³⁰

Reg. \$10.00 NOW \$7⁰⁰

Reg. \$12.00 NOW \$8⁴⁰

Reg. \$14.00 NOW \$9⁸⁰



You Haven't Worn A Good Jean Until You've Worn A Caribu

JUST ARRIVED—NEW SHIPMENT OF
Blue Denim Flares

PLAINVIEW

3200-B OLTON RD.
NEXT DOOR TO BASKIN-ROBBINS

A HAPPY PLACE TO SHOP

THE BUSY CORNER

MAKE NO BONES ABOUT IT!



WE ARE READY

TO

HANDLE

YOUR

GRAIN SORGHUM

BONDED STORAGE-HIGHEST MARKET PRICES

PROMPT-COURTEOUS SERVICE

EARTH ELEVATOR

PHONE 257-3301

LETTERS

September 24, 1973

Mr. Ross Middleton
Publisher
The Earth News-Sun
207 Main Street
Earth, Texas 79031

Dear Mr. Middleton:
I enjoyed very much seeing and visiting with you. I had the opportunity to meet many of your local citizens and was greatly encouraged by their interest in my campaign. Also, I want you to personally know that I would deeply appreciate your help and the help of your newspaper in my race. I believe that I have the necessary experience and know-how after serving as Secretary of State to bring new vitality to the office. If elected, I promise to operate the office in an efficient and orderly manner and in a way that you will be proud of the State Comptroller.

Sincerely,
Bob Bullock, Comptroller
P.O. Box 3331
Austin, Texas 78764

Bookmobile Schedule

The High Plains Bookmobile will be in your area on the following dates:
Thursday, October 4, 1973
Athens 9:15 - 10:15
Springlake #1 11:00 - 11:45
Springlake #2 12:00 - 1:00
Earth 1:15 - 3:45
Friday, October 5, 1973
Pleasant Valley 10:00 - 11:00
Sudan #1 12:00 - 1:00
Sudan #2 1:00 - 3:45



GOVERNOR DOLPH BRISCOE participated in the September 18 swearing-in ceremony of Mack Wallace to the Texas Railroad Commission in the Governor's Reception Room, State Capitol, Austin. Wallace, appointed by the Governor to fill the unexpired term of Bryon Tunnell, was sworn in by Supreme Court Chief Justice Joe R. Greenhill. Wallace is a former member of Governor Briscoe's staff as Executive Director of the Criminal Justice Council. Wallace's term will end in November of 1974 at which time he can run for re-election.

Three Constitutional Amendments Deal With Local Government

Cities and counties operate in partnership with the state, deriving their powers from the state Constitution and statutes. Three of the nine constitutional amendments you will be asked to vote on this November 6 deal with the powers accorded these local units of government. In its efforts to provide for the conservation and development of our natural resources, the state is empowered to create conservation and reclamation districts. With the rapid growth of our cities, the

number of these districts designed to deal with urban problems has grown quickly. Amendment 4 would require that a copy of a bill to create a conservation and reclamation district be submitted to each city and county affected. Then, the cities and counties would have the chance to file their approval or objections with the governor, lieutenant governor and speaker of the House of Representatives.

Since the Texas Gulf Coast is often the target of hurricanes and tropical storms, residents usually have a difficult time insuring their property unless their area is adequately protected by sea walls or breakwaters. Since 1876, our Constitution has permitted cities and counties to levy taxes to construct these tidal barriers. Originally, the Constitution required a majority of two-thirds of the taxpayers residing in an area

to approve such a taxing authority. In 1932, this was changed to require two-thirds approval of those actually voting on the issue. Amendment 5 would further change this requirement to a simple majority of the resident taxpayers voting in such an election. In the period after the Civil War many Texas cities and towns spent large amounts of money and went heavily in debt. Tax rates also increased sharply. The 1876 Constitution restricted the permissible rates and purposes of local as well as state taxes. Amendment 8 would require all incorporated cities, towns, and villages to levy such ad valorem taxes as are necessary to pay the principal and interest on general obligations they issue. The Legislature is empowered to limit the total principal amount of general obligations which may be issued.

Clayton Claims Lead In Speaker's Race

Representative Bill Clayton today announced he is now assured that recent pledges of support have clearly placed him in the lead of the hotly contested race for Speaker of the Texas House of Representatives for the 1975 session. Clayton, who let it be known that his vote total is now approaching the 50 mark, remarked that he is pleased by the broad base of support he is attracting. He noted that several of the more liberal legislators have become recent supporters of his candidacy and various citizen groups across the state have begun to show a strong interest in the race. Clayton pointed out that local citizen interest is a new ingredient which has not before played much of a part in the selection of the presiding officer of the House. Clayton stated that he encourages citizen participation and feels all Texans should express their enthusiasm for a given candidate to their own representative who may not have committed to anyone for Speaker.

Rep. Clayton, who was in Austin this week on his way to attend the Houston Governor's Conference on Intergovernmental Affairs, stated that, "My supporters and I are elated and more confident than ever because of our position at this point in the race. The candidacies of my declared opponents and of my rumored opponents have either lost ground or failed to garner much support or enthusiasm at all. While I realize that the race should be very interesting for the next several months, I now have a clear lead and expect it to merge into a decisive majority well before the 64th session starts." Rep. Clayton has been campaigning across the state, meeting with various representatives and citizen groups since the end of the last session, and expects to continue to do so. FARMERS RECEIVED only 4¢ of every dollar Americans spent of farm-produced foods at the store in 1972.

Grain Sorghum Producers Elect Directors

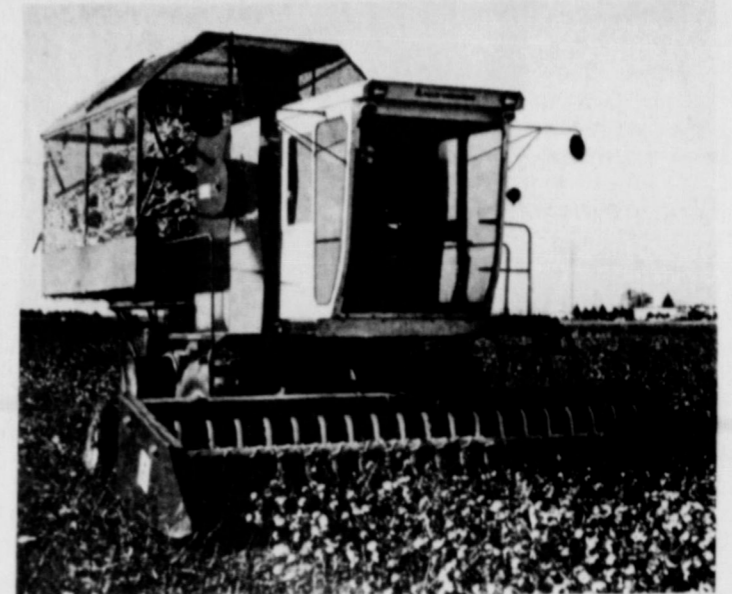
Farmers in 29 Texas High Plains counties reelected three directors and elected one new director to the Texas Grain Sorghum Producers Board to serve six-year terms. Texas Agriculture Commissioner John C. White certified the election results in which 791 votes were cast. The results were canvassed September 19 by the Lubbock County judge and representatives of the Texas Department of Agriculture, the Texas Agricultural Extension Service and the Texas Grain Sorghum Producers Board as required under the Texas Commodity Referendum Law. Don A. Nelson of Tulla was elected to his first term on the 12-member board; A.W. (Dub) Anthony of Friona; John Gilbreath of Hart; and E.C. Whitten of Edmonson were re-elected. There were seven candidates for the four places. The board administers a fund contributed by grain sorghum growers for education and research, insect and disease control and promotion of grain sorghum products. There are six agriculture

PARTY LINE

Mr. and Mrs. Ricky Williams from Albuquerque, New Mexico visited their grandmother, Mrs. Agnes Williams.

... The U.S. cocoa bean grind for the second quarter of 1973 amounted to 161.8 million pounds, down 5.8 percent from the first quarter figure of 171.7 million pounds.

NEW ALLIS-CHALMERS 860 XTB COTTON HARVESTER



WE JUST HAVE A FEW LEFT

LARGE BASKET 4-ROW NEW ROOMY CABS-MORE COMFORT

MULESHOE IMPLEMENT & SUPPLY
MULESHOE - PHONE 272-3308

AUTHORIZED DEALER FOR **SINGER**
SANDERS SEWING MACHINE CENTER
REPAIR ON ALL MAKES MACHINES & VACUUMS
RENT A SEWING MACHINE BY THE WEEK
Scissor Sharpening
226 MAIN ST. HEREFORD, TEXAS 79045

Limited Time... Limited Quantities
ONEIDA Hairloom STAINLESS PLACE SETTING Sale
You save \$5.00 on each 5-Pc. Place Setting you purchase.
5-PIECE PLACE SETTING \$11. (Reg. \$16.00)
Said Fork, Place Fork, Place Knife, Place Spoon, Teaspoon.
ONEIDA
Plainview Hardware Co.
"SINCE 1912"
500 ASH STREET Plainview 296-2123

"YOU OWN A BUSINESS... BE ITS BEST CUSTOMER"

REALIZE MORE PROFIT FROM YOUR SOYBEANS and CASTOR BEANS BRING THEM TO US FOR HIGHEST MARKET PRICE

FARMERS COOPERATIVE ASSOCIATION of SPRINGLAKE

YOU GOTTA LOVE THE GUY

RIERSON

No. _____

DON RIERSON PONTIAC CADILLAC TOYOTA 3110 OLTON ROAD PHONE 296-2788 PLAINVIEW

SUNNYSIDE NEWS

By TONY BOWDEN



her mother at the hospital, Mrs. Waggoner visited Mrs. Lilley again Saturday and Mrs. Wauline Lilley came home with her and stayed until Monday.

Dr. and Mrs. Myles Sadler and Gregory of Lubbock spent Saturday and Sunday with Mr. and Mrs. E. R. Sadler and also visited with Mr. and Mrs. Gale Sadler, Cindy and Susan, Drizzle on Sunday, Monday and Tuesday added .15 inch of moisture to the record. Corn harvest was resumed again the last part of the week. .30 inch of rain was recorded for Sunday night.

Mr. and Mrs. Phillip Jones, Renee and Lonnie Wilson were dinner guests Sunday of Mr. and Mrs. Charlie Jones in Olton. Renee Jones was home from South Plains College for the week-end.

Several from the community attended the Springlake-Earth Dimmitt game this week. Steve Morgan was back on crutches after a pulled legiment in his foot.

Kenneth Smith and Joe Fuller and Baldomero Sausada are on the "B" team which won over Dimmitt Thursday night. Kenneth made one of the touch-downs.

Clint Dawson and Tommy Graham are managers for the Springlake - Earth 8th grade team which lost to Dimmitt Tuesday night. This was their first game.

Lynn Brown, Mark Bridge and Pat Fuller play on the Springlake - Earth 7th grade team which lost to Dimmitt Tuesday afternoon and it was their first game.

Debbie Waggoner visited her parents, Mr. and Mrs. Bill Morgan Sunday on her way to Lubbock. She moved to Lubbock this week to take a nursing job at the orthopedic hospital there.

Mr. and Mrs. Virgil Lilley, cousin of Eldon Lilley, received word last Saturday morning that his brother, Kenneth Lilley had died Friday night. They are custom cutting in the community at the time.

They, Eldon Lilley and Lynn West of Dimmitt attended the funeral services in Lampasas last Sunday.

Mrs. Eldon Lilley prepared a birthday dinner last Sunday for Mrs. Tommy Bischoff. She and the children of Canyon and Mrs. Lynn West and children of Dimmitt spent the day together.

Mr. and Mrs. Weldon Bradley visited with and had supper with Mr. and Mrs. Eldon Hestand in Roswell Tuesday night.

Larry Starnes spoke to the Dimmitt Young Farmer Organization Thursday. He and his family attended a social in Dimmitt Saturday night sponsored by the Young Farmers.

Mr. and Mrs. Larry Starnes and girls visited in Amarillo last Sunday and attended the church services with Mr. and Mrs. Herman Wilson of Amarillo.

Mr. and Mrs. Estil Robbett of Klondike spent last week end with Mr. and Mrs. R.V. Bills. They all attended the Delta County reunion in Lubbock last Sunday.

Mrs. Larry Sadler and girls

and Mrs. Tex Conard of Dimmitt spent Saturday and Saturday night in Amarillo with Larry Sadler who came down from ensilage cutting in Spearman to visit with them.

Mrs. Marian Miller, Aaron and Anita of California arrived Saturday night on their way to Milwaukee where she and her husband and several other couples from California will establish a church. Rev. Miller and Mrs. Tex Conard are brother and sister. They were at the Larry Sadler home when they returned home from Amarillo Sunday and stayed with them through Sunday.

Mr. and Mrs. Weldon Bradley, Mr. and Mrs. Ezell Sadler, Mr. and Mrs. R. J. Lefevere, Mr. and Mrs. Lee Bradley and

children and Carl Bradley and boys had a picnic lunch at the park in Clovis with Mrs. Vernon Scott and boys of Farwell, Mr. and Mrs. Dale Widner and Jason of Friona and Mr. and Mrs. Cleo Widner of Melrose.

Lee and Lynn Brown spent Saturday, Saturday night and Sunday at Green Belt Lake with their uncle and aunt, Mr. and Mrs. Jim Bob Swinney of Lubbock who have a cabin there. Mr. and Mrs. Cliff Brown attended a P.A.G. meeting in Amarillo Saturday night and joined the family at Green Belt Lake Sunday for the day.

Mr. and Mrs. Howard Bridges of Weatherford visited Thursday and Thursday night with

CONTINUED ON PAGE 10

Quint Waggoner was dismissed from Methodist Hospital in Lubbock Thursday and is doing satisfactorily.

Mrs. Thomas Parson attended a meeting of Llanos Altos Associational officers in Leveland Tuesday where they were trained in the coming years work by state officers.

Mrs. E. R. Sadler and Mrs. L. B. Bowden worked with auxiliary duties at Plains Memorial Hospital in Dimmitt Monday afternoon. They also had ECG's on the new Telemed Computer recently installed at the hospital. Within a few minutes a printed analysis and interpretation was received from Schiller Park, Illinois.

The R.A.s were re-organized Wednesday night with Cliff Brown, director. He will be assisted by Bill Morgan.

Howard Cummings was admitted to the Littlefield Hospital last Sunday and was dismissed Tuesday.

Mrs. Lloyd Blanton visited in Amarillo last Sunday with Mrs. F. M. Sweeney and Bill.

Mr. and Mrs. M.H. Fowlkes of Lubbock visited Thursday and spent Thursday night with Mr. and Mrs. E. R. Sadler.

Computer Center. This electrocardiogram service allows the doctor to concentrate his attention on further clinical diagnosis. It is very unusual for a small hospital to offer this computer ECG service.

The Baptist Men of Southside Baptist Church in Lubbock put on the program for the local Baptist Men Tuesday night at family night. Sandwiches and home made ice cream were served after the program. This is the church pastored by Rev. M. D. Durham.

The W.M.U. executive committee met at the church Monday night for a planning meeting with the director for next year, Mrs. Thomas Parson.

Mrs. E. R. Little went to Lubbock Monday and spent the week with her father, A. E. Davies.

Mr. and Mrs. Thomas Parson visited in Clovis Friday night through Sunday with his brother, Mr. and Mrs. Joe Parson.

Mr. and Mrs. Hershel Wilson and Daneen were in Rotan over the week-end in a Lay Witness Mission.

Mrs. J. Paul Waggoner was in Plainview Wednesday with Mrs. Roy Lilley who underwent major surgery Wednesday in Nichols Memorial Hospital. She kept Jason Wilke Thursday while his mother stayed with

Mr. and Mrs. Vernon Orr vacationed in Colorado and norther New Mexico for two weeks returning home Wednesday. They toured the Durango, Silverton, Ouray, and Red River area reporting the color very pretty. They also saw some snow. Lisa came home from Wayland for the weekend.

The Baptist Women met Wednesday night for a Prayer Retreat. Mrs. Hershel Wilson was in charge of the retreat. The week of prayer program for state missions was observed by the Baptist Women Thursday morning.

Mr. and Mrs. Elezio Reyes (Sausada) and family were honored with a house warming Thursday night. Mr. Reyes has worked for Hershel Wilson several years and has built a home in Sunnyside.

Mr. and Mrs. Thomas Parson visited in Clovis Friday night through Sunday with his brother, Mr. and Mrs. Joe Parson.

Mr. and Mrs. Hershel Wilson and Daneen were in Rotan over the week-end in a Lay Witness Mission.

Mrs. J. Paul Waggoner was in Plainview Wednesday with Mrs. Roy Lilley who underwent major surgery Wednesday in Nichols Memorial Hospital. She kept Jason Wilke Thursday while his mother stayed with

COW POKES By Ace Reid

"Now, it ain't the rollin'. It's puttin' in them filters that throws me."

"COW POKES" BROUGHT BY:
CITIZEN STATE BANK
MEMBER F. D. I. C.
EARTH, TEXAS

Doug Goen is Gifford-Hill in this area.

He's highly qualified to help you with any irrigation problems you may have and he's got the very best equipment available to do it with.

Gifford-Hill's 360, Gifford-Hill's Side Wheel Roll, Gifford-Hill's Water Gun, Vanguard PVC Plastic Pipe and Clad Aluminum Pipe. Plus a long list of accessories.

If you haven't already met our irrigation expert, drop by soon and get acquainted.

And while you're there, let him show you the latest additions to Gifford-Hill's line of irrigation equipment.

Gifford Hill & Company, Inc.
P.O. Box 633, Olton, Tx 79064
(806) 285-2050

SALE ENDS SEPT. 29

S-K TOOLS

CHICAGO, ILLINOIS 60632

DEEP IMPACT SOCKET SET No. 4018 - 1/2" DRIVE

Eight Deep Impact 6 Pt. Sockets, 1/2" to 3/4"

No. 4018 \$18.15

S-K Air Impact Wrenches 1/2" Square Drive Model 735

New 1/2" impact wrench tackles such automotive jobs as: wheel lugs, cylinder heads, doors, fenders, main bearings, clutches, transmissions, oil pans, radiators, differential nuts, many others. Designed to meet needs of professionals, with many popular features. Protective front and back bumpers. Streamlined styling for better looks, better balance. Built-in power regulator as in higher priced tools. Contoured trigger for operating comfort. Rugged one-piece impact hammer construction. Conveniently located, easy to use reverse mechanism. Easily replaceable air inlet.

Specifications: Drive: 1/2" square. Bolt capacity: 1/2" (12.7 mm.). Weight: 5 1/2 lbs. Length: 6 1/2". Recommended air pressure: 90-120 psi. Air inlet: 1/4". Recommended hose size: 3/8" min.

15% OFF ON THESE AND OTHER

\$99.95

S-K TOOLS DURING

Ery & OX 401 S. FIRST MULESHOE TEXAS 79347 PH. 272-4511

BIG TOOL SALE

Take advantage of the Sale to get ready for harvest.

SELL IT FAST! BUY IT RIGHT! USE WANT ADS!

CLASSIFIED

REPOSSESSED KIRBY classic vacuum cleaner with shag rake, all attachments, floor polisher. Less than 2 months old. Full factory warranty. \$35.00 down or trade-in. Kirby Co., 510 W. Etter, Phone 647-4465, Dimmitt, 9-27-ltc

FRIDAY AND SATURDAY
1 BLK. SO. AND 1 1/2 BLK. WEST OF CAUTION LIGHT
ALL SIZE OF CLOTHING
DISHES-TAPE PLAYER-CAR COATS
MANY MORE ITEMS.

FOR SALE:
Mobile Homes, All sizes and decors,
Muleshoe Mobile Home Sales, Inc.,
Hours 9 a.m. to 6 p.m.
Closed Sundays.
1807 W. Am. Blvd.
Muleshoe, Tx. Pho. 806-272-3574.

FOR SALE: New and used instruments, new and used piano and organs. Everything musical - Phillips House of Music 118 Main Street, Clovis, New Mexico-Phone 769-5041. 8/23/t.f.c.

FOR SALE: Living room suite Call 257-3967 after 6 p.m.

FOR SALE: -Sewing Machine. We are franchise dealers for Singer, Necchi, Neclo and Good Housekeeper. We repair any make. Scissors and pinning sheets sharpened. Call 272-3030 in Muleshoe, Texas, Harvey Bass Appliance. 6/1/tfc

GARAGE SALE
1 MILE WEST OF CAUTION LIGHT
USED CLOTHING-USED FURNITURE
MISCELLANEOUS ITEMS
Sept. 29-Saturday-9 to 6
Sept. 30-Sunday-1 to 6

FEEDERS GRAIN, INC. DAILY BUYERS FOR CATTLE FEEDERS
Federal Storage License 3-4451
We Can Use Your Grain
SUDAN LIVESTOCK and FEEDING CO.
Ph. 227-5321-Sudan

TRUCK SEATS EXCHANGE
15 Minute Service
MCCORMICK'S Upholstery
CHARLES POWELL OWNER
PHONE 385-4555 LITTLEFIELD

PAY CASH & SAVE

ROOFING SHINGLES
240 Self-Sealing, 3 Tab
18 Year Bonded
\$10.90 PER SQUARE
YOU HAUL AND SAVE

FLOOR TILE
12"x12" VA **\$8.10 PER 45' BOX**

PLYWOOD
4 X 8 1/2" CD
EXTERIOR GLUE **\$6.65 PER SHEET**

Farm Discount Lumber & Supply
PHONE 364-8882
DUMMITT HIGHWAY
U.S. 386 SOUTH HEREFORD, TEXAS

JAMES GLAZE INSURANCE CO.
Muleshoe, 218 S. 1st
*Auto Insurance *Crop Hail
*Farm and Ranch *Homeowners
Phone 272-3549

FLOATING TAILWATER PIT PUMPS

No Seals • No Bearings • Open Impeller
"Pumps the largest amount of water for the smallest amount of money!"
Pumps from 300 to 1000 gallons per minute

OWENS ELECTRIC
809 E. 2nd-Hereford, Texas-Pho. 364-3572

DEAD STOCK REMOVAL

7-DAYS A WEEK SERVICE

Please Call As Soon As Possible

MULESHOE BI-PRODUCTS

Phone 965-2429 LAZBUDDIE

JOB PRINTING

EARTH NEWS

To Rest Assured use SAFETY DEPOSIT BOX Protection

FIRST STATE BANK
Dimmitt, Texas

LAMMONS FUNERAL HOME
Ambulance Service
Phone 385-5121
LITTLEFIELD TEXAS

COMMERCIAL PRINTING

Winnboro Blue Granite
White Georgie Marble
and others, including
Bronze for Memorial Park
Specifications.
See or Call Collect
Percy Parson, Olton
Phone 285-2621 or Frank Ellis
Muleshoe, Phone 272-4574
EARTH NEWS-SUN

CONTINUED FROM
PAGE 9
SUNNYSIDE NEWS

Mr. and Mrs. E.R. Sadler and Mr. and Mrs. M. H. Fowlkes of Lubbock. They have bought the M. A. Pennington house in Dimmitt and will be moving to Dimmitt in the near future. Mr. and Mrs. Jack Wolf of Vega visited Sunday afternoon with Mr. and Mrs. E.R. Sadler and family. Mr. and Mrs. Eldon Lilley attended the fair in Lubbock Sunday afternoon.

Vietnam Veterans Urged To Keep Eye On Calendar

Recently returned Vietnam Era veterans are advised to "keep an eye on the calendar" to avoid overlooking important federal and state obligations and benefits, according to Jack Coker, VA Regional Office Director. Coker suggested veterans follow this recommended schedule:

...As soon as possible, register with local state employment service office. (Veterans have up to one year to apply for unemployment compensation, but applications filed after a long period of unemployment could result in a lower rate of unemployment compensation).
...In 10 days, report address to Selective Service through local board (in person or by mail).

...In 30 days, register with Selective Service or any local board, if not already registered.
...In 90 days, apply to former employer for re-employment.

...In 120 days, (one year if totally disabled at time of separation) (convert Servicemen's Group Life Insurance (without examination) to private, commercial policy).

...Within one year from date of notice of VA rating on disability, apply to any VA office for G.I. life insurance based on service-connected disability.

...Within one year, apply to any VA office for dental care.
...As soon as possible, apply to any VA office for G.I. education or training, which must be completed within eight years of separation from military service.

VA notes there are no time limits for veterans to:
...Apply to any VA office for a G.I. loan guaranty to buy a farm, or buy, build or improve a home.

...File claims with any VA office for compensation for service-connected disabilities or disease, or apply for hospital care.

...Seek assistance from local offices of state employment service in finding employment or entering Labor Department job training programs.

VA added that its 72 Veterans Assistance Centers around the country are ready to help veterans get a fresh start in civilian life.

...53 percent of American families with \$25,000-plus income live in suburbs, while 31 percent live in central cities.

English Educators To Meet Saturday

English educators at the high school and college and university levels will meet Sept. 29 at Texas Tech University for a one-day series of discussions of competency based education programs.

The educators, members of the Texas Joint English Committee for School and College (TJEC), represent District XV11 of the TJEC and will come from 17 counties in the South Plains area.

"The Texas Joint English Committee acts as a liaison organization between teachers of English in high schools and colleges and universities," said Dr. Leon Higdon, assistant professor of English at Texas Tech and chairman of the meeting.

Through the TJEC, Teachers of English attempt to achieve continuity between programs at their various levels to improve the quality and content of educational programs.

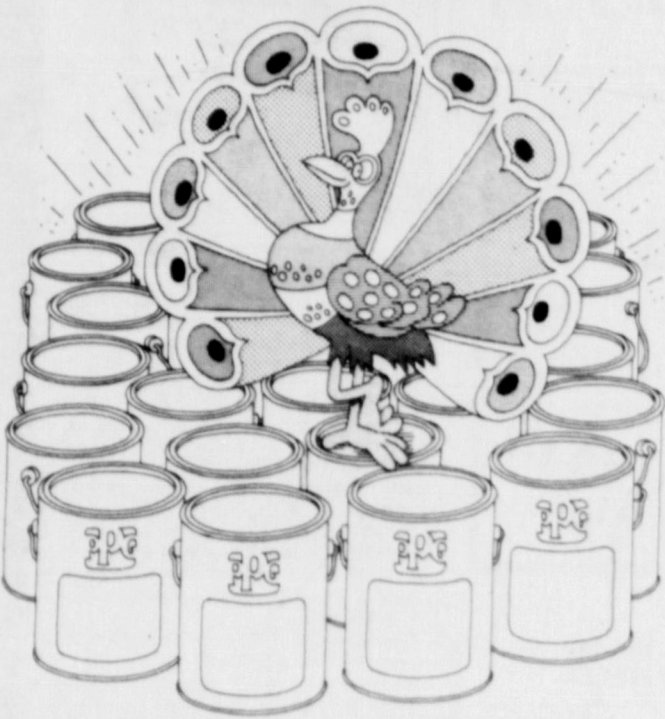
Program topics for the meeting include "Update--Communicate," a discussion by Mrs. Kathleen Weiss, head of the English Department, Brownfield High School; "English

for the Future," by Miss Eleanor Dudgeon, O'Donnell High School; "The Coordinated Vocational Academic Adjustment Program, Today's Answer for Tomorrow's Drop-outs," by Mrs. Ellen Harris, Coronado High School; "Competency Based Education: Descriptions and Implications," by Dr. Elmer Ellis, professor of education, Texas Tech; and "Coping with Tomorrow Today," by Neil Duncan, co-chairman, TJEC, Texas Wesleyan College.

The TJEC District meeting will begin at 8:30 a.m. in the University Center on the Texas Tech Campus and will continue through noon. A 12:30 p.m. luncheon is scheduled in conjunction with the meeting. The luncheon will be followed by a meeting of the district officers.

...Total value of new construction put in place in June came to \$137.6 billion after seasonal adjustment, up \$0.9 billion from May.

PITTSBURGH PAINTS ANNOUNCES THE 1974 House & Garden COLORS



Thirty five inspired colors to suit every decorative theme. Come in and see the gorgeous "heavenly blues," the striking beach plum, the vibrant orange peel. Beautiful paint that's beautifully priced.

AS LOW AS
\$9.35 GAL
CUSTOM-MIXED

H. S. SANDERS LUMBER
EARTH

Charity Ends In The Lab.

The parable of the Good Samaritan was put to the test recently by two Princeton University psychologists studying bystander behavior in emergencies.

In the experiment, conducted by Drs. John M. Darley and C. Daniel Batson, 40 unwitting theological students on their way across campus encountered a groaning, coughing "victim" slumped in a doorway.

Sixty per cent of the subjects kept right on walking. Prior to encountering the "victim," subjects in the experiment were asked to prepare a 3-5 minute impromptu talk on a specific topic--some on vocations and others on the parable of the Good Samaritan.

Equipped with a map and instructions to go to another laboratory to tape the speech, subjects were told they were either already late for the session (high-hurry condition), were expected momentarily (intermediate-hurry condition), or that they could take their time (low-hurry condition).

The hurry condition of the subject proved significant to whether he would stop to help the victim. Of the 16 students (40 per cent) who did stop:

- 63 per cent were low-hurry subjects
- 45 per cent were intermediate-hurry subjects
- 10 per cent were high-hurry subjects

"A person not in a hurry may stop and offer help to a person in distress," concluded Darley and Batson. "A person in a hurry is likely to keep going. Ironically, he is likely to keep going even if he is hurrying to speak on the parable of the Good Samaritan, thus inadvertently confirming the point of the parable."

To Darley and Batson the parable suggests several approaches to the helping-behavior question.

One interpretation of the parable, according to the psychologists, is that religiosity of the sanctimonious kind can be a positive impediment to helping. But more importantly, the hurry of the parable's priest and the Levite is related to their status as important men. The lowly Samaritan on the other hand, with little responsibility and time on his hands could afford to stop and assist the distressed victim.

The researchers theorize that some of the subjects in their study may have been in too much of a hurry to realize the full import of the situation. For others, however, the emergency appears to have posed a conflict between helping the victim or getting to the experimenter who was depending on the student to get to the laboratory quickly. Consequently, they arrived at the laboratory "aroused and anxious," and "conflict, rather than callousness, can explain their failure to stop," say the researchers.

Darley and Batson's study if published in the July issue of the Journal of Personality and Social Psychology.

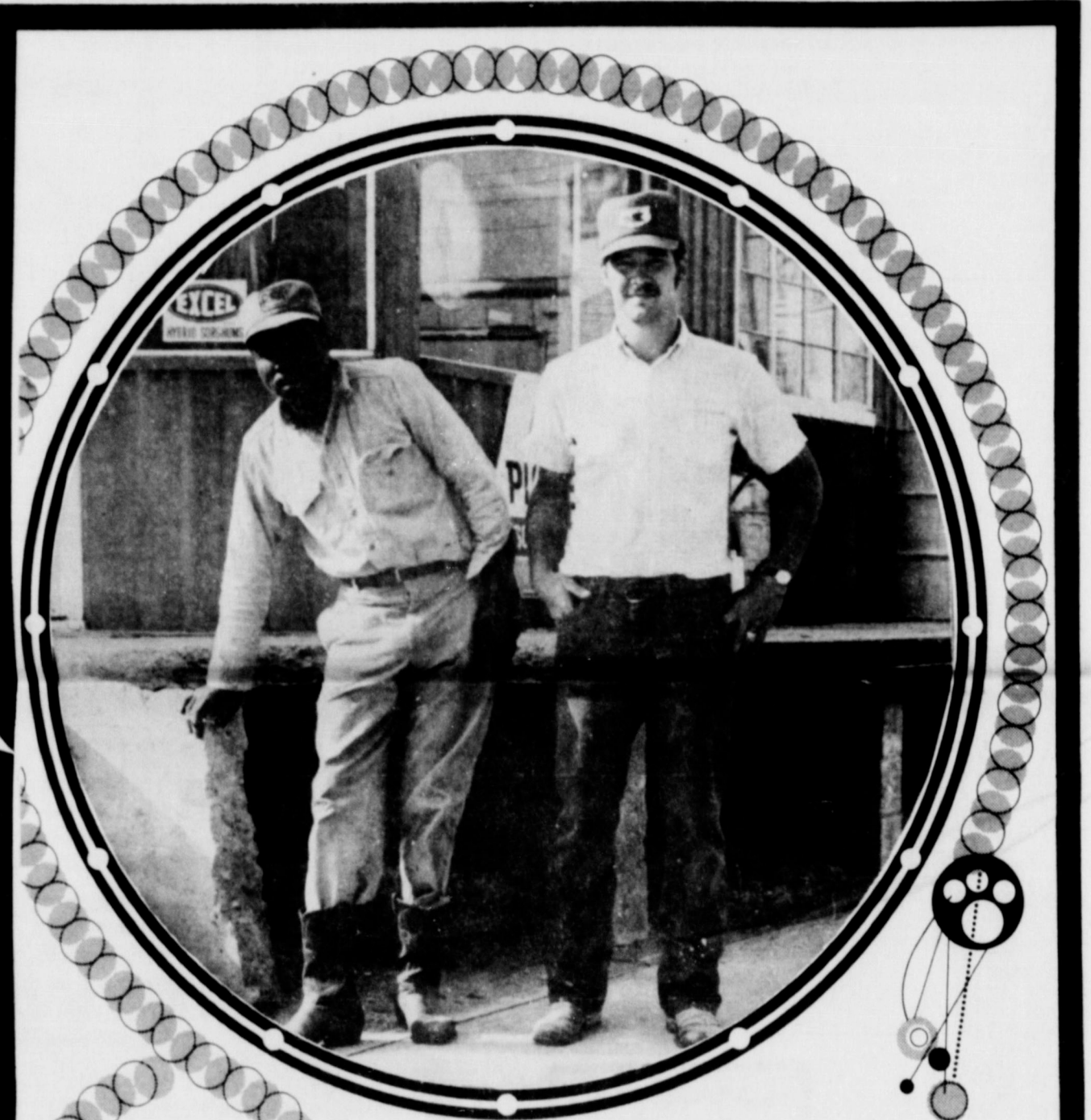
Party Line

Lee Williams and his son, Randy, visited in Earth Monday

and Tuesday with their mother and grandmother, Mrs. Agnes Williams. Randy will be stationed in the Panama for the next four years in the armed services, so he had to come visit his grandmother before leaving.

LOOK FOR THE BIG FORMAL OPENING OF BARRY & YOUNG EQUIPMENT

Dealers For
Tye- Dempster-
Heston-Case- Krause
MULESHOE



RICKY BYERS
Manager
and
J. B. FLUELLEN

WE ARE READY and WANT YOUR

MILO-CORN and SOYBEANS

BONDED GRAIN STORAGE HIGHEST MARKET PRICES

WE WOULD ALSO LIKE TO HELP YOU PLAN YOUR FALL PLOWDOWN PROGRAM

WE HANDLE DRY and LIQUID FERTILIZER- AMMONIA CHEMICALS and SEED

Sunnyside Grain & Supply

PHONE 846-2281

now celebrating our **55th** year of fashion!

Now Thru October 13
FEATURING EACH DAY A
"Special Purchase"

ON SELECTED ITEMS

100% POLYESTER DOUBLEKNIT
PANTS \$9.99
REG. 15.00

FALL
Pant Suits
REG. \$28.00

\$19.90



SPECIAL

**Pajamas-
Robe Set**

REG. \$13.00

\$7.88

bentley's

PLAINVIEW 633 BROADWAY