

★★★★★★★★★★★★★★★★★★★★
NOSIN... With Polly
 ★★★★★★★★★★★★★★★★★★★★★★

In this issue of the News-Sun you will find a summary of the nine constitutional amendments that Texas voters will vote on in a special election in the November 6 election.

As a result of an amendment passed last year, a summary of the entire 9 amendments are carried in each paper in the county. Here-to-fore the amendments were published in their entirety in each county. However, Lamb County, having five papers in the county, each paper would publish only one or two of the amendments, therefore, unless an individual purchased all five papers they could not get the full context of each of the amendments. Please read this summary over and provide yourself with the facts of each of the amendments. Briefly, the nine amendments contain the following provisions:

Amendment 1 provides for annual regular sessions of the Legislature and for an annual salary for legislators of \$15,000 and a daily allowance of \$18 when the Legislature is in session.

Amendment 2 would permit single adults, who otherwise qualify, to claim homestead protection of their property.

Amendment 3 would extend the \$3,000 ad valorem tax exemption to the homesteads of unmarried adults.

Amendment 4 provides that cities and counties be given

notice of and approval or disapproval of the creation of conservation and reclamation districts within or partially within their boundaries.

Amendment 5 would allow cities and counties bordering on the Gulf of Mexico to levy taxes for building sea walls and breakwaters if such projects are approved by a majority of the resident taxpayers.

Amendment 6 grants district courts the general jurisdiction of a probate court and authorizes the Legislature to adjust the jurisdiction of the courts in probate matters.

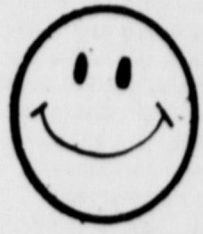
Amendment 7 provides authorization for the Veterans Land Board to extend its lending authority by \$100 million.

Amendment 8 authorizes and requires cities and towns to levy ad valorem taxes sufficient to pay the principal and interest on their general obligations.

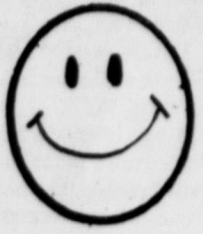
Amendment 9 allows the Legislature to exempt certain water supply corporations and cooperatives from the property tax on certain facilities.

It may seem strange to you as it does to me that we are voting on nine amendments to the constitution while we have a committee hard at work trying to come up with a new constitution. This committee is supposed to submit its efforts to the public in November and the State Legislature will meet in January at a Constitutional Convention.

The NEWSpaper Dedicated to the Development of the World's Richest Irrigation Area.



The Earth News-Sun



"A CONSOLIDATION OF THE EARTH NEWS AND EARTH SUN, OCTOBER 12, 1956"

VOLUME 20 10 CENTS EARTH, LAMB COUNTY, TEXAS, THURSDAY, SEPTEMBER 20, 1973 10 PAGES NUMBER 6

Scott Lee Winner Of First Contest



ELMER HALL, JR.

Scott Lee was winner of the first week's football contest with nine games correct. Four persons had nine games with the tie breaker score making the difference in the winners.

Second place was taken by Marianne Messer and Derek Edwards placing third.

Others in the contest and their scores were:

90---Vicki Freeman; 80--- Guy Kelley, Larry Price, Mary Fulfer, Jerry Been, Wendy Branscum, Edwin Fulfer, Kevin Riley and Doug Jones; 70--- Royce Jordan, James Thomas, Kenny O'Hair, Jimmy Randolph, Brad Freeman, Allen Moore, Marvin Been, Jr., Chuck Dunnam, Faye Kelley, Carlos Triana, Ronnie Hucks, Randy Kelley, Lance Phelps, Jerry Barden, Robert Conner and Mrs. Ray Joe Riley; 60---Rodney Geissler, Debbie Green, Dickie Brown, Andy Ellis, William P. Holland, Jr., Kirk O'Hair, Kevin Kelley, Charles Winder, Eric Freeman, Nicho Triano, Glenn Branscum, Lane Louder and Jodie Riley; 50--- Guy F. Kelley, Larry Dear, Randy Bills, Lonnie Neinst, Dawn Branscum and Glenn Bills; 40---Ronnie Thomas.

Don't forget there is plenty of time for you to get in the contest and be a winner.



GOOD FRIENDS, GOOD FOOD, GOOD ENTERTAINMENT was the enthusiastic report of the Lion sponsored teachers reception Thursday night. Everyone attending enjoyed "The Revelations" and their religious singing program.

221 Attend Teacher Reception

The Earth and Springlake Lions Clubs entertained the Springlake-Earth teachers and guests at a dinner reception in the school cafeteria Thursday evening.

Bob Belew, president of the Earth Lions Club, acted as the master of ceremonies.

The meeting was opened with the entire group singing one verse of "America" and giving the pledge to the flag.

Lon David Hartman, pastor of the First Baptist Church in Earth, gave the invocation.

The luncheon staff prepared

the dinner of fried chicken, baked potato, green beans, salad, hot rolls, plum butter, tea and coffee.

Members of the Springlake-Earth junior high school honor society served as waiters and waitresses.

Dinner music was played by Mrs. Faye Washington on her organ.

After the dinner Bob Belew welcomed the guests followed by school superintendent Bill Mann giving the response.

Lion Norman Hinchliffe in-

troduced the Earth Lions Club members who then introduced their guests.

The Springlake Lions were introduced by Jimmy Banks, president of the Club. The members introduced their guests also.

Special guests were introduced by Lion Doug Parish.

The Revelations of Amarillo were introduced as the program by Lion Bill Scott.

To conclude the program, Lion Quentin Dunn, minister of the Earth Church of Christ, gave the benediction.

Ex-Students Making Plans For 1973 Homecoming

Members of the Springlake-Earth Ex-Students Association met Thursday, September 18 in the high school library to make plans for the 1973 Homecoming scheduled for Friday, November 9.

Classes of 1933 - 43 - 53 - 63 and 73 will be honored after the Wolverine-Bovina game. Refreshments will be served, door prizes given and entertainment will also be provided in the cafeteria following the game.

A Mexican food supper will be served beginning at 5:30 p.m. in the school cafeteria. Prices for the supper was set at \$1.75 adults and students under 12 \$1.00. Advance tickets will be sold by ex-student officers.

Another meeting was held Tuesday, September 18 at the City Hall to make final plans for the activities. Ward Cooksey, high school principal, was also present at the meetings to give the group help in making

the plans. Officers and committee chairmen for the ex-students present at the meetings were, Darrell Sawyer, president; Carolyn Curtis, secretary; Betty McAlpine, treasurer; Naomi Wood,

honor class chairman; Dianne Carpenter, membership chairman; Gary Bulls, finance chairman; Ann Kelley, program chairman; Danny Byers, publicity chairman and Earl Jordan,

Elmer Hall, Jr. Appointed Deputy at Earth

Elmer Hall, Jr. of Olton has been appointed county deputy for Earth.

Hall and his wife, Theima, moved to Earth last week and is replacing Wayne Cooper.

Prior to being appointed deputy sheriff, Hall served as a city patrolman at Olton.

Cooper was moved to Littlefield recently to replace Jerry Collins who resigned from the sheriff's office.

Girl Scout Fund Drive Planned

The Annual Girl Scout fund drive for the Earth and Springlake Girl Scouts will be kicked off with a coffee Friday, October 12 from 10 a.m. until 12 noon in the meeting room at Citizens State Bank in Earth.

The campaign will continue through October 20. The goal for Springlake-Earth is \$575.

During the drive, volunteers will be making door to door solicitations.

Anyone wishing to help out with the drive or to make contributions, are urged to contact Mrs. Doug Parish in Earth or Mrs. James E. Jones in Springlake.

Mrs. Phil Neinst of Springlake assisted by Mollie Gonzales, is leader for the junior Girl Scouts, who are fourth and fifth graders.

Adult leaders for the second graders Brownie Troop are Mrs. Don Sanderson and Mrs. Richard Green. Adult leaders for the third graders troop are Mrs. Doug Parish and Mrs. Troy Layman.

If you can't attend the coffee and wish to help, call Mrs. James Edwin Jones (Gayle) and she will give you the necessary papers needed for making the fund drive.

It was announced by those conducting the drive that it was not necessary to have a girl in Scouting to participate in the program.

City Council Meets In Called Meetings September 11 and 14

Wilton McDonald, manager of the local Pioneer Natural Gas Company office met with Earth city officials, Tuesday, September 11 in a called meeting. The purpose of the meeting was to get a decision on the proposed cost adjustment change for natural gas.

Mayor Larry Tunnell reported on the West Texaco Utilities Commission meeting held in Lubbock September 6. He said that the decision of that commission was to appoint a four man committee to seek additional information. They were to then report their findings to the cities represented.

The city council voted to wait for this report before making a final decision on the rate adjustment change.

Other business conducted at

this meeting was the completion of the "use report" on Revenue Sharing funds for the period from July 1, 1973 through June 31, 1974.

Approved for use was \$2000 for public safety, 100% maintenance; \$2000, environmental protection, 100% maintenance; \$2000, health, 100% maintenance; \$2100, recreation, 80% maintenance and 20% for new or expanded service and \$4000, transportation, 100% equipment.

Present were Larry Tunnell, mayor; Doug Parish, Calvin Wood, Harvey Hickman and Glenn Bulls, Aldermen; Betty McAlpine, city secretary and Wilton McDonald.

On Friday, September 14, another meeting of the city council was called. The pur-

pose of the meeting was to make the final decision on purchasing a maintainer for the city.

The council voted to purchase the Galeon from Yellow House Machinery for \$3700.

Present for the meeting were mayor pro-tem Doug Parish, aldermen, Donald Runyon, Harvey Hickman, Glenn Bulls and Calvin Wood; Betty McAlpine, city secretary and Johnny Enloe, city water superintendent.

"You can't go around digging up dirt, without finding yourself in a hole."

Pharmacist To Fill Prescriptions In Earth Each Wednesday

Mrs. Sheila Thames of Hereford, a registered pharmacist, was in Earth Wednesday to look over the Earth Clinic and set up a drug center here.

Mrs. Thames will stock the drug counter and will be in Earth every Wednesday from 1 p.m. until 5 o'clock to fill prescriptions here.

Dr. Hinckley of Littlefield has been coming to Earth each Wednesday for the past several months to serve the people here and has built up a weekly

practice here.

Mrs. Thames, who is co-owner with her husband in the Thames Pharmacy in Hereford looks forward to serving the Earth people with their drug needs.

CONSERVE ELECTRICAL POWER use small appliances for small-portion cooking. Portable grills, pressure cooking pans and electric pots use less power than a range--and keep the kitchen cooler.

Weather Slows Harvest

Harvesting of the area's biggest corn crop ever got off to a slow start with only a few loads harvested before the rain last week.

Elevator operators had expected the harvest to be well underway by the end of this week. This can still happen if weather conditions improve.

Wet weather the later part of last week and the first part of this week halted the few combines that had been running. However, it is the consensus of opinions that probably did more good than harm, as it slowed down a few anxious farmers and gave the corn more time to be ready.

With the memory of last year's disastrously wet fall, most farmers have no desire to let the corn dry in the field any longer than they have to. Most of the corn was out before the bad weather hit last year, but the milo crop was heavily damaged.

The weather the past few days is a sad reminder that a wet fall may set in. With this in mind, corn and milo farmers are anxious to get the combines rolling.

A YOUNG CHILD develops good manners when he observes consideration for others being practiced in his own family.



CLIFF JAMES

Cliff and Loretta James Win More Honors

The James' children, Cliff and La Cretia, carried off another bunch of honors at the Tri-State Fair Paint Horse Show in Amarillo, Tuesday.

Cliff placed fourth in gelding class for youths 18 years of age and under, third in the barrel race for all ages, first, barrel race for youths 18 and under, fourth, pole bending, youths

18 and under and third, trail class, youths 18 and under.

La Cretia participating in English pleasure (hunt seat) for all ages, placed fourth; fifth in English pleasure (hunt seat), youths 18 and under, fifth barrel race, all ages; first, pole bending, youths 18 and under and fifth, trail class, youths 18 and under.

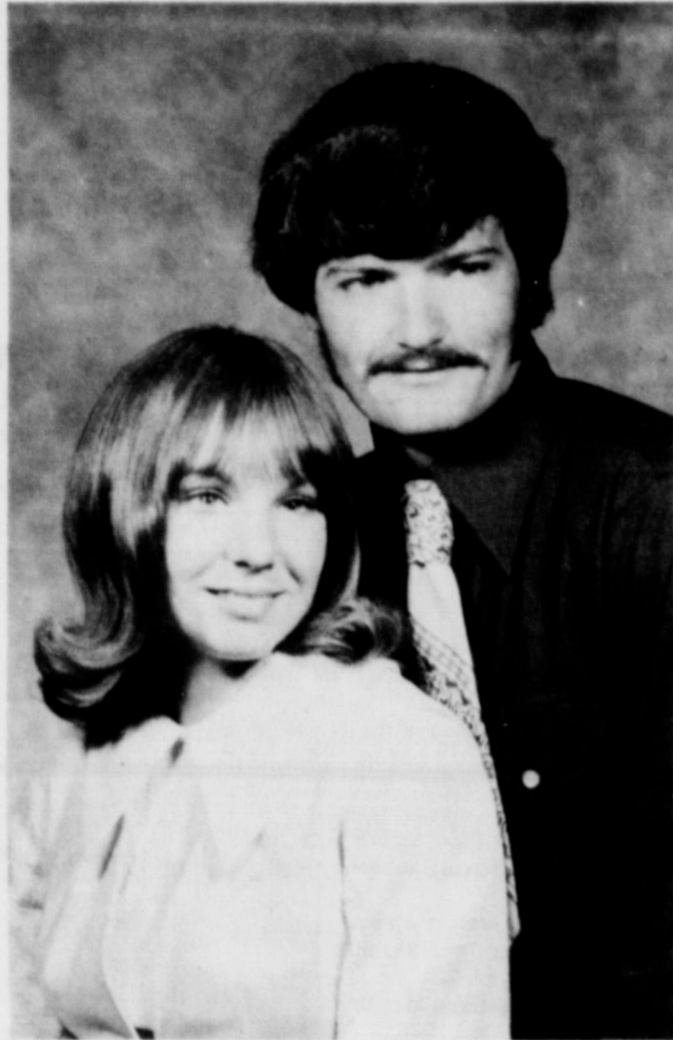


LACRETIA JAMES

XIT Study Club Collecting Coupons

The XIT Study Club met in the home of Mrs. W.B. Hucks Tuesday evening. Mrs. Harlon Watson demonstrated how to decorate a cake for the program. During the business session, members made plans to go to Lubbock Tuesday, September 25 to attend the performance of the U. S. Air Force Band and Choir. Other business voted on by the club was the collection of Betty Crocker coupons. These will be used to obtain a pickup for Girl's Town to be presented

before Christmas. It was announced that anyone having these coupons and wish to donate them to the club for this project may leave them with Mrs. Bud Matlock in Earth or at the Springlake Post Office. The club is also planning a knife sale. Refreshments of cake and coffee were served to members present. Mrs. Bud Matlock, Mrs. Ralph Rudd, Mrs. Ernest Baker, Mrs. Jim Winder, new member, Mrs. Bill Verden and Mrs. W.B. Hucks, hostess,



DEBRA LYNN FLOWERS and MICHAEL MONROE HENDERSON

H.D. Club Meets In Boone Home

The Springlake Home Demonstration Club met Thursday in the home of Mrs. Keith Boone. Mrs. Herman Cooper, vice-president, presided at the meeting. The devotional, "What Is A Mother" and "Life Is A Patchwork Quilt," was presented by Mrs. Keith Boone. Members answered roll call by giving "A costly mistake made by not reading labels." During a short business session Mrs. Orlan Bibby was elected secretary-treasurer to replace Mrs. James Smith. Mrs. James Packard was ap-

pointed to represent the club at the TSDA convention at Waco. Refreshments of strawberry Jello, chicken salad, coffee, soft drinks, pineapple sherbert and lazy daisy cake was served to Mrs. Orlan Bibby, Marvel Caruthers, Mrs. Herman Cooper, Mrs. Ruel Fanning, Mrs. Bruce Higgins, Mrs. T. V. Murrell, Mrs. James Packard and Mrs. Lynn Bowerman. Mrs. Bowerman also received the hostess gift. The next meeting will be Thursday, September 27 at 2 p.m. in the home of Mrs. Herman Cooper.

Baptist Men To Entertain Families

Men of the First Baptist Church in Earth will honor members of their families Wednesday night, September 26. The men will prepare hamburgers, hot dogs and homemade ice cream, cake and

cookies. Hershel Hulcy, the incoming president and Billy Pittman, outgoing president of the Baptist Brotherhood, will co-sponsor the family night in the fellowship hall of the church.

Pre-Natal Education Class Offered

A prenatal education class for expectant parents has been announced by the Marriage and Family Services Division at Central Plains Mental Health Center in Littlefield. Set for Monday evenings from 7:30 p.m. to 9:30 p.m. on October 8, 15, 22 and 29, the class is designed to assist expectant parents in knowing more about pregnancy and childbirth. As well, the class will emphasize normal development of children from birth to age three. Claude Dollins, director of the Marriage and Family Service Division, indicated that both husbands and wives are welcome in the class. However, some wives may choose to attend the class alone. Dollins suggested that a major

section of the program would deal with how expectant parents can strengthen their relationship while providing a healthy family setting for their expected arrival. He also noted that families expecting their first child as well as those who already have children would be welcome for the class. Registration for the class can be made by calling 385-4013. Many local physicians will likely have information about the class. WITH SMALL CHILDREN around guard fans with hardware cloth. This screening provides extra protection but doesn't reduce the fan's effectiveness. THE AMERICAN CONSUMER now buys more fine jewelry as an investment.

Engagement Told

Mr. and Mrs. William H. Flowers of Edwards, Missouri, announce the engagement and approaching marriage of their daughter, Debra Lynn, to Michael Monroe Henderson, son of Mr. and Mrs. Sam

Henderson of Warsaw, Missouri. The couple will exchange vows October 6 in the home of the bride's parents. Debra is the granddaughter of Mr. and Mrs. Guy Kelley of Earth.

Living Plants Lend Warmth To Homes

Living plants often breathe "house life" into home life. They are that "something lacking" in the otherwise well furnished home, according to Patricia A. Bradshaw, housing and home furnishings specialist with the Texas Agricultural Extension Service, Texas A&M University System. "Plants add an immediate sense of intimacy and indi-

viduality to even carefully furnished rooms that lack warmth and personality." In selecting plants, decor factors to consider include placement, size and container style, she said. "Placement of plants can soften sharp lines or fill 'vacancies' in a room. "A floor plant set in a corner will soften the sharp line where two walls meet—if it's large enough and tall enough to do the job. "Perhaps a stand will lift it to a suitable height. "The cocktail table requires a plant kept in scale with the table and other accessories on it, and the plant on a side table just below a picture on the wall shouldn't be so tall it hides the picture. "Placing the plant on a base or pedestal adds to its importance, as well as protecting delicate furniture finishes. "It's a 'no-no' to set a potted plant directly on a piece of furniture. Turning to containers, she cited simple design as the keynote to beauty. "Its container shouldn't compete with the plant for interest. "Avoid ornate or elaborate containers except for a very special effect. "Container material, design and color should harmonize with furnishings background." Miss Bradshaw advised home decorators to consult the florist or nurseryman for proper care of plants, adding, "most green foliage plants need plenty of light. They require proper watering techniques and well-drained soil."

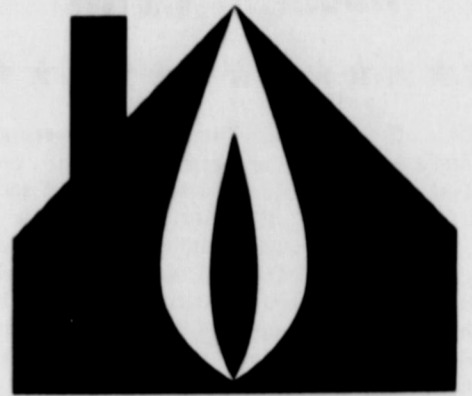
Home Sewing Boom Hits

Home sewing is one of the ten fastest growing industries in the United States, according to Mrs. Becky Culp. "Because of this, the number of fabric outlets has quintupled since 1967," the clothing specialist, Texas Agricultural Extension Service, Texas A&M University System, noted. "Reported sales for sewing machines, patterns, notions and fabrics totaled over \$3 billion in 1972. "Currently there are over 45 million homesewers, and predictions indicate that by 1977, this figure will increase by 25 to 30 percent. "Popularity of sewing stems from several factors—two of which are leisure time utilized for creative purposes and the resulting satisfaction gained by a sense of accomplishment. "Other important factors include high ready-to-wear prices, lack of selection and poor workmanship. "Ease of sewing today's fabrics, abundance of available time savers and sophisticated promotional programs also have greatly boosted sewing popularity," Mrs. Culp said. "Another influence comes from menswear. "From neckties to designer suits, menswear fabrics, patterns and notions are in demand. "Men sew too, the specialist added. "Home economics programs have offered all-male sewing courses for several years, and surveys reveal that many new students take sewing more seriously than women. "However, their interests are more highly associated along career aspirations, as tailors or retailers, than women students. "The average home seamstress doesn't sew for necessity, but to stretch family income. For example, with today's rapid increases for food and housing, home sewing serves to release additional dollars in these areas as well as other held in special values by the

family. With today's wide variety, homesewers easily remain in vogue with the assistance of fashionable pattern designs and fabrics. "As a result, home sewing has reached a level of maturity and sophistication that can challenge and motivate every consumer, no matter where his or her interests and needs may lie," the specialist concluded.

SIX LADIES ATTEND DESIGN SCHOOL IN LUBBOCK, SUNDAY

Six ladies from the area attended the "South Plains Design Time" school in Lubbock Sunday, September 16. The design school was presided over by Lubbock Wholesale Florist and Mabeis Wholesale Florist. Designers were Dulen Beene of Mansfield Flowers and Gift at Ft. Worth, and Jerry Dorsey of Freeman Flowers Inc. of Amarillo. Deane Dille was commentator for the exciting holiday show. Attending from the area were Mildred Howell, Deloris Gover, Renee Barrett, Hope Lovelace, Bertie Lee Brown and Mrs. Upchurch.



natural
energy
HOME

CLEAN ENERGY FOR TODAY AND TOMORROW

A Natural Energy Home uses natural gas for heating, cooling, water heating, cooking and clothes drying to save you money and help conserve our cleanest natural energy resource... natural gas. That's because electricity in West Texas is generated by burning natural gas, and in the process of generating and transmitting electricity to your home, 2/3 of the gas energy is lost. So, by using gas directly in the home for the jobs it can do, you're helping to conserve it and you're getting more energy for your money.



PIONEER NATURAL GAS COMPANY

WE'RE REAL

WE'LL PROVIDE
THE APPAREL
YOU PROVIDE
THE BODY



SWINGERS AT THE

PLACE
AROUND
THE CORNER

3200-B OLTON ROAD
Next Door To Baskin-Robbins
PLAINVIEW

PUT
YOUR
BODY
IN
OUR
CLOTHING

AND
YOU'RE
SURE
TO
WEAR



A HAPPY
PLACE
TO SHOP

Come
Sooner

PLACE
AROUND
THE CORNER

THE BUSY
CORNER

SAY SOMETHING
NICE
ABOUT YOUR
NEIGHBOR
TODAY!

The EARTH NEWS-SUN



Published at Earth, Texas 79031 every Thursday except the first Thursday following Christmas.

Second Class Postage paid at Earth, Texas 79031.

SUBSCRIPTION RATE
Earth and Trade Territory, per year, \$4.00 plus tax
Elsewhere in United States, per year, \$5.50 plus tax

CLASSIFIED RATES
6¢ per word, first insertion, 5¢ per word thereafter, 4¢ minimum.

ADVERTISING RATES GIVEN ON REQUEST

ROSS AND POLLY MIDDLETON, Publishers

GIBSON'S DISCOUNT CENTER

1723 WEST AMERICAN BLVD.
MULESHOE, TEXAS

OPEN 9 til 8
CLOSED SUNDAYS
PRICES EFFECTIVE
Thursday Sept. 20th
Good thru Saturday

KODAK X-15 COLOR OUTFIT Now Only \$17⁸⁸	CLOSE-OUT ALL LAWN CHAIRS \$250 ALL CHAISE LOUNGES \$500	DUPONT GAS BOOSTER 8 fl. oz. Can 39¢
ARTHRTIS PAIN FORMULA BY ANACIN 100 Ct. Bottle \$139	SUDDEN BEAUTY HAIR SPRAY 16 Oz. 66¢	BAGGIES FOOD STORAGE BAGS 75 Ct. 64¢
FAB LAUNDRY DETERGENT GIANT SIZE 65¢	PAL'S CHEWABLE VITAMINS 100 Ct. \$199 With Iron \$229	4-WAY NASAL SPRAY 1/2 Fl. Oz. 59¢
BUFFERIN TABLETS 100 Ct. Bottle 99¢	VEL DISHWASHING LIQUID 32 Oz. 59¢	DOUBLE-KNIT FABRICS 1 To 6 Yd. Lengths Our reg. \$222 \$2.88 yd. Yd.



MISS GENA WISIAN

**Miss Wisian To Be Installed
As Worthy Advisor**

Miss Gena Wisian will be installed as Worthy Advisor of the Earth Chapter of Rainbow For Girls, Saturday, September 22.

The open installation will be conducted in the local lodge hall at 7 p.m. The public is invited to attend.

Low Cholesterol Eggs

The way for diet-conscious consumers to get low cholesterol eggs is to be sure they come from high production commercial flocks.

The research also hints that the low producing barnyard hen may be the layer of high cholesterol eggs.

These findings were aired by Dr. W. F. Krueger of the Texas Agricultural Experiment Station.

Krueger said egg yolk cholesterol was measured from 67 hens in a closed population of White Leghorns. Three eggs per hen were analyzed to arrive at the average cholesterol level for each hen.

Results showed that hens with the highest rate of lay produced eggs with the lowest amounts of cholesterol. Krueger also noted that cholesterol making ability is heritable.

"Hatching eggs need cholesterol. The high cholesterol eggs had the best hatchability. To get one thing, something else usually must be sacrificed. If one selects for low cholesterol, some hatchability is sacrificed," the researcher pointed out.

"If we select for high hatchability, then we miss out goal of low cholesterol eggs for consumers."

**Pat Cleavinger Presents
Program To Town And
Country Study Club**

The Town and Country Study Club met in the home of Mrs. M. E. Kelley, Thursday, September 12 for the first meeting of the new year.

Mrs. Wayne Rutherford, president called the meeting to order and challenged each of the members as the new year begins to consider the "Garden of Resolutions for 1973-73".

In my garden I have planted five rows of PEAS... Preparedness, Promptness, Persistency, Politeness and A Prayer.

Next to these I planted three rows of SQUASH...

Squash Gossip, Squash Criticism, and Squash Indifference. Then I put in five rows of LETTUCE...

Let Us be Faithful, Let Us be Unselfish, Let Us be Loyal, Let Us be Truthful and Let Us Love one another as God Loves us.

Of course no garden is complete without TURNIPS and mine has five rows.

Turn-up for Meetings, Turn-up with a Smile, Turn-up with a New Member, Turn-up with a New Idea and Turn-up with

Determination. Mrs. Gladys Parish, program chairman, introduced Miss Pat Cleavinger, who was winner of the REA award this year as the guest speaker.

Miss Cleavinger gave the high points of her two-weeks stay in Washington, D.C. and showed slides of many places of interest. Her talk was greatly appreciated and enjoyed by all present.

Delicious fresh fruit salad was served from a watermelon bowl by Mrs. Lucille Campbell and punch and coffee was served by Mrs. Ray Kelley.

Also on the serving table were assorted dainty muffins, pickles, olives and celery sticks.

Members present were: Mrs. Sam Cearley, Mrs. Lucille Campbell, Mrs. R.W. Fanning, Mrs. Lena Hite, Mrs. Ray Kelley, Mrs. John Laing, Mrs. Carra Morgan, Mrs. Gladys Parish, Mrs. Marie Ross, Mrs. Wayne Rutherford, Mrs. John Welch, Mrs. H. S. Sanders, the hostess, Mrs. Marshal Kelley and two guests, Mrs. Gladys Anderson and Pat Cleavinger.

Green Oranges Are Ripe

Some oranges turn green when ripe.

"Sound improbable? Well it's true -- Valencia oranges undergo a natural phenomenon called regreening," Mrs. Karen Walker, foods and nutrition specialist with the Texas Agricultural Extension Service, Texas A&M, noted.

"As the fruit ripens on the tree, it turns orange and appears ripe long before it is. But when temperatures rise in the spring, chlorophyll (the green color) returns to the skins.

"The longer these oranges remain on a tree, the sweeter and greener they become. So, when green around the stems, Valencia oranges are sweet, juicy and fully ripe," the specialist said.

These green ripe oranges currently appear in supermarkets since they're in season from February to November.

A calorie-saving nutrition bonus, oranges provide an adult's daily requirement of vitamin C, yet have only 65 calories each.

"Everyone needs vitamin C daily--it holds body cells together," she added.

For a taste treat that's hard to beat, Mrs. Walker suggested combining orange sections with watermelon, cantaloupe and fresh pineapple. Top with a scoop of sherbet for a finishing touch.

WHEN A CHILD tells a lie, parents' natural reaction is to uncover the truth--but uncovering the reason for it is more important.

NOTICE

There will be a come and go bridal shower honoring Miss Jamie Hooten, bride-elect of Randal Blanton, in the Church of Christ fellowship hall, Tuesday, October 2 beginning at 10:30 a.m. Everyone is invited to attend.

NOTICE

There will be a showing of Indian jewelry by Mr. and Mrs. Gayle Sawyer in the home of Mr. and Mrs. Jearl James, 2 miles west of Earth, Saturday, September 22 at 6 p.m. All jewelry is made by Santa Domingo, Zuni, Alamo, Navajo and Tom Tom Apache Indian tribes.


All persons interested in Indian jewelry are invited to attend.

**What's Cooking
At School**

SEPTEMBER 24-28

- MONDAY
 - Frito Pie/Spanish Rice
 - Tossed Salad
 - Doubs
 - Cornbread/Butter
 - Milk
- TUESDAY
 - Meat Loaf/Catsup
 - Creamed Corn
 - Cabbage Slaw,
 - Pumpkin Pie
 - Cornbread/Butter
 - Milk
- WEDNESDAY
 - Tacos
 - Pinto Beans
 - Lettuce/Cheese
 - Spooned Tomato Salad
 - Gingerbread
 - Cornbread/Butter
 - Milk
- THURSDAY
 - Roast and Gravy
 - Au-Graten-Potatoes
 - Jello Salad
 - Stewed Apricots
 - Hot Rolls/Butter
 - Milk
- FRIDAY
 - Stew
 - Tuna Sandwiches
 - Corn Chips/Crackers
 - Peach Cobbler
 - Milk

FOR
MINOR
REPAIR
WORK



GAS and OIL
LUBRICATION - TIRE
SERVICE - BATTERY
SERVICE



ROAD
SERVICE
COME TO

CARR TEXACO
PHONE 257-2386 - EARTH





**Doug Goen
is Gifford-Hill in this area.**

He's highly qualified to help you with any irrigation problems you may have and he's got the very best equipment available to do it with.

Gifford-Hill's 360, Gifford-Hill's Side Wheel Roll, Gifford-Hill's Water Gun, Vanguard PVC Plastic Pipe and Clad Aluminum Pipe. Plus a long list of accessories.

If you haven't already met our irrigation expert, drop by soon and get acquainted.

And while you're there, let him show you the latest additions to Gifford-Hill's line of irrigation equipment.



Gifford Hill & Company, Inc.
P.O. Box 633, Olton, Tx. 79064
(806) 285-2050

**READY TO SHOW
YOU!**

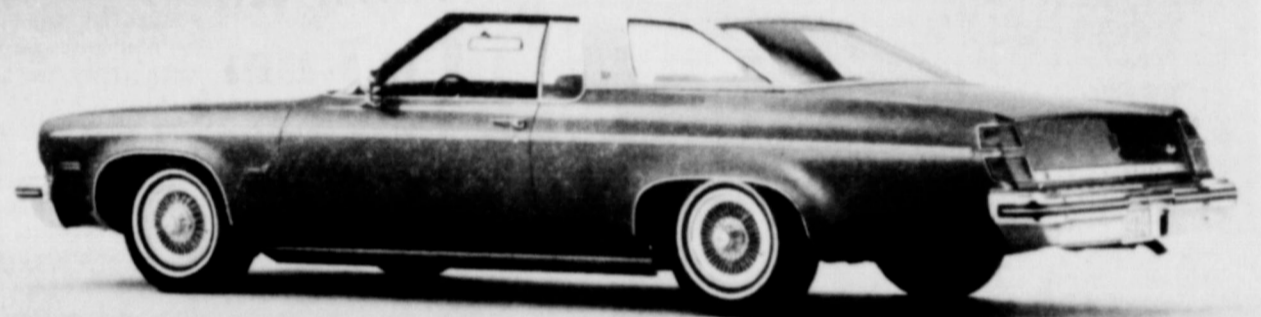
At The

**PREMIERE SHOWING
OF
The New
74 BUICKS
AND
OLDSMOBILES**

AT

Town & Country Oldsmobile-Buick

IN MULESHOE



1974 OLDSMOBILE DELTA 88 ROYALE HARDTOP COUPE

COME BY AND SEE THE MOST
EXCITING
CARS ON THE MARKET

Thursday, September 20



ELECTRA 225 HARDTOP SEDAN

SALES PERSONNEL

BUDDY HOWARD-JOHN ADRIAN

BIDDY HICKS-DARRELL TURNER

REFRESHMENTS
WILL
BE SERVED

**TOWN and COUNTRY
OLDSMOBILE and BUICK**

MULESHOE--PHONE 272-4588



QUARTERBACK HAL WOOD - No. 12 draws back for a pass to Junior Saucedo for 11 yards to set up the Wolverines first touchdown Friday night. The Wolverines defense held the Cooper Pirates scoreless for the night.

Wolverines Scuttle The Pirates 13-0

The Springlake-Earth Wolverines scuttled the Cooper Pirates 13-0 Friday night. The defense held the Pirates scoreless and allowed a total 223 yards total to the Wolverines 339 yards.

The Wolverines first TD came in the last minutes of the first half when quarterback Hal Wood climaxed a 70 yard drive with an 11 yard pass to Junior Saucedo. The drive was highlighted by a 48 yard run by Doug Jones.

The Wolverines caught the Pirates flat footed on the kickoff for the second half when Jacob Miller took the ball on the kickoff and scampered 85 yards for the TD.

The win evened the Wolverines season mark at 1 - 1.

The Wolverines had a total of nine first downs, the Pirates a total of six.

Total yards gained rushing and passing for the Wolverines was 256, for the Pirates 169 yards.

In the penalty department the Wolverines were penalized 54 yards and the Pirates were penalized 97 yards.

The Wolverines travel to Dimmitt Friday night for their first game away from home.

Hope to see you there.

DENIM IS THE ONLY fabric in the world that provides the best value for less than one dollar per linear yard.

New Fords To Show At Muleshoe Motor Co.

Robert Hooten, owner-manager of Muleshoe Motor Company and his personnel invite area folks to attend the premier showing of the new Fords, Mercury and Thunderbirds at their firm in Muleshoe.

Hooten indicated he would have at least 15 new automobiles for the showing Thursday, September 20 through September 22. Refreshments will be served all day Thursday.

Among the new cars Muleshoe Motor Company will have on display is the Pinto, Maverick, Torino, Mustang, Brougham Ltd., Mercury and Thunderbird.

Viewing the 15 new cars will give everyone attending a first hand idea of the comfort, beauty, safety and durability built into the new Fords.

There is much that could be said about each of the new Fords, however, "seeing is believing," so that is why the personnel at Muleshoe Motor is so anxious to be your host at the premier showing Thursday, Friday and Saturday.

Earth Lions Sell \$1600 In Brooms And Light Bulbs

The Earth Lions Club broom and light bulb sale totaled a little over \$1600.

The club received approximately \$600 of this to be used in their local projects. The remainder of the sale proceeds goes to the Lighthouse For The Blind to help in their aid to blind people.

All the items except the light bulbs are produced by blind people.

The members of the club wish to say thanks to all who helped make this project a success.

Food eaten at home today costs the average American worker only 15.7 per cent of his take-home pay. In 1952 he was spending 23 per cent of his take-home pay on groceries.

Jim Stephens Wins Trip To Rome

Jim Stephens of Springlake was pleasantly surprised when notified last week that he was the recipient of a free trip to Rome, Italy for he and his wife.

The trip is being awarded by Ragu Spaghetti Sauce of Italy. The trip was awarded as a result of a pleasing display Stephens had made in a store. Stephens said he was not too well versed as yet, on the date of the trip and the itinerary, but expected to have details on the trip in a short time.

Cub Scout Organizational Meeting Set

There will be a meeting of all parents and Cub Scouts at the Community Building in Springlake, Monday, October 1 at 7:30 p.m.

Purpose of the meeting is to select adult leaders to help with the program for 1973-74. Anyone interested in helping may contact Budell Baucum, phone 986-2661 or 986-2471.

City Water Bills Increased By \$1.00 In September

The September billing for residents of the City of Earth will have the additional increase of 75¢ for sanitation and an additional 75¢ charge on sewer. Therefore, increasing the overall monthly water bill by a dollar and a half.

The additional charge was recommended, discussed and finalized when the City Council met in their last regular session.



"Keep up the competitive spirit—when competition steps out monopoly moves in."—Mrs. Gary Hiott, The Pickens (S.C.) Sentinel.

"Whenever there is a crisis of some kind, the only way Congress can figure to solve it is to either levy a new tax or appropriate umteen million (or billion) dollars."—Bill Epler, Brewery Gulch, Bisbee (Ariz.) Gazette.

"The smallest package you'll ever see is a man wrapped up in himself."—J. D. Eldridge, Overton County (Tenn.) News.

Profits Create Jobs

FOOTBALL



3 Big Prizes

GIVEN AWAY WEEKLY

First Prize—\$500

Second Prize—\$300

Third Prize—\$200

CONTEST RULES

The teams that are playing in this week's contest games are listed side by side in the official entry blank on this page.

Use the handy entry and mark out the teams you predict to lose. Print the scores you predict in the tie-breaker game in the spaces provided.

Each week's entry must be turned in or mailed to the Earth News-Sun office. Contestants are given a week to prepare and turn in their entries.

Entries must be in by 4:00 p. m. Friday or postmarked on that date. All late entries will be discarded.

In case of tie, a coin will be flipped to determine the winners.

Each week the number of games correctly predicted will count toward each contestant's season total. The person picking the most games correctly for the entire season will receive the grand prize. In the event of a tie on the season total, a coin will be flipped to determine the winner.

The weekly prizes will be given to the persons picking the most number of games for that week. The tie-breaker will count as one of the games picked, and the predicted score will be used to determine the top three places in that week's contest, if necessary.

Only one entry per person is allowed.

HART
FARWEI
BOVINA
KRESS
SUDAN
VEGA
MULESH
DALLAS
TEXAS I
WEST TE
WOL
Nam
Addr
City

CITIZENS STATE BANK MEMBER F. D. I. C.—EARTH	EARTH PUMP & MACHINE INC. YOUR DEALER FOR SINGER PUMPS WENDELL CLAYTON
H. S. SANDERS LUMBER EARTH PHONE 257-2005 WE APPRECIATE YOUR BUSINESS	CHEM-TEX FARM SUPPLY ELDON PARISH-Manager EARTH---Phone 257-2195
HALSELL CATTLE CO. EARTH---KANSAS CITY	KMP LAKE PUMPS AND PARISH WINDMILLS EARTH---Phone 257-3411
WOOD-JORDAN EQUIPMENT, INC. EARTH---Phone 257-3484	EARTH OIL & GAS CO., INC. EARTH---Phone 257-3461
EARTH ELEVATOR "YOUR ACCO DEALER" EARTH---Phone 257-3301	YOUR Olin AGENT FARM CHEMICAL CO. EARTH-SPRINGLAKE
*Football Mums"-Phone 257-2051-Earth Howell's 216 Floral Gid and Mildred Howell-Owners	SPRINGLAKE MOTOR SUPPLY SPRINGLAKE---Phone 986-2291
EARTH AUTO PARTS "Your Hometown Auto Parts Dealer"	COBB'S IN MULESHOE "Quality Clothing for the Entire Family"
DENT FARM SUPPLY "Your John Deere Dealer" EARTH	LOWE SPRAYING SERVICE KENNETH LOWE---Phone 965-2338
PAY and SAVE EARTH	SUNNYSIDE GRAIN & SUPPLY RICKY BYERS-Manager SUNNYSIDE
EARTH GIN, INC. EARTH---Phone 257-3371	GIBSON'S DISCOUNT CENTER MULESHOE
PARSON-ELLIS-SINGLETON FUNERAL HOME EARTH---Phone 257-3350	CONSUMER'S "The Store That Has Everything" OLTON
EARTH DRY GOODS EARTH---Phone 257-2026	PRODUCTION CREDIT ASSOC. DON LOAFMAN-Manager OLTON

a

nouncing

DYER WELL SERVICE

(COMPLETE DOMESTIC WELL SERVICE)

SALES & SERVICE

SUBMERSIBLE PUMPS & WINDMILLS

NEW ALL

HYDRAULIC SERVICE RIG

RIGGED FOR WINDMILLS

TURNKEY JOBS

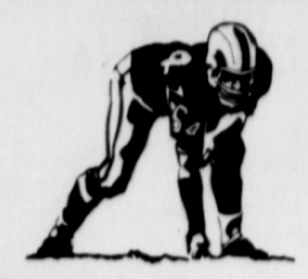
WELL DRILLED AND RIGGED TO YOUR SPECIFICATIONS

DEALER FOR WEBTROL SUBMERSIBLE PUMPS

HARLEY DYER, OWNER

108 N. W. 11th. ST. PHONE 647-2366
DIMMITT, TEXAS

CONTEST



DIMMITT-THERE

September 21

Game Time 8:00 p.m.

es

OFFICIAL ENTRY BLANK
SEPTEMBER 28-29-30

RT	ANTON
RWELL	SEAGRAVES
VINA	SANFORD-FRITCH
ESS	RALLS
DAN	SHALLOWATER
IA	BOYS RANCH
LESHOE	LITTLEFIELD
LAS	ST. LOUIS
CAS TECH	TEXAS
T TEXAS	NORTHERN ILLINOIS

--- TIE BREAKER ---
WOLVERINES..... FRIONA.....

Name _____
Address _____
City _____ State _____



Nothing to suscribe to—Nothing to buy
—No obligation— JUST FILL OUT AND SEND
IN YOUR ENTRY

THIS CONTEST MADE POSSIBLE BY THE PARTICIPATING
MERCHANTS LISTED ON THIS PAGE.....

SPRINGLAKE GIN, INC.
W. H. and BILLY BRADEN
SPRINGLAKE---Phone 986-2401

ARDEN'S WELDING SHOP
SPRINGLAKE---Phone 986-2181

James Glaze Co.
REAL ESTATE LOANS
GENERAL INSURANCE
JAMES (BUGAR) GLAZE, OWNER DRAWER A
OFF. 272-4549 RES. 272-4743 MULESHOE, TEXAS

TRI-COUNTY SAVINGS & LOAN
MULESHOE

MULESHOE IMPLEMENT and SUPPLY
MULESHOE---Phone 272-3308

Western Auto associate store
320 MAIN STREET MULESHOE,
The Family Store

BAILEY COUNTY ELECTRIC COOPERATIVE
MULESHOE

MULESHOE MOTOR CO.
YOUR FRIENDLY FORD-MERCURY DEALER
FORD MULESHOE MERCURY

WALLACE HOME FURNISHINGS
(FORMERLY E.C. ROGERS FURNITURE)
BERT WALLACE OWNER-MGR.
LITTLEFIELD 385-3888

CHOW-TEX FEED LOTS, INC.
LAZBUDDIE---Phone 965-2900
HUGH COLLIS MGR.

Plains AUTO PARTS
P.O. Box 586 MULESHOE, TEXAS 79347

Marcum Olds-Cadillac-Pontiac
LITTLEFIELD---Phone 385-5171

FARMERS GRAIN
SUNNYSIDE

Littlefield Federal Savings & Loan
HOME LOANS PHONE 385-5197

BIG T PUMP
"We Appreciate Your Business"
DIMMITT

FIRST NATIONAL BANK
AMHERST---Member F. D. I. C.

WESTERN DRUG
THE DRUG STORE THAT APPRECIATES YOUR BUSINESS

CENTRAL COMPRESS SUDAN NICKELS GIN
PLEASANT VALLEY-EARTH

LITTLEFIELD HOSPITAL PHARMACY
401 W. 6th.
FLOYCE PIERCE--DOYLE REEVES pharmacist

FIRST STATE BANK
DIMMITTMEMBER F.D.I.C.

THOMPSON CHEVROLET
OLTON---Phone 285-2646
MARCUS MESSER-Earth---Phone 257-3420

SHERLEY-ANDERSON LAZBUDDIE ELEVATOR

LITTLEFIELD FROZEN FOOD CENTER
Mr. Kirby - Owner- Mgr. 385-3818

OLTON STATE BANK
OLTON---Member F. D. I. C.

RASCO
"Your Family Store"
MULESHOE

who said you wouldn't see the ads on this page?

EARTH CO-OP GINS, INC.
"We Don't Want To Gin All The Cotton Just Yours"

EARTH NEWS-SUN

SPRINGLAKE GRAIN
SPRINGLAKE---Phone 986-2311

EARTH AG SUPPLY, INC.
EARTH---Phone 257-3762

Alligators Seem To Be Coming Back Strong

Texas alligators seem to be making a strong comeback, particularly on the Texas Parks and Wildlife Department's J. D. Murphree Wildlife Management Area near Fort Arthur.

An aerial survey of alligator nests on the area by department biologists turned up 65 mounds which are presumably holding alligator eggs. Biologists say undiscovered nests may up the total to approximately 100.

Biologist Jim Dunks, headquartered on the Murphree Area, says there has been a dramatic increase in nesting activity. "Normally, we spot two or three nests per year while we are working on the area," he said. "This year, we spotted 26 while we were working at other duties."

This large number of nests prompted an aerial survey to find out the extent of the increase in nesting.

Dunks says the nest count will provide a basis for determining future increases or declines in the alligator breeding activities on the area.

Man-made levees seem to be the favored nesting sites, according to Dunks. The levees provide suitable habitat, that is, high, dry ground for the nests and abundant water in the adjoining ditches.

Biologists say two or three survivors per nest after the first year is considered good for alligators. The fewer large alligators there are in the area, the better the chances of survival for the smaller alligators.

Bring Your Ad With You **\$500.** Bring Your Ad With You

No matter what age or condition, we will allow at least \$500 trade-in for it toward the purchase of any of these cars.

General Motors

'71 OLDS DELTA CUSTOM COUPE
Loaded, cruise-control, tape, radio, etc. \$2495
\$2995 less \$500 trade-in

'69 BUICK RIVIERA
Gold with white vinyl top, very low mileage. \$2495 less \$500 trade-in

'71 GRAND PRIX
Very nice, new car trade-in, one owner, black with black vinyl top.
\$3650 less \$500 trade-in

'71 PONTIAC GRANDVILLE 4-DR.
Green with rally wheels, only 22,000 miles, one owner, like new in every way
\$3250 less \$500 trade-in

'70 CHEVROLET MONTE CARLO
Blue color, extra nice, another one owner car. \$2695 less \$500 trade-in

'71 PONTIAC LEMANS SPORT COUPE
Gold, a local low mileage car, a real sharpie. \$2895 less \$500 trade-in

Bring Your Ad With You **Ford Products**

'70 FORD TORINO GT COUPE
Air and power.
\$1750 less \$500 trade-in

'71 FORD LTD
Extra nice one owner car, 4-dr.
\$2695 less \$500 trade-in

'69 MERCURY MARQUIS 4-DR.
Local car, like new, light blue, FM radio, power seats, truly a fine car.
\$1895 less \$500 trade-in

'70 FORD MUSTANG FASTBACK
Air and power, one owner.
\$2150 less \$500 trade-in

Bring Your Ad With You **All Brands**

'71 PLYMOUTH SPT. FURY GRAN COUPE
Air and power, like new.
\$2750 less \$500 trade-in

'68 JAVELIN COUPE
Air and power, Sharp
\$1250 less \$500 trade-in

'68 DODGE HARD TOP COUPE
Air and power.
\$995 less \$500 trade-in

'69 PLYMOUTH SATELLITE 4-DR.
\$1195 less \$500 trade-in

'70 JEEP 3/4 TON PICKUP
4-wheel drive, air and power, real nice. \$2750 less \$500 trade-in

'71 CHEVROLET 1/2 TON PICKUP
Custom, air and power.
\$2450 less \$500 trade-in

Bring Your Ad With You **Older Models**

CASH PRICE

'66 Chev. Impala 4-dr., extra nice \$400
'66 Dodge Coronet 440 4-dr. \$250
'65 Chevrolet Super Sport \$400
'65 Pontiac Catalina 4-dr. \$250
'62 Olds F-85 Coupe \$150

Johnston Motor Co.
Plainview's Authorized Jeep Dealer
416 W. 5th 296-6363

Springlake - Earth FTA To Sell Candy

Springlake-Earth Future Teachers of America met Monday afternoon after school with Jerry Beard, sponsor. Among items of business discussed by the group were several money making projects. The group decided to sell candy in the near future.

Lisa Clayton was elected historian and Kathy Winders, secretary-treasurer to serve in place of those who had been elected and had moved. Other business performed by the group was the selection of Sheila Lewis and Jimmy Coker as students of the month.



FTA STUDENTS OF THE MONTH—Sheila Lewis and Jimmy Coker, senior students at Springlake-Earth High School, were selected by the local FTA chapter as students of the month Monday afternoon.

Farm Equipment In Short Supply

Many farm equipment dealers are at a loss for an explanation, others have their own theories about the cause of the problem, but all farm implement dealers are worried about yet another shortage which has hit the country—a shortage on tractors. A few dealers reported that they can get tractors, but there is a long delay between order and delivery time. A few tractors are coming through but they are extremely slow. It takes 60 days or more to get one, most dealers indicated. They encourage farmers to put in their order early.

One area dealer said he had problems in obtaining tractors for most of the year. He claimed that during wheat harvest, most of the country around made a good crop and many of the farmers who normally would not have been buying machinery, did so. In fact, many bought at one time and that fact helped in creating the shortage. Another factor to be considered in the shortage of tractors is the fact that there is also a shortage of steel, plastic and rubber. This

added to a fact that demand for tractors exceeds the supply. Dealers who are getting tractors in agree that they have signed purchase orders for them, that they are already sold - that they do not receive floor display models.

Some dealers vowed that they had the same numbers of tractors coming in as they did in years past, but the demand for them is higher this year than in past years.

Used equipment has moved this year because of the lack of new equipment. Now dealers admit they don't have very much used equipment because farmers are not trading it in, as they cannot get the new equipment when they need it.

One dealer said he expected this to all clear up, but until then, he sure hoped farmers could make do with what they could get for them.

WHEN MAKING YARDAGE selections, obtain a permanent care label for each garment you expect to make from the fabric. Stitch label into completed project for a built-in laundering guide.

New Cars Shown Thursday At Town and Country Oldsmobile - Buick

The new '74 Oldsmobile and '74 Buick will be on display at the Town and Country Oldsmobile and Buick Company in Muleshoe Thursday, September 20. Darrell Turner, co-owner and manager made the

announcement this week. Turner and members of his personnel, John Adrian, Buddy Howard and Biddy Hicks, will be your hosts. They invite you to come by and see the car that is bound to make history

this year. The built-in features of both the Oldsmobile and Buick is bound to implant a desire for ownership within its viewers.

Thursday has been set aside as a day to visit and inspect the new cars. Turner and his personnel will be looking for you and will be delighted to have you drop by.

Explaining the new features on these new cars would take much time and space. So, to be sure you are acquainted with these new features, the Town and Country Oldsmobile and Buick personnel invite you to come see them for yourself.

Ammonia Short In Area

At a time when American farmers are being called on to produce even more, local farmers are faced with a shortage of anhydrous ammonia, a fertilizer vital to increased crop production in the area.

Fertilizer dealers report that the ammonia supply is tight as farmers finish up with pre-plant applications ahead of wheat.

Vernon Hasley, office manager at the Dimmitt Western Ammonia plant, reports that the plant is producing 85-90 tons of ammonia per day, but this ammonia is used for making other products.

"We're not able to buy ammonia from outside areas in large amounts," said Hasley. "Right now we are only managing to stay even with the demand. The freeze on the selling price of ammonia and the high cost of the raw products used in producing it has led to the current shortage, but it should become available state-wide again soon," he added.

Some fertilizer dealers around the area report that the current ammonia supply situation is tight. It doesn't look like it will let up for some time, all fertilizer will be in tight supply for the coming year. Some are inclined to think that if we have a bad winter it may tighten up the situation even more.

Many dealers are advising farmers to get their fertilizer early and get it down as soon as the fields can be made ready this year. Many wheat farmers are using dry fertilizer as it is in more plentiful right now than ammonia.

Seven Wrecks In Lamb In August

The Texas Highway Patrol investigated seven accidents on rural highways in Lamb County during the month of August according to Sergeant T. Keffer, Highway Patrol supervisor of this area.

These crashes resulted in no persons killed and five persons injured.

The rural traffic accident summary for this county during the first eight months of 1973 shows a total of 68 accidents resulting in four persons killed and 34 persons injured.

The rural traffic accident summary for the 60 counties of the Lubbock Department of Public Safety Region for August 1973 shows a total of 586 accidents resulting in 24 persons killed and 328 persons injured as compared to August, 1972, with 593 accidents resulting in 28 persons killed and 359 persons injured. This was 7 less accidents, 4 less fatalities, and 31 less injured in 1973 at the same period of time.

The 24 traffic deaths for the month of August, 1973, occurred in the following counties: Montague, four; Armstrong, Castro, Dallam, Swisher, Baylor, Clay, Wise Counties, two each; and Deaf Smith, Donley, Farmer, Haskell, Lubbock and Lynn counties, one each.

The Veteran Sergeant reminds you, the Texas motorist, to Drive Friendly the Texas Way!

HIGH FOOD COSTS encourage maximum use of home appliances such as freezers. Save money—prepare frozen dinners from leftovers and freeze day-old baked goods.

Steve Hay Enrolls At LCC

Steve Hay, son of Mr. and Mrs. Cullen Hay of Earth, has enrolled in Lubbock Christian College (LCC) as a freshman Music major.

Hay is a 1973 graduate of Springlake High School. Lubbock Christian College, a fully accredited senior college offering liberal arts and professional programs, has a student body of 1100.

Fourteen modern, permanent buildings and a half-dozen temporary structures now form the heart of the school's 120 acre main campus in west Lubbock. Soon, this 10-million dollar plant will be significantly enlarged by the addition of a half-million

dollar Mabee Christian Development Center. About two miles north of Lubbock, the Lubbock Christian College agriculture campus (two farm-ranches totaling 530 acres) provides extensive crop and animal studies, and unique research and demonstration facilities.

Hay has been selected to be a member of LCC's A Cappella Chorus. Dr. Wayne Hinds, coordinator of LCC's Music Department, is director and organizer of the 16 year-old organization.

DENSITY MAKES A DIFFERENCE in carpeting—tighter tufts mean easier cleaning.

Notice

THERE WILL BE
AN ORGANIZATIONAL
MEETING
FOR CUB SCOUTS
AT THE
SPRING LAKE
COMMUNITY BUILDING
MONDAY, OCTOBER 1
7:30 P.M.

AUTHORIZED DEALER FOR
SINGER
SEWING MACHINE
CENTER
REPAIR ON ALL MAKES MACHINES & VACUUMS
RENT A SEWING MACHINE BY THE WEEK
Scissor Sharpening
PH. 384-4081
226 MAIN ST.
HEREFORD, TEXAS 79045

PANT PLACE PANTS

STAND OUT FROM THE REST OF THE CROWD.

GUYS & GALS

CORDUROY FLARES

Sensational buy from a famous market... looking cotton corduroy flares in great solid colors. Button-front styles for guys and gals. This low, low price is for one week only!

\$3.60

A PAIR

THIS SALE BEGINS SEPTEMBER 23 and CONTINUES THROUGH SEPTEMBER 29

PANT PLACE

2313 W. 5th PLAINVIEW
10 A.M. 'til 7 P.M.
RANDY STEWART - Mgr.

Franciscan Once a Year Sale!

SEPTEMBER 20-29, 1973

Save \$6.05 on 20 piece sets of Earthenware.
12 favorite patterns. Regularly \$41.00. now \$34.95

Save \$2.05 on single 5 piece Earthenware place settings.
Regularly \$11.00. now just \$8.95

Save 20% on the 8 serving dishes you use most:
sugar with lid, creamer, medium and large vegetables, 1-quart pitcher, salt & pepper, soup / cereal bowl, salad plate

Save 20% on Madeira Casual Crystal.
All 6 regular shapes, except Flancho Ruby

It's the sale you wait all year for. Your one chance all year to save on Franciscan Earthenware and Madeira Casual Crystal. Your best chance all year to start your set or add to it.

Come in before the sale ends.

Your table and your budget will both be happier.

Howell's 216 Floral

Phone 257-2051 - Earth

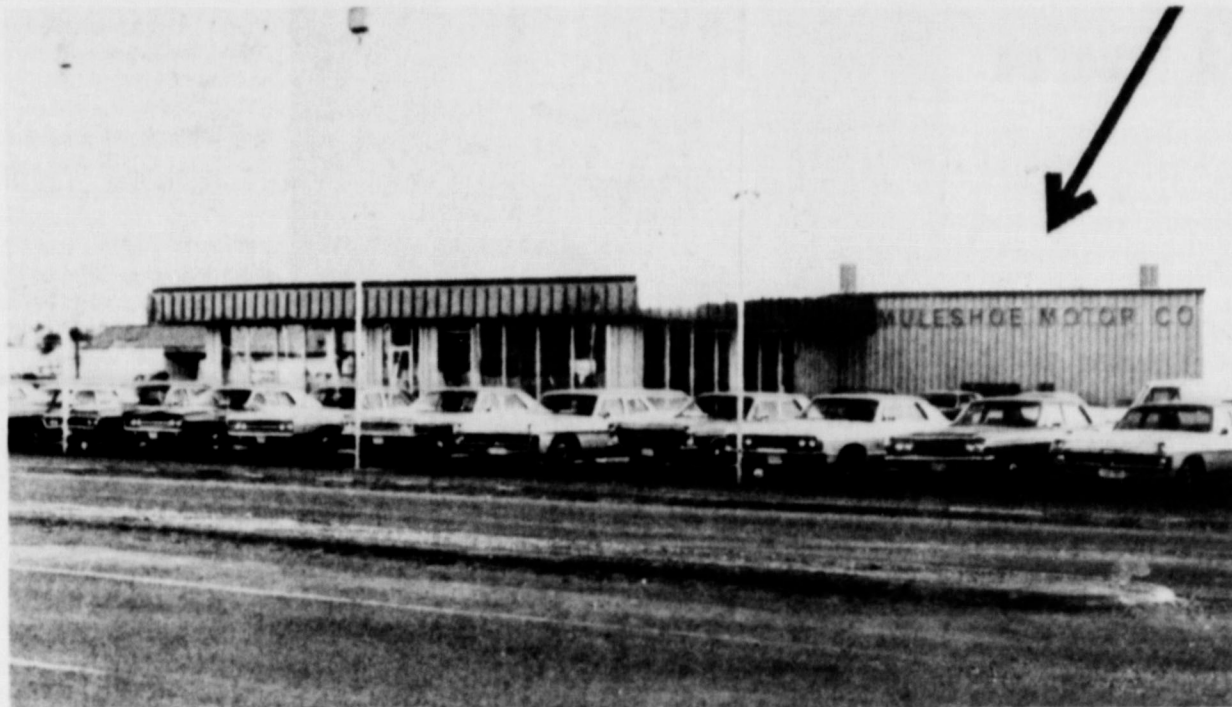
the 1974 Fords are here!

COME SEE THE "BETTER IDEAS" AT

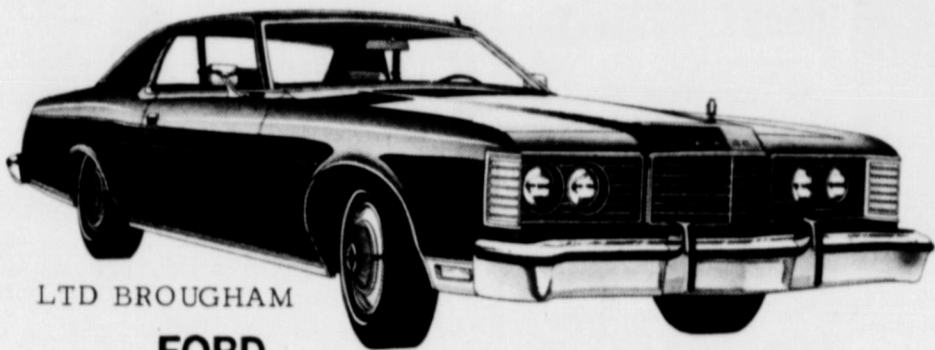
Get that solid big-car feeling in a mid-size car



GRAND TORINO BROUGHAM 2-DOOR HARDTOP
1974 FORD TORINO



FORD MAVERICK 4-DOOR SEDAN



LTD BROUGHAM
FORD

*Look at it closely
decide for yourself*



PINTO

WE HAVE 15 NEW '74 MODELS

FOR THE BIG SHOWING

THURSDAY, FRIDAY

AND SATURDAY

SEPTEMBER 20-21-22

COME ONE

AND ALL

THUNDERBIRD
Still unique in all the world



Starring the smaller new

Mustang II

*A New Class
of Small Car.
First Class*



MUSTANG II
HARDTOP



Luxurious... Exciting... Sheer fun to drive!



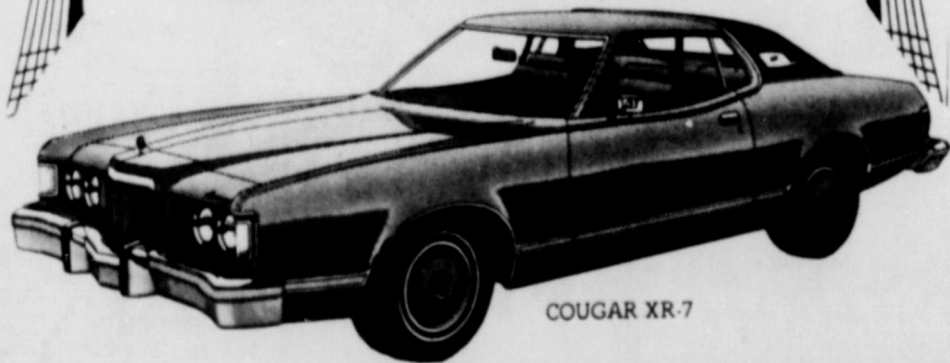
THE CLOSER

YOU LOOK, THE BETTER

WE LOOK



*Totally new and
totally unlike any Cougar
anybody's ever seen before!
In size and luxury
Cougar moved up
a whole new class*



COUGAR XR-7

"CAR CAPITAL OF WEST PLAINS"

MULESHOE MOTOR CO.

FORD - MERCURYS

Charles Winder To Be Honored

Charles Winder, senior student at Springlake-Earth High School is being featured in the annual edition of "Who's Who Among American High School Students, 1972-73". This is the largest student award publication in the nation.

Charles is the son of Mr. and Mrs. James Winder of Springlake. He is active in football, national honor society, has served as vice-president of the junior class and is vice-president of the senior class.

Students from over 18,000 public, private and parochial high schools throughout the country are recognized for their leadership in academics, athletics, activities or community service in the book. Less than two per cent of the junior and senior class students nationwide are awarded this recognition.

In addition to having his biography published in the book, Charles will also compete for one of ten \$1000

scholarship awards funded by the publishers and will be invited to participate in the firm's annual "Survey of High Achievers" later in the academic year.

Charles plans to attend Texas Tech University upon graduation in June.

Anderson Presents PTA Program

The Springlake-Earth PTA met Tuesday, September 11 in the school auditorium.

The meeting was called to order by Mrs. Bob Belew, president. Minutes of the previous meeting and the associations finances were discussed.

The enchilada dinner cleared almost \$175 after all bills were paid.

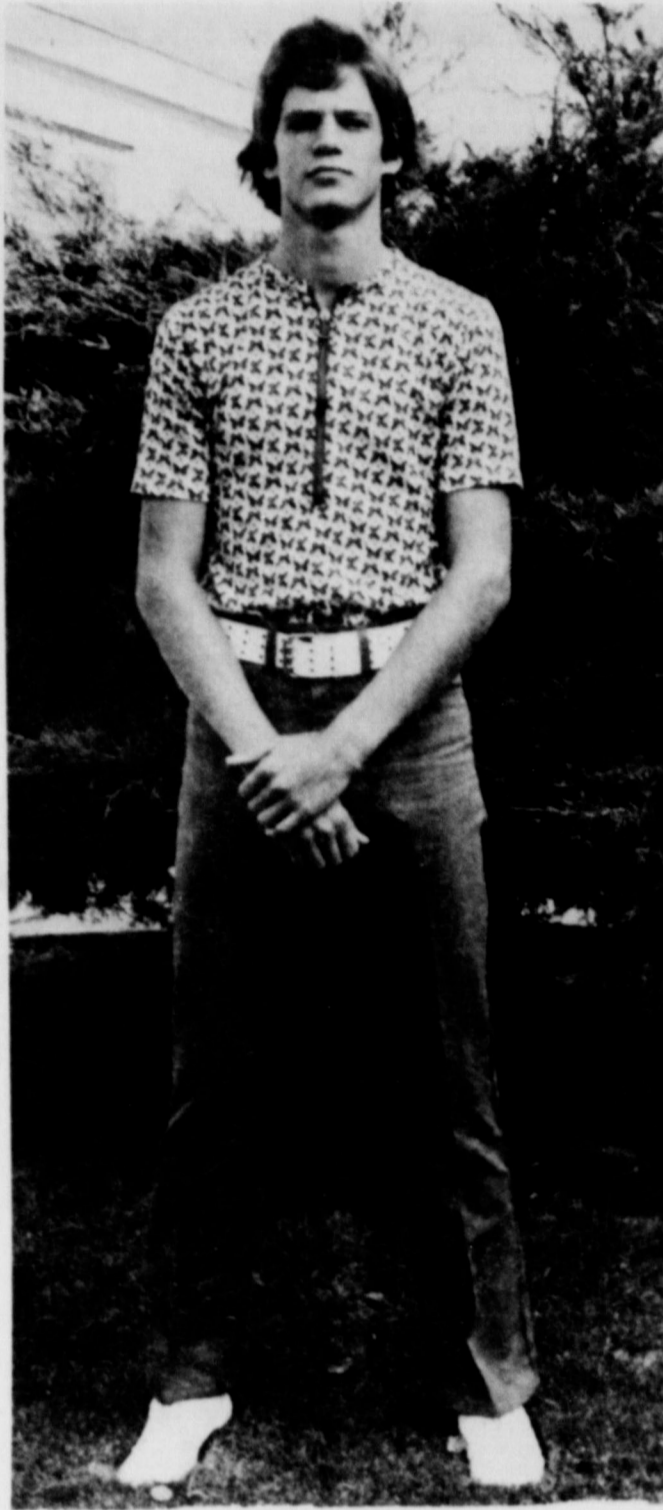
Other projects for the coming year including an ecology project for the community and the possibility of purchasing a new P.A. system for the auditorium were discussed.

Following the business portion of the meeting, Wayne Anderson, school choral director, and his sixth grade general music class presented the program.

Mr. Anderson demonstrated to the audience his method of conducting his classes.

The next scheduled meeting will be Tuesday, October 9. The program for this meeting will be presented by a group of students from Lubbock, who will present a program on Parent Teacher Student Association.

Everyone in the area are urged to be present for this meeting.



CHARLES WINDER

A GENERAL WORLD-WIDE demand for food has had much to do with changing food prices in the past year.

'74 Chevy Showing At Thompson Chevrolet

The beautiful new '74 Chevrolet will go on display Thursday, September 20 at Thompson Chevrolet in Olton. Fred Thompson, owner-manager of the firm is real pleased with the new models and invites everyone in the area to see the new car. Marcus Messer of Earth, salesman for Thompson Chevrolet, is anxious for his friends in Earth and Springlake to see and inspect the new '74 model.

The Chevy has always been one of America's most popular automobiles, and it is expected to be more popular in '74. The new Chevy has the big car feel, and the economy of the little car. The comfort, beauty and dependability makes the Chevy a favorite in this country.

Thompson and his personnel will be looking for you Thursday to inspect the new cars. They will be pleased to have you come by. So, don't forget, you have a date to see

Junior High National Honor Society

The Junior High National Honor Society met Friday, September 14, for the purpose of electing new officers.

Chosen as president for the honor society was Susan Clayton; vice president, Keevin Kelley; secretary, Connie Dear; treasurer, Baldomero Sauseda; reporter, Alayne Slover and parliamentarian, Jill Borden. Mrs. Evelyn Verden is the sponsor for the honor society.

the new Chevrolet on Thursday (today) September 20 in Olton.

LUBBOCK THEATRE CENTER

The Lubbock Theater Center is preparing for its season opener, the captivating musical, "The Unsinkable Molly Brown". The music and lyrics are by Meredith Wilson and the play skims the high points of Molly Brown's life from very

poor days in Hannibal, Missouri to the pinnacle of her renown after she survives the sinking of the Titanic.

Molly was married to J. J. Brown, who earned riches during the Colorado gold mining boom. She spent many years in an effort to be socially accepted, but was not a success until she rushed home to Denver from Europe to help the wives and children of miners involved in a southern Colorado coal strike.

Production dates are September 27-30, and October 4-7. Tickets for this fun filled musical will go on sale September 24, at the Lubbock Theater Center. Prices are \$3.50 each.

HERE FOR EXPERT BRAKE SERVICE

3426JAN 69 Form 30

How are your brakes? Do you sometimes feel that they are just about ready to give out? Better come in for a check up. Let our experts help.

Plains
AUTO PARTS
P. O. Box 584
MULSHOE, TEXAS
79347

South Main
Mulshoe
Phone 272-4576

ONCE-A-YEAR SALE-A-THON

Singer stretch-stitch sewing machine SALE

Reg. 159.95
Carrying case #574
sale-priced at 16.95

Famous Stylist* sewing machine, for knits, stretch fabrics, wovens! It sews all! With choice of built-in stitches, including blindstitch. Exclusive Singer* front drop-in bobbin. snap-on presser feet.

Many other Sale-A-Thon specials. See them all!

We repair all makes of sewing machines
We have a credit plan designed to fit your budget.
We also have a liberal trade-in policy.

ROBISON SEWING MACHINE CENTER
308 W 4th LITTLEFIELD 385-4621
*A Trademark of THE SINGER COMPANY

PUBLIC NOTICE

SUMMARY OF PROPOSED CONSTITUTIONAL AMENDMENTS

SPECIAL ELECTION NOVEMBER 6, 1973

NUMBER ONE ON THE BALLOT (S.J.R. 8)

Article III, Sections 5, 24 and 49a and Article VIII, Section 6 of the Texas Constitution are amended to:

Provide for regular annual sessions of the Legislature. The regular session in each odd-numbered year would be for a period not to exceed 180 days. The regular session in each even-numbered year would be for a period not to exceed 60 days and would be limited to consideration of fiscal matters and any emergency matters submitted by the Governor. The 60 day session could be extended by the Governor for a period not to exceed 30 days.

Provide an annual salary for members of the Legislature not exceeding \$15,000 per year and a per diem not exceeding \$18 per day for each day of each regular session or special session.

Provide that no appropriation of money shall be made for a longer term than one year and direct the Comptroller to make annual estimates of anticipated revenue rather than biennial estimates.

The wording of the proposed amendment as it will appear on the ballot is as follows:

"The constitutional amendment to provide for annual regular sessions of the legislature; and to provide an annual salary of \$15,000 and per diem for the members of the legislature, effective in January, 1975."

NUMBER TWO ON THE BALLOT (H.J.R. 7)

Article XVI, Sections 50 and 51 of the Texas Constitution are amended to:

Include within the scope of homestead protection the real property of a single adult person which meets the other requirements of homestead property; and to provide that a family homestead may not be abandoned except with the consent of both spouses.

Presently a single adult person is not entitled to claim a homestead exemption and a married man can abandon a family homestead without the consent of his wife.

The wording of the proposed amendment as it will appear on the ballot is as follows:

"The constitutional amendment to include within the scope of homestead protection the real property of a single adult person which meets the other requirements of homestead property; and to provide that a family homestead may not be abandoned except with the consent of both spouses."

NUMBER THREE ON THE BALLOT (S.J.R. 13)

Article VIII, Sections 1-a and 1-b of the Texas Constitution are amended to:

Extend the \$3,000 ad valorem tax exemption to the residential homesteads of unmarried adults.

The wording of the proposed amendment as it will appear on the ballot is as follows:

"The constitutional amendment to extend the \$3,000 ad valorem tax exemption to the homesteads of unmarried adults."

NUMBER FOUR ON THE BALLOT (S.J.R. 1)

Article XVI, Section 59, of the Texas Constitution is amended by adding a new Subsection (e) which provides that no law creating a conservation and reclamation district shall be passed unless a copy of the proposed law is delivered to the commissioners court of each county and to the governing body of each incorporated city or town in whose jurisdiction said district or any part thereof is or will be located. Each such commissioners court and governing body may file its written consent or opposition to the proposed law with the Governor, Lieutenant Governor and Speaker of the House of Representatives. Each special law creating such a district must comply with general laws then in effect relating to consent by political subdivisions to the creation of such districts.

The wording of the proposed amendment as it will appear on the ballot is as follows:

"The constitutional amendment establishing certain requirements relative to the enactment of laws creating certain conservation and reclamation districts."

NUMBER FIVE ON THE BALLOT (S.J.R. 12)

Article XI, Section 7 of the Texas Constitution is amended to:

Provide that all counties and cities bordering on the coast of the Gulf of Mexico are authorized to levy a tax to pay for bonds issued for the construction of sea walls and breakwaters upon a majority vote of the resident property tax-payers. Counties and cities are presently authorized to levy such taxes and this amendment only changes the required vote from a two-thirds majority to a simple majority.

The wording of the proposed amendment as it will appear on the ballot is as follows:

"The constitutional amendment authorizing counties and cities bordering on the Gulf of Mexico to issue bonds

for the construction of sea walls and breakwaters upon a vote of the resident property tax-payers.

NUMBER SIX ON THE BALLOT (S.J.R. 26)

Article V, Section 8 of the Texas Constitution is amended by adding a new paragraph which:

Provides that the district court, concurrently with the county court, shall have the general jurisdiction of a probate court and in a probate proceeding shall also have the jurisdiction otherwise conferred on it by law. It also provides that the legislature may increase, diminish, or eliminate the jurisdiction of the district court or county court in probate matters, may adopt rules governing the filing, distribution, or transfer of cases and proceedings as between the courts having jurisdiction of probate matters, and may provide that all appeals in probate matters shall be to the courts of civil appeals.

The wording of the proposed constitutional amendment as it will appear on the ballot is as follows:

"The constitutional amendment stating that the district court concurrently with the county court shall have the general jurisdiction of a probate court, and providing the jurisdiction thereof, and further providing that in any probate proceeding the district court shall also have jurisdiction otherwise conferred upon it by law, and further providing that the legislature may increase, diminish or eliminate the jurisdiction of the district court or county court in probate matters, and further providing that the legislature shall have power to adopt rules governing the filing, distribution and transfer of all such cases and proceedings as between district courts, county courts, and other courts having jurisdiction thereof, and further providing that the legislature may provide that all appeals in such matters shall be to the courts of (civil) appeals."

NUMBER SEVEN ON THE BALLOT (H.J.R. 6)

Article III, Section 49-b of the Texas Constitution is amended to:

Provide for an additional \$100 million in bonds or obligations of the State of Texas for the Veterans' Land Fund. This amendment increases the present \$400 million authorization to \$500 million.

Remove the present provision which permits buying of land only by those veterans who served between September 16, 1940 and the date of formal withdrawal of United States troops from the armed conflict in Viet Nam. This amendment would allow all veterans who served after September 16, 1940 to buy land from the Veterans' Land Fund, provided they are otherwise qualified.

Provide that, in the event of the death of an eligible

Texas veteran after the veteran has filed breakwaters an application and contract of sale to purchase through the Board the tract selected by him or her and before the purchase has been completed, then the surviving spouse may complete the transaction.

NUMBER EIGHT ON THE BALLOT (S.J.R. 29)

Article XI, of the Texas Constitution is amended by adding a new Section 5(a) which:

Authorizes and requires the courts having jurisdiction of probate matters, and notwithstanding the constitutional limitations on total tax rates, to levy such annual ad valorem taxes on the taxable property in the city, town or village as are necessary to pay the principal of and interest on, when due, the general obligations hereinafter issued by the city, town, or village. The legislature is empowered to limit by general or special law the total principal amount of general obligations which may be issued, but unless and until the legislature acts to do so, the limitations established by statute with respect to the total principal amount of bonds which may be issued by independent school districts shall apply as the rate limitation on cities, towns, and villages.

The wording of the proposed constitutional amendment as it appears on the ballot is as follows:

"The constitutional amendment to authorize cities, towns, and villages to levy such ad valorem taxes as are sufficient to pay the principal of and interest on their general obligations hereafter issued subject to the restrictions provided by law."

NUMBER NINE ON THE BALLOT (S.J.R. 25)

Article VIII of the Texas Constitution is amended by adding a new Section 2C which:

Allows the Legislature, by general law, to exempt all real and personal property used by non-profit water supply corporations or cooperatives from all property taxes. The exemption would apply only to such property as is reasonably necessary to conduct the business of a non-profit water supply corporation or cooperative.

The wording of the proposed constitutional amendment as it will appear on the ballot is as follows:

"The constitutional amendment authorizing the legislature to exempt from property taxes certain property used by a non-profit water supply corporation or a non-profit water supply cooperative."

The Star Performer Is Here

The All New

Chevrolet Impala Custom Coupe

Chevrolet Caprice 4-Dr. Sedan

'74 Chevrolet

BEAUTY
ECONOMY
AND
COMFORT
ALL
IN
ONE

SEE THEM TODAY

THURSDAY, SEPTEMBER 20

REFRESHMENTS WILL BE SERVED ALL DAY

Thompson Chevrolet Co.

OLTON - PHONE 285-2646
MARCUS MESSER - EARTH - PHONE 257-3420

COME
SEE THE
GREATEST
OF THE
NEW
'74
CARS

SUNNYSIDE NEWS

By TUNY BOWDEN



Quint Waggoner underwent major surgery in Methodist Hospital in Lubbock Tuesday morning. Nine of the ten specialists who consulted on the case recommended the surgery which involved cutting the pelvic bone, slanting it and pinning it in two places rather than correct the hip socket. He was placed in a body cast which he will wear three months, but is not expected to be hospitalized much longer. The cast is from his chest to his toes on his left leg and to his knee on his right leg. He is still miserable, but is improving as expected and was much better Sunday. Holly and Gay are staying with Mrs. Eules Waggoner and Eddie. Eules went back to Arkansas Wednesday.

August 29. She is currently stationed at Ft. McClellon, Alabama where she is taking the 6 to 8 week basic training. Her mother was also a WAC. Mr. and Mrs. Hershel Wilson attended the Brotherhood family night program in Southside Baptist Church in Lubbock Tuesday night. Hershel brought the special music. Mrs. Elizabeth Worthington of Fort Worth visited this week with Mr. and Mrs. Weldon Bradley and family and her parents, Mr. and Mrs. Elmer Dixon of Dimmitt. They visited in Seminole Wednesday with Mr. and Mrs. Bill Bailey. Mrs. John Gilbreath, Mrs. E.R. Sadler, Mrs. L.B. Bowden and Mrs. Bill Tidwell of the El Paso Gas Plant attended the new member coffee of the Plains Memorial Hospital Auxiliary in Dimmitt Wednesday morning. Mrs. Tidwell became a new member.

Rain Tuesday night was recorded as .35 Saturday night there was none in the north, .40 at Sunnyside proper and one inch in the southeast part of the community. Debbie Wilson has been named as assistant editor of the Springlake - Earth High School annual staff. Mrs. Howard Cummings is the sponsor and advisor. Mrs. Floyd Ivey visited in Olton Thursday afternoon with Mr. and Mrs. Mokey Ivey and Paula Sue. Paula was ill with the flu. Mrs. Eules Waggoner and Mrs. Millicent Davis of Dimmitt attended their weekly art class in Amarillo Thursday. Mr. and Mrs. Ezell Sadler visited with relatives in Breckenridge Friday through Tuesday, and with relatives in Abilene. Mrs. Pearl Sadler of Dimmitt went with them. They also attended the Caps reunion near Abilene on Sunday. Mr. and Mrs. Roy Phelan hosted a fellowship after revival services Thursday night for Mr. and Mrs. Herman Wilson of Amarillo. Mr. Wilson drove the bus that took the Lay Witness Mission group to Arizona recently. Mr. and Mrs. Garnet Ball and Debra of Hart, the evangelistic team and several local people were present. Debra did not attend Draughtons in Lubbock as earlier reported. Mr. and Mrs. Grady Epperson of Ropesville came up Friday and attended the Springlake-Earth-Cooper football game to see their grandson, Lonnie Wilson, play football and their granddaughter, Debbie Wilson, twirl with the band. They had a fish fry after the game at the Wilson home and spent the night with them. Mrs. L. B. Bowden helped with the cemetery working at West Lawn Memorial Park in Dimmitt Saturday morning. Mr. and Mrs. Aurelio Garza, Janie and her husband of four months and Junior Garza all of



VISITATION AND GETTING ACQUAINTED with new members of the faculty is shown following the delightful program. A record crowd attended and were delighted with the event. Most attendance exclaimed this program to be the most pleasing program ever presented at a reception for the faculty.

Commissioners' Court Grants Raises To Elected Officials, County Help

Lamb County Judge G. T. Sides and commissioners Jack Peel, A. J. Spain, Buddy Free and Hubert Dykes authorized an increase in salaries for themselves, other elective officials and county employees in a budget setting session Monday. Salary increases for county employees were set at a maximum of \$600 increase, leaving the exact amount up to each individual official. The raises are to be effective Oct. 1 of this year. After authorizing elective officials' salary increases from \$300 to \$900 per year, effective Nov. 1 of this year, the commissioners' court set a public hearing on the matter for 10 a.m. October 8.

The following scale of increases is set for elected officials:
 County Judge from \$7,500 to \$8,400
 County Clerk from \$6,450 to \$7,350
 County Sheriff from \$7,200 to \$8,000
 County Attorney from \$6,450 to \$7,200
 County Treasurer from \$5,880 to \$6,780
 District Clerk from \$5,880 to \$6,780
 Assessor-Collector from \$6,900 to \$7,400
 Commissioner prec. 1 from \$6,600 to \$7,500
 Commissioner prec. 2 from \$6,600 to \$7,500

Commissioner prec. 3 from \$6,600 to \$7,500
 Commissioner prec. 4 from \$6,600 to \$7,500
 J. P. precinct 4 from \$6,250 to \$6,780
 J. P. precinct 5 from \$2,100 to \$2,400
 In addition to the above salaries, the county judge gets \$900 travel expenses, the county clerk gets \$900 travel expenses and the tax assessor-collector gets \$1,500 travel expenses.
 Other salary increases include: \$600 annual to the county judge's secretary, the sheriff's five field deputies, the secretary to the county attorney and J. P. precinct 4, two deputies in the tax assessor collector's office and a part time deputy, the county clerk's chief deputy and four other deputies, the district clerk's deputy, county precinct employees.
 Raises of \$300 annually to other precinct employees, \$400 to the sheriff's office deputy, \$200 in travel expenses for the associate county agent and home demonstration agent, \$600 to secretary for the extension office, \$300 to veterans' service officer, \$450 to county librarian, \$450 to assistant county librarian, \$850 for maintenance foreman and increase of monthly salary from \$60 a month to \$87.50 for custodian of city dump.
 In other action commissioners approved the list of delinquent tax rolls for 1974, approved the supplemental tax roll, approved the delinquent taxes and real property rolls, and approved the errors in assessments.
 A change of voting places from the Claude Cook home to the Farmers Coop Gin in Sudan was approved. J. J. Coker was named election judge and Hollis Cain named alternate for voting precinct 13.

OUR MEN IN SERVICE

Corporal CRAIG W. FLORI
 Timbakion, Crete, Sept., Marine Lance Corporal Craig W. Flori, son of Mrs. Olline Flori of Littlefield, participated in a combined surface and helicopter training assault exercise, named "Timbaktwo", with the Second Battalion, 6th Marine Regiment, off the coast here. Following "Timbaktwo" he participated in three weeks of intensive training in Crete's regorous hill country and artillery exercises near Porto Scudo, Sardinia.

BUY PEANUTS in the shell, either raw or salted. Compared to the cost of nut meats, they're usually better values.

FOR SALE: Earth's Best Home-town Honey \$1.25 a pint. Call or see Elaine Bills 257-3861. 8/23/tfc

BUY PEANUTS in the shell, either raw or salted. Compared to the cost of nut meats, they're usually better values.

FOR SALE: New and used instruments, new and used piano and organs. Everything musical - Phillips House of Music 118 Main Street, Clovis, New Mexico-Phone 763-5041. 8/23/t.f.c.

FOR SALE: Living room suite Call 257-3967 after 6 p.m.

FOR SALE: Sewing Machines. We are franchise dealers for Singer, Necchi, Neclo and Good Housekeeper. We repair any make. Scissors and pinking shears sharpened. Call 272-5110 in Muleshoe, Texas. Harvey Bass Appliance. 6/1/tfc

FOR SALE: Starting Thursday, September 20 and continuing for a week. We will have dishes, furniture, clothing, including many items of children's clothing. Faye Ellis 1/2 mile North of caution light in Earth. 9/19/73.t.c.

FOR SALE! LARGE 3 Bedroom BRICK HOME SEE: Faye Ellis 1/2 mile North of caution light in Earth or call 257-3936 or 257-3868

Extension Cord Standards

Electric extension cords must conform to safety standards. The Food and Drug Administration and the National Electrical Manufacturers Association recently agreed on voluntary safety standards concerning extension cords. Mrs. Doris Myers, home management specialist with the Texas Agricultural Extension Service, Texas A&M University System, noted. "Under new standards, extension cords can have no more than three outlets. Also, protective devices must cover outlets when not in use." According to the specialist, the cord itself or its package will bear the warnings: "Caution. Avoid hazards. Keep children away. Fully insert plugs. Cover unused outlets. Unplug when not in use." All cords manufactured after January 1, 1973, must meet these standards.

PLANNED USE REPORT			
The Government of plans to expend its revenue sharing allocation for the entitlement period beginning July 1, 1973 and ending June 30, 1974 in the following manner based upon an estimated total of			
<input checked="" type="checkbox"/> EXECUTIVE PROPOSAL Check this block if this plan is based on an executive proposal			
DEBT How will the availability of revenue sharing funds affect the borrowing requirements of your jurisdiction?			
<input type="checkbox"/> Avoid debt increase		<input type="checkbox"/> No effect	
<input type="checkbox"/> Lesser debt increase		<input checked="" type="checkbox"/> Too soon to predict	
TAXES In which of the following manners is it expected that the availability of Revenue Sharing Funds will affect the tax levels of your jurisdiction? Check as many as apply.			
<input type="checkbox"/> Will enable reducing rate of a major tax		<input type="checkbox"/> Will reduce amount of rate increase of a major tax	
<input type="checkbox"/> Will prevent increase in rate of a major tax		<input type="checkbox"/> No effect on tax levels	
<input type="checkbox"/> Will prevent enacting a new major tax		<input checked="" type="checkbox"/> Too soon to predict	
OPERATING/MAINTENANCE EXPENDITURES			
Priority Expenditure	Planned Expenditures	Percent Planned for Maint. of Existing Services	New or expanded Services
Public Safety	\$ 2,000.00	100%	
Environmental Protection	\$ 2,000.00	100%	
Public Transportation	\$ 2,000.00	100%	
Health	\$ 2,000.00	100%	
Recreation	\$ 2,000.00	100%	
Laboratory	\$ 2,000.00	100%	
Special Studies For Poor Or Aged	\$ 2,000.00	100%	
Financial Administration	\$ 2,000.00	100%	
Total	\$10,000.00		
CAPITAL EXPENDITURES			
Expenditure Categories	Planned Expenditures	Percent Planned For Equip. Purchase	Land Acquisition
Multi-Purpose & Gen. Govt.			
Education			
Health			
Transportation	\$ 1,000.00	100%	
Development			
Housing & Community Development			
Economic Development			
Environmental Conservation			
Public Safety			
Recreation			
Culture			
Other (Specify)			
Other (Specify)			
Total	\$1,000.00		
I have advised a local newspaper and the news media of the contents of this report. Furthermore, I have reviewed and documented the contents of this report and they are open for public and news media scrutiny.			
Signature of Chief Executive Officer _____			
Name & Title (please print) _____			
Date published _____			
Name of Newspaper _____			

SELL IT FAST! BUY IT RIGHT! USE WANT ADS!

PAY CASH & SAVE

ROOFING SHINGLES
 240 Self-Sealing, 3 Tab
 18 Year Bonded
\$10.90 PER SQUARE
 YOU HAUL AND SAVE

FLOOR TILE
 12"x12" VA
\$8.10 PER 45' BOX

PLYWOOD
 4 X 8
 1/2" CD
EXTERIOR GLUE PER SHEET \$6.65

Farm Discount Lumber & Supply
 PHONE 364-8002
 DIMMITT HIGHWAY
 U.S. 306 SOUTH HEREFORD, TEXAS

JAMES GLAZE INSURANCE CO.
 Muleshoe, 218 S. 1st
 *Auto Insurance *Crop Hail
 *Farm and Ranch *Homeowners
 Phone 272-4549

FLOATING TAILWATER PIT PUMPS
 • No Seals • No Bearings • Open Impeller
 "Pumps the largest amount of water for the smallest amount of money!"
 Pumps from 300 to 1000 gallons per minute

OWENS ELECTRIC
 809 E. 2nd-Hereford, Texas-Pho. 364-3572

DEAD STOCK REMOVAL
7-DAYS A WEEK SERVICE
 Please Call As Soon As Possible

MULESHOE BI-PRODUCTS
 Phone 965-2429 LAZBUDDIE

FEEDERS GRAIN, INC.
 DAILY BUYERS FOR CATTLE FEEDERS
 Federal Storage License 3-4451
 We Can Use Your Grain
SUDAN LIVESTOCK and FEEDING CO.
 Ph.227-5321-Sudan

TRUCK SEATS EXCHANGE
 15 Minute Service
McCORMICK'S Upholstery
 CHARLES POWELL OWNER
PHONE 385-4555 LITTLEFIELD

JOB PRINTING
 EARTH NEWS

To Rest Assured use SAFETY DEPOSIT BOX Protection
FIRST STATE BANK
 Dimmitt, Texas

FOR SALE: Used heavy duty Signature Electric dryer, \$100. Muleshoe Mobile Home Sales, Phone 272-2574. 8/17/tfc

LAMMONS FUNERAL HOME
 Ambulance Service
 Phone 385-5121
 LITTLEFIELD TEXAS

QUICKBALL PRYOR CO., INC.
 Automobile Parts Supplies & Equip. P.O. Box 567 Earth Texas

MONUMENTS
 Winsboro Blue Granite White Georgia Marble and others, including Bronze for Memorial Park Specifications.
 See or Call Collect
 Percy Parson, Olton Phone 285-2621 or Frank Ellis Muleshoe, Phone 272-4574

COMMERCIAL PRINTING
 EARTH NEWS-SUN

Pontiac Showing Thursday At Don Riererson Pontiac

Twenty new Pontiacs will be on display Thursday at Don Riererson Pontiac, Cadillac, Toyota in Plainview. Don Riererson, owner-manager, invites everyone in the area to attend the big premier showing and see the all new Pontiac. Riererson and his personnel are excited about the new Pontiacs their built in comfort, economy, safety devices and roadability. Riererson expects this to be a Pontiac year, when more

people will buy more Pontiacs for more dependability, comfort and economy. People are looking to get more for their money and Riererson feels they definitely will feel their money is well spent when they buy a Pontiac. His enthusiasm for the new '74 models is endless. So, you may see for yourself this new car on Thursday, September 20 at Riererson Pontiac, Cadillac, Toyota in Plainview.

Coffee, Cause Of Heart Disease?

Heavy coffee drinkers may be more prone to heart disease than those who don't drink coffee according to Hershel Jick and Dennis Stone of the Boston University Medical Center. In the August 10, 1973 issue of Science, the weekly journal of the American Association for the Advancement of Science, staff writer Thomas H. Maugh 11 discusses Jick

and Stone's observed connection between heavy coffee drinking and myocardial infarction. Myocardial infarction, explained Maugh, is the degeneration of the heart muscle caused when the blood supply is restricted by clogged or blocked blood vessels. In their two studies, Jick and Stone of the Boston Collaborative Drug Surveillance Program found that patients drinking

one-to-five cups of coffee daily run an approximately 50 percent greater risk of developing myocardial infarction than those who don't drink coffee. Further, patients who drank six or more cups daily ran almost a 100 percent greater risk.

Stone and Jick did not aim specifically at coffee in their studies. Through a screening operation at cooperating hospitals, said Maugh, they obtained information on all newly admitted patients' use of drugs, tobacco, alcohol, coffee, and tea. The association between coffee use and myocardial infarction was only one correlation observed.

The link between coffee and myocardial infarction is a mystery, explained Maugh, and Jick and Stone caution that there is still insufficient evidence that coffee is a cause of myocardial infarction.

The strongest case against Jick's and Stone's finding is that their conclusions are drawn from retrospective studies in which data is gathered after the onset of the disease. Many scientists claim that retrospective studies evidence is gathered prior to the development of the disease and can bring conclusions.

Maugh concludes that despite criticism, Jick's and Stone's results are important. Although there is little other evidence that coffee causes heart disease, Maugh explains, the excessive use of coffee and the high incidence of heart disease in the U. S. suggests that more research should be conducted.

Group Slates Seminar On Consumer Buying

Good buying sense begins with buying know-how. This and related topics on consumer decision making will be the center of discussion at a one-day seminar sponsored by the Texas Agricultural Extension Service and the South Plains Development Women's Task Force Thursday, September 27. The event will be held at the Texas Tech University Center Coronado Room.

Mrs. Hazel Schoenberg, associate director of the Good Housekeeping Bureau headquartered in New York, will be one of the noted speakers for the occasion.

Crops May Turn Into Headaches, Attend Meeting In Earth, Oct. 8

An excellent crop can turn into trailer loads of headaches if producers do not plan well enough for cotton harvesting and handling, says Buddy C. Logsdon, county Extension Agent.

Growers might be able to save themselves hundreds or even thousands of dollars by taking advantage of information to be offered at two meetings in Lamb County for producers and area citizens at Earth, in the Show Barn, October 8 at 1:30 p.m. and at Littlefield, "Willy Room", in Lamb County REA Building, October 8 at 7:30 p.m.

Designed to update producers on facts about harvest-aid chemicals, cotton harvesting and field storage, the meetings are sponsored by the South

Plains Development Program and the Texas Agricultural Extension Service.

Specialists with the Extension Service based at Lubbock will present facts on the use of harvest-aid chemicals, equipment systems for harvesting, and field storage systems, with specific information on labor, time and cost comparisons.

They are Roy Childers, area agricultural engineer-cotton mechanization, and Robert B. Metzger, area agronomist-cotton, and Marvin Sartin, area economist-management.

Accompanying the specialists will be District Extension Agent Billy C. Gunter and Buddy C. Logsdon, Lamb County Extension Agent.

SPD is a volunteer organization composed of citizens in-

terested in the economic and social growth of the South Plains.

SALE ENDS SEPT. 29

S-K TOOLS

CHICAGO, ILLINOIS 60632



DEEP IMPACT SOCKET SET No. 4018 - 1/2" DRIVE

Eight Deep Impact 6 Pt. Sockets, 1/2" to 1 1/2"

No. 4018 No. Pos. 8

\$18.15

S-K Air Impact Wrenches 1/2" Square Drive Model 735



New 1/2" impact wrench tackles such automotive jobs as: wheel lugs, cylinder heads, doors, fenders, main bearings, clutches, transmissions, oil pans, radiators, differential nuts, many others. Designed to meet needs of professionals, with many popular features. Protective front and back bumpers. Streamlined styling for better looks, better balance. Built-in power regulator as in higher priced tools. Contoured trigger for operating comfort. Rugged one-piece impact hammer construction. Conveniently located, easy to use reverse mechanism. Easily replaceable air inlet.

Specifications: Drive: 1/2" square. Bolt capacity: 1/2" (12.7 mm.). Weight: 5 1/2 lbs. Length: 6 1/2". Recommended air pressure: 90-120 psi. Air inlet: 1/4". Recommended hose size: 3/16" min.

\$99.95

15% OFF
ON
THESE AND OTHER

S-K TOOLS DURING



401 S. FIRST MULESHOE TEXAS 79347 PH. 272-4511

BIG TOOL SALE

Take advantage of the Sale to get ready for harvest.

COW POKES By Ace Reid

"300 of these—and I wanted to be a brand inspector!"

"COW POKES" BROUGHT BY:

CITIZEN STATE BANK
MEMBER F.D.I.C.
EARTH, TEXAS

don't stick your neck out...

Get the facts first **free**

... THERE'S only one sure way to find out how great electric heat would be in YOUR nest... and that's to have one of the "wise birds" at the electric company give you a FREE — NO OBLIGATION electric heating cost estimate.

ELECTRICITY—IT DOES SO MUCH GOOD

Total **ELECTRIC Heating**

FOR SO MANY PEOPLE

38-8

EQUAL OPPORTUNITY EMPLOYER

Hunting Laws Differ In Various State

If you are thinking about hunting in another state, it would be a good idea to check the hunting laws there before you go.

Otherwise, you might not hunt.

Colorado, for example, now requires that persons born after Jan. 1, 1949, must be certified as having passed an authorized hunter safety training course. Texas' hunter safety program with the Parks and Wildlife Department fills this requirement.

Colorado is just one of 17 states with a mandatory hunter safety program.

Other states include California, Connecticut, Delaware, Kansas, Michigan, Minnesota, Montana, New Hampshire, New Jersey, New York, Oregon, Pennsylvania, Rhode Island, South Dakota, Utah and Washington.

Several more states are in the process of developing their own mandatory programs.

Many states also require that hunters wear specific colored clothing. Hunting safety experts say wearing blaze orange clothing is a good idea whether it is required or not.

Louisiana requires that hunters wear at least 800 square inches of blaze orange clothing while hunting, and several other states require 500 square inches. Hunters meeting Louisiana's requirements would be legal in the other states.

According to Mrs. Tom Box, chairman of the SPD Women's Task Force and Mrs. Lynn Bowerman, Lamb County Extension Agent, the one-day program is designed to alert consumers to the importance of sound decision making in home, clothing and food buying.

Seven experts will present detailed information on housing and home furnishing, family life, home management, consumer education, and clothing, says Mrs. Box. Specific topics to be reviewed will include meat labeling, unit pricing, open-code dating, shopping motivation and general buying tips with emphasis on balancing personal tastes and convenience against economy.

The event begins with registration at 9:15 a.m. at the University Center Coronado Room with the program getting underway at 9:40. After a welcome by Mrs. Box and an overview of the Women's Task Force by Mrs. Crawford, Mrs. Schoenberg will outline "Consumer Decision in a World of Inflation." Pat Bradshaw, Extension specialist in Housing and Home Furnishing from College Station, will end the morning session with a discussion on how to "Buy a House, Not a Nightmare."

Beginning the afternoon session at 1:00 p.m. will be Marilyn Brown, Extension specialist in Consumer Education and Clothing from College Station, speaking on "Clothing What You See May Not Be What You Get." Mrs. Schoenberg again addresses seminar guests, this time on "Food Buying—A Bag of Tricks." "Consumer Decision Via the Computer" will be the subject of discussion by Dr. Jane Coulter, assistant professor, Home and Family Life, Texas Tech University. Lynn Bourland, Extension specialist in Home Management from College Station, concludes the seminar on the topic "Who Put the Con in Consumer?"

"Decision making in consumer buying is especially important these days with rising prices and increasing shortages," says District Extension Agent Catherine Crawford. "We hope that interested persons will take this opportunity to better acquaint themselves with consumer shopping decisions and motivation. We believe the carefully chosen speakers will offer the kind of information that people can use."

The SPD Program is a voluntary organization composed of citizens interested in the economic and social growth of the South Plains.

YOU ARE INVITED To See The NEW '74 PONTIACS TODAY

20 NEW '74



CATALINA HARDTOP COUPE

PONTIACS IN STOCK



GRAND PRIX HARDTOP COUPE

REFRESHMENTS WILL BE SERVED

ALL DAY THURSDAY

DON RIERERSON

PLAINVIEW

3110 OLTON ROAD



PONTIAC
Cadillac

296-2788