

# PEACE

By DAVID HARTMAN

Is peace an elusive dream? It depends on the kind you are looking for. Where do you find peace? In a bottle? Sometime. From a pill? For a short time.

In isolation from others? Maybe?

In fun, fun, fun? Perhaps. However, all of these are temporary. They have a way of wearing off and out.

Some seem to find peace in meditation. I suppose it depends on what you are meditating about.

Peace is more than absence of war. It is more than having no conflicts and struggles in life.

There is peace in knowing who you really are and that you are headed in the right direction.

There is peace in knowing you are doing the best you know how at whatever task.

Above this there is peace in knowing God personally and

that He is in control of your life. Paul put it this way in Colossians 3:15, "Let the peace of heart which comes from Christ be always present in your hearts and lives..." (Living Bible) Have you really tried it? If you haven't don't knock it.

It is possible to have peace of heart even when your world is falling down around your ears. Even though everything seems to be falling apart for you it is still possible to have that deep assurance everything is eventually going to be okay. However, that kind of peace doesn't come apart from Jesus Christ.

Jesus himself put it this way, "I am leaving you with a gift --Peace of mind and heart! And the peace I give isn't fragile like the peace the world gives. So don't be troubled or afraid." (John 14:27, Living Bible)

The peace of God isn't easily shattered. So don't be afraid to try it. If you've tried everything else to no avail what have you got to lose?



## Norman Clayton Breaks Record In Bass Tournament

Norman Clayton, an avid sports fan defied all Plainview Bass Club by-laws, by doing what never had been done before in any Bass Club Tournament by successfully landing a record eight pound 11 ounce largemouth black bass at Plainview's first Bass Tournament of the year. The tourney was held

February 15-16 at Oak Creek Lake.

Clayton is a new member of the Plainview Bass Club. He is also a member of the newly organized Hereford Bass Club. In catching the "Big One" Clayton broke the existing Big Bass record, set by Joe Don Scott of Plainview a year ago

## 'Self Preservation of Women' Film, Draws Large Group

The program of "Self Preservation of Women" was well attended Thursday evening at the Community Hall. The meeting was sponsored by the

at Possum Kingdom Lake. Clayton's catch topped Scott's record by two pounds nine ounces.

Clayton's skill at fishing not only landed him the Big Bass of the tournament and the big record for all the PBC tournament, but he also carried with him a trophy for winning the Individual Championship at the tournament. Clayton had a total of 12 pounds 2 ounces of fish to take home along with both Big Bass honors and Individual honors.

Clayton caught the Big Bass on a "Bomber Pinfish" lure Saturday, February 16.

Thirty-one members of the PBC fished in the tournament and caught a total of 45 bass in the two-day event, averaging nearly two and one-half pounds a piece.

Town and Country Study Club. The president, Mrs. Wayne Rutherford, welcomed the guest, and Mrs. Marie Ross introduced the guest speaker Mr. Bert Sinclair, Safety Educational Patrolman with the Texas Department of Safety.

Mr. Sinclair showed slides as he discussed and demonstrated many ways a woman can defend herself when being attacked. He listed various dangerous things women do without thinking, among those were driving with unlocked doors, picking up hitchhikers, not looking in both back and front of the car before getting in.

Sinclair strongly stressed a point about being cautious when stopped on the highway by any one, including policemen. He said roll down the window only enough to put your drivers license through and no more. Never unlock doors or get outside.

Homes should have good locks, and storm doors should

be locked at all times. He also pointed out the fact that a woman should never open the door to a stranger, regardless of what he says his need is. He also cautioned ladies never get next door unless porch lights were on and never leave the home without leaving lights on. If on vacation, he assured his audience, "Leave a light on somewhere in the house. If you have fire arms in your house learn to use them. He elaborated further by saying cops are just human beings and many have wives and daughters, they understand and there is nothing wrong in calling the police if you are only just pretty sure you hear a prowler." "The business of the police is to protect people and they want to be of service."

Mr. Sinclair made the statement that, "There are only two kind of cops, A Bold One and An Old One, but he said, "rest assured there are no OLD BOLD ONES."

Refreshments of coffee, tea and cookies were served by the hostesses, members of the Town and Country Study Club.

Monday Only!  
Reg. \$2.39 & \$2.19  
Perma Press PRINTS  
\$1.49 and \$1.69  
One Basket Of KNITS-\$2.50 yd.  
SASSY STITCHIN  
Bee Hive Mail

## Did You Know

YOU CAN AFFORD YOUR OWN **Mobile Home**

Come See Us  
WE CAN PROVE IT TO YOU

## R.&C. MOBILE HOME SALES

Hiway 60- Texico, N.M.

We Also Have  
"A FEW USED CARS FOR SALE"

**The EARTH NEWS-SUN**

Published at Earth, Texas 79031 every Thursday except the first Thursday following Christmas.

Second Class Postage paid at Earth, Texas 79031.

SUBSCRIPTION RATE  
Earth and Trade Territory, per year.....\$4.00 plus tax  
Elsewhere in United States, per year.....\$5.50 plus tax

CLASSIFIED RATES  
6¢ per word, first insertion, 5¢ per word thereafter.....60¢ minimum.

ADVERTISING RATES GIVEN ON REQUEST

ROSS AND POLLY MIDDLETON.....Publishers

## BENDER'S February Clearance

### TREMENDOUS SAVINGS

LATE MODELS  
**CADILLACS**  
**OLDSMOBILE**

LOCAL-ONE OWNER-LOW MILEAGE-FULLY EQUIPPED

# Bender

CLOVIS

Oldsmobile  
Cadillac  
Datsun

# THANK YOU

TO THE BUYERS AND SUPPORTERS OF OUR ANNUAL LIVESTOCK SHOW FOR MAKING OUR SHOW A SUCCESS... AND FOR ENCOURAGING OUR YOUTH TO PARTICIPATE IN THIS WORTHWHILE PROGRAM...

## BUYERS and CONTRIBUTORS

BUYERS OF THE GRAND CHAMPIONS and RESERVE CHAMPIONS

CITIZENS STATE BANK  
EARTH OIL and GAS CO., INC.  
DENT FARM SUPPLY, INC.

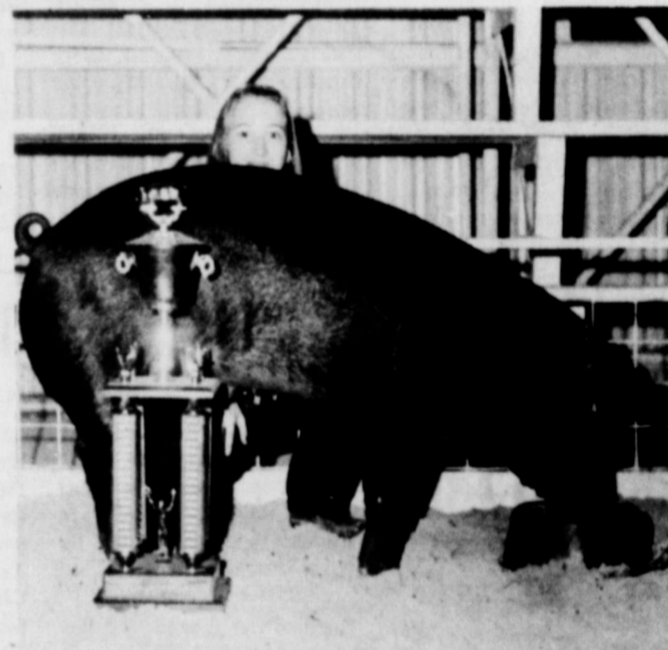
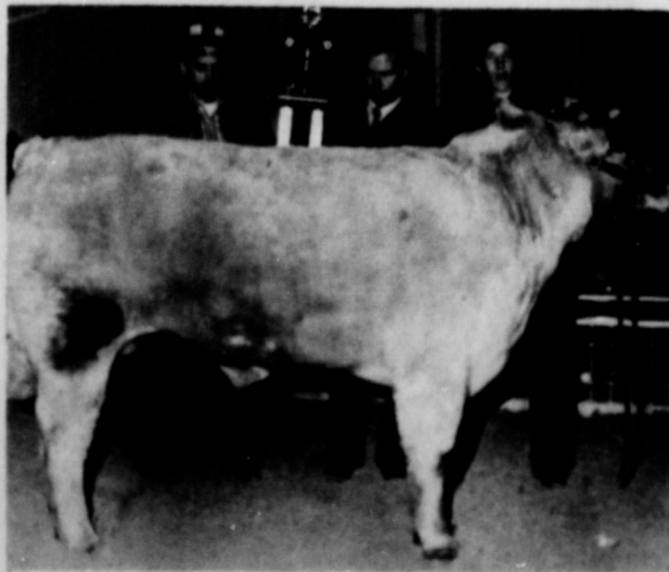
WOOD and JORDAN, INC.  
EARTH AG SUPPLY  
TORO GRAIN-Oilton

EARTH DRY GOODS-Earth  
TIBBETS GIN-Dodd  
K. and W. WELDING-Springlake  
KENNETH SAWYER-Earth  
EARTH AG SUPPLY-Earth  
SPRINGLAKE GRAIN-Springlake  
CLARENCE KELLEY-Earth  
TORO GRAIN-Oilton  
ERNEST GREEN-Springlake  
T. L. FREE-Earth  
SUNNYSIDE FEEDERS-Sunnyside  
FARM PAC KITCHENS-Lubbock  
TED HABERER-Earth  
EARTH 66-Earth  
PRAIT'S JEWELRY-Littlefield  
EARTH NEWS-SUN-Earth  
LOWE SPRAYING-Dodd  
ROGER HABERER-Earth

FARR BETTER FEEDS-Hereford  
HARVEY BASS APPLIANCES-Muleshoe  
MULESHOE LOCKER-Muleshoe  
SUNNYSIDE PORK PRODUCERS-Sunnyside  
JAMES CRANE TIRE CO.-Muleshoe  
MULESHOE MOTOR CO.-Muleshoe  
SAM FOX TEXACO-Muleshoe  
DIMMITT AG IND.-Dimmitt  
ST. CLAIR DEPT. STORE-Muleshoe  
POYNERS WHITE STORE-Muleshoe  
DONALD LEONARD CATTLE CO.-Levelland  
MASHED O LAND AND CATTLE CO.-Earth  
LAYMAN BROS.-Earth  
GARY'S TV LAB-Earth  
FLAGG GRAIN-Flagg  
Q-P PARTS-Earth  
TAYLORS MARKET BASKET-Earth  
HOMER STARKEY-Earth



FARMERS COOPERATIVE ASSOCIATION-Springlake  
FIRST STATE BANK-Dimmitt  
EARTH GIN, INC.-Earth  
SERVICE SEED and DELINTING-Earth  
BELEW S-B COTTON SEED-Earth  
HIGH PLAINS GRAIN-Oilton  
BARTON BROS. GIN, INC.-Earth  
GIFFORD-HILL-Oilton  
SUDAN FEEDERS-Sudan  
TIDE PRODUCTS-Sunnyside  
WAGNEW FARM STORE-Sunnyside  
STANLEY SCHAEFFER-Dimmitt  
LIVELY and SMITH FARMS  
and FUNK SEEDS-Earth  
ESTACADO-Sunnyside  
EARTH ELEVATOR-Earth  
MILCOT SEED CO.-Littlefield  
CITIZENS STATE BANK-Earth  
OLTON STATE BANK-Oilton  
FARM CHEMICAL-Earth-Springlake  
DENT FARM SUPPLY-Earth  
KMP PUMP CO.-Earth  
SPRINGLAKE MOTOR SUPPLY-Springlake  
EARTH OIL and GAS CO., INC.-Earth  
WOOD-JORDAN-DAVIS IMPLEMENT-Oilton  
WOOD-JORDAN, INC.-Earth  
McMILLAN BOOKKEEPING-Earth  
SANDERS LUMBER-Earth  
BOB and J. D. PHIPPS-Earth  
TEMPLETON and SON CATTLE CO.-Earth  
4-WAY CATTLE CO.-Sunnyside  
BRIDGES BROTHERS-Earth



THOMPSON IMP. CO.-Oilton  
THOMPSON CHEV. CO.-Oilton  
FLAGG FERTILIZERS-Flagg  
JERRY KELLEY-Earth  
DON CARTER-Amherst  
LITTLEFIELD FROZEN FOOD CENTER-Littlefield  
THE GREEN TREE-Earth  
THE LITTLE GALLERY-Earth  
SASSY STITCHEN-Earth  
THE DAISY-Earth  
PAMPERED LADY-Earth  
KARD KORNER-Earth  
THE TEA ROOM-Earth  
LAMB CO. FARM BUREAU-Littlefield  
EARTH COOP GIN-Earth  
DARRELL SAWYER-Earth  
E. C. KELLEY-Earth  
BUSBY MOTOR CO.-Springlake  
DIMMITT VETERINARY CLINIC-Dimmitt  
DALE FOWLER FORD-Dimmitt  
DEWITT KELLEY-Earth  
JOHN BRIDGES-Earth  
T. H. LEWIS-Earth  
JERALD JAMES-Earth  
TOMMY ALAIR-Springlake  
NICKELS GIN-Earth  
CENTRAL COMPRESS AND WHSE-Sudan  
SOUTHWESTERN PUBLIC SERVICE-Earth  
PIONEER NATURAL GAS-Earth  
T-BAR WESTERN STORE-Earth  
CALVIN WOOD-Earth  
EARTH PUMP AND MACHINE-Earth  
FARMERS UNION INS.-Earth

## The JUNIOR EXHIBITORS

## Recipes For Using Scout Cookies

### LEMON CREME ICE CREAM PIE

1 1/2 cups crushed Lemon cremes (including filling)  
2 tablespoons softened butter or margarine  
3 pints vanilla ice cream  
1/2 cup lemonade concentrate  
1 drop yellow food coloring  
Combine crushed cookies and butter. Firmly press into 9-inch

pie plate. Soften 1 1/2 pints of the ice cream. Spread in pie shell. Combine lemonade concentrate and food coloring; swirl over softened ice cream. Freeze until firm to the touch. Soften remaining 1 1/2 pints ice cream and spread over concentrate. Freeze until firm. If desired, garnish with sprigs of fresh mint and lemon slices. Makes 8 servings.

### REFRIGERATOR DESSERT

Two 3oz. pkg. raspberry or strawberry flavored gelatin  
1/2 cup butter or margarine  
1 cup sugar  
1 egg, well beaten  
One 8 1/2 oz. can crushed pineapple, drained  
1 cup chopped nutmeats  
56 Scot-Teas cookies

Prepare gelatin according to package directions; refrigerate until partially set. Beat butter and sugar thoroughly; add egg, pineapple and nutmeats. Place a layer of cookies over bottom of 13 x 9-inch pan. Cover the cookies with the creamed mixture then gently press another layer of cookies into the creamed mixture. Pour partially set gelatin on top. Place in refrig-

erator until firm. Cut into bars. Makes 14 servings.

### GREEN ANGEL DELIGHT

2 cups crushed Girl Scout Sandwich Cookie crumbs (including filling)  
1/2 cup melted butter or margarine

One 13oz. can evaporated milk  
One 3-oz. package lime flavored gelatin  
1 3/4 cups hot water  
1/2 cup lime juice  
2 tablespoons lemon juice  
1 cup sugar

One 6-oz. pkg. (1 cup) chocolate pieces  
Mix butter with sandwich cookie crumbs. Line 13x9-inch dish with mixture. Whip milk which has been chilled in freezing compartment. Dissolve gelatin in hot water. After partially set, whip until fluffy. Mix juices and sugar together; fold into gelatin. Fold in whipped milk and chocolate pieces. Pour over cookie crumbs. Place in refrigerator until ready to serve. Makes 14 servings.

### APPLE-RAISIN BROWN BETTY

2 1/2 cups Scot-Teas cookie pieces (1/2")  
4 cups finely chopped tart apples  
3/4 cup seedless raisins  
2/3 cup firmly packed brown sugar

1/2 teaspoon nutmeg  
1/2 teaspoon cinnamon  
1/2 cup butter or margarine, melted  
2 tablespoons lemon juice  
1/3 cup water  
Cream

Sprinkle 1/3 of cookie pieces in greased 1 1/2-quart casserole. Mix next 5 ingredients. Spread half the mixture on top of cookies and repeat layers. Cover with remaining cookies. Drizzle with butter mixed with juice and water. Cover and bake in preheated moderate oven (375 degree F.) 40 minutes. Uncover and bake 20 minutes longer. Serve warm with cream. Makes 6 servings.

### SAVANNAH TOFFEE TORTE

1/2 cup butter or margarine  
1 cup confectioners sugar  
3 eggs, separated  
1-1/2 oz. (1-1/2 sq.) unsweetened chocolate, melted  
Dash salt  
14 Savannah cookies, crushed into crumbs (including filling)  
1/2 cup chopped nutmeats  
Beat together butter and sugar



BRYAN SMITH and KAREN ROBINSON

## Jr. High Citizen Of The Week

The twosome who were named "Citizens of the Week" in Junior High school last week were Bryan Smith and Karen Robinson.

Byron, is in the 6th grade and son of Rev. and Mrs. Glen Smith of Springlake. Byron is 12 years of age, his favorite subject is P. E. "All Foods" are classed as his favorite food and

he enjoys playing football. Karen, 12, is a seventh grade student and the daughter of Mr. and Mrs. Bob Robinson. Her favorite subject is math and her favorite food is steak. In sports she enjoys swimming. Blue is her favorite color. She is a member of the band and of the Honor Society.

ORANGE and GRAPEFRUIT juice yields about two-and-one-

half times as much vitamin C as tomato juice.

1st Monday Only  
One Group  
SPORTSWEAR  
1/2 off  
One Group  
DRESSES  
1/2 off  
The GREEN TREE  
Bee Hive Mall

HEY KIDS!  
IT'S KITE  
FLYING TIME  
We Have  
KITES  
OF ALL KINDS

The DAISY  
Bee Hive Mall



## Mother-to-Be The Stork Shop

1312 Main

NOVELTY-Weave  
DOUBLE KNIT  
POLYESTER-

A dress with go-every-where possibilities, machine-washable. Assorted textured patterns. Sizes 6-16.

22.00

CLOVIS

until fluffy. Beat egg yolks; add to creamed mixture. Add melted chocolate and salt. Beat egg whites until stiff. Fold into creamed mixture. Sprinkle half of cookie crumbs and nutmeats in 8-inch square pan. Pour mixture over crumbs. Then sprinkle with remaining crumbs and nutmeats. Refrigerate at least 12 hours before serving. Makes 9 servings.

## Services Today For Ala Payne

Funeral services for Ola Cecil Payne 61, of Truth of Consequences, New Mexico, formerly of Earth, are scheduled for 2:30 p.m. (today) Thursday, February 28 in the First Baptist Church of Earth, Rev. David Hartman, Past or of the church will officiate. Payne died at 2 p.m. Sunday in St. Annis Hospital in Truth of Consequences, New Mexico. He had been a resident of

Truth or Consequences for the past year.

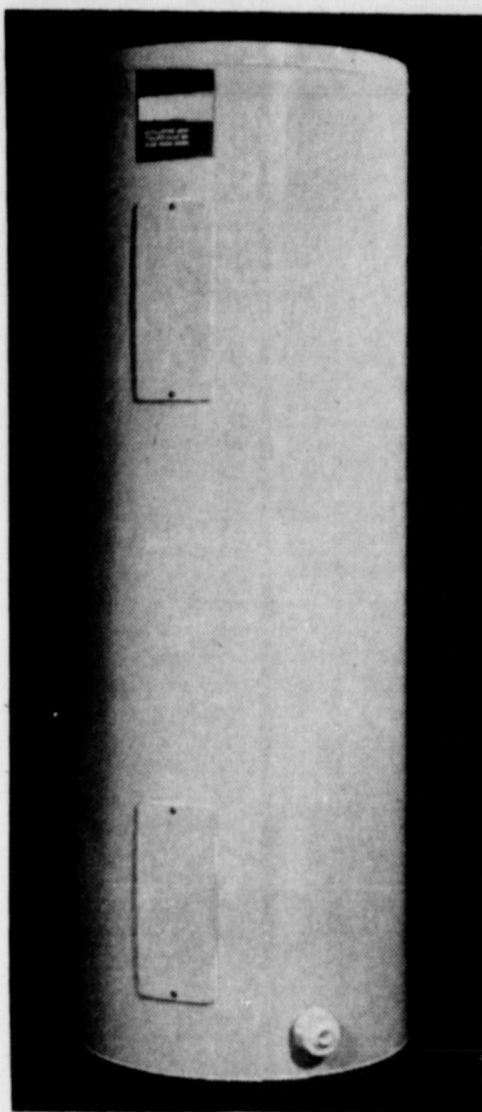
Payne had resided in Earth from 1944 to 1955. He was engaged in Building Construction and Cement Finisher.

He served in the U.S. Army in World War II from May '42 until October '43.

Survivors included three sons, Lloyd of Borger, Texas; Harold Payne of Chino Valley, Arizona; Robert of Bryson, Texas; Three daughters; Mrs. Doris Smith, Vernon, Illinois; Mrs. Betty Jones, Jermyn, Texas; Mrs. Louise Warren of Ft. Worth. Three sisters Mrs. Stella Offield, Silverton; Mrs. Lura Moore, Clarksdale, Arizona and Mrs. Laverne May of Deming, New Mexico. Two brothers; Sam of Bagdad, Arizona and Terria of Chino Valley, Arizona.

Pallbearers will be Herb Wandborn, E. R. McAlpine, James Wages, Melvin Parish, Leon Foster, and G. Kellar. Burial will be in the Earth Cemetery.

# PIZZAZZ!



We've got the only  
**WATER  
HEATER**  
in town  
that's got it!!!

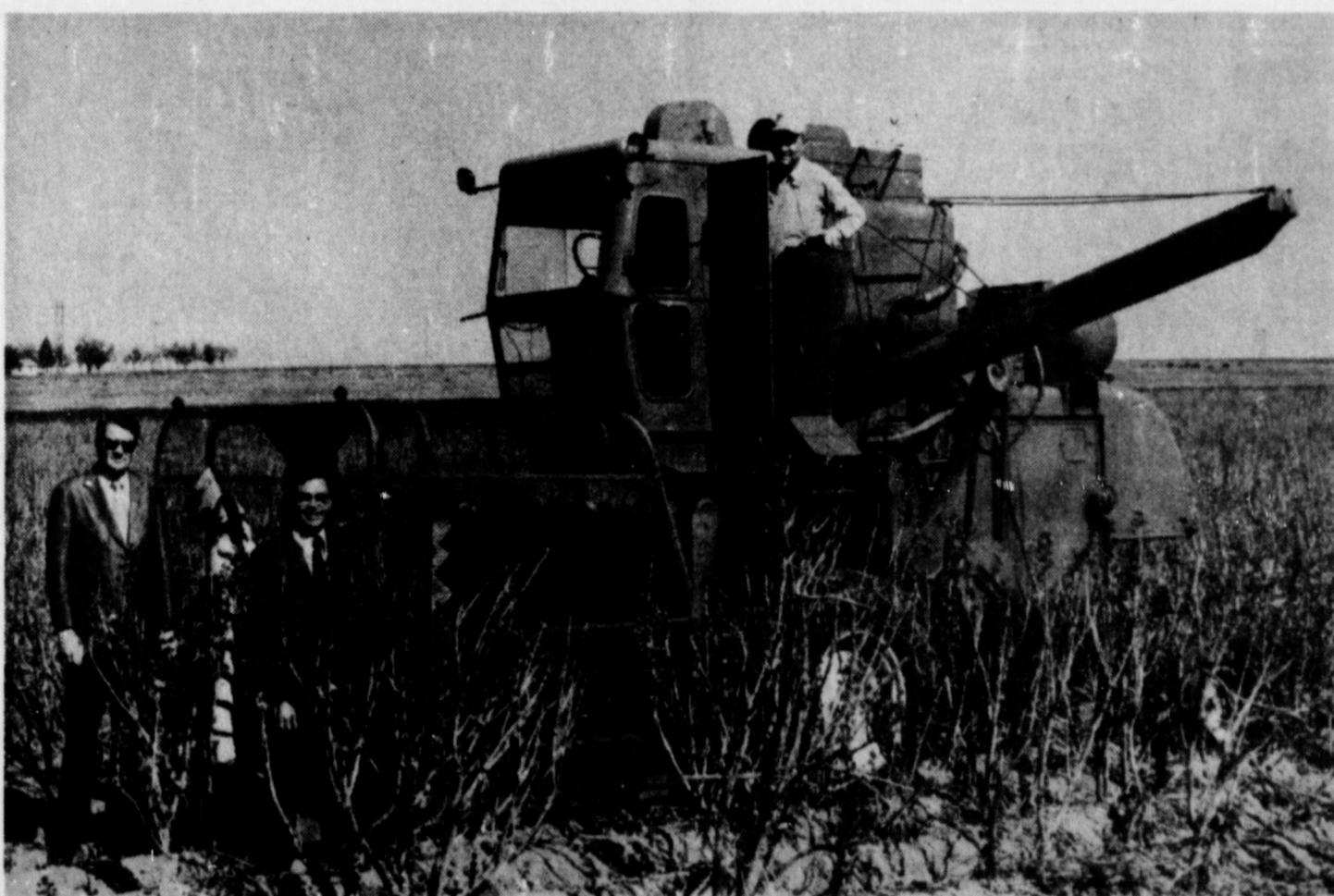
What's PIZZAZZ in a water heater? PIZZAZZ is everything a good water heater should be... fully insulated all around and on the top and on the bottom... one that needs no flue or vent, for easy installation... one that silently gives you all the hot water you need, when you want it... and one that's practically maintenance free. What's a PIZZAZZ water heater? Clean styling - an ELECTRIC WATER HEATER... we sell, service, install, finance and guarantee em!

WE SELL 'EM - Call Us!



Of Course-IT'S ELECTRIC

# WHAT'S GOOD ABOUT CASTOR BEANS ?



CASTOR BEANS... A GOOD WAY TO MAKE AN ASSURED, ADDITIONAL CASH CROP

... EXTRA MONEY ...

*But you'd better get your bid in early because:*

- ★ Plains Co-Op Oil Mill is contracting only 10,000 acres on a first come, first serve basis
- ★ Plenty of good seed is available
- ★ 12¢ per pound; \$12 per 100 weight
- ★ Prices based on clean seed delivered to Co-Op Oil Mill, Plainview

For more information:

Wayne Martin Mary Trammel  
Plains Co-Op Oil Mill Plains Co-Op Oil Mill  
Lubbock 747-3434 Plainview 293-2583

# Plains Cooperative Oil Mill

2901 AVE. A, LUBBOCK

806-747-3434

## Griffith-Adams Exchange Vows, Friday

MONDAY ONLY!

ALL NEW  
SPRING DRESSES  
\$5.00 off

The GREEN TREE  
Bee Hive Mall

In a setting of candlelight amid baskets of lovely gladiolas and mums, Miss Teresa Lynn Griffin of Olton and Johnny Jess Adams of Lubbock exchanged wedding vows in the First Baptist Church in Halfway at 7:30 p. m. Friday, February 22. Rev. Gene Thurber, pastor of the church officiated. Parents of the couple are Mr. and Mrs. Billy L. Griffith, Olton and Mr. and Mrs. Clifton

Adams of the Circle Community.

The altar of the church was centered with lovely white wrought iron candelabra holding long white tapers and entwined with tropical greenery. Flanking candelabra were hung with crystal prisms. Floor baskets filled with white gladioli, chrysanthemums and pompons extended to candle trees entwined with tropical foliage. The bridal aisle was marked with bows of white satin and gypsophila.

Nuptial selections were presented by organist, Mrs. Johnny Downy of Halfway and soloist, Mrs. Darwin Cox also of Halfway.

Given in marriage by her father, the bride was adorned in a lovely Princess style gown of white organza accented in Rachel lace and dimensional Venice lace appliques. The deep waist length yoke of Rachel lace was outlined in lace, "uffling and center scallops outlined in pearl beading, with a Duchess neckline of lace.

Long fitted sleeves repeated the scalloped beading and were cuffed with a lace flounce over the hands.

The full circular skirt was appliqued in Venice lace medallions, and the hemline encircled in a deep lace flounce extending around the chapel length train.

Matching lace edged triple tiers of silk illusion veiling cascading from a pearl encrusted Camelot caplet.

For "something old" the bride wore a wedding ring having belonged to her great-grandmother, the late Mrs. John Griffith; "something new", her bridal attire; "borrowed" was a white bible, property of Mrs. Jimmy Lively, sister of the groom. She wore the traditional blue and carried in her shoe pennies minted in the years of birth of both bride and groom.

Atop the white Bible she carried a cascade arrangement of pink sweetheart roses, stephanotis and gypsophila showered with white satin streamers and love knots.

Miss Carol Walden, Canyon, served as maid of honor. Other bridal attendants were Misses Sydonna Allen and Diane Williams, both of Lubbock, cousins of the bride.



MRS. JOHNNY ADAMS  
(nee Teresa Lynn Griffith)

Attendants were gowned in pale blue slipper satin. The formal length gowns were designed with Madras necklines and leg-to-mutton sleeves. Each carried a nosegay of roses, pompons and gypsophila tied with streamers of velvet and satin ribbon.

Jerry Jenkins Olton served as best man. Groomsmen were Larry Williams, Lubbock cousin of the bride; and Billy W. Griffith, brother of the bride. Candles were lighted by Tammy Williams, Lockney, cousin of the bride, and Terry Griffith, brother of the bride.

Sheri Griffith, Lubbock, cousin of the bride served as flower girl. Ring bearer was Michael Allen, Lubbock, cousin of the bride. For her daughter's wedding Mrs. Griffith chose a formal length gown of pink. The mother of the groom wore a formal length gown of aqua.

Immediately following the ceremony a reception in Fellowship Hall of the church. The brides table, was laid with white lace over blue, was centered with a silver and crystal epergne filled with white stock, carnations and pompons, beautiful three tiered wedding cake and Reception punch were served, using silver and crystal appointments.

For travel the bride wore a multi-colored plaid pant suit, styled with short waist length blouse and matching jacket. She wore a corsage lifted from the bridal bouquet. Following a wedding trip to various places of interest in New Mexico the couple will be at home in Lubbock.

Both are graduates of Olton High School. The bride attended West Texas State University at Canyon. The groom is presently employed with a meat packing company in Lubbock.

## Mrs. Rudd Is TOPS Queen

Seven members of the local TOPS CLUB gathered for a regular meeting Thursday at the City Hall in Springlake.

Mrs. Ralph Rudd was Queen for the week, having lost the most weight. Mrs. Bob Robinson was runner-up.

Mrs. W. B. Hucks, president led the group singing the TOPS song.

Those present were Mrs. T. V. Marell, Mrs. Ralph Rudd, Mrs. Fred Clayton, Mrs. W. B. Hucks, Mrs. Gerald Inglis, Mrs. James Paclard and Mrs. Bob Robinson.

PACKAGING OF THE future may include more convenient forms of produce. Forecasts include ready-to-serve grapefruit halves and peeled oranges.

LOVING GOD IS  
PEACE

Karen Armstrong  
On Dean's List  
At Texas Tech

Karen Armstrong, a junior student at Texas Tech was listed on the Dean's Honor Roll for the fall semester.

Karen a 1971 graduate of Springlake-Earth High School, is an Elementary Education major specializing in Physical Education.

Miss Armstrong is the daughter of Mr. and Mrs. Bob Armstrong of Earth.



Words cannot express our thanks and appreciation for the many cards, visits and concern for Chubby on his recent illness and surgery.

The Dent Family

GOD IS ALL  
POWERFUL

Monday Only!  
Milton Bradley  
SWIVEL GAME  
Reg. \$6.50-Now \$4  
Parker Bros.  
POW WOW GAME  
Reg. \$6.50-Now \$4  
The DAISY  
Bee Hive Mall

Monday Only!  
Reg. \$15.00  
TABLES-\$7.50  
Reg. \$23.00  
ICE BUCKET  
and 8 GLASSES  
Set-\$15.00  
The DAISY  
Bee Hive Mall

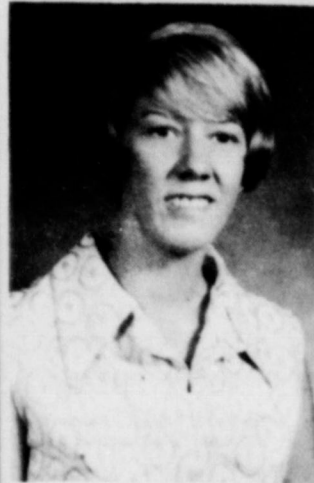
## Bride-Elects Make Selections Here!

SUE,  
BRIDE-ELECT  
OF  
DON HABERER  
HAS SELECTED  
CRYSTAL AND  
CHINA HERE



SUE SMITH

JUDY,  
BRIDE-ELECT  
OF  
CHUCK ALLMON  
HAS SELECTED



JUDY GOVER

STAINLESS STEEL  
AND  
CORNING WARE  
HERE

Howell's 216 Floral

Come To The → PLACE AROUND THE CORNER ←  
VILLAGE CENTER in PLAINVIEW



"THE GREAT DENIM LOOK"

JUMP SUIT in light weight denim with eyelet floral sleeves, back tie.

Yellow Saddle-Stitched SKIRT in denim topped with loose fitting patch-work JACKET.

Light weight Blue Denim PANT SUIT with floral print eyelet trim.

THE BUSY CORNER

BANKAMERICA

WALGREEN'S

A HAPPY PLACE TO SHOP

NEXT DOOR TO BASKIN-ROBBINS

GOD LOVES YOU

## Troop 373 Visits News Office

Members of the Girl Scout Troop 373 have busied themselves selling cookies and Monday they had sold 350 boxes of Scout Cookies and were issued additional boxes at their meeting Monday afternoon in the Scout Hut in Earth. They are hoping to make enough money to go to Camp Rio Blanco near Crosbyton.



It is difficult to find words that express our love and appreciation for the friends who did so many nice things in our time of sorrow. Thank you for the lovely flowers, memorials cards and calls and for every act of kindness shown.

It is on occasions such as this that the true love of Christ is manifest-May God's choice blessings be with each of you.

The family of Edith Brockette Billye Jo Hestand and family Wileta G. McCall and family

ON STAGE  
Springlake-Earth  
School Auditorium  
Feb. 28 (tonite) 8 P.M.

Sponsored By  
Student Council  
Adults \$1.50  
Children \$1.00

IN PERSON!  
YOU'LL WANT TO SEE THE GREAT DR. KIT HYPNOTIST  
INTERNATIONALLY FAMOUS  
AMAZING FUNNY MYSTIFYING  
THE SHOW TRICKS BEATING RECORDS EVERYWHERE! \$1000 REWARDS TO YOU (SEE FRONT PROGRAM & SEAT)  
Never a dull moment in this eye Raring Laugh Packed Hypnotic Fantasy of all Time! It's one show you will always remember.  
Don't Miss It For The World!

—REVIVAL—  
**FIRST BAPTIST CHURCH**  
Of Springlake  
**MARCH 3-10**  
**JOHN C. DENTON, Preacher**  
**WAYNE ANDERSON, Singer**  
Services Daily  
**10:30 A.M. — 8:00 P.M.**  
**"EVERYONE WELCOME"**

OPEN 9 A.M.-8 P.M.  
MON. THRU SAT.  
CLOSED SUNDAYS  
PRICES GOOD  
THRU SATURDAY  
MARCH 2nd

**GIBSON'S DISCOUNT CENTER**  
1723 A.W. American Muleshoe

SWIFT'S <b>CHILI</b> No Beans 15 oz. can <b>53¢</b>	KEEBLER ZESTA SALTINE <b>CRACKERS</b> 1 lb. box <b>39¢</b>	<b>COCA-COLA</b> 28 oz. Bottle <b>4/\$1.00</b>
<b>SCOPE</b> MOUTHWASH 18 oz. Bottle OUR REG. \$1.29 <b>79¢</b>	<b>GLEEM II</b> TOOTHPASTE 24¢ Off Label 5 oz. Tubes <b>2 89¢</b>	FIRST PRIZE <b>ROSE BUSHES</b> TYLER GROWN No. 1 1/2 OUR REG. \$1.29 <b>99¢</b>
1 GALLON VENTED <b>GAS CAN</b> OUR REG. \$1.37 <b>\$1.09</b>	GERING 3-TUBE 50 ft. SOFT SPRINKLER <b>HOSE</b> No. GSK50 <b>\$2.49</b>	U.S. ANTENNA COLOR <b>T.V. ANTENNA</b> OUR REG. \$39.97 <b>\$27.77</b>
KODAK POKET '10' INSTAMATIC <b>CAMERA OUTFIT</b> OUR REG. \$17.57 <b>\$15.37</b>	<b>ALL YARN</b> YOUR CHOICE <b>79¢</b>	<b>WHIZ</b> AUTOMOTIVE <b>CHEMICALS</b> RED TAGGED <b>50 TO 70%</b>

ATTEND THE CHURCH OF YOUR CHOICE

here comes *Spring*

WE ARE GETTING IN OUR NEW SPRING CLOTHING DAILY

COME SEE US!

**Highland YOUTH SHOP**

NO. 6 HIGHLAND SHOPPING CENTER — PHONE 763-6914  
CLOVIS, NEW MEXICO 88101

**NOTICE**

There will be a bridal shower honoring Judy Gover, bride-elect of Chuck Allmon, Saturday, March 9, from 3:00 to 4:30 p. m. in the Church of Christ Fellowship Hall. Anyone wishing to be hostess please call Mrs. Fred Clayton 257-3396 or M. Perry Martin 257-3352. 2/28/2tp

**NOTICE**

A bridal shower honoring Miss Sue Smith, bride-elect of Don Haberer, son of Mr. and Mrs. Ted Haberer has been set for Saturday, March 9 from 4:30 to 6 p. m. Selection have been made at the Bee Hive Mall and at 216 Floral in Earth. 2/21/3tc

**NOTICE**

There will be a bridal shower honoring Gail Rother, bride-elect of Jimmy Littleton, Saturday, March 2 from 3:00 to 4:30 p. m. in the home of Mrs. C. C. Goodwin. Everyone is invited.



BARBARA BUCKNER and BOB CLEAVINGER

*Engagement Announced*

Mr. and Mrs. L. O. Buckner of Tulla, announce the engagement and approaching marriage of their daughter, Barbara, to Bob Cleavinger, son of Mr. and Mrs. R. A. Cleavinger of Springlake. Vows will be exchanged at 7:00 p. m. on May 25 in the United

Methodist Church at Earth. The couple are '73 graduates of Springlake-Earth High School.

Barbara is currently employed in Tulla and Bob is a Freshman at South Plains in Levelland. Friends and relatives are invited to attend the ceremony.

*Troop 308 H Has Safety-First Aid Program*

Members of Brownie Troop 308 met Wednesday in the Scout Hut in Earth for a program on Safety and First Aid.

Hershel Hulcy demonstrated the art of making a splint. He then allowed each member of the Troop to make splints. He inspected each and approved them.

Boxes of cookies were distributed among the members of the Troop to begin their sales Friday.

At the conclusion of the meet-

ing refreshments of cookies and Kool-Aid was served to Melinda and Belinda Zamora, Jennifer Pellham, Michael Field, Angela Layman, Dyan Jones, Tammie Green and Joy Parish. Leaders are Mrs. Doug Parish and Mrs. Troy Layman.

*What's Cooking At School*

**MONDAY**  
Mexican Casserole  
Waldorf salad  
Cherry cobbler  
Cornbread, crackers  
Butter and milk

**TUESDAY**  
Fried chicken and gravy  
Creamed potatoes  
Toss salad  
Strawberry jello cake  
Hot rolls  
Butter and milk

**WEDNESDAY**  
Chili Beans,  
Potato salad  
Buttered spinach  
Spiced fruit cake  
Cornbread  
Butter and milk

**THURSDAY**  
Pizza  
Creamed english peas  
Spring salad  
Prune cake  
Orange juice and milk

**FRIDAY**  
Hamburgers, Onions, pickles  
French fries, catsup  
Apricot cobbler  
Milk



It was once considered unhealthy to eat food left out in the night air.

Monday Only!  
Reg. \$4.98 & \$5.98  
KNITS-\$3.98  
Fashion BELTS-1/2 price  
One Group TRIMS-1/2 price  
SASSY STITCHIN  
Bee Hive Mall

Mr. and Mrs. Richard Stockstill of Oklahoma City and California visited last week with Mrs. Cecil Parish of Garland Stovall of Norwalk, Earth.

Thursday, March 7

**9 99¢**

KING SIZE WALLET CREATIVE COLOR PORTRAITS FOR ONLY

Extra Charge for GROUPS

NO LIMIT

GET PICTURES MADE OF GRANDPA, GRANDMA, DAD, MOM AND ALL THE LITTLE ONES AT THESE SAME LOW PRICES!

**SHUGART COLOR PHOTOS**

ASK About Our FREE 8 x 10 OFFER

**PAY & SAVE**

HIGHWAY 70 - EARTH

Queen's Coiffures Presents Our New Beauty Operators, Judy Lee and Ella Joe.

Judy Lee      Trava Harville      Ella Joe

- Hair Cutting
- Hair Coloring
- Blow Dry
- Hair Styling

**Queen's Coiffures**

OPEN TUESDAY THRU SATURDAY  
209 E. 7th 762-1775  
CLOVIS

**IT'S OUR FIRST Anniversary**

Everyone At Carlisle-Oldham Ford - Joe, Buck And All Employees, Wish To Thank Everyone For Making This First Year A Good One.

Our Pledge To You Now, As It Has Always Been, Is To Give You Honest And Just Service And Sales And Of Course, The Best Service Possible.

Again Thanks, And Do Come See Us.

**CARLISLE-OLDHAM FORD INC.**

525 PHELPS AVE.      LITTLEFIELD, TEXAS      385-5164

Old mother Hubbard went to the cupboard to get her poor dog a bone but when she got there, the cupboard was bare..

... said she--  
"I must get a Loan."

As far as we know, the bank has never been asked to extend credit to feed Fido. However, if Mother Hubbard needed new cupboards, she would have a lot of 'credit company' at our bank. Because we make many loans to cover household improvements. Arrangements are easy and quick. Rates are reasonable.

**CITIZENS STATE BANK**

MEMBER F. D. I. C. - EARTH

ATTEND CHURCH  
SMILE!

### Lisa Orr On Honor Roll

Lisa Susan Orr, freshman student at Wayland Baptist College, was named to the Dean's Honor Roll for the past semester. Her grade point was listed as 4.0. Lisa is a Political Science major with a minor in Speech. She is the daughter of Mr. and Mrs. Vernon L. Orr and a '73 graduate of Springlake-Earth school.

Monday Only!  
1 Basket  
Miscellaneous  
Items - \$1.00  
We Have New  
Merchandise  
Arriving Daily

The DAISY  
Bee Hive Mall

**FOR SPRING...  
THE LIGHTWEIGHT  
SUIT**

It's crisper. Sharper.  
Newer. It might  
even be a convertible  
one with contrasting  
slacks. Of  
polyester-wool blends.  
shape-keeping cool.



**SLACK-ING OFF  
FOR SPRING**



New patterns, new textures, new colors. It works wonders for wardrobe versatility. Neat.

**KEN'S**

"The Man's Shop"

3211 OLTON ROAD  
IN PLAINVIEW



**GIRL SCOUT TROOP 373**-This group of girls are a hard working group. They have sold 350 boxes of Scout cookies and are eager to sell more. They are working for a camping trip to Rio Blanco. They are front row (L to R,) Kari Neinaast, Sylvia DeLaGarza, Elm Guana, Delma Gonzales and Amy Gonzales. Back row; Donna and Tammy Fulerwider, Teresa Lunsford and Carolyn McGowan.

### Voters Guide lines For Elections

Rumors regarding the qualifications for voting in the oncoming elections have been circulating around. The following is a voters guidelines and will answer all questions regarding legality of the would be voter.

1. Register to vote at least 30 days prior to the Democratic Primary, which is May 4, 1974.

2. All registered voters, 18 years and older are eligible to vote in all Democratic Party elections.

3. Present registrations are valid if you have voted in a Democratic Primary or a General Election within the last three years.

4. Register to vote at your County Clerk's office or with

a properly deputized person allowed to register voters.

5. Notify your County Clerk of change of address 5 days prior to election day so that you are registered in the proper precinct, if you have moved within the county.

6. On moving from one county to another, you must re-register 30 days prior to the election, if you wish to vote in your new place of residence.

7. On April 14, 1974, the absentee voting for the first primary by personal appearance at the County Clerk's office begins and goes through the fourth day preceding the election.

8. Applications for absentee voting for the first primary must be received by the County Clerk not later than the close

of business on April 30, 1974. 9. Marked absentee ballots for the first primary must be mailed back to the County Clerk and postmarked not later than midnight on May 3, 1974.

### 19 Students Exhibit Animals In Houston Show

Nineteen students at Springlake-Earth are in Houston this week where they will be exhibiting animals in the Houston Livestock Show, February 25 through March 1.

Those participating are: Brian Britton, Brad Haley, Sam Parish, Scott Scheller, Terry Lively, Randy Bills, Joe O'Ball-ejo, Ronnie Hucks, Kenny O'Hair and Kirk O'Hair. Also Brad Bridges, Emilio Ramon, Larry Dear, Brent Been, Lee Brown, Donnie Henderson, John Cleavinger, Monty Watson and Shelia Lewis.

### Pictures To Be Made At Pay & Save

Pictures will be made locally at Pay and Save Grocery Store in Earth on Thursday, March 7. An expert from Shurgart Studios in Levelland, The photos are done by experts in the field of photography and the price is so economical there is a special price of 9 wallet size color portrait for only 99¢. Raeford Daniel, manager of Pay and Save invites everyone to drop by to get their photos made.



Monday Only!  
Reg. \$2.39 & \$2.19  
Perma Press  
PRINTS  
\$1.49 and \$1.69  
One Basket Of  
KNITS-\$2.50 yd.  
SASSY STITCHIN  
Bee Hive Mall

## Doug Goen is Gifford-Hill in this area.

He's highly qualified to help you with any irrigation problems you may have and he's got the very best equipment available to do it with.

Gifford-Hill's 360, Gifford-Hill's Side Wheel Roll, Vanguard PVC Plastic Pipe and Aluminum Pipe. Plus a long list of accessories.

If you haven't already met our irrigation expert, drop by soon and get acquainted.

And while you're there, let him show you the latest additions to Gifford-Hill's line of irrigation equipment.

Check with us before you buy. We can save you money!

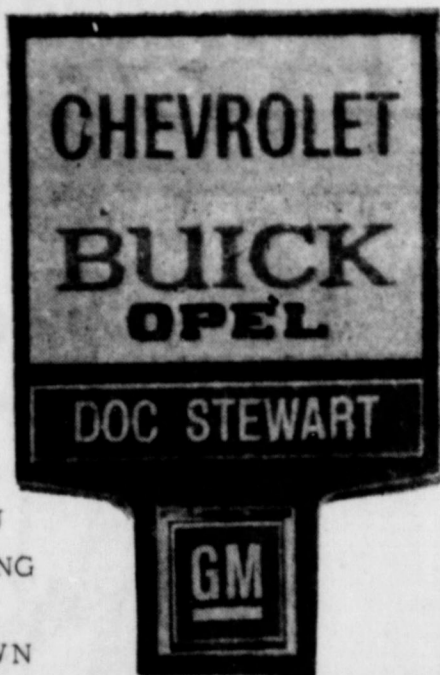
**Gifford-Hill & Company, Inc.**

P.O. Box 633  
Olton, Tx 79064  
(806) 285-2050



**THE SIGN OF SAVINGS!**

THIS IS WHAT YOU HAVE BEEN WAITING FOR OUR 1974 SELL DOWN



### JUST RECEIVED

New Shipment Of Opals, The Largest Selling Car In Germany. Drive One Today And See Why

**FULL SIZED CARS**

That Can Deliver Up To 20 MPG

150 NEW UNITS IN STOCK

Biggest Stock Of Commercials From Dallas To Denver - - -

**CHEVY II NOVAS**  
\$2646<sup>70</sup> Plus Freight

DON'T WAIT BUY NOW AND SAVE

**VEGA**  
\$2379<sup>70</sup> Price Plus Freight

So Get your Deal Today From the dealership

that has been selling more cars in Clovis than any other dealership for: 33 consecutive years

THE BOSS says sell em to somebody some where some how

**"DOC" STEWART**

Chevrolet - Buick - Opel

2500 Mabry Drive

Clovis, N.M.

**FROM DATE OF DEPOSIT**

**5.25%** Per Annum - Regular Passbook (No minimum)

**5.75%** Per Annum - Three Month Time Certificate \*\*

**6.50%** Per Annum - One Year Time Certificate \*\*

**6.75%** Per Annum - Thirty Month Time Certificate \*\*

**7.50%** Per Annum - Four Year Time Certificate \*\*

\*\*A \$1000.00 minimum deposit is required on all certificate accounts and a substantial withdrawal penalty is required for early withdrawal. All accounts are compounded daily and paid quarterly...



LITTLEFIELD FEDERAL SAVINGS AND LOAN ASSOCIATION



# SUNNYSIDE NEWS

By TENEY BOWDEN



The community has had two farm sales this week. The sale of Hershel Wilson was held at his home Tuesday. Mrs. Jo Hogue's sale was Wednesday at the farm. Ladies from the community sold food and drinks at the Wilson sale to help with the indebtedness on the community building.

Renee Jones was one of the twelve students of South Plains College in Levelland who were recently named to the Dean's Honor Roll. She had a 4.0 or straight average.

Lee Brown was initiated into the Springlake-Earth Honor Society Tuesday night.

Matt Gilbreath won first place with a heavy weight lamb in the Other Breeds class, 4th with a light weight lamb in the Other class and Breed Champion in the Dimmitt show. Coby placed 5th and 7th with his lambs. Hal

Gilbreath sold a lamb, but didn't show. Quint Waggoner placed 19th with his lamb and sold it for a good price. Quint has been off his crutches for only two weeks.

Ray Axtell of Earth was dismissed from South Plains Hospital in Amberst last Thursday. Charles reported this week that his dad was feeling lots better this week.

Gerald Graham and L. B. Bowden attended the hail suppression meeting of the board of directors of Better Weather, Inc. in Springlake Thursday night.

Robert Duke, Mrs. Cliff Brown, and Mrs. L. B. Bowden attended the meeting of the Castro County Genealogical Society in Dimmitt Thursday night.

A fire at the Russell Curry home on the M. H. Fowlkes

farm Saturday morning was confined to one wall of the bath due to the quick response of the Dimmitt Fire Department.

Gale Sadler attended the Board of Directors Meeting of Agri-Industries in Dimmitt Thursday night.

Mr. and Mrs. Ezell Sadler visited in Hale Center Thursday night with Mr. and Mrs. Erzell Keeler.

Baptist Women met Wednesday night for the Bible Study Group meeting with the leader, Mrs. L. B. Bowden in charge. Rev. Mack Turner began teaching the book "The Mission Task of the Church" in the Wednesday night Prayer Service.

The Baptist Young Women met at the church Monday afternoon with the W. M. U. director, Mrs. Thomas Parson in charge of the meeting.

Mr. and Mrs. E. R. Sadler spent last Sunday night and Monday in Lubbock with Mr. and Mrs. M. H. Fowlkes, Mr. and Mrs. Alton Louder and Mrs. Lowell Westmoreland of Littlefield returned home Tuesday night from Houston where they had visited since last Thursday with Mr. and Mrs. Tom Messer, Bart and Shelley. Mr. and Mrs. Bill Morgan visited in Oklahoma City from last Thursday until Tuesday with his mother.

Mr. and Mrs. Cecil Curtis returned home from a flight to St. Petersburg, Florida Tuesday after spending thirteen days with Debbie and her family.

They flew in a 727 Brannifand with Debbie and her family. They flew in a 727 Brannif and were in the air less than 8 hours round trip. They left Tampa at 9:10 Tuesday morning and were in Lubbock at 12:10. They spent Tuesday night in Slaton with Verdona and family before returning home.

Don Blankenship of Canyon visited Saturday with Mr. and Mrs. Cliff Brown, Lee and Lynn.

Mrs. Thomas Parson took Darrell Parson to his home in Plainview Thursday and spent Thursday night and Friday with Rev. and Mrs. Ellis Parson and family.

Cliff Brown and Winston Waggoner attended a date night trade meeting in Amarillo Friday night.

Mrs. Cecil Curtis visited Sunday and spent Sunday night and Monday with her parents, Mr. and Mrs. M. E. Stephens of Petersburg.

Mrs. W. E. Louder was admitted to Plains Memorial Hospital in Dimmitt Sunday evening.

The local Baptist Men had as

persons killed and six persons injured.

The rural traffic accident summary for this county during the month of January of 1974 shows a total of 13 accidents resulting in one person killed and six persons injured.

The rural traffic accident summary for the 60 counties of the Lubbock Department of Public Safety Region for January, 1974, shows a total of 553 accidents resulting in 16 persons killed and 302 persons injured as compared to January, 1973, with 572 accidents 207 persons injured. This was 19 less accidents, and 95 more injured in 1974 at the same period of time.

The 16 traffic deaths for the month of January, 1974, occurred in the following counties; three in Parker; two in Lubbock,

Potter; and one each in Crosby, Haskell, Lamb, Lynn, Montague, Palo Pinto, Young, Brisco, and Ochiltree.

## ATTEND CHURCH

## Six File For Election In Springlake

Much enthusiasm has been shown in the election for the City of Springlake as six people have already filed for the six vacancies.

Harlon Watson has filed for the position of mayor. The five positions as alderman are Jim Fulenwider, Phil Neinast, G. H.

## ENERGY TALKS

By Warren B. Davis  
Director, Energy Economics  
Gulf Oil Corporation



## 13 Wrecks In Lamb In January

The Texas Highway Patrol investigated 13 accidents on rural highways in Lamb County during the month of January, 1974, according to Sergeant Thurman Keffer, Highway Patrol supervisor of this area.

These crashes resulted in one

# THEY'RE ALL IN CLASSIFIED

**SAY SOMETHING NICE**

FOR SALE-Used refrigerator, \$30, baby bed, \$10 and other items. See at second house behind Bee Hive Mall. 2/28/74

FOR SALE-1973 Westinghouse washer and dryer. Phone 965-2818. 2/21/74

HOUSE FOR SALE to be moved, needs repair, contact Gardner Sanderson 965-2605. 2/7/74

For Sale-House with 8 acres. Will sell house or land separate. Phone 257-3995 nights. 1-17-74

FOR SALE-1970 Trail 70 Honda in good condition. Call 257-3983. 2/21/74

FOR SALE-One year old couch phone 965-2448. 2/28/74

LOST or STRAYED-----two female Dachshunds, one red, one black, Reward-call collect Sunnyside 846-2281.

**WE ARE STILL HERE and STILL WANT TO HELP YOU WITH YOUR IRRIGATION PROBLEM**

STATE LINE IRRIGATION CO., INC.  
Littlefield-Muleshoe

**For Sale or Rent**

3-Bedroom Modern House, concrete floor, located on front of the 100'x200' lot call 986-2602 day or night

**FOR SALE 5,000 Bales**

Wheat Stubble-Blended Alfafa 75¢ BALE  
**DAN HEARD**  
Call 385-3492 or 385--5889

**WANTED**

**Good Farmhand**

**Good Wages**

**KENNY HAMILTON**

965-2966

**WINTER IS TOUGH ON ANY CAR!**

**KEEP STEERING WORKING SMOOTHLY**

Don't wait for something to happen... take precautions now. Come in and let us align that front-end today. Same-day service.

**Plains AUTO PARTS**  
A. G. Box 200  
LITTLEFIELD, TEXAS 79047

South Main  
Muleshoe  
Phone 272-4576

**CONSERVE Energy**

**FIBERGLASS INSULATION CAN CUT HEATING COSTS!!**

FULL THICK 1/2" \$795 PER 100'

**STORM DOORS**

TEMPERED SAFETY GLASS - SELF STORING- REMOVABLE SASH

\$3295

32" OR 36"

**FARM DISCOUNT LUMBER & Supply**

364-6002  
US 385 SOUTH (Dimmitt Hiway)  
HEREFORD, TEXAS

**FLOATING TAILWATER PIT PUMPS**

No Seals • No Bearings • Open Impeller  
"Pumps the largest amount of water for the smallest amount of money!"

Pumps from 200 to 1000 gallons per minute

**OWENS ELECTRIC**

809 E. 2nd-Hereford, Texas-Pho. 364-3572

## Political Calendar

The Earth News-Sun is authorized to announce the following candidates for election to the office under which their names appear below, subject to the action of the Democratic primary in Lamb County, Texas, May 4, 1974.

- COUNTY JUDGE**  
Bill Angel  
G. T. (Truitt) Sides
- COUNTY COMMISSIONER PRECINCT 2**  
T. L. (Buddy) Free  
Clarence H. Kelley
- COUNTY CLERK**  
Mary Beth Willey  
Kathryn Day  
Betty Anne Hall
- DISTRICT CLERK**  
Ray Lynn Britt
- COUNTY TREASURER**  
Lucy Moreland

**HAMMONS FUNERAL HOME**

Ambulance Service  
Phone 385-5121

LITTLEFIELD TEXAS

**FEEDERS GRAIN, INC.**

DAILY BUYERS FOR CATTLE FEEDERS

Federal Storage License 3-4451  
We Can Use Your Grain

SUDAN LIVESTOCK and FEEDING CO.  
Ph:227-5321-Sudan

**QUICKBALL PRYOR CO., INC.**

Automobile Parts Supplies & Equip.  
P. O. Box 567  
Earth Texas

**MONUMENTS**

Winsboro Blue Granite  
White Georgie Marble and others, including Bronze for Memorial Park Specifications.

See or Call Collect  
Percy Parson, Olton  
Phone 285-2621 or Frank Ellis Muleshoe, Phone 272-4574

**JAMES GLAZE INSURANCE CO.**

Muleshoe, 218 S. 1st

\*Auto Insurance \*Crop Hail  
\*Farm and Ranch \*Homeowners

Phone 272-8549

**SINGER SALES & SERVICE**

WE HAVE A FULL STOCK OF ALL MODELS SINGER SEWING MACHINES AND CABINETS. OUR PRICES ARE THE SAME AS ANYWHERE IN THE U.S.A.

WE WILL DO OUR BEST TO TRADE WITH YOU.

REPAIR SERVICE ON ALL SINGER AND ALL OTHER MAKES OF MACHINES.

**Robinson Upholstry & Sewing Center**

308 W. 4th. St. Pho 385-4621 Littlefield

**DEAD STOCK REMOVAL**

**7-DAYS A WEEK SERVICE**

Please Call As Soon As Possible

**MULESHOE BI-PRODUCTS**

Phone 965-2429 LAZBUDDIE

**Yard Boy Drilling**

(Located In Canyon)

Has Expanded Its Business

And Opened A Branch Office In Olton

Mr. & Mrs. Carroll W. Freeman

invite you to come by and get acquainted with them. They are anxious to serve you.

They Drill

- ★ Cesspools
- ★ Underground Trash Holes
- ★ Ditching

Location - Former Vaughn's Grinding & Machine

**Yard Boy Drilling**

285-3361

in OLTON

To Rest Assured use **SAFETY DEPOSIT BOX** Protection

**FIRST STATE BANK**  
Dimmitt, Texas

**FB**

Life Auto Home

Joe Gilbert, Littlefield  
Elroy Wistan, Springlake  
Eddie Wilson, Sudan  
Ed Jennings, Littlefield

TRUCK SEATS EXCHANGE  
15 Minute Service

**McCORMICK'S Upholstry**

CHARLES POWELL OWNER  
PHONE 385-4865  
LITTLEFIELD

## Flying Queens To Play Taiwan China, March 5

Monday Only!  
**CANDLES**  
 Buy One-Get One  
**FREE**  
**CANDLEHOLDERS**  
 and **CANDLE RINGS**  
 1/2 price  
 The **DAISY**  
 Bee Hive Mall

PLAINVIEW---For the second time in three years, the Hutcherson Flying Queens of Wayland College will be playing host to the Taiwan basketball team from the Republic of China Tuesday, March 5 at 7:30 p.m. in Hutcherson Center.

Taiwan edged the Queens, 66-62 in a tough, physical game before 1,700 fans. But before the only sellout crowd of 3,000 in the history of the center, the Queens emerged with a 54-47 victory.

Half a dozen of the players who were on the Ya Tung team on its 1972 tour that produced

16 victories in 23 games are still playing for Taiwan, which is playing five other teams on the U. S. Tour.

While the Chinese girls aren't as tall as their American counterparts, they make up for their general lack of size by a full court press, fast-break offense and hard, aggressive play.

The same regulations used for Olympic play will help make for an exciting brand of basketball. In earlier international competition this year, the Queens beat Mexico's National Team, 60-34 and 51-47.

The customary exchange of gifts and national anthems of both countries precede the game, adding to the color-surrounding international competition.

The Queens currently are 20-3 under new coach Dean Weese and face National General West of Fullerton, California this weekend in 8 p.m. games Friday and Saturday at Hutcherson Center. The Queens beat NGW in the championship game of the Gold Coast Classic before the Christmas holidays.

Tickets to the Taiwan game can be purchased at the door or game night. All tickets are \$1.50 and there will be no reserved seats. Season tickets will not be honored this game only.

## High School Students Attend College Classes

LEVELLAND-College on weekends for high school students? Seems to be working at South Plains College, where 56 area high school students are taking a course in computer programming.

Robert Pearce, course instructor, divided the students in two groups, with half meeting from 6 to 9 p.m. on Fridays and the other half meeting from 9 a.m. until noon on Saturdays, every other weekend. Sessions began January 25-26.

"Main purpose of the course is to teach the students how to write a Fortran computer program, which is used for scientific work and to familiarize students with computers," Pearce said. Pearce is chairman-elect of the math and engineering department and an associate professor of math at SPC.

This is the same college level program taught to pre-engineering majors at SPC, Pearce noted.

There is a \$5 fee for taking the course, which covers cost of materials used, he said. The class is still open to any interested high school student. Next sessions are scheduled for February 22-23.

Although no credit or grade is given for the course, the students gain experience from it by actually running the computer themselves, Pearce said.

"A good advantage in taking the course is that it gives a sound background in Fortran programming. No matter what college a student goes to, if he is interested in computers, he will eventually have to take a similar course," Pearce said. Pearce initiated the course sending a letter of invitation to high schools in the area, asking math or pre-engineer-

ing students if they were interested in a computer course. "The response was really good," he said.

The outline of the computer course includes Fortran constants, variables, operations, simple input-output statements, simple programs, keypunch, complicated programs, arrays, dimension statements and operation of the computer.

The remaining schedule for class sessions is March 1-2, March 15-16, April 5-6, April 19-20, and May 3-4. Classes are in 101 Technical Arts Building.

Students from the Levelland area attending the class are Barbara Bradford of Levelland High School; Ida Solis, Randy Spradley, Dolla Solis and Larry Grissom, a teacher, all representing Anton High School; Joli Grant and Terri Howard, both of Whitharral High School; Lester Wilson and Tommy Gregory, a teacher, both representing Snyder High School; and Miles Cato of Seminole High School.

Other schools represented in the classes are Post High, Lorenzo, Springlake-Earth, New Deal High School; and Coronado, Monterey and Lubbock High School, all in Lubbock.

Monday Only!  
 Reg. \$4.98 & \$5.98  
 KNITS-\$3.98  
 Fashion  
 BELTS-1/2 price  
 One Group  
 TRIMS-1/2 price  
 SASSY STITCHIN  
 Bee Hive Mall

## SHUGART COUPON

Thursday, March 7

**PAY & SAVE**

HWY. 70

9

WALLET SIZE  
 COLOR PORTRAITS  
**99¢**



ASK About Our  
**FREE**  
 8 x 10  
 OFFER

Extra charge  
 for  
 GROUPS

## HARVEY FLOYD ANNOUNCES CANDIDACY AS STATE REPRESENTATIVE

As Democratic candidate for State Representative of the 74th District seeking your support, you are probably asking yourself, "Who is Harvey Floyd and how can he serve me?"

I am a businessman, a family man, and a 14-year resident of your district who is faced with the same type of situations you face and who understands your needs and concerns.

As you hear my proposal, I ask that you think of it as a joint proposal — yours and mine — and to think of this election in a personal way which will allow us to better conditions.

Primary among our problems is inflation, which affects us all. There is an existing need in Texas for additional revenue to meet the demands of inflated prices. I believe our proposal can sufficiently increase state revenue and at the same time avoid a state income tax and increased state property taxes on property, etc.

Crude oil produced in the United States is priced at approximately \$4.50 a barrel. Texas taxes crude oil on a basis of about \$3.71 per barrel. State tax on oil is 4.6 per cent at the well plus a 3-16c per barrel pipeline tax giving a total of under 20c per barrel state revenue from oil.

Texas collected approximately \$210 million from this source in the fiscal year ended August 31. Revision of the state's taxation program of crude oil would greatly increase this revenue source.

An even more urgent need is revision of the state program taxing natural gas. Texas collected \$125 million in taxes in the latest fiscal year on \$1.8 billion paid for natural gas produced in Texas. Much of this gas goes to other states where it serves as cheap fuel.

Natural gas in Texas is taxed at 7.4 per cent of its wellhead value. Many contracts were made, and are still in force, which sell gas at price ceilings imposed by the Federal Power Commission with a base tax on Texas-produced gas at 16c per thousand cubic feet. Current market value is 75c per thousand or more. A consumer buying gas at 16c per thousand pays state tax of 1.2c while the buyer of 75c gas pays 5.6c tax.

This present percentage system of taxation is unfair to the buyer paying high prices and favors those who pay the least for gas at the well. With action from the state and cooperation from the Federal Power Commission in changing from a percentage tax to a flat-rate of taxing natural gas, the taxing system would be equalized and would create an untapped source of state revenue.

The above proposal is but one I have to suggest. If elected, I pledge to serve you on the district level as your needs from the local level are communicated to me from you. By working together, I believe I can represent you well. I solicit your support and influence in the upcoming election.



**HARVEY FLOYD**

## Thoughts

From The Living Bible

After another forty days, Noah opened a porthole and released a raven that flew back and forth until the earth was dry. Meanwhile he sent out a dove to see if it could find dry ground, but the dove found no place to light, and returned to Noah, for the water was still too high. So Noah held out his hand and drew the dove back into the boat. Seven days later Noah released the dove again, and this time, towards evening, the bird returned to him with an olive leaf in her beak. So Noah knew that the water was almost gone.

## Announcing

A Change In Ownership For  
**PARMER COUNTY SPRAYING SERVICE**



Junior Lambert & Wife Virginia

Junior Lambert And Buck Gregory  
 Have Purchased The Intrest Of  
 T.C. Wiseman In The Business...

Ovid Lawlis Will Be Associated With Us Once Again...

For All Your Spraying Needs  
 Call

# PARMER COUNTY SPRAYING SERVICE

Ph. Tharp 225-4990

Junior Lambert

Buck Gregory

Ovid Lawlis



# attend Farming Frontiers

Farming Frontiers '74—the year's most outstanding farm-oriented film program—is coming your way. See the latest in agricultural developments, and new John Deere Tractors and equipment. These films were made in many parts of the U.S. and Canada. Be sure to come.



Tuesday, March 5- Beginning At 8a.m.

## DENT FARM SUPPLY

TUFFY DENT---EARTH