



BAILEY COUNTY JOURNAL

'The Community of Opportunity-Where Water Makes the Difference'

20¢

WEATHER

February 2 68 23
February 3 53 17
February 4 67 17

Vol. 22, No. 6

12 Pages Today

Published Every Sunday at Muleshoe, Bailey County, Texas 79347

Sunday, February 5, 1984

Around Muleshoe

In Thursday's farm story in the Journal, a typographical error was made with regard to the 1984 wheat program: Farmers may divert an additional 10-20 percent of their base and receive PIK equal to -75 NOT 15-percent of the established yield times the acres diverted. Also, the ACR program of 1984 is the same as the CUA of 1983, instead of ACP.

As of Thursday afternoon, the Tel-Cot ticker tape showed that Secretary of Agriculture John Block had announced a 12.1 cent deficiency payment of 1983 cotton. Nothing official, however, has been received on this announcement.

The Texas Department of Parks and Wildlife division will hold a public hearing on the 1984-1985 hunting regulations on February 6 at 7 p.m. in the Bailey County Courthouse. All interested citizens are urged to attend.

The 17th Annual Water, Inc. Membership meeting will be held on February 11 at the Quality Inn on I-40 East in Amarillo, Texas. Special speakers include Congressman Jack Hightower, and Senators John Montford and Bill Sarpius. Registration fee is \$15 and will get underway at 8:30 a.m. that day.

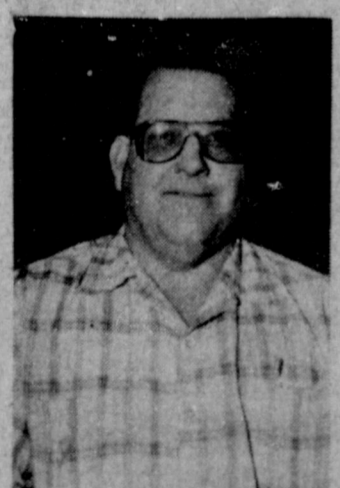
In Thursday's Muleshoe Journal, the headline on the announcement of R.O. Gregory's candidacy for Commissioner of Precinct One, said Precinct Three. Although the story and the political calendar show R.O. Gregory to be filed in Precinct One, the headline was incorrect. Our apologies for this error.

Bailey County Electric Cooperative Association will hold its annual meeting on Saturday, February 25 at the Muleshoe High School Auditorium. A free lunch will be served to cooperative members and their invited guests, beginning at 12 noon. The meeting will begin at 1 p.m., according to Connie Gupton, Manager.

The Jennyslippers will sponsor skating at the Bailey County Civic Center. Cont. Page 6, Col. 1

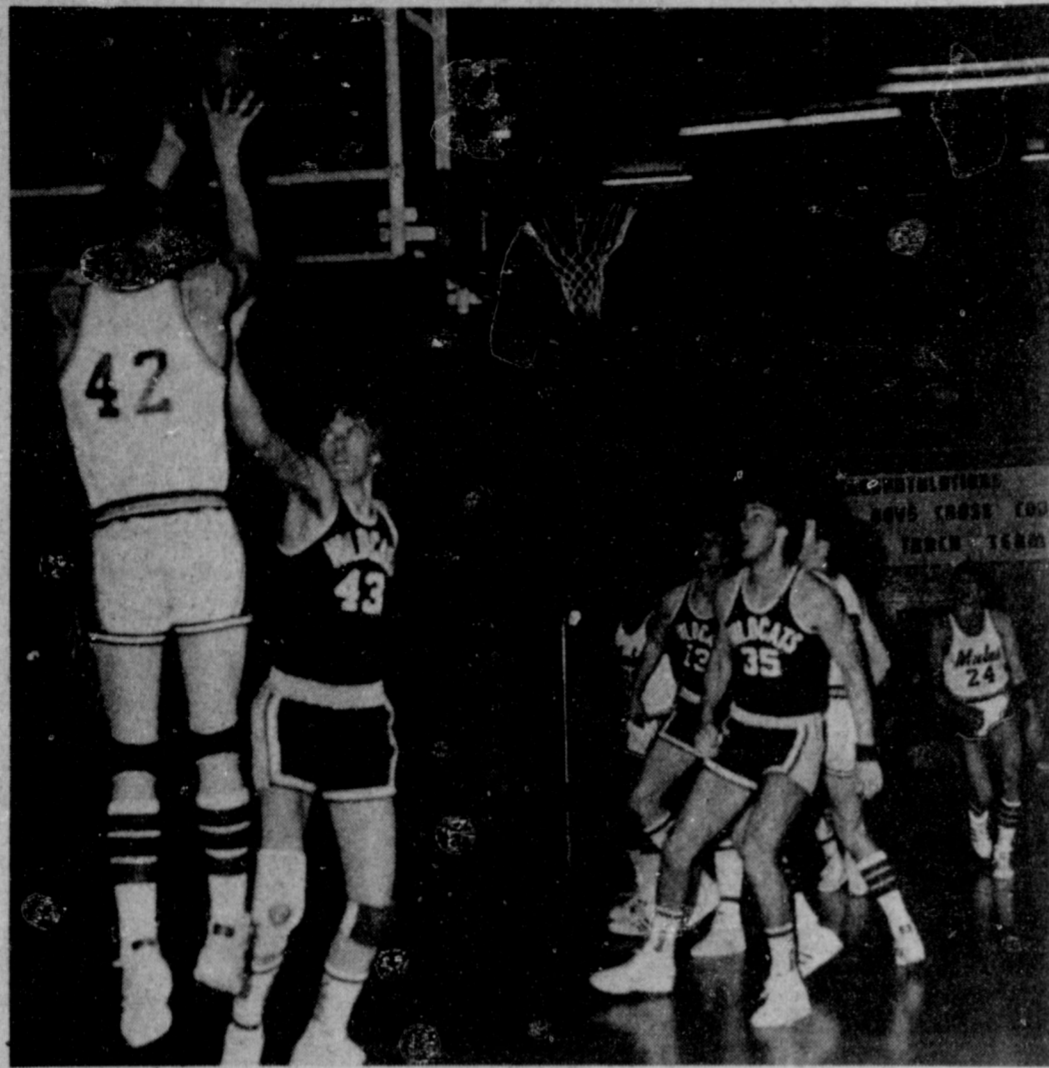
Williams Announces Commissioners Candidacy

Marshall "Catfish" Williams, 44, has authorized the Journal to officially announce his candidacy for the office of Bailey County Commissioner, Precinct One, subject to the Democratic



MARSHALL WILLIAMS

primary in May. Williams is a self-employed carpenter and resides in Progress. He has made his home in Bailey County for the past ten years, moving to Progress from the Lubbudie Community. He is married to Ann, owner of Ann's T-Shirts, and they are the parents of three daughters: Kim and Marsha of Lubbock and Suzanne, a junior at Muleshoe High School. The Williams



MAKE IT COUNT. MULES...The Muleshoe Varsity Mules slipped past the Littlefield Wildcats in Tuesday night's basketball action here in Muleshoe. The Mules won by a score of 54 to the Cats 53. Mule, Preston Langford, #42 goes in for a shot here against the Wildcats, for one of the seven points he scored in the game.

Area Farmers Can Apply For FmHA Emergency Loans

Applications for emergency farm loans for losses caused by this Summer's drought and extremely high temperatures are now being accepted at the Farmers Home Administration (FmHA) office in Muleshoe, FmHA county supervisor Henry W. Taylor, III said today. Bailey County is one of 50 in Texas recently named by Secretary of Agriculture John R. Block as eligible for loans to cover part of actual

production losses resulting from the drought. Taylor, said, "Farmers may be eligible for loans of up to 80 percent of their actual losses, or the operating loan needed to continue in business, or \$500,000, whichever is less." For farmers unable to obtain credit from private commercial lenders, the interest rate on the first \$100,000 borrowed is 5 percent; interest rate is 8 percent on the balance borrowed over that

amount. For farmers who can obtain commercial credit but who choose to borrow from FmHA, the interest rate is 13.75 percent. As a general rule, a farmer must have suffered at least a 30-percent loss of production to be eligible for an FmHA emergency loan, Taylor said. Farmers participating in the PIK or Federal Crop Insurance programs will have to figure in proceeds from those programs in determining their loss. Applications for loans under this emergency designation will be accepted until July 19, 1984, but farmers should apply as soon as possible. Delays in applying could create backlogs in processing and possible carry over into the new farming season, Taylor said.

City Officers Attend Penal Code School

According to Sgt. Wayne Holmes of the Muleshoe City Police Department, the main word for his department is "update." Last week, Sgt. Holmes, City Detective Julian Dominguez and City Patrolman Tom Watson attended a 16 hour Penal Code School in Lubbock. The school was taught by Danny Close of TCLOSE and sponsored by

the South Plains Association of Governments. Sgt. Holmes commented, "In my opinion, this district cannot stand still and all our officers need to be advancing. The word is 'update and more update.'" He added, "this year alone, there are 16 pages of changes in the Penal Code, and if we stand still, there is no way we can fall behind. If I don't keep my people updated, they'll really fall behind and there would be no way we could even know what laws we were supposed to be enforcing."

Also, added the sergeant, two more officers will be attending a penal code school this month, in the continuing effort by the Muleshoe City Police Department to keep their officers informed on current laws. Cont. Page 6, Col. 2

Mules Skim By Cats, Mulettes Drop Game

Muleshoe's Varsity Mules slipped past the Littlefield Wildcat cagers here in Muleshoe on Tuesday, January 31 with a score of Mules -54, Cats -53.

The Mules did a good job, with Mark Moton leading the scoring attack with a total of 20 points. Moton was also leading rebounder, responsible for 13 rebounds in the game. The Mules were without the services of Rob Donaldson, who was out due to illness.

Darin Shaw was second in scoring and rebounds, also, with 13 points and nine rebounds to his credit. Jeff Hamilton was next with 10 points and eight rebounds. Preston Langford scored seven for the Mules and picked up six rebounds. Cont. Page 6, Col. 4

Trent Hysinger and John Agee both scored two points each, but Hysinger had six rebounds to his credit while Agee had two. The Muleshoe were off in field goal percentage, making only 19 out of 60 attempts for 32 percent. However, in free throws, they hit a little bit better with 16 out of 31 for 52 percent. The Mules will play their next home game against Abernathy on Tuesday, February 7, according to Coach Scott Murray. On the same night, Muleshoe's Varsity Mulettes did not fare quite so well as did the Mules. Littlefield managed to overcome the Mulettes 45 to 26 in their game. Leading the Mulettes Cont. Page 6, Col. 5

Superintendent Responds To Education Proposals

Civil Jury Trials Begin Here Monday

Longer School Day Draws Negative Response

Seven civil jury trials are scheduled in 287th Judicial District Court in Bailey County on February 6, Monday. A jury panel of one hundred has been ordered to report for jury selection beginning at 9:30 a.m. that morning.

Cases set for trial include: Judy Van Dyck Morin vs. Joseph Paul Van Dyck, Individually and as Independent Executor of Estate of B.H. Dyck and Barbara Van Dyck Mills; Donald Puckett vs. Andy Douglass; Tony Gene Carter vs. Ideal Mutual Insurance Company; Joyce A. Shafer vs. Young Waldrep & Co. P.C.; Johnny W. Young and Thomas L. Waldrep; Bob Gage vs. Lonnie Wood; Muleshoe State Bank vs. Margaret Williams vs. George Williams; and Jaime Garcia vs. Employers' Fire Insurance Company.

Cases will be called in the order listed and tried in an order determined at docket call on Friday, February 3.

Those called for petit jury duty include: Margaret Ann Stevens, Gloria Torrez Perez, Doran Coleman Reynolds, Carolyn Tallent Stancell, Arturo Murillo, Ruth Massingale Hall, Weldon L. Eagle, Jacinto Saiz Bara, Melvern West, Felipe Miramontes, Elwood Mitchell Autry, Barry L. Freeman, Joy Whitley, Karen Marple Mason and Mae Palmer.

Also Sue Smith Hill, Rhonda Kay Mills, Roy Whitt, Yolanda Kay Bell, Ruth Bruns Briscoe, Rita Bishop Lane, Marsha Killough Pollard, Michael Ashel Richardson, Hazle Templar Robinson, William Carroll Killingsworth, Jeanne Mills, James Leslie Byers, Julie Cont. Page 6, Col. 1

Search Underway For Man, Woman Of Year

The Muleshoe Chamber Of Commerce and Agriculture will once again honor a Man Of The Year and a Woman Of The Year at their 34th Annual Banquet this spring.

The recipients of these awards are chosen from written nominations submitted to the Chamber by the general public and only written nominations will be accepted. Nominations should list the nominee's activities, club memberships and fam-

ily details. They should also indicate any other information which would help the Board of Directors to make a decision concerning who should receive these awards. This procedure is used so that deserving individuals with whom the Board is not familiar may be considered on an equal basis with those they do know. All nominations will be read and a vote will be taken by the Chamber's Board of Directors in their February meeting. The results of the vote will remain a secret until they are announced at the Banquet on Thursday, March 29. Cont. Page 6, Col. 2

Texas Supreme Court Honors Jack. D. Young Muleshoe attorney and District Judge Jack D. Young was among 218 Texas lawyers certified as members of the College of the State Bar of Texas. The College was created by the Supreme Court of Texas as a means of recognizing members of the State Bar for their participation in continuing legal education programs. Young and other participating attorneys have completed at least 80 hours of continuing legal education work within a period of three years. Cont. Page 6, Col. 5

Ann Burns, Robert Alton Morris and Katnie Howard Ballard.

Others include Martha Faye Stroud, B. Gene Hamilton, Sr., Terry Nelson Young, Mary Scott Johnson, Erwin Nieman, Terry Glenn Field, Ruth Andrew Williams, Roger Gene McGuire, Charles Kenneth Harvey, Brenda Kay Hawkins, Johnny Hodges, Agnes Lorraine Lopez, Willie Bell Phillips, Lucy Jaramillo Bachicha, George Emery Green, Gerry Grant Pierce, Maria Munserato Olivas, Jessie Vernon Stancell, Wesley Oliver Glover and Cont. Page 6, Col. 1

Webelos Scouts Learn First Aid

Muleshoe's Webelos, Ten year old cub scouts, received first aid training on January 30, Monday night from Hugh Young, Young is Pack Committee Chairman and a certified instructor on first aid.

Scouts who were present at the meeting learned about cardio-pulmonary resuscitation (CPR), bandaging, splinting, and how to stop bleeding. In addition, each scout had the opportunity to practice the technique on his partner.

The name "Webelos" stands for "We'll Be Loyal Scouts" and is a program designed to prepare the Cub Scouts for the Boy Scout Program. Cont. Page 6, Col. 7

Sheriff's Office To Get "New Wheels"

The Bailey County Commissioners' Court met in a special session in the Courthouse on Thursday, February 2 at 10 a.m.

Members of the Court authorized County Judge Gordon H. Green to advertise for bids for the purchase of a new automobile for the Sheriff's department. Also considered and passed was the ratification of the County's contract with the Bailey County Appraisal District for a term of two years, beginning on January 1, 1984 to 1986. Cont. Page 6, Col. 4

With the topic of education and increasing the length of the school days and year much in the news, the Journal approached the local Superintendent of Schools regarding his views and convictions on the proposals being advocated by various groups and organizations.

H. John Fuller, Muleshoe Superintendent, responded in a very negative way to the suggestions being made by the select committee to increase the school day to a nine hour academic day and also to provisions to be made to supervise young children from 6 a.m. to 6 p.m. Fuller stated that he would oppose such a proposal.

"Educational research and my personal convictions support the idea that educational achievement improves with increased time spent by the individual student studying (Time on Task). What we need to do is better utilize the seven to eight hour day that we presently have by reducing class interruptions and demanding more academic excellence," Fuller stated.

He further explained: "This would include improving our teaching techniques, increasing homework, and reducing the number of class periods missed for extra-curricular activities." "I would even support increasing the number of school days from the present 175 days to 180 days, which we had just a decade ago; or, even increasing to 185 days," Fuller said. "But," the Superintendent

stated, "To go to a nine to twelve hour school day borders on the ridiculous, if the intent is to increase student learning in a cost efficient manner."

Fuller was emphatic in his feelings, stating, "I personally believe that there are many other more practical and educationally sound ways to improve student achievement rather than increasing the hours in the school day. Attention needs to be paid to the new state-mandated curriculum law (H.B. 246) and how it can be used to strengthen the academic program. Also, more cooperation and planning between home and school would appear to be a more sensible way to improve the student learning," the Superintendent stated.

In an effort to find out just how the people in the Muleshoe-Bailey County area feel about the proposed educational changes, the Journal is asking for citizen's response to increased school hours. In addition, these responses, after being recorded locally, will be sent on to State Senator Bill Sarpius to provide him with input on the proposal to lengthen the school day throughout Texas. The response form is published on Page 6 in this issue of the Journal.

Sarpius said he was talking with school officials throughout the Panhandle and South Plains about the proposal, but would like to know the feelings of those who would be directly affected by the proposal.

"While this is a subcommittee recommendation at this time, the final work product of the Select Committee will have a definite impact on what future direction public education will take in Texas. If there is a majority in our district who adamantly oppose this idea, then I would like to be armed with that knowledge if we are to oppose it before the Legislature," Sarpius said.

The Seantor said he had already received some comments critical of the idea. "I have heard from some who say it would put their children on buses before sunup and they wouldn't get home until after dark. They also are disturbed that youngsters who work in the afternoons would be unable to Cont. Page 6, Col. 6



MULETTES DROP GAME TO LITTLEFIELD...Muleshoe's Varsity Girls dropped a game Tuesday night to the Littlefield Varsity Girls by a score of 45 to 26. Kelly Hamblen, #44, takes a shot for the Mulettes. She lead in the scoring attack with 11 points on the board.

BORDEN'S 12 OZ
 ICE CREAM 1/4 GAL \$1.69
 ROUNDS GAL 1
 1/2 GAL BUTTERMILK..... **99¢**
89¢
 COTTAGE CHEESE



VALENTINE SPECIALS

HEAVY GRAIN FED BEEF
ROUND STEAK
\$2.19
 LB.

RED RIPE SLICERS
TOMATOES
 LB. **49¢**
 FRESH **GOLDEN CARROTS** 1 LB. PKG. **35¢**
 PORTALES MARYLAND SWEET **YAMS** LB. **35¢**
 CALIFORNIA RUBY RED **GRAPEFRUIT** LB. **29¢**
 CALIFORNIA MINEOLA **TANGERINES** LB. **35¢**
 SNOW WHITE CELLO WRAP **CAULIFLOWER** EACH **89¢**

THRIFTWAY SUPER BUDGET STRETCHERS TEN POUND SALE!

WRIGHT'S COVERED WAGON SLICED SLAB 10 LB. BOX **\$8.99**
BACON
 FRESH 73% LEAN **GROUND BEEF** 10 LB. PKG. **\$12.80**
BILLY BOY HOT LINKS 10 LB. BOX **\$11.99**
 HEAVY GRAIN FED BEEF-LEAN & MEATY **SHORT RIBS** 10 LB. PKG. **\$13.89**

WRIGHT'S HICKORY SMOKED SLICED SLAB
BACON
 LB. **\$1.49**
 HEAVY GRAIN FED BEEF BONELESS CENTER CUT **ROUND STEAK** LB. **\$2.39**
 HORMEL WRANGLER COARSER GROUND WITH THE SMOKIER FLAVOR 1 LB. PKG. **\$1.99**

RANCH STYLE **BEANS**
 No. 300 CANS **2.75¢**

CONTADINA TOMATO **SAUCE**
 8 OZ. CANS **4 \$1.00**

SUNSHINE KRISPY **CRACKERS**
 16 OZ. BOX **79¢**

SUPER SUGAR CRISP **CEREAL**
 18 OZ. BOX **\$1.69**

25¢ OFF LABEL
 REGULAR OR BUTTER FLAVOR
CRISCO SHORTENING
 3 LB. CAN **\$2.29**

ALL GRINDS
FOLGER'S COFFEE
 1 LB. CAN **\$2.29**

WHITE OR ASSORTED BATHROOM TISSUE
WHITE CLOUD
 4 ROLL PKG. **99¢**

PURE GRANULATED
SHURFINE SUGAR
 5 LB. BAG **\$1.59**

TOTAL GROCERY SAVERS

HORMEL **CHUNK HAM** 6 1/2 OZ. CAN **\$1.19**
 CARNATION **HOT COCOA MIX** 20 OZ. CANNISTER **\$2.19**
 NABISCO CHOC. CHIP COOKIES **CHIPS AHOY!** 19 OZ. PKG. **\$1.99**
 LAUNDRY DETERGENT **ARM & HAMMER** 65 OZ. PKG. **\$1.49**
 COUNTRY CROCK **MARGARINE** 3 LB. **\$1.89**
 PILLSBURY FLAKY **BISCUIT** 10 CT. **57¢**

FROZEN FOOD SPECIALS

ASSORTED MORTON **HONEY BUNS** 9 OZ. PKG. **75¢**
 ORE IDA HASH BROWN **POTATOES** 2 LB. PKG. **\$1.19**
 BANQUET 8 PIECE FRIED **CHICKEN** 30 OZ. PKG. **\$3.29**
 BOOTH FANTAIL **SHRIMP** 1 LB. PKG. **\$5.49**
 FLAKED COFFEE **FOLGER'S** 13 OZ. CAN **\$2.29**
 FOLGER'S INSTANT **COFFEE** CRYSTALS 8 OZ. JAR **\$3.99**
 HERSHEY ASSORTED **CANDY BARS** 4 35¢ SIZE **\$1.00**
 30" OFF LABEL-DEODORANT SOAP -GOLD **DIAL** 3 BATH BARS **\$1.39**
 GLADIOLA **FLOUR** 5 LB. **99¢**

FRESH DAIRY SPECIALS

REGULAR OR UNSCENTED DEODORANT **SURE SOLID** 3 OZ. STICK **\$2.69**
 KRAFT DELUXE AM. PIM. SWISS. OLD ENG. **SLICES** 8 OZ. PKG. **\$1.29**
 POPSRITE YELLOW **POPCORN** 2 LB. PKG. **79¢**
 AUNT JEMIMA MIX FOR **PANCAKES** 2 LB. BOX **99¢**
 AUNT JEMIMA PANCAKE **SYRUP** 24 OZ. BTL. **\$1.89**
BAND-AID BRAND 50 CT. LARGE SHEER STRIPS 50 CT. LARGE PLASTIC STRIPS 30 CT. ALL WIDE PLASTIC STRIPS PKG. **\$1.69**
 FAMILY SIZE TOOTHPASTE **GLEEM** 7 OZ. TUBE **\$1.39**
 FIELD TRIAL **DOG FOOD** 25 LB. **\$4.79**
 DEL MONTE **KETCHUP** 32 OZ. **\$1.09**

THRIFTY GROCERY BUYS

CHICKEN, BEEF CHOW MEIN BI-PAK DINNERS 42 OZ. PAK **\$2.39**
LA CHOY 5 OZ. CAN **69¢**
NOODLES 5 OZ. CAN **69¢**
 DINTY MOORE **BEEF STEW** 40 OZ. CAN **\$2.49**
 WHITE HOUSE **APPLESAUCE** 25 OZ. JAR **79¢**
 COMET LONG GRAIN **RICE** 28 OZ. PKG. **89¢**

50% OFF LABEL-KING SIZE
FRESH START
\$3.19
 34 OZ. BTL.

AT AFFILIATED FOODS INC.
 MEMBER STORE
 272-4739
 401 West American

SERV-ALL
THRIFTWAY
 We're proud to give you more!

PRICES EFFECTIVE FEB. 5-11, 1984
 WE RESERVE THE RIGHT TO LIMIT QUANTITIES
 WE ACCEPT FOOD STAMPS
 ON SALE THIS WEEK
CUP **79¢**
 EACH WITH EACH \$1.00 PURCHASE

Cotton Policy And The '85 Farm Bill

Cotton policy options for the 1985 farm bill will be based to a large degree on policy lessons learned from the past 50 years, according to an Extension economist and professor for the Agricultural and Food Policy Center of the Texas A&M University System.

Dr. Ronald D. Knutson, an economist in marketing and policy with the Texas Agricultural Extension Service, told delegates attending the Beltwide Cotton Conference in Atlanta, Ga., Jan. 9 that "cotton will obviously not stand alone in this debate."

"The critical issue in the 1985 farm bill debate will involve selecting the balance between the degree of income support through the target price mechanism, price support through the loan program, and production controls," Knutson said.

The policy outcome will be influenced by who is elected President and his

Courthouse News

MARRIAGE LICENSE
Enrique Lopez Avitia and Delfina Bautista Venegas, Morton.

Johnathan Zapala, Level-land and Elizabeth Valle, Muleshoe.

WARRANTY DEEDS
Edward L. Derrick and wife, Trudy B. Derrick to Kathryn A. Hancock -- The Southwesterly 31.65 feet of Lot Number (17) and the Northeasterly 43.35 feet of Lot Number (16), in Block Number (1), Parkland Place Addition to the City of Muleshoe, Bailey County, Texas.

O.D. McDonald and wife, Myrtle McDonald to Elias Noe Anzaldua, Jr. and wife, Viola B. Anzaldua -- All of Lot 1, of Block 2, of Lake-side Addition No. 3, to the Town of Muleshoe, Bailey County, Texas.

Jerry E. Waltrip and wife, Mitzel Waltrip to Harvey Duane Page and wife, Linda Dianne Page -- a (5) acre tract of land located in the Northeast corner of Tract Number (93), League Number (182), Floyd County School Land, in Bailey County, Texas.

T.M. Lobaugh and wife, Anita Lobaugh to R.D. Dale and wife, Lora A. Dale -- Lot No. (6), Block No. (2), Lenaus Subdivision to the City of Muleshoe, Bailey County, Texas.

Emilio Estrada and wife, Elaine Estrada to Torome Clemmons and wife, Jim Ella Clemmons -- All of the (W80') of Lots (11) and (12), Block (2), Golf Course Addition to the Town of Muleshoe, Bailey County, Texas.

Joel Nowlin and wife, Ruth Nowlin to Ralph O. Wenner -- All of Lots (7), (8), and (9), in Block (3), Harvey Addition to the Town of Muleshoe, Bailey County, Texas.

Alice Kelton, Ira Holt, Cecil Holt, Doris Underhill, Robert Kelton, Mamie Provenance and Acie Kelton to Francisco Gonzales and wife, Dianne Gonzales--Lot 15 and 16, in Block 47, Original Town of Muleshoe, Bailey County, Texas.

Gwynneth A. Petersen, Paul R. Petersen and Eric P. Petersen to Nick Manzanares and wife, Pita Manzanares--All of Lot (10), Section (39), Block Y, WD&FW Johnson Subdivision, Bailey County, Texas.

Charles Day and wife, Marlana Day to Paula Madrid--All of Lot Number (1), and the (N10') of Lot Number (2), Block Number (1), Hill Top Addition to the Town of Muleshoe, Bailey County, Texas.

Roy M. Bara and wife, Betty F. Bara to Elmer R. Davis and wife, Theresia J. Davis--The Northeasterly 55 feet of Lot (3), in Block (1) of Parkland Place Addition to the City of Muleshoe, Bailey County, Texas.

M.K. Gentry and Jim Brady to Carlos Guerra, Jr. and wife, Maria Guerra--All of Lot (12), Block (1), Legion Addition to the Town of Muleshoe, Bailey County, Texas.

NEW VEHICLES
Delbert Watson, 1984 Ford PU, Muleshoe Mtr. Co., Inc.; Missouri Valley, Inc., 1984 Merc SW, Muleshoe Mtr. Co., Inc.; Jame Robinson, 1984 Merc 4 dr, Muleshoe Mtr. Co., Inc.

choice for the Secretary of Agriculture post, Knutson predicted. "The outcome will also be influenced by how well we-the people--have learned farm policy lessons from programs spanning the past 50 years."

He emphasized that since the 1970s, government policy impacting agriculture has been an interesting--yet often frustrating--mixture of domestic farm policy, foreign policy and general economic policy.

"While at one time it was possible to limit our discussions of policy to domestic farm programs, this certainly is no longer an option," Knutson told the cotton conferees.

In the absence of government intervention, farm prices are determined in a world market setting, Knutson explained. "This does not mean that these prices are determined by competitive, free market forces. In regard to cotton, only a few countries compete in that world market since most are state traders. This means that government officials, not competitive market forces, determine supplies, exports, imports and prices," Knutson said.

In this kind of environment, fiber diplomacy has as much impact on the prices received by our High Plains cotton farmer as does domestic farm programs, said the economist.

Additionally, the strong U.S. dollar has had the effect of raising the cost of our cotton in terms of currencies of many of our major competitors. The strong U.S. dollar can be traced directly to economic policies that foster high levels of deficit spending, Knutson added.

Result of the interaction of these political and economic forces in a world context has led some agricultural policymakers to conclude that current farm programs are counterproductive and outdated. Other economists have raised questions concerning the need to reevaluate the consistency of supporting farm prices while attempting to expand exports of farm commodities, he said.

Local Man's Mother Dies At Granbury

Services for Mamie A. (Sam) Allen, 93, of Granbury were held at 4 p.m. Saturday, Feb. 4 in Martin's Chapel with the Rev. Chester Grey, the Rev. Frank Harris, the Rev. Gene Hadley and the Rev. Rick Nelson officiating.

Interment was in Granbury Cemetery under the direction of Martin's Funeral Home of Granbury. Mrs. Allen died Thursday afternoon at a Granbury Hospital.

She was born Oct. 20, 1890, in Gainsville, Georgia and was a housewife.

Survivors include one daughter, Mrs. Pauline Allen Arnold of Acton; two sons, Buck Allen of Muleshoe and Sam Allen of Peaster; one brother, Raleigh Bryant of Joshua; four grandchildren; six great grandchildren; and three great great grandchildren.

"As an economist, my inclination is to subscribe to both points of view. Basis for this conclusion lies in an analysis of our experience with farm programs during the past 50 years applied to today's economic and political conditions," he said.

Knutson said that lessons from the past have demonstrated that commodity programs cannot operate independently of one another. Yet, feed grains and wheat have a reserve acreage pro-

gram in 1984 while cotton does not. A wheat has a PIK (payment-in-kind) program this year while cotton and feed grains do not.

Acreage allotments or marketing quotas cannot be imposed on one commodity without encouraging the development of surpluses on another, he warned.

In regard to price supports, Knutson said that experience with farm policy indicates that high price supports (loan rates) stimu-

Hance Proposes Economic Incentive On Toxic Waste

Democratic Congressman Kent Hance, a United States Senate candidate, told a joint committee of the Texas legislature today that he will fight for a bill in Congress which will induce industry to stop burying toxic waste in landfills, especially in flood prone areas.

Noting that buried hazardous and toxic waste poses a serious threat to groundwater, Hance said, "I grew up in perhaps the most arid part of the State and have always had a deep appreciation for the quantity and the quality of our water for consumers, agriculture, and industry."

Hance proposed a tax credit as an economic incentive for oil and chemical companies to find other means of waste disposal. "The objective of the tax credit is to encourage companies to make capital investments for waste handling facilities," Hance said. The credit would be \$60 per dry ton for those companies now landfilling in flood prone areas and \$40 per dry ton

for those using landfills in other areas. Hance argues the potential cost of cleaning up future contaminations far exceeds the investment made through this tax credit.

"Hazardous and toxic waste disposal is everyone's problem, industry's and the public's. We all have a stake in a cleaner environment, and it is essential for all concerned to craft the most effective and workable approach to ending landfill disposal," Hance added.

The Lubbock lawmaker also noted that recent studies show industry is already making corrections and some changes. "Industry realizes the need to handle the problem," Hance said. "This economic incentive will give them the capital necessary to search for other methods of disposal such as recycling."

These new proposals will be offered to the Superfund Toxic Waste Clean-Up Law, which faces reauthorization this year. Superfund must be approved by the House

Cold Weather May Deter Insects

One benefit of the record-setting cold wave that blanketed Texas in late December may be a reduction in insect pests in 1984.

"We should see a reduction in the numbers of certain pests this coming spring and summer, such as boll weevils, Mexican fruit flies, greenbugs and some worms, points out Dr. John Thomas, entomologist with the Texas Agricultural Extension Service, Texas A&M University System.

However, he cautions farmers and gardeners not to be lulled into a false sense of security, since some pests will still be around that will require monitoring and possible insecticide treatments.

"Presently, we have few if any greenbugs (certain aphids) on wheat due to the recent cold weather," notes Thomas. "Of course, most of the wheat was burned back severely by the unusually cold weather, but greenbug numbers should be much lighter once the crop recovers and puts out new growth."

One insect problem has increased in wheat which the recent cold weather, Thomas notes. Grain mites have become a problem in some wheat because the crop was weakened by the frigid conditions.

late production, reduce exports, increase imports and government stocks, and ultimately lead to production controls.

Acreage controls, based on farm policy experiences of the past half century, do not effectively limit production, he said. Farmers take their poorest land out of production and do a more efficient production job on the land they actually farm, Knutson said.

Target prices, from the perspective of farmers and economists, have been both good and bad news over the

years, and production controls are helpful if farmers are willing to produce mainly for the domestic market, Knutson said.

Thus, 1985 farm bill options, he predicted, include moving to a free market, developing a system of mandatory production controls, fine-tuning current policy, or establishing a stabilization and cost-sharing partnership between producers and government.

With Limitations
Viola--Do you believe in free speech?
Percy--That depends on whether I'm bigger than the other fellow.



**Classified
Advertising
Brings
Great Results**
Call 272-4536

Three Way News By Mrs. H.W. Garvin

Mr. and Mrs. S.G. Long visited the Bill Key family Wednesday evening.

Tuesday night the Three Way basketball boys played Bledsoe with Three Way losing the game. Friday night the Three Way basketball teams played Whitharral on the home court with Three Way girls winning their game and Three Way boys losing.

Mr. and Mrs. George Tyson spent Thursday night in Lubbock visiting their daughter the Tommy Durhams.

Mrs. Adolph Wittner was


in Lubbock Monday to be with her sister Mrs. Roland Nitcher who underwent surgery Mrs. Witters father B.J. Emerson came home with his daughter for a visit.

Mr. and Mrs. Bill Dupler and Eugena spent the weekend in Monahans visiting their daughter the Bobby Sinclairs.

Mr. and Mrs. Bill Dolle and Darla spent the weekend in Lubbock visiting.

Mrs. Carry Chambers and Mr. and Mrs. Delbert Mouser from Spade visited Mr. and Mrs. Rayford Masten Friday evening.

A baby shower was held at the Three Way home room Sunday afternoon honoring John Anthony Ferguson, infant son of Mr. and Mrs. John Ferguson.



TAX ACCOUNTING
WRITE UP
QUARTERLY REPORTS

Robin E. Davis

TAX SERVICE

2433 S. FARWELL AVE.
LITTLEFIELD, TEXAS 79339

806/385-6825

PERRY'S FEBRUARY

Valentine Values on Many Items

The One-Stop for All Your Shopping Needs

VALENTINE GIFTS



**BRACH'S
1-LB. HEART
BOX VALENTINE
CHOCOLATES 5.99 BOX**

A perfect tribute for your favorite Valentine.

100% ORLON ACRYLIC SAYELLE



**KNITTING
YARN 87¢**

3 1/2 Oz. Solid Colors
3 Oz. Varigated Colors

PACKAGE OF 28 VALENTINES



28 Cards w/Envelopes
For Classmates
and Teacher.

Sale Price **99¢**

32-OZ. SUNLIGHT DISHWASHING LIQUID 163



TOWELS

22x42
Velour and
Jacquard
Borders
Fringed or
Terry
Solids
Hemmed

7 Dollar Value! **2.97 EACH**

1-GAL. LIQUID BLEACH 99¢



VINYL-COATED HANGERS 8 FOR 88¢



TWIN PAK BOX CRACKER JACKS 1.88 Box



DECA Thanks Local Merchants

Muleshoe High School DECA would like to take this opportunity to thank the following businesses for their donations and door prizes for the "Anything Goes" assembly on Wednesday.

January 25 to raise money for the Spina/Bifida Association.

ANTHONY'S
PAY-N-SAVE
A&M FARM SUPPLY
CHICK-N-DOCK
SONIC
FAIR STORE
POYNOR'S
ANN'S T-SHIRTS
PERRY'S
WILLIAMS BROS.
ANA'S HOUSE OF BEAUTY
SOMETHING SPECIAL
LEAL'S
MOHAWK AUTO
MULESHOE JOURNAL
WESTERN DRUG
ALBERTSON'S SHOP FOR MEN
MULESHOE SUPERMARKET
NEW DIMENSIONS
CORRAL
JAMES ROY'S MEAT MARKET

DINNER BELL
MULESHOE FLORAL
HIGGINBOTHAM-BARTLETT
PIZZA HUT
SAN FRANCISCO CAFE
FRY & COX
RICHLAND HILLS TEXICO
VIOLA'S
LINDSEY'S JEWELRY
SHEAR SHACK
CHUBBY'S
HARVEY BASS APPLIANCE
LION'S CLUB
ART LOFT
WILSON APPLIANCE
WRINKLER MEAT MARKET
THRIFTWAY
HONEYCOMB
DAIRY QUEEN
SPUDNUT SHOP
HURST'S
LATRELLS'

Two Muleshoe Youths Executive Council Members

Two West Texas State University students from Muleshoe are serving as Executive Council members of the Baptist Student Union for 1984.

Wayne Precure, a sophomore industrial technology major, and Kent Reynolds, sophomore computer information systems major, serve on the council.

The BSU provides opportunities for personal and spiritual growth and service

for college students. Each year students participate in Bible Studies, conferences, retreats, community missions projects, mission trips, worship and weekly fellowships. The BSU groups are supported by local churches, said Brenda Crim, campus evangelism coordinator.

Executive Council members provide leadership for the 125 students involved in the BSU. Members conduct weekly committee meetings and attend council meetings, plan events, set goals and provide leadership in obtaining those goals, Crim said.

"Council trains students in leadership and gives them an opportunity for ministry to others," she said.

Precure is council vice president. He also participates in the WTSU Recreation Club and Fellowship of Christian Athletes. He is the son of Mr. and Mrs. Ray Precure.

Reynolds is intramurals chairperson. He also participates in the WTSU Recreation Club. He is the son of Garry and Sherri Shipman of Muleshoe.

WOTS Weekly Meeting

Faye Weiborn and Mildred Williams were the hostesses for the WOTS luncheon Thursday, Feb. 2 at Summit Savings and Loan. The luncheon was preceded by a "Fun Time" of games, with 12 members and one guest present. Lois Martinec was absent due to her recent surgery.

Karen Mason was the lucky lady of the day, winning the hot dish carrier and hot pad.

Members present were: Kay Madry, Betty Barker, Faye Weiborn, June Dunham, Bertha Welkener, Pat Cummins, Betty Moore and Karen Mason.

Guests present included Louise Brown of Longview, Texas. Her husband, Oscar works with Combustion Engineering and works at Talk Station. She will be in Muleshoe a few weeks.

Hostesses for the Feb. 9 luncheon will be Kay Madry and LaJune Duren.

For more information on WOTS you may call either Mildred Williams at 272-5260 or Lois Martinec at 272-3019.



HEAD-TURNING HAIR— Full, lustrous hair needs daily care and attention. Incorporate into your daily routine a quick and easy spring hair shape-up, and greet the new season with glorious locks. For tips on care and styling, write for a copy of "Hair Affair," The General Electric and Revlon Flex hair beauty booklet. Hair Affair Offer, P.O. Box 975, Berlin, CT 06038. Enclose 50 cents for handling. †



NEW ARRIVALS

S.A. Parsons of Battiest, Okla. and Vivian Morris of Muleshoe.

Victor Rangel, Jr.

Mr. and Mrs. Victor Rangel of Friona are the proud parents of a son born at 5:26 a.m. Feb. 1 in West Plains Medical Center. The young man has been named Victor Rangel, Jr. The couple have one other child, Vellissa Josie, 11 months old.

Grandparents are Tony and Viola Garcia of Clovis, N.M. and Ester Ortiz of Mexico.

Great grandmother is Annie Garcia of Morion.

Sandy Jo Barela

Mr. and Mrs. Jerry Barela of Clovis, N.M. are the proud parents of a daughter born at 6:02 a.m. Jan. 31 in West Plains Medical Center.

The young lady weighed eight pounds and has been named Sandy Jo. The couple have four other children, Cherry, 10; Ginger, five; Marae Jo, four; and Jerry, Jr. 19 months old.

Grandparents are Mr. and Mrs. Marcie Gallegos of Belen, N.M. and Mr. and Mrs. Richard Barela of Clovis, N.M.

Some Run

"They tell me that Jenkins had to propose at least five times to Miss Moneybags before she accepted him."

"Well, she certainly gave him a run for her money."

Rebekah Lodge

The Muleshoe Rebekah Lodge No. 114 met Tuesday evening with Dimple Sims, Noble Grand, presiding. There were 19 present. The opening prayer was given by Thursie Reid, chaplain, with the accompanying music by Jessie Robinson, musician.

The American Flag was presented by Opal Talley, flagbearer, escorted by Ina Wilemon, acting Warden, and Ona Berry, acting Conductor. Minutes of the previous meeting and roll call were read by Fern Davis, secretary.

The Charter was undraped by Opal Talley, Patsy Chance, Nita Griffith, Dodie Atkinson, Thursie, Reid, Dimple Sims and Ina Wilemon. The Charter had been draped for 30 days in memory of Howard Kemp and Francis Thompson.

Refreshments were provided by Dorothy Chance, Ranetta Dawson and Fern Davis.

TWISTER BEADS

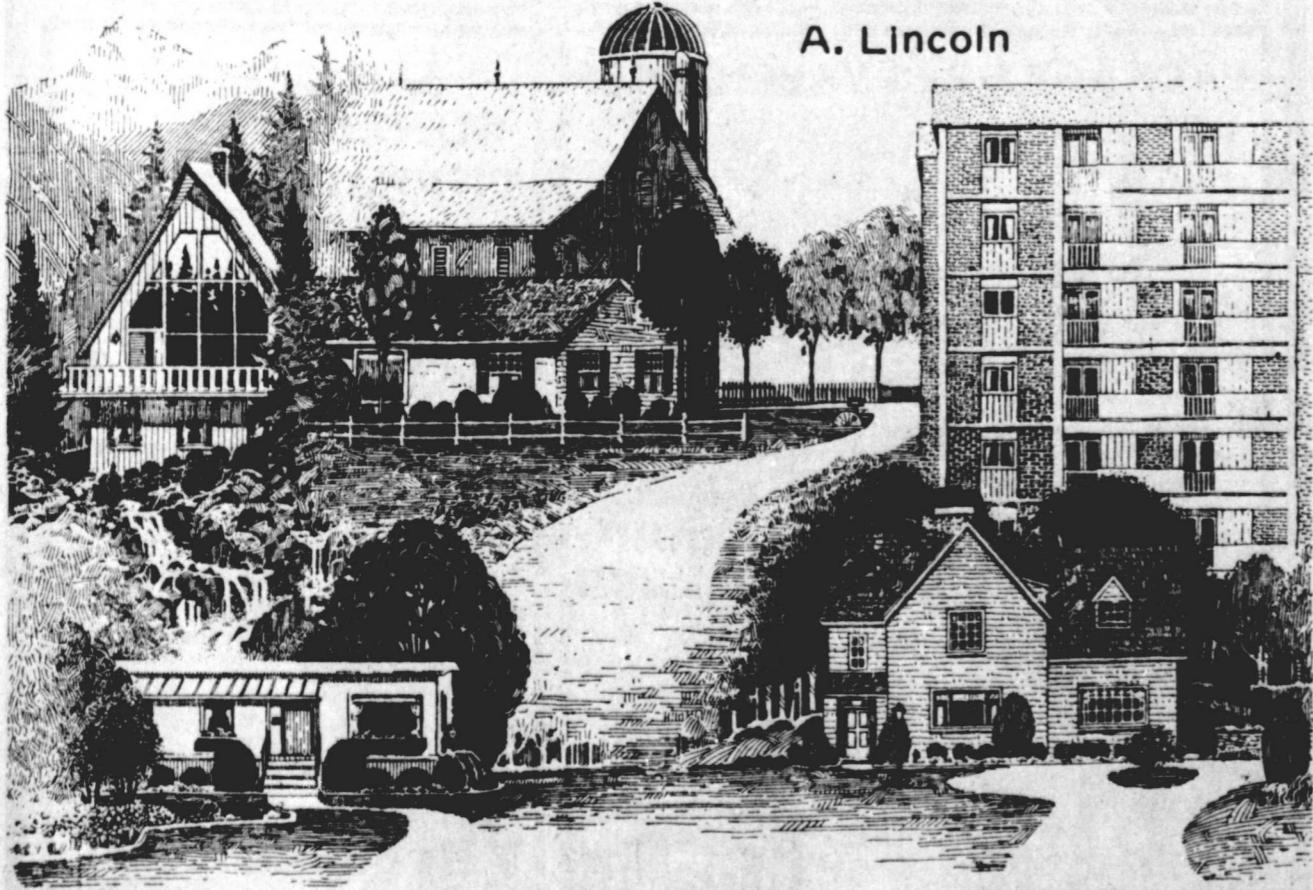
\$4.00 per strand
Other Jewelry Available
272-4365 or 272-4808

Ellis Funeral Home Pre-Need Funeral Plans

Guaranteed By Texas Department of Banking
Price Frozen at Time of Purchase

THE STRENGTH OF A NATION LIES IN THE HOMES OF ITS PEOPLE

A. Lincoln



HOME SWEET HOME!!!

If you need one . . . now's the time to knock on the door of Muleshoe State Bank. We have money to loan right now.

Want to buy a home!!! Ask us about a home mortgage loan now. We can help you get your foot in the door, with payments that won't eat you out of house and home.

Fact is, Muleshoe State Bank can help you do almost anything that has to do with money.

We are offering more new services to more new customers than ever before. But one thing will never change, the Customer always comes first at Muleshoe State Bank.



MULESHOE STATE BANK

MEMBER FDIC

101 West American Blvd. Phone 806/272-4561
MULESHOE, TEXAS 79347



Equal Housing
LENDER

Shape up hair for a fresh, new look

Full, lustrous locks start with hair that is healthy and well cared for. Even the most expert cut and style will be wasted on hair that is neglected or damaged by over exposure to the sun, wind or dry winter air.

Help rid your hair of the winter doldrums and greet the new season with glorious, gleaming tresses by adopting a spring hair shape-up regimen. Here are some quick and easy shape-up suggestions from personal care advisors at the General Electric Company and Revlon Flex.

• Start by trimming off dead ends. If you've worn the same style for years, why not try something different? Ask your stylist for a consultation and remember, your hair has to work with your lifestyle; do you have time to set and curl hair daily? Or do you prefer a "wash and wear" style?

• When styling, use appliances that are gentle on hair. For example, General Electric's soft roller hairsetter has soft foam rollers that are lighter than standard plastic ones to help prevent hair breakage and tangles. In addition, the soft roller has a special steaming station that steams each roller before winding for

gentle curling and consistent results. Choose a hair dryer with variable heat settings and use the low setting as often as possible. For smooth curls and waves, the GE tangle free heated curling brush has triangle-shaped bristles that are guaranteed to prevent tangles.

• Most experts today believe that hair can be washed as often as you

feel necessary without worrying about damage. Winter air tends to make hair dryer than usual; your spring shape-up should include concentrated conditioning. Help protect hair from salt water, sun and chlorine by continuing your spring shape-up regimen throughout the summer. When shampooing, make shower water as cold as you can stand it in the final rinse. This stimulates

scalp and closes pores.

• The 100-brush-strokes-a-night theory has also been dispelled. In fact, over brushing can damage and break hair. Smooth out tangles by using a hard rubber comb, starting from the hair ends and working up to the roots. Wet hair loses much of its elasticity and resilience and should be treated like silk.

• When time allows, try using natural rinses, freshly squeezed lemon juice for blonde hair or dark beer for brunettes and redheads. Such rinses leave hair with a natural glisten.

Additional hair care tips, as well as step-by-step instructions for creating eight contemporary hairstyles can be found in "Hair Affair," the General Electric and Revlon Flex hair beauty booklet.

For a copy, write: Hair Affair Offer, Department B, P.O. Box 975, Berlin, CT 06038. Enclose 50 cents for postage and handling.

WTSU Names Alpha Kappa Psi 1984 Officers

Alpha Kappa Psi, the national professional business fraternity at West Texas State University, has inducted the 1984 officers.

President is Kevin Craig, junior computer information systems major from Amarillo. First vice president is Cindy Johnson, junior accounting major, Amarillo. Second vice president is Mike Gensler, sophomore computer information systems major from Amarillo.

Treasurer is Meg Byrd, junior accounting major from Elkhart, Kan. Secretary is Shelly Hill, junior general business major from Pampa. Master of rituals is Mary Mata, junior computer information systems major from Muleshoe.

Alpha Kappa Psi chapters are nationally rated each year for efficiency in organizational activities, scholarships and programs. The WTSU Epsilon Iota Chapter has tied for first place for seven consecutive years and has maintained that position for 15 of the past 16 years, said Bob Chester, assistant professor of administrative services and faculty adviser for the chapter.

Epsilon Iota Chapter is tied for first with 20 other universities including the University of Texas, Texas Tech University, Michigan State University, Arizona State University and Baylor University.

Mr. and Mrs. Vernon Lott
and
Mr. and Mrs. Marshall Cook
invite you to share in the joy of
the marriage uniting their children
Becky Leala
and
Wesley Thomas
This celebration of love will be
on Friday, the tenth of February
Nineteen hundred and eighty-four
at seven-thirty o'clock in the evening
First United Methodist Church
Muleshoe, Texas

To Place Your Want Ads Call 272-4536

Monday Special
Hot Beef
Sandwich
\$2.00

Tuesday Special
Chicken
Fried Steak
\$3.25

Wednesday Special
B-B-Q-
Beef Plate
\$3.90

Thursday Special
Chicken
Gizzards
\$2.75

Friday Special
Calf Fries
\$4.75

Specials Include
Coffee or Tea & Tax

Big Boy's Bar-B-Que

401 Main

272-5338

WTSU To Host Workshop For Art Educators In Texas

West Texas State University will host one of six workshops for art educators in Texas on Saturday, Feb. 18.

The workshop, featuring workshop leaders from WTSU and the Texas Panhandle area, is one of the Texas Art Education Association spring workshops. "Art and Culture: The Rainbow Connection" also will be hosted in February at the University of Houston, Midland College, Dallas Museum of Fine Arts, University of Texas at Tyler and J. Frank Dobie Middle School at New Braunfels.

Dr. Anne Gregory, assistant professor of art at WTSU, will direct the conference.

Sessions will begin at 9 a.m. at Mary Moody Northern Hall with a slide presentation on making Puebloan-style pots from local clays, presented by Alvin Lynn, art teacher at Dumas High School. Participants will work with clay to form the pots.

Another morning session will focus on arrowhead making using Plains Indian techniques and applying the method to making simple jewelry. Demonstrating the flint-knapping technique will be Dr. Jack Hughes, WTSU professor of anthropology.

Jose Flores, who is president of the Amarillo Society of Scribes, will conduct a calligraphy workshop on the origins of writing. Participants will learn to make quill pens. The presentation also will include slides and information on membership in the Amarillo Society of Scribes.

Lunch will be served in the WTSU East Dining Hall. The conference registration fee of \$15 includes lunch.

The afternoon session will feature an open house at the Panhandle-Plains Historical Museum located on the WTSU campus. Carol Cline, curator of exhibits, will conduct a tour of the museum's new facilities which include the Texas Conservation Center, one of few centers in the United States devoted to the restoration and preservation of artifacts.

Participants also will learn about museum resources available to teachers, said Gregory.

Interested persons should register before the week prior to the conference by sending the \$15 registration fee and the workshop site preference to Dr. Cynthia Broderick, TAEA Spring

Workshops, 2511 Old Gate Road, San Antonio, Texas, 78230, or to Gregory at WT Box 207, Canyon, Texas, 79016.

Gregory said participants also may register on the day of the workshop.

Continuing education credits will be awarded and participants will receive certificates.

Walt McAdams Visits In Muleshoe

Walt McAdams, director of Satellite Franchise Operations for H&R Block, visited this week with Doris Wedel, franchise owner of the Muleshoe H&R Block office.

According to Mrs. Wedel, the primary purpose of McAdams' visit was to provide the local franchise with all the new and updated methods for improving the client service. This included information on the same day service program and changes made for 1984, filing requirements.



ART ASSOCIATION LEASE PROGRAM...Members of the Muleshoe Art Association provided paintings for the "Lease A Painting" program held Friday at the Corral Restaurant. Cara Juan Schuster is shown with one of the paintings that was leased. Money from the lease program will go toward expenses of the Spring Art Show.

SPC Hosts Financial Aid Workshop

High school students planning to attend college this fall can find out more about financing their education during a special Financial Aid Workshop Feb. 15 at South Plains College.

According to Steve Beck, director of Student Financial Aid at SPC, the workshop will discuss the various federal and state financial aid programs which are available to students. He will also explain how application is made for financial aid and provide some pointers on how students can hunt for scholarships. The workshop will begin at 7 p.m. in the Student Assistance Center.

"This is the third year we have hosted this workshop and a lot of information about financial aid is presented," said Beck. "We want to encourage anyone who needs more information about financing their college education to attend, regardless of where they plan to attend school this fall."

The workshop is free and Beck said high school seniors and their parents are welcome.

Personnel from SPC's admissions office, housing office and counseling de-

partment will also be on hand to answer questions pertaining to those areas.

For more information, contact SPC at 806 894-9611.

SEE YOUR DOCTOR

This information comes from Smith Kline and French Laboratories, a leader in high blood pressure research and therapeutics.

High blood pressure and other heart diseases occur almost twice as often in blacks than in whites.

The death rate from hypertension and heart disease is also higher for black people. If you are black, it is especially important that you get your blood pressure checked regularly.

See your doctor. He or she can detect high blood pressure through a simple, painless test. Once your doctor discovers your problem, and you follow the treatment given you, high blood pressure can be controlled.

Enochs News by Mrs. J. D. Bayless

Mrs. Oleta Burris of Wellman, came Friday and spent the night until Saturday afternoon with her sister and husband, Wanda and J.E. Layton. Oleta had a Tupper Ware party at Mrs. Buford Petersons Friday afternoon there were 16 women present.

Mrs. Etta Layton went to Littlefield Thursday afternoon to see her Dr. she is improving still weak from the 23 days in the hospital with a gallbladder attack.

Louie Key from Fairbanks Alaska, visited his dad Mr. and Mrs. Sid Key, his grandparents, Mr. and Mrs. Bill Key and friends the past week. Mr. and Mrs. Sid Key and Mrs. Bill Key took him to catch the plane at Lubbock Monday morning.

Mrs. Zed Robinson was in the hospital most of December in California. Mrs. Stuff Jones had a letter from her saying she is improving and tell all of her friends hello, they are in Redondo Beach California where her daughter is.

Mrs. Margie Simmons of Lubbock visited friends in the area the past week.

Mrs. J.D. Bayless was in Littlefield Thursday morning for X-rays and found out she had two broke ribs instead of one, she is improving everyday, thanks to all of her friends for the phone calls, cards, prayers and food they brought.

Mrs. Mamie Adams was admitted to the Cochran Memorial Hospital Thursday where she is still a patient, she is feeling much better.

Dennis Turney was shooting goals Saturday and broke his ankle sorry Dennis hope you will be well soon.

Guests Friday afternoon till Saturday were Olene and Ray Cunningham of Lubbock in the home of her sister, the J.D. Bayless's.

Mr. and Mrs. Clifford Snitker drove to Friona Sunday after Sunday school to visit a granddaughter, Mr. and Mrs. Ray Spencer and family to help their little great-grandson Logan J. to celebrate his first birthday.

Mrs. Juanita Snow of Muleshoe visited her sister, Mrs. Etta Layton Tuesday and spent the night with her and Mrs. Snow had eye surgery Monday Jan. 30 at Methodist Hospital in Lubbock, wishing you a speedy recovery and you can see good.

Mr. and Mrs. E. N.

McCall were in Clovis, New Mexico Saturday and visited her aunt, Mrs. Pearl Knighten at the Retirement Ranch Home.

Mr. and Mrs. Jerry Waltrip and Sally took Louie Key to Muleshoe Saturday to eat out.

Mrs. J.D. Bayless will celebrate her 75 Birthday Wednesday February 8th.

Mr. and Mrs. Chester Petree had the J.D. Bayless's home with them Sunday for dinner they cooked J.D. a birthday dinner his birthday was Tuesday January 31.

Mr. and Mrs. Bill Key and Louie Key visited in the home of Mr. and Mrs. Homer Howard in Littlefield other guests were Mr. and

Mrs. Robert Butler of Littlefield also Mrs. Hubert Gammons of Weatherford.

Guests in the home of Mr. and Mrs. Ed Autry Sunday afternoon, were Mr. and Mrs. W.T. Autry and daughter, Ida Marie of Dimmitt, Mr. and Mrs. E.M. Autry and JoAnn.

Do They?

Achievements are like trousers—they become threadbare if you rest on them.

-Sunshine Magazine.

Safest

The safest rule for predictions is to be indefinite about the date. Sooner or later almost anything can happen.

-Labor.

FOR ALL YOUR COLLECTOR'S OR GIFT NEEDS --

Check Our Outstanding Selections Now!

Antiques & Junk

109 S. First

272-5275

West Plains Medical Center

PATIENTS IN THE WEST PLAINS MEDICAL CENTER

Jan. 31.-Juan Rodriguez, Ethel Harding, Ella Hallford, Sallie Schuster, Pearl Cox, Darian Bledsoe, David Shelby, Jimenez Madrid, Nora Barela--Baby Girl Barcla, Velma Howell and Emma Kane.

Feb. 1.-Juan Rodriguez, Abel Peralez, Ella Hallford, Sallie Schuster, Pearl Cox, Darian Bledsoe, David Shelby, Jimenez Madrid, Ada Murrah, Nora Barela--Baby Girl Barcla, Velma Howell, Emma Kane and Susie Medley.

Feb. 2.-Juan Rodriguez, Abel Peralez, Alma Englant, L.G. Allen, Ethel Harding, Velma Howell, Ella Hallford, Sallie Schuster, John E. Burch, Darian Bledsoe, David Shelby, Minenez Madrid, Lori Ellis, Marie Sowders, Ada Murrah, Justin Daniel, Vicki May--Baby Girl May, Darlene Hennigh (Lisa), Teresa Rangel --Baby Boy Rangel, Dell Snell, Maria Estrada, Emma Kane and Susie Medley.

Want Ads Pay Call 272-4536

CROCHET CLASS

LEARN TO CROCHET WITH FABRIC. MAKE RAG VEST. CLASS BEGINS SOON. CALL: 272-4365 or 272-4808

Make Plans Now To Attend The...

SPIRITUAL LIFE CRUSADE

With Jim & Pam King *GOSPEL RECORDING ARTISTS *DYNAMIC 'WORD' MINISTRY

Sunday, Feb. 5 at 10:30 A.M. and 6:30 P.M. Mon. through Wed. 7:30 P.M.

FIRST ASSEMBLY OF GOD

The Church On The Grow! 521 S. First In Muleshoe Nursery Provided For More Information Call 272-3017

Anthony's Spring Fabric Sale

Royal Loring Polyester sale **2.99** yd. Reg. 3.49 yd. 60"-61" Visa® Royal Loring is a versatile stretch woven fabric made of DuPont Dacron® polyester. Choose from misty lilac, misty blue, silver, navy, misiy rose, dill, wheat, or peach.

45" Poly-Cotton Prints 3 yards **\$4** 1.37 yd. Reg. 1.79 yd. Lively looks for Spring sewing! These 45" poly-cotton fabrics come in stripes, dots, and pretty prints for dresses, skirts, and tops. Choose from several soft Spring colors.

60" Flemish Linens 2 yards **\$5** 2.88 yard Reg. 3.99 yd. 60" Flemish linens are a rich blend of polyester, Rayon®, and linen. A choice of basic, pastel, and bright colors.

60" Oxford Cloth 3 yards **\$5** 1.77 yard Reg. 1.99 yd. The classic fabric from Dan River®, made of 60% cotton and 40% polyester in Spring stripes and solids.

60" Stretch Terrycloth 2 yards **\$5** 2.88 yard Reg. 3.99 yd. This stretch terry is perfect for active fashions in 80% cotton and 20% polyester. Red, navy, white, royal, and assorted pastels.

All Simplicity Patterns save \$1

Save \$1 on all of your favorite patterns from Simplicity! Sew up the season's best looks with easy instructions.

321 MAIN ST. **Anthony's** Spring Fashion Stop OPEN 8 to 6

Bailey County Journal 1984 206 MAIN #272-5052

SALE
1/2 Price
-Starts Monday-
Looking Good

206 MAIN #272-5052

Jury Trials

Con't from Page 1

Johanna Schuster Wrinkle.
Also Oron Sims, W. Timothy Campbell, Betty Faye Pedroza, Rosa Davis Allison, L.M. Bell, Lanelda Boyce Mills, Richard C. Orozco, Terry Stovall Maricle, Amy Kay Grimes, Eva Bell Jones, Gary Ray Hugg, Lacie Gene Kirk, Hortense W. Poteet, Carolyn Joe

Embry Smyer, Charlott Shepard Welch, Eddy Mack Ragsdale, Domingo Estrada, Mikel Lynn Morris, Michael Robert Caldwell and Lester Carl Dupler.
Also Ernest Herman Ramm, Jose Carlos Reyna, Tom B. Smith, Joyce Marie Albertson, Mrs., A.V. Wood, Bobby Radall Burris, Ray L. Mardis, Contance Greene Caldwell, Vowery Throckmorton Dodd, Steven Jennings Neptune, Janie L. Contreras, Janie Delgado Saldana, Lisa Gaye Redwine, Anna Griffiths Rudd and Charles Edward Wells.

Also Johnny Dwayne Ramage, Clifford A. Mardis, Rosie Guerrero Locker, Alvin R. Allison, Charles Dusty Bogard, Aubrey Don Heathington, Felipa Trevino Garica, Claudine Elliott, Mrs., Sandra C. Martin, Terri Clark Precure, Frank Jones Sneed, Shawnda Turner Phipps, Ralph Eddie Miller, Virgle A. Obenhaus and Edwin Ray Cox.

Muleshoe...

Con't from Page 1

on Friday, February 10 at 7 p.m. This will be the start of their fund-raising activities for the July fireworks project. In addition to skating, a "skate exchange table" will be set up so that those having skates they have outgrown may bring them for exchange, sale or trade for others.

The Cub Scout Pack 620 annual Blue and Gold Banquet will be held on Tuesday, February 7 at 7 p.m. in the Muleshoe High School Cafeteria. Scouts and their parents are urged to attend.

Farmers are reminded that February 24 is the final date for sign up in the 1984 Farm Program, and are advised to sign up early to avoid waiting lines on the last days. The office will close at 5 p.m. that day.

In a regular directors' meeting Friday, February 3, the Bailey County Unit of the American Heart Association finalized plans for the 1984 fund raising campaign, and assigned volunteers to begin collection of donations for the annual Radio Day Auction on February 18. Anyone wishing to donate articles for this cause may call D.O. Burelsmith at 272-4804 or Glenda Dale at 272-4003.

Anyone who is interested in joining "Weight Watchers" is asked to call 272-4830 between 8 a.m. and 5 p.m.

Loans...

Con't from Page 1

FmHA is a credit agency of the U.S. Department of Agriculture. It is authorized to provide disaster emergency loans to recognized farmers who work at and rely on farming for a substantial part of their living. Eligibility is extended to individual farmers who are U.S. Citizens, and to farming partnerships, corporations or cooperatives in which U.S. Citizens hold a majority interest.

The FmHA office in Muleshoe, Texas is open from 9:00 a.m. to 5:00 p.m. Monday through Friday.



The Journal has been authorized to announce the following candidates for public office:

- SHERIFF**
Tom Watson
Bob Henderson
- Tax Assessor/Collector**
Kathleen Hayes
- State Senator**
Bill Sarpaulis
- U.S. Congress**
Don R. Richards
Tom M. Richards
- Co. Commissioner Precinct 1**
R.L. Scott
G.L. Hoss-Gibson
R. O. Gregory
- Marshall-Catfish'**
Williams
Co. Commissioner Precinct 3
James Warren
Joey Kindle

Lazbuddie FFA Youth Place In 4-County Show

Lazbuddie's FFA members traveled to Hereford last week, January 25-27, for the Annual Four County Stock Show held there. The

show includes intrants from Deaf Smith, Parmer, Oldham and Castro Counties.

Entries from Lazbuddie did fairly well, according to Rick Copp, Lazbuddie FFA supervisor, for a stock show of this size.

Microcomputer Courses Planned At Lazbuddie

The Lazbuddie Independent School District is again offering classes in Beginning Basic Language Programming for the micro-computer.

There will be four two hour classes beginning on Monday, February 13 and running each Monday night until March 5. A 6 p.m. and an 8 p.m., session will be held.

Each session will be beginning basic language programming, assuming a person has never been before a micro computer. Proficiency in math or typing is not needed to enroll.

Enrollment charges are \$35 and classes will be limited to nine persons per class. To enroll, or for more information, call Dennis Owen at Lazbuddie ISD, 965-2156 or 965-2638 after 5 p.m.

Williams...

Con't from Page 1 backhoes and other heavy equipment. He worked on diesel engines and heavy equipment at American Equipment Company in Lubbock, and feels that his "knowledge of diesel mechanics would be helpful."

Of his work history on roads, Williams stated: "I served as an employee of Crosby County for three years, driving a maintainer and I also worked in Parmer County in the same capacity for one and one half years. I feel that I have a working knowledge of how to make and care for county roads."

"If I am elected," he added, "I will devote full time, all interest and energy to the job of commissioner. Also, I would work to the best of my ability to represent the people of the county and would make every attempt to handle the financial affairs of the county in a conservative, conscientious manner," Williams stated.

"I hope to contact every voter in Precinct One. I earnestly solicit your support and vote in the Democratic primaries," Williams said.

Pd. Pol. Ad.

shire, Scott Holt with a ninth place Hampshire and Dusty Jesko with an eighth place Duroc hog.

Lazbuddie showman, Sheldon Mason was selected to compete in the showman ship class, but did not place, Copp said. The FFA students from Lazbuddie will be preparing this week for the Parmer County Stock Show to be held in Friona, beginning on Wednesday and running through Friday. Congratulations go to these youth and good luck for the coming shows.

Young...

Con't from Page 1

Special certification ceremonies for the new members were held recently during a luncheon at the Texas Law Center in Austin. Presiding over the ceremony was State Bar of Texas President Blake Tarr of Houston. Lawyers were presented their certificates by Supreme Court Justice Charles Barrow.

Basketball...

Con't from Page 1 scoring was Kelley Hamblen with 11 points. Mary Norman added six points and Kacy Henry had three. Others who scored were Meischelle Logsdon, K.K. Flowers and Kristi Campbell, with two points each.

Rebounds were led by Logsdon, with six, Hamblen had five, Flowers, 4 and Barbie Seaton had three. Henry and Norman had two rebounds each and Bessire, Campbell and Ellis had one rebound each. Polly Harrison also saw some action in the game.

The Mulettes were 22 percent in field goals, hitting only nine out of 40 attempts. In free throws, they made eight out of 14 attempts for 57 percent for the game. The Mulettes will play their final home game against Abernathy on Tuesday, February 7. They will have one other game left to play, and that against Tulia on February 10, in Tulia, according to Coach Johnson.

Scientists look at cloning methods
COLLEGE STATION—Recombinant DNA, a practice more commonly known as "cloning" or "genetic engineering," is under study by Texas A&M University veterinary scientists to determine if it can produce healthier, healthier cattle.

Dr. James Womack, a geneticist, and Dr. Duane Kraemer, a pioneer in embryo transfer studies, are leading tests with cattle regarding the insertion of genetic material from one strain of mammal to the embryo of another.

Let us know how you feel about **EXTENDING THE SCHOOL DAY**

- I favor longer school hours.
- I disagree with the longer school hour proposal.

Any Reasons:

Mail Your Opinion To

The Journal
Po Box 449
Muleshoe, Tx 79347

Only by expressing your views will our elected officials know how a majority of the people feel on this important issue.

DECA Nets \$500 With Spina Bifida Assembly

On Wednesday, January 25, the Muleshoe High School Chapter of DECA sponsored a fund raising assembly for the Spina Bifida Association. Approximately 150 high school students were involved as participants in the "Anything Goes" competition.

The competition involved pie-eating, egg dropping, balloon bursting, pie tossing and tricycle racing.

Winner with total points in the contests was the Muleshoe Senior Class. The VICA won second place and FHA won third. Brock Sanders was the master of ceremonies, and added his own brand of humor to the event.

Fourteen teams entered the competition, paying a entry fee of \$25 each. First place winners won \$50,

second, \$25 and third \$10. Additional money was raised for the Spina Bifida by admission charges to the event, which also entitled the buyer to free refresh-

ments and a chance at forty-two different door prizes, donated by Muleshoe merchants and businessmen.

The overall event raised about \$500 for Spina Bifida, and the funds will be used for research and equipment to benefit victims of this birth defect.

The assembly was a Civic Consciousness Project, undertaken by Muleshoe High School DECA students.

Scouts...

Con't from Page 1

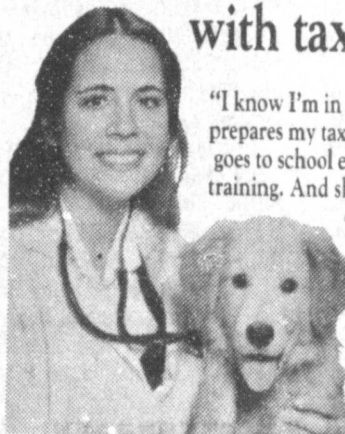
Those scouts in attendance for the training were: Greg Combs, Todd Young, Guy Wiley, Colin Robinson, David Quintana, Robert Chavez, Joshua Barron, Jesse Singletary and Jason Harmon.

Several parents and guests along with Webelos leader Howard Watson were also present.

ON OIL PRICES

Nigeria's new military ruler Maj. Gen. Mohammed Buhari recently summoned diplomats to discuss his takeover of the government. OPEC said the new leader of the oil-producing West African nation had pledged not to slash prices, easing fears of a price war.

"I take the same care with animals that Block takes with taxes."



"I know I'm in good hands when Block prepares my tax return. My preparer goes to school every year to get special training. And she does taxes hundreds of times. Training and experience - that's what makes you good at your job. I'll care for the animals and let Block take care of my taxes."

People who know their business go to



224 W. 2nd Wkdays 9-6 Sat. 9-5 272-3332

**Goes Easily On Your Walls!
Goes Easy On Your Wallet!**



Reg. \$7.95
Sale \$4.95

Popular Colors For Living Rooms, Dining Rooms, Bedrooms & Halls.

- Vanity Yellow •Satinwood
- Latex Flat Wall Finish •White •Ceiling White

Don't put off painting rooms because of money — when you can get a paint this good at an economical price! This long-lasting interior finish spreads on smoothly, dries quickly and produces a rich finish. Tools and hands clean 'up in soapy water.



401 S. First

272-4511

WE'VE ADDED SOMETHING NEW

MICHELIN IS HERE!



AMERICAN & IMPORTED CARS! VANS! PICKUPS! RV's & 4WD's!

WHATEVER YOU DRIVE WE CAN PUT YOU ON

MICHELIN

SIZE	PRICE	SIZE	PRICE
*P175/80 R-13	66.72	P215/75 R14	84.85
*P185/80 R-13	67.01	P225/75 R14	87.68
*P175/75 R-14	69.94	P215/75 R15	86.38
*P185/75 R-14	72.71	P225/75 R15	89.27
*P195/75 R-14	76.35	P235/75 R15	93.62
*P205/75 R14	81.49		

MICHELIN WE PUT AMERICA ON RADIALS



103 Main Street WHITE'S STORES, INC. Muleshoe, Texas 79347

RIGHTS RESERVED TO LIMIT QUANTITIES

MULESHOE SUPERMARKET

HOME OWNED AND HOME OPERATED

402 MAIN Store Hours Mon-Fri. 7:30 - 9:00 p.m. 272-4244
Sat. 7:30 - 9:00 p.m. Sun. 9:00 a.m. - 8:00 p.m.



STOCK-UP AND SAVE



2ND BIG WEEK

There's no better time to save ...

TRAINLOAD SALE

Shop Today!

Buy The Whole Case ... Save!

VALENTINE VALUES!

Betty Crocker Asst. **Cake Mix**
18 1/2 Oz. Box

.89

Betty Crocker Asst. **Cake Frosting**
18 1/2 Oz. Can

\$1.19

Enriched **Gladiola Flour**
5 Lb. Bag

.99

All Grinds **Folgers Coffee**
1 Lb. Can

2.29

Great at Breakfast **Orange Juice**
6 Oz.

.39

Assted **Jeno Pizza**
10 Oz.

.99

PEPSI **DIET PEPSI**
or
MOUNTAIN DEW

2 liter Bottle **89¢**

WITH SUPER SAVERS
Gladiola **FLOUR** 5 lb **59¢**

WITH SUPER SAVERS
Folger's **COFFEE** 1 lb **1.89**

WITH SUPER SAVERS
Pinto **BEANS** 2 lb Bag **39¢**

WITH SUPER SAVERS
Boutique Facial **TISSUE** 100 ct **29¢**

WITH SUPER SAVERS
Delsey Bathroom **TISSUE** 4 Roll **59¢**

WITH SUPER SAVERS
T V **MILK** gal **1.99**

Chopped Broccoli 20 Oz. **.99**

Red Delicious **Apples** **.49**
Lb.

Soup Mix 18 Oz. **.89**

Treetop **Apple Juice** 64 Oz. Btl. **1.99**

Lone Star **Dog Food** 20 Lb. Bag **3.99**

Del Monte **Catsup** 32 Oz. Btl. **1.19**



Great in Salad **Lettuce** Lb. **.29**

Good for your Eyes **Carrots** 1 Lb. Bag 3 For **\$1**

High in Vitamin C. Naval **Oranges** 3 For **\$1**

Crisp Bell **Peppers** 3 For **\$1**

Gladiola White or Yellow **Cornbread Mix** 4 FOR **\$1**

Log Cabin **Syrup** 24 Oz. **1.89**

Welch **Grape Juice** 32 Oz. **1.39**

American Beauty **Eibo Roni** 10 Oz. **.59**

Great with Cornbread **Pinto Beans** 2 Lb. **.89**

30C Off Detergent **Fab** 49 Oz. **1.99**

Royal Crown 4-6 Lb. **Smoked Picnics** Lb. **.79**

Extra Lean **Ground Beef** Lb. **1.79**

Little Sizzlers 12 Oz. **1.08**

1/2 MOON **Cheddar** 8 Oz. **1.09**

Meat Franks 12 Oz. **.79**

Wilson's **Sliced Bacon** 18 Oz. **1.89**

T-Bone **Steak** Lb. **2.79**

Quaker Reg or **Quick Oats** 18 Oz. **.99**

Pillsbury **Biscuits** 7 1/2 Oz. 5 FOR **\$1**

Boutique **Facial Tissue** 100 Cl. **.69**

Club or Cubed **Steak** Lb. **2.49**

Half Sliced **Cooked Ham** 4 Oz. **.99**

Sirloin Rib or Boneless Round **Steak** **\$1.99**
Lb.

Rainbow **Solid Margarine**
1 Lb. Solid

.39

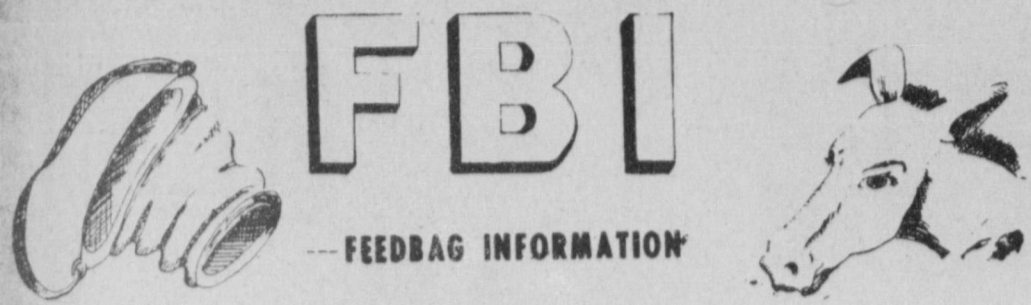
Comstock Cherry **Pie Filling**
21 Oz. Can

\$1.69



We Will Be Happy To Take Your Gold Bond Book Orders

At Muleshoe Junior High



Seventh Grade Boys Participate In Three Way Tourney

The seventh grade boys participated in the Three-Way tournament this past weekend and came home Saturday afternoon with the Consolation trophy. I'm very proud of our team members because many of

them had responsibilities at the Stockshow also and yet were able for the most part to meet their responsibilities to the team.

The opening game was a match with Spade. Spade ran a tight man-to-man defense. We hadn't seen that very often this year and it caused enough confusion to cause the Mules to turn the ball over too many times. As in any sport, you must control the ball if you expect to win, and we just gave them the ball too many times and they defeated us by 8 pts, with a final score of Spade 49, Mules 41. Micheal Dunham scored 17 pts. To lead our team with David Sanders and Richard Ring each adding 5. Esteven Sandoval, Jeff Hicks, and Billy Murphy 4 each, and Kevin King with 2.

Game two was a must win situation for us if we were to remain in the tournament. It was a good game for us as we played defense well and were able to fast break on them successfully. David Sanders led our scoring list with 17 pts, Richard Ring hit

for 12, Brad Long 4 and Esteven Sandoval, Billy Murphy, and Kevin King hit 2 each. At the final sound of the horn the Mules led 39-23, and seated us against Whiteface for the Consolation trophy on Saturday.

The Mules had their highest scoring game of the year against Whiteface. We led the entire game as the 1st quarter score was Muleshoe 19, Whiteface 7. Halftime showed our team to be ahead 29-15. We made a couple of adjustments during the half break and held the Antelopes to only 4 pts. in the last 2 periods of the game while we added another 32 pts. The final score was Muleshoe 61 to the Antelopes 19. Micheal Dunham and David Sanders shared the scoring lead with 24 pts. each, Bradley Long with 6, Edward Hurtado 4 and Richard Ring 3. Sanders also led in rebounds with 18, Dunham accounted for 15, Long 7, Hurtado 4 and every other member of the team with at least 1 each.

Friday the 7th "B" boys played Olton B. The Mules

got off to a good start and led the Colts by a score of 6 to 4 at the end of the first quarter. The second period was an even match with each team adding 4 or more each to their tally.

Third period scoring was again even as each team once again added an additional 4 points to their score. The fourth quarter was one to remember as the Mules were in foul trouble and had to finish the game with only four players. This proved to be hopeless effort as the Colts put in six more points to take an 18 to 14 lead as the game came to a close. Jr. Jaramillo score 10 and Benny Parker 4 to account for the Mule's scoring.

Cotton Headed For

'Same Song, Second Verse

The 1984 cotton crop could be headed for the "same song, second verse" scenario -- overproduction followed by lower prices.

"Because the 1983 PIK program reduced supplies and thus caused some strengthening in prices, many farmers will be inclined to plant more cotton in 1984," believes Dr. Carl Anderson, economist with the Texas Agricultural Extension Service, Texas A&M University System. "That will bring prices down again by harvesttime."

Anderson views the government's '84 cotton program as not sufficiently attractive to cotton producers to keep them from planting substantially more acres than in 1983. Such increased production in the U.S., coupled with an expected increase in foreign production, would cause the world crop to exceed consumption levels. This would also put pressure on the export market for U.S. cotton.

"Because the '84 cotton program allows for a large deficiency payment -- the maximum is 26 cents a pound for eligible producers, many large-scale operators will probably reach the \$50,000 payment limitation," points out Anderson. "This drastically reduces the program's effectiveness to cut production."

With a base cotton acreage around 15.5 million with no paid diversion or other incentives to producers, Anderson speculates that planted acres will reach 12 to 13 million. This could mean a 13- to 14-million-bale crop. The economist pegs domestic use and exports at 11.5 to 12 million bales, so an average pro-

Mexico-Soliciting Large Texas Dairy Cattle Buy

The path is almost clear for a "modern day cattle drive" that could send thousands of Texas dairy cattle to Mexico, Texas Department of Agriculture international marketing director Paul Lewis said today.

Dairy farmers across the state have been sent specifications outlining the type of cattle the Mexican government wants to buy in its largest purchase of U.S. dairy cattle, Lewis said.

"The Mexican government, utilizing U.S. credit guarantees, is looking for 30,000 dairy cattle, and they want to give Texas dairymen the first opportunity to offer cattle for sale," Lewis said. "Texas dairymen who decide to reduce their herds under the federal dairy reduction program now have another option for the cattle that meet the Mexican requirements. Instead of sending good dairy cattle to slaughter, dairymen can negotiate with Mexican buyers for better prices."

Texas Agriculture Commissioner Jim Hightower said the Mexican purchases will benefit dairy farmers who get a better price selling to Mexico than to the local slaughter market, while also helping ease the depressing effect of the dairy herd reduction program on beef prices.

"This program makes good sense all the way around--Mexico gets good quality Texas dairy cattle, dairymen get a better price than they could get on the slaughter market, and beef producers also get some relief as well," Hightower said.

Copies of the specifications and a participation questionnaire prepared by the TDA marketing staff are being mailed by the two large dairy cooperative associations, Associated Milk Producers, Inc. and Southern Milk Sales, to their membership. The informa-

tion is also being distributed by major milk purchasers to independent dairy farmers, and is available at all TDA offices.

"The specifications the Mexican government outlined are reasonable, and I think that a substantial number of dairy producers will want to consider this option," Lewis said.

"We should learn from the participation questionnaire about how many dairy cattle are available, and where they are located," Lewis said. "Interested dairy producers should complete and return the questionnaire, which is not a sales contract or binding in any way, to their cooperative or TDA as soon as possible because the Mexican government is anxious to begin purchasing cattle."

"We hope to have at least

some preliminary results from the survey within two weeks so we can bring the buyers and sellers together and get this cattle drive on the road," Lewis said.

Three Way News By Mrs. H.W. Garvin

Mrs. H.W. Garvin was a dinner guest in the home of her brother Mr. and Mrs. George Tyson Sunday.

Mr. and Mrs. Rayford Masten returned home Thursday from Lake Kimp after two weeks stay at their cabin.

Mr. and Mrs. Carl Dupler from Midland, Wesley Dupler and children from Lubbock and Jerry Dupler from Morton visited their mother and grandmother Mrs. Minnie Dupler Sunday afternoon.

Sudan News

By Evelyn Ritchie

Mr. and Mrs. James Synatseck and Mr. and Mrs. Freddie Maxwell were in Austin for the Young Farmers Convention.

Mr. and Mrs. Bobby Jack Markham have returned from Denton where they attended an Art Show/Sale and went on to Longview to visit her aunt there and also to Dallas to visit their daughter, Rene.

Mr. and Mrs. Bernard Wilson were in Canadian last week to visit relatives.

Laura Martin was taken one day last week to the Methodist Hospital in Lubbock following a fall in which it was reported that she broke both legs.

Mrs. J.C. Wells has been released from the Methodist Hospital and is now at home.

Mr. and Mrs. Glen Chester and Mr. and Mrs. Gary Ray were in Denver during the weekend to attend a horse show.

Becky Byerley has completed her studies at Texas Tech and is now doing her student teaching at Monterey High in Lubbock.

Mr. and Mrs. Tom Mills of Odessa visited during the weekend with her parents, Mr. and Mrs. Raymond Harper as did their other daughter, Lori and son Dale who is a student at Texas Tech.

Among college students home for the weekend were Caprice Johnson, Dale and Lori Harper, Sheila Summer, Gary Fields, Sandra Hill and Dora Black.

Zetha Young remains a patient in the Methodist Hospital and is in room 387.

Pearl Wingo also remains a patient in the Methodist Hospital.

Mr. and Mrs. Haldon Messamore, Gail Messamore and Dan were in the mountains recently for a skiing trip.

Mr. and Mrs. Paul Gordon, Chris and Paula of Lubbock visited Sunday with his parents, Mr. and Mrs. Raymond Gordon as did Wayne's brother, Mr. and Mrs. John Gordon also of Lubbock. Joining them were Mr. and Mrs. Philip Gordon Jeff and Kay Lynn.

In last week's edition of this paper, in the chatter about Mr. and Mrs. Gordon it sounded as if Letha accompanied them to Vega. She is unable to go anywhere and she did not go. We Apologize.

7th Grade Mules Scalp Chieftains

The seventh grade Mules met the Friona Chieftains here Monday night, January 23, and gathered enough points to claim the victory. David Sanders 4 points, Michael Dunham's 3, and 2 points by Richard Ring got the game off to a fine start. Friona put in 12 points, however, and led 12-10 at the end of the opening period.

The second period, just as the opening one, was a time of high scoring and many substitutions. Dunham led the scoring this time with 10 and Ring with 5. Fifteen Mules saw action the first half and gained a 2 point advantage over the Chieftains by the end of the period.

The third quarter proved

to be a big one for the Mules as they outscored the Chieftains 10 to 6. The fourth quarter was an even scoring effort with each team adding 10. The final tally was Mules 45, Chieftains 37. All 22 of the Mules saw action with 9 of them getting in on the scoring effort. Michael Dunham led the team with 14 points, Sanders had 10, Ring 7, Billy Murphy 4, Edward Hurtado 4, Benny Parker 2, Esteven Sandoval 2, Johnny Horn 1, and Bradley Long 1.

The 7th Mules now have a 6-4 season record and will be playing in the Three-Way tournament the weekend of January 28.

Mary's Lines

Muleshoe Jr. High did not have any school Thursday nor Friday, January 26 or 27, because of the Bailey County Livestock Show here at the Civic Center.

Monday, January 23, the seventh and eighth grade Mules and Mullettes played the Friona Chieftains. The seventh Mules won 45-37 and the eighth grade Mules won with the score of 50-40. The seventh grade Mullettes lost 22-20 and the eighth grade Mullettes also lost with the score of 24-17.

The eighth grade won the contest where the grade with less homework papers missing gets to go lunch four minutes early. The sixth grade came in second place again and they get to go lunch two minutes early and the seventh grade goes to eat lunch at the regular time. This was for Monday, Tuesday, and Wednesday, January 23, 24, and 25.

Congratulations eighth graders.

SUMMIT SAVINGS ASSOCIATION

City of Plainview

304 West 6th Plainview, Texas 79072

County of Hale

Charter Date, March 20, 1972 Date Insured July 2, 1973

No. Authorized Branches 10 No. Operating Branches 9

Vice President: William A. Dickenson*

Secretary: Evelyn Mitchell

(Managing Officer designated by asterisk)

STATEMENT OF CONDITION

DECEMBER 31, 1983

ASSETS

First mortgage loans	\$98,261,403
All other loans	8,105,603
Real estate owned	2,250,765
Investment real estate	1,429,128
Stock in Federal Home Loan Bank	1,863,800
Cash on hand and demand deposits	2,840,264
Securities and certificates of deposit	6,364,015
Office bldg. and land	2,210,133
Furniture, fixtures, equip. and leasehold impv.	133,726
Investment in subsidiary corporations	24,169,911
Deferred charges and other assets	16,324,551
TOTAL ASSETS	\$163,953,299

LIABILITIES

Deposit accounts	\$117,081,720
Advances from FHBL of Dallas	13,840,000
Other borrowed money	316,535
Other liabilities	15,512,272
TOTAL LIABILITIES	\$146,750,527

NET WORTH

Common Stock	\$820,272
Paid-in surplus	13,093,716
Regulatory Reserves	3,288,784
TOTAL NET WORTH	\$17,202,722
TOTAL LIABILITIES AND NET WORTH	\$163,953,299

BOARD OF DIRECTORS

Carl H. Bohn, Jr. Robert W. Callaway William A. Dickenson

James M. Holbrook Alfred R. Roberts

Certified to be true and correct by:

William A. Dickenson

Vice President

STATE OF TEXAS

COUNTY OF HALE

We, William A. Dickenson, Vice-President, and Myron E. Morgan, V.P. and Controller of the Summit Savings Association, located at Plainview, Texas, each of us do solemnly swear that the statement of condition as of December 31, 1983 submitted herewith is true to the best of our knowledge and belief.

CORRECT-ATTEST

William A. Dickenson

Vice president

Myron E. Morgan

V.P. & Controller

Subscribed and sworn to before me this the 27th day of January, 1984.

Lois Haigood,

Notary Public

Hale County, Texas

"ATTENTION"

FARMERS-RANCHERS & DEALERS

WARD BROS. TRACTOR, INC. IS NOW TAKING CONSIGNMENTS FOR THEIR ANNUAL FARM MACHINERY AUCTION TO BE HELD MARCH 1 & 2nd, 1984. THIS IS THE LARGEST FARM MACHINERY AUCTION IN THE SOUTHWEST WITH BUYERS FROM SEVERAL DIFFERENT STATES. LISTINGS FOR CONSIGNMENTS NEED TO BE IN BY FEB. 7, 1984. FOR FURTHER INFORMATION CONTACT: WARD BROS. TRACTOR, INC. CLOVIS, N.M., PHONE 505-762-2612 OR 505-762-1015.

INTEREST-FREE 'TIL 1985

JOHN DEERE TRACTORS, 40-TO-300-HP



Or get a generous cash rebate in lieu of interest waiver.* Finance the power size of your choice with John Deere and no interest will be charged until next New Year's Day... OR take the cash rebate shown in the chart, lower right.

Special discounts on John Deere tillage tools: Buy a new John Deere tillage tool between now and May 1, 1984, and we'll give you a discount from the base price--10% off any field cultivator, disk, mulch finisher, mulch tiller, or chisel plow; 5% off any moldboard plow; and \$350 off a 250 SprayCart sparyer. That means, for example, you'd save more than \$1,500 on a 24-foot mulch finisher.

Special deals on Max-Emerge* planters: Using special allowances from John Deere, we're cutting the price on all Max-Emerge planters... but for a limited time only. With the price of seed so much higher this year, you need the proven ability of a Max-Emerge planter to deliver maximum germination and uniform emergence more than ever.

Titan combines interest-free 'til the '84 harvest:* Finance a new 4420, 6620, 6622 Hillside, 6601 PTO, 7720, 7721 PTO, or 8820 Combine with John Deere and pay no interest charge until next harvest season in your area. Or take a cash rebate in lieu of waiver.

Double cash rebates worth up to \$1,600 on John Deere hay and forage tools: This offer covers new square and round balers, mower/conditioners, SP hay windrowers, and PTO forage harvesters. Buy any one now and get a cash rebate... PLUS a certificate entitling

you to a double cash rebate for purchasing a second tool anytime before April 30, 1985. See us for details. Special financing offer on used tractors and combines: Interest charges will be waived to July 1, 1984 on all used tractors and to January 1, 1985 on all used combines purchased from your dealer through April, 1984.*

Model** Cash Rebate in lieu of Waiver on Tractors

Model**	Cash Rebate in lieu of Waiver on Tractors		
	Feb. '84	March '84	April '84
1250	\$ 750	\$ 750	\$ 600
2150	850	750	700
2255	850	800	750
2350	1,025	925	825
2550	1,150	1,050	950
2750	1,350	1,225	1,100
2950	1,600	1,450	1,300
4050	2,250	2,050	1,850
4250	2,450	2,200	2,000
4450	2,600	2,350	2,100
4650	3,200	2,900	2,600
4850	3,500	3,200	2,900
8450	4,200	3,800	3,400
8650	5,100	4,650	4,200
8850	6,400	5,800	5,200

*Availability of John Deere financing subject to approval of credit. This offer may be reduced in value or withdrawn at any time.

**A similar financing rebate offer applies to any 40 Series Tractors remaining in inventory. See your dealer.

WE'LL MAKE YOU A GREAT DEAL... AND NOW THROUGH APRIL, JOHN DEERE WILL MAKE IT EVEN GREATER.

Dent-Rempe, Inc.

(806) 272-4296

1516 W. American Blvd

Muleshoe, Tx 79347

Leon "Tuffy" Dent

Ronnie Dent

A&M

Five Point

\$10.59

HI PROTEIN DOG FOOD

- A 26% crude protein formula
- Formulated for high learning dogs
- For peak condition and performance

Nursing Home News By Joyce Stancell

Harry Freeman and Mr. Englant are in the hospital at this time. We miss them and are praying for a speedy recovery for them.

Ruby McCamish visited in the home of her son Sun. Mr. and Mrs. Frank McCamish.

The Goodtime Gospel Quartet from the Trinity Baptist Church came to sing to the residents Sun. afternoon.

Mr. and Mrs. J.R. Shofner visited Alva Shofner Tues.

Mrs. Gatewood visited Mr. and Mrs. Murphy Berry Fri.

Edith Bruns was visited by Ruth Brisco, Jana St. Clair and Benny Bruns last week.

Out thanks to Jana St. Clair for leading our exercise class. Also to Lindy Schuster.

Bertie Hendrix was visited by Audrey Tues. Audrey played Skip-Bo with Mrs. Hendrix and other residents.

J.D. Gage was visited by his sister Lena Hawkins also C.W. Wilhite.

Lynn Bratcher was visited by C.W. Wilhite also his family members.

Audra Maxwell was visited several times this week by her husband.

Edith Goucher was visited by her husband S.E. Goucher.

Clara Weaver is out visiting with her family at this time.

Cordelia Cochran had a visit from her brother Bud Coffman of Lubbock, also Minnie Mae Glascock.

Barbara Case was visited by her son Jim last week.

Alta Taylor was visited by Mr. and Mrs. Herber Clay. Josie Flowers and Mrs. Clay gave Alta a new perm Tues. afternoon.

Among those visiting Annie Dunn were her daughter Benny Weidbush and Josie Flowers.

Louise Sullivan went out to her home over the weekend. She and Tommy visited relatives in Sudan Sun.

Among those visiting the nursing home this week were, J.E. Embry, Hap Damell, Jerry Hutton. We welcome a visit from you too.

Out thanks to Mr. J.C. Shanks, Helen Free, Pike and Timmy for helping us to go to the A.A.R.P. luncheon last Fri.

The Hospital and Nursing Home Aux. came Tues. to shampoo and set the ladies hair and give manicures. Several of the ladies stayed and played Skip-Bo with the residents.

Alma Henley was visited by Mrs. Barbour Wed. She is spending 2 or 3 days with Stanley and Cleo.

The Trinity Baptist church will host our Valentine Party, Feb. 13 (Mon.) at 2:30 p.m. We are all excited and looking forward to it.

Glenda Jennings and Jackie Johnson came Wed. afternoon to have a Sing-A-Long with the residents.

Sandhills Philosopher

Editor's note: The Sandhills Philosopher on his Johnson grass farm on Sandy Acres looks at over-crowded courts this week.

Dear editor:

As is well know, courts are so over-crowded with trials, appeals and reappeals and so far behind that in many cases justice is as slow as 5 o'clock traffic in a big city.

One reason for this is that there are so many lawyers being turned out it's necessary for them to file all sorts of frivolous cases in order to have enough to go around. If car manufacturers over-produce, they stack their extra cars on vacant lots, but you can't park surplus lawyers like that. They'll get rusty if left out in the rain.

So, regardless of how far-out your case is, like a kid's suing his parents because they didn't buy him a bicycle, you can always find a lawyer somewhere who'll take the case. Did you develop an ingrowing toenail from stepping on your car's gas pedal? Sue the company that made the pedal. An ingrown toenail is painful and ought to be good for a couple of million. If you lose, appeal it. If that fails, appeal again. Convicts do it all the time.

I therefore had to read the following twice to make sure I was reading it right: A judge has fined a lawyer \$500 for making a "legal nuisance" of himself. He'd filed one of those preposterous cases.

This opens up all sorts of possibilities for slowing down the filing of frivolous cases.

It also opens up the possibility of lawyers filing more suits demanding a legal definition of a frivolous suit. Probably go all the way to the Supreme Court.

This is going nowhere. Let's change the subject. There's an old saying, "If it ain't broke, don't fix it." But some repair men now have a new version: "If it ain't broke, go ahead and fix it anyway and send him a bill."

Yours faithfully,
J.A.

Sudan News by Evelyn Ritchie

Visiting recently with Mr. and Mrs. George Collins were their daughter, Mr. and Mrs. A.M. Johnson and Jerry of Bovina.

Mr. and Mrs. Gary Ray were in Denver this weekend for a horse show as were Mr. and Mrs. Glenn Chester.

January Full Month For Law Officials

Muleshoe law enforcement officials have had a fairly active January, with a number of bad check cases being filed, along with failure to appear warrants on traffic citations. In addition to that, several accidents were recorded during the month with most being due to the severe cold and icy conditions of early this year.

On January 30, police arrested Emelia Corona Elizarreraz on alleged theft charges stemming from a report from a local supermarket. The suspect pled guilty before Judge Linda Huckabay and was fined \$100 plus \$20 in court costs.

A burglary was reported by Big Boy's Barbeque on January 30. Investigation revealed that the intruder had entered the establishment through an unlocked window. Approximately \$5 to \$6 in change was reported as missing.

Burglary of a vehicle was reported on January 29 by J.O. Parker, when suspects took approximately \$135 worth of tools from his pickup while it sat in the drive of his home.

On January 30, police arrested Veronica Jean Solis on a warrant. She was booked into the county jail.

On January 28, officers arrested Aurelio Vezquez Cuevas on charges of alleged DWI. He was taken to the county jail, and his vehicle impounded. Also on the 28th, Nicanor Ramirez was arrested on charges of alleged DWI. He was given a breath test and was booked into the county jail pending bond.

The burglary of a home was reported on January 28 by Mark Ward. Investigation showed that the back door of the home had been forced open. An AM/FM Stereo Cassette player valued at \$126 was taken.

Robert Saldana Lopez was arrested by local officers on January 29, on charges of alleged DWI. He was booked into the county jail pending bond.

On January 28, Gilbert Vela was arrested on charges of alleged DWI and booked into the Bailey County Jail, pending bond.

A passenger, Lulo Torres was also arrested on charges of alleged public intoxication and booked, pending bond.

Maria Guewra reported a stolen bicycle to police on January 27. The bike was taken from her home at 1420 Avenue B. It was valued at \$65.

A report of criminal trespassing was made by Espranza Laredo on January 28, when a party allegedly entered the residence without the owner's consent and made threats. An assault was reported on January 24, by Jose Estrada. A complaint was to be filed on this incident.

JoAnn Davenport, manager of the New Dimensions reported a theft to police on January 22. Approximately \$75 had been taken from the cash drawer. No suspects were named, however.

On January 20, Gordon Elmore Noble was arrested on charges of alleged DWI, and booked into county jail pending bond. On January 14, Otwell Cathey Taylor was arrested on charges of alleged DWI and booked into the county jail, pending bond. Also on the 14th, William Tood Allison was arrested by police on charges of alleged DWI, and booked into county jail, pending bond.

On January 11, General Telephone Company reported the complaint of a customer of harrassing phone calls. No further action was taken on this at the time.

On January 8, Alfonso Carlo Jaramillo was arrested on charges of alleged DWI and booked into county jail, pending bond. On that same date, Cal Ray Hood was also arrested on charges of alleged DWI. He was booked into county jail pending bond.

Benito Villanueva Alarcon was arrested on January 8 on charges of alleged DWI. He was placed in jail, pending bond. And, also on January 8, Harold Wayne Campa was arrested on alleged DWI charges and placed in county jail, pending bond.

On January 7, a burglary was reported at John's Custom Mill. However, investigation showed that nothing was taken, but that damage was done to a lock.

On January 4, the West Plains Medical Center reported the theft of two nitrous oxide cylinders valued at \$494. The chains which held the cylinders had been cut and the cylinders removed.

In the Bailey County Sheriff's Department, most of the goings-on had to do with DWI filings. On January 11, Joe Ortega Gutierrez was placed in jail on charges of alleged DWI, he was released later on a \$500 personal recognizance bond.

On January 14, William Todd Allison was arrested and placed in jail on charges of alleged DWI. He was later released on \$750 bond. Also on the 14th, Alfonso Jaramillo who was arrested on a prior DWI charge laid out three days in the county jail.

On January 20, Otwell Cathey Taylor, arrested for alleged DWI was released on a \$500 cash bond. Also on the 20th, Gordon Elmore Noble was arrested on charges of alleged DWI. He was later released on a \$2500 bond.

On January 27, Armando Toscano was arrested on charges of alleged DWI. He was later released after posting \$750 bond.

On January 27, local officers arrested Frank Trevino and Elisio Garcia on charges of burglary of a habitat in Lubbock County. They were released to Lubbock authorities. On January 28, Nicanor Ramirez was arrested on alleged charges of DWI. He was released after posting \$750 bond. Also on the 28th, Holario Torres was arrested on a charge of alleged public intoxication.

On January 28, Aurelio

Vargas Cuevas was arrested on charges of alleged DWI. He was released after posting \$500 cash bond. Gilbert Vela was arrested on January 28 on alleged charges of DWI and released after posting \$500 cash bond. Sheriff's officers also arrested one person on a warrant from Randall County. That suspect was later released to Randall County authorities.

Social Security News And Views

Debt management has been a household phrase around our place for quite a while, especially the last couple of years.

I notice that every leap year the government is more vocal about the National Debt and tries to come up with ways to cut government spending. No argument there.

If I had any argument, it would be that I don't think enough of us, (you and I) really realize who the government is. It is: You and I. And that is absolutely the bottom line.

So we need to help each other keep costs down and do our part.

And that is what Social Security is asking those of you receiving Social Security benefits to do this year. By making accurate estimates of your current earnings you can save yourself and Social Security a big headache and a lot of money too.

Inaccurate, low estimates of earnings cause overpayments to beneficiaries and these overpayments must be paid back.

During calendar year 1983 Social Security identified 1.2 million people who were overpaid because they underestimated or failed to report their earnings to Social Security. The total overpayment dollars identified through a combination of annual reports and other enforcement actions in 1983 was just over one billion dollars.

Over the next three months we will be receiving annual reports of earnings from about 1.3 million working beneficiaries. Experience indicates that about 35 percent of them will include earnings estimates for 1984 which will turn out to be substantially lower than actual earnings and result in overpayments. Unlike non-reporters, these beneficiaries are fulfilling their reporting responsibilities, but their low estimates will cause about 70 percent of the overpayments expected from excess earnings in calendar year 1984.

How can you do your part to keep from being overpaid?

Don't underestimate your earnings. Be optimistic. If you should overestimate your earnings, Social Security will pay you any benefits due shortly after you file your annual report of earnings with us. Also, remember that you can revise your estimate of earnings at any time simply by calling the nearest Social Security office.

Our goal is and has been for years, to pay the proper person the correct amount, at the proper time.



WHO MADE THE SHOT?...It's hard to tell here, but looks like Preston Langford tried a shot for the Mules and a Littlefield Wildcat is going up to block it. However, it could have been the other way around, the Wildcat made the shot and the Mules are headed for the rebound.

TIPRO Supports Gas Decontrol

The Executive Committee of the Texas Independent Producers and Royalty Owners Association (TIPRO) has reaffirmed its support for federal legislation to decontrol natural gas.

The TIPRO panel approved the decontrol resolution during the association's Mid-Winter Committees Meeting Thursday.

Taxpayers: Attach All Documents

When you file your federal tax return, be sure to attach all supporting documents and schedules before mailing it, the IRS says.

Documents such as earning statements, schedules, statements verifying deductions, or other pertinent information should be securely attached to the 1040, 1040A, or 1040EZ. Taxpayers must include W-2 forms from all employers if they worked at more than one job, the IRS points out, regardless of the amount of earnings.

Pivot Products Distributors Introduces -- The P & R Surge System -- The Ultimate Surge Flow Unit




FEATURES
durable - all cast aluminum with stainless hardware
portable - 55 lbs., 24" wide
weatherproof - electronics sealed in control box
serviceable - valve body opens. Control box is detachable for storage and opens to actuator and rechargeable battery user friendly - instructions for programming on face

This compact light weight unit is combined with the most complete programmable controller yet devised. This rugged efficient unit diverts water flow with a very minimum of turbulence and negligible back pressure. The unit can be programmed for just one set of surge cycles on a set watering time, with the option to also program a second surge setting of a different watering time on an indefinite number of surge cycles. Any standard 12 volt car battery will give the P&R Surge Systems long life in the field. The controller's memory battery pack is recharged off the main power supply and the unit can store the program for over 1 year.

Contact Pivot Products Dist. now to have one or more of these units in time for prewatering which incidentally is the most preferable time to have the Surge Flow unit. Orders received prior to February 1, 1984, will have the best chance of March delivery. Call today 272-5134, or come by Pivot Products Distributors West Highway 84 in Muleshoe, Texas

PIVOT PRODUCTS DISTRIBUTORS, INC.
West Highway 84
Telephone 806/272-5134 or 806/272-5536
MULESHOE, TEXAS 79347

ATTENTION, FARMERS!

Omaha Indemnity Is Now Offering ALL RISK Crop Insurance In Texas. To Learn More About Insuring Your Cotton, Corn Milo, & Other Crops Against All Adverse Weather Contact **Ronnie Holt** 965-2642 or 965-2764 Rt 1, Box 151 Muleshoe 79347 

 TOOL VALUE OF THE MONTH	 BARGAIN OF THE MONTH	 HARDWARE VALUE OF THE MONTH
 3.29 16-Oz. Nail Hammer High-carbon steel claw hammer with hickory handle. 3-16-HFN Quantities Limited	 7.99 Moist and Dry Heating Pad Sponge included for moist heat. 3-heat settings. "on" light. 1819 Quantities Limited	 4.44 Enamelled Wood Toilet Seat Dial-On hinges for easy installation. Colors 40DCMX Quantities Limited
 Fry & Cox, Inc. 401 S. First 272-4511		

December Pipeline Summary Released

Railroad Commission Chairman Mack Wallace has announced that 25 permits to operate new pipelines in Texas were granted by the RRC in December. In 1983, the Commission approved 220 permits, while 177 were granted in 1982.

Sixteen of the new permits were for gathering pipelines, four were for trunk transmission lines, and five were for other types of lines. Gathering lines bring oil and gas from production leases, while a trunk transmission line is a larger diameter line into which smaller lines connect.

Twenty-four of the newly-permitted lines will transport gas, and one will carry crude oil.

In December, six permits were granted to operate pipelines in Southeast Texas (District 3); five in West Central Texas (District 7B); three in East Texas (District 6); two each in North Texas (District 9) and the Midland area (District 8); and one

each in deep South Texas (District 4) and the San Angelo (District 7C) and Refugio (District 2) areas.

There were also four offshore lines.

Gathering lines approved: The Superior Oil Co., The

Woodlands, gas, three lines -- all offshore; Tejas Gas Corp., Corpus Christi, gas, two lines--one in Rusk County and one in Fort Bend County; Hilliard Oil & Gas Inc., Midland, gas, Goliad County; M & P Pipeline Inc., Henderson, gas, Rusk County; DeSoto Operating Co., Abilene, gas, Stephens County; Arenas Petroleum Inc., Dallas, crude oil, Archer County; HGI Corp., Houston, gas, San Patricio County; Hawthorne Enterprises Inc., Brooksmith, gas, Brown County; Equitable Petroleum Corp., Metairie, La., gas, Brazoria County; Victoria Gas Corp., Corpus Christi, gas, Colorado County; GSI Inc., Bryan, gas, Brazos County; Crockett County Gas Co.

Inc., Midland, gas, Crockett County; Liberty Natural Gas Co., Dallas, gas, Pecos County.

Trunk transmission lines approved:

Texas Sea Rim Pipeline Inc., Houston, gas, offshore; Reliance Pipeline Co., Houston, gas, Newton County; Esperanza Transmission Co., Corpus Christi, gas, Smith County; Madleon Transmission Co. Inc., Houston, gas, Grayson County.

Multi-purpose and other lines approved:

Stonewall Natural Gas Transmission Systems, Midland, gas, Stonewall County; Enserch Exploration, Bridgeport, gas, Stephens County; Endevo Pipeline Co., Dallas, gas, Brazoria County; Pronghorn Pipeline Co., Fort Worth, gas, Eastland County; Texaco Inc., Midland, gas, Midland County.

1984 Farm Income Should Improve

While it may not be a banner year for agriculture, 1984 should bring some improvement in Texas farm income over the depressed conditions of recent years.

"We could have a 10 to 15 percent increase in farm income over 1983," points out Dr. Carl Anderson, economist with the Texas Agricultural Extension Service, Texas A&M University System.

Anderson sees an increase in farm earnings due to slightly higher prices, fairly steady production costs and continued improvement in demand for farm commodities.

"However, there is a dark cloud hanging over crop producers," contends the economist. "The potential for overproduction is there. It could take hold again and put farmers right back where they were a year ago--facing surplus commodities and depressed markets."

Government programs are offering farmers higher target prices and larger deficiency payments in 1984 which should boost cash flows for participants, notes Anderson.

However, the voluntary nature of the programs and the \$50,000 payment limitations will not entice enough farmers to participate so as to have a major effect on curbing production.

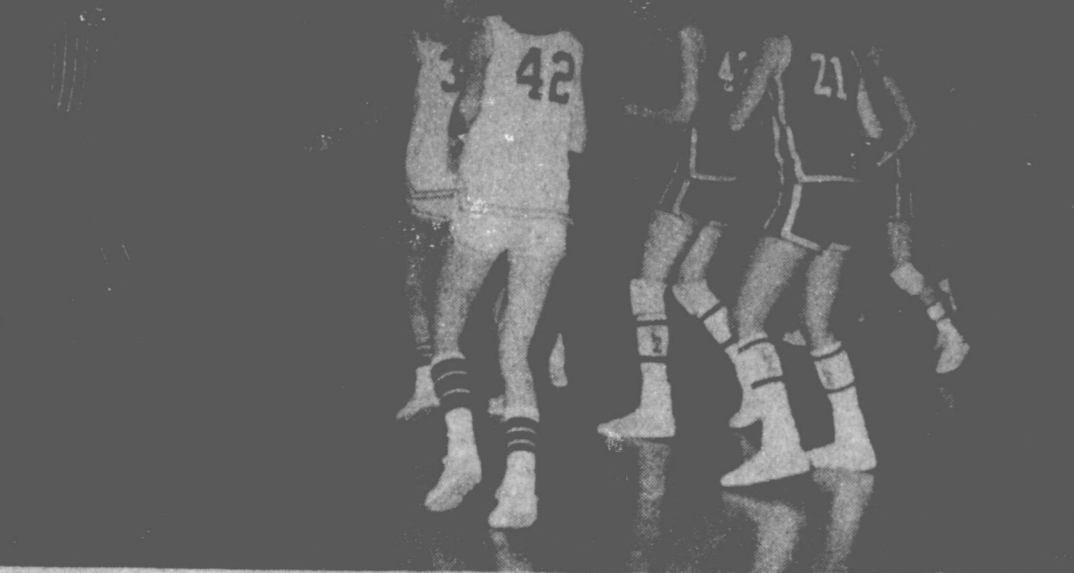
"Without doubt, farmers will be facing either tighter production controls or lower prices for the next several years," says Anderson. "At current demand, some crop acreage must be retired. However, the mood in Washington reflects a more flexible farm policy, less government control and market-oriented programs for the 1985 farm bill."

For 1984 farmers with strong management skills in producing, financing and marketing and with little or no debt should do well, says the economist. But agricul-

tural lenders will tighten up on credit conditions, with the Farm Credit System and the Farmers Home Administration handling an increasing number of loans.

Ranchers, like farmers, should see some improvement in prices during 1984, notes Anderson. Reduced beef and pork supplies should help market prices along with an improved demand resulting from continued economic recovery. However, heavy marketing of culled dairy cows as a result of the new dairy program could dampen meat prices somewhat.

As far as land values are concerned, Anderson sees cropland prices stagnating or declining slightly, especially in prime agricultural areas such as the Texas High Plains. But he expects Texas ranchland values to continue to advance faster than the rate of inflation.



TRYING FOR TWO... Littlefield's varsity girls made a try for two of their 45 points on Tuesday night in Muleshoe. The Littlefield squad outdistanced the Mulettes in the game 45-26.

Bullock Trims Red Tape For Oil Producers

State Comptroller Bob Bullock has trimmed a dozen monthly reports for Texas oil producers down to a single yearly report, cutting tax red tape for more than 6,000 producers and saving about \$17,000 a year in printing and mailing costs for the state.

These producers will use a new, simplified short report form and send it to the state only once a year instead of every month.

"The biggest major oil company and the smallest barrel-a-day producer both pay the same tax rate for oil produced in our state," Bullock said, "but, there is no reason they should both fill out the same paperwork."

Bullock explained state production taxes are paid by the first purchaser of crude oil but producers have also

been required to file monthly reports showing how much oil they sold, the price they got and the county of production. The last of these monthly reports were filed in January. Under the new procedure, producers will report the amount produced and the price paid yearly.

"This change won't have any effect on the amount of money we collect or when we get it," Bullock said. "The purchasers of this oil will keep on sending their reports and their taxes in every month. It will simply relieve a paperwork burden for the producers, especially smaller producers."

"Those large producers who operate refineries and pay taxes on their own production will also continue to file monthly reports," Bullock said.

Bullock's new procedure

continues the paper work reduction policies of the State Comptroller's Office that have so far eliminated 38 percent of the forms taxpayers once were required to complete and return to the state. Bullock also pioneered the use of electronic Optical Character Reading (OCR) equipment to simplify tax reports and speed processing three years ago. The federal Internal Revenue Service recently announced it is following Bullock's lead in using OCR equipment to help process federal tax returns.



SHAWN SMITH

Lazbuddie

Grad Honored

At WTSU

Shawn Smith, a sophomore general business major from Lazbuddie, is a member of the West Texas State University Student Foundation selected on the basis of his leadership abilities, scholastic aptitude and participation in campus activities.

The WTSU Student Foundation supports WTSU in annual projects, which are an October phonathon designed and conducted by the students to provide scholarship funds; a senior weekend, a weekend of activities at WTSU for high school seniors; and an all-university Funfair, a project designed to involve WTSU students in recreational and competitive games.

Smith also is president of the WTSU Flying Club and secretary for Jarrett Hall, a men's residence hall. He is the son of Jerry and Donna Smith of Lazbuddie.

Texas Senior Citizens Offered Intern Program

Senator John Tower (R-Texas) has announced he is accepting applications from Texas senior citizens who wish to participate in an intern program in his Washington office May 7 - May 11.

The program is designed to provide increased communication between the retired community and their representatives in Congress. Tower was the first member of the Texas Congressional delegation to participate in the initial program in 1977.

The two citizens selected from the applicants will spend a week in Tower's Washington office observing the legislative process, meeting with representatives of departments and agencies, and participating in the operations of a Congressional office.

"The interns selected last year, Ella Mae Swenson of Tyler and Cyril Krotzer of Harlingen both contributed much to my understanding more fully the needs and concerns of our senior citizens," Tower said.

"I once again look forward to learning firsthand more about our senior citizens' problems, needs, and opinions," the Texas republican added. "At the same time, I hope the interns will learn more about the legislative process and government programs designed for their needs and then share with their peers the exper-

iences and information gained in Washington."

Tower said the interns' demanding schedule of activities will include meetings with various agencies, department and committee representatives, and the opportunity to attend committee hearings plans also include a private tour of the White House and social activities with the Congressional staff and other interns.

Tower said the applicants should be senior citizens, 65 years of age or older, active in their communities, interested in legislation, and willing and able to communicate their knowledge to their fellow senior citizens in Texas.

Interns will receive their airfare to and from Washington, as well as a stipend to cover expenses while in Washington.

Applications can be obtained from Tower's Dallas office at 1100 Commerce, Room 7C14, Dallas, Texas 75242. The deadline for returning the application with two letters of recommendation to the Dallas office is March 15.

Now serving his fourth term, Tower is chairman of the Senate Armed Services Committee and member of the Banking, Housing and Urban Affairs Committee and the Budget Committee. He is also chairman of the Senate Republican Policy Committee.

PLAINS PRIDE

Thousands of corn acres prove this pair from Pioneer is doing something right.

3186

Over the past three years in on-farm tests in this area, no hybrid has produced a higher average yield than this one. However, it's the "extras" that make 3186 ideally suited for irrigated Plains production. Drought tolerance—making the most of weather and moisture conditions. Plus excellent stalk strength, outstanding late season plant health, very good ear retention. Disease resistance. A tall semi-upright-leaved hybrid, 3186 normally produces large, girthy ears with excellent shuck cover, for either grain or silage production.

3184

It provides protection against diseases and stress and consistently produces excellent yields. In fact, in over 300 on-farm yield tests in this area during the past seven years, 3184's average yield has been almost 700 lbs/A. more than competitive hybrids. But, it's under tough growing conditions that 3184 really shines. Exceptional root and stalk strength. Shorter growth habit, relatively low ear placement, late season plant health and excellent stay-green qualities. It's often used as the measure for standability in this area. Preferred by food corn processors because of excellent grain quality and shuck cover.

Plant 'em together. They'll give great yields in the good years and make the most of the tough years, too. Come on in and let's talk.

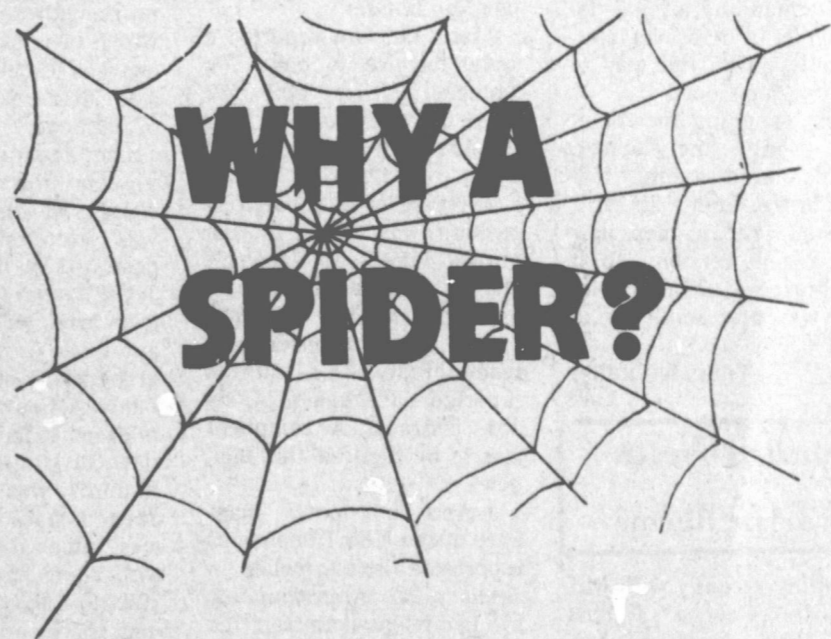
PIONEER DAYS CASH DISCOUNTS

Feb. 5-11

Don Bryant Seed

965-2227

965-2464



Don't be surprised to find a spider in your morning newspaper. The spider is merely looking to see which of the town's merchants is not advertising. He will then go to that store, spin his web across the door and lead a life of undisturbed peace!



NEWSPAPER ADVERTISING DOES MAKE THE DIFFERENCE

Muleshoe Publishing

Call 272-4536 for YOUR Advertisement!

RANDGEAR Now Available
 Randolph Gearhead
 20 Hp. to 750 Hp.
 WE CAN SAVE YOU MONEY — COME IN AND CHECK WITH BUTCH OR R. O. BEFORE YOU BUY
 Leo's Blacksmith & Machine
 310 W. American Blvd. 272-4418

**BUY
SELL
AND
TRADE
WITH...**

Classified Ads

**DEADLINE FOR CLASSIFIED
ADS IS TUESDAYS AND
FRIDAYS 11:00A.M**

CLASSIFIED RATES
1st Insertion
Per Word...\$15
Minimum Charge...\$2.30
2nd Insertion
Per Word...\$13
Minimum Charge...\$2.00
CARD OF THANKS
Per Word...\$20
CLASSIFIED DISPLAY
\$.170..per column inch
BLIND AD RATES
50% more
DEADLINES
11 a.m. Tues for Thurs.
11 a.m. Fri. for Sun.
**WE RESERVE THE RIGHT
TO CLASSIFY REVISE OR
REJECT ANY AD.
NOT RESPONSIBLE FOR
ANY ERROR AFTER AD
HAS RUN ONCE.**

**AFTER
DEADLINE???**

You can call 272-4536
until 5:00 p.m.
on Friday and Tuesday
and get your **WORD AD**
in
TOO-LATE-TO
in the next issue!!!
Tuesday for Thursday
and Friday for Sunday.

1. PERSONALS

Own your own Jean-Sport-wear, Ladies Apparel, or Children's store. 300 Brand names. \$15,500 includes \$9,000 Inventory, store fixtures. Training and much more. Mr. Tate 704-753-4738. 1-6s-1tc

CONCERNED about someone's drinking **HELP IS AVAILABLE** through Al-Anon Call 227-2350 or 965-2870 or come to visit Tuesday nights. 8:00 p.m. at 1116 W. American Boulevard, Muleshoe. 1-6s-1tc

3. HELP WANTED

Farmer Seed Dealer Wanted; Write Box 16343 Lubbock, Tx. 79490. 1-6s-2tc

PROCESS MAIL AT HOME \$75.00 per hundred! No experience. Part or full time. Start immediately. Details sent self-addressed stamped envelope to C.R.I. 5288, P.O. Box 3149, Stuart, Fl. 33495. 3-2t-4tsp

4. HOUSES FOR RENT

House for rent, 2 bedroom, partially furnished. Call 272-3885. a4-6s-2tc

2 Bedroom, 1 bath, fireplace, guest house. \$200.00 a month, \$100.00 deposit. 303 W. 10th, 272-4079. m4-6s-1tc

SKIING IS GREAT Save \$5. Nice 2 Bedroom Ruidoso House, Cable T.V. Steve Allredge 806 456-7192, or Bob Allredge 806 983-2912. 4-1s-tfc

5. APTS. FOR RENT

3 Room Furnished Apt. for rent, in Muleshoe, all bills and Cable T.V. Paid. \$250 a month plus \$100 deposit. Call Maurine Routon at Farwell 1-825-3555. 5-2t-tfc

**8. REAL ESTATE
FOR SALE**

3 Bedroom, 1 bath, paneled, fully carpeted, aluminum siding, storm windows, storage building. Call 272-5415. 18-5t-2tc

EXTRA NICE 3-1/2-1. New carpet, paneling through out. Screened in patio. Call 4541 or 5671 after 5:00 p.m. Ask for Debby. 8-13t-tfc

Nice 2 bedroom, 1 bath & garage in Lenau Addition. Central Heat, Large Kitchen, Patio. Mid 20's. 272-3123. b8-4s-tfc

TOWN and COUNTRY

Real Estate

John W. Smith
Broker
806-272-5335
223 East Ave. B
Muleshoe, Tx 79347

Henry Realty

111 W. Ave. B
Muleshoe
272-4581

315 Acres on HWY West of Muleshoe, 5 Wells, Underground Pipe, Lays Excellent, Owner Financing.

800 Acres West of Muleshoe on HWY Excellent Improvements. Priced Right to Sell. Owner Financing.

38 Acres West of Muleshoe, 6 Inch Well, Sideroll, All Wheat.

One Acre Sites For Home Construction. 3 Miles East of Muleshoe on HWY.

2 Bedroom Home. 4 Rooms Remodeled, Storage, Call 272-3123, down Owner Financing.

8-5s-tfc

**8. REAL ESTATE
FOR SALE**

**JIMMIE CRAWFORD
REAL ESTATE & INS.**
1725 W Ave E
Muleshoe, Texas
Phone 272-3666

2-1-1 in Lenau Addition. Outside trim just painted.

3-2 with carport in Richland Hills. Very nice.

3-1/2-2 with carport in Lenau Addition. Price has been reduced to sell.

3 Duplex apartments all rented. Good Income.

154 acres west of town with 4 wells. All waters.

160 acres west of town with 2 wells. Good price.

320 acres N.E. of town with 3 wells. Good Land. 8-3s-stfc

**8. REAL ESTATE
FOR SALE**

BINGHAM & NIEMAN REALTY
116 E. Ave C
272-5285---272-5286

RICHLAND HILLS
3-1 3/4-2 carport Brick, Cent. A&H, built ins, gas log fireplace, fenced yard, & PRICED TO SELL!!!!

3-1 3/4 Brick, Cent. heat, Evap. air, fireplace. A very nice home..... 8-19s-tfc

3-2+2 carport Brick, Cent. A&H, built ins, 2 fireplaces, nice den & living area.....

LENAU ADD.
JUST LISTED-3-1-1 home has nice large rooms, fireplace, DW, utility, nice screened porch, workshop, storage bldg., fenced yard, Mid 30's!!!!!!!

3-1-1/2 home, Cent. heat, Evap. air, DW, water softener, fenced yard, cellar, & more.....

2-1-1 home, Cent. heat, large rooms, fenced yard. Nice & only \$23,500!!!!

3-1-1 carport home, Cent. heat, earhtone carpet, fenced yard. Very Nice....

3-1-1 home on corner lot, Cent. heat, Evap. air, fenced yard!!!!

BEAUTIFULLY LAND-SCAPED 2-2 Brick, built ins, Cent. A&H, fireplace, sprinkler system, & Much More.....

COUNTRY CLUB
3-1 3/4-2 Brick home, Cent. A&H, built ins, nice fenced yard, & in a nice area.....

2-1 home on corner lot plus nice storage bldg....

ASSUME VA LOAN 3-1 3/4-1 carport home, Cent. A&H, utility, fenced yard. Small Equity & Close to Schools

ENJOY COUNTRY LIVING in this 3-1 3/4-2 home on 1 acre, Cent. A&H, built-ins, nice large patio, fenced yard, storm shelter, fruit trees!!!!

2-1 home on 1 acre, built ins, nice carpet, on pavement.....

2-1-1 home on corner lot, freshly painted interior, includes furniture & other items. One Block to School.....

Nice 3-2 home on 1 acre, isolated master bdrm., Cent. A&H, built ins, fireplace, wet bar, fenced yard, & insulated storage. Mid 70's!!!!

3-1 3/4-1 carport, large master bdrm., nice workshop & storage bldg. Low 30's....

2-1-1 home priced at only \$8,000!!!!

3-1 3/4 home on corner

"WE APPRECIATE YOUR BUSINESS"
GEORGE NIEMAN, BROKER
DIANNE NIEMAN, BROKER

8-6s-stfc

**J.B. SUDDERTH
REALTY, INC**
Drawer 887
Farwell, Tx. 79325
Ph. 806-481-3288

160 Acre on Hwy. N.W. of Muleshoe, 2 wells, Excellent Financing. Priced for Immediate Sale.

320 Acre, 3-8 inch wells, 1 Circle. Lays Excellent. Oklahoma Lane Area.

320 Acre, 1 Circle, 2-8 inch wells, good water area. Oklahoma Lane Area.

480 Acres-irrigated with Circle Sprinklers, lays good, on highway-West of Muleshoe. Owner says sell!

50 acres in edge of Muleshoe 6 inch electric well. Barn, Corral, side roll sprinkler, City Water. Owner says Sell. 8-6s-tfc

**8. REAL ESTATE
FOR SALE**

lot, Cent. A&H, built ins, isolated master, utility, & only \$42,500.....

A STEAL AT ONLY \$20,000 is this 3-1+1 carport home, Cent. heat, fenced yard, new roof, and more.....

3-2 3/4 home on corner lot, Cent. A&H, built ins, 2 fireplaces, approx. 3,000 sq. ft. of living area, new carpet, & large gameroom.....50's....

EARTH-3-1 3/4-2 Brick, isolated master, Cent. A&H, built ins, fireplace, finished basement, fenced yard, storage bldg., & only 4 yrs. old!!!!!!

EXTRA NICE 2-1+ carport home, new paint, fenced yard, & storage bldg.....

3-1 3/4-2 home on corner lot, Cent. A&H, built ins, covered patio, fenced yard. Buy Equity & Assume!!!!!!

3-2-1+1 carport home, built ins, Cent. heat, fireplace, fenced yard. \$47,500.....

3-1/2-1 Brick near schools, fenced yard, nice large workshop. \$39,500!!!

3-1 3/4-1 carport Brick, Cent. A&H, built ins, storage area, fenced yard, on corner lot.....

CLOVIS HWY. 3-1 home & 2-1 home (rented) on approx. 4.4 acres, fenced, & has sprinkler system. \$42,500!!!!!!

2-1 3/4 Mobile home +2 carport, built ins, cable TV, plus large barn & corals, on 2 acres, on pavement close to town.....

NICE CONVENIENCE STORE with video game-room & gas pumps, good equipment. Owner will show books.....

CHURCH BLDG. on 2 lots, approx. 2350 sq. ft., paved parking.....

FARMS
1062 acres, 3 wells, 2 circles, large metal barn, 9% Owner financing.....

2-1-1 home on 32 acres, 6" well, fully allotted, close to town on pavement.....

80 acres, 6" well, underground tile, close to town.....

40 acres, 8" well, underground line, & sideroll sprinkler.....

We also have a good selection of other farms, commercial property, & lots. Check with us for details on these listings.

"WE APPRECIATE YOUR BUSINESS"
GEORGE NIEMAN, BROKER
DIANNE NIEMAN, BROKER

Rex Harris - Broker John Craig - Builder

8-5s-stfc

**9. AUTOMOBILES
FOR SALE**

For Sale; 1980 Chevrolet 1/2 ton Pickup. 4 speed, 4 wheel drive. Air and other extras, Call 272-4515 from 8 a.m. to 5 p.m. 9-44s-tfc

For Sale, 1977 Jeep Cherokee Chief, NADA Wholesale, 1972 Toyota Corella \$500 Good Work car 272-3204.

**10. FARM EQUIP.
FOR SALE**

For Sale, 4 used Zimmatic center pivot sprinklers call 965-2781. c10-6s-3tc

Complete Propane System 60 gal tank, hoses, fittings and century regulator. 965-2356

FOR SALE: Avenger 3 Wheel Hoe Hands with spray tanks attached. Call First National Bank. 272-4515. 10-21t-tfc

FOR SALE

In Line Booster Pump 25 horse power.

90 Horse power Pearlless standard gear head 4-3.

70 Horse power Pearlless gear head 6-5.

100 Horse power Newman Electric Motor. Call 806-272-4869. f10-5s-1mc

**8. REAL ESTATE
FOR SALE**

**11. FOR SALE
OR TRADE**

Hide-a-bed sofa and a pool table for sale. 272-4755. s11-6s-4tc

FOR SALE: Baled Milo stalks. Call 933-4324. d11-5s-4tc

Pea-Green Hay FOR SALE In the Barn. Call 272-3842 or 272-3692. s11-4s-tfc

GOOD INVESTMENT Large Richland Hills lot. Priced 1/2 market value. 272-4096. 11-2s-stfc

FOR SALE - 14 x 84 Mobile Home Unfurnished - 3 bedroom 2 bath Masonite Siding - House Top Roof - Call 272-4022 After 5 p.m. or weekends. 11-3s-tfc

PIANO FOR SALE

Wanted: Responsible party to assume small monthly payments on spinet console piano, can be seen locally. Write (include phone number) Credit Manager, P.O. Box 478, Lockhart, Tx. 78644-0478. ill-4t-6tcx

**13. PROPERTY
FOR LEASE**

Land for lease, irrigated and dry land. Phone 946-3472. o13-6s-2tc

**8. REAL ESTATE
FOR SALE**

AMERICAN VALLEY INVESTMENTS REALTORS

TO TRULY SERVE THE CLIENT

SIMPLY BEAUTIFUL--Elegant 3 Bedroom, 2 Bath home in Country Club Addition. Fireplace, Slanted Beamed Ceiling, Skylight, Stained Glass, Lots of Storage, Game-room, Matching Storage Building, much, much more---Assumable Loan.

JUST REDUCED--2 Bedroom, 1 Bath Home in the country. Double Car Garage. Basement. Located on approximately 1/2 acre. Was \$14,000.00--But Owner says sell for less.

PRICE REDUCED--Large 3 Bedroom, 1 3/4 Bath, 2 Car Garage Brick Home. Located on 1 Acre Close to Town. Approximately 2600 sq. ft. Lots of Storage. Cable. Large Fenced Yard. \$57,500.00

MUST SELL--NOW 3 Bedroom 1 3/4 Bath, 2 car Garage, Fireplace. Cathedral Beamed Den.

JUST LISTED--Nice 2 Bedroom, 1 Bath, Single-Car Garage. Well-Insulated. New Roof. Storm Doors & Windows.

NEW ON THE MARKET--160 Acres in Lazbuddie Area. 2-8" Irrigation Wells. Good Land in Good Area.

280 Acres in Lazbuddie Area-- Electric Valley Sprinkler--2 Siderolls 1-8" Well 1-6" Well, 3/4 Mile Underground PVC, 1/4 Minerals, 25hp. Lake Pump, 32 Acres of Improved Grasses. **PRICED TO SELL!**

LOVELY CORNER LOT--Extra Nice 3 Bedroom, 1 3/4 Bath, Carport, Isolated Master Bedroom. Carpet like new. Lots of Storage. Good Location.

ENCLOSED PATIO--Extra Neat 3 Bedroom, 1 Bath, single Car Garage with Workshop. Paved area in back for Recreational Vehicles. Well-Kept Yards.

GOOD RENT PROPERTY--2 Bedroom and 1 Bedroom Homes. In Good Condition. \$22,500.00.

REDUCED FOR QUICK SALE--1 Bath, Single Car Garage. Separate Dining Room.

80 Acres in YL Community. 1-6" Well -- 30 Hp. Elec. Motor, 1/2 Mile Underground Pipe Domestic Well. Some Minerals.

160 Acres in Lazbuddie Area. Good Water. Priced to Sell.

LARGE BUILDING in Back for Workshop, Storage, or Hobbies. 3 Bedroom, 1 Bath Home in Lenau Addition.

2 BEDROOM--1 Bath, Den, Utility Room. New Plumbing. Close to Park. \$13,000.00

PRICE REDUCED TO SELL--Nice, Well-Built 2 Bedroom, 1 Bath, Single-Car Garage. Storage Building.

GOOD STARTER HOME--1 Bedroom Home. Priced at only \$9,500.00.

2 BEDROOM--Home at only \$15,000.00.

LARGE FENCED YARD--3 Bedroom, 1 Bath, Good Roof. New Plumbing. Close to Hospital. \$17,000.00.

272-4266

Derrell Matthews--965-2127
Thursic Reid--272-3142
Karen Harris--272-5183
Lucille Harp--272-4693

Rex Harris - Broker John Craig - Builder

8-5s-stfc

15. MISCELLANEOUS

HONEY FOR SALE
Nick Landers
334 W. Ave. J.
272-3096
15-5t-tfc

Bruce & Matthews Inc. Refrigeration & Electrical Contractor's, Heating, Cooling, Appliance service. 424 N. First. 272-5114. 15-44t-tfc

ALEX'S TIRE SERVICE
For service 24 hours a day telephone 272-5012 or Mobile 965-2242. 224 East Fourth Street, Muleshoe, Tx. 79347. 15-5s-stfc

HOME REPAIRS. F.M. Saldana Construction Licensed and bonded plumber. Specialize in cement, carpenter work, remodeling, painting, acoustical ceilings. 272-4955. 15-16s-tfc

SIGNS PAINTED Exterior-house painting Kenneth King 272-3817 15-5t-2tc

Clock Repair 109 E. 9th St. Clovis 762-0516 Lonnie May 15-3s-stfc

Treflan \$119.00 5 gal. can \$697.00 30 gal. drum Call 806-272-4737 Watson Chemical (Jimmy Watson) For Any Chemical Will Deliver Substantial Order. w15-5t-3tc

Tree & Shrubbery Trimming, Lawn Thatching, Stump Removal, Dormant spraying & feeding. Custom Tree & Landscape Service, Box 2704, Amarillo, Texas, 79102. 373-4593. c15-3t-8tc

YE'OLE GARAGE SALE Across from Dairy Queen, Used clothing, inventory changes. Odds and ends, coming and going daily. New items and used ones. No Million Dollar Deals. Just one million dollar deals - Come See Us! James & Wanda Kemp 15-38s-tfc

DAVIS COMMERCIAL PUMPING SERVICE
Cess Pools Grease Pits Dipping Vats Mud Pits Septic Tanks
"If it's part liquid & not over 20 ft. deep we'll try to drain it."
806-272-4673
806-272-3467
Muleshoe, Texas
15-38s-stfc

BIBLES
Great peace have they who love thy law. 1. Where may this great statement be found? 2. Who is its author? 3. Is its truth evident today? 4. What is the most pressing need of mankind, other than salvation?

BALLOONS EXPRESS
Let Our Clowns Deliver Your Valentine A Bouquet of Balloons Call 965-2857 15-5t-3tc

TOO LATE TO CLASSIFY
For Sale 1983 Blazer Silverado package, Loaded, asking \$13,000. 704 W. Ave. K 272-3612. t1tc 19-6s-3tc

Poor work, completed, is usually better than brilliant performance postponed.

After the bowl games comes a relative sports draught, as far as outdoor sports are concerned, and we advise readers to fill the gap with skiing or hiking.

Golden Gleams
Night is the mother of thoughts. -John Florio.

18. LEGAL NOTICES

THE STATE OF TEXAS
To: Ramon Gonzalez Defendant, Greeting:
You are hereby commanded to appear by filing a written answer to the Plaintiff's Petition at or before ten o'clock A.M. of the first Monday after the expiration of forty-two days from the date of the issuance of this citation, same being Monday the 5th day of March 1984, at or before ten o'clock A.M. before the Honorable 287th Judicial District Court of Bailey County, Texas, at the Court House of said County in Muleshoe, Texas.

Said Plaintiff's Petition was filed in said court, on the 18th day of January A.D. 1984, in this cause, numbered 5085 on the docket of said court, and styled, ANA MARIA GONZALEZ Plaintiff, vs. RAMON GONZALEZ Defendant.

The names of the parties to the cause are as follows: ANA MARIA GONZALEZ are Plaintiffs and RAMON GONZALEZ are Defendants.

A brief statement of the nature of this suit is as follows, to wit:

Establishing and foreclosure of plaintiff's Judgment Lien on all of defendant's interest in the following real property: All of Lot Eight (8) and the Easterly six feet of Lot Nine (9), Block Three (3), Highland Addition to the City of Muleshoe, Bailey County, Texas, as is more fully shown by Plaintiff's Petition on file in this suit.

If this citation is not served within ninety days after the date of its issuance, it shall be returned unserved. The officer executing this process shall promptly execute the same according to law, and make due return as the law directs.

Issued and given under my hand and the Seal of said Court, at office in Muleshoe, Texas, this 18th day of January A.D. 1984.

Attest:
Nelda Merriott Clerk,
District Court,
Bailey County, Texas.
g18-4s-4tsc



Classified Advertising Brings Great Results

Call 272-4536



BIBLE VERSE

"Great peace have they who love thy law."

- Where may this great statement be found?
- Who is its author?
- Is its truth evident today?
- What is the most pressing need of mankind, other than salvation?

Answers to Bible Verse

1. Psalm 119:165.
2. The absolute identity of the writer is not known, but probably David.
3. Certainly--those who love and obey God's laws are at peace with themselves, with God and their fellowmen.
4. Peace of mind, which comes only through a right relationship with God.

Golden Gleams
Night is the mother of thoughts. -John Florio.



PRICES EFFECTIVE FEBRUARY 6 THRU 11, 1984
WE RESERVE THE RIGHT TO LIMIT

STORE HOURS:

Mon - Sat 8:00 a.m. - 9:00 p.m.
Sun Only 9:00 a.m. - 7:00 p.m.

STORE ADDRESS:

515 W. Amer. Blvd.

32 OZ. PLUS DEP.
COCA-COLA
\$1.99
6 BTL. CTN.

DIG CHOCOLATE/100,000/CHUNCH
NESTLE CANDY BARS

4 35' SIZE BARS **\$1.00**

NESTLE
BUTTERSCOTCH MORSELS



6 OZ. PKG. **79¢**

NESTLE CHOCOLATE
CHIP MORSELS



6 OZ. PKG. **89¢**

NESTLE CHOCOLATE CHIP
MORSELS

12 OZ. PKG. **\$1.59**

NESTLE CRUNCH 3 49' SIZE FOR **\$1**



NESTEA
LEMON TEA MIX

20 OZ. JAR **\$1.99**



REFRESHING
NESTEA MIX

26.5 OZ. CAN **\$2.59**



APPIAN WAY
PIZZA MIX

12 1/2 OZ. PKG. **69¢**



GOLD/ALMOND/WHITE
DIAL SOAP

BATH BAR **49¢**

TONE SOAP BATH BAR **59¢**

SKINNER SHORT CUT
ELBO MACARONI



24 OZ. PKG. **89¢**

WASHINGTON
D'ANJOU PEARS
39¢ LB.

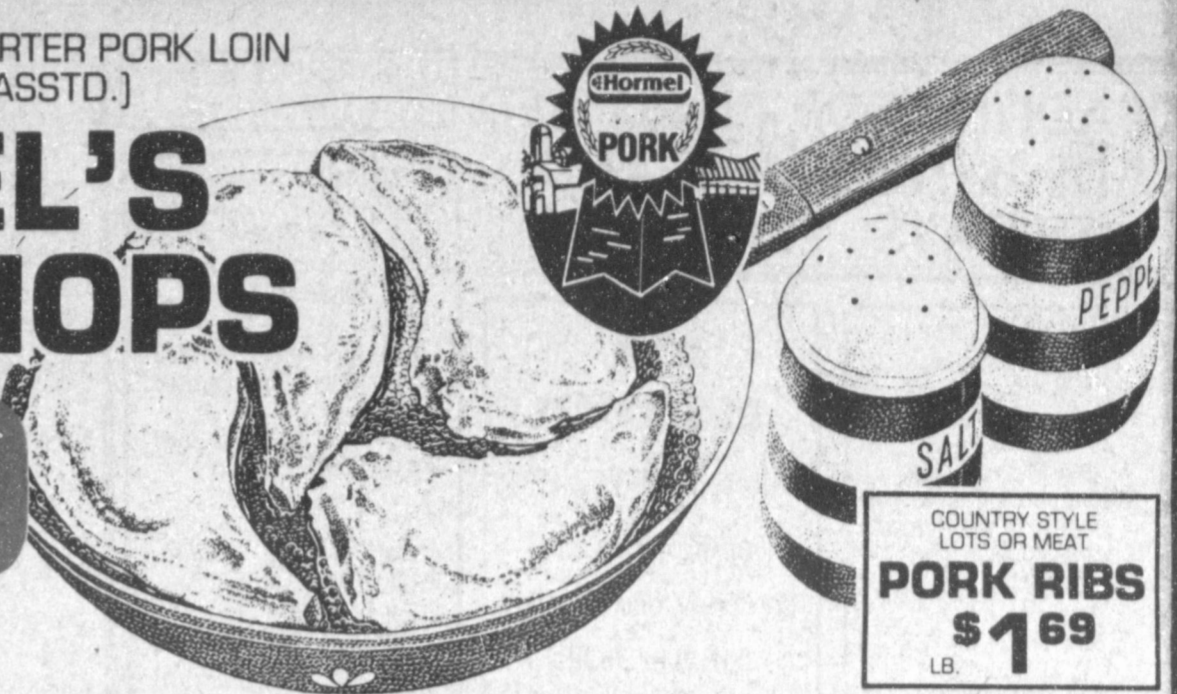
CALIFORNIA FULL OF JUICE
TANGY LEMONS LB. **39¢**
SNOW WHITE
FRESH MUSHROOMS 8 OZ. PKG. **\$1.19**
LONG GREEN SLICES
CUCUMBERS LB. **39¢**

Sweet Food Buys

FOR VALENTINE'S DAY

SUPER SELECT LEAN TRIM QUARTER PORK LOIN
OR FAMILY PAK (9-11 ASSTD.)

HORMEL'S PORK CHOPS
\$1.69 LB.



COUNTRY STYLE LOTS OR MEAT
PORK RIBS
LB. **\$1.69**

WRIGHT'S HICKORY SMOKED
SLICED SLAB BACON LB. **\$1.59**
SUPER SELECT LEAN TRIM CENTER CUT
PORK CHOPS LB. **\$2.19**
SUPER SELECT LEAN TRIM CENTER CUT WAFER THIN BREAKFAST
PORK CHOPS LB. **\$2.29**

SUPER SELECT LEAN TRIM FRESH
PORK BUTT ROAST LB. **\$1.49**
SUPER SELECT LEAN TRIM FRESH
PORK STEAK LB. **\$1.69**
HATCH'S BRAND WHOLE HOG
PORK SAUSAGE 1 LB. ROLL **\$1.69**

ARMOUR
POTTED MEAT
4 5 OZ. CANS **\$1.00**



VLASIC KOSHER OR POLISH
DILL PICKLES
46 OZ. JAR **\$1.39**



DOW
HANDI WRAP 200 FT. ROLL **\$1.19**
DOW
SARAN WRAP 100 FT. ROLL **\$1.59**
DOW
ZIPLOCK BAGS GALLON SIZE **\$1.19**
DOW REGULAR
FREEZER BAGS 20 CT. BOX **\$1.19**
DOW ZIPLOCK
SANDWICH BAGS 50 CT. BOX **98¢**

MORRISON CORN-KITS/PAN-KITS/
BIS-KITS 5 6 OZ. PKGS. **\$1.00**



MORRISON
MEX-KITS 6 OZ. PKG. **29¢**

LUNCHEON MEAT
ARMOUR TREET
\$1.29 12 OZ. CAN

Winner of The Stamps
Cleo Seagroves

ARMOUR
VIENNA SAUSAGE
2 5 OZ. CANS **89¢**



24 OZ. O'BRIEN/2 LB. HASH BROWN
ORE-IDA POTATOES
YOUR CHOICE EACH **98¢**



BORDEN'S
ORANGE JUICE QUART SIZE **89¢**
BORDEN'S
HI-PRO MILK 1/2 GAL. CTN. **99¢**
ASSORTED FLAVORS
BORDEN'S SHERBET 1/2 GAL. CTN. **\$1.59**
BORDEN'S ASSORTED
FROSTY POPS 24 CT. PKG. **\$1.79**
MRS. GOODCOOKE ASSORTED
COOKIES 16 OZ. PKG. **\$1.09**
VAN DE KAMP
FISH KABOBS 16 OZ. PKG. **\$1.69**
VAN DE KAMP LIGHT & CRISPY
FISH STICKS 7 1/2 OZ. PKG. **89¢**

REFRESHING TEA
INSTANT NESTEA
\$2.19 3 OZ. JAR

ARMOUR
BEEF STEW
24 OZ. CAN **\$1.29**

ARMOUR
CORN BEEF HASH
15 OZ. CAN **89¢**

DELICIOUS
NESTLE QUICK
2 LB. BOX **\$2.49**

REG. FREEZE DRIED/
DECAFFENATED
TASTER'S CHOICE
\$5.19 8 OZ. JAR

You could **Win FREE Groceries for Life!**
In the \$100,000.00 Grocery Sweepstakes from Dow
Manufacturers Offer Expires April 30, 1984
SEE STORE DISPLAY FOR DETAILS