

Cowboy Country



News

God Bless America!



Published each Wednesday in the county seat of Yoakum County, Plains, Texas

Volume V111, Issue 11 November 21, 2001

Connection schedules 2002 Round Up and annual meeting

Yoakum County Connection met November 13 to discuss future plans and review events and accomplishments this year. Treasurer L.J. Sanders discussed plans to seek financial

help to make the Water Melon Round Up Chairperson a partially paid position. Connection will seek funding from the county, and councils of both Plains and Denver City. Sand-

ers said the chairs involvement during the planning and staging of the annual event has become so large and cumbersome it is unrealistic to expect a volunteer to accept the position. Jeannette Head has served as chairperson four years, and will again be in charge of organizing the event scheduled on August 31 in 2002.

Connection Executive Director Tonya Patton reviewed the Story Book Theatre presentations given in both Plains and Denver City schools in October, with financial assistance from Texas Commission on Arts and Plains and Denver City schools.

Extension Agent Debbie Pollard discussed the workshop on teen pregnancy and drug and alcohol abuse, directed by Dr. Linda Louridine, Extension Health Specialist, held at First Baptist Church October 27.

Letters to members will be mailed soon announcing the Connection Annual Meeting January 10 at the Connection building in Denver City, and a reminder for membership dues.

Acting chair Linda Powell appointed Lee Ann Romines and Sue Holder to a nominating committee for Connection directors, and Doug Brown and Jeannette Head will be in charge of doorprizes for the meeting.

Tonya Patton has resigned her position as Summer Youth Program Director. Some 405 youths from Plains and Denver City attended 25 classes offered this summer. The program is funded with assistance from the Commission on Arts, and profits from the Watermelon Round Up. Linda Powell also announced the Connection's web site is now up, and is currently featuring pictures from the last Round Up and the Youth Program, with the assistance of Russell Jones and crosswind.net. The website address is yoakumconnection.com.

Giving Thanks To Texas Farmers And Ranchers

"Oh beautiful, for spacious skies, for amber waves of grain, for purple mountains' majesty above the fruited plains, America..." The ode to our Nation celebrates the strength, natural beauty and cherished freedoms that symbolize the United States of America. Embedded in that celebration of our Nation is an appreciation for this country's agriculture abilities.

"Thanksgiving is truly an American holiday, a tradition that began when our Nation's ancestors joined together to celebrate the bounty of the land. I would ask that all Texans join me in remembering and thanking those who preserve the beauty and bounty of Texas agriculture," says John Fuston, State Executive Director for the Texas Farm Service Agency.

Farmers and ranchers comprise less than 2 percent of the American population, yet grow enough food for the Nation's more than 200 million citizens, with generous amounts of food exported annually. In Texas, with a population of more than 20.8 million, more than 14 percent of jobs are in farming or farm related activities. Seventy eight percent of the State's land is farmland, while the majority of the farms in Texas, more than 87 percent, operate on less than 1,000 acres.

In recent months Texans have been reminded how important it is for this Nation to be strong. One of the keys to this country's strength and security

is the ability of its farmers to produce a plentiful and safe food supply. Generally, Americans take for granted that the shelves the local grocery are full, that fresh, safe food is available for their children and families.

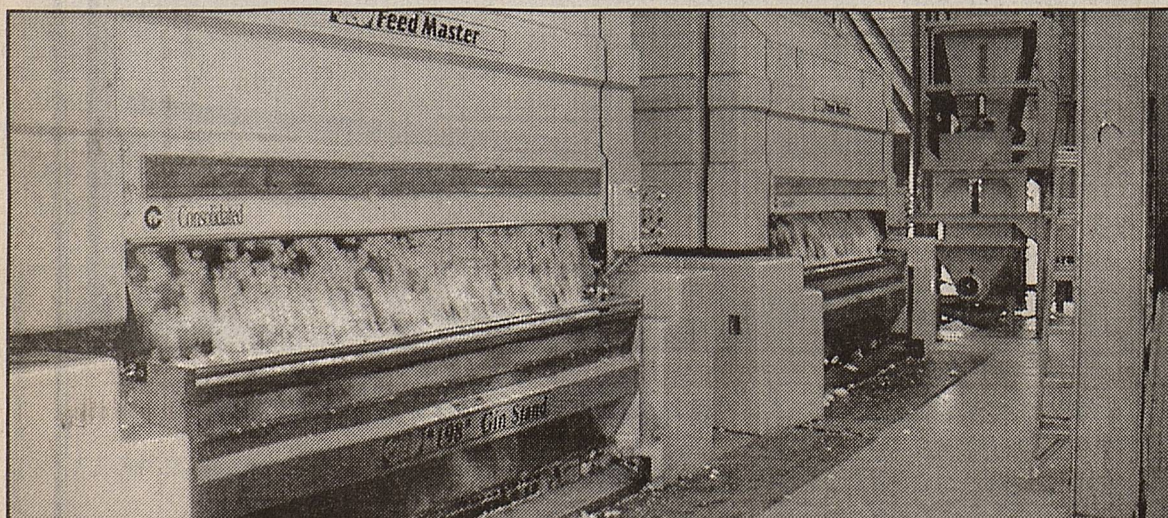
"Most of us don't know what it means to be hungry, but for much of the world, a safe and plentiful food supply is an unheard of luxury," Fuston says. In 1999, Americans spent \$618 billion for foods originating from the U.S. farms. Of that, only 20 percent was paid to farmers, the rest covered expenses for transportation, processing and distribution.

The efficiency and productivity of Texas producers contributes greatly to the quality of life most Texans enjoy. National support provided to the agricultural sector is critical to maintaining that quality of life. Tax dollars that support farmers also support consumer comfort.

Farms and farm families are a valuable part of Texas culture. They embody a way of life based on wholesome values, hard work and self sufficiency, with emphasis on family and community.

"As family and friends gather for your Thanksgiving feast, remember those who helped make this holiday fulfilling and those who keep America strong. We in Texas Farm Service Agency offer a heart felt thanks to our Texas producers for all they do and all they represent."

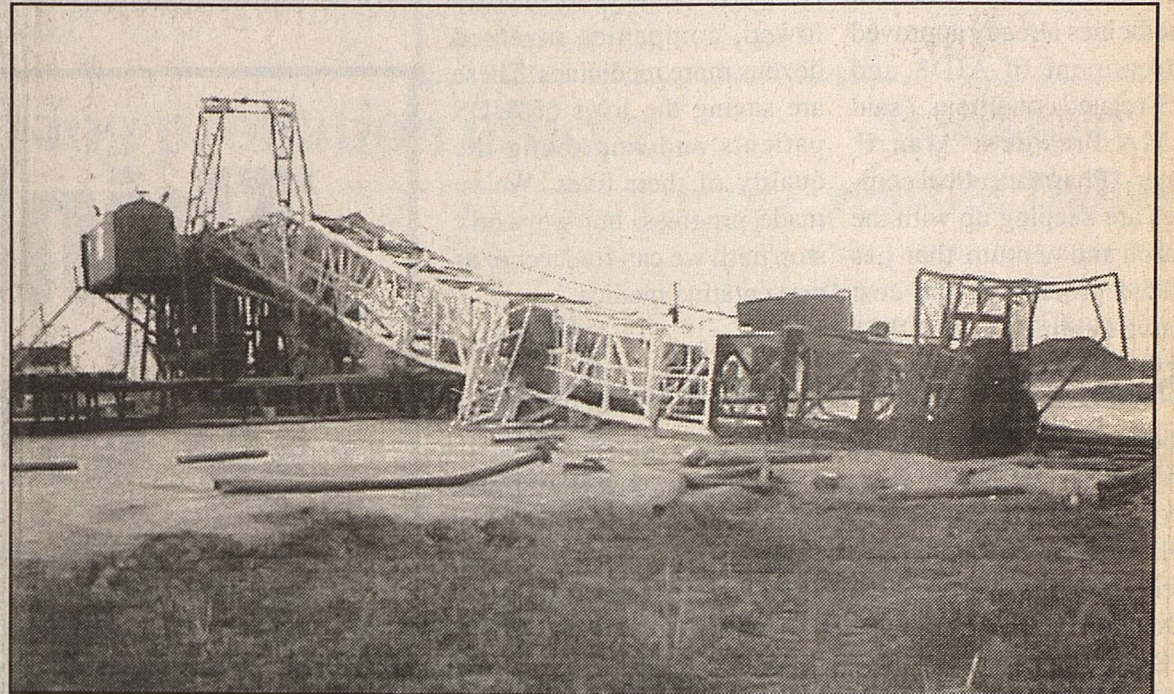
Wet weather slows cotton harvest



These gin stands at New Tex Gin were one of only a few running late last week.

There are very few times a farmer will complain about rain, but one of them is when cotton is ready for harvesting, and the recent rainy, drizzly and foggy conditions throughout the area put harvesting on hold. Another problem facing cotton producers is the lack of a killing freeze. Many fields of cotton have again greened up to the point they cannot be stripped. With current dismal prices for the crop, most producers are reluctant to spend more money to chemically defoliate their cotton. A number of the area gins shut down operations last week for lack of cotton, due to weather conditions and green regrowth.

Drilling rig collapse kills one



Rig 17 the morning after the derrick collapsed

Sometime after midnight on November 12, A Key Energy drilling rigs derrick collapsed. Details of the accident are very sketchy, but it is known a Key Energy employee was severely hurt when the derrick fell. Bryan R. Meyer, 42, apparently a resident of Big Spring, was tended by EMS personnel from Denver City, and later was airlifted to a hospital in Lubbock, where he died from internal injuries. The accident occurred about three miles east of Denver City, just off County Road 365.

Cowboys season ends with 33-17 loss to Tahoka



Cowboy defense encircles Bulldog runner

The Cowboys hopes for a bi-district title were dashed Friday night by the Tahoka Bulldogs. They fought their way into the district playoff action, and ended the season with 6 wins, 5 losses, a much better showing than many fans predicted at the start of the season. Despite being outsized by virtually every team they faced, they played extremely tough, and for their efforts they should be graded A-plus.

The Cowboys scared the Bulldogs early - Joseph Rodriguez' kickoff was fumbled and recovered by Armando Ramirez at the 45. Jared Bell passed to Rodriguez for 31 yards, and rushes by Bell moved the ball to the Bulldogs 6, and a pass to Tanner Hamm moved the ball to the 2 on fourth down. The Cowboys could go no further, and on the Bulldogs first play from scrimmage, fumbled the

ball in their end zone for a safety and two point Cowboy lead. Good defensive work stopped a Bulldog drive at the 40. Rodriguez gained 4 yards on the ground, Bell hit Chris Hansen with a 9 yard pass completion, and with good blocking by the Cowboy line, Bell and Moises Gonzales moved the ball to the 35, where Rodriguez broke over left guard for a quick touchdown, then made the the extra point kick for a 9-0 lead.

Tahoka took the kickoff, but couldn't move the ball. They punted on fourth down, and the kick was fumbled to the Bulldogs at the 8 yardline. A pass completion and PAT put them back in the game, 9-7.

Both teams struggled on offense in their next possessions. With some three minutes left in the period, Bulldog quarterback McCord tossed the ball

from their 20, which turned into an 80 yard touchdown and 14-9 game. In their next possession, McCord again went to the air, and his second pass produced another quick score to end the first half with the 'Dogs up 21-9

Turn To Page 4
"Cowboys"

CCN
wishes
you
and
yours
the
greatest,
happiest
Thanksgiving
Ever

Drug companies testing new weapons against AIDS

Washington, D.C. - As the war on AIDS enters its third decade, pharmaceutical companies are testing 98 new weapons to thwart this persistent and deadly enemy, according to a new survey released by the Pharmaceutical Research and Manufacturers of America (PhRMA).

The medicines in the pipeline include 38 medicines that attack the AIDS virus, 15 for AIDS related cancers, 6 for fungal infections that often attack weakened immune systems of AIDS patients, 7 target opportunistic infections, 8 medicines designed to strengthen the immune system, and 14 vaccines. "These medicines in development will add to the arsenal of 68 medicines already approved for treatment of AIDS and AIDS-related conditions," said PhRMA President Alan F. Holmer. "Pharmaceutical companies are keeping up with the research momentum that has provided protective, and cost effective treatments to AIDS patients."

Four new AIDS medicines were approved by the Food and Drug Administration last year, including: the first in a new class of medicines called nucleotides, which in clinical tests, proved effective in patients who had developed resistance to other drugs; a medicine for AIDS-related fungal infection; a medicine for AIDS-related CMV retinitis, which can lead to blindness and a medicine combining three antiretroviral drugs in one tablet.

"Just four years after the virus causing AIDS was discovered, a pharmaceutical company introduced the first medicines for the disease," said Holmer. "In the years that followed, companies invented dozens more medicines. These are saving the lives of AIDS patients and improving the quality of their lives. We've made progress, but we won't stop until we can find a cure or preventative medicine."

Share The Warmth kicks off

Lubbock - The 2001 "Share the Warmth: Hats, gloves and Scarf Drive" kicks off November and will run through November 30. ABC Bank, American State Bank, Brunswick South Plains Bowl, City Bank, Classic Lanes, Court Place, Covenant Health Systems, Lubbock National Bank, Mardel Christian Book Store, McDougal Companies, Mr. Gatti's, Peoples Bank, PNB Financial, South Plains College, Texas Tech, Texas Tech Health Center, University Medical Center, United Supermarkets, and Whisperwood Bank will be collecting items to be distributed to people in need on the South Plains. Plaza Cleaners and Spic & Span Cleaners of Lubbock have donated their time to clean and mend the coats before they are distributed.

The goal this year is to collect 6,000 coats, hats, gloves and scarves for the estimated 20,000 families in need of winter clothing. All sizes are needed. If you want to participate, drop off your donated items at any of the above locations. They will be cleaned and then distributed. Saturday, December 8. Special thanks to the Boys and Girls Clubs of Lubbock, Hurley Packaging, Ramar Communications, Papa Johns Pizza, South Plains Mall, United Way, Contact Lubbock, Red Raider Outfitter, and Lubbock Avalanche Journal.

For more information, call Kendra at Contact Lubbock, 765-6262.

WHAT A MESS!



Workers are shown ripping up one layer of the floor of the Middle School Gym. The floor will be removed, "all the way to bedrock," a worker quipped.

Help needed in Christmas Assistance Program

The annual Christmas Assistance delivery of food and toys for children of the needy will take place on December 22.

In the meantime, there will be plenty of work for anyone wanting to take part. Food must be received at the courthouse, stored in the basement, and on December 21, the food items must be sorted and placed in delivery boxes.

At least eight to ten volunteers will be needed to sort and store the food items in delivery boxes. To learn more about how you can play Santa Claus, see either Toni Jones, Melba Crutcher or Debbie Rushing.



Work is nearing completion on the installation of a new water pumping station at the City's main storage tank southwest of town. City Administrator Ed Hansen said the old pumps were too ancient to be relied on, and when the new station is in operation the old equipment will be sold. The water passing through this pump station goes directly to the City's watertower on 16th street, and then into the city distribution system.

Think We're Going to Let a Little Thing Like the Economy Slow Us Down?

Not for all the Belt-Busters* in the world.

No matter how far the Dow dips or manufacturing slips, you can count on your Plains DQ® to be here, serving up your favorite DQ® burgers and baskets, plus a few new tastes, like our fresh salads and Texas Toast Sandwiches. So put down the business section and come to DQ. Hey, at least your smile will turn up!



A Proud Member of the Plains Community For More Than 30 Years

©Reg. U.S. Pat. & TM Off. Am. D.Q. Corp.
*Reg. U.S. Pat. & TM Tx. D.Q. Op. Coun. ©Tx. D.Q. Op. Coun.
www.dqtexas.com

Recession-Proof Your Lunch

Steak Finger Basket

\$1.99



Offer good at Plains DQ® stores. Valid through January 15, 2002. Limit 1 coupon per person per visit. Limit 3 per coupon. Cannot be combined with other offers.

Yoakum County Plains Clinic

Amir Memon, MD

and

Jo Lena Wall, PA - C

Will take Medicaid, Medicare, Major Insurance and now CHIPS

Will see Minor Emergencies, Chronic Medical Problems, Immunizations

TEXAS HEALTH STEPS

Office Hours: Monday & Tuesday 8-5

Wednesday 8-12

Thursday & Friday 8-5

Will take walk-ins

Appointments preferred

Please call 806-456-6365

G. B. Aerial Application, Inc.



Professional, Licensed Ag Applications
At Affordable Rates!

806-456-6300 Office

806-456-6790 Fax

806-456-7536 David Mobile

806-456-7974 Sarah Mobile

806-632-5375 Dain Mobile

G & B

www.gbaerial.com

G & B

www.gbaerial.com



Gary Walker, Consultant to Sandy Land Underground Water District, presented an impressive plaque and gift certificate from he and the board of directors at a recent farewell reception for Kathy Jones. She served as Administrative Assistant to the water district since its creation in 1990, until her resignation earlier this month to accept employment in Austin.

'Help For the Home Front'

**** Editor's note -** The following editorial appeared in the October issue of *FISCAL NOTES*, a publication of the Texas Comptroller office
 "As I watched the horrible events of September 11, 2001 unfold, I was at first saddened, then outraged, and now I am resolved. Resolved that we as Americans and Texans must mobilize to respond to this act of war.

So, my staff and I got to work. This month I will be outlining a Texas War Relief Package, with many proposals to be immediately implement to lend aid to our fellow Texans. Complete details will be included in this publication's November issue.

Our nation is embarking on a noble, just, all encompassing battle against terrorism. We owe it to those defending our country to provide the support they need. Texas state government must tackle this historic task.

My plan will concentrate on helping Texas' children, helping families left behind, shoring up our transportation infrastructure, combating the threat of terrorism in the Lone Star State and bringing some peace of mind to the men and women from this great state that may very soon find themselves on the frontline fight against this new enemy.

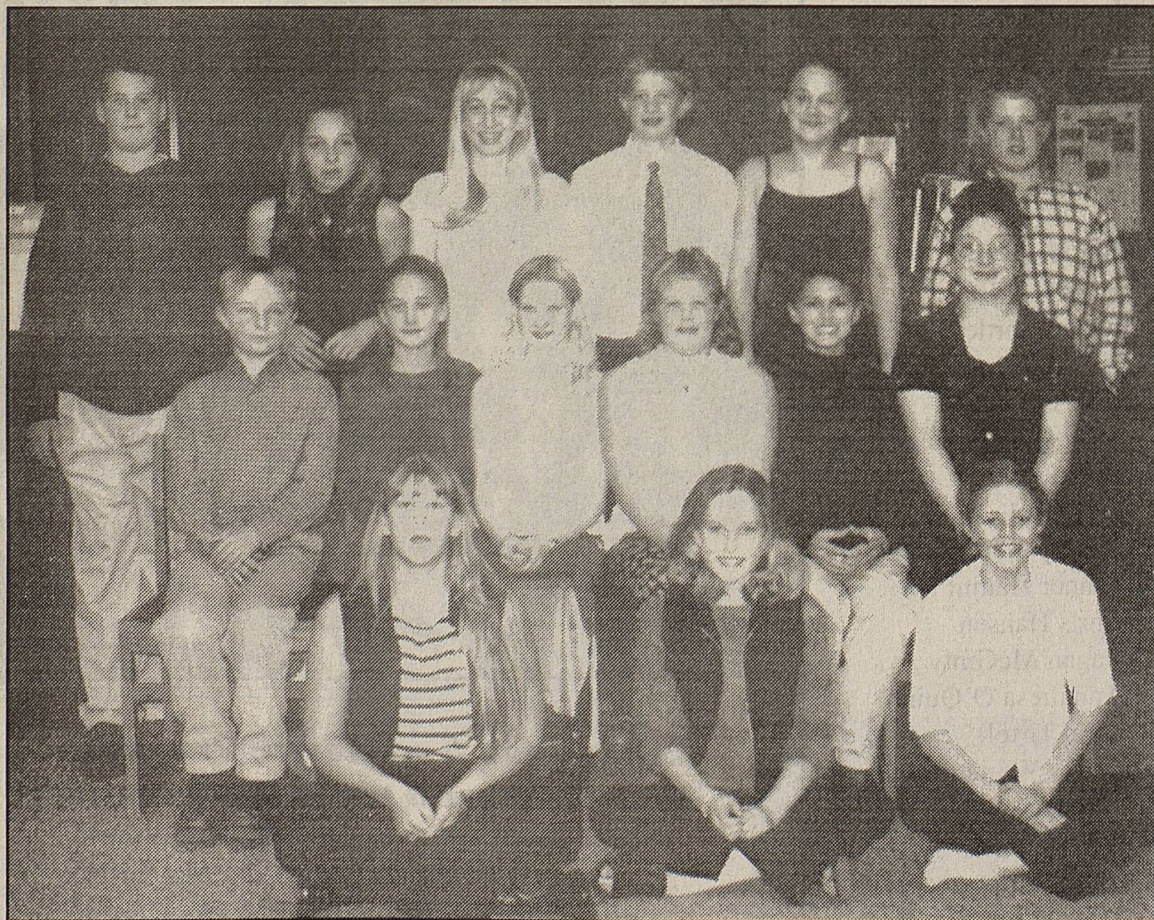
Sam Houston knew the obligation a government has to protect and defend the freedoms its people enjoy and should never take for granted. Before the Battle of San Jacinto, he said: "We view ourselves on the eve of battle. We are nerved for the contest and must conquer, or perish."

Today, we too are nerved for the contest. Led by another great Texan and former Governor, President George W. Bush, this nation stands firm in our values, certain of our righteousness and determined in our quest to defend freedom.

I am a little past *recruiting* age, but by God I can and I will lead the charge here at home to take care of the children and families of these fine men and women as they do what must be done. You too are needed. Join with us. Stand strong, become another warrior in the battle for freedom!"

Carole Keeton Rylander
 Comptroller

District winning One Act Play cast



Shown here is the Plains Middle School cast and crew, winners of the District 3-AA One Act Play competition held here November 10. Front row- Allison Friesen, Lauren Hise, Lauren Davis. Second row- Stetson Sellers, Katie Winn, Caitlin Carter, Amber Friesen, Douglas Conway, Angelica Mendoza. Third row- Adam McCravey, Desiraye Broome, Skylar Keesee, Blake O'Quinn, Joani Bell, Reagan Haynes.

Buying auto insurance by the mile ?

Starting January 1 a new state law will encourage insurance companies to let car owners buy miles of insurance as needed. Two decades ago, despite objections from insurance companies, compulsory insurance was adopted in Texas. Now company representatives say numbers of uninsured cars may be higher than ever - about one in five cars on the road are uninsured.

The major problem according to proponents of the cents per mile now project is, car insurance can only be bought at fixed rates. They contend that makes insurance like a tax on the car, instead of a cost of driving it, yet say its affordable in most zip code areas.

Deborah Bell, President of

Texas National Organization for Women, explains, "A company assigns the car to one of the company rate categories by profiling your zip code, car type and use, your credit history and other data. The choice of continuing to pay a fixed rate or buying miles as needed is offered only *after* the company sets the rate.

The new law lets insurance companies restrict availability of the cents per mile choice to selected customers. Bell urges Texans to demand their companies make the choice available to all their policyholders. "We need the per-mile alternative to dollars per year prices that force millions of cars to go uninsured."

County losing probation officer

Brad Richards, Juvenile Probation Officer here since February, 1998, has accepted employment as a U.S. Probation Officer. Richards said his headquarters would be in Midland, and he wasn't sure how large an area made up that district. "I will be supervising federal offenders referred to our office by various government law enforcement departments, and that includes such agencies as the FBI, DEA, IRS, the Secret Service, even Immigration and Naturalization."

Richards considers joining the U.S. Probation Service a positive, major step upwards in his career.

His former boss, Chief Probation Officer Ted Welch, said, "This is a good move for Brad, a great opportunity for him and his family. He has been an excellent probation officer, an asset to our office here, and we will miss him."

Richards will be on his new job December 3.



Ted Welch and Brad Richards

How risky?

number of proposals for reforming Social Security suggest that a portion of workers' payroll taxes be invested in the stock market. Critics say investing in the stock market is too risky.

The Social Security Administration calculates a person's retirement benefits based on the person's 35 years of highest earnings, so researchers at the Private Enterprise Research Center at Texas A&M University looked at the historic returns for the 95 35-year periods between 1906 and 2000 on portfolios holding the Standard & Poor's 500 stocks and bonds to see just how risky investing in the 20th century was.

The researchers found:

The average annual real rate of return for all-stock portfolios was 6.4 percent. The lowest return was 2.7 percent for the 35-year period ending in 1921.

A mixed portfolio, with 60 percent stocks and 40 percent bonds, produced an average annual real return of 5.1 percent. The lowest return was 2 percent for the period ending in 1920.

By comparison, workers entering the labor market today can expect a rate of return on their Social Security taxes of less than 2 percent.

Steamboat reaches Dallas

Dallas- A great new era of water transportation may be at hand for this prairie city on the Trinity. Practically the entire population lined the river banks to see the steam vessel Job Boat #1 complete the journey from Galveston. The sixty foot boat draws three feet of water, and the voyage from Galveston took 369 days, but much of that time was spent clearing the channel. It's believed future trips will be much faster. Cost of overland transport to the Gulf is prohibitive but river transportation may be cheap enough to make farming profitable here.

May 5, 1868

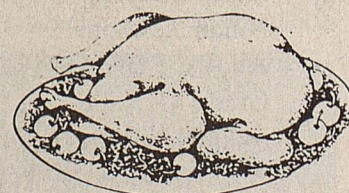
Texas at a Glance

Love of Labor

Site Selection magazine recently asked 100 corporate executives to rank the best labor markets in the U.S. based on labor quality, labor availability and breadth of work force training resources. Based on their responses, Site Selection listed Dallas as the top labor market in the country, and Austin as the seventh-best market.

Top 10 Labor Markets

- | | |
|------------------|----------------------|
| 1. Dallas | 6. San Francisco |
| 2. New York City | 7. Austin |
| 3. Boston | 8. Raleigh-Durham |
| 4. Atlanta | 9. San Jose |
| 5. Chicago | 10. Washington, D.C. |



Have A Happy One!

Our Big Thanksgiving Show!
OLD MILL And Thanks to all of you for shopping with us!
TRADE DAYS Where the Fun Begins!
 500 Vendors • 5th & Hwy 207, Post, Texas
 November 23, 24 & 25
 www.omtd.com (806) 495-3529

AG INSURANCE PLUS

CROP INSURANCE MPCI-CRC-CAT-CROP HAIL
 456-2788

Jim Brown, Agent
 Mobile 806-891-0449
 or 891-0450
 Home 592-3490

Jeff Lowery, Sales Assoc.
 Mobile 806-891-3133
 Home 456-3195

We strive to care for you... because WE CARE

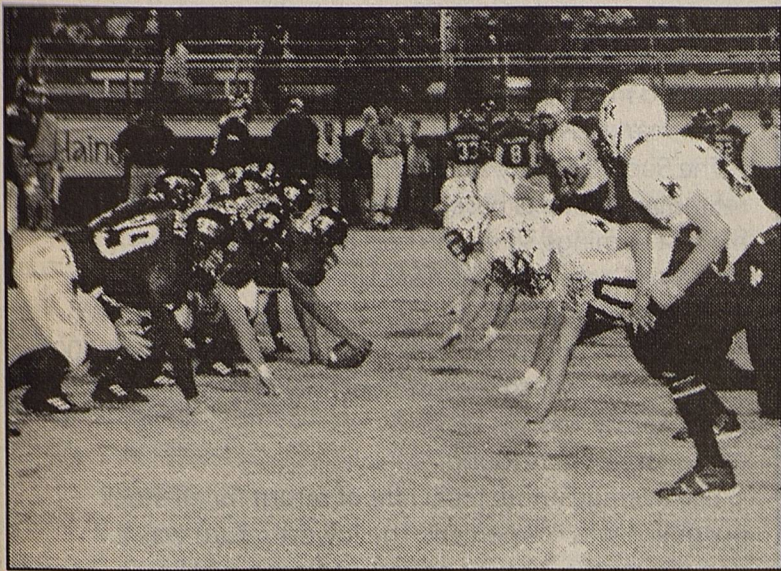
Plains Memorial Chapel

Norman Head, Owner

910 Avenue E
 Across from old couthouse

PO Box 40
 806-456-2152

Cowboy - Bulldog action



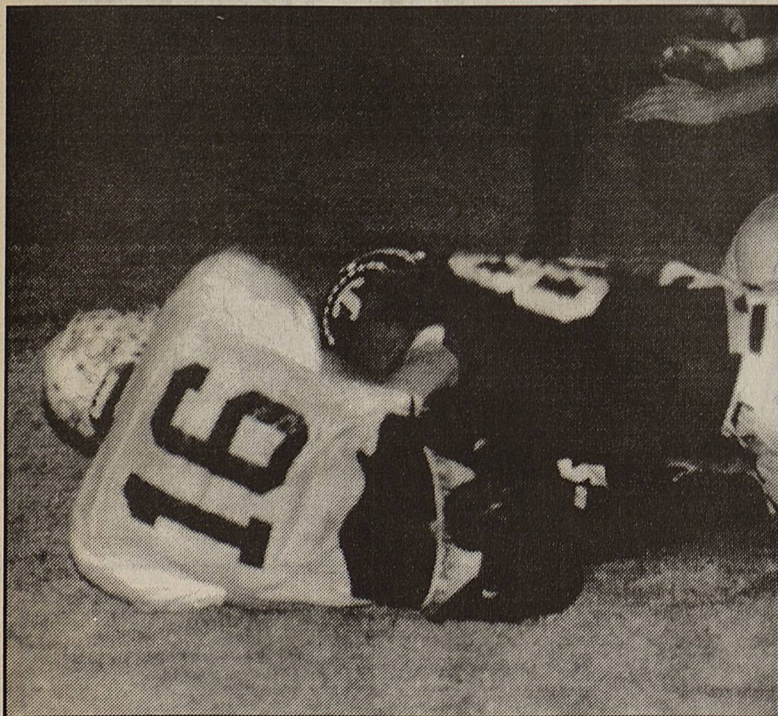
Two forces about to collide



Chris Hansesn, 24, and Bulldog battle for the ball



Moises Gonzales tries to outrace a Bulldog



Jared Bell, 16, wrestles a 'Dog for the ball.

From Page One, "Cowboys"

Late in the third period, the Bulldogs ground down the field, and in six plays moved the ball 49 yards to push the score to 27-9.

The Cowboy offense managed a first down late in the period, but a fourth down run failed and gave the Bulldogs the ball on the 29, where their tailback skirted right end for 62 yards and the score was 33-9.

Late in the final period, the Cowboys started a drive on their 27. The linemen opened holes for rushes by Gonzales and Rodriguez, a Bell pass to Rodriguez gained 22 yards, but the drive was stopped on fourth down on Tahoka's 12 yard line. Bell then hit Hamm with a desperation pass, and Rodriguez' kick produced the final 33-17 score.

Other Sports

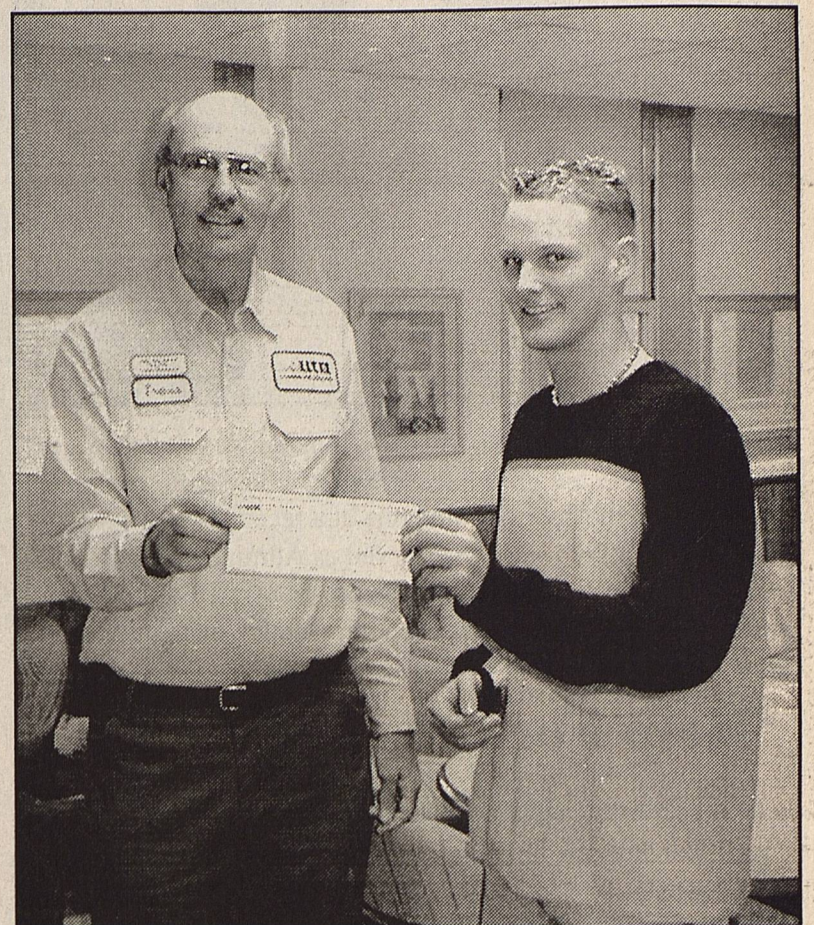
PHS Volleyball:

On November 6, the Cowgirls faced Tornillo for Regional Quarter Finals honors, and won handily, 15-2, 15-1. They then advanced to meet Peaster in Regional Semi-Finals, but fell 9-15, 2-15. Their season ended with a record of 10 wins, 22 losses. Coach Lusk said, "Think big, believe big, act big, and results will be big." That sums up the Cowgirls season. I am very proud of their accomplishments and improvement, and look forward to a great year next year. We will miss our two seniors, Annaliesa O'Quinn and Chelsi Wagnon." The full roster includes Moriah Traweek, Krystal Gonzalez, Micaela Villegas, Annaliesa O'Quinn, Mackenzie Winn, Jessica Rodriguez, Chelsi Wagnon, Kayla Willis, Kristian Morales, Chelsea Blount, Sandra Gallegos, Manuela Villegas. Post season All-District honors included Outstanding Hitter- Annaliesa O'Quinn; 1st Team All-District- Chelsea Blount. 2nd Team, Mackenzie Winn, and Honorable Mention, Kayla Willis and Manuela Villegas. Congratulations to all!

Cowgirl Basketball:

JV Girls- In recent practice games, Denver City downed the Cowgirls 50-18. Sandra Gallegos led scoring with 8 points, Prisma Ortiz and Sarah Martinez 3 each, Jamie Covarrubias and Mayra Flores 2 each. They next faced Roosevelt, and showed great improvement. Marlie Diaz had 7 points, Kristian Morales 6, Jamie 3, Daniela Lazos and Prisma 2 each, Sarah Martinez 1.

Alltel Communications donates to Student Council



Last week Travis Jones, representing Alltel Communications, presented PHS Student Council President Jarod Newland a \$100 check. Jones said, "Alltel Communications believes in showing pride in the communities we serve, with participation and support of local activities. On behalf of Alltel, I am pleased to make this presentaiton to the student council."

Student of the Week

PHS Student of the Week is Jessica Rodriguez, a Junior and the daughter of Mr. and Mrs. Jesse Rodriguez. She was nominated by Mrs. Lusk, who said, "Abraham Lincoln once said, 'I will prepare and some day my chance will come'. Jessica is a great example of this quote. She works very hard and diligently each day in the classroom and on the court, to be the best she can be. She has an awesome attitude, a great work ethic, and a tremendous desire to succeed. She has a heart of gold, and I would take ten more just like her!"



The 2001 Cowgirl Volleyball Team



Christmas Assistance Program

The 2001 Christmas Assistance Program will accept applications at the following times:
November 19 - December 10, 2 PM - 5 PM.
 Applications will be accepted at the County Treasurer office at the courthouse. Only **ONE** adult per household may apply.
 Applicants must have a driver license, or other identification, and a receipt of payment from a gas or electric bill, with applicants current address

Second six weeks Honor Roll

Middle School 5th Grade:

All A's:
 Chris Addison
 Reyna Gallegos
 Maria Ruiz
 Holden Welch
 All A's, 1 B:
 Brianna Conway
 Yesenia Loya

6th Grade:

All A's
 Kurt Aldredge
 Douglas Conway
 Ryan Crump
 Lauren Davis
 Amber Friesen
 Zachary Ramos
 All A, 1 B:
 Maria Andalzola

Anna Harms

7th Grade:

All A's
 Scott Addison
 Caitlin Carter
 Landon Craft
 Angelica Mendoza
 Araceli Mendoza

8th Grade:

All A's:
 Michael Crump
 Allison Friesen
 BJ Lester
 Blake Parrish
 Abel Ramos
 All A, 1B:
 Skylar keesee
 Ramiro Martinez
 Adam McCravey
 Blake O'Quinn

High School

9th Grade:

All A's
 Evan Cain
 Mayra Flores
 Breck Hamm
 Brandon Hise
 Kerry Sisson
 All A's, 1 B:
 Kayla Walker

10th Grade:

Helen Neufeld
 Nolan Newsom
 All A's, 1 B:
 Grady McNabb
 Manuel Villegas
 April Wilmeth
 11th Grade:
 Jordan Bean
 Kelly Bowers
 Sandra Gallegos
 Jill Gray
 Nick Hays
 Kayla Willis

Liz Wilmeth

All A's, 1 B:

Kevin Bartley
 Krystal Gonzales
 Kim Martinez
 12th Grade:
 All A's:
 Jared Bell
 Ashley Gonzales
 Tanner Hamm
 Chris Hansen
 Ragan McGinty
 Annaliesa O'Quinn
 Scott Tirrell
 Becky Wilmeth
 All A's, 1 B:
 Allison Butler
 Moises Gonzales
 Arasley Luna
 Jeffrey Lollar
 Servando Luna
 Carmen Mendoza
 Jarod Newland

TPA MEMBER 2001
 Cowboy Country
 News
TEXAS PRESS ASSOCIATION

Cowboy Country News

Published weekly, each Wednesday at 1205 Copeland Ave., P.O. Box 179, Plains, Texas 79355

Holly Dyer, Publisher Gary Dyer, Editor
 Subscription price in Zip Code 793 \$15 annually Other Zip Codes \$18 annually. Periodical postage rate paid at Plains, TX. POSTMASTER: Send address changes to Cowboy Country News, Box 179, Plains, TX 79355
 E-Mail us at ccn@crosswind.net
 ID# 017574 Ph. 806-456-8451 FAX 806-456-2010

HICKS

Carpet *Heating* Air Conditioning
 Maytag Appliances
 204 N. Main, Denver City
 806-592-3973 or 592-3930



TRANE "It's hard to stop a TRANE!"



Edward Jones

Serving Individual Investors Since 1871

Mike Speed
 Investment Representative

Stocks • Mutual Funds • Bonds • CDs
 Governmental Securities • Tax-Free Bonds
 Money Market Funds • IRAs

308 West Main (806) 637-2364
 Brownfield, Texas 79316 1-800-215-0124

Lifelines & Styles

PHS Students Entertain TSA MO GA



L-R, Becky Wilmeth, Liz Wilmeth, Chris Hansen

Three Plains High School students entertained TSA MOGA members November 12 with their experiences from leadership camps last spring and summer. The program was part of the club's "Concepts of American Patriotism/Leadership: 'Active Members in Training'" focus.

Senior Becky Wilmeth, daughter of Gay and Jet Wilmeth, was Plains High School's representative to Texas' Bluebonnet Girls State in June. She attended a 10 day session at Texas Lutheran University in Seguin. Becky was a part of the Nationalist Party who made up a platform of bills that dealt with many subjects from the audience when she mentioned that her party also proposed legislation that would require mandatory driving tests for senior citizens.

Senior Chris Hansen, son of Terri and Ed Hansen, attended the week long Boys State session at the University of Texas in Austin. Chris attended the review sessions to prepare for the exam to become a Boys State lawyer, and passed the test on his first try. Chris said that he learned that "you have to be a great public speaker to get your point across," and that "democracy is working chaos." One of the week's speakers who impressed him the most was a former CIA agent who investigated the KGB in Russia.

The group also toured the capitol and the LBJ Library.

Junior Elizabeth Wilmeth, daughter of Mary and Ty Wilmeth, was the school's representative to the Hugh O'Brien Youth Leadership Seminar in Amarillo last May. Liz enjoyed the speaker from NASA and from the education field. The group toured a hospital in Amarillo, where she noted that the Neonatal Intensive Care Unit, the emergency helicopter, and the 911 dispatch center as highlights of the tour. This seminar is sponsored for sophomores in the South Plains and Panhandle to develop leadership skills.

The students were introduced by Renetta O'Quinn. Hostesses for the meeting were Michele Jones, Sarah Kay Burrus and Sarah Shelton. Members brought gifts to be taken to the Veteran's hospital in Big Spring for Christmas.

The club will celebrate the lighting of the city's Christmas tree in Pioneer Plaza at 5:45 p.m. November 28. Each member is asked to bring can goods for the community food basket.

The next regular meeting will be a Christmas party at the home of Carolyn Culwell December 3. Members are invited to bring spouses or a friend and are encouraged to fill a stocking with monetary gifts to support the "Sit Jones Scholarship Fund."

Senior Citizens Corner

Well here I am one more time. This has been a hectic week at home and at the Center, but so far we have made it pretty well. We fed 140 in the dining room today at the Center and served 20 that are home bound.

Jerry & Genevieve Gordy and Layne and myself & our daughter Rojean and our son Henry did not go to the Center today because our cousin was buried this morning and Trinity Baptist Church fed the fam-

ily. We had Roger and Glenda Andress visiting Tuesday at the Center.

The men are still playing in the domino room. We have our garage sale going on also. Maggie has been sick again. We really miss people when they are sick and can't be at the Center.

I guess that's all for this week. Till next week, Wanda B.

New At The Library

NEW BOOKS & VIDEOS

FICTION:

Desecration...Tim LaHaye (Left Behind #9), Midnight Bayou...Nora Roberts, The Kiss...Danielle Steel, Last Man Standing...David Baldacci, Kentucky Rich...Fern Michaels, Custody...Nancy Thayer, Hosts...Paul Wilson, Orchid Blues...Stuart Woods, Portrait In Sepia...Isabel Allende, Shade...Calvin Miller, Bone Walker...Kathleen O'Neal Gear, Grand Avenue...Joy Fielding, Hope To Die...Lawrence Block, Fleeced...Carol Higgins Clark, When The Last Leaf Falls...Bill Myers, The Jerusalem Scrolls...Bodie Thoene, A Moment Of Weakness...Karen Kingsbury, A Time To Dance...Karen Kingsbury, Blood And Gold...Anne Rice, Bend In The Road...Nichol.

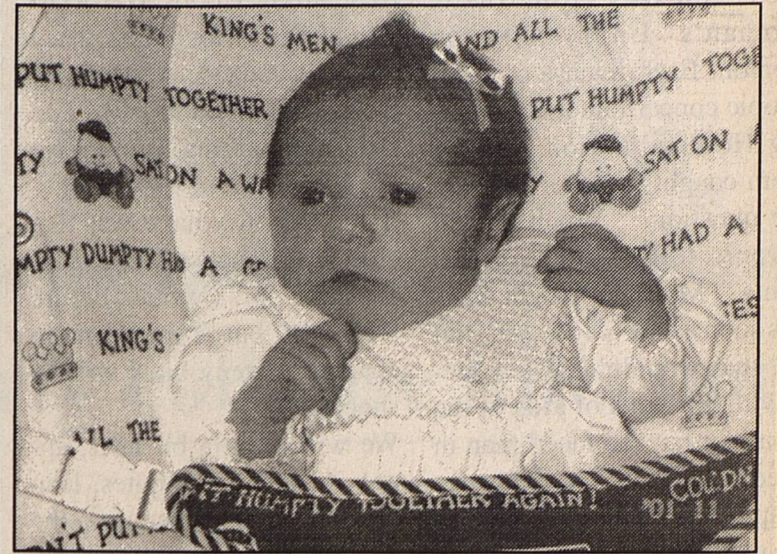
NON-FICTION:

Making Animal Characters In Polymer Clay...Sherian Frey, Simple Handmade Furniture...Cally Matthews, Love Beyond Reason...John Ortberg, A Season In Dornoch: Golf & Life In The Scottish Highlands...Lorne Rubenstein, Looking For Alaska...Peter Jenkins, Islam: A Short History...Karen Armstrong, Heaven And Earth: Making The Psychic Connection...James Van Praagh, Christmas In Plains...Jimmy Carter, Heartbeat: George Bush In His Own Words...Jim McGrath, At The Altar Of Speed: The Fast Life & Tragic Death Of Dale Earnhardt...Leigh Montville, The No Spin Zone...Bill O'Reilly, My Journey...Robert H. Schuller, No More Heartburn...Sherry Rogers, M.D., Seldom Disappointed...Tony Hillerman, Ripcord: Screaming Eagles Under Siege, Vietnam 1970...Keith Nolan.

VIDEOS:

Gaither Gospel Series: 50 Years: The Happy Goodmans, London Homecoming, Mountain Homecoming, Harmony In The Heartland.

NEW BABY!!



Big brother, Zane Daniel, announces the arrival of his baby sister, Addison Lynn Addy arrived on October 29, 2001 at Baptist St. Anthony's Hospital in Amarillo, Texas. She weighed 6 lb. 15 oz. and was 18 3/4 inches long. They are the children of Ronny & Jalyn Wall. Proud grandparents and great grandparents are Kenneth & Glenda Vestal, Dan & Linda Wall, Mozelle Vestal, Leroy and Lou Bond, and Nolan & Thelma Jones.

Story Time At The Yoakum County Library

Seven boys and girls attended the weekly story time activities on Wednesday, November 7, 2001 at 10:00 a.m. Everyone enjoyed Todderobics, followed by the pledges to the United States and Texas flags. We sang "America the Beautiful" and then discussed facts about Texas, such as the state flower, the state tree and the nickname for Texas. The boys and girls enjoyed singing "I'm a Little Teapot," "The Itsy Bitsy Spider," "If You're Happy and You

Know It," and "Five Little Monkeys." We all practiced counting to ten. The group listened to the reading of the book, Snappy Little Numbers and all counted the objects on each page as it was read. The video, Richard Scary's 1, 2, 3's, completed the program. Those attending were Jentry Wall, Peyton McWhirter, Mesa Davis, Amanda Dusek, Nattgew Garcia, Arista and Braedon Davis.

Now is the time to order your personalized or plain Christmas Cards! Call Susie Powell 456-3411



Please visit my web site

www.suzypal.com

Industrial or Toxic CANCER NO FEE FOR FIRST VISIT

May occur 30 to 50 years after exposure to asbestos. Many workers were exposed from the 1940s through the 1970s. Industrial maintenance and operators are among those at risk for mesothelioma, throat cancer or lung cancer. Call us for professional insight.

Ryan A. Krebs, MD, JD (Doctor-Lawyer in full time Law Practice)

Richard A. Dodd, L.C.

Timothy R. Cappolino, P.C. Board Certified Personal Injury Trial Law & Civil Trial Law, Texas Board of Legal Specialization, Commerce, Texas

1-800-460-0606

www.wrongfuldeathlaw.com

Wedding Shower for Emilie Rushing bride of Doug Rushing

Date: December 1st

Time: 2:00 p.m. - 3:30 p.m.

Place: Home of Mrs. Bobbie Gayle

Selections: Target, Dillard's,

Pier One and Nelson's

Colors: Hunter Green, Crimson and Cream

Nelson Prescription Pharmacy



Pharmacy

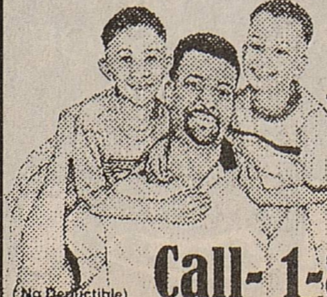
"Your Business is Appreciated"

Our Toll-Free Number Is For Your Convenience Call 1-800-658-9604

For all your Pharmacy Needs !!

805 Tahoka Rd. Brownfield, Tx

Health Benefits for the Entire Family



only \$70 Per Month!

* FLAT RATE * GUARANTEED ACCEPTANCE

* SELF-EMPLOYED OR NOTI-NO INCREASE!

* MEDICAL DISCOUNTS ON DOCTOR, DENTAL, CHIROPRACTIC, EMERGENCY ROOM, HOSPITAL CONFINEMENT, VISION, RX & MORE!

Call- 1-888-369-1739

(No Deductible)

FIRST BAPTIST CHURCH Plains, Texas

Sunday School 9:30 am.

Morning Worship 10:45 am.

Evening Program 6:00 pm.

Wednesday

5:30 - 6:30 p.m. Supper

6:00 pm. Zombies

7:00 pm. - RA's, GA's, Mission Friends, Sanctuary Choir Practice

First United Methodist Church

1202 Avenue G - Plains, Tx.

456-3727

Experiencing God's Love - Transforming Lives

Sunday Schedule

Sunday School - 9:45 am

Morning Worship - 10:45 am

Youth Fellowship/Study - 4:30 pm

Choir Rehearsal - 6:45 pm

Wednesday Connections

Food, Fellowship & Bible Study

5:30 - 7:30 pm

Other Opportunities

Fitness/exercise Class - 5:30 - 6:30 pm

Tuesdays & Thursdays



God loves you and so do we! Come in Christ with us!

From The Hack

Recently I received an only semi-fascinating packet of press releases from Texas Woman's University at Denton. Each release covered a topic concerning the upcoming Holiday Season. One of them caught my eye, begging the question, "When should parents tell children about Santa?" My first thought was, "as soon as the cord is cut", but no, that wouldn't be fair, depriving millions of kids of the idea of a fat, red faced man in a red suit, whom I have always suspiciously made it through the night with the help of strong spirits, sitting in a sleigh filled with billions of gifts, and assisted by scores of goofier looking dwarfs than the scores featured in Wizard of Oz, tossing out gifts at every dwelling in the world containing greedy, runny nosed children, circling the globe in hardly the blink of an eye. Pretty good stuff, huh? OK, I admit, I was hooked on Santa Claus when I was a very young lad. I would be up before the cock crowed twice on Christmas morn, tearing open gift packages expressing joy when I discovered something I truly lusted after, muttering mild oaths of disgust when I got something from Aunt Minerval loathed.

It was a great shock when I discovered the guy in red with the great jelly belly sitting in Sears hearing urchins whine in his ear about what they wanted Christmas Day was in fact Seymore Frump, a dog catcher at Maple. It was truly traumatic, and I was still very teary eyed when I took my seat in 9th grade history. My teacher was totally compassionate. He grunted, "Sorry to hear your woe, Dyer. Do you think you could stand hearing the truth about the tooth fairy today?"

One day after our publishing date, 87 million roasted tur-

keys, 49 million hams, 26 million hens, and 13 million legs of lamb will have been cooked, devoured (partially), and on the following day, approximately 387 million people in the US will be moaning, clutching their gut and groaning, 'Why Did I Do It AGAIN?' 'Tis the season to be piggish, that's why. I happen to be one of you piglets. Of course, the people frequenting Hobbs Wal Mart cannot qualify for piglets. They have moved up to the HOG class, and are doing well in state and national ratings for Fat City USA.

I don't know what it was like around your house Thanksgiving Day. Ours (written before the event, but if the scenario changes a teeny bit, I will be shocked!).

We will sleep a bit later, approximately 12 minutes, leap cheerfully out of bed onto the cold floor then mildly curse old man winter, just around the corner. The Bride will be all business - stuff the hapless bird, push him into the oven, then start all the other good things going, whatever women do to make it so good.

We will watch a bit of the tube, have a glass of wine or two, and then, the MOMENT of the DAY! I get to whack away on the bird with a dull knife, which I have cursed since last year. She will pick remnants from the floor while uttering mild oaths about me. Finally, we will get it together, and then I will offer our thanks to the

Good Lord for our Blessings, and our hope for a complete, total victory in the war we face with terrorists, no matter how long it takes. Amen. We hope your's was a good one too.

Lea County Electric Cooperative Inc.

...moving at the speed of light!

During this Thanksgiving season, our hearts and prayers go out to those whose lives have been impacted by the events of September 11, as well as to our valiant servicemen and women who have dedicated themselves to the defense of liberty. Closer to home, we pause to give thanks for all of the folks who together make our community a special place to live.

A VERY HAPPY THANKSGIVING TO ALL!

Tatum
(505) 398-2233

"Owned By Those We Serve"
Michael A. Dreyspring, General Manager
Lovington (505) 396-3631
800 510-LCEC (5232)

Plains
(806) 456-3322

Visit our homepage: www.lcecnec.com

NOTICE FOR BIDS THE STATE OF TEXAS) COUNTY OF YOAKUM)

The Commissioners Court of Yoakum County will receive bids until 10:00 A.M., Friday, December 7th, 2001, for the purchase of (1) New 2001 or 2002 Jail Transport Vehicle for the Yoakum County Sheriff's Department with or without the trade-in of (1) 1993 Chevrolet Suburban.

Bids will be reviewed with contract to be awarded in Commissioners Court on Monday, Decemf 10, 2001.

Bid price will be paid from 2001 budgeted funds.

To inspect the trade-in, please contact Sheriff Don Corzine at 806-456-2377.

For bid forms and specifications, please contact the Yoakum County Auditor, 806-456-2422, P.O. Box 516, Plains, Texas, 79355 or Sheriff Don Corzine, P.O. Box 189, Plains, Texas 79355, 806-456-2377.

Sealed bids should be marked "VEHICLE" on the envelope and mailed or delivered to County Judge, Dallas Brewer, P.O. Box 456/Cowboy Way and Avenue G, Plains, Texas 79355. **NO FAX COPIES WILL BE ACCEPTED.**

Commissioners Court reserves the right to reject any or all bids. Published in Cowboy Country News November 21, 2001.

NOTICE FOR BIDS THE STATE OF TEXAS) COUNTY OF YOAKUM)

The Commissioners Court of Yoakum County will receive bids until 10:00 A.M., Friday, December 7th, 2001, for the sale of (1) Used 1993 Chevrolet Suburban from the Yoakum County Sheriff's Department. Bids will be reviewed with contract to be awarded in Commissioners Court on Monday, December 10, 2001.

To inspect the vehicle, please contact Sheriff Don Corzine at 806/456-2377.

Sealed bids should be marked "SUBURBAN" on the envelope and mailed or delivered to County Judge, Dallas Brewer, P.O. Box 456/Cowboy Way and Avenue G, Plains, Texas 79355. **NO FAX COPIES WILL BE ACCEPTED.**

Commissioners Court reserves the right to reject any or all bids. Published in Cowboy Country News November 21, 2001.

* County Job Opening *

The Yoakum County Auditor's office announces a job opening for an Assistant County Auditor. Position requires a high school diploma or GED, and clerical and computer skills. Applications may be obtained at the County Auditor's office at the courthouse in Plains (phone 806-456-2422). Completed application must be returned to Auditor's office by 5:00 p.m. on Monday, December 3, 2001.

Life, Health and Long Term Care Insurance Ag Insurance Plus

James F. (Jim) Brown, Agent
456-2788 * Mobile 806-891-0449

or 891-0450 * Home 592-3490

CITY OF PLAINS NOTICE

In an effort to help control the loose dog problem within the City, the City Council has amended the Animal Control Ordinance to read as follows:

AN ORDINANCE OF THE CITY OF PLAINS, TEXAS, AMENDING THE CITY'S CODE OF ORDINANCES TO PROVIDE FOR REVISED ANIMAL IMPOUNDMENT FEES; ESTABLISHING THE SEVERABILITY OF THIS ORDINANCE AND PROVIDING FOR ANY CONFLICTING PROVISIONS; AND ESTABLISHING AN EFFECTIVE DATE FOR THIS ORDINANCE.

ARTICLE I. CODE AMENDED

That from and after the effective date of this ordinance, Chapter 2, Article 2.900, Section 2.903(a) shall be amended to read as follows:

(A) Payment of Impounding Fees. Any domestic animal impounded under the provisions of this article may be reclaimed by the owner upon the payment of all impoundment fees as follows:

1 st Impoundment	\$50.00
2 nd Impoundment within six month period	\$100.00
3 rd Impoundment and impoundment thereafter within any twelve month period	\$150.00

This ordinance shall become effective on this 12th day of November 2001.

TERRY COUNTY TRACTOR

Massey Ferguson
Kubota
Bush Hog Shredders,
Lilliston Rolling
Cultivators, Lorenz
& Buffalo Cultivators,
Baker Disc & Switch
Plows, Spray Coupe,
Wilmar Sprayer
Brownfield, Tx.
806-637-4569

Grand Entry

Western Wear
110 N. Main
Denver City, TX
BOOT & SHOE
REPAIR
806-592-8198

Job Opening:

The Magnolia. 114 N. Main, Denver City. Now taking resumes for part-time; W-F from 10:00-6:00 592-7044

Experienced Pumper

to work vacation relief. Approx. 10 wks / yr. Send work history to: Pumper, PO Box 1029 Plains, TX 79355

Rojo Electric

Ag & Resedential Parts & Service
Joe St. Romain
456-7540

• Stocks • Bonds
• Mutual Funds
• IRAs • CDs



Joe Harper
Investment Representative

Edward Jones
Serving Individual Investors Since 1871

82 St. & Slide Rd.
Lubbock, TX 79424
Bus: 806-698-8577
Fax: 877-590-6968
800-867-9897

Firestone® - Ford®

NO FEE FOR FIRST VISIT

Tire failure causing roll-overs are usually devastating to those involved and their loved ones. Call us for professional insight into a dangerous and defective product.

Ryan A. Krebs, MD, JD
Doctor-Lawyer in full time Law Practice
Richard A. Dodd, L.C.
Timothy R. Cappolino, P.C.
Board Certified Personal Injury Trial Law & Civil Trial Law, Texas Board of Legal Specialization
Consortium, Texas

1-800-460-0606
www.headtraumalaw.com

Lost & Found

Set of car keys found on 2nd St. Call Wilma Powell 456-8822



BAYER LUMBER & HARDWARE

1018 Ave. E Plains, Tx 79355
806-456-4800 Voice & Fax



SPECIALS!

BROWN JERSEY GLOVES .99
4pk "AA" H.D. BATTERIES \$1.99

MULTI - PERIL CROP & CROP HAIL

STATE LINE INSURANCE

DANNY BELL
Office 456-3521 Home 456-6325
Mobile 456-7517

College of the Southwest - Hobbs Campus
Spring Special Course Offerings
January 11-May 11, 2002

Course: The IEP is for You, Too
 (EDU 4751/5751 or SPED 4751/5751) 1 Credit Hour
 This course will explore the Individual Education Plan (IEP) from the needs of general education teachers, parents, and others who work with special education students. During this course, we will look at placement of the student, Behavior Management Plans and the teacher's part in creating and implementing them, as well as testing requirements, and how these and other components of the IEP work in the general education setting.
Faculty: June Studley
Dates, Time, Room: Saturdays, January 19 and January 26, 2002, 9:00 am - 5:00 pm, Room S124

Course: Current Issues in Bonding and Attachment
 (EDU 4641/5641, SPED 4641/5641, EDC 5641 or PSY 4641/5641) 1 Credit Hour
 This class will examine the various aspects of both infant and adult attachment. The focus will be on the ways to recognize different types of attachment styles and the significance of each in both children and adults. Various techniques will be reviewed to assist teachers and counselors in their interaction with children experiencing these types of difficulties.
Faculty: Mike Westbrook
Dates, Time, Room: Saturdays, February 2 and February 9, 2002, 8:00 am - 4:00 pm, Room S124


Course: Affective and Effective Classrooms
 (EDU 4621/5621 or SPED 4621/5621 or PSY 4761/5621) 1 Credit Hour
 The workshop will incorporate brain-based learning strategies and the importance of recognition of emotional intelligence and how this impacts effectiveness in the classroom.
Faculty: Judy Cagle
Dates, Time, Room: Saturdays, February 23 and March 2, 2002, 8:00 am - 4:00 pm, Room A100

Course: Experiential and Activity-Based Strategies for Counselors and Teachers Who Work With Children or Adults
 (EDU 4761/5761 or SPED 4761/5761 or PSY 4761/5761 or EDC 5761) 1 Credit Hour
 In this workshop, information on the theory underlying this approach with both children and adults will be presented. However, most of the course involves hands-on activities that can be used to address a variety of problem behaviors and life skills needed by children and adults. Adaptations of activities to teach specific academic content areas will be addressed for those with this interest.
Faculty: Dr. Marianne Westbrook
Dates, Time, Room: Saturdays, March 2 and March 16, 2002, 8:00 am - 4:00 pm, Room S124

Course: Character Education
 (EDU 5783) 3 Credit Hour
 This workshop will explore personal values and contemporary ethics, as well as help develop and initiate effective team approaches to character education development in schools, athletics, and the community.
Faculty: Fred DiIus and Mina Sanders
Dates, Time, Room: Tuesdays, January 11-May 11, 2002, 6:00 pm - 9:00 pm, Room TBA

TUITION: Graduate \$158.00; Undergraduate \$150.00

*“Never before
 in the history of our country
 has there been greater need
 for such an education.”*



COLLEGE OF THE SOUTHWEST

**Schedule of Classes
 Spring/Summer 2002**

www.csw.edu

6610 Lovington Highway
 Hobbs, New Mexico
 505.392.6561

500 West Church
 Carlsbad, New Mexico
 505.887.3500

Constitutional privilege of self-government * Free, democratic society

Christian principles * Individual liberty and responsibility
 Commitment to excellence * Dedication to servant leadership * Free enterprise * American tradition
 Academic distinction * Independent support & governance * Debt-free operation * Ideas of Western Civilization



College of the Southwest

will be recognized regionally and nationally for the achievements of CSW graduates, their character and knowledge. This is accomplished through rare and remarkable teamwork as the Board, faculty, staff, graduates, students, and friends of the College join together in living the tenets of the mission:

College of the Southwest - Hobbs Campus Spring 2002 January 11 - May 11, 2002

MASTER OF SCIENCE IN EDUCATION COURSE OFFERINGS

DEPT	NO	CR	SEC	TITLE	DAY	TIME	ROOM	FACULTY
ADMINISTRATION								
EDA	5213	3	1	Theories of Curriculum Development	Mon	6:00 - 9:00 pm	TBA	DeSoto
EDA	5213	3	2	Theories of Curriculum Development	Thur	6:00 - 9:00 pm	L109	Huddleston
EDA	5213	3	3	Theories of Curriculum Development	Sat	9:00 - 11:50 am	MHC	Huddleston
EDA	5303	3	1	Policies & Public Relations	Tues	6:00 - 9:00 pm	TBA	Brown
EDA	5303	3	2	Policies & Public Relations	Sat	9:00 - 11:50 am	L109	Posey, B
EDA	5403	3	1	Educational Finance & Facilities	Wed	6:00 - 9:00 pm	L109	Rounds, S
EDA	5503	3	1	School Administration	Mon	6:00 - 9:00 pm	A100	Brown
EDA	5503	3	2	School Administration	Sat	1:00 - 3:50 pm	L109	Miller
EDA	5803	3	1	Internship in Educational Administration	TBA		TBA	Brown
COLLEGE COURSES								
EDC	5901	1	1	Portfolio Assessment	TBA		TBA	Fleming
COUNSELING								
EDC	5323	3	1	Advanced Theories of Psychological Counseling	Mon	6:00 - 9:00 pm	L109	Westbrook
EDC	5433	3	1	School Counselors & Play Therapy	Wed	6:00 - 9:00 pm	S124	Holland
EDC	5453	3	1	Achievement, Ability, & Processing	Tues	6:00 - 9:00 pm	TBA	Westbrook
EDC	5803	3	1	Internship in Counseling	TBA		TBA	Posey, E
EDC	5813	3	1	Counseling Practicum	TBA		TBA	Sanders
CURRICULUM & INSTRUCTION								
EDI	5131	1	1	Applied Advanced Technology (Jan.19 & 26, 2002)	Wed	8:00 am - 5:00 pm	A105	Erickson
EDI	5113	3	1	Brain-Based Instruction	Mon	6:00 - 9:00 pm	TBA	Posey, E
EDI	5113	3	2	Brain-Based Instruction	Thur	6:00 - 9:00 pm	TBA	Cagle
EDI	5113	3	3	Brain-Based Instruction (CSW-C)	Thur	6:00 - 9:00 pm	CSWC	Crouch
EDI	5133	3	1	Advanced Instructional Technology	Tues	5:30 - 8:30 pm	A105	Erickson
EDI	5213	3	1	Theories of Curriculum Development	Mon	6:00 - 9:00 pm	TBA	Sanders
EDI	5213	3	2	Theories of Curriculum Development	Thur	6:00 - 9:00 pm	L109	DeSoto
EDI	5213	3	3	Theories of Curriculum Development	Sat	9:00 - 11:50 am	MHC	Huddleston
EDI	5303	3	1	Policies & Public Relations	Tues	6:00 - 9:00 pm	TBA	Brown
EDI	5303	3	2	Policies & Public Relations	Sat	9:00 - 11:50 am	L100	Posey, B
EDI	5413	3	1	Program Development & Management	Wed	6:00 - 9:00 pm	TBA	Fleming
EDI	5413	3	2	Program Development & Management	Tues	6:00 - 9:00 pm	L109	Hunt, M
EDI	5533	3	1	Exceptional Populations in the Regular Classroom	Thur	6:00 - 9:00 pm	TBA	Westbrook
EDUCATION CORE								
EDU	5213	3	1	Professional/Ethical Issues in Counseling	Thur	6:00 - 9:00 pm	S124	Sanders
EDU	5413	3	1	Program Development & Management	Wed	6:00 - 9:00 pm	TBA	Fleming
EDU	5413	3	2	Program Development & Management	Tues	6:00 - 9:00 pm	L109	Hunt, M
EDU	5513	3	1	Culturally Diverse & Special Needs Populations	Mon	6:00 - 9:00 pm	S124	Cagle
EDU	5513	3	2	Culturally Diverse & Special Needs Populations	Sat	9:00 - 11:50 am	L109	Williams
EDU	5523	3	1	Educational Statistics & Research Design	Wed	6:00 - 9:00 pm	A100	Brown
EDU	5523	3	2	Educational Statistics & Research Design	Tues	6:00 - 9:00 pm	S124	Fleming
EDU	5523	3	40	Educational Statistics & Research Design	Tues	6:00 - 9:00 pm	CSWC	Nance
EDUCATIONAL DIAGNOSTICIAN								
EDG	5113	3	1	Brain-Based Instruction	Mon	6:00 - 9:00 pm	TBA	Posey, E
EDG	5113	3	2	Brain-Based Instruction	Thur	6:00 - 9:00 pm	TBA	Cagle
EDG	5113	3	3	Brain-Based Instruction (CSW-C)	Thur	6:00 - 9:00 pm	CSWC	Crouch
EDG	5453	3	1	Achievement, Ability, & Processing	Tues	6:00 - 9:00 pm	TBA	Westbrook
EDG	5533	3	1	Exceptional Populations in the Regular Classroom	Thur	6:00 - 9:00 pm	TBA	Westbrook
EDG	5803	3	1	Internship in Educational Diagnostics	TBA		TBA	Westbrook
SPED	5453	3	1	Achievement, Ability, & Processing	Tues	6:00 - 9:00 pm	TBA	Westbrook

UNDERGRADUATE COURSE OFFERINGS

DEPT	NO	CR	SEC	TITLE	DAY	TIME	ROOM	FACULTY
ACCOUNTING								
ACT	2203	3	1	Income Tax Accounting	MW	1:00 - 2:20 pm	A105	Stephens
ACT	2214	4	1	Principles of Accounting II	M-Th	11:00 - 11:50 am	S121	Stephens
ACT	2214	4	2	Principles of Accounting II	MW	7:00 - 8:50 pm	A106	Stephens
ACT	3213	3	1	Intermediate Accounting II	TTh	5:30 - 6:50 pm	A102	Chesher
ACT	3253	3	1	Cost Accounting II	MW	5:30 - 6:50 pm	A105	Stephens
ACT	4213	3	1	Corporate Income Tax	TTh	1:00 - 2:20 pm	A105	Stephens
ACT	4363	3	1	Advanced Computer Applications in Accounting	MW	2:30 - 3:50 pm	A105	Wilson
ACT	4813	3	1	Internship in Accounting	TBA		TBA	Stephens
ART								
ART	2203	3	1	The History of Western Art II	MW	1:00 - 2:20 pm	L109	Phillips
ART	2203	3	2	The History of Western Art II	MW	5:30 - 6:50 pm	A106	Phillips
ART	2213	3	1	The Artist	TTh	1:00 - 2:20 pm	A100	Phillips
ATHLETIC TRAINING								
ATE	2813	3	1	Clinical Practicum I	TBA		TBA	Lloyd
BIOLOGY								
BIO	1154	3	1	General Biology II	MW	9:30 - 10:50 am	S121	Ross
BIO	115L	1	1	General Biology II Laboratory	Tues	8:00 - 9:50 am	A109	Ross
BIO	1304	3	1	Life Science	MW	2:30 - 3:50 pm	S121	Staff
BIO	130L	1	1	Life Science Laboratory	Tues	2:30 - 4:30 pm	A109	Staff
BIO	2114	3	1	Principles of Human Anatomy & Physiology II	MW	11:00 - 12:20 pm	A100	Ross
BIO	211L	1	1	Principles of Human Anatomy & Physiology II Laboratory	Tues	11:00 - 12:40 pm	A109	Ross
BIO	3103	3	1	Animal Behavior	MW	2:30 - 3:50 pm	A102	Massey
BIO	3104	3	1	Microbiology	MW	1:00 - 2:20 pm	A101	Ross
BIO	310L	1	1	Microbiology Laboratory	Tues	12:40 - 2:30 pm	A109	Ross
BIO	3303	3	1	Conservation of Natural Resources	MW	8:00 - 9:20 am	S121	Ross
BIO	3324	3	1	Vertebrate Zoology	MW	11:00 - 12:20 pm	A106	Massey
BIO	332L	1	1	Vertebrate Zoology Laboratory	Wed	1:00 - 2:50 pm	A109	Massey
BIO	3503	3	1	General Ecology	TTh	1:00 - 2:20 pm	S121	Staff
BIO	4223	3	1	Field Biology	TTh	9:30 - 10:50 am	S121	Staff
BIO	4903	3	1	Undergraduate Research	Fri	1:00 - 3:50 pm	A109	Ross
BUSINESS ADMINISTRATION								
BUA	3303	3	1	Professional Communication & Sales Presentation	TTh	9:30 - 10:50 am	A100	Dunn
BUA	3303	3	2	Professional Communication & Sales Presentation	TTh	7:00 - 8:20 pm	A101	Rickles
BUA	3413	3	1	Business Law II	MW	1:00 - 2:20 pm	L100	Rickles

SPRING 2002 CALENDAR COLLEGE OF THE SOUTHWEST - CARLSBAD CAMPUS Spring Session "A" January 7 - March 15, 2002

Advisement, Registration Fall "A"	November 26
Payment, Textbook Purchase	December 17
*Classes Begin	January 7
Last Day to Change Classes	January 14
Last Day for 100% Refund	January 14
Last Day for 50% Refund	January 21
Zero Percent Refund	January 22
Last Day to Withdraw with a "W"	February 8
Final Examinations Begin	March 11
Final Examinations End	March 15

Spring Session "B" March 18 - May 24, 2002

Advisement, Registration Fall "B"	February 4
Payment, Textbook Purchase	February 25
Classes Begin	March 18
Last Day to Change Classes	March 25
Last Day for 100% Refund	March 25
Last Day for 50% Refund	April 1
Zero Percent Refund	April 2
Last Day to Withdraw with a "W"	April 19
Final Examinations Begin	May 20
Final Examinations End	May 24

*The scheduled rates are set according to the day classes begin; therefore, refunds are not based on the date an individual registers or begins attending class.

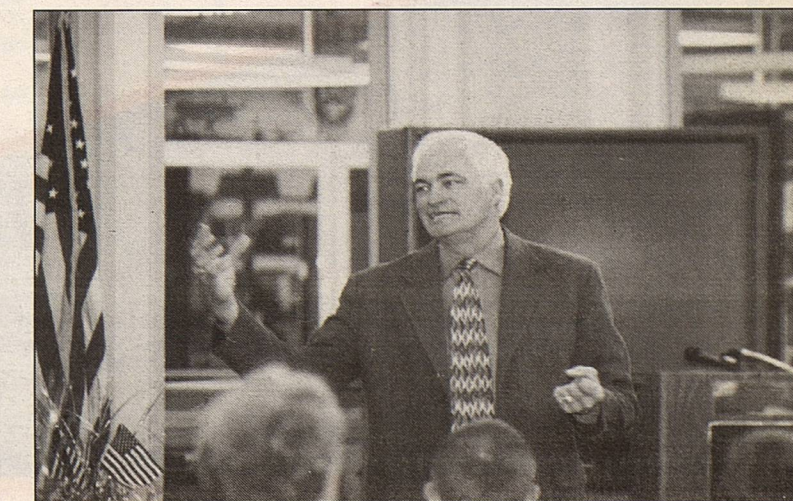
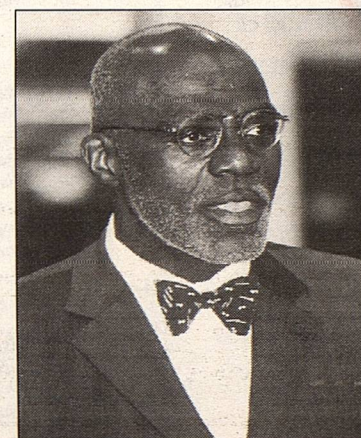
NOTE: All charges are payable at registration.

SPRING 2002 CALENDAR COLLEGE OF THE SOUTHWEST - HOBBS CAMPUS January 11 - May 11, 2002

Faculty Conven	January 4
Dorms Open	January 6
New Student Advisement/Registration	January 7-11
Tuition Payment 9:00 am-6:00 pm	January 7-11
*Classes Begin	January 11
Last Day to Change Classes	January 17
Last Day for 100% Tuition Refund	January 17
Last Day to File for Graduation	January 17
Last Day for 75% Tuition Refund	January 24
Last Day for 50% Tuition Refund	January 31
Last Day for 25% Tuition Refund	February 7
**Zero Percent Tuition Refund	February 14
Last Day to Withdraw with a "W"	March 1
Mid-Semester	March 8
Spring Break Begins	March 25-30
Family Week	TBA
Last Day to Withdraw with a "WF/WP"	May 2
Final Examinations Begin	May 3
Final Examinations End	May 9
Commencement	May 11
Dorms Closed	May 11

* The scheduled rates are set according to the day classes begin; therefore, refunds are not based on the date an individual registers or begins attending class.

** Tuition refunds for Special Course Offerings will not be made after classes have begun.



College of the Southwest - Carlsbad
Spring "B" Session
March 18 - May 24, 2002

UNDERGRADUATE COURSE OFFERINGS

DEPT	NO	CR	SEC	TITLE	DAY	TIME	FACULTY
ACCOUNTING							
ACT	3213	3	30	Intermediate Accounting II	Internet		Lunsford, S
ACT	4213	3	50	Income Tax Accounting II	Thurs	6:00 - 9:00 pm	Lunsford, P
ACT	4363	3	50	Computer Applications in Accounting	Wed	6:00 - 9:00 pm	Lunsford, P
BIOLOGY							
BIO	3303	3	50	Management & Conservation of Natural Resources	Mon	6:00 - 9:00 pm	Staff
COLLEGE COURSES							
CSW	4691	1	50	Senior Seminar in Leadership & Ethics	Wed	6:00 - 7:00 pm	Staff
CRIMINAL JUSTICE							
CRJ	2203	3	30	Crime in America	Internet		Staff
CRJ	2403	3	30	Probation and Parole	Internet		Staff
CRJ	2703	3	30	Topics in Cr. Comparative Criminal Justice	Internet		Read, D
CRJ	3503	3	30	Juvenile Justice System	Internet		Read, D
CRJ	4403	3	30	Prosecution & Adjudication	Internet		Read, D
CRJ	4503	3	30	Penology	Internet		Staff
COMPUTER SCIENCE							
CSI	2103	3	50	Database Management	Mon	6:00 - 9:00 pm	Williams, L
CSI	2203	3	50	Educational Technology	Thurs	6:00 - 9:00 pm	Baca, K
EDUCATION							
BIL	3202	2	50	Science & Math for K-12 Bilingual Learners			
BIL	3311	1	50	Parents & Community Relations & Involvement			
EDU	3203	3	50	Psychological Foundations of Teaching	Wed	6:00 - 9:00 pm	Giblin
EDU	3213	3	50	Survey of Multicultural & Exceptional Learners	Mon	3:00 - 6:00 pm	Wheeler
EDU	3253	3	50	Education Measurement & Evaluation	Mon	6:00 - 9:00 pm	Click
EDU	4114	4	50	Teaching in the Elementary School	Wed	5:00 - 9:00 pm	Alsop
EDU	4203	3	50	Diagnostic/Corrective Teaching	Tues	6:00 - 9:00 pm	Wheeler
EDU	4502	2	50	Field Experience II	Thurs	4:00 - 6:00 pm	Sensibaugh
SPED	3222	2	50	Classroom Management & the Exceptional Learner	Wed	6:00 - 8:00 pm	Staff
SPED	3323	3	50	Methods and Material in Special Education	Mon	6:00 - 9:00 pm	Fox
SPED	4211	1	50	Learners with Physical Impairments	Tues	4:00 - 5:00 pm	Fox
SPED	4221	1	50	Learners with Cognitive Deficits	Tues	5:00 - 6:00 pm	Fox
SPED	4231	1	50	Learners with Behavior Disorders	Thurs	4:00 - 5:00 pm	Fox
SPED	4241	1	50	Learners with Learning Disabilities	Thurs	5:00 - 6:00 pm	Fox
ENGLISH							
ENG	1123	3	30	Rhetoric & Composition	Internet		Milligan
ENG	2223	3	50	Life & Literature of the Southwest	Tues	6:00 - 9:00 pm	Walker
ENG	2303	3	50	Survey of British Literature	Mon	6:00 - 9:00 pm	Milligan
ENG	2433	3	50	Survey of Popular Fiction	Wed	6:00 - 9:00 pm	Milligan
ENG	3513	3	50	Children's Literature	Tues	6:00 - 9:00 pm	Clingman
ENVIRONMENTAL MANAGEMENT							
EMS	4303	3	50	Environment and Energy	Wed	6:00 - 9:00 pm	Beasley
EMS	4542	2	50	The Geosphere	Thurs	4:00 - 6:00 pm	Nance
FINANCE							
FIN	3443	3	50	Financial Analysis	Thurs	6:00 - 9:00 pm	Staff
HISTORY							
HIS	2203	3	30	American History from 1877	Internet		Groves, K
HIS	2203	3	50	American History from 1877	Tues	1:00 - 4:00 pm	Vaughn
HIS	2223	3	50	Life and Literature of the Southwest	Tues	6:00 - 9:00 pm	Walker, M
HIS	2303	3	50	History and Geography of New Mexico	Tues	6:00 - 9:00 pm	Vaughn
HIS	4103	3	50	History of US Foreign Policy	Thurs	6:00 - 9:00 pm	Staff
LINGUISTICS							
LIN	2253	3	50	Introduction to Linguistics	Tues	6:00 - 9:00 pm	Vardeman
MATHEMATICS							
MAT	3303	3	50	Linear Algebra	Wed	6:00 - 9:00 pm	Hayes
MAT	3323	3	50	Statistics II	Thurs	6:00 - 9:00 pm	Brown, G
MANAGEMENT							
MGT	3223	3	50	Leadership & Motivation	Wed	6:00 - 9:00 pm	Staff
MGT	3503	3	30	Organizational Behavior	Internet		Brown, G
MGT	4123	3	50	Management Information System	Mon	6:00 - 9:00 pm	Lunsford, P
MGT	4303	3	50	Industrial & Organizational Psychology	TBA		Courts
POLITICAL SCIENCE							
POS	4143	3	50	Comparative Politics	Wed	1:00 - 4:00 pm	Vaughn
PSYCHOLOGY							
PSY	2103	3	50	Psychology of Adjustment	Wed	6:00 - 9:00 pm	Courts
PSY	3503	3	50	Social Psychology	Mon	6:00 - 9:00 pm	Courts
PSY	3213	3	30	Developmental Psychology	Internet		Hamel
PSY	4303	3	50	Industrial & Organizational Psychology	TBA		Courts
PSY	4313	3	50	Interviewing & Counseling Techniques	Tues	6:00 - 9:00 pm	Roberto
PSY	4403	3	50	Experimental Psychology	Mon	6:00 - 9:00 pm	Wilbanks, D
RELIGION							
REL	1203	3	50	New Testament Survey	Thurs	6:00 - 9:00 pm	Robinson
REL	1203	3	30	New Testament Survey	Internet		Rogers, D
SOCIOLOGY							
SOC	2213	3	30	Marriage and the Family	Internet		Hamel
SOC	3503	3	50	Social Psychology	Mon	6:00 - 9:00 pm	Staff
SOC	3503	3	30	Social Psychology	Internet		Staff
THEATRE							
THE	4103	3	50	Oral Interpretation	Fri	1:00 - 4:00 pm	Milligan, R

A dedication to servant leadership, shared by Board members, faculty, staff, students, graduates, contributors, & other friends of the College

CSW believes the best way to teach servant leadership is to model it in order to produce graduates who embrace the concept of serving others and the community. For this reason, CSW takes a leading role in serving the people of this region in a number of innovative ways.

- ★ Center for Business Leadership
- ★ Center for Educational Excellence
- ★ CSW Theatre Productions
- ★ Distinguished Lecture Series
- ★ Estacado Library Information Network
- ★ Hatton W. Sumners Speaker Series
- ★ I CAN! Scholarship Program
- ★ Success 2000 Leadership Camp

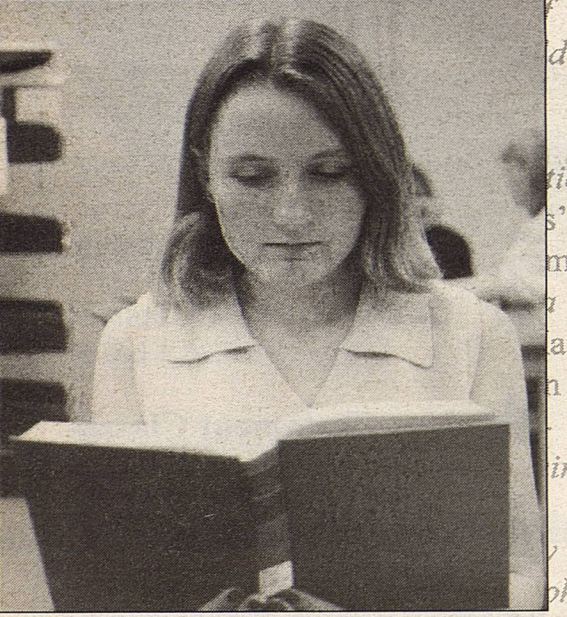
CHEMISTRY

CHE	1304	3	1	Chemical Concepts	MW	11:00 - 12:20 pm	S126	Dodd
CHE	130L	1	1	Chemical Concepts Laboratory	Thur	11:00 - 12:50 pm	S126	Dodd
COLLEGE COURSES								
CSW	1201	1	1	Freshman Success	Tues	9:30 - 10:20 am	S113	Owensby
CSW	1201	1	2	Freshman Success	Mon	1:00 - 1:50 pm	S113	Owensby
CSW	3901	1	1	Portfolio Assessment	TBA		TBA	Fleming
CSW	4691	1	1	Senior Seminar in Leadership & Ethics	Tues	1:00 - 1:50 pm	L100	Case
CSW	4691	1	2	Senior Seminar in Leadership & Ethics	Thur	1:00 - 1:50 pm	L100	Case
CSW	4691	1	3	Senior Seminar in Leadership & Ethics	Mon	5:30 - 6:20 pm	L100	Dodd
COMPUTER SCIENCE								
CSI	1203	3	1	Computer Applications	MW	8:00 - 9:20 am	A105	Staff
CSI	1303	3	1	Business Technology	TTh	9:30 - 10:50 am	A105	Mills
CSI	2203	3	1	Education Technology	TTh	8:00 - 9:20 am	A105	Sagerty
CSI	2203	3	2	Education Technology	TTh	8:30 - 9:50 am	A105	Fox
CSI	2213	3	1	Electronic Spreadsheets	MW	9:30 - 10:50 am	A105	Dodd
CRIMINAL JUSTICE								
CRJ	3103	3	1	Criminology	MW	7:00 - 8:20 pm	S103	Staff
CRJ	4203	3	1	Issues in Ethics, Law, & Criminal Justice	MW	8:30 - 9:50 pm	S103	Staff
ECONOMICS								
ECO	2213	3	1	Freedom, Ethics, & Free Enterprise	TTh	8:00 - 9:20 am	L109	DiUlus
ECO	2213	3	2	Freedom, Ethics, & Free Enterprise	TTh	2:30 - 3:50 pm	S113	Case
ECO	2213	3	3	Freedom, Ethics, & Free Enterprise	Mon	7:00 - 9:50 pm	L100	Neal
ECO	2802	2	1	Internship in Free Enterprise	TTh	11:00 - 11:50 am	ITV	Wilson
ECO	3802	2	1	Internship in Free Enterprise	TTh	11:00 - 11:50 am	ITV	Wilson
ECO	4802	2	1	Internship in Free Enterprise	TTh	11:00 - 11:50 am	ITV	Wilson
EDUCATION								
BIL	3102	2	1	Teaching English as a Second Language	MW	5:00 - 5:50 pm	L109	Navarrete
BIL	3301	1	1	Assessment and Evaluation of Bilingual Learners & Bilingual Programs	Mon	6:00 - 6:50 pm	S103	Navarrete
BIL	3311	1	1	Parents & Community Relations & Involvement Strategies	Wed	6:00 - 6:50 pm	S103	Navarrete
BIL	4101	1	1	Research in Bilingual Education	Mon	4:00 - 4:50 pm	S103	Palomo, M
EDU	1101	1	1	Field-Based Observation	Tues	9:30 - 10:20 am	L108	Fox
EDU	1101	1	2	Field-Based Observation	Thur	11:00 - 11:50 am	A100	Fox
EDU	2103	3	1	Foundations of Education	MW	1:00 - 2:20 pm	S124	Sagerty
EDU	2103	3	2	Foundations of Education	TTh	5:30 - 6:50 pm	S113	McGinnis
EDU	3203	3	1	Psychological Foundations of Teaching & Learning	MW	8:00 - 9:20 am	S124	Sagerty
EDU	3203	3	2	Psychological Foundations of Teaching & Learning	TTh	1:00 - 2:20 pm	S124	Fox
EDU	3203	3	3	Psychological Foundations of Teaching & Learning	MW	7:00 - 8:20 pm	S113	Goad
EDU	3213	3	1	Survey of Multicultural & Exceptional Learners	TTh	11:00 - 12:20 pm	S124	Sagerty
EDU	3213	3	2	Survey of Multicultural & Exceptional Learners	MW	5:30 - 6:50 pm	S121	Hunt, M
EDU	3213	3	3	Survey of Multicultural & Exceptional Learners	TTh	2:30 - 3:50 pm	L109	Westbrook
EDU	3222	2	1	Classroom Management & Organization	TTh	9:30 - 10:20 am	S124	Harris
EDU	3222	2	2	Classroom Management & Organization	Thurs	5:30 - 7:20 pm	A100	Huddlestone
EDU	3503	3	1	Communication Arts in the Elementary School	MW	9:30 - 10:50 am	S124	Harris
EDU	3503	3	2	Communication Arts in the Elementary School	TTh	8:00 - 9:20 am	S124	Goad
EDU	3523	3	2	Educational Measurement & Evaluation	MW	1:00 - 2:20 pm	A100	Fox
EDU	3523	3	3	Educational Measurement & Evaluation	MW	8:30 - 9:50 pm	S113	Baker
EDU	4114	4	1	Teaching in the Elementary School	MW	11:00 - 12:50 pm	S124	Harris
EDU	4114	4	2	Teaching in the Elementary School	MW	4:00 - 5:50 pm	S124	McPeters
EDU	4203	3	1	Diagnostic/Corrective Teaching	TTh	1:00 - 2:20 pm	A102	Patterson
EDU	4203	3	2	Diagnostic/Corrective Teaching	TTh	7:00 - 8:20 pm	S121	Gage
EDU	4213	3	1	Teaching in the Secondary School	TTh	4:00 - 5:20 pm	S124	Fox
EDU	4413	3	1	Reading in the Content Area	TTh	8:30 - 9:50 pm	A102	Gage
EDU	4502	2	1	Field Experience II	Wed	8:00 - 9:20 am	S103	McGinnis
EDU	4502	2	2	Field Experience II	Mon	7:00 - 8:20 pm	A102	Hightower
EDU	4546	6	1	Intern Teaching	TBA		TBA	Harris
EDU	4601	1	1	Intern Teaching Seminar	Mon	5:00 - 5:50 pm	S113	Harris
SPED	1101	1	1	Field-Based Observation in Special Education	Tues	9:30 - 10:20 am	L108	Fox
SPED	1101	1	2	Field-Based Observation in Special Education	Thur	11:00 - 11:50 am	A100	Fox
SPED	3423	3	1	Special Education Curriculum	MW	4:00 - 5:20 pm	L109	Hunt, K
SPED	3523	3	1	Assessment, Evaluation, Referral, & Placement of the Exceptional Learner	MW	5:30 - 6:20 pm	A102	Hunt, K
SPED	4231	1	1	Learners with Behavior Disorders	Tues	4:00 - 4:50 pm	S103	Emery
SPED	4241	1	1	Learners with Learning Disabilities	Thur	4:00 - 4:50 pm	S103	Emery
SPED	4502	2	1	Field Experience II in Special Education Settings	Wed	8:00 - 9:20 am	S103	McGinnis
SPED	4502	2	2	Field Experience II in Special Education Settings	Mon	7:00 - 8:20 pm	A102	Hightower
SPED	4546	6	1	Intern Teaching in K-12 Special Education Settings	TBA		TBA	Harris
SPED	4601	1	1	Intern Teaching Seminar	Mon	5:00 - 5:50 pm	S113	Harris
ENGLISH								
ENG	1013	3	1	Mechanics of English	MW	11:00 - 12:20 pm	L108	Staff
ENG	1113	3	1	Rhetoric & Composition	MW	11:00 - 12:20 pm	A105	Phillips
ENG	1123	3	1	Rhetoric & Literature	MW	9:30 - 10:50 am	L100	Clingman
ENG	1123	3	2	Rhetoric & Literature	TTh	11:00 - 12:20 pm	A101	Clingman
ENG	2303	3	1	Survey of British Literature	TTh	9:30 - 10:50 am	L109	Staff
ENG	2433	3	1	Survey of Popular Fiction	TTh	8:00 - 9:20 am	L100	Clingman
ENG	3403	3	1	American Classic Drama	TTh	2:30 - 3:50 pm	MHC	Floyd
ENG	3503	3	1	Advanced Grammar	MW	5:30 - 6:50 pm	L108	Vardeman

Holy Bible * Plato's *The Apology* * Aristotle's *Politics* * Augustine's *City of God* * Thomas Aquinas' *Summa Theologiae* * Magna Carta * Dante's *Divine Comedy* * Martin Luther's *Ninety-Five Theses* * The ideas of Western Civilization: the preservation and advancement of a free, democratic society

Government * Samuel Rutherford's *Lex Rex* * John Milton's *Areopagitica* * The English Bill of Rights * Montesquieu's *The Spirit of the Laws* * The Declaration of Independence * The Wealth of Nations * The Constitution of the United States of America * Edmund Burke's *Reflections on the Revolution in France*

Isaac Newton's *Principia Mathematica* * John Locke's *Two Treatises on Civil Government* * Samuel Rutherford's *Lex Rex* * John Locke's *Two Treatises on Civil Government* * Plato *The Republic* * *Principia Mathematica*



HPE 2102 2 1	Lifetime Fitness	MW 9:30 - 10:20 am	MFC Callahan
HPE 2213 3 1	Workplace Training Standard First Aid	TTh 8:00 - 9:20 am	MFC Lloyd
HPE 2263 3 1	Anatomy for the Physical Educator/Coach	MW 8:00 - 9:20 am	MFC Callahan
HPE 2313 2 1	Nutrition & Sports	MW 11:00 - 11:50 am	S103 Massey
HPE 3112 2 1	PE Activities/Secondary	TTh 11:00 - 11:50 am	MFC Drummond
HPE 3322 2 1	Techniques of Teaching Gymnastics & Tumbling	TTh 9:30 - 10:20 am	MFC Drummond
HPE 3403 3 1	Measurement & Evaluation in Physical Education	TTh 1:00 - 2:20 pm	MFC Duallen
HPE 4103 3 1	Kinesiology	MW 1:00 - 2:20 pm	MFC Callahan
HPE 4303 3 1	Administration of Physical Education & Sports	MW 11:00 - 12:20 pm	MFC Callahan
HPE 4503 3 1	Secondary School Physical Education Programs	TTh 9:30 - 10:50 am	L100 Lloyd
HISTORY			
HIS 1203 3 1	Western Civilization from 1716	MW 9:30 - 10:50 am	L109 Sumruld
HIS 1203 3 2	Western Civilization from 1716	TTh 8:30 - 9:50 pm	S113 Huff
HIS 2203 3 1	American History from 1877	MW 8:00 - 9:20 am	S113 Sumruld
HIS 2203 3 2	American History from 1877	TTh 8:00 - 9:20 am	S113 Sumruld
HIS 2203 3 3	American History from 1877	TTh 7:00 - 8:20 pm	L108 Huff
HIS 2303 3 1	History & Geography of New Mexico	MW 4:00 - 5:20 pm	A100 Higgins
HIS 2303 3 2	History & Geography of New Mexico	TTh 1:00 - 2:20 pm	S113 Goldman
HIS 3313 3 1	World History	TTh 9:30 - 10:50 am	S103 Sumruld
HIS 4703 3 1	Topics: Fall of Rome	MW 1:00 - 2:20 pm	S121 Sumruld
MANAGEMENT			
MGT 2103 3 1	Principles of Management	TTh 5:30 - 6:50 pm	A101 Munoz
MGT 3503 3 1	Organizational Behavior	MW 11:00 - 12:20 pm	L100 Rickles
MGT 4162 2 1	Creating a Business Plan	TTh 1:00 - 1:50 pm	S103 Wilson
MGT 4162 2 2	Creating a Business Plan	TTh 7:00 - 7:50 pm	A102 Wilson
MGT 4163 3 1	Topics: Current Issues in Management	MW 9:30 - 10:50 am	A102 DiUlus
MGT 4303 3 1	Industrial & Organizational Psychology	TTh 8:00 - 9:20 am	A100 Dunn
MGT 4303 3 2	Industrial & Organizational Psychology	TTh 5:30 - 6:50 pm	S121 Dunn
MGT 4813 3 1	Internship in Management	TBA	TBA Dunn
MARKETING			
MKT 3323 3 1	Principles of Marketing & Sales	MW 1:00 - 2:20 pm	S103 Sanderson
MKT 3323 3 2	Principles of Marketing & Sales	TTh 7:00 - 8:20 pm	MHC Noel
MKT 3503 3 1	Consumer Behavior	TTh 9:30 - 10:50 am	A102 DiUlus
MKT 3513 3 1	Advertising & Promotion	MW 7:00 - 8:20 pm	MHC Noel
MKT 4123 3 1	Services Marketing	MW 8:00 - 9:20 am	A102 McDowell
MKT 4133 3 1	Marketing Management	TTh 11:00 - 12:20 pm	A102 DiUlus
MKT 4813 3 1	Internship in Marketing	TBA	TBA DiUlus
MATHEMATICS			
MAT 1103 3 1	Intermediate Algebra	MW 8:00 - 9:20 am	L100 Staff
MAT 1103 3 2	College Algebra for General Education	MW 8:00 - 9:20 am	A101 Roan
MAT 1103 3 3	College Algebra for General Education	MW 11:00 - 12:20 pm	A101 Roan
MAT 1413 3 1	Pre-Calculus Mathematics	TTh 8:00 - 9:20 am	A101 Dodd
MAT 2103 3 1	Principles of Probability & Statistics	MW 7:00 - 8:20 pm	S121 Staff
MAT 2214 4 1	Analytic Geometry & Calculus II	M-Th 9:30 - 10:20 am	A101 Roan
MAT 3213 3 1	Differential Equations	MW 2:30 - 3:50 pm	A101 Roan
MAT 3303 3 1	Linear Algebra	TTh 1:00 - 2:20 pm	A101 Roan
MAT 3323 3 1	Statistics II	TTh 2:30 - 3:50 pm	A101 Smith, H
MAT 4703 3 1	Topics: Problem-Solving Techniques	MW 8:00 - 9:20 am	A106 Dodd
MUSIC			
MUS 1801 1 1	CSW Ambassadors	MW 11:00 - 11:50 am	MHC Floyd
MUS 2203 3 1	Introduction to Country & Western Music	TTh 5:30 - 6:50 pm	L100 Studley
MUS 2801 1 1	CSW Ambassadors	MW 11:00 - 11:50 am	MHC Floyd
MUS 3801 1 1	CSW Ambassadors	MW 11:00 - 11:50 am	MHC Floyd
MUS 4801 1 1	CSW Ambassadors	MW 11:00 - 11:50 am	MHC Floyd
PHILOSOPHY			
PHI 2203 3 1	Logic	MW 7:00 - 8:20 pm	A101 Huff
POLITICAL SCIENCE			
POS 3103 3 1	American Ideologies	MW 1:00 - 2:20 pm	A102 Goldman
POS 4143 3 1	Comparative Politics	MW 11:00 - 12:20 pm	S113 Goldman
PSYCHOLOGY			
PSY 2103 3 1	Psychology of Adjustment	MW 9:30 - 10:50 am	A100 Wolske
PSY 3113 3 1	Cognition	MW 11:00 - 12:20 pm	A102 Anderson
PSY 3113 3 2	Cognition	TTh 7:00 - 8:20 pm	L100 Staff
PSY 3213 3 1	Developmental Psychology	TTh 11:00 - 12:20 pm	S113 Wolske
PSY 3213 3 2	Developmental Psychology	MW 8:30 - 9:50 pm	S121 Staff
PSY 3223 3 1	Psychology of Aging	TTh 4:00 - 5:20 pm	L109 Sweet
PSY 4103 3 1	Personality	TTh 9:30 - 10:50 am	A106 Wolske
PSY 4103 3 2	Personality	MW 5:30 - 6:50 pm	A101 Anderson
PSY 4203 3 1	Abnormal Psychology	MW 2:30 - 3:50 pm	A100 Wolske
PSY 4303 3 1	Industrial & Organizational Psychology	TTh 8:00 - 9:20 am	A100 Dunn
PSY 4303 3 2	Industrial & Organizational Psychology	TTh 5:30 - 6:50 pm	S121 Dunn
PSY 4313 3 1	Interviewing & Counseling Techniques	MW 8:00 - 9:20 am	A100 Anderson
PSY 4523 3 1	Psychological & Educational Testing	TTh 2:30 - 3:50 pm	A100 Sweet
PSY 4703 3 1	Special Topics in Psychology	TTh 8:30 - 9:50 pm	S121 Staff
PSY 4803 3 1	Psychology Practicum	TBA	TBA Wolske
RELIGION			
REL 1101 1 1	Chapel: LIFE I	Tues 12:00 - 12:50 pm	MBSC Ray
REL 1103 3 1	Old Testament Survey	TTh 2:30 - 3:50 pm	A106 Staff
REL 1103 3 2	Old Testament Survey	TTh 7:00 - 8:20 pm	A106 Glasgow
REL 1201 1 1	Chapel: LIFE II	Tues 12:00 - 12:50 pm	MBSC Ray
REL 1203 3 1	New Testament Survey	MW 1:00 - 2:20 pm	A106 Reed
REL 1203 3 2	New Testament Survey	MW 2:30 - 3:50 pm	A106 Glasgow
REL 1203 3 3	New Testament Survey	TTh 1:00 - 2:20 pm	A106 Staff
REL 1203 3 4	New Testament Survey	TTh 5:30 - 6:50 pm	A106 Glasgow
REL 1203 3 5	New Testament Survey	Fri 9:00 - 11:50 am	L109 Staff
REL 1301 1 1	Chapel: LIFE III	Tues 12:00 - 12:50 pm	MBSC Ray
SOCIOLOGY			
SOC 2213 3 1	Marriage & the Family	TTh 1:00 - 2:20 pm	L109 Staff
SOC 3203 3 1	Race & Ethnic Relations	MW 2:30 - 3:50 pm	S113 Reed
SOC 3223 3 1	Sociology of Organizations	TTh 5:30 - 6:50 pm	L108 Staff
SPANISH			
SPA 3303 3 1	Survey of Spanish Literature	TTh 7:00 - 8:20 pm	S103 Palomo, J
SPA 3403 3 1	Survey of Spanish-American Literature	TTh 5:30 - 6:50 pm	S103 Palomo, J
SPEECH			
SPE 1103 3 1	Principles of Speech	TTh 9:30 - 10:50 am	MHC Lyle
SPE 1103 3 2	Principles of Speech	TTh 1:00 - 2:20 pm	MHC Lyle
SPE 1103 3 3	Principles of Speech	MW 5:30 - 6:20 pm	MHC Lyle
THEATRE			
THE 2602 2 1	Theatre Workshop	TBA	TBA Floyd
THE 3403 3 1	American Classic Drama	TTh 2:30 - 3:50 pm	MHC Floyd
THE 3602 2 1	Theatre Workshop	TBA	TBA Floyd
THE 4602 2 1	Theatre Workshop	TBA	TBA Floyd

ECONOMICS			
ECO 2213 3	20 Freedom, Ethics, & Free Enterprise	Internet	Staff
ECO 2213 3	11 Freedom, Ethics, & Free Enterprise	TTh 8:00 - 9:20 am	DiUlus (ITV)
ECO 2802 2	11 Internship in Free Enterprise	TTh 11:00 - 12:00 pm	ITV
ECO 3802 2	11 Internship in Free Enterprise	TTh 11:00 - 12:00 pm	ITV
ECO 4802 2	11 Internship in Free Enterprise	TTh 11:00 - 12:00 pm	ITV
EDUCATION			
BIL 3102 2	11 Teaching English as a Second Language	MW 5:00 - 5:50 pm	ITV
BIL 3112 2	40 Social Studies & Fine Arts for K-12 Bilingual Learners	Mon 6:00 - 9:00 pm	Montoya
EDU 1101 1	40 Field-Based Observations	Wed 5:00 - 5:50 pm	Sensibaugh, R
EDU 2103 3	40 Foundations of Education	Wed 6:00 - 9:00 pm	Wittman, B
EDU 3203 3	40 Psychological Foundations of Teaching & Learning	Mon 6:00 - 9:00 pm	Giblin, B
EDU 3213 3	11 Multicultural & Exceptional Learners	TTh 2:30 - 3:50 pm	ITV
EDU 3222 2	40 Classroom Management & Organization	Tues 4:00 - 6:00 pm	Alsop, P
EDU 3523 3	40 Educational Measurement & Evaluation	Tues 6:00 - 9:00 pm	Click, P
EDU 4213 3	40 Teaching in the Secondary School	Mon 6:00 - 9:00 pm	Giblin, B
EDU 4413 3	40 Reading in the Content Area	Thurs 6:00 - 9:00 pm	Williams, J
EDU 4546 6	40 Intern Teaching	TBA TBA	Wheeler, G
EDU 4601 1	40 Intern Teaching Seminar	Wed 5:00 - 5:50 pm	Wheeler, G
SPED 1101 1	40 Field-Based Observations	Wed 5:00 - 5:50 pm	Sensibaugh, R
SPED 2103 3	40 Introduction to Exceptional Learners & Special Education	Wed 6:00 - 9:00 pm	Robilliard, M
SPED 3423 3	11 Special Education Curriculum	MW 4:00 - 5:20 pm	ITV
SPED 3523 3	40 Assessment, Evaluation, Referral & Placement	Mon 6:00 - 9:00 pm	Fox
SPED 4201 1	40 The Gifted/Talented Learner	Tues 4:00 - 5:00 pm	Lee
SPED 4502 2	40 Field Experience II in a Special Education Setting	Tues 7:00 - 9:00 pm	Fox
SPED 4546 6	40 Intern Teaching	TBA TBA	Wheeler, G
SPED 4601 1	40 Intern Teaching Seminar	Wed 5:00 - 5:50 pm	Wheeler, G
ENGLISH			
ENG 1113 3	20 Rhetoric & Composition	Internet	Milligan, R
ENG 2303 3	11 Survey of British Literature	TTh 9:30 - 10:50 am	ITV
ENG 2213 3	40 Creative Writing	Fri 1:00 - 4:00 pm	Walker, M
ENG 3563 3	40 The Novel	Tues 6:00 - 9:00 pm	Milligan, R
ENG 4403 3	40 Advanced Composition	Wed 6:00 - 9:00 pm	Walker, M
ENVIRONMENTAL MANAGEMENT			
EMS 4532 2	40 Hydrosphere	Wed 7:00 - 9:00 pm	Nance, R
EMS 4552 2	40 Ethics of Environmental Management	Tues 6:00 - 8:00 pm	Kehman, R
FINANCE			
FIN 3203 3	40 Principles of Public Finance	Thurs 6:00 - 9:00 pm	Beasley, J
FIN 3423 3	40 Financial Management	Wed 6:00 - 9:00 pm	Bradford, W
GEOLOGY			
GEO 1104 3	40 Physical Geology	Tues 6:00 - 9:00 pm	Breene, R
GEO 110L 1	40 Physical Geology Laboratory	TBA TBA	Breene, R
HISTORY			
HIS 1203 3	11 Western Civilization to 1715	MW 9:30 - 10:50 am	ITV
HIS 2103 3	20 American History to 1876	Internet	Groves, K
HIS 2103 3	40 American History to 1876	Thurs 9:00 - 12:00 pm	Vaughn, J
MANAGEMENT			
MGT 2103 3	20 Principles of Management	Internet	Brown, J
MGT 3113 3	40 Problem Solving in Business	Mon 6:00 - 9:00 pm	Beasley, J
MGT 3123 3	40 Ethics & Leadership	Tues 6:00 - 9:00 pm	Lunsford, S
MGT 3503 3	40 Organizational Behavior	Thurs 1:00 - 4:00 pm	Vandergriff, B
MGT 4162 2	40 Creating a Business Plan	Wed 6:00 - 8:00 pm	Coalson, L
MGT 4303 3	40 Industrial & Organization Psychology	Thurs 6:00 - 9:00 pm	Courts, S
MATHEMATICS			
MAT 1203 3	40 College Algebra for Math & Science Majors	Wed 6:00 - 9:00 pm	Hayes, R
MAT 2103 3	40 Probability & Statistics	Tues 6:00 - 9:00 pm	Brown, G
MAT 2214 4	40 Analytical Geometry & Calculus II	Sat 9:00 - 12:00 pm	Hayes, R
MAT 4103 3	40 Mathematical Logic	Mon 6:00 - 9:00 pm	Hayes, R
POLITICAL SCIENCE			
POS 3303 3	40 American Presidency	Thurs 6:00 - 9:00 pm	Scott, G
POS 4143 3	40 Comparative Politics	Thurs 1:00 - 4:00 pm	Vaughn, J
PSYCHOLOGY			
PSY 3103 3	40 Principles of Behavior Management	Tues 6:00 - 9:00 pm	Staff
PSY 3113 3	40 Cognition	Wed 6:00 - 9:00 pm	Courts, S
PSY 3213 3	40 Developmental Psychology	Thurs 6:00 - 9:00 pm	Giblin, B
PSY 3223 3	11 Psychology of Aging	TTh 4:00 - 5:20 pm	ITV
PSY 4103 3	20 Personality	Internet	Hamel, M
PSY 4303 3	40 Industrial & Organizational Psychology	Thurs 6:00 - 9:00 pm	Courts, S
RELIGION			
REL 1103 3	20 Old Testament Survey	Internet	Staff
REL 1103 3	40 Old Testament Survey	Thurs 6:00 - 9:00 pm	Robinson, M
REL 1203 3	11 New Testament Survey	Fri 9:00 - 11:50 am	ITV
SOCIOLOGY			
SOC 1103 3	20 Introduction to Sociology	Internet	Staff
SOC 2213 3	11 Marriage and the Family	TTh 1:00 - 2:20 pm	ITV
SOC 3203 3	20 Race & Ethnic Relations	Internet	Staff
SOC 3203 3	40 Race & Ethnic Relations	Tues 6:00 - 9:00 pm	Williams, R
SOC 3303 3	40 Applied Sociology	Mon 6:00 - 9:00 pm	Courts, S
SPEECH			
SPE 1103 3	40 Principles of Speech	Wed 6:00 - 9:00 pm	Milligan, R

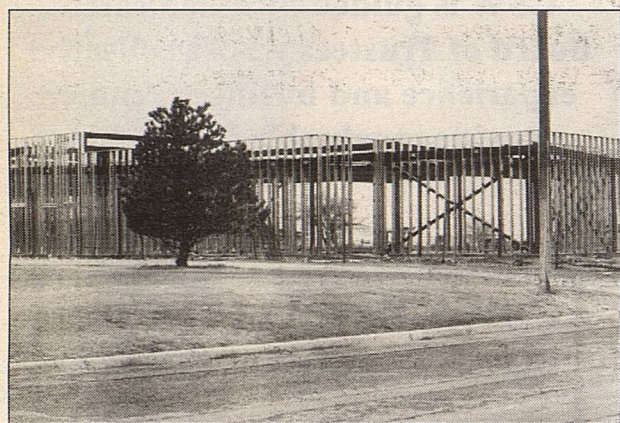
A
relentless commitment to excellence in all endeavors

Whether it's courses for CSW students, a holiday event shared with the community, or a professional development seminar for area teachers, CSW strives for excellence in everything we do.

- ★ Ambassadors
- ★ Annual Educational Conference
- ★ Business Leadership Council
- ★ Campus Publications
- ★ Center for Business Leadership
- ★ Center for Educational Excellence
- ★ College of the Southwest-Carlsbad
- ★ CSW Theatre Department
- ★ Distinguished Lecture Series
- ★ Hatton W. Sumners Speaker Series
- ★ I Can! Scholarship Program
- ★ LIFE Program
- ★ Master's in Education
 - Administration
 - Counseling
 - Curriculum & Instruction
 - Educational Diagnostics
- ★ Multicultural Conference
- ★ Mustang Athletics
- ★ President's Student Advisory Council
- ★ Regional Prayer Breakfast
- ★ Senior Seminar
- ★ SIFE Competition
- ★ Sigma Tau Delta
- ★ SW Association of Future Educators
- ★ Students in Free Enterprise
- ★ Success 2000
- ★ Taste of Literature
- ★ Trustee of Free Enterprise Program
- ★ Undergraduate Programs

Debt-free operation

An important factor for many advocates of CSW is that the school operates debt free--yet accepts no tax dollars. CSW, a 501(c)(3) organization, maintains a balanced budget while meeting educational needs through sound business and financial planning.



CSW is currently undergoing the first of three phases of campus construction, with the entire \$6.2 million either pledged or in-hand before groundbreaking even began. CSW is, and will continue to remain, debt free.

Phase One:

- 1) Renovation & expansion of library (completed)
- 2) New academic / science lab building (completed)
- 3) New Student Center (in progress)
- 4) New chapel
- 5) New residence hall
- 6) Renovation & expansion of existing Student Center as new academic building

College of the Southwest - Carlsbad Spring 2002

MASTER OF SCIENCE IN EDUCATION COURSE OFFERINGS January 11 - May 11, 2002

DEPT	NO	CR	SEC	TITLE	DAY	TIME	ROOM	FACULTY
ADMINISTRATION								
EDA	5213	3	1	Theories of Curriculum Development	Mon	6:00 - 9:00 pm	TBA	Sanders
EDA	5213	3	2	Theories of Curriculum Development	Thur	6:00 - 9:00 pm	L109	DeSoto
EDA	5213	3	3	Theories of Curriculum Development	Sat	9:00 - 11:50 am	MHC	Huddleston
EDA	5303	3	1	Policies & Public Relations	Tues	6:00 - 9:00 pm	TBA	Brown
EDA	5303	3	2	Policies & Public Relations	Sat	9:00 - 11:50 am	L100	Posey, B
EDA	5403	3	1	Educational Finance & Facilities	Wed	6:00 - 9:00 pm	L109	Rounds
EDA	5503	3	1	School Administration	Mon	6:00 - 9:00 pm	A100	Brown
EDA	5503	3	1	School Administration	Sat	1:00 - 3:50 pm	L109	Miller
EDA	5803	3	1	Internship in Educational Administration	TBA		TBA	Brown
COLLEGE COURSES								
EDC	5901	1	1	Portfolio Assessment	TBA		TBA	Fleming
COUNSELING								
EDC	5323	3	1	Advanced Theories of Psychological Counseling	Mon	6:00 - 9:00 pm	L109	Westbrook
EDC	5433	3	1	School Counselors & Play Therapy	Wed	6:00 - 9:00 pm	S124	Holland
EDC	5453	3	1	Achievement, Ability, & Processing	Tues	6:00 - 9:00 pm	TBA	Westbrook
EDC	5803	3	1	Internship in Counseling	TBA		TBA	Posey, E
EDC	5813	3	1	Counseling Practicum	TBA		TBA	Sanders
CURRICULUM & INSTRUCTION								
EDI	5113	3	1	Brain-Based Instruction	Mon	6:00 - 9:00 pm	TBA	Posey, E
EDI	5113	3	1	Brain-Based Instruction	Thur	6:00 - 9:00 pm	TBA	Cagle
EDI	5113	3	3	Brain-Based Instruction (CSW-C)	Thur	6:00 - 9:00 pm	CSWC	Crouch
EDI	5133	3	1	Advanced Instructional Technology	Tues	5:30 - 8:30 pm	A105	Erickson
EDI	5213	3	1	Theories of Curriculum Development	Mon	6:00 - 9:00 pm	TBA	Sanders
EDI	5213	3	2	Theories of Curriculum Development	Thur	6:00 - 9:00 pm	L109	DeSoto
EDI	5213	3	3	Theories of Curriculum Development	Sat	9:00 - 11:50 am	MHC	Huddleston
EDI	5303	3	1	Policies & Public Relations	Tues	6:00 - 9:00 pm	TBA	Brown
EDI	5303	3	2	Policies & Public Relations	Sat	9:00 - 11:50 am	L100	Posey, B
EDI	5413	3	1	Program Development & Management	Wed	6:00 - 9:00 pm	TBA	Fleming
EDI	5413	3	2	Program Development & Management	Tues	6:00 - 9:00 pm	L109	Hunt, M
EDUCATION CORE								
EDU	5213	3	1	Professional/Ethical Issues in Counseling	Thur	6:00 - 9:00 pm	S124	Sanders
EDU	5413	3	1	Program Development & Management	Wed	6:00 - 9:00 pm	TBA	Fleming
EDU	5413	3	2	Program Development & Management	Tues	6:00 - 9:00 pm	L109	Hunt, M
EDU	5513	3	1	Culturally Diverse & Special Needs Populations	Mon	6:00 - 9:00 pm	S124	Cagle
EDU	5513	3	2	Culturally Diverse & Special Needs Populations	Sat	9:00 - 11:50 am	L109	Williams
EDU	5523	3	1	Educational Statistics & Research Design	Wed	6:00 - 9:00 pm	A100	Brown
EDU	5523	3	2	Educational Statistics & Research Design	Tues	6:00 - 9:00 pm	S124	Fleming
EDU	5523	3	40	Educational Statistics & Research Design	Tues	6:00 - 9:00 pm	CSWC	Nance
EDUCATIONAL DIAGNOSTICIAN								
EDG	5113	3	1	Brain-Based Instruction	Mon	6:00 - 9:00 pm	TBA	Posey, E
EDG	5113	3	2	Brain-Based Instruction	Thur	6:00 - 9:00 pm	TBA	Cagle
EDG	5113	3	3	Brain-Based Instruction (CSW-C)	Thur	6:00 - 9:00 pm	CSWC	Crouch
EDG	5453	3	1	Achievement, Ability, & Processing	Tues	6:00 - 9:00 pm	TBA	Westbrook
EDG	5803	3	1	Internship in Educational Diagnostician	TBA		TBA	Westbrook
SPED	5453	3	1	Achievement, Ability, & Processing	Tues	6:00 - 9:00 pm	TBA	Westbrook

College of the Southwest - Carlsbad Spring "A" Session January 7 - March 15, 2002

UNDERGRADUATE COURSE OFFERINGS

DEPT	NO	CR	SEC	TITLE	DAY	TIME	FACULTY
ACCOUNTING							
ACT	3203	3	20	Intermediate Accounting I	Internet		Lunsford, P
ACT	3243	3	40	Cost Accounting I	Tues	6:00 - 9:00 pm	Lunsford, S
ACT	4343	3	20	Auditing Theory & Practice	Internet		Lunsford, S
ART							
ART	2203	3	11	The History of Western Art II	MW	1:00 - 2:20 pm	ITV
BIOLOGY							
BIO	3324	3	40	Vertebrate Zoology	W	6:00 - 9:00 pm	West, S
BIO	332L	1	40	Vertebrate Zoology Laboratory	TBA	2-Hour Lab	West, S
BIO	3404	3	40	Genetics	M	6:00 - 9:00 pm	Sengupta, S
BIO	340L	1	40	Genetics Laboratory	TBA	2-Hour Lab	Sengupta, S
BIO	4703	3	40	Ecology	Thurs	6:00 - 9:00 pm	Breene, R
BUSINESS							
BUA	2223	3	40	Principles of Real Estate	Tues	6:00 - 9:00 pm	Vandergrif, B
BUA	3303	3	40	Professional Communications & Sales Presentation	Wed	6:00 - 9:00 pm	Lunsford, S
COMPUTER SCIENCE							
CSI	2203	3	40	Educational Technology	Wed	6:00 - 9:00 pm	Baca, K
CRIMINAL JUSTICE							
CRJ	1113	3	20	Criminal Law I	Internet		Read, D
CRJ	1303	3	20	History of American Law Enforcement System	Internet		Staff
CRJ	2703	3	20	Topics in Criminal Justice: Terrorism	Internet		Read, D
CRJ	3203	3	20	Understanding Criminal Behavior	Internet		Staff
CRJ	4103	3	20	Corrections Operations & Management	Internet		Staff
CRJ	4203	3	20	Issues in Ethics, Law, & Criminal Justice	Internet		Staff
CRJ	4413	3	20	Civil Law & the Legal System	Internet		Staff

College of the Southwest Internet Classes - Spring Session "A" January 7 - March 15, 2002

DEPT	NO	CR	SEC	TITLE	DAY	TIME	ROOM	FACULTY
ACCOUNTING								
ACT	3203	3	12	Intermediate Accounting I	Internet		TBA	Lunsford, S
ACT	4343	3	12	Auditing Theory & Ethics	Internet		TBA	Lunsford, S
CRIMINAL JUSTICE								
CRJ	1113	3	12	Criminal Law I	Internet		TBA	Read, D
CRJ	1303	3	12	History of American Law Enforcement	Internet		TBA	Staff
CRJ	2703	3	12	Topics: Terrorism	Internet		TBA	Read, D
CRJ	3203	3	12	Understanding Criminal Behavior	Internet		TBA	Staff
CRJ	3303	3	12	Law Enforcement Management	Internet		TBA	Bower, W
CRJ	3313	3	12	Correctional Process	Internet		TBA	Staff
CRJ	4103	3	12	Corrections Operations & Management	Internet		TBA	Staff
CRJ	4203	3	12	Issues in Ethics, Law, & Criminal Justice	Internet		TBA	Staff
CRJ	4413	3	12	Civil Law & the Legal System	Internet		TBA	Staff
ECONOMICS								
ECO	2213	3	12	Freedom, Ethics, & Free Enterprise	Internet		TBA	Staff
ENGLISH								
ENG	1113	3	12	Rhetoric and Composition	Internet		TBA	Milligan, R
HISTORY								
HIS	2103	3	12	American History to 1876	Internet		TBA	Groves
MANAGEMENT								
MGT	2103	3	12	Principles of Management	Internet		TBA	Brown, G
PSYCHOLOGY								
PSY	4103	3	12	Personality	Internet		TBA	Hamel
RELIGION								
REL	1103	3	12	Old Testament Survey	Internet		TBA	Staff
SOCIOLOGY								
SOC	1103	3	12	Introduction to Sociology	Internet		TBA	Staff
SOC	3203	3	12	Race & Ethnic Relations	Internet		TBA	Staff

College of the Southwest Internet Classes - Spring Session "B" March 18 - May 24, 2002

DEPT	NO	CR	SEC	TITLE	DAY	TIME	ROOM	FACULTY
ACCOUNTING								
ACT	3213	3	16	Intermediate Accounting II	Internet		TBA	Lunsford, S
CRIMINAL JUSTICE								
CRJ	2203	3	16	Crime in America	Internet		TBA	Staff
CRJ	2403	3	16	Probation & Parole	Internet		TBA	Staff
CRJ	2703	3	16	Topics: Comparative Criminal Justice	Internet		TBA	Read, D
CRJ	3503	3	16	Juvenile Justice System	Internet		TBA	Read, D
CRJ	4403	3	16	Prosecution & Adjudication	Internet		TBA	Staff
CRJ	4503	3	16	Penology	Internet		TBA	Staff
ENGLISH								
ENG	1123	3	16	Rhetoric & Literature	Internet		TBA	Milligan, R
HISTORY								
HIS	2203	3	16	American History from 1877	Internet		TBA	Groves, K
MANAGEMENT								
MGT	3503	3	16	Organizational Behavior	Internet		TBA	Brown, G
PSYCHOLOGY								
PSY	3213	3	16	Developmental Psychology	Internet		TBA	Hamel
RELIGION								
REL	1203	3	16	New Testament Survey	Internet		TBA	Rogers
SOCIOLOGY								
SOC	2213	3	16	Marriage & the Family	Internet		TBA	Hamel
SOC	3503	3	16	Social Psychology	Internet		TBA	Staff



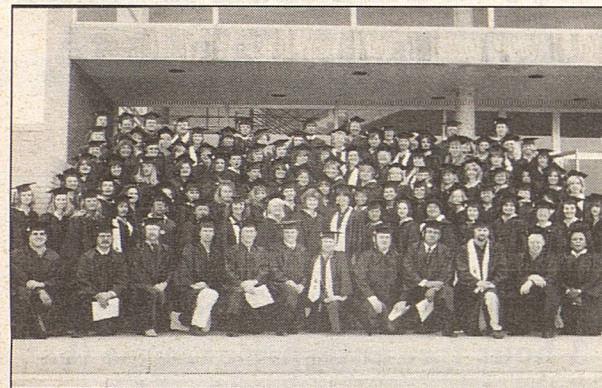
The American tradition of free enterprise, individual liberty & responsibility, the constitutional privilege of self-government

Every CSW graduate completes a 3-hour free enterprise course that provides an invaluable working knowledge of our heritage of freedom & responsibility, the market economy, and the role of government in a free society.



As CSW's most visible commitment to the principles of free enterprise, our Students in Free Enterprise team consistently ranks among the top handful of teams in the world.

Academic distinction: the higher levels of learning of CSW graduates



- ★ Alpha Chi National Honor Society
- ★ NAIA All-America Scholar Athletes
- ★ Sigma Tau Delta, the International English Honor Society
- ★ Who's Who Among America's Teachers
- ★ Who's Who Among Students in American Universities & Colleges

For value and quality, CSW is consistently named to the college guides of *U.S. News & World Report*, *Money* magazine, and *Time/Princeton Review*.

College of the Southwest - Hobbs Campus
Summer Session I
June 3 - June 28, 2002

MASTER OF SCIENCE IN EDUCATION COURSE OFFERINGS

DEPT NO	CR	SEC	TITLE	DAY	TIME
ADMINISTRATION					
EDA 5303	3	1	Policies & Public Relations	M-F	3:00 - 5:00 pm
EDA 5513	3	1	Theories of Administration	M-F	5:30 - 7:30 pm
EDA 5803	3	1	Internship in Educational Administration	TBA	TBA
COUNSELING					
EDC 5313	3	1	Counseling Techniques for School Counselors (June 3 - August 2, 2002)	M-F	3:00 - 4:00 pm
EDC 5423	3	1A	Child Adolescent Counseling	M-F	10:00 - 12:00 pm
EDC 5423	3	1B	Child Adolescent Counseling	M-F	5:30 - 7:30 pm
EDC 5463	3	1	Psychoeducational Assessment	M-F	10:00 - 12:00 pm
EDC 5803	3	1	Internship in Counseling	TBA	TBA
EDC 5813	3	1	Counseling Practicum	TBA	TBA
CURRICULUM & INSTRUCTION					
EDI 5131	1	1	Applied Advanced Technology (June 8 & 15, 2002)	Sat	8:00 am - 5:00 pm
EDI 5233	3	3	Advanced Classroom Management	M-F	12:30 - 2:30 pm
EDI 5303	3	1	Policies & Public Relations	M-F	3:00 - 5:00 pm
EDI 5413	3	1A	Program Development & Management	M-F	7:45 - 9:45 am
EDI 5413	3	1B	Program Development & Management	M-F	7:45 - 9:45 pm
EDUCATION CORE					
EDU 5103	3	1A	Instructional Strategies	M-F	10:00 - 12:30 pm
EDU 5103	3	1B	Instructional Strategies	M-F	12:30 - 2:30 pm
EDU 5203	3	1A	Theory of Learning & Development	M-F	12:30 - 2:30 pm
EDU 5203	3	1B	Theory of Learning & Development	M-F	5:30 - 7:30 pm
EDU 5413	3	1A	Program Development & Management	M-F	7:45 - 9:45 am
EDU 5413	3	1B	Program Development & Management	M-F	7:45 - 9:45 pm
EDU 5513	3	1	Culturally Diverse & Special Needs Populations	M-F	3:00 - 5:00 pm
EDUCATIONAL DIAGNOSTICIAN					
EDG 5453	3	1	Achievement, Ability, & Processing	M-F	7:45 - 9:45 am
EDG 5463	3	1	Psychoeducational Assessment	M-F	10:00 - 12:00 pm
EDG 5803	3	1	Internship in Educational Diagnostics	TBA	TBA

UNDERGRADUATE COURSE OFFERINGS

DEPT NO	CR	SEC	TITLE	DAY	TIME
ACCOUNTING					
ACT 3243	3	1	Cost Accounting I	M-F	3:00 - 5:00 pm
ACT 4503	3	1	CPA Review I	M-F	10:00 - 12:00 pm
ASTRONOMY					
AST 1104	3	1	Descriptive Astronomy	M-F	5:30 - 7:30 pm
AST 110L	1	1	Descriptive Astronomy Laboratory	M-F	7:30 - 8:45 pm
COMPUTER SCIENCE					
CSI 2203	3	1	Educational Technology	M-F	3:00 - 5:00 pm
CRIMINAL JUSTICE					
CRJ 3303	3	1	Law Enforcement Management	M-F	5:30 - 7:30 pm
ECONOMICS					
ECO 2213	3	1	Freedom, Ethics & Free Enterprise	M-F	10:00 - 12:00 pm
EDUCATION					
BIL 3202	2	1	Science & Math for K-12 Bilingual Learners	M-F	3:00 - 4:15 pm
BIL 3301	1	1	Assessment & Evaluation of Bilingual Learners	M-F	12:30 - 1:30 pm
BIL 3311	1	1	Parents & Community Relations & Involvement Strategies	M-F	1:30 - 2:30 pm
BIL 4101	1	1	Research in Bilingual Education	M-F	4:15 - 5:15 pm
EDU 2103	3	1	Foundations of Education	M-F	7:45 - 9:45 am
EDU 3213	3	1	Survey of Exceptional and Multicultural Learners	M-F	12:30 - 2:30 pm
EDU 3503	3	1	Communication Arts in Elementary School	M-F	10:00 - 12:00 pm
EDU 3523	3	1	Educational Measurement & Evaluation	M-F	12:30 - 2:30 pm
EDU 4114	4	1	Teaching in the Elementary Schools	M-F	3:00 - 5:30 pm
EDU 4203	3	1	Diagnostic/Corrective Teaching	M-F	7:45 - 9:45 am
SPED 2103	3	1	Introduction to Exceptional Learners & Special Education	M-F	10:00 - 12:00 pm
SPED 3423	3	1	Special Education Curriculum	M-F	12:30 - 2:30 pm
SPED 3523	3	1	Assessment, Evaluation, Referral, & Placement of the Exceptional Learner	M-F	7:45 - 9:45 am
SPED 4101	1	1	Research in Special Education	M-F	3:00 - 4:00 pm
SPED 4201	1	1	Learners Who are Gifted/Talented	M-F	4:00 - 5:00 pm
ENGLISH					
ENG 3513	3	1	Children's Literature	M-F	7:45 - 9:45 am
ENG 4703	3	1	Topics	M-F	10:00 - 12:00 pm
FINANCE					
FIN 2403	3	1	Principles of Finance	M-F	5:30 - 7:30 pm
HISTORY					
HIS 1103	3	1	Western Civilization to 1715	M-F	10:00 - 12:00 pm
MANAGEMENT					
MGT 4162	2	1	Creating a Business Plan	M-F	12:30 - 1:45 pm
MATHEMATICS					
MAT 1103	3	1	College Algebra for General Education	M-F	10:00 - 12:00 pm
MAT 2103	3	1	Principles of Probability & Statistics	M-F	7:45 - 9:45 am
MUSIC					
MUS 1103	3	1	Music Appreciation	M-F	7:45 - 9:45 am
PSYCHOLOGY					
PSY 3213	3	1	Developmental Psychology	M-F	7:45 - 9:45 pm
PSY 3403	3	1	Interpersonal Group Dynamics	M-F	12:30 - 2:30 pm
PSY 3503	3	1	Social Psychology	M-F	5:30 - 7:30 pm
RELIGION					
REL 1203	3	1	New Testament Survey	M-F	3:00 - 5:00 pm
SOCIOLOGY					
SOC 3503	3	1	Social Psychology	M-F	5:30 - 7:30 pm

College of the Southwest - Hobbs Campus
Summer Session II
July 8 - August 2, 2002

MASTER OF SCIENCE IN EDUCATION COURSE OFFERINGS

DEPT NO	CR	SEC	TITLE	DAY	TIME
ADMINISTRATION					
EDA 5213	3	2	Theories of Curriculum Development	M-F	12:30 - 2:30 pm
EDA 5313	3	2A	Educational Law	M-F	12:30 - 2:30 pm
EDA 5313	3	2B	Educational Law	M-F	5:30 - 7:30 pm
EDA 5403	3	2	Educational Finance & Facilities	M-F	7:45 - 9:45 pm
EDA 5523	3	2	Applied Educational Leadership	M-F	TBA
EDA 5803	3	2	Internship in Educational Administration	M-F	TBA
COUNSELING					
EDC 5323	3	2	Advanced Theories of Counseling	M-F	7:45 - 9:45 am
EDC 5443	3	2	Individual Cognitive Assessment	M-F	10:00 - 12:00 pm
EDC 5713	3	2	Psychopathology for School Counselors	M-F	5:30 - 7:30 pm
EDC 5803	3	2	Internship in Counseling	M-F	TBA
EDC 5813	3	2	Counseling in Practicum	TBA	TBA
CURRICULUM AND INSTRUCTION					
EDI 5213	3	2	Theories of Curriculum Development	M-F	12:30 - 2:30 pm
EDI 5223	3	2	Advanced Assessment	M-F	3:00 - 5:00 pm
EDI 5233	3	2	Advanced Classroom Management	M-F	10:00 - 12:00 pm
EDI 5313	3	2A	Educational Law	M-F	12:30 - 2:30 pm
EDI 5313	3	2B	Educational Law	M-F	5:30 - 7:30 pm
EDI 5333	3	2	Reading Comprehension Across the Curriculum	M-F	5:30 - 7:30 pm
EDUCATION CORE					
EDU 5213	3	2	Personal/Ethical Issues in Counseling	M-F	5:30 - 7:30 pm
EDU 5513	3	2	Culturally Diverse and Special Needs Populations	M-F	7:45 - 9:45 am
EDUCATIONAL DIAGNOSTICIAN					
EDG 5223	3	2	Advanced Assessment	M-F	3:00 - 5:00 pm
EDG 5443	3	2	Individual Cognitive Assessment	M-F	10:00 - 12:00 pm
EDG 5803	3	2	Internship in Educational Diagnostics	M-F	TBA

UNDERGRADUATE COURSE OFFERINGS

DEPT NO	CR	SEC	TITLE	DAY	TIME
ACCOUNTING					
ACT 4313	3	2	CPA Review II	M-F	3:00 - 5:00 pm
ACT 4343	3	2	Auditing Theory and Ethics	M-F	5:30 - 7:00 pm
ACT 4813	3	2	Internship in Accounting	TBA	TBA
COMPUTER SCIENCE					
CSI 1303	3	2	Business Technology	M-F	12:30 - 2:30 pm
CRIMINAL JUSTICE					
CRJ 3203	3	2	Understanding Criminal Behavior	M-F	5:30 - 7:30 pm
ECONOMICS					
ECO 2103	3	2	Principals of Macroeconomics	M-F	3:00 - 5:00 pm
EDUCATION					
BIL 3111	1	2	Language Arts for K-12 Bilingual Learners	M-F	4:15 - 5:00 pm
BIL 3112	2	2	Social Studies/Fine Arts for K-12 Bilingual Learners	M-F	3:00 - 4:15 pm
EDU 3203	3	2	Psychological Foundations of Teaching & Learning	M-F	7:45 - 9:45 am
EDU 3213	3	2	Survey of Multicultural & Exceptional Learners	M-F	12:30 - 2:30 pm
EDU 3222	2	2	Classroom Management and Organization	M-F	10:00 - 11:15 am
EDU 4213	3	2	Teaching in the Secondary School	M-F	7:45 - 9:45 am
EDU 4413	3	2	Reading in Content Areas	M-F	3:00 - 5:00 pm
SPED 3222	2	2	Classroom Management & Exceptional Learners	M-F	12:30 - 1:45 pm
SPED 3323	3	2	Methods and Materials for Special Education	M-F	7:45 - 9:45 am
SPED 4211	1	2	Learners with Physical Impairments	M-F	10:00 - 11:00 am
SPED 4221	1	2	Learners with Cognitive Deficits	M-F	11:00 - 12:00 pm
ENGLISH					
ENG 2213	3	2	Creative Writing	M-F	12:30 - 2:30 pm
ENG 4403	3	2	Advanced Composition	M-F	10:00 - 12:00 pm
FINANCE					
FIN 3403	3	2	Investments/Personal Finance Planning	M-F	10:00 - 12:00 pm
HISTORY					
HIS 1203	3	2	Western Civilization from 1716	M-F	10:00 - 12:00 pm
MANAGEMENT					
MGT 2103	3	2	Principles of Management	M-F	10:00 - 12:00 pm
MARKETING					
MKT 3323	3	2	Principles of Marketing & Sales	M-F	12:30 - 2:30 pm
MKT 4813	3	2	Marketing Internship	TBA	TBA
POLITICAL SCIENCE					
POS 4223	3	2	Constitutional History	M-F	7:45 - 9:45 am
PSYCHOLOGY					
PSY 3103	3	2	Principles of Behavior Management	M-F	5:30 - 7:30 pm
PSY 4203	3	2	Abnormal Psychology	M-F	7:45 - 9:45 pm
PSY 4403	3	2	Experimental Psychology	M-F	12:30 - 2:30 pm
PSY 4703	3	2	Topics	M-F	7:45 - 9:45 am
RELIGION					
REL 1103	3	2	Old Testament Survey	M-F	3:00 - 5:00 pm
SOCIOLOGY					
SOC 3203	3	2	Race and Ethnic Relations	M-F	7:45 - 9:45 pm

Independence of support and governance

Because CSW does not accept federal, state, or local government funds for capital or operational needs, the College remains free of governmental control. Instead, CSW is guided by a dedicated Board of Trustees whose collective experience and business acumen provide invaluable leadership.

CSW's Board of Trustees
Samuel S. Spencer, Jr., Chairman

- Chris Brininstool
- Jim Britton
- David Chavez
- Genaro Gonzales
- William J. Gray
- Mike Hartgraves
- Joe Henderson
- Mike Hoyl
- Gay Kernan
- Jim Koontz
- John Kuitu
- Pete McCleskey
- Jim Miller
- Randy Owensby
- Gary Don Reagan
- Samuel W. Small
- Charley Trimble
- Kent Waldrop
- Jim Walls
- Thelma A. Webber
- Peyton Yates