

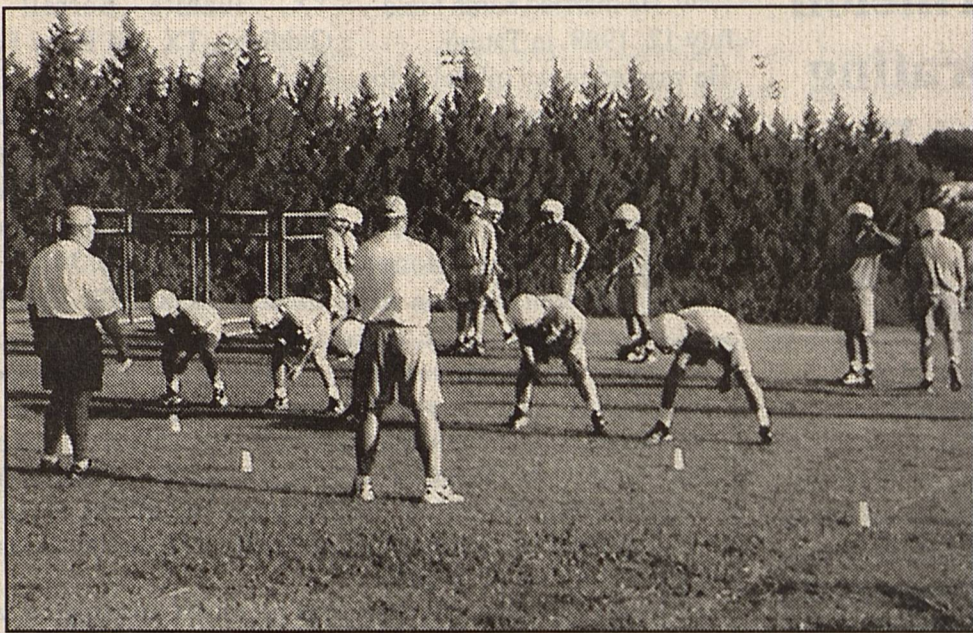
Cowboy News Country



Published each Wednesday in the county seat of Yoakum County, Plains, Texas

Volume V11, Issue 48 Aug. 15, 2001

Pigskin Season Coming Up Soon



Coaches McWhirter and Davis drill linemen in blocking assignments

Two-a-day football workouts are underway at the PHS practice field, and there is lots of panting, puffing and sweating going on. Coach Larry McMinn reported some 35 players are practicing, but expects to pick up a few more by time school starts. "We have our recurring problem; guys who want to play, some speed, but not much size." He reported eight starters from the 2000 Cowboy team are currently working out. A positive note - The long, tiring trips to games at Coahoma, Stanton and Colorado City won't be a problem this year - they are home games this season.



Safety procedure - sweat a great deal, drink a great deal of water

Plains ISD adopts budget for upcoming year

The Plains ISD board met in regular session on August 6 and considered a number of important topics. A top issue on the agenda was adopting a budget for the upcoming school year, which included additional expenditures over normal operating costs. Those expenditures covered capital projects including additional roof replacement over several areas of the three campus facility, replacement of the running track, and additional money to help pay the cost of a large increase in recapture to the state. Superintendent Jim Haynes explained, "For those people unfamiliar with the school funding system in Texas, Plains ISD must send locally raised property tax money to the state, to be used by the poorer school districts. Plains ISD is considered a rich school district, and so must comply with this law to help funds other school districts."

To raise the funds needed to operate the school district and pay for additional, or 'Robin Hood' money sent to the state, the board adopted a tax rate of \$1.35 per \$100 valuation. This tax rate automatically triggered a tax roll back election, which will be held September 29. Haynes said, "Interested parties are invited to call my office for details concerning the election, and the need for the \$1.35 rate. I will be glad to speak to groups or individuals concerning the need for supporting the board adopted rate." The board also reviewed the work done on redrawing single-member district lines, and set a public hearing date on August 21 at 1:00 P.M., to hear public testimony and make a final decision on the suggested new boundaries. These combined new issues will make the first two months of school extremely hectic for the administration and board.

PHS Cowboys 2001 Schedule

Date	Opponent	Place	Time
Aug. 18	*Tahoka	there	TBA
Aug. 24	*Morton	here	TBA
Aug. 31	Open		
Sept. 7	Abernathy	here	8:00
Sept. 14	Sudan	there	8:00
Sept. 21	Sundown	there	8:00
Sept. 28	**Petersburg	here	8:00
Oct. 5	Wink	there	8:00
Oct. 12	Stanton	here	7:30
Oct. 19	Coahoma	here	7:30
Oct. 26	Seagraves	there	7:30
Nov. 2	Colorado City	here	7:30
Nov. 9	Forsan	there	7:30

*Scrimmages
**Homecoming

From The Editor

I like my job, or at least 95 percent of it. I suppose there's no such thing as an absolutely perfect job. I'm sure scientists must often work on projects they see little merit in. Lawyers probably take cases they're not truly enthused over. Doctors probably treat some patients, some maladies, they would prefer another physician take care of. Judges often have to rule on cases they wish they didn't have to handle, and even ministers must often deal with situations they would like to wish off on another minister. This is the way I all too often find myself feeling about being editor of a small town weekly newspaper. Events, stories, news items come along, and you suddenly wish you could ignore some of them, not report them, and you had much rather be driving a John Deere tractor, even hoeing weeds than reporting what has to be reported. When you must feature an article you know will cause friends or family members pain and embarrassment, it's very tempting to stick one's head in the sand and hope it goes away. Invariably, the event itself will not go away, for it's common knowledge around the community, and is legal public information. The event will also likely be reported in other area papers. It is very tempting to play a pick and choose game --- report and print detrimental information only about people you don't know or care about. That is also quick death for a newspaper. If you fail to report a court proceeding for one person because you want to spare that person, or that family, you will draw down the wrath of every other person or family you DO report on. We occasionally must report court proceedings which are painful for us to write, and we fully realize the stories are painful for innocent families and friends to read. We hope ALL our readers will understand our position in such matters; We have no choice; We cannot play pick and choose in this job.

Promoting Round Up No. 6



Immediately following the conclusion of Rodeo and Reunion weekend, city employees removed the banner advertising that event, and simultaneously raised the Watermelon Round Up banner shown here. Dozens of volunteers are busy organizing and promoting the event. If you would like to take part in making #6 a big success, jobs are still open!

Residential electric rates a bargain here

Prolonged steaming hot weather here and throughout the Southwest have put a strain on air conditioning units, with an accompanying strain on residents wallets when it's time to pay the electric bill. Residents of Plains may grumble when they see larger than normal power bills, but their grumbles would be longer and louder if they lived in many locations around the country, where average monthly electric rates are much higher than those charged by city residents supplier, Lea County Electric Cooperative. Statistical data for this article was furnished by the Cooperative, and by City Administrator David Brunson. All data is based on 1000 kilowatt hours. The average residence in Plains consumes around 750 kWh per month. The latest cost figures reflect rates charged in June 2001.

Investor Owned Utilities per kWh-
Central Power & Light - \$100.00
El Paso Electric - \$109.97

Entergy Gulf States - \$95.14
Reliant Energy HL & P - \$110.41
Texas - New Mexico Power - \$107.01
West Texas Utilities - \$104.78
Average investor owned charge - \$94.25
Cooperatives per kWh-
CoServ Electric (Denton County) - \$105.54
Nueces Electric CoOp - \$90.54
San Patricio Electric CoOp - \$90.86
South Plains Electric CoOp - \$90.34
Tri-County Electric CoOp - \$92.45
Average cooperative charge - \$85.49
Texas Municipalities per kWh
The average charge for 1000 kWh by Texas municipally owned electric utilities was \$87.97
In sharp contrast to these charges, a rate calculation sheet from Lea County Electric dated August 10 shows a 1000 kWh base rate of \$54.85, plus a fuel adjustment of \$14.78 for a total monthly charge of \$69.63. Paying your bill may be painful, but it's a pretty good bargain.

Hobbs, NM Ag Teacher Spends Month In Russia

** Information for this article is courtesy of writer Starla Jones, from a recent article published in the Hobbs News-Sun. Brent Van Dyke is the husband of former resident and PHS graduate Kim Van Dyke, the daughter of locals Bo and Sheila Stephens.

"An agriculture teacher at Hobbs High School and its FFA sponsor, Brent Van Dyke has been to Russia three times over the past six years and during that time witnessed its evolution from a socialistic country that suffered from Iron Curtain isolation to one slowly adopting the free enterprise ideals of its Western neighbors.

First invited along with FFA students to teach the free enter-

prise system they'd won a national award for in 1995, Van Dyke returned to Russia in 1998 and again this June. His mission this time was to help develop a marketing curriculum for high schools and work with government officials on eliminating international barriers to trade.

As a direct result of Van Dyke's work, the agriculturally dependent city of Moldova worked out a recent agreement to import Tyson chicken legs in exchange for exporting its wine. Another agreement to export honey in exchange for hay equipment is in the works.

Van Dyke was impressed with the intelligence of the Russian people, especially the younger

ones. He heard kids speak in three or four different languages. About 90 percent of the young people speak English, and are interested in math and science.

Another surprise was the lack of crime there, as well as a resurgence in its religious community. Although there is a shortage of churches, sometimes services are held in makeshift sanctuaries and are 'just packed', according to the Hobbs educator.

After returning to the United States, Van Dyke made reports to the USDA and New Mexico's congressional delegation. The politicians are in agreement with his assessment of Russia: 'Their people are

extremely intelligent. They just lack technology and resources. If they ever figure out the free enterprise system, they're going to be a force to reckon with, because they have such a tremendous amount of natural resources - oil, agriculture, wood and hydroelectricity.'

Van Dyke is now making lectures at College of the Southwest about his trip, and concludes by saying, 'Somebody is going to step in and be Russia's mentor. That's inevitable. If it's not the United States, then it's going to be someone else. My opinion is it better be the U.S., because I would rather have Russia as our ally rather than our enemy.'

County Court criminal Cases

Eight criminal cases were heard in County Court August 8, Judge Dallas Brewer presiding, and Criminal District Attorney Richard Clark representing the state.

James Deward Johnson pled guilty to assault causing injury to a family member. A 90 day jail sentence was suspended and probated 12 months. He must pay \$210 court costs, complete the 8 hour Anger management course provided by Women's Protective Service, and pay the \$25 fee. He was represented by Attorney Warren New, and investigating officer was William Gardner, Denver City Police.

Will Taff pled guilty to theft by check, over \$20 but less than \$500. He will make time payments on \$214 court costs, must pay \$772 restitution, and serve 24 hours community service.

Dustie Lawrence Hicks pled guilty to driving with suspended license. He was fined \$100, must pay \$210 court costs, and a reinstatement fee of \$100 to the DPS. Investigating officer was Trooper Brad Taylor, DPS.

Mario Caballero pled guilty to theft by check, over \$20 but

less than \$500. His 180 day jail sentence was suspended and probated 12 months. He will make time payments on \$255 court costs, must pay \$931.47 restitution, and serve 24 hours community service.

Jeremy Ray Grado pled guilty to a first DWI, blood test .11. A 90 day jail sentence was suspended and probated 12 months. He must pay the \$150.25 balance on court costs by September 10, and was fined \$500. He must pay \$113.50 restitution to Yoakum County Hospital. He will serve 72 hours in jail with credit for 10.5 hours served. He must complete the DWI first offender program, serve 24 hours community service, and attend weekly AA meetings.

His attorney was Jack R. Stern, and investigating officer was William Gardner, D.C. Police. Gabriel Lopez Rios pled guilty to a first DWI, BT .071/.088. A 90 day jail sentence was suspended and probated 12 months. He will make time payments on \$225 court costs, was fined \$500, must spend 72 hours in jail with credit for 12 hours, attend weekly AA meetings, complete the DWI first offender program, and perform 24 hours community service.

Cliff Payne was his attorney, investigating officer was Rodger Holguin, D.C. Police.

Jose Ramon Lopez-Mendias pled guilty to a first DWI, breath test refused. His 90 day jail sentence was suspended and probated 12 months. He will make time payments on \$225 court costs, and was fined \$500. An assault causes bodily injury cause was adjudicated. He will serve 72 hours in jail, with credit for 5 days served. He must attend weekly AA meetings, complete the first offender program, and perform 24 hours community service.

Justin Neil Bennett pled guilty to a first DWI, blood test .09. A 90 day jail sentence was suspended and probated 12 months. He was fined \$500, must pay \$225 court costs, and restitution of \$208.50. He must spend 72 hours in jail with credit for 13.5 hours served, attend weekly AA meetings, and complete the DWI first offender program. He must surrender his driver license 90 days, and install an ignition interlock device on any vehicle driven. Investigating officer was DPS Trooper Brad Taylor.

Watermelon Decorating Contest Rules



A new feature of the 6th annual Yoakum County Watermelon Round Up scheduled for Saturday, September 1 is a watermelon decorating contest.

Official rules for the contest include;

1. Entrants must live in Yoakum County or within 10 miles of county line.
2. Awards of \$250 savings bonds go to age groups Juniors, 0 - 9, Youth, 10 - 20, and Adults 21 and up. Any age group is eligible for Best in Show for a \$500 savings bond, regardless of other age group wins.
3. Winners must verify savings bonds have correct name, address and social security number with donor banks.
4. A whole, or parts of real watermelon of any variety may be used.
5. No restrictions apply on decoration materials except must be in good taste. Chair will determine if inappropriate in case of dispute.
6. Painting or carving may be done on the watermelon(s).
7. If prop to hold watermelon in certain position is needed, contestant is responsible.
8. Contestant must leave watermelon on display from 10 AM until 5 PM day of contest. Disposal of melon or materials will be handled by Chair if contestant doesn't claim it.
9. Only one entrant per person; Form to be filled out will be at the information desk when entering contest.
10. Name plates may accompany entry if it adds to understanding of decorations.



Yoakum County Hospital, Plains Clinic Boost PHS Athletics



Yoakum County Hospital Controller Suann Parrish, center of photo, is surrounded by PHS Cheerleaders Stacie Alldrege, Jessica Rodriguez, Kerri Hansen, Jamie Covarrubias, Jill Gray, and Allison Butler. The girls are holding "Battle Flags", which will be given to Cowboy and Cowgirl fans at PHS sporting events this year. The flags were donated to the school by Yoakum County Hospital and the Plains Clinic.



Edward Jones

Serving Individual Investors Since 1871

Mike Speed
Investment Representative

Stocks • Mutual Funds • Bonds • CDs
Governmental Securities • Tax-Free Bonds
Money Market Funds • IRAs

308 West Main Brownfield, Texas 79316 (806) 637-2364 1-800-215-0124

HICKS

*Carpet *Heating *Air Conditioning

*Maytag Appliances

204 N. Main, Denver City

806-592-3973 or 592-3930



Its hard to stop a TRANE®



Obituary

Services Held For Homer Shelton

Services for Homer Shelton, 87, of Tatum, NM were held at 11:00 am., August 10 at the First Baptist Church in Tatum with the Reverend Wayne Brazil officiating. Masonic graveside services under the auspices of Tatum Lodge No. 46 in Tatum Cemetery. Arrangements were under the direction of Rix Funeral Directors. He died Tuesday, August 7th at Quail Ridge Alzheimer Care Center, Lubbock, TX.

He was born November 5, 1913 in Calvert, TX and has been a resident of Tatum since July 12, 1988, in Tatum.

He worked in the oil fields for 30 years and owned and operated the "Steak House Cafe" in Tatum until he retired in 1983. Throughout his life he raised Appaloosa and Quarter Horses and enjoyed trail rides on his

covered wagon with a team of mules. He was a thirty second degree Scottish Rite Mason and a member of the Lion's Club, Tatum Chamber of Commerce and Tatum Baptist Church.

Survivors include his wife, Sarah Field Shelton of Tatum; two sons, Robert Shelton of Sublimity, Oregon, and Jerry Shelton of Lubbock, TX; a daughter, Marcella Shelton of Las Angeles, Cal.; three grandchildren and four great-grandchildren; a brother, Virgil Shelton of Shepherd, TX; three sisters, Doris Nettles of Lott, TX, Juanita Sorrell of Giddings, TX and Ruby Faye Biel of Dripping Springs, TX.

The family suggests memorials be sent to the Alzheimer's Association, 3601 4th Street, Lubbock, TX 79420 or American Cancer Society, 3411 73rd Street, Lubbock, TX 79423.

Attention, any student that was not attending Plains Elementary or Jr. High School in May of 2001 should pre-register for the new school year. Registration will be open for any child that will be four years old by September 1, 2001 through the eighth grade. Pre-registration will be held from 8:00 AM. to 3:00 PM., August 13-17. Please bring report card, shot records, birth certificate, and social security card if possible.

Atencion, cualquier estudiante que no estaba asistiendo a las Llanuras Elemental o Hijo, High School in May of 2001 should pre-register for the new school year. El registro estara abierto para cualquier nino que tendra cuatro anos en 1 de septiembre de 2001 a traves de la octava calidad. El pre-registro se sostendra de 8:00 ES. a 3:00 PM. el 13-17 de agosto. Por favor traiga tarjeta del informe, archivos del tiro, certificado del nacimiento, y tarjeta del seguro social si posible.

INVITATION FOR BIDS

The City of Plains will receive bids for Water System Improvements - Distribution Pump Station, until 4:00 p.m. on September 7, 2001 at City Hall, Plains, Texas. The bids will be publicly opened and read aloud at that time. Bids will be considered at the regular City Council Meeting on September 10, 2001.

Bids are invited for several items and quantities of work as follows:

1. Installation of piping, fittings and valves
2. Installation of three horizontal centrifugal pumps
3. Metal Building (Alternate Bid Item)

Bid/Contact Documents including Drawings and Technical Specifications are on file at West Texas Consultants, Inc., 305 N. W. Avenue "C", Andrews, Texas 79714.

Copies of Bid/Contract Documents may be obtained by depositing \$25.00 with the Engineer for each set of documents obtained. The deposit will be refunded if the documents and drawings are returned in good condition within 10 days following the bid opening.

A Bid Bond in the amount of 5% of the bid issued by an acceptable surety shall be submitted with each bid. A certified check or bank draft payable to the City of Plains may be submitted in lieu of the Bid Bond.

The City of Plains reserves the right to reject any or all bids or to waive any informalities in the bidding.

Bids may be held by the City of Plains for a period not to exceed 30 days from the date of the bid opening for the purpose of reviewing the bids and investigating the bidders qualifications prior to the contract award.

CITY OF PLAINS

T. J. MILLER, MAYOR

MULTI - PERIL CROP & CROP HAIL

STATE  LINE
INSURANCE
DANNY BELL
Office 456-3521 Home 456-6325
Mobile 456-7517

Hunter education class at SPC

A series of hunter education classes have been scheduled at South Plains College in Levelland. Topics include hunting rules and regulations,

ethics and responsibilities, wildlife conservation, modern and primitive hunting weapons, hunting safety, outdoor survival and first aid. Participants must be 12 years old to be certified. Hunters 17 years old or older must have a certificate to hunt in Texas. Cost is \$10 per person, and instructors are Rick and Betty Monger. To pre-register, call 806-894-9611, ext. 2341.

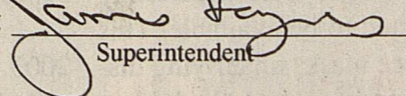
Session one of the classes will start Saturday, August 18, 9 am-6 pm, and Sunday, August 19, 1:30 pm-5 pm, in the SPC Law Enforcement Building, room to be announced.

A second session is scheduled for September 15 and 16, same hours and location, and the third session will be held November 10 and 11, same hours and location.

Notice of Public Hearing Plains ISD, Plains, Texas

The School Board of Plains ISD cordially invites the Public to attend a hearing on the topic of reapportionment on the 21st day of August 2001, at 1:00 p.m. This meeting will be held in the boardroom located in the Superintendent's office in Plains, Texas.

The School Board is considering one or more alternate plans for the redistricting of Plains ISD districts, which may be adopted after the public hearing is ended. Public comment is sincerely solicited.

Signed: 
Superintendent

Pursuant to Chapter 552 of the Texas Government Code, Notice is hereby given that the School Board of Plains ISD, Plains, Texas will convene in special session on the 21st day of August 2001, at 1:00 p.m. to receive public comment on the reapportionment of the School Board districts for Plains ISD. Following the public hearing, the School Board will take up for consideration and possible action one or more alternative plans for the redistricting of the School Board districts. The Court reserves the right to take any and all appropriate action regarding the redistricting of Plains ISD political boundaries, including the acceptance of new boundaries for the School Board districts, modification of any boundaries, and/or tabling the pending proposals for later consideration and/or action.

The Public is invited to attend and participate in this meeting. Those wishing to address the School Board should sign a speakers request form provided for this purpose. Each speaker will be asked to come before the Board, to identify themselves, their address, and the School Board district they reside within. Comments should be reasonably concise and to the point. Questions will be answered, but the Board will not permit argument or excessive discussion of any particular topic. The hearing will be conducted under rules of judicial decorum. A tape recording of the hearing will be made. Your comments will be transcribed and included with the submission of the proposed changes to existing School Board districts to the United States Department of Justice.

NOTICE OF PUBLIC HEARING ON TAX INCREASE

The Yoakum County Court will hold a public hearing on a proposal to increase total tax revenues from properties on the tax roll by 8 percent. Your individual taxes may increase or decrease, depending on the change in the taxable value of your property in relation to the change in taxable value of all other property and the tax rate that is adopted.

The public hearing will be held on August 22nd from 5:00 - 6:00pm at the District Courtroom in the Courthouse at Plains.

FOR the proposal: Dallas Brewer, County Judge
Woody Lindsey, Commissioner, Precinct 1
JR Slentz, Commissioner, Precinct 2
Ty Earl Powell, Commissioner, Precinct 3

AGAINST the proposal: None
PRESENT and not voting: None
ABSENT: Jack Cobb, Commissioner, Precinct 4

The following table compares taxes on an average home in this taxing unit last year to taxes proposed on the average home this year. Again, your individual taxes may be higher or lower, depending on the taxable value of your property.

	Last Year	This Year
Average residence homestead value	\$ 38,686	\$ 38,904
General exemptions available (amount available on the average homestead, not including senior citizen's or disabled person's exemptions)	0	0
Average taxable value	\$ 38,686	\$ 38,904
Tax rate	.49187/ \$100	.37121 / \$100
Tax	\$ 190.28	\$ 144.41

Under this proposal, taxes on the average homestead would decrease by \$45.87 or 24.1 percent compared with last year's taxes. Comparing tax rates without adjusting for changes in property value, the tax rate would decrease by \$ 0.12066 per \$100 of taxable value or 24.5 percent compared to last year's tax rate. These tax rate figures are not adjusted for changes in the taxable value of property.

New assignments at PISD



The teachers shown here were introduced to the Plains ISD Board of Trustees during the board meeting August 6. Shown left to right are Laurie Biera, Speech Therapy, Kathy Haynes, Second Grade, Tege Taylor, Third Grade, and Kevin Bartley, Elementary P.E. and head Baseball Coach.

Biera and Bartley are both new to the district. During the meeting, Superintendent Jim Haynes presented Cowboy Country News with a 'Media Honor Roll certificate', the third time CCN has won the award.

2001 Property Tax Rates in Yoakum County		
This notice concerns 2001 property tax rates for Yoakum County. It presents information about three tax rates. Last year's tax rate is the actual rate the taxing unit used to determine property taxes last year. This year's effective tax rate would impose the same total taxes as last year if you compare properties taxed in both years. This year's rollback tax rate is the highest tax rate the taxing unit can set before taxpayers can start tax rollback procedures. In each case these rates are found by dividing the total amount of taxes by the tax base (the total value of taxable property) with adjustments as required by state law. The rates are given per \$100 of property value.		
	General Fund	Farm to Market/ Flood Control Fund
Last year's tax rate:		
Last year's operating taxes	\$ 5,834,681	\$ 1,025,860
Last year's debt taxes	\$ 0	\$ 0
Last year's total taxes	\$ 5,834,681	\$ 1,025,860
Last year's tax base	\$1,395,255,966	\$1,392,130,466
Last year's total tax rate	\$.41818 / \$100	\$.7369 / \$100
This year's effective tax rate:		
Last year's adjusted taxes (after subtracting taxes on lost property)	\$ 5,832,605	\$ 1,025,547
+ This year's adjusted tax base (after subtracting value of new property)	\$1,995,658,417	\$1,992,574,917
- This year's effective tax rate for each fund	\$.29226 / \$100	\$.05146 / \$100
Total effective tax rate	\$.34372 / \$100	
x 1.03 - maximum rate unless unit publishes notices and holds hearing	\$.35403 / \$100	
This year's rollback tax rate:		
Last year's adjusted operating taxes (after subtracting taxes on lost property and adjusting for any transferred function, tax increment financing, state criminal justice mandate, and/or enhanced indigent health care expenditures)	\$ 5,832,605	\$ 1,025,547
+ This year's adjusted tax base	\$1,995,658,417	\$1,992,574,917
- This year's effective operating rate	\$.29226 / \$100	\$.05146 / \$100
x 1.08 - this year's maximum operating rate	\$.31564 / \$100	\$.05557 / \$100
+ This year's debt rate	\$ 0 / \$100	\$ 0 / \$100
- This year's rollback rate for each fund	\$.31564 / \$100	\$.05557 / \$100
This year's total rollback rate	\$.37121 / \$100	

Statement of Increase/Decrease

If Yoakum County adopts a 2001 tax rate equal to the effective tax rate of \$.34372 per \$100 of value, taxes would decrease compared to 2000 taxes by \$ 262.00.

Schedule A - Unencumbered Fund Balances

The following estimated balances will be left in the unit's property tax accounts at the end of the fiscal year. These balances are not encumbered by a corresponding debt obligation.

Type of Property Tax Fund	Balance
General Fund	1,636,939
Road & Bridge Precincts	1,565,362
Jury	55,933

Schedule B - 2001 Debt Service

The unit plans to pay the following amounts for long-term debts that are secured by property taxes. These amounts will be paid from property tax revenues (or additional sales tax revenues, if applicable).

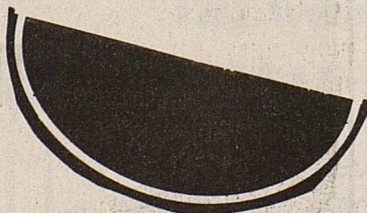
Description of Debt	Principal or Contract Payment to be Paid from Property Taxes	Interest to be Paid from Property Taxes	Other Amounts to be Paid	Total Payment
	\$	\$	\$	\$
(expand as needed)				
Total required for 2001 debt service		\$		\$ 0
- Amount (if any) paid from funds listed in Schedule A		\$		\$ 0
- Amount (if any) paid from other resources		\$		\$ 0
- Excess collections last year		\$		\$ 0
- Total to be paid from taxes in 2001		\$		\$ 0
+ Amount added in anticipation that the unit will collect only % of its taxes in 2001		\$		\$ 0
- Total Debt Levy		\$		\$ 0

This notice contains a summary of actual effective and rollback tax rates' calculations. You can inspect a copy of the full calculations at Yoakum County Tax Office, Ave G and Cowboy Way, Plains, Tx.

Name of person preparing this notice: Betty N. Rivas
Title: Tax Assessor Collector
Date prepared: 08-09-01

MEMBER 2001
Cowboy Country News
TEXAS PRESS ASSOCIATION

Cowboy Country News
Published weekly each Wednesday at 1205 Copeland Ave., PO Box 179, Plains, TX 79355
Holly Dyer, Publisher Gary Dyer, Editor
Subscription price in Zip Code 793 \$15 annually
Other Zip Codes \$18 annually. Periodical postage rate paid at Plains, Tx. POSTMASTER; Send address changes to Cowboy Country News, Box 179, Plains, Tx. 79355
E-Mail us at ccn@hiplains.net
ID# 017574 806-456-8451 FAX 806-456-2010



Brownfield Funeral Home
Serving since 1920
120 W. Tate P.O. Box 507
Brownfield, Texas 79316
Independently Owned & Operated Since 1920
Bob and Jacalyn Jones, Owners
806-637-3555
Pre-funeral Arrangements--Monuments--Cremation

AG INSURANCE PLUS
CROP INSURANCE MPC1-CRC-CAT-CROP HAIL
456-2788
Jim Brown, Agent
Mobile 806-891-0449
or 891-0450
Home 592-3490
Jeff Lowery, Sales Assoc.
Mobile 806-891-3133
Home 456-3195



CAPITOL COMMENT

U.S. SENATOR
KAY BAILEY HUTCHISON



AGRICULTURE OUTLOOK

America has put men on the moon, created the Internet and made enormous progress toward curing or preventing the illnesses that have plagued humanity from biblical times. We enjoy the highest standard of living in the history of the world. In many ways, we are living in a post-industrial society. But agriculture — the tilling of soil and raising of livestock — remains one of the foundations of America's strength and wealth. Our food supply is the envy of the world. American efficiency and its products set the standard that others can only hope to follow.

These facts are not lost on Congress. The Senate worked hard through the summer to agree on an emergency agriculture spending bill. On August 3, we finally approved legislation that provides \$5.5 billion in emergency assistance to U.S. producers. The bill includes \$4.6 billion in Agricultural Market Loss payments, \$84.7 million in cottonseed payments, \$16.9 million for wool and mohair supplemental payments and \$54.2 million for peanut supplemental payments. The House passed identical legislation in June, and the President has said he will sign the bill into law.

I am committed to assisting Texas farmers and ranchers who have faced severe weather conditions and drastic economic losses for the past several years. The emergency assistance included in this legislation is essential to providing relief that our farmers and ranchers need to maintain their viability.

This supplemental emergency funding is critical to the vitality of Texas farmers and ranchers, and I believe it is important to expedite this process to ensure that the funding reaches their hands as soon as possible.

In the fiscal year 2002 agriculture appropriations bill passed by the Senate in July, Texas' priority agricultural research projects received \$10.8 million in funding I had requested. Those initiatives include research that focuses on feedlot air quality, aerial crop protection, competitiveness in the cotton industry, efficient irrigation, developing foods for health and agriculture economics studies.

Meanwhile, the Senate Agriculture Committee is holding hearings on the first piece of major farm legislation since the 1996 Freedom to Farm Bill. Some fine-tuning is in order. We need to move quickly to address agriculture's challenges. I believe that the upcoming farm bill must accomplish several specific objectives:

- Increase funding for commodities, specialty crops and livestock;
- Continue voluntary participation in the direct payment program;
- Comply with the World Trade Organization's requirements, and monitor the WTO member nations to see that they comply as well. We need to ensure that American farmers enjoy the best possible position in world markets;
- Fund critical agriculture research and development of new farm technologies;
- Strengthen incentives to encourage farmers and ranchers to improve soil and water.

A stable farm economy, in the long run, depends on three elements: free trade that is fair, tax relief (on which we have made a tremendous start this year) and assistance when disaster strikes. Strong farms keep America strong.

Youth Center Pool Results

A good turn out for the Pool Tournament at the Plains Youth Center resulted in these winners: **Student-Adult** T.J. Cordova & dad Terry 1st, Tray Cleveland & dad Sale 2nd, Brabt Huerta & dad David 3rd. **Student Singles** Ricardo Agnevoy 1st, T.J. Cordova 2nd, Tray Cleveland 3rd. **Student Doubles** T.J. Cordova & Johnathan DeLaRosa 1st, C.J. Tarango & Jose Luis Gallagos 2nd, Brant Hureta & Tray Cleveland 3rd. The Center thanks all the adults who came to help.

Routine meeting of Commissioner Court

In the August 13 meeting of Commissioners Court, the members approved declaring an emergency to amend the 2001 Permanent Improvement budget to provide funds to complete the new Physicians Clinic in Denver City. The sum of \$185,118 had previously been budgeted for the improvement fund, and was made available for the completion of the clinic. The court also approved a line item transfer of \$27,000 from the health and sanitation department to provide funds for paving of the new clinic.

The court approved a request by County Treasurer Toni Jones for the purchase of a new laser printer for her office.

The court also approved a request of L.J. Sanders to construct a fire guard on his property.

**Yoakum County
4 - H Awards
Banquet Friday,
August 17, 7 p.m.
Mustang Cafeteria,
Denver City**

Shortfall Warning

The following article was originally published in Fiscal Notes, a publication of the Texas Comptroller office, Carole Keeton Rylander, Comptroller: "This month I certified the 2002-2003 biennial budget, but warned legislators that next session the state budget could be \$5 billion in the red.

This is tough news, but I am committed to being the voice of fiscal responsibility, and the people of Texas need to know just what we are facing next session.

Appropriations for the 2002-03 biennium from General Revenue, at approximately \$61.7 billion, balance with the \$61.7 billion in funds currently expected to be available. This balance masks underlying discrepancies making the budget next session a challenge.

The appropriations base for general revenue for the subsequent 2004-05 biennium will be at least \$1.4 billion more than the \$61.7 billion because Senate Bill 1 includes funding for only one year of teacher health insurance at \$1.25 billion, and delays the last Medicaid premium payment of

\$150 million.

The 2002-03 budget also relies on a projected \$2.9 billion surplus from this biennium as part of the revenue base used to fund the \$61.7 billion in appropriations and an additional \$800 million is funded by one time measures that cannot be repeated next biennium.

This does not necessarily mean there will be a \$5 billion shortfall next biennium, but does imply the seeds have been sown for significant challenges to budget writers next session.

I am pleased the Legislature took my advice and chose not to raid the state's Rainy Day Fund, the balance of which is expected to increase more than \$1.1 billion by November, 2003.

The budget I certified appropriates a total of \$113.8 billion from all funds for the 2002-03 biennium. Of that amount, \$61.7 billion is from general revenue, \$4.5 billion is general revenue dedicated, and \$47.5 billion is from federal and other funds.

When the Legislature adjourned two years ago, total appropriations from all funds

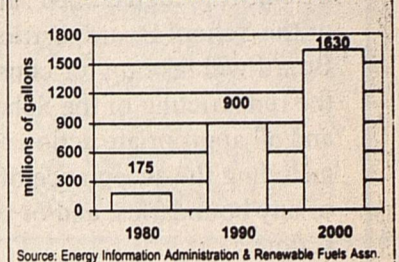
was \$98.2 billion. All funds appropriations of \$113.8 billion for the next biennium represents an increase of 15.9 percent, compared to an increase of 11 percent for the 2000-01 biennium over the 1998-99 biennium."

Facts About Ethanol

- Is made from starch found in grains and processing wastes from the pulp and paper and food and beverage industries.
- Ethanol's high octane content help vehicles operate more smoothly.
- Ethanol decreases demand for imported oil and MTBE by 100,000 barrels/day.
- Over 3 trillion miles have been driven on ethanol-blended fuels since 1980.
- Ethanol-blended fuels represent 12 percent of all motor fuel sold in the U.S.
- Is a renewable fuel that reduces tailpipe emissions and greenhouse effects.
- Impacts more than 195,000 American jobs across the country.

Source: Renewable Fuels Association

U.S. Fuel Ethanol Production



Source: Energy Information Administration & Renewable Fuels Assn

COLLEGE OF THE SOUTHWEST

A World of Difference -- Not a World Away

From the moment you begin to discover College of the Southwest, you'll notice the *difference*. Real people answer the telephones. Friendly admission counselors greet you by name and give you a personal tour of the campus, introducing you to faculty and staff. You begin to become part of the CSW family.

In the classroom, you'll notice another *difference*. Caring, dedicated professors--rather than teaching assistants--provide quality, individualized instruction, so you're never treated as just as a number. Class sizes are purposely kept small to create an ideal learning environment because the quality of your education is our most important goal.

The main *difference*, however, is found in CSW's mission. The CSW educational experience is unlike almost any other in the world, with its emphasis on Christian principles; the preservation and advancement of a free, democratic society; and the American tradition of free enterprise. CSW's mission is also firmly centered in academic distinction, independent support and governance, debt-free operation, excellence in all endeavors, and a dedication to servant leadership. CSW indeed offers a world of *difference*, but we're not a world away.

Fall classes begin August 20.
Register now to see what a *difference* CSW can make in your life!

6610 Lovington Hwy. Hobbs, NM 88240 (505) 392-6561 www.csw.edu

You May Be An Oil & Gas Royalty Millionaire.

\$ Per Mo.	Cash Value
2K =	\$100,000
5K =	\$250,000
10K =	\$500,000
20K =	\$1 Million

We purchase quality Overriding Royalty Interest (ORRI) and Royalty Interest (RI) properties from individuals and estates.
Call 214-742-0800
Or visit RoyaltyInvestor.com and submit e-summary
Quick action on quality property.

Rezulin/Diabetes Drug Users

REZULIN has been linked to liver dysfunction and other health problems in numerous individuals. It was taken off the market 3-21-00 by its manufacturer, Parke-Davis, a division of Warner-Lambert. You or someone you love may be affected. If you wish to know your legal rights with regard to medical problems associated with the use of REZULIN, please contact our offices for a free legal consultation.

JOHN G. EMERSON, JR.
THE EMERSON FIRM
Attorneys at Law
2800 S. Gesner, Suite 800, Houston, Texas (832) 723-8850
Email: jge@emersonfirm.com
*Licensed by the Supreme Court of Texas. Not Certified by the Texas Board of Legal Specialization. We often work in conjunction with another law firm on client cases.

G. B. Aerial Application, Inc.

Professional, Licensed Ag Applications At Affordable Rates !

806-456-6300 Office
806-456-6790 Fax
806-456-7536 David Mobile
806-456-7974 Sarah Mobile
806-632-5375 Dain Mobile

G & B

Yoakum County Plains Clinic

Amir Memon, MD and Jo Lena Wall, PA-C

Will take Medicaid, Medicare, Major Insurance and now CHIPS
Will see Minor Emergencies, Chronic Medical Problems, Immunizations
TEXAS HEALTH STEPS
Will take walk-ins. Appointments preferred.
Please call 806-456-6365

Lifelines & Styles

Yoakum County Art Association Show Results



Dylan Dennison of Abernathy

Best In Show: America the Beautiful--J.D. Keel. Best In Photography: Indian Ocean--Wadonna Davis. Best In Crafts: Garden Basket Quilt--Helen Beal.

Original Landscapes--Oil: 1st Hillside Hollyhocks--Dylan Dennison, 2nd Down Country Roads--J.D. Keel, 3rd Sunset--Lavona Lewis, Honorable Mention Picking Bluebonnets--J.D. Keel, Texas Windmill--J.D. Keel.

Original Landscapes--Watercolor: 1st Spring Thaw--Sharon Pickett, 2nd Old Car--Susie Powell, 3rd Days Gone By--Susie Powell, Honorable Mention Church--Susie Powell.

Original Still Life--1st Upsy Daisy--Helen Clements, 2nd Yummy Palat--Linda Culp, 3rd Musical Moments--Susie Powell, Honorable Mention The Market--Susie Powell & Pansies--J.D. Keel.

Original Portraits--1st Erica--Eloise Brown, 2nd Southern Beauty--Eloise Brown, 3rd Girl With a Kitten--Eileen Fillipp.

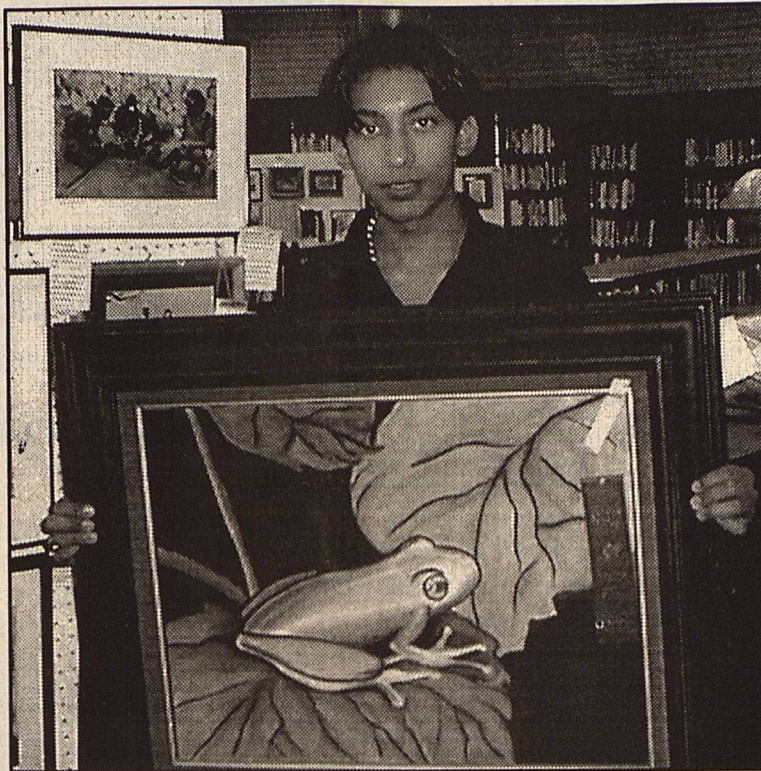
Original Wildlife--1st Meet Me in the Garden--Susie Powell, 2nd Disappearing Tricks--Esequiel Morales, 3rd Bear Careful--Tina Coffman, Honorable Mention-- Webster--Eileen Fillipp & Buffalo Herd--Jeanette Head.

Classwork--1st Fall Melodies--Vivian Rice, 2nd The Big Tree--Eileen Fillipp, 3rd White Petunias--Jimmie Bayer, Honorable Mention Butterfly--Jimmie Bayer.

Copies-- 1st Blues on Lookout--Eileen Fillipp, 2nd Mothers Watchful Eye--Eileen Fillipp, 3rd Gramp's Place--Jimmie Bayer, Honorable Mention Shadows--Jimmie Bayer & Country Daisies--Sue Holder.

Original Miniatures--1st Bluebonnets--J.D. Keel, 2nd Eyes Have It--Linda Powell, 3rd Narcissus--Susie Powell, Honorable Mention Luz Lizard--Linda Powell & Hill Country--J.D. Keel.

Photography--Landscape 1st Walkway--Wadonna Davis, 2nd Storm Brewing--Sue Holder, 3rd Outline Cloud--Tim Winkler, Honorable



Esequiel Morales of Pearsall

Mention Evening at Drumpoint--Pat McNabb & Three Seasons--Lanny Smith.

Wild Life--1st Elijah in Snow--Tim Winkler, 2nd Squirrel Showing Off--Pat McNabb, 3rd Ladybug on Rosebud--Pat McNabb, Honorable Mention Pink Galah--Jimmie Bayer.

Portrait--1st Attentive--Elfida Winkler, 2nd From Ballerina to Actress--Elfida Winkler, 3rd Cowgirl--Ashlee Davis, Honorable Mention Baby on Beach--Ashlee Davis & Reflection of Young Family--Vivian Rice. Crafts--Small Fabrics--1st Celtic Spring--Sara Harris, 2nd Now I Lay Me Down To Sleep--Darlene Wilson, 3rd God Is Love--Darlene Wilson, Honorable Mention Mini Christmas Ornaments--Darlene Wilson & Christmas Stocking--Jeanette Head.

Large Fabrics-- 1st Wedding Ring Quilt--Helen Beal, 2nd Southwest Afghan--Lori Vantine, 3rd Little Fluttering Friends--Darlene Wilson, Honorable Mention Baby Afghan--Lori Vantine & Striped Afghan--Linda Wall.

Wood-- 1st Drop Leaf Table--Marlene Gibson, 2nd Watermelon Table--Ashlee, Michael Davis & Melba Fitzgerald, 3rd Birdhouse Shelf--Marlene Gibson, Honorable Mention Toothpick Stockade--Jeanette Head & Southwest Table--Deborah Brown.

Other-- 1st Watering Can Wreath--Denise Wells, 2nd Flag with Stamps--Pat McNabb, 3rd Charming Angels--Julia Lemley, Honorable Mention Book--Susie Powell & Hearth Wreath--Denise Wells.

Students--Paintings-- 1st Iris--Lendsey Welborn, 2nd Tiger Cat--Holden Welch, 3rd Kaleidoscope--Lauren Davis, Honorable Mention Amy Fillipp, Kenyon Powell, Hunter Welch, Shelby Estep, Shyann Vantine, Katy Estep, Codie Welborn.

Ceramics-- 1st Scalloped Tray--Lauren Davis, 2nd Multi Colored Tile--Lauren Davis, 3rd Little Tray--Haley Welch, Honorable Mention Flower Title--Lauren Davis & Haley's Shield--Haley Welch.

Senior Citizens Corner

This has been a very sad week for our town. I know Linda Jones was not an official member of Yoakum County Senior Citizens, but she was very good about letting all of us come down and sit and enjoy her, her help, her drinks and her food. We send our condolences, love and prayers to her husband, children, grandchildren, father, sisters, and all of her family.

Thursday night the 16th is our pot luck supper and as far as I know the Harvesters will be

here. They are the group that sings Christian Music. Friday the 17th is site council meeting at 12:30 pm. Wednesday the 15th is Denver City pool tournament. We always have a good turn out.

We had two to come for birthdays. They were Rev. Harold Brown and Zelma Boone. We did not have anyone for anniversary.

Til Next Week,
Wanda B.

Immunization Records For School Kids

While back to school often include notebooks, pencils and paper, clothing, shoes, backpacks and lunch boxes, one of the top items required is an up to date immunization record for children in schools and child care facilities.

Immunization requirements remain the same for this school year with one exception, said Monica Gamez of the Immunization Division at the Texas Department of Health (TDH). "TDH is deferring for one school year the requirement that students have a booster dose of tetanus and diphtheria (Td)." This 10 year booster is usually given to students at about age 14.

The action applies to Texas schools from July 1, 2001, to August 1, 2002. Once the deferment is lifted, all students will be required to show proof of a Td booster. The deferment is due to a national shortage of adult tetanus and diphtheria vaccine that resulted when one of two manufacturers discontinued production.

Vaccines required at various ages for all children are polio; diphtheria, tetanus and pertussis or acellular pertussis (DPT/DTaP); *Haemophilus influenzae* type b (Hib); measles, mumps and rubella (MMR); chickenpox (varicella); and hepatitis B.

A hepatitis A vaccine requirement affects only children attending school or child care facilities in 32 counties along the Texas-Mexico border. Children with proof of a previous hepatitis A infection do not need to be vaccinated.

All children attending public or private schools or licensed, certified or registered child care facilities must have the required immunizations for their age group completed by the first day of attendance. State law gives local school districts and child care facilities the option of allowing children to attend if at least one immunization in each series has been received, but the remaining required immunizations must be received as soon as medically possible.

South Plains Health Department will be offering community CPR Classes starting August 20th at Hillside Church of Christ Fellowship Hall. For more information call 592-2706

My thanks to everyone who supported me as Rodeo Queen Candidate.

My SPECIAL THANKS to the Plains Lion's Club, and especially to Lion Butch Mack.

Kayla Willis

Life, Health and Long Term Care Insurance

Ag Insurance Plus

James F. (Jim) Brown, Agent
456-2788 * Mobile 806-891-0449

or 891-0450 * Home 592-3490

Nelson Prescription

Pharmacy
"Your Business is Appreciated"

Our Toll-Free Number Is For Your Convenience Call 1-800-658-9604 For all your Pharmacy Needs !!

805 Tahoka Rd. Brownfield, Tx



Designing Women

is pleased to announce

JoElda Rodriguez

Specializing in Family Cuts, Perms, Color,

Nails, Manicures, Pedicures

-Summer Special-

Manicures \$10.00 - w/parrffin \$13.00

Pedicures \$15.00 - w/parrffin \$18.00

(Call or Come By For Appointment)

114 N. Main
Denver City 592-2648

HEALTH BENEFITS

for the ENTIRE FAMILY

only \$70 per month!

• FLAT RATE • GUARANTEED ACCEPTANCE

• SELF-EMPLOYED OR NOT! - NO INCREASE!

• DEEP MEDICAL DISCOUNTS ON DOCTOR, DENTAL, CHIROPRACTIC, EMERGENCY ROOM, HOSPITAL CONFINEMENT, VISION, RX & MORE!

Call 1-888-369-1739



(NO Deductible)

First United Methodist Church
1202 Avenue G - Plains, Tx.

Cordially invites you to grow in Christ with us!



Sunday Schedule

Sunday School - 9:45 am

Morning Worship - 10:45 am

Youth Fellowship & Study

4:30-5:30 pm

Choir Rehearsal - 6:45 pm Sundays

Wednesday Connections

Food & Fellowship - 5:30-6:30 pm

Bible Study - 6:30-7:30 pm

Other Opportunities

Fitness/Exercise Class - 5:30-6:30 pm

Tuesdays & Fridays

Afternoon Bible Study - 5:15 pm Thursdays

God loves you and so do we!

Come grow in Christ with us!

Did you take Fen-Phen?

If you took Pondimin, Phentermine (Fastin, Adipex) or Redux and you have heart problems, valve leakage, murmurs, regurgitation, or PPH, then call us to discuss your legal rights for damages against the manufacturers and your eligibility for echocardiographic testing.

DAVID P. WILLIS - WILLIS LAW FIRM

3333 One Houston Center Houston, Texas 77010

BOARD CERTIFIED PERSONAL INJURY TRIAL LAWYER

Texas Board of Legal Specialization

1 (800) 468-4878 or 1 (800) 883-9858

Mr. Willis is likely to associate with other attorneys in the handling of this matter

FIRST BAPTIST CHURCH Plains, Texas

Wge Care registration is in progress for the coming year. If you would like your child to attend Wge Care please contact Melissa Hamilton - 456-5081 or the church office 456-3661. Wge Care will begin Sept. 4, 2001

From The Hack

I've mentioned here before my fondness for Dave Barry, the humor columnist who is regularly featured in the Sunday AJ. When I finished his fun stuff Sunday last, I glanced at his picture accompanying the article. It shows a very youthful young man, a mirthful if not wicked gleam in his very bright eyes.

I was puzzled, for very recently I read in his writings he admitted to being in his mid-fifties. It's quite obvious the picture in the AJ must have been taken a number of years ago. No one in their mid-fifties could look so sprightly, so full of gleeful merriment. Is that the secret to his success? Run a photo of himself at a much younger age? I mentioned this puzzler to the Bride.

She sniffed the way she always does when I know she's about ready to harpoon me, and said, "How should I know? You wanta take a shot at being funnier in your stuff, I'll dig up an old picture of you, sans wrinkles and bald spot. I bet anyone who reads you're stuff will faint and fall over with mirth when they see you're trying to look like someone you no longer look like. I know just the picture....it shows you in all

your macho glory, holding a fish you supposedly caught... you look about as young as the fish. You want me to paste that sucker on your column and see if it will increase your reader numbers?"

For some reason I had lost absolutely all my enthusiasm for the idea. No more photos for me.

With the start of school just days away, this seems appropriate; A principal had a problem with young ladies who were starting to use lipstick. When applying it in the school bathroom, they would blot their lips on the mirrors, leaving lip prints. Before it got out of hand, he thought of a way to stop it. He gathered all the girls who used lipstick, and then took them to the bathroom and lectured them about how hard it was to clean the lipstick off the mirrors. The principal then asked the custodian who was present to demonstrate how difficult it was to clean the mirrors.

The custodian took a long handled brush, dipped it into a toilet and vigorously scrubbed the lipstick from the mirror. From that day forward the mirrors stayed lipstick free. (Stolen from the Levelland & Hockley County News Press)

Old age is the most unexpected of all the things that can happen to a person.


*** Legal Notice ***
The Sandy Land Water Underground Conservation District will hold a meeting at 9:00 A.M. on Tuesday, August 21, 2001 at the district office located at 1012 Avenue F, Plains, Texas to consider adopting a proposed tax rate for year 2001. The proposed tax rate for tax year 2001 is .01 per \$100 of value.

• Stocks • Bonds
• Mutual Funds
• IRAs • CDs

82 St. & Slide Rd.
Lubbock, TX 79424
Bus: 806-698-8577
Fax: 877-590-6968
800-867-9897

Joe Harper
Investment Representative

Edward Jones
Serving Individual Investors Since 1871



USDA United States Department of Agriculture

On The Level

with Donald Haley
USDA/NRCS

Natural Resources Conservation Service

Had enough bad news? Want to hear some good "stuff" about one of our local kids and how he made himself, his family and all of us proud?

Joel Horn, son of Ken and Jan Horn of Tokio, was one of forty students from across Texas who recently attended the Texas Youth Range Workshop in Junction.

The Yoakum Soil and Water Conservation District was one of Joel's sponsors for the event. The Youth Range Workshop involves on-site, real-world training for high school age youth interested in careers in range management, biology, resource conservation, etc.

In addition, participants realize the opportunity to develop important life skills, such as leadership, teamwork and communication.

Okay...time to start gettin' proud!

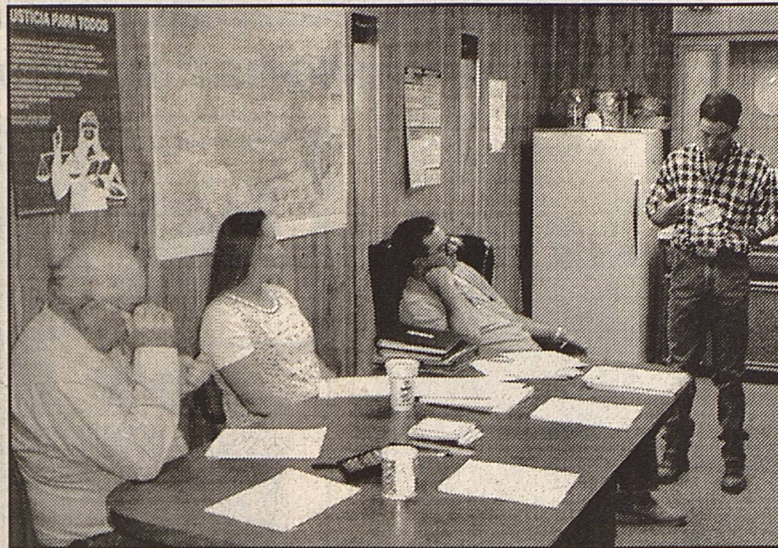
At the Youth Range Workshop, students select the leaders who they think will benefit them and their group the most. For his leadership among other students, Joel

was selected by his peers for the Ramrod Award, signifying their trust in his leadership ability to represent their group.

While at the workshop, Joel made an appearance on the local radio station, where he spoke about brush control here on the South Plains and answered questions from call-in guests concerning the Youth Range Workshop and his experiences here in West Texas.

At the end of the workshop, Joel received yet another honor!

He was selected by the



adult leaders of the workshop as recipient of the Trail Boss award.

This signified Joel's being chosen as the "best" among the forty students for showing positive leadership, an eagerness to express views on range management and

conservation and a willingness to work hard to put those views into action.

Joel was recently on the August agenda of the Yoakum SWCD board meeting and gave the Board members a synopsis of his trip.

"It was an experience that was much more than I ever expected and one that I will never forget. I appreciate the Board members of the Yoakum SWCD and their help in allowing me to attend," said Joel.

The Yoakum SWCD Board members were so impressed with Joel and the opportunities offered by the Youth Range Workshop to area youths that they asked him to work with County Extension Agent Arlan Gentry to help select a deserving student that the Yoakum SWCD could assist with sponsorship at the 2002 Youth Range Workshop.

Said Yoakum SWCD Board Chairman Donald Burgess, "Joel was very impressive with his hard work ethic and willingness to lead rather than follow. These types of opportunities benefit not only the students that attend, but our entire community and nation.

Nice going, Joel. Job well done.

*** Help Wanted ***
Part Time, Full Time.
Apply At Uncles's Convenience Store For Application !!

TERRY COUNTY TRACTOR
Massey Ferguson Kubota
Bush Hog Shredders, Lilliston Rolling Cultivators, Lorenz & Buffalo Cultivators, Baker Disc & Switch Plows, Spray Coupe, Wilmar Sprayer
Brownfield, Tx.
806-637-4569

*** FOR SALE ***
Shelled Black-eye Peas at Jack Spears Drilling Office



Give Us A Call !

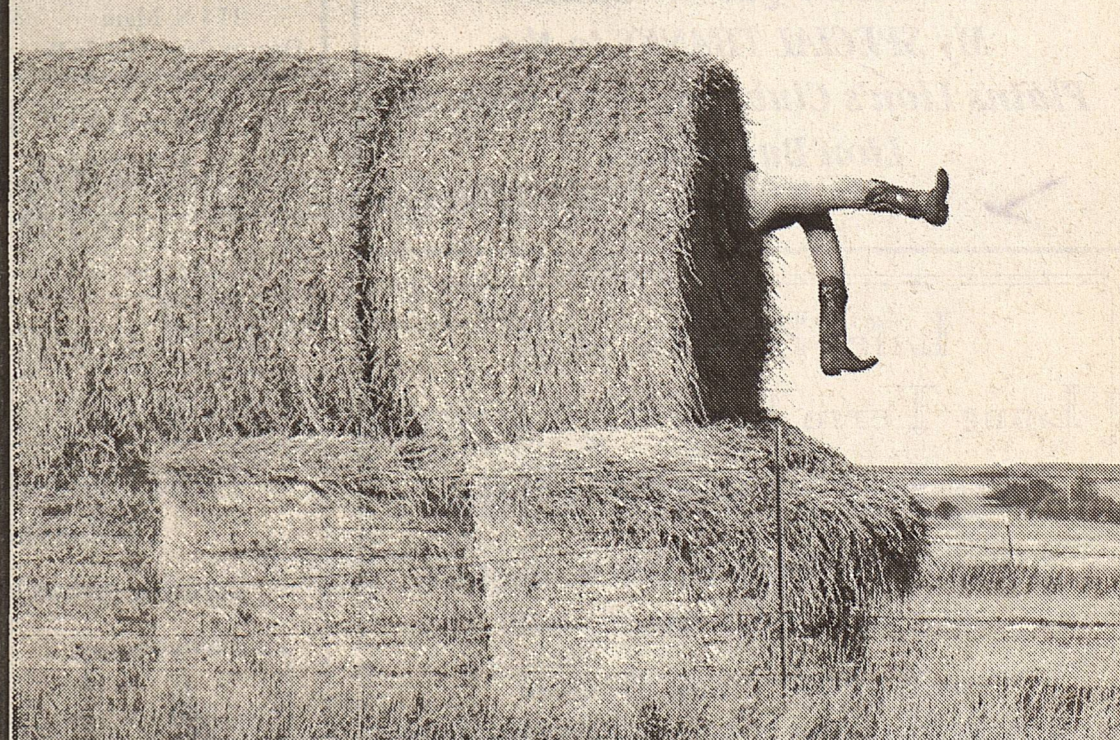
Brownfield Farmers COOP

806-637-4517

PROPANE

TAKES THE STRESS OUT OF ALL YOUR CHORES

Some things are worse than your computer crashing...but not many.



Let PowerShield help
Starting at \$6.69/month
For more information call Lea County Electric today!
(505) 396-3631 or toll Free: (800) 510-5232



POWERSHIELD
SURGE PROTECTION PROGRAM



BAYER LUMBER & HARDWARE

1018 Ave. E Plains, Tx 79355
806-456-4800 Voice & Fax



SPECIALS !

RED LEATHER GLOVES \$2.99 pr.

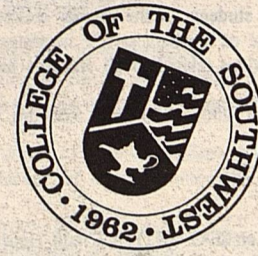
BROWN JERSEY GLOVES .99

4pk "AA" H.D. BATTERIES \$1.99

College of the Southwest



Fall 2001 / Spring 2002



COLLEGE OF THE SOUTHWEST Mission Statement

College of the Southwest will be recognized regionally and nationally for the achievements of CSW graduates, their character and knowledge. This is accomplished through rare and remarkable teamwork as the Board, faculty, staff, graduates, students, and friends of the College join together in living the tenets of the mission:

- ★ Christian principles
- ★ The ideas of Western Civilization: the preservation and advancement of a free democratic society
- ★ The American tradition of free enterprise, individual liberty, and responsibility, the constitutional privilege of self-government
- ★ Academic distinction: the higher levels of learning of CSW graduates
- ★ Independence of support and governance
- ★ Debt-free operation
- ★ A relentless commitment to excellence in all endeavors
- ★ A dedication to servant leadership, shared by Board members, faculty, staff, students, graduates, contributors, and other friends of the College



... Christian principles; the ideas of Western Civilization: the preservation and advancement of a free, democratic society; the American tradition of free enterprise, individual liberty & responsibility, the constitutional privilege of self-government ...

Never before in the history of our country has there been greater need for such an education.



6610 Lovington Highway
Hobbs, New Mexico
505.392.6861

www.csw.edu • 800.530.4400

500 West Church
Carlsbad, New Mexico
505.887.3500

College of the Southwest - Hobbs
Fall 2001
August 20 - December 8, 2001

MASTER OF SCIENCE IN EDUCATION COURSE OFFERINGS

COURSE NO	CR	SEC	TITLE	DAY	TIME	ROOM	FACULTY
EDA 5203	3	1	Educational Leadership and Supervision	Mon	6:00 - 9:00 pm	L109	Atherton
EDA 5203	3	2	Educational Leadership and Supervision	Sat	6:00 - 9:00 pm	L100	Huddleston
EDA 5313	3	1	Educational Law	Mon	6:00 - 9:00 pm	A101	Miller, G
EDA 5313	3	2	Educational Law	Wed	6:00 - 9:00 pm	A101	Posey, B
EDA 5513	3	1	Theories of Administration	Wed	6:00 - 9:00 pm	TBA	Brown
EDA 5803	3	1	Internship in Educational Administration	TBA	TBA		Brown
COLLEGE COURSES							
CSW 5901	1	1	Portfolio Assessment	TBA	TBA		Fleming
COUNSELING							
EDC 5103	3	1	Career Development & Life Planning	Mon	6:00 - 9:00 pm	A100	Posey, E
EDC 5103	3	2	Career Development & Life Planning	Sat	9:00 - 12:00 pm	MHC	Cagle
EDC 5313	3	1	Counseling Techniques for School Counselors	Tues	6:00 - 9:00 pm	A101	Sanders
EDC 5403	3	1	Group Processes	Mon	6:00 - 9:00 pm	CSWC	Nance
EDC 5403	3	2	Group Processes	Thur	6:00 - 9:00 pm	S124	Cagle
EDC 5413	3	1	Family Intervention	Wed	6:00 - 9:00 pm	A100	Sanders
EDC 5443	3	1	Individual Cognitive Assessment	Tues	6:00 - 9:00 pm	A100	Westbrook
EDC 5803	3	1	Internship in Counseling	TBA	TBA		Posey, E
EDC 5813	3	1	Counseling Practicum	TBA	TBA		Sanders
CURRICULUM & INSTRUCTION							
EDI 5131	1	1	Applied Advanced Technology	Sat	8:00 - 11:45 am	A105	Erickson
EDI 5203	3	1	Educational Leadership & Supervision	Mon	6:00 - 9:00 pm	L109	Atherton
EDI 5203	3	2	Educational Leadership & Supervision	Sat	9:00 - 12:00 pm	L100	Huddleston
EDI 5223	3	1	Advanced Assessment	Mon	6:00 - 9:00 pm	TBA	Westbrook
EDI 5231	1	1	Professionalism & Ethics	Wed	6:00 - 7:00 pm	L109	Crouch
EDI 5313	3	1	Educational Law	Mon	6:00 - 9:00 pm	A101	Miller, G
EDI 5313	3	2	Educational Law	Wed	6:00 - 9:00 pm	A101	Posey, B
EDI 5533	3	1	Exceptional Populations in Regular Classrooms	Thur	6:00 - 9:00 pm	L109	Crouch
EDUCATION CORE							
EDU 5103	3	1	Instructional Strategies	Thur	6:00 - 9:00 pm	A101	Huddleston
EDU 5103	3	2	Instructional Strategies	Sat	9:00 - 12:00 pm	L109	Westbrook
EDU 5122	2	1	Current Issues in Education	Wed	7:00 - 9:00 pm	L109	Crouch
EDU 5203	3	1	Theories of Learning & Human Development	Thur	6:00 - 9:00 pm	S124	Fleming
EDU 5203	3	2	Theories of Learning & Human Development	Sat	1:00 - 4:00 pm	L109	Erickson
EDU 5523	3	1	Educational Statistics & Research Design	Mon	6:00 - 9:00 pm	S121	Fleming
EDU 5523	3	2	Educational Statistics & Research Design	Tues	6:00 - 9:00 pm	L109	Brown
EDU 5523	3	3	Educational Statistics & Research Design	Thur	6:00 - 9:00 pm	TBA	Brown
EDUCATIONAL DIAGNOSTICS							
EDG 5103	3	1	Career Development & Life Planning	Mon	6:00 - 9:00 pm	A100	Posey, E
EDG 5103	3	2	Career Development & Life Planning	Sat	9:00 - 12:00 pm	MHC	Cagle
EDG 5223	3	1	Advanced Assessment	Mon	6:00 - 9:00 pm	TBA	Westbrook
EDG 5413	3	1	Family Intervention	Wed	6:00 - 9:00 pm	A100	Sanders
EDG 5443	3	1	Individual Cognitive Assessment	Tues	6:00 - 9:00 pm	A100	Westbrook
EDG 5533	3	1	Exceptional Populations in Regular Classrooms	Thur	6:00 - 9:00 pm	L109	Crouch
SPED 5443	3	1	Individual Cognitive Assessment	Tues	6:00 - 9:00 pm	A100	Westbrook

UNDERGRADUATE COURSE OFFERINGS

COURSE NO	CR	SEC	TITLE	DAY	TIME	ROOM	FACULTY
ACT 2204	4	1	Principles of Accounting I	M-Th	11:00 - 11:50 am	A101	Stephens
ACT 2204	4	2	Principles of Accounting I	MW	7:00 - 8:50 pm	A106	Stephens
ACT 2204	4	12	Principles of Accounting I	Internet Class			Lunsford, P
ACT 2214	4	16	Principles of Accounting II	Internet Class			Lunsford, P
ACT 3203	3	1	Intermediate Accounting I	TTh	5:30 - 6:50 pm	A102	Wilson, T
ACT 3233	3	1	Governmental & Nonprofit Accounting	MW	9:30 - 10:50 am	S121	Stephens
ACT 3243	3	1	Cost Accounting I	MW	5:30 - 6:50 pm	A105	Stephens
ACT 4203	3	1	Personal Income Tax	TTh	1:00 - 2:20 pm	A105	Stephens
ACT 4253	3	1	Advanced Accounting	TTh	8:00 - 9:20 am	S110	Stephens
ACT 4343	3	1	Auditing Theory & Ethics	TTh	7:00 - 8:20 pm	A102	Wilson, T
ACT 4363	3	1	Adv. Computer Applications in Accounting	MW	8:00 - 9:20 am	A105	Lunsford, P
ACT 4813	3	1	Internship in Accounting	TBA	TBA		Stephens
ART							
ART 1103	3	1	Art Appreciation	MW	1:00 - 2:20 pm	S113	Phillips
ART 1103	3	2	Art Appreciation	TTh	1:00 - 2:20 pm	L109	Phillips
ART 2103	3	1	The History of Western Art I	MW	11:00 - 12:20 pm	L109	Phillips
ATHLETIC TRAINING							
ATE 2103	3	1	Introduction to Athletic Training	MW	9:30 - 10:50 am	S108	Staff
ATE 2813	3	1	Clinical Practicum in Athletic Training I	TBA	TBA		Lloyd
ATE 4833	3	1	Clinical Practicum in Athletic Training VI	TBA	TBA		Lloyd
BIOLOGY							
BIO 1104	3	1	General Biology I	MW	9:30 - 10:50 am	S124	Ross
BIO 110L	1	1	General Biology Laboratory I	Tues	8:00 - 9:50 am	A109	Ross
BIO 1304	3	1	Life Sciences	MW	2:30 - 3:50 pm	S121	Ross
BIO 130L	1	1	Life Sciences Laboratory	Thur	2:30 - 4:20 pm	A109	Ross
BIO 2104	3	1	Principles of Human Anatomy & Physiology	MW	4:00 - 5:20 pm	S121	Ross
BIO 210L	1	1	Principles of Human Anatomy & Physiology Laboratory I	Tues	4:00 - 5:50 pm	A109	Ross
BIO 2204	3	1	General Botany	MW	8:00 - 9:20 am	S121	Ross
BIO 220L	1	1	General Botany Laboratory	Thur	8:00 - 9:50 am	A109	Ross
BIO 3204	3	1	Plant Taxonomy	TTh	2:30 - 3:50 pm	S121	Wallace
BIO 320L	1	1	Plant Taxonomy Laboratory	Wed	3:00 - 4:50 pm	A109	Wallace

COLLEGE OF THE SOUTHWEST
SPECIAL COURSE OFFERINGS
FALL 2001
AUGUST 20 - DECEMBER 8, 2001

Course: **Introduction to Special Education for General Education Teachers**
(EDU 4751/5751 or SPED 4751/5751) 1 Credit Hour
This course is designed to introduce and define terminology used in special education settings. Discussions will cover special education students in the regular classroom, teaching methods appropriate for different exceptionalities, and the role of teachers at IEP meetings. Information will be provided on mandated testing, benchmarks and objectives related to all students and current legal implications.
Faculty: June Studley
Dates, Time, Room: Saturdays, September 8 and September 15, 2001, 9:00 am - 5:00 pm, Room A100

Course: **Media and Pop Culture**
(ENG 4641 or MKT 4641 or PSY 4641 or SOC 4641) 1 Credit Hour
This class will explore various aspects of popular culture and its relationship to the media. We will look at the influences of literature, film, music, television, and advertising on popular culture. Issues of race, ethnicity, class, gender, sexuality, cultural imperialism and censorship, as shaped by and reflected in various media will be the focus of the class.
Faculty: Michele Clingman
Dates, Time, Room: Saturdays, September 8 and September 15, 2001, 9:00 am - 5:00 pm, Room A101

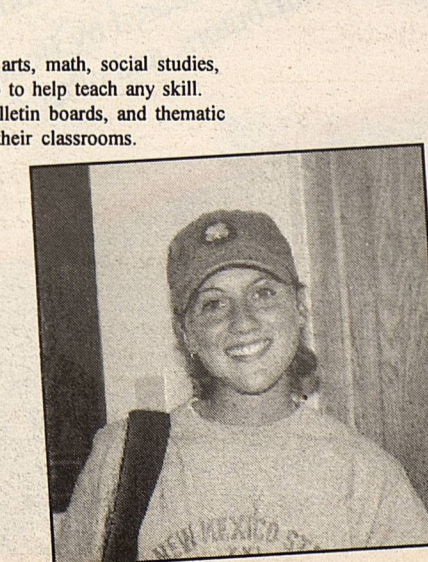
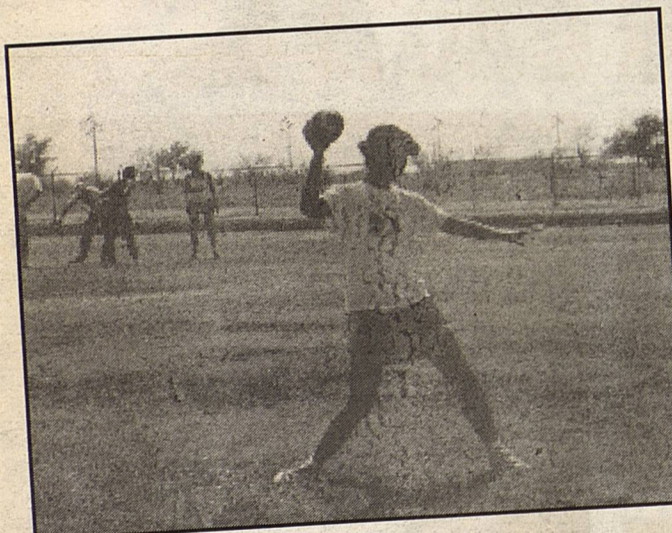
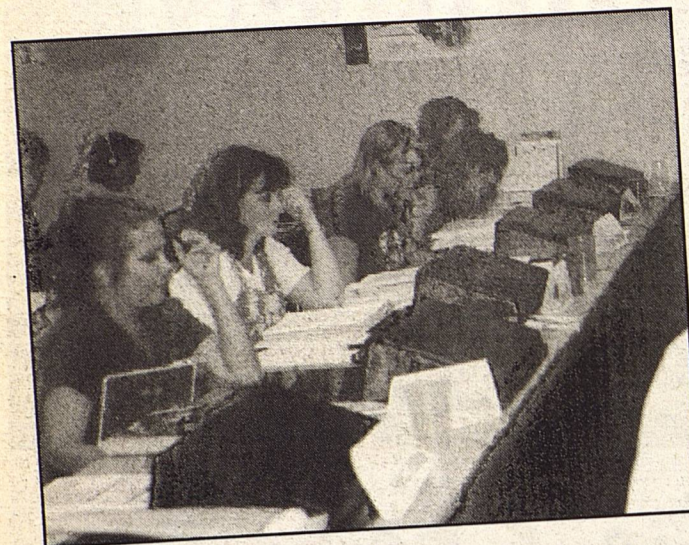
Course: **How to Prepare and Understand Financial Statements**
(ACT 4701) 1 Credit Hour
A study of business financial statements including an overview of basic Generally Accepted Accounting Principles (GAAP).
Faculty: Thomas K. Wilson, CPA
Dates, Time, Room: Saturdays, September 15 and September 22, 2001, 9:00 am - 5:00 pm, Room A105

Course: **The Effects of Alcohol and Drug Abuse**
(PSY 4761 or EDC 5761) 1 Credit Hour
Physiological and psychological effects of psychoactive substances will be addressed in this class, as well as education of the client, family members, and the community at large about substance abuse. An overview of theories of alcohol and drug abuse/addiction will be included along with identification and treatment of relapse. Content of this offering is relevant to school counselors, mental health and substance abuse counselors, as well as educators.
Faculty: Mike Westbrook
Dates, Time, Room: Saturdays, September 22 and September 29, 2001, 9:00 am - 5:00 pm, Room A102

Course: **Introduction to Montessori: Theory and Practice**
(EDU 4661/5661) 1 Credit Hour
Although the Montessori Method of education has been around since the turn of the twentieth century, most teachers know little about its philosophy and methodology. Once considered radical (the idea of child-sized furniture, child-centered education, and a curriculum designed to meet the cognitive capacity of children as they develop), Montessori is the unacknowledged basis of multiple current ideologies and practices used in early childhood today. There are six essential principles of the Montessori Method which can be applied to any classroom: 1) freedom, 2) structure and order, 3) reality and nature, 4) beauty and atmosphere, 5) engaging materials, and 6) development of community life.
Faculty: Carol Sanford
Dates, Time, Room: Saturdays, October 6 and October 13, 2001, 9:00 am - 5:00 pm, Room S113

Course: **Using Paper Bags in the Classroom**
(EDU 4631/5631 or SPED 4631/5631) 1 Credit Hour
This workshop will offer innovative and inexpensive ways to enhance language arts, math, social studies, and science programs using paper bags. Paper bags can be used at any level K-6 to help teach any skill. Suggestions for using paper bags include individual projects, center activities, bulletin boards, and thematic units. Participants will have an opportunity to "make and take" bags to use in their classrooms.
Faculty: Pam Hightower
Dates, Time, Room: Saturdays, October 13 and October 20, 2001, 9:00 am - 5:00 pm, Room S124

TUITION: Graduate \$158.00; Undergraduate \$150.00



A dedication to servant leadership, shared by Board members, faculty, staff, students, graduates, contributors, & other friends of the College

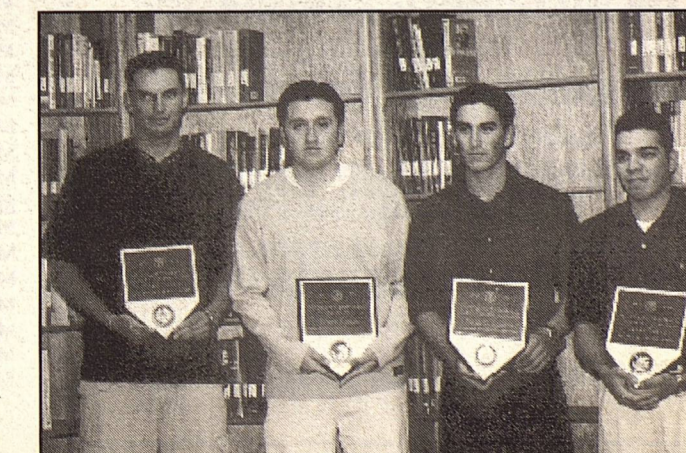
CSW believes the best way to teach servant leadership is to model it in order to produce graduates who embrace the concept of serving others and the community. For this reason, CSW takes a leading role in serving the people of this region in a number of innovative ways.

- ★ Center for Business Leadership
- ★ Center for Educational Excellence
- ★ CSW Theatre Productions
- ★ Distinguished Lecture Series
- ★ Estacado Library Information Network
- ★ Hatton W. Sumners Speaker Series
- ★ I CAN! Scholarship Program
- ★ Success 2000 Leadership Camp

PSY 4523	3	1	Psychological & Educational Testing	TTh	2:30 - 3:50 pm		
PSY 4703	3	1	Special Topics in Psychology	TTh	8:30 - 9:50 pm		
PSY 4803	3	1	Psychology Practicum	TBA	TBA		
RELIGION							
REL 1101	1	1	Chapel: LIFE I	Tues	12:00 - 12:50 pm		
REL 1103	3	1	Old Testament Survey	TTh	2:30 - 3:50 pm		
REL 1103	3	2	Old Testament Survey	TTh	7:00 - 8:20 pm		
REL 1201	1	1	Chapel: LIFE II	Tues	12:00 - 12:50 pm		
REL 1203	3	1	New Testament Survey	MW	1:00 - 2:20 pm		
REL 1203	3	2	New Testament Survey	MW	2:30 - 3:50 pm		
REL 1203	3	3	New Testament Survey	TTh	1:00 - 2:20 pm		
REL 1203	3	4	New Testament Survey	TTh	5:30 - 6:50 pm		
REL 1203	3	5	New Testament Survey	Fri	9:00 - 11:50 am		
REL 1301	1	1	Chapel: LIFE III	Tues	12:00 - 12:50 pm		
SOCIOLOGY							
SOC 2213	3	1	Marriage & the Family	TTh	1:00 - 2:20 pm		
SOC 3203	3	1	Race & Ethnic Relations	MW	2:30 - 3:50 pm		
SOC 3223	3	1	Sociology of Organizations	TTh	5:30 - 6:50 pm		
SPANISH							
SPA 3303	3	1	Survey of Spanish Literature	TTh	7:00 - 8:20 pm		
SPA 3403	3	1	Survey of Spanish-American Literature	TTh	5:30 - 6:50 pm		
SPEECH							
SPE 1103	3	1	Principles of Speech	TTh	9:30 - 10:50 am		
SPE 1103	3	2	Principles of Speech	TTh	1:00 - 2:20 pm		
SPE 1103	3	3	Principles of Speech	MW	5:30 - 6:20 pm		
THEATRE							
THE 2602	2	1	Theatre Workshop	TBA	TBA		
THE 3403	3	1	American Classic Drama	TTh	2:30 - 3:50 pm		
THE 3602	2	1	Theatre Workshop	TBA	TBA		
THE 4602	2	1	Theatre Workshop	TBA	TBA		



BIO 3314	3	1	Invertebrate Zoology	TTh	1:00 - 2:20 pm	S121	Massey
BIO 331L	1	1	Invertebrate Zoology Laboratory	Wed	1:00 - 2:50 pm	A109	Massey
BIO 3404	3	1	Genetics	TTh	11:00 - 12:20 pm	S121	Massey
BIO 340L	1	1	Genetics Laboratory	Mon	11:00 - 12:50 pm	A109	Massey
BIO 3513	3	1	Cell Biology	TTh	9:30 - 10:50 am	A101	Wallace
BUSINESS							
BUA 1103	3	1	Business & Society	TTh	8:00 - 9:20 am	L109	Bradford
BUA 3313	3	1	Business Law I	MW	2:30 - 3:50 pm	A100	Rickles
CHEMISTRY							
CHE 1104	3	1	Principles of Chemistry I	TTh	9:30 - 10:50 am	S121	Dodd
CHE 110L	1	1	Chemistry Laboratory I	Wed	10:00 - 11:50 am	S126	Dodd
CHE 1304	3	1	Chemical Concepts	MW	11:00 - 12:20 pm	A102	Dodd
CHE 130L	1	1	Chemical Concepts Laboratory	Tues	11:00 - 12:50 pm	S126	Dodd
COMPUTER SCIENCE							
CSI 1203	3	1	Computer Applications	MW	11:00 - 12:20 pm	A105	Sagerty
CSI 1203	3	2	Computer Applications	Fri	9:00 - 11:50 am	A105	Staff
CSI 2103	3	12	Database Management	Internet Class			Williams, L
CSI 2203	3	1	Educational Technology	TTh	9:30 - 10:50 am	A105	Sagerty
CSI 2213	3	1	Electronic Spreadsheets	MW	1:00 - 2:20 pm	A105	Dodd
COLLEGE COURSES							
CSW 1102	2	1	Freshman Success	MW	1:00 - 1:50 pm	A102	Owensby
CSW 1102	2	2	Freshman Success	TTh	10:00 - 10:50 am	A102	Owensby
CSW 4691	1	1	Senior Seminar in Leadership & Ethics	Wed	8:00 - 8:50 am	L109	McGinnes
CSW 4691	1	2	Senior Seminar in Leadership & Ethics	Tues	1:00 - 1:50 pm	S113	Case
CSW 4691	1	3	Senior Seminar in Leadership & Ethics	Thur	1:00 - 1:50 pm	S113	Case
CSW 4691	1	4	Senior Seminar in Leadership & Ethics	Mon	5:30 - 6:20 pm	MHC	Reed
CRIMINAL JUSTICE							
CRJ 1103	3	1	Introduction to Criminal Justice	MW	7:00 - 8:20 pm	A102	Fons
CRJ 1103	3	12	Introduction to Criminal Justice	TBA	TBA		Lunsford, S
CRJ 1103	3	16	Introduction to Criminal Justice	Internet Class			Lunsford, S
CRJ 1113	3	16	Criminal Law I	Internet Class			Read
CRJ 1123	3	16	Criminal Law II	Internet Class			Read
CRJ 1203	3	16	Introduction to the Judicial Process	TBA	TBA		Lunsford, S
CRJ 2303	3	12	Criminal Investigations	Internet Class			Read
CRJ 2703	3	12	Topics: Serial Killers	Internet Class			Read
CRJ 2703	3	16	Topics: Criminal Investigations II	Internet Class			Bower
CRJ 3103	3	12	Criminology	Internet Class			Lunsford, S
CRJ 3203	3	1	Understanding Criminal Behavior	MW	8:30 - 9:50 pm	A102	Pruitt
CRJ 3303	3	12	Law Enforcement Management	Internet Class			Bower
CRJ 3313	3	16	Correctional Process	Internet Class			Read
CRJ 4803	3	16	Seminar in Criminal Justice	Internet Class			Lunsford, S
ECONOMICS							
ECO 2103	3	1	Principles of Macroeconomics	MW	8:00 - 9:20 am	A102	Rickles
ECO 2213	3	1	Freedom, Ethics, & Free Enterprise	MW	9:30 - 10:50 am	L109	DiUlus
ECO 2213	3	2	Freedom, Ethics, & Free Enterprise	TTh	2:30 - 3:50 pm	S113	Case
ECO 2213	3	3	Freedom, Ethics, & Free Enterprise	Mon	7:00 - 9:50 pm	S113	Neal
ECO 2213	3	12	Freedom, Ethics, & Free Enterprise	Internet Class			Brown, G
ECO 2802	2	1	Internship in Free Enterprise	TTh	11:00 - 12:20 pm	L109	DiUlus
ECO 3802	2	1	Internship in Free Enterprise	TTh	11:00 - 12:20 pm	L109	DiUlus
ECO 4802	2	1	Internship in Free Enterprise	TTh	11:00 - 12:20 pm	L109	DiUlus
EDUCATION							
BIL 2103	3	1	Introduction to Bilingual Education	TTh	7:00 - 8:20 pm	L100	Palomo, M
BIL 3111	1	1	Language Arts for K-12 Bilingual Learners	Mon	4:00 - 4:50 pm	L109	Greene
BIL 3112	2	1	Social Studies & Fine Arts for K-12 Bilingual Learners	MW	5:30 - 6:20 pm	S110	Molina
BIL 3202	2	1	Science & Math for K-12 Bilingual Learners	MW	6:30 - 7:20 pm	S110	Navarrete
EDU 1101	1	1	Field-Based Observation	Tues	8:00 - 8:50 am	A100	McGinnes
EDU 1101	1	2	Field-Based Observation	Thur	9:30 - 10:20 am	S110	Fox
EDU 1101	1	3	Field-Based Observation	Wed	6:00 - 6:50 pm	A102	Miller, S
EDU 2103	3	1	Foundations of Education	MW	9:30 - 10:50 am	A100	Sagerty
EDU 2103	3	2	Foundations of Education	TTh	2:30 - 3:50 pm	A101	Fox
EDU 2103	3	3	Foundations of Education	MW	4:00 - 5:20 pm	S124	McGinnes
EDU 3203	3	1	Psychological Foundations of Teaching & Learning	MW	11:00 - 12:20 pm	S124	Goat
EDU 3203	3	2	Psychological Foundations of Teaching & Learning	TTh	8:30 - 9:50 pm	S108	Miller, S
EDU 3213	3	1	Survey of Multicultural & Exceptional Learners	TTh	1:00 - 2:20 pm	S124	Sagerty
EDU 3213	3	2	Survey of Multicultural & Exceptional Learners	TTh	7:00 - 8:20 pm	S113	Rains
EDU 3222	2	1	Classroom Management & Organization	MW	9:30 - 10:20 am	A102	Fox
EDU 3222	2	2	Classroom Management & Organization	TTh	3:00 - 3:50 pm	S124	Harris
EDU 3222	2	3	Classroom Management & Organization	Fri	9:00 - 10:50 am	A106	Fox
EDU 3503	3	1	Communication Arts in the Elementary School	MW	8:00 - 9:20 am	S124	Goat
EDU 3503	3	2	Communication Arts in the Elementary School	TTh	5:30 - 6:50 pm	S121	Emery
EDU 3523	3	1	Educational Measurement & Evaluation	MW	2:30 - 3:50 pm	S124	Fox
EDU 3523	3	2	Educational Measurement & Evaluation	MW	7:00 - 8:20 pm	S108	DeSoto
EDU 4114	4	1	Teaching in the Elementary School	MW	12:30 - 2:20 pm	S124	McGinnes
EDU 4114	4	2	Teaching in the Elementary School	TTh	7:00 - 8:50 pm	S121	Emery
EDU 4203	3	1	Diagnostic/Corrective Teaching	TTh	11:00 - 12:20 pm	S108	Patterson
EDU 4203	3	2	Diagnostic/Corrective Teaching	MW	5:30 - 6:50 pm	S108	Chaney
EDU 4213	3	1	Teaching in the Secondary School	TTh	1:00 - 2:20 pm	S110	Fox
EDU 4413	3	1	Reading in the Content Area	TTh	9:30 - 10:50 am	S103	Gage
EDU 4502	2	1	Field Experience II	Thur	1:00 - 2:20 pm	A102	McGinnes
EDU 4502	2	2	Field Experience II	Mon	8:30 - 9:50 pm	A106	Hightower
EDU 4546	6	1	Intern Teaching	TBA	TBA		Harris
EDU 4601	1	1	Intern Teaching Seminar	Mon	5:00 - 5:50 pm	S113	Harris
SPED 1101	1	1	Field-Based Observation in Special Ed Settings	Tues	8:00 - 8:50 am	A100	McGinnes
SPED 1101	1	2	Field-Based Observation in Special Ed Settings	Tues	9:30 - 10:20 am	S110	Fox



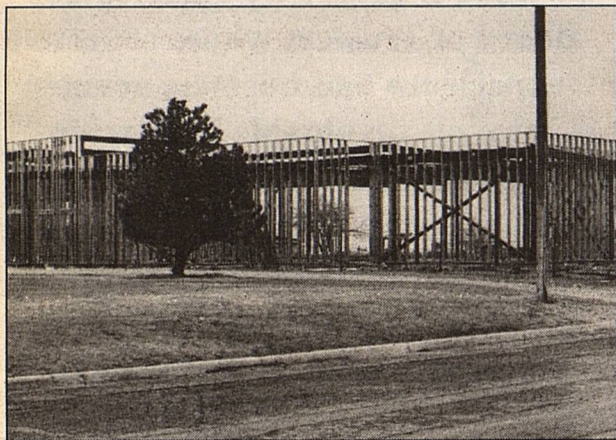
College
of the
Southwest
will be recognized
regionally and nationally
for the achievements of
CSW graduates, their
character and
knowledge. This is
accomplished through
rare and remarkable
teamwork as the Board,
faculty, staff, graduates,
students, and friends of
the College join together
in living the tenets of the
mission:

SPED 1101	1	3	Field-Based Observation in Special Education Settings	Wed	6:00 - 6:50 pm	A102	Miller, S
SPED 2103	3	1	Introduction to Special Education	TTh	7:00 - 8:20 pm	S108	Harris
SPED 3222	2	1	Classroom Management & the Exceptional Learner	TTh	4:00 - 4:50 pm	A102	DeSoto
SPED 3323	3	1	Methods & Materials for Special Education	Mon	4:00 - 6:50 pm	S103	Hunt, K
SPED 4101	1	1	Research in Special Education	Wed	5:30 - 6:20 pm	WBR	Harris
SPED 4201	1	1	Learners Who Are Gifted/Talented	Wed	6:30 - 7:20 pm	WBR	Harris
SPED 4211	1	1	Learners with Physical Impairments	Tues	5:30 - 6:20 pm	S103	DeSoto
SPED 4221	1	1	Learners with Cognitive Deficits	Thur	5:30 - 6:20 pm	S103	Harris
SPED 4502	2	1	Field Experience II in Special Ed Settings	Thur	1:00 - 2:20 pm	A102	McGinnes
SPED 4502	2	2	Field Experience II in Special Ed Settings	Mon	8:30 - 9:50 pm	A106	Hightower
SPED 4546	6	1	Intern Teaching in K-12 Special Education Settings	TBA	TBA		Harris
SPED 4601	1	1	Intern Teaching Seminar in Special Education Settings	Mon	5:00 - 5:50 pm	S113	Harris
ENGLISH							
ENG 1013	3	1	Mechanics of English	MW	11:00 - 12:20 pm	L100	Holloman
ENG 1113	3	1	Rhetoric & Composition	MW	9:30 - 10:50 am	L108	Clingman
ENG 1113	3	2	Rhetoric & Composition	TTh	1:00 - 2:20 pm	L108	Clingman
ENG 2213	3	1	Creative Writing	TTh	2:30 - 3:50 pm	L108	Sandle
ENG 2223	3	1	Life & Literature of the Southwest	MW	1:00 - 2:20 pm	L100	Clingman
ENG 2223	3	2	Life & Literature of the Southwest	TTh	5:30 - 6:50 pm	L100	Staff
ENG 2403	3	1	Survey of American Literature	TTh	8:00 - 9:20 am	L100	Sandle
ENG 3313	3	1	European Classic Drama	TTh	1:00 - 2:20 pm	MHC	Floyd
ENG 3413	3	1	Classical Mythology	MW	9:30 - 10:50 am	L100	Staff
ENG 3503	3	1	Advanced Grammar	MW	8:00 - 9:20 am	L100	Sandle
ENG 3513	3	1	Children's Literature	TTh	9:30 - 10:50 am	L100	Clingman
ENG 3533	3	1	The English Renaissance	MW	4:00 - 5:20 pm	L100	Sandle
ENG 3813	3	1	Technical Newspaper Writing	Fri	9:00 - 11:50 am	LWR	Staff
ENG 3823	3	1	Yearbook Production	Fri	1:00 - 3:30 pm	LWR	Staff
ENG 4403	3	1	Advanced Composition	MW	2:30 - 3:50 pm	L108	Sandle
FINANCE							
FIN 2403	3	1	Principles of Finance	TTh	2:30 - 3:50 pm	A102	Rickles
FIN 2403	3	2	Principles of Finance	MW	7:30 - 8:20 pm	L100	Bruce
FIN 3403	3	1	Investments/Personal Financial Planning	MW	5:30 - 6:50 pm	A106	Staff
FIN 3443	3	1	Financial Analysis	TTh	1:00 - 2:20 pm	L100	Staff
FIN 4803	3	1	Investment Internship I	Wed	7:00 - 9:50 pm	MSC	DiUlus
FIN 4823	3	1	Internship in Finance	TBA	TBA		DiUlus
GEOGRAPHY							
GEOG2103	3	1	Physical & Cultural Geography	MW	11:00 - 12:20 pm	S110	Goldman
GEOLOGY							
GEO 1304	3	1	Earth Science	TTh	8:00 - 9:20 am	S121	Staff
GEO 130L	1	1	Earth Science Laboratory	Wed	7:30 - 9:20 am	A109	Staff
HEALTH/PHYSICAL EDUCATION							
HPE 0510	0	1	Soccer	TBA	TBA		Jones
HPE 0510	0	1	Volleyball	TBA	TBA		Luallen
HPE 1241	1	1	Weight Training	MW	7:00 - 7:50 pm	WTR	Staff
HPE 2203	3	1	Concepts in Physical Education	TTh	11:00 - 12:20 pm	MFC	Staff
HPE 3303	3	1	Psychology of Physical Education & Sports	MW	11:00 - 12:20 pm	MFC	Staff
HPE 3312	3	1	Techniques of Rhythms & Games	TTh	8:00 - 8:50 am	Staff	Staff
HPE 3523	3	1	Theory and Practice of Volleyball	MW	1:00 - 2:20 pm	MFC	Luallen
HPE 4203	3	1	Physiology of Exercise	TTh	9:30 - 10:50 am	MFC	Staff
HPE 4403	3	1	Physical Education in the Elementary School	MW	8:00 - 9:20 am	MFC	Staff
HISTORY							
HIS 1103	3	1	Western Civilization to 1715	MW	9:30 - 10:50 am	S110	Sumruld
HIS 1103	3	2	Western Civilization to 1715	TTh	11:00 - 12:20 pm	S113	Sumruld
HIS 1103	3	3	Western Civilization to 1715	TTh	8:30 - 9:50 pm	S113	Staff
HIS 1103	3	16	Western Civilization to 1715	Internet Class			Groves
HIS 2103	3	1	American History to 1876	MW	8:00 - 9:20 am	S113	Sumruld
HIS 2103	3	2	American History to 1876	TTh	8:00 - 9:20 am	S113	Staff
HIS 2103	3	3	American History to 1876	MW	7:00 - 8:20 pm	S124	Huff
HIS 2103	3	12	American History to 1876	Internet Class			Groves
HIS 2203	3	16	American History from 1877	Internet Class			Groves
HIS 2223	3	1	Life and Literature of the Southwest	MW	1:00 - 2:20 pm	L100	Clingman
HIS 2303	3	1	History and Geography of New Mexico	MW	5:30 - 6:50 pm	TBA	Staff
HIS 3103	3	1	Theory of History	TTh	9:30 - 10:50 am	S108	Sumruld
HIS 3213	3	1	Colonial America	TTh	1:00 - 2:20 pm	S103	Goldman
HIS 4103	3	1	The History of U.S. Foreign Policy	MW	1:00 - 2:20 pm	S108	Sumruld
LINGUISTICS							
LN 2253	3	1	Introduction to Linguistics	MW	11:00 - 12:20 pm	A100	Staff
MANAGEMENT							
MGT2103	3	1	Principles of Management	MW	9:30 - 10:50 am	S103	Dunn
MGT2103	3	2	Principles of Management	MW	5:30 - 6:50 pm	L100	Dunn
MGT3223	3	1	Leadership & Motivation	MW	7:00 - 8:20 pm	MHC	Noel
MGT3403	3	1	Human Resource Management	MW	8:00 - 9:20 am	S110	Dunn
MGT3403	3	16	Human Resource Management	Internet Class			Lunsford, P
MGT4123	3	1	Management Information Systems	TTh	7:00 - 8:20 pm	A105	Lunsford, S
MGT4413	3	1	Strategic Management	TTh	8:00 - 9:20 am	A102	Sanderson
MGT4803	3	1	Internship in Management	TBA	TBA		Dunn
MARKETING							
MKT3343	3	1	Marketing Research	MW	11:00 - 12:20 pm	S103	Rickles
MKT3413	3	1	Principles of Retailing	TTh	9:30 - 10:50 am	L109	Bradford
MKT3423	3	1	Salesmanship	TTh	5:30 - 6:50 pm	MHC	Munoz
MKT4123	3	1	Services Marketing	MW	8:00 - 9:20 am	S103	McDowell
MKT4133	3	1	Marketing Management	TTh	2:30 - 3:50 pm	S103	Dodd
MKT4203	3	1	Topics in Marketing	TTh	8:30 - 9:50 pm	S110	Munoz
MKT4813	3	1	Internship in Marketing	TBA	TBA		DiUlus

ENG 3823	3	1	Yearbook Production	TBA	TBA		
ENG 4403	3	1	Advanced Composition	MW	4:00 - 5:20 pm		
ENG 4523	3	1	Major British Author	MW	11:00 - 12:20 pm		
FINANCE							
FIN 3303	3	1	Money & Banking	TTh	5:30 - 6:50 pm		
FIN 3423	3	1	Financial Management	TTh	7:00 - 8:20 pm		
FIN 4413	3	1	Insurance & Risk	TTh	4:00 - 5:20 pm		
FIN 4813	3	1	Investment Internship II	TBA	TBA		
FIN 4823	3	1	Internship in Finance	TBA	TBA		
GEOGRAPHY							
GEOG 2303	3	1	History & Geography of New Mexico	MW	4:00 - 5:20 pm		
GEOG 2303	3	2	History & Geography of New Mexico	TTh	1:00 - 2:20 pm		
GEOLOGY							
GEO 1204	3	1	Historical Geology	TTh	7:00 - 8:20 pm		
GEO 120L	1	1	Historical Geology Laboratory	TTh	8:30 - 9:50 pm		
HEALTH/PHYSICAL EDUCATION							
HPE 0520	1	1	Athletics: Baseball	TBA			
HPE 1103	3	1	Personal & Community Health	MW	9:30 - 10:50 am		
HPE 1241	1	1	Weight Training	MW	7:00 - 7:50 pm		
HPE 2102	2	1	Lifetime Fitness	MW	9:30 - 10:20 am		
HPE 2213	3	1	Workplace Training Standard First Aid	TTh	8:00 - 9:20 am		
HPE 2263	3	1	Anatomy for the Physical Educator/Coach	MW	8:00 - 9:20 am		
HPE 2312	2	1	Nutrition & Sports	MW	11:00 - 11:50 am		
HPE 3112	2	1	PE Activities / Secondary	TTh	11:00 - 11:50 am		
HPE 3322	2	1	Techniques of Teaching Gymnastics & Tumbling	TTh	9:30 - 10:20 am		
HPE 3403	3	1	Measurement & Evaluation in Physical Education	TTh	1:00 - 2:20 pm		
HPE 4103	3	1	Kinesiology	MW	1:00 - 2:20 pm		
HPE 4303	3	1	Administration of Physical Education & Sports	MW	11:00 - 12:20 pm		
HPE 4503	3	1	Secondary School Physical Education Programs	TTh	9:30 - 10:50 am		
HISTORY							
HIS 1203	3	1	Western Civilization from 1716	MW	9:30 - 10:50 am		
HIS 1203	3	2	Western Civilization from 1716	TTh	8:30 - 9:50 pm		
HIS 2203	3	1	American History from 1877	MW	8:00 - 9:20 am		
HIS 2203	3	2	American History from 1877	TTh	8:00 - 9:20 am		
HIS 2203	3	3	American History from 1877	TTh	7:00 - 8:50 pm		
HIS 2303	3	1	History & Geography of New Mexico	MW	4:00 - 5:20 pm		
HIS 2303	3	2	History & Geography of New Mexico	TTh	1:00 - 2:20 pm		
HIS 3313	3	1	World History	TTh	9:30 - 10:50 am		
HIS 4103	3	1	The History of U.S. Foreign Policy	MW	1:00 - 2:20 pm		
MANAGEMENT							
MGT 2103	3	1	Principles of Management	TTh	5:30 - 6:50 pm		
MGT 3503	3	1	Organizational Behavior	MW	11:00 - 12:20 pm		
MGT 4162	2	1	Creating a Business Plan	TTh	1:00 - 1:50 pm		
MGT 4162	2	2	Creating a Business Plan	TTh	7:00 - 8:50 pm		
MGT 4163	3	1	Topics: Current Issues in Management	MW	9:30 - 10:50 am		
MGT 4303	3	1	Industrial & Organizational Psychology	TTh	8:00 - 9:20 am		
MGT 4303	3	2	Industrial & Organizational Psychology	TTh	5:30 - 6:50 pm		
MGT 4813	3	1	Internship in Management	TBA	TBA		
MARKETING							
MKT 3323	3	1	Principles of Marketing & Sales	MW	1:00 - 2:20 pm		
MKT 3323	3	2	Principles of Marketing & Sales	TTh	7:00 - 8:20 pm		
MKT 3503	3	1	Consumer Behavior	TTh	9:30 - 10:50 am		
MKT 3513	3	1	Advertising & Promotion	MW	7:00 - 8:50 pm		
MKT 4123	3	1	Services Marketing	MW	8:00 - 9:20 am		
MKT 4133	3	1	Marketing Management	TTh	11:00 - 12:20 pm		
MKT 4813	3	1	Internship in Marketing	TBA	TBA		
MATHEMATICS							
MAT 1103	3	1	College Algebra for General Education	MW	8:00 - 9:20 am		
MAT 1103	3	2	College Algebra for General Education	MW	11:00 - 12:20 pm		
MAT 1413	3	1	Pre-Calculus Mathematics	TTh	8:00 - 9:50 am		
MAT 2103	3	1	Principles of Probability & Statistics	MW	7:00 - 8:20 pm		
MAT 2214	4	1	Analytic Geometry & Calculus II	M-Th	9:30 - 10:20 am		
MAT 3204	4	1	Analytic Geometry & Calculus III	M-Th	1:00 - 2:20 pm		
MAT 3213	3	1	Differential Equations	MW	2:30 - 3:50 pm		
MAT 3303	3	1	Linear Algebra	TTh	1:00 - 2:20 pm		
MAT 3323	3	1	Statistics II	TTh	2:30 - 3:50 pm		
MUSIC							
MUS 1801	1	1	CSW Ambassadors	MW	11:00 - 11:50 am		
MUS 2203	3	1	Introduction to Country & Western Music	TTh	5:30 - 6:50 pm		
MUS 2801	1	1	CSW Ambassadors	MW	11:00 - 11:50 am		
MUS 3801	1	1	CSW Ambassadors	MW	11:00 - 11:50 am		
MUS 4801	1	1	CSW Ambassadors	MW	11:00 - 11:50 am		
PHILOSOPHY							
PHI 2203	3	1	Logic	MW	7:00 - 8:20 pm		
POLITICAL SCIENCE							
POS 3103	3	1	American Ideologies	MW	1:00 - 2:20 pm		
POS 4143	3	1	Comparative Politics	MW	11:00 - 12:20 pm		
PSYCHOLOGY							
PSY 2103	3	1	Psychology of Adjustment	MW	9:30 - 10:50 am		
PSY 3113	3	1	Cognition	MW	11:00 - 12:20 pm		
PSY							

Debt-free operation

An important factor for many advocates of CSW is that the school operates debt free--yet accepts no tax dollars. CSW, a 501(c)(3) organization, maintains a balanced budget while meeting educational needs through sound business and financial planning.



CSW is currently undergoing the first of three phases of campus construction, with the entire \$6.2 million either pledged or in-hand before groundbreaking even began. CSW is, and will continue to remain, debt free.

Phase One:

- 1) Renovation & expansion of library (completed)
- 2) New academic / science lab building (completed)
- 3) New Student Center (in progress)
- 4) New chapel
- 5) New residence hall
- 6) Renovation & expansion of existing Student Center as new academic building

BIO 332L 1 1	Vertebrate Zoology Laboratory	Mon	1:00 - 2:50 pm
BIO 3503 3 1	General Ecology	TTh	1:00 - 2:20 pm
BIO 4223 3 1	Field Biology	TTh	9:30 - 10:50 am
BIO 4903 3 1	Undergraduate Research	TBA	TBA
BUSINESS ADMINISTRATION			
BUA 3303 3 1	Professional Communication & Sales Presentation	TTh	9:30 - 10:50 am
BUA 3303 3 2	Professional Communication & Sales Presentation	TTh	5:30 - 6:50 pm
BUA 3413 3 1	Business Law II	MW	1:00 - 2:20 pm
CHEMISTRY			
CHE 1304 3 1	Chemical Concepts	MW	11:00 - 12:20 pm
CHE 130L 1 1	Chemical Concepts Laboratory	Thur	11:00 - 12:20 pm
COLLEGE COURSES			
CSW 1201 1 1	Freshman Success	Tues	9:30 - 10:20 am
CSW 1201 1 2	Freshman Success	Mon	1:00 - 1:50 pm
CSW 3901 1 1	Portfolio Assessment	TBA	TBA
CSW 4691 1 1	Senior Seminar in Leadership & Ethics	Tues	1:00 - 1:50 pm
CSW 4691 1 2	Senior Seminar in Leadership & Ethics	Thur	1:00 - 1:50 pm
CSW 4691 1 3	Senior Seminar in Leadership & Ethics	Mon	5:30 - 6:20 pm
COMPUTER SCIENCE			
CSI 1203 3 1	Computer Applications	MW	8:00 - 9:20 am
CSI 2203 3 1	Education Technology	TTh	8:00 - 9:20 am
CSI 2203 3 2	Education Technology	TTh	8:30 - 9:50 pm
CSI 2213 3 1	Electronic Spreadsheets	MW	9:30 - 10:50 am
CRIMINAL JUSTICE			
CRJ 3103 3 1	Criminology	MW	7:00 - 8:20 pm
CRJ 4203 3 1	Issues in Ethics, Law, & Criminal Justice	MW	8:30 - 9:50 pm
ECONOMICS			
ECO 2213 3 1	Freedom, Ethics, & Free Enterprise	TTh	8:00 - 9:20 am
ECO 2213 3 2	Freedom, Ethics, & Free Enterprise	TTh	2:30 - 3:50 pm
ECO 2213 3 3	Freedom, Ethics, & Free Enterprise	Mon	7:00 - 9:50 pm
ECO 2802 2 1	Internship in Free Enterprise	TTh	11:00 - 11:50 am
ECO 3802 2 1	Internship in Free Enterprise	TTh	11:00 - 11:50 am
EC 4802 2 1	Internship in Free Enterprise	TTh	11:00 - 11:50 am
EDUCATION			
BIL 3102 2 1	Teaching English-as-a-Second Language	MW	5:00 - 5:50 pm
BIL 3301 1 1	Assessment and Evaluation of Bilingual Learners & Bilingual Programs	Mon	6:00 - 6:50 pm
BIL 3311 1 1	Parents & Community Relations & Involvement Strategies	Wed	6:00 - 6:50 pm
BIL 4101 1 1	Research in Bilingual Education	Mon	4:00 - 4:50 pm
EDU 1101 1 1	Field-Based Observation	Tues	9:30 - 10:20 am
EDU 1101 1 2	Field-Based Observation	Thur	11:00 - 11:50 am
EDU 2103 3 1	Foundations of Education	MW	1:00 - 2:20 pm
EDU 2103 3 2	Foundations of Education	TTh	5:30 - 6:50 pm
EDU 3203 3 1	Psychological Foundations of Teaching & Learning	MW	8:00 - 9:20 am
EDU 3203 3 2	Psychological Foundations of Teaching & Learning	TTh	1:00 - 2:20 pm
EDU 3203 3 3	Psychological Foundations of Teaching & Learning	MW	7:00 - 8:20 pm
EDU 3213 3 1	Survey of Multicultural & Exceptional Learners	TTh	11:00 - 12:20 pm
EDU 3213 3 2	Survey of Multicultural & Exceptional Learners	MW	5:30 - 6:50 pm
EDU 3213 3 3	Survey of Multicultural & Exceptional Learners	TTh	2:30 - 3:50 pm
EDU 3222 2 1	Classroom Management & Organization	TTh	9:30 - 10:20 am
EDU 3222 2 2	Classroom Management & Organization	TTh	5:30 - 6:50 pm
EDU 3503 3 1	Communication Arts in the Elementary School	MW	9:30 - 10:50 am
EDU 3503 3 2	Communication Arts in the Elementary School	TTh	8:00 - 9:20 am
EDU 3523 3 1	Educational Measurement & Evaluation	MW	1:00 - 2:20 pm
EDU 3523 3 2	Educational Measurement & Evaluation	MW	8:30 - 9:50 pm
EDU 4114 4 1	Teaching in the Elementary School	MW	11:00 - 12:50 pm
EDU 4114 4 2	Teaching in the Elementary School	MW	4:00 - 5:50 pm
EDU 4203 3 1	Diagnostic/Corrective Teaching	TTh	1:00 - 2:20 pm
EDU 4203 3 2	Diagnostic/Corrective Teaching	TTh	7:00 - 8:20 pm
EDU 4213 3 1	Teaching in the Secondary School	TTh	4:00 - 5:20 pm
EDU 4413 3 1	Reading in the Content Area	TTh	8:30 - 9:50 pm
EDU 4502 2 1	Field Experience II	Wed	8:00 - 9:20 am
EDU 4502 2 2	Field Experience II	Mon	7:00 - 8:20 pm
EDU 4546 6 1	Intern Teaching	TBA	TBA
EDU 4601 1 1	Intern Teaching Seminar	Mon	5:00 - 5:50 pm
SPED 1101 1 1	Field-Based Observation in Special Education	Tues	9:30 - 10:20 am
SPED 1101 1 2	Field-Based Observation in Special Education	Thur	11:00 - 11:50 am
SPED 3423 3 1	Special Education Curriculum	MW	4:00 - 5:20 pm
SPED 3523 3 1	Assessment, Evaluation, Referral, & Placement of the Exceptional Learner	MW	5:30 - 6:20 pm
SPED 4231 1 1	Learners with Behavior Disorders	Tues	4:00 - 4:50 pm
SPED 4241 1 1	Learners with Learning Disabilities	Thur	4:00 - 4:50 pm
SPED 4502 2 1	Field Experience II in Special Education Settings	Wed	8:00 - 9:20 am
SPED 4502 2 2	Field Experience II in Special Education Settings	Mon	7:00 - 8:20 pm
SPED 4546 6 1	Intern Teaching in K-12 Special Education Setting	TBA	TBA
SPED 4601 1 1	Intern Teaching Seminar	Mon	5:00 - 5:50 pm
ENGLISH			
ENG 1113 3 1	Rhetoric & Composition	MW	11:00 - 11:50 am
ENG 1123 3 1	Rhetoric & Literature	MW	9:30 - 10:50 am
ENG 1123 3 2	Rhetoric & Literature	TTh	11:00 - 12:20 pm
ENG 2303 3 1	Survey of British Literature	TTh	9:30 - 10:50 am
ENG 2433 3 1	Survey of Popular Fiction	TTh	8:00 - 9:20 am
ENG 3403 3 1	American Classic Drama	TTh	2:30 - 3:50 pm
ENG 3503 3 1	Advanced Grammar	MW	5:30 - 6:50 pm
ENG 3513 3 1	Children's Literature	MW	8:30 - 9:50 pm
ENG 3573 3 1	Young Adult Literature	TTh	4:00 - 5:20 pm
ENG 3583 3 1	Masterworks of Literature	TTh	2:30 - 3:50 pm
ENG 3813 3 1	Technical Newspaper Writing	Fri	9:00 - 11:50 am

MATHEMATICS			
MAT1013 3 1	Intermediate Algebra	TTh	1:00 - 2:20 pm
MAT1103 3 1	College Algebra for General Education	MW	8:00 - 9:20 am
MAT1103 3 2	College Algebra for General Education	MW	5:30 - 6:50 pm
MAT1103 3 16	College Algebra for General Education	Internet Class	
MAT1203 3 1	College Algebra for Mathematics or Science Majors	TTh	8:00 - 9:20 am
MAT2103 3 1	Principles of Probability & Statistics	MW	4:00 - 5:20 pm
MAT2204 4 1	Analytic Geometry & Calculus I	M-Th	9:30 - 10:20 am
MAT3203 3 1	Discrete Mathematics	MW	1:00 - 2:20 pm
MAT3204 4 1	Analytic Geometry & Calculus III	M-Th	11:00 - 11:50 am
MAT3313 3 1	Statistics I	TTh	11:00 - 12:20 pm
MAT3403 3 1	College Geometry	MW	2:30 - 3:50 pm
MAT3423 3 1	Abstract Algebra	TTh	1:00 - 2:20 pm
MUSIC			
MUS 1103 3 1	Music Appreciation	Fri	9:00 - 11:50 am
MUS 1203 3 1	Great Composers	TTh	5:30 - 6:50 pm
MUS 1801 1 1	CSW Ambassadors	MW	11:00 - 11:50 am
MUS 2801 1 1	CSW Ambassadors	MW	11:00 - 11:50 am
MUS 3801 1 1	CSW Ambassadors	MW	11:00 - 11:50 am
MUS 4801 1 1	CSW Ambassadors	MW	11:00 - 11:50 am
PHILOSOPHY			
PHI 2103 3 1	History of Philosophy	TTh	7:00 - 8:20 pm
PHYSICS			
PHY 1104 3 1	General Physics I	MW	1:00 - 2:20 pm
PHY 110L 1 1	General Physics I Laboratory	Tues	1:00 - 2:50 pm
POLITICAL SCIENCE			
POS 3113 3 1	Political Parties	MW	8:00 - 9:20 am
POS 4223 3 1	Constitutional History	MW	2:30 - 3:50 pm
PSYCHOLOGY			
PSY 1103 3 1	General Psychology	MW	8:00 - 9:20 am
PSY 1103 3 2	General Psychology	MW	11:00 - 12:20 pm
PSY 1103 3 12	General Psychology	Internet Class	
PSY 3103 3 1	Principles of Behavior Management	MW	9:30 - 10:50 am
PSY 3103 3 2	Principles of Behavior Management	MW	7:00 - 8:20 pm
PSY 3223 3 1	Psychology of Aging	TTh	2:30 - 3:50 pm
PSY 3403 3 1	Interpersonal Group Dynamics	Fri	9:00 - 11:50 am
PSY 3403 3 2	Interpersonal Group Dynamics	MW	5:30 - 6:50 pm
PSY 3503 3 1	Social Psychology	MW	1:00 - 2:20 pm
PSY 3503 3 2	Social Psychology	MW	8:30 - 9:50 pm
PSY 3513 3 1	History of Psychology	TTh	9:30 - 10:50 am
PSY 4103 3 16	Personality	Internet Class	
PSY 4203 3 12	Abnormal Psychology	Internet Class	
PSY 4213 3 1	Theories of Guidance & Counseling	TTh	8:00 - 9:20 am
PSY 4403 3 1	Experimental Psychology	TTh	11:00 - 12:20 pm
PSY 4403 3 2	Experimental Psychology	TTh	7:00 - 8:20 pm
PSY 4703 3 1	Topics in Psychology	TTh	5:30 - 6:50 pm
PSY 4803 3 1	Psychology Practicum	TBA	TBA
RELIGION			
REL 1101 1 1	Life I	Tues	12:00 - 12:50 pm
REL 1103 3 1	Old Testament Survey	MW	1:00 - 2:20 pm
REL 1103 3 2	Old Testament Survey	MW	2:30 - 3:50 pm
REL 1103 3 3	Old Testament Survey	Fri	1:00 - 3:50 pm
REL 1103 3 4	Old Testament Survey	TTh	7:00 - 8:20 pm
REL 1201 1 1	Life II	Tues	12:00 - 12:50 pm
REL 1203 3 1	New Testament Survey	TTh	2:30 - 3:50 pm
REL 1203 3 2	New Testament Survey	TTh	5:30 - 6:50 pm
REL 1203 3 12	New Testament Survey	Internet Class	
REL 1301 1 1	Life III	Tues	12:50 - 12:50 pm
SOCIOLOGY			
SOC 1103 3 1	Introduction to Sociology	TTh	9:30 - 10:50 am
SOC 3503 3 1	Social Psychology	MW	1:00 - 2:20 pm
SOC 3503 3 2	Social Psychology	MW	8:30 - 9:50 pm
SPANISH			
SPA 3103 3 1	Spanish Comparative Linguistics	TTh	4:30 - 5:50 pm
SPA 3203 3 1	Spanish Grammar & Composition	TTh	6:00 - 7:20 pm
THEATRE			
THE 1103 3 1	Introduction to Theatre	TTh	9:30 - 10:50 am
THE 1602 2 1	Theatre Workshop	TBA	TBA
THE 2213 3 1	Acting	TTh	2:30 - 3:50 pm
THE 2602 2 1	Theatre Workshop	TBA	TBA
THE 3213 3 1	Advanced Acting	TTh	2:30 - 3:50 pm
THE 3313 3 1	European Classic Drama	TTh	1:00 - 2:20 pm
THE 3602 2 1	Theatre Workshop	TBA	TBA
THE 4602 2 1	Theatre Workshop	TBA	TBA
THE 4702 2 1	Workshop: New York Theatre Tour	TBA	TBA

NOTE: Room numbers may change; check with the Registrar's office.

Christian principles

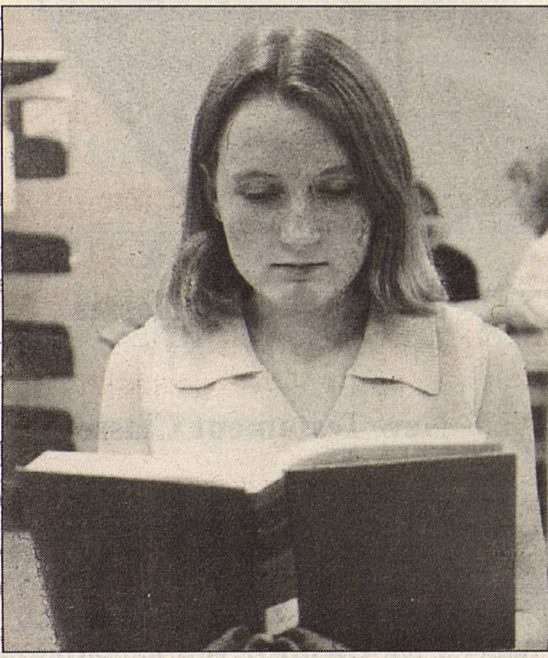
CSW is dedicated to providing students the opportunity to anchor their lives in Christian principles.



- ★ Old Testament Classes
- ★ New Testament Classes
- ★ Campus Crusade for Christ
- ★ Life Insights for Excellence
- ★ Senior Seminar in Leadership and Ethics (CSW's LIFE and Senior Seminar programs earned the College a place on the Templeton Foundation's prestigious honor roll of "Colleges that Encourage Character Development.")
- ★ Bible Studies

Holy Bible * Plato's *The Apology* * Aristotle's *Politics* * Augustine's *City of God* * Thomas Aquinas' *Summa Theologiae* * Magna Carta * Dante's *Divine Comedy* * Martin Luther's *Ninety-Five Theses* * Christian Religion * Balthasar Hubmaier's *Against the Heretics and Those Who Burn Them* * Thomas Helwys' *A Short Christian Catechism* * Descartes' *Meditations on First Philosophy* * Isaac Newton's *Principia Mathematica* * Samuel Rutherford's *Lex Rectoria* * John Milton's *Areopagitica* * The English Bill of Rights * Montesquieu's *The Spirit of the Laws* * The Declaration of Independence * The Constitution of the United States of America * Edmund Burke's *Reflections on the Revolution in France* * John Locke's *Two Treatises on Civil Government* * Samuel Rutherford's *Lex Rex* * Plato's *The Republic* * *Principia Mathematica* * *History*

The ideas of Western Civilization: the preservation and advancement of a free, democratic society



**FALL 2001 CALENDAR
COLLEGE OF THE SOUTHWEST - HOBBS CAMPUS**

Faculty Conven	August 10
New Student Advisem/Registration	August 13-17
Tuition Payment 9:00 am-6:00 pm	August 13-17
Dorms Open	August 19
*Classes Begin	August 20
Last Day to Change Classes	August 24
Last Day for 100% Tuition Refund	August 24
Last Day for 75% Tuition Refund	August 31
Labor Day - Classes Dismissed	September 3
Last Day for 50% Tuition Refund	September 7
Last Day for 25% Tuition Refund	September 14
**Zero Percent Tuition Refund	September 17
Fall Festival	October TBA
Last Day to Withdraw with a "W"	October 5
Mid-Semester	October 12
Last Day to File for Graduation	November 5
Thanksgiving Holiday	November 21-23
Classes Resume	November 26
Last Day to Withdraw with a "WF/WP"	December 3
Final Examinations Begin	December 4
Final Examinations End	December 7
Commencement	December 8
Dorms Closed	December 8

* The scheduled rates are set according to the day classes begin; therefore, refunds are not based on the date an individual registers or begins attending class.
** Tuition refunds for Special Course Offerings will not be made after classes have begun.

**TUITION & FEES
HOBBS CAMPUS**

Tuition Per Semester Hour	\$150.00
Graduate Tuition Per Semester Hour	158.00
Directed Studies Per Semester Hour	162.00
Audit Per Semester Hour	75.00
Application Fee (One Time Fee)	25.00
Change of Course Fee (Per Change Slip)	20.00
<i>This charge made for any course changes other than those required by the College.</i>	
Student Service Fee for Fall Session	95.00

NOTE: Fees are not refundable. CSW reserves the right to make such changes as it deems necessary. A complete list of fees is contained in the 2000-2001 *Bulletin*.

All tuition, housing expenses, and fees are due at the beginning of the semester. If a student's account is not clear by the twenty-first class day, the student will be dropped from classes with a financial indebtedness.



**College of the Southwest - Hobbs
Spring 2002
January 11 - May 11, 2002**

MASTER OF SCIENCE IN EDUCATION COURSE OFFERINGS

COURSE NO	CR	SECTION TITLE	DAY	TIME
ADMINISTRATION				
EDA 5213	3	1 Theories of Curriculum Development	Mon	6:00 - 9:00 pm
EDA 5213	3	2 Theories of Curriculum Development	Thur	6:00 - 9:00 pm
EDA 5213	3	3 Theories of Curriculum Development	Sat	1:00 - 3:50 pm
EDA 5303	3	1 Policies & Public Relations	Tues	6:00 - 9:00 pm
EDA 5303	3	2 Policies & Public Relations	Sat	9:00 - 11:50 am
EDA 5403	3	1 Educational Finance & Facilities	Wed	6:00 - 9:00 pm
EDA 5503	3	1 School Administration	Mon	6:00 - 9:00 pm
EDA 5803	3	1 Internship in Educational Administration	TBA	TBA
COLLEGE COURSES				
EDC 5901	1	1 Portfolio Assessment	TBA	TBA
COUNSELING				
EDC 5323	3	1 Advanced Theories of Psychological Counseling	Thur	6:00 - 9:00 pm
EDC 5433	3	1 School Counselors & Play Therapy	Wed	6:00 - 9:00 pm
EDC 5433	3	2 School Counselors & Play Therapy -- CSW-C	Wed	6:00 - 9:00 pm
EDC 5453	3	1 Achievement, Ability, & Processing	Wed	6:00 - 9:00 pm
EDC 5803	3	1 Internship in Counseling	TBA	TBA
EDC 5813	3	1 Counseling Practicum	TBA	TBA
CURRICULUM & INSTRUCTION				
EDI 5113	3	1 Brain-Based Instruction	Mon	6:00 - 9:00 pm
EDI 5113	3	2 Brain-Based Instruction	Thur	6:00 - 9:00 pm
EDI 5113	3	3 Brain-Based Instruction -- CSW-C	Thur	6:00 - 9:00 pm
EDI 5133	3	1 Advanced Instructional Technology	Tues	6:00 - 9:00 pm
EDI 5213	3	1 Theories of Curriculum Development	Mon	6:00 - 9:00 pm
EDI 5213	3	2 Theories of Curriculum Development	Thur	6:00 - 9:00 pm
EDI 5213	3	3 Theories of Curriculum Development	Sat	1:00 - 3:50 pm
EDI 5303	3	1 Policies & Public Relations	Tues	6:00 - 9:00 pm
EDI 5303	3	2 Policies & Public Relations	Sat	9:00 - 11:50 am
EDI 5413	3	1 Program Development & Management	Wed	6:00 - 9:00 pm
EDI 5413	3	2 Program Development & Management	Thur	6:00 - 9:00 pm
EDUCATION CORE				
EDU 5213	3	1 Professional/Ethical Issues in Counseling	Thur	6:00 - 9:00 pm
EDU 5413	3	1 Program Development & Management	Wed	6:00 - 9:00 pm
EDU 5413	3	2 Program Development & Management	Tues	6:00 - 9:00 pm
EDU 5513	3	1 Culturally Diverse & Special Needs Populations	Mon	6:00 - 9:00 pm
EDU 5513	3	2 Culturally Diverse & Special Needs Populations	Sat	9:00 - 11:50 am
EDU 5523	3	1 Educational Statistics & Research Design	Mon	6:00 - 9:00 pm
EDU 5523	3	2 Educational Statistics & Research Design	Tues	6:00 - 9:00 pm
EDUCATIONAL DIAGNOSTICIAN				
EDG 5113	3	1 Brain-Based Instruction	Mon	6:00 - 9:00 pm
EDG 5113	3	2 Brain-Based Instruction	Thur	6:00 - 9:00 pm
EDG 5113	3	3 Brain-Based Instruction -- CSW-C	Thur	6:00 - 9:00 pm
EDG 5473	3	1 Educational Diagnostic Process for Exceptional Learners	Thur	5:00 - 8:00 pm
SPED 5453	3	1 Achievement, Ability, & Processing	Wed	6:00 - 9:00 pm
UNDERGRADUATE COURSE OFFERINGS				
COURSE NO	CR	SECTION TITLE	DAY	TIME
ACCOUNTING				
ACT 2203	3	1 Income Tax Accounting	MW	1:00 - 2:20 pm
ACT 2214	4	1 Principles of Accounting II	M-Th	11:00 - 11:50 am
ACT 2214	4	2 Principles of Accounting II	MW	7:00 - 8:50 pm
ACT 3213	3	1 Intermediate Accounting II	TTh	5:30 - 6:50 pm
ACT 3253	3	1 Cost Accounting II	MW	5:30 - 6:50 pm
ACT 4213	3	1 Corporate Income Tax	TTh	1:00 - 2:20 pm
ACT 4363	3	1 Advanced Computer Applications in Accounting	MW	2:30 - 3:50 pm
ACT 4813	3	1 Internship in Accounting	TBA	TBA
ART				
ART 2203	3	1 The History of Western Art II	MW	1:00 - 2:20 pm
ART 2203	3	2 The History of Western Art II	MW	5:30 - 6:50 pm
ART 2213	3	1 The Artist	TTh	1:00 - 2:20 pm
ATHLETIC TRAINING				
ATE 2813	3	1 Clinical Practicum I	TBA	TBA
ATE 2823	3	1 Clinical Practicum II	TBA	TBA
ATE 3833	3	1 Clinical Practicum III	TBA	TBA
BIOLOGY				
BIO 1154	3	1 General Biology II	MW	9:30 - 10:50 am
BIO 115L	1	1 General Biology II Laboratory	Tues	8:00 - 9:50 am
BIO 1304	3	1 Life Science	MW	2:30 - 3:50 pm
BIO 130L	1	1 Life Science Laboratory	Tues	2:30 - 4:30 pm
BIO 2114	3	1 Principles of Human Anatomy & Physiology II	MW	11:00 - 12:20 pm
BIO 211L	1	1 Principles of Human Anatomy & Physiology II Laboratory	Tues	11:00 - 12:50 pm
BIO 3103	3	1 Animal Behavior	MW	2:30 - 3:50 pm
BIO 3303	3	1 Conservation Natural Resources	MW	8:00 - 9:20 am
BIO 3324	3	1 Vertebrate Zoology	MW	11:00 - 12:20 pm

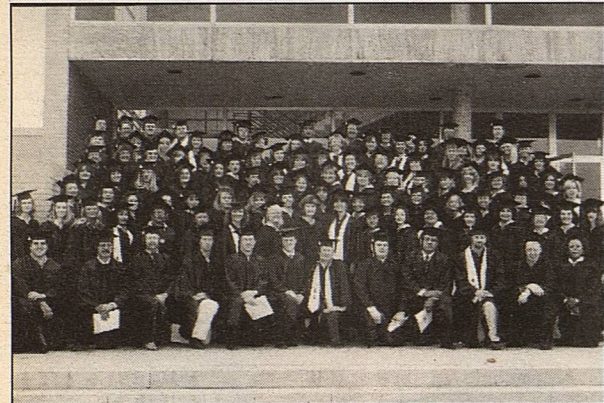
Independence
of support and
governance

Because CSW does not accept federal, state, or local government funds for capital or operational needs, the College remains free of governmental control. Instead, CSW is guided by a dedicated Board of Trustees whose collective experience and business acumen provide invaluable leadership.

CSW's Board of Trustees
Samuel S. Spencer, Jr., Chairman

- Chris Brininstool
- Jim Britton
- David Chavez
- Genaro Gonzales
- William J. Gray
- Mike Hartgraves
- Joe Henderson
- Mike Hoyl
- Gay Kernan
- Jim Koontz
- John Kuitu
- Pete McCleskey
- Jim Miller
- Randy Owensby
- Gary Don Reagan
- Samuel W. Small
- Charley Trimble
- Kent Waldrop
- Jim Walls
- Thelma A. Webber
- Peyton Yates

Academic distinction: the higher levels of learning of CSW graduates



- ★ Alpha Chi National Honor Society
- ★ NAIA All-America Scholar Athletes
- ★ Sigma Tau Delta, the International English Honor Society
- ★ Who's Who Among America's Teachers
- ★ Who's Who Among Students in American Universities & Colleges

For value and quality, CSW is consistently named to the college guides of *U.S. News & World Report*, *Money* magazine, and *Time/Princeton Review*.

FALL 2001 CALENDAR
COLLEGE OF THE SOUTHWEST - CARLSBAD CAMPUS
Fall Session "A"
August 6, 2001 - October 12, 2001

Advisement, Pre-Registration Fall "A"	July 17 - 21
Registration Textbook Purchase	July 24 - 28
Classes Begin	July 31
Last Day to Change Classes	August 7
Last Day for 100% Refund	August 7
Last Day for 50% Refund	August 14
Zero Percent Refund	August 15
Last Day to Withdraw with a "W"	August 28
Final Examinations	October 2 - 6

Fall Session "B"
October 15, 2001 - December 21, 2001

Advisement, Pre-Registration Fall "B"	September 25 - 29
Registration Textbook Purchase	October 2 - 6
Classes Begin	October 9
Last Day to Change Classes	October 16
Last Day for 100% Refund	October 16
Last Day for 50% Refund	October 23
Zero Percent Refund	October 24
Last Day to Withdraw with a "W"	November 6
Final Examinations	December 11 - 15

*The scheduled rates are set according to the day classes begin; therefore, refunds are not based on the date an individual registers or begins attending class.

NOTE: All charges are payable at registration.

TUITION & FEES
CARLSBAD CAMPUS

Tuition Per Semester Hour	\$170.00
Directed Studies Per Semester Hour	182.00
Audit Per Semester Hour	85.00
Application Fee (One Time Only)	25.00
Change of Course Fee (Per Change Slip)	20.00
This charge made for any course change(s) other than those required by the College.	
Placement Fee	8.00
Recording Fee (On Transcripts)	15.00
Per Credit Hour	
Transcript (Official); First Transcript Free of Charge	5.00
Transcript (Domestic-Fax Only)	10.00
Transcript (Student Copy)	1.00
Student Service Fee	35.00

NOTE: Fees are not refundable. CSW reserves the right to make such changes as it deems necessary.

All tuition, fees, and other expenses are due at the beginning of the session. If a student's account is not clear by the fourteenth class day of the session, the student will be dropped from classes with a financial indebtedness.



COLLEGE OF THE SOUTHWEST - CARLSBAD

MASTER OF SCIENCE IN EDUCATION COURSE OFFERINGS
August 20 - December 8, 2001

COURSE NO	CR	SEC	TITLE	DAY	TIME	ROOM	FACULTY
EDA 5203	3	1	Educational Leadership & Supervision	Mon	6:00 - 9:00 pm	L109	Atherton
EDA 5203	3	2	Educational Leadership & Supervision	Sat	6:00 - 9:00 pm	L100	Huddleston
EDA 5313	3	1	Educational Law	Mon	6:00 - 9:00 pm	A101	Miller, G
EDA 5313	3	2	Educational Law	Wed	6:00 - 9:00 pm	A101	Miller, G
EDA 5803	3	1	Internship in Educational Administration	TBA	TBA		Miller, G
COLLEGE COURSES							
CSW 5901	1	1	Portfolio Assessment	TBA	TBA		Fleming
COUNSELING							
EDC 5103	3	1	Career Development & Life Planning	Mon	6:00 - 9:00 pm	A100	Staff
EDC 5103	3	2	Career Development & Life Planning	Sat	9:00 - 12:00 pm	MHC	Cagle
EDC 5313	3	1	Counseling Techniques for School Counselors	Tues	6:00 - 9:00 pm	A101	Sanders
EDC 5403	3	1	Group Processes	Mon	6:00 - 9:00 pm	CSWC	Nance, T
EDC 5403	3	2	Group Processes	Thur	6:00 - 9:00 pm	S124	Cagle
EDC 5413	3	1	Family Intervention	Wed	6:00 - 9:00 pm	A100	Sanders
EDC 5803	3	1	Internship in Counseling	TBA	TBA		Posely, E
EDC 5813	3	1	Counseling Practicum	TBA	TBA		Sanders
CURRICULUM & INSTRUCTION							
EDI 5203	3	1	Educational Leadership & Supervision	Mon	6:00 - 9:00 pm	L109	Atherton
EDI 5203	3	2	Educational Leadership & Supervision	Sat	9:00 - 12:00 pm	L100	Huddleston
EDI 5231	1	1	Professionalism & Ethics	Wed	6:00 - 7:00 pm	L109	Crouch
EDI 5313	3	1	Educational Law	Mon	6:00 - 9:00 pm	A101	Miller, G
EDI 5313	3	2	Educational Law	Wed	6:00 - 9:00 pm	A101	Posely, B
EDI 5533	3	1	Exceptional Populations in Regular Classrooms	Thur	6:00 - 9:00 pm	L109	Crouch
EDUCATION CORE							
EDU 5103	3	1	Instructional Strategies	Thur	6:00 - 9:00 pm	A101	Staff
EDU 5103	3	2	Instructional Strategies	Sat	9:00 - 12:00 pm	L109	Davis
EDU 5122	2	1	Current Issues in Education	Wed	7:00 - 9:00 pm	L109	Crouch
EDU 5203	3	1	Theories of Learning & Human Development	Thur	6:00 - 9:00 pm	S124	Fleming
EDU 5203	3	2	Theories of Learning & Human Development	Sat	1:00 - 4:00 pm	L109	Erickson
EDU 5523	3	1	Educational Statistics & Research Design	Mon	6:00 - 9:00 pm	S121	Fleming
EDU 5523	3	2	Educational Statistics & Research Design	Tues	6:00 - 9:00 pm	L109	Posely, E
EDU 5523	3	3	Educational Statistics & Research Design	Thur	6:00 - 9:00 pm	TBA	Staff
SPED 5443	3	1	Individual Cognitive Assessment	Tues	5:00 - 8:00 pm	A100	Staff
EDUCATIONAL DIAGNOSTICIAN							
EDG 5103	3	1	Career Development & Life Planning	Mon	6:00 - 9:00 pm	A100	Staff
EDG 5103	3	2	Career Development & Life Planning	Sat	9:00 - 12:00 pm	MHC	Cagle
EDG 5413	3	1	Family Intervention	Wed	6:00 - 9:00 pm	A100	Sanders
EDG 5443	3	1	Individual Cognitive Assessment	Tues	5:00 - 8:00 pm	A100	Westbrook, M
EDG 5533	3	1	Exceptional Populations in Regular Classrooms	Thur	6:00 - 9:00 pm	L109	Crouch

COLLEGE OF THE SOUTHWEST - CARLSBAD CAMPUS
FALL "A" SESSION
August 6, 2001 - October 12, 2001

UNDERGRADUATE COURSE OFFERINGS

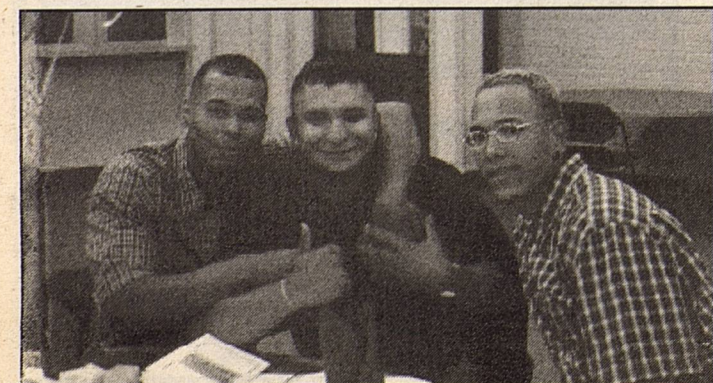
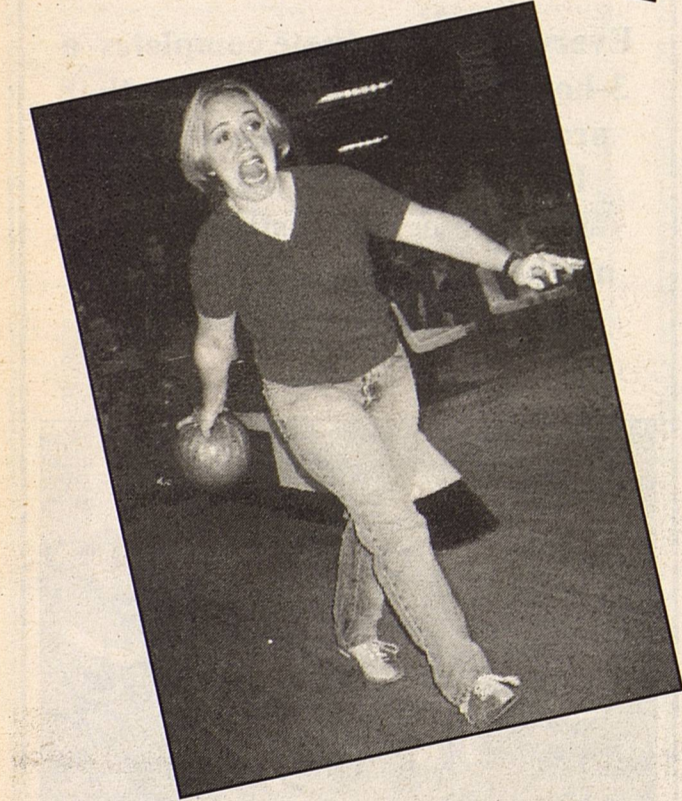
COURSE NO	CR	SECTION	TITLE	DAY	TIME	FACULTY
ACCOUNTING						
ACT 2204	4	20	Principles of Accounting I	Internet Class		Lunsford, S
ACT 3133	3	40	Managerial Accounting	Wed	6:00 - 9:00 pm	Lunsford, P
ART						
ART 1103	3	11	Art Appreciation (ITV)	TTh	1:00 - 2:20 pm	Phillips
ART 2103	3	11	History of Western Art I (ITV)	MW	11:00 - 12:20 pm	Phillips
BIOLOGY						
BIO 3314	4	40	Invertebrate Zoology	Thur	5:00 - 9:00 pm	Breene
BIO 3404	4	40	Genetics	Mon	5:00 - 9:00 pm	Sengupta
BUSINESS ADMINISTRATION						
BUA 1103	3	11	Business & Society	TTh	8:00 - 9:20 am	Bradford
BUA 3313	3	40	Business Law I	Thur	6:00 - 9:00 pm	Banks, D
BUA 4503	3	40	Business Ethics	Wed	6:00 - 9:00 pm	Beasley
CRIMINAL JUSTICE						
CRJ 1103	3	20	Introduction to Criminal Justice	Internet Class		Lunsford, S
CRJ 2303	3	20	Criminal Investigations	Internet Class		Read
CRJ 2703	3	20	Topics: Serial Killers	Internet Class		Read
CRJ 3103	3	20	Criminology	Internet Class		Lunsford, S
CRJ 3303	3	20	Law Enforcement Management	Internet Class		Bower
COMPUTER SCIENCE						
CSI 2103	3	20	Database Management	Internet Class		Williams, L
CSI 2203	3	40	Educational Technology	Sat	9:00 - 12:00 pm	Baca
ECONOMICS						
ECO 2103	3	40	Principles of Macroeconomics	Thur	6:00 - 9:00 pm	Connors
ECO 2802	2	11	Internship in Free Enterprise (ITV)	TTh	11:00 - 12:20 pm	DiUlus
ECO 2213	3	11	Freedom, Ethics, & Free Enterprise (ITV)	MW	9:30 - 10:50 am	DiUlus
ECO 2213	3	20	Freedom, Ethics, & Free Enterprise	Internet Class		Waters
ECO 3802	2	11	Internship in Free Enterprise (ITV)	TTh	11:00 - 12:20 pm	DiUlus

The American tradition of free enterprise, individual liberty & responsibility, the constitutional privilege of self-government

Every CSW graduate completes a 3-hour free enterprise course that provides an invaluable working knowledge of our heritage of freedom & responsibility, the market economy, and the role of government in a free society.



As CSW's most visible commitment to the principles of free enterprise, our Students in Free Enterprise team consistently ranks among the top handful of teams in the world.



ECO 4802	2	11	Internship in Free Enterprise (ITV)	TTh	11:00 - 12:20 pm	DiUlus
EDUCATION						
BIL 3111	1	11	Language Arts for K-12 Bilingual Learners	MW	4:00 - 5:50 pm	Greenc
EDU 1101	1	40	Field-Based Observation	Tues	4:30 - 5:30 pm	Alsop
EDU 2103	3	40	Foundations of Education	Tues	6:00 - 9:00 pm	Wittman
EDU 3222	2	40	Classroom Management & Organization	Wed	6:00 - 8:00 pm	Alsop
EDU 4213	3	40	Teaching in the Secondary School	Thur	6:00 - 9:00 pm	Staff
EDU 4546	6	40	Student Teaching	TBA	TBA	Wheeler
EDU 4601	1	40	Student Teaching Seminar	Wed	5:00 - 6:00 pm	Wheeler
EDU 4601	1	41	Student Teaching Seminar	Wed	5:00 - 6:00 pm	Wheeler
SPED1101	1	40	Field-Based Observation in Special Education	Tues	4:30 - 5:30 pm	Sensibaugh
SPED2103	3	40	Introduction to Exceptional Learners & Special Education	Wed	6:00 - 9:00 pm	Staff
SPED4201	1	40	Special Education for Gifted/Talented	Thur	5:00 - 6:00 pm	Lee
SPED4211	1	40	Learners With Physical Impairments	Thur	6:00 - 7:00 pm	Fox
SPED4221	1	40	Learners With Cognitive Deficits	Thur	7:00 - 8:00 pm	Fox
SPED4241	1	40	Learners With Learning Disabilities	Wed	5:00 - 6:00 pm	Fox
ENGLISH						
ENG 1113	3	40	Rhetoric & Composition	Wed	9:00 - 12:00 pm	Milligan
ENG 2103	3	40	Expository Writing	Tues	9:00 - 12:00 pm	Walker
ENG 2223	3	40	Life & Literature of the Southwest	Wed	6:00 - 9:00 pm	Walker
ENG 4533	3	40	Major American Author	Fri	9:00 - 12:00 pm	Milligan
ENVIRONMENTAL MANAGEMENT						
EMS 3303	3	40	Social Analysis of Contemporary Environmental Issues	Mon	6:00 - 9:00 pm	Waters
EMS 4402	2	40	Renewable Resource Management	Wed	5:00 - 7:00 pm	Waters
EMS 4813	3	40	Seminar in Environmental Studies	Tues	6:00 - 9:00 pm	Scott
FINANCE						
FIN 2403	3	40	Principles of Finance	Mon	6:00 - 9:00 pm	Bradford
FIN 3403	3	40	Investments/Personal Financial Planning	Fri	1:00 - 4:00 pm	Staff
FIN 3443	3	40	Financial Analysis	Tues	6:00 - 9:00 pm	Abercrombie
GEOGRAPHY						
GEOG2103	3	40	Physical & Cultural Geography	Thur	9:00 - 12:00 pm	Vuk
HISTORY						
HIS 2103	3	20	American History to 1876	Internet Class		Groves
HIS 2303	3	40	History & Geography of New Mexico	Tues	9:00 - 12:00 pm	Vaughn
HIS 3313	3	40	World History	TBA	TBA	Tigert
MANAGEMENT						
MGT3223	3	40	Leadership & Motivation	Mon	6:00 - 9:00 pm	Beasley
MGT3403	3	40	Human Resources & Performance Evaluations	Fri	1:00 - 4:00 pm	Vandergriff
MGT3503	3	20	Organizational Behavior	Internet Class		Lunsford, P
MGT4693	3	40	Senior Seminar in Organizational Management	Thur	6:00 - 9:00 pm	Scott
MARKETING						
MKT3323	3	40	Principles of Marketing and Sales	Mon	5:00 - 8:00 pm	Coalson
MKT3343	3	40	Marketing Research	Sat	9:00 - 12:00 pm	Coalson
MKT3413	3	11	Principles of Retailing (ITV)	TTh	9:30 - 10:50 am	Bradford
MATHEMATICS						
MAT2103	3	40	Principles of Probability & Statistics	Mon	6:00 - 9:00 pm	Hayes
MAT3313	3	40	Statistics I	Sat	9:00 - 12:00 pm	Brown
MUSIC						
MUS 1103	3	11	Music Appreciation (ITV)	Fri	9:00 - 11:50 am	Staff
POLITICAL SCIENCE						
POS 3113	3	40	Political Parties	Mon	1:00 - 4:00 pm	Vaughn
POS 4223	3	40	Constitutional History	Tues	1:00 - 4:00 pm	Vaughn
PSYCHOLOGY						
PSY 1103	3	20	General Psychology	Internet Class		Spencer
PSY 3103	3	40	Principles of Behavior Management	Thur	6:00 - 9:00 pm	Courts
PSY 3113	3	40	Cognition	Thur	6:00 - 9:00 pm	Roberto
PSY 3223	3	11	Psychology of Aging (ITV)	TTh	2:30 - 3:50 pm	Staff
PSY 3403	3	40	Interpersonal Group Dynamics	Wed	6:00 - 9:00 pm	Courts
PSY 3503	3	11	Social Psychology (ITV)	MW	1:00 - 2:20 pm	Reed
PSY 4203	3	20	Abnormal Psychology	Internet Class		Hamel
RELIGION						
REL 110	3	40	Old Testament Survey	Thur	6:00 - 9:00 pm	Robinson
REL 1203	3	20	New Testament Survey	Internet Class		Rogers
SOCIOLOGY						
SOC 3223	3	40	Sociology of Organizations	Tues	6:00 - 9:00 pm	Williams
SOC 3503	3	11	Social Psychology (ITV)	MW	1:00 - 2:20 pm	Reed
SPANISH						
SPA 3203	3	11	Spanish Grammar & Composition (ITV)	TTh	4:30 - 5:50 pm	Palomo, J

COLLEGE OF THE SOUTHWEST - CARLSBAD CAMPUS
FALL "B" SESSION
October 15, 2001 - December 21, 2001

UNDERGRADUATE COURSE OFFERINGS

COURSE NO	CR	SECTION TITLE	DAY	TIME	FACULTY
ACCOUNTING					
ACT 2214	4	Principles of Accounting II	Internet Class		Lunsford, P
ACT 4213	3	Corporate Income Tax	Th	6:00 - 9:00 pm	Lunsford, P
ACT 4253	3	Advanced Accounting	Wed	6:00 - 9:00 pm	Lunsford, S

BIOLOGY						
BIO 2204	4	50	General Botany	TBA	TBA	Breene
BIO 3104	4	50	Microbiology	Tues	5:00 - 9:00 pm	Staff
BIO 3324	3	50	Vertebrate Zoology	Thur	5:00 - 9:00 pm	Sengupta
BIO 3503	3	50	General Ecology	Wed	6:00 - 9:00 pm	West
BUSINESS ADMINISTRATION						
BUA 3303	3	50	Professional Communications & Sales	Mon	9:00 - 12:00 pm	Milligan
BUA 3413	3	50	Business Law II	Thur	6:00 - 9:00 pm	Banks
CRIMINAL JUSTICE						
CRJ 1103	3	30	Introduction to Criminal Justice	Internet Class		Lunsford, S
CRJ 1113	3	30	Criminal Law I	Internet Class		Read
CRJ 1123	3	30	Criminal Law II	Internet Class		Read
CRJ 1203	3	30	Introduction to the Judicial Process	Internet Class		Lunsford, S
CRJ 2703	3	30	Topics: Criminal Investigations II	Internet Class		Bower
CRJ 3313	3	30	Correctional Process	Internet Class		Read
COLLEGE COURSES						
CSW 3901	1	50	Portfolio Assessment	TBA	TBA	Fleming
CSW 4691	1	50	Senior Seminar in Leadership & Ethics	Internet Class		Baca
COMPUTER SCIENCE						
CSI 2213	3	30	Electronic Spreadsheets	Internet Class		Williams, L
ECONOMICS						
ECO 2103	3	50	Principles of Macroeconomics	Sat	9:00 - 12:00 pm	Staff
ECO 3303	3	50	Managerial Economics	Tues	6:00 - 9:00 pm	Staff
EDUCATION						
BIL 3202	2	50	Science & Math for K-12 Bilingual Learners	Wed	1:00 - 3:00 pm	Schnoor
BIL 4101	1	50	Research in Bilingual Education	Wed	4:00 - 5:00 pm	Ramirez
EDU 3203	3	50	Psychological Foundations of Teaching & Learning	Tues	6:00 - 9:00 pm	Giblin
EDU 3213	3	50	Survey of Multicultural & Exceptional Learners	Mon	6:00 - 9:00 pm	Staff
EDU 3503	3	50	Communication Arts in the Elementary School	Wed	1:00 - 4:00 pm	Jenkins
EDU 3523	3	50	Educational Measurement & Evaluation	Mon	6:00 - 9:00 pm	Click
EDU 4114	4	50	Teaching in the Elementary School	Tues	5:00 - 9:00 pm	Alsop
EDU 4413	3	50	Reading in the Content Area	TBA		Williams, J
EDU 4502	2	50	Field Experience II	Wed	6:00 - 8:00 pm	Sensibaugh
SPED3323	3	50	Methods & Materials for Special Education	Mon	6:00 - 9:00 pm	Hamberg
SPED3423	3	50	Special Education Curriculum	Thur	6:00 - 9:00 pm	Fox
SPED3523	3	50	Assessment, Evaluation, Referral, & Placement of the Exceptional Learner	Wed	6:00 - 9:00 pm	Fox
SPED4101	1	50	Research in Special Education	Thur	5:00 - 6:00 pm	Staff
SPED4211	1	50	Learners With Physical Impairments	Thur	6:00 - 7:00 pm	Staff
SPED4221	1	50	Learners With Cognitive Deficits	Thur	7:00 - 8:00 pm	Staff
SPED4231	1	50	Learners With Behavior Disorders	Thur	8:00 - 9:00 pm	Staff
ENGLISH						
ENG 2223	3	50	Life & Literature of the Southwest	Tues	9:00 - 12:00 pm	Walker
ENG 3223	3	50	Technical Writing	Mon	6:00 - 9:00 pm	Walker
ENG 3513	3	50	Children's Literature	Tues	6:00 - 9:00 pm	Wittman
ENVIRONMENTAL MANAGEMENT						
EMS 3113	3	50	Survey of Environmental Law	Tues	6:00 - 9:00 pm	Barnes
EMS 3202	2	50	Introduction to Fossil & Non-Fossil Fuel Energy	Wed	6:00 - 9:00 pm	Standiford
EMS 4833	3	50	Senior Project in Environmental Management	Mon	6:00 - 9:00 pm	Scott
FINANCE						
FIN 3413	3	50	Corporate Finance	Mon	6:00 - 9:00 pm	Bradford
FIN 3423	3	50	Financial Management	Thur	6:00 - 9:00 pm	Bradford
HISTORY						
HIS 1103	3	30	Western Civilization to 1715	Internet Class		Groves
HIS 2203	3	30	American History from 1877	Internet Class		Groves
HIS 2223	3	50	Life & Literature of the Southwest	Tues	9:00 - 12:00 pm	Walker
HIS 3223	3	50	Civil War & Reconstruction	Fri	9:00 - 12:00 pm	Dinwiddie
MANAGEMENT						
MGT3133	3	50	Computer Applications Technology	Sat	9:00 - 12:00 pm	Staff
MGT3403	3	30	Human Resources & Performance Evaluation	Internet Class		Lunsford, P
MGT4103	3	50	Organizational Development & Change	Tues	6:00 - 9:00 pm	Scott
MGT4413	3	30	Strategic Management	Internet Class		Lunsford, P
MARKETING						
MKT3413	3	50	Principles of Retailing	TBA	TBA	Coalson
MKT4123	3	50	Services Marketing	TBA	TBA	Coalson
MATHEMATICS						
MAT1103	3	30	College Algebra for General Education	Internet Class		Morse
MAT3203	3	50	Discrete Mathematics	Tues	6:00 - 9:00 pm	Hayes
MAT3323	3	50	Statistics II	Wed	6:00 - 9:00 pm	Staff
MAT3403	3	50	College Geometry	Sat	9:00 - 12:00 pm	Hayes
POLITICAL SCIENCES						
POS 2103	3	50	National, State, & Local Government	Wed	9:00 - 12:00 pm	Scott
POS 3103	3	50	American Ideologies	Thur	9:00 - 12:00 pm	Vaughn
PSYCHOLOGY						
PSY 4103	3	30	Personality	Internet Class		Hamel
PSY 4213	3	50	Theories of Guidance & Counseling	Thur	6:00 - 9:00 pm	Courts
RELIGION						
REL 1203	3	50	New Testament Survey	Thur	6:00 - 9:00 pm	Robinson
SOCIOLOGY						
SOC 1103	3	50	Introduction to Sociology	Mon	6:00 - 9:00 pm	Staff
SOC 2213	3	50	Marriage & Family	Wed	6:00 - 9:00 pm	Wilbanks
SOC 3203	3	50	Race & Ethnic Relations	Mon	6:00 - 9:00 pm	Williams, R

