

50¢

POSTMASTER: Send address changes to Cowboy Country News, Box 179, Plains, Tx. 79355

BAZE, BOOKBINDING
514 W 7TH AVE
AMARILLO, TX
ARCHIVES

79101

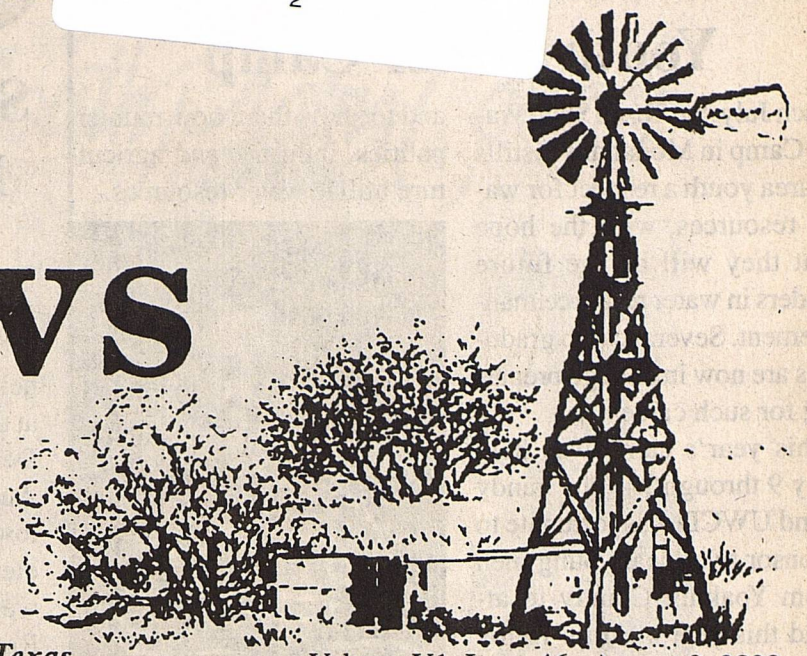
0514

Postage Paid
Plains, Texas

Cowboy Country News

Published each Wednesday in the county seat of Yoakum County, Plains, Texas

Volume V1, Issue 46, August 9, 2000

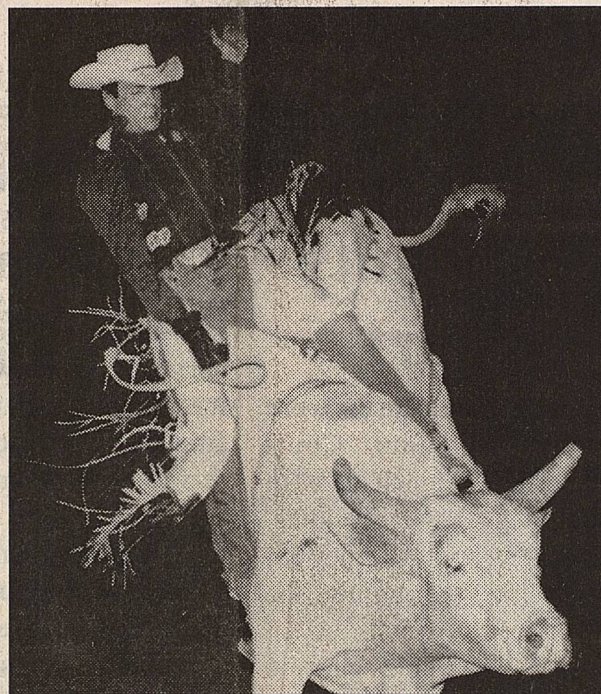


Rodeo, Reunion, Art Show...

A Very Big And Busy Weekend



2000-2001 Rodeo Queen Elizabeth Clanahan. She and Queen Candidates Candace Bowers and Allison Butler set a new record for selling saddle raffle tickets, almost 17,000! (More Photos Inside)



This Cowboy had his hand full of bull. The bulls proved tough-only three were ridden in three nights.

Scores of volunteer workers gave a weary sigh of relief Saturday night when the lights went off at the rodeo arena, and the band played the good night final tune at the street dance. The 47th annual Plains Rodeo, Old Settlers Reunion and Yoakum County Art Show were finally history.

There was some disappointment in numbers present for the barbecue lunch Saturday. A little more than 500 paid tickets were turned in for the meal, down from last years number. Rodeo Association spokesmen estimate the help from donors, and sale of excess brisket and sausage made catering the meal a breakeven proposition.

Queen Candidates Elizabeth Clanahan, Candace Bowers and Allison Butler sold an amazing 16,672 tickets for the saddle raffle, establishing a new record in sales efforts.

In the local roping club competition, member Larry Murphree was the big winner. Teamed with Tanner Blount in the team roping event, they both win first place buckles for their work. Murphree then teamed up with Kipp Blount in ribbon roping, and the duo also won fancy buckles.



Art Show first place winners Susie Powell, Sharon Pickett, Betty Estep



Art Show first place winners Marlene Gibson, Eileen Fillipp, Elouise Brown.



Art Show first place photography winner Wadonna Davis.

SPS Fuel Increase To Affect Lea County Electric Bills

Electric bills issued in August could be higher due to an increase in fuel charges from Southwestern Public Service, Lea County Electric's wholesale power supplier, according to Allan Brown, Manager of Marketing and Member Services for the Cooperative. "The increase in the fuel component of customers' electric bills has been caused by a significant increase in natural gas prices. Our base rates for electric services have not changed, but fuel costs from our supplier can and do fluctuate, and these costs are passed on to our customers through a power cost recovery factor (PCRF). While we do everything we can to minimize the impact of such changes to our customers by 'leveling' the factor rather than pass through monthly fluctuations from our wholesale supplier, significant increases make it necessary to adjust the factor," said Brown.

The factor for June and July was a credit of \$.00255 per kWh; the factor for August will be a charge of \$.00679 per kWh. This means that for an average monthly residential consumption of 700kWh, the August fuel charge will be \$4.75; the same usage in June and July would have resulted in a credit of \$1.79.

In addition to higher natural gas prices, summer heat typically means higher energy costs as cooling and irrigation loads increase. "When increased usage combines with an increase in fuel charges, higher bills are the unfortunate result. Our budget payment program can help our members avoid fluctuations in electric bills by establishing a fixed monthly payment," according to Brown. Customers interested in obtaining more information on this program are encouraged to call the Cooperative at 396-3631 or toll free at 800-510-5232.

Kristen Gray Receives T.I.L.F. Scholarship

Kristen Elaine Gray, a graduate of Plains High School, has been awarded a scholarship by the Texas Interscholastic League Foundation.

Gray received a Nelda C. and H. J. Lutcher Stark Foundation Scholarship in the amount of \$13,040, payable \$1,630 each semester for four years. This year the grants, including one in honor of Clyde V. McKee, Jr., to students who have participated in the UIL Academic State Meet and who have compiled an outstanding record of academic and extracurricular achievement. Recipients must attend a state supported four year college or university.

This year the TILF awarded 422 new awards and will renew approximately 208 awards for a total of 630 scholarships for 2000-01 with an approximate

value of \$1,082,000. Recipients may attend any approved college or university in Texas.

Gray placed first in Calculator Applications at the 1997, 1998, 1999, and 2000 UIL Academic State Meets. She placed second in Number Sense and Mathematics, and fourth in Science at the 2000 state meet. She also participated in UIL Computer Science, Basketball, Track, Cross Country, and Volleyball throughout her high school career. She is involved in National Honor Society, was Valedictorian of her graduating class, and was a National Merit Scholar. She was active in the community through her various volunteer efforts.

Gray plans to attend Texas A&M University College Station and major in Aerospace Engineering.

County proposes tax rate increase

In Monday's session of Commissioners Court, a proposed 2000 tax rate above the effective tax rate was approved. The new tax rate would be .49187 per hundred dollars valuation, compared to the effective rate of .45544 per hundred. Judge Brewer announced new regulations require a public hearing be held on the proposed rate increase, which was scheduled for 5 to 6 PM on Wednesday, August 16.

Following the public hearing, the Court will formally set the rate and adopt the county operating budget for 2000-2001 in a special public meeting on August 30, from 4 to 6 PM.

In other court business, Administrator Ed Rogers and Controller Clay Taylor gave a brief up date on the current financial condition of the County Hospital and Plains Clinic. The local clinic continues to see increased numbers in patient visits and procedures, and was recently approved by health officials as a certified Rural Health Clinic.

The county hospital in Denver City continues to improve it's financial condition. Rogers said the facility passed a review test which will allow changes in Medicare collections, benefitting the hospital by some \$300,000.

Taylor reported patients days are up in all hospital departments, including emergency room, X-ray, physical therapy and respiratory procedures. The hospital net income figure is currently \$181,000, compared to \$30,000 at this time last year.

The Tax Assessor/Collector's monthly report indicated taxes totaling \$28,128 were collected for the month of July.

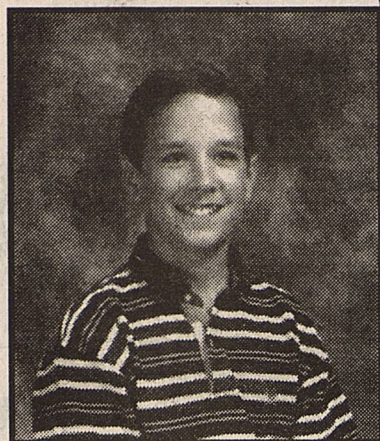
District Sponsors Youth Water Camp

Each July, the Texas State Water Camp in Monahans instills in area youth a respect for water resources, with the hope that they will be the future leaders in water resource management. Several camp graduates are now in college preparing for such careers.

This year's camp was held July 9 through 14. The Sandy Land UWCD was fortunate to sponsor two local young men from Yoakum County to attend this year's camp. Kelby Johnson, 8th grader at Plains Middle School and the son of Zane and Timmie Johnson and Scott Bruton, also an 8th grader at Plains Middle School and the son of Kevin and the late Tina Bruton.

The camp is housed at the George and Opal Bentley 4-H Center in Monahans. This one week educational experience uses hands on techniques and field trips to train students in conservation and preservation

and to show them how municipalities, industry, and agriculture utilize water resources.



Kelby Johnson



Scott Bruton

PHS Registration Schedule

Registration for Plains High School students will be held August 10 and 11 in the high school foyer. Students are strongly urged to attend and review their schedules and choose their lockers at the following assigned times:

Thursday, August 10 -

Seniors 10 a.m. to 12 noon
 Juniors 1 p.m. to 3 p.m.

Friday, August 11 -

Sophomores 10 a.m. to 12 noon

Freshmen 1 p.m. to 3 p.m.

** PHS students are reminded of the following ACT assessment test information;

Postmark deadline for the

September 23 ACT test is August 18. Basic test fee is \$523. The LATE deadline is September 1, and the test fee increases to \$38.

** PHS students should also note the following Texas Academic Skills Program (TASP) information on test schedules: The postmark deadline for regular registration for the September 16 TASP test is August 18. The postmark deadline for registration for the November 11 TASP test is October 13.

For further information on the ACT or TASP tests, students should contact PHS Counselor Arlon Alexander.

TX Boll Weevil Eradication Foundation Field Clerk-Plains District

Administrative activities for our Plains office

*General office duties.

*Proficiency in word processing, windows, computer experience a must.

Must be an insurable driver according to the TBWEF Fleet Insurance Policy, some travel for training. For more info call HR at 915-672-2846 ext. 3135. Send resume to: TBWEF, PO Box 5089, Abilene, TX 79608

Fax: 915-677-1006. Email jobs@txbollweevil.org

www.txbollweevil.org
 EEO & Drug Free Workplace

Texas Boll Weevil Eradication Foundation ACCEPTING APPLICATIONS!

Seasonal Positions

*Airport Recorders *Ground Observers

*Trappers *Mist Blow Operators

* Candidate must have a valid Driver's license and be insurable under foundation fleet policy.

*No experience necessary. Outdoor work. Ag background helpful.

For more information, apply in person:

Plains 1179 CR 305 806-456-4121	Seagraves 510 Railroad Ave. 806-546-8858	Brownfield Old Union School 806-755-2617	Seminole 1104 Hobbs Hwy. 915-758-1261
---------------------------------------	--	--	---

www.txbollweevil.org - Equal Opportunity Employer
 Cotton...a Texas tradition

MEMBER 2000
Cowboy Country
News
TEXAS PRESS ASSOCIATION

Cowboy Country News
 Published Weekly each Wednesday at 1205 Copeland Ave., PO Box 179, Plains, TX 79355
 Holly Dyer, Publisher Gary Dyer, Editor
 Subscription price in Zip Code 793 \$15 annually
 Other Zip Codes \$18 annually
 E-Mail us at ccn@hiplains.net
 ID # 017574 806-456-8451 FAX 806-456-2010



Obituaries

Services Held For 'Sonny' Richards

Services for Charles Benjamin (Sonny) Richards, Jr., 86, were held August 5, 2000 at 3 PM, at the Trinity Baptist Church in Denver City with Brother Jim Auld officiating. Burial followed at Gaines County Cemetery in Seagraves. Services were under the direction of Ratliff Funeral Home.

Sonny Richards died at the Yoakum County Hospital on August 3, 2000, after a brief illness.

He was born on February 24, 1914, in Seminole, the son of Ethel and Charley Richards. His parents moved to Gaines County in 1904 and remained there the rest of their lives. He was raised in Seagraves and moved to Denver City in 1957. He was a Sergeant in the Army

and served overseas during WW11 for two years in England and France. He was a barber and cut hair at the City Barber Shop over fifty years.

He married Mary Parks on April 14, 1962 in Denver City.

Sonny was a member of the Trinity Baptist Church, Denver City Riding Club, the V.F.W. and the Yoakum County Senior Citizens. He enjoyed high school football and was a loyal fan of the Denver City Mustangs and the Seagraves Eagles.

He was preceded in death by his parents and five sisters; Ora Ivey, Floye Belle Webb, Leone Lewis, Billye Dulin and Margaret Turland. He is survived by his wife Mary; a daughter, Sandra Folmar of Denver City; a son: Stephen Tabb of Sturton, Mo; a sister: Joannie Lee Herford of Lake Charles, La; 5 grandchildren, 12 great grandchildren and several nieces and nephews.

Criminal cases heard in County Court

Four criminal cases were heard in County Court Wednesday, August 2, with Judge Dallas Brewer presiding. Criminal District Attorney Richard Clark represented the state.

Fortunato Ochoa pled guilty to possession of marijuana; two ounces or less. He was fined \$250, must pay \$210 court costs, and serve 10 days in the county jail.

Jason Wayne Allen pled true to the offense of striking a fixture on highway. He must pay \$520 restitution, and serve 45 days in jail, with credit for 26 days served.

Dora Maria Salinas pled guilty to a first DWI, B.T. .095 and

.096. A 90 day jail sentence was suspended and probated 12 months. A fine and court costs totaling \$725 will be met with time payments. The defendant will serve 72 hours in jail, with credit for 10 hours served, attend weekly AA meetings, complete the DWI first offender program, and serve 24 hours community service.

In a plea bargain, Roy Don Bohannon pled guilty to driving while licenses was suspended. He was sentenced to 90 days in jail, with credit for 164 days served. His attorney was Paul Mansur.

**REMINDER:
 School starts
 August 21st**

Simplify Your Finances and Earn

5.72%

with the Edward Jones Full Service Account:

- Comprehensive record-keeping
- Competitive money market yields
- Line of credit
- Consolidated tax information (1099s)
- Automatic reinvestment of dividends and interest
- Direct deposit of Social Security and government checks
- Online access to your investments and timely market news (optional)

Call or stop by today for more information.

Wayne House
 5206 82nd Street
 Lubbock, Texas 79424
 Bus 806-698-8577
 Hm 806-456-3900
 800-867-9897
 www.edwardjones.com



Edward Jones

Serving Individual Investors Since 1871

Volunteerism and YOU

The annual Rodeo and Old Settlers Reunion, the annual Art Association show and sale, and the 5th annual Watermelon Round Up on September 2 are opportunities for Plains to extend its hospitality and friendliness to ex-residents and scores of visitors.

Each event is the culmination of months of planning, organizing and plain old hard work performed by many volunteers and organizations.

The rodeo and reunion is planned by an informal committee of members of the Roping Club, the Lions Club and the Chamber of Commerce. They have a heavy load - they must contract with the rodeo producer, help recruit contestants, select Rodeo Queen contestants, provide tickets for each queen candidate, organize the Saturday parade, organize the art show and sale, make the many arrangements for the Reunion Bar-B-Q, solicit donations, prepare the concession stand for each night's rodeo, secure a band for the dance, get the rodeo arena ready, set up bleachers for the parade. Workers must be recruited to serve food at the Bar-B-Q, slice meat, sell tickets, take rodeo tickets at the gate, direct parking, work in the concession stand three nights.

The annual Watermelon Round Up is another Herculean effort. A committee of the Yoakum County connection plans the event. Jeannette Head serves as chair of this committee, and oversees 28 other committees.

Many people in these committees arrange for arts and craft booths, commercial exhibits, food booths, team roping, publicity, finance, logistics, stage entertainment, fun runs, multicultural events, games, volleyball, brisket/chili cook off, car show, door prizes, watermelon weigh-in, seed spitting, hospitality room, handing out free watermelon slices, selling whole melons.

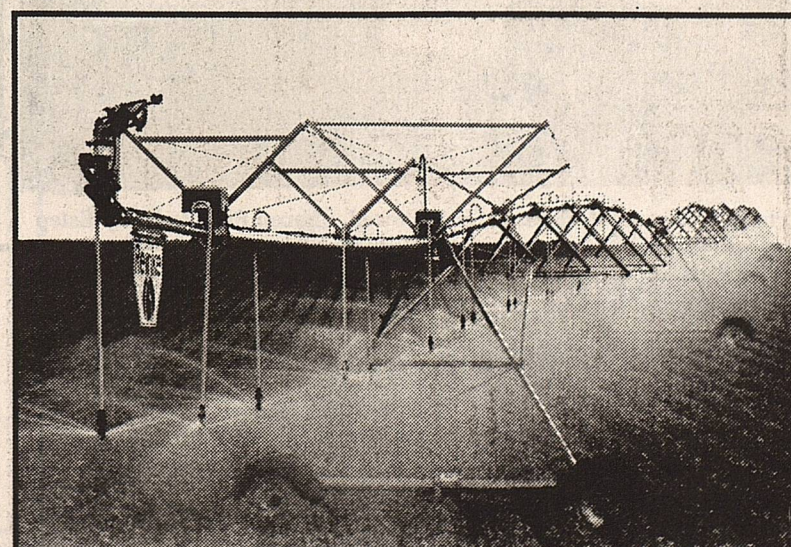
Preparations for the Round Up begin in January, and are still being made as this is printed. Spaces for all booths must be marked, hay bales must be moved in for seating, restored cars must be registered for the show, volleyball and horseshoe courts must be prepared, arrangements made for stock and contestants in the day long team roping.

The many county volunteers who labor so hard to make these events successful showcases for our community are be commended, if not actually praised for their work and dedication. It takes very little imagination to appreciate what a large effort these events require.

It should also be readily apparent many of the faces of volunteer workers are very familiar - many workers are the same folks who donated helping hands last year, and the year before, and the year before that. They are the folks committee chairmen can count on. Unfortunately, many times there are simply not enough of these same volunteers. They need 'new blood', they need participation by younger generations to continue the successful tradition of our rodeo, reunion, art show, and round up.

If you are one of the many who enjoy these annual activities, and would like to see them continue, we will appreciate you asking yourself a question; "If they are important for the county and our community, shouldn't I be willing to volunteer my services to help continue these traditions?"

We can assure you, there are ALWAYS plenty of jobs available for willing volunteers.



Better Design.

Reinke Irrigation Systems are designed to be stronger while maintaining an overall lower system weight - which means less stress on the drive train and a longer service life for your pivot irrigation system. See your Reinke Dealer today for a system designed to last!

More strength, less weight.

Jack Spears
 Drilling Company

Water Well Drilling & Pump Service
 456-4925 - 456-3845



The future of irrigation.
 www.reinke.com • 402-365-7251

Notice of Public Hearing On Tax Increase

The Yoakum County Commissioners Court will hold a public hearing on a proposal to increase total tax revenues from properties on the tax roll by 8 percent. Your individual taxes may increase or decrease, depending on the change in the taxable value of your property in relation to the change in taxable value of all other property and the tax rate that is adopted.

The public hearing will be held on August 16th from 5:00 - 6:00 pm at the District Courtroom in the Courthouse at Plains.

For the proposal: Dallas Brewer, County Judge
Woody Lindsey, Commissioner, Precinct 1
Jim Barron, Commissioner, Precinct 3

Against the proposal: None
Present and not voting: None

Absent: J.R. Slentz, Commissioner, Precinct 2
Jack Cobb, Commissioner, Precinct 4

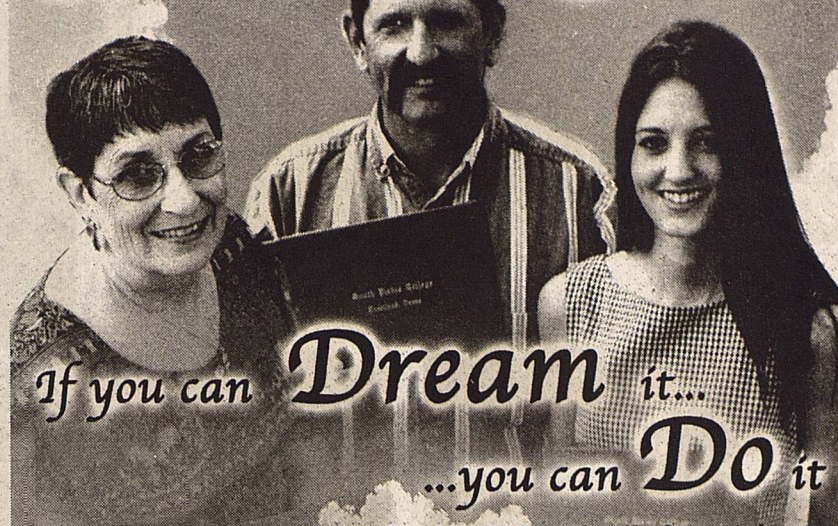
The following table compares taxes on an average home in this taxing unit last year to taxes proposed on the average home this year. Again, your individual taxes may be higher or lower, depending on the taxable value of your property.

	Last Year	This Year
Average residence homestead value	\$38,607	\$ 38,686
General exemptions available (amount available on the average homestead, not including senior citizen's or disabled person's exemptions)	2,999	2,999
Average taxable value	\$35,608	\$35,687
Tax Rate	55.0 / \$100	49.187 / \$100
Tax	\$195.84	\$175.53

Under this proposal, taxes on the average homestead would decrease by 20.31 or 10.3 percent compared with last year's taxes. Comparing tax rates without adjusting for changes in property value, the tax rate would decrease by \$0.05813 per \$100 of taxable value or 10.6 percent compared to last year's tax rate. These tax rate figures are not adjusted for changes in the taxable value of property.

Criminal Justice Mandate (for counties): The Yoakum County Auditor certifies that Yoakum County has spent \$3,810 in the previous 12 months beginning August 1, 1999, for the maintenance and operations cost of keeping inmates sentenced to the Texas Department of Criminal Justice. Yoakum County Sheriff has provided information on these costs, minus the state revenues received for reimbursement of such cost.

South Plains College



If you can **Dream** it...
...you can **Do** it

Three generations of the Faerber-Wright family have taken advantage of the educational programs at South Plains College. A quality faculty, first class facilities and innovative educational programs give SPC its reputation for guaranteeing student success no matter the generation. If you can dream it, you can do it at South Plains College. We take your education personally. To learn more, call us or visit our web site at www.spc.cc.tx.us.

- Four Convenient Locations
- Small Classes
- Teachers Who Care
- Academic Transfer Courses
- Technical Programs
- Flexible Schedules
- Affordable Tuition and Fees
- Financial Aid

Fall Registration Begins Aug. 21

Classes Begin Aug. 28

Late Registration Aug. 28 - Sept. 1

Call 806-894-9611 in Levelland

or 806-747-0576 in Lubbock

FOR ENROLLMENT DETAILS

An Equal Opportunity Educational Institution.

Public Notice City of Plains

Texas Community Development Program

City of Plains is giving notice of the city's intent to submit a Community Development Fund application for a grant from the Texas Community Development Program. The grant application requested is \$250,000.00 for water system improvements in the city of Plains. The application is available for review at City Hall during regular business hours.



Lalitos

For Great Mexican Food

Hours: Tues.-Fri. 11:00 - 9:00 Sat. 11:00 - 8:00
Sun. 11:00 - 2:00

All Major Credit Cards are Accepted

456-2233



AG INSURANCE PLUS

CROP INSURANCE MPC1-CRC-CAT-CROP HAIL
FARM MACHINERY INSURANCE

Jim Brown 456-2788

Mobile 806-891-0449 or
891-0450

Home 592-3490

Jeff Lowery
Mobile 806-891-3133
Home 456-3195

Nelson's Prescription Pharmacy

"Your Business is always appreciated"

Use our Toll-Free Number

1-800-658-9604

For All Your Pharmacy Needs!!
805 Tahoka Rd. Brownfield, TX

HICKS

*Carpet *Heating *Air Conditioning

*Maytag Appliances

204 N. Main, Denver City

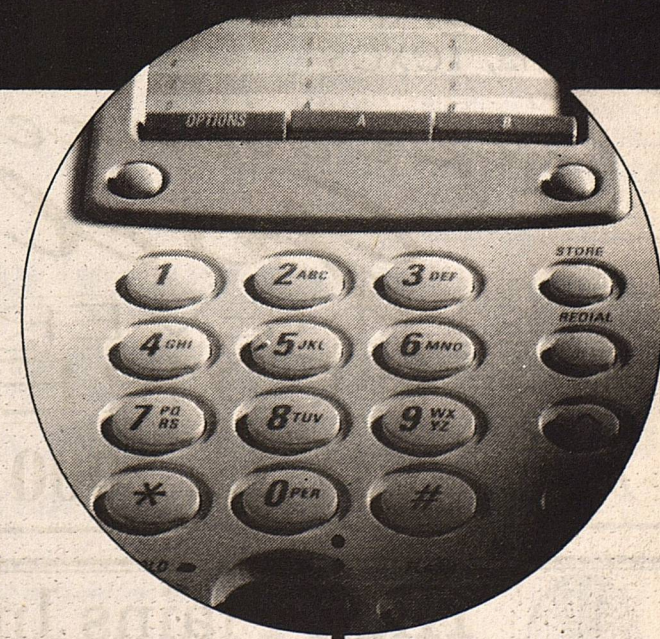
806-592-3973 or 592-3930



TRANE

"Its hard to stop a TRANE"

TurboCharge your phone.



Turn your phone into a high-performance machine with 12 calling features for only \$14.95. That's a savings of 60 percent,* with a money-back guarantee.

For better performance, you need the ALLTEL Complete Package. You'll get 12 features, including Caller ID Deluxe, Call Waiting, Call Return and more, all for only \$14.95.

Call 1-877-234-7723 to order or for more information.


*Average savings based on Complete Package. Display devices that are compatible with Caller ID or Caller ID Deluxe service may not necessarily work with Caller ID on Call Waiting service. Check the display unit specifications to ensure that it is capable of supporting Caller ID on Call Waiting service. Savings may vary by state. Service availability may vary.

ALLTEL
The power to simplify

Sign up now and there's no activation fee.



SWIM PARTY!!!!
ALL PLAINS YOUTH CENTER GRADES
 at County Swimming Pool,
 Thursday, August 10, 8 pm - 10 pm
FOOD and REFRESHMENTS!!!

 **First United Methodist Church of Plains Invites you to Worship!**

Sunday School 9:45 am
 Morning Worship 10:45 am
 Evening Worship 6:30 pm
 Evening Study 7:00 pm
 Thursday Afternoon Study 5:15 pm

FIRST BAPTIST CHURCH
 Plains, Texas

Experience God

LIKE NEVER BEFORE

August 11-13, 2000

 **A BIG THANK YOU!**

From **Elizabeth Clanahan**

Thank You-Plains, Denver City, Tokio, Bronco, Lovington and everyone else for the support you have given me while running for Rodeo Queen. This generous support could not have been matched anywhere else except West Texas and Eastern New Mexico. **THANK YOU BUTCH MACK.**
 Love,
 Elizabeth Clanahan

Thank You, Plains and the Chamber of Commerce for your support in this year's Rodeo Queen Contest!
 Sincerely,
Allison Butler

 **We strive to care for you... because WE CARE**

Plains Memorial Chapel



Norman & Judy Head, Owners
 910 Avenue E PO Box 40
 Across from old couthouse 806-456-2152

Yoakum County Plains Clinic
Jo Lena Wall PA-C
 Will see Minor Emergencies, Chronic medical problems, Immunizations

TEXAS HEALTH STEPS
 Toe Nail and Wart removal, Allergy Injections or stop by for
 Blood Pressure check

Office Hours: Monday & Tuesday 8-5
Wednesday 8-12 noon
Thursday & Friday 8-5

Will take walk-ins. Appointments preferred.
 Please call 806-456-6365

 **High Plains Internet** 

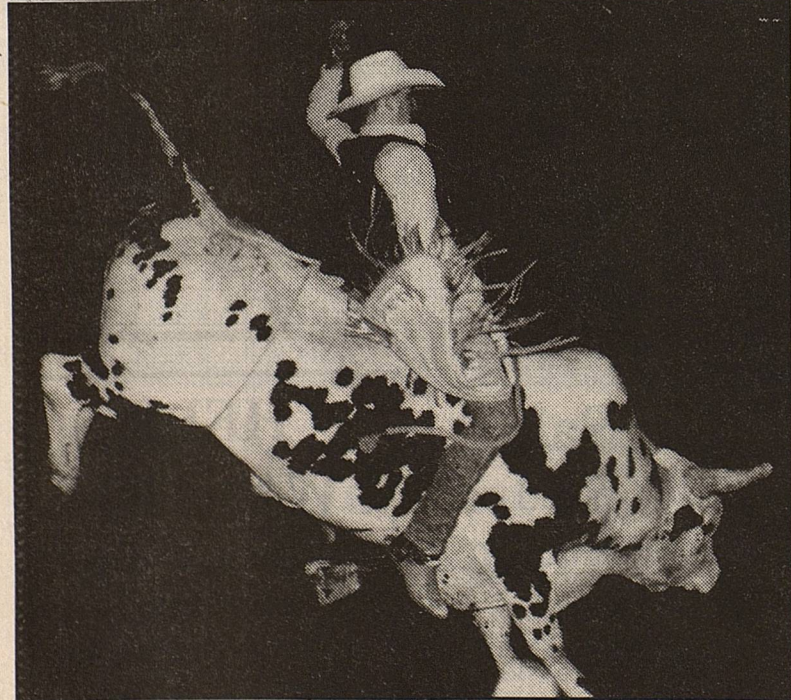
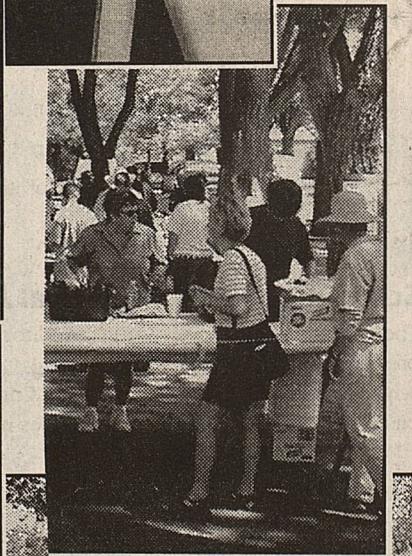
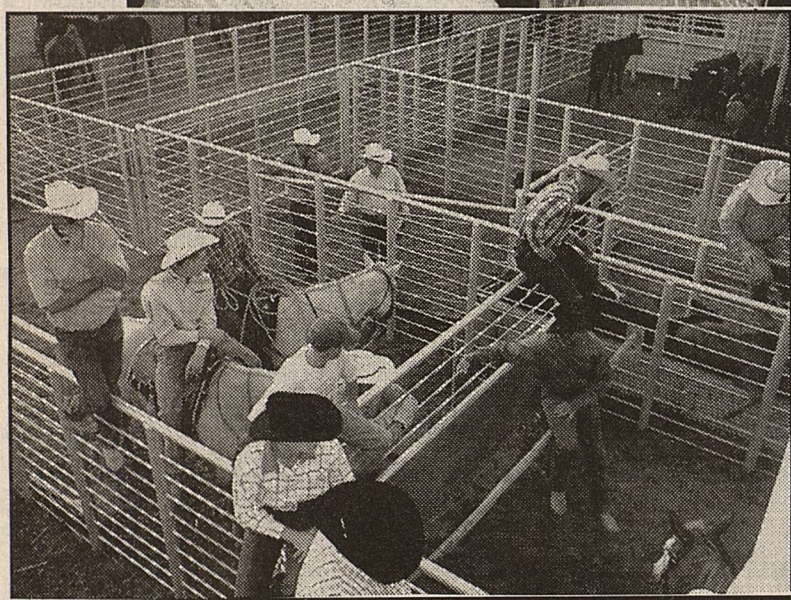
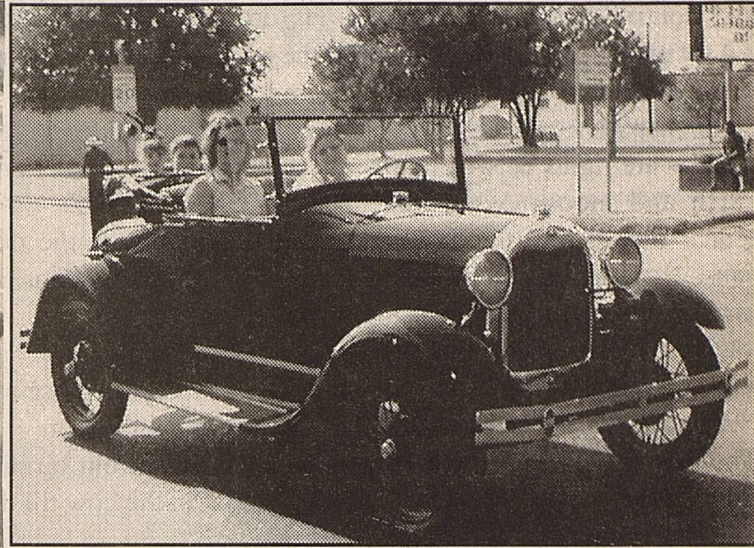
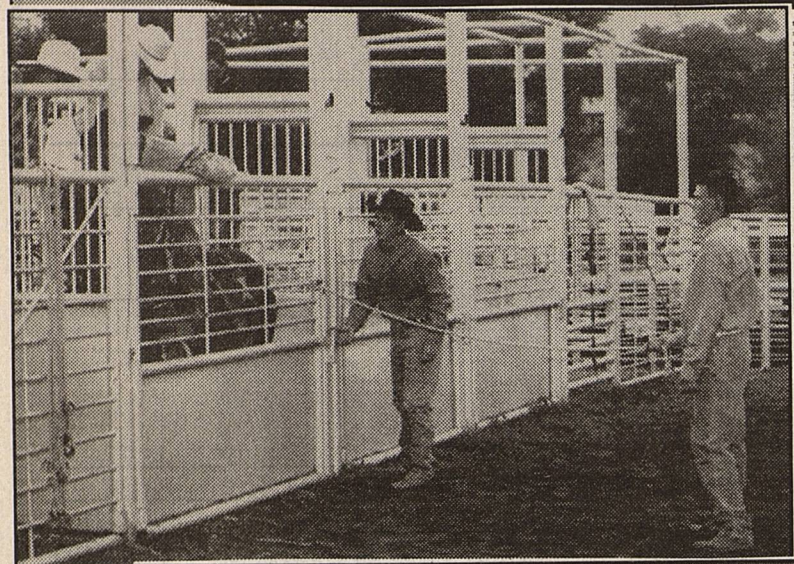
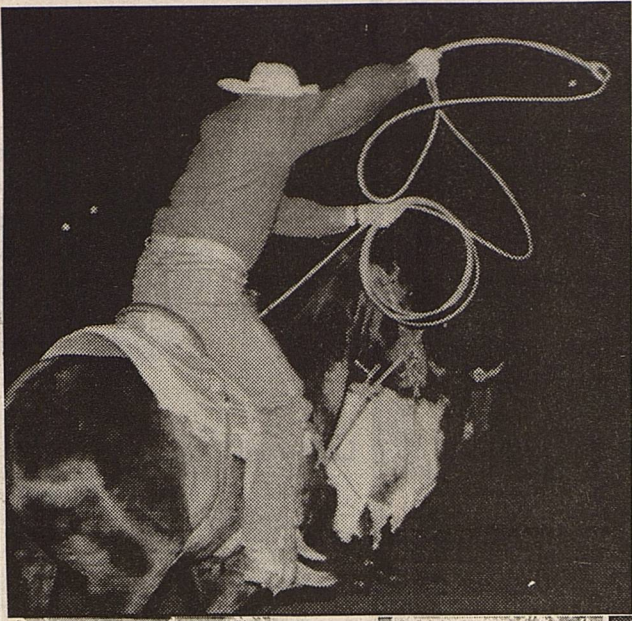
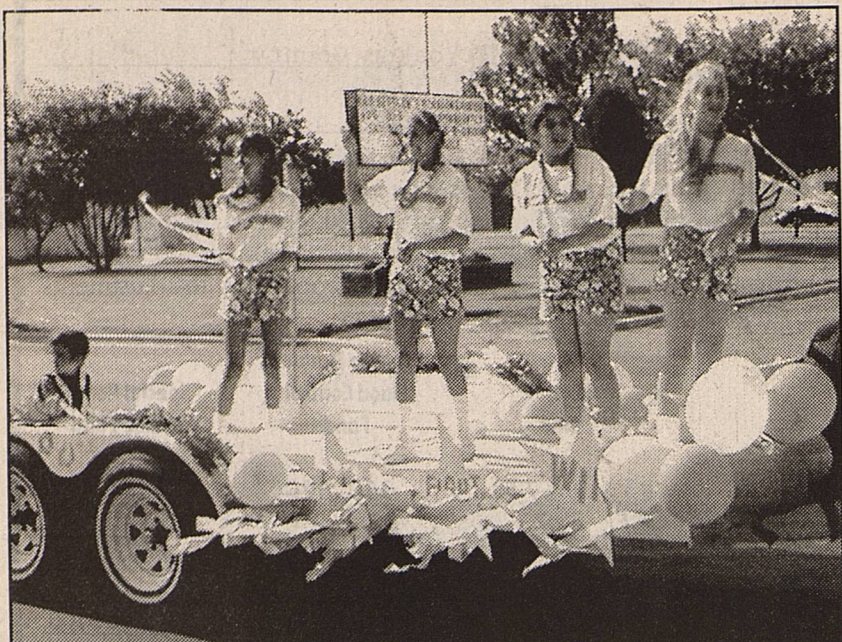
SERVING PLAINS, DENVER CITY, HIGGINBOTHAM & SURROUNDING AREA

Your Fastest, Easiest, Most Affordable Access To:

UNLIMITED ACCESS JUST \$24.95 PER MONTH PLUS TAX!
 Apple, Macintosh computers welcome

820 N. MUSTANG DR. 592-3359 DENVER CITY

WORLD WIDE WEB - E-MAIL - IRC CHAT - WEB PAGES - NEWS GROUPS - AG INFO. - WEATHER - SPORTS - NEWS - RESEARCH LIBRARIES - BUSINESS & STOCKS, AND MUCH, MUCH MORE.



IN THE MATTER OF COUNTY FINANCES
IN THE HANDS OF

TONI JONES
Treasurer of YOAKUM County, Texas.

COMMISSIONERS' COURT

YOAKUM County, Texas,
In Regular Session
JULY 31 Term, 2000

WE, THE UNDERSIGNED, as County Commissioners within and for said YOAKUM County, and the Hon. DALLAS BREWER, County Judge of said YOAKUM County, constituting the entire Commissioners' Court of said County, and each one of us, do hereby certify that on this, the 31ST day of JULY A. D. 2000, at a regular term of our said Court, we have compared and examined the report of TONI JONES, Treasurer of said County, for period beginning on the 1ST day of JUNE A. D. 1999, and ending on the 30TH day of JUNE A. D. 2000, and finding the same correct have caused an order to be entered upon the minutes of the Commissioners' Court of said County, stating the approval of said Treasurer's Report by our said Court, which said order recites separately the amount received and paid out of each fund by said County Treasurer since his last report to this Court, and for and during the time covered by his present report, and the balance of each fund remaining in said Treasurer's hands on the said 30TH day of JUNE A. D. 2000, and have ordered the proper credits to be made in the accounts of the said County Treasurer, in accordance with said order as required by Articles 1636-1637, Chapter 1, Title 34 of the Revised Statutes of Texas, 1925.

And we, and each of us, further certify that we have actually and fully inspected and counted all the actual cash and assets in hands of the said Treasurer belonging to YOAKUM County at the close of the examination of said Treasurer's Report, on this the 31ST day of JULY A. D. 2000, and the same to be as follows, to-wit:

FUNDS	BEGINNING BALANCE	RECEIPTS	MONTHLY TRANSFERS		DISBURSEMENTS	ENDING BALANCE
			TO	FROM		
GENERAL	6,103,528.41	75,921.69	28,785.66	61,414.46	327,932.28	5,818,889.02
PRECINCT #1	771,995.97	9,797.64	1,971.72	3,686.66	27,362.34	752,716.33
PRECINCT #2	842,782.11	11,876.84	1,971.72	3,691.76	27,845.63	825,093.28
PRECINCT #3	547,658.57	7,142.37	1,971.72	3,911.92	25,149.06	527,611.68
PRECINCT #4	567,960.68	7,240.15	1,971.71	4,380.00	30,331.12	542,461.42
ROAD & BRIDGE	.00	.00	1,797.20	1,797.20	.00	44.48
FARM-MARKET LATERAL	.00	.00	6,089.67	6,089.67	.00	.00
LATERAL ROAD	44.39	.09	.00	.00	.00	44.48
JURY	78,380.50	402.38	231.65	.00	2,845.90	76,168.63
C.C. RECORDS MGMT	17,563.58	1,328.81	.00	.00	.00	18,892.39
COURTHOUSE SECURITY	3,430.11	373.44	.00	.00	.00	3,803.55
CDA FEE ACCOUNT	1,045.58	648.57	.00	.00	211.12	1,483.03
ELECTION SERVICES	211.43	.43	.00	.00	.00	211.86
JUVENILE PROBATION-ST	12,076.19	6,382.71	.00	.00	.00	10,630.97
LAW LIBRARY	1,006.49	235.92	.00	30.71	7,797.22	1,242.41
PROBATED EDUCATION	425.29	9.86	.00	.00	.00	435.15
ABANDONED VEHICLES	1,525.92	3.10	.00	.00	.00	1,529.02
SPECIAL VIDEO	175.33	16.95	.00	.00	.00	192.28
Y.C. DRUG FORFEITURE	302.87	.62	.00	.00	.00	303.49
Y.C.S.O. FORFEITURE	87.18	.18	.00	.00	.00	87.36
HOSPITAL D/S	870,838.29	25,568.24	.00	10,000.00	4,996.36	881,410.17
Y.C. RECORDS MGMT	6,934.99	178.89	.00	.00	.00	7,113.88
YOUTH CENTER	11,760.23	26,673.97	.00	1,140.55	15,664.81	21,628.84
PLAINS AIRPORT	33.57	.23	500.00	.00	92.55	441.25
PERMANENT IMPROVEMENT	708,737.78	3,661.52	688.47	.00	.00	713,087.77
HOSPITAL	645,715.97	366,199.15	136.00	28,848.23	267,765.93	715,436.96
PLAINS CLINIC	4,198.68	2,030.61	10,000.00	716.66	13,113.30	2,399.33
HOSPITAL MEMORIAL	16,724.81	85.95	.00	.00	.00	16,810.76
JUVENILE PROBATION-TR	5,811.39	11.81	30.71	.00	.00	5,853.91
AD VALOREM TAX	16,298.73	42,318.74	.00	37,489.91	.00	21,127.56
CRIMINAL JUSTICE	5,418.98	6,218.47	.00	4.01	322.42	11,311.02
HOSPITALIZATION INS.	10,322.98	35,708.37	107,290.24	205.82	139,140.80	13,974.97
Y.C. FEE ACCOUNT	12,613.02	12,834.52	.00	28.91	13,700.52	11,718.11
TOTALS	11,265,510.02	642,872.22	163,436.47	163,436.47	904,271.36	11,004,110.88

G. B. Aerial Application, Inc.



Professional, Licensed Ag Applications
At Affordable Rates!

806-456-6300 Office
806-456-6790 Fax

G & B

806-456-7536 David Mobile
806-456-7974 Sarah Mobile
806-632-5375 Dain Mobile

G & B



BAYER LUMBER
& HARDWARE

1018 Ave. E Plains, Tx 79355
806-456-4800 Voice & Fax

WE ACCEPT VISA, MASTER CARD, and DISCOVER



STRAW HATS \$3.99
CHOPPING HOES \$16.95
LIME \$2.99 BAG
16-8-8 FERTILIZER \$7.95 Per 40 LB BAG

RINSE-N-VAC CARPET CLEANER
\$18.00 PER DAY RENTAL

From The Hack

School will start soon, either to the delight or disgust of all our youngsters. The following is supposedly the work of some young scholars responding to school questions. I am reasonably sure none of our bright kids contributed any of this;

- A set of teeth is eight canines, eight cuspids two molars and eight cuspidors.
- Tides are fights between the earth and moon. All water tend toward the moon, because there is no water in the moon, and nature abhors a vacuum. I forget where the sun goes this fight.
- A fossil is an extinct animal. The older it is, the more extinct it is.
- Many women believe an alcoholic binge will have no ill effects on an unborn fetus, but that is a large misconception.
- Equator is a menagerie lion running around the earth through Africa.
- Germinate is to become a naturalized German.
- Litter is a nest of young puppies.
- Magnet is something you

find crawling all over a dead cat.

- Momentum is what you give a person when they are going away.
- Planet is a body of earth surrounded by sky.
- Rhubarb is a kind of celery gone bloodshot.
- Vacuum is a large empty space where the Pope lives.
- Before giving a blood transfusion, find out if the blood is affirmative or negative.
- To remove dust from the eye, pull the eye down over the nose.
- For drowning, climb on top of the person and move up and down to make perspiration.
- For fainting, rub the person's chest, or if a lady, rub her arm above the hand instead.
- For dog bite, put the dog away several days. If he has not recovered, then kill it.
- For head cold, use an agonizer to spray the nose until it drops in your throat.
- To keep milk from turning sour, keep it in the cow till the last minute.
- When you breathe, you inspire. When you don't you expire.
- H2O is hot water. CO2 is cold water.
- To collect fumes of sulfur, hold a deacon over a flame in a test tube.
- Nitrogen is not found in Ireland because it is not found in a free state.

- Water is composed of two gins, Qxygin and Hydrogin. Oxygin is pure gin, Hydrogin is gin and water.
- Three kinds of blood vessels are arteries, vanes and caterpillars.
- Blood flows up one leg and down the other.
- Respiration is composed of two acts, first inspiration then expectoration.
- The moon is a planet just like earth, only deader.
- A super-saturated solution is one that holds more than it can hold.
- Mushrooms always grow in damp places and so they look like umbrellas.
- The pistol of a flower is its only protection against insects.

Bridal Shower
honoring
Miss Nemi Cobb, Bride elect
of Joe H. Hayes, 11
Saturday, August 19, 2000
10 - 11:30 A.M.
in the home of
Mrs. Jo Ann Barron
202 1st Street
Selections: Lubbock, Sournel
Pantry, Dillards, Linens 'n Things

Trailers For Sale
New trailers at good prices, from 8' to 20' in length, can custom build to meet your individual needs.
Call 505-396-4192

AIR CONDITIONING
 Financing available on new central refrigerated air conditioning and heating equipment. Payments as low as \$59 Monthly.
Bankruptcy? Bad Credit? No problem! WE WILL FINANCE YOU!
AIR AMERICA 791-1093

CRP
grass seeding
shredding, crop planting and discing
CALL
806-456-7450
456-7550 mobile

*** House For Sale***
4 Br, 2 Bath
1508 Ave. G
For Appointment to see call Tim
456-7195 or call
662-334-4416

FOR SALE
1997 Ford 1/2 ton pickup
Call 456-2243
If no answer leave message.

Assistant Manager Trainee Needed
\$2,000 monthly full time
\$1,000 monthly part time if qualified
Call for Information
806-795-9275

2000 Property Tax Rates in Yoakum County


This notice concerns 2000 property tax rates for Yoakum. It presents information about three tax rates. Last year's tax rate is the actual rate the taxing unit used to determine property taxes last year. This year's effective tax rate would impose the same total taxes as last year if you compare properties taxed in both years. This year's rollback tax rate is the highest tax rate the taxing unit can set before taxpayers can start tax rollback procedures. In each case these rates are found by dividing the total amount of taxes by the tax base (the total value of taxable property) with adjustments as required by state law. The rates are given per \$100 of property value.

	General Fund	Farm to Market/ Flood Control Fund	Special Road/ Bridge Fund
Last year's tax rate:			
Last year's operating taxes	\$ 5,406,737	\$ 950,520	\$ _____
Last year's debt taxes	\$ 0	\$ 0	\$ _____
Last year's total taxes	\$ 5,406,737	\$ 950,520	\$ _____
Last year's tax base	\$ 1,156,323,570	\$ 1,153,264,430	\$ _____
Last year's total tax rate	\$.46758/\$100	\$.08242/\$100	\$/100
This year's effective tax rate:			
Last year's adjusted taxes (after subtracting taxes on lost property)	\$ 5,399,389	\$ 949,368	\$ _____
+ This year's adjusted tax base (after subtracting value of new property)	\$ 1,394,446,022	\$ 1,391,428,522	\$ _____
= This year's effective tax rate for each fund	\$.38721/\$100	\$.06823/\$100	\$/100
Total effective tax rate	\$.45544/\$100		
This year's rollback tax rate:			
Last year's adjusted operating taxes (after subtracting taxes on lost property and including taxes for state criminal justice mandate)	\$ 5,399,389	\$ 949,368	\$ _____
+ This year's adjusted tax base	\$ 1,394,446,022	\$ 1,391,428,522	\$ _____
= This year's effective operating rate	\$.38721/\$100	\$.06823/\$100	\$/100
x 1.08 = this year's maximum operating rate	\$.41818/\$100	\$.07369/\$100	\$/100
+ This year's debt rate	\$ 0/\$100	\$ 0/\$100	\$/100
= This year's rollback rate for each fund	\$.41818/\$100	\$.07369/\$100	\$/100
This year's total rollback rate	\$.49187/\$100		
Statement of Increase/Decrease			
If Yoakum County adopts a 2000 tax rate equal to the effective tax rate of \$.45544 per \$100 of value, taxes would increase compared to 1999 taxes by \$ 49.00			
Schedule A - Unencumbered Fund Balances			
The following estimated balances will be left in the unit's property tax accounts at the end of the fiscal year. These balances are not encumbered by a corresponding debt obligation.			
Type of Property Tax Fund	General	Balance	\$ 2,518,685
Road & Bridge Precincts			1,599,895
Jury			43,904
Permanent Improvement			566,616
Schedule B - 2000 Debt Service			
The unit plans to pay the following amounts for long-term debts that are secured by property taxes. These amounts will be paid from property tax revenues (or additional sales tax revenues, if applicable).			
Description of Debt	Principal or Contract Payment to be Paid from Property Taxes	Interest to be Paid from Property Taxes	Other Amounts to be Paid
	\$	\$	\$
(expand as needed)			
Total required for 2000 debt service			\$ 0
- Amount (if any) paid from funds listed in Schedule A			\$ 0
- Amount (if any) paid from other resources			\$ 0
- Excess collections last year			\$ 0
= Total to be paid from taxes in 2000			\$ 0
+ Amount added in anticipation that the unit will collect only _____ % of its taxes in 2000			\$ 0
= Total Debt Levy			\$ 0
Schedule D - State Criminal Justice Mandate (For Counties)			
The Yoakum County Auditor certifies that Yoakum County has spent \$ -0- in the previous 12 months beginning Aug. 1, 1999, for the maintenance and operations cost of keeping inmates sentenced to the Texas Department of Criminal Justice. Yoakum County Sheriff has provided information on these costs, minus the state revenues received for reimbursement of such costs.			
This notice contains a summary of actual effective and rollback tax rates' calculations. You can inspect a copy of the full calculations at Yoakum County Tax Office			
Name of person preparing this notice	Wanda Smith		
Title	Tax Assessor Collector		
Date prepared	July 26, 2000		

Public Notice
City of Plains
Texas Community Development Program
 City of Plains is giving notice of the city's intent to submit a Planning/Capacity Building Fund application for a grant from the Texas Community Development Program. The grant application requested is \$32,750.00 for citywide comprehensive planning studies. The application is available for review at City Hall during regular business hours.

NOTICE
The City of Plains will conduct a Budget Hearing
Monday, August 14, 2000
on the proposed FY2000-2001 Budget
This hearing will be held at 5:00 p.m.
at the Plains City Hall
 The Public Hearing is available to all persons regardless of disability. If you require special assistance to attend this hearing, please contact City Hall at 456-2288 at least 4 hours in advance of the hearing.

How do you protect your electronics?



Let PowerShield help
 starting at \$6.69/month
 For more information call Lea County Electric today!
 (505) 396-3631 or Toll Free: (800) 510-5232

POWERSHIELD
 SURGE PROTECTION PROGRAM

*** House For Sale***
4 Br, 2 Bath
1508 Ave. G
For Appointment to see call Tim
456-7195 or call
662-334-4416

FOR SALE
1997 Ford 1/2 ton pickup
Call 456-2243
If no answer leave message.

Assistant Manager Trainee Needed
\$2,000 monthly full time
\$1,000 monthly part time if qualified
Call for Information
806-795-9275

Dyck Pump Service
Sales & Supply
P.O. Box 451
Seminole, Tx. 79360
Welding, Machine Work,
Fast Bailing, Well Drilling
915-758-5432
Mobile 758-9671

*** For Sale***
20 Ft. Seed Trailer. Ask for Brad Douglas
806-780-1302

HELP WANTED
Assistant Manager
Part time, Full time,
apply at Uncle's for application

Advertise It Here !

TERRY COUNTY TRACTOR
Massey Ferguson Kubota
Bush Hog Shredders, Lilliston Rolling Cultivators, Lorenz & Buffalo Cultivators, Baker Disc & Switch Plows, Spray Coupe, Wilmar Sprayer
Brownfield, Tx. 806-637-4569

***Repair or fix it *Build it or tear it down**
*** Hang it up or down * Wire it or light it**
***Have a job you can't get done?**
Then it's time to call Tommy Williams!
Handyman Construction Co.
Home 456-2277 Mobil 806-891-0692

MULTI - PERIL CROP & CROP HAIL

STATE LINE INSURANCE
DANNY BELL
Office 456-3521 Home 456-6325
Mobile 456-7517