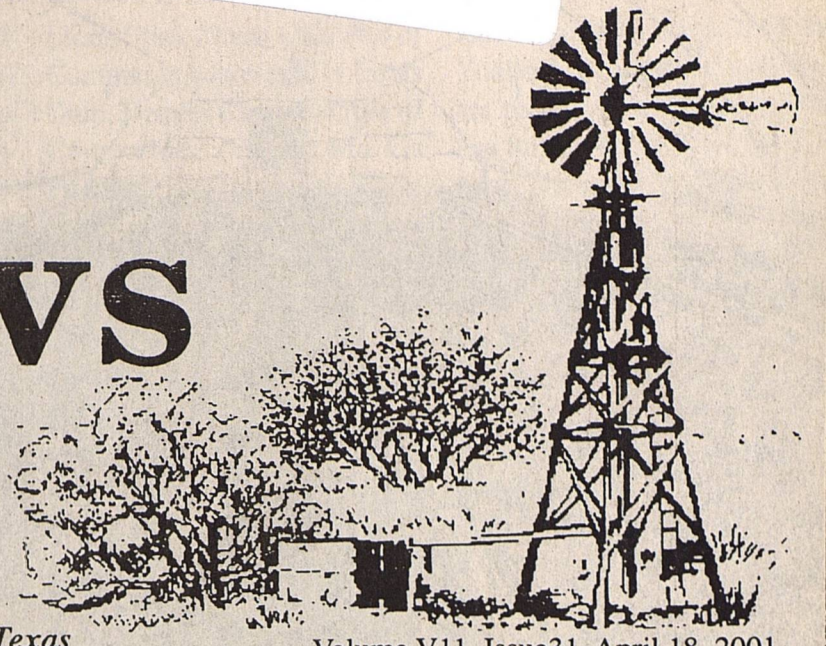


Cowboy Country News

Published each Wednesday in the county seat of Yoakum County, Plains, Texas

Volume V11, Issue 31, April 18, 2001



Counties could pay big water bill

The current issue of *County Issues*, a publication of the Texas Association of Counties, contains an article under the above headline. Yoakum County Judge Dallas Brewer furnished the publication to CCN, and related he had spoken to the article's author, and permission was granted to feature the story in this issue.

Judge Brewer, who served as a member of the state mandated Regional Water Planning Committee, said "In my opinion, this piece of legislation is a bad bill for Yoakum and all other counties in the state."

The article reads; "The most significant piece of water legislation of this session would require Texas counties to collect \$1 per year for every man, woman and child in the state and remit the money to a state water infrastructure fund.

A primary purpose of SB 2 (sponsored by Sen. J.E. 'Buster' Brown and the sequel to 1997's landmark SB 1) is to fund the regional plans developed by the 16 regional water planning groups created by SB 1. The bill as originally filed directs counties to remit annually to the state comptroller a water fee... "in an amount equal to one dollar per resident as determined by the most recent federal census." The total cost of the 16 regional plans approaches \$17 billion over the 50 year planning period, although the costs to repair and replace an aging

treatment and delivery infrastructure over the same period could well reach \$100 billion. The proposed committee substitute retains the language directing counties to collect the \$1 per capita but does not identify a manner in which it would be collected. It would, however allow a commissioners court to assess a surcharge on the sale of bottled water in the county to recover the fee. Retailers would collect the surcharge and remit it to the county. Otherwise, the bill directs counties to..... "collect this fee from its residents in a manner and in amounts determined by the county."

As filed, the bill also includes provisions for a sales tax on the sale of domestic sewage service, expected to raise some \$165 million per year. Municipal interests contended the bill made the sale of domestic potable water service subject to the sales tax as well, adding another \$200 million per year to the state Water Infrastructure Fund. The sales tax provision failed to find its way into the committee substitute.

Other funding sources are certain to stir controversy. The bill directs the Texas Natural Resource Conservation Commission to assess an annual fee on certain surface water rights. Industrial users could be charged up to 50 cents per acre-

Turn To Page 2,
"Water Bill"

Early Voting For City of Plains Election

Early voting by personal appearance for the May 5, 2001 City of Plains General Election will be conducted each weekday at Plains City Hall, 601 11th Street, Plains, Texas. Early voting hours are between 8:00 a.m. and 5:00 p.m., beginning on Wednesday, April 18, 2001 and ending Tuesday, May 1, 2001.

The purpose of the General Election is to elect three (3) Council Members. Incumbent members are Owen Schneider, Rick Ramos, and new comer candidate is Christy Brink.

Criminal cases in County Court

In County Court April 11, Judge Dallas Brewer presiding, eight plea bargain or guilty pleas were entered by defendants.

Aaron Noe Madrid pled true to the state's motion to revoke community supervision from a prior consumption of alcohol by minor, 3rd enhanced charge. He was to serve 30 days in jail with credit for 36 days served.

Dennis Charles Randle pled guilty to driving while license

Turn To Page 2,
"County Court"

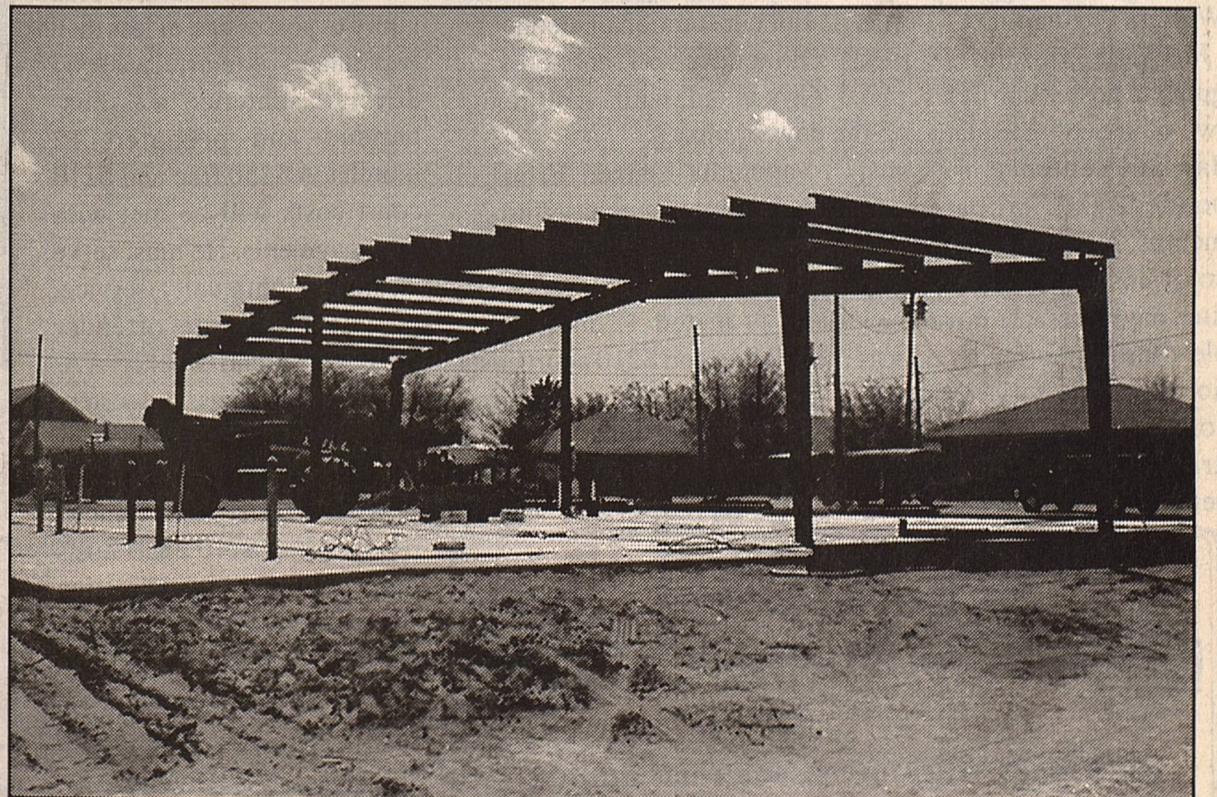
Trustees Honor Basketball Team



In the April 9 meeting of the Plains Independent School District Board of Trustees, adopted a resolution honoring the 2000-2001 PHS Cowboy Basketball Team. The resolution read in part; "Whereas, Coaches Marc Johnson and Michael Davis and the Cowboy Basketball Team have represented their school in a most exemplary fashion, and, Whereas, the team advanced to the Regional Tournament in playoff competition, and Whereas, each member of the team, whether in starting or supporting roles, has through their hard work and dedication contributed to the success of the team; and Whereas, the hard work and dedication of this team should be an example to the other students and athletes of Plains ISD. Now therefore be it resolved, the Plains ISD Board of Trustees does adopt this Resolution of Congratulations for each player of the team and the coaches, and Furthermore, express their continued support for the team and wish them continued success in the future.

Team members, standing L-R, Jared Bell, Kelsey Blundell, Adam Garcia, Jarod Newland, Dustin Six, Brett Squyres, Coach Davis, Aaron Cain, Joseph Rodriguez Coach Johnson. Board members, L-R, John Gray, Randy Tuggle, Danny Bell, Pres. Dwayne Canada, Wayne Sisson, Brad Palmer, Ramon Diaz. Not present for photo were Cowboys Eddy Gallegos, Tanner Hamm, Moises Gonzales.

New fire hall, EMS building on the rise



Workers were raising steel framework for the new City of Plains Fire Department and EMS Service last week. Construction bids for the approximate 3,500 square foot building were awarded to Fryar Construction of Denver City. Weather permitting, the project should be finished in mid May this year.

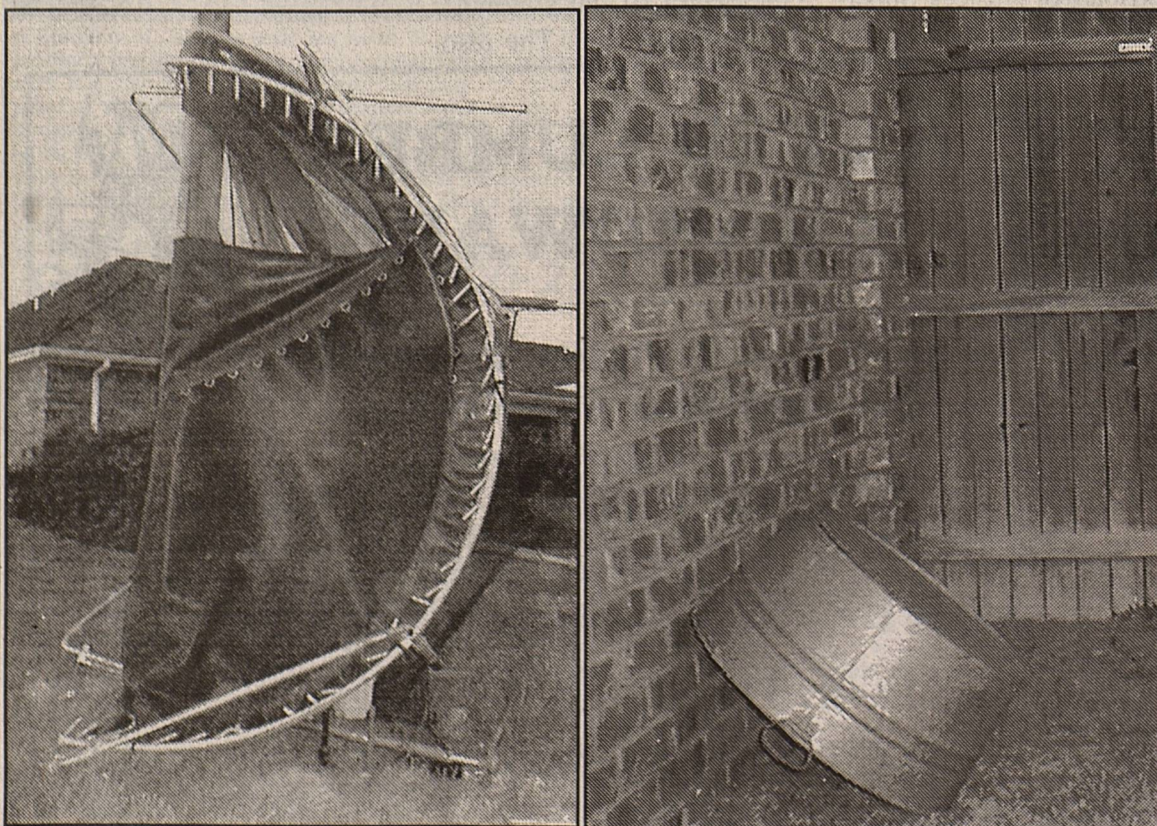
Yoakum County Connection Meets

The Yoakum County Connection met April 10th in the Connection building in Denver City at 6:30 pm. Chair David Brunson presided over discussion of the Young Leadership Retreat held in Ruidoso March 30, 31 and April 1. Treasurer L.J. Sanders gave a financial report on the workshop and other activities. Executive Director Tonya Patton announced the Student Art Show will be held on April 28th in the Con-

nection building. Reception will be held from 2-4 pm. Discussion of the Summer Youth Program followed. Anyone interested in teaching a photography class is urged to contact Patton. Schedules will be available in May in the county libraries for enrollment. The Storybook Theater for the public schools is set for the week of October 15 in Plains and Denver City. Jeannette Head reported 6000 Watermelon

Round Up brochures had been ordered and will soon be in for distribution. Directors present were Jeannette Head, James Altman, Nancy Dickson, Linda Powell, Carolyn Culwell, Pam Burgess, LeAnn Romines, Sue Holder, L.J. Sanders, Doug Brown, and David Brunson. Debbie Pollard, Yoakum County Extension Service, was also present.

More windstorm damage scenes



The fierce wind and sand storm which tore through the South Plains week before last left some odd trails of destruction. The trampoline in photo on left was ripped from the backyard of Jered and Kay Sellers and folded neatly around the utility pole between the Sellers' and Gary and Frankie Walker's home. Vaughn Culwell told CCN, "If you can identify this washtub, you can have it." The tub cleared Vaughn and Carolyn's seven foot fence and landed in this corner of their backyard.

Lots Of Watermelons



This photo depicts one of two greenhouses bulging at the seams with some 330,000 seedless and Allsweet watermelon plants. Owner/producer Mackey McWhirter told CCN he would start transplanting the young plants the first week of May, weather permitting. The two green houses hold enough plants for two irrigated circles of watermelons, roughly 250 acres.

From Page 1, "Water Bill"

foot (about 326,000 gallons), irrigators could pay 10 cents per acre-foot, and other undefined " consumptive freshwater uses)could pay up to 50 cents per acre-foot, although surface water rights used for municipal water supply would be exempt for any such fee.

Hydro-electricity producers would pay up to one hundredth of one cent per kilowatt-hour. Groundwater protection advocates have expressed concern regarding the following provision: one-half of the export fees charged by groundwater conservation districts for water transported out of the district are destined for the state fund. The bill would also pledge to the proposed Water Infrastructure Fund the " proceeds from the sale of any political subdivision bonds or obligations held in the fund and not other-

wise pledged to the discharge, repayment or redemption of revenue bonds or other bonds, the proceeds of which were placed in the fund."

More ordinary funding sources that remain in the current version of the bill include appropriations from the legislature, repayments of loans made from the fund, interest earned on money credited to the fund, gifts, grants, or donations made to the fund, as well as money from revenue bonds."

Judge Brewer said he was sure other county judges and commissioners around the state would be very concerned about aspects of the proposed bill. " I never dreamed I would see the day when the state charged counties a water fee!"

In a brief interview last Friday, State Representative Gary Walker told CCN, "There is no doubt SB 2 will pass. What the

final version of the bill will look like remains to be seen." He explained the Senate version of the bill must go to the House, where it will probably be amended. Representative Ron Lewis, a member of the Natural Resources Committee, is the House sponsor of the bill. " I have asked Representative Lewis to let me lead legislation efforts on ground water provisions in the bill. There is a huge need for improvements and additions to the state's water infrastructure over the next 50 years, as called for by the 16 Regional Water Planning Districts, and the entire state must share in funding the programs. We'll know where those funds are coming from when the bill clears the House," the Representative said. He thinks debate on SB in the House should start around the last of this month.

officer was Patricia Valdez, Denver City Police.

Issac Ray Asebedo pled true to the state's motion to revoke community supervision from a prior consumption of alcohol by a minor. He will serve 60 days in jail, with credit for 15 days credit.

Samantha Lennett Esquivel pled guilty to purchase/furnish alcohol to a minor. A 90 day jail sentence was suspended and probated 12 months. A \$400 fine and \$210 court costs will be met with time payments. She must serve 72 hours in jail with credit for 11.5 hours served, attend weekly

AA meetings, and serve 24 hours community service. Investigating officer was William Gardner.

Michael Duane Skinner pled guilty to possession of less than two ounces of marijuana. A 60 day jail sentence was suspended and probated 12 months. A \$250 fine and \$210 court costs will be met with time payments. He must serve 24 hours community service, complete the drug offender program, attend weekly AA/ Narcotics meetings, and surrender his driver license one year.

Michael Paul Arriaga pled guilty to burglary of a vehicle. He must pay \$210 court costs and a \$250 fine. Investigating officer was William Gardner. Tommy Wayne Bullock pled guilty to a subsequent DWI, breath test .121/.130. A 180 day jail sentence was suspended and probated 18 months. He must pay a \$750 fine and \$225 court costs. He must attend weekly AA meetings, complete the Managed Care Center Outpatient Treatment Program, surrender his driver license 90 days, install an interlock device on any vehicle driven, and complete the DWI repeat offender program. His attorney was Bill Helwig, and Brad Taylor, DPS, was the arresting officer.

Criminal District Attorney Richard Clark represented the state in all cases.

Environmentally Friendly Schools... Money Savers?

When students and staff entered the halls of Roy Lee Walker Elementary in August 2000, they were greeted by a host of environmentally friendly design features unique to Texas schools, including a windmill, pond, weather station and rainwater collection system.

The McKinney ISD school is the first state funded "sustainable" school in Texas. High performance sustainable schools are designed to help schools meet their energy needs without compromising the ability of future generations to meet their own.

These schools become "3-D textbooks," or "buildings that teach," says Gary Keep, CEO of the SHW Group, the architectural firm that helped design the school. "The schools are designed to help children learn about the building and the environment."

A second sustainable school, Austin ISD's J.J. Pickle Elementary, is set to open in August 2001. Although the schools may cost more to build, they ultimately produce better results at lower costs over the life of the structure, compared to more traditional building design systems.

"They are the first two schools,

but they won't be the last," says Robin Bailey of the State Energy Conservation Office's (SECO) energy management training program for schools and local government.

Bailey says SECO provided \$200,000 grants for both the Walker Elementary and Pickle Elementary projects through its Sustainable School Design Demonstration Program. SECO is also developing a proposal process that will award more grants to school districts building sustainable schools.

Walker Elementary's architectural design includes a rainwater collection system that feeds school lawns, a 30 foot windmill that helps circulate water and geothermal technology that replaces the central plant heating ventilation and air conditioning system.

The school also features a weather station that tracks real time conditions, a sundial that helps students identify winter and summers solstices and solar panels that will be used as an energy source for one part of the school. One of the most significant features is a day lit system that uses natural instead of artificial light in learning spaces.

The design includes large skylights that funnel sunlight into

classrooms and are expected to cut electricity costs. Natural light also helps improve student performance.

While the initial building costs at Roy Lee Walker were about 15 percent higher than they would be at a typical school, the savings over the life cycle of the structure will more than make up for the costs, says Wyndol Fry, executive director of Facilities and Construction at McKinney ISD.

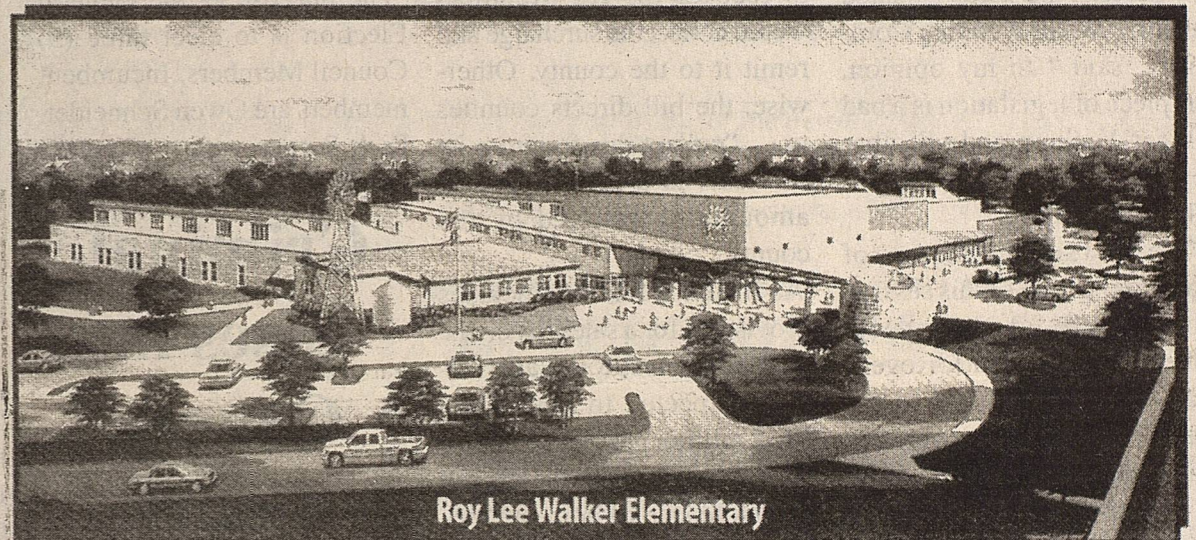
Fry says the school will save about \$50,000 a year in utility costs.

A sustainable school serves as a teaching tool for students to learn about energy and environmental conservation while experiencing it on a daily basis.

McKinney ISD has three additional schools in various stages of construction that incorporate sustainable design features.

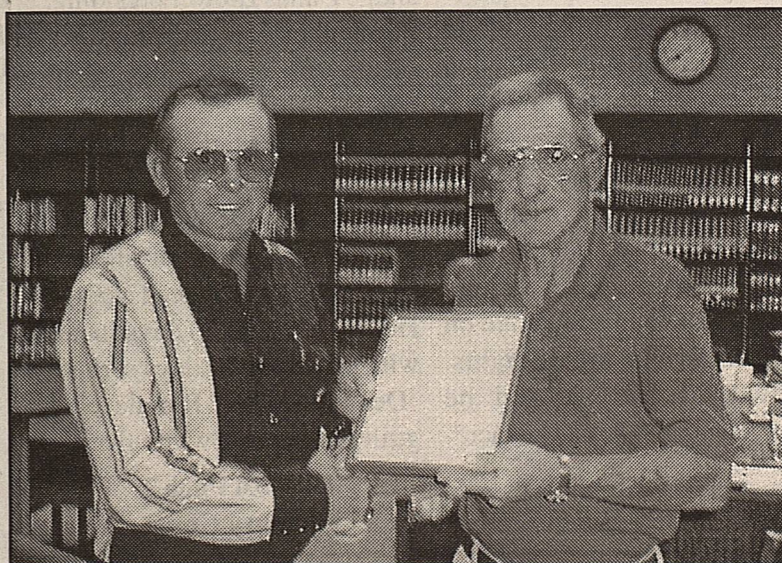
Two schools are about 50 to 60 percent complete and a third school is in the design stage.

The Energy Efficient Partnership Program targets districts with 50 or fewer campuses in Texas and has helped more than 400 school districts. Savings have ranges from \$900 at one school to as much as \$325,000 annually.



Roy Lee Walker Elementary

CCN editor honored by PISD



Board President Dwayne Canada presents plaque to Gary Dyer

At the April 9 meeting of the PISD Board of Trustees, Superintendent Jim Haynes read a resolution naming CCN editor Gary Dyer to the statewide Media Honor Roll. The reso-

lution outlined this newspaper's support of the school district by sharing with the community school activities and issues. The resolution concluded, " We express our appreciation for your balanced and accurate approach to sharing with this community both the challenges facing our schools and the successes achieved by the teachers and students. Your work has focused on the goal of providing the best public schools we can for every child who attends them."

Scholarships Available!

The Texas Workforce Center has limited funds available to assist youth to provide specialized assistance in job search or attend approved colleges, vocational schools or short-term training programs. Call or stop by today to see if you qualify. The Texas Workforce Center of Levelland serves Hockley, Terry, Yoakum and Cochran counties

Texas Workforce Center of Levelland
(806) 894-5005 1-800-419-9675



SPCAA is an equal opportunity employer/program. Auxiliary aides are available upon request.

* Federal eligibility and suitability requirements must be met.



BAYER LUMBER & HARDWARE

1018 Ave. E Plains, Tx 79355
806-456-4800 Voice & Fax



SPECIALS!!

MINI - HAND WARMERS .99
TOE WARMERS \$1.25
12 HOUR WARM PACKS .99
RED LEATHER GLOVES \$2.99
WD - 40 \$1.98

These golfers didn't win peanuts!



Birdsong Peanut Co. hosted a four-man scramble tournament April 12. Some 90 golfers (and would be golfers) involved in growing peanuts, or in a related business, battled

the Yoakum County Course and windy conditions. When the smoke cleared, the foursome here were declared tournament champs, posting a 61 score. Shown are Ray Roberts, Denver

City, and Plains threesome, Buddy Hanna, Bruce Lester and Arlon Gentry. Buddy removed a bit of luster from the win when he lied, "This is neat - we shot MY AGE!"

Yoakum County Leadership Retreat

A Leadership Retreat for young adults in Yoakum County was held in Ruidoso, New Mexico on March 30th, 31st, and April 1st. This activity was sponsored by the Yoakum County Connection, Yoakum County Economic Development, and the Yoakum County Extension Service. Other sponsors for the event included: Yoakum County 4-H Adult Leaders, Yoakum County Extension Education Clubs (formerly Home Demonstration Clubs), Yoakum County Art Association, Bill Helwig, Jerome and Jeannette Head, Oxy Permian, Ltd., Renaissance Production, Plains

Lions Club, Plains Chamber of Commerce, Denver City Lions Club, Denver City Chamber of Commerce, and Tsa Mo Ga Federated Women's Club. Great enthusiasm was generated by all of the participants of the Retreat as they were involved in sessions on team building, managing resources, leadership styles, and personality profiles. Speakers for the event were Joe Frank Wheeler of Borger and Dr. Linda Jouridine, Texas Agricultural Extension Service Health Specialist and Associate Professor of Texas A&M. The Yoakum County Extension Ser-

vice in collaborations with the Yoakum County Connection are planning follow up activities for participants for the Retreat. Those participating from Denver City were: Chair-Lesa and Lanny Wood, Jimmy and Mary Lucy Bearden, Casey and Diane Clark, Paul and Jonette Mansur, LeAnn Romines, and Debbie Pollard. Plains participants included: JoLena and Chad Wall, Doug and Terri Isaacks, Robert and Jill Rotunno, Ricky and Janie Ramos, Melissa Garcia, Ed and Terri Hansen, Treon Ortega, Lori Vantine, Dottie Mayes, Arlan and Lisa Gentry.



Some of the participants in the Leadership Retreat. A number of those attending were not available for photo.

PHS Golf Update

The Cowgirl and Cowboy Golf Teams finished the second half of district play at Big Spring last week, and both teams will advance to the regional meet at Baird April 23 and 24.

The girls clinched first place in district 3-2A with a combined score of 887. Individual scores were; Liz Wilmeth 105-99, 199; Allison Butler 106-112, 218; Mackenzie Winn 106-114, 220; Mandi Rogers 130-120, 250. Liz was 3rd medalist in district.

The Cowboys placed second in the district race with a combined score of 682. Kelsey Blundell shot 74-83, 157; Aaron Cain 84-84, 168; Dustin Six 88-88, 176; Jared Bell 90-91, 181; Chase Howell 107-102, 209. Kelsey was 2nd district medalist.

District 3-2A Track Results

Cowgirls:
100 M dash- Moriah Traweek, 2nd, 13.25
100 M hurdles- Jill Gray 2nd, 19.04

800 M relay- Jessica Rodriguez, Kayla Willis, Moriah Traweek, Michaela Traweek, 2nd, 1:52.64 (New School Record)
1600 M relay- Jessica, Kayla, Moriah, Michaela, 4:24.62

** All the above Cowgirls qualified for regional at ACU April 27, 28.

3rd Place:
800 M run- Chelsea Blount 2:38.78
200 M dash- Michaela Traweek, 27.16 (New school record)

5th Place:
300 hurdles- Jill Gray

6th Place:
3200 Run- Kenia Molina

7th Place:
Kayla Willis
200 dash- Jessica Rodriguez
1600 run- Kenia Molina

Cowboys:
JV -
3200 run- Brandon Davis 2nd
1600 run- Brandon Davis 3rd
110 hurdles- Grady McNabb 3rd
400 dash- Coty McDonnell 6th

Varsity-
400 relay- Moises Gonzales, Jared Bell, Joseph Rodriguez, Israel Moreno, 2nd, 44.7
400 dash- Jared Bell 2nd, 52.02
200 dash- Israel Moreno 2nd, 23.3
Shot Put- Chris McGinty 2nd, 47' 3"

** All of the above varsity Cowboys qualified for regional.

100 dash- Moises Gonzales 3rd, 11.3

800 run- Richard Diaz 5th, 2.16, Jonathan DeLa Rosa 6th, 2.20

1600 run- Jose Ramirez 6th, n/a

FOOTBALL CAMP

Jay Novacek Football Camp

"Daily Instructions from several of the Dallas Cowboys!"

Ages 8-18 • 10th Big Year • Texas A&M University - July 7-11



Troy Alkman, David LaFleur, Larry Allen, Daryl Johnson, Emmitt Smith, Chad Hennings, Darren Woodson, Dexter Coakley, Mark Stepnoski

Limited Enrollment! • Outstanding Coaching Staff!

"THE BEST FOOTBALL CAMP IN THE USA!"

For FREE Brochure call (24 hours): 1-800-555-0801

Have you or a loved one recently had a **STROKE** or a **HEART ATTACK**?

A University of California study has linked 10 deaths and at least 13 people left with permanent disabilities to popular over-the-counter dietary supplement Ephedra. In addition, more than 400 cold and sinus products containing PPA (phenylpropanolamine) were pulled off the market due to reports of seizures, strokes and heart problems. These popular medicines have been available over-the-counter for more than 20 years with no warning on the labels. If you or someone close to you has suffered seizures, heart irregularities, a stroke or heart attack and you think that one of these medications was in use within 3 days before the episode, contact us immediately about filing a claim against the manufacturer. There are time limits for filing suits, so don't delay. Main Street Law Firm is a Minnesota law firm that associates with experienced lawyers throughout the country.

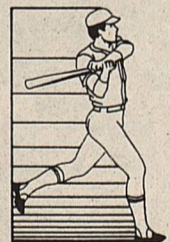
CALL TOLL FREE 1-800-220-3541

Relieve Sinus Pain & Allergies for Free!

Boost your Immune System with Kan Jang, a fast acting NATURAL dietary supplement.

For information and a **Free Sample** please send your name & address to:

SHI-Kan Jang
P.O. Box 99, York Harbor, ME 03911
or
email: kanjang@aol.com • fax 207-351-1086



Edward Jones

Serving Individual Investors Since 1871

Mike Speed
Investment Representative

Stocks • Mutual Funds • Bonds • CDs
Governmental Securities • Tax-Free Bonds
Money Market Funds • IRAs

308 West Main
Brownfield, Texas 79316

(806) 637-2364
1-800-215-0124

HICKS

*Carpet *Heating *Air Conditioning
*Maytag Appliances
204 N. Main, Denver City
806-592-3973 or 592-3930



"It's hard to stop a TRANE"

Squyres qualifies for State

PHS senior Brett Squyres had good performances in recent Texas High School Association rodeos at Ft. Stockton and San Angelo. In tie-down calf roping, he won 4th at Ft. Stockton, and 7th at San Angelo, to qualify for the fourth consecutive time for the State Finals at Abilene in June, competing with the top 100 ropers in the state. He also competes in team roping, and he and his partner, Justin Nevarez of Denver City, were only

four places out of qualifying for state in that event.

Brett was one of 12 high school seniors awarded scholarships by the associations Region II. The top four ropers at the state meet will advance to the national finals to be held in Springfield, Ohio.

Brett has also competed in the High Plains Junior Rodeo Assn. since he was nine. He plans to continue rodeoing in college.

Lea County Electric Cooperative

MAKE PLANS TO ATTEND THE 52ND ANNUAL MEETING OF MEMBERS

Friday, April 27 at 7:30 p.m. (MDT) At Pannell Auditorium In Lovington

*Over 40 Great Door Prizes to be given away.
*Featured Speaker ~ "World's Worst Farmer!"

Michael A. Dreyspring, General Manager
Tatum Lovington (505) 396-3631 Plains (806) 456-3322
(505) 398-2233 800 510-LCEC (5232)

Visit our homepage: www.lcecn.com

Send us your comments and questions to: lcecn@lcecn.com

"Owned By Those We Serve"



MEMBER 2001

Cowboy Country News

TEXAS PRESS ASSOCIATION

Cowboy Country News

Published weekly each Wednesday at 1205 Copeland Ave., PO Box 179, Plains, TX 79355

Holly Dyer, Publisher Gary Dyer, Editor
Subscription price in Zip Code 793 \$15 annually
Other Zip Codes \$18 annually. Periodical postage rate paid at Plains, Tx. POSTMASTER; Send address changes to Cowboy Country News, Box 179, Plains, Tx. 79355

E-Mail us at ccn@hiplains.net

ID# 017574 806-456-8451 FAX 806-456-2010

MULTI - PERIL CROP & CROP HAIL

STATE INSURANCE LINE

DANNY BELL

Office 456-3521 Home 456-6325
Mobile 456-7517



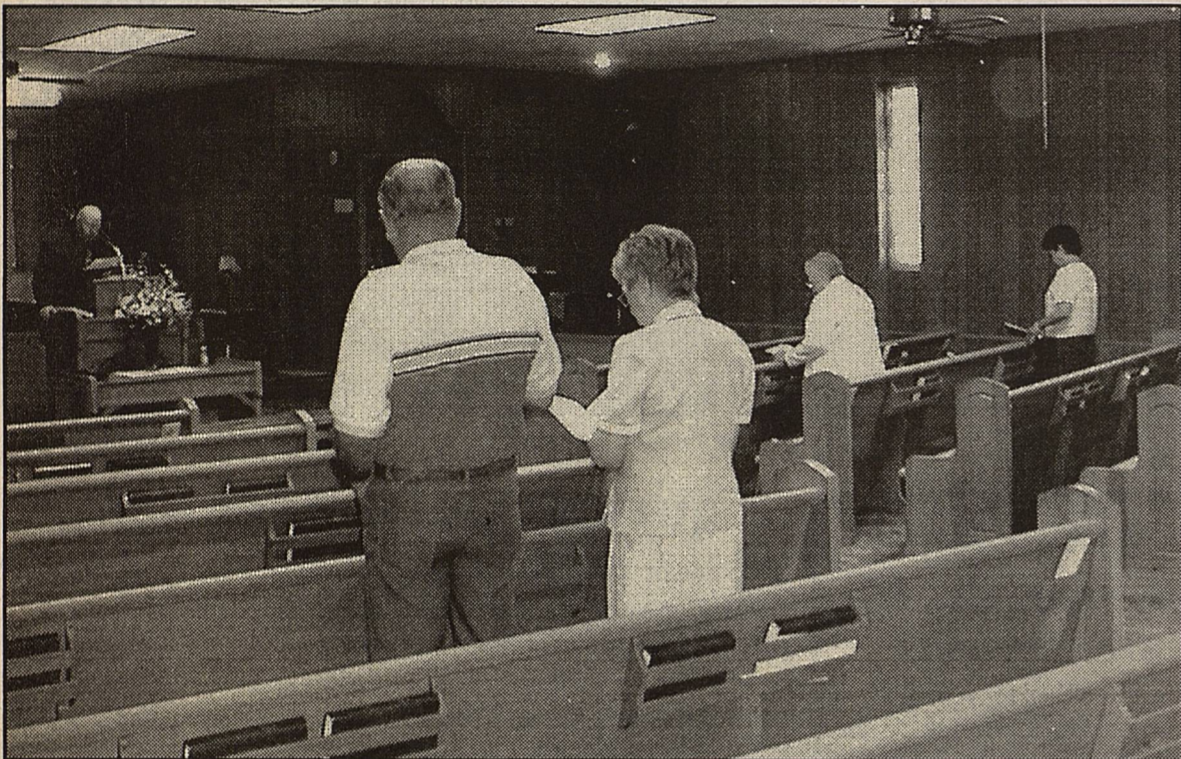
The Scenes Of Easter



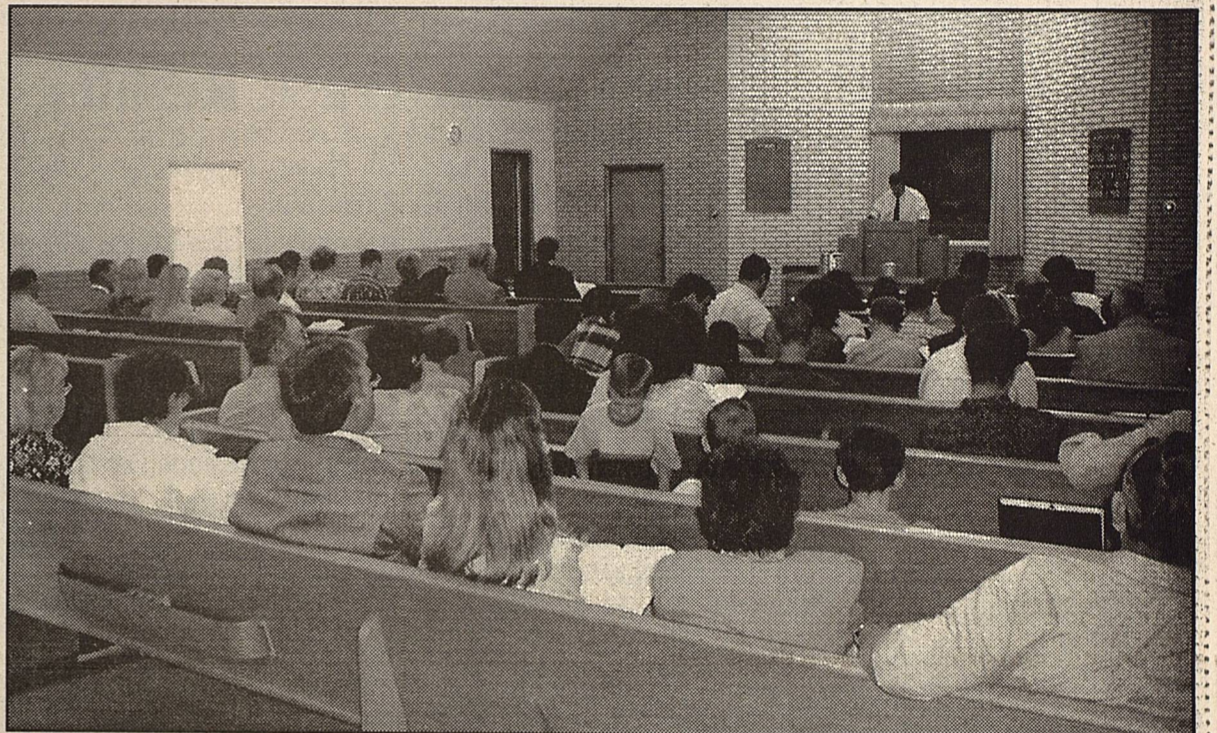
The march to Calvary - faithful of Sacred Heart Catholic Church enact Christ's final journey



The Methodists greeted Easter morning in Sunrise Services on the hill in Stanford Park



Assembly of God members were few, but devoutly celebrated the Resurrection of Jesus



Hillside Church of Christ members and guests singing Hymns Of Praise Sunday morning



Templo Bautista Nueva Vision faithful celebrated the risen Savior in song.



First Baptist celebrated the Holiday with the musical homage, "The Redeemer"

Yoakum County Plains Clinic

Jo Lena Wall PA-C

Will take Medicaid, Medicare, Major Insurance and now CHIPS

Will see Minor Emergencies, Chronic Medical Problems, Immunizations

TEXAS HEALTH STEPS

Office Hours: Monday & Tuesday 8-5

Wednesday 8-12 noon

Thursday & Friday 8-5

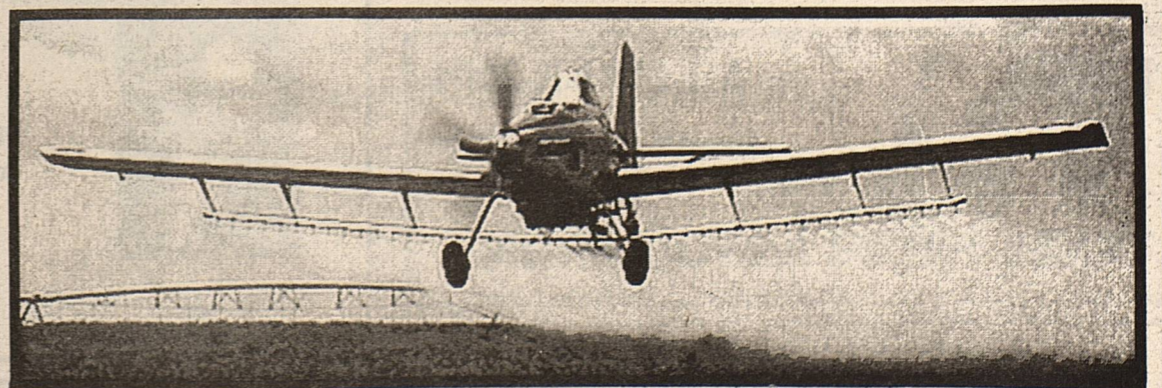
Will take walk-ins.

Appointments preferred.

Please call 806-456-6365

We Hope You Had A Joyful Easter !

G. B. Aerial Application, Inc.



Professional, Licensed Ag Applications At Affordable Rates !

806-456-6300 Office

806-456-6790 Fax

806-456-7536 David Mobile

806-456-7974 Sarah Mobile

806-632-5375 Dain Mobile

G & B

G & B

Lifelines & Styles

Plains, D.C. High Schools to present one-act plays at dinner theatre

High school theatre students from Plains and Denver City will present their one-act play contest shows at a dinner theatre Thursday, April 19 here.

The two Yoakum County schools won their district contests and advanced to the area level recently. Plains will present a Spanish tragedy,

Blood Wedding, and Denver City will present *Into the woods*, a comedy. In the area contest, Lisa San Fillippo won All-Star Cast honors, and Taylor Gray and Emily Blair made cast honorable mention.

An enchilada dinner will be served in Plains ISD cafeteria at 6 p.m., and the two produc-

tions will go on stage at 7:30 in PISD auditorium. Tickets are available from cast members, or at the door, for \$6. Plains High's *Blood Wedding* concerns the arranged wedding of a young Spanish couple in Spain. The mother of the groom has lost all the men in her family except the groom in

feuds with the Felix family. She arranges a wedding with the bride, who is loved by Leonardo Felix. He and the bride run away from the reception. Guided by the Moon and Death (as a beggar woman), the groom overtakes the two lovers. He and Leonardo kill each other, leaving the mother alone in her empty house. The play is directed by Gary Davis and Ray Portillo.

Into the Woods, originally produced as a Broadway musical, features such characters as Cinderella, Little Red Riding Hood, The Witch, Jack and the Beanstalk. Various fairy tales are intertwined in a hilarious, entertaining adventure. Denver City's play is directed by Kim and Buddy Mock and Billy Boiles.

This is Denver City's second consecutive district win in one-act play, and Plains' fifth consecutive district win.

Senior Citizens

This is Thursday morning. Today is the bake sale. Hope there is lots of goodies brought. We surely do like the home made goodies.

Friday night is Jamboree at Higginbotham. Community Building. We all have a lot of fun and see many friends.

Winners of '42' are Tom Clevenger and June Hanneman, congratulations to both. Next Wednesday is Denver City Pool Tournament.

Thursday the 19th is our pot luck supper. The Harvesters from Levelland will sing and play Christian music.

This sand is what I do not like, because it makes my asthma act up.

Ireta, hurry and get back with us. We all miss you. Till next week, Wanda B.

TSA MO GA celebrates Federation Program

TSA MO GA Celebrated Federation Program, April 9th, honoring Caprock District President Sandra Harmon and members of the Tejas Study Club of Denver City, with a dinner at the Plains Community Center. A buffet dinner was served by the Social Committee, Billie Blundell, Dolores Davis, Connie McWhirter, Martha Palmer, Renetta O'Quinn, Valeria and Zareta Winn. Tejas members attending were Sandra Harmon, Joanna Fears, Maidelle Mitchell, Linda Moore, Sandra Mitchell, Judy London, Louise Swanson, Hazel Akin, Barbara Brewer, Vera Bennett and Grace New. TSA MO GA members attending included Judy Head, Mary Jo St. Romain, Wilma Powell, Mattie Field, Toni Jones, Ann McGinty, Rhonda Carter, Deborah Rushing, Shannon Dusek, Sarah Shelton, Carolyn Culwell and Bonnie Earnest.

President Judy Head welcomed Sandra Harmon the Tejas Club Members, and led the pledges to the United States and Texas flags.

Mattie Field, Federation Day Program Coordinator introduced Joanna Fears, Tejas Study Club President. She spoke on the Tejas Club theme "Cultivating Friendship and Preserving Pride." Judy Head was asked to speak about TSA MO GA's Club theme, "Reflecting the Past, Living the Present, Building the Future", in respect to TSA MO GO's 65th birthday.

Mattie Field presented the Keynote Speaker, Sandra Harmon, Caprock District President. The theme of her talk was "Federation from Generation to Generation". She spoke to the clubs about GFWC and TFWC history and her project, Operation Smile, and her goal to save our women's clubs.

Wilma Powell, Federation Counselor, reminded the ladies of the 104th Annual Convention of the Texas Federation Of Women's Club's Convention, May 2-4, 2001, to be held in San Angelo with the Heart of Texas District Clubs as Hostess.

Library Easter Egg Hunt Scenes



Following the weekly activities of the Library Storytime last Wednesday, Library personnel took the preschoolers to the courthouse grounds for a candy Easter egg hunt. Diligently searching for treasures the Easter Bunny left behind were Bailey Winn, Bailey and Evan Rios, Amanda Dusek, Clayton Gass, Madison Davis and Jentry Wall.



Brownfield Funeral Home



120 W. Tate P.O. Box 507
Brownfield, Texas 79316

Independently Owned & Operated Since 1920
Bob and Jacalyn Jones, Owners
806-637-3555

Pre-funeral Arrangements--Monuments--Cremation

Nelson Prescription Pharmacy



"Your Business is Appreciated"

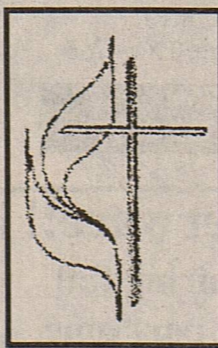
Our Toll-Free Number Is For Your Convenience Call 1-800-658-9604
For all your Pharmacy Needs !!

805 Tahoka Rd. Brownfield, Tx

First United Methodist Church

1202 Avenue G - Plains, TX.

Cordially invites you to worship and grow in Christ with us!



Sunday Schedule

Sunday School - 9:45 am
Morning Worship - 10:45 am
Youth Fellowship - 5 - 6:00 pm
Wednesday Connections
Food & Fellowship - 5:30-6:30 pm
Eve. Bible Study - 6:30 - 8:00 pm
Other Opportunities

Afternoon Bible Study - 5:15 pm Thursdays

GOD loves you and so do we!
Come grow in CHRIST with us!

You are invited to a "Wedding Shower"

honoring Miss. Jennifer Sheets

Bride-elect of Mr. Yancey House

Sunday, April 29, 2001

in the home of Mrs. Charlotte Palmer

Plains, Tx - 3:00 - 4:30 pm.

Gift selections: Dillard's, Target and Nelson's (Brownfield)

Still Renovating..But we're open for business!!

Magnificent Obsessions

Clothing, Gifts & Scrapbooking Materials
637-0052

The Blue Dragonfly

Greenhouse, Watergardens, etc.
637-0054

501 E. Broadway-Brownfield

Life, Health and
Long Term Care Insurance

Ag Insurance Plus

James F. (Jim) Brown, Agent

456-2788 * Mobile 806-891-0449

or 891-0450 * Home 592-3490

FIRST BAPTIST CHURCH Plains, Texas

Sunday School 9:30 am.
Morning Worship 10:45 am.
Evening Program 6:00 pm.

Wednesday

5:15 - 6:30 pm. Supper
6:00 pm. Zombies

7:00 pm. - RA's, GA's, Mission Friends,
Generation X, Sanctuary Choir Practice



Sisters & Friends

Individual Styling by
Dena Pierce

106 Plains Hwy. Denver City, TX. 79323
806-592-9979

Collectables

Wearables

From The Hack

Working furiously Friday, my head buried in the computer keyboard, I overheard a conversation between the Bride and oldest daughter Dolores, who helps us two days a week.

The Bride was telling old daughter a story; "We were on this return trip from California after visiting your aunt Eva and uncle Zig (he of the irregularity fame I have mentioned in the past) and somewhere out in the Arizona desert I saw these beautiful small cactus plants. I told my babies, Kids, I'm going to stop and get one of those cacti to plant in our yard at Hobbs. One of the kids asked, what's a cacti, and I said, that's a pregnant cactus. They understood pregnant. It would be beautiful in our yard."

At the time, her youngest was about a year old, in the front seat with Bride. Debbie, the next youngest, was approaching four, and the elders, Buddy and Dolores were sitting on each side of Debbie.

Bride dutifully stopped, dug up the cactus, (now against the law, I'm sure), and placed it in the back seat.

Miles down the road, the two elder siblings began to fight, swinging punches and slaps around younger sister Debbie, when one blow felled her onto the floorboard, where she became impaled on the cactus. All Hell broke loose at that moment. Bride said the child screamed louder than a wounded panther. She stomped on the brakes, leaped out (cursing, I suspicion), to pluck her baby daughter from the grasp

of the cactus spines. Needless to say, after a stop at a Doctor's office to de-impale the girl, the rest of the trip was considerably muted in the backseat.

I dutifully continued to pound away on the computer keyboard, taking notes as she continued, "And there's another cactus story I doubt I told you. Your Aunt Eva and Uncle Zig, while they were in California, had this momma quail which would come into their backyard looking for water, and she brought her chicks with her. Aunt Eva was fascinated by the momma and her baby quail, and she begged Zig to see if he could trap them for her pets (They both would still be in the California Penal System if he had been competent enough to do it.)

Bride said, "Zig saw the little bird family in his back yard one afternoon, and stealthily sneaked up behind them, spread his arms in a calm, shooting manner, and attempted to herd the bird family into a large trap he'd constructed. The momma refused to be herded, the baby quail chased her all over the yard, and Uncle Zig, not renowned for athletic grace, scrambled after them in a zig-zag pattern, until he tripped and fell, into, guess what? A CACTUS plant, which impaled him in very serious portions of his male body, from navel downwards.

Not one to endure pain more than a hangnail, he screamed he was dying, bleeding to death, his liver and esophagus were pierced. Eva gathered his body up and hustled him to a hospital emergency room, where the quills were painfully extracted.

They later received a bill from the hospital telling them they owed \$105. Eva examined the statement, and shrieked, "My God, Zig, I could have bought the dam momma and whole covey of quail in a pet store for

twenty bucks!"

I don't know why I have to sneak this info from the Bride. She has lots of other kin I could write about if she'd just tell me straight out!

Easter Sunday; Following the Saturday evening coverage of the U.S. 'Spyplane crew' return to its home base at Whidbey Island, Washington, I got a bit choked up. When it was finally revealed how close the Navy plane and it's 24 crew members came to crashing into the South China Sea, I too felt a debt of gratitude to the entire crew. A few days earlier at the Table of Wisdom I'd heard a local disclose his displeasure with how the pilot had 'wandered about aimlessly before he finally followed the Chinese Jet fighter to Hainan Island to be forced to land.

Now that the military and White House has finally released information about what really occurred, that opinion seems pretty ridiculous.

When your aircraft is rammed, suffering damage extensive enough to send it into a perilous dive thousands of feet, then recovers long enough to stall the forced landing orders from the Chinese jet, which according to news items allowed the crew to erase or destroy all the sensitive data from computers, I would say they acted pretty well; Well enough to get the Hero's welcome in Guam, Hawaii, and Whidby Island.

I still realize it's remarkably easy to prop back on your butt and second guess the military in such situations. Most of us, if we were honest, would have to admit, "Man, I don't even know how to react when a vehicle just semi-swerves at me on the highway." Ease up, Beevis' and Butthead's.... how well would you have flown the aircraft? How well would you have responded to orders as a terrified crew member?

Wide Open Spaces

By M. Ray Perryman

In the next few weeks, the Texas Legislature has the opportunity to greatly enhance the lives of people and success of businesses in rural Texas without raising taxes one cent.

Rural Texas conjures up images of fields of cotton, cattle grazing on vast expanses, and silent pumps coaxing black gold from beneath the soil. All these thoughts revolve around the wide-open spaces that once lured settlers to the Lone Star State.

But agriculture and oil and gas extraction, once the mainstays of rural Texas, now employ only half as many workers as they did in their heyday. Meanwhile, people are moving to our state seeking high tech-related jobs. The spaces are still wide open, but they are now invisible and "cyber."

It is no surprise that economists now view high-speed Internet access as a key tool for local economic development. It's becoming as critical as access to a trained labor pool and private capital. Confirming this view, both a recent legislative study committee and the Public Utility Commission (PUC) have emphasized that access to high-speed Internet, or broadband communications technology, at competitive prices is critical to the future prosperity -- if not the survival -- of rural Texas.

What does affordable access to broadband communications technology mean to rural Texas? It means rural Texans can bring first-class education via the Internet to the most remote school. A science teacher, for instance, could use broadband technologies to stay current on the subject and help students learn from scientists living hundreds of miles away.

It means businesses have the option of locating in smaller communities. The Internet is a way to put rural Texas on a more even footing with other parts of our state, indeed the entire country.

It means top physicians and the life-saving medical information is accessible not just to the best city hospitals, but also online to rural clinics in any part of Texas.

Without affordable access to this vital new-economy infrastructure, rural Texas will surely continue to lag in economic performance. Texas can't afford it.

However, as was the case with electricity and telephones in another era, private investors have no incentive to bring these technologies to areas where there aren't enough people to make their capital investment pay off. We may agree on the need, but how does it get paid for?

Here's a partial solution. One PUC commissioner has proposed using what the PUC says are local phone companies' over earnings -- excess money these companies make just to connect your in-state long distance calls.

Specifically, Texans pay almost 6 cents per minute to local phone companies for an in-state long distance call, compared to just over a penny per minute for a call to another state. What is the actual cost of the service to the local phone companies? About a penny.

According to a study by The Perryman Group, this gap in pricing means Texans pay as much as \$536 million per year more than necessary on their phone bills. Rural customers pay \$132 million or one quarter of the total.

This burden is disproportionately harder on rural customers, who spend 14% more time on long-distance calls than their urban neighbors. Most rural Texans also pay higher rates -- many of the least populous areas have access rates well above the state's average, some as high as 15 cents per minute. In addition, these costs eat up a bigger portion of budgets in rural areas, which have lower per capita incomes.

If these funds were returned to rural customers, they would begin to help rural Texas. However, using these funds to augment investment in high-speed Internet services would produce more dramatic economic gains. Even on a conservative basis, The Perryman Group estimates the benefits over one decade to be \$2.33 billion in yearly production and almost 35,000 jobs.

We have a unique opportunity to see that rural Texas has the means to develop the needed broadband Internet infrastructure it needs for long-term economic progress. Let's ensure that the wide-open spaces now linking the global economy also encompass those original wide-open spaces where the Texas economy began.

Dr. M. Ray Perryman is President and Chief Executive Officer of The Perryman Group (www.perrymangroup.com) a Texas-based economic analysis firm. He also serves as Institute Distinguished Professor of Economic Theory and Method at the International Institute for Advanced Studies. A native Texan now residing in Odessa, he frequently advises legislative bodies and regulatory agencies on matters of public policy.

Rent it, Sell it,
Buy it, Find it
HERE
For Just
\$6
Per Issue!

HEALTH BENEFITS

for the ENTIRE FAMILY

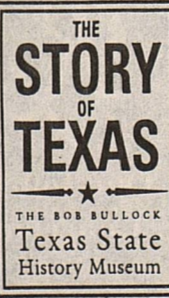
only **\$70** per month!

- FLAT RATE • GUARANTEED ACCEPTANCE
- SELF-EMPLOYED OR NOT! - NO INCREASE!
- DEEP MEDICAL DISCOUNTS ON DOCTOR, DENTAL, CHIROPRACTIC, EMERGENCY ROOM, HOSPITAL CONFINEMENT, VISION, RX & MORE!



Call 1-888-369-1739

For everyone in Texas,
and the Texan in everyone



Grand Opening Celebration April 28, 2001, in Austin

www.TheStoryofTexas.com

IMAX® Theatre • Texas Spirit Theater
3 Floors of Interactive Exhibits • (512) 936-TSHM (8746)

★ PUBLIC AUCTION ★

DFW MEDICAL CENTER

9 A.M. • May 4 & 5 • 2 AUCTIONEERS

(preview 4/27 and 5/3 - 9 a.m. - 4 p.m.)

2709 Hospital Blvd. • Grand Prairie, TX
120 Bed Regional Hospital

ER, OB, PT, LAB, X-RAY, CCU, CAT, MRI,
vehicles, banquet facility, offices, food service, TX #6756

henrybutcher.com • 972-238-7766
mikejonesauctiongroup.com ★ 972-712-0202

Your \$6 Ad
Here Will
Get
RESULTS!

Tupperware!!

Now hiring full
time or part time.
Fund raisers avail-
able. For more in-
formation call 806-
592-9952

★ PUBLIC AUCTION ★

former ARCO Technology Machine / Fab Shop
and over 100,000 s.f. of office assets

9 a.m. Saturday • April 21, 2001

(Inspect 9-3, Friday, April 20)

2300 W. Plano Pkwy • Plano, TX

(north of Hwy 190 just east of Independence Pkwy follow signs)
EDM, lathes, Bridgeport & Mill, grinders, machine center, Chicago CPA36,
10 ft. shear, 100 ton Wysong with press brake, saws, overhead cranes, TX #6756

972-712-0202 ★ mikejonesauctiongroup.com

Texas Boll Weevil
Eradication Foundation
HIRING SOON!

Seasonal Positions Available

- *Airport Recorder
- *Ground Observer
- *Trapper
- *Mist-Blower Operator

- Team environment
- Outdoor work.
- At least 18 years old.
- Must have valid driver's license and be insurable under foundation fleet insurance policy.
- No experience necessary.
- Ag background helpful.

For more information, apply in person:

Plains 1179 CR 305 806-456-4121	Brownfield Rt. 5, Box 61 806-755-2617
--	--

Seminole 1104 Hobbs Highway 915-758-1261	Seagraves 510 Railroad Ave 806-546-8858
---	--

Equal Opportunity Employer
Cotton ... a Texas tradition
www.txbollweevil.org

AG INSURANCE PLUS

CROP INSURANCE MPC1-CRC-CAT-CROP HAIL

456-2788

Jim Brown, Agent Mobile 806-891-0449 or 891-0450 Home 592-3490	Jeff Lowrey, Sales Assoc. Mobile 806-891-3133 Home 456-3195
--	---

ATTENTION FARMERS:

**TIRED OF HIGH PRICES FOR
ROUNDUP AND BOLLGARD SEED
REDUCE YOUR SEED COST**

AMX 1621 COTTONSEED
Strong New versatile performer
Grown and produced by WGSD

Key Characteristics

- *Outstanding yield potential
- *Early / Medium Maturity
- *Superior Gin Turnout

Fiber Characteristics (Average)

Strength	28 to 30
Micronaire	4.0 to 4.5
Length/Staple	1.1 " (36 to 38)

*Retain your own seed for Delinting,
reduce your seed cost to approximately
\$13.00 per bag the following year.

TRY OUR AMX 1621
\$30.00 Per 50lb. bag.

P.O. Box 1020
Seminole, Texas 79360
(915) 758-3628

TERRY COUNTY TRACTOR

Massey Ferguson
Kubota
Bush Hog Shredders,
Lilliston Rolling
Cultivators, Lorenz
& Buffalo Cultivators,
Baker Disc & Switch
Plows, Spray Coupe,
Wilmar Sprayer
Brownfield, Tx.
806-637-4569

SPRING SAVINGS SALE!

30% off on all
CAROLE Fabrics
Custom Products on
Sale

April 1 thru April 30

- *Draperies
- *Top Treatments *Soft Shades *Fringe & Trim
- *Fashion Accessories
- *Cut Decorative Fabric Yardage

JLM Home Interiors
Call: 456-6012 or
456-8902

CSW

College of the Southwest

... Christian principles;
the ideas of
Western Civilization;
the preservation and
advancement of
a free, democratic society;
the American tradition
of free enterprise,
individual liberty
& responsibility, the
constitutional privilege
of self-government . . .

*Never before in the history of our country
has there been greater need for such an education.*

Summer 2001 & Fall 2001
Schedule of Classes



www.csw.edu • 800-530-4400

500 West Church
Carlsbad, New Mexico
505-887-3500

6610 Lovington Highway
Hobbs, New Mexico
505-392-6561



**College of the Southwest Hobbs Campus
Special Course Offerings
Summer Session I
June 4 - June 29, 2001**

Course: **Writer's Refresher Workshop**
(ENG 3601) 1 Credit Hour
This course is a comprehensive review of the basic rules of grammar, punctuation, and style for both the student and the professional.
Faculty: Michael Sandie
Dates, Time, Room: Saturdays, June 9 and June 16, 2001, 9:00 am - 5:00 pm, Room A105

Course: **Introduction to Special Education for General Education Teachers**
(EDU 4751/5751 or SPED 4751/5751) 1 Credit Hour
This course is designed to introduce and define terminology used in special education settings. Discussions will cover special education students in the regular classroom, teaching methods appropriate for different exceptionalities, and the role of teachers at IEP meetings. Information will be provided on mandated testing, benchmarks, and objectives related to all students and current legal implications.
Faculty: June Studley
Dates, Time, Room: Monday through Friday, June 11-15, 2001, 10:00 am - 1:00 pm, Room A100

Course: **Cognitive Behavioral Therapy as a Counseling and Self-Help Tool**
(EDU 4641/5641 or SPED 4641/5641 or PSY 4641) 1 Credit Hour
This course will teach participants how to apply this effective counseling strategy. While some theory will be covered, the majority of the class will involve how to use it in working with adults and children for a variety of problem behaviors and emotional difficulties.
Faculty: Mike Westbrook
Dates, Time, Room: Fridays, June 8 and June 15, 2001, 8:00 am - 4:00 pm, Room MHC

**Summer Session II
July 5 - August 1, 2001**

Course: **Experiential and Activity-Based Strategies for Counseling Children**
(EDU 4761/5761 or SPED 4761/5761 or PSY 4761) 1 Credit Hour
In this workshop, information on the theory underlying strategies for working with children in counseling will be presented. However, most of the course includes hands-on activities that can be used to address a variety of problem behaviors.
Faculty: Dr. Marianne Westbrook
Dates, Time, Room: Fridays, July 13 and July 20, 2001, 8:00 am - 4:00 pm, Room MHC

Course: **Basics of Power Point and Publisher**
(EDU 4651 or CSI 4651) 1 Credit Hour
A Power Point presentation will be developed, and sample items will be created in Publisher.
Faculty: Jerri Erickson
Dates, Time, Room: Saturdays, July 7 and July 14, 2001, 9:00 am - 5:00 pm, Room A105

Course: **An Overview of Christian History**
(HIS 4701) 1 Credit Hour
Christian history will be covered from the Old Testament to the New Testament.
Faculty: Dr. William Sumruld
Dates, Time, Room: Saturdays, July 21 and July 28, 2001, 9:00 am - 5:00 pm, Room A106

College of the Southwest

will be recognized regionally and nationally for the achievements of CSW graduates, their character and knowledge. This is accomplished through rare and remarkable teamwork as the Board, faculty, staff, graduates, students, and friends of the College join together in living the tenets of the mission:

College of the Southwest Hobbs Campus Summer Session I June 4 - June 29, 2001

MASTER OF SCIENCE IN EDUCATION COURSE OFFERINGS

COURSE NO.	CR.	TITLE	DAY	TIME	ROOM	STAFF
ADMINISTRATION						
EDA 5213	3	Theories of Curriculum Development	M-F	7:45 - 9:45 pm	A101	Davis
EDA 5303	3	Policies and Public Relations	M-F	3:00 - 5:00 pm	A100	Posey, B
EDA 5513	3	Theories of Administration	M-F	5:30 - 7:30 pm	S124	Staff
EDA 5803	3	Internship in Educational Administration	TBA		TBA	Posey, E
COUNSELING						
EDC 5403	3	Group Processes	M-F	7:45 - 9:45 pm	S124	Staff
EDC 5423	3	Child and Adolescent Counseling	M-F	5:30 - 7:30 pm	L109	Staff
EDC 5463	3	Psychoeducational Assessment	M-F	7:45 - 9:45 pm	A100	Salb
EDC 5713	3	Psychopathology for School Counselors	M-F	5:30 - 7:30 pm	CSWC	Frazier
EDC 5803	3	Internship in Counseling	TBA		TBA	Sanders
CURRICULUM & INSTRUCTION						
EDI 5213	3	Theories of Curriculum	M-F	7:45 - 9:45 pm	A101	Davis
EDI 5233	3	Advanced Classroom Management	M-F	12:30 - 2:30 pm	S124	Gilberts
EDI 5303	3	Policies and Public Relations	M-F	3:00 - 5:00 pm	A100	Posey, B
EDI 5333	3	Reading Comprehension Across the Curriculum	M-F	10:00 - Noon	S124	Cagle
EDI 5413A	3	Program Development and Management	M-F	7:45 - 9:45 am	L109	Fleming
EDI 5413B	3	Program Development and Management	M-F	3:00 - 5:00 pm	A101	Gilberts
EDUCATION CORE						
EDU 5103	3	Instructional Strategies	M-F	10:00 - Noon	L109	Davis
EDU 5213	3	Professional/Ethical Issues in Counseling	M-F	12:30 - 2:30 pm	L109	Sanders
EDU 5413A	3	Program Development and Management	M-F	7:45 - 9:45 am	L109	Fleming
EDU 5413B	3	Program Development and Management	M-F	3:00 - 5:00 pm	A101	Gilberts
EDU 5513	3	Culturally Diverse and Special Needs Population	M-F	3:00 - 5:00 pm	L109	Frazier
EDUCATIONAL DIAGNOSTICIAN						
EDG 5453	3	Achievement, Ability, and Processing	M-F	7:45 - 9:45 am	MHC	Westbrook
EDG 5463	3	Psychoeducational Assessment	M-F	7:45 - 9:45 pm	A100	Salb

UNDERGRADUATE COURSE OFFERINGS

ASTRONOMY						
AST 1104	3	Descriptive Astronomy	M-F	5:30 - 7:30 pm	A101	Navarrete
AST 110L	1	Astronomy Laboratory	M-F	7:30 - 8:45 pm	A109	Navarrete
BIOLOGY						
BIO 4703	3	Topics: Ecology of the Pond	M-F	7:45 - 9:45 am	A109	Staff
BUSINESS						
BUA 3303	3	Professional Comm. and Sales Presentation	M-F	10:00 - Noon	A106	Dunn
COMPUTER SCIENCE						
CSI 2203	3	Educational Technology	M-F	3:00 - 5:00 pm	A105	Staff
CRIMINAL JUSTICE						
CRJ 4303	3	Criminal Justice Administration	M-F	5:30 - 7:30 pm	A102	Staff
EDUCATION						
BIL 2103	3	Introduction to Bilingual Education	M-F	12:30 - 2:30 pm	S110	Palomo, J
BIL 3202	2	Science and Math for K-12 Bilingual Learners	M-F	3:00 - 4:15 pm	S121	Navarrete
EDU 2103	3	Foundations of Education	M-F	7:45 - 9:45 am	S110	Fox
EDU 3213	3	Survey of Multicultural and Exceptional Learners	M-F	12:30 - 2:30 pm	S121	Sagerty
EDU 3503	3	Communication Arts in the Elementary School	M-F	10:00 - Noon	S121	Goad
EDU 4114	4	Teaching in the Elementary School	M-F	3:00 - 5:30 pm	S124	Hunt, M
EDU 4203	3	Diagnostic/Corrective Teaching	M-F	7:45 - 9:45 am	S113	Elliott
SPED 2103	3	Introduction to Special Education	M-F	10:00 - Noon	S113	Hunt, K
SPED 3423	3	Special Education Curriculum	M-F	12:30 - 2:30 pm	A101	DeSoto
SPED 3523	3	Assessment, Evaluation, Referral, and Placement of the Exceptional Learner	M-F	7:45 - 9:45 am	S103	Hunt, K
SPED 4101	1	Research in Special Education	M-F	3:00 - 4:00 pm	S110	DeSoto
SPED 4201	1	The Gifted/Talented Learner	M-F	4:00 - 5:00 pm	S110	DeSoto
ENGLISH						
ENG 2223	3	Life and Literature of the Southwest	M-F	10:00 - Noon	L100	Clingman
ENG 3513	3	Children's Literature	M-F	7:45 - 9:45 am	L100	Clingman
FINANCE						
FIN 3423	3	Financial Management	M-F	5:30 - 7:30 pm	S110	Rickles
HISTORY						
HIS 1103	3	Western Civilization to 1715	M-F	10:00 - Noon	S110	Sumruld
HIS 2223	3	Life and Literature of the Southwest	M-F	10:00 - Noon	L100	Clingman
MANAGEMENT						
MGT 3503	3	Organizational Behavior	M-F	7:45 - 9:45 pm	S110	Rickles
MGT 4203	3	Topics in Management: Current Issues	M-F	12:30 - 2:30 pm	A102	Dunn
MATHEMATICS						
MAT 1103	3	College Algebra for General Education	M-F	10:00 - Noon	A101	Roan
MAT 2103	3	Principles of Probability and Statistics	M-F	7:45 - 9:45 am	A101	Roan
MUSIC						
MUS 1103	3	Music Appreciation	M-F	7:45 - 9:45 am	S121	Studley
PSYCHOLOGY						
PSY 3403	3	Interpersonal Group Dynamics	M-F	12:30 - 2:30 pm	A106	Staff
PSY 3503	3	Social Psychology	M-F	5:30 - 7:30 pm	S113	Staff
PSY 4403	3	Experimental Psychology	M-F	7:45 - 9:45 pm	S108	Staff
RELIGION						
REL 1203	3	New Testament Survey	M-F	3:00 - 5:00 pm	A106	Glasgow
SOCIOLOGY						
SOC 3503	3	Social Psychology	M-F	5:30 - 7:30 pm	S113	Staff

MUSIC

MUS 1103 3 Music Appreciation (ITV) F 9:00 - 11:50 am Staff

POLITICAL SCIENCE

POS 3113 3 Political Parties M 9:00 - 12:00 pm Vaughn
POS 4223 3 Constitutional History W 9:00 - 12:00 pm Staff

PSYCHOLOGY

PSY 3103 3 Principles of Behavior Management Th 6:00 - 9:00 pm Staff
PSY 3223 3 Psychology of Aging (ITV)
PSY 3403 3 Interpersonal Group Dynamics W 6:00 - 9:00 pm Staff
PSY 3503 3 Social Psychology (ITV)

RELIGION

REL 1103 3 Old Testament Survey Tu 6:00 - 9:00 pm Robinson
REL 2103 3 World Religions Sat 9:00 - 12:00 pm Staff

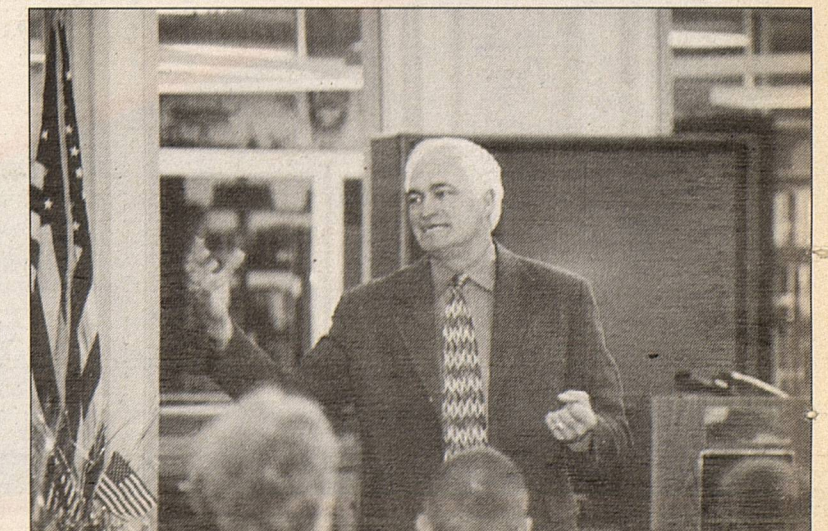
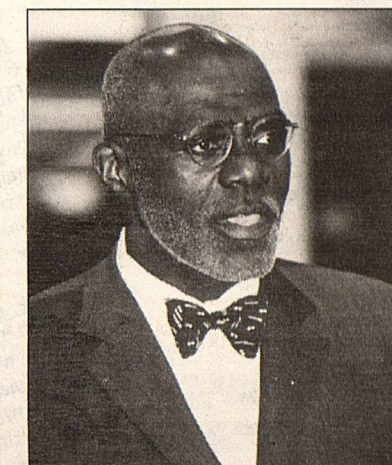
SOCIOLOGY

SOC 3223 3 Sociology of Organizations Tu 6:00 - 9:00 pm Staff
SOC 3503 3 Social Psychology (ITV)

CSW-Carlsbad Fall Session "B" October 15 - December 21, 2001

UNDERGRADUATE COURSE OFFERINGS

COURSE NO.	CR.	TITLE	DAY	TIME	FACULTY
ACCOUNTING					
ACT 2214	4	Principles of Accounting II	M	6:00 - 9:00 pm	Lunsford
ACT 4203	3	Income Tax Accounting	Th	6:00 - 9:00 pm	Lunsford
BIOLOGY					
BIO 3223	3	Vertebrate Zoology	Tu	6:00 - 9:00 pm	Bierle
BIO 3503	3	General Ecology	F	1:00 - 4:00 pm	Breene
BIO 4203	3	Entomology	F	1:00 - 4:00 pm	Breene
BUSINESS ADMINISTRATION					
BUA 3413	3	Business Law II	Th	6:00 - 9:00 pm	Banks
CRIMINAL JUSTICE					
CRJ 1703	3	Introduction to Criminal Justice	Internet Class		Lunsford
CRJ 2713	3	Criminal Law I	Internet Class		Lunsford
CRJ 4203	3	Issues in Ethics, Law and Justice	Internet Class		Staff
CRJ 4303	3	Criminal Justice Administration	W	6:00 - 9:00 pm	Blendon
COLLEGE COURSES					
CSW 4691	1	Senior Seminar in Leadership and Ethics	Sat	11:00 - 12:00 pm	Staff
ECONOMICS					
ECO 2103	3	Principles of Macroeconomics	Sat	9:00 - 12:00 pm	Connors
EDUCATION					
BIL 3202	2	Teaching English as a Second Language	W	1:00 - 3:00 pm	Castillo
BIL 4101	1	Bilingual Research	W	3:00 - 4:00 pm	Castillo
EDU 3203	3	Psych. Foundations of Teaching & Learning	W	9:00 - 12:00 pm	Wheeler
EDU 3213	3	Survey of Multicultural and Exceptional Learners	W	6:00 - 9:00 pm	Castillo
EDU 3503	3	Communication Arts in the Elementary School	W	2:00 - 5:00 pm	Wheeler
EDU 3523	3	Educational Measurement and Evaluation	M	6:00 - 9:00 pm	Click
EDU 4114	4	Teaching in the Elementary School	W	6:00 - 9:00 pm	Staff
EDU 4502	2	Field Experience II	W	6:00 - 9:00 pm	Nelson
SPED 3223	3	Methods and Materials for Special Education	M	6:00 - 9:00 pm	Hamburger
SPED 3523	3	Assessment, Evaluation, Referral, and Placement of the Exceptional Learner	Tu	6:00 - 9:00 pm	Fox
SPED 4101	1	Research in Special Education	Th	5:00 - 6:00 pm	Fox
SPED 4211	1	The Physically-Impaired Learner	Th	6:00 - 7:00 pm	Fox
SPED 4221	1	The Mentally-Impaired Learner	Th	7:00 - 8:00 pm	Fox
SPED 4231	1	The Behavior-Disordered Learner	Th	8:00 - 9:00 pm	Fox
ENGLISH					
ENG 1123	3	Rhetoric and Literature	M	9:00 - 12:00 pm	Milligan
ENG 3223	3	Technical Writing	Th	6:00 - 9:00 pm	Milligan
ENG 3513	3	Children's Literature	Tu	6:00 - 6:00 pm	Wittman
ENG 3583	3	Masterworks of Literature	F	1:00 - 4:00 pm	Buckholz
ENVIRONMENTAL MANAGEMENT					
EMS 3113	3	Survey of Environmental Law	Tu	6:00 - 9:00 pm	Barnes
EMS 3202	2	Introduction to Fossil and Non-Fossil Fuel Energy	W	6:00 - 9:00 pm	Standiford
EMS 4833	3	Senior Project in Environmental Management	Th	6:00 - 9:00 pm	Scott
FINANCE					
FIN 3423	3	Financial Management	Th	6:00 - 9:00 pm	Connors
HISTORY					
HIS 1103	3	Western Civilization to 1715	Internet Class		Sumruld
HIS 2203	3	American History from 1877	Th	1:00 - 4:00 pm	Vuk
LINGUISTICS					
LIN 2253	3	Introduction to Linguistics	M	9:00 - 12:00 pm	Walker
MANAGEMENT					
MGT 3403	3	Human Resources and Performance Evaluation	Tu	1:00 - 4:00 pm	Vandergriff
MGT 4683	3	Senior Project in Organizational Management	W	6:00 - 9:00 pm	Staff
MARKETING					
MKT 4323	3	Marketing Analysis for Managers	M	6:00 - 9:00 pm	Staff
MATHEMATICS					
MAT 1103	3	College Algebra for General Education	Sat	9:00 - 12:00 pm	Hayes
MAT 3323	3	Statistics II	W	6:00 - 9:00 pm	Hayes
MAT 4703	3	Topics in Mathematics: Math Their Way	Sat	1:00 - 4:00 pm	Oney
MAT 5703	3	Topics in Mathematics: Math Their Way	Sat	1:00 - 4:00 pm	Oney
POLITICAL SCIENCES					
POS 3103	3	American Ideologies	Th	9:00 - 12:00 pm	Vaughn
PSYCHOLOGY					
PSY 1103	3	General Psychology	M	6:00 - 9:00 pm	Roberto
PSY 3113	3	Cognition	W	6:00 - 9:00 pm	Roberto
PSY 4203	3	Abnormal Psychology	M	6:00 - 9:00 pm	Frazier
RELIGION					
REL 1203	3	New Testament Survey	Th	6:00 - 9:00 pm	Robinson
SOCIOLOGY					
SOC 2213	3	Marriage and Family	Sat	9:00 - 12:00 pm	Frazier
SPEECH					
SPE 3103	3	Professional Speech Communication	F	9:00 - 12:00 pm	Milligan



A dedication to servant leadership, shared by Board members, faculty, staff, students, graduates, contributors, & other friends of the College

CSW believes the best way to teach servant leadership is to model it in order to produce graduates who embrace the concept of serving others and the community. For this reason, CSW takes a leading role in serving the people of this region in a number of innovative ways.

- ★ Center for Business Leadership
- ★ Center for Educational Excellence
- ★ CSW Theatre Productions
- ★ Distinguished Lecture Series
- ★ Estacado Library Information Network
- ★ Hatton W. Sumners Speaker Series
- ★ I CAN! Scholarship Program
- ★ Success 2000 Leadership Camp

College of the Southwest Carlsbad Campus
Fall 2001 Session "A"
August 6 - October 12, 2001

MASTER OF SCIENCE IN EDUCATION COURSE OFFERINGS

COURSE NO.	CR	TITLE	DAY	TIME	FACULTY
ADMINISTRATION					
EDA 5313B	3	Educational Law	Sat	9:00 - Noon	Cagle
EDA 5803	3	Internship in Educational Administration	TBA		Posey, E
COUNSELING					
EDC 5103	3	Career Development	M	6:00 - 9:00 pm	Posey, E
EDC 5403B	3	Group Processes	Th	6:00 - 9:00 pm	Staff
EDC 5803	3	Internship in Counseling	TBA		Sanders
CURRICULUM & INSTRUCTION					
EDI 5313B	3	Educational Law	Sat	9:00 - Noon	Cagle
EDUCATION CORE					
EDU 5103	3	Instructional Strategies	Th	6:00 - 9:00 pm	Castillo
EDU 5203A	3	Theories of Learning and Human Development	Tu	6:00 - 9:00 pm	Frazier
EDU 5203B	3	Theories of Learning and Human Development	Sat	1:00 - 4:00 pm	Sanford
EDU 5523B	3	Educational Statistics and Research Design	W	6:00 - 9:00 pm	Dunn, E

UNDERGRADUATE COURSE OFFERINGS

COURSE NO.	CR	TITLE	DAY	TIME	FACULTY
ACCOUNTING					
ACT 2204	4	Principles of Accounting I	Internet Class		Lunsford, S
ACT 3133	3	Managerial Accounting	Wed	6:00 - 9:00 pm	Lunsford, P
ART					
ART 1103	3	Art Appreciation (ITV)	TTh	1:00 - 2:20 pm	Staff
ART 2103	3	History of Western Art I (ITV)	MW	11:00 - 12:20pm	Staff
BIOLOGY					
BIO 3314	4	Invertebrate Zoology	Th	5:00 - 9:00 pm	Breene
BIO 3404	4	Genetics	M	5:00 - 9:00 pm	Sengupta
BIO 3513	3	Cell Biology	Tu	6:00 - 9:00 pm	Staff
BUSINESS ADMINISTRATION					
BUA 3313	3	Business Law I	Th	6:00 - 9:00 pm	Banks, D
BUA 4503	3	Business Ethics	Tu	6:00 - 9:00 pm	Kehrman
CRIMINAL JUSTICE					
CRJ 1703	3	Introduction to Criminal Justice	Internet Class		Lunsford, S
CRJ 3103	3	Criminology	Internet Class		Lunsford, S
CRJ 3513	3	Victimology	W	6:00 - 9:00 pm	Staff
CRJ 4413	3	Civil Law and The Legal System	M	6:00 - 9:00 pm	Lunsford, S
COMPUTER SCIENCE					
CSI 2103	3	Database Management	M	6:00 - 9:00 pm	Williams, L
CSI 2203	3	Educational Technology	Sat	9:00 - 12:00 pm	Baca
ECONOMICS					
ECO 2103	3	Principles of Macroeconomics	Th	6:00 - 9:00 pm	Connors
ECO 2802	2	Internship in Free Enterprise (ITV)	TTh	11:00 - 12:20 pm	DiUlus
ECO 2213	3	Principles of Business in a Free Enterprise System (ITV)	MW	9:30 - 10:50 am	Staff
ECO 3802	2	Internship in Free Enterprise (ITV)	TTh	11:00 - 12:20 pm	DiUlus
ECO 4802	2	Internship in Free Enterprise (ITV)	TTh	11:00 - 12:20 pm	DiUlus
EDUCATION					
EDU 1101	1	Field-Based Observation	Tu	4:30 - 5:30 pm	Nelson
EDU 2103	3	Foundations of Education	Tu	6:00 - 9:00 pm	Wittman
EDU 3222A	2	Classroom Management and Organization (ITV)			
EDU 4213	3	Teaching in the Secondary School	Th	6:00 - 9:00 pm	Staff
EDU 4546	6	Student Teaching	TBA	TBA	Wheeler
EDU 4601	1	Student Teaching Seminar	W	5:00 - 6:00 pm	Wheeler
SPED 1101	1	Field-Based Observation in Special Education	M	5:00 - 6:00 pm	Staff
SPED 2103	3	Introduction to Exceptional Learners and Special Education	W	6:00 - 9:00 pm	Fox
SPED 4201	1	The Gifted/Talented Learner	Th	5:00 - 6:00 pm	Nelson
SPED 4211	1	The Physically Impaired Learner	Th	6:00 - 7:00 pm	Nelson
SPED 4221	1	The Mentally Impaired Learner	Th	7:00 - 8:00 pm	Nelson
ENGLISH					
ENG 1113	3	Rhetoric and Composition	W	9:00 - 12:00 pm	Milligan
ENG 2103	3	Expository Writing	Tu	9:00 - 12:00 pm	Staff
ENG 2223	3	Life and Literature of the Southwest	W	6:00 - 9:00 pm	Staff
ENG 4533	3	Major American Author	F	9:00 - 12:00 pm	Milligan
ENVIRONMENTAL MANAGEMENT					
EMS 3303	3	Soc. Analysis of Contemp. Environment Issues	M	6:00 - 9:00 pm	Staff
EMS 4402	2	Renewable Resource Management	M	5:00 - 7:00 pm	Staff
EMS 4813	3	Seminar in Environmental Studies	Tu	6:00 - 9:00 pm	Scott
FINANCE					
FIN 2403	3	Principles of Finance	M	6:00 - 9:00 pm	Bradford
FIN 3403	3	Investments/Personal Financial Planning	Sat	9:00 - 12:00 pm	Staff
FIN 3443	3	Financial Analysis	W	6:00 - 9:00 pm	Abercrombie
GEOGRAPHY					
GEOG 2103	3	Physical and Cultural Geography	Th	9:00 - 12:00 pm	Vuk
HISTORY					
HIS 2303	3	History and Geography of New Mexico	Tu	9:00 - 12:00 pm	Vaughn
HIS 3213	3	Colonial American	Th	1:00 - 4:00 pm	Staff
MANAGEMENT					
MGT 3223	3	Leadership and Motivation	Tu	6:00 - 9:00 pm	Staff
MGT 3403	3	Human Resources and Performance Evaluations	F	1:00 - 4:00 pm	Vandergriff
MGT 4693	3	Senior Seminar in Organizational Management	Th	6:00 - 9:00 pm	Staff
MARKETING					
MKT 3323	3	Principles of Marketing and Sales	M	5:00 - 8:00 pm	Staff
MKT 3343	3	Marketing Research	Sat	9:00 - 12:00 pm	Staff
MATHEMATICS					
MAT 2103	3	Principles of Probability and Statistics	M	6:00 - 9:00 pm	Hayes
MAT 2204	4	Analytical Geometry and Calculus I	W	6:00 - 9:00 pm	Hayes
MAT 3313	3	Statistics I	Sat	9:00 - 12:00 pm	Staff

College of the Southwest Hobbs Campus
Summer Session II
July 5 - August 1, 2001

MASTER OF SCIENCE IN EDUCATION COURSE OFFERINGS

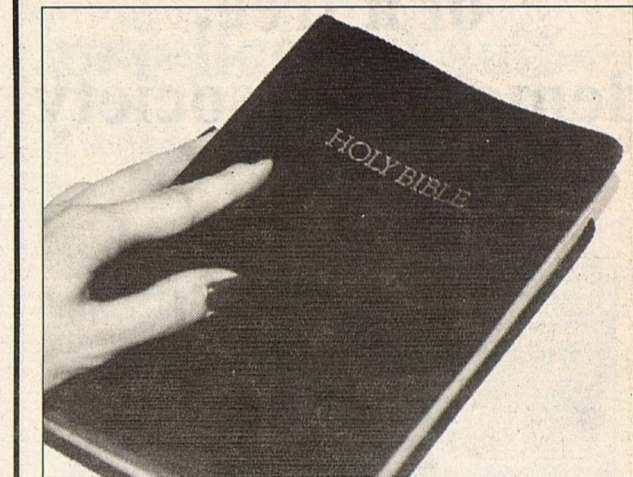
COURSE NO.	CR	TITLE	DAY	TIME	ROOM	STAFF
ADMINISTRATION						
EDA 5213	3	Theories of Curriculum Development	M-F	12:30 - 2:30 pm	S124	Sanders
EDA 5313	3	Educational Law	M-F	12:30 - 2:30 pm	L109	Cagle
EDA 5403	3	Finance and Facilities	M-F	5:30 - 7:30 pm	L109	Rounds
EDA 5523	3	Applied Educational Research	M-F	3:00 - 5:00 pm	CSWC	Staff
EDA 5803	3	Internship in Educational Administration	TBA		TBA	Posey, E
COUNSELING						
EDC 5313	3	Counseling Techniques for School Counselors	M-F	3:00 - 5:00 pm	S124	Sanders
EDC 5323	3	Advanced Theories of Psychological Counseling	M-F	7:45 - 9:45 am	L109	Salb
EDC 5443	3	Individual Cognitive Assessment	M-F	10:00 - Noon	A101	Westbrook
EDC 5713	3	Psychopathology for School Counselors	M-F	7:45 - 9:45 pm	L109	Salb
EDC 5803	3	Internship in Counseling	TBA		TBA	Sanders
CURRICULUM & INSTRUCTION						
EDI 5213	3	Theories of Curriculum Development	M-F	12:30 - 2:30 pm	S124	Sanders
EDI 5223	3	Advanced Assessment	M-F	3:00 - 5:00 pm	L109	Frazier
EDI 5233	3	Advanced Classroom Management	M-F	12:30 - 2:30 pm	CSWC	Staff
EDI 5313	3	Educational Law	M-F	12:30 - 2:30 pm	L109	Cagle
EDUCATION CORE						
EDU 5203A	3	Theories of Learning and Human Development	M-F	10:00 - Noon	L109	Cagle
EDU 5203B	3	Theories of Learning and Human Development	M-F	5:30 - 7:30 pm	S124	Davis
EDU 5513	3	Culturally Diverse and Special Needs Population	M-F	7:45 - 9:45 am	S124	Staff
EDUCATIONAL DIAGNOSTICIAN						
EDG 5223	3	Advanced Assessment	M-F	3:00 - 5:00 pm	L109	Frazier
EDG 5443	3	Individual Cognitive Assessment	M-F	10:00 - Noon	A101	Westbrook

UNDERGRADUATE COURSE OFFERINGS

COURSE NO.	CR	TITLE	DAY	TIME	ROOM	STAFF
ACCOUNTING						
ACT 4343	3	Auditing Theory and Ethics	M-F	3:00 - 5:00 pm	A101	Stephens
BIOLOGY						
BIO 4223	3	Field Biology	M-F	10:00 - Noon	A109	Staff
BIO 4703	3	Topics in Biology: Ecology	M-F	7:45 - 9:45 am	A106	Ross
CRIMINAL JUSTICE						
CRJ 4103	3	Corrections, Operations, and Management	M-F	5:30 - 7:30 pm	A101	Staff
ECONOMICS						
ECO 3203	3	Principles of Business in a Free Enterprise System	M-F	10:00 - Noon	S113	Case
EDUCATION						
BIL 3111	1	Language Arts for K-12 Bilingual Learners	M-F	4:15 - 5:00 pm	S110	Green
BIL 3112	2	Social Studies and Fine Arts for K-12 Bilingual Learners	M-F	3:00 - 4:15 pm	S110	Salgado
EDU 3203	3	Psych. Foundations of Teaching and Learning	M-F	7:45 - 9:45 am	S113	Kiutur
EDU 3222	2	Classroom Management and Organization	M-F	10:00 - 11:15 am	S110	Emery
EDU 3523	3	Educational Measurement and Evaluation	M-F	12:30 - 2:30 pm	S121	Gage
EDU 4213	3	Teaching in the Secondary School	M-F	7:45 - 9:45 am	S110	Hunt, M
EDU 4413	3	Reading in the Content Area	M-F	3:00 - 5:00 pm	S121	Emery
SPED 3222	2	Classroom Mgt. and the Exceptional Learner	M-F	12:30 - 1:45 pm	S103	Hunt, K
SPED 3323	3	Methods and Materials for Special Education	M-F	7:45 - 9:45 am	S103	Hunt, K
SPED 4211	1	The Physically Impaired Learner	M-F	10:00 - 11:00 am	S103	DeSoto
SPED 4221	1	The Mentally Impaired Learner	M-F	11:00 - Noon	S103	DeSoto
ENGLISH						
ENG 2213	3	Creative Writing	M-F	12:30 - 2:30 pm	L108	Taylor
ENG 2423	3	Survey of Western World Literature	M-F	7:45 - 9:45 am	L100	Taylor
ENG 4703	3	Topics in English: Literature and Children's Film	M-F	10:00 - Noon	L100	Taylor
FINANCE						
FIN 2403	3	Principles of Finance	M-F	5:30 - 7:30 pm	A102	Stephens
HISTORY						
HIS 1203	3	Western Civilization from 1716	M-F	10:00 - Noon	A106	Sumruld
HIS 4703	3	Topics in History: The Vietnam War	M-F	12:30 - 2:30 pm	A102	Sumruld
LINGUISTICS						
LIN 2253	3	Introduction to Linguistics	M-F	3:00 - 5:00 pm	A102	Vardeman
MARKETING						
MKT 3323	3	Principles of Marketing and Sales	M-F	12:30 - 2:30 pm	A106	Owensby
POLITICAL SCIENCE						
POS 3103	3	American Ideologies	M-F	5:30 - 7:30 pm	A106	Staff
POS 4223	3	Constitutional History	M-F	7:45 - 9:45 am	A106	Staff
PSYCHOLOGY						
PSY 3103	3	Principles of Behavior Management	M-F	12:30 - 2:30 pm	S110	Wolske
PSY 3213	3	Developmental Psychology	M-F	7:45 - 9:45 pm	S110	Staff
PSY 3513	3	History of Psychology	M-F	5:30 - 7:30 pm	S110	Staff
PSY 4703	3	Topics in Psychology: Stress Management	M-F	7:45 - 9:45 am	A102	Wolske
RELIGION						
REL 1103	3	Old Testament Survey	M-F	3:00 - 5:00 pm	A106	Glasgow
SOCIOLOGY						
SOC 3203	3	Race and Ethnic Relations	M-F	7:45 - 9:45 pm	A106	Staff

Christian principles

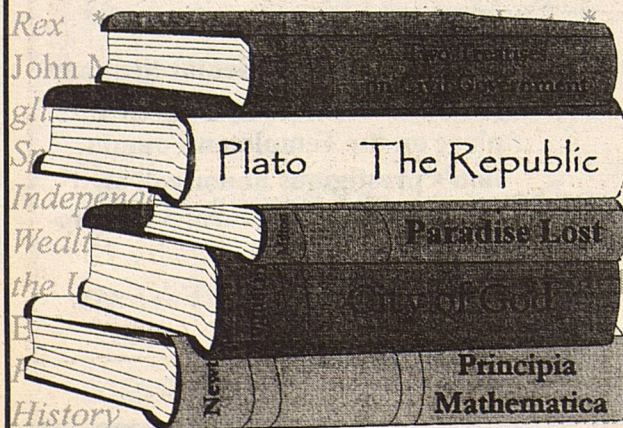
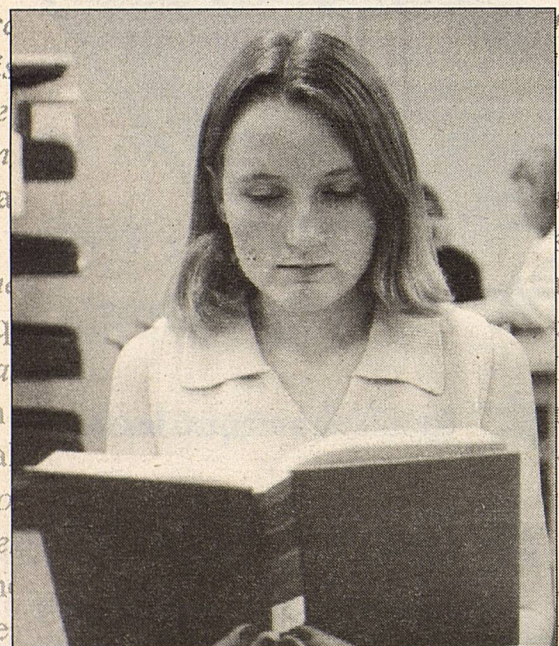
CSW is dedicated to providing students the opportunity to anchor their lives in Christian principles.



- ★ Old Testament Classes
- ★ New Testament Classes
- ★ Campus Crusade for Christ
- ★ Life Insights for Excellence
- ★ Senior Seminar in Leadership and Ethics (CSW's LIFE and Senior Seminar programs earned the College a place on the Templeton Foundation's prestigious honor roll of "Colleges that Encourage Character Development.")
- ★ Bible Studies

Holy Bible * Plato's *The Apology* * Aristotle's *Politics* * Augustine's *City of God* * Thomas Aquinas' *Summa Theologiae* * Magna Carta * Dante's *Divine Comedy* * Martin Luther's *Ninety-Five Theses* * John Calvin's *Institutes of the Christian Religion* * Balthasar Humboldt's *On the Philosophy of Language* * Thomas Helwys' *Christianity in America* * Descartes' *Meditations on First Philosophy* * Isaac Newton's *Principia Mathematica* * John Locke's *Two Treatises on Civil Government* * Samuel Rutherford's *Lex Rex* * John Milton's *Areopagitica* * The English Bill of Rights * Montesquieu's *The Spirit of the Laws* * The Declaration of Independence * The Constitution of the United States of America * Edmund Burke's *Reflections on the Revolution in France*

The ideas of Western Civilization: the preservation and advancement of a free, democratic society



**College of the Southwest -- Hobbs Campus
Summer 2001**

Summer Session I June 4 - June 29, 2001

Registration 9:00 am to 6:00 pm.....	May 31
Dorms Open.....	June 3
*Classes Begin.....	June 4
Last Day to Change Classes.....	June 6
Last Day for 100% Tuition Refund.....	June 8
Zero Percent Tuition Refund.....	June 11
Last Day to Withdraw with a "W".....	June 15
Last Day to Withdraw with a "WF/WP".....	June 28
Final Examinations for Session I.....	June 29

Summer Session II July 5 - August 1, 2001

Registration 9:00 am to 6:00 pm.....	June 28
*Classes Begin.....	July 5
Last Day to Change Classes.....	July 9
Last Day for 100% Tuition Refund.....	July 11
Zero Percent Tuition Refund.....	July 12
Last Day to Withdraw with a "W".....	July 18
Last Day to Withdraw with a "WF/WP".....	July 31
Final Examinations for Session II.....	August 1
Dorms Closed.....	August 2

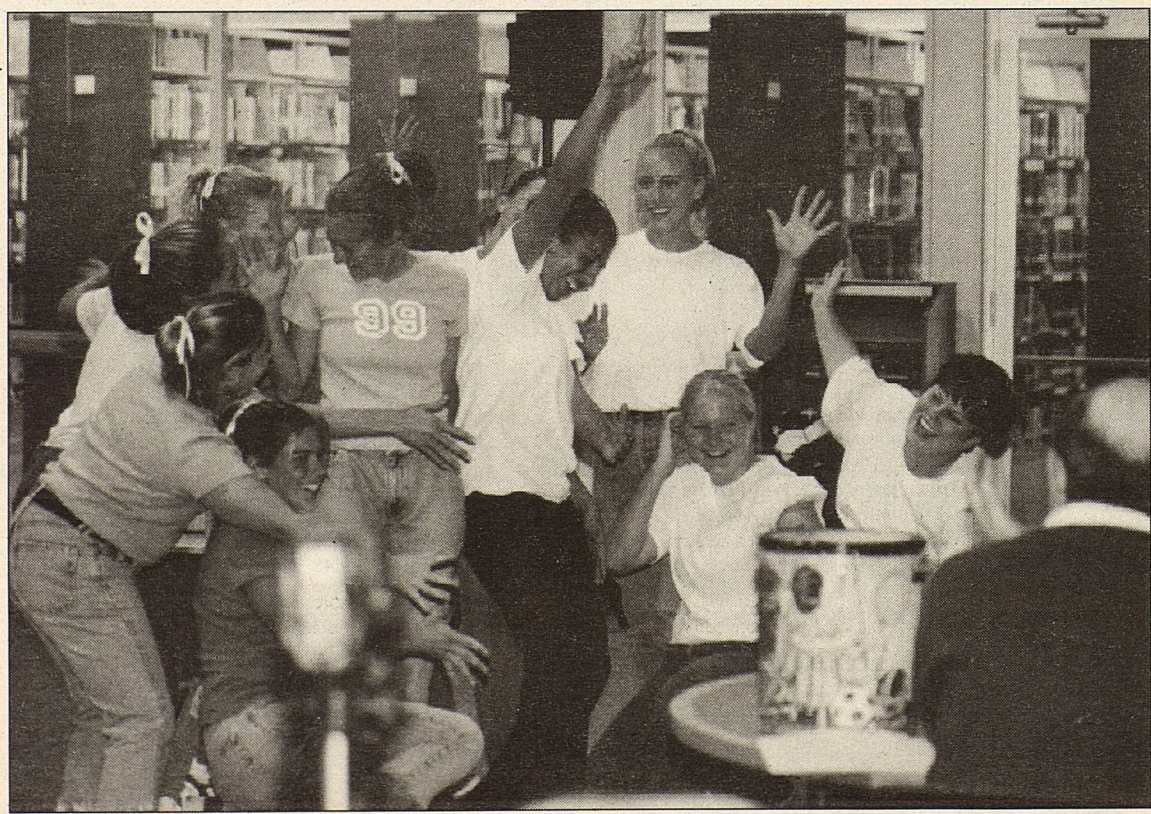
* The scheduled rates are set according to the day classes begin; therefore, refunds are not based on the date an individual registers or begins attending class.
** Tuition refunds for Special Course Offerings will not be made after classes have begun.

Tuition & Fees

Tuition Per Semester Hour.....	\$150.00
Graduate Tuition Per Semester Hour.....	158.00
Directed Studies Per Semester Hour.....	162.00
Audit Per Semester Hour.....	75.00
Application Fee (One Time Fee).....	25.00
Change of Course Fee (Per Change Slip).....	20.00
<i>This charge made for any course changes other than those required by the College.</i>	
Student Service Fee for Summer Session (per semester).....	30.00

NOTE: Fees are not refundable. CSW reserves the right to make such changes as it deems necessary. A complete list of fees is contained in the 2000-2001 *Bulletin*.

All tuition, housing expenses, and fees are due at the beginning of the semester. If a student's account is not clear by the twenty-first class day, the student will be dropped from classes with a financial indebtedness.



PSYCHOLOGY

PSY 1103A 3	General Psychology	MW	8:00 - 9:20 am	A100
PSY 1103B 3	General Psychology	MW	11:00 - 12:20 pm	S113
PSY 3103A 3	Principles of Behavior Management	MW	9:30 - 10:50 am	S113
PSY 3103B 3	Principles of Behavior Management	MW	7:00 - 8:20 pm	S103
PSY 3223 3	Psychology of Aging	TTh	2:30 - 3:50 pm	L109
PSY 3403A 3	Interpersonal Group Dynamics	Fri	9:00 - 11:50 am	A102
PSY 3403B 3	Interpersonal Group Dynamics	MW	5:30 - 6:50 pm	S124
PSY 3503A 3	Social Psychology	MW	1:00 - 2:20 pm	L109
PSY 3503B 3	Social Psychology	MW	8:30 - 9:50 pm	S124
PSY 3513 3	History of Psychology	TTh	9:30 - 10:50 am	S124
PSY 4213 3	Theories of Guidance and Counseling	TTh	8:00 - 9:20 am	A101
PSY 4403A 3	Experimental Psychology	TTh	11:00 - 12:20 pm	S110
PSY 4403 3	Experimental Psychology	TTh	7:00 - 8:20 pm	S110
PSY 4703 3	Topics in Psychology	TTh	5:30 - 6:50 pm	S113
PSY 4803 3	Psychology Practicum	TBA	TBA	

RELIGION

REL 1101 1	Life I	Tu	12:00 - 12:50 pm	MSC
REL 1103A 3	Old Testament Survey	MW	1:00 - 2:20 pm	A106
REL 1103B 3	Old Testament Survey	MW	2:30 - 3:50 pm	A106
REL 1103C 3	Old Testament Survey	Fri	1:00 - 3:50 pm	A106
REL 1103D 3	Old Testament Survey	TTh	7:00 - 8:20 pm	A106
REL 1201 1	Life II	Tu	12:00 - 12:50 pm	MSC
REL 1203A 3	New Testament Survey	TTh	2:30 - 3:50 pm	A106
REL 1203B 3	New Testament Survey	TTh	5:30 - 6:50 pm	A106
REL 1301 1	Life III	Tu	12:50 - 12:50 pm	MSC

SOCIOLOGY

SOC 1103 3	Introduction to Sociology	TTh	9:30 - 10:50 am	A100
SOC 3503A 3	Social Psychology	MW	1:00 - 2:20 pm	L109
SOC 3503A 3	Social Psychology	MW	8:30 - 9:50 pm	S124

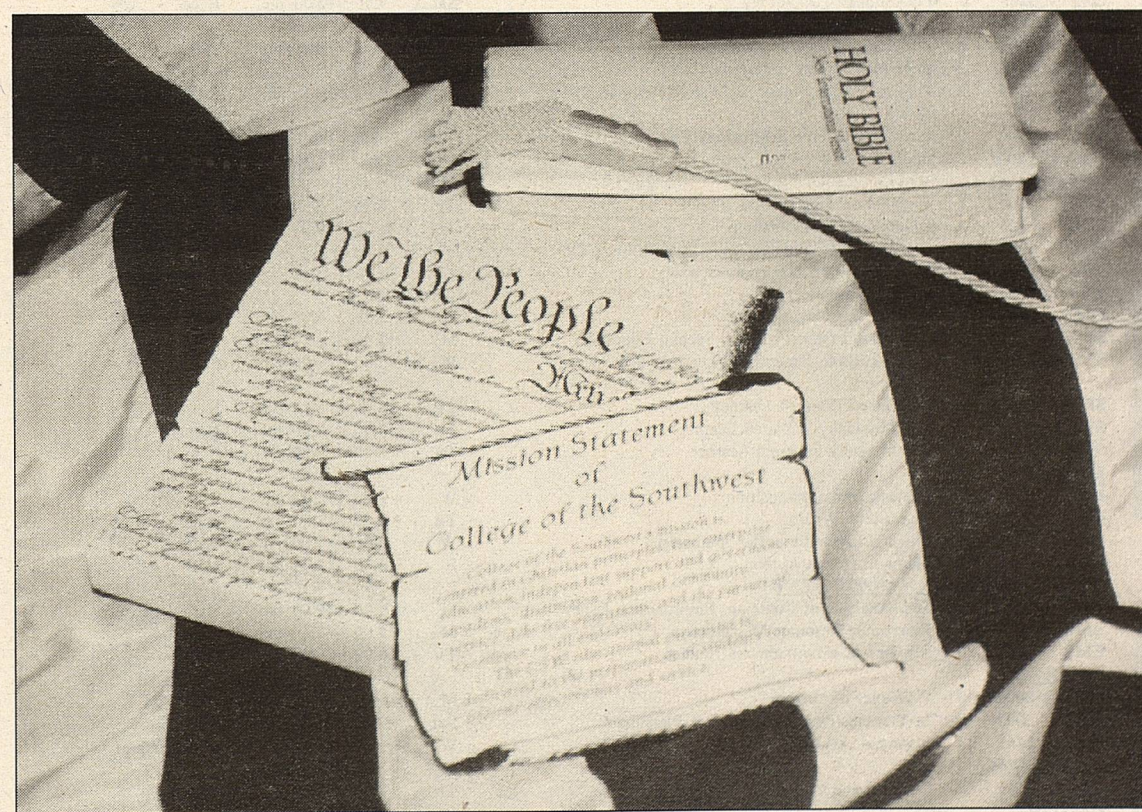
SPANISH

SPA 3103 3	Spanish Comparative Linguistics	TTh	6:00 - 7:20 pm	WBR
SPA 3203 3	Spanish Grammar and Composition	TTh	4:30 - 5:50 pm	L109

THEATRE

THE 1103 3	Introduction to Theatre	TTh	9:30 - 10:50 am	MHC
THE 1602 2	Theatre Workshop	TBA	TBA	MHC
THE 2213 3	Acting	TTh	2:30 - 3:50 pm	MHC
THE 2602 2	Theatre Workshop	TBA	TBA	MHC
THE 3213 3	Advanced Acting	TTh	2:30 - 3:50 pm	MHC
THE 3303 3	European Classics	TTh	1:00 - 2:20 pm	MHC
THE 3602 2	Theatre Workshop	TBA	TBA	MHC
THE 4602 2	Theatre Workshop	TBA	TBA	MHC

NOTE: Room numbers may change; check with the Registrar's office.



College of the Southwest's mission is centered in Christian principles, free enterprise education, independent support and governance, academic distinction, regional community service, debt-free operations, and the pursuit of excellence in all endeavors. The CSW educational enterprise is dedicated to the preparation of students for lifetime effectiveness and service.

College of the Southwest, founded in 1962, is independently supported and governed and offers undergraduates degrees in 20 fields of liberal arts, as well as the Master of Science degree in Educational Administration, School Counseling, and Curriculum and Instruction.

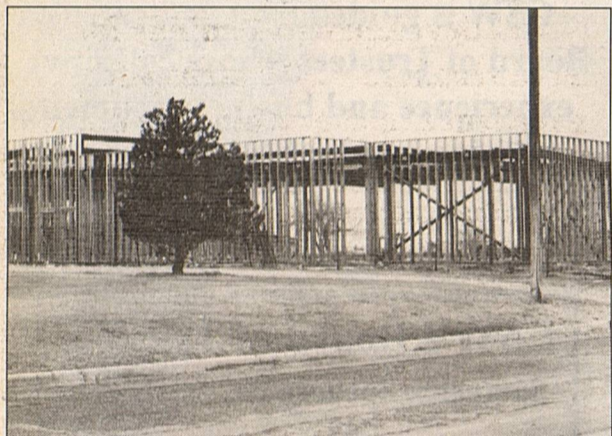
A
relentless commitment to excellence in all endeavors

Whether it's courses for CSW students, a holiday event shared with the community, or a professional development seminar for area teachers, CSW strives for excellence in everything we do.

- ★ Ambassadors
- ★ Annual Educational Conference
- ★ Business Leadership Council
- ★ Campus Publications
- ★ Center for Business Leadership
- ★ Center for Educational Excellence
- ★ College of the Southwest-Carlsbad
- ★ CSW Theatre Department
- ★ Distinguished Lecture Series
- ★ Hatton W. Sumners Speaker Series
- ★ I Can! Scholarship Program
- ★ LIFE Program
- ★ Master's in Education
 - Administration
 - Counseling
 - Curriculum & Instruction
 - Educational Diagnostics
- ★ Multicultural Conference
- ★ Mustang Athletics
- ★ President's Student Advisory Council
- ★ Regional Prayer Breakfast
- ★ Senior Seminar
- ★ SIFE Competition
- ★ Sigma Tau Delta
- ★ SW Association of Future Educators
- ★ Students in Free Enterprise
- ★ Success 2000
- ★ Taste of Literature
- ★ Trustee of Free Enterprise Program
- ★ Undergraduate Programs

Debt-free operation

An important factor for many advocates of CSW is that the school operates debt free--yet accepts no tax dollars. CSW, a 501(c)(3) organization, maintains a balanced budget while meeting educational needs through sound business and financial planning.



CSW is currently undergoing the first of three phases of campus construction, with the entire \$6.2 million either pledged or in-hand before groundbreaking even began. CSW is, and will continue to remain, debt free.

Phase One:

- 1) Renovation & expansion of library (completed)
- 2) New academic / science lab building (completed)
- 3) New Student Center (in progress)
- 4) New chapel
- 5) New residence hall
- 6) Renovation & expansion of existing Student Center as new academic building

ENG 2403	3	Survey of American Literature	TTh	8:00 - 9:20 am	L100
ENG 3413	3	Classical Mythology	MW	9:30 - 10:50 am	L100
ENG 3503	3	Advanced Grammar	MW	8:00 - 9:20 am	L100
ENG 3513	3	Children's Literature	TTh	9:30 - 10:50 am	L100
ENG 3813	3	Technical Newspaper Writing	Fri	9:00 - 11:50 am	LWR
ENG 3823	3	Yearbook Production	Fri	1:00 - 3:30 pm	LWR
ENG 4403	3	Advanced Composition	MW	2:30 - 3:50 pm	L108
ENG		Upper Division English	MW	4:00 - 5:20 pm	L100
FINANCE					
FIN 2403A	3	Principles of Finance	TTh	2:30 - 3:50 pm	A102
FIN 2403B	3	Principles of Finance	MW	7:30 - 8:20 pm	L100
FIN 3403	3	Investments/Personal Financial Planning	MW	5:30 - 6:50 pm	A106
FIN 3443	3	Financial Analysis	TTh	1:00 - 2:20 pm	L100
FIN 4803	3	Investment Internship I	W	7:00 - 9:50 pm	MSC
FIN 4823	3	Internship in Finance	TBA	TBA	
GEOGRAPHY					
GEOG 2103	3	Physical and Cultural Geography	MW	11:00 - 12:20 pm	S110
GEOLOGY					
GEO 1304	3	Earth Science	TTh	8:00 - 9:20 am	S121
GEO 1301	1	Earth Science Laboratory	W	7:30 - 9:20 am	A109
HEALTH/PHYSICAL EDUCATION					
HPE 0510A	0	Soccer	TBA	TBA	
HPE 0510B	0	Volleyball	TBA	TBA	
HPE		Elective	MW	9:30 - 10:50 am	MFC
HPE 1241	1	Weight Training	MW	7:00 - 7:50 pm	WTR
HPE 2203	3	Concepts in Physical Education	TTh	11:00 - 12:20 pm	MFC
HPE 3303	3	Psychology of Physical Education & Sports	MW	11:00 - 12:20 pm	MFC
HPE 3312	3	Techniques of Rhythms and Games	TTh	8:00 - 8:50 am	
HPE 4203	3	Physiology of Exercise	TTh	9:30 - 10:50 am	MFC
HPE 4403	3	Physical Education in the Elementary School	MW	8:00 - 9:20 am	MFC
HISTORY					
HIS 1103A	3	Western Civilization to 1715	MW	9:30 - 10:50 am	S110
HIS 1103B	3	Western Civilization to 1715	TTh	11:00 - 12:20 pm	S113
HIS 1103C	3	Western Civilization to 1715	TTh	8:30 - 9:50 pm	S113
HIS 2103A	3	American History to 1876	MW	8:00 - 9:20 am	S113
HIS 2103B	3	American History to 1876	TTh	8:00 - 9:20 am	S113
HIS 2103C	3	American History to 1876	MW	7:00 - 8:20 pm	S124
HIS 2223A	3	Life and Literature of the Southwest	MW	1:00 - 2:20 pm	L100
HIS 2223B	3	Life and Literature of the Southwest	TTh	5:30 - 6:50 pm	L100
HIS 3103	3	Theory of History	TTh	9:30 - 10:50 am	S108
HIS 3213	3	Colonial America	TTh	1:00 - 2:20 pm	S103
HIS 4103	3	The History of U.S. Foreign Policy	MW	1:00 - 2:20 pm	S108
LINGUISTICS					
LIN 2253	3	Introduction to Linguistics	MW	11:00 - 12:20 pm	A100
MANAGEMENT					
MGT 2103A	3	Principles of Management	MW	9:30 - 10:50 am	S103
MGT 2103B	3	Principles of Management	MW	5:30 - 6:50 pm	L100
MGT 3223	3	Leadership and Motivation	MW	7:00 - 8:20 pm	MHC
MGT 3403	3	Human Resource Management	MW	8:00 - 9:20 am	S110
MGT 4123	3	Management Information Systems	TTh	7:00 - 8:20 pm	A105
MGT 4413	3	Strategic Management	TTh	8:00 - 9:20 am	A102
MGT 4803	3	Internship in Management	TBA	TBA	
MARKETING					
MKT 3343	3	Marketing Research	MW	11:00 - 12:20 pm	S103
MKT 3413	3	Principles of Retailing	TTh	9:30 - 10:50 am	L109
MKT 3423	3	Salesmanship	TTh	5:30 - 6:50 pm	MHC
MKT 4123	3	Services Marketing	MW	8:00 - 9:20 am	S103
MKT 4133	3	Marketing Management	TTh	2:30 - 3:50 pm	S103
MKT 4203	3	Topics	TTh	8:30 - 9:50 pm	S110
MKT 4813	3	Internship in Marketing	TBA	TBA	
MATHEMATICS					
MAT 1013	3	Intermediate Algebra	TTh	1:00 - 2:20 pm	S108
MAT 1103	3	College Algebra for General Education	MW	8:00 - 9:20 am	A106
MAT 1203	3	College Algebra for Mathematics or Science Majors	TTh	8:00 - 9:20 am	A106
MAT 2103	3	Principles of Probability and Statistics	MW	4:00 - 5:20 pm	A106
MAT 2204	4	Analytic Geometry and Calculus I	M-Th	9:30 - 10:20 am	A106
MAT 3203	3	Discrete Mathematics	MW	1:00 - 2:20 pm	A101
MAT 3204	4	Analytic Geometry and Calculus III	M-Th	11:00 - 11:50 am	A106
MAT 3313	3	Statistics I	TTh	11:00 - 12:20 pm	S124
MAT 3403	3	College Geometry	MW	2:30 - 3:50 pm	A101
MAT 3423	3	Abstract Algebra	TTh	1:00 - 2:20 pm	A100
MUSIC					
MUS 1103	3	Music Appreciation	Fri	9:00 - 11:50 am	L109
MUS 1203	3	Great Composers	TTh	5:30 - 6:50 pm	S108
MUS 1801	1	CSW Ambassadors	MW	11:00 - 11:50 am	MHC
MUS 2801	1	CSW Ambassadors	MW	11:00 - 11:50 am	MHC
MUS 3801	1	CSW Ambassadors	MW	11:00 - 11:50 am	MHC
MUS 4801	1	CSW Ambassadors	MW	11:00 - 11:50 am	MHC
PHILOSOPHY					
PHI 2103	3	History of Philosophy	TTh	7:00 - 8:20 pm	S103
PHYSICS					
PHY 1104	3	Physics	MW	1:00 - 2:20 pm	S121
PHY 1101	1	Physics Laboratory	Tu	1:00 - 2:50 pm	S126
POLITICAL SCIENCE					
POS 3113	3	Political Parties	MW	8:00 - 9:20 am	S108
POS 4223	3	Constitutional History	MW	2:30 - 3:50 pm	L109

College of the Southwest Carlsbad Campus
Summer Session 2001
May 28 - August 3, 2001

COURSE NO.	CR	TITLE	DAY	TIME	ROOM	FACULTY
ACCOUNTING						
ACT 2204	4	Principles of Accounting I	Tues	5:00 - 9:00 pm	CSWC	Lunsford
ACT 3233	3	Governmental and Non-Profit Accounting	Mon	6:00 - 9:00 pm	CSWC	Lunsford
BIOLOGY						
BIO 3204	3	Plant Taxonomy	Wed	5:00 - 9:00 pm	CSWC	Waters
BIO 3513	3	Cell Biology	Tues	6:00 - 9:00 pm	CSWC	Bierle
BUSINESS ADMINISTRATION						
BUA 2223	3	Principles of Real Estate	Wed	6:00 - 9:00 pm	CSWC	Staff
BUA 3303	3	Professional Communications and Sales	Wed	9:00 - Noon	CSWC	Milligan
CRIMINAL JUSTICE						
CRJ 3403	3	Community Corrections	Mon	6:00 - 9:00 pm	CSWC	Blenden
CRJ 4203	3	Issues in Ethics, Law, and Criminal Justice	Wed	6:00 - 9:00 pm	CSWC	Parker-Stevens
ECONOMICS						
ECO 2103	3	Macroeconomics	Mon	6:00 - 9:00 pm	CSWC	Staff
ECO 3203	3	Prin. of Economics in a Free Enterprise System	Internet			DiUlus
EDUCATION						
EDU 2103	3	Foundations of Education	Tues	1:30 - 4:30 pm	CSWC	Wheeler
EDU 3203	3	Psych. Foundations of Teaching and Learning	Tues	9:00 - Noon	CSWC	Staff
EDU 3503	3	Communication Arts	Wed	2:00 - 5:00 pm	CSWC	Wittman
EDU 4203	3	Diagnostic/Corrective Teaching	Fri	9:00 - Noon	CSWC	Schnoor
SPED 2103	3	Intro. to the Exceptional Learner and Special Education	Mon	1:00 - 4:00 pm	CSWC	Denning
SPED 3323	3	Methods and Materials in Special Education	Thur	9:00 - Noon	CSWC	Hamberg
ENGLISH						
ENG 2223	3	Life and Literature of the Southwest	Tues	2:00 - 5:00 pm	CSWC	Walker
ENG 3413	3	Classical Mythology	Mon	9:00 - Noon	CSWC	Moore
ENVIRONMENTAL MANAGEMENT						
EMS 4523	3	Atmospheric Science and Pollution	Thur	6:00 - 9:00 pm	CSWC	Staff
HISTORY						
HIS 2223	3	Life and Literature of the Southwest	Mon	2:00 - 5:00 pm	CSWC	Walker
MANAGEMENT						
MGT 2103	3	Principles of Management	Tues	6:00 - 9:00 pm	CSWC	Beasley
MGT 3223	3	Leadership and Motivation	Wed	6:00 - 9:00 pm	CSWC	Lunsford, P
MGT 4413	3	Strategic Management	Thur	6:00 - 9:00 pm	CSWC	Staff
MATHEMATICS						
MAT 1413	3	Pre-Calculus Mathematics	Thur	6:00 - 9:00 pm	CSWC	Hayes
POLITICAL SCIENCE						
POS 2103	3	National, State, and Local Government	Tues	9:00 - Noon	CSWC	Vaughn
POS 4223	3	Constitutional History	Thur	1:00 - 4:00 pm	CSWC	Vaughn
RELIGION						
REL 3213	3	History of Christianity	Thur	6:00 - 9:00 pm	CSWC	Staff
SPEECH						
SPE 1103	3	Principles of Speech	Wed	1:00 - 4:00 pm	CSWC	Staff

College of the Southwest -- Carlsbad Campus
Summer 2001 May 28 - August 3, 2001

Advisement, Pre-Registration	May 21-25
Registration, Textbook Purchase	May 21-25
*Classes Begin	May 28
Last Day to Change Classes	June 4
Last Day for 100% Refund	June 4
Last Day for 50% Refund	June 11
Zero Percent Refund	June 12
Last Day to Withdraw with a "W"	July 5
Last Day to Withdraw with a "WP/WF"	July 23
Final Examinations Begin	July 30
Final Examinations End	August 3

Tuition & Fees

Tuition Per Semester Hour	\$170.00
Directed Studies Per Semester Hour	182.00
Audit Per Semester Hour	85.00
Change of Course Fee (Per Change Slip)	20.00
<i>This charge is made for any course changes other than those required by the College.</i>	
Student Service Fee (Per Session)	35.00

*NOTE: All charges are payable at registration. Fees are not refundable. CSW reserves the right to make such changes in fees and charges as it deems necessary.

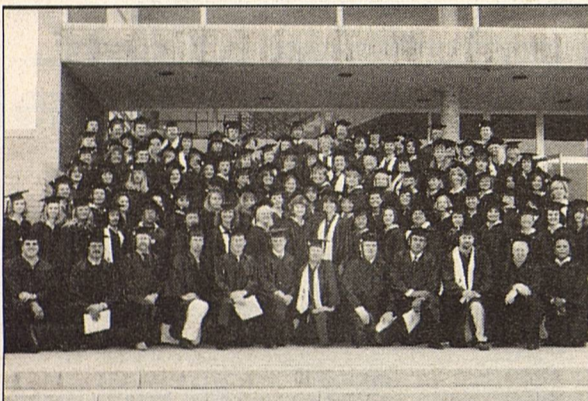
The American tradition of free enterprise, individual liberty & responsibility, the constitutional privilege of self-government

Every CSW graduate completes a 3-hour free enterprise course that provides an invaluable working knowledge of our heritage of freedom & responsibility, the market economy, and the role of government in a free society.



As CSW's most visible commitment to the principles of free enterprise, our Students in Free Enterprise team consistently ranks among the top handful of teams in the world.

Academic
distinction: the
higher levels of
learning of CSW
graduates



★ Alpha Chi National Honor Society

★ NAIA All-America Scholar Athletes

★ Sigma Tau Delta, the International English Honor Society

★ Who's Who Among America's Teachers

★ Who's Who Among Students in American Universities & Colleges

For value and quality, CSW is consistently named to the college guides of *U.S. News & World Report*, *Money* magazine, and *Time/Princeton Review*.

College of the Southwest Hobbs Campus

Fall 2001

August 20, 2001 - December 8, 2001

MASTER OF SCIENCE IN EDUCATION COURSE OFFERINGS

COURSE NO.	CR	TITLE	DAY	TIME	ROOM
ADMINISTRATION					
EDA 5203	3	Educational Leadership and Supervision	M	6:00 - 9:00 pm	L109
EDA 5313A	3	Educational Law	M	6:00 - 9:00 pm	A101
EDA 5313B	3	Educational Law	W	6:00 - 9:00 pm	A101
EDA 5803	3	Internship in Educational Administration	TBA	TBA	
COLLEGE COURSES					
CSW 5901	1	Portfolio Assessment	TBA	TBA	
COUNSELING					
EDC 5103A	3	Career Development	M	6:00 - 9:00 pm	A100
EDC 5103B	3	Career Development	Sat	9:00 - 12:00 pm	MHC
EDC 5313	3	Counseling Techniques for School Counselors	Tu	6:00 - 9:00 pm	A101
EDC 5403A	3	Group Processes	M	6:00 - 9:00 pm	CSWC
EDC 5403B	3	Group Processes	Th	6:00 - 9:00 pm	S124
EDC 5413	3	Family Intervention	W	6:00 - 9:00 pm	A100
EDC 5803	3	Internship in Counseling	TBA	TBA	
EDC 5813	3	Counseling Practicum	TBA	TBA	
CURRICULUM & INSTRUCTION					
EDI 5203	3	Educational Leadership and Supervision	M	6:00 - 9:00 pm	L109
EDI 5231	1	Professionalism and Ethics	W	6:00 - 7:00 pm	L109
EDI 5313A	3	Educational Law	M	6:00 - 9:00 pm	A101
EDI 5313B	3	Educational Law	W	6:00 - 9:00 pm	A101
EDI 5533	3	Exceptional Populations in Regular Classrooms	Th	6:00 - 9:00 pm	L109
EDUCATION CORE					
EDU 5103A	3	Instructional Strategies	Th	6:00 - 9:00 pm	A101
EDU 5103B	3	Instructional Strategies	Sat	9:00 - 12:00 pm	L109
EDU 5122	2	Current Issues in Education	W	7:00 - 9:00 pm	L109
EDU 5203A	3	Theories of Learning and Human Development	Tu	6:00 - 9:00 pm	S124
EDU 5203B	3	Theories of Learning and Human Development	Sat	1:00 - 4:00 pm	L109
EDU 5523A	3	Educational Statistics and Research Design	M	6:00 - 9:00 pm	S121
EDU 5523B	3	Educational Statistics and Research Design	Tu	6:00 - 9:00 pm	L109
SPED 5443	3	Individual Cognitive Assessment	Tu	5:00 - 8:00 pm	A100
EDUCATIONAL DIAGNOSTICIAN					
EDG 5103A	3	Career Development	M	6:00 - 9:00 pm	A100
EDG 5103B	3	Career Development	Sat	9:00 - 12:00 pm	MHC
EDG 5413	3	Family Intervention	W	6:00 - 9:00 pm	A100
EDG 5443	3	Individual Cognitive Assessment	Tu	5:00 - 8:00 pm	A100
EDG 5533	3	Exceptional Populations in Regular Classrooms	Th	6:00 - 9:00 pm	L109

UNDERGRADUATE COURSE OFFERINGS

COURSE NO.	CR	TITLE	DAY	TIME	ROOM
ACCOUNTING					
ACT 2204A	4	Principles of Accounting I	M-Th	11:00 - 11:50 am	A101
ACT 2204B	4	Principles of Accounting I	MW	7:00 - 8:50 pm	A106
ACT 3203	3	Intermediate Accounting I	TTh	5:30 - 6:50 pm	A102
ACT 3233	3	Governmental And Nonprofit Accounting	MW	9:30 - 10:50 am	S121
ACT 3243	3	Cost Accounting I	MW	5:30 - 6:50 pm	A105
ACT 4203	3	Personal Income Tax	TTh	1:00 - 2:20 pm	A105
ACT 4343	3	Auditing Theory and Ethics	TTh	7:00 - 8:20 pm	A102
ACT 4253	3	Advanced Accounting	TTh	8:00 - 9:20 am	S110
ACT 4363	3	Advanced Computer Applications in Accounting	MW	8:00 - 9:20 am	A105
ACT 4813	3	Internship in Accounting	TBA	TBA	
ART					
ART 1103A	3	Art Appreciation	MW	1:00 - 2:20 pm	S113
ART 1103B	3	Art Appreciation	TTh	1:00 - 2:20 pm	L109
ART 2103	3	The History of Western Art I	MW	11:00 - 12:20 pm	L109
ATHLETIC TRAINING					
ATE 2103	3	Introduction to Athletic Training	MW	9:30 - 10:50 am	S108
ATE 2813	3	Clinical Practicum in Athletic Training I	TBA	TBA	
ATE 4833	3	Clinical Practicum in Athletic Training VI	TBA	TBA	
BIOLOGY					
BIO 1104	3	General Biology I	MW	9:30 - 10:50 am	S124
BIO 110L	1	General Biology Laboratory I	Tu	8:00 - 9:50 am	A109
BIO 1304	3	Life Sciences	MW	2:30 - 3:50 pm	S121
BIO 130L	1	Life Sciences Laboratory	Th	2:30 - 4:20 pm	A109
BIO 2104	3	Principles of Human Anatomy and Physiology	MW	4:00 - 5:20 pm	S121
BIO 210L	1	Principles of Human Anatomy and Physiology Laboratory I	Tu	4:00 - 5:50 pm	A109
BIO 2204	3	General Botany	MW	8:00 - 9:20 am	S121
BIO 220L	1	General Botany Laboratory	Th	8:00 - 9:50 am	A109
BIO 3204	3	Plant Taxonomy	TTh	2:30 - 3:50 pm	S121
BIO 320L	1	Plant Taxonomy Laboratory	W	3:00 - 4:50 pm	A109
BIO 3314	3	Invertebrate Zoology	TTh	1:00 - 2:20 pm	S121
BIO 331L	1	Invertebrate Zoology Laboratory	W	1:00 - 2:50 pm	A109
BIO 3404	3	Genetics	TTh	11:00 - 12:20 pm	S121
BIO 340L	1	Genetics Laboratory	M	11:00 - 12:50 pm	A109
BIO 3513	3	Cell Biology	TTh	9:30 - 10:50 am	A101
BUSINESS					
BUA 1103	3	Business and Society	TTh	8:00 - 9:20 am	L109
BUA 3313A	3	Business Law I	MW	2:30 - 3:50 pm	A100

CHEMISTRY

CHE 1104	3	Principles Chemistry I	TTh	9:30 - 10:50 am	S121
CHE 110LA	1	Chemistry Laboratory I	W	10:00 - 11:50 am	S126
CHE 1304	3	Chemical Concepts	MW	11:00 - 12:20 pm	A102
CHE 130L	1	Chemical Concepts Laboratory	Tu	11:00 - 12:50 pm	S126

COMPUTER SCIENCE

CSI 1203A	3	Computer Applications	MW	11:00 - 12:20 pm	A105
CSI 1203B	3	Computer Applications	Fri	9:00 - 11:50 am	A105
CSI 2203	3	Educational Technology	TTh	9:30 - 10:50 am	A105
CSI 2213	3	Electronic Spreadsheets	MW	1:00 - 2:20 pm	A105

COLLEGE COURSES

CSW 1103A	3	Freshman Success	MW	1:00 - 2:20 pm	A102
CSW 1103B	3	Freshman Success	TTh	9:30 - 10:50 am	A102
CSW 3901	1	Portfolio Assessment	TBA	TBA	
CSW 4691A	1	Senior Seminar in Leadership and Ethics	W	8:00 - 8:50 am	L109
CSW 4691B	1	Senior Seminar in Leadership and Ethics	Tu	1:00 - 1:50 pm	S113
CSW 4691C	1	Senior Seminar in Leadership and Ethics	Th	1:00 - 1:50 pm	S113
CSW 4691D	1	Senior Seminar in Leadership and Ethics	M	5:30 - 6:20 pm	MHC

CRIMINAL JUSTICE

CRJ 1103	3	Introduction to Criminal Justice	MW	7:00 - 8:20 pm	A102
CRJ 3203	3	Understanding Criminal Behavior	MW	8:30 - 9:50 pm	A102

ECONOMICS

ECO 2103A	3	Principles of Macroeconomics	MW	8:00 - 9:20 am	A102
ECO 2213A	3	Principles of Business in Free Enterprise System	MW	9:30 - 10:50 am	L109
ECO 2213B	3	Principles of Business in Free Enterprise System	TTh	2:30 - 3:50 pm	S113
ECO 2213C	3	Principles of Business in Free Enterprise System	M	7:00 - 9:50 pm	S113
ECO 2802	2	Internship in Free Enterprise	TTh	11:00 - 12:20 pm	L109
ECO 3802	2	Internship in Free Enterprise	TTh	11:00 - 12:20 pm	L109
ECO 4802	2	Internship in Free Enterprise	TTh	11:00 - 12:20 pm	L109

EDUCATION

BIL 2103	3	Introduction to Bilingual Education	TTh	7:00 - 8:20 pm	L100
BIL 3111	1	Language Arts for K-12 Bilingual Learners	M	4:00 - 4:50 pm	L109
BIL 3112	2	Social Studies and Fine Arts for K-12 Bilingual Learners	MW	5:30 - 6:20 pm	S110

BIL 3202	2	Science and Math for K-12 Bilingual Learners	MW	6:30 - 7:20 pm	S110
EDU 1101A	1	Field-Based Observation	Tu	8:00 - 8:50 am	A100
EDU 1101B	1	Field-Based Observation	Th	9:30 - 10:20 am	S110
EDU 1101C	1	Field-Based Observation	W	6:00 - 6:50 pm	A102
EDU 2103A	3	Foundations of Education	TTh	2:30 - 3:50 pm	A101
EDU 2103B	3	Foundations of Education	TTh	5:30 - 6:50 pm	A101
EDU 2103C	3	Foundations of Education	MW	4:00 - 5:20 pm	S124
EDU 3203A	3	Psychological Foundations of Teaching and Learning	MW	11:00 - 12:20 pm	S124

EDU 3203B	3	Psychological Foundations of Teaching and Learning	TTh	8:30 - 9:50 pm	S108
-----------	---	--	-----	----------------	------

EDU 3213A	3	Survey of Multicultural and Exceptional Learners	TTh	1:00 - 2:20 pm	S124
EDU 3213B	3	Survey of Multicultural and Exceptional Learners	TTh	7:00 - 8:20 pm	S113
EDU 3222A	2	Classroom Management and Organization	MW	9:30 - 10:20 am	A102
EDU 3222B	2	Classroom Management and Organization	TTh	3:00 - 3:50 pm	S124
EDU 3222C	2	Classroom Management and Organization	Fri	9:00 - 10:50 am	A106
EDU 3503A	3	Communication Arts in the Elementary School	MW	8:00 - 9:20 am	S124
EDU 3503B	3	Communication Arts in the Elementary School	TTh	5:30 - 6:50 pm	S121
EDU 3523A	3	Educational Measurement and Evaluation	MW	2:30 - 3:50 pm	S124
EDU 3523B	3	Educational Measurement and Evaluation	MW	7:00 - 8:20 pm	S108

EDU 4114A	4	Teaching in the Elementary School	MW	12:30 - 2:20 pm	S124
EDU 4114B	4	Teaching in the Elementary School	TTh	7:00 - 8:50 pm	S121
EDU 4203A	3	Diagnostic/Corrective Teaching	TTh	11:00 - 12:20 pm	S108
EDU 4203B	3	Diagnostic/Corrective Teaching	MW	5:30 - 6:50 pm	S108
EDU 4213	3	Teaching in the Secondary School	TTh	1:00 - 2:20 pm	S110
EDU 4413	3	Reading in the Content Area	TTh	9:30 - 10:50 am	S103
EDU 4502A	2	Field Experience II	Th	1:00 - 2:20 pm	A102
EDU 4502B	2	Field Experience II	M	8:30 - 9:50 pm	A106
EDU 4546	6	Intern Teaching	TBA	TBA	

EDU 4601	1	Intern Teaching Seminar	M	5:00 - 5:50 pm	S113
SPED 1101A	1	Field-Based Observation in Special Education Settings	Tu	8:00 - 8:50 am	A100

SPED 1101B	1	Field-Based Observation in Special Education Settings	Tu	9:30 - 10:20 am	S110
SPED 1101C	1	Field-Based Observation in Special Education Settings	W	6:00 - 6:50 pm	A102

SPED 2103	3	Introduction to Special Education	TTh	7:00 - 8:20 pm	S108
SPED 3222	2	Classroom Management and the Exceptional Learner	TTh	4:00 - 4:50 pm	A102

SPED 3323	3	Methods and Materials for Special Education	M	4:00 - 6:50 pm	S103
SPED 4101	1	Research in Special Education	W	5:30 - 6:20 pm	WBR
SPED 4201	1	Learners Who Are Gifted/Talented	W	6:30 - 7:20 pm	WBR
SPED 4211	1	Learners with Physical Impairments	Tu	5:30 - 6:20 pm	S103
SPED 4221	1	Learners with Cognitive Deficits	Th	5:30 - 6:20 pm	S103
SPED 4502A	2	Field Experience II in Special Education Settings	Th	1:00 - 2:20 pm	A102
SPED 4502B	2	Field Experience II in Special Education Settings	M	8:30 - 9:50 pm	A106
SPED 4546	6	Intern Teaching in K-12 Special Education Settings	TBA	TBA	

ENGLISH

ENG 4601	1	Intern Teaching Seminar in Special Education	M	5:00 - 5:50 pm	S113
ENG 1013	3	Mechanics of English	MW	11:00 - 12:20 pm	L100
ENG 1113A	3	Rhetoric and Composition	MW	9:30 - 10:50 am	L108
ENG 1113B	3	Rhetoric and Composition	TTh	1:00 - 2:20 pm	L108
ENG 2213	3	Creative Writing	TTh	2:30 - 3:50 pm	L108
ENG 2223A	3	Life and Literature of the Southwest	MW	1:00 - 2:20 pm	L100
ENG 2223B	3	Life and Literature of the Southwest	TTh	5:30 - 6:50 pm	L100

Independence
of support and
governance

Because CSW does not accept federal, state, or local government funds for capital or operational needs, the College remains free of governmental control. Instead, CSW is guided by a dedicated Board of Trustees whose collective experience and business acumen provide invaluable leadership.

CSW's Board of Trustees
Samuel S. Spencer, Jr., Chairman

Chris Brininstool
Jim Britton
David Chavez
Genaro Gonzales
William J. Gray
Mike Hartgraves
Joe Henderson
Mike Hoyl
Gay Kernan
Jim Koontz
John Kuitu
Pete McCleskey
Jim Miller
Randy Owensby
Gary Don Reagan
Samuel W. Small
Charley Trimble
Kent Waldrop
Jim Walls
Thelma A. Webber
Peyton Yates