

50¢

POSTMASTER: Send address change to Cowboy Country News, Box 179, Plains, Tx. 79355

474 W 7TH AVE AMARILLO, TX ARCHIVES 79101

2

0514

Postage Paid Texas

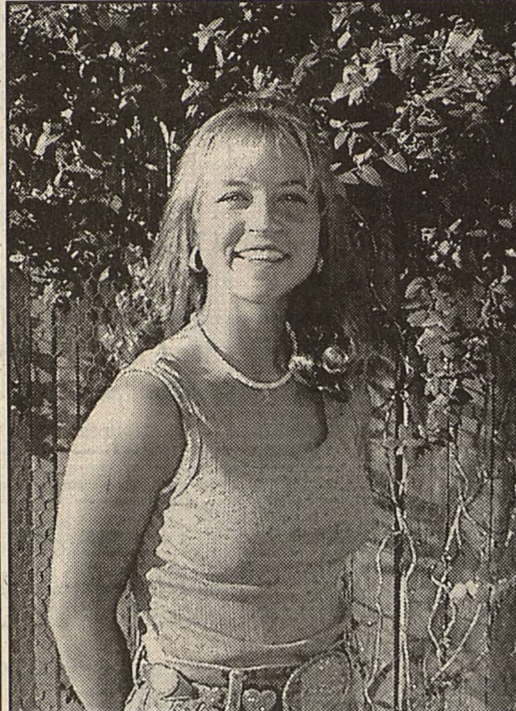
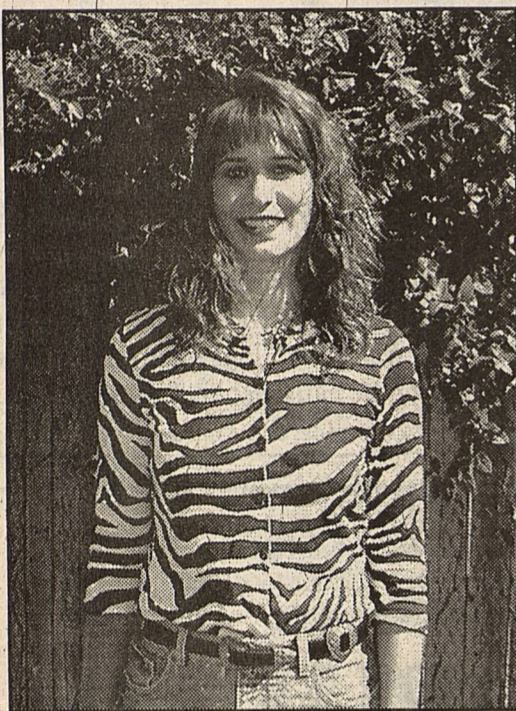
Cowboy Country News

Published each Wednesday in the county seat of Yoakum County, Plains, Texas



Volume VI, Issue 44, July 26, 2000

47th Annual Rodeo Queen Candidates



Roping Club Candidate Candace Bowers is 18, a 2000 graduate of PHS, and will be a freshman at SPC this fall. She is the daughter of Tim and Donna Bowers.

Chamber of Commerce Candidate Allison Butler is 16, and will be a PHS Junior this fall. She is the daughter of Bill and Dana Butler of Plains.

Plains Lions Club Candidate Elizabeth Clanahan is 16, and will be a PHS Junior this fall. She is the daughter of Noel and Beth Clanahan.

These three young ladies have worked extremely hard selling tickets for their nominations. They will receive a small percentage of the sales for their work, but more importantly, the dollars they gener-

ate are a major source of funding for the annual rodeo and reunion. If they haven't contacted you, please do your part and contact them. Public support will continue the tradition.

Redistricting woes sure to plague legislators in coming 77th session

District 80 State Representative Gary Walker will attend a joint house and senate public hearing on redistricting issues in Lubbock August 25. Interviewed last Wednesday, Walker told CCN, "This will be one of a number of area redistricting meetings held before the next legislative session convenes January 9. The house and senate redistricting committee is trying to get an early start on studying issues which are certain to come up in the next session."

The U.S. Congress mandated years ago a nationwide census count every 10 years. Numbers of the recent census are presently being crunched to determine the population of the nation, and possibly more importantly, where they live. The federal government must release the final numbers to state governments by April 1, 2001.

Walker said, "Congress is still wrangling to determine which of two sets of census figures will be furnished to the states, statistical numbers (the actual count) or sampling numbers. This question probably won't be answered until Congress reconvenes following the summer break."

Walker said the type of count is vital to all fifty states. "Historically, the states have been under counted using statistical numbers. This is an important issue, for each state's population numbers determines the amount of federal funds available to the state."

Also at stake are voting districts in the states. Population numbers determine State House and Senate districts, U.S. Congressional seats, and in Texas, the State Board of Education members. "There are usually few problems in Texas counties with sparse populations. The problems usually arise in counties with large, urban populations."

He pointed out the Texas Legislature must function from January 9, 2001, until April 1 before final census data are available, and face a deadline of May 29, when the session officially ends.

"House and Senate redistricting committees will draft bills, and hopefully, agree to a final version acceptable to both. The bill then goes to the governor. He can approve it, or veto it. This opens up many other problems in case of a veto," Walker explained. "If time allows, the committees can hammer out another redistricting proposal. If this is not accomplished, the governor has two alternatives. He can call a special session for a specified period of time to complete redistricting legislation, or, he can pass redistricting authority to the Legislative Redistricting Board (LRB), comprised of the Lieutenant Governor, Speaker of the House, Attorney General, State Land Commissioner, and the Comptroller. The Board must then present their plan for statewide redistricting."

Ironically, national politics could enter into the confusing pic-

Turn To Page 3, "REDISTRICTING"

Court urged to play role in economic development

Denver City Councilman Mike Fears addressed Monday's session of commissioners court and asked the county to play an active role in participating in the recently organized Denver City Economic Development Board. Fears said any program which enhances economic development would have a very positive effect on the entire county, regardless of where a project was developed.

Judge Brewer said there were legal questions about what the county could and could not do in any project. He referred the question to Attorney Richard Clark, who said statutes had been established detailing what actions city governments and county governments could take in any development project.

Turn to Page 6, "Court"

25th annual Jamaica celebrated



Sacred Heart Catholic Church celebrated its 25th annual Jamaica fund raising event in Stanford Park last Sunday. Early that morning, food, game and shopping booths were going up, and by noon the park swarmed with visitors and supporters of the church. There was something for ev-

eryone at this year's Jamaica; games, food, rides, music, and more food!

MORE PHOTOS INSIDE

2000 Terry County Peanut Field Day

Producers are invited to meet at the Larry Newsom Farm on Wednesday, July 26, 2000 at 1:00 pm. on Highway 82/380, 3.8 miles west of hwy. 137 intersection (2/10th mile east of Technical Seed Producers).

Participants will visit a variety test at this site and hear discussions of current peanut topics by Calvin Trostle, Extension Agronomist, Dr. Thomas 'Chip' Lee, Extension Plant Pathologist, Dr. Robert Lemon, Extension Agronomist and Peanut representative's of Western Peanut Growers to provide an update/overview of current activities. Scott A. Russell, Extension Agent, Integrated Pest Management. Terry and Yoakum Counties will also discuss cotton topics. Ice cold drinks and snacks will be provided by Western Peanut Growers.

County libraries benefit from Gates' grant

The Plains and Denver City county libraries were notified recently they were the recipients of substantial grant funds awarded by the Bill and Melinda Gates Foundation. Head Librarian Opal Roberts, who shares her time between the two libraries, said each library received \$ 8711 from the foundation.

Bill Gates, founder of the Microsoft group now embroiled in litigation over anti-trust issues, and his wife Melinda started the foundation to expand the availability of public access computing, and to provide access to the Internet and to digital information through public libraries. Roberts told CCN the foundation awarded similar grant funding to all public libraries in Texas meeting their criteria.

To be eligible for a Gates Foundation Grant, a library must be recognized by the State Library Association as a public library, be open to public use acting as a public library, not as an administrative facility. It must serve an area of over ten percent poverty, and not have previously received a Foundation grant. Library personnel Pat McNabb, Plains, and Maria Castruita, Denver City, attended a Gates Foundation workshop in Lubbock last week.



Head Librarian Opal Roberts

PLAINS STATE BANK

Compare OUR CD Rates

3 Month	5.96 APY*
6 Month	6.96 APY*
1 Year	7.06 APY*
2 Year	7.06 APY*
3 Year	7.23 APY*

*Annual Percentage Yield

Rates Effective 07/18/2000
Early withdrawal penalty may apply.
Rates subject to change.

Minimum Deposit \$1,000

Interest MAY remain on deposit!



Plains State Bank

We're not just a "House" ...

We're a "Home"

That serves *all* your financial needs!

Plains State Bank
601 9th Street
P.O. Box 549
Plains, Texas 79355
(806) 456-2022

MEMBER FDIC

EQUAL HOUSING LENDER

50th Anniversary of Korean War recalled

On June 25, 1950, the North Korean Army, organized and equipped by Soviet Russia, lunged across the 38th parallel to subdue its countrymen in South Korea.

U.S. armed forces, with assistance from South Korean and United Nation forces would battle North Korean troops in bloody combat, and later, hordes of Communist Chinese forces invading from the north.

The bloodletting would continue until July 27, 1953, when a military armistice agreement was reached. President Eisenhower declared, "We have won an armistice on a single battleground, not peace in the world" The following years of a 'Cold War' proved his prophecy correct.

Almost seven million US. service men and women served during the Korean conflict. Almost a million of them had seen service in World War II, 347,000 of them would serve in the Vietnam War. 291,000 served during all three wars.

36,940 Americans died during the three years of fighting - 33,665 from battle wounds, 3,275 from other causes. 8,176 G.I.'s are listed as missing in action (bodies not recovered). More than 92,100 service men were wounded in action, 103,200 total wounded including those with multiple wounds.

131 service men were honored with presentations of the Medal of Honor.

'Woe to those who call evil good'

The following prayer was given a number of years ago by Minister Joe Wright prior to the opening session of the Kansas Senate.

"Heavenly Father, we come before you today to ask your forgiveness and seek your direction and guidance. We know your word says, "Woe to those who call evil good," but that is exactly what we have done.

We have lost our spiritual equilibrium and reversed our values. We have ridiculed the absolute truth of your word and called it pluralism.

We have worshiped other gods and called it multiculturalism. We have endorsed perversion and called it alternative lifestyle. We have exploited the poor and called it the lottery.

We have rewarded laziness and called it welfare.

We have killed our unborn and called it choice.

We have shot abortionists and called it justifiable.

We have neglected to discipline our children and called it building self-esteem.

We have abused power and called it politics.

We have coveted our neighbors possessions and called it ambition.

We have polluted the air with profanity and pornography and called it freedom of expression.

We have ridiculed the time honored values of our forefathers and called it enlightenment.

Search us, Oh God, and know our hearts today, cleanse us from every sin and set us free. Guide and bless these men and women who have been sent to direct us to the center of your will, to openly ask in the name of Your Son, the living Savior, Jesus Christ. Amen"

It was reported the response was immediate. A few senate members walked out in protest, but in six short weeks, Central Christian Church, where Wright was pastor, logged more than 5,000 phone calls, with only 47 of the calls responding negatively. This article received via e-mail from reader Bill Armstrong in Arkansas.

We are currently evaluating cases involving HEART DAMAGE or DEATH due to HEART ATTACK or UNKNOWN CAUSE (adults)/SIDS (infants) while taking

PROPULSID

FOR INFORMATION, CALL:
713-847-8934 1-800-752-2716

Law Offices of Donald W. Puryear
8121 Broadway, Suite 130 Houston, TX 77061
Not Certified by the Texas Board of Legal Specialization



Lalitos

For Great Mexican Food

Hours: Tues.-Fri. 11:00 -9:00 Sat. 11:00 - 8:00
Sun. 11:00 - 2:00

All Major Credit Cards are Accepted

456-2233



CROP INSURANCE MPCI - CRC - CAT - CROP HAIL FARM MACHINERY INSURANCE AG INSURANCE PLUS

Jim Brown 456-2788
Mobile 806-891-0449 or 891-0450 Home 592-3490
Jeff Lowrey
Mobile 806-891-3133 Home 456-3195

Nelson's Prescription Pharmacy

"Your Business is always appreciated"
Use our Toll-Free Number
1-800-658-9604
For All Your Pharmacy Needs!!
805 Tahoka Rd. Brownfield, TX

HICKS

Carpet *Heating* Air Conditioning

Maytag Appliances

204 N. Main, Denver City

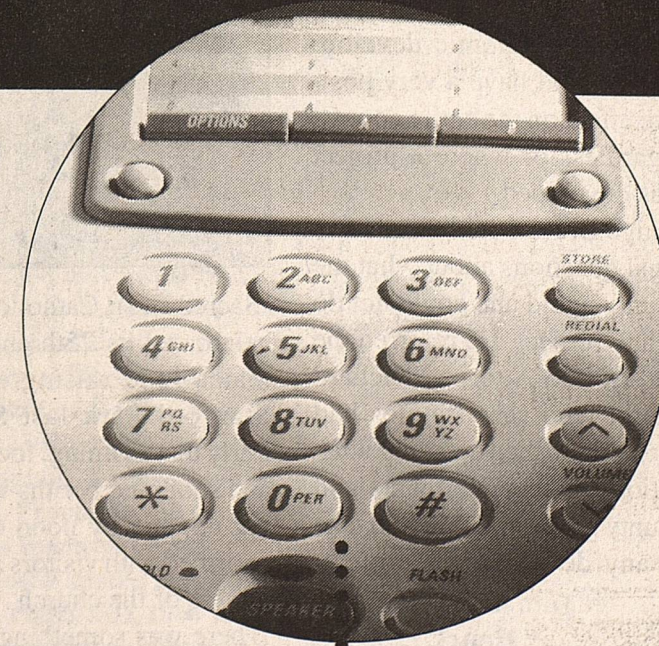
806-592-3973 or 592-3930



TRANE "Its hard to stop a TRANE!"

TurboCharge your phone.

Turn your phone into a high-performance machine with 12 calling features for only \$14.95. That's a savings of 60 percent,* with a money-back guarantee.



For better performance, you need the ALLTEL Complete Package. You'll get 12 features, including Caller ID Deluxe, Call Waiting, Call Return and more, all for only \$14.95.

Call 1-877-234-7723 to order or for more information.

*Average savings based on Complete Package. Display devices that are compatible with Caller ID or Caller ID Deluxe service may not necessarily work with Caller ID on Call Waiting service. Check the display unit specifications to ensure that it is capable of supporting Caller ID on Call Waiting service. Savings may vary by state. Service availability may vary.

ALLTEL
The power to simplify

Sign up now and there's no activation fee.

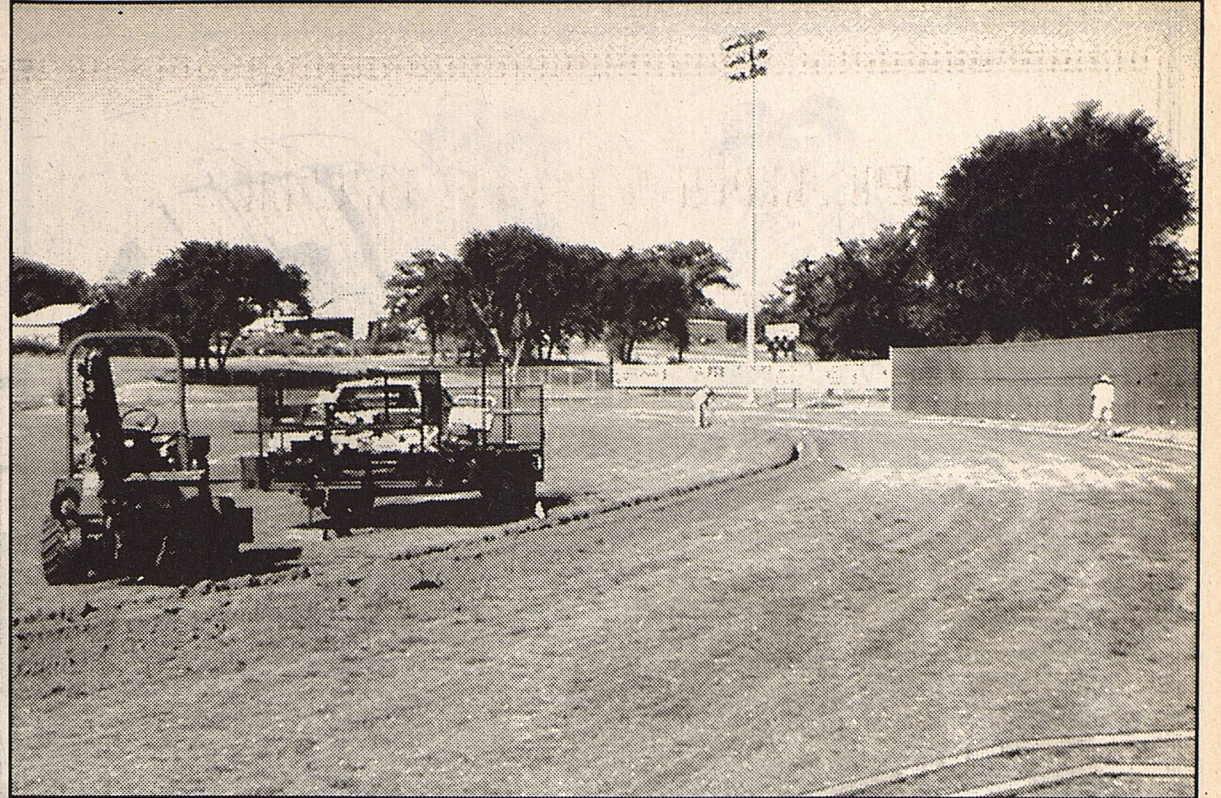
From Page 1, "REDISTRICTING"

ture this year. If Governor George W. Bush wins the republican Presidential nomination, and then the national election in November, Lt. Governor Rick Perry would move up to the Governor's chair. Under this scenario, the 31 member state senate would elect a presiding officer, who would become the new Lt. Governor, to join the other four members of the LRB.

If this situation comes to pass, another area sure to be closely watched by state politicians is the make-up of the senate. Currently, there are 16 Republican and 15 Democrat senators.

Walker said, "My crystal ball is not always crystal clear, but I envision this happening: The legislature will submit a compromise redistricting bill to the governor, and the session will adjourn May 29. Then, Governor Bush, or possibly Governor Perry will veto the bill and submit it to the LRB. What ever the final decision, redistricting is sure to have a much more profound effect on rural Texas counties. I am sure there will be some re-drawing of precinct lines here in Yoakum County, but probably none of the major changes large metropolitan areas will experience. I feel certain there will be lawsuits filed in protest to what ever the final district line drawing is."

REMINDER:
Cobblers are needed for the Old Settlers Reunion, Saturday, August 5. Serving cups may be picked up at the Dairy Queen



Employees of Langston Lawn and Sprinklers of Lubbock are shown laying poly pipe in recently dug trenches at Cowboy Baseball Park. Work on the new automated sprinkler system was due to be completed this week. School officials say the sprinkler system will allow more time for grounds and maintenance personnel to concentrate on other projects, and reduce time irrigating the field.

Need Money?

Don't Go To Strangers

We've been meeting the needs of our community since 1957. People just naturally come to us when they need a loan.

Are you ready for that well deserved vacation? A new computer? How about a new car? Maybe you're expecting a new child, or putting one through college. Whatever the reason, we're your neighbor and your friend, where "banking is the way it ought to be".

Stop in and see us today, for your loan needs or any other financial reason. For additional details call 806-456-2022.

Good You
 ...And Our Community Too!

PLAINS STATE BANK
PSB

601 9th Street • Plains • TX 79355
 Telephone: 806-456-2022

MEMBER
FDIC

Equal
 Opportunity
 Lender

UP COMING AUCTION

TERRY COUNTY FALL SUPER SALE
BROWNFIELD, TX

TUESDAY, AUGUST 29th

NOW ACCEPTING CONSIGNMENTS FOR PEANUT AND COTTON HARVEST EQUIPMENT, TRACTORS, ROLLING STOCK AND OTHER FARM EQUIPMENT. CALL TO GET YOUR ITEMS ON OUR NEXT HANDBILL!!!

QUALITY AUCTIONEERS, INC.: (806) 866-4646
 CHARLES MACHA, AUCTIONEER #6911: (806) 894-5758
 JAMES FULLWOOD (806) 798-0866

TA

MEMBER 2000

Cowboy Country

News

TEXAS PRESS ASSOCIATION

Cowboy Country News

Published Weekly each Wednesday at 1205

Copeland Ave., PO Box 179, Plains, TX 79355

Holly Dyer, Publisher

Gary Dyer, Editor

Subscription price in Zip Code 793 \$15 annually

Other Zip Codes \$18 annually

E-Mail us at ccn@hiplains.net

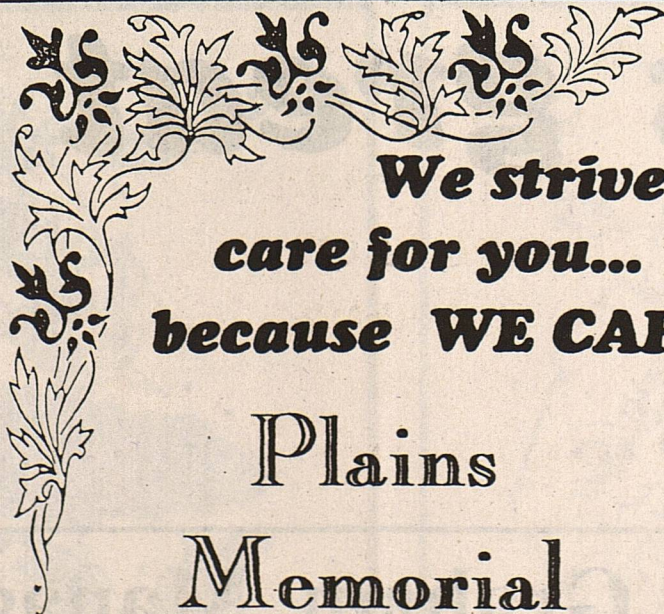
ID # 017574 806-456-8451 FAX 806-456-2010

5th annual Watermelon Round Up

T-Shirts & Caps

at CCN

1205 Copeland - 456-8451



We strive to care for you...

because WE CARE

Plains
 Memorial
 Chapel

Norman & Judy Head, Owners

910 Avenue E
 Across from old couthouse

PO Box 40
 806-456-2152

Larry Combest Comments

Water is a precious resource. We drink it, use it to grow crops and cook our food. Its uses are endless, which makes it the most essential natural resource we have. It is absolutely necessary we have an abundant and potable water supply, and to pursue this objective in a manner scientifically sound, economically sure and fundamentally fair to those who work hardest to keep our water clean. Unfortunately, the Clinton-Gore Administration and the EPA, under the guise of cleaning our water, recently pushed through new Total Maximum Daily Load (TMDL) regulations which would force states, landowners and small businesses to comply with complex and burdensome regulations potentially costing billions, with uncertain results in water quality.

TMDL is the amount of particles from soil and other runoff from farm fields allowed to enter rivers and other waterbodies. The EPA currently requires calculation of daily particle loading into a waterbody, whether the source is natural or man made to determine if water quality standards are being met. Under the new rules, the EPA asserts unprecedented authority over farming, ranching and forestry operations to meet EPA imposed limits on water runoff from the soil.

The new regulations require states to submit plans to clean up every waterway which fails to meet quality standards for fishing, drinking and swimming. States would be required

to say how much pollution should be allowed from both direct and indirect sources.

Landowners would be allotted a strict pollution budget if the EPA found they were contributing to nearby water quality problems. Anyone who lives or does business near a watershed area identified as impaired, with farmers, ranchers and municipalities being significantly impacted because of their water usage. I am all for clean water, but I want to ensure EPA's plans are effective and cost efficient.

The Clean Water Act of 1972 established a clear role for the federal government in regulation of point source pollution, which is from a pipe. Congress explicitly excluded agricultural storm water discharge from the point source designation, thereby placing discharges from farming, ranching and forestry operations outside the reach of the federal program. Congress never gave the federal government the power to manage nonpoint sources of pollution and never gave EPA the authority to change the distinctions between point and nonpoint sources of pollution.

The EPA has failed to establish a scientific basis for its new rules. Even the EPA Regional Director from Texas has admitted this and during Congressional hearings, witnesses testified the new rules are techni-

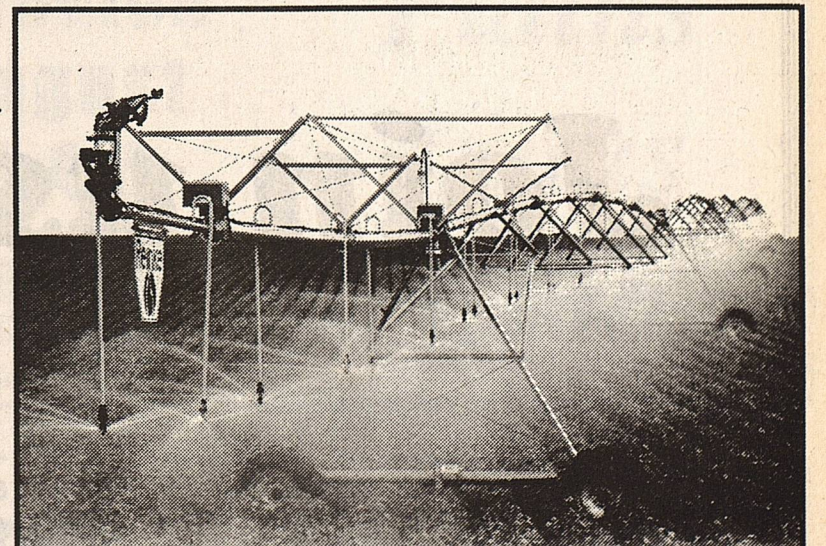
cally, scientifically and fiscally unworkable. EPA's disregard for Congressional intent has the potential to cost farmers, ranchers and states billions of dollars, without helping the environment, by forcing them to comply to a standard impossible to meet.

Under EPA plans, unless their demands are strictly met, farmers and landowners all over Texas, may eventually have to obtain federal permission to irrigate crops and fields, or run the risk of becoming lawbreakers as the result of heavy rain.

The House included language in a recent emergency spending bill to delay these rules until the most serious flaws are addressed. I also introduced HR 4502, the Water Pollution Program Improvement Act which would require EPA to delay its rules until the National Academy of Sciences conducts a study on scientific bases of the development and implementation of TMDLs, the cost of the rules to states and landowners.

This rule has drawn more than 30,000 public comments, and the subject of 12 Congressional hearings, yet the White House still skirted around Congress to implement a regulation the people of this country do not want.

I can assure West Texans this battle with the EPA will continue, to ensure states' rights and landowners discussion making authority over their farms and ranches.



Better Design.

Reinke Irrigation Systems are designed to be stronger while maintaining an overall lower system weight - which means less stress on the drive train and a longer service life for your pivot irrigation system. See your Reinke Dealer today for a system designed to last!

More strength, less weight.

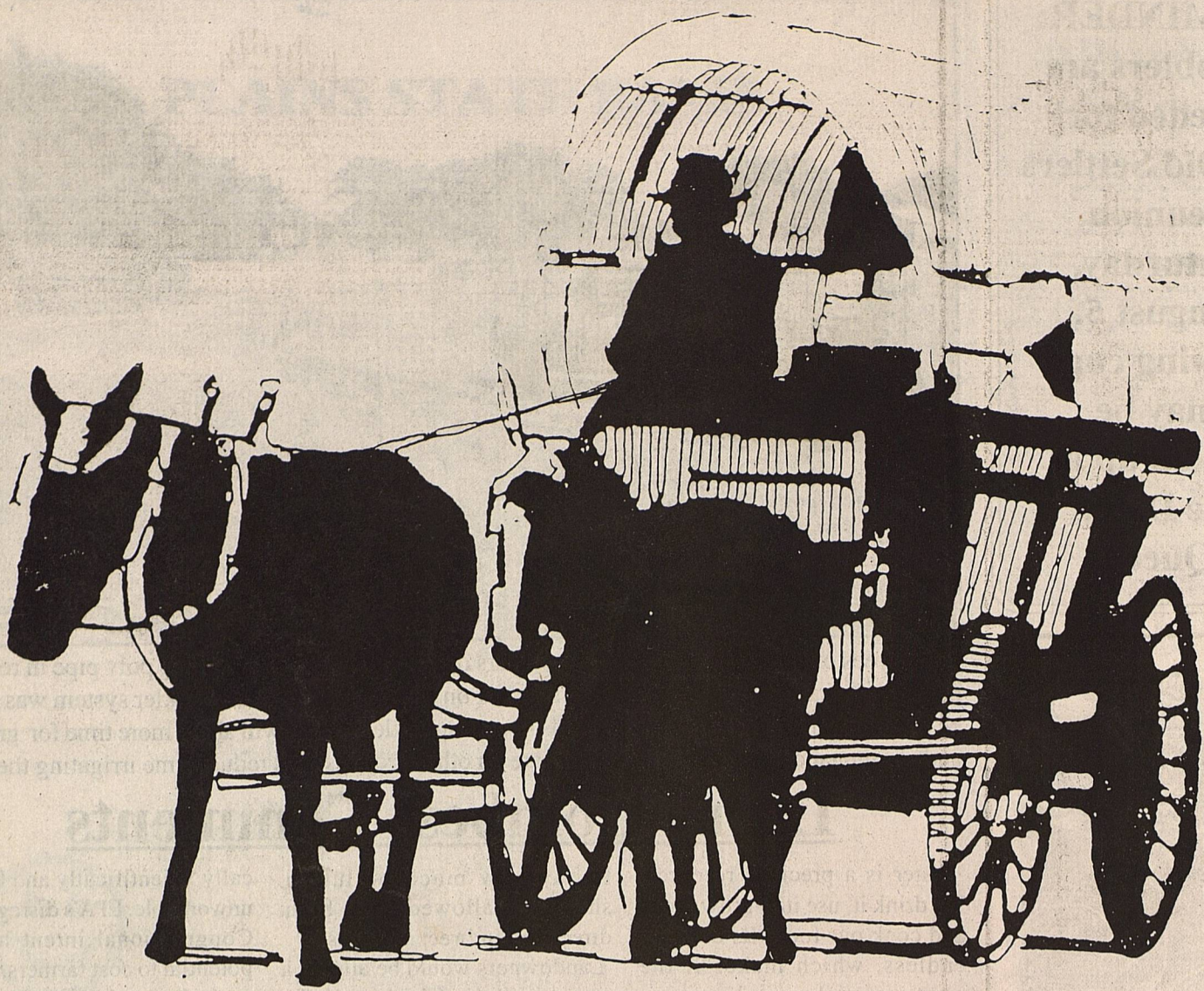
Jack Spears
 Drilling Company

Water Well Drilling
 & Pump Service
 456-4925 - 456-3845

Reinke
 Irrigation Systems

The future of irrigation.

www.reinke.com • 402-365-7251



**Head
'em
for
the**

**Old Settlers
Reunion
and Rodeo !
August 3, 4, 5**

**Join us in our support
of this great event**



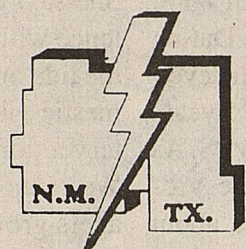
**Kelley Graham, Manager
and all our friendly staff**





**Don't get
all tied
up and
miss the
47th
Rodeo &
Reunion!**

**Lea County Electric
Cooperative, Inc.**



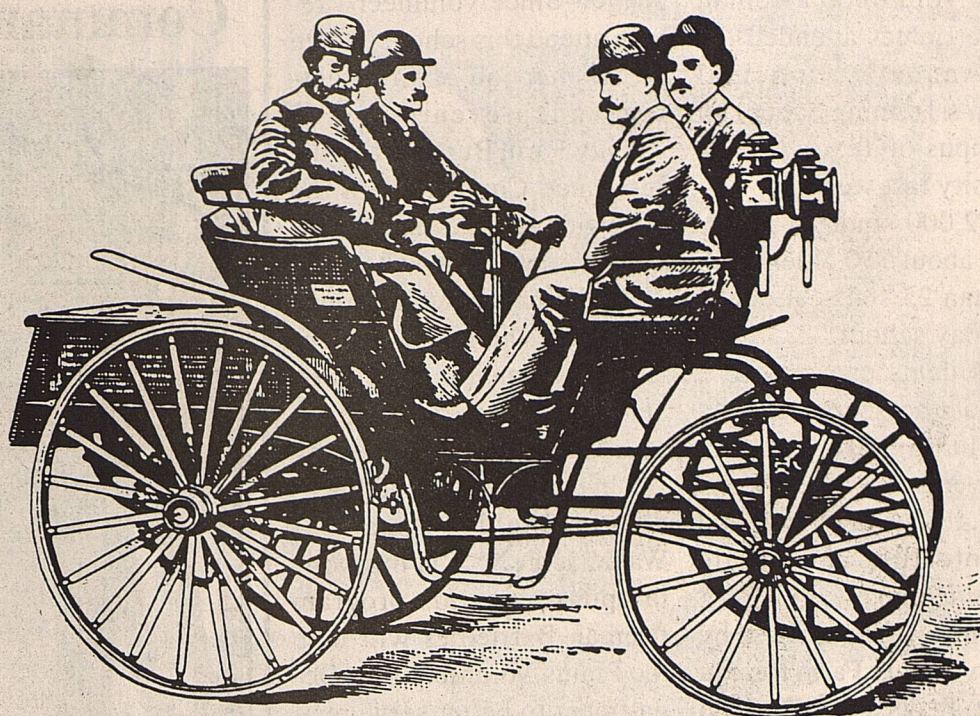
"Owned By Those We Serve"

Michael A. Dreyspring
General Manager

Lovington
18 W. Washington
P.O. Drawer 1447
Lovington, N.M.
88260
(505) 396-3631
1-800-510-5232

Tatum
102 S. Main
P.O. Box 737
Tatum, N.M.
88267
(505) 398-2233
1-800-510-5232

Plains
507 9th St.
P.O. Box 305
Plains, Texas
79355
(806) 456-3322
1-800-510-5232



**" We Don't Care How
You Get Here....
Just Meet Us At The
Rodeo And Reunion ! "**

SUNDOWN
STATE BANK

Sundown:
5th & Slaughter
Sundown, Tx. 79372
(806) 229-2111

Levelland:
1102 Austin
Levelland, Tx. 79336
(806) 894-7799

Brownfield:
101 S. First St.
Brownfield, Tx. 79316
(806) 637-7712

Denver City:
202 W. Broadway
Denver City, Tx. 79323
(806) 592-9292

Member FDIC



Equal Housing Lender



*Join Us For
A Real Fling
At The
Rodeo &
Reunion !!*

Plains Chamber
of Commerce

" Proud of the past, plans for the future"



**Rodeo
And
Old
Settlers
Reunion
August
3,4,5**

**See
You
There !
Plains
Lions
Club**

**No Bull...
It's Gonna
Be Wild
And
Wooly !**

The Mayor, Council
and Staff of
The City Of Plains



Lots of
strange stuff
goes on at the
Rodeo and
Reunion. Be
There!
**Cowboy
Country
News**

Local Fireman attends school

Plains Volunteer Fireman Alex Barrientes attended the 71st Annual Municipal Firemen's Training School on the campus of Texas A & M University last week.

Some 2,000 students representing about 750 cities from more than 25 states attended the six day school.

Fire students can choose a course at the school from a list including fire fighting, fire prevention, officer development, rescue practices, and fire protection and public safety emergency service.

Barrientes was sponsored by Yoakum County Farm Bureau and the Texas Farm Bureau Insurance Companies by contributing to the cost of the

school. Since volunteer firemen attend this school to help do a better job of fire fighting and prevention, 125 County Farm Bureaus and the Insurance Companies in the statewide program sponsored 125 firemen at the school.

"The Farm Bureau Insurance Companies believe volunteer fire departments have been very effective in reducing the amount of loss involved by fire in rural areas," said President Donald Patman of Waxahachie. "It is our hope in sponsoring this program fireman Barrientes will help the Plains Volunteer Fire Department to better serve residents of Yoakum County."

Continued from Page 1, "COURT"

and he would research the issue and report back to the court. Fears expressed hopes the commissioners court would play an active role in support of the Denver City Board, Commissioner Lindseys said he felt the court was all in favor of developing economic opportunities, but the decision to play an active role would have to be made after Clark's advice was received.

Ed Rogers, Administrator of the Yoakum County Hospital, reported the Hospital Board of Directors had approved a contract with Dr. Mohammed Halipoto to serve as the county's fourth physician. Rogers said Dr. Halipoto specialized in the care of women, but would be on emergency call for all patients. The Doctor has been in private practice in Houston. The court approved the new contract.

Rogers also displayed drawings of the proposed new doctor's clinic in Denver City. The plans allow office space for four physicians and a nurse practitioner, exam and procedure offices, with a common registration and waiting room. The Hospital Board has approved the proposed project with a preliminary estimate of some \$100 per square foot for the approximate 11,000 square foot facility. The court delayed making a decision on approving the proposed clinic until work was finished on the new county operating budget.

Baled wheat straw needed for seating at Watermelon Round Up! If you can help, please call 456-3566



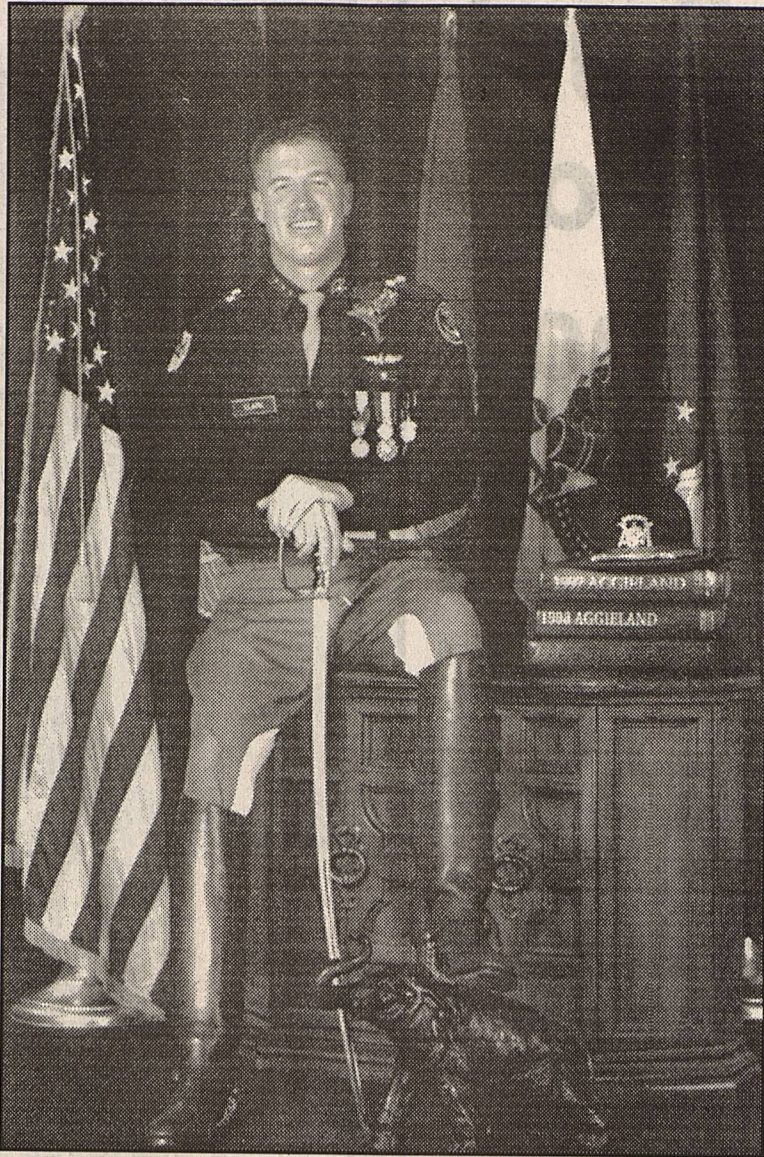
Scenes like this will be repeated many more times in the 49th Rodeo, August 3,4,5



First United Methodist Church of Plains Invites you to Worship!

Sunday School 9:45 am
Morning Worship 10:45 am
Evening Worship 6:30 pm
Evening Study 7:00 pm
Thursday Afternoon Study 5:15 pm

Clark named to Commandant's Honor Roll



Justin Clark, a senior at Texas A & M University and a member of the Corps of Cadets, was named recently to the Commandant's Honor Roll. To qualify for the honor a cadet must maintain at least a 3.0 GPR.

A letter to Justin's parents, Richard and Kathy Clark of Denver City, explained Clark's

name would appear on the Honor Roll Board in the Corps of Cadets Center.

Clark has also been appointed Battalion Commander of all U.S. Navy R.O.T.C. students at Texas A&M for 2000-2001. He was Valedictorian of the 1997 graduating class at Denver City.

Teens Hurting Other Teens

in the name of love

Preventing abuse. Do we dare to speak about it? Is it possible that OUR teenagers can become involved in violent relationships? Surely it doesn't happen very often? Right? Unfortunately, it is happening much more often than many of us care to imagine. Research shows that one out of three teen relationships end in some form of abuse. So although the thought of our youth experiencing what we consider to be an 'adult' problem is hard to take, we must begin to speak out against violence in teen relationships.

Women's Protective Services recently received a \$25,000 grant from the Texas Bar Foundation to fund the Dating Violence Program. The money from this grant has provided supplies, publicity, brochures, manuals and equipment to enhance the message this program offers teens. This program will also include a PowerPoint computer presentation for guiding the discussions and teaching in the classroom setting.

Heidi Knight, Community Education Advocate with WPS, will be conducting the Dating Violence Program. Heidi developed this program over 5 years ago before coming to WPS. As a survivor of domestic violence, she is passionate about sharing this information with

others. Heidi's idea for this program began with a trip to the dentist's office back in 1992: "I had moved on and remarried-distanced myself from the abuse. I was reading a magazine in the waiting room on this topic and the article listed the signs of abuse. I couldn't believe it! I thought, why hadn't anyone told me these things when I was thirteen? Why isn't anyone telling our teenagers?" And thus began a year and a half of researching and planning which led to the curriculum used in the Dating Violence Program.

Heidi believes the best way to protect teenagers is to teach them about abusive dating relationships. This program addresses misconceptions and stereotypes which reinforce the use and tolerance of violence. The program also defies abuse and teaches teenagers about the types of abuse and the signs to look for in an abusive personality. Heidi approaches teenagers with optimism and hope by helping them identify and seek healthy dating relationships. She says addressing dating violence with teenagers will "turn the tide on the fight against domestic violence by starting intervention at a younger age." We cannot wait until our teenagers grow up to address such an important issue.

New Books at the Library

FICTION: *The House On Hope Street*..Danielle Steel, *White Desert*..Loren D. Estleman, *Death Benefit*..Philip Harper, *West To Comanche County*..Doug Bowman, *Someone Else's Child*..Nancy Woodruff, *The Great Divide*..T. Davis Bunn, *Magic Terror*..Peter Straub, *The Road Taken*..Rona Jaffe, *The Search*..Iris Johansen, *Silent Children*..Ramsey Campbell, *This Way To Heaven*..Tom Foley, *The High Flyer*..Susan Howatch, *Murder In Foggy Bottom*..Margaret Truman, *The Bishop And The Missing L Train*..Andrew Greeley, *The Summoning God*..Kathleen O'Neal Gear, *Devil's Claw*..J.A. Jance.
NON FICTION: *Ghosts Of The Titanic*..Charles Pellegrino, *Failing Forward*..John Maxwell (Donated by Dolores Davis In Memory of Bob White), *Tornado Alley: Monster Storms Of The Great Plains*..Howard Bluestein.

FIRST BAPTIST CHURCH Plains, Texas

Sunday Morning Bible Study
9:30 am.
Sunday Morning Worship Service
10:45 am.
Sunday Evening Worship Service
6:00pm.
Wednesday Evening Come and
Go Prayer Time 6:00 - 9:00 pm.

Medical Arts Hospital

changing for tomorrow ■ caring for today

Medical Arts Hospital Home Care is in need of a LVN on a PRN basis to make home visits in the Denver City and Plains area. For more information call toll free, 1-877-308-9643.

Medical Arts Hospital Home Care
1600 N. Bryan
Lamesa, Texas 79331
806-872-2183 Fax 806-872-3935

O₂ medical

Equipment & Supply

P.O. Box 1347 * Denver City, Texas 79323
* 1-888-209-3706 Pager *(806) 891-0656 Cellular
(806) 592-1000 - Office * 592-3538 - Fax

TOLL FREE 1-800-688-9049

Serving the South Plains Region and BEYOND...
Denver City * Seminole * Plains * Brownfield * Lubbock * Midland
* Odessa * Andrews * Hobbs, NM * Lovington, NM
24-Hour Personal Service * 7 Days A Week

July, 1543- Hernando de Soto blown ashore near Sabine Lake.
July, 1823- San Felipe de Austin established.
July, 1861- Texas Confederate troops captured Ft. Fillmore, near Mesilla, NM

Rodeo Event T - Shirts !

Tim Waller, Artist

- * Bareback Rider
- * Team Ropers
- * Bull Rider
- Calf Roper



We also have Children Rodeo T-Shirts, Rodeo Caps, Ladies Western Shirts!

Sisters & Friends

106 Plains Highway
Denver City 79323

806-592-9979

High Plains Internet

SERVING PLAINS, DENVER CITY, HIGGINBOTHAM & SURROUNDING AREA

Your Fastest, Easiest, Most Affordable Access To:
WORLD WIDE WEB - E-MAIL - IRC CHAT - WEB PAGES - NEWS GROUPS - AG INFO. - WEATHER - SPORTS - NEWS - RESEARCH LIBRARIES - BUSINESS & STOCKS, AND MUCH, MUCH MORE.

UNLIMITED ACCESS JUST \$24.95 PER MONTH PLUS TAX !
Apple, Macintosh computers welcome

820 N. MUSTANG DR. 592-3359 DENVER CITY

Jamaica 2000



and a great time was had by all!

G. B. Aerial Application, Inc.



*Professional, Licensed Ag Applications
At Affordable Rates !*

806-456-6300 Office
806-456-6790 Fax
806-456-7536 David Mobile
806-456-7974 Sarah Mobile
806-632-5375 Dain Mobile

G & B

G & B



BAYER LUMBER & HARDWARE

1018 Ave. E Plains, Tx 79355
806-456-4800 Voice & Fax

WE ACCEPT VISA, MASTER CARD, and DISCOVER



- STRAW HATS \$3.99
- CHOPPING HOES \$16.95
- LIME \$2.99 BAG
- 16-8-8 FERTILIZER \$7.95 Per 40 LB BAG
- RINSE-N-VAC CARPET CLEANER
\$18.00 PER DAY RENTAL

From The Hack

I had a most satisfying day recently. No, no lottery win, no hole-in-one, no IRS refund. I feel extremely fortunate, however, to foil another would be tele-marketer. You know, the ones who call ONLY when you're asleep, eating, on another phone, way behind in a print deadline, or getting ready to walk out the door for an important or fun event.

I believe the lady calling, obviously one inhabiting a region like Boston, Nova Scotia, or Bangor, Maine, I'm still not sure, said, "Mr. Dyer, you have been selected as one of our prime candidates for a new, revolutionary type health insurance policy for senior citizens. By the way, Mr. Dyer, we show your age to be 68, is that correct?"

I had decided I would play this out a bit, having nothing better to do than boil an egg or trim my toenails. I gravely answered, "I'm very sorry,

madam, your data is considerably off course. I turned 80 last month."

A pause, and she hurriedly said, "Well, fine, Mr. Dyer, you still fall in our parameters even at that distinguished age. Now, sir, please tell me, how old is Mrs. Dyer?"

I didn't hesitate a second and replied, "A hell of a lot older than me! She turned 83 two months ago."

Another longer pause, then the not quite so sweet femme voice continued, "I see. I'm sure that eliminates any children still living in your home?"

"Not quite," I bellowed in my most beligerant manner. "We've still got Cleophus with us." Another pause, and she breathed, "Uh, and who is Cleophus, sir?"

"Who? Why he's our mongoloid son, lady, born seven years ago next month!"

A really big pause this time, and she finally blurted, "Sir, do you mean to tell me you fathered a son by your wife when you were 73, and your wife was 76?"

I chuckled and hissed, "Well, that's what she keeps telling me. I really thought I was in Montana at the time fishing for trout and poaching buffalo, but if that's her story, so be it. She never has been real truthful,

though."

There was a really LONG pause this time, and she quietly asked, "Mr. Dyer, are you drinking?"

I roared, "What? Me drink at 10:32 AM? Are you mad? I am not drinking anything, but I must admit, I have been gargling gin for about two hours to be ridden of a fish taste in my mouth from last night's stuffed carp dinner. Quite tasty too."

I really thought she'd finally hung up, and was about to do the same, when she sort of whispered, "Mr. Dyer, I suppose you smoke also?"

"Why, as matter of fact, I'm afraid (cough, cough, wheeze) I do. I'm cutting back quite seriously, however. As one of the stock holders of Liggett and Meyers, I feel like I'm about to get my tokus sued off, so I've switched to snuff. May get a divorce, though. The bride takes a dim view of me spitting on her deck and on the churchhouse steps."

The line abruptly went dead. I confess, I slept better that night than I have in months.

Two items in recent AP releases caught my eye, both dealing with animals. One of course, was the demise of the Chihuahua dog so blatantly

displayed by Taco Bell in TV ads since 1998. You know, the ones which featured the mutt uttering, "Drop the chalupa!", and "Yo queiro Taco Bell."

Why am I not broken hearted to see the little mutt disappear from my TV? Now, please don't get me wrong. I love some animals, especially dogs. I do not enjoy images of dogs which look like, (A) animals with eyes like starving Ethiopian infants, (B) A body the size of an over stuffed cock roach, and (C) ears which looked cloned from a prize mule. I must also add, the dog, which is rumored to have been rescued from an animal pound, and whose owner made a jillion bucks, is still standing by, probably wetting down the ad agencies turf, waiting for a possible resurrection of the commercials. Taco Bell cautiously announced the future of the dog would be determined by future sales, She could be called back. BARF.

Another fascinating animal feature; The AP also reported animal loving parrot owners are deeply concerned about the mental well being of their birds during their absence. An MIT professor has become so con-

cerned about the birds psychological well being he's determined the birds suffer for companionship during their owners absence. The report says the pet birds become bored, almost psychotic in their absence from their owner.

Obviously a computer nerd, the expert has suggested teaching parrots to become computer experts. She suggested they be trained to get on a computer and check out the internet.

I can guarantee this; If things don't improve around our three computers, I am going

to purchase a parrot and cage. Depending upon, of course, costivity. I've heard ounce for ounce they are about the equivalent of Russian caviar. If I can find a non-pedigree parrot, even a bit scruffy and foul mouthed, I will perch him (or her) before the bride's computer, and yell, "OK bird, peck, claw all you want, surf til your heart's content. While you do, I'm gonna get the Bride back to cooking, cleaning, darning my socks, especially double washing my underwear. That should keep her off the internet awhile."

SCHOOL NOTICE

Pre Kindergarten Classes Now Forming
Plains Elementary School will again offer preschool classes for children who will be four years old by August 21, 2000. Children who qualify for the program will be enrolled first. If the classes are not full, the remaining places will be given to non qualifying children who are on a waiting list. If you wish to enroll your child or place your child on the waiting list, please call 456-7438 or come by the elementary office between August 1 and August 15. Thank you.

El Pre-jardin de infantes Clasifica Formando Ahora
Plains Elementary School de nuevo el preschool de la oferta clasifica para ninos que tendran cuatro anos en 21 de agosto de 2000. Se enrollaran ninos que califican para el programa primero. Si las clases no estan llenas, los lugares restantes se daran a ninos no calificativos que estan en una lista de espera. Si usted desea enrollarse a su nino o poner a su nino en la lista de espera, pro favor llame 456-7438 o viene la oficina elemental entre el 1 de agosto y el 15 de agosto. Gracias

***Repair or fix it *Build it or tear it down
* Hang it up or down * Wire it or light it
*Have a job you can't get done?
Then it's time to call Tommy Williams!
Handyman Construction Co.
Home 456-2277 Mobil 806-891-0692**

CRP
grass seeding
*shredding, crop
planting and
discing*
CALL
806-456-7450
456-7550 mobile

A dollar and a deed is
all you need at
Clayton Homes
2005 N. University
Lubbock, TX
877-749-4063 or
749-4062 WAC

*** For Sale***
20 Ft. Seed
Trailer. Ask for
Brad Douglas
806-780-1302

AIR CONDITIONING
Financing available on new
central refrigerated air
conditioning and heating
equipment. Payments as
low as \$59 Monthly.
Bankruptcy? Bad Credit?
No problem! WE WILL
FINANCE YOU!
AIR AMERICA 791-1093

No Payments Til
October when you
purchase from
Clayton Homes
2005 N. University
Lubbock

**HELP
WANTED**
Assistant Manager
Part time, Full time,
apply at Uncle's for
application


Qualify by phone!!
Reward for good
credit! We'll give you
the best deal in
LUBBOCK
CLAYTON HOMES
2005 N. UNIVERSITY
LUBBOCK, TX
749-4063

**Yoakum County
Plains Clinic**
Jo Lena Wall PA-C
Will see Minor Emergencies, Chronic medical
problems, Immunizations
TEXAS HEALTH STEPS
Toe Nail and Wart removal, Allergy Injections or stop by for
Blood Pressure check
Office Hours: Monday & Tuesday 8-5
Wednesday 8-12 noon
Thursday & Friday 8-5
Will take walk-ins. Appointments preferred.
Please call 806-456-6365

LUV homes
Featuring SKYLINE
Quality Homes
NOW OPEN!!
North of Loop 289 on University
2318 North University Avenue
Lubbock, TX 79415
We LUV
our CUSTOMERS Office 806-767-0544 *Fax 806-767-0769

*** House For Sale***
4 Br, 2 Bath
1508 Ave. G
For Appointment
to see call Tim
456-7195 or call
662-334-4416

Are the dog days of
summer taking a bite out of
your energy budget?



Let Lea County
Electric help you
beat the heat
this summer
with a cool 5%
loan. That's
right! A cool 5%!

With our new
ERC loan pro-
gram, our mem-
bers can borrow
money at a low,
low 5% for up to
7 years for a
new heat pump
or central air up-
grade.

Lea County Electric
Don't get burned this summer by your old, high-cost,
low-efficiency cooling unit! Stop by Lea County Electric
at 18 W. Washington in Lovington or give us a call at
396-3631. Funds are limited, so call today!

Trailers For Sale
New trailers at good
prices, from 8' to 20'
in length, can custom
build to meet your
individual needs.
Call 505-396-4192

**Assistant Manager
Trainee Needed**
\$2,000 monthly full time
\$1,000 monthly part time
if qualified
Call for Information
806-795-9275

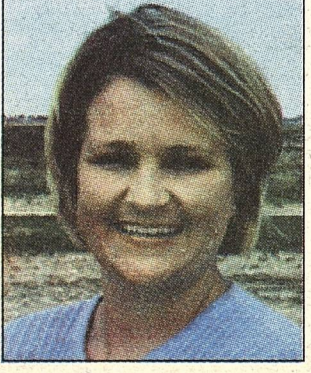
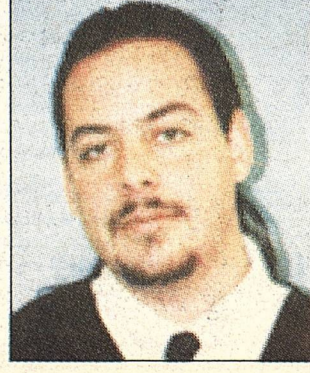
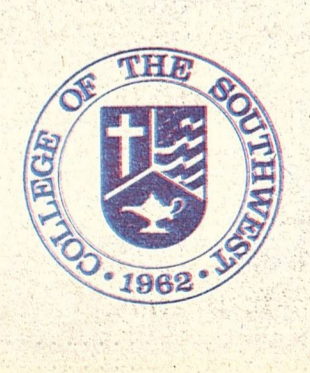
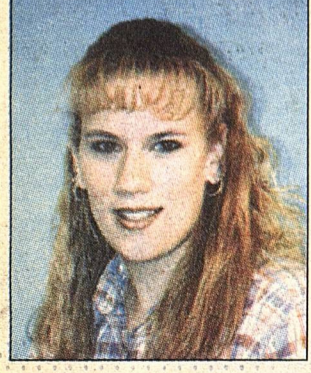
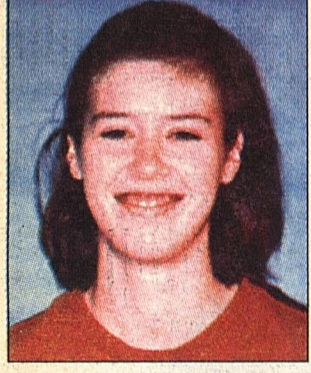
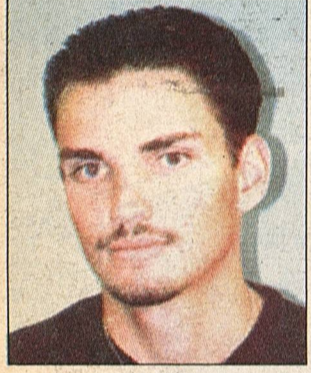
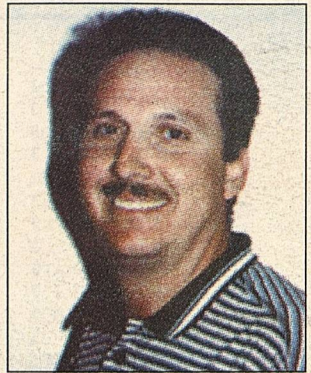
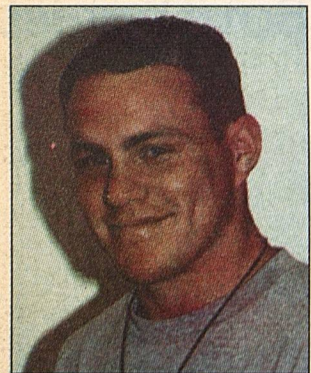
Previously
owned homes
starting at
\$2500.00!
Clayton Homes
2005 N. University

**TERRY
COUNTY
TRACTOR**
Massey Ferguson
Kubota
Bush Hog Shredders,
Lilliston Rolling
Cultivators, Lorenz
& Buffalo Cultivators,
Baker Disc & Switch
Plows, Spray Coupe,
Wilmar Sprayer
Brownfield, Tx.
806-637-4569

Dyck Pump Service
Sales & Supply
P.O. Box 451
Seminole, Tx. 79360
Welding, Machine Work,
Fast Bailing, Well Drilling
915-758-5432
Mobile 758-9671

Legal Proposals
Plains Independent School District will accept proposals for the purchase and installation of curbed rooftop heating/cooling (HVAC) units and/or furnace/condensing unit/coil ducted equipment to divide classrooms that are currently sharing heating/cooling units. Proposals will be accepted until 1:00 p.m., July 31, 2000, in the Business Office.
Plains ISD invites interested parties to make proposals for providing milk for its school lunch program beginning August 18, 2000. Proposals will be received until 1:00 P.M., July 31, 2000 at the Business Office.
Proposals should be addressed to Eric Banfield, Business Manager, Plains ISD, 1000 10th Street, Box 479, Plains, Texas 79355. For questions or other information, please contact Eric Banfield at 806-456-7483.
Plains I.S.D. reserves the right to accept or reject any and all proposals, to waive all technicalities, and to contract with the vendor that represents the best value to the district.

MULTI - PERIL CROP & CROP HAIL
**STATE LINE
INSURANCE**
DANNY BELL
Office 456-3521 Home 456-6325
Mobile 456-7517



**SPECIAL COURSE OFFERINGS
FALL 2000
AUGUST 21 - DECEMBER 9, 2000**

Course:

Picture This

(EDU 4741/5741) 1 Credit Hour
This hands-on course will teach how to design and create many useful projects for home and school using a digital camera, a scanner, and a computer.
Faculty: Nancy Powell
Dates, Time, Room: Saturdays, September 9 and September 16; 9:00 am - 5:00 pm, Room TBA

Faculty:
Dates, Time, Room:

Course:

Emotional Intelligence in the Classroom

(EDU 4751/5751 or SPED 4751/5751) 1 Credit Hour
This course will provide students with a working knowledge of Daniel Goleman's theory of Emotional Intelligence (EI). For academic and career success, many educators believe that a student's EI is more important than the student's IQ. Emotional literacy prepares students to work with others, while emotion is the "glue" which triggers and seals learning.
Faculty: Judy Cagle
Dates, Time, Room: Saturdays, September 16 and September 23; 9:00 am - 5:00 pm, Room S121

Faculty:
Dates, Time, Room:

Course:

Brain-Based Learning

(EDU 4711/5711 or SPED 4711/5711) 1 Credit Hour
This course will provide a summary of the principles of "brain-based learning," i.e., the ability to learn, whether individually, in groups, or in organizations. Strategies to start using brain-based learning as a framework for redesigning curriculums, lesson plans, and classrooms will be presented.
Faculty: Judy Cagle
Dates, Time, Room: Saturdays, October 21 and October 28; 9:00 am - 5:00 pm, Room L100

Faculty:
Dates, Time, Room:

Course:

Childhood Depression

(PSY 4761/5761) 1 Credit Hour
This course offers an in-depth look at the symptoms, signs, causes, treatment, and prevention of depression in children.
Faculty: Kirk Anderson
Dates, Time, Room: Saturdays, October 21 and October 28; 9:00 am - 5:00 pm, MHC

Faculty:
Dates, Time, Room:

Course:

Antisocial Personality Disorder

(PSY 4731/5731) 1 Credit Hour
This course will probe the criminal mind and its development, examine the influence of environment and heredity, and discuss current methods of treatment.
Faculty: Kirk Anderson
Dates, Time, Room: Saturdays, November 4 and November 11; 9:00 am - 5:00 pm, Room S121

Faculty:
Dates, Time, Room:

Course:

True Colors

(EDU 4631/5631 or SPED 4631/5631) 1 Credit Hour (\$20.00 Course Fee)
True Colors can help in understanding others. This system uses colors to identify four distinct personality types, each with associated needs and values. An understanding of *True Colors* helps with more effective communication and prediction of others' behavior. Teachers can utilize the information to help recognize students' best learning styles and assist in managing classroom behavior.
Faculty: Ruth Ann Pruett
Dates, Time, Room: Saturdays, November 4 and November 11; 9:00 am - 5:00 pm, Room 124

Faculty:
Dates, Time, Room:

TUITION:

Graduate \$158.00; Undergraduate \$150.00

COLLEGE OF THE SOUTHWEST

Shaping the future...



...one person at a time

**FALL 2000
SPRING 2001**

6610 Lovington Highway • Hobbs
392-6561

1-800-530-4400
www.csw.edu

500 West Church • Carlsbad
887-3500

College of the Southwest's mission is centered in Christian principles, free enterprise education, independent support and governance, academic distinction, regional community service, debt-free operations, and the pursuit of excellence in all endeavors. The CSW educational enterprise is dedicated to the preparation of students for lifetime effectiveness and service.

College of the Southwest, founded in 1962, is independently supported and governed and offers undergraduates degrees in 20 fields of liberal arts, as well as the Master of Science degree in Educational Administration, School Counseling, and Curriculum and Instruction.

COLLEGE OF THE SOUTHWEST - HOBBS
FALL 2000
AUGUST 21, 2000 - DECEMBER 9, 2000

MASTER OF SCIENCE IN EDUCATION COURSE OFFERINGS

COURSE NO.	CR	TITLE	DAY	TIME	ROOM	FACULTY
ADMINISTRATION						
EDA 5203	3	Educational Leadership & Supervision	Tu	6:00 - 9:00 pm	S124	Atherton
EDA 5313A	3	Educational Law	M	10:00 - 9:00 pm	M-1	Posey, B
EDA 5313B	3	Educational Law	Sat	9:00 - 12 Noon	L109	Cagle
EDA 5803	3	Internship in Educational Administration	TBA	TBA		Posey, E
COUNSELING						
EDC 5103	3	Career Development	M	6:00 - 9:00 pm	L109	Posey, E
EDC 5313	3	Counseling Techniques for School Counselors	Tu	6:00 - 9:00 pm	M-2	Sanders
EDC 5403A	3	Group Processes	Th	6:00 - 9:00 pm	S124	Cagle
EDC 5403B	3	Group Processes	Th	6:00 - 9:00 pm	CSWC	Frazier
EDC 5413	3	Family Intervention	W	6:00 - 9:00 pm	M-1	Sanders
EDC 5803	3	Internship in Counseling	TBA	TBA		Sanders
CURRICULUM & INSTRUCTION						
EDI 5203	3	Educational Leadership & Supervision	Tu	6:00 - 9:00 pm	S124	Atherton
EDI 5231	1	Professionalism & Ethics	W	6:00 - 7:00 pm	S124	Ingle
EDI 5313A	3	Educational Law	M	6:00 - 9:00 pm	M-1	Posey, B
EDI 5313B	3	Educational Law	Sat	9:00 - 12 Noon	L109	Cagle
EDI 5533	3	Exceptional Populations in Regular Classrooms	Th	6:00 - 9:00 pm	M-2	Staff
EDUCATION CORE						
EDU 5103	3	Instructional Strategies	Th	6:00 - 9:00 pm	L109	Castillo
EDU 5122	2	Current Issues in Education	W	7:00 - 9:00 pm	S124	Ingle
EDU 5203A	3	Theories of Learning & Human Development	Tu	6:00 - 9:00 pm	L109	Frazier
EDU 5203B	3	Theories of Learning & Human Development	Sat	1:00 - 4:00 pm	L109	Sanford
EDU 5523A	3	Educational Statistics & Research Design	M	6:00 - 9:00 pm	S124	Staff
EDU 5523B	3	Educational Statistics & Research Design	W	6:00 - 9:00 pm	L109	Dunn, E
EDUCATIONAL DIAGNOSTICIAN						
EDG 5463	3	Psychoeducational Assessment	Th	6:00 - 9:00 pm	M-1	Westbrook

UNDERGRADUATE COURSE OFFERINGS

ACCOUNTING						
ACT 2204A	4	Principles of Accounting I	M-Th	11:00 - 11:50 am	M-1	Stephens
ACT 2204B	4	Principles of Accounting I	MW	7:00 - 8:50 pm	M-4	Stephens
ACT 3203	3	Intermediate Accounting	TTh	1:00 - 2:20 pm	M-1	Stephens
ACT 3233	3	Governmental & Nonprofit Accounting	MW	9:30 - 10:50 am	M-1	Stephens
ACT 4203	3	Income Tax Accounting I	TTh	5:30 - 6:50 pm	L108	Wilson, T
ACT 4253	3	Advanced Accounting	TTh	7:00 - 8:20 pm	M-4	Wilson, T
ACT 4343	3	Auditing Theory and Ethics	TTh	9:30 - 10:50 am	M-2	Stephens
ACT 4353	3	Advanced Auditing	TTh	9:30 - 10:50 am	M-2	Stephens
ACT 4363	3	Computer Applications in Accounting	TTh	8:00 - 9:20 am	L108	Staff
ACT 4813	3	Internship in Accounting	TBA	TBA		Stephens
ART						
ART 1103A	3	Art Appreciation	MW	1:00 - 2:20 pm	L109	Staff
ART 1103B	3	Art Appreciation	TTh	1:00 - 2:20 pm	S113	Staff
ART 2103	3	The History of Western Art I	MW	11:00 - 12:20 pm	L109	Staff
ATHLETIC TRAINING						
ATE 2103	3	Introduction to Athletic Training	MW	9:30 - 10:50 am	M-4	Lloyd
ATE 2813	3	Clinical Practicum in Athletic Training I	TBA	TBA		Lloyd
ATE 2823	3	Clinical Practicum in Athletic Training II	TBA	TBA		Lloyd
ATE 3223	3	Evaluation of Athletic Injuries	TTh	8:00 - 9:20 am	ATR	Lloyd
ATE 3833	3	Clinical Practicum in Athletic Training III	TBA	TBA		Lloyd
ATE 3843	3	Clinical Practicum in Athletic Training IV	TBA	TBA		Lloyd
ATE 4403	3	Advanced Athletic Training	TTh	9:30 - 10:50 am	ATR	Lloyd
ATE 4813	3	Clinical Practicum in Athletic Training V	TBA	TBA		Lloyd
ATE 4833	3	Clinical Practicum in Athletic Training VI	TBA	TBA		Lloyd
BIOLOGY						
BIO 1104A	3	General Biology I	MW	9:30 - 10:50 am	S124	Staff
BIO 1104A	1	General Biology Laboratory I	Tu	8:00 - 9:50 am	S126	Staff
BIO 1104B	3	General Biology I	MW	5:30 - 6:50 pm	S121	Staff
BIO 1104B	1	General Biology Laboratory I	Tu	5:30 - 7:20 pm	S126	Staff
BIO 1101B	1	General Biology Laboratory I	Tu	5:30 - 7:20 pm	S126	Staff
BIO 2104	3	Principles of Human Anatomy & Physiology	MW	11:00 - 12:20 pm	S103	Massey
BIO 210L	1	Principles of Human Anatomy & Physiology Laboratory I	Tu	11:00 - 12:50 pm	S126	Massey
BIO 2204	3	General Botany	MW	8:00 - 9:20 am	S121	Staff
BIO 220L	1	General Botany Laboratory	Th	8:00 - 9:50 am	S126	Staff
BIO 3104	3	Microbiology	TTh	11:00 - 12:20 pm	S121	Staff
BIO 310L	1	Microbiology Laboratory	W	11:00 - 12:50 pm	S126	Staff
BIO 3313	3	Invertebrate Zoology	TTh	1:00 - 2:20 pm	S103	Massey
BIO 331L	1	Invertebrate Zoology Laboratory	W	1:00 - 2:50 pm	S126	Massey
BIO 4204	3	Entomology	TTh	2:30 - 3:50 pm	S121	Staff
BIO 420L	1	Entomology Laboratory	W	3:00 - 4:50 pm	S126	Staff
BUSINESS						
BUA 1103	3	Business & Society	TTh	5:30 - 6:50 pm	S121	Staff
BUA 3313A	3	Business Law I	MW	2:30 - 3:50 pm	S108	Staff
BUA 3313B	3	Business Law I	MW	5:30 - 6:50 pm	S108	Staff
CHEMISTRY						
CHE 1104	3	Principles of Chemistry I	TTh	9:30 - 10:50 am	S121	Staff
CHE 1104A	1	Chemistry Laboratory I	Wed	10:00 - 11:50 am	S126	Staff
COLLEGE COURSES						
CSW 1103A	3	Freshman Success	MW	8:00 - 9:20 am	M-1	Jámieson, C

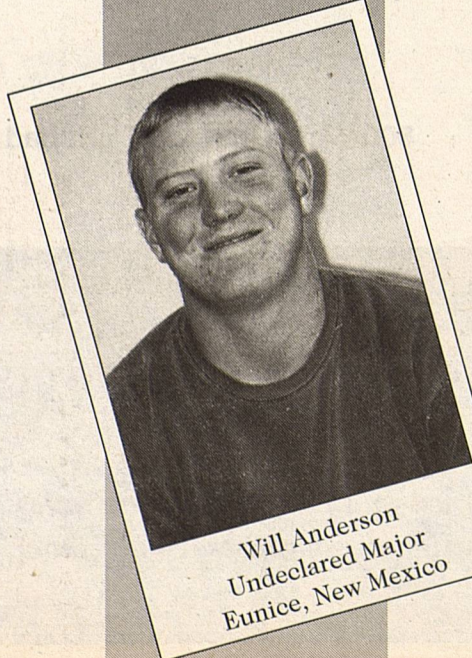
MGT 4163	3	Topics in Management	TTh	6:30 - 7:20 am		
MGT 4303A	3	Industrial & Organizational Psychology	TTh	8:00 - 9:20 am		
MGT 4303B	3	Industrial & Organizational Psychology	MW	5:30 - 6:50 pm		
MGT 4803	3	Internship in Management	TBA	TBA		
MARKETING						
MKT 3323A	3	Principles of Marketing & Sales	MW	2:30 - 3:50 pm		
MKT 3323B	3	Principles of Marketing & Sales	TTh	7:00 - 8:20 pm		
MKT 3423	3	Salesmanship	MW	7:00 - 8:20 pm		
MKT 3513	3	Advertising & Promotion	TTh	1:00 - 2:20 pm		
MKT 4123	3	Services Marketing	MW	8:30 - 9:50 pm		
MKT 4133	3	Marketing Management	MW	9:30 - 10:50 am		
MKT 4803	3	Internship in Marketing	TBA	TBA		
MATHEMATICS						
MAT 1103A	3	College Algebra for General Education	MW	8:00 - 9:20 am		
MAT 1103B	3	College Algebra for General Education	MW	11:00 - 12:20 pm		
MAT 1413	3	Pre-Calculus Mathematics	MW	1:00 - 2:20 pm		
MAT 2214	4	Analytic Geometry & Calculus II	M-Th	9:30 - 10:20 am		
MAT 3213	3	Differential Equations	MW	4:00 - 5:20 pm		
MAT 3303	3	Linear Algebra	TTh	1:00 - 2:20 pm		
MAT 3323A	3	Statistics II	TTh	2:30 - 3:50 pm		
MAT 3323B	3	Statistics II	TTh	7:00 - 8:20 pm		
MAT 4703	3	Topics in Mathematics	TBA	TBA		
MUSIC						
MUS 1801	1	CSW Ambassadors	Fri	1:00 - 3:50 pm		
MUS 2103	3	Jazz: The American Music	TTh	5:30 - 6:50 pm		
MUS 2801	1	CSW Ambassadors	Fri	1:00 - 3:50 pm		
MUS 3801	1	CSW Ambassadors	Fri	1:00 - 3:50 pm		
MUS 4801	1	CSW Ambassadors	Fri	1:00 - 3:50 pm		
PHILOSOPHY						
PHI 2203	3	Logic	Fri	1:00 - 3:50 pm		
POLITICAL SCIENCE						
POS 3103	3	American Ideologies	MW	1:00 - 2:20 pm		
POS 4143	3	Comparative Politics	MW	11:00 - 12:20 pm		
PSYCHOLOGY						
PSY 2103A	3	Psychology of Adjustment	MW	9:30 - 10:50 am		
PSY 2103B	3	Psychology of Adjustment	Fri	1:00 - 3:50 pm		
PSY 3113	3	Cognition	MW	11:00 - 12:20 pm		
PSY 3213	3	Developmental Psychology	TTh	11:00 - 12:20 pm		
PSY 3223	3	Psychology of Aging	TTh	6:30 - 7:50 am		
PSY 4103	3	Personality	TTh	9:30 - 10:50 am		
PSY 4203	3	Abnormal Psychology	MW	2:30 - 3:50 pm		
PSY 4303A	3	Industrial & Organizational Psychology	TTh	8:00 - 9:20 am		
PSY 4303B	3	Industrial & Organizational Psychology	MW	5:30 - 6:50 pm		
PSY 4313A	3	Interviewing & Counseling Techniques	MW	8:00 - 9:20 am		
PSY 4313B	3	Interviewing & Counseling Techniques	MW	7:00 - 8:20 pm		
PSY 4523A	3	Psychological & Educational Testing	TTh	2:30 - 3:50 pm		
PSY 4523B	3	Psychological & Educational Testing	Sat	9:00 - 11:50 am		
PSY 4703	3	Topics in Psychology	TTh	7:00 - 8:20 pm		
PSY 4803	3	Psychology Practicum	TBA	TBA		
RELIGION						
REL 1101	1	LIFE I	Tu	12:00 - 12:50 pm		
REL 1201	1	LIFE II	Tu	12:00 - 12:50 pm		
REL 1301	1	LIFE III	Tu	12:00 - 12:50 pm		
REL 1103A	3	Old Testament Survey	TTh	2:30 - 3:50 pm		
REL 1103B	3	Old Testament Survey	TTh	7:00 - 8:20 pm		
REL 1203A	3	New Testament Survey	MW	1:00 - 2:20 pm		
REL 1203B	3	New Testament Survey	MW	2:30 - 3:50 pm		
REL 1203C	3	New Testament Survey	TTh	1:00 - 2:20 pm		
REL 1203D	3	New Testament Survey	TTh	5:30 - 6:50 pm		
SOCIOLOGY						
SOC 2213	3	Marriage & the Family	MW	1:00 - 2:20 pm		
SOC 3203A	3	Race & Ethnic Relations	MW	2:30 - 3:50 pm		
SOC 3203B	3	Race & Ethnic Relations	TTh	4:00 - 5:20 pm		
SPANISH						
SPA 3303	3	Survey of Spanish Literature	TTh	5:30 - 6:50 pm		
SPA 3403	3	Survey of Spanish-American Literature	TTh	4:00 - 5:20 pm		
SPEECH						
SPE 1103A	3	Principles of Speech	TTh	9:30 - 10:50 am		
SPE 1103B	3	Principles of Speech	TTh	1:00 - 2:20 pm		
SPE 1103C	3	Principles of Speech	TTh	7:00 - 8:20 pm		
THEATRE						
THE 2602	2	Theatre Workshop	TBA	TBA		
THE 3602	2	Theatre Workshop	TBA	TBA		
THE 4203	3	Oral Interpretation	TTh	2:30 - 3:50 pm		
THE 4602	2	Theatre Workshop	TBA	TBA		



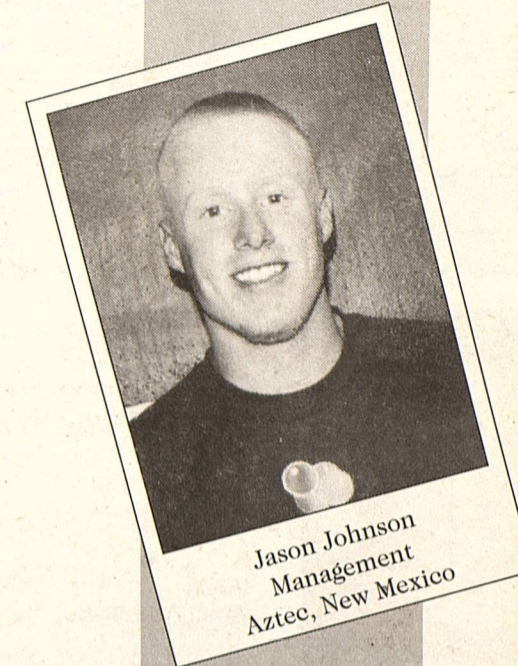
Michelle Chavez
Elementary Ed/Language Arts
Jal, New Mexico



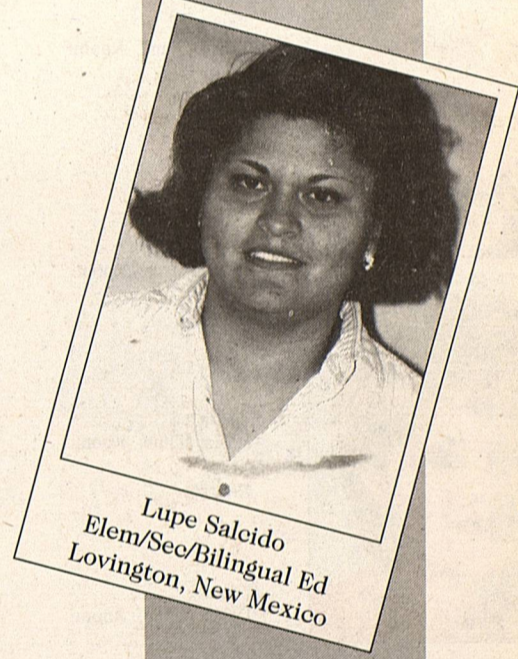
Sarah Nunn
May 2000 Graduate
Hobbs, New Mexico



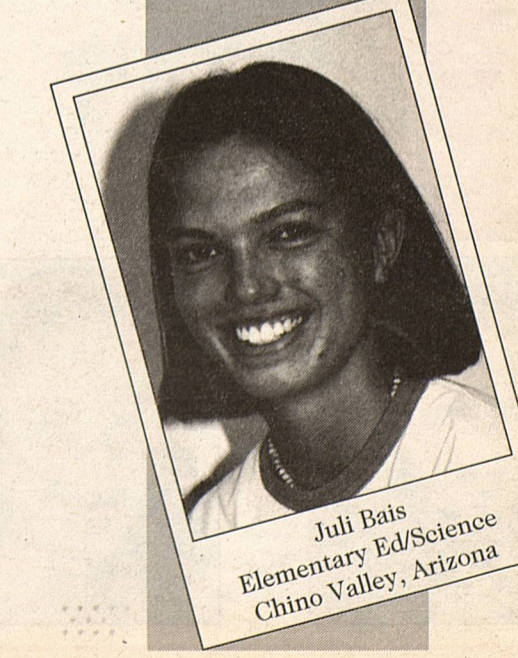
Will Anderson
Undeclared Major
Eunice, New Mexico



Jason Johnson
Management
Aztec, New Mexico

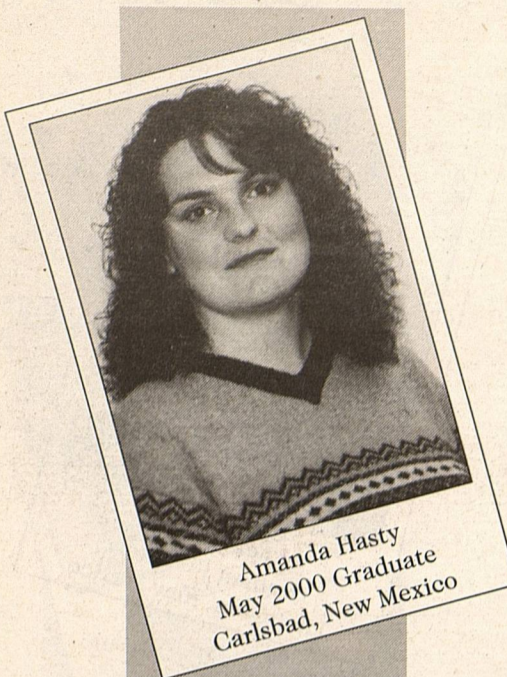


Lupe Salcido
Elem/Sec/Bilingual Ed
Lovington, New Mexico



Juli Bais
Elementary Ed/Science
Chino Valley, Arizona

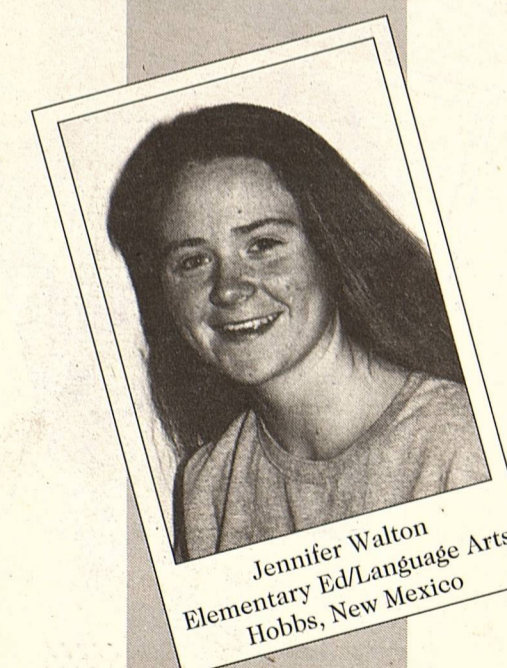
ECO 3802	2	Internship in Free Enterprise	TTh	11:00 - 11:50 am
ECO 4802	2	Internship in Free Enterprise	TTh	11:00 - 11:50 am
EDUCATION				
BIL 3102	2	Teaching English as a Second Language	MW	4:00 - 4:50 pm
BIL 3301	1	Assessment & Evaluation of Bilingual Learners & Bilingual Programs	M	5:00 - 5:50 pm
BIL 3311	1	Parents, Community Relations, & Involvement Strategies	W	5:00 - 5:50 pm
BIL 4101	1	Research in Bilingual Education	M	6:00 - 6:50 pm
EDU 1101A	1	Field-Based Observation	Tu	11:00 - 11:50 am
EDU 1101B	1	Field-Based Observation	Th	11:00 - 11:50 am
EDU 2103A	3	Foundations of Education	MW	1:00 - 2:20 pm
EDU 2103B	3	Foundations of Education	TTh	2:30 - 3:50 pm
EDU 2103C	3	Foundations of Education	TTh	7:00 - 8:20 pm
EDU 3203A	3	Psych. Foundations of Teaching & Learning	MW	8:00 - 9:20 am
EDU 3203B	3	Psych. Foundations of Teaching & Learning	Fri	1:00 - 3:50 pm
EDU 3203C	3	Psych. Foundations of Teaching & Learning	MW	7:00 - 8:20 pm
EDU 3213A	3	Survey of Multicultural & Exceptional Learners	TTh	11:00 - 12:20 pm
EDU 3213B	3	Survey of Multicultural & Exceptional Learners	MW	5:30 - 6:50 pm
EDU 3222A	2	Classroom Management & Organization	TTh	9:30 - 10:20 am
EDU 3222B	2	Classroom Management & Organization	TTh	5:30 - 6:20 am
EDU 3503A	3	Communication Arts in the Elementary School	MW	9:30 - 10:20 am
EDU 3503B	3	Communication Arts in the Elementary School	MW	8:30 - 9:50 pm
EDU 3523A	3	Educational Measurement & Evaluation	MW	2:30 - 3:50 pm
EDU 3523B	3	Educational Measurement & Evaluation	MW	8:30 - 9:50 pm
EDU 4114A	4	Teaching in the Elementary School	MW	11:00 - 12:50 pm
EDU 4114B	4	Teaching in the Elementary School	MW	4:00 - 5:50 pm
EDU 4203A	3	Diagnostic/Corrective Teaching	TTh	4:00 - 5:20 pm
EDU 4203B	3	Diagnostic/Corrective Teaching	TTh	1:00 - 2:20 pm
EDU 4213	3	Teaching in the Secondary Schools	TTh	7:00 - 8:20 pm
EDU 4413	3	Reading in the Content Area	MW	9:30 - 10:50 pm
EDU 4502A	2	Field Experience II	Th	8:00 - 9:20 am
EDU 4502B	2	Field Experience II	Fri	9:00 - 10:20 am
EDU 4502C	2	Field Experience II	M	7:00 - 8:20 pm
EDU 4546	6	Intern Teaching	TBA	TBA
EDU 4601	1	Intern Teaching Seminar	M	5:00 - 5:50 pm
SPED 1101A	1	Field-Based Observation in Special Ed Settings	Tu	11:00 - 11:50 am
SPED 1101B	1	Field Based Observation in Special Ed Settings	Th	11:00 - 11:50 am
SPED 3423	3	Special Education Curriculum	MW	9:30 - 10:20 am
SPED 3523	3	Assessment, Evaluation, Referral, & Placement of the Exceptional Learner	MW	4:00 - 5:50 pm
SPED 4231	1	The Behavior-Disordered Learner	Tu	4:00 - 4:50 pm
SPED 4241	1	The Learning-Disabled Learner	Th	4:00 - 5:50 pm
SPED 4502A	2	Field Experience II in Special Ed Settings	Th	8:00 - 9:20 am
SPED 4502B	2	Field Experience II in Special Ed Settings	Fri	9:00 - 10:20 am
SPED 4502C	2	Field Experience II in Special Ed Settings	M	7:00 - 8:20 pm
SPED 4546	6	Intern Teaching in K-12 Special Ed Settings	TBA	TBA
SPED 4601	1	Student-Teaching Seminar	M	5:00 - 5:50 pm
ENGLISH				
ENG 1113	3	Rhetoric & Composition	MW	11:00 - 12:20 pm
ENG 1123A	3	Rhetoric & Literature	MW	9:30 - 10:50 am
ENG 1123B	3	Rhetoric & Literature	TTh	11:00 - 12:20 pm
ENG 1123C	3	Rhetoric & Literature	MW	7:00 - 8:20 pm
ENG 2303	3	Survey of British Literature	TTh	9:30 - 10:50 am
ENG 2433	3	Survey of Popular Fiction	TTh	8:00 - 9:20 am
ENG 3213	3	Advanced Creative Writing	Fri	9:00 - 11:50 am
ENG 3503	3	Advanced Grammar	TTh	1:00 - 2:20 pm
ENG 3573	3	Young Adult Literature	MW	1:00 - 2:20 pm
ENG 3813	3	Technical Newspaper Writing	Fri	9:00 - 11:50 am
ENG 3823	3	Yearbook Production	TBA	TBA
ENG 4403A	3	Advanced Composition	MW	2:30 - 3:50 pm
ENG 4403B	3	Advanced Composition	TTh	7:00 - 8:20 pm
ENG 4523	3	Major British Author	MW	11:00 - 12:20 pm
FINANCE				
FIN 3303	3	Money & Banking	TTh	5:30 - 6:50 pm
FIN 3423	3	Financial Management	MW	9:30 - 10:50 am
FIN 4413	3	Insurance & Risk	TTh	7:00 - 8:20 pm
FIN 4813	3	Investment Internship II	TBA	TBA
FIN 4823	3	Internship in Finance	TBA	TBA
GEOGRAPHY				
GEOG 2303	3	The History & Geography of New Mexico	TTh	1:00 - 2:20 pm
GEOLOGY				
GEO 1204	3	Historical Geology	TTh	4:00 - 5:20 pm
GEO 120L	1	Historical Geology Laboratory	Tu	5:30 - 7:20 pm
HEALTH/PHYSICAL EDUCATION				
HPE 0520	0	Athletics: Baseball	TBA	TBA
HPE 2102	2	Lifetime Fitness	TTh	9:30 - 10:20 am
HPE 2213	3	Workplace Training Standard First Aid	TTh	8:00 - 9:20 am
HPE 2263	3	Anatomy for the Physical Educator/Coach	MW	8:00 - 9:20 am
HPE 2303	3	Motor Learning	MW	9:30 - 10:50 am
HPE 2312	2	Nutrition & Sports	MW	11:00 - 11:50 am
HPE 3403	3	Measurement & Evaluation in Physical Education	TTh	1:00 - 2:20 pm
HPE 4103	3	Kinesiology	MW	1:00 - 2:20 pm
HPE 4303	3	Physical Education & Athletic Administration	MW	11:00 - 12:20 pm
HPE 4503	3	Secondary School Physical Education Programs	TTh	11:00 - 12:20 pm
HISTORY				
HIS 1203A	3	Western Civilization from 1716	MW	9:30 - 10:50 am
HIS 1203B	3	Western Civilization from 1716	TTh	8:30 - 9:50 pm
HIS 2203A	3	American History from 1877	MW	8:00 - 9:20 am
HIS 2203B	3	American History from 1877	TTh	8:00 - 9:20 am
HIS 2203C	3	American History from 1877	Fri	1:00 - 3:50 pm
HIS 2303	3	The History & Geography of New Mexico	TTh	1:00 - 2:20 pm
HIS 3313	3	World History	TTh	9:30 - 10:50 am
MANAGEMENT				
MGT 2103	3	Principles of Management	MW	6:30 - 7:50 am
MGT 3503	3	Organizational Behavior	MW	11:00 - 12:20 pm
MGT 4162A	2	Creating a Business Plan	TTh	2:30 - 3:20 pm
MGT 4162B	2	Creating a Business Plan	TTh	8:30 - 9:20 pm



Amanda Hasty
May 2000 Graduate
Carlsbad, New Mexico

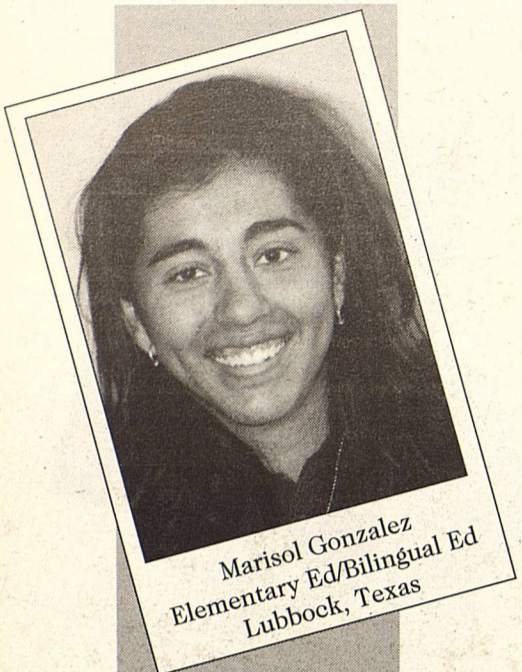


Deana Swartz
Elementary Ed/Language Arts
Lovington, New Mexico



Jennifer Walton
Elementary Ed/Language Arts
Hobbs, New Mexico

CSW 1103B	3	Freshman Success	MW	1:00 - 2:20 pm	M-1	Jamieson, C
CSW 1103C	3	Freshman Success	TTh	9:30 - 10:50 am	M-1	Jamieson, C
CSW 4691A	1	Senior Seminar in Leadership and Ethics	W	8:00 - 9:00 am	L109	Staff
CSW 4691B	1	Senior Seminar in Leadership and Ethics	Tu	11:00 - 11:50 am	S113	Case
CSW 4691C	1	Senior Seminar in Leadership and Ethics	Th	11:00 - 11:50 am	S113	Case
CSW 4691D	1	Senior Seminar in Leadership and Ethics	M	5:30 - 6:20 pm	MHC	Staff
COMPUTER SCIENCE						
CSI 1203	3	Computer Applications	Fri	9:00 - 11:50 am	L108	Staff
CSI 2203	3	Educational Technology	MW	8:00 - 9:20 am	L108	Sagerty
CSI 2213A	3	Electronic Spreadsheets	TTh	6:30 - 7:50 am	L108	Staff
CSI 2213B	3	Electronic Spreadsheets	MW	1:00 - 2:20 pm	L108	Staff
CRIMINAL JUSTICE						
CRJ 3313	3	Victimology	MW	7:00 - 8:20 pm	TBA	McMahon, J
CRJ 4103	3	Corrections, Operations, & Management	MW	8:30 - 9:50 pm	TBA	McMahon, J
ECONOMICS						
ECO 2103A	3	Principles of Macroeconomics	MW	8:00 - 9:20 am	M-2	Rickles
ECO 2103B	3	Principles of Macroeconomics	MW	8:30 - 9:50 pm	S110	Rickles
ECO 2802	2	Internship in Free Enterprise	TTh	11:00 - 11:50 am	MSC	DiUlus
ECO 3203A	3	Principles of Business in Free Enterprise System	MW	9:30 - 10:50 am	M-2	Staff
ECO 3203B	3	Principles of Business in Free Enterprise System	TTh	9:30 - 10:50 am	L109	Case
ECO 3203C	3	Principles of Business in Free Enterprise System	TTh	2:30 - 3:50 pm	S113	Staff
ECO 3203D	3	Principles of Business in Free Enterprise System	M	7:00 - 9:50 pm	S113	Neal
ECO 3802	2	Internship in Free Enterprise	TTh	11:00 - 11:50 am	MSC	DiUlus
ECO 4802	2	Internship in Free Enterprise	TTh	11:00 - 11:50 am	MSC	DiUlus
EDUCATION						
BIL 2103	3	Introduction to Bilingual Education	TTh	7:00 - 8:20 pm	S108	Palomo
BIL 3111	1	Language Arts for K-12 Bilingual Learners	M	4:00 - 4:50 pm	S110	Staff
BIL 3112	2	Soc. Studies/Fine Arts for K-12 Bilingual Learners	MW	5:30 - 6:20 pm	S110	Navarrete
BIL 3202	2	Science and Math for K-12 Bilingual Learners	MW	6:30 - 7:20 pm	S110	Navarrete
EDU 1101A	1	Field-Based Observation	Fri	1:00 - 1:50 pm	S124	Staff
EDU 1101B	1	Field-Based Observation	Tu	8:00 - 8:50 am	S108	Staff
EDU 1101C	1	Field-Based Observation	Th	11:00 - 11:50 am	S110	Staff
EDU 1101D	1	Field-Based Observation	W	6:00 - 6:50 pm	S103	Sagerty
EDU 2103A	3	Foundations of Education	MW	9:30 - 10:50 am	M-3	Sagerty
EDU 2103B	3	Foundations of Education	TTh	4:00 - 5:20 pm	S110	Havink
EDU 3203A	3	Psych. Foundations of Teaching & Learning	MW	11:00 - 12:20 pm	S124	Connell
EDU 3203B	3	Psych. Foundations of Teaching & Learning	TTh	8:30 - 9:50 pm	S108	Hightower
EDU 3203C	3	Psych. Foundations of Teaching & Learning	TTh	6:30 - 7:50 am	S108	Staff
EDU 3213A	3	Survey of Multicultural & Exceptional Learners	TTh	1:00 - 2:20 pm	S124	Ayyagari
EDU 3213B	3	Survey of Multicultural & Exceptional Learners	MW	1:00 - 2:20 pm	S124	Sagerty
EDU 3213C	3	Survey of Multicultural & Exceptional Learners	TTh	7:00 - 8:20 pm	S113	Hunt, M
EDU 3222A	2	Classroom Management and Organization	MW	9:30 - 10:20 am	L109	Ayyagari
EDU 3222B	2	Classroom Management and Organization	TTh	3:00 - 3:50 pm	S124	Connell
EDU 3503A	3	Communication Arts in the Elementary School	MW	8:00 - 9:20 am	S124	Goad
EDU 3503B	3	Communication Arts in the Elementary School	Fri	1:00 - 3:30 pm	S113	Goad, S
EDU 3523A	3	Educational Measurement and Evaluation	MW	6:30 - 7:50 am	S124	Staff
EDU 3523B	3	Educational Measurement and Evaluation	TTh	8:00 - 9:20 am	S124	Gage
EDU 3523C	3	Educational Measurement and Evaluation	MW	7:00 - 8:20 pm	S108	Hunt, M
EDU 4114A	4	Teaching in the Elementary School	MW	12:30 - 2:20 pm	L100	Wright
EDU 4114B	4	Teaching in the Elementary School	TTh	7:00 - 8:50 pm	S121	McPeters
EDU 4203A	3	Diagnostic/Corrective Teaching	TTh	11:00 - 12:20 pm	S124	Staff
EDU 4203B	3	Diagnostic/Corrective Teaching	MW	5:30 - 6:50 pm	M-3	Elliott
EDU 4213	3	Teaching in the Secondary School	TTh	1:00 - 2:20 pm	S110	Connell
EDU 4413	3	Reading in the Content Area	TTh	9:30 - 10:50 am	S113	Gage
EDU 4502A	2	Field Experience II	Fri	9:00 - 10:50 am	S124	Harris
EDU 4502B	2	Field Experience II	Th	1:00 - 2:20 pm	M-3	Harris
EDU 4502C	2	Field Experience II	M	8:30 - 9:50 pm	S103	Hightower
EDU 4546	6	Intern Teaching	TBA	TBA	TBA	Harris
EDU 4601	1	Intern Teaching Seminar	M	5:00 - 5:50 pm	S113	Staff
SPED 1101A	1	Field-Based Observation in Special Ed Settings	Fri	1:00 - 1:50 pm	S124	Staff
SPED 1101B	1	Field-Based Observation in Special Ed Settings	Tu	8:00 - 8:50 am	S108	Staff
SPED 1101C	1	Field-Based Observation in Special Ed Settings	Th	11:00 - 11:50 am	S110	Staff
SPED 1101D	1	Field-Based Observation in Special Ed Settings	W	6:00 - 6:50 pm	S103	Sagerty
SPED 2103	3	Introduction to Special Education	TTh	2:30 - 3:50 pm	M-1	Harris
SPED 3222	2	Classroom Mgt. & the Exceptional Learner	TTh	4:00 - 4:50 pm	S108	Emery
SPED 3323	3	Methods & Materials for Special Education	MW	4:00 - 5:20 pm	S108	Hunt, K
SPED 4101	1	Research in Special Education	M	2:30 - 3:20 pm	S103	Harris
SPED 4201	1	The Gifted/Talented Learner	W	2:30 - 3:20 pm	S103	Harris
SPED 4211	1	The Physically-Impaired Learner	Tu	5:30 - 6:20 pm	S108	Emery
SPED 4221	1	The Mentally-Impaired Learner	Th	5:30 - 6:20 pm	S108	Emery
SPED 4502A	2	Field Experience II in Special Ed Settings	Fri	9:00 - 10:50 am	S124	Harris
SPED 4502B	2	Field Experience II in Special Ed Settings	Th	1:00 - 2:20 pm	M-3	Harris
SPED 4502C	2	Field Experience II in Special Ed Settings	M	8:30 - 9:50 pm	S103	Hightower
SPED 4546	6	Intern Teaching in K-12 Special Ed Settings	TBA	TBA	TBA	Harris
SPED 4601	1	Intern Teaching Seminar in Special Ed	M	5:00 - 5:50 pm	S113	Staff
ENGLISH						
ENG 1013	3	Mechanics of English	MW	11:00 - 12:20 pm	L100	Holloman
ENG 1113A	3	Rhetoric and Composition	MW	9:30 - 10:50 am	L108	Erwin
ENG 1113B	3	Rhetoric and Composition	MW	11:00 - 12:20 pm	L108	Clingman
ENG 1113C	3	Rhetoric and Composition	TTh	1:00 - 2:20 pm	L108	Erwin
ENG 2213	3	Creative Writing	TTh	2:30 - 3:50 pm	L108	Sandle/Clingman
ENG 2223A	3	Life & Literature of the Southwest	MW	1		



Marisol Gonzalez
Elementary Ed/Bilingual Ed
Lubbock, Texas



Kristi Cyr
May 2000 Graduate
Hobbs, New Mexico



Michelle Taylor
Elementary Ed/Language Arts
Denver City, Texas

ENG 3813	3	Technical Newspaper Writing	Fri	9:00 - 11:50 am	LWR	Clingman
ENG 3823	3	Yearbook Production	Fri	1:00 - 3:30 pm	LWR	Clingman
ENG 4403	3	Advanced Composition	MW	2:30 - 3:50 pm	L108	Sandle
FINANCE						
FIN 2403A	3	Principles of Finance	TTh	2:30 - 3:50 pm	M-2	Owensby
FIN 2403B	3	Principles of Finance	MW	5:30 - 6:50 pm	M-2	Rickles
FIN 3413	3	Corporate Finance	TTh	7:00 - 8:20 pm	MHC	Staff
FIN 3443	3	Financial Analysis	TTh	5:30 - 6:50 pm	M-4	Staff
FIN 4803	3	Investment Internship I	W	7:00 - 10:00 pm	DiUlus	DiUlus
FIN 4823	3	Internship in Finance	TBA	TBA	DiUlus	DiUlus
GEOGRAPHY						
GEOG 2103	3	Physical & Cultural Geography	MW	11:00 - 12:20 pm	S110	Goldman
GEOLOGY						
GEO 1104	3	Physical Geology	TTh	8:00 - 9:20 am	S103	Staff
GEO 110L	1	Physical Geology Laboratory	M	8:00 - 9:50 am	S126	Staff
GEO 1304	3	Earth Science	MW	2:30 - 3:50 pm	S124	Staff
GEO 130L	1	Earth Science Laboratory	Th	2:30 - 4:20 pm	S126	Staff
HEALTH/PHYSICAL EDUCATION						
HPE 0510A	0	Soccer	TBA	TBA		Jones, J
HPE 0510B	0	Volleyball	TBA	TBA		Luallen
HPE 1241	1	Weight Training	MW	7:00 - 7:50 pm	WTR	Staff
HPE 2203	3	Concepts in Physical Education	TTh	11:00 - 12:20 pm	MFC	Staff
HPE 3303	3	Psychology of Physical Education & Sports	MW	11:00 - 12:20 pm	MFC	Luallen
HPE 3312	2	Techniques of Teaching Rhythms & Games	TTh	1:00 - 1:50 pm		Staff
HPE 3513	3	Theory & Practice of Basketball	MW	1:00 - 2:20 pm		Staff
HPE 4203	3	Physiology of Exercise	MW	9:30 - 10:50 am		Staff
HPE 4403	3	Physical Education in the Elementary School	MW	8:00 - 9:20 am	MFC	Staff
HISTORY						
HIS 1103A	3	Western Civilization to 1715	MW	9:30 - 10:50 am	S113	Sumruld
HIS 1103B	3	Western Civilization to 1715	TTh	11:00 - 12:20 pm	M-2	Staff
HIS 2103A	3	American History to 1876	MW	6:30 - 7:50 am	S113	Staff
HIS 2103B	3	American History to 1876	MW	8:00 - 9:20 am	S113	Goldman
HIS 2103C	3	American History to 1876	TTh	8:00 - 9:20 am	S113	Sumruld
HIS 2103D	3	American History to 1876	TTh	8:30 - 9:50 pm	S113	Huff
HIS 2223A	3	Life and Literature of the Southwest	MW	1:00 - 2:20 pm	S113	Clingman
HIS 2223B	3	Life and Literature of the Southwest	TTh	5:30 - 6:50 pm	L100	Erwin
HIS 3103	3	Theory of History	TTh	9:30 - 10:50 am	S108	Sumruld
HIS 3223	3	Civil War and Reconstruction	TTh	1:00 - 2:20 pm	L109	Sumruld
HIS 4103	3	The History of U.S. Foreign Policy	MW	1:00 - 2:20 pm	M-2	Sumruld
LINGUISTICS						
LIN 2253A	3	Introduction to Linguistics	MW	11:00 - 12:20 pm	M-3	Staff
LIN 2253B	3	Introduction to Linguistics	TTh	5:30 - 6:50 pm	S110	Staff
MANAGEMENT						
MGT 2103A	3	Principles of Management	MW	9:30 - 10:50 am	S108	Dunn, T
MGT 2103B	3	Principles of Management	MW	5:30 - 6:50 pm	L100	Dunn, T
MGT 3223	3	Leadership & Motivation	TTh	9:30 - 10:50 am	S124	Dunn, T
MGT 3403A	3	Human Resource Management	MW	8:00 - 9:20 am	S110	Dunn, T
MGT 3403B	3	Human Resource Management	MW	7:00 - 8:20 pm	M-2	Dunn, T
MGT 4123	3	Management Information Systems	TTh	7:00 - 8:20 pm	L108	Staff
MGT 4413A	3	Strategic Management	MW	6:30 - 7:50 am	S103	Sanderson
MGT 4413B	3	Strategic Management	TTh	8:00 - 9:20 am	M-1	Owensby
MGT 4803	3	Internship in Management	TBA	TBA		Dunn, T
MARKETING						
MKT 3343	3	Marketing Research	MW	11:00 - 12:20 pm	M-4	Owensby
MKT 3413	3	Principles of Retailing	TTh	11:00 - 12:20 pm	M-3	Staff
MKT 4133	3	Marketing Management	TTh	2:30 - 3:50 pm	S103	Staff
MKT 4203	3	Topics	TTh	8:30 - 9:50 pm	S110	Staff
MKT 4813	3	Internship in Marketing	TBA	TBA		Dunn, T
MATHEMATICS						
MAT 1013	3	Intermediate Algebra	TTh	1:00 - 2:20 pm	S108	Staff
MAT 1103A	3	College Algebra for General Education	MW	9:30 - 10:50 am	S121	Staff
MAT 1103B	3	College Algebra for General Education	MW	11:00 - 12:20 pm	S121	Staff
MAT 1103C	3	College Algebra for General Education	MW	1:00 - 2:20 pm	S121	Staff
MAT 1203	3	College Algebra for Math or Science Majors	TTh	8:00 - 9:20 am	S121	Staff
MAT 2103	3	Principles of Probability & Statistics	MW	2:30 - 3:50 pm	S110	Staff
MAT 2204	4	Analytic Geometry & Calculus I	M-Th	9:30 - 10:20 am	S103	Staff
MAT 3203	3	Discrete Mathematics	MW	1:00 - 2:20 pm	S108	Staff
MAT 3204	4	Analytic Geometry & Calculus III	M-Th	11:00 - 11:50 am	S108	Staff
MAT 3313A	3	Statistics I	TTh	1:00 - 2:20 pm	S121	Staff
MAT 3313B	3	Statistics I	MW	7:00 - 8:20 pm	S121	Staff
MAT 3403	3	College Geometry	MW	2:30 - 3:50 pm	S121	Staff
MAT 3423	3	Abstract Algebra	TTh	8:00 - 9:20 am	S110	Staff
MUSIC						
MUS 1103	3	Music Appreciation	MW	4:30 - 5:20 pm	L109	Staff
MUS 1801	1	CSW Ambassadors	Fri	1:00 - 1:50 pm	TBA	Cohagen
MUS 2801	1	CSW Ambassadors	Fri	1:00 - 1:50 pm	TBA	Cohagen
MUS 3801	1	CSW Ambassadors	Fri	1:00 - 1:50 pm	TBA	Cohagen
MUS 4801	1	CSW Ambassadors	Fri	1:00 - 1:50 pm	TBA	Cohagen
PHILOSOPHY						
PHI 1103	3	Introduction to Philosophy	TTh	7:00 - 8:20 pm	S103	Huff
POLITICAL SCIENCE						
POS 2103	3	National, State, & Local Government	MW	2:30 - 3:50 pm	M-2	Spillar
POS 3113	3	Political Parties	MW	8:00 - 9:20 am	S108	Spillar
POS 4223	3	Constitutional History	MW	2:30 - 3:50 pm	M-1	Goldman
PSYCHOLOGY						
PSY 1103A	3	General Psychology	MW	8:00 - 9:20 am	M-3	Wolske
PSY 1103B	3	General Psychology	MW	11:00 - 12:20 pm	S113	Wolske
PSY 1103C	3	General Psychology	Fri	9:00 - 11:50 am	S113	Anderson
PSY 3103A	3	Principles of Behavior Management	MW	9:30 - 10:50 am	S110	Wolske
PSY 3103B	3	Principles of Behavior Management	MW	7:00 - 8:20 pm	S103	Staff

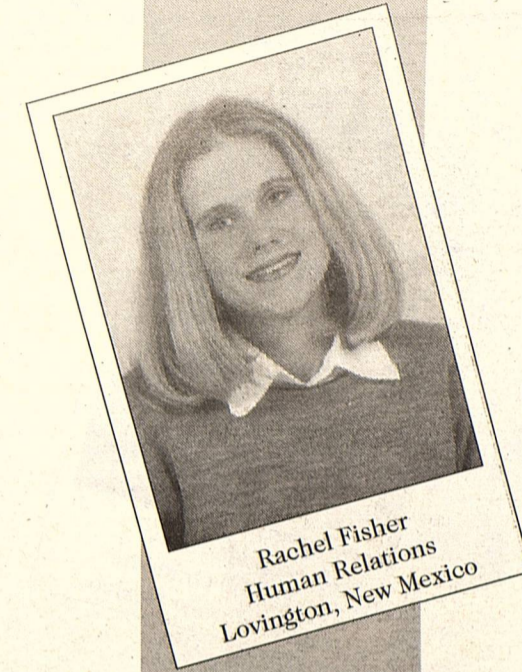
COLLEGE OF THE SOUTHWEST
HOBBS CAMPUS
SPRING 2001 COURSE SCHEDULE

MASTER OF SCIENCE IN EDUCATION COURSE OFFERINGS

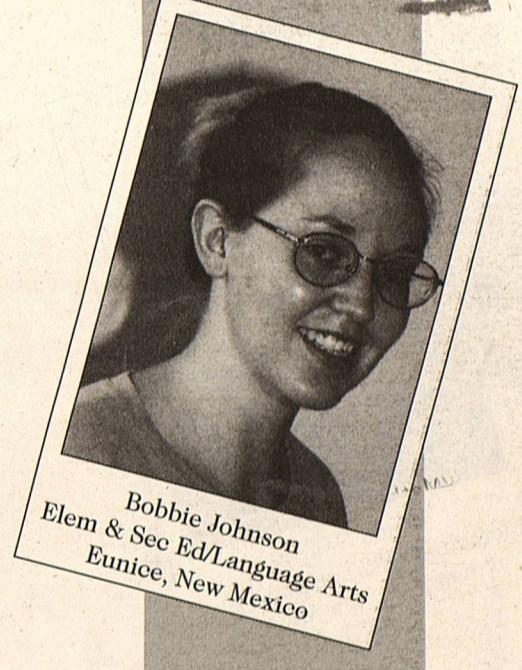
COURSE NO.	CR	TITLE	DAY	TIME
ADMINISTRATION				
EDA 5213A	3	Theories of Curriculum Development	Th	6:00 - 9:00 pm
EDA 5303A	3	Policies & Public Relations	Tu	6:00 - 9:00 pm
EDA 5303B	3	Policies & Public Relations	Sat	1:00 - 3:50 pm
EDA 5403	3	Educational Finance & Facilities	W	6:00 - 9:00 pm
EDA 5503	3	School Administration	M	6:00 - 9:00 pm
EDA 5803	3	Internship in Educational Administration	TBA	TBA
COUNSELING				
EDC 5323	3	Advanced Theories of Psychological Counseling	Th	6:00 - 9:00 pm
EDC 5433	3	School Counseling & Play Therapy	W	6:00 - 9:00 pm
EDC 5803	3	Internship in Counseling	TBA	TBA
CURRICULUM & INSTRUCTION				
EDI 5113	3	Brain-Based Instruction	M	6:00 - 9:00 pm
EDI 5133	3	Advanced Instructional Technology	Sat	9:00 - 11:50 am
EDI 5213A	3	Theories of Curriculum Development	Th	6:00 - 9:00 pm
EDI 5303A	3	Policies & Public Relations	Tu	6:00 - 9:00 pm
EDI 5303B	3	Policies & Public Relations	Sat	1:00 - 3:50 pm
EDI 5413A	3	Program Development & Management	W	6:00 - 9:00 pm
EDI 5413B	3	Program Development & Management	Sat	9:00 - 11:50 am
EDUCATION CORE				
EDU 5213	3	Professional/Ethical Issues in Counseling	Th	6:00 - 9:00 pm
EDU 5413A	3	Program Development & Management	W	6:00 - 9:00 pm
EDU 5413B	3	Program Development & Management	W	6:00 - 9:00 pm
EDU 5513A	3	Culturally Diverse & Special Needs Population	Sat	9:00 - 11:50 am
EDU 5523	3	Educational Statistics & Research Design	Tu	6:00 - 9:00 pm

UNDERGRADUATE COURSE OFFERINGS

ACCOUNTING				
ACT 2214A	4	Principles of Accounting II	M-Th	11:00 - 11:50 am
ACT 2214B	4	Principles of Accounting II	MW	7:00 - 8:50 pm
ACT 3213	3	Intermediate Accounting II	TTh	1:00 - 2:20 pm
ACT 3223A	3	Cost Accounting	MW	8:00 - 9:20 am
ACT 3223B	3	Cost Accounting	MW	5:30 - 6:50 pm
ACT 4213	3	Income Tax Accounting II	TTh	5:30 - 6:50 pm
ACT 4363	3	Computer Applications in Accounting	TTh	2:30 - 3:50 pm
ACT 4813	3	Accounting Internship	TBA	TBA
ART				
ART 2203A	3	The History of Western Art II	MW	1:00 - 2:20 pm
ART 2213	3	The Artist	TTh	1:00 - 2:20 pm
ATHLETIC TRAINING				
ATE 2813	3	Clinical Practicum in Athletic Training I	TBA	TBA
ATE 2823	3	Clinical Practicum in Athletic Training II	TBA	TBA
ATE 3303	3	Therapeutic Modalities in Athletic Training	MW	9:30 - 10:50 am
ATE 3403	3	Rehabilitation of Athletic Injuries	TTh	9:30 - 10:50 am
ATE 3833	3	Clinical Practicum in Athletic Training III	TBA	TBA
ATE 3843	3	Clinical Practicum in Athletic Training IV	TBA	TBA
ATE 4303	3	Organization and Administration of Athletic Training	MW	11:00 - 12:20 pm
ATE 4813	3	Clinical Practicum in Athletic Training V	TBA	TBA
ATE 4833	3	Clinical Practicum in Athletic Training VI	TBA	TBA
BIOLOGY				
BIO 1154	3	General Biology II	MW	9:30 - 10:50 am
BIO 115L	1	General Biology Laboratory II	Tu	8:00 - 9:50 am
BIO 2114	3	Principles of Human Anatomy & Physiology II	MW	11:00 - 12:20 pm
BIO 211L	1	Principles of Human Anatomy & Physiology Laboratory II	Tu	11:00 - 12:50 pm
BIO 3303	3	Management & Conservation of Natural Resources	MW	8:00 - 9:20 am
BIO 3323	3	Vertebrate Zoology	TTh	2:30 - 3:50 pm
BIO 332L	1	Vertebrate Zoology Laboratory	M	1:00 - 2:50 pm
BIO 3503	3	General Ecology	TTh	1:00 - 2:20 pm
BIO 4223	3	Field Biology	Fri	9:00 - 11:50 am
BIO 4703	3	Topics	Fri	9:00 - 11:50 am
BUSINESS ADMINISTRATION				
BUA 3303A	3	Professional Communication & Sales Presentation	TTh	9:30 - 10:50 am
BUA 3413A	3	Business Law II	MW	1:00 - 2:20 pm
BUA 3413B	3	Business Law II	MW	5:30 - 6:50 pm
CHEMISTRY				
CHE 1204	3	Principles of Chemistry II	MW	1:00 - 2:20 pm
CHE 120L	1	Chemistry Laboratory II	Tu	1:00 - 2:50 pm
COMPUTER SCIENCE				
CSI 1203	3	Computer Applications	MW	9:30 - 10:50 am
CSI 2203A	3	Educational Technology	MW	6:30 - 7:50 am
CSI 2203B	3	Educational Technology	TTh	8:00 - 9:20 am
CSI 2213	3	Electronic Spreadsheets	TTh	8:30 - 9:50 pm
COLLEGE COURSES				
CSW 4691A	1	Senior Seminar in Leadership and Ethics	Tu	11:00 - 11:50 am
CSW 4691B	1	Senior Seminar in Leadership and Ethics	Th	11:00 - 11:50 am
CSW 4691C	1	Senior Seminar in Leadership and Ethics	Tu	5:30 - 6:20 pm
CRIMINAL JUSTICE				
CRJ 3503	3	Juvenile Justice Systems	MW	7:00 - 8:20 pm
CRJ 4503	3	Penology	MW	8:30 - 9:50 pm
ECONOMICS				
ECO 2802	2	Internship in Free Enterprise	TTh	11:00 - 11:50 am
ECO 3203A	3	Principles of Business in a Free Enterprise System	TTh	8:00 - 9:20 am
ECO 3203B	3	Principles of Business in a Free Enterprise System	TTh	9:30 - 10:50 am
ECO 3203C	3	Principles of Business in a Free Enterprise System	M	7:00 - 9:40 pm



Rachel Fisher
Human Relations
Lovington, New Mexico



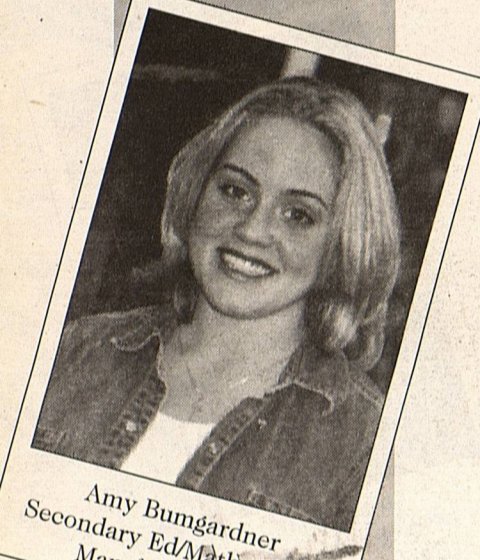
Bobbie Johnson
Elem & Sec Ed/Language Arts
Eunice, New Mexico



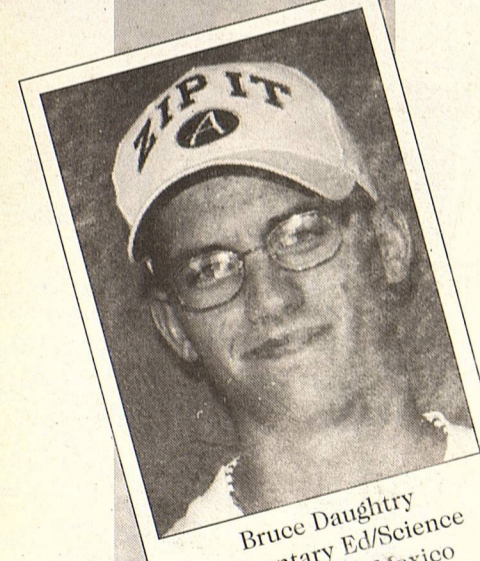
Stephanie Mann
Elem & Sec Ed/Language Arts
Hobbs, New Mexico



Eva Marie Anguish
Secondary Ed/Social Studies
Hobbs, New Mexico



Amy Bumgardner
Secondary Ed/Mathematics
Mansfield, Texas

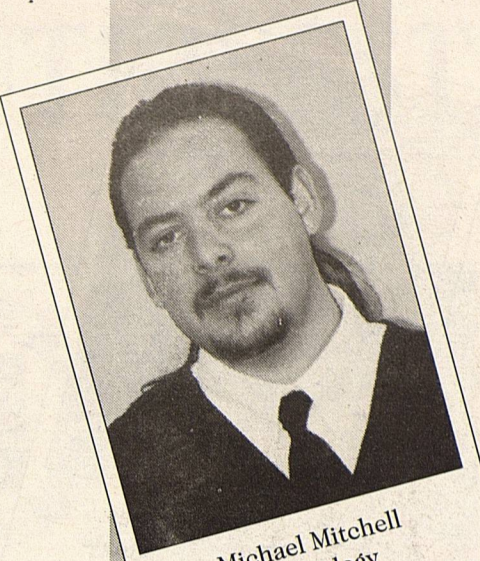


Bruce Daughtry
Elementary Ed/Science
Eunice, New Mexico

MATHEMATICS					
MAT 1103	3	College Algebra for General Education	Sat	9:00 - 12:00 pm	CSWC Hayes
MAT 3323	3	Statistics II	W	6:00 - 9:00 pm	CSWC Hayes
MAT 4703	3	Topics in Mathematics: Math Their Way	Sat	1:00 - 4:00 pm	CSWC Oney
MAT 5703	3	Topics in Mathematics: Math Their Way	Sat	1:00 - 4:00 pm	CSWC Oney
POLITICAL SCIENCES					
POS 3103	3	American Ideologies	Th	9:00 - 12:00 pm	CSWC Vaughn
PSYCHOLOGY					
PSY 1103	3	General Psychology	M	6:00 - 9:00 pm	CSWC Roberto
PSY 3113	3	Cognition	W	6:00 - 9:00 pm	CSWC Roberto
PSY 4203	3	Abnormal Psychology	M	6:00 - 9:00 pm	CSWC Frazier
RELIGION					
REL 1203	3	New Testament Survey	Th	6:00 - 9:00 pm	CSWC Robinson
SOCIOLOGY					
SOC 2213	3	Marriage and Family	Sat	9:00 - 12:00 pm	CSWC Frazier
SPEECH					
SPE 3103	3	Professional Speech Communication	Fri	9:00 - 12:00 pm	CSWC Milligan

PSY 3223A	3	Psychology of Aging	TTh	2:30 - 3:50 pm	L109 Sweat
PSY 3223B	3	Psychology of Aging	MW	7:00 - 8:20 pm	S103 Barchenger
PSY 3403	3	Interpersonal Group Dynamics	MW	5:30 - 6:50 pm	M-4 Barchenger
PSY 3503A	3	Social Psychology	TTh	6:30 - 7:50 am	S110 Anderson
PSY 3503B	3	Social Psychology	MW	1:00 - 2:20 pm	M-4 Staff
PSY 4213A	3	Theories of Guidance & Counseling	TTh	8:00 - 9:20 am	M-2 Staff
PSY 4213B	3	Theories of Guidance & Counseling	TTh	5:30 - 6:50 pm	S113 Sweat
PSY 4403	3	Experimental Psychology	TTh	11:00 - 12:20 pm	S103 Wolske
PSY 4703	3	Topics: Existential Therapy	Sat	9:00 - 11:50 am	M-1 Reed
PSY 4803	3	Psychology Practicum	TBA	TBA	Wolske
RELIGION					
REL 1101	1	Life I	Tu	12:00 - 12:50 pm	MSC Staff
REL 1103A	3	Old Testament Survey	MW	1:00 - 2:20 pm	M-3 Reed
REL 1103B	3	Old Testament Survey	MW	2:30 - 3:50 pm	M-3 Glasgow
REL 1103C	3	Old Testament Survey	Fri	1:00 - 3:50 pm	M-3 Staff
REL 1103D	3	Old Testament Survey	TTh	7:00 - 8:20 pm	M-3 Glasgow
REL 1201	1	Life II	Tu	12:00 - 12:50 pm	MSC Staff
REL 1203A	3	New Testament Survey	TTh	2:30 - 3:50 pm	M-3 Staff
REL 1203B	3	New Testament Survey	TTh	5:30 - 6:50 pm	M-3 Glasgow
REL 1301	1	Life III	Tu	12:50 - 12:50 pm	MSC Staff
SOCIOLOGY					
SOC 1103	3	Introduction to Sociology	TTh	9:30 - 10:50 am	S110 Staff
SOC 3503A	3	Social Psychology	TTh	6:30 - 7:50 am	S110 Anderson
SOC 3503B	3	Social Psychology	MW	1:00 - 2:20 pm	S113 Staff
SPANISH					
SPA 3103	3	Spanish Comparative Linguistics	TTh	5:30 - 6:50 pm	S103 Palomo
SPA 3203	3	Spanish Grammar & Composition	TTh	4:00 - 5:20 pm	L109 Palomo
THEATRE					
THE 1103	3	Introduction to Theatre	TTh	9:30 - 10:50 am	MHC Floyd
THE 1602	2	Theatre Workshop	TBA	TBA	MHC Floyd
THE 2213	3	Acting	TTh	2:30 - 3:50 pm	MHC Floyd
THE 3213	3	Advanced Acting	TTh	2:30 - 3:50 pm	MHC Floyd
THE 2602	2	Theatre Workshop	TBA	TBA	MHC Floyd
THE 3303	3	European Classics	TTh	1:00 - 2:20 pm	MHC Floyd
THE 3602	2	Theatre Workshop	TBA	TBA	MHC Floyd
THE 4602	2	Theatre Workshop	TBA	TBA	MHC Floyd

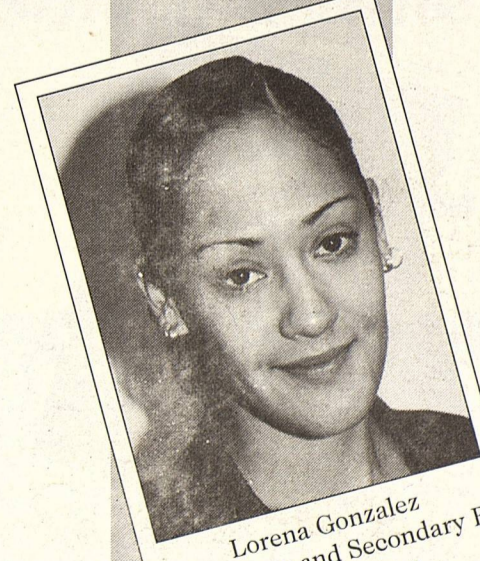
NOTE: Room numbers may change; check with the Registrar's office.



Michael Mitchell
Psychology
Hobbs, New Mexico



Heather Presley
Elementary Ed/Language Arts
Vista, California



Lorena Gonzalez
Elementary and Secondary Ed
El Paso, Texas

COLLEGE OF THE SOUTHWEST - CARLSBAD
FALL SESSION "A"
JULY 31, 2000 - OCTOBER 6, 2000

Advisement, Pre-Registration Fall "A"	July 17 - 21
Registration Textbook Purchase	July 24 - 28
* Classes Begin	July 31
Last Day to Change Classes	August 7
Last Day for 100% Refund	August 7
Zero Percent Refund	August 15
Last Day to Withdraw with a "W"	August 28
Final Examinations	October 2 - 6

FALL SESSION "B"
OCTOBER 9, 2000 - DECEMBER 15, 2000

Advisement, Pre-Registration Fall "B"	September 25 - 29
Registration Textbook Purchase	October 2 - 6
* Classes Begin	October 9
Last Day to Change Classes	October 16
Last Day for 100% Refund	October 16
Zero Percent Refund	October 24
Last Day to Withdraw with a "W"	November 6
Final Examinations	December 11 - 15

*The scheduled rates are set according to the day classes begin; therefore, refunds are not based on the date an individual registers or begins attending class.

TUITION & FEES

Tuition Per Semester Hour	\$170.00
Directed Studies Per Semester Hour	182.00
Audit Per Semester Hour	85.00
Application Fee (One Time Only)	25.00
Change of Course Fee (Per Change Slip)	20.00
This charge made for any course change(s) other than those required by the College.	
Placement Fee	8.00
Recording Fee (On Transcripts)	15.00
Per Credit Hour	
Transcript (Official); First Transcript Free of Charge	5.00
Transcript (Domestic-Fax Only)	10.00
Transcript (Student Copy)	1.00
Student Service Fee	35.00

NOTE: Fees are not refundable. A complete list of fees is contained in the 2000-2002 Bulletin. All tuition, fees, and other expenses are due at the beginning of the session. If a student's account is not clear by the fourteenth class day of the session, the student will be dropped from classes with a financial indebtedness. CSW reserves the right to make such changes as it deems necessary.

HOBBS CAMPUS --- FALL 2000
AUGUST 21 - DECEMBER 9, 2000

Registration 9:00 am to 6:00 pm	August 17
Dorms Open	August 20
*Classes Begin	August 21
All College Convocation (Attendance Required)	August 22
Last Day to Change Classes	August 25
Last Day for 100% Tuition Refund	August 25
Labor Day - Classes Dismissed	September 4
Zero Percent Tuition Refund	September 18
Last Day to Withdraw with a "W"	October 6
Last Day to File for Graduation	November 6
Thanksgiving Holiday Begins at 1:00	November 22
Classes Resume	November 27
Final Examinations	December 4-8
Commencement	December 9
Dorms Closed	December 9

* The scheduled rates are set according to the day classes begin; therefore, refunds are not based on the date an individual registers or begins attending class. Note: Tuition refunds for Special Course Offerings will not be made after classes have begun.

TUITION & FEES

Tuition Per Semester Hour	\$150.00
Graduate Tuition Per Semester Hour	158.00
Directed Studies Per Semester Hour	162.00
Audit Per Semester Hour	75.00
Application Fee (One Time Fee)	25.00
Change of Course Fee (Per Change Slip)	20.00
This charge made for any course changes other than those required by the College.	
Student Service Fee for Fall Session	95.00

NOTE: Fees are not refundable. A complete list of fees is contained in the 2000-2002 Bulletin. All tuition, housing expenses, and fees are due at the beginning of the semester. If a student's account is not clear by the twenty-first class day, the student will be dropped from classes with a financial indebtedness. CSW reserves the right to make such changes as it deems necessary.

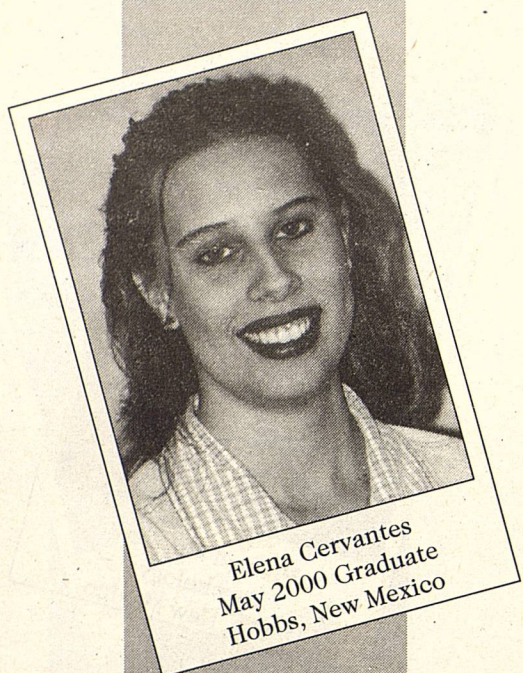
COLLEGE OF THE SOUTHWEST - CARLSBAD
FALL "A" SESSION
JULY 31 - OCTOBER 6, 2000

MASTER OF SCIENCE IN EDUCATION COURSE OFFERINGS

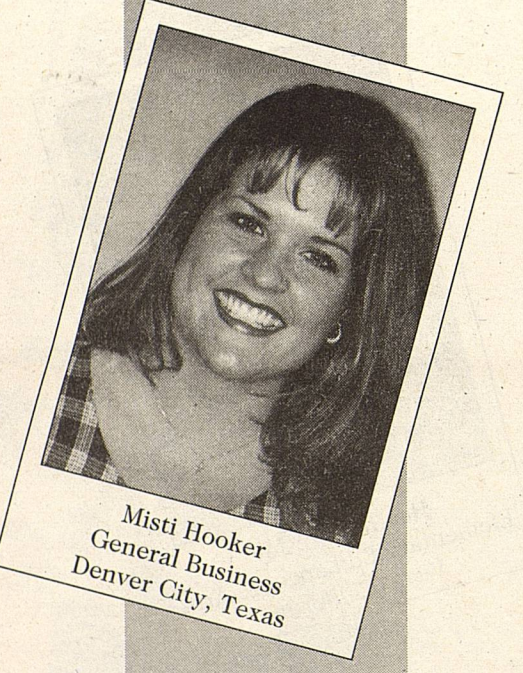
COURSE NO.	CR	TITLE	DAY	TIME	ROOM	FACULTY
ADMINISTRATION						
EDA 5313B	3	Educational Law (ITV)	Sat	9:00 - 12 Noon	L109	Cagle
EDA 5803	3	Internship in Educational Administration	TBA	TBA		Posey, E
COUNSELING						
EDC 5103	3	Career Development (ITV)	M	6:00 - 9:00 pm	L109	Posey, E
EDC 5403B	3	Group Processes	Th	6:00 - 9:00 pm	L109	Frazier
EDC 5803	3	Internship in Counseling	TBA	TBA		Sanders
CURRICULUM & INSTRUCTION						
EDI 5313B	3	Educational Law (ITV)	Sat	9:00 - 12 Noon	L109	Cagle
EDUCATION CORE						
EDU 5103	3	Instructional Strategies (ITV)	Th	6:00 - 9:00 pm	L109	Castillo
EDU 5203A	3	Theories of Learning & Human Developmt. (ITV)	Tu	6:00 - 9:00 pm	L109	Frazier
EDU 5203B	3	Theories of Learning & Human Developmt. (ITV)	Sat	1:00 - 4:00 pm	L109	Sanford
EDU 5523B	3	Educational Statistics & Research Design (ITV)	W	6:00 - 9:00 pm	L109	Dunn, E

UNDERGRADUATE COURSE OFFERINGS

COURSE NO.	CR	TITLE	DAY	TIME	ROOM	FACULTY
ACCOUNTING						
ACT 2204	4	Principles of Accounting I	Internet Class			Lunsford
ACT 3133	3	Managerial Accounting	W	6:00 - 9:00 pm	CSWC	Lunsford
ART						
ART 1103	3	Art Appreciation (ITV)	MW	1:00 - 2:20 pm	L109	Staff
ART 2103	3	History of Western Art I (ITV)	MW	11:00 - 12:20 pm	L109	Staff
BIOLOGY						
BIO 3513	3	Cell Biology	Sat	9:00 - 12:00 pm	CSWC	Bierle, B
BIO 4223	3	Field Biology	Sat	9:00 - 12:00 pm	CSWC	West
BUSINESS ADMINISTRATION						
BUA 3303	3	Professional Communication & Sales	Th	1:00 - 4:00 pm	CSWC	Milligan
BUA 3313	3	Business Law I	Th	6:00 - 9:00 pm	CSWC	Banks, D
CRIMINAL JUSTICE						
CRJ 1703	3	Introduction to Criminal Justice	Internet Class			Lunsford
CRJ 3103	3	Criminology	Internet Class			Lunsford
CRJ 3403	3	Community Corrections	M	6:00 - 9:00 pm	CSWC	Perozynski
CRJ 3503	3	Juvenile Justice Systems	Th	6:00 - 9:00 pm	CSWC	Blenden
COMPUTER SCIENCE						
CSI 1203	3	Computer Applications	Sat	9:00 - 12:00 pm	CSWC	Williams, L
CSI 2203	3	Educational Technology	Sat	1:00 - 4:00 pm	CSWC	Baca
ECONOMICS						
ECO 3802	2	Internship in Free Enterprise (ITV)	TTh	11:00 - 12:20 pm	L109	DiUlus
ECO 3203	3	Principles of Business in a Free Enterprise System (ITV)	TTh	9:30 - 10:50 am	L109	Case
ECO 4802	2	Internship in Free Enterprise (ITV)	TTh	11:00 - 12:20 pm	L109	DiUlus
EDUCATION						
BIO 3301	1	Assessment & Evaluation	W	4:00 - 5:00 pm	CSWC	Castillo
EDU 1101	1	Field-Based Observation	Tu	4:30 - 5:30 pm	CSWC	Nelson
EDU 2103	3	Foundations of Education	Tu	6:00 - 9:00 pm	CSWC	Wittman
EDU 3222A	2	Classroom Management & Organization (ITV)	MW	9:30 - 10:50 am	L109	Ayyagari
EDU 4203	3	Diagnostic/Corrective Teaching	M	6:00 - 9:00 pm	CSWC	Wheeler
EDU 4213	3	Teaching in the Secondary School	M	6:00 - 9:00 pm	CSWC	Staff
EDU 4546	6	Student Teaching	TBA	TBA		Wheeler
EDU 4601	1	Student Teaching Seminar	W	5:00 - 6:00 pm	CSWC	Wheeler
SPED 1101	1	Field-Based Observation in Special Education	M	4:00 - 5:00 pm	CSWC	Fox
SPED 2103	3	Intro. to Exceptional Learners & Special Ed	W	6:00 - 9:00 pm	CSWC	Fox
SPED 4241	1	The Learning Disabled Learner	M	5:00 - 6:00 pm	CSWC	Fox
ENGLISH						
ENG 1113A	3	Rhetoric & Composition	M	9:00 - 12:00 pm	CSWC	Castillo
ENG 1113B	3	Rhetoric & Composition	Internet Class			Milligan
ENG 2403	3	Survey of American Literature (ITV)	TTh	8:00 - 9:20 am	L109	Sandle
ENG 2423	3	Survey of Western Literature	M	9:00 - 12:00 pm	CSWC	Walker
ENG 3503	3	Advanced Grammar	Th	6:00 - 9:00 pm	CSWC	Merchant, K
ENG 4403	3	Advanced Composition	F	1:00 - 4:00 pm	CSWC	Milligan
ENG 4533	3	Major American Author	F	9:00 - 12:00 pm	CSWC	Milligan
ENVIRONMENTAL MANAGEMENT						
EMS 3303	3	Soc. Analysis of Contemp Environmental Issues	Sat	9:00 - 12:00 pm	CSWC	Scott
EMS 4402	2	Renewable Resource Management	W	6:00 - 9:00 pm	CSWC	West
EMS 4813	3	Seminar in Environmental Studies	Tu	6:00 - 9:00 pm	CSWC	Scott
FINANCE						
FIN 2403	3	Principles of Finance	M	6:00 - 9:00 pm	CSWC	Bradford
FIN 3443	3	Financial Analysis	W	6:00 - 9:00 pm	CSWC	Abercrombie
GEOGRAPHY						
GEOG2303	3	History & Geography of New Mexico	Tu	9:00 - 12:00 pm	CSWC	Vaughn
HISTORY						
HIS 2103	3	American History to 1876	Th	1:00 - 4:00 pm	CSWC	Vaughn
HIS 2303	3	History & Geography of New Mexico	Tu	9:00 - 12:00 pm	CSWC	Vaughn
HIS 3223	3	Civil War & Reconstruction (ITV)	TTh	1:00 - 2:20 pm	L109	Sumruld
MANAGEMENT						
MGT 3133	3	Computer Applications Technology	M	6:00 - 9:00 pm	CSWC	Williams



Elena Cervantes
May 2000 Graduate
Hobbs, New Mexico



Misti Hooker
General Business
Denver City, Texas



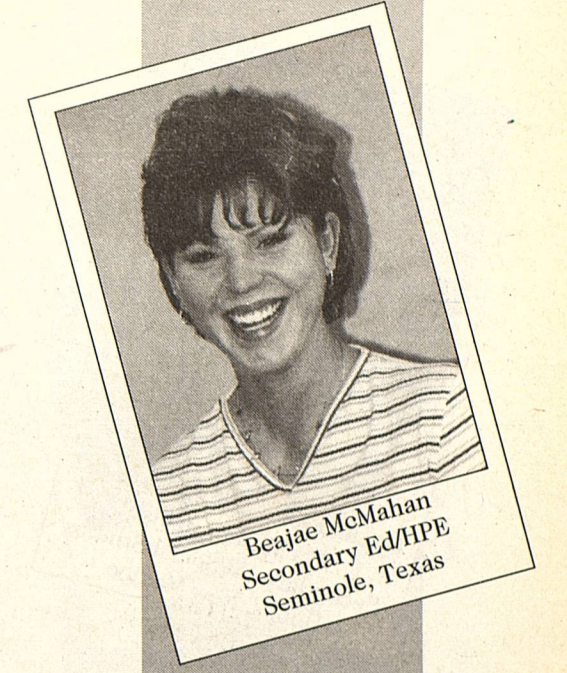
Gina Lozano
Elementary Ed/Psychology
Hobbs, New Mexico

MGT 4103	3	Organizational Development & Change	W	6:00 - 9:00 pm	CSWC	Bendixson
MGT 4693	3	Senior Seminar in Organizational Management	Th	6:00 - 9:00 pm	CSWC	Staff
MARKETING						
MKT 3323	3	Principles of Sales Marketing	Tu	1:00 - 4:00 pm	CSWC	Vandergriff
MKT 4123	3	Services Marketing	Th	6:00 - 9:00 pm	CSWC	Abercrombie
MATHEMATICS						
MAT 3203	3	Discrete Mathematics	F	6:00 - 9:00 pm	CSWC	Hayes
MAT 3313	3	Statistics I	W	6:00 - 9:00 pm	CSWC	Hayes
MUSIC						
MUS 1103	3	Music Appreciation (ITV)	MW	4:00 - 5:20 pm	L109	Staff
POLITICAL SCIENCE						
POS 3113	3	Political Parties	W	9:00 - 12:00 Noon	CSWC	Vaughn
POS 4223	3	Constitutional History	Th	9:00 - 12:00 Noon	CSWC	Vaughn
PSYCHOLOGY						
PSY 3223	3	Psychology of Aging (ITV)	TTh	2:30 - 3:50 pm	L109	Sweet
PSY 3403	3	Interpersonal Group Dynamics	F	6:00 - 9:00 pm	CSWC	Hamel
PSY 3503	3	Social Psychology	W	6:00 - 9:00 pm	CSWC	Frazier
RELIGION						
REL 1103	3	Old Testament Survey	Th	6:00 - 9:00 pm	CSWC	Harbaugh
SOCIOLOGY						
SOC 1103	3	Introduction to Sociology	M	6:00 - 9:00 pm	CSWC	Frazier
SOC 3203	3	Race & Ethnic Relations	Tu	6:00 - 9:00 pm	CSWC	Staff

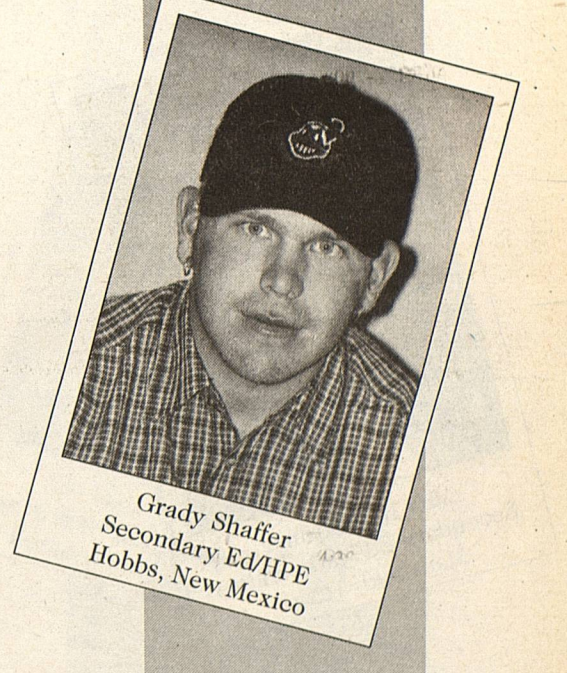
COLLEGE OF THE SOUTHWEST - CARLSBAD
FALL "B" SESSION
OCTOBER 9 - DECEMBER 15, 2000

UNDERGRADUATE COURSE OFFERINGS

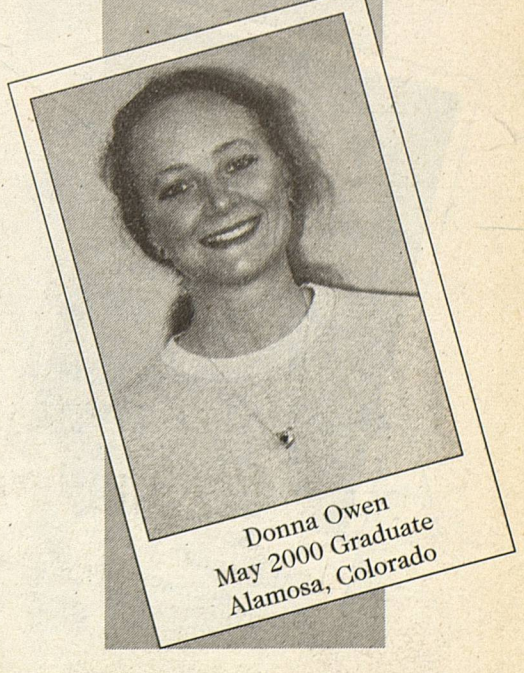
COURSE NO.	CR	TITLE	DAY	TIME	ROOM	FACULTY
ACCOUNTING						
ACT 2214	4	Principles of Accounting II	M	6:00 - 9:00 pm	CSWC	Lunsford
ACT 4203	3	Income Tax Accounting	Th	6:00 - 9:00 pm	CSWC	Lunsford
BIOLOGY						
BIO 3223	3	Vertebrate Zoology	Tu	6:00 - 9:00 pm	CSWC	Bierle
BIO 3503	3	General Ecology	Fri	1:00 - 4:00 pm	CSWC	Breene
BIO 4203	3	Entomology	Fri	1:00 - 4:00 pm	CSWC	Breene
BUSINESS ADMINISTRATION						
BUA 3413	3	Business Law II	Th	6:00 - 9:00 pm	CSWC	Banks
CRIMINAL JUSTICE						
CRJ 2703	3	Introduction to Judicial Process	Internet Class			Lunsford
CRJ 2713	3	Criminal Law I	Internet Class			Lunsford
CRJ 4203	3	Issues in Ethics, Law, and Criminal Justice	Internet Class			Staff
CRJ 4303	3	Criminal Justice Administration	W	6:00 - 9:00 pm	CSWC	Staff
COLLEGE COURSES						
CSW 4691	1	Senior Seminar in Leadership and Ethics	Sat	11:00 - 12:00 pm	CSWC	Staff
ECONOMICS						
ECO 2103	3	Principles of Macroeconomics	Sat	9:00 - 12:00 pm	CSWC	Connors
EDUCATION						
BIL 3202	2	Teaching English as a Second Language	W	1:00 - 3:00 pm	CSWC	Castillo
BIL 4101	1	Bilingual Research	W	3:00 - 4:00 pm	CSWC	Castillo
EDU 3203	3	Psych. Foundations of Teaching & Learning	W	9:00 - 12:00 pm	CSWC	Wheeler
EDU 3213	3	Survey of Multicultural & Exceptional Learners	W	6:00 - 9:00 pm	CSWC	Castillo
EDU 3503	3	Communication Arts in the Elementary School	W	2:00 - 5:00 pm	CSWC	Wheeler
EDU 3523	3	Educational Measurement & Evaluation	M	6:00 - 9:00 pm	CSWC	Click
EDU 4114	4	Teaching in the Elementary School	W	6:00 - 9:00 pm	CSWC	Staff
EDU 4502	2	Field Experience II	W	6:00 - 9:00 pm	CSWC	Nelson
SPED 3323	3	Methods & Materials for Special Education	M	6:00 - 9:00 pm	CSWC	Hamberg
SPED 3523	3	Assessment, Evaluation, Referral, & Placement of the Exceptional Learner	Tu	6:00 - 9:00 pm	CSWC	Fox
SPED 4101	1	Research in Special Education	Th	5:00 - 6:00 pm	CSWC	Fox
SPED 4211	1	The Physically-Impaired Learner	Th	6:00 - 7:00 pm	CSWC	Fox
SPED 4221	1	The Mentally-Impaired Learner	Th	7:00 - 8:00 pm	CSWC	Fox
SPED 4231	1	The Behavior-Disordered Learner	Th	8:00 - 9:00 pm	CSWC	Fox
ENGLISH						
ENG 1123	3	Rhetoric & Literature	M	9:00 - 12:00 pm	CSWC	Milligan
ENG 3223	3	Technical Writing	Th	6:00 - 9:00 pm	CSWC	Milligan
ENG 3513	3	Children's Literature	Tu	6:00 - 6:00 pm	CSWC	Wittman
ENG 3583	3	Masterworks of Literature	Fri	1:00 - 4:00 pm	CSWC	Buckholz
ENVIRONMENTAL MANAGEMENT						
EMS 3113	3	Survey of Environmental Law	Tu	6:00 - 9:00 pm	CSWC	Barnes
EMS 3202	2	Intro. to Fossil and Non-Fossil Fuel Energy	W	6:00 - 9:00 pm	CSWC	Standiford
EMS 4833	3	Senior Project in Environmental Management	Th	6:00 - 9:00 pm	CSWC	Scott
FINANCE						
FIN 3423	3	Financial Management	Th	6:00 - 9:00 pm	CSWC	Connors
HISTORY						
HIS 1103	3	Western Civilization to 1715	Internet Class			Sumruld
HIS 2203	3	American History from 1877	Th	1:00 - 4:00 pm	CSWC	Vuk
LINGUISTICS						
LIN 2253	3	Introduction to Linguistics	M	9:00 - 12:00 pm	CSWC	Walker
MANAGEMENT						
MGT 3403	3	Human Resources & Performance Evaluation	Tu	1:00 - 4:00 pm	CSWC	Vandergriff
MGT 4683	3	Senior Project in Organizational Management	W	6:00 - 9:00 pm	CSWC	Staff
MARKETING						
MKT 4323	3	Marketing Analysis for Managers	M	6:00 - 9:00 pm	CSWC	Staff



Beajae McMahan
Secondary Ed/HIPE
Seminole, Texas



Grady Shaffer
Secondary Ed/HIPE
Hobbs, New Mexico



Donna Owen
May 2000 Graduate
Alamosa, Colorado