

BAZE, BOOKBINDING
514 W 7TH AVE
AMARILLO, TX
ARCHIVES
79101
2 0514

Cowboy Country News

50¢

Published each Wednesday in the county seat of Yoakum County, Plains, Texas

Volume V11, Issue 12, December 6, 2000



Read your mail carefully - money scams still around

The U.S. Postal Inspection Service and the U.S. Secret Service report "The Nigerian Scam" is still alive, and people are still intrigued by it. Apparently started in Great Britain in the mid-1980's, the scam has bilked individuals and businesses over \$250 million worldwide. A recent incident illustrates even citizens of Yoakum County could be targeted as Nigerian Scam victims.

Tommy Hicks, owner of Hicks Air and Appliances in Denver City, recently received an official looking letter from one Dr. James Aleri, purportedly Manager of Budget and Planning for the Nigerian Ministry of Petroleum. The letter stated quite calmly, "We believe that you would be in a position to help us in our bid to transfer the sum of \$41.5 million U.S. dollars into a foreign account."

The letter explains the millions were accumulated from "undeclared windfalls from sales of crude oil during the Gulf War." The 'good Doctor' further advised Hicks Nigerian laws prohibit government officials from operating foreign bank accounts, and for providing them with a depository for the \$41.5 million, Hicks would receive the princely sum of \$8.3 million for the temporary use of his account.

In a telephone conversation with Hicks, he told CCN, "I had to read the thing twice, and both times I thought, someone has fallen out of a tree!" He then gave the Nigerian letter to Criminal District Attorney Clark. The CDA furnished information from both postal authorities and the Secret Service on the scam, outlining probable future developments. The scam target would be urged to reply by phone or fax, eventually furnish bank account information, blank company letterhead forms, urged to travel to Nigeria to complete the transfer, advised of necessary attorney fees to be paid before the transfer could be completed, even bribery funds for certain Nigerian officials.

Information from the two U.S. government agencies warn citizens in the strongest language, DO NOT get involved. It is an open invitation to financial disaster, and a number of U.S. citizens who traveled to Nigeria to consummate the great windfall have not only lost their money, but have been jailed, and a number have been killed.

Local Lions Club President honored in Lubbock

Plains Lions Club President Debbie Rushing was invited as a special guest to attend a meeting of the Lubbock Noon Lions Club on November 21. The Lubbock club is the second largest Lions Club in the nation.

Ms. Rushing said the Lubbock Club President introduced her, and a spokesman for Habitat For Humanity told

of her three days volunteer labor building a new and free home in Lubbock for a deserving family. He said, "She showed up for work with a smile on her face, and after three days of hard work, she was still smiling."

She received an engraved medallion with key chain with the inscription, "Above & Beyond".



A Visitor From The North Pole!

Last Wednesday's Christmas tree lighting ceremony in Pioneer Park drew what sponsoring Chamber of Commerce officials say was one of the largest crowds ever.

Following Brother Bill Wright's reading of the Christmas Story, and the Cowboy Band playing seasonal tunes, Santa Claus' arrival via the local fire truck was greeted with shouts of excitement from hundreds of youngsters.

Each child who brought at least one can of food had their photo taken with Santa in the Community Building.



The expressions on these kids escorting Santa to the photo session explain a great deal about Christmas



Micah was delighted to pose on Mr. Claus' knee



Bailey Winn struck a great pose with Santa Claus.

There's Power In The Sky

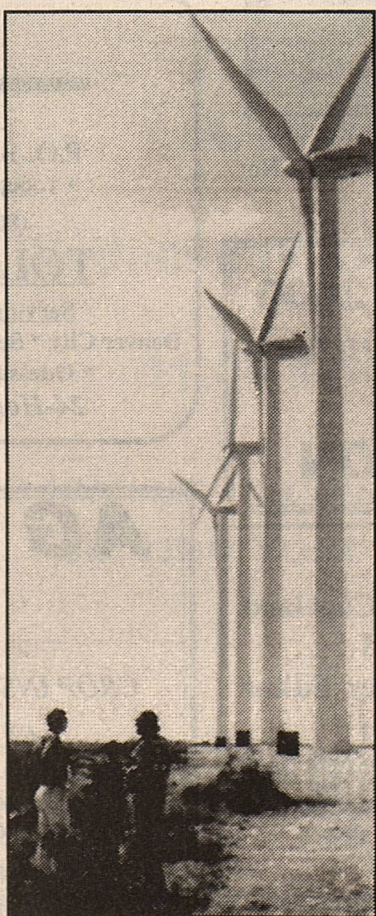
West Texas has a new crop: Electricity. Tall, odd shaped structures are popping up in West Texas. They're wind turbines, an old technology with a 21st century update. Once too expensive for commercial production, computer controlled turbines and the rise in fossil fuel prices has brought the cost of wind-generated electricity in line with other power sources.

A push by the 1999 Texas Legislature to restructure the retail electric power market put in place rules that encourage wind generation. One rule requires Texas utilities to get an additional 2,000 megawatts power from renewable resources, such as wind and solar power by 2009. A megawatt is a million watts, or a thousand kilowatts. Rules easing the cost of transmitting electricity from remote areas aids the development of wind farms in West Texas.

A big boost is the market - the cost of wind generated electricity has dropped from 38 cents a kilowatt hour to about four cents in 2000, a rate comparable to other sources.

In 1998, a 75 megawatt wind farm was built at McCamey. It supplies power to Texas based Central and South West Corp.

Utilities in Houston, Dallas, Austin, San An-

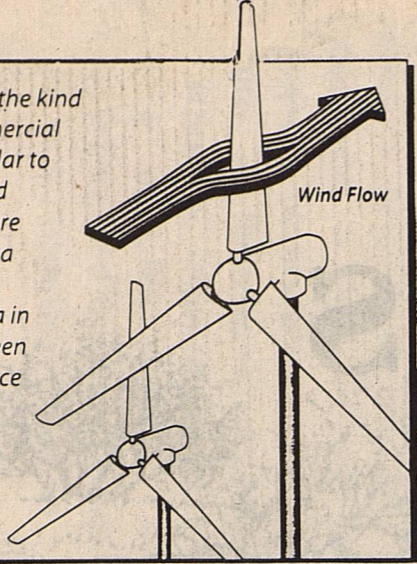


tonio and Amarillo are proposing wind projects with a total capacity of more than 500 megawatts. They should come on line in 2001, and when all are completed the utilities will be well on the way to their 2009 goal.

The 200 megawatt project to be built atop 3,141 foot King Mountain near McCamey, is billed by Reliant Energy of Houston as the largest in the world. Reliant, formerly Houston Lighting and Power, will buy 75% of the electricity generated, and the City of Austin will buy the rest. The power will be generated from 160 wind turbines - each capable of generating some 1.3 megawatts - and will supply enough power to serve nearly 65,000 households.

Dallas based TXU will buy electricity from another 160 megawatt wind turbine facility, also to be built in the West Texas high mesa area. Wind produced electricity is already flowing from a 41 megawatt wind plant at Big Spring, which has the highest wind turbines in the world. Other smaller projects are wind farms producing electric power for SPS Amarillo, Austin Energy, and City Public Service. Please turn to page 2, "Wind Power"

Horizontal axis wind turbines, the kind most commonly used in commercial applications, have blades similar to airplane propellers. When wind passes over them, it moves more rapidly over one side, creating a low pressure area behind the blade and a high pressure area in the front. The difference between the two pressures creates a force that cause the blades to spin.



Source: The Center for Renewable Energy and Sustainable Technology.

of San Antonio. Plans are also underway for construction of an 82 megawatt wind farm in Pecos County.

A combination of factors has come together in Texas to make this happen, according to The American Wind Energy Association. Texas' abundance of wind, a drop in costs of wind energy technology, a well crafted requirement for renewable energy, and non-discriminatory electricity transmission rules.

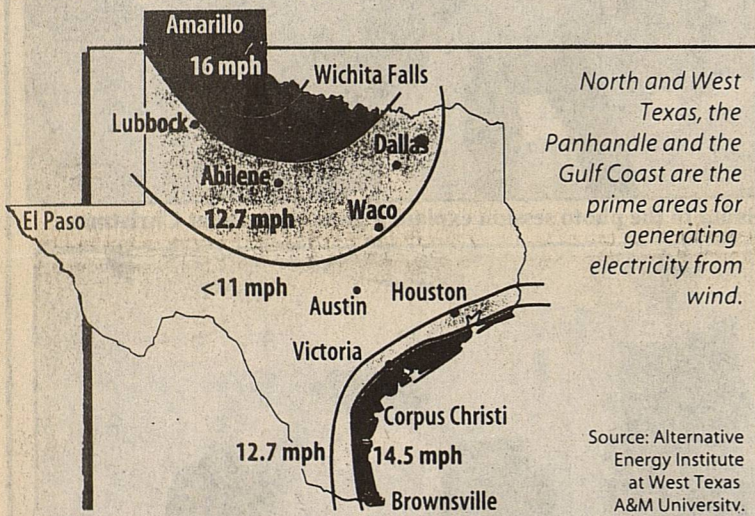
Texas is one of the best areas in the U.S. to capture wind energy for electricity. It's been calculated the state has enough wind energy to produce 250,000 megawatts of power - the annual energy equivalent of 1.3 BILLION barrels of crude oil and about five times the total present electrical generating capacity in Texas.

The American Wind Energy Association calculates commercial wind turbines need

annual average winds speeds of at least 11 mph. Virtually all of Texas meets that criteria, but North and West Texas, the Panhandle and Gulf Coast all exceed the minimum, with wind speeds averaging 12.7 mph along the coast, and 16 mph in the Panhandle.

Happily, the economics of wind energy are not limited to a cost per megawatt of electricity comparable to other energy sources. Wind is bringing investments to a part of Texas at the mercy of oil and gas prices and a water dependent agricultural economy. It takes 4,000 pounds of water to make one megawatt-hour of electricity in a conventional power plant. The wind generators don't use water, preserving a scarce West Texas resource, and keeping costs down.

** Information for this article courtesy of FISCAL NOTES, a publication of the Texas Comptroller Office.



Barbosa golf tournament held

The Austin Wholesale and Decking Supply Company celebrated their 3rd annual golf tournament earlier in Austin, and business owner Zaragosa Barbos reported the event was a huge success. He was presented an award from his employees and many of the contractors he does business with. Among several bands performing at the event were five time Grammy award winner Flaco Jimenez and his Conjunto group. Mr. and Mrs. Barbosa wish to thank everyone who made the tournament a success.



Pictured are Zaragosa Barbosa, Benjamin Barbosa, Flaco Jimenez, Fernando Barbosa, and family guest Mike Bernal of Lubbock. Not shown, Ramiro Barbosa

MEMBER 2000
Cowboy Country
News
TEXAS PRESS ASSOCIATION

Cowboy Country News
Published weekly each Wednesday at 1205 Copeland Ave., PO Box 179, Plains, TX 79355
Holly Dyer, Publisher Gary Dyer, Editor
Subscription price in Zip Code 793 \$15 annually
Other Zip Codes \$18 annually. Periodical postage rate paid at Plains, Tx. POSTMASTER; Send address changes to Cowboy Country News, Box 179, Plains, Tx. 79355
E-Mail us at ccn@hiplains.net
ID# 017574 806-456-8451 FAX 806-456-2010

Services held for Melva Foister

Lawton, OK - Services for Melva Foister, 65, of Lawton were held recently at St. Paul's Methodist Church, with Rev. Bob Johns officiating. Burial was at Post Cemetery in Ft. Sill, OK.

She died Thursday, Nov. 2, 2000 at her home. She was born June 3, 1935, in Lamesa. She graduated from high school in Littlefield. She married Larry Wesley Foister Sept. 4, 1976 in Denton. She retired from civil service after 30 years service. At Ft. Sill, she was the first female civilian awarded the medal of The Order of St. Barbara. She was an active member of the Center for Creative Living Quilt Club and Wichita Quilt Club. She was a mem-

ber of St. Paul's Methodist Church.

A son, David, preceded her in death. Survivors include her husband; a son, Russell Hays of Charleston, SC; three daughters, Sherry Mayer, Summerville, SC, Debbie Coddington, Mansfield, and Donna Brooks of Round Rock; her mother, Alma Been of Lubbock; three brothers, Burl Anderson, Arlington, Gerald Anderson, Lubbock, and Ernie Anderson, Houston. Two sisters, Carol Williams, Anchorage, and Kathy Gillasphy, Galveston, and one great grandchild. The family suggests memorials to the American Cancer Society.

Grand Jury selection list for the 121st District Court on December 11, 2000 at 9:00 A.M.

A Grand Jury selection will be held for the 212st District Court of Yoakum County, Texas, on December 11, 2000 at 9:00 a.m. at the Courthouse in Plains, Texas. The following citizens have been summoned to appear:

Plains & Tokio Residents:

Mario Ruiz Medina, Ashlee Brooke Davis, Frances Irene Murphree, Sandra Ann Ramos, Jerry Lynn Parrish, Isaias T. Jimenez, Mike Blount, Latonna Brooks Keesee, Angelica Tarango, Diana Delos Santos Guerra, Ralph Edward Elam, Jobita Juarez Sandoval, Marie Isabell Gonzales, Janie Martinez Pando, Tammy D. Sellers, Guadalupe Herrera Saenz, Gary L. Six.

Denver City Residents:

Leroy Eldon Lott, Gregorio Phillip Garza, Melchor Arzate, Helen Williamson Fred, Richard L. Outka, Donald Gibson McLaurin, Veronica Flores, Laurentino Chavez Morales, Jack Dennis Miller, Modena B. Merritt, Frank Emmert, Barbara Hyden Wright, Frank Hernandez, Tenesy Villarreal, Loretta M. Cooley, Monica Lucille Jones, Rusty Jay Stevenson, Jessica M. Gonzalez, Erik Paul Lambert, Carlos Parra Verdugo, Therman B. Meyer, Daniel Medrano, Ruben Rufus Spurgeon, Yveta Bustamante Rivera, Ponciano Aguilar Lopez, Charles D. Jividen, Heather Amber Spurgeon, Amber Lee Lasalle, Resa Hanneman, Teresa V. Enriquez, Kari Anne Galyon, David Allen Gonzales, Judy Clayton London, Wanda Busby Snead, Eric Jesse Perez, Michael E. Warlick, John Allen Luther, Connie Crystle Torres, Sally Kidd Scott, Molly Cole Davis, Marcel John Dorethy, Bella Hernandez Guzman, Salvador Fernandez Martinez, Dennis G. Harrison.

Substance Abuse Program Offered

The Lubbock MHMR Center has received a grant from the Texas Commission on Alcohol and Drug Abuse to provide services in a fifteen county catchment area. These services cover a variety of programs.

Outreach, screening, assessment, referral and education will be provided to people who are believed to have a substance abuse issue. These will be offered at no cost in the included counties. For further information please contact Mona Kile at 806-787-8342.

Lubbock Regional MHMR Center will provide a youth prevention program in the counties. These programs will take place in various schools. Groups will be offered during the school day as well as after

school programming. Programming will be offered during holidays and spring and summer breaks. For further information please contact David Allen at 806-790-4458.

The counties in the catchment area are Lubbock, Lynn, Motley, Hockley, King, Lamb, Dickens, Floyd, Garza, Hale, Bailey, Cochran, Crosby, Terry and Yoakum.

A public resource center will be managed by Lubbock Regional MHMR Center. Substance abuse materials will be provided to the West Texas and Panhandle region. The "library" will be taken to many outlying counties and materials can be ordered. For further information please contact Rebeca Wallace at 806-767-1747.

SPS fuel increase to affect Lea County Electric bills

Electric bills issued in December could be higher due to sustained increases in fuel charges from Southwestern Public Service, Lea County Electric's wholesale power supplier, according to Allan Brown. Manager of Marketing and Member Services for the Cooperative. "The increase in the fuel component of customers electric bills has been caused by a significant increase in natural gas prices that began last summer. Our base rates for electric service have not changed, but fuel costs from our power supplier can and do fluctuate, and these costs are passed on to our customers through a power cost recovery factor (PCRF). While we do everything we can to minimize the impact of such changes to our customers by 'leveling' the factor rather than pass through monthly fluctuations from our wholesale supplier, significant increases make it necessary to adjust the factor," said Brown.

The new factor for December will be \$.01052 per kwh, up from the previous factor of \$.00797 per kwh. The change will result in an increase of \$1.91 for an average monthly use of 750 kwh.

Natural gas prices reached record highs last summer, driven largely by the growing nation wide demand for gas-fueled peaking electric generation units. "While we are still trying to make up ground for fuel costs incurred six months ago, it is our expectation natural gas prices will decline over time. Our budget payment plan can help our members avoid fluctuations in electric bills by establishing a fixed monthly payment," according to Brown. Customers interested in obtaining more information on this program are encouraged to call the Cooperative at 396-3631 or toll free at 800-510-5232.



More faces of kids greeting Santa last week

Bayless Jewelers
One Million Dollar
54th
Anniversary Sale
Just in time for the Christmas Season
At Savings up to
50%
off Regular Price
Sale Starts
Friday, Nov. 24th at 9:30 AM
507 W Main • Brownfield
(806) 637-4543

Christmas Wrapper
As your stockings are hung by the chimney with care, are your gifts not wrapped and looking bare?
CALL
DEBRA LOWE
for all your holiday wrapping needs
456-6585
leave a message

Lalitos
For Great Mexican Food
Hours: Tues.-Fri. 11:00 -9:00 Sat. 11:00 - 8:00
Sun. 11:00 - 2:00
All Major Credit Cards are Accepted
456-2233

O₂ medical
Equipment & Supply
P.O. Box 1347 * Denver City, Texas 79323
* 1-888-209-3706 Pager *(806) 891-0656 Cellular
(806) 592-1000 - Office * 592-3538 - Fax
TOLL FREE 1-800-688-9049
Serving the South Plains Region and BEYOND...
Denver City * Seminole * Plains * Brownfield * Lubbock * Midland
* Odessa * Andrews * Hobbs, NM * Lovington, NM
24-Hour Personal Service * 7 Days A Week

AG INSURANCE PLUS
CROP INSURANCE MPC1-CRC-CAT-CROP HAIL
FARM MACHINERY INSURANCE
Jim Brown 456-2788
Mobile 806-891-0449 or 891-0450 Home 592-3490
Jeff Lowery
Mobile 806-891-3133 Home 456-3195

Yoakum County Shootout II Action Scenes

PISD Basketball Summary

Jr. High:
 7th Girls - Report unavailable
 8th Girls - The 8th Lady Wranglers had a tough time with Coahoma and were downed 24-13. Marlie Diaz managed 5 points, Jesenia Suarez and Jamie Covarrubias had 3 each, and Kristian Morales 2. They play at Seagraves December 7, and Jr. High teams will compete there in the tournament Dec. 8 & 9.
 7th Boys - The younger Wranglers defeated Coahoma 47-24 Nov. 27. T. J. Cordova topped scoring with 11 points, Michael Therwanger had 10, Blake Parrish 8, David Allredge and Blake O'Quinn 6 each, Casson Curtis, Todd Williams and Cade Arnett 2 each. Also seeing court time were Abel Ramos and B.J. Lester.
 8th Boys - The older Wranglers also downed coahoma, 31-25 in an aggressive and improved effort. Cody Flores scored 14 points, Evan Cain had 6, John Wagnon 4, Brandon Hise 3, Kelby Johnson and Brant Huerta 2 each.

Youakum County Shootout II:
 JV Girls - The young Cowgirls soundly defeated Seagraves, 43-15. Jessica Rodriguez scored 11 points, Kayla Willis and Jessica Knight had 8 each, Keri Hansen 7, Jill Gray 4, Moriah Traweck 3, Mandi Rogers 2. They didn't fare well against Littlefield, falling 45-33. Jill managed 14 points, Jessica Rodriguez had 7, Mandi 5, Kayla 4, Keri 2, Jessica Knight 1. They bounced back and soundly defeated Midland Trinity 52-31. Jessica R. was top scorer with 15 points, Jessica K. 7, Jill 6, Mandi 5, Kayla, Sarah Martinez, Kim Trent 4 each, Keri 3. The Cowgirls next fought hard and played well, but were downed by Brownfield 43-40. Kayla led the scoring with 15, Jessica R. had 9, Jessica K 6, Jill 5, Keri and Mandi 2 each, Kenia 1.
 JV Cowboys - The young Cowboys had a rough Shootout. They fell to Brownfield 63-43, with Jonathan Peppin managing 13 points, Zach Broome 10, Angel Ruiz and David Garza 6 each, Chase Howell, Jonathan de la Rosa, Sterling Justus and Kelly Bowers 2 each. They next faced O'Donnell and were downed 42-25. Zach topped the scoring with 8 points, Jeremy Diamond and Jonathan Peppin had 6 each, Chase 4, Jonathan de la Rosa 1. Their last opponent, Kermit, dropped the Cowboys 43-29. Chase managed 7 points, David and Sterlin 6 each, Zach 4, Peppin and Kelly Bowers 2.

Varsity Cowgirls - The Cowgirls opened the Shootout with a 52-45 win over Midland Trinity. Annaliesa O'Quinn topped scoring with 12 points, Lexi Warren had 10, Chelsi Wagnon 9, Kim Willis 7, Chelsea Blount 6, Mackenzie Winn, Tanya Vasquez, Arasley Luna and Michaela Traweck 2 each. Kim pulled down 9 rebounds, and Lexi and Chelsi W. had 7 each. Tanya was credited with 3 steals. Against the Ysleta Lady Indians, the Cowgirls could make 18.5% of their shots from the floor, and fell 49-26. Tanya had 10 points, Mackenzie 8, Annaliesa 4, Lexi 2, Michaela 1. Tanya again had 3 steals, and Lexi and Michaela had 6 rebounds each



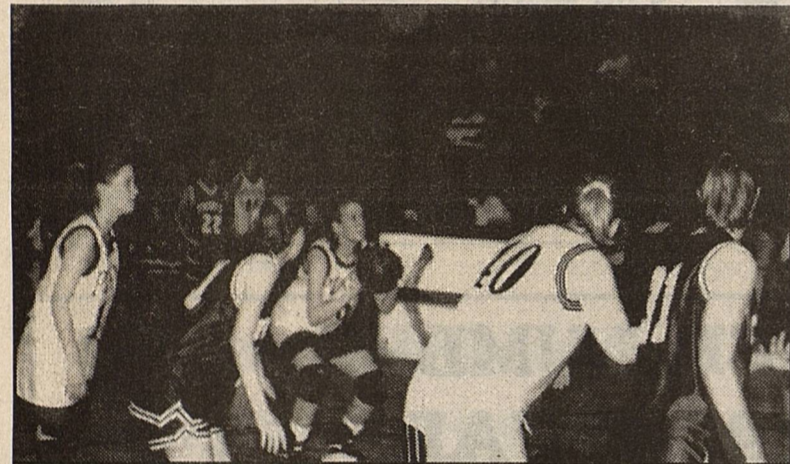
Michaela Traweck gets jump shot over defense



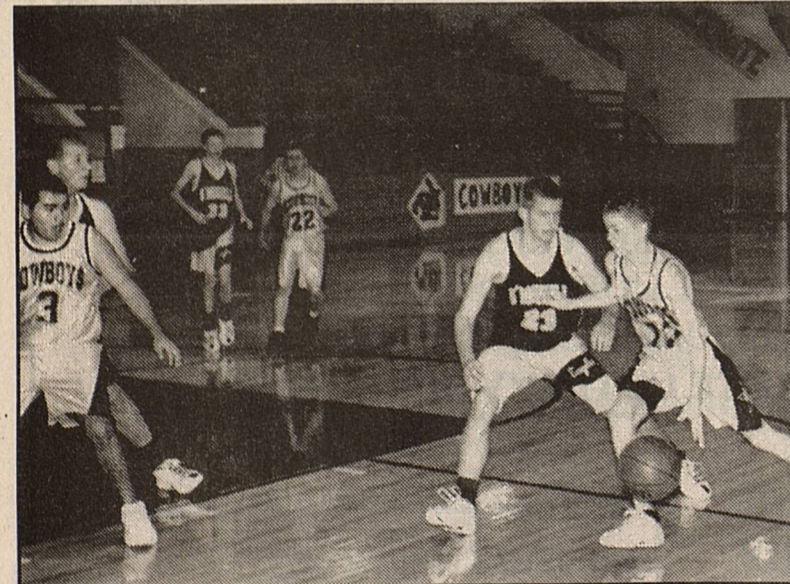
Jarod Newland lays one in



Dustin Six arches good shot



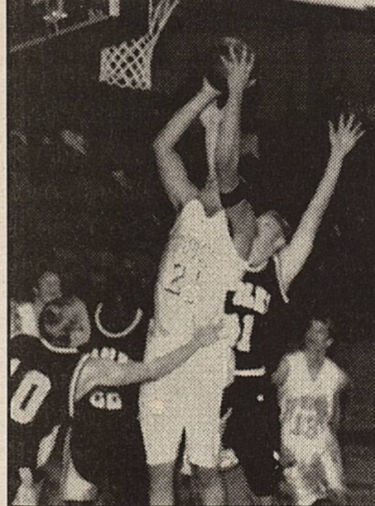
Annaliesa O'Quinn takes free shot



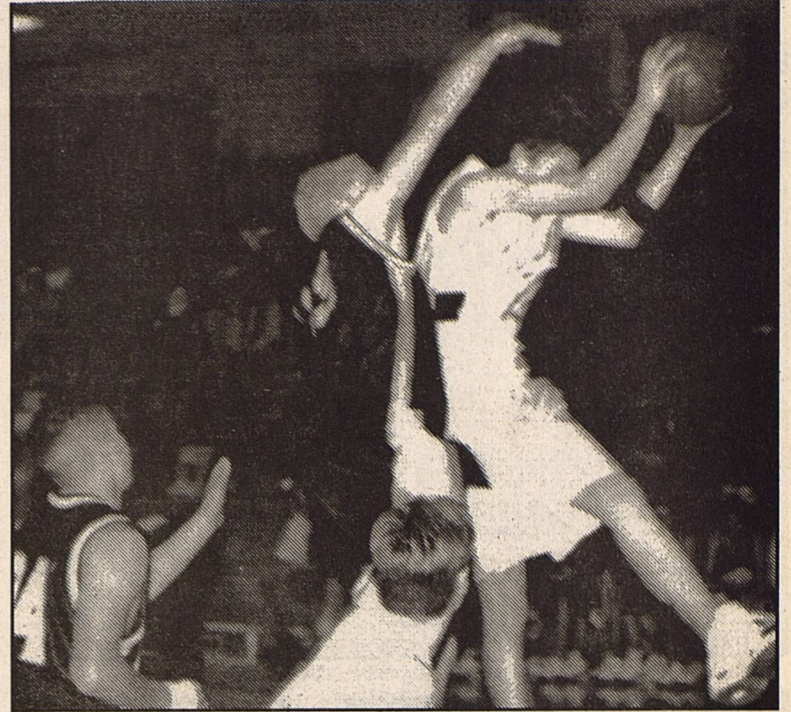
Chase Howell maneuvers inside



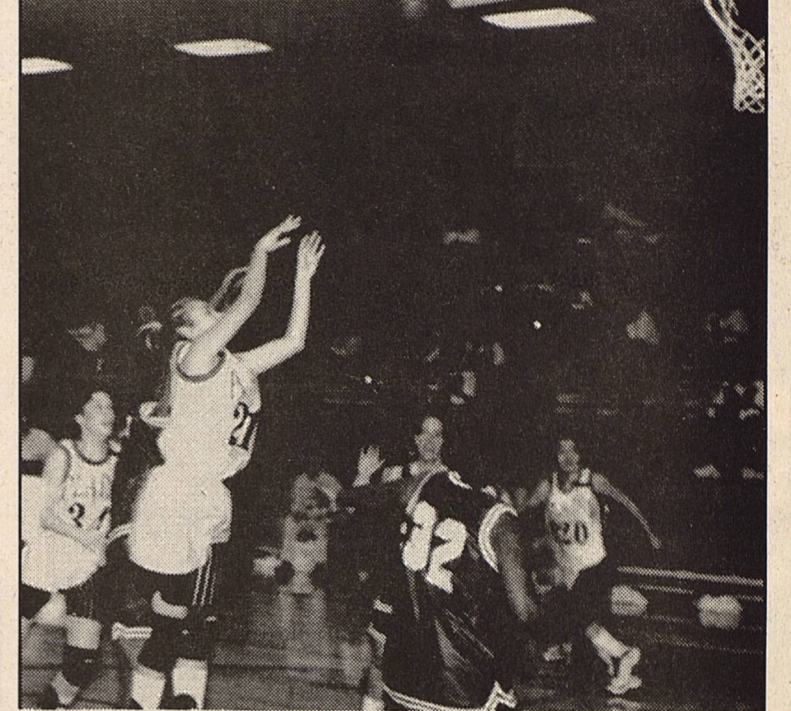
Jarod Bell takes jumper



Eddy Gallegos goes high for 2



Dustin Six goes high for rebound



Chelsi Wagnon gets off good jump shot



Sterling Justus shoots over big Eagle



Tanya Vasquez works around Lady Eagle

Yoakum County Plains Clinic

Jo Lena Wall PA-C

Will see Minor Emergencies, Chronic medical problems, Immunizations

TEXAS HEALTH STEPS

Toe Nail and Wart removal, Allergy Injections or stop by for Blood Pressure check

Office Hours: Monday & Tuesday 8-5
 Wednesday 8-12 noon

Thursday & Friday 8-5

Will take walk-ins. Appointments preferred.
 Please call 806-456-6365



Plains State Bank

601 9th Street
 Plains, Texas

OPEN HOUSE

Wednesday, December 13, 2000

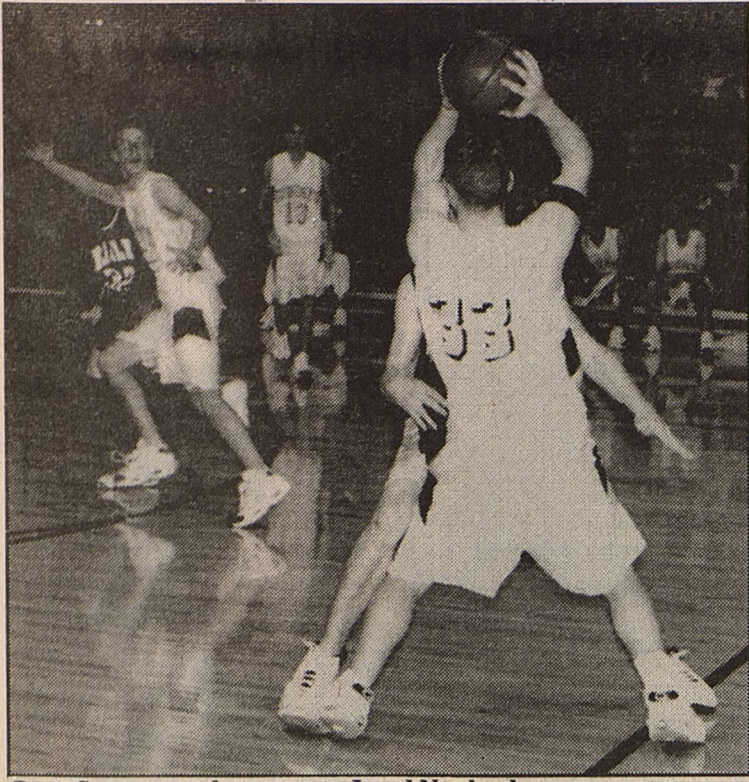
11:00 a.m. - 3:00 p.m.

Please join us in celebrating our 43rd year of serving your banking needs!

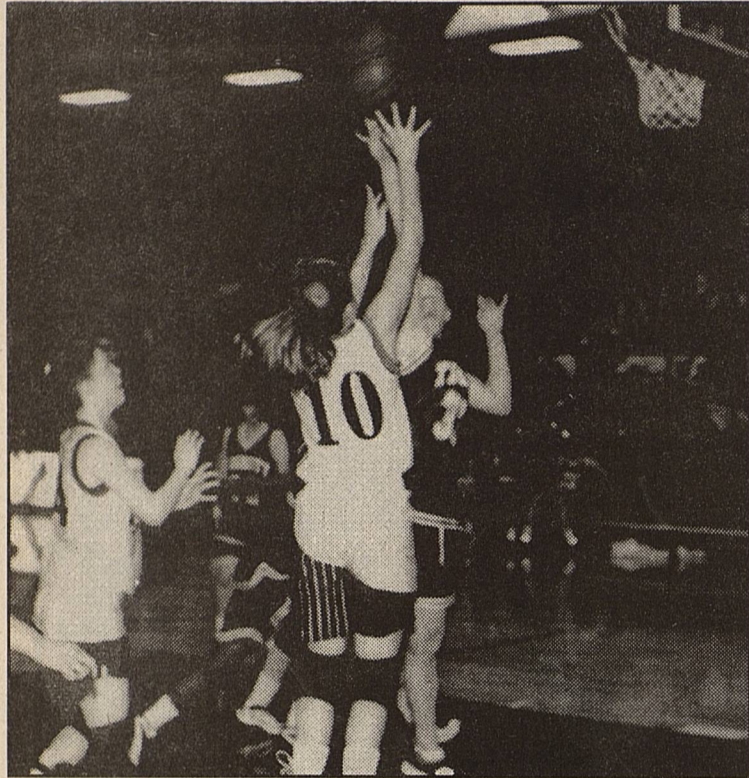
MEMBER FDIC

EQUAL OPPORTUNITY LENDER

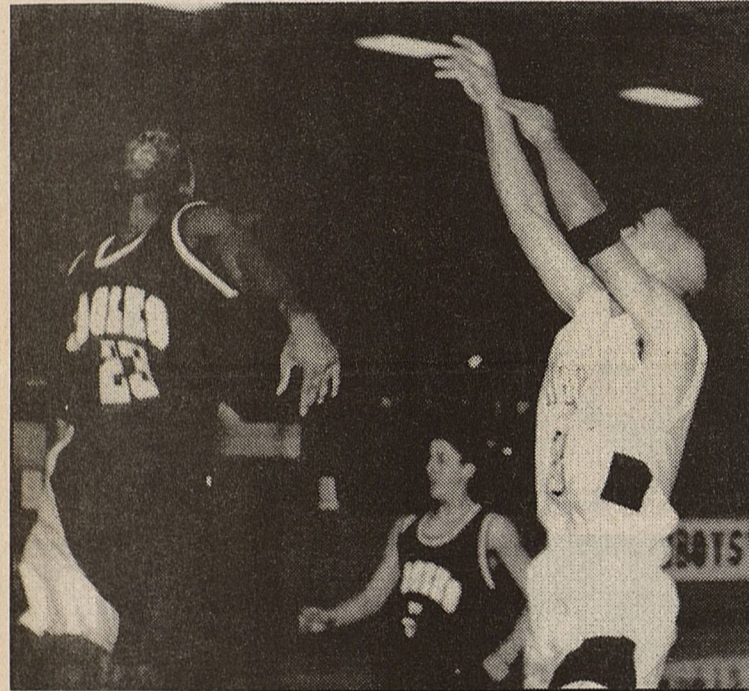




Brett Squyres ready to pass to Jarod Newland



Chelsea Blount made this shot



Adam Garcia fires ball over Eagle defender



Jeremy Diamond goes high with jump shot

More Shootout Results

Varsity Cowgirl Shootout results continued - The girls had a great win against Brownfield, 45-44. Annaliesa had 16 big points, Michaela 9, Chelsi W. 6 Lexi 4, Mackenzie and Tanya 3 each, Chelsea B. 2. Annaliesa pulled down 11 rebounds, Lexi had 3 steals, and Chelsea B. had 3 steals.

In their final Shootout outing, the Cowgirls were downed by the Roosevelt Lady Eagles 52-26. Chelsi Wagnin was top scorer with 7 points, Annalies O'Quinn had 6, Tanya Vasquez 4, Kexi Warren, Mackenzie Winn and Kim Willis 3 each. Chelsea Blount, Chelsi Wagnon and Annaliesa O'Quinn had 5 rebounds each, and Lexi managed 5 steals.

Varsity Cowboys - The Cowboys had a good showing in the Shootout. The soundly beat Midland Trinity 59-28. Eddy Gallegos was lead scorer with 14 points, Adam Garcia had 12, Jared Bell 10, Jarod Newland 6, Aaron Cain, Dustin Six and Kelsey Blundell 4 each, Moises Gonzales and Brett Squyres 2 each. Eddy had 12 rebounds, Jared Bell 8. The Cowboys next downed Brownfield 69-61. Eddy Gallegos poured in 21 points, Dustin Six had 16, Jared Bell 12, Adam Garcia 10, Jarod Newland and Brett Squyres 4 each, Kelsey Blundell 2, Eddy had 15 rebounds, Jared B. 10. The Cowboys racked up their third Sshotout victory over Roosevelt, 68-45. Eddy was again high man scoring with 18 points, Klesey had 13, Jarod N. 12, Dustin 11, Adam 9, Tanner Hamm 2. Eddy had 11 rebounds, Dustin 7. The Cowboy streak when they took on tough Lorenzo in the championship game, going down 77-58. Eddy had 25 points and 17 rebounds, Adam scored 11, and Kelsey was credited with 5 assists. As of December 4, their season record is now 7 wins to one loss.

Math, Science Team competes at Seminole

13 PHS students competed in a UIL practice meet at Seminole December 2. They competed well and were second in Sweepstakes competition in the A thru AAA division. The number sense team finished 2nd, the calculator team was first, the math team finished second, and the Science team was 6th.

Individual results included;

Freshmen - Grady McNabb 5th NS, 6th Cal, 7th Math, 8th Sci. Nolan Newsom 6th NS, 3rd Math, 2nd Sci. Helen Neufeld 9th Cal, 8th Math. Sarah Martinez 6th Math.

Sophomores - Liz Wilmeth 9th NS, 2nd Cal, 8th Math, 9th SCI. Jordan Bean 10th NS, 4th Cal. Jill Gray 1st NS, 1st Cal, 1st Math.

Juniors - Chris Hansen 5th NS, 10th Math. Annaliesa O'Quinn 3rd NS, 2nd Cal, 4th Math.

Seniors - Aaron Cain 10th Math, 10th Sci. Eric Nixon 4th NS, 4th Math, 7th Sci. Amanda Garcia 2nd NS, 1st Cal, 2nd Math.

Jill Gray had the highest calculator score for any grade level and any school classification.

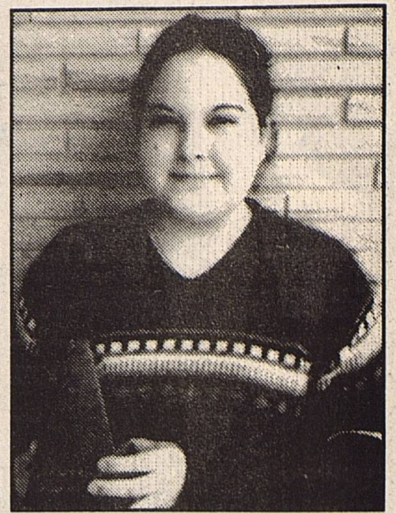


Kelsey Blundell lays two points in

Student of the Week

PHS student of the week is Kim Martinez, a sophomore and the daughter of Mr. and Mrs. Alfred Martinez. She was nominated by Mr. Portillo who said, "Will Rogers once said, "People do what people see!"

True leaders are Role Models: One who has 'been there'. People's minds are changed through observation and not argument. Being a leader also means role modeling how to follow! The person I'm describing to you makes others feel important, promotes visions, follows the Golden Rule, admits mistakes and makes a game of competition. It is a joy to see the honesty, integrity, and loyalty this student has in her school. This person is very accountable, pursues excellence and has self control. Above all, she is caring and kind to her fel-



low classmates and teachers. Even though her health kept her away for a while at the beginning of the semester, she came back strong and willing to catch up and do her part in the many activities she is involved in. I am honored to announce that Kim Martinez is our Student of the Week."

1/2 PRICE

DIAMOND EARRINGS

14K Yellow Gold		
.05 Carat ^{ms} \$160 ^{ms} SALE \$29 ⁹⁵	1/4 Carat ^{ms} \$280 ^{ms} SALE \$139 ⁰⁰	
.16 Carat ^{ms} \$160 ^{ms} SALE \$79 ⁰⁰	1/2 Carat ^{ms} \$360 ^{ms} SALE \$179 ⁰⁰	
1/5 Carat ^{ms} \$240 ^{ms} SALE \$119 ⁰⁰	3/8 Carat ^{ms} \$460 ^{ms} SALE \$199 ⁰⁰	

Sale Hours
 Mon thru Sat 9:30 AM to 6:00 PM
 Closed Sunday
 507 W Main • Brownfield
 (806) 637-4543

BAYER LUMBER & HARDWARE

1018 Ave. E Plains, Tx 79355

806-456-4800 Voice & Fax

CHRISTMAS DRAWING

YOUR CHANCES ARE BETTER THAN THE LOTTERY
 COME IN AND SIGN UP TO WIN:

1st PRIZE: 12 VOLT CORDLESS DRILL KIT
 2nd PRIZE: 3 1/2 QUART CROCK POT
 3rd PRIZE: 7 PIECE CUTLERY SET

OFFICIAL ENTRY FORM

NAME _____

ADDRESS _____

CITY _____ STATE _____ ZIP _____

PHONE _____

**DRAWING WILL BE
 DECEMBER 22ND
 AT 3:00 PM.**

G. B. Aerial Application, Inc.

*Professional, Licensed Ag Applications
 At Affordable Rates !*

806-456-6300 Office 806-456-6790 Fax	806-456-7536 David Mobile 806-456-7974 Sarah Mobile 806-632-5375 Dain Mobile
---	--

**Executive Director of Economic
 Development Corporation and Chamber of Commerce for
 Denver City, Texas**

Combined position of Executive Director of Denver City Economic Development Corporation and Chamber of Commerce. Opportunity to provide leadership to Board of Directors of both groups. Aggressive, future oriented entities seeking to have Executive Director who will be leader in work, focused on securing business opportunities and development for this West Texas community. Recently passed economic development tax and chamber monies will fund salary, travel expense and business development projects. Looking for person with ability to work with two Boards of Directors, travel to promote City and business opportunities, handle day to day leadership of Chamber and Economic Development Corporation. Will supervise one full time assistant and part time person. Prior experience, educational background and work experience will be considered. Professionalism, leadership, knowledge of business, background, enthusiasm, promotional skills and availability to travel are also factors. Salary will be competitive for area, job and expectations. May consider bonus incentive plans also. Submit resumes, references and recommendation letters prior to December 22nd, 2000. Parties selected for interviews will be notified prior to January 1, 2001. Interviews to be scheduled between January 1 and January 5th.

For more information, contact Myrl Slentz, Interim Chamber Director, Denver City, Texas, 806-592-5424. Mail, fax and/or e-mail resumes and up to three letters of recommendation plus up to five references to Denver City Chamber of Commerce, 120 North Main Street, Denver City, Texas 79323; Fax# 806-592-7613; E-Mail: dccoc@hiplains.net.

Lifelines & Styles

A new and proud U.S. Citizen



Rosa Quezada, proudly displaying the U.S. Flag and certificate of her citizenship is shown with her equally proud family, daughter Sandra, husband Lalito, and daughter Prisma.

Rosa recently took the oath of allegiance to the country in ceremonies held at Lubbock's Christian Renewal Center. She reported she was one of 194 people granted U.S. citizenship by the US District Court of the Northwest Texas District.

To become eligible for citizenship, Rosa spent six months of long, hard hours studying U.S. history, government, and perfecting her speaking, reading and writing skills in the English

language. She said the swearing in ceremony was one of the most exciting highlights of her life.

Originally from Ojinaga in the Mexican State of Chihuahua, Rosa and Lalito came to the U.S. 33 years ago. They worked some ten years in Muleshoe for Jessie Leal, owner of the chain of Leal's Restaurants. They opened Lalito's Mexican Restaurant here in 1996, and moved into their present new building in April, 2000.

On your next visit to the popular eatery, congratulations would be in order for Rosa and her hard working family.

Library Storytime

At Storytime on November 29th at the Yoakum County Library we talked about Thanksgiving and the coming of Christmas. We said the pledges to the United States and Texas flags, sang the "Jungle Bells", "Santa Claus is Coming to Town" and "Rudolph the Red Nosed Reindeer", read two books, "Christmas is Coming" and "If You Take a Mouse to a Movie", and watched the movie "Santa's Workshop". The children were thrilled with the miniature horse, Legs, that Donna Taylor brought for them to see and pet. The children attending were: Micah St. Romain, Clayton Gass, Jentry Wall and Amanda Dusek.

Half of 60 is



Happy 30th Birthday
SHERRY

Christmas Volunteers Needed
Workers are needed for the Christmas Gift Assistance Program. Delivery of food and toys will start at 1:00 p.m., Friday, December 22 at the Courthouse. If you can help, contact Toni Jones at 456-8794.

Yoakum County Courthouse OPEN HOUSE
Wednesday
December 20th
11:00 am. to 3:00 pm.

Dear Friends,
Thank you for all your concern, prayers, and gifts of condolence during our time of loss. Your many cards, flowers, and phone calls, as well as food, were greatly appreciated. We love each and everyone of you. You are very special to us.

Again Thanks,
Helen Milstead
Kevin, Pat, and Amy Wynn
Mark, Heather, Hunter, and Dylan Howard

Cherry Blossom Inn

invites you to come try our
All American Buffet
Friday, December 8, 5-9 p.m.

Wednesday night is 'Fajita Night' for \$6.95, Beef or Chicken

* We now have an inside Smoking Section and feature Live entertainment on Saturday nights! *
BYOB for your special occasions and special events
302 Main Street,
Seagraves, Tx 806-546-1407
We have a new TV Room for you sports fans

New Baby Boy

Monte and Jennifer Pierce of Glen Rose, Texas are happy to announce the birth of their son Holt Warren Pierce. Born October 9th at 6:45 p.m., weighed 6 lbs. 9 oz. and was 20 inches long.

Grandparents are Joe and Joyce Pierce of Plains, Sue Reeves of Floydada, Richie Crow of Baird. Great grandparents are James and Jerry Warren of Plains, Gilbert Pierce of Plains, Erma Crow of Baird and Florence Howard of Ballinger.

54th One Million Dollar SALE Now in Progress

DIRECT IMPORT PRICES

1 CARAT SOLITAIRE RINGS

\$1999⁰⁰

Sale Hours
Mon thru Sat 9:30 AM to 6:00 PM
Closed Sunday
507 W Main • Brownfield
(806) 637-4543

Sisters and Friends

Celebrating our
FIRST Anniversary!
Open House, Monday,
Dec. 4th thru Saturday, Dec. 9th.
Refreshments! Door Prizes!
We Honor - Master Card, Visa,
Discover and American Express

Owner 106 Plains Hwy.
Dena Pierce Denver City

FIRST BAPTIST CHURCH Plains, Texas



Presented by
DBAB Children's
Choir

December 10
Evening Service
6:00 P.M.



Nelson's

Prescription Pharmacy

"Your Business is always appreciated"

Use our Toll-Free Number

1-800-658-9604

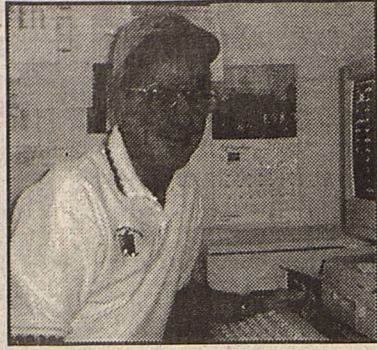
For All Your Pharmacy Needs!!

805 Tahoka Rd. Brownfield, TX

**First United Methodist
Church of Plains
Invites you to Worship!**

Sunday School 9:45 am
Morning Worship 10:45 am
Evening Worship 6:15 pm
Wednesday Evening Study 6:30 pm
Tuesday Afternoon Study 5:15 pm

From The Hack



There are two things in this life I bitterly despise. Number uno is moving, something I have experienced far too often. And now, here we go again. For the past few days we have been moving the CCN business from our home to it's new home, 506 Cowboy Way. You know, the former Lavender Patch, next to the Cowboy Restaurant.

Why are we moving, you ask? Because quite simply, it is cheaper to move and pay rent than it is to get a divorce, the ultimatum made by the Bride. I am sure that will disappoint at least one lawyer in Denver City, one I frequently lose money to on the golf course. He told the Bride several years ago, "If you ever get ready to shuck old Dyer, your fee will be one dollar, but man, is it ever going to be tough on him!"

We were faced with moving three computers, a printer, copy machine, Zip drive, photo scanner and Fax machine and two phones. Do you realize the electronic wiring needed to make that stuff work is the equivalent of the number of miles from here to Gila Bend, Arizona, maybe a bit further? Amazingly enough, we got it shuffled around, hooked up, and everything worked, thanks to about four miles of tape we

affixed to the ends of the wires with terse messages like, "plug this into third hole from right on back of # 3 computer, stupid."

The move was really thrilling Sunday when we awoke to an inch or two of snow. I came perilously close to breaking my tokus when I slipped on the sidewalk, carrying the Bride's computer. I think her shriek of anguish, which was probably heard in Denver City, scared me back upright.

Anyway, the worst is over, if we can find all the stuff we have already forgotten where we stuffed it. Now, I have ranted about moving so much, I've forgotten what my second most hated experience is. I think old Pete Dyer was right, when he said, the only way to enjoy moving is to get about half smashed. I suggested to the Bride we experiment with his theory, but I was quickly and firmly vetoed.

JP Court

December 1, 2000-In Justice of the Peace Court, Precinct 1, with Judge Melba Crutcher presiding there were 104 traffic cases, 1 felony case, and 2 cases filed by Yoakum County Sanitarian.

Bonds set: 3 cases of theft over

\$20.00, under \$500.00 by check-\$500.00 bond. More than one drivers license in possession-\$500.00 bond. Driving while intoxicated-Lubbock-held until transported. Driving while license suspended-Lubbock-\$750.00 bond. Assault, domestic violence-Lubbock-\$2500.00 bond. Driving under the influence-\$500.00 bond. Minor in possession of alcoholic beverage-\$500.00 bond. 2 cases, assault causes bodily injury-enhanced-\$3000.00 bond. Assault causes bodily injury-\$1500.00 bond. Possession of marijuana-\$500.00 bond.

In the Estate of Annette C. Cleveland, deceased, in the County Court of Yoakum County, Texas

Notice To Creditors

Notice is hereby given that original Letter Testamentary upon the Estate of Annette C. Cleveland, Deceased, was granted to G.W. Cleveland in the probate court of Yoakum County, Texas. All persons having claims against said estate are hereby requested to present same at G. W. Cleveland within the time prescribed by law at the following address: G.W. Cleveland, Rt. 1, Box 137, Plains, Texas 79355

For Sale

Female Mini-Dachshund, Red Dapple Color. Call 456-8848

The Yoakum County Tax Office in Denver City and Plains will be closed for Motor Vehicle business December 29, 2000, due to an inventory audit by the Texas Department of Transportation. Taxes can be paid until noon on the day.

TERRY COUNTY

TRACTOR

Massey Ferguson Kubota Bush Hog Shredders, Lilliston Rolling Cultivators, Lorenz & Buffalo Cultivators, Baker Disc & Switch Plows, Spray Coupe, Wilmar Sprayer Brownfield, Tx. 806-637-4569

*** House For Sale* PRICE REDUCED 4 Br., 2 Bath 1508 Ave. G For appointment to see. Call Tim 456-7195 or 662-334-4416**

Large House for Sale 2-3 Br., Lg. Den, Lg. Fenced backyard on corner lot 1101 17th St. 456-7110

FOR SALE

4-Antique Church Pew's-\$200.00 ea. or best offer, 6-Hanging Shop Lights-\$5.00 ea.-you remove, 1-Podium-\$25.00, 1-Commode-\$10.00-you remove, 1-Bathroom Lavatory-\$10.00-you remove, 1-Refrigerated Air Unit-make offer, 1-Display Case-\$200.00.

PLACE-Yoakum County Art Association Building Ph.-456-4424-Betty Estep, Ph.-456-3171-Linda Powell Ph.-456-4022-Inita Teaff

CORN SEED BLOCKS AVAILABLE

WEST GAINES SEED & DELINTING, INC. HAS SEVERAL CORN PRODUCTION CONTRACTS AVAILABLE FOR THE 2001 CROP YEAR. IF YOU WOULD LIKE TO PRODUCE AND HARVEST CORN FOR US PLEASE CALL OR COME BY WEST GAINES SEED & DELINTING. ASK FOR BILL PRINCE OR DAVID HICKS.

CALL 915-758-3628 SEMINOLE, TX

MULTI - PERIL CROP & CROP HAIL

STATE INSURANCE LINE

DANNY BELL

Office 456-3521 Home 456-6325 Mobile 456-7517

HICKS

*Carpet *Heating *Air Conditioning *Maytag Appliances 204 N. Main, Denver City 806-592-3973 or 592-3930



TRANE

Its hard to stop a TRANE™

SUNDOWN STATE BANK

Sundown * Levelland * Brownfield * Denver City

OPEN HOUSE !!



Tuesday, December 12th Refreshments will be served !! COME BY and VISIT !!



202 West Broadway Denver City, Texas 806-592-9292

Member FDIC



Equal Housing Lender

Lea County Electric Cooperative, Inc.

will offer the following vehicles for sealed bid:

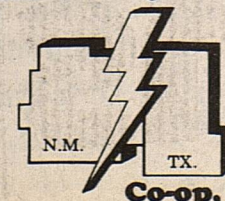
Unit #	Model	Model
308	1990	F800, 4X2 Ford Cab & Chassis
338	1992	4900 4X2 International Cab & Bed
325	1995	1500 4X4 Chevy V-6 Auto
323	1996	1500 4X4 Chevy V-6 Auto
335	1991	1500 GMC 4X4 V-6 Auto
303	1994	1500 Chevy 4X4 V-6 Auto
381	1986	30 Chevy Van 4X2 V-8 Auto

All vehicles may be seen at Lea County Electric Plant Yard in Lovington between 7:00 a.m. to 3:00 p.m., Monday thru Friday. Please contact Butch Taylor at 396-3631 ext. 101 for an appointment to view the vehicles.

Bid Forms may be picked up at Cooperative's main office in Lovington or at district offices in Tatum or Plains. 10% of bid must be enclosed (check or money order). All Bids must be either hand delivered or postmarked by 5:00 p.m. on Dec. 18th, 2000. Unsuccessful bids will be returned by mail -- LCEC has the right to reject any and all bids for any reason. Board Members and employees of LCEC are prohibited from submitting bids.

Lea County Electric Cooperative, Inc.

Lea County Electric



Co-op, Inc.

Michael A. Dreyspring, General Manager

Lovington (505)396-3631

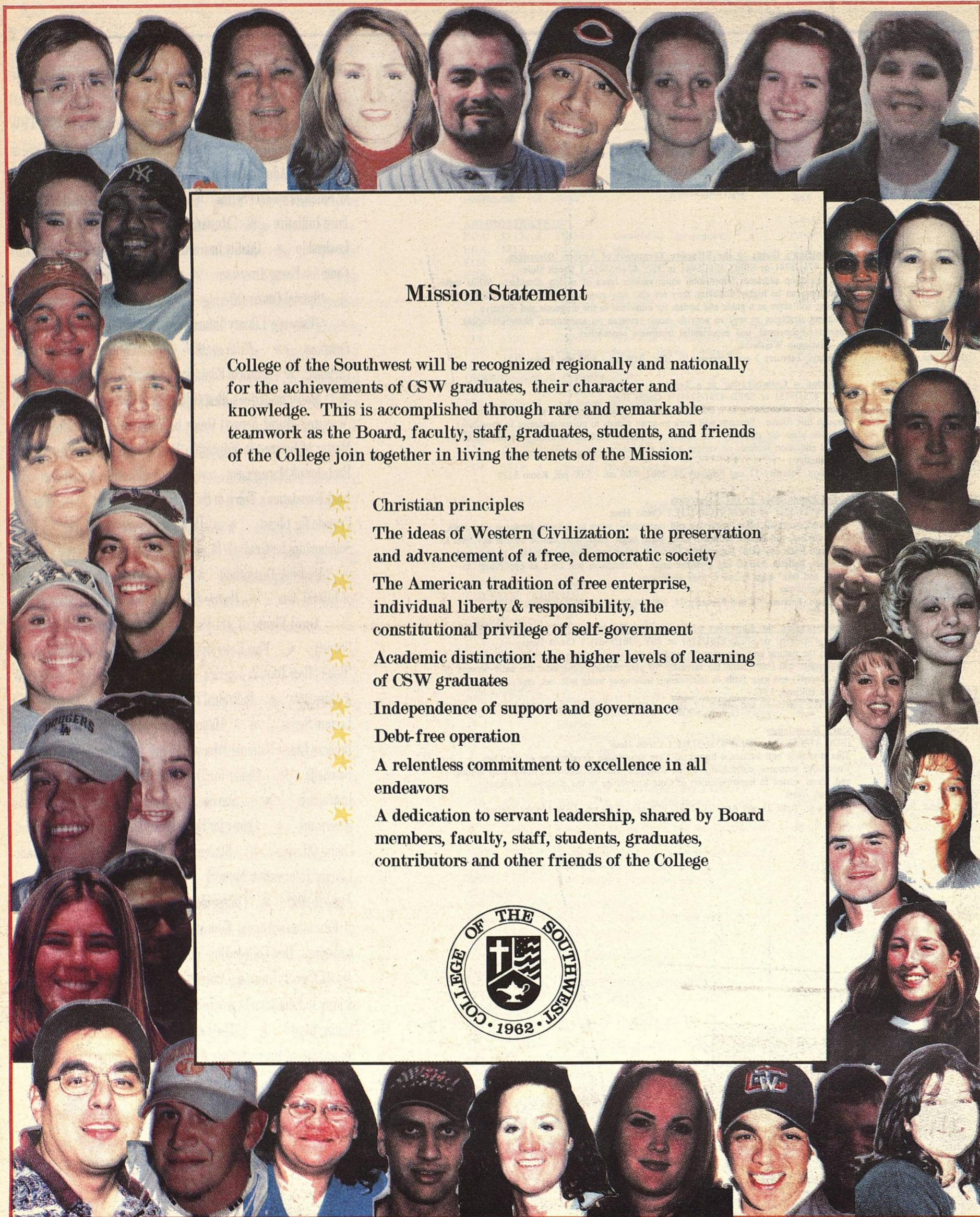
Tatum (505)398-2233

Plains (806)456-3322

Visit our homepage: <http://www.lcecnec.com>

Send us your comments and questions to: lcecnec@lcecnec.com

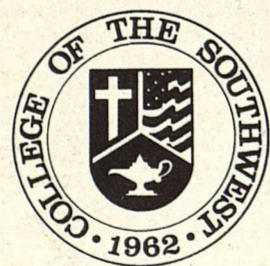
We Get Our Power From You.



Mission Statement

College of the Southwest will be recognized regionally and nationally for the achievements of CSW graduates, their character and knowledge. This is accomplished through rare and remarkable teamwork as the Board, faculty, staff, graduates, students, and friends of the College join together in living the tenets of the Mission:

- ★ Christian principles
- ★ The ideas of Western Civilization: the preservation and advancement of a free, democratic society
- ★ The American tradition of free enterprise, individual liberty & responsibility, the constitutional privilege of self-government
- ★ Academic distinction: the higher levels of learning of CSW graduates
- ★ Independence of support and governance
- ★ Debt-free operation
- ★ A relentless commitment to excellence in all endeavors
- ★ A dedication to servant leadership, shared by Board members, faculty, staff, students, graduates, contributors and other friends of the College



COURAGE
dare to dream

CHALLENGE
dare to achieve

CHARACTER
dare to grow

College of the
Southwest
dare to shine



Schedule of Classes

Spring 2001
Summer 2001

Hobbs, New Mexico
(505) 392-6561

1-800-530-4400
www.csw.edu

Carlsbad, New Mexico
(505) 887-3500

Christian Principles * *Time/Princeton Review's* "The Best College for You" * Bachelor of Arts and Sciences Degree * Bilingual Education * Alpha Chi National Honor Society * www.csw.edu * Freshman Success * Lady Mustang Volleyball * Teacher Certification * CSW's Board of Trustees * Intramural Sports * Hatton W. Summers Speaker Series * Master's Degree in Curriculum and Instruction * *Ad Tempus* * Criminal Justice Program * Special Education * Dr. J. L. Burke Literary Contest * Templeton Foundation's Honor Roll of "Colleges That Encourage Character Development" * Life Insights for Excellence * Phase One of Comprehensive Campus Master Plan * Bachelor of Science * Commitment to Excellence * Intel Foundation's *Teach to the Future* Pilot Project * Campus Crusade for Christ * Debt-Free Operations * I CAN! Scholarships for Grades 7-12 * *VISTA* * Athletic Training * Academic Distinction * Undergraduate Degrees in 21 Fields of Liberal Arts * *Prairie Dog Post* * Lady Mustang Soccer * Great Financial Aid Packages * President's Student Advisory Council * Free Enterprise Education * *Money* magazine's "Best College Buys in America" * Small Class Size * CSW Ambassadors * Individual Responsibility * Distinguished Lecture Series * Hatton W. Summers Speaker Series * Reader's Digest National Education Trust Initiative * Mustang Baseball * Center for Business Leadership * Quality Instruction * *Success 2000: A Leadership Camp for Young Americans* * Center for Educational Excellence * Special Course Offerings * Students In Free Enterprise * Estacado Library Information Network * *Southwest Creations* * *Faith in 2000* * College of the Southwest-Carlsbad * School of Education's Annual Educational Conference * *Money* magazine's "Best College Buys in America" * *U.S. News and World Report's* Guide to "America's Best Colleges" * Master of Science in Education Degree in School Counseling * Bachelor of Management * The Leadership Council * National Association of Intercollegiate Athletics * Senior Seminar in Leadership and Ethics * "A Taste of Literature" * Servant Leadership * Individual Attention * Sigma Tau Delta, the International English Honor Society * Southwest Creations * CSW Theatre Department * Master of Science in Education Degree in Educational Administration * Christian Principles

College of the Southwest -- Hobbs Campus
Spring 2001 Semester January 12 - May 10, 2001

MASTER OF SCIENCE IN EDUCATION COURSE OFFERINGS

COURSE NO.	CR.	TITLE	DAY	TIME	ROOM	STAFF
ADMINISTRATION						
EDA 5213	3	Theories of Curriculum Development	Th	6:00 - 9:00 pm	L109	Sanders
EDA 5303A	3	Policies and Public Relations	Tu	6:00 - 9:00 pm	A100	Posey, B
EDA 5303B	3	Policies and Public Relations	Sat	1:00 - 3:50 pm	L109	Atherton
EDA 5403	3	Educational Finance and Facilities	W	6:00 - 9:00 pm	L109	Cagle
EDA 5503	3	School Administration	M	6:00 - 9:00 pm	A102	Dunn, E
EDA 5803	3	Internship in Educational Administration	TBA		TBA	Posey, E/Ingle
COLLEGE COURSE						
CSW 5901	1	Portfolio Assessment	TBA		TBA	Fleming
COUNSELING						
EDC 5323A	3	Advanced Theories of Psychological Counseling	Th	6:00 - 9:00 pm	A100	Avalos
EDC 5323B	3	Advanced Theories of Psychological Counseling	Th	6:00 - 9:00 pm	CSWC	Frazier
EDC 5433A	3	School Counseling and Play Therapy	W	6:00 - 9:00 pm	S124	Posey, E
EDC 5433B	3	School Counseling and Play Therapy	W	6:00 - 9:00 pm	CSWC	Frazier
EDC 5803	3	Internship in Counseling	TBA		TBA	Sanders
CURRICULUM & INSTRUCTION						
EDI 5113A	3	Brain-Based Instruction	M	6:00 - 9:00 pm	S124	Salb
EDI 5113B	3	Brain-Based Instruction	M	6:00 - 9:00 pm	CSWC	Holderness
EDI 5133	3	Advanced Instructional Technology	Sat	9:00 - 11:50 am	A105	Erickson
EDI 5213	3	Theories of Curriculum Development	Th	6:00 - 9:00 pm	L109	Sanders
EDI 5303A	3	Policies and Public Relations	Tu	6:00 - 9:00 pm	A100	Posey, B
EDI 5303B	3	Policies and Public Relations	Sat	1:00 - 3:50 pm	L109	Atherton
EDI 5413A	3	Program Development and Management	W	6:00 - 9:00 pm	A102	Fleming
EDI 5413B	3	Program Development and Management	Sat	9:00 - 11:50 am	L109	Rounds
EDUCATION CORE						
EDU 5213	3	Professional/Ethical Issues in Counseling	M	6:00 - 9:00 pm	L109	Sanders
EDU 5413A	3	Program Development and Management	W	6:00 - 9:00 pm	A102	Fleming
EDU 5413B	3	Program Development and Management	Sat	9:00 - 11:50 am	L109	Rounds
EDU 5513A	3	Culturally Diverse and Special Needs Population	Tu	6:00 - 9:00 pm	L109	Castillo
EDU 5513B	3	Culturally Diverse and Special Needs Population	Sat	9:00 - 11:50 am	MHC	Cagle
EDU 5523	3	Educational Statistics and Research Design	Tu	6:00 - 9:00 pm	S124	Fleming
EDUCATIONAL DIAGNOSTICIAN						
EDG 5113A	3	Brain-Based Instruction	M	6:00 - 9:00 pm	S124	Salb
EDG 5113B	3	Brain-Based Instruction	M	6:00 - 9:00 pm	CSWC	Holderness
EDG 5473	3	Educational Diagnostic Process for Exceptional Learners	Th	5:00 - 8:00 pm	S103	Westbrook

UNDERGRADUATE COURSE OFFERINGS

ACCOUNTING						
ACT 2214A	4	Principles of Accounting II	M-Th	11:00 - 11:50 am	A100	Stephens
ACT 2214B	4	Principles of Accounting II	MW	7:00 - 8:50 pm	A100	Stephens
ACT 3213	3	Intermediate Accounting II	TTh	1:00 - 2:20 pm	S108	Stephens
ACT 3223A	3	Cost Accounting	MW	8:00 - 9:20 am	A100	Stephens
ACT 3223B	3	Cost Accounting	MW	5:30 - 6:50 pm	A101	Stephens
ACT 4213	3	Income Tax Accounting II	TTh	5:30 - 6:50 pm	A105	Wilson
ACT 4363	3	Computer Applications in Accounting	TTh	2:30 - 3:50 pm	A105	Staff
ACT 4813	3	Accounting Internship	TBA		TBA	Stephens
ART						
ART 2203A	3	The History of Western Art II	MW	1:00 - 2:20 pm	L109	Staff
ART 2213	3	The Artist	TTh	1:00 - 2:20 pm	A100	Staff
ATHLETIC TRAINING						
ATE 2813	3	Clinical Practicum in Athletic Training I	TBA		TBA	Lloyd
ATE 2823	3	Clinical Practicum in Athletic Training II	TBA		TBA	Lloyd
ATE 3303	3	Therapeutic Modalities in Athletic Training	MW	9:30 - 10:50 am	ATR	Lloyd
ATE 3833	3	Clinical Practicum in Athletic Training III	TBA		TBA	Lloyd
ATE 3843	3	Clinical Practicum in Athletic Training IV	TBA		TBA	Lloyd
ATE 4103	3	Rehabilitation of Athletic Injuries	TTh	8:00 - 9:20 am	ATR	Lloyd
ATE 4303	3	Organization and Administration of Athletic Training	MW	11:00 - 12:20 pm	S110	Lloyd
ATE 4813	3	Clinical Practicum in Athletic Training V	TBA		TBA	Lloyd
ATE 4833	3	Clinical Practicum in Athletic Training VI	TBA		TBA	Lloyd
BIOLOGY						
BIO 1154	3	General Biology II	MW	9:30 - 10:50 am	A106	Ross
BIO 115L	1	General Biology Laboratory II	Tu	8:00 - 9:50 am	A104	Ross
BIO 2114	3	Principles of Human Anatomy and Physiology II	MW	11:00 - 12:20 pm	A106	Ross
BIO 211L	1	Principles of Human Anatomy and Physiology Laboratory II	Tu	11:00 - 12:50 pm	A104	Ross
BIO 3303	3	Management and Conservation of Natural Resources	MW	8:00 - 9:20 am	S110	Ross
BIO 3324	3	Vertebrate Zoology	TTh	2:30 - 3:50 pm	A101	Massey
BIO 332L	1	Vertebrate Zoology Laboratory	M	1:00 - 2:50 pm	A104	Massey
BIO 3503	3	General Ecology	TTh	1:00 - 2:20 pm	S121	Ross
BIO 4223	3	Field Biology	Fri	9:00 - 11:50 am	A106	Wallace
BUSINESS ADMINISTRATION						
BUA 3303	3	Professional Communication and Sales Presentation	TTh	9:30 - 10:50 am	S110	Dunn, T
BUA 3413A	3	Business Law II	MW	1:00 - 2:20 pm	A101	Ricketts
BUA 3413B	3	Business Law II	MW	5:30 - 6:50 pm	S110	Sanchez
CHEMISTRY						
CHE 1204	3	Principles of Chemistry II	MW	1:00 - 2:20 pm	S121	Dodd, S
CHE 120L	1	Chemistry Laboratory II	Tu	1:00 - 2:50 pm	A104	Dodd, S
COMPUTER SCIENCE						
CSI 1203	3	Computer Applications	MW	9:30 - 10:50 am	A105	Sagerty
CSI 2203A	3	Educational Technology	MW	6:30 - 7:50 am	A106	Dodd, S
CSI 2203B	3	Educational Technology	TTh	8:00 - 9:20 am	A105	Dodd, S
CSI 2213	3	Electronic Spreadsheets	TTh	8:30 - 9:50 pm	A105	Dodd, S
COLLEGE COURSES						
CSW 3901	1	Portfolio Assessment	TBA		TBA	Fleming
CSW 4691A	1	Senior Seminar in Leadership and Ethics	Tu	11:00 - 11:50 am	S113	Case
CSW 4691B	1	Senior Seminar in Leadership and Ethics	Th	11:00 - 11:50 am	S113	Case
CSW 4691C	1	Senior Seminar in Leadership and Ethics	Tu	5:30 - 6:20 pm	S113	McGinnes

College of the Southwest
Special Course Offerings
Spring 2001

Course: A Clinician's Guide to the Effective Treatment of Anxiety Disorders (EDU 4741/5741 or SPED 4741/5741 or PSY 4741/5741) 1 Credit Hour
 This workshop addresses information about various types of anxiety disorders. While these conditions can be highly disabling, they are also very responsive to proper treatment. This offering will serve as a guide and update for clinicians in the diagnosis and effective treatment strategies as well as provide recent research on assessment, pharmacological, cognitive-behavioral, and experiential treatment approaches.
Faculty: Dr. Marianne Westbrook
Dates, Time, Room: Saturdays, February 3 and February 10, 2001, 9:00 am - 5:00 pm, Room S124

Course: Inclusion -- Collaborating as a Team (EDU 4751/5751 or SPED 4751/5751) 1 Credit Hour
 Methods of collaborating as a team to develop an inclusion program will be addressed through this course. Students will work in small groups to utilize strategies in developing inclusion plans for students. The course will explore methods of making modifications for special education students on various levels and subjects.
Faculty: June Studley
Dates, Time, Room: Saturdays, February 17 and February 24, 2001, 9:00 am - 5:00 pm, Room S124

Course: Using Paper Bags in the Classroom (EDU 4711/5711 or SPED 4711/5711) 1 Credit Hour
 This workshop will offer innovative and inexpensive ways to enhance language arts, math, social studies, and science programs using paper bags. Paper bags can be used at any level K-6 to help teach any skill. Suggestions for using paper bags include individual project center activities, bulletin boards, and thematic units. Participants will have an opportunity to "make and take" bags to use in their classrooms.
Faculty: Pam Hightower
Dates, Time, Room: Saturdays, February 17 and February 24, 2001, 9:00 am - 5:00 pm, Room S113

Course: Understanding the Language of Play in the Treatment of Traumatized Children (EDU 4761/5761 or SPED 4761/5761 or PSY 4761/5761) 1 Credit Hour
 Play is the natural and less intrusive medium of communication for traumatized children. Participants will learn about the rationale for play therapy, experience the basic process of play therapy, and gain skills in intervention techniques using toys, art, and sand.
Faculty: Mickie Holland, LPC
Dates, Time, Room: Saturdays, March 10 and March 17, 2001, 9:00 am - 5:00 pm, Room S124

Course: Core Knowledge (EDU 4731/5731 or SPED 4731/5731) 1 Credit Hour
 This workshop will include a history of Core Knowledge, development of the Core Knowledge sequence, correlation of state standards with the sequence, lesson plan writing, and issues related to implementation of Core Knowledge in the classroom / school.
Faculty: Dr. Sam Ayers
Dates, Time, Room: Saturdays, April 21 and April 28, 2001, 9:00 am - 5:00 pm, CSW Library Atrium

* "A Taste of Literature" * Servant Leadership * Individual Attention * Sigma Tau Delta, the International English Honor Society * Southwest Creations * CSW Theatre Department * Master of Science in Education Degree in Educational Administration * Christian Principles * Hatton W. Summers Speaker Series * Reader's Digest National Education Trust Initiative * Mustang Baseball * Center for Business Leadership * Quality Instruction * *Success 2000: A Leadership Camp for Young Americans* * Center for Educational Excellence * Special Course Offerings * Students In Free Enterprise * Estacado Library Information Network * *Southwest Creations* * *Faith in 2000* * College of the Southwest-Carlsbad * School of Education's Annual Educational Conference * *Money* magazine's "Best College Buys in America" * *U.S. News and World Report's* Guide to "America's Best Colleges" * Master of Science in Education Degree in School Counseling * Bachelor of Management * Commitment to Excellence * Intel Foundation's *Teach to the Future* Pilot Project * Campus Crusade for Christ * Debt-Free Operations * I CAN! Scholarships for Grades 7-12 * *VISTA* * Athletic Training * Academic Distinction * Undergraduate Degrees in 21 Fields of Liberal Arts * *Prairie Dog Post* * Lady Mustang Soccer * Great Financial Aid Packages * President's Advisory Council * Free Enterprise Education * *Money* magazine's "Best College Buys in America" * Small Class Size * CSW Ambassadors * Individual Responsibility * Distinguished Lecture Series * Hatton W. Summers Speaker Series * Reader's Digest National Education Trust Initiative * Mustang Baseball * Center for Business Leadership * Quality Instruction * *Success 2000: A Leadership Camp for Young Americans* * Center for Educational Excellence * Special Course Offerings * Students In Free Enterprise * Estacado Library Information Network * *Southwest Creations* * *Faith in 2000* * College of the Southwest-Carlsbad * School of Education's Annual Educational Conference * *Money* magazine's "Best College Buys in America" * *U.S. News and World Report's* Guide to "America's Best Colleges" * Master of Science in Education Degree in School Counseling * Bachelor of Management * The Leadership Council * National Association of Intercollegiate Athletics * Southwest Creations



* Commitment to Excellence * Intel Foundation's *Teach to the Future* Pilot Project * Campus Crusade for Christ * Debt-Free Operations * I CAN! Scholarships for Grades 7-12 * *VISTA* * Athletic Training * Academic Distinction * Undergraduate Degrees in 21 Fields of Liberal Arts * *Prairie Dog Post* * Lady Mustang Soccer * Great Financial Aid Packages * President's Advisory Council * Free Enterprise Education * *Money* magazine's "Best College Buys in America" * Small Class Size * CSW Ambassadors * Individual Responsibility * Distinguished Lecture Series * Hatton W. Sumners Speaker Series * Reader's Digest National Education Trust Initiative * Mustang Baseball * Center for Business Leadership * Quality Instruction * *Success 2000: A Leadership Camp for Young Americans* * Center for Educational Excellence * Special Course Offerings * Students In Free Enterprise * Estacado Library Information Network * *Southwest Creations* * *Faith in 2000* * College of the Southwest-Carlsbad * School of Education's Annual Educational Conference * *Money* magazine's "Best College Buys in America" * *U.S. News and World Report's* Guide to "America's Best Colleges" * Master of Science in Education Degree in School Counseling * Bachelor of Management * The Leadership Council * National Association of Intercollegiate Athletics * Senior Seminar in Leadership and Ethics * "A Taste of Literature" * Servant Leadership * Individual Attention * Sigma Tau Delta, the International English Honor Society * Southwest CSW Theatre Department * Master of Science in Education Degree in Educational Administration * Christian Principles * Hatton W. Sumners Speaker Series * Reader's Digest National Education Trust Initiative * Mustang Baseball * Center for Business Leadership * Quality Instruction * *Success 2000: A Leadership Camp for Young Americans* * Center for Educational Excellence * Special Course Offerings * Students In Free Enterprise * Estacado Library Information Network * *Southwest Creations* * *Faith in 2000* * College of the Southwest-Carlsbad * School of Education's Annual Educational Conference * *Money* magazine's "Best College Buys in America" * *U.S. News and World Report's* Guide to "America's Best Colleges" * Master of Science in Education Degree in School Counseling * Bachelor of Management * The Leadership



**College of the Southwest Hobbs Campus
Summer Session II
July 5 - August 1, 2001**

MASTER OF SCIENCE IN EDUCATION COURSE OFFERINGS

COURSE NO.	CR	TITLE	DAY	TIME	ROOM
ADMINISTRATION					
EDA 5213	3	Theories of Curriculum Development	M-F	12:30 - 2:30 pm	S124
EDA 5313	3	Educational Law	M-F	12:30 - 2:30 pm	L109
EDA 5403	3	Educational Finance and Facilities	M-F	5:30 - 7:30 pm	L109
EDA 5803	3	Internship in Educational Administration	TBA		TBA
COLLEGE COURSE					
CSW 5901	1	Portfolio Assessment	TBA		TBA
COUNSELING					
EDC 5313	3	Counseling Techniques for School Counselors	M-F	3:00 - 5:00 pm	S124
EDC 5323	3	Advanced Theories of Psychological Counseling	M-F	7:45 - 9:45 am	L109
EDC 5713	3	Psychopathology for School Counselors	M-F	7:45 - 9:45 pm	L109
EDC 5803	3	Internship in Counseling	TBA		TBA
CURRICULUM & INSTRUCTION					
EDI 5213	3	Theories of Curriculum	M-F	12:30 - 2:30 pm	S124
EDI 5223	3	Advanced Assessment	M-F	3:00 - 5:00 pm	L109
EDI 5313	3	Educational Law	M-F	12:30 - 2:30 pm	L109
EDUCATION CORE					
EDU 5203A	3	Theories of Learning and Human Development	M-F	10:00 - Noon	L109
EDU 5203B	3	Theories of Learning and Human Development	M-F	5:30 - 7:30 pm	S124
EDU 5513	3	Culturally Diverse and Special Needs Population	M-F	7:45 - 9:45 am	S124

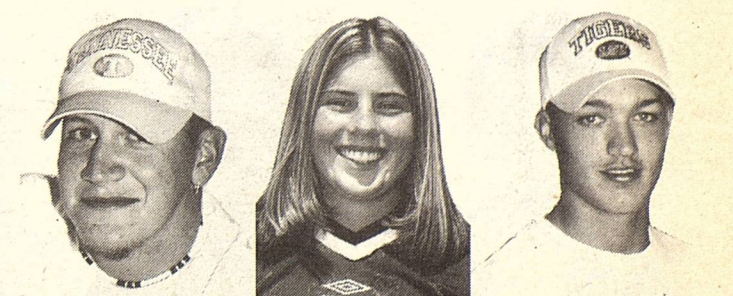
UNDERGRADUATE COURSE OFFERINGS

ACCOUNTING					
ACT 4343	3	Auditing Theory and Ethics	M-F	3:00 - 5:00 pm	A101
BIOLOGY					
BIO 4223	3	Field Biology	M-F	10 :00-Noon	A104
BIO 4703	3	Topics in Biology: Ecology	M-F	7:45 - 9:45 am	A106
COLLEGE COURSES					
CSW 3901	1	Portfolio Assessment	TBA		TBA
CRIMINAL JUSTICE					
CRJ 4103	3	Corrections, Operations, and Management	M-F	5:30 - 7:30 pm	A101
ECONOMICS					
ECO 3203	3	Principles of Business in a Free Enterprise System	M-F	10:00 - Noon	S113
EDUCATION					
BIL 3111	1	Language Arts for K-12 Bilingual Learners	M-F	4:15 - 5:00 pm	S110
BIL 3112	2	Social Studies and Fine Arts for K-12 Bilingual Learners	M-F	3:00 - 4:15 pm	S110
EDU 3203	3	Psychological Foundations of Teaching and Learning	M-F	7:45 - 9:45 am	S113
EDU 3222	2	Classroom Management and Organization	M-F	10:00-11:15 am	S110
EDU 3503	3	Communication Arts in the Elementary School	M-F	7:45 - 9:45 am	S124
EDU 3523	3	Educational Measurement and Evaluation	M-F	12:30 - 2:30 pm	S121
EDU 4213	3	Teaching in the Secondary School	M-F	7:45 - 9:45 am	S110
EDU 4413	3	Reading in the Content Area	M-F	3:00 - 5:00 pm	S121
SPED 3222	2	Classroom Management and the Exceptional Learner	M-F	12:30 - 1:45 pm	S103
SPED 3323	3	Methods and Materials for Special Education	M-F	7:45 - 9:45 am	S103
SPED 4211	1	The Physically Impaired Learner	M-F	10:00-11:00 am	S103
SPED 4221	1	The Mentally Impaired Learner	M-F	11:00 - Noon	S103
ENGLISH					
ENG 2213	3	Creative Writing	M-F	12:30 - 2:30 pm	L108
ENG 2423	3	Survey of Western World Literature	M-F	7:45 - 9:45 am	L100
ENG 4703	3	Topics in English	M-F	10:00 - Noon	L100
FINANCE					
FIN 2103	3	Principles of Finance	M-F	5:30 - 7:30 pm	A102
HISTORY					
HIS 1203	3	Western Civilization from 1716	M-F	10:00 - Noon	A106
HIS 4703	3	Topics in History	M-F	12:30 - 2:30 pm	A102
LINGUISTICS					
LIN 2253	3	Introduction to Linguistics	M-F	3:00 - 5:00 pm	A102
MARKETING					
MKT 3323	3	Principles of Marketing and Sales	M-F	12:30 - 2:30 pm	A106
POLITICAL SCIENCE					
POS 3103	3	American Ideologies	M-F	5:30 - 7:30 pm	A106
POS 4223	3	Constitutional History	M-F	7:45 - 9:45 am	A106
PSYCHOLOGY					
PSY 3103	3	Principles of Behavior Management	M-F	12:30 - 2:30 pm	S110
PSY 3213	3	Developmental Psychology	M-F	7:45 - 9:45 pm	S110
PSY 3513	3	History of Psychology	M-F	5:30 - 7:30 pm	S110
PSY 4703	3	Topics in Psychology	M-F	7:45 - 9:45 am	A102
RELIGION					
REL 1103	3	Old Testament Survey	M-F	3:00 - 5:00 pm	A106
SOCIOLOGY					
SOC 3203	3	Race and Ethnic Relations	M-F	7:45 - 9:45 pm	A106

CRIMINAL JUSTICE

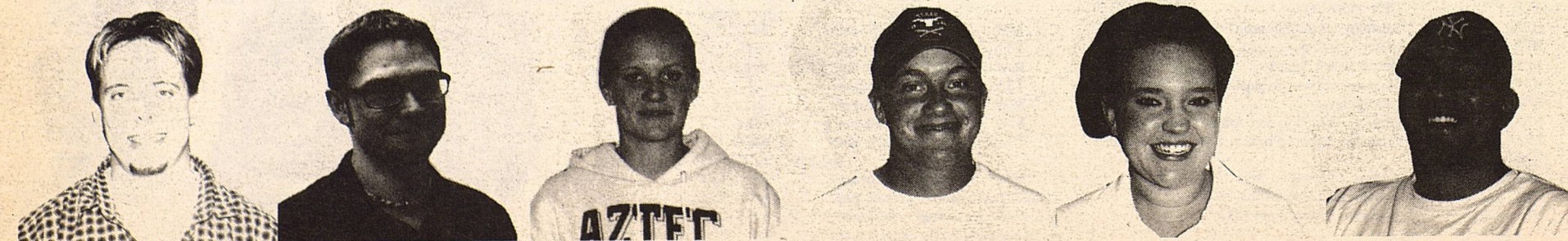
CRJ 3503	3	Juvenile Justice Systems	MW	7:00 - 8:20 pm	S103
CRJ 4503	3	Penology	MW	8:30 - 9:50 pm	S103
ECONOMICS					
ECO 2802	2	Internship in Free Enterprise	TTh	11:00 - 11:50 am	L109
ECO 3203A	3	Principles of Business in a Free Enterprise System	TTh	8:00 - 9:20 am	L109
ECO 3203B	3	Principles of Business in a Free Enterprise System	TTh	9:30 - 10:50 am	A100
ECO 3203C	3	Principles of Business in a Free Enterprise System	M	7:00 - 9:50 pm	A101
ECO 3802	2	Internship in Free Enterprise	TTh	11:00 - 11:50 am	L109
ECO 4802	2	Internship in Free Enterprise	TTh	11:00 - 11:50 am	L109
EDUCATION					
BIL 3102	2	Teaching English as a Second Language	MW	4:00 - 4:50 pm	L109
BIL 3301	1	Assessment and Evaluation of Bilingual Learners and Bilingual Programs	M	5:00 - 5:50 pm	L109
BIL 3311	1	Parents and Community Relations and Involvement Strategies	W	5:00 - 5:50 pm	L109
BIL 4101	1	Research in Bilingual Education	M	6:00 - 6:50 pm	S108
EDU 1101A	1	Field-Based Observation	Tu	11:00 - 11:50 am	S121
EDU 1101B	1	Field-Based Observation	Th	11:00 - 11:50 am	S121
EDU 2103A	3	Foundations of Education	MW	1:00 - 2:20 pm	S124
EDU 2103B	3	Foundations of Education	TTh	2:30 - 3:50 pm	S124
EDU 2103C	3	Foundations of Education	TTh	7:00 - 8:20 pm	S113
EDU 3203A	3	Psychological Foundations of Teaching and Learning	MW	8:00 - 9:20 am	L109
EDU 3203B	3	Psychological Foundations of Teaching and Learning	Fri	1:00 - 3:50 pm	S124
EDU 3203C	3	Psychological Foundations of Teaching and Learning	MW	7:00 - 8:20 pm	S110
EDU 3213A	3	Survey of Multicultural and Exceptional Learners	TTh	11:00 - 12:20 pm	S124
EDU 3213B	3	Survey of Multicultural and Exceptional Learners	MW	5:30 - 6:50 pm	S121
EDU 3222A	2	Classroom Management and Organization	TTh	9:30 - 10:20 am	S108
EDU 3222B	2	Classroom Management and Organization	TTh	5:30 - 6:20 pm	S108
EDU 3503A	3	Communication Arts in the Elementary School	MW	1:00 - 2:20 pm	S103
EDU 3503B	3	Communication Arts in the Elementary School	MW	8:30 - 9:50 pm	S108
EDU 3523A	3	Educational Measurement and Evaluation	MW	2:30 - 3:50 pm	S124
EDU 3523B	3	Educational Measurement and Evaluation	MW	8:30 - 9:50 pm	S110
EDU 4114A	4	Teaching in the Elementary School	MW	11:00 - 12:50 pm	S124
EDU 4114B	4	Teaching in the Elementary School	MW	4:00 - 5:50 pm	S124
EDU 4203A	3	Diagnostic/Corrective Teaching	TTh	4:00 - 5:20 pm	S124
EDU 4203B	3	Diagnostic/Corrective Teaching	TTh	1:00 - 2:20 pm	S124
EDU 4213	3	Teaching in the Secondary Schools	TTh	7:00 - 8:20 pm	S108
EDU 4413	3	Reading in the Content Area	MW	9:30 - 10:50 am	S108
EDU 4502A	2	Field Experience II	Th	8:00 - 9:20 am	S103
EDU 4502B	2	Field Experience II	Fri	9:00 - 10:20 am	S124
EDU 4502C	2	Field Experience II	M	7:00 - 8:20 pm	S108
EDU 4546	6	Intern Teaching	TBA		TBA
EDU 4601	1	Intern Teaching Seminar	M	5:00 - 5:50 pm	S113
SPED 1101A	1	Field-Based Observation in Special Education Settings	Tu	11:00 - 11:50 am	S121
SPED 1101B	1	Field-Based Observation in Special Education Settings	Th	11:00 - 11:50 am	S121
SPED 3423	3	Special Education Curriculum	MW	9:30 - 10:50 am	S103
SPED 3523	3	Assessment, Evaluation, Referral, and Placement of the Exceptional Learner	MW	4:00 - 5:20 pm	A102
SPED 4231	1	The Behavior-Disordered Learner	Tu	4:00 - 4:50 pm	S110
SPED 4241	1	The Learning-Disabled Learner	Th	4:00 - 4:50 pm	S110
SPED 4502A	2	Field Experience II in Special Education Settings	Th	8:00 - 9:20 am	S103
SPED 4502B	2	Field Experience II in Special Education Settings	Fri	9:00 - 10:20 am	S124
SPED 4502C	2	Field Experience II in Special Education Settings	M	7:00 - 8:20 pm	S108
SPED 4546	6	Intern Teaching in K-12 Special Education Settings	TBA		TBA
SPED 4601	1	Intern Teaching Seminar	M	5:00 - 5:50 pm	S113
ENGLISH					
ENG 1113	3	Rhetoric and Composition	MW	11:00 - 12:20 pm	L108
ENG 1123A	3	Rhetoric and Literature	MW	9:30 - 10:50 am	A100
ENG 1123B	3	Rhetoric and Literature	TTh	11:00 - 12:20 pm	L100
ENG 1123C	3	Rhetoric and Literature	MW	7:00 - 8:20 pm	L100
ENG 2303	3	Survey of British Literature	TTh	9:30 - 10:50 am	L100
ENG 2433	3	Survey of Popular Fiction	TTh	8:00 - 9:20 am	L100
ENG 3213	3	Advanced Creative Writing	Fri	9:00 - 11:50 am	L108
ENG 3503	3	Advanced Grammar	TTh	1:00 - 2:20 pm	L100
ENG 3573	3	Young Adult Literature	MW	1:00 - 2:20 pm	L100
ENG 3813	3	Technical Newspaper Writing	Fri	9:00 - 11:50 am	LWR
ENG 3823	3	Yearbook Production	TBA		TBA
ENG 4403A	3	Advanced Composition	MW	2:30 - 3:50 pm	L108
ENG 4403B	3	Advanced Composition	TTh	7:00 - 8:20 pm	L108
ENG 4523	3	Major British Author: George Eliot	MW	11:00 - 12:20 pm	L100
FINANCE					
FIN 3303	3	Money and Banking	TTh	5:30 - 6:50 pm	L100
FIN 3423	3	Financial Management	MW	9:30 - 10:50 am	L100
FIN 4413	3	Insurance and Risk	TTh	7:00 - 8:20 pm	S110
FIN 4813	3	Investment Internship II	TBA		TBA
FIN 4823	3	Internship in Finance	TBA		TBA
GEOGRAPHY					
GEOG 2303	3	The History and Geography of New Mexico	TTh	1:00 - 2:20 pm	L109
GEOLOGY					
GEO 1204	3	Historical Geology	TTh	4:00 - 5:20 pm	S121
GEO 120L	1	Historical Geology Laboratory	TTh	5:30 - 6:30 pm	S121
HEALTH/PHYSICAL EDUCATION					
HPE 0520	0	Athletics: Baseball	TBA		TBA
HPE 2102	2	Lifetime Fitness	MW	9:30 - 10:20 am	MFC
HPE 2213	3	Workplace Training Standard First Aid with Adult CPR and AED	TTh	9:30 - 10:50 am	MFC
HPE 2263	3	Anatomy for the Physical Educator/Coach	MW	8:00 - 9:20 am	MFC
HPE 2303	3	Motor Learning	TTh	9:30 - 10:50 am	ATR
HPE 2312	2	Nutrition and Sports	MW	11:00 - 11:50 am	S108
HPE 3403	3	Measurement and Evaluation in Physical Education	TTh	1:00 - 2:20 pm	MFC
HPE 4103	3	Kinesiology	MW	1:00 - 2:20 pm	S110
HPE 4303	3	Physical Education and Athletic Administration	MW	11:00 - 12:20 pm	MFC
HPE 4503	3	Secondary School Physical Education Programs	TTh	11:00 - 12:20 pm	MFC
HISTORY					
HIS 1203A	3	Western Civilization from 1716	MW	9:30 - 10:50 am	L109
HIS 1203B	3	Western Civilization from 1716	TTh	8:30 - 9:50 pm	S110
HIS 2203A	3	American History from 1877	MW	8:00 - 9:20 am	S113

* Bachelor of Arts and Sciences Degree * Bilingual Education * Alpha Chi National Honor Society * www.csw.edu * Freshman Success * Lady Mustang Volleyball * Teacher Certification * CSW's Board of Trustees * Intramural Sports * Hatton W. Sumners Speaker Series * Master's Degree in Curriculum and Instruction * *Ad Tempus* * Criminal Justice Program * Special Education * Dr. J. L. Burke Literary Contest * Templeton Foundation's Honor Roll of "Colleges That Encourage Character Development" * *Faith in 2000* * Life Insights for Excellence * Phase One of Comprehensive Campus Master Plan * Bachelor of Science * Commitment to Excellence * Intel Foundation's *Teach to the Future* Pilot Project * Campus Crusade for Christ * Debt-Free Operations * I CAN! Scholarships for Grades 7-12 * *VISTA* * Athletic Training * Academic Distinction * Undergraduate Degrees in 21 Fields of Liberal Arts * *Prairie Dog Post* * Lady Mustang Soccer * Great Financial Aid Packages * President's Student Advisory Council * Free Enterprise Education * *Money* magazine's "Best College Buys in America" * Small Class Size * CSW Ambassadors * Individual Responsibility * Distinguished Lecture Series * Hatton W. Sumners Speaker Series * Reader's Digest National Education Trust Initiative * Mustang Baseball * Center for Business Leadership * Quality Instruction * *Success 2000: A Leadership Camp for Young Americans* * Center for Educational Excellence * Special Course Offerings * Students In Free Enterprise * Estacado Library Information Network * *Southwest Creations* * Life Insights for Excellence * Phase One of Comprehensive Campus Master Plan * Bachelor of Science * Commitment to Excellence * Intel Foundation's *Teach to the Future* Pilot Project * Campus Crusade for Christ * Debt-Free Operations * I CAN! Scholarships for Grades 7-12 * *VISTA* * Athletic Training * Academic Distinction * Undergraduate Degrees in 21 Fields of Liberal Arts * *Prairie Dog Post* * Lady Mustang Soccer * Great Financial Aid Packages * President's Student Advisory Council * Free Enterprise Education * *Money* magazine's "Best College Buys in America" * CSW Ambassadors * Individual Responsibility * Distinguished Lecture Series * Hatton W. Sumners Speaker Series * Reader's Digest National Education Trust Initiative * Small Class



* Distinguished Lecture Series * Hatton W. Summers Speaker Series * Reader's Digest National Education Trust Initiative * Mustang Baseball * Center for Business Leadership * Quality Instruction * *Success 2000: A Leadership Camp for Young Americans* * Center for Educational Excellence * Special Course Offerings * Students In Free Enterprise * Estacado Library Information Network * *Southwest Creations* * *Faith in 2000* * College of the Southwest-Carlsbad * School of Education's Annual Educational Conference * *Money* magazine's "Best College Buys in America" * *U.S. News and World Report's* Guide to "America's Best Colleges" * Master of Science in Education Degree in School Counseling * Bachelor of Management * The Leadership Council * National Association of Intercollegiate Athletics * Senior Seminar in Leadership and Ethics * "A Taste of Literature" * Servant Leadership * Individual Attention * Sigma Tau Delta, the International English Honor Society * Southwest Association of Future Educators * CSW Theatre Department * Master of Science in Education Degree in Educational Administration * Christian Principles * *Time/Princeton Review's* "The Best College for You" * Bachelor of Arts and Sciences Degree * Bilingual Education * Alpha Chi National Honor Society * www.csw.edu * Freshman Success * Lady Mustang Volleyball * Teacher Certification * CSW's Board of Trustees * Intramural Sports * Hatton W. Summers Speaker Series * Master's Degree in Curriculum and Instruction * *Ad Tempus* * Criminal Justice Program * Special Education * Dr. J. L. Burke Literary Contest * Templeton Foundation's Honor Roll of "Colleges That Encourage Character Development" * Life Insights for Excellence * Phase One of Comprehensive Campus Master Plan * Bachelor of Science * Commitment to Excellence * Intel Foundation's *Teach to the Future* Pilot Project * Campus Crusade for Christ * Debt-Free Operations * I CAN! Scholarships for Grades 7-12 * *VISTA* * Athletic Training * Academic Distinction * Undergraduate Degrees in 21 Fields of Liberal Arts * *Prairie Dog Post* * Lady Mustang Soccer * Great Financial Aid Packages * President's Student Advisory Council * Free Enterprise Education * *Money* magazine's "Best College Buys in America" * Small Class Size * CSW Ambassadors * Individual Responsibility *

HISTORY (continued)							
HIS 2203B	3	American History from 1877	TTh	8:00 - 9:20 am	A100	Sumruld	
HIS 2203C	3	American History from 1877	Fri	1:00 - 3:50 pm	S113	Staff	
HIS 2303	3	The History and Geography of New Mexico	TTh	1:00 - 2:20 pm	L109	Goldman	
HIS 3313	3	World History	TTh	9:30 - 10:50 am	L109	Sumruld	
HIS 4703	3	Topics: US Indian Policy	MW	1:00 - 2:20 pm	A100	Sumruld	
MANAGEMENT							
MGT 2103	3	Principles of Management	MW	6:30 - 7:50 am	L100	Sanderson	
MGT 3503	3	Organizational Behavior	MW	11:00 - 12:20 pm	A102	Rickles	
MGT 4162A	2	Creating a Business Plan	TTh	2:30 - 3:20 pm	A102	DiUlus	
MGT 4162B	2	Creating a Business Plan	TTh	8:30 - 9:20 pm	A102	Wilson	
MGT 4163	3	Topics: Current Issues in Management	TTh	6:30 - 7:50 am	S108	Sanderson	
MGT 4303A	3	Industrial and Organizational Psychology	TTh	8:00 - 9:20 am	S113	Dunn, T	
MGT 4303B	3	Industrial and Organizational Psychology	MW	5:30 - 6:50 pm	A100	Dunn, T	
MGT 4813	3	Internship in Management	TBA		TBA	Dunn, T	
MARKETING							
MKT 3323A	3	Principles of Marketing and Sales	MW	2:30 - 3:50 pm	L109	Lunsford, P	
MKT 3323B	3	Principles of Marketing and Sales	TTh	7:00 - 8:20 pm	A102	Noel	
MKT 3423	3	Salesmanship	MW	7:00 - 8:20 pm	S121	Munoz	
MKT 3513	3	Advertising and Promotion	TTh	1:00 - 2:20 pm	S110	Rickles	
MKT 4123	3	Services Marketing	MW	8:30 - 9:50 pm	A106	Munoz	
MKT 4133	3	Marketing Management	MW	9:30 - 10:50 am	A102	Dodd, S	
MKT 4813	3	Internship in Marketing	TBA		TBA	DiUlus	
MATHEMATICS							
MAT 1103A	3	College Algebra for General Education	MW	8:00 - 9:20am	A101	Roan	
MAT 1103B	3	College Algebra for General Education	MW	11:00 - 12:20 pm	A101	Fox	
MAT 1413	3	Pre-Calculus Mathematics	MW	1:00 - 2:20 pm	A102	Roan	
MAT 2103	3	Principles of Probability and Statistics	MW	2:30 - 3:50 pm	A102	Fox	
MAT 2214	4	Analytic Geometry and Calculus II	M-Th	9:30 - 10:20 am	A101	Fox	
MAT 3204	4	Analytic Geometry and Calculus III	M-Th	9:30 - 10:20 am	S113	Roan	
MAT 3213	3	Differential Equations	MW	4:00 - 5:20 pm	A106	Roan	
MAT 3303	3	Linear Algebra	TTh	1:00 - 2:20 pm	A101	Roan	
MAT 3323A	3	Statistics I	TTh	2:30 - 3:50 pm	A100	Fox	
MAT 3323B	3	Statistics II	TTh	7:00 - 8:20 pm	S121	Fox	
MAT 4703	3	Topics in Mathematics	TBA		TBA	Fox	
MUSIC							
MUS 1801	1	CSW Ambassadors	Fri	1:00 - 3:50 pm	TBA	Cohagen	
MUS 2103	3	Jazz: The American Music	TTh	5:30 - 6:50 pm	S110	Studley	
MUS 2801	1	CSW Ambassadors	Fri	1:00 - 3:50 pm	TBA	Cohagen	
MUS 3801	1	CSW Ambassadors	Fri	1:00 - 3:50 pm	TBA	Cohagen	
MUS 4801	1	CSW Ambassadors	Fri	1:00 - 3:50 pm	TBA	Cohagen	
PHILOSOPHY							
PHI 2203	3	Logic	Fri	1:00 - 3:50 pm	A102	Staff	
POLITICAL SCIENCE							
POS 3103	3	American Ideologies	MW	1:00 - 2:20 pm	S108	Goldman	
POS 4143	3	Comparative Politics	MW	11:00 - 12:20 pm	S103	Goldman	
PSYCHOLOGY							
PSY 2103A	3	Psychology of Adjustment	MW	9:30 - 10:50 am	S121	Wolske	
PSY 2103B	3	Psychology of Adjustment	Fri	1:00 - 3:50 pm	L109	Staff	
PSY 3113	3	Cognition	MW	11:00 - 12:20 pm	L109	Staff	
PSY 3213	3	Developmental Psychology	TTh	11:00 - 12:20 pm	A101	Wolske	
PSY 3223	3	Psychology of Aging	TTh	6:30 - 7:50 am	S110	Anderson	
PSY 4103	3	Personality	TTh	9:30 - 10:50 am	S124	Wolske	
PSY 4203	3	Abnormal Psychology	MW	2:30 - 3:50 pm	A101	Wolske	
PSY 4303A	3	Industrial and Organizational Psychology	TTh	8:00 - 9:20 am	S113	Dunn, T	
PSY 4303B	3	Industrial and Organizational Psychology	MW	5:30 - 6:50 pm	A100	Dunn, T	
PSY 4313A	3	Interviewing and Counseling Techniques	MW	8:00 - 9:20 am	A102	Anderson	
PSY 4313B	3	Interviewing and Counseling Techniques	MW	7:00 - 8:20 pm	S113	Barchenger	
PSY 4523A	3	Psychological and Educational Testing	TTh	2:30 - 3:50 pm	S110	Sweat	
PSY 4523B	3	Psychological and Educational Testing	Sat	9:00 - 11:50 am	L100	Staff	
PSY 4703	3	Topics: Rehabilitation Counseling	TTh	7:00 - 8:20 pm	L100	Sweat	
PSY 4803	3	Psychology Practicum	TBA		TBA	Staff	
RELIGION							
REL 1101	1	LIFE I	Tu	12:00 - 12:50 pm	MSC	Sumruld	
REL 1201	1	LIFE II	Tu	12:00 - 12:50 pm	MSC	Sumruld	
REL 1301	1	LIFE III	Tu	12:00 - 12:50 pm	MSC	Sumruld	
REL 1103A	3	Old Testament Survey	TTh	2:30 - 3:50 pm	A106	Staff	
REL 1103B	3	Old Testament Survey	TTh	7:00 - 8:20 pm	A106	Glasgow	
REL 1203A	3	New Testament Survey	MW	1:00 - 2:20 pm	A106	Staff	
REL 1203B	3	New Testament Survey	MW	2:30 - 3:50 pm	A106	Glasgow	
REL 1203C	3	New Testament Survey	TTh	1:00 - 2:20 pm	A106	Glasgow	
REL 1203D	3	New Testament Survey	TTh	5:30 - 6:50 pm	A106	Glasgow	
SOCIOLOGY							
SOC 2213	3	Marriage and the Family	MW	1:00 - 2:20 pm	S113	Staff	
SOC 3203A	3	Race and Ethnic Relations	MW	2:30 - 3:50 pm	S113	Staff	
SOC 3203B	3	Race and Ethnic Relations	TTh	4:00 - 5:20 pm	S113	Staff	
SPANISH							
SPA 3303	3	Survey of Spanish Literature	TTh	4:30 - 5:50 pm	L109	Palomo, J	
SPA 3403	3	Survey of Spanish-American Literature	TTh	7:00 - 8:20 pm	S103	Palomo, J	
SPEECH							
SPE 1103A	3	Principles of Speech	TTh	9:30 - 10:50 am	MHC	Floyd	
SPE 1103B	3	Principles of Speech	TTh	1:00 - 2:20 pm	MHC	Floyd	
SPE 1103C	3	Principles of Speech	TTh	7:00 - 8:20 pm	MHC	Staff	
THEATRE							
THE 2602	2	Theatre Workshop	TBA		TBA	Floyd	
THE 3602	2	Theatre Workshop	TBA		TBA	Floyd	
THE 4103	3	Oral Interpretation	TTh	2:30 - 3:50 pm	MHC	Floyd	
THE 4602	2	Theatre Workshop	TBA		TBA	Floyd	



College of the Southwest Hobbs Campus
Summer Session I
June 4 - June 29, 2001

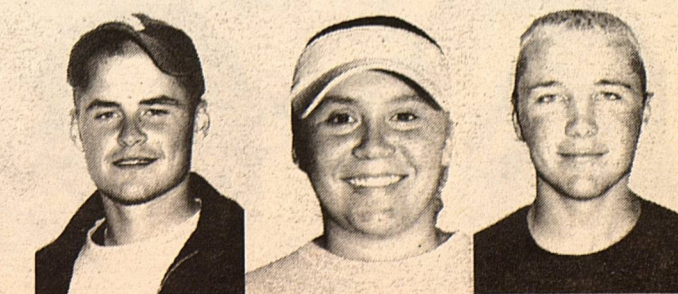
MASTER OF SCIENCE IN EDUCATION COURSE OFFERINGS

COURSE NO.	CR	TITLE	DAY	TIME	ROOM
ADMINISTRATION					
EDA 5303	3	Policies and Public Relations	M-F	3:00 - 5:00 pm	L109
EDA 5513	3	Theories of Administration	M-F	5:30 - 7:30 pm	S124
EDA 5803	3	Internship in Educational Administration	TBA		TBA
COLLEGE COURSE					
CSW 5901	1	Portfolio Assessment	TBA		TBA
COUNSELING					
EDC 5403	3	Group Processes	M-F	7:45 - 9:45 pm	S124
EDC 5423	3	Child and Adolescent Counseling	M-F	5:30 - 7:30 pm	L109
EDC 5803	3	Internship in Counseling	TBA		TBA
CURRICULUM & INSTRUCTION					
EDI 5233	3	Advanced Classroom Management	M-F	12:30 - 2:30 pm	S124
EDI 5303	3	Policies and Public Relations	M-F	3:00 - 5:00 pm	L109
EDI 5333	3	Reading Comprehension Across the Curriculum	M-F	10:00 - Noon	S124
EDI 5413	3	Program Development and Management	M-F	7:45 - 9:45 am	L109
EDUCATION CORE					
EDU 5103	3	Instructional Strategies	M-F	10:00 - Noon	L109
EDU 5213	3	Professional/Ethical Issues in Counseling	M-F	12:30 - 2:30 pm	L109
EDU 5413	3	Program Development and Management	M-F	7:45 - 9:45 am	L109
EDUCATIONAL DIAGNOSTICIAN					
EDG 5453	3	Achievement, Ability, and Processing	M-F	7:45 - 9:45 am	MHC

UNDERGRADUATE COURSE OFFERINGS

ASTRONOMY					
AST 1104	3	Descriptive Astronomy	M-F	5:30 - 7:30 pm	S126
AST 110L	1	Astronomy Laboratory	M-F	7:30 - 8:45 pm	A104
BIOLOGY					
BIO 4703	3	Topics	M-F	7:45 - 9:45 am	A104
BUSINESS					
BUA 3303	3	Professional Communication and Sales Presentation	M-F	10:00 - Noon	A106
COLLEGE COURSES					
CSW 3901	1	Portfolio Assessment	TBA		TBA
COMPUTER SCIENCE					
CSI 2203	3	Educational Technology	M-F	3:00 - 5:00 pm	A105
CRIMINAL JUSTICE					
CRJ 4303	3	Criminal Justice Administration	M-F	5:30 - 7:30 pm	A102
EDUCATION					
BIL 2103	3	Introduction to Bilingual Education	M-F	12:30 - 2:30 pm	S110
BIL 3202	2	Science and Math for K-12 Bilingual Learners	M-F	3:00 - 4:15 pm	S121
EDU 2103	3	Foundations of Education	M-F	7:45 - 9:45 am	S110
EDU 3213	3	Survey of Multicultural and Exceptional Learners	M-F	12:30 - 2:30 pm	S121
EDU 3503	3	Communication Arts in the Elementary School	M-F	10:00 - Noon	S121
EDU 4114	4	Teaching in the Elementary School	M-F	3:00 - 5:30 pm	S124
EDU 4203	3	Diagnostic / Corrective Teaching	M-F	7:45 - 9:45 am	S113
SPED 2103	3	Introduction to Special Education	M-F	10:00 - Noon	S113
SPED 3523	3	Assessment, Evaluation, Referral, and Placement of the Exceptional Learner	M-F	7:45 - 9:45 am	S103
SPED 4101	1	Research in Special Education	M-F	3:00 - 4:00 pm	S110
SPED 4201	1	The Gifted / Talented Learner	M-F	4:00 - 5:00 pm	S110
ENGLISH					
ENG 2223	3	Life and Literature of the Southwest	M-F	10:00 - Noon	L100
ENG 3513	3	Children's Literature	M-F	7:45 - 9:45 am	L100
FINANCE					
FIN 3423	3	Financial Management	M-F	5:30 - 7:30 pm	S110
HISTORY					
HIS 1103	3	Western Civilization to 1715	M-F	10:00 - Noon	S110
HIS 2223	3	Life and Literature of the Southwest	M-F	10:00 - Noon	L100
MANAGEMENT					
MGT 3503	3	Organizational Behavior	M-F	7:45 - 9:45 pm	S110
MGT 4203	3	Topics in Management	M-F	12:30 - 2:30 pm	A102
MATHEMATICS					
MAT 1103	3	College Algebra for General Education	M-F	10:00 - Noon	A101
MAT 2103	3	Principles of Probability and Statistics	M-F	7:45 - 9:45 am	A101
MUSIC					
MUS 1103	3	Music Appreciation	M-F	7:45 - 9:45 am	S121
PSYCHOLOGY					
PSY 3403	3	Interpersonal Group Dynamics	M-F	12:30 - 2:30 pm	A106
PSY 3503	3	Social Psychology	M-F	5:30 - 7:30 pm	S113
PSY 4403	3	Experimental Psychology	M-F	7:45 - 9:45 pm	S108
RELIGION					
REL 1203	3	New Testament Survey	M-F	3:00 - 5:00 pm	A106
SOCIOLOGY					
SOC 3503	3	Social Psychology	M-F	5:30 - 7:30 pm	S113

* CSW's Board of Trustees * Intramural Sports * Hatton W. Summers Speaker Series * *Ad Tempus* * Special Education Life Insights for Excellence * Phase One of Comprehensive Campus Master Plan * Bachelor of Science * Commitment to Excellence * Intel Foundation's *Teach to the Future* Pilot Project * Campus Crusade for Christ * Debt-Free Operations * I CAN! Scholarships for Grades 7-12 * *VISTA* * Athletic Training * Academic Distinction * Undergraduate Degrees in 21 Fields of Liberal Arts * *Prairie Dog Post* * Lady Mustang Soccer * Great Financial Aid Packages * President's Student Advisory Council * Free Enterprise Education * *Money* magazine's "Best College Buys in America" * Small Class Size * CSW Ambassadors * Individual Responsibility * * Distinguished Lecture Series * Hatton W. Summers Speaker Series * Reader's Digest National Education Trust Initiative * Mustang Baseball * Center for Business Leadership * Quality Instruction * Distinguished Lecture Series * * Hatton W. Summers Speaker Series * Reader's Digest National Education Trust Initiative * Mustang Baseball * Center for Business Leadership * Quality Instruction * Distinguished Lecture Series * * Hatton W. Summers Speaker Series * Reader's Digest National Education Trust Initiative * Mustang Baseball * Center for Business Leadership * Quality Instruction * *Success 2000: A Leadership Camp for Young Americans* * Center for Educational Excellence * Special Course Offerings * Students In Free Enterprise * Estacado Library Information Network * *Southwest Creations* * *Faith in 2000* * College of the Southwest-Carlsbad * *Ad Tempus* * Special Education * Life Insights for Excellence * School of Education's Annual Educational Conference * *Money* magazine's "Best College Buys in America" * *U.S. News and World Report's* Guide to "America's Best Colleges" * Master of Science in Education Degree in School Counseling * Bachelor of Management * The Leadership Council * National Association of Intercollegiate Athletics * Senior Seminar in Leadership and Ethics * "A Taste of Literature" * Servant Leadership * Individual Attention * Sigma Tau Delta, the International English Honor Society * Southwest Association of Future Educators * CSW Theatre Department * Master of Science in Education Degree in Educational Administration * Christian Principles * *Time/Princeton Review's* "The Best College for You" * Bachelor of Arts and Sciences Degree * Bilingual Education * Alpha Chi



* School of Education's Annual Educational Conference *
 Money magazine's "Best College Buys in America" * U.S. News
 and World Report's Guide to "America's Best Colleges" * Master
 of Science in Education Degree in School Counseling * Bachelor
 of Management * The Leadership Council * National
 Association of Intercollegiate Athletics * Senior Seminar in
 Leadership and Ethics * "A Taste of Literature" * Servant
 Leadership * Individual Attention * Sigma Tau Delta, the
 International English Honor Society * Southwest Association of
 Future Educators * CSW Theatre Department * Master of
 Science in Education Degree in Educational Administration *
 Christian Principles * Time/Princeton Review's "The Best College
 for You" * Bachelor of Arts and Sciences Degree * Bilingual
 Education * Alpha Chi National Honor Society *
 www.csw.edu * Freshman Success * Lady Mustang Volleyball
 * Teacher Certification * CSW's Board of Trustees *
 Intramural Sports * Hatton W. Sumners Speaker Series *
 Ad Tempus * Special Education * Life Insights for
 Excellence * Phase One of Comprehensive Campus Master Plan
 * Bachelor of Science * Commitment to Excellence * Intel
 Foundation's Teach to the Future Pilot Project * Campus
 Crusade for Christ * Debt-Free Operations * I CAN!
 Scholarships for Grades 7-12 * VISTA * Athletic Training
 * Academic Distinction * Undergraduate Degrees in 21 Fields
 of Liberal Arts * Prairie Dog Post * Lady Mustang Soccer
 * Great Financial Aid Packages * President's Student
 Advisory Council * Free Enterprise Education * Money
 magazine's "Best College Buys in America" * Small Class Size
 * CSW Ambassadors * Individual Responsibility *
 Distinguished Lecture Series * Hatton W. Sumners Speaker
 Series * Reader's Digest National Education Trust Initiative
 * Mustang Baseball * Center for Business Leadership *
 Quality Instruction * Distinguished Lecture Series *
 Hatton W. Sumners Speaker Series * Reader's Digest National
 Education Trust Initiative * Mustang Baseball * Center for
 Business Leadership * Quality Instruction * Success 2000:
 A Leadership Camp for Young Americans * Center for Educational
 Excellence * Special Course Offerings * Students In Free
 Enterprise * Estacado Library Information Network *
 Southwest Creations * Faith in 2000 * College of the



College of the Southwest – Carlsbad Campus
Spring Session "A"
January 8 - March 16, 2001

Advisement, Pre-Registration	Tuesday - Friday, January 2-5
Registration & Textbook Purchase	Tuesday - Friday, January 2-5
Classes Begin*	Monday, January 8
Last Day to Change Classes	Monday, January 15
Last Day for 100% Refund	Monday, January 15
Last Day for 50% Refund	Monday, January 22
Zero Percent Refund	Tuesday, January 23
Last Day to Withdraw with a "W"	Monday, February 5
Final Examinations Begin	Monday, March 12
Final Examinations End	Friday, March 16

Spring Session "B"
March 19 - May 25, 2001

Advisement, Pre-Registration	Monday - Friday, March 12-16
Registration, Textbook Purchase	Monday - Friday, March 12-16
Classes Begin*	Monday, March 19
Last Day to Change Classes	Monday, March 26
Last Day for 100% Refund	Monday, March 26
Last Day for 50% Refund	Monday, April 2
Zero Percent Refund	Tuesday, April 3
Last Day to Withdraw with a "W"	Monday, April 23
Final Examinations Begin	Monday, May 21
Final Examinations End	Friday, May 25

* The scheduled rates are set according to the day classes begin; therefore, refunds are not based on the date an individual registers or begins attending class.

Tuition and Fees

Tuition Per Semester Hour	\$170.00
Directed Studies Per Semester Hour	182.00
Audit Per Semester Hour	85.00
Change of Course Fee (Per Change Slip)	35.00

This charge is made for any course changes other than those required by the College.

Note: Fees are not refundable. A complete list of fees is contained in the current issue of the CSW Bulletin. CSW reserves the right to make such changes as it deems necessary.

DID YOU KNOW . . .

An astounding 92% of all eligible New Mexico
 residents at CSW-Carlsbad receive financial aid!
 To see what you qualify for, call David Arnold,
 CSW's Director of Financial Aid, today!

. . . AND CHECK THIS OUT!

According to indications in college guides for
 U.S. News & World Report, Money magazine,
 and the Time / Princeton Review, CSW is one of
 the least expensive independent colleges in the
 entire United States!

College of the Southwest – Hobbs Campus
Spring 2001
January 12 - May 10, 2001

New Student Academic Advisement	Monday - Thursday, January 8-11
Registration 9:00 am to 7:00 pm	Thursday, January 11
Classes Begin*	Friday, January 12
Last Day for 100% Tuition Refund	Thursday, January 18
Last Day to Change Classes	Thursday, January 18
Last Day for 75% Tuition Refund	Thursday, January 25
Last Day for 50% Tuition Refund	Thursday, February 1
Last Day for 25% Tuition Refund	Thursday, February 8
Zero Percent Tuition Refund	Friday, February 9
Last Day to Withdraw with a "W"	Friday, March 2
Spring Break Begins	March 26 - March 30
Last Day to Withdraw	Thursday, May 3
Final Examinations Begin	Friday, May 4
Final Examinations End	Thursday, May 10
Commencement	Saturday, May 12

* The scheduled rates are set according to the day classes begin; therefore, refunds are not based on the date an individual registers or begins attending class.
Note: Tuition refunds for Special Course Offerings will not be made after classes have begun.

Tuition and Fees

Tuition Per Semester Hour	\$150.00
Graduate Tuition Per Semester Hour	158.00
Directed Studies Per Semester Hour	160.00
Audit Per Semester Hour	75.00
Change of Course Fee (Per Change Slip)	20.00

This charge is made for any course changes other than those required by the College.
Student Service Fee for Spring Semester 95.00

Note: Fees are not refundable. A complete list of fees is contained in the current issue of the CSW Bulletin. All tuition, housing expenses, and fees are due at the beginning of the semester. If a student's account is not clear by the twenty-first class day, the student will be dropped from classes with a financial indebtedness. CSW reserves the right to make such changes as it deems necessary.

GREAT NEWS!

According to David Arnold, Director of
 Financial Aid at College of the Southwest, there
 is still a considerable amount of financial aid
 money left to eligible New Mexico residents!
 Simply stop by the campus and visit with David
 today to see what financial aid you qualify for!



* Bachelor of Management * The Leadership Council *
 National Association of Intercollegiate Athletics * Senior Seminar
 in Leadership and Ethics * "A Taste of Literature" *
 Servant Leadership * Individual Attention * Sigma Tau
 Delta, the International English Honor Society * Southwest
 Association of Future Educators * CSW Theatre Department
 * Master of Science in Education Degree in Educational
 Administration * Christian Principles * Time/Princeton
 Review's "The Best College for You" * Bachelor of Arts and
 Sciences Degree * Bilingual Education * Alpha Chi
 National Honor Society * www.csw.edu * Freshman Success
 * Lady Mustang Volleyball * Teacher Certification *
 CSW's Board of Trustees * Intramural Sports * Hatton W.
 Sumners Speaker Series * Master's Degree in Curriculum and
 Instruction * Ad Tempus * Criminal Justice Program *
 Special Education * Dr. J. L. Burke Literary Contest *
 Templeton Foundation's Honor Roll of "Colleges That Encourage
 Character Development" * Life Insights for Excellence *
 Phase One of Comprehensive Campus Master Plan * Bachelor of
 Science * Commitment to Excellence * Intel Foundation's
 Teach to the Future Pilot Project * Campus Crusade for Christ
 * Debt-Free Operations * I CAN! Scholarships for Grades
 7-12 * VISTA * Athletic Training * Academic
 Distinction * Undergraduate Degrees in 21 Fields of Liberal Arts
 * Prairie Dog Post * Lady Mustang Soccer * Great
 Financial Aid Packages * President's Student Advisory Council
 * Free Enterprise Education * Money magazine's "Best College
 Buys in America" * Small Class Size * CSW Ambassadors
 * Individual Responsibility * Hatton W. Sumners Speaker
 Series * Reader's Digest National Education Trust Initiative
 * Mustang Baseball * Center for Business Leadership *
 Quality Instruction * Success 2000: A Leadership Camp for
 Young Americans * Center for Educational Excellence *
 Special Course Offerings * Students In Free Enterprise *
 Estacado Library Information Network * Southwest Creations
 * Faith in 2000 * College of the Southwest-Carlsbad *
 School of Education's Annual Educational Conference * Money
 magazine's "Best College Buys in America" * U.S. News and
 World Report's Guide to "America's Best Colleges" * Master of
 Science in Education Degree in School Counseling *

Life Insights for Excellence * Phase One of Comprehensive Campus Master Plan * Bachelor of Science * Commitment to Excellence * Intel Foundation's Teach to the Future Pilot Project * Campus Crusade for Christ * Debt-Free Operations * I CAN Scholarships for Grades 7-12 * VISTA * Athletic Training * Academic Distinction * Undergraduate Degrees in 21 Fields of Liberal Arts * Prairie Dog Post * Lady Mustang Soccer * Great Financial Aid Packages * President's Student Advisory Council * Free Enterprise Education * Money magazine's "Best College Buys in America" * Small Class Size * CSW Ambassadors * Individual Responsibility * Hatton W. Sumners Speaker Series * Reader's Digest National Education Trust Initiative * Mustang Baseball * Center for Business Leadership * Quality Instruction * Success 2000: A Leadership Camp for Young Americans * Center for Educational Excellence * Special Course Offerings * Students In Free Enterprise * Estacado Library Information Network * Southwest Creations * Faith in 2000 * College of the Southwest-Carlsbad * School of Education's Annual Educational Conference * Money magazine's "Best College Buys in America" * U.S. News and World Report's Guide to "America's Best Colleges" * Master of Science in Education * Degree in School Counseling * Bachelor of Management * The Leadership Council * National Association of Intercollegiate Athletics * Senior Seminar in Leadership and Ethics * "A Taste of Literature" * Servant Leadership * Individual Attention * Sigma Tau Delta, the International English Honor Society * Southwest Association of Future Educators * CSW Theatre Department * Bachelor of Science in Education Degree in Educational Administration * Christian Principles * Time/Princeton Review's "The Best College for You" * Bachelor of Arts and Sciences Degree * Bilingual Education * Alpha Chi National Honor Society * www.csw.edu * Freshman Success * Lady Mustang Volleyball * Teacher Certification * CSW's Board of Trustees * Intramural Sports * Hatton W. Sumners Speaker Series * Ad Tempus * Special Education * Life Insights for Excellence * Phase One of Comprehensive Campus Master Plan * Bachelor of Science * Commitment to Excellence * Intel Foundation's Teach to the Future Pilot Project * Campus Crusade for Christ * Debt-Free Operations * I CAN Scholarships for Grades 7-12 * VISTA * Athletic Training * Academic Distinction * Undergraduate Degrees in 21 Fields of Liberal Arts * Prairie Dog Post * Lady Mustang Soccer * Great Financial Aid Packages * President's Student Advisory Council * Free Enterprise Education * Money magazine's "Best College Buys in America" * Small Class Size * CSW Ambassadors * Individual Responsibility * Distinguished Lecture Series * Hatton W. Sumners Speaker Series * Reader's Digest National Education Trust Initiative * Mustang Baseball * Center for Business Leadership * Quality Instruction * Distinguished Lecture Series * Hatton W. Sumners Speaker Series * Reader's Digest National Education Trust Initiative * Mustang Baseball * Center for Business Leadership * Quality Instruction * Success 2000: A Leadership Camp for Young Americans * Center for Educational Excellence * Special Course Offerings * Students In Free Enterprise * Estacado Library Information Network * Southwest Creations * Faith in 2000 * College of the

College of the Southwest -- Carlsbad Campus
Spring 2001 Session "A"
January 8 - March 16, 2001

COURSE NO.	CR	TITLE	DAY	TIME	ROOM	FACULTY
ACCOUNTING						
ACT 3203	3	Intermediate Accounting I	M	6:00 - 9:00 pm	108	Lunsford
ACT 4343	3	Auditing Theory and Practice	W	6:00 - 9:00 pm	108	Lunsford
ART 2203A	3	The History of Western Art II	MW	1:00 - 2:20 pm	ITV	Staff
ART 2213	3	The Artist	TTh	1:00 - 2:20 pm	ITV	Staff
BIOLOGY						
BIO 3324	4	Vertebrate Zoology and Laboratory	W	6:00 - 10:00 pm	111	West
BIO 3404	4	Genetics and Laboratory	M	6:00 - 9:00 pm	111	Breene
BIO 4703	3	Ecology	Fri	6:00 - 9:00 pm	111	Bierle
BUSINESS ADMINISTRATION						
BUA 2223	3	Principles of Real Estate	T	6:00 - 9:00 pm	110	Vandergrif
BUA 3303	3	Professional Communication and Sales	W	6:00 - 9:00 pm	107	Milligan
COLLEGE COURSES						
CSW 4691	1	Senior Seminar in Leadership and Ethics	Sat	11:00 - Noon	106	Staff
COMPUTER SCIENCE						
CSI 2213	3	Electronic Spreadsheets	Th	6:00 - 9:00 pm	108	Williams,
CRIMINAL JUSTICE						
CRJ 1703	3	Introduction to Criminal Justice	Internet Class			Lunsford
CRJ 2703	3	Introduction to Judicial Processes	Internet Class			Lunsford
CRJ 2713	3	Criminal Law I	Internet Class			Lunsford
CRJ 2723	3	Criminal Law II	Internet Class			Lunsford
CRJ 2733	3	Criminal Investigation I	Internet Class			Lunsford
CRJ 3203	3	Understanding Criminal Behavior	M	6:00 - 9:00 pm	Conf	Blenden
CRJ 3303	3	Law Enforcement Management	Th	6:00 - 9:00 pm	Conf	Banks
CRJ 3313	3	Correctional Processes	Tu	6:00 - 9:00 pm	Conf	Stevens
CRJ 3403	3	Community Corrections	Internet Class			
CRJ 3503	3	Juvenile Justice Systems	Internet Class			
CRJ 4103	3	Corrections Operations and Management	Internet Class			
ECONOMICS						
ECO 3802	2	Internship in Free Enterprise	TTh	11:00 - Noon	ITV	DiUlus
ECO 3203	3	Principles of Business in a Free Enterprise System	Th	8:00 - 9:20 am	ITV	DiUlus
ECO 4802	2	Internship in Free Enterprise	TTh	11:00 - Noon	ITV	DiUlus
EDUCATION						
BIL 3102	2	Teaching English as a Second Language	MW	4:00 - 4:50 pm	ITV	Castillo
BIL 3301	1	Assessment and Evaluation of Bilingual Learner	M	5:00 - 5:50 pm	ITV	Castillo
BIL 4101	1	Research in Bilingual Education	W	5:00 - 5:50 pm	ITV	Castillo
EDU 1101	1	Field-Based Observations	W	5:00 - 5:50 pm	106	Nelson
EDU 2103	3	Foundations of Education	W	6:00 - 9:00 pm	106	Wittman
EDU 3203	3	Psychological Foundations of Teaching and Learning	MW	8:00 - 9:20 am	ITV	Staff
EDU 3222	2	Classroom Management and Organization	M	4:00 - 6:00 pm	107	Alsop
EDU 4213	3	Teaching in the Secondary School	M	6:00 - 9:00 pm	107	Castillo
EDU 4413	3	Reading in the Content Area	Fri	6:00 - 9:00 pm	106	Sanford
EDU 4546	6	Student Teaching	TBA		CSWC	Wheeler
EDU 4601	1	Student Teaching Seminar	W	5:00 - 5:50 pm	107	Wheeler
SPED 1101	1	Field-Based Observation	W	5:00 - 5:50 pm	CSWC	Hamberg
SPED 2103	3	Introduction to Exceptional Learners & Special Ed	W	6:00 - 9:00 pm	CSWC	Nelson
SPED 3523	3	Assessment, Evaluation, Referral, & Placement	M	6:00 - 9:00 pm	CSWC	Nelson
SPED 4201	1	The Gifted / Talented Learner	Tu	4:00 - 5:00 pm	CSWC	Fox
SPED 4502	2	Field Experience II in Special Education Settings	Tu	7:00 - 9:00 pm	CSWC	Nelson
SPED 4546	6	Student Teaching	TBA		CSWC	Wheeler
SPED 4601	1	Intern Teaching Seminar	W	5:00 - 5:50 pm	CSWC	Wheeler
ENGLISH						
ENG 2213	3	Creative Writing	Fri	1:00 - 4:00 pm	106	Milligan
ENG 3563	3	The Novel	Tu	6:00 - 9:00 pm	106	Milligan
ENVIRONMENTAL MANAGEMENT						
EMS 4532	2	Hydrosphere	W	7:00 - 9:00 pm	110	Nance, R
EMS 4552	2	Ethics of Environmental Management	Sat	9:00 - Noon	110	Kehrman
FINANCE						
FIN 3203	3	Principles of Public Finance	Fri	6:00 - 9:00 pm	CSWC	Beasley
FIN 3423	3	Financial Management	W	6:00 - 9:00 pm	CSWC	Bradford
HISTORY						
HIS 1203	3	Western Civilization from 1716	MW	9:30 - 10:50 am	ITV	Sumruld
HIS 2103	3	American History to 1876	W	6:00 - 9:00 pm	CSWC	Bradford
HIS 2303	3	The History and Geography of New Mexico	TTh	1:00 - 2:20 pm	ITV	Staff
MANAGEMENT						
MGT 3113	3	Problem Solving in Business	M	6:00 - 9:00 pm	CSWC	Beasley
MGT 3123	3	Ethics and Leadership	Tu	6:00 - 9:00 pm	CSWC	Bendixson
MGT 3503	3	Organizational Behavior	Th	1:00 - 4:00 pm	CSWC	Vandergrif
MGT 4162	2	Creating a Business Plan	W	6:00 - 8:00 pm	CSWC	Lunsford, I
MARKETING						
MKT 3323A	3	Principles of Marketing and Sales	MW	2:30 - 3:50 pm	ITV	Lunsford, I
MKT 3323B	3	Principles of Marketing and Sales	Th	6:00 - 9:00 pm	CSWC	Coalson
MKT 3503	3	Consumer Behavior	Sat	9:00 - Noon	CSWC	Coalson
MATHEMATICS						
MAT 1203	3	College Algebra for Math and Science Majors	Tu	9:00 - Noon	110	Hayes
MAT 2214	4	Analytic Geometry and Calculus II	Sat	9:00 - Noon	110	Hayes
MAT 3313	3	Statistics I	Tu	6:00 - 9:00 pm	CSWC	Hayes
MAT 4103	3	Mathematical Logic	M	6:00 - 9:00 pm	CSWC	Hayes
POLITICAL SCIENCE						
POS 3103	3	American Ideologies	Th	1:00 - 4:00 pm	CSWC	Vaughn
POS 3303	3	American Presidency	Tu	1:00 - 4:00 pm	CSWC	Vaughn
PSYCHOLOGY						
PSY 3103	3	Principles of Behavior Management	Th	6:00 - 9:00 pm	CSWC	Frazier
PSY 3113A	3	Cognition	MW	11:00 - 12:20 pm	ITV	Staff
PSY 3113B	3	Cognition	W	6:00 - 9:00 pm	CSWC	Frazier
PSY 3213	3	Developmental Psychology	Th	6:00 - 9:00 pm	CSWC	Frazier
RELIGION						
REL 1103	3	Old Testament Survey	Th	6:00 - 9:00 pm	CSWC	Robinson
SOCIOLOGY						
SOC 3203	3	Race and Ethnic Relations	Tu	6:00 - 9:00 pm	CSWC	Williams,
SPANISH						
SPA 3303	3	Survey of Literature	TTh	4:30 - 5:50 pm	ITV	Palomo, J
SPEECH						
SPE 1103	3	Principles of Speech	M	9:00 - Noon	CSWC	Milligan



College of the Southwest -- Carlsbad Campus
Spring 2001 Session "B"
March 19 - May 25, 2001

COURSE NO.	CR	TITLE	DAY	TIME	ROOM	FACULTY
ACCOUNTING						
ACT 3213	3	Intermediate Accounting II	Th	6:00 - 9:00 pm	108	Lunsford
ACT 4023	3	Accounting Information Systems	M	6:00 - 9:00 pm	108	Lunsford
ACT 4253	3	Advanced Accounting				Lunsford
ACT 4363	3	Computer Applications in Accounting	W	6:00 - 9:00 pm	108	Lunsford
BIOLOGY						
BIO 3303	3	Management and Conservation of Natural Resources	M	6:00 - 9:00 pm	111	Bierle
BIO 3314	3	Invertebrate Zoology	T	6:00 - 9:00 pm	111	Breene
BIO 3311	1	Invertebrate Zoology Laboratory	TBA		111	Breene
BIO 4204	3	Entomology	Th	6:00 - 9:00 pm	CSWC	Breene
BIO 4201	1	Entomology Laboratory	TBA		CSWC	Breene
COMPUTER SCIENCE						
CSI 2103	3	Database Management	M	6:00 - 9:00 pm	CSWC	Williams
CSI 2203	3	Educational Technology	Tu	6:00 - 9:00 pm	108	Baca
CRIMINAL JUSTICE						
CRJ 3313	3	Criminal Processes	W	6:00 - 9:00 pm	CSWC	Blenden
CRJ 3603	3	Victimology	Tu	6:00 - 9:00 pm	CSWC	Parker-Stevens
CRJ 4103	3	Correctional Operations and Management	Th	6:00 - 9:00 pm	CSWC	Banks
CRJ 4403	3	Prosecution and Adjudication	Internet Class		CSWC	Staff
CRJ 4413	3	Civil Law and the Legal System	Internet Class		CSWC	Staff
CRJ 4503	3	Penology	Internet Class		CSWC	Staff
EDUCATION						
EDU 3203	3	Psychology Foundations of Teaching and Learning	W	6:00 - 9:00 pm	CSWC	Hamel/Wheele
EDU 3213	3	Survey of Multicultural and Exceptional Learner	W	9:00 - Noon	CSWC	Castillo
EDU 3523	3	Educational Measurement and Evaluation	M	6:00 - 9:00 pm	CSWC	Click
EDU 4114	4	Teaching in the Elementary School	W	5:00 - 9:00 pm	CSWC	Alsop
EDU 4502	2	Field Experience II	Th	4:00 - 6:00 pm	CSWC	Nelson
SPED 3222	2	Classroom Management and the Exceptional Learner	W	6:00 - 8:00 pm	CSWC	Nelson
SPED 3423	3	Special Education Curriculum	M	6:00 - 9:00 pm	CSWC	Hamberg
SPED 4211	1	The Physically Impaired Learner	Tu	4:00 - 5:00 pm	CSWC	Fox
SPED 4221	1	The Mentally Impaired Learner	Tu	5:00 - 6:00 pm	CSWC	Fox
SPED 4231	1	The Behavior-Disordered Learner	Th	4:00 - 5:00 pm	CSWC	Fox
SPED 4241	1	The Learning-Disabled Learner	Th	5:00 - 6:00 pm	CSWC	Fox
ENGLISH						
ENG 2223	3	Life and Literature of the Southwest	Tu	6:00 - 9:00 pm	CSWC	Aycock
ENG 2303	3	Survey of British Literature	Th	6:00 - 9:00 pm	CSWC	Milligan
ENG 2433	3	Survey of Popular Literature	Sat	9:00 - Noon	CSWC	Milligan
ENG 3223	3	Technical Writing	Internet Class			Milligan
ENG 3513	3	Children's Literature	Tu	6:00 - 9:00 pm	CSWC	Baca
ENVIRONMENTAL MANAGEMENT						
EMS 3303	3	Social Analysis	Sat	9:00 - Noon	CSWC	Waters
EMS 4303	3	Environment and Energy	W	6:00 - 9:00 pm	CSWC	Beasley
EMS 4402	2	Renewable Resource Management	Tu	6:00 - 8:00 pm	CSWC	Bierle
EMS 4542	2	The Geosphere	Th	4:00 - 6:00 pm	CSWC	Nance, R
EMS 4833	3	Senior Project in Environmental Management	Th	6:00 - 9:00 pm	CSWC	Scott
FINANCE						
FIN 3303	3	Money and Banking	W	1:00 - 4:00 pm	CSWC	St. John
FIN 3413	3	Corporate Finance	Tu	6:00 - 9:00 pm	CSWC	Bradford
FIN 3443	3	Financial Analysis	Th	6:00 - 9:00 pm	CSWC	Abercrombie
HISTORY						
HIS 2203	3	American History from 1876	Tu	9:00 - Noon	CSWC	Vaughn
HIS 2223	3	Life and Literature of the Southwest	Tu	6:00 - 9:00 pm	CSWC	Aycock
HIS 4103	3	The History of U.S. Foreign Policy	Th	1:00 - 4:00 pm	CSWC	Staff
MANAGEMENT						
MGT 3223	3	Leadership and Motivation	Th	6:00 - 9:00 pm	CSWC	Bendixson
MGT 4123	3	Management Information Systems	M	6:00 - 9:00 pm	CSWC	Lunsford, P
MGT 4153	3	Business Operations Management	Fri	1:00 - 4:00 pm	CSWC	Bradford
MGT 4683	3	Senior Projects in Organizational Management	Sat	9:00 - Noon	CSWC	Staff
MATHEMATICS						
MAT 3204	4	Analytical Geometry and Calculus III	Tu	6:00 - 9:00 pm	CSWC	Hayes
MAT 3213	3	Differential Equations	M	6:00 - 9:00 pm	CSWC	Hayes
MAT 3303	3	Linear Algebra	W	6:00 - 9:00 pm	CSWC	Hayes
MAT 3323	3	Statistics II	Th	9:00 - Noon	CSWC	Hayes
POLITICAL SCIENCE						
POS 3113	3	Political Parties	Fri	9:00 - Noon	CSWC	Vaughn
POS 4143	3	Comparative Politics	Tu	1:00 - 4:00 pm	CSWC	Vaughn
PSYCHOLOGY						
PSY 4103	3	Personality	Sat	1:00 - 4:00 pm	CSWC	Hamel
PSY 4313	3	Interviewing and Counseling Techniques	Tu	6:00 - 9:00 pm	CSWC	Roberto
RELIGION						
REL 1203	3	New Testament Survey	Th	6:00 - 9:00 pm	CSWC	Robinson
SOCIOLOGY						
SOC 2113	3	Marriage and the Family	W	6:00 - 9:00 pm	CSWC	Frazier



School of Education's Annual Educational Conference * Money magazine's "Best College Buys in America" * U.S. News and World Report's Guide to "America's Best Colleges" * Master of Science in Education Degree in School Counseling * Bachelor of Management * The Leadership Council * National Association of Intercollegiate Athletics * Senior Seminar in Leadership and Ethics * "A Taste of Literature" * Servant Leadership * Individual Attention * Sigma Tau Delta, the International English Honor Society * Southwest Association of Future Educators * CSW Theatre Department * Master of Science in Education Degree in Educational Administration * Christian Principles * Time/Princeton Review's "The Best College for You" * Bachelor of Arts and Sciences Degree * Bilingual Education * Alpha Chi National Honor Society * www.csw.edu * Freshman Success * Lady Mustang Volleyball * Teacher Certification * CSW's Board of Trustees * Intramural Sports * Hatton W. Sumners Speaker Series * Ad Tempus * Special Education * Life Insights for Excellence * Phase One of Comprehensive Campus Master Plan * Bachelor of Science * Commitment to Excellence * Intel Foundation's Teach to the Future Pilot Project * Campus Crusade for Christ * Debt-Free Operations * I CAN Scholarships for Grades 7-12 * VISTA * Athletic Training * Academic Distinction * Undergraduate Degrees in 21 Fields of Liberal Arts * Prairie Dog Post * Lady Mustang Soccer * Great Financial Aid Packages * President's Student Advisory Council * Free Enterprise Education * Money magazine's "Best College Buys in America" * Small Class Size * CSW Ambassadors * Individual Responsibility * Distinguished Lecture Series * Hatton W. Sumners Speaker Series * Reader's Digest National Education Trust Initiative * Mustang Baseball * Center for Business Leadership * Quality Instruction * Distinguished Lecture Series * Hatton W. Sumners Speaker Series * Reader's Digest National Education Trust Initiative * Mustang Baseball * Center for Business Leadership * Quality Instruction * Success 2000: A Leadership Camp for Young Americans * Center for Educational Excellence * Special Course Offerings * Students In Free Enterprise * Estacado Library Information Network * Southwest Creations * Faith in 2000 * College of the